

Arkansas Covered Employment & Earnings



Annual
2017

**COVERED EMPLOYMENT AND EARNINGS
STATE OF ARKANSAS
ANNUAL 2017**

**ASA HUTCHINSON, GOVERNOR
STATE OF ARKANSAS**

**DARYL E. BASSETT, DIRECTOR
DEPARTMENT OF WORKFORCE SERVICES**

**PUBLISHED BY
LABOR MARKET INFORMATION & ANALYSIS
BUREAU OF LABOR STATISTICS PROGRAMS
POST OFFICE BOX 2981
LITTLE ROCK, ARKANSAS 72203-2981
SUSAN PRICE, BLS PROGRAMS MANAGER
TELEPHONE (501) 682-3103**

STATE OF ARKANSAS WEBPAGE: <http://www.arkansas.gov>

DEPARTMENT OF WORKFORCE SERVICES WEBPAGE: <http://www.dws.arkansas.gov>

WEBPAGE FOR LABOR MARKET INFORMATION: <http://www.discover.arkansas.gov>

RELEASED: MAY 2018

TABLE OF CONTENTS

	Page
Description of Data	1
Industry Classification	1
Definition of Covered Employment and Earnings	2
Federal Government	2
County Classification	2
Significant Developments During Calendar Year 2017	3

GRAPHS AND TABLES

Graph 1	Average Total Covered Employment for Selected Years, Arkansas	7
Graph 2	Total Covered Earnings, by Calendar Quarter for Selected Years, Arkansas	8
Table 1	Annual Comparison of Covered Employment and Wages, by Industry	5
Table 2	Total Covered Employment in Arkansas, 2010 – 2017	6
Table 3	Total Covered Earnings, 2010 – 2017	9
Table 4	Total Taxable Earnings, 2010 – 2017	10
Table 5	State Summary – Employment and Total Earnings, by Industry, Calendar Year 2017	11
Table 6	County Summary – Employment and Total Earnings, by Industry, Calendar Year 2017	22
Table 7	Federal Government Employment and Total Earnings in Arkansas, Calendar Year 2017	60
Table 8	Workforce Investment Area – Employment and Total Earnings, by Industry, Calendar Year 2017	61

EMPLOYMENT AND EARNINGS
UNDER THE ARKANSAS EMPLOYMENT SECURITY LAW
ANNUAL 2017

DESCRIPTION AND CLASSIFICATION OF DATA

This publication contains covered employment and payroll data by industry and county for the Calendar Year 2017 and a record for total covered employment by month, quarterly payroll data, average weekly earnings, and total taxable earnings for 2010 through 2017. These data are compiled from quarterly contributions and wage reports submitted by employers subject to the Arkansas Employment Security Law.

Employment data have been tabulated for each month of the quarter by industry under the **North American Industry Classification System** (NAICS) by state, county, and workforce area. Payroll data represent the total wages paid during the quarter and are classified by industry for the state and by publishable industry groups for each county and workforce area.

Due to industry classification revisions, previously published data will not always be comparable with current data. For this reason, comparisons should not be made between the same industries under different revisions. For more information, visit the NAICS home page at <http://www.census.gov/naics>.

Industry Classification Revisions

- SIC (Standard Industrial Classification) 1987 to NAICS 2002
- NAICS 2002 to NAICS 2007
- NAICS 2007 to NAICS 2012
- NAICS 2012 to NAICS 2017

The tabulation of this data is a joint effort in conjunction with the United States Bureau of Labor Statistics. Data included in this publication are subject to revisions. Revisions are typically reflected in the Annual Covered Employment and Earnings publication.

DEFINITION OF COVERED EMPLOYMENT AND EARNINGS

Covered Employment is the total number of workers employed by establishments subject to the Arkansas Employment Security Law that worked or received pay for the payroll period including the 12th of the month. Earnings include all wages paid to any covered employee by their employer including salaries, bonuses, commissions, fees, fringe benefits, sick pay made directly to employees or dependents, deferred compensation, and reported tips. These wages include both taxable and nontaxable wages. Only the first \$12,000 paid to each worker by an employer in the calendar year is taxable under the Arkansas Employment Security Law.

An Arkansas state unemployment account is required of any entity meeting the definition of an employer. As described by Arkansas Department of Workforce Services Law, the definition of an employer includes, but is not limited to, a sole proprietorship, partnership, corporation, associations, trust, estate, and receiver or trustee in bankruptcy. The entity must employ one or more individuals for ten or more days in a calendar year, whether or not the days are consecutive.

Currently excluded from coverage is employment covered by the Railroad Unemployment Insurance Act, some domestic service workers, employees of small agricultural establishments, self-employed workers, unpaid family workers, insurance and real estate agents paid only on a commission basis, and employees of churches and religious organizations except separately incorporated schools.

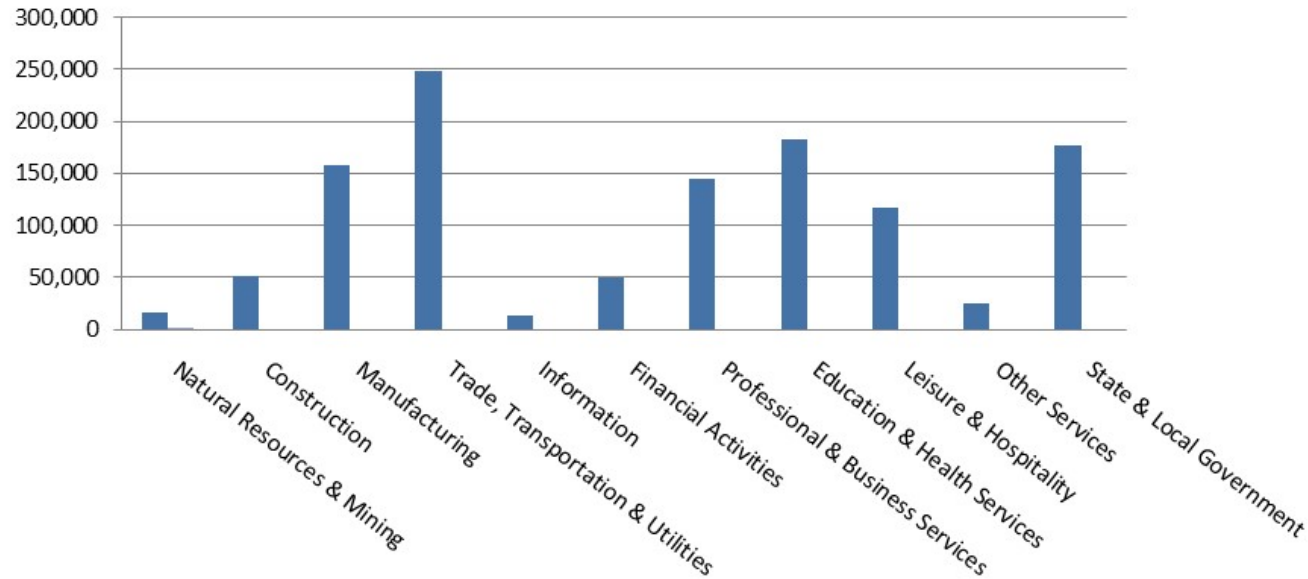
Civilian federal workers are covered by Unemployment Compensation for Federal Employees (UCFE).

SIGNIFICANT DEVELOPMENTS DURING CALENDAR YEAR 2017

AVERAGE EMPLOYMENT CHANGES

Covered employment averaged 1,180,339 during the Calendar Year 2017 (see Table 1, page 5), an increase of 8,794 from the previous year. The greatest employment gain occurred in Education and Health Services (+5,443). The largest annual loss occurred in Trade, Transportation, & Utilities (-1,693).

Average Covered Employment by NAICS



EMPLOYMENT CHANGES FOR CALENDAR YEAR 2017

Seven of the eleven major industry sectors recorded over-the-year employment gains (see Table 1). The increase in Educational & Health Services brought the sector's employment average to 183,328; this growth was mainly due to the expansion in Health Care & Social Assistance. The Manufacturing subsector had an average of 157,323 jobs, an increase of 2,532 from 2016. Jobs in Professional & Business Services grew to 144,038. This increase can be attributed mainly to Administrative & Waste Services which experienced a gain of 1,315.

Four major industry sectors experienced over-the-year losses. Trade, Transportation, & Utilities had the most significant decline in average employment (-1,298), Retail Trade lost 1,693 jobs. State & Local Government (-1,109), Information (-465), and Natural Resources & Mining (-444) also reported job losses over the year.

EMPLOYMENT CHANGES FOR CALENDAR YEAR 2017

Pulaski County posted the highest average covered employment for Arkansas counties in 2017 at 240,839. Benton County averaged 117,105 in covered employment, slightly higher than Washington County with 103,348. Sebastian County had the fourth highest average covered employment with 64,747, followed by Craighead County with 49,794. Four of the five leading counties experienced over the year growth in employment ranging from a low of 1,466 added jobs in Craighead County to 2,946 jobs in Benton County, Sebastian County lost 691 jobs from 2016 to 2017.

COVERED WAGES

Wages paid to covered workers totaled \$50,204,325,311 for the Calendar Year 2017 (see Table 1), for an average weekly wage of \$817.96 (see Table 5). Employees in Benton County recorded the highest average weekly wage (\$1,106.36), and workers in Newton County the lowest (\$463.94) (see Table 6).

The Professional & Business Services sector recorded the highest average weekly wage for the State of Arkansas at \$1,139.71. The Leisure and Hospitality sector reported the lowest average weekly wage at \$311.14 (see Table 5).

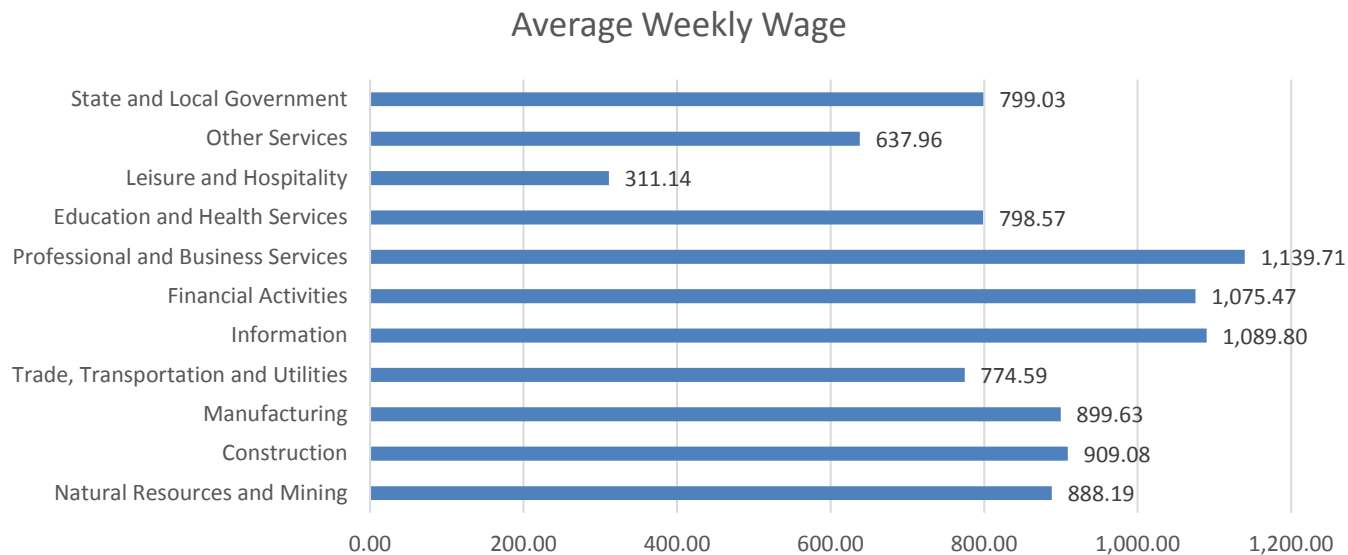


TABLE 1. YEARLY COMPARISON OF COVERED EMPLOYMENT AND WAGES, BY INDUSTRY

North American Industry Classification System - Industry Groups	Number of Employing Units	Average Covered Employment	Percent of Total	Total Calendar Earnings		Percent of Total	Average Weekly Earnings
				2016	2017		
Total	88,230	1,180,339	100	8,794	\$50,204,325,311	100	\$817.96
Natural Resources & Mining	2,554	16,475	1.4	-444	760,913,380	1.5	888.19
Agriculture, Forestry, Fishing & Hunting	2,112	12,676	1.1	-90	516,371,614	1.0	783.39
Mining	442	3,799	0.3	-354	244,541,766	0.5	1,237.89
Construction	6,826	51,109	4.3	807	2,416,027,194	4.8	909.08
Manufacturing	2,936	157,323	13.3	2,532	7,359,703,794	14.7	899.63
Trade, Transportation & Utilities	21,517	247,752	21.0	-1,298	9,979,061,802	19.9	774.59
Wholesale Trade	7,180	46,898	4.0	651	3,170,071,330	6.3	1,299.90
Retail Trade	11,034	140,613	11.9	-1,693	3,770,429,327	7.5	515.66
Transportation & Warehousing	2,891	52,533	4.5	-250	2,379,532,746	4.7	871.08
Utilities	412	7,708	0.7	-6	659,028,399	1.3	1,644.22
Information	1,124	12,770	1.1	-465	723,673,359	1.4	1,089.80
Financial Activities	8,261	49,604	4.2	190	2,774,083,810	5.5	1,075.47
Finance & Insurance	4,898	36,200	3.1	83	2,268,411,669	4.5	1,205.06
Real Estate & Rental & Leasing	3,363	13,404	1.1	107	505,672,141	1.0	725.49
Professional & Business Services	13,871	144,038	12.2	1,671	8,536,382,651	17.0	1,139.71
Professional & Technical Services	8,739	42,831	3.6	290	2,620,300,590	5.2	1,176.49
Management of Companies & Enterprises	551	35,106	3.0	66	4,014,956,723	8.0	2,199.36
Administrative & Waste Services	4,581	66,101	5.6	1,315	1,901,125,338	3.8	553.09
Education & Health Services	15,767	183,328	15.5	5,443	7,612,836,856	15.2	798.57
Educational Services	829	11,489	1.0	311	409,859,670	0.8	686.04
Health Care & Social Assistance	14,938	171,839	14.6	5,132	7,202,977,186	14.3	806.10
Leisure & Hospitality	7,024	116,709	9.9	1,366	1,888,257,505	3.8	311.14
Arts, Entertainment & Recreation	965	11,186	0.9	139	230,612,540	0.5	396.46
Accommodation & Food Services	6,059	105,523	8.9	1,227	1,657,644,965	3.3	302.09
Other Services	5,325	24,795	2.1	101	822,547,328	1.6	637.96
State & Local Government	3,025	176,436	14.9	-1,109	7,330,837,632	14.6	799.03
Local Government	1,959	108,082	9.2	-72	4,133,621,140	8.2	735.49
State Government	1,066	68,354	5.8	-1,037	3,197,216,492	6.4	899.51
Nonclassifiable Establishments	0	0	0.0	0	0	0.0	0.00

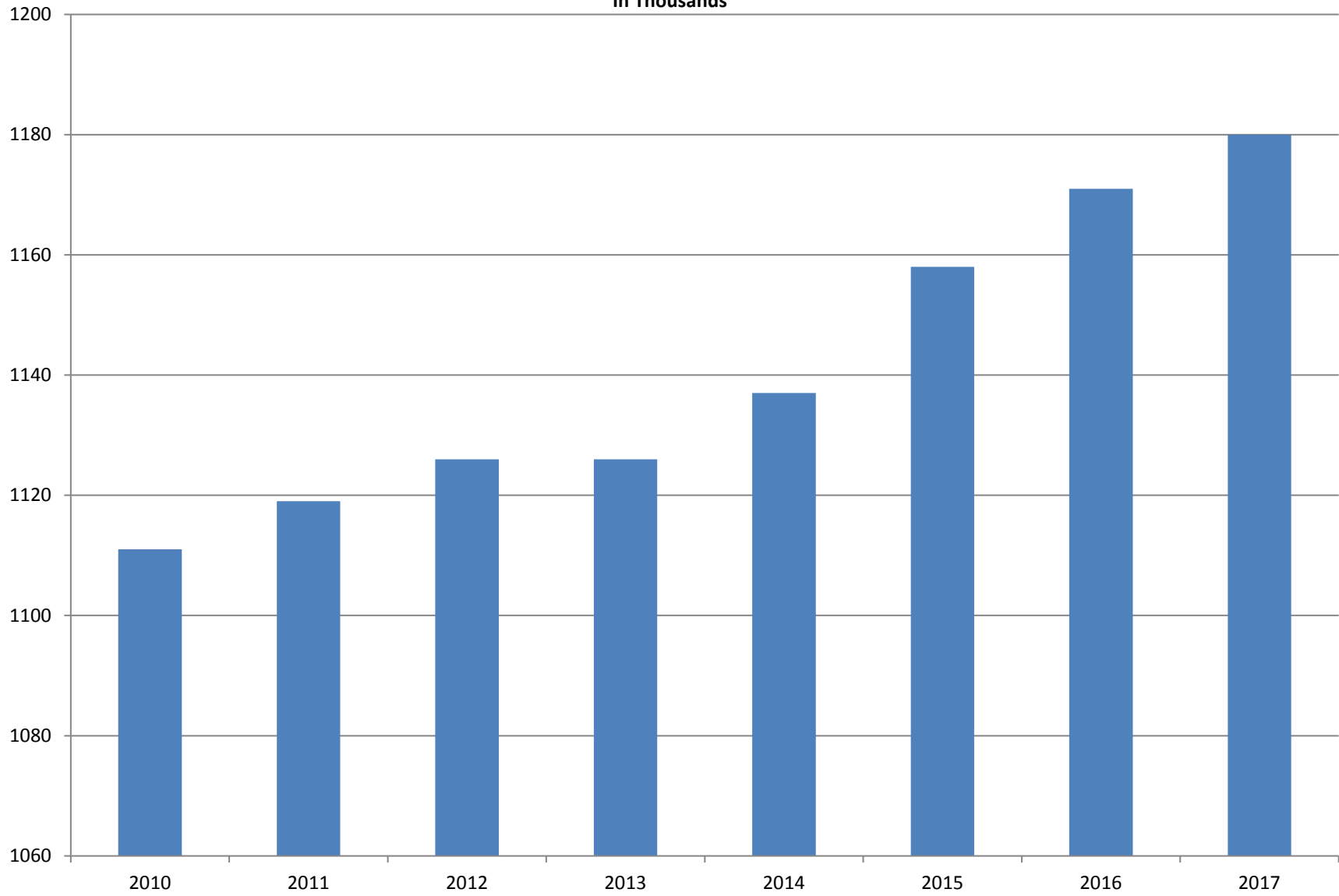
Note: Items do not necessarily add to total because of rounding. Because of industry code changes between years, substantial employment and wage shifts among industries are anticipated.

TABLE 2. TOTAL COVERED EMPLOYMENT IN ARKANSAS

PERIOD	2010	2011	2012	2013	2014	2015	2016	2017
AVERAGE	1,110,947	1,118,639	1,126,171	1,125,890	1,137,486	1,157,634	1,171,490	1,180,399
January	1,089,984	1,098,349	1,113,274	1,112,991	1,114,412	1,135,577	1,152,434	1,162,153
February	1,091,282	1,098,445	1,119,319	1,121,492	1,122,905	1,144,902	1,162,294	1,172,930
March	1,106,198	1,113,061	1,131,123	1,129,100	1,132,106	1,146,413	1,170,837	1,179,908
April	1,115,341	1,129,635	1,136,608	1,134,734	1,140,788	1,158,606	1,178,630	1,185,282
May	1,123,250	1,126,371	1,142,985	1,138,383	1,149,046	1,167,657	1,181,644	1,189,981
June	1,130,164	1,123,412	1,136,699	1,130,402	1,144,876	1,164,607	1,177,506	1,185,938
July	1,073,743	1,080,937	1,078,836	1,083,849	1,096,675	1,119,390	1,132,361	1,138,087
August	1,099,795	1,106,262	1,108,552	1,109,759	1,125,162	1,148,502	1,160,743	1,168,694
September	1,124,281	1,132,779	1,134,829	1,135,673	1,150,545	1,173,776	1,185,352	1,193,046
October	1,125,073	1,138,395	1,135,677	1,138,312	1,153,684	1,173,953	1,185,022	1,194,135
November	1,126,781	1,138,543	1,137,411	1,141,035	1,158,579	1,177,717	1,186,046	1,197,739
December	1,125,466	1,137,474	1,138,742	1,134,955	1,161,056	1,180,513	1,185,009	1,196,898

AVERAGE TOTAL COVERED EMPLOYMENT

In Thousands



TOTAL COVERED EARNINGS BY CALENDAR YEAR

In Thousands

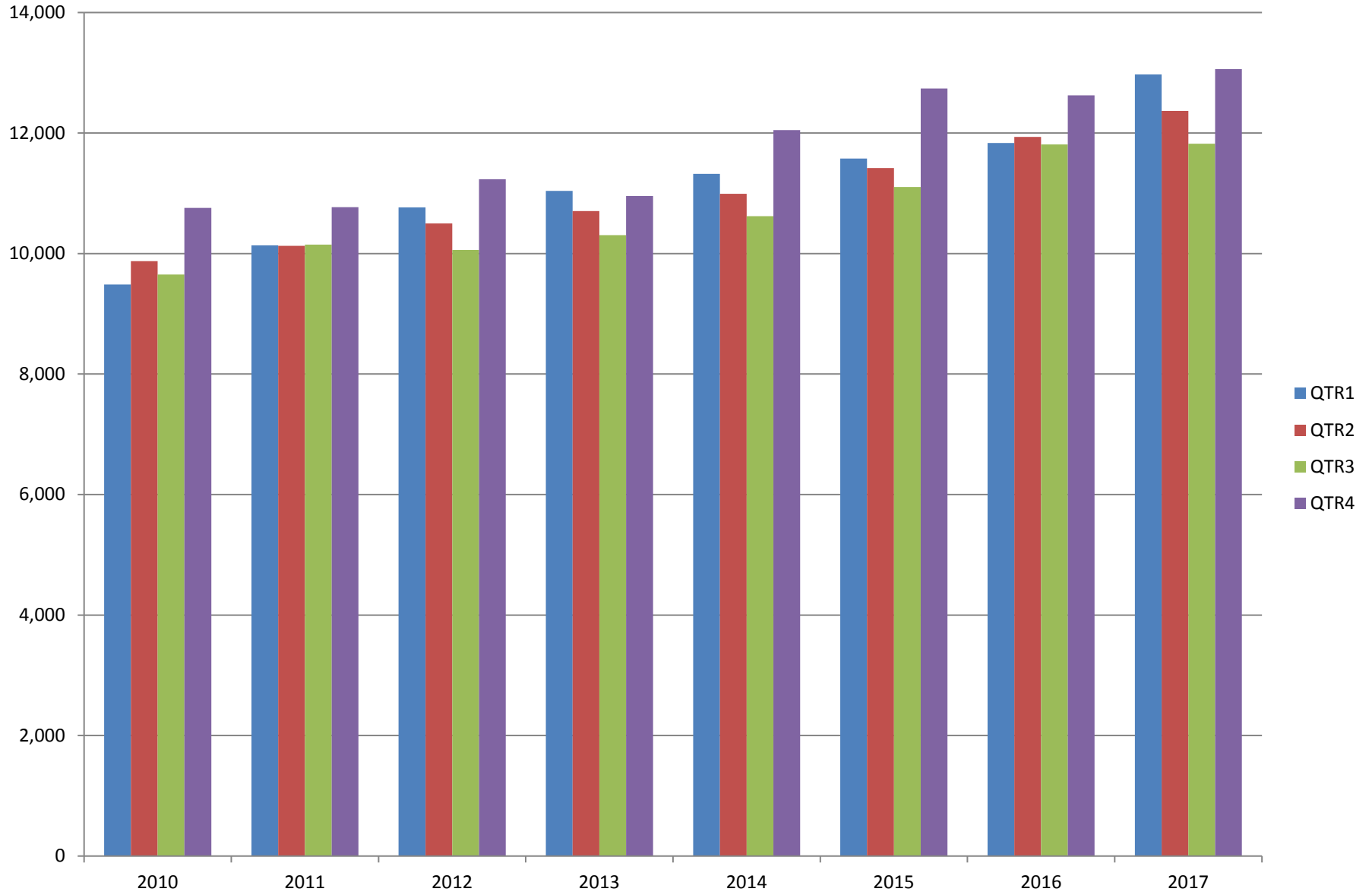


TABLE 3. TOTAL COVERED EARNINGS 2010 - 2017

PERIOD	2010	2011	2012	2013
TOTAL	\$39,769,504,992	\$41,177,659,236	\$42,551,238,929	\$43,371,086,461
January - March	9,486,245,580	10,134,035,254	10,766,175,449	11,050,678,946
April - June	9,873,489,653	10,128,274,611	10,494,369,042	10,692,826,528
July - September	9,653,588,807	10,147,287,431	10,053,294,410	10,322,652,747
October - December	10,756,180,952	10,768,061,940	11,237,400,028	11,304,928,240
Average Weekly Earnings	\$688.42	\$707.89	\$726.62	\$740.80

PERIOD	2014	2015	2016	2017
TOTAL	\$44,980,520,034	\$46,836,352,793	\$48,207,277,530	\$50,224,574,844
January - March	11,321,422,241	11,575,046,688	11,836,255,664	12,970,946,939
April - June	10,991,760,061	11,419,363,330	11,935,722,186	12,367,259,067
July - September	10,619,889,280	11,104,443,452	11,809,460,297	11,823,484,551
October - December	12,047,448,452	12,737,499,323	12,625,839,383	13,062,884,287
Average Weekly Earnings	\$760.46	\$778.05	\$791.35	\$818.25

TABLE 4. TOTAL TAXABLE EARNINGS, 2010 - 2017

PERIOD	2010	2011	2012	2013
TOTAL	11,332,118,456	11,479,396,226	11,624,348,048	11,644,747,978
January - March	5,607,134,758	5,828,877,821	6,167,036,199	6,184,735,653
April - June	2,977,100,591	2,910,604,359	2,838,154,846	2,805,431,293
July - September	1,577,067,770	1,601,382,146	1,494,712,584	1,506,497,129
October - December	1,170,815,337	1,138,531,900	1,124,444,419	1,148,083,903

PERIOD	2014	2015	2016	2017
TOTAL	11,919,662,224	12,258,632,610	12,511,938,047	12,765,934,583
January - March	6,288,682,396	6,378,966,662	6,595,351,454	6,971,816,280
April - June	2,831,013,392	2,915,293,283	3,003,077,908	2,918,611,828
July - September	1,552,243,963	1,640,978,599	1,651,582,584	1,580,186,171
October - December	1,247,722,473	1,323,394,066	1,261,926,101	1,295,320,304

TABLE 5. STATEWIDE SUMMARY CALENDAR YEAR 2017

North American Industry Classification System - Industry Groups		Average Employing Units	Average Covered Employment	Total Calendar Earnings	Average Weekly Earnings
TOTAL, ALL INDUSTRIES		88,230	1,180,339	\$50,204,325,311	\$817.96
NATURAL RESOURCES & MINING		2,554	16,475	\$760,913,380	\$888.19
11	AGRICULTURE, FORESTRY, FISHING & HUNTING	2,112	12,676	\$516,371,614	\$783.39
111	CROP PRODUCTION	944	4,092	\$130,804,406	\$614.73
1111	Oilseed & Grain Farming	690	2,789	91,631,735	631.82
1112	Vegetable & Melon Farming	35	213	5,548,553	500.95
1113	Fruit & Tree Nut Farming	15	44	1,096,011	479.03
1114	Greenhouse & Nursery Production	40	364	11,436,908	604.23
1119	Other Crop Farming	164	682	21,091,199	594.72
112	ANIMAL PRODUCTION & AQUACULTURE	331	3,244	\$159,930,899	\$948.09
1121	Cattle Ranching & Farming	123	419	12,609,911	578.75
1122	Hog & Pig Farming	14	144	7,406,731	989.15
1123	Poultry & Egg Production	129	2,282	124,544,137	1,049.55
1125	Animal Aquaculture	43	343	13,889,319	778.72
	Other	22	56	1,480,801	508.52
113	FORESTRY & LOGGING	402	2,262	\$92,546,993	\$786.80
1131	Timber Tract Operations	33	142	5,860,896	793.73
1132	Forest Nurseries & Gathering of Forest Products	6	24	1,445,049	1,157.89
1133	Logging	363	2,096	85,241,048	782.09
114	FISHING, HUNTING & TRAPPING	5	23	\$533,825	\$446.34
115	SUPPORT ACTIVITIES FOR AGRICULTURE & FORESTRY	430	3,055	\$132,555,491	\$834.42
1151	Support Activities for Crop Production	294	1,512	76,765,669	976.36
1152	Support Activities for Animal Production	64	708	23,305,625	633.03
1153	Support Activities for Forestry	72	835	32,484,197	748.14
21	MINING	442	3,799	\$244,541,766	\$1,237.89
211	OIL & GAS EXTRACTION	76	756	\$60,514,794	\$1,539.35
212	MINING (EXCEPT OIL & GAS)	103	1,691	\$93,108,216	\$1,058.87
213	SUPPORT ACTIVITIES FOR MINING	263	1,352	\$90,918,756	\$1,293.22

Note: Data may not add due to rounding.

TABLE 5. STATEWIDE SUMMARY CALENDAR YEAR 2017

North American Industry Classification System - Industry Groups		Average Employing Units	Average Covered Employment	Total Calendar Earnings	Average Weekly Earnings
CONSTRUCTION		6,826	51,109	\$2,416,027,194	\$909.08
236	CONSTRUCTION OF BUILDINGS	1,778	10,291	\$521,497,802	\$974.52
2361	Residential Building Construction	1,195	3,368	143,641,926	820.17
2362	Nonresidential Building Construction	583	6,923	377,855,876	1,049.61
237	HEAVY & CIVIL ENGINEERING CONSTRUCTION	705	9,041	\$481,735,446	\$1,024.68
2371	Utility System Construction	393	4,976	275,269,707	1,063.84
2372	Land Subdivision	48	91	3,844,063	812.35
2373	Highway, Street & Bridge Construction	178	3,252	164,005,639	969.85
2379	Other Heavy Construction	86	722	38,616,037	1,028.55
238	SPECIALTY TRADE CONTRACTORS	4,343	31,777	\$1,412,793,946	\$854.99
2381	Building Foundation & Exterior Contractors	796	5,869	251,880,196	825.33
2382	Building Equipment Contractors	2,103	17,208	820,496,020	916.94
2383	Building Finishing Contractors	722	4,043	158,273,830	752.84
2389	Other Specialty Trade Contractors	722	4,657	182,143,900	752.15
MANUFACTURING		2,936	157,323	\$7,359,703,794	\$899.63
311	FOOD MANUFACTURING	287	47,298	\$1,746,936,177	\$710.28
3111	Animal Food Manufacturing	47	1,881	97,678,456	998.63
3112	Grain & Oilseed Milling	34	2,689	124,898,832	893.23
3114	Fruit, Vegetable & Specialty Food	19	4,237	192,813,936	875.14
3115	Dairy Product Manufacturing	8	577	25,488,661	849.51
3116	Animal Slaughtering & Processing	77	31,879	1,050,599,854	633.77
3118	Bakeries & Tortilla Manufacturing	71	3,878	157,558,211	781.32
3119	Other Food Manufacturing	21	2,123	97,057,741	879.18
	Other	10	34	840,486	475.39
312	BEVERAGE & TOBACCO PRODUCT MANUFACTURING	54	1,472	\$71,162,111	\$929.69
313	TEXTILE MILLS	8	117	\$6,728,646	\$1,105.96
314	TEXTILE PRODUCT MILLS	44	989	\$49,082,553	\$954.39
3141	Textile Furnishing Mills	9	35	1,728,208	949.56
3149	Other Textile Product Mills	35	954	47,354,345	954.57
315	APPAREL MANUFACTURING	16	884	24,371,881	\$530.19
3151	Apparel Knitting Mills	3	619	17,805,528	553.17
	Other	13	265	6,566,353	476.51
316	LEATHER & ALLIED PRODUCT MANUFACTURING	15	1,038	\$26,254,407	\$486.41
3162	Footwear Manufacturing	5	851	20,443,184	461.97
3169	Other Leather & Allied Product Manufacturing	10	187	5,811,223	597.62

Note: Data may not add due to rounding.

TABLE 5. STATEWIDE SUMMARY CALENDAR YEAR 2017

North American Industry Classification System - Industry Groups		Average Employing Units	Average Covered Employment	Total Calendar Earnings	Average Weekly Earnings
321	WOOD PRODUCT MANUFACTURING	320	9,562	\$412,746,264	\$830.10
3211	Sawmills & Wood Preservation	152	4,608	213,382,599	890.52
3212	Veneer & Engineered Wood Products	40	1,807	90,840,216	966.76
3219	Other Wood Product Manufacturing	128	3,147	108,523,449	663.17
322	PAPER MANUFACTURING	72	9,361	\$613,095,825	\$1,259.51
3221	Pulp, Paper & Paperboard Mills	13	3,714	317,854,468	1,645.82
3222	Converted Paper Product Manufacturing	59	5,647	295,241,357	1,005.44
323	PRINTING & RELATED SUPPORT ACTIVITIES	242	3,932	\$160,669,641	\$785.81
324	PETROLEUM & COAL PRODUCTS MANUFACTURING	20	1,247	\$83,175,645	\$1,282.70
325	CHEMICAL MANUFACTURING	123	5,347	\$334,036,291	\$1,201.38
3251	Basic Chemical Manufacturing	33	1,801	135,373,456	1,445.49
3252	Resin, Rubber & Artificial Fibers	9	473	28,515,596	1,159.36
3253	Agricultural Chemical Manufacturing	14	448	30,498,945	1,309.19
3254	Pharmaceutical & Medicine Manufacturing	19	490	24,673,560	968.35
3255	Paint, Coating & Adhesive Manufacturing	10	244	14,494,972	1,142.42
3256	Soap, Cleaning Compound, & Toilet Preparation Manufacturing	14	1,180	59,666,344	972.40
3259	Other Chemical Preparation Manufacturing	24	711	40,813,418	1,103.90
326	PLASTICS & RUBBER PRODUCTS MANUFACTURING	123	10,826	\$529,354,645	\$940.32
3261	Plastics Product Manufacturing	95	6,632	295,734,369	857.54
3262	Rubber Product Manufacturing	28	4,194	233,620,276	1,071.22
327	NONMETALLIC MINERAL PRODUCT MANUFACTURING	235	3,593	\$175,673,797	\$940.26
3271	Clay Product & Refractory Manufacturing	13	481	21,920,459	876.40
3272	Glass & Glass Product Manufacturing	9	346	16,864,975	937.36
3273	Cement & Concrete Product Manufacturing	177	2,054	98,547,745	922.66
3274	Lime & Gypsum Product Manufacturing	3	299	18,731,851	1,204.78
3279	Other Nonmetallic Mineral Products Manufacturing	33	413	19,608,767	913.05
331	PRIMARY METAL MANUFACTURING	76	7,848	\$558,670,822	\$1,368.97
3311	Iron & Steel Mills & Ferroalloys	11	3,003	294,005,780	1,882.77
3312	Purchased Steel Product Manufacturing	21	1,878	110,323,590	1,129.72
3313	Alumina & Aluminum Production	17	944	53,525,402	1,090.40
3314	Other Nonferrous Metal Production	8	344	17,533,220	980.17
3315	Foundries	19	1,679	83,282,830	953.90

Note: Data may not add due to rounding.

TABLE 5. STATEWIDE SUMMARY CALENDAR YEAR 2017

North American Industry Classification System - Industry Groups		Average Employing Units	Average Covered Employment	Total Calendar Earnings	Average Weekly Earnings
332	FABRICATED METAL PRODUCT MANUFACTURING	515	15,296	\$785,472,872	\$987.53
3321	Forging & Stamping	13	413	18,789,672	874.91
3322	Cutlery & Hand Tool Manufacturing	12	573	25,521,672	856.55
3323	Architectural & Structural Metals	150	4,449	246,470,894	1,065.37
3324	Boilers, Tanks & Shipping Containers	15	655	34,833,100	1,022.70
3325	Hardware Manufacturing	5	245	11,765,508	923.51
3326	Spring & Wire Product Manufacturing	11	365	16,446,031	866.49
3327	Machine Shops & Threaded Products	202	1,833	78,180,157	820.22
3328	Coating, Engraving & Heat Treating Metals	39	619	24,238,097	753.02
3329	Other Fabricated Metal Product Manufacturing	68	6,144	329,227,741	1,030.49
333	MACHINERY MANUFACTURING	211	11,165	\$531,676,698	\$915.77
3331	Agriculture, Construction & Mining Machinery	40	2,571	99,015,078	740.62
3332	Industrial Machinery Manufacturing	22	710	38,632,149	1,046.37
3333	Commercial & Service Industry Machinery	20	723	38,018,440	1,011.24
3334	HVAC & Commercial Refrigeration Equipment	23	2,898	142,253,310	943.98
3335	Metalworking Machinery Manufacturing	58	1,029	46,311,135	865.50
3336	Turbine & Power Transmission Equipment Manufacturing	5	653	33,463,799	985.50
3339	Other General Purpose Machinery Manufacturing	43	2,581	133,982,787	998.29
334	COMPUTER & ELECTRONIC PRODUCT MANUFACTURING	51	2,110	\$108,884,723	\$992.39
3343	Audio & Video Equipment Manufacturing	5	128	5,291,715	795.03
3344	Semiconductors & Electronic Components	25	1,481	74,795,511	971.22
3345	Electronic Instrument Manufacturing	16	413	22,877,686	1,065.27
	Other	5	88	5,919,811	1,293.66
335	ELECTRICAL EQUIPMENT & APPLIANCES	57	4,779	\$254,892,488	\$1,025.69
3353	Electrical Equipment Manufacturing	22	3,158	172,619,571	1,051.17
3359	Other Electrical Equipment & Component Manufacturing	20	1,221	63,823,329	1,005.22
	Other	15	400	18,449,588	887.00
336	TRANSPORTATION EQUIPMENT MANUFACTURING	135	13,567	\$625,299,155	\$886.34
3362	Motor Vehicle Body & Trailer Manufacturing	32	2,005	76,964,022	738.19
3363	Motor Vehicle Parts Manufacturing	42	5,219	229,374,077	845.19
3364	Aerospace Product & Parts Manufacturing	27	2,996	186,512,487	1,197.19
3366	Ship & Boat Building	21	2,032	68,896,502	652.03
	Other	13	1,315	63,552,067	929.40
337	FURNITURE & RELATED PRODUCT MANUFACTURING	162	3,590	\$128,889,297	\$690.43
3371	Household & Institutional Furniture	136	2,914	100,839,181	665.48
3372	Office Furniture & Fixtures Manufacturing	20	586	25,422,334	834.29
3379	Other Furniture Related Product Manufacturing	6	90	2,627,782	561.49
339	MISCELLANEOUS MANUFACTURING	170	3,302	\$132,629,856	\$772.43
3391	Medical Equipment & Supplies Manufacturing	66	1,604	71,513,712	857.40
3399	Other Miscellaneous Manufacturing	104	1,698	61,116,144	692.17

Note: Data may not add due to rounding.

TABLE 5. STATEWIDE SUMMARY CALENDAR YEAR 2017

North American Industry Classification System - Industry Groups		Average Employing Units	Average Covered Employment	Total Calendar Earnings	Average Weekly Earnings
TRADE, TRANSPORTATION & UTILITIES		21,517	247,752	\$9,979,061,802	\$774.59
42	WHOLESALE TRADE	7,180	46,898	\$3,170,071,330	\$1,299.90
423	MERCHANT WHOLESALERS, DURABLE GOODS	2,087	20,487	\$1,157,767,088	\$1,086.77
4231	Motor Vehicle & Part Merchant Wholesalers	232	2,633	117,798,788	860.37
4232	Furniture & Furnishings Merchant Wholesalers	51	485	31,262,028	1,239.57
4233	Lumber & Supply Merchant Wholesalers	163	1,443	70,407,410	938.32
4234	Commercial Goods Merchant Wholesalers	291	2,391	174,416,921	1,402.83
4235	Metal & Mineral Merchant Wholesalers	52	838	43,771,608	1,004.49
4236	Appliances & Electronics Goods Merchant Wholesalers	194	2,065	137,705,789	1,282.42
4237	Hardware & Plumbing Merchant Wholesalers	226	2,352	130,651,917	1,068.26
4238	Machinery & Supply Merchant Wholesalers	677	6,543	367,984,891	1,081.56
4239	Miscellaneous Durable Goods Merchant Wholesalers	201	1,737	83,767,736	927.41
424	MERCHANT WHOLESALERS, NONDURABLE GOODS	1,113	14,492	\$809,334,554	\$1,073.98
4241	Paper & Paper Product Merchant Wholesalers	69	1,120	77,771,865	1,335.37
4242	Druggist' Goods Merchant Wholesalers	52	739	45,272,669	1,178.12
4243	Apparel & Piece Goods Merchant Wholesalers	36	624	31,345,775	966.03
4244	Grocery Product Merchant Wholesalers	279	4,374	279,307,465	1,228.01
4245	Farm Product Merchant Wholesalers	69	772	28,520,430	710.45
4246	Chemical merchant Wholesalers	86	636	44,495,340	1,345.41
4247	Petroleum Merchant Wholesalers	134	1,194	57,393,441	924.39
4248	Alcoholic Beverage Merchant Wholesalers	43	1,597	84,249,694	1,014.52
4249	Miscellaneous Nondurable Goods Merchant Wholesaler	345	3,436	160,977,875	900.97
425	ELECTRONIC MARKETS & AGENTS & BROKERS	\$3,980	\$11,919	\$1,202,969,688	\$1,940.94
44 - 45	RETAIL TRADE	11,034	140,613	\$3,770,429,327	\$515.66
441	MOTOR VEHICLE & PARTS DEALERS	1,535	19,394	\$847,495,961	\$840.36
4411	Automobile Dealers	630	12,041	607,977,344	971.01
4412	Other Motor Vehicle Dealers	173	1,684	72,521,374	828.17
4413	Automotive Parts, Accessories & Tire Stores	732	5,669	166,997,243	566.50
442	FURNITURE & HOME FURNISHINGS STORES	507	3,661	\$112,945,059	\$593.29
4421	Furniture Stores	273	2,034	72,212,688	682.75
4422	Home Furnishings Stores	234	1,627	40,732,371	481.45
443	ELECTRONICS & APPLIANCE STORES	416	3,588	\$123,115,295	\$659.87
444	BUILDING MATERIAL & GARDEN SUPPLY STORES	838	11,559	\$332,113,888	\$552.54
4441	Building Material & Supplies Dealers	593	9,552	282,272,899	568.29
4442	Lawn & Garden Equipment & Supplies Stores	245	2,007	49,840,989	477.57

Note: Data may not add due to rounding.

TABLE 5. STATEWIDE SUMMARY CALENDAR YEAR 2017

North American Industry Classification System - Industry Groups		Average Employing Units	Average Covered Employment	Total Calendar Earnings	Average Weekly Earnings
445	FOOD & BEVERAGE STORES	1,065	19,877	\$438,612,118	\$424.35
4451	Grocery Stores	564	17,018	362,243,389	409.34
4452	Specialty Food Stores	155	1,085	37,957,651	672.77
4453	Beer, Wine & Liquor Stores	346	1,774	38,411,078	416.39
446	HEALTH & PERSONAL CARE STORES	989	8,657	\$328,875,585	\$730.57
447	GASOLINE STATIONS	1,573	12,194	\$224,173,349	\$353.54
44711	Gasoline Stations with Convenience Stores	1,473	10,972	196,614,712	344.61
44719	Other Gasoline Stations	100	1,222	27,558,637	433.69
448	CLOTHING & CLOTHING ACCESSORIES STORES	1,054	8,448	\$146,080,925	\$332.53
4481	Clothing Stores	776	6,467	99,028,499	294.48
4482	Shoe Stores	140	1,245	20,074,355	310.08
4483	Jewelry, Luggage & Leather Goods Stores	138	736	26,978,071	704.90
451	SPORTING GOODS, HOBBY, BOOK & MUSIC STORES	468	4,557	\$88,060,307	\$371.62
4511	Sporting Goods & Musical Instrument Stores	403	4,062	79,932,413	378.42
4512	Book, Periodical & Music Stores	65	495	8,127,894	315.77
452	GENERAL MERCH&ISE STORES	957	39,585	\$897,931,623	\$436.22
453	MISCELLANEOUS STORE RETAILERS	1,193	7,200	\$157,900,593	\$421.74
4531	Florists	176	629	11,878,460	363.17
4532	Office Supplies, Stationery & Gift Stores	244	1,657	37,313,134	433.05
4533	Used Merchandise Stores	263	2,177	45,265,401	399.86
4539	Other Miscellaneous Store Retailers	510	2,737	63,443,598	445.77
454	NONSTORE RETAILERS	439	1,893	\$73,124,624	\$742.86
4541	Electronic Shopping & Mail-Order Houses	210	763	31,999,767	806.53
4542	Vending Machine Operators	65	466	15,152,914	625.33
4543	Direct Selling Establishments	164	664	25,971,943	752.20
48 - 49	TRANSPORTATION & WAREHOUSING	2,891	52,533	\$2,379,532,746	\$871.08
481	AIR TRANSPORTATION	52	704	\$27,017,553	\$738.02
4811	Scheduled Air Transportation	20	621	20,805,354	644.29
4812	Nonsheduled Air Transportation	32	83	6,212,199	1,439.34
483	WATER TRANSPORTATION	5	22	\$1,550,010	\$1,354.90
484	TRUCK TRANSPORTATION	1,803	31,466	\$1,513,104,313	\$924.75
4841	General Freight Trucking	1,040	25,069	1,232,435,301	945.42
4842	Specialized Freight Trucking	763	6,397	280,669,012	843.75

Note: Data may not add due to rounding.

TABLE 5. STATEWIDE SUMMARY CALENDAR YEAR 2017

North American Industry Classification System - Industry Groups		Average Employing Units	Average Covered Employment	Total Calendar Earnings	Average Weekly Earnings
485	TRANSIT & GROUND PASSENGER TRANSPORTATION	114	1,764	\$38,685,244	\$421.74
4851	Urban Transit Systems	3	105	3,429,735	628.16
4853	Taxi & Limousine Service	31	410	7,356,837	345.07
4854	School & Employee Bus Transportation	12	378	7,973,306	405.64
4859	Other Ground Passenger Transportation	59	763	17,001,713	428.51
	Other	9	108	2,923,653	520.59
486	PIPELINE TRANSPORTATION	38	426	\$39,033,427	\$1,762.07
487	SCENIC AND SIGHTSEEING TRANSPORTATION	4	33	\$443,677	\$258.55
488	SUPPORT ACTIVITIES FOR TRANSPORTATION	479	5,234	\$252,774,198	\$928.74
4881	Support Activities for Air Transportation	101	978	40,903,164	804.29
4882	Support Activities for Rail Transportation	43	648	31,599,511	937.78
4883	Support Activities for Water Transportation	21	729	42,594,489	1,123.63
4884	Support Activities for Road Transportation	158	859	29,298,031	655.91
4885	Freight Transportation Arrangement	141	1,896	103,964,385	1,054.49
4889	Other Support Activities for Transportation	15	124	4,414,618	684.65
491	POSTAL SERVICE	12	291	\$13,649,773	\$902.05
492	COURIERS & MESSENGERS	161	4,038	\$162,846,708	\$775.55
493	OTHER WAREHOUSING & STORAGE	223	8,555	\$330,427,843	\$742.77
22	UTILITIES	412	7,708	\$659,028,399	\$1,644.22
2211	Power Generation & Supply	164	5,707	545,725,899	1,838.92
2212	Natural Gas Distribution	66	1,058	77,645,131	1,411.32
2213	Water, Sewage & Other Systems	182	943	35,657,369	727.17
INFORMATION		1,124	12,770	\$723,673,359	\$1,089.80
511	PUBLISHING INDUSTRIES, EXCEPT INTERNET	213	3,051	\$125,316,711	\$789.88
5111	Newspaper, Book & Directory Publishers	178	2,674	96,405,666	693.33
5112	Software Publishers	35	377	28,911,045	1,474.75
512	MOTION PICTURE & SOUND RECORDING INDUSTRY	146	1,123	\$23,349,887	\$399.85
5121	Motion Picture & Video Industries	132	1,104	22,314,086	388.69
5122	Sound Recording Industries	14	19	1,035,801	1,048.38
515	BROADCASTING, EXCEPT INTERNET	117	1,597	\$69,125,702	\$832.40
5151	Radio & Television Broadcasting	114	1,574	68,264,044	834.03
5152	Cable & Other Subscription Programming	3	23	861,658	720.45

Note: Data may not add due to rounding.

TABLE 5. STATEWIDE SUMMARY CALENDAR YEAR 2017

North American Industry Classification System - Industry Groups		Average Employing Units	Average Covered Employment	Total Calendar Earnings	Average Weekly Earnings
517	TELECOMMUNICATIONS	346	5,348	\$389,913,996	\$1,402.08
5173	Wired & Wireless Telecommunications Carriers	255	5,004	367,208,345	1,411.21
5174	Satellite Telecommunications Carriers	6	7	276,043	758.36
5179	Other Telecommunications	85	337	22,429,608	1,279.94
518	DATA PROCESSING, HOSTING & RELATED SERVICES	222	1,381	\$102,436,218	\$1,426.45
519	OTHER INFORMATION SERVICES	80	270	\$13,530,845	\$963.74
FINANCIAL ACTIVITIES		8,261	49,604	\$2,774,083,810	\$1,075.47
52	FINANCE & INSURANCE	4,898	36,200	\$2,268,411,669	\$1,205.06
522	CREDIT INTERMEDIATION & RELATED ACTIVITIES	1,913	19,046	\$1,019,556,933	\$1,029.45
5221	Depository Credit Intermediation	1,388	16,165	840,648,790	1,000.08
5222	Nondepository Credit Intermediation	390	1,770	120,807,080	1,312.55
5223	Activities Related to Credit Intermediation	135	1,111	58,101,063	1,005.70
523	FINANCIAL INVESTMENT & RELATED ACTIVITIES	689	3,055	\$397,248,554	\$2,500.62
5231	Securities & Commodity Contracts Intermediation & Brokerage	297	2,171	307,584,921	2,724.59
5239	Other Financial Investment Activities	392	884	89,663,633	1,950.57
524	INSURANCE CARRIERS & RELATED ACTIVITIES	2,218	14,009	\$844,488,941	\$1,159.27
5241	Insurance Carriers	298	6,210	424,598,850	1,314.87
5242	Insurance Agencies, Brokerages & Support	1,920	7,799	419,890,091	1,035.36
	OTHER	78	90	\$7,117,241	\$1,520.78
53	REAL ESTATE & RENTAL & LEASING	3,363	13,404	\$505,672,141	\$725.49
531	REAL ESTATE	2,737	9,272	\$341,826,335	\$708.97
5311	Lessors of Real Estate	1,112	4,193	141,774,154	650.23
5312	Offices of Real Estate Agents & Brokers	844	1,800	78,709,571	840.91
5313	Activities Related to Real Estate	781	3,279	121,342,610	711.65
532	RENTAL & LEASING SERVICES	609	4,086	\$160,118,694	\$753.60
5321	Automotive Equipment Rental & Leasing	114	993	30,545,007	591.54
5322	Consumer Goods Rental	316	1,914	60,073,107	603.58
5323	General Rental Centers	38	246	10,750,983	840.45
5324	Machinery & Equipment Rental & Leasing	141	933	58,749,597	1,210.93
533	LESSORS OF NONFINANCIAL INTANGIBLE ASSETS	17	46	\$3,727,112	\$1,558.16

Note: Data may not add due to rounding.

TABLE 5. STATEWIDE SUMMARY CALENDAR YEAR 2017

North American Industry Classification System - Industry Groups		Average Employing Units	Average Covered Employment	Total Calendar Earnings	Average Weekly Earnings
PROFESSIONAL & BUSINESS SERVICES		13,871	144,038	\$8,536,382,651	\$1,139.71
54	PROFESSIONAL & TECHNICAL SERVICES	8,739	42,831	\$2,620,300,590	\$1,176.49
5411	Legal Services	1,655	6,005	335,312,260	1,073.82
5412	Accounting & Bookkeeping Services	1,257	5,924	301,695,388	979.38
5413	Architectural & Engineering Services	973	6,516	430,193,788	1,269.64
5414	Specialized Design Services	173	382	20,782,542	1,046.24
5415	Computer Systems Design & Related Services	1,728	9,469	775,145,263	1,574.26
5416	Management & Technical Consulting Services	1,888	6,140	373,373,537	1,169.42
5417	Scientific Research & Development Services	118	779	49,421,767	1,220.05
5418	Advertising & Related Services	381	3,724	184,289,271	951.67
5419	Other Professional & Technical Services	566	3,892	150,086,774	741.59
55	MANAGEMENT OF COMPANIES & ENTERPRISES	551	35,106	\$4,014,956,723	\$2,199.36
56	ADMINISTRATIVE & SUPPORT SERVICES	4,581	66,101	\$1,901,125,338	\$553.09
561	ADMINISTRATIVE & SUPPORT SERVICES	4,272	62,885	\$1,750,265,970	\$535.25
5611	Office Administrative Services	677	4,066	215,373,307	1,018.64
5612	Facilities Support Services	49	1,220	32,644,443	514.57
5613	Employment Services	1,069	28,527	669,278,844	451.18
5614	Business Support Services	358	7,495	268,552,323	689.06
5615	Travel Arrangement & Reservation Services	107	378	17,225,436	876.34
5616	Investigation & Security Services	288	4,898	130,421,904	512.07
5617	Services to Buildings & Dwellings	1,536	15,026	369,331,136	472.68
5619	Other Support Services	188	1,275	47,438,577	715.51
562	WASTE MANAGEMENT & REMEDIATION SERVICES	309	3,216	\$150,859,368	\$902.10
5621	Waste Collection Services	138	1,278	56,582,400	851.43
5622	Waste Treatment & disposal Services	35	891	50,176,695	1,082.98
5629	Remediation & Other Waste Services	136	1,047	44,100,273	810.01
EDUCATION & HEALTH SERVICES		15,767	183,328	\$7,612,836,856	\$798.57
61	EDUCATIONAL SERVICES	829	11,489	\$409,859,670	\$686.04
6111	Elementary & Secondary Schools	98	3,857	130,696,200	651.64
6112	Junior Colleges	6	108	2,855,289	508.42
6113	Colleges & Universities	102	4,246	160,077,350	725.01
6114	Business, Computer, & Management Training	48	135	7,965,088	1,134.63
6115	Technical & Trade Schools	105	860	51,730,468	1,156.76
6116	Other Schools & Instruction	307	1,776	33,407,131	361.74
6117	Educational Support Services	163	507	23,128,144	877.26

Note: Data may not add due to rounding.

TABLE 5. STATEWIDE SUMMARY CALENDAR YEAR 2017

North American Industry Classification System - Industry Groups		Average Employing Units	Average Covered Employment	Total Calendar Earnings	Average Weekly Earnings
62	HEALTH CARE & SOCIAL ASSISTANCE	14,938	171,839	\$7,202,977,186	\$806.10
621	AMBULATORY HEALTH CARE SERVICES	5,689	56,613	\$3,477,075,045	\$1,181.12
6211	Offices of Physicians	2,256	24,822	2,049,506,022	1,587.85
6212	Offices of Dentists	985	7,255	354,442,904	939.52
6213	Offices of Other Health Practitioners	1,506	8,888	374,668,792	810.66
6214	Outpatient Care Centers	327	5,058	279,683,959	1,063.37
6215	Medical & Diagnostic Laboratories	181	1,244	72,557,860	1,121.66
6216	Home Health Care Services	260	6,627	229,667,969	666.47
6219	Other Ambulatory Health Care Services	174	2,719	116,547,539	824.31
622	HOSPITALS	108	43,297	\$2,070,397,017	\$919.59
6221	General Medical & Surgical Hospitals	83	38,560	1,860,060,755	927.66
6222	Psychiatric & Substance Abuse Hospitals	10	2,193	89,404,367	784.00
6223	Other Hospitals	15	2,544	120,931,895	914.16
623	Residential & Mental Health Facilities	624	32,303	\$827,625,274	\$492.71
6231	Nursing Care Facilities (Skilled Nursing Facilities)	271	22,903	590,947,022	496.20
6232	Residential Mental Health Facilities	170	4,604	118,703,252	495.82
6233	Continuing Care & Assisted Living Facilities	149	4,043	95,525,737	454.37
6239	Other Residential Care Facilities	34	753	22,449,263	573.33
624	SOCIAL ASSISTANCE	8,517	39,626	\$827,879,850	\$401.78
6241	Individual & Family Services	7,400	24,929	527,356,314	406.81
6242	Emergency & Other Relief Services	136	1,346	36,786,895	525.59
6243	Vocational Rehabilitation Services	92	3,227	72,222,557	430.40
6244	Child Day Care Services	889	10,124	191,514,084	363.79
LEISURE & HOSPITALITY		7,024	116,709	\$1,888,257,505	\$311.14
71	ARTS, ENTERTAINMENT & RECREATION	965	11,186	\$230,612,540	\$396.46
711	PERFORMING ARTS & SPECTATOR SPORTS	216	2,826	\$72,899,650	\$496.08
7111	Performing Arts Companies	48	463	8,791,512	365.16
7112	Spectator Sports	66	1,448	43,972,398	583.99
7113	Performing Arts & Sports Promoters	49	815	16,306,269	384.76
7114	Agents & Managers for Public Figures	16	40	1,393,989	670.19
7115	Independent Artists, Writers, & Performers	37	60	2,435,482	780.60
712	MUSEUMS, PARKS, & HISTORICAL SITES	53	677	\$19,561,723	\$555.67
713	GAMBLING, RECREATIONAL & AMUSEMENT INDUSTRY	696	7,683	\$138,151,167	\$345.80
7131	Amusement Parks & Arcades	29	485	6,173,411	244.78
7139	Other Amusement & Recreation Industries	667	7,198	131,977,756	352.60
72	ACCOMMODATION & FOOD SERVICES	6,059	105,523	\$1,657,644,965	\$302.09

Note: Data may not add due to rounding.

TABLE 5. STATEWIDE SUMMARY CALENDAR YEAR 2017

North American Industry Classification System - Industry Groups		Average Employing Units	Average Covered Employment	Total Calendar Earnings	Average Weekly Earnings
721	ACCOMMODATION	892	11,343	\$210,945,918	\$357.63
7211	Travel Accommodation	806	10,777	199,273,468	355.59
7212	RV Parks & Recreational Camps	69	455	9,213,927	389.43
7213	Rooming & Boarding Houses	17	111	2,458,523	425.94
722	FOOD SERVICES & DRINKING PLACES	5,167	94,180	\$1,446,699,047	\$295.40
7223	Special Food Services	259	4,269	78,164,861	352.11
7224	Drinking Places, Alcoholic Beverages	145	1,026	15,362,525	287.95
7225	Restaurants & Other Eating Places	4,763	88,885	1,353,171,661	292.77
722511	Full-Service Restaurants	2,090	38,751	651,420,476	323.28
722513	Limited-Service Eating Places	2,209	45,571	629,276,320	265.55
722514	Cafeterias, Grill Buffets, & Buffets	90	1,631	29,798,352	351.35
722515	Snack & Nonalcoholic Beverage Bars	374	2,932	42,676,513	279.91
	OTHER SERVICES	5,325	24,795	\$822,547,328	\$637.96
811	REPAIR & MAINTENANCE	2,196	10,482	\$404,264,024	\$741.68
8111	Automotive Repair & Maintenance	1,400	6,572	230,989,835	675.91
8112	Electronic Equipment Repair & Maintenance	170	885	40,034,649	869.94
8113	Commercial Machinery Repair & Maintenance	456	2,457	115,842,684	906.69
8114	Household Goods Repair & Maintenance	170	568	17,396,856	589.01
812	PERSONAL & LAUNDRY SERVICES	1,332	7,899	\$197,393,381	\$480.57
8121	Personal Care Services	633	3,058	63,860,225	401.60
8122	Death Care Services	245	1,582	48,336,050	587.57
8123	Drycleaning & Laundry Service	227	2,311	65,108,034	541.79
8129	Other Personal Services	227	948	20,089,072	407.52
813	MEMBERSHIP ASSOCIATIONS & ORGANIZATIONS	1,077	5,473	\$199,041,977	\$699.38
8131	Religious Organizations	84	282	8,120,923	553.80
8132	Grantmaking & Giving Organizations	120	459	23,743,983	994.80
8133	Social Advocacy Organizations	206	1,444	54,125,103	720.82
8134	Civic & Social Organizations	190	1,248	22,618,026	348.53
8139	Professional & Similar Organizations	477	2,040	90,433,942	852.51
814	PRIVATE HOUSEHOLDS	720	941	\$21,847,946	\$446.50
	LOCAL GOVERNMENT	1,959	108,082	\$4,133,621,140	\$735.49
	STATE GOVERNMENT	1,066	68,354	\$3,197,216,492	\$899.51
	NONCLASSIFIABLE ESTABLISHMENTS	0	0	0	\$0.00

Note: Data may not add due to rounding.

TABLE 6. COUNTY SUMMARY CALENDAR YEAR 2017

North American Industry Classification System - Industry Groups	Average Employing Units	Average Covered Employment	Total Calendar Earnings	Average Weekly Earnings
ARKANSAS COUNTY - TOTAL	764	9,372	\$373,196,717	\$765.78
Natural Resources & Mining	54	204	8,333,498	785.59
Construction	44	246	11,178,467	873.86
Manufacturing	32	3,625	152,644,935	809.79
Trade, Transportation & Utilities	193	2,024	83,275,647	791.23
Wholesale Trade	47	460	23,544,136	984.29
Retail Trade	89	956	25,895,063	520.90
Transportation, Warehousing & Utilities	57	608	33,836,448	1,070.23
Information	10	70	2,860,636	785.89
Financial Activities	44	287	14,054,196	941.72
Professional & Business Services	47	430	26,047,602	1,164.92
Education & Health Services	198	1,085	37,196,556	659.28
Leisure & Hospitality	56	442	5,881,495	255.90
Other Services	40	92	2,796,870	584.63
Local Government	32	700	23,685,968	650.71
State Government	14	167	5,240,847	603.51
ASHLEY COUNTY - TOTAL	559	6,548	\$275,907,773	\$810.31
Natural Resources & Mining	40	356	13,639,865	736.81
Construction	37	533	23,248,134	838.80
Manufacturing	22	1,593	111,565,126	1,346.82
Trade, Transportation & Utilities	115	1,212	39,487,669	626.55
Wholesale Trade	25	209	11,827,340	1,088.27
Retail Trade	66	742	17,005,531	440.74
Transportation, Warehousing & Utilities	24	261	10,654,798	785.06
Information	5	35	941,269	517.18
Financial Activities	35	182	6,384,213	674.58
Professional & Business Services	40	217	7,147,265	633.40
Education & Health Services	154	988	34,378,565	669.16
Leisure & Hospitality	32	360	4,705,998	251.39
Other Services	37	137	4,253,438	597.06
Local Government	32	840	26,634,524	609.76
State Government	10	95	3,521,707	712.90

Note: Data may not add due to rounding.

TABLE 6. COUNTY SUMMARY CALENDAR YEAR 2017

North American Industry Classification System - Industry Groups	Average Employing Units	Average Covered Employment	Total Calendar Earnings	Average Weekly Earnings
BAXTER COUNTY - TOTAL	1,210	14,717	\$505,458,566	\$660.48
Natural Resources & Mining	6	55	2,198,450	768.69
Construction	114	515	17,080,847	637.82
Manufacturing	54	2,321	92,684,311	767.94
Trade, Transportation & Utilities	255	2,924	81,067,202	533.17
Wholesale Trade	34	411	16,891,011	790.33
Retail Trade	196	2,312	56,334,910	468.58
Transportation, Warehousing & Utilities	25	201	7,841,281	750.22
Information	19	184	8,301,876	867.67
Financial Activities	113	740	41,640,928	1,082.14
Professional & Business Services	135	797	25,730,224	620.84
Education & Health Services	266	3,821	155,509,089	782.66
Leisure & Hospitality	117	1,659	24,070,053	279.01
Other Services	85	333	8,282,480	478.31
Local Government	35	1,073	38,801,741	695.42
State Government	11	295	10,091,365	657.85
BENTON COUNTY - TOTAL	6,387	117,105	\$6,737,139,814	\$1,106.36
Natural Resources & Mining	47	748	52,660,092	1,353.87
Construction	621	4,880	234,705,546	924.91
Manufacturing	191	11,796	507,619,617	827.56
Trade, Transportation & Utilities	1,681	27,881	1,378,278,101	950.66
Wholesale Trade	747	5,631	560,150,365	1,913.00
Retail Trade	748	12,526	351,892,540	540.25
Transportation, Warehousing & Utilities	186	9,724	466,235,196	922.05
Information	77	913	51,901,017	1,093.21
Financial Activities	633	3,742	211,651,782	1,087.71
Professional & Business Services	1,223	32,440	3,170,076,693	1,879.25
Education & Health Services	809	11,211	447,543,396	767.69
Leisure & Hospitality	612	12,192	221,297,127	349.06
Other Services	394	2,108	72,795,929	664.10
Local Government	82	8,166	351,595,105	828.00
State Government	17	1,028	37,015,409	692.45

Note: Data may not add due to rounding.

TABLE 6. COUNTY SUMMARY CALENDAR YEAR 2017

North American Industry Classification System - Industry Groups	Average Employing Units	Average Covered Employment	Total Calendar Earnings	Average Weekly Earnings
BOONE COUNTY - TOTAL	954	13,648	\$508,612,059	\$716.66
Natural Resources & Mining	4	6	240,241	\$770.00
Construction	68	406	15,968,328	756.36
Manufacturing	63	1,798	72,104,317	771.20
Trade, Transportation & Utilities	236	3,426	135,343,963	759.71
Wholesale Trade	37	297	10,360,437	670.84
Retail Trade	155	1,965	52,854,085	517.26
Transportation, Warehousing & Utilities	44	1,164	72,129,441	1,191.67
Information	14	285	12,335,996	832.39
Financial Activities	93	414	19,631,437	911.90
Professional & Business Services	103	1,486	68,295,741	883.84
Education & Health Services	167	1,512	46,326,026	589.21
Leisure & Hospitality	82	1,215	18,302,309	289.69
Other Services	54	261	9,020,233	664.62
Local Government	53	2,122	83,533,765	757.03
State Government	17	717	27,509,703	737.84
BRADLEY COUNTY - TOTAL	368	3,707	\$122,909,851	\$637.62
Natural Resources & Mining	45	263	9,553,295	698.54
Construction	17	76	2,465,847	623.95
Manufacturing	11	898	35,036,691	750.31
Trade, Transportation & Utilities	68	478	12,877,721	518.09
Wholesale Trade	10	69	3,623,375	1,009.86
Retail Trade	37	325	6,495,131	384.33
Transportation, Warehousing & Utilities	21	84	2,759,215	631.69
Information	4	23	847,348	708.48
Financial Activities	25	132	5,643,804	822.23
Professional & Business Services	26	94	3,024,907	618.84
Education & Health Services	104	669	23,924,792	687.73
Leisure & Hospitality	17	191	2,295,568	231.13
Other Services	27	106	2,805,167	508.92
Local Government	14	435	14,510,013	641.47
State Government	10	342	9,924,698	558.07

Note: Data may not add due to rounding.

TABLE 6. COUNTY SUMMARY CALENDAR YEAR 2017

North American Industry Classification System - Industry Groups	Average Employing Units	Average Covered Employment	Total Calendar Earnings	Average Weekly Earnings
CALHOUN COUNTY - TOTAL	100	2,868	\$151,945,865	\$1,018.84
Natural Resources & Mining	6	38	1,291,292	653.49
Construction	9	90	3,226,444	689.41
Manufacturing	9	2,060	121,602,891	1,135.20
Trade, Transportation & Utilities	20	222	8,332,813	721.83
Retail Trade	9	52	1,055,299	390.27
Transportation, Warehousing & Utilities	11	170	7,277,514	823.25
Professional & Business Services	5	10	424,057	815.49
Education & Health Services	18	63	2,417,909	738.07
Leisure & Hospitality	4	15	204,316	261.94
Other Services	4	3	53,857	345.24
Local Government	11	181	5,239,195	556.65
State Government	7	79	3,052,630	743.09
Other	7	107	6,100,461	1,096.42
CARROLL COUNTY - TOTAL	796	10,862	\$318,784,722	\$564.40
Natural Resources & Mining	19	203	7,422,494	703.15
Trade, Transportation & Utilities	194	1,649	49,308,543	575.04
Wholesale Trade	22	161	5,358,383	640.04
Retail Trade	145	1,146	25,799,232	432.93
Transportation, Warehousing & Utilities	27	342	18,150,928	1,020.63
Information	10	67	2,940,026	843.87
Financial Activities	61	369	16,823,061	876.75
Professional & Business Services	64	557	19,532,929	674.39
Education & Health Services	100	1,095	34,843,929	611.94
Leisure & Hospitality	171	1,616	24,171,961	287.65
Other Services	46	131	3,257,408	478.19
Local Government	25	1,016	32,602,211	617.09
State Government	9	90	3,397,761	726.02
Other	97	4,069	124,484,399	588.33

Note: Data may not add due to rounding.

TABLE 6. COUNTY SUMMARY CALENDAR YEAR 2017

North American Industry Classification System - Industry Groups	Average Employing Units	Average Covered Employment	Total Calendar Earnings	Average Weekly Earnings
CHICOT COUNTY - TOTAL	521	3,074	\$97,520,995	\$610.09
Natural Resources & Mining	54	223	8,640,174	745.10
Construction	17	161	7,289,587	870.71
Manufacturing	6	23	1,370,042	1,145.52
Trade, Transportation & Utilities	67	662	18,897,462	548.96
Wholesale Trade	15	69	3,196,337	890.84
Retail Trade	39	308	7,607,087	474.97
Transportation, Warehousing & Utilities	13	285	8,094,038	546.16
Information	3	3	58,942	377.83
Financial Activities	27	159	7,424,065	897.93
Professional & Business Services	18	42	1,805,474	826.68
Education & Health Services	267	725	18,660,051	494.96
Leisure & Hospitality	18	136	1,812,588	256.30
Other Services	17	69	2,314,694	645.12
Local Government	17	574	19,548,478	654.93
State Government	10	297	9,699,438	628.04
CLARK COUNTY - TOTAL	627	9,070	\$310,651,659	\$658.66
Natural Resources & Mining	46	263	10,938,139	799.81
Construction	20	57	1,678,029	566.14
Manufacturing	33	1,424	76,616,933	1,034.69
Trade, Transportation & Utilities	127	1,398	41,590,705	572.12
Wholesale Trade	13	31	1,479,739	917.95
Retail Trade	89	1,206	32,362,081	516.04
Transportation, Warehousing & Utilities	25	161	7,748,885	925.57
Information	3	15	541,685	694.47
Financial Activities	73	306	12,226,849	768.40
Professional & Business Services	49	573	21,715,261	728.80
Education & Health Services	129	1,640	51,537,881	604.34
Leisure & Hospitality	60	1,055	15,075,110	274.79
Other Services	43	231	7,518,247	625.89
Local Government	30	969	31,795,708	631.02
State Government	14	1,139	39,417,112	665.51

Note: Data may not add due to rounding.

TABLE 6. COUNTY SUMMARY CALENDAR YEAR 2017

North American Industry Classification System - Industry Groups	Average Employing Units	Average Covered Employment	Total Calendar Earnings	Average Weekly Earnings
CLAY COUNTY - TOTAL	375	3,239	\$95,167,332	\$565.03
Natural Resources & Mining	57	247	7,136,763	555.65
Construction	29	131	4,422,671	649.25
Manufacturing	13	128	3,724,329	559.54
Trade, Transportation & Utilities	88	803	26,002,473	622.72
Wholesale Trade	20	237	8,569,898	695.38
Retail Trade	42	409	10,542,129	495.68
Transportation, Warehousing & Utilities	26	157	6,890,446	844.00
Information	5	35	1,038,335	570.51
Financial Activities	25	107	3,632,298	652.82
Professional & Business Services	26	107	3,509,922	630.83
Education & Health Services	52	514	14,399,428	538.74
Leisure & Hospitality	25	254	3,056,135	231.39
Other Services	25	74	2,314,478	601.48
Local Government	21	796	24,397,777	589.43
State Government	9	43	1,532,723	685.48
CLEBURNE COUNTY - TOTAL	654	6,368	\$204,237,422	\$616.78
Natural Resources & Mining	26	261	13,516,932	995.94
Construction	66	299	11,545,391	742.56
Manufacturing	34	1,145	43,381,652	728.61
Trade, Transportation & Utilities	144	1,236	39,300,297	611.47
Wholesale Trade	32	120	5,575,215	893.46
Retail Trade	91	946	25,158,346	511.43
Transportation, Warehousing & Utilities	21	170	8,566,736	969.09
Information	9	55	1,865,536	652.29
Financial Activities	79	264	10,976,860	799.60
Professional & Business Services	65	258	10,049,730	749.09
Education & Health Services	87	975	28,157,002	555.36
Leisure & Hospitality	80	877	13,688,555	300.16
Other Services	38	125	3,248,911	499.83
Local Government	18	767	24,954,293	625.67
State Government	8	106	3,552,263	644.46

Note: Data may not add due to rounding.

TABLE 6. COUNTY SUMMARY CALENDAR YEAR 2017

North American Industry Classification System - Industry Groups	Average Employing Units	Average Covered Employment	Total Calendar Earnings	Average Weekly Earnings
CLEVELAND COUNTY - TOTAL	128	970	\$30,250,616	\$599.73
Natural Resources & Mining	16	140	5,735,361	787.82
Construction	9	20	798,955	768.23
Manufacturing	4	81	2,843,098	675.00
Trade, Transportation & Utilities	36	183	5,375,944	564.94
Retail Trade	19	78	1,076,663	265.45
Other Trade, Transportation & Utilities	17	105	4,299,281	787.41
Financial Activities	3	26	1,222,682	904.35
Professional & Business Services	4	7	170,105	467.32
Education & Health Services	31	162	3,332,797	395.63
Other Services	4	12	401,168	642.90
Local Government	11	301	9,087,642	580.61
State Government	6	29	1,159,940	769.19
Other	4	9	122,924	262.66
COLUMBIA COUNTY - TOTAL	712	7,884	\$312,077,704	\$761.22
Natural Resources & Mining	39	343	21,514,081	1,206.22
Construction	39	167	6,417,747	739.03
Manufacturing	32	1,792	106,159,018	1,139.24
Trade, Transportation & Utilities	162	1,338	42,258,311	607.37
Wholesale Trade	29	190	10,351,164	1,047.69
Retail Trade	95	959	23,000,231	461.22
Transportation, Warehousing & Utilities	38	189	8,906,916	906.28
Information	7	51	1,711,892	645.51
Financial Activities	66	331	15,651,082	909.31
Professional & Business Services	52	297	10,469,413	677.90
Education & Health Services	182	1,063	25,672,061	464.43
Leisure & Hospitality	50	695	10,179,743	281.68
Other Services	45	138	3,257,481	453.94
Local Government	26	1,048	38,325,381	703.27
State Government	12	621	30,461,494	943.31

Note: Data may not add due to rounding.

TABLE 6. COUNTY SUMMARY CALENDAR YEAR 2017

North American Industry Classification System - Industry Groups	Average Employing Units	Average Covered Employment	Total Calendar Earnings	Average Weekly Earnings
CONWAY COUNTY - TOTAL	526	6,331	\$234,682,127	\$712.86
Natural Resources & Mining	31	238	10,152,843	820.37
Construction	45	473	27,754,409	1,128.41
Manufacturing	18	883	50,803,576	1,106.45
Trade, Transportation & Utilities	115	1,319	42,664,497	622.04
Wholesale Trade	17	116	4,583,197	759.81
Retail Trade	74	775	20,186,780	500.91
Transportation, Warehousing & Utilities	24	428	17,894,520	804.03
Information	3	12	200,186	320.81
Financial Activities	38	150	6,316,321	809.78
Professional & Business Services	36	518	12,894,055	478.69
Education & Health Services	134	805	28,672,651	684.97
Leisure & Hospitality	41	469	6,543,793	268.32
Other Services	26	93	2,864,140	592.25
Local Government	30	994	34,168,322	661.05
State Government	9	377	11,647,334	594.13
CRAIGHEAD COUNTY - TOTAL	2,828	49,794	\$1,895,037,173	\$731.88
Natural Resources & Mining	92	356	13,477,162	728.02
Construction	234	2,107	92,472,883	844.01
Manufacturing	100	6,570	313,063,826	916.36
Trade, Transportation & Utilities	790	10,145	338,425,971	641.52
Wholesale Trade	181	1,666	85,869,867	991.20
Retail Trade	474	6,838	176,436,550	496.20
Transportation, Warehousing & Utilities	135	1,641	76,119,554	892.04
Information	20	409	18,743,147	881.28
Financial Activities	270	1,622	81,801,055	969.85
Professional & Business Services	373	4,734	147,930,665	600.93
Education & Health Services	474	10,596	501,068,426	909.39
Leisure & Hospitality	260	5,617	85,145,292	291.51
Other Services	158	795	23,936,445	579.01
Local Government	35	3,860	149,740,459	746.02
State Government	22	2,983	129,231,842	833.13

Note: Data may not add due to rounding.

TABLE 6. COUNTY SUMMARY CALENDAR YEAR 2017

North American Industry Classification System - Industry Groups	Average Employing Units	Average Covered Employment	Total Calendar Earnings	Average Weekly Earnings
CRAWFORD COUNTY - TOTAL	1,244	19,044	\$674,843,025	\$681.46
Natural Resources & Mining	24	241	9,275,489	740.14
Construction	148	954	42,543,802	857.60
Manufacturing	69	4,452	183,848,662	794.15
Trade, Transportation & Utilities	311	5,496	195,498,723	684.06
Wholesale Trade	76	765	38,382,095	964.86
Retail Trade	167	1,957	53,229,117	523.06
Transportation, Warehousing & Utilities	68	2,774	103,887,511	720.20
Information	10	58	1,949,345	646.33
Financial Activities	123	500	19,914,648	765.95
Professional & Business Services	155	1,473	51,403,535	671.10
Education & Health Services	180	1,654	53,841,111	626.00
Leisure & Hospitality	95	1,631	24,262,962	286.08
Other Services	76	394	13,620,570	664.81
Local Government	43	2,030	73,745,712	698.61
State Government	10	161	4,938,466	589.88
CRITTENDEN COUNTY - TOTAL	1,241	16,397	\$585,282,691	\$686.43
Natural Resources & Mining	54	251	8,926,915	683.95
Construction	46	507	25,321,668	960.46
Manufacturing	43	2,134	108,037,633	973.59
Trade, Transportation & Utilities	303	4,431	164,748,074	715.02
Wholesale Trade	61	789	37,775,682	920.73
Retail Trade	157	1,994	47,422,167	457.35
Transportation, Warehousing & Utilities	85	1,648	79,550,225	928.28
Information	5	55	2,143,229	749.38
Financial Activities	98	447	19,311,852	830.83
Professional & Business Services	108	1,223	38,119,707	599.40
Education & Health Services	327	2,037	63,906,989	603.33
Leisure & Hospitality	127	2,364	43,857,581	356.77
Other Services	75	492	16,477,669	644.06
Local Government	42	2,007	79,652,637	763.22
State Government	13	449	14,778,737	632.98

Note: Data may not add due to rounding.

TABLE 6. COUNTY SUMMARY CALENDAR YEAR 2017

North American Industry Classification System - Industry Groups	Average Employing Units	Average Covered Employment	Total Calendar Earnings	Average Weekly Earnings
CROSS COUNTY - TOTAL	480	4,864	\$160,481,286	\$634.49
Natural Resources & Mining	42	254	8,102,754	613.47
Construction	22	61	1,989,758	627.29
Manufacturing	10	393	13,436,988	657.52
Trade, Transportation & Utilities	124	1,196	43,170,727	694.15
Wholesale Trade	28	287	16,279,793	1,090.85
Retail Trade	70	795	22,078,353	534.07
Transportation, Warehousing & Utilities	26	114	4,812,581	811.84
Information	6	42	1,300,214	595.34
Financial Activities	44	290	10,439,727	692.29
Professional & Business Services	39	128	5,026,440	755.17
Education & Health Services	100	1,014	32,748,265	621.08
Leisure & Hospitality	33	333	4,362,527	251.94
Other Services	34	104	3,095,684	572.43
Local Government	17	690	24,069,268	670.83
State Government	9	359	12,738,934	682.39
DALLAS COUNTY - TOTAL	246	2,744	\$87,407,581	\$612.58
Natural Resources & Mining	27	148	5,161,268	670.64
Construction	15	74	2,411,465	626.68
Manufacturing	11	579	23,513,218	780.96
Trade, Transportation & Utilities	59	456	13,290,540	560.50
Wholesale Trade	6	16	705,342	847.77
Retail Trade	39	338	8,716,817	495.95
Transportation, Warehousing & Utilities	14	102	3,868,381	729.33
Information	4	18	512,386	547.42
Financial Activities	15	75	3,359,988	861.54
Professional & Business Services	10	29	978,966	649.18
Education & Health Services	58	813	25,589,196	605.29
Leisure & Hospitality	13	144	1,942,882	259.47
Other Services	13	53	1,284,821	466.19
Local Government	14	326	8,242,894	486.25
State Government	7	29	1,119,957	742.68

Note: Data may not add due to rounding.

TABLE 6. COUNTY SUMMARY CALENDAR YEAR 2017

North American Industry Classification System - Industry Groups	Average Employing Units	Average Covered Employment	Total Calendar Earnings	Average Weekly Earnings
DESHA COUNTY - TOTAL	557	4,558	\$157,339,288	\$663.83
Natural Resources & Mining	68	276	9,234,907	643.46
Construction	16	91	3,581,696	756.91
Manufacturing	15	954	51,812,855	1,044.45
Trade, Transportation & Utilities	109	844	27,030,307	615.89
Wholesale Trade	19	187	10,177,896	1,046.68
Retail Trade	64	478	10,144,525	408.13
Transportation, Warehousing & Utilities	26	179	6,707,886	720.66
Information	3	12	444,225	711.90
Financial Activities	29	205	7,201,027	675.52
Professional & Business Services	34	87	3,081,367	681.12
Education & Health Services	195	767	19,673,003	493.26
Leisure & Hospitality	36	366	5,107,424	268.36
Other Services	22	55	1,086,218	379.80
Local Government	21	786	25,330,329	619.75
State Government	9	115	3,755,930	628.08
DREW COUNTY - TOTAL	539	6,381	\$224,448,787	\$676.43
Natural Resources & Mining	53	333	13,796,951	796.77
Construction	25	175	8,695,695	955.57
Manufacturing	21	826	33,180,112	772.49
Trade, Transportation & Utilities	123	1,158	35,159,888	583.90
Wholesale Trade	20	147	6,796,669	889.15
Retail Trade	79	878	22,298,709	488.41
Transportation, Warehousing & Utilities	24	133	6,064,510	876.88
Information	5	47	1,767,396	723.16
Financial Activities	48	248	11,008,931	853.67
Professional & Business Services	33	258	11,764,232	876.88
Education & Health Services	140	925	32,499,131	675.66
Leisure & Hospitality	39	604	8,622,364	274.53
Other Services	15	52	1,523,200	563.31
Local Government	23	1,187	42,513,873	688.77
State Government	14	568	23,917,014	809.76

Note: Data may not add due to rounding.

TABLE 6. COUNTY SUMMARY CALENDAR YEAR 2017

North American Industry Classification System - Industry Groups	Average Employing Units	Average Covered Employment	Total Calendar Earnings	Average Weekly Earnings
FAULKNER COUNTY - TOTAL	2,804	39,973	\$1,569,692,030	\$755.17
Natural Resources & Mining	52	351	24,194,525	1,325.58
Construction	309	2,701	125,508,468	893.60
Manufacturing	99	3,174	165,134,517	1,000.52
Trade, Transportation & Utilities	637	7,432	227,748,755	589.31
Wholesale Trade	138	537	29,774,157	1,066.26
Retail Trade	414	6,131	159,075,743	498.96
Transportation, Warehousing & Utilities	85	764	38,898,855	979.13
Information	19	270	14,514,614	1,033.80
Financial Activities	310	1,468	65,141,196	853.35
Professional & Business Services	424	5,183	311,572,525	1,156.04
Education & Health Services	437	6,944	260,880,728	722.49
Leisure & Hospitality	262	5,110	76,321,658	287.23
Other Services	197	847	24,340,849	552.65
Local Government	41	3,234	139,515,567	829.62
State Government	17	3,259	134,818,628	795.54
FRANKLIN COUNTY - TOTAL	361	4,438	\$156,319,932	\$677.37
Natural Resources & Mining	20	232	16,273,133	1,348.90
Construction	31	109	3,986,803	703.39
Manufacturing	14	942	36,749,647	750.24
Trade, Transportation & Utilities	89	952	33,094,337	668.52
Wholesale Trade	14	50	1,040,296	400.11
Retail Trade	53	623	14,944,392	461.30
Transportation, Warehousing & Utilities	22	279	17,109,649	1,179.33
Information	4	20	629,684	605.47
Financial Activities	29	80	2,895,454	696.02
Professional & Business Services	34	334	11,848,227	682.19
Education & Health Services	69	553	15,063,631	523.84
Leisure & Hospitality	29	344	4,489,507	250.98
Other Services	15	50	1,396,010	536.93
Local Government	19	697	24,318,546	670.97
State Government	8	125	5,574,953	857.69

Note: Data may not add due to rounding.

TABLE 6. COUNTY SUMMARY CALENDAR YEAR 2017

North American Industry Classification System - Industry Groups	Average Employing Units	Average Covered Employment	Total Calendar Earnings	Average Weekly Earnings
FULTON COUNTY - TOTAL	190	1,854	\$54,076,312	\$560.91
Natural Resources & Mining	3	6	140,968	451.82
Construction	9	60	2,900,649	929.70
Manufacturing	11	107	2,532,650	455.19
Trade, Transportation & Utilities	43	289	10,201,513	678.83
Retail Trade	26	166	3,937,164	456.11
Other Trade, Transportation & Utilities	17	123	6,264,349	979.42
Information	4	29	713,517	473.15
Financial Activities	20	90	3,379,723	722.16
Professional & Business Services	15	34	1,242,793	702.94
Education & Health Services	42	483	12,178,727	484.90
Leisure & Hospitality	16	139	1,934,609	267.65
Other Services	6	14	384,142	527.67
Local Government	12	527	15,703,883	573.05
State Government	9	76	2,763,138	699.17
GARLAND COUNTY - TOTAL	3,098	36,094	\$1,286,981,314	\$685.70
Natural Resources & Mining	27	230	11,249,851	940.62
Construction	325	1,735	63,718,903	706.26
Manufacturing	93	2,572	114,231,264	854.10
Trade, Transportation & Utilities	683	7,252	232,917,835	617.65
Wholesale Trade	145	855	50,138,457	1,127.72
Retail Trade	479	5,922	161,491,047	524.42
Transportation, Warehousing & Utilities	59	475	21,288,331	861.88
Information	29	407	15,655,780	739.74
Financial Activities	338	1,469	79,174,800	1,036.48
Professional & Business Services	385	2,906	115,897,560	766.96
Education & Health Services	541	7,813	344,123,440	847.02
Leisure & Hospitality	387	6,962	128,459,376	354.84
Other Services	233	987	25,388,893	494.68
Local Government	34	2,790	121,449,891	837.12
State Government	23	971	34,713,721	687.51

Note: Data may not add due to rounding.

TABLE 6. COUNTY SUMMARY CALENDAR YEAR 2017

North American Industry Classification System - Industry Groups	Average Employing Units	Average Covered Employment	Total Calendar Earnings	Average Weekly Earnings
GRANT COUNTY - TOTAL	350	4,023	\$152,159,963	\$727.36
Natural Resources & Mining	24	168	8,685,798	994.25
Construction	30	213	10,522,098	949.99
Manufacturing	17	1,266	60,397,463	917.45
Trade, Transportation & Utilities	95	634	19,199,120	582.36
Wholesale Trade	22	83	4,660,752	1,079.88
Retail Trade	46	474	11,950,945	484.86
Transportation, Warehousing & Utilities	27	77	2,587,423	646.21
Financial Activities	21	91	3,537,931	747.66
Professional & Business Services	28	103	5,513,998	1,029.50
Education & Health Services	77	435	10,643,308	470.53
Leisure & Hospitality	23	310	3,845,524	238.56
Local Government	10	711	26,935,771	728.55
State Government	7	41	1,433,332	672.29
Other	18	51	1,445,620	545.11
GREENE COUNTY - TOTAL	894	15,191	\$557,900,717	\$706.26
Natural Resources & Mining	39	258	9,573,267	713.57
Construction	72	325	13,278,623	785.72
Manufacturing	65	5,012	227,483,940	872.84
Trade, Transportation & Utilities	240	2,683	80,178,102	574.69
Wholesale Trade	44	433	19,022,575	844.85
Retail Trade	160	1,924	48,970,773	489.47
Transportation, Warehousing & Utilities	36	326	12,184,754	718.78
Information	9	94	2,393,515	489.67
Financial Activities	74	540	24,374,877	868.05
Professional & Business Services	91	824	27,955,167	652.43
Education & Health Services	153	2,016	76,107,089	725.99
Leisure & Hospitality	70	1,283	17,585,446	263.59
Other Services	40	160	4,297,560	516.53
Local Government	30	1,593	58,269,049	703.43
State Government	11	403	16,404,082	782.79

Note: Data may not add due to rounding.

TABLE 6. COUNTY SUMMARY CALENDAR YEAR 2017

North American Industry Classification System - Industry Groups	Average Employing Units	Average Covered Employment	Total Calendar Earnings	Average Weekly Earnings
HEMPSTEAD COUNTY - TOTAL	500	7,706	\$273,618,705	\$682.83
Natural Resources & Mining	25	255	10,974,793	827.66
Construction	29	186	8,511,096	879.97
Manufacturing	29	2,282	98,280,454	828.22
Trade, Transportation & Utilities	124	1,251	44,166,121	678.94
Wholesale Trade	20	170	5,919,143	669.59
Retail Trade	77	836	20,919,796	481.22
Transportation, Warehousing & Utilities	27	245	17,327,182	1,360.06
Information	8	30	1,261,200	808.46
Financial Activities	44	208	8,281,286	765.65
Professional & Business Services	30	206	7,019,027	655.25
Education & Health Services	96	1,011	26,528,648	504.62
Leisure & Hospitality	42	596	8,897,222	287.08
Other Services	30	129	3,702,274	551.92
Local Government	27	837	30,775,136	707.08
State Government	16	715	25,221,448	678.36
HOT SPRING COUNTY - TOTAL	636	8,392	\$300,549,444	\$688.73
Natural Resources & Mining	23	144	4,593,862	613.50
Construction	54	340	12,868,656	727.87
Manufacturing	27	1,427	72,643,393	978.97
Trade, Transportation & Utilities	153	1,606	63,262,577	757.53
Wholesale Trade	18	100	4,960,746	953.99
Retail Trade	96	882	21,485,028	468.45
Transportation, Warehousing & Utilities	39	624	36,816,803	1,134.64
Information	7	54	2,222,696	791.56
Financial Activities	53	209	9,144,182	841.39
Professional & Business Services	52	939	23,638,162	484.11
Education & Health Services	136	1,078	36,692,415	654.57
Leisure & Hospitality	54	669	8,781,421	252.43
Other Services	38	132	3,397,833	495.02
Local Government	27	947	35,521,425	721.34
State Government	12	847	27,782,822	630.80

Note: Data may not add due to rounding.

TABLE 6. COUNTY SUMMARY CALENDAR YEAR 2017

North American Industry Classification System - Industry Groups	Average Employing Units	Average Covered Employment	Total Calendar Earnings	Average Weekly Earnings
HOWARD COUNTY - TOTAL	353	6,936	\$226,746,357	\$628.68
Natural Resources & Mining	20	210	7,833,092	717.32
Construction	21	136	6,125,633	866.18
Manufacturing	19	3,367	112,122,313	640.39
Trade, Transportation & Utilities	86	907	29,322,060	621.70
Wholesale Trade	17	80	3,396,283	816.41
Retail Trade	51	635	16,323,390	494.35
Transportation, Warehousing & Utilities	18	192	9,602,387	961.78
Financial Activities	32	129	5,264,039	784.74
Professional & Business Services	22	141	4,536,602	618.74
Education & Health Services	82	834	26,785,962	617.64
Leisure & Hospitality	21	325	4,566,740	270.22
Local Government	17	639	22,094,392	664.93
State Government	10	101	3,524,149	671.01
Other	23	147	4,571,375	598.03
INDEPENDENCE COUNTY - TOTAL	890	15,561	\$573,157,454	\$708.33
Natural Resources & Mining	16	241	12,455,931	993.93
Construction	60	441	20,450,533	891.79
Manufacturing	37	2,941	127,454,652	833.41
Trade, Transportation & Utilities	227	2,970	100,378,739	649.95
Wholesale Trade	27	319	11,639,298	701.67
Retail Trade	154	1,857	46,991,130	486.63
Transportation, Warehousing & Utilities	46	794	41,748,311	1,011.15
Information	11	125	4,008,531	616.70
Financial Activities	83	527	25,961,359	947.36
Professional & Business Services	89	1,278	37,151,157	559.03
Education & Health Services	164	3,452	154,038,992	858.14
Leisure & Hospitality	79	1,239	16,502,846	256.14
Other Services	64	360	8,005,431	427.64
Local Government	46	1,418	46,225,337	626.90
State Government	14	569	20,523,946	693.66

Note: Data may not add due to rounding.

TABLE 6. COUNTY SUMMARY CALENDAR YEAR 2017

North American Industry Classification System - Industry Groups	Average Employing Units	Average Covered Employment	Total Calendar Earnings	Average Weekly Earnings
IZARD COUNTY - TOTAL	255	3,027	\$98,036,232	\$622.83
Natural Resources & Mining	7	143	7,416,228	997.34
Construction	24	99	3,516,307	683.04
Manufacturing	10	278	9,722,987	672.59
Trade, Transportation & Utilities	66	538	16,460,528	588.38
Wholesale Trade	13	26	792,125	585.89
Retail Trade	42	366	9,054,809	475.77
Transportation, Warehousing & Utilities	11	146	6,613,594	871.13
Information	4	6	332,365	1,065.27
Financial Activities	25	169	6,145,422	699.30
Professional & Business Services	15	49	1,617,770	634.92
Education & Health Services	49	677	19,763,523	561.40
Leisure & Hospitality	19	173	2,356,916	262.00
Other Services	10	27	705,446	502.45
Local Government	17	469	15,291,343	627.00
State Government	9	399	14,707,397	708.86
JACKSON COUNTY - TOTAL	439	5,151	\$186,690,651	\$696.99
Natural Resources & Mining	57	286	10,302,385	692.74
Construction	20	94	4,001,728	818.68
Manufacturing	14	916	43,982,228	923.38
Trade, Transportation & Utilities	106	1,023	34,248,956	643.83
Wholesale Trade	20	202	10,898,028	1,037.51
Retail Trade	70	731	19,031,309	500.67
Transportation, Warehousing & Utilities	16	90	4,319,619	923.00
Information	3	13	503,565	744.92
Financial Activities	30	134	5,789,359	830.85
Professional & Business Services	31	114	4,299,698	725.32
Education & Health Services	88	884	32,543,604	707.96
Leisure & Hospitality	25	303	4,026,914	255.58
Other Services	21	64	2,269,288	681.88
Local Government	32	557	17,573,517	606.74
State Government	12	763	27,149,409	684.28

Note: Data may not add due to rounding.

TABLE 6. COUNTY SUMMARY CALENDAR YEAR 2017

North American Industry Classification System - Industry Groups	Average Employing Units	Average Covered Employment	Total Calendar Earnings	Average Weekly Earnings
JEFFERSON COUNTY - TOTAL	2,093	26,418	\$1,019,842,071	\$742.39
Natural Resources & Mining	40	158	8,416,309	1,024.38
Construction	87	545	22,397,509	790.31
Manufacturing	58	4,859	262,645,247	1,039.49
Trade, Transportation & Utilities	405	4,449	147,076,898	635.74
Wholesale Trade	72	670	28,012,475	804.03
Retail Trade	280	3,083	78,935,461	492.37
Transportation, Warehousing & Utilities	53	696	40,128,962	1,108.78
Information	9	70	3,398,202	933.57
Financial Activities	154	943	43,768,844	892.59
Professional & Business Services	145	2,151	71,104,489	635.70
Education & Health Services	872	4,813	187,901,993	750.78
Leisure & Hospitality	135	1,880	27,039,208	276.59
Other Services	112	542	17,464,045	619.64
Local Government	40	2,624	93,521,017	685.40
State Government	36	3,384	135,108,310	767.80
JOHNSON COUNTY - TOTAL	483	8,616	\$275,426,608	\$614.75
Natural Resources & Mining	14	220	8,504,002	743.36
Construction	34	192	7,252,436	726.41
Manufacturing	34	2,699	88,372,996	629.67
Trade, Transportation & Utilities	108	1,906	59,313,517	598.45
Retail Trade	75	893	21,124,664	454.92
Other Trade, Transportation & Utilities	33	1,013	38,188,853	724.98
Information	5	26	779,768	576.75
Financial Activities	48	181	6,613,076	702.62
Professional & Business Services	51	402	9,212,902	440.72
Education & Health Services	95	1,261	45,792,967	698.36
Leisure & Hospitality	42	593	7,638,311	247.71
Other Services	30	82	2,086,485	489.33
Local Government	14	956	35,754,418	719.23
State Government	8	98	4,105,730	805.68

Note: Data may not add due to rounding.

TABLE 6. COUNTY SUMMARY CALENDAR YEAR 2017

North American Industry Classification System - Industry Groups	Average Employing Units	Average Covered Employment	Total Calendar Earnings	Average Weekly Earnings
LAFAYETTE COUNTY - TOTAL	170	1,180	\$37,329,321	\$608.37
Natural Resources & Mining	28	107	3,164,098	568.67
Construction	9	66	4,324,312	1,260.00
Manufacturing	6	39	3,095,434	1,526.35
Trade, Transportation & Utilities	29	199	5,238,485	506.23
Retail Trade	18	117	2,352,590	386.68
Other Trade, Transportation & Utilities	11	82	2,885,895	676.80
Financial Activities	15	54	1,700,916	605.74
Professional & Business Services	9	37	1,311,977	681.90
Education & Health Services	39	187	4,702,999	483.65
Leisure & Hospitality	6	43	601,306	268.92
Local Government	14	290	8,608,560	570.86
State Government	9	112	3,227,490	554.17
Other	6	46	1,353,744	565.95
LAWRENCE COUNTY - TOTAL	412	3,930	\$127,133,156	\$622.10
Natural Resources & Mining	52	197	7,464,795	728.70
Construction	23	88	3,264,752	713.45
Manufacturing	20	461	16,434,317	685.56
Trade, Transportation & Utilities	119	853	29,352,152	661.74
Wholesale Trade	19	216	9,493,708	845.24
Retail Trade	62	498	13,368,151	516.22
Transportation, Warehousing & Utilities	38	139	6,490,293	897.94
Financial Activities	29	126	4,918,746	750.72
Professional & Business Services	26	100	3,839,637	738.39
Education & Health Services	57	553	17,867,278	621.34
Leisure & Hospitality	31	346	4,790,432	266.25
Local Government	24	1,048	34,027,610	624.41
State Government	9	78	2,583,757	637.02
Other	22	80	2,589,680	622.52

Note: Data may not add due to rounding.

TABLE 6. COUNTY SUMMARY CALENDAR YEAR 2017

North American Industry Classification System - Industry Groups	Average Employing Units	Average Covered Employment	Total Calendar Earnings	Average Weekly Earnings
LEE COUNTY - TOTAL	285	1,895	\$58,877,578	\$597.50
Natural Resources & Mining	42	217	8,237,267	730.00
Construction	7	25	929,593	715.07
Trade, Transportation & Utilities	40	319	11,564,182	697.14
Wholesale Trade	10	107	5,021,864	902.56
Retail Trade	20	163	3,919,385	462.41
Transportation, Warehousing & Utilities	10	49	2,622,933	1,029.41
Financial Activities	18	63	1,894,306	578.24
Professional & Business Services	13	44	2,132,535	932.05
Education & Health Services	126	468	12,473,918	512.57
Leisure & Hospitality	8	66	962,071	280.32
Local Government	15	291	6,027,051	398.30
State Government	6	386	14,230,012	708.95
Other	10	16	426,643	512.79
LINCOLN COUNTY - TOTAL	292	2,758	\$93,218,850	\$649.99
Natural Resources & Mining	35	172	5,896,925	659.32
Construction	19	107	3,995,777	718.15
Manufacturing	9	261	8,473,318	624.32
Trade, Transportation & Utilities	46	353	12,856,835	700.42
Wholesale Trade	9	54	2,083,274	741.91
Retail Trade	24	173	3,540,952	393.61
Transportation, Warehousing & Utilities	13	126	7,232,609	1,103.88
Financial Activities	20	71	2,645,380	716.52
Professional & Business Services	10	25	983,995	756.92
Education & Health Services	106	412	11,678,026	545.09
Leisure & Hospitality	15	168	1,822,927	208.67
Local Government	7	339	10,634,999	603.30
State Government	11	802	32,309,627	774.74
Other	14	48	1,921,041	769.65

Note: Data may not add due to rounding.

TABLE 6. COUNTY SUMMARY CALENDAR YEAR 2017

North American Industry Classification System - Industry Groups	Average Employing Units	Average Covered Employment	Total Calendar Earnings	Average Weekly Earnings
LITTLE RIVER COUNTY - TOTAL	251	3,302	\$164,939,393	\$960.60
Natural Resources & Mining	16	102	3,972,619	748.99
Construction	13	189	7,661,289	779.54
Manufacturing	17	1,099	98,783,756	1,728.56
Trade, Transportation & Utilities	60	571	15,887,951	535.09
Wholesale Trade	8	26	1,852,512	1,370.20
Retail Trade	37	451	10,968,890	467.72
Transportation, Warehousing & Utilities	15	94	3,066,549	627.36
Financial Activities	16	68	2,361,869	667.95
Professional & Business Services	15	76	2,660,856	673.29
Education & Health Services	51	210	5,699,436	521.93
Leisure & Hospitality	13	183	2,319,357	243.73
Local Government	20	674	21,948,059	626.23
State Government	10	73	2,420,715	637.70
Other	20	57	1,223,486	412.78
LOGAN COUNTY - TOTAL	498	5,329	\$170,087,404	\$613.79
Natural Resources & Mining	27	109	3,793,622	669.31
Construction	44	237	8,964,865	727.43
Manufacturing	21	1,149	47,019,612	786.97
Trade, Transportation & Utilities	100	992	27,747,999	537.92
Wholesale Trade	9	40	1,160,449	557.91
Retail Trade	68	777	18,570,762	459.63
Transportation, Warehousing & Utilities	23	175	8,016,788	880.97
Information	5	30	1,297,888	831.98
Financial Activities	48	199	8,517,711	823.13
Professional & Business Services	41	127	4,425,585	670.14
Education & Health Services	114	711	21,460,126	580.44
Leisure & Hospitality	34	339	4,436,851	251.69
Other Services	30	148	4,540,024	589.92
Local Government	22	775	24,312,754	603.29
State Government	12	513	13,570,367	508.71

Note: Data may not add due to rounding.

TABLE 6. COUNTY SUMMARY CALENDAR YEAR 2017

North American Industry Classification System - Industry Groups	Average Employing Units	Average Covered Employment	Total Calendar Earnings	Average Weekly Earnings
LONOKE COUNTY - TOTAL	1,279	13,784	\$472,583,964	\$659.33
Natural Resources & Mining	85	470	19,107,656	781.82
Construction	132	943	41,698,999	850.38
Manufacturing	37	1,705	80,206,027	904.65
Trade, Transportation & Utilities	303	2,793	85,647,397	589.71
Wholesale Trade	76	430	20,623,817	922.35
Retail Trade	169	2,081	51,471,704	475.66
Transportation, Warehousing & Utilities	58	282	13,551,876	924.16
Information	12	84	4,177,065	956.29
Financial Activities	151	649	36,570,688	1,083.64
Professional & Business Services	151	758	28,511,418	723.35
Education & Health Services	200	1,699	50,734,512	574.26
Leisure & Hospitality	108	1,736	26,146,465	289.64
Other Services	61	194	5,072,813	502.86
Local Government	25	2,588	88,647,714	658.72
State Government	14	165	6,063,210	706.67
MADISON COUNTY - TOTAL	254	3,248	\$112,913,894	\$668.54
Natural Resources & Mining	11	46	1,591,035	665.15
Construction	26	104	4,370,070	808.08
Manufacturing	21	1,149	41,458,679	693.89
Trade, Transportation & Utilities	52	677	20,728,643	588.81
Wholesale Trade	7	29	1,057,852	701.49
Retail Trade	36	499	12,926,460	498.17
Transportation, Warehousing & Utilities	9	149	6,744,331	870.46
Information	6	51	4,432,407	1,671.35
Financial Activities	19	89	3,224,431	696.72
Professional & Business Services	24	90	3,788,121	809.43
Education & Health Services	45	261	7,474,771	550.75
Leisure & Hospitality	16	179	2,272,462	244.14
Other Services	18	46	1,396,486	583.82
Local Government	9	515	20,814,540	777.24
State Government	7	41	1,362,249	638.95

Note: Data may not add due to rounding.

TABLE 6. COUNTY SUMMARY CALENDAR YEAR 2017

North American Industry Classification System - Industry Groups	Average Employing Units	Average Covered Employment	Total Calendar Earnings	Average Weekly Earnings
MARION COUNTY - TOTAL	280	3,713	\$109,550,908	\$567.40
Natural Resources & Mining	3	13	338,417	500.62
Construction	20	50	1,466,144	563.90
Manufacturing	21	1,675	52,850,008	606.77
Trade, Transportation & Utilities	54	538	13,936,799	498.17
Wholesale Trade	6	45	1,461,790	624.70
Retail Trade	40	458	10,599,012	445.04
Transportation, Warehousing & Utilities	8	35	1,875,997	1,030.77
Information	3	54	3,307,269	1,177.80
Financial Activities	35	197	6,926,365	676.14
Professional & Business Services	26	81	2,407,637	571.61
Education & Health Services	50	347	9,842,931	545.50
Leisure & Hospitality	31	211	2,674,370	243.74
Other Services	13	29	521,968	346.13
Local Government	17	478	13,888,627	558.76
State Government	7	40	1,390,373	668.45
MILLER COUNTY - TOTAL	886	12,847	\$491,500,555	\$735.73
Natural Resources & Mining	31	192	8,262,576	827.58
Construction	69	637	27,194,244	820.98
Manufacturing	28	2,360	144,251,701	1,175.45
Trade, Transportation & Utilities	220	3,386	122,474,016	695.59
Wholesale Trade	48	475	23,954,652	969.82
Retail Trade	126	1,242	30,153,591	466.89
Transportation, Warehousing & Utilities	46	1,669	68,365,773	787.73
Information	7	128	7,470,924	1,122.43
Financial Activities	84	424	17,689,188	802.30
Professional & Business Services	86	1,111	27,129,105	469.59
Education & Health Services	182	1,081	33,743,831	600.30
Leisure & Hospitality	90	1,451	23,016,719	305.05
Other Services	50	243	6,109,213	483.48
Local Government	24	1,358	53,320,630	755.08
State Government	15	476	20,838,408	841.89

Note: Data may not add due to rounding.

TABLE 6. COUNTY SUMMARY CALENDAR YEAR 2017

North American Industry Classification System - Industry Groups	Average Employing Units	Average Covered Employment	Total Calendar Earnings	Average Weekly Earnings
MISSISSIPPI COUNTY - TOTAL	1,134	17,777	\$828,174,212	\$895.90
Natural Resources & Mining	110	517	18,994,999	706.55
Construction	52	854	47,954,876	1,079.87
Manufacturing	61	6,238	425,572,499	1,311.97
Trade, Transportation & Utilities	279	2,891	107,621,125	715.89
Wholesale Trade	59	344	17,791,667	994.61
Retail Trade	151	1,710	40,376,525	454.08
Transportation, Warehousing & Utilities	69	837	49,452,933	1,136.22
Information	6	39	1,173,061	578.43
Financial Activities	82	454	16,877,393	714.90
Professional & Business Services	87	1,274	41,336,236	623.96
Education & Health Services	240	1,641	57,473,186	673.52
Leisure & Hospitality	93	1,168	16,372,096	269.56
Other Services	52	267	10,600,628	763.51
Local Government	49	1,939	66,474,547	659.29
State Government	23	495	17,723,566	688.56
MONROE COUNTY - TOTAL	302	2,053	\$62,447,500	\$584.96
Natural Resources & Mining	34	128	6,129,944	920.97
Construction	9	21	610,942	559.47
Manufacturing	6	133	4,363,208	630.89
Trade, Transportation & Utilities	75	544	18,574,793	656.63
Wholesale Trade	16	184	8,325,605	870.15
Retail Trade	36	255	5,974,402	450.56
Transportation, Warehousing & Utilities	23	105	4,274,786	782.93
Financial Activities	22	90	3,474,344	742.38
Professional & Business Services	14	21	495,268	453.54
Education & Health Services	72	378	10,759,179	547.37
Leisure & Hospitality	22	227	3,274,794	277.43
Local Government	21	337	9,613,898	548.61
State Government	7	64	2,736,594	822.29
Other	20	110	2,414,536	422.12

Note: Data may not add due to rounding.

TABLE 6. COUNTY SUMMARY CALENDAR YEAR 2017

North American Industry Classification System - Industry Groups	Average Employing Units	Average Covered Employment	Total Calendar Earnings	Average Weekly Earnings
MONTGOMERY COUNTY - TOTAL	165	1,306	\$34,524,289	\$508.37
Natural Resources & Mining	7	29	1,015,903	673.68
Construction	25	77	2,049,826	511.94
Manufacturing	8	37	1,164,080	605.03
Trade, Transportation & Utilities	35	222	5,393,597	467.22
Wholesale Trade	9	49	1,650,588	647.80
Retail Trade	21	156	3,363,551	414.64
Transportation, Warehousing & Utilities	5	17	379,458	429.25
Information	4	5	162,972	626.82
Financial Activities	9	55	1,971,336	689.28
Professional & Business Services	14	20	543,607	522.70
Education & Health Services	20	59	1,667,069	543.37
Leisure & Hospitality	15	281	5,428,517	371.51
Other Services	12	65	1,371,215	405.68
Local Government	9	421	12,416,375	567.16
State Government	7	35	1,339,792	736.15
NEVADA COUNTY - TOTAL	198	2,394	\$87,122,523	\$699.85
Natural Resources & Mining	12	75	3,213,086	823.87
Trade, Transportation & Utilities	38	577	19,299,241	643.22
Retail Trade	22	322	6,712,430	400.89
Other Trade, Transportation & Utilities	16	255	12,586,811	949.23
Financial Activities	11	64	2,419,970	727.15
Professional & Business Services	11	43	1,460,168	653.03
Education & Health Services	47	430	10,134,665	453.25
Leisure & Hospitality	10	89	1,165,554	251.85
Local Government	28	359	10,532,454	564.20
State Government	9	55	1,897,453	663.45
Other	32	702	36,999,932	1,013.59

Note: Data may not add due to rounding.

TABLE 6. COUNTY SUMMARY CALENDAR YEAR 2017

North American Industry Classification System - Industry Groups	Average Employing Units	Average Covered Employment	Total Calendar Earnings	Average Weekly Earnings
NEWTON COUNTY - TOTAL	118	1,043	\$25,162,042	\$463.94
Natural Resources & Mining	4	14	\$320,049	439.63
Construction	6	17	519,930	588.16
Manufacturing	9	35	1,215,316	667.76
Trade, Transportation & Utilities	32	159	4,656,448	563.19
Retail Trade	16	103	2,309,383	431.18
Other Trade, Transportation & Utilities	16	56	2,347,065	806.00
Education & Health Services	23	256	4,432,808	332.99
Leisure & Hospitality	16	156	2,390,407	294.68
Other Services	3	4	75,718	364.03
Local Government	13	348	9,437,074	521.50
State Government	7	36	1,273,126	680.09
Other	5	18	841,166	898.68
OUACHITA COUNTY - TOTAL	657	6,797	\$230,307,531	\$651.61
Natural Resources & Mining	35	157	6,308,010	772.66
Construction	38	199	7,698,015	743.91
Manufacturing	25	554	24,394,248	846.79
Trade, Transportation & Utilities	158	1,481	45,690,908	593.30
Wholesale Trade	25	219	9,152,306	803.68
Retail Trade	105	969	22,001,698	436.65
Transportation, Warehousing & Utilities	28	293	14,536,904	954.12
Information	6	44	1,828,014	798.96
Financial Activities	53	259	10,489,132	778.82
Professional & Business Services	44	597	20,528,760	661.28
Education & Health Services	189	1,259	49,274,994	752.66
Leisure & Hospitality	41	499	6,040,949	232.81
Other Services	26	111	3,383,632	586.21
Local Government	29	1,013	33,034,522	627.13
State Government	13	624	21,636,347	666.80

Note: Data may not add due to rounding.

TABLE 6. COUNTY SUMMARY CALENDAR YEAR 2017

North American Industry Classification System - Industry Groups	Average Employing Units	Average Covered Employment	Total Calendar Earnings	Average Weekly Earnings
PERRY COUNTY - TOTAL	141	1,171	\$36,623,507	\$601.45
Natural Resources & Mining	7	76	\$4,038,712	1,021.94
Construction	17	103	3,585,882	669.51
Manufacturing	5	30	1,286,735	824.83
Trade, Transportation & Utilities	26	180	4,870,343	520.34
Retail Trade	18	144	2,230,792	297.92
Other Trade, Transportation & Utilities	8	36	2,639,551	1,410.02
Financial Activities	7	26	1,106,568	818.47
Professional & Business Services	14	39	1,583,623	780.88
Education & Health Services	32	231	6,172,872	513.89
Leisure & Hospitality	8	79	1,079,313	262.73
Local Government	10	338	10,175,403	578.94
State Government	7	33	1,242,636	724.15
Other	8	36	1,481,420	791.36
PHILLIPS COUNTY - TOTAL	768	5,320	\$170,290,478	\$615.57
Natural Resources & Mining	59	237	7,284,171	591.06
Construction	30	116	3,501,238	580.44
Manufacturing	14	381	16,088,681	812.07
Trade, Transportation & Utilities	146	1,251	40,144,232	617.11
Wholesale Trade	27	257	12,532,082	937.75
Retail Trade	82	753	16,766,352	428.19
Transportation, Warehousing & Utilities	37	241	10,845,798	865.45
Information	8	25	1,203,742	925.96
Financial Activities	41	206	7,581,861	707.79
Professional & Business Services	40	233	9,715,156	801.85
Education & Health Services	322	1,396	41,323,645	569.26
Leisure & Hospitality	36	300	3,956,908	253.65
Other Services	31	72	1,876,024	501.07
Local Government	27	752	25,551,744	653.43
State Government	14	351	12,063,076	660.92

Note: Data may not add due to rounding.

TABLE 6. COUNTY SUMMARY CALENDAR YEAR 2017

North American Industry Classification System - Industry Groups	Average Employing Units	Average Covered Employment	Total Calendar Earnings	Average Weekly Earnings
PIKE COUNTY - TOTAL	256	2,534	\$75,726,801	\$574.70
Natural Resources & Mining	26	124	5,133,176	796.09
Construction	13	42	1,475,418	675.56
Manufacturing	19	360	12,222,548	652.91
Trade, Transportation & Utilities	62	529	15,225,113	553.48
Wholesale Trade	8	111	3,533,621	612.20
Retail Trade	35	346	8,373,274	465.39
Transportation, Warehousing & Utilities	19	72	3,318,218	886.28
Information	7	30	1,140,810	731.29
Financial Activities	23	222	9,107,388	788.93
Professional & Business Services	14	63	3,729,684	1,138.49
Education & Health Services	35	323	7,030,989	418.61
Leisure & Hospitality	26	244	3,172,222	250.02
Other Services	12	59	1,659,741	540.98
Local Government	10	429	13,254,867	594.18
State Government	9	109	2,574,845	454.28
POINSETT COUNTY - TOTAL	514	5,190	\$185,647,243	\$687.89
Natural Resources & Mining	72	400	17,713,073	851.59
Construction	23	92	3,697,352	772.86
Manufacturing	19	697	30,529,313	842.33
Trade, Transportation & Utilities	130	1,189	41,231,463	666.87
Wholesale Trade	28	340	19,050,204	1,077.50
Retail Trade	71	682	14,996,132	422.86
Transportation, Warehousing & Utilities	31	167	7,185,127	827.40
Information	5	56	2,194,713	753.68
Financial Activities	39	177	7,510,317	815.98
Professional & Business Services	27	183	11,466,691	1,204.99
Education & Health Services	100	838	26,906,003	617.45
Leisure & Hospitality	39	336	4,300,853	246.16
Other Services	19	50	1,440,951	554.21
Local Government	30	1,006	33,328,406	637.11
State Government	11	166	5,328,108	617.25

Note: Data may not add due to rounding.

TABLE 6. COUNTY SUMMARY CALENDAR YEAR 2017

North American Industry Classification System - Industry Groups	Average Employing Units	Average Covered Employment	Total Calendar Earnings	Average Weekly Earnings
POLK COUNTY - TOTAL	497	5,677	\$175,726,093	\$595.27
Natural Resources & Mining	21	139	6,672,078	923.09
Construction	34	190	6,074,046	614.78
Manufacturing	32	1,240	42,644,862	661.37
Trade, Transportation & Utilities	125	1,030	28,696,498	535.78
Wholesale Trade	22	60	1,916,613	614.30
Retail Trade	71	762	17,697,058	446.62
Transportation, Warehousing & Utilities	32	208	9,082,827	839.76
Information	8	72	2,047,021	546.75
Financial Activities	47	242	8,614,163	684.53
Professional & Business Services	42	141	5,513,262	751.95
Education & Health Services	88	1,030	35,388,629	660.73
Leisure & Hospitality	40	449	6,103,174	261.40
Other Services	26	181	5,091,734	540.98
Local Government	21	674	21,083,469	601.56
State Government	13	289	7,797,157	518.84
POPE COUNTY - TOTAL	1,825	25,600	\$1,027,832,721	\$772.11
Natural Resources & Mining	33	662	28,215,861	819.66
Construction	154	1,354	75,571,886	1,073.34
Manufacturing	72	4,330	187,028,906	830.65
Trade, Transportation & Utilities	427	6,042	274,620,759	874.08
Wholesale Trade	79	569	23,983,994	810.60
Retail Trade	266	3,154	79,213,753	482.99
Transportation, Warehousing & Utilities	82	2,319	171,423,012	1,421.56
Information	19	152	6,104,990	772.39
Financial Activities	189	981	39,878,188	781.74
Professional & Business Services	275	1,881	101,504,603	1,037.75
Education & Health Services	343	3,238	115,591,806	686.51
Leisure & Hospitality	141	2,783	41,608,529	287.52
Other Services	114	536	15,621,673	560.48
Local Government	43	2,013	76,272,372	728.65
State Government	15	1,628	65,813,148	777.42

Note: Data may not add due to rounding.

TABLE 6. COUNTY SUMMARY CALENDAR YEAR 2017

North American Industry Classification System - Industry Groups	Average Employing Units	Average Covered Employment	Total Calendar Earnings	Average Weekly Earnings
PRAIRIE COUNTY - TOTAL	260	1,502	\$49,949,456	\$639.52
Natural Resources & Mining	36	164	7,369,284	864.13
Construction	10	51	1,745,681	658.25
Manufacturing	7	39	943,768	465.37
Trade, Transportation & Utilities	61	353	12,290,674	669.57
Wholesale Trade	12	82	5,760,998	1,351.08
Retail Trade	34	205	4,109,499	385.51
Transportation, Warehousing & Utilities	15	66	2,420,177	705.18
Financial Activities	16	51	1,987,210	749.33
Professional & Business Services	16	117	5,597,312	920.01
Education & Health Services	55	266	7,352,018	531.52
Leisure & Hospitality	18	103	1,409,290	263.12
Local Government	16	294	9,220,059	603.09
State Government	7	27	963,621	686.34
Other	18	37	1,070,539	556.41
PULASKI COUNTY - TOTAL	14,231	240,839	\$11,450,368,692	\$914.30
Natural Resources & Mining	53	630	40,147,704	1,225.51
Construction	930	8,960	458,186,496	983.40
Manufacturing	339	12,720	709,800,774	1,073.11
Trade, Transportation & Utilities	3,132	48,616	2,112,782,503	835.74
Wholesale Trade	941	11,541	753,086,787	1,254.87
Retail Trade	1,803	25,746	763,495,987	570.29
Transportation, Warehousing & Utilities	388	11,329	596,199,729	1,012.04
Information	202	5,281	344,495,834	1,254.48
Financial Activities	1,674	16,717	1,195,278,140	1,375.01
Professional & Business Services	2,721	34,254	1,681,819,903	944.20
Education & Health Services	2,511	41,069	2,033,277,401	952.09
Leisure & Hospitality	1,220	23,556	418,518,538	341.67
Other Services	1,140	6,616	256,016,055	744.16
Local Government	110	14,653	669,839,483	879.11
State Government	199	27,767	1,530,205,861	1,059.78

Note: Data may not add due to rounding.

TABLE 6. COUNTY SUMMARY CALENDAR YEAR 2017

North American Industry Classification System - Industry Groups	Average Employing Units	Average Covered Employment	Total Calendar Earnings	Average Weekly Earnings
RANDOLPH COUNTY - TOTAL	397	5,332	\$166,021,366	\$598.78
Natural Resources & Mining	28	215	9,747,449	871.86
Construction	29	120	3,923,659	628.79
Manufacturing	27	1,299	43,410,505	642.66
Trade, Transportation & Utilities	90	869	26,614,066	588.96
Wholesale Trade	17	133	4,805,544	694.84
Retail Trade	55	595	14,773,469	477.49
Transportation, Warehousing & Utilities	18	141	7,035,053	959.50
Information	6	29	1,227,727	814.14
Financial Activities	33	155	5,549,325	688.50
Professional & Business Services	35	230	6,790,451	567.76
Education & Health Services	66	910	28,967,814	612.17
Leisure & Hospitality	32	384	5,264,897	263.67
Other Services	17	65	1,775,186	525.20
Local Government	24	773	21,946,168	545.98
State Government	10	283	10,804,119	734.17
SAINT FRANCIS COUNTY - TOTAL	726	6,754	\$217,161,292	\$618.33
Natural Resources & Mining	44	218	8,301,872	732.35
Trade, Transportation & Utilities	151	1,907	61,399,724	619.17
Wholesale Trade	29	566	23,976,725	814.65
Retail Trade	100	1,055	24,730,874	450.80
Transportation, Warehousing & Utilities	22	286	12,692,125	853.42
Information	5	51	1,884,668	710.66
Financial Activities	63	247	8,139,186	633.70
Professional & Business Services	46	144	5,930,534	792.01
Education & Health Services	253	1,464	49,863,761	655.00
Leisure & Hospitality	46	643	8,433,429	252.23
Other Services	25	59	1,324,087	431.58
Local Government	28	807	27,276,165	649.99
State Government	16	450	15,995,196	683.56
Other	49	764	28,612,670	720.21

Note: Data may not add due to rounding.

TABLE 6. COUNTY SUMMARY CALENDAR YEAR 2017

North American Industry Classification System - Industry Groups	Average Employing Units	Average Covered Employment	Total Calendar Earnings	Average Weekly Earnings
SALINE COUNTY - TOTAL	2,024	23,909	\$841,064,271	\$676.49
Natural Resources & Mining	14	56	2,337,538	802.73
Construction	274	2,076	90,615,996	839.41
Manufacturing	83	1,416	68,296,958	927.54
Trade, Transportation & Utilities	452	5,509	182,549,490	637.24
Wholesale Trade	114	656	34,795,208	1,020.03
Retail Trade	275	4,354	126,500,492	558.73
Transportation, Warehousing & Utilities	63	499	21,253,790	819.09
Information	17	167	7,672,241	883.49
Financial Activities	201	753	34,724,902	886.83
Professional & Business Services	267	1,561	63,956,113	787.91
Education & Health Services	325	4,515	166,960,227	711.13
Leisure & Hospitality	188	3,424	52,296,816	293.72
Other Services	156	798	24,846,289	598.76
Local Government	32	2,750	117,907,293	824.53
State Government	15	884	28,900,408	628.71
SCOTT COUNTY - TOTAL	179	2,974	\$87,571,158	\$566.26
Natural Resources & Mining	17	164	6,581,226	771.72
Trade, Transportation & Utilities	32	364	9,820,970	518.86
Wholesale Trade	6	35	751,669	413.00
Retail Trade	20	259	5,816,672	431.89
Transportation, Warehousing & Utilities	6	70	3,252,629	893.58
Financial Activities	19	62	1,878,659	582.71
Professional & Business Services	12	92	2,690,025	562.30
Education & Health Services	44	321	11,868,324	711.02
Leisure & Hospitality	14	129	2,029,238	302.51
Local Government	6	494	15,627,596	608.36
State Government	6	29	1,069,659	709.32
Other	29	1,319	36,005,461	524.95

Note: Data may not add due to rounding.

TABLE 6. COUNTY SUMMARY CALENDAR YEAR 2017

North American Industry Classification System - Industry Groups	Average Employing Units	Average Covered Employment	Total Calendar Earnings	Average Weekly Earnings
SEARCY COUNTY - TOTAL	162	1,498	\$38,600,388	\$495.54
Construction	10	12	287,679	461.02
Manufacturing	17	199	5,204,256	502.92
Trade, Transportation & Utilities	36	227	5,553,047	470.44
Wholesale Trade	7	37	898,586	467.04
Retail Trade	24	175	3,907,074	429.35
Transportation, Warehousing & Utilities	5	15	747,387	958.19
Financial Activities	11	60	1,758,100	563.49
Professional & Business Services	13	73	2,405,520	633.70
Education & Health Services	39	353	9,102,978	495.91
Leisure & Hospitality	12	153	1,985,187	249.52
Local Government	10	301	8,875,691	567.06
State Government	6	42	1,428,674	654.15
Other	8	78	1,999,256	492.91
SEBASTIAN COUNTY - TOTAL	3,658	64,747	\$2,667,601,018	\$792.32
Natural Resources & Mining	43	506	36,952,880	1,404.41
Construction	259	2,364	100,465,945	817.27
Manufacturing	187	11,849	574,797,056	932.89
Trade, Transportation & Utilities	894	13,262	500,571,304	725.86
Wholesale Trade	233	2,586	134,507,871	1,000.27
Retail Trade	551	7,959	206,066,061	497.90
Transportation, Warehousing & Utilities	110	2,717	159,997,372	1,132.45
Information	40	916	59,173,741	1,242.31
Financial Activities	404	2,440	116,318,432	916.76
Professional & Business Services	561	8,271	316,433,833	735.74
Education & Health Services	592	11,408	562,925,493	948.94
Leisure & Hospitality	345	6,146	99,199,737	310.39
Other Services	267	1,319	39,720,919	579.12
Local Government	43	4,522	184,743,936	785.66
State Government	23	1,744	76,297,742	841.32

Note: Data may not add due to rounding.

TABLE 6. COUNTY SUMMARY CALENDAR YEAR 2017

North American Industry Classification System - Industry Groups	Average Employing Units	Average Covered Employment	Total Calendar Earnings	Average Weekly Earnings
SEVIER COUNTY - TOTAL	306	4,792	\$153,358,061	\$615.44
Natural Resources & Mining	15	172	6,164,313	689.21
Construction	18	189	9,035,595	919.37
Trade, Transportation & Utilities	89	841	27,872,913	637.36
Wholesale Trade	13	101	7,824,459	1,489.81
Retail Trade	62	662	16,362,360	475.32
Transportation, Warehousing & Utilities	14	78	3,686,094	908.80
Financial Activities	25	194	8,019,283	794.93
Professional & Business Services	24	97	2,376,542	471.16
Education & Health Services	57	543	16,645,301	589.51
Leisure & Hospitality	24	306	3,780,340	237.58
Local Government	12	912	30,019,984	633.01
State Government	7	150	5,055,355	648.12
Other	35	1,388	44,388,435	615.00
SHARP COUNTY - TOTAL	394	3,774	\$111,628,614	\$568.81
Construction	30	140	5,480,437	752.81
Manufacturing	21	185	5,064,963	526.50
Trade, Transportation & Utilities	81	1,060	36,075,050	654.48
Wholesale Trade	12	37	929,306	483.01
Retail Trade	57	661	14,899,183	433.47
Transportation, Warehousing & Utilities	12	362	20,246,561	1,075.57
Information	7	32	1,245,766	748.66
Financial Activities	35	178	7,570,535	817.91
Professional & Business Services	34	118	3,832,581	624.61
Education & Health Services	88	806	23,514,597	561.05
Leisure & Hospitality	36	381	5,344,425	269.76
Local Government	24	712	19,734,849	533.03
State Government	7	51	1,821,568	686.87
Other	31	111	1,943,843	336.77

Note: Data may not add due to rounding.

TABLE 6. COUNTY SUMMARY CALENDAR YEAR 2017

North American Industry Classification System - Industry Groups	Average Employing Units	Average Covered Employment	Total Calendar Earnings	Average Weekly Earnings
STONE COUNTY - TOTAL	266	2,540	\$71,583,223	\$541.97
Natural Resources & Mining	5	10	222,950	428.75
Construction	15	35	871,492	478.84
Manufacturing	19	201	5,126,316	490.46
Trade, Transportation & Utilities	70	593	16,249,402	526.96
Wholesale Trade	7	36	1,172,931	626.57
Retail Trade	52	519	13,232,874	490.32
Transportation, Warehousing & Utilities	11	38	1,843,597	932.99
Financial Activities	27	142	6,807,376	921.91
Professional & Business Services	11	29	667,314	442.52
Education & Health Services	53	547	19,113,255	671.96
Leisure & Hospitality	29	437	5,691,478	250.46
Local Government	10	375	12,160,644	623.62
State Government	7	124	3,360,735	521.21
Other	20	47	1,312,261	536.93
UNION COUNTY - TOTAL	1,288	17,326	\$813,945,565	\$903.43
Natural Resources & Mining	82	386	18,438,933	918.64
Construction	83	1,427	74,845,747	1,008.65
Manufacturing	49	3,023	190,141,789	1,209.58
Trade, Transportation & Utilities	307	3,417	130,639,597	735.24
Wholesale Trade	65	498	25,869,114	998.96
Retail Trade	180	2,063	52,487,279	489.27
Transportation, Warehousing & Utilities	62	856	52,283,204	1,174.59
Information	8	119	4,342,554	701.77
Financial Activities	101	603	28,500,999	908.95
Professional & Business Services	131	1,929	169,883,215	1,693.62
Education & Health Services	293	2,376	86,027,771	696.29
Leisure & Hospitality	91	1,367	21,606,251	303.95
Other Services	95	439	12,519,201	548.41
Local Government	32	1,725	57,410,856	640.03
State Government	16	515	19,588,652	731.47

Note: Data may not add due to rounding.

TABLE 6. COUNTY SUMMARY CALENDAR YEAR 2017

North American Industry Classification System - Industry Groups	Average Employing Units	Average Covered Employment	Total Calendar Earnings	Average Weekly Earnings
VAN BUREN COUNTY - TOTAL	348	3,565	\$123,668,916	\$667.11
Natural Resources & Mining	10	136	12,464,457	1,762.51
Construction	40	154	4,684,984	585.04
Manufacturing	7	133	3,868,306	559.33
Trade, Transportation & Utilities	95	1,008	40,345,879	769.72
Wholesale Trade	11	91	4,548,246	961.17
Retail Trade	56	608	14,094,769	445.81
Transportation, Warehousing & Utilities	28	309	21,702,864	1,350.69
Information	4	27	508,456	362.15
Financial Activities	29	110	4,387,795	767.10
Professional & Business Services	35	149	4,879,369	629.76
Education & Health Services	63	758	23,883,170	605.93
Leisure & Hospitality	27	361	5,795,287	308.72
Other Services	21	55	1,532,121	535.71
Local Government	11	631	19,705,279	600.55
State Government	6	43	1,613,813	721.74
WASHINGTON COUNTY - TOTAL	5,913	103,348	\$4,746,656,034	\$883.25
Natural Resources & Mining	40	301	17,058,979	1,089.89
Construction	549	5,231	260,395,037	957.29
Manufacturing	212	12,660	548,656,407	833.42
Trade, Transportation & Utilities	1,355	22,921	937,100,767	786.23
Wholesale Trade	370	3,824	264,676,351	1,331.05
Retail Trade	785	12,731	363,369,186	548.89
Transportation, Warehousing & Utilities	200	6,366	309,055,230	933.61
Information	74	885	43,086,846	936.26
Financial Activities	652	3,592	178,346,094	954.83
Professional & Business Services	1,070	13,010	1,048,186,684	1,549.38
Education & Health Services	842	15,488	730,476,499	907.00
Leisure & Hospitality	644	12,560	206,641,892	316.39
Other Services	392	2,069	65,617,918	609.90
Local Government	60	8,124	346,206,967	819.53
State Government	23	6,507	364,881,944	1,078.37

Note: Data may not add due to rounding.

TABLE 6. COUNTY SUMMARY CALENDAR YEAR 2017

North American Industry Classification System - Industry Groups	Average Employing Units	Average Covered Employment	Total Calendar Earnings	Average Weekly Earnings
WHITE COUNTY - TOTAL	1,784	23,586	\$854,328,682	\$696.57
Natural Resources & Mining	53	285	13,112,880	884.81
Construction	156	1,005	42,064,358	804.91
Manufacturing	59	2,099	97,972,362	897.61
Trade, Transportation & Utilities	478	6,160	220,352,969	687.92
Wholesale Trade	87	584	25,856,892	851.45
Retail Trade	304	3,489	95,672,761	527.33
Transportation, Warehousing & Utilities	87	2,087	98,823,316	910.61
Information	17	135	4,412,065	628.50
Financial Activities	169	860	39,029,605	872.76
Professional & Business Services	189	1,186	40,525,592	657.11
Education & Health Services	323	5,579	230,729,965	795.32
Leisure & Hospitality	164	2,679	37,829,664	271.55
Other Services	115	506	16,632,242	632.12
Local Government	46	2,599	93,014,030	688.24
State Government	15	493	18,652,950	727.61
WOODRUFF COUNTY - TOTAL	202	1,738	\$59,535,172	\$658.75
Natural Resources & Mining	27	129	4,155,712	619.52
Construction	10	41	1,391,652	652.74
Manufacturing	6	202	9,558,142	909.95
Trade, Transportation & Utilities	47	393	14,384,309	703.87
Wholesale Trade	11	132	7,111,830	1,036.11
Retail Trade	27	192	3,479,284	348.49
Transportation, Warehousing & Utilities	9	69	3,793,195	1,057.19
Financial Activities	11	68	2,627,422	743.05
Education & Health Services	61	250	7,635,324	587.33
Leisure & Hospitality	10	74	993,900	258.29
Local Government	9	429	12,313,169	551.96
State Government	5	27	1,050,624	748.31
Other	16	125	5,424,918	834.60

Note: Data may not add due to rounding.

TABLE 6. COUNTY SUMMARY CALENDAR YEAR 2017

North American Industry Classification System - Industry Groups	Average Employing Units	Average Covered Employment	Total Calendar Earnings	Average Weekly Earnings
YELL COUNTY - TOTAL	408	6,446	\$195,849,514	\$584.29
Natural Resources & Mining	23	208	8,659,105	800.58
Construction	31	227	8,477,280	718.17
Manufacturing	20	2,426	73,098,010	579.44
Trade, Transportation & Utilities	78	761	21,123,710	533.80
Wholesale Trade	15	65	1,207,776	357.33
Retail Trade	47	521	11,035,086	407.32
Transportation, Warehousing & Utilities	16	175	8,880,848	975.92
Financial Activities	29	126	4,430,750	676.24
Professional & Business Services	39	275	9,430,155	659.45
Education & Health Services	107	795	20,747,766	501.88
Leisure & Hospitality	27	315	3,748,478	228.84
Local Government	25	1,126	39,088,709	667.59
State Government	10	66	1,936,340	564.20
Other	19	121	5,109,211	812.02
STATEWIDE COUNTY - TOTAL	9,397	33,926	\$1,983,133,083	\$1,124.13
Natural Resources & Mining	95	292	18,959,006	1,248.62
Construction	763	3,830	227,163,854	1,140.61
Manufacturing	43	121	13,607,066	2,162.60
Trade, Transportation & Utilities	3,146	8,350	752,921,813	1,734.04
Wholesale Trade	2,742	6,779	669,379,636	1,898.91
Retail Trade	142	497	26,682,573	1,032.45
Transportation, Warehousing & Utilities	262	1,074	56,859,604	1,018.11
Information	277	562	48,052,877	1,644.29
Financial Activities	596	1,601	113,459,980	1,362.85
Professional & Business Services	3,621	15,025	619,131,955	792.44
Education & Health Services	444	2,488	110,968,238	857.72
Leisure & Hospitality	88	193	6,625,360	660.16
Other Services	310	722	39,612,128	1,055.09
Local Government	0	0	0	0.00
State Government	14	742	32,630,806	845.71

Note: Statewide classification includes employment and payroll data for employers that have not provided a physical location for each employing unit. This section also includes employers without a physical location in Arkansas.

TABLE 7. FEDERAL GOVERNMENT EMPLOYMENT AND EARNINGS IN ARKANSAS

North American Industry Classification System - Industry Groups	Average Employing Units	Average Covered Employment	Total Calendar Earnings	Average Weekly Earnings
TOTAL	1,163	20,040	\$1,362,072,172	\$1,307.07
Trade, Transportation & Utilities	594	5,600	284,849,148	978.19
Information	2	43	2,766,814	1,237.39
Financial Activities	14	109	8,831,128	1,558.07
Professional & Business Services	34	784	59,594,573	1,461.80
Education & Health Services	18	5,167	411,707,608	1,532.31
Leisure & Hospitality	23	302	12,689,963	808.07
Other Services	1	1	33,325	640.87
Public Administration	477	8,034	581,599,613	1,392.16

Note: Data may not add due to rounding.

TABLE 8. LOCAL WORKFORCE DEVELOPMENT AREASUMMARY CALENDAR YEAR 2017

North American Industry Classification System - Industry Groups	Average Employing Units	Average Covered Employment	Total Calendar Earnings	Average Weekly Earnings
CENTRAL WORKFORCE DEVELOPMENT AREA	6,663	81,215	2,995,737,221	\$709.36
Natural Resources & Mining	221	1,168	59,138,947	973.71
Construction	734	5,793	260,180,086	863.71
Manufacturing	231	6,467	318,944,478	948.44
Trade, Transportation & Utilities	1,526	16,629	526,811,109	609.24
Wholesale Trade	355	1,888	99,279,785	1,011.24
Retail Trade	927	13,025	347,131,840	512.52
Transportation, Warehousing & Utilities	244	1,716	80,399,484	901.02
Information	56	572	27,350,074	919.52
Financial Activities	699	3,010	141,898,340	906.58
Professional & Business Services	872	7,640	410,132,636	1,032.35
Education & Health Services	1,089	13,802	496,686,664	692.05
Leisure & Hospitality	598	10,599	159,449,023	289.30
Other Services	443	1,934	56,758,872	564.38
Local Government	134	9,203	364,904,531	762.51
State Government	60	4,398	173,482,461	758.57

*Note: Pulaski County is not included in the Central Workforce Investment Area. Please refer to Page 51 for information on Pulaski County.
Central Workforce Investment Area includes these counties: Faulkner, Lonoke, Monroe, Prairie, and Saline.

EASTERN WORKFORCE DEVELOPMENT AREA	3,493	35,233	\$1,192,093,325	\$650.66
Natural Resources & Mining	240	1,177	40,852,979	667.49
Construction	144	904	39,558,687	841.53
Manufacturing	79	3,480	158,455,920	875.64
Trade, Transportation & Utilities	763	9,104	321,026,939	678.12
Wholesale Trade	155	2,006	95,586,146	916.35
Retail Trade	429	4,761	114,917,131	464.18
Transportation, Warehousing & Utilities	180	2,338	110,523,662	909.09
Information	25	174	6,578,900	727.11
Financial Activities	263	1,254	47,366,932	726.40
Professional & Business Services	245	1,772	60,924,372	661.19
Education & Health Services	1,129	6,381	200,316,578	603.71
Leisure & Hospitality	248	3,706	61,572,516	319.51
Other Services	171	738	23,056,682	600.81
Local Government	128	4,548	162,576,865	687.44
State Government	58	1,995	69,805,955	672.89

Eastern Workforce Investment Area includes these counties: Crittenden, Cross, Lee, Phillips, and Saint Francis.

TABLE 8. LOCAL WORKFORCE DEVELOPMENT AREASUMMARY CALENDAR YEAR 2017

North American Industry Classification System - Industry Groups	Average Employing Units	Average Covered Employment	Total Calendar Earnings	Average Weekly Earnings
NORTH CENTRAL WORKFORCE DEVELOPMENT AREA	5,420	67,156	\$2,336,942,678	\$669.21
Natural Resources & Mining	208	1,505	74,003,284	945.61
Construction	428	2,366	96,907,531	787.66
Manufacturing	219	8,207	348,664,258	817.00
Trade, Transportation & Utilities	1,354	15,269	527,997,642	664.99
Wholesale Trade	227	1,583	69,734,979	847.16
Retail Trade	878	9,535	245,551,629	495.24
Transportation, Warehousing & Utilities	249	4,151	212,711,034	985.45
Information	65	448	14,228,787	610.78
Financial Activities	508	2,541	112,675,456	852.75
Professional & Business Services	491	3,320	109,183,646	632.44
Education & Health Services	1,019	14,410	551,558,159	736.08
Leisure & Hospitality	484	6,663	94,164,594	271.78
Other Services	326	1,293	35,687,134	530.77
Local Government	225	8,484	276,676,344	627.15
State Government	93	2,650	95,195,843	690.83

North Central Workforce Investment Area includes these counties: Cleburne, Fulton, Independence, IZard, Jackson, Sharp, Stone, Van Buren, White, and Woodruff.

NORTHEAST WORKFORCE DEVELOPMENT AREA	6,542	100,455	\$3,855,081,199	\$738.00
Natural Resources & Mining	448	2,190	84,107,508	738.56
Construction	461	3,718	169,014,816	874.20
Manufacturing	304	20,407	1,060,218,729	999.11
Trade, Transportation & Utilities	1,733	19,432	649,425,352	642.70
Wholesale Trade	369	3,368	164,603,463	939.86
Retail Trade	1,015	12,656	319,463,729	485.42
Transportation, Warehousing & Utilities	350	3,408	165,358,160	933.09
Information	52	679	27,429,940	776.88
Financial Activities	551	3,181	144,664,011	874.57
Professional & Business Services	665	7,452	242,828,769	626.65
Education & Health Services	1,142	17,068	722,789,224	814.38
Leisure & Hospitality	548	9,389	136,515,151	279.61
Other Services	330	1,473	46,295,486	604.41
Local Government	213	11,015	388,184,016	677.72
State Government	95	4,451	183,608,197	793.29

Northeast Workforce Investment Area includes these counties: Clay, Craighead, Greene, Lawrence, Mississippi, Poinsett, and Randolph.

TABLE 8. LOCAL WORKFORCE DEVELOPMENT AREASUMMARY CALENDAR YEAR 2017

North American Industry Classification System - Industry Groups	Average Employing Units	Average Covered Employment	Total Calendar Earnings	Average Weekly Earnings
NORTHWEST WORKFORCE DEVELOPMENT AREA	16,071	269,179	\$13,102,878,427	\$936.10
Natural Resources & Mining	136	1,451	83,422,826	1,105.64
Construction	1,477	11,510	545,635,283	911.64
Manufacturing	622	35,408	1,435,435,608	779.61
Trade, Transportation & Utilities	3,894	60,401	2,625,973,513	836.07
Wholesale Trade	1,233	10,440	860,968,408	1,585.93
Retail Trade	2,145	31,915	879,991,882	530.25
Transportation, Warehousing & Utilities	517	18,046	885,013,223	943.12
Information	205	2,445	126,494,986	994.93
Financial Activities	1,620	9,219	480,791,744	1,002.93
Professional & Business Services	2,660	48,536	4,340,475,169	1,719.77
Education & Health Services	2,339	34,343	1,445,552,427	809.45
Leisure & Hospitality	1,702	29,940	503,805,768	323.60
Other Services	1,007	4,988	161,184,778	621.43
Local Government	305	22,142	905,755,721	786.67
State Government	104	8,796	448,350,604	980.23

Northwest Workforce Investment Area includes these counties: Baxter, Benton, Boone, Carroll, Madison, Marion, Newton, Searcy, and Washington.

SOUTHEAST WORKFORCE DEVELOPMENT AREA	6,158	67,807	\$2,546,794,911	\$722.30
Natural Resources & Mining	428	2,291	91,933,083	771.69
Construction	301	2,166	94,173,765	836.12
Manufacturing	194	14,385	719,968,887	962.50
Trade, Transportation & Utilities	1,252	11,996	401,237,491	643.22
Wholesale Trade	239	1,968	94,762,066	925.99
Retail Trade	741	7,495	184,950,067	474.55
Transportation, Warehousing & Utilities	272	2,534	121,525,358	922.27
Information	44	279	11,223,677	773.62
Financial Activities	406	2,344	102,891,073	844.14
Professional & Business Services	384	3,415	130,643,434	735.69
Education & Health Services	2,142	10,980	379,888,222	665.35
Leisure & Hospitality	373	4,466	61,228,637	263.65
Other Services	301	1,147	35,133,185	589.05
Local Government	206	8,498	292,402,614	661.70
State Government	127	5,840	226,070,843	744.44

Southeast Workforce Investment Area includes these counties: Arkansas, Ashley, Bradley, Chicot, Cleveland, Desha, Drew, Grant, Jefferson, and Lincoln.

TABLE 8. LOCAL WORKFORCE DEVELOPMENT AREASUMMARY CALENDAR YEAR 2017

North American Industry Classification System - Industry Groups	Average Employing Units	Average Covered Employment	Total Calendar Earnings	Average Weekly Earnings
SOUTHWEST WORKFORCE DEVELOPMENT AREA	5,660	76,767	\$3,030,299,161	\$759.12
Natural Resources & Mining	335	2,185	96,298,161	847.55
Construction	351	3,378	157,896,250	898.89
Manufacturing	238	19,048	997,938,791	1,007.51
Trade, Transportation & Utilities	1,350	14,644	504,472,956	662.48
Wholesale Trade	237	1,821	90,233,915	952.92
Retail Trade	820	8,646	211,054,371	469.44
Transportation, Warehousing & Utilities	293	4,177	203,184,670	935.46
Information	51	470	22,205,054	908.55
Financial Activities	466	2,490	106,949,609	825.99
Professional & Business Services	439	4,572	248,778,688	1,046.41
Education & Health Services	1,293	9,870	313,222,773	610.29
Leisure & Hospitality	405	5,712	84,321,379	283.89
Other Services	347	1,485	40,619,339	526.02
Local Government	254	9,363	319,552,063	656.33
State Government	131	3,550	138,044,098	747.80

Southwest Workforce Investment Area includes these counties: Calhoun, Columbia, Dallas, Hempstead, Howard, Lafayette, Little River, Miller, Nevada, Ouachita, Sevier, and Union

WEST CENTRAL WORKFORCE DEVELOPMENT AREA	8,154	105,555	\$3,778,847,984	\$688.46
Natural Resources & Mining	236	2,195	92,501,454	810.42
Construction	717	4,600	204,432,725	854.65
Manufacturing	328	16,188	677,468,441	804.81
Trade, Transportation & Utilities	1,811	21,215	760,982,653	689.81
Wholesale Trade	324	1,968	94,677,152	925.16
Retail Trade	1,200	13,999	360,866,056	495.73
Transportation, Warehousing & Utilities	287	5,248	305,439,445	1,119.25
Information	80	760	30,282,291	766.25
Financial Activities	808	3,724	169,969,458	877.72
Professional & Business Services	928	7,615	300,149,612	757.99
Education & Health Services	1,571	17,241	658,029,856	733.97
Leisure & Hospitality	800	13,449	221,535,070	316.77
Other Services	529	2,281	63,025,454	531.36
Local Government	232	10,985	409,897,490	717.58
State Government	114	5,302	190,573,480	691.22

West Central Workforce Investment Area includes these counties: Clark, Conway, Garland, Hot Spring, Johnson, Montgomery, Perry, Pike, Pope, and Yell

TABLE 8. LOCAL WORKFORCE DEVELOPMENT AREASUMMARY CALENDAR YEAR 2017

North American Industry Classification System - Industry Groups	Average Employing Units	Average Covered Employment	Total Calendar Earnings	Average Weekly Earnings
WESTERN WORKFORCE DEVELOPMENT AREA	6,429	102,205	\$3,932,148,630	\$739.87
Natural Resources & Mining	151	1,390	79,548,428	1,100.56
Construction	522	3,884	162,877,701	806.45
Manufacturing	335	20,892	919,200,842	846.11
Trade, Transportation & Utilities	1,549	22,094	795,429,831	692.35
Wholesale Trade	360	3,535	177,758,993	967.03
Retail Trade	929	12,337	316,324,062	493.08
Transportation, Warehousing & Utilities	260	6,222	301,346,776	931.39
Information	68	1,099	65,330,939	1,143.19
Financial Activities	669	3,523	158,139,067	863.22
Professional & Business Services	844	10,437	392,314,467	722.86
Education & Health Services	1,086	15,678	700,547,314	859.30
Leisure & Hospitality	557	9,037	140,521,469	299.03
Other Services	422	2,117	65,158,215	591.90
Local Government	154	9,192	343,832,013	719.34
State Government	72	2,862	109,248,344	734.08

Western Workforce Investment Area includes these counties: Crawford, Franklin, Logan, Polk, Scott, and Sebastian