

Arkansas Covered
Employment
& Earnings



Annual
2016

**COVERED EMPLOYMENT AND EARNINGS
STATE OF ARKANSAS
ANNUAL 2016**

**ASA HUTCHINSON, GOVERNOR
STATE OF ARKANSAS**

**DARYL E. BASSETT, DIRECTOR
DEPARTMENT OF WORKFORCE SERVICES**

**PUBLISHED BY
LABOR MARKET INFORMATION & ANALYSIS
BUREAU OF LABOR STATISTICS PROGRAMS
POST OFFICE BOX 2981
LITTLE ROCK, ARKANSAS 72203-2981
SUSAN PRICE, BLS PROGRAMS MANAGER
TELEPHONE (501) 682-3103**

STATE OF ARKANSAS WEBPAGE: <http://www.arkansas.gov>

DEPARTMENT OF WORKFORCE SERVICES WEBPAGE: <http://www.dws.arkansas.gov>

WEBPAGE FOR LABOR MARKET INFORMATION: <http://www.discover.arkansas.gov>

RELEASED: JULY 2017

TABLE OF CONTENTS

	Page
Description of Data	1
Industry Classification	1
Definition of Covered Employment and Earnings	2
Federal Government	2
County Classification	2
Significant Developments During Calendar Year 2016	3

GRAPHS AND TABLES

Graph 1	Average Total Covered Employment for Selected Years, Arkansas	7
Graph 2	Total Covered Earnings, by Calendar Quarter for Selected Years, Arkansas	8
Table 1	Annual Comparison of Covered Employment and Wages, by Industry	5
Table 2	Total Covered Employment in Arkansas, 2009 – 2016	6
Table 3	Total Covered Earnings, 2009 – 2016	9
Table 4	Total Taxable Earnings, 2009 – 2016	10
Table 5	State Summary – Employment and Total Earnings, by Industry, Calendar Year 2016	11
Table 6	County Summary – Employment and Total Earnings, by Industry, Calendar Year 2016	22
Table 7	Federal Government Employment and Total Earnings in Arkansas, Calendar Year 2016	60
Table 8	Workforce Investment Area – Employment and Total Earnings, by Industry, Calendar Year 2016	61

EMPLOYMENT AND EARNINGS
UNDER THE ARKANSAS EMPLOYMENT SECURITY LAW
ANNUAL 2016

DESCRIPTION AND CLASSIFICATION OF DATA

This publication contains covered employment and payroll data by industry and county for the Calendar Year 2016 and a record for total covered employment by month, quarterly payroll data, average weekly earnings, and total taxable earnings for 2009 through 2016. These data are compiled from quarterly contributions and wage reports submitted by employers subject to the Arkansas Employment Security Law.

Employment data have been tabulated for each month of the quarter by industry under the **North American Industry Classification System** (NAICS) by state, county, and workforce area. Payroll data represent the total wages paid during the quarter and are classified by industry for the state and by publishable industry groups for each county and workforce area.

Due to industry classification revisions, previously published data will not always be comparable with current data. For this reason, comparisons should not be made between the same industries under different revisions. For more information, visit the NAICS home page at <http://www.census.gov/naics>.

Industry Classification Revisions

- SIC (Standard Industrial Classification) 1987 to NAICS 2002
- NAICS 2002 to NAICS 2007
- NAICS 2007 to NAICS 2012

The tabulation of this data is a joint effort in conjunction with the United States Bureau of Labor Statistics. Data included in this publication are subject to revisions. Revisions are typically reflected in the Annual Covered Employment and Earnings publication.

DEFINITION OF COVERED EMPLOYMENT AND EARNINGS

Covered Employment is the total number of workers employed by establishments subject to the Arkansas Employment Security Law that worked or received pay for the payroll period including the 12th of the month. Earnings include all wages paid to any covered employee by their employer including salaries, bonuses, commissions, fees, fringe benefits, sick pay made directly to employees or dependents, deferred compensation, and reported tips. These wages include both taxable and nontaxable wages. Only the first \$12,000 paid to each worker by an employer in the calendar year is taxable under the Arkansas Employment Security Law.

An Arkansas state unemployment account is required of any entity meeting the definition of an employer. As described by Arkansas Department of Workforce Services Law, the definition of an employer includes, but is not limited to, a sole proprietorship, partnership, corporation, associations, trust, estate, and receiver or trustee in bankruptcy. The entity must employ one or more individuals for ten or more days in a calendar year, whether or not the days are consecutive.

Currently excluded from coverage is employment covered by the Railroad Unemployment Insurance Act, some domestic service workers, employees of small agricultural establishments, self-employed workers, unpaid family workers, insurance and real estate agents paid only on a commission basis, and employees of churches and religious organizations except separately incorporated schools.

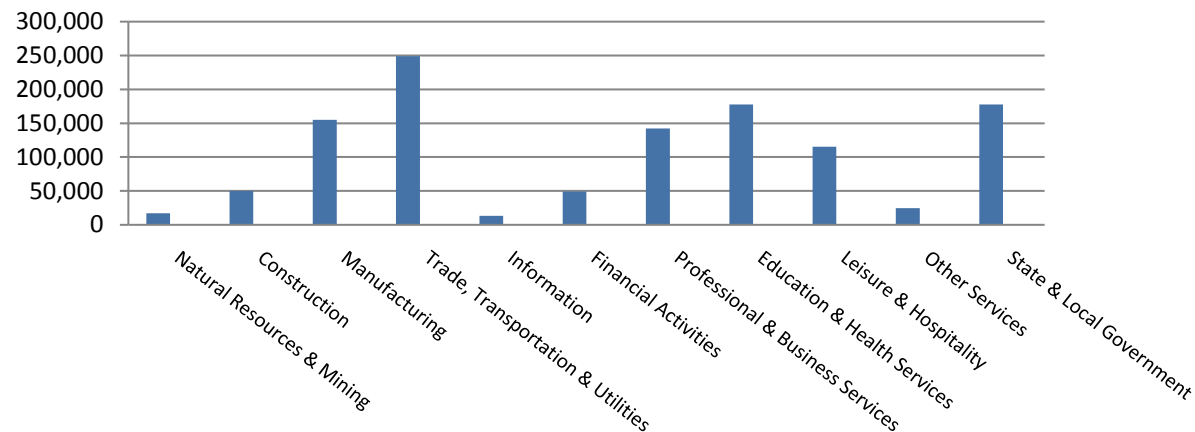
Civilian federal workers are covered by Unemployment Compensation for Federal Employees (UCFE).

SIGNIFICANT DEVELOPMENTS DURING CALENDAR YEAR 2016

AVERAGE EMPLOYMENT CHANGES

Covered employment averaged 1,171,545 during the Calendar Year 2016 (see Table 1, page 5), an increase of 13,851 from the previous year. The greatest employment gain occurred in Education and Health Services (+5,859). The largest annual loss occurred in Natural Resources and Mining (-1,762).

Average Covered Employment by NAICS



EMPLOYMENT CHANGES FOR CALENDAR YEAR 2016

Seven of the eleven major industry sectors recorded over-the-year employment gains (see Table 1). The increase in Educational & Health Services brought the sector's employment average to 142,367; this growth was mainly due to the expansion in Health Care & Social Assistance. The Professional & Business Services subsector had an average of 142,367 jobs, an increase of 3,645 from 2015. Jobs in Leisure & Hospitality grew to 115,343. This increase can be attributed mainly to Accommodation & Food Services which expanded by 3,222 jobs.

Four major industry sectors experienced over-the-year losses. Natural Resources & Mining had the most significant decline in average employment (-1,762), almost all of the decline was centered in the Mining subsector. State & Local Government (-1,295), Trade, Transportation & Utilities (-80), and Financial Activities (-75) experiences job losses over the year.

EMPLOYMENT CHANGES FOR CALENDAR YEAR 2016

Pulaski County posted the highest average covered employment for Arkansas counties in 2016 at 238,363. Benton County averaged 114,159 in covered employment, slightly higher than Washington County with 101,141. Sebastian County had the fourth highest average covered employment with 65,438, followed by Craighead County with 48,328. All of the five leading counties experienced over the year growth in employment ranging from a low of 949 added jobs to 5,141.

COVERED WAGES

Wages paid to covered workers totaled \$48,207,782,764 for the Calendar Year 2016 (see Table 1), for an average weekly wage of \$791.32 (see Table 5). Employees in Benton County recorded the highest average weekly wage (\$1,050.64), and workers in Newton County the lowest (\$461.08) (see Table 6).

The Professional & Business Services sector recorded the highest average weekly wage for the State of Arkansas at \$1,075.74. The Leisure and Hospitality sector reported the lowest average weekly wage at \$299.12 (see Table 5).

Average Weekly Wage by Industry

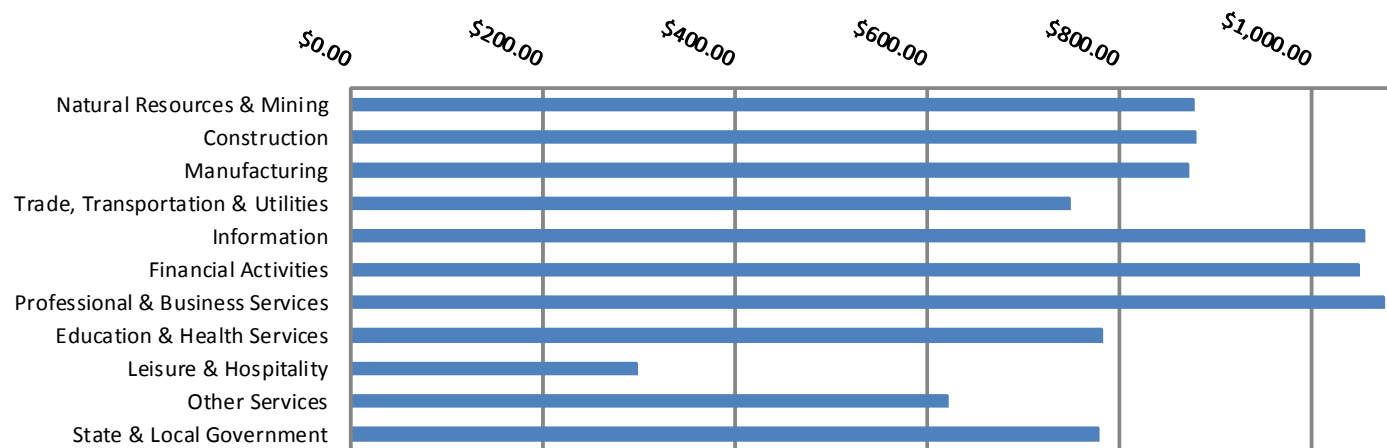


TABLE 1. YEARLY COMPARISON OF COVERED EMPLOYMENT AND WAGES, BY INDUSTRY

North American Industry Classification System - Industry Groups	Number of Employing Units	Average Covered Employment	Percent of Total	Net Change From: 2015	Total Calendar Earnings 2016	Percent of Total	Average Weekly Earnings
Total	87,400	1,171,545	100	13,851	\$48,207,782,764	100	\$791.32
Natural Resources & Mining	2,592	16,919	1.4	-1,762	772,847,274	1.6	878.45
Agriculture, Forestry, Fishing & Hunting	2,116	12,766	1.1	-12	501,564,094	1.0	755.56
Mining	476	4,153	0.4	-1,750	271,283,180	0.6	1,256.20
Construction	6,710	50,302	4.3	1,069	2,302,324,500	4.8	880.19
Manufacturing	2,943	154,791	13.2	-80	7,022,193,305	14.6	872.42
Trade, Transportation & Utilities	21,460	249,050	21.3	983	9,710,031,742	20.1	749.77
Wholesale Trade	7,037	46,247	3.9	-994	3,047,160,100	6.3	1,267.09
Retail Trade	11,111	142,306	12.1	1,763	3,714,613,538	7.7	501.98
Transportation & Warehousing	2,888	52,783	4.5	450	2,310,838,968	4.8	841.92
Utilities	424	7,714	0.7	-236	637,419,136	1.3	1,589.07
Information	1,098	13,235	1.1	-75	725,892,822	1.5	1,054.74
Financial Activities	8,214	49,414	4.2	1,170	2,697,506,583	5.6	1,049.81
Finance & Insurance	4,900	36,117	3.1	988	2,212,983,694	4.6	1,178.32
Real Estate & Rental & Leasing	3,314	13,297	1.1	182	484,522,889	1.0	700.74
Professional & Business Services	13,777	142,367	12.2	3,645	7,963,777,453	16.5	1,075.74
Professional & Technical Services	8,695	42,541	3.6	1,181	2,516,184,816	5.2	1,137.45
Management of Companies & Enterprises	531	35,040	3.0	1,633	3,642,500,180	7.6	1,999.09
Administrative & Waste Services	4,551	64,786	5.5	831	1,805,092,457	3.7	535.82
Education & Health Services	15,287	177,885	15.2	5,859	7,235,281,788	15.0	782.19
Educational Services	802	11,178	1.0	279	392,405,915	0.8	675.10
Health Care & Social Assistance	14,485	166,707	14.2	5,580	6,842,875,873	14.2	789.37
Leisure & Hospitality	6,903	115,343	9.8	3,634	1,794,088,504	3.7	299.12
Arts, Entertainment & Recreation	958	11,047	0.9	412	221,068,917	0.5	384.84
Accommodation & Food Services	5,945	104,296	8.9	3,222	1,573,019,587	3.3	290.04
Other Services	5,348	24,694	2.1	703	797,962,564	1.7	621.42
State & Local Government	3,068	177,545	15.2	-1,295	7,185,876,229	14.9	778.34
Local Government	1,948	108,154	9.2	-515	4,078,260,026	8.5	725.15
State Government	1,120	69,391	5.9	-780	3,107,616,203	6.4	861.23
Nonclassifiable Establishments	0	0	0.0	0	0	0.0	0.00

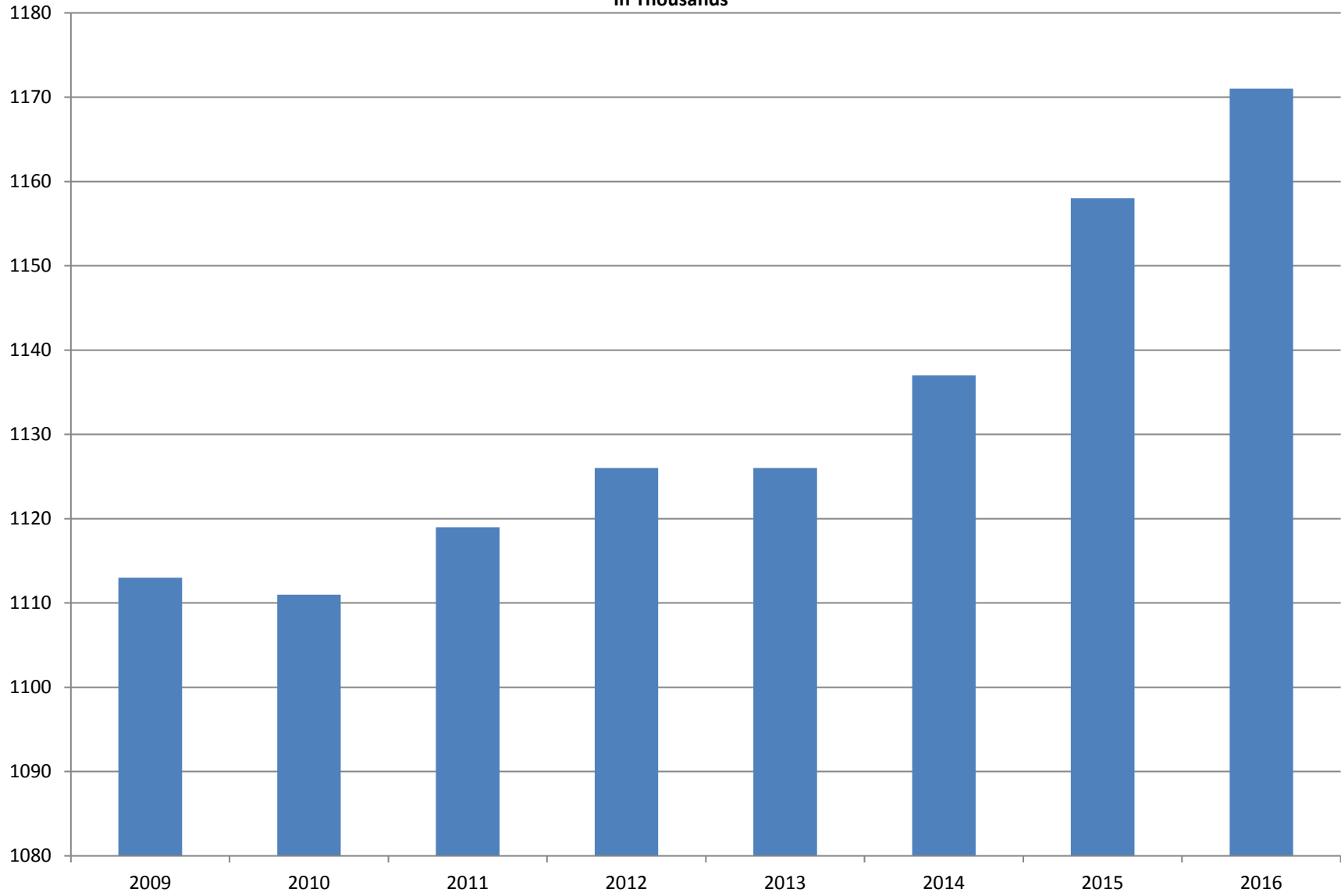
Note: Items do not necessarily add to total because of rounding. Because of industry code changes between years, substantial employment and wage shifts among industries are anticipated.

TABLE 2. TOTAL COVERED EMPLOYMENT IN ARKANSAS

PERIOD	2009	2010	2011	2012	2013	2014	2015	2016
AVERAGE	1,112,591	1,110,947	1,118,639	1,126,171	1,125,890	1,137,486	1,157,634	1,171,286
January	1,119,299	1,089,984	1,098,349	1,113,274	1,112,991	1,114,412	1,135,577	1,153,115
February	1,119,476	1,091,282	1,098,445	1,119,319	1,121,492	1,122,905	1,144,902	1,162,987
March	1,124,386	1,106,198	1,113,061	1,131,123	1,129,100	1,132,106	1,146,413	1,170,873
April	1,123,383	1,115,341	1,129,635	1,136,608	1,134,734	1,140,788	1,158,606	1,178,480
May	1,122,322	1,123,250	1,126,371	1,142,985	1,138,383	1,149,046	1,167,657	1,181,258
June	1,117,884	1,130,164	1,123,412	1,136,699	1,130,402	1,144,876	1,164,607	1,177,108
July	1,071,048	1,073,743	1,080,937	1,078,836	1,083,849	1,096,675	1,119,390	1,130,652
August	1,093,192	1,099,795	1,106,262	1,108,552	1,109,759	1,125,162	1,148,502	1,159,416
September	1,116,580	1,124,281	1,132,779	1,134,829	1,135,673	1,150,545	1,173,776	1,185,181
October	1,113,157	1,125,073	1,138,395	1,135,677	1,138,312	1,153,684	1,173,953	1,185,035
November	1,115,443	1,126,781	1,138,543	1,137,411	1,141,035	1,158,579	1,177,717	1,186,308
December	1,114,919	1,125,466	1,137,474	1,138,742	1,134,955	1,161,056	1,180,513	1,185,015

AVERAGE TOTAL COVERED EMPLOYMENT

In Thousands



TOTAL COVERED EARNINGS BY CALENDAR YEAR

In Thousands

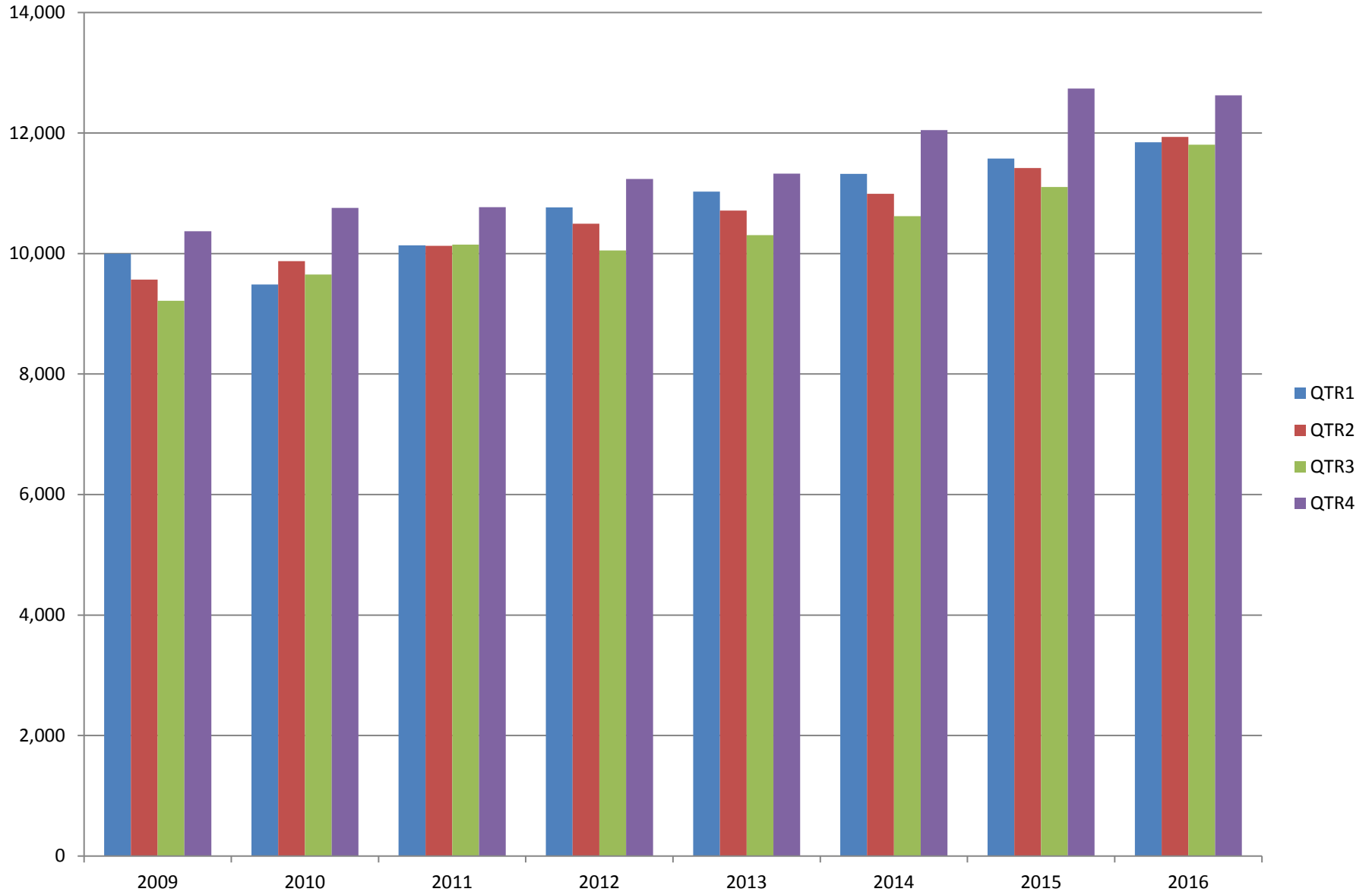


TABLE 3. TOTAL COVERED EARNINGS 2009 - 2016

PERIOD	2009	2010	2011	2012
TOTAL	\$39,149,476,305	\$39,769,504,992	\$41,177,659,236	\$42,551,238,929
January - March	9,998,452,028	9,486,245,580	10,134,035,254	10,766,175,449
April - June	9,566,968,853	9,873,489,653	10,128,274,611	10,494,369,042
July - September	9,213,797,140	9,653,588,807	10,147,287,431	10,053,294,410
October - December	10,370,258,284	10,756,180,952	10,768,061,940	11,237,400,028
Average Weekly Earnings	\$676.69	\$688.42	\$707.89	\$726.62

PERIOD	2013	2014	2015	2016
TOTAL	\$43,371,086,461	\$44,980,520,034	\$46,836,352,793	\$48,216,814,491
January - March	11,027,184,315	11,321,422,241	11,575,046,688	11,847,506,815
April - June	10,711,027,503	10,991,760,061	11,419,363,330	11,935,742,777
July - September	10,304,451,772	10,619,889,280	11,104,443,452	11,807,220,282
October - December	11,328,422,871	12,047,448,452	12,737,499,323	12,626,344,617
Average Weekly Earnings	\$740.80	\$760.46	\$778.05	\$791.65

TABLE 4. TOTAL TAXABLE EARNINGS, 2009 - 2016

PERIOD	2009	2010	2011	2012
TOTAL	9,787,660,886	11,332,118,456	11,479,396,226	11,624,348,048
January - March	5,423,705,265	5,607,134,758	5,828,877,821	6,167,036,199
April - June	2,293,670,854	2,977,100,591	2,910,604,359	2,838,154,846
July - September	1,165,280,065	1,577,067,770	1,601,382,146	1,494,712,584
October - December	905,004,702	1,170,815,337	1,138,531,900	1,124,444,419

PERIOD	2013	2014	2015	2016
TOTAL	11,644,747,978	11,919,662,224	12,258,632,610	12,538,167,625
January - March	6,184,735,653	6,288,682,396	6,378,966,662	6,607,245,841
April - June	2,805,431,293	2,831,013,392	2,915,293,283	3,010,214,324
July - September	1,506,497,129	1,552,243,963	1,640,978,599	1,656,043,561
October - December	1,148,083,903	1,247,722,473	1,323,394,066	1,264,663,899

TABLE 5. STATEWIDE SUMMARY CALENDAR YEAR 2016

North American Industry Classification System - Industry Groups		Average Employing Units	Average Covered Employment	Total Calendar Earnings	Average Weekly Earnings
TOTAL, ALL INDUSTRIES		87,400	1,171,545	\$48,207,782,764	\$791.32
NATURAL RESOURCES & MINING		2,592	16,919	\$772,847,274	\$878.45
11	AGRICULTURE, FORESTRY, FISHING & HUNTING	2,116	12,766	\$501,564,094	\$755.56
111	CROP PRODUCTION	950	4,266	\$129,891,380	\$585.54
1111	Oilseed & Grain Farming	686	2,891	90,916,714	604.77
1112	Vegetable & Melon Farming	29	199	5,002,628	483.44
1113	Fruit & Tree Nut Farming	14	62	1,185,503	367.71
1114	Greenhouse & Nursery Production	42	368	10,589,484	553.38
1119	Other Crop Farming	179	746	22,197,051	572.21
112	ANIMAL PRODUCTION & AQUACULTURE	323	3,177	\$148,239,093	\$897.31
1121	Cattle Ranching & Farming	125	419	12,065,652	553.78
1122	Hog & Pig Farming	14	139	7,005,909	969.27
1123	Poultry & Egg Production	114	2,175	113,701,023	1,005.31
1125	Animal Aquaculture	48	383	13,951,579	700.52
1129	Other Animal Production	22	61	1,514,930	477.59
113	FORESTRY & LOGGING	413	2,368	\$96,012,014	\$779.72
1131	Timber Tract Operations	35	168	8,899,558	1,018.72
1132	Forest Nurseries & Gathering of Forest Products	6	24	1,168,521	936.31
1133	Logging	372	2,176	85,943,935	759.54
114	FISHING, HUNTING & TRAPPING	4	29	\$672,559	\$445.99
115	SUPPORT ACTIVITIES FOR AGRICULTURE & FORESTRY	426	2,926	\$126,749,048	\$833.04
1151	Support Activities for Crop Production	295	1,524	74,285,545	937.38
1152	Support Activities for Animal Production	63	682	21,595,093	608.93
1153	Support Activities for Forestry	68	720	30,868,410	824.48
21	MINING	476	4,153	\$271,283,180	\$1,256.20
211	OIL & GAS EXTRACTION	81	981	\$85,453,753	\$1,675.17
212	MINING (EXCEPT OIL & GAS)	101	1,613	\$86,475,733	\$1,030.99
213	SUPPORT ACTIVITIES FOR MINING	294	1,559	\$99,353,694	\$1,225.56

Note: Data may not add due to rounding.

TABLE 5. STATEWIDE SUMMARY CALENDAR YEAR 2016

North American Industry Classification System - Industry Groups		Average Employing Units	Average Covered Employment	Total Calendar Earnings	Average Weekly Earnings
CONSTRUCTION		6,710	50,302	\$2,302,324,500	\$880.19
236	CONSTRUCTION OF BUILDINGS	1,695	10,370	\$529,042,899	\$981.09
2361	Residential Building Construction	1,123	3,209	131,226,977	786.41
2362	Nonresidential Building Construction	572	7,161	397,815,922	1,068.33
237	HEAVY & CIVIL ENGINEERING CONSTRUCTION	710	7,863	\$379,085,386	\$927.14
2371	Utility System Construction	390	4,230	205,598,934	934.71
2372	Land Subdivision	52	91	3,562,196	752.79
2373	Highway, Street & Bridge Construction	179	2,938	140,798,804	921.60
2379	Other Heavy Construction	89	604	29,125,452	927.33
238	SPECIALTY TRADE CONTRACTORS	4,305	32,069	\$1,394,196,215	\$836.06
2381	Building Foundation & Exterior Contractors	800	6,030	249,640,248	796.15
2382	Building Equipment Contractors	2,054	17,142	804,230,606	902.23
2383	Building Finishing Contractors	713	4,179	161,620,102	743.74
2389	Other Specialty Trade Contractors	738	4,718	178,705,259	728.41
MANUFACTURING		2,943	154,791	\$7,022,193,305	\$872.42
311	FOOD MANUFACTURING	278	45,157	\$1,609,787,486	\$685.55
3111	Animal Food Manufacturing	45	1,602	84,208,218	1,010.85
3112	Grain & Oilseed Milling	34	2,600	125,385,650	927.41
3114	Fruit, Vegetable & Specialty Food	19	4,221	190,290,428	866.96
3115	Dairy Product Manufacturing	8	539	23,947,173	854.40
3116	Animal Slaughtering & Processing	76	30,351	941,627,625	596.63
3118	Bakeries & Tortilla Manufacturing	64	3,660	150,535,107	790.96
3119	Other Food Manufacturing	23	2,136	92,744,599	835.00
	Other	9	48	1,048,686	420.15
312	BEVERAGE & TOBACCO PRODUCT MANUFACTURING	53	1,370	\$64,660,115	\$907.64
313	TEXTILE MILLS	8	105	\$5,952,577	\$1,090.22
3132	Fiber, Yarn, & Thread Mills	4	85	5,099,304	1,153.69
3133	Textile, Fabric Finishing/Coating Mills	4	20	853,273	820.45
314	TEXTILE PRODUCT MILLS	47	947	\$46,441,441	\$943.09
3141	Textile Furnishing Mills	9	36	1,683,038	899.06
3149	Other Textile Product Mills	38	911	44,758,403	944.83
315	APPAREL MANUFACTURING	17	893	24,288,997	\$523.06
3151	Apparel Knitting Mills	3	672	18,817,667	538.51
3152	Other	14	221	5,471,330	476.10
316	LEATHER & ALLIED PRODUCT MANUFACTURING	15	1,167	\$30,693,388	\$505.79
3162	Footwear Manufacturing	6	974	24,957,852	492.77
3169	Other Leather & Allied Product Manufacturing	9	193	5,735,536	571.50

Note: Data may not add due to rounding.

TABLE 5. STATEWIDE SUMMARY CALENDAR YEAR 2016

North American Industry Classification System - Industry Groups		Average Employing Units	Average Covered Employment	Total Calendar Earnings	Average Weekly Earnings
321	WOOD PRODUCT MANUFACTURING	320	9,431	\$384,165,602	\$783.35
3211	Sawmills & Wood Preservation	150	4,511	193,181,945	823.55
3212	Veneer & Engineered Wood Products	44	1,877	89,924,585	921.32
3219	Other Wood Product Manufacturing	126	3,043	101,059,072	638.66
322	PAPER MANUFACTURING	73	9,556	\$617,027,581	\$1,241.72
3221	Pulp, Paper & Paperboard Mills	12	3,879	325,005,074	1,611.27
3222	Converted Paper Product Manufacturing	61	5,677	292,022,507	989.22
323	PRINTING & RELATED SUPPORT ACTIVITIES	239	3,961	\$171,573,474	\$832.99
324	PETROLEUM & COAL PRODUCTS MANUFACTURING	19	1,160	\$75,223,873	\$1,247.08
325	CHEMICAL MANUFACTURING	120	5,016	\$316,240,512	\$1,212.43
3251	Basic Chemical Manufacturing	31	1,815	134,350,549	1,423.51
3252	Resin, Rubber & Artificial Fibers	7	293	17,746,432	1,164.77
3253	Agricultural Chemical Manufacturing	16	447	32,042,443	1,378.53
3254	Pharmaceutical & Medicine Manufacturing	17	323	17,489,787	1,041.31
3255	Paint, Coating & Adhesive Manufacturing	9	266	14,899,581	1,077.18
3256	Soap, Cleaning Compound, & Toilet Preparation Manufacturing	16	1,171	57,998,809	952.49
3259	Other Chemical Preparation Manufacturing	24	701	41,712,911	1,144.32
326	PLASTICS & RUBBER PRODUCTS MANUFACTURING	128	11,014	\$539,770,508	\$942.46
3261	Plastics Product Manufacturing	99	6,798	300,940,346	851.33
3262	Rubber Product Manufacturing	29	4,216	238,830,162	1,089.39
327	NONMETALLIC MINERAL PRODUCT MANUFACTURING	231	3,589	\$165,904,282	\$888.96
3271	Clay Product & Refractory Manufacturing	12	410	17,620,781	826.49
3272	Glass & Glass Product Manufacturing	10	351	16,462,899	901.98
3273	Cement & Concrete Product Manufacturing	171	2,121	96,702,486	876.79
3274	Lime & Gypsum Product Manufacturing	3	284	17,261,562	1,168.85
3279	Other Nonmetallic Mineral Products Manufacturing	35	423	17,856,554	811.81
331	PRIMARY METAL MANUFACTURING	76	7,995	\$510,835,841	\$1,228.74
3311	Iron & Steel Mills & Ferroalloys	10	2,623	240,899,369	1,766.18
3312	Purchased Steel Product Manufacturing	22	1,943	102,306,469	1,012.57
3313	Alumina & Aluminum Production	18	1,239	65,478,290	1,016.30
3314	Other Nonferrous Metal Production	8	419	19,093,788	876.34
3315	Foundries	18	1,771	83,057,925	901.90

Note: Data may not add due to rounding.

TABLE 5. STATEWIDE SUMMARY CALENDAR YEAR 2016

North American Industry Classification System - Industry Groups		Average Employing Units	Average Covered Employment	Total Calendar Earnings	Average Weekly Earnings
332	FABRICATED METAL PRODUCT MANUFACTURING	519	14,987	\$750,323,298	\$962.79
3321	Forging & Stamping	11	363	14,946,967	791.85
3322	Cutlery & Hand Tool Manufacturing	11	582	26,195,081	865.55
3323	Architectural & Structural Metals	149	4,285	229,118,336	1,028.27
3324	Boilers, Tanks & Shipping Containers	16	675	34,451,177	981.52
3325	Hardware Manufacturing	5	246	11,770,013	920.11
3326	Spring & Wire Product Manufacturing	13	379	16,514,260	837.95
3327	Machine Shops & Threaded Products	209	1,844	76,289,382	795.61
3328	Coating, Engraving & Heat Treating Metals	38	649	24,648,034	730.36
3329	Other Fabricated Metal Product Manufacturing	67	5,964	316,390,048	1,020.19
333	MACHINERY MANUFACTURING	210	10,901	\$492,367,142	\$868.60
3331	Agriculture, Construction & Mining Machinery	40	2,592	97,818,305	725.74
3332	Industrial Machinery Manufacturing	21	630	34,144,438	1,042.26
3333	Commercial & Service Industry Machinery	22	740	39,176,778	1,018.11
3334	HVAC & Commercial Refrigeration Equipment	22	2,960	134,485,676	873.74
3335	Metalworking Machinery Manufacturing	59	1,039	43,595,763	806.91
3336	Turbine & Power Transmission Equipment Manufacturing	5	636	31,768,147	960.58
3339	Other General Purpose Machinery Manufacturing	41	2,304	111,378,035	929.64
334	COMPUTER & ELECTRONIC PRODUCT MANUFACTURING	57	2,310	\$116,318,773	\$968.35
3343	Audio & Video Equipment Manufacturing	6	141	5,717,636	779.82
3344	Semiconductors & Electronic Components	26	1,646	81,668,599	954.16
3345	Electronic Instrument Manufacturing	18	413	22,111,779	1,029.60
	Other	7	110	6,820,759	1,192.44
335	ELECTRICAL EQUIPMENT & APPLIANCES	58	4,884	\$248,634,996	\$979.00
3353	Electrical Equipment Manufacturing	23	3,155	162,612,636	991.18
3359	Other Electrical Equipment & Component Manufacturing	19	1,305	66,534,752	980.47
	Other	16	424	19,487,608	883.87
336	TRANSPORTATION EQUIPMENT MANUFACTURING	143	13,512	\$600,746,865	\$855.00
3362	Motor Vehicle Body & Trailer Manufacturing	34	1,832	68,238,930	716.31
3363	Motor Vehicle Parts Manufacturing	44	5,099	211,953,934	799.38
3364	Aerospace Product & Parts Manufacturing	29	3,301	192,263,613	1,120.08
3366	Ship & Boat Building	21	1,882	61,590,878	629.35
	Other	15	1,398	66,699,510	917.51
337	FURNITURE & RELATED PRODUCT MANUFACTURING	159	3,445	\$120,559,091	\$672.99
3371	Household & Institutional Furniture	134	2,689	89,332,527	638.87
3372	Office Furniture & Fixtures Manufacturing	19	659	28,415,213	829.21
3379	Other Furniture Related Product Manufacturing	6	97	2,811,351	557.37
339	MISCELLANEOUS MANUFACTURING	173	3,391	\$130,677,463	\$741.09
3391	Medical Equipment & Supplies Manufacturing	69	1,675	73,054,556	838.74
3399	Other Miscellaneous Manufacturing	104	1,716	57,622,907	645.77

Note: Data may not add due to rounding.

TABLE 5. STATEWIDE SUMMARY CALENDAR YEAR 2016

North American Industry Classification System - Industry Groups		Average Employing Units	Average Covered Employment	Total Calendar Earnings	Average Weekly Earnings
TRADE, TRANSPORTATION & UTILITIES		21,460	249,050	\$9,710,031,742	\$749.77
42	WHOLESALE TRADE	7,037	46,247	\$3,047,160,100	\$1,267.09
423	MERCHANT WHOLESALERS, DURABLE GOODS	2,106	20,353	\$1,126,909,172	\$1,064.77
4231	Motor Vehicle & Part Merchant Wholesalers	229	2,626	113,730,407	832.87
4232	Furniture & Furnishings Merchant Wholesalers	52	464	27,751,548	1,150.18
4233	Lumber & Supply Merchant Wholesalers	166	1,413	68,545,628	932.90
4234	Commercial Goods Merchant Wholesalers	290	2,423	176,635,191	1,401.91
4235	Metal & Mineral Merchant Wholesalers	51	854	44,046,640	991.86
4236	Appliances & Electronics Goods Merchant Wholesalers	199	1,915	124,570,112	1,250.96
4237	Hardware & Plumbing Merchant Wholesalers	225	2,293	126,756,097	1,063.07
4238	Machinery & Supply Merchant Wholesalers	684	6,571	362,446,400	1,060.74
4239	Miscellaneous Durable Goods Merchant Wholesalers	210	1,794	82,427,149	883.58
424	MERCHANT WHOLESALERS, NONDURABLE GOODS	1,141	14,601	\$799,911,818	\$1,053.55
4241	Paper & Paper Product Merchant Wholesalers	70	1,153	72,831,200	1,214.74
4242	Druggist' Goods Merchant Wholesalers	52	618	33,764,498	1,050.68
4243	Apparel & Piece Goods Merchant Wholesalers	39	602	30,213,187	965.15
4244	Grocery Product Merchant Wholesalers	284	4,380	284,831,519	1,250.58
4245	Farm Product Merchant Wholesalers	71	812	28,767,253	681.30
4246	Chemical merchant Wholesalers	92	636	43,986,966	1,330.04
4247	Petroleum Merchant Wholesalers	138	1,277	59,804,500	900.62
4248	Alcoholic Beverage Merchant Wholesalers	43	1,612	81,934,111	977.45
4249	Miscellaneous Nondurable Goods Merchant Wholesaler	352	3,511	163,778,584	897.06
425	ELECTRONIC MARKETS & AGENTS & BROKERS	3,790	11,293	\$1,120,339,110	\$1,907.82
44 - 45	RETAIL TRADE	11,111	142,306	\$3,714,613,538	\$501.98
441	MOTOR VEHICLE & PARTS DEALERS	1,549	19,567	\$850,717,927	\$836.10
4411	Automobile Dealers	627	12,034	609,281,871	973.65
4412	Other Motor Vehicle Dealers	168	1,649	69,414,585	809.52
4413	Automotive Parts, Accessories & Tire Stores	754	5,884	172,021,471	562.22
442	FURNITURE & HOME FURNISHINGS STORES	503	3,600	\$108,508,003	\$579.64
4421	Furniture Stores	272	2,035	69,963,408	661.15
4422	Home Furnishings Stores	231	1,565	38,544,595	473.64
443	ELECTRONICS & APPLIANCE STORES	443	3,756	\$125,170,875	\$640.88
444	BUILDING MATERIAL & GARDEN SUPPLY STORES	837	11,395	\$316,327,571	\$533.85
4441	Building Material & Supplies Dealers	596	9,378	267,933,042	549.43
4442	Lawn & Garden Equipment & Supplies Stores	241	2,017	48,394,529	461.41

Note: Data may not add due to rounding.

TABLE 5. STATEWIDE SUMMARY CALENDAR YEAR 2016

North American Industry Classification System - Industry Groups		Average Employing Units	Average Covered Employment	Total Calendar Earnings	Average Weekly Earnings
445	FOOD & BEVERAGE STORES	1,071	19,843	\$429,966,166	\$416.70
4451	Grocery Stores	570	17,049	357,847,143	403.64
4452	Specialty Food Stores	149	1,005	34,283,619	656.02
4453	Beer, Wine & Liquor Stores	352	1,789	37,835,404	406.71
446	HEALTH & PERSONAL CARE STORES	991	8,510	\$316,862,664	\$716.04
447	GASOLINE STATIONS	1,591	12,386	\$220,220,218	\$341.92
44711	Gasoline Stations with Convenience Stores	1,488	11,109	192,301,923	332.89
44719	Other Gasoline Stations	103	1,277	27,918,295	420.43
448	CLOTHING & CLOTHING ACCESSORIES STORES	1,085	8,916	\$147,416,010	\$317.96
4481	Clothing Stores	804	6,906	100,841,483	280.81
4482	Shoe Stores	142	1,269	20,603,864	312.24
4483	Jewelry, Luggage & Leather Goods Stores	139	741	25,970,663	674.00
451	SPORTING GOODS, HOBBY, BOOK & MUSIC STORES	474	4,672	\$88,405,811	\$363.89
4511	Sporting Goods & Musical Instrument Stores	411	4,170	80,347,999	370.54
4512	Book, Periodical & Music Stores	63	502	8,057,812	308.68
452	GENERAL MERCH&ISE STORES	928	40,497	\$887,165,485	\$421.29
453	MISCELLANEOUS STORE RETAILERS	1,208	7,259	\$152,896,114	\$405.06
4531	Florists	181	651	12,001,214	354.52
4532	Office Supplies, Stationery & Gift Stores	257	1,862	39,820,765	411.27
4533	Used Merchandise Stores	259	2,010	38,304,725	366.48
4539	Other Miscellaneous Store Retailers	511	2,736	62,769,410	441.19
454	NONSTORE RETAILERS	431	1,905	\$70,956,694	\$716.30
4541	Electronic Shopping & Mail-Order Houses	207	747	30,187,044	777.14
4542	Vending Machine Operators	68	455	14,104,620	596.14
4543	Direct Selling Establishments	156	703	26,665,030	729.43
48 - 49	TRANSPORTATION & WAREHOUSING	2,888	52,783	\$2,310,838,968	\$841.92
481	AIR TRANSPORTATION	52	650	\$24,490,718	\$724.58
4811	Scheduled Air Transportation	21	571	18,348,046	617.95
4812	Nonsheduled Air Transportation	31	79	6,142,672	1,495.30
483	WATER TRANSPORTATION	4	19	\$1,286,325	\$1,301.95
484	TRUCK TRANSPORTATION	1,820	32,397	\$1,477,892,223	\$877.27
4841	General Freight Trucking	1,062	26,094	1,209,923,377	891.69
4842	Specialized Freight Trucking	758	6,303	267,968,846	817.59

Note: Data may not add due to rounding.

TABLE 5. STATEWIDE SUMMARY CALENDAR YEAR 2016

North American Industry Classification System - Industry Groups		Average Employing Units	Average Covered Employment	Total Calendar Earnings	Average Weekly Earnings
485	TRANSIT & GROUND PASSENGER TRANSPORTATION	113	1,778	\$36,415,222	\$393.87
4853	Taxi & Limousine Service	34	420	6,946,413	318.06
4854	School & Employee Bus Transportation	13	427	8,505,631	383.07
4855	Charter Bus Industry Service	8	106	2,837,514	514.79
4859	Other Ground Passenger Transportation	54	710	14,269,994	386.51
	Other	4	115	3,855,670	644.76
486	PIPELINE TRANSPORTATION	33	424	\$41,449,930	\$1,879.99
487	SCENIC AND SIGHTSEEING TRANSPORTATION	5	27	\$439,719	\$313.19
488	SUPPORT ACTIVITIES FOR TRANSPORTATION	465	5,080	\$241,455,904	\$914.05
4881	Support Activities for Air Transportation	101	975	40,716,294	803.08
4882	Support Activities for Rail Transportation	42	616	28,776,029	898.35
4883	Support Activities for Water Transportation	20	684	39,993,741	1,124.43
4884	Support Activities for Road Transportation	154	853	27,149,956	612.09
4885	Freight Transportation Arrangement	132	1,843	101,078,960	1,054.71
4889	Other Support Activities for Transportation	16	109	3,740,924	660.01
491	POSTAL SERVICE	11	287	\$12,983,548	\$869.98
492	COURIERS & MESSENGERS	162	3,785	\$152,878,240	\$776.74
493	OTHER WAREHOUSING & STORAGE	234	8,623	334,530,687	\$746.06
22	UTILITIES	424	7,714	\$637,419,136	\$1,589.07
2211	Power Generation & Supply	165	5,658	522,923,741	1,777.35
2212	Natural Gas Distribution	73	1,110	79,909,153	1,384.43
2213	Water, Sewage & Other Systems	186	946	34,586,242	703.09
INFORMATION		1,098	13,235	\$725,892,822	\$1,054.74
511	PUBLISHING INDUSTRIES, EXCEPT INTERNET	226	3,228	\$129,302,395	\$770.32
5111	Newspaper, Book & Directory Publishers	192	2,854	101,272,804	682.39
5112	Software Publishers	34	374	28,029,591	1,441.26
512	MOTION PICTURE & SOUND RECORDING INDUSTRY	138	1,085	\$21,408,624	\$379.45
5121	Motion Picture & Video Industries	122	1,059	20,159,376	366.08
5122	Sound Recording Industries	16	26	1,249,248	924.00
515	BROADCASTING, EXCEPT INTERNET	123	1,613	\$68,481,107	\$816.46
5151	Radio & Television Broadcasting	119	1,588	67,543,633	817.96
5152	Cable & Other Subscription Programming	4	25	937,474	721.13

Note: Data may not add due to rounding.

TABLE 5. STATEWIDE SUMMARY CALENDAR YEAR 2016

North American Industry Classification System - Industry Groups		Average Employing Units	Average Covered Employment	Total Calendar Earnings	Average Weekly Earnings
517	TELECOMMUNICATIONS	340	5,644	\$394,916,745	\$1,345.60
5171	Wired Telecommunications Carriers	212	3,732	261,918,821	1,349.65
5172	Wireless Telecommunications Carriers (except Satellite)	44	1,617	114,416,113	1,360.74
5174	Satellite Telecommunications Carriers	6	6	309,381	991.61
5179	Other Telecommunications	78	289	18,272,430	1,215.89
518	DATA PROCESSING, HOSTING & RELATED SERVICES	190	1,337	\$96,216,799	\$1,383.94
519	OTHER INFORMATION SERVICES	81	328	\$15,567,152	\$912.71
FINANCIAL ACTIVITIES		8,214	49,414	\$2,697,506,583	\$1,049.81
52	FINANCE & INSURANCE	4,900	36,117	\$2,212,983,694	\$1,178.32
522	CREDIT INTERMEDIATION & RELATED ACTIVITIES	1,937	19,093	\$1,001,282,962	\$1,008.51
5221	Depository Credit Intermediation	1,404	16,156	823,888,778	980.69
5222	Nondepository Credit Intermediation	392	1,814	119,262,908	1,264.34
5223	Activities Related to Credit Intermediation	141	1,123	58,131,276	995.47
523	FINANCIAL INVESTMENT & RELATED ACTIVITIES	674	3,075	\$396,747,146	\$2,481.22
5231	Securities & Commodity Contracts Intermediation & Brokerage	304	2,185	315,609,994	2,777.77
5239	Other Financial Investment Activities	370	890	81,137,152	1,753.18
524	INSURANCE CARRIERS & RELATED ACTIVITIES	2,211	13,849	\$807,672,805	\$1,121.54
5241	Insurance Carriers	313	6,004	403,743,948	1,293.19
5242	Insurance Agencies, Brokerages & Support	1,898	7,845	403,928,857	990.17
	OTHER	78	100	\$7,280,781	\$1,400.15
53	REAL ESTATE & RENTAL & LEASING	3,314	13,297	\$484,522,889	\$700.74
531	REAL ESTATE	2,670	9,123	\$327,631,910	\$690.63
5311	Lessors of Real Estate	1,103	4,126	134,482,616	626.81
5312	Offices of Real Estate Agents & Brokers	796	1,763	77,356,128	843.80
5313	Activities Related to Real Estate	771	3,234	115,793,166	688.56
532	RENTAL & LEASING SERVICES	626	4,119	\$152,813,024	\$713.45
5321	Automotive Equipment Rental & Leasing	111	966	29,217,979	581.66
5322	Consumer Goods Rental	329	2,042	62,479,610	588.41
5323	General Rental Centers	39	224	9,184,884	788.54
5324	Machinery & Equipment Rental & Leasing	147	887	51,930,551	1,125.89
533	LESSORS OF NONFINANCIAL INTANGIBLE ASSETS	18	55	\$4,077,955	\$1,425.86

Note: Data may not add due to rounding.

TABLE 5. STATEWIDE SUMMARY CALENDAR YEAR 2016

North American Industry Classification System - Industry Groups		Average Employing Units	Average Covered Employment	Total Calendar Earnings	Average Weekly Earnings
PROFESSIONAL & BUSINESS SERVICES		13,777	142,367	\$7,963,777,453	\$1,075.74
54	PROFESSIONAL & TECHNICAL SERVICES	8,695	42,541	\$2,516,184,816	\$1,137.45
5411	Legal Services	1,677	5,997	330,277,518	1,059.11
5412	Accounting & Bookkeeping Services	1,253	5,317	234,468,792	848.04
5413	Architectural & Engineering Services	955	6,211	394,549,116	1,221.62
5414	Specialized Design Services	179	401	19,517,297	935.99
5415	Computer Systems Design & Related Services	1,674	10,297	800,570,298	1,495.15
5416	Management & Technical Consulting Services	1,872	6,041	358,354,413	1,140.78
5417	Scientific Research & Development Services	142	870	51,161,380	1,130.89
5418	Advertising & Related Services	381	3,636	183,885,780	972.57
5419	Other Professional & Technical Services	562	3,771	143,400,222	731.29
55	MANAGEMENT OF COMPANIES & ENTERPRISES	531	35,040	\$3,642,500,180	\$1,999.09
56	ADMINISTRATIVE & SUPPORT SERVICES	4,551	64,786	\$1,805,092,457	\$535.82
561	ADMINISTRATIVE & SUPPORT SERVICES	4,253	61,772	\$1,669,479,965	\$519.74
5611	Office Administrative Services	649	4,002	197,336,333	948.26
5612	Facilities Support Services	42	1,023	24,062,339	452.33
5613	Employment Services	1,056	27,594	639,792,399	445.88
5614	Business Support Services	356	8,218	285,035,312	667.01
5615	Travel Arrangement & Reservation Services	105	389	16,113,859	796.61
5616	Investigation & Security Services	294	4,688	119,882,413	491.77
5617	Services to Buildings & Dwellings	1,562	14,557	341,062,194	450.57
5619	Other Support Services	189	1,301	46,195,116	682.83
562	WASTE MANAGEMENT & REMEDIATION SERVICES	298	3,014	\$135,612,492	\$865.27
5621	Waste Collection Services	129	1,162	49,820,018	824.51
5622	Waste Treatment & disposal Services	34	847	45,267,106	1,027.77
5629	Remediation & Other Waste Services	135	1,005	40,525,368	775.46
EDUCATION & HEALTH SERVICES		15,287	177,885	\$7,235,281,788	\$782.19
61	EDUCATIONAL SERVICES	802	11,178	\$392,405,915	\$675.10
6111	Elementary & Secondary Schools	95	3,593	118,127,371	632.25
6112	Junior Colleges	7	133	4,176,670	603.91
6113	Colleges & Universities	84	4,106	152,467,894	714.10
6114	Business, Computer, & Management Training	47	132	7,791,471	1,135.12
6115	Technical & Trade Schools	111	867	51,542,666	1,143.26
6116	Other Schools & Instruction	288	1,698	29,953,774	339.24
6117	Educational Support Services	170	649	28,346,069	839.93

Note: Data may not add due to rounding.

TABLE 5. STATEWIDE SUMMARY CALENDAR YEAR 2016

North American Industry Classification System - Industry Groups		Average Employing Units	Average Covered Employment	Total Calendar Earnings	Average Weekly Earnings
62	HEALTH CARE & SOCIAL ASSISTANCE	14,485	166,707	\$6,842,875,873	\$789.37
621	AMBULATORY HEALTH CARE SERVICES	5,567	53,947	\$3,307,386,335	\$1,179.00
6211	Offices of Physicians	2,225	24,290	1,974,074,180	1,562.91
6212	Offices of Dentists	987	7,161	345,504,873	927.85
6213	Offices of Other Health Practitioners	1,444	8,194	342,518,946	803.87
6214	Outpatient Care Centers	329	4,910	264,838,792	1,037.28
6215	Medical & Diagnostic Laboratories	186	1,115	65,849,981	1,135.74
6216	Home Health Care Services	220	5,548	203,330,517	704.79
6219	Other Ambulatory Health Care Services	176	2,729	111,269,046	784.09
622	HOSPITALS	106	41,316	\$1,928,064,852	\$897.43
6221	General Medical & Surgical Hospitals	80	36,733	1,729,026,794	905.19
6222	Psychiatric & Substance Abuse Hospitals	11	2,200	87,184,041	762.10
6223	Other Hospitals	15	2,383	111,854,017	902.66
623	Residential & Mental Health Facilities	650	31,807	\$799,656,370	\$483.48
6231	Nursing Care Facilities (Skilled Nursing Facilities)	283	22,310	563,985,658	486.14
6232	Residential Mental Health Facilities	177	4,488	114,532,476	490.76
6233	Continuing Care & Assisted Living Facilities	150	3,962	91,549,402	444.36
6239	Other Residential Care Facilities	40	1,047	29,588,834	543.47
624	SOCIAL ASSISTANCE	8,162	39,637	\$807,768,316	\$391.91
6241	Individual & Family Services	7,037	24,999	516,400,133	397.25
6242	Emergency & Other Relief Services	137	1,324	34,441,234	500.25
6243	Vocational Rehabilitation Services	91	3,305	73,082,625	425.25
6244	Child Day Care Services	897	10,009	183,844,324	353.23
LEISURE & HOSPITALITY		6,903	115,343	\$1,794,088,504	\$299.12
71	ARTS, ENTERTAINMENT & RECREATION	958	11,047	\$221,068,917	\$384.84
711	PERFORMING ARTS & SPECTATOR SPORTS	211	2,788	\$68,913,056	\$475.34
7111	Performing Arts Companies	47	454	8,423,786	356.82
7112	Spectator Sports	67	1,493	42,115,996	542.48
7113	Performing Arts & Sports Promoters	45	752	15,303,087	391.34
7114	Agents & Managers for Public Figures	15	35	1,355,889	744.99
7115	Independent Artists, Writers, & Performers	37	54	1,714,298	610.50
712	MUSEUMS, PARKS, & HISTORICAL SITES	56	655	\$18,300,557	\$537.30
713	GAMBLING, RECREATIONAL & AMUSEMENT INDUSTRY	691	7,604	\$133,855,304	\$338.52
7131	Amusement Parks & Arcades	33	667	7,840,691	226.06
7139	Other Amusement & Recreation Industries	658	6,937	126,014,613	349.34
72	ACCOMMODATION & FOOD SERVICES	5,945	104,296	\$1,573,019,587	\$290.04

Note: Data may not add due to rounding.

TABLE 5. STATEWIDE SUMMARY CALENDAR YEAR 2016

North American Industry Classification System - Industry Groups		Average Employing Units	Average Covered Employment	Total Calendar Earnings	Average Weekly Earnings
721	ACCOMMODATION	890	11,201	\$202,610,689	\$347.86
7211	Travel Accommodation	805	10,627	190,884,458	345.43
7212	RV Parks & Recreational Camps	66	453	8,993,357	381.79
7213	Rooming & Boarding Houses	19	121	2,732,874	434.34
722	FOOD SERVICES & DRINKING PLACES	5,055	93,095	\$1,370,408,898	\$283.09
7223	Special Food Services	226	3,874	69,617,335	345.58
7224	Drinking Places, Alcoholic Beverages	150	1,100	15,243,882	266.50
7225	Restaurants & Other Eating Places	4,679	88,121	1,285,547,681	280.55
722511	Full-Service Restaurants	2,099	39,105	625,399,967	307.55
722513	Limited-Service Eating Places	2,135	44,586	592,326,542	255.48
722514	Cafeterias, Grill Buffets, & Buffets	89	1,646	28,880,420	337.42
722515	Snack & Nonalcoholic Beverage Bars	356	2,784	38,940,752	268.99
	OTHER SERVICES	5,348	24,694	\$797,962,564	\$621.42
811	REPAIR & MAINTENANCE	2,192	10,245	\$383,161,096	\$719.23
8111	Automotive Repair & Maintenance	1,399	6,479	220,587,161	654.74
8112	Electronic Equipment Repair & Maintenance	172	861	38,168,821	852.52
8113	Commercial Machinery Repair & Maintenance	452	2,304	106,534,909	889.21
8114	Household Goods Repair & Maintenance	169	601	17,870,205	571.81
812	PERSONAL & LAUNDRY SERVICES	1,308	7,916	\$191,818,992	\$466.00
8121	Personal Care Services	610	2,999	61,252,006	392.77
8122	Death Care Services	247	1,625	48,189,970	570.30
8123	Drycleaning & Laundry Service	237	2,405	63,954,211	511.39
8129	Other Personal Services	214	887	18,422,805	399.42
813	MEMBERSHIP ASSOCIATIONS & ORGANIZATIONS	1,085	5,555	\$201,317,494	\$696.94
8131	Religious Organizations	76	261	7,573,208	558.00
8132	Grantmaking & Giving Organizations	113	441	22,419,546	977.65
8133	Social Advocacy Organizations	215	1,544	54,100,650	673.83
8134	Civic & Social Organizations	195	1,232	21,245,315	331.63
8139	Professional & Similar Organizations	486	2,077	95,978,775	888.66
814	PRIVATE HOUSEHOLDS	763	978	\$21,664,982	\$426.01
	LOCAL GOVERNMENT	1,948	108,154	\$4,078,260,026	\$725.15
	STATE GOVERNMENT	1,120	69,391	\$3,107,616,203	\$861.23
	NONCLASSIFIABLE ESTABLISHMENTS	0	0	0	\$0.00

Note: Data may not add due to rounding.

TABLE 6. COUNTY SUMMARY CALENDAR YEAR 2016

ARKANSAS COUNTY - TOTAL	768	9,713	\$380,583,205	\$753.52
ASHLEY COUNTY - TOTAL	556	6,565	\$271,601,997	\$795.60

TABLE 6. COUNTY SUMMARY CALENDAR YEAR 2016

BAXTER COUNTY - TOTAL	1,196	14,474	\$479,147,918	\$636.62
BENTON COUNTY - TOTAL	6,080	114,159	\$6,236,867,221	\$1,050.64

TABLE 6. COUNTY SUMMARY CALENDAR YEAR 2016

BOONE COUNTY - TOTAL	973	13,757	\$491,497,694	\$687.06
BRADLEY COUNTY - TOTAL	358	3,657	\$117,587,268	\$618.35

TABLE 6. COUNTY SUMMARY CALENDAR YEAR 2016

CALHOUN COUNTY - TOTAL	100	2,747	\$140,469,363	\$983.38
CARROLL COUNTY - TOTAL	785	10,731	\$304,479,192	\$545.65

TABLE 6. COUNTY SUMMARY CALENDAR YEAR 2016

CHICOT COUNTY - TOTAL	511	3,191	\$97,254,884	\$586.11
CLARK COUNTY - TOTAL	618	9,015	\$300,312,627	\$640.63

TABLE 6. COUNTY SUMMARY CALENDAR YEAR 2016

CLAY COUNTY - TOTAL	384	3,284	\$93,867,465	\$549.68
CLEBURNE COUNTY - TOTAL	660	6,454	\$200,892,545	\$598.59

TABLE 6. COUNTY SUMMARY CALENDAR YEAR 2016

CLEVELAND COUNTY - TOTAL	123	951	\$28,997,310	\$586.37
COLUMBIA COUNTY - TOTAL	724	8,023	\$305,697,602	\$732.74

TABLE 6. COUNTY SUMMARY CALENDAR YEAR 2016

CONWAY COUNTY - TOTAL	547	6,576	\$235,914,281	\$689.90
CRAIGHEAD COUNTY - TOTAL	2,780	48,328	\$1,792,429,332	\$713.25

TABLE 6. COUNTY SUMMARY CALENDAR YEAR 2016

CRAWFORD COUNTY - TOTAL	1,234	19,367	\$662,889,498	\$658.23
CRITTENDEN COUNTY - TOTAL	1,275	16,416	\$576,109,192	\$674.89

TABLE 6. COUNTY SUMMARY CALENDAR YEAR 2016

CROSS COUNTY - TOTAL	475	4,935	\$159,491,777	\$621.51
DALLAS COUNTY - TOTAL	251	2,815	\$84,884,575	\$579.89

TABLE 6. COUNTY SUMMARY CALENDAR YEAR 2016

DESHA COUNTY - TOTAL	546	4,517	\$149,105,117	\$634.80
DREW COUNTY - TOTAL	530	6,359	\$213,891,997	\$646.85

TABLE 6. COUNTY SUMMARY CALENDAR YEAR 2016

FAULKNER COUNTY - TOTAL	2,809	40,069	\$1,547,733,145	\$742.82
FRANKLIN COUNTY - TOTAL	362	4,320	\$149,225,550	\$664.29

TABLE 6. COUNTY SUMMARY CALENDAR YEAR 2016

FULTON COUNTY - TOTAL	190	1,796	\$50,089,333	\$536.33
GARLAND COUNTY - TOTAL	3,090	35,834	\$1,228,110,454	\$659.08

TABLE 6. COUNTY SUMMARY CALENDAR YEAR 2016

GRANT COUNTY - TOTAL	343	3,931	\$146,741,964	\$717.87
GREENE COUNTY - TOTAL	883	15,266	\$543,190,933	\$684.26

TABLE 6. COUNTY SUMMARY CALENDAR YEAR 2016

HEMPSTEAD COUNTY - TOTAL	505	7,734	\$260,433,493	\$647.57
HOT SPRING COUNTY - TOTAL	619	8,411	\$288,858,107	\$660.44

TABLE 6. COUNTY SUMMARY CALENDAR YEAR 2016

HOWARD COUNTY - TOTAL	352	6,916	\$217,453,724	\$604.66
INDEPENDENCE COUNTY - TOTAL	911	15,296	\$543,574,941	\$683.41

TABLE 6. COUNTY SUMMARY CALENDAR YEAR 2016

IZARD COUNTY - TOTAL	257	3,114	\$98,676,692	\$609.39
JACKSON COUNTY - TOTAL	450	5,260	\$184,209,137	\$673.48

TABLE 6. COUNTY SUMMARY CALENDAR YEAR 2016

JEFFERSON COUNTY - TOTAL	2,095	26,764	\$994,467,037	\$714.56
JOHNSON COUNTY - TOTAL	502	8,543	\$266,590,247	\$600.11

TABLE 6. COUNTY SUMMARY CALENDAR YEAR 2016

LAFAYETTE COUNTY - TOTAL	174	1,184	\$38,776,621	\$629.82
LAWRENCE COUNTY - TOTAL	416	3,989	\$124,893,464	\$602.11

TABLE 6. COUNTY SUMMARY CALENDAR YEAR 2016

LEE COUNTY - TOTAL	294	1,940	\$61,631,249	\$610.94
LINCOLN COUNTY - TOTAL	285	2,842	\$91,376,581	\$618.31

TABLE 6. COUNTY SUMMARY CALENDAR YEAR 2016

LITTLE RIVER COUNTY - TOTAL	241	3,432	\$174,253,624	\$976.41
LOGAN COUNTY - TOTAL	501	5,443	\$165,258,883	\$583.88

TABLE 6. COUNTY SUMMARY CALENDAR YEAR 2016

LONOKE COUNTY - TOTAL	1,307	13,921	\$462,893,633	\$639.45
MADISON COUNTY - TOTAL	250	3,133	\$103,267,512	\$633.87

TABLE 6. COUNTY SUMMARY CALENDAR YEAR 2016

MARION COUNTY - TOTAL	277	3,786	\$107,921,047	\$548.18
MILLER COUNTY - TOTAL	881	12,900	\$489,149,054	\$729.20

TABLE 6. COUNTY SUMMARY CALENDAR YEAR 2016

MISSISSIPPI COUNTY - TOTAL	1,176	17,900	\$769,373,821	\$826.57
MONROE COUNTY - TOTAL	306	2,106	\$61,249,370	\$559.29

TABLE 6. COUNTY SUMMARY CALENDAR YEAR 2016

MONTGOMERY COUNTY - TOTAL	166	1,341	\$34,708,754	\$497.74
NEVADA COUNTY - TOTAL	196	2,439	\$86,814,900	\$684.51

TABLE 6. COUNTY SUMMARY CALENDAR YEAR 2016

NEWTON COUNTY - TOTAL	119	1,066	\$25,558,715	\$461.08
OUACHITA COUNTY - TOTAL	651	6,981	\$226,155,536	\$623.00

TABLE 6. COUNTY SUMMARY CALENDAR YEAR 2016

PERRY COUNTY - TOTAL	143	1,203	\$38,475,507	\$615.06
PHILLIPS COUNTY - TOTAL	782	5,404	\$167,781,689	\$597.07

TABLE 6. COUNTY SUMMARY CALENDAR YEAR 2016

PIKE COUNTY - TOTAL	253	2,425	\$69,667,864	\$552.48
POINSETT COUNTY - TOTAL	525	5,167	\$179,405,101	\$667.72

TABLE 6. COUNTY SUMMARY CALENDAR YEAR 2016

POLK COUNTY - TOTAL	491	5,756	\$169,723,034	\$567.04
POPE COUNTY - TOTAL	1,807	25,903	\$1,000,052,925	\$742.45

TABLE 6. COUNTY SUMMARY CALENDAR YEAR 2016

PRAIRIE COUNTY - TOTAL	256	1,443	\$45,825,694	\$610.72
PULASKI COUNTY - TOTAL	14,242	238,363	\$11,131,270,274	\$898.05

TABLE 6. COUNTY SUMMARY CALENDAR YEAR 2016

RANDOLPH COUNTY - TOTAL	401	4,829	\$143,386,840	\$571.02
SAINT FRANCIS COUNTY - TOTAL	744	7,262	\$224,370,580	\$594.16

TABLE 6. COUNTY SUMMARY CALENDAR YEAR 2016

SALINE COUNTY - TOTAL	1,972	23,421	\$800,483,579	\$657.27
SCOTT COUNTY - TOTAL	182	2,992	\$83,477,405	\$536.54

TABLE 6. COUNTY SUMMARY CALENDAR YEAR 2016

SEARCY COUNTY - TOTAL	170	1,519	\$39,108,761	\$495.12
SEBASTIAN COUNTY - TOTAL	3,656	65,438	\$2,631,182,757	\$773.25

TABLE 6. COUNTY SUMMARY CALENDAR YEAR 2016

SEVIER COUNTY - TOTAL	316	4,828	\$150,800,799	\$600.67
SHARP COUNTY - TOTAL	388	3,797	\$109,384,384	\$554.00

TABLE 6. COUNTY SUMMARY CALENDAR YEAR 2016

STONE COUNTY - TOTAL	270	2,486	\$67,414,586	\$521.49
UNION COUNTY - TOTAL	1,295	17,638	\$810,065,466	\$883.22

TABLE 6. COUNTY SUMMARY CALENDAR YEAR 2016

VAN BUREN COUNTY - TOTAL	358	3,545	\$124,297,359	\$674.28
WASHINGTON COUNTY - TOTAL	5,844	101,141	\$4,435,590,111	\$843.38

TABLE 6. COUNTY SUMMARY CALENDAR YEAR 2016

WHITE COUNTY - TOTAL	1,799	23,831	\$844,447,629	\$681.44
WOODRUFF COUNTY - TOTAL	207	1,742	\$57,405,882	\$633.73

TABLE 6. COUNTY SUMMARY CALENDAR YEAR 2016

YELL COUNTY - TOTAL	407	6,315	\$187,244,994	\$570.21
STATEWIDE COUNTY - TOTAL	8,900	31,427	\$1,830,309,963	\$1,120.00

TABLE 7. FEDERAL GOVERNMENT EMPLOYMENT AND EARNINGS IN ARKANSAS

North American Industry Classification System - Industry Groups	Average Employing Units	Average Covered Employment	Total Calendar Earnings	Average Weekly Earnings
TOTAL	1,166	20,265	\$1,350,804,538	\$1,281.87
Trade, Transportation & Utilities	597	5,545	278,781,764	966.85
Information	2	41	2,544,940	1,193.69
Financial Activities	14	106	8,745,874	1,586.70
Professional & Business Services	34	772	57,468,338	1,431.55
Education & Health Services	18	5,272	414,670,838	1,512.60
Leisure & Hospitality	23	302	12,659,297	806.12
Other Services	1	1	31,416	604.15
Public Administration	477	8,226	575,902,071	1,346.35

Note: Data may not add due to rounding.

TABLE 8. LOCAL WORKFORCE DEVELOPMENT AREASUMMARY CALENDAR YEAR 2016

North American Industry Classification System - Industry Groups	Average Employing Units	Average Covered Employment	Total Calendar Earnings	Average Weekly Earnings
CENTRAL WORKFORCE DEVELOPMENT AREA	6,650	80,960	\$2,918,185,421	\$693.17
Natural Resources & Mining	230	1,271	65,754,716	994.90
Construction	711	5,741	247,631,391	829.50
Trade, Transportation & Utilities	1,558	16,607	513,526,670	594.66
Wholesale Trade	362	1,748	90,275,194	993.17
Retail Trade	940	13,172	346,961,667	506.55
Transportation, Warehousing & Utilities	256	1,687	76,289,809	869.66
Information	57	564	24,748,220	843.84
Financial Activities	698	2,998	138,718,075	889.81
Professional & Business Services	879	8,172	418,890,021	985.75
Education & Health Services	1,060	12,690	442,904,456	671.19
Leisure & Hospitality	589	10,450	148,948,174	274.10
Local Government	132	9,651	375,442,557	748.11
State Government	66	4,468	169,814,198	730.90
Other	670	8,348	371,806,943	856.51

*Note: Pulaski County is not included in the Central Workforce Investment Area. Please refer to Page 51 for information on Pulaski County.
Central Workforce Investment Area includes these counties: Faulkner, Lonoke, Monroe, Prairie, and Saline.

EASTERN WORKFORCE DEVELOPMENT AREA	3,570	35,957	\$1,189,384,487	\$636.11
Natural Resources & Mining	240	1,181	39,996,911	651.29
Manufacturing	74	3,396	153,032,154	866.59
Trade, Transportation & Utilities	787	9,328	319,204,796	658.08
Wholesale Trade	162	2,098	96,566,214	885.15
Retail Trade	444	4,915	116,057,343	454.09
Transportation, Warehousing & Utilities	181	2,315	106,581,239	885.37
Financial Activities	260	1,273	46,276,129	699.08
Professional & Business Services	255	2,246	71,465,988	611.91
Education & Health Services	1,168	6,359	196,144,108	593.18
Leisure & Hospitality	245	3,702	59,948,907	311.42
Local Government	127	4,501	164,654,693	703.50
State Government	62	2,137	69,233,608	623.03
Other	352	1,834	69,427,193	727.99

Eastern Workforce Investment Area includes these counties: Crittenden, Cross, Lee, Phillips, and Saint Francis.

TABLE 8. LOCAL WORKFORCE DEVELOPMENT AREASUMMARY CALENDAR YEAR 2016

North American Industry Classification System - Industry Groups	Average Employing Units	Average Covered Employment	Total Calendar Earnings	Average Weekly Earnings
NORTH CENTRAL WORKFORCE DEVELOPMENT AREA	5,490	67,321	\$2,280,392,488	\$651.41
Construction	424	2,366	90,645,614	736.76
Manufacturing	225	8,092	334,093,868	793.98
Trade, Transportation & Utilities	1,387	15,455	523,046,951	650.83
Retail Trade	896	9,619	238,957,262	477.73
Other Trade, Transportation & Utilities	491	5,836	284,089,689	936.13
Financial Activities	513	2,534	108,751,607	825.33
Education & Health Services	1,024	14,076	520,683,405	711.36
Leisure & Hospitality	482	6,550	86,730,290	254.64
Local Government	226	8,507	274,881,570	621.39
State Government	103	2,890	96,119,511	639.60
Other	1,106	6,851	245,439,672	688.95

North Central Workforce Investment Area includes these counties: Cleburne, Fulton, Independence, IZard, Jackson, Sharp, Stone, Van Buren, White, and Woodruff.

NORTHEAST WORKFORCE DEVELOPMENT AREA	6,565	98,763	\$3,646,546,956	\$710.04
Natural Resources & Mining	458	2,191	77,808,572	682.94
Construction	452	3,808	174,858,923	883.05
Manufacturing	303	19,399	955,191,771	946.91
Trade, Transportation & Utilities	1,742	19,498	629,455,329	620.83
Wholesale Trade	377	3,375	162,798,423	927.63
Retail Trade	1,023	12,779	312,637,907	470.48
Transportation, Warehousing & Utilities	342	3,344	154,018,999	885.74
Financial Activities	564	3,236	142,588,654	847.37
Professional & Business Services	667	7,100	220,499,306	597.24
Education & Health Services	1,129	16,676	689,640,609	795.29
Leisure & Hospitality	539	9,212	130,314,247	272.04
Local Government	215	10,997	381,058,783	666.37
State Government	102	4,431	173,496,481	752.98
Other	394	2,215	71,634,281	621.93

Northeast Workforce Investment Area includes these counties: Clay, Craighead, Greene, Lawrence, Mississippi, Poinsett, and Randolph.

TABLE 8. LOCAL WORKFORCE DEVELOPMENT AREASUMMARY CALENDAR YEAR 2016

North American Industry Classification System - Industry Groups	Average Employing Units	Average Covered Employment	Total Calendar Earnings	Average Weekly Earnings
NORTHWEST WORKFORCE DEVELOPMENT AREA	15,694	263,766	\$12,223,438,171	\$891.19
Natural Resources & Mining	132	1,422	79,531,783	1,075.57
Trade, Transportation & Utilities	3,846	60,007	2,536,528,226	812.89
Retail Trade	2,130	31,999	858,111,074	515.71
Other Trade, Transportation & Utilities	1,716	28,008	1,678,417,152	1,152.43
Information	204	2,450	121,564,822	954.20
Professional & Business Services	2,603	47,666	3,885,138,478	1,567.45
Education & Health Services	2,226	33,123	1,360,468,029	789.87
Leisure & Hospitality	1,659	29,188	473,328,109	311.86
Other Services	993	4,850	150,468,655	596.62
Local Government	305	21,848	867,507,534	763.59
State Government	109	8,775	428,564,062	939.22
Other	3,617	54,437	2,320,338,473	819.70

Northwest Workforce Investment Area includes these counties: Baxter, Benton, Boone, Carroll, Madison, Marion, Newton, Searcy, and Washington.

SOUTHEAST WORKFORCE DEVELOPMENT AREA	6,115	68,490	\$2,491,607,360	\$699.60
Natural Resources & Mining	432	2,387	93,754,839	755.33
Construction	302	2,075	87,808,472	813.79
Manufacturing	202	14,291	701,449,893	943.91
Trade, Transportation & Utilities	1,256	12,332	400,941,695	625.24
Retail Trade	747	7,723	186,975,548	465.58
Other Trade, Transportation & Utilities	509	4,609	213,966,147	892.76
Financial Activities	412	2,407	107,891,672	862.00
Education & Health Services	2,034	10,792	359,321,937	640.29
Other Services	312	1,184	34,763,864	564.64
Local Government	206	8,662	293,826,922	652.33
State Government	137	6,028	219,662,950	700.78
Other	822	8,332	192,185,116	443.58

Southeast Workforce Investment Area includes these counties: Arkansas, Ashley, Bradley, Chicot, Cleveland, Desha, Drew, Grant, Jefferson, and Lincoln.

TABLE 8. LOCAL WORKFORCE DEVELOPMENT AREASUMMARY CALENDAR YEAR 2016

North American Industry Classification System - Industry Groups	Average Employing Units	Average Covered Employment	Total Calendar Earnings	Average Weekly Earnings
SOUTHWEST WORKFORCE DEVELOPMENT AREA	5,686	77,637	\$2,984,954,757	\$739.38
Natural Resources & Mining	348	2,291	99,515,517	835.34
Trade, Transportation & Utilities	1,374	15,048	502,348,350	641.98
Wholesale Trade	241	1,918	92,331,303	925.76
Retail Trade	840	8,860	208,614,295	452.80
Transportation, Warehousing & Utilities	293	4,270	201,402,752	907.06
Information	53	438	20,061,507	880.82
Financial Activities	480	2,549	107,745,145	812.88
Professional & Business Services	459	4,390	231,709,247	1,015.02
Education & Health Services	1,222	9,722	307,628,291	608.51
Leisure & Hospitality	404	5,717	80,552,109	270.96
Other Services	366	1,698	43,162,742	488.84
Local Government	253	9,494	317,016,272	642.14
State Government	142	3,642	130,403,173	688.56
Other	585	22,648	1,144,812,404	972.08

Southwest Workforce Investment Area includes these counties: Calhoun, Columbia, Dallas, Hempstead, Howard, Lafayette, Little River, Miller, Nevada, Ouachita, Sevier, and Union

WEST CENTRAL WORKFORCE DEVELOPMENT AREA	8,152	105,566	\$3,649,935,760	\$664.90
Construction	737	4,567	197,002,159	829.54
Trade, Transportation & Utilities	1,818	21,554	751,033,217	670.08
Wholesale Trade	316	1,944	88,312,807	873.62
Retail Trade	1,212	14,247	358,264,295	483.59
Transportation, Warehousing & Utilities	290	5,363	304,456,115	1,091.73
Financial Activities	808	3,926	165,437,127	810.36
Professional & Business Services	938	7,622	278,529,776	702.75
Education & Health Services	1,516	16,801	636,546,919	728.60
Leisure & Hospitality	784	13,373	209,782,811	301.67
Local Government	227	10,974	399,817,706	700.64
State Government	125	5,436	187,537,987	663.45
Other	1,199	21,313	824,248,058	743.72

West Central Workforce Investment Area includes these counties: Clark, Conway, Garland, Hot Spring, Johnson, Montgomery, Perry, Pike, Pope, and Yell

TABLE 8. LOCAL WORKFORCE DEVELOPMENT AREASUMMARY CALENDAR YEAR 2016

North American Industry Classification System - Industry Groups	Average Employing Units	Average Covered Employment	Total Calendar Earnings	Average Weekly Earnings
WESTERN WORKFORCE DEVELOPMENT AREA	6,426	103,316	\$3,861,757,127	\$718.81
Natural Resources & Mining	161	1,455	83,664,578	1,105.80
Trade, Transportation & Utilities	1,561	22,765	791,991,428	669.04
Wholesale Trade	372	3,619	178,142,301	946.62
Retail Trade	918	12,613	318,486,790	485.59
Transportation, Warehousing & Utilities	271	6,533	295,362,337	869.44
Financial Activities	661	3,457	148,506,283	826.12
Professional & Business Services	878	10,808	407,089,055	724.34
Education & Health Services	1,045	15,597	683,355,974	842.56
Leisure & Hospitality	549	9,239	138,122,067	287.50
Local Government	150	9,108	336,773,861	711.07
State Government	76	2,860	99,544,326	669.34
Other	1,345	28,027	1,172,709,555	804.66

Western Workforce Investment Area includes these counties: Crawford, Franklin, Logan, Polk, Scott, and Sebastian