

**COVERED EMPLOYMENT AND EARNINGS
STATE OF ARKANSAS
1999**

**MIKE HUCKABEE, GOVERNOR
STATE OF ARKANSAS**

**ED ROLLE, DIRECTOR
ARKANSAS EMPLOYMENT SECURITY DEPARTMENT**

**PUBLISHED BY
LABOR MARKET INFORMATION SECTION
ARKANSAS EMPLOYMENT SECURITY DEPARTMENT
POST OFFICE BOX 2981
LITTLE ROCK, ARKANSAS 72203-2981**

TELEPHONE: (501) 682-3198

STATE OF ARKANSAS HOME PAGE: <http://www.state.ar.us>

ARKANSAS EMPLOYMENT SECURITY DEPARTMENT HOME PAGE: <http://www.state.ar.us/esd/>

INTERNET SITE FOR THIS PUBLICATION: <http://www.state.ar.us/esd/99anene.html>

RELEASED: MAY 2000



TABLE OF CONTENTS

	Page
Description of Data	1
Industry Classification	1
Definition of Covered Employment, Earnings, and Average Weekly Earnings	2
County Classification	2
Significant Developments During Calendar Year 1999	3

LIST OF GRAPHS AND TABLES

Graph 1	Total and Manufacturing Average Covered Employment for Selected Years, Arkansas	7
Graph 2	Total Covered Earnings, by Calendar Quarter for Selected Years, Arkansas	8
Table 1	Average Covered Employment and Average Weekly Earnings, by Industry, 1999	5
Table 2	Total Covered Employment in Arkansas, 1993-1999	6
Table 3	Manufacturing Covered Employment, 1993-1999	6
Table 4	Total Covered Earnings, 1993-1999	9
Table 5	Total Taxable Earnings, 1993-1999	10
Table 6	Covered Earnings in Manufacturing, 1993-1999	11
Table 7	State Summary - Employment and Total Earnings, by Industry, Calendar Year 1999	12
Table 8	County Summary - Employment and Total Earnings, by Industry, Calendar Year 1999	27
Table 9	Federal Government Employment and Earnings in Arkansas, 1999	53

ARKANSAS AVERAGE COVERED EMPLOYMENT AND EARNINGS BY COUNTY AND INDUSTRY, 1999

DESCRIPTION OF DATA

Tables contained in this report represent average monthly employment, total payroll data, and average weekly earnings by industry and county for the calendar year 1999. These data were compiled from quarterly contribution and wage reports submitted by employers subject to the Arkansas Employment Security Law. An employing unit is a single physical location where business is conducted, production takes place, or services are provided. Employment data represents a monthly average for the year by industry on a statewide and county basis. Payroll data represents the total earnings paid during the year and are also shown by industry for the state and in publishable groups in each county. The tabulation of this data is a joint effort in conjunction with the Bureau of Labor Statistics. Average weekly earnings data are computed from total earnings reported by all establishments subject to the Arkansas

Employment Security Law and are not to be confused with wage rates prevailing in various industries. Neither are these earnings to be confused with the monthly series of average weekly earnings of production workers that appear in the Arkansas Labor Market Trends and in other labor area releases. In addition, there are tables included which give total covered employment and manufacturing employment by months, quarterly payrolls, and average weekly earnings for the years 1993 through 1999. Data contained in this publication are subject to revision. Annual average data may not equal the sum of previously published quarterly data due to revisions that occur throughout the year. Because of industry code changes between years, there may be substantial employment and wage shifts among industries.

INDUSTRY CLASSIFICATION

Previously published industry data will not be comparable in all instances with currently published data since industry codes have been revised according to the following Manuals: (a) manufacturing industries were coded according to the 1945 Standard Industrial Manual until December 31, 1957, while nonmanufacturing industries were coded under the Social Security Board Industrial Classification Manual (1942); (b) between January 1, 1958 and December 31, 1967, industry codes were assigned under the 1957 Standard

Industrial Classification (SIC) Manual; (c) between January 1, 1968 and December 31, 1974, industry codes were assigned under the 1967 Standard Industrial Classification (SIC) Manual; (d) between January 1, 1975 and December 31, 1987, industry codes were assigned under the 1972 Standard Industrial Classification (SIC) Manual; and (e) since January 1, 1988, industry codes have been assigned under the 1987 Standard Industrial Classification (SIC) Manual.

DEFINITION OF COVERED EMPLOYMENT, EARNINGS, AND AVERAGE WEEKLY EARNINGS

Covered employment is the number of workers employed by employers subject to the Arkansas Employment Security Law who worked or received pay for the payroll period which includes the 12th of the month. An employer is subject to the law when he has employed one or more employees in each of ten days during the current or preceding calendar year.

Currently excluded from coverage is employment covered by the Railroad Unemployment Insurance Act; some domestic service workers; employees of small agricultural establishments; self-employed and unpaid family workers; insurance and real estate agents who are on commission only; and employees of churches and religious organizations, except separately incorporated schools. The payroll information in this publication includes all wages and salaries paid to covered employees by their employers including bonuses,

commissions, and cash values of remuneration received in any medium other than cash. These wages include both taxable and nontaxable wages. Only the first \$9,000 paid to each worker by an employer in the calendar year is taxable under the Arkansas Employment Security Law.

The average covered employment and average weekly earnings data, included in tables in this publication, were computed in the following manner: Employment data for the twelve months were totaled and divided by 12 to secure the average employment for the year. Total earnings for the year were divided by the average employment to secure the average annual earnings per employee. The average annual earnings per employee were then divided by 52 (number of weeks in a year) to secure the average weekly earnings per employee for the year.

FEDERAL GOVERNMENT EMPLOYMENT

The table on page 53 lists the average number of civilians employed by the Federal Government in Arkansas during 1999. Employment and wage data are set out by industry divisions. These data are obtained from required reports submitted by various government

agencies having employment in the State. Civilian Federal workers are covered by the Unemployment Compensation for Federal Employees (UCFE) program.

COUNTY CLASSIFICATION

Employment and payroll data by county are classified according to the county where the workers are employed. Employers with operations in more than one county are requested to furnish this agency with a breakdown of employment and wages for at least one quarter of each year by the counties in which they operate. This information is invaluable in the preparation of monthly employment, payroll, and average weekly earnings figures by county. Employment, payroll, and average weekly earnings data for multi-area employers

who do not furnish county data each quarter of the year are pro-rated by county on the basis of one quarter's information.

The "rest-of-state" data includes firms which did not provide a county breakdown of employment and payrolls. It also includes sales and other type personnel with no permanent place of work, as well as employment of employers with no established place of business in Arkansas.

SIGNIFICANT DEVELOPMENTS DURING CALENDAR YEAR 1999

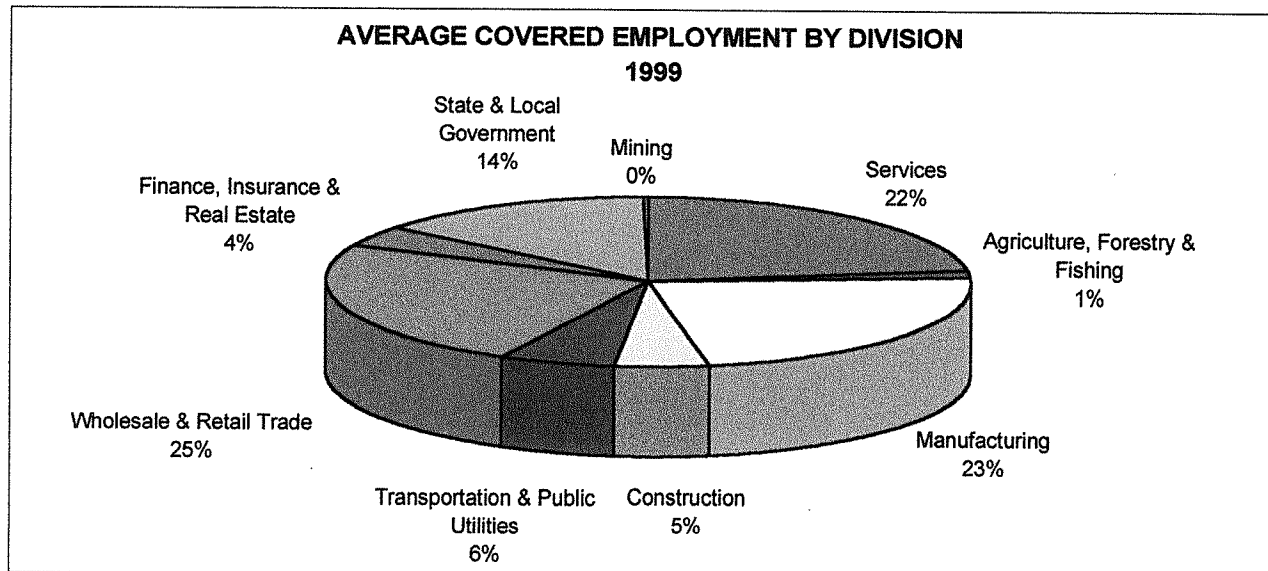
AVERAGE COVERED EMPLOYMENT

Covered employment in Arkansas averaged 1,092,368 in 1999. This represented an increase of 18,637, or 1.7 percent, from the level of 1,073,732 recorded in 1998. Manufacturing industries experienced an over-the-year decrease while nonmanufacturing industries recorded an increase. The manufacturing sector decreased by 1,435 to an average of 251,836, while nonmanufacturing industries rose 20,071 to average 840,533.

Wholesale and retail trade posted a gain of 5,621 and led all nonmanufacturing industries with an average of 261,766. Services ranked second with an average of 245,730 and experienced a gain of 6,419. State and local government increased 2,313 to rank third with an average of 154,004.

Apparel and other textile products posted the largest loss (-1,365) among the manufacturing industry groups to average 5,533. Other manufacturing industries with significant decreases were electronic & other electric equipment (-942) and industrial machinery & equipment (-564). The most significant gain occurred in fabricated metal products (+876).

Pulaski ranked first among the counties in covered employment, averaging 233,360 during 1999. Second ranked Washington County averaged 76,888, followed by Sebastian County with 73,625. Benton and Craighead Counties averaged 66,215 and 38,310, respectively, to make the top five among the counties.



AVERAGE WEEKLY EARNINGS

Average weekly earnings paid to covered workers amounted to \$482.50 during 1999. This represented an increase of \$18.37, or 4.0 percent, from the level of \$464.13 recorded in 1998. Employees in the paper and allied products industry led all published industry groups with average weekly earnings of \$806.95. Workers in chemicals and allied products ranked second averaging \$780.80, followed by petroleum and coal products employees (\$752.84) and primary metal industries workers (\$718.69). Apparel and other textile

products employees (\$316.83) and leather and leather products workers (\$329.97) posted the lowest averages.

Little River County employees ranked first averaging \$656.66. Benton County employees (\$582.05) ranked second followed by Calhoun County (\$562.56), Pulaski County (\$561.67), and Ashley County (561.67). Employees in Newton County ranked last among the counties with an average of \$299.84.

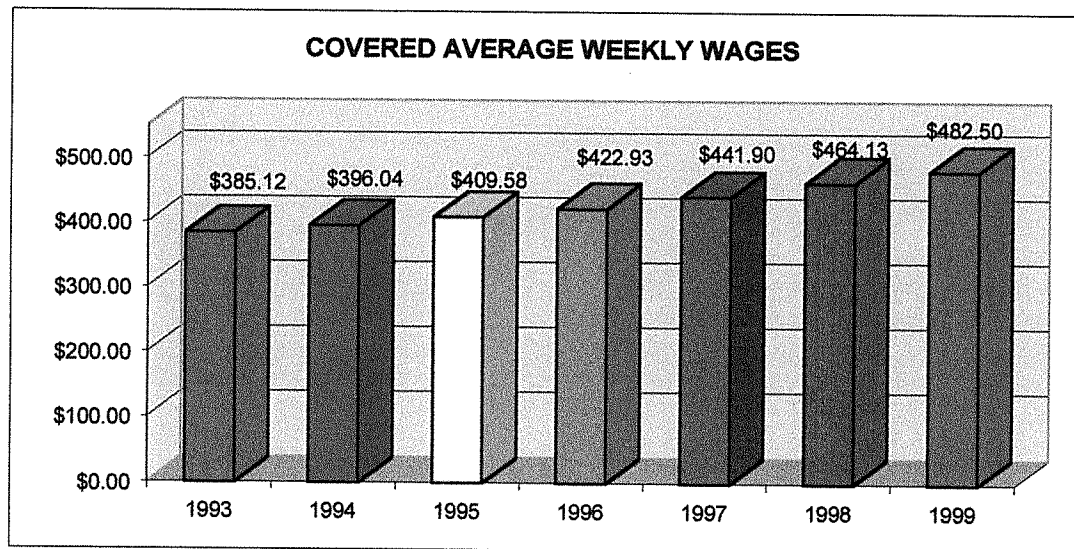


TABLE 1. AVERAGE COVERED EMPLOYMENT AND AVERAGE WEEKLY EARNINGS, BY INDUSTRY, 1999

Industry Group	Average Covered Employment	% of Total	Net Change From 1998 to 1999	Average Weekly Earnings
Total	1,092,368	100.0	18,636	\$482.50
Manufacturing	251,836	23.1	-1,435	544.08
Food and Kindred Products	57,534	5.3	141	455.64
Textile Mill Products	4,338	0.4	212	505.49
Apparel & Other Textile Products	5,533	0.5	-1,365	316.83
Lumber and Wood Products	22,811	2.1	67	491.26
Furniture & Fixtures	11,391	1.0	-252	449.72
Paper and Allied Products	14,732	1.3	198	806.95
Printing and Publishing	11,319	1.0	413	510.21
Chemicals and Allied Products	6,196	0.6	-408	780.80
Petroleum and Coal Products	914	0.1	-63	752.84
Rubber and Miscellaneous Plastics Products	14,434	1.3	220	588.88
Leather and Leather Products	2,454	0.2	-245	329.97
Stone, Clay and Glass Products	5,584	0.5	-78	558.32
Primary Metal Industries	10,050	0.9	-191	718.69
Fabricated Metal Products	19,890	1.8	876	595.32
Industrial Machinery & Equip.	18,925	1.7	-564	553.07
Electronic & Other Elec. Equip.	18,953	1.7	-942	560.88
Transportation Equipment	17,368	1.6	60	578.35
Instruments & Related Products	5,324	0.5	191	562.79
Miscellaneous Manufacturing Industries	4,085	0.4	295	419.18
Nonmanufacturing	840,532	76.9	20,071	464.05
Agriculture, Forestry & Fishing	16,163	1.5	487	395.61
Mining	3,190	0.3	-138	670.78
Construction	50,385	4.6	2,524	508.20
Transportation & Public Utilities	65,183	6.0	1,825	651.15
Wholesale & Retail Trade	261,766	24.0	5,621	385.83
Finance, Insurance & Real Estate	44,111	4.0	1,019	623.97
Services	245,730	22.5	6,419	447.79
State & Local Government	154,004	14.1	2,313	486.41
Local Government	98,926	9.1	1,398	445.66
State Government	55,078	5.0	915	559.60
Nonclassifiable Establishments	0	0.0	0	0.00

Note: Items do not necessarily add to totals because of rounding. Because of industry code changes between years there may be substantial employment & wage shifts among industries.

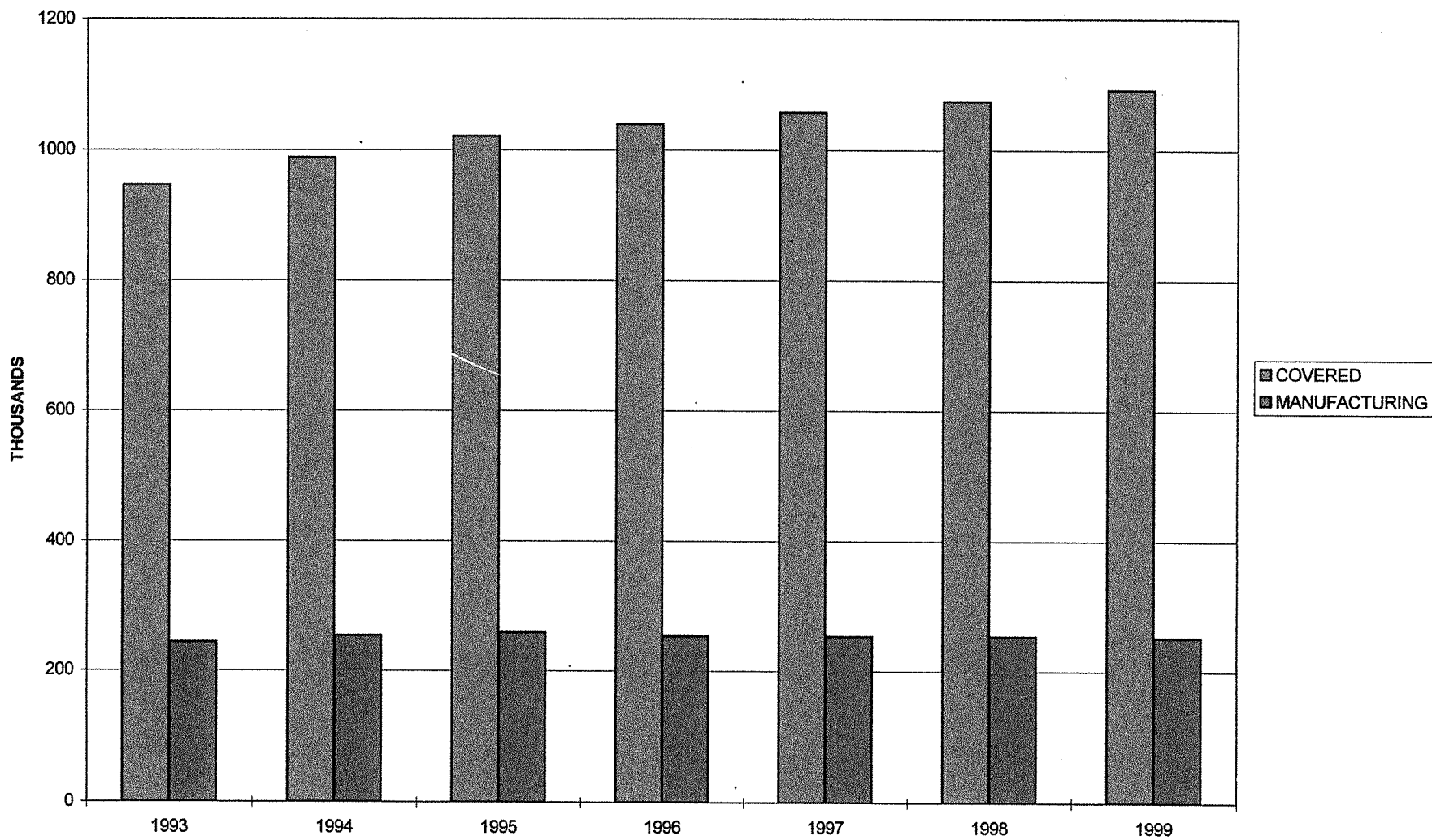
TABLE 2. TOTAL COVERED EMPLOYMENT IN ARKANSAS

Period	1993	1994	1995	1996	1997	1998	1999
Average	947,353	987,634	1,021,440	1,039,357	1,057,350	1,073,732	1,092,368
January	914,402	949,582	994,537	1,017,447	1,025,949	1,050,970	1,065,920
February	923,979	954,796	1,003,997	1,021,306	1,034,361	1,057,593	1,074,315
March	932,968	968,696	1,014,804	1,032,978	1,046,551	1,066,099	1,084,653
April	944,486	982,542	1,019,684	1,038,846	1,057,633	1,074,416	1,093,574
May	951,453	992,205	1,025,143	1,049,419	1,067,078	1,083,133	1,098,539
June	956,517	1,000,327	1,029,990	1,051,282	1,066,728	1,086,125	1,101,752
July	923,648	966,045	992,336	1,009,501	1,028,510	1,046,396	1,062,574
August	938,347	983,551	1,013,715	1,031,586	1,050,656	1,063,680	1,081,268
September	968,086	1,015,514	1,041,492	1,055,695	1,075,759	1,088,772	1,108,220
October	972,089	1,013,272	1,041,045	1,055,507	1,079,093	1,089,836	1,110,327
November	970,765	1,012,367	1,039,808	1,055,247	1,076,715	1,087,855	1,111,842
December	971,500	1,012,712	1,040,728	1,053,474	1,079,166	1,089,913	1,115,432

TABLE 3. MANUFACTURING COVERED EMPLOYMENT

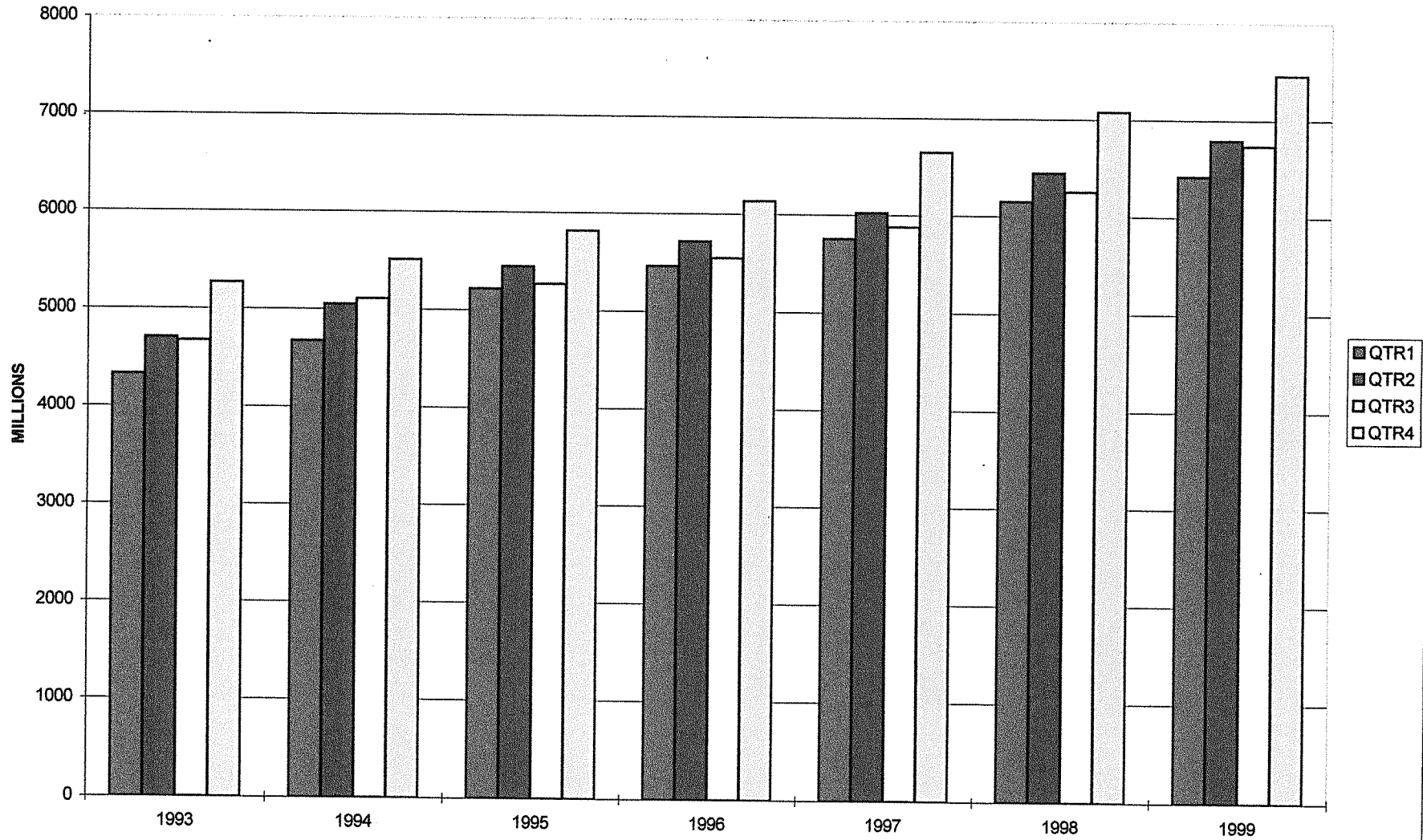
Period	1993	1994	1995	1996	1997	1998	1999
Average	243,729	253,953	258,532	253,407	252,753	253,271	251,836
January	236,739	246,018	257,416	254,998	249,199	251,864	250,018
February	238,222	245,967	258,286	253,319	250,182	252,767	250,419
March	240,301	247,221	258,236	253,815	250,608	252,860	250,571
April	242,917	250,427	258,500	253,344	251,894	253,093	250,950
May	243,389	252,086	257,957	252,605	253,155	253,579	251,434
June	244,700	255,254	259,922	254,470	254,829	255,655	252,938
July	245,514	256,560	258,433	253,333	254,148	254,450	253,015
August	245,932	257,168	259,908	253,960	254,116	254,276	252,913
September	246,212	258,975	259,517	253,023	253,787	254,088	253,269
October	246,362	258,959	258,301	253,014	253,367	252,386	252,031
November	246,958	259,390	258,219	252,785	253,257	251,847	251,993
December	247,506	259,409	257,691	252,214	254,492	252,381	252,480

TOTAL COVERED AND MANUFACTURING EMPLOYMENT



GRAPH ONE

TOTAL COVERED EARNINGS BY CALENDAR QUARTER



GRAPH TWO

TABLE 4. TOTAL COVERED EARNINGS

Period	1993	1994	1995	1996
Total	\$18,972,044,401	\$20,339,457,312	\$21,755,030,337	\$22,858,110,862
Jan.-March	4,326,273,709	4,676,047,400	5,216,754,264	5,464,913,869
Apr.-June	4,705,927,956	5,049,632,485	5,449,448,715	5,714,811,819
July-Sept.	4,673,569,659	5,103,000,944	5,270,916,007	5,548,435,311
Oct.-Dec.	5,266,273,077	5,510,776,483	5,817,911,351	6,129,949,863
Average Weekly Earnings	385.12	396.04	409.58	422.93

TABLE 4. TOTAL COVERED EARNINGS (CONTINUED)

Period	1997	1998	1999
Total	\$24,296,555,335	\$25,914,345,060	\$27,407,644,088
Jan.-March	5,751,056,136	6,145,178,755	6,418,456,638
Apr.-June	6,021,537,518	6,441,129,069	6,791,961,159
July-Sept.	5,877,681,886	6,246,775,598	6,733,496,511
Oct.-Dec.	6,646,279,795	7,081,261,638	7,463,729,780
Average Weekly Earnings	441.90	464.13	482.50

TABLE 5. TOTAL TAXABLE EARNINGS

Period	1993	1994	1995	1996
Total	\$6,707,789,836	\$7,425,105,759	\$7,817,421,753	\$7,993,176,348
Jan.-March	2,985,628,570	3,252,179,748	3,591,833,807	3,726,235,905
Apr.-June	1,888,648,820	2,080,889,209	2,141,221,185	2,176,236,591
July-Sept.	1,058,929,055	1,215,839,115	1,183,562,914	1,189,773,883
Oct.-Dec.	774,583,391	876,197,687	900,803,847	900,929,969

TABLE 5. TOTAL TAXABLE EARNINGS (CONTINUED)

Period	1997	1998	1999
Total	\$8,262,066,213	\$8,554,973,370	\$8,804,810,340
Jan.-March	3,871,667,342	4,063,795,529	4,203,067,856
Apr.-June	2,223,918,770	2,271,303,325	2,325,650,244
July-Sept.	1,208,701,615	1,236,054,184	1,267,577,494
Oct.-Dec.	957,778,486	983,820,332	1,008,514,746

TABLE 6. COVERED EARNINGS IN MANUFACTURING

Period	1993	1994	1995	1996
Total	\$5,454,565,249	\$5,889,443,098	\$6,153,931,784	\$6,287,177,585
Jan.-March	1,242,725,873	1,361,400,241	1,511,433,659	1,541,337,684
Apr.-June	1,342,226,591	1,438,659,873	1,527,368,381	1,554,807,256
July-Sept.	1,375,061,570	1,520,885,717	1,518,447,296	1,548,044,837
Oct.-Dec.	1,494,551,215	1,568,497,267	1,596,682,448	1,642,987,808
Average Weekly Earnings	430.38	445.98	457.76	477.13

TABLE 6. COVERED EARNINGS IN MANUFACTURING (CONTINUED)

Period	1997	1998	1999
Total	\$6,576,855,039	\$6,891,440,822	\$7,125,044,461
Jan.-March	1,580,259,292	1,641,674,535	1,654,610,660
Apr.-June	1,605,319,439	1,695,339,424	1,745,308,845
July-Sept.	1,612,928,955	1,695,313,056	1,812,797,128
Oct.-Dec.	1,778,347,353	1,859,113,807	1,912,327,828
Average Weekly Earnings	500.40	523.26	544.08

TABLE 7. STATE SUMMARY
EMPLOYMENT AND TOTAL EARNINGS, BY INDUSTRY
CALENDAR YEAR 1999

INDUSTRY GROUP		AVERAGE # OF EMPLOYING UNITS	AVERAGE COVERED EMPLOYMENT	TOTAL EARNINGS	AVERAGE WEEKLY EARNINGS
TOTAL, ALL INDUSTRIES		70,839	1,092,368	\$27,407,644,088	\$482.50
MANUFACTURING		4,397	251,836	\$7,125,044,461	\$544.08
20	FOOD AND KINDRED PRODUCTS	350	57,534	\$1,363,163,240	\$455.64
201	Meat Products	107	39,464	862,328,938	420.21
202	Dairy Products	14	785	21,726,375	532.25
203	Preserved Fruits and Vegetables	43	6,875	178,735,693	499.96
204	Grain Mill Products	100	3,847	115,723,848	578.49
205	Bakery Products	18	2,689	76,068,603	544.02
207	Fats and Oils	14	750	22,791,263	584.39
208	Beverages	15	1,021	30,391,733	572.44
	Other Food and Kindred Products	39	2,103	55,396,787	506.57
22	TEXTILE MILL PRODUCTS	25	4,338	\$114,026,251	\$505.49
23	APPAREL AND OTHER TEXTILE PRODUCTS	139	5,533	\$91,157,270	\$316.83
232	Men's and Boys' Furnishings	34	3,980	67,107,007	324.25
233	Women's and Misses' Outerwear	10	173	1,860,899	206.86
238	Miscellaneous Apparel and Accessories	6	128	2,143,094	321.98
239	Misc. Fabricated Textile Products	84	899	15,172,287	324.55
	Other Apparel and Other Textile Products	5	353	4,873,983	265.53
24	LUMBER AND WOOD PRODUCTS	1,170	22,811	\$582,716,171	\$491.26
241	Logging	640	3,438	79,103,379	442.47
242	Sawmills and Planing Mills	239	9,382	267,743,830	548.81
243	Millwork, Plywood & Structural Members	115	4,184	113,286,628	520.70
249	Miscellaneous Wood Products	102	3,721	83,427,156	431.17
	Other Lumber and Wood Products	74	2,086	39,155,178	360.97
25	FURNITURE AND FIXTURES	131	11,391	\$266,382,637	\$449.72
251	Household Furniture	73	5,170	108,393,643	403.19
252	Office Furniture	12	816	19,122,023	450.65
253	Public Building & Related Furniture	18	2,723	69,879,781	493.52
254	Partitions and Fixtures	20	2,367	61,707,435	501.34
259	Miscellaneous Furniture and Fixtures	9	315	7,279,755	444.43

**TABLE 7. STATE SUMMARY
EMPLOYMENT AND TOTAL EARNINGS, BY INDUSTRY
CALENDAR YEAR 1999**

	INDUSTRY GROUP	AVERAGE # OF EMPLOYING UNITS	AVERAGE COVERED EMPLOYMENT	TOTAL EARNINGS	AVERAGE WEEKLY EARNINGS
26	PAPER AND ALLIED PRODUCTS	107	14,732	\$618,176,293	\$806.95
262	Paper Mills	24	5,619	298,830,442	1022.73
267	Misc. Converted Paper Products	33	4,569	146,561,554	616.87
	Other Paper and Allied Products	50	4,544	172,784,297	731.24
27	PRINTING AND PUBLISHING	469	11,319	\$300,302,187	\$510.21
271	Newspapers	139	3,938	86,188,155	420.89
272	Periodicals	23	178	4,259,506	460.19
273	Books	23	100	3,387,430	651.43
274	Miscellaneous Publishing	34	1,051	27,412,314	501.58
275	Commercial Printing	227	3,793	115,512,997	585.66
279	Printing Trade Services	9	147	5,599,735	732.57
	Other Printing and Publishing	14	2,112	57,942,050	527.59
28	CHEMICALS AND ALLIED PRODUCTS	120	6,196	\$251,568,693	\$780.80
281	Industrial Inorganic Chemicals	18	1,193	60,434,992	974.19
282	Plastics Materials and Synthetics	6	325	15,069,320	891.68
283	Drugs	7	78	2,824,172	696.29
284	Soap, Cleaners, and Toilet Goods	24	1,310	43,531,846	639.05
285	Paints and Allied Products	7	362	12,586,790	668.66
286	Industrial Organic Chemicals	14	1,177	51,820,776	846.69
287	Agricultural Chemicals	21	923	33,700,206	702.15
289	Miscellaneous Chemical Products	24	827	31,600,591	734.83
29	PETROLEUM AND COAL PRODUCTS	24	914	\$35,780,877	\$752.84
295	Asphalt Paving and Roofing Materials	17	293	10,218,915	670.71
	Other Petroleum and Coal Products	7	621	25,561,962	791.59
30	RUBBER AND MISC. PLASTICS PRODUCTS	204	14,434	\$441,995,136	\$588.88
301	Tires and Inner Tubes	4	2,105	100,870,309	921.53
305	Hose & Belting & Gaskets & Packing	10	1,360	40,171,358	568.03
306	Fabricated Rubber Products, NEC	24	2,626	77,595,120	568.25
308	Miscellaneous Plastics Products, NEC	167	8,343	223,358,349	514.85

**TABLE 7. STATE SUMMARY
EMPLOYMENT AND TOTAL EARNINGS, BY INDUSTRY
CALENDAR YEAR 1999**

INDUSTRY GROUP		AVERAGE # OF EMPLOYING UNITS	AVERAGE COVERED EMPLOYMENT	TOTAL EARNINGS	AVERAGE WEEKLY EARNINGS
31	LEATHER AND LEATHER PRODUCTS	26	2,454	\$42,106,749	\$329.97
314	Footwear, Except Rubber	12	1,920	32,983,308	330.36
	Other Leather and Leather Products	14	534	9,123,441	328.56
32	STONE, CLAY, AND GLASS PRODUCTS	251	5,584	\$162,118,411	\$558.32
322	Glass and Glassware, Pressed or Blown	8	552	14,145,065	492.79
323	Products Of Purchased Glass	14	327	6,103,295	358.93
325	Structural Clay Products	9	480	12,953,818	518.98
327	Concrete, Gypsum, and Plaster Products	167	2,888	85,102,013	566.68
328	Cut Stone and Stone Products	18	155	2,824,237	350.40
329	Misc. Nonmetallic Mineral Products	21	687	25,292,607	708.00
	Other Stone, Clay, and Glass Products	14	495	15,697,376	609.84
33	PRIMARY METAL INDUSTRIES	74	10,050	\$375,588,703	\$718.69
331	Blast Furnace and Basic Steel Products	21	4,549	197,767,631	836.06
332	Iron and Steel Foundries	10	240	5,946,621	476.49
335	Nonferrous Rolling and Drawing	19	3,096	103,648,368	643.81
336	Nonferrous Foundries (Castings)	13	1,723	51,061,396	569.91
	Other Primary Metal Industries	11	442	17,164,687	746.81
34	FABRICATED METAL PRODUCTS	367	19,890	\$615,722,629	\$595.32
341	Metal Cans and Shipping Containers	3	314	12,330,070	755.15
342	Cutlery, Handtools, and Hardware	32	2,486	64,987,199	502.72
343	Plumbing and Heating, Except Electric	5	1,137	32,973,139	557.69
344	Fabricated Structural Metal Products	175	6,237	209,277,864	645.27
345	Screw Machine Products, Bolts, Etc.	16	537	16,399,202	587.28
346	Metal Forgings and Stampings	23	2,299	61,600,028	515.27
347	Metal Services, NEC	42	903	22,770,497	484.93
348	Ordinance and Accessories, NEC	15	1,776	65,688,062	711.28
349	Misc. Fabricated Metal Products	57	4,203	129,696,568	593.42

**TABLE 7. STATE SUMMARY
EMPLOYMENT AND TOTAL EARNINGS, BY INDUSTRY
CALENDAR YEAR 1999**

INDUSTRY GROUP		AVERAGE # OF EMPLOYING UNITS	AVERAGE COVERED EMPLOYMENT	TOTAL EARNINGS	AVERAGE WEEKLY EARNINGS
35	INDUSTRIAL MACHINERY AND EQUIPMENT	454	18,925	\$544,277,965	\$553.07
352	Farm and Garden Machinery	39	2,371	51,606,497	418.57
353	Construction and Related Machinery	35	2,513	75,799,089	580.05
354	Metalworking Machinery	100	3,479	98,113,341	542.34
355	Special Industrial Machinery	30	925	32,864,117	683.25
356	General Industrial Machinery	26	2,285	64,577,314	543.49
358	Refrigeration and Service Machinery	41	5,507	171,586,689	599.19
359	Industrial Machinery, NEC	180	1,553	39,067,286	483.77
	Other Industrial Machinery and Equipment	3	292	10,663,632	702.29
36	ELECTRONIC & OTHER ELECTRIC EQUIPMENT	107	18,953	\$552,779,401	\$560.88
361	Electric Distribution Equipment	8	1,208	30,154,365	480.04
362	Electrical Industrial Apparatus	22	6,295	194,445,757	594.02
364	Electric Lighting and Wiring Equipment	24	2,527	69,962,357	532.42
365	Household Audio and Video Equipment	9	1,007	28,982,300	553.48
367	Electronic Components and Accessories	26	1,809	46,158,337	490.69
369	Misc. Electrical Equipment & Supplies	10	1,224	30,149,824	473.70
	Other Electronic & Other Electric Equipment	8	4,883	152,926,461	602.27
37	TRANSPORTATION EQUIPMENT	182	17,368	\$522,330,812	\$578.35
371	Motor Vehicles and Equipment	82	9,687	265,065,145	526.21
372	Aircraft and Parts	27	4,369	170,294,700	749.58
373	Ship and Boat Building And Repairing	38	1,758	42,699,905	467.09
379	Miscellaneous Transportation Equipment	27	581	13,151,015	435.29
	Other Transportation Equipment	8	973	31,120,047	615.07
38	INSTRUMENTS AND RELATED PRODUCTS	55	5,324	\$155,807,809	\$562.79
381	Search and Navigation Equipment	7	317	10,138,577	615.06
382	Measuring and Controlling Devices	18	1,700	39,528,246	447.15
	Other Instruments and Related Products	30	3,307	106,140,986	617.23

TABLE 7. STATE SUMMARY
 EMPLOYMENT AND TOTAL EARNINGS, BY INDUSTRY
 CALENDAR YEAR 1999

INDUSTRY GROUP		AVERAGE # OF EMPLOYING UNITS	AVERAGE COVERED EMPLOYMENT	TOTAL EARNINGS	AVERAGE WEEKLY EARNINGS
39	MISCELLANEOUS MANUFACTURING INDUSTRIES	149	4,085	\$89,043,227	\$419.18
393	Musical Instruments	8	870	20,415,459	451.27
394	Toys and Sporting Goods	46	1,371	30,243,445	424.22
395	Pens, Pencils, Office, & Art Supplies	6	33	586,489	341.78
399	Miscellaneous Manufactures	85	1,785	36,778,523	396.23
	Other Miscellaneous Manufacturing Industries	4	26	1,019,311	753.93

**TABLE 7. STATE SUMMARY
EMPLOYMENT AND TOTAL EARNINGS, BY INDUSTRY
CALENDAR YEAR 1999**

INDUSTRY GROUP		AVERAGE # OF EMPLOYING UNITS	AVERAGE COVERED EMPLOYMENT	TOTAL EARNINGS	AVERAGE WEEKLY EARNINGS
NONMANUFACTURING		66,442	840,532	\$20,282,599,627	\$464.05
AGRICULTURE, FORESTRY, AND FISHING		2,161	16,163	\$332,496,907	\$395.61
01	AGRICULTURAL PRODUCTION-CROPS	698	3,880	\$72,091,974	\$357.32
011	Cash Grains	373	1,800	35,190,754	375.97
013	Field Crops, Except Cash Grains	121	850	15,369,017	347.72
016	Vegetables and Melons	10	53	582,619	211.40
017	Fruits and Tree Nuts	10	88	1,426,752	311.79
018	Horticultural Specialties	43	302	4,683,132	298.21
019	General Farms, Primarily Crop	142	787	14,839,700	362.62
02	AGRICULTURAL PRODUCTION-LIVESTOCK	223	4,121	\$98,340,488	\$458.91
021	Livestock, Except Dairy and Poultry	70	704	16,195,138	442.39
025	Poultry and Eggs	86	2,728	66,949,510	471.95
027	Animal Specialties	55	578	13,183,830	438.64
	Other Agricultural Production-Livestock	12	111	2,012,010	348.58
07	AGRICULTURAL SERVICES	1,122	7,190	\$138,387,091	\$370.14
071	Soil Preparation Services	7	27	709,480	505.33
072	Crop Services	294	1,858	44,592,390	461.54
074	Veterinary Services	278	1,636	26,756,990	314.52
075	Animal Services, Except Veterinary	134	1,099	18,934,985	331.33
076	Farm Labor and Management Services	17	45	1,251,329	534.76
078	Landscape and Horticultural Services	392	2,524	46,141,917	351.56
08	FORESTRY	110	932	\$23,140,144	\$477.47
085	Forestry Services	77	780	18,676,728	460.47
	Other Forestry	33	152	4,463,416	564.70
09	FISHING, HUNTING, AND TRAPPING	10	41	\$537,210	\$251.97

**TABLE 7. STATE SUMMARY
EMPLOYMENT AND TOTAL EARNINGS, BY INDUSTRY
CALENDAR YEAR 1999**

INDUSTRY GROUP		AVERAGE # OF EMPLOYING UNITS	AVERAGE COVERED EMPLOYMENT	TOTAL EARNINGS	AVERAGE WEEKLY EARNINGS
MINING		305	3,190	\$111,269,507	\$670.78
13	OIL AND GAS EXTRACTION	214	1,501	\$56,032,741	\$717.89
138	Oil and Gas Field Services	127	1,016	32,695,417	618.86
	Other Oil and Gas Extraction	87	485	23,337,324	925.35
14	NONMETALLIC MINERALS, EXCEPT FUELS	86	1,577	\$50,520,142	\$616.07
142	Crushed and Broken Stone	19	314	10,451,714	640.11
144	Sand and Gravel	48	1,005	31,635,845	605.35
149	Miscellaneous Nonmetallic Minerals, Except Fuels	14	149	4,136,745	533.91
	Other Nonmetallic Minerals, Except Fuels	5	109	4,295,838	757.91
	OTHER MINING	5	112	\$4,716,624	\$809.86
CONSTRUCTION		6,845	50,385	\$1,331,506,385	\$508.20
15	GENERAL BUILDING CONTRACTORS	1,862	12,221	\$325,047,147	\$511.49
152	Residential Building Construction	1,251	4,232	92,264,293	419.26
153	Operative Builders	21	69	1,424,300	396.96
154	Nonresidential Building Construction	591	7,920	231,358,554	561.77
16	HEAVY CONSTRUCTION, EX. BUILDING	793	9,023	\$255,686,285	\$544.95
161	Highway and Street Construction	167	2,767	83,086,507	577.45
162	Heavy Construction, Except Highway	626	6,256	172,599,778	530.57
17	SPECIAL TRADE CONTRACTORS	4,190	29,141	\$750,772,953	\$495.45
171	Plumbing, Heating, Air-Conditioning	1,039	7,588	206,894,155	524.35
172	Painting and Paper Hanging	272	1,560	32,389,996	399.28
173	Electrical Work	692	5,322	152,732,823	551.89
174	Masonry, Stonework, and Plastering	475	3,616	80,839,415	429.92
175	Carpentry and Floor Work	213	859	19,330,458	432.76
176	Roofing, Siding, and Sheet Metal Work	269	1,916	46,012,291	461.82
177	Concrete Work	265	1,793	37,293,332	399.99
178	Water Well Drilling	56	365	9,804,724	516.58
179	Misc. Special Trade Contractors	913	6,121	165,475,759	519.89

**TABLE 7. STATE SUMMARY
EMPLOYMENT AND TOTAL EARNINGS, BY INDUSTRY
CALENDAR YEAR 1999**

INDUSTRY GROUP		AVERAGE # OF EMPLOYING UNITS	AVERAGE COVERED EMPLOYMENT	TOTAL EARNINGS	AVERAGE WEEKLY EARNINGS
TRANSPORTATION AND PUBLIC UTILITIES		4,173	65,183	\$2,207,094,081	\$651.15
41	LOCAL AND INTERURBAN PASSENGER TRANSIT	138	2,007	\$37,235,476	\$356.78
411	Local and Suburban Transportation	99	1,394	27,292,158	376.51
414	Bus Charter Service	16	151	2,571,432	327.49
	Other Local and Interurban Passenger Transit	23	462	7,371,886	306.86
42	TRUCKING AND WAREHOUSING	2,374	34,572	\$1,043,908,367	\$580.68
421	Trucking & Courier Services, Ex. Air	2,151	32,415	993,030,088	589.13
	Other Trucking and Warehousing	223	2,157	50,878,279	453.61
44	WATER TRANSPORTATION	65	793	\$21,666,953	\$525.44
449	Water Transportation Services	58	705	19,477,345	531.30
	Other Water Transportation	7	88	2,189,608	478.50
45	TRANSPORTATION BY AIR	195	6,357	\$180,867,436	\$547.15
451	Air Transportation, Scheduled	65	4,452	119,539,805	516.36
	Other Transportation by Air	130	1,905	61,327,631	619.10
46	PIPELINES, EXCEPT NATURAL GAS	16	213	\$10,439,428	\$942.53
47	TRANSPORTATION SERVICES	309	2,232	\$62,689,895	\$540.13
472	Passenger Transportation Arrangement	121	556	11,560,339	399.85
473	Freight Transportation Arrangement	144	857	29,231,417	655.94
	Other Transportation Services	44	819	21,898,139	514.19
48	COMMUNICATIONS	602	10,264	\$428,142,164	\$802.17
481	Telephone Communications	363	7,009	334,408,676	917.53
483	Radio and Television Broadcasting	146	2,184	58,248,954	512.90
	Other Communications	93	1,071	35,484,534	637.16
49	ELECTRIC, GAS, AND SANITARY SERVICES	477	8,745	\$422,144,362	\$928.32
492	Gas Production and Distribution	99	1,610	74,543,960	890.40
494	Water Supply	153	643	13,550,100	405.25
	Other Electric, Gas, and Sanitary Services	225	6,492	334,050,302	989.53

TABLE 7. STATE SUMMARY
EMPLOYMENT AND TOTAL EARNINGS, BY INDUSTRY
CALENDAR YEAR 1999

INDUSTRY GROUP		AVERAGE # OF EMPLOYING UNITS	AVERAGE COVERED EMPLOYMENT	TOTAL EARNINGS	AVERAGE WEEKLY EARNINGS
WHOLESALE AND RETAIL TRADE		21,878	261,766	\$5,251,865,528	\$385.83
WHOLESALE TRADE		6,330	51,590	\$1,682,507,405	\$627.17
50	WHOLESALE TRADE-DURABLE GOODS	3,825	26,879	\$896,197,231	\$641.19
501	Motor Vehicles, Parts, and Supplies	557	4,573	121,780,226	512.12
502	Furniture and Homefurnishings	129	654	22,637,890	665.66
503	Lumber and Construction Materials	273	2,065	66,197,210	616.48
504	Professional & Commercial Equipment	673	3,596	159,002,514	850.32
505	Metals and Minerals, Except Petroleum	91	941	32,330,377	660.72
506	Electrical Goods	329	2,237	89,956,647	773.33
507	Hardware, Plumbing & Heating Equipment	313	2,475	79,060,850	614.30
508	Machinery, Equipment, and Supplies	1,152	8,570	276,425,364	620.29
509	Miscellaneous Durable Goods	311	1,767	48,806,153	531.17
51	WHOLESALE TRADE-NONDURABLE GOODS	2,505	24,711	\$786,310,174	\$611.93
511	Paper and Paper Products	192	2,199	59,815,812	523.10
512	Drugs, Proprietaries, and Sundries	223	2,236	99,379,855	854.72
513	Apparel, Piece Goods, and Notions	118	1,024	28,886,716	542.49
514	Groceries and Related Products	621	7,685	252,715,212	632.39
515	Farm-Product Raw Materials	114	1,464	33,916,374	445.52
516	Chemical and Allied Products	216	1,054	55,060,636	1004.61
517	Petroleum and Petroleum Products	238	2,049	58,965,819	553.42
518	Beer, Wine, and Distilled Beverages	50	1,064	37,657,560	680.62
519	Misc. Nondurable Goods	735	5,936	159,912,190	518.07
RETAIL TRADE		15,548	210,176	\$3,569,358,123	\$326.59
52	BUILDING MATERIALS & GARDEN SUPPLIES	831	8,931	\$192,467,017	\$414.43
521	Lumber and Other Building Materials	293	5,585	119,304,743	410.80
523	Paint, Glass, and Wallpaper Stores	125	579	13,613,652	452.16
525	Hardware Stores	170	1,234	22,058,857	343.77
526	Retail Nurseries and Garden Stores	117	635	9,177,757	277.95
527	Mobile Home Dealers	126	899	28,312,008	605.63

**TABLE 7. STATE SUMMARY
EMPLOYMENT AND TOTAL EARNINGS, BY INDUSTRY
CALENDAR YEAR 1999**

INDUSTRY GROUP		AVERAGE # OF EMPLOYING UNITS	AVERAGE COVERED EMPLOYMENT	TOTAL EARNINGS	AVERAGE WEEKLY EARNINGS
53	GENERAL MERCHANDISE STORES	629	48,729	\$1,263,588,085	\$498.67
531	Department Stores	171	44,161	1,200,123,118	522.62
533	Variety Stores	240	2,867	43,456,028	291.49
539	Misc. General Merchandise Stores	219	1,701	20,008,939	226.21
54	FOOD STORES	2,079	30,157	\$393,576,921	\$250.98
541	Grocery Stores	1,762	28,564	375,078,667	252.52
542	Meat and Fish Markets	61	237	3,073,891	249.42
544	Candy, Nut, and Confectionery Stores	25	115	1,065,575	178.19
546	Retail Bakeries	122	689	7,829,435	218.53
549	Miscellaneous Food Stores	98	514	6,074,971	227.29
	Other Food Stores	11	38	454,382	229.95
55	AUTOMOTIVE DEALERS & SERVICE STATIONS	2,505	23,772	\$555,487,233	\$449.37
551	New and Used Car Dealers	312	8,770	294,550,419	645.89
552	Used Car Dealers	422	1,575	37,224,052	454.51
553	Auto and Home Supply Stores	609	4,109	84,997,583	397.80
554	Gasoline Service Stations	992	8,135	107,585,985	254.33
555	Boat Dealers	72	412	9,545,997	445.57
556	Recreational Vehicle Dealers	36	265	7,299,057	529.68
557	Motorcycle Dealers	53	449	12,800,087	548.23
559	Automotive Dealers, NEC	12	56	1,484,053	509.63
56	APPAREL AND ACCESSORY STORES	1,005	7,801	\$86,666,146	\$213.65
561	Men's & Boys' Clothing Stores	57	283	5,155,093	350.31
562	Women's Clothing Stores	291	1,930	22,173,808	220.94
563	Women's Accessory & Specialty Stores	44	297	3,080,639	199.47
564	Children's and Infants' Wear Stores	49	238	2,302,811	186.07
565	Family Clothing Stores	235	3,110	30,312,786	187.44
566	Shoe Stores	222	1,444	17,168,090	228.64
569	Misc. Apparel & Accessory Stores	110	498	6,472,919	249.96
57	FURNITURE AND HOMEFURNISHINGS STORES	1,242	7,743	\$158,499,603	\$393.65
571	Furniture and Homefurnishings Stores	741	4,306	89,828,600	401.18
572	Household Appliance Stores	113	529	9,104,324	330.97
573	Radio, Television, & Computer Stores	389	2,909	59,566,679	393.78

**TABLE 7. STATE SUMMARY
EMPLOYMENT AND TOTAL EARNINGS, BY INDUSTRY
CALENDAR YEAR 1999**

INDUSTRY GROUP		AVERAGE # OF EMPLOYING UNITS	AVERAGE COVERED EMPLOYMENT	TOTAL EARNINGS	AVERAGE WEEKLY EARNINGS
58	EATING AND DRINKING PLACES	3,891	64,201	\$604,610,721	\$181.11
59	MISCELLANEOUS RETAIL	3,368	18,843	\$314,462,397	\$320.93
591	Drug Stores and Proprietary Stores	499	4,253	92,271,785	417.22
592	Liquor Stores	360	1,463	18,886,071	248.25
593	Used Merchandise Stores	346	1,038	14,637,269	271.18
594	Miscellaneous Shopping Goods Stores	1,009	6,238	87,298,928	269.13
596	Nonstore Retailers	163	1,467	29,984,477	393.06
598	Fuel Dealers	170	963	21,864,442	436.63
599	Retail Stores, NEC	823	3,421	49,519,425	278.37
FINANCE, INSURANCE, AND REAL ESTATE		5,864	44,111	\$1,431,245,818	\$623.97
60	DEPOSITORY INSTITUTIONS	1,092	17,601	\$477,497,725	\$521.71
602	Commercial Banks	817	14,986	414,111,150	531.41
603	Savings Institutions	105	1,564	39,042,055	480.06
606	Credit Unions	83	529	12,295,621	446.98
	Other Depository Institutions	87	522	12,048,899	443.89
61	NONDEPOSITORY INSTITUTIONS	274	2,066	\$77,408,072	\$720.53
611	Federal & Fed.-Sponsored Credit	26	188	7,635,594	781.06
614	Personal Credit Institutions	44	197	10,371,856	1012.48
615	Business Credit Institutions	61	314	13,736,807	841.30
616	Mortgage Bankers and Brokers	144	1,366	45,663,815	642.86
62	SECURITY AND COMMODITY BROKERS	355	2,474	\$210,048,709	\$1,632.74
621	Security Brokers and Dealers	230	2,161	194,677,523	1732.44
	Other Security and Commodity Brokers	125	313	15,371,186	944.41
63	INSURANCE CARRIERS	412	5,473	\$214,674,550	\$754.31
631	Life Insurance	68	767	29,103,326	729.70
632	Medical Service and Health Insurance	46	2,215	91,846,949	797.42
633	Fire, Marine, and Casualty Insurance	201	1,784	72,717,503	783.86
635	Surety Insurance	21	41	2,336,759	1096.04
636	Title Insurance	65	612	14,758,536	463.75
	Other Insurance Carriers	11	54	3,911,477	1392.98

**TABLE 7. STATE SUMMARY
EMPLOYMENT AND TOTAL EARNINGS, BY INDUSTRY
CALENDAR YEAR 1999**

INDUSTRY GROUP		AVERAGE # OF EMPLOYING UNITS	AVERAGE COVERED EMPLOYMENT	TOTAL EARNINGS	AVERAGE WEEKLY EARNINGS
64	INSURANCE AGENTS, BROKERS & SERVICE	1,417	5,322	\$167,999,145	\$607.06
65	REAL ESTATE	2,122	10,196	\$213,544,016	\$402.77
651	Real Estate Operators and Lessors	703	3,206	52,056,129	312.25
653	Real Estate Agents and Managers	1,122	4,791	104,035,744	417.59
654	Title Abstract Offices	111	797	19,393,704	467.95
655	Subdividers and Developers	187	1,401	38,058,439	522.41
67	HOLDING AND OTHER INVESTMENT OFFICES	195	979	\$70,073,601	\$1,376.48
671	Holding Offices	60	541	54,850,355	1949.75
679	Miscellaneous Investing	84	336	11,746,970	672.33
	Other Holding and Other Investment Offices	51	102	3,476,276	655.41
SERVICES		22,084	245,730	\$5,721,882,082	\$447.79
70	HOTELS AND OTHER LODGING PLACES	716	10,963	\$123,373,899	\$216.42
701	Hotels and Motels	654	10,646	119,863,943	216.52
702	Rooming and Boarding Houses	9	35	371,265	203.99
703	Camps and Recreational Vehicle Parks	40	231	2,452,539	204.17
704	Membership-Basis Organization Hotels	14	51	686,152	258.73
72	PERSONAL SERVICES	1,561	9,005	\$146,343,858	\$312.53
721	Laundry, Cleaning, & Garment Services	450	4,216	65,417,721	298.39
722	Photographic Studios, Portrait	159	521	7,769,447	286.78
723	Beauty Shops	433	1,454	21,679,484	286.74
724	Barber Shops	25	49	933,441	366.34
725	Shoe Repair and Shoeshine Parlors	13	13	129,226	191.16
726	Funeral Service and Crematories	199	1,571	36,455,039	446.25
729	Miscellaneous Personal Services	285	1,183	13,959,500	226.92

**TABLE 7. STATE SUMMARY
EMPLOYMENT AND TOTAL EARNINGS, BY INDUSTRY
CALENDAR YEAR 1999**

INDUSTRY GROUP		AVERAGE # OF EMPLOYING UNITS	AVERAGE COVERED EMPLOYMENT	TOTAL EARNINGS	AVERAGE WEEKLY EARNINGS
73	BUSINESS SERVICES	3,565	57,112	\$1,154,358,702	\$388.70
731	Advertising	179	1,389	42,745,179	591.81
732	Credit Reporting and Collection	101	852	18,988,934	428.61
733	Mailing, Reproduction, Stenographic	185	1,136	24,973,651	422.77
734	Services to Buildings	599	6,817	84,693,774	238.92
735	Misc. Equipment Rental & Leasing	407	2,566	70,118,431	525.50
736	Personnel Supply Services	489	26,783	328,949,112	236.19
737	Computer and Data Processing Services	719	7,805	419,087,104	1032.59
738	Miscellaneous Business Services	889	9,765	164,802,517	324.55
75	AUTO REPAIR, SERVICES, AND PARKING	1,805	8,562	\$181,665,514	\$408.03
751	Automotive Rentals, No Drivers	129	1,152	27,066,450	451.83
752	Automobile Parking	12	73	1,201,257	316.45
753	Automotive Repair Shops	1,380	5,459	126,798,751	446.68
754	Automotive Services, Except Repair	284	1,879	26,599,056	272.23
76	MISCELLANEOUS REPAIR SERVICES	714	3,451	\$97,753,964	\$544.74
762	Electrical Repair Shops	181	1,264	39,134,960	595.41
763	Watch, Clock, and Jewelry Repair	8	20	378,785	364.22
764	Reupholstery and Furniture Repair	42	115	1,858,722	310.82
769	Miscellaneous Repair Shops	485	2,052	56,381,497	528.39
78	MOTION PICTURES	356	3,357	\$45,323,165	\$259.64
783	Motion Picture Theaters	60	858	6,041,918	135.42
784	Video Tape Rental	232	1,434	13,269,180	177.95
	Other Motion Pictures	64	1,065	26,012,067	469.70
79	AMUSEMENT & RECREATION SERVICES	862	8,551	\$106,429,288	\$239.35
791	Dance Studios, Schools, and Halls	42	189	1,422,542	144.74
792	Producers, Orchestras, Entertainers	65	715	10,041,041	270.07
793	Bowling Centers	43	427	4,737,569	213.37
794	Commercial Sports	68	903	12,849,911	273.66
799	Misc. Amusement, Recreation Services	645	6,318	77,378,225	235.52

**TABLE 7. STATE SUMMARY
EMPLOYMENT AND TOTAL EARNINGS, BY INDUSTRY
CALENDAR YEAR 1999**

INDUSTRY GROUP		AVERAGE # OF EMPLOYING UNITS	AVERAGE COVERED EMPLOYMENT	TOTAL EARNINGS	AVERAGE WEEKLY EARNINGS
80	HEALTH SERVICES	4,428	94,003	\$2,756,021,862	\$563.82
801	Offices & Clinics of Medical Doctors	1,840	17,100	913,820,606	1027.69
802	Offices And Clinics of Dentists	876	4,978	148,700,593	574.45
803	Offices of Osteopathic Physicians	19	87	3,909,054	864.07
804	Offices of Other Health Practitioners	882	4,226	108,583,109	494.12
805	Nursing and Personal Care Facilities	276	20,193	315,534,009	300.50
806	Hospitals	106	39,148	1,065,895,076	523.60
807	Medical and Dental Laboratories	115	966	29,905,217	595.34
808	Home Health Care Services	130	3,906	79,389,765	390.87
809	Health and Allied Services, NEC	188	3,400	90,284,433	510.66
81	LEGAL SERVICES	1,369	4,792	\$177,694,788	\$713.11
82	EDUCATIONAL SERVICES	286	6,450	\$133,880,769	\$399.17
821	Elementary and Secondary Schools	81	2,840	45,864,954	310.57
822	Colleges and Universities	26	2,784	68,285,771	471.69
823	Libraries	10	58	824,938	273.52
824	Vocational Schools	43	203	4,022,488	381.06
829	Schools & Educational Services, NEC	128	565	14,882,618	506.56
83	SOCIAL SERVICES	1,833	21,713	\$303,735,682	\$269.01
832	Individual and Family Services	591	7,040	103,898,599	283.81
833	Job Training and Related Services	108	2,761	42,053,818	292.91
835	Child Day Care Services	796	6,818	74,386,173	209.81
836	Residential Care	218	3,423	54,084,595	303.85
839	Social Services, NEC	122	1,672	29,312,497	337.14
84	MUSEUMS, BOTANICAL, ZOOLOGICAL GARDENS	33	182	\$2,510,284	\$265.25
86	MEMBERSHIP ORGANIZATIONS	805	4,054	\$66,947,971	\$317.58
861	Business Associations	184	558	16,289,249	561.39
862	Professional Organizations	44	256	9,275,263	696.76
863	Labor Organizations	156	787	7,890,977	192.82
864	Civic and Social Associations	249	1,757	19,353,916	211.83
865	Political Organizations	15	17	486,722	550.59
866	Religious Organizations	34	138	1,986,189	276.78
869	Membership Organizations, NEC	126	541	11,665,655	414.68

**TABLE 7. STATE SUMMARY
EMPLOYMENT AND TOTAL EARNINGS, BY INDUSTRY
CALENDAR YEAR 1999**

INDUSTRY GROUP		AVERAGE # OF EMPLOYING UNITS	AVERAGE COVERED EMPLOYMENT	TOTAL EARNINGS	AVERAGE WEEKLY EARNINGS
87	ENGINEERING & MANAGEMENT SERVICES	2,313	11,431	\$398,608,600	\$670.59
871	Engineering & Architectural Services	548	3,631	137,735,553	729.49
872	Accounting, Auditing, & Bookkeeping	816	3,437	105,710,394	591.47
873	Research and Testing Services	144	1,414	41,077,878	558.67
874	Management and Public Relations	806	2,949	114,084,775	743.96
88	PRIVATE HOUSEHOLDS	1,403	1,938	\$22,268,056	\$220.97
89	SERVICES, NEC	43	164	\$4,965,680	\$582.28
	LOCAL GOVERNMENT	1,996	98,926	\$2,292,525,513	\$445.66
	STATE GOVERNMENT	1,139	55,078	\$1,602,713,806	\$559.60
	NONCLASSIFIABLE ESTABLISHMENTS	0	0	\$0	

Note: Items do not necessarily add to totals because of rounding.

**TABLE 8. COUNTY SUMMARY
EMPLOYMENT AND TOTAL EARNINGS, BY INDUSTRY
CALENDAR YEAR 1999**

INDUSTRY GROUP	AVERAGE # OF EMPLOYING UNITS	AVERAGE COVERED EMPLOYMENT	TOTAL EARNINGS	AVERAGE WEEKLY EARNINGS
ARKANSAS COUNTY - TOTAL	658	9,548	\$226,989,273	\$457.18
MANUFACTURING	31	3,149	87,278,348	533.00
NONMANUFACTURING	627	6,399	139,710,925	419.87
AGRICULTURE, FORESTRY, AND FISHING	49	225	6,023,481	514.83
CONSTRUCTION	54	307	7,475,642	468.28
TRANSPORTATION AND PUBLIC UTILITIES	67	1,073	31,892,222	571.59
WHOLESALE AND RETAIL TRADE	195	2,028	42,031,767	398.57
WHOLESALE TRADE	51	607	21,268,257	673.81
RETAIL TRADE	144	1,421	20,763,510	281.00
FINANCE, INSURANCE, AND REAL ESTATE	36	291	7,657,189	506.03
SERVICES	177	1,305	21,416,906	315.60
LOCAL GOVERNMENT	33	964	18,699,396	373.03
STATE GOVERNMENT	15	207	4,514,322	419.39
ASHLEY COUNTY - TOTAL	587	9,802	\$286,283,082	\$561.67
MANUFACTURING	67	4,007	165,004,065	791.90
NONMANUFACTURING	520	5,795	121,279,017	402.47
CONSTRUCTION	62	1,023	28,081,691	527.89
TRANSPORTATION AND PUBLIC UTILITIES	41	362	10,910,253	579.59
WHOLESALE AND RETAIL TRADE	158	1,493	22,420,961	288.80
WHOLESALE TRADE	28	203	5,993,025	567.74
RETAIL TRADE	130	1,290	16,427,936	244.90
FINANCE, INSURANCE, AND REAL ESTATE	38	284	6,670,451	451.68
SERVICES	136	1,126	20,311,358	346.89
LOCAL GOVERNMENT	36	969	19,991,643	396.75
STATE GOVERNMENT	12	221	4,088,910	355.80
OTHER NONMANUFACTURING	37	317	8,803,750	534.08
BAXTER COUNTY - TOTAL	1,107	13,706	\$298,999,108	\$419.52
MANUFACTURING	73	3,585	90,593,671	485.97
NONMANUFACTURING	1,034	10,121	208,405,437	395.99
CONSTRUCTION	121	496	10,051,132	389.70
TRANSPORTATION AND PUBLIC UTILITIES	52	414	11,345,772	527.02
WHOLESALE AND RETAIL TRADE	324	3,198	45,010,756	270.67
WHOLESALE TRADE	42	342	6,965,848	391.69
RETAIL TRADE	282	2,856	38,044,908	256.17
FINANCE, INSURANCE, AND REAL ESTATE	78	449	14,068,624	602.56
SERVICES	390	4,059	95,510,147	452.51
LOCAL GOVERNMENT	35	1,059	23,249,462	422.20
STATE GOVERNMENT	12	253	5,472,263	415.95
OTHER NONMANUFACTURING	22	193	3,697,281	368.40

**TABLE 8. COUNTY SUMMARY
EMPLOYMENT AND TOTAL EARNINGS, BY INDUSTRY
CALENDAR YEAR 1999**

INDUSTRY GROUP	AVERAGE # OF EMPLOYING UNITS	AVERAGE COVERED EMPLOYMENT	TOTAL EARNINGS	AVERAGE WEEKLY EARNINGS
BENTON COUNTY - TOTAL	3,262	66,215	\$2,004,096,614	\$582.05
MANUFACTURING	227	16,498	461,598,752	538.06
NONMANUFACTURING	3,035	49,717	1,542,497,862	596.65
CONSTRUCTION	421	2,530	64,285,813	488.64
TRANSPORTATION AND PUBLIC UTILITIES	189	4,160	138,122,952	638.51
WHOLESALE AND RETAIL TRADE	957	22,812	855,478,775	721.18
WHOLESALE TRADE	258	1,900	67,449,287	682.69
RETAIL TRADE	699	20,912	788,029,488	724.68
FINANCE, INSURANCE, AND REAL ESTATE	290	2,716	80,116,898	567.27
SERVICES	1,007	11,072	248,776,921	432.10
LOCAL GOVERNMENT	68	4,770	116,809,489	470.93
STATE GOVERNMENT	18	579	13,690,093	454.70
OTHER NONMANUFACTURING	85	1,078	25,216,921	449.85
BOONE COUNTY - TOTAL	976	13,634	\$309,033,283	\$435.89
MANUFACTURING	74	3,053	80,195,710	505.15
NONMANUFACTURING	902	10,581	228,837,573	415.91
CONSTRUCTION	89	622	14,620,173	452.02
TRANSPORTATION AND PUBLIC UTILITIES	66	1,347	44,672,502	637.78
WHOLESALE AND RETAIL TRADE	285	3,852	64,611,913	322.57
WHOLESALE TRADE	61	1,131	26,361,419	448.23
RETAIL TRADE	224	2,721	38,250,494	270.34
FINANCE, INSURANCE, AND REAL ESTATE	72	467	13,155,230	541.72
SERVICES	319	1,938	35,303,084	350.31
LOCAL GOVERNMENT	46	1,780	41,525,637	448.63
STATE GOVERNMENT	18	541	14,490,539	515.09
OTHER NONMANUFACTURING	7	34	458,495	259.33
BRADLEY COUNTY - TOTAL	340	3,805	\$79,895,509	\$403.80
MANUFACTURING	57	1,038	29,950,074	554.88
NONMANUFACTURING	283	2,767	49,945,435	347.12
CONSTRUCTION	25	87	1,865,366	412.33
TRANSPORTATION AND PUBLIC UTILITIES	24	59	1,785,034	581.82
WHOLESALE AND RETAIL TRADE	83	723	10,113,406	269.00
WHOLESALE TRADE	21	185	3,277,596	340.71
RETAIL TRADE	62	538	6,835,810	244.35
FINANCE, INSURANCE, AND REAL ESTATE	25	145	3,140,697	416.54
SERVICES	78	719	13,704,158	366.54
LOCAL GOVERNMENT	17	463	9,747,726	404.87
STATE GOVERNMENT	11	252	5,438,751	415.05
OTHER NONMANUFACTURING	20	319	4,150,297	250.20

**TABLE 8. COUNTY SUMMARY
EMPLOYMENT AND TOTAL EARNINGS, BY INDUSTRY
CALENDAR YEAR 1999**

INDUSTRY GROUP	AVERAGE # OF EMPLOYING UNITS	AVERAGE COVERED EMPLOYMENT	TOTAL EARNINGS	AVERAGE WEEKLY EARNINGS
CALHOUN COUNTY - TOTAL	145	2,982	\$87,233,402	\$562.56
MANUFACTURING	40	1,949	64,833,802	639.71
NONMANUFACTURING	105	1,033	22,399,600	417.00
CONSTRUCTION	13	76	1,414,010	357.80
TRANSPORTATION AND PUBLIC UTILITIES	19	133	3,948,987	570.99
WHOLESALE AND RETAIL TRADE	26	101	1,065,539	202.88
SERVICES	14	100	1,796,749	345.53
LOCAL GOVERNMENT	13	210	4,032,810	369.30
STATE GOVERNMENT	10	285	6,701,972	452.22
OTHER NONMANUFACTURING	10	128	3,439,533	516.76
CARROLL COUNTY - TOTAL	770	9,691	\$181,941,336	\$361.04
AGRICULTURE, FORESTRY, AND FISHING	22	404	8,405,866	400.13
WHOLESALE AND RETAIL TRADE	277	2,037	27,854,930	262.97
WHOLESALE TRADE	25	68	1,423,460	402.56
RETAIL TRADE	252	1,969	26,431,470	258.15
SERVICES	247	1,837	30,614,349	320.49
LOCAL GOVERNMENT	25	787	16,117,729	393.85
STATE GOVERNMENT	10	88	1,873,854	409.50
OTHER	189	4,538	97,074,608	411.37
CHICOT COUNTY - TOTAL	356	4,408	\$84,154,926	\$367.14
MANUFACTURING	15	1,086	17,073,507	302.34
NONMANUFACTURING	341	3,322	67,081,419	388.33
CONSTRUCTION	17	177	4,932,164	535.87
TRANSPORTATION AND PUBLIC UTILITIES	18	112	3,493,941	599.92
WHOLESALE AND RETAIL TRADE	111	839	13,147,047	301.34
WHOLESALE TRADE	28	229	5,985,397	502.64
RETAIL TRADE	83	610	7,161,650	225.78
FINANCE, INSURANCE, AND REAL ESTATE	28	166	4,219,048	488.77
SERVICES	85	559	9,751,669	335.48
LOCAL GOVERNMENT	16	871	16,723,116	369.23
STATE GOVERNMENT	13	308	8,596,725	536.76
OTHER NONMANUFACTURING	53	290	6,217,709	412.31

**TABLE 8. COUNTY SUMMARY
EMPLOYMENT AND TOTAL EARNINGS, BY INDUSTRY
CALENDAR YEAR 1999**

INDUSTRY GROUP	AVERAGE # OF EMPLOYING UNITS	AVERAGE COVERED EMPLOYMENT	TOTAL EARNINGS	AVERAGE WEEKLY EARNINGS
CLARK COUNTY - TOTAL	612	9,944	\$204,299,876	\$395.10
MANUFACTURING	78	3,224	77,023,510	459.44
NONMANUFACTURING	534	6,720	127,276,366	364.23
AGRICULTURE, FORESTRY, AND FISHING	6	19	349,109	353.35
CONSTRUCTION	37	154	3,257,516	406.78
TRANSPORTATION AND PUBLIC UTILITIES	34	412	11,918,067	556.30
WHOLESALE AND RETAIL TRADE	171	2,148	28,759,194	257.48
WHOLESALE TRADE	28	178	3,954,648	427.25
RETAIL TRADE	143	1,970	24,804,546	242.14
FINANCE, INSURANCE, AND REAL ESTATE SERVICES	62	342	7,716,622	433.91
LOCAL GOVERNMENT	183	1,823	33,481,176	353.19
STATE GOVERNMENT	27	813	16,546,636	391.40
	15	1,010	25,248,046	480.73
CLAY COUNTY - TOTAL	469	6,295	\$110,183,146	\$336.60
MANUFACTURING	28	2,940	50,370,194	329.48
NONMANUFACTURING	441	3,355	59,812,952	342.85
AGRICULTURE, FORESTRY, AND FISHING	71	225	3,984,773	340.58
CONSTRUCTION	44	163	3,553,635	419.26
TRANSPORTATION AND PUBLIC UTILITIES	40	248	6,405,997	496.74
WHOLESALE AND RETAIL TRADE	125	1,240	18,330,041	284.27
WHOLESALE TRADE	40	463	9,250,066	384.20
RETAIL TRADE	85	777	9,079,975	224.73
FINANCE, INSURANCE, AND REAL ESTATE SERVICES	32	155	3,179,851	394.52
LOCAL GOVERNMENT	96	455	7,369,310	311.47
STATE GOVERNMENT	22	790	15,130,109	368.31
	11	80	1,859,236	446.93
CLEBURNE COUNTY - TOTAL	598	6,317	\$130,425,884	\$397.05
MANUFACTURING	48	1,781	44,598,134	481.56
NONMANUFACTURING	550	4,536	85,827,750	363.87
CONSTRUCTION	61	236	4,759,753	387.85
TRANSPORTATION AND PUBLIC UTILITIES	48	395	11,700,339	569.64
WHOLESALE AND RETAIL TRADE	182	1,576	23,566,923	287.57
WHOLESALE TRADE	35	174	4,813,947	532.05
RETAIL TRADE	147	1,402	18,752,976	257.23
FINANCE, INSURANCE, AND REAL ESTATE SERVICES	52	242	5,297,992	421.01
LOCAL GOVERNMENT	161	1,222	22,286,379	350.72
STATE GOVERNMENT	20	651	13,627,061	402.55
OTHER NONMANUFACTURING	10	120	2,428,541	389.19
	16	94	2,160,762	442.05

**TABLE 8. COUNTY SUMMARY
EMPLOYMENT AND TOTAL EARNINGS, BY INDUSTRY
CALENDAR YEAR 1999**

INDUSTRY GROUP	AVERAGE # OF EMPLOYING UNITS	AVERAGE COVERED EMPLOYMENT	TOTAL EARNINGS	AVERAGE WEEKLY EARNINGS
CLEVELAND COUNTY - TOTAL	126	1,124	\$20,074,894	\$343.47
MANUFACTURING	24	172	3,374,407	377.28
NONMANUFACTURING	102	952	16,700,487	337.36
CONSTRUCTION	12	80	1,014,129	243.78
TRANSPORTATION AND PUBLIC UTILITIES	12	91	2,036,058	430.27
WHOLESALE AND RETAIL TRADE	28	184	2,469,268	258.08
WHOLESALE TRADE	6	82	1,460,232	342.46
RETAIL TRADE	22	102	1,009,036	190.24
FINANCE, INSURANCE, AND REAL ESTATE	5	28	606,690	416.68
LOCAL GOVERNMENT	12	301	5,734,238	366.36
STATE GOVERNMENT	8	57	1,136,671	383.49
OTHER NONMANUFACTURING	25	211	3,703,433	337.53
COLUMBIA COUNTY - TOTAL	737	9,923	\$237,325,735	\$459.94
MANUFACTURING	60	3,099	101,913,365	632.42
NONMANUFACTURING	677	6,824	135,412,370	381.61
AGRICULTURE, FORESTRY, AND FISHING	22	156	3,571,884	440.32
MINING	35	295	9,468,504	617.24
CONSTRUCTION	48	251	5,638,303	431.99
TRANSPORTATION AND PUBLIC UTILITIES	55	548	16,422,631	576.31
WHOLESALE AND RETAIL TRADE	216	2,126	29,025,075	262.55
WHOLESALE TRADE	42	287	6,702,801	449.13
RETAIL TRADE	174	1,839	22,322,274	233.43
FINANCE, INSURANCE, AND REAL ESTATE	40	376	9,472,239	484.46
SERVICES	216	1,424	22,703,483	306.60
LOCAL GOVERNMENT	30	1,141	24,868,785	419.15
STATE GOVERNMENT	16	506	14,241,466	541.25
CONWAY COUNTY - TOTAL	450	6,472	\$155,756,613	\$462.81
MANUFACTURING	26	1,406	47,217,255	645.82
NONMANUFACTURING	424	5,066	108,539,358	412.02
CONSTRUCTION	49	517	15,931,595	592.61
TRANSPORTATION AND PUBLIC UTILITIES	27	415	11,343,020	525.63
WHOLESALE AND RETAIL TRADE	147	1,590	25,733,422	311.24
WHOLESALE TRADE	35	344	9,303,512	520.10
RETAIL TRADE	112	1,246	16,429,910	253.58
FINANCE, INSURANCE, AND REAL ESTATE	27	154	3,924,548	490.08
SERVICES	122	1,162	24,855,933	411.36
LOCAL GOVERNMENT	24	779	16,387,234	404.54
STATE GOVERNMENT	13	320	6,499,291	390.58
OTHER NONMANUFACTURING	15	129	3,864,315	576.08

**TABLE 8. COUNTY SUMMARY
EMPLOYMENT AND TOTAL EARNINGS, BY INDUSTRY
CALENDAR YEAR 1999**

INDUSTRY GROUP	AVERAGE # OF EMPLOYING UNITS	AVERAGE COVERED EMPLOYMENT	TOTAL EARNINGS	AVERAGE WEEKLY EARNINGS
CRAIGHEAD COUNTY - TOTAL	2,392	38,310	\$925,946,333	\$464.80
MANUFACTURING	150	8,670	253,988,754	563.37
NONMANUFACTURING	2,242	29,640	671,957,579	435.97
CONSTRUCTION	240	1,907	45,389,976	457.73
TRANSPORTATION AND PUBLIC UTILITIES	154	1,747	50,759,821	558.76
WHOLESALE AND RETAIL TRADE	728	9,533	155,491,024	313.67
WHOLESALE TRADE	184	1,734	46,982,569	521.06
RETAIL TRADE	544	7,799	108,508,455	267.56
FINANCE, INSURANCE, AND REAL ESTATE SERVICES	190	1,170	37,342,053	613.77
LOCAL GOVERNMENT	792	9,907	248,954,535	483.25
STATE GOVERNMENT	40	2,811	63,634,736	435.34
OTHER NONMANUFACTURING	24	2,139	62,628,944	563.07
	74	426	7,756,490	350.15
CRAWFORD COUNTY - TOTAL	989	15,422	\$358,436,787	\$446.96
MANUFACTURING	72	4,474	107,805,570	463.38
NONMANUFACTURING	917	10,948	250,631,217	440.25
CONSTRUCTION	152	832	20,846,491	481.84
TRANSPORTATION AND PUBLIC UTILITIES	73	2,441	75,559,622	595.28
WHOLESALE AND RETAIL TRADE	290	3,179	49,019,049	296.53
WHOLESALE TRADE	79	557	13,613,141	470.00
RETAIL TRADE	211	2,622	35,405,908	259.68
FINANCE, INSURANCE, AND REAL ESTATE SERVICES	78	374	9,517,076	489.36
LOCAL GOVERNMENT	247	2,026	45,657,358	433.38
STATE GOVERNMENT	40	1,657	39,896,911	463.03
OTHER NONMANUFACTURING	12	164	4,020,835	471.49
	25	275	6,113,875	427.54
CRITTENDEN COUNTY - TOTAL	1,149	16,938	\$381,414,835	\$433.04
MANUFACTURING	54	2,149	65,649,273	587.48
NONMANUFACTURING	1,095	14,789	315,765,562	410.60
CONSTRUCTION	92	633	14,929,636	453.57
TRANSPORTATION AND PUBLIC UTILITIES	85	1,758	57,937,247	633.78
WHOLESALE AND RETAIL TRADE	347	5,172	89,918,273	334.34
WHOLESALE TRADE	85	829	24,625,360	571.25
RETAIL TRADE	262	4,343	65,292,913	289.12
FINANCE, INSURANCE, AND REAL ESTATE SERVICES	92	468	12,204,945	501.52
LOCAL GOVERNMENT	357	3,794	73,051,651	370.28
STATE GOVERNMENT	40	2,120	50,346,150	456.70
OTHER NONMANUFACTURING	19	417	9,721,631	448.33
	63	427	7,656,029	344.80

**TABLE 8. COUNTY SUMMARY
EMPLOYMENT AND TOTAL EARNINGS, BY INDUSTRY
CALENDAR YEAR 1999**

INDUSTRY GROUP	AVERAGE # OF EMPLOYING UNITS	AVERAGE COVERED EMPLOYMENT	TOTAL EARNINGS	AVERAGE WEEKLY EARNINGS
CROSS COUNTY - TOTAL	447	5,681	\$120,300,332	\$407.23
MANUFACTURING	23	1,430	35,093,175	471.94
NONMANUFACTURING	424	4,251	85,207,157	385.46
AGRICULTURE, FORESTRY, AND FISHING	37	173	3,330,469	370.22
CONSTRUCTION	38	142	2,762,997	374.19
TRANSPORTATION AND PUBLIC UTILITIES	48	449	12,279,138	525.92
WHOLESALE AND RETAIL TRADE	134	1,388	23,127,534	320.43
WHOLESALE TRADE	35	313	8,116,756	498.69
RETAIL TRADE	99	1,075	15,010,778	268.53
FINANCE, INSURANCE, AND REAL ESTATE	32	219	5,279,071	463.56
SERVICES	103	791	14,209,488	345.46
LOCAL GOVERNMENT	19	856	18,339,135	412.00
STATE GOVERNMENT	13	233	5,879,325	485.25
DALLAS COUNTY - TOTAL	288	3,420	\$73,341,686	\$412.40
MANUFACTURING	69	1,236	32,905,647	511.97
NONMANUFACTURING	219	2,184	40,436,039	356.05
AGRICULTURE, FORESTRY, AND FISHING	5	27	448,597	319.51
CONSTRUCTION	20	131	3,105,531	455.89
TRANSPORTATION AND PUBLIC UTILITIES	23	96	2,253,739	451.47
WHOLESALE AND RETAIL TRADE	79	634	10,139,880	307.57
WHOLESALE TRADE	14	79	2,018,672	491.40
RETAIL TRADE	65	555	8,121,208	281.40
FINANCE, INSURANCE, AND REAL ESTATE	13	74	1,663,738	432.36
SERVICES	55	760	13,771,047	348.46
LOCAL GOVERNMENT	16	396	7,728,720	375.33
STATE GOVERNMENT	9	64	1,324,787	398.07
DESHA COUNTY - TOTAL	456	5,611	\$129,631,937	\$444.29
MANUFACTURING	21	1,570	51,620,338	632.29
NONMANUFACTURING	435	4,041	78,011,599	371.25
CONSTRUCTION	28	225	6,464,228	552.50
TRANSPORTATION AND PUBLIC UTILITIES	34	216	5,508,442	490.42
WHOLESALE AND RETAIL TRADE	138	1,236	19,234,176	299.26
WHOLESALE TRADE	28	243	7,312,122	578.67
RETAIL TRADE	110	993	11,922,054	230.89
FINANCE, INSURANCE, AND REAL ESTATE	36	249	4,833,582	373.31
SERVICES	115	719	12,938,359	346.06
LOCAL GOVERNMENT	23	910	18,538,197	391.76
STATE GOVERNMENT	11	182	4,082,198	431.34
OTHER NONMANUFACTURING	50	304	6,412,417	405.64

**TABLE 8. COUNTY SUMMARY
EMPLOYMENT AND TOTAL EARNINGS, BY INDUSTRY
CALENDAR YEAR 1999**

INDUSTRY GROUP	AVERAGE # OF EMPLOYING UNITS	AVERAGE COVERED EMPLOYMENT	TOTAL EARNINGS	AVERAGE WEEKLY EARNINGS
DREW COUNTY - TOTAL	499	7,319	\$153,312,235	\$402.83
MANUFACTURING	48	2,364	55,005,656	447.46
NONMANUFACTURING	451	4,955	98,306,579	381.54
CONSTRUCTION	28	108	2,260,732	402.55
TRANSPORTATION AND PUBLIC UTILITIES	39	189	6,123,557	623.07
WHOLESALE AND RETAIL TRADE	158	1,722	25,877,428	288.99
WHOLESALE TRADE	34	259	7,949,247	590.23
RETAIL TRADE	124	1,463	17,928,181	235.66
FINANCE, INSURANCE, AND REAL ESTATE	37	231	7,325,984	609.89
SERVICES	126	1,057	17,555,366	319.40
LOCAL GOVERNMENT	24	989	21,025,000	408.82
STATE GOVERNMENT	14	524	14,940,112	548.30
OTHER NONMANUFACTURING	25	135	3,198,400	455.61
FAULKNER COUNTY - TOTAL	1,729	32,284	\$830,941,403	\$494.97
MANUFACTURING	85	7,551	223,803,039	569.98
NONMANUFACTURING	1,644	24,733	607,138,364	472.07
CONSTRUCTION	249	2,594	65,339,008	484.39
TRANSPORTATION AND PUBLIC UTILITIES	66	667	21,250,444	612.69
WHOLESALE AND RETAIL TRADE	530	7,043	102,823,206	280.76
WHOLESALE TRADE	129	844	19,902,266	453.48
RETAIL TRADE	401	6,199	82,920,940	257.24
FINANCE, INSURANCE, AND REAL ESTATE	151	888	23,288,991	504.35
SERVICES	561	8,666	261,688,346	580.71
LOCAL GOVERNMENT	34	2,318	57,733,711	478.97
STATE GOVERNMENT	20	2,352	70,834,387	579.17
OTHER NONMANUFACTURING	33	205	4,180,271	392.15
FRANKLIN COUNTY - TOTAL	293	4,029	\$81,539,523	\$389.20
MANUFACTURING	20	1,108	24,548,533	426.07
NONMANUFACTURING	273	2,921	56,990,990	375.21
CONSTRUCTION	20	165	3,890,410	453.43
TRANSPORTATION AND PUBLIC UTILITIES	21	343	10,183,256	570.94
WHOLESALE AND RETAIL TRADE	85	755	9,235,583	235.24
WHOLESALE TRADE	14	69	893,691	249.08
RETAIL TRADE	71	686	8,341,892	233.85
FINANCE, INSURANCE, AND REAL ESTATE	27	146	2,438,361	321.18
SERVICES	78	641	11,063,073	331.91
LOCAL GOVERNMENT	23	663	14,456,378	419.32
STATE GOVERNMENT	10	133	3,210,827	464.26
OTHER NONMANUFACTURING	9	75	2,513,102	644.39

**TABLE 8. COUNTY SUMMARY
EMPLOYMENT AND TOTAL EARNINGS, BY INDUSTRY
CALENDAR YEAR 1999**

INDUSTRY GROUP	AVERAGE # OF EMPLOYING UNITS	AVERAGE COVERED EMPLOYMENT	TOTAL EARNINGS	AVERAGE WEEKLY EARNINGS
FULTON COUNTY - TOTAL	195	1,838	\$30,350,229	\$317.55
MANUFACTURING	13	400	5,367,944	258.07
NONMANUFACTURING	182	1,438	24,982,285	334.09
TRANSPORTATION AND PUBLIC UTILITIES	11	105	3,163,403	579.38
WHOLESALE AND RETAIL TRADE	68	363	3,822,916	202.53
WHOLESALE TRADE	12	51	596,503	224.93
RETAIL TRADE	56	312	3,226,413	198.87
FINANCE, INSURANCE, AND REAL ESTATE	11	76	1,512,696	382.77
SERVICES	52	303	4,729,162	300.15
LOCAL GOVERNMENT	13	435	8,369,058	369.98
STATE GOVERNMENT	10	72	1,493,945	399.02
OTHER NONMANUFACTURING	17	84	1,891,105	432.95
GARLAND COUNTY - TOTAL	2,697	33,377	\$753,145,307	\$433.94
MANUFACTURING	123	3,914	115,634,088	568.15
NONMANUFACTURING	2,574	29,463	637,511,219	416.11
AGRICULTURE, FORESTRY, AND FISHING	65	474	9,231,582	374.54
MINING	14	202	6,457,087	614.73
CONSTRUCTION	364	2,412	51,492,467	410.55
TRANSPORTATION AND PUBLIC UTILITIES	97	988	30,819,961	599.89
WHOLESALE AND RETAIL TRADE	833	9,830	165,762,025	324.29
WHOLESALE TRADE	161	1,382	40,436,021	562.67
RETAIL TRADE	672	8,448	125,326,004	285.29
FINANCE, INSURANCE, AND REAL ESTATE	251	1,391	39,136,615	541.07
SERVICES	894	10,786	248,945,367	443.85
LOCAL GOVERNMENT	34	2,507	62,673,147	480.76
STATE GOVERNMENT	23	874	22,992,968	505.92
GRANT COUNTY - TOTAL	280	3,859	\$89,981,456	\$448.41
MANUFACTURING	42	1,525	44,961,481	566.98
NONMANUFACTURING	238	2,334	45,019,975	370.94
CONSTRUCTION	28	181	4,541,856	482.56
TRANSPORTATION AND PUBLIC UTILITIES	34	125	3,420,859	526.29
WHOLESALE AND RETAIL TRADE	78	773	10,713,679	266.54
WHOLESALE TRADE	20	112	3,113,796	534.65
RETAIL TRADE	58	661	7,599,883	221.11
FINANCE, INSURANCE, AND REAL ESTATE	18	90	2,084,817	445.47
SERVICES	53	294	5,401,557	353.32
LOCAL GOVERNMENT	10	741	15,369,348	398.87
STATE GOVERNMENT	10	64	1,487,918	447.09
OTHER NONMANUFACTURING	7	66	1,999,941	582.73

**TABLE 8. COUNTY SUMMARY
EMPLOYMENT AND TOTAL EARNINGS, BY INDUSTRY
CALENDAR YEAR 1999**

INDUSTRY GROUP	AVERAGE # OF EMPLOYING UNITS	AVERAGE COVERED EMPLOYMENT	TOTAL EARNINGS	AVERAGE WEEKLY EARNINGS
GREENE COUNTY - TOTAL	801	14,287	\$323,324,238	\$435.20
MANUFACTURING	55	6,316	172,418,428	524.97
NONMANUFACTURING	746	7,971	150,905,810	364.07
CONSTRUCTION	70	319	6,790,969	409.39
TRANSPORTATION AND PUBLIC UTILITIES	42	244	8,679,630	684.08
WHOLESALE AND RETAIL TRADE	273	2,892	42,297,301	281.26
WHOLESALE TRADE	58	444	10,105,788	437.71
RETAIL TRADE	215	2,448	32,191,513	252.89
FINANCE, INSURANCE, AND REAL ESTATE SERVICES	55	326	8,487,851	500.70
LOCAL GOVERNMENT	242	2,519	46,773,285	357.08
STATE GOVERNMENT	31	1,302	28,930,647	427.31
OTHER NONMANUFACTURING	11	243	6,333,761	501.25
	22	126	2,612,366	398.71
HEMPSTEAD COUNTY - TOTAL	498	9,278	\$198,254,903	\$410.93
MANUFACTURING	41	3,883	92,599,228	458.60
NONMANUFACTURING	457	5,395	105,655,675	376.62
CONSTRUCTION	32	126	2,893,803	441.67
TRANSPORTATION AND PUBLIC UTILITIES	30	250	9,373,597	721.05
WHOLESALE AND RETAIL TRADE	142	1,526	21,676,990	273.18
WHOLESALE TRADE	32	226	5,011,640	426.45
RETAIL TRADE	110	1,300	16,665,350	246.53
FINANCE, INSURANCE, AND REAL ESTATE SERVICES	31	234	5,743,256	472.00
LOCAL GOVERNMENT	162	1,623	29,367,067	347.97
STATE GOVERNMENT	32	931	20,138,461	415.98
OTHER NONMANUFACTURING	15	481	11,637,084	465.26
	13	224	4,825,417	414.27
HOT SPRING COUNTY - TOTAL	594	7,475	\$170,600,805	\$438.90
MANUFACTURING	82	2,378	67,655,664	547.13
NONMANUFACTURING	512	5,097	102,945,141	388.41
AGRICULTURE, FORESTRY, AND FISHING	12	94	1,728,830	353.69
MINING	4	102	3,359,939	633.47
CONSTRUCTION	81	298	6,008,157	387.72
TRANSPORTATION AND PUBLIC UTILITIES	53	339	10,155,163	576.08
WHOLESALE AND RETAIL TRADE	149	1,466	23,626,850	309.93
WHOLESALE TRADE	27	128	5,095,274	765.52
RETAIL TRADE	122	1,338	18,531,576	266.35
FINANCE, INSURANCE, AND REAL ESTATE SERVICES	35	263	6,060,098	443.12
LOCAL GOVERNMENT	139	1,105	19,341,091	336.60
STATE GOVERNMENT	28	1,147	26,090,629	437.44
	13	284	6,574,384	445.18

**TABLE 8. COUNTY SUMMARY
EMPLOYMENT AND TOTAL EARNINGS, BY INDUSTRY
CALENDAR YEAR 1999**

INDUSTRY GROUP	AVERAGE # OF EMPLOYING UNITS	AVERAGE COVERED EMPLOYMENT	TOTAL EARNINGS	AVERAGE WEEKLY EARNINGS
HOWARD COUNTY - TOTAL	356	8,237	\$170,734,015	\$398.61
MANUFACTURING	41	4,870	109,637,827	432.94
NONMANUFACTURING	315	3,367	61,096,188	348.95
AGRICULTURE, FORESTRY, AND FISHING	16	249	4,950,247	382.32
TRANSPORTATION AND PUBLIC UTILITIES	29	329	8,651,199	505.68
WHOLESALE AND RETAIL TRADE	113	983	13,213,287	258.50
WHOLESALE TRADE	25	130	2,856,130	422.50
RETAIL TRADE	88	853	10,357,157	233.50
FINANCE, INSURANCE, AND REAL ESTATE	22	135	2,955,873	421.06
SERVICES	83	814	12,572,933	297.04
LOCAL GOVERNMENT	18	566	12,281,442	417.28
STATE GOVERNMENT	13	182	4,036,122	426.47
OTHER NONMANUFACTURING	21	109	2,435,085	429.62
INDEPENDENCE COUNTY - TOTAL	883	16,207	\$373,749,128	\$443.48
MANUFACTURING	57	5,886	154,256,280	503.99
NONMANUFACTURING	826	10,321	219,492,848	408.97
AGRICULTURE, FORESTRY, AND FISHING	14	124	2,817,872	437.01
MINING	3	38	1,213,691	614.22
CONSTRUCTION	75	568	13,613,221	460.90
TRANSPORTATION AND PUBLIC UTILITIES	70	1,339	40,534,854	582.16
WHOLESALE AND RETAIL TRADE	275	3,104	46,373,547	287.31
WHOLESALE TRADE	54	545	12,961,511	457.36
RETAIL TRADE	221	2,559	33,412,036	251.09
FINANCE, INSURANCE, AND REAL ESTATE	74	347	9,029,315	500.41
SERVICES	263	3,193	70,248,357	423.09
LOCAL GOVERNMENT	37	1,210	25,523,233	405.65
STATE GOVERNMENT	16	400	10,138,758	487.44
IZARD COUNTY - TOTAL	255	2,978	\$61,964,434	\$400.14
MANUFACTURING	20	649	16,777,720	497.15
NONMANUFACTURING	235	2,329	45,186,714	373.11
CONSTRUCTION	24	73	1,187,075	312.72
TRANSPORTATION AND PUBLIC UTILITIES	14	103	2,585,609	482.75
WHOLESALE AND RETAIL TRADE	80	558	7,448,469	256.70
WHOLESALE TRADE	13	34	657,208	371.72
RETAIL TRADE	67	524	6,791,261	249.24
FINANCE, INSURANCE, AND REAL ESTATE	23	159	3,104,880	375.53
SERVICES	61	556	8,309,209	287.40
LOCAL GOVERNMENT	18	465	8,825,425	364.99
STATE GOVERNMENT	10	338	11,901,896	677.17
OTHER NONMANUFACTURING	5	77	1,824,151	455.58

**TABLE 8. COUNTY SUMMARY
EMPLOYMENT AND TOTAL EARNINGS, BY INDUSTRY
CALENDAR YEAR 1999**

INDUSTRY GROUP	AVERAGE # OF EMPLOYING UNITS	AVERAGE COVERED EMPLOYMENT	TOTAL EARNINGS	AVERAGE WEEKLY EARNINGS
JACKSON COUNTY - TOTAL	557	5,940	\$127,923,684	\$414.15
MANUFACTURING	34	1,217	34,340,035	542.63
NONMANUFACTURING	523	4,723	93,583,649	381.05
CONSTRUCTION	34	202	4,941,444	470.43
TRANSPORTATION AND PUBLIC UTILITIES	30	307	7,821,459	489.94
WHOLESALE AND RETAIL TRADE	162	1,285	20,260,122	303.20
WHOLESALE TRADE	35	235	6,272,901	513.33
RETAIL TRADE	127	1,050	13,987,221	256.18
FINANCE, INSURANCE, AND REAL ESTATE	33	170	4,219,350	477.30
SERVICES	175	1,633	34,931,456	411.36
LOCAL GOVERNMENT	34	714	12,738,582	343.10
STATE GOVERNMENT	12	203	4,509,438	427.19
OTHER NONMANUFACTURING	43	209	4,161,798	382.94
JEFFERSON COUNTY - TOTAL	1,761	33,257	\$812,316,934	\$469.72
MANUFACTURING	91	8,415	260,680,495	595.73
NONMANUFACTURING	1,670	24,842	551,636,439	427.03
AGRICULTURE, FORESTRY, AND FISHING	60	481	10,752,860	429.91
CONSTRUCTION	117	880	21,917,156	478.96
TRANSPORTATION AND PUBLIC UTILITIES	87	1,123	43,176,803	739.38
WHOLESALE AND RETAIL TRADE	574	7,184	119,874,278	320.89
WHOLESALE TRADE	117	1,246	33,834,474	522.20
RETAIL TRADE	457	5,938	86,039,804	278.65
FINANCE, INSURANCE, AND REAL ESTATE	130	1,172	31,929,514	523.92
SERVICES	630	8,017	175,257,002	420.40
LOCAL GOVERNMENT	42	3,194	77,359,857	465.78
STATE GOVERNMENT	30	2,792	71,368,969	491.58
JOHNSON COUNTY - TOTAL	421	7,930	\$158,708,969	\$384.88
MANUFACTURING	43	3,293	71,365,876	416.77
NONMANUFACTURING	378	4,637	87,343,093	362.23
CONSTRUCTION	31	130	2,656,380	392.96
TRANSPORTATION AND PUBLIC UTILITIES	12	61	1,723,859	543.46
WHOLESALE AND RETAIL TRADE	149	2,029	32,576,661	308.76
WHOLESALE TRADE	24	72	1,422,221	379.87
RETAIL TRADE	125	1,957	31,154,440	306.14
FINANCE, INSURANCE, AND REAL ESTATE	38	219	5,173,973	454.34
SERVICES	111	1,147	22,063,058	369.91
LOCAL GOVERNMENT	14	732	16,117,939	423.44
STATE GOVERNMENT	10	141	3,252,872	443.65
OTHER NONMANUFACTURING	13	178	3,778,351	408.21

**TABLE 8. COUNTY SUMMARY
EMPLOYMENT AND TOTAL EARNINGS, BY INDUSTRY
CALENDAR YEAR 1999**

INDUSTRY GROUP	AVERAGE # OF EMPLOYING UNITS	AVERAGE COVERED EMPLOYMENT	TOTAL EARNINGS	AVERAGE WEEKLY EARNINGS
LAFAYETTE COUNTY - TOTAL	179	1,873	\$37,525,995	\$385.29
MANUFACTURING	15	523	11,627,174	427.53
NONMANUFACTURING	164	1,350	25,898,821	368.93
AGRICULTURE, FORESTRY, AND FISHING	12	57	743,432	250.82
MINING	7	56	1,429,903	491.04
CONSTRUCTION	12	77	2,335,823	583.37
TRANSPORTATION AND PUBLIC UTILITIES	18	120	3,991,200	639.62
WHOLESALE AND RETAIL TRADE	40	226	2,941,969	250.34
FINANCE, INSURANCE, AND REAL ESTATE	17	89	2,131,093	460.48
SERVICES	34	257	3,848,763	287.99
LOCAL GOVERNMENT	16	380	6,613,756	334.70
STATE GOVERNMENT	10	90	1,862,882	398.05
LAWRENCE COUNTY - TOTAL	447	4,844	\$90,898,183	\$360.87
MANUFACTURING	35	1,310	27,470,151	403.26
NONMANUFACTURING	412	3,534	63,428,032	345.15
CONSTRUCTION	29	103	1,707,146	318.74
TRANSPORTATION AND PUBLIC UTILITIES	50	192	4,343,312	435.03
WHOLESALE AND RETAIL TRADE	128	1,187	17,155,699	277.94
WHOLESALE TRADE	26	250	6,265,454	481.96
RETAIL TRADE	102	937	10,890,245	223.51
FINANCE, INSURANCE, AND REAL ESTATE	28	137	3,222,757	452.38
SERVICES	104	557	9,233,119	318.78
LOCAL GOVERNMENT	29	1,031	19,246,523	359.00
STATE GOVERNMENT	12	146	3,790,259	499.24
OTHER NONMANUFACTURING	32	181	4,729,217	502.47
LEE COUNTY - TOTAL	230	2,482	\$50,644,230	\$392.40
AGRICULTURE, FORESTRY, AND FISHING	29	194	3,281,145	325.25
TRANSPORTATION AND PUBLIC UTILITIES	18	96	2,413,383	483.45
WHOLESALE AND RETAIL TRADE	58	420	6,462,816	295.92
WHOLESALE TRADE	10	63	1,627,489	496.79
RETAIL TRADE	48	357	4,835,327	260.47
SERVICES	69	386	6,837,520	340.65
LOCAL GOVERNMENT	16	411	8,004,850	374.55
STATE GOVERNMENT	10	480	11,638,233	466.28
OTHER	30	495	12,006,283	466.44

**TABLE 8. COUNTY SUMMARY
EMPLOYMENT AND TOTAL EARNINGS, BY INDUSTRY
CALENDAR YEAR 1999**

INDUSTRY GROUP	AVERAGE # OF EMPLOYING UNITS	AVERAGE COVERED EMPLOYMENT	TOTAL EARNINGS	AVERAGE WEEKLY EARNINGS
LINCOLN COUNTY - TOTAL	196	3,104	\$69,100,326	\$428.11
MANUFACTURING	19	717	15,025,394	403.00
NONMANUFACTURING	177	2,387	54,074,932	435.65
AGRICULTURE, FORESTRY, AND FISHING	25	163	3,684,599	434.71
CONSTRUCTION	15	72	1,161,380	310.20
WHOLESALE AND RETAIL TRADE	43	308	4,043,563	252.47
WHOLESALE TRADE	7	36	957,754	511.62
RETAIL TRADE	36	272	3,085,809	218.17
FINANCE, INSURANCE, AND REAL ESTATE	17	70	1,616,636	444.13
SERVICES	40	359	5,718,726	306.34
LOCAL AND STATE GOVERNMENT	20	1,244	32,954,662	509.44
OTHER NONMANUFACTURING	17	171	4,895,366	550.54
LITTLE RIVER COUNTY - TOTAL	271	4,447	\$151,849,051	\$656.66
MANUFACTURING	27	1,589	90,903,065	1100.15
NONMANUFACTURING	244	2,858	60,945,986	410.09
TRANSPORTATION AND PUBLIC UTILITIES	27	500	15,761,151	606.20
WHOLESALE AND RETAIL TRADE	82	624	8,268,709	254.83
WHOLESALE TRADE	15	62	1,535,000	476.12
RETAIL TRADE	67	562	6,733,709	230.42
FINANCE, INSURANCE, AND REAL ESTATE	20	123	2,437,748	381.14
SERVICES	53	314	4,476,099	274.14
LOCAL GOVERNMENT	20	698	13,724,928	378.14
STATE GOVERNMENT	13	91	2,006,851	424.10
OTHER NONMANUFACTURING	29	508	14,270,500	540.22
LOGAN COUNTY - TOTAL	400	5,890	\$119,962,444	\$391.68
MANUFACTURING	34	2,289	56,284,577	472.87
NONMANUFACTURING	366	3,601	63,677,867	340.07
AGRICULTURE, FORESTRY, AND FISHING	7	34	375,491	212.38
MINING	4	31	1,037,372	643.53
CONSTRUCTION	29	98	2,130,421	418.06
TRANSPORTATION AND PUBLIC UTILITIES	35	105	2,634,438	482.50
WHOLESALE AND RETAIL TRADE	125	1,162	14,667,908	242.75
WHOLESALE TRADE	23	100	1,736,736	333.99
RETAIL TRADE	102	1,062	12,931,172	234.16
FINANCE, INSURANCE, AND REAL ESTATE	39	224	5,460,694	468.81
SERVICES	92	780	13,355,507	329.28
LOCAL GOVERNMENT	23	742	14,779,524	383.05
STATE GOVERNMENT	13	426	9,236,512	416.96

**TABLE 8. COUNTY SUMMARY
EMPLOYMENT AND TOTAL EARNINGS, BY INDUSTRY
CALENDAR YEAR 1999**

INDUSTRY GROUP	AVERAGE # OF EMPLOYING UNITS	AVERAGE COVERED EMPLOYMENT	TOTAL EARNINGS	AVERAGE WEEKLY EARNINGS
LONOKE COUNTY - TOTAL	972	10,423	\$219,029,780	\$404.12
MANUFACTURING	50	1,759	52,603,929	575.11
NONMANUFACTURING	922	8,664	166,425,851	369.40
CONSTRUCTION	114	595	14,529,693	469.61
TRANSPORTATION AND PUBLIC UTILITIES	66	377	10,982,016	560.19
WHOLESALE AND RETAIL TRADE	295	3,009	44,994,179	287.56
WHOLESALE TRADE	72	429	12,298,028	551.28
RETAIL TRADE	223	2,580	32,696,151	243.71
FINANCE, INSURANCE, AND REAL ESTATE	78	420	10,197,994	466.94
SERVICES	245	1,811	31,393,919	333.37
LOCAL GOVERNMENT	27	1,793	38,281,557	410.59
STATE GOVERNMENT	15	180	4,358,378	465.64
OTHER NONMANUFACTURING	82	479	11,688,115	469.25
MADISON COUNTY	204	2,484	\$49,203,869	\$380.93
MANUFACTURING	31	855	18,355,223	412.85
NONMANUFACTURING	173	1,629	30,848,646	364.18
AGRICULTURE, FORESTRY, AND FISHING	5	13	217,515	321.77
CONSTRUCTION	23	81	1,471,788	349.43
TRANSPORTATION AND PUBLIC UTILITIES	18	101	2,852,232	543.08
WHOLESALE AND RETAIL TRADE	51	467	6,392,605	263.24
WHOLESALE TRADE	9	45	877,065	374.81
RETAIL TRADE	42	422	5,515,540	251.35
FINANCE, INSURANCE, AND REAL ESTATE	12	95	2,310,678	467.75
SERVICES	49	361	6,934,362	369.40
LOCAL GOVERNMENT	8	459	9,415,455	394.48
STATE GOVERNMENT	8	53	1,254,011	455.01
MARION COUNTY - TOTAL	266	3,880	\$73,812,109	\$365.84
MANUFACTURING	32	1,932	40,605,764	404.18
NONMANUFACTURING	234	1,948	33,206,345	327.81
CONSTRUCTION	19	60	974,021	312.19
TRANSPORTATION AND PUBLIC UTILITIES	18	89	3,160,672	682.95
WHOLESALE AND RETAIL TRADE	66	586	7,469,566	245.13
WHOLESALE TRADE	6	38	819,588	414.77
RETAIL TRADE	60	548	6,649,978	233.37
FINANCE, INSURANCE, AND REAL ESTATE	24	116	2,825,886	468.48
SERVICES	72	504	6,478,001	247.18
LOCAL GOVERNMENT	22	457	9,323,640	392.34
STATE GOVERNMENT	8	101	2,304,789	438.84
OTHER NONMANUFACTURING	5	35	669,770	368.01

**TABLE 8. COUNTY SUMMARY
EMPLOYMENT AND TOTAL EARNINGS, BY INDUSTRY
CALENDAR YEAR 1999**

INDUSTRY GROUP	AVERAGE # OF EMPLOYING UNITS	AVERAGE COVERED EMPLOYMENT	TOTAL EARNINGS	AVERAGE WEEKLY EARNINGS
MILLER COUNTY - TOTAL	818	13,339	\$320,068,051	\$461.44
MANUFACTURING	48	2,609	111,207,019	819.70
NONMANUFACTURING	770	10,730	208,861,032	374.33
AGRICULTURE, FORESTRY, AND FISHING	14	73	1,321,655	348.17
MINING	6	25	1,747,984	1344.60
CONSTRUCTION	84	646	14,823,839	441.29
TRANSPORTATION AND PUBLIC UTILITIES	58	1,075	32,522,391	581.80
WHOLESALE AND RETAIL TRADE	273	3,439	56,737,730	317.28
WHOLESALE TRADE	58	773	20,533,176	510.83
RETAIL TRADE	215	2,666	36,204,554	261.16
FINANCE, INSURANCE, AND REAL ESTATE	57	402	10,493,839	502.00
SERVICES	239	3,160	44,768,092	272.44
LOCAL GOVERNMENT	25	1,445	34,778,700	462.85
STATE GOVERNMENT	15	463	11,666,802	484.58
MISSISSIPPI COUNTY - TOTAL	1,264	21,770	\$551,752,627	\$487.40
MANUFACTURING	78	8,280	287,414,708	667.54
NONMANUFACTURING	1,186	13,490	264,337,919	376.83
AGRICULTURE, FORESTRY, AND FISHING	118	713	12,568,105	338.98
CONSTRUCTION	81	515	14,047,465	524.55
TRANSPORTATION AND PUBLIC UTILITIES	69	736	22,287,599	582.35
WHOLESALE AND RETAIL TRADE	394	4,160	69,898,799	323.13
WHOLESALE TRADE	92	904	27,223,008	579.11
RETAIL TRADE	302	3,256	42,675,791	252.05
FINANCE, INSURANCE, AND REAL ESTATE	108	575	16,814,754	562.37
SERVICES	345	3,803	65,253,019	329.97
LOCAL GOVERNMENT	50	2,364	49,970,325	406.50
STATE GOVERNMENT	24	624	13,497,853	415.98
MONROE COUNTY - TOTAL	334	2,962	\$53,098,868	\$344.74
MANUFACTURING	17	339	8,389,295	475.91
NONMANUFACTURING	317	2,623	44,709,573	327.79
AGRICULTURE, FORESTRY, AND FISHING	32	143	2,817,050	378.84
CONSTRUCTION	16	60	1,225,536	392.80
TRANSPORTATION AND PUBLIC UTILITIES	30	185	4,138,187	430.16
WHOLESALE AND RETAIL TRADE	101	951	13,414,640	271.27
WHOLESALE TRADE	26	237	4,856,493	394.07
RETAIL TRADE	75	714	8,558,147	230.50
FINANCE, INSURANCE, AND REAL ESTATE	23	156	4,333,701	534.23
SERVICES	83	581	8,047,510	266.37
LOCAL GOVERNMENT	21	424	8,178,770	370.95
STATE GOVERNMENT	12	124	2,554,179	396.12

**TABLE 8. COUNTY SUMMARY
EMPLOYMENT AND TOTAL EARNINGS, BY INDUSTRY
CALENDAR YEAR 1999**

INDUSTRY GROUP	AVERAGE # OF EMPLOYING UNITS	AVERAGE COVERED EMPLOYMENT	TOTAL EARNINGS	AVERAGE WEEKLY EARNINGS
MONTGOMERY COUNTY - TOTAL	178	1,544	\$26,334,288	\$328.00
MANUFACTURING	34	321	5,090,697	304.98
NONMANUFACTURING	144	1,223	21,243,591	334.04
CONSTRUCTION	21	164	3,749,187	439.63
TRANSPORTATION AND PUBLIC UTILITIES	10	35	599,578	329.44
WHOLESALE AND RETAIL TRADE	46	222	3,307,324	286.50
WHOLESALE TRADE	10	33	606,522	353.45
RETAIL TRADE	36	189	2,700,802	274.81
FINANCE, INSURANCE, AND REAL ESTATE	8	71	1,525,083	413.08
SERVICES	39	270	3,687,865	262.67
LOCAL GOVERNMENT	9	383	6,806,694	341.77
STATE GOVERNMENT	8	62	1,379,171	427.78
OTHER NONMANUFACTURING	3	16	188,689	226.79
NEVADA COUNTY - TOTAL	205	2,333	\$52,997,050	\$436.85
MANUFACTURING	21	704	24,020,933	656.17
NONMANUFACTURING	184	1,629	28,976,117	342.07
TRANSPORTATION AND PUBLIC UTILITIES	16	179	5,183,717	556.91
WHOLESALE AND RETAIL TRADE	52	374	4,867,213	250.27
WHOLESALE TRADE	7	23	272,087	227.50
RETAIL TRADE	45	351	4,595,126	251.76
FINANCE, INSURANCE, AND REAL ESTATE	14	44	1,068,696	467.09
SERVICES	43	461	6,694,761	279.27
LOCAL GOVERNMENT	28	441	8,087,718	352.68
STATE GOVERNMENT	11	81	2,097,406	497.96
OTHER NONMANUFACTURING	20	49	976,606	383.28
NEWTON COUNTY - TOTAL	121	1,023	\$15,950,373	\$299.84
MANUFACTURING	26	119	1,658,692	268.05
NONMANUFACTURING	95	904	14,291,681	304.03
CONSTRUCTION	7	11	130,358	227.90
WHOLESALE AND RETAIL TRADE	21	170	1,846,064	208.83
WHOLESALE TRADE	3	15	252,234	323.38
RETAIL TRADE	18	155	1,593,830	197.75
SERVICES	29	198	2,351,239	228.36
LOCAL GOVERNMENT	12	360	6,807,898	363.67
STATE GOVERNMENT	8	94	1,804,482	369.17
OTHER NONMANUFACTURING	18	71	1,351,640	366.10

**TABLE 8. COUNTY SUMMARY
EMPLOYMENT AND TOTAL EARNINGS, BY INDUSTRY
CALENDAR YEAR 1999**

INDUSTRY GROUP	AVERAGE # OF EMPLOYING UNITS	AVERAGE COVERED EMPLOYMENT	TOTAL EARNINGS	AVERAGE WEEKLY EARNINGS
OUACHITA COUNTY - TOTAL	676	7,937	\$180,637,501	\$437.67
MANUFACTURING	66	1,633	54,631,699	643.36
NONMANUFACTURING	610	6,304	126,005,802	384.39
AGRICULTURE, FORESTRY, AND FISHING	13	61	1,363,226	429.77
MINING	14	115	3,167,288	529.65
CONSTRUCTION	47	204	4,083,957	384.99
TRANSPORTATION AND PUBLIC UTILITIES	53	388	11,985,116	594.03
WHOLESALE AND RETAIL TRADE	213	2,088	32,966,870	303.63
WHOLESALE TRADE	40	341	10,057,165	567.18
RETAIL TRADE	173	1,747	22,909,705	252.19
FINANCE, INSURANCE, AND REAL ESTATE	48	310	7,922,794	491.49
SERVICES	179	1,717	32,431,966	363.24
LOCAL GOVERNMENT	32	1,152	24,882,722	415.38
STATE GOVERNMENT	12	271	7,201,863	511.06
PERRY COUNTY - TOTAL	136	1,075	\$19,614,965	\$350.89
MANUFACTURING	7	93	1,844,867	381.49
NONMANUFACTURING	129	982	17,770,098	348.00
CONSTRUCTION	22	78	1,672,998	412.47
TRANSPORTATION AND PUBLIC UTILITIES	7	36	1,139,605	608.76
WHOLESALE AND RETAIL TRADE	33	193	2,370,630	236.21
WHOLESALE TRADE	6	13	265,333	392.50
RETAIL TRADE	27	180	2,105,297	224.92
SERVICES	33	191	3,022,644	304.33
LOCAL GOVERNMENT	12	352	6,404,373	349.89
STATE GOVERNMENT	8	65	1,512,621	447.52
OTHER NONMANUFACTURING	14	67	1,647,227	472.80
PHILLIPS COUNTY - TOTAL	663	7,848	\$160,491,569	\$393.27
MANUFACTURING	27	1,128	31,304,702	533.70
NONMANUFACTURING	636	6,720	129,186,867	369.70
AGRICULTURE, FORESTRY, AND FISHING	65	463	8,553,539	355.27
TRANSPORTATION AND PUBLIC UTILITIES	45	317	10,132,454	614.68
WHOLESALE AND RETAIL TRADE	207	1,979	33,694,500	327.42
WHOLESALE TRADE	42	600	15,034,698	481.88
RETAIL TRADE	165	1,379	18,659,802	260.22
FINANCE, INSURANCE, AND REAL ESTATE	46	296	6,619,147	430.04
SERVICES	183	1,654	28,345,858	329.57
LOCAL GOVERNMENT	33	1,228	25,964,051	406.60
STATE GOVERNMENT	15	529	11,139,501	404.95
OTHER NONMANUFACTURING	42	254	4,737,817	358.71

**TABLE 8. COUNTY SUMMARY
EMPLOYMENT AND TOTAL EARNINGS, BY INDUSTRY
CALENDAR YEAR 1999**

INDUSTRY GROUP	AVERAGE # OF EMPLOYING UNITS	AVERAGE COVERED EMPLOYMENT	TOTAL EARNINGS	AVERAGE WEEKLY EARNINGS
PIKE COUNTY - TOTAL	272	3,090	\$55,997,202	\$348.50
MANUFACTURING	47	810	16,145,861	383.33
NONMANUFACTURING	225	2,280	39,851,341	336.13
AGRICULTURE, FORESTRY, AND FISHING	7	130	2,046,060	302.67
MINING	4	68	2,042,810	577.72
CONSTRUCTION	18	102	2,394,684	451.49
TRANSPORTATION AND PUBLIC UTILITIES	27	171	5,013,503	563.82
WHOLESALE AND RETAIL TRADE	90	694	8,979,501	248.82
WHOLESALE TRADE	17	115	1,818,487	304.09
RETAIL TRADE	73	579	7,161,014	237.84
FINANCE, INSURANCE, AND REAL ESTATE	20	202	4,221,892	401.93
SERVICES	36	288	3,781,436	252.50
LOCAL GOVERNMENT	13	487	8,997,455	355.29
STATE GOVERNMENT	11	137	2,374,000	333.24
POINSETT COUNTY - TOTAL	510	6,586	\$139,279,207	\$406.69
MANUFACTURING	30	2,220	55,826,554	483.60
NONMANUFACTURING	480	4,366	83,452,653	367.58
AGRICULTURE, FORESTRY, AND FISHING	49	296	7,787,688	505.96
TRANSPORTATION AND PUBLIC UTILITIES	48	215	5,668,696	507.04
WHOLESALE AND RETAIL TRADE	155	1,516	24,891,066	315.75
WHOLESALE TRADE	28	444	11,637,582	504.05
RETAIL TRADE	127	1,072	13,253,484	237.76
FINANCE, INSURANCE, AND REAL ESTATE	43	335	7,313,339	419.82
SERVICES	109	632	10,196,974	310.28
LOCAL GOVERNMENT	31	1,048	20,877,606	383.10
STATE GOVERNMENT	15	186	4,033,015	416.98
OTHER NONMANUFACTURING	30	138	2,684,269	374.06
POLK COUNTY - TOTAL	535	6,795	\$128,364,286	\$363.29
MANUFACTURING	64	2,429	49,819,243	394.43
NONMANUFACTURING	471	4,366	78,545,043	345.96
AGRICULTURE, FORESTRY, AND FISHING	23	217	5,660,047	501.60
CONSTRUCTION	37	126	2,323,782	354.67
TRANSPORTATION AND PUBLIC UTILITIES	57	455	10,205,605	431.34
WHOLESALE AND RETAIL TRADE	148	1,324	16,160,445	234.73
WHOLESALE TRADE	31	125	2,054,994	316.15
RETAIL TRADE	117	1,199	14,105,451	226.24
FINANCE, INSURANCE, AND REAL ESTATE	37	214	4,534,741	407.51
SERVICES	135	1,073	19,725,637	353.53
LOCAL GOVERNMENT	21	698	14,278,718	393.40
STATE GOVERNMENT	15	259	5,656,068	419.96

**TABLE 8. COUNTY SUMMARY
EMPLOYMENT AND TOTAL EARNINGS, BY INDUSTRY
CALENDAR YEAR 1999**

INDUSTRY GROUP	AVERAGE # OF EMPLOYING UNITS	AVERAGE COVERED EMPLOYMENT	TOTAL EARNINGS	AVERAGE WEEKLY EARNINGS
POPE COUNTY - TOTAL	1,507	23,981	\$601,737,400	\$482.54
MANUFACTURING	106	5,284	138,488,053	504.02
NONMANUFACTURING	1,401	18,697	463,249,347	476.47
CONSTRUCTION	157	1,384	37,418,688	519.94
TRANSPORTATION AND PUBLIC UTILITIES	97	2,465	129,343,271	1009.08
WHOLESALE AND RETAIL TRADE	483	5,848	91,228,344	300.00
WHOLESALE TRADE	112	802	23,856,724	572.05
RETAIL TRADE	371	5,046	67,371,620	256.76
FINANCE, INSURANCE, AND REAL ESTATE SERVICES	125	628	16,555,901	506.98
LOCAL GOVERNMENT	449	4,914	102,342,787	400.51
STATE GOVERNMENT	41	1,843	43,776,177	456.78
OTHER NONMANUFACTURING	15	926	26,969,486	560.09
	34	689	15,614,693	435.82
PRAIRIE COUNTY - TOTAL	236	1,722	\$33,669,780	\$376.01
MANUFACTURING	9	244	6,768,583	533.46
NONMANUFACTURING	227	1,478	26,901,197	350.02
AGRICULTURE, FORESTRY, AND FISHING	27	153	3,750,261	471.38
TRANSPORTATION AND PUBLIC UTILITIES	25	94	2,364,338	483.70
WHOLESALE AND RETAIL TRADE	70	422	6,368,165	290.20
WHOLESALE TRADE	12	102	2,467,378	465.19
RETAIL TRADE	58	320	3,900,787	234.42
SERVICES	56	293	3,868,359	253.90
LOCAL GOVERNMENT	15	346	6,383,820	354.81
STATE GOVERNMENT	10	59	1,366,110	445.28
OTHER NONMANUFACTURING	24	111	2,800,144	485.13
PULASKI COUNTY - TOTAL	12,662	233,360	\$6,815,665,324	\$561.67
MANUFACTURING	477	21,179	692,477,575	628.78
NONMANUFACTURING	12,185	212,181	6,123,187,749	554.97
AGRICULTURE, FORESTRY, AND FISHING	177	1,412	31,173,640	424.57
MINING	6	334	13,678,166	787.55
CONSTRUCTION	1,032	10,656	331,251,007	597.81
TRANSPORTATION AND PUBLIC UTILITIES	518	18,213	700,768,895	739.93
WHOLESALE AND RETAIL TRADE	3,717	57,194	1,276,182,424	429.10
WHOLESALE TRADE	1,257	16,303	582,600,944	687.23
RETAIL TRADE	2,460	40,891	693,581,480	326.19
FINANCE, INSURANCE, AND REAL ESTATE SERVICES	1,385	15,825	661,004,468	803.26
LOCAL GOVERNMENT	5,091	71,522	1,962,787,123	527.75
STATE GOVERNMENT	101	15,695	435,791,372	533.97
	159	21,332	710,550,654	640.56

**TABLE 8. COUNTY SUMMARY
EMPLOYMENT AND TOTAL EARNINGS, BY INDUSTRY
CALENDAR YEAR 1999**

INDUSTRY GROUP	AVERAGE # OF EMPLOYING UNITS	AVERAGE COVERED EMPLOYMENT	TOTAL EARNINGS	AVERAGE WEEKLY EARNINGS
RANDOLPH COUNTY - TOTAL	383	5,385	\$101,285,154	\$361.71
MANUFACTURING	39	1,883	39,774,300	406.21
NONMANUFACTURING	344	3,502	61,510,854	337.78
AGRICULTURE, FORESTRY, AND FISHING	13	45	869,425	371.55
CONSTRUCTION	29	116	2,221,623	368.31
TRANSPORTATION AND PUBLIC UTILITIES	25	164	4,965,173	582.22
WHOLESALE AND RETAIL TRADE	116	1,124	14,408,764	246.52
WHOLESALE TRADE	23	159	2,896,219	350.29
RETAIL TRADE	93	965	11,512,545	229.42
FINANCE, INSURANCE, AND REAL ESTATE SERVICES	21	177	5,013,830	544.74
LOCAL GOVERNMENT	108	1,009	15,993,981	304.83
STATE GOVERNMENT	22	674	13,064,853	372.77
STATE GOVERNMENT	11	193	4,973,205	495.54
SAINT FRANCIS COUNTY - TOTAL	655	9,140	\$192,792,273	\$405.64
MANUFACTURING	35	2,221	57,887,217	501.22
NONMANUFACTURING	620	6,919	134,905,056	374.96
CONSTRUCTION	57	275	6,193,983	433.15
TRANSPORTATION AND PUBLIC UTILITIES	36	385	13,032,682	650.98
WHOLESALE AND RETAIL TRADE	213	2,294	36,665,268	307.37
WHOLESALE TRADE	44	553	14,338,763	498.64
RETAIL TRADE	169	1,741	22,326,505	246.61
FINANCE, INSURANCE, AND REAL ESTATE SERVICES	53	270	6,116,089	435.62
LOCAL GOVERNMENT	184	1,724	28,493,695	317.84
STATE GOVERNMENT	31	1,200	27,026,806	433.12
STATE GOVERNMENT	15	555	12,917,407	447.59
OTHER NONMANUFACTURING	31	216	4,459,126	397.00
SALINE COUNTY - TOTAL	1,375	17,698	\$414,961,080	\$450.90
MANUFACTURING	92	2,468	83,335,190	649.35
NONMANUFACTURING	1,283	15,230	331,625,890	418.74
CONSTRUCTION	216	1,429	38,424,203	517.09
TRANSPORTATION AND PUBLIC UTILITIES	65	423	13,196,282	599.94
WHOLESALE AND RETAIL TRADE	407	5,158	97,346,056	362.94
WHOLESALE TRADE	101	524	15,572,492	571.51
RETAIL TRADE	306	4,634	81,773,564	339.35
FINANCE, INSURANCE, AND REAL ESTATE SERVICES	122	597	13,710,600	441.65
LOCAL AND STATE GOVERNMENT	392	3,795	76,449,162	387.40
LOCAL AND STATE GOVERNMENT	50	3,723	90,928,663	469.68
OTHER NONMANUFACTURING	31	105	1,570,924	287.72

**TABLE 8. COUNTY SUMMARY
EMPLOYMENT AND TOTAL EARNINGS, BY INDUSTRY
CALENDAR YEAR 1999**

INDUSTRY GROUP	AVERAGE # OF EMPLOYING UNITS	AVERAGE COVERED EMPLOYMENT	TOTAL EARNINGS	AVERAGE WEEKLY EARNINGS
SCOTT COUNTY - TOTAL	205	3,320	\$61,214,358	\$354.58
MANUFACTURING	33	1,621	33,100,208	392.69
NONMANUFACTURING	172	1,699	28,114,150	318.22
AGRICULTURE, FORESTRY, AND FISHING	11	169	3,478,854	395.86
TRANSPORTATION AND PUBLIC UTILITIES	17	103	2,252,897	420.63
WHOLESALE AND RETAIL TRADE	66	579	6,958,286	231.11
WHOLESALE TRADE	10	80	1,395,998	335.58
RETAIL TRADE	56	499	5,562,288	214.36
FINANCE, INSURANCE, AND REAL ESTATE	13	77	1,376,697	343.83
SERVICES	41	330	5,769,679	336.23
LOCAL GOVERNMENT	5	330	6,306,485	367.51
STATE GOVERNMENT	8	66	1,312,099	382.31
OTHER NONMANUFACTURING	11	45	659,153	281.69
SEARCY COUNTY - TOTAL	148	1,502	\$23,518,709	\$301.12
MANUFACTURING	15	243	3,942,183	311.98
NONMANUFACTURING	133	1,259	19,576,526	299.02
TRANSPORTATION AND PUBLIC UTILITIES	12	46	970,376	405.68
WHOLESALE AND RETAIL TRADE	47	374	3,973,016	204.29
WHOLESALE TRADE	10	69	778,641	217.01
RETAIL TRADE	37	305	3,194,375	201.41
FINANCE, INSURANCE, AND REAL ESTATE	9	46	672,257	281.04
SERVICES	31	289	3,915,911	260.57
LOCAL GOVERNMENT	12	298	5,957,124	384.43
STATE GOVERNMENT	9	151	3,229,525	411.30
OTHER NONMANUFACTURING	13	55	858,317	300.11
SEBASTIAN COUNTY - TOTAL	3,437	73,625	\$1,878,680,382	\$490.71
MANUFACTURING	245	23,442	679,545,525	557.47
NONMANUFACTURING	3,192	50,183	1,199,134,857	459.52
AGRICULTURE, FORESTRY, AND FISHING	46	347	6,977,740	386.71
MINING	51	552	19,659,530	684.91
CONSTRUCTION	280	2,920	78,619,975	517.78
TRANSPORTATION AND PUBLIC UTILITIES	179	3,761	123,777,923	632.90
WHOLESALE AND RETAIL TRADE	1,099	14,849	274,902,082	356.02
WHOLESALE TRADE	285	2,633	81,646,971	596.33
RETAIL TRADE	814	12,216	193,255,111	304.23
FINANCE, INSURANCE, AND REAL ESTATE	315	2,362	72,722,968	592.09
SERVICES	1,158	20,713	495,700,573	460.23
LOCAL GOVERNMENT	43	3,597	99,373,093	531.28
STATE GOVERNMENT	22	1,083	27,400,973	486.56

**TABLE 8. COUNTY SUMMARY
EMPLOYMENT AND TOTAL EARNINGS, BY INDUSTRY
CALENDAR YEAR 1999**

INDUSTRY GROUP	AVERAGE # OF EMPLOYING UNITS	AVERAGE COVERED EMPLOYMENT	TOTAL EARNINGS	AVERAGE WEEKLY EARNINGS
SEVIER COUNTY - TOTAL	312	5,402	\$108,630,578	\$386.72
MANUFACTURING	26	2,363	50,069,554	407.48
NONMANUFACTURING	286	3,039	58,561,024	370.57
CONSTRUCTION	25	116	2,363,976	391.91
TRANSPORTATION AND PUBLIC UTILITIES	21	112	3,118,598	535.47
WHOLESALE AND RETAIL TRADE	90	984	15,384,855	300.67
WHOLESALE TRADE	21	177	5,607,835	609.28
RETAIL TRADE	69	807	9,777,020	232.99
FINANCE, INSURANCE, AND REAL ESTATE	22	145	3,922,944	520.28
SERVICES	94	755	14,562,773	370.93
LOCAL GOVERNMENT	11	606	12,316,197	390.84
STATE GOVERNMENT	10	162	4,039,804	479.56
OTHER NONMANUFACTURING	13	159	2,851,877	344.93
SHARP COUNTY - TOTAL	412	4,195	\$69,755,779	\$319.78
MANUFACTURING	21	470	7,100,733	290.54
NONMANUFACTURING	391	3,725	62,655,046	323.46
CONSTRUCTION	38	149	2,808,998	362.54
TRANSPORTATION AND PUBLIC UTILITIES	31	403	12,022,618	573.71
WHOLESALE AND RETAIL TRADE	139	1,187	12,949,449	209.80
WHOLESALE TRADE	18	68	1,246,630	352.55
RETAIL TRADE	121	1,119	11,702,819	201.12
FINANCE, INSURANCE, AND REAL ESTATE	34	207	4,234,268	393.37
SERVICES	102	935	15,574,738	320.34
LOCAL GOVERNMENT	29	709	12,187,928	330.58
STATE GOVERNMENT	10	95	2,270,726	459.66
OTHER NONMANUFACTURING	8	40	606,321	291.50
STONE COUNTY - TOTAL	260	2,966	\$49,172,075	\$318.82
MANUFACTURING	29	743	12,624,606	326.76
NONMANUFACTURING	231	2,223	36,547,469	316.17
CONSTRUCTION	20	91	1,704,508	360.21
WHOLESALE AND RETAIL TRADE	93	777	10,273,711	254.27
WHOLESALE TRADE	16	44	813,021	355.34
RETAIL TRADE	77	733	9,460,690	248.21
FINANCE, INSURANCE, AND REAL ESTATE	11	78	1,753,017	432.20
SERVICES	59	542	8,410,597	298.42
LOCAL GOVERNMENT	10	370	7,087,536	368.38
STATE GOVERNMENT	13	241	4,312,627	344.13
OTHER NONMANUFACTURING	25	124	3,005,473	466.11

**TABLE 8. COUNTY SUMMARY
EMPLOYMENT AND TOTAL EARNINGS, BY INDUSTRY
CALENDAR YEAR 1999**

INDUSTRY GROUP	AVERAGE # OF EMPLOYING UNITS	AVERAGE COVERED EMPLOYMENT	TOTAL EARNINGS	AVERAGE WEEKLY EARNINGS
UNION COUNTY - TOTAL	1,371	20,637	\$526,886,285	\$490.98
MANUFACTURING	91	6,254	200,595,466	616.82
NONMANUFACTURING	1,280	14,383	326,290,819	436.27
AGRICULTURE, FORESTRY, AND FISHING	28	119	2,166,591	350.13
MINING	63	371	16,059,220	832.43
CONSTRUCTION	100	1,421	44,553,887	602.96
TRANSPORTATION AND PUBLIC UTILITIES	78	1,351	48,065,766	684.19
WHOLESALE AND RETAIL TRADE	415	3,927	65,998,809	323.20
WHOLESALE TRADE	104	686	20,679,267	579.71
RETAIL TRADE	311	3,241	45,319,542	268.91
FINANCE, INSURANCE, AND REAL ESTATE	101	696	18,474,008	510.44
SERVICES	441	4,100	77,514,296	363.58
LOCAL GOVERNMENT	38	1,835	39,847,852	417.60
STATE GOVERNMENT	18	565	13,610,390	463.25
VAN BUREN COUNTY - TOTAL	340	3,587	\$62,522,437	\$335.20
MANUFACTURING	20	700	14,857,601	408.18
NONMANUFACTURING	320	2,887	47,664,836	317.50
CONSTRUCTION	37	120	2,196,591	352.02
TRANSPORTATION AND PUBLIC UTILITIES	39	236	5,271,242	429.53
WHOLESALE AND RETAIL TRADE	104	875	10,376,798	228.06
WHOLESALE TRADE	13	55	1,050,905	367.45
RETAIL TRADE	91	820	9,325,893	218.71
FINANCE, INSURANCE, AND REAL ESTATE	24	134	3,967,748	569.42
SERVICES	84	784	11,910,451	292.15
LOCAL GOVERNMENT	13	528	9,566,333	348.42
STATE GOVERNMENT	8	125	2,863,392	440.52
OTHER NONMANUFACTURING	11	85	1,512,281	342.15
WASHINGTON COUNTY - TOTAL	4,242	76,888	\$1,930,979,717	\$482.97
MANUFACTURING	216	18,044	525,327,106	559.88
NONMANUFACTURING	4,026	58,844	1,405,652,611	459.38
CONSTRUCTION	409	3,416	96,140,864	541.24
TRANSPORTATION AND PUBLIC UTILITIES	242	6,126	189,046,353	593.46
WHOLESALE AND RETAIL TRADE	1,355	19,567	351,904,796	345.86
WHOLESALE TRADE	332	3,598	117,045,284	625.59
RETAIL TRADE	1,023	15,969	234,859,512	282.83
FINANCE, INSURANCE, AND REAL ESTATE	396	2,748	88,683,723	620.62
SERVICES	1,454	15,990	371,408,964	446.68
LOCAL AND STATE GOVERNMENT	84	9,971	286,820,522	553.18
OTHER NONMANUFACTURING	86	1,026	21,647,389	405.75

**TABLE 8. COUNTY SUMMARY
EMPLOYMENT AND TOTAL EARNINGS, BY INDUSTRY
CALENDAR YEAR 1999**

INDUSTRY GROUP	AVERAGE # OF EMPLOYING UNITS	AVERAGE COVERED EMPLOYMENT	TOTAL EARNINGS	AVERAGE WEEKLY EARNINGS
WHITE COUNTY - TOTAL	1,410	22,909	\$526,946,946	\$442.34
MANUFACTURING	92	4,847	132,128,142	524.23
NONMANUFACTURING	1,318	18,062	394,818,804	420.37
CONSTRUCTION	159	1,129	29,613,192	504.41
TRANSPORTATION AND PUBLIC UTILITIES	89	1,369	40,025,884	562.26
WHOLESALE AND RETAIL TRADE	505	6,852	126,575,508	355.25
WHOLESALE TRADE	107	717	17,260,114	462.94
RETAIL TRADE	398	6,135	109,315,394	342.66
FINANCE, INSURANCE, AND REAL ESTATE	108	672	14,387,656	411.73
SERVICES	359	5,153	121,423,204	453.15
LOCAL GOVERNMENT	45	2,107	45,306,161	413.51
STATE GOVERNMENT	19	605	14,441,700	459.05
OTHER NONMANUFACTURING	34	175	3,045,499	334.67
WOODRUFF COUNTY - TOTAL	204	2,425	\$50,990,883	\$404.37
MANUFACTURING	9	501	12,645,719	485.40
NONMANUFACTURING	195	1,924	38,345,164	383.27
AGRICULTURE, FORESTRY, AND FISHING	23	116	2,360,142	391.27
CONSTRUCTION	9	77	1,738,149	434.10
TRANSPORTATION AND PUBLIC UTILITIES	18	138	3,722,214	518.70
WHOLESALE AND RETAIL TRADE	68	777	15,072,208	373.04
WHOLESALE TRADE	21	510	11,889,755	448.33
RETAIL TRADE	47	267	3,182,453	229.22
FINANCE, INSURANCE, AND REAL ESTATE	15	73	1,522,115	400.98
SERVICES	44	210	4,043,518	370.29
LOCAL GOVERNMENT	10	470	8,504,842	347.99
STATE GOVERNMENT	9	66	1,381,976	402.67
YELL COUNTY - TOTAL	401	6,884	\$132,066,653	\$368.93
MANUFACTURING	40	3,154	62,915,054	383.61
NONMANUFACTURING	361	3,730	69,151,599	356.53
CONSTRUCTION	49	298	5,787,063	373.46
TRANSPORTATION AND PUBLIC UTILITIES	26	203	5,714,019	541.31
WHOLESALE AND RETAIL TRADE	104	917	11,809,909	247.67
WHOLESALE TRADE	22	87	1,528,744	337.92
RETAIL TRADE	82	830	10,281,165	238.21
FINANCE, INSURANCE, AND REAL ESTATE	24	215	5,537,427	495.30
SERVICES	98	675	10,932,994	311.48
LOCAL GOVERNMENT	28	999	20,473,761	394.12
STATE GOVERNMENT	12	123	2,772,196	433.43
OTHER NONMANUFACTURING	20	300	6,124,230	392.58

**TABLE 8. COUNTY SUMMARY
EMPLOYMENT AND TOTAL EARNINGS, BY INDUSTRY
CALENDAR YEAR 1999**

INDUSTRY GROUP	AVERAGE # OF EMPLOYING UNITS	AVERAGE COVERED EMPLOYMENT	TOTAL EARNINGS	AVERAGE WEEKLY EARNINGS
REST-OF-STATE-TOTAL	3,682	13,476	\$516,944,447	\$737.70
MINING	27	57	2,340,131	789.52
CONSTRUCTION	634	3,684	100,404,323	524.12
TRANSPORTATION AND PUBLIC UTILITIES	169	645	20,118,051	599.82
WHOLESALE AND RETAIL TRADE	1,513	4,369	239,823,989	1055.62
WHOLESALE TRADE	1,414	4,040	230,825,321	1098.75
RETAIL TRADE	99	329	8,998,668	525.99
FINANCE, INSURANCE, AND REAL ESTATE	201	500	20,502,860	788.57
SERVICES	1,090	3,368	107,231,015	612.27
OTHER	48	853	26,524,078	597.98

Note: Items do not necessarily add to totals because of rounding.

TABLE 9. FEDERAL GOVERNMENT EMPLOYMENT AND EARNINGS IN ARKANSAS, 1999

INDUSTRY	AVERAGE EMPLOYMENT	TOTAL EARNINGS	AVERAGE WEEKLY EARNINGS
Manufacturing	928	\$39,602,488	\$820.67
Transportation and Public Utilities	7,299	\$258,796,935	\$681.86
Retail Trade	314	\$4,695,349	\$287.56
Finance, Insurance, and Real Estate Services	204	\$9,668,059	\$911.39
Public Administration	5,017	\$228,283,570	\$875.04
	7,011	\$292,810,492	\$803.16
TOTAL	20,774	\$833,856,893	\$771.91

