

ARKANSAS

COVERED EMPLOYMENT & EARNINGS

SECOND QUARTER 2021



Arkansas Division of
Workforce Services



**COVERED EMPLOYMENT AND EARNINGS
STATE OF ARKANSAS
SECOND QUARTER 2021**

**ASA HUTCHINSON, GOVERNOR
STATE OF ARKANSAS**

**CHARISSE CHILDERS, DIRECTOR
DIVISION OF WORKFORCE SERVICES**

**PUBLISHED BY
LABOR MARKET INFORMATION
BUREAU OF LABOR STATISTICS PROGRAMS
POST OFFICE BOX 2981
LITTLE ROCK, ARKANSAS 72203-2981
SUSAN PRICE, BLS PROGRAMS MANAGER
TELEPHONE (501) 682-3103**

STATE OF ARKANSAS WEBPAGE: <http://www.arkansas.gov>

DIVISION OF WORKFORCE SERVICES WEBPAGE: <http://www.dws.arkansas.gov/>

WEBPAGE FOR LABOR MARKET INFORMATION: <http://www.discover.arkansas.gov>

RELEASED: OCTOBER 2021

TABLE OF CONTENTS

DESCRIPTION OF DATA	PAGE
Description and Classification of Data	1
Definition of Covered Employment and Earnings	2
Significant Developments During Second Quarter 2021	3

LIST OF GRAPHS AND TABLES

Graph 1	Total Covered Employment for Selected Years, Arkansas	7
Graph 2	Total Covered Earnings, by Calendar Quarter for Selected Years, Arkansas	8
Table 1	Quarterly Comparison of Covered Employment and Wages, by Industry	5
Table 2	Total Covered Employment in Arkansas, 2014 – 2021	6
Table 3	Total Covered Earnings, 2014 – 2021	9
Table 4	Total Taxable Earnings, 2014 – 2021	10
Table 5	State Summary – Employment and Total Earnings, by Industry, Second Quarter 2021	11
Table 6	County Summary – Employment and Total Earnings, by Industry, Second Quarter 2021	22
Table 7	Federal Government Employment and Total Earnings in Arkansas, Second Quarter 2021	60
Table 8	Local Workforce Development Area – Employment and Total Earnings, by Industry, Second Quarter 2021	61

EMPLOYMENT AND EARNINGS
UNDER THE ARKANSAS EMPLOYMENT SECURITY LAW
SECOND QUARTER 2021

DESCRIPTION AND CLASSIFICATION OF DATA

This publication contains covered employment and payroll data by industry and county for the Second Quarter 2021 and a record for total covered employment by month, quarterly payroll data, average weekly earnings, and total taxable earnings for 2014 through 2021. These data are compiled from quarterly contributions and wage reports submitted by employers subject to the Arkansas Employment Security Law.

Employment data have been tabulated for each month of the quarter by industry under the **North American Industry Classification System** (NAICS) by state, county, and workforce area. Payroll data represent the total wages paid during the quarter and are classified by industry for the state and by publishable industry groups for each county and workforce area.

Due to industry classification revisions, previously published data will not always be comparable with current data. For this reason, comparisons should not be made between the same industries under different revisions. For more information, visit the NAICS home page at <http://www.census.gov/naics>.

Industry Classification Revisions

- SIC (Standard Industrial Classification) 1987 to NAICS 2002
- NAICS 2002 to NAICS 2007
- NAICS 2007 to NAICS 2012
- NAICS 2012 to NAICS 2018

The tabulation of this data is a joint effort in conjunction with the United States Bureau of Labor Statistics. Data included in this publication are subject to revisions. Revisions are typically reflected in the Annual Covered Employment and Earnings publication.

DEFINITION OF COVERED EMPLOYMENT AND EARNINGS

Covered Employment is the total number of workers employed by establishments subject to the Arkansas Employment Security Law that worked or received pay for the payroll period including the 12th of the month. Earnings include all wages paid to any covered employee by their employer including salaries, bonuses, commissions, fees, fringe benefits, sick pay made directly to employees or dependents, deferred compensation, and reported tips. These wages include both taxable and nontaxable wages. Only the first \$10,000 paid to each worker by an employer in the calendar year is taxable under the Arkansas Employment Security Law.

An Arkansas state unemployment insurance account is required of any entity meeting the definition of an employer. As described by Arkansas Division of Workforce Services Law, the definition of an employer includes, but is not limited to, a sole proprietorship, partnership, corporation, associations, trust, estate, and receiver or trustee in bankruptcy. The entity must employ one or more individuals for ten or more days in a calendar year, whether or not the days are consecutive.

Currently excluded from coverage is employment covered by the Railroad Unemployment Insurance Act, some domestic service workers, employees of small agricultural establishments, self-employed workers, unpaid family workers, insurance and real estate agents paid only on a commission basis, and employees of churches and religious organizations except separately incorporated schools.

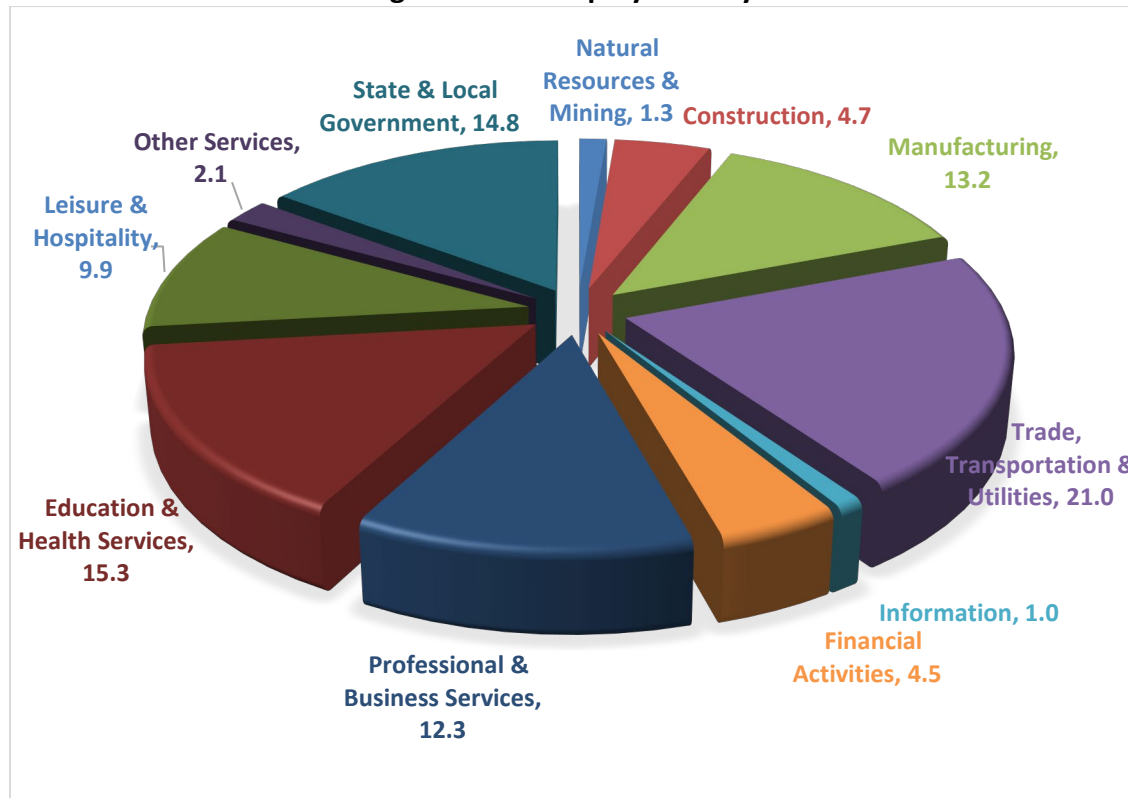
Civilian federal workers are covered by Unemployment Compensation for Federal Employees (UCFE).

SIGNIFICANT DEVELOPMENTS DURING SECOND QUARTER 2021

AVERAGE EMPLOYMENT CHANGES

Covered employment averaged 1,183,515 during the Second Quarter 2021 (refer to Table 1), an increase of 16,962 (1.5%) from the previous quarter and a gain of 67,383 (6.0%) from the average recorded one year ago. The over-the-year comparison is more significant when used as an economic indicator and allows for seasonal factors that appear when comparing over-the-quarter data to be disregarded.

Average Covered Employment by NAICS



EMPLOYMENT CHANGES FROM FIRST QUARTER 2021

Gains were recorded in nine major industry groups. (refer to Table 1). Significant gains occurred in Leisure & Hospitality (9,918), Construction (2,638), Trade, Transportation & Utilities (2,035), and Professional & Business Services (1,434). Small losses occurred in two major industry sectors.

EMPLOYMENT CHANGES FROM SECOND QUARTER 2020 (QUARTER YEAR AGO COMPARISON)

Over-the-year gains were recorded in ten major industry groups. (refer to Table 1). Large increases occurred in Leisure & Hospitality (24,907), Professional & Business Services (13,199), Trade, Transportation & Utilities (11,730), Education & Health Services (5,436), Manufacturing (5,025), Construction (2,928), Other Services (2,478) and Financial Activities (1,167). One major industry sector had a small decrease.

COVERED WAGES

Wages paid to covered workers totaled \$14,844,193,608 for the Second Quarter 2021 (refer to Table 1), for an average weekly wage of \$964.80 (refer to Table 5). Benton County workers recorded the highest average weekly wage (\$1,418.61), and employees in Searcy reported the lowest (\$585.88) (refer to Table 6). Professional & Business Services recorded the highest average weekly wage for the State of Arkansas (\$1,392.55). The Leisure & Hospitality sector recorded the lowest (\$396.77) (refer to Table 5).

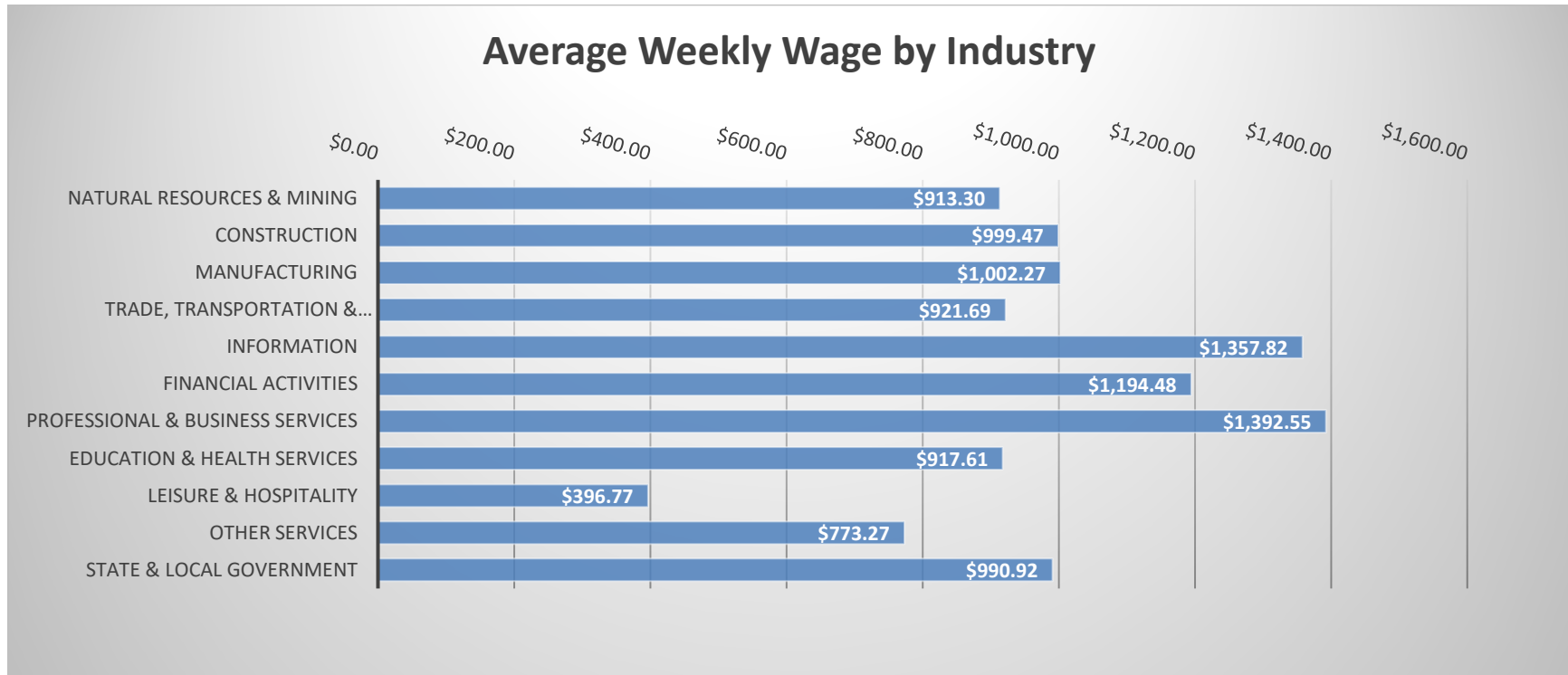


TABLE 1. QUARTERLY COMPARISON OF COVERED EMPLOYMENT AND WAGES, BY INDUSTRY

North American Industry Classification System - Industry Groups	Number of Employing Units	Monthly Employment Average	Percent of Total	Net Change From:		Total Wages Paid Apr - Jun 2021	Percent of Total
				Jan - Mar 2021	Apr - Jun 2020		
TOTAL	94,924	1,183,515	100	16,962	67,383	\$14,844,193,608	100
Natural Resources & Mining	2,568	15,774	1.3	496	-241	187,278,161	1.3
Agriculture, Forestry, Fishing & Hunting	2,154	12,374	1.0	367	-155	134,079,430	0.9
Mining	414	3,400	0.3	129	-86	53,198,731	0.4
Construction	7,601	55,617	4.7	2,638	2,928	722,642,314	4.9
Manufacturing	3,063	156,029	13.2	45	5,025	2,032,977,372	13.7
Trade, Transportation & Utilities	22,174	248,227	21.0	2,035	11,730	2,974,249,397	20.0
Wholesale Trade	7,426	47,251	4.0	601	1,341	876,367,236	5.9
Retail Trade	11,108	138,314	11.7	1,430	9,002	1,156,014,561	7.8
Transportation & Warehousing	3,225	55,175	4.7	323	1,780	765,836,383	5.2
Utilities	415	7,487	0.6	-319	-393	176,031,217	1.2
Information	1,891	11,444	1.0	292	182	202,004,943	1.4
Financial Activities	9,324	52,693	4.5	572	1,167	818,227,670	5.5
Finance & Insurance	5,495	38,542	3.3	90	304	667,150,857	4.5
Real Estate & Rental & Leasing	3,829	14,151	1.2	482	864	151,076,813	1.0
Professional & Business Services	16,534	145,559	12.3	1,434	13,199	2,635,068,619	17.8
Professional & Technical Services	10,500	44,563	3.8	781	2,610	735,762,426	5.0
Management of Companies & Enterprises	546	33,697	2.8	-615	260	1,277,646,334	8.6
Administrative & Waste Services	5,488	67,298	5.7	1,268	10,329	621,659,859	4.2
Education & Health Services	15,450	181,321	15.3	-706	5,436	2,162,979,669	14.6
Educational Services	1,053	12,316	1.0	-46	1,276	129,213,772	0.9
Health Care & Social Assistance	14,397	169,005	14.3	-660	4,160	2,033,765,897	13.7
Leisure & Hospitality	7,643	116,804	9.9	9,918	24,907	602,476,703	4.1
Arts, Entertainment & Recreation	1,094	11,687	1.0	1,879	2,714	76,553,722	0.5
Accommodation & Food Services	6,549	105,116	8.9	8,039	22,193	525,922,981	3.5
Other Services	5,621	24,988	2.1	773	2,478	251,192,099	1.7
State & Local Government	3,055	175,059	14.8	-535	572	2,255,096,661	15.2
Local Government	1,998	110,147	9.3	-20	285	1,426,487,030	9.6
State Government	1,057	64,912	5.5	-515	286	828,609,631	5.6
Nonclassifiable Establishments	0	0	0.0	0	0	0	0.0

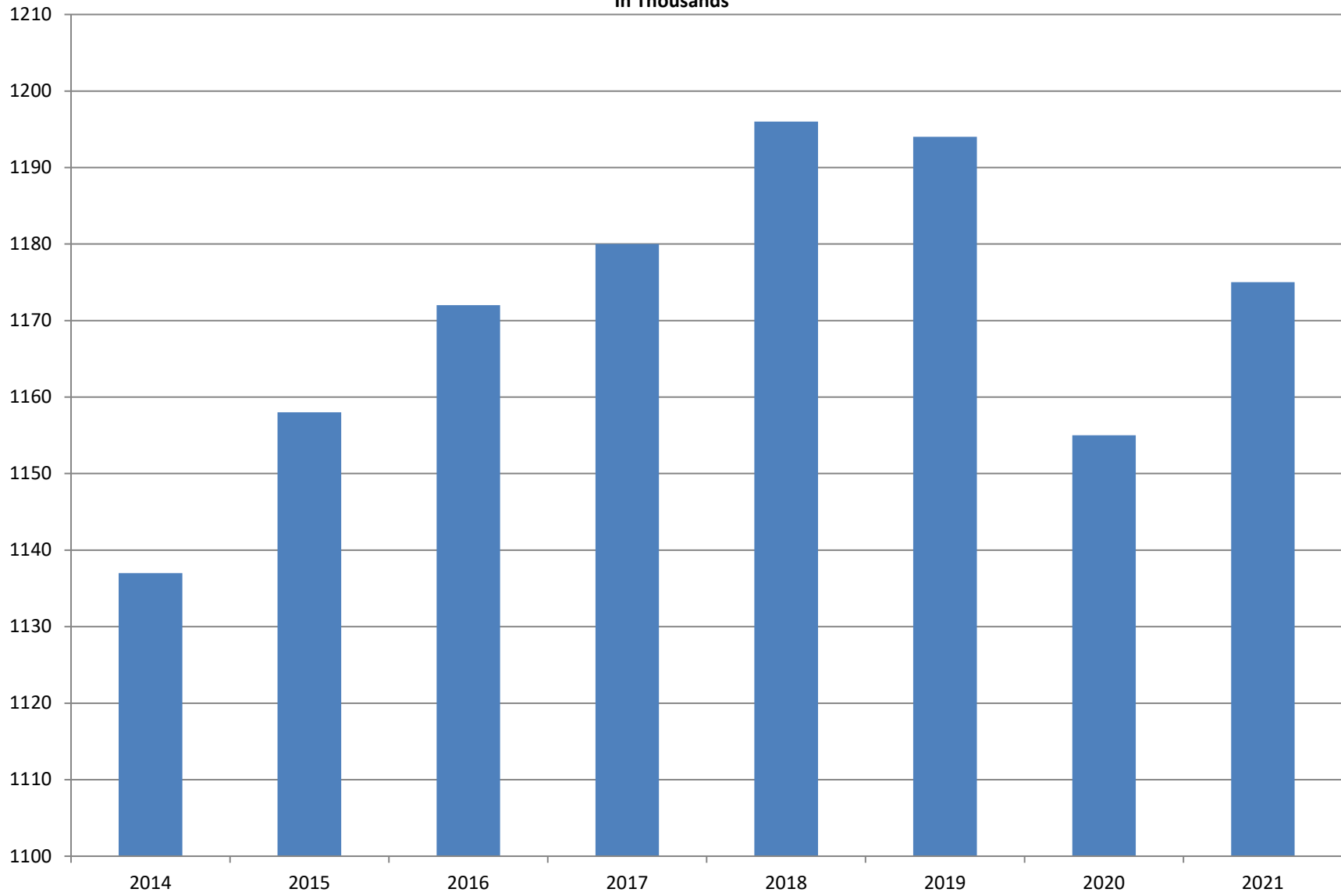
Note: Items do not necessarily add to total because of rounding. Because of industry code changes between years, substantial employment and wage shifts among industries are anticipated.

TABLE 2. TOTAL COVERED EMPLOYMENT IN ARKANSAS

PERIOD	2014	2015	2016	2017	2018	2019	2020	2021
AVERAGE	1,137,486	1,157,634	1,171,503	1,180,337	1,195,781	1,194,322	1,155,490	1,175,034
January	1,114,412	1,135,577	1,152,434	1,161,239	1,173,537	1,186,848	1,195,722	1,162,474
February	1,122,905	1,144,902	1,162,294	1,172,290	1,183,185	1,194,355	1,200,543	1,160,490
March	1,132,106	1,146,413	1,170,837	1,179,686	1,190,199	1,198,481	1,199,702	1,176,694
April	1,140,788	1,158,606	1,178,630	1,185,212	1,194,816	1,204,176	1,090,183	1,181,663
May	1,149,046	1,167,657	1,181,644	1,189,900	1,201,113	1,206,476	1,120,448	1,184,368
June	1,144,876	1,164,607	1,177,506	1,186,326	1,195,468	1,202,260	1,137,765	1,184,514
July	1,096,675	1,119,390	1,132,361	1,137,883	1,168,432	1,155,337	1,099,733	
August	1,125,162	1,148,502	1,160,743	1,168,802	1,200,284	1,185,213	1,137,611	
September	1,150,545	1,173,776	1,185,510	1,193,845	1,222,012	1,202,177	1,157,279	
October	1,153,684	1,173,953	1,185,022	1,194,194	1,205,161	1,209,366	1,170,351	
November	1,158,579	1,177,717	1,186,046	1,197,650	1,208,638	1,194,675	1,177,588	
December	1,161,056	1,180,513	1,185,009	1,197,013	1,206,531	1,192,501	1,178,954	

AVERAGE TOTAL COVERED EMPLOYMENT

In Thousands



TOTAL COVERED EARNINGS BY CALENDAR YEAR

In Millions

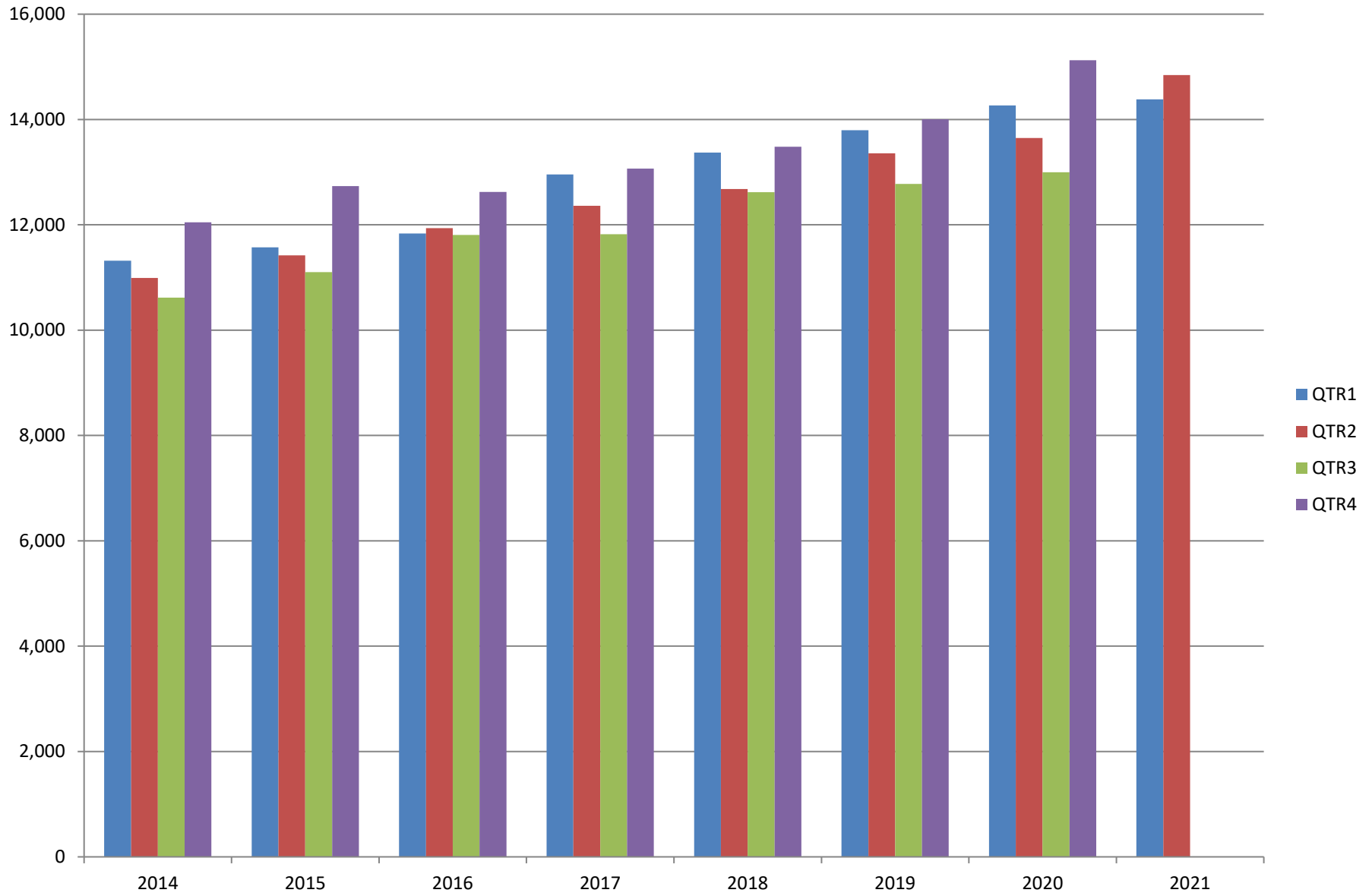


TABLE 3. TOTAL COVERED EARNINGS 2014- 2020

PERIOD	2014	2015	2016	2017
TOTAL	\$44,980,520,034	\$46,836,352,793	\$48,207,277,530	\$50,207,202,141
January - March	11,321,422,241	11,575,046,688	11,836,255,664	12,955,088,347
April - June	10,991,760,061	11,419,363,330	11,935,722,186	12,363,027,711
July - September	10,619,889,280	11,104,443,452	11,809,460,297	11,823,324,966
October - December	12,047,448,452	12,737,499,323	12,625,839,383	13,065,761,117
Average Weekly Earnings	\$760.46	\$778.05	\$791.34	\$818.01

PERIOD	2018	2019	2020	2021
TOTAL	\$52,159,789,393	\$53,931,077,907	\$56,042,071,520	\$29,227,132,570
January - March	13,372,730,974	13,795,046,820	14,268,302,306	14,382,938,962
April - June	12,682,491,819	13,356,848,831	13,651,304,330	14,844,193,608
July - September	12,619,347,460	12,776,218,481	12,998,944,628	
October - December	13,485,219,140	14,002,963,775	15,123,520,256	
Average Weekly Earnings	\$838.84	\$868.39	\$932.71	\$956.67

TABLE 4. TOTAL TAXABLE EARNINGS, 2014 - 2021

PERIOD	2014	2015	2016	2017
TOTAL	11,919,662,224	12,258,632,610	12,511,938,047	12,744,039,136
January - March	6,288,682,396	6,378,966,662	6,595,351,454	6,958,706,950
April - June	2,831,013,392	2,915,293,283	3,003,077,908	2,908,226,426
July - September	1,552,243,963	1,640,978,599	1,651,582,584	1,576,968,648
October - December	1,247,722,473	1,323,394,066	1,261,926,101	1,300,137,112

PERIOD	2018	2019	2020	2021
TOTAL	11,335,932,409	11,498,854,755	8,525,235,479	9,109,792,765
January - March	6,577,871,657	6,737,833,125	5,589,526,770	6,792,133,353
April - June	2,278,450,975	2,283,514,220	1,172,837,688	2,317,659,412
July - September	1,328,868,479	1,327,818,133	864,579,237	
October - December	1,150,741,298	1,149,689,277	898,291,784	

TABLE 5. STATEWIDE SUMMARY

North American Industry Classification System - Industry Groups		Number of Employing Units	Employment			Total Earnings Apr - Jun 2021	Average Weekly Earnings
			Apr	May	Jun		
TOTAL, ALL INDUSTRIES		94,924	1,181,663	1,184,368	1,184,514	\$14,844,193,608	\$964.80
NATURAL RESOURCES & MINING		2,568	15,702	15,739	15,880	\$187,278,161	\$913.30
11	AGRICULTURE, FORESTRY, FISHING & HUNTING	2,154	12,343	12,336	12,443	\$134,079,430	\$833.51
111	CROP PRODUCTION	961	3,948	3,943	3,996	\$35,280,380	\$684.92
1111	Oilseed & Grain Farming	705	2,480	2,550	2,598	22,316,007	675.12
1112	Vegetable & Melon Farming	31	113	113	138	1,278,696	810.67
1113	Fruit & Tree Nut Farming	15	43	47	64	422,884	633.69
1114	Greenhouse & Nursery Production	44	685	602	578	5,707,800	706.27
1119	Other Crop Farming	166	627	631	618	5,554,993	683.33
112	ANIMAL PRODUCTION & AQUACULTURE	360	3,251	3,234	3,255	\$40,733,319	\$965.09
1121	Cattle Ranching & Farming	137	444	437	438	3,349,155	585.96
1122	Hog & Pig Farming	11	134	130	132	1,748,593	1,018.99
1123	Poultry & Egg Production	143	2,258	2,253	2,268	31,370,327	1,067.90
1125	Animal Aquaculture	39	340	340	338	3,742,838	848.46
	Other	30	75	74	79	522,406	528.75
115	SUPPORT ACTIVITIES FOR AGRICULTURE & FORESTRY	415	2,990	2,987	2,998	\$33,169,531	\$852.87
1151	Support Activities for Crop Production	283	1,414	1,448	1,497	17,864,317	945.75
1152	Support Activities for Animal Production	61	575	579	591	5,119,219	677.00
1153	Support Activities for Forestry	71	1,001	960	910	10,185,995	818.74
	OTHER	418	2,154	2,172	2,194	\$24,896,200	\$881.18
21	MINING	414	3,359	3,403	3,437	\$53,198,731	\$1,203.71
211	OIL & GAS EXTRACTION	67	430	440	441	\$8,384,710	\$1,475.92
212	MINING (EXCEPT OIL & GAS)	103	1,843	1,876	1,894	\$28,338,967	\$1,165.11
213	SUPPORT ACTIVITES FOR MINING	244	1,086	1,087	1,102	\$16,475,054	\$1,160.90

TABLE 5. STATEWIDE SUMMARY

North American Industry Classification System - Industry Groups		Number of Employing Units	Employment			Total Earnings Apr - Jun 2021	Average Weekly Earnings
			Apr	May	Jun		
CONSTRUCTION		7,601	55,456	55,463	55,933	\$722,642,314	\$999.47
236	CONSTRUCTION OF BUILDINGS	1,984	10,837	10,831	10,794	\$155,618,693	\$1,106.28
2361	Residential Building Construction	1,364	4,058	4,083	4,101	48,656,967	917.21
2362	Nonresidential Building Construction	620	6,779	6,748	6,693	106,961,726	1,220.75
237	HEAVY & CIVIL ENGINEERING CONSTRUCTION	779	9,160	8,971	9,137	\$128,350,483	\$1,086.23
2371	Utility System Construction	460	5,135	4,848	4,936	70,223,614	1,086.23
2372	Land Subdivision	46	93	90	85	932,829	803.24
2373	Highway, Street & Bridge Construction	174	3,154	3,241	3,322	47,423,801	1,126.27
2379	Other Heavy Construction	99	778	792	794	9,770,239	953.75
238	SPECIALTY TRADE CONTRACTORS	4,838	35,459	35,661	36,002	\$438,673,138	\$945.02
2381	Building Foundation & Exterior Contractors	916	6,052	6,059	6,026	72,868,929	927.16
2382	Building Equipment Contractors	2,373	20,019	20,248	20,546	261,446,523	992.12
2383	Building Finishing Contractors	792	3,932	3,953	3,963	44,217,717	861.25
2389	Other Specialty Trade Contractors	757	5,456	5,401	5,467	60,139,969	850.19
MANUFACTURING		3,063	155,822	155,538	156,727	2,032,977,372	\$1,002.27
311	FOOD MANUFACTURING	316	48,488	48,085	48,511	\$528,309,820	\$840.32
3111	Animal Food Manufacturing	43	1,959	1,961	1,995	29,786,949	1,162.12
3112	Grain & Oilseed Milling	32	2,795	2,775	2,801	35,259,914	972.03
3114	Fruit, Vegetable & Specialty Food	16	4,448	4,410	4,475	58,463,288	1,011.89
3115	Dairy Product Manufacturing	10	592	590	589	6,647,243	866.17
3116	Animal Slaughtering & Processing	92	32,296	31,988	32,277	327,299,426	782.21
3118	Bakeries & Tortilla Manufacturing	84	4,056	4,071	4,080	42,907,247	811.15
3119	Other Food Manufacturing	30	2,312	2,259	2,262	27,695,600	935.36
	Other	9	30	31	32	250,153	620.73
312	BEVERAGE & TOBACCO PRODUCT MANUFACTURING	74	1,569	1,609	1,700	\$20,087,828	\$950.32
313	TEXTILE MILLS	15	130	134	139	\$1,928,204	\$1,104.14
314	TEXTILE PRODUCT MILLS	42	756	758	744	\$10,099,648	\$1,032.19
3141	Textile Furnishing Mills	7	19	19	19	115,041	465.75
3149	Other Textile Product Mills	35	737	739	725	9,984,607	1,046.86
315	APPAREL MANUFACTURING	22	623	646	651	\$5,114,576	\$614.73
3151	Apparel Knitting Mills	5	355	360	358	2,906,572	625.11
	Other	17	268	286	293	2,208,004	601.58

TABLE 5. STATEWIDE SUMMARY

North American Industry Classification System - Industry Groups		Number of Employing Units	Employment			Total Earnings	Average Weekly Earnings
			Apr	May	Jun	Apr - Jun 2021	
316	LEATHER & ALLIED PRODUCT MANUFACTURING	11	925	955	931	\$7,073,063	\$580.66
3162	Footwear Manufacturing	3	720	743	724	4,931,551	\$520.37
3169	Other Leather & Allied Product Manufacturing	8	205	212	207	2,141,512	\$791.98
321	WOOD PRODUCT MANUFACTURING	306	10,073	10,074	10,160	\$124,879,308	\$950.88
3211	Sawmills & Wood Preservation	134	4,827	4,860	4,889	65,329,194	1,034.30
3212	Veneer & Engineered Wood Products	37	2,082	2,059	2,066	26,982,044	1,003.16
3219	Other Wood Product Manufacturing	135	3,164	3,155	3,205	32,568,070	789.13
322	PAPER MANUFACTURING	73	8,596	8,614	8,586	\$140,461,392	\$1,256.56
3221	Pulp, Paper & Paperboard Mills	15	3,152	3,145	3,160	65,203,570	1,591.09
3222	Converted Paper Product Manufacturing	58	5,444	5,469	5,426	75,257,822	1,062.93
323	PRINTING & RELATED SUPPORT ACTIVITIES	253	3,036	2,930	2,926	\$32,788,274	\$850.94
324	PETROLEUM & COAL PRODUCTS MANUFACTURING	23	1,138	1,129	1,157	\$22,254,129	\$1,499.87
325	CHEMICAL MANUFACTURING	143	5,463	5,430	5,424	\$93,367,276	\$1,320.48
3251	Basic Chemical Manufacturing	31	1,864	1,839	1,857	38,251,659	1,587.64
3252	Resin, Rubber & Artificial Fibers	12	405	403	399	6,862,873	1,312.13
3253	Agricultural Chemical Manufacturing	19	478	474	474	9,272,587	1,500.58
3254	Pharmaceutical & Medicine Manufacturing	35	482	484	472	7,454,808	1,196.34
3255	Paint, Coating & Adhesive Manufacturing	10	210	207	210	3,006,450	1,106.53
3256	Soap, Cleaning Compound, & Toilet Preparation Manufacturing	15	1,417	1,407	1,393	18,689,211	1,022.74
3259	Other Chemical Preparation Manufacturing	21	607	616	619	9,829,688	1,231.48
326	PLASTICS & RUBBER PRODUCTS MANUFACTURING	124	10,588	10,579	10,629	\$137,425,860	\$997.41
3261	Plastics Product Manufacturing	96	6,393	6,382	6,408	77,756,650	935.40
3262	Rubber Product Manufacturing	28	4,195	4,197	4,221	59,669,210	1,091.72
327	NONMETALLIC MINERAL PRODUCT MANUFACTURING	220	3,527	3,523	3,536	\$46,141,635	\$1,005.86
3271	Clay Product & Refractory Manufacturing	11	462	469	470	6,114,927	1,007.24
3272	Glass & Glass Product Manufacturing	7	370	365	374	5,158,801	1,073.48
3273	Cement & Concrete Product Manufacturing	164	2,095	2,085	2,087	26,597,667	979.40
3274	Lime & Gypsum Product Manufacturing	3	274	278	280	4,618,715	1,281.08
3279	Other Nonmetallic Mineral Products Manufacturing	35	326	326	325	3,651,525	862.50
331	PRIMARY METAL MANUFACTURING	70	7,786	7,763	7,834	\$157,455,173	\$1,553.94
3311	Iron & Steel Mills & Ferroalloys	12	3,643	3,659	3,714	101,092,327	2,117.74
3312	Purchased Steel Product Manufacturing	21	1,655	1,615	1,615	24,404,235	1,152.87
3313	Alumina & Aluminum Production	14	876	886	884	12,946,511	1,129.12
3314	Other Nonferrous Metal Production	5	246	247	257	3,414,277	1,050.55
3315	Foundries	18	1,366	1,356	1,364	15,597,823	880.93

TABLE 5. STATEWIDE SUMMARY

North American Industry Classification System - Industry Groups		Number of Employing Units	Employment			Total Earnings	Average Weekly Earnings
			Apr	May	Jun	Apr - Jun 2021	
332	FABRICATED METAL PRODUCT MANUFACTURING	526	14,847	14,886	15,109	\$206,287,751	\$1,061.61
3321	Forging & Stamping	12	415	422	443	5,517,941	994.82
3322	Cutlery & Hand Tool Manufacturing	14	599	609	660	8,295,905	1,024.86
3323	Architectural & Structural Metals	159	4,732	4,737	4,771	68,314,518	1,107.08
3324	Boilers, Tanks & Shipping Containers	15	594	574	559	8,221,605	1,098.61
3325	Hardware Manufacturing	5	234	236	243	3,607,489	1,167.60
3326	Spring & Wire Product Manufacturing	9	314	314	313	4,170,302	1,022.72
3327	Machine Shops & Threaded Products	201	2,112	2,102	2,125	24,903,434	906.60
3328	Coating, Engraving & Heat Treating Metals	40	545	546	562	6,745,572	941.72
3329	Other Fabricated Metal Product Manufacturing	71	5,302	5,346	5,433	76,510,985	1,097.97
333	MACHINERY MANUFACTURING	222	11,198	11,210	11,473	\$154,403,453	\$1,051.67
3331	Agriculture, Construction & Mining Machinery	35	2,926	2,943	3,022	35,663,832	925.67
3332	Industrial Machinery Manufacturing	27	594	596	628	11,350,954	1,440.84
3333	Commercial & Service Industry Machinery	22	783	791	793	10,726,357	1,045.76
3334	HVAC & Commercial Refrigeration Equipment	24	2,459	2,447	2,532	33,328,674	1,034.05
3335	Metalworking Machinery Manufacturing	54	1,076	1,071	1,077	12,992,843	930.01
3336	Turbine & Power Transmission Equipment Manufacturing	6	257	243	241	3,316,953	1,033.00
3339	Other General Purpose Machinery Manufacturing	54	3,103	3,119	3,180	47,023,840	1,154.19
334	COMPUTER & ELECTRONIC PRODUCT MANUFACTURING	53	1,739	1,784	1,730	\$24,454,732	\$1,074.32
3344	Semiconductors & Electronic Components	26	1,263	1,305	1,262	17,477,897	1,053.10
3345	Navigational, Measuring, Electromedical, & Control Instr, Mfg Other	20 7	313 163	313 166	298 170	4,895,506 2,081,329	1,222.65 962.54
335	ELECTRICAL EQUIPMENT & APPLIANCES	58	4,154	4,155	4,222	\$61,425,725	\$1,131.21
3351	Electric Lighting Equipment Manufacturing	11	250	248	240	3,073,918	\$961.20
3352	Household Appliance Manufacturing	6	88	85	86	940,833	\$838.28
3353	Electrical Equipment Manufacturing	23	2,601	2,599	2,653	39,726,624	1,167.41
3359	Other Electrical Equipment & Component Manufacturing	18	1,215	1,223	1,243	17,684,350	1,108.67
336	TRANSPORTATION EQUIPMENT MANUFACTURING	143	14,162	14,234	14,156	\$183,237,777	\$993.74
3362	Motor Vehicle Body & Trailer Manufacturing	29	2,139	2,140	2,136	23,419,856	842.49
3363	Motor Vehicle Parts Manufacturing	45	4,682	4,771	4,664	59,990,761	980.66
3364	Aerospace Product & Parts Manufacturing	30	4,068	4,061	4,092	64,203,417	1,212.35
3366	Ship & Boat Building Other	22 17	2,054 1,219	2,048 1,214	2,018 1,246	20,384,840 15,238,903	768.66 955.88
337	FURNITURE & RELATED PRODUCT MANUFACTURING	160	3,454	3,456	3,462	\$36,223,122	\$805.94
3371	Household & Institutional Furniture Other	127 33	2,866 588	2,863 593	2,873 589	29,588,922 6,634,200	793.79 864.95
339	MISCELLANEOUS MANUFACTURING	209	3,570	3,584	3,647	\$39,558,626	\$845.19
3391	Medical Equipment & Supplies Manufacturing	92	1,750	1,756	1,775	20,876,611	912.27
3399	Other Miscellaneous Manufacturing	117	1,820	1,828	1,872	18,682,015	781.02

TABLE 5. STATEWIDE SUMMARY

North American Industry Classification System - Industry Groups		Number of Employing Units	Employment			Total Earnings Apr - Jun 2021	Average Weekly Earnings
			Apr	May	Jun		
TRADE, TRANSPORTATION & UTILITIES		22,174	247,023	248,683	248,976	\$2,974,249,397	\$921.69
42	WHOLESALE TRADE	7,426	47,117	47,222	47,415	\$876,367,236	\$1,426.69
423	MERCHANT WHOLESALERS, DURABLE GOODS	3,612	24,612	24,716	24,851	\$430,337,369	\$1,338.77
4231	Motor Vehicle & Part Merchant Wholesalers	309	3,123	3,176	3,177	50,205,925	1,222.67
4232	Furniture & Furnishings Merchant Wholesalers	122	523	516	534	11,140,927	1,634.45
4233	Lumber & Supply Merchant Wholesalers	271	1,616	1,614	1,638	23,464,046	1,112.32
4234	Commercial Goods Merchant Wholesalers	758	3,486	3,445	3,428	77,675,563	1,730.39
4235	Metal & Mineral Merchant Wholesalers	130	1,035	1,033	1,035	16,973,297	1,262.30
4236	Appliances & Electronics Goods Merchant Wholesalers	380	2,739	2,768	2,816	53,770,700	1,490.88
4237	Hardware & Plumbing Merchant Wholesalers	324	2,845	2,850	2,876	46,870,369	1,261.96
4238	Machinery & Supply Merchant Wholesalers	985	7,360	7,404	7,433	118,535,307	1,232.34
4239	Miscellaneous Durable Goods Merchant Wholesalers	333	1,885	1,910	1,914	31,701,235	1,281.43
424	MERCHANT WHOLESALERS, NONDURABLE GOODS	2,201	18,184	18,164	18,252	\$346,860,952	\$1,466.02
4241	Paper & Paper Product Merchant Wholesalers	127	1,357	1,321	1,319	24,593,519	1,419.92
4242	Druggist' Goods Merchant Wholesalers	308	1,728	1,679	1,701	50,476,744	2,280.44
4243	Apparel & Piece Goods Merchant Wholesalers	128	784	770	771	12,415,564	1,232.31
4244	Grocery Product Merchant Wholesalers	594	5,918	5,940	5,910	125,103,485	1,624.83
4245	Farm Product & Raw Material Merchant Wholesalers	86	748	766	788	7,437,567	745.60
4246	Chemical Merchant Wholesalers	231	1,149	1,154	1,139	27,931,491	1,872.67
4247	Petroleum Merchant Wholesalers	160	924	927	932	14,317,879	1,187.25
4248	Alcoholic Beverage Merchant Wholesalers	80	1,622	1,629	1,666	27,439,957	1,287.84
4249	Miscellaneous Nondurable Goods Merchant Wholesaler	487	3,954	3,978	4,026	57,144,746	1,102.80
425	ELECTRONIC MARKETS & AGENTS & BROKERS	1,613	4,321	4,342	4,312	\$99,168,915	\$1,763.79
44 - 45	RETAIL TRADE	11,108	137,470	138,881	138,592	\$1,156,014,561	\$642.91
441	MOTOR VEHICLE & PARTS DEALERS	1,555	19,101	19,249	19,321	\$300,731,243	\$1,203.37
4411	Automobile Dealers	619	11,441	11,470	11,491	217,722,422	1,460.49
4412	Other Motor Vehicle Dealers	180	1,812	1,858	1,890	29,289,921	1,215.69
4413	Automotive Parts, Accessories & Tire Stores	756	5,848	5,921	5,940	53,718,900	700.02
442	FURNITURE & HOME FURNISHINGS STORES	479	3,384	3,429	3,432	\$36,404,170	\$820.01
4421	Furniture Stores	270	1,922	1,949	1,959	24,026,186	951.03
4422	Home Furnishings Stores	209	1,462	1,480	1,473	12,377,984	646.99
443	ELECTRONICS & APPLIANCE STORES	361	3,003	3,003	2,968	\$30,568,144	\$786.07
444	BUILDING MATERIAL & GARDEN SUPPLY STORES	853	13,612	13,773	13,684	\$107,072,363	\$601.65
4441	Building Material & Supplies Dealers	612	11,119	11,180	11,143	90,435,844	624.06
4442	Lawn & Garden Equipment & Supplies Stores	241	2,493	2,593	2,541	16,636,519	503.37

TABLE 5. STATEWIDE SUMMARY

North American Industry Classification System - Industry Groups		Number of Employing Units	Employment			Total Earnings Apr - Jun 2021	Average Weekly Earnings
			Apr	May	Jun		
445	FOOD & BEVERAGE STORES	1,088	20,163	20,170	20,160	\$125,806,304	\$479.93
4451	Grocery Stores	575	17,486	17,439	17,423	106,712,760	470.43
4452	Specialty Food Stores	148	737	781	790	7,414,185	741.32
4453	Beer, Wine & Liquor Stores	365	1,940	1,950	1,947	11,679,359	461.75
446	HEALTH & PERSONAL CARE STORES	1,003	8,613	8,612	8,609	\$85,893,896	\$767.27
447	GASOLINE STATIONS	1,628	12,536	12,769	13,052	\$71,251,888	\$428.68
44711	Gasoline Stations with Convenience Stores	1,537	11,542	11,757	12,046	65,097,127	425.02
44719	Other Gasoline Stations	91	994	1,012	1,006	6,154,761	471.56
448	CLOTHING & CLOTHING ACCESSORIES STORES	922	6,459	6,559	6,546	\$38,202,296	\$450.62
4481	Clothing Stores	705	5,004	5,062	5,066	25,486,026	388.67
4482	Shoe Stores	99	872	889	891	4,906,398	426.94
4483	Jewelry, Luggage & Leather Goods Stores	118	583	608	589	7,809,872	1,012.52
451	SPORTING GOODS, HOBBY, BOOK & MUSIC STORES	445	4,027	4,010	4,080	\$25,297,183	\$481.79
4511	Sporting Goods & Musical Instrument Stores	386	3,677	3,655	3,732	23,532,403	490.83
4512	Book, Periodical & Music Stores	59	350	355	348	1,764,780	386.76
452	GENERAL MERCHANDISE STORES	962	37,162	37,730	37,134	\$259,184,083	\$533.91
4522	Department Stores	99	5,852	5,958	6,077	36,955,304	476.78
4523	Gen. Merchandise Stores, Warehouse clubs & Supercenters	863	31,310	31,772	31,057	222,228,779	544.76
453	MISCELLANEOUS STORE RETAILERS	1,214	7,167	7,300	7,350	\$49,399,453	\$522.52
4531	Florists	162	585	629	611	3,453,325	436.67
4532	Office Supplies, Stationery & Gift Stores	228	1,158	1,200	1,214	7,875,476	508.80
4533	Used Merchandise Stores	256	2,058	2,036	2,064	11,456,058	429.31
4539	Other Miscellaneous Store Retailers	568	3,366	3,435	3,461	26,614,594	598.50
454	NONSTORE RETAILERS	598	2,243	2,277	2,256	\$26,203,538	\$892.41
4541	Electronic Shopping & Mail-Order Houses	369	1,201	1,231	1,290	14,098,380	874.12
4542	Vending Machine Operators	52	354	358	276	3,527,847	824.01
4543	Direct Selling Establishments	177	688	688	690	8,577,311	958.07
48 - 49	TRANSPORTATION & WAREHOUSING	3,225	54,981	55,099	55,444	765,836,383	\$1,067.71
481	AIR TRANSPORTATION	44	637	669	701	\$7,187,187	\$826.40
4811	Scheduled Air Transportation	16	532	560	593	5,205,790	712.96
4812	Nonshceduled Air Transportation	28	105	109	108	1,981,397	1,420.02
484	TRUCK TRANSPORTATION	2,063	31,392	31,325	31,418	\$479,431,203	\$1,175.31
4841	General Freight Trucking	1,277	25,482	25,400	25,507	403,904,369	1,220.18
4842	Specialized Freight Trucking	786	5,910	5,925	5,911	75,526,834	982.15

TABLE 5. STATEWIDE SUMMARY

North American Industry Classification System - Industry Groups		Number of Employing Units	Employment			Total Earnings	Average Weekly Earnings
			Apr	May	Jun	Apr - Jun 2021	
485	TRANSIT & GROUND PASSENGER TRANSPORTATION	125	1,301	1,301	1,224	\$9,372,313	\$565.30
4853	Taxi & Limousine Service	33	220	217	231	1,610,881	556.50
4854	School & Employee Bus Transportation	18	297	293	178	1,588,413	477.29
4859	Other Ground Passenger Transportation	63	626	636	660	4,743,253	569.51
	Other	11	158	155	155	1,429,766	705.01
486	PIPELINE TRANSPORTATION	37	538	531	539	\$12,525,693	\$1,797.60
488	SUPPORT ACTIVITIES FOR TRANSPORTATION	521	5,492	5,512	5,541	\$77,837,065	\$1,085.67
4881	Support Activities for Air Transportation	122	1,108	1,106	1,095	12,769,347	890.53
4882	Support Activities for Rail Transportation	38	588	582	584	8,103,613	1,066.17
4883	Support Activities for Water Transportation	19	471	476	484	6,524,244	1,052.13
4884	Support Activities for Road Transportation	155	888	894	898	9,271,219	798.33
4885	Freight Transportation Arrangement	177	2,331	2,355	2,375	40,203,195	1,313.93
4889	Other Support Activities for Transportation	10	106	99	105	965,447	718.70
493	WAREHOUSING & STORAGE	205	9,598	9,648	9,795	\$114,454,001	\$909.49
	OTHER	230	6,023	6,113	6,226	65,028,921	\$817.27
22	UTILITIES	415	7,455	7,481	7,525	\$176,031,217	\$1,808.58
2211	Power Generation & Supply	176	5,548	5,588	5,636	148,934,284	2,049.22
2212	Natural Gas Distribution	58	957	959	955	17,093,516	1,373.97
2213	Water, Sewage & Other Systems	181	950	934	934	10,003,417	819.19
	INFORMATION	1,891	11,315	11,440	11,577	\$202,004,943	\$1,357.82
511	PUBLISHING INDUSTRIES, EXCEPT INTERNET	250	1,947	1,919	1,879	\$21,846,191	\$877.53
5111	Newspaper, Book & Directory Publishers	173	1,526	1,500	1,496	14,385,859	734.15
5112	Software Publishers	77	421	419	383	7,460,332	1,407.70
512	MOTION PICTURE & SOUND RECORDING INDUSTRY	169	576	694	808	\$5,013,068	\$556.72
5121	Motion Picture & Video Industries	150	549	667	780	4,640,043	536.46
5122	Sound Recording Industries	19	27	27	28	373,025	1,049.79
515	BROADCASTING, EXCEPT INTERNET	121	1,380	1,376	1,363	\$16,521,026	\$925.60

TABLE 5. STATEWIDE SUMMARY

North American Industry Classification System - Industry Groups		Number of Employing Units	Employment			Total Earnings	Average Weekly Earnings
			Apr	May	Jun	Apr - Jun 2021	
517	TELECOMMUNICATIONS	370	3,304	3,317	3,327	\$57,773,526	\$1,340.20
5173	Telecommunications Resellers	271	2,863	2,873	2,876	49,527,078	1,327.14
5174	Satellite Telecommunications Carriers	4	7	7	6	72,346	834.76
5179	Other Telecommunications	95	434	437	445	8,174,102	1,433.38
518	DATA PROCESSING, HOSTING & RELATED SERVICES	831	3,668	3,692	3,751	\$94,159,097	\$1,955.63
519	OTHER INFORMATION SERVICES	150	440	442	449	\$6,692,035	\$1,160.27
FINANCIAL ACTIVITIES		9,324	52,619	52,759	52,701	\$818,227,670	\$1,194.48
52	FINANCE & INSURANCE	5,495	38,547	38,560	38,520	\$667,150,857	\$1,331.50
522	CREDIT INTERMEDIATION & RELATED ACTIVITIES	2,111	19,667	19,662	19,663	\$316,045,271	\$1,236.33
5221	Depository Credit Intermediation	1,454	16,230	16,264	16,257	239,142,469	1,132.01
5222	Nondepository Credit Intermediation	444	2,218	2,180	2,192	54,257,415	1,899.99
5223	Activities Related to Credit Intermediation	213	1,219	1,218	1,214	22,645,387	1,431.35
523	FINANCIAL INVESTMENT & RELATED ACTIVITIES	842	3,067	3,050	3,077	\$102,208,545	\$2,565.43
5231	Security & Commodity Contracts Intermediation & Brokerage	354	1,994	1,990	1,987	79,508,021	3,072.85
5239	Other Financial Investment Activities	488	1,073	1,060	1,090	22,700,524	1,625.37
524	INSURANCE CARRIERS & RELATED ACTIVITIES	2,442	15,746	15,756	15,711	\$246,478,679	\$1,204.75
5241	Insurance Carriers	324	7,254	7,244	7,256	119,685,522	1,269.64
5242	Insurance Agencies and Brokerages	2,118	8,492	8,512	8,455	126,793,157	1,149.30
	OTHER	100	67	92	69	\$2,418,362	\$2,447.73
53	REAL ESTATE & RENTAL & LEASING	3,829	14,072	14,199	14,181	\$151,076,813	\$821.25
531	REAL ESTATE	3,215	10,250	10,319	10,237	\$104,907,732	\$785.87
5311	Lessors of Real Estate	1,138	4,147	4,130	4,140	37,968,566	705.64
5312	Offices of Real Estate Agents & Brokers	1,095	2,200	2,230	2,211	24,872,075	864.28
5313	Activities Related to Real Estate	982	3,903	3,959	3,886	42,067,091	826.34
532	RENTAL & LEASING SERVICES	593	3,767	3,822	3,890	\$45,230,711	\$909.30
5321	Automotive Equipment Rental & Leasing	122	916	906	904	8,578,460	726.21
5322	Consumer Goods Rental	306	1,660	1,719	1,783	16,251,341	726.52
5323	General Rental Centers	28	193	192	190	2,396,955	961.99
5324	Machinery & Equipment Rental & Leasing	137	998	1,005	1,013	18,003,955	1,377.57
533	LESSORS OF NONFINANCIAL INTANGIBLE ASSETS	21	55	58	54	\$938,370	\$1,296.69

TABLE 5. STATEWIDE SUMMARY

North American Industry Classification System - Industry Groups		Number of Employing Units	Employment			Total Earnings Apr - Jun 2021	Average Weekly Earnings
			Apr	May	Jun		
PROFESSIONAL & BUSINESS SERVICES		16,534	146,076	146,096	144,504	\$2,635,068,619	\$1,392.55
54	PROFESSIONAL & TECHNICAL SERVICES	10,500	44,800	44,609	44,281	\$735,762,426	\$1,270.04
5411	Legal Services	1,747	6,045	6,046	6,038	81,342,959	1,035.44
5412	Accounting & Bookkeeping Services	1,447	6,647	6,280	5,891	80,193,288	983.43
5413	Architectural & Engineering Services	1,137	6,666	6,747	6,813	111,125,824	1,267.89
5414	Specialized Design Services	193	407	429	437	5,472,311	992.02
5415	Computer Systems Design & Related Services	2,336	9,028	8,925	8,672	204,279,766	1,770.57
5416	Management & Technical Consulting Services	2,400	6,576	6,646	6,776	131,735,168	1,520.17
5417	Scientific Research & Development Services	190	959	965	985	16,617,752	1,318.28
5418	Advertising & Related Services	434	3,993	4,048	4,058	53,558,504	1,021.54
5419	Other Professional & Technical Services	616	4,479	4,523	4,611	51,436,854	871.96
55	MANAGEMENT OF COMPANIES & ENTERPRISES	546	33,585	33,650	33,856	\$1,277,646,334	\$2,916.59
56	ADMINISTRATIVE & WASTE SERVICES	5,488	67,691	67,837	66,367	\$621,659,859	\$710.57
561	ADMINISTRATIVE & SUPPORT SERVICES	5,127	63,865	64,004	62,492	\$569,044,486	\$689.84
5611	Office Administrative Services	756	3,601	3,602	3,565	68,567,201	1,469.47
5612	Facilities Support Services	68	868	773	762	9,294,116	892.55
5613	Employment Services	1,435	28,349	28,545	27,372	227,238,665	622.31
5614	Business Support Services	448	8,805	8,580	8,664	91,307,493	808.90
5615	Travel Arrangement & Reservation Services	115	217	231	237	2,748,561	925.96
5616	Investigation & Security Services	328	4,857	4,775	4,657	39,719,255	641.47
5617	Services to Buildings & Dwellings	1,780	15,978	16,294	16,032	117,607,060	561.86
5619	Other Support Services	197	1,190	1,204	1,203	12,562,135	805.94
562	WASTE MANAGEMENT & REMEDIATION SERVICES	361	3,826	3,833	3,875	\$52,615,373	\$1,052.71
5621	Waste Collection Services	140	1,334	1,348	1,359	16,571,386	946.34
5622	Waste Treatment & Disposal Services	45	1,076	1,058	1,075	17,996,058	1,294.15
5629	Remediation & Other Waste Services	176	1,416	1,427	1,441	18,047,929	972.20
EDUCATION & HEALTH SERVICES		15,450	181,648	181,114	181,202	2,162,979,669	\$917.61
61	EDUCATIONAL SERVICES	1,053	12,469	12,256	12,224	129,213,772	\$807.02
6111	Elementary & Secondary Schools	109	4,759	4,770	4,525	49,988,576	820.82
6113	Colleges & Universities	148	4,050	3,788	3,766	45,193,287	898.76
6115	Technical & Trade Schools	133	913	937	880	13,091,457	1,106.63
6116	Other Schools & Instruction	356	1,779	1,832	1,802	9,512,417	405.54
6117	Educational Support Services	213	702	696	999	7,901,157	760.68
	Other	94	266	233	252	3,526,878	1,083.75

TABLE 5. STATEWIDE SUMMARY

North American Industry Classification System - Industry Groups		Number of Employing Units	Employment			Total Earnings Apr - Jun 2021	Average Weekly Earnings
			Apr	May	Jun		
62	HEALTH CARE & SOCIAL ASSISTANCE	14,397	169,179	168,858	168,978	\$2,033,765,897	\$925.67
621	AMBULATORY HEALTH CARE SERVICES	6,422	60,973	61,050	61,055	\$1,010,461,938	\$1,273.68
6211	Offices of Physicians	2,418	26,737	26,799	26,848	584,794,854	1,678.85
6212	Offices of Dentists	965	7,616	7,673	7,490	101,022,914	1,023.44
6213	Offices of Other Health Practitioners	1,805	10,236	10,195	10,251	112,532,157	846.39
6214	Outpatient Care Centers	451	5,428	5,434	5,499	82,937,631	1,169.82
6215	Medical & Diagnostic Laboratories	207	1,496	1,504	1,515	26,725,102	1,365.96
6216	Home Health Care Services	356	6,507	6,490	6,501	65,467,980	774.85
6219	Other Ambulatory Health Care Services	220	2,953	2,955	2,951	36,981,300	963.33
622	HOSPITALS	125	43,593	43,383	43,734	\$577,004,916	\$1,018.71
6221	General Medical & Surgical Hospitals	91	38,891	38,651	38,957	514,950,753	1,020.05
6222	Psychiatric & Substance Abuse Hospitals	12	1,793	1,804	1,811	21,753,979	928.28
6223	Speciality Hospitals	22	2,909	2,928	2,966	40,300,184	1,056.46
623	Residential & Mental Health Facilities	665	27,800	27,735	27,698	\$213,631,905	\$592.31
6231	Nursing Care Facilities (Skilled Nursing Facilities)	284	18,681	18,632	18,568	144,596,917	597.14
6232	Residential Mental Health Facilities	188	3,997	3,997	3,978	31,443,186	606.09
6233	Continuing Care & Assisted Living Facilities	156	4,213	4,200	4,236	28,939,380	527.97
6239	Other Residential Care Facilities	37	909	906	916	8,652,422	731.13
624	SOCIAL ASSISTANCE	7,185	36,813	36,690	36,491	\$232,667,138	\$488.14
6241	Individual & Family Services	6,080	22,336	22,203	21,973	144,821,146	502.47
6242	Emergency & Other Relief Services	169	1,477	1,467	1,483	11,321,989	590.19
6243	Vocational Rehabilitation Services	93	2,617	2,604	2,626	16,231,063	477.33
6244	Child Day Care Services	843	10,383	10,416	10,409	60,292,940	445.84
LEISURE & HOSPITALITY		7,643	114,854	116,794	118,763	\$602,476,703	\$396.77
71	ARTS, ENTERTAINMENT & RECREATION	1,094	10,955	11,317	12,790	76,553,722	\$503.86
711	PERFORMING ARTS & SPECTATOR SPORTS	256	2,293	2,044	2,372	21,358,730	\$734.68
7111	Performing Arts Companies	45	293	326	513	2,159,293	440.19
7112	Spectator Sports	72	1,540	1,275	1,253	15,183,879	861.35
7113	Performing Arts & Sports Promoters	55	360	314	504	3,029,734	593.52
7114	Agents & Managers for Public Figures	20	28	58	30	398,602	792.97
7115	Independent Artists, Writers, & Performers	64	72	71	72	587,222	630.29
712	MUSEUMS, PARKS, & HISTORICAL SITES	59	745	765	790	7,675,426	\$770.11
713	GAMBLING, RECREATIONAL & AMUSEMENT INDUSTRY	779	7,917	8,508	9,628	47,519,566	420.91
72	ACCOMMODATION & FOOD SERVICES	6,549	103,899	105,477	105,973	525,922,981	\$384.87

TABLE 5. STATEWIDE SUMMARY

North American Industry Classification System - Industry Groups		Number of Employing Units	Employment			Total Earnings	Average Weekly Earnings
			Apr	May	Jun	Apr - Jun 2021	
721	ACCOMMODATION	949	9,799	10,356	10,857	\$56,629,968	\$421.40
7211	Travel Accommodation	844	9,265	9,779	10,059	52,499,406	416.29
7212	RV Parks & Recreational Camps	87	442	488	736	3,516,989	487.16
7213	Rooming & Boarding Houses	18	92	89	62	613,573	582.69
722	FOOD SERVICES & DRINKING PLACES	5,600	94,100	95,121	95,116	\$469,293,013	\$380.88
7223	Special Food Services	367	4,601	4,264	3,266	23,076,465	438.99
7224	Drinking Places, Alcoholic Beverages	152	923	891	911	5,020,051	425.13
7225	Restaurants & Other Eating Places	5,081	88,576	89,966	90,939	441,196,497	377.82
722511	Full-Service Restaurants	2,128	35,781	36,721	37,109	200,632,422	422.40
722513	Limited-Service Eating Places	2,368	47,514	47,869	48,255	215,064,092	345.52
722514	Cafeterias, Grill Buffets, & Buffets	90	1,277	1,275	1,274	7,491,980	451.89
722515	Snack & Nonalcoholic Beverage Bars	495	4,004	4,101	4,301	18,008,003	334.97
OTHER SERVICES		5,621	24,851	24,898	25,215	\$251,192,099	\$773.27
811	REPAIR & MAINTENANCE	2,303	11,914	11,777	11,822	\$132,277,031	\$859.56
8111	Automotive Repair & Maintenance	1,492	7,236	7,305	7,407	72,393,814	761.17
8112	Electronic Equipment Repair & Maintenance	167	961	937	929	10,556,411	861.72
8113	Commercial Machinery Repair & Maintenance	471	2,994	2,814	2,739	42,791,442	1,155.37
8114	Household Goods Repair & Maintenance	173	723	721	747	6,535,364	688.34
812	PERSONAL & LAUNDRY SERVICES	1,454	7,137	7,240	7,304	\$56,446,442	\$600.81
8121	Personal Care Services	730	2,718	2,750	2,762	19,269,636	540.32
8122	Death Care Services	244	1,474	1,470	1,470	13,676,604	715.03
8123	Drycleaning & Laundry Service	192	1,785	1,767	1,785	14,538,920	628.66
8129	Other Personal Services	288	1,160	1,253	1,287	8,961,282	558.92
813	MEMBERSHIP ASSOCIATIONS & ORGANIZATIONS	1,198	5,006	5,081	5,307	\$56,707,737	\$850.10
8131	Religious Organizations	118	365	368	399	2,950,579	601.50
8132	Grantmaking & Giving Organizations	135	464	456	455	8,032,951	1,348.19
8133	Social Advocacy Organizations	238	1,183	1,197	1,181	13,612,343	882.14
8134	Civic & Social Organizations	204	946	994	1,032	5,632,087	437.32
8139	Professional & Similar Organizations	503	2,048	2,066	2,240	26,479,777	961.71
814	PRIVATE HOUSEHOLDS	666	794	800	782	\$5,760,889	\$559.53
LOCAL GOVERNMENT		1,998	110,533	110,768	109,140	\$1,426,487,030	\$996.21
STATE GOVERNMENT		1,057	65,764	65,076	63,896	\$828,609,631	\$981.93
NONCLASSIFIABLE ESTABLISHMENTS		0	0	0	0	\$0	\$0.00

TABLE 6. COUNTY SUMMARY

North American Industry Classification System - Industry Groups	Number of Employing Units	Employment			Total Earnings Apr - Jun 2021	Average Weekly Earnings
		Apr	May	Jun		
ARKANSAS COUNTY - TOTAL	1,107	10,167	10,210	10,311	\$116,832,446	\$878.56
Natural Resources & Mining	67	184	187	187	1,806,340	747.04
Construction	102	352	357	346	3,665,416	801.77
Manufacturing	48	3,630	3,647	3,713	46,740,124	981.45
Trade, Transportation & Utilities	250	2,238	2,258	2,260	27,188,287	928.69
Wholesale Trade	49	439	448	451	6,447,308	1,111.99
Retail Trade	124	1,094	1,094	1,080	8,397,411	592.98
Transportation, Warehousing & Utilities	77	705	716	729	12,343,568	1,324.89
Information	11	56	56	63	411,522	542.67
Financial Activities	91	368	367	376	5,160,526	1,071.91
Professional & Business Services	126	594	590	619	8,653,952	1,107.63
Education & Health Services	203	1,059	1,057	1,050	10,383,630	756.86
Leisure & Hospitality	95	676	676	686	2,867,689	324.72
Other Services	68	135	138	136	1,142,617	644.70
Local Government	32	718	720	724	7,458,877	796.15
State Government	14	157	157	151	1,353,466	671.70
ASHLEY COUNTY - TOTAL	541	5,631	5,728	5,713	\$61,461,450	\$830.80
Natural Resources & Mining	46	338	339	372	3,455,297	760.13
Construction	33	422	455	419	5,304,110	944.46
Manufacturing	26	1,101	1,116	1,120	17,364,745	1,200.85
Trade, Transportation & Utilities	116	1,227	1,239	1,228	11,182,425	698.58
Wholesale Trade	21	184	187	190	2,709,416	1,114.53
Retail Trade	66	743	754	743	4,881,511	502.90
Transportation, Warehousing & Utilities	29	300	298	295	3,591,498	928.12
Information	5	21	21	22	221,974	800.39
Financial Activities	37	188	185	182	1,960,572	815.21
Professional & Business Services	33	145	152	160	1,424,389	719.27
Education & Health Services	136	813	828	857	8,202,613	757.77
Leisure & Hospitality	34	357	365	368	1,582,376	335.01
Other Services	33	117	123	110	1,088,377	717.61
Local Government	32	798	805	782	8,730,648	844.77
State Government	10	104	100	93	943,924	733.43

TABLE 6. COUNTY SUMMARY

North American Industry Classification System - Industry Groups	Number of Employing Units	Employment			Total Earnings	Average Weekly Earnings
		Apr	May	Jun	Apr - Jun 2021	
BAXTER COUNTY - TOTAL	1,241	15,099	15,075	15,093	\$145,207,836	\$740.26
Natural Resources & Mining	7	32	33	29	356,088	874.19
Construction	106	546	558	548	5,121,653	715.45
Manufacturing	56	2,608	2,611	2,624	25,748,311	757.61
Trade, Transportation & Utilities	255	2,755	2,765	2,750	22,377,710	624.44
Wholesale Trade	34	164	169	166	1,734,150	801.98
Retail Trade	201	2,412	2,415	2,401	18,676,699	596.29
Transportation, Warehousing & Utilities	20	179	181	183	1,966,861	835.90
Information	22	153	147	151	1,746,396	893.60
Financial Activities	121	744	728	728	10,869,063	1,140.11
Professional & Business Services	153	932	912	899	8,195,249	689.47
Education & Health Services	256	3,881	3,881	3,899	44,139,496	873.51
Leisure & Hospitality	120	1,600	1,615	1,680	7,749,809	365.36
Other Services	98	316	305	320	2,487,309	609.98
Local Government	36	1,237	1,228	1,192	13,509,635	852.50
State Government	11	295	292	273	2,907,117	780.09
BENTON COUNTY - TOTAL	7,341	126,092	126,092	127,107	\$2,331,613,057	\$1,418.61
Natural Resources & Mining	51	783	781	797	12,514,018	1,223.15
Construction	764	5,844	5,811	5,945	75,997,153	996.47
Manufacturing	214	12,585	12,532	12,624	150,538,916	920.48
Trade, Transportation & Utilities	1,734	30,894	31,024	31,091	469,952,251	1,166.02
Wholesale Trade	755	6,570	6,597	6,581	169,882,158	1,985.19
Retail Trade	764	12,603	12,774	12,768	113,515,309	686.74
Transportation, Warehousing & Utilities	215	11,721	11,653	11,742	186,554,784	1,225.97
Information	120	829	843	830	14,339,643	1,322.60
Financial Activities	784	4,214	4,204	4,197	72,904,456	1,333.66
Professional & Business Services	1,484	33,644	33,506	33,758	1,158,978,578	2,650.50
Education & Health Services	907	12,381	12,351	12,337	143,007,238	890.28
Leisure & Hospitality	710	12,608	12,913	13,284	74,476,790	442.91
Other Services	471	2,392	2,401	2,443	23,382,661	745.72
Local Government	85	8,910	8,910	8,909	126,844,085	1,095.13
State Government	17	1,008	816	892	8,677,268	737.28

TABLE 6. COUNTY SUMMARY

North American Industry Classification System - Industry Groups	Number of Employing Units	Employment			Total Earnings	Average Weekly Earnings
		Apr	May	Jun	Apr - Jun 2021	
BOONE COUNTY - TOTAL	959	14,183	14,108	14,095	\$154,244,457	\$839.78
Construction	68	438	440	459	4,852,928	837.63
Manufacturing	57	1,896	1,845	1,853	19,793,301	816.53
Trade, Transportation & Utilities	241	3,772	3,805	3,813	43,654,150	884.46
Wholesale Trade	41	379	378	368	4,301,921	882.45
Retail Trade	157	2,092	2,114	2,117	17,125,043	625.01
Transportation, Warehousing & Utilities	43	1,301	1,313	1,328	22,227,186	1,301.21
Information	15	290	294	299	3,204,306	837.44
Financial Activities	90	449	444	422	5,902,293	1,035.79
Professional & Business Services	107	1,339	1,318	1,338	16,346,473	944.25
Education & Health Services	157	1,588	1,574	1,530	15,563,033	765.45
Leisure & Hospitality	90	1,237	1,290	1,350	6,465,258	384.83
Local Government	53	2,163	2,121	2,049	28,802,078	1,049.52
State Government	16	745	709	694	7,044,708	756.84
Other	65	266	268	288	2,615,929	734.40
BRADLEY COUNTY - TOTAL	333	3,519	3,512	3,461	\$35,518,173	\$781.21
Natural Resources & Mining	41	254	222	169	2,197,907	786.37
Construction	15	72	74	76	660,507	686.60
Manufacturing	11	885	892	898	11,997,595	1,035.02
Trade, Transportation & Utilities	70	452	452	448	4,114,726	702.33
Wholesale Trade	11	101	102	97	1,372,890	1,056.07
Retail Trade	38	278	279	278	1,815,982	501.88
Transportation, Warehousing & Utilities	21	73	71	73	925,854	984.60
Information	3	22	25	24	176,828	574.74
Financial Activities	22	123	120	124	1,287,177	809.38
Professional & Business Services	25	97	96	95	874,103	700.40
Education & Health Services	83	513	527	533	5,092,889	747.16
Leisure & Hospitality	14	191	196	194	720,996	286.37
Other Services	25	82	85	83	589,929	544.55
Local Government	14	466	463	458	5,307,004	882.98
State Government	10	362	360	359	2,498,512	533.38

TABLE 6. COUNTY SUMMARY

North American Industry Classification System - Industry Groups	Number of Employing Units	Employment			Total Earnings	Average Weekly Earnings
		Apr	May	Jun	Apr - Jun 2021	
CALHOUN COUNTY - TOTAL	106	3,516	3,538	3,546	\$52,166,077	\$1,135.69
Natural Resources & Mining	8	36	38	38	379,407	781.75
Construction	11	133	133	128	1,442,752	845.03
Manufacturing	9	2,744	2,751	2,765	43,748,338	1,222.25
Trade, Transportation & Utilities	20	160	166	164	1,810,549	852.69
Retail Trade	10	41	42	42	260,772	481.43
Transportation, Warehousing & Utilities	10	119	124	122	1,549,777	979.84
Professional & Business Services	5	9	11	10	68,451	526.55
Education & Health Services	23	61	60	61	700,108	887.71
Leisure & Hospitality	4	9	9	8	31,015	275.28
Other Services	2	3	2	2	15,590	513.96
Local Government	11	186	185	189	1,796,508	740.32
State Government	7	70	70	69	677,559	748.13
Other	6	105	113	112	1,495,800	1,046.01
CARROLL COUNTY - TOTAL	798	10,821	10,941	11,130	\$97,473,002	\$683.87
Natural Resources & Mining	21	278	281	285	2,832,581	774.49
Trade, Transportation & Utilities	182	1,520	1,559	1,553	13,279,535	661.60
Wholesale Trade	27	219	214	219	2,053,593	726.85
Retail Trade	130	1,091	1,130	1,113	7,532,019	521.34
Transportation, Warehousing & Utilities	25	210	215	221	3,693,923	1,319.57
Information	8	66	63	65	742,579	883.32
Financial Activities	60	383	386	389	4,665,301	929.71
Professional & Business Services	71	518	511	513	5,084,070	760.86
Education & Health Services	99	985	1,018	1,007	9,564,420	733.28
Leisure & Hospitality	179	1,606	1,653	1,762	8,824,635	405.59
Other Services	42	141	141	148	1,016,036	545.28
Local Government	25	1,066	1,068	1,098	11,940,353	852.56
State Government	9	89	89	89	844,547	729.95
Other	102	4,169	4,172	4,221	38,678,945	710.55

TABLE 6. COUNTY SUMMARY

North American Industry Classification System - Industry Groups	Number of Employing Units	Employment			Total Earnings	Average Weekly Earnings
		Apr	May	Jun	Apr - Jun 2021	
CHICOT COUNTY - TOTAL	445	2,723	2,746	2,776	\$25,623,299	\$717.17
Natural Resources & Mining	57	212	220	238	2,223,516	765.85
Construction	14	133	125	132	1,709,423	1,011.49
Manufacturing	3	6	6	6	63,549	814.73
Trade, Transportation & Utilities	66	711	716	733	5,701,706	609.16
Wholesale Trade	11	44	45	45	679,437	1,170.10
Other Trade, Warehousing & Utilities	55	667	671	688	5,022,269	572.06
Financial Activities	28	176	172	166	2,233,114	1,002.60
Professional & Business Services	17	41	46	42	744,197	1,331.30
Education & Health Services	201	493	504	511	4,590,392	702.47
Leisure & Hospitality	13	101	102	106	433,066	323.42
Local Government	17	532	537	523	5,363,285	777.44
State Government	9	239	238	237	1,928,983	623.46
Other	20	79	80	82	632,068	605.24
CLARK COUNTY - TOTAL	653	8,419	8,238	8,055	\$79,887,215	\$746.01
Natural Resources & Mining	53	302	313	317	3,357,302	831.29
Construction	26	90	86	87	1,105,062	969.64
Manufacturing	33	1,013	1,012	1,005	13,792,755	1,050.48
Trade, Transportation & Utilities	136	1,338	1,344	1,326	12,053,364	694.00
Wholesale Trade	19	61	64	68	859,505	1,027.71
Retail Trade	89	1,111	1,113	1,098	9,216,347	640.23
Transportation, Warehousing & Utilities	28	166	167	160	1,977,512	925.66
Financial Activities	76	335	334	337	3,198,695	733.76
Professional & Business Services	52	596	592	603	7,392,710	952.55
Education & Health Services	127	1,623	1,585	1,547	14,934,616	724.81
Leisure & Hospitality	64	1,021	937	918	4,204,780	337.39
Local Government	28	882	946	920	9,384,931	788.12
State Government	13	1,001	869	768	8,375,823	732.71
Other	45	218	220	227	2,087,177	724.30

TABLE 6. COUNTY SUMMARY

North American Industry Classification System - Industry Groups	Number of Employing Units	Employment			Total Earnings	Average Weekly Earnings
		Apr	May	Jun	Apr - Jun 2021	
CLAY COUNTY - TOTAL	350	3,074	3,072	3,033	\$28,210,764	\$709.25
Natural Resources & Mining	51	240	244	246	2,029,192	641.47
Construction	32	129	128	122	1,130,823	688.55
Manufacturing	12	123	122	122	994,866	625.57
Trade, Transportation & Utilities	82	736	736	746	7,412,575	771.23
Wholesale Trade	18	248	241	245	2,721,522	855.65
Retail Trade	42	350	357	365	2,880,967	620.19
Transportation, Warehousing & Utilities	22	138	138	136	1,810,086	1,013.86
Information	7	23	25	25	176,347	557.47
Financial Activities	22	98	97	76	930,189	792.10
Professional & Business Services	22	89	90	92	941,521	801.75
Education & Health Services	49	460	440	448	4,195,600	718.26
Leisure & Hospitality	23	223	222	210	765,289	269.63
Other Services	21	78	79	83	814,304	782.98
Local Government	20	832	846	820	8,410,849	777.01
State Government	9	43	43	43	409,209	732.04
CLEBURNE COUNTY - TOTAL	643	6,173	6,271	6,328	\$61,310,924	\$753.71
Natural Resources & Mining	20	139	132	132	2,160,843	1,237.36
Construction	65	328	341	331	3,293,564	760.05
Manufacturing	34	1,185	1,210	1,201	13,101,734	840.79
Trade, Transportation & Utilities	148	1,272	1,284	1,298	13,141,953	786.91
Wholesale Trade	31	89	93	94	1,116,508	933.54
Retail Trade	97	1,040	1,046	1,052	9,935,864	730.69
Transportation, Warehousing & Utilities	20	143	145	152	2,089,581	1,095.93
Information	13	56	56	50	637,809	908.56
Financial Activities	70	251	252	249	3,045,824	934.68
Professional & Business Services	73	339	336	329	3,430,087	788.40
Education & Health Services	75	786	784	797	7,348,871	716.47
Leisure & Hospitality	82	854	934	994	4,634,347	384.42
Other Services	37	106	107	107	830,674	599.04
Local Government	18	750	742	753	8,847,206	909.43
State Government	8	107	93	87	838,012	673.82

TABLE 6. COUNTY SUMMARY

North American Industry Classification System - Industry Groups	Number of Employing Units	Employment			Total Earnings	Average Weekly Earnings
		Apr	May	Jun	Apr - Jun 2021	
CLEVELAND COUNTY - TOTAL	120	962	971	967	\$9,268,073	\$737.51
Natural Resources & Mining	17	119	131	129	1,502,210	914.68
Construction	3	6	6	6	29,654	380.18
Manufacturing	5	115	116	117	1,652,883	1,096.08
Trade, Transportation & Utilities	28	134	135	139	1,094,851	619.26
Retail Trade	15	60	60	63	289,540	365.12
Other Trade, Transportation, & Utilities	13	74	75	76	805,311	825.96
Financial Activities	4	26	25	24	308,874	950.38
Education & Health Services	31	211	208	206	1,603,048	591.89
Other Services	5	7	7	7	54,637	600.41
Local Government	13	288	288	278	2,550,531	689.21
State Government	6	29	29	29	297,912	790.22
Other	8	27	26	32	173,473	470.97
COLUMBIA COUNTY - TOTAL	663	7,796	7,774	7,742	\$84,866,101	\$840.10
Natural Resources & Mining	43	357	371	383	5,487,565	1,139.84
Construction	37	134	129	133	1,280,241	746.06
Manufacturing	28	1,844	1,835	1,844	29,055,030	1,214.02
Trade, Transportation & Utilities	161	1,386	1,417	1,394	12,150,833	668.11
Wholesale Trade	29	175	176	172	2,476,904	1,092.91
Retail Trade	91	1,010	1,029	1,014	6,693,291	505.93
Transportation, Warehousing & Utilities	41	201	212	208	2,980,638	1,107.63
Information	6	29	28	24	252,904	720.52
Financial Activities	59	318	321	324	4,049,051	970.30
Professional & Business Services	50	369	351	364	3,271,109	696.38
Education & Health Services	147	970	969	953	7,951,660	634.51
Leisure & Hospitality	57	800	731	721	3,160,453	323.86
Other Services	37	110	117	110	819,803	561.38
Local Government	27	828	845	842	9,727,819	892.60
State Government	11	651	660	650	7,659,633	901.38

TABLE 6. COUNTY SUMMARY

North American Industry Classification System - Industry Groups	Number of Employing Units	Employment			Total Earnings	Average Weekly Earnings
		Apr	May	Jun	Apr - Jun 2021	
CONWAY COUNTY - TOTAL	512	6,620	6,605	6,623	73,683,632	\$856.71
Natural Resources & Mining	29	221	211	217	2,117,288	752.86
Construction	50	521	521	515	9,661,594	1,431.98
Manufacturing	21	984	978	1,004	14,574,213	1,133.94
Trade, Transportation & Utilities	108	1,357	1,356	1,358	12,640,683	716.55
Wholesale Trade	14	115	121	120	1,306,250	846.75
Retail Trade	74	822	824	808	6,212,558	584.22
Transportation, Warehousing & Utilities	20	420	411	430	5,121,875	937.33
Financial Activities	38	145	148	153	1,886,256	975.99
Professional & Business Services	38	656	648	657	5,195,277	611.38
Education & Health Services	119	667	668	641	6,974,405	814.51
Leisure & Hospitality	41	450	448	473	2,129,030	358.36
Local Government	31	1,172	1,190	1,166	14,717,061	962.65
State Government	9	348	351	342	2,943,839	652.59
Other	28	99	86	97	843,986	690.66
CRAIGHEAD COUNTY - TOTAL	2,936	51,268	51,238	51,304	\$590,449,153	\$885.88
Natural Resources & Mining	103	354	359	364	3,592,771	769.82
Construction	257	2,327	2,378	2,397	30,590,560	994.00
Manufacturing	101	7,598	7,581	7,686	96,931,973	978.30
Trade, Transportation & Utilities	764	10,302	10,336	10,280	109,409,815	816.63
Wholesale Trade	176	2,134	2,133	2,131	29,408,730	1,060.74
Retail Trade	455	6,234	6,275	6,193	54,666,980	674.55
Transportation, Warehousing & Utilities	133	1,934	1,928	1,956	25,334,105	1,004.87
Information	25	334	335	362	4,761,525	1,065.77
Financial Activities	302	1,779	1,772	1,808	25,992,288	1,119.28
Professional & Business Services	399	4,524	4,539	4,438	49,499,060	846.08
Education & Health Services	461	11,104	10,991	11,035	148,570,084	1,034.87
Leisure & Hospitality	280	5,247	5,315	5,351	26,641,004	386.35
Other Services	188	795	777	786	7,463,335	730.41
Local Government	35	3,964	3,988	4,031	53,149,363	1,023.55
State Government	21	2,940	2,867	2,766	33,847,375	911.11

TABLE 6. COUNTY SUMMARY

North American Industry Classification System - Industry Groups	Number of Employing Units	Employment			Total Earnings Apr - Jun 2021	Average Weekly Earnings
		Apr	May	Jun		
CRAWFORD COUNTY - TOTAL	1,257	19,095	19,087	19,104	\$200,102,107	\$806.09
Natural Resources & Mining	22	256	224	201	2,706,952	917.30
Construction	137	962	974	959	10,520,278	838.60
Manufacturing	61	4,535	4,480	4,555	54,926,660	934.07
Trade, Transportation & Utilities	332	5,534	5,595	5,548	57,902,633	801.23
Wholesale Trade	70	769	765	766	11,309,476	1,134.73
Retail Trade	173	2,053	2,098	2,071	16,321,753	605.36
Transportation, Warehousing & Utilities	89	2,712	2,732	2,711	30,271,404	856.62
Information	11	32	32	43	543,402	1,171.97
Financial Activities	126	493	499	501	5,206,837	804.81
Professional & Business Services	166	1,380	1,375	1,357	13,868,250	778.30
Education & Health Services	179	1,619	1,617	1,623	15,015,871	713.15
Leisure & Hospitality	91	1,580	1,612	1,658	7,508,918	357.28
Other Services	81	406	412	420	3,638,739	678.28
Local Government	41	2,151	2,121	2,093	27,046,641	980.60
State Government	10	147	146	146	1,216,926	639.70
CRITTENDEN COUNTY - TOTAL	1,159	14,974	15,110	15,167	\$161,519,536	\$823.71
Natural Resources & Mining	56	255	256	263	2,201,368	656.34
Construction	36	381	387	367	5,117,932	1,040.58
Manufacturing	38	1,938	2,022	1,948	25,456,419	994.34
Trade, Transportation & Utilities	303	4,088	4,096	4,164	44,878,876	838.73
Wholesale Trade	50	685	681	693	9,968,785	1,117.28
Retail Trade	155	1,816	1,816	1,811	12,464,904	528.48
Transportation, Warehousing & Utilities	98	1,587	1,599	1,660	22,445,187	1,068.85
Information	4	31	25	24	276,574	797.81
Financial Activities	97	422	423	425	6,025,283	1,094.84
Professional & Business Services	103	946	967	951	9,727,142	783.77
Education & Health Services	263	1,816	1,815	1,791	18,276,771	777.89
Leisure & Hospitality	139	2,307	2,395	2,490	14,107,290	452.66
Other Services	68	444	442	460	4,225,616	724.47
Local Government	39	2,016	1,968	1,949	27,959,110	1,087.49
State Government	13	330	314	335	3,267,155	770.13

TABLE 6. COUNTY SUMMARY

North American Industry Classification System - Industry Groups	Number of Employing Units	Employment			Total Earnings	Average Weekly Earnings
		Apr	May	Jun	Apr - Jun 2021	
CROSS COUNTY - TOTAL	476	4,604	4,631	4,644	\$43,849,989	\$729.10
Natural Resources & Mining	46	267	275	287	2,590,362	721.08
Construction	25	79	77	74	776,560	779.16
Manufacturing	11	277	286	303	2,345,103	624.92
Trade, Transportation & Utilities	122	1,052	1,067	1,049	11,012,726	802.21
Wholesale Trade	26	267	256	254	3,580,780	1,063.49
Retail Trade	66	684	712	695	6,167,649	680.68
Transportation, Warehousing & Utilities	30	101	99	100	1,264,297	972.54
Information	5	29	26	24	241,147	704.42
Financial Activities	50	228	227	225	2,480,229	841.71
Professional & Business Services	40	160	164	155	1,835,000	884.05
Education & Health Services	82	955	955	965	7,917,229	635.50
Leisure & Hospitality	41	435	434	448	1,926,263	337.53
Other Services	28	96	94	96	853,824	688.94
Local Government	17	685	684	673	8,391,580	948.34
State Government	9	341	342	345	3,479,966	781.20
DALLAS COUNTY - TOTAL	220	2,642	2,674	2,617	\$25,271,020	\$735.13
Natural Resources & Mining	20	102	100	99	1,032,920	791.91
Construction	16	69	64	60	659,346	788.38
Manufacturing	9	576	584	577	6,385,176	848.30
Trade, Transportation & Utilities	51	470	477	465	4,006,801	654.85
Wholesale Trade	5	18	20	19	305,862	1,238.31
Retail Trade	35	320	331	322	2,273,584	539.23
Transportation, Warehousing & Utilities	11	132	126	124	1,427,355	862.28
Information	3	18	18	19	179,703	754.00
Financial Activities	15	66	66	66	771,997	899.76
Professional & Business Services	13	34	31	33	215,860	508.30
Education & Health Services	48	774	790	779	7,849,750	773.15
Leisure & Hospitality	12	152	154	146	556,583	284.16
Other Services	12	41	43	45	316,793	566.71
Local Government	14	310	317	298	3,009,410	750.79
State Government	7	30	30	30	286,681	735.08

TABLE 6. COUNTY SUMMARY

North American Industry Classification System - Industry Groups	Number of Employing Units	Employment			Total Earnings	Average Weekly Earnings
		Apr	May	Jun	Apr - Jun 2021	
DESHA COUNTY - TOTAL	480	4,274	4,301	4,252	\$43,465,625	\$781.99
Natural Resources & Mining	66	265	273	271	2,258,782	644.32
Construction	14	78	81	70	857,185	863.81
Manufacturing	14	999	1,001	1,006	13,612,227	1,045.00
Trade, Transportation & Utilities	98	799	811	801	7,686,370	735.70
Wholesale Trade	19	193	199	199	3,095,778	1,208.82
Retail Trade	53	444	448	441	2,837,418	491.21
Transportation, Warehousing & Utilities	26	162	164	161	1,753,174	830.76
Information	4	21	20	20	249,509	943.92
Financial Activities	28	201	206	213	1,911,749	711.57
Professional & Business Services	33	91	92	90	1,942,247	1,641.80
Education & Health Services	135	532	524	517	4,450,746	652.95
Leisure & Hospitality	36	354	364	361	1,446,210	309.31
Other Services	22	62	61	69	368,607	443.04
Local Government	21	756	754	723	7,761,969	802.16
State Government	9	116	114	111	920,024	622.62
DREW COUNTY - TOTAL	537	6,245	6,314	6,242	\$61,862,892	\$759.32
Natural Resources & Mining	53	347	289	283	3,451,462	866.69
Construction	26	158	162	164	2,067,648	985.85
Manufacturing	23	891	917	923	10,590,362	894.88
Trade, Transportation & Utilities	113	1,043	1,042	1,038	9,032,222	667.42
Wholesale Trade	17	116	115	117	1,259,229	835.03
Retail Trade	73	831	831	841	6,532,332	602.26
Transportation, Warehousing & Utilities	23	96	96	80	1,240,661	1,052.60
Information	5	30	30	31	263,825	669.04
Financial Activities	51	209	207	204	2,708,820	1,008.25
Professional & Business Services	38	307	400	404	4,123,408	856.49
Education & Health Services	129	803	809	797	6,914,230	662.35
Leisure & Hospitality	43	636	633	638	2,732,232	330.63
Other Services	20	56	53	55	474,593	667.81
Local Government	23	1,219	1,238	1,236	13,941,764	871.20
State Government	13	546	534	469	5,562,326	828.67

TABLE 6. COUNTY SUMMARY

North American Industry Classification System - Industry Groups	Number of Employing Units	Employment			Total Earnings Apr - Jun 2021	Average Weekly Earnings
		Apr	May	Jun		
FAULKNER COUNTY - TOTAL	3,080	40,996	41,227	41,136	462,428,101	\$865.07
Natural Resources & Mining	37	251	249	248	3,238,662	999.18
Construction	387	2,989	3,029	3,088	37,571,233	952.15
Manufacturing	103	2,799	2,777	2,780	37,752,844	1,042.63
Trade, Transportation & Utilities	650	7,784	7,822	7,858	73,884,661	726.66
Wholesale Trade	131	817	829	874	11,591,835	1,061.52
Retail Trade	422	6,086	6,139	6,116	50,593,655	636.58
Transportation, Warehousing & Utilities	97	881	854	868	11,699,171	1,037.19
Financial Activities	339	1,487	1,493	1,507	19,665,015	1,011.38
Professional & Business Services	478	3,683	3,698	3,749	46,269,163	959.34
Education & Health Services	495	7,804	7,807	7,810	86,959,069	856.82
Leisure & Hospitality	296	5,386	5,488	5,450	25,925,955	366.51
Local Government	44	3,362	3,372	3,340	52,346,636	1,199.13
State Government	18	3,075	3,056	2,842	32,663,014	840.03
Other	233	2,376	2,436	2,464	46,151,849	1,463.77
FRANKLIN COUNTY - TOTAL	366	4,502	4,482	4,473	\$43,424,572	\$744.67
Natural Resources & Mining	15	115	116	135	1,636,234	1,031.67
Construction	35	164	163	166	1,435,922	672.14
Manufacturing	16	963	962	970	10,424,058	830.93
Trade, Transportation & Utilities	84	1,011	1,006	1,008	10,071,703	768.34
Wholesale Trade	10	47	46	48	306,504	501.64
Retail Trade	49	656	660	652	4,490,235	526.53
Transportation, Warehousing & Utilities	25	308	300	308	5,274,964	1,328.93
Information	6	27	29	29	428,600	1,163.62
Financial Activities	32	66	67	59	692,882	832.79
Professional & Business Services	30	383	378	354	3,152,640	652.50
Education & Health Services	62	518	518	513	4,017,935	598.59
Leisure & Hospitality	30	345	353	359	1,463,434	319.50
Other Services	16	49	53	51	397,090	598.93
Local Government	32	725	702	717	8,311,932	894.65
State Government	8	136	135	112	1,392,142	838.81

TABLE 6. COUNTY SUMMARY

North American Industry Classification System - Industry Groups	Number of Employing Units	Employment			Total Earnings	Average Weekly Earnings
		Apr	May	Jun	Apr - Jun 2021	
FULTON COUNTY - TOTAL	201	2,087	2,104	2,100	\$19,704,795	\$722.82
Manufacturing	11	124	122	121	1,021,073	642.05
Trade, Transportation & Utilities	50	293	312	311	3,002,011	756.30
Retail Trade	32	189	199	202	1,338,728	523.62
Other Trade, Transportation, & Utilities	18	104	113	109	1,663,283	1,177.41
Information	5	35	33	28	366,581	881.20
Financial Activities	22	85	92	98	1,004,085	842.59
Professional & Business Services	12	26	23	23	170,369	546.05
Education & Health Services	40	472	475	470	4,016,629	654.14
Leisure & Hospitality	17	136	140	144	555,751	305.36
Other Services	10	22	24	22	166,545	565.20
Local Government	12	566	570	572	5,624,295	759.90
State Government	9	59	59	59	507,543	661.72
Other	13	269	254	252	3,269,913	973.67
GARLAND COUNTY - TOTAL	3,106	36,224	36,195	36,441	\$371,269,601	\$787.04
Natural Resources & Mining	29	202	207	204	2,364,624	890.18
Construction	351	1,834	1,907	1,934	19,397,071	788.77
Manufacturing	94	2,373	2,349	2,344	29,905,378	976.68
Trade, Transportation & Utilities	664	7,342	7,427	7,463	71,602,513	743.24
Wholesale Trade	134	746	741	771	11,126,254	1,137.11
Retail Trade	465	6,017	6,098	6,091	52,921,262	670.80
Transportation, Warehousing & Utilities	65	579	588	601	7,554,997	986.12
Information	30	365	381	380	3,750,232	768.60
Financial Activities	363	1,561	1,569	1,557	19,709,326	970.41
Professional & Business Services	399	2,982	2,988	2,891	29,152,738	759.23
Education & Health Services	488	7,647	7,650	7,608	91,713,701	924.02
Leisure & Hospitality	405	7,241	7,038	7,495	43,571,831	461.79
Other Services	222	926	907	916	7,183,010	602.99
Local Government	40	2,917	2,944	2,908	44,992,920	1,184.06
State Government	21	834	828	741	7,926,257	761.19

TABLE 6. COUNTY SUMMARY

North American Industry Classification System - Industry Groups	Number of Employing Units	Employment			Total Earnings	Average Weekly Earnings
		Apr	May	Jun	Apr - Jun 2021	
GRANT COUNTY - TOTAL	353	4,087	4,126	4,187	\$47,969,503	\$892.73
Natural Resources & Mining	25	176	180	179	2,324,836	1,002.80
Construction	35	261	267	260	3,607,303	1,056.41
Manufacturing	17	1,231	1,236	1,266	17,119,867	1,058.33
Trade, Transportation & Utilities	87	677	691	680	5,999,501	676.03
Wholesale Trade	16	76	69	73	1,274,837	1,349.51
Retail Trade	51	549	569	558	4,225,970	581.88
Transportation, Warehousing & Utilities	20	52	53	49	498,694	747.29
Financial Activities	24	162	163	164	3,484,504	1,644.41
Professional & Business Services	34	135	139	141	1,807,521	1,005.11
Education & Health Services	68	367	374	382	2,718,316	558.60
Leisure & Hospitality	25	246	245	259	1,009,740	310.69
Local Government	10	723	725	748	8,972,174	942.85
State Government	7	45	45	45	388,440	664.00
Other	21	64	61	63	537,301	659.53
GREENE COUNTY - TOTAL	902	15,036	15,130	15,082	\$159,380,193	\$812.85
Natural Resources & Mining	40	215	225	227	2,174,750	752.42
Construction	70	401	417	417	4,496,938	840.29
Manufacturing	60	4,649	4,645	4,675	57,397,857	948.22
Trade, Transportation & Utilities	228	2,693	2,724	2,717	25,045,693	710.57
Wholesale Trade	46	482	485	498	5,911,763	931.23
Retail Trade	152	1,989	2,023	1,993	16,598,987	637.89
Transportation, Warehousing & Utilities	30	222	216	226	2,534,943	881.00
Information	9	119	120	120	1,749,952	1,124.89
Financial Activities	76	557	558	561	6,549,620	901.82
Professional & Business Services	98	863	851	803	7,614,416	698.12
Education & Health Services	151	2,041	2,056	2,023	22,541,804	849.99
Leisure & Hospitality	85	1,286	1,307	1,301	6,154,259	364.72
Other Services	44	171	170	176	1,348,225	601.80
Local Government	31	1,665	1,678	1,681	19,903,626	914.24
State Government	10	376	379	381	4,403,053	894.44

TABLE 6. COUNTY SUMMARY

North American Industry Classification System - Industry Groups	Number of Employing Units	Employment			Total Earnings	Average Weekly Earnings
		Apr	May	Jun	Apr - Jun 2021	
HEMPSTEAD COUNTY - TOTAL	519	7,373	7,423	7,392	\$75,911,828	\$789.53
Natural Resources & Mining	23	240	244	248	3,082,806	971.88
Construction	28	135	143	140	1,406,211	776.34
Manufacturing	26	2,173	2,189	2,180	25,766,670	908.92
Trade, Transportation & Utilities	127	1,300	1,318	1,318	12,942,228	758.81
Wholesale Trade	26	176	176	186	1,954,188	838.23
Retail Trade	73	860	871	870	6,162,969	546.80
Transportation, Warehousing & Utilities	28	264	271	262	4,825,071	1,397.09
Information	7	14	15	15	206,511	1,083.10
Financial Activities	45	194	195	193	2,211,607	876.93
Professional & Business Services	38	260	264	257	2,503,566	739.75
Education & Health Services	104	848	849	845	6,443,474	584.95
Leisure & Hospitality	47	576	570	575	2,798,041	375.19
Other Services	30	114	112	108	1,009,637	697.58
Local Government	28	839	839	842	10,798,952	988.92
State Government	16	680	685	671	6,742,125	764.18
HOT SPRING COUNTY - TOTAL	606	8,291	8,189	8,158	\$86,148,845	\$806.90
Natural Resources & Mining	22	158	156	160	1,535,995	747.81
Construction	58	216	205	204	1,975,029	729.24
Manufacturing	29	1,520	1,529	1,539	20,476,100	1,029.92
Trade, Transportation & Utilities	156	1,678	1,688	1,683	19,521,923	892.27
Wholesale Trade	19	89	85	83	1,129,982	1,014.65
Retail Trade	96	878	898	887	6,815,937	590.65
Transportation, Warehousing & Utilities	41	711	705	713	11,576,004	1,254.76
Information	5	36	35	35	456,618	994.09
Financial Activities	54	203	201	199	2,257,160	863.82
Professional & Business Services	52	848	740	736	7,066,296	701.67
Education & Health Services	99	983	981	976	10,166,888	798.03
Leisure & Hospitality	55	687	699	697	3,327,361	368.63
Other Services	37	160	172	163	1,021,592	476.27
Local Government	27	954	951	935	11,919,421	968.53
State Government	12	848	832	831	6,424,462	590.43

TABLE 6. COUNTY SUMMARY

North American Industry Classification System - Industry Groups	Number of Employing Units	Employment			Total Earnings	Average Weekly Earnings
		Apr	May	Jun	Apr - Jun 2021	
HOWARD COUNTY - TOTAL	351	6,584	6,576	6,596	\$65,097,515	\$760.40
Natural Resources & Mining	19	207	201	201	2,272,895	861.27
Construction	21	80	79	75	675,353	666.03
Manufacturing	19	3,129	3,114	3,206	32,394,481	791.16
Trade, Transportation & Utilities	78	870	880	881	8,096,045	710.12
Wholesale Trade	15	88	88	88	933,501	816.00
Retail Trade	45	570	580	585	4,242,018	564.22
Transportation, Warehousing & Utilities	18	212	212	208	2,920,526	1,066.40
Financial Activities	34	138	142	142	1,439,705	787.30
Professional & Business Services	22	147	139	138	1,462,397	795.93
Education & Health Services	80	804	809	747	6,980,946	682.62
Leisure & Hospitality	30	327	335	332	1,515,617	351.87
Local Government	17	684	685	686	8,724,335	979.71
State Government	10	100	100	97	685,299	532.48
Other	21	98	92	91	850,442	698.42
INDEPENDENCE COUNTY - TOTAL	942	16,404	16,412	16,361	\$175,382,745	\$823.01
Natural Resources & Mining	23	302	291	295	3,483,134	905.18
Construction	63	713	676	635	8,097,706	923.27
Manufacturing	45	3,537	3,577	3,634	43,200,987	927.56
Trade, Transportation & Utilities	237	2,820	2,824	2,850	29,125,900	791.31
Wholesale Trade	28	232	231	229	3,043,686	1,015.01
Retail Trade	164	1,847	1,859	1,894	14,440,933	595.09
Transportation, Warehousing & Utilities	45	741	734	727	11,641,281	1,220.00
Information	10	78	80	80	768,749	745.39
Financial Activities	88	612	615	588	9,005,921	1,145.06
Professional & Business Services	91	1,128	1,153	1,184	10,215,732	680.37
Education & Health Services	168	3,591	3,558	3,509	41,032,424	888.44
Leisure & Hospitality	92	1,271	1,297	1,273	5,520,385	331.67
Other Services	62	284	290	288	2,196,583	588.06
Local Government	48	1,476	1,469	1,477	17,120,574	893.46
State Government	15	592	582	548	5,614,650	752.43

TABLE 6. COUNTY SUMMARY

North American Industry Classification System - Industry Groups	Number of Employing Units	Employment			Total Earnings	Average Weekly Earnings
		Apr	May	Jun	Apr - Jun 2021	
IZARD COUNTY - TOTAL	247	2,651	2,667	2,516	\$24,512,743	\$722.08
Natural Resources & Mining	7	86	91	91	1,577,414	1,358.28
Construction	22	73	76	71	662,814	695.26
Manufacturing	10	162	166	148	1,247,372	604.74
Trade, Transportation & Utilities	67	527	541	554	4,232,687	602.20
Wholesale Trade	13	53	52	50	441,084	656.70
Retail Trade	43	380	393	406	2,711,503	530.73
Transportation, Warehousing & Utilities	11	94	96	98	1,080,100	865.46
Information	5	10	10	10	203,751	1,567.32
Financial Activities	21	164	168	164	1,491,400	693.89
Professional & Business Services	15	63	65	62	730,517	887.27
Education & Health Services	39	447	450	442	4,197,364	723.39
Leisure & Hospitality	24	175	179	185	814,470	348.71
Other Services	14	31	31	33	187,173	454.67
Local Government	14	501	492	381	5,442,175	914.04
State Government	9	412	398	375	3,725,606	725.53
JACKSON COUNTY - TOTAL	429	5,163	5,247	5,257	\$51,564,251	\$759.52
Natural Resources & Mining	57	315	331	325	3,234,083	768.62
Construction	22	122	126	130	1,169,078	713.72
Manufacturing	10	992	1,017	1,023	11,744,671	893.90
Trade, Transportation & Utilities	104	979	1,015	1,005	10,577,278	813.91
Wholesale Trade	16	210	216	221	3,466,675	1,236.48
Retail Trade	68	685	708	690	5,880,932	651.53
Transportation, Warehousing & Utilities	20	84	91	94	1,229,671	1,054.91
Information	3	6	6	6	57,251	733.99
Financial Activities	32	127	126	129	1,393,596	841.88
Professional & Business Services	34	126	129	138	1,377,541	808.89
Education & Health Services	74	742	741	737	7,733,011	803.85
Leisure & Hospitality	31	367	374	380	1,577,142	324.67
Other Services	18	55	58	54	453,075	626.08
Local Government	32	554	553	561	5,712,114	790.28
State Government	12	778	771	769	6,535,411	650.63

TABLE 6. COUNTY SUMMARY

North American Industry Classification System - Industry Groups	Number of Employing Units	Employment			Total Earnings	Average Weekly Earnings
		Apr	May	Jun	Apr - Jun 2021	
JEFFERSON COUNTY - TOTAL	1,943	24,966	24,982	24,742	\$273,222,761	\$844.17
Natural Resources & Mining	34	133	129	124	1,928,792	1,153.12
Construction	89	465	462	479	4,868,755	799.12
Manufacturing	59	4,366	4,360	4,375	65,185,584	1,148.22
Trade, Transportation & Utilities	402	4,122	4,110	4,103	42,180,543	789.13
Wholesale Trade	68	627	616	610	8,020,219	998.82
Retail Trade	278	2,852	2,848	2,838	22,978,233	621.07
Transportation, Warehousing & Utilities	56	643	646	655	11,182,091	1,327.41
Information	11	58	55	60	738,065	984.52
Financial Activities	147	990	1,001	1,008	12,820,529	986.52
Professional & Business Services	144	1,979	1,966	1,948	16,942,729	663.48
Education & Health Services	746	4,230	4,214	4,225	48,987,403	892.32
Leisure & Hospitality	136	2,559	2,625	2,682	15,419,110	452.36
Other Services	98	427	444	448	4,304,169	753.05
Local Government	41	2,318	2,311	2,225	26,047,971	877.02
State Government	36	3,319	3,305	3,065	33,799,111	805.02
JOHNSON COUNTY - TOTAL	490	8,111	8,115	8,082	\$80,250,226	\$761.86
Natural Resources & Mining	13	207	211	215	2,503,541	912.70
Construction	41	192	192	188	1,730,618	698.21
Manufacturing	33	2,260	2,243	2,240	21,635,621	740.45
Trade, Transportation & Utilities	104	2,008	2,016	1,966	19,293,623	743.30
Retail Trade	71	937	938	908	6,796,350	563.56
Other Trade, Transportation & Utilities	33	1,071	1,078	1,058	12,497,273	899.28
Information	4	12	12	12	161,233	1,033.54
Financial Activities	43	155	159	159	1,651,936	805.95
Professional & Business Services	50	247	260	256	1,930,990	584.03
Education & Health Services	103	1,220	1,211	1,217	13,449,453	850.80
Leisure & Hospitality	48	569	577	593	2,290,852	304.00
Other Services	28	79	77	79	656,351	644.53
Local Government	14	1,057	1,052	1,053	13,916,724	1,015.67
State Government	9	105	105	104	1,029,284	756.46

TABLE 6. COUNTY SUMMARY

North American Industry Classification System - Industry Groups	Number of Employing Units	Employment			Total Earnings	Average Weekly Earnings
		Apr	May	Jun	Apr - Jun 2021	
LAFAYETTE COUNTY - TOTAL	153	1,058	1,073	1,062	\$10,278,260	\$742.85
Natural Resources & Mining	22	63	69	71	426,973	485.38
Construction	11	71	71	70	991,259	1,079.02
Manufacturing	5	35	35	38	529,121	1,130.60
Trade, Transportation & Utilities	29	203	212	214	1,749,292	641.79
Retail Trade	16	113	121	120	703,168	458.39
Other Trade, Transportation & Utilities	13	90	91	94	1,046,124	877.87
Financial Activities	13	80	78	81	936,751	904.49
Professional & Business Services	9	38	36	33	287,279	619.58
Education & Health Services	29	159	157	158	1,238,273	602.86
Leisure & Hospitality	7	53	54	57	282,287	397.21
Local Government	15	289	295	274	3,265,987	878.43
State Government	7	29	29	29	290,175	769.69
Other	6	38	37	37	280,863	578.70
LAWRENCE COUNTY - TOTAL	400	3,859	3,816	3,809	\$38,058,187	\$764.77
Natural Resources & Mining	55	189	186	188	2,070,205	848.56
Construction	27	172	171	169	2,944,090	1,326.96
Manufacturing	15	301	291	289	2,946,196	771.73
Trade, Transportation & Utilities	114	775	788	799	7,784,134	760.52
Wholesale Trade	19	191	192	200	2,492,688	986.68
Retail Trade	60	466	480	485	3,750,365	604.80
Transportation, Warehousing & Utilities	35	118	116	114	1,541,081	1,021.94
Financial Activities	28	119	121	122	1,345,103	857.48
Professional & Business Services	22	93	93	86	930,047	789.07
Education & Health Services	49	573	553	550	4,919,091	677.31
Leisure & Hospitality	35	360	349	347	1,453,993	317.74
Local Government	24	1,025	1,027	1,019	11,212,431	842.55
State Government	9	72	72	72	606,080	647.52
Other	22	180	165	168	1,846,817	830.78

TABLE 6. COUNTY SUMMARY

North American Industry Classification System - Industry Groups	Number of Employing Units	Employment			Total Earnings Apr - Jun 2021	Average Weekly Earnings
		Apr	May	Jun		
LEE COUNTY - TOTAL	240	1,606	1,609	1,615	\$15,422,716	\$736.87
Natural Resources & Mining	36	154	154	155	1,693,980	844.32
Construction	5	6	7	6	48,508	589.17
Trade, Transportation & Utilities	38	342	342	343	3,340,613	750.64
Wholesale Trade	10	120	121	120	1,643,407	1,050.55
Retail Trade	19	168	171	169	1,038,432	471.73
Transportation, Warehousing & Utilities	9	54	50	54	658,774	962.18
Financial Activities	13	47	46	42	488,243	834.60
Professional & Business Services	15	54	54	52	979,575	1,412.85
Education & Health Services	90	326	333	354	3,210,389	731.35
Leisure & Hospitality	9	76	71	70	342,504	364.24
Local Government	15	210	213	206	1,978,075	725.72
State Government	6	370	368	367	3,172,353	662.52
Other	13	21	21	20	168,476	627.08
LINCOLN COUNTY - TOTAL	275	2,622	2,633	2,665	\$25,297,819	\$737.12
Natural Resources & Mining	37	133	129	138	1,291,409	745.04
Construction	19	135	139	134	1,676,415	948.20
Manufacturing	9	298	315	323	2,812,524	693.42
Trade, Transportation & Utilities	45	330	331	333	3,824,742	887.96
Wholesale Trade	7	48	50	51	621,560	962.66
Retail Trade	24	161	161	160	987,585	472.83
Transportation, Warehousing & Utilities	14	121	120	122	2,215,597	1,408.52
Financial Activities	19	66	66	66	636,182	741.47
Professional & Business Services	10	23	24	22	288,738	965.68
Education & Health Services	88	303	301	307	2,517,688	637.77
Leisure & Hospitality	16	113	121	130	473,243	300.03
Local Government	7	321	314	322	3,366,052	811.68
State Government	10	841	836	834	7,798,179	716.68
Other	15	59	57	56	612,647	821.98

TABLE 6. COUNTY SUMMARY

North American Industry Classification System - Industry Groups	Number of Employing Units	Employment			Total Earnings	Average Weekly Earnings
		Apr	May	Jun	Apr - Jun 2021	
LITTLE RIVER COUNTY - TOTAL	244	2,962	2,962	2,977	\$36,993,373	\$959.10
Natural Resources & Mining	16	59	59	55	531,701	709.25
Construction	12	73	66	64	724,875	824.03
Manufacturing	15	895	894	896	19,767,823	1,699.00
Trade, Transportation & Utilities	58	524	525	517	4,200,839	619.04
Wholesale Trade	7	31	31	32	518,453	1,272.80
Retail Trade	37	416	419	412	2,952,338	546.36
Transportation, Warehousing & Utilities	14	77	75	73	730,048	748.77
Financial Activities	13	54	55	56	460,446	643.98
Professional & Business Services	17	122	120	131	1,313,552	812.67
Education & Health Services	46	186	181	187	1,445,835	602.26
Leisure & Hospitality	19	240	245	246	908,188	286.71
Local Government	20	675	683	693	6,766,676	761.36
State Government	10	81	80	79	525,252	505.05
Other	18	53	54	53	348,186	502.19
LOGAN COUNTY - TOTAL	486	5,121	5,125	5,113	\$45,574,195	\$684.75
Natural Resources & Mining	24	127	123	124	1,176,668	726.04
Construction	42	166	171	167	1,896,345	868.29
Manufacturing	21	1,182	1,174	1,149	12,212,529	804.07
Trade, Transportation & Utilities	102	972	981	987	7,350,296	576.95
Wholesale Trade	10	50	51	58	392,015	568.96
Retail Trade	71	795	801	803	5,295,335	509.38
Transportation, Warehousing & Utilities	21	127	129	126	1,662,946	1,004.60
Information	5	24	25	24	260,949	824.92
Financial Activities	47	182	183	185	2,196,875	921.77
Professional & Business Services	43	107	109	105	957,723	688.51
Education & Health Services	105	639	633	624	5,519,144	671.76
Leisure & Hospitality	30	310	319	321	1,201,319	291.82
Other Services	33	138	135	138	1,304,251	732.31
Local Government	22	817	818	835	8,431,498	787.75
State Government	12	457	454	454	3,066,598	518.44

TABLE 6. COUNTY SUMMARY

North American Industry Classification System - Industry Groups	Number of Employing Units	Employment			Total Earnings Apr - Jun 2021	Average Weekly Earnings
		Apr	May	Jun		
LONOKE COUNTY - TOTAL	1,337	14,099	14,250	14,289	\$140,861,873	\$762.39
Natural Resources & Mining	92	516	523	516	5,351,051	794.12
Construction	157	912	910	923	10,225,332	859.63
Manufacturing	37	1,453	1,470	1,528	20,479,459	1,061.79
Trade, Transportation & Utilities	291	3,056	3,106	3,127	27,679,452	687.65
Wholesale Trade	68	440	437	437	6,030,694	1,059.13
Retail Trade	168	2,287	2,335	2,361	17,379,233	574.34
Transportation, Warehousing & Utilities	55	329	334	329	4,269,525	993.22
Information	18	86	89	92	1,036,053	895.46
Financial Activities	174	743	747	752	10,694,462	1,100.78
Professional & Business Services	154	679	688	579	5,585,418	662.35
Education & Health Services	200	1,738	1,763	1,782	15,982,968	698.16
Leisure & Hospitality	115	1,987	2,004	2,061	9,834,239	374.99
Other Services	61	196	199	192	1,558,221	612.59
Local Government	24	2,580	2,599	2,585	30,869,603	917.54
State Government	14	153	152	152	1,565,615	790.58
MADISON COUNTY - TOTAL	265	3,329	3,395	3,429	\$33,747,997	\$767.06
Natural Resources & Mining	10	55	54	54	517,700	732.94
Construction	37	144	147	155	1,482,136	766.89
Manufacturing	22	1,218	1,229	1,242	12,787,740	799.95
Trade, Transportation & Utilities	57	667	677	679	5,789,800	660.46
Wholesale Trade	7	30	30	32	334,708	839.57
Retail Trade	37	498	508	507	3,616,709	551.64
Transportation, Warehousing & Utilities	13	139	139	140	1,838,383	1,014.93
Information	6	51	50	50	1,301,026	1,988.32
Financial Activities	19	82	84	82	845,122	786.40
Professional & Business Services	27	78	86	81	1,195,494	1,126.05
Education & Health Services	34	250	246	258	2,237,210	684.72
Leisure & Hospitality	15	144	148	153	605,024	313.75
Other Services	22	51	75	80	391,355	438.41
Local Government	9	549	559	555	6,222,410	863.46
State Government	7	40	40	40	372,980	717.27

TABLE 6. COUNTY SUMMARY

North American Industry Classification System - Industry Groups	Number of Employing Units	Employment			Total Earnings	Average Weekly Earnings
		Apr	May	Jun	Apr - Jun 2021	
MARION COUNTY - TOTAL	282	3,367	3,394	3,394	\$31,537,258	\$716.67
Manufacturing	22	1,357	1,367	1,368	14,216,997	801.77
Trade, Transportation & Utilities	56	522	533	533	4,013,485	583.24
Wholesale Trade	6	40	40	40	298,096	573.26
Retail Trade	42	448	459	459	3,192,257	539.29
Transportation, Warehousing & Utilities	8	34	34	34	523,132	1,183.56
Information	4	55	53	52	815,376	1,176.02
Financial Activities	30	187	208	229	1,885,287	697.22
Professional & Business Services	23	86	82	70	701,219	679.91
Education & Health Services	42	264	264	259	2,550,065	747.75
Leisure & Hospitality	37	219	228	225	926,018	318.00
Other Services	15	26	25	26	155,965	467.43
Local Government	18	505	491	487	4,978,039	774.63
State Government	7	39	39	39	365,859	721.62
Other	28	107	104	106	928,948	676.25
MILLER COUNTY - TOTAL	886	12,079	12,224	12,294	\$132,209,952	\$833.67
Natural Resources & Mining	31	298	298	299	3,832,897	988.28
Construction	69	606	629	667	7,252,443	879.94
Manufacturing	25	2,403	2,416	2,404	37,971,505	1,213.16
Trade, Transportation & Utilities	213	2,540	2,553	2,575	27,519,034	828.19
Wholesale Trade	45	499	497	503	6,823,666	1,050.50
Retail Trade	119	1,244	1,256	1,252	9,309,644	572.60
Transportation, Warehousing & Utilities	49	797	800	820	11,385,724	1,087.08
Information	6	85	85	89	1,208,559	1,076.83
Financial Activities	87	405	414	400	4,857,008	919.48
Professional & Business Services	80	1,064	1,073	1,070	8,152,028	586.60
Education & Health Services	182	1,208	1,244	1,252	9,965,394	620.87
Leisure & Hospitality	98	1,454	1,516	1,551	7,471,896	381.39
Other Services	54	224	227	225	1,728,260	589.98
Local Government	26	1,314	1,294	1,285	16,840,115	998.25
State Government	15	478	475	477	5,410,813	873.18

TABLE 6. COUNTY SUMMARY

North American Industry Classification System - Industry Groups	Number of Employing Units	Employment			Total Earnings	Average Weekly Earnings
		Apr	May	Jun	Apr - Jun 2021	
MISSISSIPPI COUNTY - TOTAL	1,050	16,433	16,352	16,366	\$241,892,535	\$1,135.71
Natural Resources & Mining	105	490	503	512	4,981,270	763.80
Construction	56	702	698	694	10,884,854	1,199.57
Manufacturing	60	6,013	5,862	5,872	131,024,205	1,703.74
Trade, Transportation & Utilities	261	2,681	2,722	2,722	27,755,664	788.33
Wholesale Trade	53	347	349	345	5,551,618	1,230.68
Retail Trade	142	1,550	1,585	1,567	10,734,972	526.86
Transportation, Warehousing & Utilities	66	784	788	810	11,469,074	1,111.13
Information	8	26	24	23	176,921	559.29
Financial Activities	76	400	404	403	4,097,783	783.46
Professional & Business Services	79	956	961	977	11,226,545	895.21
Education & Health Services	197	1,301	1,300	1,285	12,807,950	760.60
Leisure & Hospitality	92	1,071	1,061	1,059	4,782,893	345.89
Other Services	47	273	272	317	3,133,728	838.94
Local Government	50	2,037	2,061	2,043	26,638,638	1,001.04
State Government	19	483	484	459	4,382,084	709.15
MONROE COUNTY - TOTAL	259	1,900	1,899	1,978	\$17,103,680	\$683.23
Natural Resources & Mining	24	103	102	113	1,047,888	760.44
Manufacturing	6	124	129	137	1,181,859	699.32
Trade, Transportation & Utilities	66	503	489	536	5,690,922	859.48
Wholesale Trade	16	145	147	141	2,283,518	1,217.01
Retail Trade	33	257	237	282	1,668,657	496.23
Transportation, Warehousing & Utilities	17	101	105	113	1,738,747	1,257.83
Financial Activities	20	82	81	81	854,546	808.21
Professional & Business Services	13	26	25	29	192,014	553.89
Education & Health Services	49	319	324	314	2,627,783	633.66
Leisure & Hospitality	25	278	283	294	1,149,330	310.21
Local Government	21	309	312	310	3,000,011	743.62
State Government	7	65	65	65	647,114	765.82
Other	28	91	89	99	712,213	589.09

TABLE 6. COUNTY SUMMARY

North American Industry Classification System - Industry Groups	Number of Employing Units	Employment			Total Earnings	Average Weekly Earnings
		Apr	May	Jun	Apr - Jun 2021	
MONTGOMERY COUNTY - TOTAL	153	1,219	1,182	1,283	\$9,914,592	\$621.06
Natural Resources & Mining	6	23	23	21	163,304	562.47
Construction	25	72	67	61	498,890	575.64
Manufacturing	7	33	34	36	323,946	725.79
Trade, Transportation & Utilities	34	235	241	243	1,698,315	545.09
Wholesale Trade	7	60	61	60	576,405	734.90
Retail Trade	22	160	163	169	1,018,089	477.53
Transportation, Warehousing & Utilities	5	15	17	14	103,821	520.84
Financial Activities	11	45	46	53	363,315	582.24
Professional & Business Services	12	22	22	20	246,894	890.24
Education & Health Services	16	47	47	47	376,001	615.39
Leisure & Hospitality	14	256	277	373	1,760,242	448.36
Local Government	9	418	357	359	3,976,889	809.30
State Government	7	36	36	36	300,229	641.51
Other	12	32	32	34	206,567	486.42
NEVADA COUNTY - TOTAL	199	2,282	2,247	2,273	\$22,898,774	\$776.88
Natural Resources & Mining	13	47	46	47	661,399	1,090.22
Trade, Transportation & Utilities	40	527	525	544	4,756,607	687.77
Retail Trade	23	310	313	330	2,107,624	510.36
Other Trade, Transportation & Utilities	17	217	212	214	2,648,983	950.71
Financial Activities	11	67	64	67	511,957	596.69
Professional & Business Services	12	54	56	62	694,655	932.01
Education & Health Services	42	353	361	360	2,310,045	496.36
Leisure & Hospitality	9	94	91	97	349,170	285.74
Other Services	15	53	45	47	297,529	473.52
Local Government	29	392	388	378	4,005,465	798.22
State Government	9	54	54	54	417,638	594.93
Other	19	641	617	617	8,894,309	1,094.68

TABLE 6. COUNTY SUMMARY

North American Industry Classification System - Industry Groups	Number of Employing Units	Employment			Total Earnings	Average Weekly Earnings
		Apr	May	Jun	Apr - Jun 2021	
NEWTON COUNTY - TOTAL	112	985	979	970	\$7,960,141	\$626.09
Construction	7	22	21	20	213,737	782.92
Manufacturing	8	38	36	30	364,417	808.62
Trade, Transportation & Utilities	27	165	156	155	1,353,240	656.06
Retail Trade	14	111	105	106	742,692	532.27
Other Trade, Transportation & Utilities	13	54	51	49	610,548	914.91
Education & Health Services	20	201	199	189	1,201,361	470.69
Leisure & Hospitality	13	167	170	180	930,049	415.14
Other Services	4	3	3	3	14,969	383.82
Local Government	14	318	321	321	3,168,728	761.71
State Government	7	35	35	35	312,342	686.47
Other	12	36	38	37	401,298	834.30
OUACHITA COUNTY - TOTAL	631	6,630	6,718	6,724	\$70,019,713	\$805.02
Natural Resources & Mining	35	141	144	146	1,615,831	865.16
Construction	42	212	217	218	2,481,386	885.05
Manufacturing	27	696	702	700	9,179,141	1,009.66
Trade, Transportation & Utilities	148	1,486	1,511	1,552	13,141,411	666.66
Wholesale Trade	22	185	182	190	2,036,193	843.61
Retail Trade	92	940	956	978	6,377,044	512.05
Transportation, Warehousing & Utilities	34	361	373	384	4,728,174	975.95
Information	6	30	30	32	393,651	987.42
Financial Activities	52	262	263	250	2,742,305	816.57
Professional & Business Services	43	352	351	373	3,415,913	732.61
Education & Health Services	167	1,264	1,273	1,261	15,607,117	948.30
Leisure & Hospitality	43	461	481	472	1,923,153	313.86
Other Services	24	97	101	100	1,098,527	850.69
Local Government	31	1,022	1,040	1,046	12,720,748	944.52
State Government	13	607	605	574	5,700,530	736.57

TABLE 6. COUNTY SUMMARY

North American Industry Classification System - Industry Groups	Number of Employing Units	Employment			Total Earnings	Average Weekly Earnings
		Apr	May	Jun	Apr - Jun 2021	
PERRY COUNTY - TOTAL	156	1,132	1,130	1,109	\$10,544,702	\$721.86
Construction	15	78	83	75	731,067	714.86
Manufacturing	6	27	29	27	422,027	1,173.38
Trade, Transportation & Utilities	28	181	179	189	1,522,243	639.87
Retail Trade	17	138	140	145	710,315	387.52
Other Trade, Transportation & Utilities	11	43	39	44	811,928	1,487.05
Financial Activities	10	29	29	26	329,741	905.88
Professional & Business Services	21	59	56	61	499,010	654.30
Education & Health Services	31	213	210	202	1,729,752	638.68
Leisure & Hospitality	12	88	92	85	380,834	331.64
Local Government	9	321	321	313	3,497,550	845.16
State Government	7	34	34	34	316,262	715.52
Other	17	102	97	97	1,116,216	870.23
PHILLIPS COUNTY - TOTAL	688	4,844	4,890	4,731	\$48,411,523	\$772.34
Natural Resources & Mining	64	228	234	230	2,017,957	672.95
Construction	27	112	117	104	896,546	621.31
Manufacturing	12	409	409	408	5,032,289	947.22
Trade, Transportation & Utilities	133	1,111	1,128	1,126	10,834,769	743.04
Wholesale Trade	26	257	266	260	3,636,508	1,071.77
Retail Trade	72	640	651	655	4,515,435	535.47
Transportation, Warehousing & Utilities	35	214	211	211	2,682,826	973.45
Information	7	11	11	11	140,930	985.52
Financial Activities	39	191	194	193	2,180,056	870.40
Professional & Business Services	40	265	274	271	2,947,145	839.64
Education & Health Services	263	1,059	1,054	1,006	10,852,983	802.99
Leisure & Hospitality	39	367	377	376	1,436,435	295.97
Other Services	23	46	44	45	347,079	593.30
Local Government	27	739	743	669	8,777,464	941.69
State Government	14	306	305	292	2,947,870	753.35

TABLE 6. COUNTY SUMMARY

North American Industry Classification System - Industry Groups	Number of Employing Units	Employment			Total Earnings Apr - Jun 2021	Average Weekly Earnings
		Apr	May	Jun		
PIKE COUNTY - TOTAL	266	2,630	2,648	2,626	\$24,945,196	\$728.31
Natural Resources & Mining	25	145	141	141	1,605,470	867.67
Construction	19	47	55	48	400,366	615.95
Manufacturing	16	441	431	436	4,901,388	864.75
Trade, Transportation & Utilities	70	543	549	529	4,504,204	641.23
Wholesale Trade	8	105	106	105	1,111,486	811.70
Retail Trade	40	356	365	348	2,446,115	528.05
Transportation, Warehousing & Utilities	22	82	78	76	946,603	925.62
Information	8	26	26	26	302,606	895.28
Financial Activities	23	236	234	234	2,667,697	874.46
Professional & Business Services	13	71	64	55	799,127	970.60
Education & Health Services	29	251	251	254	1,694,094	517.12
Leisure & Hospitality	26	244	267	282	1,172,847	341.31
Other Services	18	77	81	79	583,033	567.70
Local Government	10	456	456	449	5,679,789	963.06
State Government	9	93	93	93	634,575	524.88
POINSETT COUNTY - TOTAL	469	5,221	5,255	5,263	\$60,534,670	\$887.57
Natural Resources & Mining	66	265	280	280	3,718,138	1,040.04
Construction	24	85	91	91	900,401	778.22
Manufacturing	15	772	760	760	14,110,840	1,420.75
Trade, Transportation & Utilities	117	1,155	1,181	1,185	12,432,639	814.85
Wholesale Trade	22	428	432	433	6,802,083	1,214.01
Retail Trade	66	603	620	624	3,984,011	497.77
Transportation, Warehousing & Utilities	29	124	129	128	1,646,545	997.30
Professional & Business Services	27	250	250	253	4,019,154	1,231.74
Education & Health Services	75	780	771	756	7,324,389	732.66
Leisure & Hospitality	45	502	509	530	2,121,162	317.65
Other Services	19	61	64	57	524,847	665.49
Local Government	30	1,015	1,013	1,015	11,953,857	906.53
State Government	10	106	106	105	925,765	673.94
Other	41	230	230	231	2,503,478	836.07

TABLE 6. COUNTY SUMMARY

North American Industry Classification System - Industry Groups	Number of Employing Units	Employment			Total Earnings	Average Weekly Earnings
		Apr	May	Jun	Apr - Jun 2021	
POLK COUNTY - TOTAL	472	5,628	5,658	5,564	\$53,257,870	\$729.39
Natural Resources & Mining	25	175	171	172	2,246,909	1,001.00
Construction	31	215	221	223	2,111,122	739.27
Manufacturing	36	1,190	1,186	1,174	13,688,395	889.82
Trade, Transportation & Utilities	114	1,094	1,092	1,079	8,878,422	627.52
Wholesale Trade	16	42	40	41	455,175	853.99
Retail Trade	64	809	806	793	5,486,737	525.82
Transportation, Warehousing & Utilities	34	243	246	245	2,936,510	923.24
Information	6	42	42	43	276,885	503.12
Financial Activities	41	197	201	200	2,039,618	787.09
Professional & Business Services	35	144	149	138	1,723,057	922.57
Education & Health Services	83	962	965	977	9,569,926	760.48
Leisure & Hospitality	41	479	497	466	1,941,793	310.75
Other Services	27	150	146	139	1,234,744	655.04
Local Government	21	672	677	663	7,317,539	839.30
State Government	12	308	311	290	2,229,460	566.00
POPE COUNTY - TOTAL	1,802	24,526	24,260	23,880	\$281,817,797	\$894.98
Natural Resources & Mining	39	810	807	815	8,663,625	822.08
Construction	158	1,287	1,185	1,189	21,522,533	1,356.66
Manufacturing	75	3,360	3,329	3,351	36,633,661	842.02
Trade, Transportation & Utilities	406	5,992	5,986	5,985	83,695,546	1,075.23
Wholesale Trade	73	543	540	539	6,926,712	985.49
Retail Trade	262	3,108	3,124	3,094	25,232,981	624.38
Transportation, Warehousing & Utilities	71	2,341	2,322	2,352	51,535,853	1,695.35
Information	17	106	105	116	939,476	663.00
Financial Activities	197	876	879	877	10,836,291	950.11
Professional & Business Services	253	2,103	1,980	1,979	25,651,577	976.51
Education & Health Services	347	3,084	3,108	3,058	32,003,114	798.41
Leisure & Hospitality	147	2,691	2,667	2,571	12,789,699	372.24
Other Services	104	490	480	475	4,088,174	652.89
Local Government	44	2,196	2,206	2,201	28,135,417	983.31
State Government	15	1,531	1,528	1,263	16,858,684	900.15

TABLE 6. COUNTY SUMMARY

North American Industry Classification System - Industry Groups	Number of Employing Units	Employment			Total Earnings	Average Weekly Earnings
		Apr	May	Jun	Apr - Jun 2021	
PRAIRIE COUNTY - TOTAL	246	1,439	1,449	1,466	\$13,273,175	\$703.50
Natural Resources & Mining	38	158	159	157	2,119,957	1,032.11
Construction	12	52	52	52	624,869	924.36
Trade, Transportation & Utilities	59	358	368	377	3,199,802	669.46
Wholesale Trade	12	96	96	93	1,219,666	987.58
Retail Trade	34	205	215	227	1,427,079	509.00
Transportation, Warehousing & Utilities	13	57	57	57	553,057	746.37
Financial Activities	16	54	55	55	536,685	755.19
Professional & Business Services	12	63	59	61	560,001	706.18
Education & Health Services	45	244	256	261	1,962,897	595.24
Leisure & Hospitality	18	81	79	85	380,773	358.66
Local Government	15	306	302	293	2,909,210	745.12
State Government	7	29	29	29	263,084	697.84
Other	24	94	90	96	715,897	590.03
PULASKI COUNTY - TOTAL	14,546	231,408	231,961	232,633	\$3,129,858,530	\$1,037.75
Natural Resources & Mining	51	619	641	650	11,373,691	1,374.19
Construction	959	9,561	9,571	9,750	137,886,522	1,101.72
Manufacturing	328	11,804	11,749	11,881	173,593,722	1,130.56
Trade, Transportation & Utilities	3,096	47,173	47,549	47,662	601,381,442	974.69
Wholesale Trade	895	11,361	11,406	11,486	196,881,698	1,326.43
Retail Trade	1,763	23,579	23,739	23,759	218,258,372	708.63
Transportation, Warehousing & Utilities	438	12,233	12,404	12,417	186,241,372	1,159.90
Information	221	2,625	2,660	2,670	43,503,925	1,262.02
Financial Activities	1,750	17,035	16,993	17,006	321,365,565	1,453.17
Professional & Business Services	2,813	34,191	33,985	33,746	485,146,908	1,098.46
Education & Health Services	2,555	41,322	41,129	41,242	554,583,640	1,034.67
Leisure & Hospitality	1,295	19,944	20,538	21,167	114,099,229	427.10
Other Services	1,163	6,319	6,469	6,643	72,101,277	856.30
Local Government	108	14,359	14,365	13,875	211,491,273	1,145.70
State Government	207	26,456	26,312	26,341	403,331,336	1,176.56

TABLE 6. COUNTY SUMMARY

North American Industry Classification System - Industry Groups	Number of Employing Units	Employment			Total Earnings	Average Weekly Earnings
		Apr	May	Jun	Apr - Jun 2021	
RANDOLPH COUNTY - TOTAL	401	5,950	5,937	5,936	\$54,283,548	\$702.85
Natural Resources & Mining	26	252	251	253	3,020,897	922.13
Construction	26	79	81	85	611,315	575.81
Manufacturing	29	1,782	1,758	1,776	17,741,660	770.17
Trade, Transportation & Utilities	101	920	923	925	8,179,132	681.90
Wholesale Trade	14	117	116	112	1,291,187	863.67
Retail Trade	58	634	637	638	4,584,154	554.15
Transportation, Warehousing & Utilities	29	169	170	175	2,303,791	1,034.33
Information	5	15	15	11	169,733	955.35
Financial Activities	35	151	151	143	1,414,951	733.77
Professional & Business Services	29	241	241	239	1,923,528	615.66
Education & Health Services	63	973	974	957	8,477,601	673.68
Leisure & Hospitality	30	458	474	461	1,905,703	315.71
Other Services	20	48	48	49	330,503	526.00
Local Government	27	766	781	783	8,042,421	796.54
State Government	10	265	240	254	2,466,104	749.80
SAINT FRANCIS COUNTY - TOTAL	637	6,169	6,226	6,245	\$59,670,515	\$738.74
Natural Resources & Mining	41	169	175	179	1,665,313	734.80
Construction	34	188	192	197	2,284,421	913.65
Trade, Transportation & Utilities	140	1,626	1,661	1,667	16,983,850	791.15
Wholesale Trade	27	471	472	479	6,733,914	1,092.81
Retail Trade	89	885	913	913	6,330,461	538.87
Transportation, Warehousing & Utilities	24	270	276	275	3,919,475	1,101.70
Information	5	45	46	46	429,203	722.97
Financial Activities	53	195	206	199	1,565,229	602.01
Professional & Business Services	48	192	191	195	2,081,766	831.15
Education & Health Services	197	1,308	1,301	1,299	13,706,168	809.36
Leisure & Hospitality	48	613	628	661	2,640,139	320.33
Local Government	28	797	794	784	8,017,695	779.05
State Government	13	353	357	336	3,288,731	725.56
Other	30	683	675	682	7008000	792.76

TABLE 6. COUNTY SUMMARY

North American Industry Classification System - Industry Groups	Number of Employing Units	Employment			Total Earnings	Average Weekly Earnings
		Apr	May	Jun	Apr - Jun 2021	
SALINE COUNTY - TOTAL	2,177	25,230	25,238	25,287	\$263,006,335	\$801.18
Natural Resources & Mining	15	65	65	69	660,325	765.74
Construction	292	2,335	2,293	2,265	28,029,166	938.38
Manufacturing	81	1,332	1,334	1,385	18,294,874	1,042.19
Trade, Transportation & Utilities	478	5,756	5,750	5,737	55,195,056	738.70
Wholesale Trade	107	541	533	525	8,346,167	1,204.53
Retail Trade	290	4,525	4,529	4,508	38,817,868	660.52
Transportation, Warehousing & Utilities	81	690	688	704	8,031,021	890.16
Information	25	129	138	130	1,611,805	936.91
Financial Activities	244	897	898	912	12,313,141	1,049.68
Professional & Business Services	290	1,800	1,808	1,777	22,476,278	963.20
Education & Health Services	345	4,676	4,678	4,725	50,804,483	832.74
Leisure & Hospitality	206	3,555	3,649	3,649	17,416,689	370.33
Other Services	154	783	760	820	7,141,180	697.40
Local Government	33	3,114	3,082	3,037	42,548,581	1,063.46
State Government	14	788	783	781	6,514,757	639.20
SCOTT COUNTY - TOTAL	182	2,946	2,952	3,016	\$25,869,347	\$669.72
Natural Resources & Mining	19	158	160	161	1,877,191	904.38
Trade, Transportation & Utilities	35	314	323	342	2,401,252	566.02
Wholesale Trade	6	21	22	22	171,398	608.51
Retail Trade	23	228	236	255	1,318,217	423.09
Transportation, Warehousing & Utilities	6	65	65	65	911,637	1,078.86
Financial Activities	16	60	62	64	556,503	690.45
Professional & Business Services	13	123	122	127	868,181	538.57
Education & Health Services	40	272	280	279	3,101,837	861.38
Leisure & Hospitality	18	154	154	166	641,770	312.45
Other Services	9	34	35	35	264,233	586.32
Local Government	6	512	506	518	5,631,709	846.11
State Government	6	31	31	31	303,140	752.21
Other	20	1,288	1,279	1,293	10,223,531	611.21

TABLE 6. COUNTY SUMMARY

North American Industry Classification System - Industry Groups	Number of Employing Units	Employment			Total Earnings	Average Weekly Earnings
		Apr	May	Jun	Apr - Jun 2021	
SEARCY COUNTY - TOTAL	173	1,545	1,585	1,570	\$11,932,435	\$585.88
Construction	9	8	8	12	42,587	350.99
Manufacturing	15	148	135	128	1,000,760	561.91
Trade, Transportation & Utilities	34	242	252	247	1,807,744	562.98
Wholesale Trade	5	35	34	36	270,881	595.34
Retail Trade	23	188	198	191	1,274,730	509.82
Transportation, Warehousing & Utilities	6	19	20	20	262,133	1,025.29
Financial Activities	13	69	86	90	652,972	615.04
Education & Health Services	39	301	300	296	2,474,189	636.53
Leisure & Hospitality	17	152	153	154	614,837	309.12
Local Government	10	320	321	320	3,086,967	741.29
State Government	6	43	43	43	359,831	643.70
Other	30	262	287	280	1,892,548	526.83
SEBASTIAN COUNTY - TOTAL	3,707	61,814	62,252	61,866	\$749,889,696	\$930.72
Natural Resources & Mining	33	234	238	243	3,859,804	1,245.77
Construction	264	2,462	2,490	2,468	26,617,051	827.82
Manufacturing	186	10,753	10,782	10,933	142,588,724	1,013.46
Trade, Transportation & Utilities	882	12,859	13,010	12,929	154,745,944	920.42
Wholesale Trade	222	2,680	2,700	2,706	38,217,535	1,090.70
Retail Trade	547	7,568	7,657	7,528	62,943,594	638.40
Transportation, Warehousing & Utilities	113	2,611	2,653	2,695	53,584,815	1,553.68
Information	39	794	774	793	17,518,912	1,712.34
Financial Activities	424	2,321	2,319	2,306	32,067,575	1,065.39
Professional & Business Services	562	7,481	7,601	7,356	83,299,970	856.72
Education & Health Services	637	11,474	11,413	11,432	165,421,724	1,112.34
Leisure & Hospitality	368	6,075	6,254	6,328	30,864,762	381.77
Other Services	248	1,111	1,119	1,119	10,591,255	729.81
Local Government	43	4,638	4,661	4,408	62,025,259	1,044.25
State Government	21	1,612	1,591	1,551	20,288,716	984.86

TABLE 6. COUNTY SUMMARY

North American Industry Classification System - Industry Groups	Number of Employing Units	Employment			Total Earnings	Average Weekly Earnings
		Apr	May	Jun	Apr - Jun 2021	
SEVIER COUNTY - TOTAL	315	4,607	4,657	4,648	\$44,613,956	\$740.05
Natural Resources & Mining	17	138	149	152	1,739,588	914.45
Construction	20	166	168	180	2,279,738	1,023.53
Trade, Transportation & Utilities	83	756	784	779	6,677,315	664.48
Wholesale Trade	10	70	71	71	872,578	949.83
Retail Trade	58	592	613	610	4,423,987	562.49
Transportation, Warehousing & Utilities	15	94	100	98	1,380,750	1,091.21
Financial Activities	29	196	196	189	2,104,738	835.99
Professional & Business Services	27	176	169	162	1,393,381	634.22
Education & Health Services	59	465	446	450	4,046,492	686.12
Leisure & Hospitality	25	256	260	276	1,042,632	303.80
Local Government	13	899	930	901	8,853,096	748.36
State Government	8	165	168	155	1,781,958	842.67
Other	34	1,390	1,387	1,404	14,695,018	811.09
SHARP COUNTY - TOTAL	388	3,456	3,491	3,399	\$30,445,983	\$679.10
Construction	28	111	114	112	1,106,803	757.91
Manufacturing	16	159	173	180	1,648,313	742.93
Trade, Transportation & Utilities	85	760	756	761	5,073,554	514.19
Wholesale Trade	15	44	43	41	275,523	496.74
Retail Trade	62	683	679	686	4,305,611	485.16
Transportation, Warehousing & Utilities	8	33	34	34	492,420	1,125.10
Information	8	21	20	17	176,381	701.78
Financial Activities	37	177	182	184	2,492,662	1,059.35
Professional & Business Services	36	119	121	113	1,149,292	751.33
Education & Health Services	79	821	800	814	7,647,128	724.73
Leisure & Hospitality	33	398	408	407	1,747,873	332.53
Local Government	24	740	753	665	8,397,609	898.01
State Government	7	53	53	53	444,753	645.51
Other	35	97	111	93	561,615	430.58

TABLE 6. COUNTY SUMMARY

North American Industry Classification System - Industry Groups	Number of Employing Units	Employment			Total Earnings	Average Weekly Earnings
		Apr	May	Jun	Apr - Jun 2021	
STONE COUNTY - TOTAL	281	2,482	2,518	2,446	\$21,174,967	\$656.26
Natural Resources & Mining	6	8	8	12	57,285	472.13
Construction	16	32	35	38	254,364	559.04
Manufacturing	20	262	259	263	2,022,021	595.18
Trade, Transportation & Utilities	64	536	552	546	4,595,561	649.03
Wholesale Trade	5	35	35	31	286,884	655.49
Retail Trade	47	463	481	477	3,704,655	601.63
Transportation, Warehousing & Utilities	12	38	36	38	604,022	1,244.55
Financial Activities	38	137	141	144	1,264,958	691.74
Professional & Business Services	17	34	30	29	196,639	487.94
Education & Health Services	48	504	495	477	4,852,971	758.75
Leisure & Hospitality	33	458	490	499	1,976,198	315.17
Local Government	10	375	373	305	4,907,985	1,075.60
State Government	7	95	94	94	756,181	616.62
Other	22	41	41	39	290,804	554.62
UNION COUNTY - TOTAL	1,212	16,415	16,359	16,403	\$217,719,315	\$1,021.68
Natural Resources & Mining	81	354	346	347	5,228,921	1,152.51
Construction	74	1,513	1,424	1,428	22,497,895	1,189.42
Manufacturing	51	2,798	2,823	2,836	53,254,318	1,453.17
Trade, Transportation & Utilities	289	3,313	3,346	3,313	38,373,855	888.04
Wholesale Trade	64	448	452	457	7,391,704	1,257.02
Retail Trade	172	1,968	1,994	1,969	15,255,010	593.56
Transportation, Warehousing & Utilities	53	897	900	887	15,727,141	1,352.21
Information	8	56	56	59	634,122	855.77
Financial Activities	94	579	575	584	7,670,975	1,018.54
Professional & Business Services	119	1,804	1,780	1,800	34,057,836	1,459.79
Education & Health Services	263	1,966	1,959	1,949	20,898,399	821.03
Leisure & Hospitality	99	1,424	1,415	1,452	6,509,999	350.11
Other Services	86	389	396	400	3,262,682	635.38
Local Government	32	1,740	1,757	1,758	20,578,255	903.68
State Government	16	479	482	477	4,752,058	762.61

TABLE 6. COUNTY SUMMARY

North American Industry Classification System - Industry Groups	Number of Employing Units	Employment			Total Earnings Apr - Jun 2021	Average Weekly Earnings
		Apr	May	Jun		
VAN BUREN COUNTY - TOTAL	332	3,541	3,553	3,579	\$35,932,641	\$776.93
Natural Resources & Mining	9	35	34	34	563,272	1,262.00
Construction	36	121	124	137	1,071,600	647.36
Trade, Transportation & Utilities	88	1,069	1,067	1,070	12,713,033	915.09
Wholesale Trade	10	43	44	43	489,472	868.89
Retail Trade	52	611	614	611	4,602,034	578.44
Transportation, Warehousing & Utilities	26	415	409	416	7,621,527	1,418.40
Information	6	29	31	32	364,337	913.89
Financial Activities	41	165	165	165	1,971,581	919.15
Professional & Business Services	29	126	125	126	1,095,602	670.64
Education & Health Services	49	693	696	693	7,070,403	783.68
Leisure & Hospitality	26	303	302	303	1,327,940	337.50
Other	31	337	328	344	2,878,219	658.28
Local Government	11	621	639	633	6,498,809	792.25
State Government	6	42	42	42	377,845	692.02
WASHINGTON COUNTY - TOTAL	6,505	107,586	108,071	108,176	\$1,371,631,790	\$977.45
Natural Resources & Mining	41	318	323	329	4,337,273	1,031.87
Construction	644	6,538	6,602	6,711	89,919,352	1,045.32
Manufacturing	229	13,895	13,881	13,902	173,534,292	960.85
Trade, Transportation & Utilities	1,364	22,440	22,420	22,500	263,231,074	901.81
Wholesale Trade	383	3,651	3,685	3,707	67,794,120	1,416.72
Retail Trade	783	12,629	12,684	12,685	113,713,442	690.60
Transportation, Warehousing & Utilities	198	6,160	6,051	6,108	81,723,512	1,029.49
Information	96	794	805	836	12,340,879	1,169.57
Financial Activities	770	3,887	3,904	3,872	57,888,275	1,145.40
Professional & Business Services	1,220	13,571	13,701	13,736	234,118,969	1,317.49
Education & Health Services	935	16,028	15,965	15,966	214,447,519	1,031.88
Leisure & Hospitality	711	12,329	12,477	12,181	65,944,182	411.44
Other Services	412	2,190	2,210	2,228	24,571,954	855.53
Local Government	61	8,782	8,861	8,886	127,203,419	1,106.51
State Government	22	6,814	6,922	7,029	104,094,602	1,156.84

TABLE 6. COUNTY SUMMARY

North American Industry Classification System - Industry Groups	Number of Employing Units	Employment			Total Earnings	Average Weekly Earnings
		Apr	May	Jun	Apr - Jun 2021	
WHITE COUNTY - TOTAL	1,804	24,169	24,233	24,364	\$258,492,806	\$819.78
Natural Resources & Mining	42	356	354	368	5,277,924	1,129.85
Construction	177	1,311	1,354	1,359	16,086,728	922.55
Manufacturing	57	2,235	2,196	2,209	26,425,603	918.41
Trade, Transportation & Utilities	466	6,374	6,461	6,468	67,251,929	804.00
Wholesale Trade	79	562	555	562	6,501,311	893.57
Retail Trade	306	3,628	3,683	3,711	30,638,023	641.47
Transportation, Warehousing & Utilities	81	2,184	2,223	2,195	30,112,595	1,052.57
Information	24	102	104	100	1,032,699	778.81
Financial Activities	191	943	953	941	12,171,002	990.02
Professional & Business Services	182	1,201	1,196	1,204	11,100,955	711.40
Education & Health Services	320	5,463	5,376	5,441	65,871,795	933.73
Leisure & Hospitality	169	2,571	2,651	2,676	11,444,841	334.40
Other Services	115	527	519	523	5,084,023	747.76
Local Government	46	2,609	2,628	2,639	32,159,565	942.29
State Government	15	477	441	436	4,585,742	781.57
WOODRUFF COUNTY - TOTAL	187	1,771	1,792	1,791	\$17,830,113	\$768.52
Natural Resources & Mining	32	213	226	230	1,882,603	649.40
Construction	12	30	30	30	286,868	735.56
Manufacturing	5	195	197	200	2,649,275	1,032.72
Trade, Transportation & Utilities	50	371	361	354	3,799,709	807.42
Wholesale Trade	15	153	150	151	1,865,714	948.35
Retail Trade	25	149	145	139	964,217	513.88
Transportation, Warehousing & Utilities	10	69	66	64	969,778	1,124.60
Financial Activities	10	37	39	40	365,589	727.30
Education & Health Services	40	236	240	250	2,248,791	714.81
Leisure & Hospitality	11	83	80	74	342,650	333.64
Local Government	9	379	390	376	3,555,973	716.69
State Government	5	29	29	29	299,648	794.82
Other	13	198	200	208	2,399,007	913.56

TABLE 6. COUNTY SUMMARY

North American Industry Classification System - Industry Groups	Number of Employing Units	Employment			Total Earnings	Average Weekly Earnings
		Apr	May	Jun	Apr - Jun 2021	
YELL COUNTY - TOTAL	418	6,307	6,306	6,297	\$59,569,243	\$726.96
Natural Resources & Mining	27	244	251	245	2,903,472	905.45
Construction	33	227	224	214	2,111,092	732.59
Manufacturing	21	2,377	2,339	2,355	21,929,921	715.71
Trade, Transportation & Utilities	88	723	737	737	5,858,792	615.40
Wholesale Trade	16	63	63	63	449,902	549.33
Retail Trade	50	514	522	526	3,289,945	486.06
Transportation, Warehousing & Utilities	22	146	152	148	2,118,945	1,096.38
Financial Activities	31	165	165	163	2,094,782	980.55
Professional & Business Services	41	325	328	335	2,875,774	671.70
Education & Health Services	100	670	661	675	5,382,008	619.14
Leisure & Hospitality	22	259	277	282	1,190,969	335.99
Local Government	23	1,124	1,128	1,097	13,255,443	913.39
State Government	10	66	66	66	558,526	650.96
Other	22	127	130	128	1,408,464	844.23
STATEWIDE COUNTY - TOTAL	14,176	40,924	40,978	40,145	\$699,561,883	\$1,322.75
Natural Resources & Mining	113	221	220	228	3,887,723	1,341.06
Construction	990	3,939	3,789	3,866	61,631,038	1,226.72
Manufacturing	162	266	287	322	7,674,891	2,024.15
Trade, Transportation & Utilities	3,907	8,485	8,502	8,567	216,003,334	1,950.65
Wholesale Trade	3,136	6,362	6,349	6,322	181,169,125	2,196.62
Retail Trade	328	959	983	1,069	16,200,688	1,241.65
Transportation, Warehousing & Utilities	443	1,164	1,170	1,176	18,633,521	1,225.08
Information	919	1,524	1,580	1,606	37,758,166	1,849.98
Financial Activities	1,074	3,213	3,265	3,256	58,926,236	1,397.00
Professional & Business Services	5,567	17,930	18,166	17,058	244,908,814	1,063.28
Education & Health Services	825	2,944	2,959	3,168	38,085,935	968.92
Leisure & Hospitality	136	466	447	418	3,216,468	557.67
State Government	18	692	689	688	7,478,800	834.16
Other	465	1,244	1,074	968	19,990,478	1,403.89

Note: Statewide classification includes employment and payroll data for employers that have not provided a physical location for each employing unit. This section also includes employers without a physical location in Arkansas.

TABLE 7. FEDERAL GOVERNMENT EMPLOYMENT AND EARNINGS IN ARKANSAS

North American Industry Classification System - Industry Groups	Number of Employing Units	Employment			Total Earnings Apr - Jun 2021	Average Weekly Earnings
		Apr	May	Jun		
TOTAL	1,193	20,505	20,538	20,667	\$402,566,831	\$1,505.43
Trade, Transportation & Utilities	585	5,612	5,606	5,594	84,000,828	1,153.03
Information	2	36	32	31	601,761	1,402.71
Financial Activities	14	110	110	108	2,526,450	1,777.52
Professional & Business Services	33	846	893	904	15,494,976	1,352.92
Education & Health Services	20	5,419	5,388	5,422	125,783,709	1,788.59
Leisure & Hospitality	23	243	255	270	3,351,075	1,006.93
Other Services	1	1	1	1	9,139	703.00
Public Administration	515	8,238	8,253	8,337	170,798,893	1,587.53

TABLE 8. LOCAL WORKFORCE DEVELOPMENT AREA SUMMARY

North American Industry Classification System - Industry Groups	Number of Employing Units	Employment			Total Earnings Apr - Jun 2021	Average Weekly Earnings
		Apr	May	Jun		
CENTRAL LOCAL WORKFORCE DEVELOPMENT AREA	7,099	83,664	84,063	84,156	\$896,673,164	\$821.51
Natural Resources & Mining	206	1,093	1,098	1,103	12,417,883	869.97
Construction	855	6,301	6,298	6,342	76,593,299	933.18
Manufacturing	232	5,762	5,761	5,885	78,085,997	1,035.15
Trade, Transportation & Utilities	1,544	17,457	17,535	17,635	165,649,893	726.37
Wholesale Trade	334	2,039	2,042	2,070	29,471,880	1,105.71
Retail Trade	947	13,360	13,455	13,494	109,886,492	629.10
Transportation, Warehousing & Utilities	263	2,058	2,038	2,071	26,291,521	983.83
Information	74	1,755	1,780	1,793	41,339,027	1,790.50
Financial Activities	793	3,263	3,274	3,307	44,063,849	1,032.97
Professional & Business Services	947	6,251	6,278	6,195	75,082,874	925.38
Education & Health Services	1,134	14,781	14,828	14,892	158,337,200	821.09
Leisure & Hospitality	660	11,287	11,503	11,539	54,706,986	367.76
Other Services	457	1,933	1,956	2,031	17,068,531	665.35
Local Government	137	9,671	9,667	9,565	131,674,041	1,051.32
State Government	60	4,110	4,085	3,869	41,653,584	796.78

Note: Pulaski County is not included in the Central Local Workforce Development Area. Please refer to Page 51 for information on Pulaski County.

Central Local Workforce Development Area includes these counties: Faulkner, Lonoke, Monroe, Prairie, and Saline.

EASTERN LOCAL WORKFORCE DEVELOPMENT AREA	3,200	32,197	32,466	32,402	\$328,874,279	\$781.89
Natural Resources & Mining	243	1,073	1,094	1,114	10,168,980	715.24
Construction	127	766	780	748	9,123,967	917.84
Manufacturing	73	3,256	3,344	3,295	39,610,073	923.78
Trade, Transportation & Utilities	736	8,219	8,294	8,349	87,050,834	808.01
Wholesale Trade	139	1,800	1,796	1,806	25,563,394	1,092.05
Retail Trade	401	4,193	4,263	4,243	30,516,881	554.56
Transportation, Warehousing & Utilities	196	2,226	2,235	2,300	30,970,559	1,057.10
Information	24	122	114	110	1,120,825	747.55
Financial Activities	252	1,083	1,096	1,084	12,739,040	900.94
Professional & Business Services	246	1,617	1,650	1,624	17,570,628	829.02
Education & Health Services	895	5,464	5,458	5,415	53,963,540	762.27
Leisure & Hospitality	276	3,798	3,905	4,045	20,452,631	401.76
Other Services	147	652	643	662	5,793,762	683.20
Local Government	126	4,447	4,402	4,281	55,123,924	968.84
State Government	55	1,700	1,686	1,675	16,156,075	736.68

Eastern Local Workforce Development Area includes these counties: Crittenden, Cross, Lee, Phillips, and Saint Francis.

TABLE 8. LOCAL WORKFORCE DEVELOPMENT AREA SUMMARY

North American Industry Classification System - Industry Groups	Number of Employing Units	Employment			Total Earnings Apr - Jun 2021	Average Weekly Earnings
		Apr	May	Jun		
NORTH CENTRAL LOCAL WORKFORCE DEVELOPMENT AREA	5,454	67,897	68,288	68,141	\$696,351,968	\$786.47
Natural Resources & Mining	204	1,475	1,486	1,505	18,398,626	950.70
Construction	451	3,097	3,120	3,086	35,196,750	873.09
Manufacturing	218	9,019	9,077	9,150	104,413,414	884.36
Trade, Transportation & Utilities	1,359	15,001	15,173	15,217	153,513,615	780.47
Wholesale Trade	218	1,449	1,451	1,452	17,765,795	942.05
Retail Trade	896	9,675	9,807	9,868	78,522,500	617.40
Transportation, Warehousing & Utilities	245	3,877	3,915	3,897	57,225,320	1,129.77
Information	81	357	359	339	3,741,772	818.47
Financial Activities	550	2,698	2,733	2,702	34,206,618	970.59
Professional & Business Services	496	3,346	3,364	3,403	31,756,327	724.65
Education & Health Services	932	13,755	13,615	13,630	152,019,387	855.64
Leisure & Hospitality	518	6,616	6,855	6,935	29,941,597	338.61
Other Services	328	1,318	1,335	1,320	11,212,166	651.25
Local Government	224	8,571	8,609	8,362	98,266,305	887.83
State Government	93	2,644	2,562	2,492	23,685,391	710.04

North Central Local Workforce Development Area includes these counties: Cleburne, Fulton, Independence, Izard, Jackson, Sharp, Stone, Van Buren, White, and Woodruff.

NORTHEAST LOCAL WORKFORCE DEVELOPMENT AREA	6,508	100,841	100,800	100,793	\$1,172,809,050	\$894.90
Natural Resources & Mining	446	2,005	2,048	2,070	21,587,223	813.60
Construction	492	3,895	3,964	3,975	51,558,981	1,005.43
Manufacturing	292	21,238	21,019	21,180	321,147,597	1,168.26
Trade, Transportation & Utilities	1,667	19,262	19,410	19,374	198,019,652	787.25
Wholesale Trade	348	3,947	3,948	3,964	54,179,591	1,054.30
Retail Trade	975	11,826	11,977	11,865	97,200,436	628.88
Transportation, Warehousing & Utilities	344	3,489	3,485	3,545	46,639,625	1,023.20
Information	60	585	588	613	7,733,993	999.31
Financial Activities	576	3,270	3,268	3,276	42,174,880	991.71
Professional & Business Services	676	7,016	7,025	6,888	76,154,271	839.70
Education & Health Services	1,045	17,232	17,085	17,054	208,836,519	938.14
Leisure & Hospitality	590	9,147	9,237	9,259	43,824,303	365.85
Other Services	359	1,602	1,571	1,632	15,420,776	740.61
Local Government	217	11,304	11,394	11,392	139,311,185	943.05
State Government	88	4,285	4,191	4,080	47,039,670	864.55

Northeast Local Workforce Development Area includes these counties: Clay, Craighead, Greene, Lawrence, Mississippi, Poinsett, and Randolph.

TABLE 8. LOCAL WORKFORCE DEVELOPMENT AREA SUMMARY

North American Industry Classification System - Industry Groups	Number of Employing Units	Employment			Total Earnings	Average Weekly Earnings
		Apr	May	Jun	Apr - Jun 2021	
NORTHWEST LOCAL WORKFORCE DEVELOPMENT AREA	17,676	283,007	283,640	284,964	\$4,185,347,973	\$1,134.14
Natural Resources & Mining	145	1,573	1,578	1,604	21,298,918	1,033.68
Construction	1,731	14,021	14,077	14,345	182,342,845	991.43
Manufacturing	654	37,529	37,411	37,590	432,761,427	887.48
Trade, Transportation & Utilities	3,950	62,977	63,191	63,321	825,458,989	1,005.29
Wholesale Trade	1,258	11,088	11,147	11,149	246,669,627	1,705.12
Retail Trade	2,151	32,072	32,387	32,347	279,388,900	666.02
Transportation, Warehousing & Utilities	541	19,817	19,657	19,825	299,400,462	1,165.15
Information	274	2,243	2,260	2,288	34,564,532	1,174.56
Financial Activities	1,890	10,039	10,070	10,034	155,854,802	1,193.20
Professional & Business Services	3,109	50,337	50,311	50,582	1,425,990,093	2,175.99
Education & Health Services	2,489	35,879	35,798	35,741	435,184,531	934.92
Leisure & Hospitality	1,892	30,062	30,647	30,969	166,536,602	419.20
Other Services	1,129	5,389	5,432	5,539	54,620,266	770.46
Local Government	311	23,850	23,880	23,817	325,755,714	1,050.70
State Government	102	9,108	8,985	9,134	124,979,254	1,059.29
Northwest Local Workforce Development Area includes these counties: Baxter, Benton, Boone, Carroll, Madison, Marion, Newton, Searcy, and Washington.						
SOUTHEAST LOCAL WORKFORCE DEVELOPMENT AREA	6,134	65,196	65,523	65,316	\$700,522,041	\$824.64
Natural Resources & Mining	443	2,161	2,099	2,090	22,440,551	815.53
Construction	350	2,082	2,128	2,086	24,446,416	896.04
Manufacturing	215	13,522	13,606	13,747	187,139,460	1,056.54
Trade, Transportation & Utilities	1,275	11,733	11,785	11,763	118,005,373	771.86
Wholesale Trade	220	1,843	1,845	1,847	25,645,259	1,069.22
Retail Trade	763	7,272	7,302	7,267	54,763,073	578.62
Transportation, Warehousing & Utilities	292	2,618	2,638	2,649	37,597,041	1,097.56
Information	45	233	230	243	2,301,550	752.30
Financial Activities	451	2,509	2,512	2,527	32,512,047	994.01
Professional & Business Services	465	3,432	3,524	3,545	36,942,463	811.84
Education & Health Services	1,820	9,324	9,346	9,385	95,460,955	785.22
Leisure & Hospitality	414	5,239	5,333	5,431	26,709,412	385.16
Other Services	322	1,064	1,087	1,087	9,572,662	682.23
Local Government	210	8,139	8,155	8,019	89,500,275	849.50
State Government	124	5,758	5,718	5,393	55,490,877	759.12
Southeast Local Workforce Development Area includes these counties: Arkansas, Ashley, Bradley, Chicot, Cleveland, Desha, Drew, Grant, Jefferson, and Lincoln.						

TABLE 8. LOCAL WORKFORCE DEVELOPMENT AREA SUMMARY

North American Industry Classification System - Industry Groups	Number of Employing Units	Employment			Total Earnings Apr - Jun 2021	Average Weekly Earnings
		Apr	May	Jun		
SOUTHWEST LOCAL WORKFORCE DEVELOPMENT AREA	5,499	73,944	74,225	74,274	\$838,045,884	\$869.41
Natural Resources & Mining	328	2,042	2,065	2,086	26,292,903	979.75
Construction	352	3,209	3,139	3,182	41,818,586	1,012.64
Manufacturing	225	19,183	19,204	19,324	280,271,299	1,120.72
Trade, Transportation & Utilities	1,297	13,535	13,714	13,716	135,424,809	762.89
Wholesale Trade	230	1,759	1,762	1,793	23,857,105	1,036.03
Retail Trade	771	8,384	8,525	8,504	60,761,449	551.76
Transportation, Warehousing & Utilities	296	3,392	3,427	3,419	50,806,255	1,145.20
Information	46	306	311	314	3,978,252	986.10
Financial Activities	456	2,440	2,453	2,436	28,629,144	901.45
Professional & Business Services	435	4,429	4,381	4,433	56,836,027	990.41
Education & Health Services	1,190	9,058	9,098	9,002	85,437,493	725.99
Leisure & Hospitality	450	5,846	5,861	5,933	26,549,034	347.32
Other Services	328	1,294	1,303	1,294	10,791,250	640.01
Local Government	263	9,178	9,258	9,192	107,087,366	894.47
State Government	129	3,424	3,438	3,362	34,929,721	788.41
Southwest Local Workforce Development Area includes these counties: Calhoun, Columbia, Dallas, Hempstead, Howard, Lafayette, Little River, Miller, Nevada, Ouachita, Sevier, and Union						
WEST CENTRAL LOCAL WORKFORCE DEVELOPMENT AREA	8,162	103,479	102,868	102,554	\$1,078,031,049	\$805.36
Natural Resources & Mining	251	2,375	2,378	2,394	25,907,905	836.54
Construction	776	4,564	4,525	4,515	59,133,322	1,003.10
Manufacturing	335	14,388	14,273	14,337	164,595,010	883.38
Trade, Transportation & Utilities	1,794	21,397	21,523	21,479	232,391,206	832.76
Wholesale Trade	314	1,860	1,852	1,885	24,311,659	1,002.39
Retail Trade	1,186	14,041	14,185	14,074	114,659,899	625.53
Transportation, Warehousing & Utilities	294	5,496	5,486	5,520	93,419,648	1,306.41
Information	78	642	653	666	6,884,608	810.18
Financial Activities	846	3,750	3,764	3,758	44,995,199	921.18
Professional & Business Services	931	7,909	7,678	7,593	80,810,393	804.51
Education & Health Services	1,459	16,405	16,372	16,225	178,424,032	840.27
Leisure & Hospitality	834	13,506	13,279	13,769	72,818,445	414.37
Other Services	511	2,150	2,130	2,139	17,226,843	619.32
Local Government	235	11,497	11,551	11,401	149,476,145	1,001.32
State Government	112	4,896	4,742	4,278	45,367,941	752.34
West Central Local Workforce Development Area includes these counties: Clark, Conway, Garland, Hot Spring, Johnson, Montgomery, Perry, Pike, Pope, and Yell						

TABLE 8. LOCAL WORKFORCE DEVELOPMENT AREA SUMMARY

North American Industry Classification System - Industry Groups	Number of Employing Units	Employment			Total Earnings	Average Weekly Earnings
		Apr	May	Jun	Apr - Jun 2021	
WESTERN LOCAL WORKFORCE DEVELOPMENT AREA	6,470	99,106	99,556	99,136	\$1,118,117,787	\$866.45
Natural Resources & Mining	138	1,065	1,032	1,036	13,503,758	994.65
Construction	518	4,021	4,072	4,038	42,910,588	816.29
Manufacturing	329	19,855	19,807	20,016	243,684,482	942.31
Trade, Transportation & Utilities	1,549	21,784	22,007	21,893	241,350,250	847.94
Wholesale Trade	334	3,609	3,624	3,641	50,852,103	1,079.19
Retail Trade	927	12,109	12,258	12,102	95,855,871	606.56
Transportation, Warehousing & Utilities	288	6,066	6,125	6,150	94,642,276	1,190.80
Information	69	923	905	935	19,078,293	1,593.44
Financial Activities	686	3,319	3,331	3,315	42,760,290	990.24
Professional & Business Services	849	9,618	9,734	9,437	103,869,821	832.61
Education & Health Services	1,106	15,484	15,426	15,448	202,646,437	1,008.77
Leisure & Hospitality	578	8,943	9,189	9,298	43,621,996	366.99
Other Services	414	1,888	1,900	1,902	17,430,312	706.92
Local Government	165	9,515	9,485	9,234	118,764,578	970.72
State Government	69	2,691	2,668	2,584	28,496,982	827.93

Western Local Workforce Development Area includes these counties: Crawford, Franklin, Logan, Polk, Scott, and Sebastian