

ARKANSAS

COVERED EMPLOYMENT & EARNINGS

ANNUAL 2021



Arkansas Division of
Workforce Services



**COVERED EMPLOYMENT AND EARNINGS
STATE OF ARKANSAS
ANNUAL 2021**

**ASA HUTCHINSON, GOVERNOR
STATE OF ARKANSAS**

**CHARISSE CHILDERS, DIRECTOR
DIVISION OF WORKFORCE SERVICES**

**PUBLISHED BY
LABOR MARKET INFORMATION
BUREAU OF LABOR STATISTICS PROGRAMS
POST OFFICE BOX 2981
LITTLE ROCK, ARKANSAS 72203-2981
SUSAN PRICE, BLS PROGRAMS MANAGER
TELEPHONE (501) 682-3103**

STATE OF ARKANSAS WEBPAGE: <http://www.arkansas.gov>

DEPARTMENT OF WORKFORCE SERVICES WEBPAGE: <http://www.dws.arkansas.gov>

WEBPAGE FOR LABOR MARKET INFORMATION: <http://www.discover.arkansas.gov>

RELEASED: June 2022

TABLE OF CONTENTS

	Page
Description of Data	1
Industry Classification	1
Definition of Covered Employment and Earnings	2
Federal Government	2
County Classification	2
Significant Developments During Calendar Year 2021	3

GRAPHS AND TABLES

Graph 1	Average Total Covered Employment for Selected Years, Arkansas	7
Graph 2	Total Covered Earnings, by Calendar Quarter for Selected Years, Arkansas	8
Table 1	Annual Comparison of Covered Employment and Wages, by Industry	5
Table 2	Total Covered Employment in Arkansas, 2014 – 2021	6
Table 3	Total Covered Earnings, 2014 – 2021	9
Table 4	Total Taxable Earnings, 2014 – 2021	10
Table 5	State Summary – Employment and Total Earnings, by Industry, Calendar Year 2021	11
Table 6	County Summary – Employment and Total Earnings, by Industry, Calendar Year 2021	22
Table 7	Federal Government Employment and Total Earnings in Arkansas, Calendar Year 2021	60
Table 8	Workforce Investment Area – Employment and Total Earnings, by Industry, Calendar Year 2021	61

EMPLOYMENT AND EARNINGS
UNDER THE ARKANSAS EMPLOYMENT SECURITY LAW
ANNUAL 2021

DESCRIPTION AND CLASSIFICATION OF DATA

This publication contains covered employment and payroll data by industry and county for the Calendar Year 2021 and a record for total covered employment by month, quarterly payroll data, average weekly earnings, and total taxable earnings for 2014 through 2021. These data are compiled from quarterly contributions and wage reports submitted by employers subject to the Arkansas Employment Security Law.

Employment data have been tabulated for each month of the quarter by industry under the **North American Industry Classification System** (NAICS) by state, county, and workforce area. Payroll data represent the total wages paid during the quarter and are classified by industry for the state and by publishable industry groups for each county and workforce area.

Due to industry classification revisions, previously published data will not always be comparable with current data. For this reason, comparisons should not be made between the same industries under different revisions. For more information, visit the NAICS home page at <http://www.census.gov/naics>.

Industry Classification Revisions

- SIC (Standard Industrial Classification) 1987 to NAICS 2002
- NAICS 2002 to NAICS 2007
- NAICS 2007 to NAICS 2012
- NAICS 2012 to NAICS 2017

The tabulation of this data is a joint effort in conjunction with the United States Bureau of Labor Statistics. Data included in this publication are subject to revisions. Revisions are typically reflected in the Annual Covered Employment and Earnings publication.

DEFINITION OF COVERED EMPLOYMENT AND EARNINGS

Covered Employment is the total number of workers employed by establishments subject to the Arkansas Employment Security Law that worked or received pay for the payroll period including the 12th of the month. Earnings include all wages paid to any covered employee by their employer including salaries, bonuses, commissions, fees, fringe benefits, sick pay made directly to employees or dependents, deferred compensation, and reported tips. These wages include both taxable and nontaxable wages. Only the first \$10,000 paid to each worker by an employer in the calendar year is taxable under the Arkansas Employment Security Law.

An Arkansas state unemployment account is required of any entity meeting the definition of an employer. As described by Arkansas Division of Workforce Services Law, the definition of an employer includes, but is not limited to, a sole proprietorship, partnership, corporation, associations, trust, estate, and receiver or trustee in bankruptcy. The entity must employ one or more individuals for ten or more days in a calendar year, whether or not the days are consecutive.

Currently excluded from coverage is employment covered by the Railroad Unemployment Insurance Act, some domestic service workers, employees of small agricultural establishments, self-employed workers, unpaid family workers, insurance and real estate agents paid only on a commission basis, and employees of churches and religious organizations except separately incorporated schools.

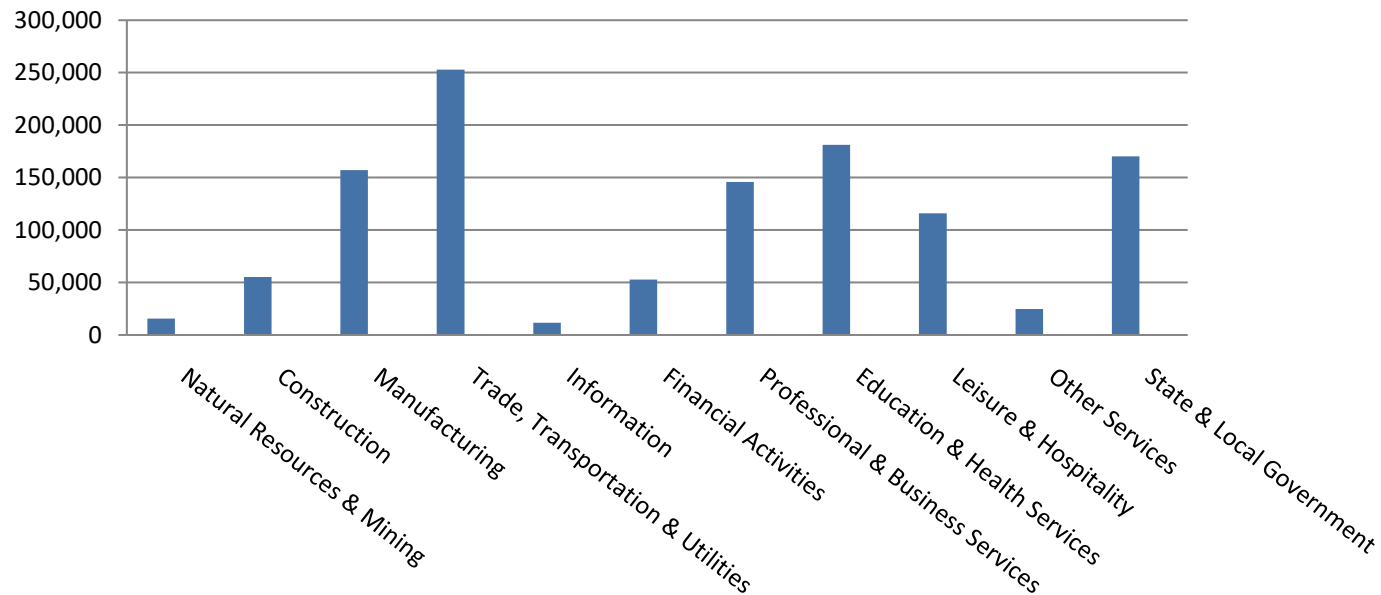
Civilian federal workers are covered by Unemployment Compensation for Federal Employees (UCFE).

SIGNIFICANT DEVELOPMENTS DURING CALENDAR YEAR 2021

AVERAGE EMPLOYMENT CHANGES

Covered employment averaged 1,183,810 during the Calendar Year 2021 (see Table 1, page 5), an increase of 28,452 from the previous year. Nine major industry groups reported over-the-year gains. The largest increase occurred in Leisure & Hospitality (9,692). Two major industries reported losses. The only large decline occurred in State & Local Government (-2,320).

Average Covered Employment by NAICS



EMPLOYMENT CHANGES FOR CALENDAR YEAR 2021

Nine of eleven major industry sectors recorded over-the-year employment gains (see Table 1). The Leisure & Hospitality subsector had an average of 116,062 jobs: an increase of 9,692 from 2020. Gains can be mostly attributed to Accommodation & Food Services (8,390). Jobs in Trade, Transportation, & Utilities increased 8,452 over-the-year. Declines occurred in State & Local Government (-2,320) and Natural Resources & Mining (-372).

EMPLOYMENT CHANGES FOR CALENDAR YEAR 2021

Pulaski County posted the highest average covered employment for Arkansas counties in 2021 at 233,829. Benton County averaged 126,791 in covered employment, slightly higher than Washington County with 108,441. Sebastian County had the fourth highest average covered employment with 62,034, followed by Craighead County with 51,604. All five leading counties experienced higher average covered employment, with Pulaski County (4,443) leading the way.

COVERED WAGES

Wages paid to covered workers totaled \$60,436,397,807 for the Calendar Year 2021 (see Table 1), for an average weekly wage of \$981.78 (see Table 5). Employees in Benton County recorded the highest average weekly wage (\$1,365.73), and workers in Searcy the lowest (\$600.84) (see Table 6).

The Information sector recorded the highest average weekly wage for the State of Arkansas at \$1,441.80. The Leisure and Hospitality sector reported the lowest average weekly wage at \$393.60 (see Table 5).

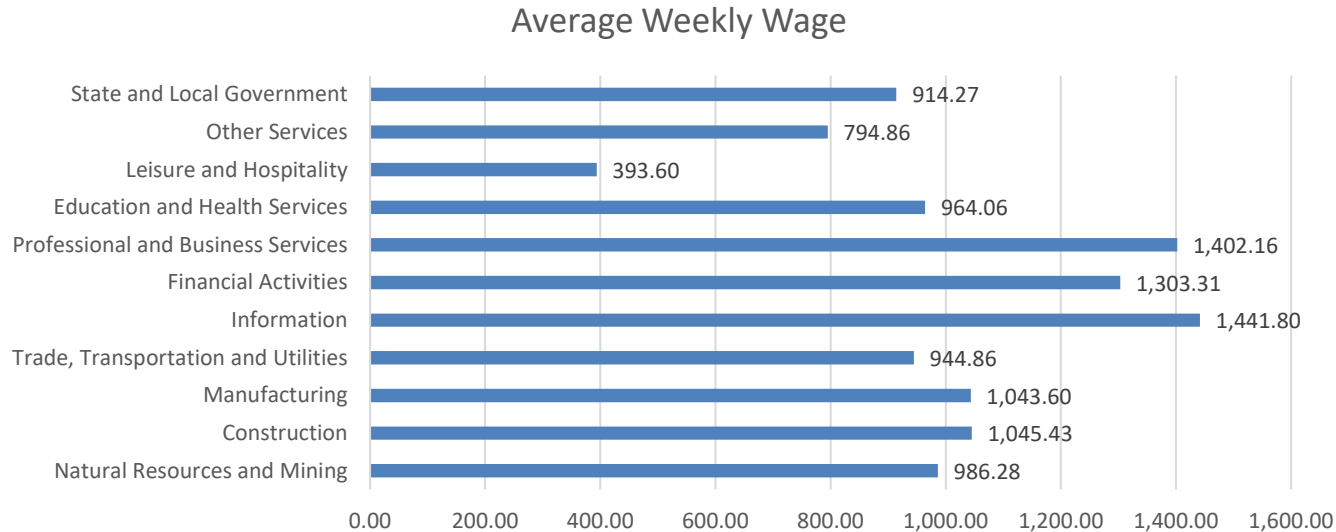


TABLE 1. YEARLY COMPARISON OF COVERED EMPLOYMENT AND WAGES, BY INDUSTRY

North American Industry Classification System - Industry Groups	Number of Employing Units	Average Covered Employment	Percent of Total	Net Change From: 2020	2021	Percent of Total	Average Weekly Earnings
Total	94,676	1,183,810	100	28,452	\$60,436,397,807	100	\$981.78
Natural Resources & Mining	2,555	15,568	1.3	-372	798,431,625	1.3	986.28
Agriculture, Forestry, Fishing & Hunting	2,147	12,257	1.0	-201	575,945,519	1.0	903.64
Mining	408	3,311	0.3	-171	222,486,106	0.4	1,292.23
Construction	7,495	55,278	4.7	2,116	3,005,045,519	5.0	1,045.43
Manufacturing	3,013	157,186	13.3	2,275	8,529,999,553	14.1	1,043.59
Trade, Transportation & Utilities	22,036	252,929	21.4	8,452	12,427,112,637	20.6	944.86
Wholesale Trade	7,427	47,686	4.0	1,422	3,817,500,189	6.3	1,539.52
Retail Trade	11,001	139,952	11.8	4,578	4,629,157,310	7.7	636.09
Transportation & Warehousing	3,193	57,774	4.9	2,814	3,230,030,513	5.3	1,075.15
Utilities	415	7,515	0.6	-364	750,424,625	1.2	1,920.33
Information	1,971	11,685	1.0	181	876,067,820	1.4	1,441.80
Financial Activities	9,338	52,887	4.5	954	3,584,266,283	5.9	1,303.31
Finance & Insurance	5,489	38,739	3.3	387	2,935,945,803	4.9	1,457.46
Real Estate & Rental & Leasing	3,850	14,148	1.2	567	648,320,480	1.1	881.23
Professional & Business Services	16,616	145,809	12.3	6,348	10,631,287,849	17.6	1,402.16
Professional & Technical Services	10,594	44,762	3.8	2,078	3,168,334,278	5.2	1,361.19
Management of Companies & Enterprises	540	33,981	2.9	184	4,849,916,025	8.0	2,744.70
Administrative & Waste Services	5,482	67,066	5.7	4,086	2,613,037,546	4.3	749.27
Education & Health Services	15,429	181,184	15.3	4	9,082,925,675	15.0	964.06
Educational Services	1,060	12,545	1.1	764	507,241,573	0.8	777.57
Health Care & Social Assistance	14,369	168,639	14.2	-760	8,575,684,102	14.2	977.93
Leisure & Hospitality	7,581	116,062	9.8	9,692	2,375,492,440	3.9	393.60
Arts, Entertainment & Recreation	1,085	11,504	1.0	1,302	312,168,740	0.5	521.84
Accommodation & Food Services	6,496	104,558	8.8	8,390	2,063,323,700	3.4	379.50
Other Services	5,565	24,828	2.1	1,083	1,026,209,140	1.7	794.86
State & Local Government	3,056	170,355	14.4	-2,320	8,099,027,693	13.4	914.27
Local Government	1,998	106,016	9.0	-350	4,631,377,299	7.7	840.11
State Government	1,058	64,339	5.4	-1,970	3,467,650,394	5.7	1,036.47
Nonclassifiable Establishments	23	39	0.0	39	531,573	0.0	262.12

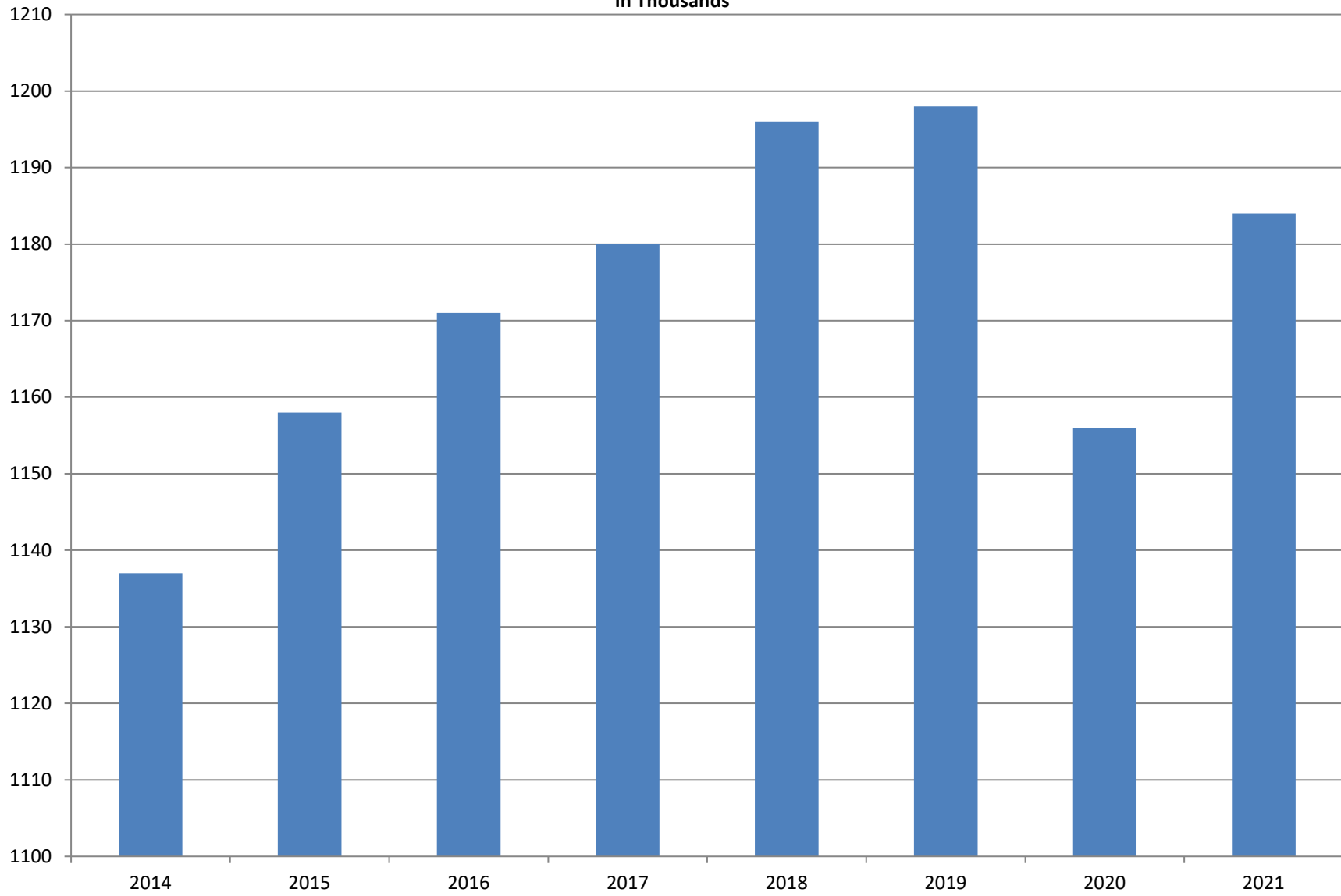
Note: Items do not necessarily add to total because of rounding. Because of industry code changes between years, substantial employment and wage shifts among industries are anticipated.

TABLE 2. TOTAL COVERED EMPLOYMENT IN ARKANSAS

PERIOD	2014	2015	2016	2017	2018	2019	2020	2021
AVERAGE	1,137,486	1,157,634	1,171,286	1,180,337	1,195,781	1,197,710	1,156,116	1,184,035
January	1,114,412	1,135,577	1,153,115	1,161,239	1,173,537	1,186,848	1,195,722	1,162,474
February	1,122,905	1,144,902	1,162,987	1,172,290	1,183,185	1,194,355	1,200,543	1,160,490
March	1,132,106	1,146,413	1,170,873	1,179,686	1,190,199	1,198,481	1,199,702	1,176,694
April	1,140,788	1,158,606	1,178,480	1,185,212	1,194,816	1,204,176	1,090,183	1,181,663
May	1,149,046	1,167,657	1,181,258	1,189,900	1,201,113	1,206,476	1,120,448	1,184,368
June	1,144,876	1,164,607	1,177,108	1,186,326	1,195,468	1,202,260	1,137,765	1,184,514
July	1,096,675	1,119,390	1,130,652	1,137,883	1,168,432	1,155,337	1,099,733	1,148,094
August	1,125,162	1,148,502	1,159,416	1,168,802	1,200,284	1,185,213	1,137,611	1,178,344
September	1,150,545	1,173,776	1,185,181	1,193,845	1,222,012	1,202,177	1,157,279	1,192,866
October	1,153,684	1,173,953	1,185,035	1,194,194	1,205,161	1,209,176	1,173,041	1,208,960
November	1,158,579	1,177,717	1,186,308	1,197,650	1,208,638	1,215,078	1,180,121	1,213,376
December	1,161,056	1,180,513	1,185,015	1,197,013	1,206,531	1,212,940	1,181,246	1,216,573

AVERAGE TOTAL COVERED EMPLOYMENT

In Thousands



TOTAL COVERED EARNINGS BY CALENDAR YEAR

In Millions

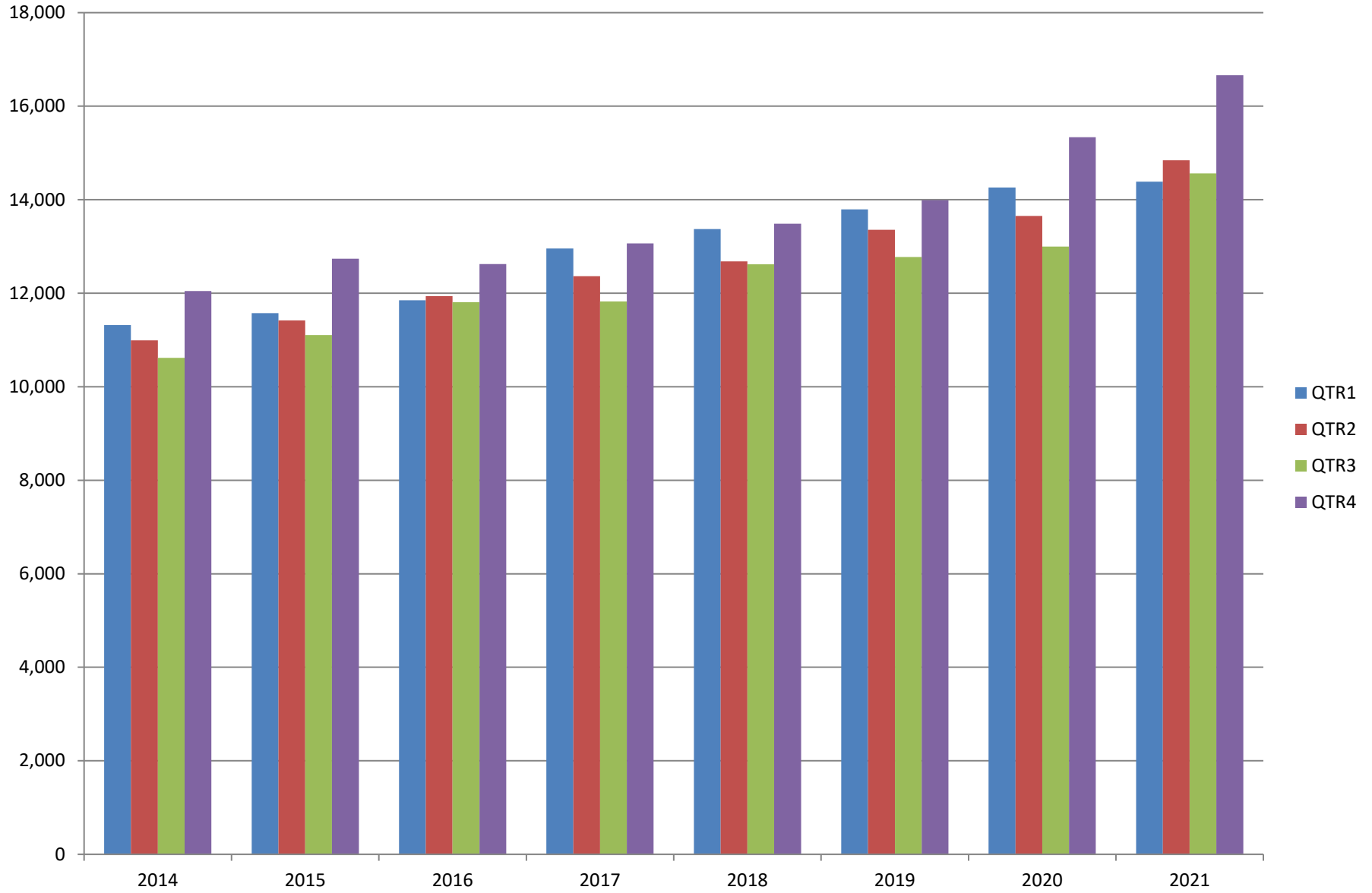


TABLE 3. TOTAL COVERED EARNINGS, 2014 - 2021

PERIOD	2014	2015	2016	2017
TOTAL	\$44,980,520,034	\$46,836,352,793	\$48,216,814,491	\$50,207,202,141
January - March	11,321,422,241	11,575,046,688	11,847,506,815	12,955,088,347
April - June	10,991,760,061	11,419,363,330	11,935,742,777	12,363,027,711
July - September	10,619,889,280	11,104,443,452	11,807,220,282	11,823,324,966
October - December	12,047,448,452	12,737,499,323	12,626,344,617	13,065,761,117
Average Weekly Earnings	\$760.46	\$778.05	\$791.65	\$818.01

PERIOD	2018	2019	2020	2021
TOTAL	\$52,159,789,393	\$53,919,607,098	\$56,255,427,941	\$60,447,031,805
January - March	13,372,730,974	13,795,046,820	14,268,302,306	14,382,938,962
April - June	12,682,491,819	13,356,848,831	13,651,304,330	14,844,193,608
July - September	12,619,347,460	12,776,218,481	12,998,944,628	14,562,361,042
October - December	13,485,219,140	13,991,492,966	15,336,876,677	16,657,538,193
Average Weekly Earnings	\$838.84	\$865.75	\$935.75	\$981.76

TABLE 4. TOTAL TAXABLE EARNINGS, 2014 - 2021

PERIOD	2014	2015	2016	2017
TOTAL	11,919,662,224	12,258,632,610	12,538,167,625	12,744,039,136
January - March	6,288,682,396	6,378,966,662	6,607,245,841	6,958,706,950
April - June	2,831,013,392	2,915,293,283	3,010,214,324	2,908,226,426
July - September	1,552,243,963	1,640,978,599	1,656,043,561	1,576,968,648
October - December	1,247,722,473	1,323,394,066	1,264,663,899	1,300,137,112

PERIOD	2018	2019	2020	2021
TOTAL	11,343,357,036	11,506,122,596	8,527,228,792	12,037,233,970
January - March	6,577,871,657	6,737,833,125	5,589,526,770	6,792,133,353
April - June	2,278,450,975	2,283,514,220	1,172,837,688	2,317,659,412
July - September	1,328,689,516	1,327,818,133	864,579,237	1,493,255,899
October - December	1,158,344,888	1,156,957,118	900,285,097	1,434,185,306

TABLE 5 STATEWIDE SUMMARY CALENDAR YEAR 2021

North American Industry Classification System - Industry Groups		Average Employing Units	Average Covered Employment	Total Calendar Earnings	Average Weekly Earnings
TOTAL, ALL INDUSTRIES		94,676	1,183,810	\$60,436,397,807	\$981.78
NATURAL RESOURCES & MINING		2,555	15,568	\$798,431,625	\$986.28
11	AGRICULTURE, FORESTRY, FISHING & HUNTING	2,147	12,257	\$575,945,519	\$903.64
111	CROP PRODUCTION	960	3,967	\$148,430,689	\$719.55
1111	Oilseed & Grain Farming	704	2,486	\$91,971,071	711.45
1112	Vegetable & Melon Farming	32	133	\$5,806,449	839.57
1113	Fruit & Tree Nut Farming	15	57	\$1,859,362	627.32
1114	Greenhouse & Nursery Production	44	631	\$24,510,212	746.99
1119	Other Crop Farming	166	660	\$24,283,595	707.56
112	ANIMAL PRODUCTION & AQUACULTURE	354	3,163	\$178,704,209	\$1,086.51
1121	Cattle Ranching & Farming	135	431	\$14,024,055	625.74
1122	Hog & Pig Farming	12	128	\$7,288,777	1,095.07
1123	Poultry & Egg Production	140	2,203	\$140,182,080	1,223.70
1125	Animal Aquaculture	38	319	\$14,761,092	889.87
	Other	30	82	\$2,448,205	574.16
115	SUPPORT ACTIVITIES FOR AGRICULTURE & FORESTRY	416	2,951	\$142,774,109	\$930.42
1151	Support Activities for Crop Production	281	1,521	\$80,719,351	1,020.58
1152	Support Activities for Animal Production	62	573	\$21,408,578	718.51
1153	Support Activities for Forestry	73	857	\$40,646,180	912.09
	OTHER	417	2,176	\$106,036,512	937.12
21	MINING	408	3,311	\$222,486,106	\$1,292.23
211	OIL & GAS EXTRACTION	66	434	\$39,061,345	\$1,730.83
212	MINING (EXCEPT OIL & GAS)	104	1,834	\$115,333,059	\$1,209.35
213	SUPPORT ACTIVITIES FOR MINING	238	1,043	\$68,091,702	\$1,255.47

Note: Data may not add due to rounding.

TABLE 5 STATEWIDE SUMMARY CALENDAR YEAR 2021

North American Industry Classification System - Industry Groups		Average Employing Units	Average Covered Employment	Total Calendar Earnings	Average Weekly Earnings
CONSTRUCTION		7,495	55,278	\$3,005,045,519	\$1,045.43
236	CONSTRUCTION OF BUILDINGS	1,950	10,922	\$653,995,798	\$1,151.51
2361	Residential Building Construction	1,339	4,062	\$208,747,765	988.28
2362	Nonresidential Building Construction	611	6,860	\$445,248,033	1,248.17
237	HEAVY & CIVIL ENGINEERING CONSTRUCTION	777	9,088	\$535,546,505	\$1,133.25
2371	Utility System Construction	463	4,967	\$292,675,860	1,133.16
2372	Land Subdivision	46	87	\$4,229,235	934.84
2373	Highway, Street & Bridge Construction	170	3,250	\$198,148,016	1,172.47
2379	Other Heavy Construction	98	784	\$40,493,394	993.26
238	SPECIALTY TRADE CONTRACTORS	4,768	35,268	\$1,815,503,216	\$989.95
2381	Building Foundation & Exterior Contractors	901	5,917	\$305,864,012	994.08
2382	Building Equipment Contractors	2,344	20,143	\$1,089,118,237	1,039.79
2383	Building Finishing Contractors	775	3,905	\$174,400,193	858.86
2389	Other Specialty Trade Contractors	748	5,303	\$246,120,774	892.53
MANUFACTURING		3,013	157,186	\$8,529,999,553	\$1,043.59
311	FOOD MANUFACTURING	310	49,117	\$2,233,409,843	\$874.45
3111	Animal Food Manufacturing	42	1,993	\$118,048,274	1,139.07
3112	Grain & Oilseed Milling	31	2,761	\$143,642,403	1,000.49
3114	Fruit, Vegetable & Specialty Food	15	4,456	\$233,479,252	1,007.63
3115	Dairy Product Manufacturing	9	546	\$27,659,416	974.20
3116	Animal Slaughtering & Processing	93	32,826	\$1,402,788,049	821.81
3118	Bakeries & Tortilla Manufacturing	84	4,143	\$183,794,661	853.13
3119	Other Food Manufacturing	28	2,354	\$122,794,336	1,003.16
	Other	9	38	\$1,203,452	609.03
312	BEVERAGE & TOBACCO PRODUCT MANUFACTURING	73	1,631	\$87,519,445	\$1,031.92
313	TEXTILE MILLS	16	140	\$8,639,725	\$1,186.78
3132	Fiber, Yarn, & Thread Mills	6	115	\$7,778,525	1,300.76
3133	Textile, Fabric Finishing/Coating Mills	10	25	\$861,200	662.46
314	TEXTILE PRODUCT MILLS	42	762	\$40,533,252	\$1,022.95
3141	Textile Furnishing Mills	7	19	\$489,442	495.39
3149	Other Textile Product Mills	35	743	\$40,043,810	1,036.44
315	APPAREL MANUFACTURING	22	649	\$20,609,161	\$610.68
316	LEATHER & ALLIED PRODUCT MANUFACTURING	11	913	\$26,640,309	\$561.13
3162	Footwear Manufacturing	3	706	\$18,627,452	507.39
3169	Other Leather & Allied Product Manufacturing	8	207	\$8,012,857	744.41

Note: Data may not add due to rounding.

TABLE 5 STATEWIDE SUMMARY CALENDAR YEAR 2021

North American Industry Classification System - Industry Groups		Average Employing Units	Average Covered Employment	Total Calendar Earnings	Average Weekly Earnings
321	WOOD PRODUCT MANUFACTURING	298	10,068	\$518,622,654	\$990.62
3211	Sawmills & Wood Preservation	130	4,830	\$265,781,214	1,058.21
3212	Veneer & Engineered Wood Products	38	2,064	\$115,808,157	1,079.01
3219	Other Wood Product Manufacturing	131	3,174	\$137,033,283	830.26
322	PAPER MANUFACTURING	71	8,583	\$595,011,596	\$1,333.16
3221	Pulp, Paper & Paperboard Mills	15	3,121	\$286,478,810	1,765.21
3222	Converted Paper Product Manufacturing	56	5,462	\$308,532,786	1,086.29
323	PRINTING & RELATED SUPPORT ACTIVITIES	250	3,034	\$138,861,656	\$880.16
324	PETROLEUM & COAL PRODUCTS MANUFACTURING	23	1,130	\$87,090,862	\$1,482.15
325	CHEMICAL MANUFACTURING	138	5,420	\$383,393,022	\$1,360.32
3251	Basic Chemical Manufacturing	32	1,856	\$154,811,271	1,604.06
3252	Resin, Rubber & Artificial Fibers	12	402	\$28,122,765	1,345.33
3253	Agricultural Chemical Manufacturing	18	472	\$36,428,974	1,484.23
3254	Pharmaceutical & Medicine Manufacturing	34	455	\$30,318,338	1,281.42
3255	Paint, Coating & Adhesive Manufacturing	9	212	\$12,647,099	1,147.23
3256	Soap, Cleaning Compound, & Toilet Preparation Manufacturing	14	1,418	\$82,384,699	1,117.29
3259	Other Chemical Preparation Manufacturing	19	605	\$38,679,876	1,229.49
326	PLASTICS & RUBBER PRODUCTS MANUFACTURING	124	10,648	\$591,789,319	\$1,068.80
3261	Plastics Product Manufacturing	96	6,465	\$329,035,765	978.75
3262	Rubber Product Manufacturing	29	4,183	\$262,753,554	1,207.97
327	NONMETALLIC MINERAL PRODUCT MANUFACTURING	218	3,491	\$196,739,689	\$1,083.77
3271	Clay Product & Refractory Manufacturing	10	472	\$24,574,668	1,001.25
3272	Glass & Glass Product Manufacturing	7	385	\$22,146,011	1,106.19
3273	Cement & Concrete Product Manufacturing	163	2,056	\$118,609,384	1,109.41
3274	Lime & Gypsum Product Manufacturing	3	283	\$19,052,692	1,294.69
3279	Other Nonmetallic Mineral Products Manufacturing	35	295	\$12,356,934	805.54
331	PRIMARY METAL MANUFACTURING	71	7,784	\$732,712,369	\$1,810.20
3311	Iron & Steel Mills & Ferroalloys	12	3,714	\$504,029,786	2,609.82
3312	Purchased Steel Product Manufacturing	21	1,561	\$94,546,551	1,164.77
3313	Alumina & Aluminum Production	14	884	\$53,941,880	1,173.47
3314	Other Nonferrous Metal Production	5	254	\$13,919,058	1,053.84
3315	Foundries	19	1,371	\$66,275,094	929.63

Note: Data may not add due to rounding.

TABLE 5 STATEWIDE SUMMARY CALENDAR YEAR 2021

North American Industry Classification System - Industry Groups		Average Employing Units	Average Covered Employment	Total Calendar Earnings	Average Weekly Earnings
332	FABRICATED METAL PRODUCT MANUFACTURING	518	15,082	\$861,653,053	\$1,098.68
3321	Forging & Stamping	12	424	\$22,541,744	1,022.39
3322	Cutlery & Hand Tool Manufacturing	14	624	\$33,260,381	1,025.04
3323	Architectural & Structural Metals	155	4,783	\$296,893,348	1,193.70
3324	Boilers, Tanks & Shipping Containers	15	581	\$32,558,441	1,077.67
3325	Hardware Manufacturing	5	245	\$14,443,522	1,133.71
3326	Spring & Wire Product Manufacturing	10	307	\$16,375,567	1,025.78
3327	Machine Shops & Threaded Products	200	2,114	\$107,863,922	981.22
3328	Coating, Engraving & Heat Treating Metals	40	548	\$28,056,811	984.59
3329	Other Fabricated Metal Product Manufacturing	68	5,456	\$309,659,317	1,091.46
333	MACHINERY MANUFACTURING	219	11,486	\$626,505,828	\$1,048.95
3331	Agriculture, Construction & Mining Machinery	35	2,969	\$139,038,762	900.58
3332	Industrial Machinery Manufacturing	26	611	\$44,170,933	1,390.25
3333	Commercial & Service Industry Machinery	23	806	\$47,256,739	1,127.52
3334	HVAC & Commercial Refrigeration Equipment	24	2,544	\$138,003,294	1,043.20
3335	Metalworking Machinery Manufacturing	54	1,092	\$52,664,276	927.45
3336	Turbine & Power Transmission Equipment Manufacturing	6	251	\$13,431,350	1,029.06
3339	Other General Purpose Machinery Manufacturing	53	3,213	\$191,940,474	1,148.82
334	COMPUTER & ELECTRONIC PRODUCT MANUFACTURING	54	1,712	\$98,353,006	\$1,104.79
3343	Audio & Video Equipment Manufacturing	5	92	\$3,366,197	703.64
3344	Semiconductors & Electronic Components	25	1,245	\$72,022,839	1,112.49
3345	Electronic Instrument Manufacturing	21	302	\$18,546,726	1,181.02
	Other	3	73	\$4,417,244	1,163.66
335	ELECTRICAL EQUIPMENT & APPLIANCES	56	4,303	\$256,780,118	\$1,147.59
3353	Electrical Equipment Manufacturing	23	2,700	\$168,179,059	1,197.86
3359	Other Electrical Equipment & Component Manufacturing	16	1,264	\$72,584,352	1,104.31
	Other	17	339	\$16,016,707	908.59
336	TRANSPORTATION EQUIPMENT MANUFACTURING	140	14,193	\$726,817,627	\$984.80
3362	Motor Vehicle Body & Trailer Manufacturing	29	2,130	\$93,371,324	843.01
3363	Motor Vehicle Parts Manufacturing	45	4,707	\$226,113,891	923.80
3364	Aerospace Product & Parts Manufacturing	29	4,072	\$259,837,499	1,227.13
3366	Ship & Boat Building	22	2,057	\$86,329,814	807.09
	Other	15	1,227	\$61,165,099	958.64
337	FURNITURE & RELATED PRODUCT MANUFACTURING	157	3,435	\$140,891,338	\$788.78
3371	Household & Institutional Furniture	126	2,847	\$113,493,071	766.62
	Other	32	588	\$27,398,267	896.07
339	MISCELLANEOUS MANUFACTURING	204	3,605	\$157,425,681	\$839.78
3391	Medical Equipment & Supplies Manufacturing	87	1,768	\$82,290,216	895.08
3399	Other Miscellaneous Manufacturing	117	1,837	\$75,135,465	786.56

Note: Data may not add due to rounding.

TABLE 5 STATEWIDE SUMMARY CALENDAR YEAR 2021

North American Industry Classification System - Industry Groups		Average Employing Units	Average Covered Employment	Total Calendar Earnings	Average Weekly Earnings
TRADE, TRANSPORTATION & UTILITIES		22,036	252,929	\$12,427,112,637	\$944.86
42	WHOLESALE TRADE	7,427	47,686	\$3,817,500,189	\$1,539.52
423	MERCHANT WHOLESALERS, DURABLE GOODS	3,648	25,022	\$1,869,401,647	\$1,436.74
4231	Motor Vehicle & Part Merchant Wholesalers	309	3,260	\$226,389,184	1,335.47
4232	Furniture & Furnishings Merchant Wholesalers	124	515	\$42,219,126	1,576.52
4233	Lumber & Supply Merchant Wholesalers	269	1,632	\$106,263,926	1,252.17
4234	Commercial Goods Merchant Wholesalers	771	3,439	\$331,353,208	1,852.92
4235	Metal & Mineral Merchant Wholesalers	130	1,050	\$84,834,884	1,553.75
4236	Appliances & Electronics Goods Merchant Wholesalers	385	2,838	\$233,667,571	1,583.37
4237	Hardware & Plumbing Merchant Wholesalers	327	2,870	\$198,740,192	1,331.68
4238	Machinery & Supply Merchant Wholesalers	1,000	7,426	\$509,838,766	1,320.31
4239	Miscellaneous Durable Goods Merchant Wholesalers	333	1,992	\$136,094,790	1,313.86
424	MERCHANT WHOLESALERS, NONDURABLE GOODS	2,221	18,381	\$1,512,571,734	\$1,582.50
4241	Paper & Paper Product Merchant Wholesalers	128	1,341	\$115,965,257	1,663.01
4242	Druggist' Goods Merchant Wholesalers	317	1,753	\$224,835,306	2,466.49
4243	Apparel & Piece Goods Merchant Wholesalers	128	778	\$50,314,027	1,243.67
4244	Grocery Product Merchant Wholesalers	602	6,052	\$545,204,755	1,732.44
4245	Farm Product Merchant Wholesalers	93	877	\$37,401,380	820.13
4246	Chemical merchant Wholesalers	227	1,156	\$121,577,179	2,022.51
4247	Petroleum Merchant Wholesalers	159	926	\$61,656,997	1,280.47
4248	Alcoholic Beverage Merchant Wholesalers	82	1,681	\$119,386,995	1,365.80
4249	Miscellaneous Nondurable Goods Merchant Wholesaler	486	3,817	\$236,229,838	1,190.17
425	ELECTRONIC MARKETS & AGENTS & BROKERS	1,559	4,283	\$435,526,808	\$1,955.53
44 - 45	RETAIL TRADE	11,001	139,952	\$4,629,157,310	\$636.09
441	MOTOR VEHICLE & PARTS DEALERS	1,547	19,085	\$1,119,414,551	\$1,127.96
4411	Automobile Dealers	616	11,333	\$794,414,421	1,348.03
4412	Other Motor Vehicle Dealers	180	1,864	\$112,849,199	1,164.26
4413	Automotive Parts, Accessories & Tire Stores	751	5,888	\$212,150,931	692.91
442	FURNITURE & HOME FURNISHINGS STORES	475	3,438	\$146,104,895	\$817.25
4421	Furniture Stores	270	1,940	\$95,852,480	950.16
4422	Home Furnishings Stores	205	1,498	\$50,252,415	645.12
443	ELECTRONICS & APPLIANCE STORES	356	3,019	\$126,428,078	\$805.34
444	BUILDING MATERIAL & GARDEN SUPPLY STORES	842	13,108	\$438,389,213	\$643.16
4441	Building Material & Supplies Dealers	604	10,767	\$373,269,478	666.69
4442	Lawn & Garden Equipment & Supplies Stores	238	2,341	\$65,119,735	534.94

Note: Data may not add due to rounding.

TABLE 5 STATEWIDE SUMMARY CALENDAR YEAR 2021

North American Industry Classification System - Industry Groups		Average Employing Units	Average Covered Employment	Total Calendar Earnings	Average Weekly Earnings
445	FOOD & BEVERAGE STORES	1,072	20,304	\$523,358,276	\$495.69
4451	Grocery Stores	568	17,620	\$442,303,697	482.74
4452	Specialty Food Stores	146	777	\$33,835,755	837.44
4453	Beer, Wine & Liquor Stores	358	1,907	\$47,218,824	476.17
446	HEALTH & PERSONAL CARE STORES	993	8,746	\$355,984,475	\$782.74
447	GASOLINE STATIONS	1,611	12,734	\$293,094,706	\$442.63
44711	Gasoline Stations with Convenience Stores	1,515	11,229	\$238,920,439	409.17
44719	Other Gasoline Stations	269	1,008	\$27,049,903	516.06
448	CLOTHING & CLOTHING ACCESSORIES STORES	914	6,739	\$160,303,636	\$457.45
4481	Clothing Stores	698	5,216	\$110,463,646	407.27
4482	Shoe Stores	99	916	\$19,879,738	417.36
4483	Jewelry, Luggage & Leather Goods Stores	117	607	\$29,960,252	949.19
451	SPORTING GOODS, HOBBY, BOOK & MUSIC STORES	433	4,164	\$104,109,670	\$480.81
4511	Sporting Goods & Musical Instrument Stores	376	3,790	\$96,578,120	490.05
4512	Book, Periodical & Music Stores	57	374	\$7,531,550	387.27
452	GENERAL MERCHANDISE STORES	962	38,754	\$1,045,238,989	\$518.68
453	MISCELLANEOUS STORE RETAILERS	1,198	7,447	\$202,821,706	\$523.76
4531	Florists	158	607	\$13,470,776	426.78
4532	Office Supplies, Stationery & Gift Stores	224	1,250	\$32,478,859	499.67
4533	Used Merchandise Stores	253	2,156	\$45,795,642	408.48
4539	Other Miscellaneous Store Retailers	564	3,434	\$111,076,429	622.04
454	NONSTORE RETAILERS	599	2,414	\$113,909,115	\$907.44
4541	Electronic Shopping & Mail-Order Houses	372	1,298	\$61,979,868	918.27
4542	Vending Machine Operators	52	378	\$15,622,301	794.79
4543	Direct Selling Establishments	175	738	\$36,306,946	946.08
48 - 49	TRANSPORTATION & WAREHOUSING	3,193	57,774	3,230,030,513	\$1,075.15
481	AIR TRANSPORTATION	43	676	\$31,806,328	\$904.82
4811	Scheduled Air Transportation	15	568	\$23,188,159	785.08
4812	Nonsheduled Air Transportation	29	108	\$8,618,169	1,534.57
483	WATER TRANSPORTATION	8	35	\$2,484,514	\$1,365.12
484	TRUCK TRANSPORTATION	2,031	31,534	\$1,970,395,966	\$1,201.63
4841	General Freight Trucking	1,253	25,545	1,648,483,504	1,241.01
4842	Specialized Freight Trucking	778	5,989	321,912,462	1,033.67

Note: Data may not add due to rounding.

TABLE 5 STATEWIDE SUMMARY CALENDAR YEAR 2021

North American Industry Classification System - Industry Groups		Average Employing Units	Average Covered Employment	Total Calendar Earnings	Average Weekly Earnings
485	TRANSIT & GROUND PASSENGER TRANSPORTATION	121	1,305	\$39,639,928	\$584.14
4853	Taxi & Limousine Service	32	219	\$6,400,909	562.07
4854	School & Employee Bus Transportation	18	279	\$7,251,527	499.83
4855	Charter Bus Industry Service	7	67	\$2,349,337	674.32
4859	Other Ground Passenger Transportation	60	653	\$20,160,208	593.72
	Other	5	87	\$3,477,947	768.78
486	PIPELINE TRANSPORTATION	37	539	\$53,271,357	\$1,900.65
487	SCENIC AND SIGHTSEEING TRANSPORTATION	4	12	\$208,704	\$334.46
488	SUPPORT ACTIVITIES FOR TRANSPORTATION	525	5,570	\$329,211,582	\$1,136.62
4881	Support Activities for Air Transportation	122	1,098	\$54,217,423	949.58
4882	Support Activities for Rail Transportation	39	584	\$33,039,757	1,087.98
4883	Support Activities for Water Transportation	19	495	\$30,062,867	1,167.94
4884	Support Activities for Road Transportation	157	918	\$39,269,822	822.65
4885	Freight Transportation Arrangement	178	2,380	\$168,900,389	1,364.74
4889	Other Support Activities for Transportation	10	95	\$3,721,324	753.30
491	POSTAL SERVICE	16	259	\$12,377,221	\$919.01
492	COURIERS & MESSENGERS	202	6,268	\$268,195,309	\$822.85
493	OTHER WAREHOUSING & STORAGE	206	11,576	\$522,439,604	\$867.91
22	UTILITIES	415	7,515	\$750,424,625	\$1,920.33
2211	Power Generation & Supply	177	5,610	\$627,321,063	2,150.42
2212	Natural Gas Distribution	58	959	\$82,309,151	1,650.54
2213	Water, Sewage & Other Systems	181	946	\$40,794,411	829.29
INFORMATION		1,971	11,685	\$876,067,820	\$1,441.80
511	PUBLISHING INDUSTRIES, EXCEPT INTERNET	252	1,896	\$93,635,776	\$949.73
5111	Newspaper, Book & Directory Publishers	171	1,492	\$61,029,148	786.62
5112	Software Publishers	82	404	\$32,606,628	1,552.11
512	MOTION PICTURE & SOUND RECORDING INDUSTRY	173	798	\$24,087,283	\$580.47
5121	Motion Picture & Video Industries	153	772	\$22,528,870	561.20
5122	Sound Recording Industries	20	26	\$1,558,413	1,152.67
515	BROADCASTING, EXCEPT INTERNET	121	1,374	\$68,232,494	\$955.00
5151	Radio & Television Broadcasting	118	1,357	\$67,461,721	956.04
5152	Cable & Other Subscription Programming	3	17	\$770,773	871.92

Note: Data may not add due to rounding.

TABLE 5 STATEWIDE SUMMARY CALENDAR YEAR 2021

North American Industry Classification System - Industry Groups		Average Employing Units	Average Covered Employment	Total Calendar Earnings	Average Weekly Earnings
517	TELECOMMUNICATIONS	366	3,316	\$250,512,900	\$1,452.82
5173	Wired & Wireless Telecommunications Carriers	269	2,871	\$215,867,333	1,445.94
5174	Satellite Telecommunications Carriers	5	6	\$340,490	1,091.31
5179	Other Telecommunications	92	439	\$34,305,077	1,502.76
518	DATA PROCESSING, HOSTING & RELATED SERVICES	905	3,830	\$410,749,348	\$2,062.41
519	OTHER INFORMATION SERVICES	154	471	\$28,850,019	\$1,177.94
FINANCIAL ACTIVITIES		9,338	52,887	\$3,584,266,283	\$1,303.31
52	FINANCE & INSURANCE	5,489	38,739	\$2,935,945,803	\$1,457.46
522	CREDIT INTERMEDIATION & RELATED ACTIVITIES	2,097	19,659	\$1,356,188,731	\$1,326.65
5221	Depository Credit Intermediation	1,437	16,186	\$1,037,130,396	1,232.23
	Other	660	3,473	\$319,058,335	1,766.70
523	FINANCIAL INVESTMENT & RELATED ACTIVITIES	840	3,109	\$487,117,618	\$3,013.07
5231	Securities & Commodity Contracts Intermediation & Brokerage	357	2,015	\$376,505,637	3,593.30
5239	Other Financial Investment Activities	484	1,094	\$110,611,981	1,944.38
524	INSURANCE CARRIERS & RELATED ACTIVITIES	2,455	15,877	\$1,083,534,370	\$1,312.41
5241	Insurance Carriers	324	7,282	\$548,370,103	1,448.17
5242	Insurance Agencies, Brokerages & Support	2,131	8,595	\$535,164,267	1,197.40
	OTHER	97	94	\$9,105,084	\$1,862.74
53	REAL ESTATE & RENTAL & LEASING	3,850	14,148	\$648,320,480	\$881.23
531	REAL ESTATE	3,245	10,299	\$456,624,855	\$852.63
5311	Lessors of Real Estate	1,122	4,074	\$158,354,462	747.49
5312	Offices of Real Estate Agents & Brokers	1,113	2,247	\$117,376,632	1,004.56
5313	Activities Related to Real Estate	1,010	3,978	\$180,893,761	874.49
532	RENTAL & LEASING SERVICES	583	3,790	\$187,437,207	\$951.07
5321	Automotive Equipment Rental & Leasing	123	916	\$35,959,830	754.95
5322	Consumer Goods Rental	299	1,645	\$64,788,159	757.40
5323	General Rental Centers	28	192	\$9,498,457	951.37
5324	Machinery & Equipment Rental & Leasing	133	1,037	\$77,190,761	1,431.47
533	LESSORS OF NONFINANCIAL INTANGIBLE ASSETS	22	59	\$4,258,418	\$1,388.01

Note: Data may not add due to rounding.

TABLE 5 STATEWIDE SUMMARY CALENDAR YEAR 2021

North American Industry Classification System - Industry Groups		Average Employing Units	Average Covered Employment	Total Calendar Earnings	Average Weekly Earnings
PROFESSIONAL & BUSINESS SERVICES		16,616	145,809	\$10,631,287,849	\$1,402.16
54	PROFESSIONAL & TECHNICAL SERVICES	10,594	44,762	\$3,168,334,278	\$1,361.19
5411	Legal Services	1,740	6,090	\$380,666,069	1,202.05
5412	Accounting & Bookkeeping Services	1,460	6,139	\$328,653,022	1,029.52
5413	Architectural & Engineering Services	1,134	6,777	\$500,691,741	1,420.79
5414	Specialized Design Services	193	422	\$24,222,666	1,103.84
5415	Computer Systems Design & Related Services	2,385	8,897	\$829,481,804	1,792.92
5416	Management & Technical Consulting Services	2,426	6,902	\$588,093,392	1,638.58
5417	Scientific Research & Development Services	195	978	\$74,603,378	1,466.95
5418	Advertising & Related Services	440	3,985	\$229,182,421	1,105.99
5419	Other Professional & Technical Services	623	4,572	\$212,739,785	894.83
55	MANAGEMENT OF COMPANIES & ENTERPRISES	540	33,981	\$4,849,916,025	\$2,744.70
56	ADMINISTRATIVE & SUPPORT SERVICES	5,482	67,066	\$2,613,037,546	\$749.27
561	ADMINISTRATIVE & SUPPORT SERVICES	5,126	63,172	\$2,392,643,975	\$728.37
5611	Office Administrative Services	773	3,656	\$276,006,643	1,451.81
5612	Facilities Support Services	68	759	\$35,883,354	909.18
5613	Employment Services	1,457	28,296	\$1,016,046,106	690.53
5614	Business Support Services	453	8,578	\$372,460,861	835.01
5615	Travel Arrangement & Reservation Services	114	241	\$11,851,240	945.68
5616	Investigation & Security Services	323	4,771	\$163,104,522	657.44
5617	Services to Buildings & Dwellings	1,749	15,662	\$465,509,422	571.58
5619	Other Support Services	189	1,209	\$51,781,827	823.66
562	WASTE MANAGEMENT & REMEDIATION SERVICES	356	3,894	\$220,393,571	\$1,088.43
5621	Waste Collection Services	137	1,346	68,565,109	979.61
5622	Waste Treatment & disposal Services	45	1,114	74,403,482	1,284.41
5629	Remediation & Other Waste Services	174	1,434	77,424,980	1,038.31
EDUCATION & HEALTH SERVICES		15,429	181,184	\$9,082,925,675	\$964.06
61	EDUCATIONAL SERVICES	1,060	12,545	\$507,241,573	\$777.57
6111	Elementary & Secondary Schools	113	4,818	\$187,868,923	749.87
6113	Colleges & Universities	153	4,017	\$179,647,761	860.04
6115	Technical & Trade Schools	130	931	\$54,500,333	1,125.76
6116	Other Schools & Instruction	357	1,854	\$39,013,851	404.67
6117	Educational Support Services	213	669	\$31,314,385	900.15
	Other	94	256	\$14,896,320	1,119.01

Note: Data may not add due to rounding.

TABLE 5 STATEWIDE SUMMARY CALENDAR YEAR 2021

North American Industry Classification System - Industry Groups		Average Employing Units	Average Covered Employment	Total Calendar Earnings	Average Weekly Earnings
62	HEALTH CARE & SOCIAL ASSISTANCE	14,369	168,639	\$8,575,684,102	\$977.93
621	AMBULATORY HEALTH CARE SERVICES	6,360	61,273	\$4,235,771,119	\$1,329.41
6211	Offices of Physicians	2,406	26,909	\$2,482,728,799	1,774.31
6212	Offices of Dentists	969	7,634	\$412,767,690	1,039.80
6213	Offices of Other Health Practitioners	1,800	10,246	\$454,019,913	852.15
6214	Outpatient Care Centers	445	5,542	\$348,027,841	1,207.66
6215	Medical & Diagnostic Laboratories	210	1,524	\$109,030,304	1,375.81
6216	Home Health Care Services	313	6,458	\$274,391,706	817.09
6219	Other Ambulatory Health Care Services	218	2,960	\$154,804,866	1,005.75
622	HOSPITALS	126	43,581	\$2,485,045,251	\$1,096.56
6221	General Medical & Surgical Hospitals	92	38,869	\$2,236,193,945	1,106.38
6222	Psychiatric & Substance Abuse Hospitals	12	1,791	\$84,622,581	908.63
6223	Other Hospitals	22	2,921	\$164,228,725	1,081.22
623	Residential & Mental Health Facilities	649	27,853	\$909,867,956	\$628.21
6231	Nursing Care Facilities (Skilled Nursing Facilities)	270	18,699	\$623,932,603	641.68
6232	Residential Mental Health Facilities	187	4,007	\$130,386,300	625.76
6233	Continuing Care & Assisted Living Facilities	155	4,249	\$121,361,155	549.27
6239	Other Residential Care Facilities	37	898	\$34,187,898	732.14
624	SOCIAL ASSISTANCE	7,234	35,932	\$944,999,776	\$505.76
6241	Individual & Family Services	6,146	21,524	\$588,539,868	525.84
6242	Emergency & Other Relief Services	171	1,456	\$45,637,351	602.78
6243	Vocational Rehabilitation Services	93	2,618	\$66,506,822	488.53
6244	Child Day Care Services	824	10,334	\$244,315,735	454.65
LEISURE & HOSPITALITY		7,581	116,062	\$2,375,492,440	\$393.60
71	ARTS, ENTERTAINMENT & RECREATION	1,085	11,504	\$312,168,740	\$521.84
711	PERFORMING ARTS & SPECTATOR SPORTS	255	2,439	\$88,250,402	\$695.83
7111	Performing Arts Companies	44	418	\$10,071,675	463.36
7112	Spectator Sports	74	1,413	\$56,678,453	771.39
7113	Performing Arts & Sports Promoters	57	491	\$17,080,156	668.97
7114	Agents & Managers for Public Figures	20	44	\$1,716,559	750.24
7115	Independent Artists, Writers, & Performers	60	73	\$2,703,559	712.21
712	MUSEUMS, PARKS, & HISTORICAL SITES	58	763	\$29,686,339	\$748.22
713	GAMBLING, RECREATIONAL & AMUSEMENT INDUSTRY	772	8,302	\$194,231,999	\$449.92
72	ACCOMMODATION & FOOD SERVICES	6,496	104,558	\$2,063,323,700	\$379.50

Note: Data may not add due to rounding.

TABLE 5 STATEWIDE SUMMARY CALENDAR YEAR 2021

North American Industry Classification System - Industry Groups		Average Employing Units	Average Covered Employment	Total Calendar Earnings	Average Weekly Earnings
721	ACCOMMODATION	952	10,223	\$227,861,044	\$428.64
7211	Travel Accommodation	846	9,618	\$211,851,279	423.59
7212	RV Parks & Recreational Camps	88	517	\$13,369,811	497.31
7213	Rooming & Boarding Houses	18	88	\$2,639,954	576.91
722	FOOD SERVICES & DRINKING PLACES	5,544	94,335	\$1,835,462,656	\$374.17
7223	Special Food Services	365	4,493	\$98,213,744	420.37
7224	Drinking Places, Alcoholic Beverages	147	892	\$18,806,695	405.46
7225	Restaurants & Other Eating Places	5,033	88,950	\$1,718,442,217	371.52
722511	Full-Service Restaurants	2,107	36,020	\$776,504,244	414.57
722513	Limited-Service Eating Places	2,348	47,494	\$837,706,331	339.20
722514	Cafeterias, Grill Buffets, & Buffets	90	1,261	\$29,904,237	456.05
722515	Snack & Nonalcoholic Beverage Bars	488	4,175	\$74,327,405	342.36
	OTHER SERVICES	5,565	24,828	\$1,026,209,140	\$794.86
811	REPAIR & MAINTENANCE	2,284	11,690	\$528,591,809	\$869.57
8111	Automotive Repair & Maintenance	1,482	7,283	\$292,931,364	773.49
8112	Electronic Equipment Repair & Maintenance	162	919	\$42,985,474	899.50
8113	Commercial Machinery Repair & Maintenance	469	2,801	\$167,950,509	1,153.09
8114	Household Goods Repair & Maintenance	172	687	\$24,724,462	692.10
812	PERSONAL & LAUNDRY SERVICES	1,433	7,246	\$227,890,158	\$604.82
8121	Personal Care Services	718	2,711	\$74,731,002	530.11
8122	Death Care Services	243	1,486	\$53,450,543	691.72
8123	Drycleaning & Laundry Service	186	1,779	\$62,537,863	676.03
8129	Other Personal Services	287	1,270	\$37,170,750	562.85
813	MEMBERSHIP ASSOCIATIONS & ORGANIZATIONS	1,197	5,123	\$246,166,702	\$924.06
8131	Religious Organizations	114	356	\$11,218,890	606.03
8132	Grantmaking & Giving Organizations	136	470	\$33,130,937	1,355.60
8133	Social Advocacy Organizations	239	1,188	\$59,302,500	959.96
8134	Civic & Social Organizations	203	994	\$22,750,825	440.16
8139	Professional & Similar Organizations	506	2,115	\$119,763,550	1,088.96
814	PRIVATE HOUSEHOLDS	651	769	\$23,560,471	\$589.19
	LOCAL GOVERNMENT	1,998	106,016	\$4,631,377,299	\$840.11
	STATE GOVERNMENT	1,058	64,339	\$3,467,650,394	\$1,036.47
	NONCLASSIFIABLE ESTABLISHMENTS	23	39	\$531,573	\$262.12

Note: Data may not add due to rounding.

TABLE 6 COUNTY SUMMARY CALENDAR YEAR 2021

North American Industry Classification System - Industry Groups	Average Employing Units	Average Covered Employment	Total Calendar Earnings	Average Weekly Earnings
ARKANSAS COUNTY - TOTAL	1,083	10,215	\$467,636,268	\$880.37
Natural Resources & Mining	67	184	\$7,686,655	803.37
Construction	99	337	\$15,602,890	890.37
Manufacturing	46	3,636	\$177,809,235	940.43
Trade, Transportation & Utilities	247	2,267	\$111,578,476	946.51
Wholesale Trade	49	421	\$25,451,269	1,162.58
Retail Trade	121	1,082	\$34,048,203	605.15
Transportation, Warehousing & Utilities	76	764	\$52,079,004	1,310.89
Information	11	60	\$1,787,109	572.79
Financial Activities	87	369	\$19,927,256	1,038.53
Professional & Business Services	124	658	\$42,154,566	1,232.01
Education & Health Services	202	1,048	\$42,862,804	786.53
Leisure & Hospitality	90	668	\$11,413,843	328.59
Other Services	67	138	\$4,645,832	647.41
Local Government	32	696	\$26,442,299	730.61
State Government	14	154	\$5,725,303	714.95
ASHLEY COUNTY - TOTAL	537	5,618	\$249,933,866	\$855.54
Natural Resources & Mining	44	332	\$14,486,853	839.14
Construction	34	437	\$22,058,880	970.73
Manufacturing	27	1,097	\$75,222,711	1,318.68
Trade, Transportation & Utilities	116	1,212	\$44,880,467	712.12
Wholesale Trade	22	185	\$11,125,075	1,156.45
Retail Trade	66	736	\$19,364,807	505.98
Transportation, Warehousing & Utilities	29	291	\$14,390,585	951.00
Information	5	24	\$915,938	733.92
Financial Activities	36	183	\$7,384,139	775.97
Professional & Business Services	32	162	\$5,935,472	704.59
Education & Health Services	133	815	\$36,137,976	852.71
Leisure & Hospitality	35	376	\$6,434,853	329.11
Other Services	34	115	\$3,890,997	650.67
Local Government	32	766	\$28,568,899	717.23
State Government	10	99	\$4,016,681	780.24

Note: Data may not add due to rounding.

TABLE 6 COUNTY SUMMARY CALENDAR YEAR 2021

North American Industry Classification System - Industry Groups	Average Employing Units	Average Covered Employment	Total Calendar Earnings	Average Weekly Earnings
BAXTER COUNTY - TOTAL	1,237	15,014	\$598,150,745	\$766.14
Construction	107	544	\$21,418,412	757.16
Manufacturing	55	2,625	\$108,028,098	791.41
Trade, Transportation & Utilities	252	2,734	\$91,235,209	641.74
Wholesale Trade	33	162	\$7,777,404	923.24
Retail Trade	198	2,385	\$75,342,386	607.50
Transportation, Warehousing & Utilities	21	187	\$8,115,419	834.58
Information	22	152	\$7,634,766	965.94
Financial Activities	124	731	\$43,715,286	1,150.04
Professional & Business Services	155	929	\$34,932,102	723.11
Education & Health Services	254	3,897	\$194,304,407	958.85
Leisure & Hospitality	123	1,608	\$30,347,201	362.94
Local Government	36	1,157	\$43,877,951	729.31
State Government	11	283	\$10,870,395	738.68
Other	100	354	\$11,786,918	640.31
BENTON COUNTY - TOTAL	7,340	126,791	\$9,004,425,857	\$1,365.73
Natural Resources & Mining	50	740	\$58,148,538	1,511.14
Construction	762	5,890	\$315,421,058	1,029.85
Manufacturing	212	12,724	\$660,179,595	997.78
Trade, Transportation & Utilities	1,738	31,510	\$1,946,106,355	1,187.72
Wholesale Trade	756	6,660	\$734,278,881	2,120.23
Retail Trade	770	12,917	\$456,801,048	680.08
Transportation, Warehousing & Utilities	213	11,933	\$755,026,426	1,216.77
Information	123	839	\$66,754,617	1,530.09
Financial Activities	789	4,245	\$317,676,993	1,439.15
Professional & Business Services	1,479	33,521	\$4,192,572,571	2,405.25
Education & Health Services	909	12,462	\$600,284,924	926.33
Leisure & Hospitality	709	13,072	\$298,675,308	439.39
Other Services	468	2,381	\$95,150,909	768.51
Local Government	85	8,464	\$417,189,542	947.88
State Government	17	943	\$36,265,447	739.57

Note: Data may not add due to rounding.

TABLE 6 COUNTY SUMMARY CALENDAR YEAR 2021

North American Industry Classification System - Industry Groups	Average Employing Units	Average Covered Employment	Total Calendar Earnings	Average Weekly Earnings
BOONE COUNTY - TOTAL	941	14,088	\$614,837,567	\$839.28
Manufacturing	56	1,866	\$78,854,299	812.66
Trade, Transportation & Utilities	236	3,854	\$185,534,130	925.78
Wholesale Trade	41	380	\$17,901,546	905.95
Retail Trade	155	2,133	\$67,697,280	610.35
Transportation, Warehousing & Utilities	41	1,341	\$99,935,304	1,433.13
Information	15	292	\$14,282,780	940.65
Financial Activities	92	440	\$25,460,733	1,112.79
Professional & Business Services	108	1,316	\$69,392,916	1,014.04
Education & Health Services	153	1,553	\$63,620,019	787.81
Leisure & Hospitality	87	1,263	\$24,592,600	374.45
Other Services	56	273	\$10,972,535	772.93
Local Government	53	2,055	\$91,805,383	859.12
State Government	16	718	\$29,239,245	783.14
Other	70	458	\$21,082,927	885.24
BRADLEY COUNTY - TOTAL	333	3,535	\$142,275,001	\$773.99
Natural Resources & Mining	44	279	\$11,061,516	762.44
Construction	15	71	\$2,661,535	720.89
Manufacturing	11	906	\$49,012,194	1,040.33
Trade, Transportation & Utilities	71	455	\$16,855,249	712.39
Wholesale Trade	11	103	\$5,915,220	1,104.41
Retail Trade	38	278	\$7,404,821	512.23
Transportation, Warehousing & Utilities	22	74	\$3,535,208	918.71
Information	3	24	\$668,902	535.98
Financial Activities	21	123	\$6,015,171	940.46
Professional & Business Services	24	95	\$3,458,965	700.20
Education & Health Services	82	533	\$20,159,165	727.35
Leisure & Hospitality	14	191	\$2,893,437	291.32
Other Services	25	76	\$2,389,727	604.69
Local Government	14	432	\$16,207,280	721.48
State Government	10	350	\$10,891,860	598.45

Note: Data may not add due to rounding.

TABLE 6 COUNTY SUMMARY CALENDAR YEAR 2021

North American Industry Classification System - Industry Groups	Average Employing Units	Average Covered Employment	Total Calendar Earnings	Average Weekly Earnings
CALHOUN COUNTY - TOTAL	115	3,521	\$218,815,100	\$1,195.11
Natural Resources & Mining	7	37	\$1,486,646	772.69
Construction	11	124	\$5,693,071	882.92
Manufacturing	9	2,765	\$185,308,632	1,288.83
Trade, Transportation & Utilities	29	161	\$7,066,421	844.05
Retail Trade	10	42	\$1,053,596	482.42
Transportation, Warehousing & Utilities	19	119	\$6,012,825	971.69
Professional & Business Services	5	13	\$452,799	669.82
Education & Health Services	23	57	\$2,992,720	1,009.69
Leisure & Hospitality	4	8	\$120,572	289.84
Local Government	11	179	\$5,799,259	623.04
State Government	7	68	\$2,947,265	833.50
Other	8	109	\$6,947,715	1,225.78
CARROLL COUNTY - TOTAL	800	10,855	\$395,826,007	\$701.25
Natural Resources & Mining	21	275	\$11,864,062	829.65
Trade, Transportation & Utilities	184	1,556	\$56,148,070	693.94
Wholesale Trade	27	221	\$9,328,881	811.77
Retail Trade	131	1,125	\$30,161,688	515.58
Transportation, Warehousing & Utilities	26	210	\$16,657,501	1,525.41
Information	9	62	\$4,600,893	1,427.08
Financial Activities	59	381	\$21,466,137	1,083.49
Professional & Business Services	71	484	\$20,531,120	815.76
Education & Health Services	101	994	\$40,433,296	782.26
Leisure & Hospitality	178	1,653	\$33,749,124	392.63
Other Services	42	145	\$4,190,339	555.75
Local Government	25	1,042	\$38,177,926	704.60
State Government	9	87	\$3,671,099	811.47
Other	102	4,176	\$160,993,941	741.39

Note: Data may not add due to rounding.

TABLE 6 COUNTY SUMMARY CALENDAR YEAR 2021

North American Industry Classification System - Industry Groups	Average Employing Units	Average Covered Employment	Total Calendar Earnings	Average Weekly Earnings
CHICOT COUNTY - TOTAL	448	2,733	\$104,039,760	\$732.08
Natural Resources & Mining	57	233	\$9,588,769	791.41
Construction	14	127	\$6,960,684	1,054.01
Manufacturing	3	6	\$274,341	879.30
Trade, Transportation & Utilities	71	742	\$24,795,639	642.64
Wholesale Trade	11	48	\$2,720,538	1,089.96
Retail Trade	43	266	\$7,341,390	530.75
Transportation, Warehousing & Utilities	17	428	\$14,733,711	662.01
Professional & Business Services	17	42	\$1,994,530	913.25
Education & Health Services	199	492	\$19,251,559	752.48
Leisure & Hospitality	14	100	\$1,619,632	311.47
Other Services	19	74	\$2,528,561	657.11
Local Government	17	511	\$19,501,565	733.91
State Government	9	232	\$8,403,445	696.57
Other	29	174	\$9,121,035	\$1,008.07
CLARK COUNTY - TOTAL	652	8,326	\$326,982,130	\$755.24
Natural Resources & Mining	52	309	\$13,974,618	869.72
Construction	26	89	\$4,469,092	965.66
Manufacturing	33	1,008	\$59,551,140	1,136.13
Trade, Transportation & Utilities	134	1,350	\$49,362,901	703.18
Wholesale Trade	18	64	\$3,721,639	1,118.28
Retail Trade	87	1,122	\$37,211,562	637.80
Transportation, Warehousing & Utilities	29	164	\$8,429,700	988.47
Financial Activities	78	327	\$13,289,346	781.54
Professional & Business Services	54	607	\$30,775,208	975.01
Education & Health Services	127	1,588	\$60,726,284	735.40
Leisure & Hospitality	63	1,025	\$17,379,241	326.06
Local Government	28	894	\$32,592,353	701.09
State Government	13	909	\$35,658,314	754.39
Other	45	220	\$9,203,633	804.51

Note: Data may not add due to rounding.

TABLE 6 COUNTY SUMMARY CALENDAR YEAR 2021

North American Industry Classification System - Industry Groups	Average Employing Units	Average Covered Employment	Total Calendar Earnings	Average Weekly Earnings
CLAY COUNTY - TOTAL	345	3,022	\$110,466,300	\$702.96
Natural Resources & Mining	50	244	\$8,585,339	676.65
Construction	32	119	\$4,231,461	683.82
Manufacturing	13	124	\$4,100,784	635.98
Trade, Transportation & Utilities	82	733	\$29,531,890	774.79
Wholesale Trade	19	244	\$10,614,520	836.58
Retail Trade	41	350	\$11,249,578	618.11
Transportation, Warehousing & Utilities	22	139	\$7,667,792	1,060.85
Information	7	24	\$712,377	570.81
Financial Activities	21	95	\$4,231,710	856.62
Professional & Business Services	21	91	\$3,618,495	764.69
Education & Health Services	49	453	\$17,949,025	761.97
Leisure & Hospitality	21	208	\$3,107,329	287.29
Other Services	22	83	\$3,430,221	794.77
Local Government	20	805	\$29,214,375	697.91
State Government	9	43	\$1,753,294	784.12
CLEBURNE COUNTY - TOTAL	635	6,170	\$235,698,973	\$734.63
Natural Resources & Mining	20	130	\$8,893,762	1,315.65
Construction	63	322	\$13,503,890	806.49
Manufacturing	34	1,212	\$52,080,892	826.37
Wholesale Trade	30	95	\$5,063,244	1,024.95
Retail Trade	96	1,056	\$38,283,019	697.17
Transportation, Warehousing & Utilities	20	146	\$8,217,281	1,082.36
Information	13	48	\$2,170,032	869.40
Financial Activities	71	246	\$13,328,057	1,041.91
Professional & Business Services	70	331	\$14,105,255	819.50
Education & Health Services	73	786	\$29,285,494	716.52
Leisure & Hospitality	82	888	\$17,287,744	374.39
Local Government	18	707	\$26,651,029	724.92
State Government	8	98	\$3,543,344	695.32
Other	183	1,402	\$54,849,474	752.35

Note: Data may not add due to rounding.

TABLE 6 COUNTY SUMMARY CALENDAR YEAR 2021

North American Industry Classification System - Industry Groups	Average Employing Units	Average Covered Employment	Total Calendar Earnings	Average Weekly Earnings
CLEVELAND COUNTY - TOTAL	120	959	\$37,293,464	\$747.84
Natural Resources & Mining	18	123	\$5,802,236	907.17
Manufacturing	4	119	\$5,955,749	962.47
Trade, Transportation & Utilities	28	133	\$4,399,499	636.13
Retail Trade	16	64	\$1,252,276	376.28
Other Trade, Transportation & Utilities	13	69	\$3,147,223	877.15
Financial Activities	4	26	\$1,533,595	1,134.32
Education & Health Services	31	213	\$7,100,779	641.10
Other Services	5	7	\$241,852	664.43
Local Government	13	273	\$10,095,711	711.17
State Government	6	29	\$1,274,988	845.48
Other	11	36	\$889,055	474.92
COLUMBIA COUNTY - TOTAL	659	7,752	\$339,223,705	\$841.53
Natural Resources & Mining	44	366	\$23,458,907	1,232.60
Construction	34	128	\$5,170,832	776.87
Manufacturing	27	1,843	\$118,276,082	1,234.15
Trade, Transportation & Utilities	160	1,435	\$49,495,274	663.30
Wholesale Trade	29	184	\$10,780,655	1,126.74
Retail Trade	91	1,049	\$26,889,123	492.94
Transportation, Warehousing & Utilities	41	202	\$11,825,496	1,125.81
Information	6	26	\$1,082,195	800.44
Financial Activities	57	325	\$18,933,538	1,120.33
Professional & Business Services	52	346	\$12,311,392	684.27
Education & Health Services	149	968	\$34,904,361	693.43
Leisure & Hospitality	55	767	\$12,452,285	312.21
Other Services	37	113	\$3,376,112	574.56
Local Government	27	803	\$30,563,724	731.96
State Government	11	632	\$29,199,003	888.48

Note: Data may not add due to rounding.

TABLE 6 COUNTY SUMMARY CALENDAR YEAR 2021

North American Industry Classification System - Industry Groups	Average Employing Units	Average Covered Employment	Total Calendar Earnings	Average Weekly Earnings
CONWAY COUNTY - TOTAL	507	6,691	\$292,154,142	\$839.69
Natural Resources & Mining	29	221	\$9,294,825	808.81
Construction	50	532	\$34,271,945	1,238.86
Manufacturing	20	1,030	\$62,747,423	1,171.54
Trade, Transportation & Utilities	106	1,362	\$51,634,758	729.06
Wholesale Trade	14	117	\$5,460,799	897.57
Retail Trade	73	824	\$24,973,761	582.85
Transportation, Warehousing & Utilities	20	421	\$21,200,198	968.40
Information	4	11	\$234,617	410.17
Financial Activities	37	149	\$7,770,035	1,002.84
Professional & Business Services	37	677	\$22,085,787	627.37
Education & Health Services	120	667	\$31,100,751	896.69
Leisure & Hospitality	40	458	\$8,274,321	347.43
Other Services	24	89	\$3,214,712	694.62
Local Government	32	1,137	\$49,471,217	836.74
State Government	9	358	\$12,053,751	647.49
CRAIGHEAD COUNTY - TOTAL	2,914	51,604	\$2,402,090,218	\$895.16
Natural Resources & Mining	105	360	\$16,646,777	889.25
Construction	256	2,351	\$133,428,291	1,091.42
Manufacturing	102	7,738	\$400,977,241	996.52
Trade, Transportation & Utilities	759	10,455	\$449,337,785	826.51
Wholesale Trade	177	2,108	\$126,097,326	1,150.36
Retail Trade	452	6,368	\$217,541,486	656.96
Transportation, Warehousing & Utilities	130	1,979	\$105,698,973	1,027.12
Information	25	369	\$21,239,882	1,106.94
Financial Activities	297	1,784	\$108,308,350	1,167.52
Professional & Business Services	398	4,570	\$189,001,129	795.33
Education & Health Services	450	11,083	\$636,228,620	1,103.96
Leisure & Hospitality	280	5,415	\$107,191,220	380.68
Other Services	188	818	\$31,884,717	749.59
Local Government	35	3,878	\$170,798,948	846.98
State Government	21	2,783	\$137,047,258	947.01

Note: Data may not add due to rounding.

TABLE 6 COUNTY SUMMARY CALENDAR YEAR 2021

North American Industry Classification System - Industry Groups	Average Employing Units	Average Covered Employment	Total Calendar Earnings	Average Weekly Earnings
CRAWFORD COUNTY - TOTAL	1,246	19,133	\$812,567,971	\$816.72
Natural Resources & Mining	22	210	\$9,900,736	906.66
Construction	136	988	\$48,097,691	936.19
Manufacturing	61	4,673	\$232,327,790	956.10
Trade, Transportation & Utilities	325	5,542	\$243,116,631	843.62
Wholesale Trade	68	779	\$48,583,156	1,199.35
Retail Trade	170	2,095	\$66,867,143	613.80
Transportation, Warehousing & Utilities	86	2,668	\$127,666,332	920.21
Information	11	40	\$2,515,649	1,209.45
Financial Activities	123	497	\$22,469,653	869.43
Professional & Business Services	161	1,368	\$59,442,818	835.62
Education & Health Services	183	1,606	\$60,273,028	721.73
Leisure & Hospitality	92	1,583	\$29,150,816	354.13
Other Services	81	419	\$15,390,326	706.37
Local Government	42	2,065	\$84,620,417	788.05
State Government	10	142	\$5,262,416	712.68
CRITTENDEN COUNTY - TOTAL	1,140	14,984	\$639,148,949	\$820.30
Natural Resources & Mining	56	251	\$9,808,653	751.51
Construction	35	378	\$21,301,199	1,083.70
Manufacturing	37	1,949	\$102,111,987	1,007.54
Trade, Transportation & Utilities	301	4,202	\$193,711,723	886.54
Wholesale Trade	50	706	\$42,947,515	1,169.85
Retail Trade	155	1,797	\$51,395,268	550.01
Transportation, Warehousing & Utilities	97	1,699	\$99,368,940	1,124.74
Information	4	25	\$1,099,125	845.48
Financial Activities	95	425	\$25,920,735	1,172.88
Professional & Business Services	101	929	\$39,671,699	821.22
Education & Health Services	255	1,816	\$73,681,370	780.26
Leisure & Hospitality	136	2,363	\$56,473,865	459.60
Other Services	69	454	\$17,144,031	726.20
Local Government	39	1,845	\$84,447,749	880.21
State Government	13	347	\$13,776,813	763.51

Note: Data may not add due to rounding.

TABLE 6 COUNTY SUMMARY CALENDAR YEAR 2021

North American Industry Classification System - Industry Groups	Average Employing Units	Average Covered Employment	Total Calendar Earnings	Average Weekly Earnings
CROSS COUNTY - TOTAL	463	4,556	\$168,931,968	\$713.06
Natural Resources & Mining	46	257	\$10,034,183	750.84
Construction	23	77	\$3,131,079	781.99
Manufacturing	11	294	\$9,184,132	600.74
Trade, Transportation & Utilities	117	1,066	\$44,307,568	799.31
Wholesale Trade	26	250	\$13,948,629	1,072.97
Retail Trade	64	711	\$24,904,768	673.61
Transportation, Warehousing & Utilities	28	105	\$5,454,171	998.93
Information	5	26	\$776,028	573.99
Financial Activities	50	224	\$9,835,035	844.35
Professional & Business Services	39	153	\$7,080,791	889.99
Education & Health Services	81	952	\$33,547,921	677.68
Leisure & Hospitality	39	427	\$7,358,108	331.39
Other Services	28	90	\$3,222,699	688.61
Local Government	17	651	\$26,774,708	790.93
State Government	9	339	\$13,679,716	776.02
DALLAS COUNTY - TOTAL	220	2,660	\$102,864,988	\$743.67
Natural Resources & Mining	20	99	\$4,185,087	812.95
Construction	16	64	\$2,779,005	835.04
Manufacturing	9	585	\$27,356,382	899.29
Trade, Transportation & Utilities	51	473	\$16,223,941	659.62
Wholesale Trade	5	18	\$1,276,961	1,364.27
Retail Trade	35	322	\$9,126,907	545.09
Transportation, Warehousing & Utilities	11	133	\$5,820,073	841.54
Information	3	18	\$690,855	738.09
Financial Activities	15	65	\$3,540,156	1,047.38
Professional & Business Services	13	35	\$1,234,730	678.42
Education & Health Services	48	794	\$32,521,963	787.69
Leisure & Hospitality	12	146	\$2,166,933	285.42
Other Services	12	43	\$1,331,099	595.30
Local Government	14	308	\$9,605,093	599.72
State Government	7	30	\$1,229,744	788.30

Note: Data may not add due to rounding.

TABLE 6 COUNTY SUMMARY CALENDAR YEAR 2021

North American Industry Classification System - Industry Groups	Average Employing Units	Average Covered Employment	Total Calendar Earnings	Average Weekly Earnings
DESHA COUNTY - TOTAL	479	4,211	\$176,596,668	\$806.48
Natural Resources & Mining	67	271	\$10,174,227	721.99
Construction	14	78	\$3,590,407	885.21
Manufacturing	14	981	\$59,080,709	1,158.17
Trade, Transportation & Utilities	96	814	\$32,252,066	761.96
Wholesale Trade	20	195	\$11,714,425	1,155.27
Retail Trade	50	451	\$11,893,996	507.16
Transportation, Warehousing & Utilities	27	168	\$8,643,645	989.43
Information	4	19	\$1,113,342	1,126.86
Financial Activities	28	208	\$8,566,004	791.98
Professional & Business Services	33	86	\$4,465,847	998.62
Education & Health Services	133	494	\$17,481,975	680.55
Leisure & Hospitality	37	358	\$5,558,438	298.58
Other Services	22	62	\$1,498,031	464.65
Local Government	21	729	\$28,963,455	764.05
State Government	9	111	\$3,852,167	667.39
DREW COUNTY - TOTAL	538	6,187	\$247,446,101	\$769.13
Natural Resources & Mining	54	353	\$15,967,176	869.86
Construction	26	171	\$8,453,025	950.63
Manufacturing	23	927	\$44,786,988	929.11
Trade, Transportation & Utilities	114	1,036	\$36,060,665	669.38
Wholesale Trade	17	112	\$5,636,695	967.84
Retail Trade	73	831	\$24,951,970	577.43
Transportation, Warehousing & Utilities	23	93	\$5,472,000	1,131.51
Information	5	31	\$1,196,515	742.25
Financial Activities	51	206	\$11,490,504	1,072.68
Professional & Business Services	37	295	\$16,021,394	1,044.42
Education & Health Services	130	810	\$29,176,425	692.70
Leisure & Hospitality	44	633	\$11,114,066	337.65
Other Services	20	50	\$1,756,407	675.54
Local Government	23	1,186	\$47,661,056	772.82
State Government	13	489	\$23,761,880	934.48

Note: Data may not add due to rounding.

TABLE 6 COUNTY SUMMARY CALENDAR YEAR 2021

North American Industry Classification System - Industry Groups	Average Employing Units	Average Covered Employment	Total Calendar Earnings	Average Weekly Earnings
FAULKNER COUNTY - TOTAL	3,045	40,920	\$1,827,799,855	\$858.99
Natural Resources & Mining	36	225	\$12,336,009	1,054.36
Construction	376	3,059	\$158,847,249	998.61
Manufacturing	101	2,841	\$150,750,154	1,020.43
Trade, Transportation & Utilities	632	7,940	\$300,274,190	727.27
Wholesale Trade	128	856	\$51,222,628	1,150.76
Retail Trade	412	6,192	\$200,497,230	622.69
Transportation, Warehousing & Utilities	91	892	\$48,554,332	1,046.79
Financial Activities	344	1,495	\$83,184,994	1,070.04
Professional & Business Services	471	3,652	\$186,782,694	983.56
Education & Health Services	494	7,756	\$354,317,451	878.52
Leisure & Hospitality	297	5,415	\$102,981,885	365.73
Local Government	44	3,141	\$154,719,193	947.27
State Government	18	2,941	\$137,020,552	895.96
Other	233	2,455	\$186,585,484	1,461.58
FRANKLIN COUNTY - TOTAL	367	4,513	\$176,067,119	\$750.26
Natural Resources & Mining	16	125	\$7,831,105	1,204.79
Construction	36	161	\$5,975,803	713.78
Manufacturing	17	1,008	\$44,607,484	851.03
Trade, Transportation & Utilities	81	1,002	\$40,810,644	783.25
Wholesale Trade	9	46	\$1,290,005	539.30
Retail Trade	49	646	\$17,696,598	526.81
Transportation, Warehousing & Utilities	23	310	\$21,824,041	1,353.85
Information	6	29	\$1,769,593	1,173.47
Financial Activities	31	64	\$2,848,111	855.80
Professional & Business Services	31	375	\$14,134,839	724.86
Education & Health Services	65	508	\$16,767,579	634.75
Leisure & Hospitality	30	344	\$5,661,563	316.50
Other Services	16	51	\$1,598,845	602.88
Local Government	32	720	\$28,568,217	763.04
State Government	8	126	\$5,493,336	838.42

Note: Data may not add due to rounding.

TABLE 6 COUNTY SUMMARY CALENDAR YEAR 2021

North American Industry Classification System - Industry Groups	Average Employing Units	Average Covered Employment	Total Calendar Earnings	Average Weekly Earnings
FULTON COUNTY - TOTAL	197	2,074	\$76,431,537	\$708.70
Manufacturing	11	122	\$4,194,463	661.17
Trade, Transportation & Utilities	49	307	\$12,492,408	782.54
Retail Trade	31	192	\$5,203,027	521.14
Other Trade, Transportation & Utilities	18	115	\$7,289,381	1,218.96
Information	5	33	\$1,570,721	915.34
Financial Activities	20	86	\$4,394,189	982.60
Professional & Business Services	11	22	\$661,851	578.54
Education & Health Services	42	467	\$16,263,858	669.74
Leisure & Hospitality	17	140	\$2,159,277	296.60
Other Services	9	21	\$686,131	628.33
Local Government	12	546	\$17,714,645	623.93
State Government	9	58	\$2,195,402	727.92
Other	13	272	\$14,098,592	996.79
GARLAND COUNTY - TOTAL	3,112	36,061	\$1,487,682,497	\$793.36
Natural Resources & Mining	29	202	\$10,789,946	1,027.22
Construction	347	1,872	\$80,562,566	827.61
Manufacturing	92	2,344	\$118,177,415	969.56
Trade, Transportation & Utilities	658	7,499	\$293,783,100	753.39
Wholesale Trade	130	778	\$54,584,157	1,349.22
Retail Trade	464	6,139	\$208,438,446	652.95
Transportation, Warehousing & Utilities	64	582	\$30,760,497	1,016.41
Information	29	399	\$16,265,001	783.93
Financial Activities	370	1,530	\$81,794,837	1,028.09
Professional & Business Services	403	2,949	\$126,498,388	824.91
Education & Health Services	494	7,750	\$391,825,459	972.27
Leisure & Hospitality	409	7,072	\$166,036,814	451.50
Other Services	221	925	\$29,172,409	606.49
Local Government	40	2,728	\$139,725,001	984.98
State Government	21	791	\$33,051,561	803.55

Note: Data may not add due to rounding.

TABLE 6 COUNTY SUMMARY CALENDAR YEAR 2021

North American Industry Classification System - Industry Groups	Average Employing Units	Average Covered Employment	Total Calendar Earnings	Average Weekly Earnings
GRANT COUNTY - TOTAL	349	4,154	\$193,470,499	\$895.66
Natural Resources & Mining	25	177	\$10,089,767	1,096.24
Construction	35	263	\$16,024,625	1,171.73
Manufacturing	18	1,291	\$71,916,653	1,071.27
Trade, Transportation & Utilities	85	676	\$24,460,409	695.85
Wholesale Trade	17	77	\$6,383,213	1,594.21
Retail Trade	49	554	\$16,185,901	561.85
Transportation, Warehousing & Utilities	20	45	\$1,891,295	808.25
Financial Activities	25	165	\$14,112,079	1,644.76
Professional & Business Services	33	139	\$6,719,985	929.72
Education & Health Services	67	366	\$11,842,190	622.23
Leisure & Hospitality	25	273	\$4,416,232	311.09
Local Government	10	700	\$30,126,139	827.64
State Government	7	45	\$1,670,035	713.69
Other	21	59	\$2,092,385	682.00
GREENE COUNTY - TOTAL	886	15,048	\$635,585,124	\$812.25
Natural Resources & Mining	40	217	\$9,015,293	798.94
Construction	70	416	\$20,544,206	949.71
Manufacturing	57	4,696	\$234,420,925	959.99
Trade, Transportation & Utilities	227	2,752	\$100,468,880	702.07
Wholesale Trade	47	499	\$25,553,785	984.81
Retail Trade	152	2,034	\$64,416,891	609.04
Transportation, Warehousing & Utilities	28	219	\$10,498,204	921.87
Information	9	121	\$6,796,353	1,080.16
Financial Activities	76	565	\$28,663,329	975.61
Professional & Business Services	97	817	\$30,277,837	712.69
Education & Health Services	143	2,034	\$91,656,905	866.58
Leisure & Hospitality	83	1,272	\$23,515,242	355.52
Other Services	43	172	\$5,413,847	605.30
Local Government	31	1,613	\$67,417,239	803.77
State Government	10	373	\$17,395,068	896.84

Note: Data may not add due to rounding.

TABLE 6 COUNTY SUMMARY CALENDAR YEAR 2021

North American Industry Classification System - Industry Groups	Average Employing Units	Average Covered Employment	Total Calendar Earnings	Average Weekly Earnings
HEMPSTEAD COUNTY - TOTAL	516	7,307	\$309,067,948	\$813.41
Natural Resources & Mining	23	243	\$13,076,067	1,034.83
Construction	28	130	\$5,313,169	785.97
Manufacturing	27	2,185	\$111,404,165	980.50
Trade, Transportation & Utilities	126	1,319	\$53,703,118	782.98
Wholesale Trade	26	190	\$7,727,148	782.10
Retail Trade	73	859	\$24,319,671	544.45
Transportation, Warehousing & Utilities	27	270	\$21,656,299	1,542.47
Information	7	15	\$881,429	1,130.04
Financial Activities	45	193	\$9,233,480	920.04
Professional & Business Services	37	256	\$11,012,241	827.24
Education & Health Services	105	840	\$28,728,000	657.69
Leisure & Hospitality	46	565	\$10,645,424	362.34
Other Services	30	110	\$4,053,111	708.59
Local Government	28	784	\$33,888,698	831.26
State Government	16	667	\$27,129,046	782.18
HOT SPRING COUNTY - TOTAL	601	8,227	\$341,810,873	\$798.99
Natural Resources & Mining	22	159	\$6,462,507	781.63
Construction	57	209	\$7,681,187	706.77
Manufacturing	29	1,533	\$84,015,510	1,053.94
Trade, Transportation & Utilities	153	1,679	\$78,633,408	900.64
Wholesale Trade	20	86	\$4,989,252	1,115.66
Retail Trade	93	898	\$26,903,150	576.13
Transportation, Warehousing & Utilities	41	695	\$46,741,006	1,293.33
Information	5	37	\$1,869,958	971.91
Financial Activities	54	200	\$9,850,539	947.17
Professional & Business Services	53	827	\$30,497,375	709.18
Education & Health Services	99	959	\$40,080,546	803.73
Local Government	27	935	\$38,024,934	782.08
State Government	12	829	\$27,810,942	645.15
Other	90	860	\$16,883,967	377.55

Note: Data may not add due to rounding.

TABLE 6 COUNTY SUMMARY CALENDAR YEAR 2021

North American Industry Classification System - Industry Groups	Average Employing Units	Average Covered Employment	Total Calendar Earnings	Average Weekly Earnings
HOWARD COUNTY - TOTAL	353	6,461	\$253,728,502	\$755.21
Natural Resources & Mining	19	204	\$9,425,708	888.55
Construction	21	76	\$2,704,445	684.32
Manufacturing	19	3,092	\$129,107,662	802.99
Trade, Transportation & Utilities	79	876	\$34,117,932	748.99
Wholesale Trade	16	88	\$4,331,879	946.65
Retail Trade	46	575	\$17,133,706	573.03
Transportation, Warehousing & Utilities	18	213	\$12,652,347	1,142.32
Professional & Business Services	22	142	\$5,734,397	776.60
Education & Health Services	81	771	\$29,811,403	743.57
Leisure & Hospitality	30	314	\$5,638,177	345.31
Other Services	20	81	\$3,075,856	730.26
Local Government	17	654	\$24,676,236	725.60
State Government	10	98	\$3,011,357	590.93
Other	36	153	\$6,425,329	807.61
INDEPENDENCE COUNTY - TOTAL	922	16,255	\$717,561,806	\$848.92
Natural Resources & Mining	23	295	\$15,684,797	1,022.48
Construction	60	589	\$29,040,679	948.17
Manufacturing	44	3,600	\$178,309,397	952.51
Trade, Transportation & Utilities	234	2,860	\$116,501,350	783.36
Wholesale Trade	28	231	\$12,283,421	1,022.60
Retail Trade	163	1,899	\$58,344,333	590.84
Transportation, Warehousing & Utilities	44	730	\$45,873,596	1,208.47
Information	10	77	\$3,468,408	866.24
Financial Activities	88	618	\$37,202,529	1,157.66
Professional & Business Services	90	1,194	\$45,352,189	730.45
Education & Health Services	161	3,513	\$185,035,612	1,012.92
Leisure & Hospitality	89	1,255	\$21,944,485	336.26
Other Services	60	294	\$9,179,802	600.46
Local Government	48	1,392	\$53,346,315	736.99
State Government	15	568	\$22,496,243	761.66

Note: Data may not add due to rounding.

TABLE 6 COUNTY SUMMARY CALENDAR YEAR 2021

North American Industry Classification System - Industry Groups	Average Employing Units	Average Covered Employment	Total Calendar Earnings	Average Weekly Earnings
IZARD COUNTY - TOTAL	243	2,694	\$97,591,456	\$696.64
Natural Resources & Mining	7	92	\$6,021,685	1,258.71
Construction	22	71	\$2,542,951	688.77
Manufacturing	9	152	\$5,434,313	687.54
Trade, Transportation & Utilities	65	539	\$17,313,082	617.71
Wholesale Trade	13	54	\$1,874,799	667.66
Retail Trade	42	389	\$10,849,624	536.37
Transportation, Warehousing & Utilities	11	96	\$4,588,659	919.20
Financial Activities	21	165	\$6,494,912	756.98
Professional & Business Services	16	56	\$2,222,012	763.05
Education & Health Services	38	545	\$19,850,228	700.43
Leisure & Hospitality	24	172	\$3,126,088	349.52
Local Government	14	470	\$17,616,272	720.80
State Government	9	386	\$15,340,357	764.27
Other	19	46	\$1,629,556	681.25
JACKSON COUNTY - TOTAL	420	5,113	\$209,459,989	\$787.81
Natural Resources & Mining	54	312	\$12,629,380	778.44
Construction	22	117	\$5,029,035	826.60
Manufacturing	10	1,004	\$50,933,511	975.59
Trade, Transportation & Utilities	103	986	\$41,066,654	800.96
Wholesale Trade	16	208	\$12,649,101	1,169.48
Retail Trade	67	688	\$23,173,212	647.73
Transportation, Warehousing & Utilities	20	90	\$5,244,341	1,120.59
Information	3	7	\$257,498	707.41
Financial Activities	32	129	\$6,354,195	947.26
Professional & Business Services	32	114	\$5,107,656	861.62
Education & Health Services	74	741	\$31,888,204	827.58
Leisure & Hospitality	29	367	\$5,858,925	307.01
Other Services	18	54	\$2,524,067	898.88
Local Government	32	537	\$20,389,705	730.19
State Government	12	745	\$27,421,159	707.83

Note: Data may not add due to rounding.

TABLE 6 COUNTY SUMMARY CALENDAR YEAR 2021

North American Industry Classification System - Industry Groups	Average Employing Units	Average Covered Employment	Total Calendar Earnings	Average Weekly Earnings
JEFFERSON COUNTY - TOTAL	1,942	24,635	\$1,121,747,311	\$875.67
Natural Resources & Mining	34	121	\$8,295,521	1,318.42
Construction	86	451	\$19,465,840	830.03
Manufacturing	59	4,351	\$283,811,062	1,254.40
Trade, Transportation & Utilities	400	4,146	\$169,740,191	787.32
Wholesale Trade	69	617	\$32,768,364	1,021.33
Retail Trade	274	2,880	\$92,485,556	617.56
Transportation, Warehousing & Utilities	58	649	\$44,486,271	1,318.19
Information	11	57	\$3,062,592	1,033.26
Financial Activities	144	995	\$53,584,999	1,035.66
Professional & Business Services	144	1,955	\$76,558,736	753.09
Education & Health Services	760	4,129	\$195,831,339	912.08
Leisure & Hospitality	134	2,637	\$65,053,358	474.41
Other Services	95	428	\$16,997,251	763.72
Local Government	41	2,189	\$88,740,392	779.60
State Government	36	3,176	\$140,606,030	851.37
JOHNSON COUNTY - TOTAL	477	8,091	\$310,992,287	\$739.17
Natural Resources & Mining	12	212	\$10,300,615	934.38
Construction	40	188	\$6,999,860	716.02
Manufacturing	32	2,276	\$90,621,293	765.69
Trade, Transportation & Utilities	103	2,032	\$79,075,768	748.37
Retail Trade	73	944	\$26,674,168	543.39
Other Trade, Transportation & Utilities	30	1,088	\$52,401,600	926.22
Information	4	13	\$688,628	1,018.68
Financial Activities	42	152	\$6,620,078	837.56
Professional & Business Services	48	247	\$8,066,590	628.04
Education & Health Services	99	1,223	\$50,832,724	799.31
Leisure & Hospitality	46	589	\$9,608,608	313.72
Other Services	29	82	\$2,666,356	625.32
Local Government	14	975	\$41,054,930	809.76
State Government	9	102	\$4,456,837	840.28

Note: Data may not add due to rounding.

TABLE 6 COUNTY SUMMARY CALENDAR YEAR 2021

North American Industry Classification System - Industry Groups	Average Employing Units	Average Covered Employment	Total Calendar Earnings	Average Weekly Earnings
LAFAYETTE COUNTY - TOTAL	154	1,038	\$37,793,831	\$700.20
Natural Resources & Mining	22	64	\$1,917,911	576.30
Construction	11	79	\$4,469,929	1,088.10
Manufacturing	5	33	\$1,639,458	955.40
Trade, Transportation & Utilities	29	201	\$6,860,873	656.42
Retail Trade	16	114	\$2,784,234	469.68
Other Trade, Transportation & Utilities	13	87	\$4,076,639	901.11
Financial Activities	13	76	\$3,432,133	868.45
Professional & Business Services	9	35	\$1,291,849	709.81
Education & Health Services	30	158	\$5,195,531	632.37
Leisure & Hospitality	7	52	\$1,065,120	393.91
Local Government	15	271	\$9,414,322	668.06
State Government	7	29	\$1,250,007	828.92
Other	6	40	\$1,256,698	604.18
LAWRENCE COUNTY - TOTAL	390	3,791	\$144,037,909	\$730.67
Natural Resources & Mining	55	188	\$8,543,825	873.96
Construction	25	175	\$12,075,630	1,326.99
Manufacturing	15	281	\$10,986,966	751.91
Trade, Transportation & Utilities	112	797	\$31,182,746	752.41
Wholesale Trade	19	192	\$9,217,207	923.20
Retail Trade	59	487	\$15,438,917	609.66
Transportation, Warehousing & Utilities	34	118	\$6,526,622	1,063.66
Financial Activities	28	119	\$5,301,825	856.79
Professional & Business Services	22	93	\$4,132,559	854.54
Education & Health Services	45	561	\$20,284,438	695.34
Leisure & Hospitality	34	349	\$5,720,656	315.22
Local Government	24	990	\$36,665,676	712.23
State Government	9	71	\$2,621,162	709.96
Other	21	167	\$6,522,426	751.09

Note: Data may not add due to rounding.

TABLE 6 COUNTY SUMMARY CALENDAR YEAR 2021

North American Industry Classification System - Industry Groups	Average Employing Units	Average Covered Employment	Total Calendar Earnings	Average Weekly Earnings
LEE COUNTY - TOTAL	236	1,610	\$63,548,652	\$759.06
Natural Resources & Mining	36	173	\$7,069,805	785.88
Construction	5	7	\$218,943	601.49
Trade, Transportation & Utilities	37	345	\$14,245,287	794.05
Wholesale Trade	10	121	\$6,904,416	1,097.33
Retail Trade	18	169	\$4,337,440	493.56
Transportation, Warehousing & Utilities	9	55	\$3,003,431	1,050.15
Financial Activities	13	49	\$2,247,951	882.24
Professional & Business Services	15	47	\$3,585,322	1,466.99
Education & Health Services	89	324	\$13,070,925	775.81
Leisure & Hospitality	10	73	\$1,300,874	342.70
Local Government	15	213	\$7,336,633	662.39
State Government	6	359	\$13,828,719	740.77
Other	12	20	\$644,193	619.42
LINCOLN COUNTY - TOTAL	270	2,603	\$103,513,616	\$764.75
Natural Resources & Mining	37	142	\$6,191,869	838.55
Construction	19	135	\$6,450,546	918.88
Manufacturing	9	311	\$11,600,372	717.31
Trade, Transportation & Utilities	43	330	\$14,656,945	854.13
Wholesale Trade	7	50	\$2,429,481	934.42
Retail Trade	24	159	\$3,923,167	474.50
Transportation, Warehousing & Utilities	13	121	\$8,304,297	1,319.82
Financial Activities	19	64	\$2,562,626	770.02
Professional & Business Services	10	22	\$1,219,063	1,065.61
Education & Health Services	87	310	\$10,908,849	676.73
Leisure & Hospitality	16	116	\$1,745,183	289.32
Local Government	7	306	\$11,648,681	732.07
State Government	10	815	\$34,080,846	804.17
Other	15	52	\$2,448,636	905.56

Note: Data may not add due to rounding.

TABLE 6 COUNTY SUMMARY CALENDAR YEAR 2021

North American Industry Classification System - Industry Groups	Average Employing Units	Average Covered Employment	Total Calendar Earnings	Average Weekly Earnings
LITTLE RIVER COUNTY - TOTAL	243	2,946	\$157,120,997	\$1,025.65
Natural Resources & Mining	15	66	\$2,607,836	759.86
Construction	11	70	\$3,053,085	838.76
Manufacturing	15	904	\$88,095,664	1,874.06
Trade, Transportation & Utilities	59	533	\$17,128,954	618.02
Wholesale Trade	7	30	\$1,940,186	1,243.71
Retail Trade	37	424	\$11,918,989	540.59
Transportation, Warehousing & Utilities	15	79	\$3,269,779	795.95
Financial Activities	13	54	\$1,827,536	650.83
Professional & Business Services	17	108	\$5,696,744	1,014.38
Education & Health Services	47	180	\$6,058,599	647.29
Leisure & Hospitality	18	232	\$3,528,899	292.51
Local Government	20	668	\$25,361,569	730.12
State Government	10	80	\$2,350,342	564.99
Other	19	51	\$1,411,769	532.34
LOGAN COUNTY - TOTAL	477	5,066	\$181,618,442	\$689.43
Natural Resources & Mining	24	123	\$5,027,579	786.05
Construction	41	169	\$7,508,137	854.36
Manufacturing	21	1,154	\$48,532,178	808.76
Trade, Transportation & Utilities	97	987	\$30,579,206	595.81
Wholesale Trade	10	56	\$1,667,226	572.54
Retail Trade	71	812	\$21,676,805	513.38
Transportation, Warehousing & Utilities	16	119	\$7,235,175	1,169.23
Information	5	24	\$1,118,453	896.20
Financial Activities	48	181	\$9,233,445	981.03
Professional & Business Services	42	106	\$3,859,981	700.29
Education & Health Services	103	633	\$24,325,053	739.00
Leisure & Hospitality	30	310	\$4,788,573	297.06
Other Services	33	135	\$5,304,715	755.66
Local Government	22	801	\$27,959,881	671.27
State Government	12	443	\$13,381,241	580.88

Note: Data may not add due to rounding.

TABLE 6 COUNTY SUMMARY CALENDAR YEAR 2021

North American Industry Classification System - Industry Groups	Average Employing Units	Average Covered Employment	Total Calendar Earnings	Average Weekly Earnings
LONOKE COUNTY - TOTAL	1,330	14,174	\$544,132,999	\$738.26
Natural Resources & Mining	91	508	\$22,472,293	850.71
Construction	156	922	\$43,159,204	900.20
Manufacturing	36	1,500	\$76,034,080	974.80
Trade, Transportation & Utilities	288	3,099	\$110,948,529	688.49
Wholesale Trade	67	427	\$24,336,587	1,096.05
Retail Trade	165	2,345	\$68,759,270	563.88
Transportation, Warehousing & Utilities	55	327	\$17,852,672	1,049.91
Information	18	87	\$4,561,439	1,008.28
Financial Activities	171	750	\$45,992,368	1,179.29
Professional & Business Services	155	626	\$22,691,423	697.08
Education & Health Services	201	1,783	\$65,694,566	708.56
Leisure & Hospitality	116	1,993	\$38,125,205	367.88
Other Services	63	180	\$5,886,808	628.93
Local Government	24	2,575	\$101,952,534	761.41
State Government	14	151	\$6,614,550	842.40
MADISON COUNTY - TOTAL	262	3,406	\$139,057,611	\$785.14
Natural Resources & Mining	10	55	\$1,959,994	685.31
Construction	34	151	\$6,887,749	877.20
Manufacturing	22	1,275	\$55,896,626	843.09
Trade, Transportation & Utilities	57	682	\$24,882,050	701.61
Wholesale Trade	7	32	\$2,031,723	1,220.99
Other Trade, Transportation, Warehousing & Utilities	50	650	\$22,850,327	676.05
Information	6	50	\$5,210,960	2,004.22
Financial Activities	19	83	\$3,659,643	847.92
Professional & Business Services	26	82	\$4,430,857	1,039.13
Education & Health Services	37	248	\$9,399,172	728.84
Leisure & Hospitality	14	157	\$2,384,243	292.04
Other Services	21	58	\$1,516,496	502.82
Local Government	9	525	\$21,222,260	777.37
State Government	7	40	\$1,607,561	772.87

Note: Data may not add due to rounding.

TABLE 6 COUNTY SUMMARY CALENDAR YEAR 2021

North American Industry Classification System - Industry Groups	Average Employing Units	Average Covered Employment	Total Calendar Earnings	Average Weekly Earnings
MARION COUNTY - TOTAL	282	3,372	\$127,461,221	\$726.92
Manufacturing	23	1,386	\$60,001,244	832.52
Trade, Transportation & Utilities	55	538	\$16,358,139	584.72
Wholesale Trade	6	39	\$1,242,775	612.81
Retail Trade	40	465	\$13,027,630	538.78
Transportation, Warehousing & Utilities	8	34	\$2,087,734	1,180.85
Information	3	53	\$3,386,397	1,228.74
Financial Activities	31	195	\$7,444,469	734.17
Professional & Business Services	25	78	\$3,193,198	787.28
Education & Health Services	43	266	\$10,809,403	781.48
Leisure & Hospitality	36	199	\$3,367,420	325.42
Other Services	15	28	\$638,809	438.74
Local Government	18	480	\$16,685,102	668.47
State Government	7	39	\$1,577,870	778.04
Other	27	110	\$3,999,170	699.16
MILLER COUNTY - TOTAL	881	12,142	\$543,404,745	\$860.66
Natural Resources & Mining	30	289	\$15,063,647	1,002.37
Construction	67	618	\$30,822,420	959.12
Manufacturing	24	2,366	\$164,470,618	1,336.81
Trade, Transportation & Utilities	214	2,609	\$112,015,695	825.66
Wholesale Trade	46	500	\$28,767,629	1,106.45
Retail Trade	119	1,269	\$37,308,264	565.38
Transportation, Warehousing & Utilities	49	840	\$45,939,802	1,051.74
Information	7	88	\$7,241,250	1,582.44
Financial Activities	88	403	\$21,038,654	1,003.94
Professional & Business Services	79	1,116	\$35,160,941	605.89
Education & Health Services	184	1,214	\$41,062,209	650.46
Leisure & Hospitality	97	1,486	\$28,533,012	369.25
Other Services	53	232	\$7,298,248	604.96
Local Government	26	1,250	\$57,299,418	881.53
State Government	15	471	\$23,398,633	955.36

Note: Data may not add due to rounding.

TABLE 6 COUNTY SUMMARY CALENDAR YEAR 2021

North American Industry Classification System - Industry Groups	Average Employing Units	Average Covered Employment	Total Calendar Earnings	Average Weekly Earnings
MISSISSIPPI COUNTY - TOTAL	1,032	16,510	\$1,063,712,895	\$1,239.01
Natural Resources & Mining	106	527	\$22,264,630	812.46
Construction	53	698	\$45,815,327	1,262.27
Manufacturing	60	6,048	\$621,229,990	1,975.32
Trade, Transportation & Utilities	257	2,769	\$123,201,919	855.64
Wholesale Trade	54	353	\$30,144,631	1,642.22
Retail Trade	137	1,592	\$43,085,506	520.46
Transportation, Warehousing & Utilities	65	824	\$49,971,782	1,166.26
Information	8	24	\$754,928	604.91
Financial Activities	75	400	\$17,178,513	825.89
Professional & Business Services	79	960	\$45,162,609	904.70
Education & Health Services	188	1,272	\$52,304,229	790.76
Leisure & Hospitality	91	1,033	\$17,893,410	333.11
Other Services	47	290	\$13,491,855	894.69
Local Government	50	2,020	\$86,404,385	822.59
State Government	19	469	\$18,011,100	738.52
MONROE COUNTY - TOTAL	252	1,869	\$67,600,421	\$695.56
Natural Resources & Mining	25	97	\$5,096,441	1,010.40
Manufacturing	6	130	\$4,838,333	715.73
Trade, Transportation & Utilities	64	487	\$21,861,053	863.25
Wholesale Trade	16	135	\$8,699,528	1,239.25
Retail Trade	31	245	\$7,418,145	582.27
Transportation, Warehousing & Utilities	16	107	\$5,743,380	1,032.24
Financial Activities	20	80	\$3,849,373	925.33
Professional & Business Services	13	23	\$702,010	586.96
Education & Health Services	50	315	\$11,211,309	684.45
Leisure & Hospitality	22	278	\$4,578,194	316.70
Local Government	21	309	\$10,092,160	628.09
State Government	7	64	\$2,805,847	843.10
Other	26	86	\$2,565,701	573.73

Note: Data may not add due to rounding.

TABLE 6 COUNTY SUMMARY CALENDAR YEAR 2021

North American Industry Classification System - Industry Groups	Average Employing Units	Average Covered Employment	Total Calendar Earnings	Average Weekly Earnings
MONTGOMERY COUNTY - TOTAL	155	1,159	\$36,298,698	\$602.29
Natural Resources & Mining	6	21	\$621,835	569.45
Construction	24	68	\$2,180,150	616.56
Trade, Transportation & Utilities	34	235	\$6,827,709	558.73
Wholesale Trade	7	59	\$2,315,037	754.58
Retail Trade	22	161	\$4,098,479	489.55
Transportation, Warehousing & Utilities	5	15	\$414,193	531.02
Financial Activities	12	48	\$1,490,021	596.96
Professional & Business Services	12	20	\$720,436	692.73
Education & Health Services	17	40	\$1,608,208	773.18
Leisure & Hospitality	14	253	\$6,299,778	478.85
Other Services	12	31	\$768,071	476.47
Local Government	9	369	\$12,904,021	672.50
State Government	7	36	\$1,280,879	684.23
Other	8	38	\$1,597,590	808.50
NEVADA COUNTY - TOTAL	198	2,212	\$92,750,257	\$806.36
Natural Resources & Mining	13	48	\$2,851,165	1,142.29
Trade, Transportation & Utilities	41	503	\$18,910,326	722.98
Retail Trade	24	305	\$8,423,954	531.14
Other Trade, Transportation & Utilities	17	198	\$10,486,372	1,018.49
Financial Activities	11	65	\$2,143,593	634.20
Professional & Business Services	12	66	\$3,176,767	925.63
Education & Health Services	40	321	\$8,792,862	526.77
Leisure & Hospitality	10	97	\$1,463,575	290.16
Local Government	29	387	\$12,807,916	636.45
State Government	9	53	\$1,803,727	654.47
Other	34	672	\$40,800,326	1,167.59

Note: Data may not add due to rounding.

TABLE 6 COUNTY SUMMARY CALENDAR YEAR 2021

North American Industry Classification System - Industry Groups	Average Employing Units	Average Covered Employment	Total Calendar Earnings	Average Weekly Earnings
NEWTON COUNTY - TOTAL	115	949	\$30,159,160	\$611.15
Construction	7	20	\$846,830	814.26
Manufacturing	8	36	\$1,619,940	865.35
Trade, Transportation & Utilities	28	162	\$5,915,845	702.26
Retail Trade	14	109	\$3,107,836	548.31
Other Trade, Transportation & Utilities	14	53	\$2,808,009	1,018.87
Education & Health Services	22	201	\$5,196,385	497.17
Leisure & Hospitality	14	151	\$3,093,428	393.97
Local Government	14	313	\$10,565,003	649.12
State Government	7	35	\$1,348,189	740.76
Other	16	31	\$1,573,540	976.14
OUACHITA COUNTY - TOTAL	626	6,552	\$267,819,579	\$786.08
Natural Resources & Mining	33	152	\$7,032,894	889.79
Construction	41	211	\$9,969,483	908.63
Manufacturing	27	694	\$38,072,411	1,054.99
Trade, Transportation & Utilities	146	1,525	\$53,145,480	670.18
Wholesale Trade	22	186	\$9,437,883	975.79
Retail Trade	90	969	\$24,449,721	485.23
Transportation, Warehousing & Utilities	35	370	\$19,257,876	1,000.93
Information	6	30	\$1,511,718	969.05
Financial Activities	51	257	\$11,457,849	857.37
Professional & Business Services	44	325	\$13,202,848	781.23
Education & Health Services	168	1,242	\$62,693,449	970.73
Leisure & Hospitality	44	452	\$7,448,042	316.88
Other Services	23	100	\$3,442,889	662.09
Local Government	31	981	\$37,138,681	728.04
State Government	13	583	\$22,703,835	748.91

Note: Data may not add due to rounding.

TABLE 6 COUNTY SUMMARY CALENDAR YEAR 2021

North American Industry Classification System - Industry Groups	Average Employing Units	Average Covered Employment	Total Calendar Earnings	Average Weekly Earnings
PERRY COUNTY - TOTAL	152	1,103	\$40,853,674	\$712.28
Construction	16	75	\$3,007,690	771.20
Manufacturing	5	29	\$1,713,595	1,136.34
Trade, Transportation & Utilities	27	185	\$6,120,478	636.22
Retail Trade	17	145	\$3,012,194	399.50
Other Trade, Transportation & Utilities	10	40	\$3,108,284	1,494.37
Financial Activities	10	24	\$1,371,492	1,098.95
Professional & Business Services	21	48	\$2,001,410	801.85
Education & Health Services	30	207	\$7,281,488	676.47
Leisure & Hospitality	11	84	\$1,404,171	321.47
Local Government	9	317	\$11,656,316	707.13
State Government	7	34	\$1,362,016	770.37
Other	16	100	\$4,935,018	949.04
PHILLIPS COUNTY - TOTAL	681	4,813	\$186,773,445	\$746.27
Natural Resources & Mining	63	276	\$10,149,418	707.18
Construction	26	110	\$3,589,980	627.62
Manufacturing	12	406	\$19,641,636	930.35
Trade, Transportation & Utilities	131	1,120	\$42,433,119	728.59
Wholesale Trade	27	260	\$14,180,638	1,048.86
Retail Trade	70	651	\$17,582,981	519.41
Transportation, Warehousing & Utilities	34	209	\$10,669,500	981.74
Information	7	11	\$576,987	1,008.72
Financial Activities	39	191	\$9,252,197	931.55
Professional & Business Services	41	259	\$11,161,141	828.72
Education & Health Services	263	1,033	\$42,793,365	796.66
Leisure & Hospitality	38	370	\$6,042,104	314.04
Other Services	23	49	\$1,459,960	572.98
Local Government	27	690	\$27,052,504	753.97
State Government	14	298	\$12,621,034	814.47

Note: Data may not add due to rounding.

TABLE 6 COUNTY SUMMARY CALENDAR YEAR 2021

North American Industry Classification System - Industry Groups	Average Employing Units	Average Covered Employment	Total Calendar Earnings	Average Weekly Earnings
PIKE COUNTY - TOTAL	264	2,604	\$95,274,362	\$703.61
Natural Resources & Mining	25	143	\$6,806,265	915.31
Construction	18	50	\$1,653,553	635.98
Manufacturing	16	426	\$18,890,071	852.75
Trade, Transportation & Utilities	70	529	\$18,226,495	662.59
Wholesale Trade	8	101	\$4,461,722	849.53
Retail Trade	41	355	\$9,880,708	535.25
Transportation, Warehousing & Utilities	22	73	\$3,884,065	1,023.20
Information	8	26	\$1,675,292	1,239.12
Financial Activities	23	230	\$11,100,994	928.18
Professional & Business Services	14	63	\$3,888,359	1,186.92
Education & Health Services	29	255	\$7,177,356	541.28
Leisure & Hospitality	24	247	\$4,150,222	323.13
Other Services	18	75	\$2,380,166	610.30
Local Government	10	469	\$16,574,858	679.63
State Government	9	91	\$2,750,731	581.30
POINSETT COUNTY - TOTAL	467	5,164	\$241,125,641	\$897.95
Natural Resources & Mining	67	269	\$14,159,072	1,012.23
Construction	23	90	\$4,347,473	928.95
Manufacturing	15	774	\$56,528,082	1,404.49
Trade, Transportation & Utilities	118	1,205	\$57,250,290	913.67
Wholesale Trade	23	433	\$33,799,761	1,501.14
Retail Trade	66	642	\$16,487,803	493.88
Transportation, Warehousing & Utilities	30	130	\$6,962,726	1,029.99
Professional & Business Services	27	250	\$17,464,593	1,343.43
Education & Health Services	74	748	\$29,245,651	751.89
Leisure & Hospitality	44	478	\$7,997,868	321.77
Other Services	19	58	\$2,198,691	729.01
Local Government	30	956	\$36,882,501	741.92
State Government	10	102	\$3,827,335	721.59
Other	41	234	\$11,224,085	922.43

Note: Data may not add due to rounding.

TABLE 6 COUNTY SUMMARY CALENDAR YEAR 2021

North American Industry Classification System - Industry Groups	Average Employing Units	Average Covered Employment	Total Calendar Earnings	Average Weekly Earnings
POLK COUNTY - TOTAL	469	5,581	\$206,406,879	\$711.23
Natural Resources & Mining	26	170	\$9,268,799	1,048.51
Construction	31	214	\$8,803,712	791.13
Manufacturing	36	1,210	\$50,393,452	800.91
Trade, Transportation & Utilities	114	1,083	\$36,318,456	644.90
Wholesale Trade	15	42	\$2,815,564	1,289.18
Retail Trade	64	811	\$22,142,328	525.05
Transportation, Warehousing & Utilities	35	230	\$11,360,564	949.88
Information	6	42	\$1,103,079	505.07
Financial Activities	41	200	\$8,278,280	795.99
Professional & Business Services	35	139	\$7,015,013	970.53
Education & Health Services	80	952	\$40,671,786	821.59
Leisure & Hospitality	41	490	\$7,633,719	299.60
Other Services	27	130	\$4,441,830	657.08
Local Government	21	649	\$23,525,855	697.10
State Government	12	302	\$8,952,898	570.10
POPE COUNTY - TOTAL	1,789	24,200	\$1,130,816,240	\$898.61
Natural Resources & Mining	39	685	\$32,756,097	919.60
Construction	156	1,201	\$79,510,187	1,273.14
Manufacturing	74	3,362	\$155,397,324	888.88
Trade, Transportation & Utilities	397	6,058	\$340,312,644	1,080.30
Wholesale Trade	71	542	\$27,940,838	991.37
Retail Trade	256	3,130	\$100,382,629	616.75
Transportation, Warehousing & Utilities	70	2,386	\$211,989,177	1,708.60
Information	17	112	\$4,141,208	711.06
Financial Activities	196	867	\$48,362,934	1,072.73
Professional & Business Services	253	2,032	\$109,919,920	1,040.28
Education & Health Services	349	3,197	\$138,063,110	830.48
Leisure & Hospitality	149	2,669	\$50,498,850	363.86
Other Services	103	478	\$17,069,635	686.74
Local Government	44	2,109	\$89,640,150	817.38
State Government	15	1,430	\$65,144,181	876.06

Note: Data may not add due to rounding.

TABLE 6 COUNTY SUMMARY CALENDAR YEAR 2021

North American Industry Classification System - Industry Groups	Average Employing Units	Average Covered Employment	Total Calendar Earnings	Average Weekly Earnings
PRAIRIE COUNTY - TOTAL	241	1,448	\$54,667,041	\$726.03
Natural Resources & Mining	38	160	\$8,956,707	1,076.53
Construction	12	49	\$2,420,703	950.04
Trade, Transportation & Utilities	59	355	\$13,113,515	710.37
Wholesale Trade	13	81	\$4,771,217	1,132.77
Retail Trade	33	220	\$6,085,234	531.93
Transportation, Warehousing & Utilities	14	54	\$2,257,064	803.80
Financial Activities	15	53	\$2,288,532	830.38
Professional & Business Services	12	59	\$2,304,733	751.22
Education & Health Services	43	249	\$8,746,510	675.51
Leisure & Hospitality	18	81	\$1,546,354	367.13
Local Government	15	302	\$10,902,131	694.23
State Government	7	29	\$1,118,656	741.81
Other	23	111	\$3,269,200	566.39
PULASKI COUNTY - TOTAL	14,389	233,829	\$13,179,251,455	\$1,083.90
Natural Resources & Mining	51	634	\$46,688,061	1,416.16
Construction	946	9,607	\$581,957,820	1,164.93
Manufacturing	323	11,828	\$714,055,605	1,160.96
Trade, Transportation & Utilities	3,055	49,971	\$2,595,095,676	998.69
Wholesale Trade	886	11,603	\$860,965,524	1,426.96
Retail Trade	1,737	24,081	\$875,053,343	698.81
Transportation, Warehousing & Utilities	432	14,287	\$859,076,809	1,156.35
Information	216	2,672	\$196,407,248	1,413.57
Financial Activities	1,729	17,047	\$1,447,434,018	1,632.85
Professional & Business Services	2,782	34,126	\$2,061,819,668	1,161.88
Education & Health Services	2,551	41,114	\$2,361,107,032	1,104.39
Leisure & Hospitality	1,280	20,456	\$449,739,751	422.80
Other Services	1,142	6,406	\$293,230,136	880.27
Local Government	108	13,800	\$713,931,574	994.89
State Government	207	26,168	\$1,717,784,866	1,262.39

Note: Data may not add due to rounding.

TABLE 6 COUNTY SUMMARY CALENDAR YEAR 2021

North American Industry Classification System - Industry Groups	Average Employing Units	Average Covered Employment	Total Calendar Earnings	Average Weekly Earnings
RANDOLPH COUNTY - TOTAL	391	5,903	\$217,524,452	\$708.65
Natural Resources & Mining	26	239	\$12,510,644	1,006.65
Construction	24	77	\$2,372,093	592.43
Manufacturing	28	1,748	\$74,492,790	819.54
Trade, Transportation & Utilities	100	936	\$33,544,811	689.20
Wholesale Trade	14	112	\$5,025,789	862.94
Retail Trade	57	647	\$18,696,629	555.72
Transportation, Warehousing & Utilities	29	177	\$9,822,393	1,067.19
Information	5	14	\$736,964	1,012.31
Financial Activities	34	146	\$5,763,811	759.20
Professional & Business Services	30	254	\$8,350,991	632.27
Education & Health Services	59	974	\$36,722,575	725.05
Leisure & Hospitality	30	454	\$7,170,639	303.74
Other Services	20	47	\$1,345,128	550.38
Local Government	27	762	\$25,151,973	634.77
State Government	10	252	\$9,362,033	714.44
SAINT FRANCIS COUNTY - TOTAL	632	6,083	\$237,081,213	\$749.51
Natural Resources & Mining	42	169	\$6,899,894	785.15
Trade, Transportation & Utilities	138	1,653	\$67,629,131	786.79
Wholesale Trade	26	438	\$25,122,234	1,103.01
Retail Trade	88	923	\$25,821,299	537.99
Transportation, Warehousing & Utilities	24	292	\$16,685,598	1,098.89
Information	5	46	\$1,751,826	732.37
Financial Activities	53	197	\$7,134,255	696.43
Professional & Business Services	48	188	\$7,965,389	814.79
Education & Health Services	198	1,319	\$57,542,650	838.96
Leisure & Hospitality	48	616	\$10,419,623	325.29
Other Services	19	54	\$1,284,059	457.29
Local Government	28	721	\$28,326,023	755.52
State Government	13	345	\$13,903,407	774.99
Other	42	775	\$34,224,956	849.25

Note: Data may not add due to rounding.

TABLE 6 COUNTY SUMMARY CALENDAR YEAR 2021

North American Industry Classification System - Industry Groups	Average Employing Units	Average Covered Employment	Total Calendar Earnings	Average Weekly Earnings
SALINE COUNTY - TOTAL	2,180	24,964	\$1,031,592,653	\$794.68
Natural Resources & Mining	15	57	\$2,402,324	810.50
Construction	293	2,288	\$115,311,091	969.20
Manufacturing	80	1,350	\$73,763,407	1,050.76
Trade, Transportation & Utilities	481	5,720	\$219,538,652	738.09
Wholesale Trade	109	532	\$34,774,592	1,257.03
Retail Trade	290	4,499	\$152,178,004	650.48
Transportation, Warehousing & Utilities	82	689	\$32,586,056	909.51
Information	24	129	\$7,006,154	1,044.45
Financial Activities	242	927	\$52,893,461	1,097.28
Professional & Business Services	294	1,794	\$93,410,267	1,001.31
Education & Health Services	345	4,629	\$204,941,172	851.41
Leisure & Hospitality	207	3,567	\$68,757,997	370.70
Other Services	155	785	\$28,898,657	707.95
Local Government	33	2,954	\$136,245,492	886.97
State Government	14	764	\$28,423,979	715.46
SCOTT COUNTY - TOTAL	180	2,898	\$101,871,307	\$676.01
Natural Resources & Mining	18	142	\$7,287,234	986.90
Trade, Transportation & Utilities	35	323	\$10,145,251	604.03
Wholesale Trade	6	21	\$689,523	631.43
Retail Trade	23	237	\$5,824,255	472.59
Transportation, Warehousing & Utilities	6	65	\$3,631,473	1,074.40
Financial Activities	16	61	\$2,371,313	747.58
Professional & Business Services	13	129	\$3,768,383	561.77
Education & Health Services	40	247	\$13,149,983	1,023.82
Leisure & Hospitality	18	154	\$2,365,300	295.37
Local Government	6	501	\$17,364,315	666.53
State Government	6	31	\$1,296,032	803.99
Other	29	1,310	\$44,123,496	647.73

Note: Data may not add due to rounding.

TABLE 6 COUNTY SUMMARY CALENDAR YEAR 2021

North American Industry Classification System - Industry Groups	Average Employing Units	Average Covered Employment	Total Calendar Earnings	Average Weekly Earnings
SEARCY COUNTY - TOTAL	168	1,506	\$47,052,898	\$600.84
Construction	10	7	\$193,201	530.77
Manufacturing	14	135	\$4,251,293	605.60
Trade, Transportation & Utilities	33	242	\$7,243,376	575.60
Wholesale Trade	5	34	\$1,117,501	632.07
Other Trade, Transportation, Warehousing & Utilities	28	208	\$6,125,875	566.37
Financial Activities	13	70	\$2,497,671	686.17
Education & Health Services	38	358	\$12,304,356	660.96
Leisure & Hospitality	15	154	\$2,315,062	289.09
Local Government	10	287	\$9,474,538	634.85
State Government	6	42	\$1,551,055	710.19
Other	29	211	\$7,222,346	658.25
SEBASTIAN COUNTY - TOTAL	3,689	62,034	\$3,024,007,179	\$937.45
Natural Resources & Mining	33	233	\$18,019,204	1,487.22
Construction	264	2,413	\$113,439,778	904.08
Manufacturing	183	10,981	\$597,660,559	1,046.67
Trade, Transportation & Utilities	878	13,108	\$614,594,231	901.67
Wholesale Trade	221	2,750	\$169,081,982	1,182.39
Retail Trade	546	7,645	\$245,327,724	617.11
Transportation, Warehousing & Utilities	111	2,713	\$200,184,525	1,418.98
Information	40	790	\$68,346,290	1,663.74
Financial Activities	422	2,324	\$138,519,161	1,146.23
Professional & Business Services	558	7,569	\$328,748,187	835.26
Education & Health Services	638	11,388	\$703,090,475	1,187.30
Leisure & Hospitality	364	6,010	\$120,007,038	384.00
Other Services	245	1,098	\$42,540,300	745.07
Local Government	43	4,538	\$200,427,082	849.35
State Government	21	1,582	\$78,614,874	955.64

Note: Data may not add due to rounding.

TABLE 6 COUNTY SUMMARY CALENDAR YEAR 2021

North American Industry Classification System - Industry Groups	Average Employing Units	Average Covered Employment	Total Calendar Earnings	Average Weekly Earnings
SEVIER COUNTY - TOTAL	313	4,617	\$175,533,419	\$731.13
Natural Resources & Mining	17	146	\$7,811,486	1,028.91
Construction	20	171	\$9,373,446	1,054.14
Trade, Transportation & Utilities	83	782	\$27,416,937	674.23
Wholesale Trade	11	75	\$3,858,663	989.40
Retail Trade	58	612	\$17,907,348	562.70
Transportation, Warehousing & Utilities	15	95	\$5,650,926	1,143.91
Financial Activities	28	191	\$8,638,681	869.78
Professional & Business Services	26	164	\$5,308,836	622.52
Education & Health Services	60	443	\$15,656,401	679.65
Leisure & Hospitality	25	271	\$3,980,084	282.44
Local Government	13	892	\$31,141,230	671.38
State Government	8	162	\$6,891,618	818.09
Other	34	1,395	\$59,314,700	817.68
SHARP COUNTY - TOTAL	380	3,419	\$116,989,407	\$658.03
Construction	29	108	\$4,463,560	794.79
Trade, Transportation & Utilities	84	780	\$21,218,241	523.13
Retail Trade	61	700	\$17,787,430	488.67
Other Trade, Transportation, Warehousing & Utilities	23	80	\$3,430,811	824.71
Information	8	21	\$748,130	685.10
Financial Activities	36	181	\$10,397,691	1,104.73
Professional & Business Services	34	113	\$4,711,682	801.85
Education & Health Services	74	811	\$32,280,485	765.45
Leisure & Hospitality	34	388	\$6,466,256	320.49
Local Government	24	705	\$24,769,518	675.66
State Government	7	52	\$1,921,759	710.71
Other	50	260	\$10,012,085	740.54

Note: Data may not add due to rounding.

TABLE 6 COUNTY SUMMARY CALENDAR YEAR 2021

North American Industry Classification System - Industry Groups	Average Employing Units	Average Covered Employment	Total Calendar Earnings	Average Weekly Earnings
STONE COUNTY - TOTAL	278	2,459	\$90,327,170	\$706.41
Natural Resources & Mining	6	10	\$258,858	497.80
Construction	14	35	\$1,038,263	570.47
Manufacturing	20	267	\$15,799,173	1,137.94
Trade, Transportation & Utilities	64	555	\$18,657,534	646.48
Wholesale Trade	5	31	\$1,055,663	654.88
Retail Trade	48	485	\$15,131,237	599.97
Transportation, Warehousing & Utilities	12	39	\$2,470,634	1,218.26
Financial Activities	38	131	\$5,510,138	808.89
Professional & Business Services	19	37	\$989,967	514.54
Education & Health Services	48	496	\$21,774,636	844.24
Leisure & Hospitality	32	442	\$7,256,124	315.70
Local Government	10	354	\$14,581,144	792.11
State Government	7	92	\$3,272,928	684.14
Other	21	40	\$1,188,405	571.35
UNION COUNTY - TOTAL	1,199	16,293	\$874,295,443	\$1,031.94
Natural Resources & Mining	81	347	\$20,647,232	1,144.27
Construction	74	1,443	\$91,199,517	1,215.41
Manufacturing	51	2,874	\$208,265,354	1,393.56
Trade, Transportation & Utilities	289	3,360	\$154,599,615	884.84
Wholesale Trade	64	440	\$30,622,375	1,338.39
Retail Trade	172	2,026	\$61,692,633	585.59
Transportation, Warehousing & Utilities	54	894	\$62,284,607	1,339.80
Information	8	57	\$2,763,232	932.26
Financial Activities	93	572	\$31,110,476	1,045.94
Professional & Business Services	114	1,799	\$157,670,890	1,685.45
Education & Health Services	260	1,943	\$85,085,682	842.13
Leisure & Hospitality	97	1,375	\$24,961,068	349.11
Other Services	85	420	\$13,733,512	628.82
Local Government	32	1,646	\$65,139,201	761.04
State Government	16	457	\$19,119,664	804.56

Note: Data may not add due to rounding.

TABLE 6 COUNTY SUMMARY CALENDAR YEAR 2021

North American Industry Classification System - Industry Groups	Average Employing Units	Average Covered Employment	Total Calendar Earnings	Average Weekly Earnings
VAN BUREN COUNTY - TOTAL	323	3,516	\$140,111,470	\$766.34
Natural Resources & Mining	9	33	\$2,292,178	1,335.77
Construction	34	125	\$4,451,864	684.90
Trade, Transportation & Utilities	87	1,077	\$52,533,984	938.04
Wholesale Trade	10	44	\$2,130,540	931.18
Retail Trade	51	624	\$18,376,092	566.32
Transportation, Warehousing & Utilities	26	409	\$32,027,352	1,505.89
Information	6	33	\$1,512,606	881.47
Financial Activities	39	165	\$7,741,902	902.32
Professional & Business Services	28	125	\$4,518,461	695.15
Education & Health Services	49	687	\$28,912,311	809.32
Leisure & Hospitality	24	277	\$5,030,264	349.23
Local Government	11	591	\$19,867,535	646.48
State Government	6	41	\$1,630,998	765.01
Other	30	362	\$11,619,367	617.26
WASHINGTON COUNTY - TOTAL	6,468	108,441	\$5,776,237,470	\$1,024.35
Natural Resources & Mining	42	327	\$19,836,898	1,166.60
Construction	640	6,592	\$375,849,257	1,096.46
Manufacturing	226	13,979	\$720,090,020	990.62
Trade, Transportation & Utilities	1,358	22,736	\$1,132,042,794	957.51
Wholesale Trade	383	3,728	\$314,480,133	1,622.24
Retail Trade	778	12,868	\$456,788,893	682.65
Transportation, Warehousing & Utilities	197	6,140	\$360,773,768	1,129.96
Information	95	865	\$53,521,522	1,189.90
Financial Activities	765	3,893	\$248,206,844	1,226.10
Professional & Business Services	1,208	13,849	\$1,144,657,527	1,589.48
Education & Health Services	939	16,147	\$884,817,837	1,053.80
Leisure & Hospitality	709	12,469	\$262,861,002	405.41
Other Services	404	2,253	\$101,354,939	865.13
Local Government	61	8,370	\$407,951,112	937.30
State Government	22	6,961	\$425,047,718	1,174.26

Note: Data may not add due to rounding.

TABLE 6 COUNTY SUMMARY CALENDAR YEAR 2021

North American Industry Classification System - Industry Groups	Average Employing Units	Average Covered Employment	Total Calendar Earnings	Average Weekly Earnings
WHITE COUNTY - TOTAL	1,791	24,362	\$1,028,262,296	\$811.69
Natural Resources & Mining	42	353	\$25,694,476	1,399.79
Construction	174	1,417	\$70,724,506	959.84
Manufacturing	57	2,259	\$110,572,864	941.30
Trade, Transportation & Utilities	460	6,505	\$267,264,043	790.11
Wholesale Trade	80	571	\$28,481,233	959.22
Retail Trade	302	3,678	\$119,548,875	625.07
Transportation, Warehousing & Utilities	78	2,256	\$119,233,935	1,016.38
Information	23	102	\$4,041,722	762.01
Financial Activities	186	944	\$49,284,293	1,004.00
Professional & Business Services	180	1,181	\$45,724,960	744.56
Education & Health Services	324	5,462	\$265,838,738	935.97
Leisure & Hospitality	170	2,638	\$45,959,546	335.04
Other Services	115	516	\$20,378,860	759.50
Local Government	46	2,531	\$104,031,309	790.44
State Government	15	454	\$18,746,979	794.09
WOODRUFF COUNTY - TOTAL	184	1,778	\$75,663,444	\$818.37
Natural Resources & Mining	32	212	\$8,759,407	794.58
Construction	12	30	\$1,128,123	723.16
Manufacturing	5	219	\$11,244,771	987.42
Trade, Transportation & Utilities	47	346	\$15,659,762	870.37
Wholesale Trade	14	145	\$8,052,222	1,067.93
Retail Trade	23	142	\$3,796,313	514.13
Transportation, Warehousing & Utilities	10	59	\$3,811,227	1,242.25
Financial Activities	10	40	\$1,594,093	766.39
Education & Health Services	39	247	\$10,320,276	803.51
Leisure & Hospitality	11	82	\$1,460,881	342.61
Local Government	9	363	\$12,885,201	682.62
State Government	5	29	\$1,280,978	849.45
Other	15	210	\$11,329,952	1,037.54

Note: Data may not add due to rounding.

TABLE 6 COUNTY SUMMARY CALENDAR YEAR 2021

North American Industry Classification System - Industry Groups	Average Employing Units	Average Covered Employment	Total Calendar Earnings	Average Weekly Earnings
YELL COUNTY - TOTAL	418	6,260	\$234,096,108	\$719.15
Natural Resources & Mining	27	240	\$12,062,846	966.57
Construction	32	210	\$8,517,754	780.01
Manufacturing	21	2,367	\$89,819,496	729.74
Trade, Transportation & Utilities	88	739	\$23,623,610	614.75
Wholesale Trade	17	64	\$1,782,841	535.71
Retail Trade	50	526	\$13,183,152	481.98
Transportation, Warehousing & Utilities	22	149	\$8,657,617	1,117.40
Financial Activities	31	166	\$9,988,348	1,157.13
Professional & Business Services	41	335	\$12,167,047	698.45
Education & Health Services	99	655	\$21,894,147	642.81
Leisure & Hospitality	23	275	\$4,671,367	326.67
Local Government	23	1,082	\$43,223,903	768.23
State Government	10	65	\$2,416,889	715.06
Other	23	126	\$5,710,701	871.60
STATEWIDE COUNTY - TOTAL	14,536	40,941	\$3,083,551,895	\$1,448.40
Natural Resources & Mining	111	196	\$15,326,616	1,503.79
Construction	973	3,783	\$250,002,656	1,270.88
Manufacturing	151	275	\$31,431,135	2,197.98
Trade, Transportation & Utilities	3,941	8,756	\$946,150,288	2,078.03
Wholesale Trade	3,154	6,444	\$788,332,200	2,352.61
Retail Trade	328	1,087	\$78,377,344	1,386.62
Transportation, Warehousing & Utilities	459	1,225	\$79,440,744	1,247.11
Information	1,009	1,675	\$171,061,155	1,963.96
Financial Activities	1,143	3,455	\$272,147,112	1,514.79
Professional & Business Services	5,732	17,785	\$1,111,466,336	1,201.82
Education & Health Services	850	2,871	\$156,136,102	1,045.84
Leisure & Hospitality	136	451	\$14,706,695	627.10
Other Services	470	1,019	\$82,266,158	1,552.54
Local Government	2	2	\$135,737	1,305.16
State Government	19	673	\$32,721,905	935.02

Note: Statewide classification includes employment and payroll data for employers that have not provided a physical location for each employing unit. This section also includes employers without a physical location in Arkansas.

TABLE 7. FEDERAL GOVERNMENT EMPLOYMENT AND EARNINGS IN ARKANSAS

North American Industry Classification System - Industry Groups	Average Employing Units	Average Covered Employment	Total Calendar Earnings	Average Weekly Earnings
TOTAL	1,190	20,568	\$1,552,110,456	\$1,451.20
Trade, Transportation & Utilities	582	5,621	317,613,636	1,086.63
Information	2	33	2,369,285	1,380.70
Financial Activities	14	107	9,376,789	1,685.26
Professional & Business Services	33	861	68,131,719	1,521.75
Education & Health Services	20	5,421	487,760,917	1,730.31
Leisure & Hospitality	22	247	12,877,090	1002.58
Other Services	1	1	40,222	773.50
Public Administration	516	8,277	653,940,798	1,519.37

Note: Data may not add due to rounding.

TABLE 8 LOCAL WORKFORCE DEVELOPMENT AREA SUMMARY CALENDAR YEAR 2021

North American Industry Classification System - Industry Groups	Average Employing Units	Average Covered Employment	Total Calendar Earnings	Average Weekly Earnings
CENTRAL WORKFORCE DEVELOPMENT AREA	7,049	83,375	\$3,525,792,969	\$813.24
Natural Resources & Mining	205	1,047	\$51,263,774	941.59
Construction	843	6,333	\$320,278,753	972.56
Trade, Transportation & Utilities	1,522	17,601	\$665,735,939	727.38
Wholesale Trade	334	2,031	\$123,804,552	1,172.26
Retail Trade	930	13,501	\$434,937,883	619.52
Transportation, Warehousing & Utilities	258	2,069	\$106,993,504	994.47
Information	74	1,776	\$166,385,861	1,801.65
Financial Activities	792	3,305	\$188,208,728	1,095.13
Professional & Business Services	944	6,154	\$305,891,127	955.89
Education & Health Services	1,132	14,732	\$644,911,008	841.85
Leisure & Hospitality	659	11,334	\$215,989,635	366.48
Local Government	136	9,281	\$413,911,510	857.65
State Government	60	3,949	\$175,983,584	857.00
Other	684	7,863	\$377,233,050	922.61

*Note: Pulaski County is not included in the Central Workforce Investment Area. Please refer to Page 51 for information on Pulaski County.
Central Workforce Investment Area includes these counties: Faulkner, Lonoke, Monroe, Prairie, and Saline.

EASTERN WORKFORCE DEVELOPMENT AREA	3,153	32,046	\$1,295,484,227	\$777.42
Natural Resources & Mining	243	1,126	\$43,961,953	750.82
Manufacturing	71	3,267	\$157,832,555	929.06
Trade, Transportation & Utilities	723	8,386	\$362,326,828	830.89
Wholesale Trade	138	1,775	\$103,103,432	1,117.05
Retail Trade	394	4,251	\$124,041,756	561.14
Transportation, Warehousing & Utilities	191	2,360	\$135,181,640	1,101.55
Financial Activities	250	1,086	\$54,390,173	963.14
Professional & Business Services	243	1,576	\$69,464,342	847.62
Education & Health Services	884	5,444	\$220,636,231	779.39
Leisure & Hospitality	269	3,849	\$81,594,574	407.67
Local Government	126	4,120	\$173,937,617	811.88
State Government	55	1,688	\$67,809,689	772.53
Other	289	1,504	\$63,530,265	812.32

Eastern Workforce Investment Area includes these counties: Crittenden, Cross, Lee, Phillips, and Saint Francis.

TABLE 8 LOCAL WORKFORCE DEVELOPMENT AREA SUMMARY CALENDAR YEAR 2021

North American Industry Classification System - Industry Groups	Average Employing Units	Average Covered Employment	Total Calendar Earnings	Average Weekly Earnings
NORTH CENTRAL WORKFORCE DEVELOPMENT AREA	5,371	67,840	\$2,788,097,548	\$790.35
Construction	440	3,076	\$145,691,059	910.84
Manufacturing	215	9,185	\$441,513,022	924.40
Trade, Transportation & Utilities	1,337	15,252	\$614,270,602	774.51
Retail Trade	882	9,853	\$310,493,162	606.01
Other Trade, Transportation & Utilities	455	5,399	\$303,777,440	1,082.03
Financial Activities	540	2,705	\$142,301,999	1,011.67
Education & Health Services	922	13,755	\$641,449,842	896.81
Leisure & Hospitality	511	6,649	\$116,549,590	337.09
Local Government	224	8,196	\$311,852,673	731.72
State Government	93	2,523	\$97,850,147	745.83
Other	1,090	6,499	\$276,618,614	818.52

North Central Workforce Investment Area includes these counties: Cleburne, Fulton, Independence, Izard, Jackson, Sharp, Stone, Van Buren, White, and Woodruff.

NORTHEAST WORKFORCE DEVELOPMENT AREA	6,424	101,042	\$4,814,542,539	\$916.33
Natural Resources & Mining	448	2,044	\$91,725,580	862.99
Construction	483	3,926	\$222,814,481	1,091.41
Manufacturing	288	21,409	\$1,402,736,778	1,260.02
Trade, Transportation & Utilities	1,654	19,647	\$824,518,321	807.05
Wholesale Trade	352	3,941	\$240,453,019	1,173.33
Retail Trade	964	12,120	\$386,916,810	613.92
Transportation, Warehousing & Utilities	338	3,586	\$197,148,492	1,057.26
Financial Activities	530	3,109	\$169,447,538	1,048.12
Professional & Business Services	674	7,035	\$298,008,213	814.63
Education & Health Services	1,008	17,125	\$884,391,443	993.14
Leisure & Hospitality	582	9,209	\$172,596,364	360.43
Local Government	217	11,024	\$452,535,097	789.42
State Government	88	4,093	\$190,017,250	892.79
Other	453	2,421	\$105,751,474	840.02

Northeast Workforce Investment Area includes these counties: Clay, Craighead, Greene, Lawrence, Mississippi, Poinsett, and Randolph.

TABLE 8 LOCAL WORKFORCE DEVELOPMENT AREA SUMMARY CALENDAR YEAR 2021

North American Industry Classification System - Industry Groups	Average Employing Units	Average Covered Employment	Total Calendar Earnings	Average Weekly Earnings
NORTHWEST WORKFORCE DEVELOPMENT AREA	17,612	284,422	\$16,733,208,536	\$1,131.39
Natural Resources & Mining	144	1,539	\$96,205,029	1,202.14
Trade, Transportation & Utilities	3,939	64,014	\$3,465,465,968	1,041.08
Retail Trade	2,145	32,700	\$1,123,164,124	660.53
Other Trade, Transportation & Utilities	1,795	31,314	\$2,342,301,844	1,438.47
Information	275	2,318	\$155,665,479	1,291.44
Professional & Business Services	3,094	50,393	\$5,475,342,286	2,089.48
Education & Health Services	2,494	36,126	\$1,821,169,799	969.45
Leisure & Hospitality	1,884	30,726	\$661,385,388	413.95
Other Services	1,107	5,460	\$224,024,417	789.04
Local Government	311	22,693	\$1,056,948,817	895.69
State Government	102	9,148	\$511,178,579	1,074.59
Other	4,262	62,005	\$3,265,822,774	1,012.89

Northwest Workforce Investment Area includes these counties: Baxter, Benton, Boone, Carroll, Madison, Marion, Newton, Searcy, and Washington.

SOUTHEAST WORKFORCE DEVELOPMENT AREA	6,098	64,850	\$2,843,952,554	\$843.35
Natural Resources & Mining	445	2,215	\$99,344,589	862.52
Construction	342	2,075	\$101,375,887	939.54
Manufacturing	212	13,625	\$779,470,014	1,100.17
Trade, Transportation & Utilities	1,270	11,811	\$479,679,606	781.02
Retail Trade	753	7,301	\$218,852,087	576.45
Other Trade, Transportation & Utilities	517	4,510	\$260,827,519	1,112.18
Financial Activities	442	2,512	\$134,276,140	1,027.96
Education & Health Services	1,822	9,210	\$390,753,061	815.90
Other Services	318	1,041	\$37,629,470	695.14
Local Government	210	7,788	\$307,955,477	760.43
State Government	124	5,500	\$234,283,235	819.17
Other	913	9,073	\$279,185,075	591.75

Southeast Workforce Investment Area includes these counties: Arkansas, Ashley, Bradley, Chicot, Cleveland, Desha, Drew, Grant, Jefferson, and Lincoln.

TABLE 8 LOCAL WORKFORCE DEVELOPMENT AREA SUMMARY CALENDAR YEAR 2021

North American Industry Classification System - Industry Groups	Average Employing Units	Average Covered Employment	Total Calendar Earnings	Average Weekly Earnings
SOUTHWEST WORKFORCE DEVELOPMENT AREA	5,477	73,501	\$3,372,418,514	\$882.36
Natural Resources & Mining	323	2,061	\$109,564,586	1,022.32
Trade, Transportation & Utilities	1,306	13,777	\$550,684,566	768.68
Wholesale Trade	230	1,777	\$100,958,774	1,092.58
Retail Trade	770	8,566	\$243,008,146	545.56
Transportation, Warehousing & Utilities	307	3,434	\$206,717,646	1,157.64
Information	47	310	\$19,217,915	1,192.18
Financial Activities	451	2,422	\$121,314,559	963.24
Professional & Business Services	429	4,405	\$252,254,434	1,101.26
Education & Health Services	1,196	8,931	\$353,503,180	761.18
Leisure & Hospitality	443	5,765	\$102,003,191	340.26
Other Services	325	1,326	\$43,625,904	632.70
Local Government	263	8,823	\$342,835,347	747.25
State Government	129	3,330	\$141,034,241	814.47
Other	566	22,351	\$1,336,380,591	1,149.82

Southwest Workforce Investment Area includes these counties: Calhoun, Columbia, Dallas, Hempstead, Howard, Lafayette, Little River, Miller, Nevada, Ouachita, Sevier, and Union

WEST CENTRAL WORKFORCE DEVELOPMENT AREA	8,126	102,722	\$4,296,961,011	\$804.44
Construction	766	4,494	\$228,853,984	979.31
Trade, Transportation & Utilities	1,770	21,668	\$947,600,871	841.01
Wholesale Trade	307	1,889	\$108,523,157	1,104.81
Retail Trade	1,175	14,244	\$454,758,249	613.97
Transportation, Warehousing & Utilities	288	5,535	\$384,319,465	1,335.28
Financial Activities	851	3,693	\$191,638,624	997.93
Professional & Business Services	934	7,805	\$346,620,520	854.04
Education & Health Services	1,462	16,541	\$750,590,073	872.65
Leisure & Hospitality	833	13,377	\$280,959,991	403.91
Local Government	236	11,015	\$474,867,683	829.06
State Government	112	4,645	\$185,986,101	770.00
Other	1,163	19,484	\$889,843,164	878.28

West Central Workforce Investment Area includes these counties: Clark, Conway, Garland, Hot Spring, Johnson, Montgomery, Perry, Pike, Pope, and Yell

TABLE 8 LOCAL WORKFORCE DEVELOPMENT AREA SUMMARY CALENDAR YEAR 2021

North American Industry Classification System - Industry Groups	Average Employing Units	Average Covered Employment	Total Calendar Earnings	Average Weekly Earnings
WESTERN WORKFORCE DEVELOPMENT AREA	6,428	99,225	\$4,502,538,897	\$872.64
Natural Resources & Mining	138	1,003	\$57,334,657	1,099.29
Trade, Transportation & Utilities	1,529	22,045	\$975,564,419	851.03
Wholesale Trade	330	3,694	\$224,127,456	1,166.80
Retail Trade	923	12,246	\$379,534,853	596.01
Transportation, Warehousing & Utilities	277	6,105	\$371,902,110	1,171.49
Financial Activities	681	3,327	\$183,719,963	1,061.94
Professional & Business Services	840	9,686	\$416,969,221	827.86
Education & Health Services	1,108	15,334	\$858,277,904	1,076.39
Leisure & Hospitality	574	8,891	\$169,607,009	366.85
Local Government	166	9,274	\$382,465,767	793.09
State Government	69	2,626	\$113,000,797	827.53
Other	1,323	27,039	\$1,345,599,160	957.02

Western Workforce Investment Area includes these counties: Crawford, Franklin, Logan, Polk, Scott, and Sebastian