



Arkansas Covered Employment & Earnings Annual 2020



Arkansas Division of
Workforce Services

**COVERED EMPLOYMENT AND EARNINGS
STATE OF ARKANSAS
ANNUAL 2020**

**ASA HUTCHINSON, GOVERNOR
STATE OF ARKANSAS**

**CHARISSE CHILDERS, DIRECTOR
DIVISION OF WORKFORCE SERVICES**

**PUBLISHED BY
LABOR MARKET INFORMATION
BUREAU OF LABOR STATISTICS PROGRAMS
POST OFFICE BOX 2981
LITTLE ROCK, ARKANSAS 72203-2981
SUSAN PRICE, BLS PROGRAMS MANAGER
TELEPHONE (501) 682-3103**

STATE OF ARKANSAS WEBPAGE: <http://www.arkansas.gov>

DEPARTMENT OF WORKFORCE SERVICES WEBPAGE: <http://www.dws.arkansas.gov>

WEBPAGE FOR LABOR MARKET INFORMATION: <http://www.discover.arkansas.gov>

RELEASED: MAY 2021

TABLE OF CONTENTS

	Page
Description of Data	1
Industry Classification	1
Definition of Covered Employment and Earnings	2
Federal Government	2
County Classification	2
Significant Developments During Calendar Year 2020	3

GRAPHS AND TABLES

Graph 1	Average Total Covered Employment for Selected Years, Arkansas	7
Graph 2	Total Covered Earnings, by Calendar Quarter for Selected Years, Arkansas	8
Table 1	Annual Comparison of Covered Employment and Wages, by Industry	5
Table 2	Total Covered Employment in Arkansas, 2013 – 2020	6
Table 3	Total Covered Earnings, 2013 – 2020	9
Table 4	Total Taxable Earnings, 2013 – 2020	10
Table 5	State Summary – Employment and Total Earnings, by Industry, Calendar Year 2020	11
Table 6	County Summary – Employment and Total Earnings, by Industry, Calendar Year 2020	22
Table 7	Federal Government Employment and Total Earnings in Arkansas, Calendar Year 2020	60
Table 8	Workforce Investment Area – Employment and Total Earnings, by Industry, Calendar Year 2020	61

EMPLOYMENT AND EARNINGS
UNDER THE ARKANSAS EMPLOYMENT SECURITY LAW
ANNUAL 2020

DESCRIPTION AND CLASSIFICATION OF DATA

This publication contains covered employment and payroll data by industry and county for the Calendar Year 2020 and a record for total covered employment by month, quarterly payroll data, average weekly earnings, and total taxable earnings for 2013 through 2020. These data are compiled from quarterly contributions and wage reports submitted by employers subject to the Arkansas Employment Security Law.

Employment data have been tabulated for each month of the quarter by industry under the **North American Industry Classification System** (NAICS) by state, county, and workforce area. Payroll data represent the total wages paid during the quarter and are classified by industry for the state and by publishable industry groups for each county and workforce area.

Due to industry classification revisions, previously published data will not always be comparable with current data. For this reason, comparisons should not be made between the same industries under different revisions. For more information, visit the NAICS home page at <http://www.census.gov/naics>.

Industry Classification Revisions

- SIC (Standard Industrial Classification) 1987 to NAICS 2002
- NAICS 2002 to NAICS 2007
- NAICS 2007 to NAICS 2012
- NAICS 2012 to NAICS 2017

The tabulation of this data is a joint effort in conjunction with the United States Bureau of Labor Statistics. Data included in this publication are subject to revisions. Revisions are typically reflected in the Annual Covered Employment and Earnings publication.

DEFINITION OF COVERED EMPLOYMENT AND EARNINGS

Covered Employment is the total number of workers employed by establishments subject to the Arkansas Employment Security Law that worked or received pay for the payroll period including the 12th of the month. Earnings include all wages paid to any covered employee by their employer including salaries, bonuses, commissions, fees, fringe benefits, sick pay made directly to employees or dependents, deferred compensation, and reported tips. These wages include both taxable and nontaxable wages. Only the first \$7,000 paid to each worker by an employer in the calendar year is taxable under the Arkansas Employment Security Law.

An Arkansas state unemployment account is required of any entity meeting the definition of an employer. As described by Arkansas Division of Workforce Services Law, the definition of an employer includes, but is not limited to, a sole proprietorship, partnership, corporation, associations, trust, estate, and receiver or trustee in bankruptcy. The entity must employ one or more individuals for ten or more days in a calendar year, whether or not the days are consecutive.

Currently excluded from coverage is employment covered by the Railroad Unemployment Insurance Act, some domestic service workers, employees of small agricultural establishments, self-employed workers, unpaid family workers, insurance and real estate agents paid only on a commission basis, and employees of churches and religious organizations except separately incorporated schools.

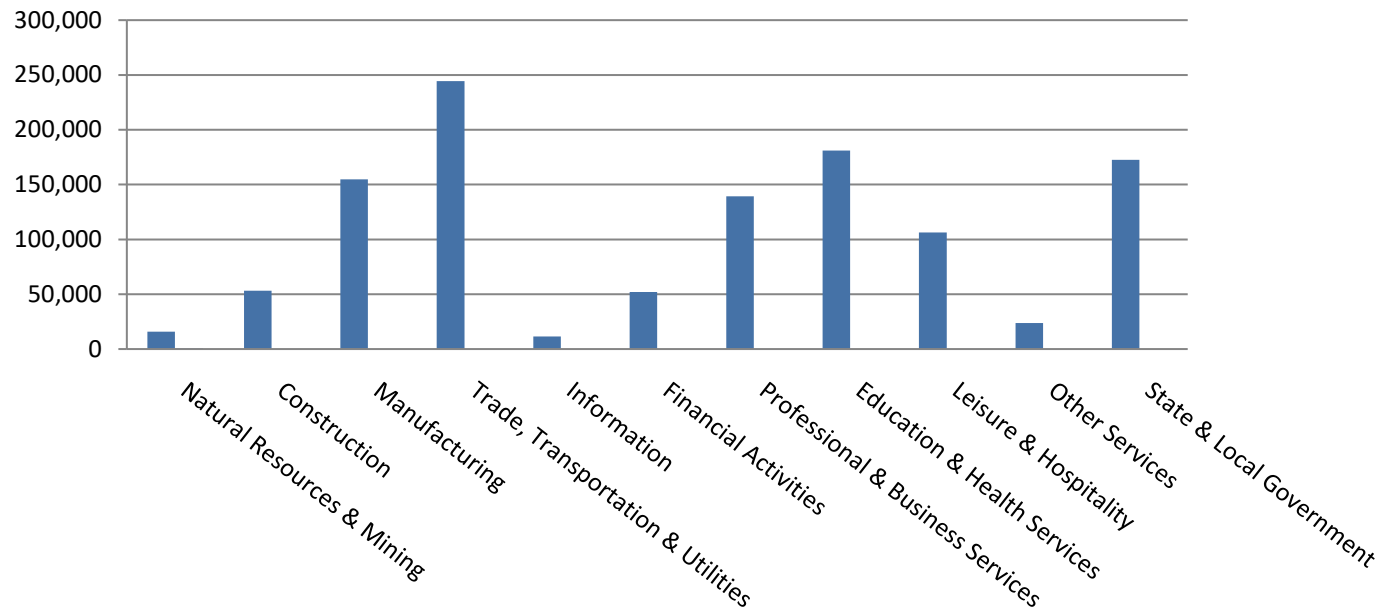
Civilian federal workers are covered by Unemployment Compensation for Federal Employees (UCFE).

SIGNIFICANT DEVELOPMENTS DURING CALENDAR YEAR 2020

AVERAGE EMPLOYMENT CHANGES

Covered employment averaged 1,155,358 during the Calendar Year 2020 (see Table 1, page 5), a decrease of 42,414 from the previous year. The greatest employment loss occurred in Leisure & Hospitality (-14,203). Two major industries reported small over-the-year gains.

Average Covered Employment by NAICS



EMPLOYMENT CHANGES FOR CALENDAR YEAR 2020

Nine of the eleven major industry sectors recorded over-the-year employment losses (see Table 1). The Leisure & Hospitality subsector had an average of 106,370 jobs, a decrease of 14,203 from 2019. Losses can be mostly attributed to declines in Accommodation & Food Services (-12,676). Jobs in Manufacturing declined to 154,911; a loss of 7,288 jobs. Small over-the-year gains occurred in Construction (643) and Information (545).

EMPLOYMENT CHANGES FOR CALENDAR YEAR 2020

Pulaski County posted the highest average covered employment for Arkansas counties in 2020 at 229,386. Benton County averaged 122,773 in covered employment, slightly higher than Washington County with 105,265. Sebastian County had the fourth highest average covered employment with 60,371, followed by Craighead County with 50,145. Four of the five leading counties experienced over the year losses in employment ranging from a low of 1,586 lost jobs in Craighead County to 13,186 jobs in Pulaski County. Of the top five, Benton County was the only one to experience job gains (815).

COVERED WAGES

Wages paid to covered workers totaled \$55,870,426,298 for the Calendar Year 2020 (see Table 1), for an average weekly wage of \$929.96 (see Table 5). Employees in Benton County recorded the highest average weekly wage (\$1,312.66), and workers in Searcy the lowest (\$564.23) (see Table 6).

The Information sector recorded the highest average weekly wage for the State of Arkansas at \$1,341.94. The Leisure and Hospitality sector reported the lowest average weekly wage at \$353.86 (see Table 5).

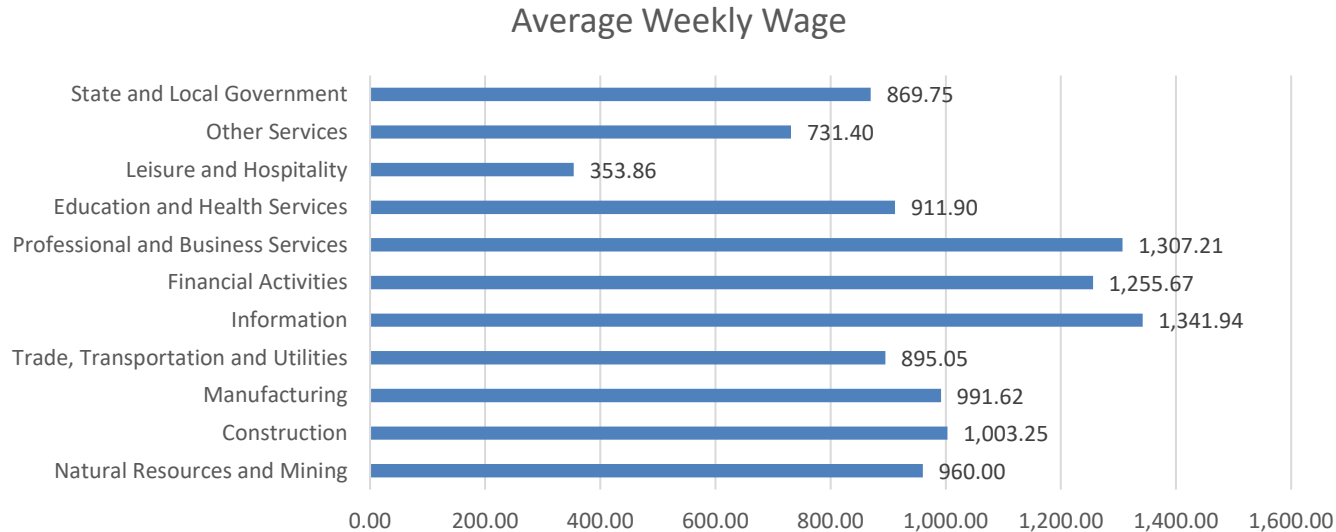


TABLE 1. YEARLY COMPARISON OF COVERED EMPLOYMENT AND WAGES, BY INDUSTRY

North American Industry Classification System - Industry Groups	Number of Employing Units	Average Covered Employment	Percent of Total	Net Change From: 2019	2020	Percent of Total	Average Weekly Earnings
Total	92,361	1,155,358	100	-42,414	\$55,870,426,298	100	\$929.96
Natural Resources & Mining	2,570	15,940	1.4	-449	795,726,425	1.4	960.00
Agriculture, Forestry, Fishing & Hunting	2,137	12,458	1.1	-139	565,107,783	1.0	872.33
Mining	433	3,482	0.3	-310	230,618,642	0.4	1,273.69
Construction	7,287	53,162	4.6	643	2,773,413,516	5.0	1,003.25
Manufacturing	2,973	154,911	13.4	-7,288	7,987,898,182	14.3	991.62
Trade, Transportation & Utilities	21,881	244,477	21.2	-4,112	11,378,537,318	20.4	895.05
Wholesale Trade	7,345	46,264	4.0	-1,223	3,707,305,529	6.6	1,541.03
Retail Trade	11,025	135,374	11.7	-1,326	4,123,359,449	7.4	585.75
Transportation & Warehousing	3,098	54,960	4.8	-1,619	2,788,374,730	5.0	975.67
Utilities	413	7,879	0.7	56	759,497,610	1.4	1,853.75
Information	1,536	11,504	1.0	545	802,761,430	1.4	1,341.94
Financial Activities	8,913	51,933	4.5	-1	3,390,955,756	6.1	1,255.67
Finance & Insurance	5,225	38,352	3.3	377	2,805,487,459	5.0	1,406.75
Real Estate & Rental & Leasing	3,688	13,581	1.2	-378	585,468,297	1.0	829.03
Professional & Business Services	15,517	139,461	12.1	-6,539	9,479,820,636	17.0	1,307.21
Professional & Technical Services	9,798	42,684	3.7	-2,274	2,861,729,445	5.1	1,289.32
Management of Companies & Enterprises	541	33,797	2.9	41	4,440,937,907	7.9	2,526.93
Administrative & Waste Services	5,178	62,980	5.5	-4,306	2,177,153,284	3.9	664.79
Education & Health Services	15,669	181,180	15.7	-6,409	8,591,362,539	15.4	911.90
Educational Services	981	11,781	1.0	-322	467,289,901	0.8	762.78
Health Care & Social Assistance	14,688	169,399	14.7	-6,087	8,124,072,638	14.5	922.27
Leisure & Hospitality	7,480	106,370	9.2	-14,203	1,957,279,168	3.5	353.86
Arts, Entertainment & Recreation	1,071	10,202	0.9	-1,527	253,366,736	0.5	477.60
Accommodation & Food Services	6,409	96,168	8.3	-12,676	1,703,912,432	3.0	340.73
Other Services	5,484	23,745	2.1	-1,512	903,094,904	1.6	731.40
State & Local Government	3,051	172,675	14.9	-3,089	7,809,576,424	14.0	869.75
Local Government	1,989	106,366	9.2	-2,418	4,400,045,502	7.9	795.52
State Government	1,062	66,309	5.7	-671	3,409,530,922	6.1	988.82
Nonclassifiable Establishments	0	0	0.0	0	0	0.0	0.00

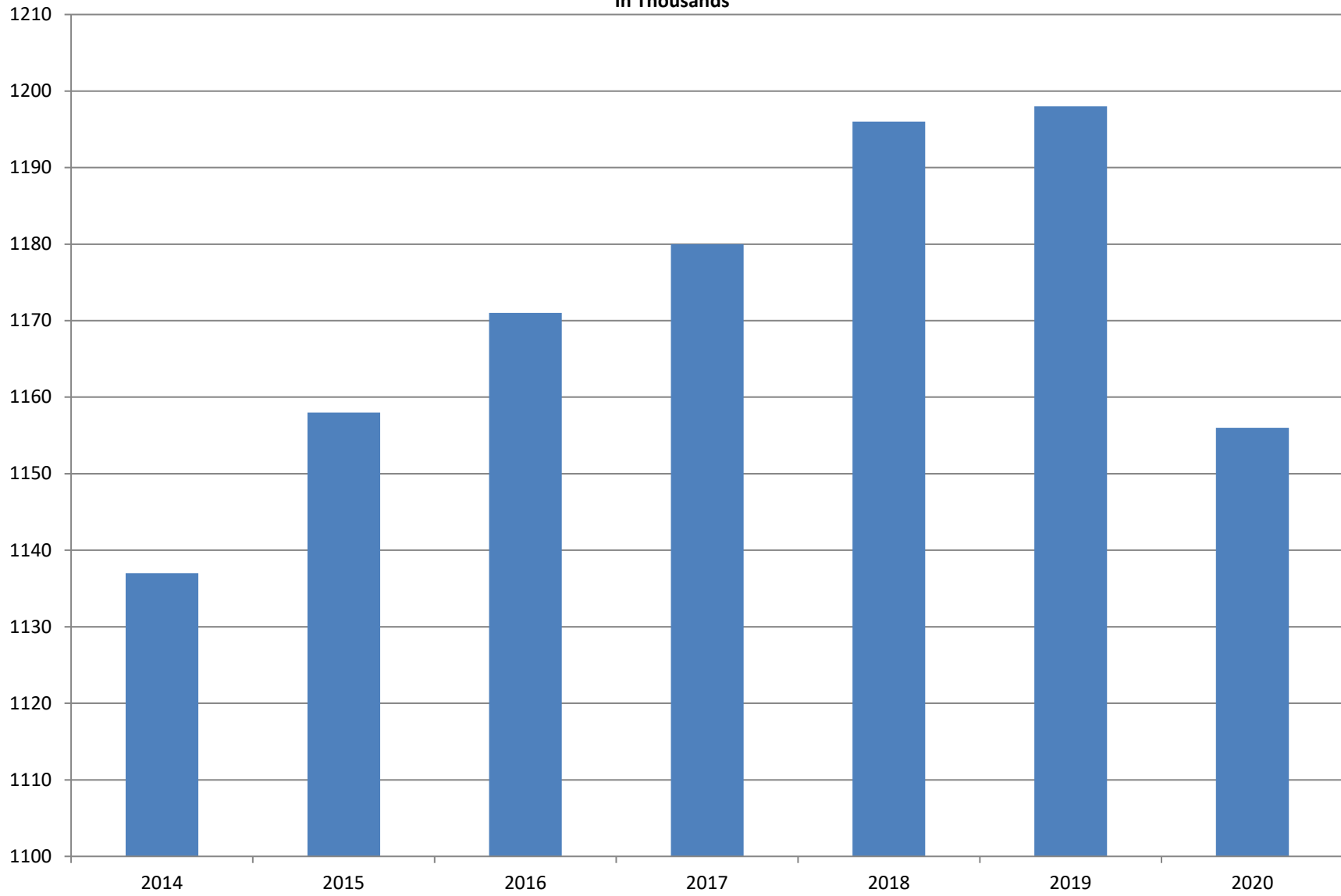
Note: Items do not necessarily add to total because of rounding. Because of industry code changes between years, substantial employment and wage shifts among industries are anticipated.

TABLE 2. TOTAL COVERED EMPLOYMENT IN ARKANSAS

PERIOD	2013	2014	2015	2016	2017	2018	2019	2020
AVERAGE	1,125,890	1,137,486	1,157,634	1,171,286	1,180,337	1,195,781	1,197,710	1,156,116
January	1,112,991	1,114,412	1,135,577	1,153,115	1,161,239	1,173,537	1,186,848	1,195,722
February	1,121,492	1,122,905	1,144,902	1,162,987	1,172,290	1,183,185	1,194,355	1,200,543
March	1,129,100	1,132,106	1,146,413	1,170,873	1,179,686	1,190,199	1,198,481	1,199,702
April	1,134,734	1,140,788	1,158,606	1,178,480	1,185,212	1,194,816	1,204,176	1,090,183
May	1,138,383	1,149,046	1,167,657	1,181,258	1,189,900	1,201,113	1,206,476	1,120,448
June	1,130,402	1,144,876	1,164,607	1,177,108	1,186,326	1,195,468	1,202,260	1,137,765
July	1,083,849	1,096,675	1,119,390	1,130,652	1,137,883	1,168,432	1,155,337	1,099,733
August	1,109,759	1,125,162	1,148,502	1,159,416	1,168,802	1,200,284	1,185,213	1,137,611
September	1,135,673	1,150,545	1,173,776	1,185,181	1,193,845	1,222,012	1,202,177	1,157,279
October	1,138,312	1,153,684	1,173,953	1,185,035	1,194,194	1,205,161	1,209,176	1,173,041
November	1,141,035	1,158,579	1,177,717	1,186,308	1,197,650	1,208,638	1,215,078	1,180,121
December	1,134,955	1,161,056	1,180,513	1,185,015	1,197,013	1,206,531	1,212,940	1,181,246

AVERAGE TOTAL COVERED EMPLOYMENT

In Thousands



TOTAL COVERED EARNINGS BY CALENDAR YEAR

In Thousands

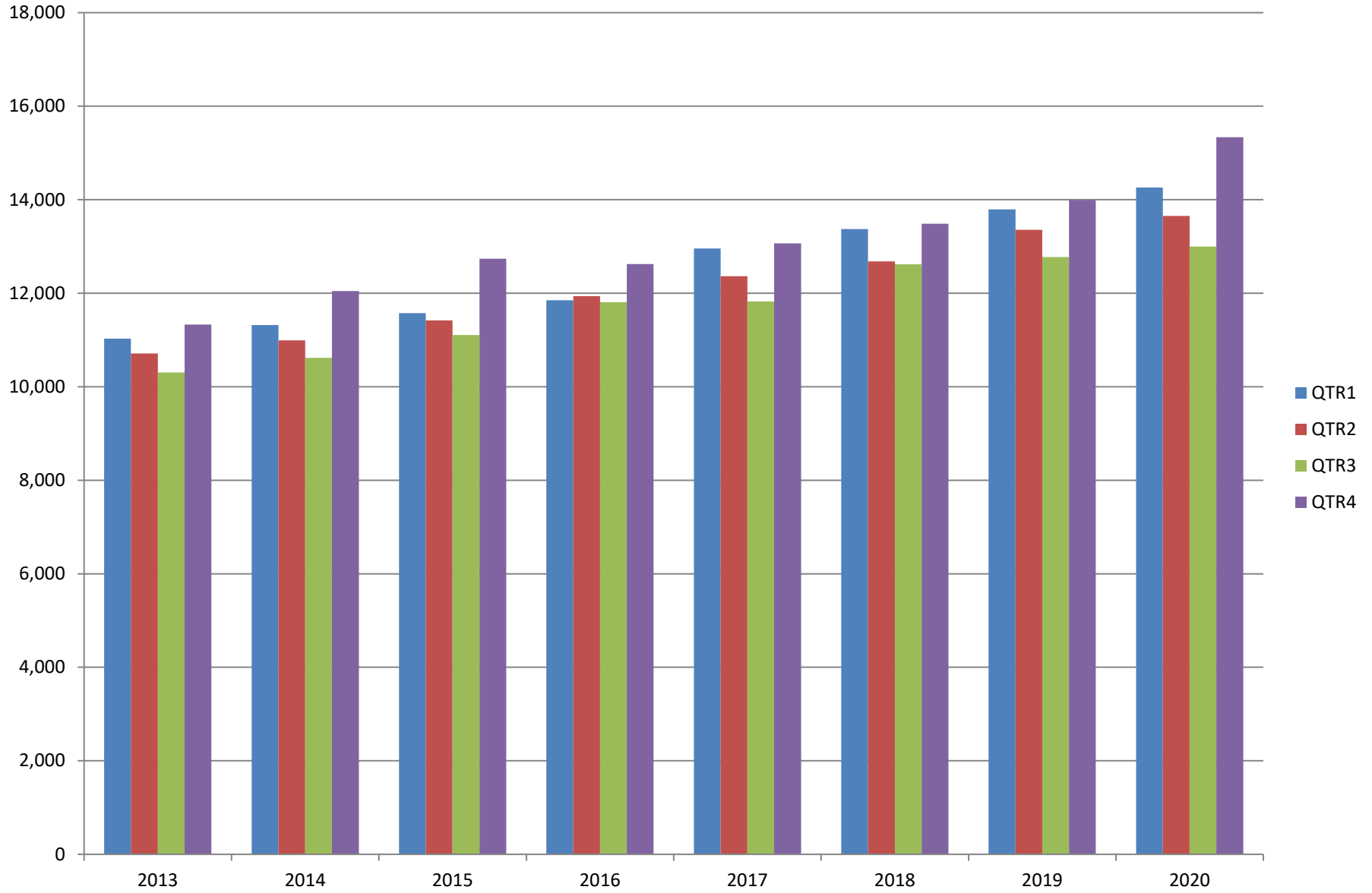


TABLE 3. TOTAL COVERED EARNINGS 2013 - 2020

PERIOD	2013	2014	2015	2016
TOTAL	\$43,371,086,461	\$44,980,520,034	\$46,836,352,793	\$48,216,814,491
January - March	11,027,184,315	11,321,422,241	11,575,046,688	11,847,506,815
April - June	10,711,027,503	10,991,760,061	11,419,363,330	11,935,742,777
July - September	10,304,451,772	10,619,889,280	11,104,443,452	11,807,220,282
October - December	11,328,422,871	12,047,448,452	12,737,499,323	12,626,344,617
Average Weekly Earnings	\$740.80	\$760.46	\$778.05	\$791.65

PERIOD	2017	2018	2019	2020
TOTAL	\$50,207,202,141	\$52,159,789,393	\$53,919,607,098	\$56,255,427,941
January - March	12,955,088,347	13,372,730,974	13,795,046,820	14,268,302,306
April - June	12,363,027,711	12,682,491,819	13,356,848,831	13,651,304,330
July - September	11,823,324,966	12,619,347,460	12,776,218,481	12,998,944,628
October - December	13,065,761,117	13,485,219,140	13,991,492,966	15,336,876,677
Average Weekly Earnings	\$818.01	\$838.84	\$865.75	\$935.75

TABLE 4. TOTAL TAXABLE EARNINGS, 2013 - 2020

PERIOD	2013	2014	2015	2016
TOTAL	11,644,747,978	11,919,662,224	12,258,632,610	12,538,167,625
January - March	6,184,735,653	6,288,682,396	6,378,966,662	6,607,245,841
April - June	2,805,431,293	2,831,013,392	2,915,293,283	3,010,214,324
July - September	1,506,497,129	1,552,243,963	1,640,978,599	1,656,043,561
October - December	1,148,083,903	1,247,722,473	1,323,394,066	1,264,663,899

PERIOD	2017	2018	2019	2020
TOTAL	12,744,039,136	11,343,357,036	11,506,122,596	8,527,228,792
January - March	6,958,706,950	6,577,871,657	6,737,833,125	5,589,526,770
April - June	2,908,226,426	2,278,450,975	2,283,514,220	1,172,837,688
July - September	1,576,968,648	1,328,689,516	1,327,818,133	864,579,237
October - December	1,300,137,112	1,158,344,888	1,156,957,118	900,285,097

TABLE 5. STATEWIDE SUMMARY CALENDAR YEAR 2020

North American Industry Classification System - Industry Groups		Average Employing Units	Average Covered Employment	Total Calendar Earnings	Average Weekly Earnings
TOTAL, ALL INDUSTRIES		92,361	1,155,358	\$55,870,426,298	\$929.96
NATURAL RESOURCES & MINING		2,570	15,940	\$795,726,425	\$960.00
11	AGRICULTURE, FORESTRY, FISHING & HUNTING	2,137	12,458	\$565,107,783	\$872.33
111	CROP PRODUCTION	959	3,980	\$142,542,826	\$688.75
1111	Oilseed & Grain Farming	708	2,664	94,520,729	682.32
1112	Vegetable & Melon Farming	38	134	5,230,299	750.62
1113	Fruit & Tree Nut Farming	13	49	1,528,013	599.69
1114	Greenhouse & Nursery Production	41	510	19,266,449	726.49
1119	Other Crop Farming	159	623	21,997,336	679.01
112	ANIMAL PRODUCTION & AQUACULTURE	345	3,228	\$177,246,995	\$1,055.95
1121	Cattle Ranching & Farming	128	401	13,223,365	634.15
1122	Hog & Pig Farming	12	132	8,195,213	1,193.94
1123	Poultry & Egg Production	133	2,292	138,331,720	1,160.66
1125	Animal Aquaculture	41	330	15,496,679	903.07
1129	Other Animal Production	31	73	2,000,018	526.88
113	FORESTRY & LOGGING	412	2,234	\$103,597,711	\$891.79
1131	Timber Tract Operations	32	165	9,014,745	1,050.67
1132	Forest Nurseries & Gathering of Forest Products	8	53	4,247,326	1,541.12
1133	Logging	372	2,016	90,335,640	861.72
114	FISHING, HUNTING & TRAPPING	5	13	\$375,067	\$554.83
115	SUPPORT ACTIVITIES FOR AGRICULTURE & FORESTRY	416	3,003	\$141,345,184	\$905.15
1151	Support Activities for Crop Production	282	1,560	81,095,180	999.69
1152	Support Activities for Animal Production	62	648	23,360,052	693.26
1153	Support Activities for Forestry	72	795	36,889,952	892.35
21	MINING	433	3,482	\$230,618,642	\$1,273.69
211	OIL & GAS EXTRACTION	75	578	\$51,050,322	\$1,698.51
212	MINING (EXCEPT OIL & GAS)	107	1,775	\$104,421,058	\$1,131.32
213	SUPPORT ACTIVITIES FOR MINING	251	1,129	\$75,147,262	\$1,280.02

Note: Data may not add due to rounding.

TABLE 5. STATEWIDE SUMMARY CALENDAR YEAR 2020

North American Industry Classification System - Industry Groups		Average Employing Units	Average Covered Employment	Total Calendar Earnings	Average Weekly Earnings
CONSTRUCTION		7,287	53,162	\$2,773,413,516	\$1,003.25
236	CONSTRUCTION OF BUILDINGS	1,907	11,096	\$642,886,690	\$1,114.20
2361	Residential Building Construction	1,300	3,772	188,871,195	962.92
2362	Nonresidential Building Construction	607	7,324	454,015,495	1,192.12
237	HEAVY & CIVIL ENGINEERING CONSTRUCTION	760	8,289	\$459,901,606	\$1,066.99
2371	Utility System Construction	443	4,507	256,539,628	1,094.62
2372	Land Subdivision	48	110	4,843,821	846.82
2373	Highway, Street & Bridge Construction	175	2,874	158,412,725	1,059.99
2379	Other Heavy Construction	94	798	40,105,432	966.49
238	SPECIALTY TRADE CONTRACTORS	4,620	33,777	\$1,670,625,220	\$951.16
2381	Building Foundation & Exterior Contractors	847	5,944	293,647,915	950.05
2382	Building Equipment Contractors	2,278	18,908	983,267,865	1,000.05
2383	Building Finishing Contractors	758	3,758	163,137,562	834.82
2389	Other Specialty Trade Contractors	737	5,167	230,571,878	858.15
MANUFACTURING		2,973	154,911	\$7,987,898,182	\$991.62
311	FOOD MANUFACTURING	306	49,352	\$2,095,566,900	\$816.57
3111	Animal Food Manufacturing	45	1,798	103,672,300	1,108.84
3112	Grain & Oilseed Milling	33	2,758	141,598,891	987.33
3114	Fruit, Vegetable & Specialty Food	16	4,308	228,212,316	1,018.73
3115	Dairy Product Manufacturing	8	585	27,661,365	909.32
3116	Animal Slaughtering & Processing	88	33,525	1,303,869,028	747.93
3118	Bakeries & Tortilla Manufacturing	82	3,947	172,483,657	840.38
3119	Other Food Manufacturing	24	2,397	117,059,066	939.15
	Other	10	34	1,010,277	571.42
312	BEVERAGE & TOBACCO PRODUCT MANUFACTURING	63	1,451	\$80,551,507	\$1,067.59
313	TEXTILE MILLS	10	133	\$7,690,226	\$1,111.95
3132	Fiber, Yarn, & Thread Mills	6	109	6,902,527	1,217.81
3133	Textile, Fabric Finishing/Coating Mills	4	24	787,699	631.17
314	TEXTILE PRODUCT MILLS	43	780	\$40,905,773	\$1,008.52
3141	Textile Furnishing Mills	8	20	498,424	479.25
3149	Other Textile Product Mills	35	760	40,407,349	1,022.45
315	APPAREL MANUFACTURING	17	661	20,559,667	\$598.15
3151	Apparel Knitting Mills	3	368	11,172,753	583.86
3152	Other	14	293	9,386,914	616.10
316	LEATHER & ALLIED PRODUCT MANUFACTURING	12	976	\$26,909,740	\$530.22
3162	Footwear Manufacturing	4	777	19,805,431	490.18
3169	Other Leather & Allied Product Manufacturing	8	200	7,104,309	683.11

Note: Data may not add due to rounding.

TABLE 5. STATEWIDE SUMMARY CALENDAR YEAR 2020

North American Industry Classification System - Industry Groups		Average Employing Units	Average Covered Employment	Total Calendar Earnings	Average Weekly Earnings
321	WOOD PRODUCT MANUFACTURING	301	9,446	\$453,240,555	\$922.74
3211	Sawmills & Wood Preservation	134	4,443	231,697,788	1,002.86
3212	Veneer & Engineered Wood Products	41	1,967	107,513,538	1,051.13
3219	Other Wood Product Manufacturing	126	3,036	114,029,229	722.29
322	PAPER MANUFACTURING	72	8,971	\$639,818,519	\$1,371.55
3221	Pulp, Paper & Paperboard Mills	14	3,333	309,945,916	1,788.33
3222	Converted Paper Product Manufacturing	58	5,638	329,872,603	1,125.17
323	PRINTING & RELATED SUPPORT ACTIVITIES	250	3,151	\$138,243,128	\$843.71
324	PETROLEUM & COAL PRODUCTS MANUFACTURING	23	1,110	\$85,238,903	\$1,476.77
325	CHEMICAL MANUFACTURING	135	5,512	\$372,599,823	\$1,299.96
3251	Basic Chemical Manufacturing	30	1,895	153,398,426	1,556.71
3252	Resin, Rubber & Artificial Fibers	13	493	32,894,148	1,283.12
3253	Agricultural Chemical Manufacturing	17	473	33,977,777	1,381.44
3254	Pharmaceutical & Medicine Manufacturing	28	477	28,218,555	1,137.66
3255	Paint, Coating & Adhesive Manufacturing	11	215	12,728,223	1,138.48
3256	Soap, Cleaning Compound, & Toilet Preparation Manufacturing	15	1,337	73,436,130	1,056.27
3259	Other Chemical Preparation Manufacturing	21	622	37,946,564	1,173.22
326	PLASTICS & RUBBER PRODUCTS MANUFACTURING	125	10,154	\$556,217,834	\$1,053.43
3261	Plastics Product Manufacturing	96	6,211	316,386,947	979.61
3262	Rubber Product Manufacturing	29	3,943	239,830,887	1,169.70
327	NONMETALLIC MINERAL PRODUCT MANUFACTURING	227	3,549	\$193,785,014	\$1,050.05
3271	Clay Product & Refractory Manufacturing	11	467	24,003,282	988.44
3272	Glass & Glass Product Manufacturing	7	372	19,935,847	1,030.60
3273	Cement & Concrete Product Manufacturing	170	2,103	116,657,372	1,066.77
3274	Lime & Gypsum Product Manufacturing	3	283	18,836,081	1,279.97
3279	Other Nonmetallic Mineral Products Manufacturing	36	324	14,352,432	851.88
331	PRIMARY METAL MANUFACTURING	70	7,573	\$599,432,010	\$1,522.19
3311	Iron & Steel Mills & Ferroalloys	11	3,539	370,010,618	2,010.62
3312	Purchased Steel Product Manufacturing	21	1,873	104,846,322	1,076.50
3313	Alumina & Aluminum Production	14	869	52,636,588	1,164.84
3314	Other Nonferrous Metal Production	6	244	12,710,620	1,001.78
3315	Foundries	18	1,048	59,227,862	1,086.83

Note: Data may not add due to rounding.

TABLE 5. STATEWIDE SUMMARY CALENDAR YEAR 2020

North American Industry Classification System - Industry Groups		Average Employing Units	Average Covered Employment	Total Calendar Earnings	Average Weekly Earnings
332	FABRICATED METAL PRODUCT MANUFACTURING	519	14,237	\$783,313,048	\$1,058.07
3321	Forging & Stamping	12	400	19,602,320	942.42
3322	Cutlery & Hand Tool Manufacturing	14	442	22,167,865	964.49
3323	Architectural & Structural Metals	152	4,506	275,599,587	1,176.21
3324	Boilers, Tanks & Shipping Containers	13	600	31,973,647	1,024.80
3325	Hardware Manufacturing	5	249	13,119,589	1,013.25
3326	Spring & Wire Product Manufacturing	10	334	16,424,102	945.65
3327	Machine Shops & Threaded Products	203	2,114	98,493,335	895.98
3328	Coating, Engraving & Heat Treating Metals	41	548	23,792,485	834.94
3329	Other Fabricated Metal Product Manufacturing	69	5,044	282,140,118	1,075.69
333	MACHINERY MANUFACTURING	214	11,207	\$591,803,858	\$1,015.51
3331	Agriculture, Construction & Mining Machinery	35	2,660	122,851,079	888.17
3332	Industrial Machinery Manufacturing	27	636	41,351,631	1,250.35
3333	Commercial & Service Industry Machinery	23	846	50,560,023	1,149.30
3334	HVAC & Commercial Refrigeration Equipment	25	2,661	136,300,718	985.03
3335	Metalworking Machinery Manufacturing	52	958	44,808,619	899.48
3336	Turbine & Power Transmission Equipment Manufacturing	5	575	28,893,893	966.35
3339	Other General Purpose Machinery Manufacturing	47	2,871	167,037,895	1,118.87
334	COMPUTER & ELECTRONIC PRODUCT MANUFACTURING	52	1,750	\$92,924,657	\$1,021.15
3343	Audio & Video Equipment Manufacturing	5	85	3,150,495	712.78
3344	Semiconductors & Electronic Components	24	1,259	65,290,591	997.29
3345	Electronic Instrument Manufacturing	20	327	19,228,941	1,130.85
	Other	3	79	5,254,630	1,279.12
335	ELECTRICAL EQUIPMENT & APPLIANCES	55	4,155	\$240,000,533	\$1,110.81
3353	Electrical Equipment Manufacturing	20	2,595	156,963,726	1,163.21
3359	Other Electrical Equipment & Component Manufacturing	19	1,240	68,235,135	1,058.24
	Other	16	320	14,801,672	889.52
336	TRANSPORTATION EQUIPMENT MANUFACTURING	136	14,077	\$687,497,953	\$939.20
3362	Motor Vehicle Body & Trailer Manufacturing	32	1,947	80,285,072	792.99
3363	Motor Vehicle Parts Manufacturing	43	4,675	206,379,610	848.95
3364	Aerospace Product & Parts Manufacturing	28	4,192	260,502,273	1,195.05
3366	Ship & Boat Building	21	1,999	77,546,157	746.01
	Other	12	1,264	62,784,841	955.22
337	FURNITURE & RELATED PRODUCT MANUFACTURING	158	3,264	\$132,170,586	\$778.72
3371	Household & Institutional Furniture	127	2,659	106,796,793	772.39
3372	Office Furniture & Fixtures Manufacturing	26	538	23,296,095	832.72
3379	Other Furniture Related Product Manufacturing	5	67	2,077,698	596.35
339	MISCELLANEOUS MANUFACTURING	185	3,402	\$149,427,948	\$844.68
3391	Medical Equipment & Supplies Manufacturing	76	1,677	79,134,403	907.46
3399	Other Miscellaneous Manufacturing	109	1,725	70,293,545	783.65

Note: Data may not add due to rounding.

TABLE 5. STATEWIDE SUMMARY CALENDAR YEAR 2020

North American Industry Classification System - Industry Groups		Average Employing Units	Average Covered Employment	Total Calendar Earnings	Average Weekly Earnings
TRADE, TRANSPORTATION & UTILITIES		21,881	244,477	\$11,378,537,318	\$895.05
42	WHOLESALE TRADE	7,345	46,264	\$3,707,305,529	\$1,541.03
423	MERCHANT WHOLESALERS, DURABLE GOODS	3,431	23,990	\$1,642,920,173	\$1,316.99
4231	Motor Vehicle & Part Merchant Wholesalers	297	3,102	197,596,138	1,224.99
4232	Furniture & Furnishings Merchant Wholesalers	101	459	34,150,363	1,430.80
4233	Lumber & Supply Merchant Wholesalers	248	1,587	90,469,417	1,096.28
4234	Commercial Goods Merchant Wholesalers	708	3,320	299,156,006	1,732.83
4235	Metal & Mineral Merchant Wholesalers	134	1,049	62,379,969	1,143.58
4236	Appliances & Electronics Goods Merchant Wholesalers	360	2,670	200,104,580	1,441.26
4237	Hardware & Plumbing Merchant Wholesalers	310	2,774	179,356,363	1,243.39
4238	Machinery & Supply Merchant Wholesalers	956	7,237	468,844,420	1,245.85
4239	Miscellaneous Durable Goods Merchant Wholesalers	317	1,792	110,862,917	1,189.72
424	MERCHANT WHOLESALERS, NONDURABLE GOODS	2,093	17,535	\$1,623,819,793	\$1,780.86
4241	Paper & Paper Product Merchant Wholesalers	128	1,143	95,629,466	1,608.95
4242	Druggist' Goods Merchant Wholesalers	271	1,600	201,675,321	2,423.98
4243	Apparel & Piece Goods Merchant Wholesalers	101	728	43,817,808	1,157.49
4244	Grocery Product Merchant Wholesalers	583	5,831	745,865,464	2,459.88
4245	Farm Product Merchant Wholesalers	85	795	33,846,767	818.74
4246	Chemical merchant Wholesalers	221	1,094	120,274,679	2,114.24
4247	Petroleum Merchant Wholesalers	161	977	60,877,031	1,198.27
4248	Alcoholic Beverage Merchant Wholesalers	73	1,577	106,492,850	1,298.63
4249	Miscellaneous Nondurable Goods Merchant Wholesaler	470	3,790	215,340,407	1,092.65
425	ELECTRONIC MARKETS & AGENTS & BROKERS	1,821	4,739	\$440,565,563	\$1,787.81
44 - 45	RETAIL TRADE	11,025	135,374	\$4,123,359,449	\$585.75
441	MOTOR VEHICLE & PARTS DEALERS	1,534	18,581	\$926,771,389	\$959.18
4411	Automobile Dealers	624	11,214	647,593,054	1,110.55
4412	Other Motor Vehicle Dealers	170	1,715	92,129,338	1,033.07
4413	Automotive Parts, Accessories & Tire Stores	740	5,652	187,048,997	636.43
442	FURNITURE & HOME FURNISHINGS STORES	493	3,241	\$127,184,378	\$754.66
4421	Furniture Stores	271	1,844	83,411,365	869.88
4422	Home Furnishings Stores	222	1,397	43,773,013	602.57
443	ELECTRONICS & APPLIANCE STORES	368	3,039	\$117,262,181	\$742.03
444	BUILDING MATERIAL & GARDEN SUPPLY STORES	847	12,498	\$393,825,839	\$605.98
4441	Building Material & Supplies Dealers	609	10,312	335,456,981	625.59
4442	Lawn & Garden Equipment & Supplies Stores	238	2,186	58,368,858	513.48

Note: Data may not add due to rounding.

TABLE 5. STATEWIDE SUMMARY CALENDAR YEAR 2020

North American Industry Classification System - Industry Groups		Average Employing Units	Average Covered Employment	Total Calendar Earnings	Average Weekly Earnings
445	FOOD & BEVERAGE STORES	1,069	20,206	\$501,169,718	\$476.98
4451	Grocery Stores	567	17,597	426,770,607	466.39
4452	Specialty Food Stores	144	758	30,286,421	768.38
4453	Beer, Wine & Liquor Stores	358	1,851	44,112,690	458.30
446	HEALTH & PERSONAL CARE STORES	1,004	8,386	\$342,594,014	\$785.64
447	GASOLINE STATIONS	1,608	12,287	\$267,131,510	\$418.10
44711	Gasoline Stations with Convenience Stores	1,515	11,229	238,920,439	409.17
44719	Other Gasoline Stations	93	1,058	28,211,071	512.78
448	CLOTHING & CLOTHING ACCESSORIES STORES	949	5,970	\$127,905,817	\$412.01
4481	Clothing Stores	728	4,489	85,114,581	364.63
4482	Shoe Stores	105	920	17,565,018	367.16
4483	Jewelry, Luggage & Leather Goods Stores	116	561	25,226,218	864.74
451	SPORTING GOODS, HOBBY, BOOK & MUSIC STORES	441	3,970	\$93,859,267	\$454.66
4511	Sporting Goods & Musical Instrument Stores	379	3,598	86,843,861	464.17
4512	Book, Periodical & Music Stores	62	372	7,015,406	362.67
452	GENERAL MERCH&ISE STORES	960	38,504	\$970,908,297	\$484.92
453	MISCELLANEOUS STORE RETAILERS	1,193	6,851	\$170,981,477	\$479.95
4531	Florists	159	541	11,429,207	406.27
4532	Office Supplies, Stationery & Gift Stores	230	1,222	29,375,997	462.29
4533	Used Merchandise Stores	254	1,982	40,406,429	392.05
4539	Other Miscellaneous Store Retailers	550	3,106	89,769,844	555.81
454	NONSTORE RETAILERS	559	1,841	\$83,765,562	\$875.00
4541	Electronic Shopping & Mail-Order Houses	336	789	38,311,308	933.78
4542	Vending Machine Operators	56	346	13,656,845	759.05
4543	Direct Selling Establishments	167	706	31,797,409	866.13
48 - 49	TRANSPORTATION & WAREHOUSING	3,098	54,960	\$2,788,374,730	\$975.67
481	AIR TRANSPORTATION	45	721	\$32,486,494	\$866.49
4811	Scheduled Air Transportation	17	617	24,360,697	759.28
4812	Nonsheduled Air Transportation	28	104	8,125,797	1,502.55
483	WATER TRANSPORTATION	8	38	\$2,439,996	\$1,234.82
484	TRUCK TRANSPORTATION	1,943	31,637	\$1,737,509,033	\$1,056.16
4841	General Freight Trucking	1,178	25,541	1,435,880,418	1,081.13
4842	Specialized Freight Trucking	765	6,096	301,628,615	951.53

Note: Data may not add due to rounding.

TABLE 5. STATEWIDE SUMMARY CALENDAR YEAR 2020

North American Industry Classification System - Industry Groups		Average Employing Units	Average Covered Employment	Total Calendar Earnings	Average Weekly Earnings
485	TRANSIT & GROUND PASSENGER TRANSPORTATION	128	1,461	\$39,517,194	\$520.15
4853	Taxi & Limousine Service	34	240	6,024,751	482.75
4854	School & Employee Bus Transportation	19	286	6,575,026	442.11
4855	Charter Bus Industry Service	7	65	1,776,298	525.53
4859	Other Ground Passenger Transportation	63	776	21,638,281	536.24
	Other	5	94	3,502,838	716.62
486	PIPELINE TRANSPORTATION	40	395	\$40,282,910	\$1,961.19
487	SCENIC AND SIGHTSEEING TRANSPORTATION	4	12	\$187,997	\$301.28
488	SUPPORT ACTIVITIES FOR TRANSPORTATION	526	5,539	\$293,138,558	\$1,017.74
4881	Support Activities for Air Transportation	120	1,131	51,439,232	874.64
4882	Support Activities for Rail Transportation	37	729	38,344,712	1,011.52
4883	Support Activities for Water Transportation	20	452	26,343,804	1,120.82
4884	Support Activities for Road Transportation	157	895	35,882,976	771.01
4885	Freight Transportation Arrangement	182	2,221	136,995,563	1,186.19
4889	Other Support Activities for Transportation	10	111	4,132,271	715.92
491	POSTAL SERVICE	14	227	\$11,993,668	\$1,016.07
492	COURIERS & MESSENGERS	178	5,706	\$234,657,123	\$790.86
493	OTHER WAREHOUSING & STORAGE	212	9,224	\$396,161,757	\$825.94
22	UTILITIES	413	7,879	\$759,497,610	\$1,853.75
2211	Power Generation & Supply	173	5,923	639,352,858	2,075.85
2212	Natural Gas Distribution	63	1,015	81,107,724	1,536.71
2213	Water, Sewage & Other Systems	177	941	39,037,028	797.78
INFORMATION		1,536	11,504	\$802,761,430	\$1,341.94
511	PUBLISHING INDUSTRIES, EXCEPT INTERNET	239	2,264	\$104,025,422	\$883.61
5111	Newspaper, Book & Directory Publishers	176	1,915	77,716,455	780.44
5112	Software Publishers	63	349	26,308,967	1,449.69
512	MOTION PICTURE & SOUND RECORDING INDUSTRY	163	690	\$19,483,613	\$543.02
5121	Motion Picture & Video Industries	145	669	18,279,873	525.46
5122	Sound Recording Industries	18	21	1,203,740	1,102.33
515	BROADCASTING, EXCEPT INTERNET	124	1,441	\$70,600,684	\$942.20
5151	Radio & Television Broadcasting	121	1,424	69,881,146	943.73
5152	Cable & Other Subscription Programming	3	17	719,538	813.96

Note: Data may not add due to rounding.

TABLE 5. STATEWIDE SUMMARY CALENDAR YEAR 2020

North American Industry Classification System - Industry Groups		Average Employing Units	Average Covered Employment	Total Calendar Earnings	Average Weekly Earnings
517	TELECOMMUNICATIONS	363	3,381	\$253,849,076	\$1,443.87
5173	Wired & Wireless Telecommunications Carriers	261	2,965	223,303,367	1,448.33
5174	Satellite Telecommunications Carriers	4	4	267,672	1,286.88
5179	Other Telecommunications	98	412	30,278,037	1,413.28
518	DATA PROCESSING, HOSTING & RELATED SERVICES	539	3,382	\$335,633,747	\$1,908.48
519	OTHER INFORMATION SERVICES	108	346	\$19,168,888	\$1,065.41
FINANCIAL ACTIVITIES		8,913	51,933	\$3,390,955,756	\$1,255.67
52	FINANCE & INSURANCE	5,225	38,352	\$2,805,487,459	\$1,406.75
522	CREDIT INTERMEDIATION & RELATED ACTIVITIES	2,041	19,756	\$1,329,558,950	\$1,294.21
5221	Depository Credit Intermediation	1,440	16,595	1,041,534,780	1,206.96
5222	Nondepository Credit Intermediation	429	1,993	202,726,243	1,956.14
5223	Activities Related to Credit Intermediation	172	1,168	85,297,927	1,404.40
523	FINANCIAL INVESTMENT & RELATED ACTIVITIES	779	3,061	\$436,407,274	\$2,741.73
5231	Securities & Commodity Contracts Intermediation & Brokerage	338	2,029	336,468,328	3,189.03
5239	Other Financial Investment Activities	441	1,032	99,938,946	1,862.31
524	INSURANCE CARRIERS & RELATED ACTIVITIES	2,313	15,460	\$1,031,184,479	\$1,282.70
5241	Insurance Carriers	310	6,857	523,558,272	1,468.34
5242	Insurance Agencies, Brokerages & Support	2,003	8,603	507,626,207	1,134.73
	OTHER	92	75	\$8,336,756	\$2,137.63
53	REAL ESTATE & RENTAL & LEASING	3,688	13,581	\$585,468,297	\$829.03
531	REAL ESTATE	3,083	9,858	\$411,863,670	\$803.45
5311	Lessors of Real Estate	1,093	4,052	148,097,411	702.87
5312	Offices of Real Estate Agents & Brokers	1,047	2,075	100,289,940	929.47
5313	Activities Related to Real Estate	943	3,731	163,476,319	842.61
532	RENTAL & LEASING SERVICES	587	3,670	\$169,962,766	\$890.60
5321	Automotive Equipment Rental & Leasing	125	935	34,033,292	699.99
5322	Consumer Goods Rental	303	1,621	60,900,714	722.50
5323	General Rental Centers	29	193	9,030,868	899.85
5324	Machinery & Equipment Rental & Leasing	130	921	65,997,892	1,378.06
533	LESSORS OF NONFINANCIAL INTANGIBLE ASSETS	18	53	\$3,641,861	\$1,321.43

Note: Data may not add due to rounding.

TABLE 5. STATEWIDE SUMMARY CALENDAR YEAR 2020

North American Industry Classification System - Industry Groups		Average Employing Units	Average Covered Employment	Total Calendar Earnings	Average Weekly Earnings
PROFESSIONAL & BUSINESS SERVICES		15,517	139,461	\$9,479,820,636	\$1,307.21
54	PROFESSIONAL & TECHNICAL SERVICES	9,798	42,684	\$2,861,729,445	\$1,289.32
5411	Legal Services	1,698	6,010	364,911,452	1,167.64
5412	Accounting & Bookkeeping Services	1,352	6,129	309,385,528	970.75
5413	Architectural & Engineering Services	1,084	6,429	450,982,297	1,349.00
5414	Specialized Design Services	181	349	19,009,687	1,047.48
5415	Computer Systems Design & Related Services	2,165	8,824	767,862,709	1,673.46
5416	Management & Technical Consulting Services	2,145	6,040	473,902,629	1,508.86
5417	Scientific Research & Development Services	162	876	63,414,988	1,392.14
5418	Advertising & Related Services	413	3,651	213,776,592	1,126.02
5419	Other Professional & Technical Services	598	4,376	198,483,563	872.26
55	MANAGEMENT OF COMPANIES & ENTERPRISES	541	33,797	\$4,440,937,907	\$2,526.93
56	ADMINISTRATIVE & SUPPORT SERVICES	5,178	62,980	\$2,177,153,284	\$664.79
561	ADMINISTRATIVE & SUPPORT SERVICES	4,836	59,287	\$1,978,149,258	\$641.65
5611	Office Administrative Services	725	3,453	258,053,111	1,437.17
5612	Facilities Support Services	69	1,208	45,706,296	727.62
5613	Employment Services	1,290	24,312	683,708,674	540.81
5614	Business Support Services	412	8,682	355,261,043	786.91
5615	Travel Arrangement & Reservation Services	117	257	12,097,751	905.25
5616	Investigation & Security Services	320	4,939	152,806,666	594.98
5617	Services to Buildings & Dwellings	1,699	15,195	421,917,036	533.98
5619	Other Support Services	204	1,241	48,598,681	753.09
562	WASTE MANAGEMENT & REMEDIATION SERVICES	342	3,693	\$199,004,026	\$1,036.28
5621	Waste Collection Services	135	1,309	64,424,858	946.48
5622	Waste Treatment & disposal Services	42	1,054	67,399,110	1,229.73
5629	Remediation & Other Waste Services	165	1,330	67,180,058	971.37
EDUCATION & HEALTH SERVICES		15,669	181,180	\$8,591,362,539	\$911.90
61	EDUCATIONAL SERVICES	981	11,781	\$467,289,901	\$762.78
6111	Elementary & Secondary Schools	110	4,450	168,103,104	726.46
6112	Junior Colleges	12	116	3,668,798	608.22
6113	Colleges & Universities	132	4,014	173,390,939	830.70
6114	Business, Computer, & Management Training	68	135	9,237,290	1,315.85
6115	Technical & Trade Schools	120	821	52,349,967	1,226.22
6116	Other Schools & Instruction	338	1,614	34,302,144	408.71
6117	Educational Support Services	201	631	26,237,659	799.64

Note: Data may not add due to rounding.

TABLE 5. STATEWIDE SUMMARY CALENDAR YEAR 2020

North American Industry Classification System - Industry Groups		Average Employing Units	Average Covered Employment	Total Calendar Earnings	Average Weekly Earnings
62	HEALTH CARE & SOCIAL ASSISTANCE	14,688	169,399	\$8,124,072,638	\$922.27
621	AMBULATORY HEALTH CARE SERVICES	6,163	58,536	\$3,924,396,862	\$1,289.28
6211	Offices of Physicians	2,376	26,069	2,327,811,454	1,717.20
6212	Offices of Dentists	956	6,966	358,991,195	991.05
6213	Offices of Other Health Practitioners	1,741	9,533	421,091,643	849.46
6214	Outpatient Care Centers	395	5,169	315,633,767	1,174.29
6215	Medical & Diagnostic Laboratories	202	1,332	92,395,674	1,333.96
6216	Home Health Care Services	279	6,638	266,618,003	772.41
6219	Other Ambulatory Health Care Services	214	2,829	141,855,126	964.29
622	HOSPITALS	127	42,941	\$2,326,761,738	\$1,042.02
6221	General Medical & Surgical Hospitals	93	38,337	2,099,981,104	1,053.40
6222	Psychiatric & Substance Abuse Hospitals	13	1,880	85,701,754	876.65
6223	Other Hospitals	21	2,724	141,078,880	995.98
623	Residential & Mental Health Facilities	654	30,950	\$981,280,674	\$609.72
6231	Nursing Care Facilities (Skilled Nursing Facilities)	279	21,431	694,808,952	623.48
6232	Residential Mental Health Facilities	185	4,087	130,766,925	615.30
6233	Continuing Care & Assisted Living Facilities	152	4,502	122,769,194	524.42
6239	Other Residential Care Facilities	38	930	32,935,603	681.05
624	SOCIAL ASSISTANCE	7,744	36,972	\$891,633,364	\$463.78
6241	Individual & Family Services	6,646	22,952	561,893,810	470.79
6242	Emergency & Other Relief Services	171	1,429	42,952,787	578.04
6243	Vocational Rehabilitation Services	94	2,955	74,988,785	488.02
6244	Child Day Care Services	833	9,636	211,797,982	422.69
LEISURE & HOSPITALITY		7,480	106,370	\$1,957,279,168	\$353.86
71	ARTS, ENTERTAINMENT & RECREATION	1,071	10,202	\$253,366,736	\$477.60
711	PERFORMING ARTS & SPECTATOR SPORTS	256	2,141	\$73,085,154	\$656.46
7111	Performing Arts Companies	45	357	7,830,787	421.83
7112	Spectator Sports	73	1,295	49,427,559	734.00
7113	Performing Arts & Sports Promoters	58	379	12,387,369	628.55
7114	Agents & Managers for Public Figures	20	38	929,164	470.22
7115	Independent Artists, Writers, & Performers	60	72	2,510,275	670.48
712	MUSEUMS, PARKS, & HISTORICAL SITES	56	739	\$28,631,288	\$745.06
713	GAMBLING, RECREATIONAL & AMUSEMENT INDUSTRY	759	7,322	\$151,650,294	\$398.30
7131	Amusement Parks & Arcades	26	335	4,763,833	273.47
7139	Other Amusement & Recreation Industries	729	6,559	135,086,146	396.07
72	ACCOMMODATION & FOOD SERVICES	6,409	96,168	\$1,703,912,432	\$340.73

Note: Data may not add due to rounding.

TABLE 5. STATEWIDE SUMMARY CALENDAR YEAR 2020

North American Industry Classification System - Industry Groups		Average Employing Units	Average Covered Employment	Total Calendar Earnings	Average Weekly Earnings
721	ACCOMMODATION	927	9,473	\$189,705,131	\$385.11
7211	Travel Accommodation	830	8,903	175,393,755	378.86
7212	RV Parks & Recreational Camps	79	475	11,653,679	471.81
7213	Rooming & Boarding Houses	18	95	2,657,697	538.00
722	FOOD SERVICES & DRINKING PLACES	5,482	86,695	\$1,514,207,301	\$335.88
7223	Special Food Services	304	3,741	73,281,331	376.71
7224	Drinking Places, Alcoholic Beverages	144	671	11,548,242	330.97
7225	Restaurants & Other Eating Places	5,034	82,283	1,429,377,728	334.07
722511	Full-Service Restaurants	2,134	31,745	603,777,654	365.76
722513	Limited-Service Eating Places	2,358	45,876	742,864,831	311.40
722514	Cafeterias, Grill Buffets, & Buffets	92	1,285	26,546,944	397.29
722515	Snack & Nonalcoholic Beverage Bars	450	3,377	56,188,299	319.97
	OTHER SERVICES	5,484	23,745	\$903,094,904	\$731.40
811	REPAIR & MAINTENANCE	2,246	10,936	\$459,647,162	\$808.28
8111	Automotive Repair & Maintenance	1,441	6,917	264,404,922	735.10
8112	Electronic Equipment Repair & Maintenance	159	939	43,130,482	883.31
8113	Commercial Machinery Repair & Maintenance	477	2,463	130,859,928	1,021.74
8114	Household Goods Repair & Maintenance	169	617	21,251,830	662.38
812	PERSONAL & LAUNDRY SERVICES	1,409	6,932	\$199,213,067	\$552.66
8121	Personal Care Services	704	2,533	61,036,211	463.39
8122	Death Care Services	248	1,484	49,566,761	642.32
8123	Drycleaning & Laundry Service	200	1,872	60,248,010	618.92
8129	Other Personal Services	257	1,043	28,362,085	522.94
813	MEMBERSHIP ASSOCIATIONS & ORGANIZATIONS	1,147	5,053	\$221,089,316	\$841.42
8131	Religious Organizations	105	326	10,418,088	614.56
8132	Grantmaking & Giving Organizations	128	441	28,577,562	1,246.19
8133	Social Advocacy Organizations	229	1,195	56,997,733	917.25
8134	Civic & Social Organizations	194	942	21,166,718	432.11
8139	Professional & Similar Organizations	491	2,149	103,929,215	930.03
814	PRIVATE HOUSEHOLDS	682	824	\$23,145,359	\$540.17
	LOCAL GOVERNMENT	1,989	106,366	\$4,400,045,502	\$795.52
	STATE GOVERNMENT	1,062	66,309	\$3,409,530,922	\$988.82
	NONCLASSIFIABLE ESTABLISHMENTS	0	0	0	\$0.00

Note: Data may not add due to rounding.

TABLE 6. COUNTY SUMMARY CALENDAR YEAR 2020

North American Industry Classification System - Industry Groups	Average Employing Units	Average Covered Employment	Total Calendar Earnings	Average Weekly Earnings
ARKANSAS COUNTY - TOTAL	1,067	10,006	\$426,445,909	\$819.60
Natural Resources & Mining	65	182	7,216,540	762.53
Construction	91	315	15,292,776	933.62
Manufacturing	43	3,711	168,400,148	872.67
Trade, Transportation & Utilities	239	2,155	99,432,124	887.31
Wholesale Trade	52	436	25,076,500	1,106.06
Retail Trade	114	1,077	32,106,040	573.28
Transportation, Warehousing & Utilities	73	642	42,249,584	1,265.56
Information	11	40	1,619,629	778.67
Financial Activities	84	352	18,139,767	991.03
Professional & Business Services	114	570	32,261,081	1,088.43
Education & Health Services	214	1,082	39,980,265	710.58
Leisure & Hospitality	97	625	10,159,714	312.61
Other Services	63	119	3,560,702	575.42
Local Government	32	697	24,819,299	684.78
State Government	14	158	5,563,864	677.20
ASHLEY COUNTY - TOTAL	562	5,701	\$249,177,317	\$840.53
Natural Resources & Mining	46	340	14,926,870	844.28
Construction	36	466	21,945,566	905.64
Manufacturing	26	1,102	79,871,829	1,393.83
Trade, Transportation & Utilities	115	1,174	41,457,302	679.09
Wholesale Trade	24	179	10,631,302	1,142.17
Retail Trade	63	713	17,668,925	476.56
Transportation, Warehousing & Utilities	28	282	13,157,075	897.24
Information	5	31	1,081,737	671.05
Financial Activities	37	174	6,439,542	711.71
Professional & Business Services	38	177	6,374,585	692.59
Education & Health Services	148	855	36,223,450	814.74
Leisure & Hospitality	38	360	5,495,457	293.56
Other Services	31	119	3,732,181	603.13
Local Government	32	804	27,624,720	660.75
State Government	10	99	4,004,078	777.79

Note: Data may not add due to rounding.

TABLE 6. COUNTY SUMMARY CALENDAR YEAR 2020

North American Industry Classification System - Industry Groups	Average Employing Units	Average Covered Employment	Total Calendar Earnings	Average Weekly Earnings
BAXTER COUNTY - TOTAL	1,226	14,589	\$560,264,227	\$738.52
Natural Resources & Mining	8	57	2,444,357	824.68
Construction	100	518	18,951,086	703.56
Manufacturing	53	2,438	99,776,334	787.03
Trade, Transportation & Utilities	255	2,637	90,197,405	657.78
Wholesale Trade	34	163	17,585,302	2,074.72
Retail Trade	199	2,298	64,757,577	541.92
Transportation, Warehousing & Utilities	22	176	7,854,526	858.23
Information	22	154	7,639,411	953.97
Financial Activities	121	717	40,671,363	1,090.85
Professional & Business Services	148	909	31,697,310	670.59
Education & Health Services	256	3,936	182,113,318	889.78
Leisure & Hospitality	119	1,476	25,113,213	327.20
Other Services	97	309	8,928,325	555.66
Local Government	36	1,148	41,769,908	699.71
State Government	11	290	10,962,197	726.94
BENTON COUNTY - TOTAL	7,034	122,773	\$8,380,293,240	\$1,312.66
Natural Resources & Mining	50	813	61,125,733	1,445.87
Construction	699	5,533	283,824,448	986.47
Manufacturing	205	12,610	639,413,283	975.13
Trade, Transportation & Utilities	1,724	29,632	1,875,247,051	1,217.01
Wholesale Trade	756	6,299	856,422,558	2,614.65
Retail Trade	763	12,196	398,030,366	627.62
Transportation, Warehousing & Utilities	205	11,137	620,794,127	1,071.95
Information	100	957	83,541,490	1,678.75
Financial Activities	748	4,133	294,427,308	1,369.96
Professional & Business Services	1,406	33,509	3,828,597,634	2,197.23
Education & Health Services	877	12,006	541,677,352	867.64
Leisure & Hospitality	688	11,841	246,002,796	399.53
Other Services	435	2,273	84,729,247	716.85
Local Government	85	8,444	401,818,458	915.12
State Government	17	1,022	39,888,440	750.57

Note: Data may not add due to rounding.

TABLE 6. COUNTY SUMMARY CALENDAR YEAR 2020

North American Industry Classification System - Industry Groups	Average Employing Units	Average Covered Employment	Total Calendar Earnings	Average Weekly Earnings
BOONE COUNTY - TOTAL	951	13,449	561,882,033	\$803.44
Manufacturing	56	1,545	73,865,392	919.41
Trade, Transportation & Utilities	243	3,716	164,054,034	849.00
Wholesale Trade	42	385	16,740,826	836.21
Retail Trade	159	2,048	62,032,994	582.49
Transportation, Warehousing & Utilities	42	1,283	85,280,214	1,278.26
Information	14	277	14,290,469	992.12
Financial Activities	94	452	23,429,231	996.82
Professional & Business Services	99	1,297	62,404,190	925.27
Education & Health Services	159	1,597	59,461,963	716.03
Leisure & Hospitality	84	1,105	19,271,588	335.39
Other Services	62	278	11,410,419	789.32
Local Government	53	2,048	87,195,639	818.77
State Government	17	716	28,702,356	770.91
Other	70	418	17,796,752	818.77
BRADLEY COUNTY - TOTAL	340	3,606	\$135,847,153	\$724.47
Natural Resources & Mining	41	210	9,036,176	827.49
Construction	15	77	2,892,657	722.44
Manufacturing	11	955	44,976,103	905.68
Trade, Transportation & Utilities	67	474	16,064,198	651.74
Wholesale Trade	11	101	5,578,558	1,062.18
Retail Trade	36	290	6,981,967	463.00
Transportation, Warehousing & Utilities	20	83	3,503,673	811.79
Information	3	27	813,177	579.19
Financial Activities	24	124	5,701,396	884.21
Professional & Business Services	27	101	3,698,620	704.23
Education & Health Services	90	595	21,621,006	698.80
Leisure & Hospitality	13	167	2,462,660	283.59
Other Services	25	82	2,498,490	585.95
Local Government	14	430	14,741,198	659.27
State Government	10	364	11,341,472	599.19

Note: Data may not add due to rounding.

TABLE 6. COUNTY SUMMARY CALENDAR YEAR 2020

North American Industry Classification System - Industry Groups	Average Employing Units	Average Covered Employment	Total Calendar Earnings	Average Weekly Earnings
CALHOUN COUNTY - TOTAL	102	3,360	\$205,182,694	\$1,174.35
Natural Resources & Mining	6	32	1,368,479	822.40
Construction	10	130	5,881,917	870.11
Manufacturing	9	2,587	172,268,873	1,280.58
Trade, Transportation & Utilities	17	176	7,027,636	767.88
Retail Trade	8	41	966,990	453.56
Transportation, Warehousing & Utilities	9	135	6,060,646	863.34
Professional & Business Services	6	11	483,337	844.99
Education & Health Services	23	60	2,798,135	896.84
Leisure & Hospitality	4	8	114,484	275.20
Local Government	11	176	5,480,438	598.82
State Government	7	71	3,067,878	830.95
Other	9	109	6,691,517	1,180.58
CARROLL COUNTY - TOTAL	783	10,436	\$360,099,968	\$663.57
Natural Resources & Mining	22	277	11,666,393	809.94
Trade, Transportation & Utilities	181	1,498	51,332,301	658.99
Wholesale Trade	24	195	8,109,124	799.72
Retail Trade	134	1,099	27,399,288	479.44
Transportation, Warehousing & Utilities	23	204	15,823,889	1,491.69
Information	9	63	4,022,711	1,227.93
Financial Activities	54	360	19,588,044	1,046.37
Professional & Business Services	72	482	18,383,823	733.48
Education & Health Services	100	1,026	38,978,754	730.60
Leisure & Hospitality	169	1,391	26,214,742	362.42
Other Services	43	140	4,030,421	553.63
Local Government	25	1,025	35,509,068	666.21
State Government	9	91	3,852,142	814.06
Other	99	4,083	146,521,569	690.11

Note: Data may not add due to rounding.

TABLE 6. COUNTY SUMMARY CALENDAR YEAR 2020

North American Industry Classification System - Industry Groups	Average Employing Units	Average Covered Employment	Total Calendar Earnings	Average Weekly Earnings
CHICOT COUNTY - TOTAL	475	2,778	\$100,237,122	\$693.89
Natural Resources & Mining	55	230	9,490,068	793.48
Construction	14	117	6,537,891	1,074.60
Manufacturing	5	8	414,547	996.51
Trade, Transportation & Utilities	66	634	21,027,403	637.81
Wholesale Trade	11	46	2,438,292	1,019.35
Retail Trade	42	273	7,655,252	539.25
Transportation, Warehousing & Utilities	13	315	10,933,859	667.51
Professional & Business Services	16	42	2,045,721	936.69
Education & Health Services	230	582	19,135,247	632.28
Leisure & Hospitality	15	102	1,495,201	281.90
Other Services	18	76	2,574,269	651.38
Local Government	17	566	19,838,869	674.06
State Government	9	241	8,718,813	695.72
Other	30	180	8,959,093	\$957.17
CLARK COUNTY - TOTAL	654	8,528	335,526,561	\$756.62
Natural Resources & Mining	49	296	13,170,022	855.64
Construction	26	93	4,503,489	931.24
Manufacturing	34	1,233	78,462,034	1,223.75
Trade, Transportation & Utilities	136	1,394	47,985,563	661.98
Wholesale Trade	15	47	2,512,130	1,027.88
Retail Trade	93	1,174	36,957,722	605.39
Transportation, Warehousing & Utilities	28	173	8,515,711	946.61
Financial Activities	75	336	12,910,736	738.94
Professional & Business Services	54	572	29,949,064	1,006.89
Education & Health Services	127	1,591	57,257,602	692.09
Leisure & Hospitality	65	970	15,013,055	297.64
Local Government	29	888	31,238,235	676.50
State Government	14	950	36,735,142	743.63
Other	45	205	8,301,619	778.76

Note: Data may not add due to rounding.

TABLE 6. COUNTY SUMMARY CALENDAR YEAR 2020

North American Industry Classification System - Industry Groups	Average Employing Units	Average Covered Employment	Total Calendar Earnings	Average Weekly Earnings
CLAY COUNTY - TOTAL	351	2,989	\$103,408,466	\$665.31
Natural Resources & Mining	50	231	7,913,798	658.82
Construction	30	107	3,912,470	703.18
Manufacturing	12	100	3,297,651	634.16
Trade, Transportation & Utilities	82	734	27,747,209	726.98
Wholesale Trade	19	246	9,895,494	773.57
Retail Trade	41	357	10,952,559	589.99
Transportation, Warehousing & Utilities	22	131	6,899,156	1,012.79
Information	7	24	739,015	592.16
Financial Activities	23	100	4,195,780	806.88
Professional & Business Services	24	85	3,298,978	746.38
Education & Health Services	50	490	16,847,073	661.19
Leisure & Hospitality	22	213	2,966,905	267.87
Other Services	22	77	3,306,154	825.71
Local Government	20	784	27,367,825	671.31
State Government	9	44	1,815,608	793.53
CLEBURNE COUNTY - TOTAL	639	6,033	\$217,838,965	\$694.38
Natural Resources & Mining	19	164	10,440,958	1,224.31
Construction	64	317	12,972,649	786.98
Manufacturing	33	1,130	46,774,006	796.02
Trade, Transportation & Utilities	153	1,232	44,069,295	687.89
Wholesale Trade	32	104	5,086,038	940.47
Retail Trade	102	989	31,611,202	614.67
Transportation, Warehousing & Utilities	19	139	7,372,055	1,019.93
Information	12	50	2,112,954	812.67
Financial Activities	72	252	13,178,113	1,005.66
Professional & Business Services	65	300	12,224,850	783.64
Education & Health Services	75	845	28,678,858	652.68
Leisure & Hospitality	80	811	14,763,462	350.08
Other Services	40	106	3,082,809	559.29
Local Government	18	726	25,701,616	680.80
State Government	8	100	3,839,395	738.35

Note: Data may not add due to rounding.

TABLE 6. COUNTY SUMMARY CALENDAR YEAR 2020

North American Industry Classification System - Industry Groups	Average Employing Units	Average Covered Employment	Total Calendar Earnings	Average Weekly Earnings
CLEVELAND COUNTY - TOTAL	126	994	\$36,525,696	\$706.66
Natural Resources & Mining	15	145	5,971,539	791.98
Construction	5	19	849,819	860.14
Manufacturing	4	116	5,641,723	935.30
Trade, Transportation & Utilities	29	144	4,520,689	603.72
Retail Trade	16	69	1,199,232	334.23
Other Trade, Transportation & Utilities	13	75	3,321,457	851.66
Financial Activities	5	22	1,205,693	1,053.93
Education & Health Services	34	199	6,565,791	634.50
Other Services	6	10	374,427	720.05
Local Government	13	284	9,464,366	640.87
State Government	6	30	1,307,840	838.36
Other	9	25	623,809	479.85
COLUMBIA COUNTY - TOTAL	689	7,704	\$321,496,791	\$802.52
Natural Resources & Mining	45	370	22,840,967	1,187.16
Construction	36	145	5,647,709	749.03
Manufacturing	28	1,879	117,637,574	1,203.97
Trade, Transportation & Utilities	166	1,392	46,604,694	643.85
Wholesale Trade	29	189	10,679,638	1,086.65
Retail Trade	95	993	24,796,716	480.22
Transportation, Warehousing & Utilities	42	210	11,128,340	1,019.08
Information	6	27	1,168,554	832.30
Financial Activities	62	330	17,957,116	1,046.45
Professional & Business Services	51	307	9,609,736	601.96
Education & Health Services	160	854	26,201,332	590.01
Leisure & Hospitality	59	742	11,115,616	288.09
Other Services	37	118	3,184,937	519.06
Local Government	27	927	35,831,378	743.33
State Government	12	613	23,697,178	743.42

Note: Data may not add due to rounding.

TABLE 6. COUNTY SUMMARY CALENDAR YEAR 2020

North American Industry Classification System - Industry Groups	Average Employing Units	Average Covered Employment	Total Calendar Earnings	Average Weekly Earnings
CONWAY COUNTY - TOTAL	511	6,572	\$271,952,228	\$795.78
Natural Resources & Mining	27	229	9,025,826	757.96
Construction	48	501	29,503,278	1,132.48
Manufacturing	19	995	58,172,211	1,124.32
Trade, Transportation & Utilities	113	1,336	47,011,297	676.69
Wholesale Trade	15	103	4,575,017	854.19
Retail Trade	76	807	23,300,937	555.26
Transportation, Warehousing & Utilities	22	426	19,135,343	863.82
Information	3	11	178,198	311.53
Financial Activities	37	147	7,202,909	942.30
Professional & Business Services	37	662	20,127,051	584.68
Education & Health Services	125	715	33,098,428	890.22
Leisure & Hospitality	37	417	6,937,866	319.95
Other Services	25	105	3,359,267	615.25
Local Government	31	1,088	45,398,373	802.43
State Government	9	366	11,937,524	627.23
CRAIGHEAD COUNTY - TOTAL	2,881	50,145	\$2,212,811,245	\$848.62
Natural Resources & Mining	105	384	16,294,541	816.03
Construction	249	2,135	105,121,805	946.87
Manufacturing	102	7,180	369,567,294	989.84
Trade, Transportation & Utilities	766	10,152	411,975,952	780.40
Wholesale Trade	180	2,049	122,784,969	1,152.39
Retail Trade	461	6,249	193,899,307	596.71
Transportation, Warehousing & Utilities	125	1,854	95,291,676	988.42
Information	22	353	20,492,256	1,116.38
Financial Activities	288	1,762	103,563,840	1,130.31
Professional & Business Services	378	4,662	176,617,303	728.55
Education & Health Services	458	11,008	594,451,683	1,038.50
Leisure & Hospitality	275	5,108	90,172,146	339.48
Other Services	180	760	25,152,045	636.44
Local Government	36	3,856	165,374,062	824.76
State Government	22	2,785	134,028,318	925.48

Note: Data may not add due to rounding.

TABLE 6. COUNTY SUMMARY CALENDAR YEAR 2020

North American Industry Classification System - Industry Groups	Average Employing Units	Average Covered Employment	Total Calendar Earnings	Average Weekly Earnings
CRAWFORD COUNTY - TOTAL	1,263	19,265	\$757,594,695	\$756.25
Natural Resources & Mining	23	218	9,461,767	834.67
Construction	145	1,021	47,685,064	898.16
Manufacturing	62	4,645	212,260,919	878.78
Trade, Transportation & Utilities	328	5,712	222,255,019	748.27
Wholesale Trade	74	742	41,257,614	1,069.29
Retail Trade	169	2,023	59,566,677	566.24
Transportation, Warehousing & Utilities	85	2,947	121,430,728	792.40
Information	11	35	1,832,141	1,006.67
Financial Activities	121	523	22,759,132	836.86
Professional & Business Services	160	1,457	59,196,177	781.32
Education & Health Services	186	1,613	58,257,728	694.57
Leisure & Hospitality	94	1,520	24,998,395	316.28
Other Services	81	394	14,355,323	700.67
Local Government	42	1,980	79,045,566	767.73
State Government	10	147	5,487,464	717.88
CRITTENDEN COUNTY - TOTAL	1,177	15,102	\$603,022,622	\$767.88
Natural Resources & Mining	59	258	9,779,045	728.91
Construction	41	398	21,364,811	1,032.32
Manufacturing	39	1,954	96,262,339	947.39
Trade, Transportation & Utilities	298	4,197	179,275,266	821.44
Wholesale Trade	53	677	36,701,477	1,042.54
Retail Trade	155	1,868	51,568,083	530.89
Transportation, Warehousing & Utilities	90	1,652	91,005,706	1,059.39
Information	5	35	1,725,834	948.26
Financial Activities	100	426	24,926,739	1,125.26
Professional & Business Services	106	930	36,536,958	755.52
Education & Health Services	272	1,883	73,718,606	752.88
Leisure & Hospitality	138	2,236	46,598,379	400.77
Other Services	66	444	16,168,432	700.30
Local Government	40	1,979	82,554,390	802.22
State Government	13	362	14,111,823	749.67

Note: Data may not add due to rounding.

TABLE 6. COUNTY SUMMARY CALENDAR YEAR 2020

North American Industry Classification System - Industry Groups	Average Employing Units	Average Covered Employment	Total Calendar Earnings	Average Weekly Earnings
CROSS COUNTY - TOTAL	479	4,564	\$161,979,455	\$682.51
Natural Resources & Mining	45	277	10,323,957	716.74
Construction	21	69	2,635,881	734.64
Manufacturing	10	263	8,774,031	641.56
Trade, Transportation & Utilities	123	1,087	42,564,059	753.03
Wholesale Trade	25	284	15,507,513	1,050.08
Retail Trade	66	697	22,009,109	607.25
Transportation, Warehousing & Utilities	32	106	5,047,437	915.72
Information	6	34	1,087,876	615.31
Financial Activities	50	240	10,062,250	806.27
Professional & Business Services	41	153	6,797,476	854.38
Education & Health Services	88	942	32,035,142	653.99
Leisure & Hospitality	39	416	6,317,516	292.04
Other Services	30	99	3,462,475	672.59
Local Government	17	641	24,572,699	737.21
State Government	9	343	13,346,093	748.27
DALLAS COUNTY - TOTAL	228	2,625	\$96,338,241	\$705.77
Natural Resources & Mining	22	111	4,542,086	786.92
Construction	15	69	3,454,922	962.91
Manufacturing	9	532	24,506,554	885.86
Trade, Transportation & Utilities	51	481	15,968,454	638.43
Wholesale Trade	5	16	1,048,710	1,260.47
Retail Trade	34	314	8,622,283	528.07
Transportation, Warehousing & Utilities	12	151	6,297,461	802.02
Information	3	16	584,289	702.27
Financial Activities	17	69	3,637,495	1,013.79
Professional & Business Services	13	37	1,109,912	576.88
Education & Health Services	52	754	29,439,654	750.86
Leisure & Hospitality	13	148	2,043,114	265.48
Other Services	12	47	1,338,551	547.69
Local Government	14	330	8,455,993	492.77
State Government	7	31	1,257,217	779.91

Note: Data may not add due to rounding.

TABLE 6. COUNTY SUMMARY CALENDAR YEAR 2020

North American Industry Classification System - Industry Groups	Average Employing Units	Average Covered Employment	Total Calendar Earnings	Average Weekly Earnings
DESHA COUNTY - TOTAL	503	4,418	\$173,180,270	\$753.82
Natural Resources & Mining	66	288	10,398,362	694.34
Construction	15	91	3,991,056	843.42
Manufacturing	14	1,014	58,129,828	1,102.45
Trade, Transportation & Utilities	100	827	30,024,757	698.19
Wholesale Trade	18	186	11,256,152	1,163.79
Retail Trade	54	453	11,178,682	474.56
Transportation, Warehousing & Utilities	28	188	7,589,923	776.38
Information	5	23	1,191,586	996.31
Financial Activities	27	204	8,332,063	785.45
Professional & Business Services	34	98	4,022,258	789.30
Education & Health Services	152	601	19,813,974	634.01
Leisure & Hospitality	37	342	4,883,572	274.60
Other Services	23	54	1,194,032	425.23
Local Government	21	767	27,488,317	689.21
State Government	9	109	3,710,465	654.63
DREW COUNTY - TOTAL	541	6,151	\$234,030,692	\$731.68
Natural Resources & Mining	56	366	16,459,548	864.84
Construction	23	141	6,464,298	881.66
Manufacturing	21	872	40,143,079	885.30
Trade, Transportation & Utilities	111	1,072	34,573,223	620.21
Wholesale Trade	17	119	5,454,010	881.38
Retail Trade	73	845	23,633,665	537.86
Transportation, Warehousing & Utilities	21	108	5,485,548	976.77
Information	5	31	1,187,824	736.86
Financial Activities	53	208	11,390,286	1,053.10
Professional & Business Services	38	287	14,075,429	943.14
Education & Health Services	137	837	27,986,797	643.02
Leisure & Hospitality	41	591	9,139,216	297.38
Other Services	20	58	1,965,287	651.62
Local Government	23	1,164	47,099,244	778.14
State Government	13	524	23,546,461	864.15

Note: Data may not add due to rounding.

TABLE 6. COUNTY SUMMARY CALENDAR YEAR 2020

North American Industry Classification System - Industry Groups	Average Employing Units	Average Covered Employment	Total Calendar Earnings	Average Weekly Earnings
FAULKNER COUNTY - TOTAL	2,968	39,708	1,772,790,640	\$858.57
Natural Resources & Mining	40	262	17,470,276	1,282.32
Construction	362	2,915	145,523,570	960.04
Manufacturing	98	3,145	177,422,383	1,084.89
Trade, Transportation & Utilities	633	7,491	294,069,342	754.93
Wholesale Trade	133	720	73,812,570	1,971.49
Retail Trade	407	5,921	175,054,152	568.56
Transportation, Warehousing & Utilities	93	850	45,202,620	1,022.68
Financial Activities	321	1,472	79,258,791	1,035.47
Professional & Business Services	466	3,521	173,970,114	950.18
Education & Health Services	483	7,522	328,702,617	840.36
Leisure & Hospitality	281	4,686	80,548,717	330.56
Local Government	42	3,108	147,887,147	915.05
State Government	18	3,102	139,014,902	861.82
Other	224	2,484	188,922,781	1,462.61
FRANKLIN COUNTY - TOTAL	372	4,473	\$167,028,955	\$718.11
Natural Resources & Mining	18	148	11,009,940	1,430.61
Construction	32	152	5,901,939	746.70
Manufacturing	17	955	38,323,911	771.73
Trade, Transportation & Utilities	83	977	37,426,669	736.69
Wholesale Trade	10	52	1,217,364	450.21
Retail Trade	49	627	16,267,655	498.95
Transportation, Warehousing & Utilities	24	298	19,941,650	1,286.89
Information	6	26	1,244,696	920.63
Financial Activities	31	66	2,931,591	854.19
Professional & Business Services	33	365	14,070,443	741.33
Education & Health Services	66	547	17,340,352	609.63
Leisure & Hospitality	30	334	5,024,102	289.27
Other Services	16	56	1,696,107	582.45
Local Government	32	712	26,325,313	711.03
State Government	8	135	5,733,892	816.79

Note: Data may not add due to rounding.

TABLE 6. COUNTY SUMMARY CALENDAR YEAR 2020

North American Industry Classification System - Industry Groups	Average Employing Units	Average Covered Employment	Total Calendar Earnings	Average Weekly Earnings
FULTON COUNTY - TOTAL	204	2,015	\$69,183,339	\$660.27
Manufacturing	11	110	3,309,046	578.50
Trade, Transportation & Utilities	51	296	11,888,673	772.39
Retail Trade	31	181	4,675,618	496.77
Other Trade, Transportation & Utilities	20	115	7,213,055	1,206.20
Information	5	29	1,310,068	868.75
Financial Activities	20	87	3,888,429	859.51
Professional & Business Services	16	27	862,438	614.27
Education & Health Services	43	494	15,636,797	608.72
Leisure & Hospitality	15	123	1,914,459	299.32
Other Services	10	18	613,786	655.75
Local Government	12	534	16,020,079	576.93
State Government	9	61	2,285,119	720.40
Other	12	236	11,454,445	933.38
GARLAND COUNTY - TOTAL	3,053	35,223	\$1,414,877,686	\$772.48
Natural Resources & Mining	28	185	8,230,851	855.60
Construction	330	1,927	80,026,388	798.63
Manufacturing	93	2,477	121,658,071	944.52
Trade, Transportation & Utilities	666	7,294	267,423,122	705.07
Wholesale Trade	136	756	49,587,997	1,261.40
Retail Trade	465	5,960	187,626,201	605.40
Transportation, Warehousing & Utilities	65	578	30,208,924	1,005.09
Information	30	397	16,162,134	782.90
Financial Activities	345	1,507	77,434,740	988.14
Professional & Business Services	387	2,915	119,445,043	788.00
Education & Health Services	495	7,777	397,589,562	983.15
Leisure & Hospitality	398	6,281	134,244,745	411.02
Other Services	221	894	26,702,181	574.39
Local Government	38	2,770	132,313,788	918.59
State Government	22	799	33,647,061	809.84

Note: Data may not add due to rounding.

TABLE 6. COUNTY SUMMARY CALENDAR YEAR 2020

North American Industry Classification System - Industry Groups	Average Employing Units	Average Covered Employment	Total Calendar Earnings	Average Weekly Earnings
GRANT COUNTY - TOTAL	345	4,013	\$176,284,174	\$844.77
Natural Resources & Mining	27	194	10,367,968	1,027.75
Construction	36	239	14,295,953	1,150.30
Manufacturing	16	1,212	64,874,411	1,029.36
Trade, Transportation & Utilities	82	663	21,570,803	625.68
Wholesale Trade	16	73	4,927,869	1,298.17
Retail Trade	47	541	14,807,598	526.36
Transportation, Warehousing & Utilities	19	49	1,835,336	720.30
Financial Activities	21	130	11,249,154	1,664.08
Professional & Business Services	33	126	6,252,335	954.26
Education & Health Services	72	373	11,441,796	589.90
Leisure & Hospitality	23	250	3,722,783	286.37
Local Government	10	725	28,951,080	767.93
State Government	7	46	1,710,232	714.98
Other	18	55	1,847,659	646.03
GREENE COUNTY - TOTAL	885	14,580	\$590,767,454	\$779.21
Natural Resources & Mining	39	216	8,563,184	762.39
Construction	69	386	18,580,044	925.67
Manufacturing	63	4,651	225,752,811	933.43
Trade, Transportation & Utilities	222	2,624	89,915,662	658.97
Wholesale Trade	42	455	23,344,193	986.65
Retail Trade	150	1,943	56,464,331	558.85
Transportation, Warehousing & Utilities	30	226	10,107,138	860.04
Information	10	125	6,432,845	989.67
Financial Activities	76	556	26,687,504	923.06
Professional & Business Services	92	790	28,014,065	681.94
Education & Health Services	149	1,925	82,496,771	824.14
Leisure & Hospitality	83	1,199	20,127,038	322.82
Other Services	41	156	4,761,662	586.99
Local Government	31	1,570	62,425,853	764.65
State Government	10	382	17,010,015	856.32

Note: Data may not add due to rounding.

TABLE 6. COUNTY SUMMARY CALENDAR YEAR 2020

North American Industry Classification System - Industry Groups	Average Employing Units	Average Covered Employment	Total Calendar Earnings	Average Weekly Earnings
HEMPSTEAD COUNTY - TOTAL	517	7,355	\$289,887,146	\$757.95
Natural Resources & Mining	22	255	12,771,447	963.16
Construction	25	123	5,226,804	817.20
Manufacturing	27	2,148	100,783,935	902.31
Trade, Transportation & Utilities	128	1,317	51,937,633	758.39
Wholesale Trade	27	185	7,291,959	758.00
Retail Trade	74	868	23,406,101	518.57
Transportation, Warehousing & Utilities	27	264	21,239,573	1,547.17
Information	7	17	955,761	1,081.18
Financial Activities	46	196	8,849,467	868.28
Professional & Business Services	37	234	9,180,835	754.51
Education & Health Services	104	909	28,546,198	603.92
Leisure & Hospitality	48	568	9,687,895	328.00
Other Services	29	112	3,847,993	660.71
Local Government	28	796	31,306,363	756.34
State Government	16	680	26,792,815	757.72
HOT SPRING COUNTY - TOTAL	606	8,127	\$323,656,980	\$765.86
Natural Resources & Mining	26	170	6,470,862	732.00
Construction	52	187	6,315,169	649.44
Manufacturing	29	1,389	76,095,832	1,053.55
Trade, Transportation & Utilities	153	1,686	76,856,714	876.64
Wholesale Trade	19	85	4,843,330	1,095.78
Retail Trade	96	881	24,699,802	539.16
Transportation, Warehousing & Utilities	38	720	47,313,582	1,263.72
Information	5	38	1,819,912	921.01
Financial Activities	50	207	10,025,884	931.43
Professional & Business Services	55	843	28,170,745	642.64
Education & Health Services	105	986	38,583,133	752.52
Leisure & Hospitality	54	655	10,375,085	304.61
Other Services	38	158	4,248,448	517.09
Local Government	27	962	36,131,324	722.28
State Government	12	846	28,563,872	649.30

Note: Data may not add due to rounding.

TABLE 6. COUNTY SUMMARY CALENDAR YEAR 2020

North American Industry Classification System - Industry Groups	Average Employing Units	Average Covered Employment	Total Calendar Earnings	Average Weekly Earnings
HOWARD COUNTY - TOTAL	352	6,303	235,364,953	\$718.11
Natural Resources & Mining	17	204	8,790,901	828.70
Construction	21	83	2,825,159	654.58
Manufacturing	18	2,932	114,551,365	751.33
Trade, Transportation & Utilities	78	853	32,365,974	729.69
Wholesale Trade	15	87	4,051,851	895.63
Retail Trade	45	558	15,857,277	546.50
Transportation, Warehousing & Utilities	18	208	12,456,846	1,151.71
Professional & Business Services	23	151	5,645,268	718.96
Education & Health Services	85	811	29,906,891	709.16
Leisure & Hospitality	27	304	4,792,587	303.17
Other Services	20	86	2,909,368	650.57
Local Government	17	631	23,320,279	710.72
State Government	10	95	3,516,664	711.88
Other	36	153	6,740,497	847.22
INDEPENDENCE COUNTY - TOTAL	918	15,955	\$675,576,155	\$814.28
Natural Resources & Mining	20	267	15,170,059	1,092.63
Construction	60	642	38,260,249	1,146.07
Manufacturing	42	3,343	163,183,972	938.72
Trade, Transportation & Utilities	242	2,857	110,952,603	746.83
Wholesale Trade	28	201	10,305,703	986.00
Retail Trade	168	1,900	54,903,736	555.71
Transportation, Warehousing & Utilities	46	756	45,743,164	1,163.59
Information	10	85	3,488,756	789.31
Financial Activities	87	577	32,695,620	1,089.71
Professional & Business Services	88	1,167	41,405,921	682.32
Education & Health Services	158	3,654	173,492,565	913.08
Leisure & Hospitality	88	1,145	18,154,886	304.92
Other Services	61	284	8,039,477	544.38
Local Government	47	1,359	48,237,904	682.60
State Government	15	575	22,494,143	752.31

Note: Data may not add due to rounding.

TABLE 6. COUNTY SUMMARY CALENDAR YEAR 2020

North American Industry Classification System - Industry Groups	Average Employing Units	Average Covered Employment	Total Calendar Earnings	Average Weekly Earnings
IZARD COUNTY - TOTAL	247	2,721	\$97,782,530	\$691.08
Natural Resources & Mining	7	67	3,848,452	1,104.61
Construction	23	67	2,390,328	686.09
Manufacturing	9	172	6,260,085	699.92
Trade, Transportation & Utilities	65	551	20,745,371	724.05
Wholesale Trade	12	54	5,183,174	1,845.86
Retail Trade	43	385	9,995,066	499.25
Transportation, Warehousing & Utilities	10	112	5,567,131	955.89
Information	4	7	510,747	1,403.15
Financial Activities	21	164	6,380,012	748.13
Professional & Business Services	15	43	1,275,180	570.30
Education & Health Services	44	595	20,762,888	671.07
Leisure & Hospitality	23	153	2,558,952	321.64
Other Services	13	30	723,097	463.52
Local Government	14	470	16,448,393	673.01
State Government	9	402	15,879,025	759.62
JACKSON COUNTY - TOTAL	434	5,149	\$200,862,507	\$750.19
Natural Resources & Mining	59	296	11,185,977	726.74
Construction	22	118	4,762,002	776.08
Manufacturing	13	1,022	50,242,388	945.40
Trade, Transportation & Utilities	106	970	37,506,717	743.59
Wholesale Trade	17	212	12,028,441	1,091.11
Retail Trade	69	669	20,768,097	596.99
Transportation, Warehousing & Utilities	20	89	4,710,179	1,017.76
Information	3	8	300,698	722.83
Financial Activities	32	123	6,166,730	964.15
Professional & Business Services	33	124	4,905,366	760.76
Education & Health Services	77	805	32,440,731	774.98
Leisure & Hospitality	26	306	4,927,450	309.67
Other Services	19	60	2,279,485	730.60
Local Government	32	539	18,038,500	643.59
State Government	12	778	28,106,463	694.74

Note: Data may not add due to rounding.

TABLE 6. COUNTY SUMMARY CALENDAR YEAR 2020

North American Industry Classification System - Industry Groups	Average Employing Units	Average Covered Employment	Total Calendar Earnings	Average Weekly Earnings
JEFFERSON COUNTY - TOTAL	1,993	24,888	\$1,066,762,592	\$824.28
Natural Resources & Mining	39	131	8,174,876	1,200.07
Construction	87	470	21,901,008	896.11
Manufacturing	60	4,472	277,478,791	1,193.23
Trade, Transportation & Utilities	393	4,172	153,427,571	707.22
Wholesale Trade	68	626	29,478,032	905.57
Retail Trade	271	2,883	82,441,538	549.92
Transportation, Warehousing & Utilities	54	663	41,508,001	1,203.97
Information	10	65	3,299,826	976.28
Financial Activities	150	1,005	52,149,986	997.89
Professional & Business Services	142	1,908	72,874,178	734.50
Education & Health Services	794	4,498	193,968,137	829.29
Leisure & Hospitality	138	2,164	38,912,610	345.80
Other Services	103	437	16,177,679	711.92
Local Government	40	2,278	87,597,673	739.50
State Government	37	3,288	140,800,257	823.51
JOHNSON COUNTY - TOTAL	484	8,043	\$283,459,331	\$677.75
Natural Resources & Mining	13	202	9,124,460	868.67
Construction	41	190	6,697,923	677.93
Manufacturing	32	2,303	85,901,958	717.31
Trade, Transportation & Utilities	100	1,982	68,001,355	659.80
Retail Trade	71	913	23,352,896	491.89
Other Trade, Transportation & Utilities	29	1,069	44,648,459	803.20
Information	4	14	742,836	1,020.38
Financial Activities	47	174	6,845,832	756.61
Professional & Business Services	46	266	7,578,575	547.90
Education & Health Services	105	1,223	47,804,029	751.68
Leisure & Hospitality	45	544	7,951,282	281.08
Other Services	29	76	2,359,007	596.91
Local Government	14	967	35,987,886	715.69
State Government	8	102	4,464,188	841.66

Note: Data may not add due to rounding.

TABLE 6. COUNTY SUMMARY CALENDAR YEAR 2020

North American Industry Classification System - Industry Groups	Average Employing Units	Average Covered Employment	Total Calendar Earnings	Average Weekly Earnings
LAFAYETTE COUNTY - TOTAL	160	1,051	\$36,155,580	\$661.56
Natural Resources & Mining	23	72	1,990,953	531.77
Construction	11	77	3,991,168	996.80
Manufacturing	6	38	2,079,187	1,052.22
Trade, Transportation & Utilities	29	186	6,118,049	632.55
Retail Trade	16	100	2,432,548	467.80
Other Trade, Transportation & Utilities	13	86	3,685,501	824.13
Financial Activities	13	73	3,020,626	795.74
Professional & Business Services	10	35	1,172,120	644.02
Education & Health Services	32	197	5,883,221	574.31
Leisure & Hospitality	6	36	611,536	326.68
Local Government	15	267	8,774,868	632.01
State Government	8	32	1,318,712	792.50
Other	7	38	1,195,140	604.83
LAWRENCE COUNTY - TOTAL	400	3,738	\$135,557,956	\$697.40
Natural Resources & Mining	54	189	8,432,432	858.00
Construction	27	153	8,787,605	1,104.53
Manufacturing	17	292	10,984,990	723.46
Trade, Transportation & Utilities	115	788	29,115,360	710.55
Wholesale Trade	18	177	8,282,737	899.91
Retail Trade	61	488	14,254,013	561.71
Transportation, Warehousing & Utilities	36	123	6,578,610	1,028.55
Financial Activities	28	122	5,274,652	831.44
Professional & Business Services	23	88	3,868,032	845.29
Education & Health Services	48	554	20,067,621	696.60
Leisure & Hospitality	32	302	4,759,011	303.04
Local Government	24	1,011	34,669,172	659.46
State Government	9	72	2,703,627	722.12
Other	23	167	6,895,454	794.04

Note: Data may not add due to rounding.

TABLE 6. COUNTY SUMMARY CALENDAR YEAR 2020

North American Industry Classification System - Industry Groups	Average Employing Units	Average Covered Employment	Total Calendar Earnings	Average Weekly Earnings
LEE COUNTY - TOTAL	254	1,699	\$63,243,664	\$715.85
Natural Resources & Mining	37	192	7,358,147	736.99
Construction	4	6	146,553	469.72
Trade, Transportation & Utilities	40	325	13,360,146	790.54
Wholesale Trade	10	111	6,425,638	1,113.24
Retail Trade	20	157	3,829,016	469.01
Transportation, Warehousing & Utilities	10	57	3,105,492	1,047.74
Financial Activities	15	56	2,199,819	755.43
Professional & Business Services	13	50	4,121,237	1,585.09
Education & Health Services	103	372	12,972,511	670.62
Leisure & Hospitality	8	69	1,125,334	313.64
Local Government	15	237	7,037,447	571.04
State Government	6	374	14,364,792	738.63
Other	13	18	557,678	595.81
LINCOLN COUNTY - TOTAL	278	2,686	\$101,725,250	\$728.32
Natural Resources & Mining	33	143	5,645,510	759.21
Construction	19	132	5,920,789	862.59
Manufacturing	9	310	11,146,293	691.46
Trade, Transportation & Utilities	42	316	14,279,803	869.02
Wholesale Trade	7	51	2,352,143	886.93
Retail Trade	22	150	3,589,335	460.17
Transportation, Warehousing & Utilities	13	115	8,338,325	1,394.37
Financial Activities	18	67	2,723,224	781.64
Professional & Business Services	11	24	1,199,240	960.93
Education & Health Services	101	374	10,925,370	561.77
Leisure & Hospitality	14	127	1,513,978	229.25
Local Government	7	296	10,477,394	680.70
State Government	10	848	35,593,865	807.19
Other	14	49	2,299,784	902.58

Note: Data may not add due to rounding.

TABLE 6. COUNTY SUMMARY CALENDAR YEAR 2019

North American Industry Classification System - Industry Groups	Average Employing Units	Average Covered Employment	Total Calendar Earnings	Average Weekly Earnings
LITTLE RIVER COUNTY - TOTAL	251	3,102	\$173,410,317	\$1,075.05
Natural Resources & Mining	16	67	2,481,106	712.14
Construction	12	75	3,146,523	806.80
Manufacturing	15	1,014	104,452,683	1,980.97
Trade, Transportation & Utilities	60	546	17,651,406	621.70
Wholesale Trade	7	30	1,943,413	1,245.78
Retail Trade	37	403	10,832,365	516.91
Transportation, Warehousing & Utilities	16	113	4,875,628	829.75
Financial Activities	14	55	1,904,287	665.83
Professional & Business Services	16	121	5,319,198	845.39
Education & Health Services	52	207	6,656,944	618.45
Leisure & Hospitality	18	224	3,268,207	280.58
Local Government	20	660	24,348,962	709.47
State Government	10	79	2,778,368	676.33
Other	18	54	1,402,633	499.51
LOGAN COUNTY - TOTAL	485	5,018	\$173,551,437	\$665.11
Natural Resources & Mining	22	117	4,392,632	722.00
Construction	40	154	6,636,071	828.68
Manufacturing	20	1,116	47,137,484	812.27
Trade, Transportation & Utilities	101	973	28,276,937	558.88
Wholesale Trade	8	49	1,370,238	537.77
Retail Trade	71	799	20,182,868	485.77
Transportation, Warehousing & Utilities	22	125	6,723,831	1,034.44
Information	5	25	1,139,192	876.30
Financial Activities	51	182	9,466,684	1,000.28
Professional & Business Services	42	105	3,815,980	698.90
Education & Health Services	107	667	23,591,158	680.17
Leisure & Hospitality	31	297	4,422,621	286.36
Other Services	32	128	4,953,655	744.24
Local Government	22	790	25,770,025	627.31
State Government	12	464	13,948,998	578.12

Note: Data may not add due to rounding.

TABLE 6. COUNTY SUMMARY CALENDAR YEAR 2020

North American Industry Classification System - Industry Groups	Average Employing Units	Average Covered Employment	Total Calendar Earnings	Average Weekly Earnings
LONOKE COUNTY - TOTAL	1,326	13,441	\$497,068,649	\$711.18
Natural Resources & Mining	93	499	22,133,096	852.98
Construction	148	946	45,711,650	929.25
Manufacturing	36	1,218	57,761,722	911.99
Trade, Transportation & Utilities	286	2,964	102,523,626	665.18
Wholesale Trade	66	408	22,786,380	1,074.02
Retail Trade	166	2,244	62,125,155	532.40
Transportation, Warehousing & Utilities	54	312	17,612,091	1,085.56
Information	16	88	4,726,551	1,032.90
Financial Activities	166	704	44,808,639	1,224.01
Professional & Business Services	154	549	20,101,939	704.15
Education & Health Services	202	1,801	62,323,701	665.48
Leisure & Hospitality	121	1,790	31,155,835	334.72
Other Services	65	179	5,368,762	576.79
Local Government	25	2,545	93,892,746	709.48
State Government	14	158	6,560,382	798.49
MADISON COUNTY - TOTAL	255	3,340	\$127,392,664	\$733.49
Natural Resources & Mining	11	53	1,918,736	696.20
Construction	35	139	6,612,145	914.80
Manufacturing	23	1,230	48,751,864	762.22
Trade, Transportation & Utilities	53	667	22,678,286	653.85
Wholesale Trade	9	33	1,757,369	1,024.11
Retail Trade	34	483	13,435,036	534.92
Transportation, Warehousing & Utilities	10	151	7,485,881	953.37
Information	5	52	5,502,463	2,034.93
Financial Activities	20	88	3,667,347	801.43
Professional & Business Services	25	81	4,685,565	1,112.43
Education & Health Services	32	248	8,859,631	687.01
Leisure & Hospitality	15	156	2,253,121	277.75
Other Services	20	51	1,293,253	487.65
Local Government	9	534	19,521,097	703.01
State Government	7	41	1,649,156	773.53

Note: Data may not add due to rounding.

TABLE 6. COUNTY SUMMARY CALENDAR YEAR 2020

North American Industry Classification System - Industry Groups	Average Employing Units	Average Covered Employment	Total Calendar Earnings	Average Weekly Earnings
MARION COUNTY - TOTAL	279	3,358	117,093,975	\$670.58
Manufacturing	22	1,402	53,787,246	737.78
Trade, Transportation & Utilities	59	526	15,405,267	563.22
Wholesale Trade	6	36	1,233,246	658.79
Retail Trade	44	455	12,087,535	510.88
Transportation, Warehousing & Utilities	9	35	2,084,486	1,145.32
Information	3	56	3,449,054	1,184.43
Financial Activities	29	187	7,167,396	737.08
Professional & Business Services	25	79	2,767,578	673.70
Education & Health Services	44	298	10,870,502	701.50
Leisure & Hospitality	33	175	2,653,832	291.63
Other Services	15	27	599,271	426.83
Local Government	18	471	15,299,973	624.69
State Government	7	39	1,626,795	802.17
Other	24	98	3,467,061	680.35
MILLER COUNTY - TOTAL	884	12,012	\$515,722,544	\$825.65
Natural Resources & Mining	31	304	14,464,763	915.03
Construction	67	571	26,792,765	902.36
Manufacturing	28	2,190	148,909,357	1,307.60
Trade, Transportation & Utilities	218	2,894	120,945,792	803.69
Wholesale Trade	47	483	26,905,596	1,071.25
Retail Trade	122	1,297	36,600,315	542.68
Transportation, Warehousing & Utilities	49	1,114	57,439,881	991.57
Information	5	96	6,861,442	1,374.49
Financial Activities	83	401	20,186,600	968.09
Professional & Business Services	77	993	28,095,700	544.11
Education & Health Services	186	1,217	39,125,412	618.25
Leisure & Hospitality	93	1,334	23,790,746	342.96
Other Services	55	244	7,382,235	581.83
Local Government	26	1,290	55,942,702	833.97
State Government	15	478	23,225,030	934.38

Note: Data may not add due to rounding.

TABLE 6. COUNTY SUMMARY CALENDAR YEAR 2020

North American Industry Classification System - Industry Groups	Average Employing Units	Average Covered Employment	Total Calendar Earnings	Average Weekly Earnings
MISSISSIPPI COUNTY - TOTAL	1,065	16,802	\$909,408,183	\$1,040.87
Natural Resources & Mining	103	524	22,186,853	814.26
Construction	56	793	49,385,637	1,197.63
Manufacturing	62	6,208	496,712,618	1,538.69
Trade, Transportation & Utilities	260	2,739	107,957,382	757.98
Wholesale Trade	53	351	21,667,317	1,187.12
Retail Trade	140	1,588	40,208,118	486.92
Transportation, Warehousing & Utilities	67	800	46,081,947	1,107.74
Information	6	27	683,973	487.16
Financial Activities	82	421	17,267,558	788.76
Professional & Business Services	82	979	41,032,083	806.00
Education & Health Services	208	1,310	49,631,663	728.59
Leisure & Hospitality	92	1,029	15,281,169	285.59
Other Services	45	258	10,859,708	809.46
Local Government	50	2,025	79,848,378	758.29
State Government	19	489	18,561,161	729.95
MONROE COUNTY - TOTAL	265	1,903	\$65,935,734	\$666.31
Natural Resources & Mining	26	104	5,669,804	1,048.41
Construction	9	18	764,372	816.64
Manufacturing	6	138	5,256,358	732.49
Trade, Transportation & Utilities	67	513	21,503,577	806.10
Wholesale Trade	16	164	9,518,365	1,116.13
Retail Trade	32	242	6,957,188	552.86
Transportation, Warehousing & Utilities	19	107	5,028,024	903.67
Financial Activities	21	84	3,745,253	857.43
Professional & Business Services	13	27	733,976	522.77
Education & Health Services	53	329	10,484,959	612.87
Leisure & Hospitality	24	242	3,603,779	286.38
Local Government	21	310	9,296,990	576.74
State Government	7	65	2,913,081	861.86
Other	18	73	1,963,585	517.28

Note: Data may not add due to rounding.

TABLE 6. COUNTY SUMMARY CALENDAR YEAR 2020

North American Industry Classification System - Industry Groups	Average Employing Units	Average Covered Employment	Total Calendar Earnings	Average Weekly Earnings
MONTGOMERY COUNTY - TOTAL	163	1,162	\$34,699,578	\$574.27
Natural Resources & Mining	8	27	808,875	576.12
Construction	25	62	1,857,334	576.10
Trade, Transportation & Utilities	32	214	6,220,840	559.03
Wholesale Trade	7	58	2,131,482	706.72
Retail Trade	21	141	3,724,802	508.02
Transportation, Warehousing & Utilities	4	15	364,556	467.38
Financial Activities	11	49	1,622,411	636.74
Professional & Business Services	14	22	610,796	533.91
Education & Health Services	21	53	1,773,999	643.69
Leisure & Hospitality	14	249	5,832,148	450.43
Other Services	12	33	740,982	431.81
Local Government	9	378	12,319,597	626.76
State Government	7	36	1,287,613	687.83
Other	10	39	1,624,983	801.27
NEVADA COUNTY - TOTAL	202	2,346	\$95,582,943	\$783.52
Natural Resources & Mining	13	52	2,979,021	1,101.71
Trade, Transportation & Utilities	39	524	20,926,511	768.00
Retail Trade	22	288	7,510,531	501.50
Other Trade, Transportation & Utilities	17	236	13,415,980	1,093.22
Financial Activities	11	62	2,085,311	646.81
Professional & Business Services	11	57	3,132,615	1,056.89
Education & Health Services	46	407	10,944,063	517.11
Leisure & Hospitality	9	83	1,190,622	275.86
Local Government	29	380	11,847,994	599.59
State Government	9	54	1,854,935	660.59
Other	35	727	40,621,871	1,074.54

Note: Data may not add due to rounding.

TABLE 6. COUNTY SUMMARY CALENDAR YEAR 2020

North American Industry Classification System - Industry Groups	Average Employing Units	Average Covered Employment	Total Calendar Earnings	Average Weekly Earnings
NEWTON COUNTY - TOTAL	115	972	\$29,284,438	\$579.39
Construction	7	25	827,898	636.84
Manufacturing	7	38	1,462,898	740.33
Trade, Transportation & Utilities	25	158	5,427,002	660.54
Retail Trade	12	105	2,752,134	504.05
Other Trade, Transportation & Utilities	13	53	2,674,868	970.56
Education & Health Services	23	225	5,631,292	481.31
Leisure & Hospitality	15	136	2,516,570	355.85
Local Government	14	327	9,549,896	561.63
State Government	7	36	1,386,221	740.50
Other	17	27	2,482,661	1,768.28
OUACHITA COUNTY - TOTAL	654	6,391	\$238,506,915	\$717.68
Natural Resources & Mining	36	154	6,804,598	849.73
Construction	42	192	8,243,687	825.69
Manufacturing	26	405	19,359,286	919.24
Trade, Transportation & Utilities	153	1,486	48,884,991	632.64
Wholesale Trade	24	205	9,306,141	873.00
Retail Trade	93	950	22,775,981	461.05
Transportation, Warehousing & Utilities	36	331	16,802,869	976.23
Information	6	32	1,526,057	917.10
Financial Activities	52	261	11,428,871	842.09
Professional & Business Services	45	506	19,575,096	743.96
Education & Health Services	183	1,235	56,824,141	884.84
Leisure & Hospitality	40	417	6,534,212	301.34
Other Services	27	104	3,523,704	651.57
Local Government	31	1,010	33,797,975	643.53
State Government	13	589	22,004,297	718.44

Note: Data may not add due to rounding.

TABLE 6. COUNTY SUMMARY CALENDAR YEAR 2020

North American Industry Classification System - Industry Groups	Average Employing Units	Average Covered Employment	Total Calendar Earnings	Average Weekly Earnings
PERRY COUNTY - TOTAL	150	1,103	\$39,692,240	\$692.03
Construction	15	85	3,103,017	702.04
Manufacturing	5	31	1,788,857	1,109.71
Trade, Transportation & Utilities	27	176	5,564,423	608.00
Retail Trade	16	141	2,669,680	364.11
Other Trade, Transportation & Utilities	11	35	2,894,743	1,590.52
Financial Activities	10	26	1,212,842	897.07
Professional & Business Services	19	48	1,816,877	727.92
Education & Health Services	31	211	6,961,196	634.45
Leisure & Hospitality	10	71	1,270,467	344.11
Local Government	9	306	10,511,823	660.62
State Government	7	35	1,400,777	769.66
Other	17	114	6,061,961	1,022.60
PHILLIPS COUNTY - TOTAL	712	5,047	\$180,760,286	\$688.76
Natural Resources & Mining	62	280	9,453,072	649.25
Construction	28	112	3,723,476	639.33
Manufacturing	11	407	18,989,216	897.24
Trade, Transportation & Utilities	133	1,206	42,833,494	683.02
Wholesale Trade	26	270	14,158,209	1,008.42
Retail Trade	69	708	17,661,428	479.72
Transportation, Warehousing & Utilities	38	228	11,013,857	928.97
Information	7	12	666,785	1,068.57
Financial Activities	41	196	8,639,764	847.70
Professional & Business Services	41	267	10,939,961	787.95
Education & Health Services	285	1,150	41,652,884	696.54
Leisure & Hospitality	39	354	5,385,930	292.59
Other Services	24	57	1,429,678	482.35
Local Government	27	703	24,745,491	676.92
State Government	14	303	12,300,535	780.69

Note: Data may not add due to rounding.

TABLE 6. COUNTY SUMMARY CALENDAR YEAR 2020

North American Industry Classification System - Industry Groups	Average Employing Units	Average Covered Employment	Total Calendar Earnings	Average Weekly Earnings
PIKE COUNTY - TOTAL	264	2,546	\$90,580,513	\$684.18
Natural Resources & Mining	23	112	5,326,101	914.51
Construction	17	47	1,479,666	605.43
Manufacturing	17	430	18,995,186	849.52
Trade, Transportation & Utilities	70	532	19,017,078	687.43
Wholesale Trade	9	106	4,291,368	778.55
Retail Trade	41	348	9,402,305	519.58
Transportation, Warehousing & Utilities	20	78	5,323,405	1,312.48
Information	7	26	1,167,948	863.87
Financial Activities	25	225	10,781,896	921.53
Professional & Business Services	13	53	3,282,475	1,191.03
Education & Health Services	31	270	7,196,162	512.55
Leisure & Hospitality	26	232	3,615,242	299.67
Other Services	16	67	2,020,784	580.02
Local Government	10	458	14,847,407	623.42
State Government	9	94	2,850,568	583.18
POINSETT COUNTY - TOTAL	475	4,986	215,859,285	\$832.56
Natural Resources & Mining	67	290	14,515,965	962.60
Construction	25	87	3,816,753	843.67
Manufacturing	17	703	43,539,427	1,191.03
Trade, Transportation & Utilities	116	1,162	53,669,854	888.22
Wholesale Trade	21	405	31,353,036	1,488.75
Retail Trade	66	623	15,248,090	470.68
Transportation, Warehousing & Utilities	29	134	7,068,728	1,014.46
Professional & Business Services	28	210	14,947,155	1,368.79
Education & Health Services	81	759	27,736,069	702.75
Leisure & Hospitality	42	450	7,140,346	305.14
Other Services	19	59	2,045,624	666.76
Local Government	30	944	34,668,037	706.24
State Government	10	101	3,932,087	748.68
Other	40	221	9,847,968	856.94

Note: Data may not add due to rounding.

TABLE 6. COUNTY SUMMARY CALENDAR YEAR 2020

North American Industry Classification System - Industry Groups	Average Employing Units	Average Covered Employment	Total Calendar Earnings	Average Weekly Earnings
POLK COUNTY - TOTAL	477	5,545	\$192,867,592	\$668.89
Natural Resources & Mining	23	165	8,818,217	1,027.76
Construction	31	202	8,025,875	764.08
Manufacturing	36	1,234	46,098,618	718.41
Trade, Transportation & Utilities	118	1,070	34,235,721	615.31
Wholesale Trade	18	60	3,240,440	1,038.60
Retail Trade	64	778	19,919,362	492.37
Transportation, Warehousing & Utilities	36	232	11,075,919	918.10
Information	6	47	1,037,300	424.43
Financial Activities	41	210	8,238,055	754.40
Professional & Business Services	38	134	6,704,723	962.22
Education & Health Services	83	959	37,701,689	756.03
Leisure & Hospitality	42	451	6,395,174	272.69
Other Services	26	149	4,819,453	622.03
Local Government	21	638	21,930,587	661.04
State Government	12	286	8,862,180	595.90
POPE COUNTY - TOTAL	1,820	23,619	\$1,034,308,981	\$842.14
Natural Resources & Mining	36	649	29,708,868	880.31
Construction	160	1,109	66,578,778	1,154.52
Manufacturing	73	3,377	145,743,335	829.95
Trade, Transportation & Utilities	407	5,950	311,578,129	1,007.04
Wholesale Trade	74	540	25,777,774	918.01
Retail Trade	262	3,066	91,489,461	573.85
Transportation, Warehousing & Utilities	71	2,344	194,310,894	1,594.18
Information	17	107	4,274,326	768.21
Financial Activities	191	867	44,740,950	992.39
Professional & Business Services	255	1,886	91,070,899	928.61
Education & Health Services	368	3,132	133,544,111	819.97
Leisure & Hospitality	150	2,516	43,082,751	329.30
Other Services	104	437	14,181,678	624.08
Local Government	44	2,069	82,442,465	766.28
State Government	15	1,520	67,362,691	852.26

Note: Data may not add due to rounding.

TABLE 6. COUNTY SUMMARY CALENDAR YEAR 2020

North American Industry Classification System - Industry Groups	Average Employing Units	Average Covered Employment	Total Calendar Earnings	Average Weekly Earnings
PRAIRIE COUNTY - TOTAL	250	1,447	\$52,058,442	\$691.86
Natural Resources & Mining	35	170	8,908,175	1,007.71
Construction	12	51	2,972,065	1,120.69
Manufacturing	5	61	1,549,319	488.44
Trade, Transportation & Utilities	60	349	11,495,971	633.46
Wholesale Trade	12	78	4,332,845	1,068.26
Retail Trade	34	218	4,998,609	440.95
Transportation, Warehousing & Utilities	14	53	2,164,517	785.38
Financial Activities	16	54	2,340,789	833.61
Professional & Business Services	14	58	2,555,492	847.31
Education & Health Services	48	254	8,192,805	620.29
Leisure & Hospitality	19	78	1,357,874	334.78
Local Government	15	299	10,068,441	647.57
State Government	7	29	1,134,529	752.34
Other	19	44	1,482,982	648.16
PULASKI COUNTY - TOTAL	14,431	229,386	\$12,370,772,500	\$1,037.11
Natural Resources & Mining	52	624	44,080,721	1,358.50
Construction	940	9,030	522,831,944	1,113.45
Manufacturing	329	12,342	715,000,121	1,114.08
Trade, Transportation & Utilities	3,091	47,500	2,317,238,901	938.15
Wholesale Trade	910	11,421	800,053,928	1,347.14
Retail Trade	1,778	23,483	781,843,343	640.27
Transportation, Warehousing & Utilities	403	12,596	735,341,630	1,122.67
Information	217	2,807	169,650,801	1,162.28
Financial Activities	1,721	17,589	1,449,568,611	1,584.87
Professional & Business Services	2,773	33,117	1,912,428,484	1,110.53
Education & Health Services	2,560	40,432	2,228,228,301	1,059.82
Leisure & Hospitality	1,283	19,158	378,864,784	380.30
Other Services	1,149	6,171	265,914,050	828.67
Local Government	108	14,037	685,851,921	939.62
State Government	208	26,579	1,681,113,861	1,216.34

Note: Data may not add due to rounding.

TABLE 6. COUNTY SUMMARY CALENDAR YEAR 2020

North American Industry Classification System - Industry Groups	Average Employing Units	Average Covered Employment	Total Calendar Earnings	Average Weekly Earnings
RANDOLPH COUNTY - TOTAL	397	5,814	\$206,940,987	\$684.49
Natural Resources & Mining	25	243	12,773,524	1,010.88
Construction	26	77	2,369,981	591.90
Manufacturing	29	1,700	71,862,410	812.92
Trade, Transportation & Utilities	97	919	30,744,325	643.35
Wholesale Trade	14	112	4,681,571	803.84
Retail Trade	57	630	17,172,928	524.20
Transportation, Warehousing & Utilities	26	177	8,889,826	965.87
Information	5	21	960,507	879.59
Financial Activities	34	150	5,769,463	739.67
Professional & Business Services	32	248	7,787,009	603.83
Education & Health Services	66	959	33,848,536	678.76
Leisure & Hospitality	31	406	5,916,687	280.25
Other Services	18	46	1,276,760	533.76
Local Government	24	789	24,201,656	589.88
State Government	10	256	9,430,129	708.39
SAINT FRANCIS COUNTY - TOTAL	652	6,219	\$227,596,909	\$703.79
Natural Resources & Mining	43	179	7,337,744	788.33
Trade, Transportation & Utilities	143	1,666	62,176,245	717.71
Wholesale Trade	29	515	25,473,913	951.23
Retail Trade	93	893	23,850,587	513.62
Transportation, Warehousing & Utilities	21	258	12,851,745	957.94
Information	5	45	1,854,671	792.59
Financial Activities	51	241	8,806,857	702.75
Professional & Business Services	47	182	7,473,580	789.69
Education & Health Services	206	1,338	53,791,342	773.13
Leisure & Hospitality	47	600	9,341,087	299.39
Other Services	23	54	1,257,995	448.00
Local Government	28	749	26,592,229	682.76
State Government	14	369	14,539,443	757.74
Other	45	796	34,425,716	831.70

Note: Data may not add due to rounding.

TABLE 6. COUNTY SUMMARY CALENDAR YEAR 2020

North American Industry Classification System - Industry Groups	Average Employing Units	Average Covered Employment	Total Calendar Earnings	Average Weekly Earnings
SALINE COUNTY - TOTAL	2,145	24,521	\$956,769,044	\$750.35
Natural Resources & Mining	14	60	2,537,860	813.42
Construction	290	2,283	110,911,185	934.26
Manufacturing	79	1,313	69,797,441	1,022.28
Trade, Transportation & Utilities	477	5,607	200,009,988	685.99
Wholesale Trade	113	515	29,862,125	1,115.09
Retail Trade	289	4,467	141,884,617	610.82
Transportation, Warehousing & Utilities	75	625	28,263,246	869.64
Information	19	135	7,422,225	1,057.30
Financial Activities	224	853	46,300,617	1,043.84
Professional & Business Services	296	1,850	88,106,316	915.87
Education & Health Services	341	4,543	187,653,728	794.35
Leisure & Hospitality	202	3,339	57,478,944	331.05
Other Services	156	730	26,266,795	691.96
Local Government	33	3,010	130,607,353	834.45
State Government	14	798	29,676,592	715.17
SCOTT COUNTY - TOTAL	189	2,958	\$96,853,705	\$629.67
Natural Resources & Mining	18	176	7,214,734	788.32
Trade, Transportation & Utilities	37	322	10,020,984	598.48
Wholesale Trade	7	28	930,106	638.81
Retail Trade	24	227	5,604,927	474.83
Transportation, Warehousing & Utilities	6	67	3,485,951	1,000.56
Financial Activities	16	60	2,253,369	722.23
Professional & Business Services	15	119	3,079,328	497.63
Education & Health Services	43	300	13,762,299	882.20
Leisure & Hospitality	19	151	2,091,698	266.39
Local Government	6	480	16,716,926	669.75
State Government	6	31	1,321,018	819.49
Other	29	1,319	40,393,349	588.93

Note: Data may not add due to rounding.

TABLE 6. COUNTY SUMMARY CALENDAR YEAR 2020

North American Industry Classification System - Industry Groups	Average Employing Units	Average Covered Employment	Total Calendar Earnings	Average Weekly Earnings
SEARCY COUNTY - TOTAL	168	1,422	\$41,721,534	\$564.23
Construction	11	7	148,938	409.17
Manufacturing	14	144	4,520,926	603.76
Trade, Transportation & Utilities	34	249	7,049,193	544.42
Wholesale Trade	5	34	1,086,543	614.56
Retail Trade	23	197	5,010,199	489.09
Transportation, Warehousing & Utilities	6	18	952,451	1,017.58
Financial Activities	13	68	2,342,697	662.53
Education & Health Services	39	314	9,878,501	605.00
Leisure & Hospitality	15	137	1,800,066	252.68
Local Government	10	307	8,879,724	556.23
State Government	6	43	1,602,758	716.80
Other	26	153	5,498,731	691.14
SEBASTIAN COUNTY - TOTAL	3,682	60,371	\$2,790,046,331	\$888.75
Natural Resources & Mining	39	281	24,487,742	1,675.87
Construction	261	2,391	108,046,696	869.02
Manufacturing	187	10,724	542,779,589	973.34
Trade, Transportation & Utilities	871	12,542	533,657,570	818.26
Wholesale Trade	220	2,606	145,432,458	1,073.21
Retail Trade	541	7,363	219,456,985	573.18
Transportation, Warehousing & Utilities	110	2,573	168,768,127	1,261.38
Information	39	808	64,055,823	1,524.56
Financial Activities	407	2,318	130,684,145	1,084.19
Professional & Business Services	564	7,364	316,788,902	827.28
Education & Health Services	646	11,375	658,737,115	1,113.67
Leisure & Hospitality	350	5,442	98,388,790	347.68
Other Services	252	1,091	38,728,059	682.65
Local Government	43	4,420	195,510,901	850.64
State Government	23	1,615	78,180,999	930.95

Note: Data may not add due to rounding.

TABLE 6. COUNTY SUMMARY CALENDAR YEAR 2020

North American Industry Classification System - Industry Groups	Average Employing Units	Average Covered Employment	Total Calendar Earnings	Average Weekly Earnings
SEVIER COUNTY - TOTAL	313	4,656	\$164,225,230	\$678.30
Natural Resources & Mining	18	168	8,113,511	928.74
Construction	20	162	8,284,934	983.49
Trade, Transportation & Utilities	82	777	26,050,878	644.76
Wholesale Trade	11	72	3,642,328	972.84
Retail Trade	58	610	17,077,803	538.39
Transportation, Warehousing & Utilities	13	95	5,330,747	1,079.10
Financial Activities	27	195	8,906,556	878.36
Professional & Business Services	26	179	5,860,753	629.65
Education & Health Services	62	429	14,887,998	667.38
Leisure & Hospitality	24	265	3,417,889	248.03
Local Government	13	884	28,876,934	628.20
State Government	8	149	5,389,672	695.62
Other	33	1,448	54,436,105	722.96
SHARP COUNTY - TOTAL	383	3,310	\$110,896,073	\$644.30
Construction	27	108	5,217,737	929.08
Trade, Transportation & Utilities	85	745	24,898,773	642.71
Wholesale Trade	14	37	6,492,934	3,374.71
Retail Trade	62	666	16,112,184	465.24
Transportation, Warehousing & Utilities	9	42	2,293,655	1,050.21
Information	7	20	689,925	663.39
Financial Activities	32	162	8,445,848	1,002.59
Professional & Business Services	38	126	4,733,555	722.46
Education & Health Services	83	818	30,588,313	719.12
Leisure & Hospitality	33	368	5,881,869	307.37
Local Government	24	693	21,524,391	597.30
State Government	7	54	2,019,582	719.22
Other	47	216	6,896,080	613.97

Note: Data may not add due to rounding.

TABLE 6. COUNTY SUMMARY CALENDAR YEAR 2020

North American Industry Classification System - Industry Groups	Average Employing Units	Average Covered Employment	Total Calendar Earnings	Average Weekly Earnings
STONE COUNTY - TOTAL	273	2,414	\$76,277,565	\$607.65
Natural Resources & Mining	4	9	226,455	483.88
Construction	16	32	903,327	542.86
Manufacturing	18	232	6,846,044	567.48
Trade, Transportation & Utilities	66	557	17,495,374	604.04
Wholesale Trade	5	33	1,142,562	665.83
Retail Trade	48	482	14,021,375	559.42
Transportation, Warehousing & Utilities	13	42	2,331,437	1,067.51
Financial Activities	37	122	5,080,246	800.80
Professional & Business Services	14	29	680,349	451.16
Education & Health Services	49	535	21,274,045	764.70
Leisure & Hospitality	30	393	6,078,684	297.45
Local Government	10	363	13,024,515	690.00
State Government	7	96	3,285,735	658.20
Other	22	46	1,382,791	578.09
UNION COUNTY - TOTAL	1,243	16,219	\$856,102,773	\$1,015.08
Natural Resources & Mining	82	344	17,945,678	1,003.22
Construction	77	1,366	81,905,929	1,153.08
Manufacturing	51	2,734	194,326,405	1,366.88
Trade, Transportation & Utilities	296	3,474	150,084,377	830.81
Wholesale Trade	66	443	28,411,435	1,233.35
Retail Trade	174	2,059	57,408,198	536.18
Transportation, Warehousing & Utilities	56	972	64,264,744	1,271.46
Information	8	64	3,046,377	915.38
Financial Activities	95	570	29,412,398	992.32
Professional & Business Services	123	1,783	181,647,550	1,959.18
Education & Health Services	278	2,034	83,059,826	785.30
Leisure & Hospitality	96	1,290	22,366,126	333.42
Other Services	89	384	11,782,887	590.09
Local Government	32	1,680	60,088,849	687.83
State Government	16	496	20,436,371	792.35

Note: Data may not add due to rounding.

TABLE 6. COUNTY SUMMARY CALENDAR YEAR 2020

North American Industry Classification System - Industry Groups	Average Employing Units	Average Covered Employment	Total Calendar Earnings	Average Weekly Earnings
VAN BUREN COUNTY - TOTAL	334	3,297	122,405,654	\$713.97
Natural Resources & Mining	9	82	7,820,723	1,834.13
Construction	36	112	3,768,629	647.09
Trade, Transportation & Utilities	91	849	34,272,675	776.31
Wholesale Trade	11	42	2,011,810	921.16
Retail Trade	51	585	16,415,522	539.63
Transportation, Warehousing & Utilities	29	222	15,845,343	1,372.60
Information	7	34	1,487,567	841.38
Financial Activities	36	151	7,170,427	913.20
Professional & Business Services	28	113	4,768,100	811.45
Education & Health Services	57	703	27,435,568	750.51
Leisure & Hospitality	24	247	4,259,545	331.64
Local Government	11	590	18,989,483	618.95
State Government	6	43	1,700,468	760.50
Other	29	373	10,732,469	553.33
WASHINGTON COUNTY - TOTAL	6,357	105,265	\$5,250,579,134	\$959.22
Natural Resources & Mining	38	314	18,426,180	1,128.50
Construction	610	6,229	351,255,624	1,084.43
Manufacturing	229	13,736	677,524,283	948.55
Trade, Transportation & Utilities	1,364	22,222	1,023,260,611	885.52
Wholesale Trade	382	3,579	281,666,224	1,513.46
Retail Trade	783	12,162	395,963,944	626.11
Transportation, Warehousing & Utilities	199	6,481	345,630,443	1,025.57
Information	88	834	49,287,854	1,136.50
Financial Activities	741	3,854	233,537,688	1,165.31
Professional & Business Services	1,187	13,123	970,820,967	1,422.67
Education & Health Services	920	15,866	845,445,680	1,024.74
Leisure & Hospitality	704	11,146	211,413,136	364.76
Other Services	394	2,100	87,503,739	801.32
Local Government	60	8,294	388,241,853	900.19
State Government	22	7,547	393,861,519	1,003.61

Note: Data may not add due to rounding.

TABLE 6. COUNTY SUMMARY CALENDAR YEAR 2020

North American Industry Classification System - Industry Groups	Average Employing Units	Average Covered Employment	Total Calendar Earnings	Average Weekly Earnings
WHITE COUNTY - TOTAL	1,799	23,488	\$947,438,831	\$775.71
Natural Resources & Mining	47	365	21,321,168	1,123.35
Construction	165	1,160	57,327,291	950.39
Manufacturing	59	2,249	106,474,230	910.44
Trade, Transportation & Utilities	476	6,232	247,130,547	762.60
Wholesale Trade	82	585	29,347,336	964.74
Retail Trade	308	3,476	104,344,453	577.28
Transportation, Warehousing & Utilities	86	2,171	113,438,758	1,004.84
Information	21	98	3,747,121	735.31
Financial Activities	185	929	47,306,271	979.26
Professional & Business Services	181	1,107	39,884,834	692.88
Education & Health Services	326	5,401	251,256,234	894.62
Leisure & Hospitality	164	2,485	39,957,120	309.22
Other Services	114	477	17,997,571	725.59
Local Government	46	2,520	96,418,651	735.80
State Government	15	465	18,617,793	769.97
WOODRUFF COUNTY - TOTAL	193	1,724	\$66,761,411	\$744.71
Natural Resources & Mining	34	176	6,408,974	700.28
Construction	11	32	1,127,433	677.54
Manufacturing	5	188	8,713,936	891.36
Trade, Transportation & Utilities	47	358	14,631,605	785.97
Wholesale Trade	13	144	7,331,046	979.04
Retail Trade	25	148	3,633,125	472.08
Transportation, Warehousing & Utilities	9	66	3,667,434	1,068.60
Financial Activities	11	44	1,628,711	711.85
Education & Health Services	44	239	9,073,234	730.06
Leisure & Hospitality	12	97	1,571,486	311.56
Local Government	9	379	13,503,102	685.16
State Government	5	32	1,307,403	785.70
Other	15	179	8,795,527	944.94

Note: Data may not add due to rounding.

TABLE 6. COUNTY SUMMARY CALENDAR YEAR 2020

North American Industry Classification System - Industry Groups	Average Employing Units	Average Covered Employment	Total Calendar Earnings	Average Weekly Earnings
YELL COUNTY - TOTAL	417	6,339	\$222,251,518	\$674.25
Natural Resources & Mining	26	247	12,004,112	934.61
Construction	33	231	9,503,970	791.21
Manufacturing	22	2,403	83,968,724	671.99
Trade, Transportation & Utilities	87	771	24,099,234	601.10
Wholesale Trade	15	62	1,570,651	487.17
Retail Trade	49	535	12,869,623	462.60
Transportation, Warehousing & Utilities	23	174	9,658,960	1,067.52
Financial Activities	31	151	8,018,283	1,021.18
Professional & Business Services	38	321	10,814,117	647.86
Education & Health Services	102	689	21,712,910	606.03
Leisure & Hospitality	25	276	4,101,659	285.79
Local Government	23	1,057	39,997,414	727.70
State Government	10	68	2,501,194	707.35
Other	20	125	5,529,901	850.75
STATEWIDE COUNTY - TOTAL	12,299	34,322	\$2,372,899,901	\$1,329.55
Natural Resources & Mining	116	252	17,654,504	1,347.26
Construction	922	3,775	235,926,872	1,201.87
Manufacturing	88	204	22,637,453	2,134.00
Trade, Transportation & Utilities	3,668	7,831	801,543,253	1,968.37
Wholesale Trade	3,013	6,160	696,833,853	2,175.43
Retail Trade	260	515	38,788,120	1,448.40
Transportation, Warehousing & Utilities	395	1,156	65,921,280	1,096.64
Information	616	1,158	112,314,144	1,865.19
Financial Activities	876	2,321	181,687,689	1,505.38
Professional & Business Services	4,768	14,046	767,885,421	1,051.33
Education & Health Services	693	2,789	136,123,180	938.60
Leisure & Hospitality	127	443	11,259,328	488.77
Other Services	410	802	51,853,598	1,243.37
Local Government	0	0	28,890	0.00
State Government	15	701	33,985,569	932.34

Note: Statewide classification includes employment and payroll data for employers that have not provided a physical location for each employing unit. This section also includes employers without a physical location in Arkansas.

TABLE 7. FEDERAL GOVERNMENT EMPLOYMENT AND EARNINGS IN ARKANSAS

North American Industry Classification System - Industry Groups	Average Employing Units	Average Covered Employment	Total Calendar Earnings	Average Weekly Earnings
TOTAL	1,196	21,224	\$1,518,130,277	\$1,375.56
Trade, Transportation & Utilities	587	5,551	305,294,488	1,057.66
Information	2	37	2,567,252	1,334.33
Financial Activities	14	105	9,142,846	1,674.51
Professional & Business Services	32	849	65,996,919	1,494.90
Education & Health Services	19	5,357	464,510,426	1,667.52
Leisure & Hospitality	23	262	13,016,315	955.40
Other Services	1	1	37,963	730.06
Public Administration	518	9,062	657,564,068	1,395.44

Note: Data may not add due to rounding.

TABLE 8. LOCAL WORKFORCE DEVELOPMENT AREA SUMMARY CALENDAR YEAR 2020

North American Industry Classification System - Industry Groups	Average Employing Units	Average Covered Employment	Total Calendar Earnings	Average Weekly Earnings
CENTRAL WORKFORCE DEVELOPMENT AREA	6,954	81,020	\$3,344,622,509	\$793.87
Natural Resources & Mining	208	1,095	56,719,211	996.12
Construction	821	6,213	305,882,842	946.78
Trade, Transportation & Utilities	1,523	16,924	629,602,504	715.42
Wholesale Trade	340	1,885	140,312,285	1,431.47
Retail Trade	928	13,092	391,019,721	574.37
Transportation, Warehousing & Utilities	255	1,947	98,270,498	970.63
Information	67	1,863	173,293,603	1,788.82
Financial Activities	748	3,167	176,454,089	1,071.47
Professional & Business Services	943	6,005	285,467,837	914.20
Education & Health Services	1,127	14,449	597,357,810	795.05
Leisure & Hospitality	647	10,135	174,145,149	330.43
Local Government	136	9,272	391,752,677	812.52
State Government	60	4,152	179,299,486	830.46
Other	674	7,745	374,647,301	930.25

*Note: Pulaski County is not included in the Central Workforce Investment Area. Please refer to Page 51 for information on Pulaski County.
Central Workforce Investment Area includes these counties: Faulkner, Lonoke, Monroe, Prairie, and Saline.

EASTERN WORKFORCE DEVELOPMENT AREA	3,274	32,631	\$1,236,602,936	\$728.78
Natural Resources & Mining	246	1,186	44,251,965	717.54
Manufacturing	72	3,221	149,353,197	891.70
Trade, Transportation & Utilities	737	8,481	340,209,210	771.43
Wholesale Trade	143	1,857	98,266,750	1,017.63
Retail Trade	403	4,323	118,918,223	529.01
Transportation, Warehousing & Utilities	191	2,301	123,024,237	1,028.18
Financial Activities	257	1,159	54,635,429	906.54
Professional & Business Services	248	1,582	65,869,212	800.71
Education & Health Services	954	5,685	214,170,485	724.48
Leisure & Hospitality	271	3,675	68,768,246	359.85
Local Government	127	4,309	165,502,256	738.63
State Government	56	1,751	68,662,686	754.10
Other	306	1,582	65,180,250	792.33

Eastern Workforce Investment Area includes these counties: Crittenden, Cross, Lee, Phillips, and Saint Francis.

TABLE 8. LOCAL WORKFORCE DEVELOPMENT AREA SUMMARY CALENDAR YEAR 2020

North American Industry Classification System - Industry Groups	Average Employing Units	Average Covered Employment	Total Calendar Earnings	Average Weekly Earnings
NORTH CENTRAL WORKFORCE DEVELOPMENT AREA	5,424	66,106	\$2,585,023,030	\$752.00
Construction	434	2,817	137,975,888	941.92
Manufacturing	214	8,782	402,297,721	880.95
Trade, Transportation & Utilities	1,382	14,647	563,591,633	739.97
Retail Trade	907	9,481	276,480,378	560.80
Other Trade, Transportation & Utilities	475	5,166	287,111,255	1,068.79
Financial Activities	533	2,611	131,940,407	971.78
Education & Health Services	956	14,089	610,639,233	833.49
Leisure & Hospitality	495	6,128	100,067,913	314.03
Local Government	223	8,173	287,906,634	677.43
State Government	93	2,606	99,535,126	734.51
Other	1,094	6,253	251,068,475	772.15

North Central Workforce Investment Area includes these counties: Cleburne, Fulton, Independence, Izard, Jackson, Sharp, Stone, Van Buren, White, and Woodruff.

NORTHEAST WORKFORCE DEVELOPMENT AREA	6,454	99,054	\$4,374,753,576	\$849.33
Natural Resources & Mining	443	2,077	90,680,297	839.60
Construction	482	3,738	191,974,295	987.64
Manufacturing	302	20,834	1,221,717,201	1,127.70
Trade, Transportation & Utilities	1,658	19,118	751,125,744	755.56
Wholesale Trade	347	3,795	222,009,317	1,125.01
Retail Trade	976	11,878	348,199,346	563.74
Transportation, Warehousing & Utilities	335	3,445	180,917,081	1,009.92
Financial Activities	531	3,111	162,758,797	1,006.10
Professional & Business Services	659	7,062	275,564,625	750.40
Education & Health Services	1,060	17,005	825,079,416	933.07
Leisure & Hospitality	577	8,707	146,363,302	323.27
Local Government	215	10,979	428,554,983	750.66
State Government	89	4,129	187,480,945	873.19
Other	438	2,294	93,453,971	783.43

Northeast Workforce Investment Area includes these counties: Clay, Craighead, Greene, Lawrence, Mississippi, Poinsett, and Randolph.

TABLE 8. LOCAL WORKFORCE DEVELOPMENT AREA SUMMARY CALENDAR YEAR 2020

North American Industry Classification System - Industry Groups	Average Employing Units	Average Covered Employment	Total Calendar Earnings	Average Weekly Earnings
NORTHWEST WORKFORCE DEVELOPMENT AREA	17,168	275,604	\$15,428,611,213	\$1,076.56
Natural Resources & Mining	143	1,600	99,002,510	1,189.93
Trade, Transportation & Utilities	3,938	61,305	3,254,651,150	1,020.95
Retail Trade	2,151	31,043	981,469,073	608.01
Other Trade, Transportation & Utilities	1,787	30,262	2,273,182,077	1,444.55
Information	244	2,397	167,950,708	1,347.44
Professional & Business Services	2,981	49,560	4,922,937,013	1,910.25
Education & Health Services	2,450	35,516	1,702,916,993	922.07
Leisure & Hospitality	1,842	27,563	537,239,064	374.83
Other Services	1,077	5,191	198,851,131	736.67
Local Government	310	22,598	1,007,785,616	857.62
State Government	103	9,825	483,531,584	946.43
Other	4,080	60,049	3,053,745,444	977.97

Northwest Workforce Investment Area includes these counties: Baxter, Benton, Boone, Carroll, Madison, Marion, Newton, Searcy, and Washington.

SOUTHEAST WORKFORCE DEVELOPMENT AREA	6,230	65,241	\$2,700,216,175	\$795.93
Natural Resources & Mining	443	2,229	97,687,457	842.80
Construction	341	2,067	100,091,813	931.23
Manufacturing	209	13,772	751,076,752	1,048.78
Trade, Transportation & Utilities	1,244	11,631	436,377,873	721.51
Retail Trade	738	7,294	201,262,234	530.63
Other Trade, Transportation & Utilities	506	4,337	235,115,639	1,042.53
Financial Activities	448	2,465	126,264,675	985.06
Education & Health Services	1,972	9,996	387,661,833	745.80
Other Services	317	1,042	35,283,640	651.18
Local Government	209	8,011	298,102,160	715.61
State Government	125	5,707	236,297,347	796.25
Other	922	8,321	231,372,625	534.73

Southeast Workforce Investment Area includes these counties: Arkansas, Ashley, Bradley, Chicot, Cleveland, Desha, Drew, Grant, Jefferson, and Lincoln.

TABLE 8. LOCAL WORKFORCE DEVELOPMENT AREA SUMMARY CALENDAR YEAR 2020

North American Industry Classification System - Industry Groups	Average Employing Units	Average Covered Employment	Total Calendar Earnings	Average Weekly Earnings
SOUTHWEST WORKFORCE DEVELOPMENT AREA	5,595	73,124	\$3,227,976,127	\$848.92
Natural Resources & Mining	331	2,133	105,093,510	947.51
Trade, Transportation & Utilities	1,317	14,106	544,566,395	742.41
Wholesale Trade	237	1,774	95,130,796	1,031.25
Retail Trade	778	8,481	228,287,108	517.64
Transportation, Warehousing & Utilities	302	3,851	221,148,491	1,104.35
Information	46	326	19,083,121	1,125.72
Financial Activities	458	2,432	117,441,347	928.65
Professional & Business Services	438	4,414	270,832,120	1,179.95
Education & Health Services	1,263	9,114	334,273,815	705.33
Leisure & Hospitality	437	5,419	88,933,034	315.60
Other Services	336	1,321	40,669,464	592.06
Local Government	263	9,031	328,072,735	698.60
State Government	131	3,367	135,339,137	773.00
Other	575	21,461	1,243,671,449	1,114.43

Southwest Workforce Investment Area includes these counties: Calhoun, Columbia, Dallas, Hempstead, Howard, Lafayette, Little River, Miller, Nevada, Ouachita, Sevier, and Union

WEST CENTRAL WORKFORCE DEVELOPMENT AREA	8,122	101,262	\$4,051,005,616	\$769.33
Construction	747	4,432	209,569,012	909.34
Trade, Transportation & Utilities	1,791	21,335	873,757,755	787.58
Wholesale Trade	313	1,831	98,503,644	1,034.57
Retail Trade	1,190	13,966	416,093,429	572.95
Transportation, Warehousing & Utilities	288	5,538	359,160,682	1,247.19
Financial Activities	822	3,689	180,796,483	942.49
Professional & Business Services	918	7,588	312,865,642	792.92
Education & Health Services	1,510	16,647	745,521,132	861.23
Leisure & Hospitality	824	12,211	232,424,300	366.04
Local Government	234	10,943	441,188,312	775.33
State Government	113	4,816	190,750,630	761.69
Other	1,163	19,601	864,132,350	847.81

West Central Workforce Investment Area includes these counties: Clark, Conway, Garland, Hot Spring, Johnson, Montgomery, Perry, Pike, Pope, and Yell

TABLE 8. LOCAL WORKFORCE DEVELOPMENT AREA SUMMARY CALENDAR YEAR 2020

North American Industry Classification System - Industry Groups	Average Employing Units	Average Covered Employment	Total Calendar Earnings	Average Weekly Earnings
WESTERN WORKFORCE DEVELOPMENT AREA	6,468	97,630	\$4,177,942,715	\$822.95
Natural Resources & Mining	143	1,105	65,385,032	1,137.92
Trade, Transportation & Utilities	1,538	21,596	865,872,900	771.04
Wholesale Trade	337	3,537	193,448,220	1,051.78
Retail Trade	918	11,817	340,998,474	554.93
Transportation, Warehousing & Utilities	283	6,242	331,426,206	1,021.08
Financial Activities	667	3,359	176,332,976	1,009.53
Professional & Business Services	852	9,544	403,655,553	813.35
Education & Health Services	1,131	15,461	809,390,341	1,006.74
Leisure & Hospitality	566	8,195	141,320,780	331.63
Local Government	166	9,020	365,299,318	778.82
State Government	71	2,678	113,534,551	815.29
Other	1,334	26,672	1,237,151,264	892.00

Western Workforce Investment Area includes these counties: Crawford, Franklin, Logan, Polk, Scott, and Sebastian