



Arkansas Covered Employment & Earnings Second Quarter 2020



Arkansas Division of
Workforce Services

**COVERED EMPLOYMENT AND EARNINGS
STATE OF ARKANSAS
SECOND QUARTER 2020**

**ASA HUTCHINSON, GOVERNOR
STATE OF ARKANSAS**

**CHARISSE CHILDERS, DIRECTOR
DIVISION OF WORKFORCE SERVICES**

**PUBLISHED BY
LABOR MARKET INFORMATION
BUREAU OF LABOR STATISTICS PROGRAMS
POST OFFICE BOX 2981
LITTLE ROCK, ARKANSAS 72203-2981
SUSAN PRICE, BLS PROGRAMS MANAGER
TELEPHONE (501) 682-3103**

STATE OF ARKANSAS WEBPAGE: <http://www.arkansas.gov>

DIVISION OF WORKFORCE SERVICES WEBPAGE: <http://www.dws.arkansas.gov/>

WEBPAGE FOR LABOR MARKET INFORMATION: <http://www.discover.arkansas.gov>

RELEASED: NOVEMBER 2020

TABLE OF CONTENTS

DESCRIPTION OF DATA	PAGE
Description and Classification of Data	1
Definition of Covered Employment and Earnings	2
Significant Developments During Second Quarter 2020	3

LIST OF GRAPHS AND TABLES

Graph 1	Total Covered Employment for Selected Years, Arkansas	7
Graph 2	Total Covered Earnings, by Calendar Quarter for Selected Years, Arkansas	8
Table 1	Quarterly Comparison of Covered Employment and Wages, by Industry	5
Table 2	Total Covered Employment in Arkansas, 2013 – 2020	6
Table 3	Total Covered Earnings, 2013 – 2020	9
Table 4	Total Taxable Earnings, 2013 – 2020	10
Table 5	State Summary – Employment and Total Earnings, by Industry, Second Quarter 2020	11
Table 6	County Summary – Employment and Total Earnings, by Industry, Second Quarter 2020	22
Table 7	Federal Government Employment and Total Earnings in Arkansas, Second Quarter 2020	60
Table 8	Local Workforce Development Area – Employment and Total Earnings, by Industry, Second Quarter 2020	61

EMPLOYMENT AND EARNINGS
UNDER THE ARKANSAS EMPLOYMENT SECURITY LAW
SECOND QUARTER 2020

DESCRIPTION AND CLASSIFICATION OF DATA

This publication contains covered employment and payroll data by industry and county for the Second Quarter 2020 and a record for total covered employment by month, quarterly payroll data, average weekly earnings, and total taxable earnings for 2013 through 2020. These data are compiled from quarterly contributions and wage reports submitted by employers subject to the Arkansas Employment Security Law.

Employment data have been tabulated for each month of the quarter by industry under the **North American Industry Classification System** (NAICS) by state, county, and workforce area. Payroll data represent the total wages paid during the quarter and are classified by industry for the state and by publishable industry groups for each county and workforce area.

Due to industry classification revisions, previously published data will not always be comparable with current data. For this reason, comparisons should not be made between the same industries under different revisions. For more information, visit the NAICS home page at <http://www.census.gov/naics>.

Industry Classification Revisions

- SIC (Standard Industrial Classification) 1987 to NAICS 2002
- NAICS 2002 to NAICS 2007
- NAICS 2007 to NAICS 2012
- NAICS 2012 to NAICS 2018

The tabulation of this data is a joint effort in conjunction with the United States Bureau of Labor Statistics. Data included in this publication are subject to revisions. Revisions are typically reflected in the Annual Covered Employment and Earnings publication.

DEFINITION OF COVERED EMPLOYMENT AND EARNINGS

Covered Employment is the total number of workers employed by establishments subject to the Arkansas Employment Security Law that worked or received pay for the payroll period including the 12th of the month. Earnings include all wages paid to any covered employee by their employer including salaries, bonuses, commissions, fees, fringe benefits, sick pay made directly to employees or dependents, deferred compensation, and reported tips. These wages include both taxable and nontaxable wages. Only the first \$7,000 paid to each worker by an employer in the calendar year is taxable under the Arkansas Employment Security Law.

An Arkansas state unemployment insurance account is required of any entity meeting the definition of an employer. As described by Arkansas Division of Workforce Services Law, the definition of an employer includes, but is not limited to, a sole proprietorship, partnership, corporation, associations, trust, estate, and receiver or trustee in bankruptcy. The entity must employ one or more individuals for ten or more days in a calendar year, whether or not the days are consecutive.

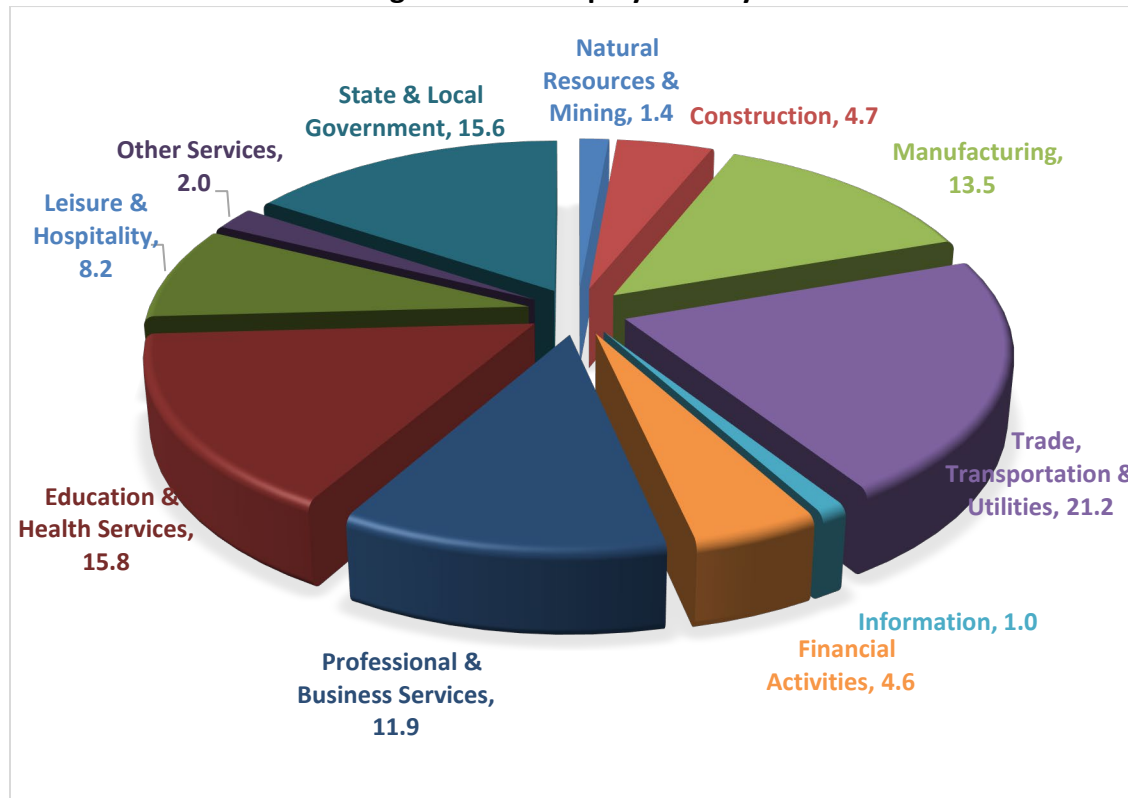
Currently excluded from coverage is employment covered by the Railroad Unemployment Insurance Act, some domestic service workers, employees of small agricultural establishments, self-employed workers, unpaid family workers, insurance and real estate agents paid only on a commission basis, and employees of churches and religious organizations except separately incorporated schools.

Civilian federal workers are covered by Unemployment Compensation for Federal Employees (UCFE).

SIGNIFICANT DEVELOPMENTS DURING SECOND QUARTER 2020

AVERAGE EMPLOYMENT CHANGES

Covered employment averaged 1,116,132 during the Second Quarter 2020 (refer to Table 1), a decrease of 82,524 (-6.9%) from the previous quarter and a loss of 88,172 (-7.3%) from the average recorded one year ago. The over-the-year comparison is more significant when used as an economic indicator and allows for seasonal factors that appear when comparing over-the-quarter data to be disregarded.

Average Covered Employment by NAICS**EMPLOYMENT CHANGES FROM FIRST QUARTER 2020**

Eight major industry sectors reported losses. Large declines occurred in Leisure & Hospitality (-27,496), Professional & Business Services (-14,664), Education & Health Services (-13,197), Trade, Transportation & Utilities (-10,565), Manufacturing (-9,637), State & Local Government (-5,284) and Other Services (-2,372). Small increases occurred in three major industry sectors.

EMPLOYMENT CHANGES FROM SECOND QUARTER 2019 (QUARTER YEAR AGO COMPARISON)

Over-the-year losses were recorded in nine major industry groups (refer to Table 1). Significant declines occurred in Leisure & Hospitality (-30,563), Professional & Business Services (-13,277), Manufacturing (-11,315), Education & Health Services (-11,183), Trade, Transportation, & Utilities (-11,101), State & Local Government (-7,029) and Other Services (-3,046). Two major industry sectors reported small gains.

COVERED WAGES

Wages paid to covered workers totaled \$13,256,539,684 for the Second Quarter 2020 (refer to Table 1), for an average weekly wage of \$913.63 (refer to Table 5). Benton County workers recorded the highest average weekly wage (\$1,326.29), and employees in Searcy County reported the lowest (\$554.26) (refer to Table 6). Professional & Business Services recorded the highest average weekly wage for the State of Arkansas (\$1,316.29). The Leisure & Hospitality sector recorded the lowest (\$345.02) (refer to Table 5).

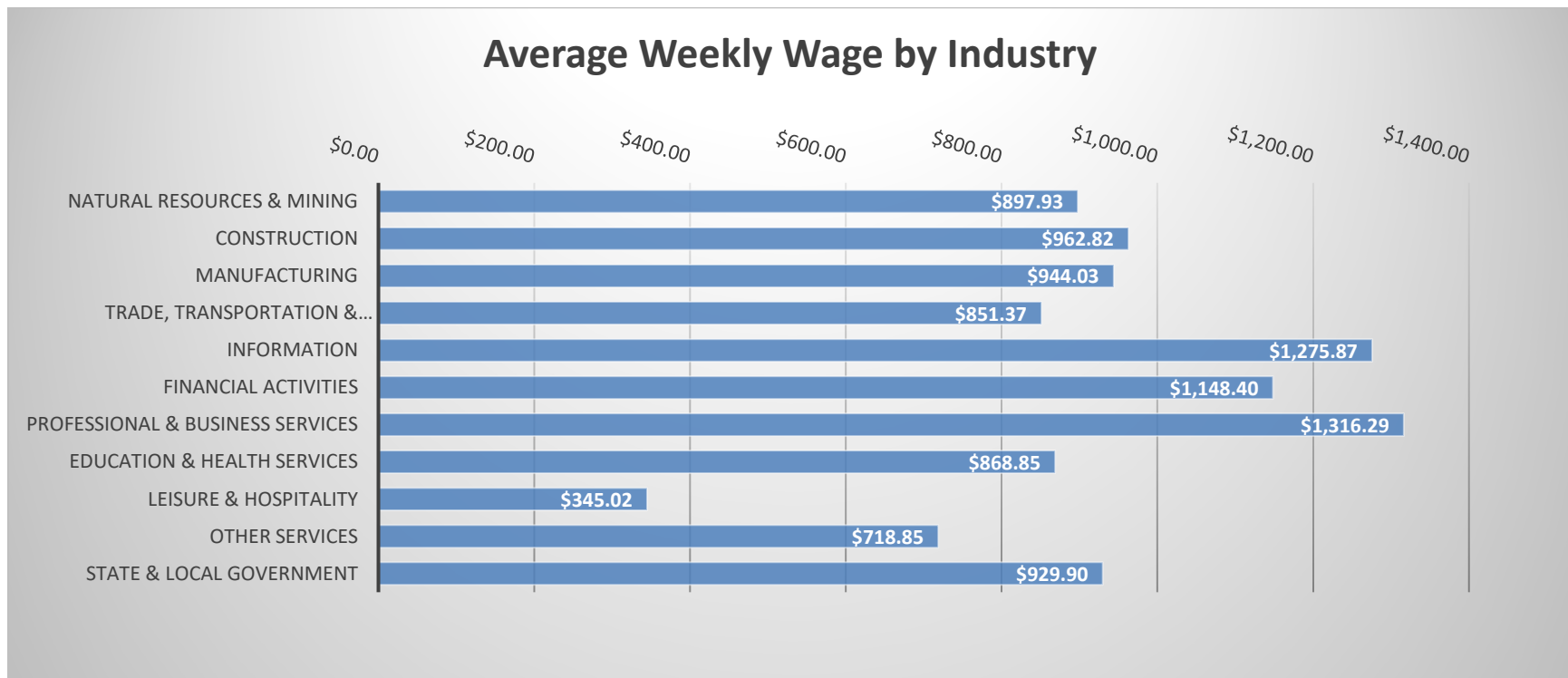


TABLE 1. QUARTERLY COMPARISON OF COVERED EMPLOYMENT AND WAGES, BY INDUSTRY

North American Industry Classification System - Industry Groups	Number of Employing Units	Monthly Employment Average	Percent of Total	Net Change From:		Total Wages Paid Apr - Jun 2020	Percent of Total
				Jan - Mar 2020	Apr - Jun 2019		
TOTAL	91,999	1,116,132	100	-82,524	-88,172	\$13,256,539,684	100
Natural Resources & Mining	2,555	16,015	1.4	297	-476	186,939,669	1.4
Agriculture, Forestry, Fishing & Hunting	2,125	12,529	1.1	399	-145	133,799,269	1.0
Mining	430	3,485	0.3	-102	-332	53,140,400	0.4
Construction	7,247	52,689	4.7	500	54	659,494,829	5.0
Manufacturing	2,953	151,004	13.5	-9,637	-11,315	1,853,174,331	14.0
Trade, Transportation & Utilities	21,819	236,498	21.2	-10,565	-11,101	2,617,514,879	19.7
Wholesale Trade	7,327	45,910	4.1	-1,384	-1,825	791,946,981	6.0
Retail Trade	10,986	129,313	11.6	-6,019	-6,691	983,936,507	7.4
Transportation & Warehousing	3,094	53,395	4.8	-3,162	-2,661	662,815,118	5.0
Utilities	412	7,880	0.7	-1	76	178,816,273	1.3
Information	1,474	11,262	1.0	449	153	186,795,513	1.4
Financial Activities	8,847	51,526	4.6	-556	-389	769,234,419	5.8
Finance & Insurance	5,184	38,239	3.4	-141	316	634,589,905	4.8
Real Estate & Rental & Leasing	3,663	13,287	1.2	-415	-706	134,644,514	1.0
Professional & Business Services	15,394	132,360	11.9	-14,664	-13,277	2,264,903,669	17.1
Professional & Technical Services	9,712	41,953	3.8	-3,472	-2,871	653,095,938	4.9
Management of Companies & Enterprises	540	33,437	3.0	-1,048	108	1,116,836,003	8.4
Administrative & Waste Services	5,142	56,969	5.1	-10,144	-10,515	494,971,728	3.7
Education & Health Services	15,729	175,885	15.8	-13,197	-11,183	1,986,625,156	15.0
Educational Services	972	11,041	1.0	-1,598	-960	116,416,612	0.9
Health Care & Social Assistance	14,757	164,845	14.8	-11,598	-10,222	1,870,208,544	14.1
Leisure & Hospitality	7,481	91,896	8.2	-27,496	-30,563	412,183,511	3.1
Arts, Entertainment & Recreation	1,076	8,973	0.8	-2,604	-3,768	52,017,036	0.4
Accommodation & Food Services	6,405	82,923	7.4	-24,892	-26,795	360,166,475	2.7
Other Services	5,448	22,510	2.0	-2,372	-3,046	210,356,974	1.6
State & Local Government	3,052	174,487	15.6	-5,284	-7,029	2,109,316,734	15.9
Local Government	1,988	109,862	9.8	-5,105	-4,300	1,305,965,108	9.9
State Government	1,064	64,626	5.8	-178	-2,728	803,351,626	6.1
Nonclassifiable Establishments	0	0	0.0	0	0	0	0.0

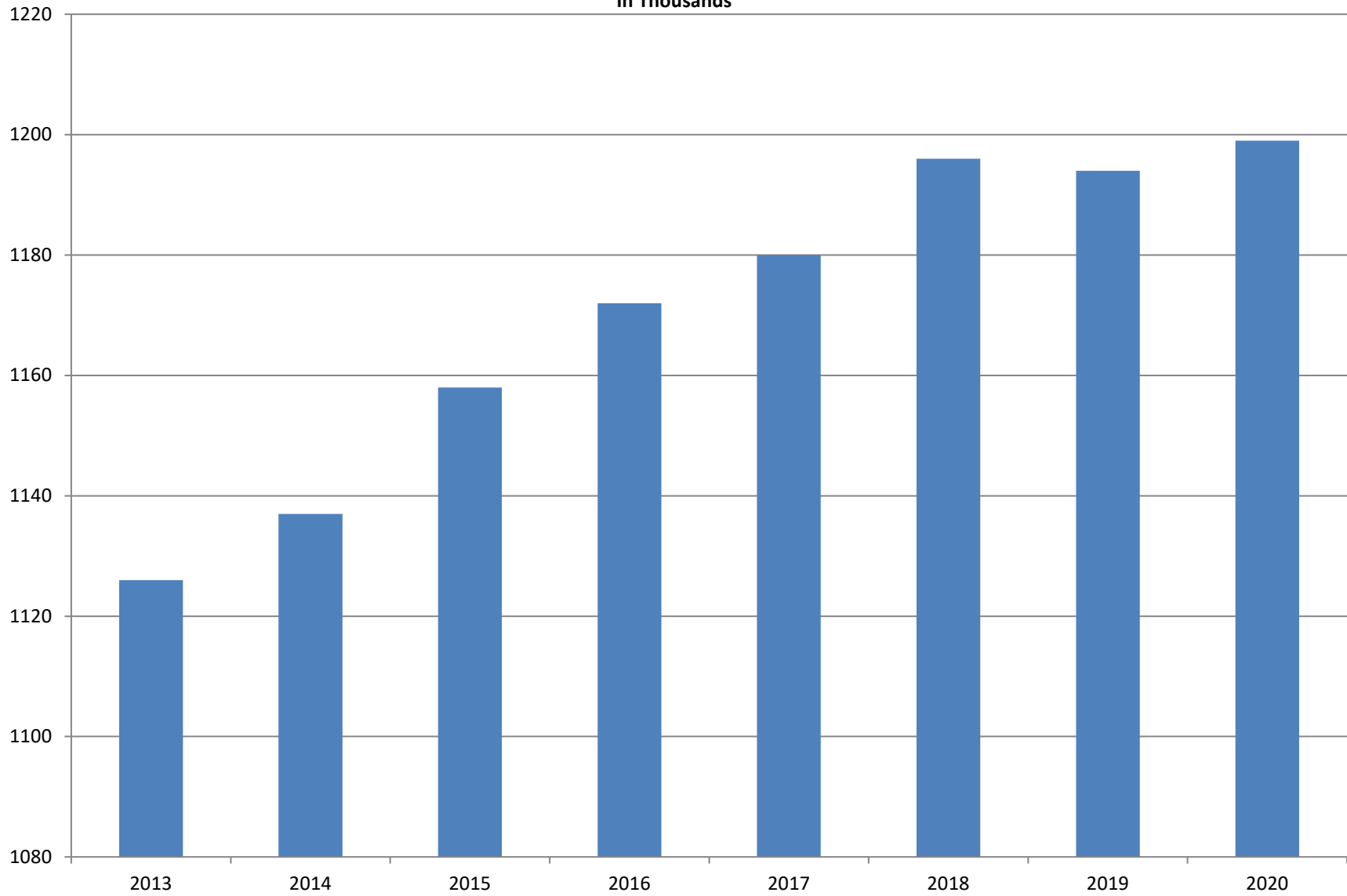
Note: Items do not necessarily add to total because of rounding. Because of industry code changes between years, substantial employment and wage shifts among industries are anticipated.

TABLE 2. TOTAL COVERED EMPLOYMENT IN ARKANSAS

PERIOD	2013	2014	2015	2016	2017	2018	2019	2020
AVERAGE	1,125,890	1,137,486	1,157,634	1,171,503	1,180,337	1,195,781	1,194,322	1,198,656
January	1,112,991	1,114,412	1,135,577	1,152,434	1,161,239	1,173,537	1,186,848	1,195,722
February	1,121,492	1,122,905	1,144,902	1,162,294	1,172,290	1,183,185	1,194,355	1,200,543
March	1,129,100	1,132,106	1,146,413	1,170,837	1,179,686	1,190,199	1,198,481	1,199,702
April	1,134,734	1,140,788	1,158,606	1,178,630	1,185,212	1,194,816	1,204,176	
May	1,138,383	1,149,046	1,167,657	1,181,644	1,189,900	1,201,113	1,206,476	
June	1,130,402	1,144,876	1,164,607	1,177,506	1,186,326	1,195,468	1,202,260	
July	1,083,849	1,096,675	1,119,390	1,132,361	1,137,883	1,168,432	1,155,337	
August	1,109,759	1,125,162	1,148,502	1,160,743	1,168,802	1,200,284	1,185,213	
September	1,135,673	1,150,545	1,173,776	1,185,510	1,193,845	1,222,012	1,202,177	
October	1,138,312	1,153,684	1,173,953	1,185,022	1,194,194	1,205,161	1,209,366	
November	1,141,035	1,158,579	1,177,717	1,186,046	1,197,650	1,208,638	1,194,675	
December	1,134,955	1,161,056	1,180,513	1,185,009	1,197,013	1,206,531	1,192,501	

AVERAGE TOTAL COVERED EMPLOYMENT

In Thousands



TOTAL COVERED EARNINGS BY CALENDAR YEAR

In Thousands

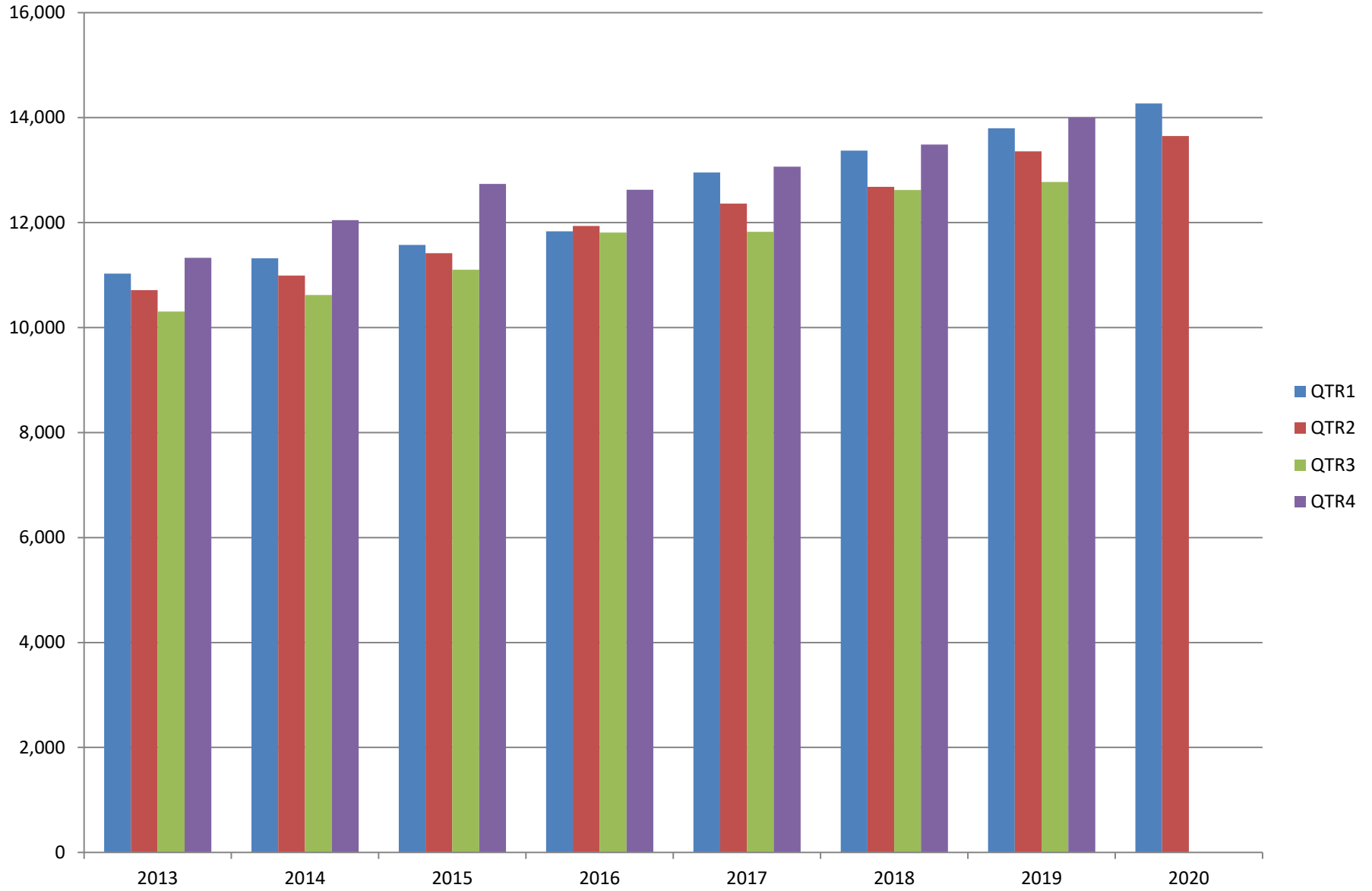


TABLE 3. TOTAL COVERED EARNINGS 2013 - 2020

PERIOD	2013	2014	2015	2016
TOTAL	\$43,371,086,461	\$44,980,520,034	\$46,836,352,793	\$48,207,277,530
January - March	11,027,184,315	11,321,422,241	11,575,046,688	11,836,255,664
April - June	10,711,027,503	10,991,760,061	11,419,363,330	11,935,722,186
July - September	10,304,451,772	10,619,889,280	11,104,443,452	11,809,460,297
October - December	11,328,422,871	12,047,448,452	12,737,499,323	12,625,839,383
Average Weekly Earnings	\$740.80	\$760.46	\$778.05	\$791.34

PERIOD	2017	2018	2019	2020
TOTAL	\$50,207,202,141	\$52,159,789,393	\$53,931,077,907	\$27,919,606,636
January - March	12,955,088,347	13,372,730,974	13,795,046,820	14,268,302,306
April - June	12,363,027,711	12,682,491,819	13,356,848,831	13,651,304,330
July - September	11,823,324,966	12,619,347,460	12,776,218,481	
October - December	13,065,761,117	13,485,219,140	14,002,963,775	
Average Weekly Earnings	\$818.01	\$838.84	\$868.39	\$895.86

TABLE 4. TOTAL TAXABLE EARNINGS, 2013 - 2020

PERIOD	2013	2014	2015	2016
TOTAL	11,644,747,978	11,919,662,224	12,258,632,610	12,511,938,047
January - March	6,184,735,653	6,288,682,396	6,378,966,662	6,595,351,454
April - June	2,805,431,293	2,831,013,392	2,915,293,283	3,003,077,908
July - September	1,506,497,129	1,552,243,963	1,640,978,599	1,651,582,584
October - December	1,148,083,903	1,247,722,473	1,323,394,066	1,261,926,101

PERIOD	2017	2018	2019	2020
TOTAL	12,744,039,136	11,335,932,409	11,498,854,755	6,762,364,458
January - March	6,958,706,950	6,577,871,657	6,737,833,125	5,589,526,770
April - June	2,908,226,426	2,278,450,975	2,283,514,220	1,172,837,688
July - September	1,576,968,648	1,328,868,479	1,327,818,133	
October - December	1,300,137,112	1,150,741,298	1,149,689,277	

TABLE 5. STATEWIDE SUMMARY

North American Industry Classification System - Industry Groups		Number of Employing Units	Employment			Total Earnings Apr - Jun 2020	Average Weekly Earnings
			Apr	May	Jun		
TOTAL, ALL INDUSTRIES		91,999	1,090,183	1,120,448	1,137,765	\$13,256,539,684	\$913.63
NATURAL RESOURCES & MINING		2,555	15,811	16,090	16,143	\$186,939,669	\$897.93
11	AGRICULTURE, FORESTRY, FISHING & HUNTING	2,125	12,305	12,605	12,678	\$133,799,269	\$821.45
111	CROP PRODUCTION	948	3,964	4,098	4,137	\$34,602,000	\$654.57
1111	Oilseed & Grain Farming	699	2,678	2,770	2,786	23,050,024	646.01
1112	Vegetable & Melon Farming	39	132	138	154	1,059,478	576.64
1113	Fruit & Tree Nut Farming	13	51	49	54	437,511	655.61
1114	Greenhouse & Nursery Production	41	491	487	479	4,492,818	711.60
1119	Other Crop Farming	156	612	654	664	5,562,169	665.07
112	ANIMAL PRODUCTION & AQUACULTURE	346	3,241	3,236	3,254	\$40,716,384	\$965.58
1121	Cattle Ranching & Farming	129	388	398	400	3,119,494	606.98
1122	Hog & Pig Farming	12	128	131	132	1,488,247	878.37
1123	Poultry & Egg Production	133	2,311	2,296	2,307	31,976,522	1,067.28
1125	Animal Aquaculture	41	343	342	342	3,663,542	823.21
	Other	31	71	69	73	468,579	507.67
115	SUPPORT ACTIVITIES FOR AGRICULTURE & FORESTRY	414	2,986	3,060	3,051	\$33,438,958	\$848.27
1151	Support Activities for Crop Production	281	1,371	1,442	1,470	17,436,966	939.51
1152	Support Activities for Animal Production	61	662	662	648	6,138,021	718.29
1153	Support Activities for Forestry	72	953	956	933	9,863,971	800.95
	OTHER	417	2,114	2,211	2,236	\$25,041,927	\$880.80
21	MINING	430	3,506	3,485	3,465	\$53,140,400	\$1,172.84
211	OIL & GAS EXTRACTION	74	572	565	563	\$11,354,100	\$1,541.28
212	MINING (EXCEPT OIL & GAS)	107	1,813	1,791	1,796	\$24,400,985	\$1,042.78
213	SUPPORT ACTIVITIES FOR MINING	249	1,121	1,129	1,106	\$17,385,315	\$1,195.47

TABLE 5. STATEWIDE SUMMARY

North American Industry Classification System - Industry Groups		Number of Employing Units	Employment			Total Earnings Apr - Jun 2020	Average Weekly Earnings
			Apr	May	Jun		
CONSTRUCTION		7,247	51,601	52,983	53,484	\$659,494,829	\$962.82
236	CONSTRUCTION OF BUILDINGS	1,907	10,859	11,169	11,240	\$153,183,708	\$1,062.59
2361	Residential Building Construction	1,296	3,604	3,770	3,808	43,544,276	898.65
2362	Nonresidential Building Construction	611	7,255	7,399	7,432	109,639,432	1,145.59
237	HEAVY & CIVIL ENGINEERING CONSTRUCTION	754	8,170	8,310	8,322	\$112,727,878	\$1,048.87
2371	Utility System Construction	438	4,673	4,569	4,517	65,069,043	1,091.35
2372	Land Subdivision	48	111	116	114	1,256,287	850.18
2373	Highway, Street & Bridge Construction	176	2,684	2,877	2,915	37,085,236	1,009.69
2379	Other Heavy Construction	92	702	748	776	9,317,312	965.92
238	SPECIALTY TRADE CONTRACTORS	4,586	32,572	33,504	33,922	\$393,583,243	\$908.29
2381	Building Foundation & Exterior Contractors	839	5,756	6,000	6,019	70,298,560	912.67
2382	Building Equipment Contractors	2,266	18,299	18,635	18,869	227,148,157	939.35
2383	Building Finishing Contractors	749	3,559	3,706	3,791	41,466,995	865.53
2389	Other Specialty Trade Contractors	732	4,958	5,163	5,243	54,669,531	821.14
MANUFACTURING		2,953	149,444	151,246	152,322	1,853,174,331	\$944.03
311	FOOD MANUFACTURING	304	49,407	49,132	48,466	\$511,365,175	\$802.74
3111	Animal Food Manufacturing	46	1,727	1,726	1,729	27,322,663	1,216.76
3112	Grain & Oilseed Milling	33	2,770	2,788	2,797	33,007,009	911.67
3114	Fruit, Vegetable & Specialty Food	16	4,259	4,175	4,280	58,497,114	1,061.77
3115	Dairy Product Manufacturing	7	561	563	553	6,051,214	832.70
3116	Animal Slaughtering & Processing	88	33,906	33,678	32,853	317,720,505	730.01
3118	Bakeries & Tortilla Manufacturing	79	3,775	3,797	3,847	39,720,804	802.73
3119	Other Food Manufacturing	25	2,387	2,372	2,374	28,790,753	931.45
	Other	10	22	33	33	255,113	669.00
312	BEVERAGE & TOBACCO PRODUCT MANUFACTURING	62	1,335	1,385	1,464	\$16,832,846	\$928.42
313	TEXTILE MILLS	9	134	136	143	\$1,788,751	\$999.49
314	TEXTILE PRODUCT MILLS	43	603	668	762	\$8,608,400	\$977.15
3141	Textile Furnishing Mills	8	21	21	19	127,180	481.13
3149	Other Textile Product Mills	35	582	647	743	8,481,220	992.50
315	APPAREL MANUFACTURING	17	304	480	697	\$3,914,652	\$609.98
3151	Apparel Knitting Mills	3	105	274	400	2,136,373	632.87
	Other	14	199	206	297	1,778,279	584.58

TABLE 5. STATEWIDE SUMMARY

North American Industry Classification System - Industry Groups		Number of Employing Units	Employment			Total Earnings	Average Weekly Earnings
			Apr	May	Jun	Apr - Jun 2020	
316	LEATHER & ALLIED PRODUCT MANUFACTURING	12	854	983	920	\$6,844,935	\$572.94
3162	Footwear Manufacturing	4	675	792	727	5,065,238	\$532.77
3169	Other Leather & Allied Product Manufacturing	8	179	191	193	1,779,697	\$729.48
321	WOOD PRODUCT MANUFACTURING	301	9,268	9,260	9,312	\$101,089,078	\$837.94
3211	Sawmills & Wood Preservation	134	4,325	4,389	4,376	52,592,315	927.17
3212	Veneer & Engineered Wood Products	42	1,935	1,939	1,951	23,523,892	931.95
3219	Other Wood Product Manufacturing	125	3,008	2,932	2,985	24,972,871	645.71
322	PAPER MANUFACTURING	74	9,073	8,924	8,900	\$148,700,802	\$1,275.81
3221	Pulp, Paper & Paperboard Mills	15	3,429	3,307	3,283	71,539,028	1,647.77
3222	Converted Paper Product Manufacturing	59	5,644	5,617	5,617	77,161,774	1,055.02
323	PRINTING & RELATED SUPPORT ACTIVITIES	250	2,705	2,697	2,939	\$30,959,131	\$856.54
324	PETROLEUM & COAL PRODUCTS MANUFACTURING	22	1,145	1,035	1,080	\$19,334,169	\$1,368.63
325	CHEMICAL MANUFACTURING	136	5,589	5,574	5,563	\$90,054,222	\$1,242.48
3251	Basic Chemical Manufacturing	30	1,944	1,929	1,928	38,167,213	1,518.33
3252	Resin, Rubber & Artificial Fibers	13	479	500	504	7,452,052	1,159.61
3253	Agricultural Chemical Manufacturing	17	481	476	468	8,459,900	1,370.02
3254	Pharmaceutical & Medicine Manufacturing	30	489	483	473	6,797,337	1,085.55
3255	Paint, Coating & Adhesive Manufacturing	11	224	224	222	2,866,589	987.34
3256	Soap, Cleaning Compound, & Toilet Preparation Manufacturing	15	1,339	1,341	1,359	17,098,632	976.93
3259	Other Chemical Preparation Manufacturing	20	633	621	609	9,212,499	1,141.15
326	PLASTICS & RUBBER PRODUCTS MANUFACTURING	125	8,894	9,980	9,823	\$115,785,528	\$931.10
3261	Plastics Product Manufacturing	96	6,205	6,132	6,094	72,876,778	912.47
3262	Rubber Product Manufacturing	29	2,689	3,848	3,729	42,908,750	964.55
327	NONMETALLIC MINERAL PRODUCT MANUFACTURING	225	3,489	3,501	3,505	\$44,198,801	\$971.87
3271	Clay Product & Refractory Manufacturing	11	466	464	463	6,103,387	1,011.11
3272	Glass & Glass Product Manufacturing	7	363	361	363	4,802,713	1,019.61
3273	Cement & Concrete Product Manufacturing	169	2,069	2,075	2,082	25,568,828	947.72
3274	Lime & Gypsum Product Manufacturing	3	282	280	277	4,443,907	1,222.31
3279	Other Nonmetallic Mineral Products Manufacturing	35	309	321	320	3,279,966	796.75
331	PRIMARY METAL MANUFACTURING	70	7,526	6,773	7,453	\$134,153,308	\$1,423.25
3311	Iron & Steel Mills & Ferroalloys	11	3,556	3,236	3,510	83,539,663	1,871.32
3312	Purchased Steel Product Manufacturing	21	1,950	1,571	1,863	24,461,423	1,048.47
3313	Alumina & Aluminum Production	14	881	871	874	12,260,966	1,077.48
3314	Other Nonferrous Metal Production	6	258	177	192	2,290,280	842.94
3315	Foundries	18	881	918	1,014	11,600,976	951.71

TABLE 5. STATEWIDE SUMMARY

North American Industry Classification System - Industry Groups		Number of Employing Units	Employment			Total Earnings	Average Weekly Earnings
			Apr	May	Jun	Apr - Jun 2020	
332	FABRICATED METAL PRODUCT MANUFACTURING	513	14,012	14,123	13,748	\$185,814,758	\$1,023.81
3321	Forging & Stamping	12	368	368	409	4,394,496	885.69
3322	Cutlery & Hand Tool Manufacturing	13	398	396	413	5,212,925	996.67
3323	Architectural & Structural Metals	148	4,234	4,287	4,324	63,823,682	1,146.64
3324	Boilers, Tanks & Shipping Containers	13	628	613	585	7,852,443	992.39
3325	Hardware Manufacturing	5	262	252	248	3,442,556	1,042.57
3326	Spring & Wire Product Manufacturing	10	309	348	333	4,082,161	951.55
3327	Machine Shops & Threaded Products	204	2,138	2,131	2,101	23,903,542	865.97
3328	Coating, Engraving & Heat Treating Metals	41	547	541	539	6,241,417	885.27
3329	Other Fabricated Metal Product Manufacturing	67	5,128	5,187	4,796	66,861,536	1,021.08
333	MACHINERY MANUFACTURING	211	11,101	11,160	11,292	\$138,797,171	\$954.61
3331	Agriculture, Construction & Mining Machinery	34	2,566	2,556	2,729	28,800,464	846.55
3332	Industrial Machinery Manufacturing	27	609	620	616	10,445,357	1,306.49
3333	Commercial & Service Industry Machinery	23	828	843	848	11,471,667	1,050.94
3334	HVAC & Commercial Refrigeration Equipment	24	2,711	2,726	2,659	29,652,408	845.22
3335	Metalworking Machinery Manufacturing	52	884	919	926	10,600,418	896.39
3336	Turbine & Power Transmission Equipment Manufacturing	5	674	673	672	8,781,470	1,003.71
3339	Other General Purpose Machinery Manufacturing	46	2,829	2,823	2,842	39,045,387	1,060.80
334	COMPUTER & ELECTRONIC PRODUCT MANUFACTURING	52	1,723	1,778	1,766	\$22,947,832	\$1,005.44
3344	Semiconductors & Electronic Components	24	1,254	1,270	1,265	15,866,346	966.34
3345	Navigational, Measuring, Electromedical, & Control Instr, Mfg Other	21 7	329 140	336 172	337 164	4,897,840 2,183,646	1,128.01 1,058.65
335	ELECTRICAL EQUIPMENT & APPLIANCES	54	4,182	3,942	4,148	\$54,280,187	\$1,020.71
3351	Electric Lighting Equipment Manufacturing	10	255	269	268	2,886,358	\$841.01
3352	Household Appliance Manufacturing	5	26	28	21	311,357	\$958.02
3353	Electrical Equipment Manufacturing	20	2,624	2,377	2,596	33,791,093	1,026.45
3359	Other Electrical Equipment & Component Manufacturing	19	1,277	1,268	1,263	17,291,379	1,047.88
336	TRANSPORTATION EQUIPMENT MANUFACTURING	136	12,434	13,500	13,788	\$155,361,942	\$902.59
3362	Motor Vehicle Body & Trailer Manufacturing	32	2,002	1,836	1,778	18,077,929	742.85
3363	Motor Vehicle Parts Manufacturing	42	2,812	4,260	4,575	38,881,776	770.39
3364	Aerospace Product & Parts Manufacturing	29	4,312	4,242	4,208	64,769,910	1,171.20
3366	Ship & Boat Building Other	21 12	1,981 1,327	1,870 1,292	1,975 1,252	17,287,568 16,344,759	684.76 974.39
337	FURNITURE & RELATED PRODUCT MANUFACTURING	158	2,674	2,968	3,153	\$28,093,413	\$737.13
3371	Household & Institutional Furniture Other	127 31	2,179 495	2,386 582	2,550 603	22,500,083 5,593,330	729.77 768.31
339	MISCELLANEOUS MANUFACTURING	179	2,992	3,247	3,400	\$34,249,230	\$819.97
3391	Medical Equipment & Supplies Manufacturing	70	1,424	1,591	1,680	18,816,842	924.89
3399	Other Miscellaneous Manufacturing	109	1,568	1,656	1,720	15,432,388	720.33

TABLE 5. STATEWIDE SUMMARY

North American Industry Classification System - Industry Groups		Number of Employing Units	Employment			Total Earnings Apr - Jun 2020	Average Weekly Earnings
			Apr	May	Jun		
TRADE, TRANSPORTATION & UTILITIES		21,819	229,889	236,987	242,617	\$2,617,514,879	\$851.37
42	WHOLESALE TRADE	7,327	45,496	46,051	46,183	\$791,946,981	\$1,326.92
423	MERCHANT WHOLESALERS, DURABLE GOODS	3,402	23,601	23,742	23,670	\$374,301,268	\$1,216.36
4231	Motor Vehicle & Part Merchant Wholesalers	294	3,044	3,016	3,012	43,605,833	1,109.22
4232	Furniture & Furnishings Merchant Wholesalers	97	452	451	441	7,846,883	1,347.34
4233	Lumber & Supply Merchant Wholesalers	243	1,583	1,595	1,579	20,433,759	991.27
4234	Commercial Goods Merchant Wholesalers	701	3,251	3,287	3,258	68,310,067	1,609.21
4235	Metal & Mineral Merchant Wholesalers	135	1,038	1,058	1,049	14,382,925	1,055.37
4236	Appliances & Electronics Goods Merchant Wholesalers	360	2,646	2,643	2,632	44,239,504	1,288.87
4237	Hardware & Plumbing Merchant Wholesalers	303	2,728	2,772	2,785	41,428,936	1,153.96
4238	Machinery & Supply Merchant Wholesalers	955	7,178	7,231	7,189	109,018,500	1,164.84
4239	Miscellaneous Durable Goods Merchant Wholesalers	314	1,681	1,689	1,725	25,034,861	1,133.91
424	MERCHANT WHOLESALERS, NONDURABLE GOODS	2,072	17,209	17,369	17,491	\$317,188,990	\$1,405.78
4241	Paper & Paper Product Merchant Wholesalers	128	1,080	1,058	1,103	19,810,656	1,410.58
4242	Druggist' Goods Merchant Wholesalers	267	1,571	1,577	1,573	45,767,830	2,237.20
4243	Apparel & Piece Goods Merchant Wholesalers	97	694	670	685	10,304,295	1,160.52
4244	Grocery Product Merchant Wholesalers	576	5,691	5,678	5,658	114,505,206	1,551.90
4245	Farm Product & Raw Material Merchant Wholesalers	84	740	793	780	7,415,226	739.82
4246	Chemical Merchant Wholesalers	217	1,063	1,097	1,124	25,632,799	1,801.24
4247	Petroleum Merchant Wholesalers	161	960	989	1,003	13,879,928	1,085.05
4248	Alcoholic Beverage Merchant Wholesalers	73	1,563	1,550	1,566	25,313,791	1,248.48
4249	Miscellaneous Nondurable Goods Merchant Wholesaler	469	3,847	3,957	3,999	54,559,259	1,066.73
425	ELECTRONIC MARKETS & AGENTS & BROKERS	1,853	4,686	4,940	5,022	\$100,456,723	\$1,582.63
44 - 45	RETAIL TRADE	10,986	123,729	129,620	134,589	\$983,936,507	\$585.31
441	MOTOR VEHICLE & PARTS DEALERS	1,526	17,813	17,863	18,140	\$218,926,604	\$938.78
4411	Automobile Dealers	623	10,769	10,702	10,869	152,234,245	1,086.30
4412	Other Motor Vehicle Dealers	166	1,623	1,684	1,757	21,688,127	988.34
4413	Automotive Parts, Accessories & Tire Stores	737	5,421	5,477	5,514	45,004,232	632.80
442	FURNITURE & HOME FURNISHINGS STORES	484	2,529	2,851	3,090	\$27,712,671	\$755.05
4421	Furniture Stores	262	1,553	1,743	1,803	18,276,430	827.15
4422	Home Furnishings Stores	222	976	1,108	1,287	9,436,241	645.98
443	ELECTRONICS & APPLIANCE STORES	369	2,970	3,000	2,992	\$27,595,164	\$710.57
444	BUILDING MATERIAL & GARDEN SUPPLY STORES	850	12,434	12,884	13,124	\$93,633,975	\$562.09
4441	Building Material & Supplies Dealers	611	10,265	10,549	10,773	79,000,434	577.16
4442	Lawn & Garden Equipment & Supplies Stores	239	2,169	2,335	2,351	14,633,541	492.63

TABLE 5. STATEWIDE SUMMARY

North American Industry Classification System - Industry Groups		Number of Employing Units	Employment			Total Earnings Apr - Jun 2020	Average Weekly Earnings
			Apr	May	Jun		
445	FOOD & BEVERAGE STORES	1,061	20,051	20,406	20,481	\$125,726,938	\$476.12
4451	Grocery Stores	564	17,592	17,857	17,843	107,988,713	467.62
4452	Specialty Food Stores	142	689	723	775	6,912,025	729.35
4453	Beer, Wine & Liquor Stores	355	1,770	1,826	1,863	10,826,200	457.66
446	HEALTH & PERSONAL CARE STORES	998	7,754	7,753	8,128	\$78,756,652	\$768.97
447	GASOLINE STATIONS	1,608	11,687	11,939	12,168	\$64,149,294	\$413.58
44711	Gasoline Stations with Convenience Stores	1,515	10,708	10,968	11,171	57,597,009	404.65
44719	Other Gasoline Stations	93	979	971	997	6,552,285	513.09
448	CLOTHING & CLOTHING ACCESSORIES STORES	952	2,906	4,132	5,353	\$24,615,975	\$458.45
4481	Clothing Stores	730	1,832	2,962	4,013	15,753,561	412.79
4482	Shoe Stores	105	647	716	855	3,467,491	360.77
4483	Jewelry, Luggage & Leather Goods Stores	117	427	454	485	5,394,923	911.41
451	SPORTING GOODS, HOBBY, BOOK & MUSIC STORES	443	2,750	3,273	3,630	\$19,606,449	\$468.72
4511	Sporting Goods & Musical Instrument Stores	381	2,493	3,011	3,357	18,217,548	474.44
4512	Book, Periodical & Music Stores	62	257	262	273	1,388,901	404.69
452	GENERAL MERCHANDISE STORES	960	35,586	37,806	39,351	\$246,757,928	\$505.08
4522	Department Stores	131	3,865	4,685	5,751	28,445,075	459.01
4523	Gen. Merchandise Stores, Warehouse clubs & Supercenters	829	31,721	33,121	33,600	218,312,853	511.77
453	MISCELLANEOUS STORE RETAILERS	1,191	5,604	6,032	6,346	\$37,369,998	\$479.58
4531	Florists	155	463	554	504	2,652,820	402.49
4532	Office Supplies, Stationery & Gift Stores	232	875	1,026	1,086	6,494,058	501.72
4533	Used Merchandise Stores	253	1,456	1,574	1,754	8,364,226	403.47
4539	Other Miscellaneous Store Retailers	551	2,810	2,878	3,002	19,858,894	527.37
454	NONSTORE RETAILERS	544	1,645	1,681	1,786	\$19,084,859	\$861.54
4541	Electronic Shopping & Mail-Order Houses	325	680	738	746	8,387,999	894.50
4542	Vending Machine Operators	56	336	304	246	2,929,598	763.05
4543	Direct Selling Establishments	163	629	639	794	7,767,262	869.28
48 - 49	TRANSPORTATION & WAREHOUSING	3,094	52,818	53,460	53,907	662,815,118	\$954.88
481	AIR TRANSPORTATION	45	732	705	663	\$6,484,906	\$712.63
4811	Scheduled Air Transportation	16	630	601	557	4,604,007	594.22
4812	Nonshceduled Air Transportation	29	102	104	106	1,880,899	1,391.20
484	TRUCK TRANSPORTATION	1,941	31,249	31,688	31,559	\$414,350,013	\$1,011.89
4841	General Freight Trucking	1,172	25,188	25,486	25,355	342,381,619	1,039.22
4842	Specialized Freight Trucking	769	6,061	6,202	6,204	71,968,394	899.34

TABLE 5. STATEWIDE SUMMARY

North American Industry Classification System - Industry Groups		Number of Employing Units	Employment			Total Earnings	Average Weekly Earnings
			Apr	May	Jun	Apr - Jun 2020	
485	TRANSIT & GROUND PASSENGER TRANSPORTATION	129	1,255	1,228	1,333	\$8,430,064	\$509.80
4853	Taxi & Limousine Service	34	208	212	218	1,417,353	512.67
4854	School & Employee Bus Transportation	19	136	127	231	829,529	387.51
4859	Other Ground Passenger Transportation	64	755	732	753	4,798,424	494.34
	Other	12	156	157	131	1,384,758	719.73
486	PIPELINE TRANSPORTATION	40	404	394	390	\$9,082,698	\$1,764.32
488	SUPPORT ACTIVITIES FOR TRANSPORTATION	526	5,554	5,577	5,520	\$69,245,159	\$959.68
4881	Support Activities for Air Transportation	119	1,121	1,132	1,124	12,124,550	828.54
4882	Support Activities for Rail Transportation	35	813	789	741	9,460,776	931.82
4883	Support Activities for Water Transportation	20	448	442	441	5,712,391	990.42
4884	Support Activities for Road Transportation	159	859	904	899	8,524,304	738.97
4885	Freight Transportation Arrangement	183	2,197	2,194	2,202	32,439,243	1,135.44
4889	Other Support Activities for Transportation	10	116	116	113	983,895	658.12
493	WAREHOUSING & STORAGE	214	8,650	8,715	8,994	\$98,590,403	\$863.14
	OTHER	199	4,974	5,153	5,448	56,631,875	\$839.09
22	UTILITIES	412	7,846	7,856	7,938	\$178,816,273	\$1,745.57
2211	Power Generation & Supply	173	5,893	5,905	5,984	151,494,780	1,966.05
2212	Natural Gas Distribution	63	1,018	1,019	1,013	17,739,587	1,342.21
2213	Water, Sewage & Other Systems	176	935	932	941	9,581,906	787.47
	INFORMATION	1,474	11,257	11,317	11,212	\$186,795,513	\$1,275.87
511	PUBLISHING INDUSTRIES, EXCEPT INTERNET	239	2,306	2,304	2,246	\$24,197,766	\$814.48
5111	Newspaper, Book & Directory Publishers	175	1,944	1,937	1,899	17,950,478	716.68
5112	Software Publishers	64	362	367	347	6,247,288	1,339.85
512	MOTION PICTURE & SOUND RECORDING INDUSTRY	163	438	515	497	\$3,767,930	\$599.67
5121	Motion Picture & Video Industries	146	420	496	478	3,514,546	581.81
5122	Sound Recording Industries	17	18	19	19	253,384	1,044.16
515	BROADCASTING, EXCEPT INTERNET	125	1,415	1,414	1,416	\$16,658,502	\$905.60

TABLE 5. STATEWIDE SUMMARY

North American Industry Classification System - Industry Groups		Number of Employing Units	Employment			Total Earnings Apr - Jun 2020	Average Weekly Earnings
			Apr	May	Jun		
517	TELECOMMUNICATIONS	363	3,419	3,428	3,396	\$60,648,399	\$1,366.38
5173	Telecommunications Resellers	259	3,014	3,020	2,990	53,560,222	1,369.69
5174	Satellite Telecommunications Carriers	4	5	5	5	61,321	943.40
5179	Other Telecommunications	100	400	403	401	7,026,856	1,346.83
518	DATA PROCESSING, HOSTING & RELATED SERVICES	483	3,356	3,332	3,333	\$77,415,603	\$1,782.77
519	OTHER INFORMATION SERVICES	101	323	324	324	\$4,107,313	\$976.15
FINANCIAL ACTIVITIES		8,847	51,218	51,627	51,732	\$769,234,419	\$1,148.40
52	FINANCE & INSURANCE	5,184	38,180	38,259	38,277	\$634,589,905	\$1,276.58
522	CREDIT INTERMEDIATION & RELATED ACTIVITIES	2,022	19,710	19,624	19,670	\$303,333,133	\$1,186.36
5221	Depository Credit Intermediation	1,433	16,628	16,555	16,598	243,100,228	1,126.94
5222	Nondepository Credit Intermediation	430	1,938	1,940	1,945	40,502,312	1,605.13
5223	Activities Related to Credit Intermediation	159	1,144	1,129	1,127	19,730,593	1,339.18
523	FINANCIAL INVESTMENT & RELATED ACTIVITIES	766	3,052	3,067	3,075	\$93,745,144	\$2,353.00
5231	Insurance Carriers	336	2,049	2,045	2,029	73,712,692	2,778.15
5239	Insurance Agencies, Brokerages & Support	430	1,003	1,022	1,046	20,032,452	1,505.33
524	INSURANCE CARRIERS & RELATED ACTIVITIES	2,301	15,346	15,483	15,466	\$235,788,708	\$1,175.35
5231	Security & Commodity Contracts Intermediation & Brokerage	308	6,852	6,848	6,867	111,574,342	1,251.90
5239	Other Financial Investment Activities	1,993	8,494	8,635	8,599	124,214,366	1,114.15
	OTHER	95	72	85	66	\$1,722,920	\$1,782.95
53	REAL ESTATE & RENTAL & LEASING	3,663	13,038	13,368	13,455	\$134,644,514	\$779.50
531	REAL ESTATE	3,063	9,627	9,809	9,755	\$94,576,300	\$747.67
5311	Lessors of Real Estate	1,099	3,997	4,083	4,000	34,637,572	661.70
5312	Offices of Real Estate Agents & Brokers	1,026	1,957	2,007	2,023	21,550,818	830.68
5313	Activities Related to Real Estate	938	3,673	3,719	3,732	38,387,910	796.36
532	RENTAL & LEASING SERVICES	584	3,371	3,519	3,657	\$39,387,442	\$861.80
5321	Automotive Equipment Rental & Leasing	125	812	790	830	7,534,430	714.93
5322	Consumer Goods Rental	300	1,506	1,645	1,752	14,820,436	697.55
5323	General Rental Centers	30	149	195	192	1,728,588	744.23
5324	Machinery & Equipment Rental & Leasing	129	904	889	883	15,303,988	1,319.76
533	LESSORS OF NONFINANCIAL INTANGIBLE ASSETS	16	40	40	43	\$680,772	\$1,277.25

TABLE 5. STATEWIDE SUMMARY

North American Industry Classification System - Industry Groups		Number of Employing Units	Employment			Total Earnings Apr - Jun 2020	Average Weekly Earnings
			Apr	May	Jun		
PROFESSIONAL & BUSINESS SERVICES		15,394	131,875	132,192	133,012	\$2,264,903,669	\$1,316.29
54	PROFESSIONAL & TECHNICAL SERVICES	9,712	42,206	41,974	41,679	\$653,095,938	\$1,197.49
5411	Legal Services	1,688	5,856	5,947	6,006	78,931,893	1,022.80
5412	Accounting & Bookkeeping Services	1,341	6,460	6,136	5,837	74,928,314	938.05
5413	Architectural & Engineering Services	1,073	6,349	6,354	6,436	99,263,466	1,196.87
5414	Specialized Design Services	180	339	349	349	4,251,369	946.08
5415	Computer Systems Design & Related Services	2,151	8,902	8,703	8,522	183,083,386	1,617.10
5416	Management & Technical Consulting Services	2,114	5,778	5,885	5,880	104,419,328	1,373.58
5417	Scientific Research & Development Services	159	854	848	841	13,987,684	1,269.34
5418	Advertising & Related Services	410	3,621	3,616	3,528	48,252,819	1,034.40
5419	Other Professional & Technical Services	596	4,047	4,136	4,280	45,977,679	851.34
55	MANAGEMENT OF COMPANIES & ENTERPRISES	540	33,342	33,231	33,739	\$1,116,836,003	\$2,569.30
56	ADMINISTRATIVE & WASTE SERVICES	5,142	56,327	56,987	57,594	\$494,971,728	\$668.34
561	ADMINISTRATIVE & SUPPORT SERVICES	4,805	52,651	53,328	53,934	\$447,085,867	\$645.19
5611	Office Administrative Services	727	3,290	3,348	3,370	52,823,311	1,218.03
5612	Facilities Support Services	70	1,341	1,176	1,180	12,181,731	760.39
5613	Employment Services	1,269	18,837	18,970	19,718	143,340,647	575.03
5614	Business Support Services	403	8,344	8,296	8,070	82,094,777	766.69
5615	Travel Arrangement & Reservation Services	116	250	248	248	2,983,533	922.93
5616	Investigation & Security Services	317	4,708	4,796	4,753	36,410,750	589.36
5617	Services to Buildings & Dwellings	1,697	14,739	15,316	15,388	105,630,595	536.41
5619	Other Support Services	206	1,142	1,178	1,207	11,620,523	760.32
562	WASTE MANAGEMENT & REMEDIATION SERVICES	337	3,676	3,659	3,660	\$47,885,861	\$1,005.06
5621	Waste Collection Services	131	1,291	1,299	1,302	15,669,761	929.11
5622	Waste Treatment & Disposal Services	41	1,074	1,052	1,055	16,636,515	1,206.91
5629	Remediation & Other Waste Services	165	1,311	1,308	1,303	15,579,585	916.70
EDUCATION & HEALTH SERVICES		15,729	172,587	176,783	178,286	1,986,625,156	\$868.85
61	EDUCATIONAL SERVICES	972	11,242	10,880	11,000	116,416,612	\$811.10
6111	Elementary & Secondary Schools	108	4,323	4,261	4,095	45,090,991	820.70
6113	Colleges & Universities	131	4,188	3,746	3,490	42,595,431	860.44
6115	Technical & Trade Schools	118	714	768	777	12,238,128	1,250.19
6116	Other Schools & Instruction	336	1,204	1,359	1,516	7,366,182	416.74
6117	Educational Support Services	199	553	533	885	6,062,959	709.87
	Other	80	260	213	237	3,062,921	995.53

TABLE 5. STATEWIDE SUMMARY

North American Industry Classification System - Industry Groups		Number of Employing Units	Employment			Total Earnings Apr - Jun 2020	Average Weekly Earnings
			Apr	May	Jun		
62	HEALTH CARE & SOCIAL ASSISTANCE	14,757	161,345	165,903	167,286	\$1,870,208,544	\$872.71
621	AMBULATORY HEALTH CARE SERVICES	6,144	52,986	56,385	57,883	\$866,974,506	\$1,196.21
6211	Offices of Physicians	2,369	25,073	25,367	25,762	521,949,756	1,580.67
6212	Offices of Dentists	958	3,831	6,312	6,994	59,922,422	806.92
6213	Offices of Other Health Practitioners	1,733	8,618	8,964	9,227	96,502,622	830.69
6214	Outpatient Care Centers	396	4,983	5,115	5,188	71,349,613	1,077.15
6215	Medical & Diagnostic Laboratories	200	1,224	1,224	1,267	20,229,477	1,256.62
6216	Home Health Care Services	276	6,474	6,616	6,651	64,224,237	750.77
6219	Other Ambulatory Health Care Services	212	2,783	2,787	2,794	32,796,379	904.88
622	HOSPITALS	124	42,289	41,971	42,307	\$530,980,331	\$968.13
6221	General Medical & Surgical Hospitals	91	37,865	37,470	37,768	475,198,229	969.57
6222	Psychiatric & Substance Abuse Hospitals	13	1,873	1,834	1,872	21,909,495	906.26
6223	Speciality Hospitals	20	2,551	2,667	2,667	33,872,607	991.35
623	Residential & Mental Health Facilities	667	31,496	31,567	30,720	\$256,547,722	\$631.28
6231	Nursing Care Facilities (Skilled Nursing Facilities)	289	21,837	21,790	21,003	183,492,503	655.18
6232	Residential Mental Health Facilities	188	4,169	4,287	4,233	33,386,633	607.19
6233	Continuing Care & Assisted Living Facilities	153	4,492	4,498	4,554	31,347,897	534.12
6239	Other Residential Care Facilities	37	998	992	930	8,320,689	657.59
624	SOCIAL ASSISTANCE	7,822	34,574	35,980	36,376	\$215,705,985	\$465.52
6241	Individual & Family Services	6,734	22,183	22,831	23,028	138,508,075	469.76
6242	Emergency & Other Relief Services	171	1,371	1,418	1,448	10,775,704	586.90
6243	Vocational Rehabilitation Services	92	2,788	2,809	2,871	18,481,534	503.66
6244	Child Day Care Services	825	8,232	8,922	9,029	47,940,672	422.53
LEISURE & HOSPITALITY		7,481	78,080	94,007	103,602	\$412,183,511	\$345.02
71	ARTS, ENTERTAINMENT & RECREATION	1,076	7,186	8,775	10,958	52,017,036	\$445.93
711	PERFORMING ARTS & SPECTATOR SPORTS	258	1,645	1,460	1,689	13,024,027	\$626.94
7111	Performing Arts Companies	44	230	360	437	2,040,601	458.53
7112	Spectator Sports	74	1,064	696	865	7,380,716	648.85
7113	Performing Arts & Sports Promoters	59	271	294	287	2,871,512	777.77
7114	Agents & Managers for Public Figures	20	18	39	28	197,359	535.82
7115	Independent Artists, Writers, & Performers	61	62	71	72	533,839	600.94
712	MUSEUMS, PARKS, & HISTORICAL SITES	55	691	737	765	7,244,672	\$762.36
713	GAMBLING, RECREATIONAL & AMUSEMENT INDUSTRY	763	4,850	6,578	8,504	31,748,337	367.58
72	ACCOMMODATION & FOOD SERVICES	6,405	70,894	85,232	92,644	360,166,475	\$334.11

TABLE 5. STATEWIDE SUMMARY

North American Industry Classification System - Industry Groups		Number of Employing Units	Employment			Total Earnings	Average Weekly Earnings
			Apr	May	Jun	Apr - Jun 2020	
721	ACCOMMODATION	927	7,415	8,036	8,944	\$38,645,511	\$365.57
7211	Travel Accommodation	829	6,948	7,511	8,198	35,081,988	357.32
7212	RV Parks & Recreational Camps	80	380	444	674	2,958,565	455.77
7213	Rooming & Boarding Houses	18	87	81	72	604,958	581.69
722	FOOD SERVICES & DRINKING PLACES	5,478	63,479	77,196	83,700	\$321,520,964	\$330.68
7223	Special Food Services	300	2,696	2,585	2,184	13,051,494	403.47
7224	Drinking Places, Alcoholic Beverages	141	267	433	574	1,781,012	322.61
7225	Restaurants & Other Eating Places	5,037	60,516	74,178	80,942	306,688,458	328.21
722511	Full-Service Restaurants	2,147	17,110	25,421	29,954	111,178,691	353.96
722513	Limited-Service Eating Places	2,350	39,634	44,351	46,375	177,137,683	313.58
722514	Cafeterias, Grill Buffets, & Buffets	91	824	1,113	1,116	5,325,486	402.54
722515	Snack & Nonalcoholic Beverage Bars	449	2,948	3,293	3,497	13,046,598	309.18
OTHER SERVICES		5,448	20,927	22,809	23,794	\$210,356,974	\$718.85
811	REPAIR & MAINTENANCE	2,234	10,434	10,784	10,829	\$110,323,773	\$794.44
8111	Automotive Repair & Maintenance	1,434	6,484	6,761	6,810	63,067,769	725.71
8112	Electronic Equipment Repair & Maintenance	158	947	941	928	10,810,756	885.93
8113	Commercial Machinery Repair & Maintenance	473	2,409	2,459	2,472	31,176,874	980.20
8114	Household Goods Repair & Maintenance	169	594	623	619	5,268,374	662.19
812	PERSONAL & LAUNDRY SERVICES	1,403	5,124	6,469	6,991	\$42,986,261	\$533.79
8121	Personal Care Services	698	1,078	2,248	2,688	11,028,443	423.18
8122	Death Care Services	250	1,423	1,499	1,500	12,561,845	655.56
8123	Drycleaning & Laundry Service	203	1,742	1,782	1,828	13,234,583	570.65
8129	Other Personal Services	252	881	940	975	6,161,390	508.53
813	MEMBERSHIP ASSOCIATIONS & ORGANIZATIONS	1,136	4,575	4,757	5,155	\$51,598,398	\$821.93
8131	Religious Organizations	104	319	320	326	2,577,632	616.41
8132	Grantmaking & Giving Organizations	123	430	435	436	6,907,218	1,225.19
8133	Social Advocacy Organizations	230	1,170	1,169	1,183	12,653,526	829.09
8134	Civic & Social Organizations	193	639	757	963	5,028,152	491.88
8139	Professional & Similar Organizations	486	2,017	2,076	2,247	24,431,870	889.29
814	PRIVATE HOUSEHOLDS	675	794	799	819	\$5,448,542	\$521.29
LOCAL GOVERNMENT		1,988	111,479	109,796	108,310	\$1,305,965,108	\$914.41
STATE GOVERNMENT		1,064	66,015	64,611	63,251	\$803,351,626	\$956.22
NONCLASSIFIABLE ESTABLISHMENTS		0	0	0	0	\$0	\$0.00

TABLE 6. COUNTY SUMMARY

North American Industry Classification System - Industry Groups	Number of Employing Units	Employment			Total Earnings	Average Weekly Earnings
		Apr	May	Jun	Apr - Jun 2020	
ARKANSAS COUNTY - TOTAL	1,034	9,691	9,855	9,873	\$103,784,187	\$814.11
Natural Resources & Mining	63	174	188	184	1,748,819	739.15
Construction	82	281	281	289	3,380,894	916.81
Manufacturing	41	3,809	3,740	3,641	41,610,121	858.12
Trade, Transportation & Utilities	231	2,026	2,093	2,097	24,986,255	927.62
Wholesale Trade	51	465	466	466	6,845,200	1,130.75
Retail Trade	111	993	1,060	1,053	7,618,223	566.02
Transportation, Warehousing & Utilities	69	568	567	578	10,522,832	1,417.60
Information	10	34	36	34	345,543	766.74
Financial Activities	82	350	353	346	4,099,485	901.84
Professional & Business Services	108	542	560	575	7,482,225	1,029.62
Education & Health Services	217	1,013	1,035	1,061	9,197,405	682.69
Leisure & Hospitality	94	495	603	658	2,275,200	299.00
Other Services	60	101	108	113	766,801	549.55
Local Government	32	709	705	731	6,568,682	706.69
State Government	14	157	153	144	1,322,757	672.36
ASHLEY COUNTY - TOTAL	565	5,480	5,699	5,712	\$61,369,462	\$838.45
Natural Resources & Mining	46	324	333	357	3,747,966	852.97
Construction	37	425	477	441	5,537,696	951.55
Manufacturing	25	1,120	1,108	1,123	18,994,299	1,308.06
Trade, Transportation & Utilities	112	1,124	1,172	1,147	10,076,654	675.39
Wholesale Trade	24	172	174	183	2,450,242	1,068.89
Retail Trade	61	679	717	696	4,387,791	484.02
Transportation, Warehousing & Utilities	27	273	281	268	3,238,621	909.21
Information	5	31	31	31	268,149	665.38
Financial Activities	38	190	191	195	1,729,949	693.09
Professional & Business Services	39	169	177	174	1,563,428	693.83
Education & Health Services	150	788	838	861	8,393,861	778.87
Leisure & Hospitality	39	275	330	355	1,197,668	287.90
Other Services	32	94	103	112	783,071	584.82
Local Government	32	840	840	821	8,132,845	750.42
State Government	10	100	99	95	943,876	740.88

TABLE 6. COUNTY SUMMARY

North American Industry Classification System - Industry Groups	Number of Employing Units	Employment			Total Earnings	Average Weekly Earnings
		Apr	May	Jun	Apr - Jun 2020	
BAXTER COUNTY - TOTAL	1,224	13,690	14,287	14,485	\$129,364,742	\$703.06
Natural Resources & Mining	9	55	56	58	593,482	810.40
Construction	101	504	521	531	4,585,481	680.07
Manufacturing	53	2,388	2,348	2,220	23,693,401	786.04
Trade, Transportation & Utilities	254	2,402	2,581	2,669	18,901,516	570.03
Wholesale Trade	33	160	156	163	1,697,538	817.83
Retail Trade	198	2,091	2,253	2,334	15,356,488	530.67
Transportation, Warehousing & Utilities	23	151	172	172	1,847,490	861.30
Information	22	161	162	160	1,856,044	886.79
Financial Activities	119	704	716	701	9,696,092	1,054.96
Professional & Business Services	149	891	897	897	7,434,630	638.99
Education & Health Services	255	3,777	3,876	3,923	39,013,521	777.74
Leisure & Hospitality	120	1,037	1,376	1,564	5,598,114	324.84
Other Services	95	262	284	307	2,154,876	582.98
Local Government	36	1,203	1,167	1,194	13,035,293	844.04
State Government	11	306	303	261	2,802,292	743.31
BENTON COUNTY - TOTAL	6,962	115,952	119,436	121,316	\$2,050,071,833	\$1,326.29
Natural Resources & Mining	50	849	850	877	13,678,548	1,225.38
Construction	687	5,330	5,473	5,506	69,060,040	977.19
Manufacturing	204	12,056	12,287	12,363	144,126,489	906.12
Trade, Transportation & Utilities	1,713	28,043	28,620	29,254	403,317,982	1,083.29
Wholesale Trade	753	6,175	6,176	6,165	152,667,902	1,902.74
Retail Trade	757	10,849	11,430	12,033	93,155,791	626.53
Transportation, Warehousing & Utilities	203	11,019	11,014	11,056	157,494,289	1,098.40
Information	96	945	944	920	15,805,236	1,298.46
Financial Activities	740	4,065	4,077	4,102	71,801,492	1,353.28
Professional & Business Services	1,391	33,189	33,026	33,242	1,007,855,533	2,338.52
Education & Health Services	871	11,157	11,568	11,559	122,025,064	821.36
Leisure & Hospitality	682	8,457	10,519	11,495	52,463,865	397.33
Other Services	426	1,916	2,218	2,290	19,899,123	714.84
Local Government	85	8,869	8,783	8,801	120,087,405	1,047.61
State Government	17	1,076	1,071	907	9,951,056	751.93

TABLE 6. COUNTY SUMMARY

North American Industry Classification System - Industry Groups	Number of Employing Units	Employment			Total Earnings	Average Weekly Earnings
		Apr	May	Jun	Apr - Jun 2020	
BOONE COUNTY - TOTAL	949	12,642	13,071	13,169	\$134,847,380	\$800.34
Construction	65	383	404	420	4,029,283	770.37
Manufacturing	56	1,383	1,466	1,525	14,991,771	790.96
Trade, Transportation & Utilities	243	3,475	3,605	3,660	38,814,562	834.00
Wholesale Trade	42	380	374	375	3,912,390	799.70
Retail Trade	159	1,849	1,960	2,006	15,363,297	609.69
Transportation, Warehousing & Utilities	42	1,246	1,271	1,279	19,538,875	1,187.82
Information	14	273	287	274	3,415,276	945.01
Financial Activities	95	458	464	437	5,714,009	970.29
Professional & Business Services	95	1,246	1,230	1,288	14,393,933	882.49
Education & Health Services	161	1,442	1,489	1,458	13,221,308	695.16
Leisure & Hospitality	84	783	1,010	1,115	4,225,619	335.33
Local Government	53	2,179	2,119	2,027	26,351,310	961.43
State Government	17	758	715	677	6,938,873	744.78
Other	66	262	282	288	2,751,436	763.16
BRADLEY COUNTY - TOTAL	342	3,629	3,541	3,648	\$32,546,850	\$694.29
Natural Resources & Mining	41	211	167	163	2,042,198	871.12
Construction	15	66	72	87	688,242	705.89
Manufacturing	11	969	874	957	9,743,304	803.02
Trade, Transportation & Utilities	66	475	489	491	4,013,005	636.48
Wholesale Trade	11	100	100	101	1,354,405	1,038.39
Retail Trade	36	279	292	290	1,719,686	460.92
Transportation, Warehousing & Utilities	19	96	97	100	938,914	739.50
Information	3	26	26	26	223,834	662.23
Financial Activities	24	129	127	122	1,279,978	781.43
Professional & Business Services	27	103	97	99	917,686	708.27
Education & Health Services	93	568	595	607	5,115,931	667.01
Leisure & Hospitality	13	144	161	169	560,373	272.82
Other Services	25	82	85	84	592,917	545.13
Local Government	14	489	481	471	4,806,225	769.69
State Government	10	367	367	372	2,563,157	534.81

TABLE 6. COUNTY SUMMARY

North American Industry Classification System - Industry Groups	Number of Employing Units	Employment			Total Earnings	Average Weekly Earnings
		Apr	May	Jun	Apr - Jun 2020	
CALHOUN COUNTY - TOTAL	102	3,315	3,334	3,344	\$46,894,697	\$1,082.94
Natural Resources & Mining	6	31	30	31	313,635	786.71
Construction	10	129	126	126	1,369,853	829.71
Manufacturing	9	2,530	2,542	2,559	38,699,953	1,170.33
Trade, Transportation & Utilities	17	178	183	180	1,858,315	792.68
Retail Trade	8	40	44	41	242,869	448.37
Transportation, Warehousing & Utilities	9	138	139	139	1,615,446	896.14
Professional & Business Services	6	11	11	11	136,262	952.88
Education & Health Services	23	62	62	60	731,475	917.40
Leisure & Hospitality	4	7	6	6	28,290	343.60
Other Services	3	3	3	3	18,598	476.87
Local Government	11	187	191	188	1,602,458	653.35
State Government	7	72	71	71	695,409	749.90
Other	6	105	109	109	1,440,449	1,029.14
CARROLL COUNTY - TOTAL	779	9,634	9,929	10,429	\$85,544,960	\$658.21
Natural Resources & Mining	22	239	243	248	2,373,379	750.28
Trade, Transportation & Utilities	182	1,411	1,475	1,532	11,959,978	624.72
Wholesale Trade	24	177	189	202	1,707,261	693.63
Retail Trade	136	1,034	1,082	1,123	6,805,084	484.84
Transportation, Warehousing & Utilities	22	200	204	207	3,447,633	1,302.14
Information	9	62	63	60	637,241	794.90
Financial Activities	54	291	290	367	4,470,113	1,088.15
Professional & Business Services	72	462	458	472	4,354,018	721.82
Education & Health Services	99	1,026	1,030	1,048	8,894,974	661.30
Leisure & Hospitality	166	832	1,052	1,382	5,046,399	356.57
Other Services	42	122	130	135	944,105	562.97
Local Government	25	1,064	1,030	1,055	10,265,899	752.32
State Government	9	91	92	91	870,506	733.16
Other	99	4,034	4,066	4,039	35,728,348	679.22

TABLE 6. COUNTY SUMMARY

North American Industry Classification System - Industry Groups	Number of Employing Units	Employment			Total Earnings Apr - Jun 2020	Average Weekly Earnings
		Apr	May	Jun		
CHICOT COUNTY - TOTAL	478	2,762	2,859	2,829	\$24,537,190	\$670.11
Natural Resources & Mining	54	219	229	225	2,394,421	821.04
Construction	14	113	122	132	1,692,647	1,064.33
Manufacturing	5	9	9	9	89,029	760.93
Trade, Transportation & Utilities	67	590	614	615	4,548,894	577.10
Wholesale Trade	11	48	50	47	540,021	859.45
Retail Trade	43	268	291	293	1,926,371	521.77
Transportation, Warehousing & Utilities	13	274	273	275	2,082,502	584.64
Financial Activities	29	182	182	177	2,051,053	874.90
Professional & Business Services	16	46	56	47	694,393	1,075.47
Education & Health Services	231	610	621	568	4,673,892	599.55
Leisure & Hospitality	16	91	100	109	366,561	281.97
Local Government	17	580	590	602	5,414,874	705.18
State Government	9	243	243	246	1,969,294	620.84
Other	20	79	93	99	642,132	546.81
CLARK COUNTY - TOTAL	659	8,142	8,159	8,151	\$78,955,015	\$745.15
Natural Resources & Mining	49	282	288	284	3,135,634	847.32
Construction	26	83	87	83	962,001	877.47
Manufacturing	34	1,212	1,283	1,274	17,509,321	1,072.06
Trade, Transportation & Utilities	135	1,330	1,366	1,386	11,490,007	649.57
Wholesale Trade	15	47	45	47	584,574	970.52
Retail Trade	92	1,110	1,151	1,173	8,814,036	592.31
Transportation, Warehousing & Utilities	28	173	170	166	2,091,397	948.19
Financial Activities	77	322	323	345	3,053,159	711.69
Professional & Business Services	55	554	549	552	6,990,277	974.71
Education & Health Services	127	1,548	1,521	1,477	13,815,885	701.34
Leisure & Hospitality	67	710	732	843	2,985,221	301.49
Local Government	29	897	901	959	8,796,293	736.28
State Government	14	999	904	745	8,444,449	735.92
Other	46	205	205	203	1,772,768	667.37

TABLE 6. COUNTY SUMMARY

North American Industry Classification System - Industry Groups	Number of Employing Units	Employment			Total Earnings	Average Weekly Earnings
		Apr	May	Jun	Apr - Jun 2020	
CLAY COUNTY - TOTAL	350	2,943	3,024	3,008	\$26,152,363	\$672.44
Natural Resources & Mining	49	253	252	260	2,019,779	609.28
Construction	28	105	115	118	1,015,083	693.05
Manufacturing	12	103	103	103	857,466	640.38
Trade, Transportation & Utilities	84	681	707	692	6,987,163	775.20
Wholesale Trade	19	208	217	222	2,542,702	906.92
Retail Trade	42	346	363	342	2,797,404	614.23
Transportation, Warehousing & Utilities	23	127	127	128	1,647,057	995.00
Information	7	23	24	24	167,062	543.00
Financial Activities	22	102	102	80	909,118	738.72
Professional & Business Services	24	80	83	81	774,361	732.37
Education & Health Services	51	503	519	505	3,993,467	603.52
Leisure & Hospitality	22	203	218	223	746,199	267.39
Other Services	22	76	80	79	784,086	769.97
Local Government	20	772	778	798	7,478,324	734.99
State Government	9	42	43	45	420,255	746.01
CLEBURNE COUNTY - TOTAL	641	5,155	6,039	6,215	\$52,583,418	\$697.03
Natural Resources & Mining	19	168	169	168	2,654,563	1,213.05
Construction	65	290	320	324	3,092,899	764.18
Manufacturing	33	606	1,098	1,115	9,779,947	800.61
Trade, Transportation & Utilities	153	1,168	1,214	1,247	10,699,497	680.38
Wholesale Trade	32	99	103	99	1,326,968	1,017.35
Retail Trade	101	937	978	1,002	7,545,710	596.95
Transportation, Warehousing & Utilities	20	132	133	146	1,826,819	1,025.73
Information	11	46	47	46	506,409	840.75
Financial Activities	71	249	250	246	2,869,480	888.84
Professional & Business Services	65	270	304	323	2,840,439	730.75
Education & Health Services	76	797	811	823	6,717,769	637.70
Leisure & Hospitality	81	565	838	950	3,608,864	353.94
Other Services	41	113	115	105	756,331	524.14
Local Government	18	777	776	788	8,240,828	812.36
State Government	8	106	97	80	816,392	665.72

TABLE 6. COUNTY SUMMARY

North American Industry Classification System - Industry Groups	Number of Employing Units	Employment			Total Earnings	Average Weekly Earnings
		Apr	May	Jun	Apr - Jun 2020	
CLEVELAND COUNTY - TOTAL	127	986	991	974	\$8,901,547	\$696.10
Natural Resources & Mining	15	138	138	146	1,425,861	779.73
Construction	5	18	18	19	198,041	830.94
Manufacturing	4	110	115	117	1,380,477	931.50
Trade, Transportation & Utilities	29	149	155	152	1,231,623	623.29
Retail Trade	16	65	70	69	306,112	346.28
Other Trade, Transportation, & Utilities	13	84	85	83	925,511	847.54
Financial Activities	5	22	22	23	236,531	814.69
Education & Health Services	35	201	201	177	1,414,738	563.87
Other Services	6	10	8	8	90,880	806.63
Local Government	13	284	278	278	2,455,696	674.64
State Government	6	29	29	30	302,296	792.73
Other	9	25	27	24	165,404	502.24
COLUMBIA COUNTY - TOTAL	691	7,573	7,734	7,620	\$78,538,454	\$790.52
Natural Resources & Mining	45	374	375	375	5,600,229	1,149.79
Construction	36	142	146	141	1,389,730	747.57
Manufacturing	27	1,821	1,843	1,846	26,396,774	1,105.55
Trade, Transportation & Utilities	164	1,358	1,404	1,373	11,966,805	667.85
Wholesale Trade	29	196	196	182	2,760,870	1,109.97
Retail Trade	93	947	991	992	6,292,990	495.64
Transportation, Warehousing & Utilities	42	215	217	199	2,912,945	1,065.32
Information	6	26	29	28	272,392	757.35
Financial Activities	63	323	327	331	4,019,663	945.58
Professional & Business Services	51	299	304	312	2,419,916	610.32
Education & Health Services	163	777	802	728	5,572,551	557.42
Leisure & Hospitality	60	650	733	731	2,541,281	277.41
Other Services	37	126	128	128	802,720	484.93
Local Government	27	1,021	990	976	10,752,589	830.72
State Government	12	656	653	651	6,803,804	801.08

TABLE 6. COUNTY SUMMARY

North American Industry Classification System - Industry Groups	Number of Employing Units	Employment			Total Earnings	Average Weekly Earnings
		Apr	May	Jun	Apr - Jun 2020	
CONWAY COUNTY - TOTAL	510	6,259	6,488	6,513	\$66,793,296	\$800.30
Natural Resources & Mining	27	203	207	213	2,061,909	763.76
Construction	47	497	516	508	7,459,445	1,131.76
Manufacturing	19	975	988	992	13,493,201	1,053.74
Trade, Transportation & Utilities	114	1,288	1,334	1,354	11,555,337	670.68
Wholesale Trade	15	97	101	101	1,080,576	833.99
Retail Trade	76	777	804	830	5,860,198	560.91
Transportation, Warehousing & Utilities	23	414	429	423	4,614,563	841.15
Information	3	10	12	13	43,169	284.63
Financial Activities	36	147	150	152	1,698,184	872.80
Professional & Business Services	37	563	626	667	4,829,019	600.43
Education & Health Services	124	667	721	663	7,317,351	823.32
Leisure & Hospitality	37	335	408	434	1,572,512	308.32
Other Services	26	115	124	125	743,993	471.68
Local Government	31	1,102	1,067	1,053	12,895,681	923.63
State Government	9	357	335	339	3,123,495	699.13
CRAIGHEAD COUNTY - TOTAL	2,868	46,664	48,512	49,153	\$513,020,817	\$820.27
Natural Resources & Mining	103	350	371	369	3,393,371	718.43
Construction	246	2,117	2,252	2,288	24,470,756	848.29
Manufacturing	102	7,123	7,118	7,110	88,442,342	955.92
Trade, Transportation & Utilities	763	9,268	9,674	9,912	95,867,287	766.73
Wholesale Trade	179	2,029	2,066	2,051	27,310,778	1,025.46
Retail Trade	460	5,419	5,760	6,012	45,739,963	614.01
Transportation, Warehousing & Utilities	124	1,820	1,848	1,849	22,816,546	954.39
Information	21	331	326	326	4,807,887	1,128.70
Financial Activities	285	1,702	1,727	1,752	23,753,323	1,058.01
Professional & Business Services	378	4,081	4,315	4,373	40,621,003	734.13
Education & Health Services	457	10,512	10,733	10,737	126,547,339	913.11
Leisure & Hospitality	275	3,557	4,452	4,806	18,775,257	338.10
Other Services	180	611	716	768	5,695,087	627.33
Local Government	36	4,072	3,941	3,965	49,603,739	955.67
State Government	22	2,940	2,887	2,747	31,043,426	835.53

TABLE 6. COUNTY SUMMARY

North American Industry Classification System - Industry Groups	Number of Employing Units	Employment			Total Earnings	Average Weekly Earnings
		Apr	May	Jun	Apr - Jun 2020	
CRAWFORD COUNTY - TOTAL	1,260	18,525	19,149	19,327	\$185,680,969	\$751.73
Natural Resources & Mining	23	255	256	210	2,632,867	842.70
Construction	146	965	1,004	1,065	11,197,742	851.71
Manufacturing	61	4,440	4,567	4,529	51,167,482	872.33
Trade, Transportation & Utilities	324	5,659	5,781	5,819	53,994,282	721.95
Wholesale Trade	74	722	721	709	9,494,042	1,018.09
Retail Trade	167	1,919	1,991	2,049	14,138,668	547.54
Transportation, Warehousing & Utilities	83	3,018	3,069	3,061	30,361,572	765.91
Information	11	34	34	34	442,330	1,000.75
Financial Activities	121	526	534	528	5,613,825	815.80
Professional & Business Services	159	1,469	1,480	1,473	12,825,864	669.34
Education & Health Services	186	1,508	1,574	1,595	14,031,879	692.35
Leisure & Hospitality	96	1,182	1,419	1,533	5,612,115	313.28
Other Services	81	349	370	399	3,398,699	701.53
Local Government	42	1,991	1,982	1,991	23,514,454	909.86
State Government	10	147	148	151	1,249,430	646.48
CRITTENDEN COUNTY - TOTAL	1,171	13,614	14,384	14,768	\$138,982,016	\$749.96
Natural Resources & Mining	60	241	265	274	2,114,801	625.68
Construction	40	371	390	407	4,789,987	946.39
Manufacturing	39	1,466	1,817	1,869	17,894,025	801.51
Trade, Transportation & Utilities	293	4,022	4,026	4,062	41,242,304	785.92
Wholesale Trade	53	680	684	675	8,694,091	983.98
Retail Trade	154	1,804	1,833	1,877	12,536,119	524.66
Transportation, Warehousing & Utilities	86	1,538	1,509	1,510	20,012,094	1,013.42
Information	5	29	24	27	371,022	1,070.26
Financial Activities	99	415	432	432	6,004,279	1,083.35
Professional & Business Services	106	784	906	890	8,620,025	771.02
Education & Health Services	274	1,817	1,847	1,848	17,622,590	737.80
Leisure & Hospitality	138	1,611	1,772	2,038	8,084,300	344.14
Other Services	64	386	432	442	3,872,956	709.33
Local Government	40	2,137	2,144	2,147	25,218,358	905.35
State Government	13	335	329	332	3,147,369	729.23

TABLE 6. COUNTY SUMMARY

North American Industry Classification System - Industry Groups	Number of Employing Units	Employment			Total Earnings	Average Weekly Earnings
		Apr	May	Jun	Apr - Jun 2020	
CROSS COUNTY - TOTAL	483	4,374	4,592	4,601	\$39,929,336	\$679.18
Natural Resources & Mining	45	282	287	278	2,308,117	628.86
Construction	21	71	72	73	661,950	707.21
Manufacturing	11	189	279	280	1,943,057	599.46
Trade, Transportation & Utilities	125	1,081	1,119	1,118	10,627,442	739.15
Wholesale Trade	25	295	298	297	3,929,286	1,018.83
Retail Trade	67	693	724	726	5,497,717	592.02
Transportation, Warehousing & Utilities	33	93	97	95	1,200,439	972.02
Information	6	31	32	30	276,020	684.91
Financial Activities	50	243	247	232	2,633,252	841.65
Professional & Business Services	41	149	149	149	1,703,381	879.39
Education & Health Services	90	855	896	904	7,110,031	617.99
Leisure & Hospitality	38	355	405	426	1,395,472	271.53
Other Services	30	93	97	97	799,345	642.73
Local Government	17	681	663	667	7,049,815	808.99
State Government	9	344	346	347	3,421,454	761.39
DALLAS COUNTY - TOTAL	226	2,468	2,640	2,559	\$23,470,291	\$706.43
Natural Resources & Mining	22	105	106	111	1,102,405	790.07
Construction	15	64	69	70	1,117,677	1,270.57
Manufacturing	9	490	521	521	5,382,882	810.84
Trade, Transportation & Utilities	50	449	486	490	3,979,392	644.44
Wholesale Trade	5	14	16	17	246,125	1,208.47
Retail Trade	33	291	314	322	2,165,489	539.08
Transportation, Warehousing & Utilities	12	144	156	151	1,567,778	802.21
Information	3	16	16	16	141,917	682.29
Financial Activities	17	67	65	66	761,738	887.81
Professional & Business Services	13	34	35	33	245,355	555.10
Education & Health Services	51	709	745	706	7,241,295	773.64
Leisure & Hospitality	13	128	154	156	491,197	258.80
Other Services	12	42	50	41	310,134	538.12
Local Government	14	333	361	317	2,407,149	549.45
State Government	7	31	32	32	289,150	702.39

TABLE 6. COUNTY SUMMARY

North American Industry Classification System - Industry Groups	Number of Employing Units	Employment			Total Earnings	Average Weekly Earnings
		Apr	May	Jun	Apr - Jun 2020	
DESHA COUNTY - TOTAL	500	4,416	4,415	4,458	\$41,857,898	\$726.88
Natural Resources & Mining	64	278	300	300	2,470,391	649.31
Construction	14	94	98	99	962,796	763.52
Manufacturing	14	1,030	990	991	12,868,652	986.28
Trade, Transportation & Utilities	99	813	805	819	7,396,629	700.42
Wholesale Trade	18	190	193	197	2,945,892	1,172.11
Retail Trade	53	431	444	446	2,732,314	477.32
Transportation, Warehousing & Utilities	28	192	168	176	1,718,423	739.85
Information	4	23	25	25	255,753	808.49
Financial Activities	28	201	202	205	2,033,584	771.86
Professional & Business Services	35	106	110	108	1,273,944	907.37
Education & Health Services	152	625	613	606	4,573,295	572.33
Leisure & Hospitality	36	305	316	356	1,208,116	285.36
Other Services	24	50	56	58	289,467	407.32
Local Government	21	778	790	783	7,652,477	751.15
State Government	9	113	110	108	872,794	608.50
DREW COUNTY - TOTAL	542	5,949	6,007	5,982	\$57,660,013	\$741.79
Natural Resources & Mining	55	297	323	324	3,653,062	893.02
Construction	22	145	143	139	1,497,028	809.06
Manufacturing	21	857	825	858	8,473,498	769.85
Trade, Transportation & Utilities	110	1,010	1,050	1,089	8,563,058	627.53
Wholesale Trade	18	117	118	123	1,255,832	809.52
Retail Trade	72	778	819	850	5,960,300	562.10
Transportation, Warehousing & Utilities	20	115	113	116	1,346,926	903.57
Information	5	27	27	27	275,752	785.62
Financial Activities	53	199	204	198	2,507,545	962.84
Professional & Business Services	39	277	274	282	4,826,309	1,337.05
Education & Health Services	140	819	838	771	6,569,881	624.43
Leisure & Hospitality	41	528	577	595	1,986,503	269.66
Other Services	20	53	58	60	479,098	646.56
Local Government	23	1,184	1,139	1,159	13,266,102	879.21
State Government	13	553	549	480	5,562,177	811.36

TABLE 6. COUNTY SUMMARY

North American Industry Classification System - Industry Groups	Number of Employing Units	Employment			Total Earnings	Average Weekly Earnings
		Apr	May	Jun	Apr - Jun 2020	
FAULKNER COUNTY - TOTAL	2,960	37,005	38,368	39,384	424,435,237	\$853.51
Natural Resources & Mining	42	246	252	264	3,918,632	1,186.75
Construction	361	2,810	2,883	2,968	34,645,808	923.13
Manufacturing	99	2,965	3,024	3,273	40,773,568	1,015.90
Trade, Transportation & Utilities	631	6,813	7,088	7,393	60,562,497	656.33
Wholesale Trade	133	685	695	696	9,457,179	1,051.26
Retail Trade	405	5,312	5,586	5,863	40,850,347	562.44
Transportation, Warehousing & Utilities	93	816	807	834	10,254,971	963.18
Financial Activities	317	1,442	1,442	1,457	18,469,506	981.85
Professional & Business Services	465	3,364	3,385	3,419	41,181,343	934.64
Education & Health Services	482	6,993	7,260	7,373	78,999,851	843.00
Leisure & Hospitality	276	3,421	4,097	4,499	16,466,025	316.21
Local Government	42	3,382	3,301	3,304	48,375,428	1,117.81
State Government	18	3,221	3,196	2,947	32,869,563	810.05
Other	227	2,348	2,440	2,487	48,173,016	1,528.09
FRANKLIN COUNTY - TOTAL	372	4,402	4,405	4,489	\$39,951,497	\$693.41
Natural Resources & Mining	18	146	146	148	1,945,867	1,020.56
Construction	31	139	144	153	1,341,195	709.88
Manufacturing	16	965	937	928	8,944,332	729.36
Trade, Transportation & Utilities	84	937	964	1,014	9,076,389	718.54
Wholesale Trade	11	47	71	75	297,384	355.58
Retail Trade	49	615	619	640	4,037,027	497.13
Transportation, Warehousing & Utilities	24	275	274	299	4,741,978	1,290.45
Information	6	24	25	26	292,687	900.58
Financial Activities	31	67	68	63	713,083	831.10
Professional & Business Services	33	374	360	367	3,092,440	648.17
Education & Health Services	67	549	547	545	4,253,389	598.14
Leisure & Hospitality	30	289	329	349	1,217,149	290.47
Other Services	16	51	53	57	401,603	575.64
Local Government	32	719	689	720	7,266,121	787.97
State Government	8	142	143	119	1,407,242	803.83

TABLE 6. COUNTY SUMMARY

North American Industry Classification System - Industry Groups	Number of Employing Units	Employment			Total Earnings	Average Weekly Earnings
		Apr	May	Jun	Apr - Jun 2020	
FULTON COUNTY - TOTAL	202	1,970	1,981	1,994	\$17,717,644	\$687.75
Manufacturing	11	97	104	103	707,713	537.23
Trade, Transportation & Utilities	52	265	304	314	2,783,319	727.41
Retail Trade	32	155	184	191	1,159,417	504.83
Other Trade, Transportation, & Utilities	20	110	120	123	1,623,902	1,061.61
Information	5	26	27	27	278,879	804.46
Financial Activities	19	87	97	99	896,924	731.39
Professional & Business Services	15	30	30	30	246,013	630.80
Education & Health Services	42	515	510	510	4,146,385	623.36
Leisure & Hospitality	15	74	102	127	406,415	309.53
Other Services	10	13	17	17	139,633	685.60
Local Government	12	572	524	493	4,915,322	713.85
State Government	9	61	63	63	518,064	639.32
Other	12	230	203	211	2,678,977	959.98
GARLAND COUNTY - TOTAL	3,045	31,868	33,452	35,128	\$334,106,208	\$767.58
Natural Resources & Mining	27	190	191	188	2,062,660	836.55
Construction	329	1,837	1,974	2,019	19,560,542	774.27
Manufacturing	93	2,380	2,494	2,467	29,229,203	918.84
Trade, Transportation & Utilities	667	6,669	7,032	7,296	62,796,593	690.17
Wholesale Trade	138	752	765	749	10,155,350	1,034.22
Retail Trade	463	5,365	5,688	5,956	45,354,743	615.35
Transportation, Warehousing & Utilities	66	552	579	591	7,286,500	976.48
Information	30	412	401	405	3,800,579	720.08
Financial Activities	339	1,473	1,505	1,511	18,245,765	937.97
Professional & Business Services	383	2,760	2,840	2,827	26,975,004	738.70
Education & Health Services	499	7,427	7,586	7,682	92,606,538	941.65
Leisure & Hospitality	400	4,386	4,985	6,274	26,062,730	384.43
Other Services	219	662	799	893	5,990,602	587.28
Local Government	37	2,852	2,846	2,844	38,745,186	1,046.73
State Government	22	820	799	722	8,030,806	791.65

TABLE 6. COUNTY SUMMARY

North American Industry Classification System - Industry Groups	Number of Employing Units	Employment			Total Earnings	Average Weekly Earnings
		Apr	May	Jun	Apr - Jun 2020	
GRANT COUNTY - TOTAL	346	3,890	3,989	4,024	\$42,394,547	\$821.92
Natural Resources & Mining	26	192	190	194	2,476,468	992.17
Construction	35	232	245	244	3,273,014	1,047.59
Manufacturing	16	1,201	1,183	1,178	14,715,224	953.35
Trade, Transportation & Utilities	82	629	657	663	5,317,976	629.67
Wholesale Trade	16	73	73	73	1,096,466	1,155.39
Retail Trade	46	505	531	538	3,750,250	549.84
Transportation, Warehousing & Utilities	20	51	53	52	471,260	697.13
Financial Activities	21	124	122	124	2,376,111	1,481.98
Professional & Business Services	34	115	143	129	1,535,589	915.68
Education & Health Services	73	333	350	365	2,605,290	573.68
Leisure & Hospitality	24	204	241	244	887,526	297.26
Local Government	10	764	758	779	8,359,505	838.38
State Government	7	45	46	46	392,136	660.53
Other	18	51	54	58	455,708	645.17
GREENE COUNTY - TOTAL	887	13,487	14,328	14,469	\$139,499,627	\$761.33
Natural Resources & Mining	37	214	220	255	2,156,739	722.36
Construction	71	386	380	372	4,284,566	868.85
Manufacturing	63	4,055	4,472	4,501	49,635,353	879.21
Trade, Transportation & Utilities	223	2,493	2,603	2,682	21,461,599	636.75
Wholesale Trade	41	447	453	463	5,277,764	893.58
Retail Trade	152	1,828	1,926	1,990	13,884,462	557.82
Transportation, Warehousing & Utilities	30	218	224	229	2,299,373	790.80
Information	10	104	115	112	1,451,939	1,012.27
Financial Activities	76	558	562	569	6,011,103	821.30
Professional & Business Services	93	713	755	739	6,719,068	702.56
Education & Health Services	150	1,936	1,906	1,836	19,907,071	809.08
Leisure & Hospitality	84	884	1,155	1,239	4,484,178	315.68
Other Services	39	132	149	155	1,108,543	586.74
Local Government	31	1,629	1,627	1,623	17,947,152	848.87
State Government	10	383	384	386	4,332,316	867.10

TABLE 6. COUNTY SUMMARY

North American Industry Classification System - Industry Groups	Number of Employing Units	Employment			Total Earnings Apr - Jun 2020	Average Weekly Earnings
		Apr	May	Jun		
HEMPSTEAD COUNTY - TOTAL	517	7,282	7,371	7,301	\$70,064,429	\$736.48
Natural Resources & Mining	22	250	248	252	2,901,986	892.92
Construction	25	120	131	127	1,293,787	789.86
Manufacturing	27	2,120	2,110	2,116	22,827,372	830.11
Trade, Transportation & Utilities	127	1,255	1,308	1,295	11,919,832	712.99
Wholesale Trade	27	170	174	154	1,739,113	805.89
Retail Trade	74	832	877	885	5,806,935	516.60
Transportation, Warehousing & Utilities	26	253	257	256	4,373,784	1,317.67
Information	7	16	17	17	229,473	1,059.11
Financial Activities	46	198	196	198	1,990,449	775.90
Professional & Business Services	36	223	226	228	2,097,937	715.12
Education & Health Services	106	930	910	905	6,935,136	583.03
Leisure & Hospitality	48	480	550	553	2,229,508	325.02
Other Services	29	107	108	113	933,220	656.58
Local Government	28	865	845	841	9,905,230	896.05
State Government	16	718	722	656	6,800,499	748.73
HOT SPRING COUNTY - TOTAL	606	7,836	7,920	7,929	\$78,585,678	\$765.68
Natural Resources & Mining	26	171	180	172	1,596,238	704.33
Construction	51	174	181	181	1,491,485	642.14
Manufacturing	30	1,369	1,371	1,385	18,123,202	1,013.89
Trade, Transportation & Utilities	153	1,645	1,669	1,704	18,275,211	840.45
Wholesale Trade	19	80	80	86	1,108,131	1,039.52
Retail Trade	97	859	872	908	6,241,030	545.75
Transportation, Warehousing & Utilities	37	706	717	710	10,926,050	1,182.09
Information	5	39	39	39	444,807	877.33
Financial Activities	49	212	214	199	2,291,352	846.04
Professional & Business Services	56	830	753	668	6,313,886	647.29
Education & Health Services	105	947	949	918	9,257,839	759.21
Leisure & Hospitality	53	463	571	672	2,181,763	295.13
Other Services	39	143	151	161	940,677	477.10
Local Government	27	995	992	996	11,227,274	868.56
State Government	12	848	850	834	6,441,944	587.13

TABLE 6. COUNTY SUMMARY

North American Industry Classification System - Industry Groups	Number of Employing Units	Employment			Total Earnings	Average Weekly Earnings
		Apr	May	Jun	Apr - Jun 2020	
HOWARD COUNTY - TOTAL	351	5,954	6,119	6,236	\$57,792,281	\$728.42
Natural Resources & Mining	16	199	204	198	2,189,729	840.80
Construction	20	81	86	85	733,514	671.72
Manufacturing	18	2,716	2,772	2,926	26,737,643	733.33
Trade, Transportation & Utilities	78	823	862	871	7,889,168	712.28
Wholesale Trade	15	83	87	90	983,678	873.09
Retail Trade	45	536	567	578	4,053,724	556.50
Transportation, Warehousing & Utilities	18	204	208	203	2,851,766	1,070.08
Financial Activities	34	139	140	143	1,507,549	824.40
Professional & Business Services	23	154	150	146	1,404,031	720.02
Education & Health Services	86	764	770	745	6,835,281	692.13
Leisure & Hospitality	27	229	283	290	1,048,795	301.78
Local Government	17	662	660	642	7,777,721	913.88
State Government	10	100	94	89	884,987	721.65
Other	22	87	98	101	783,863	632.49
INDEPENDENCE COUNTY - TOTAL	919	15,730	15,926	15,950	\$166,518,656	\$807.20
Natural Resources & Mining	19	264	260	260	3,525,289	1,037.66
Construction	60	696	679	647	10,182,377	1,162.11
Manufacturing	43	3,402	3,338	3,318	40,041,597	918.71
Trade, Transportation & Utilities	242	2,726	2,792	2,856	27,529,463	758.65
Wholesale Trade	28	179	192	196	2,483,934	1,010.96
Retail Trade	167	1,763	1,813	1,871	13,699,631	580.40
Transportation, Warehousing & Utilities	47	784	787	789	11,345,898	1,109.44
Information	10	84	83	84	705,788	648.90
Financial Activities	86	560	567	555	6,828,423	936.85
Professional & Business Services	88	1,160	1,136	1,137	9,774,405	657.04
Education & Health Services	159	3,603	3,710	3,736	40,760,160	851.32
Leisure & Hospitality	89	922	1,109	1,131	4,301,381	313.92
Other Services	61	252	273	277	1,883,519	541.97
Local Government	47	1,482	1,427	1,394	15,485,557	830.49
State Government	15	579	552	555	5,500,697	752.90

TABLE 6. COUNTY SUMMARY

North American Industry Classification System - Industry Groups	Number of Employing Units	Employment			Total Earnings	Average Weekly Earnings
		Apr	May	Jun	Apr - Jun 2020	
IZARD COUNTY - TOTAL	245	2,669	2,717	2,611	\$23,983,556	\$692.09
Natural Resources & Mining	8	82	61	61	1,091,136	1,234.32
Construction	23	61	65	72	585,768	682.71
Manufacturing	9	175	178	154	1,400,483	637.45
Trade, Transportation & Utilities	63	518	552	560	4,225,607	598.25
Wholesale Trade	11	44	51	54	379,349	587.53
Retail Trade	43	365	391	396	2,415,935	483.96
Transportation, Warehousing & Utilities	9	109	110	110	1,430,323	1,003.27
Information	4	6	5	6	104,583	1,419.68
Financial Activities	21	131	168	176	1,465,988	712.22
Professional & Business Services	14	35	38	46	346,149	671.27
Education & Health Services	44	581	580	586	5,307,931	701.15
Leisure & Hospitality	23	109	134	148	563,564	332.62
Other Services	13	24	24	32	172,726	498.25
Local Government	14	522	501	386	4,983,507	816.21
State Government	9	425	411	384	3,736,114	706.71
JACKSON COUNTY - TOTAL	431	5,095	5,192	5,209	\$49,412,647	\$735.86
Natural Resources & Mining	58	302	315	324	2,967,642	727.78
Construction	21	110	117	120	1,116,088	742.24
Manufacturing	13	1,008	1,027	997	11,494,973	874.90
Trade, Transportation & Utilities	105	948	975	988	9,737,902	771.97
Wholesale Trade	17	219	226	227	3,413,548	1,172.23
Retail Trade	69	651	663	672	5,203,720	604.66
Transportation, Warehousing & Utilities	19	78	86	89	1,120,634	1,022.17
Information	3	8	8	8	69,685	670.05
Financial Activities	32	123	122	125	1,438,027	896.90
Professional & Business Services	33	123	128	128	1,251,153	761.81
Education & Health Services	77	803	814	819	8,090,396	766.43
Leisure & Hospitality	26	283	292	290	1,169,618	312.04
Other Services	19	59	62	63	470,111	589.60
Local Government	32	543	547	553	5,111,590	717.95
State Government	12	785	785	794	6,495,462	634.07

TABLE 6. COUNTY SUMMARY

North American Industry Classification System - Industry Groups	Number of Employing Units	Employment			Total Earnings	Average Weekly Earnings
		Apr	May	Jun	Apr - Jun 2020	
JEFFERSON COUNTY - TOTAL	1,997	24,202	24,524	24,487	\$252,323,679	\$795.33
Natural Resources & Mining	39	134	139	143	1,928,744	1,069.94
Construction	85	405	447	450	5,104,729	904.77
Manufacturing	61	4,387	4,380	4,443	59,897,684	1,046.37
Trade, Transportation & Utilities	392	3,977	4,116	4,155	38,150,810	718.81
Wholesale Trade	68	632	645	636	7,627,816	920.16
Retail Trade	271	2,698	2,815	2,866	19,824,332	545.99
Transportation, Warehousing & Utilities	53	647	656	653	10,698,662	1,262.23
Information	9	70	69	68	801,627	893.68
Financial Activities	150	1,001	1,018	1,016	12,251,028	931.52
Professional & Business Services	142	1,726	1,755	1,782	15,240,967	668.28
Education & Health Services	802	4,523	4,560	4,460	48,884,514	832.98
Leisure & Hospitality	139	1,722	1,903	2,146	7,201,420	287.97
Other Services	101	414	433	428	3,921,351	709.75
Local Government	40	2,385	2,337	2,231	25,783,850	855.76
State Government	37	3,458	3,367	3,165	33,156,955	765.93
JOHNSON COUNTY - TOTAL	480	7,517	7,821	8,101	\$72,295,899	\$711.79
Natural Resources & Mining	13	197	201	212	2,180,807	825.02
Construction	41	192	193	190	1,648,645	661.66
Manufacturing	32	2,003	2,169	2,303	20,088,600	715.96
Trade, Transportation & Utilities	98	1,920	1,967	2,022	17,828,220	696.26
Retail Trade	69	849	876	928	5,693,175	495.22
Other Trade, Transportation & Utilities	29	1,071	1,091	1,094	12,135,045	860.07
Information	4	15	13	14	176,668	970.70
Financial Activities	48	179	178	179	1,708,744	735.68
Professional & Business Services	44	189	183	221	1,671,468	650.46
Education & Health Services	106	1,184	1,198	1,241	11,966,468	762.21
Leisure & Hospitality	43	435	493	492	1,719,996	279.52
Other Services	29	70	72	70	549,859	598.54
Local Government	14	1,031	1,052	1,053	11,743,757	864.19
State Government	8	102	102	104	1,012,667	758.74

TABLE 6. COUNTY SUMMARY

North American Industry Classification System - Industry Groups	Number of Employing Units	Employment			Total Earnings	Average Weekly Earnings
		Apr	May	Jun	Apr - Jun 2020	
LAFAYETTE COUNTY - TOTAL	161	1,059	1,083	1,043	\$9,837,848	\$712.80
Natural Resources & Mining	23	76	82	76	491,418	484.63
Construction	11	75	77	82	950,946	937.82
Manufacturing	6	33	46	38	829,561	1,636.21
Trade, Transportation & Utilities	30	181	192	201	1,501,225	603.55
Retail Trade	17	97	101	102	625,046	480.80
Other Trade, Transportation & Utilities	13	84	91	99	876,179	737.94
Financial Activities	13	74	75	69	718,979	761.09
Professional & Business Services	10	38	36	36	283,473	594.70
Education & Health Services	32	209	210	190	1,436,462	544.32
Leisure & Hospitality	6	26	29	30	119,580	324.65
Local Government	15	276	265	250	2,909,737	848.90
State Government	8	32	32	32	302,635	727.49
Other	7	39	39	39	293,832	579.55
LAWRENCE COUNTY - TOTAL	398	3,646	3,698	3,674	\$33,748,462	\$706.85
Natural Resources & Mining	53	181	188	183	1,877,483	784.90
Construction	27	147	147	148	1,882,703	982.96
Manufacturing	16	266	282	272	2,348,019	660.79
Trade, Transportation & Utilities	116	784	808	812	7,271,007	697.97
Wholesale Trade	17	182	185	182	2,177,808	915.43
Retail Trade	61	485	498	507	3,490,298	540.57
Transportation, Warehousing & Utilities	38	117	125	123	1,602,901	1,013.43
Financial Activities	28	121	125	120	1,292,673	815.05
Professional & Business Services	23	88	85	85	859,743	769.00
Education & Health Services	48	564	541	496	4,728,053	681.50
Leisure & Hospitality	31	211	268	296	994,258	296.06
Local Government	24	1,036	1,005	1,015	10,163,232	767.46
State Government	9	73	74	74	616,002	643.23
Other	23	175	175	173	1,715,289	756.86

TABLE 6. COUNTY SUMMARY

North American Industry Classification System - Industry Groups	Number of Employing Units	Employment			Total Earnings	Average Weekly Earnings
		Apr	May	Jun	Apr - Jun 2020	
LEE COUNTY - TOTAL	256	1,673	1,701	1,728	\$15,784,055	\$713.93
Natural Resources & Mining	38	174	182	175	1,913,011	831.38
Construction	3	3	9	9	41,775	459.07
Trade, Transportation & Utilities	40	320	331	329	3,266,163	769.11
Wholesale Trade	10	118	118	113	1,623,412	1,073.45
Retail Trade	20	150	158	157	953,572	473.24
Transportation, Warehousing & Utilities	10	52	55	59	689,179	958.08
Financial Activities	15	58	59	58	635,260	837.71
Professional & Business Services	13	48	48	47	838,839	1,353.69
Education & Health Services	106	371	360	405	3,338,885	678.27
Leisure & Hospitality	7	59	65	68	272,506	327.53
Local Government	15	247	247	232	2,068,821	657.60
State Government	6	375	376	382	3,242,442	660.42
Other	13	18	24	23	166,353	590.60
LINCOLN COUNTY - TOTAL	276	2,554	2,744	2,763	\$25,258,221	\$723.09
Natural Resources & Mining	32	143	142	141	1,309,666	709.46
Construction	19	128	138	141	1,461,902	828.90
Manufacturing	9	202	318	316	2,660,638	734.44
Trade, Transportation & Utilities	40	300	317	321	4,080,290	1,003.84
Wholesale Trade	7	55	56	56	672,972	929.95
Retail Trade	21	130	146	149	933,742	507.01
Transportation, Warehousing & Utilities	12	115	115	116	2,473,576	1,649.78
Financial Activities	18	67	65	65	648,563	759.74
Professional & Business Services	11	22	21	24	298,525	1,028.21
Education & Health Services	103	374	385	388	2,725,116	548.28
Leisure & Hospitality	13	110	129	144	390,908	235.53
Local Government	7	306	321	304	3,120,652	773.52
State Government	10	856	857	867	8,022,667	717.59
Other	14	46	51	52	539,294	835.25

TABLE 6. COUNTY SUMMARY

North American Industry Classification System - Industry Groups	Number of Employing Units	Employment			Total Earnings Apr - Jun 2020	Average Weekly Earnings
		Apr	May	Jun		
LITTLE RIVER COUNTY - TOTAL	254	3,164	3,071	3,016	\$42,804,638	\$1,067.78
Natural Resources & Mining	15	65	64	63	583,724	701.59
Construction	12	59	66	63	612,823	752.24
Manufacturing	15	1,105	987	931	25,138,494	1,919.02
Trade, Transportation & Utilities	62	548	555	542	4,435,210	622.19
Wholesale Trade	7	31	30	29	495,830	1,271.36
Retail Trade	39	396	406	401	2,755,060	528.50
Transportation, Warehousing & Utilities	16	121	119	112	1,184,320	776.43
Financial Activities	14	52	53	55	477,497	688.70
Professional & Business Services	17	128	111	115	1,213,136	790.83
Education & Health Services	53	201	210	207	1,736,922	648.59
Leisure & Hospitality	18	193	221	231	854,735	305.81
Local Government	20	680	668	675	6,748,872	769.86
State Government	10	83	81	79	692,457	657.60
Other	18	50	55	55	310,768	448.22
LOGAN COUNTY - TOTAL	484	4,657	4,822	5,031	\$41,671,071	\$662.74
Natural Resources & Mining	22	117	122	124	1,001,164	636.47
Construction	40	146	146	141	1,607,613	856.78
Manufacturing	20	811	903	1,076	10,111,477	836.35
Trade, Transportation & Utilities	101	955	986	977	7,017,665	554.99
Wholesale Trade	8	35	35	36	276,653	602.29
Retail Trade	71	795	823	818	5,120,704	485.10
Transportation, Warehousing & Utilities	22	125	128	123	1,620,308	994.46
Information	5	26	26	26	267,961	792.78
Financial Activities	50	178	180	184	2,181,405	928.78
Professional & Business Services	41	112	108	109	1,012,808	710.41
Education & Health Services	109	637	650	669	5,545,982	654.32
Leisure & Hospitality	31	263	291	309	1,114,135	297.92
Other Services	31	125	130	129	1,213,297	729.14
Local Government	22	818	810	812	7,448,550	704.47
State Government	12	469	470	475	3,149,014	513.93

TABLE 6. COUNTY SUMMARY

North American Industry Classification System - Industry Groups	Number of Employing Units	Employment			Total Earnings	Average Weekly Earnings
		Apr	May	Jun	Apr - Jun 2020	
LONOKE COUNTY - TOTAL	1,319	12,884	13,409	13,347	\$124,274,092	\$723.48
Natural Resources & Mining	93	523	515	514	4,840,263	719.71
Construction	148	922	940	973	10,931,038	889.79
Manufacturing	36	1,391	1,382	1,041	15,315,225	926.66
Trade, Transportation & Utilities	284	2,916	3,011	3,017	25,110,421	647.89
Wholesale Trade	66	422	425	402	5,345,367	987.63
Retail Trade	164	2,183	2,273	2,298	15,560,879	531.68
Transportation, Warehousing & Utilities	54	311	313	317	4,204,175	1,031.02
Information	15	80	88	89	1,078,919	968.80
Financial Activities	168	680	693	689	9,596,946	1,074.04
Professional & Business Services	153	521	494	482	4,741,611	730.94
Education & Health Services	201	1,587	1,775	1,814	14,683,167	654.64
Leisure & Hospitality	120	1,380	1,618	1,816	6,703,888	321.36
Other Services	63	165	173	173	1,207,673	545.39
Local Government	24	2,564	2,565	2,581	28,544,095	854.36
State Government	14	155	155	158	1,520,846	749.92
MADISON COUNTY - TOTAL	251	3,293	3,340	3,364	\$31,871,765	\$735.72
Natural Resources & Mining	10	54	55	55	526,417	740.74
Construction	35	131	141	148	1,493,545	820.63
Manufacturing	23	1,224	1,217	1,186	11,678,043	743.02
Trade, Transportation & Utilities	50	646	670	683	5,542,238	639.81
Wholesale Trade	9	34	34	34	446,498	1,010.18
Retail Trade	31	465	480	493	3,211,143	515.32
Transportation, Warehousing & Utilities	10	147	156	156	1,884,597	947.51
Information	5	50	51	51	1,275,819	1,936.97
Financial Activities	20	89	89	88	957,147	830.38
Professional & Business Services	25	74	78	90	1,151,264	1,097.84
Education & Health Services	31	252	260	265	2,119,446	629.48
Leisure & Hospitality	17	138	143	154	570,702	302.76
Other Services	19	44	50	50	319,826	512.54
Local Government	9	551	545	552	5,860,475	820.64
State Government	7	40	41	42	376,843	707.02

TABLE 6. COUNTY SUMMARY

North American Industry Classification System - Industry Groups	Number of Employing Units	Employment			Total Earnings	Average Weekly Earnings
		Apr	May	Jun	Apr - Jun 2020	
MARION COUNTY - TOTAL	281	3,423	3,246	3,408	\$28,976,927	\$663.59
Manufacturing	21	1,548	1,321	1,382	12,746,640	691.96
Trade, Transportation & Utilities	61	501	516	553	3,868,800	568.66
Wholesale Trade	7	35	35	36	291,540	634.70
Retail Trade	44	433	445	479	3,026,613	514.70
Transportation, Warehousing & Utilities	10	33	36	38	550,647	1,187.59
Information	3	56	56	56	794,901	1,091.90
Financial Activities	29	153	180	222	1,794,203	746.03
Professional & Business Services	24	76	77	75	647,663	655.53
Education & Health Services	46	290	297	293	2,602,339	682.43
Leisure & Hospitality	33	134	154	172	600,813	301.41
Other Services	15	20	22	29	134,155	436.04
Local Government	18	504	484	487	4,493,386	703.01
State Government	7	39	39	40	372,391	728.27
Other	24	102	100	99	921,636	706.60
MILLER COUNTY - TOTAL	879	10,148	11,748	11,992	\$114,784,577	\$781.66
Natural Resources & Mining	31	334	349	315	3,577,695	827.28
Construction	67	560	586	577	6,374,730	853.80
Manufacturing	27	895	2,158	2,234	25,730,628	1,123.10
Trade, Transportation & Utilities	218	2,887	2,828	2,773	28,722,885	780.91
Wholesale Trade	47	490	490	484	6,315,213	995.46
Retail Trade	122	1,287	1,305	1,320	9,021,270	532.17
Transportation, Warehousing & Utilities	49	1,110	1,033	969	13,386,402	992.66
Information	5	95	96	98	1,485,974	1,186.56
Financial Activities	80	392	404	407	4,649,903	891.98
Professional & Business Services	75	800	833	868	6,122,925	564.97
Education & Health Services	187	1,142	1,186	1,179	9,658,303	635.54
Leisure & Hospitality	94	938	1,207	1,428	5,053,281	326.38
Other Services	54	237	246	240	1,784,867	569.70
Local Government	26	1,388	1,375	1,389	16,282,809	905.00
State Government	15	480	480	484	5,340,577	853.49

TABLE 6. COUNTY SUMMARY

North American Industry Classification System - Industry Groups	Number of Employing Units	Employment			Total Earnings	Average Weekly Earnings
		Apr	May	Jun	Apr - Jun 2020	
MISSISSIPPI COUNTY - TOTAL	1,063	16,364	16,223	16,523	\$216,247,676	\$1,016.15
Natural Resources & Mining	104	473	473	495	4,860,144	778.33
Construction	53	782	757	740	11,280,704	1,142.27
Manufacturing	62	6,059	5,774	6,054	115,241,342	1,486.79
Trade, Transportation & Utilities	258	2,660	2,746	2,781	25,453,256	717.46
Wholesale Trade	54	369	369	365	5,210,283	1,090.09
Retail Trade	138	1,542	1,632	1,643	10,146,619	486.10
Transportation, Warehousing & Utilities	66	749	745	773	10,096,354	1,027.76
Information	5	26	25	25	143,468	435.63
Financial Activities	83	414	430	419	4,187,952	765.20
Professional & Business Services	80	879	821	842	9,675,205	878.34
Education & Health Services	210	1,331	1,413	1,286	11,952,110	684.41
Leisure & Hospitality	94	911	992	1,086	3,623,175	279.73
Other Services	45	252	265	264	2,592,489	766.03
Local Government	50	2,054	2,061	2,063	22,679,541	847.16
State Government	19	523	466	468	4,558,290	721.97
MONROE COUNTY - TOTAL	265	1,881	1,910	1,948	\$16,236,069	\$652.86
Natural Resources & Mining	26	99	115	121	1,244,527	857.31
Manufacturing	6	135	137	142	1,277,401	712.04
Trade, Transportation & Utilities	66	528	528	518	5,468,773	801.79
Wholesale Trade	16	178	177	173	2,594,921	1,134.14
Retail Trade	31	234	239	239	1,554,334	503.78
Transportation, Warehousing & Utilities	19	116	112	106	1,319,518	911.69
Financial Activities	21	85	85	86	814,099	733.86
Professional & Business Services	13	31	32	23	181,157	486.11
Education & Health Services	55	324	334	345	2,394,962	551.03
Leisure & Hospitality	22	179	214	245	804,402	290.96
Local Government	21	320	315	318	2,655,890	643.12
State Government	7	63	65	67	660,503	781.66
Other	28	117	85	83	734,355	594.62

TABLE 6. COUNTY SUMMARY

North American Industry Classification System - Industry Groups	Number of Employing Units	Employment			Total Earnings	Average Weekly Earnings
		Apr	May	Jun	Apr - Jun 2020	
MONTGOMERY COUNTY - TOTAL	160	1,104	1,177	1,284	\$9,436,725	\$610.86
Natural Resources & Mining	8	30	32	31	255,824	634.80
Construction	24	60	61	54	431,246	568.68
Manufacturing	8	35	38	38	359,014	746.39
Trade, Transportation & Utilities	31	214	220	219	1,516,218	535.83
Wholesale Trade	7	57	58	56	527,046	711.26
Retail Trade	20	139	144	145	882,264	475.70
Transportation, Warehousing & Utilities	4	18	18	18	106,908	456.87
Financial Activities	10	45	52	57	405,281	607.31
Professional & Business Services	15	23	23	23	133,276	445.74
Education & Health Services	21	54	54	53	445,136	638.04
Leisure & Hospitality	14	193	243	348	1,499,563	441.39
Local Government	9	390	386	386	3,907,726	776.06
State Government	7	35	35	37	296,743	639.99
Other	13	25	33	38	186,698	448.79
NEVADA COUNTY - TOTAL	203	2,343	2,339	2,286	\$22,544,647	\$746.64
Natural Resources & Mining	13	49	52	52	761,033	1,147.86
Trade, Transportation & Utilities	39	517	523	524	5,048,197	744.86
Retail Trade	22	270	279	291	1,732,025	475.83
Other Trade, Transportation & Utilities	17	247	244	233	3,316,172	1,057.00
Financial Activities	11	68	69	55	495,532	595.59
Professional & Business Services	11	59	59	53	772,847	1,042.98
Education & Health Services	47	424	418	411	3,003,603	553.18
Leisure & Hospitality	9	61	71	70	229,872	262.61
Other Services	15	43	37	42	284,074	537.34
Local Government	29	376	370	336	3,750,334	799.87
State Government	9	53	54	55	423,050	602.64
Other	20	693	686	688	7,776,105	868.16

TABLE 6. COUNTY SUMMARY

North American Industry Classification System - Industry Groups	Number of Employing Units	Employment			Total Earnings	Average Weekly Earnings
		Apr	May	Jun	Apr - Jun 2020	
NEWTON COUNTY - TOTAL	114	926	1,022	1,012	\$7,307,662	\$569.72
Construction	7	21	46	23	228,019	584.66
Manufacturing	7	36	38	37	307,253	638.78
Trade, Transportation & Utilities	25	155	163	163	1,292,825	620.26
Retail Trade	12	102	108	108	654,939	475.28
Other Trade, Transportation & Utilities	13	53	55	55	637,886	903.09
Education & Health Services	23	224	225	227	1,436,946	490.54
Leisure & Hospitality	15	97	148	159	653,397	373.23
Other Services	4	4	4	4	20,944	402.77
Local Government	14	336	334	326	2,759,566	639.38
State Government	7	35	36	37	316,211	675.66
Other	12	18	28	36	292,501	823.17
OUACHITA COUNTY - TOTAL	657	6,219	6,332	6,315	\$59,756,815	\$730.95
Natural Resources & Mining	37	143	146	153	1,554,124	811.41
Construction	42	171	197	198	1,925,668	785.13
Manufacturing	26	405	419	405	4,747,709	891.48
Trade, Transportation & Utilities	154	1,457	1,508	1,508	12,042,423	621.29
Wholesale Trade	24	203	203	201	2,086,352	793.19
Retail Trade	94	922	978	986	5,821,904	465.53
Transportation, Warehousing & Utilities	36	332	327	321	4,134,167	973.51
Information	6	32	32	32	369,286	887.71
Financial Activities	51	271	270	259	2,837,081	818.39
Professional & Business Services	44	432	457	455	3,979,515	683.30
Education & Health Services	186	1,174	1,216	1,200	13,538,086	870.24
Leisure & Hospitality	40	337	373	405	1,435,526	297.11
Other Services	27	103	104	113	1,077,096	776.75
Local Government	31	1,076	1,030	1,038	10,742,409	788.49
State Government	13	618	580	549	5,507,892	727.56

TABLE 6. COUNTY SUMMARY

North American Industry Classification System - Industry Groups	Number of Employing Units	Employment			Total Earnings	Average Weekly Earnings
		Apr	May	Jun	Apr - Jun 2020	
PERRY COUNTY - TOTAL	149	1,089	1,153	1,142	\$10,302,096	\$702.54
Construction	14	92	89	92	766,847	648.22
Manufacturing	5	35	30	31	478,260	1,149.66
Trade, Transportation & Utilities	28	167	176	175	1,385,392	617.19
Retail Trade	17	135	143	142	608,676	334.44
Other Trade, Transportation & Utilities	11	32	33	33	776,716	1,829.00
Financial Activities	10	25	26	25	282,471	857.71
Professional & Business Services	19	52	52	57	438,473	628.48
Education & Health Services	31	184	216	213	1,630,779	613.92
Leisure & Hospitality	10	63	76	84	328,193	339.63
Local Government	9	331	334	333	3,065,759	708.90
State Government	7	35	35	36	320,931	698.69
Other	16	105	119	96	1,604,991	1,157.45
PHILLIPS COUNTY - TOTAL	717	5,017	5,099	5,143	\$46,565,168	\$704.23
Natural Resources & Mining	62	254	269	262	2,216,796	651.68
Construction	27	104	122	120	836,580	557.97
Manufacturing	11	401	408	414	4,837,739	912.84
Trade, Transportation & Utilities	135	1,188	1,201	1,228	10,835,804	691.34
Wholesale Trade	26	271	267	267	3,726,596	1,068.30
Retail Trade	72	695	716	738	4,447,157	477.56
Transportation, Warehousing & Utilities	37	222	218	223	2,662,051	926.58
Information	7	12	12	12	151,759	972.81
Financial Activities	41	195	195	196	2,014,277	793.23
Professional & Business Services	40	262	303	302	2,849,049	758.33
Education & Health Services	292	1,124	1,112	1,196	10,280,283	691.25
Leisure & Hospitality	38	341	368	380	1,322,029	280.15
Other Services	23	54	51	58	342,432	484.80
Local Government	27	769	758	702	7,951,444	823.22
State Government	14	313	300	273	2,926,976	762.37

TABLE 6. COUNTY SUMMARY

North American Industry Classification System - Industry Groups	Number of Employing Units	Employment			Total Earnings	Average Weekly Earnings
		Apr	May	Jun	Apr - Jun 2020	
PIKE COUNTY - TOTAL	264	2,478	2,515	2,593	\$23,467,712	\$713.90
Natural Resources & Mining	23	110	95	112	1,111,062	808.83
Construction	16	35	38	42	310,160	622.39
Manufacturing	17	409	417	429	4,278,479	786.73
Trade, Transportation & Utilities	71	527	538	540	5,809,207	835.26
Wholesale Trade	10	106	107	106	1,052,013	761.04
Retail Trade	41	341	346	354	2,371,340	525.68
Transportation, Warehousing & Utilities	20	80	85	80	2,385,854	2,247.27
Information	7	27	26	27	288,410	831.95
Financial Activities	25	223	217	219	2,583,878	904.82
Professional & Business Services	14	58	54	54	652,616	907.25
Education & Health Services	32	264	269	270	1,741,719	500.54
Leisure & Hospitality	25	186	227	268	901,081	305.35
Other Services	15	62	62	61	463,352	577.99
Local Government	10	482	477	476	4,679,109	752.47
State Government	9	95	95	95	648,639	525.21
POINSETT COUNTY - TOTAL	475	4,954	5,058	5,047	\$53,766,215	\$823.93
Natural Resources & Mining	64	283	299	300	3,557,992	930.92
Construction	25	88	88	94	939,761	803.21
Manufacturing	18	683	680	686	9,816,638	1,105.60
Trade, Transportation & Utilities	117	1,172	1,211	1,178	13,065,223	846.69
Wholesale Trade	21	410	426	427	7,358,352	1,344.48
Retail Trade	68	627	651	623	3,942,459	478.59
Transportation, Warehousing & Utilities	28	135	134	128	1,764,412	1,025.62
Professional & Business Services	29	196	204	205	3,267,014	1,246.16
Education & Health Services	83	754	759	754	7,083,893	721.10
Leisure & Hospitality	41	373	411	446	1,647,438	309.09
Other Services	19	57	56	57	495,390	672.48
Local Government	30	1,028	1,027	1,010	10,722,216	807.29
State Government	10	99	101	102	915,738	699.75
Other	39	221	222	215	2,254,912	790.83

TABLE 6. COUNTY SUMMARY

North American Industry Classification System - Industry Groups	Number of Employing Units	Employment			Total Earnings	Average Weekly Earnings
		Apr	May	Jun	Apr - Jun 2020	
POLK COUNTY - TOTAL	478	5,371	5,458	5,437	\$47,894,358	\$679.49
Natural Resources & Mining	23	165	172	170	2,160,767	983.51
Construction	32	198	207	198	2,046,209	783.09
Manufacturing	36	1,236	1,211	1,224	11,916,868	749.13
Trade, Transportation & Utilities	117	1,011	1,083	1,109	8,502,557	612.59
Wholesale Trade	18	57	57	62	678,846	890.10
Retail Trade	64	731	786	806	4,987,788	495.49
Transportation, Warehousing & Utilities	35	223	240	241	2,835,923	929.61
Information	6	47	45	48	247,506	407.98
Financial Activities	40	211	208	206	2,041,044	753.62
Professional & Business Services	38	143	142	138	1,695,241	924.85
Education & Health Services	84	906	924	898	8,331,534	704.79
Leisure & Hospitality	43	369	418	438	1,446,202	272.44
Other Services	26	144	150	144	1,170,862	616.89
Local Government	21	659	639	624	6,329,500	759.97
State Government	12	282	259	240	2,006,068	592.75
POPE COUNTY - TOTAL	1,816	22,420	23,112	23,122	\$253,539,494	\$852.23
Natural Resources & Mining	35	762	792	784	8,074,029	796.94
Construction	162	1,067	1,069	1,091	16,979,550	1,214.24
Manufacturing	73	3,338	3,329	3,331	34,238,654	790.28
Trade, Transportation & Utilities	406	5,627	5,769	5,846	78,264,139	1,047.50
Wholesale Trade	74	519	538	540	6,076,767	878.10
Retail Trade	261	2,819	2,935	2,993	21,540,601	568.30
Transportation, Warehousing & Utilities	71	2,289	2,296	2,313	50,646,771	1,694.36
Information	17	92	90	106	935,815	749.85
Financial Activities	192	859	865	865	10,146,161	904.37
Professional & Business Services	251	1,860	1,756	1,763	20,986,292	900.35
Education & Health Services	371	2,835	2,983	3,115	30,307,045	782.93
Leisure & Hospitality	149	1,810	2,257	2,329	9,079,609	327.59
Other Services	102	385	416	430	3,311,239	620.74
Local Government	43	2,186	2,191	2,142	24,275,260	859.33
State Government	15	1,599	1,595	1,320	16,941,701	866.11

TABLE 6. COUNTY SUMMARY

North American Industry Classification System - Industry Groups	Number of Employing Units	Employment			Total Earnings	Average Weekly Earnings
		Apr	May	Jun	Apr - Jun 2020	
PRAIRIE COUNTY - TOTAL	249	1,411	1,466	1,432	\$12,762,810	\$683.51
Natural Resources & Mining	35	180	190	180	2,143,145	899.22
Construction	11	36	46	46	539,194	972.10
Trade, Transportation & Utilities	59	343	363	356	2,892,019	628.43
Wholesale Trade	12	85	85	84	1,149,882	1,044.71
Retail Trade	33	205	223	217	1,196,952	428.25
Transportation, Warehousing & Utilities	14	53	55	55	545,185	771.85
Financial Activities	16	53	54	54	549,045	786.97
Professional & Business Services	15	59	59	56	702,185	931.28
Education & Health Services	47	249	246	217	1,882,227	610.06
Leisure & Hospitality	20	68	78	74	284,848	298.79
Local Government	15	316	310	315	2,835,875	695.47
State Government	7	28	29	30	263,693	699.45
Other	24	79	91	104	670,579	564.78
PULASKI COUNTY - TOTAL	14,421	215,689	220,680	224,606	\$2,830,485,342	\$988.22
Natural Resources & Mining	52	629	622	628	10,199,143	1,252.61
Construction	943	8,971	8,988	9,008	121,753,952	1,041.91
Manufacturing	330	12,508	12,034	12,230	170,207,983	1,068.17
Trade, Transportation & Utilities	3,085	43,344	44,889	46,350	523,635,244	897.88
Wholesale Trade	910	11,221	11,222	11,168	180,483,869	1,239.18
Retail Trade	1,776	20,719	21,696	22,955	181,813,829	641.84
Transportation, Warehousing & Utilities	399	11,404	11,971	12,227	161,337,546	1,045.78
Information	214	2,735	2,738	2,699	39,948,101	1,128.10
Financial Activities	1,711	17,549	17,530	17,573	312,640,910	1,370.28
Professional & Business Services	2,762	31,461	31,375	31,784	423,212,555	1,032.18
Education & Health Services	2,575	38,260	39,013	40,021	504,657,893	992.89
Leisure & Hospitality	1,283	13,539	16,435	18,178	77,691,009	372.34
Other Services	1,150	5,475	5,938	6,227	61,495,946	804.50
Local Government	108	14,669	14,601	13,674	193,270,713	1,038.58
State Government	208	26,549	26,517	26,234	391,771,893	1,140.09

TABLE 6. COUNTY SUMMARY

North American Industry Classification System - Industry Groups	Number of Employing Units	Employment			Total Earnings	Average Weekly Earnings
		Apr	May	Jun	Apr - Jun 2020	
RANDOLPH COUNTY - TOTAL	395	5,549	5,741	5,698	\$51,202,654	\$695.55
Natural Resources & Mining	25	249	255	258	3,187,157	965.22
Construction	25	82	92	76	663,188	612.17
Manufacturing	29	1,658	1,643	1,636	17,068,318	797.82
Trade, Transportation & Utilities	97	904	928	918	7,441,149	624.43
Wholesale Trade	14	119	119	119	1,193,871	771.73
Retail Trade	57	614	634	628	4,161,415	511.90
Transportation, Warehousing & Utilities	26	171	175	171	2,085,863	931.05
Information	5	23	22	20	218,366	775.26
Financial Activities	32	146	149	153	1,354,639	697.79
Professional & Business Services	32	226	227	242	1,851,477	614.77
Education & Health Services	66	912	926	888	8,033,496	680.07
Leisure & Hospitality	31	295	411	422	1,399,772	286.37
Other Services	19	46	48	46	330,033	544.01
Local Government	24	754	790	798	7,345,594	723.80
State Government	10	254	250	241	2,309,465	715.37
SAINT FRANCIS COUNTY - TOTAL	653	5,975	6,108	6,239	\$56,899,446	\$716.66
Natural Resources & Mining	44	165	173	187	1,715,702	754.15
Construction	36	199	206	212	2,209,369	826.34
Trade, Transportation & Utilities	141	1,592	1,628	1,734	15,990,554	744.88
Wholesale Trade	28	531	522	526	6,864,774	1,003.28
Retail Trade	92	847	895	913	5,999,206	521.44
Transportation, Warehousing & Utilities	21	214	211	295	3,126,574	1,002.11
Information	5	40	40	40	426,869	820.90
Financial Activities	51	241	250	239	2,051,556	648.54
Professional & Business Services	46	189	188	162	1,721,549	737.07
Education & Health Services	208	1,298	1,326	1,339	13,345,616	777.13
Leisure & Hospitality	47	466	533	578	1,937,731	283.56
Local Government	28	757	749	739	7,353,057	755.84
State Government	14	388	383	338	3,411,389	709.87
Other	33	640	632	671	6736054	800.04

TABLE 6. COUNTY SUMMARY

North American Industry Classification System - Industry Groups	Number of Employing Units	Employment			Total Earnings	Average Weekly Earnings
		Apr	May	Jun	Apr - Jun 2020	
SALINE COUNTY - TOTAL	2,137	22,828	23,594	24,230	\$232,611,484	\$759.77
Natural Resources & Mining	14	58	55	56	604,493	825.43
Construction	292	2,228	2,255	2,292	26,490,367	902.31
Manufacturing	79	1,315	1,304	1,323	17,000,966	995.26
Trade, Transportation & Utilities	475	5,213	5,420	5,565	47,393,647	675.21
Wholesale Trade	113	466	477	511	6,560,435	1,041.23
Retail Trade	287	4,172	4,335	4,427	34,127,900	608.91
Transportation, Warehousing & Utilities	75	575	608	627	6,705,312	854.91
Information	19	128	126	124	1,869,500	1,141.33
Financial Activities	220	822	828	842	10,676,170	988.66
Professional & Business Services	295	1,760	1,750	1,760	20,371,504	892.05
Education & Health Services	340	4,089	4,315	4,355	43,870,949	793.48
Leisure & Hospitality	202	2,523	2,959	3,317	12,533,085	328.70
Other Services	154	564	691	738	6,040,538	699.43
Local Government	33	3,325	3,087	3,042	39,054,511	953.31
State Government	14	803	804	816	6,705,754	638.66
SCOTT COUNTY - TOTAL	188	2,941	2,972	2,991	\$24,728,786	\$640.91
Natural Resources & Mining	18	173	168	170	1,795,274	810.75
Trade, Transportation & Utilities	38	319	330	332	2,402,911	565.26
Wholesale Trade	8	31	34	28	290,180	720.05
Retail Trade	24	224	234	239	1,296,361	429.21
Transportation, Warehousing & Utilities	6	64	62	65	816,370	986.35
Financial Activities	16	60	61	61	544,633	690.57
Professional & Business Services	14	119	120	119	722,396	465.66
Education & Health Services	42	290	302	303	3,208,753	827.35
Leisure & Hospitality	19	117	137	184	493,079	259.79
Other Services	9	34	34	34	246,306	557.25
Local Government	6	524	513	498	5,436,199	817.27
State Government	6	31	31	32	305,131	749.09
Other	20	1,274	1,276	1,258	9,574,104	580.20

TABLE 6. COUNTY SUMMARY

North American Industry Classification System - Industry Groups	Number of Employing Units	Employment			Total Earnings Apr - Jun 2020	Average Weekly Earnings
		Apr	May	Jun		
SEARCY COUNTY - TOTAL	169	1,346	1,554	1,533	\$10,647,101	\$554.26
Construction	12	6	6	14	39,440	350.06
Manufacturing	14	138	141	118	1,067,510	620.53
Trade, Transportation & Utilities	34	239	261	262	1,653,122	500.64
Wholesale Trade	5	35	35	34	266,686	591.76
Retail Trade	23	186	208	210	1,142,830	436.64
Transportation, Warehousing & Utilities	6	18	18	18	243,606	1,041.05
Financial Activities	14	40	77	108	527,661	541.19
Education & Health Services	39	302	310	275	2,329,888	606.16
Leisure & Hospitality	14	101	121	127	389,308	257.42
Local Government	10	324	330	322	2,648,203	626.15
State Government	6	43	44	44	367,578	647.52
Other	26	153	264	263	1,624,391	551.26
SEBASTIAN COUNTY - TOTAL	3,676	56,702	57,990	59,540	\$649,366,943	\$860.08
Natural Resources & Mining	39	283	289	281	5,280,065	1,428.46
Construction	260	2,333	2,359	2,394	25,053,286	815.91
Manufacturing	185	10,853	10,429	10,643	123,702,248	894.18
Trade, Transportation & Utilities	874	11,408	11,850	12,236	120,808,618	785.45
Wholesale Trade	223	2,570	2,572	2,594	33,726,528	1,006.08
Retail Trade	539	6,381	6,838	7,185	51,362,261	580.91
Transportation, Warehousing & Utilities	112	2,457	2,440	2,457	35,719,829	1,120.89
Information	38	796	790	803	13,199,782	1,275.05
Financial Activities	406	2,316	2,312	2,307	31,150,642	1,036.57
Professional & Business Services	563	6,779	6,761	7,249	70,534,097	782.97
Education & Health Services	647	10,979	11,285	11,169	152,709,682	1,054.07
Leisure & Hospitality	347	3,926	4,864	5,457	20,884,039	338.27
Other Services	251	940	1,000	1,098	9,051,600	687.57
Local Government	43	4,444	4,409	4,381	58,206,682	1,014.98
State Government	23	1,645	1,642	1,522	18,786,202	901.49

TABLE 6. COUNTY SUMMARY

North American Industry Classification System - Industry Groups	Number of Employing Units	Employment			Total Earnings	Average Weekly Earnings
		Apr	May	Jun	Apr - Jun 2020	
SEVIER COUNTY - TOTAL	310	4,584	4,654	4,624	\$40,702,626	\$677.60
Natural Resources & Mining	17	169	171	173	1,874,889	843.40
Construction	20	161	170	163	1,970,684	920.59
Trade, Transportation & Utilities	81	769	770	789	6,341,666	628.63
Wholesale Trade	11	73	72	73	927,910	982.26
Retail Trade	57	606	613	626	4,274,877	534.69
Transportation, Warehousing & Utilities	13	90	85	90	1,138,879	991.77
Financial Activities	27	196	195	193	2,120,124	837.77
Professional & Business Services	26	181	183	186	1,393,525	584.70
Education & Health Services	62	417	425	440	3,469,904	624.61
Leisure & Hospitality	24	244	274	275	836,176	243.33
Local Government	13	847	851	856	7,965,970	719.77
State Government	8	160	154	128	1,370,570	715.58
Other	32	1,440	1,461	1,421	13,359,118	713.30
SHARP COUNTY - TOTAL	379	3,233	3,296	3,268	\$26,430,181	\$622.57
Construction	27	106	112	109	1,055,859	745.14
Manufacturing	15	141	113	117	969,151	602.83
Trade, Transportation & Utilities	83	745	761	773	4,833,799	489.47
Wholesale Trade	13	35	40	45	227,414	437.33
Retail Trade	61	667	677	683	4,061,504	462.39
Transportation, Warehousing & Utilities	9	43	44	45	544,881	952.59
Information	7	18	18	20	148,057	610.13
Financial Activities	32	168	166	163	1,936,144	899.00
Professional & Business Services	38	136	137	140	1,269,612	709.41
Education & Health Services	82	759	776	782	7,292,807	726.35
Leisure & Hospitality	32	285	358	388	1,436,237	321.47
Local Government	24	740	720	640	6,561,347	721.03
State Government	7	53	54	55	464,791	662.10
Other	32	82	81	81	462,377	437.30

TABLE 6. COUNTY SUMMARY

North American Industry Classification System - Industry Groups	Number of Employing Units	Employment			Total Earnings	Average Weekly Earnings
		Apr	May	Jun	Apr - Jun 2020	
STONE COUNTY - TOTAL	268	2,224	2,404	2,470	\$19,072,652	\$620.09
Natural Resources & Mining	4	9	8	9	50,896	451.74
Construction	14	30	33	34	235,195	559.54
Manufacturing	16	199	206	217	1,526,910	566.50
Trade, Transportation & Utilities	66	540	556	563	4,383,967	609.82
Wholesale Trade	5	42	35	40	327,350	645.66
Retail Trade	48	456	478	483	3,450,460	561.93
Transportation, Warehousing & Utilities	13	42	43	40	606,157	1,119.06
Financial Activities	36	113	129	121	1,202,818	764.66
Professional & Business Services	14	26	32	28	165,652	444.50
Education & Health Services	49	533	543	558	5,072,053	716.32
Leisure & Hospitality	30	245	367	408	1,383,957	313.11
Local Government	10	386	386	387	3,907,532	778.03
State Government	7	96	96	97	752,597	600.96
Other	22	47	48	48	391,075	631.11
UNION COUNTY - TOTAL	1,246	15,802	16,035	16,192	\$197,671,457	\$949.77
Natural Resources & Mining	82	333	348	334	4,466,549	1,015.51
Construction	78	1,339	1,331	1,346	18,955,410	1,089.22
Manufacturing	51	2,743	2,765	2,764	48,587,290	1,355.47
Trade, Transportation & Utilities	297	3,304	3,398	3,483	36,271,061	821.82
Wholesale Trade	66	452	445	445	6,925,814	1,190.96
Retail Trade	174	1,902	1,986	2,094	13,910,441	536.63
Transportation, Warehousing & Utilities	57	950	967	944	15,434,806	1,244.98
Information	8	57	63	61	710,689	906.11
Financial Activities	95	572	566	571	7,861,447	1,061.54
Professional & Business Services	122	1,787	1,776	1,802	31,046,352	1,335.42
Education & Health Services	280	1,958	1,945	1,986	19,724,523	772.93
Leisure & Hospitality	96	1,114	1,219	1,297	5,119,944	325.49
Other Services	89	339	373	374	2,692,497	572.14
Local Government	32	1,762	1,754	1,678	17,404,266	773.27
State Government	16	494	497	496	4,831,429	749.79

TABLE 6. COUNTY SUMMARY

North American Industry Classification System - Industry Groups	Number of Employing Units	Employment			Total Earnings	Average Weekly Earnings
		Apr	May	Jun	Apr - Jun 2020	
VAN BUREN COUNTY - TOTAL	333	3,140	3,273	3,324	\$31,191,533	\$739.25
Natural Resources & Mining	9	84	84	84	1,867,944	1,710.57
Construction	36	104	118	107	899,045	630.61
Manufacturing	8	180	201	225	1,591,395	606.01
Trade, Transportation & Utilities	91	849	878	873	8,578,397	761.40
Wholesale Trade	11	46	47	46	544,463	903.92
Retail Trade	51	574	603	598	4,180,115	543.46
Transportation, Warehousing & Utilities	29	229	228	229	3,853,819	1,296.42
Information	7	35	37	37	362,692	767.87
Financial Activities	36	141	141	148	1,718,546	922.30
Professional & Business Services	27	103	91	98	1,043,583	824.75
Education & Health Services	58	687	696	689	6,771,361	754.16
Leisure & Hospitality	24	167	218	246	871,735	318.81
Other Services	20	135	171	181	1,212,424	574.52
Local Government	11	612	594	592	5,883,768	755.17
State Government	6	43	44	44	390,643	688.16
WASHINGTON COUNTY - TOTAL	6,355	97,140	99,724	101,730	\$1,232,531,857	\$952.57
Natural Resources & Mining	38	309	316	317	4,172,325	1,022.13
Construction	613	5,966	6,138	6,265	82,484,000	1,036.24
Manufacturing	229	13,379	13,242	13,232	163,995,848	949.62
Trade, Transportation & Utilities	1,365	20,707	21,133	21,928	232,297,485	840.66
Wholesale Trade	381	3,483	3,520	3,546	61,726,138	1,350.32
Retail Trade	782	10,847	11,329	12,062	92,484,424	623.36
Transportation, Warehousing & Utilities	202	6,377	6,284	6,320	78,086,923	949.37
Information	89	831	847	832	11,821,277	1,086.85
Financial Activities	735	3,757	3,792	3,790	55,586,734	1,131.29
Professional & Business Services	1,183	12,526	12,628	12,718	210,019,370	1,279.73
Education & Health Services	918	14,910	15,401	15,667	194,276,661	975.10
Leisure & Hospitality	708	7,819	9,520	10,109	43,792,263	368.18
Other Services	395	1,781	1,957	2,067	20,013,138	795.59
Local Government	60	8,882	8,517	8,577	119,576,596	1,062.31
State Government	22	6,273	6,233	6,228	94,496,160	1,164.02

TABLE 6. COUNTY SUMMARY

North American Industry Classification System - Industry Groups	Number of Employing Units	Employment			Total Earnings Apr - Jun 2020	Average Weekly Earnings
		Apr	May	Jun		
WHITE COUNTY - TOTAL	1,798	22,635	23,089	23,271	\$234,979,095	\$785.94
Natural Resources & Mining	48	359	361	356	4,933,460	1,058.08
Construction	162	1,127	1,154	1,184	13,933,456	927.97
Manufacturing	59	2,236	2,244	2,178	24,979,057	865.79
Trade, Transportation & Utilities	476	5,915	6,028	6,202	60,844,070	773.82
Wholesale Trade	81	570	599	595	6,625,675	866.78
Retail Trade	309	3,273	3,346	3,442	25,365,814	581.82
Transportation, Warehousing & Utilities	86	2,072	2,083	2,165	28,852,581	1,053.53
Information	21	94	100	95	873,989	697.89
Financial Activities	184	936	932	923	11,330,921	936.88
Professional & Business Services	178	1,072	1,077	1,053	9,411,657	678.30
Education & Health Services	330	5,354	5,303	5,282	63,361,447	917.36
Leisure & Hospitality	165	1,929	2,422	2,517	8,863,623	297.82
Other Services	114	449	468	478	4,227,730	699.38
Local Government	46	2,675	2,629	2,603	27,913,828	814.68
State Government	15	489	371	400	4,305,857	788.62
WOODRUFF COUNTY - TOTAL	191	1,696	1,697	1,744	\$15,629,618	\$702.13
Natural Resources & Mining	33	176	183	184	1,481,616	629.67
Construction	10	31	35	36	301,991	683.24
Manufacturing	5	186	178	179	1,919,213	815.65
Trade, Transportation & Utilities	47	365	361	370	3,578,978	753.57
Wholesale Trade	13	146	145	147	1,779,191	937.40
Retail Trade	25	155	149	156	885,895	444.43
Transportation, Warehousing & Utilities	9	64	67	67	913,892	1,065.14
Financial Activities	11	45	45	45	408,612	698.48
Education & Health Services	44	231	230	234	1,946,356	646.27
Leisure & Hospitality	12	87	84	95	326,808	283.52
Local Government	9	372	378	393	3,573,416	721.46
State Government	5	31	31	33	302,122	733.90
Other	15	172	172	175	1,790,506	796.13

TABLE 6. COUNTY SUMMARY

North American Industry Classification System - Industry Groups	Number of Employing Units	Employment			Total Earnings	Average Weekly Earnings
		Apr	May	Jun	Apr - Jun 2020	
YELL COUNTY - TOTAL	420	6,382	6,377	6,331	\$58,736,547	\$710.04
Natural Resources & Mining	26	247	248	241	3,190,266	1,000.29
Construction	33	223	225	235	2,365,282	799.17
Manufacturing	22	2,429	2,420	2,378	21,397,535	683.26
Trade, Transportation & Utilities	88	771	785	813	5,988,226	583.33
Wholesale Trade	15	63	67	66	415,517	489.23
Retail Trade	50	535	546	579	3,288,152	457.11
Transportation, Warehousing & Utilities	23	173	172	168	2,284,557	1,027.69
Financial Activities	33	168	170	169	2,043,514	930.14
Professional & Business Services	38	325	325	324	2,622,485	621.34
Education & Health Services	103	682	670	721	5,617,204	625.31
Leisure & Hospitality	25	239	267	288	964,005	280.18
Local Government	23	1,113	1,079	966	12,644,472	923.99
State Government	10	69	69	70	570,324	632.76
Other	19	116	119	126	1,333,234	852.27
STATEWIDE COUNTY - TOTAL	12,070	31,421	31,865	31,710	\$544,244,940	\$1,322.11
Natural Resources & Mining	112	247	233	251	3,769,541	1,190.01
Construction	907	3,682	3,832	3,786	57,096,910	1,166.04
Manufacturing	79	181	195	203	5,094,894	2,030.65
Trade, Transportation & Utilities	3,648	7,683	7,926	8,102	181,047,475	1,762.06
Wholesale Trade	2,997	5,992	6,245	6,416	155,773,641	1,927.18
Retail Trade	251	456	459	459	8,608,290	1,445.80
Transportation, Warehousing & Utilities	400	1,235	1,222	1,227	16,665,544	1,043.95
Information	565	1,090	1,111	1,077	26,128,620	1,839.44
Financial Activities	854	2,203	2,240	2,209	40,871,351	1,417.90
Professional & Business Services	4,699	11,881	11,811	11,198	173,519,738	1,147.69
Education & Health Services	664	2,583	2,689	3,080	33,981,814	938.93
Leisure & Hospitality	130	386	384	332	2,597,793	544.00
State Government	15	705	705	716	7,654,249	830.84
Other	397	780	739	756	12,482,555	1,028.79

Note: Statewide classification includes employment and payroll data for employers that have not provided a physical location for each employing unit. This section also includes employers without a physical location in Arkansas.

TABLE 7. FEDERAL GOVERNMENT EMPLOYMENT AND EARNINGS IN ARKANSAS

North American Industry Classification System - Industry Groups	Number of Employing Units	Employment			Total Earnings Apr - Jun 2020	Average Weekly Earnings
		Apr	May	Jun		
TOTAL	1,193	20,583	20,726	20,509	\$395,077,730	\$1,474.84
Trade, Transportation & Utilities	586	5,491	5,589	5,545	80,618,355	1,119.05
Information	2	37	36	36	672,639	1,424.08
Financial Activities	14	100	102	106	2,448,630	1,834.64
Professional & Business Services	32	824	887	890	15,047,535	1,335.07
Education & Health Services	18	5,314	5,300	5,312	123,592,238	1,790.86
Leisure & Hospitality	23	253	266	278	3,353,072	970.87
Other Services	1	1	1	1	8,105	623.46
Public Administration	517	8,563	8,545	8,341	169,337,156	1,535.53

TABLE 8. LOCAL WORKFORCE DEVELOPMENT AREA SUMMARY

North American Industry Classification System - Industry Groups	Number of Employing Units	Employment			Total Earnings Apr - Jun 2020	Average Weekly Earnings
		Apr	May	Jun		
CENTRAL LOCAL WORKFORCE DEVELOPMENT AREA	6,930	76,009	78,747	80,341	\$810,319,692	\$795.40
Natural Resources & Mining	210	1,106	1,127	1,135	12,751,060	1,096.54
Construction	822	6,015	6,142	6,295	72,854,763	911.16
Manufacturing	225	5,838	5,888	5,836	74,672,706	981.22
Trade, Transportation & Utilities	1,515	15,813	16,410	16,849	141,427,357	665.09
Wholesale Trade	340	1,836	1,859	1,866	25,107,784	1,041.92
Retail Trade	920	12,106	12,656	13,044	93,290,412	569.45
Transportation, Warehousing & Utilities	255	1,871	1,895	1,939	23,029,161	931.54
Information	66	1,862	1,858	1,847	45,036,745	1,866.91
Financial Activities	742	3,082	3,102	3,128	40,105,766	993.90
Professional & Business Services	941	5,735	5,720	5,740	67,177,800	901.57
Education & Health Services	1,125	13,242	13,930	14,104	141,831,156	792.96
Leisure & Hospitality	640	7,571	8,966	9,951	36,792,248	320.54
Other Services	449	1,568	1,777	1,878	14,183,933	626.69
Local Government	135	9,907	9,578	9,560	121,465,799	965.07
State Government	60	4,270	4,249	4,018	42,020,359	773.47

Note: Pulaski County is not included in the Central Local Workforce Development Area. Please refer to Page 51 for information on Pulaski County.

Central Local Workforce Development Area includes these counties: Faulkner, Lonoke, Monroe, Prairie, and Saline.

EASTERN LOCAL WORKFORCE DEVELOPMENT AREA	3,280	30,653	31,884	32,479	\$298,160,021	\$724.15
Natural Resources & Mining	249	1,116	1,176	1,176	10,268,427	683.29
Construction	127	748	799	821	8,539,661	832.22
Manufacturing	73	2,646	3,087	3,186	31,171,290	806.52
Trade, Transportation & Utilities	734	8,203	8,305	8,471	81,962,267	757.21
Wholesale Trade	142	1,895	1,889	1,878	24,838,159	1,012.34
Retail Trade	405	4,189	4,326	4,411	29,433,771	525.48
Transportation, Warehousing & Utilities	187	2,119	2,090	2,182	27,690,337	999.86
Information	26	116	116	116	1,264,425	838.48
Financial Activities	256	1,152	1,183	1,157	13,338,624	881.48
Professional & Business Services	246	1,432	1,594	1,550	15,732,843	793.41
Education & Health Services	970	5,465	5,541	5,692	51,697,405	714.47
Leisure & Hospitality	268	2,832	3,143	3,490	13,012,038	317.25
Other Services	148	597	645	661	5,381,916	652.64
Local Government	127	4,591	4,561	4,487	49,641,495	839.92
State Government	56	1,755	1,734	1,672	16,149,630	722.12

Eastern Local Workforce Development Area includes these counties: Crittenden, Cross, Lee, Phillips, and Saint Francis.

TABLE 8. LOCAL WORKFORCE DEVELOPMENT AREA SUMMARY

North American Industry Classification System - Industry Groups	Number of Employing Units	Employment			Total Earnings Apr - Jun 2020	Average Weekly Earnings
		Apr	May	Jun		
NORTH CENTRAL LOCAL WORKFORCE DEVELOPMENT AREA	5,407	63,547	65,614	66,056	\$637,519,000	\$753.62
Natural Resources & Mining	205	1,459	1,456	1,461	18,677,514	984.96
Construction	428	2,779	2,829	2,838	34,031,040	929.83
Manufacturing	212	8,230	8,687	8,603	94,410,439	853.72
Trade, Transportation & Utilities	1,378	14,039	14,421	14,746	137,194,999	732.78
Wholesale Trade	219	1,413	1,474	1,485	17,423,385	919.67
Retail Trade	906	8,996	9,282	9,494	67,968,201	564.78
Transportation, Warehousing & Utilities	253	3,630	3,665	3,767	51,803,413	1,080.69
Information	74	342	351	348	3,223,449	714.58
Financial Activities	528	2,553	2,617	2,601	30,095,883	893.73
Professional & Business Services	480	3,107	3,123	3,136	28,020,100	690.39
Education & Health Services	961	13,863	13,973	14,019	149,466,665	824.09
Leisure & Hospitality	497	4,666	5,924	6,300	22,932,202	313.32
Other Services	328	1,160	1,247	1,270	9,607,275	602.95
Local Government	223	8,681	8,482	8,229	86,576,695	786.83
State Government	93	2,668	2,504	2,505	23,282,739	699.87

North Central Local Workforce Development Area includes these counties: Cleburne, Fulton, Independence, Izard, Jackson, Sharp, Stone, Van Buren, White, and Woodruff.

NORTHEAST LOCAL WORKFORCE DEVELOPMENT AREA	6,436	93,607	96,584	97,572	\$1,033,637,814	\$828.92
Natural Resources & Mining	435	2,003	2,058	2,120	21,052,665	979.10
Construction	475	3,707	3,831	3,836	44,536,761	903.61
Manufacturing	302	19,947	20,072	20,362	283,409,478	1,083.16
Trade, Transportation & Utilities	1,658	17,962	18,677	18,975	177,546,684	736.73
Wholesale Trade	345	3,764	3,835	3,829	51,071,558	1,031.30
Retail Trade	978	10,861	11,464	11,745	84,162,620	570.07
Transportation, Warehousing & Utilities	335	3,337	3,378	3,401	42,312,506	965.25
Information	55	581	586	580	7,527,146	994.30
Financial Activities	561	3,204	3,257	3,249	39,194,028	931.49
Professional & Business Services	659	6,263	6,490	6,567	63,767,871	761.68
Education & Health Services	1,065	16,512	16,797	16,502	182,245,429	844.32
Leisure & Hospitality	578	6,434	7,907	8,518	31,670,277	319.72
Other Services	344	1,335	1,475	1,528	12,552,185	667.74
Local Government	215	11,345	11,229	11,272	125,939,798	858.68
State Government	89	4,314	4,205	4,063	44,195,492	810.60

Northeast Local Workforce Development Area includes these counties: Clay, Craighead, Greene, Lawrence, Mississippi, Poinsett, and Randolph.

TABLE 8. LOCAL WORKFORCE DEVELOPMENT AREA SUMMARY

North American Industry Classification System - Industry Groups	Number of Employing Units	Employment			Total Earnings Apr - Jun 2020	Average Weekly Earnings
		Apr	May	Jun		
NORTHWEST LOCAL WORKFORCE DEVELOPMENT AREA	17,084	258,046	265,609	270,446	\$3,711,164,227	\$1,078.48
Natural Resources & Mining	143	1,618	1,631	1,668	21,998,605	1,032.46
Construction	1,609	12,802	13,192	13,381	166,583,159	976.31
Manufacturing	639	35,815	35,751	35,715	404,503,222	870.12
Trade, Transportation & Utilities	3,927	57,579	59,024	60,704	717,648,508	934.04
Wholesale Trade	1,254	10,479	10,519	10,555	222,715,953	1,628.88
Retail Trade	2,142	27,856	29,295	30,848	231,200,609	606.30
Transportation, Warehousing & Utilities	531	19,244	19,210	19,301	263,731,946	1,053.78
Information	241	2,382	2,414	2,357	35,658,738	1,150.42
Financial Activities	1,809	9,568	9,706	9,844	150,783,053	1,195.00
Professional & Business Services	2,957	48,517	48,555	48,944	1,246,894,353	1,970.64
Education & Health Services	2,443	33,380	34,456	34,715	385,920,147	868.43
Leisure & Hospitality	1,839	19,398	24,043	26,277	113,340,480	375.16
Other Services	1,064	4,414	4,954	5,173	46,263,919	734.22
Local Government	310	23,912	23,309	23,341	305,078,133	997.74
State Government	103	8,661	8,574	8,327	116,491,910	1,051.67
Northwest Local Workforce Development Area includes these counties: Baxter, Benton, Boone, Carroll, Madison, Marion, Newton, Searcy, and Washington.						
SOUTHEAST LOCAL WORKFORCE DEVELOPMENT AREA	6,207	63,559	64,624	64,750	\$650,633,594	\$778.23
Natural Resources & Mining	435	2,110	2,149	2,177	23,197,596	831.77
Construction	328	1,907	2,041	2,041	23,796,989	916.95
Manufacturing	207	13,694	13,542	13,633	170,432,926	962.36
Trade, Transportation & Utilities	1,228	11,093	11,468	11,549	108,365,194	733.14
Wholesale Trade	225	1,869	1,893	1,898	25,004,184	1,019.47
Retail Trade	730	6,826	7,185	7,250	49,159,121	533.58
Transportation, Warehousing & Utilities	273	2,398	2,390	2,401	34,201,889	1,097.89
Information	43	230	233	232	2,419,860	803.50
Financial Activities	448	2,465	2,486	2,471	29,213,827	908.33
Professional & Business Services	456	3,123	3,211	3,237	33,967,493	819.00
Education & Health Services	1,996	9,854	10,036	9,864	94,153,923	730.25
Leisure & Hospitality	418	3,881	4,368	4,782	16,097,887	285.08
Other Services	314	962	1,031	1,052	8,318,882	630.46
Local Government	209	8,319	8,239	8,159	85,560,908	798.84
State Government	125	5,921	5,820	5,553	55,108,109	735.36
Southeast Local Workforce Development Area includes these counties: Arkansas, Ashley, Bradley, Chicot, Cleveland, Desha, Drew, Grant, Jefferson, and Lincoln.						

TABLE 8. LOCAL WORKFORCE DEVELOPMENT AREA SUMMARY

North American Industry Classification System - Industry Groups	Number of Employing Units	Employment			Total Earnings Apr - Jun 2020	Average Weekly Earnings
		Apr	May	Jun		
SOUTHWEST LOCAL WORKFORCE DEVELOPMENT AREA	5,597	69,911	72,460	72,528	\$764,862,760	\$821.35
Natural Resources & Mining	329	2,128	2,175	2,133	25,417,416	911.37
Construction	347	2,917	3,001	2,994	36,801,584	952.95
Manufacturing	226	16,857	18,167	18,310	245,005,513	1,060.11
Trade, Transportation & Utilities	1,317	13,726	14,017	14,029	131,976,179	729.10
Wholesale Trade	237	1,774	1,778	1,750	22,921,253	997.65
Retail Trade	778	8,126	8,461	8,638	56,702,630	518.74
Transportation, Warehousing & Utilities	302	3,826	3,778	3,641	52,352,296	1,074.37
Information	46	319	330	329	4,301,049	1,014.88
Financial Activities	455	2,431	2,443	2,430	28,287,836	893.75
Professional & Business Services	434	4,146	4,181	4,245	51,115,274	938.26
Education & Health Services	1,276	8,767	8,899	8,757	79,883,541	697.67
Leisure & Hospitality	439	4,407	5,120	5,472	19,988,185	307.53
Other Services	334	1,243	1,317	1,321	9,894,180	588.32
Local Government	263	9,473	9,360	9,186	98,249,544	809.20
State Government	131	3,497	3,450	3,322	33,942,459	762.77
Southwest Local Workforce Development Area includes these counties: Calhoun, Columbia, Dallas, Hempstead, Howard, Lafayette, Little River, Miller, Nevada, Ouachita, Sevier, and Union						
WEST CENTRAL LOCAL WORKFORCE DEVELOPMENT AREA	8,109	95,095	98,174	100,294	\$986,218,670	\$775.26
Natural Resources & Mining	242	2,256	2,310	2,291	24,791,698	1,074.55
Construction	743	4,260	4,433	4,495	51,975,203	909.48
Manufacturing	333	14,185	14,539	14,628	159,195,469	847.42
Trade, Transportation & Utilities	1,791	20,158	20,856	21,355	214,908,550	795.18
Wholesale Trade	316	1,791	1,847	1,834	21,843,562	921.20
Retail Trade	1,186	12,929	13,505	14,008	100,654,215	574.35
Transportation, Warehousing & Utilities	289	5,438	5,504	5,513	92,410,773	1,295.99
Information	76	669	656	686	6,769,776	776.86
Financial Activities	819	3,653	3,700	3,721	42,458,509	884.79
Professional & Business Services	912	7,214	7,161	7,156	71,612,796	767.55
Education & Health Services	1,519	15,792	16,167	16,353	174,705,964	834.51
Leisure & Hospitality	823	8,820	10,259	12,032	47,294,673	350.81
Other Services	506	1,750	1,949	2,067	14,693,816	588.08
Local Government	232	11,379	11,325	11,208	131,980,517	898.12
State Government	113	4,959	4,819	4,302	45,831,699	751.18
West Central Local Workforce Development Area includes these counties: Clark, Conway, Garland, Hot Spring, Johnson, Montgomery, Perry, Pike, Pope, and Yell						

TABLE 8. LOCAL WORKFORCE DEVELOPMENT AREA SUMMARY

North American Industry Classification System - Industry Groups	Number of Employing Units	Employment			Total Earnings	Average Weekly Earnings
		Apr	May	Jun	Apr - Jun 2020	
WESTERN LOCAL WORKFORCE DEVELOPMENT AREA	6,458	92,598	94,796	96,815	\$989,293,624	\$803.28
Natural Resources & Mining	143	1,139	1,153	1,103	14,816,004	1,007.09
Construction	518	3,813	3,895	3,989	41,524,807	819.24
Manufacturing	327	19,543	19,284	19,616	215,070,411	849.23
Trade, Transportation & Utilities	1,538	20,289	20,994	21,487	201,802,422	741.91
Wholesale Trade	342	3,462	3,490	3,504	44,763,633	987.96
Retail Trade	914	10,665	11,291	11,737	80,942,809	554.39
Transportation, Warehousing & Utilities	282	6,162	6,213	6,246	76,095,980	943.05
Information	68	931	924	941	14,517,604	1,198.22
Financial Activities	664	3,358	3,363	3,349	42,244,632	968.10
Professional & Business Services	848	8,996	8,971	9,455	89,882,846	756.41
Education & Health Services	1,135	14,869	15,282	15,179	188,081,219	957.50
Leisure & Hospitality	566	6,146	7,458	8,270	30,766,719	324.59
Other Services	414	1,643	1,737	1,861	15,482,367	681.71
Local Government	166	9,155	9,042	9,026	108,201,506	917.22
State Government	71	2,716	2,693	2,539	26,903,087	781.13

Western Local Workforce Development Area includes these counties: Crawford, Franklin, Logan, Polk, Scott, and Sebastian