

Arkansas Covered
Employment & Earnings
Annual
2019

**COVERED EMPLOYMENT AND EARNINGS
STATE OF ARKANSAS
ANNUAL 2019**

**ASA HUTCHINSON, GOVERNOR
STATE OF ARKANSAS**

**CHARISSE CHILDERS, DIRECTOR
DIVISION OF WORKFORCE SERVICES**

**PUBLISHED BY
LABOR MARKET INFORMATION & ANALYSIS
BUREAU OF LABOR STATISTICS PROGRAMS
POST OFFICE BOX 2981
LITTLE ROCK, ARKANSAS 72203-2981
SUSAN PRICE, BLS PROGRAMS MANAGER
TELEPHONE (501) 682-3103**

STATE OF ARKANSAS WEBPAGE: <http://www.arkansas.gov>

DEPARTMENT OF WORKFORCE SERVICES WEBPAGE: <http://www.dws.arkansas.gov>

WEBPAGE FOR LABOR MARKET INFORMATION: <http://www.discover.arkansas.gov>

RELEASED: MAY 2020

TABLE OF CONTENTS

	Page
Description of Data	1
Industry Classification	1
Definition of Covered Employment and Earnings	2
Federal Government	2
County Classification	2
Significant Developments During Calendar Year 2019	3

GRAPHS AND TABLES

Graph 1	Average Total Covered Employment for Selected Years, Arkansas	7
Graph 2	Total Covered Earnings, by Calendar Quarter for Selected Years, Arkansas	8
Table 1	Annual Comparison of Covered Employment and Wages, by Industry	5
Table 2	Total Covered Employment in Arkansas, 2012 – 2019	6
Table 3	Total Covered Earnings, 2012 – 2019	9
Table 4	Total Taxable Earnings, 2012 – 2019	10
Table 5	State Summary – Employment and Total Earnings, by Industry, Calendar Year 2019	11
Table 6	County Summary – Employment and Total Earnings, by Industry, Calendar Year 2019	22
Table 7	Federal Government Employment and Total Earnings in Arkansas, Calendar Year 2019	60
Table 8	Workforce Investment Area – Employment and Total Earnings, by Industry, Calendar Year 2019	61

EMPLOYMENT AND EARNINGS
UNDER THE ARKANSAS EMPLOYMENT SECURITY LAW
ANNUAL 2019

DESCRIPTION AND CLASSIFICATION OF DATA

This publication contains covered employment and payroll data by industry and county for the Calendar Year 2019 and a record for total covered employment by month, quarterly payroll data, average weekly earnings, and total taxable earnings for 2012 through 2019. These data are compiled from quarterly contributions and wage reports submitted by employers subject to the Arkansas Employment Security Law.

Employment data have been tabulated for each month of the quarter by industry under the **North American Industry Classification System** (NAICS) by state, county, and workforce area. Payroll data represent the total wages paid during the quarter and are classified by industry for the state and by publishable industry groups for each county and workforce area.

Due to industry classification revisions, previously published data will not always be comparable with current data. For this reason, comparisons should not be made between the same industries under different revisions. For more information, visit the NAICS home page at <http://www.census.gov/naics>.

Industry Classification Revisions

- SIC (Standard Industrial Classification) 1987 to NAICS 2002
- NAICS 2002 to NAICS 2007
- NAICS 2007 to NAICS 2012
- NAICS 2012 to NAICS 2017

The tabulation of this data is a joint effort in conjunction with the United States Bureau of Labor Statistics. Data included in this publication are subject to revisions. Revisions are typically reflected in the Annual Covered Employment and Earnings publication.

DEFINITION OF COVERED EMPLOYMENT AND EARNINGS

Covered Employment is the total number of workers employed by establishments subject to the Arkansas Employment Security Law that worked or received pay for the payroll period including the 12th of the month. Earnings include all wages paid to any covered employee by their employer including salaries, bonuses, commissions, fees, fringe benefits, sick pay made directly to employees or dependents, deferred compensation, and reported tips. These wages include both taxable and nontaxable wages. Only the first \$10,000 paid to each worker by an employer in the calendar year is taxable under the Arkansas Employment Security Law.

An Arkansas state unemployment account is required of any entity meeting the definition of an employer. As described by Arkansas Division of Workforce Services Law, the definition of an employer includes, but is not limited to, a sole proprietorship, partnership, corporation, associations, trust, estate, and receiver or trustee in bankruptcy. The entity must employ one or more individuals for ten or more days in a calendar year, whether or not the days are consecutive.

Currently excluded from coverage is employment covered by the Railroad Unemployment Insurance Act, some domestic service workers, employees of small agricultural establishments, self-employed workers, unpaid family workers, insurance and real estate agents paid only on a commission basis, and employees of churches and religious organizations except separately incorporated schools.

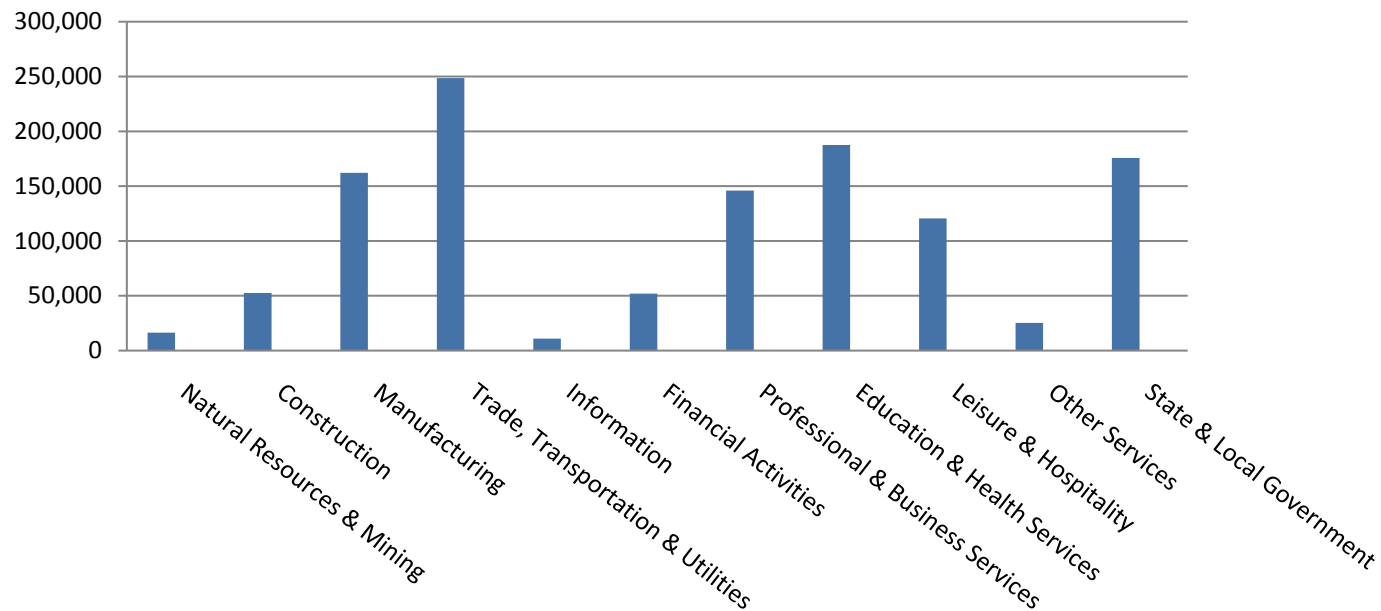
Civilian federal workers are covered by Unemployment Compensation for Federal Employees (UCFE).

SIGNIFICANT DEVELOPMENTS DURING CALENDAR YEAR 2019

AVERAGE EMPLOYMENT CHANGES

Covered employment averaged 1,197,772 during the Calendar Year 2019 (see Table 1, page 5), an increase of 6,828 from the previous year. The greatest employment gain occurred in Leisure & Hospitality (+2,155). The largest annual loss occurred in State & Local Government (-1,120), mostly due to the reorganization of State Government.

Average Covered Employment by NAICS



EMPLOYMENT CHANGES FOR CALENDAR YEAR 2019

Nine of the eleven major industry sectors recorded over-the-year employment gains (see Table 1). The Leisure & Hospitality subsector had an average of 120,573 jobs, an increase of 2,155 from 2018. Growth can be mostly attributed to expansion in Accommodation & Food Services (1,853). Jobs in Construction grew to 52,519; an increase of 1,682 jobs. Two major industry sectors experienced over-the-year losses. State & Local Government had the most significant decline in average employment (-1,120). The only other over-the-year decline occurred in Professional & Business Services (-671).

EMPLOYMENT CHANGES FOR CALENDAR YEAR 2019

Pulaski County posted the highest average covered employment for Arkansas counties in 2019 at 242,572. Benton County averaged 121,958 in covered employment, slightly higher than Washington County with 107,553. Sebastian County had the fourth highest average covered employment with 63,583, followed by Craighead County with 51,731. Four of the five leading counties experienced over the year growth in employment ranging from a low of 605 added jobs in Pulaski County to 2,630 jobs in Washington County. Sebastian County lost 938 jobs from 2018 to 2019.

COVERED WAGES

Wages paid to covered workers totaled \$53,910,916,863 for the Calendar Year 2019 (see Table 1), for an average weekly wage of \$865.56 (see Table 5). Employees in Benton County recorded the highest average weekly wage (\$1,201.34), and workers in Newton County the lowest (\$521.31) (see Table 6).

The Professional & Business Services sector recorded the highest average weekly wage for the State of Arkansas at \$1,216.64. The Leisure and Hospitality sector reported the lowest average weekly wage at \$332.68 (see Table 5).

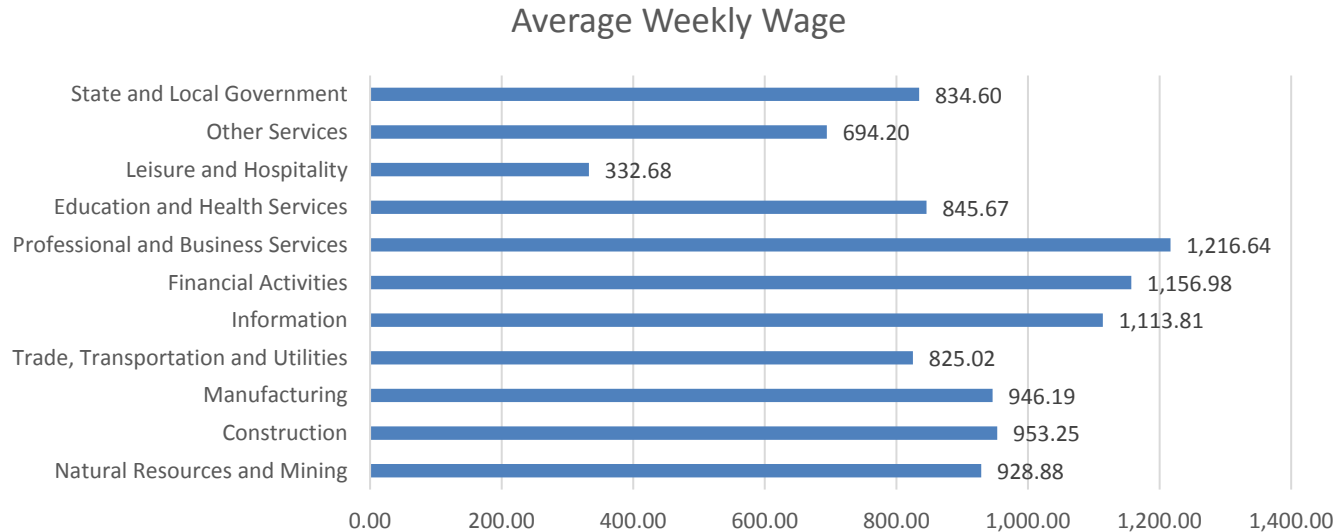


TABLE 1. YEARLY COMPARISON OF COVERED EMPLOYMENT AND WAGES, BY INDUSTRY

North American Industry Classification System - Industry Groups	Number of Employing Units	Average Covered Employment	Percent of Total	Net Change From: 2018	Total Calendar Earnings 2019	Percent of Total	Average Weekly Earnings
Total	90,753	1,197,772	100	6,828	\$53,910,916,863	100	\$865.56
Natural Resources & Mining	2,580	16,389	1.4	52	791,616,886	1.5	928.88
Agriculture, Forestry, Fishing & Hunting	2,152	12,597	1.1	80	544,533,536	1.0	831.29
Mining	428	3,792	0.3	-28	247,083,350	0.5	1,253.06
Construction	7,097	52,519	4.4	1,682	2,603,303,825	4.8	953.25
Manufacturing	2,933	162,199	13.5	1,602	7,980,504,912	14.8	946.19
Trade, Transportation & Utilities	21,827	248,589	20.8	42	10,664,750,710	19.8	825.02
Wholesale Trade	7,331	47,487	4.0	114	3,364,701,866	6.2	1,362.60
Retail Trade	11,041	136,700	11.4	-2,406	3,863,427,633	7.2	543.50
Transportation & Warehousing	3,043	56,579	4.7	2,306	2,728,554,401	5.1	927.41
Utilities	412	7,823	0.7	28	708,062,402	1.3	1,740.58
Information	1,303	10,959	0.9	49	634,727,041	1.2	1,113.81
Financial Activities	8,593	51,934	4.3	1,296	3,124,492,061	5.8	1,156.98
Finance & Insurance	5,049	37,975	3.2	970	2,561,159,106	4.8	1,296.99
Real Estate & Rental & Leasing	3,544	13,959	1.2	326	563,332,955	1.0	776.08
Professional & Business Services	14,920	146,000	12.2	-671	9,236,707,180	17.1	1,216.64
Professional & Technical Services	9,388	44,958	3.8	960	2,865,033,753	5.3	1,225.52
Management of Companies & Enterprises	547	33,756	2.8	-1,027	4,259,841,597	7.9	2,426.83
Administrative & Waste Services	4,985	67,286	5.6	-604	2,111,831,830	3.9	603.58
Education & Health Services	15,775	187,589	15.7	1,438	8,249,242,790	15.3	845.67
Educational Services	929	12,103	1.0	229	455,277,843	0.8	723.40
Health Care & Social Assistance	14,846	175,486	14.7	1,209	7,793,964,947	14.5	854.11
Leisure & Hospitality	7,317	120,573	10.1	2,155	2,085,816,740	3.9	332.68
Arts, Entertainment & Recreation	1,014	11,729	1.0	302	256,528,005	0.5	420.60
Accommodation & Food Services	6,303	108,844	9.1	1,853	1,829,288,735	3.4	323.20
Other Services	5,357	25,257	2.1	303	911,741,909	1.7	694.20
State & Local Government	3,051	175,764	14.7	-1,120	7,628,012,809	14.1	834.60
Local Government	1,989	108,784	9.1	-238	4,307,966,549	8.0	761.56
State Government	1,062	66,980	5.6	-882	3,320,046,260	6.2	953.23
Nonclassifiable Establishments	0	0	0.0	0	0	0.0	0.00

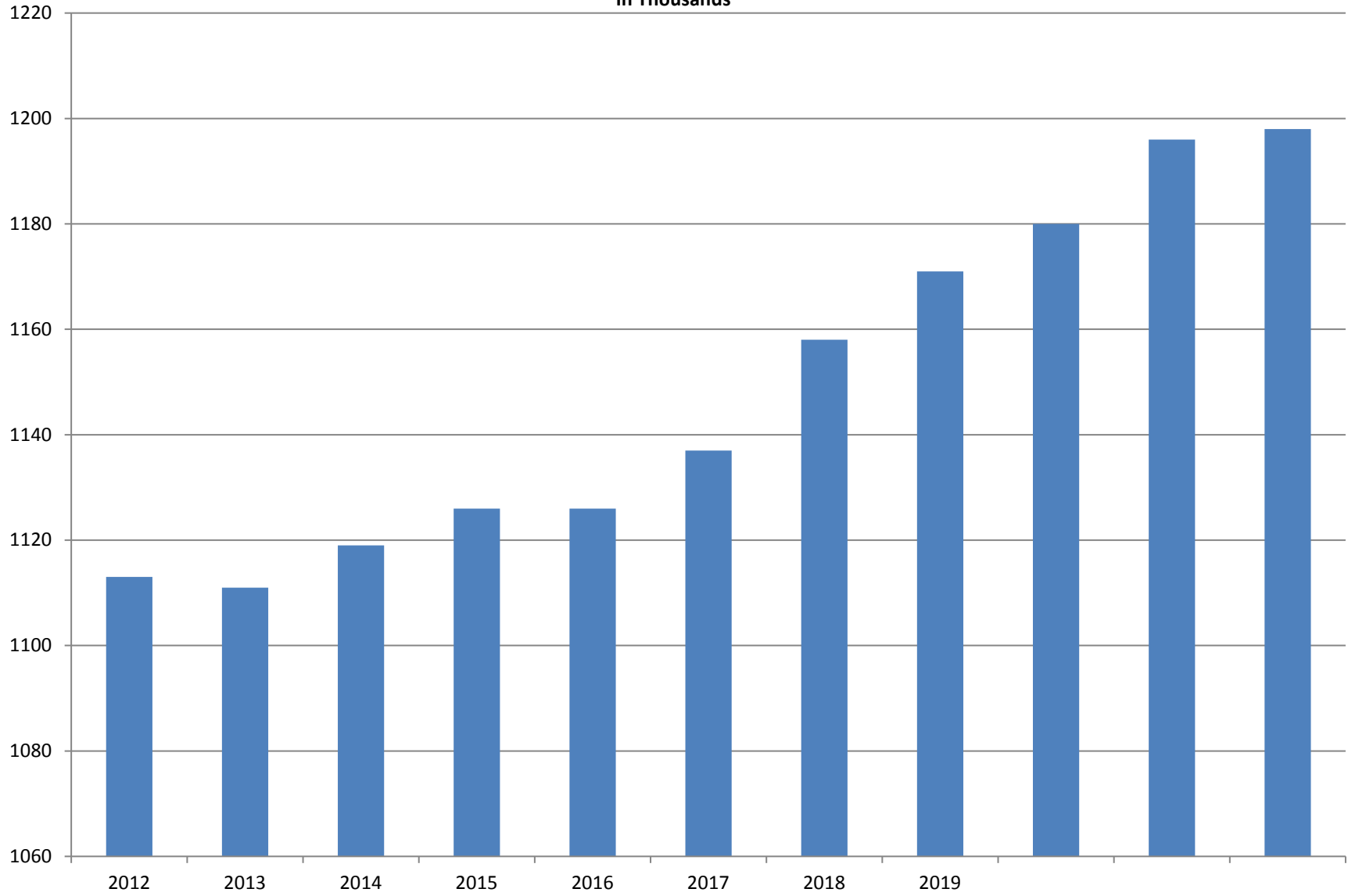
Note: Items do not necessarily add to total because of rounding. Because of industry code changes between years, substantial employment and wage shifts among industries are anticipated.

TABLE 2. TOTAL COVERED EMPLOYMENT IN ARKANSAS

PERIOD	2012	2013	2014	2015	2016	2017	2018	2019
AVERAGE	1,126,171	1,125,890	1,137,486	1,157,634	1,171,286	1,180,337	1,195,781	1,197,710
January	1,113,274	1,112,991	1,114,412	1,135,577	1,153,115	1,161,239	1,173,537	1,186,848
February	1,119,319	1,121,492	1,122,905	1,144,902	1,162,987	1,172,290	1,183,185	1,194,355
March	1,131,123	1,129,100	1,132,106	1,146,413	1,170,873	1,179,686	1,190,199	1,198,481
April	1,136,608	1,134,734	1,140,788	1,158,606	1,178,480	1,185,212	1,194,816	1,204,176
May	1,142,985	1,138,383	1,149,046	1,167,657	1,181,258	1,189,900	1,201,113	1,206,476
June	1,136,699	1,130,402	1,144,876	1,164,607	1,177,108	1,186,326	1,195,468	1,202,260
July	1,078,836	1,083,849	1,096,675	1,119,390	1,130,652	1,137,883	1,168,432	1,155,337
August	1,108,552	1,109,759	1,125,162	1,148,502	1,159,416	1,168,802	1,200,284	1,185,213
September	1,134,829	1,135,673	1,150,545	1,173,776	1,185,181	1,193,845	1,222,012	1,202,177
October	1,135,677	1,138,312	1,153,684	1,173,953	1,185,035	1,194,194	1,205,161	1,209,176
November	1,137,411	1,141,035	1,158,579	1,177,717	1,186,308	1,197,650	1,208,638	1,215,078
December	1,138,742	1,134,955	1,161,056	1,180,513	1,185,015	1,197,013	1,206,531	1,212,940

AVERAGE TOTAL COVERED EMPLOYMENT

In Thousands



TOTAL COVERED EARNINGS BY CALENDAR YEAR

In Thousands

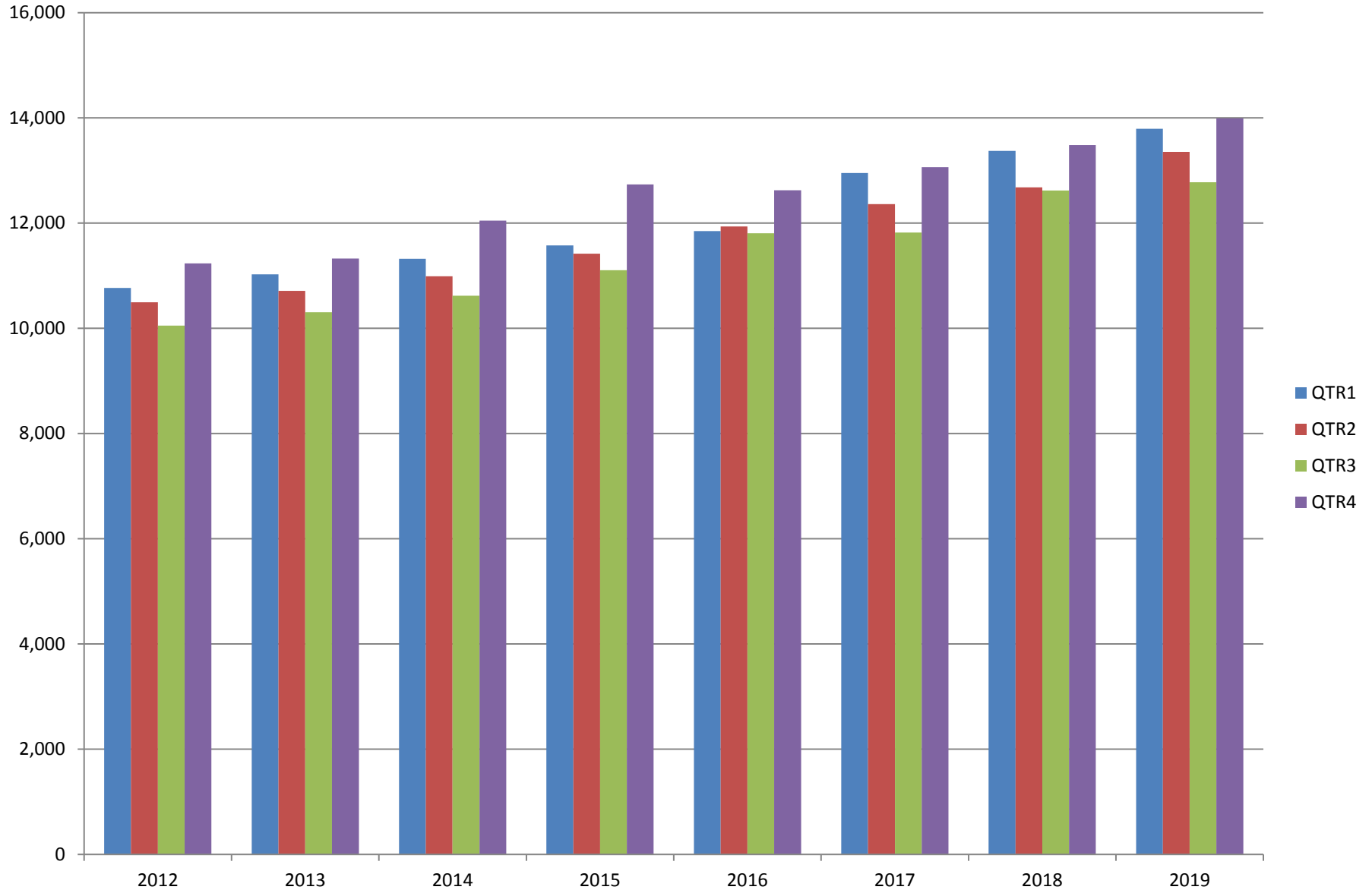


TABLE 3. TOTAL COVERED EARNINGS 2012 - 2019

PERIOD	2012	2013	2014	2015
TOTAL	\$42,551,238,929	\$43,371,086,461	\$44,980,520,034	\$46,836,352,793
January - March	10,766,175,449	11,027,184,315	11,321,422,241	11,575,046,688
April - June	10,494,369,042	10,711,027,503	10,991,760,061	11,419,363,330
July - September	10,053,294,410	10,304,451,772	10,619,889,280	11,104,443,452
October - December	11,237,400,028	11,328,422,871	12,047,448,452	12,737,499,323
Average Weekly Earnings	\$726.62	\$740.80	\$760.46	\$778.05

PERIOD	2016	2017	2018	2019
TOTAL	\$48,216,814,491	\$50,207,202,141	\$52,159,789,393	\$53,919,607,098
January - March	11,847,506,815	12,955,088,347	13,372,730,974	13,795,046,820
April - June	11,935,742,777	12,363,027,711	12,682,491,819	13,356,848,831
July - September	11,807,220,282	11,823,324,966	12,619,347,460	12,776,218,481
October - December	12,626,344,617	13,065,761,117	13,485,219,140	13,991,492,966
Average Weekly Earnings	\$791.65	\$818.01	\$838.84	\$865.75

TABLE 4. TOTAL TAXABLE EARNINGS, 2012 - 2019

PERIOD	2012	2013	2014	2015
TOTAL	11,624,348,048	11,644,747,978	11,919,662,224	12,258,632,610
January - March	6,167,036,199	6,184,735,653	6,288,682,396	6,378,966,662
April - June	2,838,154,846	2,805,431,293	2,831,013,392	2,915,293,283
July - September	1,494,712,584	1,506,497,129	1,552,243,963	1,640,978,599
October - December	1,124,444,419	1,148,083,903	1,247,722,473	1,323,394,066

PERIOD	2016	2017	2018	2019
TOTAL	12,538,167,625	12,744,039,136	11,343,357,036	11,506,122,596
January - March	6,607,245,841	6,958,706,950	6,577,871,657	6,737,833,125
April - June	3,010,214,324	2,908,226,426	2,278,450,975	2,283,514,220
July - September	1,656,043,561	1,576,968,648	1,328,689,516	1,327,818,133
October - December	1,264,663,899	1,300,137,112	1,158,344,888	1,156,957,118

TABLE 5. STATEWIDE SUMMARY CALENDAR YEAR 2019

North American Industry Classification System - Industry Groups		Average Employing Units	Average Covered Employment	Total Calendar Earnings	Average Weekly Earnings
TOTAL, ALL INDUSTRIES		90,753	1,197,772	\$53,910,916,863	\$865.56
NATURAL RESOURCES & MINING		2,580	16,389	\$791,616,886	\$928.88
11	AGRICULTURE, FORESTRY, FISHING & HUNTING	2,152	12,597	\$544,533,536	\$831.29
111	CROP PRODUCTION	974	4,080	\$135,667,482	\$639.46
1111	Oilseed & Grain Farming	723	2,766	93,844,906	652.46
1112	Vegetable & Melon Farming	42	248	6,822,754	529.06
1113	Fruit & Tree Nut Farming	10	34	883,815	499.90
1114	Greenhouse & Nursery Production	40	415	14,015,740	649.48
1119	Other Crop Farming	159	617	20,100,267	626.49
112	ANIMAL PRODUCTION & AQUACULTURE	341	3,237	\$166,946,059	\$991.81
1121	Cattle Ranching & Farming	132	386	12,291,741	612.38
1122	Hog & Pig Farming	12	139	6,816,167	943.02
1123	Poultry & Egg Production	131	2,299	131,370,607	1,098.89
1125	Animal Aquaculture	42	346	14,849,440	825.34
1129	Other Animal Production	24	67	1,618,104	464.44
113	FORESTRY & LOGGING	414	2,271	\$104,869,950	\$888.04
1131	Timber Tract Operations	35	162	8,953,140	1,062.81
1132	Forest Nurseries & Gathering of Forest Products	8	53	4,207,324	1,526.61
1133	Logging	371	2,056	91,709,486	857.80
114	FISHING, HUNTING & TRAPPING	5	16	\$463,387	\$556.96
115	SUPPORT ACTIVITIES FOR AGRICULTURE & FORESTRY	418	2,993	\$136,586,658	\$877.60
1151	Support Activities for Crop Production	279	1,496	76,476,651	983.09
1152	Support Activities for Animal Production	64	704	24,429,010	667.31
1153	Support Activities for Forestry	75	793	35,680,997	865.29
21	MINING	428	3,792	\$247,083,350	\$1,253.06
211	OIL & GAS EXTRACTION	75	669	\$55,415,013	\$1,592.93
212	MINING (EXCEPT OIL & GAS)	108	1,802	\$100,814,993	\$1,075.89
213	SUPPORT ACTIVITIES FOR MINING	245	1,321	\$90,853,344	\$1,322.62

Note: Data may not add due to rounding.

TABLE 5. STATEWIDE SUMMARY CALENDAR YEAR 2019

North American Industry Classification System - Industry Groups		Average Employing Units	Average Covered Employment	Total Calendar Earnings	Average Weekly Earnings
CONSTRUCTION		7,097	52,519	\$2,603,303,825	\$953.25
236	CONSTRUCTION OF BUILDINGS	1,889	11,044	\$610,587,700	\$1,063.21
2361	Residential Building Construction	1,291	3,715	171,340,618	886.95
2362	Nonresidential Building Construction	598	7,329	439,247,082	1,152.55
237	HEAVY & CIVIL ENGINEERING CONSTRUCTION	738	8,261	\$433,728,567	\$1,009.68
2371	Utility System Construction	420	4,643	249,555,087	1,033.63
2372	Land Subdivision	45	91	3,955,501	835.90
2373	Highway, Street & Bridge Construction	178	2,756	142,881,971	997.00
2379	Other Heavy Construction	95	771	37,336,008	931.26
238	SPECIALTY TRADE CONTRACTORS	4,470	33,214	\$1,558,987,558	\$902.65
2381	Building Foundation & Exterior Contractors	821	6,031	276,789,559	882.59
2382	Building Equipment Contractors	2,196	18,543	922,514,989	956.73
2383	Building Finishing Contractors	732	3,801	157,820,809	798.48
2389	Other Specialty Trade Contractors	721	4,839	201,862,201	802.22
MANUFACTURING		2,933	162,199	\$7,980,504,912	\$946.19
311	FOOD MANUFACTURING	302	49,087	\$1,922,449,865	\$753.16
3111	Animal Food Manufacturing	48	1,940	105,349,076	1,044.30
3112	Grain & Oilseed Milling	34	2,745	135,694,871	950.64
3114	Fruit, Vegetable & Specialty Food	18	4,111	202,151,249	945.64
3115	Dairy Product Manufacturing	7	560	25,865,216	888.23
3116	Animal Slaughtering & Processing	81	33,318	1,177,105,672	679.41
3118	Bakeries & Tortilla Manufacturing	80	4,042	168,089,794	799.73
3119	Other Food Manufacturing	22	2,333	107,233,635	883.92
	Other	12	38	960,352	486.01
312	BEVERAGE & TOBACCO PRODUCT MANUFACTURING	63	1,485	\$74,702,828	\$967.40
313	TEXTILE MILLS	9	130	\$7,955,810	\$1,176.89
3132	Fiber, Yarn, & Thread Mills	5	107	7,018,470	1,261.41
3133	Textile, Fabric Finishing/Coating Mills	4	23	937,340	783.73
314	TEXTILE PRODUCT MILLS	43	897	\$43,541,020	\$933.48
3141	Textile Furnishing Mills	9	22	495,173	432.84
3149	Other Textile Product Mills	34	875	43,045,847	946.06
315	APPAREL MANUFACTURING	16	865	23,237,865	\$516.63
3151	Apparel Knitting Mills	3	497	14,545,820	562.83
3152	Other	13	368	8,692,045	454.22
316	LEATHER & ALLIED PRODUCT MANUFACTURING	12	1,117	\$30,475,209	\$524.67
3162	Footwear Manufacturing	4	912	23,664,285	498.99
3169	Other Leather & Allied Product Manufacturing	8	204	6,810,924	642.06

Note: Data may not add due to rounding.

TABLE 5. STATEWIDE SUMMARY CALENDAR YEAR 2019

North American Industry Classification System - Industry Groups		Average Employing Units	Average Covered Employment	Total Calendar Earnings	Average Weekly Earnings
321	WOOD PRODUCT MANUFACTURING	302	9,686	\$446,186,709	\$885.87
3211	Sawmills & Wood Preservation	141	4,763	235,676,901	951.55
3212	Veneer & Engineered Wood Products	40	1,748	92,437,938	1,016.96
3219	Other Wood Product Manufacturing	121	3,175	118,071,870	715.15
322	PAPER MANUFACTURING	69	9,612	\$660,460,761	\$1,321.39
3221	Pulp, Paper & Paperboard Mills	15	3,854	345,286,475	1,722.92
3222	Converted Paper Product Manufacturing	54	5,758	315,174,286	1,052.63
323	PRINTING & RELATED SUPPORT ACTIVITIES	248	3,733	\$160,488,349	\$826.77
324	PETROLEUM & COAL PRODUCTS MANUFACTURING	21	1,218	\$89,392,472	\$1,411.40
325	CHEMICAL MANUFACTURING	126	5,649	\$363,489,706	\$1,237.42
3251	Basic Chemical Manufacturing	30	1,930	147,370,702	1,468.42
3252	Resin, Rubber & Artificial Fibers	12	490	31,791,309	1,247.70
3253	Agricultural Chemical Manufacturing	16	482	34,061,733	1,358.99
3254	Pharmaceutical & Medicine Manufacturing	25	509	27,451,378	1,037.15
3255	Paint, Coating & Adhesive Manufacturing	10	224	13,309,309	1,142.63
3256	Soap, Cleaning Compound, & Toilet Preparation Manufacturing	12	1,299	67,699,322	1,002.24
3259	Other Chemical Preparation Manufacturing	21	715	41,805,953	1,124.42
326	PLASTICS & RUBBER PRODUCTS MANUFACTURING	121	10,947	\$559,451,681	\$982.80
3261	Plastics Product Manufacturing	95	6,749	316,695,759	902.40
3262	Rubber Product Manufacturing	26	4,198	242,755,922	1,112.05
327	NONMETALLIC MINERAL PRODUCT MANUFACTURING	226	3,687	\$189,510,413	\$988.45
3271	Clay Product & Refractory Manufacturing	11	474	23,910,407	970.07
3272	Glass & Glass Product Manufacturing	8	367	18,801,743	985.21
3273	Cement & Concrete Product Manufacturing	170	2,170	110,533,079	979.56
3274	Lime & Gypsum Product Manufacturing	3	292	18,968,926	1,249.27
3279	Other Nonmetallic Mineral Products Manufacturing	34	384	17,296,258	866.20
331	PRIMARY METAL MANUFACTURING	70	8,508	\$652,788,040	\$1,475.51
3311	Iron & Steel Mills & Ferroalloys	9	3,358	360,307,930	2,063.43
3312	Purchased Steel Product Manufacturing	22	2,412	149,422,517	1,191.34
3313	Alumina & Aluminum Production	15	885	52,060,858	1,131.27
3314	Other Nonferrous Metal Production	6	267	14,394,180	1,036.75
3315	Foundries	18	1,586	76,602,555	928.83

Note: Data may not add due to rounding.

TABLE 5. STATEWIDE SUMMARY CALENDAR YEAR 2019

North American Industry Classification System - Industry Groups		Average Employing Units	Average Covered Employment	Total Calendar Earnings	Average Weekly Earnings
332	FABRICATED METAL PRODUCT MANUFACTURING	521	15,161	\$794,198,280	\$1,007.39
3321	Forging & Stamping	12	441	21,760,695	948.92
3322	Cutlery & Hand Tool Manufacturing	14	540	25,458,611	906.65
3323	Architectural & Structural Metals	151	4,650	264,488,097	1,093.83
3324	Boilers, Tanks & Shipping Containers	14	600	31,743,303	1,017.41
3325	Hardware Manufacturing	5	266	14,003,092	1,012.37
3326	Spring & Wire Product Manufacturing	10	347	16,057,283	889.90
3327	Machine Shops & Threaded Products	206	2,313	104,290,467	867.09
3328	Coating, Engraving & Heat Treating Metals	41	663	27,049,557	784.59
3329	Other Fabricated Metal Product Manufacturing	68	5,341	289,347,175	1,041.82
333	MACHINERY MANUFACTURING	207	11,956	\$616,325,276	\$991.34
3331	Agriculture, Construction & Mining Machinery	36	2,885	148,457,356	989.58
3332	Industrial Machinery Manufacturing	26	701	42,861,796	1,175.84
3333	Commercial & Service Industry Machinery	23	835	46,667,879	1,074.80
3334	HVAC & Commercial Refrigeration Equipment	23	2,977	143,734,661	928.49
3335	Metalworking Machinery Manufacturing	50	903	43,914,863	935.23
3336	Turbine & Power Transmission Equipment Manufacturing	5	790	41,246,059	1,004.04
3339	Other General Purpose Machinery Manufacturing	44	2,865	149,442,662	1,003.11
334	COMPUTER & ELECTRONIC PRODUCT MANUFACTURING	49	1,923	\$101,730,856	\$1,017.35
3343	Audio & Video Equipment Manufacturing	5	105	4,382,908	802.73
3344	Semiconductors & Electronic Components	22	1,369	72,117,006	1,013.05
3345	Electronic Instrument Manufacturing	18	371	20,548,548	1,065.13
	Other	4	78	4,682,394	1,154.44
335	ELECTRICAL EQUIPMENT & APPLIANCES	53	4,440	\$240,792,811	\$1,042.93
3353	Electrical Equipment Manufacturing	20	2,786	155,638,173	1,074.32
3359	Other Electrical Equipment & Component Manufacturing	20	1,314	69,387,526	1,015.51
	Other	13	340	15,767,112	891.80
336	TRANSPORTATION EQUIPMENT MANUFACTURING	134	15,232	\$732,558,267	\$924.87
3362	Motor Vehicle Body & Trailer Manufacturing	30	2,176	91,727,944	810.66
3363	Motor Vehicle Parts Manufacturing	41	5,211	222,752,472	822.05
3364	Aerospace Product & Parts Manufacturing	27	4,050	259,381,981	1,231.63
3366	Ship & Boat Building	23	2,410	85,912,651	685.55
	Other	13	1,385	72,783,219	1,010.60
337	FURNITURE & RELATED PRODUCT MANUFACTURING	165	3,533	\$133,043,078	\$724.18
3371	Household & Institutional Furniture	133	2,793	101,440,827	698.46
3372	Office Furniture & Fixtures Manufacturing	26	667	29,541,838	851.74
3379	Other Furniture Related Product Manufacturing	6	73	2,060,413	542.79
339	MISCELLANEOUS MANUFACTURING	176	3,333	\$137,725,616	\$794.65
3391	Medical Equipment & Supplies Manufacturing	68	1,615	74,083,348	882.15
3399	Other Miscellaneous Manufacturing	108	1,718	63,642,268	712.39

Note: Data may not add due to rounding.

TABLE 5. STATEWIDE SUMMARY CALENDAR YEAR 2019

North American Industry Classification System - Industry Groups		Average Employing Units	Average Covered Employment	Total Calendar Earnings	Average Weekly Earnings
TRADE, TRANSPORTATION & UTILITIES		21,827	248,589	\$10,664,750,710	\$825.02
42	WHOLESALE TRADE	7,331	47,487	\$3,364,701,866	\$1,362.60
423	MERCHANT WHOLESALERS, DURABLE GOODS	3,244	24,142	\$1,591,478,162	\$1,267.72
4231	Motor Vehicle & Part Merchant Wholesalers	286	3,109	189,911,341	1,174.70
4232	Furniture & Furnishings Merchant Wholesalers	89	459	32,763,768	1,372.71
4233	Lumber & Supply Merchant Wholesalers	229	1,593	85,589,205	1,033.24
4234	Commercial Goods Merchant Wholesalers	633	3,220	283,372,329	1,692.38
4235	Metal & Mineral Merchant Wholesalers	139	1,072	63,826,146	1,144.99
4236	Appliances & Electronics Goods Merchant Wholesalers	330	2,693	200,704,451	1,433.23
4237	Hardware & Plumbing Merchant Wholesalers	302	2,779	172,956,539	1,196.86
4238	Machinery & Supply Merchant Wholesalers	934	7,257	452,228,364	1,198.39
4239	Miscellaneous Durable Goods Merchant Wholesalers	302	1,960	110,126,019	1,080.51
424	MERCHANT WHOLESALERS, NONDURABLE GOODS	2,027	17,901	\$1,299,718,607	\$1,396.27
4241	Paper & Paper Product Merchant Wholesalers	129	1,235	93,132,089	1,450.20
4242	Druggist' Goods Merchant Wholesalers	249	1,619	184,531,037	2,191.89
4243	Apparel & Piece Goods Merchant Wholesalers	81	756	44,659,429	1,136.03
4244	Grocery Product Merchant Wholesalers	566	5,786	470,657,187	1,564.31
4245	Farm Product Merchant Wholesalers	79	803	30,308,976	725.86
4246	Chemical merchant Wholesalers	227	1,082	108,488,915	1,928.21
4247	Petroleum Merchant Wholesalers	167	1,159	64,472,591	1,069.76
4248	Alcoholic Beverage Merchant Wholesalers	70	1,629	97,934,085	1,156.14
4249	Miscellaneous Nondurable Goods Merchant Wholesaler	459	3,832	205,534,298	1,031.47
425	ELECTRONIC MARKETS & AGENTS & BROKERS	2,060	5,444	\$473,505,097	\$1,672.64
44 - 45	RETAIL TRADE	11,041	136,700	\$3,863,427,633	\$543.50
441	MOTOR VEHICLE & PARTS DEALERS	1,521	19,129	\$877,314,597	\$881.98
4411	Automobile Dealers	621	11,584	617,532,591	1,025.17
4412	Other Motor Vehicle Dealers	171	1,757	80,716,998	883.47
4413	Automotive Parts, Accessories & Tire Stores	729	5,788	179,065,008	594.95
442	FURNITURE & HOME FURNISHINGS STORES	498	3,572	\$120,541,298	\$648.96
4421	Furniture Stores	268	1,963	76,611,682	750.54
4422	Home Furnishings Stores	230	1,609	43,929,616	525.05
443	ELECTRONICS & APPLIANCE STORES	380	3,252	\$117,512,808	\$694.91
444	BUILDING MATERIAL & GARDEN SUPPLY STORES	843	11,850	\$357,426,655	\$580.05
4441	Building Material & Supplies Dealers	603	9,836	306,546,141	599.34
4442	Lawn & Garden Equipment & Supplies Stores	240	2,014	50,880,514	485.83

Note: Data may not add due to rounding.

TABLE 5. STATEWIDE SUMMARY CALENDAR YEAR 2019

North American Industry Classification System - Industry Groups		Average Employing Units	Average Covered Employment	Total Calendar Earnings	Average Weekly Earnings
445	FOOD & BEVERAGE STORES	1,043	19,147	\$444,214,603	\$446.16
4451	Grocery Stores	551	16,556	375,211,117	435.83
4452	Specialty Food Stores	145	802	29,422,829	705.52
4453	Beer, Wine & Liquor Stores	347	1,789	39,580,657	425.47
446	HEALTH & PERSONAL CARE STORES	1,010	8,699	\$334,332,731	\$739.11
447	GASOLINE STATIONS	1,619	12,334	\$241,758,084	\$376.94
44711	Gasoline Stations with Convenience Stores	1,523	11,145	213,629,758	368.62
44719	Other Gasoline Stations	96	1,189	28,128,326	454.94
448	CLOTHING & CLOTHING ACCESSORIES STORES	993	7,684	\$142,225,754	\$355.95
4481	Clothing Stores	751	5,875	96,997,247	317.50
4482	Shoe Stores	122	1,146	19,656,051	329.84
4483	Jewelry, Luggage & Leather Goods Stores	120	663	25,572,456	741.75
451	SPORTING GOODS, HOBBY, BOOK & MUSIC STORES	441	4,383	\$90,289,381	\$396.15
4511	Sporting Goods & Musical Instrument Stores	381	3,921	82,712,627	405.67
4512	Book, Periodical & Music Stores	60	462	7,576,754	315.38
452	GENERAL MERCH&ISE STORES	995	37,605	\$899,822,705	\$460.16
453	MISCELLANEOUS STORE RETAILERS	1,172	7,165	\$159,732,898	\$428.72
4531	Florists	162	587	11,744,679	384.77
4532	Office Supplies, Stationery & Gift Stores	234	1,518	34,305,628	434.60
4533	Used Merchandise Stores	249	2,144	40,751,428	365.52
4539	Other Miscellaneous Store Retailers	527	2,916	72,931,163	480.97
454	NONSTORE RETAILERS	526	1,880	\$78,256,119	\$800.49
4541	Electronic Shopping & Mail-Order Houses	288	719	31,578,708	844.62
4542	Vending Machine Operators	61	425	15,739,346	712.19
4543	Direct Selling Establishments	177	736	30,938,065	808.37
48 - 49	TRANSPORTATION & WAREHOUSING	3,043	56,579	\$2,728,554,401	\$927.41
481	AIR TRANSPORTATION	45	744	\$31,882,338	\$824.09
4811	Scheduled Air Transportation	17	643	23,874,183	714.03
4812	Nonsheduled Air Transportation	28	101	8,008,155	1,524.78
483	WATER TRANSPORTATION	8	36	\$2,661,056	\$1,421.50
484	TRUCK TRANSPORTATION	1,896	32,946	\$1,730,927,607	\$1,010.35
4841	General Freight Trucking	1,112	26,587	1,425,732,673	1,031.25
4842	Specialized Freight Trucking	784	6,359	305,194,934	922.96

Note: Data may not add due to rounding.

TABLE 5. STATEWIDE SUMMARY CALENDAR YEAR 2019

North American Industry Classification System - Industry Groups		Average Employing Units	Average Covered Employment	Total Calendar Earnings	Average Weekly Earnings
485	TRANSIT & GROUND PASSENGER TRANSPORTATION	124	1,842	\$45,488,298	\$474.90
4853	Taxi & Limousine Service	29	338	7,350,922	418.24
4854	School & Employee Bus Transportation	14	388	8,968,032	444.49
4855	Charter Bus Industry Service	7	89	2,611,658	564.32
4859	Other Ground Passenger Transportation	69	926	22,824,697	474.01
	Other	5	101	3,732,989	710.77
486	PIPELINE TRANSPORTATION	40	405	\$40,050,502	\$1,901.73
487	SCENIC AND SIGHTSEEING TRANSPORTATION	4	23	\$328,895	\$275.00
488	SUPPORT ACTIVITIES FOR TRANSPORTATION	524	5,883	\$297,152,960	\$971.35
4881	Support Activities for Air Transportation	110	1,136	47,957,045	811.84
4882	Support Activities for Rail Transportation	37	883	44,051,050	959.38
4883	Support Activities for Water Transportation	22	453	25,974,979	1,102.69
4884	Support Activities for Road Transportation	160	911	34,919,026	737.12
4885	Freight Transportation Arrangement	182	2,389	139,951,363	1,126.57
4889	Other Support Activities for Transportation	13	111	4,299,497	744.89
491	POSTAL SERVICE	14	236	\$11,721,022	\$955.10
492	COURIERS & MESSENGERS	170	5,574	\$202,302,074	\$697.96
493	OTHER WAREHOUSING & STORAGE	218	8,890	\$366,039,649	\$791.81
22	UTILITIES	412	7,823	\$708,062,402	\$1,740.58
2211	Power Generation & Supply	166	5,867	590,311,924	1,934.92
2212	Natural Gas Distribution	68	1,021	80,068,254	1,508.10
2213	Water, Sewage & Other Systems	178	935	37,682,224	775.04
INFORMATION		1,303	10,959	\$634,727,041	\$1,113.81
511	PUBLISHING INDUSTRIES, EXCEPT INTERNET	236	2,684	\$119,795,780	\$858.33
5111	Newspaper, Book & Directory Publishers	181	2,251	86,240,654	736.77
5112	Software Publishers	55	433	33,555,126	1,490.28
512	MOTION PICTURE & SOUND RECORDING INDUSTRY	150	1,310	\$29,479,147	\$432.75
5121	Motion Picture & Video Industries	135	1,294	28,574,035	424.65
5122	Sound Recording Industries	15	16	905,112	1,087.88
515	BROADCASTING, EXCEPT INTERNET	124	1,553	\$72,054,423	\$892.25
5151	Radio & Television Broadcasting	121	1,535	71,329,224	893.63
5152	Cable & Other Subscription Programming	3	18	725,199	774.79

Note: Data may not add due to rounding.

TABLE 5. STATEWIDE SUMMARY CALENDAR YEAR 2019

North American Industry Classification System - Industry Groups		Average Employing Units	Average Covered Employment	Total Calendar Earnings	Average Weekly Earnings
517	TELECOMMUNICATIONS	354	3,406	\$242,779,479	\$1,370.77
5173	Wired & Wireless Telecommunications Carriers	247	3,015	213,974,266	1,364.81
5174	Satellite Telecommunications Carriers	4	6	290,793	932.03
5179	Other Telecommunications	103	385	28,514,420	1,424.30
518	DATA PROCESSING, HOSTING & RELATED SERVICES	346	1,659	\$151,848,699	\$1,760.20
519	OTHER INFORMATION SERVICES	93	347	\$18,769,513	\$1,040.21
FINANCIAL ACTIVITIES		8,593	51,934	\$3,124,492,061	\$1,156.98
52	FINANCE & INSURANCE	5,049	37,975	\$2,561,159,106	\$1,296.99
522	CREDIT INTERMEDIATION & RELATED ACTIVITIES	1,967	19,621	\$1,165,768,471	\$1,142.58
5221	Depository Credit Intermediation	1,409	16,588	950,493,799	1,101.92
5222	Nondepository Credit Intermediation	416	1,929	145,223,127	1,447.77
5223	Activities Related to Credit Intermediation	142	1,104	70,051,545	1,220.24
523	FINANCIAL INVESTMENT & RELATED ACTIVITIES	725	3,074	\$423,898,759	\$2,651.89
5231	Securities & Commodity Contracts Intermediation & Brokerage	302	2,111	329,744,629	3,003.90
5239	Other Financial Investment Activities	423	963	94,154,130	1,880.22
524	INSURANCE CARRIERS & RELATED ACTIVITIES	2,273	15,200	\$963,714,028	\$1,219.27
5241	Insurance Carriers	302	6,714	484,816,306	1,388.65
5242	Insurance Agencies, Brokerages & Support	1,971	8,486	478,897,722	1,085.27
	OTHER	84	80	\$7,777,848	\$1,869.68
53	REAL ESTATE & RENTAL & LEASING	3,544	13,959	\$563,332,955	\$776.08
531	REAL ESTATE	2,938	9,723	\$379,462,753	\$750.53
5311	Lessors of Real Estate	1,104	4,321	153,875,783	684.83
5312	Offices of Real Estate Agents & Brokers	963	1,991	89,712,866	866.52
5313	Activities Related to Real Estate	871	3,411	135,874,104	766.04
532	RENTAL & LEASING SERVICES	589	4,179	\$180,117,809	\$828.86
5321	Automotive Equipment Rental & Leasing	124	1,160	38,285,404	634.70
5322	Consumer Goods Rental	298	1,839	63,963,990	668.88
5323	General Rental Centers	35	219	10,378,787	911.38
5324	Machinery & Equipment Rental & Leasing	132	961	67,489,628	1,350.55
533	LESSORS OF NONFINANCIAL INTANGIBLE ASSETS	17	57	\$3,752,393	\$1,265.99

Note: Data may not add due to rounding.

TABLE 5. STATEWIDE SUMMARY CALENDAR YEAR 2019

North American Industry Classification System - Industry Groups		Average Employing Units	Average Covered Employment	Total Calendar Earnings	Average Weekly Earnings
PROFESSIONAL & BUSINESS SERVICES		14,920	146,000	\$9,236,707,180	\$1,216.64
54	PROFESSIONAL & TECHNICAL SERVICES	9,388	44,958	\$2,865,033,753	\$1,225.52
5411	Legal Services	1,673	5,983	354,836,775	1,140.53
5412	Accounting & Bookkeeping Services	1,293	6,481	320,177,319	950.05
5413	Architectural & Engineering Services	1,046	6,386	427,762,711	1,288.16
5414	Specialized Design Services	175	363	19,137,874	1,013.87
5415	Computer Systems Design & Related Services	2,016	9,795	841,640,378	1,652.41
5416	Management & Technical Consulting Services	2,041	6,801	452,140,021	1,278.49
5417	Scientific Research & Development Services	142	780	54,564,967	1,345.29
5418	Advertising & Related Services	401	3,905	209,202,122	1,030.25
5419	Other Professional & Technical Services	601	4,464	185,571,586	799.44
55	MANAGEMENT OF COMPANIES & ENTERPRISES	547	33,756	\$4,259,841,597	\$2,426.83
56	ADMINISTRATIVE & SUPPORT SERVICES	4,985	67,286	\$2,111,831,830	\$603.58
561	ADMINISTRATIVE & SUPPORT SERVICES	4,651	63,656	\$1,921,496,464	\$580.49
5611	Office Administrative Services	741	4,299	241,582,826	1,080.68
5612	Facilities Support Services	67	1,591	54,154,787	654.58
5613	Employment Services	1,223	28,262	688,193,199	468.28
5614	Business Support Services	380	7,641	331,124,110	833.37
5615	Travel Arrangement & Reservation Services	120	377	17,914,326	913.81
5616	Investigation & Security Services	305	5,036	146,549,947	559.62
5617	Services to Buildings & Dwellings	1,618	15,243	394,464,335	497.66
5619	Other Support Services	197	1,207	47,512,934	757.01
562	WASTE MANAGEMENT & REMEDIATION SERVICES	334	3,630	\$190,335,366	\$1,008.35
5621	Waste Collection Services	134	1,235	58,873,391	916.75
5622	Waste Treatment & disposal Services	41	1,049	66,440,528	1,218.02
5629	Remediation & Other Waste Services	159	1,346	65,021,447	928.98
EDUCATION & HEALTH SERVICES		15,775	187,589	\$8,249,242,790	\$845.67
61	EDUCATIONAL SERVICES	929	12,103	\$455,277,843	\$723.40
6111	Elementary & Secondary Schools	103	4,409	155,307,308	677.41
6112	Junior Colleges	7	115	3,324,138	555.88
6113	Colleges & Universities	125	4,241	172,867,073	783.86
6114	Business, Computer, & Management Training	65	128	9,520,749	1,430.40
6115	Technical & Trade Schools	117	825	51,311,749	1,196.08
6116	Other Schools & Instruction	324	1,763	36,120,344	394.00
6117	Educational Support Services	188	622	26,826,482	829.41

Note: Data may not add due to rounding.

TABLE 5. STATEWIDE SUMMARY CALENDAR YEAR 2019

North American Industry Classification System - Industry Groups		Average Employing Units	Average Covered Employment	Total Calendar Earnings	Average Weekly Earnings
62	HEALTH CARE & SOCIAL ASSISTANCE	14,846	175,486	\$7,793,964,947	\$854.11
621	AMBULATORY HEALTH CARE SERVICES	6,028	59,646	\$3,825,646,217	\$1,233.45
6211	Offices of Physicians	2,337	25,923	2,235,844,601	1,658.64
6212	Offices of Dentists	969	7,496	381,475,762	978.66
6213	Offices of Other Health Practitioners	1,692	9,914	419,579,356	813.88
6214	Outpatient Care Centers	369	5,228	305,110,727	1,122.32
6215	Medical & Diagnostic Laboratories	193	1,362	94,988,526	1,341.19
6216	Home Health Care Services	270	6,966	257,239,479	710.15
6219	Other Ambulatory Health Care Services	198	2,757	131,407,766	916.60
622	HOSPITALS	121	43,922	\$2,229,016,169	\$975.95
6221	General Medical & Surgical Hospitals	90	39,157	2,002,969,831	983.70
6222	Psychiatric & Substance Abuse Hospitals	11	1,940	85,070,655	843.29
6223	Other Hospitals	20	2,825	140,975,683	959.67
623	Residential & Mental Health Facilities	654	32,435	\$889,491,523	\$527.38
6231	Nursing Care Facilities (Skilled Nursing Facilities)	289	22,796	628,033,747	529.81
6232	Residential Mental Health Facilities	175	4,309	120,142,377	536.19
6233	Continuing Care & Assisted Living Facilities	154	4,418	112,048,881	487.73
6239	Other Residential Care Facilities	36	912	29,266,518	617.12
624	SOCIAL ASSISTANCE	8,043	39,483	\$849,811,038	\$413.91
6241	Individual & Family Services	6,982	24,272	528,741,750	418.92
6242	Emergency & Other Relief Services	146	1,399	38,142,770	524.31
6243	Vocational Rehabilitation Services	93	3,279	72,430,139	424.79
6244	Child Day Care Services	822	10,533	210,496,379	384.32
LEISURE & HOSPITALITY		7,317	120,573	\$2,085,816,740	\$332.68
71	ARTS, ENTERTAINMENT & RECREATION	1,014	11,729	\$256,528,005	\$420.60
711	PERFORMING ARTS & SPECTATOR SPORTS	236	3,127	\$86,079,711	\$529.38
7111	Performing Arts Companies	46	523	9,536,103	350.64
7112	Spectator Sports	68	1,634	54,679,272	643.53
7113	Performing Arts & Sports Promoters	55	873	18,228,575	401.55
7114	Agents & Managers for Public Figures	18	28	859,463	590.29
7115	Independent Artists, Writers, & Performers	49	69	2,776,298	773.77
712	MUSEUMS, PARKS, & HISTORICAL SITES	54	751	\$24,729,523	\$633.25
713	GAMBLING, RECREATIONAL & AMUSEMENT INDUSTRY	724	7,851	\$145,718,771	\$356.93
7131	Amusement Parks & Arcades	26	508	6,985,514	264.44
7139	Other Amusement & Recreation Industries	696	7,267	136,674,839	361.68
72	ACCOMMODATION & FOOD SERVICES	6,303	108,844	\$1,829,288,735	\$323.20

Note: Data may not add due to rounding.

TABLE 5. STATEWIDE SUMMARY CALENDAR YEAR 2019

North American Industry Classification System - Industry Groups		Average Employing Units	Average Covered Employment	Total Calendar Earnings	Average Weekly Earnings
721	ACCOMMODATION	912	11,497	\$226,457,599	\$378.79
7211	Travel Accommodation	819	10,837	211,634,091	375.55
7212	RV Parks & Recreational Camps	76	549	12,185,693	426.85
7213	Rooming & Boarding Houses	17	111	2,637,815	457.00
722	FOOD SERVICES & DRINKING PLACES	5,391	97,347	\$1,602,831,136	\$316.64
7223	Special Food Services	305	4,750	90,271,544	365.47
7224	Drinking Places, Alcoholic Beverages	144	1,022	16,662,297	313.53
7225	Restaurants & Other Eating Places	4,942	91,575	1,495,897,295	314.14
722511	Full-Service Restaurants	2,103	39,129	707,829,702	347.88
722513	Limited-Service Eating Places	2,335	47,512	705,890,476	285.71
722514	Cafeterias, Grill Buffets, & Buffets	89	1,657	33,317,931	386.68
722515	Snack & Nonalcoholic Beverage Bars	415	3,277	48,859,186	286.73
	OTHER SERVICES	5,357	25,257	\$911,741,909	\$694.20
811	REPAIR & MAINTENANCE	2,209	11,134	\$453,747,625	\$783.72
8111	Automotive Repair & Maintenance	1,399	6,913	251,131,572	698.60
8112	Electronic Equipment Repair & Maintenance	158	990	45,715,434	888.02
8113	Commercial Machinery Repair & Maintenance	488	2,615	136,789,183	1,005.95
8114	Household Goods Repair & Maintenance	164	616	20,111,436	627.85
812	PERSONAL & LAUNDRY SERVICES	1,347	7,741	\$210,825,257	\$523.75
8121	Personal Care Services	649	2,910	69,429,434	458.83
8122	Death Care Services	250	1,563	48,249,875	593.65
8123	Drycleaning & Laundry Service	205	2,172	66,159,063	585.77
8129	Other Personal Services	243	1,096	26,986,885	473.52
813	MEMBERSHIP ASSOCIATIONS & ORGANIZATIONS	1,121	5,501	\$224,263,785	\$784.00
8131	Religious Organizations	102	329	9,984,946	583.64
8132	Grantmaking & Giving Organizations	123	444	27,389,334	1,186.30
8133	Social Advocacy Organizations	218	1,279	56,797,603	854.00
8134	Civic & Social Organizations	194	1,286	24,250,579	362.64
8139	Professional & Similar Organizations	484	2,163	105,841,323	941.01
814	PRIVATE HOUSEHOLDS	680	881	\$22,905,242	\$499.98
	LOCAL GOVERNMENT	1,989	108,784	\$4,307,966,549	\$761.56
	STATE GOVERNMENT	1,062	66,980	\$3,320,046,260	\$953.23
	NONCLASSIFIABLE ESTABLISHMENTS	0	0	0	\$0.00

Note: Data may not add due to rounding.

TABLE 6. COUNTY SUMMARY CALENDAR YEAR 2019

North American Industry Classification System - Industry Groups	Average Employing Units	Average Covered Employment	Total Calendar Earnings	Average Weekly Earnings
ARKANSAS COUNTY - TOTAL	854	10,130	\$419,539,585	\$796.45
Natural Resources & Mining	58	185	7,200,158	748.46
Construction	57	267	13,533,286	974.74
Manufacturing	34	3,962	176,991,461	859.08
Trade, Transportation & Utilities	202	2,168	93,741,527	831.51
Wholesale Trade	48	443	23,893,269	1,037.21
Retail Trade	95	1,028	28,973,813	542.01
Transportation, Warehousing & Utilities	59	697	40,874,445	1,127.76
Information	10	50	1,817,099	698.88
Financial Activities	57	307	16,546,013	1,036.46
Professional & Business Services	65	495	28,542,264	1,108.87
Education & Health Services	207	1,096	38,318,876	672.36
Leisure & Hospitality	73	619	9,442,037	293.34
Other Services	45	106	3,396,082	616.13
Local Government	32	703	24,420,704	668.04
State Government	14	172	5,590,078	625.01
ASHLEY COUNTY - TOTAL	567	6,491	\$294,890,122	\$873.67
Natural Resources & Mining	47	351	14,883,019	815.42
Construction	36	573	27,816,762	933.57
Manufacturing	25	1,593	120,826,058	1,458.62
Trade, Transportation & Utilities	119	1,202	40,995,336	655.88
Wholesale Trade	25	185	10,231,295	1,063.54
Retail Trade	66	711	17,365,154	469.68
Transportation, Warehousing & Utilities	28	306	13,398,887	842.06
Information	5	37	1,088,285	565.64
Financial Activities	37	182	7,083,735	748.49
Professional & Business Services	37	207	7,383,370	685.93
Education & Health Services	148	918	34,348,610	719.55
Leisure & Hospitality	37	387	5,586,823	277.62
Other Services	34	129	4,043,620	602.81
Local Government	32	810	27,094,157	643.26
State Government	10	102	3,740,347	705.19

Note: Data may not add due to rounding.

TABLE 6. COUNTY SUMMARY CALENDAR YEAR 2019

North American Industry Classification System - Industry Groups	Average Employing Units	Average Covered Employment	Total Calendar Earnings	Average Weekly Earnings
BAXTER COUNTY - TOTAL	1,213	14,705	\$529,883,540	\$692.97
Natural Resources & Mining	8	57	2,404,690	811.30
Construction	105	508	18,041,150	682.96
Manufacturing	54	2,437	95,590,711	754.32
Trade, Transportation & Utilities	255	2,682	75,614,443	542.18
Wholesale Trade	32	184	7,516,133	785.55
Retail Trade	199	2,285	59,230,820	498.49
Transportation, Warehousing & Utilities	24	213	8,867,490	800.60
Information	22	168	7,742,659	886.29
Financial Activities	117	716	43,145,392	1,158.83
Professional & Business Services	141	910	30,866,231	652.29
Education & Health Services	261	3,874	171,609,539	851.88
Leisure & Hospitality	116	1,612	25,750,314	307.20
Other Services	87	298	8,129,519	524.62
Local Government	36	1,138	40,253,742	680.24
State Government	11	305	10,735,150	676.87
BENTON COUNTY - TOTAL	6,733	121,958	\$7,618,679,850	\$1,201.34
Natural Resources & Mining	48	797	57,058,264	1,376.76
Construction	664	5,160	252,528,152	941.15
Manufacturing	192	12,256	562,461,746	882.55
Trade, Transportation & Utilities	1,698	29,439	1,590,562,066	1,039.02
Wholesale Trade	757	6,056	619,843,111	1,968.31
Retail Trade	747	12,316	375,222,238	585.89
Transportation, Warehousing & Utilities	194	11,067	595,496,717	1,034.78
Information	81	974	60,683,869	1,198.15
Financial Activities	697	4,009	253,514,305	1,216.08
Professional & Business Services	1,332	32,289	3,553,927,828	2,116.66
Education & Health Services	849	12,038	515,317,001	823.22
Leisure & Hospitality	654	13,171	257,888,254	376.54
Other Services	416	2,428	93,912,491	743.83
Local Government	85	8,359	382,276,504	879.47
State Government	17	1,038	38,549,370	714.19

Note: Data may not add due to rounding.

TABLE 6. COUNTY SUMMARY CALENDAR YEAR 2019

North American Industry Classification System - Industry Groups	Average Employing Units	Average Covered Employment	Total Calendar Earnings	Average Weekly Earnings
BOONE COUNTY - TOTAL	949	14,068	552,571,350	\$755.36
Manufacturing	58	1,906	79,800,306	805.15
Trade, Transportation & Utilities	248	3,634	151,729,274	802.94
Wholesale Trade	40	333	12,793,320	738.81
Retail Trade	164	2,036	57,587,671	543.94
Transportation, Warehousing & Utilities	44	1,265	81,348,283	1,236.67
Information	14	270	13,202,526	940.35
Financial Activities	93	433	22,216,109	986.68
Professional & Business Services	95	1,418	71,385,408	968.12
Education & Health Services	167	1,653	53,945,409	627.59
Leisure & Hospitality	82	1,238	19,624,548	304.84
Other Services	57	275	10,518,102	735.53
Local Government	53	2,112	86,235,086	785.21
State Government	17	744	28,147,247	727.54
Other	65	385	15,767,335	787.58
BRADLEY COUNTY - TOTAL	363	3,779	\$136,984,392	\$697.09
Natural Resources & Mining	45	230	9,801,116	819.49
Construction	18	86	2,848,571	636.98
Manufacturing	12	968	40,871,135	811.97
Trade, Transportation & Utilities	72	499	15,477,344	596.48
Wholesale Trade	12	100	5,272,550	1,013.95
Retail Trade	38	311	6,672,454	412.59
Transportation, Warehousing & Utilities	22	88	3,532,340	771.93
Information	3	25	782,909	602.24
Financial Activities	25	131	5,791,713	850.22
Professional & Business Services	26	110	4,939,475	863.54
Education & Health Services	99	669	26,196,698	753.04
Leisure & Hospitality	14	179	2,332,976	250.64
Other Services	25	92	2,578,425	538.97
Local Government	14	433	14,725,156	653.99
State Government	10	357	10,638,874	573.09

Note: Data may not add due to rounding.

TABLE 6. COUNTY SUMMARY CALENDAR YEAR 2019

North American Industry Classification System - Industry Groups	Average Employing Units	Average Covered Employment	Total Calendar Earnings	Average Weekly Earnings
CALHOUN COUNTY - TOTAL	104	3,123	\$182,585,539	\$1,124.32
Natural Resources & Mining	6	35	1,235,260	678.71
Construction	10	126	5,589,987	853.17
Manufacturing	8	2,322	149,622,867	1,239.17
Trade, Transportation & Utilities	19	190	7,381,441	747.11
Retail Trade	9	44	940,520	411.07
Transportation, Warehousing & Utilities	10	146	6,440,921	848.38
Professional & Business Services	7	10	472,742	909.12
Education & Health Services	22	59	2,636,093	859.22
Leisure & Hospitality	4	13	176,156	260.59
Local Government	11	180	5,646,571	603.27
State Government	7	79	3,147,372	766.16
Other	10	109	6,677,050	1,178.03
CARROLL COUNTY - TOTAL	780	10,756	\$336,634,966	\$601.87
Natural Resources & Mining	21	220	8,316,082	726.93
Trade, Transportation & Utilities	185	1,592	51,653,305	623.95
Wholesale Trade	23	194	7,081,906	702.01
Retail Trade	137	1,112	26,564,577	459.40
Transportation, Warehousing & Utilities	25	286	18,006,822	1,210.79
Information	11	66	3,227,553	940.43
Financial Activities	57	383	18,532,226	930.52
Professional & Business Services	65	364	13,527,343	714.67
Education & Health Services	102	1,096	38,123,184	668.92
Leisure & Hospitality	162	1,659	26,770,621	310.32
Other Services	43	150	3,834,770	491.64
Local Government	25	1,038	34,425,913	637.80
State Government	9	99	3,683,983	715.61
Other	100	4,089	134,539,986	632.75

Note: Data may not add due to rounding.

TABLE 6. COUNTY SUMMARY CALENDAR YEAR 2019

North American Industry Classification System - Industry Groups	Average Employing Units	Average Covered Employment	Total Calendar Earnings	Average Weekly Earnings
CHICOT COUNTY - TOTAL	491	2,934	\$98,986,811	\$648.80
Natural Resources & Mining	52	237	9,035,612	733.17
Construction	14	124	6,215,897	964.00
Manufacturing	6	12	551,584	883.95
Trade, Transportation & Utilities	65	615	18,825,349	588.66
Wholesale Trade	12	48	2,699,449	1,081.51
Retail Trade	40	281	7,604,888	520.45
Transportation, Warehousing & Utilities	13	286	8,521,012	572.96
Professional & Business Services	16	41	1,823,873	855.48
Education & Health Services	247	657	18,995,271	556.00
Leisure & Hospitality	15	109	1,463,503	258.20
Other Services	18	72	2,530,271	675.82
Local Government	17	605	21,175,680	673.10
State Government	10	282	9,960,720	679.26
Other	31	180	8,409,051	\$898.40
CLARK COUNTY - TOTAL	659	9,214	\$329,771,312	\$688.27
Natural Resources & Mining	50	297	13,434,156	869.86
Construction	26	85	4,298,454	972.50
Manufacturing	34	1,367	73,296,134	1,031.12
Trade, Transportation & Utilities	138	1,458	45,619,437	601.71
Wholesale Trade	15	47	2,422,269	991.11
Retail Trade	91	1,207	33,976,717	541.34
Transportation, Warehousing & Utilities	32	204	9,220,451	869.20
Information	4	9	413,627	883.82
Financial Activities	72	314	11,972,349	733.24
Professional & Business Services	49	589	27,904,514	911.08
Education & Health Services	128	1,663	56,280,594	650.82
Leisure & Hospitality	69	1,191	17,292,508	279.22
Other Services	45	207	7,615,472	707.49
Local Government	30	934	31,401,717	646.55
State Government	14	1,100	40,242,350	703.54

Note: Data may not add due to rounding.

TABLE 6. COUNTY SUMMARY CALENDAR YEAR 2019

North American Industry Classification System - Industry Groups	Average Employing Units	Average Covered Employment	Total Calendar Earnings	Average Weekly Earnings
CLAY COUNTY - TOTAL	361	3,089	\$97,108,232	\$604.55
Natural Resources & Mining	54	240	7,012,216	561.88
Construction	29	107	3,460,230	621.90
Manufacturing	13	105	3,368,234	616.89
Trade, Transportation & Utilities	84	729	25,308,703	667.63
Wholesale Trade	19	238	8,844,435	714.64
Retail Trade	41	359	9,862,983	528.34
Transportation, Warehousing & Utilities	24	132	6,601,285	961.73
Information	6	24	738,887	592.06
Financial Activities	21	95	3,780,625	765.31
Professional & Business Services	26	127	5,255,717	795.84
Education & Health Services	51	512	15,224,007	571.82
Leisure & Hospitality	23	220	2,881,033	251.84
Other Services	24	77	2,605,973	650.84
Local Government	21	807	25,725,871	613.05
State Government	9	46	1,746,736	730.24
CLEBURNE COUNTY - TOTAL	641	6,294	\$221,572,567	\$677.00
Natural Resources & Mining	22	178	10,850,951	1,172.32
Construction	65	324	12,897,765	765.54
Manufacturing	32	1,254	49,807,949	763.83
Trade, Transportation & Utilities	154	1,220	40,449,183	637.60
Wholesale Trade	33	115	5,141,832	859.84
Retail Trade	99	961	28,115,456	562.62
Transportation, Warehousing & Utilities	22	144	7,191,895	960.46
Information	10	54	2,039,717	726.39
Financial Activities	75	260	10,979,534	812.10
Professional & Business Services	65	261	10,503,794	773.93
Education & Health Services	75	891	36,563,935	789.17
Leisure & Hospitality	81	885	14,461,001	314.23
Other Services	36	112	3,068,614	526.89
Local Government	18	749	26,286,440	674.91
State Government	8	106	3,663,684	664.67

Note: Data may not add due to rounding.

TABLE 6. COUNTY SUMMARY CALENDAR YEAR 2019

North American Industry Classification System - Industry Groups	Average Employing Units	Average Covered Employment	Total Calendar Earnings	Average Weekly Earnings
CLEVELAND COUNTY - TOTAL	127	1,021	\$34,141,940	\$643.07
Natural Resources & Mining	16	167	6,498,528	748.33
Construction	7	9	281,175	600.80
Manufacturing	3	112	5,155,850	885.28
Trade, Transportation & Utilities	30	158	5,072,340	617.37
Retail Trade	17	68	1,081,229	305.78
Other Trade, Transportation & Utilities	13	90	3,991,111	852.80
Financial Activities	4	23	1,048,674	876.82
Education & Health Services	32	193	4,384,599	436.89
Other Services	5	12	452,240	724.74
Local Government	14	294	9,543,031	624.22
State Government	6	30	1,178,734	755.60
Other	10	23	526,769	440.44
COLUMBIA COUNTY - TOTAL	699	8,080	\$327,336,047	\$779.07
Natural Resources & Mining	43	391	25,582,064	1,258.22
Construction	37	163	6,063,939	715.42
Manufacturing	31	1,904	115,070,367	1,162.23
Trade, Transportation & Utilities	169	1,411	48,465,015	660.54
Wholesale Trade	31	230	13,093,172	1,094.75
Retail Trade	96	946	23,358,157	474.84
Transportation, Warehousing & Utilities	42	235	12,013,686	983.12
Information	6	32	1,322,303	794.65
Financial Activities	60	340	16,818,422	951.27
Professional & Business Services	52	290	9,019,681	598.12
Education & Health Services	165	943	24,175,518	493.02
Leisure & Hospitality	59	791	11,514,469	279.94
Other Services	38	128	3,216,258	483.21
Local Government	27	1,036	37,646,421	698.81
State Government	12	651	28,441,590	840.17

Note: Data may not add due to rounding.

TABLE 6. COUNTY SUMMARY CALENDAR YEAR 2019

North American Industry Classification System - Industry Groups	Average Employing Units	Average Covered Employment	Total Calendar Earnings	Average Weekly Earnings
CONWAY COUNTY - TOTAL	527	6,471	\$257,315,566	\$764.70
Natural Resources & Mining	30	258	10,184,294	759.12
Construction	48	472	27,986,763	1,140.27
Manufacturing	19	987	57,553,063	1,121.37
Trade, Transportation & Utilities	115	1,326	43,875,015	636.31
Wholesale Trade	15	125	5,042,899	775.83
Retail Trade	76	771	20,898,991	521.28
Transportation, Warehousing & Utilities	24	430	17,933,125	802.02
Information	3	12	207,269	332.16
Financial Activities	41	157	7,033,281	861.50
Professional & Business Services	40	482	15,986,907	637.84
Education & Health Services	128	791	31,295,028	760.84
Leisure & Hospitality	37	447	6,969,150	299.83
Other Services	26	96	2,944,510	589.85
Local Government	31	1,046	40,803,776	750.18
State Government	9	397	12,476,510	604.36
CRAIGHEAD COUNTY - TOTAL	2,826	51,731	\$2,107,167,113	\$783.33
Natural Resources & Mining	101	391	15,819,215	778.05
Construction	243	2,162	101,449,371	902.38
Manufacturing	101	7,051	341,749,738	932.08
Trade, Transportation & Utilities	769	10,482	381,424,268	699.78
Wholesale Trade	181	1,977	107,296,206	1,043.70
Retail Trade	462	6,644	181,769,568	526.12
Transportation, Warehousing & Utilities	126	1,861	92,358,494	954.39
Information	20	382	19,229,546	968.06
Financial Activities	281	1,719	93,185,188	1,042.48
Professional & Business Services	377	4,894	174,288,765	684.86
Education & Health Services	447	11,309	567,690,721	965.35
Leisure & Hospitality	266	5,679	93,962,695	318.19
Other Services	164	747	23,681,020	609.64
Local Government	35	3,982	163,016,928	787.28
State Government	22	2,933	131,669,658	863.32

Note: Data may not add due to rounding.

TABLE 6. COUNTY SUMMARY CALENDAR YEAR 2019

North American Industry Classification System - Industry Groups	Average Employing Units	Average Covered Employment	Total Calendar Earnings	Average Weekly Earnings
CRAWFORD COUNTY - TOTAL	1,259	19,600	\$724,438,268	\$710.79
Natural Resources & Mining	23	245	9,774,244	767.21
Construction	145	993	44,136,875	854.77
Manufacturing	62	4,686	199,745,957	819.73
Trade, Transportation & Utilities	317	5,660	210,656,015	715.74
Wholesale Trade	74	733	38,536,703	1,011.04
Retail Trade	168	1,978	56,152,891	545.94
Transportation, Warehousing & Utilities	75	2,949	115,966,421	756.23
Information	11	46	1,809,741	756.58
Financial Activities	126	503	20,920,680	799.84
Professional & Business Services	164	1,581	58,412,776	710.51
Education & Health Services	185	1,682	56,144,883	641.92
Leisure & Hospitality	91	1,606	24,534,670	293.79
Other Services	83	433	15,579,703	691.94
Local Government	42	2,006	77,558,468	743.52
State Government	10	159	5,164,256	624.61
CRITTENDEN COUNTY - TOTAL	1,196	16,250	\$610,417,326	\$722.39
Natural Resources & Mining	57	240	8,599,935	689.10
Construction	44	410	20,798,259	975.53
Manufacturing	41	2,080	108,748,054	1,005.44
Trade, Transportation & Utilities	299	4,274	172,983,836	778.34
Wholesale Trade	54	744	37,520,349	969.82
Retail Trade	157	1,889	47,534,514	483.92
Transportation, Warehousing & Utilities	88	1,641	87,928,973	1,030.43
Information	4	43	1,706,666	763.27
Financial Activities	103	451	22,726,592	969.07
Professional & Business Services	108	1,066	34,869,431	629.05
Education & Health Services	281	2,081	73,268,132	677.08
Leisure & Hospitality	136	2,662	52,757,421	381.13
Other Services	69	512	17,373,619	652.55
Local Government	41	2,025	82,943,944	787.69
State Government	13	406	13,641,437	646.15

Note: Data may not add due to rounding.

TABLE 6. COUNTY SUMMARY CALENDAR YEAR 2019

North American Industry Classification System - Industry Groups	Average Employing Units	Average Covered Employment	Total Calendar Earnings	Average Weekly Earnings
CROSS COUNTY - TOTAL	476	4,743	\$160,118,987	\$649.21
Natural Resources & Mining	45	284	9,447,276	639.71
Construction	23	63	2,244,651	685.18
Manufacturing	10	300	9,821,678	629.59
Trade, Transportation & Utilities	125	1,118	40,393,675	694.81
Wholesale Trade	27	299	15,595,551	1,003.06
Retail Trade	66	709	19,889,535	539.48
Transportation, Warehousing & Utilities	32	110	4,908,589	858.14
Information	6	43	1,161,822	519.60
Financial Activities	46	282	10,956,388	747.16
Professional & Business Services	41	147	6,322,209	827.08
Education & Health Services	88	975	33,379,517	658.37
Leisure & Hospitality	34	398	5,550,790	268.21
Other Services	32	108	3,495,668	622.45
Local Government	17	671	24,332,757	697.37
State Government	9	354	13,012,556	706.90
DALLAS COUNTY - TOTAL	231	2,643	\$89,454,410	\$650.88
Natural Resources & Mining	23	115	4,625,290	773.46
Construction	14	69	2,814,052	784.30
Manufacturing	9	554	23,209,325	805.66
Trade, Transportation & Utilities	56	485	15,437,632	612.12
Wholesale Trade	6	21	1,069,610	979.50
Retail Trade	35	304	8,371,303	529.56
Transportation, Warehousing & Utilities	15	160	5,996,719	720.76
Information	4	16	571,132	686.46
Financial Activities	16	70	3,458,668	950.18
Professional & Business Services	10	35	1,187,439	652.44
Education & Health Services	52	736	25,522,872	666.88
Leisure & Hospitality	13	152	1,882,239	238.14
Other Services	13	50	1,302,488	500.96
Local Government	14	332	8,338,471	483.00
State Government	7	29	1,104,802	732.63

Note: Data may not add due to rounding.

TABLE 6. COUNTY SUMMARY CALENDAR YEAR 2019

North American Industry Classification System - Industry Groups	Average Employing Units	Average Covered Employment	Total Calendar Earnings	Average Weekly Earnings
DESHA COUNTY - TOTAL	525	4,622	\$169,997,562	\$707.31
Natural Resources & Mining	66	277	9,709,592	674.09
Construction	15	97	3,866,706	766.60
Manufacturing	14	1,065	59,222,396	1,069.38
Trade, Transportation & Utilities	105	822	28,855,055	675.07
Wholesale Trade	20	180	10,735,263	1,146.93
Retail Trade	57	459	10,610,849	444.56
Transportation, Warehousing & Utilities	28	183	7,508,943	789.09
Information	4	22	891,488	779.27
Financial Activities	28	201	7,736,504	740.19
Professional & Business Services	34	89	3,266,676	705.85
Education & Health Services	167	732	20,345,132	534.50
Leisure & Hospitality	36	353	4,913,367	267.67
Other Services	26	58	1,213,900	402.49
Local Government	21	789	26,193,454	638.43
State Government	9	117	3,783,292	621.84
DREW COUNTY - TOTAL	542	6,388	\$228,363,246	\$687.48
Natural Resources & Mining	59	399	17,551,967	845.96
Construction	24	166	8,963,153	1,038.36
Manufacturing	21	913	37,410,118	787.98
Trade, Transportation & Utilities	113	1,032	31,613,163	589.09
Wholesale Trade	17	100	4,281,439	823.35
Retail Trade	76	825	21,976,863	512.28
Transportation, Warehousing & Utilities	20	107	5,354,861	962.41
Information	6	44	1,804,775	788.80
Financial Activities	50	212	10,709,733	971.49
Professional & Business Services	38	309	14,855,829	924.56
Education & Health Services	135	850	26,693,886	603.93
Leisure & Hospitality	42	667	9,436,142	272.06
Other Services	17	67	2,023,212	580.72
Local Government	24	1,168	43,602,761	717.91
State Government	13	561	23,698,507	812.37

Note: Data may not add due to rounding.

TABLE 6. COUNTY SUMMARY CALENDAR YEAR 2019

North American Industry Classification System - Industry Groups	Average Employing Units	Average Covered Employment	Total Calendar Earnings	Average Weekly Earnings
FAULKNER COUNTY - TOTAL	2,877	40,924	\$1,681,671,547	\$790.24
Natural Resources & Mining	40	243	18,253,368	1,444.55
Construction	338	2,936	139,847,143	916.00
Manufacturing	98	3,321	178,832,141	1,035.56
Trade, Transportation & Utilities	633	7,578	247,440,374	627.93
Wholesale Trade	135	712	39,342,525	1,062.62
Retail Trade	413	6,020	164,351,558	525.02
Transportation, Warehousing & Utilities	85	846	43,746,291	994.41
Information	22	258	27,328,361	2,037.00
Financial Activities	309	1,437	68,298,716	914.01
Professional & Business Services	448	4,891	298,329,742	1,172.99
Education & Health Services	461	7,540	304,119,492	775.66
Leisure & Hospitality	271	5,336	85,024,795	306.43
Other Services	196	929	28,411,335	588.13
Local Government	43	3,244	145,835,322	864.53
State Government	18	3,211	139,950,758	838.17
FRANKLIN COUNTY - TOTAL	384	4,644	\$164,888,188	\$682.80
Natural Resources & Mining	18	221	14,486,648	1,260.59
Construction	35	162	5,736,115	680.93
Manufacturing	17	978	37,685,699	741.03
Trade, Transportation & Utilities	84	964	35,104,937	700.31
Wholesale Trade	11	58	1,555,859	515.87
Retail Trade	50	615	14,546,741	454.87
Transportation, Warehousing & Utilities	23	291	19,002,337	1,255.77
Information	7	28	1,090,218	748.78
Financial Activities	31	75	2,931,002	751.54
Professional & Business Services	35	354	13,150,024	714.36
Education & Health Services	67	572	16,037,272	539.18
Leisure & Hospitality	33	362	4,927,402	261.76
Other Services	17	61	1,699,340	535.73
Local Government	32	726	26,230,064	694.80
State Government	8	141	5,809,467	792.34

Note: Data may not add due to rounding.

TABLE 6. COUNTY SUMMARY CALENDAR YEAR 2019

North American Industry Classification System - Industry Groups	Average Employing Units	Average Covered Employment	Total Calendar Earnings	Average Weekly Earnings
FULTON COUNTY - TOTAL	201	2,054	\$64,497,801	\$603.87
Manufacturing	12	125	3,135,578	482.40
Trade, Transportation & Utilities	48	293	10,740,408	704.94
Retail Trade	29	173	4,035,607	448.60
Other Trade, Transportation & Utilities	19	120	6,704,801	1,074.49
Information	5	29	1,025,495	680.04
Financial Activities	18	84	3,586,295	821.04
Professional & Business Services	18	36	1,205,278	643.85
Education & Health Services	43	519	14,300,959	529.90
Leisure & Hospitality	15	136	1,893,058	267.68
Other Services	10	17	550,696	622.96
Local Government	12	539	15,829,190	564.76
State Government	9	63	2,154,075	657.53
Other	11	213	10,076,769	909.78
GARLAND COUNTY - TOTAL	3,041	37,289	\$1,368,367,776	\$705.70
Natural Resources & Mining	29	262	13,018,683	955.57
Construction	326	1,896	74,701,273	757.68
Manufacturing	90	2,558	122,347,019	919.79
Trade, Transportation & Utilities	672	7,287	245,209,121	647.12
Wholesale Trade	140	807	47,274,307	1,126.54
Retail Trade	469	5,958	172,446,181	556.61
Transportation, Warehousing & Utilities	63	522	25,488,633	939.02
Information	31	427	16,822,096	757.62
Financial Activities	332	1,494	71,465,802	919.91
Professional & Business Services	385	2,960	113,911,733	740.07
Education & Health Services	517	8,132	376,391,278	890.10
Leisure & Hospitality	388	7,484	146,198,749	375.67
Other Services	215	998	26,894,964	518.25
Local Government	34	2,821	124,704,323	850.11
State Government	22	970	36,702,735	727.65

Note: Data may not add due to rounding.

TABLE 6. COUNTY SUMMARY CALENDAR YEAR 2019

North American Industry Classification System - Industry Groups	Average Employing Units	Average Covered Employment	Total Calendar Earnings	Average Weekly Earnings
GRANT COUNTY - TOTAL	350	4,203	\$173,795,923	\$795.20
Natural Resources & Mining	28	188	10,202,552	1,043.63
Construction	37	238	14,230,712	1,149.86
Manufacturing	17	1,387	69,868,596	968.73
Trade, Transportation & Utilities	83	633	20,020,912	608.24
Wholesale Trade	17	71	4,733,822	1,282.18
Retail Trade	47	507	13,265,068	503.15
Transportation, Warehousing & Utilities	19	55	2,022,022	707.00
Financial Activities	20	115	6,936,993	1,160.03
Professional & Business Services	32	114	5,904,226	995.99
Education & Health Services	75	402	11,100,085	531.00
Leisure & Hospitality	23	294	3,811,018	249.28
Local Government	10	734	28,380,646	743.57
State Government	7	45	1,607,406	686.93
Other	18	53	1,732,777	628.73
GREENE COUNTY - TOTAL	884	15,529	\$597,901,907	\$740.43
Natural Resources & Mining	38	228	8,391,165	707.76
Construction	73	349	15,828,663	872.20
Manufacturing	64	5,214	245,222,656	904.45
Trade, Transportation & Utilities	228	2,659	84,841,455	613.60
Wholesale Trade	43	464	21,459,534	889.40
Retail Trade	152	1,882	50,628,793	517.34
Transportation, Warehousing & Utilities	33	313	12,753,128	783.55
Information	11	182	7,740,116	817.85
Financial Activities	75	560	26,251,534	901.49
Professional & Business Services	89	786	26,449,136	647.12
Education & Health Services	151	2,022	78,804,315	749.49
Leisure & Hospitality	77	1,382	21,873,423	304.37
Other Services	37	160	4,777,501	574.22
Local Government	31	1,591	61,136,184	738.97
State Government	10	396	16,585,759	805.45

Note: Data may not add due to rounding.

TABLE 6. COUNTY SUMMARY CALENDAR YEAR 2019

North American Industry Classification System - Industry Groups	Average Employing Units	Average Covered Employment	Total Calendar Earnings	Average Weekly Earnings
HEMPSTEAD COUNTY - TOTAL	519	7,724	\$283,162,649	\$705.00
Natural Resources & Mining	23	270	12,439,627	886.01
Construction	26	133	5,876,147	849.65
Manufacturing	29	2,243	96,653,983	828.68
Trade, Transportation & Utilities	127	1,318	48,350,557	705.48
Wholesale Trade	24	171	6,167,146	693.56
Retail Trade	76	854	21,916,931	493.54
Transportation, Warehousing & Utilities	27	293	20,266,480	1,330.17
Information	8	22	1,046,925	915.14
Financial Activities	44	212	8,945,992	811.50
Professional & Business Services	33	230	8,496,350	710.40
Education & Health Services	109	1,003	28,816,893	552.51
Leisure & Hospitality	46	626	10,049,022	308.71
Other Services	30	122	4,294,944	677.01
Local Government	28	826	32,010,177	745.25
State Government	16	719	26,182,032	700.28
HOT SPRING COUNTY - TOTAL	606	8,154	\$302,208,431	\$712.74
Natural Resources & Mining	25	170	6,699,477	757.86
Construction	49	195	5,812,685	573.24
Manufacturing	28	1,400	71,986,451	988.82
Trade, Transportation & Utilities	150	1,601	66,603,694	800.03
Wholesale Trade	18	80	4,571,672	1,098.96
Retail Trade	97	863	21,853,899	486.98
Transportation, Warehousing & Utilities	35	658	40,178,123	1,174.25
Information	5	42	1,818,352	832.58
Financial Activities	49	214	9,663,196	868.37
Professional & Business Services	53	861	24,012,401	536.33
Education & Health Services	120	1,077	38,497,012	687.40
Leisure & Hospitality	48	656	8,954,979	262.52
Other Services	39	152	3,839,712	485.79
Local Government	27	924	35,525,653	739.38
State Government	13	862	28,794,819	642.40

Note: Data may not add due to rounding.

TABLE 6. COUNTY SUMMARY CALENDAR YEAR 2019

North American Industry Classification System - Industry Groups	Average Employing Units	Average Covered Employment	Total Calendar Earnings	Average Weekly Earnings
HOWARD COUNTY - TOTAL	356	6,609	225,889,848	\$657.29
Natural Resources & Mining	16	203	8,261,062	782.59
Construction	22	102	3,792,652	715.06
Manufacturing	18	3,128	110,139,049	677.13
Trade, Transportation & Utilities	81	831	29,639,721	685.91
Wholesale Trade	16	80	3,668,124	881.76
Retail Trade	47	547	14,893,062	523.59
Transportation, Warehousing & Utilities	18	204	11,078,535	1,044.36
Professional & Business Services	23	155	5,136,016	637.22
Education & Health Services	87	856	28,446,526	639.08
Leisure & Hospitality	25	336	4,985,292	285.33
Other Services	22	94	2,962,776	606.13
Local Government	17	654	23,015,772	676.78
State Government	10	99	3,582,554	695.91
Other	35	151	5,928,428	755.02
INDEPENDENCE COUNTY - TOTAL	910	16,100	\$660,039,807	\$788.39
Natural Resources & Mining	20	251	13,157,645	1,008.09
Construction	60	514	25,760,990	963.82
Manufacturing	42	3,470	179,605,606	995.38
Trade, Transportation & Utilities	239	2,893	104,496,853	694.63
Wholesale Trade	31	311	12,720,154	786.55
Retail Trade	162	1,845	48,989,984	510.63
Transportation, Warehousing & Utilities	46	737	42,786,715	1,116.45
Information	11	101	3,259,573	620.63
Financial Activities	87	571	33,339,171	1,122.83
Professional & Business Services	87	1,160	37,564,842	622.76
Education & Health Services	156	3,630	167,189,557	885.73
Leisure & Hospitality	84	1,252	18,294,331	281.00
Other Services	63	285	7,418,294	500.56
Local Government	46	1,382	47,865,436	666.06
State Government	15	591	22,087,509	718.71

Note: Data may not add due to rounding.

TABLE 6. COUNTY SUMMARY CALENDAR YEAR 2019

North American Industry Classification System - Industry Groups	Average Employing Units	Average Covered Employment	Total Calendar Earnings	Average Weekly Earnings
IZARD COUNTY - TOTAL	247	3,065	\$99,674,094	\$625.39
Natural Resources & Mining	9	129	6,831,177	1,018.36
Construction	20	75	2,950,744	756.60
Manufacturing	9	309	10,640,132	662.19
Trade, Transportation & Utilities	62	508	15,990,863	605.35
Wholesale Trade	12	49	1,416,121	555.78
Retail Trade	39	328	7,991,349	468.54
Transportation, Warehousing & Utilities	11	131	6,583,393	966.44
Information	4	6	391,268	1,254.06
Financial Activities	25	167	6,191,012	712.92
Professional & Business Services	16	41	1,080,990	507.03
Education & Health Services	47	707	20,899,321	568.47
Leisure & Hospitality	19	189	2,856,249	290.62
Other Services	13	34	782,968	442.86
Local Government	14	488	16,022,908	631.42
State Government	9	412	15,036,462	701.85
JACKSON COUNTY - TOTAL	429	5,112	\$192,932,634	\$725.79
Natural Resources & Mining	60	268	9,589,264	688.09
Construction	21	109	5,373,581	948.06
Manufacturing	11	946	47,827,952	972.27
Trade, Transportation & Utilities	106	964	34,091,054	680.08
Wholesale Trade	18	208	10,971,899	1,014.41
Retail Trade	70	666	18,632,794	538.02
Transportation, Warehousing & Utilities	18	90	4,486,361	958.62
Information	4	11	348,803	609.80
Financial Activities	31	128	5,873,378	882.42
Professional & Business Services	31	114	4,371,993	737.52
Education & Health Services	78	855	32,182,750	723.86
Leisure & Hospitality	25	327	4,763,439	280.14
Other Services	18	63	2,341,957	714.88
Local Government	32	551	18,149,206	633.44
State Government	12	776	28,019,257	694.37

Note: Data may not add due to rounding.

TABLE 6. COUNTY SUMMARY CALENDAR YEAR 2019

North American Industry Classification System - Industry Groups	Average Employing Units	Average Covered Employment	Total Calendar Earnings	Average Weekly Earnings
JEFFERSON COUNTY - TOTAL	2,020	25,689	\$1,039,196,343	\$777.94
Natural Resources & Mining	43	135	8,028,928	1,143.72
Construction	84	491	21,266,971	832.95
Manufacturing	59	4,714	272,640,177	1,112.24
Trade, Transportation & Utilities	391	4,324	150,229,257	668.14
Wholesale Trade	70	679	30,152,589	853.99
Retail Trade	270	2,953	78,314,939	510.01
Transportation, Warehousing & Utilities	51	692	41,761,729	1,160.56
Information	9	66	3,486,221	1,015.80
Financial Activities	150	994	48,955,393	947.13
Professional & Business Services	141	2,026	68,672,521	651.84
Education & Health Services	827	4,800	194,216,325	778.11
Leisure & Hospitality	136	1,894	29,183,907	296.32
Other Services	102	467	16,402,797	675.46
Local Government	41	2,436	89,949,780	710.10
State Government	37	3,342	136,164,066	783.52
JOHNSON COUNTY - TOTAL	480	8,353	\$276,374,206	\$636.28
Natural Resources & Mining	13	200	8,579,464	824.95
Construction	36	223	7,658,040	660.40
Manufacturing	33	2,480	88,192,320	683.87
Trade, Transportation & Utilities	101	1,877	61,890,998	634.10
Retail Trade	71	881	21,593,985	471.36
Other Trade, Transportation & Utilities	30	996	40,297,013	778.05
Information	4	17	738,880	835.84
Financial Activities	47	178	6,730,894	727.19
Professional & Business Services	46	383	7,731,416	388.20
Education & Health Services	108	1,246	45,458,511	701.61
Leisure & Hospitality	43	608	8,354,128	264.24
Other Services	27	78	2,331,962	574.94
Local Government	14	961	34,578,683	691.96
State Government	8	102	4,128,910	778.45

Note: Data may not add due to rounding.

TABLE 6. COUNTY SUMMARY CALENDAR YEAR 2019

North American Industry Classification System - Industry Groups	Average Employing Units	Average Covered Employment	Total Calendar Earnings	Average Weekly Earnings
LAFAYETTE COUNTY - TOTAL	165	1,137	\$35,897,412	\$607.15
Natural Resources & Mining	23	81	2,071,922	491.91
Construction	11	77	4,187,198	1,045.75
Manufacturing	6	35	1,974,745	1,085.02
Trade, Transportation & Utilities	32	203	5,843,387	553.56
Retail Trade	17	111	2,325,211	402.84
Other Trade, Transportation & Utilities	15	92	3,518,176	735.40
Financial Activities	14	67	2,473,749	710.03
Professional & Business Services	10	36	1,140,871	609.44
Education & Health Services	34	190	5,316,798	538.14
Leisure & Hospitality	6	38	566,967	286.93
Local Government	15	285	8,719,720	588.38
State Government	9	88	2,507,212	547.90
Other	5	37	1,094,843	569.05
LAWRENCE COUNTY - TOTAL	403	3,863	\$129,964,009	\$646.99
Natural Resources & Mining	54	183	7,226,121	759.37
Construction	25	114	4,990,908	841.92
Manufacturing	18	360	13,023,525	695.70
Trade, Transportation & Utilities	117	796	27,940,990	675.03
Wholesale Trade	18	186	8,209,492	848.79
Retail Trade	62	478	13,129,011	528.20
Transportation, Warehousing & Utilities	37	132	6,602,487	961.90
Financial Activities	29	122	5,140,707	810.33
Professional & Business Services	25	98	3,729,376	731.82
Education & Health Services	49	566	18,645,591	633.51
Leisure & Hospitality	30	330	4,483,558	261.28
Local Government	24	1,032	34,871,071	649.80
State Government	9	80	2,717,802	653.32
Other	23	182	7,194,360	760.18

Note: Data may not add due to rounding.

TABLE 6. COUNTY SUMMARY CALENDAR YEAR 2019

North American Industry Classification System - Industry Groups	Average Employing Units	Average Covered Employment	Total Calendar Earnings	Average Weekly Earnings
LEE COUNTY - TOTAL	261	1,813	\$62,911,810	\$667.32
Natural Resources & Mining	40	207	7,510,710	697.76
Construction	5	26	804,839	595.30
Trade, Transportation & Utilities	42	320	12,312,956	739.96
Wholesale Trade	10	102	5,430,080	1,023.77
Retail Trade	22	163	3,879,223	457.67
Transportation, Warehousing & Utilities	10	55	3,003,653	1,050.23
Financial Activities	16	56	1,848,402	634.75
Professional & Business Services	13	49	3,340,255	1,310.93
Education & Health Services	104	426	13,155,196	593.86
Leisure & Hospitality	7	63	1,004,251	306.55
Local Government	15	268	7,400,333	531.02
State Government	6	382	15,020,997	756.19
Other	13	16	513,871	617.63
LINCOLN COUNTY - TOTAL	286	2,793	\$99,030,622	\$681.86
Natural Resources & Mining	32	148	5,349,645	695.12
Construction	20	140	5,752,725	790.21
Manufacturing	8	308	10,913,766	681.43
Trade, Transportation & Utilities	43	336	13,962,874	799.16
Wholesale Trade	8	56	2,512,696	862.88
Retail Trade	23	157	3,569,567	437.23
Transportation, Warehousing & Utilities	12	123	7,880,611	1,232.12
Financial Activities	19	69	2,826,402	787.74
Professional & Business Services	11	27	1,204,190	857.69
Education & Health Services	108	412	10,610,827	495.28
Leisure & Hospitality	15	150	1,691,950	216.92
Local Government	7	311	10,353,500	640.21
State Government	10	844	34,397,740	783.76
Other	13	48	1,967,003	788.06

Note: Data may not add due to rounding.

TABLE 6. COUNTY SUMMARY CALENDAR YEAR 2019

North American Industry Classification System - Industry Groups	Average Employing Units	Average Covered Employment	Total Calendar Earnings	Average Weekly Earnings
LITTLE RIVER COUNTY - TOTAL	252	3,394	\$174,616,477	\$989.40
Natural Resources & Mining	16	70	2,559,915	703.27
Construction	14	155	6,234,030	773.45
Manufacturing	17	1,159	104,848,533	1,739.70
Trade, Transportation & Utilities	61	571	17,513,743	589.85
Wholesale Trade	6	29	2,088,880	1,385.20
Retail Trade	39	419	10,505,001	482.15
Transportation, Warehousing & Utilities	16	123	4,919,862	769.21
Financial Activities	14	54	1,956,255	696.67
Professional & Business Services	14	126	5,076,483	774.80
Education & Health Services	49	209	6,455,566	594.00
Leisure & Hospitality	18	225	3,000,784	256.48
Local Government	20	685	22,906,355	643.08
State Government	10	83	2,687,667	622.72
Other	19	57	1,377,146	464.62
LOGAN COUNTY - TOTAL	492	5,026	\$165,336,246	\$632.62
Natural Resources & Mining	22	114	4,071,905	686.89
Construction	42	203	8,418,967	797.55
Manufacturing	21	969	40,875,212	811.21
Trade, Transportation & Utilities	101	952	27,006,110	545.53
Wholesale Trade	7	30	1,019,038	653.23
Retail Trade	72	784	19,310,193	473.66
Transportation, Warehousing & Utilities	22	138	6,676,879	930.45
Information	5	28	1,054,676	724.37
Financial Activities	51	188	9,110,994	931.98
Professional & Business Services	44	111	4,186,092	725.24
Education & Health Services	109	711	22,729,333	614.77
Leisure & Hospitality	31	306	4,326,800	271.92
Other Services	32	159	4,902,636	592.97
Local Government	22	797	25,292,345	610.28
State Government	12	488	13,361,176	526.53

Note: Data may not add due to rounding.

TABLE 6. COUNTY SUMMARY CALENDAR YEAR 2019

North American Industry Classification System - Industry Groups	Average Employing Units	Average Covered Employment	Total Calendar Earnings	Average Weekly Earnings
LONOKE COUNTY - TOTAL	1,312	13,839	\$490,222,424	\$681.22
Natural Resources & Mining	89	508	21,321,596	807.15
Construction	139	946	45,932,440	933.74
Manufacturing	36	1,455	73,738,655	974.61
Trade, Transportation & Utilities	298	2,788	92,057,468	634.98
Wholesale Trade	70	416	22,169,805	1,024.86
Retail Trade	170	2,054	53,415,581	500.11
Transportation, Warehousing & Utilities	58	318	16,472,082	996.13
Information	14	96	4,528,375	907.13
Financial Activities	158	661	37,819,870	1,100.31
Professional & Business Services	160	551	21,299,904	743.40
Education & Health Services	200	1,796	56,647,867	606.56
Leisure & Hospitality	117	2,063	32,771,608	305.49
Other Services	63	188	5,253,672	537.41
Local Government	24	2,618	92,524,368	679.65
State Government	14	169	6,326,601	719.91
MADISON COUNTY - TOTAL	256	3,348	\$119,153,848	\$684.41
Natural Resources & Mining	12	48	1,719,872	689.05
Construction	31	123	5,152,554	805.59
Manufacturing	23	1,210	44,456,770	706.56
Trade, Transportation & Utilities	52	665	21,740,352	628.70
Wholesale Trade	8	34	1,537,097	869.40
Retail Trade	33	477	13,019,733	524.90
Transportation, Warehousing & Utilities	11	154	7,183,522	897.04
Information	6	55	5,560,696	1,944.30
Financial Activities	19	89	3,534,388	763.70
Professional & Business Services	25	79	4,093,316	996.43
Education & Health Services	35	260	8,440,875	624.33
Leisure & Hospitality	18	199	2,622,440	253.42
Other Services	19	38	1,114,473	564.00
Local Government	9	539	19,192,865	684.77
State Government	7	43	1,525,247	682.13

Note: Data may not add due to rounding.

TABLE 6. COUNTY SUMMARY CALENDAR YEAR 2019

North American Industry Classification System - Industry Groups	Average Employing Units	Average Covered Employment	Total Calendar Earnings	Average Weekly Earnings
MARION COUNTY - TOTAL	284	3,875	124,101,266	\$615.89
Manufacturing	22	1,847	63,620,178	662.41
Trade, Transportation & Utilities	59	516	14,149,880	527.35
Wholesale Trade	6	34	1,173,048	663.49
Retail Trade	44	446	11,017,230	475.04
Transportation, Warehousing & Utilities	9	36	1,959,602	1,046.80
Information	3	55	3,542,879	1,238.77
Financial Activities	33	196	6,904,584	677.45
Professional & Business Services	26	79	2,458,375	598.44
Education & Health Services	45	323	10,202,879	607.46
Leisure & Hospitality	35	208	2,809,900	259.79
Other Services	14	31	542,319	336.43
Local Government	18	485	15,178,156	601.83
State Government	7	39	1,490,553	734.99
Other	22	96	3,201,563	641.34
MILLER COUNTY - TOTAL	875	13,133	\$532,515,697	\$779.77
Natural Resources & Mining	32	294	13,860,954	906.66
Construction	67	588	26,742,830	874.63
Manufacturing	27	2,340	151,726,631	1,246.93
Trade, Transportation & Utilities	217	3,516	138,789,822	759.11
Wholesale Trade	47	495	27,345,468	1,062.37
Retail Trade	122	1,262	32,573,524	496.37
Transportation, Warehousing & Utilities	48	1,759	78,870,830	862.28
Information	6	109	7,107,310	1,253.94
Financial Activities	83	410	19,057,899	893.90
Professional & Business Services	76	1,115	25,667,587	442.70
Education & Health Services	187	1,268	39,754,445	602.92
Leisure & Hospitality	87	1,410	23,687,164	323.07
Other Services	52	257	7,519,692	562.68
Local Government	26	1,352	56,778,692	807.62
State Government	15	474	21,822,671	885.37

Note: Data may not add due to rounding.

TABLE 6. COUNTY SUMMARY CALENDAR YEAR 2019

North American Industry Classification System - Industry Groups	Average Employing Units	Average Covered Employment	Total Calendar Earnings	Average Weekly Earnings
MISSISSIPPI COUNTY - TOTAL	1,090	17,708	\$932,653,505	\$1,012.86
Natural Resources & Mining	110	528	21,640,639	788.19
Construction	53	833	49,231,308	1,136.56
Manufacturing	58	6,671	519,014,710	1,496.19
Trade, Transportation & Utilities	265	2,737	105,097,560	738.44
Wholesale Trade	56	389	21,619,353	1,068.78
Retail Trade	144	1,540	38,875,718	485.46
Transportation, Warehousing & Utilities	65	808	44,602,489	1,061.56
Information	5	27	634,976	452.26
Financial Activities	81	450	18,886,694	807.12
Professional & Business Services	83	1,103	46,503,053	810.78
Education & Health Services	227	1,567	57,530,658	706.04
Leisure & Hospitality	92	1,161	16,713,177	276.84
Other Services	47	270	11,038,281	786.20
Local Government	49	1,853	66,155,848	686.58
State Government	20	508	20,206,601	764.94
MONROE COUNTY - TOTAL	275	1,999	\$63,513,256	\$611.01
Natural Resources & Mining	27	111	5,377,000	931.57
Construction	9	18	686,547	733.49
Manufacturing	6	144	5,275,587	704.54
Trade, Transportation & Utilities	69	526	19,841,219	725.40
Wholesale Trade	16	182	9,330,528	985.90
Retail Trade	33	242	6,153,362	488.98
Transportation, Warehousing & Utilities	20	102	4,357,329	821.52
Financial Activities	22	90	3,559,655	760.61
Professional & Business Services	14	28	698,045	479.43
Education & Health Services	60	373	10,315,471	531.83
Leisure & Hospitality	22	229	3,217,683	270.21
Local Government	21	323	9,572,113	569.90
State Government	7	66	2,798,364	815.37
Other	18	91	2,171,572	458.91

Note: Data may not add due to rounding.

TABLE 6. COUNTY SUMMARY CALENDAR YEAR 2019

North American Industry Classification System - Industry Groups	Average Employing Units	Average Covered Employment	Total Calendar Earnings	Average Weekly Earnings
MONTGOMERY COUNTY - TOTAL	163	1,226	\$33,561,820	\$526.44
Natural Resources & Mining	8	31	976,505	605.77
Construction	24	69	1,922,095	535.70
Trade, Transportation & Utilities	34	224	5,863,911	503.43
Wholesale Trade	7	58	2,070,838	686.62
Retail Trade	22	146	3,311,342	436.16
Transportation, Warehousing & Utilities	5	20	481,731	463.20
Financial Activities	8	39	1,188,534	586.06
Professional & Business Services	15	21	569,714	521.72
Education & Health Services	22	56	1,748,460	600.43
Leisure & Hospitality	14	273	5,773,109	406.67
Other Services	11	32	638,307	383.60
Local Government	9	411	12,418,606	581.07
State Government	7	34	1,266,365	716.27
Other	11	36	1,196,214	639.00
NEVADA COUNTY - TOTAL	203	2,483	\$96,731,683	\$749.18
Natural Resources & Mining	13	60	3,117,562	999.22
Trade, Transportation & Utilities	39	563	21,070,726	719.73
Retail Trade	23	316	7,329,895	446.07
Other Trade, Transportation & Utilities	16	247	13,740,831	1,069.82
Financial Activities	12	65	2,519,390	745.38
Professional & Business Services	12	51	2,756,771	1,039.51
Education & Health Services	47	435	10,203,758	451.09
Leisure & Hospitality	9	91	1,279,507	270.39
Local Government	29	388	11,368,206	563.45
State Government	9	53	1,801,721	653.74
Other	33	777	42,614,042	1,054.70

Note: Data may not add due to rounding.

TABLE 6. COUNTY SUMMARY CALENDAR YEAR 2019

North American Industry Classification System - Industry Groups	Average Employing Units	Average Covered Employment	Total Calendar Earnings	Average Weekly Earnings
NEWTON COUNTY - TOTAL	113	1,010	\$27,379,395	\$521.31
Construction	6	22	742,808	649.31
Manufacturing	7	30	1,315,496	843.27
Trade, Transportation & Utilities	25	153	4,903,372	616.31
Retail Trade	12	101	2,417,852	460.37
Other Trade, Transportation & Utilities	13	52	2,485,520	919.20
Education & Health Services	23	250	5,100,294	392.33
Leisure & Hospitality	17	149	2,619,921	338.14
Local Government	14	331	9,843,194	571.88
State Government	7	36	1,374,459	734.22
Other	14	39	1,479,851	729.71
OUACHITA COUNTY - TOTAL	655	6,692	\$237,738,624	\$683.19
Natural Resources & Mining	35	167	7,213,791	830.70
Construction	42	225	9,319,669	796.55
Manufacturing	25	456	19,908,891	839.61
Trade, Transportation & Utilities	157	1,476	47,499,314	618.87
Wholesale Trade	25	216	9,491,563	845.05
Retail Trade	98	931	21,184,407	437.59
Transportation, Warehousing & Utilities	34	329	16,823,344	983.36
Information	6	37	1,588,370	825.56
Financial Activities	52	259	10,931,106	811.64
Professional & Business Services	43	564	20,706,098	706.02
Education & Health Services	187	1,272	54,932,726	830.50
Leisure & Hospitality	38	457	6,609,955	278.15
Other Services	26	109	3,392,088	598.46
Local Government	31	1,050	33,882,179	620.55
State Government	13	620	21,754,437	674.77

Note: Data may not add due to rounding.

TABLE 6. COUNTY SUMMARY CALENDAR YEAR 2019

North American Industry Classification System - Industry Groups	Average Employing Units	Average Covered Employment	Total Calendar Earnings	Average Weekly Earnings
PERRY COUNTY - TOTAL	145	1,085	\$36,552,187	\$647.86
Construction	14	84	3,087,215	706.78
Manufacturing	6	31	1,651,740	1,024.65
Trade, Transportation & Utilities	27	163	4,575,125	539.77
Retail Trade	17	130	2,222,017	328.70
Other Trade, Transportation & Utilities	10	33	2,353,108	1,371.28
Financial Activities	10	25	1,212,053	932.35
Professional & Business Services	18	42	1,545,729	707.75
Education & Health Services	31	219	6,329,924	555.84
Leisure & Hospitality	8	63	991,687	302.71
Local Government	9	318	10,134,559	612.88
State Government	7	36	1,385,933	740.35
Other	15	104	5,638,222	1,042.57
PHILLIPS COUNTY - TOTAL	730	5,281	\$178,639,797	\$650.52
Natural Resources & Mining	63	280	9,510,320	653.18
Construction	28	99	3,010,863	584.86
Manufacturing	12	392	17,484,598	857.76
Trade, Transportation & Utilities	138	1,201	41,478,074	664.16
Wholesale Trade	27	271	13,401,334	950.99
Retail Trade	73	698	17,031,106	469.23
Transportation, Warehousing & Utilities	38	232	11,045,634	915.59
Information	6	14	695,091	954.80
Financial Activities	41	211	8,799,489	801.99
Professional & Business Services	40	258	10,416,599	776.43
Education & Health Services	294	1,364	42,054,028	592.91
Leisure & Hospitality	39	340	4,861,340	274.96
Other Services	28	70	1,516,234	416.55
Local Government	27	720	26,707,780	713.35
State Government	14	332	12,105,381	701.19

Note: Data may not add due to rounding.

TABLE 6. COUNTY SUMMARY CALENDAR YEAR 2019

North American Industry Classification System - Industry Groups	Average Employing Units	Average Covered Employment	Total Calendar Earnings	Average Weekly Earnings
PIKE COUNTY - TOTAL	257	2,578	\$84,324,790	\$629.03
Natural Resources & Mining	23	111	4,822,624	835.52
Construction	15	51	1,642,588	619.38
Manufacturing	17	421	16,579,781	757.34
Trade, Transportation & Utilities	67	536	16,509,993	592.35
Wholesale Trade	10	116	4,258,952	706.06
Retail Trade	37	340	8,798,828	497.67
Transportation, Warehousing & Utilities	20	80	3,452,213	829.86
Information	7	27	1,177,245	838.49
Financial Activities	22	205	9,717,713	911.61
Professional & Business Services	14	56	4,237,044	1,455.03
Education & Health Services	33	300	7,040,588	451.32
Leisure & Hospitality	26	242	3,450,574	274.20
Other Services	14	63	1,863,253	568.76
Local Government	10	452	14,322,526	609.37
State Government	9	114	2,960,861	499.47
POINSETT COUNTY - TOTAL	484	5,171	199,309,788	\$741.23
Natural Resources & Mining	69	289	13,523,689	899.90
Construction	24	80	2,943,568	707.59
Manufacturing	19	732	34,564,758	908.07
Trade, Transportation & Utilities	123	1,206	48,995,684	781.28
Wholesale Trade	24	409	27,779,394	1,306.16
Retail Trade	70	652	14,308,704	422.04
Transportation, Warehousing & Utilities	29	145	6,907,586	916.13
Professional & Business Services	28	197	16,286,457	1,589.85
Education & Health Services	81	785	26,609,104	651.86
Leisure & Hospitality	41	456	6,175,472	260.44
Other Services	18	57	1,869,548	630.75
Local Government	30	991	32,881,734	638.08
State Government	11	134	4,786,390	686.91
Other	40	244	10,673,384	841.22

Note: Data may not add due to rounding.

TABLE 6. COUNTY SUMMARY CALENDAR YEAR 2019

North American Industry Classification System - Industry Groups	Average Employing Units	Average Covered Employment	Total Calendar Earnings	Average Weekly Earnings
POLK COUNTY - TOTAL	488	5,788	\$189,159,404	\$628.49
Natural Resources & Mining	24	176	8,836,296	965.50
Construction	31	204	7,335,840	691.54
Manufacturing	35	1,330	47,864,622	692.09
Trade, Transportation & Utilities	126	1,065	31,852,861	575.17
Wholesale Trade	19	61	2,826,669	891.13
Retail Trade	70	763	17,746,578	447.29
Transportation, Warehousing & Utilities	37	241	11,279,614	900.06
Information	6	51	1,180,109	444.99
Financial Activities	40	212	7,745,574	702.61
Professional & Business Services	41	142	6,447,662	873.19
Education & Health Services	87	1,017	37,051,374	700.62
Leisure & Hospitality	42	477	6,474,691	261.03
Other Services	23	148	4,587,315	596.06
Local Government	21	670	21,341,357	612.55
State Government	12	296	8,441,703	548.45
POPE COUNTY - TOTAL	1,847	25,601	\$1,089,964,894	\$818.75
Natural Resources & Mining	36	609	27,262,597	860.89
Construction	160	1,136	68,519,673	1,159.93
Manufacturing	74	4,607	219,415,727	915.90
Trade, Transportation & Utilities	412	6,094	304,236,003	960.07
Wholesale Trade	72	551	23,680,934	826.50
Retail Trade	264	3,089	84,583,356	526.58
Transportation, Warehousing & Utilities	76	2,454	195,971,713	1,535.73
Information	17	134	4,499,184	645.69
Financial Activities	194	896	41,375,086	888.03
Professional & Business Services	265	1,901	88,127,879	891.51
Education & Health Services	375	3,232	125,182,182	744.85
Leisure & Hospitality	145	2,788	45,855,958	316.30
Other Services	111	547	16,958,425	596.20
Local Government	43	2,055	80,436,569	752.73
State Government	15	1,602	68,095,611	817.44

Note: Data may not add due to rounding.

TABLE 6. COUNTY SUMMARY CALENDAR YEAR 2019

North American Industry Classification System - Industry Groups	Average Employing Units	Average Covered Employment	Total Calendar Earnings	Average Weekly Earnings
PRAIRIE COUNTY - TOTAL	255	1,419	\$46,998,866	\$636.94
Natural Resources & Mining	36	161	8,057,594	962.45
Construction	12	44	1,519,064	663.93
Manufacturing	5	46	1,214,852	507.88
Trade, Transportation & Utilities	60	339	11,300,393	641.05
Wholesale Trade	12	81	4,491,885	1,066.45
Retail Trade	34	204	4,651,285	438.47
Transportation, Warehousing & Utilities	14	54	2,157,223	768.24
Financial Activities	15	52	2,173,217	803.70
Professional & Business Services	15	62	2,224,314	689.92
Education & Health Services	51	251	7,033,703	538.90
Leisure & Hospitality	19	93	1,469,170	303.80
Local Government	16	304	9,661,810	611.20
State Government	7	29	1,056,822	700.81
Other	19	38	1,287,927	651.78
PULASKI COUNTY - TOTAL	14,451	242,572	\$12,124,263,922	\$961.19
Natural Resources & Mining	51	605	40,451,858	1,285.82
Construction	936	9,338	510,907,853	1,052.17
Manufacturing	331	13,568	773,289,901	1,096.03
Trade, Transportation & Utilities	3,126	49,637	2,248,502,076	871.13
Wholesale Trade	916	11,777	797,829,957	1,302.78
Retail Trade	1,803	24,701	759,845,824	591.57
Transportation, Warehousing & Utilities	407	13,159	690,826,295	1,009.58
Information	204	3,434	189,082,001	1,058.88
Financial Activities	1,704	17,828	1,354,392,657	1,460.96
Professional & Business Services	2,792	35,427	1,896,002,385	1,029.20
Education & Health Services	2,572	41,541	2,123,155,373	982.88
Leisure & Hospitality	1,288	23,250	439,835,108	363.80
Other Services	1,136	6,655	269,598,325	779.05
Local Government	108	14,744	680,525,008	887.62
State Government	203	26,545	1,598,521,377	1,158.06

Note: Data may not add due to rounding.

TABLE 6. COUNTY SUMMARY CALENDAR YEAR 2019

North American Industry Classification System - Industry Groups	Average Employing Units	Average Covered Employment	Total Calendar Earnings	Average Weekly Earnings
RANDOLPH COUNTY - TOTAL	392	5,805	\$190,097,335	\$629.75
Natural Resources & Mining	26	242	12,187,648	968.50
Construction	26	90	2,640,005	564.10
Manufacturing	27	1,639	61,807,530	725.20
Trade, Transportation & Utilities	95	898	27,743,748	594.14
Wholesale Trade	15	118	4,412,010	719.04
Retail Trade	55	615	15,215,464	475.78
Transportation, Warehousing & Utilities	25	165	8,116,274	945.95
Information	5	23	905,495	757.10
Financial Activities	31	149	5,977,693	771.51
Professional & Business Services	35	262	7,576,634	556.12
Education & Health Services	67	960	31,381,183	628.63
Leisure & Hospitality	30	413	5,624,395	261.89
Other Services	16	46	1,140,444	476.77
Local Government	24	811	23,759,252	563.39
State Government	10	272	9,353,308	661.29
SAINT FRANCIS COUNTY - TOTAL	678	6,624	\$226,012,740	\$656.16
Natural Resources & Mining	44	194	7,366,392	730.21
Trade, Transportation & Utilities	143	1,801	63,304,316	675.95
Wholesale Trade	29	562	26,352,788	901.75
Retail Trade	93	932	23,361,936	482.05
Transportation, Warehousing & Utilities	21	307	13,589,592	851.26
Information	5	51	1,803,478	680.04
Financial Activities	58	259	9,056,957	672.48
Professional & Business Services	47	175	6,987,427	767.85
Education & Health Services	221	1,428	52,100,403	701.63
Leisure & Hospitality	47	663	9,999,714	290.05
Other Services	23	54	1,338,859	476.80
Local Government	28	801	27,721,766	665.56
State Government	15	426	14,889,610	672.16
Other	47	772	31,443,818	783.28

Note: Data may not add due to rounding.

TABLE 6. COUNTY SUMMARY CALENDAR YEAR 2019

North American Industry Classification System - Industry Groups	Average Employing Units	Average Covered Employment	Total Calendar Earnings	Average Weekly Earnings
SALINE COUNTY - TOTAL	2,094	24,628	\$912,072,698	\$712.19
Natural Resources & Mining	13	54	2,264,202	806.34
Construction	279	2,108	95,012,072	866.77
Manufacturing	75	1,335	70,681,644	1,018.17
Trade, Transportation & Utilities	475	5,577	189,527,909	653.54
Wholesale Trade	112	626	34,642,481	1,064.22
Retail Trade	289	4,339	127,669,755	565.84
Transportation, Warehousing & Utilities	74	612	27,215,673	855.19
Information	17	147	8,101,450	1,059.84
Financial Activities	212	808	39,413,421	938.06
Professional & Business Services	293	1,854	83,283,450	863.86
Education & Health Services	336	4,682	185,155,182	760.50
Leisure & Hospitality	194	3,489	57,314,137	315.91
Other Services	153	832	26,732,733	617.90
Local Government	33	2,955	127,863,228	832.12
State Government	14	787	26,723,270	653.00
SCOTT COUNTY - TOTAL	186	2,965	\$91,931,671	\$596.26
Natural Resources & Mining	19	163	7,453,509	879.37
Trade, Transportation & Utilities	35	321	9,439,176	565.49
Wholesale Trade	7	41	1,328,824	623.28
Retail Trade	22	211	4,831,946	440.39
Transportation, Warehousing & Utilities	6	69	3,278,406	913.71
Financial Activities	17	62	2,001,134	620.70
Professional & Business Services	13	99	2,795,824	543.09
Education & Health Services	41	305	12,544,691	790.96
Leisure & Hospitality	19	150	2,078,792	266.51
Local Government	6	512	16,046,714	602.72
State Government	6	32	1,247,580	749.75
Other	30	1,321	38,324,251	557.91

Note: Data may not add due to rounding.

TABLE 6. COUNTY SUMMARY CALENDAR YEAR 2019

North American Industry Classification System - Industry Groups	Average Employing Units	Average Covered Employment	Total Calendar Earnings	Average Weekly Earnings
SEARCY COUNTY - TOTAL	167	1,491	\$40,846,017	\$526.83
Construction	13	8	144,370	347.04
Manufacturing	16	168	4,614,251	528.19
Trade, Transportation & Utilities	36	242	6,334,036	503.34
Wholesale Trade	6	37	1,048,304	544.86
Retail Trade	24	187	4,385,524	451.00
Transportation, Warehousing & Utilities	6	18	900,208	961.76
Financial Activities	12	64	2,093,737	629.13
Education & Health Services	39	333	9,486,162	547.83
Leisure & Hospitality	13	156	2,023,787	249.48
Local Government	10	304	8,900,780	563.06
State Government	6	42	1,556,843	712.84
Other	22	174	5,692,051	629.09
SEBASTIAN COUNTY - TOTAL	3,689	63,583	\$2,781,059,161	\$841.14
Natural Resources & Mining	42	348	27,186,109	1,502.33
Construction	264	2,405	105,322,013	842.17
Manufacturing	191	11,308	545,563,796	927.80
Trade, Transportation & Utilities	887	12,944	533,566,041	792.71
Wholesale Trade	224	2,687	147,224,192	1,053.68
Retail Trade	551	7,605	208,351,529	526.86
Transportation, Warehousing & Utilities	112	2,652	177,990,320	1,290.68
Information	38	860	65,018,448	1,453.90
Financial Activities	407	2,625	135,785,061	994.76
Professional & Business Services	556	7,813	329,076,650	809.98
Education & Health Services	633	11,701	625,359,540	1,027.79
Leisure & Hospitality	350	6,144	106,197,102	332.40
Other Services	255	1,187	39,104,123	633.53
Local Government	43	4,534	190,979,466	810.03
State Government	23	1,714	77,900,812	874.03

Note: Data may not add due to rounding.

TABLE 6. COUNTY SUMMARY CALENDAR YEAR 2019

North American Industry Classification System - Industry Groups	Average Employing Units	Average Covered Employment	Total Calendar Earnings	Average Weekly Earnings
SEVIER COUNTY - TOTAL	317	4,690	\$157,772,482	\$646.93
Natural Resources & Mining	18	169	8,294,215	943.81
Construction	20	167	8,910,838	1,026.12
Trade, Transportation & Utilities	86	822	26,352,097	616.51
Wholesale Trade	12	82	4,742,509	1,112.22
Retail Trade	61	646	16,739,351	498.31
Transportation, Warehousing & Utilities	13	94	4,870,237	996.37
Financial Activities	26	192	8,120,705	813.37
Professional & Business Services	25	131	3,678,562	540.01
Education & Health Services	63	439	14,570,762	638.28
Leisure & Hospitality	25	281	3,684,001	252.12
Local Government	13	916	29,252,098	614.13
State Government	7	155	5,293,012	656.70
Other	34	1,418	49,616,192	672.89
SHARP COUNTY - TOTAL	381	3,459	\$99,444,617	\$552.88
Construction	28	111	4,168,044	722.11
Trade, Transportation & Utilities	82	741	17,785,604	461.58
Wholesale Trade	12	36	852,662	455.48
Retail Trade	60	654	14,697,136	432.17
Transportation, Warehousing & Utilities	10	51	2,235,806	843.06
Information	7	27	657,745	468.48
Financial Activities	31	166	7,915,974	917.05
Professional & Business Services	37	128	4,268,151	641.25
Education & Health Services	84	841	28,145,307	643.59
Leisure & Hospitality	33	405	5,881,564	279.28
Local Government	24	722	20,855,887	555.51
State Government	7	55	1,901,618	664.90
Other	48	263	7,864,723	575.07

Note: Data may not add due to rounding.

TABLE 6. COUNTY SUMMARY CALENDAR YEAR 2019

North American Industry Classification System - Industry Groups	Average Employing Units	Average Covered Employment	Total Calendar Earnings	Average Weekly Earnings
STONE COUNTY - TOTAL	272	2,566	\$78,473,059	\$588.11
Natural Resources & Mining	4	9	198,688	424.55
Construction	15	34	881,288	498.47
Manufacturing	17	224	5,968,074	512.37
Trade, Transportation & Utilities	69	573	16,665,363	559.32
Wholesale Trade	6	40	1,288,160	619.31
Retail Trade	50	490	13,128,874	515.26
Transportation, Warehousing & Utilities	13	43	2,248,329	1,005.51
Financial Activities	35	165	9,167,681	1,068.49
Professional & Business Services	14	29	611,635	405.59
Education & Health Services	50	550	20,537,787	718.10
Leisure & Hospitality	28	439	6,178,938	270.67
Local Government	11	371	13,166,152	682.47
State Government	7	122	3,602,942	567.93
Other	22	50	1,494,511	574.81
UNION COUNTY - TOTAL	1,277	17,051	\$855,917,939	\$965.34
Natural Resources & Mining	81	392	20,715,901	1,016.28
Construction	82	1,542	91,276,573	1,138.34
Manufacturing	54	2,846	197,037,233	1,331.40
Trade, Transportation & Utilities	304	3,408	143,231,608	808.23
Wholesale Trade	68	467	28,561,941	1,176.16
Retail Trade	177	2,012	52,700,258	503.71
Transportation, Warehousing & Utilities	59	929	61,969,409	1,282.80
Information	8	89	3,574,441	772.35
Financial Activities	94	600	29,438,488	943.54
Professional & Business Services	127	1,880	169,792,402	1,736.83
Education & Health Services	293	2,220	84,414,728	731.24
Leisure & Hospitality	95	1,436	24,254,937	324.82
Other Services	91	402	12,440,121	595.11
Local Government	32	1,731	59,834,534	664.74
State Government	16	505	19,906,973	758.07

Note: Data may not add due to rounding.

TABLE 6. COUNTY SUMMARY CALENDAR YEAR 2019

North American Industry Classification System - Industry Groups	Average Employing Units	Average Covered Employment	Total Calendar Earnings	Average Weekly Earnings
VAN BUREN COUNTY - TOTAL	330	3,382	\$118,246,015	\$672.37
Natural Resources & Mining	9	96	7,832,526	1,569.02
Construction	36	123	4,249,491	664.40
Manufacturing	8	175	5,108,897	561.42
Trade, Transportation & Utilities	91	846	31,301,146	711.52
Wholesale Trade	10	45	1,790,825	765.31
Retail Trade	53	572	15,378,486	517.03
Transportation, Warehousing & Utilities	28	229	14,131,835	1,186.75
Information	6	37	1,439,570	748.22
Financial Activities	33	154	7,265,390	907.27
Professional & Business Services	32	134	5,034,293	722.49
Education & Health Services	57	753	26,792,589	684.25
Leisure & Hospitality	23	257	4,251,651	318.14
Other Services	18	159	4,174,715	504.92
Local Government	11	607	19,156,281	606.90
State Government	6	41	1,639,466	768.98
WASHINGTON COUNTY - TOTAL	6,263	107,553	\$5,057,566,581	\$904.31
Natural Resources & Mining	42	305	16,896,574	1,065.36
Construction	599	6,056	326,952,462	1,038.23
Manufacturing	229	13,589	602,701,149	852.93
Trade, Transportation & Utilities	1,378	22,737	988,191,794	835.80
Wholesale Trade	390	3,804	276,636,162	1,398.51
Retail Trade	792	12,285	375,779,285	588.24
Transportation, Warehousing & Utilities	196	6,648	335,776,347	971.31
Information	83	906	48,044,380	1,019.79
Financial Activities	704	3,753	206,101,059	1,056.08
Professional & Business Services	1,148	13,484	972,787,910	1,387.38
Education & Health Services	904	16,140	814,918,146	970.97
Leisure & Hospitality	705	13,459	236,640,236	338.12
Other Services	388	2,125	77,172,450	698.39
Local Government	61	8,401	376,201,923	861.17
State Government	22	6,598	390,958,498	1,139.50

Note: Data may not add due to rounding.

TABLE 6. COUNTY SUMMARY CALENDAR YEAR 2019

North American Industry Classification System - Industry Groups	Average Employing Units	Average Covered Employment	Total Calendar Earnings	Average Weekly Earnings
WHITE COUNTY - TOTAL	1,799	23,716	\$904,772,828	\$733.66
Natural Resources & Mining	51	348	19,705,732	1,088.96
Construction	165	1,043	49,448,010	911.72
Manufacturing	60	2,143	100,008,043	897.45
Trade, Transportation & Utilities	486	6,141	228,681,663	716.13
Wholesale Trade	86	583	26,555,487	875.96
Retail Trade	312	3,473	96,281,213	533.13
Transportation, Warehousing & Utilities	88	2,085	105,844,963	976.25
Information	19	115	3,770,572	630.53
Financial Activities	175	911	43,443,817	917.08
Professional & Business Services	184	1,143	41,103,372	691.56
Education & Health Services	322	5,610	245,152,723	840.37
Leisure & Hospitality	162	2,712	40,702,176	288.62
Other Services	114	482	17,455,070	696.42
Local Government	46	2,572	96,394,324	720.74
State Government	15	496	18,907,326	733.07
WOODRUFF COUNTY - TOTAL	194	1,681	\$60,125,124	\$687.84
Natural Resources & Mining	32	159	5,291,107	639.95
Construction	11	34	1,198,878	678.10
Manufacturing	5	175	8,026,505	882.03
Trade, Transportation & Utilities	47	366	13,994,106	735.29
Wholesale Trade	12	137	6,796,268	954.00
Retail Trade	26	162	3,455,802	410.23
Transportation, Warehousing & Utilities	9	67	3,742,036	1,074.06
Financial Activities	11	47	1,703,133	696.86
Education & Health Services	48	241	7,624,084	608.37
Leisure & Hospitality	11	81	1,230,277	292.09
Local Government	9	390	12,529,099	617.81
State Government	5	30	1,155,650	740.80
Other	15	158	7,372,285	897.31

Note: Data may not add due to rounding.

TABLE 6. COUNTY SUMMARY CALENDAR YEAR 2019

North American Industry Classification System - Industry Groups	Average Employing Units	Average Covered Employment	Total Calendar Earnings	Average Weekly Earnings
YELL COUNTY - TOTAL	412	6,412	\$208,230,742	\$624.52
Natural Resources & Mining	24	243	11,304,121	894.60
Construction	32	239	8,950,520	720.19
Manufacturing	21	2,442	78,848,538	620.93
Trade, Transportation & Utilities	82	716	20,431,147	548.75
Wholesale Trade	14	57	1,292,688	436.13
Retail Trade	47	513	11,625,122	435.79
Transportation, Warehousing & Utilities	21	146	7,513,337	989.64
Financial Activities	30	119	4,337,941	701.02
Professional & Business Services	36	311	11,137,686	688.70
Education & Health Services	111	772	21,421,790	533.62
Leisure & Hospitality	26	292	4,071,740	268.16
Local Government	23	1,088	39,955,255	706.22
State Government	10	70	2,238,403	614.95
Other	17	120	5,533,601	886.80
STATEWIDE COUNTY - TOTAL	11,195	35,831	\$2,195,246,227	\$1,178.21
Natural Resources & Mining	106	324	23,832,095	1,414.54
Construction	857	3,336	188,480,157	1,086.52
Manufacturing	63	169	19,095,995	2,172.96
Trade, Transportation & Utilities	3,519	7,955	774,373,437	1,872.00
Wholesale Trade	2,956	6,442	683,017,400	2,038.96
Retail Trade	201	468	31,399,322	1,290.24
Transportation, Warehousing & Utilities	362	1,045	59,956,715	1,103.36
Information	433	819	79,136,039	1,858.18
Financial Activities	754	2,005	146,189,499	1,402.16
Professional & Business Services	4,341	16,373	728,225,281	855.33
Education & Health Services	621	3,012	136,470,892	871.33
Leisure & Hospitality	115	210	6,908,817	632.68
Other Services	371	880	58,999,819	1,289.33
Local Government	0	0	0	0.00
State Government	15	748	33,534,196	862.15

Note: Statewide classification includes employment and payroll data for employers that have not provided a physical location for each employing unit. This section also includes employers without a physical location in Arkansas.

TABLE 7. FEDERAL GOVERNMENT EMPLOYMENT AND EARNINGS IN ARKANSAS

North American Industry Classification System - Industry Groups	Average Employing Units	Average Covered Employment	Total Calendar Earnings	Average Weekly Earnings
TOTAL	1,178	20,301	\$1,436,997,290	\$1,361.24
Trade, Transportation & Utilities	588	5,624	294,689,245	1,007.66
Information	2	36	2,833,322	1,513.53
Financial Activities	14	98	8,499,687	1,667.91
Professional & Business Services	32	832	64,087,739	1,481.32
Education & Health Services	18	5,436	450,124,533	1,592.39
Leisure & Hospitality	23	273	12,926,955	910.61
Other Services	1	1	35,646	685.50
Public Administration	500	8,001	603,800,163	1,451.26

Note: Data may not add due to rounding.

TABLE 8. LOCAL WORKFORCE DEVELOPMENT AREASUMMARY CALENDAR YEAR 2019

North American Industry Classification System - Industry Groups	Average Employing Units	Average Covered Employment	Total Calendar Earnings	Average Weekly Earnings
CENTRAL WORKFORCE DEVELOPMENT AREA	6,813	82,809	\$3,194,478,791	\$741.86
Natural Resources & Mining	205	1,077	55,273,760	986.96
Construction	777	6,052	282,997,266	899.25
Trade, Transportation & Utilities	1,535	16,808	560,167,363	640.91
Wholesale Trade	345	2,017	109,977,224	1,048.56
Retail Trade	939	12,859	356,241,541	532.76
Transportation, Warehousing & Utilities	251	1,932	93,948,598	935.15
Information	60	535	40,636,879	1,460.71
Financial Activities	716	3,048	151,264,879	954.38
Professional & Business Services	930	7,386	405,835,455	1,056.67
Education & Health Services	1,108	14,642	563,271,715	739.80
Leisure & Hospitality	623	11,210	179,797,393	308.44
Local Government	137	9,444	385,456,841	784.90
State Government	60	4,262	176,855,815	798.00
Other	662	8,345	392,921,425	905.47

*Note: Pulaski County is not included in the Central Workforce Investment Area. Please refer to Page 51 for information on Pulaski County.
Central Workforce Investment Area includes these counties: Faulkner, Lonoke, Monroe, Prairie, and Saline.

EASTERN WORKFORCE DEVELOPMENT AREA	3,341	34,711	\$1,238,100,660	\$685.94
Natural Resources & Mining	249	1,205	42,434,633	677.22
Manufacturing	74	3,357	159,445,091	913.39
Trade, Transportation & Utilities	747	8,714	330,472,857	729.31
Wholesale Trade	147	1,978	98,300,102	955.71
Retail Trade	411	4,391	111,696,314	489.18
Transportation, Warehousing & Utilities	189	2,345	120,476,441	988.00
Financial Activities	264	1,259	53,387,828	815.48
Professional & Business Services	249	1,695	61,935,921	702.70
Education & Health Services	988	6,274	213,957,276	655.81
Leisure & Hospitality	263	4,126	74,173,516	345.71
Local Government	128	4,485	169,106,580	725.09
State Government	57	1,900	68,669,981	695.04
Other	322	1,696	64,516,977	731.55

Eastern Workforce Investment Area includes these counties: Crittenden, Cross, Lee, Phillips, and Saint Francis.

TABLE 8. LOCAL WORKFORCE DEVELOPMENT AREASUMMARY CALENDAR YEAR 2019

North American Industry Classification System - Industry Groups	Average Employing Units	Average Covered Employment	Total Calendar Earnings	Average Weekly Earnings
NORTH CENTRAL WORKFORCE DEVELOPMENT AREA	5,404	67,429	\$2,499,778,546	\$712.94
Construction	430	2,574	116,848,168	872.99
Manufacturing	212	8,965	414,926,878	890.06
Trade, Transportation & Utilities	1,384	14,545	514,196,243	679.85
Retail Trade	900	9,324	250,706,701	517.08
Other Trade, Transportation & Utilities	484	5,221	263,489,542	970.52
Financial Activities	521	2,653	129,465,385	938.45
Education & Health Services	960	14,597	599,389,012	789.66
Leisure & Hospitality	481	6,683	100,512,684	289.23
Local Government	223	8,371	286,254,923	657.62
State Government	93	2,692	98,167,989	701.28
Other	1,100	6,349	240,017,264	727.00

North Central Workforce Investment Area includes these counties: Cleburne, Fulton, Independence, Izard, Jackson, Sharp, Stone, Van Buren, White, and Woodruff.

NORTHEAST WORKFORCE DEVELOPMENT AREA	6,440	102,896	\$4,254,201,889	\$795.09
Natural Resources & Mining	452	2,101	85,800,693	785.35
Construction	473	3,735	180,544,053	929.59
Manufacturing	300	21,772	1,218,751,151	1,076.50
Trade, Transportation & Utilities	1,681	19,507	701,352,408	691.42
Wholesale Trade	356	3,781	199,620,424	1,015.30
Retail Trade	986	12,170	323,790,241	511.65
Transportation, Warehousing & Utilities	339	3,556	177,941,743	962.31
Financial Activities	518	3,095	153,222,441	952.05
Professional & Business Services	663	7,467	280,089,138	721.35
Education & Health Services	1,073	17,721	795,885,579	863.69
Leisure & Hospitality	559	9,641	151,713,753	302.62
Local Government	214	11,067	407,546,888	708.18
State Government	91	4,369	187,066,254	823.40
Other	416	2,421	92,229,531	732.61

Northeast Workforce Investment Area includes these counties: Clay, Craighead, Greene, Lawrence, Mississippi, Poinsett, and Randolph.

TABLE 8. LOCAL WORKFORCE DEVELOPMENT AREASUMMARY CALENDAR YEAR 2019

North American Industry Classification System - Industry Groups	Average Employing Units	Average Covered Employment	Total Calendar Earnings	Average Weekly Earnings
NORTHWEST WORKFORCE DEVELOPMENT AREA	16,758	278,764	\$14,406,816,813	\$993.87
Natural Resources & Mining	144	1,535	88,997,307	1,114.98
Trade, Transportation & Utilities	3,936	61,660	2,904,878,522	905.99
Retail Trade	2,152	31,245	925,224,930	569.46
Other Trade, Transportation & Utilities	1,784	30,415	1,979,653,592	1,251.69
Information	223	2,499	142,222,049	1,094.45
Professional & Business Services	2,846	48,710	4,652,668,883	1,836.88
Education & Health Services	2,425	35,967	1,627,143,489	870.00
Leisure & Hospitality	1,802	31,851	576,750,021	348.23
Other Services	1,033	5,357	195,534,794	701.94
Local Government	311	22,707	972,508,163	823.63
State Government	103	8,944	478,021,350	1,027.81
Other	3,935	59,534	2,768,092,235	894.15

Northwest Workforce Investment Area includes these counties: Baxter, Benton, Boone, Carroll, Madison, Marion, Newton, Searcy, and Washington.

SOUTHEAST WORKFORCE DEVELOPMENT AREA	6,125	68,050	\$2,694,926,546	\$761.58
Natural Resources & Mining	446	2,317	98,261,117	815.55
Construction	312	2,191	104,775,958	919.64
Manufacturing	199	15,034	794,451,141	1,016.22
Trade, Transportation & Utilities	1,223	11,789	418,793,157	683.16
Retail Trade	729	7,300	189,434,824	499.04
Other Trade, Transportation & Utilities	494	4,489	229,358,333	982.57
Financial Activities	419	2,411	115,989,275	925.16
Education & Health Services	2,045	10,729	385,210,309	690.45
Other Services	299	1,087	35,411,569	626.49
Local Government	212	8,283	295,438,869	685.92
State Government	126	5,852	230,759,764	758.32
Other	844	8,357	215,835,387	496.67

Southeast Workforce Investment Area includes these counties: Arkansas, Ashley, Bradley, Chicot, Cleveland, Desha, Drew, Grant, Jefferson, and Lincoln.

TABLE 8. LOCAL WORKFORCE DEVELOPMENT AREASUMMARY CALENDAR YEAR 2019

North American Industry Classification System - Industry Groups	Average Employing Units	Average Covered Employment	Total Calendar Earnings	Average Weekly Earnings
SOUTHWEST WORKFORCE DEVELOPMENT AREA	5,653	76,759	\$3,199,618,807	\$801.61
Natural Resources & Mining	329	2,247	109,977,563	941.23
Trade, Transportation & Utilities	1,348	14,794	549,575,063	714.39
Wholesale Trade	241	1,854	98,143,533	1,018.00
Retail Trade	800	8,392	212,837,620	487.73
Transportation, Warehousing & Utilities	307	4,548	238,593,910	1,008.87
Information	47	379	20,240,561	1,027.02
Financial Activities	453	2,484	112,748,144	872.88
Professional & Business Services	432	4,623	253,131,002	1,052.98
Education & Health Services	1,295	9,630	325,246,685	649.51
Leisure & Hospitality	425	5,856	91,690,493	301.11
Other Services	339	1,391	41,427,656	572.74
Local Government	263	9,435	329,399,196	671.39
State Government	131	3,555	138,232,043	747.77
Other	591	22,365	1,227,950,401	1,055.87

Southwest Workforce Investment Area includes these counties: Calhoun, Columbia, Dallas, Hempstead, Howard, Lafayette, Little River, Miller, Nevada, Ouachita, Sevier, and Union

WEST CENTRAL WORKFORCE DEVELOPMENT AREA	8,137	106,383	\$3,986,671,724	\$720.67
Construction	730	4,450	204,579,306	884.09
Trade, Transportation & Utilities	1,798	21,282	814,814,444	736.28
Wholesale Trade	314	1,911	93,456,699	940.47
Retail Trade	1,191	13,898	381,310,438	527.62
Transportation, Warehousing & Utilities	293	5,473	340,047,307	1,194.84
Financial Activities	805	3,641	164,696,849	869.88
Professional & Business Services	921	7,606	295,165,023	746.29
Education & Health Services	1,573	17,488	709,645,367	780.37
Leisure & Hospitality	804	14,044	247,912,582	339.47
Local Government	230	11,010	424,281,667	741.08
State Government	114	5,287	198,292,497	721.26
Other	1,162	21,575	927,283,989	826.53

West Central Workforce Investment Area includes these counties: Clark, Conway, Garland, Hot Spring, Johnson, Montgomery, Perry, Pike, Pope, and Yell

TABLE 8. LOCAL WORKFORCE DEVELOPMENT AREASUMMARY CALENDAR YEAR 2019

North American Industry Classification System - Industry Groups	Average Employing Units	Average Covered Employment	Total Calendar Earnings	Average Weekly Earnings
WESTERN WORKFORCE DEVELOPMENT AREA	6,498	101,606	\$4,116,812,938	\$779.18
Natural Resources & Mining	148	1,267	71,808,711	1,089.93
Trade, Transportation & Utilities	1,550	21,906	847,625,140	744.11
Wholesale Trade	342	3,610	192,491,285	1,025.42
Retail Trade	933	11,956	320,939,878	516.22
Transportation, Warehousing & Utilities	275	6,340	334,193,977	1,013.69
Financial Activities	672	3,665	178,494,445	936.59
Professional & Business Services	853	10,100	414,069,028	788.40
Education & Health Services	1,122	15,988	769,867,093	926.02
Leisure & Hospitality	566	9,045	148,539,457	315.81
Local Government	166	9,245	357,448,414	743.54
State Government	71	2,830	111,924,994	760.57
Other	1,350	27,560	1,217,035,656	849.22

Western Workforce Investment Area includes these counties: Crawford, Franklin, Logan, Polk, Scott, and Sebastian