

Arkansas Covered  
Employment & Earnings  
Third Quarter  
2019

**COVERED EMPLOYMENT AND EARNINGS  
STATE OF ARKANSAS  
THIRD QUARTER 2019**

**ASA HUTCHINSON, GOVERNOR  
STATE OF ARKANSAS**

**CHARISSE CHILDERS, DIRECTOR  
DIVISION OF WORKFORCE SERVICES**

**PUBLISHED BY  
LABOR MARKET INFORMATION  
BUREAU OF LABOR STATISTICS PROGRAMS  
POST OFFICE BOX 2981  
LITTLE ROCK, ARKANSAS 72203-2981  
SUSAN PRICE, BLS PROGRAMS MANAGER  
TELEPHONE (501) 682-3103**

**STATE OF ARKANSAS WEBPAGE: <http://www.arkansas.gov>**

**DIVISION OF WORKFORCE SERVICES WEBPAGE: <http://www.dws.arkansas.gov/>**

**WEBPAGE FOR LABOR MARKET INFORMATION: <http://www.discover.arkansas.gov>**

**RELEASED: JANUARY 2020**



## TABLE OF CONTENTS

DESCRIPTION OF DATA	PAGE
Description and Classification of Data	1
Definition of Covered Employment and Earnings	2
Significant Developments During Third Quarter 2019	3

### LIST OF GRAPHS AND TABLES

Graph 1	Total Covered Employment for Selected Years, Arkansas	7
Graph 2	Total Covered Earnings, by Calendar Quarter for Selected Years, Arkansas	8
Table 1	Quarterly Comparison of Covered Employment and Wages, by Industry	5
Table 2	Total Covered Employment in Arkansas, 2012 – 2019	6
Table 3	Total Covered Earnings, 2012 – 2019	9
Table 4	Total Taxable Earnings, 2012 – 2019	10
Table 5	State Summary – Employment and Total Earnings, by Industry, Third Quarter 2019	11
Table 6	County Summary – Employment and Total Earnings, by Industry, Third Quarter 2019	22
Table 7	Federal Government Employment and Total Earnings in Arkansas, Third Quarter 2019	60
Table 8	Local Workforce Development Area – Employment and Total Earnings, by Industry, Third Quarter 2019	61



EMPLOYMENT AND EARNINGS  
UNDER THE ARKANSAS EMPLOYMENT SECURITY LAW  
THIRD QUARTER 2019

**DESCRIPTION AND CLASSIFICATION OF DATA**

This publication contains covered employment and payroll data by industry and county for the Third Quarter 2019 and a record for total covered employment by month, quarterly payroll data, average weekly earnings, and total taxable earnings for 2012 through 2019. These data are compiled from quarterly contributions and wage reports submitted by employers subject to the Arkansas Employment Security Law.

Employment data have been tabulated for each month of the quarter by industry under the **North American Industry Classification System** (NAICS) by state, county, and workforce area. Payroll data represent the total wages paid during the quarter and are classified by industry for the state and by publishable industry groups for each county and workforce area.

Due to industry classification revisions, previously published data will not always be comparable with current data. For this reason, comparisons should not be made between the same industries under different revisions. For more information, visit the NAICS home page at <http://www.census.gov/naics>.

Industry Classification Revisions

- SIC (Standard Industrial Classification) 1987 to NAICS 2002
- NAICS 2002 to NAICS 2007
- NAICS 2007 to NAICS 2012
- NAICS 2012 to NAICS 2018

The tabulation of this data is a joint effort in conjunction with the United States Bureau of Labor Statistics. Data included in this publication are subject to revisions. Revisions are typically reflected in the Annual Covered Employment and Earnings publication.

## **DEFINITION OF COVERED EMPLOYMENT AND EARNINGS**

Covered Employment is the total number of workers employed by establishments subject to the Arkansas Employment Security Law that worked or received pay for the payroll period including the 12<sup>th</sup> of the month. Earnings include all wages paid to any covered employee by their employer including salaries, bonuses, commissions, fees, fringe benefits, sick pay made directly to employees or dependents, deferred compensation, and reported tips. These wages include both taxable and nontaxable wages. Only the first \$10,000 paid to each worker by an employer in the calendar year is taxable under the Arkansas Employment Security Law.

An Arkansas state unemployment insurance account is required of any entity meeting the definition of an employer. As described by Arkansas Department of Workforce Services Law, the definition of an employer includes, but is not limited to, a sole proprietorship, partnership, corporation, associations, trust, estate, and receiver or trustee in bankruptcy. The entity must employ one or more individuals for ten or more days in a calendar year, whether or not the days are consecutive.

Currently excluded from coverage is employment covered by the Railroad Unemployment Insurance Act, some domestic service workers, employees of small agricultural establishments, self-employed workers, unpaid family workers, insurance and real estate agents paid only on a commission basis, and employees of churches and religious organizations except separately incorporated schools.

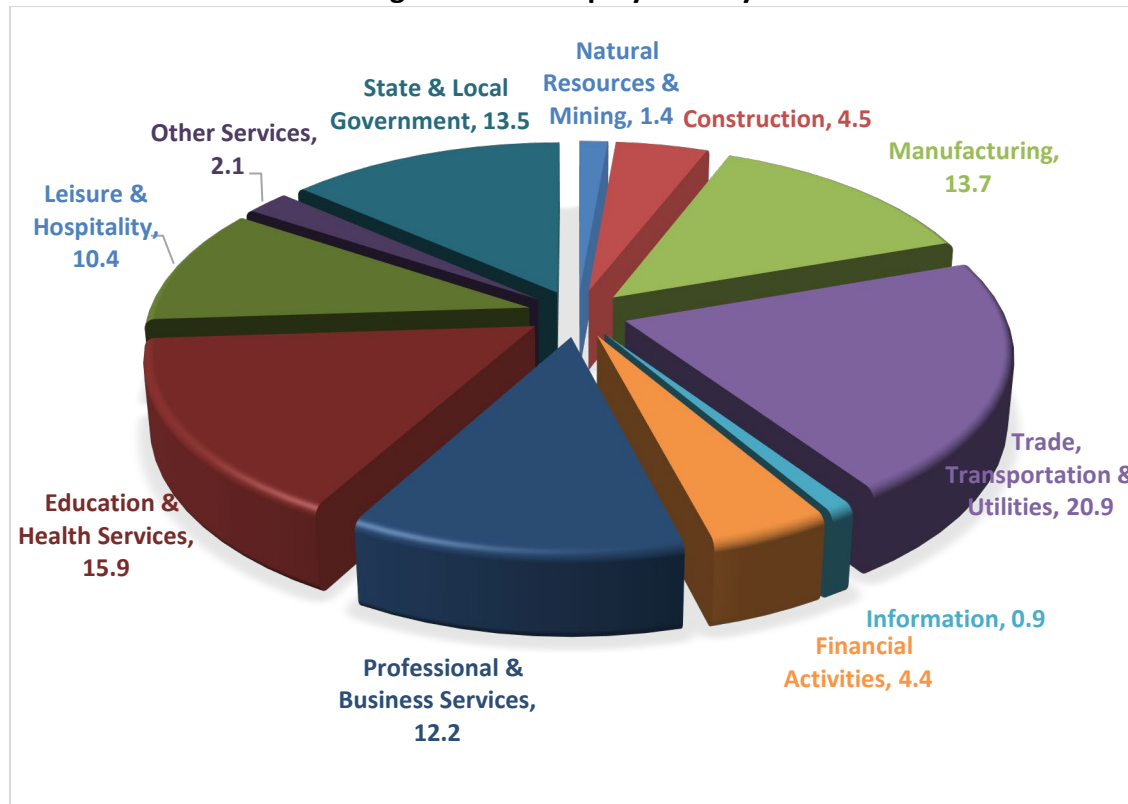
Civilian federal workers are covered by Unemployment Compensation for Federal Employees (UCFE).

## SIGNIFICANT DEVELOPMENTS DURING THIRD QUARTER 2019

### AVERAGE EMPLOYMENT CHANGES

Covered employment averaged 1,180,909 during the Third Quarter 2019 (refer to Table 1), a decrease of 12,319 (1.0%) from the previous quarter and a loss of 1,398 (0.1%) from the average recorded one year ago. The over-the-year comparison is more significant when used as an economic indicator and allows for seasonal factors that appear when comparing over-the-quarter data to be disregarded.

**Average Covered Employment by NAICS**



### EMPLOYMENT CHANGES FROM SECOND QUARTER 2019

Over the quarter declines were recorded in eight of eleven industry groups. Large losses occurred in State & Local Government (-21,638) due to the continuance of summer break at State & Local schools and universities. Construction, Education & Health Services, and Financial Activities reported minor gains.



### EMPLOYMENT CHANGES FROM THIRD QUARTER 2018 (QUARTER YEAR AGO COMPARISON)

Over-the-year gains were recorded in nine industry groups (refer to Table 1). The largest expansions occurred in Construction (1,765), Leisure & Hospitality (1,646) and Education & Health Services (1,556). Contractions occurred in Professional & Business Services (-2,536) and Trade, Transportation & Utilities (-700).

### COVERED WAGES

Wages paid to covered workers totaled \$12,776,218,481 for the Third Quarter 2019 (refer to Table 1), for an average weekly wage of \$832.23 (refer to Table 5). Calhoun County workers recorded the highest average weekly wage (\$1,109.88), and employees in Newton County reported the lowest (\$486.80) (refer to Table 6). Information recorded the highest average weekly wage for the State of Arkansas (\$1,161.22). The Leisure & Hospitality sector recorded the lowest (\$337.09) (refer to Table 5).

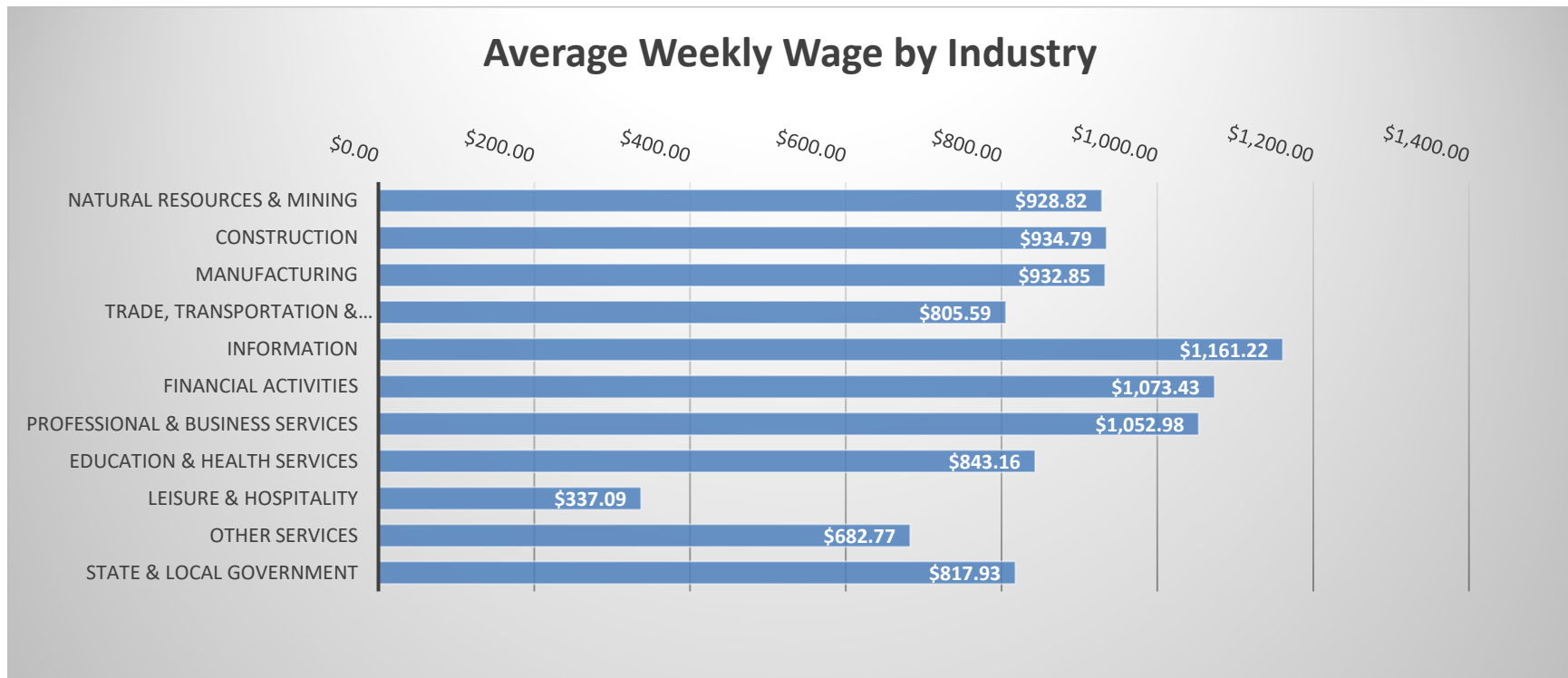


TABLE 1. QUARTERLY COMPARISON OF COVERED EMPLOYMENT AND WAGES, BY INDUSTRY

North American Industry Classification System - Industry Groups	Number of Employing Units	Monthly Employment Average	Percent of Total	Net Change From:		Total Wages Paid Jul - Sep 2019	Percent of Total
				Apr - Jun 2019	Jul- Sep 2018		
<b>TOTAL</b>	<b>91,090</b>	<b>1,180,909</b>	<b>100</b>	<b>-12,319</b>	<b>-1,398</b>	<b>\$12,776,218,481</b>	<b>100</b>
<b>Natural Resources &amp; Mining</b>	2,585	16,429	1.4	-62	119	198,374,837	1.6
Agriculture, Forestry, Fishing & Hunting	2,148	12,547	1.1	-127	68	138,929,749	1.1
Mining	437	3,882	0.3	65	51	59,445,088	0.5
<b>Construction</b>	7,107	53,512	4.5	877	1,765	650,292,229	5.1
<b>Manufacturing</b>	2,943	161,815	13.7	-504	968	1,962,328,295	15.4
<b>Trade, Transportation &amp; Utilities</b>	21,963	247,390	20.9	-209	-700	2,590,833,094	20.3
Wholesale Trade	7,356	47,487	4.0	-248	69	816,319,687	6.4
Retail Trade	11,111	135,772	11.5	-232	-2,608	955,027,291	7.5
Transportation & Warehousing	3,082	56,280	4.8	224	1,823	657,527,853	5.1
Utilities	414	7,851	0.7	47	16	161,958,263	1.3
<b>Information</b>	1,310	10,877	0.9	-232	91	164,202,204	1.3
<b>Financial Activities</b>	8,596	52,108	4.4	193	1,133	727,143,085	5.7
Finance & Insurance	5,045	38,000	3.2	77	818	590,541,831	4.6
Real Estate & Rental & Leasing	3,551	14,108	1.2	115	316	136,601,254	1.1
<b>Professional &amp; Business Services</b>	15,008	143,666	12.2	-1,971	-2,536	1,966,600,461	15.4
Professional & Technical Services	9,439	44,392	3.8	-432	615	690,250,596	5.4
Management of Companies & Enterprises	552	33,852	2.9	523	-935	756,915,746	5.9
Administrative & Waste Services	5,017	65,422	5.5	-2,062	-2,216	519,434,119	4.1
<b>Education &amp; Health Services</b>	15,749	187,497	15.9	429	1,556	2,055,164,046	16.1
Educational Services	934	11,602	1.0	-399	350	111,764,214	0.9
Health Care & Social Assistance	14,815	175,895	14.9	828	1,206	1,943,399,832	15.2
<b>Leisure &amp; Hospitality</b>	7,388	122,396	10.4	-63	1,646	536,355,782	4.2
Arts, Entertainment & Recreation	1,020	12,654	1.1	-87	314	67,526,359	0.5
Accommodation & Food Services	6,368	109,742	9.3	24	1,332	468,829,423	3.7
<b>Other Services</b>	5,382	25,341	2.1	-215	30	224,922,587	1.8
<b>State &amp; Local Government</b>	3,059	159,878	13.5	-21,638	51	1,700,001,861	13.3
Local Government	1,988	93,108	7.9	-21,054	434	850,622,331	6.7
State Government	1,071	66,770	5.7	-584	-382	849,379,530	6.6
<b>Nonclassifiable Establishments</b>	0	0	0.0	0	0	0	0.0

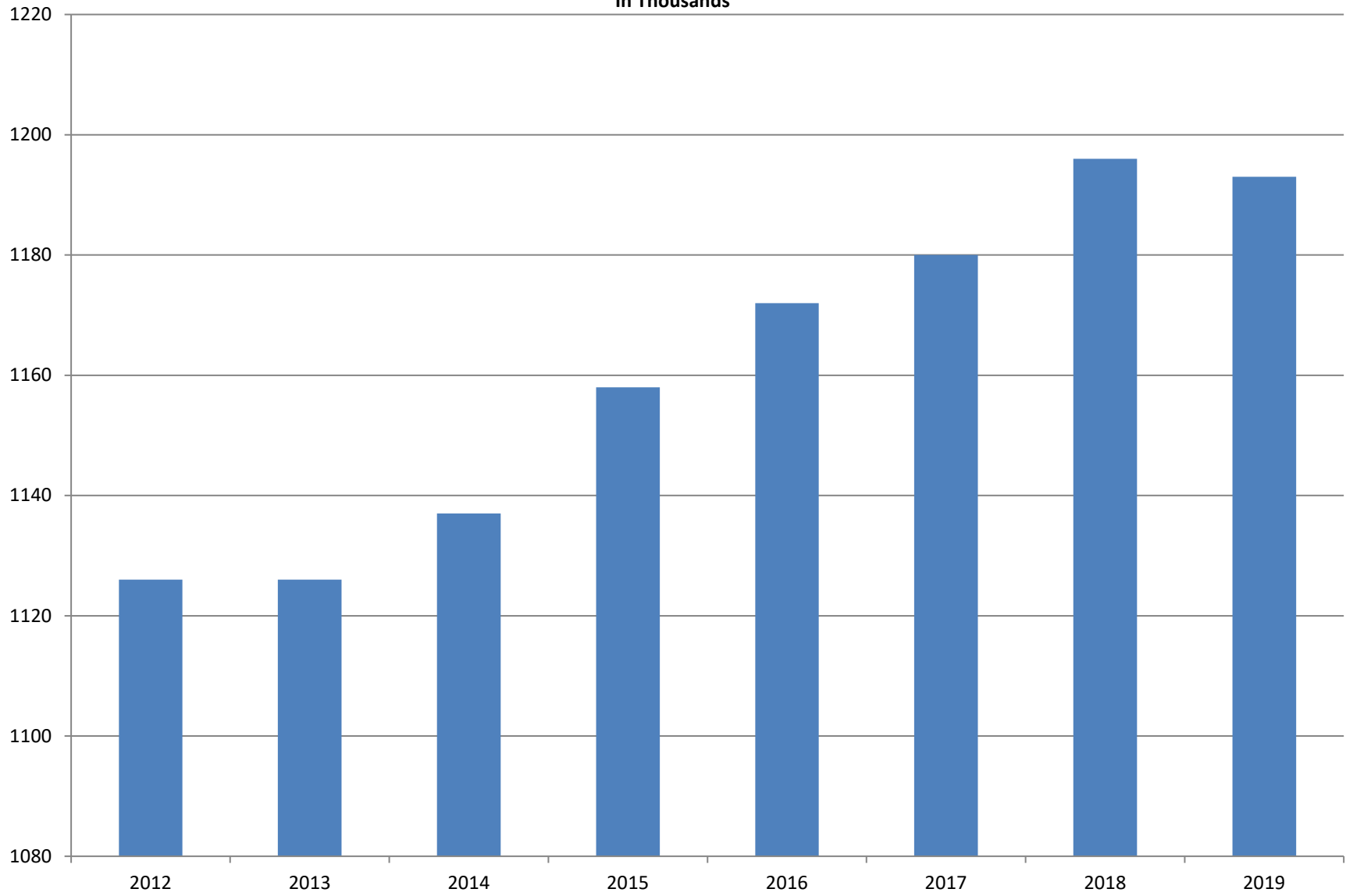
Note: Items do not necessarily add to total because of rounding. Because of industry code changes between years, substantial employment and wage shifts among industries are anticipated.

**TABLE 2. TOTAL COVERED EMPLOYMENT IN ARKANSAS**

<b>PERIOD</b>	<b>2012</b>	<b>2013</b>	<b>2014</b>	<b>2015</b>	<b>2016</b>	<b>2017</b>	<b>2018</b>	<b>2019</b>
<b>AVERAGE</b>	<b>1,126,171</b>	<b>1,125,890</b>	<b>1,137,486</b>	<b>1,157,634</b>	<b>1,171,503</b>	<b>1,180,337</b>	<b>1,195,781</b>	<b>1,192,814</b>
January	1,113,274	1,112,991	1,114,412	1,135,577	1,152,434	1,161,239	1,173,537	1,186,848
February	1,119,319	1,121,492	1,122,905	1,144,902	1,162,294	1,172,290	1,183,185	1,194,355
March	1,131,123	1,129,100	1,132,106	1,146,413	1,170,837	1,179,686	1,190,199	1,198,481
April	1,136,608	1,134,734	1,140,788	1,158,606	1,178,630	1,185,212	1,194,816	1,204,176
May	1,142,985	1,138,383	1,149,046	1,167,657	1,181,644	1,189,900	1,201,113	1,206,476
June	1,136,699	1,130,402	1,144,876	1,164,607	1,177,506	1,186,326	1,195,468	1,202,260
July	1,078,836	1,083,849	1,096,675	1,119,390	1,132,361	1,137,883	1,168,432	1,155,337
August	1,108,552	1,109,759	1,125,162	1,148,502	1,160,743	1,168,802	1,200,284	1,185,213
September	1,134,829	1,135,673	1,150,545	1,173,776	1,185,510	1,193,845	1,222,012	1,202,177
October	1,135,677	1,138,312	1,153,684	1,173,953	1,185,022	1,194,194	1,205,161	NA
November	1,137,411	1,141,035	1,158,579	1,177,717	1,186,046	1,197,650	1,208,638	NA
December	1,138,742	1,134,955	1,161,056	1,180,513	1,185,009	1,197,013	1,206,531	NA

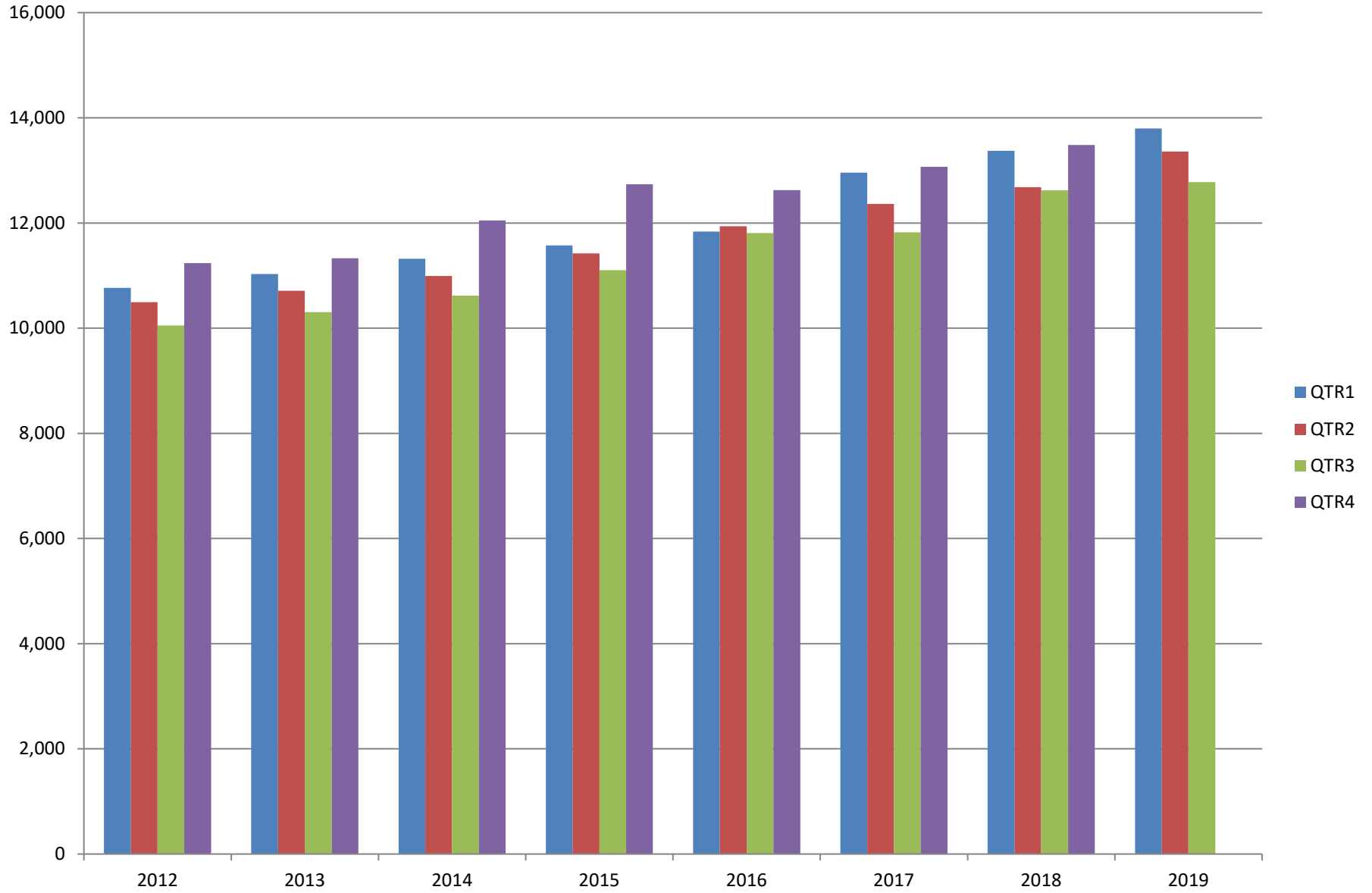
# AVERAGE TOTAL COVERED EMPLOYMENT

In Thousands



# TOTAL COVERED EARNINGS BY CALENDAR YEAR

In Thousands



**TABLE 3. TOTAL COVERED EARNINGS 2012 - 2019**

<b>PERIOD</b>	<b>2012</b>	<b>2013</b>	<b>2014</b>	<b>2015</b>
<b>TOTAL</b>	<b>\$42,551,238,929</b>	<b>\$43,371,086,461</b>	<b>\$44,980,520,034</b>	<b>\$46,836,352,793</b>
January - March	10,766,175,449	11,027,184,315	11,321,422,241	11,575,046,688
April - June	10,494,369,042	10,711,027,503	10,991,760,061	11,419,363,330
July - September	10,053,294,410	10,304,451,772	10,619,889,280	11,104,443,452
October - December	11,237,400,028	11,328,422,871	12,047,448,452	12,737,499,323
<b>Average Weekly Earnings</b>	<b>\$726.62</b>	<b>\$740.80</b>	<b>\$760.46</b>	<b>\$778.05</b>

<b>PERIOD</b>	<b>2016</b>	<b>2017</b>	<b>2018</b>	<b>2019</b>
<b>TOTAL</b>	<b>\$48,207,277,530</b>	<b>\$50,207,202,141</b>	<b>\$52,159,789,393</b>	<b>\$39,928,114,132</b>
January - March	11,836,255,664	12,955,088,347	13,372,730,974	13,795,046,820
April - June	11,935,722,186	12,363,027,711	12,682,491,819	13,356,848,831
July - September	11,809,460,297	11,823,324,966	12,619,347,460	12,776,218,481
October - December	12,625,839,383	13,065,761,117	13,485,219,140	NA
<b>Average Weekly Earnings</b>	<b>\$791.34</b>	<b>\$818.01</b>	<b>\$838.84</b>	<b>\$858.30</b>

**TABLE 4. TOTAL TAXABLE EARNINGS, 2012 - 2019**

<b>PERIOD</b>	<b>2012</b>	<b>2013</b>	<b>2014</b>	<b>2015</b>
<b>TOTAL</b>	<b>11,624,348,048</b>	<b>11,644,747,978</b>	<b>11,919,662,224</b>	<b>12,258,632,610</b>
January - March	6,167,036,199	6,184,735,653	6,288,682,396	6,378,966,662
April - June	2,838,154,846	2,805,431,293	2,831,013,392	2,915,293,283
July - September	1,494,712,584	1,506,497,129	1,552,243,963	1,640,978,599
October - December	1,124,444,419	1,148,083,903	1,247,722,473	1,323,394,066
<b>PERIOD</b>	<b>2016</b>	<b>2017</b>	<b>2018</b>	<b>2019</b>
<b>TOTAL</b>	<b>12,511,938,047</b>	<b>12,744,039,136</b>	<b>11,335,932,409</b>	<b>10,349,165,478</b>
January - March	6,595,351,454	6,958,706,950	6,577,871,657	6,737,833,125
April - June	3,003,077,908	2,908,226,426	2,278,450,975	2,283,514,220
July - September	1,651,582,584	1,576,968,648	1,328,868,479	1,327,818,133
October - December	1,261,926,101	1,300,137,112	1,150,741,298	N/A

TABLE 5. STATEWIDE SUMMARY

North American Industry Classification System - Industry Groups		Number of Employing Units	Employment			Total Earnings	Average Weekly Earnings
			Jul	Aug	Sep	Jul- Sep 2019	
<b>TOTAL, ALL INDUSTRIES</b>		<b>91,090</b>	<b>1,155,337</b>	<b>1,185,213</b>	<b>1,202,177</b>	<b>\$12,776,218,481</b>	<b>\$832.23</b>
<b>NATURAL RESOURCES &amp; MINING</b>		<b>2,585</b>	<b>16,533</b>	<b>16,391</b>	<b>16,363</b>	<b>\$198,374,837</b>	<b>\$928.82</b>
<b>11</b>	<b>AGRICULTURE, FORESTRY, FISHING &amp; HUNTING</b>	<b>2,148</b>	<b>12,656</b>	<b>12,502</b>	<b>12,484</b>	<b>\$138,929,749</b>	<b>\$851.73</b>
<b>111</b>	<b>CROP PRODUCTION</b>	<b>964</b>	<b>4,080</b>	<b>4,109</b>	<b>4,319</b>	<b>\$33,740,950</b>	<b>\$622.51</b>
1111	Oilseed & Grain Farming	718	2,815	2,831	3,006	23,309,556	621.72
1112	Vegetable & Melon Farming	42	257	231	236	1,686,958	537.70
1113	Fruit & Tree Nut Farming	10	29	32	32	222,275	551.55
1114	Greenhouse & Nursery Production	38	341	364	387	3,290,128	695.29
1119	Other Crop Farming	156	638	651	658	5,232,033	620.13
<b>112</b>	<b>ANIMAL PRODUCTION &amp; AQUACULTURE</b>	<b>342</b>	<b>3,285</b>	<b>3,215</b>	<b>3,210</b>	<b>\$41,469,073</b>	<b>\$985.56</b>
1121	Cattle Ranching & Farming	133	405	391	381	2,983,452	584.95
1122	Hog & Pig Farming	12	133	138	136	1,537,609	871.83
1123	Poultry & Egg Production	131	2,313	2,299	2,291	33,054,475	1,105.02
1125	Animal Aquaculture	42	346	323	337	3,491,349	800.89
	Other	24	88	64	65	402,188	427.71
<b>115</b>	<b>SUPPORT ACTIVITIES FOR AGRICULTURE &amp; FORESTRY</b>	<b>418</b>	<b>2,984</b>	<b>2,846</b>	<b>2,576</b>	<b>\$36,052,456</b>	<b>\$989.75</b>
1151	Support Activities for Crop Production	276	1,448	1,400	1,495	20,087,172	1,067.35
1152	Support Activities for Animal Production	65	699	708	704	5,995,782	655.44
1153	Support Activities for Forestry	77	837	738	377	9,969,502	1,178.61
	<b>OTHER</b>	<b>424</b>	<b>2,307</b>	<b>2,332</b>	<b>2,379</b>	<b>\$27,667,270</b>	<b>\$909.77</b>
<b>21</b>	<b>MINING</b>	<b>437</b>	<b>3,877</b>	<b>3,889</b>	<b>3,879</b>	<b>\$59,445,088</b>	<b>\$1,178.02</b>
<b>211</b>	<b>OIL &amp; GAS EXTRACTION</b>	<b>80</b>	<b>675</b>	<b>667</b>	<b>667</b>	<b>\$12,676,255</b>	<b>\$1,456.09</b>
<b>212</b>	<b>MINING (EXCEPT OIL &amp; GAS)</b>	<b>109</b>	<b>1,856</b>	<b>1,859</b>	<b>1,867</b>	<b>\$24,663,922</b>	<b>\$1,019.65</b>
<b>213</b>	<b>SUPPORT ACTIVITES FOR MINING</b>	<b>248</b>	<b>1,346</b>	<b>1,363</b>	<b>1,345</b>	<b>\$22,104,911</b>	<b>\$1,258.30</b>



TABLE 5. STATEWIDE SUMMARY

North American Industry Classification System - Industry Groups		Number of Employing Units	Employment			Total Earnings Jul- Sep 2019	Average Weekly Earnings
			Jul	Aug	Sep		
<b>CONSTRUCTION</b>		<b>7,107</b>	<b>53,355</b>	<b>53,551</b>	<b>53,630</b>	<b>\$650,292,229</b>	<b>\$934.79</b>
<b>236</b>	<b>CONSTRUCTION OF BUILDINGS</b>	<b>1,891</b>	<b>11,198</b>	<b>11,231</b>	<b>11,278</b>	<b>\$144,712,389</b>	<b>\$990.75</b>
2361	Residential Building Construction	1,296	3,771	3,787	3,811	42,369,190	860.01
2362	Nonresidential Building Construction	595	7,427	7,444	7,467	102,343,199	1,057.29
<b>237</b>	<b>HEAVY &amp; CIVIL ENGINEERING CONSTRUCTION</b>	<b>742</b>	<b>8,430</b>	<b>8,463</b>	<b>8,536</b>	<b>\$111,415,462</b>	<b>\$1,011.10</b>
2371	Utility System Construction	422	4,647	4,674	4,787	62,711,927	1,025.80
2372	Land Subdivision	45	103	96	89	1,021,878	818.81
2373	Highway, Street & Bridge Construction	178	2,895	2,875	2,871	38,117,724	1,017.98
2379	Other Heavy Construction	97	785	818	789	9,563,933	922.68
<b>238</b>	<b>SPECIALTY TRADE CONTRACTORS</b>	<b>4,474</b>	<b>33,727</b>	<b>33,857</b>	<b>33,816</b>	<b>\$394,164,378</b>	<b>\$897.05</b>
2381	Building Foundation & Exterior Contractors	820	6,084	6,073	6,100	71,620,415	905.28
2382	Building Equipment Contractors	2,204	18,893	18,967	18,896	230,744,028	938.20
2383	Building Finishing Contractors	734	3,833	3,837	3,832	38,712,312	776.70
2389	Other Specialty Trade Contractors	716	4,917	4,980	4,988	53,087,623	823.04
<b>MANUFACTURING</b>		<b>2,943</b>	<b>161,798</b>	<b>162,171</b>	<b>161,475</b>	<b>\$1,962,328,295</b>	<b>\$932.85</b>
<b>311</b>	<b>FOOD MANUFACTURING</b>	<b>300</b>	<b>48,847</b>	<b>49,050</b>	<b>49,425</b>	<b>\$491,277,410</b>	<b>\$769.55</b>
3111	Animal Food Manufacturing	48	1,950	1,949	1,957	23,987,842	945.30
3112	Grain & Oilseed Milling	34	2,719	2,739	2,786	35,336,025	989.14
3114	Fruit, Vegetable & Specialty Food	18	4,051	4,103	4,131	49,881,533	937.01
3115	Dairy Product Manufacturing	7	562	563	555	6,814,149	936.01
3116	Animal Slaughtering & Processing	80	33,129	33,191	33,550	302,229,330	698.36
3118	Bakeries & Tortilla Manufacturing	80	4,094	4,073	4,058	46,428,749	876.43
3119	Other Food Manufacturing	21	2,317	2,396	2,345	26,388,590	862.80
	Other	12	25	36	43	211,192	468.62
<b>312</b>	<b>BEVERAGE &amp; TOBACCO PRODUCT MANUFACTURING</b>	<b>63</b>	<b>1,519</b>	<b>1,537</b>	<b>1,512</b>	<b>\$20,805,795</b>	<b>\$1,051.08</b>
<b>313</b>	<b>TEXTILE MILLS</b>	<b>10</b>	<b>138</b>	<b>138</b>	<b>134</b>	<b>\$1,959,401</b>	<b>\$1,102.85</b>
<b>314</b>	<b>TEXTILE PRODUCT MILLS</b>	<b>43</b>	<b>896</b>	<b>882</b>	<b>895</b>	<b>\$10,107,817</b>	<b>\$872.64</b>
3141	Textile Furnishing Mills	9	23	24	23	119,139	392.77
3149	Other Textile Product Mills	34	873	858	872	9,988,678	885.55
<b>315</b>	<b>APPAREL MANUFACTURING</b>	<b>16</b>	<b>877</b>	<b>899</b>	<b>861</b>	<b>\$6,010,519</b>	<b>\$525.99</b>
3151	Apparel Knitting Mills	3	486	479	475	3,368,359	539.80
	Other	13	391	420	386	2,642,160	509.38

TABLE 5. STATEWIDE SUMMARY

North American Industry Classification System - Industry Groups		Number of Employing Units	Employment			Total Earnings	Average Weekly Earnings
			Jul	Aug	Sep	Jul- Sep 2019	
<b>316</b>	<b>LEATHER &amp; ALLIED PRODUCT MANUFACTURING</b>	<b>12</b>	<b>1,121</b>	<b>1,092</b>	<b>1,082</b>	<b>\$7,111,035</b>	<b>\$498.03</b>
3162	Footwear Manufacturing	4	914	887	881	5,511,849	\$474.26
3169	Other Leather & Allied Product Manufacturing	8	207	205	201	1,599,186	\$602.03
<b>321</b>	<b>WOOD PRODUCT MANUFACTURING</b>	<b>302</b>	<b>9,589</b>	<b>9,633</b>	<b>9,654</b>	<b>\$111,471,167</b>	<b>\$890.85</b>
3211	Sawmills & Wood Preservation	141	4,753	4,774	4,781	58,150,130	937.89
3212	Veneer & Engineered Wood Products	39	1,750	1,755	1,752	23,678,893	1,039.44
3219	Other Wood Product Manufacturing	122	3,086	3,104	3,121	29,642,144	734.67
<b>322</b>	<b>PAPER MANUFACTURING</b>	<b>69</b>	<b>9,690</b>	<b>9,694</b>	<b>9,584</b>	<b>\$162,170,515</b>	<b>\$1,291.91</b>
3221	Pulp, Paper & Paperboard Mills	15	3,936	3,909	3,844	84,090,726	1,660.16
3222	Converted Paper Product Manufacturing	54	5,754	5,785	5,740	78,079,789	1,042.79
<b>323</b>	<b>PRINTING &amp; RELATED SUPPORT ACTIVITIES</b>	<b>247</b>	<b>3,651</b>	<b>3,792</b>	<b>3,820</b>	<b>\$39,341,942</b>	<b>\$806.08</b>
<b>324</b>	<b>PETROLEUM &amp; COAL PRODUCTS MANUFACTURING</b>	<b>21</b>	<b>1,220</b>	<b>1,215</b>	<b>1,176</b>	<b>\$21,323,246</b>	<b>\$1,362.71</b>
<b>325</b>	<b>CHEMICAL MANUFACTURING</b>	<b>127</b>	<b>5,692</b>	<b>5,665</b>	<b>5,647</b>	<b>\$87,767,214</b>	<b>\$1,191.13</b>
3251	Basic Chemical Manufacturing	30	1,940	1,942	1,919	35,678,440	1,419.32
3252	Resin, Rubber & Artificial Fibers	13	486	490	487	7,815,236	1,232.75
3253	Agricultural Chemical Manufacturing	16	487	479	480	7,750,209	1,236.87
3254	Pharmaceutical & Medicine Manufacturing	25	505	502	496	6,777,206	1,040.57
3255	Paint, Coating & Adhesive Manufacturing	10	228	220	215	3,246,841	1,130.12
3256	Soap, Cleaning Compound, & Toilet Preparation Manufacturing	12	1,326	1,303	1,330	16,734,548	975.45
3259	Other Chemical Preparation Manufacturing	21	720	729	720	9,764,734	1,038.91
<b>326</b>	<b>PLASTICS &amp; RUBBER PRODUCTS MANUFACTURING</b>	<b>121</b>	<b>11,019</b>	<b>10,966</b>	<b>10,918</b>	<b>\$137,865,989</b>	<b>\$966.94</b>
3261	Plastics Product Manufacturing	96	6,818	6,779	6,754	80,053,841	907.77
3262	Rubber Product Manufacturing	25	4,201	4,187	4,164	57,812,148	1,062.88
<b>327</b>	<b>NONMETALLIC MINERAL PRODUCT MANUFACTURING</b>	<b>226</b>	<b>3,718</b>	<b>3,709</b>	<b>3,677</b>	<b>\$47,501,243</b>	<b>\$987.20</b>
3271	Clay Product & Refractory Manufacturing	11	451	466	463	5,530,105	924.77
3272	Glass & Glass Product Manufacturing	8	365	364	368	4,550,602	957.28
3273	Cement & Concrete Product Manufacturing	171	2,243	2,214	2,196	28,774,024	998.07
3274	Lime & Gypsum Product Manufacturing	3	289	295	295	4,446,031	1,167.24
3279	Other Nonmetallic Mineral Products Manufacturing	33	370	370	355	4,200,481	885.24
<b>331</b>	<b>PRIMARY METAL MANUFACTURING</b>	<b>70</b>	<b>8,582</b>	<b>8,519</b>	<b>8,442</b>	<b>\$152,547,145</b>	<b>\$1,378.19</b>
3311	Iron & Steel Mills & Ferroalloys	9	3,375	3,336	3,300	81,422,695	1,876.92
3312	Purchased Steel Product Manufacturing	22	2,450	2,432	2,407	35,490,660	1,123.63
3313	Alumina & Aluminum Production	15	881	891	886	12,788,353	1,110.29
3314	Other Nonferrous Metal Production	6	268	263	263	3,547,148	1,030.95
3315	Foundries	18	1,608	1,597	1,586	19,298,289	929.55

TABLE 5. STATEWIDE SUMMARY

North American Industry Classification System - Industry Groups		Number of Employing Units	Employment			Total Earnings	Average Weekly Earnings
			Jul	Aug	Sep	Jul- Sep 2019	
<b>332</b>	<b>FABRICATED METAL PRODUCT MANUFACTURING</b>	<b>523</b>	<b>14,790</b>	<b>15,264</b>	<b>14,667</b>	<b>\$192,777,650</b>	<b>\$994.77</b>
3321	Forging & Stamping	12	450	449	448	5,196,619	890.29
3322	Cutlery & Hand Tool Manufacturing	14	567	558	536	6,532,495	907.59
3323	Architectural & Structural Metals	152	4,691	4,659	4,627	63,823,036	1,053.76
3324	Boilers, Tanks & Shipping Containers	14	600	594	557	7,432,225	979.51
3325	Hardware Manufacturing	5	273	263	254	3,246,050	948.21
3326	Spring & Wire Product Manufacturing	10	352	341	344	4,074,367	906.69
3327	Machine Shops & Threaded Products	206	2,347	2,354	2,312	25,938,572	853.53
3328	Coating, Engraving & Heat Treating Metals	41	657	634	654	6,648,133	788.78
3329	Other Fabricated Metal Product Manufacturing	69	4,853	5,412	4,935	69,886,153	1,061.02
<b>333</b>	<b>MACHINERY MANUFACTURING</b>	<b>209</b>	<b>12,010</b>	<b>11,814</b>	<b>11,750</b>	<b>\$145,072,369</b>	<b>\$941.09</b>
3331	Agriculture, Construction & Mining Machinery	36	2,894	2,794	2,761	28,297,756	772.90
3332	Industrial Machinery Manufacturing	26	682	679	686	9,823,481	1,107.45
3333	Commercial & Service Industry Machinery	23	840	840	840	11,163,435	1,022.29
3334	HVAC & Commercial Refrigeration Equipment	23	3,043	2,967	2,912	35,410,689	915.90
3335	Metalworking Machinery Manufacturing	51	899	894	887	10,986,319	946.01
3336	Turbine & Power Transmission Equipment Manufacturing	5	764	782	768	10,455,988	1,042.75
3339	Other General Purpose Machinery Manufacturing	45	2,888	2,858	2,896	38,934,701	1,039.68
<b>334</b>	<b>COMPUTER &amp; ELECTRONIC PRODUCT MANUFACTURING</b>	<b>50</b>	<b>1,952</b>	<b>1,899</b>	<b>1,873</b>	<b>\$25,912,478</b>	<b>\$1,044.69</b>
3343	Audio & Video Equipment Manufacturing	5	98	98	98	840,390	659.65
3344	Semiconductors & Electronic Components	22	1,397	1,348	1,348	18,764,733	1,057.98
3345	Navigational, Measuring, Electromedical, & Control Instr, Mfg Other	18 5	383 74	379 74	354 73	5,291,123 1,016,232	1,094.11 1,061.15
<b>335</b>	<b>ELECTRICAL EQUIPMENT &amp; APPLIANCES</b>	<b>52</b>	<b>4,427</b>	<b>4,354</b>	<b>4,319</b>	<b>\$57,657,072</b>	<b>\$1,015.69</b>
3351	Electric Lighting Equipment Manufacturing	9	296	299	303	3,356,614	\$862.59
3352	Household Appliance Manufacturing	4	28	28	22	347,881	\$1,029.23
3353	Electrical Equipment Manufacturing	20	2,791	2,723	2,705	37,213,281	1,044.86
3359	Other Electrical Equipment & Component Manufacturing	19	1,312	1,304	1,289	16,739,296	989.22
<b>336</b>	<b>TRANSPORTATION EQUIPMENT MANUFACTURING</b>	<b>138</b>	<b>15,228</b>	<b>15,228</b>	<b>15,265</b>	<b>\$176,844,365</b>	<b>\$892.59</b>
3362	Motor Vehicle Body & Trailer Manufacturing	30	2,183	2,171	2,145	23,548,808	836.18
3363	Motor Vehicle Parts Manufacturing	43	5,202	5,191	5,230	53,663,983	792.68
3364	Aerospace Product & Parts Manufacturing	28	4,049	4,082	4,140	62,028,513	1,166.51
3366	Ship & Boat Building Other	23 14	2,396 1,398	2,433 1,351	2,427 1,323	21,497,386 16,105,675	683.70 912.74
<b>337</b>	<b>FURNITURE &amp; RELATED PRODUCT MANUFACTURING</b>	<b>168</b>	<b>3,522</b>	<b>3,522</b>	<b>3,459</b>	<b>\$32,831,418</b>	<b>\$721.36</b>
3371	Household & Institutional Furniture Other	135 33	2,780 742	2,780 742	2,721 738	25,287,389 7,544,029	704.69 783.50
<b>339</b>	<b>MISCELLANEOUS MANUFACTURING</b>	<b>176</b>	<b>3,310</b>	<b>3,299</b>	<b>3,315</b>	<b>\$33,972,505</b>	<b>\$789.98</b>
3391	Medical Equipment & Supplies Manufacturing	68	1,618	1,611	1,612	17,884,974	852.57
3399	Other Miscellaneous Manufacturing	108	1,692	1,688	1,703	16,087,531	730.38

TABLE 5. STATEWIDE SUMMARY

North American Industry Classification System - Industry Groups		Number of Employing Units	Employment			Total Earnings Jul- Sep 2019	Average Weekly Earnings
			Jul	Aug	Sep		
<b>TRADE, TRANSPORTATION &amp; UTILITIES</b>		<b>21,963</b>	<b>247,272</b>	<b>247,453</b>	<b>247,445</b>	<b>\$2,590,833,094</b>	<b>\$805.59</b>
<b>42</b>	<b>WHOLESALE TRADE</b>	<b>7,356</b>	<b>47,710</b>	<b>47,476</b>	<b>47,275</b>	<b>\$816,319,687</b>	<b>\$1,322.34</b>
<b>423</b>	<b>MERCHANT WHOLESALERS, DURABLE GOODS</b>	<b>3,265</b>	<b>24,330</b>	<b>24,298</b>	<b>24,269</b>	<b>\$389,711,223</b>	<b>\$1,233.70</b>
4231	Motor Vehicle & Part Merchant Wholesalers	286	3,121	3,107	3,098	50,741,476	1,255.58
4232	Furniture & Furnishings Merchant Wholesalers	91	459	458	448	8,100,624	1,369.51
4233	Lumber & Supply Merchant Wholesalers	230	1,633	1,653	1,638	21,117,976	989.72
4234	Commercial Goods Merchant Wholesalers	641	3,235	3,225	3,254	69,193,549	1,643.79
4235	Metal & Mineral Merchant Wholesalers	139	1,068	1,057	1,047	14,774,391	1,074.87
4236	Appliances & Electronics Goods Merchant Wholesalers	337	2,737	2,748	2,739	47,032,263	1,319.75
4237	Hardware & Plumbing Merchant Wholesalers	299	2,762	2,772	2,756	40,571,798	1,129.40
4238	Machinery & Supply Merchant Wholesalers	940	7,323	7,304	7,330	111,806,550	1,175.09
4239	Miscellaneous Durable Goods Merchant Wholesalers	302	1,992	1,974	1,959	26,372,596	1,027.17
<b>424</b>	<b>MERCHANT WHOLESALERS, NONDURABLE GOODS</b>	<b>2,043</b>	<b>17,947</b>	<b>17,774</b>	<b>17,671</b>	<b>\$314,981,395</b>	<b>\$1,361.40</b>
4241	Paper & Paper Product Merchant Wholesalers	131	1,197	1,255	1,243	21,392,645	1,336.07
4242	Druggist' Goods Merchant Wholesalers	251	1,589	1,565	1,564	43,216,366	2,113.82
4243	Apparel & Piece Goods Merchant Wholesalers	84	731	734	732	10,538,592	1,106.96
4244	Grocery Product Merchant Wholesalers	569	5,817	5,809	5,765	114,745,032	1,522.60
4245	Farm Product & Raw Material Merchant Wholesalers	79	791	815	816	8,102,351	772.00
4246	Chemical Merchant Wholesalers	230	1,102	1,090	1,096	29,004,762	2,035.71
4247	Petroleum Merchant Wholesalers	168	1,159	1,116	1,128	15,451,634	1,047.83
4248	Alcoholic Beverage Merchant Wholesalers	71	1,634	1,636	1,624	24,346,832	1,148.04
4249	Miscellaneous Nondurable Goods Merchant Wholesaler	460	3,927	3,754	3,703	48,183,181	976.74
<b>425</b>	<b>ELECTRONIC MARKETS &amp; AGENTS &amp; BROKERS</b>	<b>2,048</b>	<b>5,433</b>	<b>5,404</b>	<b>5,335</b>	<b>\$111,627,069</b>	<b>\$1,592.88</b>
<b>44 - 45</b>	<b>RETAIL TRADE</b>	<b>11,111</b>	<b>135,701</b>	<b>135,813</b>	<b>135,801</b>	<b>\$955,027,291</b>	<b>\$541.08</b>
<b>441</b>	<b>MOTOR VEHICLE &amp; PARTS DEALERS</b>	<b>1,522</b>	<b>19,255</b>	<b>19,441</b>	<b>19,468</b>	<b>\$223,748,239</b>	<b>\$887.73</b>
4411	Automobile Dealers	621	11,651	11,757	11,736	157,329,738	1,033.09
4412	Other Motor Vehicle Dealers	170	1,815	1,812	1,817	22,089,108	936.35
4413	Automotive Parts, Accessories & Tire Stores	731	5,789	5,872	5,915	44,329,393	582.04
<b>442</b>	<b>FURNITURE &amp; HOME FURNISHINGS STORES</b>	<b>501</b>	<b>3,538</b>	<b>3,521</b>	<b>3,505</b>	<b>\$29,973,669</b>	<b>\$654.77</b>
4421	Furniture Stores	270	1,986	1,988	1,947	19,093,016	744.14
4422	Home Furnishings Stores	231	1,552	1,533	1,558	10,880,653	540.80
<b>443</b>	<b>ELECTRONICS &amp; APPLIANCE STORES</b>	<b>381</b>	<b>3,187</b>	<b>3,179</b>	<b>3,187</b>	<b>\$29,045,993</b>	<b>\$701.66</b>
<b>444</b>	<b>BUILDING MATERIAL &amp; GARDEN SUPPLY STORES</b>	<b>848</b>	<b>12,009</b>	<b>11,612</b>	<b>11,683</b>	<b>\$92,407,450</b>	<b>\$604.03</b>
4441	Building Material & Supplies Dealers	606	9,967	9,611	9,653	79,164,759	624.98
4442	Lawn & Garden Equipment & Supplies Stores	242	2,042	2,001	2,030	13,242,691	503.21

TABLE 5. STATEWIDE SUMMARY

North American Industry Classification System - Industry Groups		Number of Employing Units	Employment			Total Earnings Jul- Sep 2019	Average Weekly Earnings
			Jul	Aug	Sep		
<b>445</b>	<b>FOOD &amp; BEVERAGE STORES</b>	<b>1,042</b>	<b>19,119</b>	<b>19,038</b>	<b>19,115</b>	<b>\$108,787,428</b>	<b>\$438.34</b>
4451	Grocery Stores	549	16,533	16,450	16,465	91,576,996	427.38
4452	Specialty Food Stores	146	801	799	838	7,151,668	676.94
4453	Beer, Wine & Liquor Stores	347	1,785	1,789	1,812	10,058,764	430.98
<b>446</b>	<b>HEALTH &amp; PERSONAL CARE STORES</b>	<b>1,007</b>	<b>8,615</b>	<b>8,589</b>	<b>8,560</b>	<b>\$84,293,221</b>	<b>\$755.02</b>
<b>447</b>	<b>GASOLINE STATIONS</b>	<b>1,674</b>	<b>12,457</b>	<b>12,420</b>	<b>12,491</b>	<b>\$63,124,280</b>	<b>\$389.83</b>
44711	Gasoline Stations with Convenience Stores	1,578	11,268	11,236	11,283	56,187,821	383.77
44719	Other Gasoline Stations	96	1,189	1,184	1,208	6,936,459	447.00
<b>448</b>	<b>CLOTHING &amp; CLOTHING ACCESSORIES STORES</b>	<b>978</b>	<b>7,297</b>	<b>7,457</b>	<b>7,381</b>	<b>\$35,227,976</b>	<b>\$367.27</b>
4481	Clothing Stores	745	5,578	5,640	5,614	24,001,945	329.07
4482	Shoe Stores	114	1,097	1,180	1,101	5,260,168	359.35
4483	Jewelry, Luggage & Leather Goods Stores	119	622	637	666	5,965,863	715.19
<b>451</b>	<b>SPORTING GOODS, HOBBY, BOOK &amp; MUSIC STORES</b>	<b>444</b>	<b>4,234</b>	<b>4,369</b>	<b>4,287</b>	<b>\$21,971,353</b>	<b>\$393.35</b>
4511	Sporting Goods & Musical Instrument Stores	383	3,795	3,871	3,837	20,041,161	402.06
4512	Book, Periodical & Music Stores	61	439	498	450	1,930,192	321.15
<b>452</b>	<b>GENERAL MERCHANDISE STORES</b>	<b>998</b>	<b>37,046</b>	<b>36,911</b>	<b>36,778</b>	<b>\$207,532,947</b>	<b>\$432.49</b>
4522	Department Stores	136	7,201	7,181	7,165	37,085,957	397.19
4523	Gen. Merchandise Stores, Warehouse clubs & Supercenters	862	29,845	29,730	29,613	170,446,990	441.02
<b>453</b>	<b>MISCELLANEOUS STORE RETAILERS</b>	<b>1,185</b>	<b>7,123</b>	<b>7,446</b>	<b>7,341</b>	<b>\$39,876,500</b>	<b>\$420.00</b>
4531	Florists	162	544	569	567	2,718,642	373.44
4532	Office Supplies, Stationery & Gift Stores	236	1,454	1,567	1,599	8,509,213	425.04
4533	Used Merchandise Stores	251	2,141	2,349	2,236	9,808,817	336.54
4539	Other Miscellaneous Store Retailers	536	2,984	2,961	2,939	18,839,828	489.38
<b>454</b>	<b>NONSTORE RETAILERS</b>	<b>531</b>	<b>1,821</b>	<b>1,830</b>	<b>2,005</b>	<b>\$19,038,235</b>	<b>\$776.77</b>
4541	Electronic Shopping & Mail-Order Houses	292	719	722	723	7,717,690	823.02
4542	Vending Machine Operators	61	415	428	420	3,927,836	717.68
4543	Direct Selling Establishments	178	687	680	862	7,392,709	765.37
<b>48 - 49</b>	<b>TRANSPORTATION &amp; WAREHOUSING</b>	<b>3,082</b>	<b>55,990</b>	<b>56,300</b>	<b>56,550</b>	<b>\$657,527,853</b>	<b>\$898.70</b>
<b>481</b>	<b>AIR TRANSPORTATION</b>	<b>45</b>	<b>737</b>	<b>759</b>	<b>762</b>	<b>\$8,259,735</b>	<b>\$844.15</b>
4811	Scheduled Air Transportation	16	634	655	657	6,299,639	747.05
4812	Nonshceduled Air Transportation	29	103	104	105	1,960,096	1,449.78
<b>483</b>	<b>WATER TRANSPORTATION</b>	<b>8</b>	<b>36</b>	<b>38</b>	<b>40</b>	<b>\$615,419</b>	<b>\$1,245.79</b>
<b>484</b>	<b>TRUCK TRANSPORTATION</b>	<b>1,922</b>	<b>32,914</b>	<b>32,974</b>	<b>32,923</b>	<b>\$417,698,894</b>	<b>\$975.52</b>
4841	General Freight Trucking	1,129	26,527	26,558	26,539	342,449,892	992.50
4842	Specialized Freight Trucking	793	6,387	6,416	6,384	75,249,002	905.05

TABLE 5. STATEWIDE SUMMARY

North American Industry Classification System - Industry Groups		Number of Employing Units	Employment			Total Earnings	Average Weekly Earnings
			Jul	Aug	Sep	Jul- Sep 2019	
<b>485</b>	<b>TRANSIT &amp; GROUND PASSENGER TRANSPORTATION</b>	<b>126</b>	<b>1,747</b>	<b>1,860</b>	<b>1,869</b>	<b>\$11,126,106</b>	<b>\$468.88</b>
4853	Taxi & Limousine Service	29	363	333	333	1,837,590	412.11
4854	School & Employee Bus Transportation	14	280	413	410	2,003,050	419.08
4859	Other Ground Passenger Transportation	71	911	919	943	5,645,754	469.84
	Other	12	193	195	183	1,639,712	662.69
<b>486</b>	<b>PIPELINE TRANSPORTATION</b>	<b>43</b>	<b>398</b>	<b>412</b>	<b>403</b>	<b>\$9,439,201</b>	<b>\$1,795.78</b>
<b>487</b>	<b>SCENIC &amp; SIGHTSEEING TRANSPORTATION</b>	<b>4</b>	<b>37</b>	<b>29</b>	<b>21</b>	<b>\$106,031</b>	<b>\$281.25</b>
<b>488</b>	<b>SUPPORT ACTIVITIES FOR TRANSPORTATION</b>	<b>529</b>	<b>5,857</b>	<b>5,905</b>	<b>5,936</b>	<b>\$71,937,605</b>	<b>\$938.01</b>
4881	Support Activities for Air Transportation	110	1,137	1,155	1,167	11,801,734	787.36
4882	Support Activities for Rail Transportation	40	861	855	871	10,762,530	960.05
4883	Support Activities for Water Transportation	22	437	466	490	6,740,010	1,116.57
4884	Support Activities for Road Transportation	157	906	901	914	8,677,287	735.92
4885	Freight Transportation Arrangement	187	2,386	2,410	2,389	32,813,173	1,053.90
4889	Other Support Activities for Transportation	13	130	118	105	1,142,871	747.14
<b>493</b>	<b>WAREHOUSING &amp; STORAGE</b>	<b>216</b>	<b>8,752</b>	<b>8,825</b>	<b>8,916</b>	<b>\$84,297,310</b>	<b>\$734.28</b>
	<b>OTHER</b>	<b>189</b>	<b>5,512</b>	<b>5,498</b>	<b>5,680</b>	<b>\$54,047,552</b>	<b>\$747.30</b>
<b>22</b>	<b>UTILITIES</b>	<b>414</b>	<b>7,871</b>	<b>7,864</b>	<b>7,819</b>	<b>\$161,958,263</b>	<b>\$1,586.78</b>
2211	Power Generation & Supply	166	5,904	5,899	5,866	134,843,623	1,761.15
2212	Natural Gas Distribution	70	1,019	1,018	1,017	17,871,574	1,350.43
2213	Water, Sewage & Other Systems	178	948	947	936	9,243,066	753.45
<b>INFORMATION</b>		<b>1,310</b>	<b>10,891</b>	<b>10,905</b>	<b>10,836</b>	<b>\$164,202,204</b>	<b>\$1,161.22</b>
<b>511</b>	<b>PUBLISHING INDUSTRIES, EXCEPT INTERNET</b>	<b>236</b>	<b>2,679</b>	<b>2,689</b>	<b>2,637</b>	<b>\$30,310,345</b>	<b>\$873.79</b>
5111	Newspaper, Book & Directory Publishers	181	2,261	2,262	2,218	21,741,726	744.30
5112	Software Publishers	55	418	427	419	8,568,619	1,564.38
<b>512</b>	<b>MOTION PICTURE &amp; SOUND RECORDING INDUSTRY</b>	<b>150</b>	<b>1,369</b>	<b>1,297</b>	<b>1,223</b>	<b>\$8,431,068</b>	<b>\$500.29</b>
5121	Motion Picture & Video Industries	135	1,353	1,281	1,204	8,209,307	493.60
5122	Sound Recording Industries	15	16	16	19	221,761	1,003.44
<b>515</b>	<b>BROADCASTING, EXCEPT INTERNET</b>	<b>126</b>	<b>1,521</b>	<b>1,526</b>	<b>1,556</b>	<b>\$18,000,348</b>	<b>\$902.44</b>

TABLE 5. STATEWIDE SUMMARY

North American Industry Classification System - Industry Groups		Number of Employing Units	Employment			Total Earnings	Average Weekly Earnings
			Jul	Aug	Sep	Jul- Sep 2019	
<b>517</b>	<b>TELECOMMUNICATIONS</b>	<b>355</b>	<b>3,345</b>	<b>3,372</b>	<b>3,397</b>	<b>\$60,740,953</b>	<b>\$1,385.91</b>
5173	Telecommunications Resellers	247	2,958	2,976	3,002	53,694,317	1,386.64
5174	Satellite Telecommunications Carriers	4	6	5	5	60,910	878.51
5179	Other Telecommunications	104	381	391	390	6,985,726	1,387.34
<b>518</b>	<b>DATA PROCESSING, HOSTING &amp; RELATED SERVICES</b>	<b>350</b>	<b>1,631</b>	<b>1,674</b>	<b>1,682</b>	<b>\$42,048,213</b>	<b>\$1,945.75</b>
<b>519</b>	<b>OTHER INFORMATION SERVICES</b>	<b>93</b>	<b>346</b>	<b>347</b>	<b>341</b>	<b>\$4,671,277</b>	<b>\$1,042.54</b>
<b>FINANCIAL ACTIVITIES</b>		<b>8,596</b>	<b>52,231</b>	<b>52,338</b>	<b>51,755</b>	<b>\$727,143,085</b>	<b>\$1,073.43</b>
<b>52</b>	<b>FINANCE &amp; INSURANCE</b>	<b>5,045</b>	<b>37,995</b>	<b>38,078</b>	<b>37,927</b>	<b>\$590,541,831</b>	<b>\$1,195.43</b>
<b>522</b>	<b>CREDIT INTERMEDIATION &amp; RELATED ACTIVITIES</b>	<b>1,969</b>	<b>19,670</b>	<b>19,737</b>	<b>19,632</b>	<b>\$272,373,888</b>	<b>\$1,064.64</b>
5221	Depository Credit Intermediation	1,405	16,587	16,637	16,585	221,056,796	1,024.17
5222	Nondepository Credit Intermediation	422	1,973	1,989	1,968	34,894,655	1,357.94
5223	Activities Related to Credit Intermediation	142	1,110	1,111	1,079	16,422,437	1,148.42
<b>523</b>	<b>FINANCIAL INVESTMENT &amp; RELATED ACTIVITIES</b>	<b>726</b>	<b>3,095</b>	<b>3,061</b>	<b>3,025</b>	<b>\$84,187,230</b>	<b>\$2,116.09</b>
5231	Insurance Carriers	304	2,130	2,109	2,078	64,932,252	2,372.07
5239	Insurance Agencies, Brokerages & Support	422	965	952	947	19,254,978	1,551.49
<b>524</b>	<b>INSURANCE CARRIERS &amp; RELATED ACTIVITIES</b>	<b>2,265</b>	<b>15,154</b>	<b>15,201</b>	<b>15,196</b>	<b>\$232,452,299</b>	<b>\$1,177.64</b>
5231	Security & Commodity Contracts Intermediation & Brokerage	303	6,687	6,703	6,737	116,120,485	1,331.40
5239	Other Financial Investment Activities	1,962	8,467	8,498	8,459	116,331,814	1,055.92
	<b>OTHER</b>	<b>85</b>	<b>76</b>	<b>79</b>	<b>74</b>	<b>\$1,528,414</b>	<b>\$1,540.22</b>
<b>53</b>	<b>REAL ESTATE &amp; RENTAL &amp; LEASING</b>	<b>3,551</b>	<b>14,236</b>	<b>14,260</b>	<b>13,828</b>	<b>\$136,601,254</b>	<b>\$744.81</b>
<b>531</b>	<b>REAL ESTATE</b>	<b>2,944</b>	<b>9,832</b>	<b>9,901</b>	<b>9,579</b>	<b>\$90,759,442</b>	<b>\$714.54</b>
5311	Lessors of Real Estate	1,106	4,400	4,416	4,237	36,266,138	641.16
5312	Offices of Real Estate Agents & Brokers	970	2,000	2,021	2,009	20,883,510	799.22
5313	Activities Related to Real Estate	868	3,432	3,464	3,333	33,609,794	758.25
<b>532</b>	<b>RENTAL &amp; LEASING SERVICES</b>	<b>590</b>	<b>4,349</b>	<b>4,300</b>	<b>4,188</b>	<b>\$44,922,911</b>	<b>\$807.57</b>
5321	Automotive Equipment Rental & Leasing	124	1,184	1,170	1,166	9,369,977	614.29
5322	Consumer Goods Rental	299	1,969	1,942	1,851	16,024,705	641.79
5323	General Rental Centers	34	218	225	214	2,496,191	876.78
5324	Machinery & Equipment Rental & Leasing	133	978	963	957	17,032,038	1,356.27
<b>533</b>	<b>LESSORS OF NONFINANCIAL INTANGIBLE ASSETS</b>	<b>17</b>	<b>55</b>	<b>59</b>	<b>61</b>	<b>\$918,901</b>	<b>\$1,211.74</b>

TABLE 5. STATEWIDE SUMMARY

North American Industry Classification System - Industry Groups		Number of Employing Units	Employment			Total Earnings Jul- Sep 2019	Average Weekly Earnings
			Jul	Aug	Sep		
<b>PROFESSIONAL &amp; BUSINESS SERVICES</b>		<b>15,008</b>	<b>142,296</b>	<b>143,598</b>	<b>145,104</b>	<b>\$1,966,600,461</b>	<b>\$1,052.98</b>
<b>54</b>	<b>PROFESSIONAL &amp; TECHNICAL SERVICES</b>	<b>9,439</b>	<b>44,649</b>	<b>44,604</b>	<b>43,923</b>	<b>\$690,250,596</b>	<b>\$1,196.08</b>
5411	Legal Services	1,687	5,996	6,000	5,935	79,100,456	1,018.01
5412	Accounting & Bookkeeping Services	1,300	5,898	5,918	5,929	73,110,849	950.79
5413	Architectural & Engineering Services	1,049	6,466	6,457	6,371	102,592,291	1,227.07
5414	Specialized Design Services	176	356	359	364	4,413,842	944.00
5415	Computer Systems Design & Related Services	2,042	9,970	9,959	9,630	211,433,631	1,650.68
5416	Management & Technical Consulting Services	2,044	6,712	6,674	6,596	108,000,946	1,247.29
5417	Scientific Research & Development Services	141	790	787	782	13,489,876	1,319.65
5418	Advertising & Related Services	402	3,915	3,929	3,869	51,319,679	1,011.10
5419	Other Professional & Technical Services	598	4,546	4,521	4,447	46,789,026	798.98
<b>55</b>	<b>MANAGEMENT OF COMPANIES &amp; ENTERPRISES</b>	<b>552</b>	<b>33,849</b>	<b>33,899</b>	<b>33,809</b>	<b>\$756,915,746</b>	<b>\$1,719.95</b>
<b>56</b>	<b>ADMINISTRATIVE &amp; WASTE SERVICES</b>	<b>5,017</b>	<b>63,798</b>	<b>65,095</b>	<b>67,372</b>	<b>\$519,434,119</b>	<b>\$610.75</b>
<b>561</b>	<b>ADMINISTRATIVE &amp; SUPPORT SERVICES</b>	<b>4,680</b>	<b>60,181</b>	<b>61,480</b>	<b>63,766</b>	<b>\$472,369,714</b>	<b>\$587.88</b>
5611	Office Administrative Services	733	4,155	4,372	4,353	57,150,834	1,023.96
5612	Facilities Support Services	70	1,639	1,679	1,667	13,190,285	610.61
5613	Employment Services	1,231	24,814	25,555	28,033	168,246,517	495.22
5614	Business Support Services	383	7,438	7,231	7,218	76,689,482	808.59
5615	Travel Arrangement & Reservation Services	121	392	380	383	4,452,923	889.69
5616	Investigation & Security Services	306	4,879	5,045	5,076	36,469,857	561.07
5617	Services to Buildings & Dwellings	1,640	15,682	16,018	15,842	104,437,418	506.94
5619	Other Support Services	196	1,182	1,200	1,194	11,732,398	757.12
<b>562</b>	<b>WASTE MANAGEMENT &amp; REMEDIATION SERVICES</b>	<b>337</b>	<b>3,617</b>	<b>3,615</b>	<b>3,606</b>	<b>\$47,064,405</b>	<b>\$1,002.12</b>
5621	Waste Collection Services	136	1,236	1,225	1,251	14,446,822	898.14
5622	Waste Treatment & Disposal Services	43	1,037	1,039	1,023	16,475,825	1,226.88
5629	Remediation & Other Waste Services	158	1,344	1,351	1,332	16,141,758	925.01
<b>EDUCATION &amp; HEALTH SERVICES</b>		<b>15,749</b>	<b>186,034</b>	<b>187,726</b>	<b>188,731</b>	<b>2,055,164,046</b>	<b>\$843.16</b>
<b>61</b>	<b>EDUCATIONAL SERVICES</b>	<b>934</b>	<b>10,765</b>	<b>11,480</b>	<b>12,562</b>	<b>111,764,214</b>	<b>\$740.99</b>
6111	Elementary & Secondary Schools	105	3,755	4,329	4,695	36,055,446	651.11
6113	Colleges & Universities	127	3,804	3,852	4,349	43,743,964	840.88
6115	Technical & Trade Schools	115	743	778	842	13,180,498	1,287.20
6116	Other Schools & Instruction	325	1,658	1,697	1,798	8,819,437	394.97
6117	Educational Support Services	190	584	594	617	7,108,229	913.85
	Other	72	221	230	261	2,856,640	925.88



TABLE 5. STATEWIDE SUMMARY

North American Industry Classification System - Industry Groups		Number of Employing Units	Employment			Total Earnings	Average Weekly Earnings
			Jul	Aug	Sep	Jul- Sep 2019	
<b>62</b>	<b>HEALTH CARE &amp; SOCIAL ASSISTANCE</b>	<b>14,815</b>	<b>175,269</b>	<b>176,246</b>	<b>176,169</b>	<b>\$1,943,399,832</b>	<b>\$849.90</b>
<b>621</b>	<b>AMBULATORY HEALTH CARE SERVICES</b>	<b>6,061</b>	<b>59,922</b>	<b>60,114</b>	<b>59,847</b>	<b>\$950,720,289</b>	<b>\$1,219.66</b>
6211	Offices of Physicians	2,342	25,936	26,070	25,860	554,331,400	1,642.86
6212	Offices of Dentists	970	7,604	7,591	7,462	94,735,303	964.91
6213	Offices of Other Health Practitioners	1,712	10,056	10,102	10,111	103,700,636	790.61
6214	Outpatient Care Centers	372	5,188	5,240	5,232	76,721,843	1,130.59
6215	Medical & Diagnostic Laboratories	194	1,399	1,410	1,403	23,808,326	1,304.42
6216	Home Health Care Services	273	6,985	6,902	6,958	64,181,973	710.54
6219	Other Ambulatory Health Care Services	198	2,754	2,799	2,821	33,240,808	916.04
<b>622</b>	<b>HOSPITALS</b>	<b>123</b>	<b>43,942</b>	<b>44,093</b>	<b>44,209</b>	<b>\$561,575,004</b>	<b>\$979.96</b>
6221	General Medical & Surgical Hospitals	92	39,142	39,302	39,354	507,192,575	993.60
6222	Psychiatric & Substance Abuse Hospitals	11	1,924	1,931	1,985	20,373,758	805.07
6223	Speciality Hospitals	20	2,876	2,860	2,870	34,008,671	911.94
<b>623</b>	<b>Residential &amp; Mental Health Facilities</b>	<b>649</b>	<b>32,676</b>	<b>32,823</b>	<b>32,579</b>	<b>\$220,971,129</b>	<b>\$519.93</b>
6231	Nursing Care Facilities (Skilled Nursing Facilities)	283	22,965	23,035	22,775	154,923,075	519.83
6232	Residential Mental Health Facilities	176	4,280	4,293	4,303	29,805,704	534.19
6233	Continuing Care & Assisted Living Facilities	153	4,414	4,486	4,495	28,476,983	490.60
6239	Other Residential Care Facilities	37	1,017	1,009	1,006	7,765,367	591.03
<b>624</b>	<b>SOCIAL ASSISTANCE</b>	<b>7,982</b>	<b>38,729</b>	<b>39,216</b>	<b>39,534</b>	<b>\$210,133,410</b>	<b>\$412.77</b>
6241	Individual & Family Services	6,916	24,144	24,157	24,272	130,821,890	415.99
6242	Emergency & Other Relief Services	146	1,394	1,399	1,390	9,472,362	522.57
6243	Vocational Rehabilitation Services	94	3,296	3,182	3,221	18,427,785	438.45
6244	Child Day Care Services	826	9,895	10,478	10,651	51,411,373	382.42
<b>LEISURE &amp; HOSPITALITY</b>		<b>7,388</b>	<b>122,533</b>	<b>123,471</b>	<b>121,184</b>	<b>\$536,355,782</b>	<b>\$337.09</b>
<b>71</b>	<b>ARTS, ENTERTAINMENT &amp; RECREATION</b>	<b>1,020</b>	<b>13,462</b>	<b>12,977</b>	<b>11,523</b>	<b>67,526,359</b>	<b>\$410.49</b>
<b>711</b>	<b>PERFORMING ARTS &amp; SPECTATOR SPORTS</b>	<b>236</b>	<b>3,209</b>	<b>3,199</b>	<b>2,853</b>	<b>21,462,007</b>	<b>\$534.80</b>
7111	Performing Arts Companies	46	528	574	599	2,563,679	347.81
7112	Spectator Sports	68	1,551	1,556	1,368	13,169,316	679.12
7113	Performing Arts & Sports Promoters	56	1,038	963	790	4,846,704	400.74
7114	Agents & Managers for Public Figures	17	16	39	24	228,632	667.86
7115	Independent Artists, Writers, & Performers	49	76	67	72	653,676	701.62
<b>712</b>	<b>MUSEUMS, PARKS, &amp; HISTORICAL SITES</b>	<b>53</b>	<b>803</b>	<b>781</b>	<b>774</b>	<b>5,998,611</b>	<b>\$587.06</b>
<b>713</b>	<b>GAMBLING, RECREATIONAL &amp; AMUSEMENT INDUSTRY</b>	<b>731</b>	<b>9,450</b>	<b>8,997</b>	<b>7,896</b>	<b>40,065,741</b>	<b>350.98</b>
<b>72</b>	<b>ACCOMMODATION &amp; FOOD SERVICES</b>	<b>6,368</b>	<b>109,071</b>	<b>110,494</b>	<b>109,661</b>	<b>468,829,423</b>	<b>\$328.62</b>

TABLE 5. STATEWIDE SUMMARY

North American Industry Classification System - Industry Groups		Number of Employing Units	Employment			Total Earnings	Average Weekly Earnings
			Jul	Aug	Sep	Jul- Sep 2019	
<b>721</b>	<b>ACCOMMODATION</b>	<b>912</b>	<b>12,120</b>	<b>11,908</b>	<b>11,678</b>	<b>\$59,006,046</b>	<b>\$381.36</b>
7211	Travel Accommodation	818	11,257	11,243	11,018	54,861,133	377.72
7212	RV Parks & Recreational Camps	77	776	568	540	3,517,589	430.87
7213	Rooming & Boarding Houses	17	87	97	120	627,324	476.21
<b>722</b>	<b>FOOD SERVICES &amp; DRINKING PLACES</b>	<b>5,456</b>	<b>96,951</b>	<b>98,586</b>	<b>97,983</b>	<b>\$409,823,377</b>	<b>\$322.21</b>
7223	Special Food Services	313	3,396	4,684	5,175	19,593,548	341.12
7224	Drinking Places, Alcoholic Beverages	146	1,005	1,028	1,022	4,207,208	317.80
7225	Restaurants & Other Eating Places	4,997	92,550	92,874	91,786	386,022,621	321.35
722511	Full-Service Restaurants	2,134	39,320	39,277	39,040	180,082,491	353.27
722513	Limited-Service Eating Places	2,354	48,125	48,548	47,821	184,403,235	294.51
722514	Cafeterias, Grill Buffets, & Buffets	88	1,676	1,654	1,623	8,611,633	401.23
722515	Snack & Nonalcoholic Beverage Bars	421	3,429	3,395	3,302	12,925,262	294.56
<b>OTHER SERVICES</b>		<b>5,382</b>	<b>25,538</b>	<b>25,273</b>	<b>25,211</b>	<b>\$224,922,587</b>	<b>\$682.77</b>
<b>811</b>	<b>REPAIR &amp; MAINTENANCE</b>	<b>2,221</b>	<b>11,046</b>	<b>11,087</b>	<b>11,094</b>	<b>\$110,465,590</b>	<b>\$767.21</b>
8111	Automotive Repair & Maintenance	1,403	6,945	6,965	6,938	62,571,591	692.61
8112	Electronic Equipment Repair & Maintenance	158	1,008	1,000	990	11,067,279	851.90
8113	Commercial Machinery Repair & Maintenance	494	2,460	2,490	2,536	31,707,473	977.44
8114	Household Goods Repair & Maintenance	166	633	632	630	5,119,247	623.41
<b>812</b>	<b>PERSONAL &amp; LAUNDRY SERVICES</b>	<b>1,354</b>	<b>7,760</b>	<b>7,811</b>	<b>7,799</b>	<b>\$53,783,664</b>	<b>\$531.09</b>
8121	Personal Care Services	654	2,936	2,951	2,955	17,425,242	454.79
8122	Death Care Services	251	1,552	1,578	1,557	11,344,816	558.57
8123	Drycleaning & Laundry Service	203	2,162	2,164	2,185	18,122,094	642.30
8129	Other Personal Services	246	1,110	1,118	1,102	6,891,512	477.58
<b>813</b>	<b>MEMBERSHIP ASSOCIATIONS &amp; ORGANIZATIONS</b>	<b>1,122</b>	<b>5,848</b>	<b>5,488</b>	<b>5,429</b>	<b>\$55,305,076</b>	<b>\$761.27</b>
8131	Religious Organizations	103	322	308	327	2,439,356	588.22
8132	Grantmaking & Giving Organizations	120	447	437	450	7,070,381	1,223.11
8133	Social Advocacy Organizations	219	1,256	1,235	1,245	14,656,939	905.35
8134	Civic & Social Organizations	194	1,506	1,219	1,251	6,211,654	360.53
8139	Professional & Similar Organizations	486	2,317	2,289	2,156	24,926,746	850.68
<b>814</b>	<b>PRIVATE HOUSEHOLDS</b>	<b>685</b>	<b>884</b>	<b>887</b>	<b>889</b>	<b>\$5,368,257</b>	<b>\$465.73</b>
	<b>LOCAL GOVERNMENT</b>	<b>1,988</b>	<b>71,860</b>	<b>95,760</b>	<b>111,704</b>	<b>\$850,622,331</b>	<b>\$702.76</b>
	<b>STATE GOVERNMENT</b>	<b>1,071</b>	<b>64,996</b>	<b>66,576</b>	<b>68,739</b>	<b>\$849,379,530</b>	<b>\$978.53</b>
	<b>NONCLASSIFIABLE ESTABLISHMENTS</b>	<b>0</b>	<b>0</b>	<b>0</b>	<b>0</b>	<b>\$0</b>	<b>\$0.00</b>

TABLE 6. COUNTY SUMMARY

North American Industry Classification System - Industry Groups	Number of Employing Units	Employment			Total Earnings	Average Weekly Earnings
		Jul	Aug	Sep	Jul- Sep 2019	
<b>ARKANSAS COUNTY - TOTAL</b>	<b>862</b>	<b>9,933</b>	<b>10,134</b>	<b>10,107</b>	<b>\$103,651,483</b>	<b>\$792.72</b>
Natural Resources & Mining	58	196	198	196	1,761,212	688.87
Construction	56	274	270	267	3,693,586	1,051.01
Manufacturing	35	3,955	3,917	3,929	45,201,285	883.91
Trade, Transportation & Utilities	203	2,208	2,208	2,159	22,981,279	806.60
Wholesale Trade	48	467	441	420	5,526,309	960.32
Retail Trade	94	974	984	971	6,962,443	548.56
Transportation, Warehousing & Utilities	61	767	783	768	10,492,527	1,044.59
Information	10	45	46	45	476,633	808.77
Financial Activities	57	311	320	299	3,562,997	884.12
Professional & Business Services	68	474	480	483	6,520,144	1,047.08
Education & Health Services	207	1,080	1,118	1,097	9,287,419	650.46
Leisure & Hospitality	75	591	610	636	2,323,816	291.92
Other Services	47	103	102	114	827,008	598.27
Local Government	32	519	690	713	5,528,008	663.73
State Government	14	177	175	169	1,488,096	659.13
<b>ASHLEY COUNTY - TOTAL</b>	<b>571</b>	<b>6,280</b>	<b>6,460</b>	<b>6,450</b>	<b>\$70,873,241</b>	<b>\$852.29</b>
Natural Resources & Mining	47	359	351	370	3,715,198	793.85
Construction	37	567	590	552	7,001,774	945.46
Manufacturing	25	1,637	1,612	1,571	29,074,435	1,392.01
Trade, Transportation & Utilities	120	1,184	1,203	1,201	10,178,433	654.65
Wholesale Trade	26	192	185	187	2,587,502	1,058.72
Retail Trade	66	706	702	713	4,131,020	449.46
Transportation, Warehousing & Utilities	28	286	316	301	3,459,911	884.21
Information	5	36	38	37	290,368	603.68
Financial Activities	38	183	181	185	1,622,960	682.20
Professional & Business Services	38	215	219	195	1,878,575	689.22
Education & Health Services	147	895	904	882	8,411,307	724.01
Leisure & Hospitality	38	398	426	402	1,537,254	289.36
Other Services	34	130	128	131	992,735	588.93
Local Government	32	592	725	821	5,239,183	565.50
State Government	10	84	83	103	931,019	795.74

TABLE 6. COUNTY SUMMARY

North American Industry Classification System - Industry Groups	Number of Employing Units	Employment			Total Earnings Jul- Sep 2019	Average Weekly Earnings
		Jul	Aug	Sep		
<b>BAXTER COUNTY - TOTAL</b>	<b>1,215</b>	<b>14,225</b>	<b>14,441</b>	<b>14,793</b>	<b>\$129,558,419</b>	<b>\$687.96</b>
Natural Resources & Mining	8	57	57	58	622,592	835.32
Construction	104	544	524	530	4,586,242	662.31
Manufacturing	53	2,445	2,391	2,427	23,255,525	738.90
Trade, Transportation & Utilities	260	2,661	2,628	2,630	18,737,146	546.02
Wholesale Trade	32	174	169	163	1,661,095	757.57
Retail Trade	204	2,280	2,244	2,257	14,781,343	503.03
Transportation, Warehousing & Utilities	24	207	215	210	2,294,708	837.89
Information	22	167	166	161	1,934,955	903.90
Financial Activities	117	725	731	727	9,321,068	985.35
Professional & Business Services	141	899	893	904	7,483,137	640.53
Education & Health Services	258	3,842	3,883	3,874	44,346,734	882.31
Leisure & Hospitality	117	1,719	1,731	1,630	7,106,966	322.85
Other Services	88	282	314	310	2,046,194	521.19
Local Government	36	627	848	1,234	7,541,099	642.40
State Government	11	257	275	308	2,576,761	707.90
<b>BENTON COUNTY - TOTAL</b>	<b>6,776</b>	<b>119,467</b>	<b>121,039</b>	<b>122,999</b>	<b>\$1,594,232,052</b>	<b>\$1,012.09</b>
Natural Resources & Mining	49	837	816	816	13,781,352	1,288.10
Construction	669	5,218	5,296	5,354	62,539,552	909.52
Manufacturing	192	12,230	12,202	12,294	143,108,899	899.23
Trade, Transportation & Utilities	1,715	29,264	29,208	29,306	378,196,323	994.28
Wholesale Trade	766	6,066	6,038	6,029	148,705,862	1,892.50
Retail Trade	753	12,235	12,300	12,272	93,112,239	583.79
Transportation, Warehousing & Utilities	196	10,963	10,870	11,005	136,378,222	958.40
Information	80	949	958	957	14,347,025	1,156.02
Financial Activities	700	4,046	4,032	4,040	58,337,776	1,110.96
Professional & Business Services	1,342	32,312	32,616	32,482	623,367,289	1,476.79
Education & Health Services	853	11,713	11,881	12,072	127,361,595	824.07
Leisure & Hospitality	658	13,560	13,698	13,394	67,079,721	380.79
Other Services	416	2,474	2,410	2,429	22,940,622	723.91
Local Government	85	5,974	6,999	8,759	73,803,489	783.71
State Government	17	890	923	1,096	9,368,409	743.19

TABLE 6. COUNTY SUMMARY

North American Industry Classification System - Industry Groups	Number of Employing Units	Employment			Total Earnings	Average Weekly Earnings
		Jul	Aug	Sep	Jul- Sep 2019	
<b>BOONE COUNTY - TOTAL</b>	<b>951</b>	<b>13,465</b>	<b>13,639</b>	<b>14,140</b>	<b>\$131,279,326</b>	<b>\$734.54</b>
Construction	60	396	392	392	4,030,050	788.15
Manufacturing	59	1,948	1,944	1,863	20,395,649	817.84
Trade, Transportation & Utilities	249	3,678	3,633	3,655	37,304,359	785.04
Wholesale Trade	41	330	324	331	3,201,755	750.12
Retail Trade	164	2,058	2,045	2,051	14,356,790	538.37
Transportation, Warehousing & Utilities	44	1,290	1,264	1,273	19,745,814	1,190.68
Information	14	266	267	262	3,314,148	962.02
Financial Activities	93	441	443	426	5,361,881	944.55
Professional & Business Services	98	1,399	1,422	1,425	16,082,194	874.06
Education & Health Services	164	1,683	1,691	1,652	13,170,318	604.72
Leisure & Hospitality	82	1,254	1,252	1,239	5,214,008	321.29
Local Government	53	1,433	1,607	2,158	16,526,010	733.68
State Government	17	690	693	782	7,072,875	753.90
Other	62	277	295	286	2,807,834	755.20
<b>BRADLEY COUNTY - TOTAL</b>	<b>360</b>	<b>3,525</b>	<b>3,588</b>	<b>3,810</b>	<b>\$32,315,748</b>	<b>\$682.73</b>
Natural Resources & Mining	46	186	197	213	2,371,300	918.16
Construction	18	104	90	96	844,207	671.78
Manufacturing	12	950	957	965	10,113,990	812.67
Trade, Transportation & Utilities	70	527	518	511	4,052,223	600.98
Wholesale Trade	11	102	102	100	1,346,679	1,022.28
Retail Trade	37	317	321	318	1,745,177	421.27
Transportation, Warehousing & Utilities	22	108	95	93	960,367	748.73
Information	3	26	27	28	195,646	557.40
Financial Activities	24	132	133	129	1,408,336	824.87
Professional & Business Services	26	96	78	78	799,051	731.73
Education & Health Services	97	657	656	661	6,042,488	706.39
Leisure & Hospitality	14	177	184	180	592,318	252.66
Other Services	26	96	97	94	585,996	471.18
Local Government	14	209	279	477	2,386,968	570.82
State Government	10	365	372	378	2,923,225	605.01

TABLE 6. COUNTY SUMMARY

North American Industry Classification System - Industry Groups	Number of Employing Units	Employment			Total Earnings	Average Weekly Earnings
		Jul	Aug	Sep	Jul- Sep 2019	
<b>CALHOUN COUNTY - TOTAL</b>	<b>100</b>	<b>3,178</b>	<b>3,166</b>	<b>3,133</b>	<b>\$45,579,388</b>	<b>\$1,109.88</b>
Natural Resources & Mining	6	35	35	35	320,762	704.97
Construction	10	144	149	144	1,475,863	779.37
Manufacturing	8	2,346	2,359	2,373	37,754,227	1,230.93
Trade, Transportation & Utilities	17	193	188	189	1,875,058	759.13
Retail Trade	8	46	40	40	236,495	433.14
Transportation, Warehousing & Utilities	9	147	148	149	1,638,563	851.64
Professional & Business Services	6	12	11	12	146,300	964.62
Education & Health Services	22	60	64	60	627,850	787.44
Leisure & Hospitality	4	13	13	13	44,393	262.68
Other Services	3	4	4	4	26,316	506.08
Local Government	11	189	158	119	1,126,553	557.88
State Government	7	78	79	79	847,676	828.89
Other	6	104	106	105	1,334,390	977.58
<b>CARROLL COUNTY - TOTAL</b>	<b>776</b>	<b>10,793</b>	<b>11,109</b>	<b>11,138</b>	<b>\$84,921,446</b>	<b>\$593.14</b>
Natural Resources & Mining	21	215	228	234	2,242,038	764.24
Trade, Transportation & Utilities	186	1,652	1,632	1,603	13,156,528	621.26
Wholesale Trade	23	192	190	189	1,744,577	705.07
Retail Trade	138	1,162	1,148	1,127	6,748,934	453.14
Transportation, Warehousing & Utilities	25	298	294	287	4,663,017	1,224.21
Information	10	64	66	65	725,985	859.15
Financial Activities	55	389	387	373	4,214,825	846.52
Professional & Business Services	67	470	469	453	4,343,320	720.05
Education & Health Services	102	1,071	1,096	1,095	9,735,052	688.70
Leisure & Hospitality	160	1,967	1,896	1,839	7,919,355	320.51
Other Services	43	156	156	155	985,160	486.82
Local Government	25	594	986	1,097	6,804,394	586.57
State Government	9	103	105	104	1,024,255	757.59
Other	98	4,112	4,088	4,120	33,770,534	632.56

TABLE 6. COUNTY SUMMARY

North American Industry Classification System - Industry Groups	Number of Employing Units	Employment			Total Earnings	Average Weekly Earnings
		Jul	Aug	Sep	Jul- Sep 2019	
<b>CHICOT COUNTY - TOTAL</b>	<b>490</b>	<b>2,839</b>	<b>2,947</b>	<b>2,981</b>	<b>\$24,810,874</b>	<b>\$653.08</b>
Natural Resources & Mining	52	237	243	241	2,542,559	813.79
Construction	14	129	132	142	1,672,692	957.83
Manufacturing	6	11	12	11	135,294	918.29
Trade, Transportation & Utilities	66	622	617	633	5,014,953	618.21
Wholesale Trade	12	48	46	47	773,565	1,266.06
Retail Trade	41	289	279	282	1,885,661	511.94
Transportation, Warehousing & Utilities	13	285	292	304	2,355,727	617.06
Financial Activities	29	178	181	172	2,047,506	889.83
Professional & Business Services	16	40	40	42	402,392	761.15
Education & Health Services	245	659	671	696	4,541,672	517.31
Leisure & Hospitality	15	108	106	104	365,521	265.25
Local Government	17	507	590	594	4,801,799	655.30
State Government	10	261	262	261	2,591,070	762.68
Other	20	87	93	85	695,416	605.59
<b>CLARK COUNTY - TOTAL</b>	<b>661</b>	<b>8,776</b>	<b>9,111</b>	<b>9,372</b>	<b>\$80,868,636</b>	<b>\$684.62</b>
Natural Resources & Mining	50	295	293	303	3,422,368	886.39
Construction	26	93	96	97	1,012,350	816.85
Manufacturing	34	1,355	1,395	1,385	18,502,936	1,032.63
Trade, Transportation & Utilities	139	1,445	1,425	1,432	11,679,851	626.53
Wholesale Trade	16	51	51	50	642,294	975.14
Retail Trade	91	1,187	1,170	1,186	8,568,814	558.12
Transportation, Warehousing & Utilities	32	207	204	196	2,468,743	938.57
Information	4	7	7	8	109,114	1,144.55
Financial Activities	72	323	324	317	2,879,620	689.34
Professional & Business Services	51	591	606	586	6,745,511	873.05
Education & Health Services	128	1,586	1,590	1,704	13,537,316	640.16
Leisure & Hospitality	68	1,144	1,172	1,217	4,258,135	278.13
Other Services	45	208	202	203	2,005,509	754.99
Local Government	30	773	969	949	6,678,954	572.76
State Government	14	956	1,032	1,171	10,036,972	733.21

TABLE 6. COUNTY SUMMARY

North American Industry Classification System - Industry Groups	Number of Employing Units	Employment			Total Earnings	Average Weekly Earnings
		Jul	Aug	Sep	Jul- Sep 2019	
<b>CLAY COUNTY - TOTAL</b>	<b>359</b>	<b>2,993</b>	<b>3,118</b>	<b>3,052</b>	<b>\$23,832,762</b>	<b>\$600.23</b>
Natural Resources & Mining	53	231	213	215	1,958,545	685.85
Construction	29	128	118	127	1,119,773	692.79
Manufacturing	13	105	103	100	855,269	640.81
Trade, Transportation & Utilities	85	738	742	726	6,291,865	658.19
Wholesale Trade	19	238	241	232	2,178,966	707.23
Retail Trade	42	366	364	358	2,471,754	524.27
Transportation, Warehousing & Utilities	24	134	137	136	1,641,145	930.53
Information	6	22	22	23	205,240	706.91
Financial Activities	21	100	99	95	846,222	664.22
Professional & Business Services	26	136	131	122	1,128,580	669.52
Education & Health Services	51	508	511	515	4,008,122	602.97
Leisure & Hospitality	22	213	215	186	699,865	263.04
Other Services	23	80	82	77	647,267	624.98
Local Government	21	686	836	820	5,593,541	551.16
State Government	9	46	46	46	478,473	800.12
<b>CLEBURNE COUNTY - TOTAL</b>	<b>641</b>	<b>6,056</b>	<b>6,207</b>	<b>6,360</b>	<b>\$50,995,860</b>	<b>\$631.92</b>
Natural Resources & Mining	21	169	173	168	2,623,889	1,187.28
Construction	64	336	340	354	3,347,919	750.09
Manufacturing	32	1,238	1,276	1,269	12,317,323	751.38
Trade, Transportation & Utilities	155	1,222	1,227	1,219	10,091,995	634.93
Wholesale Trade	32	114	109	113	1,237,966	850.25
Retail Trade	101	966	970	962	7,119,234	566.91
Transportation, Warehousing & Utilities	22	142	148	144	1,734,795	922.44
Information	11	58	59	58	552,396	728.43
Financial Activities	74	257	257	257	2,710,486	811.28
Professional & Business Services	65	245	250	241	2,516,627	789.08
Education & Health Services	75	868	902	904	6,689,402	577.30
Leisure & Hospitality	82	1,017	933	878	3,982,775	325.00
Other Services	36	115	114	113	786,914	530.98
Local Government	18	444	587	782	4,526,973	576.22
State Government	8	87	89	117	849,161	668.81



TABLE 6. COUNTY SUMMARY

North American Industry Classification System - Industry Groups	Number of Employing Units	Employment			Total Earnings Jul- Sep 2019	Average Weekly Earnings
		Jul	Aug	Sep		
<b>CLEVELAND COUNTY - TOTAL</b>	<b>128</b>	<b>863</b>	<b>1,029</b>	<b>1,045</b>	<b>\$8,712,901</b>	<b>\$684.60</b>
Natural Resources & Mining	17	175	173	171	1,774,083	788.83
Construction	6	8	9	10	61,346	524.32
Manufacturing	3	109	110	111	1,329,970	930.05
Trade, Transportation & Utilities	30	157	161	157	1,278,081	620.93
Retail Trade	17	67	70	67	272,186	307.90
Other Trade, Transportation, & Utilities	13	90	91	90	1,005,895	856.57
Financial Activities	4	21	19	21	254,657	963.39
Education & Health Services	33	202	202	204	1,372,380	520.89
Other Services	5	12	12	12	104,984	672.97
Local Government	14	121	286	304	2,085,589	676.92
State Government	6	30	30	30	327,166	838.89
Other	10	28	27	25	124,645	359.55
<b>COLUMBIA COUNTY - TOTAL</b>	<b>704</b>	<b>7,596</b>	<b>7,888</b>	<b>8,110</b>	<b>\$79,631,313</b>	<b>\$778.86</b>
Natural Resources & Mining	45	405	396	430	6,044,959	1,133.22
Construction	38	167	166	168	1,584,732	729.95
Manufacturing	31	1,863	1,892	1,904	28,601,460	1,166.34
Trade, Transportation & Utilities	170	1,451	1,455	1,461	12,065,429	637.58
Wholesale Trade	31	250	255	253	3,283,161	999.54
Retail Trade	96	964	955	978	5,754,779	458.41
Transportation, Warehousing & Utilities	43	237	245	230	3,027,489	981.25
Information	6	30	30	30	332,319	852.10
Financial Activities	60	345	337	331	3,895,645	887.46
Professional & Business Services	52	288	302	285	2,319,639	611.77
Education & Health Services	165	937	912	907	5,840,281	489.03
Leisure & Hospitality	59	755	770	798	2,744,014	272.59
Other Services	39	125	126	134	818,604	490.67
Local Government	27	666	915	1,067	8,015,384	698.53
State Government	12	564	587	595	7,368,847	973.94

TABLE 6. COUNTY SUMMARY

North American Industry Classification System - Industry Groups	Number of Employing Units	Employment			Total Earnings Jul- Sep 2019	Average Weekly Earnings
		Jul	Aug	Sep		
<b>CONWAY COUNTY - TOTAL</b>	<b>529</b>	<b>6,135</b>	<b>6,488</b>	<b>6,636</b>	<b>\$62,964,950</b>	<b>\$754.47</b>
Natural Resources & Mining	30	265	263	263	2,684,304	783.13
Construction	47	471	487	489	7,153,779	1,140.89
Manufacturing	19	977	1,006	1,022	14,889,070	1,143.41
Trade, Transportation & Utilities	116	1,341	1,342	1,336	10,699,394	614.35
Wholesale Trade	14	125	127	123	1,206,973	742.75
Retail Trade	76	772	772	772	5,064,490	504.63
Transportation, Warehousing & Utilities	26	444	443	441	4,427,931	769.45
Information	3	13	13	12	50,835	308.71
Financial Activities	42	157	155	154	1,631,508	807.94
Professional & Business Services	40	457	476	490	3,607,622	585.05
Education & Health Services	129	810	814	818	7,892,138	745.81
Leisure & Hospitality	37	469	459	456	1,861,725	310.43
Other Services	26	90	89	85	690,284	603.40
Local Government	31	697	980	1,109	8,346,091	691.32
State Government	9	388	404	402	3,458,200	668.38
<b>CRAIGHEAD COUNTY - TOTAL</b>	<b>2,838</b>	<b>49,632</b>	<b>51,085</b>	<b>52,736</b>	<b>\$524,034,598</b>	<b>\$788.07</b>
Natural Resources & Mining	101	386	388	428	3,539,918	679.62
Construction	242	2,204	2,194	2,233	28,532,236	992.97
Manufacturing	100	7,095	7,124	7,092	83,657,079	905.89
Trade, Transportation & Utilities	770	10,357	10,397	10,498	94,109,056	694.91
Wholesale Trade	181	1,997	1,981	1,980	25,602,085	991.64
Retail Trade	462	6,560	6,600	6,669	45,539,781	529.99
Transportation, Warehousing & Utilities	127	1,800	1,816	1,849	22,967,190	969.83
Information	21	383	382	385	4,540,004	911.04
Financial Activities	281	1,732	1,758	1,749	22,082,965	972.72
Professional & Business Services	377	4,857	4,914	5,193	44,741,967	689.99
Education & Health Services	450	11,351	11,413	11,420	147,290,457	994.33
Leisure & Hospitality	272	5,544	5,621	5,741	23,318,772	318.30
Other Services	167	772	773	792	6,197,241	611.95
Local Government	35	2,173	3,289	4,294	33,112,408	783.24
State Government	22	2,778	2,832	2,911	32,912,495	891.35

TABLE 6. COUNTY SUMMARY

North American Industry Classification System - Industry Groups	Number of Employing Units	Employment			Total Earnings Jul- Sep 2019	Average Weekly Earnings
		Jul	Aug	Sep		
<b>CRAWFORD COUNTY - TOTAL</b>	<b>1,264</b>	<b>18,744</b>	<b>19,732</b>	<b>19,710</b>	<b>\$174,831,875</b>	<b>\$693.39</b>
Natural Resources & Mining	23	226	226	235	2,341,993	786.70
Construction	146	1,004	996	1,011	11,135,123	853.42
Manufacturing	63	4,709	4,691	4,716	49,685,083	812.25
Trade, Transportation & Utilities	319	5,727	5,722	5,704	52,228,765	702.66
Wholesale Trade	73	736	734	717	9,529,632	1,005.55
Retail Trade	168	1,989	1,965	1,950	13,747,139	537.33
Transportation, Warehousing & Utilities	78	3,002	3,023	3,037	28,951,994	737.28
Information	11	51	49	44	453,170	726.23
Financial Activities	126	504	502	501	4,873,879	746.34
Professional & Business Services	163	1,567	1,578	1,527	13,625,167	673.00
Education & Health Services	184	1,641	1,679	1,676	13,339,081	616.14
Leisure & Hospitality	92	1,676	1,655	1,609	6,246,576	291.81
Other Services	85	434	427	425	3,766,416	675.87
Local Government	42	1,041	2,041	2,099	15,706,313	699.58
State Government	10	164	166	163	1,430,309	669.52
<b>CRITTENDEN COUNTY - TOTAL</b>	<b>1,199</b>	<b>15,320</b>	<b>15,937</b>	<b>16,511</b>	<b>\$148,264,697</b>	<b>\$716.27</b>
Natural Resources & Mining	55	238	228	254	1,875,300	601.06
Construction	44	415	424	468	5,311,209	937.77
Manufacturing	42	2,096	2,116	2,116	27,510,363	1,003.25
Trade, Transportation & Utilities	304	4,326	4,203	4,196	43,480,797	788.53
Wholesale Trade	54	777	692	689	8,914,168	953.25
Retail Trade	163	1,920	1,872	1,860	12,129,529	495.24
Transportation, Warehousing & Utilities	87	1,629	1,639	1,647	22,437,100	1,053.47
Information	4	39	38	38	424,329	851.50
Financial Activities	103	451	438	458	5,364,480	919.05
Professional & Business Services	109	1,000	1,063	1,094	8,945,847	653.92
Education & Health Services	278	2,030	2,095	2,068	17,816,335	663.89
Leisure & Hospitality	137	2,775	2,764	2,724	13,771,786	384.62
Other Services	69	523	531	515	4,380,739	644.32
Local Government	41	1,089	1,633	2,169	15,804,531	745.70
State Government	13	338	404	411	3,578,981	716.32

TABLE 6. COUNTY SUMMARY

North American Industry Classification System - Industry Groups	Number of Employing Units	Employment			Total Earnings	Average Weekly Earnings
		Jul	Aug	Sep	Jul- Sep 2019	
<b>CROSS COUNTY - TOTAL</b>	<b>476</b>	<b>4,516</b>	<b>4,824</b>	<b>4,811</b>	<b>\$39,267,449</b>	<b>\$640.36</b>
Natural Resources & Mining	46	272	290	293	2,587,456	698.37
Construction	24	68	66	69	614,166	698.18
Manufacturing	10	318	310	284	2,355,476	596.02
Trade, Transportation & Utilities	125	1,154	1,136	1,113	10,173,573	689.91
Wholesale Trade	27	315	305	296	4,057,155	1,022.13
Retail Trade	66	721	716	701	4,858,136	524.37
Transportation, Warehousing & Utilities	32	118	115	116	1,258,282	832.01
Information	6	40	40	41	270,796	516.46
Financial Activities	45	282	287	268	2,708,128	746.66
Professional & Business Services	41	143	142	151	1,547,449	819.04
Education & Health Services	87	973	977	988	8,340,188	655.09
Leisure & Hospitality	35	441	434	444	1,580,376	276.50
Other Services	31	103	113	107	871,766	622.84
Local Government	17	358	666	700	5,035,478	674.03
State Government	9	364	363	353	3,182,597	680.04
<b>DALLAS COUNTY - TOTAL</b>	<b>226</b>	<b>2,563</b>	<b>2,644</b>	<b>2,630</b>	<b>\$21,172,141</b>	<b>\$623.44</b>
Natural Resources & Mining	22	117	116	120	1,159,948	758.30
Construction	14	60	76	72	564,643	626.45
Manufacturing	9	557	557	551	5,880,666	815.06
Trade, Transportation & Utilities	53	475	493	493	3,862,164	610.04
Wholesale Trade	5	19	20	21	239,593	921.51
Retail Trade	34	293	301	302	2,082,170	536.27
Transportation, Warehousing & Utilities	14	163	172	170	1,540,401	703.92
Information	4	15	15	15	147,758	757.73
Financial Activities	16	69	67	66	791,501	904.23
Professional & Business Services	10	33	34	35	236,647	535.40
Education & Health Services	52	721	724	714	5,821,634	622.26
Leisure & Hospitality	12	159	161	151	474,999	232.73
Other Services	13	51	52	51	324,970	486.97
Local Government	14	276	319	333	1,609,389	400.21
State Government	7	30	30	29	297,822	772.23

TABLE 6. COUNTY SUMMARY

North American Industry Classification System - Industry Groups	Number of Employing Units	Employment			Total Earnings	Average Weekly Earnings
		Jul	Aug	Sep	Jul- Sep 2019	
<b>DESHA COUNTY - TOTAL</b>	<b>516</b>	<b>4,395</b>	<b>4,590</b>	<b>4,652</b>	<b>\$41,802,700</b>	<b>\$707.40</b>
Natural Resources & Mining	65	296	292	327	2,499,000	630.26
Construction	14	97	100	97	1,011,292	793.79
Manufacturing	14	1,068	1,066	1,036	15,271,709	1,111.75
Trade, Transportation & Utilities	104	817	820	829	7,073,197	661.91
Wholesale Trade	19	184	177	177	2,479,129	1,063.40
Retail Trade	57	475	471	475	2,699,729	438.43
Transportation, Warehousing & Utilities	28	158	172	177	1,894,339	862.24
Information	4	17	18	25	232,909	895.80
Financial Activities	28	206	202	200	1,841,690	699.02
Professional & Business Services	34	89	93	93	803,872	674.58
Education & Health Services	162	728	727	741	4,920,665	517.09
Leisure & Hospitality	36	367	362	360	1,302,429	276.00
Other Services	25	55	50	55	278,489	401.67
Local Government	21	554	763	771	5,672,263	626.91
State Government	9	101	97	118	895,185	653.74
<b>DREW COUNTY - TOTAL</b>	<b>544</b>	<b>6,099</b>	<b>6,225</b>	<b>6,500</b>	<b>\$54,547,537</b>	<b>\$668.72</b>
Natural Resources & Mining	59	408	408	411	4,766,472	896.46
Construction	23	211	217	200	3,060,327	1,124.57
Manufacturing	21	918	907	912	9,276,600	782.15
Trade, Transportation & Utilities	113	1,038	1,049	1,011	7,817,833	582.35
Wholesale Trade	17	96	101	97	1,006,836	790.30
Retail Trade	76	830	835	817	5,428,161	504.69
Transportation, Warehousing & Utilities	20	112	113	97	1,382,836	991.04
Information	6	47	48	47	527,393	857.09
Financial Activities	50	214	214	211	2,527,662	912.84
Professional & Business Services	39	307	313	309	2,963,708	736.20
Education & Health Services	135	853	868	868	5,994,838	534.35
Leisure & Hospitality	43	641	665	666	2,398,252	280.65
Other Services	18	62	62	68	521,327	626.59
Local Government	24	895	1,007	1,216	8,896,841	658.47
State Government	13	505	467	581	5,796,284	861.30

TABLE 6. COUNTY SUMMARY

North American Industry Classification System - Industry Groups	Number of Employing Units	Employment			Total Earnings Jul- Sep 2019	Average Weekly Earnings
		Jul	Aug	Sep		
<b>FAULKNER COUNTY - TOTAL</b>	<b>2,886</b>	<b>39,284</b>	<b>39,990</b>	<b>41,449</b>	<b>\$409,798,800</b>	<b>\$783.35</b>
Natural Resources & Mining	39	233	240	232	3,958,295	1,295.68
Construction	339	2,968	2,984	3,056	34,857,328	892.98
Manufacturing	99	3,339	3,348	3,322	44,855,627	1,034.20
Trade, Transportation & Utilities	638	7,469	7,544	7,460	61,630,934	632.87
Wholesale Trade	134	698	700	697	9,033,612	995.07
Retail Trade	419	5,923	5,995	5,932	41,616,266	538.03
Transportation, Warehousing & Utilities	85	848	849	831	10,981,056	1,002.41
Information	22	267	254	258	11,465,154	3,396.41
Financial Activities	304	1,436	1,445	1,422	16,539,375	887.00
Professional & Business Services	451	4,892	4,939	4,915	72,967,484	1,141.91
Education & Health Services	460	7,510	7,666	7,727	74,755,367	753.23
Leisure & Hospitality	275	5,337	5,388	5,397	21,823,525	312.38
Other Services	198	944	956	955	7,441,549	601.50
Local Government	43	1,850	2,218	3,408	24,021,722	741.50
State Government	18	3,039	3,008	3,297	35,482,440	876.31
<b>FRANKLIN COUNTY - TOTAL</b>	<b>387</b>	<b>4,385</b>	<b>4,696</b>	<b>4,700</b>	<b>\$40,054,245</b>	<b>\$670.73</b>
Natural Resources & Mining	18	218	220	218	3,898,788	1,371.52
Construction	36	164	172	174	1,433,479	648.63
Manufacturing	17	978	996	1,008	9,283,774	718.45
Trade, Transportation & Utilities	83	980	1,013	959	8,272,689	646.71
Wholesale Trade	11	55	74	52	320,743	408.94
Retail Trade	49	631	636	620	3,442,374	420.98
Transportation, Warehousing & Utilities	23	294	303	287	4,509,572	1,177.23
Information	7	29	31	28	287,702	754.46
Financial Activities	31	75	75	68	694,763	735.46
Professional & Business Services	36	351	349	342	3,136,097	694.54
Education & Health Services	69	563	584	573	4,117,918	552.49
Leisure & Hospitality	33	361	368	372	1,277,380	267.74
Other Services	17	63	59	60	425,269	539.23
Local Government	32	474	697	753	5,743,922	688.94
State Government	8	129	132	145	1,482,464	842.63

TABLE 6. COUNTY SUMMARY

North American Industry Classification System - Industry Groups	Number of Employing Units	Employment			Total Earnings	Average Weekly Earnings
		Jul	Aug	Sep	Jul- Sep 2019	
<b>FULTON COUNTY - TOTAL</b>	<b>199</b>	<b>1,969</b>	<b>1,985</b>	<b>2,105</b>	<b>\$15,253,001</b>	<b>\$580.94</b>
Manufacturing	12	129	130	132	780,104	460.42
Trade, Transportation & Utilities	48	313	300	298	2,809,657	711.73
Retail Trade	29	184	179	181	1,039,206	440.84
Other Trade, Transportation, & Utilities	19	129	121	117	1,770,451	1,113.26
Information	5	30	29	28	274,982	729.40
Financial Activities	17	94	94	85	853,206	721.22
Professional & Business Services	19	36	34	30	269,582	622.11
Education & Health Services	41	517	509	498	3,350,289	507.31
Leisure & Hospitality	15	141	140	135	502,341	278.67
Other Services	10	17	17	17	136,474	617.53
Local Government	12	402	429	566	2,908,496	480.45
State Government	9	63	65	65	600,803	718.38
Other	11	227	238	251	2,767,067	891.84
<b>GARLAND COUNTY - TOTAL</b>	<b>3,047</b>	<b>36,356</b>	<b>37,036</b>	<b>37,228</b>	<b>\$334,926,368</b>	<b>\$698.70</b>
Natural Resources & Mining	29	270	264	267	3,248,295	935.84
Construction	323	1,925	1,956	1,947	19,036,981	753.80
Manufacturing	90	2,555	2,520	2,508	29,234,467	889.68
Trade, Transportation & Utilities	675	7,372	7,257	7,238	59,890,946	632.05
Wholesale Trade	140	810	794	803	10,541,213	1,010.63
Retail Trade	471	6,034	5,940	5,905	42,995,251	554.95
Transportation, Warehousing & Utilities	64	528	523	530	6,354,482	927.53
Information	32	394	413	412	4,323,367	818.46
Financial Activities	335	1,521	1,538	1,512	17,496,640	883.33
Professional & Business Services	387	2,977	2,971	2,922	28,187,094	733.34
Education & Health Services	511	8,127	8,180	8,216	94,858,559	892.65
Leisure & Hospitality	396	7,731	7,613	7,203	37,317,476	381.95
Other Services	213	1,014	984	972	6,919,852	537.67
Local Government	34	1,601	2,394	3,059	25,212,995	824.83
State Government	22	869	946	972	9,199,696	761.75

TABLE 6. COUNTY SUMMARY

North American Industry Classification System - Industry Groups	Number of Employing Units	Employment			Total Earnings	Average Weekly Earnings
		Jul	Aug	Sep	Jul- Sep 2019	
<b>GRANT COUNTY - TOTAL</b>	<b>354</b>	<b>4,054</b>	<b>4,178</b>	<b>4,245</b>	<b>\$42,155,562</b>	<b>\$779.69</b>
Natural Resources & Mining	28	189	194	198	2,620,838	1,040.98
Construction	38	246	250	243	3,614,399	1,128.68
Manufacturing	17	1,398	1,376	1,344	17,039,166	954.86
Trade, Transportation & Utilities	86	659	649	622	4,888,938	584.57
Wholesale Trade	18	78	72	67	1,131,033	1,202.80
Retail Trade	49	528	523	502	3,272,571	486.29
Transportation, Warehousing & Utilities	19	53	54	53	485,334	700.00
Financial Activities	20	113	117	117	1,889,783	1,256.78
Professional & Business Services	32	121	119	115	1,458,227	947.93
Education & Health Services	75	414	423	416	2,788,553	513.58
Leisure & Hospitality	23	315	326	310	978,426	237.42
Local Government	10	499	625	786	6,010,374	726.18
State Government	7	45	46	46	423,815	713.89
Other	18	55	53	48	443,043	655.39
<b>GREENE COUNTY - TOTAL</b>	<b>885</b>	<b>15,058</b>	<b>15,287</b>	<b>15,628</b>	<b>\$144,836,096</b>	<b>\$727.03</b>
Natural Resources & Mining	37	250	247	251	2,365,156	729.69
Construction	73	353	360	352	4,110,916	890.77
Manufacturing	67	5,214	5,158	5,196	58,698,113	870.10
Trade, Transportation & Utilities	230	2,645	2,653	2,643	21,232,468	617.03
Wholesale Trade	43	460	456	466	5,549,659	926.69
Retail Trade	154	1,863	1,874	1,863	12,325,569	507.92
Transportation, Warehousing & Utilities	33	322	323	314	3,357,240	807.87
Information	11	186	178	177	1,999,068	852.72
Financial Activities	74	563	578	577	5,858,062	786.88
Professional & Business Services	88	724	752	766	6,120,906	630.03
Education & Health Services	148	1,982	2,043	2,028	21,018,319	801.32
Leisure & Hospitality	78	1,288	1,441	1,442	5,473,990	302.86
Other Services	38	163	155	165	1,160,715	554.57
Local Government	31	1,286	1,320	1,637	12,744,972	693.18
State Government	10	404	402	394	4,053,411	779.50



TABLE 6. COUNTY SUMMARY

North American Industry Classification System - Industry Groups	Number of Employing Units	Employment			Total Earnings	Average Weekly Earnings
		Jul	Aug	Sep	Jul- Sep 2019	
<b>HEMPSTEAD COUNTY - TOTAL</b>	<b>516</b>	<b>7,364</b>	<b>7,522</b>	<b>7,772</b>	<b>\$68,011,619</b>	<b>\$692.69</b>
Natural Resources & Mining	23	260	265	262	3,220,271	944.27
Construction	25	123	120	124	1,393,044	875.94
Manufacturing	29	2,234	2,215	2,212	23,287,908	806.81
Trade, Transportation & Utilities	127	1,313	1,331	1,327	11,751,432	682.92
Wholesale Trade	24	167	186	175	1,503,275	657.03
Retail Trade	75	849	859	856	5,331,865	479.89
Transportation, Warehousing & Utilities	28	297	286	296	4,916,292	1,290.70
Information	8	22	22	22	286,353	1,001.23
Financial Activities	45	214	215	208	2,088,030	756.44
Professional & Business Services	34	228	236	227	2,188,961	731.03
Education & Health Services	105	985	1,002	999	7,576,127	585.51
Leisure & Hospitality	46	609	637	623	2,582,754	318.90
Other Services	30	127	124	125	1,107,278	679.59
Local Government	28	511	599	885	6,207,730	718.07
State Government	16	738	756	758	6,321,731	647.81
<b>HOT SPRING COUNTY - TOTAL</b>	<b>604</b>	<b>8,000</b>	<b>8,157</b>	<b>8,225</b>	<b>\$72,814,050</b>	<b>\$689.17</b>
Natural Resources & Mining	25	169	165	174	1,750,920	795.39
Construction	49	200	200	198	1,529,404	590.20
Manufacturing	30	1,397	1,387	1,387	17,903,475	990.55
Trade, Transportation & Utilities	148	1,639	1,636	1,604	16,108,503	761.91
Wholesale Trade	18	76	82	75	962,134	952.92
Retail Trade	96	883	870	854	5,378,374	476.09
Transportation, Warehousing & Utilities	34	680	684	675	9,767,995	1,105.52
Information	5	39	44	38	423,513	807.72
Financial Activities	49	217	220	205	2,397,758	861.88
Professional & Business Services	54	916	887	848	5,954,987	518.38
Education & Health Services	117	1,092	1,110	1,100	9,305,567	650.34
Leisure & Hospitality	48	628	691	666	2,273,730	264.34
Other Services	39	154	157	158	1,005,893	494.94
Local Government	27	693	760	969	6,458,408	615.36
State Government	13	856	900	878	7,701,892	674.78

TABLE 6. COUNTY SUMMARY

North American Industry Classification System - Industry Groups	Number of Employing Units	Employment			Total Earnings	Average Weekly Earnings
		Jul	Aug	Sep	Jul- Sep 2019	
<b>HOWARD COUNTY - TOTAL</b>	<b>357</b>	<b>6,302</b>	<b>6,557</b>	<b>6,686</b>	<b>\$54,935,497</b>	<b>\$648.63</b>
Natural Resources & Mining	16	224	204	209	2,098,158	760.11
Construction	22	104	104	99	870,252	654.16
Manufacturing	18	3,158	3,137	3,131	27,993,841	685.35
Trade, Transportation & Utilities	81	825	838	819	7,360,555	684.36
Wholesale Trade	16	81	79	75	912,513	896.08
Retail Trade	47	545	552	539	3,710,059	523.33
Transportation, Warehousing & Utilities	18	199	207	205	2,737,983	1,034.11
Financial Activities	33	135	134	133	1,299,455	745.96
Professional & Business Services	23	153	147	147	1,261,887	651.46
Education & Health Services	87	840	881	893	7,232,721	638.52
Leisure & Hospitality	26	331	351	339	1,256,946	284.10
Local Government	17	337	567	690	3,818,749	552.85
State Government	10	91	89	96	901,551	753.81
Other	24	104	105	130	841,382	572.76
<b>INDEPENDENCE COUNTY - TOTAL</b>	<b>909</b>	<b>15,317</b>	<b>15,475</b>	<b>16,162</b>	<b>\$148,319,962</b>	<b>\$728.96</b>
Natural Resources & Mining	20	252	251	252	3,383,367	1,034.14
Construction	60	497	497	499	5,851,837	904.50
Manufacturing	42	3,468	3,406	3,361	37,110,958	836.74
Trade, Transportation & Utilities	237	2,828	2,848	2,866	25,161,421	679.76
Wholesale Trade	29	300	305	308	3,183,853	804.75
Retail Trade	162	1,792	1,808	1,833	11,767,908	499.85
Transportation, Warehousing & Utilities	46	736	735	725	10,209,660	1,072.89
Information	11	96	94	98	823,294	659.69
Financial Activities	87	563	582	579	7,257,578	971.48
Professional & Business Services	90	1,182	1,223	1,206	9,411,125	601.44
Education & Health Services	155	3,609	3,608	3,666	39,329,526	833.97
Leisure & Hospitality	85	1,237	1,259	1,270	4,717,612	289.08
Other Services	62	290	270	277	1,707,367	470.74
Local Government	45	718	904	1,480	8,193,255	609.53
State Government	15	577	533	608	5,372,622	721.67

TABLE 6. COUNTY SUMMARY

North American Industry Classification System - Industry Groups	Number of Employing Units	Employment			Total Earnings	Average Weekly Earnings
		Jul	Aug	Sep	Jul- Sep 2019	
<b>IZARD COUNTY - TOTAL</b>	<b>240</b>	<b>2,853</b>	<b>3,077</b>	<b>3,118</b>	<b>\$23,838,443</b>	<b>\$608.00</b>
Natural Resources & Mining	8	136	135	131	1,683,007	966.13
Construction	19	87	94	93	984,625	829.27
Manufacturing	8	288	292	271	2,411,345	653.89
Trade, Transportation & Utilities	61	512	500	495	3,877,350	593.74
Wholesale Trade	12	54	51	47	358,419	544.16
Retail Trade	39	330	322	320	1,956,254	464.45
Transportation, Warehousing & Utilities	10	128	127	128	1,562,677	941.56
Information	3	5	5	5	96,532	1,485.11
Financial Activities	24	173	181	168	1,346,607	595.32
Professional & Business Services	16	44	40	40	245,093	456.13
Education & Health Services	46	712	711	714	5,175,636	558.90
Leisure & Hospitality	19	199	191	181	784,601	317.10
Other Services	13	30	37	33	194,084	447.89
Local Government	14	314	495	547	3,204,994	545.44
State Government	9	353	396	440	3,834,569	744.24
<b>JACKSON COUNTY - TOTAL</b>	<b>426</b>	<b>4,870</b>	<b>5,145</b>	<b>5,152</b>	<b>\$47,024,717</b>	<b>\$715.49</b>
Natural Resources & Mining	59	283	285	292	2,575,689	691.15
Construction	21	115	92	109	1,007,914	736.06
Manufacturing	11	957	981	951	12,194,839	974.11
Trade, Transportation & Utilities	105	955	955	951	8,415,046	678.76
Wholesale Trade	17	212	204	203	2,690,221	1,002.94
Retail Trade	70	657	661	652	4,637,528	543.25
Transportation, Warehousing & Utilities	18	86	90	96	1,087,297	922.48
Information	4	12	11	11	95,697	649.53
Financial Activities	31	128	128	127	1,425,989	859.20
Professional & Business Services	30	111	109	106	1,023,011	724.17
Education & Health Services	77	841	833	835	7,500,644	689.88
Leisure & Hospitality	26	345	358	344	1,204,164	265.41
Other Services	18	65	64	61	512,076	621.95
Local Government	32	319	551	561	3,860,888	622.62
State Government	12	739	778	804	7,208,760	716.74

TABLE 6. COUNTY SUMMARY

North American Industry Classification System - Industry Groups	Number of Employing Units	Employment			Total Earnings	Average Weekly Earnings
		Jul	Aug	Sep	Jul- Sep 2019	
<b>JEFFERSON COUNTY - TOTAL</b>	<b>2,020</b>	<b>24,750</b>	<b>25,444</b>	<b>25,778</b>	<b>\$250,739,042</b>	<b>\$761.63</b>
Natural Resources & Mining	43	134	132	136	1,994,631	1,145.02
Construction	84	482	510	478	5,437,584	853.62
Manufacturing	59	4,725	4,704	4,677	68,802,148	1,125.58
Trade, Transportation & Utilities	389	4,302	4,278	4,254	35,749,655	642.82
Wholesale Trade	69	690	678	668	7,299,645	827.37
Retail Trade	269	2,918	2,917	2,906	18,995,160	501.49
Transportation, Warehousing & Utilities	51	694	683	680	9,454,850	1,060.71
Information	9	57	55	55	851,803	1,177.07
Financial Activities	150	995	997	1,004	12,031,622	926.75
Professional & Business Services	141	1,946	2,058	2,094	16,451,963	622.60
Education & Health Services	827	4,761	4,838	4,832	46,001,221	735.62
Leisure & Hospitality	136	1,838	1,861	1,915	7,087,748	291.35
Other Services	103	460	457	455	3,907,925	657.31
Local Government	41	1,866	2,292	2,532	17,669,514	609.50
State Government	38	3,184	3,262	3,346	34,753,228	819.03
<b>JOHNSON COUNTY - TOTAL</b>	<b>476</b>	<b>7,831</b>	<b>7,927</b>	<b>8,335</b>	<b>\$64,688,155</b>	<b>\$619.60</b>
Natural Resources & Mining	13	200	198	204	2,256,818	865.12
Construction	36	235	236	224	1,954,047	648.83
Manufacturing	32	2,433	2,410	2,432	21,414,258	679.28
Trade, Transportation & Utilities	101	1,869	1,855	1,860	14,771,272	610.45
Retail Trade	71	888	861	859	5,139,903	454.81
Other Trade, Transportation & Utilities	30	981	994	1,001	9,631,369	746.85
Information	4	18	17	16	191,596	866.95
Financial Activities	47	181	180	174	1,581,780	682.29
Professional & Business Services	45	354	356	353	1,745,979	379.04
Education & Health Services	107	1,231	1,247	1,253	11,080,212	685.33
Leisure & Hospitality	42	597	599	582	2,182,075	283.21
Other Services	27	80	83	80	602,470	572.15
Local Government	14	530	641	1,054	5,795,164	601.05
State Government	8	103	105	103	1,112,484	825.49

TABLE 6. COUNTY SUMMARY

North American Industry Classification System - Industry Groups	Number of Employing Units	Employment			Total Earnings Jul- Sep 2019	Average Weekly Earnings
		Jul	Aug	Sep		
<b>LAFAYETTE COUNTY - TOTAL</b>	<b>164</b>	<b>1,066</b>	<b>1,072</b>	<b>1,105</b>	<b>\$8,097,721</b>	<b>\$576.23</b>
Natural Resources & Mining	22	83	80	78	514,476	492.64
Construction	10	74	75	76	967,124	991.92
Manufacturing	6	35	35	34	317,991	705.60
Trade, Transportation & Utilities	33	202	195	209	1,469,954	559.77
Retail Trade	18	107	102	110	569,284	411.83
Other Trade, Transportation & Utilities	15	95	93	99	900,670	724.21
Financial Activities	13	73	71	67	623,607	682.03
Professional & Business Services	10	33	32	32	264,443	629.13
Education & Health Services	36	209	207	216	1,425,289	520.43
Leisure & Hospitality	5	37	41	43	140,787	268.51
Local Government	15	209	264	278	1,564,790	480.83
State Government	9	72	33	32	526,831	887.42
Other	5	39	39	40	282,429	552.34
<b>LAWRENCE COUNTY - TOTAL</b>	<b>402</b>	<b>3,524</b>	<b>3,794</b>	<b>3,893</b>	<b>\$30,759,774</b>	<b>\$633.16</b>
Natural Resources & Mining	53	185	185	186	1,803,957	748.74
Construction	25	112	113	114	1,373,335	934.88
Manufacturing	17	361	363	365	3,335,252	706.77
Trade, Transportation & Utilities	118	794	801	783	6,755,473	655.57
Wholesale Trade	17	191	184	179	1,947,961	811.43
Retail Trade	63	473	483	475	3,195,210	515.27
Transportation, Warehousing & Utilities	38	130	134	129	1,612,302	946.74
Financial Activities	29	122	120	116	1,370,509	883.44
Professional & Business Services	25	92	89	86	906,134	783.18
Education & Health Services	49	517	543	581	4,586,287	644.96
Leisure & Hospitality	30	304	322	333	1,066,545	256.65
Local Government	24	774	994	1,070	7,129,471	579.73
State Government	9	81	81	80	743,108	708.62
Other	23	182	183	179	1,689,703	716.79

TABLE 6. COUNTY SUMMARY

North American Industry Classification System - Industry Groups	Number of Employing Units	Employment			Total Earnings	Average Weekly Earnings
		Jul	Aug	Sep	Jul- Sep 2019	
<b>LEE COUNTY - TOTAL</b>	<b>261</b>	<b>1,779</b>	<b>1,799</b>	<b>1,851</b>	<b>\$14,846,759</b>	<b>\$631.09</b>
Natural Resources & Mining	40	180	184	246	1,556,880	588.98
Construction	6	26	26	27	196,022	572.61
Trade, Transportation & Utilities	42	333	328	327	2,974,219	694.69
Wholesale Trade	10	111	103	103	1,194,206	869.36
Retail Trade	22	168	171	169	995,745	452.34
Transportation, Warehousing & Utilities	10	54	54	55	784,268	1,110.34
Financial Activities	16	55	56	54	481,558	673.51
Professional & Business Services	13	45	44	49	742,559	1,241.74
Education & Health Services	102	429	436	429	3,205,896	571.73
Leisure & Hospitality	8	67	67	62	255,749	301.12
Local Government	15	242	253	252	1,362,117	420.80
State Government	6	386	389	389	3,952,114	783.53
Other	13	16	16	16	119,645	575.22
<b>LINCOLN COUNTY - TOTAL</b>	<b>284</b>	<b>2,721</b>	<b>2,838</b>	<b>2,864</b>	<b>\$24,672,905</b>	<b>\$675.98</b>
Natural Resources & Mining	32	143	140	143	1,238,965	671.16
Construction	20	159	158	159	1,499,622	727.03
Manufacturing	8	315	320	320	2,900,409	700.86
Trade, Transportation & Utilities	42	350	344	343	3,345,150	744.41
Wholesale Trade	8	58	51	52	586,584	840.78
Retail Trade	23	175	165	164	911,447	417.33
Transportation, Warehousing & Utilities	11	117	128	127	1,847,119	1,145.86
Financial Activities	20	68	70	67	637,208	717.31
Professional & Business Services	11	29	26	27	294,129	827.76
Education & Health Services	106	421	416	420	2,694,905	494.75
Leisure & Hospitality	15	166	144	139	431,973	222.02
Local Government	7	165	305	328	1,994,963	576.91
State Government	10	862	873	875	9,161,032	809.99
Other	13	43	42	43	474,549	855.56

TABLE 6. COUNTY SUMMARY

North American Industry Classification System - Industry Groups	Number of Employing Units	Employment			Total Earnings	Average Weekly Earnings
		Jul	Aug	Sep	Jul- Sep 2019	
<b>LITTLE RIVER COUNTY - TOTAL</b>	<b>251</b>	<b>3,213</b>	<b>3,242</b>	<b>3,421</b>	<b>\$38,792,903</b>	<b>\$906.46</b>
Natural Resources & Mining	16	71	72	70	651,238	705.57
Construction	14	138	116	127	1,176,178	712.40
Manufacturing	16	1,156	1,152	1,140	22,365,608	1,496.90
Trade, Transportation & Utilities	61	560	588	594	4,493,581	595.28
Wholesale Trade	6	29	29	29	502,943	1,334.07
Retail Trade	39	411	435	442	2,694,101	482.70
Transportation, Warehousing & Utilities	16	120	124	123	1,296,537	815.26
Financial Activities	14	53	51	51	442,361	658.60
Professional & Business Services	14	125	125	144	1,344,500	787.49
Education & Health Services	49	202	199	202	1,563,598	598.39
Leisure & Hospitality	17	226	235	234	798,759	265.22
Local Government	20	549	571	719	4,932,652	618.98
State Government	10	78	78	84	681,267	655.06
Other	20	55	55	56	343,161	477.05
<b>LOGAN COUNTY - TOTAL</b>	<b>491</b>	<b>4,817</b>	<b>5,048</b>	<b>5,056</b>	<b>\$39,698,896</b>	<b>\$613.99</b>
Natural Resources & Mining	23	118	115	112	984,252	658.36
Construction	42	207	204	210	2,204,545	819.23
Manufacturing	22	946	926	914	9,652,577	799.54
Trade, Transportation & Utilities	101	974	979	973	6,555,644	517.03
Wholesale Trade	7	29	28	30	231,879	615.06
Retail Trade	72	805	812	800	4,650,195	443.99
Transportation, Warehousing & Utilities	22	140	139	143	1,673,570	915.19
Information	5	27	27	27	265,463	756.30
Financial Activities	51	187	187	190	2,104,335	861.02
Professional & Business Services	42	107	108	110	965,132	685.30
Education & Health Services	107	710	694	700	5,673,161	622.24
Leisure & Hospitality	31	357	332	331	1,164,492	263.46
Other Services	33	179	153	161	1,219,257	570.72
Local Government	22	516	834	841	5,265,709	554.62
State Government	12	489	489	487	3,644,329	574.06

TABLE 6. COUNTY SUMMARY

North American Industry Classification System - Industry Groups	Number of Employing Units	Employment			Total Earnings Jul- Sep 2019	Average Weekly Earnings
		Jul	Aug	Sep		
<b>LONOKE COUNTY - TOTAL</b>	<b>1,314</b>	<b>13,165</b>	<b>14,100</b>	<b>13,553</b>	<b>\$114,803,024</b>	<b>\$649.05</b>
Natural Resources & Mining	88	522	509	518	5,276,444	786.08
Construction	137	980	978	963	10,980,155	867.47
Manufacturing	37	1,017	1,558	1,089	17,420,068	1,097.17
Trade, Transportation & Utilities	298	2,771	2,811	2,782	22,720,895	626.89
Wholesale Trade	70	424	425	414	5,399,942	986.65
Retail Trade	171	2,039	2,081	2,058	13,088,674	488.91
Transportation, Warehousing & Utilities	57	308	305	310	4,232,279	1,058.16
Information	14	94	95	84	1,166,314	985.90
Financial Activities	159	650	653	652	8,353,170	986.01
Professional & Business Services	163	506	510	513	5,041,589	760.92
Education & Health Services	197	1,827	1,823	1,798	13,907,235	589.09
Leisure & Hospitality	119	2,135	2,148	2,102	8,587,772	310.38
Other Services	64	190	200	205	1,398,895	542.56
Local Government	24	2,292	2,634	2,668	18,244,184	554.41
State Government	14	181	181	179	1,706,303	727.84
<b>MADISON COUNTY - TOTAL</b>	<b>256</b>	<b>3,071</b>	<b>3,407</b>	<b>3,448</b>	<b>\$28,305,899</b>	<b>\$658.08</b>
Natural Resources & Mining	13	54	58	55	452,306	625.02
Construction	32	126	129	118	1,289,333	797.69
Manufacturing	23	1,190	1,228	1,270	10,921,104	683.37
Trade, Transportation & Utilities	51	659	660	652	5,371,889	628.95
Wholesale Trade	8	33	35	30	396,655	934.04
Retail Trade	32	473	470	468	3,175,821	519.41
Transportation, Warehousing & Utilities	11	153	155	154	1,799,413	898.81
Information	5	54	55	55	1,186,251	1,669.21
Financial Activities	19	90	90	93	833,072	704.20
Professional & Business Services	26	79	78	81	963,588	934.31
Education & Health Services	34	269	257	261	2,066,898	606.07
Leisure & Hospitality	19	209	204	208	687,219	255.38
Other Services	18	37	37	38	267,181	550.51
Local Government	9	261	568	575	3,856,241	633.83
State Government	7	43	43	42	410,817	740.66



TABLE 6. COUNTY SUMMARY

North American Industry Classification System - Industry Groups	Number of Employing Units	Employment			Total Earnings	Average Weekly Earnings
		Jul	Aug	Sep	Jul- Sep 2019	
<b>MARION COUNTY - TOTAL</b>	<b>281</b>	<b>3,749</b>	<b>3,849</b>	<b>3,947</b>	<b>\$29,471,455</b>	<b>\$589.10</b>
Manufacturing	22	1,817	1,873	1,891	15,679,574	648.34
Trade, Transportation & Utilities	60	527	516	514	3,392,697	502.85
Wholesale Trade	6	35	33	33	328,690	751.01
Retail Trade	45	457	451	444	2,650,799	452.46
Transportation, Warehousing & Utilities	9	35	32	37	413,208	916.88
Information	3	54	54	55	801,381	1,134.56
Financial Activities	32	228	224	206	1,660,519	582.37
Professional & Business Services	25	73	76	78	560,143	569.44
Education & Health Services	43	326	312	302	2,394,363	587.81
Leisure & Hospitality	35	235	228	222	783,357	263.90
Other Services	14	30	32	32	134,712	330.72
Local Government	18	328	400	510	2,823,764	526.36
State Government	7	40	40	40	412,094	792.49
Other	22	91	94	97	828,851	678.27
<b>MILLER COUNTY - TOTAL</b>	<b>868</b>	<b>12,606</b>	<b>12,935</b>	<b>13,392</b>	<b>\$126,106,570</b>	<b>\$747.48</b>
Natural Resources & Mining	32	299	306	317	3,441,989	861.50
Construction	68	578	587	614	7,040,875	913.33
Manufacturing	27	2,370	2,360	2,351	34,758,021	1,132.76
Trade, Transportation & Utilities	213	3,463	3,451	3,492	33,755,936	748.59
Wholesale Trade	47	498	495	494	6,538,695	1,014.75
Retail Trade	120	1,261	1,255	1,269	7,901,854	481.77
Transportation, Warehousing & Utilities	46	1,704	1,701	1,729	19,315,387	868.21
Information	6	114	114	111	1,634,605	1,112.73
Financial Activities	83	419	416	413	4,425,409	818.31
Professional & Business Services	76	1,152	1,163	1,158	6,709,401	445.82
Education & Health Services	184	1,250	1,260	1,264	9,748,419	596.09
Leisure & Hospitality	87	1,517	1,514	1,524	6,072,705	307.66
Other Services	51	237	238	245	1,757,252	563.22
Local Government	26	737	1,050	1,428	10,977,583	787.96
State Government	15	470	476	475	5,784,375	939.38

TABLE 6. COUNTY SUMMARY

North American Industry Classification System - Industry Groups	Number of Employing Units	Employment			Total Earnings Jul- Sep 2019	Average Weekly Earnings
		Jul	Aug	Sep		
<b>MISSISSIPPI COUNTY - TOTAL</b>	<b>1,094</b>	<b>16,938</b>	<b>17,491</b>	<b>17,822</b>	<b>\$216,841,427</b>	<b>\$957.69</b>
Natural Resources & Mining	108	491	495	526	4,794,773	731.80
Construction	54	816	838	824	11,914,924	1,109.60
Manufacturing	59	6,584	6,636	6,654	119,690,083	1,389.80
Trade, Transportation & Utilities	267	2,742	2,737	2,728	26,127,362	734.66
Wholesale Trade	56	393	384	380	5,194,528	1,036.07
Retail Trade	146	1,550	1,525	1,505	9,334,788	470.35
Transportation, Warehousing & Utilities	65	799	828	843	11,598,046	1,083.59
Information	5	26	25	31	152,032	427.86
Financial Activities	80	454	453	448	4,372,227	744.63
Professional & Business Services	83	980	1,152	1,176	10,918,783	761.70
Education & Health Services	229	1,424	1,460	1,604	14,366,711	738.72
Leisure & Hospitality	94	1,177	1,190	1,170	4,256,215	277.69
Other Services	47	281	270	264	2,725,090	771.62
Local Government	49	1,472	1,744	1,880	12,831,448	581.06
State Government	19	491	491	517	4,691,779	722.29
<b>MONROE COUNTY - TOTAL</b>	<b>273</b>	<b>1,922</b>	<b>1,994</b>	<b>2,024</b>	<b>\$16,003,479</b>	<b>\$621.74</b>
Natural Resources & Mining	26	131	124	125	2,011,499	1,221.56
Manufacturing	6	136	143	146	1,291,465	701.25
Trade, Transportation & Utilities	69	547	531	540	4,712,385	672.11
Wholesale Trade	16	183	176	180	2,031,028	869.57
Retail Trade	33	261	251	245	1,574,190	479.89
Transportation, Warehousing & Utilities	20	103	104	115	1,107,167	793.48
Financial Activities	22	91	92	89	866,855	735.45
Professional & Business Services	14	19	18	22	168,597	659.44
Education & Health Services	58	352	367	376	2,617,162	551.56
Leisure & Hospitality	23	236	233	229	836,834	276.67
Local Government	21	239	323	342	2,074,150	529.48
State Government	7	66	67	67	752,580	868.36
Other	27	105	96	88	671,952	536.56

TABLE 6. COUNTY SUMMARY

North American Industry Classification System - Industry Groups	Number of Employing Units	Employment			Total Earnings	Average Weekly Earnings
		Jul	Aug	Sep	Jul- Sep 2019	
<b>MONTGOMERY COUNTY - TOTAL</b>	<b>161</b>	<b>1,165</b>	<b>1,219</b>	<b>1,248</b>	<b>\$8,075,212</b>	<b>\$513.08</b>
Natural Resources & Mining	8	35	37	38	343,574	720.78
Construction	24	65	69	69	513,560	583.81
Manufacturing	8	31	31	32	299,148	734.41
Trade, Transportation & Utilities	32	221	216	218	1,504,233	529.97
Wholesale Trade	6	56	56	55	526,308	727.28
Retail Trade	22	149	145	148	880,675	459.80
Transportation, Warehousing & Utilities	4	16	15	15	97,250	487.88
Financial Activities	8	44	43	40	310,495	564.19
Professional & Business Services	15	22	23	22	167,963	578.52
Education & Health Services	22	52	56	57	435,146	608.60
Leisure & Hospitality	14	354	340	285	1,786,072	421.01
Local Government	9	270	331	417	2,172,523	492.49
State Government	7	34	34	33	341,038	779.22
Other	14	37	39	37	201,460	411.42
<b>NEVADA COUNTY - TOTAL</b>	<b>205</b>	<b>2,380</b>	<b>2,428</b>	<b>2,482</b>	<b>\$23,015,470</b>	<b>\$728.57</b>
Natural Resources & Mining	13	63	63	63	836,263	1,021.08
Trade, Transportation & Utilities	44	578	586	589	5,355,028	704.95
Retail Trade	26	329	338	338	1,930,565	443.30
Other Trade, Transportation & Utilities	18	249	248	251	3,424,463	1,056.50
Financial Activities	11	68	71	54	631,905	755.57
Professional & Business Services	12	49	50	52	644,195	984.51
Education & Health Services	46	433	439	435	2,571,331	454.00
Leisure & Hospitality	9	88	104	86	309,469	256.89
Other Services	14	40	36	39	237,754	477.10
Local Government	29	275	296	383	1,932,607	467.49
State Government	9	53	53	52	488,542	713.55
Other	18	733	730	729	10,008,376	1,053.66

TABLE 6. COUNTY SUMMARY

North American Industry Classification System - Industry Groups	Number of Employing Units	Employment			Total Earnings	Average Weekly Earnings
		Jul	Aug	Sep	Jul- Sep 2019	
<b>NEWTON COUNTY - TOTAL</b>	<b>113</b>	<b>927</b>	<b>1,029</b>	<b>1,014</b>	<b>\$6,265,092</b>	<b>\$486.80</b>
Construction	6	24	26	24	196,457	612.65
Manufacturing	7	33	30	28	313,321	794.56
Trade, Transportation & Utilities	25	157	149	150	1,256,976	636.12
Retail Trade	12	103	97	101	601,161	460.90
Other Trade, Transportation & Utilities	13	54	52	49	655,815	976.40
Education & Health Services	23	247	252	248	1,211,146	374.16
Leisure & Hospitality	16	169	166	153	647,868	306.37
Other Services	3	3	3	3	16,576	425.03
Local Government	14	204	330	338	1,910,927	505.71
State Government	7	36	36	35	372,773	803.97
Other	12	54	37	35	339,048	620.97
<b>OUACHITA COUNTY - TOTAL</b>	<b>657</b>	<b>6,347</b>	<b>6,457</b>	<b>6,721</b>	<b>\$56,103,767</b>	<b>\$663.10</b>
Natural Resources & Mining	35	168	171	171	1,926,837	871.87
Construction	42	234	225	238	2,339,098	774.45
Manufacturing	25	473	472	475	4,859,621	789.75
Trade, Transportation & Utilities	159	1,486	1,477	1,446	11,922,920	624.05
Wholesale Trade	25	209	205	213	2,362,951	869.69
Retail Trade	98	937	935	907	5,300,491	440.15
Transportation, Warehousing & Utilities	36	340	337	326	4,259,478	980.02
Information	6	39	38	38	433,765	870.43
Financial Activities	53	260	261	253	2,496,425	744.31
Professional & Business Services	42	602	547	551	5,422,259	736.05
Education & Health Services	187	1,265	1,294	1,293	13,017,658	779.87
Leisure & Hospitality	38	465	468	437	1,681,438	283.23
Other Services	26	112	112	108	764,996	531.74
Local Government	31	631	798	1,102	5,825,168	531.12
State Government	13	612	594	609	5,413,582	688.31

TABLE 6. COUNTY SUMMARY

North American Industry Classification System - Industry Groups	Number of Employing Units	Employment			Total Earnings	Average Weekly Earnings
		Jul	Aug	Sep	Jul- Sep 2019	
<b>PERRY COUNTY - TOTAL</b>	<b>145</b>	<b>936</b>	<b>1,098</b>	<b>1,119</b>	<b>\$8,828,372</b>	<b>\$646.15</b>
Construction	14	79	83	91	756,539	690.06
Manufacturing	6	32	33	34	443,304	1,033.34
Trade, Transportation & Utilities	27	163	160	158	1,079,549	517.93
Retail Trade	17	129	127	125	537,554	325.59
Other Trade, Transportation & Utilities	10	34	33	33	541,995	1,250.76
Financial Activities	10	24	26	26	269,036	816.91
Professional & Business Services	18	53	47	46	384,765	608.16
Education & Health Services	31	210	220	223	1,575,517	556.79
Leisure & Hospitality	8	65	65	69	262,713	304.65
Local Government	9	173	317	330	2,102,048	591.57
State Government	7	36	36	36	377,414	806.44
Other	15	101	111	106	1,577,487	1,144.77
<b>PHILLIPS COUNTY - TOTAL</b>	<b>724</b>	<b>4,946</b>	<b>5,130</b>	<b>5,245</b>	<b>\$41,347,215</b>	<b>\$622.78</b>
Natural Resources & Mining	63	294	274	294	2,318,703	620.75
Construction	28	105	107	95	740,331	556.50
Manufacturing	11	393	389	404	4,267,286	830.32
Trade, Transportation & Utilities	137	1,183	1,193	1,183	9,881,098	640.70
Wholesale Trade	27	277	270	269	3,228,933	913.16
Retail Trade	73	680	700	686	4,056,251	453.08
Transportation, Warehousing & Utilities	37	226	223	228	2,595,914	884.87
Information	6	11	10	11	175,696	1,267.04
Financial Activities	41	212	216	218	2,196,897	784.79
Professional & Business Services	38	270	244	232	2,541,603	786.22
Education & Health Services	294	1,310	1,339	1,374	10,109,342	579.90
Leisure & Hospitality	37	328	326	317	1,216,810	289.19
Other Services	28	68	70	69	359,834	401.15
Local Government	27	443	639	736	4,419,910	561.04
State Government	14	329	323	312	3,119,705	746.82

TABLE 6. COUNTY SUMMARY

North American Industry Classification System - Industry Groups	Number of Employing Units	Employment			Total Earnings	Average Weekly Earnings
		Jul	Aug	Sep	Jul- Sep 2019	
<b>PIKE COUNTY - TOTAL</b>	<b>258</b>	<b>2,376</b>	<b>2,510</b>	<b>2,605</b>	<b>\$19,508,942</b>	<b>\$601.00</b>
Natural Resources & Mining	23	111	116	116	1,223,123	822.91
Construction	14	52	50	54	411,125	608.17
Manufacturing	17	401	405	412	4,109,220	778.56
Trade, Transportation & Utilities	69	538	538	544	4,175,419	594.79
Wholesale Trade	10	110	108	112	1,044,761	730.60
Retail Trade	39	346	349	351	2,266,881	500.12
Transportation, Warehousing & Utilities	20	82	81	81	863,777	816.94
Information	7	29	28	25	314,655	885.52
Financial Activities	22	209	207	203	2,227,723	830.52
Professional & Business Services	13	56	54	54	677,144	952.83
Education & Health Services	33	284	296	299	1,586,995	416.64
Leisure & Hospitality	26	277	264	243	971,490	285.96
Other Services	15	62	63	61	480,196	595.78
Local Government	10	233	365	471	2,474,949	534.28
State Government	9	124	124	123	856,903	533.01
<b>POINSETT COUNTY - TOTAL</b>	<b>485</b>	<b>4,853</b>	<b>5,085</b>	<b>5,123</b>	<b>\$47,773,014</b>	<b>\$731.99</b>
Natural Resources & Mining	69	282	293	300	3,886,189	1,024.93
Construction	24	80	85	86	806,309	741.32
Manufacturing	19	738	720	723	9,430,837	997.87
Trade, Transportation & Utilities	126	1,208	1,186	1,201	11,381,724	730.61
Wholesale Trade	24	424	415	407	6,234,718	1,154.72
Retail Trade	72	643	634	653	3,480,738	416.19
Transportation, Warehousing & Utilities	30	141	137	141	1,666,268	917.72
Professional & Business Services	28	194	192	191	3,473,380	1,389.17
Education & Health Services	79	814	814	819	6,830,296	644.14
Leisure & Hospitality	42	448	421	430	1,521,633	270.32
Other Services	18	54	57	55	441,092	613.20
Local Government	30	690	965	978	6,233,531	546.34
State Government	11	94	99	102	1,146,536	896.90
Other	39	251	253	238	2,621,487	815.31

TABLE 6. COUNTY SUMMARY

North American Industry Classification System - Industry Groups	Number of Employing Units	Employment			Total Earnings	Average Weekly Earnings
		Jul	Aug	Sep	Jul- Sep 2019	
<b>POLK COUNTY - TOTAL</b>	<b>486</b>	<b>5,535</b>	<b>5,832</b>	<b>5,857</b>	<b>\$45,731,506</b>	<b>\$612.72</b>
Natural Resources & Mining	25	178	178	180	2,122,992	914.03
Construction	31	204	202	217	1,985,994	735.64
Manufacturing	35	1,352	1,332	1,312	11,222,288	648.09
Trade, Transportation & Utilities	125	1,055	1,085	1,054	7,674,916	554.52
Wholesale Trade	19	64	59	58	732,090	933.39
Retail Trade	69	761	774	752	4,252,119	429.06
Transportation, Warehousing & Utilities	37	230	252	244	2,690,707	855.28
Information	6	50	49	50	309,792	479.80
Financial Activities	40	212	224	220	1,861,798	654.95
Professional & Business Services	39	141	143	142	1,540,793	834.67
Education & Health Services	88	1,045	1,018	1,020	9,504,836	711.46
Leisure & Hospitality	42	465	480	480	1,649,522	267.13
Other Services	22	159	152	145	1,215,115	614.94
Local Government	21	387	692	723	4,423,679	566.51
State Government	12	287	277	314	2,219,781	583.44
<b>POPE COUNTY - TOTAL</b>	<b>1,834</b>	<b>24,413</b>	<b>24,793</b>	<b>25,418</b>	<b>\$261,035,777</b>	<b>\$807.23</b>
Natural Resources & Mining	36	649	620	258	7,946,807	1,200.97
Construction	160	1,110	1,093	1,161	14,492,940	994.21
Manufacturing	74	4,543	4,577	4,611	55,711,166	936.31
Trade, Transportation & Utilities	407	6,041	6,104	6,108	70,596,097	892.53
Wholesale Trade	71	556	560	560	5,959,107	820.51
Retail Trade	262	3,066	3,087	3,093	21,715,694	542.00
Transportation, Warehousing & Utilities	74	2,419	2,457	2,455	42,921,296	1,351.10
Information	17	124	124	127	1,169,759	719.85
Financial Activities	193	889	876	886	9,926,670	864.12
Professional & Business Services	262	1,856	1,897	1,895	20,515,775	838.25
Education & Health Services	373	3,217	3,188	3,205	32,243,368	774.27
Leisure & Hospitality	144	2,693	2,739	2,834	11,526,153	321.79
Other Services	110	523	516	530	3,876,572	570.17
Local Government	43	1,317	1,563	2,150	16,152,959	741.07
State Government	15	1,451	1,496	1,653	16,877,511	846.70

TABLE 6. COUNTY SUMMARY

North American Industry Classification System - Industry Groups	Number of Employing Units	Employment			Total Earnings	Average Weekly Earnings
		Jul	Aug	Sep	Jul- Sep 2019	
<b>PRAIRIE COUNTY - TOTAL</b>	<b>252</b>	<b>1,284</b>	<b>1,429</b>	<b>1,439</b>	<b>\$11,395,457</b>	<b>\$633.36</b>
Natural Resources & Mining	35	168	163	154	2,263,738	1,077.12
Construction	12	44	43	42	448,590	802.49
Trade, Transportation & Utilities	60	345	342	331	2,669,427	605.13
Wholesale Trade	12	88	79	76	997,344	947.15
Retail Trade	34	207	209	202	1,162,968	434.27
Transportation, Warehousing & Utilities	14	50	54	53	509,115	748.33
Financial Activities	15	51	52	48	499,827	763.87
Professional & Business Services	15	62	59	58	506,489	652.97
Education & Health Services	50	239	264	277	1,744,002	515.98
Leisure & Hospitality	19	92	97	100	361,719	288.84
Local Government	15	182	305	315	1,996,378	574.44
State Government	7	30	30	29	271,154	703.08
Other	24	71	74	85	634,133	636.25
<b>PULASKI COUNTY - TOTAL</b>	<b>14,491</b>	<b>239,013</b>	<b>241,982</b>	<b>241,301</b>	<b>\$2,953,880,888</b>	<b>\$943.75</b>
Natural Resources & Mining	52	608	607	605	9,412,010	1,193.41
Construction	939	9,580	9,567	9,511	124,610,344	1,003.43
Manufacturing	332	13,656	13,615	13,447	190,470,883	1,079.49
Trade, Transportation & Utilities	3,131	48,915	49,132	49,019	548,492,079	860.67
Wholesale Trade	911	11,761	11,828	11,733	195,334,922	1,276.18
Retail Trade	1,809	24,250	24,344	24,250	187,106,992	592.75
Transportation, Warehousing & Utilities	411	12,904	12,960	13,036	166,050,165	985.07
Information	203	3,469	3,447	3,424	47,140,725	1,052.09
Financial Activities	1,706	17,861	17,884	17,752	308,619,178	1,331.29
Professional & Business Services	2,790	35,134	35,317	35,003	447,766,666	979.87
Education & Health Services	2,579	41,251	41,738	41,848	537,130,824	992.92
Leisure & Hospitality	1,301	23,812	23,596	22,747	111,956,078	368.27
Other Services	1,138	6,836	6,785	6,671	67,604,766	768.83
Local Government	108	11,412	13,333	13,864	144,974,389	866.52
State Government	212	26,479	26,961	27,410	415,702,946	1,186.54



TABLE 6. COUNTY SUMMARY

North American Industry Classification System - Industry Groups	Number of Employing Units	Employment			Total Earnings Jul- Sep 2019	Average Weekly Earnings
		Jul	Aug	Sep		
<b>RANDOLPH COUNTY - TOTAL</b>	<b>392</b>	<b>5,646</b>	<b>5,810</b>	<b>5,918</b>	<b>\$47,085,422</b>	<b>\$625.41</b>
Natural Resources & Mining	25	254	247	256	3,187,970	971.84
Construction	26	93	88	101	723,249	591.86
Manufacturing	27	1,635	1,667	1,695	16,202,727	748.27
Trade, Transportation & Utilities	96	899	909	915	6,777,807	574.41
Wholesale Trade	15	122	119	117	1,069,522	689.42
Retail Trade	55	612	625	630	3,642,465	450.22
Transportation, Warehousing & Utilities	26	165	165	168	2,065,820	957.28
Information	5	22	21	22	242,378	860.51
Financial Activities	30	148	149	145	1,345,815	702.65
Professional & Business Services	35	263	269	267	1,925,791	556.21
Education & Health Services	67	938	958	949	7,712,109	625.56
Leisure & Hospitality	31	425	429	413	1,469,770	267.70
Other Services	16	47	47	42	273,559	464.18
Local Government	24	674	774	826	4,836,618	490.83
State Government	10	248	252	287	2,387,629	700.12
<b>SAINT FRANCIS COUNTY - TOTAL</b>	<b>670</b>	<b>6,378</b>	<b>6,673</b>	<b>6,631</b>	<b>\$54,826,410</b>	<b>\$642.83</b>
Natural Resources & Mining	43	197	187	184	1,906,424	774.55
Construction	37	209	203	198	2,177,003	823.58
Trade, Transportation & Utilities	144	1,852	1,831	1,799	15,339,329	645.72
Wholesale Trade	29	591	578	568	6,287,396	835.31
Retail Trade	95	938	931	905	5,631,676	468.50
Transportation, Warehousing & Utilities	20	323	322	326	3,420,257	812.86
Information	5	54	56	55	535,784	749.35
Financial Activities	56	271	261	238	2,316,357	694.21
Professional & Business Services	46	156	162	152	1,525,289	748.91
Education & Health Services	219	1,446	1,448	1,457	12,763,622	676.96
Leisure & Hospitality	47	639	709	673	2,651,347	302.75
Local Government	28	514	769	791	5,646,514	628.27
State Government	14	401	413	440	3,625,447	667.18
Other	31	639	634	644	6339294	763.13

TABLE 6. COUNTY SUMMARY

North American Industry Classification System - Industry Groups	Number of Employing Units	Employment			Total Earnings	Average Weekly Earnings
		Jul	Aug	Sep	Jul- Sep 2019	
<b>SALINE COUNTY - TOTAL</b>	<b>2,109</b>	<b>23,330</b>	<b>24,679</b>	<b>24,814</b>	<b>\$220,330,811</b>	<b>\$698.21</b>
Natural Resources & Mining	13	53	55	56	534,373	751.93
Construction	280	2,159	2,160	2,112	23,525,274	844.18
Manufacturing	75	1,334	1,315	1,306	16,955,625	989.34
Trade, Transportation & Utilities	478	5,560	5,564	5,567	47,120,279	651.48
Wholesale Trade	113	636	634	626	8,598,989	1,046.62
Retail Trade	292	4,325	4,324	4,325	31,775,912	565.20
Transportation, Warehousing & Utilities	73	599	606	616	6,745,378	854.82
Information	17	143	142	144	2,844,765	1,530.27
Financial Activities	213	823	821	814	9,617,599	902.95
Professional & Business Services	297	1,869	1,887	1,876	20,994,407	860.24
Education & Health Services	337	4,692	4,695	4,675	44,765,721	734.64
Leisure & Hospitality	197	3,539	3,539	3,478	14,551,811	318.12
Other Services	155	892	827	829	6,746,709	611.04
Local Government	33	1,479	2,883	3,164	25,398,654	778.80
State Government	14	787	791	793	7,275,594	708.13
<b>SCOTT COUNTY - TOTAL</b>	<b>186</b>	<b>2,746</b>	<b>2,823</b>	<b>2,994</b>	<b>\$21,889,491</b>	<b>\$589.91</b>
Natural Resources & Mining	19	168	159	154	1,809,339	868.07
Trade, Transportation & Utilities	36	317	324	320	2,316,709	556.32
Wholesale Trade	7	40	41	41	313,140	592.32
Retail Trade	23	206	211	210	1,172,006	431.36
Transportation, Warehousing & Utilities	6	71	72	69	831,563	905.18
Financial Activities	17	61	62	61	488,965	613.25
Professional & Business Services	14	94	92	102	715,650	573.44
Education & Health Services	40	300	301	302	3,271,574	836.08
Leisure & Hospitality	19	146	154	152	545,257	278.38
Other Services	10	37	37	35	245,779	520.35
Local Government	6	301	378	540	2,620,831	496.15
State Government	6	31	31	31	319,355	792.44
Other	19	1,291	1,285	1,297	9,556,032	569.39

TABLE 6. COUNTY SUMMARY

North American Industry Classification System - Industry Groups	Number of Employing Units	Employment			Total Earnings	Average Weekly Earnings
		Jul	Aug	Sep	Jul- Sep 2019	
<b>SEARCY COUNTY - TOTAL</b>	<b>167</b>	<b>1,446</b>	<b>1,475</b>	<b>1,461</b>	<b>\$10,136,278</b>	<b>\$533.81</b>
Construction	12	8	9	13	47,650	366.54
Manufacturing	16	177	175	165	1,143,680	510.50
Trade, Transportation & Utilities	36	249	242	241	1,599,348	504.21
Wholesale Trade	6	37	37	36	267,604	561.41
Retail Trade	24	193	186	186	1,104,287	451.04
Transportation, Warehousing & Utilities	6	19	19	19	227,457	920.88
Financial Activities	12	95	81	63	581,795	561.76
Education & Health Services	38	332	330	329	2,253,962	524.87
Leisure & Hospitality	13	165	145	155	534,457	265.24
Local Government	10	169	309	313	1,838,944	536.50
State Government	6	41	41	41	420,388	788.72
Other	24	210	143	141	1,716,054	801.64
<b>SEBASTIAN COUNTY - TOTAL</b>	<b>3,702</b>	<b>61,908</b>	<b>63,359</b>	<b>63,331</b>	<b>\$676,864,487</b>	<b>\$828.21</b>
Natural Resources & Mining	42	364	363	364	5,998,591	1,268.83
Construction	267	2,487	2,478	2,442	26,466,441	824.58
Manufacturing	193	11,269	11,199	11,167	135,370,584	928.78
Trade, Transportation & Utilities	888	12,701	12,727	12,656	126,573,392	766.97
Wholesale Trade	223	2,677	2,671	2,664	35,711,649	1,028.60
Retail Trade	552	7,461	7,502	7,458	51,292,101	527.93
Transportation, Warehousing & Utilities	113	2,563	2,554	2,534	39,569,642	1,193.50
Information	37	876	862	854	16,529,794	1,471.67
Financial Activities	408	2,581	2,608	2,604	32,564,776	964.32
Professional & Business Services	558	7,903	7,916	7,850	80,875,720	788.53
Education & Health Services	635	11,664	11,678	11,750	158,621,060	1,043.11
Leisure & Hospitality	351	6,331	6,259	6,087	26,891,833	332.27
Other Services	257	1,176	1,167	1,157	10,066,247	663.71
Local Government	43	2,989	4,536	4,705	37,557,161	708.67
State Government	23	1,567	1,566	1,695	19,348,888	924.84

TABLE 6. COUNTY SUMMARY

North American Industry Classification System - Industry Groups	Number of Employing Units	Employment			Total Earnings	Average Weekly Earnings
		Jul	Aug	Sep	Jul- Sep 2019	
<b>SEVIER COUNTY - TOTAL</b>	<b>319</b>	<b>4,521</b>	<b>4,684</b>	<b>4,724</b>	<b>\$37,752,956</b>	<b>\$625.47</b>
Natural Resources & Mining	18	166	169	170	2,016,951	921.68
Construction	20	167	138	138	1,998,820	1,041.23
Trade, Transportation & Utilities	86	838	854	836	6,604,324	602.88
Wholesale Trade	12	87	86	86	1,168,125	1,040.80
Retail Trade	61	645	663	644	4,086,318	483.09
Transportation, Warehousing & Utilities	13	106	105	106	1,349,881	982.68
Financial Activities	26	198	196	193	1,882,844	740.21
Professional & Business Services	25	175	163	170	1,140,762	518.21
Education & Health Services	65	413	422	425	3,317,291	607.56
Leisure & Hospitality	25	265	283	279	915,855	255.56
Local Government	13	748	898	927	6,399,997	574.01
State Government	7	128	125	147	1,192,347	687.89
Other	34	1,423	1,436	1,439	12,283,765	659.54
<b>SHARP COUNTY - TOTAL</b>	<b>383</b>	<b>3,239</b>	<b>3,250</b>	<b>3,508</b>	<b>\$23,353,082</b>	<b>\$539.08</b>
Construction	27	109	106	109	997,238	710.28
Manufacturing	16	134	130	137	1,111,522	639.66
Trade, Transportation & Utilities	84	769	736	741	4,281,192	439.88
Wholesale Trade	11	42	39	39	177,936	342.18
Retail Trade	63	653	648	654	3,504,351	413.66
Transportation, Warehousing & Utilities	10	74	49	48	598,905	808.24
Information	7	25	28	28	166,615	474.69
Financial Activities	31	166	171	168	1,929,976	881.94
Professional & Business Services	37	132	135	131	987,999	572.86
Education & Health Services	83	831	837	844	6,969,944	640.31
Leisure & Hospitality	34	407	416	431	1,609,983	296.28
Local Government	24	431	518	755	3,945,680	534.36
State Government	7	55	56	55	502,574	698.67
Other	33	180	117	109	850,359	483.34

TABLE 6. COUNTY SUMMARY

North American Industry Classification System - Industry Groups	Number of Employing Units	Employment			Total Earnings	Average Weekly Earnings
		Jul	Aug	Sep	Jul- Sep 2019	
<b>STONE COUNTY - TOTAL</b>	<b>264</b>	<b>2,458</b>	<b>2,590</b>	<b>2,557</b>	<b>\$18,800,537</b>	<b>\$570.49</b>
Natural Resources & Mining	4	8	8	8	47,332	455.12
Construction	13	31	32	33	219,968	528.77
Manufacturing	17	226	234	220	1,429,333	485.07
Trade, Transportation & Utilities	66	584	583	577	3,966,137	524.81
Wholesale Trade	6	43	44	46	320,976	556.93
Retail Trade	49	499	497	487	3,131,777	487.33
Transportation, Warehousing & Utilities	11	42	42	44	513,384	925.57
Financial Activities	34	168	164	159	2,287,732	1,075.23
Professional & Business Services	13	27	29	25	115,448	328.91
Education & Health Services	50	541	545	539	5,039,822	715.71
Leisure & Hospitality	27	482	471	451	1,741,195	286.19
Local Government	10	222	350	369	2,607,041	639.35
State Government	7	124	127	127	1,001,406	611.36
Other	23	45	47	49	345,123	564.85
<b>UNION COUNTY - TOTAL</b>	<b>1,278</b>	<b>16,171</b>	<b>16,837</b>	<b>17,134</b>	<b>\$196,567,307</b>	<b>\$904.66</b>
Natural Resources & Mining	82	400	392	370	4,966,453	986.32
Construction	81	1,468	1,499	1,509	21,895,876	1,128.89
Manufacturing	53	2,849	2,864	2,841	48,240,426	1,301.43
Trade, Transportation & Utilities	303	3,392	3,368	3,453	34,306,999	775.19
Wholesale Trade	68	475	472	472	6,674,028	1,085.38
Retail Trade	177	1,995	1,963	2,061	12,818,684	491.47
Transportation, Warehousing & Utilities	58	922	933	920	14,814,287	1,231.96
Information	8	89	88	86	934,015	819.55
Financial Activities	95	601	606	606	7,067,131	899.55
Professional & Business Services	128	1,826	1,853	1,823	32,163,476	1,349.03
Education & Health Services	293	2,192	2,224	2,237	20,329,221	705.15
Leisure & Hospitality	96	1,458	1,440	1,463	6,267,442	331.65
Other Services	91	397	413	392	3,315,833	636.60
Local Government	32	1,018	1,610	1,839	11,968,474	618.30
State Government	16	481	480	515	5,111,961	799.24

TABLE 6. COUNTY SUMMARY

North American Industry Classification System - Industry Groups	Number of Employing Units	Employment			Total Earnings	Average Weekly Earnings
		Jul	Aug	Sep	Jul- Sep 2019	
<b>VAN BUREN COUNTY - TOTAL</b>	<b>334</b>	<b>3,174</b>	<b>3,316</b>	<b>3,407</b>	<b>\$27,734,835</b>	<b>\$646.70</b>
Natural Resources & Mining	9	94	91	91	1,727,314	1,444.24
Construction	37	129	132	126	1,082,646	645.58
Manufacturing	8	192	206	198	1,408,165	545.24
Trade, Transportation & Utilities	94	818	843	831	7,331,158	678.89
Wholesale Trade	10	45	48	48	485,146	794.02
Retail Trade	53	558	579	564	3,641,179	493.99
Transportation, Warehousing & Utilities	31	215	216	219	3,204,833	1,137.81
Information	6	37	35	38	362,202	759.86
Financial Activities	33	153	151	153	1,763,680	890.60
Professional & Business Services	32	136	133	137	1,199,179	681.61
Education & Health Services	57	749	749	738	6,644,231	685.73
Leisure & Hospitality	23	278	264	257	1,156,290	333.96
Other Services	18	182	174	170	1,052,467	461.74
Local Government	11	366	498	628	3,572,464	552.56
State Government	6	40	40	40	435,039	836.61
<b>WASHINGTON COUNTY - TOTAL</b>	<b>6,298</b>	<b>103,567</b>	<b>106,993</b>	<b>108,654</b>	<b>\$1,206,621,439</b>	<b>\$872.30</b>
Natural Resources & Mining	41	295	290	294	3,842,274	1,008.74
Construction	596	6,240	6,190	6,076	82,994,214	1,034.94
Manufacturing	231	13,643	13,622	13,618	151,748,611	856.56
Trade, Transportation & Utilities	1,395	22,440	22,482	22,799	241,332,989	822.38
Wholesale Trade	390	3,815	3,742	3,794	70,335,803	1,429.95
Retail Trade	801	12,031	12,077	12,370	92,533,252	585.39
Transportation, Warehousing & Utilities	204	6,594	6,663	6,635	78,463,934	910.27
Information	83	893	902	872	11,945,849	1,033.65
Financial Activities	703	3,807	3,829	3,737	49,198,125	998.28
Professional & Business Services	1,155	13,497	13,407	13,440	218,996,175	1,252.67
Education & Health Services	904	16,060	16,135	16,307	199,594,519	949.66
Leisure & Hospitality	718	13,260	13,995	13,900	61,418,782	344.39
Other Services	389	2,118	2,116	2,161	20,012,904	722.18
Local Government	61	4,827	6,932	8,437	70,066,480	800.61
State Government	22	6,487	7,093	7,013	95,470,517	1,069.86

TABLE 6. COUNTY SUMMARY

North American Industry Classification System - Industry Groups	Number of Employing Units	Employment			Total Earnings Jul- Sep 2019	Average Weekly Earnings
		Jul	Aug	Sep		
<b>WHITE COUNTY - TOTAL</b>	<b>1,807</b>	<b>22,330</b>	<b>23,572</b>	<b>23,897</b>	<b>\$220,094,553</b>	<b>\$727.68</b>
Natural Resources & Mining	52	339	340	348	4,995,456	1,122.49
Construction	168	1,096	1,118	1,105	13,175,912	916.12
Manufacturing	59	2,134	2,160	2,137	25,889,507	929.02
Trade, Transportation & Utilities	491	6,081	6,086	6,171	54,861,666	690.39
Wholesale Trade	87	560	551	568	6,226,221	855.76
Retail Trade	314	3,476	3,442	3,487	24,043,276	533.25
Transportation, Warehousing & Utilities	90	2,045	2,093	2,116	24,592,169	907.44
Information	19	112	115	117	990,512	664.48
Financial Activities	174	914	919	893	10,071,659	852.62
Professional & Business Services	182	1,079	1,137	1,135	10,313,134	710.22
Education & Health Services	322	5,540	5,515	5,617	60,204,935	833.34
Leisure & Hospitality	165	2,697	2,715	2,638	10,455,230	299.72
Other Services	114	499	504	502	4,770,871	731.54
Local Government	46	1,365	2,504	2,680	19,737,602	695.50
State Government	15	474	459	554	4,628,069	718.24
<b>WOODRUFF COUNTY - TOTAL</b>	<b>190</b>	<b>1,586</b>	<b>1,695</b>	<b>1,706</b>	<b>\$15,154,384</b>	<b>\$701.26</b>
Natural Resources & Mining	32	167	170	177	1,518,194	681.62
Construction	11	35	36	32	303,145	679.19
Manufacturing	5	178	179	180	2,110,016	906.75
Trade, Transportation & Utilities	45	375	355	365	3,572,259	752.85
Wholesale Trade	12	141	135	147	1,818,244	991.95
Retail Trade	25	168	154	153	808,960	393.02
Transportation, Warehousing & Utilities	8	66	66	65	945,055	1,107.05
Financial Activities	11	48	44	46	438,012	732.46
Education & Health Services	47	240	238	241	1,956,914	628.09
Leisure & Hospitality	11	80	80	77	315,519	307.22
Local Government	8	274	406	401	2,763,907	590.03
State Government	5	31	31	30	312,459	783.76
Other	15	158	156	157	1,863,959	913.26

TABLE 6. COUNTY SUMMARY

North American Industry Classification System - Industry Groups	Number of Employing Units	Employment			Total Earnings	Average Weekly Earnings
		Jul	Aug	Sep	Jul- Sep 2019	
<b>YELL COUNTY - TOTAL</b>	<b>413</b>	<b>5,998</b>	<b>6,173</b>	<b>6,452</b>	<b>\$49,490,466</b>	<b>\$613.27</b>
Natural Resources & Mining	24	244	240	240	2,741,172	873.73
Construction	32	244	242	235	2,318,335	742.03
Manufacturing	22	2,438	2,434	2,444	19,698,046	621.34
Trade, Transportation & Utilities	85	736	732	745	5,367,876	559.76
Wholesale Trade	14	58	52	55	309,527	432.90
Retail Trade	49	511	509	512	2,775,618	418.10
Transportation, Warehousing & Utilities	22	167	171	178	2,282,731	1,020.90
Financial Activities	29	117	118	118	1,098,903	718.39
Professional & Business Services	36	307	306	320	2,804,579	693.69
Education & Health Services	109	744	752	752	5,088,974	522.41
Leisure & Hospitality	26	306	294	281	1,068,472	279.88
Local Government	23	665	856	1,119	7,293,383	637.53
State Government	10	73	74	75	650,290	675.98
Other	17	124	125	123	1,360,436	843.94
<b>STATEWIDE COUNTY - TOTAL</b>	<b>11,336</b>	<b>32,307</b>	<b>32,846</b>	<b>34,782</b>	<b>\$532,609,546</b>	<b>\$1,229.90</b>
Natural Resources & Mining	109	329	356	348	6,467,231	1,444.76
Construction	865	3,218	3,296	3,349	46,245,293	1,082.02
Manufacturing	64	168	164	175	4,777,199	2,174.42
Trade, Transportation & Utilities	3,561	7,931	8,044	8,033	187,547,811	1,802.74
Wholesale Trade	2,982	6,460	6,540	6,519	164,662,229	1,946.77
Retail Trade	207	448	441	450	7,726,940	1,331.70
Transportation, Warehousing & Utilities	372	1,023	1,063	1,064	15,158,642	1,110.52
Information	440	803	839	843	20,887,586	1,939.72
Financial Activities	763	1,990	1,973	1,979	35,232,492	1,368.32
Professional & Business Services	4,391	13,201	13,486	15,362	176,488,911	968.59
Education & Health Services	635	2,997	2,994	2,952	33,941,831	875.85
Leisure & Hospitality	117	180	194	217	1,481,121	578.34
State Government	14	758	761	762	9,157,709	926.49
Other	377	732	739	762	10,382,362	1,028.79

Note: Statewide classification includes employment and payroll data for employers that have not provided a physical location for each employing unit. This section also includes employers without a physical location in Arkansas.



**TABLE 7. FEDERAL GOVERNMENT EMPLOYMENT AND EARNINGS IN ARKANSAS**

North American Industry Classification System - Industry Groups	Number of Employing Units	Employment			Total Earnings Jul - Sep 2019	Average Weekly Earnings
		Jul	Aug	Sep		
<b>TOTAL</b>	<b>1,196</b>	<b>20,300</b>	<b>20,542</b>	<b>20,574</b>	<b>\$352,132,414</b>	<b>\$1,323.13</b>
Trade, Transportation & Utilities	584	5,651	5,616	5,610	66,988,165	915.97
Information	2	40	40	37	710,327	1,401.04
Financial Activities	14	99	95	94	2,288,089	1,833.40
Professional & Business Services	32	864	863	860	16,273,517	1,451.65
Education & Health Services	18	5,431	5,451	5,446	103,147,264	1,457.82
Leisure & Hospitality	23	295	287	289	3,679,103	974.77
Other Services	1	1	1	1	9,576	736.62
Public Administration	522	7,919	8,189	8,237	159,036,373	1,507.53

TABLE 8. LOCAL WORKFORCE DEVELOPMENT AREA SUMMARY

North American Industry Classification System - Industry Groups	Number of Employing Units	Employment			Total Earnings Jul- Sep 2019	Average Weekly Earnings
		Jul	Aug	Sep		
<b>CENTRAL LOCAL WORKFORCE DEVELOPMENT AREA</b>	<b>6,834</b>	<b>78,985</b>	<b>82,192</b>	<b>83,279</b>	<b>\$772,331,571</b>	<b>\$729.09</b>
Natural Resources & Mining	201	1,107	1,091	1,085	14,044,349	1,240.34
Construction	777	6,169	6,181	6,189	69,954,722	870.78
Manufacturing	222	5,862	6,402	5,910	80,828,914	1,026.35
Trade, Transportation & Utilities	1,543	16,692	16,792	16,680	138,853,920	638.77
Wholesale Trade	345	2,029	2,014	1,993	26,060,915	996.36
Retail Trade	949	12,755	12,860	12,762	89,218,010	536.49
Transportation, Warehousing & Utilities	249	1,908	1,918	1,925	23,574,995	945.99
Information	60	525	512	507	15,616,512	2,334.07
Financial Activities	713	3,051	3,063	3,025	35,876,826	905.93
Professional & Business Services	940	7,348	7,413	7,384	99,678,566	1,038.73
Education & Health Services	1,102	14,620	14,815	14,853	137,789,487	717.97
Leisure & Hospitality	633	11,339	11,405	11,306	46,161,661	312.85
Other Services	447	2,127	2,078	2,078	16,303,455	598.81
Local Government	136	6,042	8,363	9,897	71,735,088	681.19
State Government	60	4,103	4,077	4,365	45,488,071	836.77
Note: Pulaski County is not included in the Central Local Workforce Development Area. Please refer to Page 51 for information on Pulaski County. Central Local Workforce Development Area includes these counties: Faulkner, Lonoke, Monroe, Prairie, and Saline.						
<b>EASTERN LOCAL WORKFORCE DEVELOPMENT AREA</b>	<b>3,330</b>	<b>32,939</b>	<b>34,363</b>	<b>35,049</b>	<b>\$298,552,530</b>	<b>\$673.14</b>
Natural Resources & Mining	247	1,181	1,163	1,271	10,244,763	653.99
Construction	139	823	826	857	9,038,731	832.35
Manufacturing	74	3,393	3,399	3,399	40,189,535	910.07
Trade, Transportation & Utilities	752	8,848	8,691	8,618	81,849,016	722.11
Wholesale Trade	147	2,071	1,948	1,925	23,681,858	919.42
Retail Trade	419	4,427	4,390	4,321	27,671,337	486.05
Transportation, Warehousing & Utilities	186	2,350	2,353	2,372	30,495,821	994.70
Information	22	146	146	147	1,414,452	743.54
Financial Activities	261	1,271	1,258	1,236	13,067,420	800.95
Professional & Business Services	247	1,614	1,655	1,678	15,302,747	713.85
Education & Health Services	980	6,188	6,295	6,316	52,235,383	641.22
Leisure & Hospitality	264	4,250	4,300	4,220	19,476,068	351.96
Other Services	160	761	778	754	6,007,021	604.55
Local Government	128	2,646	3,960	4,648	32,268,550	661.68
State Government	56	1,818	1,892	1,905	17,458,844	717.54
Eastern Local Workforce Development Area includes these counties: Crittenden, Cross, Lee, Phillips, and Saint Francis.						

TABLE 8. LOCAL WORKFORCE DEVELOPMENT AREA SUMMARY

North American Industry Classification System - Industry Groups	Number of Employing Units	Employment			Total Earnings Jul- Sep 2019	Average Weekly Earnings
		Jul	Aug	Sep		
<b>NORTH CENTRAL LOCAL WORKFORCE DEVELOPMENT AREA</b>	<b>5,393</b>	<b>63,852</b>	<b>66,312</b>	<b>67,972</b>	<b>\$590,569,374</b>	<b>\$687.84</b>
Natural Resources & Mining	213	1,486	1,495	1,509	18,974,389	975.21
Construction	429	2,656	2,676	2,704	29,688,353	852.56
Manufacturing	210	8,944	8,994	8,856	96,763,112	833.39
Trade, Transportation & Utilities	1,386	14,457	14,433	14,514	124,367,881	661.24
Wholesale Trade	223	1,550	1,522	1,554	16,800,824	838.11
Retail Trade	905	9,283	9,260	9,293	61,649,673	511.10
Transportation, Warehousing & Utilities	258	3,624	3,651	3,667	45,917,384	968.41
Information	72	397	399	406	3,509,619	673.80
Financial Activities	516	2,664	2,691	2,635	30,084,925	868.92
Professional & Business Services	492	3,130	3,226	3,191	27,814,147	672.32
Education & Health Services	953	14,448	14,447	14,596	142,861,343	758.04
Leisure & Hospitality	487	6,883	6,827	6,662	26,469,710	299.84
Other Services	322	1,389	1,308	1,290	9,969,133	577.02
Local Government	220	4,855	7,242	8,769	55,321,300	611.83
State Government	93	2,543	2,574	2,840	24,745,462	717.67

North Central Local Workforce Development Area includes these counties: Cleburne, Fulton, Independence, Izard, Jackson, Sharp, Stone, Van Buren, White, and Woodruff.

<b>NORTHEAST LOCAL WORKFORCE DEVELOPMENT AREA</b>	<b>6,455</b>	<b>98,644</b>	<b>101,670</b>	<b>104,172</b>	<b>\$1,035,163,093</b>	<b>\$784.55</b>
Natural Resources & Mining	446	2,079	2,068	2,162	21,536,508	980.99
Construction	473	3,786	3,796	3,837	48,580,742	981.78
Manufacturing	302	21,732	21,771	21,825	291,869,360	1,031.02
Trade, Transportation & Utilities	1,692	19,383	19,425	19,494	172,675,755	683.48
Wholesale Trade	355	3,825	3,780	3,761	47,777,439	970.05
Retail Trade	994	12,067	12,105	12,153	79,990,305	508.17
Transportation, Warehousing & Utilities	343	3,491	3,540	3,580	44,908,011	976.66
Information	55	722	708	719	8,061,946	865.73
Financial Activities	550	3,312	3,353	3,311	37,859,396	875.78
Professional & Business Services	662	7,246	7,499	7,801	69,215,541	708.45
Education & Health Services	1,073	17,534	17,742	17,916	205,812,301	892.90
Leisure & Hospitality	569	9,399	9,639	9,715	37,806,790	303.43
Other Services	329	1,554	1,544	1,550	12,849,334	637.96
Local Government	214	7,755	9,922	11,505	82,481,989	652.26
State Government	90	4,142	4,203	4,337	46,413,431	844.57

Northeast Local Workforce Development Area includes these counties: Clay, Craighead, Greene, Lawrence, Mississippi, Poinsett, and Randolph.

TABLE 8. LOCAL WORKFORCE DEVELOPMENT AREA SUMMARY

North American Industry Classification System - Industry Groups	Number of Employing Units	Employment			Total Earnings Jul- Sep 2019	Average Weekly Earnings
		Jul	Aug	Sep		
<b>NORTHWEST LOCAL WORKFORCE DEVELOPMENT AREA</b>	<b>16,833</b>	<b>270,710</b>	<b>276,981</b>	<b>281,594</b>	<b>\$3,220,791,406</b>	<b>\$896.27</b>
Natural Resources & Mining	145	1,561	1,489	1,493	21,384,303	1,086.25
Construction	1,566	13,000	13,012	12,953	160,176,018	948.64
Manufacturing	634	37,229	37,188	37,314	396,606,123	819.15
Trade, Transportation & Utilities	3,977	61,287	61,150	61,550	700,348,255	878.43
Wholesale Trade	1,273	10,682	10,568	10,605	226,642,041	1,641.88
Retail Trade	2,173	30,992	31,018	31,276	229,064,626	566.66
Transportation, Warehousing & Utilities	531	19,613	19,564	19,669	244,641,588	959.38
Information	220	2,458	2,473	2,433	34,317,900	1,075.44
Financial Activities	1,734	9,845	9,831	9,678	129,732,851	1,019.91
Professional & Business Services	2,870	48,861	49,090	48,990	873,174,450	1,371.31
Education & Health Services	2,419	35,543	35,837	36,140	402,134,587	863.10
Leisure & Hospitality	1,818	32,538	33,315	32,740	151,391,733	354.35
Other Services	1,036	5,384	5,368	5,421	49,224,949	702.38
Local Government	311	14,417	18,979	23,421	185,171,348	752.10
State Government	103	8,587	9,249	9,461	117,128,889	990.21
Northwest Local Workforce Development Area includes these counties: Baxter, Benton, Boone, Carroll, Madison, Marion, Newton, Searcy, and Washington.						
<b>SOUTHEAST LOCAL WORKFORCE DEVELOPMENT AREA</b>	<b>6,129</b>	<b>65,459</b>	<b>67,433</b>	<b>68,432</b>	<b>\$654,281,993</b>	<b>\$749.98</b>
Natural Resources & Mining	447	2,323	2,328	2,406	25,284,258	826.81
Construction	310	2,277	2,326	2,244	27,896,829	940.23
Manufacturing	200	15,086	14,981	14,876	199,145,006	1,022.55
Trade, Transportation & Utilities	1,223	11,864	11,847	11,720	102,379,742	666.82
Wholesale Trade	229	1,937	1,875	1,836	22,964,467	938.30
Retail Trade	729	7,279	7,267	7,215	46,303,555	491.04
Transportation, Warehousing & Utilities	265	2,648	2,705	2,669	33,111,720	952.53
Information	44	251	255	259	2,837,001	855.81
Financial Activities	420	2,421	2,434	2,405	27,824,421	884.44
Professional & Business Services	411	3,334	3,440	3,450	31,666,985	714.77
Education & Health Services	2,034	10,670	10,823	10,817	92,055,448	657.49
Leisure & Hospitality	398	4,609	4,694	4,720	17,039,959	280.42
Other Services	303	1,083	1,076	1,086	8,576,722	609.94
Local Government	212	5,927	7,562	8,542	60,285,502	631.48
State Government	127	5,614	5,667	5,907	59,290,120	796.04
Southeast Local Workforce Development Area includes these counties: Arkansas, Ashley, Bradley, Chicot, Cleveland, Desha, Drew, Grant, Jefferson, and Lincoln.						

TABLE 8. LOCAL WORKFORCE DEVELOPMENT AREA SUMMARY

North American Industry Classification System - Industry Groups	Number of Employing Units	Employment			Total Earnings Jul- Sep 2019	Average Weekly Earnings
		Jul	Aug	Sep		
<b>SOUTHWEST LOCAL WORKFORCE DEVELOPMENT AREA</b>	<b>5,645</b>	<b>73,307</b>	<b>75,432</b>	<b>77,310</b>	<b>\$755,766,652</b>	<b>\$771.55</b>
Natural Resources & Mining	330	2,291	2,269	2,295	27,198,305	915.61
Construction	354	3,274	3,274	3,329	41,449,567	968.44
Manufacturing	234	19,057	19,067	19,034	255,038,648	1,029.69
Trade, Transportation & Utilities	1,347	14,776	14,824	14,908	134,823,380	699.04
Wholesale Trade	240	1,882	1,895	1,885	23,648,804	963.87
Retail Trade	799	8,382	8,398	8,486	52,416,665	478.75
Transportation, Warehousing & Utilities	308	4,512	4,531	4,537	58,757,911	998.49
Information	46	384	384	378	4,841,278	974.88
Financial Activities	453	2,514	2,506	2,455	26,436,927	816.16
Professional & Business Services	432	4,676	4,663	4,636	53,842,470	889.10
Education & Health Services	1,291	9,507	9,628	9,645	79,071,420	634.03
Leisure & Hospitality	424	5,923	6,017	5,990	23,289,561	299.75
Other Services	340	1,364	1,375	1,399	10,459,488	583.31
Local Government	263	6,146	8,045	9,770	64,379,076	620.04
State Government	131	3,395	3,380	3,471	34,936,532	786.87
Southwest Local Workforce Development Area includes these counties: Calhoun, Columbia, Dallas, Hempstead, Howard, Lafayette, Little River, Miller, Nevada, Ouachita, Sevier, and Union						
<b>WEST CENTRAL LOCAL WORKFORCE DEVELOPMENT AREA</b>	<b>8,128</b>	<b>101,986</b>	<b>104,512</b>	<b>106,638</b>	<b>\$963,200,928</b>	<b>\$709.84</b>
Natural Resources & Mining	245	2,296	2,264	1,926	26,672,766	1,219.28
Construction	725	4,474	4,512	4,565	49,179,060	837.50
Manufacturing	332	16,162	16,198	16,267	182,205,090	864.69
Trade, Transportation & Utilities	1,799	21,365	21,265	21,243	195,873,140	707.68
Wholesale Trade	311	1,912	1,899	1,902	21,907,055	884.91
Retail Trade	1,194	13,965	13,830	13,805	95,323,254	528.79
Transportation, Warehousing & Utilities	294	5,488	5,536	5,536	78,642,831	1,095.91
Information	80	699	720	713	7,640,339	827.00
Financial Activities	807	3,682	3,687	3,635	39,820,133	835.08
Professional & Business Services	921	7,589	7,623	7,536	70,791,419	718.15
Education & Health Services	1,560	17,353	17,453	17,627	177,603,792	781.67
Leisure & Hospitality	809	14,264	14,236	13,836	63,508,041	346.18
Other Services	506	2,260	2,227	2,217	16,607,274	571.67
Local Government	230	6,952	9,176	11,627	82,687,474	687.51
State Government	114	4,890	5,151	5,446	50,612,400	754.17
West Central Local Workforce Development Area includes these counties: Clark, Conway, Garland, Hot Spring, Johnson, Montgomery, Perry, Pike, Pope, and Yell						

TABLE 8. LOCAL WORKFORCE DEVELOPMENT AREA SUMMARY

North American Industry Classification System - Industry Groups	Number of Employing Units	Employment			Total Earnings	Average Weekly Earnings
		Jul	Aug	Sep	Jul- Sep 2019	
<b>WESTERN LOCAL WORKFORCE DEVELOPMENT AREA</b>	<b>6,516</b>	<b>98,135</b>	<b>101,490</b>	<b>101,648</b>	<b>\$999,070,500</b>	<b>\$765.27</b>
Natural Resources & Mining	150	1,272	1,261	1,263	17,155,955	1,042.96
Construction	530	4,098	4,085	4,092	43,472,570	817.28
Manufacturing	339	20,509	20,392	20,372	224,434,425	845.28
Trade, Transportation & Utilities	1,552	21,754	21,850	21,666	203,622,115	719.93
Wholesale Trade	340	3,601	3,607	3,562	46,839,133	1,003.62
Retail Trade	933	11,853	11,900	11,790	78,555,934	510.04
Transportation, Warehousing & Utilities	279	6,300	6,343	6,314	78,227,048	952.28
Information	68	1,037	1,022	1,007	17,934,846	1,349.91
Financial Activities	673	3,620	3,658	3,644	42,588,516	899.85
Professional & Business Services	852	10,163	10,186	10,073	100,858,559	765.07
Education & Health Services	1,123	15,923	15,954	16,021	194,527,630	937.22
Leisure & Hospitality	568	9,336	9,248	9,031	37,775,060	315.67
Other Services	424	2,048	1,995	1,983	16,938,083	648.65
Local Government	166	5,708	9,178	9,661	71,317,615	670.47
State Government	71	2,667	2,661	2,835	28,445,126	804.15

Western Local Workforce Development Area includes these counties: Crawford, Franklin, Logan, Polk, Scott, and Sebastian