

Arkansas Covered Employment & Earnings



Fourth Quarter
2015

**COVERED EMPLOYMENT AND EARNINGS
STATE OF ARKANSAS
FOURTH QUARTER 2015**

**ASA HUTCHINSON, GOVERNOR
STATE OF ARKANSAS**

**DARYL BASSETT, DIRECTOR
DEPARTMENT OF WORKFORCE SERVICES**

**PUBLISHED BY
LABOR MARKET INFORMATION
BUREAU OF LABOR STATISTICS PROGRAMS
POST OFFICE BOX 2981
LITTLE ROCK, ARKANSAS 72203-2981
SUSAN PRICE, BLS PROGRAMS MANAGER
TELEPHONE (501) 682-3103**

STATE OF ARKANSAS WEBPAGE: <http://www.arkansas.gov>

DEPARTMENT OF WORKFORCE SERVICES WEBPAGE: <http://www.arkansas.gov/esd/>

WEBPAGE FOR LABOR MARKET INFORMATION: <http://www.discover.arkansas.gov>

RELEASED: JULY 2016

TABLE OF CONTENTS

DESCRIPTION OF DATA	PAGE
Description and Classification of Data	1
Definition of Covered Employment and Earnings	2
Significant Developments During Fourth Quarter 2015	3

LIST OF GRAPHS AND TABLES

Graph 1	Total Covered Employment for Selected Years, Arkansas	7
Graph 2	Total Covered Earnings, by Calendar Quarter for Selected Years, Arkansas	8
Table 1	Quarterly Comparison of Covered Employment and Wages, by Industry	5
Table 2	Total Covered Employment in Arkansas, 2008 – 2015	6
Table 3	Total Covered Earnings, 2008 – 2015	9
Table 4	Total Taxable Earnings, 2008 – 2015	10
Table 5	State Summary – Employment and Total Earnings, by Industry, Fourth Quarter 2015	11
Table 6	County Summary – Employment and Total Earnings, by Industry, Fourth Quarter 2015	22
Table 7	Federal Government Employment and Total Earnings in Arkansas, Fourth Quarter 2015	60
Table 8	Local Workforce Development Area – Employment and Total Earnings, by Industry, Fourth Quarter 2015	61

EMPLOYMENT AND EARNINGS
UNDER THE ARKANSAS EMPLOYMENT SECURITY LAW
FOURTH QUARTER 2015

DESCRIPTION AND CLASSIFICATION OF DATA

This publication contains covered employment and payroll data by industry and county for the Fourth Quarter 2015 and a record for total covered employment by month, quarterly payroll data, average weekly earnings, and total taxable earnings for 2008 through 2015. These data are compiled from quarterly contributions and wage reports submitted by employers subject to the Arkansas Employment Security Law.

Employment data have been tabulated for each month of the quarter by industry under the **North American Industry Classification System** (NAICS) by state, county, and workforce area. Payroll data represent the total wages paid during the quarter and are classified by industry for the state and by publishable industry groups for each county and workforce area.

Due to industry classification revisions, previously published data will not always be comparable with current data. For this reason, comparisons should not be made between the same industries under different revisions. For more information, visit the NAICS home page at <http://www.census.gov/naics>.

Industry Classification Revisions

- SIC (Standard Industrial Classification) 1987 to NAICS 2002
- NAICS 2002 to NAICS 2007
- NAICS 2007 to NAICS 2012

The tabulation of this data is a joint effort in conjunction with the United States Bureau of Labor Statistics. Data included in this publication are subject to revisions. Revisions are typically reflected in the Annual Covered Employment and Earnings publication.

DEFINITION OF COVERED EMPLOYMENT AND EARNINGS

Covered Employment is the total number of workers employed by establishments subject to the Arkansas Employment Security Law that worked or received pay for the payroll period including the 12th of the month. Earnings include all wages paid to any covered employee by their employer including salaries, bonuses, commissions, fees, fringe benefits, sick pay made directly to employees or dependents, deferred compensation, and reported tips. These wages include both taxable and nontaxable wages. Only the first \$12,000 paid to each worker by an employer in the calendar year is taxable under the Arkansas Employment Security Law.

An Arkansas state unemployment insurance account is required of any entity meeting the definition of an employer. As described by Arkansas Department of Workforce Services Law, the definition of an employer includes, but is not limited to, a sole proprietorship, partnership, corporation, associations, trust, estate, and receiver or trustee in bankruptcy. The entity must employ one or more individuals for ten or more days in a calendar year, whether or not the days are consecutive.

Currently excluded from coverage is employment covered by the Railroad Unemployment Insurance Act, some domestic service workers, employees of small agricultural establishments, self-employed workers, unpaid family workers, insurance and real estate agents paid only on a commission basis, and employees of churches and religious organizations except separately incorporated schools.

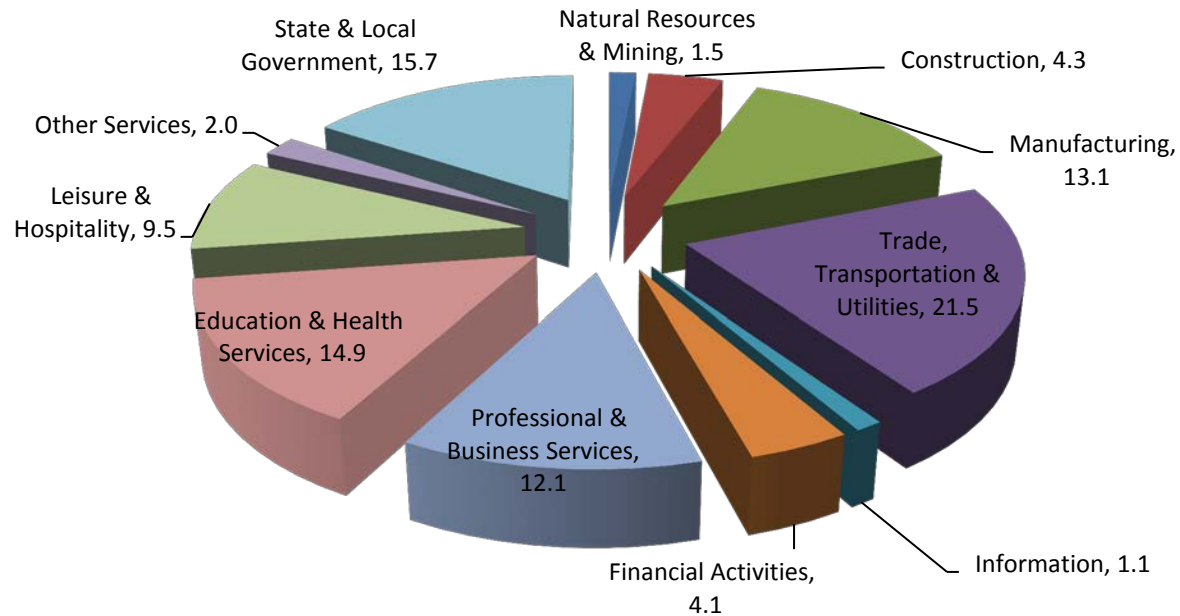
Civilian federal workers are covered by Unemployment Compensation for Federal Employees (UCFE).

SIGNIFICANT DEVELOPMENTS DURING FOURTH QUARTER 2015

AVERAGE EMPLOYMENT CHANGES

Covered employment averaged 1,177,601 during the Fourth Quarter 2015 (refer to Table 1), an increase of 30,345 (2.6%) from the previous quarter and an increase of 20,602 (1.8%) from the average recorded one year ago. The over-the-year comparison is more significant when used as an economic indicator and allows for seasonal factors that appear when comparing over-the-quarter data to be disregarded.

Average Covered Employment by NAICS



EMPLOYMENT CHANGES FROM THIRD QUARTER 2015

Compared to Third Quarter 2015, covered employment rose in five major industry sectors. State and Local Government added 23,071 jobs as schools resumed for the fall semester. Professional and Business Services expanded 4,593 jobs; the increase was mostly focused in Administrative and Waste Services. Industries in Administrative and Waste Services include both administrative-support services and waste management-remediation services. Trade, Transportation, & Utilities expanded 4,066 jobs, mainly due to the additional hiring in retail trade for the holiday season. Leisure and Hospitality had the biggest decline (-2,158) for the quarter.

EMPLOYMENT CHANGES FROM FOURTH QUARTER 2014 (QUARTER YEAR AGO COMPARISON)

Over-the-year gains were recorded in seven industry groups (refer to Table 1). The largest gains occurred in Trade, Transportation & Utilities (5,601), Leisure & Hospitality (5,417) and Professional & Business Services (5,226). The most significant losses occurred in Natural Resources & Mining (-1,907), State & Local Government (-1,756), and Manufacturing (-642).

COVERED WAGES

Wages paid to covered workers totaled \$12,726,658,797 for the Fourth Quarter 2015 (refer to Table 1), for an average weekly wage of \$831.33 (refer to Table 5). Benton County workers recorded the highest average weekly wage (\$1,042.28), and employees in Newton County reported the lowest (\$474.35) (refer to Table 6).

The Professional & Business Services industry recorded the highest average weekly wage for the State of Arkansas (\$1,122.15). The Leisure & Hospitality sector recorded the lowest (\$304.75) (refer to Table 5).

Average Weekly Wage by Industry

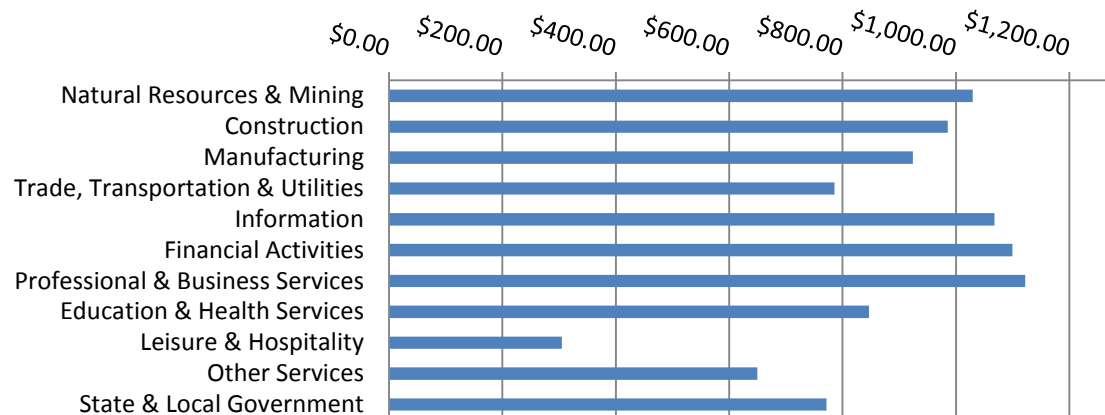


TABLE 1. QUARTERLY COMPARISON OF COVERED EMPLOYMENT AND WAGES, BY INDUSTRY

North American Industry Classification System - Industry Groups	Number of Employing Units	Monthly Employment Average	Percent of Total	Net Change From:		Total Wages Paid Oct - Dec 2015	Percent of Total
				Jul - Sep 2015	Oct - Dec 2014		
TOTAL	88,042	1,177,601	100	30,345	20,602	\$12,726,658,797	100
Natural Resources & Mining	2,643	18,030	1.5	-741	-1,907	241,263,416	1.9
Agriculture, Forestry, Fishing & Hunting	2,125	12,651	1.1	-508	-484	143,107,728	1.1
Mining	518	5,379	0.5	-233	-1,422	98,155,688	0.8
Construction	6,751	51,014	4.3	-416	3,390	653,384,220	5.1
Manufacturing	2,980	154,359	13.1	-499	-642	1,853,775,479	14.6
Trade, Transportation & Utilities	21,661	253,159	21.5	4,066	5,601	2,585,586,755	20.3
Wholesale Trade	7,132	47,564	4.0	77	559	817,073,938	6.4
Retail Trade	11,224	144,550	12.3	3,625	4,157	971,339,974	7.6
Transportation & Warehousing	2,886	53,110	4.5	461	796	635,054,056	5.0
Utilities	419	7,936	0.7	-96	89	162,118,787	1.3
Information	1,064	13,307	1.1	-224	-307	184,681,052	1.5
Financial Activities	8,297	48,787	4.1	284	815	697,135,615	5.5
Finance & Insurance	4,938	35,542	3.0	304	641	565,905,169	4.4
Real Estate & Rental & Leasing	3,359	13,245	1.1	-20	174	131,230,446	1.0
Professional & Business Services	13,987	142,728	12.1	4,593	5,226	2,082,108,477	16.4
Professional & Technical Services	8,891	41,699	3.5	1,029	789	700,445,978	5.5
Management of Companies & Enterprises	530	34,312	2.9	570	1,344	898,667,150	7.1
Administrative & Waste Services	4,566	66,717	5.7	2,994	3,093	482,995,349	3.8
Education & Health Services	15,254	175,070	14.9	2,857	4,726	1,926,983,700	15.1
Educational Services	788	11,458	1.0	1,025	398	100,333,644	0.8
Health Care & Social Assistance	14,466	163,612	13.9	1,832	4,327	1,826,650,056	14.4
Leisure & Hospitality	6,917	112,241	9.5	-2,158	5,417	444,673,732	3.5
Arts, Entertainment & Recreation	965	9,560	0.8	-2,210	351	54,795,864	0.4
Accommodation & Food Services	5,952	102,681	8.7	52	5,066	389,877,868	3.1
Other Services	5,399	23,958	2.0	-487	40	202,272,447	1.6
State & Local Government	3,089	184,949	15.7	23,071	-1,756	1,854,793,904	14.6
Local Government	1,949	114,371	9.7	21,595	-1,156	1,053,869,020	8.3
State Government	1,140	70,578	6.0	1,476	-600	800,924,884	6.3
Nonclassifiable Establishments	0	0	0.0	0	0	0	0.0

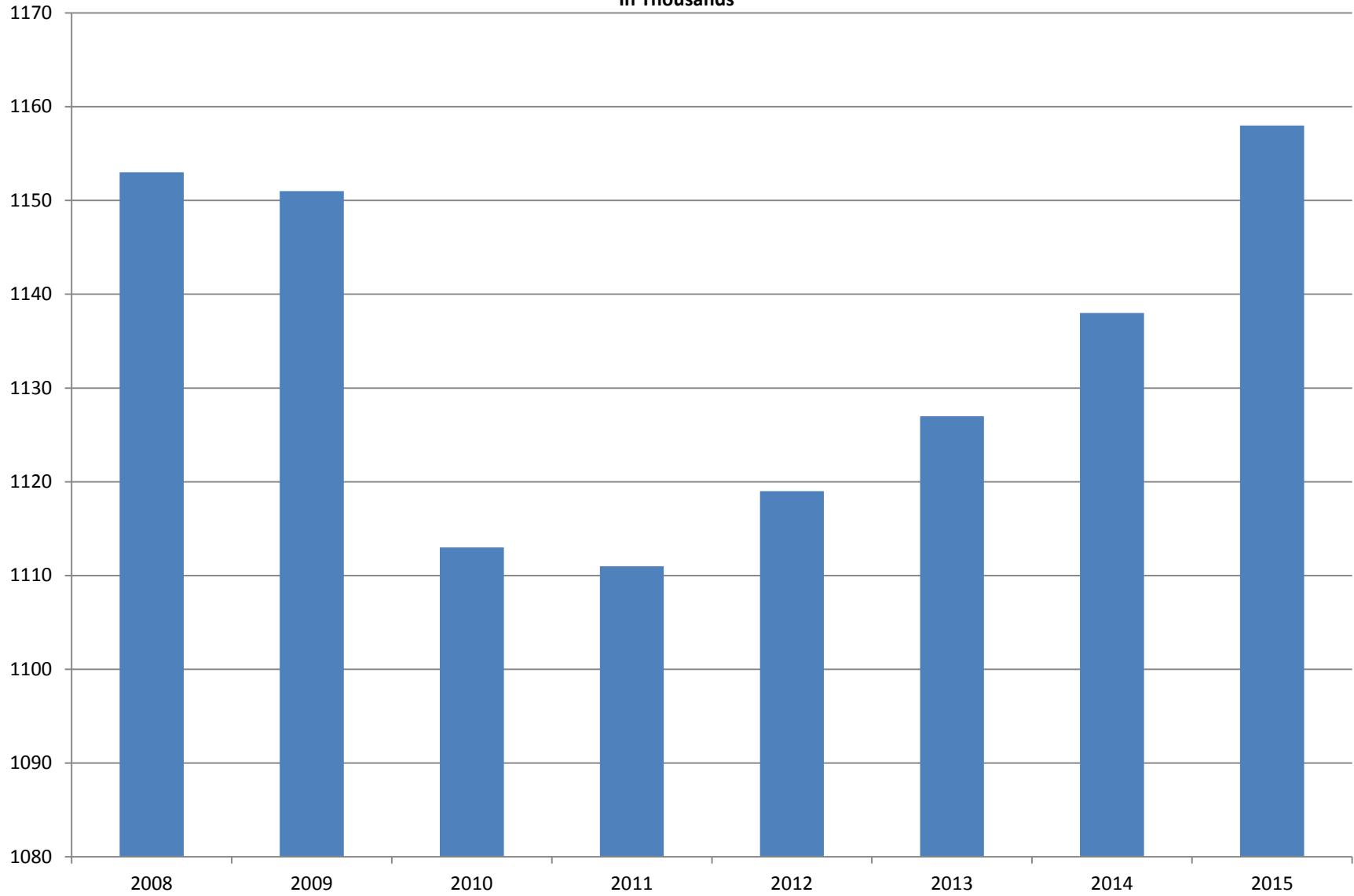
Note: Items do not necessarily add to total because of rounding. Because of industry code changes between years, substantial employment and wage shifts among industries are anticipated.

TABLE 2. TOTAL COVERED EMPLOYMENT IN ARKANSAS

PERIOD	2008	2009	2010	2011	2012	2013	2014	2015
AVERAGE	1,150,965	1,112,591	1,110,947	1,118,639	1,126,171	1,125,890	1,137,486	1,157,724
January	1,141,856	1,119,299	1,089,984	1,098,349	1,113,274	1,112,991	1,114,412	1,135,999
February	1,149,443	1,119,476	1,091,282	1,098,445	1,119,319	1,121,492	1,122,905	1,145,107
March	1,157,690	1,124,386	1,106,198	1,113,061	1,131,123	1,129,100	1,132,106	1,146,804
April	1,159,841	1,123,383	1,115,341	1,129,635	1,136,608	1,134,734	1,140,788	1,158,513
May	1,166,111	1,122,322	1,123,250	1,126,371	1,142,985	1,138,383	1,149,046	1,167,423
June	1,164,167	1,117,884	1,130,164	1,123,412	1,136,699	1,130,402	1,144,876	1,164,266
July	1,114,279	1,071,048	1,073,743	1,080,937	1,078,836	1,083,849	1,096,675	1,119,869
August	1,138,583	1,093,192	1,099,795	1,106,262	1,108,552	1,109,759	1,125,162	1,148,725
September	1,162,333	1,116,580	1,124,281	1,132,779	1,134,829	1,135,673	1,150,545	1,173,175
October	1,157,196	1,113,157	1,125,073	1,138,395	1,135,677	1,138,312	1,153,684	1,174,144
November	1,152,159	1,115,443	1,126,781	1,138,543	1,137,411	1,141,035	1,158,579	1,177,834
December	1,147,927	1,114,919	1,125,466	1,137,474	1,138,742	1,134,955	1,161,056	1,180,826

AVERAGE TOTAL COVERED EMPLOYMENT

In Thousands



TOTAL COVERED EARNINGS BY CALENDAR YEAR

In Thousands

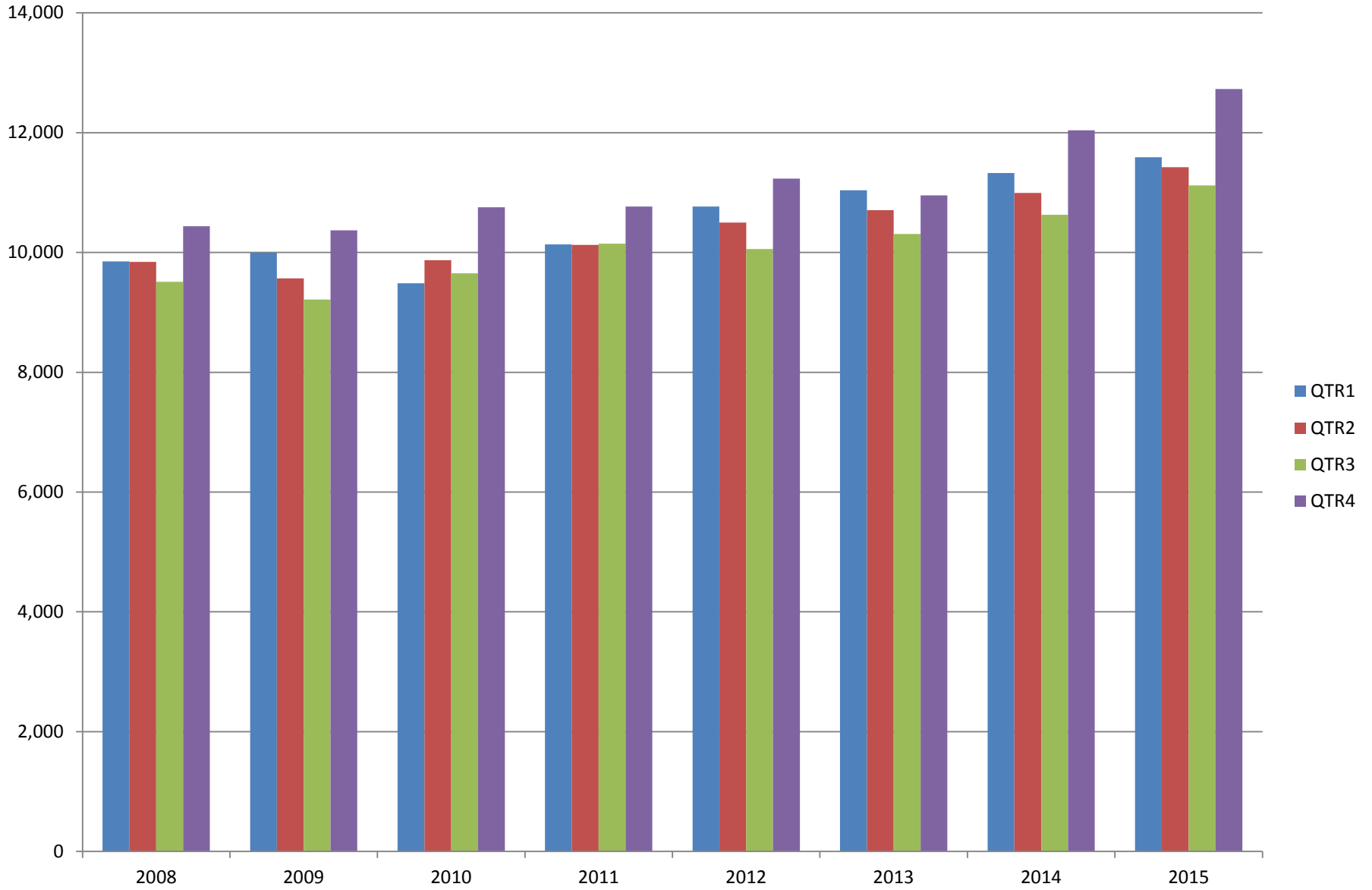


TABLE 3. TOTAL COVERED EARNINGS 2008 - 2015

PERIOD	2008	2009	2010	2011
TOTAL	\$39,643,039,342	\$39,149,476,305	\$39,769,504,992	\$41,177,659,236
January - March	9,851,866,058	9,998,452,028	9,486,245,580	10,134,035,254
April - June	9,843,711,293	9,566,968,853	9,873,489,653	10,128,274,611
July - September	9,509,150,631	9,213,797,140	9,653,588,807	10,147,287,431
October - December	10,438,311,360	10,370,258,284	10,756,180,952	10,768,061,940
Average Weekly Earnings	\$662.37	\$676.69	\$688.42	\$707.89

PERIOD	2012	2013	2014	2015
TOTAL	\$42,551,238,929	\$43,371,086,461	\$44,980,520,034	\$46,858,013,612
January - March	10,766,175,449	11,050,678,946	11,321,422,241	11,588,392,768
April - June	10,494,369,042	10,692,826,528	10,991,760,061	11,421,560,368
July - September	10,053,294,410	10,322,652,747	10,619,889,280	11,121,401,679
October - December	11,237,400,028	11,304,928,240	12,047,448,452	12,726,658,797
Average Weekly Earnings	\$726.62	\$740.80	\$760.46	\$778.35

TABLE 4. TOTAL TAXABLE EARNINGS, 2008 - 2015

PERIOD	2008	2009	2010	2011
TOTAL	10,360,487,108	9,787,660,886	11,332,118,456	11,479,396,226
January - March	5,635,750,082	5,423,705,265	5,607,134,758	5,828,877,821
April - June	2,419,313,519	2,293,670,854	2,977,100,591	2,910,604,359
July - September	1,297,473,555	1,165,280,065	1,577,067,770	1,601,382,146
October - December	1,007,949,952	905,004,702	1,170,815,337	1,138,531,900

PERIOD	2012	2013	2014	2015
TOTAL	11,624,348,048	11,644,747,978	11,919,662,224	12,280,544,995
January - March	6,167,036,199	6,184,735,653	6,288,682,396	6,387,946,312
April - June	2,838,154,846	2,805,431,293	2,831,013,392	2,919,500,476
July - September	1,494,712,584	1,506,497,129	1,552,243,963	1,645,440,596
October - December	1,124,444,419	1,148,083,903	1,247,722,473	1,327,657,611

TABLE 5. STATEWIDE SUMMARY

North American Industry Classification System - Industry Groups		Number of Employing Units	Employment			Total Earnings Oct - Dec 2015	Average Weekly Earnings
			Oct	Nov	Dec		
TOTAL, ALL INDUSTRIES		88,042	1,174,144	1,177,834	1,180,826	\$12,726,658,797	\$831.33
NATURAL RESOURCES & MINING		2,643	18,644	17,960	17,486	\$241,263,416	\$1,029.32
11	AGRICULTURE, FORESTRY, FISHING & HUNTING	2,125	13,183	12,570	12,201	\$143,107,728	\$870.13
111	CROP PRODUCTION	967	4,687	4,206	4,103	\$38,653,062	\$686.36
1111	Oilseed & Grain Farming	683	3,145	2,844	2,754	26,855,081	708.83
1112	Vegetable & Melon Farming	27	235	211	199	1,378,161	493.08
1113	Fruit & Tree Nut Farming	13	43	41	39	305,303	572.80
1114	Greenhouse & Nursery Production	43	341	299	324	2,634,464	630.66
1119	Other Crop Farming	201	923	811	787	7,480,053	684.71
112	ANIMAL PRODUCTION & AQUACULTURE	308	3,158	3,126	3,117	\$46,954,803	\$1,152.61
1121	Cattle Ranching & Farming	117	438	428	429	3,377,625	601.89
1122	Hog & Pig Farming	12	134	136	135	2,269,645	1,293.25
1123	Poultry & Egg Production	110	2,130	2,131	2,143	37,219,774	1,341.22
1125	Animal Aquaculture	50	396	374	351	3,694,234	760.50
	Other	19	60	57	59	393,525	515.99
115	SUPPORT ACTIVITIES FOR AGRICULTURE & FORESTRY	430	2,853	2,806	2,559	\$32,491,742	\$912.40
1151	Support Activities for Crop Production	298	1,677	1,641	1,372	21,699,450	1,067.71
1152	Support Activities for Animal Production	63	645	645	635	5,308,344	636.36
1153	Support Activities for Forestry	69	531	520	552	5,483,948	789.47
	OTHER	420	2,485	2,432	2,422	\$25,008,121	\$786.36
21	MINING	518	5,461	5,390	5,285	\$98,155,688	\$1,403.77
211	OIL & GAS EXTRACTION	85	1,199	1,191	1,188	\$26,196,471	\$1,689.59
212	MINING (EXCEPT OIL & GAS)	106	1,702	1,688	1,673	\$22,468,517	\$1,024.10
213	SUPPORT ACTIVITIES FOR MINING	327	2,560	2,511	2,424	\$49,490,700	\$1,523.81

TABLE 5. STATEWIDE SUMMARY

North American Industry Classification System - Industry Groups		Number of Employing Units	Employment			Total Earnings Oct - Dec 2015	Average Weekly Earnings
			Oct	Nov	Dec		
CONSTRUCTION		6,751	51,471	50,946	50,624	\$653,384,220	\$985.23
236	CONSTRUCTION OF BUILDINGS	1,682	11,218	11,188	11,140	\$164,001,408	\$1,128.20
2361	Residential Building Construction	1,110	3,271	3,224	3,247	36,834,090	872.53
2362	Nonresidential Building Construction	572	7,947	7,964	7,893	127,167,318	1,232.83
237	HEAVY & CIVIL ENGINEERING CONSTRUCTION	737	8,491	8,124	7,960	\$110,880,660	\$1,041.21
2371	Utility System Construction	409	4,919	4,631	4,519	66,082,564	1,083.93
2372	Land Subdivision	57	121	115	118	1,203,641	784.64
2373	Highway, Street & Bridge Construction	184	2,862	2,786	2,720	35,530,098	979.83
2379	Other Heavy Construction	87	589	592	603	8,064,357	1,043.16
238	SPECIALTY TRADE CONTRACTORS	4,332	31,762	31,634	31,524	\$378,502,152	\$920.21
2381	Building Foundation & Exterior Contractors	816	5,768	5,784	5,808	65,856,314	875.44
2382	Building Equipment Contractors	2,048	16,758	16,808	16,797	217,563,540	996.90
2383	Building Finishing Contractors	717	4,487	4,367	4,313	46,380,969	812.89
2389	Other Specialty Trade Contractors	751	4,749	4,675	4,606	48,701,329	801.05
MANUFACTURING		2,980	154,182	154,061	154,833	\$1,853,775,479	\$923.81
311	FOOD MANUFACTURING	272	43,611	43,598	43,998	\$419,282,463	\$737.44
3111	Animal Food Manufacturing	44	1,490	1,493	1,526	20,465,428	1,047.41
3112	Grain & Oilseed Milling	34	2,561	2,493	2,500	35,252,692	1,076.94
3114	Fruit, Vegetable & Specialty Food	20	4,234	4,222	4,232	52,104,165	947.67
3115	Dairy Product Manufacturing	8	534	531	536	6,254,857	901.58
3116	Animal Slaughtering & Processing	78	29,270	29,313	29,568	244,824,961	640.92
3118	Bakeries & Tortilla Manufacturing	59	3,455	3,453	3,521	36,157,454	800.08
3119	Other Food Manufacturing	21	2,024	2,047	2,068	23,946,011	900.15
	Other	8	43	46	47	276,895	469.84
312	BEVERAGE & TOBACCO PRODUCT MANUFACTURING	50	1,347	1,341	1,278	\$14,268,636	\$830.25
313	TEXTILE MILLS	8	44	41	40	\$390,552	\$721.02
314	TEXTILE PRODUCT MILLS	45	864	867	885	\$11,801,330	\$1,041.05
3141	Textile Furnishing Mills	9	38	39	39	398,266	792.31
3149	Other Textile Product Mills	36	826	828	846	11,403,064	1,052.59
315	APPAREL MANUFACTURING	18	873	875	894	\$6,788,345	\$592.94
3151	Apparel Knitting Mills	3	628	631	650	4,999,772	604.40
3152	Cut & Sew Apparel Manufacturing	11	141	141	139	940,952	515.78
3159	Apparel Accessories, Other Apparel Manufacturing	4	104	103	105	847,621	626.94
316	LEATHER & ALLIED PRODUCT MANUFACTURING	16	1,096	1,076	1,063	\$7,719,035	\$550.64

TABLE 5. STATEWIDE SUMMARY

North American Industry Classification System - Industry Groups		Number of Employing Units	Employment			Total Earnings Oct - Dec 2015	Average Weekly Earnings
			Oct	Nov	Dec		
321	WOOD PRODUCT MANUFACTURING	323	9,410	9,387	9,376	\$105,074,845	\$860.68
3211	Sawmills & Wood Preservation	145	4,446	4,437	4,412	53,226,278	923.88
3212	Veneer & Engineered Wood Products	46	1,979	1,957	1,936	25,767,939	1,012.68
3219	Other Wood Product Manufacturing	132	2,985	2,993	3,028	26,080,628	668.29
322	PAPER MANUFACTURING	70	9,453	9,433	9,468	\$158,711,217	\$1,291.73
3221	Pulp, Paper & Paperboard Mills	12	3,946	3,943	3,938	83,431,557	1,627.92
3222	Converted Paper Product Manufacturing	58	5,507	5,490	5,530	75,279,660	1,051.14
323	PRINTING & RELATED SUPPORT ACTIVITIES	245	4,059	4,054	4,006	\$44,431,159	\$846.06
324	PETROLEUM & COAL PRODUCTS MANUFACTURING	19	1,140	1,144	1,143	\$18,471,582	\$1,243.85
325	CHEMICAL MANUFACTURING	113	5,116	5,109	5,085	\$84,072,546	\$1,267.23
3251	Basic Chemical Manufacturing	29	1,882	1,883	1,886	36,974,202	1,509.91
3252	Resin, Rubber & Artificial Fibers	7	296	298	302	5,284,924	1,361.16
3253	Agricultural Chemical Manufacturing	13	385	389	385	7,456,867	1,484.74
3254	Pharmaceutical & Medicine Manufacturing	16	289	291	295	4,350,134	1,147.29
3255	Paint, Coating & Adhesive Manufacturing	8	251	253	256	3,809,688	1,156.79
3256	Soap, Cleaning Compound, & Toilet Preparation Manufacturing	17	1,206	1,184	1,180	15,157,638	979.81
3259	Other Chemical Preparation Manufacturing	23	807	811	781	11,039,093	1,061.89
326	PLASTICS & RUBBER PRODUCTS MANUFACTURING	143	11,420	11,470	11,407	\$150,586,233	\$1,013.23
3261	Plastics Product Manufacturing	104	7,033	7,042	7,078	84,150,414	918.04
3262	Rubber Product Manufacturing	39	4,387	4,428	4,329	66,435,819	1,166.41
327	NONMETALLIC MINERAL PRODUCT MANUFACTURING	233	3,620	3,617	3,613	\$42,831,132	\$910.98
3271	Clay Product & Refractory Manufacturing	13	402	406	403	4,600,066	876.59
3272	Glass & Glass Product Manufacturing	11	359	358	358	4,515,963	969.44
3273	Cement & Concrete Product Manufacturing	170	2,130	2,120	2,113	24,574,246	891.24
3274	Lime & Gypsum Product Manufacturing	3	270	272	274	4,339,658	1,227.28
3279	Other Nonmetallic Mineral Products Manufacturing	36	459	461	465	4,801,199	799.98
331	PRIMARY METAL MANUFACTURING	74	8,643	8,545	8,803	\$140,896,142	\$1,250.99
3311	Iron & Steel Mills & Ferroalloys	10	2,514	2,613	2,667	58,413,320	1,729.54
3312	Purchased Steel Product Manufacturing	20	2,443	2,267	2,455	35,146,957	1,132.01
3313	Alumina & Aluminum Production	18	1,288	1,287	1,306	17,843,817	1,061.02
3314	Other Nonferrous Metal Production	8	493	490	485	5,436,099	854.55
3315	Foundries	18	1,905	1,888	1,890	24,055,949	976.84

TABLE 5. STATEWIDE SUMMARY

North American Industry Classification System - Industry Groups		Number of Employing Units	Employment			Total Earnings Oct - Dec 2015	Average Weekly Earnings
			Oct	Nov	Dec		
332	FABRICATED METAL PRODUCT MANUFACTURING	532	14,888	14,883	14,867	\$196,472,122	\$1,015.72
3321	Forging & Stamping	11	383	381	364	4,165,083	852.10
3322	Cutlery & Hand Tool Manufacturing	10	621	618	599	7,562,206	949.47
3323	Architectural & Structural Metals	152	4,129	4,136	4,178	58,054,152	1,076.68
3324	Boilers, Tanks & Shipping Containers	16	713	714	697	9,265,110	1,006.64
3325	Hardware Manufacturing	6	279	277	281	3,373,739	930.17
3326	Spring & Wire Product Manufacturing	13	384	388	383	4,590,792	917.24
3327	Machine Shops & Threaded Products	216	1,856	1,871	1,890	21,982,496	903.13
3328	Coating, Engraving & Heat Treating Metals	38	705	680	668	6,835,378	768.34
3329	Other Fabricated Metal Product Manufacturing	70	5,818	5,818	5,807	80,643,166	1,066.90
333	MACHINERY MANUFACTURING	210	10,808	10,806	11,074	\$127,070,489	\$897.09
3331	Agriculture, Construction & Mining Machinery	42	2,626	2,595	2,796	27,637,854	795.56
3332	Industrial Machinery Manufacturing	22	625	628	632	8,736,951	1,069.61
3333	Commercial & Service Industry Machinery	21	733	735	739	10,429,692	1,090.55
3334	HVAC & Commercial Refrigeration Equipment	22	2,997	3,013	3,086	31,687,079	803.91
3335	Metalworking Machinery Manufacturing	59	1,038	1,046	1,037	11,577,033	856.02
3336	Turbine & Power Transmission Equipment Manufacturing	6	681	676	660	9,591,699	1,097.41
3339	Other General Purpose Machinery Manufacturing	38	2,108	2,113	2,124	27,410,181	996.92
334	COMPUTER & ELECTRONIC PRODUCT MANUFACTURING	58	2,417	2,382	2,415	\$34,741,448	\$1,111.35
3343	Audio & Video Equipment Manufacturing	7	158	158	156	1,824,231	891.90
3344	Semiconductors & Electronic Components	25	1,673	1,657	1,702	25,007,398	1,146.85
3345	Navigational, Measuring, Electromedical, & Control Instr, Mfg Other	18 8	447 139	435 132	435 122	5,868,658 2,041,161	1,028.33 1,198.57
335	ELECTRICAL EQUIPMENT & APPLIANCES	57	5,094	5,136	5,114	\$66,349,669	\$997.88
3351	Electric Lighting Equipment Manufacturing	11	344	392	399	4,043,854	\$822.20
3352	Household Appliance Manufacturing	5	51	49	47	734,297	\$1,152.74
3353	Electrical Equipment Manufacturing	22	3,263	3,271	3,259	43,201,581	1,018.03
3359	Other Electrical Equipment & Component Manufacturing	19	1,436	1,424	1,409	18,369,937	993.02
336	TRANSPORTATION EQUIPMENT MANUFACTURING	143	13,693	13,664	13,695	\$159,942,414	\$899.10
3362	Motor Vehicle Body & Trailer Manufacturing	33	1,824	1,844	1,846	19,180,344	802.73
3363	Motor Vehicle Parts Manufacturing	46	4,943	4,989	5,049	52,646,277	810.97
3364	Aerospace Product & Parts Manufacturing	27	3,431	3,425	3,410	52,539,821	1,181.04
3366	Ship & Boat Building Other	22 15	1,821 1,674	1,794 1,612	1,793 1,597	16,122,988 19,452,984	688.00 919.34
337	FURNITURE & RELATED PRODUCT MANUFACTURING	171	3,155	3,171	3,149	\$29,791,593	\$725.59
3371	Household & Institutional Furniture	144	2,285	2,319	2,329	20,425,942	679.89
3372	Office Furniture & Fixtures Manufacturing	20	767	755	721	8,616,741	886.53
3379	Other Furniture Related Product Manufacturing	7	103	97	99	748,910	578.01
339	MISCELLANEOUS MANUFACTURING	180	3,431	3,462	3,460	\$34,082,527	\$759.70
3391	Medical Equipment & Supplies Manufacturing	67	1,707	1,711	1,703	18,720,721	843.62
3399	Other Miscellaneous Manufacturing	113	1,724	1,751	1,757	15,361,806	677.57

TABLE 5. STATEWIDE SUMMARY

North American Industry Classification System - Industry Groups		Number of Employing Units	Employment			Total Earnings Oct - Dec 2015	Average Weekly Earnings
			Oct	Nov	Dec		
TRADE, TRANSPORTATION & UTILITIES		21,661	249,971	253,881	255,625	\$2,585,586,755	\$785.64
42	WHOLESALE TRADE	7,132	47,577	47,508	47,607	\$817,073,938	\$1,321.42
423	MERCHANT WHOLESALERS, DURABLE GOODS	2,178	21,242	21,155	21,192	\$313,315,132	\$1,137.04
4231	Motor Vehicle & Part Merchant Wholesalers	249	2,834	2,820	2,835	32,929,749	895.18
4232	Furniture & Furnishings Merchant Wholesalers	54	454	452	457	7,281,735	1,232.87
4233	Lumber & Supply Merchant Wholesalers	168	1,412	1,418	1,417	18,368,449	998.09
4234	Commercial Goods Merchant Wholesalers	295	2,702	2,705	2,713	48,635,782	1,382.22
4235	Metal & Mineral Merchant Wholesalers	53	859	857	863	11,446,115	1,024.20
4236	Appliances & Electronics Goods Merchant Wholesalers	203	1,894	1,894	1,902	33,218,540	1,347.24
4237	Hardware & Plumbing Merchant Wholesalers	228	2,303	2,322	2,340	34,195,095	1,132.98
4238	Machinery & Supply Merchant Wholesalers	704	6,833	6,796	6,807	104,459,046	1,179.58
4239	Miscellaneous Durable Goods Merchant Wholesalers	224	1,951	1,891	1,858	22,780,621	922.29
424	MERCHANT WHOLESALERS, NONDURABLE GOODS	1,175	14,974	14,922	14,893	\$216,762,863	\$1,116.84
4241	Paper & Paper Product Merchant Wholesalers	68	1,144	1,152	1,134	18,308,626	1,231.80
4242	Druggist' Goods Merchant Wholesalers	57	616	627	628	8,892,915	1,096.85
4243	Apparel & Piece Goods Merchant Wholesalers	38	635	607	628	8,693,676	1,072.85
4244	Grocery Product Merchant Wholesalers	293	4,281	4,279	4,302	68,235,262	1,224.27
4245	Farm Product & Raw Material Merchant Wholesalers	72	826	810	807	8,077,160	762.98
4246	Chemical Merchant Wholesalers	94	640	645	644	12,201,760	1,459.72
4247	Petroleum Merchant Wholesalers	139	1,783	1,786	1,787	27,448,600	1,182.65
4248	Alcoholic Beverage Merchant Wholesalers	42	1,510	1,533	1,535	21,340,776	1,075.75
4249	Miscellaneous Nondurable Goods Merchant Wholesaler	372	3,539	3,483	3,428	43,564,088	962.03
425	ELECTRONIC MARKETS & AGENTS & BROKERS	3,779	11,361	11,431	11,522	\$286,995,943	\$1,930.11
44 - 45	RETAIL TRADE	11,224	141,890	145,686	146,073	\$971,339,974	\$516.91
441	MOTOR VEHICLE & PARTS DEALERS	1,556	19,246	19,211	19,172	\$213,193,920	\$853.71
4411	Automobile Dealers	636	11,844	11,843	11,872	151,313,966	981.99
4412	Other Motor Vehicle Dealers	170	1,605	1,579	1,569	17,254,918	837.77
4413	Automotive Parts, Accessories & Tire Stores	750	5,797	5,789	5,731	44,625,036	594.68
442	FURNITURE & HOME FURNISHINGS STORES	521	3,717	3,833	3,855	\$29,322,608	\$593.31
4421	Furniture Stores	282	2,111	2,137	2,138	18,875,475	682.10
4422	Home Furnishings Stores	239	1,606	1,696	1,717	10,447,133	480.35
443	ELECTRONICS & APPLIANCE STORES	445	3,834	3,952	3,998	\$33,973,870	\$665.32
444	BUILDING MATERIAL & GARDEN SUPPLY STORES	841	10,871	10,893	10,877	\$79,665,468	\$563.23
4441	Building Material & Supplies Dealers	622	9,454	9,470	9,470	69,438,249	564.35
4442	Lawn & Garden Equipment & Supplies Stores	219	1,417	1,423	1,407	10,227,219	555.72

TABLE 5. STATEWIDE SUMMARY

North American Industry Classification System - Industry Groups		Number of Employing Units	Employment			Total Earnings Oct - Dec 2015	Average Weekly Earnings
			Oct	Nov	Dec		
445	FOOD & BEVERAGE STORES	1,066	19,987	20,144	20,198	\$115,128,820	\$440.39
4451	Grocery Stores	564	17,267	17,383	17,417	96,007,567	425.52
4452	Specialty Food Stores	144	974	1,001	1,011	9,190,605	710.28
4453	Beer, Wine & Liquor Stores	358	1,746	1,760	1,770	9,930,648	434.36
446	HEALTH & PERSONAL CARE STORES	1,037	8,342	8,617	8,825	\$84,019,914	\$751.99
447	GASOLINE STATIONS	1,598	12,363	12,445	12,374	\$55,958,684	\$347.31
44711	Gasoline Stations with Convenience Stores	1,489	11,000	11,106	11,046	48,417,647	337.03
44719	Other Gasoline Stations	109	1,363	1,339	1,328	7,541,037	431.82
448	CLOTHING & CLOTHING ACCESSORIES STORES	1,080	8,751	9,652	9,901	\$41,188,961	\$335.82
4481	Clothing Stores	801	6,756	7,434	7,621	28,162,216	297.97
4482	Shoe Stores	136	1,218	1,405	1,415	5,429,823	310.31
4483	Jewelry, Luggage & Leather Goods Stores	143	777	813	865	7,596,922	714.11
451	SPORTING GOODS, HOBBY, BOOK & MUSIC STORES	487	4,732	5,158	5,311	\$25,062,917	\$380.48
4511	Sporting Goods & Musical Instrument Stores	421	4,249	4,662	4,766	22,899,783	386.38
4512	Book, Periodical & Music Stores	66	483	496	545	2,163,134	327.55
452	GENERAL MERCHANDISE STORES	922	40,756	42,367	41,957	\$232,048,032	\$428.12
453	MISCELLANEOUS STORE RETAILERS	1,249	7,366	7,457	7,582	\$41,803,091	\$430.57
4531	Florists	182	672	678	693	3,389,642	382.88
4532	Office Supplies, Stationery & Gift Stores	268	2,044	2,046	2,126	12,041,084	447.03
4533	Used Merchandise Stores	272	1,938	1,992	2,010	10,282,924	399.49
4539	Other Miscellaneous Store Retailers	527	2,712	2,741	2,753	16,089,441	452.47
454	NONSTORE RETAILERS	422	1,925	1,957	2,023	\$19,973,689	\$780.58
4541	Electronic Shopping & Mail-Order Houses	204	762	779	834	8,650,041	840.49
4542	Vending Machine Operators	70	437	446	449	3,691,306	639.52
4543	Direct Selling Establishments	148	726	732	740	7,632,342	801.32
48 - 49	TRANSPORTATION & WAREHOUSING	2,886	52,561	52,751	54,017	\$635,054,056	\$919.80
481	AIR TRANSPORTATION	53	633	638	635	\$6,127,376	\$741.87
4811	Scheduled Air Transportation	21	555	557	555	4,313,315	597.11
4812	Nonshceduled Air Transportation	32	78	81	80	1,814,061	1,751.59
483	WATER TRANSPORTATION	4	21	20	21	\$397,086	\$1,477.99
484	TRUCK TRANSPORTATION	1,830	32,886	32,836	33,347	\$416,463,967	\$970.10
4841	General Freight Trucking	1,070	26,412	26,422	26,872	333,485,998	965.53
4842	Specialized Freight Trucking	760	6,474	6,414	6,475	82,977,969	988.94

TABLE 5. STATEWIDE SUMMARY

North American Industry Classification System - Industry Groups		Number of Employing Units	Employment			Total Earnings	Average Weekly Earnings
			Oct	Nov	Dec	Oct - Dec 2015	
485	TRANSIT & GROUND PASSENGER TRANSPORTATION	105	1,687	1,688	1,661	\$8,802,305	\$403.36
4853	Taxi & Limousine Service	31	473	466	458	1,990,699	328.84
4854	School & Employee Bus Transportation	17	496	494	495	2,606,384	405.03
4855	Charter Bus Industry Service	7	118	121	109	750,110	497.42
4859	Other Ground Passenger Transportation	46	507	515	512	2,840,099	427.25
	Other	4	93	92	87	615,013	521.79
486	PIPELINE TRANSPORTATION	33	481	479	475	\$12,315,282	\$1,980.48
487	SCENIC & SIGHTSEEING TRANSPORTATION	7	38	33	23	\$142,300	\$349.35
488	SUPPORT ACTIVITIES FOR TRANSPORTATION	455	5,152	5,172	5,156	\$65,709,264	\$979.57
4881	Support Activities for Air Transportation	101	965	959	975	10,849,412	863.65
4882	Support Activities for Rail Transportation	42	602	621	619	7,614,689	953.98
4883	Support Activities for Water Transportation	22	712	714	675	10,986,975	1,206.79
4884	Support Activities for Road Transportation	153	805	815	812	6,758,809	641.33
4885	Freight Transportation Arrangement	121	1,968	1,973	1,988	28,613,299	1,113.69
4889	Other Support Activities for Transportation	16	100	90	87	886,080	738.19
493	WAREHOUSING & STORAGE	218	7,799	7,646	7,625	\$78,937,381	\$789.61
	OTHER	181	3,864	4,239	5,074	\$46,159,095	\$808.39
22	UTILITIES	419	7,943	7,936	7,928	\$162,118,787	\$1,571.47
2211	Power Generation & Supply	165	5,615	5,620	5,625	128,702,596	1,761.60
2212	Natural Gas Distribution	67	1,330	1,330	1,325	23,800,596	1,378.28
2213	Water, Sewage & Other Systems	187	998	986	978	9,615,595	749.15
	INFORMATION	1,064	13,220	13,310	13,391	\$184,681,052	\$1,067.58
511	PUBLISHING INDUSTRIES, EXCEPT INTERNET	222	3,231	3,297	3,313	\$34,921,801	\$818.91
5111	Newspaper, Book & Directory Publishers	192	2,882	2,949	2,963	28,319,476	743.15
5112	Software Publishers	30	349	348	350	6,602,325	1,455.22
512	MOTION PICTURE & SOUND RECORDING INDUSTRY	137	1,083	1,086	1,109	\$5,377,971	\$378.61
5121	Motion Picture & Video Industries	119	1,053	1,063	1,080	5,021,205	362.56
5122	Sound Recording Industries	18	30	23	29	356,766	1,004.03
515	BROADCASTING, EXCEPT INTERNET	122	1,615	1,616	1,608	\$17,666,879	\$842.52
5151	Radio & Television Broadcasting	117	1,584	1,584	1,576	17,383,741	845.62
5152	Cable & Other Subscription Programming	5	31	32	32	283,138	687.78

TABLE 5. STATEWIDE SUMMARY

North American Industry Classification System - Industry Groups		Number of Employing Units	Employment			Total Earnings Oct - Dec 2015	Average Weekly Earnings
			Oct	Nov	Dec		
517	TELECOMMUNICATIONS	341	5,675	5,678	5,697	\$99,722,858	\$1,349.73
5171	Wired Telecommunications Carriers	211	3,638	3,640	3,648	66,428,791	1,403.05
5172	Wireless Telecommunications Carriers (except Satellite)	48	1,742	1,740	1,744	28,442,534	1,255.96
5174	Satellite Telecommunications Carriers	5	6	6	6	80,133	1,027.35
5179	Other Telecommunications	77	289	292	299	4,771,400	1,251.24
518	DATA PROCESSING, HOSTING & RELATED SERVICES	166	1,240	1,256	1,269	\$22,509,467	\$1,379.68
519	OTHER INFORMATION SERVICES	76	376	377	395	\$4,482,076	\$900.98
FINANCIAL ACTIVITIES		8,297	48,731	48,757	48,874	\$697,135,615	\$1,099.17
52	FINANCE & INSURANCE	4,938	35,438	35,575	35,613	\$565,905,169	\$1,224.78
522	CREDIT INTERMEDIATION & RELATED ACTIVITIES	1,954	18,730	18,782	18,779	\$270,639,819	\$1,109.51
5221	Depository Credit Intermediation	1,412	15,905	15,949	15,941	227,763,528	1,099.71
5222	Nondepository Credit Intermediation	390	2,304	2,319	2,331	35,011,594	1,161.86
5223	Activities Related to Credit Intermediation	152	521	514	507	7,864,697	1,177.00
523	FINANCIAL INVESTMENT & RELATED ACTIVITIES	670	3,141	3,146	3,125	\$91,119,468	\$2,234.12
524	INSURANCE CARRIERS & RELATED ACTIVITIES	2,239	13,459	13,526	13,577	\$202,264,062	\$1,150.74
5241	Insurance Carriers	319	5,892	5,926	5,979	103,148,251	1,337.50
5242	Insurance Agencies, Brokerages & Support	1,920	7,567	7,600	7,598	99,115,811	1,004.74
	OTHER	75	108	121	132	\$1,881,820	\$1,202.95
53	REAL ESTATE & RENTAL & LEASING	3,359	13,293	13,182	13,261	\$131,230,446	\$762.13
531	REAL ESTATE	2,696	9,080	9,027	9,124	\$89,344,227	\$757.15
5311	Lessors of Real Estate	1,121	4,145	4,083	4,103	34,963,859	654.33
5312	Offices of Real Estate Agents & Brokers	795	1,778	1,780	1,828	24,089,725	1,032.15
5313	Activities Related to Real Estate	780	3,157	3,164	3,193	30,290,643	734.72
532	RENTAL & LEASING SERVICES	641	4,149	4,093	4,077	\$40,941,568	\$766.95
5321	Automotive Equipment Rental & Leasing	109	940	919	928	7,386,116	611.59
5322	Consumer Goods Rental	331	1,998	1,940	1,938	16,079,965	631.51
5323	General Rental Centers	42	225	227	233	2,425,287	817.05
5324	Machinery & Equipment Rental & Leasing	159	986	1,007	978	15,050,200	1,169.01
533	LESSORS OF NONFINANCIAL INTANGIBLE ASSETS	22	64	62	60	\$944,651	\$1,172.02

TABLE 5. STATEWIDE SUMMARY

North American Industry Classification System - Industry Groups		Number of Employing Units	Employment			Total Earnings Oct - Dec 2015	Average Weekly Earnings
			Oct	Nov	Dec		
PROFESSIONAL & BUSINESS SERVICES		13,987	142,305	142,770	143,110	\$2,082,108,477	\$1,122.15
54	PROFESSIONAL & TECHNICAL SERVICES	8,891	41,231	41,589	42,278	\$700,445,978	\$1,292.12
5411	Legal Services	1,718	6,081	6,054	6,112	116,267,537	1,470.43
5412	Accounting & Bookkeeping Services	1,304	4,665	4,922	5,292	66,207,903	1,026.87
5413	Architectural & Engineering Services	967	6,000	5,973	6,035	115,478,327	1,479.83
5414	Specialized Design Services	185	429	428	454	6,469,127	1,138.73
5415	Computer Systems Design & Related Services	1,661	10,022	10,117	10,063	197,154,428	1,506.43
5416	Management & Technical Consulting Services	1,943	5,925	5,937	6,137	100,418,368	1,287.49
5417	Scientific Research & Development Services	151	904	909	900	14,183,166	1,206.43
5418	Advertising & Related Services	391	3,475	3,466	3,503	46,092,920	1,018.46
5419	Other Professional & Technical Services	571	3,730	3,783	3,782	38,174,202	779.94
55	MANAGEMENT OF COMPANIES & ENTERPRISES	530	33,883	34,602	34,451	\$898,667,150	\$2,014.70
56	ADMINISTRATIVE & WASTE SERVICES	4,566	67,191	66,579	66,381	\$482,995,349	\$556.88
561	ADMINISTRATIVE & SUPPORT SERVICES	4,252	64,243	63,628	63,422	\$446,427,712	\$538.55
5611	Office Administrative Services	607	3,976	3,948	4,020	57,077,720	1,102.79
5612	Facilities Support Services	32	206	210	203	2,474,621	922.56
5613	Employment Services	1,077	29,582	29,140	29,111	172,493,421	453.20
5614	Business Support Services	375	8,593	8,648	8,653	76,770,731	684.19
5615	Travel Arrangement & Reservation Services	101	342	346	349	3,614,797	804.42
5616	Investigation & Security Services	293	4,569	4,758	4,715	31,798,154	522.58
5617	Services to Buildings & Dwellings	1,565	15,606	15,223	15,001	88,546,090	445.86
5619	Other Support Services	202	1,369	1,355	1,370	13,652,178	769.54
562	WASTE MANAGEMENT & REMEDIATION SERVICES	314	2,948	2,951	2,959	\$36,567,637	\$952.66
5621	Waste Collection Services	130	1,123	1,142	1,124	13,051,695	888.74
5622	Waste Treatment & Disposal Services	38	818	820	820	12,425,966	1,166.61
5629	Remediation & Other Waste Services	146	1,007	989	1,015	11,089,976	849.96
EDUCATION & HEALTH SERVICES		15,254	174,632	175,083	175,495	\$1,926,983,700	\$846.69
61	EDUCATIONAL SERVICES	788	11,460	11,510	11,404	\$100,333,644	\$673.59
6111	Elementary & Secondary Schools	88	3,548	3,568	3,550	29,116,604	629.97
6112	Junior Colleges	6	170	167	166	1,373,484	630.13
6113	Colleges & Universities	75	4,274	4,288	4,203	37,491,995	677.79
6114	Business, Computer, & Management Training	46	112	127	136	2,139,997	1,316.92
6115	Technical & Trade Schools	111	944	943	924	14,328,483	1,176.30
6116	Other Schools & Instruction	283	1,759	1,753	1,749	7,902,602	346.64
6117	Educational Support Services	179	653	664	676	7,980,479	924.06

TABLE 5. STATEWIDE SUMMARY

North American Industry Classification System - Industry Groups		Number of Employing Units	Employment			Total Earnings Oct - Dec 2015	Average Weekly Earnings
			Oct	Nov	Dec		
62	HEALTH CARE & SOCIAL ASSISTANCE	14,466	163,172	163,573	164,091	\$1,826,650,056	\$858.81
621	AMBULATORY HEALTH CARE SERVICES	5,524	52,129	52,313	52,703	\$904,967,491	\$1,328.96
6211	Offices of Physicians	2,254	23,639	23,716	23,924	565,640,132	1,831.29
6212	Offices of Dentists	995	7,099	7,130	7,170	96,332,128	1,038.86
6213	Offices of Other Health Practitioners	1,414	7,956	7,967	7,995	90,290,224	871.15
6214	Outpatient Care Centers	314	4,585	4,600	4,629	55,326,995	924.26
6215	Medical & Diagnostic Laboratories	184	1,141	1,135	1,142	18,551,941	1,252.55
6216	Home Health Care Services	187	5,087	5,129	5,157	50,958,508	764.96
6219	Other Ambulatory Health Care Services	176	2,622	2,636	2,686	27,867,563	809.54
622	HOSPITALS	117	40,582	40,460	40,524	\$507,254,286	\$962.92
6221	General Medical & Surgical Hospitals	79	35,936	35,810	35,848	454,206,525	974.19
6222	Psychiatric & Substance Abuse Hospitals	23	2,367	2,373	2,399	24,380,209	788.09
6223	Specialty Hospitals	15	2,279	2,277	2,277	28,667,552	968.18
623	Residential & Mental Health Facilities	651	31,309	31,531	31,639	\$203,825,338	\$497.85
6231	Nursing Care Facilities (Skilled Nursing Facilities)	286	22,142	22,306	22,395	144,175,172	497.75
6232	Residential Mental Health Facilities	182	4,326	4,335	4,324	29,473,036	523.79
6233	Continuing Care & Assisted Living Facilities	142	3,745	3,773	3,802	22,348,387	455.59
6239	Other Residential Care Facilities	41	1,096	1,117	1,118	7,828,743	542.37
624	SOCIAL ASSISTANCE	8,174	39,152	39,269	39,225	\$210,602,941	\$413.11
6241	Individual & Family Services	7,006	24,215	24,302	24,339	132,359,179	419.24
6242	Emergency & Other Relief Services	140	1,352	1,355	1,373	9,113,378	515.46
6243	Vocational Rehabilitation Services	111	3,351	3,368	3,383	19,866,303	453.82
6244	Child Day Care Services	917	10,234	10,244	10,130	49,264,081	371.43
LEISURE & HOSPITALITY		6,917	112,765	112,123	111,834	\$444,673,732	\$304.75
71	ARTS, ENTERTAINMENT & RECREATION	965	9,928	9,380	9,371	\$54,795,864	\$440.92
711	PERFORMING ARTS & SPECTATOR SPORTS	216	2,306	2,242	2,408	\$17,856,192	\$592.39
7111	Performing Arts Companies	47	645	559	578	2,379,085	308.09
7112	Spectator Sports	62	1,024	1,082	1,178	10,445,433	734.01
7113	Performing Arts & Sports Promoters	41	560	523	563	3,499,716	490.66
7114	Agents & Managers for Public Figures	21	19	20	34	990,787	3,132.10
7115	Independent Artists, Writers, & Performers	45	58	58	55	541,171	730.33
712	MUSEUMS, PARKS, & HISTORICAL SITES	55	628	638	609	\$4,712,485	\$580.00
713	GAMBLING, RECREATIONAL & AMUSEMENT INDUSTRY	694	6,994	6,500	6,354	\$32,227,187	\$374.70
72	ACCOMMODATION & FOOD SERVICES	5,952	102,837	102,743	102,463	\$389,877,868	\$292.08

TABLE 5. STATEWIDE SUMMARY

North American Industry Classification System - Industry Groups		Number of Employing Units	Employment			Total Earnings Oct - Dec 2015	Average Weekly Earnings
			Oct	Nov	Dec		
721	ACCOMMODATION	893	11,153	10,970	10,703	\$51,889,056	\$364.78
7211	Travel Accommodation	807	10,624	10,461	10,187	49,180,319	362.92
7212	RV Parks & Recreational Camps	67	402	387	385	1,984,848	390.15
7213	Rooming & Boarding Houses	19	127	122	131	723,889	439.61
722	FOOD SERVICES & DRINKING PLACES	5,059	91,684	91,773	91,760	\$337,988,812	\$283.40
7223	Special Food Services	212	4,073	4,174	4,005	19,960,041	375.95
7224	Drinking Places, Alcoholic Beverages	151	1,057	1,043	1,004	3,721,537	276.68
7225	Restaurants & Other Eating Places	4,696	86,554	86,556	86,751	314,307,234	279.12
722511	Full-Service Restaurants	2,105	38,146	38,093	38,457	151,290,541	304.40
722513	Limited-Service Eating Places	2,141	44,053	44,090	43,927	145,149,049	253.62
722514	Cafeterias, Grill Buffets, & Buffets	92	1,732	1,723	1,733	7,427,865	330.40
722515	Snack & Nonalcoholic Beverage Bars	358	2,623	2,650	2,634	10,439,779	304.69
	OTHER SERVICES	5,399	23,849	23,883	24,141	\$202,272,447	\$649.45
811	REPAIR & MAINTENANCE	2,204	9,769	9,798	9,831	\$97,567,588	\$765.89
8111	Automotive Repair & Maintenance	1,404	6,164	6,158	6,172	55,503,461	692.58
8112	Electronic Equipment Repair & Maintenance	178	835	894	899	9,860,934	865.91
8113	Commercial Machinery Repair & Maintenance	445	2,209	2,189	2,198	27,698,557	969.07
8114	Household Goods Repair & Maintenance	177	561	557	562	4,504,636	618.77
812	PERSONAL & LAUNDRY SERVICES	1,323	7,751	7,785	7,923	\$49,240,777	\$484.39
8121	Personal Care Services	612	2,928	2,959	3,020	15,225,974	394.49
8122	Death Care Services	249	1,612	1,623	1,659	12,956,768	610.96
8123	Drycleaning & Laundry Service	241	2,390	2,400	2,411	16,368,315	524.55
8129	Other Personal Services	221	821	803	833	4,689,720	440.47
813	MEMBERSHIP ASSOCIATIONS & ORGANIZATIONS	1,089	5,332	5,291	5,382	\$50,093,631	\$722.28
8131	Religious Organizations	67	233	235	242	1,783,419	579.66
8132	Grantmaking & Giving Organizations	116	473	477	474	5,846,088	947.40
8133	Social Advocacy Organizations	217	1,540	1,518	1,532	14,961,955	752.24
8134	Civic & Social Organizations	203	1,106	1,121	1,143	5,068,721	347.09
8139	Professional & Similar Organizations	486	1,980	1,940	1,991	22,433,448	875.82
814	PRIVATE HOUSEHOLDS	783	997	1,009	1,005	\$5,370,451	\$411.60
	LOCAL GOVERNMENT	1,949	114,104	114,287	114,723	\$1,053,869,020	\$708.80
	STATE GOVERNMENT	1,140	70,270	70,773	70,690	\$800,924,884	\$872.93
	NONCLASSIFIABLE ESTABLISHMENTS	0	0	0	0	\$0	\$0.00

TABLE 6. COUNTY SUMMARY

North American Industry Classification System - Industry Groups	Number of Employing Units	Employment			Total Earnings	Average Weekly Earnings
		Oct	Nov	Dec	Oct - Dec 2015	
ARKANSAS COUNTY - TOTAL	771	10,128	10,051	10,175	\$103,591,665	\$787.57
Natural Resources & Mining	54	227	227	237	2,559,985	854.94
Construction	45	246	243	243	2,372,843	748.06
Manufacturing	33	3,782	3,702	3,750	41,173,946	845.80
Trade, Transportation & Utilities	201	2,565	2,553	2,571	26,771,160	803.48
Wholesale Trade	43	460	437	440	5,849,511	1,009.64
Retail Trade	95	1,058	1,085	1,106	7,362,660	522.95
Transportation, Warehousing & Utilities	63	1,047	1,031	1,025	13,558,989	1,008.38
Information	11	80	80	79	854,322	824.90
Financial Activities	45	292	291	289	4,699,908	1,243.80
Professional & Business Services	50	375	380	381	6,352,168	1,290.39
Education & Health Services	185	1,099	1,097	1,091	8,876,305	623.18
Leisure & Hospitality	53	442	456	481	1,579,423	264.31
Other Services	46	111	113	114	742,881	507.20
Local Government	32	719	717	748	6,248,758	660.27
State Government	16	190	192	191	1,359,966	547.71
ASHLEY COUNTY - TOTAL	562	6,912	6,847	6,854	\$73,780,486	\$826.00
Natural Resources & Mining	41	373	361	349	3,684,747	785.16
Construction	42	603	553	564	6,393,292	857.78
Manufacturing	24	1,699	1,712	1,697	31,748,917	1,434.35
Trade, Transportation & Utilities	111	1,213	1,207	1,200	9,751,557	621.65
Wholesale Trade	23	228	211	191	2,826,896	1,035.49
Retail Trade	66	728	741	759	4,193,847	434.39
Transportation, Warehousing & Utilities	22	257	255	250	2,730,814	827.02
Information	6	35	35	31	250,593	572.57
Financial Activities	35	183	180	178	1,720,452	733.88
Professional & Business Services	42	211	212	219	1,669,134	599.98
Education & Health Services	150	974	965	979	7,815,504	618.09
Leisure & Hospitality	29	408	410	412	1,330,682	249.66
Other Services	39	133	129	136	1,030,490	597.50
Local Government	32	902	905	907	7,229,577	614.73
State Government	11	178	178	182	1,155,541	495.66

TABLE 6. COUNTY SUMMARY

North American Industry Classification System - Industry Groups	Number of Employing Units	Employment			Total Earnings Oct - Dec 2015	Average Weekly Earnings
		Oct	Nov	Dec		
BAXTER COUNTY - TOTAL	1,235	14,522	14,518	14,549	\$130,324,661	\$689.97
Natural Resources & Mining	7	69	64	65	663,970	773.86
Construction	113	522	523	541	4,753,240	691.62
Manufacturing	56	2,382	2,381	2,377	23,872,434	771.57
Trade, Transportation & Utilities	264	2,714	2,755	2,773	18,351,186	513.82
Wholesale Trade	33	221	222	221	2,210,954	768.40
Retail Trade	207	2,318	2,358	2,365	14,159,883	464.09
Transportation, Warehousing & Utilities	24	175	175	187	1,980,349	851.03
Information	18	193	194	196	2,256,601	893.23
Financial Activities	119	760	757	767	12,104,159	1,222.97
Professional & Business Services	132	718	708	702	6,012,871	652.06
Education & Health Services	263	3,728	3,732	3,733	42,219,759	870.46
Leisure & Hospitality	123	1,545	1,513	1,494	5,645,116	286.19
Other Services	95	348	351	341	1,945,799	431.76
Local Government	33	1,202	1,204	1,221	9,850,346	626.73
State Government	12	341	336	339	2,649,180	601.72
BENTON COUNTY - TOTAL	5,963	110,989	111,850	112,289	\$1,513,622,690	\$1,042.28
Natural Resources & Mining	43	656	659	655	19,551,261	2,290.27
Construction	555	4,711	4,617	4,567	57,672,537	957.83
Manufacturing	191	10,948	10,928	11,028	126,069,295	884.18
Trade, Transportation & Utilities	1,602	25,959	26,635	26,937	328,137,702	952.13
Wholesale Trade	728	5,112	5,108	5,112	133,553,899	2,010.18
Retail Trade	710	12,151	12,589	12,631	86,129,956	531.86
Transportation, Warehousing & Utilities	164	8,696	8,938	9,194	108,453,847	932.90
Information	68	918	943	954	12,802,787	1,049.55
Financial Activities	599	3,074	3,076	3,105	43,952,916	1,095.95
Professional & Business Services	1,155	31,842	32,132	31,903	656,932,008	1,581.19
Education & Health Services	720	10,404	10,433	10,524	108,769,624	800.38
Leisure & Hospitality	550	11,254	11,142	11,205	50,541,388	347.11
Other Services	381	1,887	1,934	1,973	17,056,289	679.33
Local Government	82	8,184	8,203	8,294	82,330,416	769.80
State Government	17	1,152	1,148	1,144	9,806,467	657.09

TABLE 6. COUNTY SUMMARY

North American Industry Classification System - Industry Groups	Number of Employing Units	Employment			Total Earnings Oct - Dec 2015	Average Weekly Earnings
		Oct	Nov	Dec		
BOONE COUNTY - TOTAL	1,008	13,768	13,880	13,957	\$127,977,036	\$709.85
Construction	76	394	438	473	4,263,685	753.97
Manufacturing	62	1,750	1,745	1,792	18,349,347	800.92
Trade, Transportation & Utilities	247	3,849	3,876	3,860	39,592,709	788.67
Wholesale Trade	50	308	312	308	2,888,143	718.21
Retail Trade	156	2,101	2,116	2,105	14,324,971	522.90
Transportation, Warehousing & Utilities	41	1,440	1,448	1,447	22,379,595	1,191.35
Information	14	292	291	294	3,163,542	832.44
Financial Activities	97	449	445	445	5,453,819	939.94
Professional & Business Services	112	1,108	1,110	1,083	10,119,583	707.45
Education & Health Services	169	1,489	1,558	1,572	12,828,056	640.90
Leisure & Hospitality	88	1,183	1,156	1,166	4,016,398	264.44
Local Government	56	2,201	2,200	2,204	20,505,349	716.43
State Government	19	791	799	803	7,403,856	713.99
Other	68	262	262	265	2,280,692	667.06
BRADLEY COUNTY - TOTAL	362	3,732	3,769	3,789	\$32,015,447	\$654.40
Natural Resources & Mining	45	257	295	290	2,495,184	683.86
Construction	18	104	98	98	801,381	616.45
Manufacturing	11	838	841	846	9,098,653	831.56
Trade, Transportation & Utilities	73	517	512	516	3,969,062	592.84
Wholesale Trade	14	115	114	112	1,414,900	957.52
Retail Trade	41	354	353	359	2,091,052	452.67
Transportation, Warehousing & Utilities	18	48	45	45	463,110	774.43
Information	3	9	8	9	43,134	382.85
Financial Activities	24	132	128	129	1,378,541	817.80
Professional & Business Services	23	71	86	93	653,531	603.26
Education & Health Services	96	642	636	640	5,783,262	695.83
Leisure & Hospitality	16	195	196	193	621,889	245.74
Other Services	28	97	95	97	696,158	555.89
Local Government	14	460	460	467	3,483,213	579.54
State Government	11	410	414	411	2,991,439	558.97

TABLE 6. COUNTY SUMMARY

North American Industry Classification System - Industry Groups	Number of Employing Units	Employment			Total Earnings Oct - Dec 2015	Average Weekly Earnings
		Oct	Nov	Dec		
CALHOUN COUNTY - TOTAL	102	2,764	2,742	2,704	\$36,593,449	\$1,028.58
Natural Resources & Mining	8	44	48	50	345,609	561.66
Construction	10	121	119	118	1,038,154	669.20
Manufacturing	9	1,877	1,871	1,838	28,281,744	1,168.38
Trade, Transportation & Utilities	20	220	210	218	2,003,910	713.64
Retail Trade	11	55	52	57	287,265	404.22
Transportation, Warehousing & Utilities	9	165	158	161	1,716,645	818.49
Financial Activities	5	83	81	83	719,437	672.16
Education & Health Services	15	58	58	58	545,978	724.11
Leisure & Hospitality	6	17	15	15	48,019	235.77
Other Services	4	9	7	8	27,218	261.71
Local Government	11	214	215	196	1,356,798	500.97
State Government	8	88	86	87	762,462	674.15
Other	6	33	32	33	1,464,120	3,447.69
CARROLL COUNTY - TOTAL	782	10,625	10,643	10,647	\$79,009,972	\$571.30
Natural Resources & Mining	17	210	205	205	1,784,703	664.28
Trade, Transportation & Utilities	199	1,647	1,643	1,651	12,286,869	573.86
Wholesale Trade	30	185	184	201	1,343,013	543.73
Retail Trade	150	1,173	1,185	1,175	6,725,524	439.30
Transportation, Warehousing & Utilities	19	289	274	275	4,218,332	1,161.65
Information	10	61	62	61	577,972	724.88
Financial Activities	65	326	361	364	4,588,517	1,007.51
Professional & Business Services	66	407	453	587	3,652,381	582.49
Education & Health Services	94	1,007	1,010	1,003	8,759,356	669.33
Leisure & Hospitality	164	1,792	1,692	1,527	6,091,880	280.55
Other Services	40	124	125	123	723,032	448.53
Local Government	24	1,044	1,065	1,082	8,780,800	635.02
State Government	10	112	110	111	907,549	628.93
Other	93	3,895	3,917	3,933	30,856,913	606.29

TABLE 6. COUNTY SUMMARY

North American Industry Classification System - Industry Groups	Number of Employing Units	Employment			Total Earnings Oct - Dec 2015	Average Weekly Earnings
		Oct	Nov	Dec		
CHICOT COUNTY - TOTAL	511	3,308	3,277	3,260	\$27,054,491	\$634.16
Natural Resources & Mining	59	289	276	266	2,842,894	789.47
Construction	16	178	158	146	2,491,720	1,192.97
Manufacturing	10	29	29	29	390,331	1,035.36
Trade, Transportation & Utilities	65	698	697	704	5,158,066	567.09
Wholesale Trade	13	73	75	73	828,066	864.67
Retail Trade	39	323	323	320	2,042,954	488.04
Transportation, Warehousing & Utilities	13	302	299	311	2,287,046	578.71
Information	4	5	5	5	18,599	286.14
Financial Activities	29	139	136	135	1,635,645	920.63
Professional & Business Services	17	40	44	39	448,935	842.28
Education & Health Services	245	771	785	792	5,453,278	535.97
Leisure & Hospitality	21	173	165	167	461,101	210.71
Other Services	17	66	57	65	621,403	762.77
Local Government	18	627	632	619	5,208,719	640.05
State Government	10	293	293	293	2,323,800	610.08
CLARK COUNTY - TOTAL	609	9,198	9,252	9,287	\$78,437,069	\$652.59
Natural Resources & Mining	41	276	262	270	2,505,152	715.49
Construction	21	63	62	64	431,926	527.38
Manufacturing	31	1,444	1,446	1,439	18,895,982	1,007.30
Trade, Transportation & Utilities	121	1,374	1,393	1,396	10,373,633	575.05
Wholesale Trade	10	31	31	32	442,238	1,085.69
Retail Trade	91	1,189	1,208	1,212	8,016,155	512.57
Transportation, Warehousing & Utilities	20	154	154	152	1,915,240	960.82
Information	5	13	13	13	157,569	932.36
Financial Activities	73	283	283	291	3,107,646	836.81
Professional & Business Services	54	617	639	670	6,526,800	782.03
Education & Health Services	122	1,599	1,625	1,665	12,894,490	608.64
Leisure & Hospitality	58	1,096	1,079	1,068	3,743,352	266.37
Other Services	42	236	233	237	2,037,499	665.99
Local Government	26	964	977	988	7,461,589	587.88
State Government	15	1,233	1,240	1,186	10,301,431	649.70

TABLE 6. COUNTY SUMMARY

North American Industry Classification System - Industry Groups	Number of Employing Units	Employment			Total Earnings Oct - Dec 2015	Average Weekly Earnings
		Oct	Nov	Dec		
CLAY COUNTY - TOTAL	388	3,464	3,467	3,383	\$26,950,124	\$602.99
Natural Resources & Mining	60	282	268	230	1,810,578	535.67
Construction	28	157	138	137	1,098,684	586.90
Manufacturing	15	245	246	231	2,316,235	740.33
Trade, Transportation & Utilities	98	892	887	882	8,278,285	717.92
Wholesale Trade	21	243	258	243	2,606,176	808.37
Retail Trade	48	429	429	437	3,029,655	539.89
Transportation, Warehousing & Utilities	29	220	200	202	2,642,454	980.38
Information	5	42	42	41	307,836	568.31
Financial Activities	26	119	122	121	1,193,506	760.84
Professional & Business Services	25	104	102	99	817,409	618.47
Education & Health Services	48	471	475	482	3,281,350	530.28
Leisure & Hospitality	21	242	260	261	761,237	230.24
Other Services	29	80	75	76	717,715	717.00
Local Government	22	784	808	777	6,076,336	591.91
State Government	11	46	44	46	290,953	493.70
CLEBURNE COUNTY - TOTAL	666	6,624	6,619	6,639	\$55,618,394	\$645.56
Natural Resources & Mining	29	356	298	272	3,920,751	977.09
Construction	64	339	340	340	3,561,785	806.62
Manufacturing	34	1,025	1,056	1,101	10,073,090	730.53
Trade, Transportation & Utilities	160	1,442	1,432	1,440	13,125,863	702.14
Wholesale Trade	36	193	190	186	2,661,931	1,079.60
Retail Trade	99	982	979	979	6,630,637	520.46
Transportation, Warehousing & Utilities	25	267	263	275	3,833,295	1,098.89
Information	7	49	48	50	365,430	573.67
Financial Activities	75	253	255	258	2,725,588	821.13
Professional & Business Services	67	342	330	334	3,437,392	788.51
Education & Health Services	89	900	921	932	7,285,157	610.68
Leisure & Hospitality	77	894	906	869	3,201,503	276.81
Other Services	37	114	120	129	762,942	485.02
Local Government	18	820	824	824	6,494,880	607.30
State Government	9	90	89	90	664,013	569.64

TABLE 6. COUNTY SUMMARY

North American Industry Classification System - Industry Groups	Number of Employing Units	Employment			Total Earnings Oct - Dec 2015	Average Weekly Earnings
		Oct	Nov	Dec		
CLEVELAND COUNTY - TOTAL	123	979	983	967	\$7,451,509	\$587.09
Natural Resources & Mining	16	144	146	127	1,489,801	824.46
Construction	8	28	27	25	175,669	506.74
Manufacturing	5	72	71	71	588,935	635.08
Trade, Transportation & Utilities	35	182	174	181	1,541,681	662.52
Wholesale Trade	3	44	43	42	355,555	636.06
Retail Trade	17	54	57	58	293,201	400.37
Transportation, Warehousing & Utilities	15	84	74	81	892,925	862.17
Financial Activities	3	23	24	24	235,211	764.50
Education & Health Services	28	140	141	138	799,107	440.12
Other Services	4	14	13	13	111,525	643.41
Local Government	11	306	314	317	2,008,083	494.56
State Government	7	56	59	57	389,988	523.24
Other	6	14	14	14	111,509	612.69
COLUMBIA COUNTY - TOTAL	736	8,311	8,409	8,322	\$88,211,202	\$812.89
Natural Resources & Mining	44	410	407	407	10,995,142	2,072.99
Construction	41	172	174	177	1,832,228	808.45
Manufacturing	35	1,974	1,967	1,933	27,889,150	1,095.67
Trade, Transportation & Utilities	164	1,448	1,474	1,468	12,060,064	633.96
Wholesale Trade	28	219	214	198	3,314,616	1,212.22
Retail Trade	98	1,002	1,032	1,035	6,074,340	456.75
Transportation, Warehousing & Utilities	38	227	228	235	2,671,108	893.35
Information	8	58	58	58	545,065	722.90
Financial Activities	70	345	347	345	5,292,425	1,177.75
Professional & Business Services	56	280	288	280	2,825,629	768.95
Education & Health Services	183	1,025	1,026	1,030	6,819,915	510.82
Leisure & Hospitality	49	716	764	723	2,482,220	260.02
Other Services	47	157	160	164	853,952	409.70
Local Government	26	1,111	1,127	1,132	9,992,442	684.26
State Government	13	615	617	605	6,622,970	832.00

TABLE 6. COUNTY SUMMARY

North American Industry Classification System - Industry Groups	Number of Employing Units	Employment			Total Earnings Oct - Dec 2015	Average Weekly Earnings
		Oct	Nov	Dec		
CONWAY COUNTY - TOTAL	569	6,975	6,902	6,920	\$64,567,513	\$716.46
Natural Resources & Mining	36	280	265	276	3,228,513	907.48
Construction	53	525	531	519	7,339,773	1,075.42
Manufacturing	19	850	864	881	12,520,058	1,113.39
Trade, Transportation & Utilities	132	1,673	1,619	1,618	14,715,522	691.63
Wholesale Trade	19	135	132	137	1,951,145	1,114.52
Retail Trade	87	889	848	840	5,483,451	491.04
Transportation, Warehousing & Utilities	26	649	639	641	7,280,926	871.03
Information	3	13	13	19	49,339	253.02
Financial Activities	37	168	168	170	1,869,809	852.76
Professional & Business Services	42	678	661	665	3,829,524	440.99
Education & Health Services	140	831	835	832	7,320,261	676.26
Leisure & Hospitality	42	469	453	453	1,419,235	238.19
Other Services	26	110	109	102	976,629	702.11
Local Government	29	995	994	992	8,450,153	654.15
State Government	10	383	390	393	2,848,697	563.80
CRAIGHEAD COUNTY - TOTAL	2,758	48,186	48,347	48,298	\$480,348,154	\$765.37
Natural Resources & Mining	84	344	342	275	3,578,357	859.29
Construction	221	2,106	2,009	1,999	27,054,451	1,021.15
Manufacturing	103	6,010	5,997	6,022	74,221,144	950.02
Trade, Transportation & Utilities	771	10,365	10,609	10,682	89,019,427	648.94
Wholesale Trade	185	1,682	1,679	1,653	23,979,790	1,103.67
Retail Trade	463	7,126	7,378	7,413	46,279,955	487.29
Transportation, Warehousing & Utilities	123	1,557	1,552	1,616	18,759,682	916.22
Information	20	430	428	436	5,004,876	892.56
Financial Activities	267	1,553	1,550	1,544	20,076,250	996.98
Professional & Business Services	362	4,444	4,327	4,249	36,945,473	654.83
Education & Health Services	467	9,937	9,981	9,982	129,185,231	997.06
Leisure & Hospitality	252	5,101	5,181	5,181	19,405,925	289.61
Other Services	153	825	817	818	6,378,124	598.32
Local Government	35	4,041	4,075	4,083	36,963,163	699.23
State Government	23	3,030	3,031	3,027	32,515,733	825.66

TABLE 6. COUNTY SUMMARY

North American Industry Classification System - Industry Groups	Number of Employing Units	Employment			Total Earnings	Average Weekly Earnings
		Oct	Nov	Dec	Oct - Dec 2015	
CRAWFORD COUNTY - TOTAL	1,252	19,059	19,101	19,370	\$173,145,618	\$694.54
Natural Resources & Mining	29	257	239	255	3,148,950	967.62
Construction	147	873	888	891	10,433,683	907.91
Manufacturing	68	4,344	4,324	4,379	44,833,456	792.99
Trade, Transportation & Utilities	312	5,886	5,917	5,945	53,964,394	701.67
Wholesale Trade	84	795	801	802	10,801,567	1,039.48
Retail Trade	164	1,971	2,007	2,014	14,032,353	540.43
Transportation, Warehousing & Utilities	64	3,120	3,109	3,129	29,130,474	718.36
Information	9	98	97	97	990,480	782.78
Financial Activities	125	492	492	493	5,253,394	820.80
Professional & Business Services	157	1,470	1,455	1,495	12,737,790	665.04
Education & Health Services	172	1,556	1,573	1,588	13,531,247	661.99
Leisure & Hospitality	101	1,521	1,526	1,643	5,775,542	284.18
Other Services	79	367	382	369	3,137,074	647.53
Local Government	43	2,047	2,056	2,061	18,129,938	678.75
State Government	10	148	152	154	1,209,670	614.88
CRITTENDEN COUNTY - TOTAL	1,298	17,484	17,531	17,254	\$166,726,396	\$736.10
Natural Resources & Mining	59	305	269	264	3,037,189	836.38
Construction	45	1,175	1,195	1,078	23,005,841	1,539.74
Manufacturing	40	1,816	1,820	1,782	23,217,993	988.93
Trade, Transportation & Utilities	308	4,420	4,454	4,486	42,227,013	729.39
Wholesale Trade	65	739	744	755	9,325,366	961.58
Retail Trade	163	1,945	2,013	2,049	12,443,443	478.04
Transportation, Warehousing & Utilities	80	1,736	1,697	1,682	20,458,204	923.00
Information	5	51	53	54	549,308	802.30
Financial Activities	93	436	436	434	4,906,795	867.03
Professional & Business Services	120	1,422	1,428	1,371	11,241,575	614.60
Education & Health Services	367	2,438	2,442	2,464	18,688,039	587.23
Leisure & Hospitality	123	2,240	2,269	2,211	10,489,961	360.23
Other Services	81	453	459	466	3,941,436	660.06
Local Government	43	2,213	2,202	2,216	21,381,006	744.09
State Government	14	515	504	428	4,040,240	644.34

TABLE 6. COUNTY SUMMARY

North American Industry Classification System - Industry Groups	Number of Employing Units	Employment			Total Earnings Oct - Dec 2015	Average Weekly Earnings
		Oct	Nov	Dec		
CROSS COUNTY - TOTAL	484	5,063	5,015	5,002	\$42,116,265	\$644.51
Natural Resources & Mining	36	258	227	226	2,319,390	752.80
Construction	22	75	68	67	623,775	685.47
Manufacturing	12	518	497	492	4,338,398	664.35
Trade, Transportation & Utilities	132	1,232	1,219	1,203	11,328,957	715.48
Wholesale Trade	32	307	302	299	4,523,649	1,149.69
Retail Trade	74	785	800	794	5,544,647	537.85
Transportation, Warehousing & Utilities	26	140	117	110	1,260,661	792.70
Information	5	41	46	45	327,384	572.35
Financial Activities	43	309	306	307	3,081,116	771.18
Professional & Business Services	39	126	124	120	1,355,684	845.54
Education & Health Services	105	972	978	987	7,555,518	593.66
Leisure & Hospitality	32	344	342	348	1,113,932	248.61
Other Services	32	83	86	85	629,124	571.58
Local Government	16	712	721	716	6,020,672	646.53
State Government	10	393	401	406	3,422,315	658.14
DALLAS COUNTY - TOTAL	253	2,808	2,825	2,818	\$22,351,563	\$610.35
Natural Resources & Mining	32	179	178	177	1,613,111	697.11
Construction	18	90	76	87	853,250	778.28
Manufacturing	9	554	560	554	5,535,956	765.90
Trade, Transportation & Utilities	55	479	488	455	3,582,225	581.34
Wholesale Trade	6	15	13	14	201,992	1,109.85
Retail Trade	38	365	371	341	2,395,363	513.26
Transportation, Warehousing & Utilities	11	99	104	100	984,870	750.09
Information	4	18	18	18	175,002	747.87
Financial Activities	16	79	78	79	1,159,309	1,133.61
Professional & Business Services	11	25	25	26	173,950	528.19
Education & Health Services	59	817	809	820	5,949,892	561.35
Leisure & Hospitality	13	149	153	158	432,221	216.83
Other Services	14	57	60	65	376,531	477.43
Local Government	14	315	335	334	2,176,595	510.46
State Government	8	46	45	45	323,521	548.96

TABLE 6. COUNTY SUMMARY

North American Industry Classification System - Industry Groups	Number of Employing Units	Employment			Total Earnings	Average Weekly Earnings
		Oct	Nov	Dec	Oct - Dec 2015	
DESHA COUNTY - TOTAL	543	4,604	4,527	4,592	\$39,471,829	\$663.77
Natural Resources & Mining	70	335	292	297	2,825,363	705.64
Construction	19	94	92	87	1,099,998	929.84
Manufacturing	15	780	781	798	11,051,395	1,081.10
Trade, Transportation & Utilities	110	939	895	904	7,880,634	664.21
Wholesale Trade	22	220	221	220	3,193,174	1,114.81
Retail Trade	63	502	496	503	2,884,951	443.54
Transportation, Warehousing & Utilities	25	217	178	181	1,802,509	722.16
Information	3	10	10	10	97,847	752.67
Financial Activities	28	208	204	207	2,075,870	773.90
Professional & Business Services	39	98	91	95	734,157	596.55
Education & Health Services	170	727	740	754	4,476,050	465.08
Leisure & Hospitality	37	389	400	399	1,360,669	264.31
Other Services	21	57	56	58	275,764	372.15
Local Government	21	812	808	825	6,522,852	615.65
State Government	10	155	158	158	1,071,230	524.86
DREW COUNTY - TOTAL	517	6,442	6,468	6,518	\$55,234,109	\$656.08
Natural Resources & Mining	51	320	305	296	3,597,796	901.48
Construction	19	98	94	95	882,265	709.41
Manufacturing	21	768	768	775	7,734,856	772.38
Trade, Transportation & Utilities	125	1,265	1,260	1,270	8,775,579	533.63
Wholesale Trade	18	121	117	117	1,436,776	933.98
Retail Trade	84	1,009	1,004	1,008	5,818,844	444.49
Transportation, Warehousing & Utilities	23	135	139	145	1,519,959	837.14
Information	6	43	44	45	396,194	692.65
Financial Activities	48	236	239	239	2,783,816	899.75
Professional & Business Services	33	235	244	247	2,501,552	795.15
Education & Health Services	121	893	901	945	8,394,447	707.26
Leisure & Hospitality	38	619	626	617	2,314,269	286.82
Other Services	17	56	53	56	410,306	573.85
Local Government	22	1,286	1,306	1,312	11,147,766	658.96
State Government	16	623	628	621	6,295,263	776.04

TABLE 6. COUNTY SUMMARY

North American Industry Classification System - Industry Groups	Number of Employing Units	Employment			Total Earnings Oct - Dec 2015	Average Weekly Earnings
		Oct	Nov	Dec		
FAULKNER COUNTY - TOTAL	2,865	40,498	40,685	40,774	\$410,433,364	\$776.63
Natural Resources & Mining	64	798	752	748	14,642,939	1,470.47
Construction	310	2,635	2,662	2,672	33,825,454	979.53
Manufacturing	106	3,180	3,179	3,208	42,664,874	1,029.14
Trade, Transportation & Utilities	659	7,315	7,534	7,551	57,932,070	596.83
Wholesale Trade	146	539	529	527	7,895,130	1,142.29
Retail Trade	422	6,074	6,296	6,290	40,778,279	504.31
Transportation, Warehousing & Utilities	91	702	709	734	9,258,661	996.09
Information	20	234	239	247	2,980,970	955.44
Financial Activities	328	1,504	1,501	1,512	17,536,780	895.94
Professional & Business Services	436	5,828	5,730	5,759	83,635,750	1,114.54
Education & Health Services	439	6,311	6,383	6,369	64,410,882	779.73
Leisure & Hospitality	256	5,070	5,069	5,001	17,729,145	270.23
Other Services	189	702	710	737	5,769,826	619.59
Local Government	40	3,507	3,500	3,510	35,323,062	775.08
State Government	18	3,414	3,426	3,460	33,981,612	761.35
FRANKLIN COUNTY - TOTAL	354	4,327	4,323	4,345	\$42,336,226	\$751.82
Natural Resources & Mining	18	224	228	224	4,279,850	1,461.03
Construction	32	104	101	103	1,107,265	829.62
Manufacturing	14	863	862	864	9,690,605	863.77
Trade, Transportation & Utilities	88	944	944	956	8,821,608	715.81
Wholesale Trade	13	42	43	41	222,969	408.37
Retail Trade	54	627	628	638	4,457,027	543.34
Transportation, Warehousing & Utilities	21	275	273	277	4,141,612	1,158.49
Information	5	21	21	20	181,095	674.05
Financial Activities	31	113	111	113	1,470,678	1,007.08
Professional & Business Services	36	277	278	293	4,114,026	1,119.56
Education & Health Services	59	554	555	563	4,004,041	552.64
Leisure & Hospitality	28	332	329	315	1,024,206	242.17
Other Services	15	49	50	49	308,087	480.39
Local Government	19	717	713	714	5,991,547	644.90
State Government	9	129	131	131	1,343,218	792.77

TABLE 6. COUNTY SUMMARY

North American Industry Classification System - Industry Groups	Number of Employing Units	Employment			Total Earnings Oct - Dec 2015	Average Weekly Earnings
		Oct	Nov	Dec		
FULTON COUNTY - TOTAL	194	1,834	1,840	1,846	\$13,120,607	\$548.52
Construction	8	26	30	30	282,614	758.36
Manufacturing	13	109	104	103	661,670	483.21
Trade, Transportation & Utilities	48	306	307	308	2,564,445	642.56
Retail Trade	32	193	188	184	987,451	403.32
Other Trade, Transportation, & Utilities	16	113	119	124	1,576,994	1,022.25
Information	4	28	29	34	183,860	466.26
Financial Activities	17	87	81	86	1,106,513	1,005.31
Professional & Business Services	14	38	37	38	331,148	676.27
Education & Health Services	43	417	420	425	2,815,445	514.83
Leisure & Hospitality	15	143	150	145	428,586	225.81
Local Government	12	548	552	544	3,785,199	531.33
State Government	10	109	109	111	850,743	596.73
Other	10	23	21	22	110,384	385.96
GARLAND COUNTY - TOTAL	3,133	35,681	35,425	35,597	\$329,212,242	\$712.00
Natural Resources & Mining	29	288	277	273	3,716,736	1,023.52
Construction	339	1,701	1,674	1,667	16,807,034	769.25
Manufacturing	97	2,474	2,509	2,525	29,690,848	912.59
Trade, Transportation & Utilities	703	7,281	7,494	7,496	59,328,174	614.75
Wholesale Trade	145	850	866	876	12,381,068	1,102.30
Retail Trade	499	5,954	6,150	6,116	41,180,628	521.58
Transportation, Warehousing & Utilities	59	477	478	504	5,766,478	912.08
Information	32	443	445	451	4,336,888	747.44
Financial Activities	344	1,416	1,431	1,419	19,821,860	1,072.26
Professional & Business Services	385	2,929	2,844	2,876	29,646,194	791.01
Education & Health Services	533	7,654	7,633	7,652	90,815,239	913.61
Leisure & Hospitality	374	6,424	6,036	6,158	28,380,544	351.78
Other Services	238	971	983	990	6,840,932	536.24
Local Government	34	3,023	3,018	3,005	30,899,611	788.27
State Government	25	1,077	1,081	1,085	8,928,182	635.32

TABLE 6. COUNTY SUMMARY

North American Industry Classification System - Industry Groups	Number of Employing Units	Employment			Total Earnings	Average Weekly Earnings
		Oct	Nov	Dec	Oct - Dec 2015	
GRANT COUNTY - TOTAL	341	3,920	3,906	3,912	\$37,464,181	\$736.55
Natural Resources & Mining	27	185	179	196	2,530,896	1,042.95
Construction	25	184	179	177	2,188,918	935.44
Manufacturing	17	1,156	1,166	1,165	13,505,302	893.78
Trade, Transportation & Utilities	89	675	669	667	5,250,900	602.56
Wholesale Trade	21	105	107	110	1,464,384	1,049.49
Retail Trade	44	482	476	467	3,028,902	490.51
Transportation, Warehousing & Utilities	24	88	86	90	757,614	662.25
Information	3	9	9	9	164,958	1,409.90
Financial Activities	23	83	85	85	895,598	816.90
Professional & Business Services	27	95	96	100	1,662,142	1,318.11
Education & Health Services	68	389	388	389	2,511,730	497.11
Leisure & Hospitality	25	307	294	258	844,354	226.83
Other Services	19	46	48	45	237,393	394.12
Local Government	10	732	734	760	7,209,697	747.43
State Government	8	59	59	61	462,293	595.99
GREENE COUNTY - TOTAL	893	15,415	15,279	15,230	\$143,574,473	\$721.47
Natural Resources & Mining	38	274	250	235	2,376,747	722.64
Construction	68	332	315	295	3,085,191	755.80
Manufacturing	66	5,507	5,463	5,389	61,348,526	865.42
Trade, Transportation & Utilities	244	2,502	2,481	2,476	19,274,249	596.31
Wholesale Trade	49	415	404	403	5,041,407	952.05
Retail Trade	160	1,825	1,820	1,811	11,770,576	497.85
Transportation, Warehousing & Utilities	35	262	257	262	2,462,266	727.55
Information	10	95	89	93	680,292	566.75
Financial Activities	74	490	481	487	6,324,569	1,001.04
Professional & Business Services	92	925	891	918	8,213,153	693.25
Education & Health Services	148	1,891	1,885	1,885	17,960,756	732.17
Leisure & Hospitality	66	1,162	1,183	1,186	3,985,152	260.45
Other Services	45	171	175	179	1,221,023	536.71
Local Government	30	1,649	1,646	1,664	14,801,720	688.80
State Government	12	417	420	423	4,303,095	788.11

TABLE 6. COUNTY SUMMARY

North American Industry Classification System - Industry Groups	Number of Employing Units	Employment			Total Earnings Oct - Dec 2015	Average Weekly Earnings
		Oct	Nov	Dec		
HEMPSTEAD COUNTY - TOTAL	501	7,716	7,771	7,768	\$68,115,348	\$675.94
Natural Resources & Mining	22	230	230	236	2,354,436	780.65
Construction	30	210	204	199	2,064,901	777.35
Manufacturing	27	2,151	2,202	2,212	23,732,702	834.24
Trade, Transportation & Utilities	127	1,377	1,355	1,329	11,611,178	659.81
Wholesale Trade	20	179	178	181	1,611,275	691.14
Retail Trade	78	904	893	882	5,363,307	462.00
Transportation, Warehousing & Utilities	29	294	284	266	4,636,596	1,267.75
Information	8	43	43	43	374,541	670.02
Financial Activities	44	215	214	214	2,689,812	965.36
Professional & Business Services	32	168	175	177	1,330,014	590.24
Education & Health Services	91	915	914	915	6,609,818	555.88
Leisure & Hospitality	45	613	624	638	2,047,954	252.06
Other Services	31	138	141	139	1,008,589	556.82
Local Government	27	898	898	901	7,752,911	663.38
State Government	17	758	771	765	6,538,492	657.75
HOT SPRING COUNTY - TOTAL	626	8,507	8,603	8,551	\$78,293,803	\$704.10
Natural Resources & Mining	24	148	150	147	1,184,348	614.18
Construction	57	392	402	369	3,625,920	719.48
Manufacturing	29	1,430	1,409	1,392	18,028,580	983.32
Trade, Transportation & Utilities	148	1,609	1,610	1,613	16,263,554	776.72
Wholesale Trade	17	122	120	120	1,736,839	1,107.21
Retail Trade	94	893	892	883	5,332,476	461.23
Transportation, Warehousing & Utilities	37	594	598	610	9,194,239	1,177.44
Information	6	47	51	58	504,266	745.96
Financial Activities	54	213	210	209	2,578,554	941.54
Professional & Business Services	54	1,044	1,120	1,091	7,453,509	528.43
Education & Health Services	127	1,035	1,030	1,030	9,205,551	686.38
Leisure & Hospitality	50	589	596	634	1,757,564	222.98
Other Services	37	131	131	128	800,747	473.81
Local Government	27	988	998	1,003	9,402,833	725.96
State Government	13	881	896	877	7,488,377	651.13

TABLE 6. COUNTY SUMMARY

North American Industry Classification System - Industry Groups	Number of Employing Units	Employment			Total Earnings	Average Weekly Earnings
		Oct	Nov	Dec	Oct - Dec 2015	
HOWARD COUNTY - TOTAL	351	6,902	6,892	6,937	\$55,014,966	\$612.40
Natural Resources & Mining	17	240	243	246	2,119,419	670.91
Construction	20	142	141	149	1,596,828	853.01
Manufacturing	21	3,342	3,313	3,308	26,969,273	624.68
Trade, Transportation & Utilities	91	919	912	947	7,418,269	616.24
Wholesale Trade	15	73	74	75	798,465	830.01
Retail Trade	55	616	626	657	3,939,348	478.72
Transportation, Warehousing & Utilities	21	230	212	215	2,680,456	941.50
Information	3	25	25	25	141,910	436.65
Financial Activities	36	147	148	148	1,411,567	735.32
Professional & Business Services	23	113	115	120	1,091,317	723.69
Education & Health Services	68	694	704	708	5,867,175	642.91
Leisure & Hospitality	22	304	310	305	1,015,854	255.09
Other Services	22	127	126	126	946,881	576.55
Local Government	17	735	739	732	5,499,142	575.26
State Government	11	114	116	123	937,331	612.77
INDEPENDENCE COUNTY - TOTAL	909	14,903	15,031	15,442	\$145,052,469	\$737.69
Natural Resources & Mining	13	246	246	236	3,406,125	1,079.71
Construction	64	446	447	416	4,369,724	770.36
Manufacturing	39	2,562	2,539	2,766	33,591,403	985.36
Trade, Transportation & Utilities	233	3,022	3,059	3,102	27,127,575	681.72
Wholesale Trade	31	443	442	436	5,256,260	918.23
Retail Trade	154	1,748	1,778	1,804	11,340,688	491.01
Transportation, Warehousing & Utilities	48	831	839	862	10,530,627	959.77
Information	10	106	110	114	945,627	661.28
Financial Activities	80	500	498	504	5,811,240	892.85
Professional & Business Services	98	1,140	1,228	1,325	7,885,397	492.74
Education & Health Services	168	3,188	3,208	3,263	38,438,816	918.37
Leisure & Hospitality	78	1,190	1,186	1,178	3,878,752	251.86
Other Services	63	379	376	384	2,123,089	430.15
Local Government	47	1,494	1,505	1,522	11,816,748	603.17
State Government	16	630	629	632	5,657,973	690.47

TABLE 6. COUNTY SUMMARY

North American Industry Classification System - Industry Groups	Number of Employing Units	Employment			Total Earnings Oct - Dec 2015	Average Weekly Earnings
		Oct	Nov	Dec		
IZARD COUNTY - TOTAL	258	3,194	3,182	3,183	\$26,138,078	\$631.01
Natural Resources & Mining	8	173	174	174	1,890,590	837.41
Construction	21	132	130	129	1,402,137	827.54
Manufacturing	10	301	307	312	2,944,039	738.47
Trade, Transportation & Utilities	67	554	563	567	4,205,438	576.30
Wholesale Trade	12	26	26	25	183,770	550.76
Retail Trade	43	397	402	410	2,462,509	470.03
Transportation, Warehousing & Utilities	12	131	135	132	1,559,159	904.03
Information	4	5	6	6	79,359	1,077.27
Financial Activities	23	141	137	141	1,823,533	1,004.33
Professional & Business Services	16	47	47	47	377,332	617.56
Education & Health Services	50	689	678	680	4,781,169	539.01
Leisure & Hospitality	22	155	147	144	511,671	264.75
Other Services	10	29	29	28	165,171	443.21
Local Government	17	500	498	492	3,891,228	602.67
State Government	10	468	466	463	4,066,411	671.73
JACKSON COUNTY - TOTAL	461	5,355	5,304	5,323	\$48,486,017	\$700.11
Natural Resources & Mining	56	276	219	199	2,279,600	758.01
Construction	25	115	112	117	1,381,074	926.48
Manufacturing	17	1,043	1,037	1,059	12,344,310	907.51
Trade, Transportation & Utilities	114	1,013	987	1,009	8,594,656	659.15
Wholesale Trade	20	190	188	193	2,576,366	1,041.24
Retail Trade	75	719	704	720	4,664,566	502.30
Transportation, Warehousing & Utilities	19	104	95	96	1,353,724	1,058.98
Information	4	77	78	81	421,091	411.76
Financial Activities	33	142	142	143	1,402,864	758.17
Professional & Business Services	30	105	109	111	1,206,975	857.02
Education & Health Services	89	811	829	827	7,970,562	745.59
Leisure & Hospitality	30	292	296	287	963,282	254.05
Other Services	18	68	63	67	563,877	657.20
Local Government	32	602	623	617	4,525,643	566.98
State Government	13	811	809	806	6,832,083	649.89

TABLE 6. COUNTY SUMMARY

North American Industry Classification System - Industry Groups	Number of Employing Units	Employment			Total Earnings Oct - Dec 2015	Average Weekly Earnings
		Oct	Nov	Dec		
JEFFERSON COUNTY - TOTAL	2,128	27,098	27,150	27,099	\$263,371,174	\$747.14
Natural Resources & Mining	38	195	177	168	2,398,078	1,024.82
Construction	88	610	595	565	6,082,206	792.99
Manufacturing	64	4,952	4,932	4,948	63,486,508	987.78
Trade, Transportation & Utilities	419	4,522	4,671	4,695	41,671,352	692.43
Wholesale Trade	72	620	618	628	7,133,550	882.21
Retail Trade	288	3,100	3,223	3,236	21,958,131	530.10
Transportation, Warehousing & Utilities	59	802	830	831	12,579,671	1,178.64
Information	10	89	89	89	932,783	806.21
Financial Activities	156	1,123	1,122	1,127	14,623,660	1,000.80
Professional & Business Services	154	1,937	1,918	1,911	15,927,888	637.47
Education & Health Services	861	4,689	4,678	4,668	49,170,596	808.48
Leisure & Hospitality	139	2,011	1,974	1,953	6,699,529	260.36
Other Services	123	625	590	602	4,994,194	634.29
Local Government	39	2,866	2,864	2,876	24,056,325	645.07
State Government	37	3,479	3,540	3,497	33,328,055	731.37
JOHNSON COUNTY - TOTAL	513	8,523	8,603	8,598	\$69,817,539	\$626.33
Natural Resources & Mining	13	124	124	128	1,258,165	772.20
Construction	38	167	161	157	1,417,203	674.32
Manufacturing	36	2,644	2,687	2,700	22,822,483	655.80
Trade, Transportation & Utilities	122	1,974	2,011	1,988	16,389,260	633.21
Retail Trade	80	918	941	931	5,472,786	452.67
Other Trade, Transportation & Utilities	42	1,056	1,070	1,057	10,916,474	791.45
Information	6	37	36	35	307,004	655.99
Financial Activities	50	184	184	183	2,004,366	839.47
Professional & Business Services	53	414	403	388	2,325,618	445.38
Education & Health Services	93	1,183	1,197	1,214	11,255,751	722.73
Leisure & Hospitality	42	544	538	538	1,678,784	239.14
Other Services	37	84	86	86	553,206	498.68
Local Government	14	1,038	1,046	1,050	8,635,840	635.89
State Government	9	130	130	131	1,169,859	690.45

TABLE 6. COUNTY SUMMARY

North American Industry Classification System - Industry Groups	Number of Employing Units	Employment			Total Earnings Oct - Dec 2015	Average Weekly Earnings
		Oct	Nov	Dec		
LAFAYETTE COUNTY - TOTAL	174	1,196	1,207	1,173	\$10,817,328	\$698.07
Natural Resources & Mining	31	158	144	136	1,744,034	918.88
Construction	9	63	60	61	2,268,396	2,844.98
Manufacturing	5	30	30	30	314,832	807.26
Trade, Transportation & Utilities	29	192	190	188	1,320,684	534.69
Retail Trade	16	110	107	103	531,871	383.56
Other Trade, Transportation & Utilities	13	82	83	85	788,813	728.14
Financial Activities	14	42	49	47	414,834	693.70
Professional & Business Services	11	44	46	44	404,130	695.98
Education & Health Services	40	203	210	210	1,333,248	493.86
Leisure & Hospitality	6	44	44	45	143,860	249.61
Local Government	13	287	300	280	2,103,329	559.84
State Government	8	49	50	48	305,423	479.47
Other	8	84	84	84	464,558	425.42
LAWRENCE COUNTY - TOTAL	409	4,142	4,153	4,126	\$32,971,163	\$612.57
Natural Resources & Mining	54	219	208	204	2,153,492	787.57
Construction	24	121	120	111	1,119,750	734.10
Manufacturing	20	492	498	507	4,322,348	666.31
Trade, Transportation & Utilities	110	875	852	856	7,530,454	672.78
Wholesale Trade	19	220	212	213	2,368,876	847.54
Retail Trade	57	494	493	496	3,530,355	549.36
Transportation, Warehousing & Utilities	34	161	147	147	1,631,223	827.33
Financial Activities	33	137	141	143	1,203,004	659.42
Professional & Business Services	27	106	112	110	1,401,572	986.10
Education & Health Services	55	551	553	549	4,473,955	624.59
Leisure & Hospitality	29	376	393	377	1,137,114	228.98
Local Government	26	1,099	1,110	1,103	8,436,222	587.81
State Government	10	95	94	95	653,226	530.79
Other	21	71	72	71	540,026	582.34

TABLE 6. COUNTY SUMMARY

North American Industry Classification System - Industry Groups	Number of Employing Units	Employment			Total Earnings Oct - Dec 2015	Average Weekly Earnings
		Oct	Nov	Dec		
LEE COUNTY - TOTAL	290	1,967	1,935	1,888	\$17,430,360	\$694.71
Natural Resources & Mining	39	257	234	188	2,845,246	967.00
Construction	10	32	28	27	236,325	626.86
Trade, Transportation & Utilities	43	337	337	341	3,107,224	706.45
Wholesale Trade	9	107	108	108	1,280,939	915.17
Retail Trade	23	180	178	184	1,084,216	461.63
Transportation, Warehousing & Utilities	11	50	51	49	742,069	1,141.64
Financial Activities	18	67	69	68	528,811	598.20
Professional & Business Services	14	78	77	76	1,094,016	1,092.92
Education & Health Services	124	418	412	420	3,313,328	611.69
Leisure & Hospitality	10	86	84	86	296,407	267.19
Local Government	15	249	239	234	1,874,106	599.01
State Government	7	428	440	434	4,023,860	713.20
Other	10	15	15	14	111,037	582.36
LINCOLN COUNTY - TOTAL	283	2,794	2,802	2,822	\$24,613,700	\$674.75
Natural Resources & Mining	36	187	183	174	1,644,053	697.42
Construction	16	76	75	79	733,559	736.01
Manufacturing	9	258	254	254	2,327,617	701.23
Trade, Transportation & Utilities	47	379	378	385	3,415,351	690.16
Wholesale Trade	6	51	49	47	397,058	623.32
Retail Trade	26	182	186	194	1,010,703	415.02
Transportation, Warehousing & Utilities	15	146	143	144	2,007,590	1,069.95
Financial Activities	20	75	74	75	671,901	692.21
Professional & Business Services	9	26	25	23	171,442	534.64
Education & Health Services	92	391	390	397	3,023,811	592.36
Leisure & Hospitality	15	150	153	156	414,529	208.41
Local Government	7	359	373	366	2,861,401	601.39
State Government	12	846	852	863	8,751,745	788.61
Other	20	47	45	50	598,291	972.30

TABLE 6. COUNTY SUMMARY

North American Industry Classification System - Industry Groups	Number of Employing Units	Employment			Total Earnings Oct - Dec 2015	Average Weekly Earnings
		Oct	Nov	Dec		
LITTLE RIVER COUNTY - TOTAL	242	3,446	3,457	3,476	\$43,967,112	\$977.58
Natural Resources & Mining	13	83	85	92	864,354	767.18
Construction	17	207	191	209	2,360,730	897.50
Manufacturing	14	1,193	1,222	1,227	26,645,615	1,688.35
Trade, Transportation & Utilities	57	559	574	555	4,113,506	562.36
Wholesale Trade	7	25	25	24	438,997	1,369.01
Retail Trade	38	402	418	412	2,525,230	473.01
Transportation, Warehousing & Utilities	12	132	131	119	1,149,279	694.29
Financial Activities	18	79	78	79	710,502	694.75
Professional & Business Services	17	86	80	81	804,034	751.20
Education & Health Services	41	177	175	165	1,120,085	499.96
Leisure & Hospitality	15	183	177	177	595,327	255.83
Local Government	20	713	716	732	5,784,856	617.75
State Government	11	88	86	89	602,256	528.45
Other	19	78	73	70	365,847	382.02
LOGAN COUNTY - TOTAL	494	5,505	5,478	5,488	\$44,726,053	\$626.64
Natural Resources & Mining	28	134	131	133	1,610,461	933.78
Construction	40	255	256	258	2,589,920	777.21
Manufacturing	19	1,195	1,182	1,188	11,890,395	769.69
Trade, Transportation & Utilities	102	1,045	1,042	1,037	7,200,128	531.87
Wholesale Trade	10	73	69	70	421,289	458.59
Retail Trade	67	808	808	801	4,929,536	470.66
Transportation, Warehousing & Utilities	25	164	165	166	1,849,303	862.15
Information	5	32	32	33	378,134	899.61
Financial Activities	50	211	203	199	2,161,561	813.74
Professional & Business Services	51	126	127	124	1,300,477	796.05
Education & Health Services	105	701	696	692	5,911,232	653.01
Leisure & Hospitality	31	348	350	352	1,010,839	222.16
Other Services	27	123	124	124	1,082,625	673.41
Local Government	22	801	793	796	6,044,578	583.64
State Government	14	534	542	552	3,545,703	502.60

TABLE 6. COUNTY SUMMARY

North American Industry Classification System - Industry Groups	Number of Employing Units	Employment			Total Earnings	Average Weekly Earnings
		Oct	Nov	Dec	Oct - Dec 2015	
LONOKE COUNTY - TOTAL	1,316	13,949	13,918	13,851	\$121,671,008	\$673.04
Natural Resources & Mining	85	470	464	450	5,219,716	870.34
Construction	127	840	852	853	9,221,226	836.14
Manufacturing	36	1,723	1,733	1,728	22,589,262	1,005.58
Trade, Transportation & Utilities	328	2,916	2,924	2,938	22,363,442	587.92
Wholesale Trade	76	389	383	381	5,095,325	1,019.81
Retail Trade	186	2,212	2,225	2,232	13,848,242	479.19
Transportation, Warehousing & Utilities	66	315	316	325	3,419,875	825.53
Information	15	93	92	94	1,080,467	893.69
Financial Activities	144	653	657	667	10,214,645	1,192.32
Professional & Business Services	165	864	856	805	7,135,758	652.16
Education & Health Services	199	1,726	1,724	1,712	12,912,058	577.24
Leisure & Hospitality	111	1,724	1,716	1,730	5,819,171	259.75
Other Services	66	178	180	169	1,151,023	504.02
Local Government	24	2,605	2,561	2,546	22,705,319	679.42
State Government	16	157	159	159	1,258,921	611.62
MADISON COUNTY - TOTAL	251	3,262	3,257	3,255	\$28,637,284	\$676.14
Natural Resources & Mining	13	47	46	47	387,012	637.93
Construction	23	85	84	85	861,404	782.62
Manufacturing	23	1,127	1,109	1,115	11,236,453	773.81
Trade, Transportation & Utilities	55	668	680	678	5,202,659	592.60
Retail Trade	36	496	510	507	3,266,009	498.15
Other Trade, Transportation & Utilities	19	172	170	171	1,936,650	871.19
Information	6	51	48	50	916,522	1,419.50
Financial Activities	17	69	70	69	651,172	722.45
Professional & Business Services	23	204	200	206	2,327,818	880.64
Education & Health Services	44	248	248	244	1,622,483	505.97
Leisure & Hospitality	16	172	172	172	493,099	220.53
Other Services	15	30	30	33	293,081	727.25
Local Government	9	523	531	517	4,338,557	637.30
State Government	7	38	39	39	307,024	610.79

TABLE 6. COUNTY SUMMARY

North American Industry Classification System - Industry Groups	Number of Employing Units	Employment			Total Earnings	Average Weekly Earnings
		Oct	Nov	Dec	Oct - Dec 2015	
MARION COUNTY - TOTAL	276	3,825	3,779	3,785	\$28,917,939	\$585.95
Construction	16	50	50	53	370,217	558.40
Manufacturing	20	1,755	1,728	1,745	13,937,916	615.23
Trade, Transportation & Utilities	55	544	548	532	3,555,897	505.29
Wholesale Trade	7	40	40	41	328,674	626.84
Retail Trade	38	467	473	458	2,763,686	456.20
Transportation, Warehousing & Utilities	10	37	35	33	463,537	1,018.76
Information	3	52	51	51	1,090,459	1,634.05
Financial Activities	32	187	179	178	1,782,029	755.95
Professional & Business Services	28	81	83	89	680,471	620.68
Education & Health Services	48	333	334	334	2,485,779	573.07
Leisure & Hospitality	34	207	195	191	639,217	248.75
Local Government	17	505	504	504	3,697,042	563.89
State Government	8	64	62	60	429,585	532.98
Other	15	47	45	48	249,327	410.98
MILLER COUNTY - TOTAL	871	13,279	13,299	13,301	\$134,441,734	\$777.98
Natural Resources & Mining	29	172	164	162	1,694,324	785.14
Construction	72	681	665	676	7,299,891	833.13
Manufacturing	27	2,378	2,452	2,357	42,535,345	1,365.78
Trade, Transportation & Utilities	232	3,676	3,633	3,769	33,545,036	698.79
Wholesale Trade	52	488	487	495	6,094,426	956.74
Retail Trade	131	1,363	1,366	1,370	8,209,431	462.18
Transportation, Warehousing & Utilities	49	1,825	1,780	1,904	19,241,179	806.00
Information	7	74	73	69	1,681,776	1,796.77
Financial Activities	83	403	409	407	4,547,099	860.81
Professional & Business Services	83	1,142	1,122	1,106	7,476,454	511.97
Education & Health Services	146	1,068	1,082	1,070	8,899,320	637.79
Leisure & Hospitality	92	1,480	1,461	1,441	6,131,831	322.92
Other Services	58	274	290	281	1,741,249	475.53
Local Government	25	1,426	1,433	1,442	13,751,186	737.82
State Government	17	505	515	521	5,138,223	769.46

TABLE 6. COUNTY SUMMARY

North American Industry Classification System - Industry Groups	Number of Employing Units	Employment			Total Earnings	Average Weekly Earnings
		Oct	Nov	Dec	Oct - Dec 2015	
MISSISSIPPI COUNTY - TOTAL	1,198	17,999	17,972	18,000	\$195,893,924	\$837.60
Natural Resources & Mining	119	685	646	594	6,238,316	747.85
Construction	54	638	696	665	10,077,516	1,163.37
Manufacturing	58	6,180	6,122	6,318	97,333,553	1,206.32
Trade, Transportation & Utilities	295	2,833	2,842	2,821	25,473,517	691.91
Wholesale Trade	62	461	451	435	5,831,460	999.05
Retail Trade	166	1,631	1,654	1,650	9,736,217	455.28
Transportation, Warehousing & Utilities	67	741	737	736	9,905,840	1,032.50
Information	7	54	53	53	358,061	516.43
Financial Activities	89	463	463	457	4,301,035	717.68
Professional & Business Services	93	1,290	1,289	1,219	10,437,050	634.16
Education & Health Services	256	1,756	1,751	1,752	14,597,553	640.55
Leisure & Hospitality	91	1,245	1,228	1,228	3,885,032	242.24
Other Services	61	209	223	222	2,049,348	723.13
Local Government	51	2,089	2,095	2,114	16,720,369	612.66
State Government	24	557	564	557	4,422,574	608.22
MONROE COUNTY - TOTAL	307	2,081	2,029	2,054	\$15,945,895	\$596.99
Natural Resources & Mining	35	154	143	122	1,511,926	832.71
Construction	12	19	20	19	141,139	561.56
Manufacturing	7	108	102	98	1,200,541	899.51
Trade, Transportation & Utilities	80	618	576	599	5,335,597	686.72
Wholesale Trade	19	239	213	231	2,411,382	814.75
Retail Trade	38	271	263	268	1,983,396	570.71
Transportation, Warehousing & Utilities	23	108	100	100	940,819	704.91
Financial Activities	22	86	87	88	948,852	838.95
Professional & Business Services	14	27	27	40	160,088	393.01
Education & Health Services	69	298	297	304	2,291,889	588.32
Leisure & Hospitality	20	230	239	238	766,397	250.16
Local Government	21	357	354	361	2,376,386	511.56
State Government	8	98	97	96	710,734	563.63
Other	19	86	87	89	502,346	442.47

TABLE 6. COUNTY SUMMARY

North American Industry Classification System - Industry Groups	Number of Employing Units	Employment			Total Earnings Oct - Dec 2015	Average Weekly Earnings
		Oct	Nov	Dec		
MONTGOMERY COUNTY - TOTAL	171	1,348	1,303	1,268	\$8,693,071	\$511.89
Natural Resources & Mining	7	41	38	34	306,701	626.35
Construction	21	62	56	60	354,382	459.44
Manufacturing	9	34	34	34	292,144	660.96
Trade, Transportation & Utilities	37	230	241	223	1,412,844	469.80
Wholesale Trade	9	48	47	47	373,484	606.96
Retail Trade	21	160	173	161	903,201	421.93
Transportation, Warehousing & Utilities	7	22	21	15	136,159	541.75
Financial Activities	11	60	51	51	529,235	753.90
Professional & Business Services	17	35	35	38	288,352	616.14
Education & Health Services	20	60	60	61	471,616	601.30
Leisure & Hospitality	18	255	223	185	995,536	346.51
Local Government	9	458	449	469	3,328,394	558.21
State Government	8	45	47	44	360,926	612.43
Other	14	68	69	69	352,941	395.38
NEVADA COUNTY - TOTAL	192	2,457	2,471	2,498	\$22,065,919	\$685.72
Natural Resources & Mining	11	72	74	75	845,477	882.85
Trade, Transportation & Utilities	38	553	559	570	4,737,825	650.03
Retail Trade	22	287	290	296	1,481,689	391.67
Other Trade, Transportation & Utilities	16	266	269	274	3,256,136	928.82
Financial Activities	11	65	58	58	615,319	784.51
Professional & Business Services	12	49	47	47	399,182	644.19
Education & Health Services	40	438	447	449	2,684,059	464.32
Leisure & Hospitality	10	91	90	93	302,485	254.76
Other Services	14	41	41	42	194,489	361.95
Local Government	27	373	375	381	2,654,100	542.50
State Government	10	84	90	89	555,463	487.39
Other	19	691	690	694	9,077,520	1,009.55

TABLE 6. COUNTY SUMMARY

North American Industry Classification System - Industry Groups	Number of Employing Units	Employment			Total Earnings Oct - Dec 2015	Average Weekly Earnings
		Oct	Nov	Dec		
NEWTON COUNTY - TOTAL	124	1,071	1,059	1,046	\$6,528,348	\$474.35
Construction	5	20	19	20	129,624	507.00
Manufacturing	7	26	19	27	244,346	783.16
Trade, Transportation & Utilities	31	138	137	139	1,063,334	592.72
Retail Trade	17	82	81	85	490,645	456.56
Other Trade, Transportation & Utilities	14	56	56	54	572,689	796.14
Education & Health Services	28	225	225	234	1,138,825	384.22
Leisure & Hospitality	16	159	153	123	602,825	319.80
Other Services	3	5	5	5	30,400	467.69
Local Government	13	389	394	393	2,473,894	485.46
State Government	8	75	74	74	430,476	445.47
Other	13	34	33	31	414,624	976.35
OUACHITA COUNTY - TOTAL	670	6,991	7,014	7,053	\$60,306,576	\$660.88
Natural Resources & Mining	36	164	153	146	1,545,060	770.09
Construction	35	204	194	212	2,045,554	773.85
Manufacturing	23	513	510	506	6,226,092	939.69
Trade, Transportation & Utilities	168	1,636	1,648	1,670	13,144,102	612.28
Wholesale Trade	28	306	307	309	3,175,417	794.78
Retail Trade	112	1,023	1,025	1,027	5,884,787	441.64
Transportation, Warehousing & Utilities	28	307	316	334	4,083,898	984.78
Information	6	42	41	43	471,862	864.22
Financial Activities	59	286	284	284	3,267,033	882.82
Professional & Business Services	50	536	531	525	4,651,739	674.30
Education & Health Services	176	1,250	1,254	1,261	11,702,712	717.30
Leisure & Hospitality	43	489	502	510	1,578,018	242.61
Other Services	31	133	129	132	993,354	581.82
Local Government	29	1,080	1,091	1,087	8,877,669	628.82
State Government	14	658	677	677	5,803,381	665.63

TABLE 6. COUNTY SUMMARY

North American Industry Classification System - Industry Groups	Number of Employing Units	Employment			Total Earnings Oct - Dec 2015	Average Weekly Earnings
		Oct	Nov	Dec		
PERRY COUNTY - TOTAL	149	1,337	1,366	1,320	\$13,532,230	\$776.24
Construction	17	90	91	94	807,485	677.61
Manufacturing	5	42	45	46	315,842	548.02
Trade, Transportation & Utilities	24	184	180	186	1,269,676	532.73
Retail Trade	15	154	149	157	694,703	348.51
Other Trade, Transportation & Utilities	9	30	31	29	574,973	1,474.29
Financial Activities	8	24	25	24	322,261	1,018.74
Professional & Business Services	17	42	39	39	672,209	1,292.71
Education & Health Services	36	220	217	203	1,924,864	694.06
Leisure & Hospitality	8	79	72	79	210,082	210.78
Local Government	10	344	347	345	2,555,652	569.27
State Government	8	57	59	61	397,045	517.66
Other	16	255	291	243	5,057,114	1,479.12
PHILLIPS COUNTY - TOTAL	801	5,673	5,621	5,652	\$46,948,172	\$639.34
Natural Resources & Mining	64	293	256	245	2,281,790	663.18
Construction	30	85	81	93	866,194	771.78
Manufacturing	12	339	345	348	3,444,752	770.29
Trade, Transportation & Utilities	156	1,402	1,375	1,379	11,860,358	658.57
Wholesale Trade	31	307	301	297	3,990,376	1,017.52
Retail Trade	83	816	806	814	4,707,592	445.96
Transportation, Warehousing & Utilities	42	279	268	268	3,162,390	895.44
Information	8	37	36	36	427,518	905.12
Financial Activities	41	221	218	216	2,095,732	738.37
Professional & Business Services	45	256	252	260	2,958,787	889.06
Education & Health Services	336	1,388	1,391	1,387	11,161,630	618.28
Leisure & Hospitality	36	311	314	317	1,062,201	260.22
Other Services	32	76	76	78	470,885	472.46
Local Government	27	776	786	801	6,700,884	654.40
State Government	14	489	491	492	3,617,441	567.12

TABLE 6. COUNTY SUMMARY

North American Industry Classification System - Industry Groups	Number of Employing Units	Employment			Total Earnings Oct - Dec 2015	Average Weekly Earnings
		Oct	Nov	Dec		
PIKE COUNTY - TOTAL	252	2,396	2,383	2,378	\$17,765,332	\$572.82
Natural Resources & Mining	25	117	118	117	1,114,071	730.38
Construction	15	52	51	52	430,633	641.14
Manufacturing	17	253	251	258	1,727,714	523.23
Trade, Transportation & Utilities	64	516	523	515	3,571,624	530.39
Wholesale Trade	11	130	124	121	903,339	555.90
Retail Trade	37	327	340	336	1,979,986	455.55
Transportation, Warehousing & Utilities	16	59	59	58	688,299	902.49
Information	6	26	26	26	275,710	815.71
Financial Activities	22	217	220	219	2,159,840	759.79
Professional & Business Services	19	72	67	74	1,434,805	1,554.50
Education & Health Services	27	292	295	298	1,960,764	511.28
Leisure & Hospitality	24	203	197	185	619,647	244.44
Other Services	13	50	51	53	401,427	601.54
Local Government	10	439	426	425	3,315,852	593.18
State Government	10	159	158	156	753,245	367.50
POINSETT COUNTY - TOTAL	526	5,246	5,175	5,125	\$47,979,113	\$712.22
Natural Resources & Mining	73	477	454	423	4,845,490	825.84
Construction	22	87	83	81	1,225,915	1,127.11
Manufacturing	20	671	677	683	8,132,195	924.01
Trade, Transportation & Utilities	132	1,234	1,207	1,190	11,727,806	745.36
Wholesale Trade	32	353	344	342	6,095,790	1,353.92
Retail Trade	73	723	721	706	4,021,552	431.65
Transportation, Warehousing & Utilities	27	158	142	142	1,610,464	840.83
Information	5	55	54	55	528,611	743.82
Financial Activities	41	242	239	234	2,615,272	844.09
Professional & Business Services	29	173	170	177	2,575,940	1,143.17
Education & Health Services	104	748	757	752	5,645,797	577.26
Leisure & Hospitality	40	335	326	323	991,179	232.45
Other Services	20	44	45	45	404,165	696.04
Local Government	29	1,043	1,028	1,024	8,260,318	615.91
State Government	11	137	135	138	1,026,425	577.73

TABLE 6. COUNTY SUMMARY

North American Industry Classification System - Industry Groups	Number of Employing Units	Employment			Total Earnings	Average Weekly Earnings
		Oct	Nov	Dec	Oct - Dec 2015	
POLK COUNTY - TOTAL	495	5,790	5,845	5,834	\$45,367,365	\$599.31
Natural Resources & Mining	22	129	124	122	1,577,447	970.74
Construction	31	187	188	192	1,501,104	610.95
Manufacturing	32	1,237	1,246	1,235	10,460,834	649.28
Trade, Transportation & Utilities	131	1,092	1,108	1,111	7,580,486	528.34
Wholesale Trade	22	56	56	56	421,790	579.38
Retail Trade	74	818	836	836	4,756,662	440.84
Transportation, Warehousing & Utilities	35	218	216	219	2,402,034	848.88
Information	7	63	62	61	485,947	602.91
Financial Activities	48	244	249	246	2,235,930	698.22
Professional & Business Services	43	154	148	153	1,767,490	896.44
Education & Health Services	83	984	1,010	1,018	9,334,401	715.17
Leisure & Hospitality	34	456	449	434	1,395,438	240.50
Other Services	29	178	181	178	1,267,918	544.87
Local Government	21	725	731	734	5,670,166	597.49
State Government	14	341	349	350	2,090,204	463.80
POPE COUNTY - TOTAL	1,824	27,025	26,924	26,858	\$275,075,331	\$785.56
Natural Resources & Mining	36	583	601	636	6,661,349	844.63
Construction	155	1,764	1,513	1,419	25,375,077	1,246.97
Manufacturing	75	4,549	4,544	4,567	50,199,616	848.06
Trade, Transportation & Utilities	430	6,192	6,304	6,380	73,603,353	899.84
Wholesale Trade	81	575	582	573	7,020,139	936.43
Retail Trade	265	3,338	3,457	3,431	20,684,304	466.78
Transportation, Warehousing & Utilities	84	2,279	2,265	2,376	45,898,910	1,530.64
Information	22	180	179	179	1,820,771	781.00
Financial Activities	186	1,249	1,278	1,279	11,416,368	692.21
Professional & Business Services	287	2,265	2,240	2,126	28,521,462	992.59
Education & Health Services	324	3,131	3,122	3,132	28,531,387	701.56
Leisure & Hospitality	141	2,768	2,807	2,797	9,850,844	271.53
Other Services	110	460	461	452	3,794,152	637.71
Local Government	42	2,141	2,133	2,147	18,909,073	679.59
State Government	16	1,743	1,742	1,744	16,391,879	723.42

TABLE 6. COUNTY SUMMARY

North American Industry Classification System - Industry Groups	Number of Employing Units	Employment			Total Earnings	Average Weekly Earnings
		Oct	Nov	Dec	Oct - Dec 2015	
PRAIRIE COUNTY - TOTAL	265	1,460	1,442	1,442	\$12,183,512	\$647.23
Natural Resources & Mining	39	168	160	165	2,198,239	1,028.98
Trade, Transportation & Utilities	64	390	365	361	3,216,610	665.14
Wholesale Trade	13	88	87	85	1,380,801	1,225.56
Retail Trade	35	212	207	207	1,028,032	378.97
Transportation, Warehousing & Utilities	16	90	71	69	807,777	810.48
Financial Activities	16	57	57	59	675,350	900.87
Professional & Business Services	12	58	59	58	520,395	686.24
Education & Health Services	56	238	241	240	1,694,125	543.74
Leisure & Hospitality	19	89	93	108	343,703	273.50
Other Services	14	27	29	22	170,292	503.82
Local Government	15	298	302	305	2,267,039	578.08
State Government	9	35	36	35	270,563	589.03
Other	21	100	100	89	827,196	660.52
PULASKI COUNTY - TOTAL	14,487	238,421	239,778	240,979	\$2,987,503,171	\$958.63
Natural Resources & Mining	55	662	661	656	9,551,068	1,113.74
Construction	946	9,050	9,003	9,085	133,064,650	1,131.52
Manufacturing	330	12,770	12,789	12,851	187,697,455	1,127.70
Trade, Transportation & Utilities	3,213	48,898	50,080	50,595	551,539,750	850.95
Wholesale Trade	1,007	11,968	11,927	11,959	202,528,510	1,303.55
Retail Trade	1,820	26,191	27,230	27,473	199,000,145	567.69
Transportation, Warehousing & Utilities	386	10,739	10,923	11,163	150,011,095	1,054.62
Information	193	5,661	5,695	5,687	90,094,607	1,219.92
Financial Activities	1,700	16,397	16,367	16,428	291,346,181	1,366.76
Professional & Business Services	2,895	33,701	33,788	34,166	473,643,986	1,075.23
Education & Health Services	2,490	39,332	39,444	39,447	532,113,691	1,038.68
Leisure & Hospitality	1,209	22,771	22,665	22,716	101,644,280	344.18
Other Services	1,148	6,351	6,329	6,409	63,113,368	762.99
Local Government	108	15,519	15,444	15,396	173,884,909	865.58
State Government	200	27,309	27,513	27,543	379,809,226	1,064.14

TABLE 6. COUNTY SUMMARY

North American Industry Classification System - Industry Groups	Number of Employing Units	Employment			Total Earnings Oct - Dec 2015	Average Weekly Earnings
		Oct	Nov	Dec		
RANDOLPH COUNTY - TOTAL	401	4,253	4,220	4,259	\$30,428,578	\$551.52
Natural Resources & Mining	27	97	83	78	694,378	621.09
Construction	26	87	80	86	541,891	494.28
Manufacturing	28	574	574	588	5,017,097	666.93
Trade, Transportation & Utilities	92	814	822	819	6,241,891	586.74
Wholesale Trade	18	141	141	139	1,252,146	686.36
Retail Trade	60	547	558	553	3,483,378	484.84
Transportation, Warehousing & Utilities	14	126	123	127	1,506,367	924.53
Information	5	33	33	34	351,068	810.16
Financial Activities	35	150	144	147	1,309,471	685.23
Professional & Business Services	38	179	177	177	1,308,586	566.57
Education & Health Services	65	800	796	795	5,341,049	515.50
Leisure & Hospitality	28	388	380	394	1,261,428	250.52
Other Services	22	60	63	63	469,577	582.60
Local Government	24	744	745	761	5,198,929	533.22
State Government	11	327	323	317	2,693,213	642.72
SAINT FRANCIS COUNTY - TOTAL	744	7,270	7,262	7,279	\$58,394,061	\$617.83
Natural Resources & Mining	48	276	228	191	1,864,979	619.25
Construction	45	178	186	192	2,003,750	831.66
Trade, Transportation & Utilities	158	1,969	2,006	2,029	16,096,643	618.69
Wholesale Trade	33	543	569	581	6,056,872	825.60
Retail Trade	103	1,104	1,125	1,120	6,523,681	449.53
Transportation, Warehousing & Utilities	22	322	312	328	3,516,090	843.46
Information	5	62	62	61	590,893	737.08
Financial Activities	59	246	246	243	2,132,783	669.63
Professional & Business Services	46	445	445	469	3,279,847	556.94
Education & Health Services	261	1,421	1,435	1,449	12,911,313	692.11
Leisure & Hospitality	44	642	643	646	2,023,719	241.85
Local Government	27	839	831	820	7,033,958	651.90
State Government	16	536	535	535	4,239,645	609.20
Other	35	656	645	644	6,216,531	737.58

TABLE 6. COUNTY SUMMARY

North American Industry Classification System - Industry Groups	Number of Employing Units	Employment			Total Earnings Oct - Dec 2015	Average Weekly Earnings
		Oct	Nov	Dec		
SALINE COUNTY - TOTAL	1,980	22,931	23,128	23,311	\$212,906,715	\$708.26
Natural Resources & Mining	14	55	53	55	684,492	969.08
Construction	267	1,997	1,997	2,025	24,937,722	956.12
Manufacturing	85	1,412	1,399	1,406	17,754,331	971.58
Trade, Transportation & Utilities	459	5,278	5,380	5,384	45,637,935	656.52
Wholesale Trade	118	591	587	581	7,568,122	992.89
Retail Trade	278	4,179	4,273	4,285	32,036,285	580.43
Transportation, Warehousing & Utilities	63	508	520	518	6,033,528	900.62
Information	12	142	143	149	1,769,112	940.68
Financial Activities	202	754	753	750	9,021,555	922.42
Professional & Business Services	272	1,695	1,701	1,767	18,602,304	831.46
Education & Health Services	289	3,288	3,300	3,313	29,881,452	696.47
Leisure & Hospitality	176	3,001	3,072	3,048	11,289,509	285.63
Other Services	159	772	788	802	6,353,030	620.70
Local Government	30	3,664	3,660	3,716	39,197,011	819.34
State Government	15	873	882	896	7,778,262	677.10
SCOTT COUNTY - TOTAL	181	2,985	2,995	3,011	\$22,336,720	\$573.31
Natural Resources & Mining	17	162	155	160	1,668,516	807.22
Trade, Transportation & Utilities	34	399	400	401	3,521,671	677.24
Wholesale Trade	5	52	52	52	867,704	1,283.59
Retail Trade	22	283	282	281	1,860,388	507.47
Transportation, Warehousing & Utilities	7	64	66	68	793,579	924.92
Financial Activities	21	70	71	68	527,432	582.37
Professional & Business Services	10	69	68	68	486,357	547.49
Education & Health Services	38	294	302	303	2,757,719	707.89
Leisure & Hospitality	14	131	131	126	490,203	291.56
Other Services	11	43	43	42	411,022	741.03
Local Government	6	518	526	538	4,101,871	598.35
State Government	7	50	52	51	327,181	493.49
Other	23	1,249	1,247	1,254	8,044,748	495.06

TABLE 6. COUNTY SUMMARY

North American Industry Classification System - Industry Groups	Number of Employing Units	Employment			Total Earnings Oct - Dec 2015	Average Weekly Earnings
		Oct	Nov	Dec		
SEARCY COUNTY - TOTAL	176	1,458	1,466	1,442	\$9,808,736	\$518.45
Construction	11	14	15	18	123,738	607.55
Manufacturing	18	208	208	201	1,287,175	481.43
Trade, Transportation & Utilities	41	249	250	251	1,714,486	527.53
Wholesale Trade	8	55	55	54	355,925	500.83
Retail Trade	27	174	175	177	1,073,792	471.10
Transportation, Warehousing & Utilities	6	20	20	20	284,769	1,095.27
Financial Activities	13	53	53	51	450,518	662.20
Education & Health Services	41	313	323	318	2,286,641	553.13
Leisure & Hospitality	13	122	127	119	412,079	258.41
Other Services	5	10	10	10	65,725	505.58
Local Government	10	328	334	328	2,178,207	507.74
State Government	7	99	105	102	606,284	457.23
Other	17	62	41	44	683,883	1,073.60
SEBASTIAN COUNTY - TOTAL	3,696	64,946	65,140	65,288	\$683,421,333	\$807.23
Natural Resources & Mining	55	756	736	731	14,900,156	1,546.78
Construction	258	2,413	2,425	2,438	27,321,477	866.54
Manufacturing	189	11,766	11,737	11,778	142,995,010	935.31
Trade, Transportation & Utilities	914	13,470	13,859	13,904	129,549,103	725.05
Wholesale Trade	249	2,869	2,897	2,917	37,450,797	995.33
Retail Trade	543	7,911	8,262	8,223	53,226,331	503.48
Transportation, Warehousing & Utilities	122	2,690	2,700	2,764	38,871,975	1,100.13
Information	40	890	899	909	14,353,800	1,227.73
Financial Activities	410	2,421	2,415	2,407	29,491,474	939.63
Professional & Business Services	602	8,243	8,381	8,362	84,728,525	782.55
Education & Health Services	566	11,350	11,154	11,167	142,354,371	975.65
Leisure & Hospitality	337	6,091	5,985	5,980	23,981,255	306.50
Other Services	264	1,271	1,293	1,332	9,674,473	573.04
Local Government	39	4,608	4,582	4,605	46,730,895	781.74
State Government	22	1,667	1,674	1,675	17,340,794	797.79

TABLE 6. COUNTY SUMMARY

North American Industry Classification System - Industry Groups	Number of Employing Units	Employment			Total Earnings Oct - Dec 2015	Average Weekly Earnings
		Oct	Nov	Dec		
SEVIER COUNTY - TOTAL	317	4,754	4,738	4,773	\$37,315,467	\$603.66
Natural Resources & Mining	15	166	161	170	1,699,826	789.27
Construction	16	162	178	175	2,237,503	1,002.62
Trade, Transportation & Utilities	98	857	867	871	7,499,752	666.94
Wholesale Trade	16	116	114	118	2,296,472	1,522.86
Retail Trade	66	653	663	664	4,182,983	487.53
Transportation, Warehousing & Utilities	16	88	90	89	1,020,297	881.85
Financial Activities	27	204	202	203	2,267,950	859.40
Professional & Business Services	26	105	96	99	650,435	500.33
Education & Health Services	52	539	532	532	4,192,725	603.59
Leisure & Hospitality	26	295	295	297	895,941	233.10
Local Government	12	931	923	924	6,792,008	564.21
State Government	8	172	174	195	1,275,502	544.08
Other	37	1,323	1,310	1,307	9,803,825	574.22
SHARP COUNTY - TOTAL	393	3,773	3,754	3,726	\$27,943,950	\$573.06
Natural Resources & Mining	3	7	6	5	35,958	461.00
Construction	28	118	117	118	1,106,726	723.51
Manufacturing	18	181	181	180	1,160,698	494.19
Trade, Transportation & Utilities	82	1,082	1,082	1,047	9,776,026	702.59
Wholesale Trade	13	37	42	43	398,624	754.02
Retail Trade	57	680	677	666	3,812,543	434.91
Transportation, Warehousing & Utilities	12	365	363	338	5,564,859	1,204.69
Information	6	43	42	46	381,568	672.17
Financial Activities	32	179	170	170	1,788,645	795.31
Professional & Business Services	39	132	126	132	1,192,308	705.51
Education & Health Services	87	738	749	745	5,488,814	567.50
Leisure & Hospitality	40	398	408	393	1,198,507	230.67
Other Services	26	65	65	70	327,253	377.60
Local Government	24	764	740	753	5,006,125	511.86
State Government	8	66	68	67	481,322	552.61

TABLE 6. COUNTY SUMMARY

North American Industry Classification System - Industry Groups	Number of Employing Units	Employment			Total Earnings Oct - Dec 2015	Average Weekly Earnings
		Oct	Nov	Dec		
STONE COUNTY - TOTAL	279	2,518	2,514	2,474	\$17,376,492	\$534.23
Natural Resources & Mining	7	10	10	10	61,169	470.53
Construction	17	43	39	36	253,778	496.31
Manufacturing	21	224	235	217	1,498,060	511.40
Trade, Transportation & Utilities	68	613	601	604	4,438,238	563.37
Wholesale Trade	5	41	34	41	324,493	645.54
Retail Trade	52	535	530	526	3,667,824	532.01
Transportation, Warehousing & Utilities	11	37	37	37	445,921	927.07
Financial Activities	29	96	94	86	753,696	630.18
Professional & Business Services	14	31	32	29	192,776	483.55
Education & Health Services	50	497	497	510	4,631,034	710.57
Leisure & Hospitality	36	367	370	342	1,086,036	232.27
Local Government	10	413	409	407	3,185,459	598.13
State Government	8	167	170	176	909,081	408.94
Other	19	57	57	57	367,165	495.50
UNION COUNTY - TOTAL	1,343	18,730	18,654	18,601	\$220,996,018	\$910.94
Natural Resources & Mining	96	519	517	519	6,898,031	1,023.70
Construction	81	2,120	2,084	1,991	30,326,475	1,129.69
Manufacturing	52	3,256	3,241	3,240	54,203,227	1,284.63
Trade, Transportation & Utilities	328	4,169	4,184	4,243	47,055,310	862.09
Wholesale Trade	68	1,057	1,044	1,058	19,176,629	1,400.88
Retail Trade	199	2,272	2,293	2,322	14,600,828	489.24
Transportation, Warehousing & Utilities	61	840	847	863	13,277,853	1,201.62
Information	9	131	132	133	1,161,475	676.85
Financial Activities	103	611	604	608	6,832,391	864.90
Professional & Business Services	144	1,403	1,415	1,416	23,247,713	1,267.09
Education & Health Services	288	2,373	2,357	2,343	23,447,168	765.01
Leisure & Hospitality	89	1,263	1,232	1,224	4,779,476	296.57
Other Services	104	466	462	452	3,081,615	515.32
Local Government	32	1,833	1,839	1,839	14,774,310	618.66
State Government	17	586	587	593	5,188,827	678.04

TABLE 6. COUNTY SUMMARY

North American Industry Classification System - Industry Groups	Number of Employing Units	Employment			Total Earnings	Average Weekly Earnings
		Oct	Nov	Dec	Oct - Dec 2015	
VAN BUREN COUNTY - TOTAL	356	3,902	3,873	3,827	\$36,718,049	\$730.34
Natural Resources & Mining	9	277	277	276	5,961,830	1,657.60
Construction	39	160	166	165	1,295,900	609.07
Manufacturing	8	98	109	103	859,276	639.66
Trade, Transportation & Utilities	101	1,069	1,086	1,068	12,551,377	898.69
Wholesale Trade	10	75	74	69	985,262	1,042.97
Retail Trade	61	594	615	606	3,562,303	452.93
Transportation, Warehousing & Utilities	30	400	397	393	8,003,812	1,552.13
Information	6	31	32	32	355,699	864.05
Financial Activities	31	114	115	121	1,167,179	769.57
Professional & Business Services	36	142	126	127	1,229,123	718.09
Education & Health Services	58	767	761	759	5,937,975	599.17
Leisure & Hospitality	28	368	363	353	1,294,513	275.58
Other Services	22	49	49	47	383,109	609.72
Local Government	11	765	728	716	5,216,680	544.97
State Government	7	62	61	60	465,388	586.87
WASHINGTON COUNTY - TOTAL	5,868	99,424	100,282	100,723	\$1,229,366,252	\$944.32
Natural Resources & Mining	40	359	344	343	6,153,235	1,357.53
Construction	507	4,488	4,495	4,506	58,325,408	997.83
Manufacturing	222	12,121	12,122	12,184	134,918,067	854.72
Trade, Transportation & Utilities	1,384	22,885	23,312	23,599	251,818,905	832.60
Wholesale Trade	385	3,751	3,748	3,750	66,611,652	1,366.51
Retail Trade	802	12,427	12,853	12,861	92,004,322	556.67
Transportation, Warehousing & Utilities	197	6,707	6,711	6,988	93,202,931	1,054.02
Information	81	922	915	928	11,360,262	948.14
Financial Activities	667	3,572	3,590	3,597	49,438,828	1,060.41
Professional & Business Services	1,048	11,672	11,747	11,743	294,925,437	1,935.60
Education & Health Services	802	14,581	14,667	14,670	185,710,992	975.83
Leisure & Hospitality	647	12,292	12,408	12,335	49,610,261	309.13
Other Services	388	1,860	1,867	1,905	14,791,080	606.06
Local Government	60	8,486	8,616	8,753	84,596,512	755.07
State Government	22	6,186	6,199	6,160	87,717,265	1,091.53

TABLE 6. COUNTY SUMMARY

North American Industry Classification System - Industry Groups	Number of Employing Units	Employment			Total Earnings Oct - Dec 2015	Average Weekly Earnings
		Oct	Nov	Dec		
WHITE COUNTY - TOTAL	1,831	24,496	24,573	24,743	\$228,379,404	\$714.02
Natural Resources & Mining	60	537	531	507	7,868,290	1,152.86
Construction	162	1,098	1,080	1,084	12,271,820	868.17
Manufacturing	63	2,163	2,160	2,158	25,512,501	908.42
Trade, Transportation & Utilities	483	6,359	6,489	6,558	56,804,161	675.49
Wholesale Trade	89	603	604	616	7,265,885	919.77
Retail Trade	301	3,808	3,898	3,930	24,924,594	494.31
Transportation, Warehousing & Utilities	93	1,948	1,987	2,012	24,613,682	955.12
Information	17	137	143	143	1,236,279	674.46
Financial Activities	174	840	837	842	10,712,634	981.40
Professional & Business Services	209	1,391	1,356	1,365	11,811,319	662.86
Education & Health Services	324	5,371	5,393	5,477	57,281,519	813.92
Leisure & Hospitality	160	2,724	2,663	2,663	9,198,708	263.70
Other Services	115	483	479	485	4,062,848	647.95
Local Government	47	2,726	2,742	2,738	25,783,477	725.08
State Government	17	667	700	723	5,835,848	644.37
WOODRUFF COUNTY - TOTAL	206	1,789	1,758	1,766	\$16,270,656	\$706.71
Natural Resources & Mining	27	143	130	125	2,246,129	1,302.36
Construction	9	46	43	45	415,378	715.35
Manufacturing	7	226	228	225	2,222,035	755.19
Trade, Transportation & Utilities	46	412	399	406	4,159,010	788.64
Wholesale Trade	11	170	156	153	2,248,297	1,083.17
Retail Trade	26	179	181	179	876,104	375.10
Transportation, Warehousing & Utilities	9	63	62	74	1,034,609	1,199.78
Financial Activities	12	67	67	67	694,387	797.23
Education & Health Services	62	220	216	217	1,706,859	603.20
Leisure & Hospitality	11	79	80	83	239,528	228.41
Local Government	9	444	442	444	3,035,438	526.68
State Government	6	44	46	46	327,634	555.94
Other	17	108	107	108	1,224,258	874.68

TABLE 6. COUNTY SUMMARY

North American Industry Classification System - Industry Groups	Number of Employing Units	Employment			Total Earnings Oct - Dec 2015	Average Weekly Earnings
		Oct	Nov	Dec		
YELL COUNTY - TOTAL	408	6,251	6,223	6,228	\$48,299,817	\$595.99
Natural Resources & Mining	24	142	140	131	1,370,576	765.83
Construction	35	138	134	138	1,400,306	788.16
Manufacturing	19	2,334	2,326	2,324	17,650,951	583.23
Trade, Transportation & Utilities	76	730	737	726	5,514,097	580.25
Wholesale Trade	14	36	37	39	287,616	592.62
Retail Trade	46	514	525	520	2,899,036	429.13
Transportation, Warehousing & Utilities	16	180	175	167	2,327,445	1,028.93
Financial Activities	32	168	168	169	2,009,806	918.42
Professional & Business Services	37	275	273	278	2,442,213	682.31
Education & Health Services	104	779	774	780	5,220,762	516.41
Leisure & Hospitality	27	304	301	307	901,554	228.13
Local Government	25	1,187	1,173	1,174	10,035,882	655.34
State Government	12	90	90	89	580,983	498.41
Other	17	104	107	112	1,172,687	837.83
STATEWIDE COUNTY - TOTAL	8,777	32,186	32,570	32,504	\$447,684,780	\$1,062.22
Natural Resources & Mining	97	331	321	316	4,979,109	1,187.01
Construction	758	3,404	3,454	3,363	45,621,293	1,030.04
Manufacturing	46	125	129	125	3,572,820	2,175.45
Trade, Transportation & Utilities	2,919	7,517	7,598	7,633	166,968,661	1,693.83
Wholesale Trade	2,514	6,130	6,198	6,250	148,095,817	1,839.59
Retail Trade	143	324	339	367	4,571,611	1,024.26
Transportation, Warehousing & Utilities	262	1,063	1,061	1,016	14,301,233	1,051.05
Information	216	471	488	474	8,858,164	1,426.51
Financial Activities	549	1,340	1,387	1,380	23,316,388	1,310.13
Professional & Business Services	3,420	15,268	15,433	15,532	151,117,054	754.29
Education & Health Services	383	2,227	2,269	2,187	24,435,338	843.77
Leisure & Hospitality	87	120	122	126	1,286,005	806.44
State Government	15	723	739	747	8,258,099	862.70
Other	287	660	630	621	9,271,849	1,028.79

Note: Statewide classification includes employment and payroll data for employers that have not provided a physical location for each employing unit. This section also includes employers without a physical location in Arkansas.

TABLE 7. FEDERAL GOVERNMENT EMPLOYMENT AND EARNINGS IN ARKANSAS

North American Industry Classification System - Industry Groups	Number of Employing Units	Employment			Total Earnings Oct - Dec 2015	Average Weekly Earnings
		Oct	Nov	Dec		
TOTAL	1,163	20,245	20,363	20,575	\$330,331,411	\$1,245.94
Trade, Transportation & Utilities	596	5,403	5,494	5,609	76,004,816	1,062.62
Information	2	41	42	41	612,333	1,139.58
Financial Activities	14	113	113	112	2,061,954	1,407.80
Professional & Business Services	33	763	749	743	14,929,438	1,527.83
Education & Health Services	16	5,385	5,392	5,415	93,667,602	1,334.96
Leisure & Hospitality	22	283	277	278	2,757,020	759.23
Other Services	1	1	1	1	8,916	685.85
Public Administration	479	8,256	8,295	8,376	140,289,332	1,298.77

TABLE 8. LOCAL WORKFORCE DEVELOPMENT AREA SUMMARY

North American Industry Classification System - Industry Groups	Number of Employing Units	Employment			Total Earnings	Average
		Oct	Nov	Dec	Oct - Dec 2015	Weekly Earnings
CENTRAL LOCAL WORKFORCE DEVELOPMENT AREA	6,733	80,919	81,202	81,432	\$773,140,494	\$732.56
Natural Resources & Mining	237	1,645	1,572	1,540	24,257,312	1,176.76
Trade, Transportation & Utilities	1,590	16,517	16,779	16,833	134,485,654	619.11
Wholesale Trade	372	1,846	1,799	1,805	24,350,760	1,031.08
Retail Trade	959	12,948	13,264	13,282	89,674,234	523.98
Transportation, Warehousing & Utilities	259	1,723	1,716	1,746	20,460,660	910.64
Information	54	506	510	527	6,093,280	911.30
Financial Activities	712	3,054	3,055	3,076	38,397,182	964.71
Professional & Business Services	899	8,472	8,373	8,429	110,054,295	1,004.87
Education & Health Services	1,052	11,861	11,945	11,938	111,190,406	717.86
Leisure & Hospitality	582	10,114	10,189	10,125	35,947,925	272.63
Local Government	130	10,431	10,377	10,438	101,868,817	752.36
State Government	66	4,577	4,600	4,646	44,000,092	734.56
Other	1,411	13,742	13,802	13,880	166,845,531	929.48

Note: Pulaski County is not included in the Central Local Workforce Development Area. Please refer to Page 51 for information on Pulaski County.

Central Local Workforce Development Area includes these counties: Faulkner, Lonoke, Monroe, Prairie, and Saline.

EASTERN LOCAL WORKFORCE DEVELOPMENT AREA	3,617	37,457	37,364	37,075	\$331,615,254	\$683.91
Natural Resources & Mining	246	1,389	1,214	1,114	12,348,594	766.66
Construction	152	1,545	1,558	1,457	26,735,885	1,353.03
Trade, Transportation & Utilities	797	9,360	9,391	9,438	84,620,195	692.74
Wholesale Trade	170	2,003	2,024	2,040	25,177,202	957.66
Retail Trade	446	4,830	4,922	4,961	30,303,579	475.30
Transportation, Warehousing & Utilities	181	2,527	2,445	2,437	29,139,414	907.61
Financial Activities	254	1,279	1,275	1,268	12,745,237	769.55
Professional & Business Services	264	2,327	2,326	2,296	19,929,909	661.85
Education & Health Services	1,193	6,637	6,658	6,707	53,629,828	618.74
Leisure & Hospitality	245	3,623	3,652	3,608	14,986,220	317.78
Local Government	128	4,789	4,779	4,787	43,010,626	691.43
State Government	61	2,361	2,371	2,295	19,343,501	635.25
Other	277	4,147	4,140	4,105	44,265,259	824.33

Eastern Local Workforce Development Area includes these counties: Crittenden, Cross, Lee, Phillips, and Saint Francis.

TABLE 8. LOCAL WORKFORCE DEVELOPMENT AREA SUMMARY

North American Industry Classification System - Industry Groups	Number of Employing Units	Employment			Total Earnings	Average Weekly Earnings
		Oct	Nov	Dec	Oct - Dec 2015	
NORTH CENTRAL LOCAL WORKFORCE DEVELOPMENT AREA	5,553	68,388	68,448	68,969	\$615,104,116	\$689.72
Construction	437	2,523	2,504	2,480	26,340,936	809.73
Manufacturing	230	7,932	7,956	8,224	90,867,082	869.66
Trade, Transportation & Utilities	1,402	15,872	16,005	16,109	143,346,789	689.37
Retail Trade	900	9,835	9,952	10,004	62,929,219	487.47
Other Trade, Transportation & Utilities	502	6,037	6,053	6,105	80,417,570	1,019.95
Financial Activities	506	2,419	2,396	2,418	27,986,279	892.90
Education & Health Services	1,020	13,598	13,672	13,835	136,337,350	765.42
Leisure & Hospitality	497	6,610	6,569	6,457	22,001,086	258.56
Local Government	227	9,076	9,063	9,057	72,740,877	617.24
State Government	104	3,114	3,147	3,174	26,090,496	638.14
Other	1,130	7,244	7,136	7,215	69,393,221	741.55

North Central Local Workforce Development Area includes these counties: Cleburne, Fulton, Independence, IZard, Jackson, Sharp, Stone, Van Buren, White, and Woodruff.

NORTHEAST LOCAL WORKFORCE DEVELOPMENT AREA	6,573	98,705	98,613	98,421	\$958,145,529	\$747.65
Natural Resources & Mining	455	2,378	2,251	2,039	21,697,358	750.91
Construction	443	3,528	3,441	3,374	44,203,398	986.25
Manufacturing	310	19,679	19,577	19,738	252,691,098	988.46
Trade, Transportation & Utilities	1,742	19,515	19,700	19,726	167,545,629	655.98
Wholesale Trade	386	3,515	3,489	3,428	47,175,645	1,043.59
Retail Trade	1,027	12,775	13,053	13,066	81,851,688	485.65
Transportation, Warehousing & Utilities	329	3,225	3,158	3,232	38,518,296	924.48
Financial Activities	565	3,154	3,140	3,133	37,023,107	906.31
Professional & Business Services	666	7,221	7,068	6,949	61,699,183	670.41
Education & Health Services	1,143	16,154	16,198	16,197	180,485,691	857.91
Leisure & Hospitality	527	8,849	8,951	8,950	31,427,067	271.12
Local Government	217	11,449	11,507	11,526	96,457,057	645.53
State Government	102	4,609	4,611	4,603	45,905,219	766.37
Other	403	2,169	2,169	2,186	19,010,722	672.45

Northeast Local Workforce Development Area includes these counties: Clay, Craighead, Greene, Lawrence, Mississippi, Poinsett, and Randolph.

TABLE 8. LOCAL WORKFORCE DEVELOPMENT AREA SUMMARY

North American Industry Classification System - Industry Groups	Number of Employing Units	Employment			Total Earnings	Average Weekly Earnings
		Oct	Nov	Dec	Oct - Dec 2015	
NORTHWEST LOCAL WORKFORCE DEVELOPMENT AREA	15,683	258,944	260,734	261,693	\$3,154,192,918	\$931.56
Natural Resources & Mining	136	1,381	1,357	1,352	28,754,147	1,622.39
Trade, Transportation & Utilities	3,878	58,653	59,836	60,420	661,723,747	853.54
Wholesale Trade	1,252	9,710	9,703	9,718	207,586,011	1,644.45
Retail Trade	2,143	31,389	32,340	32,364	220,938,788	530.59
Transportation, Warehousing & Utilities	483	17,554	17,793	18,338	233,198,948	1,002.42
Information	203	2,494	2,509	2,539	32,225,070	986.02
Education & Health Services	2,209	32,328	32,530	32,632	365,821,515	865.94
Leisure & Hospitality	1,651	28,726	28,558	28,332	118,052,263	318.20
Other Services	1,002	4,547	4,603	4,677	37,303,621	622.59
Local Government	304	22,862	23,051	23,296	218,751,123	729.40
State Government	110	8,858	8,872	8,832	110,257,686	957.91
Other	6,190	99,095	99,418	99,613	1,581,303,746	1,224.03

Northwest Local Workforce Development Area includes these counties: Baxter, Benton, Boone, Carroll, Madison, Marion, Newton, Searcy, and Washington.

SOUTHEAST LOCAL WORKFORCE DEVELOPMENT AREA	6,141	69,917	69,780	69,988	\$664,048,591	\$730.82
Natural Resources & Mining	437	2,512	2,441	2,400	26,068,797	818.15
Construction	296	2,221	2,114	2,079	23,221,851	835.50
Manufacturing	209	14,334	14,256	14,333	181,106,460	973.69
Trade, Transportation & Utilities	1,275	12,955	13,016	13,093	114,185,342	674.55
Wholesale Trade	235	2,037	1,992	1,980	24,899,870	956.25
Retail Trade	763	7,792	7,944	8,010	50,685,245	492.57
Transportation, Warehousing & Utilities	277	3,126	3,080	3,103	38,600,227	956.90
Financial Activities	411	2,494	2,483	2,488	30,720,602	949.68
Education & Health Services	2,016	10,715	10,721	10,793	96,304,090	689.57
Local Government	206	9,069	9,113	9,197	75,976,391	640.38
State Government	138	6,289	6,373	6,334	58,129,320	706.17
Other	1,153	9,328	9,263	9,271	58,335,738	483.17

Southeast Local Workforce Development Area includes these counties: Arkansas, Ashley, Bradley, Chicot, Cleveland, Desha, Drew, Grant, Jefferson, and Lincoln.

TABLE 8. LOCAL WORKFORCE DEVELOPMENT AREA SUMMARY

North American Industry Classification System - Industry Groups	Number of Employing Units	Employment			Total Earnings	Average Weekly Earnings
		Oct	Nov	Dec	Oct - Dec 2015	
SOUTHWEST LOCAL WORKFORCE DEVELOPMENT AREA	5,752	79,354	79,479	79,424	\$800,196,682	\$775.05
Natural Resources & Mining	354	2,437	2,404	2,416	32,718,823	1,040.44
Trade, Transportation & Utilities	1,407	16,085	16,094	16,283	148,091,861	705.19
Wholesale Trade	245	2,526	2,503	2,520	37,470,890	1,145.47
Retail Trade	864	9,052	9,136	9,166	55,476,442	468.02
Transportation, Warehousing & Utilities	298	4,507	4,455	4,597	55,144,529	938.54
Information	53	455	453	453	6,355,500	1,077.63
Financial Activities	486	2,559	2,552	2,555	29,927,678	900.91
Education & Health Services	1,199	9,557	9,568	9,561	79,172,095	636.91
Leisure & Hospitality	416	5,644	5,667	5,626	20,453,206	278.68
Other Services	378	1,703	1,689	1,679	10,907,321	496.37
Local Government	253	9,916	9,991	9,980	81,515,346	629.41
State Government	142	3,763	3,814	3,837	34,053,851	688.50
Other	1,064	27,235	27,247	27,034	357,001,001	1,010.66

Southwest Local Workforce Development Area includes these counties: Calhoun, Columbia, Dallas, Hempstead, Howard, Lafayette, Little River, Miller, Nevada, Ouachita, Sevier, and Union

WEST CENTRAL LOCAL WORKFORCE DEVELOPMENT AREA	8,254	107,241	106,984	107,005	\$983,693,947	\$706.68
Construction	751	4,954	4,675	4,539	\$57,989,739	944.54
Manufacturing	337	16,054	16,115	16,166	172,144,218	821.88
Trade, Transportation & Utilities	1,857	21,763	22,112	22,141	202,441,737	707.67
Wholesale Trade	332	2,143	2,158	2,164	27,372,516	977.07
Retail Trade	1,235	14,336	14,683	14,587	92,646,726	490.30
Transportation, Warehousing & Utilities	290	5,284	5,271	5,390	82,422,495	1,192.89
Financial Activities	817	3,982	4,018	4,014	45,819,745	880.12
Professional & Business Services	965	8,371	8,321	8,245	83,140,686	769.39
Education & Health Services	1,526	16,784	16,788	16,867	169,600,685	775.96
Leisure & Hospitality	784	12,731	12,302	12,404	49,557,142	305.48
Local Government	226	11,577	11,561	11,598	102,994,879	684.25
State Government	126	5,798	5,833	5,766	49,220,624	652.91
Other	865	5,227	5,259	5,265	50,784,492	744.05

West Central Local Workforce Development Area includes these counties: Clark, Conway, Garland, Hot Spring, Johnson, Montgomery, Perry, Pike, Pope, and Yell

TABLE 8. LOCAL WORKFORCE DEVELOPMENT AREA SUMMARY

North American Industry Classification System - Industry Groups	Number of Employing Units	Employment			Total Earnings	Average Weekly Earnings
		Oct	Nov	Dec	Oct - Dec 2015	
WESTERN LOCAL WORKFORCE DEVELOPMENT AREA	6,472	102,612	102,882	103,336	\$1,011,333,315	\$755.71
Natural Resources & Mining	169	1,662	1,613	1,625	27,185,380	1,280.32
Trade, Transportation & Utilities	1,581	22,836	23,270	23,354	210,637,390	699.81
Wholesale Trade	383	3,887	3,918	3,938	50,186,116	986.24
Retail Trade	924	12,418	12,823	12,793	83,262,297	505.19
Transportation, Warehousing & Utilities	274	6,531	6,529	6,623	77,188,977	904.99
Financial Activities	685	3,551	3,541	3,526	41,140,469	894.14
Professional & Business Services	899	10,339	10,457	10,495	105,134,665	775.36
Education & Health Services	1,023	15,439	15,290	15,331	177,893,011	891.28
Leisure & Hospitality	545	8,879	8,770	8,850	33,677,483	293.28
Other Services	425	2,031	2,073	2,094	15,881,199	591.30
Local Government	150	9,416	9,401	9,448	86,668,995	707.61
State Government	76	2,869	2,900	2,913	25,856,770	687.28
Other	919	25,590	25,567	25,700	287,257,953	862.51

Western Local Workforce Development Area includes these counties: Crawford, Franklin, Logan, Polk, Scott, and Sebastian