

Arkansas Covered Employment & Earnings



Second Quarter
2015

**COVERED EMPLOYMENT AND EARNINGS
STATE OF ARKANSAS
SECOND QUARTER 2015**

**ASA HUTCHINSON, GOVERNOR
STATE OF ARKANSAS**

**DARYL BASSETT, DIRECTOR
DEPARTMENT OF WORKFORCE SERVICES**

**PUBLISHED BY
LABOR MARKET INFORMATION
BUREAU OF LABOR STATISTICS PROGRAMS
POST OFFICE BOX 2981
LITTLE ROCK, ARKANSAS 72203-2981
SUSAN PRICE, BLS PROGRAMS MANAGER
TELEPHONE (501) 682-3103**

STATE OF ARKANSAS WEBPAGE: <http://www.arkansas.gov>

DEPARTMENT OF WORKFORCE SERVICES WEBPAGE: <http://www.arkansas.gov/esd/>

WEBPAGE FOR LABOR MARKET INFORMATION: <http://www.discover.arkansas.gov>

RELEASED: NOVEMBER 2015

TABLE OF CONTENTS

DESCRIPTION OF DATA	PAGE
Description and Classification of Data	1
Definition of Covered Employment and Earnings	2
Significant Developments During Second Quarter 2015	3

LIST OF GRAPHS AND TABLES

Graph 1	Total Covered Employment for Selected Years, Arkansas	7
Graph 2	Total Covered Earnings, by Calendar Quarter for Selected Years, Arkansas	8
Table 1	Quarterly Comparison of Covered Employment and Wages, by Industry	5
Table 2	Total Covered Employment in Arkansas, 2008 – 2015	6
Table 3	Total Covered Earnings, 2008 – 2015	9
Table 4	Total Taxable Earnings, 2008 – 2015	10
Table 5	State Summary – Employment and Total Earnings, by Industry, Second Quarter 2015	11
Table 6	County Summary – Employment and Total Earnings, by Industry, Second Quarter 2015	22
Table 7	Federal Government Employment and Total Earnings in Arkansas, Second Quarter 2015	60
Table 8	Local Workforce Development Area – Employment and Total Earnings, by Industry, Second Quarter 2015	61

EMPLOYMENT AND EARNINGS
UNDER THE ARKANSAS EMPLOYMENT SECURITY LAW
SECOND QUARTER 2015

DESCRIPTION AND CLASSIFICATION OF DATA

This publication contains covered employment and payroll data by industry and county for the Second Quarter 2015 and a record for total covered employment by month, quarterly payroll data, average weekly earnings, and total taxable earnings for 2008 through 2015. These data are compiled from quarterly contributions and wage reports submitted by employers subject to the Arkansas Employment Security Law.

Employment data have been tabulated for each month of the quarter by industry under the **North American Industry Classification System** (NAICS) by state, county, and workforce area. Payroll data represent the total wages paid during the quarter and are classified by industry for the state and by publishable industry groups for each county and workforce area.

Due to industry classification revisions, previously published data will not always be comparable with current data. For this reason, comparisons should not be made between the same industries under different revisions. For more information, visit the NAICS home page at <http://www.census.gov/naics>.

Industry Classification Revisions

- SIC (Standard Industrial Classification) 1987 to NAICS 2002
- NAICS 2002 to NAICS 2007
- NAICS 2007 to NAICS 2012

The tabulation of this data is a joint effort in conjunction with the United States Bureau of Labor Statistics. Data included in this publication are subject to revisions. Revisions are typically reflected in the Annual Covered Employment and Earnings publication.

DEFINITION OF COVERED EMPLOYMENT AND EARNINGS

Covered Employment is the total number of workers employed by establishments subject to the Arkansas Employment Security Law that worked or received pay for the payroll period including the 12th of the month. Earnings include all wages paid to any covered employee by their employer including salaries, bonuses, commissions, fees, fringe benefits, sick pay made directly to employees or dependents, deferred compensation, and reported tips. These wages include both taxable and nontaxable wages. Only the first \$12,000 paid to each worker by an employer in the calendar year is taxable under the Arkansas Employment Security Law.

An Arkansas state unemployment insurance account is required of any entity meeting the definition of an employer. As described by Arkansas Department of Workforce Services Law, the definition of an employer includes, but is not limited to, a sole proprietorship, partnership, corporation, associations, trust, estate, and receiver or trustee in bankruptcy. The entity must employ one or more individuals for ten or more days in a calendar year, whether or not the days are consecutive.

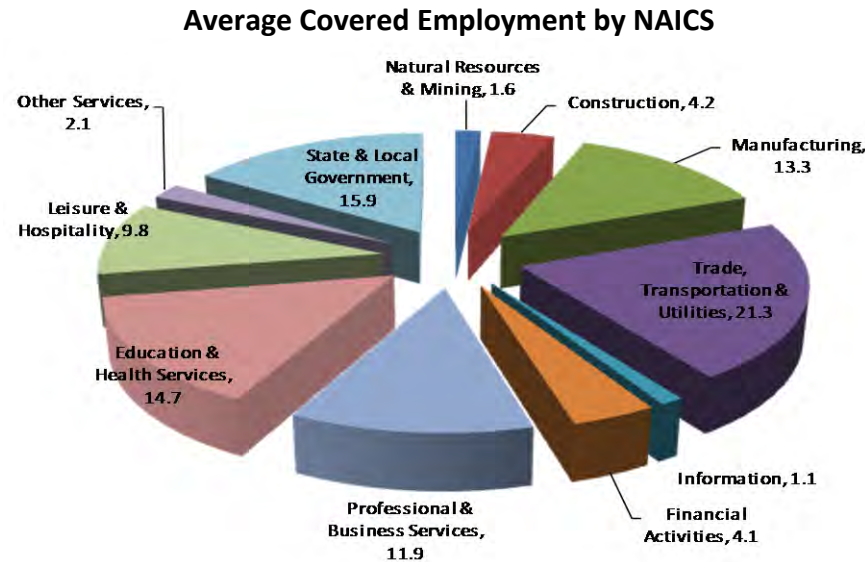
Currently excluded from coverage is employment covered by the Railroad Unemployment Insurance Act, some domestic service workers, employees of small agricultural establishments, self-employed workers, unpaid family workers, insurance and real estate agents paid only on a commission basis, and employees of churches and religious organizations except separately incorporated schools.

Civilian federal workers are covered by Unemployment Compensation for Federal Employees (UCFE).

SIGNIFICANT DEVELOPMENTS DURING SECOND QUARTER 2015

AVERAGE EMPLOYMENT CHANGES

Covered employment averaged 1,163,401 during the Second Quarter 2015 (refer to Table 1), an increase of 20,764 (1.8%) from the previous quarter and an increase of 18,498 (1.6%) from the average recorded one year ago. The over-the-year comparison is more significant when used as an economic indicator and allows for seasonal factors that appear when comparing over-the-quarter data to be disregarded.



EMPLOYMENT CHANGES FROM FIRST QUARTER 2015

Compared to First Quarter 2015, covered employment rose in nine major industry sectors. Seasonal increases in arts, entertainment & recreation, as well as accommodation & food services resulted in a gain of 7,837 jobs or 7.4 percent in Leisure & Hospitality. Trade, Transportation & Utilities gained 5,178 jobs as hiring for the spring and summer season began in retail trade. Jobs in Professional & Business Services increased 2,938, mainly due to the expansion in administrative & waste services. Manufacturing and Information sectors both decreased over the quarter -1,100 and -21 respectively.

EMPLOYMENT CHANGES FROM SECOND QUARTER 2014 (QUARTER YEAR AGO COMPARISON)

Over-the-year gains were recorded in seven industry groups (refer to Table 1). The largest gains occurred in Trade, Transportation & Utilities (7,574), Professional & Business Services (4,715), and Leisure & Hospitality (3,429). The most significant losses occurred in State & Local Government (-1,696), Natural Resources & Mining (-733) and Information (-474),.

COVERED WAGES

Wages paid to covered workers totaled \$11,421,560,368 for the Second Quarter 2015 (refer to Table 1), for an average weekly wage of \$755.18 (refer to Table 5). Benton County workers recorded the highest average weekly wage (\$1,033.72), and employees in Newton County reported the lowest (\$458.52) (refer to Table 6).

The Financial Activities industry recorded the highest average weekly wage for the State of Arkansas (\$964.11). The Leisure & Hospitality sector recorded the lowest (\$285.49) (refer to Table 5).

Average Weekly Wage by Industry

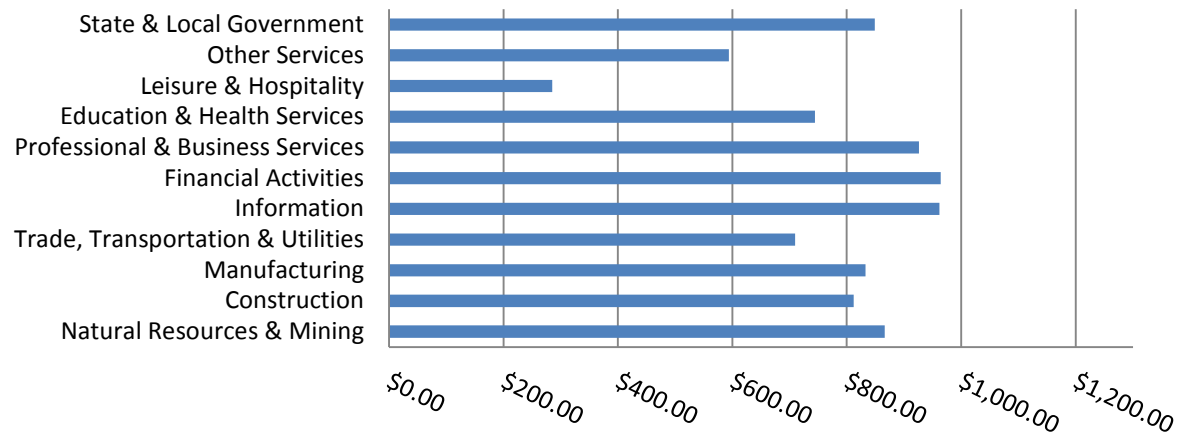


TABLE 1. QUARTERLY COMPARISON OF COVERED EMPLOYMENT AND WAGES, BY INDUSTRY

North American Industry Classification System - Industry Groups	Number of Employing Units	Monthly Employment Average	Percent of Total	Net Change From:		Total Wages Paid Apr - Jun 2015	Percent of Total
				Jan - Mar 2015	Apr - Jun 2014		
TOTAL	87,439	1,163,401	100	20,764	18,498	\$11,421,560,368	100
Natural Resources & Mining	2,607	19,103	1.6	457	-733	215,066,932	1.9
Agriculture, Forestry, Fishing & Hunting	2,086	13,004	1.1	926	-61	116,211,641	1.0
Mining	521	6,099	0.5	-470	-672	98,855,291	0.9
Construction	6,689	48,331	4.2	2,214	2,392	510,254,206	4.5
Manufacturing	3,002	154,642	13.3	-1,100	770	1,673,524,328	14.7
Trade, Transportation & Utilities	21,487	247,824	21.3	5,178	7,574	2,287,013,048	20.0
Wholesale Trade	7,023	47,371	4.1	707	630	714,551,925	6.3
Retail Trade	11,154	140,288	12.1	3,598	4,650	867,475,799	7.6
Transportation & Warehousing	2,889	52,208	4.5	782	2,236	561,129,419	4.9
Utilities	421	7,956	0.7	90	57	143,855,905	1.3
Information	1,063	13,234	1.1	-21	-474	165,505,270	1.4
Financial Activities	8,201	48,270	4.1	634	511	604,989,818	5.3
Finance & Insurance	4,885	35,166	3.0	385	386	493,235,006	4.3
Real Estate & Rental & Leasing	3,316	13,104	1.1	249	124	111,754,812	1.0
Professional & Business Services	13,615	138,082	11.9	2,938	4,715	1,662,874,874	14.6
Professional & Technical Services	8,646	41,112	3.5	-550	754	575,499,261	5.0
Management of Companies & Enterprises	522	33,216	2.9	880	973	676,606,362	5.9
Administrative & Waste Services	4,447	63,753	5.5	2,607	2,987	410,769,251	3.6
Education & Health Services	15,546	171,090	14.7	1,338	2,348	1,655,460,850	14.5
Educational Services	785	10,714	0.9	-183	119	93,383,788	0.8
Health Care & Social Assistance	14,761	160,376	13.8	1,521	2,229	1,562,077,062	13.7
Leisure & Hospitality	6,811	114,038	9.8	7,837	3,429	423,231,265	3.7
Arts, Entertainment & Recreation	954	11,877	1.0	2,542	212	52,759,334	0.5
Accommodation & Food Services	5,857	102,161	8.8	5,296	3,217	370,471,931	3.2
Other Services	5,328	24,132	2.1	719	-337	186,367,351	1.6
State & Local Government	3,090	184,655	15.9	571	-1,696	2,037,272,426	17.8
Local Government	1,954	113,823	9.8	375	-1,910	1,232,632,937	10.8
State Government	1,136	70,832	6.1	196	214	804,639,489	7.0
Nonclassifiable Establishments	0	0	0.0	0	0	0	0.0

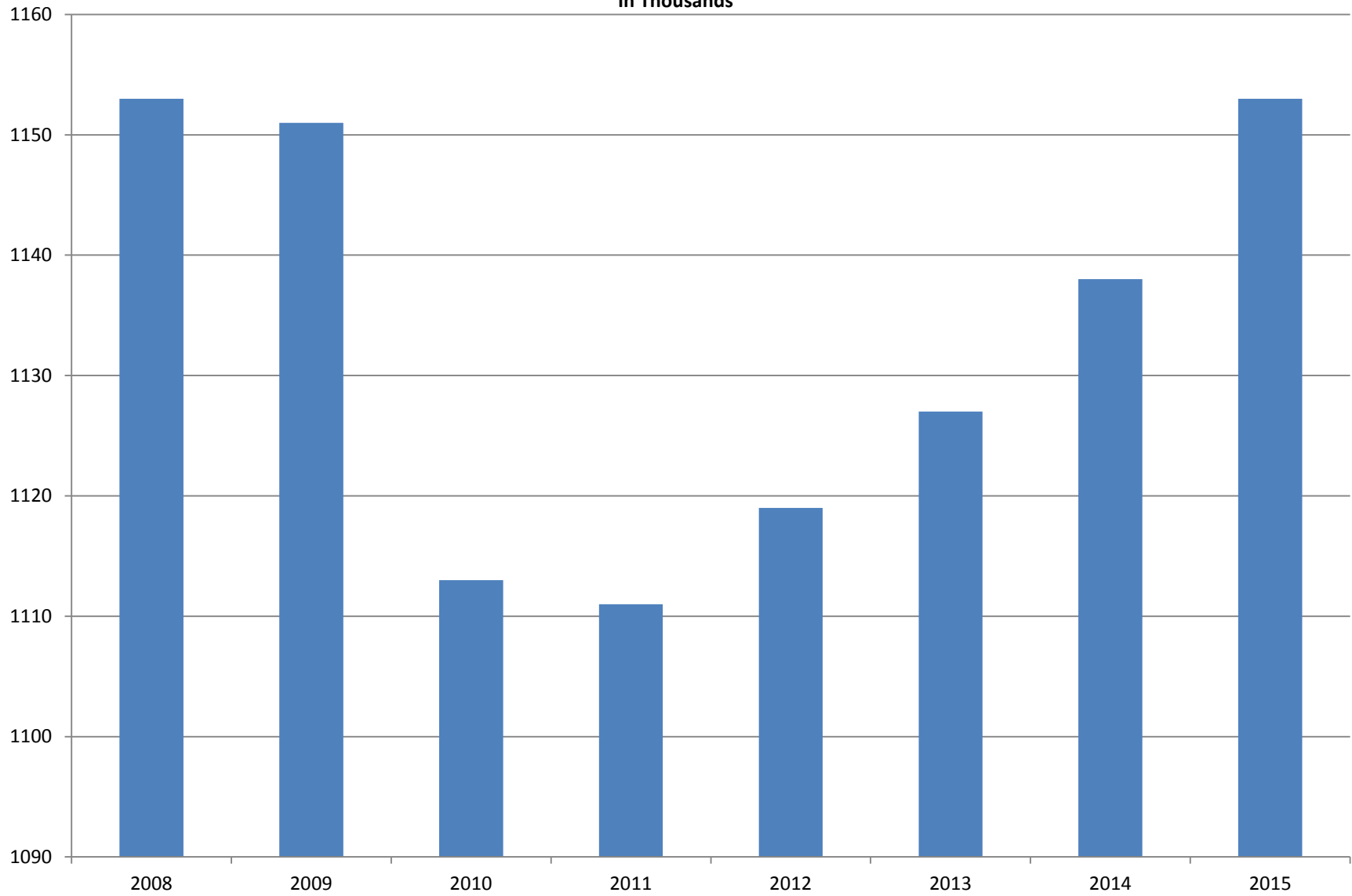
Note: Items do not necessarily add to total because of rounding. Because of industry code changes between years, substantial employment and wage shifts among industries are anticipated.

TABLE 2. TOTAL COVERED EMPLOYMENT IN ARKANSAS

PERIOD	2008	2009	2010	2011	2012	2013	2014	2015
AVERAGE	1,152,994	1,150,965	1,112,591	1,110,947	1,118,639	1,126,588	1,137,486	1,153,019
January	1,137,437	1,141,856	1,119,299	1,089,984	1,098,349	1,113,274	1,114,412	1,135,999
February	1,143,397	1,149,443	1,119,476	1,091,282	1,098,445	1,119,319	1,122,905	1,145,107
March	1,158,895	1,157,690	1,124,386	1,106,198	1,113,061	1,131,123	1,132,106	1,146,804
April	1,159,623	1,159,841	1,123,383	1,115,341	1,129,635	1,136,973	1,140,788	1,158,513
May	1,165,224	1,166,111	1,122,322	1,123,250	1,126,371	1,143,142	1,149,046	1,167,423
June	1,164,207	1,164,167	1,117,884	1,130,164	1,123,412	1,136,739	1,144,876	1,164,266
July	1,110,571	1,114,279	1,071,048	1,073,743	1,080,937	1,079,329	1,096,675	NA
August	1,139,109	1,138,583	1,093,192	1,099,795	1,106,262	1,109,425	1,125,162	NA
September	1,165,135	1,162,333	1,116,580	1,124,281	1,132,779	1,136,019	1,150,545	NA
October	1,162,768	1,157,196	1,113,157	1,125,073	1,138,395	1,136,045	1,153,684	NA
November	1,164,246	1,152,159	1,115,443	1,126,781	1,138,543	1,138,302	1,158,579	NA
December	1,165,314	1,147,927	1,114,919	1,125,466	1,137,474	1,139,361	1,161,056	NA

AVERAGE TOTAL COVERED EMPLOYMENT

In Thousands



TOTAL COVERED EARNINGS BY CALENDAR YEAR

In Thousands

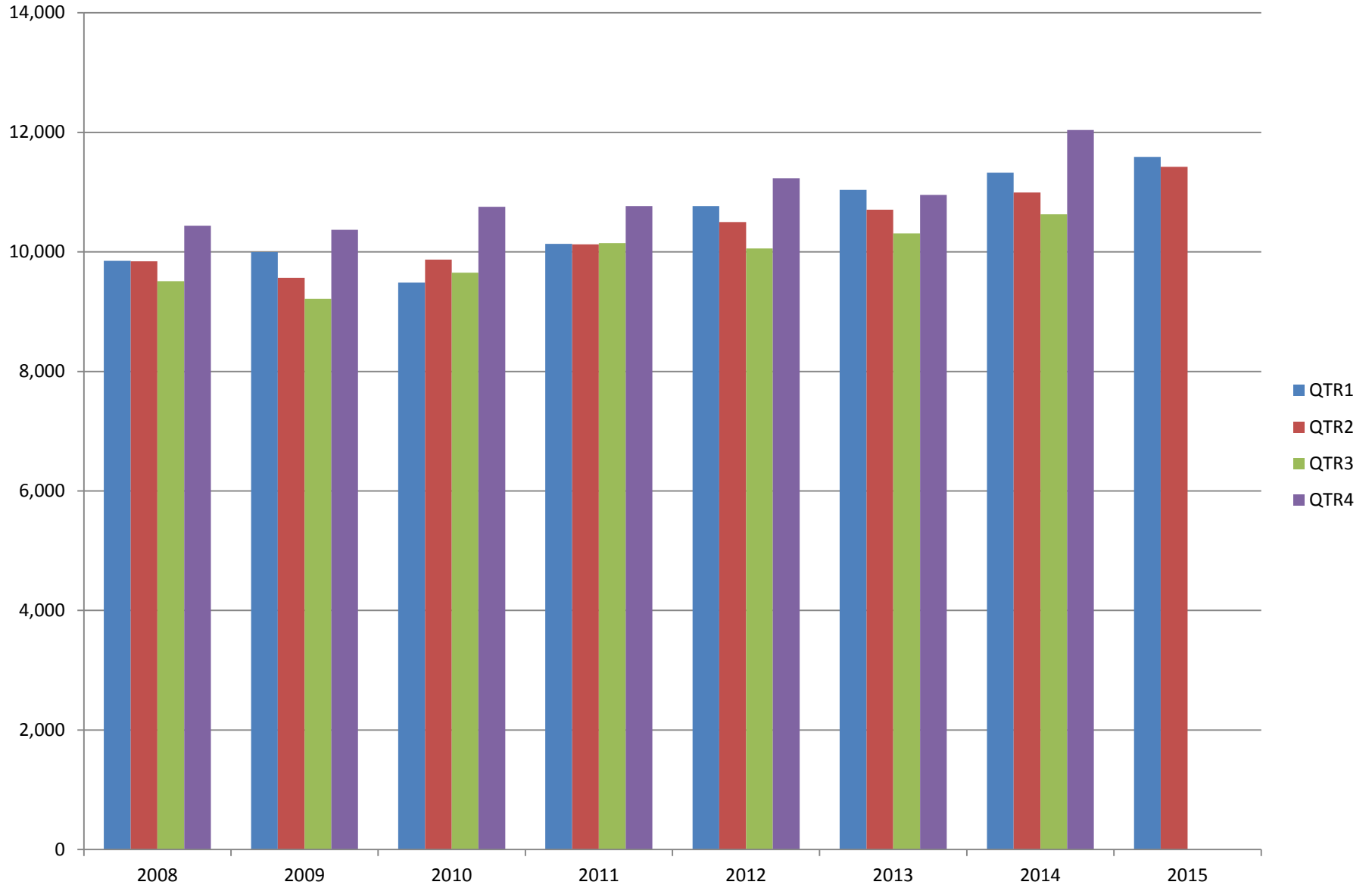


TABLE 3. TOTAL COVERED EARNINGS 2008 - 2015

PERIOD	2008	2009	2010	2011
TOTAL	\$39,643,039,342	\$39,149,476,305	\$39,769,504,992	\$41,177,659,236
January - March	9,851,866,058	9,998,452,028	9,486,245,580	10,134,035,254
April - June	9,843,711,293	9,566,968,853	9,873,489,653	10,128,274,611
July - September	9,509,150,631	9,213,797,140	9,653,588,807	10,147,287,431
October - December	10,438,311,360	10,370,258,284	10,756,180,952	10,768,061,940
Average Weekly Earnings	\$661.21	\$654.12	\$687.40	\$712.80

PERIOD	2012	2013	2014	2015
TOTAL	\$42,555,976,081	\$43,003,433,021	\$44,980,520,034	\$23,009,953,136
January - March	10,766,175,449	11,038,435,964	11,321,422,241	11,588,392,768
April - June	10,499,018,872	10,705,006,820	10,991,760,061	11,421,560,368
July - September	10,058,388,682	10,306,649,458	10,619,889,280	NA
October - December	11,232,393,078	10,953,340,779	12,047,448,452	NA
Average Weekly Earnings	\$731.59	\$734.07	\$760.46	\$767.55

TABLE 4. TOTAL TAXABLE EARNINGS, 2008 - 2015

PERIOD	2008	2009	2010	2011
TOTAL	10,360,487,108	9,787,660,886	11,332,118,456	11,479,396,226
January - March	5,635,750,082	5,423,705,265	5,607,134,758	5,828,877,821
April - June	2,419,313,519	2,293,670,854	2,977,100,591	2,910,604,359
July - September	1,297,473,555	1,165,280,065	1,577,067,770	1,601,382,146
October - December	1,007,949,952	905,004,702	1,170,815,337	1,138,531,900

PERIOD	2012	2013	2014	2015
TOTAL	11,642,854,241	11,669,483,946	11,919,662,224	9,307,446,788
January - March	6,167,036,199	6,194,767,117	6,288,682,396	6,387,946,312
April - June	2,845,540,593	2,807,334,202	2,831,013,392	2,919,500,476
July - September	1,505,833,030	1,509,412,524	1,552,243,963	NA
October - December	1,124,444,419	1,157,970,103	1,247,722,473	NA

TABLE 5. STATEWIDE SUMMARY

North American Industry Classification System - Industry Groups		Number of Employing Units	Employment			Total Earnings Apr - Jun 2015	Average Weekly Earnings
			Apr	May	Jun		
TOTAL, ALL INDUSTRIES		87,439	1,158,513	1,167,423	1,164,266	\$11,421,560,368	\$755.18
NATURAL RESOURCES & MINING		2,607	19,025	19,045	19,238	\$215,066,932	\$866.04
11	AGRICULTURE, FORESTRY, FISHING & HUNTING	2,086	12,721	13,003	13,288	116,211,641	\$687.43
111	CROP PRODUCTION	936	4,407	4,519	4,686	\$31,433,852	\$532.91
1111	Oilseed & Grain Farming	658	2,889	3,053	3,151	21,498,147	545.60
1112	Vegetable & Melon Farming	20	162	164	171	943,276	437.99
1113	Fruit & Tree Nut Farming	13	39	38	65	291,624	473.93
1114	Greenhouse & Nursery Production	43	455	383	360	2,729,192	525.72
1119	Other Crop Farming	202	862	881	939	5,971,613	513.82
112	ANIMAL PRODUCTION & AQUACULTURE	310	3,164	3,187	3,235	\$33,616,695	\$809.27
1121	Cattle Ranching & Farming	115	419	404	437	2,821,307	516.72
1122	Hog & Pig Farming	12	132	138	138	1,615,224	913.59
1123	Poultry & Egg Production	109	2,117	2,130	2,149	25,056,994	904.06
1125	Animal Aquaculture	53	443	457	446	3,769,658	646.30
	Other	21	53	58	65	353,512	463.52
113	FORESTRY & LOGGING	411	2,234	2,228	2,293	\$20,833,278	\$711.72
1131	Timber Tract Operations	38	175	176	177	1,839,855	804.13
1132	Forest Nursery, Gathering Forest Product	5	26	25	25	304,861	925.69
1133	Logging	368	2,033	2,027	2,091	18,688,562	701.15
114	FISHING, HUNTING & TRAPPING	4	21	18	20	\$125,265	\$489.95
115	SUPPORT ACTIVITIES FOR AGRICULTURE & FORESTRY	425	2,895	3,051	3,054	\$30,202,551	\$774.42
1151	Support Activities for Crop Production	295	1,416	1,486	1,528	16,511,522	860.12
1152	Support Activities for Animal Production	62	668	665	650	4,938,607	574.72
1153	Support Activities for Forestry	68	811	900	876	8,752,422	780.75
21	MINING	521	6,304	6,042	5,950	\$98,855,291	\$1,246.87
211	OIL & GAS EXTRACTION	85	1,370	1,354	1,323	\$26,705,670	\$1,522.82
212	MINING (EXCEPT OIL & GAS)	108	1,722	1,715	1,716	\$21,270,927	\$952.59
213	SUPPORT ACTIVITIES FOR MINING	328	3,212	2,973	2,911	\$50,878,694	\$1,290.81

TABLE 5. STATEWIDE SUMMARY

North American Industry Classification System - Industry Groups		Number of Employing Units	Employment			Total Earnings Apr - Jun 2015	Average Weekly Earnings
			Apr	May	Jun		
CONSTRUCTION		6,689	47,187	48,381	49,424	\$510,254,206	\$812.12
236	CONSTRUCTION OF BUILDINGS	1,661	9,597	9,828	10,103	\$112,813,283	\$881.67
2361	Residential Building Construction	1,094	2,928	2,988	3,036	26,955,369	694.87
2362	Nonresidential Building Construction	567	6,669	6,840	7,067	85,857,914	962.94
237	HEAVY & CIVIL ENGINEERING CONSTRUCTION	735	7,618	7,854	7,912	\$86,740,339	\$856.01
2371	Utility System Construction	404	4,206	4,360	4,474	49,430,298	874.77
2372	Land Subdivision	59	123	126	123	1,215,210	753.85
2373	Highway, Street & Bridge Construction	183	2,762	2,847	2,773	29,775,865	819.77
2379	Other Heavy Construction	89	527	521	542	6,318,966	917.12
238	SPECIALTY TRADE CONTRACTORS	4,293	29,972	30,699	31,409	\$310,700,584	\$778.67
2381	Building Foundation & Exterior Contractors	818	5,910	6,209	6,326	61,199,608	765.68
2382	Building Equipment Contractors	2,020	15,762	15,960	16,278	172,464,178	829.15
2383	Building Finishing Contractors	716	3,873	3,946	4,068	37,149,196	721.20
2389	Other Specialty Trade Contractors	739	4,427	4,584	4,737	39,887,602	669.54
MANUFACTURING		3,002	154,744	154,291	154,891	\$1,673,524,328	\$832.46
311	FOOD MANUFACTURING	275	42,982	42,903	43,333	\$359,071,027	\$641.26
3111	Animal Food Manufacturing	45	1,394	1,412	1,438	20,055,193	1,090.51
3112	Grain & Oilseed Milling	32	2,451	2,471	2,497	26,301,434	818.11
3114	Fruit, Vegetable & Specialty Food	21	4,311	4,345	4,296	46,176,471	822.74
3115	Dairy Product Manufacturing	9	529	531	535	5,802,025	839.45
3116	Animal Slaughtering & Processing	78	28,968	28,773	29,042	208,639,010	554.80
3118	Bakeries & Tortilla Manufacturing	60	3,325	3,340	3,463	31,874,655	726.27
3119	Other Food Manufacturing	22	1,956	1,984	2,012	19,971,895	774.34
	Other	8	48	47	50	250,344	398.43
312	BEVERAGE & TOBACCO PRODUCT MANUFACTURING	46	1,322	1,325	1,363	\$13,321,622	\$766.64
313	TEXTILE MILLS	8	44	45	44	\$384,376	\$666.93
314	TEXTILE PRODUCT MILLS	49	858	851	873	\$9,645,940	\$862.12
3141	Textile Furnishing Mills	10	37	36	35	371,297	793.37
3149	Other Textile Product Mills	39	821	815	838	9,274,643	865.12
315	APPAREL MANUFACTURING	20	881	873	903	\$5,854,159	\$508.45
3151	Apparel Knitting Mills	3	626	625	649	4,399,128	534.31
3152	Cut & Sew Apparel Manufacturing	13	147	143	153	866,134	451.19
3159	Apparel Accessories, Other Apparel Manufacturing	4	108	105	101	588,897	432.80
316	LEATHER & ALLIED PRODUCT MANUFACTURING	14	1,041	1,066	1,099	\$7,763,270	\$558.80

TABLE 5. STATEWIDE SUMMARY

North American Industry Classification System - Industry Groups		Number of Employing Units	Employment			Total Earnings Apr - Jun 2015	Average Weekly Earnings
			Apr	May	Jun		
321	WOOD PRODUCT MANUFACTURING	323	9,367	9,313	9,384	\$89,921,748	\$739.42
3211	Sawmills & Wood Preservation	144	4,395	4,391	4,389	45,439,198	795.90
3212	Veneer & Engineered Wood Products	47	1,980	1,961	2,012	22,320,774	865.27
3219	Other Wood Product Manufacturing	132	2,992	2,961	2,983	22,161,776	572.32
322	PAPER MANUFACTURING	70	9,465	9,455	9,515	\$145,810,630	\$1,183.35
3221	Pulp, Paper & Paperboard Mills	12	3,993	3,980	4,001	78,374,496	1,510.47
3222	Converted Paper Product Manufacturing	58	5,472	5,475	5,514	67,436,134	945.40
323	PRINTING & RELATED SUPPORT ACTIVITIES	242	4,013	3,905	3,726	\$39,618,896	\$785.20
324	PETROLEUM & COAL PRODUCTS MANUFACTURING	19	1,145	1,150	1,156	\$17,428,753	\$1,165.47
325	CHEMICAL MANUFACTURING	116	5,160	5,162	5,226	\$74,943,441	\$1,112.34
3251	Basic Chemical Manufacturing	30	1,872	1,875	1,894	32,821,606	1,342.71
3252	Resin, Rubber & Artificial Fibers	7	305	310	307	4,519,324	1,131.15
3253	Agricultural Chemical Manufacturing	13	395	399	405	6,011,644	1,157.05
3254	Pharmaceutical & Medicine Manufacturing	16	309	314	325	3,960,405	964.07
3255	Paint, Coating & Adhesive Manufacturing	8	270	269	268	3,693,675	1,056.24
3256	Soap, Cleaning Compound, & Toilet Preparation Manufacturing	18	1,246	1,226	1,245	14,108,727	875.94
3259	Other Chemical Preparation Manufacturing	24	763	769	782	9,828,060	980.13
326	PLASTICS & RUBBER PRODUCTS MANUFACTURING	145	11,413	11,382	11,439	\$134,896,524	\$909.33
3261	Plastics Product Manufacturing	106	7,129	7,037	7,066	72,913,343	792.49
3262	Rubber Product Manufacturing	39	4,284	4,345	4,373	61,983,181	1,100.12
327	NONMETALLIC MINERAL PRODUCT MANUFACTURING	235	3,633	3,584	3,617	\$38,644,932	\$823.15
3271	Clay Product & Refractory Manufacturing	13	409	411	404	4,091,484	771.40
3272	Glass & Glass Product Manufacturing	10	379	373	362	3,809,373	789.13
3273	Cement & Concrete Product Manufacturing	172	2,079	2,083	2,141	21,843,232	799.74
3274	Lime & Gypsum Product Manufacturing	4	275	277	277	3,777,146	1,051.45
3279	Other Nonmetallic Mineral Products Manufacturing	36	491	440	433	5,123,697	866.86
331	PRIMARY METAL MANUFACTURING	76	8,744	8,735	8,681	\$128,716,512	\$1,135.47
3311	Iron & Steel Mills & Ferroalloys	10	2,539	2,543	2,552	52,647,629	1,591.49
3312	Purchased Steel Product Manufacturing	22	2,491	2,488	2,469	31,874,392	987.60
3313	Alumina & Aluminum Production	18	1,228	1,230	1,229	17,332,445	1,084.84
3314	Other Nonferrous Metal Production	8	447	444	443	5,653,036	977.92
3315	Foundries	18	2,039	2,030	1,988	21,209,010	808.05

TABLE 5. STATEWIDE SUMMARY

North American Industry Classification System - Industry Groups		Number of Employing Units	Employment			Total Earnings	Average Weekly Earnings
			Apr	May	Jun	Apr - Jun 2015	
332	FABRICATED METAL PRODUCT MANUFACTURING	536	15,076	15,126	15,121	\$178,193,681	\$907.30
3321	Forging & Stamping	11	364	367	370	3,836,958	804.23
3322	Cutlery & Hand Tool Manufacturing	11	662	672	684	7,318,956	836.96
3323	Architectural & Structural Metals	154	4,044	4,089	4,108	48,517,666	914.66
3324	Boilers, Tanks & Shipping Containers	17	763	758	749	9,202,051	935.48
3325	Hardware Manufacturing	6	283	277	280	3,047,318	837.18
3326	Spring & Wire Product Manufacturing	13	398	394	393	4,405,807	858.00
3327	Machine Shops & Threaded Products	217	2,017	2,005	1,959	19,811,264	764.39
3328	Coating, Engraving & Heat Treating Metals	38	719	715	720	6,451,751	691.21
3329	Other Fabricated Metal Product Manufacturing	69	5,826	5,849	5,858	75,601,910	995.07
333	MACHINERY MANUFACTURING	210	11,490	11,383	11,274	\$122,426,105	\$827.37
3331	Agriculture, Construction & Mining Machinery	42	3,035	2,939	2,820	26,124,149	685.54
3332	Industrial Machinery Manufacturing	22	648	644	652	8,777,626	1,041.98
3333	Commercial & Service Industry Machinery	21	754	750	754	9,564,523	977.50
3334	HVAC & Commercial Refrigeration Equipment	22	3,125	3,108	3,126	33,910,295	836.14
3335	Metalworking Machinery Manufacturing	58	1,092	1,094	1,105	10,631,627	745.50
3336	Turbine & Power Transmission Equipment Manufacturing	6	710	719	685	7,812,937	852.88
3339	Other General Purpose Machinery Manufacturing	39	2,126	2,129	2,132	25,604,948	925.13
334	COMPUTER & ELECTRONIC PRODUCT MANUFACTURING	60	2,504	2,486	2,478	\$29,485,347	\$911.13
3343	Audio & Video Equipment Manufacturing	6	167	165	163	1,705,706	795.20
3344	Semiconductors & Electronic Components	25	1,712	1,717	1,720	19,104,113	856.21
3345	Navigational, Measuring, Electromedical, & Control Instr, Mfg Other	20 9	475 150	461 143	455 140	6,485,398 2,190,130	1,075.94 1,167.24
335	ELECTRICAL EQUIPMENT & APPLIANCES	56	5,255	5,235	5,219	\$65,974,719	\$969.19
3351	Electric Lighting Equipment Manufacturing	11	323	324	316	3,478,637	\$833.61
3352	Household Appliance Manufacturing	5	38	47	50	819,782	\$1,401.34
3353	Electrical Equipment Manufacturing	22	3,391	3,365	3,351	43,495,117	993.11
3359	Other Electrical Equipment & Component Manufacturing	18	1,503	1,499	1,502	18,181,183	931.54
336	TRANSPORTATION EQUIPMENT MANUFACTURING	142	13,788	13,713	13,807	\$152,116,447	\$849.81
3362	Motor Vehicle Body & Trailer Manufacturing	32	1,845	1,860	1,872	16,962,337	701.88
3363	Motor Vehicle Parts Manufacturing	46	5,010	4,962	4,976	52,014,365	803.00
3364	Aerospace Product & Parts Manufacturing	29	3,356	3,367	3,425	46,160,363	1,049.70
3366	Ship & Boat Building Other	20 15	1,708 1,869	1,731 1,793	1,737 1,797	15,792,248 21,187,134	704.09 895.65
337	FURNITURE & RELATED PRODUCT MANUFACTURING	173	3,265	3,238	3,261	\$27,887,150	\$659.10
3371	Household & Institutional Furniture	143	2,240	2,244	2,259	18,062,365	618.16
3372	Office Furniture & Fixtures Manufacturing	23	919	894	897	9,132,201	777.65
3379	Other Furniture Related Product Manufacturing	7	106	100	105	692,584	513.91
339	MISCELLANEOUS MANUFACTURING	187	3,298	3,361	3,372	\$31,419,049	\$722.81
3391	Medical Equipment & Supplies Manufacturing	68	1,634	1,666	1,681	18,006,177	834.22
3399	Other Miscellaneous Manufacturing	119	1,664	1,695	1,691	13,412,872	612.93

TABLE 5. STATEWIDE SUMMARY

North American Industry Classification System - Industry Groups		Number of Employing Units	Employment			Total Earnings Apr - Jun 2015	Average Weekly Earnings
			Apr	May	Jun		
TRADE, TRANSPORTATION & UTILITIES		21,487	245,912	248,224	249,336	\$2,287,013,048	\$709.88
42	WHOLESALE TRADE	7,023	47,091	47,429	47,593	\$714,551,925	\$1,160.32
423	MERCHANT WHOLESALERS, DURABLE GOODS	2,177	21,015	21,159	21,270	\$268,510,284	\$976.67
4231	Motor Vehicle & Part Merchant Wholesalers	232	2,769	2,781	2,790	28,761,233	795.83
4232	Furniture & Furnishings Merchant Wholesalers	56	446	448	449	6,520,772	1,120.47
4233	Lumber & Supply Merchant Wholesalers	165	1,382	1,397	1,415	15,529,420	854.49
4234	Commercial Goods Merchant Wholesalers	296	2,658	2,681	2,687	43,604,326	1,253.74
4235	Metal & Mineral Merchant Wholesalers	54	869	864	886	10,464,483	922.06
4236	Appliances & Electronics Goods Merchant Wholesalers	206	1,878	1,881	1,886	26,841,119	1,097.27
4237	Hardware & Plumbing Merchant Wholesalers	229	2,244	2,280	2,289	28,636,196	969.96
4238	Machinery & Supply Merchant Wholesalers	714	6,814	6,882	6,897	87,532,094	980.90
4239	Miscellaneous Durable Goods Merchant Wholesalers	225	1,955	1,945	1,971	20,620,641	810.53
424	MERCHANT WHOLESALERS, NONDURABLE GOODS	1,170	15,278	15,439	15,397	\$199,889,499	\$1,000.31
4241	Paper & Paper Product Merchant Wholesalers	67	1,128	1,121	1,074	15,376,687	1,067.85
4242	Druggist' Goods Merchant Wholesalers	55	637	630	646	8,734,793	1,053.70
4243	Apparel & Piece Goods Merchant Wholesalers	38	634	629	623	6,931,182	848.09
4244	Grocery Product Merchant Wholesalers	296	4,237	4,317	4,310	64,753,991	1,161.63
4245	Farm Product & Raw Material Merchant Wholesalers	75	775	779	782	6,898,515	681.49
4246	Chemical Merchant Wholesalers	95	667	667	664	11,008,113	1,271.44
4247	Petroleum Merchant Wholesalers	133	1,776	1,783	1,786	24,438,155	1,055.11
4248	Alcoholic Beverage Merchant Wholesalers	41	1,499	1,510	1,515	17,755,017	905.68
4249	Miscellaneous Nondurable Goods Merchant Wholesaler	370	3,925	4,003	3,997	43,993,046	851.34
425	ELECTRONIC MARKETS & AGENTS & BROKERS	3,676	10,798	10,831	10,926	\$246,152,142	\$1,744.87
44 - 45	RETAIL TRADE	11,154	139,062	140,711	141,092	\$867,475,799	\$475.66
441	MOTOR VEHICLE & PARTS DEALERS	1,583	18,862	19,027	19,220	\$203,996,125	\$824.32
4411	Automobile Dealers	641	11,560	11,665	11,776	146,922,136	968.69
4412	Other Motor Vehicle Dealers	174	1,584	1,628	1,654	16,857,381	799.46
4413	Automotive Parts, Accessories & Tire Stores	768	5,718	5,734	5,790	40,216,608	538.26
442	FURNITURE & HOME FURNISHINGS STORES	516	3,602	3,593	3,584	\$26,036,882	\$557.43
4421	Furniture Stores	276	2,074	2,059	2,069	17,156,304	638.37
4422	Home Furnishings Stores	240	1,528	1,534	1,515	8,880,578	447.75
443	ELECTRONICS & APPLIANCE STORES	450	3,714	3,690	3,744	\$29,694,982	\$614.70
444	BUILDING MATERIAL & GARDEN SUPPLY STORES	838	11,403	11,508	11,342	\$74,718,996	\$503.40
4441	Building Material & Supplies Dealers	621	9,857	9,924	9,780	65,186,981	508.88
4442	Lawn & Garden Equipment & Supplies Stores	217	1,546	1,584	1,562	9,532,015	468.82

TABLE 5. STATEWIDE SUMMARY

North American Industry Classification System - Industry Groups		Number of Employing Units	Employment			Total Earnings Apr - Jun 2015	Average Weekly Earnings
			Apr	May	Jun		
445	FOOD & BEVERAGE STORES	1,043	19,711	19,774	19,635	\$100,118,996	\$390.80
4451	Grocery Stores	556	17,020	17,063	16,919	83,581,064	378.18
4452	Specialty Food Stores	142	994	987	997	7,860,523	609.12
4453	Beer, Wine & Liquor Stores	345	1,697	1,724	1,719	8,677,409	389.59
446	HEALTH & PERSONAL CARE STORES	1,043	8,209	8,275	8,551	\$75,571,278	\$696.61
447	GASOLINE STATIONS	1,596	12,273	12,398	12,517	\$51,328,939	\$318.52
44711	Gasoline Stations with Convenience Stores	1,489	10,939	11,035	11,161	44,266,042	308.29
44719	Other Gasoline Stations	107	1,334	1,363	1,356	7,062,897	402.15
448	CLOTHING & CLOTHING ACCESSORIES STORES	1,038	7,880	7,955	7,874	\$33,380,262	\$324.90
4481	Clothing Stores	763	5,970	6,048	6,003	22,183,286	284.07
4482	Shoe Stores	136	1,140	1,136	1,113	4,591,138	312.63
4483	Jewelry, Luggage & Leather Goods Stores	139	770	771	758	6,605,838	663.08
451	SPORTING GOODS, HOBBY, BOOK & MUSIC STORES	484	4,531	4,678	4,658	\$20,595,611	\$342.74
4511	Sporting Goods & Musical Instrument Stores	421	4,037	4,166	4,167	18,608,469	347.15
4512	Book, Periodical & Music Stores	63	494	512	491	1,987,142	306.33
452	GENERAL MERCHANDISE STORES	911	39,911	40,686	40,972	\$198,667,869	\$377.12
453	MISCELLANEOUS STORE RETAILERS	1,245	7,093	7,244	7,114	\$36,864,914	\$396.59
4531	Florists	186	676	710	668	3,367,878	378.38
4532	Office Supplies, Stationery & Gift Stores	279	1,925	1,932	1,895	10,362,544	415.74
4533	Used Merchandise Stores	272	1,859	1,918	1,880	8,805,107	359.19
4539	Other Miscellaneous Store Retailers	508	2,633	2,684	2,671	14,329,385	413.97
454	NONSTORE RETAILERS	407	1,873	1,883	1,881	\$16,500,945	\$675.52
4541	Electronic Shopping & Mail-Order Houses	194	748	762	786	7,111,208	714.74
4542	Vending Machine Operators	68	429	422	419	3,276,526	595.37
4543	Direct Selling Establishments	145	696	699	676	6,113,211	681.19
48 - 49	TRANSPORTATION & WAREHOUSING	2,889	51,849	52,131	52,645	\$561,129,419	\$826.76
481	AIR TRANSPORTATION	53	627	636	621	\$5,594,612	\$685.28
4811	Scheduled Air Transportation	21	549	556	546	4,285,042	598.94
4812	Nonshceduled Air Transportation	32	78	80	75	1,309,570	1,297.03
483	WATER TRANSPORTATION	3	18	18	18	\$316,070	\$1,350.73
484	TRUCK TRANSPORTATION	1,846	32,849	33,002	33,571	\$371,655,745	\$862.65
4841	General Freight Trucking	1,084	26,339	26,458	26,936	303,247,456	877.68
4842	Specialized Freight Trucking	762	6,510	6,544	6,635	68,408,289	801.79

TABLE 5. STATEWIDE SUMMARY

North American Industry Classification System - Industry Groups		Number of Employing Units	Employment			Total Earnings	Average Weekly Earnings
			Apr	May	Jun	Apr - Jun 2015	
485	TRANSIT & GROUND PASSENGER TRANSPORTATION	100	1,661	1,693	1,667	\$8,335,816	\$383.12
4853	Taxi & Limousine Service	32	465	464	454	1,954,453	326.12
4854	School & Employee Bus Transportation	14	470	472	474	2,246,752	366.16
4855	Charter Bus Industry Service	8	118	124	127	751,683	470.10
4859	Other Ground Passenger Transportation	42	525	545	511	2,793,907	407.81
	Other	4	83	88	101	589,021	499.74
486	PIPELINE TRANSPORTATION	34	534	528	520	\$12,051,575	\$1,757.99
487	SCENIC & SIGHTSEEING TRANSPORTATION	7	32	45	54	\$141,023	\$248.43
488	SUPPORT ACTIVITIES FOR TRANSPORTATION	448	5,145	5,165	5,112	\$61,524,231	\$920.63
4881	Support Activities for Air Transportation	102	1,111	1,099	1,084	13,468,929	943.60
4882	Support Activities for Rail Transportation	40	522	530	520	5,888,796	864.47
4883	Support Activities for Water Transportation	22	754	745	681	9,945,665	1,052.82
4884	Support Activities for Road Transportation	143	747	753	781	5,829,714	589.79
4885	Freight Transportation Arrangement	124	1,912	1,932	1,921	25,547,208	1,022.64
4889	Other Support Activities for Transportation	17	99	106	125	843,919	590.15
491	POSTAL SERVICES	12	274	281	282	\$3,232,037	\$891.10
492	COURIERS & MESSENGERS	166	3,417	3,429	3,452	\$35,176,374	\$788.27
493	WAREHOUSING & STORAGE	220	7,292	7,334	7,348	\$63,101,936	\$662.69
22	UTILITIES	421	7,910	7,953	8,006	\$143,855,905	\$1,390.82
2211	Power Generation & Supply	166	5,570	5,630	5,706	112,996,824	1,542.42
2212	Natural Gas Distribution	67	1,379	1,367	1,352	22,233,624	1,252.03
2213	Water, Sewage & Other Systems	188	961	956	948	8,625,457	694.76
INFORMATION		1,063	13,156	13,232	13,314	\$165,505,270	\$962.01
511	PUBLISHING INDUSTRIES, EXCEPT INTERNET	226	3,296	3,292	3,314	\$32,453,592	\$756.34
5111	Newspaper, Book & Directory Publishers	198	2,970	2,965	2,986	25,917,397	670.43
5112	Software Publishers	28	326	327	328	6,536,195	1,537.57
512	MOTION PICTURE & SOUND RECORDING INDUSTRY	137	1,073	1,149	1,206	\$5,159,310	\$347.32
5121	Motion Picture & Video Industries	119	1,045	1,120	1,178	4,847,643	334.64
5122	Sound Recording Industries	18	28	29	28	311,667	846.15
515	BROADCASTING, EXCEPT INTERNET	122	1,619	1,624	1,622	\$16,489,997	\$782.20
5151	Radio & Television Broadcasting	117	1,589	1,593	1,591	16,255,209	785.92
5152	Cable & Other Subscription Programming	5	30	31	31	234,788	588.93

TABLE 5. STATEWIDE SUMMARY

North American Industry Classification System - Industry Groups		Number of Employing Units	Employment			Total Earnings	Average Weekly Earnings
			Apr	May	Jun	Apr - Jun 2015	
517	TELECOMMUNICATIONS	339	5,509	5,529	5,540	\$89,184,542	\$1,241.47
5171	Wired Telecommunications Carriers	213	3,563	3,570	3,572	60,184,624	1,297.41
5172	Wireless Telecommunications Carriers (except Satellite)	49	1,657	1,670	1,680	24,725,532	1,139.58
5174	Satellite Telecommunications Carriers	4	6	6	6	65,158	835.36
5179	Other Telecommunications	73	283	283	282	4,209,228	1,145.47
518	DATA PROCESSING, HOSTING & RELATED SERVICES	165	1,356	1,327	1,325	\$18,919,801	\$1,089.35
519	OTHER INFORMATION SERVICES	74	303	311	307	\$3,298,028	\$826.37
FINANCIAL ACTIVITIES		8,201	48,073	48,316	48,422	\$604,989,818	\$964.11
52	FINANCE & INSURANCE	4,885	35,062	35,153	35,283	\$493,235,006	\$1,078.92
522	CREDIT INTERMEDIATION & RELATED ACTIVITIES	1,949	18,604	18,621	18,685	\$221,062,026	\$912.44
5221	Depository Credit Intermediation	1,402	15,856	15,879	15,920	181,891,315	880.81
5222	Nondepository Credit Intermediation	394	2,301	2,284	2,300	32,198,427	1,079.22
5223	Activities Related to Credit Intermediation	153	447	458	465	6,972,284	1,174.44
523	FINANCIAL INVESTMENT & RELATED ACTIVITIES	675	3,154	3,187	3,165	\$91,961,789	\$2,232.48
524	INSURANCE CARRIERS & RELATED ACTIVITIES	2,199	13,222	13,260	13,340	\$178,990,056	\$1,037.25
5241	Insurance Carriers	311	5,691	5,719	5,808	89,149,412	1,194.85
5242	Insurance Agencies, Brokerages & Support	1,888	7,531	7,541	7,532	89,840,644	917.20
	OTHER	62	82	85	93	\$1,221,135	\$1,083.85
53	REAL ESTATE & RENTAL & LEASING	3,316	13,011	13,163	13,139	\$111,754,812	\$656.01
531	REAL ESTATE	2,656	8,790	8,838	8,763	\$70,627,449	\$617.58
5311	Lessors of Real Estate	1,110	4,071	4,074	4,023	30,254,072	573.78
5312	Offices of Real Estate Agents & Brokers	775	1,678	1,675	1,681	14,808,510	678.85
5313	Activities Related to Real Estate	771	3,041	3,089	3,059	25,564,867	642.03
532	RENTAL & LEASING SERVICES	636	4,156	4,258	4,311	\$40,260,700	\$730.13
5321	Automotive Equipment Rental & Leasing	105	874	913	938	6,952,016	588.74
5322	Consumer Goods Rental	330	1,964	2,081	2,109	15,241,710	571.55
5323	General Rental Centers	44	235	234	234	2,332,557	765.69
5324	Machinery & Equipment Rental & Leasing	157	1,083	1,030	1,030	15,734,417	1,155.27
533	LESSORS OF NONFINANCIAL INTANGIBLE ASSETS	24	65	67	65	\$866,663	\$1,015.22

TABLE 5. STATEWIDE SUMMARY

North American Industry Classification System - Industry Groups		Number of Employing Units	Employment			Total Earnings Apr - Jun 2015	Average Weekly Earnings
			Apr	May	Jun		
PROFESSIONAL & BUSINESS SERVICES		13,615	138,503	139,161	136,581	\$1,662,874,874	\$926.36
54	PROFESSIONAL & TECHNICAL SERVICES	8,646	41,860	40,745	40,731	\$575,499,261	\$1,076.79
5411	Legal Services	1,700	5,966	5,986	6,039	71,927,809	922.61
5412	Accounting & Bookkeeping Services	1,300	6,126	4,849	4,694	58,986,220	868.73
5413	Architectural & Engineering Services	949	5,645	5,761	5,869	83,365,231	1,113.64
5414	Specialized Design Services	176	418	423	413	4,778,880	879.44
5415	Computer Systems Design & Related Services	1,562	9,846	9,815	9,806	184,089,503	1,441.69
5416	Management & Technical Consulting Services	1,858	5,877	5,842	5,868	82,690,535	1,085.03
5417	Scientific Research & Development Services	147	893	912	920	12,764,860	1,081.00
5418	Advertising & Related Services	390	3,482	3,531	3,454	42,631,141	939.90
5419	Other Professional & Technical Services	564	3,607	3,626	3,668	34,265,082	725.38
55	MANAGEMENT OF COMPANIES & ENTERPRISES	522	32,957	33,126	33,566	\$676,606,362	\$1,566.90
56	ADMINISTRATIVE & SUPPORT SERVICES	4,447	63,686	65,290	62,284	\$410,769,251	\$495.62
561	ADMINISTRATIVE & SUPPORT SERVICES	4,129	60,580	62,171	59,176	\$378,028,501	\$479.52
5611	Office Administrative Services	587	3,880	3,878	3,929	43,460,534	858.16
5612	Facilities Support Services	27	211	193	192	2,088,972	808.84
5613	Employment Services	1,020	27,281	28,130	25,386	146,372,155	418.06
5614	Business Support Services	373	7,982	7,953	7,731	60,789,005	592.76
5615	Travel Arrangement & Reservation Services	99	335	343	345	3,326,495	750.39
5616	Investigation & Security Services	264	4,613	4,744	4,695	27,702,488	454.94
5617	Services to Buildings & Dwellings	1,557	14,923	15,571	15,607	82,416,394	412.55
5619	Other Support Services	202	1,355	1,359	1,291	11,872,458	684.09
562	WASTE MANAGEMENT & REMEDIATION SERVICES	318	3,106	3,119	3,108	\$32,740,750	\$809.55
5621	Waste Collection Services	132	1,121	1,116	1,111	10,855,960	748.27
5622	Waste Treatment & disposal Services	39	824	838	832	10,908,685	1,009.38
5629	Remediation & Other Waste Services	147	1,161	1,165	1,165	10,976,105	725.56
EDUCATION & HEALTH SERVICES		15,546	171,088	171,425	170,757	\$1,655,460,850	\$744.30
61	EDUCATIONAL SERVICES	785	11,042	10,854	10,247	\$93,383,788	\$670.44
6111	Elementary & Secondary Schools	85	3,328	3,343	3,100	26,181,191	618.34
6112	Junior Colleges	6	189	189	167	1,305,387	552.74
6113	Colleges & Universities	76	4,190	4,066	3,755	36,428,663	699.91
6114	Business, Computer, & Management Training	49	93	99	99	1,437,497	1,139.97
6115	Technical & Trade Schools	109	949	930	900	13,832,138	1,148.63
6116	Other Schools & Instruction	278	1,641	1,580	1,525	6,883,638	334.71
6117	Educational Support Services	182	652	647	701	7,315,274	844.07

TABLE 5. STATEWIDE SUMMARY

North American Industry Classification System - Industry Groups		Number of Employing Units	Employment			Total Earnings Apr - Jun 2015	Average Weekly Earnings
			Apr	May	Jun		
62	HEALTH CARE & SOCIAL ASSISTANCE	14,761	160,046	160,571	160,510	\$1,562,077,062	\$749.24
621	AMBULATORY HEALTH CARE SERVICES	5,452	50,457	50,904	51,074	\$727,564,633	\$1,101.45
6211	Offices of Physicians	2,238	22,957	23,114	23,077	437,696,539	1,460.73
6212	Offices of Dentists	985	6,962	7,008	7,089	79,313,988	869.14
6213	Offices of Other Health Practitioners	1,372	7,583	7,681	7,741	76,963,870	772.04
6214	Outpatient Care Centers	331	4,434	4,493	4,550	49,515,360	847.86
6215	Medical & Diagnostic Laboratories	176	1,113	1,118	1,084	13,831,995	962.90
6216	Home Health Care Services	184	4,939	4,986	5,011	46,140,648	712.90
6219	Other Ambulatory Health Care Services	166	2,469	2,504	2,522	24,102,233	742.10
622	HOSPITALS	103	40,232	40,244	40,369	\$454,028,428	\$867.03
6221	General Medical & Surgical Hospitals	76	35,763	35,742	35,823	409,399,778	880.26
6222	Psychiatric & Substance Abuse Hospitals	12	2,277	2,310	2,330	20,978,008	699.88
6223	Specialty Hospitals	15	2,192	2,192	2,216	23,650,642	826.95
623	Residential & Mental Health Facilities	625	30,678	30,690	30,783	\$187,660,684	\$469.95
6231	Nursing Care Facilities (Skilled Nursing Facilities)	266	21,785	21,708	21,810	134,840,409	476.50
6232	Residential Mental Health Facilities	175	4,235	4,276	4,265	25,930,699	468.38
6233	Continuing Care & Assisted Living Facilities	144	3,616	3,656	3,653	19,883,138	419.99
6239	Other Residential Care Facilities	40	1,042	1,050	1,055	7,006,438	513.78
624	SOCIAL ASSISTANCE	8,581	38,679	38,733	38,284	\$192,823,317	\$384.61
6241	Individual & Family Services	7,392	23,793	23,827	23,909	120,926,671	390.14
6242	Emergency & Other Relief Services	139	1,331	1,336	1,301	8,355,619	485.94
6243	Vocational Rehabilitation Services	119	3,432	3,452	3,495	18,786,069	417.69
6244	Child Day Care Services	931	10,123	10,118	9,579	44,754,958	346.35
LEISURE & HOSPITALITY		6,811	111,542	114,775	115,797	\$423,231,265	\$285.49
71	ARTS, ENTERTAINMENT & RECREATION	954	10,859	12,155	12,618	\$52,759,334	\$341.69
711	PERFORMING ARTS & SPECTATOR SPORTS	215	2,996	3,254	2,655	\$15,265,378	\$395.60
7111	Performing Arts Companies	45	386	515	515	2,038,885	332.28
7112	Spectator Sports	63	1,898	1,813	1,295	9,297,051	428.58
7113	Performing Arts & Sports Promoters	39	627	854	753	3,337,254	344.73
7114	Agents & Managers for Public Figures	22	35	19	34	215,613	565.42
7115	Independent Artists, Writers, & Performers	46	50	53	58	376,575	539.76
712	MUSEUMS, PARKS, & HISTORICAL SITES	55	562	575	655	\$3,796,222	\$488.87
713	GAMBLING, RECREATIONAL & AMUSEMENT INDUSTRY	684	7,301	8,326	9,308	\$33,697,734	\$311.87
72	ACCOMMODATION & FOOD SERVICES	5,857	100,683	102,620	103,179	\$370,471,931	\$278.95

TABLE 5. STATEWIDE SUMMARY

North American Industry Classification System - Industry Groups		Number of Employing Units	Employment			Total Earnings Apr - Jun 2015	Average Weekly Earnings
			Apr	May	Jun		
721	ACCOMMODATION	894	10,980	11,260	12,265	\$49,665,895	\$332.17
7211	Travel Accommodation	810	10,529	10,728	10,963	46,056,889	329.87
7212	RV Parks & Recreational Camps	65	344	444	1,222	3,027,827	347.63
7213	Rooming & Boarding Houses	19	107	88	80	581,179	487.70
722	FOOD SERVICES & DRINKING PLACES	4,963	89,703	91,360	90,914	\$320,806,036	\$272.20
7223	Special Food Services	198	3,667	3,233	2,581	14,100,254	343.20
7224	Drinking Places, Alcoholic Beverages	155	1,146	1,126	1,163	3,719,654	249.89
7225	Restaurants & Other Eating Places	4,610	84,890	87,001	87,170	302,986,128	269.90
722511	Full-Service Restaurants	2,050	37,564	38,192	38,389	147,121,657	297.44
722513	Limited-Service Eating Places	2,116	42,934	44,283	44,338	139,735,455	245.12
722514	Cafeterias, Grill Buffets, & Buffets	94	1,802	1,826	1,822	7,364,837	311.85
722515	Snack & Nonalcoholic Beverage Bars	350	2,590	2,700	2,621	8,764,179	255.66
	OTHER SERVICES	5,328	23,761	24,034	24,601	\$186,367,351	\$594.06
811	REPAIR & MAINTENANCE	2,211	9,683	9,840	9,840	\$89,413,121	\$702.71
8111	Automotive Repair & Maintenance	1,403	6,048	6,127	6,144	50,721,040	638.95
8112	Electronic Equipment Repair & Maintenance	176	803	813	808	8,490,446	808.31
8113	Commercial Machinery Repair & Maintenance	446	2,250	2,318	2,312	26,010,366	872.44
8114	Household Goods Repair & Maintenance	186	582	582	576	4,191,269	555.87
812	PERSONAL & LAUNDRY SERVICES	1,309	7,698	7,743	7,786	\$45,238,796	\$449.46
8121	Personal Care Services	608	2,909	2,917	2,910	14,365,172	379.47
8122	Death Care Services	246	1,619	1,627	1,622	11,605,305	550.15
8123	Drycleaning & Laundry Service	241	2,378	2,381	2,410	15,019,285	483.47
8129	Other Personal Services	214	792	818	844	4,249,034	399.57
813	MEMBERSHIP ASSOCIATIONS & ORGANIZATIONS	1,066	5,390	5,457	5,994	\$46,573,707	\$638.19
8131	Religious Organizations	60	235	229	236	1,659,307	547.02
8132	Grantmaking & Giving Organizations	112	462	454	461	5,360,436	898.35
8133	Social Advocacy Organizations	212	1,546	1,528	1,568	13,911,207	691.57
8134	Civic & Social Organizations	196	1,120	1,187	1,533	5,495,126	330.24
8139	Professional & Similar Organizations	486	2,027	2,059	2,196	20,147,631	740.12
814	PRIVATE HOUSEHOLDS	742	990	994	981	\$5,141,727	\$400.19
	LOCAL GOVERNMENT	1,954	113,961	114,911	112,597	\$1,232,632,937	\$833.03
	STATE GOVERNMENT	1,136	71,561	71,628	69,308	\$804,639,489	\$873.83
	NONCLASSIFIABLE ESTABLISHMENTS	0	0	0	0	\$0	\$0.00

TABLE 6. COUNTY SUMMARY

North American Industry Classification System - Industry Groups	Number of Employing Units	Employment			Total Earnings	Average Weekly Earnings
		Apr	May	Jun	Apr - Jun 2015	
ARKANSAS COUNTY - TOTAL	761	9,767	9,849	9,838	\$92,799,825	\$727.08
Natural Resources & Mining	50	213	220	224	2,270,101	797.37
Construction	46	238	240	240	2,058,506	661.62
Manufacturing	32	3,599	3,626	3,642	39,693,641	842.93
Trade, Transportation & Utilities	203	2,453	2,469	2,493	23,059,033	717.64
Wholesale Trade	45	499	508	504	6,010,351	917.94
Retail Trade	97	1,038	1,042	1,064	6,072,823	445.74
Transportation, Warehousing & Utilities	61	916	919	925	10,975,859	917.71
Information	11	81	83	84	797,362	741.96
Financial Activities	45	297	294	281	2,759,373	730.25
Professional & Business Services	52	358	357	345	4,299,042	935.93
Education & Health Services	176	1,041	1,059	1,035	8,107,777	596.82
Leisure & Hospitality	53	470	476	458	1,495,370	245.79
Other Services	45	100	103	103	672,993	507.54
Local Government	32	719	725	742	6,076,406	641.47
State Government	16	198	197	191	1,510,221	594.73
ASHLEY COUNTY - TOTAL	567	6,940	7,050	7,005	\$71,234,495	\$782.98
Natural Resources & Mining	41	323	328	347	3,023,219	699.06
Construction	41	626	683	693	7,230,734	833.48
Manufacturing	24	1,769	1,749	1,744	29,357,132	1,287.48
Trade, Transportation & Utilities	115	1,176	1,205	1,181	8,766,968	567.98
Wholesale Trade	23	194	197	202	2,488,910	968.57
Retail Trade	70	732	759	734	3,866,053	400.97
Transportation, Warehousing & Utilities	22	250	249	245	2,412,005	748.14
Information	6	35	37	36	237,274	507.00
Financial Activities	34	189	191	186	1,541,590	628.54
Professional & Business Services	42	206	218	210	1,681,480	612.04
Education & Health Services	151	958	964	950	7,166,328	575.82
Leisure & Hospitality	29	387	402	410	1,219,108	234.64
Other Services	41	149	146	151	1,006,678	520.88
Local Government	32	933	945	925	8,787,748	723.49
State Government	11	189	182	172	1,216,236	516.89

TABLE 6. COUNTY SUMMARY

North American Industry Classification System - Industry Groups	Number of Employing Units	Employment			Total Earnings Apr - Jun 2015	Average Weekly Earnings
		Apr	May	Jun		
BAXTER COUNTY - TOTAL	1,218	14,442	14,730	14,626	\$119,126,735	\$627.67
Natural Resources & Mining	6	66	67	64	560,463	656.54
Construction	113	514	535	526	3,985,738	583.99
Manufacturing	55	2,424	2,439	2,436	22,712,537	718.09
Trade, Transportation & Utilities	261	2,738	2,783	2,777	17,236,721	479.36
Wholesale Trade	33	218	215	217	1,932,313	686.03
Retail Trade	203	2,347	2,389	2,384	13,420,691	434.98
Transportation, Warehousing & Utilities	25	173	179	176	1,883,717	823.30
Information	19	191	192	197	2,040,171	811.74
Financial Activities	113	745	757	740	9,037,682	930.25
Professional & Business Services	131	724	741	710	5,868,835	622.69
Education & Health Services	267	3,624	3,716	3,634	35,276,410	741.82
Leisure & Hospitality	117	1,544	1,628	1,658	5,737,019	274.11
Other Services	91	359	360	362	2,072,878	442.51
Local Government	33	1,177	1,182	1,232	11,573,532	743.75
State Government	12	336	330	290	3,024,749	730.15
BENTON COUNTY - TOTAL	5,861	107,968	109,134	110,710	\$1,321,536,784	\$930.32
Natural Resources & Mining	45	688	703	708	11,272,624	1,239.34
Construction	546	4,206	4,345	4,461	47,398,296	840.61
Manufacturing	193	10,870	10,712	10,925	106,900,490	758.89
Trade, Transportation & Utilities	1,568	25,132	25,581	26,161	291,616,803	875.41
Wholesale Trade	715	4,870	4,922	4,979	112,509,115	1,757.74
Retail Trade	698	11,705	11,822	12,001	75,666,165	491.48
Transportation, Warehousing & Utilities	155	8,557	8,837	9,181	103,441,523	898.25
Information	69	911	904	895	10,816,936	921.11
Financial Activities	584	2,934	2,957	2,982	37,225,122	968.15
Professional & Business Services	1,137	31,268	31,334	31,692	547,355,761	1,339.56
Education & Health Services	716	10,089	10,092	9,955	97,442,220	746.17
Leisure & Hospitality	538	10,895	11,330	11,821	47,319,635	320.74
Other Services	366	1,804	1,842	1,853	15,079,523	632.82
Local Government	82	8,051	8,210	8,363	99,426,942	931.80
State Government	17	1,120	1,124	894	9,682,432	712.05

TABLE 6. COUNTY SUMMARY

North American Industry Classification System - Industry Groups	Number of Employing Units	Employment			Total Earnings Apr - Jun 2015	Average Weekly Earnings
		Apr	May	Jun		
BOONE COUNTY - TOTAL	1,009	13,560	13,637	13,642	\$120,316,761	\$679.87
Natural Resources & Mining	5	4	6	5	21,651	333.09
Construction	77	369	374	371	3,112,964	644.86
Manufacturing	64	1,847	1,836	1,821	17,133,884	718.38
Trade, Transportation & Utilities	245	3,700	3,737	3,741	36,407,042	751.62
Wholesale Trade	48	309	313	308	2,832,502	702.85
Retail Trade	154	1,960	1,990	1,999	12,298,189	477.06
Transportation, Warehousing & Utilities	43	1,431	1,434	1,434	21,276,351	1,142.11
Information	14	257	260	264	2,441,228	721.33
Financial Activities	97	428	430	439	4,627,654	823.38
Professional & Business Services	111	1,083	1,070	1,050	9,379,842	675.80
Education & Health Services	172	1,406	1,419	1,431	10,390,687	563.40
Leisure & Hospitality	84	1,150	1,257	1,248	4,097,762	258.72
Other Services	65	276	272	267	2,191,334	620.48
Local Government	56	2,236	2,234	2,269	23,101,331	791.08
State Government	19	804	742	736	7,411,382	749.48
BRADLEY COUNTY - TOTAL	371	3,718	3,710	3,767	\$29,755,474	\$613.37
Natural Resources & Mining	45	264	253	255	2,072,903	619.64
Construction	18	113	117	120	792,195	522.33
Manufacturing	11	818	782	795	7,757,283	747.45
Trade, Transportation & Utilities	68	484	506	557	3,021,600	450.74
Wholesale Trade	15	107	109	111	1,084,177	765.12
Retail Trade	38	340	351	354	1,539,583	339.99
Transportation, Warehousing & Utilities	15	37	46	92	397,840	524.62
Information	3	10	10	10	44,664	343.57
Financial Activities	24	131	131	126	1,314,492	781.82
Professional & Business Services	23	96	88	83	692,595	598.61
Education & Health Services	108	612	616	613	5,050,551	633.09
Leisure & Hospitality	16	197	201	205	626,776	239.87
Other Services	30	103	105	108	605,307	442.05
Local Government	14	489	499	495	4,886,239	760.35
State Government	11	401	402	400	2,890,869	554.55

TABLE 6. COUNTY SUMMARY

North American Industry Classification System - Industry Groups	Number of Employing Units	Employment			Total Earnings Apr - Jun 2015	Average Weekly Earnings
		Apr	May	Jun		
CALHOUN COUNTY - TOTAL	106	2,624	2,631	2,652	\$33,204,490	\$969.09
Natural Resources & Mining	9	36	36	36	304,232	650.07
Construction	10	80	82	87	717,521	664.99
Manufacturing	10	1,824	1,828	1,840	25,940,126	1,089.98
Trade, Transportation & Utilities	20	222	216	222	1,936,734	677.18
Retail Trade	12	57	56	57	261,647	355.18
Transportation, Warehousing & Utilities	8	165	160	165	1,675,087	788.89
Financial Activities	5	80	79	80	647,325	625.03
Education & Health Services	15	59	58	53	486,475	660.37
Leisure & Hospitality	7	16	16	16	52,317	251.52
Other Services	3	5	5	6	24,454	352.70
Local Government	11	185	195	193	1,517,946	611.34
State Government	8	86	85	85	824,873	743.58
Other	8	31	31	34	752,487	1,808.86
CARROLL COUNTY - TOTAL	777	10,297	10,654	10,641	\$71,143,854	\$519.68
Natural Resources & Mining	16	203	204	204	1,492,371	563.66
Trade, Transportation & Utilities	194	1,580	1,613	1,657	11,078,925	527.15
Wholesale Trade	22	172	177	174	1,154,366	509.35
Retail Trade	152	1,146	1,171	1,208	6,084,415	398.33
Transportation, Warehousing & Utilities	20	262	265	275	3,840,144	1,104.97
Information	11	62	65	63	594,889	722.54
Financial Activities	63	359	366	364	3,653,931	774.30
Professional & Business Services	63	415	406	416	3,084,211	575.38
Education & Health Services	96	987	976	987	7,799,162	610.10
Leisure & Hospitality	164	1,450	1,775	1,844	6,036,915	274.83
Other Services	40	127	125	132	696,893	418.81
Local Government	24	1,079	1,089	926	9,232,665	688.63
State Government	10	109	109	108	954,669	675.79
Other	96	3,926	3,926	3,940	26,519,223	518.98

TABLE 6. COUNTY SUMMARY

North American Industry Classification System - Industry Groups	Number of Employing Units	Employment			Total Earnings Apr - Jun 2015	Average Weekly Earnings
		Apr	May	Jun		
CHICOT COUNTY - TOTAL	501	3,322	3,334	3,308	\$25,290,496	\$585.74
Natural Resources & Mining	61	279	291	280	2,594,614	704.42
Construction	17	163	177	178	1,977,131	880.81
Manufacturing	9	20	20	21	236,766	895.71
Trade, Transportation & Utilities	65	671	683	682	4,790,523	542.98
Wholesale Trade	14	80	80	75	956,623	939.40
Retail Trade	38	316	324	332	1,751,660	415.87
Transportation, Warehousing & Utilities	13	275	279	275	2,082,240	579.63
Information	4	5	5	5	17,589	270.60
Financial Activities	29	140	139	130	1,446,789	816.32
Professional & Business Services	19	47	42	44	583,455	1,012.36
Education & Health Services	229	773	765	754	4,861,389	489.47
Leisure & Hospitality	23	183	180	193	493,348	204.77
Other Services	17	69	63	65	556,358	651.73
Local Government	18	676	673	660	5,176,219	594.58
State Government	10	296	296	296	2,556,315	664.32
CLARK COUNTY - TOTAL	610	9,015	8,947	8,724	\$72,651,725	\$628.26
Natural Resources & Mining	41	223	230	242	2,097,024	696.30
Construction	24	67	64	66	422,225	494.60
Manufacturing	32	1,419	1,406	1,443	17,960,505	971.12
Trade, Transportation & Utilities	122	1,351	1,346	1,344	9,526,484	544.03
Wholesale Trade	9	28	29	29	332,615	892.53
Retail Trade	93	1,158	1,158	1,156	7,280,622	483.91
Transportation, Warehousing & Utilities	20	165	159	159	1,913,247	914.12
Information	5	16	15	15	151,395	759.51
Financial Activities	71	277	272	278	2,524,204	704.36
Professional & Business Services	51	581	579	584	5,341,659	706.82
Education & Health Services	124	1,559	1,533	1,475	11,459,181	579.03
Leisure & Hospitality	59	1,107	1,120	1,093	3,530,920	245.43
Other Services	41	229	233	235	1,715,811	568.09
Local Government	26	904	920	860	8,123,757	698.48
State Government	14	1,282	1,229	1,089	9,798,560	628.11

TABLE 6. COUNTY SUMMARY

North American Industry Classification System - Industry Groups	Number of Employing Units	Employment			Total Earnings Apr - Jun 2015	Average Weekly Earnings
		Apr	May	Jun		
CLAY COUNTY - TOTAL	397	3,476	3,528	3,531	\$24,943,678	\$546.39
Natural Resources & Mining	58	244	269	270	1,768,122	521.11
Construction	29	142	146	159	1,067,350	551.03
Manufacturing	15	314	306	304	2,723,798	680.27
Trade, Transportation & Utilities	101	861	862	852	7,023,956	629.48
Wholesale Trade	22	250	248	239	2,279,875	713.87
Retail Trade	49	409	410	407	2,609,137	491.12
Transportation, Warehousing & Utilities	30	202	204	206	2,134,944	805.03
Information	5	44	44	44	331,702	579.90
Financial Activities	26	118	119	119	1,012,721	656.47
Professional & Business Services	27	102	109	111	756,515	542.18
Education & Health Services	50	472	462	453	3,172,514	527.84
Leisure & Hospitality	22	268	269	274	658,283	187.31
Other Services	31	84	83	86	649,915	592.81
Local Government	22	776	807	808	5,403,596	521.53
State Government	11	51	52	51	375,206	562.25
CLEBURNE COUNTY - TOTAL	672	6,574	6,726	6,751	\$51,328,259	\$590.74
Natural Resources & Mining	28	306	383	359	4,104,415	903.79
Construction	63	356	376	366	3,101,013	651.75
Manufacturing	34	919	949	956	8,049,611	657.79
Trade, Transportation & Utilities	157	1,467	1,464	1,467	11,843,237	621.43
Wholesale Trade	34	171	166	167	1,820,053	833.36
Retail Trade	98	967	976	979	5,875,684	464.04
Transportation, Warehousing & Utilities	25	329	322	321	4,147,500	984.69
Information	7	48	49	50	362,134	568.50
Financial Activities	78	256	255	256	2,425,059	729.63
Professional & Business Services	69	372	336	368	2,581,582	553.67
Education & Health Services	93	849	857	845	6,073,402	549.41
Leisure & Hospitality	77	947	1,001	1,030	3,391,830	262.84
Other Services	39	127	133	137	675,278	392.53
Local Government	18	824	824	820	8,012,568	749.21
State Government	9	103	99	97	708,130	546.54

TABLE 6. COUNTY SUMMARY

North American Industry Classification System - Industry Groups	Number of Employing Units	Employment			Total Earnings Apr - Jun 2015	Average Weekly Earnings
		Apr	May	Jun		
CLEVELAND COUNTY - TOTAL	127	977	967	991	\$7,510,983	\$590.56
Natural Resources & Mining	16	129	114	139	1,225,773	740.50
Construction	6	27	27	32	114,964	308.49
Manufacturing	6	85	87	88	672,198	596.63
Trade, Transportation & Utilities	37	202	204	210	1,521,027	569.82
Wholesale Trade	4	60	64	66	516,443	627.26
Retail Trade	17	57	53	55	247,975	346.82
Transportation, Warehousing & Utilities	16	85	87	89	756,609	668.97
Financial Activities	3	21	21	21	164,098	601.09
Education & Health Services	30	137	136	135	727,154	411.29
Other Services	5	14	14	14	104,603	574.74
Local Government	11	306	308	296	2,586,156	655.83
State Government	7	43	42	41	285,615	523.10
Other	6	13	14	15	109,395	601.07
COLUMBIA COUNTY - TOTAL	746	8,351	8,326	8,334	\$79,053,357	\$729.40
Natural Resources & Mining	44	432	441	446	7,133,432	1,248.05
Construction	43	182	187	188	1,766,818	732.01
Manufacturing	35	1,994	1,976	1,987	25,695,736	995.43
Trade, Transportation & Utilities	164	1,451	1,463	1,455	10,612,562	560.55
Wholesale Trade	29	217	216	208	2,521,094	907.63
Retail Trade	97	990	997	1,007	5,271,526	406.31
Transportation, Warehousing & Utilities	38	244	250	240	2,819,942	886.59
Information	8	60	58	57	528,170	696.49
Financial Activities	70	370	364	366	4,130,566	866.55
Professional & Business Services	58	257	252	259	2,137,185	642.18
Education & Health Services	185	1,007	1,020	1,015	6,469,975	490.82
Leisure & Hospitality	51	694	709	667	2,336,396	260.47
Other Services	49	173	170	167	837,221	378.83
Local Government	26	1,114	1,108	1,140	10,918,173	749.43
State Government	13	617	578	587	6,487,123	840.08

TABLE 6. COUNTY SUMMARY

North American Industry Classification System - Industry Groups	Number of Employing Units	Employment			Total Earnings Apr - Jun 2015	Average Weekly Earnings
		Apr	May	Jun		
CONWAY COUNTY - TOTAL	580	6,874	6,952	6,966	\$62,131,750	\$689.60
Natural Resources & Mining	34	313	300	301	3,521,524	889.12
Construction	53	503	510	511	6,440,294	975.21
Manufacturing	21	864	862	860	11,685,302	1,042.77
Trade, Transportation & Utilities	134	1,646	1,675	1,679	13,383,218	617.69
Wholesale Trade	22	118	117	115	1,191,517	785.62
Retail Trade	85	851	877	889	4,856,563	428.26
Transportation, Warehousing & Utilities	27	677	681	675	7,335,138	832.62
Information	3	14	15	15	51,932	272.37
Financial Activities	37	168	168	167	1,672,481	767.31
Professional & Business Services	41	635	634	606	3,278,870	403.55
Education & Health Services	149	818	829	836	6,925,387	643.64
Leisure & Hospitality	42	466	486	539	1,481,783	229.34
Other Services	27	121	116	116	942,670	616.26
Local Government	29	921	948	940	9,634,328	791.49
State Government	10	405	409	396	3,113,961	593.89
CRAIGHEAD COUNTY - TOTAL	2,731	46,417	46,738	46,622	\$424,119,485	\$700.21
Natural Resources & Mining	78	283	300	318	2,333,324	597.62
Construction	217	1,867	1,940	2,012	19,114,207	758.03
Manufacturing	103	5,851	5,906	5,941	63,162,579	823.59
Trade, Transportation & Utilities	772	10,012	10,028	10,023	78,216,608	600.41
Wholesale Trade	190	1,736	1,746	1,743	21,872,378	966.02
Retail Trade	458	6,804	6,807	6,819	40,044,941	452.33
Transportation, Warehousing & Utilities	124	1,472	1,475	1,461	16,299,289	853.31
Information	21	423	431	429	4,671,186	840.19
Financial Activities	264	1,538	1,529	1,540	17,591,033	881.15
Professional & Business Services	361	4,153	4,141	4,141	30,339,333	563.04
Education & Health Services	456	9,576	9,634	9,636	112,299,174	898.40
Leisure & Hospitality	248	5,069	5,141	5,087	17,995,824	271.48
Other Services	152	850	849	840	5,763,947	523.88
Local Government	36	4,047	4,086	3,922	43,472,804	832.20
State Government	23	2,748	2,753	2,733	29,159,466	817.23

TABLE 6. COUNTY SUMMARY

North American Industry Classification System - Industry Groups	Number of Employing Units	Employment			Total Earnings	Average Weekly Earnings
		Apr	May	Jun	Apr - Jun 2015	
CRAWFORD COUNTY - TOTAL	1,261	19,305	19,392	19,268	\$161,001,004	\$640.97
Natural Resources & Mining	31	375	306	271	3,392,279	822.30
Construction	146	839	848	841	7,649,111	698.25
Manufacturing	71	4,365	4,363	4,376	38,616,273	680.06
Trade, Transportation & Utilities	322	6,063	6,097	6,047	50,847,274	644.48
Wholesale Trade	87	789	793	796	9,850,543	955.93
Retail Trade	170	2,055	2,087	2,071	12,545,085	465.96
Transportation, Warehousing & Utilities	65	3,219	3,217	3,180	28,451,646	682.80
Information	9	103	104	104	878,306	651.72
Financial Activities	125	487	495	489	4,452,098	698.44
Professional & Business Services	152	1,472	1,494	1,502	12,089,548	624.42
Education & Health Services	178	1,540	1,534	1,501	12,086,272	609.65
Leisure & Hospitality	97	1,518	1,568	1,555	5,381,255	267.58
Other Services	77	368	383	374	2,833,796	581.29
Local Government	43	2,026	2,051	2,058	21,468,477	807.54
State Government	10	149	149	150	1,306,315	672.90
CRITTENDEN COUNTY - TOTAL	1,329	16,712	16,588	16,833	\$142,129,341	\$654.24
Natural Resources & Mining	57	274	284	308	2,098,884	559.30
Construction	49	432	514	651	6,249,172	903.02
Manufacturing	39	1,848	1,832	1,833	20,243,835	847.39
Trade, Transportation & Utilities	310	4,417	4,369	4,370	38,951,343	683.25
Wholesale Trade	63	745	740	742	8,903,545	922.62
Retail Trade	167	1,959	1,967	1,989	11,060,053	431.50
Transportation, Warehousing & Utilities	80	1,713	1,662	1,639	18,987,745	873.91
Information	5	52	51	51	519,712	778.79
Financial Activities	94	416	413	425	4,324,586	795.84
Professional & Business Services	120	1,445	1,405	1,473	11,023,708	588.46
Education & Health Services	400	2,311	2,313	2,291	16,323,568	544.75
Leisure & Hospitality	119	2,334	2,384	2,370	9,888,187	321.94
Other Services	79	457	449	451	3,531,580	600.57
Local Government	43	2,215	2,168	2,175	24,787,571	872.25
State Government	14	511	406	435	4,187,195	714.70

TABLE 6. COUNTY SUMMARY

North American Industry Classification System - Industry Groups	Number of Employing Units	Employment			Total Earnings Apr - Jun 2015	Average Weekly Earnings
		Apr	May	Jun		
CROSS COUNTY - TOTAL	496	4,972	5,075	5,059	\$40,600,885	\$620.25
Natural Resources & Mining	34	232	242	242	1,645,114	530.23
Construction	23	76	79	81	571,008	558.35
Manufacturing	11	465	474	472	4,664,977	762.96
Trade, Transportation & Utilities	134	1,232	1,260	1,264	10,492,063	644.63
Wholesale Trade	31	331	351	350	4,547,875	1,016.97
Retail Trade	76	806	814	815	4,906,560	465.00
Transportation, Warehousing & Utilities	27	95	95	99	1,037,628	828.56
Information	5	39	40	40	324,223	628.75
Financial Activities	43	309	309	298	2,569,452	647.33
Professional & Business Services	40	132	133	129	1,201,408	703.68
Education & Health Services	116	981	997	1,001	7,052,553	546.33
Leisure & Hospitality	32	322	345	335	967,237	222.76
Other Services	32	89	90	88	611,913	528.88
Local Government	16	715	721	719	7,017,481	751.47
State Government	10	380	385	390	3,483,456	696.00
DALLAS COUNTY - TOTAL	255	2,714	2,786	2,794	\$20,113,442	\$559.63
Natural Resources & Mining	33	168	164	172	1,321,557	605.11
Construction	18	73	79	79	1,090,243	1,089.15
Manufacturing	9	526	534	544	5,086,583	731.81
Trade, Transportation & Utilities	55	462	474	468	3,148,013	517.42
Wholesale Trade	6	11	19	19	191,069	899.85
Retail Trade	38	355	359	351	2,046,749	443.50
Transportation, Warehousing & Utilities	11	96	96	98	910,195	724.29
Information	4	19	20	19	126,433	503.05
Financial Activities	16	76	78	76	736,950	739.41
Professional & Business Services	11	43	45	48	181,954	308.75
Education & Health Services	61	757	771	781	4,965,314	496.25
Leisure & Hospitality	14	149	176	191	412,787	184.61
Other Services	13	57	62	62	311,786	397.52
Local Government	14	335	334	306	2,381,148	563.59
State Government	7	49	49	48	350,674	554.28

TABLE 6. COUNTY SUMMARY

North American Industry Classification System - Industry Groups	Number of Employing Units	Employment			Total Earnings Apr - Jun 2015	Average Weekly Earnings
		Apr	May	Jun		
DESHA COUNTY - TOTAL	551	4,442	4,581	4,647	\$37,959,666	\$640.81
Natural Resources & Mining	70	307	313	331	2,204,588	534.96
Construction	21	107	109	110	875,635	619.85
Manufacturing	15	769	778	817	11,681,543	1,140.33
Trade, Transportation & Utilities	111	876	897	888	6,766,931	586.85
Wholesale Trade	21	232	236	239	2,984,614	974.20
Retail Trade	65	490	501	482	2,405,479	376.86
Transportation, Warehousing & Utilities	25	154	160	167	1,376,838	660.57
Information	3	10	10	10	97,747	751.90
Financial Activities	28	211	212	213	1,539,311	558.53
Professional & Business Services	40	93	95	98	658,057	530.98
Education & Health Services	171	730	729	713	4,436,123	471.33
Leisure & Hospitality	39	335	444	491	1,277,064	232.05
Other Services	23	52	47	54	231,493	349.16
Local Government	20	797	799	779	7,176,598	697.32
State Government	10	155	148	143	1,014,576	524.96
DREW COUNTY - TOTAL	531	6,446	6,470	6,325	\$53,773,303	\$644.94
Natural Resources & Mining	48	305	301	302	2,785,005	707.81
Construction	19	86	92	86	753,487	658.64
Manufacturing	22	812	830	842	7,253,837	673.90
Trade, Transportation & Utilities	130	1,232	1,260	1,249	7,907,141	487.76
Wholesale Trade	18	105	107	107	1,207,230	873.33
Retail Trade	88	998	1,021	1,010	5,404,930	411.78
Transportation, Warehousing & Utilities	24	129	132	132	1,294,981	760.41
Information	6	47	47	47	415,469	679.98
Financial Activities	47	242	246	239	2,392,669	759.50
Professional & Business Services	36	245	250	238	4,364,764	1,374.15
Education & Health Services	129	920	901	906	7,462,394	631.50
Leisure & Hospitality	40	634	620	595	2,079,535	259.54
Other Services	16	53	52	54	329,831	478.71
Local Government	22	1,250	1,258	1,238	12,113,752	746.26
State Government	16	620	613	529	5,915,419	774.74

TABLE 6. COUNTY SUMMARY

North American Industry Classification System - Industry Groups	Number of Employing Units	Employment			Total Earnings Apr - Jun 2015	Average Weekly Earnings
		Apr	May	Jun		
FAULKNER COUNTY - TOTAL	2,840	40,697	40,780	40,616	\$396,431,861	\$749.30
Natural Resources & Mining	64	1,047	988	930	18,227,679	1,418.68
Construction	307	2,500	2,524	2,586	25,516,368	773.77
Manufacturing	103	3,268	3,240	3,239	40,567,183	960.47
Trade, Transportation & Utilities	645	7,041	7,143	7,189	52,098,183	562.52
Wholesale Trade	148	555	557	560	6,890,426	951.02
Retail Trade	409	5,734	5,828	5,874	36,009,095	476.59
Transportation, Warehousing & Utilities	88	752	758	755	9,198,662	937.20
Information	19	241	239	236	2,519,500	812.04
Financial Activities	323	1,541	1,560	1,584	15,713,923	774.02
Professional & Business Services	433	6,196	6,096	6,122	84,822,220	1,063.02
Education & Health Services	454	6,281	6,314	6,316	55,076,362	672.09
Leisure & Hospitality	249	4,892	4,951	4,974	17,015,543	265.01
Other Services	186	735	770	811	5,834,422	581.35
Local Government	39	3,506	3,521	3,591	43,852,667	953.08
State Government	18	3,449	3,434	3,038	35,187,811	818.49
FRANKLIN COUNTY - TOTAL	351	4,324	4,304	4,322	\$37,107,610	\$661.26
Natural Resources & Mining	17	252	248	245	4,101,197	1,270.38
Construction	33	102	98	105	760,017	575.04
Manufacturing	13	835	833	857	8,166,395	746.36
Trade, Transportation & Utilities	89	923	939	944	7,470,955	614.42
Wholesale Trade	13	41	40	40	224,388	427.95
Retail Trade	54	622	622	621	3,263,253	403.78
Transportation, Warehousing & Utilities	22	260	277	283	3,983,314	1,121.01
Information	5	21	20	22	193,295	708.04
Financial Activities	31	112	115	115	1,181,305	797.10
Professional & Business Services	35	297	269	274	2,369,036	650.83
Education & Health Services	59	569	569	562	3,582,182	486.27
Leisure & Hospitality	26	325	331	331	1,017,225	237.84
Other Services	15	51	53	53	304,934	448.21
Local Government	19	717	710	711	6,589,733	711.28
State Government	9	120	119	103	1,371,336	925.33

TABLE 6. COUNTY SUMMARY

North American Industry Classification System - Industry Groups	Number of Employing Units	Employment			Total Earnings Apr - Jun 2015	Average Weekly Earnings
		Apr	May	Jun		
FULTON COUNTY - TOTAL	201	1,926	1,944	1,961	\$13,459,636	\$532.68
Construction	8	33	35	32	265,319	612.27
Manufacturing	13	121	116	128	735,077	464.75
Trade, Transportation & Utilities	48	316	330	327	2,388,499	566.49
Retail Trade	31	202	205	206	858,908	323.34
Other Trade, Transportation, & Utilities	17	114	125	121	1,529,591	980.51
Information	4	32	31	28	170,299	431.87
Financial Activities	18	91	108	107	845,617	637.72
Professional & Business Services	14	38	38	37	316,944	647.26
Education & Health Services	48	438	431	432	2,472,201	438.51
Leisure & Hospitality	17	183	190	196	539,504	218.81
Local Government	12	551	543	550	4,729,324	663.86
State Government	10	106	105	106	900,713	655.70
Other	9	17	17	18	96,139	426.65
GARLAND COUNTY - TOTAL	3,108	35,945	36,093	35,651	\$302,763,742	\$648.80
Natural Resources & Mining	29	279	285	288	3,676,293	995.75
Construction	341	1,681	1,702	1,723	13,912,394	628.78
Manufacturing	95	2,505	2,513	2,521	29,260,588	895.67
Trade, Transportation & Utilities	697	7,221	7,250	7,285	52,324,126	555.01
Wholesale Trade	140	813	808	818	9,110,712	862.02
Retail Trade	496	5,837	5,889	5,915	37,201,356	486.65
Transportation, Warehousing & Utilities	61	571	553	552	6,012,058	827.80
Information	32	516	516	532	4,635,948	684.04
Financial Activities	348	1,405	1,419	1,431	15,396,643	835.03
Professional & Business Services	385	2,851	2,823	2,815	24,672,881	670.72
Education & Health Services	525	7,333	7,330	7,444	77,251,105	806.40
Leisure & Hospitality	359	7,181	7,237	7,073	28,205,011	302.86
Other Services	239	961	971	994	6,364,761	501.98
Local Government	33	2,988	3,030	2,546	38,019,651	1,024.49
State Government	25	1,024	1,017	999	9,044,341	686.56

TABLE 6. COUNTY SUMMARY

North American Industry Classification System - Industry Groups	Number of Employing Units	Employment			Total Earnings Apr - Jun 2015	Average Weekly Earnings
		Apr	May	Jun		
GRANT COUNTY - TOTAL	339	3,951	3,983	4,045	\$34,283,725	\$660.46
Natural Resources & Mining	27	174	181	183	1,982,951	850.57
Construction	27	180	171	178	2,187,358	954.21
Manufacturing	17	1,178	1,180	1,196	12,424,446	806.75
Trade, Transportation & Utilities	89	661	686	691	4,478,037	507.06
Wholesale Trade	21	100	100	103	1,137,544	866.37
Retail Trade	44	488	510	512	2,694,065	411.73
Transportation, Warehousing & Utilities	24	73	76	76	646,428	663.00
Information	3	10	10	10	119,351	918.08
Financial Activities	25	83	88	83	752,775	683.93
Professional & Business Services	27	97	90	92	1,012,326	837.33
Education & Health Services	63	386	387	381	2,510,569	502.05
Leisure & Hospitality	22	303	314	312	886,806	220.29
Other Services	21	44	42	43	214,264	383.30
Local Government	10	775	776	818	7,242,080	705.47
State Government	8	60	58	58	472,762	619.88
GREENE COUNTY - TOTAL	894	15,575	15,612	15,715	\$140,000,346	\$688.84
Natural Resources & Mining	37	265	286	293	2,220,028	607.01
Construction	68	338	343	356	3,494,751	777.71
Manufacturing	67	5,694	5,665	5,723	62,917,277	849.98
Trade, Transportation & Utilities	242	2,499	2,548	2,563	17,899,935	542.81
Wholesale Trade	51	457	465	463	4,987,368	831.00
Retail Trade	159	1,795	1,828	1,836	10,676,541	451.33
Transportation, Warehousing & Utilities	32	247	255	264	2,236,026	673.64
Information	10	96	98	100	615,431	483.07
Financial Activities	77	470	477	484	4,384,817	707.11
Professional & Business Services	87	980	947	907	6,898,265	561.72
Education & Health Services	151	1,865	1,857	1,843	16,504,764	684.42
Leisure & Hospitality	66	1,150	1,153	1,151	3,641,503	243.30
Other Services	47	181	186	189	1,124,417	466.69
Local Government	30	1,617	1,630	1,679	15,896,769	744.72
State Government	12	420	422	427	4,402,389	800.58

TABLE 6. COUNTY SUMMARY

North American Industry Classification System - Industry Groups	Number of Employing Units	Employment			Total Earnings Apr - Jun 2015	Average Weekly Earnings
		Apr	May	Jun		
HEMPSTEAD COUNTY - TOTAL	510	7,661	7,683	7,690	\$63,570,187	\$636.89
Natural Resources & Mining	22	219	222	224	2,003,144	695.13
Construction	29	181	174	159	1,601,018	718.80
Manufacturing	27	2,110	2,147	2,151	19,352,845	696.95
Trade, Transportation & Utilities	129	1,377	1,405	1,394	11,684,652	645.70
Wholesale Trade	20	172	184	186	1,460,287	621.75
Retail Trade	78	856	877	878	4,833,025	427.16
Transportation, Warehousing & Utilities	31	349	344	330	5,391,340	1,216.18
Information	7	45	45	45	352,336	602.28
Financial Activities	45	221	216	215	1,946,699	689.02
Professional & Business Services	32	171	169	169	1,199,734	543.93
Education & Health Services	95	951	942	928	6,107,866	499.65
Leisure & Hospitality	47	585	593	615	2,027,951	261.01
Other Services	33	151	141	147	974,864	512.46
Local Government	27	893	892	905	9,403,166	806.68
State Government	17	757	737	738	6,915,912	715.04
HOT SPRING COUNTY - TOTAL	626	8,501	8,552	8,524	\$71,484,351	\$644.97
Natural Resources & Mining	24	140	140	146	1,058,328	573.31
Construction	59	350	377	398	3,096,177	635.11
Manufacturing	28	1,410	1,423	1,442	15,855,490	855.90
Trade, Transportation & Utilities	150	1,603	1,608	1,614	14,369,462	687.26
Wholesale Trade	18	125	128	128	1,211,706	733.92
Retail Trade	94	883	879	883	4,749,299	414.36
Transportation, Warehousing & Utilities	38	595	601	603	8,408,457	1,078.61
Information	6	47	49	46	414,574	673.74
Financial Activities	54	208	212	203	2,142,920	793.77
Professional & Business Services	57	1,022	1,034	952	5,618,910	431.07
Education & Health Services	121	1,067	1,069	1,064	8,237,710	594.07
Leisure & Hospitality	49	591	595	654	1,729,223	216.88
Other Services	38	151	140	137	827,187	446.00
Local Government	27	1,015	1,008	1,006	10,305,081	785.11
State Government	13	897	897	862	7,829,289	680.26

TABLE 6. COUNTY SUMMARY

North American Industry Classification System - Industry Groups	Number of Employing Units	Employment			Total Earnings Apr - Jun 2015	Average Weekly Earnings
		Apr	May	Jun		
HOWARD COUNTY - TOTAL	352	7,194	7,096	7,036	\$53,622,615	\$580.25
Natural Resources & Mining	16	226	234	236	1,813,934	601.44
Construction	18	159	171	161	1,633,797	767.88
Manufacturing	21	3,646	3,493	3,456	25,823,463	562.46
Trade, Transportation & Utilities	92	880	915	902	6,679,004	571.49
Wholesale Trade	14	78	76	75	672,409	677.60
Retail Trade	56	613	633	624	3,583,177	442.19
Transportation, Warehousing & Utilities	22	189	206	203	2,423,418	935.20
Information	4	26	26	27	137,595	401.93
Financial Activities	35	148	146	150	1,118,965	581.58
Professional & Business Services	21	149	132	128	1,122,354	633.26
Education & Health Services	74	656	662	667	5,365,005	623.72
Leisure & Hospitality	22	316	322	328	977,029	233.40
Other Services	21	129	123	121	833,900	515.92
Local Government	17	726	738	739	7,042,423	737.71
State Government	11	133	134	121	1,075,146	639.46
INDEPENDENCE COUNTY - TOTAL	914	14,731	14,842	14,948	\$126,378,043	\$655.07
Natural Resources & Mining	16	275	276	270	3,285,023	923.36
Construction	64	386	415	400	3,510,691	674.57
Manufacturing	40	2,818	2,844	2,852	28,119,273	762.16
Trade, Transportation & Utilities	238	2,958	2,946	2,965	23,883,649	621.45
Wholesale Trade	31	446	443	441	4,173,976	724.23
Retail Trade	160	1,738	1,739	1,749	10,631,916	469.48
Transportation, Warehousing & Utilities	47	774	764	775	9,077,757	905.69
Information	9	110	108	109	877,308	619.13
Financial Activities	77	510	512	522	5,613,802	839.05
Professional & Business Services	93	960	921	987	5,735,918	461.53
Education & Health Services	172	3,108	3,108	3,141	29,506,739	727.72
Leisure & Hospitality	79	1,065	1,134	1,173	3,509,719	240.19
Other Services	63	369	392	385	1,967,924	396.28
Local Government	47	1,545	1,565	1,563	14,718,579	726.86
State Government	16	627	621	581	5,649,418	712.80

TABLE 6. COUNTY SUMMARY

North American Industry Classification System - Industry Groups	Number of Employing Units	Employment			Total Earnings Apr - Jun 2015	Average Weekly Earnings
		Apr	May	Jun		
IZARD COUNTY - TOTAL	256	3,167	3,155	3,059	\$24,561,376	\$604.20
Natural Resources & Mining	6	172	172	168	1,867,930	841.92
Construction	21	101	112	115	1,126,927	792.87
Manufacturing	9	280	270	278	2,172,195	605.41
Trade, Transportation & Utilities	67	591	590	602	3,918,945	507.22
Wholesale Trade	12	21	23	23	152,740	526.08
Retail Trade	43	420	422	431	2,301,764	417.26
Transportation, Warehousing & Utilities	12	150	145	148	1,464,441	762.86
Information	4	6	6	6	81,296	1,042.26
Financial Activities	22	138	138	140	1,137,719	631.13
Professional & Business Services	16	48	49	49	364,924	576.80
Education & Health Services	51	650	659	656	4,058,243	476.60
Leisure & Hospitality	22	170	191	204	542,308	221.50
Other Services	11	29	26	27	154,922	435.99
Local Government	17	513	516	379	4,593,523	752.87
State Government	10	469	426	435	4,542,444	788.16
JACKSON COUNTY - TOTAL	462	5,287	5,383	5,404	\$46,194,056	\$663.19
Natural Resources & Mining	55	269	275	280	2,186,713	612.41
Construction	25	130	128	132	1,387,045	820.74
Manufacturing	17	1,031	1,050	1,064	11,622,505	852.82
Trade, Transportation & Utilities	113	1,020	1,036	1,044	7,535,948	560.99
Wholesale Trade	21	208	215	217	2,242,716	808.67
Retail Trade	74	718	725	731	4,200,194	445.85
Transportation, Warehousing & Utilities	18	94	96	96	1,093,038	881.96
Information	4	38	42	41	262,549	500.73
Financial Activities	33	146	144	143	1,352,409	720.77
Professional & Business Services	29	112	110	112	1,045,920	722.65
Education & Health Services	94	816	844	832	7,038,211	651.77
Leisure & Hospitality	28	271	287	302	890,983	239.08
Other Services	18	63	62	62	438,661	541.33
Local Government	33	622	638	646	5,250,497	635.70
State Government	13	769	767	746	7,182,615	726.35

TABLE 6. COUNTY SUMMARY

North American Industry Classification System - Industry Groups	Number of Employing Units	Employment			Total Earnings Apr - Jun 2015	Average Weekly Earnings
		Apr	May	Jun		
JEFFERSON COUNTY - TOTAL	2,185	27,070	27,033	26,752	\$245,502,790	\$700.69
Natural Resources & Mining	37	195	204	214	2,172,984	818.04
Construction	94	587	537	567	4,987,101	680.59
Manufacturing	63	4,966	4,959	4,989	60,590,305	937.53
Trade, Transportation & Utilities	422	4,634	4,617	4,598	36,858,689	614.19
Wholesale Trade	72	654	663	665	6,227,502	725.08
Retail Trade	291	3,194	3,173	3,151	19,630,538	475.95
Transportation, Warehousing & Utilities	59	786	781	782	11,000,649	1,080.72
Information	10	103	106	105	880,104	646.82
Financial Activities	157	1,104	1,096	1,100	11,787,132	824.27
Professional & Business Services	150	1,952	1,876	1,889	13,749,120	554.99
Education & Health Services	908	4,747	4,760	4,746	41,749,439	675.96
Leisure & Hospitality	144	1,865	1,909	1,902	6,459,186	262.61
Other Services	125	614	613	605	4,602,204	579.72
Local Government	39	2,893	2,932	2,888	28,403,187	752.28
State Government	36	3,410	3,424	3,149	33,263,339	768.92
JOHNSON COUNTY - TOTAL	502	8,224	8,499	8,520	\$64,648,236	\$591.01
Natural Resources & Mining	13	127	129	129	1,079,641	647.14
Construction	37	167	174	172	1,322,587	594.96
Manufacturing	36	2,676	2,651	2,628	20,314,322	589.30
Trade, Transportation & Utilities	122	1,929	1,948	1,945	13,745,452	544.83
Retail Trade	80	876	900	905	4,664,716	401.52
Other Trade, Transportation & Utilities	42	1,053	1,048	1,040	9,080,736	667.16
Information	5	46	52	47	225,071	358.20
Financial Activities	48	183	184	180	1,418,825	598.58
Professional & Business Services	51	190	410	434	2,487,321	555.12
Education & Health Services	90	1,187	1,173	1,186	9,494,740	617.91
Leisure & Hospitality	41	509	532	517	1,651,738	244.65
Other Services	36	75	85	84	449,950	425.55
Local Government	14	1,003	1,029	1,065	11,170,117	832.33
State Government	9	132	132	133	1,288,472	748.97

TABLE 6. COUNTY SUMMARY

North American Industry Classification System - Industry Groups	Number of Employing Units	Employment			Total Earnings Apr - Jun 2015	Average Weekly Earnings
		Apr	May	Jun		
LAFAYETTE COUNTY - TOTAL	173	1,197	1,200	1,201	\$10,356,289	\$664.23
Natural Resources & Mining	31	150	150	157	1,851,776	935.08
Construction	9	73	71	69	778,937	843.92
Manufacturing	6	29	29	30	706,437	1,852.54
Trade, Transportation & Utilities	30	194	202	201	1,215,794	469.96
Retail Trade	16	110	110	109	480,349	336.93
Other Trade, Transportation & Utilities	14	84	92	92	735,445	633.28
Financial Activities	13	47	47	48	343,224	557.79
Professional & Business Services	11	51	51	45	425,727	668.33
Education & Health Services	40	216	207	204	1,316,823	484.66
Leisure & Hospitality	5	40	41	41	134,175	253.80
Local Government	13	265	271	272	2,808,670	802.17
State Government	7	48	47	47	343,917	558.91
Other	8	84	84	87	430,809	389.87
LAWRENCE COUNTY - TOTAL	412	4,070	4,099	4,018	\$31,814,820	\$602.44
Natural Resources & Mining	53	203	214	230	1,806,091	644.19
Construction	23	113	124	132	1,159,963	725.43
Manufacturing	20	487	502	498	4,344,073	674.16
Trade, Transportation & Utilities	112	874	875	870	6,944,794	611.93
Wholesale Trade	19	240	239	241	2,623,326	840.81
Retail Trade	59	504	505	494	2,951,256	453.13
Transportation, Warehousing & Utilities	34	130	131	135	1,370,212	798.49
Financial Activities	34	132	130	132	1,142,424	669.13
Professional & Business Services	27	114	105	106	1,186,182	842.26
Education & Health Services	59	535	515	473	4,011,162	607.78
Leisure & Hospitality	28	368	381	325	1,028,135	220.91
Local Government	26	1,076	1,082	1,082	9,034,038	643.45
State Government	10	103	103	101	678,283	509.86
Other	20	65	68	69	479,675	547.99

TABLE 6. COUNTY SUMMARY

North American Industry Classification System - Industry Groups	Number of Employing Units	Employment			Total Earnings Apr - Jun 2015	Average Weekly Earnings
		Apr	May	Jun		
LEE COUNTY - TOTAL	303	2,013	2,021	2,027	\$16,858,507	\$641.88
Natural Resources & Mining	37	217	216	229	1,854,369	646.42
Construction	10	42	40	39	306,064	583.72
Trade, Transportation & Utilities	44	342	345	344	2,889,869	646.84
Wholesale Trade	9	109	113	114	1,211,658	832.18
Retail Trade	25	187	184	182	975,935	407.26
Transportation, Warehousing & Utilities	10	46	48	48	702,276	1,141.29
Financial Activities	17	66	66	62	677,487	805.89
Professional & Business Services	16	84	80	84	1,175,731	1,094.04
Education & Health Services	137	411	418	415	3,010,074	558.39
Leisure & Hospitality	9	87	90	82	283,195	252.33
Local Government	15	271	268	273	2,427,981	690.03
State Government	7	477	481	479	4,138,945	664.68
Other	11	16	17	20	94,792	412.74
LINCOLN COUNTY - TOTAL	287	2,932	2,943	2,973	\$25,432,044	\$663.31
Natural Resources & Mining	38	174	176	179	1,416,255	617.82
Construction	14	78	77	74	611,218	615.94
Manufacturing	9	324	319	317	3,154,969	758.41
Trade, Transportation & Utilities	46	364	366	378	2,981,884	621.05
Wholesale Trade	6	58	61	59	458,882	594.92
Retail Trade	25	179	176	177	855,002	370.88
Transportation, Warehousing & Utilities	15	127	129	142	1,668,000	967.14
Financial Activities	20	70	66	67	591,280	672.16
Professional & Business Services	10	22	19	19	160,491	617.27
Education & Health Services	100	392	388	385	2,621,388	519.26
Leisure & Hospitality	14	160	173	188	435,002	192.68
Local Government	7	353	357	362	3,194,643	687.71
State Government	12	965	969	969	10,018,679	796.42
Other	17	30	33	35	246,235	579.83

TABLE 6. COUNTY SUMMARY

North American Industry Classification System - Industry Groups	Number of Employing Units	Employment			Total Earnings Apr - Jun 2015	Average Weekly Earnings
		Apr	May	Jun		
LITTLE RIVER COUNTY - TOTAL	242	3,487	3,449	3,491	\$38,677,918	\$856.02
Natural Resources & Mining	13	82	80	78	760,628	731.37
Construction	17	228	200	187	2,062,350	773.86
Manufacturing	14	1,216	1,211	1,230	21,455,464	1,353.91
Trade, Transportation & Utilities	58	515	548	571	3,683,171	520.17
Wholesale Trade	8	24	25	25	410,056	1,278.76
Retail Trade	37	365	400	424	2,183,295	423.75
Transportation, Warehousing & Utilities	13	126	123	122	1,089,820	677.89
Financial Activities	17	77	78	76	601,080	600.48
Professional & Business Services	17	80	80	80	689,715	663.19
Education & Health Services	41	171	167	173	1,070,085	483.25
Leisure & Hospitality	15	201	184	192	592,347	236.91
Local Government	20	740	733	745	6,787,039	706.15
State Government	11	98	98	93	649,241	518.43
Other	19	79	70	66	326,798	350.77
LOGAN COUNTY - TOTAL	487	5,434	5,507	5,563	\$41,840,743	\$585.04
Natural Resources & Mining	28	128	131	137	1,434,970	836.23
Construction	39	258	272	290	2,206,868	621.07
Manufacturing	19	1,151	1,157	1,168	10,633,550	705.95
Trade, Transportation & Utilities	103	1,042	1,065	1,066	6,290,580	457.51
Wholesale Trade	10	72	72	69	329,908	357.43
Retail Trade	67	796	819	820	4,197,032	397.76
Transportation, Warehousing & Utilities	26	174	174	177	1,763,640	775.23
Information	6	34	34	33	344,979	788.22
Financial Activities	46	179	178	178	1,682,578	725.77
Professional & Business Services	50	128	130	131	1,215,734	721.22
Education & Health Services	105	718	724	724	5,312,034	565.95
Leisure & Hospitality	29	316	312	319	1,005,782	245.09
Other Services	26	123	123	124	975,010	608.11
Local Government	22	781	803	817	6,969,495	669.86
State Government	14	576	578	576	3,769,163	502.78

TABLE 6. COUNTY SUMMARY

North American Industry Classification System - Industry Groups	Number of Employing Units	Employment			Total Earnings Apr - Jun 2015	Average Weekly Earnings
		Apr	May	Jun		
LONOKE COUNTY - TOTAL	1,301	13,673	13,801	13,894	\$114,125,207	\$636.64
Natural Resources & Mining	85	488	487	491	4,425,297	696.60
Construction	126	783	823	856	7,580,241	710.51
Manufacturing	38	1,680	1,686	1,676	20,767,149	950.50
Trade, Transportation & Utilities	320	3,002	3,015	2,978	20,378,560	522.82
Wholesale Trade	77	428	431	426	4,775,078	857.54
Retail Trade	181	2,264	2,288	2,266	12,495,728	422.94
Transportation, Warehousing & Utilities	62	310	296	286	3,107,754	804.01
Information	15	92	91	90	970,295	820.20
Financial Activities	146	627	637	645	8,489,662	1,026.27
Professional & Business Services	158	640	636	714	5,525,638	640.78
Education & Health Services	202	1,660	1,683	1,744	11,726,434	531.96
Leisure & Hospitality	106	1,753	1,809	1,788	5,754,624	248.22
Other Services	65	169	172	172	1,044,465	469.84
Local Government	25	2,622	2,605	2,584	26,135,396	772.15
State Government	15	157	157	156	1,327,446	651.77
MADISON COUNTY - TOTAL	252	3,195	3,213	3,210	\$24,874,667	\$596.83
Natural Resources & Mining	13	49	48	48	348,025	553.89
Construction	23	84	81	80	780,569	735.23
Manufacturing	23	1,076	1,091	1,098	9,059,903	640.35
Trade, Transportation & Utilities	54	614	639	646	4,517,024	548.92
Retail Trade	36	471	492	494	2,906,988	460.43
Other Trade, Transportation & Utilities	18	143	147	152	1,610,036	840.60
Information	6	42	40	42	612,068	1,139.08
Financial Activities	17	71	70	71	601,502	654.76
Professional & Business Services	25	209	199	197	1,389,608	530.05
Education & Health Services	46	255	251	254	1,488,403	451.94
Leisure & Hospitality	17	169	171	171	455,384	205.65
Other Services	12	29	30	27	264,312	709.25
Local Government	9	553	549	532	5,029,688	710.34
State Government	7	44	44	44	328,181	573.74

TABLE 6. COUNTY SUMMARY

North American Industry Classification System - Industry Groups	Number of Employing Units	Employment			Total Earnings Apr - Jun 2015	Average Weekly Earnings
		Apr	May	Jun		
MARION COUNTY - TOTAL	281	3,751	3,803	3,813	\$28,614,693	\$580.93
Construction	17	55	53	51	325,312	472.15
Manufacturing	19	1,734	1,724	1,728	14,658,053	652.26
Trade, Transportation & Utilities	52	506	512	512	2,996,018	451.89
Wholesale Trade	7	49	47	46	437,345	710.74
Retail Trade	36	430	437	439	2,218,493	392.01
Transportation, Warehousing & Utilities	9	27	28	27	340,180	957.35
Information	3	48	49	51	633,360	987.57
Financial Activities	30	173	198	204	1,604,015	643.75
Professional & Business Services	28	75	77	70	478,070	496.95
Education & Health Services	52	324	318	323	2,164,416	517.60
Leisure & Hospitality	36	220	244	242	682,706	223.16
Local Government	18	506	516	521	4,370,930	653.71
State Government	9	62	63	66	460,560	556.46
Other	17	48	49	45	241,253	392.07
MILLER COUNTY - TOTAL	862	13,286	13,289	13,300	\$125,843,667	\$728.30
Natural Resources & Mining	28	139	141	152	1,183,499	632.21
Construction	71	644	663	653	5,810,220	684.09
Manufacturing	27	2,351	2,382	2,392	39,011,789	1,263.54
Trade, Transportation & Utilities	232	3,662	3,625	3,639	30,193,578	637.72
Wholesale Trade	52	507	507	511	5,495,946	831.67
Retail Trade	130	1,409	1,391	1,379	7,533,157	415.99
Transportation, Warehousing & Utilities	50	1,746	1,727	1,749	17,164,475	758.53
Information	8	81	80	77	1,412,547	1,369.63
Financial Activities	84	406	407	387	3,757,736	722.64
Professional & Business Services	83	1,149	1,100	1,097	6,706,503	462.54
Education & Health Services	142	1,064	1,065	1,050	8,024,755	582.53
Leisure & Hospitality	90	1,482	1,510	1,553	5,462,460	277.35
Other Services	56	291	294	297	1,546,262	404.57
Local Government	25	1,504	1,504	1,486	17,562,569	901.85
State Government	16	513	518	517	5,171,749	770.98

TABLE 6. COUNTY SUMMARY

North American Industry Classification System - Industry Groups	Number of Employing Units	Employment			Total Earnings Apr - Jun 2015	Average Weekly Earnings
		Apr	May	Jun		
MISSISSIPPI COUNTY - TOTAL	1,206	17,714	17,674	17,182	\$178,173,958	\$782.14
Natural Resources & Mining	119	554	569	593	4,404,657	592.34
Construction	52	584	575	572	7,061,661	941.43
Manufacturing	56	6,123	6,008	5,828	85,959,707	1,104.56
Trade, Transportation & Utilities	293	2,951	2,934	2,924	24,705,088	647.20
Wholesale Trade	64	482	485	497	5,514,301	869.22
Retail Trade	163	1,686	1,676	1,666	8,739,534	401.12
Transportation, Warehousing & Utilities	66	783	773	761	10,451,253	1,040.93
Information	7	60	58	59	417,356	544.14
Financial Activities	86	458	459	457	3,736,121	627.50
Professional & Business Services	89	1,170	1,208	1,084	8,488,704	565.84
Education & Health Services	281	1,821	1,836	1,729	13,639,912	584.42
Leisure & Hospitality	88	1,193	1,214	1,229	3,747,955	237.87
Other Services	60	200	205	226	1,475,285	539.54
Local Government	51	2,047	2,055	1,965	19,742,812	750.95
State Government	24	553	553	516	4,794,700	682.16
MONROE COUNTY - TOTAL	311	2,267	2,220	2,219	\$16,205,127	\$557.66
Natural Resources & Mining	36	162	168	169	1,403,863	649.24
Construction	11	43	40	40	340,247	638.36
Manufacturing	7	130	130	127	1,186,291	707.39
Trade, Transportation & Utilities	82	656	650	649	5,330,858	629.26
Wholesale Trade	19	279	281	286	2,899,727	790.98
Retail Trade	39	265	257	253	1,445,805	430.51
Transportation, Warehousing & Utilities	24	112	112	110	985,326	680.79
Financial Activities	22	92	97	93	828,674	678.13
Professional & Business Services	14	48	25	26	155,877	363.35
Education & Health Services	70	290	293	271	1,853,458	500.84
Leisure & Hospitality	20	241	253	267	756,862	229.51
Local Government	21	338	331	339	2,901,823	664.34
State Government	8	106	103	107	829,937	606.09
Other	20	161	130	131	617,237	337.53

TABLE 6. COUNTY SUMMARY

North American Industry Classification System - Industry Groups	Number of Employing Units	Employment			Total Earnings Apr - Jun 2015	Average Weekly Earnings
		Apr	May	Jun		
MONTGOMERY COUNTY - TOTAL	177	1,407	1,459	1,893	\$10,021,263	\$485.94
Natural Resources & Mining	9	41	40	37	306,799	600.00
Construction	21	82	79	56	389,834	414.57
Manufacturing	9	37	38	38	302,290	617.34
Trade, Transportation & Utilities	37	218	228	229	1,412,520	482.91
Wholesale Trade	9	50	50	50	426,889	656.75
Retail Trade	20	145	153	154	798,923	407.89
Transportation, Warehousing & Utilities	8	23	25	25	186,708	590.23
Financial Activities	11	54	64	70	545,255	669.30
Professional & Business Services	17	47	50	48	363,774	578.95
Education & Health Services	21	76	77	75	415,336	420.38
Leisure & Hospitality	20	280	313	759	1,934,117	330.13
Local Government	9	456	455	459	3,590,480	604.80
State Government	8	48	47	48	389,238	628.14
Other	15	68	68	74	371,620	408.37
NEVADA COUNTY - TOTAL	199	2,406	2,442	2,431	\$20,026,712	\$634.92
Natural Resources & Mining	12	74	67	67	700,657	777.36
Trade, Transportation & Utilities	41	546	567	550	4,297,124	596.30
Wholesale Trade	3	16	16	15	67,197	329.94
Retail Trade	23	290	306	294	1,428,765	370.47
Transportation, Warehousing & Utilities	15	240	245	241	2,801,162	890.39
Financial Activities	11	56	59	52	450,275	622.21
Professional & Business Services	13	55	55	57	413,473	571.36
Education & Health Services	44	401	401	401	2,318,512	444.76
Leisure & Hospitality	8	75	79	81	268,255	263.43
Other Services	14	42	44	43	159,194	284.78
Local Government	27	399	396	405	3,321,957	638.84
State Government	10	79	79	84	592,360	564.87
Other	19	679	695	691	7,504,905	838.69

TABLE 6. COUNTY SUMMARY

North American Industry Classification System - Industry Groups	Number of Employing Units	Employment			Total Earnings Apr - Jun 2015	Average Weekly Earnings
		Apr	May	Jun		
NEWTON COUNTY - TOTAL	124	1,098	1,104	1,106	\$6,572,772	\$458.52
Construction	5	17	18	16	74,174	335.63
Manufacturing	7	24	25	23	223,700	716.99
Trade, Transportation & Utilities	31	167	165	163	1,080,027	503.51
Retail Trade	17	110	108	110	525,027	369.39
Other Trade, Transportation & Utilities	14	57	57	53	555,000	766.93
Education & Health Services	27	237	239	241	1,023,861	329.53
Leisure & Hospitality	16	140	147	163	605,065	310.29
Other Services	3	5	5	5	29,072	447.26
Local Government	13	388	385	376	2,778,535	558.05
State Government	8	80	79	79	436,391	423.13
Other	14	40	41	40	321,947	614.01
OUACHITA COUNTY - TOTAL	672	7,077	7,084	7,044	\$56,657,718	\$616.59
Natural Resources & Mining	36	152	152	149	1,356,268	690.92
Construction	35	230	254	247	2,319,583	732.27
Manufacturing	24	535	535	522	5,322,320	771.50
Trade, Transportation & Utilities	170	1,624	1,640	1,661	11,544,096	540.92
Wholesale Trade	28	269	268	277	2,637,824	747.82
Retail Trade	113	1,051	1,064	1,064	5,435,191	394.55
Transportation, Warehousing & Utilities	29	304	308	320	3,471,081	859.46
Information	6	41	42	41	442,898	824.25
Financial Activities	60	289	287	285	2,610,795	699.76
Professional & Business Services	49	565	529	526	4,365,590	621.88
Education & Health Services	179	1,223	1,223	1,198	10,042,943	636.01
Leisure & Hospitality	40	528	541	537	1,593,584	228.99
Other Services	30	134	131	133	1,111,595	644.53
Local Government	29	1,072	1,077	1,082	10,049,870	717.80
State Government	14	684	673	663	5,898,176	673.82

TABLE 6. COUNTY SUMMARY

North American Industry Classification System - Industry Groups	Number of Employing Units	Employment			Total Earnings Apr - Jun 2015	Average Weekly Earnings
		Apr	May	Jun		
PERRY COUNTY - TOTAL	158	1,218	1,213	1,227	\$9,135,566	\$576.33
Natural Resources & Mining	8	61	66	57	901,114	1,130.16
Construction	16	96	91	94	742,189	609.52
Manufacturing	5	39	41	44	305,877	569.25
Trade, Transportation & Utilities	26	198	194	192	1,246,645	492.62
Retail Trade	16	161	159	156	694,742	336.82
Other Trade, Transportation & Utilities	10	37	35	36	551,903	1,179.28
Financial Activities	9	26	27	26	241,669	705.95
Professional & Business Services	19	39	39	46	392,014	729.55
Education & Health Services	40	218	221	239	1,439,096	489.82
Leisure & Hospitality	8	87	79	77	225,659	214.30
Local Government	10	355	360	357	2,904,084	625.16
State Government	8	58	57	57	396,914	532.53
Other	9	41	38	38	340,305	671.21
PHILLIPS COUNTY - TOTAL	851	5,604	5,687	5,692	\$45,779,358	\$622.06
Natural Resources & Mining	66	288	303	312	1,934,391	494.35
Construction	27	90	109	105	960,780	729.34
Manufacturing	12	338	335	344	3,323,003	754.03
Trade, Transportation & Utilities	160	1,355	1,389	1,356	10,579,041	595.44
Wholesale Trade	30	313	312	314	3,504,751	861.33
Retail Trade	86	764	800	788	4,223,102	414.35
Transportation, Warehousing & Utilities	44	278	277	254	2,851,188	813.31
Information	8	41	41	41	429,022	804.92
Financial Activities	42	213	215	209	1,908,859	691.53
Professional & Business Services	48	266	271	263	2,792,004	805.39
Education & Health Services	380	1,327	1,337	1,372	9,719,585	555.74
Leisure & Hospitality	35	287	293	315	953,012	245.73
Other Services	32	73	75	80	471,036	476.76
Local Government	27	828	823	814	8,712,753	815.67
State Government	14	498	496	481	3,995,872	625.17

TABLE 6. COUNTY SUMMARY

North American Industry Classification System - Industry Groups	Number of Employing Units	Employment			Total Earnings Apr - Jun 2015	Average Weekly Earnings
		Apr	May	Jun		
PIKE COUNTY - TOTAL	250	2,387	2,401	2,399	\$16,797,800	\$539.36
Natural Resources & Mining	23	110	107	117	961,946	664.63
Construction	14	32	32	34	264,817	623.59
Manufacturing	17	239	242	242	1,471,958	469.82
Trade, Transportation & Utilities	66	525	537	525	3,427,813	498.45
Wholesale Trade	11	129	130	127	963,319	575.92
Retail Trade	37	336	350	342	1,884,126	422.96
Transportation, Warehousing & Utilities	18	60	57	56	580,368	774.17
Information	5	22	23	21	248,123	867.56
Financial Activities	22	199	197	201	1,733,766	670.18
Professional & Business Services	18	69	66	71	953,124	1,067.73
Education & Health Services	25	344	339	323	1,876,556	430.47
Leisure & Hospitality	25	209	227	235	690,031	237.31
Other Services	15	52	52	52	363,521	537.75
Local Government	10	428	423	423	3,985,247	721.88
State Government	10	158	156	155	820,898	403.92
POINSETT COUNTY - TOTAL	536	5,154	5,262	5,247	\$45,351,300	\$668.18
Natural Resources & Mining	69	422	439	438	3,994,038	709.55
Construction	22	90	96	95	781,880	642.11
Manufacturing	20	682	677	653	6,981,518	800.76
Trade, Transportation & Utilities	136	1,226	1,271	1,281	10,138,924	619.31
Wholesale Trade	33	381	404	408	5,080,658	982.78
Retail Trade	73	695	720	725	3,668,867	395.64
Transportation, Warehousing & Utilities	30	150	147	148	1,389,399	720.52
Information	5	53	53	53	508,549	738.10
Financial Activities	40	239	236	233	2,259,588	736.50
Professional & Business Services	30	181	180	184	2,633,939	1,115.29
Education & Health Services	112	715	731	727	5,006,578	531.69
Leisure & Hospitality	42	353	379	382	1,102,516	228.39
Other Services	20	42	44	44	282,378	501.26
Local Government	29	1,018	1,026	1,030	10,582,950	794.48
State Government	11	133	130	127	1,078,442	638.13

TABLE 6. COUNTY SUMMARY

North American Industry Classification System - Industry Groups	Number of Employing Units	Employment			Total Earnings Apr - Jun 2015	Average Weekly Earnings
		Apr	May	Jun		
POLK COUNTY - TOTAL	490	5,867	5,910	5,963	\$43,668,926	\$568.06
Natural Resources & Mining	21	114	112	121	1,336,540	888.85
Construction	29	206	214	218	1,446,116	523.07
Manufacturing	36	1,334	1,293	1,303	10,853,725	637.33
Trade, Transportation & Utilities	125	1,096	1,111	1,117	6,895,454	478.72
Wholesale Trade	22	59	56	57	561,006	752.69
Retail Trade	70	803	820	826	4,070,217	383.54
Transportation, Warehousing & Utilities	33	234	235	234	2,264,231	743.26
Information	8	64	63	71	472,223	550.38
Financial Activities	49	237	241	247	1,848,752	588.46
Professional & Business Services	44	168	163	159	1,497,077	705.06
Education & Health Services	80	997	998	1,000	7,900,057	608.71
Leisure & Hospitality	35	455	488	461	1,435,028	235.87
Other Services	28	205	209	280	1,522,173	506.15
Local Government	21	711	738	730	6,442,210	682.27
State Government	14	280	280	256	2,019,571	571.15
POPE COUNTY - TOTAL	1,818	26,523	26,618	26,440	\$241,708,340	\$700.91
Natural Resources & Mining	34	789	801	807	8,948,473	861.51
Construction	158	1,366	1,392	1,425	16,927,450	933.86
Manufacturing	78	4,567	4,548	4,562	44,440,911	749.84
Trade, Transportation & Utilities	428	6,123	6,174	6,198	58,443,415	729.22
Wholesale Trade	80	581	587	587	6,039,292	794.12
Retail Trade	269	3,340	3,359	3,366	18,792,743	430.88
Transportation, Warehousing & Utilities	79	2,202	2,228	2,245	33,611,380	1,162.02
Information	24	190	190	190	1,646,026	666.41
Financial Activities	182	1,256	1,271	1,283	10,120,601	613.00
Professional & Business Services	281	2,142	2,195	2,150	22,595,055	803.80
Education & Health Services	327	3,117	3,093	3,109	26,207,241	648.98
Leisure & Hospitality	138	2,589	2,591	2,560	8,695,638	259.26
Other Services	110	451	463	469	3,384,047	564.67
Local Government	42	2,194	2,176	2,184	23,389,285	823.55
State Government	16	1,739	1,724	1,503	16,910,198	785.81

TABLE 6. COUNTY SUMMARY

North American Industry Classification System - Industry Groups	Number of Employing Units	Employment			Total Earnings Apr - Jun 2015	Average Weekly Earnings
		Apr	May	Jun		
PRAIRIE COUNTY - TOTAL	258	1,541	1,578	1,553	\$12,849,534	\$634.69
Natural Resources & Mining	35	167	181	191	1,689,891	723.52
Trade, Transportation & Utilities	66	346	360	373	2,834,041	606.13
Wholesale Trade	12	92	96	97	1,371,042	1,110.16
Retail Trade	37	191	199	210	937,327	360.51
Transportation, Warehousing & Utilities	17	63	65	66	525,672	625.30
Financial Activities	16	60	59	59	457,717	593.41
Professional & Business Services	12	65	62	63	453,798	551.17
Education & Health Services	53	236	241	240	1,598,728	514.56
Leisure & Hospitality	18	87	88	92	276,872	239.30
Other Services	14	23	24	27	141,125	440.10
Local Government	15	308	303	297	2,608,761	663.02
State Government	9	35	36	36	304,416	656.54
Other	20	214	224	175	2,484,185	935.19
PULASKI COUNTY - TOTAL	14,355	235,812	237,045	235,551	\$2,649,222,597	\$863.00
Natural Resources & Mining	54	680	677	679	8,834,524	1,001.34
Construction	960	8,612	8,727	8,851	101,120,884	891.01
Manufacturing	338	12,773	12,811	12,860	164,142,119	985.30
Trade, Transportation & Utilities	3,165	47,518	48,032	48,228	484,874,758	778.24
Wholesale Trade	987	11,764	11,825	11,855	171,725,639	1,118.07
Retail Trade	1,796	25,189	25,570	25,706	181,837,125	548.78
Transportation, Warehousing & Utilities	382	10,565	10,637	10,667	131,311,994	950.85
Information	194	5,447	5,483	5,560	81,008,495	1,133.67
Financial Activities	1,703	16,227	16,210	16,250	263,252,962	1,247.78
Professional & Business Services	2,848	32,760	32,479	32,164	361,228,576	855.83
Education & Health Services	2,463	38,818	38,744	38,575	441,235,974	876.75
Leisure & Hospitality	1,188	22,846	23,439	23,603	97,168,611	320.85
Other Services	1,134	6,308	6,397	6,638	58,326,505	695.86
Local Government	109	15,606	15,705	14,287	201,967,967	1,022.15
State Government	199	28,217	28,341	27,856	386,061,222	1,055.41

TABLE 6. COUNTY SUMMARY

North American Industry Classification System - Industry Groups	Number of Employing Units	Employment			Total Earnings Apr - Jun 2015	Average Weekly Earnings
		Apr	May	Jun		
RANDOLPH COUNTY - TOTAL	409	4,208	4,296	4,268	\$29,865,029	\$539.61
Natural Resources & Mining	29	114	114	120	750,355	497.58
Construction	27	75	84	92	480,951	442.19
Manufacturing	27	492	527	527	4,036,693	602.55
Trade, Transportation & Utilities	96	828	836	834	5,765,626	532.64
Wholesale Trade	18	154	159	161	1,438,415	700.30
Retail Trade	59	556	559	553	2,983,911	412.83
Transportation, Warehousing & Utilities	19	118	118	120	1,343,300	870.76
Information	5	33	33	32	319,836	753.15
Financial Activities	35	147	145	147	1,146,146	602.49
Professional & Business Services	37	166	169	173	1,147,679	521.36
Education & Health Services	65	808	818	807	5,689,242	539.62
Leisure & Hospitality	29	391	416	427	1,175,693	219.87
Other Services	24	68	64	69	395,228	453.76
Local Government	24	752	755	741	6,233,077	639.86
State Government	11	334	335	299	2,724,503	649.52
SAINT FRANCIS COUNTY - TOTAL	787	7,322	7,327	7,410	\$57,054,302	\$596.87
Natural Resources & Mining	46	200	226	249	1,840,892	629.36
Construction	45	185	191	188	1,772,069	725.07
Trade, Transportation & Utilities	158	2,003	2,028	2,065	15,027,163	568.87
Wholesale Trade	32	564	583	593	6,221,721	825.16
Retail Trade	104	1,130	1,135	1,148	5,841,289	394.96
Transportation, Warehousing & Utilities	22	309	310	324	2,964,153	725.38
Information	5	61	62	61	523,697	656.81
Financial Activities	61	254	258	246	2,070,157	630.25
Professional & Business Services	47	472	451	447	2,632,213	443.38
Education & Health Services	299	1,390	1,399	1,407	11,180,884	614.92
Leisure & Hospitality	44	632	656	655	2,014,816	239.30
Local Government	28	912	909	926	9,493,944	797.56
State Government	16	549	520	502	4,385,984	644.27
Other	38	664	627	664	6,112,483	721.52

TABLE 6. COUNTY SUMMARY

North American Industry Classification System - Industry Groups	Number of Employing Units	Employment			Total Earnings Apr - Jun 2015	Average Weekly Earnings
		Apr	May	Jun		
SALINE COUNTY - TOTAL	1,941	22,494	22,896	23,130	\$194,240,886	\$654.19
Natural Resources & Mining	14	57	53	54	558,597	786.02
Construction	268	1,817	1,881	1,929	18,948,294	777.09
Manufacturing	85	1,385	1,391	1,377	16,329,671	907.39
Trade, Transportation & Utilities	439	5,166	5,300	5,347	41,288,937	602.56
Wholesale Trade	110	568	568	562	6,720,632	913.38
Retail Trade	264	4,058	4,191	4,227	29,124,720	538.72
Transportation, Warehousing & Utilities	65	540	541	558	5,443,585	766.45
Information	13	145	148	146	1,707,400	897.53
Financial Activities	201	723	723	735	7,680,939	812.71
Professional & Business Services	264	1,664	1,698	1,750	15,388,853	694.69
Education & Health Services	288	3,226	3,240	3,242	26,928,445	640.12
Leisure & Hospitality	172	3,002	3,123	3,118	10,912,553	272.45
Other Services	152	745	762	786	5,677,349	571.37
Local Government	30	3,619	3,630	3,700	41,051,472	865.23
State Government	15	945	947	946	7,768,376	631.68
SCOTT COUNTY - TOTAL	184	3,002	3,039	3,047	\$21,010,487	\$533.51
Natural Resources & Mining	18	155	152	155	1,444,493	721.52
Trade, Transportation & Utilities	34	405	418	416	2,945,196	548.56
Wholesale Trade	5	51	51	52	688,132	1,031.17
Retail Trade	22	288	300	297	1,490,824	388.74
Transportation, Warehousing & Utilities	7	66	67	67	766,240	884.12
Financial Activities	21	67	67	66	463,034	534.27
Professional & Business Services	11	62	62	61	385,328	480.66
Education & Health Services	40	281	292	305	2,432,311	639.30
Leisure & Hospitality	13	142	146	143	492,757	263.84
Other Services	11	43	44	42	381,566	682.59
Local Government	6	523	530	538	5,245,608	760.86
State Government	7	61	64	62	369,750	456.29
Other	23	1,263	1,264	1,259	6,850,444	417.56

TABLE 6. COUNTY SUMMARY

North American Industry Classification System - Industry Groups	Number of Employing Units	Employment			Total Earnings Apr - Jun 2015	Average Weekly Earnings
		Apr	May	Jun		
SEARCY COUNTY - TOTAL	177	1,590	1,724	1,707	\$10,326,674	\$474.62
Construction	12	18	14	18	103,640	478.34
Manufacturing	16	211	213	208	1,156,640	422.34
Trade, Transportation & Utilities	41	254	254	245	1,514,575	464.17
Wholesale Trade	8	53	55	57	311,736	435.99
Retail Trade	27	180	178	167	961,388	422.59
Transportation, Warehousing & Utilities	6	21	21	21	241,451	884.44
Financial Activities	13	61	79	88	414,338	419.37
Education & Health Services	43	318	319	313	2,081,322	505.58
Leisure & Hospitality	12	115	117	132	356,870	226.25
Other Services	4	10	10	10	54,897	422.28
Local Government	10	338	347	339	2,540,010	572.42
State Government	7	108	111	109	616,745	433.92
Other	19	157	260	245	1,487,637	518.58
SEBASTIAN COUNTY - TOTAL	3,723	64,360	65,012	64,897	\$641,756,224	\$762.33
Natural Resources & Mining	53	931	898	891	16,013,098	1,358.58
Construction	260	2,412	2,455	2,494	23,400,894	733.62
Manufacturing	192	11,869	11,776	11,819	131,636,899	856.58
Trade, Transportation & Utilities	917	13,107	13,201	13,189	113,835,938	665.11
Wholesale Trade	253	2,789	2,810	2,816	31,050,938	851.53
Retail Trade	539	7,705	7,784	7,758	48,602,483	482.47
Transportation, Warehousing & Utilities	125	2,613	2,607	2,615	34,182,517	1,006.80
Information	40	878	917	921	12,545,620	1,065.96
Financial Activities	415	2,419	2,402	2,410	27,190,212	867.75
Professional & Business Services	597	7,986	8,196	8,117	80,771,729	767.09
Education & Health Services	583	11,056	11,092	11,153	129,810,330	899.56
Leisure & Hospitality	338	6,093	6,346	6,374	23,207,577	284.68
Other Services	266	1,293	1,294	1,363	9,083,514	530.68
Local Government	40	4,549	4,650	4,380	56,425,177	958.92
State Government	22	1,767	1,785	1,786	17,835,236	771.04

TABLE 6. COUNTY SUMMARY

North American Industry Classification System - Industry Groups	Number of Employing Units	Employment			Total Earnings Apr - Jun 2015	Average Weekly Earnings
		Apr	May	Jun		
SEVIER COUNTY - TOTAL	319	4,645	4,745	4,722	\$35,606,227	\$582.26
Natural Resources & Mining	14	164	165	159	1,505,461	711.91
Construction	16	142	138	149	1,682,572	905.10
Trade, Transportation & Utilities	99	899	917	917	7,016,149	592.43
Wholesale Trade	16	118	118	120	2,323,527	1,506.18
Retail Trade	67	694	715	708	3,728,655	406.45
Transportation, Warehousing & Utilities	16	87	84	89	963,967	855.59
Financial Activities	28	205	210	205	1,889,621	703.33
Professional & Business Services	25	114	104	79	639,305	496.74
Education & Health Services	52	532	547	548	4,068,138	577.01
Leisure & Hospitality	26	271	283	302	846,970	228.33
Local Government	12	859	911	891	7,240,146	627.89
State Government	8	194	195	157	1,384,774	585.28
Other	39	1,265	1,275	1,315	9,333,091	558.70
SHARP COUNTY - TOTAL	396	3,806	3,815	3,862	\$27,249,537	\$547.62
Natural Resources & Mining	3	7	8	9	50,655	487.07
Construction	25	112	114	120	1,003,299	669.16
Manufacturing	18	156	156	152	1,008,228	501.44
Trade, Transportation & Utilities	83	1,122	1,119	1,073	9,002,446	626.88
Wholesale Trade	13	41	41	38	296,478	570.15
Retail Trade	58	676	680	688	3,341,072	377.21
Transportation, Warehousing & Utilities	12	405	398	347	5,364,896	1,076.57
Information	6	35	38	38	463,313	963.23
Financial Activities	32	178	180	183	1,709,681	729.28
Professional & Business Services	39	146	143	141	1,219,789	654.63
Education & Health Services	90	752	734	740	4,908,967	508.91
Leisure & Hospitality	42	427	438	448	1,251,765	220.01
Other Services	26	69	70	120	365,104	325.31
Local Government	24	728	742	766	5,718,899	590.23
State Government	8	74	73	72	547,391	576.81

TABLE 6. COUNTY SUMMARY

North American Industry Classification System - Industry Groups	Number of Employing Units	Employment			Total Earnings Apr - Jun 2015	Average Weekly Earnings
		Apr	May	Jun		
STONE COUNTY - TOTAL	282	2,458	2,453	2,509	\$16,127,660	\$501.59
Natural Resources & Mining	7	12	12	36	89,229	343.19
Construction	16	38	40	38	226,417	450.43
Manufacturing	22	222	213	220	1,227,238	432.38
Trade, Transportation & Utilities	67	579	587	591	3,683,543	483.81
Wholesale Trade	6	35	38	40	291,968	596.26
Retail Trade	50	508	513	515	2,990,686	449.32
Transportation, Warehousing & Utilities	11	36	36	36	400,889	856.60
Financial Activities	28	96	98	99	693,880	546.51
Professional & Business Services	14	39	29	28	174,246	418.86
Education & Health Services	56	491	476	487	3,971,354	630.31
Leisure & Hospitality	36	365	370	377	1,080,516	224.24
Local Government	10	402	413	410	3,724,845	701.70
State Government	8	163	164	162	931,600	439.64
Other	18	51	51	61	324,792	459.83
UNION COUNTY - TOTAL	1,344	18,080	18,222	18,322	\$197,098,201	\$832.68
Natural Resources & Mining	96	597	600	608	6,929,225	885.90
Construction	81	1,657	1,677	1,755	21,698,254	983.94
Manufacturing	51	3,199	3,227	3,224	47,107,331	1,126.52
Trade, Transportation & Utilities	329	4,105	4,129	4,229	43,063,604	797.38
Wholesale Trade	68	1,025	1,037	1,097	17,931,321	1,309.91
Retail Trade	202	2,249	2,259	2,284	12,823,533	435.70
Transportation, Warehousing & Utilities	59	831	833	848	12,308,750	1,130.76
Information	9	132	138	141	1,111,715	624.21
Financial Activities	106	620	612	612	6,684,279	836.51
Professional & Business Services	140	1,379	1,431	1,396	20,167,240	1,106.51
Education & Health Services	289	2,349	2,310	2,294	21,094,945	700.14
Leisure & Hospitality	87	1,175	1,200	1,218	4,401,724	282.71
Other Services	106	470	480	490	3,029,295	485.46
Local Government	33	1,807	1,825	1,775	16,472,117	703.03
State Government	17	590	593	580	5,338,472	698.78

TABLE 6. COUNTY SUMMARY

North American Industry Classification System - Industry Groups	Number of Employing Units	Employment			Total Earnings	Average Weekly Earnings
		Apr	May	Jun	Apr - Jun 2015	
VAN BUREN COUNTY - TOTAL	363	3,971	4,021	4,033	\$36,574,521	\$701.89
Natural Resources & Mining	10	329	325	311	5,881,797	1,406.57
Construction	41	180	172	176	1,405,188	614.16
Manufacturing	8	91	99	100	689,570	548.73
Trade, Transportation & Utilities	97	1,166	1,197	1,177	12,476,424	813.33
Wholesale Trade	10	91	89	84	944,640	825.73
Retail Trade	56	599	641	637	3,384,861	416.15
Transportation, Warehousing & Utilities	31	476	467	456	8,146,923	1,343.86
Information	8	31	31	31	331,862	823.48
Financial Activities	30	116	119	118	1,028,982	672.68
Professional & Business Services	35	154	155	158	1,039,313	513.58
Education & Health Services	63	725	730	734	5,033,409	530.63
Leisure & Hospitality	30	392	396	433	1,377,448	260.34
Other Services	23	51	52	54	346,151	508.80
Local Government	11	675	682	680	6,458,843	731.71
State Government	7	61	63	61	505,534	630.60
WASHINGTON COUNTY - TOTAL	5,717	97,544	98,254	98,574	\$986,072,420	\$773.02
Natural Resources & Mining	39	332	319	328	4,245,747	1,000.80
Construction	486	4,129	4,197	4,275	46,201,562	846.12
Manufacturing	219	12,103	12,062	12,181	119,687,798	759.93
Trade, Transportation & Utilities	1,365	22,730	22,783	22,864	205,007,115	691.89
Wholesale Trade	383	3,644	3,684	3,703	55,158,111	1,153.91
Retail Trade	786	12,443	12,522	12,456	80,598,838	497.04
Transportation, Warehousing & Utilities	196	6,643	6,577	6,705	69,250,166	802.05
Information	79	957	974	966	10,746,471	856.04
Financial Activities	636	3,419	3,468	3,471	40,519,336	902.74
Professional & Business Services	1,018	11,427	11,373	11,661	167,313,518	1,120.42
Education & Health Services	802	14,037	14,135	14,046	150,688,034	823.68
Leisure & Hospitality	624	11,726	11,836	11,632	44,558,581	292.17
Other Services	367	1,815	1,815	1,825	13,431,357	568.20
Local Government	60	8,494	8,589	8,713	103,142,392	922.70
State Government	22	6,375	6,703	6,612	80,530,509	943.83

TABLE 6. COUNTY SUMMARY

North American Industry Classification System - Industry Groups	Number of Employing Units	Employment			Total Earnings Apr - Jun 2015	Average Weekly Earnings
		Apr	May	Jun		
WHITE COUNTY - TOTAL	1,841	24,385	24,342	24,101	\$210,010,262	\$665.46
Natural Resources & Mining	56	788	674	710	10,865,793	1,154.46
Construction	159	1,022	1,077	1,105	10,804,203	778.18
Manufacturing	65	2,268	2,249	2,219	24,440,982	837.33
Trade, Transportation & Utilities	492	6,337	6,332	6,346	51,254,786	622.04
Wholesale Trade	90	589	589	606	6,529,737	844.65
Retail Trade	307	3,710	3,699	3,689	22,031,633	458.12
Transportation, Warehousing & Utilities	95	2,038	2,044	2,051	22,693,416	853.90
Information	19	144	140	139	1,167,017	636.67
Financial Activities	173	849	859	856	8,809,304	792.87
Professional & Business Services	203	1,241	1,206	1,154	9,565,267	612.99
Education & Health Services	332	5,209	5,233	5,118	49,055,504	727.54
Leisure & Hospitality	161	2,584	2,627	2,547	8,337,656	248.01
Other Services	116	500	493	476	3,750,887	589.24
Local Government	47	2,718	2,739	2,727	26,753,444	754.38
State Government	18	725	713	704	5,205,419	560.81
WOODRUFF COUNTY - TOTAL	211	1,806	1,826	1,798	\$14,470,392	\$614.98
Natural Resources & Mining	26	169	173	174	1,212,578	542.30
Construction	8	45	48	46	393,308	652.97
Manufacturing	7	229	224	216	2,018,897	696.41
Trade, Transportation & Utilities	44	404	420	413	3,779,876	705.16
Wholesale Trade	11	174	177	172	2,224,168	981.39
Retail Trade	24	173	181	173	779,753	341.45
Transportation, Warehousing & Utilities	9	57	62	68	775,955	957.58
Financial Activities	12	65	65	68	548,302	639.05
Education & Health Services	71	212	219	210	1,531,227	551.26
Leisure & Hospitality	10	71	73	73	223,849	238.05
Local Government	9	460	452	447	3,388,931	575.47
State Government	6	48	48	48	392,178	628.49
Other	18	103	104	103	981,246	730.46

TABLE 6. COUNTY SUMMARY

North American Industry Classification System - Industry Groups	Number of Employing Units	Employment			Total Earnings	Average Weekly Earnings
		Apr	May	Jun	Apr - Jun 2015	
YELL COUNTY - TOTAL	410	6,261	6,306	6,262	\$46,045,038	\$564.33
Natural Resources & Mining	25	185	181	163	1,494,659	652.03
Construction	32	156	169	170	1,353,549	631.03
Manufacturing	20	2,354	2,351	2,336	16,161,698	529.70
Trade, Transportation & Utilities	76	687	706	712	4,407,466	483.19
Wholesale Trade	14	30	33	33	199,021	478.42
Retail Trade	47	509	524	530	2,469,918	364.67
Transportation, Warehousing & Utilities	15	148	149	149	1,738,527	899.55
Financial Activities	30	159	157	160	1,599,856	775.63
Professional & Business Services	38	276	274	273	2,266,934	635.65
Education & Health Services	108	767	763	747	4,888,512	495.44
Leisure & Hospitality	27	311	324	302	934,762	230.22
Local Government	25	1,167	1,184	1,190	11,352,615	739.86
State Government	12	94	90	95	670,720	554.77
Other	17	105	107	114	914,267	647.19
STATEWIDE COUNTY - TOTAL	8,333	30,302	31,359	28,910	\$405,708,616	\$1,033.72
Natural Resources & Mining	95	304	293	292	4,600,422	1,194.19
Construction	715	2,858	3,025	3,205	39,569,453	1,004.78
Manufacturing	49	135	134	135	3,336,085	1,905.61
Trade, Transportation & Utilities	2,842	7,375	7,400	7,417	154,553,386	1,607.16
Wholesale Trade	2,439	6,040	6,021	5,976	137,203,668	1,755.41
Retail Trade	139	327	326	339	4,229,129	983.82
Transportation, Warehousing & Utilities	264	1,008	1,053	1,102	13,120,589	957.26
Information	205	470	460	465	7,933,660	1,312.43
Financial Activities	511	1,269	1,316	1,332	20,303,827	1,196.20
Professional & Business Services	3,190	14,297	15,106	12,408	134,617,796	743.00
Education & Health Services	362	2,109	2,123	2,163	22,085,669	796.98
Leisure & Hospitality	87	134	107	137	1,181,139	721.09
State Government	16	737	740	740	8,634,370	898.76
Other	261	614	655	616	8,892,809	1,028.79

Note: Statewide classification includes employment and payroll data for employers that have not provided a physical location for each employing unit. This section also includes employers without a physical location in Arkansas.

TABLE 7. FEDERAL GOVERNMENT EMPLOYMENT AND EARNINGS IN ARKANSAS

North American Industry Classification System - Industry Groups	Number of Employing Units	Employment			Total Earnings Apr - Jun 2015	Average Weekly Earnings
		Apr	May	Jun		
TOTAL	1,164	20,318	20,215	20,291	\$294,789,066	\$1,118.44
Trade, Transportation & Utilities	599	5,520	5,416	5,405	63,053,198	890.44
Information	2	43	43	43	588,015	1,051.91
Financial Activities	14	109	107	108	2,067,139	1,472.32
Professional & Business Services	33	762	772	807	10,929,544	1,077.40
Education & Health Services	16	5,363	5,347	5,344	89,989,449	1,293.56
Leisure & Hospitality	22	280	290	330	2,874,211	736.98
Other Services	1	1	1	1	8,456	650.46
Public Administration	477	8,240	8,239	8,253	125,279,054	1,168.95

TABLE 8. LOCAL WORKFORCE DEVELOPMENT AREA SUMMARY

North American Industry Classification System - Industry Groups	Number of Employing Units	Employment			Total Earnings	Average
		Apr	May	Jun	Apr - Jun 2015	Weekly Earnings
CENTRAL LOCAL WORKFORCE DEVELOPMENT AREA	6,651	80,672	81,275	81,412	\$733,852,615	\$695.89
Natural Resources & Mining	234	1,921	1,877	1,835	26,305,327	1,077.66
Trade, Transportation & Utilities	1,552	16,211	16,468	16,536	121,930,579	571.73
Wholesale Trade	366	1,922	1,933	1,931	22,656,905	903.65
Retail Trade	930	12,512	12,763	12,830	80,012,675	484.57
Transportation, Warehousing & Utilities	256	1,777	1,772	1,775	19,260,999	834.87
Information	54	587	557	547	5,590,485	762.93
Financial Activities	708	3,043	3,076	3,116	33,170,915	828.89
Professional & Business Services	881	8,613	8,517	8,675	106,346,386	951.04
Education & Health Services	1,067	11,693	11,771	11,813	97,183,427	635.74
Leisure & Hospitality	565	9,975	10,224	10,239	34,716,454	263.21
Local Government	130	10,393	10,390	10,511	116,550,119	859.47
State Government	65	4,692	4,677	4,283	45,417,986	767.73
Other	1,395	13,544	13,718	13,857	146,640,937	822.98

Note: Pulaski County is not included in the Central LOCAL WORKFORCE DEVELOPMENT AREA. Please refer to Page 51 for information on Pulaski County.
Central LOCAL WORKFORCE DEVELOPMENT AREA includes these counties: Faulkner, Lonoke, Monroe, Prairie, and Saline.

EASTERN LOCAL WORKFORCE DEVELOPMENT AREA	3,766	36,623	36,698	37,021	\$302,422,393	\$632.49
Natural Resources & Mining	240	1,211	1,271	1,340	9,373,650	565.97
Construction	154	825	933	1,064	9,859,093	806.23
Trade, Transportation & Utilities	806	9,349	9,391	9,399	77,939,479	639.19
Wholesale Trade	165	2,062	2,099	2,113	24,389,550	897.09
Retail Trade	458	4,846	4,900	4,922	27,006,939	424.90
Transportation, Warehousing & Utilities	183	2,441	2,392	2,364	26,542,990	851.09
Financial Activities	257	1,258	1,261	1,240	11,550,541	709.10
Professional & Business Services	271	2,399	2,340	2,396	18,825,064	608.86
Education & Health Services	1,332	6,420	6,464	6,486	47,286,664	563.36
Leisure & Hospitality	239	3,662	3,768	3,757	14,106,447	290.99
Local Government	129	4,941	4,889	4,907	52,439,730	821.16
State Government	61	2,415	2,288	2,287	20,191,452	666.60
Other	277	4,143	4,093	4,145	40,850,273	761.41

Eastern Local Workforce Development Area includes these counties: Crittenden, Cross, Lee, Phillips, and Saint Francis.

TABLE 8. LOCAL WORKFORCE DEVELOPMENT AREA SUMMARY

North American Industry Classification System - Industry Groups	Number of Employing Units	Employment			Total Earnings	Average Weekly Earnings
		Apr	May	Jun	Apr - Jun 2015	
NORTH CENTRAL LOCAL WORKFORCE DEVELOPMENT AREA	5,598	68,111	68,507	68,426	\$566,353,742	\$637.41
Construction	430	2,403	2,517	2,530	23,223,410	719.36
Manufacturing	233	8,135	8,170	8,185	80,083,576	754.63
Trade, Transportation & Utilities	1,406	15,960	16,021	16,005	129,767,353	624.06
Retail Trade	901	9,711	9,781	9,798	56,396,471	444.33
Other Trade, Transportation & Utilities	505	6,249	6,240	6,207	73,370,882	905.63
Financial Activities	503	2,445	2,478	2,492	24,164,755	752.05
Education & Health Services	1,070	13,250	13,291	13,195	113,649,257	660.02
Leisure & Hospitality	502	6,475	6,707	6,783	21,145,578	244.42
Local Government	228	9,038	9,114	8,988	83,349,453	708.71
State Government	105	3,145	3,079	3,012	26,565,442	663.76
Other	1,121	7,260	7,130	7,236	64,404,918	687.26

North Central Local Workforce Development Area includes these counties: Cleburne, Fulton, Independence, IZard, Jackson, Sharp, Stone, Van Buren, White, and Woodruff.

NORTHEAST Local Workforce Development Area	6,585	96,614	97,209	96,583	\$874,268,616	\$694.73
Natural Resources & Mining	443	2,085	2,191	2,262	17,276,615	609.81
Construction	438	3,209	3,308	3,418	33,160,763	770.26
Manufacturing	308	19,643	19,591	19,474	230,125,645	904.58
Trade, Transportation & Utilities	1,752	19,251	19,354	19,347	150,694,931	600.08
Wholesale Trade	397	3,700	3,746	3,752	43,796,321	902.56
Retail Trade	1,020	12,449	12,505	12,500	71,674,187	441.61
Transportation, Warehousing & Utilities	335	3,102	3,103	3,095	35,224,423	874.06
Financial Activities	562	3,102	3,095	3,112	31,272,850	775.25
Professional & Business Services	658	6,866	6,859	6,706	51,450,617	581.14
Education & Health Services	1,174	15,792	15,853	15,668	160,323,346	781.98
Leisure & Hospitality	523	8,792	8,953	8,875	29,349,909	254.43
Local Government	218	11,333	11,441	11,227	110,366,046	749.07
State Government	102	4,342	4,348	4,254	43,212,989	770.41
Other	407	2,199	2,216	2,240	17,034,905	590.70

Northeast Local Workforce Development Area includes these counties: Clay, Craighead, Greene, Lawrence, Mississippi, Poinsett, and Randolph.

TABLE 8. LOCAL WORKFORCE DEVELOPMENT AREA SUMMARY

North American Industry Classification System - Industry Groups	Number of Employing Units	Employment			Total Earnings Apr - Jun 2015	Average Weekly Earnings
		Apr	May	Jun		
NORTHWEST LOCAL WORKFORCE DEVELOPMENT AREA	15,416	253,445	256,253	258,029	\$2,688,585,360	\$808.16
Natural Resources & Mining	136	1,466	1,473	1,462	18,711,564	981.15
Trade, Transportation & Utilities	3,811	57,421	58,067	58,766	571,454,250	756.79
Wholesale Trade	1,226	9,342	9,442	9,514	174,636,301	1,424.15
Retail Trade	2,109	30,792	31,109	31,258	194,680,194	482.25
Transportation, Warehousing & Utilities	476	17,287	17,516	17,994	202,137,755	883.52
Information	204	2,472	2,488	2,482	27,925,023	865.93
Education & Health Services	2,221	31,277	31,465	31,184	308,354,515	757.60
Leisure & Hospitality	1,608	27,409	28,505	28,911	109,849,937	298.85
Other Services	962	4,453	4,486	4,506	33,938,596	582.52
Local Government	305	22,822	23,101	23,271	261,196,025	871.12
State Government	111	9,038	9,305	8,938	103,445,618	875.04
Other	6,058	97,087	97,363	98,509	1,253,709,832	987.57

Northwest Local Workforce Development Area includes these counties: Baxter, Benton, Boone, Carroll, Madison, Marion, Newton, Searcy, and Washington.

SOUTHEAST LOCAL WORKFORCE DEVELOPMENT AREA	6,220	69,565	69,920	69,651	\$623,542,801	\$688.04
Natural Resources & Mining	433	2,363	2,381	2,454	21,748,393	697.26
Construction	303	2,205	2,230	2,278	21,588,329	742.13
Manufacturing	208	14,340	14,330	14,451	172,822,120	924.89
Trade, Transportation & Utilities	1,286	12,753	12,893	12,927	100,151,833	599.17
Wholesale Trade	239	2,089	2,125	2,131	23,072,276	839.14
Retail Trade	773	7,832	7,910	7,871	44,468,108	434.59
Transportation, Warehousing & Utilities	274	2,832	2,858	2,925	32,611,449	873.56
Financial Activities	412	2,488	2,484	2,446	24,289,509	755.63
Education & Health Services	2,065	10,696	10,705	10,618	84,693,112	610.41
Local Government	205	9,191	9,272	9,203	85,643,028	714.37
State Government	137	6,337	6,331	5,948	59,144,031	733.17
Other	1,171	9,192	9,294	9,326	53,462,446	443.60

Southeast Local Workforce Development Area includes these counties: Arkansas, Ashley, Bradley, Chicot, Cleveland, Desha, Drew, Grant, Jefferson, and Lincoln.

TABLE 8. LOCAL WORKFORCE DEVELOPMENT AREA SUMMARY

North American Industry Classification System - Industry Groups	Number of Employing Units	Employment			Total Earnings	Average Weekly Earnings
		Apr	May	Jun	Apr - Jun 2015	
SOUTHWEST LOCAL WORKFORCE DEVELOPMENT AREA	5,780	78,722	78,953	79,017	\$733,830,823	\$715.47
Natural Resources & Mining	354	2,439	2,452	2,484	26,863,813	840.59
Trade, Transportation & Utilities	1,419	15,937	16,101	16,209	135,074,481	646.07
Wholesale Trade	247	2,483	2,517	2,587	34,001,109	1,034.19
Retail Trade	869	9,039	9,167	9,179	49,609,069	418.05
Transportation, Warehousing & Utilities	303	4,415	4,417	4,443	51,464,303	894.64
Information	55	468	470	468	5,196,694	852.94
Financial Activities	490	2,595	2,583	2,552	24,917,515	743.88
Education & Health Services	1,217	9,386	9,373	9,312	71,330,836	586.40
Leisure & Hospitality	412	5,532	5,654	5,741	19,105,995	260.48
Other Services	380	1,725	1,726	1,742	10,440,362	463.95
Local Government	254	9,899	9,984	9,939	95,505,224	739.04
State Government	139	3,848	3,786	3,720	35,032,417	712.03
Other	1,060	26,893	26,824	26,850	310,363,486	888.98

Southwest Local Workforce Development Area includes these counties: Calhoun, Columbia, Dallas, Hempstead, Howard, Lafayette, Little River, Miller, Nevada, Ouachita, Sevier, and Union

WEST CENTRAL LOCAL WORKFORCE DEVELOPMENT AREA	8,239	106,355	107,040	106,606	\$897,387,811	\$647.15
Natural Resources & Mining	240	2,268	2,279	2,287	\$24,045,801	811.97
Construction	755	4,500	4,590	4,649	\$44,871,516	753.69
Manufacturing	341	16,110	16,075	16,116	157,758,941	753.73
Trade, Transportation & Utilities	1,858	21,501	21,666	21,723	172,286,601	612.71
Wholesale Trade	329	2,074	2,083	2,081	21,392,003	791.38
Retail Trade	1,237	14,096	14,248	14,296	83,393,008	451.33
Transportation, Warehousing & Utilities	292	5,331	5,335	5,346	67,501,590	972.85
Financial Activities	812	3,935	3,971	3,999	37,396,220	724.90
Professional & Business Services	958	7,852	8,104	7,979	67,970,542	655.34
Education & Health Services	1,530	16,486	16,427	16,498	148,194,864	692.13
Leisure & Hospitality	768	13,330	13,504	13,809	49,078,882	278.67
Local Government	225	11,431	11,533	11,030	122,474,645	831.42
State Government	125	5,837	5,758	5,337	50,262,591	685.04
Other	627	3,105	3,133	3,179	23,047,208	564.79

West Central Local Workforce Development Area includes these counties: Clark, Conway, Garland, Hot Spring, Johnson, Montgomery, Perry, Pike, Pope, and Yell

TABLE 8. LOCAL WORKFORCE DEVELOPMENT AREA SUMMARY

North American Industry Classification System - Industry Groups	Number of Employing Units	Employment			Total Earnings	Average Weekly Earnings
		Apr	May	Jun	Apr - Jun 2015	
WESTERN LOCAL WORKFORCE DEVELOPMENT AREA	6,496	102,292	103,164	103,060	\$946,384,994	\$707.89
Natural Resources & Mining	168	1,955	1,847	1,820	27,722,577	1,137.94
Trade, Transportation & Utilities	1,590	22,636	22,831	22,779	188,285,397	636.67
Wholesale Trade	390	3,801	3,822	3,830	42,704,915	860.47
Retail Trade	922	12,269	12,432	12,393	74,168,894	461.42
Transportation, Warehousing & Utilities	278	6,566	6,577	6,556	71,411,588	836.57
Financial Activities	687	3,501	3,498	3,505	36,817,979	808.88
Professional & Business Services	889	10,113	10,314	10,244	98,328,452	739.83
Education & Health Services	1,045	15,161	15,209	15,245	161,123,186	815.13
Leisure & Hospitality	538	8,849	9,191	9,183	32,539,624	275.84
Other Services	423	2,083	2,106	2,236	15,100,993	542.39
Local Government	151	9,307	9,482	9,234	103,140,700	849.36
State Government	76	2,953	2,975	2,933	26,671,371	694.61
Other	929	25,734	25,711	25,881	256,654,715	765.95

Western Local Workforce Development Area includes these counties: Crawford, Franklin, Logan, Polk, Scott, and Sebastian