

Arkansas Covered Employment & Earnings



Fourth Quarter
2014

**COVERED EMPLOYMENT AND EARNINGS
STATE OF ARKANSAS
FOURTH QUARTER 2014**

**ASA HUTCHINSON, GOVERNOR
STATE OF ARKANSAS**

**DARYL BASSETT, DIRECTOR
DEPARTMENT OF WORKFORCE SERVICES**

**PUBLISHED BY
LABOR MARKET INFORMATION
BUREAU OF LABOR STATISTICS PROGRAMS
POST OFFICE BOX 2981
LITTLE ROCK, ARKANSAS 72203-2981
SUSAN PRICE, BLS PROGRAMS MANAGER
TELEPHONE (501) 682-3103**

STATE OF ARKANSAS WEBPAGE: <http://www.arkansas.gov>

DEPARTMENT OF WORKFORCE SERVICES WEBPAGE: <http://www.arkansas.gov/esd/>

WEBPAGE FOR LABOR MARKET INFORMATION: <http://www.discover.arkansas.gov>

RELEASED: JUNE 2015

TABLE OF CONTENTS

DESCRIPTION OF DATA	PAGE
Description and Classification of Data	1
Definition of Covered Employment and Earnings	2
Significant Developments During Fourth Quarter 2014	3

LIST OF GRAPHS AND TABLES

Graph 1	Total Covered Employment for Selected Years, Arkansas	7
Graph 2	Total Covered Earnings, by Calendar Quarter for Selected Years, Arkansas	8
Table 1	Quarterly Comparison of Covered Employment and Wages, by Industry	5
Table 2	Total Covered Employment in Arkansas, 2007 – 2014	6
Table 3	Total Covered Earnings, 2007 – 2014	9
Table 4	Total Taxable Earnings, 2007 – 2014	10
Table 5	State Summary – Employment and Total Earnings, by Industry, Fourth Quarter 2014	
11		
Table 6	County Summary – Employment and Total Earnings, by Industry, Fourth Quarter 2014	22
Table 7	Federal Government Employment and Total Earnings in Arkansas, Fourth Quarter 2014	60
Table 8	Workforce Information Area – Employment and Total Earnings, by Industry, Fourth Quarter 2014	61

EMPLOYMENT AND EARNINGS
UNDER THE ARKANSAS EMPLOYMENT SECURITY LAW
FOURTH QUARTER 2014

DESCRIPTION AND CLASSIFICATION OF DATA

This publication contains covered employment and payroll data by industry and county for the Fourth Quarter 2014 and a record for total covered employment by month, quarterly payroll data, average weekly earnings, and total taxable earnings for 2007 through 2014. These data are compiled from quarterly contributions and wage reports submitted by employers subject to the Arkansas Employment Security Law.

Employment data have been tabulated for each month of the quarter by industry under the **North American Industry Classification System** (NAICS) by state, county, and workforce area. Payroll data represent the total wages paid during the quarter and are classified by industry for the state and by publishable industry groups for each county and workforce area.

Due to industry classification revisions, previously published data will not always be comparable with current data. For this reason, comparisons should not be made between the same industries under different revisions. For more information, visit the NAICS home page at <http://www.census.gov/naics>.

Industry Classification Revisions

- SIC (Standard Industrial Classification) 1987 to NAICS 2002
- NAICS 2002 to NAICS 2007
- NAICS 2007 to NAICS 2012

The tabulation of this data is a joint effort in conjunction with the United States Bureau of Labor Statistics. Data included in this publication are subject to revisions. Revisions are typically reflected in the Annual Covered Employment and Earnings publication.

DEFINITION OF COVERED EMPLOYMENT AND EARNINGS

Covered Employment is the total number of workers employed by establishments subject to the Arkansas Employment Security Law that worked or received pay for the payroll period including the 12th of the month. Earnings include all wages paid to any covered employee by their employer including salaries, bonuses, commissions, fees, fringe benefits, sick pay made directly to employees or dependents, deferred compensation, and reported tips. These wages include both taxable and nontaxable wages. Only the first \$12,000 paid to each worker by an employer in the calendar year is taxable under the Arkansas Employment Security Law.

An Arkansas state unemployment insurance account is required of any entity meeting the definition of an employer. As described by Arkansas Department of Workforce Services Law, the definition of an employer includes, but is not limited to, a sole proprietorship, partnership, corporation, associations, trust, estate, and receiver or trustee in bankruptcy. The entity must employ one or more individuals for ten or more days in a calendar year, whether or not the days are consecutive.

Currently excluded from coverage is employment covered by the Railroad Unemployment Insurance Act, some domestic service workers, employees of small agricultural establishments, self-employed workers, unpaid family workers, insurance and real estate agents paid only on a commission basis, and employees of churches and religious organizations except separately incorporated schools.

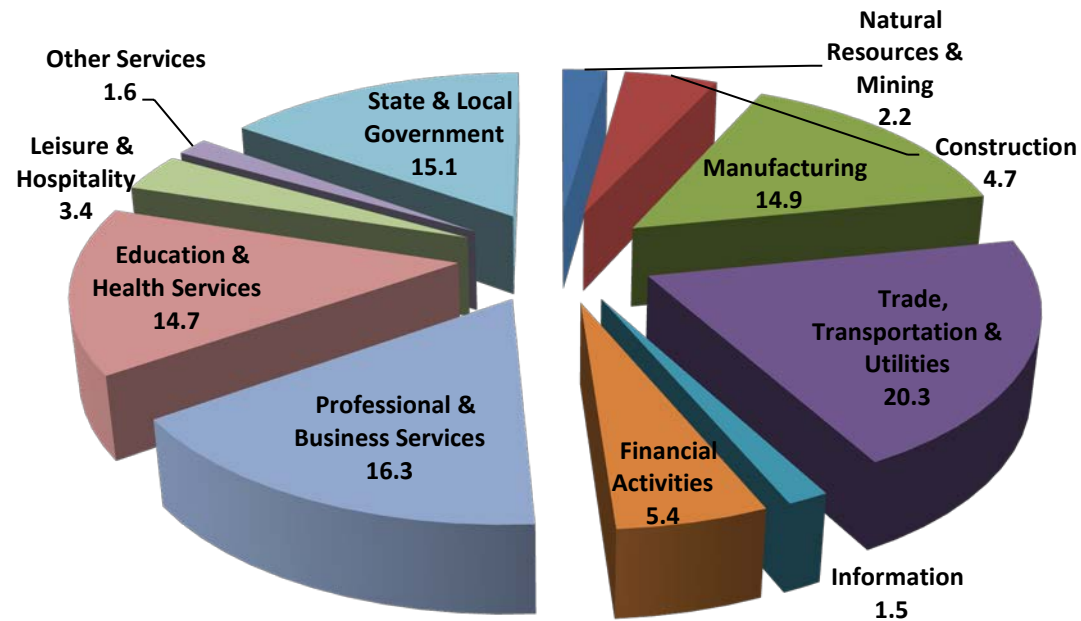
Civilian federal workers are covered by Unemployment Compensation for Federal Employees (UCFE).

SIGNIFICANT DEVELOPMENTS DURING FOURTH QUARTER 2014

AVERAGE EMPLOYMENT CHANGES

Covered employment averaged 1,156,999 during the Fourth Quarter 2014 (refer to Table 1), an increase of 32,464 (2.9%) from the previous quarter and an increase of 19,665 (1.7%) from the average recorded one year ago. The over-the-year comparison is more significant when used as an economic indicator and allows for seasonal factors that appear when comparing over-the-quarter data to be disregarded.

Average Covered Employment by NAICS



EMPLOYMENT CHANGES FROM THIRD QUARTER 2014

Compared to Third Quarter 2014, covered employment increased in five major industry sectors. State and Local Government added 25,018 jobs as schools resumed for the fall semester. Trade, Transportation & Utilities increased 5,465, mainly due to the additional hiring in retail trade for the holiday season. Professional & Business Services gained 4,531 jobs. Education & Health Services and Construction both experienced increases of 1,691 and 519, respectively. Six major industry sectors had declines ranging from 66 in Natural Resources & Mining to 3,773 in Leisure & Hospitality.

EMPLOYMENT CHANGES FROM FOURTH QUARTER 2013 (QUARTER YEAR AGO COMPARISON)

Over-the-year gains were recorded in seven industry groups (refer to Table 1). The largest gains occurred in Professional & Business Services (5,891), Trade, Transportation & Utilities (5,884) and Leisure & Hospitality (3,225). The most significant losses occurred in State & Local Government (-1,077), Information (-412), and Natural Resources & Mining (-367).

COVERED WAGES

Wages paid to covered workers totaled \$12,041,052,119 for the Fourth Quarter 2014 (refer to Table 1), for an average weekly wage of \$800.55 (refer to Table 5). Calhoun County workers recorded the highest average weekly wage (\$995.86), and employees in Newton County reported the lowest (\$462.04) (refer to Table 6).

The Professional & Business Services industry recorded the highest average weekly wage for the State of Arkansas (\$1,096.78). The Leisure & Hospitality sector recorded the lowest (\$291.06) (refer to Table 5).

Average Weekly Wage by Industry

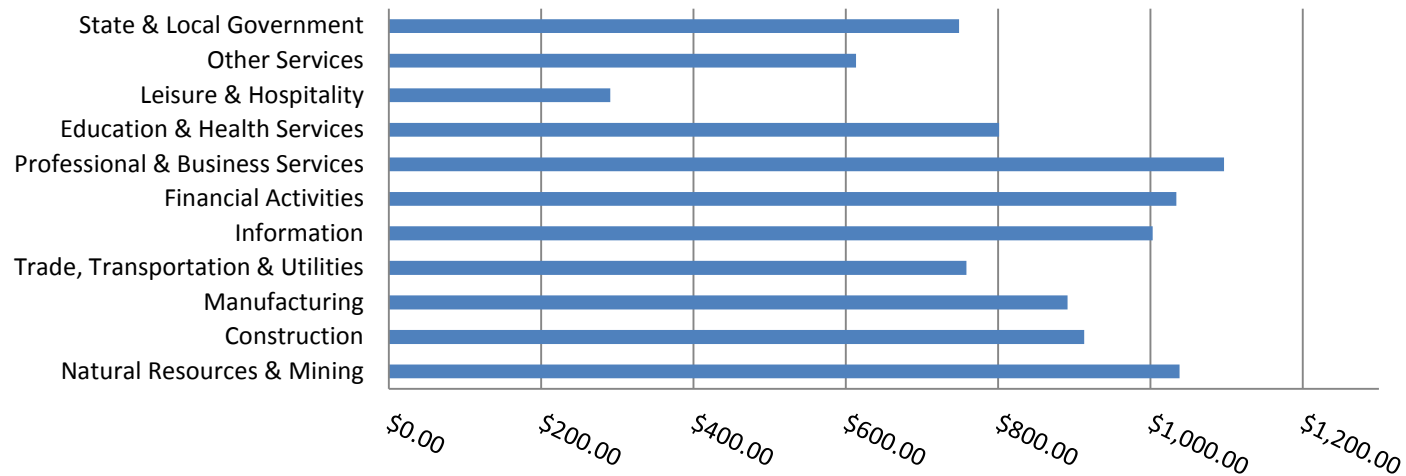


TABLE 1. QUARTERLY COMPARISON OF COVERED EMPLOYMENT AND WAGES, BY INDUSTRY

North American Industry Classification System - Industry Groups	Number of Employing Units	Monthly Employment Average	Percent of Total	Net Change From:		Total Wages Paid Oct - Dec 2014	Percent of Total
				Jul - Sep 2014	Oct - Dec 2013		
TOTAL	86,285	1,156,999	100	32,464	19,665	\$12,041,052,119	100
Natural Resources & Mining	2,586	19,937	1.7	-66	-367	269,100,115	2.2
Agriculture, Forestry, Fishing & Hunting	2,073	13,135	1.1	-60	223	140,188,963	1.2
Mining	513	6,801	0.6	-6	-591	128,911,152	1.1
Construction	6,656	47,624	4.1	519	2,645	565,411,226	4.7
Manufacturing	2,968	155,001	13.4	-119	2,892	1,795,604,030	14.9
Trade, Transportation & Utilities	21,298	247,558	21.4	5,465	5,884	2,440,909,754	20.3
Wholesale Trade	6,907	47,005	4.1	-62	783	768,955,827	6.4
Retail Trade	11,135	140,393	12.1	4,273	3,332	912,211,639	7.6
Transportation & Warehousing	2,847	52,314	4.5	1,283	1,978	613,934,739	5.1
Utilities	409	7,847	0.7	-29	-208	145,807,549	1.2
Information	1,114	13,614	1.2	-71	-412	177,530,641	1.5
Financial Activities	8,135	47,972	4.1	-33	-110	644,893,596	5.4
Finance & Insurance	4,834	34,901	3.0	23	-57	520,643,751	4.3
Real Estate & Rental & Leasing	3,301	13,071	1.1	-56	-53	124,249,845	1.0
Professional & Business Services	13,311	137,502	11.9	4,531	5,891	1,960,533,803	16.3
Professional & Technical Services	8,448	40,910	3.5	1,109	-199	691,611,992	5.7
Management of Companies & Enterprises	500	32,968	2.8	519	1,307	817,188,202	6.8
Administrative & Waste Services	4,363	63,624	5.5	2,904	4,782	451,733,609	3.8
Education & Health Services	15,082	170,344	14.7	1,691	776	1,774,908,144	14.7
Educational Services	757	11,060	1.0	905	-504	94,391,752	0.8
Health Care & Social Assistance	14,325	159,285	13.8	787	1,280	1,680,516,392	14.0
Leisure & Hospitality	6,689	106,824	9.2	-3,773	3,225	404,204,889	3.4
Arts, Entertainment & Recreation	931	9,209	0.8	-2,536	178	49,484,519	0.4
Accommodation & Food Services	5,758	97,615	8.4	-1,238	3,048	354,720,370	2.9
Other Services	5,353	23,918	2.1	-697	318	190,769,469	1.6
State & Local Government	3,093	186,705	16.1	25,018	-1,077	1,817,186,452	15.1
Local Government	1,957	115,527	10.0	22,548	-542	1,029,831,106	8.6
State Government	1,136	71,178	6.2	2,470	-535	787,355,346	6.5
Nonclassifiable Establishments	0	0	0.0	0	0	0	0.0

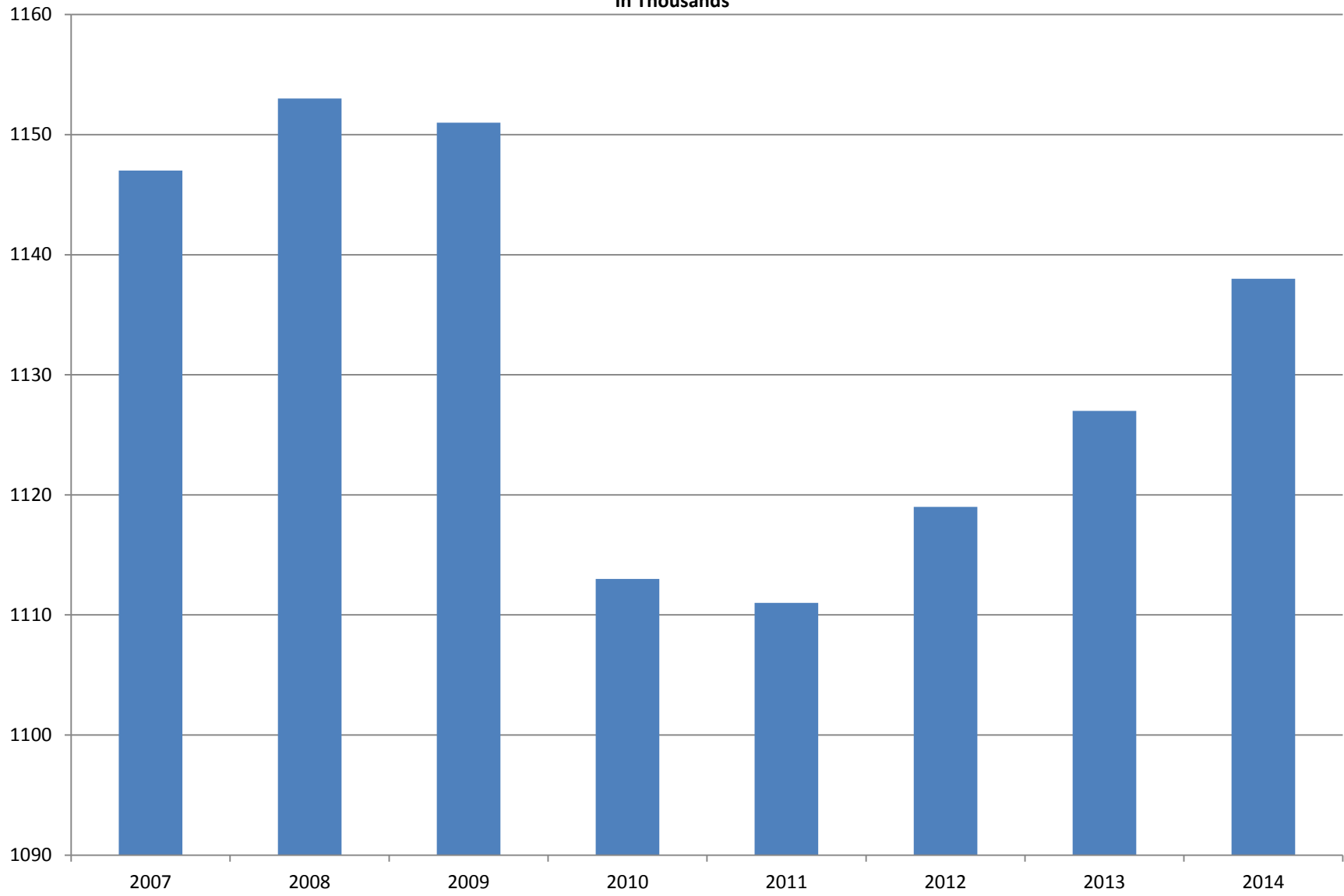
Note: Items do not necessarily add to total because of rounding. Because of industry code changes between years, substantial employment and wage shifts among industries are anticipated.

TABLE 2. TOTAL COVERED EMPLOYMENT IN ARKANSAS

PERIOD	2007	2008	2009	2010	2011	2012	2013	2014
AVERAGE	1,146,948	1,152,994	1,150,965	1,112,591	1,110,947	1,118,639	1,126,588	1,137,512
January	1,130,595	1,137,437	1,141,856	1,119,299	1,089,984	1,098,349	1,113,274	1,114,986
February	1,136,810	1,143,397	1,149,443	1,119,476	1,091,282	1,098,445	1,119,319	1,123,443
March	1,150,439	1,158,895	1,157,690	1,124,386	1,106,198	1,113,061	1,131,123	1,132,406
April	1,155,498	1,159,623	1,159,841	1,123,383	1,115,341	1,129,635	1,136,973	1,140,788
May	1,159,886	1,165,224	1,166,111	1,122,322	1,123,250	1,126,371	1,143,142	1,149,046
June	1,162,026	1,164,207	1,164,167	1,117,884	1,130,164	1,123,412	1,136,739	1,144,876
July	1,106,142	1,110,571	1,114,279	1,071,048	1,073,743	1,080,937	1,079,329	1,097,179
August	1,130,839	1,139,109	1,138,583	1,093,192	1,099,795	1,106,262	1,109,425	1,125,686
September	1,159,814	1,165,135	1,162,333	1,116,580	1,124,281	1,132,779	1,136,019	1,150,739
October	1,156,804	1,162,768	1,157,196	1,113,157	1,125,073	1,138,395	1,136,045	1,153,102
November	1,156,011	1,164,246	1,152,159	1,115,443	1,126,781	1,138,543	1,138,302	1,157,855
December	1,158,509	1,165,314	1,147,927	1,114,919	1,125,466	1,137,474	1,139,361	1,160,040

AVERAGE TOTAL COVERED EMPLOYMENT

In Thousands



TOTAL COVERED EARNINGS BY CALENDAR YEAR

In Thousands

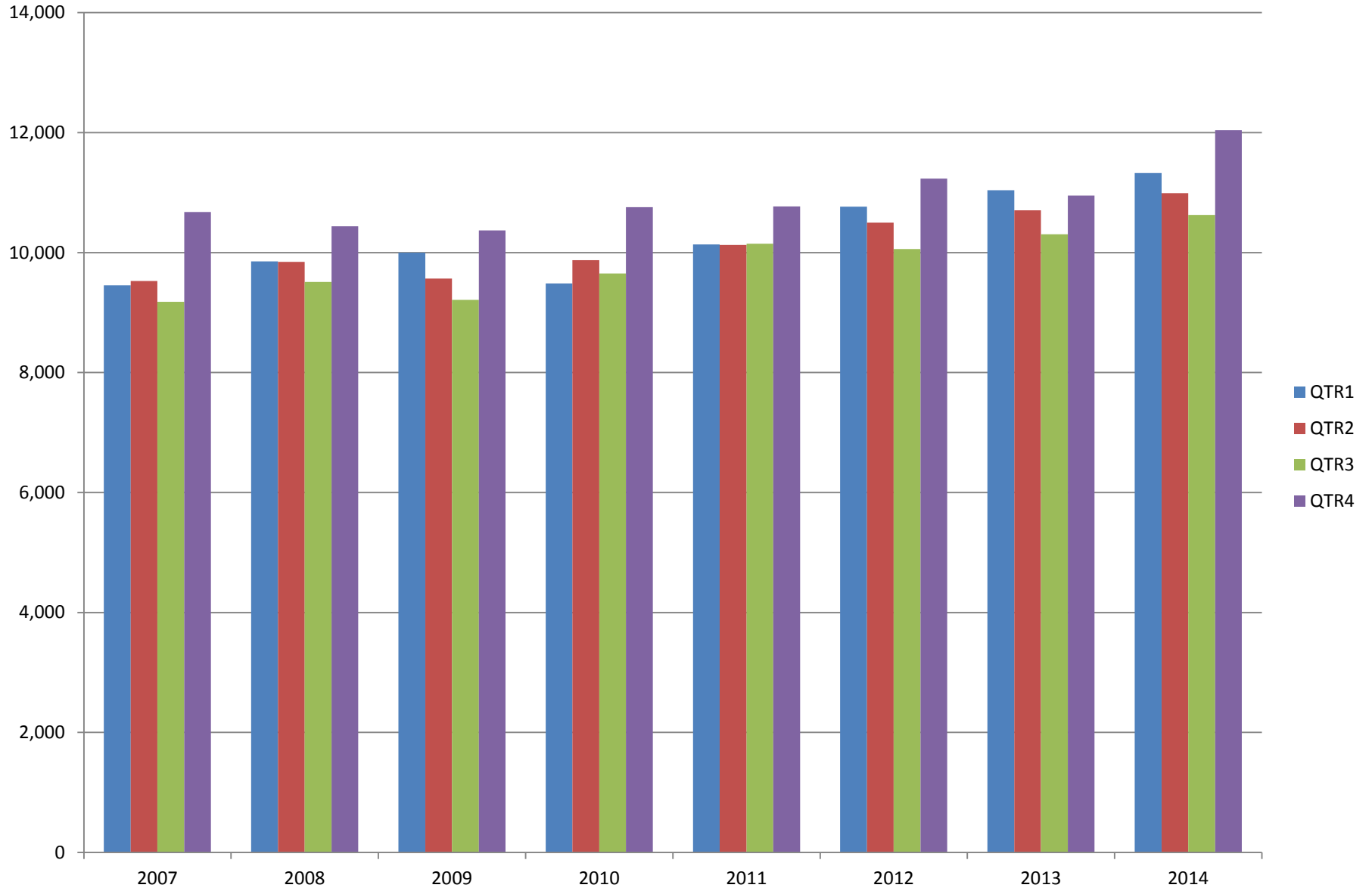


TABLE 3. TOTAL COVERED EARNINGS 2007 - 2014

PERIOD	2007	2008	2009	2010
TOTAL	\$38,833,265,464	\$39,643,039,342	\$39,149,476,305	\$39,769,504,992
January - March	9,452,711,662	9,851,866,058	9,998,452,028	9,486,245,580
April - June	9,525,837,049	9,843,711,293	9,566,968,853	9,873,489,653
July - September	9,178,902,477	9,509,150,631	9,213,797,140	9,653,588,807
October - December	10,675,814,276	10,438,311,360	10,370,258,284	10,756,180,952
Average Weekly Earnings	\$651.11	\$661.21	\$654.12	\$687.40

PERIOD	2011	2012	2013	2014
TOTAL	\$41,177,659,236	\$42,555,976,081	\$43,003,433,021	\$44,986,801,561
January - March	10,134,035,254	10,766,175,449	11,038,435,964	11,325,261,964
April - June	10,128,274,611	10,499,018,872	10,705,006,820	10,991,760,061
July - September	10,147,287,431	10,058,388,682	10,306,649,458	10,628,727,417
October - December	10,768,061,940	11,232,393,078	10,953,340,779	12,041,052,119
Average Weekly Earnings	\$712.80	\$731.59	\$734.07	\$760.55

TABLE 4. TOTAL TAXABLE EARNINGS, 2007 - 2014

PERIOD	2007	2008	2009	2010
TOTAL	10,459,105,059	10,360,487,108	9,787,660,886	11,332,118,456
January - March	5,617,417,571	5,635,750,082	5,423,705,265	5,607,134,758
April - June	2,466,606,627	2,419,313,519	2,293,670,854	2,977,100,591
July - September	1,307,060,412	1,297,473,555	1,165,280,065	1,577,067,770
October - December	1,068,020,449	1,007,949,952	905,004,702	1,170,815,337
PERIOD	2011	2012	2013	2014
TOTAL	11,479,396,226	11,642,854,241	11,669,483,946	11,934,979,213
January - March	5,828,877,821	6,167,036,199	6,194,767,117	6,294,681,175
April - June	2,910,604,359	2,845,540,593	2,807,334,202	2,831,013,392
July - September	1,601,382,146	1,505,833,030	1,509,412,524	1,562,188,659
October - December	1,138,531,900	1,124,444,419	1,157,970,103	1,247,095,987

TABLE 5. STATEWIDE SUMMARY

North American Industry Classification System - Industry Groups		Number of Employing Units	Employment			Total Earnings Oct - Dec 2015	Average Weekly Earnings
			Oct	Nov	Dec		
TOTAL, ALL INDUSTRIES		86,285	1,153,102	1,157,855	1,160,040	\$12,041,052,119	\$800.55
NATURAL RESOURCES & MINING		2,586	20,293	19,940	19,577	\$269,100,115	\$1,038.29
11	AGRICULTURE, FORESTRY, FISHING & HUNTING	2,073	13,508	13,132	12,766	\$140,188,963	\$820.97
111	CROP PRODUCTION	939	4,778	4,470	4,281	\$40,926,847	\$698.10
1111	Oilseed & Grain Farming	656	3,213	3,011	2,836	26,800,077	682.63
1112	Vegetable & Melon Farming	20	161	140	132	945,580	503.95
1113	Fruit & Tree Nut Farming	13	67	56	56	491,250	633.33
1114	Greenhouse & Nursery Production	45	340	319	335	3,895,191	904.32
1119	Other Crop Farming	205	997	944	922	8,794,749	708.89
112	ANIMAL PRODUCTION & AQUACULTURE	301	3,096	3,100	3,112	\$40,785,633	\$1,011.18
1121	Cattle Ranching & Farming	110	385	386	398	3,045,864	601.28
1122	Hog & Pig Farming	12	132	136	134	2,344,050	1,345.61
1123	Poultry & Egg Production	107	2,076	2,107	2,132	31,269,387	1,142.68
1125	Animal Aquaculture	53	439	421	401	3,792,084	693.97
	Other	19	64	50	47	334,248	479.09
115	SUPPORT ACTIVITIES FOR AGRICULTURE & FORESTRY	421	3,256	3,159	2,932	\$34,202,953	\$844.44
1151	Support Activities for Crop Production	291	1,848	1,858	1,464	21,829,030	974.37
1152	Support Activities for Animal Production	61	694	692	686	5,408,428	602.36
1153	Support Activities for Forestry	69	714	609	782	6,965,495	763.62
	OTHER	412	2,378	2,403	2,441	24,273,530	\$775.63
21	MINING	513	6,785	6,808	6,811	\$128,911,152	\$1,457.99
211	OIL & GAS EXTRACTION	84	1,414	1,414	1,428	\$34,607,757	\$1,876.51
212	MINING (EXCEPT OIL & GAS)	108	1,759	1,755	1,749	\$22,745,214	\$997.32
213	SUPPORT ACTIVITIES FOR MINING	321	3,612	3,639	3,634	\$71,558,181	\$1,517.08

TABLE 5. STATEWIDE SUMMARY

North American Industry Classification System - Industry Groups		Number of Employing Units	Employment			Total Earnings Oct - Dec 2015	Average Weekly Earnings
			Oct	Nov	Dec		
CONSTRUCTION		6,656	47,639	47,479	47,753	\$565,411,226	\$913.27
236	CONSTRUCTION OF BUILDINGS	1,639	9,757	9,563	9,561	\$125,431,008	\$1,002.24
2361	Residential Building Construction	1,089	3,120	3,103	3,084	33,108,452	820.93
2362	Nonresidential Building Construction	550	6,637	6,460	6,477	92,322,556	1,088.44
237	HEAVY & CIVIL ENGINEERING CONSTRUCTION	727	8,005	8,057	8,349	\$111,754,543	\$1,056.47
2371	Utility System Construction	389	4,303	4,427	4,445	55,839,559	978.07
2372	Land Subdivision	61	145	135	138	1,604,498	885.81
2373	Highway, Street & Bridge Construction	189	3,022	2,941	2,841	36,045,928	944.83
2379	Other Heavy Construction	88	535	554	925	18,264,558	2,092.80
238	SPECIALTY TRADE CONTRACTORS	4,290	29,877	29,859	29,843	\$328,225,675	\$845.56
2381	Building Foundation & Exterior Contractors	818	5,869	5,861	5,833	61,263,819	804.98
2382	Building Equipment Contractors	2,015	15,562	15,635	15,667	188,058,771	926.05
2383	Building Finishing Contractors	721	3,762	3,773	3,751	34,996,003	715.58
2389	Other Specialty Trade Contractors	736	4,684	4,590	4,592	43,907,082	730.74
MANUFACTURING		2,968	155,286	154,453	155,263	\$1,795,604,030	\$891.11
311	FOOD MANUFACTURING	268	43,145	43,116	43,462	\$394,695,090	\$702.14
3111	Animal Food Manufacturing	43	1,499	1,464	1,448	18,704,622	978.57
3112	Grain & Oilseed Milling	30	2,470	2,397	2,405	31,751,950	1,007.61
3114	Fruit, Vegetable & Specialty Food	19	4,433	4,352	4,417	49,416,574	863.80
3115	Dairy Product Manufacturing	8	523	528	524	6,109,369	895.15
3116	Animal Slaughtering & Processing	79	29,103	29,203	29,429	232,932,715	612.68
3118	Bakeries & Tortilla Manufacturing	58	3,228	3,265	3,296	33,584,162	791.72
3119	Other Food Manufacturing	23	1,838	1,860	1,895	21,939,818	905.24
	Other	8	51	47	48	255,880	404.45
312	BEVERAGE & TOBACCO PRODUCT MANUFACTURING	43	1,177	1,176	1,165	\$11,176,785	\$733.16
313	TEXTILE MILLS	11	73	70	70	\$610,687	\$661.63
314	TEXTILE PRODUCT MILLS	52	912	907	923	\$11,681,376	\$983.12
3141	Textile Furnishing Mills	10	36	33	33	377,703	854.53
3149	Other Textile Product Mills	42	876	874	890	11,303,673	988.08
315	APPAREL MANUFACTURING	18	851	853	874	\$5,956,663	\$533.21
316	LEATHER & ALLIED PRODUCT MANUFACTURING	13	1,106	1,109	1,104	\$8,240,738	\$572.98

TABLE 5. STATEWIDE SUMMARY

North American Industry Classification System - Industry Groups		Number of Employing Units	Employment			Total Earnings Oct - Dec 2015	Average Weekly Earnings
			Oct	Nov	Dec		
321	WOOD PRODUCT MANUFACTURING	320	9,254	9,266	9,391	\$94,312,958	\$779.78
3211	Sawmills & Wood Preservation	139	4,372	4,359	4,376	47,696,183	839.77
3212	Veneer & Engineered Wood Products	49	2,029	2,026	2,061	24,246,315	914.86
3219	Other Wood Product Manufacturing	132	2,853	2,881	2,954	22,370,460	594.20
322	PAPER MANUFACTURING	72	9,810	9,847	9,879	\$154,359,924	\$1,206.04
3221	Pulp, Paper & Paperboard Mills	12	4,056	4,024	4,048	78,583,597	1,495.27
3222	Converted Paper Product Manufacturing	60	5,754	5,823	5,831	75,776,327	1,004.53
323	PRINTING & RELATED SUPPORT ACTIVITIES	244	4,020	4,013	4,048	\$42,018,974	\$802.64
324	PETROLEUM & COAL PRODUCTS MANUFACTURING	18	1,095	1,106	1,105	\$15,853,399	\$1,106.62
325	CHEMICAL MANUFACTURING	112	5,098	5,084	5,109	\$79,900,358	\$1,205.84
3251	Basic Chemical Manufacturing	27	1,761	1,755	1,756	32,561,781	1,425.31
3252	Resin, Rubber & Artificial Fibers	7	299	299	301	4,815,605	1,236.14
3253	Agricultural Chemical Manufacturing	13	350	349	349	5,786,163	1,274.11
3254	Pharmaceutical & Medicine Manufacturing	13	290	287	289	3,507,229	934.60
3255	Paint, Coating & Adhesive Manufacturing	8	261	268	266	3,939,018	1,143.40
3256	Soap, Cleaning Compound, & Toilet Preparation Manufacturing	18	1,234	1,219	1,234	15,169,966	949.49
3259	Other Chemical Preparation Manufacturing	26	903	907	914	14,120,596	1,196.26
326	PLASTICS & RUBBER PRODUCTS MANUFACTURING	137	10,908	10,788	10,840	\$138,136,166	\$979.76
3261	Plastics Product Manufacturing	95	6,604	6,490	6,511	74,950,034	882.23
3262	Rubber Product Manufacturing	42	4,304	4,298	4,329	63,186,132	1,127.63
327	NONMETALLIC MINERAL PRODUCT MANUFACTURING	234	3,704	3,693	3,691	\$42,623,874	\$887.11
3271	Clay Product & Refractory Manufacturing	14	402	398	401	4,185,973	804.32
3272	Glass & Glass Product Manufacturing	10	385	376	380	4,445,798	899.17
3273	Cement & Concrete Product Manufacturing	171	2,004	2,012	1,996	22,276,684	855.09
3274	Lime & Gypsum Product Manufacturing	4	264	266	268	3,548,609	1,026.20
3279	Other Nonmetallic Mineral Products Manufacturing	35	649	641	646	8,166,810	973.48
331	PRIMARY METAL MANUFACTURING	76	9,971	9,943	9,596	\$159,026,035	\$1,243.59
3311	Iron & Steel Mills & Ferroalloys	8	2,474	2,502	2,521	61,207,100	1,884.05
3312	Purchased Steel Product Manufacturing	21	3,115	3,163	3,174	46,136,411	1,126.41
3313	Alumina & Aluminum Production	19	1,222	1,234	1,186	17,499,972	1,108.86
3314	Other Nonferrous Metal Production	8	594	590	600	6,201,309	802.17
3315	Foundries	20	2,566	2,454	2,115	27,981,243	905.00

TABLE 5. STATEWIDE SUMMARY

North American Industry Classification System - Industry Groups		Number of Employing Units	Employment			Total Earnings Oct - Dec 2015	Average Weekly Earnings
			Oct	Nov	Dec		
332	FABRICATED METAL PRODUCT MANUFACTURING	521	14,964	14,995	15,016	\$192,848,929	\$989.52
3321	Forging & Stamping	10	332	351	359	4,026,977	891.84
3322	Cutlery & Hand Tool Manufacturing	14	685	686	676	8,376,124	944.29
3323	Architectural & Structural Metals	148	3,905	3,914	3,928	53,909,019	1,059.04
3324	Boilers, Tanks & Shipping Containers	16	789	780	770	9,678,794	954.92
3325	Hardware Manufacturing	5	262	261	263	3,278,955	962.70
3326	Spring & Wire Product Manufacturing	13	393	401	402	4,484,545	865.30
3327	Machine Shops & Threaded Products	212	2,009	1,997	2,009	23,501,857	901.66
3328	Coating, Engraving & Heat Treating Metals	34	694	688	697	6,710,902	744.91
3329	Other Fabricated Metal Product Manufacturing	69	5,895	5,917	5,912	78,881,756	1,027.05
333	MACHINERY MANUFACTURING	208	11,319	10,581	10,721	\$128,273,399	\$907.44
3331	Agriculture, Construction & Mining Machinery	40	2,858	2,046	2,022	27,537,366	917.52
3332	Industrial Machinery Manufacturing	26	721	717	739	10,194,480	1,080.65
3333	Commercial & Service Industry Machinery	21	768	765	768	10,955,322	1,098.72
3334	HVAC & Commercial Refrigeration Equipment	20	3,047	3,124	3,189	32,725,964	806.85
3335	Metalworking Machinery Manufacturing	58	1,145	1,150	1,141	11,755,564	789.53
3336	Turbine & Power Transmission Equipment Manufacturing	6	693	682	740	8,180,325	892.56
3339	Other General Purpose Machinery Manufacturing	37	2,087	2,097	2,122	26,924,378	985.30
334	COMPUTER & ELECTRONIC PRODUCT MANUFACTURING	59	2,480	2,477	2,537	\$34,917,845	\$1,075.26
3343	Audio & Video Equipment Manufacturing	5	197	195	180	2,613,569	1,054.43
3344	Semiconductors & Electronic Components	24	1,617	1,622	1,692	23,583,380	1,103.69
3345	Electronic Instrument Manufacturing	20	496	491	495	6,306,143	981.96
	Other	10	170	169	170	2,414,753	1,094.80
335	ELECTRICAL EQUIPMENT & APPLIANCES	56	5,427	5,442	5,452	\$68,395,095	\$967.07
3351	Electric Lighting Equipment Manufacturing	11	349	374	376	3,569,147	\$749.45
3352	Household Appliance Manufacturing	5	54	53	55	852,786	\$1,214.79
3353	Electrical Equipment Manufacturing	23	3,438	3,447	3,458	44,132,284	984.66
3359	Other Electrical Equipment & Component Manufacturing	17	1,586	1,568	1,563	19,840,878	970.67
336	TRANSPORTATION EQUIPMENT MANUFACTURING	139	13,197	13,316	13,589	\$150,628,208	\$866.80
3362	Motor Vehicle Body & Trailer Manufacturing	32	1,773	1,798	1,808	17,317,761	742.96
3363	Motor Vehicle Parts Manufacturing	45	4,580	4,621	4,753	47,780,740	790.19
3364	Aerospace Product & Parts Manufacturing	27	3,309	3,338	3,366	45,530,343	1,049.34
3366	Ship & Boat Building	20	1,734	1,751	1,773	17,349,650	761.46
	Other	15	1,801	1,808	1,889	22,649,714	950.68
337	FURNITURE & RELATED PRODUCT MANUFACTURING	180	3,448	3,368	3,361	\$30,062,701	\$681.69
3371	Household & Institutional Furniture	146	2,376	2,366	2,358	19,102,335	620.88
3372	Office Furniture & Fixtures Manufacturing	25	969	900	901	10,181,795	848.25
3379	Other Furniture Related Product Manufacturing	9	103	102	102	778,571	585.25
339	MISCELLANEOUS MANUFACTURING	187	3,327	3,303	3,330	\$31,884,826	\$738.76
3391	Medical Equipment & Supplies Manufacturing	73	1,613	1,628	1,643	17,493,579	826.57
3399	Other Miscellaneous Manufacturing	114	1,714	1,675	1,687	14,391,247	654.27

TABLE 5. STATEWIDE SUMMARY

North American Industry Classification System - Industry Groups		Number of Employing Units	Employment			Total Earnings Oct - Dec 2015	Average Weekly Earnings
			Oct	Nov	Dec		
TRADE, TRANSPORTATION & UTILITIES		21,298	243,898	248,296	250,481	\$2,440,909,754	\$758.46
42	WHOLESALE TRADE	6,907	46,982	46,971	47,063	\$768,955,827	\$1,258.38
423	MERCHANT WHOLESALERS, DURABLE GOODS	2,164	20,965	20,985	21,088	\$299,423,872	\$1,096.13
4231	Motor Vehicle & Part Merchant Wholesalers	229	2,663	2,683	2,693	29,999,158	861.16
4232	Furniture & Furnishings Merchant Wholesalers	55	445	440	441	6,656,374	1,158.44
4233	Lumber & Supply Merchant Wholesalers	165	1,370	1,359	1,359	16,543,933	933.91
4234	Commercial Goods Merchant Wholesalers	294	2,639	2,659	2,665	45,387,578	1,315.34
4235	Metal & Mineral Merchant Wholesalers	54	893	889	898	11,370,257	979.07
4236	Appliances & Electronics Goods Merchant Wholesalers	196	1,859	1,864	1,867	30,020,816	1,239.33
4237	Hardware & Plumbing Merchant Wholesalers	232	2,257	2,258	2,255	32,427,275	1,105.35
4238	Machinery & Supply Merchant Wholesalers	710	6,784	6,768	6,831	102,942,113	1,165.47
4239	Miscellaneous Durable Goods Merchant Wholesalers	229	2,055	2,065	2,079	24,076,368	896.29
424	MERCHANT WHOLESALERS, NONDURABLE GOODS	1,194	15,329	15,258	15,218	\$213,021,539	\$1,073.22
4241	Paper & Paper Product Merchant Wholesalers	67	1,154	1,151	1,151	16,308,653	1,088.99
4242	Druggist' Goods Merchant Wholesalers	54	554	550	546	8,125,613	1,136.45
4243	Apparel & Piece Goods Merchant Wholesalers	38	680	669	669	8,506,033	972.71
4244	Grocery Product Merchant Wholesalers	313	4,491	4,508	4,523	68,650,461	1,171.60
4245	Farm Product Merchant Wholesalers	74	961	916	891	10,269,454	856.17
4246	Chemical Merchant Wholesalers	95	618	617	617	10,587,504	1,319.26
4247	Petroleum Merchant Wholesalers	138	1,807	1,812	1,820	27,597,461	1,170.92
4248	Alcoholic Beverage Merchant Wholesalers	43	1,468	1,472	1,485	20,273,260	1,057.28
4249	Miscellaneous Nondurable Goods Merchant Wholesaler	372	3,596	3,563	3,516	42,703,100	923.14
425	ELECTRONIC MARKETS & AGENTS & BROKERS	3,549	10,688	10,728	10,757	\$256,510,416	\$1,839.89
44 - 45	RETAIL TRADE	11,135	137,425	141,386	142,367	\$912,211,639	\$499.81
441	MOTOR VEHICLE & PARTS DEALERS	1,570	18,376	18,334	18,253	\$196,941,407	\$826.88
4411	Automobile Dealers	635	11,203	11,199	11,157	140,593,889	966.80
4412	Other Motor Vehicle Dealers	163	1,488	1,458	1,453	15,618,166	819.32
4413	Automotive Parts, Accessories & Tire Stores	772	5,685	5,677	5,643	40,729,352	552.72
442	FURNITURE & HOME FURNISHINGS STORES	518	3,611	3,648	3,679	\$26,802,815	\$565.48
4421	Furniture Stores	276	1,959	1,957	1,991	16,933,684	661.55
4422	Home Furnishings Stores	242	1,652	1,691	1,688	9,869,131	452.69
443	ELECTRONICS & APPLIANCE STORES	486	3,802	3,943	3,971	\$32,149,054	\$633.24
444	BUILDING MATERIAL & GARDEN SUPPLY STORES	829	10,507	10,539	10,484	\$73,917,938	\$541.01
4441	Building Material & Supplies Dealers	613	9,141	9,172	9,147	64,688,680	543.63
4442	Lawn & Garden Equipment & Supplies Stores	216	1,366	1,367	1,337	9,229,258	523.30

TABLE 5. STATEWIDE SUMMARY

North American Industry Classification System - Industry Groups		Number of Employing Units	Employment			Total Earnings Oct - Dec 2015	Average Weekly Earnings
			Oct	Nov	Dec		
445	FOOD & BEVERAGE STORES	1,004	18,764	19,001	19,004	\$104,172,775	\$423.47
4451	Grocery Stores	538	16,281	16,422	16,416	87,586,968	411.50
4452	Specialty Food Stores	122	799	900	883	7,150,850	639.12
4453	Beer, Wine & Liquor Stores	344	1,684	1,679	1,705	9,434,957	429.62
446	HEALTH & PERSONAL CARE STORES	1,045	8,135	8,428	8,508	\$80,202,898	\$738.24
447	GASOLINE STATIONS	1,629	12,335	12,374	12,281	\$52,551,208	\$327.85
44711	Gasoline Stations with Convenience Stores	1,521	10,972	11,009	10,940	45,553,991	319.32
44719	Other Gasoline Stations	108	1,363	1,365	1,341	6,997,217	396.84
448	CLOTHING & CLOTHING ACCESSORIES STORES	1,044	8,275	9,093	9,280	\$36,599,644	\$316.95
4481	Clothing Stores	767	6,356	7,078	7,158	24,376,413	273.18
4482	Shoe Stores	139	1,151	1,215	1,267	5,058,087	321.29
4483	Jewelry, Luggage & Leather Goods Stores	138	768	800	855	7,165,144	682.42
451	SPORTING GOODS, HOBBY, BOOK & MUSIC STORES	487	4,766	5,200	5,348	\$23,164,838	\$349.07
4511	Sporting Goods & Musical Instrument Stores	421	4,269	4,686	4,776	21,039,106	353.59
4512	Book, Periodical & Music Stores	66	497	514	572	2,125,732	309.89
452	GENERAL MERCHANDISE STORES	898	39,578	41,499	42,099	\$226,151,568	\$423.69
453	MISCELLANEOUS STORE RETAILERS	1,244	7,382	7,384	7,505	\$40,537,401	\$420.04
4531	Florists	189	656	667	685	3,323,292	381.93
4532	Office Supplies, Stationery & Gift Stores	284	2,187	2,179	2,208	11,695,236	410.54
4533	Used Merchandise Stores	257	1,865	1,856	1,934	10,451,827	426.52
4539	Other Miscellaneous Store Retailers	514	2,674	2,682	2,678	15,067,046	432.79
454	NONSTORE RETAILERS	381	1,894	1,943	1,955	\$19,020,093	\$757.81
4541	Electronic Shopping & Mail-Order Houses	171	750	795	820	8,373,890	817.10
4542	Vending Machine Operators	68	423	425	421	3,434,803	624.62
4543	Direct Selling Establishments	142	721	723	714	7,211,400	771.16
48 - 49	TRANSPORTATION & WAREHOUSING	2,847	51,660	52,097	53,184	613,934,739	\$902.74
481	AIR TRANSPORTATION	51	621	612	622	\$6,154,896	\$765.69
484	TRUCK TRANSPORTATION	1,850	33,112	33,385	33,731	\$406,727,581	\$936.47
4841	General Freight Trucking	1,109	26,548	26,822	27,169	325,723,339	933.30
4842	Specialized Freight Trucking	741	6,564	6,563	6,562	81,004,242	949.43

TABLE 5. STATEWIDE SUMMARY

North American Industry Classification System - Industry Groups		Number of Employing Units	Employment			Total Earnings Oct - Dec 2015	Average Weekly Earnings
			Oct	Nov	Dec		
485	TRANSIT & GROUND PASSENGER TRANSPORTATION	90	1,659	1,715	1,675	\$8,878,685	\$405.81
4853	Taxi & Limousine Service	29	460	470	492	2,054,388	333.40
4854	School & Employee Bus Transportation	13	487	491	488	2,537,533	399.44
4855	Charter Bus Industry Service	7	109	107	91	1,088,899	818.52
4859	Other Ground Passenger Transportation	37	511	557	518	2,613,807	380.32
	Other	4	92	90	86	584,058	502.92
486	PIPELINE TRANSPORTATION	32	519	519	517	\$15,047,492	\$2,233.12
488	SUPPORT ACTIVITIES FOR TRANSPORTATION	428	4,819	4,941	4,900	\$61,069,522	\$961.32
4881	Support Activities for Air Transportation	99	1,143	1,157	1,142	12,428,903	833.30
4882	Support Activities for Rail Transportation	41	394	414	431	4,865,210	906.17
4883	Support Activities for Water Transportation	21	687	763	748	10,730,647	1,126.62
4884	Support Activities for Road Transportation	137	712	699	694	5,503,230	603.31
4885	Freight Transportation Arrangement	115	1,808	1,825	1,813	26,879,662	1,139.00
4889	Other Support Activities for Transportation	15	75	83	72	661,870	664.08
	OTHER	9	67	47	49	\$488,302	\$691.32
493	WAREHOUSING & STORAGE	215	7,445	7,267	7,254	74,843,392	\$786.29
	OTHER	172	3,418	3,611	4,436	40,724,869	\$819.72
22	UTILITIES	409	7,831	7,842	7,867	\$145,807,549	\$1,429.39
2211	Power Generation & Supply	162	5,521	5,533	5,557	111,382,595	1,547.39
2212	Natural Gas Distribution	62	1,370	1,379	1,387	25,512,892	1,423.50
2213	Water, Sewage & Other Systems	185	940	930	923	8,912,062	736.35
	INFORMATION	1,114	13,556	13,618	13,667	\$177,530,641	\$1,003.12
511	PUBLISHING INDUSTRIES, EXCEPT INTERNET	226	3,459	3,485	3,491	\$34,214,057	\$756.64
5111	Newspaper, Book & Directory Publishers	197	3,093	3,124	3,130	28,028,137	691.99
5112	Software Publishers	29	366	361	361	6,185,920	1,312.06
512	MOTION PICTURE & SOUND RECORDING INDUSTRY	142	1,025	1,039	1,085	\$5,612,618	\$411.31
5121	Motion Picture & Video Industries	124	997	1,014	1,056	5,239,605	394.24
5122	Sound Recording Industries	18	28	25	29	373,013	1,049.76
515	BROADCASTING, EXCEPT INTERNET	123	1,688	1,693	1,701	\$16,843,547	\$764.85
5151	Radio & Television Broadcasting	118	1,655	1,662	1,669	16,602,100	768.40
5152	Cable & Other Subscription Programming	5	33	31	32	241,447	580.40

TABLE 5. STATEWIDE SUMMARY

North American Industry Classification System - Industry Groups		Number of Employing Units	Employment			Total Earnings Oct - Dec 2015	Average Weekly Earnings
			Oct	Nov	Dec		
517	TELECOMMUNICATIONS	375	5,680	5,682	5,692	\$95,023,505	\$1,285.83
5171	Wired Telecommunications Carriers	261	3,535	3,544	3,559	60,814,965	1,319.25
5172	Wireless Telecommunications Carriers (except Satellite)	41	1,800	1,796	1,803	28,856,475	1,233.41
5174	Satellite Telecommunications Carriers	3	5	5	5	87,170	1,341.08
5179	Other Telecommunications	70	340	337	325	5,264,895	1,212.55
518	DATA PROCESSING, HOSTING & RELATED SERVICES	179	1,390	1,408	1,389	\$22,187,488	\$1,222.88
519	OTHER INFORMATION SERVICES	69	314	311	309	\$3,649,426	\$901.69
FINANCIAL ACTIVITIES		8,135	47,861	48,003	48,052	\$644,893,596	\$1,034.09
52	FINANCE & INSURANCE	4,834	34,749	34,983	34,970	\$520,643,751	\$1,147.53
522	CREDIT INTERMEDIATION & RELATED ACTIVITIES	1,951	18,864	18,895	18,904	\$247,345,868	\$1,007.36
5221	Depository Credit Intermediation	1,404	16,109	16,132	16,157	207,029,797	987.15
5222	Nondepository Credit Intermediation	397	2,295	2,295	2,286	33,305,507	1,117.78
5223	Activities Related to Credit Intermediation	150	460	468	461	7,010,564	1,164.74
523	FINANCIAL INVESTMENT & RELATED ACTIVITIES	671	3,058	3,130	3,108	\$88,969,928	\$2,208.64
524	INSURANCE CARRIERS & RELATED ACTIVITIES	2,148	12,758	12,875	12,874	\$182,234,473	\$1,092.12
5241	Insurance Carriers	345	5,505	5,549	5,583	91,747,787	1,272.62
5242	Insurance Agencies, Brokerages & Support	1,803	7,253	7,326	7,291	90,486,686	954.80
	OTHER	64	69	83	84	\$2,093,482	\$2,047.08
53	REAL ESTATE & RENTAL & LEASING	3,301	13,112	13,020	13,082	\$124,249,845	\$731.19
531	REAL ESTATE	2,624	8,816	8,719	8,821	\$80,345,313	\$703.49
5311	Lessors of Real Estate	1,117	4,085	4,016	4,085	31,067,737	588.34
5312	Offices of Real Estate Agents & Brokers	761	1,710	1,707	1,754	22,428,917	1,000.95
5313	Activities Related to Real Estate	746	3,021	2,996	2,982	26,848,659	688.50
532	RENTAL & LEASING SERVICES	654	4,226	4,230	4,189	\$42,728,458	\$779.79
5321	Automotive Equipment Rental & Leasing	105	906	897	887	6,868,036	589.19
5322	Consumer Goods Rental	341	1,966	1,966	1,932	15,104,049	594.40
5323	General Rental Centers	45	214	219	227	2,302,843	805.19
5324	Machinery & Equipment Rental & Leasing	163	1,140	1,148	1,143	18,453,530	1,241.19
533	LESSORS OF NONFINANCIAL INTANGIBLE ASSETS	23	70	71	72	\$1,176,074	\$1,274.19

TABLE 5. STATEWIDE SUMMARY

North American Industry Classification System - Industry Groups		Number of Employing Units	Employment			Total Earnings Oct - Dec 2015	Average Weekly Earnings
			Oct	Nov	Dec		
PROFESSIONAL & BUSINESS SERVICES		13,311	137,421	137,472	137,614	\$1,960,533,803	\$1,096.78
54	PROFESSIONAL & TECHNICAL SERVICES	8,448	40,650	40,726	41,355	\$691,611,992	\$1,300.43
5411	Legal Services	1,704	6,096	6,095	6,144	135,567,354	1,706.29
5412	Accounting & Bookkeeping Services	1,281	4,552	4,677	5,040	69,464,046	1,123.43
5413	Architectural & Engineering Services	953	5,778	5,735	5,782	104,963,077	1,400.53
5414	Specialized Design Services	179	471	461	477	6,247,992	1,023.31
5415	Computer Systems Design & Related Services	1,466	9,402	9,487	9,585	173,429,915	1,405.57
5416	Management & Technical Consulting Services	1,764	6,029	5,862	5,966	104,233,945	1,347.03
5417	Scientific Research & Development Services	154	1,179	1,180	1,174	20,323,312	1,327.48
5418	Advertising & Related Services	381	3,367	3,374	3,369	41,097,276	938.08
5419	Other Professional & Technical Services	566	3,776	3,855	3,818	36,285,075	731.37
55	MANAGEMENT OF COMPANIES & ENTERPRISES	500	32,697	32,950	33,256	\$817,188,202	\$1,906.74
56	ADMINISTRATIVE & SUPPORT SERVICES	4,363	64,074	63,796	63,003	\$451,733,609	\$546.15
561	ADMINISTRATIVE & SUPPORT SERVICES	4,046	61,113	60,822	60,014	\$417,946,216	\$530.09
5611	Office Administrative Services	582	4,107	4,120	4,157	73,204,334	1,364.12
5612	Facilities Support Services	27	210	224	215	2,213,675	787.13
5613	Employment Services	983	27,458	27,356	26,986	149,732,397	422.42
5614	Business Support Services	373	8,067	8,173	8,173	65,704,417	621.09
5615	Travel Arrangement & Reservation Services	98	356	356	343	3,447,893	754.19
5616	Investigation & Security Services	259	4,841	4,858	4,697	30,278,842	485.37
5617	Services to Buildings & Dwellings	1,513	14,726	14,389	14,067	79,936,760	427.19
5619	Other Support Services	211	1,348	1,346	1,376	13,427,898	761.36
562	WASTE MANAGEMENT & REMEDIATION SERVICES	317	2,961	2,974	2,989	\$33,787,393	\$873.72
5621	Waste Collection Services	128	1,083	1,079	1,087	11,294,047	802.19
5622	Waste Treatment & disposal Services	38	829	833	841	11,740,873	1,082.47
5629	Remediation & Other Waste Services	151	1,049	1,062	1,061	10,752,473	782.26
EDUCATION & HEALTH SERVICES		15,082	169,958	170,267	170,808	\$1,774,908,144	\$801.50
61	EDUCATIONAL SERVICES	757	11,109	11,085	10,985	\$94,391,752	\$656.52
6111	Elementary & Secondary Schools	85	3,358	3,356	3,343	25,743,873	590.72
6112	Junior Colleges	5	163	167	168	1,317,347	610.45
6113	Colleges & Universities	69	4,194	4,184	4,174	36,426,174	669.70
6114	Business, Computer, & Management Training	44	102	101	88	1,729,388	1,371.44
6115	Technical & Trade Schools	102	930	953	929	13,494,416	1,107.43
6116	Other Schools & Instruction	265	1,707	1,668	1,635	7,958,699	366.59
6117	Educational Support Services	187	655	656	648	7,721,855	909.63

TABLE 5. STATEWIDE SUMMARY

North American Industry Classification System - Industry Groups		Number of Employing Units	Employment			Total Earnings Oct - Dec 2015	Average Weekly Earnings
			Oct	Nov	Dec		
62	HEALTH CARE & SOCIAL ASSISTANCE	14,325	158,849	159,182	159,823	\$1,680,516,392	\$811.57
621	AMBULATORY HEALTH CARE SERVICES	5,415	49,900	50,267	50,698	\$834,332,442	\$1,276.23
6211	Offices of Physicians	2,270	22,870	22,972	23,198	528,057,804	1,765.06
6212	Offices of Dentists	997	7,053	7,118	7,123	92,094,250	998.05
6213	Offices of Other Health Practitioners	1,359	7,645	7,684	7,790	83,261,674	831.10
6214	Outpatient Care Centers	302	4,258	4,266	4,316	48,386,712	869.64
6215	Medical & Diagnostic Laboratories	162	1,100	1,118	1,122	16,785,184	1,159.73
6216	Home Health Care Services	167	4,651	4,765	4,776	42,310,888	688.00
6219	Other Ambulatory Health Care Services	158	2,323	2,344	2,373	23,435,930	768.22
622	HOSPITALS	108	40,501	40,523	40,588	\$460,153,542	\$873.18
6221	General Medical & Surgical Hospitals	80	35,758	35,807	35,870	413,626,984	888.47
6222	Psychiatric & Substance Abuse Hospitals	12	2,434	2,406	2,408	21,537,462	685.73
6223	Other Hospitals	16	2,309	2,310	2,310	24,989,096	832.26
623	Residential & Mental Health Facilities	618	31,273	31,070	31,123	\$192,494,540	\$475.27
6231	Nursing Care Facilities (Skilled Nursing Facilities)	262	22,533	22,366	22,390	139,283,262	477.68
6232	Residential Mental Health Facilities	174	4,336	4,308	4,317	27,104,447	482.59
6233	Continuing Care & Assisted Living Facilities	142	3,364	3,350	3,351	18,795,717	430.95
6239	Other Residential Care Facilities	40	1,040	1,046	1,065	7,311,114	535.44
624	SOCIAL ASSISTANCE	8,184	37,175	37,322	37,414	\$193,535,868	\$399.09
6241	Individual & Family Services	6,982	22,612	22,707	22,820	121,270,728	410.71
6242	Emergency & Other Relief Services	141	1,310	1,322	1,307	8,342,370	488.74
6243	Vocational Rehabilitation Services	132	3,540	3,566	3,584	19,562,868	422.31
6244	Child Day Care Services	929	9,713	9,727	9,703	44,359,902	351.26
	LEISURE & HOSPITALITY	6,689	107,438	106,764	106,271	\$404,204,889	\$291.06
71	ARTS, ENTERTAINMENT & RECREATION	931	9,642	8,839	9,146	\$49,484,519	\$413.35
711	PERFORMING ARTS & SPECTATOR SPORTS	212	2,258	1,956	2,418	\$15,662,791	\$545.01
7111	Performing Arts Companies	45	566	339	388	2,270,642	405.25
7112	Spectator Sports	55	967	1,058	1,196	8,478,892	607.47
7113	Performing Arts & Sports Promoters	39	616	452	728	3,337,316	428.81
7114	Agents & Managers for Public Figures	22	33	37	31	989,233	2,260.24
7115	Independent Artists, Writers, & Performers	51	76	70	75	586,708	612.64
712	MUSEUMS, PARKS, & HISTORICAL SITES	55	549	530	524	\$3,669,665	\$528.29
713	GAMBLING, RECREATIONAL & AMUSEMENT INDUSTRY	664	6,835	6,353	6,204	\$30,152,063	\$358.82
72	ACCOMMODATION & FOOD SERVICES	5,758	97,796	97,925	97,125	\$354,720,370	\$279.53

TABLE 5. STATEWIDE SUMMARY

North American Industry Classification System - Industry Groups		Number of Employing Units	Employment			Total Earnings Oct - Dec 2015	Average Weekly Earnings
			Oct	Nov	Dec		
721	ACCOMMODATION	895	10,977	10,787	10,692	\$47,870,549	\$340.37
7211	Travel Accommodation	814	10,510	10,335	10,235	45,598,834	338.57
7212	RV Parks & Recreational Camps	63	363	355	355	1,729,335	371.93
7213	Rooming & Boarding Houses	18	104	97	102	542,380	413.08
722	FOOD SERVICES & DRINKING PLACES	4,863	86,819	87,138	86,433	\$306,849,821	\$271.94
7223	Special Food Services	187	3,293	3,336	3,092	14,902,867	353.78
7224	Drinking Places, Alcoholic Beverages	159	1,124	1,139	1,148	3,487,040	235.91
7225	Restaurants & Other Eating Places	4,517	82,402	82,663	82,193	288,459,914	269.22
722511	Full-Service Restaurants	2,043	36,857	36,895	36,617	140,169,239	293.08
722513	Limited-Service Eating Places	2,035	41,144	41,368	41,259	130,953,409	244.16
722514	Cafeterias, Grill Buffets, & Buffets	104	1,999	2,027	1,953	8,285,815	319.80
722515	Snack & Nonalcoholic Beverage Bars	335	2,402	2,373	2,364	9,051,451	292.59
	OTHER SERVICES	5,353	24,002	23,961	23,790	\$190,769,469	\$613.55
811	REPAIR & MAINTENANCE	2,213	9,600	9,573	9,543	\$90,288,674	\$725.58
8111	Automotive Repair & Maintenance	1,416	6,067	6,029	6,034	51,403,476	654.29
8112	Electronic Equipment Repair & Maintenance	177	756	751	760	8,752,885	891.00
8113	Commercial Machinery Repair & Maintenance	436	2,194	2,221	2,169	25,645,507	898.88
8114	Household Goods Repair & Maintenance	184	583	572	580	4,486,806	596.78
812	PERSONAL & LAUNDRY SERVICES	1,329	7,891	7,982	7,983	\$47,350,737	\$458.04
8121	Personal Care Services	617	2,798	2,833	2,816	13,883,106	379.28
8122	Death Care Services	248	1,578	1,603	1,590	12,078,393	584.22
8123	Drycleaning & Laundry Service	248	2,785	2,791	2,804	17,387,555	478.82
8129	Other Personal Services	216	730	755	773	4,001,683	408.97
813	MEMBERSHIP ASSOCIATIONS & ORGANIZATIONS	1,058	5,528	5,412	5,286	\$47,747,792	\$679.08
8131	Religious Organizations	56	227	226	225	1,721,026	585.78
8132	Grantmaking & Giving Organizations	109	450	448	452	5,238,995	895.55
8133	Social Advocacy Organizations	204	1,500	1,510	1,537	13,854,273	703.13
8134	Civic & Social Organizations	196	1,149	1,127	1,139	4,883,579	330.01
8139	Professional & Similar Organizations	493	2,202	2,101	1,933	22,049,919	815.98
814	PRIVATE HOUSEHOLDS	753	983	994	978	\$5,382,266	\$420.33
	LOCAL GOVERNMENT	1,957	114,685	116,362	115,535	\$1,029,831,106	\$685.71
	STATE GOVERNMENT	1,136	71,065	71,240	71,229	\$787,355,346	\$850.91
	NONCLASSIFIABLE ESTABLISHMENTS	0	0	0	0	\$0	\$0.00

TABLE 6. COUNTY SUMMARY

North American Industry Classification System - Industry Groups	Number of Employing Units	Employment			Total Earnings	Average Weekly Earnings
		Oct	Nov	Dec	Oct - Dec 2015	
ARKANSAS COUNTY - TOTAL	754	9,966	9,983	10,062	\$100,647,436	\$773.93
Natural Resources & Mining	50	186	192	191	2,519,590	1,021.87
Construction	47	263	261	256	2,383,636	705.22
Manufacturing	30	3,613	3,577	3,628	37,640,901	802.95
Trade, Transportation & Utilities	206	2,609	2,618	2,627	28,346,690	832.89
Wholesale Trade	45	508	486	482	6,863,559	1,073.10
Retail Trade	98	1,054	1,105	1,124	7,544,874	530.35
Transportation, Warehousing & Utilities	63	1,047	1,027	1,021	13,938,257	1,039.26
Information	11	80	80	81	798,261	764.37
Financial Activities	47	307	305	309	4,709,734	1,180.09
Professional & Business Services	49	365	364	365	5,798,216	1,223.08
Education & Health Services	168	1,060	1,059	1,073	8,682,706	627.73
Leisure & Hospitality	54	455	488	477	1,521,444	247.26
Other Services	44	105	105	108	715,701	519.38
Local Government	32	720	728	740	6,145,848	648.21
State Government	16	203	206	207	1,384,709	518.75
ASHLEY COUNTY - TOTAL	563	7,074	6,975	6,830	\$71,275,424	\$787.79
Natural Resources & Mining	39	318	354	306	3,600,142	849.49
Construction	41	670	584	543	5,968,151	766.42
Manufacturing	26	1,849	1,831	1,780	30,389,143	1,284.41
Trade, Transportation & Utilities	114	1,208	1,202	1,211	9,674,959	616.59
Wholesale Trade	22	234	225	207	2,969,386	1,028.89
Retail Trade	70	716	722	751	4,078,615	429.98
Transportation, Warehousing & Utilities	22	258	255	253	2,626,958	791.41
Information	6	39	41	36	248,716	494.79
Financial Activities	36	216	190	184	1,757,254	687.32
Professional & Business Services	44	205	209	214	1,561,039	573.63
Education & Health Services	145	922	945	927	7,400,977	611.28
Leisure & Hospitality	29	393	383	387	1,206,897	239.48
Other Services	40	126	127	133	959,207	573.46
Local Government	32	935	921	919	7,321,685	608.87
State Government	11	193	188	190	1,187,254	479.83

TABLE 6. COUNTY SUMMARY

North American Industry Classification System - Industry Groups	Number of Employing Units	Employment			Total Earnings Oct - Dec 2015	Average Weekly Earnings
		Oct	Nov	Dec		
BAXTER COUNTY - TOTAL	1,215	14,209	14,628	14,544	\$133,351,262	\$709.37
Natural Resources & Mining	6	78	75	77	629,660	631.77
Construction	114	574	583	591	4,879,586	644.20
Manufacturing	55	2,346	2,369	2,468	23,388,989	751.42
Trade, Transportation & Utilities	259	2,606	2,676	2,689	18,146,234	525.35
Wholesale Trade	33	226	225	229	2,313,900	785.26
Retail Trade	202	2,206	2,279	2,273	13,930,373	475.69
Transportation, Warehousing & Utilities	24	174	172	187	1,901,961	823.48
Information	19	192	194	194	2,209,630	879.16
Financial Activities	111	727	726	729	10,986,510	1,161.94
Professional & Business Services	131	745	724	722	13,249,589	1,395.53
Education & Health Services	258	3,568	3,615	3,602	40,161,273	859.34
Leisure & Hospitality	120	1,496	1,631	1,588	5,512,136	269.78
Other Services	90	332	341	343	1,955,880	444.25
Local Government	40	1,202	1,350	1,209	9,412,574	577.54
State Government	12	343	344	332	2,819,201	638.45
BENTON COUNTY - TOTAL	5,734	106,516	107,362	107,855	\$1,387,916,783	\$995.51
Natural Resources & Mining	41	638	646	644	15,050,062	1,801.40
Construction	543	3,925	3,935	3,984	45,754,004	891.47
Manufacturing	190	11,159	11,126	10,833	121,633,978	847.56
Trade, Transportation & Utilities	1,542	24,304	24,958	25,269	288,558,448	893.46
Wholesale Trade	702	4,640	4,638	4,642	111,549,561	1,849.30
Retail Trade	690	11,361	11,736	11,862	77,967,140	514.67
Transportation, Warehousing & Utilities	150	8,303	8,584	8,765	99,041,747	890.99
Information	69	834	845	868	10,119,225	916.85
Financial Activities	580	3,034	3,012	3,011	43,904,935	1,118.68
Professional & Business Services	1,111	31,139	31,286	31,701	611,667,869	1,499.63
Education & Health Services	685	10,035	10,034	10,092	102,048,974	780.80
Leisure & Hospitality	509	10,524	10,555	10,455	44,424,092	325.10
Other Services	365	1,717	1,716	1,730	14,650,585	654.83
Local Government	82	8,068	8,105	8,126	80,167,324	761.35
State Government	17	1,139	1,144	1,142	9,937,287	669.55

TABLE 6. COUNTY SUMMARY

North American Industry Classification System - Industry Groups	Number of Employing Units	Employment			Total Earnings Oct - Dec 2015	Average Weekly Earnings
		Oct	Nov	Dec		
BOONE COUNTY - TOTAL	995	13,483	13,494	13,633	\$128,451,738	\$729.94
Construction	75	415	380	382	3,844,231	753.72
Manufacturing	64	1,828	1,847	1,904	19,026,538	787.01
Trade, Transportation & Utilities	245	3,624	3,710	3,749	41,366,920	861.34
Wholesale Trade	49	320	317	319	2,733,167	659.76
Retail Trade	150	1,899	1,953	1,964	13,588,515	539.17
Transportation, Warehousing & Utilities	46	1,405	1,440	1,466	25,045,238	1,340.68
Information	14	254	253	251	2,573,892	783.61
Financial Activities	96	485	480	473	5,681,855	911.82
Professional & Business Services	111	1,033	959	1,020	11,551,012	885.00
Education & Health Services	162	1,403	1,412	1,415	11,095,579	605.32
Leisure & Hospitality	80	1,123	1,112	1,110	3,943,557	272.06
Local Government	57	2,229	2,261	2,249	19,686,665	674.15
State Government	19	810	808	808	7,384,600	702.45
Other	72	279	272	272	2,296,889	644.05
BRADLEY COUNTY - TOTAL	371	3,428	3,496	3,714	\$27,690,305	\$600.68
Natural Resources & Mining	43	299	254	338	2,582,345	668.83
Construction	16	106	103	108	852,931	620.92
Manufacturing	11	571	647	750	6,650,252	779.81
Trade, Transportation & Utilities	73	491	506	497	3,233,763	499.50
Wholesale Trade	15	104	105	106	1,162,533	851.67
Retail Trade	42	345	359	353	1,745,591	381.11
Transportation, Warehousing & Utilities	16	42	42	38	325,639	615.96
Information	3	13	13	13	111,113	657.47
Financial Activities	25	134	133	135	1,280,899	735.30
Professional & Business Services	26	78	80	84	752,271	717.36
Education & Health Services	101	563	569	570	4,517,273	612.48
Leisure & Hospitality	16	188	208	217	603,279	227.11
Other Services	32	108	101	107	828,664	605.16
Local Government	14	475	480	493	3,555,900	566.71
State Government	11	402	402	402	2,721,615	520.78

TABLE 6. COUNTY SUMMARY

North American Industry Classification System - Industry Groups	Number of Employing Units	Employment			Total Earnings Oct - Dec 2015	Average Weekly Earnings
		Oct	Nov	Dec		
CALHOUN COUNTY - TOTAL	106	2,599	2,602	2,606	\$33,690,256	\$995.86
Natural Resources & Mining	9	34	35	36	339,099	745.27
Construction	10	83	78	81	744,247	709.71
Manufacturing	10	1,808	1,813	1,820	27,152,308	1,151.61
Trade, Transportation & Utilities	20	226	225	224	2,103,147	719.02
Retail Trade	12	60	63	60	254,612	321.07
Transportation, Warehousing & Utilities	8	166	162	164	1,848,535	867.04
Financial Activities	5	81	79	81	645,897	618.48
Education & Health Services	14	53	54	54	499,009	715.25
Leisure & Hospitality	9	14	15	14	49,332	264.75
Other Services	3	7	6	7	26,989	311.41
Local Government	11	197	201	191	1,283,384	502.83
State Government	8	86	85	87	765,922	685.08
Other	7	10	11	11	80,922	583.57
CARROLL COUNTY - TOTAL	778	10,702	10,401	10,368	\$76,534,462	\$561.21
Natural Resources & Mining	16	197	202	204	1,758,571	673.01
Trade, Transportation & Utilities	193	1,643	1,617	1,607	11,923,008	565.33
Wholesale Trade	22	176	179	177	1,232,928	534.82
Retail Trade	151	1,175	1,170	1,157	6,783,353	447.00
Transportation, Warehousing & Utilities	20	292	268	273	3,906,727	1,082.30
Information	12	67	68	68	648,345	737.03
Financial Activities	61	362	368	367	4,054,341	852.89
Professional & Business Services	64	406	402	393	3,014,613	579.25
Education & Health Services	89	965	985	1,004	8,523,935	665.90
Leisure & Hospitality	172	1,743	1,450	1,352	5,645,502	286.65
Other Services	40	123	126	120	741,044	463.44
Local Government	24	1,097	1,101	1,109	8,296,171	578.92
State Government	10	109	112	111	908,019	631.15
Other	97	3,990	3,970	4,033	31,020,913	596.90

TABLE 6. COUNTY SUMMARY

North American Industry Classification System - Industry Groups	Number of Employing Units	Employment			Total Earnings Oct - Dec 2015	Average Weekly Earnings
		Oct	Nov	Dec		
CHICOT COUNTY - TOTAL	483	3,311	3,272	3,286	\$26,390,636	\$617.10
Natural Resources & Mining	59	293	290	272	2,562,802	691.71
Construction	18	187	145	137	2,659,410	1,308.55
Trade, Transportation & Utilities	66	697	685	713	5,176,481	570.20
Wholesale Trade	13	74	73	72	968,292	1,020.33
Retail Trade	40	334	325	324	1,976,106	463.91
Transportation, Warehousing & Utilities	13	289	287	317	2,232,083	576.82
Information	5	6	6	6	49,282	631.82
Financial Activities	29	139	136	136	1,615,730	907.20
Professional & Business Services	18	45	41	42	365,566	659.07
Education & Health Services	212	738	741	748	5,193,875	538.21
Leisure & Hospitality	23	175	167	167	469,728	212.96
Local Government	17	653	668	675	5,163,904	597.03
State Government	10	299	298	299	2,262,933	582.83
Other	26	79	95	91	870,925	758.43
CLARK COUNTY - TOTAL	608	9,129	9,146	9,130	\$73,782,653	\$621.30
Natural Resources & Mining	41	239	245	244	2,285,945	724.62
Construction	22	74	69	64	497,565	554.70
Manufacturing	31	1,423	1,431	1,433	17,643,145	949.73
Trade, Transportation & Utilities	125	1,393	1,394	1,406	9,703,711	534.06
Wholesale Trade	10	33	29	30	421,138	1,056.37
Retail Trade	96	1,183	1,194	1,216	7,347,625	471.92
Transportation, Warehousing & Utilities	19	177	171	160	1,934,948	878.99
Information	5	19	19	19	237,821	962.84
Financial Activities	70	283	265	276	3,513,106	983.88
Professional & Business Services	51	592	597	603	5,552,290	715.01
Education & Health Services	121	1,506	1,542	1,549	11,099,728	557.21
Leisure & Hospitality	59	1,126	1,087	1,053	3,597,540	254.20
Other Services	43	226	229	236	1,907,507	637.04
Local Government	26	944	960	959	7,424,878	598.47
State Government	14	1,304	1,308	1,288	10,319,417	610.62

TABLE 6. COUNTY SUMMARY

North American Industry Classification System - Industry Groups	Number of Employing Units	Employment			Total Earnings Oct - Dec 2015	Average Weekly Earnings
		Oct	Nov	Dec		
CLAY COUNTY - TOTAL	398	3,593	3,635	3,519	\$26,928,818	\$578.24
Natural Resources & Mining	62	298	304	269	1,976,140	523.57
Construction	30	155	158	158	1,066,018	522.30
Manufacturing	16	351	302	313	2,765,141	660.57
Trade, Transportation & Utilities	103	892	920	889	8,160,796	697.25
Wholesale Trade	24	253	292	271	2,710,450	766.53
Retail Trade	48	415	419	408	2,862,474	531.86
Transportation, Warehousing & Utilities	31	224	209	210	2,587,872	928.77
Information	5	43	43	43	339,543	607.41
Financial Activities	27	127	127	128	1,473,477	890.14
Professional & Business Services	26	101	92	93	718,767	579.96
Education & Health Services	47	462	452	458	3,052,536	513.43
Leisure & Hospitality	20	267	275	273	700,354	198.31
Other Services	29	75	78	74	722,749	734.75
Local Government	22	770	833	768	5,580,814	543.18
State Government	11	52	51	53	372,483	551.01
CLEBURNE COUNTY - TOTAL	675	6,700	6,630	6,599	\$54,797,070	\$634.53
Natural Resources & Mining	25	319	254	259	3,942,542	1,093.53
Construction	62	406	408	405	4,155,352	786.65
Manufacturing	35	958	954	949	9,014,904	727.15
Trade, Transportation & Utilities	163	1,559	1,572	1,562	13,979,057	687.39
Wholesale Trade	36	177	183	185	2,486,627	1,052.91
Retail Trade	100	954	963	958	6,332,065	508.26
Transportation, Warehousing & Utilities	27	428	426	419	5,160,365	935.47
Information	7	51	50	50	429,686	656.68
Financial Activities	73	243	241	239	2,531,404	807.98
Professional & Business Services	76	351	339	338	3,298,367	740.43
Education & Health Services	91	835	843	841	6,693,884	613.24
Leisure & Hospitality	78	941	929	905	2,997,363	249.26
Other Services	38	136	134	132	755,117	433.48
Local Government	18	806	808	821	6,320,898	599.04
State Government	9	95	98	98	678,496	538.06

TABLE 6. COUNTY SUMMARY

North American Industry Classification System - Industry Groups	Number of Employing Units	Employment			Total Earnings Oct - Dec 2015	Average Weekly Earnings
		Oct	Nov	Dec		
CLEVELAND COUNTY - TOTAL	128	1,030	1,092	1,039	\$8,100,323	\$591.37
Natural Resources & Mining	15	162	165	164	1,571,325	738.52
Construction	5	22	22	23	112,174	386.36
Manufacturing	6	88	89	90	732,484	633.09
Trade, Transportation & Utilities	37	213	208	212	1,684,070	613.95
Wholesale Trade	4	52	50	51	417,798	630.16
Retail Trade	17	58	56	59	287,497	383.50
Transportation, Warehousing & Utilities	16	103	102	102	978,775	735.74
Financial Activities	3	19	18	18	191,765	804.61
Education & Health Services	30	137	140	139	751,351	416.80
Other Services	6	17	17	13	104,225	511.74
Local Government	11	306	367	316	2,410,343	562.42
State Government	7	43	43	41	268,900	488.61
Other	8	23	23	23	273,686	915.34
COLUMBIA COUNTY - TOTAL	747	8,416	8,437	8,438	\$87,012,784	\$793.95
Natural Resources & Mining	43	421	426	424	8,802,831	1,598.29
Construction	44	320	316	326	3,653,731	876.47
Manufacturing	36	1,873	1,883	1,913	28,462,533	1,158.63
Trade, Transportation & Utilities	160	1,437	1,462	1,465	11,763,160	622.04
Wholesale Trade	28	207	208	200	3,537,583	1,327.42
Retail Trade	96	990	1,019	1,026	5,657,422	430.17
Transportation, Warehousing & Utilities	36	240	235	239	2,568,155	830.04
Information	8	59	59	58	551,911	723.66
Financial Activities	72	366	360	356	5,125,501	1,093.17
Professional & Business Services	63	312	312	312	3,243,846	799.76
Education & Health Services	183	1,011	1,006	988	6,501,276	499.27
Leisure & Hospitality	50	691	677	669	2,406,885	272.67
Other Services	49	185	182	184	883,701	370.11
Local Government	26	1,104	1,113	1,114	9,527,291	660.04
State Government	13	637	641	629	6,090,118	736.98

TABLE 6. COUNTY SUMMARY

North American Industry Classification System - Industry Groups	Number of Employing Units	Employment			Total Earnings Oct - Dec 2015	Average Weekly Earnings
		Oct	Nov	Dec		
CONWAY COUNTY - TOTAL	575	7,016	7,049	7,084	\$65,474,271	\$714.43
Natural Resources & Mining	32	323	315	320	4,094,509	986.31
Construction	51	522	509	514	6,897,717	1,030.28
Manufacturing	19	856	833	877	12,530,992	1,126.96
Trade, Transportation & Utilities	133	1,674	1,708	1,702	15,811,053	717.68
Wholesale Trade	23	200	202	195	2,837,034	1,096.65
Retail Trade	84	824	845	844	5,136,020	471.64
Transportation, Warehousing & Utilities	26	650	661	663	7,837,999	916.30
Information	4	16	17	17	103,430	477.37
Financial Activities	37	180	174	172	1,927,281	845.55
Professional & Business Services	45	654	703	696	3,887,642	436.99
Education & Health Services	146	854	850	845	6,861,469	621.19
Leisure & Hospitality	42	469	466	453	1,403,442	233.34
Other Services	27	118	118	118	1,108,961	722.92
Local Government	29	954	950	952	7,787,477	629.24
State Government	10	396	406	418	3,060,298	578.87
CRAIGHEAD COUNTY - TOTAL	2,721	46,397	46,866	46,760	\$446,380,172	\$735.67
Natural Resources & Mining	76	431	453	387	4,204,894	763.46
Construction	215	1,961	1,980	1,935	22,782,181	894.73
Manufacturing	105	5,889	5,849	5,876	68,020,572	891.17
Trade, Transportation & Utilities	764	9,806	10,185	10,291	83,584,761	636.97
Wholesale Trade	191	1,793	1,780	1,784	24,843,808	1,070.22
Retail Trade	451	6,541	6,924	6,976	42,196,614	476.38
Transportation, Warehousing & Utilities	122	1,472	1,481	1,531	16,544,339	851.46
Information	23	480	483	481	5,475,450	875.05
Financial Activities	267	1,570	1,560	1,566	18,669,400	917.45
Professional & Business Services	349	3,841	3,903	3,841	32,520,549	647.80
Education & Health Services	458	9,864	9,865	9,873	120,385,572	938.49
Leisure & Hospitality	247	4,957	4,965	4,900	17,434,341	271.44
Other Services	159	827	816	814	5,718,732	537.12
Local Government	35	3,983	4,012	4,011	35,962,076	691.23
State Government	23	2,788	2,795	2,785	31,621,644	872.05

TABLE 6. COUNTY SUMMARY

North American Industry Classification System - Industry Groups	Number of Employing Units	Employment			Total Earnings	Average Weekly Earnings
		Oct	Nov	Dec	Oct - Dec 2015	
CRAWFORD COUNTY - TOTAL	1,251	19,178	19,154	19,193	\$172,366,897	\$691.47
Natural Resources & Mining	32	299	289	305	4,223,110	1,091.34
Construction	147	813	809	823	9,703,776	915.88
Manufacturing	68	4,447	4,440	4,476	45,037,446	777.76
Trade, Transportation & Utilities	316	6,026	6,028	6,018	55,076,360	703.29
Wholesale Trade	85	797	795	807	10,134,065	974.84
Retail Trade	164	1,995	1,979	1,942	12,883,012	502.54
Transportation, Warehousing & Utilities	67	3,234	3,254	3,269	32,059,283	758.26
Information	10	100	99	98	843,937	655.74
Financial Activities	126	524	517	513	5,442,763	808.25
Professional & Business Services	153	1,397	1,397	1,415	12,515,594	686.20
Education & Health Services	171	1,531	1,522	1,515	12,426,176	627.75
Leisure & Hospitality	96	1,513	1,513	1,501	5,145,740	262.31
Other Services	79	365	370	371	2,831,078	590.71
Local Government	43	2,015	2,022	2,010	17,910,132	683.50
State Government	10	148	148	148	1,210,785	629.31
CRITTENDEN COUNTY - TOTAL	1,328	16,207	16,285	16,263	\$139,809,634	\$661.75
Natural Resources & Mining	57	364	343	298	4,296,920	986.66
Construction	52	452	401	384	4,768,529	889.60
Manufacturing	39	1,618	1,645	1,694	20,273,506	943.82
Trade, Transportation & Utilities	307	4,380	4,450	4,539	41,149,506	710.30
Wholesale Trade	60	719	719	728	8,860,092	943.97
Retail Trade	167	1,901	1,938	1,962	11,686,527	464.90
Transportation, Warehousing & Utilities	80	1,760	1,793	1,849	20,602,887	880.14
Information	6	63	65	69	712,507	834.64
Financial Activities	96	445	439	436	4,464,762	780.55
Professional & Business Services	123	1,412	1,426	1,415	11,160,591	605.58
Education & Health Services	392	2,238	2,225	2,210	17,231,800	595.92
Leisure & Hospitality	121	2,116	2,183	2,190	9,045,553	321.69
Other Services	78	386	380	381	3,091,520	621.99
Local Government	43	2,227	2,223	2,199	19,688,855	683.35
State Government	14	506	505	448	3,925,585	620.91

TABLE 6. COUNTY SUMMARY

North American Industry Classification System - Industry Groups	Number of Employing Units	Employment			Total Earnings Oct - Dec 2015	Average Weekly Earnings
		Oct	Nov	Dec		
CROSS COUNTY - TOTAL	499	4,971	4,967	5,010	\$41,845,101	\$646.01
Natural Resources & Mining	34	206	200	193	1,872,593	721.43
Construction	21	73	71	75	630,844	664.75
Manufacturing	11	617	603	626	5,169,966	646.30
Trade, Transportation & Utilities	135	1,264	1,247	1,245	11,476,247	705.10
Wholesale Trade	31	321	318	321	4,750,910	1,142.05
Retail Trade	77	777	793	795	5,242,510	511.55
Transportation, Warehousing & Utilities	27	166	136	129	1,482,827	793.95
Information	5	40	39	42	311,416	593.93
Financial Activities	46	297	310	314	2,980,929	746.91
Professional & Business Services	41	122	133	132	1,335,783	796.53
Education & Health Services	113	849	848	863	6,994,630	630.53
Leisure & Hospitality	33	313	324	320	946,549	228.25
Other Services	34	79	79	76	510,026	502.98
Local Government	16	728	729	741	6,134,468	644.06
State Government	10	383	384	383	3,481,650	698.66
DALLAS COUNTY - TOTAL	253	2,682	2,739	2,686	\$19,983,877	\$568.85
Natural Resources & Mining	33	185	187	183	1,555,835	646.92
Construction	18	68	63	62	584,386	698.75
Manufacturing	8	506	503	514	5,150,784	780.46
Trade, Transportation & Utilities	57	471	477	469	3,423,510	557.54
Retail Trade	38	335	341	335	2,131,073	486.44
Other Trade, Transportation, & Utilities	19	136	136	134	1,292,437	734.62
Information	4	22	22	22	130,348	455.76
Financial Activities	15	77	75	76	1,046,826	1,059.54
Professional & Business Services	11	27	28	27	134,999	379.92
Education & Health Services	61	751	750	755	4,719,528	482.77
Leisure & Hospitality	12	123	132	125	386,236	234.56
Other Services	13	65	66	63	344,409	409.69
Local Government	14	339	387	343	2,191,283	473.04
State Government	7	48	49	47	315,733	505.98

TABLE 6. COUNTY SUMMARY

North American Industry Classification System - Industry Groups	Number of Employing Units	Employment			Total Earnings Oct - Dec 2015	Average Weekly Earnings
		Oct	Nov	Dec		
DESHA COUNTY - TOTAL	537	4,528	4,495	4,481	\$39,239,174	\$670.56
Natural Resources & Mining	73	382	348	347	3,484,433	746.61
Construction	20	103	100	103	1,122,881	846.82
Manufacturing	14	820	776	760	11,474,770	1,123.95
Trade, Transportation & Utilities	112	895	902	870	7,175,612	620.89
Wholesale Trade	21	191	191	191	2,617,463	1,054.15
Retail Trade	68	500	520	518	2,881,637	432.38
Transportation, Warehousing & Utilities	23	204	191	161	1,676,512	695.84
Information	4	10	14	14	147,872	898.01
Financial Activities	29	206	205	209	2,063,971	768.23
Professional & Business Services	41	79	79	79	688,407	670.31
Education & Health Services	152	732	753	748	4,667,600	482.37
Leisure & Hospitality	41	307	323	334	1,097,553	262.74
Other Services	22	44	39	49	177,889	310.99
Local Government	19	794	801	816	6,081,391	582.08
State Government	10	156	155	152	1,056,795	526.73
DREW COUNTY - TOTAL	527	6,372	6,409	6,495	\$52,505,695	\$628.59
Natural Resources & Mining	45	297	278	282	3,434,411	924.80
Construction	19	94	96	99	796,815	636.26
Manufacturing	21	806	804	818	7,665,779	728.59
Trade, Transportation & Utilities	131	1,241	1,257	1,258	8,882,977	545.77
Wholesale Trade	19	168	163	159	1,873,098	882.15
Retail Trade	90	968	983	985	5,843,217	459.28
Transportation, Warehousing & Utilities	22	105	111	114	1,166,662	815.85
Information	8	53	52	56	536,985	769.69
Financial Activities	47	237	236	242	2,582,495	833.51
Professional & Business Services	35	228	229	232	2,141,198	717.16
Education & Health Services	125	874	879	908	7,519,443	652.11
Leisure & Hospitality	40	596	623	637	2,139,022	265.96
Other Services	18	64	64	65	374,867	448.23
Local Government	22	1,253	1,263	1,278	10,187,667	619.66
State Government	16	629	628	620	6,244,036	767.68

TABLE 6. COUNTY SUMMARY

North American Industry Classification System - Industry Groups	Number of Employing Units	Employment			Total Earnings Oct - Dec 2015	Average Weekly Earnings
		Oct	Nov	Dec		
FAULKNER COUNTY - TOTAL	2,813	40,323	40,639	40,754	\$408,437,839	\$774.38
Natural Resources & Mining	62	1,158	1,167	1,161	27,145,216	1,796.98
Construction	308	2,680	2,647	2,644	30,018,255	869.06
Manufacturing	101	3,270	3,312	3,314	42,820,410	998.55
Trade, Transportation & Utilities	661	7,289	7,484	7,573	59,581,009	615.30
Wholesale Trade	158	626	617	619	9,729,407	1,205.83
Retail Trade	409	5,842	6,039	6,094	37,930,118	486.96
Transportation, Warehousing & Utilities	94	821	828	860	11,921,484	1,096.50
Information	19	238	234	243	3,251,075	1,049.30
Financial Activities	324	1,520	1,527	1,537	18,363,632	924.47
Professional & Business Services	411	5,684	5,648	5,761	79,887,255	1,078.54
Education & Health Services	444	6,076	6,150	6,120	58,357,593	734.06
Leisure & Hospitality	246	4,823	4,823	4,780	16,256,508	260.05
Other Services	181	740	749	728	5,608,931	583.84
Local Government	38	3,444	3,489	3,474	33,516,716	743.21
State Government	18	3,401	3,409	3,419	33,631,239	758.73
FRANKLIN COUNTY - TOTAL	339	4,283	4,265	4,218	\$38,974,718	\$704.54
Natural Resources & Mining	16	263	262	262	5,014,883	1,470.50
Construction	33	101	103	93	889,089	690.82
Manufacturing	13	875	859	829	7,934,811	714.44
Trade, Transportation & Utilities	86	942	927	933	8,241,446	678.76
Wholesale Trade	13	42	37	40	219,724	426.10
Retail Trade	51	606	603	597	3,682,712	470.57
Transportation, Warehousing & Utilities	22	294	287	296	4,339,010	1,141.74
Information	5	22	22	22	186,904	653.51
Financial Activities	30	204	206	207	3,882,810	1,452.24
Professional & Business Services	31	116	118	114	865,974	574.25
Education & Health Services	55	517	534	543	3,469,877	502.35
Leisure & Hospitality	28	347	318	310	981,183	232.23
Other Services	14	48	48	48	292,719	469.10
Local Government	19	727	747	736	5,981,647	624.61
State Government	9	121	121	121	1,233,375	784.09

TABLE 6. COUNTY SUMMARY

North American Industry Classification System - Industry Groups	Number of Employing Units	Employment			Total Earnings Oct - Dec 2015	Average Weekly Earnings
		Oct	Nov	Dec		
FULTON COUNTY - TOTAL	196	1,899	1,884	1,899	\$12,555,245	\$509.92
Construction	7	31	29	28	259,461	680.40
Manufacturing	13	135	131	133	743,424	429.97
Trade, Transportation & Utilities	49	293	299	292	2,596,243	677.75
Retail Trade	32	180	179	179	983,773	421.98
Other Trade, Transportation, & Utilities	17	113	120	113	1,612,470	1,075.46
Information	4	34	32	34	216,233	499.00
Financial Activities	17	92	85	88	920,573	801.66
Professional & Business Services	14	45	41	45	340,408	599.66
Education & Health Services	49	453	453	466	2,624,536	441.44
Leisure & Hospitality	14	154	146	142	392,609	204.98
Local Government	12	541	550	552	3,534,736	496.47
State Government	10	107	105	106	864,696	627.50
Other	7	14	13	13	62,326	359.57
GARLAND COUNTY - TOTAL	3,085	35,082	35,175	35,253	\$310,027,902	\$678.09
Natural Resources & Mining	31	305	293	323	3,709,097	929.37
Construction	343	1,654	1,652	1,655	14,596,465	678.98
Manufacturing	97	2,433	2,439	2,480	28,357,517	890.10
Trade, Transportation & Utilities	697	7,202	7,405	7,406	57,557,349	603.39
Wholesale Trade	142	836	839	836	11,473,718	1,054.47
Retail Trade	498	5,786	6,001	5,979	39,317,519	510.71
Transportation, Warehousing & Utilities	57	580	565	591	6,766,112	899.43
Information	33	502	500	504	4,338,614	664.82
Financial Activities	342	1,415	1,418	1,418	18,635,751	1,011.66
Professional & Business Services	382	3,083	3,048	2,992	27,409,746	693.34
Education & Health Services	514	7,562	7,520	7,522	85,929,709	877.28
Leisure & Hospitality	351	5,988	5,782	5,849	24,803,745	324.87
Other Services	237	934	918	931	6,300,221	522.42
Local Government	33	2,991	3,180	3,137	29,449,223	730.12
State Government	25	1,013	1,020	1,036	8,940,465	672.27

TABLE 6. COUNTY SUMMARY

North American Industry Classification System - Industry Groups	Number of Employing Units	Employment			Total Earnings Oct - Dec 2015	Average Weekly Earnings
		Oct	Nov	Dec		
GRANT COUNTY - TOTAL	341	3,911	3,905	3,975	\$36,942,348	\$723.02
Natural Resources & Mining	28	182	177	177	2,893,822	1,245.90
Construction	29	202	190	195	2,020,027	794.14
Manufacturing	17	1,127	1,128	1,142	12,631,689	858.11
Trade, Transportation & Utilities	90	639	644	644	4,976,856	596.01
Wholesale Trade	21	109	104	106	1,401,200	1,013.65
Retail Trade	47	457	470	467	2,870,864	475.26
Transportation, Warehousing & Utilities	22	73	70	71	704,792	760.02
Information	4	33	33	33	1,210,656	2,822.04
Financial Activities	26	86	87	90	847,361	743.52
Professional & Business Services	27	118	127	132	1,626,241	995.45
Education & Health Services	60	375	377	378	2,396,673	489.45
Leisure & Hospitality	21	264	261	273	735,593	212.72
Other Services	21	43	43	43	245,070	438.41
Local Government	10	784	777	807	6,919,112	674.29
State Government	8	58	61	61	439,248	563.14
GREENE COUNTY - TOTAL	889	15,267	15,276	15,264	\$138,102,056	\$695.74
Natural Resources & Mining	39	267	277	251	2,498,036	725.12
Construction	64	285	264	255	2,520,160	723.35
Manufacturing	64	5,465	5,458	5,538	60,663,310	850.45
Trade, Transportation & Utilities	238	2,503	2,525	2,531	19,352,969	590.83
Wholesale Trade	50	491	487	490	5,860,589	921.28
Retail Trade	158	1,788	1,811	1,811	11,448,250	488.34
Transportation, Warehousing & Utilities	30	224	227	230	2,044,130	692.69
Information	8	83	81	80	489,531	462.99
Financial Activities	79	464	466	472	5,221,070	859.39
Professional & Business Services	92	1,021	1,030	1,012	7,946,261	598.68
Education & Health Services	150	1,845	1,853	1,831	16,690,268	696.62
Leisure & Hospitality	63	1,084	1,078	1,069	3,567,363	254.79
Other Services	50	208	209	201	1,379,747	515.22
Local Government	30	1,628	1,618	1,606	13,476,073	640.94
State Government	12	414	417	418	4,297,268	793.98

TABLE 6. COUNTY SUMMARY

North American Industry Classification System - Industry Groups	Number of Employing Units	Employment			Total Earnings Oct - Dec 2015	Average Weekly Earnings
		Oct	Nov	Dec		
HEMPSTEAD COUNTY - TOTAL	507	7,755	7,792	7,818	\$68,316,481	\$674.74
Natural Resources & Mining	22	216	212	213	2,275,969	819.38
Construction	32	203	204	198	2,181,576	832.13
Manufacturing	28	2,065	2,092	2,090	22,622,599	835.70
Trade, Transportation & Utilities	132	1,542	1,550	1,544	13,974,383	695.61
Wholesale Trade	21	276	281	280	2,704,226	745.58
Retail Trade	81	894	903	912	5,633,732	479.92
Transportation, Warehousing & Utilities	30	372	366	352	5,636,425	1,193.32
Information	8	42	41	41	357,133	664.64
Financial Activities	42	224	230	238	2,607,695	869.62
Professional & Business Services	32	157	154	159	1,187,224	582.93
Education & Health Services	90	933	937	940	6,223,658	511.11
Leisure & Hospitality	44	561	567	581	1,961,213	264.83
Other Services	33	145	150	149	927,232	481.93
Local Government	27	907	905	906	7,341,818	623.35
State Government	17	760	750	759	6,655,981	676.95
HOT SPRING COUNTY - TOTAL	611	8,299	8,356	8,445	\$73,567,818	\$676.38
Natural Resources & Mining	24	141	142	144	1,065,673	575.94
Construction	57	341	333	342	2,743,084	623.05
Manufacturing	30	1,418	1,431	1,470	17,706,343	946.07
Trade, Transportation & Utilities	151	1,478	1,500	1,535	14,510,554	741.99
Wholesale Trade	17	109	111	112	1,470,261	1,021.96
Retail Trade	95	837	832	863	5,046,259	459.92
Transportation, Warehousing & Utilities	39	532	557	560	7,994,034	1,118.72
Information	7	54	57	56	541,666	748.50
Financial Activities	52	216	213	209	2,615,299	945.97
Professional & Business Services	58	955	987	993	5,940,702	467.10
Education & Health Services	108	1,081	1,093	1,102	8,952,164	630.61
Leisure & Hospitality	47	566	550	547	1,660,541	230.43
Other Services	37	140	141	146	815,336	440.64
Local Government	27	1,008	1,011	1,013	9,604,567	731.02
State Government	13	901	898	888	7,411,889	636.56

TABLE 6. COUNTY SUMMARY

North American Industry Classification System - Industry Groups	Number of Employing Units	Employment			Total Earnings Oct - Dec 2015	Average Weekly Earnings
		Oct	Nov	Dec		
HOWARD COUNTY - TOTAL	357	7,187	6,303	6,232	\$53,796,739	\$629.48
Natural Resources & Mining	15	218	220	219	1,789,828	628.67
Construction	18	121	150	142	1,526,532	852.97
Manufacturing	21	3,710	2,787	2,703	27,089,704	679.51
Trade, Transportation & Utilities	94	916	904	914	7,341,576	619.68
Wholesale Trade	16	94	92	93	879,628	727.57
Retail Trade	55	601	592	601	3,776,283	485.76
Transportation, Warehousing & Utilities	23	221	220	220	2,685,665	937.62
Information	5	26	27	26	171,216	500.14
Financial Activities	34	147	142	145	1,261,822	670.94
Professional & Business Services	24	131	128	136	1,009,711	589.90
Education & Health Services	72	631	638	635	5,128,245	621.56
Leisure & Hospitality	23	295	300	309	922,769	235.56
Other Services	23	152	146	147	1,027,007	532.59
Local Government	17	715	731	728	5,524,743	586.45
State Government	11	125	130	128	1,003,586	604.69
INDEPENDENCE COUNTY - TOTAL	905	14,458	14,552	14,664	\$130,219,036	\$688.06
Natural Resources & Mining	15	294	289	286	3,776,924	1,002.99
Construction	65	439	431	436	4,201,747	742.45
Manufacturing	41	2,602	2,610	2,687	30,578,223	893.34
Trade, Transportation & Utilities	241	2,912	2,967	3,025	24,120,664	625.15
Wholesale Trade	32	486	480	480	4,934,533	787.51
Retail Trade	162	1,689	1,736	1,766	10,486,232	466.17
Transportation, Warehousing & Utilities	47	737	751	779	8,699,899	885.61
Information	10	113	116	117	939,600	626.68
Financial Activities	78	511	515	523	5,798,344	863.83
Professional & Business Services	94	916	932	900	5,766,727	484.27
Education & Health Services	166	3,021	3,012	3,073	32,929,415	834.52
Leisure & Hospitality	70	1,121	1,152	1,109	3,380,244	230.65
Other Services	62	352	352	342	1,912,334	421.90
Local Government	47	1,546	1,554	1,548	11,270,817	559.59
State Government	16	631	622	618	5,543,997	683.80

TABLE 6. COUNTY SUMMARY

North American Industry Classification System - Industry Groups	Number of Employing Units	Employment			Total Earnings Oct - Dec 2015	Average Weekly Earnings
		Oct	Nov	Dec		
IZARD COUNTY - TOTAL	254	3,076	3,131	3,136	\$23,558,223	\$581.88
Natural Resources & Mining	6	174	176	177	1,957,741	857.28
Construction	20	94	97	104	913,082	714.28
Manufacturing	9	280	278	276	2,215,200	612.95
Trade, Transportation & Utilities	66	540	579	584	4,008,396	543.17
Wholesale Trade	12	19	21	21	154,669	585.13
Retail Trade	44	404	423	429	2,323,401	426.89
Transportation, Warehousing & Utilities	10	117	135	134	1,530,326	914.90
Information	4	6	6	6	77,590	994.74
Financial Activities	25	143	143	148	1,668,167	887.01
Professional & Business Services	17	77	72	63	466,741	508.06
Education & Health Services	49	624	642	653	3,985,917	479.33
Leisure & Hospitality	21	116	113	109	328,773	224.47
Other Services	10	27	21	22	127,577	420.58
Local Government	17	514	518	515	3,623,985	540.60
State Government	10	481	486	479	4,185,054	667.90
JACKSON COUNTY - TOTAL	453	5,210	5,275	5,165	\$47,111,226	\$694.69
Natural Resources & Mining	53	303	267	211	2,439,225	720.74
Construction	24	124	132	130	1,520,532	909.05
Manufacturing	17	926	954	901	11,556,387	958.96
Trade, Transportation & Utilities	109	995	1,019	1,036	8,486,121	642.08
Wholesale Trade	21	208	209	210	2,833,194	1,042.77
Retail Trade	71	688	718	735	4,295,526	463.00
Transportation, Warehousing & Utilities	17	99	92	91	1,357,401	1,110.80
Information	4	34	34	33	207,341	473.74
Financial Activities	36	152	151	149	1,446,320	738.42
Professional & Business Services	31	131	125	128	1,144,614	687.87
Education & Health Services	84	828	836	850	7,675,446	704.56
Leisure & Hospitality	28	275	278	275	856,928	238.83
Other Services	21	63	64	65	557,533	670.11
Local Government	33	606	633	612	4,465,319	556.70
State Government	13	773	782	775	6,755,460	669.08

TABLE 6. COUNTY SUMMARY

North American Industry Classification System - Industry Groups	Number of Employing Units	Employment			Total Earnings Oct - Dec 2015	Average Weekly Earnings
		Oct	Nov	Dec		
JEFFERSON COUNTY - TOTAL	2,175	27,328	27,303	27,662	\$273,314,734	\$766.44
Natural Resources & Mining	36	220	215	223	2,562,351	898.65
Construction	97	686	675	1,019	17,865,328	1,732.26
Manufacturing	63	5,065	5,073	5,119	66,873,655	1,011.50
Trade, Transportation & Utilities	432	4,717	4,793	4,768	40,811,118	659.61
Wholesale Trade	74	586	577	590	6,931,595	912.49
Retail Trade	297	3,270	3,334	3,308	22,244,467	517.89
Transportation, Warehousing & Utilities	61	861	882	870	11,635,056	1,027.56
Information	13	94	95	91	930,388	766.80
Financial Activities	158	1,112	1,143	1,136	13,633,503	927.81
Professional & Business Services	154	1,957	1,833	1,785	15,982,101	661.56
Education & Health Services	883	4,744	4,772	4,778	47,008,740	758.93
Leisure & Hospitality	139	1,811	1,790	1,767	6,123,777	263.26
Other Services	125	595	596	613	4,873,484	623.42
Local Government	39	2,976	2,968	2,978	24,468,708	632.89
State Government	36	3,351	3,350	3,385	32,181,581	736.32
JOHNSON COUNTY - TOTAL	494	8,346	8,492	8,477	\$67,730,475	\$617.42
Natural Resources & Mining	14	134	132	133	1,312,397	759.05
Construction	34	188	200	185	1,528,958	615.77
Manufacturing	36	2,701	2,703	2,720	22,626,065	642.71
Trade, Transportation & Utilities	122	1,896	1,896	1,942	16,114,734	648.55
Retail Trade	79	894	894	932	5,260,490	446.31
Other Trade, Transportation & Utilities	43	1,002	1,002	1,010	10,854,244	831.06
Information	5	45	45	45	269,325	460.38
Financial Activities	49	185	188	193	1,834,619	748.01
Professional & Business Services	51	247	266	277	2,197,333	641.87
Education & Health Services	89	1,241	1,246	1,255	10,123,921	624.34
Leisure & Hospitality	38	475	479	487	1,536,405	246.05
Other Services	33	69	67	70	392,607	439.81
Local Government	14	1,031	1,140	1,038	8,595,719	618.15
State Government	9	134	130	132	1,198,392	698.36

TABLE 6. COUNTY SUMMARY

North American Industry Classification System - Industry Groups	Number of Employing Units	Employment			Total Earnings Oct - Dec 2015	Average Weekly Earnings
		Oct	Nov	Dec		
LAFAYETTE COUNTY - TOTAL	165	1,191	1,219	1,250	\$11,243,546	\$708.92
Natural Resources & Mining	30	141	147	162	2,253,144	1,155.46
Construction	10	60	65	64	1,933,905	2,361.30
Manufacturing	6	44	42	44	403,109	715.58
Trade, Transportation & Utilities	30	191	203	202	1,371,005	530.85
Retail Trade	16	106	116	112	517,753	357.73
Other Trade, Transportation & Utilities	14	85	87	90	853,252	751.54
Financial Activities	12	47	47	49	381,218	615.20
Professional & Business Services	11	41	41	47	407,468	728.92
Education & Health Services	33	206	207	208	1,362,225	506.22
Leisure & Hospitality	5	41	38	39	141,714	277.15
Local Government	13	278	287	296	2,230,480	597.82
State Government	7	56	56	53	309,834	433.33
Other	8	86	86	86	449,444	402.01
LAWRENCE COUNTY - TOTAL	409	4,169	4,189	4,145	\$31,299,691	\$577.70
Natural Resources & Mining	54	237	212	215	2,021,656	702.61
Construction	21	149	142	128	1,218,161	670.92
Manufacturing	21	483	480	482	3,925,288	626.88
Trade, Transportation & Utilities	110	873	887	879	7,372,607	644.70
Wholesale Trade	20	254	250	254	2,716,894	827.14
Retail Trade	59	489	502	500	3,287,351	508.80
Transportation, Warehousing & Utilities	31	130	135	125	1,368,362	809.68
Financial Activities	32	134	132	136	1,098,549	630.63
Professional & Business Services	27	104	106	107	1,051,436	765.42
Education & Health Services	60	542	554	548	4,001,797	561.73
Leisure & Hospitality	28	354	366	358	992,663	212.50
Local Government	26	1,115	1,128	1,113	8,367,702	575.39
State Government	10	105	106	106	715,734	521.04
Other	20	73	76	73	534,098	555.20

TABLE 6. COUNTY SUMMARY

North American Industry Classification System - Industry Groups	Number of Employing Units	Employment			Total Earnings Oct - Dec 2015	Average Weekly Earnings
		Oct	Nov	Dec		
LEE COUNTY - TOTAL	295	2,048	1,979	1,956	\$17,058,789	\$657.97
Natural Resources & Mining	37	277	249	215	2,693,679	838.89
Construction	9	52	50	48	424,999	653.84
Trade, Transportation & Utilities	46	352	340	340	3,002,197	671.33
Wholesale Trade	9	103	100	101	1,193,588	906.06
Retail Trade	26	194	187	186	1,063,183	432.72
Transportation, Warehousing & Utilities	11	55	53	53	745,426	1,068.46
Financial Activities	17	64	65	68	683,022	800.10
Professional & Business Services	15	76	76	76	1,049,468	1,062.21
Education & Health Services	130	359	362	369	2,843,869	602.09
Leisure & Hospitality	9	79	73	76	282,619	286.05
Local Government	15	292	267	267	1,697,867	474.35
State Government	7	481	481	481	4,277,628	684.09
Other	10	16	16	16	103,441	497.31
LINCOLN COUNTY - TOTAL	280	3,014	2,992	2,954	\$24,866,326	\$640.44
Natural Resources & Mining	37	210	197	170	1,925,867	770.24
Construction	15	85	78	76	651,259	628.83
Manufacturing	9	335	330	330	3,126,486	725.12
Trade, Transportation & Utilities	44	372	369	360	3,051,861	639.67
Wholesale Trade	7	54	53	51	391,834	572.30
Retail Trade	23	185	186	177	964,764	406.27
Transportation, Warehousing & Utilities	14	133	130	132	1,695,263	990.42
Financial Activities	20	72	73	73	631,607	668.60
Professional & Business Services	11	28	27	28	193,788	538.80
Education & Health Services	96	390	387	387	2,850,973	565.22
Leisure & Hospitality	14	171	172	172	447,266	200.42
Local Government	7	353	357	353	2,709,111	588.13
State Government	12	968	971	974	9,035,402	715.79
Other	15	30	31	31	242,706	608.79

TABLE 6. COUNTY SUMMARY

North American Industry Classification System - Industry Groups	Number of Employing Units	Employment			Total Earnings Oct - Dec 2015	Average Weekly Earnings
		Oct	Nov	Dec		
LITTLE RIVER COUNTY - TOTAL	240	3,542	3,481	3,535	\$39,544,298	\$864.33
Natural Resources & Mining	13	89	93	101	958,710	781.77
Construction	17	243	215	229	2,307,109	774.98
Manufacturing	15	1,253	1,243	1,243	21,955,628	1,355.09
Trade, Transportation & Utilities	57	513	513	520	4,025,724	600.91
Wholesale Trade	9	32	33	31	449,533	1,080.61
Retail Trade	35	358	361	364	2,319,270	494.20
Transportation, Warehousing & Utilities	13	123	119	125	1,256,921	790.35
Information	3	12	11	11	132,841	901.64
Financial Activities	17	82	81	83	687,816	645.23
Professional & Business Services	18	77	76	77	697,833	700.17
Education & Health Services	38	173	164	162	1,214,408	561.62
Leisure & Hospitality	14	190	172	183	596,003	252.37
Other Services	17	64	62	62	258,605	317.44
Local Government	20	741	747	762	6,071,239	622.69
State Government	11	105	104	102	638,382	473.69
LOGAN COUNTY - TOTAL	482	5,394	5,378	5,401	\$44,003,217	\$627.87
Natural Resources & Mining	24	141	142	139	2,071,241	1,132.65
Construction	39	234	226	213	2,322,329	796.32
Manufacturing	20	1,152	1,143	1,148	11,257,329	754.53
Trade, Transportation & Utilities	106	963	972	971	7,172,955	569.61
Wholesale Trade	11	96	94	92	533,808	436.83
Retail Trade	67	693	707	704	4,623,228	507.08
Transportation, Warehousing & Utilities	28	174	171	175	2,015,919	894.64
Information	5	32	32	32	339,753	816.71
Financial Activities	43	178	177	178	2,013,138	871.61
Professional & Business Services	50	135	131	139	1,531,817	872.83
Education & Health Services	102	717	714	734	5,626,474	599.73
Leisure & Hospitality	29	338	321	321	961,080	226.31
Other Services	28	126	123	123	1,014,123	629.11
Local Government	22	797	815	820	6,105,264	579.32
State Government	14	581	582	583	3,587,714	474.19

TABLE 6. COUNTY SUMMARY

North American Industry Classification System - Industry Groups	Number of Employing Units	Employment			Total Earnings Oct - Dec 2015	Average Weekly Earnings
		Oct	Nov	Dec		
LONOKE COUNTY - TOTAL	1,317	13,751	13,488	13,597	\$114,918,622	\$649.42
Natural Resources & Mining	87	490	466	457	4,961,146	810.25
Construction	127	756	759	795	7,617,353	760.97
Manufacturing	38	1,783	1,743	1,723	21,401,451	940.90
Trade, Transportation & Utilities	324	3,025	3,004	3,076	22,318,877	565.68
Wholesale Trade	79	415	421	424	5,728,568	1,049.19
Retail Trade	183	2,296	2,292	2,358	13,394,119	445.00
Transportation, Warehousing & Utilities	62	314	291	294	3,196,190	820.45
Information	15	96	95	93	1,061,442	862.49
Financial Activities	139	515	530	528	7,727,874	1,133.73
Professional & Business Services	161	772	635	657	6,259,693	699.88
Education & Health Services	203	1,681	1,661	1,664	13,226,868	609.74
Leisure & Hospitality	108	1,661	1,649	1,647	5,325,342	247.92
Other Services	75	184	184	185	1,117,683	466.41
Local Government	25	2,631	2,606	2,614	22,597,426	664.22
State Government	15	157	156	158	1,303,467	638.64
MADISON COUNTY - TOTAL	238	3,241	3,253	3,217	\$25,267,826	\$600.46
Natural Resources & Mining	13	47	48	46	350,795	574.13
Construction	21	89	90	95	800,820	674.47
Manufacturing	22	1,160	1,141	1,116	9,456,557	638.65
Trade, Transportation & Utilities	48	627	644	642	4,688,856	565.63
Retail Trade	33	486	491	487	2,985,997	470.68
Other Trade, Transportation & Utilities	15	141	153	155	1,702,859	875.21
Information	6	42	43	46	896,475	1,579.23
Financial Activities	18	74	75	71	665,422	698.00
Professional & Business Services	20	145	144	144	1,176,053	626.78
Education & Health Services	46	271	264	267	1,587,553	456.81
Leisure & Hospitality	16	167	170	162	479,526	221.76
Other Services	12	29	30	29	269,944	707.90
Local Government	9	547	561	556	4,558,976	632.25
State Government	7	43	43	43	336,849	602.59

TABLE 6. COUNTY SUMMARY

North American Industry Classification System - Industry Groups	Number of Employing Units	Employment			Total Earnings Oct - Dec 2015	Average Weekly Earnings
		Oct	Nov	Dec		
MARION COUNTY - TOTAL	280	3,822	3,803	3,844	\$30,275,296	\$609.17
Natural Resources & Mining	4	24	24	23	142,728	463.90
Construction	20	57	51	53	370,706	531.35
Manufacturing	19	1,783	1,790	1,814	15,844,534	678.75
Trade, Transportation & Utilities	54	519	508	512	3,531,243	529.50
Retail Trade	37	428	419	425	2,605,996	472.79
Other Trade, Transportation & Utilities	17	91	89	87	925,247	799.69
Information	4	49	49	50	1,065,590	1,661.52
Financial Activities	30	191	171	169	1,649,378	716.81
Professional & Business Services	25	62	64	64	417,695	507.32
Education & Health Services	48	337	336	349	2,193,587	495.32
Leisure & Hospitality	34	194	199	196	656,719	257.30
Other Services	15	29	32	32	139,642	346.51
Local Government	18	510	512	515	3,804,498	571.22
State Government	9	67	67	67	458,976	526.95
MILLER COUNTY - TOTAL	865	13,044	13,178	13,268	\$128,344,660	\$750.01
Natural Resources & Mining	30	159	154	154	1,409,065	696.29
Construction	76	679	671	663	7,300,971	836.98
Manufacturing	27	2,363	2,363	2,377	39,567,576	1,285.51
Trade, Transportation & Utilities	235	3,646	3,753	3,787	32,177,887	663.84
Wholesale Trade	52	525	528	541	6,017,372	871.16
Retail Trade	136	1,422	1,468	1,468	8,335,055	441.37
Transportation, Warehousing & Utilities	47	1,699	1,757	1,778	17,825,460	785.93
Information	8	76	76	77	1,711,485	1,724.71
Financial Activities	84	399	404	407	4,391,395	837.52
Professional & Business Services	87	988	1,020	1,036	7,088,815	537.41
Education & Health Services	133	995	1,032	1,025	8,052,247	608.85
Leisure & Hospitality	90	1,434	1,387	1,410	6,109,565	333.23
Other Services	54	281	287	275	1,569,122	429.54
Local Government	25	1,503	1,515	1,540	13,937,933	705.67
State Government	16	521	516	517	5,028,599	746.75

TABLE 6. COUNTY SUMMARY

North American Industry Classification System - Industry Groups	Number of Employing Units	Employment			Total Earnings Oct - Dec 2015	Average Weekly Earnings
		Oct	Nov	Dec		
MISSISSIPPI COUNTY - TOTAL	1,181	18,892	18,978	18,823	\$208,680,069	\$849.43
Natural Resources & Mining	116	765	707	615	6,603,856	730.22
Construction	53	828	774	730	10,701,895	1,059.03
Manufacturing	54	6,719	6,723	6,726	108,221,072	1,238.30
Trade, Transportation & Utilities	282	2,975	2,966	3,016	26,952,112	694.40
Wholesale Trade	61	461	455	466	5,706,673	952.91
Retail Trade	159	1,665	1,675	1,702	9,665,814	442.40
Transportation, Warehousing & Utilities	62	849	836	848	11,579,625	1,054.96
Information	9	70	67	67	524,062	592.83
Financial Activities	87	422	421	424	3,695,959	673.18
Professional & Business Services	89	1,371	1,502	1,483	10,825,236	573.49
Education & Health Services	272	1,800	1,806	1,818	15,100,800	642.48
Leisure & Hospitality	85	1,148	1,148	1,140	3,594,222	241.40
Other Services	58	171	177	177	1,186,950	521.74
Local Government	52	2,065	2,122	2,072	16,890,413	622.75
State Government	24	558	565	555	4,383,492	602.85
MONROE COUNTY - TOTAL	306	2,195	2,182	2,171	\$16,353,285	\$576.33
Natural Resources & Mining	36	179	165	156	1,550,690	715.70
Construction	11	49	45	45	397,092	659.26
Manufacturing	7	110	104	97	1,079,139	800.75
Trade, Transportation & Utilities	80	661	664	657	5,704,259	664.16
Wholesale Trade	19	263	261	254	2,825,598	838.12
Retail Trade	39	286	294	294	1,844,532	487.03
Transportation, Warehousing & Utilities	22	112	109	109	1,034,129	723.17
Financial Activities	22	91	88	96	944,203	792.34
Professional & Business Services	12	32	30	25	182,464	483.99
Education & Health Services	70	319	319	320	2,014,955	485.38
Leisure & Hospitality	20	234	238	237	761,764	247.94
Local Government	21	326	334	339	2,420,570	559.15
State Government	8	106	110	110	830,902	588.18
Other	19	88	85	89	467,247	411.55

TABLE 6. COUNTY SUMMARY

North American Industry Classification System - Industry Groups	Number of Employing Units	Employment			Total Earnings Oct - Dec 2015	Average Weekly Earnings
		Oct	Nov	Dec		
MONTGOMERY COUNTY - TOTAL	177	1,376	1,373	1,347	\$8,969,837	\$505.36
Natural Resources & Mining	9	37	37	34	376,896	805.33
Construction	23	73	74	72	555,759	585.63
Manufacturing	7	17	21	21	114,208	446.71
Trade, Transportation & Utilities	39	256	261	267	1,830,593	538.83
Wholesale Trade	10	58	58	61	587,682	766.21
Retail Trade	21	172	177	180	1,047,002	456.74
Transportation, Warehousing & Utilities	8	26	26	26	195,909	579.61
Financial Activities	12	55	51	53	548,027	795.39
Professional & Business Services	17	41	43	42	350,840	642.56
Education & Health Services	20	71	75	74	417,126	437.54
Leisure & Hospitality	19	241	216	185	893,078	321.02
Local Government	9	471	478	485	3,231,956	520.11
State Government	8	47	47	47	354,599	580.36
Other	14	67	70	67	296,755	335.70
NEVADA COUNTY - TOTAL	198	2,371	2,374	2,377	\$19,629,684	\$636.05
Natural Resources & Mining	12	76	76	76	821,663	831.64
Trade, Transportation & Utilities	41	540	529	529	4,251,857	614.02
Wholesale Trade	3	15	16	16	60,335	296.24
Retail Trade	25	311	301	301	1,369,497	346.15
Transportation, Warehousing & Utilities	13	214	212	212	2,822,025	1,020.75
Financial Activities	11	52	55	52	499,062	724.33
Professional & Business Services	13	41	48	45	333,331	574.05
Education & Health Services	42	411	414	411	2,341,346	437.14
Leisure & Hospitality	7	69	70	71	245,249	269.50
Other Services	16	51	54	45	174,980	269.20
Local Government	27	373	372	374	2,513,478	518.35
State Government	10	79	79	79	534,231	520.19
Other	19	679	677	695	7,914,487	890.50

TABLE 6. COUNTY SUMMARY

North American Industry Classification System - Industry Groups	Number of Employing Units	Employment			Total Earnings Oct - Dec 2015	Average Weekly Earnings
		Oct	Nov	Dec		
NEWTON COUNTY - TOTAL	122	1,047	1,055	1,074	\$6,358,935	\$462.04
Construction	5	18	18	19	105,170	441.27
Manufacturing	9	38	38	39	289,921	581.78
Trade, Transportation & Utilities	30	157	155	155	1,105,102	546.09
Retail Trade	16	99	99	101	527,677	407.26
Other Trade, Transportation & Utilities	14	58	56	54	577,425	793.17
Education & Health Services	25	225	228	247	1,060,263	349.54
Leisure & Hospitality	15	100	97	74	357,181	304.16
Other Services	3	4	4	4	24,861	478.10
Local Government	13	370	384	405	2,548,529	507.44
State Government	8	89	85	83	455,671	409.16
Other	14	46	46	48	412,237	679.51
OUACHITA COUNTY - TOTAL	662	6,927	6,905	6,994	\$58,181,064	\$644.69
Natural Resources & Mining	36	186	182	183	1,753,534	734.41
Construction	34	231	236	240	2,263,921	738.96
Manufacturing	23	522	523	536	6,093,941	889.50
Trade, Transportation & Utilities	173	1,563	1,549	1,583	11,956,704	587.70
Wholesale Trade	29	237	234	229	2,664,734	878.48
Retail Trade	117	1,033	1,019	1,037	5,767,323	430.86
Transportation, Warehousing & Utilities	27	293	296	317	3,524,647	897.77
Information	7	44	46	48	473,029	791.02
Financial Activities	60	288	279	279	3,566,244	972.79
Professional & Business Services	51	519	537	543	4,924,009	710.64
Education & Health Services	163	1,209	1,200	1,229	10,410,401	660.36
Leisure & Hospitality	43	495	483	476	1,452,131	230.47
Other Services	29	131	130	130	860,397	507.81
Local Government	29	1,050	1,052	1,062	8,441,579	615.69
State Government	14	689	688	685	5,985,174	669.83

TABLE 6. COUNTY SUMMARY

North American Industry Classification System - Industry Groups	Number of Employing Units	Employment			Total Earnings Oct - Dec 2015	Average Weekly Earnings
		Oct	Nov	Dec		
PERRY COUNTY - TOTAL	155	1,238	1,244	1,242	\$9,598,754	\$594.82
Natural Resources & Mining	9	52	60	64	823,971	1,080.38
Construction	17	121	120	104	1,106,786	740.33
Manufacturing	5	37	38	40	297,067	596.12
Trade, Transportation & Utilities	25	205	191	189	1,216,320	479.81
Retail Trade	15	169	154	153	701,206	339.95
Other Trade, Transportation & Utilities	10	36	37	36	515,114	1,090.57
Financial Activities	9	28	28	28	432,687	1,188.70
Professional & Business Services	18	39	38	37	447,062	904.98
Education & Health Services	37	235	236	234	1,803,716	590.41
Leisure & Hospitality	8	79	77	79	214,119	210.26
Local Government	10	341	355	359	2,521,098	551.46
State Government	8	61	62	62	359,166	448.02
Other	9	40	39	46	376,762	695.56
PHILLIPS COUNTY - TOTAL	837	5,699	5,707	5,684	\$47,660,741	\$643.57
Natural Resources & Mining	64	324	324	282	2,664,009	661.04
Construction	26	108	98	107	894,944	659.83
Manufacturing	13	362	350	352	3,518,137	763.04
Trade, Transportation & Utilities	161	1,386	1,386	1,350	12,468,946	698.07
Wholesale Trade	30	310	303	299	4,306,112	1,089.60
Retail Trade	86	795	798	792	5,136,786	497.03
Transportation, Warehousing & Utilities	45	281	285	259	3,026,048	846.45
Information	9	44	43	41	461,897	832.75
Financial Activities	38	197	200	197	1,821,610	707.70
Professional & Business Services	47	250	261	271	2,684,872	792.31
Education & Health Services	377	1,321	1,329	1,360	10,298,269	592.65
Leisure & Hospitality	29	283	285	279	946,731	257.94
Other Services	32	65	63	64	504,370	606.21
Local Government	27	846	853	861	7,556,818	681.20
State Government	14	513	515	520	3,840,138	572.47

TABLE 6. COUNTY SUMMARY

North American Industry Classification System - Industry Groups	Number of Employing Units	Employment			Total Earnings Oct - Dec 2015	Average Weekly Earnings
		Oct	Nov	Dec		
PIKE COUNTY - TOTAL	249	2,312	2,326	2,340	\$16,719,174	\$552.92
Natural Resources & Mining	23	112	115	121	1,050,135	696.38
Construction	13	47	48	55	383,665	590.25
Manufacturing	17	221	220	230	1,367,803	470.41
Trade, Transportation & Utilities	67	517	534	532	3,495,678	509.60
Wholesale Trade	10	118	119	125	948,976	604.96
Retail Trade	38	345	362	353	2,017,716	439.27
Transportation, Warehousing & Utilities	19	54	53	54	528,986	758.22
Information	5	23	23	23	284,774	952.42
Financial Activities	23	201	201	203	2,004,716	764.67
Professional & Business Services	17	44	42	38	1,270,538	2,364.52
Education & Health Services	24	301	301	306	1,914,019	486.45
Leisure & Hospitality	25	210	208	198	607,178	227.46
Other Services	15	37	38	40	293,520	589.00
Local Government	10	442	436	436	3,247,156	570.28
State Government	10	157	160	158	799,992	388.66
POINSETT COUNTY - TOTAL	524	5,153	5,148	5,061	\$45,484,112	\$683.27
Natural Resources & Mining	66	437	422	365	3,884,482	732.37
Construction	24	92	101	96	1,305,112	1,042.14
Manufacturing	19	666	673	663	7,059,473	813.74
Trade, Transportation & Utilities	129	1,281	1,255	1,257	12,006,376	730.48
Wholesale Trade	34	423	418	420	6,707,476	1,227.50
Retail Trade	69	698	691	691	3,786,223	420.07
Transportation, Warehousing & Utilities	26	160	146	146	1,512,677	772.30
Information	5	52	52	53	483,707	710.99
Financial Activities	37	243	238	233	2,440,999	788.95
Professional & Business Services	30	172	174	174	2,393,731	1,062.31
Education & Health Services	106	656	650	658	4,716,628	554.20
Leisure & Hospitality	45	329	343	347	999,673	226.39
Other Services	22	47	48	48	387,866	625.93
Local Government	30	1,044	1,056	1,034	8,730,008	642.83
State Government	11	134	136	133	1,076,057	616.18

TABLE 6. COUNTY SUMMARY

North American Industry Classification System - Industry Groups	Number of Employing Units	Employment			Total Earnings	Average Weekly Earnings
		Oct	Nov	Dec	Oct - Dec 2015	
POLK COUNTY - TOTAL	509	5,914	6,034	6,094	\$45,615,293	\$583.45
Natural Resources & Mining	22	123	125	124	2,667,491	1,654.77
Construction	31	208	208	210	1,537,170	566.66
Manufacturing	35	1,398	1,397	1,429	11,478,430	627.10
Trade, Transportation & Utilities	131	1,092	1,113	1,135	7,293,855	503.95
Wholesale Trade	22	56	56	56	461,328	633.69
Retail Trade	74	819	828	841	4,461,684	413.83
Transportation, Warehousing & Utilities	35	217	229	238	2,370,843	799.88
Information	8	55	58	59	395,739	530.96
Financial Activities	46	233	236	237	2,012,404	657.79
Professional & Business Services	47	155	159	158	1,733,346	847.46
Education & Health Services	85	1,023	1,032	1,044	8,536,461	635.67
Leisure & Hospitality	40	434	429	481	1,389,328	238.55
Other Services	29	179	181	182	1,270,398	540.90
Local Government	21	726	814	759	5,377,913	539.82
State Government	14	288	282	276	1,922,758	524.48
POPE COUNTY - TOTAL	1,812	26,768	26,837	26,902	\$246,924,788	\$707.80
Natural Resources & Mining	32	555	560	643	6,785,575	890.73
Construction	159	1,427	1,440	1,472	18,437,705	980.61
Manufacturing	74	4,542	4,559	4,587	47,672,151	803.72
Trade, Transportation & Utilities	430	6,127	6,219	6,291	61,240,240	758.30
Wholesale Trade	83	629	629	620	6,954,434	854.56
Retail Trade	268	3,371	3,451	3,459	20,273,191	455.06
Transportation, Warehousing & Utilities	79	2,127	2,139	2,212	34,012,615	1,211.65
Information	26	195	199	197	1,804,624	704.66
Financial Activities	183	1,296	1,318	1,312	10,487,898	616.48
Professional & Business Services	279	2,509	2,425	2,346	24,664,496	781.84
Education & Health Services	319	3,121	3,127	3,146	28,291,026	694.99
Leisure & Hospitality	140	2,531	2,522	2,496	8,626,088	263.70
Other Services	112	442	437	449	3,229,386	561.18
Local Government	42	2,274	2,284	2,216	19,640,487	669.09
State Government	16	1,749	1,747	1,747	16,045,112	706.22

TABLE 6. COUNTY SUMMARY

North American Industry Classification System - Industry Groups	Number of Employing Units	Employment			Total Earnings Oct - Dec 2015	Average Weekly Earnings
		Oct	Nov	Dec		
PRAIRIE COUNTY - TOTAL	249	1,560	1,537	1,581	\$13,680,229	\$674.86
Natural Resources & Mining	35	159	148	152	1,868,081	939.21
Trade, Transportation & Utilities	63	361	351	353	2,861,399	620.02
Wholesale Trade	10	68	73	71	1,236,565	1,346.04
Retail Trade	36	206	210	216	909,614	332.14
Transportation, Warehousing & Utilities	17	87	68	66	715,220	746.84
Financial Activities	16	63	62	64	630,540	769.89
Professional & Business Services	13	58	57	59	517,549	686.40
Education & Health Services	50	269	275	279	1,907,948	534.99
Leisure & Hospitality	16	81	82	98	294,774	260.63
Other Services	13	24	23	23	141,144	465.31
Local Government	15	309	313	330	2,384,866	578.10
State Government	9	36	37	36	303,045	641.59
Other	19	200	189	187	2,770,883	1,110.13
PULASKI COUNTY - TOTAL	14,290	234,780	235,908	236,659	\$2,827,230,268	\$922.37
Natural Resources & Mining	57	682	680	683	9,605,392	1,083.93
Construction	955	8,435	8,397	8,371	113,392,813	1,038.27
Manufacturing	337	12,558	12,622	12,736	173,903,126	1,058.43
Trade, Transportation & Utilities	3,160	47,589	48,631	49,155	514,536,710	816.78
Wholesale Trade	988	11,688	11,682	11,782	190,780,246	1,252.45
Retail Trade	1,790	25,476	26,457	26,616	185,277,597	544.33
Transportation, Warehousing & Utilities	382	10,425	10,492	10,757	138,478,867	1,008.92
Information	201	5,928	5,939	5,937	89,650,549	1,162.02
Financial Activities	1,693	15,579	15,693	15,722	253,095,431	1,242.85
Professional & Business Services	2,827	32,688	32,734	32,768	479,319,870	1,126.51
Education & Health Services	2,442	38,479	38,555	38,579	491,574,478	981.21
Leisure & Hospitality	1,167	22,204	21,929	22,230	95,117,856	330.76
Other Services	1,146	6,938	6,889	6,697	62,953,381	707.84
Local Government	106	15,722	15,787	15,662	172,500,228	843.90
State Government	199	27,978	28,052	28,119	371,580,434	1,019.02

TABLE 6. COUNTY SUMMARY

North American Industry Classification System - Industry Groups	Number of Employing Units	Employment			Total Earnings Oct - Dec 2015	Average Weekly Earnings
		Oct	Nov	Dec		
RANDOLPH COUNTY - TOTAL	414	4,670	4,639	4,634	\$32,573,684	\$539.12
Natural Resources & Mining	31	115	111	111	901,236	617.14
Construction	28	88	84	92	618,385	540.55
Manufacturing	27	481	490	490	4,151,930	655.81
Trade, Transportation & Utilities	97	843	871	870	6,170,813	551.10
Wholesale Trade	21	138	151	150	1,288,646	677.40
Retail Trade	58	566	579	576	3,365,037	451.22
Transportation, Warehousing & Utilities	18	139	141	144	1,517,130	825.72
Information	5	37	37	37	330,187	686.46
Financial Activities	35	139	138	136	1,149,972	642.56
Professional & Business Services	37	183	178	180	1,371,283	584.94
Education & Health Services	65	1,265	1,198	1,176	8,701,773	551.83
Leisure & Hospitality	29	383	388	379	1,106,054	221.95
Other Services	25	71	71	71	414,798	449.40
Local Government	24	729	733	759	4,995,725	519.07
State Government	11	336	340	333	2,661,528	608.72
SAINT FRANCIS COUNTY - TOTAL	779	7,346	7,310	7,328	\$55,165,246	\$579.08
Natural Resources & Mining	42	243	226	207	1,931,668	659.42
Construction	46	189	175	169	1,796,622	777.87
Trade, Transportation & Utilities	157	1,955	1,944	1,986	15,306,345	600.21
Wholesale Trade	32	523	512	522	5,672,116	840.69
Retail Trade	104	1,122	1,124	1,148	6,402,069	435.30
Transportation, Warehousing & Utilities	21	310	308	316	3,232,160	798.59
Information	7	68	67	65	602,881	695.63
Financial Activities	63	252	248	252	2,208,199	677.64
Professional & Business Services	50	471	465	476	3,047,991	498.15
Education & Health Services	287	1,394	1,395	1,395	11,507,319	634.69
Leisure & Hospitality	45	642	636	639	1,997,203	240.42
Local Government	28	913	927	916	6,641,625	556.13
State Government	16	533	537	535	4,482,117	644.45
Other	38	686	690	688	5,643,276	630.96

TABLE 6. COUNTY SUMMARY

North American Industry Classification System - Industry Groups	Number of Employing Units	Employment			Total Earnings Oct - Dec 2015	Average Weekly Earnings
		Oct	Nov	Dec		
SALINE COUNTY - TOTAL	1,899	22,036	22,598	22,486	\$196,847,487	\$676.79
Natural Resources & Mining	14	69	68	68	804,453	905.58
Construction	263	1,728	1,766	1,774	19,753,791	865.33
Manufacturing	82	1,367	1,390	1,376	17,191,781	959.92
Trade, Transportation & Utilities	448	5,061	5,152	5,192	43,567,550	652.65
Wholesale Trade	111	553	556	563	8,711,033	1,202.30
Retail Trade	269	3,975	4,085	4,121	29,316,022	555.39
Transportation, Warehousing & Utilities	68	533	511	508	5,540,495	823.82
Information	14	133	141	144	1,759,328	971.29
Financial Activities	196	745	747	755	8,455,628	868.40
Professional & Business Services	249	1,381	1,387	1,407	15,925,581	880.27
Education & Health Services	274	3,306	3,340	3,341	29,523,689	682.20
Leisure & Hospitality	163	2,887	2,911	2,929	10,361,665	273.99
Other Services	151	699	697	710	5,250,075	575.29
Local Government	30	3,709	4,042	3,834	36,712,282	731.30
State Government	15	951	957	956	7,541,664	607.68
SCOTT COUNTY - TOTAL	182	3,039	3,040	3,076	\$21,888,970	\$551.75
Natural Resources & Mining	18	170	161	161	1,714,867	804.35
Trade, Transportation & Utilities	33	405	405	402	3,301,715	628.66
Wholesale Trade	6	52	49	50	714,280	1,091.61
Retail Trade	21	290	294	288	1,819,129	481.42
Transportation, Warehousing & Utilities	6	63	62	64	768,306	938.10
Financial Activities	21	66	65	64	475,156	562.31
Professional & Business Services	11	62	63	62	469,445	579.32
Education & Health Services	36	284	293	288	2,608,007	695.78
Leisure & Hospitality	15	138	136	141	486,148	270.33
Other Services	11	45	44	44	344,106	597.06
Local Government	6	513	524	549	3,899,402	567.38
State Government	7	64	61	66	365,824	441.99
Other	24	1,292	1,288	1,299	8,224,300	489.28

TABLE 6. COUNTY SUMMARY

North American Industry Classification System - Industry Groups	Number of Employing Units	Employment			Total Earnings Oct - Dec 2015	Average Weekly Earnings
		Oct	Nov	Dec		
SEARCY COUNTY - TOTAL	179	1,596	1,587	1,571	\$9,993,879	\$485.12
Natural Resources & Mining	6	127	128	108	1,013,789	644.49
Construction	11	12	9	14	63,354	417.72
Manufacturing	17	236	225	237	1,271,553	420.39
Trade, Transportation & Utilities	40	248	242	246	1,612,856	505.70
Wholesale Trade	8	48	43	43	267,348	460.42
Retail Trade	26	181	180	182	1,110,586	471.99
Transportation, Warehousing & Utilities	6	19	19	21	234,922	918.86
Financial Activities	14	58	60	59	480,780	626.83
Professional & Business Services	12	26	26	33	252,839	686.44
Education & Health Services	44	310	309	309	2,107,329	524.04
Leisure & Hospitality	12	118	121	110	363,130	240.11
Local Government	10	342	348	336	2,164,325	486.80
State Government	7	108	108	108	596,152	424.61
Other	6	11	11	11	67,772	473.93
SEBASTIAN COUNTY - TOTAL	3,701	64,392	64,827	64,997	\$664,420,802	\$789.47
Natural Resources & Mining	56	948	948	943	19,447,368	1,580.79
Construction	258	2,339	2,372	2,396	25,760,152	836.45
Manufacturing	191	12,137	12,277	12,311	146,631,129	921.39
Trade, Transportation & Utilities	925	12,941	13,333	13,435	121,963,068	708.79
Wholesale Trade	253	2,807	2,838	2,813	34,764,696	948.52
Retail Trade	550	7,518	7,877	7,940	50,066,969	495.13
Transportation, Warehousing & Utilities	122	2,616	2,618	2,682	37,131,403	1,082.46
Information	45	894	896	904	12,512,453	1,071.82
Financial Activities	414	2,501	2,511	2,500	30,789,328	945.85
Professional & Business Services	590	8,166	8,043	8,041	84,566,747	804.76
Education & Health Services	572	10,962	10,944	10,972	127,783,466	896.91
Leisure & Hospitality	329	5,941	5,915	5,876	22,246,713	289.52
Other Services	260	1,245	1,244	1,247	9,099,832	562.09
Local Government	40	4,585	4,603	4,608	45,843,589	766.84
State Government	21	1,733	1,741	1,764	17,776,957	783.19

TABLE 6. COUNTY SUMMARY

North American Industry Classification System - Industry Groups	Number of Employing Units	Employment			Total Earnings Oct - Dec 2015	Average Weekly Earnings
		Oct	Nov	Dec		
SEVIER COUNTY - TOTAL	321	4,744	4,821	4,825	\$36,249,749	\$581.33
Natural Resources & Mining	14	165	165	165	1,673,262	780.08
Construction	17	151	164	165	1,913,127	919.77
Trade, Transportation & Utilities	98	862	884	894	7,271,633	635.63
Wholesale Trade	16	116	116	118	2,352,373	1,551.02
Retail Trade	66	660	681	699	3,938,708	445.56
Transportation, Warehousing & Utilities	16	86	87	77	980,552	905.12
Information	3	23	21	20	197,210	711.09
Financial Activities	30	212	229	228	2,327,062	802.71
Professional & Business Services	25	113	114	116	688,106	462.96
Education & Health Services	51	504	521	527	4,227,698	628.62
Leisure & Hospitality	26	268	266	264	804,972	232.79
Local Government	12	891	896	893	6,592,501	567.67
State Government	8	193	198	193	1,275,822	504.14
Other	37	1,362	1,363	1,360	9,278,356	524.15
SHARP COUNTY - TOTAL	393	3,742	3,831	3,785	\$26,539,386	\$539.22
Natural Resources & Mining	3	6	6	6	33,180	425.38
Construction	25	113	118	115	1,104,362	736.57
Manufacturing	18	153	152	153	1,014,206	511.02
Trade, Transportation & Utilities	81	1,062	1,160	1,125	9,264,877	638.80
Wholesale Trade	12	40	44	45	359,669	643.42
Retail Trade	58	651	678	669	3,628,059	419.04
Transportation, Warehousing & Utilities	11	371	438	411	5,277,149	998.20
Information	6	42	39	44	405,817	749.20
Financial Activities	34	183	178	174	1,722,062	742.80
Professional & Business Services	38	143	137	139	1,276,692	703.15
Education & Health Services	88	719	726	722	4,912,641	523.16
Leisure & Hospitality	42	420	400	388	1,123,582	214.64
Other Services	26	62	65	63	310,909	377.62
Local Government	24	766	775	783	4,848,415	481.44
State Government	8	73	75	73	522,643	545.75

TABLE 6. COUNTY SUMMARY

North American Industry Classification System - Industry Groups	Number of Employing Units	Employment			Total Earnings Oct - Dec 2015	Average Weekly Earnings
		Oct	Nov	Dec		
STONE COUNTY - TOTAL	278	2,430	2,416	2,422	\$16,721,444	\$530.93
Natural Resources & Mining	7	19	13	13	68,049	348.97
Construction	17	46	48	47	288,723	472.54
Manufacturing	19	181	173	176	1,040,874	453.21
Trade, Transportation & Utilities	70	622	628	633	4,911,279	601.90
Wholesale Trade	7	71	66	71	592,089	656.90
Retail Trade	52	505	519	516	3,814,498	571.60
Transportation, Warehousing & Utilities	11	46	43	46	504,692	862.72
Financial Activities	28	83	87	85	632,294	572.21
Professional & Business Services	15	32	23	28	208,942	580.93
Education & Health Services	53	480	480	495	4,296,032	681.37
Leisure & Hospitality	33	360	352	316	944,555	212.04
Local Government	10	395	399	415	3,088,558	589.53
State Government	8	159	157	160	901,306	436.96
Other	18	53	56	54	340,832	482.54
UNION COUNTY - TOTAL	1,330	17,863	17,979	18,072	\$200,541,276	\$858.38
Natural Resources & Mining	95	614	623	628	8,248,219	1,020.61
Construction	79	1,440	1,470	1,499	20,435,135	1,069.59
Manufacturing	49	3,106	3,133	3,140	46,910,115	1,154.22
Trade, Transportation & Utilities	329	4,153	4,233	4,305	46,673,971	848.71
Wholesale Trade	66	1,063	1,072	1,077	19,266,425	1,384.21
Retail Trade	204	2,237	2,294	2,328	14,108,278	474.67
Transportation, Warehousing & Utilities	59	853	867	900	13,299,268	1,171.40
Information	10	139	136	136	1,147,788	644.46
Financial Activities	109	617	613	617	6,717,735	839.33
Professional & Business Services	138	1,375	1,368	1,353	21,599,360	1,216.91
Education & Health Services	279	2,351	2,329	2,335	21,353,424	702.45
Leisure & Hospitality	88	1,125	1,145	1,150	4,258,881	287.37
Other Services	104	531	530	527	3,793,663	551.30
Local Government	33	1,818	1,806	1,780	14,210,958	606.86
State Government	17	594	593	602	5,192,027	669.74

TABLE 6. COUNTY SUMMARY

North American Industry Classification System - Industry Groups	Number of Employing Units	Employment			Total Earnings Oct - Dec 2015	Average Weekly Earnings
		Oct	Nov	Dec		
VAN BUREN COUNTY - TOTAL	358	4,007	3,933	3,895	\$44,419,271	\$866.13
Natural Resources & Mining	12	348	340	336	8,992,229	2,026.49
Construction	38	174	161	155	1,563,164	736.18
Manufacturing	8	77	78	76	802,535	801.73
Trade, Transportation & Utilities	96	1,166	1,139	1,126	16,414,924	1,104.07
Wholesale Trade	9	84	82	75	1,228,229	1,176.09
Retail Trade	55	569	562	555	3,490,562	477.77
Transportation, Warehousing & Utilities	32	513	495	496	11,696,133	1,794.62
Information	9	37	38	41	393,663	783.15
Financial Activities	31	125	123	125	1,184,305	732.71
Professional & Business Services	32	140	132	125	1,137,041	660.94
Education & Health Services	60	690	694	708	5,290,829	583.63
Leisure & Hospitality	30	380	378	363	1,271,678	261.79
Other Services	24	57	56	55	442,429	607.73
Local Government	11	749	731	719	6,430,477	674.83
State Government	7	64	63	66	495,997	593.06
WASHINGTON COUNTY - TOTAL	5,634	95,723	96,023	96,108	\$1,106,930,136	\$887.41
Natural Resources & Mining	44	375	386	394	6,200,823	1,238.93
Construction	476	4,059	4,070	4,078	50,463,238	953.99
Manufacturing	218	11,991	11,945	12,080	129,125,583	827.36
Trade, Transportation & Utilities	1,345	22,058	22,391	22,779	235,530,149	808.49
Wholesale Trade	393	3,625	3,624	3,610	66,200,291	1,406.85
Retail Trade	767	11,925	12,320	12,489	83,229,397	522.86
Transportation, Warehousing & Utilities	185	6,508	6,447	6,680	86,100,461	1,011.93
Information	86	904	902	914	10,397,304	882.12
Financial Activities	620	3,426	3,467	3,455	45,625,108	1,017.48
Professional & Business Services	985	11,279	11,190	10,953	243,589,152	1,681.91
Education & Health Services	795	13,742	13,711	13,785	162,827,386	911.19
Leisure & Hospitality	610	11,448	11,423	11,151	43,664,561	296.17
Other Services	373	1,788	1,786	1,822	13,457,464	575.53
Local Government	60	8,556	8,654	8,641	81,600,599	728.44
State Government	22	6,097	6,098	6,056	84,448,769	1,067.79

TABLE 6. COUNTY SUMMARY

North American Industry Classification System - Industry Groups	Number of Employing Units	Employment			Total Earnings Oct - Dec 2015	Average Weekly Earnings
		Oct	Nov	Dec		
WHITE COUNTY - TOTAL	1,828	24,463	24,535	24,720	\$228,550,406	\$715.46
Natural Resources & Mining	58	986	980	975	15,492,355	1,215.63
Construction	161	1,115	1,099	1,085	13,137,021	918.95
Manufacturing	62	2,340	2,307	2,298	25,554,264	849.12
Trade, Transportation & Utilities	487	6,295	6,434	6,511	57,960,436	695.19
Wholesale Trade	92	625	627	632	7,468,062	914.76
Retail Trade	302	3,654	3,762	3,816	23,583,350	484.54
Transportation, Warehousing & Utilities	93	2,016	2,045	2,063	26,909,024	1,014.01
Information	22	181	182	186	1,615,728	679.16
Financial Activities	176	888	881	888	10,277,897	892.67
Professional & Business Services	197	1,296	1,269	1,292	11,053,118	661.32
Education & Health Services	319	5,100	5,075	5,110	51,842,811	782.71
Leisure & Hospitality	158	2,375	2,386	2,414	7,804,052	251.00
Other Services	123	493	500	512	4,578,212	702.00
Local Government	47	2,731	2,724	2,728	23,446,882	661.23
State Government	18	663	698	721	5,787,630	641.50
WOODRUFF COUNTY - TOTAL	208	1,870	1,857	1,855	\$15,158,821	\$626.69
Natural Resources & Mining	27	162	145	136	1,426,680	743.19
Construction	7	41	40	39	366,793	705.37
Manufacturing	6	225	219	228	1,910,012	655.91
Trade, Transportation & Utilities	44	418	422	409	4,120,781	761.37
Wholesale Trade	11	181	167	164	2,324,291	1,047.61
Retail Trade	24	172	187	179	830,830	356.38
Transportation, Warehousing & Utilities	9	65	68	66	965,660	1,119.82
Financial Activities	14	65	65	65	713,447	844.32
Education & Health Services	68	249	247	257	1,703,239	521.99
Leisure & Hospitality	10	77	79	76	215,462	214.32
Local Government	9	484	492	493	3,260,799	512.25
State Government	6	47	46	47	334,566	551.48
Other	17	102	102	105	1,107,042	826.77

TABLE 6. COUNTY SUMMARY

North American Industry Classification System - Industry Groups	Number of Employing Units	Employment			Total Earnings Oct - Dec 2015	Average Weekly Earnings
		Oct	Nov	Dec		
YELL COUNTY - TOTAL	406	6,401	6,446	6,432	\$47,955,597	\$574.03
Natural Resources & Mining	23	198	197	188	1,881,155	744.62
Construction	34	267	280	278	2,878,841	805.27
Manufacturing	20	2,403	2,422	2,448	17,685,691	561.16
Trade, Transportation & Utilities	82	671	670	667	4,317,996	496.25
Wholesale Trade	15	35	35	35	274,793	603.94
Retail Trade	50	507	513	511	2,793,879	421.12
Transportation, Warehousing & Utilities	17	129	122	121	1,249,324	775.01
Information	3	60	59	60	832,892	1,073.78
Financial Activities	29	163	162	165	1,396,956	657.91
Professional & Business Services	39	286	290	292	2,351,004	625.05
Education & Health Services	98	744	753	750	4,835,102	496.57
Leisure & Hospitality	25	290	291	272	818,062	221.32
Other Services	16	61	58	56	317,457	418.62
Local Government	25	1,161	1,169	1,162	9,995,163	660.53
State Government	12	97	95	94	645,278	520.67
STATEWIDE COUNTY - TOTAL	7,868	29,401	29,980	29,761	\$402,357,850	\$1,041.62
Natural Resources & Mining	87	374	399	407	6,641,217	1,298.80
Construction	700	2,810	2,959	2,894	36,045,414	960.20
Manufacturing	41	127	128	125	3,076,516	1,868.33
Trade, Transportation & Utilities	2,672	6,824	6,892	6,904	144,814,110	1,620.69
Wholesale Trade	2,295	5,725	5,757	5,759	129,239,762	1,729.86
Retail Trade	131	264	265	268	4,175,190	1,208.92
Transportation, Warehousing & Utilities	246	835	870	877	11,399,158	1,018.81
Information	201	425	452	436	7,304,369	1,283.80
Financial Activities	479	1,288	1,318	1,283	23,039,054	1,367.11
Professional & Business Services	2,998	14,236	14,489	14,414	145,198,544	776.73
Education & Health Services	335	1,865	1,872	1,897	19,515,206	799.34
Leisure & Hospitality	83	105	116	110	1,047,502	730.31
State Government	17	746	747	748	7,803,999	803.62
Other	255	601	608	543	7,871,919	1,028.79

Note: Statewide classification includes employment and payroll data for employers that have not provided a physical location for each employing unit. This section also includes employers without a physical location in Arkansas.

TABLE 7. FEDERAL GOVERNMENT EMPLOYMENT AND EARNINGS IN ARKANSAS

North American Industry Classification System - Industry Groups	Number of Employing Units	Employment			Total Earnings Oct - Dec 2015	Average Weekly Earnings
		Oct	Nov	Dec		
TOTAL	1,150	20,126	20,192	20,449	\$314,181,087	\$1,193.14
Trade, Transportation & Utilities	585	5,426	5,440	5,563	64,497,136	905.96
Information	2	44	46	45	612,227	1,046.54
Financial Activities	14	112	112	110	2,028,929	1,401.84
Professional & Business Services	32	765	764	763	14,219,564	1,431.69
Education & Health Services	15	5,285	5,309	5,343	90,288,228	1,307.38
Leisure & Hospitality	21	278	279	275	2,769,940	768.29
Other Services	1	1	1	1	8,443	649.46
Public Administration	480	8,215	8,241	8,349	139,756,620	1,300.20

TABLE 8. WORKFORCE INVESTMENT AREA SUMMARY

North American Industry Classification System - Industry Groups	Number of Employing Units	Employment			Total Earnings	Average
		Oct	Nov	Dec	Oct - Dec 2015	Weekly Earnings
CENTRAL WORKFORCE INVESTMENT AREA	6,584	79,865	80,444	80,589	\$750,237,462	\$718.69
Natural Resources & Mining	234	2,055	2,014	1,994	36,329,586	1,382.77
Trade, Transportation & Utilities	1,576	16,397	16,655	16,851	134,033,094	619.82
Wholesale Trade	377	1,925	1,928	1,931	28,231,171	1,126.36
Retail Trade	936	12,605	12,920	13,083	83,394,405	498.47
Transportation, Warehousing & Utilities	263	1,867	1,807	1,837	22,407,518	938.30
Information	55	506	509	520	6,303,265	947.62
Financial Activities	697	2,934	2,954	2,980	36,121,877	939.99
Professional & Business Services	846	7,927	7,757	7,909	102,772,542	1,005.24
Education & Health Services	1,041	11,651	11,745	11,724	105,031,053	690.15
Leisure & Hospitality	553	9,686	9,703	9,691	33,000,053	261.88
Local Government	129	10,419	10,784	10,591	97,631,860	708.64
State Government	65	4,651	4,669	4,679	43,610,317	718.90
Other	1,388	13,639	13,654	13,650	155,403,815	875.91

Note: Pulaski County is not included in the Central Workforce Investment Area. Please refer to Page 51 for information on Pulaski County.
Central Workforce Investment Area includes these counties: Faulkner, Lonoke, Monroe, Prairie, and Saline.

EASTERN WORKFORCE INVESTMENT AREA	3,738	36,271	36,248	36,241	\$301,539,511	\$639.81
Natural Resources & Mining	234	1,414	1,342	1,195	13,458,869	786.10
Construction	154	874	795	783	8,515,938	801.47
Trade, Transportation & Utilities	806	9,337	9,367	9,460	83,403,241	683.39
Wholesale Trade	162	1,976	1,952	1,971	24,782,818	969.51
Retail Trade	460	4,789	4,840	4,883	29,531,075	469.60
Transportation, Warehousing & Utilities	184	2,572	2,575	2,606	29,089,348	865.85
Financial Activities	260	1,255	1,262	1,267	12,158,522	741.49
Professional & Business Services	276	2,331	2,361	2,370	19,278,705	629.98
Education & Health Services	1,299	6,161	6,159	6,197	48,875,887	609.12
Leisure & Hospitality	237	3,433	3,501	3,504	13,218,655	292.25
Local Government	129	5,006	4,999	4,984	41,719,633	642.31
State Government	61	2,416	2,422	2,367	20,007,118	640.81
Other	282	4,044	4,040	4,114	40,902,943	773.83

Eastern Workforce Investment Area includes these counties: Crittenden, Cross, Lee, Phillips, and Saint Francis.

TABLE 8. WORKFORCE INVESTMENT AREA SUMMARY

North American Industry Classification System - Industry Groups	Number of Employing Units	Employment			Total Earnings	Average Weekly Earnings
		Oct	Nov	Dec	Oct - Dec 2015	
NORTH CENTRAL WORKFORCE INVESTMENT AREA	5,548	67,855	68,044	68,140	\$599,630,128	\$678.18
Construction	426	2,583	2,563	2,544	27,510,237	825.55
Manufacturing	228	7,877	7,856	7,877	84,430,029	825.24
Trade, Transportation & Utilities	1,406	15,862	16,219	16,303	145,862,778	695.70
Retail Trade	900	9,466	9,727	9,802	59,768,296	475.69
Other Trade, Transportation & Utilities	506	6,396	6,492	6,501	86,094,482	1,024.70
Financial Activities	512	2,485	2,469	2,484	26,894,813	834.43
Education & Health Services	1,027	12,999	13,008	13,175	121,954,750	718.27
Leisure & Hospitality	484	6,219	6,213	6,097	19,315,246	240.56
Local Government	228	9,138	9,184	9,186	70,290,886	589.68
State Government	105	3,093	3,132	3,143	26,069,845	642.20
Other	1,132	7,599	7,400	7,331	77,301,544	798.87

North Central Workforce Investment Area includes these counties: Cleburne, Fulton, Independence, Izard, Jackson, Sharp, Stone, Van Buren, White, and Woodruff.

NORTHEAST WORKFORCE INVESTMENT AREA	6,536	98,141	98,731	98,206	\$929,448,602	\$726.89
Natural Resources & Mining	444	2,550	2,486	2,213	22,090,300	703.24
Construction	435	3,558	3,503	3,394	40,211,912	887.58
Manufacturing	306	20,054	19,975	20,088	254,806,786	978.12
Trade, Transportation & Utilities	1,723	19,173	19,609	19,733	163,600,434	645.20
Wholesale Trade	401	3,813	3,833	3,835	49,834,536	1,001.68
Retail Trade	1,002	12,162	12,601	12,664	76,611,763	472.38
Transportation, Warehousing & Utilities	320	3,198	3,175	3,234	37,154,135	892.48
Financial Activities	564	3,099	3,082	3,095	33,749,426	839.62
Professional & Business Services	650	6,793	6,985	6,890	56,827,263	634.51
Education & Health Services	1,158	16,434	16,378	16,362	172,649,374	810.23
Leisure & Hospitality	517	8,522	8,563	8,466	28,394,670	256.45
Local Government	219	11,334	11,502	11,363	94,002,811	634.32
State Government	102	4,387	4,410	4,383	45,128,206	790.15
Other	418	2,237	2,238	2,219	17,987,420	620.10

Northeast Workforce Investment Area includes these counties: Clay, Craighead, Greene, Lawrence, Mississippi, Poinsett, and Randolph.

TABLE 8. WORKFORCE INVESTMENT AREA SUMMARY

North American Industry Classification System - Industry Groups	Number of Employing Units	Employment			Total Earnings	Average Weekly Earnings
		Oct	Nov	Dec	Oct - Dec 2015	
NORTHWEST WORKFORCE INVESTMENT AREA	15,175	250,339	251,606	252,214	\$2,905,080,317	\$888.94
Natural Resources & Mining	139	1,512	1,534	1,522	25,284,826	1,277.36
Trade, Transportation & Utilities	3,756	55,786	56,901	57,648	606,462,816	821.63
Wholesale Trade	1,224	9,123	9,113	9,104	185,146,480	1,562.77
Retail Trade	2,072	29,760	30,647	30,940	202,729,034	512.15
Transportation, Warehousing & Utilities	460	16,903	17,141	17,604	218,587,302	976.67
Information	214	2,348	2,360	2,397	27,953,739	907.93
Education & Health Services	2,152	30,856	30,894	31,070	331,605,879	824.44
Leisure & Hospitality	1,568	26,913	26,758	26,198	105,046,404	303.52
Other Services	969	4,298	4,305	4,351	33,540,174	597.50
Local Government	313	22,921	23,276	23,146	212,239,661	706.32
State Government	111	8,805	8,809	8,750	107,345,524	939.62
Other	5,953	96,900	96,769	97,132	1,455,601,294	1,155.11

Northwest Workforce Investment Area includes these counties: Baxter, Benton, Boone, Carroll, Madison, Marion, Newton, Searcy, and Washington.

SOUTHEAST WORKFORCE INVESTMENT AREA	6,159	69,962	69,922	70,498	\$660,972,401	\$725.02
Natural Resources & Mining	425	2,549	2,470	2,470	27,137,088	836.21
Construction	307	2,418	2,254	2,559	34,432,612	1,098.88
Trade, Transportation & Utilities	1,305	13,082	13,184	13,160	113,014,387	661.50
Wholesale Trade	241	2,080	2,027	2,015	25,596,758	964.87
Retail Trade	792	7,887	8,060	8,066	50,437,632	484.71
Transportation, Warehousing & Utilities	272	3,115	3,097	3,079	36,979,997	918.51
Financial Activities	420	2,528	2,526	2,532	29,314,319	891.75
Education & Health Services	1,972	10,535	10,622	10,656	90,989,611	660.03
Local Government	203	9,249	9,330	9,375	74,963,669	618.85
State Government	137	6,302	6,302	6,331	56,782,473	692.03
Other	1,390	23,299	23,234	23,415	234,338,242	773.12

Southeast Workforce Investment Area includes these counties: Arkansas, Ashley, Bradley, Chicot, Cleveland, Desha, Drew, Grant, Jefferson, and Lincoln.

TABLE 8. WORKFORCE INVESTMENT AREA SUMMARY

North American Industry Classification System - Industry Groups	Number of Employing Units	Employment			Total Earnings	Average Weekly Earnings
		Oct	Nov	Dec	Oct - Dec 2015	
SOUTHWEST WORKFORCE INVESTMENT AREA	5,751	78,321	77,830	78,101	\$756,534,414	\$745.29
Natural Resources & Mining	352	2,504	2,520	2,544	31,881,159	972.14
Trade, Transportation & Utilities	1,426	16,060	16,282	16,436	146,334,557	692.31
Wholesale Trade	250	2,634	2,648	2,657	38,546,715	1,120.47
Retail Trade	881	9,007	9,158	9,243	53,809,006	453.06
Transportation, Warehousing & Utilities	295	4,419	4,476	4,536	53,978,836	927.46
Information	60	460	456	456	5,059,778	851.05
Financial Activities	491	2,592	2,594	2,611	29,258,273	865.96
Education & Health Services	1,159	9,228	9,252	9,269	72,033,465	599.05
Leisure & Hospitality	411	5,306	5,252	5,291	19,334,950	281.53
Other Services	379	1,830	1,831	1,817	11,281,409	475.25
Local Government	254	9,916	10,012	9,989	79,866,687	616.06
State Government	139	3,893	3,889	3,881	33,795,409	668.69
Other	1,080	26,532	25,742	25,807	327,688,727	968.49

Southwest Workforce Investment Area includes these counties: Calhoun, Columbia, Dallas, Hempstead, Howard, Lafayette, Little River, Miller, Nevada, Ouachita, Sevier, and Union

WEST CENTRAL WORKFORCE INVESTMENT AREA	8,172	105,967	106,444	106,652	\$920,751,269	\$665.95
Natural Resources & Mining	238	2,096	2,096	2,214	\$23,385,353	842.43
Construction	753	4,714	4,725	4,741	\$49,626,545	807.64
Manufacturing	336	16,051	16,097	16,306	166,000,982	790.60
Trade, Transportation & Utilities	1,871	21,419	21,778	21,937	185,798,228	658.28
Wholesale Trade	337	2,241	2,241	2,235	27,199,222	934.46
Retail Trade	1,244	14,088	14,423	14,490	88,940,907	477.31
Transportation, Warehousing & Utilities	290	5,090	5,114	5,212	69,658,099	1,042.74
Financial Activities	806	4,022	4,018	4,029	43,396,340	829.77
Professional & Business Services	957	8,450	8,439	8,316	74,071,653	678.18
Education & Health Services	1,476	16,716	16,743	16,783	160,227,980	735.95
Leisure & Hospitality	754	11,975	11,678	11,619	44,160,198	288.92
Local Government	225	11,617	11,963	11,757	101,497,724	662.83
State Government	125	5,859	5,873	5,870	49,134,608	644.17
Other	631	3,048	3,034	3,080	23,451,658	590.69

West Central Workforce Investment Area includes these counties: Clark, Conway, Garland, Hot Spring, Johnson, Montgomery, Perry, Pike, Pope, and Yell

TABLE 8. WORKFORCE INVESTMENT AREA SUMMARY

North American Industry Classification System - Industry Groups	Number of Employing Units	Employment			Total Earnings	Average Weekly Earnings
		Oct	Nov	Dec	Oct - Dec 2015	
WESTERN WORKFORCE INVESTMENT AREA	6,464	102,200	102,698	102,979	\$987,269,897	\$740.01
Natural Resources & Mining	168	1,944	1,927	1,934	35,138,960	1,396.90
Trade, Transportation & Utilities	1,597	22,369	22,778	22,894	203,049,399	688.67
Wholesale Trade	390	3,850	3,869	3,858	46,827,901	933.44
Retail Trade	927	11,921	12,288	12,312	77,536,734	489.94
Transportation, Warehousing & Utilities	280	6,598	6,621	6,724	78,684,764	910.50
Financial Activities	680	3,706	3,712	3,699	44,615,599	926.14
Professional & Business Services	882	10,031	9,911	9,929	101,682,923	785.55
Education & Health Services	1,021	15,034	15,039	15,096	160,450,461	819.74
Leisure & Hospitality	537	8,711	8,632	8,630	31,210,192	277.30
Other Services	421	2,008	2,010	2,015	14,852,256	568.12
Local Government	151	9,363	9,525	9,482	85,117,947	692.37
State Government	75	2,935	2,935	2,958	26,097,413	682.20
Other	932	26,099	26,229	26,342	285,054,747	836.17

Western Workforce Investment Area includes these counties: Crawford, Franklin, Logan, Polk, Scott, and Sebastian