

Arkansas Covered Employment & Earnings

First Quarter
2012

Jobs for People. People for Jobs.

DWS
Department of
WORKFORCE**Services**

**COVERED EMPLOYMENT AND EARNINGS
STATE OF ARKANSAS
FIRST QUARTER 2012**

**MIKE BEEBE, GOVERNOR
STATE OF ARKANSAS**

**ARTEE WILLIAMS, DIRECTOR
DEPARTMENT OF WORKFORCE SERVICES**

**PUBLISHED BY
LABOR MARKET INFORMATION & ANALYSIS
BUREAU OF LABOR STATISTICS PROGRAMS
POST OFFICE BOX 2981
LITTLE ROCK, ARKANSAS 72203-2981
BERNADETTE COLEMAN, BLS PROGRAMS MANAGER
TELEPHONE (501) 682-3159
SUSAN PRICE, QCEW LEAD ANALYST
TELEPHONE (501) 682-3103**

STATE OF ARKANSAS WEBPAGE: <http://www.arkansas.gov>

DEPARTMENT OF WORKFORCE SERVICES WEBPAGE: <http://www.arkansas.gov/esd/>

WEBPAGE FOR LABOR MARKET INFORMATION: <http://www.discover.arkansas.gov>

RELEASED: FEBRUARY 2013

TABLE OF CONTENTS

DESCRIPTION OF DATA	PAGE
Industry Classification	1
Definition of Covered Employment and Earnings	2
Federal Government	2
County Classification	2
Significant Developments During First Quarter 2012	3

LIST OF GRAPHS AND TABLES

Graph 1	Total Covered Employment for Selected Years, Arkansas	7
Graph 2	Total Covered Earnings, by Calendar Quarter for Selected Years, Arkansas	8
Table 1	Quarterly Comparison of Covered Employment and Wages, by Industry	5
Table 2	Total Covered Employment in Arkansas, 2005 – 2012	6
Table 3	Total Covered Earnings, 2005 – 2012	9
Table 4	Total Taxable Earnings, 2005 – 2012	10
Table 5	State Summary – Employment and Total Earnings, by Industry, First Quarter 2012	11
Table 6	County Summary – Employment and Total Earnings, by Industry, First Quarter 2012	22
Table 7	Federal Government Employment and Total Earnings in Arkansas, First Quarter 2012	60
Table 8	Workforce Information Area – Employment and Total Earnings, by Industry, First Quarter 2012	61

EMPLOYMENT AND EARNINGS
UNDER THE ARKANSAS EMPLOYMENT SECURITY LAW
FIRST QUARTER 2012

DESCRIPTION OF DATA

This publication contains covered employment and payroll data by industry and county for the First Quarter 2012. These data are compiled from quarterly contributions and wage reports submitted by employers subject to the Arkansas Employment Security Law. An employing unit is a single physical location where business is conducted, production takes place, or services are provided. Employment data have been tabulated for each month of the quarter by industry under the **North American Industry Classification System (NAICS)** (see "Industry Classification" below) on a statewide, county and workforce area basis. Payroll data represent the total wages paid during the quarter, and are also shown by industry for the State and

by publishable industry groups for each county and workforce area. The tabulation of this data is a joint effort in conjunction with the U.S. Bureau of Labor Statistics. In addition, there are tables included which set out total covered employment by months, quarterly payrolls, and average weekly earnings for the years 2005 through 2012. Data contained in this publication are subject to revisions. These revisions are typically reflected in the 2012 Annual Covered Employment and Earnings publication. Because of industry code changes between years, substantial employment and wage shifts among industries are anticipated.

INDUSTRY CLASSIFICATION

Previously published industry data will not be comparable in all instances with currently published data since industry codes have been revised. The last two revisions have occurred using the North American Classification System (NAICS) which is a six digit industry code. Since 2001 NAICS codes are revised every five years. The most recent revision is the NAICS 2012 codes which are being used as of 2011 publications.

Auxiliary units are establishments primarily engaged in performing management of support services for other establishments of the same enterprise. The NAICS code is based on the actual activities that

the establishment performs. Comparisons of many industries should not be made between this publication and previous Covered Employment and Earnings publications that were based on previous coding revisions. A summary is available on the NAICS home page at <http://www.census.gov/naics>.

DEFINITION OF COVERED EMPLOYMENT AND EARNINGS

Covered Employment is the number of workers employed by employers subject to the Arkansas Employment Security Law who worked or received pay for the payroll period including the 12th of the month. An employer is subject to the law when they employ one or more employees in each of ten days during the current or preceding calendar year.

Currently excluded from coverage is employment covered by the Railroad Unemployment Insurance Act, some domestic service workers, employees of small agricultural establishments, self-

employed and unpaid family workers, insurance and real estate agents who are on commission only, and employees of churches and religious organizations except separately incorporated school. The payroll information in this publication includes all wages and salaries paid to any covered employees by their employers including bonuses, commissions, and cash values of remuneration received in any medium other than cash. These wages include both taxable and nontaxable wages. Only the first \$12,000 paid to each worker by an employer in the calendar year is taxable under the Arkansas Employment Security Law.

FEDERAL GOVERNMENT EMPLOYMENT

Table 7 on page 60 lists the total number of civilians employed by the Federal Government in Arkansas during the First Quarter 2012. Employment and wage data are set out by industry divisions.

These data are obtained from required reports submitted by various government agencies having employment in the State. Civilian Federal workers are covered by the Unemployment Compensation for Federal Employees (UCFE) program.

COUNTY CLASSIFICATION

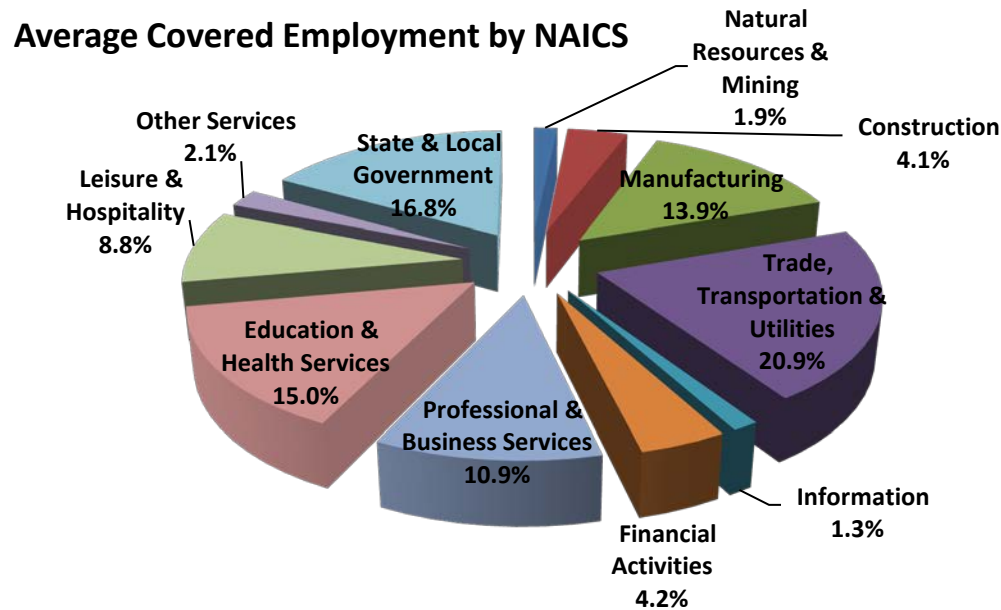
Employment and payroll data by county are classified according to the county where the workers are employed. Employers with operations in more than one county are requested to furnish this agency with a breakdown of employment and wages for at least one quarter of each year by the counties in which they operate. Many such employers submit county data with each regular contribution report. Note: This information is invaluable in the preparation of monthly employment and payroll data by county.

Employment and payroll data for multi-area employers, who do not furnish county data each quarter of the year, are prorated by county on the basis of one quarter's information. The "rest-of-state" table that appears on page 59 of this publication includes data on firms that did not provide a county breakdown of employment and payrolls. It also includes sales, and all other type of personnel with no permanent place of work, as well as employment of employers with no established place of business in Arkansas.

SIGNIFICANT DEVELOPMENTS DURING FIRST QUARTER 2012

AVERAGE EMPLOYMENT CHANGES

Covered employment averaged 1,121,239 during the First Quarter 2012 (refer to table 1), a decrease of 16,386 (-1.4%) from the previous quarter and an increase of 17,954 (1.6 %) from the average recorded one-year ago. This over-the-year increase is more significant when used as an economic indicator. This over-the-year comparison allows for the disregarding of many seasonal factors that are evident when making an over-the-quarter comparison.



EMPLOYMENT CHANGES FROM FOURTH QUARTER 2011

Compared to Fourth Quarter 2011, covered employment decreased in all major industry sectors. Most significant losses occurred in Trade, Transportation and Utilities (-4,710), which reported the highest loss in Retail Trade (-4,143). Manufacturing lost -2,250, State and Local Government reported a drop of 2,208, as well as Leisure and Hospitality (-1,269).

EMPLOYMENT CHANGES FROM FIRST QUARTER 2011 (QUARTER YEAR AGO COMPARISON)

Over the year gains were recorded in nine industry groups while two recorded losses (refer to Table 1). The largest gains were posted in Education & Health Services (5,245), Trade Transportation & Utilities (5,163), and Professional & Business Services (4,562). Losses occurred in Manufacturing (-4,157) and Information (-597).

COVERED WAGES

Wages paid to covered workers totaled \$10,766,175,449 for the First Quarter 2012 (refer to Table 1), for an average weekly wage of \$738.62 (refer to Table 5). Employees in Benton County recorded the highest average weekly wage (\$1,170.54), and workers in Newton County the lowest (\$404.15) (refer to Table 6).

The Professional & Business Services sector recorded the highest average weekly wage for the State of Arkansas at \$1,126.02; while the Leisure and Hospitality sector recorded the lowest at \$263.06 for the State of Arkansas (refer to Table 5).

Average Weekly Wage by Industry

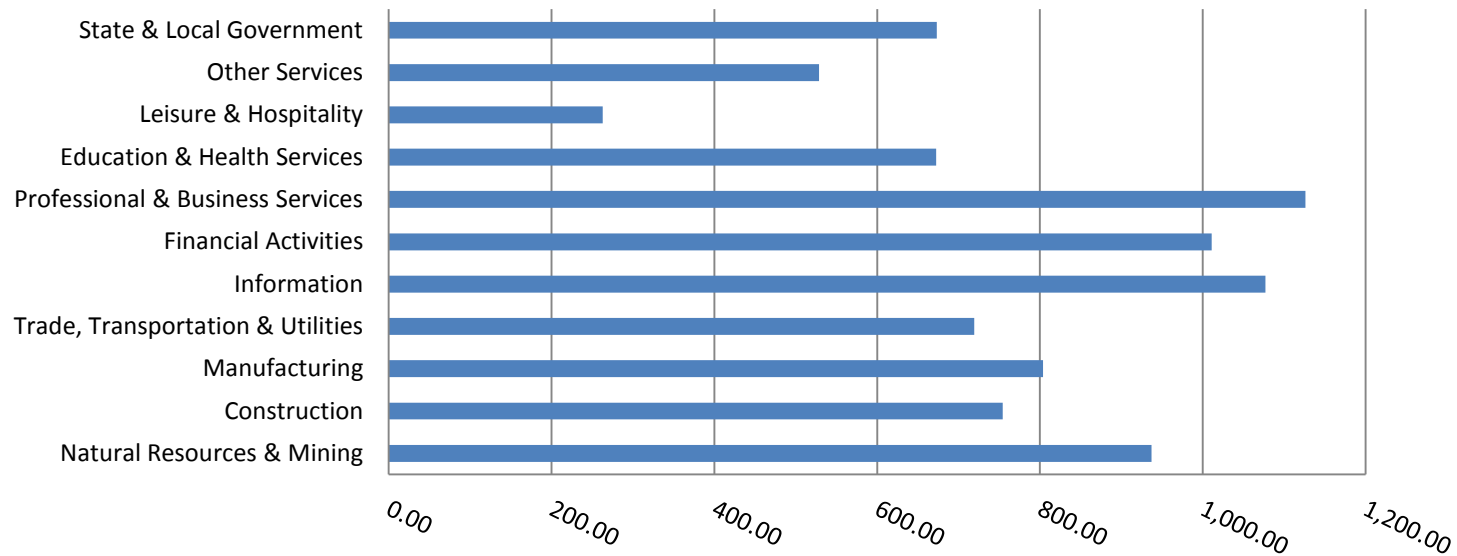


TABLE 1. QUARTERLY COMPARISON OF COVERED EMPLOYMENT AND WAGES, BY INDUSTRY

North American Industry Classification System	Number of Employing Units	Monthly Employment Average	Percent of Total	Net Change From:		Total Wages Paid Jan - Mar 2012	Percent of Total
				Oct - Dec 2011	Jan - Mar 2011		
Total	83,480	1,121,239	100	-16,386	17,954	\$10,766,175,449	100
Natural Resources & Mining	2,503	21,069	1.9	-1,060	1,281	256,674,792	2.4
Agriculture, Forestry, Fishing & Hunting	1,982	11,745	1.0	-978	616	89,451,177	0.8
Mining	521	9,324	0.8	-83	665	167,223,615	1.6
Construction	6,770	46,392	4.1	-1,565	2,101	454,837,308	4.2
Manufacturing	3,062	155,733	13.9	-2,250	-4,157	1,627,411,009	15.1
Trade, Transportation & Utilities	20,977	234,837	20.9	-4,710	5,163	2,195,817,054	20.4
Wholesale Trade	6,662	46,764	4.2	-357	1,183	718,800,242	6.7
Retail Trade	11,012	130,615	11.6	-4,143	1,980	786,845,440	7.3
Transportation & Warehousing	2,891	49,767	4.4	-732	1,515	527,755,621	4.9
Utilities	412	7,691	0.7	522	485	162,415,751	1.5
Information	1,125	14,397	1.3	-95	-597	201,567,648	1.9
Financial Activities	7,960	47,341	4.2	-772	102	622,179,685	5.8
Finance & Insurance	4,769	34,336	3.1	-395	-99	518,224,191	4.8
Real Estate & Rental & Leasing	3,191	13,006	1.2	-377	201	103,955,494	1.0
Professional & Business Services	12,389	121,788	10.9	-709	4,562	1,782,762,434	16.6
Professional & Technical Services	7,794	39,415	3.5	-65	138	494,359,790	4.6
Management of Companies & Enterprises	500	30,623	2.7	4,152	5,034	959,929,157	8.9
Administrative & Waste Services	4,095	51,751	4.6	-4,796	-609	328,473,487	3.1
Education & Health Services	13,792	168,617	15.0	-591	5,245	1,474,159,603	13.7
Educational Services	714	12,525	1.1	-148	818	85,891,794	0.8
Health Care & Social Assistance	13,078	156,092	13.9	-444	4,426	1,388,267,809	12.9
Leisure & Hospitality	6,474	98,834	8.8	-1,269	3,824	337,995,531	3.1
Arts, Entertainment & Recreation	920	8,675	0.8	91	232	39,235,255	0.4
Accommodation & Food Services	5,554	90,159	8.0	-1,360	3,591	298,760,276	2.8
Other Services	5,344	24,013	2.1	-1,157	29	164,972,607	1.5
State & Local Government	3,084	188,219	16.8	-2,208	401	1,647,797,778	15.3
Local Government	1,957	119,199	10.6	-1,012	685	944,708,380	8.8
State Government	1,127	69,020	6.2	-1,196	-284	703,089,398	6.5
Nonclassifiable Establishments	0	0	0.0	0	0	0	0.0

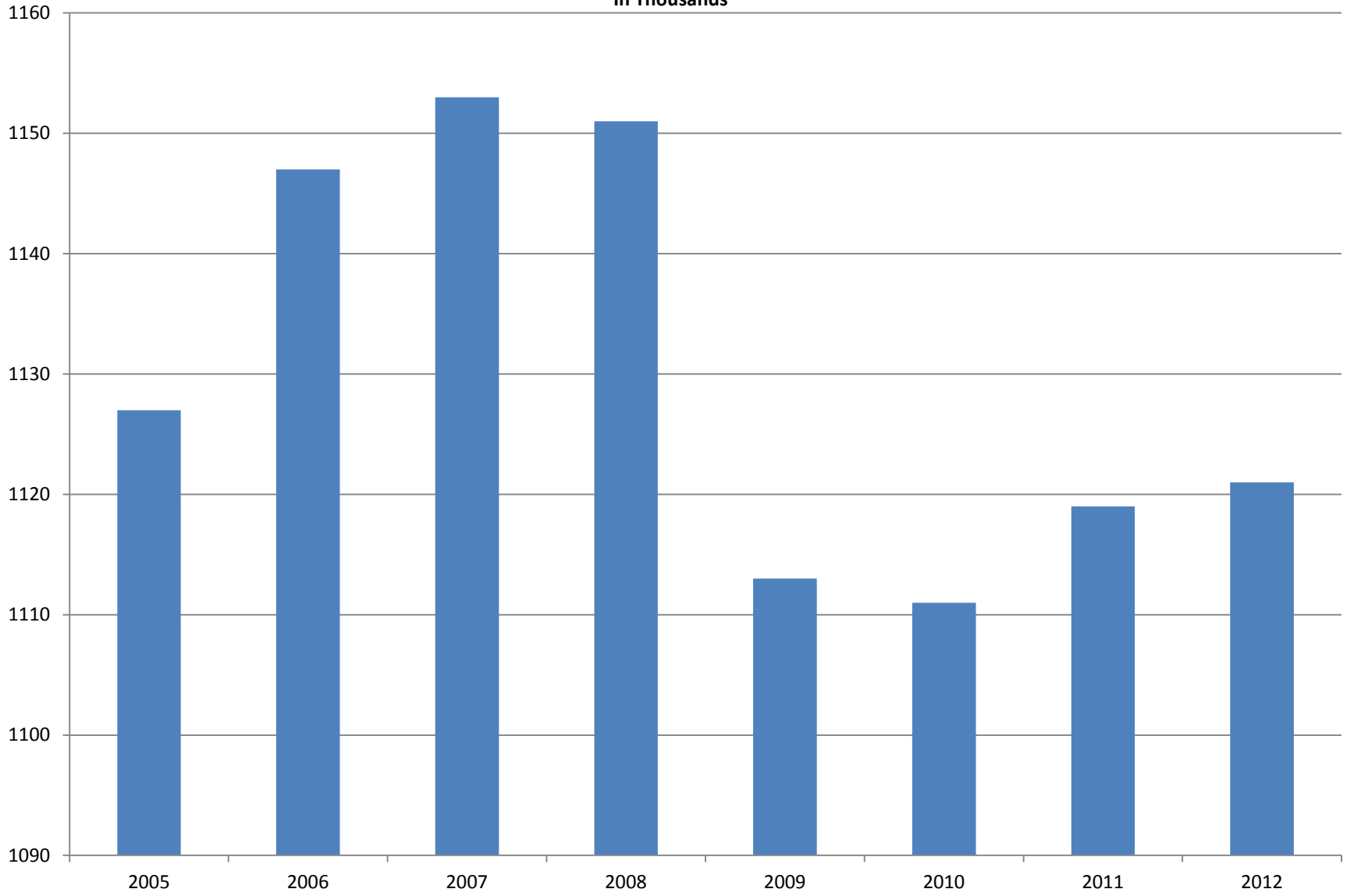
Note: Items do not necessarily add to total because of rounding. Because of industry code changes between years, substantial employment and wage shifts among industries are anticipated.

TABLE 2. TOTAL COVERED EMPLOYMENT IN ARKANSAS

Period	2005	2006	2007	2008	2009	2010	2011	2012
Average	1,126,778	1,146,948	1,152,994	1,150,965	1,112,591	1,110,947	1,118,639	1,121,239
January	1,102,768	1,130,595	1,137,437	1,141,856	1,119,299	1,089,984	1,098,349	1,113,274
February	1,110,577	1,136,810	1,143,397	1,149,443	1,119,476	1,091,282	1,098,445	1,119,319
March	1,122,619	1,150,439	1,158,895	1,157,690	1,124,386	1,106,198	1,113,061	1,131,123
April	1,129,785	1,155,498	1,159,623	1,159,841	1,123,383	1,115,341	1,129,635	N/A
May	1,135,567	1,159,886	1,165,224	1,166,111	1,122,322	1,123,250	1,126,371	N/A
June	1,136,118	1,162,026	1,164,207	1,164,167	1,117,884	1,130,164	1,123,412	N/A
July	1,090,071	1,106,142	1,110,571	1,114,279	1,071,048	1,073,743	1,080,937	N/A
August	1,114,098	1,130,839	1,139,109	1,138,583	1,093,192	1,099,795	1,106,262	N/A
September	1,144,815	1,159,814	1,165,135	1,162,333	1,116,580	1,124,281	1,132,779	N/A
October	1,142,300	1,156,804	1,162,768	1,157,196	1,113,157	1,125,073	1,138,395	N/A
November	1,145,667	1,156,011	1,164,246	1,152,159	1,115,443	1,126,781	1,138,543	N/A
December	1,146,954	1,158,509	1,165,314	1,147,927	1,114,919	1,125,466	1,137,474	N/A

AVERAGE TOTAL COVERED EMPLOYMENT

In Thousands



TOTAL COVERED EARNINGS BY CALENDAR YEAR

In Thousands

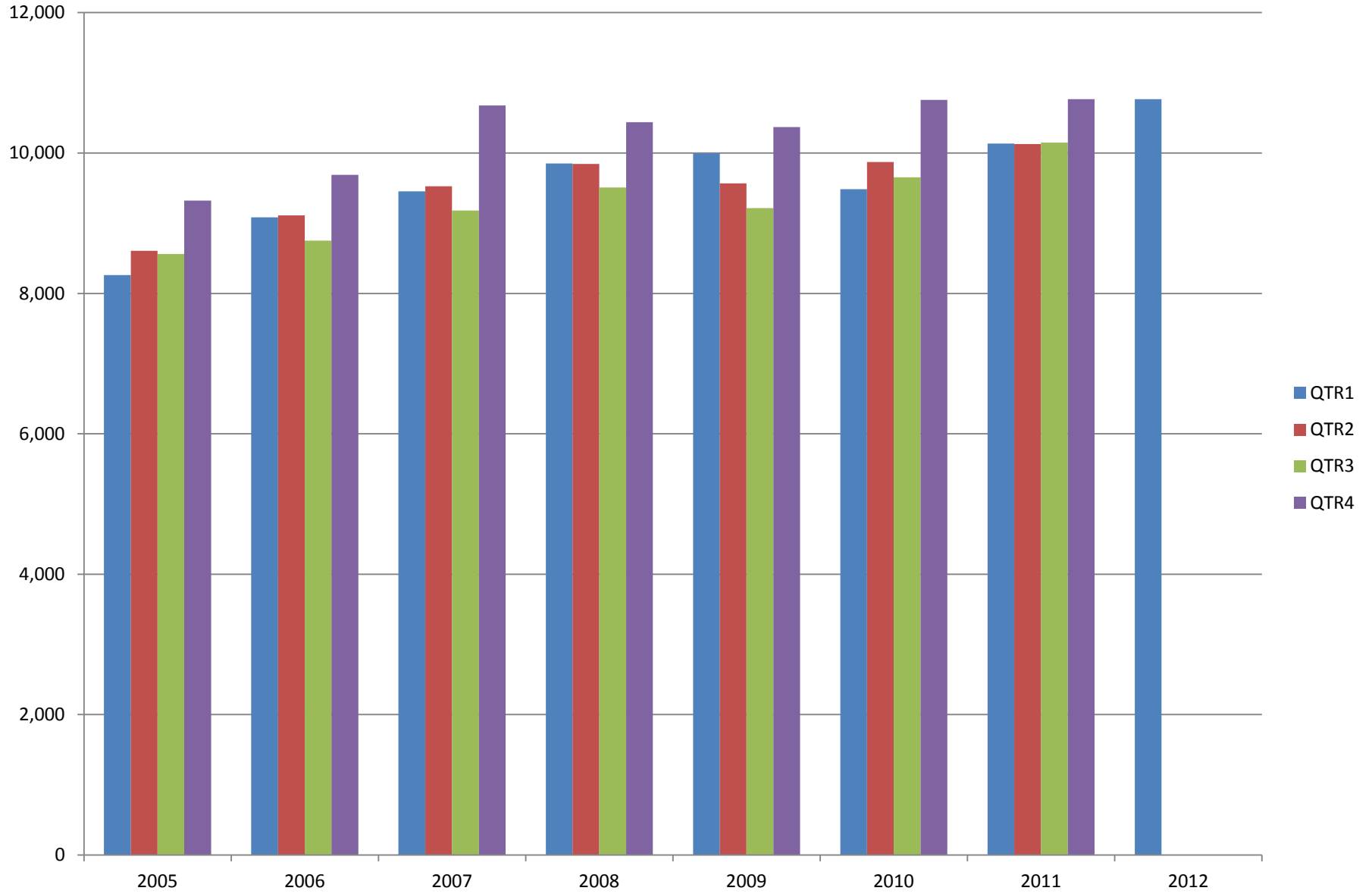


TABLE 3. TOTAL COVERED EARNINGS 2005 - 2012

Period	2005	2006	2007	2008
Total	\$34,753,107,631	\$36,636,090,775	\$38,833,265,464	\$39,643,039,342
January - March	8,261,153,981	9,085,021,816	9,452,711,662	9,851,866,058
April - June	8,607,722,353	9,112,624,590	9,525,837,049	9,843,711,293
July - September	8,562,555,369	8,750,878,205	9,178,902,477	9,509,150,631
October - December	9,321,675,928	9,687,566,164	10,675,814,276	10,438,311,360
Average Weekly Earnings	\$593.13	\$614.27	\$647.70	\$662.37

Period	2009	2010	2011	2012
Total	\$39,149,476,305	\$39,769,504,992	\$41,177,659,236	\$10,766,175,449
January - March	9,998,452,028	9,486,245,580	10,134,035,254	10,766,175,449
April - June	9,566,968,853	9,873,489,653	10,128,274,611	N/A
July - September	9,213,797,140	9,653,588,807	10,147,287,431	N/A
October - December	10,370,258,284	10,756,180,952	10,768,061,940	N/A
Average Weekly Earnings	\$676.69	\$688.42	\$707.89	\$738.62

TABLE 4. TOTAL TAXABLE EARNINGS, 2005 - 2012

Period	2005	2006	2007	2008
Total	9,991,605,239	10,197,511,360	10,459,105,059	10,360,487,108
January - March	5,062,670,306	5,421,204,601	5,617,417,571	5,635,750,082
April - June	2,506,505,721	2,385,110,992	2,466,606,627	2,419,313,519
July - September	1,353,660,445	1,314,939,803	1,307,060,412	1,297,473,555
October - December	1,068,768,767	1,076,255,964	1,068,020,449	1,007,949,952

Period	2009	2010	2011	2012
Total	9,787,660,886	11,332,118,456	11,479,396,226	6,167,036,199
January - March	5,423,705,265	5,607,134,758	5,828,877,821	6,167,036,199
April - June	2,293,670,854	2,977,100,591	2,910,604,359	N/A
July - September	1,165,280,065	1,577,067,770	1,601,382,146	N/A
October - December	905,004,702	1,170,815,337	1,138,531,900	N/A

TABLE 5. STATEWIDE SUMMARY

NORTH AMERICAN INDUSTRY CLASSIFICATION SYSTEM - INDUSTRY GROUPS		NUMBER OF EMPLOYING UNITS	EMPLOYMENT			TOTAL EARNINGS	AVERAGE WEEKLY EARNINGS
			JANUARY	FEBRUARY	MARCH	JAN-MAR 2012	
TOTAL, ALL INDUSTRIES		83,480	1,113,274	1,119,319	1,131,123	\$10,766,175,449	\$738.62
NATURAL RESOURCES & MINING		2,503	20,557	20,912	21,737	\$256,674,792	\$937.14
11	AGRICULTURE, FORESTRY, FISHING & HUNTING	1,982	11,205	11,602	12,428	89,451,177	\$585.85
111	CROP PRODUCTION	839	3,339	3,454	3,923	\$20,763,497	\$447.14
1111	Oilseed & Grain Farming	528	2,002	2,042	2,281	12,551,944	457.96
1112	Vegetable & Melon Farming	13	96	105	126	454,780	320.95
1113	Fruit & Tree Nut Farming	14	62	62	67	308,764	373.05
1114	Greenhouse & Nursery Production	44	297	343	406	2,194,223	484.09
1119	Other Crop Farming	240	882	902	1,043	5,253,786	428.87
112	ANIMAL PRODUCTION & AQUACULTURE	282	2,933	2,963	3,031	\$26,334,945	\$680.78
1121	Cattle Ranching & Farming	95	323	316	327	2,008,555	479.83
1122	Hog & Pig Farming	10	127	125	124	1,146,821	703.86
1123	Poultry & Egg Production	101	2,050	2,047	2,061	20,115,788	753.83
1125	Animal Aquaculture	59	388	431	472	2,791,752	499.03
1129	Other Animal Production	17	45	44	47	272,029	461.59
113	FORESTRY & LOGGING	411	2,149	2,131	2,150	\$17,792,964	\$638.58
1131	Timber Tract Operations	36	178	177	178	2,179,388	943.59
1132	Forest Nurseries & Gathering of Forest Products	5	22	22	22	235,089	821.99
1133	Logging	370	1,949	1,932	1,950	15,378,487	608.62
114	FISHING, HUNTING & TRAPPING	5	27	24	27	\$118,416	\$350.34
115	SUPPORT ACTIVITIES FOR AGRICULTURE & FORESTRY	445	2,757	3,030	3,297	\$24,441,355	\$620.91
1151	Support Activities for Crop Production	306	1,326	1,347	1,476	13,265,489	737.83
1152	Support Activities for Animal Production	64	729	752	752	4,756,254	491.53
1153	Support Activities for Forestry	75	702	931	1,069	6,419,612	548.28
21	MINING	521	9,352	9,310	9,309	\$167,223,615	\$1,379.65
211	OIL & GAS EXTRACTION	90	1,673	1,667	1,665	\$43,712,850	\$2,015.50
212	MINING (EXCEPT OIL & GAS)	111	2,160	2,122	2,157	\$28,315,436	\$1,014.81
213	SUPPORT ACTIVITIES FOR MINING	320	5,519	5,521	5,487	\$95,195,329	\$1,329.23

TABLE 5. STATEWIDE SUMMARY

NORTH AMERICAN INDUSTRY CLASSIFICATION SYSTEM - INDUSTRY GROUPS		NUMBER OF	EMPLOYMENT			TOTAL EARNINGS	AVERAGE
		EMPLOYING					WEEKLY
		UNITS	JANUARY	FEBRUARY	MARCH	JAN-MAR 2012	EARNINGS
CONSTRUCTION		6,770	45,628	46,092	47,455	\$454,837,308	\$754.18
236	CONSTRUCTION OF BUILDINGS	1,602	9,528	9,797	9,941	\$101,383,640	\$799.43
2361	Residential Building Construction	1,040	2,554	2,573	2,626	20,161,152	600.10
2362	Nonresidential Building Construction	562	6,974	7,224	7,315	81,222,488	871.27
237	HEAVY & CIVIL ENGINEERING CONSTRUCTION	774	8,544	8,647	8,951	\$108,019,257	\$953.54
2371	Utility System Construction	416	4,773	4,914	5,101	53,999,046	842.66
2372	L& Subdivision	77	232	233	234	2,396,105	791.05
2373	Highway, Street & Bridge Construction	194	2,498	2,457	2,562	24,035,573	737.88
2379	Other Heavy Construction	87	1,041	1,043	1,054	27,588,533	2,028.87
238	SPECIALTY TRADE CONTRACTORS	4,394	27,556	27,648	28,563	\$245,434,411	\$676.15
2381	Building Foundation & Exterior Contractors	862	5,319	5,386	5,589	43,784,707	620.12
2382	Building Equipment Contractors	1,996	14,327	14,381	14,732	140,877,530	748.39
2383	Building Finishing Contractors	765	3,735	3,756	3,869	28,072,890	570.28
2389	Other Specialty Trade Contractors	771	4,175	4,125	4,373	32,699,284	595.44
MANUFACTURING		3,062	155,744	155,389	156,066	\$1,627,411,009	\$803.85
311	FOOD MANUFACTURING	273	43,984	43,738	43,759	\$336,898,788	\$591.31
3111	Animal Food Manufacturing	46	1,694	1,681	1,670	16,928,129	774.33
3112	Grain & Oilseed Milling	29	2,305	2,303	2,336	22,939,409	762.34
3113	Sugar & Confectionery Product Manufacturing	7	38	41	37	200,385	398.64
3114	Fruit, Vegetable & Specialty Food	20	4,797	4,794	4,760	46,044,718	740.42
3115	Dairy Product Manufacturing	9	531	537	529	5,708,048	824.82
3116	Animal Slaughtering & Processing	83	29,848	29,542	29,578	199,823,082	518.31
3117	Seafood Product Preparation & Packaging	5	58	59	57	403,088	534.60
3118	Bakeries & Tortilla Manufacturing	52	2,963	3,021	3,043	26,910,284	687.94
3119	Other Food Manufacturing	22	1,750	1,760	1,749	17,941,645	787.29
312	BEVERAGE & TOBACCO PRODUCT MANUFACTURING	39	1,005	1,011	1,022	\$12,153,050	\$923.16
313	TEXTILE MILLS	15	87	93	96	\$859,216	\$718.41
314	TEXTILE PRODUCT MILLS	55	993	993	986	\$10,313,938	\$800.85
3141	Textile Furnishing Mills	13	40	39	37	483,265	961.40
3149	Other Textile Product Mills	42	953	954	949	9,830,673	794.33
315	APPAREL MANUFACTURING	27	1,180	1,194	1,178	\$6,858,641	\$445.60
316	LEATHER & ALLIED PRODUCT MANUFACTURING	17	1,400	1,387	1,378	\$8,571,982	\$474.95

TABLE 5. STATEWIDE SUMMARY

NORTH AMERICAN INDUSTRY CLASSIFICATION SYSTEM - INDUSTRY GROUPS		NUMBER OF EMPLOYING UNITS	EMPLOYMENT			TOTAL EARNINGS	AVERAGE WEEKLY EARNINGS
			JANUARY	FEBRUARY	MARCH	JAN-MAR 2012	
321	WOOD PRODUCT MANUFACTURING	328	8,613	8,607	8,655	\$74,553,653	\$664.92
3211	Sawmills & Wood Preservation	130	4,059	4,081	4,106	37,025,617	697.73
3212	Veneer & Engineered Wood Products	55	1,893	1,873	1,878	18,997,675	776.77
3219	Other Wood Product Manufacturing	143	2,661	2,653	2,671	18,530,361	535.53
322	PAPER MANUFACTURING	82	10,127	9,987	9,967	\$161,010,099	\$1,235.20
3221	Pulp, Paper & Paperboard Mills	13	4,263	4,214	4,230	89,942,503	1,633.43
3222	Converted Paper Product Manufacturing	69	5,864	5,773	5,737	71,067,596	943.95
323	PRINTING & RELATED SUPPORT ACTIVITIES	244	4,871	4,816	4,897	\$43,870,621	\$694.18
324	PETROLEUM & COAL PRODUCTS MANUFACTURING	18	931	912	927	\$13,660,712	\$1,138.08
325	CHEMICAL MANUFACTURING	116	4,638	4,659	4,652	\$68,523,126	\$1,133.63
3251	Basic Chemical Manufacturing	29	1,759	1,759	1,743	28,920,232	1,268.56
3252	Resin, Rubber & Artificial Fibers	6	270	266	263	4,180,328	1,207.37
3253	Agricultural Chemical Manufacturing	17	373	381	387	6,363,853	1,287.10
3254	Pharmaceutical & Medicine Manufacturing	12	145	149	151	2,041,717	1,058.80
3255	Paint, Coating & Adhesive Manufacturing	8	202	203	203	3,411,987	1,295.04
3256	Soap, Cleaning Compound, & Toilet Preparation Manufacturing	13	1,041	1,048	1,051	12,686,222	932.35
3259	Other Chemical Preparation Manufacturing	31	848	853	854	10,918,787	986.19
326	PLASTICS & RUBBER PRODUCTS MANUFACTURING	133	10,160	10,214	10,231	\$118,507,631	\$893.58
3261	Plastics Product Manufacturing	94	6,106	6,111	6,100	61,720,515	777.59
3262	Rubber Product Manufacturing	39	4,054	4,103	4,131	56,787,116	1,066.46
327	NONMETALLIC MINERAL PRODUCT MANUFACTURING	246	3,366	3,333	3,403	\$35,022,884	\$800.06
3271	Clay Product & Refractory Manufacturing	14	375	375	374	4,073,524	836.34
3272	Glass & Glass Product Manufacturing	13	375	376	378	4,031,846	824.12
3273	Cement & Concrete Product Manufacturing	179	1,882	1,851	1,911	17,243,617	705.05
3274	Lime & Gypsum Product Manufacturing	5	206	205	205	2,985,508	1,118.45
3279	Other Nonmetallic Mineral Products Manufacturing	35	528	526	535	6,688,389	971.35
331	PRIMARY METAL MANUFACTURING	74	10,188	10,199	10,236	\$153,833,319	\$1,159.26
3311	Iron & Steel Mills & Ferroalloys	7	2,360	2,371	2,368	58,577,850	1,904.21
3312	Purchased Steel Product Manufacturing	20	3,009	3,021	3,012	40,043,240	1,021.98
3313	Alumina & Aluminum Production	21	1,259	1,251	1,262	16,708,569	1,022.22
3314	Other Nonferrous Metal Production	7	694	685	704	6,720,068	744.50
3315	Foundries	19	2,866	2,871	2,890	31,783,592	850.20

TABLE 5. STATEWIDE SUMMARY

NORTH AMERICAN INDUSTRY CLASSIFICATION SYSTEM - INDUSTRY GROUPS		NUMBER OF	EMPLOYMENT			TOTAL EARNINGS	AVERAGE
		EMPLOYING	JANUARY	FEBRUARY	MARCH	JAN-MAR 2012	WEEKLY
		UNITS					EARNINGS
332	FABRICATED METAL PRODUCT MANUFACTURING	524	14,119	14,184	14,351	\$157,574,151	\$852.52
3321	Forging & Stamping	11	325	326	329	3,197,407	752.92
3322	Cutlery & H& Tool Manufacturing	13	841	850	842	8,424,011	767.47
3323	Architectural & Structural Metals	154	3,469	3,538	3,629	40,574,242	880.34
3324	Boilers, Tanks & Shipping Containers	17	702	701	697	8,620,012	947.25
3325	Hardware Manufacturing	8	355	353	351	4,177,791	910.39
3326	Spring & Wire Product Manufacturing	14	441	437	436	4,446,997	781.00
3327	Machine Shops & Threaded Products	206	1,816	1,821	1,869	16,785,090	703.50
3328	Coating, Engraving & Heat Treating Metals	37	701	712	721	5,772,009	624.18
3329	Other Fabricated Metal Product Manufacturing	64	5,469	5,446	5,477	65,576,592	923.20
333	MACHINERY MANUFACTURING	217	11,620	11,677	11,792	\$118,293,625	\$777.98
3331	Agriculture, Construction & Mining Machinery	38	2,985	3,018	3,090	27,363,789	694.46
3332	Industrial Machinery Manufacturing	29	658	655	661	8,093,160	946.13
3333	Commercial & Service Industry Machinery	21	835	835	835	9,912,801	913.20
3334	HVAC & Commercial Refrigeration Equipment	19	3,454	3,409	3,431	33,596,459	753.16
3335	Metalworking Machinery Manufacturing	61	1,076	1,091	1,105	11,378,070	802.48
3336	Turbine & Power Transmission Equipment Manufacturing	7	718	729	730	8,162,491	865.25
3339	Other General Purpose Machinery Manufacturing	42	1,894	1,940	1,940	19,786,855	790.82
334	COMPUTER & ELECTRONIC PRODUCT MANUFACTURING	64	2,969	2,974	2,951	\$30,429,538	\$789.54
3342	Communications Equipment Manufacturing	8	112	113	116	1,853,003	1,254.01
3343	Audio & Video Equipment Manufacturing	5	444	437	410	4,023,920	719.28
3344	Semiconductors & Electronic Components	26	1,886	1,897	1,889	18,748,367	762.79
3345	Electronic Instrument Manufacturing	22	504	502	511	5,641,986	858.27
	Other	3	23	25	25	162,262	512.95
335	ELECTRICAL EQUIPMENT & APPLIANCES	53	6,579	6,553	6,608	\$86,604,438	\$1,012.44
3353	Electrical Equipment Manufacturing	18	3,339	3,346	3,380	43,912,492	1,006.82
3359	Other Electrical Equipment & Component Manufacturing	18	1,678	1,683	1,693	26,796,647	1,223.55
	Other	17	1,562	1,524	1,535	15,895,299	793.80
336	TRANSPORTATION EQUIPMENT MANUFACTURING	146	12,339	12,369	12,422	\$132,982,208	\$826.51
3362	Motor Vehicle Body & Trailer Manufacturing	33	1,610	1,644	1,704	14,999,194	698.13
3363	Motor Vehicle Parts Manufacturing	51	4,850	4,841	4,844	44,995,767	714.39
3364	Aerospace Product & Parts Manufacturing	27	3,274	3,275	3,278	49,153,356	1,154.28
3366	Ship & Boat Building	23	1,293	1,264	1,266	9,031,857	545.19
	Other	12	1,312	1,345	1,330	14,802,034	856.75
337	FURNITURE & RELATED PRODUCT MANUFACTURING	194	3,243	3,223	3,277	\$27,627,605	\$654.38
3371	Household & Institutional Furniture	159	2,240	2,233	2,235	15,512,327	533.66
3372	Office Furniture & Fixtures Manufacturing	26	910	896	944	11,464,322	962.04
3379	Other Furniture Related Product Manufacturing	9	93	94	98	650,956	527.09
339	MISCELLANEOUS MANUFACTURING	197	3,332	3,266	3,278	\$29,261,784	\$683.75
3391	Medical Equipment & Supplies Manufacturing	79	1,574	1,566	1,568	16,687,033	817.94
3399	Other Miscellaneous Manufacturing	118	1,758	1,700	1,710	12,574,751	561.51

TABLE 5. STATEWIDE SUMMARY

NORTH AMERICAN INDUSTRY CLASSIFICATION SYSTEM - INDUSTRY GROUPS		NUMBER OF	EMPLOYMENT			TOTAL EARNINGS	AVERAGE
		EMPLOYING	JANUARY	FEBRUARY	MARCH	JAN-MAR 2012	WEEKLY
		UNITS					EARNINGS
TRADE, TRANSPORTATION & UTILITIES		20,977	234,818	233,652	236,041	\$2,195,817,054	\$719.26
42	WHOLESALE TRADE	6,662	46,549	46,622	47,121	\$718,800,242	\$1,182.37
423	MERCHANT WHOLESALERS, DURABLE GOODS	2,111	21,089	21,079	21,220	\$274,198,621	\$998.24
4231	Motor Vehicle & Part Merchant Wholesalers	236	2,592	2,627	2,637	27,004,639	793.26
4232	Furniture & Furnishings Merchant Wholesalers	60	389	389	398	4,608,223	904.28
4233	Lumber & Supply Merchant Wholesalers	171	1,320	1,300	1,323	13,324,809	779.85
4234	Commercial Goods Merchant Wholesalers	291	2,800	2,801	2,820	45,651,107	1,251.02
4235	Metal & Mineral Merchant Wholesalers	47	856	861	870	12,400,498	1,106.17
4236	Appliances & Electronics Goods Merchant Wholesalers	183	2,098	2,102	2,113	32,815,838	1,199.57
4237	Hardware & Plumbing Merchant Wholesalers	215	2,163	2,162	2,151	27,750,343	988.87
4238	Machinery & Supply Merchant Wholesalers	696	6,934	6,902	6,940	87,152,811	968.05
4239	Miscellaneous Durable Goods Merchant Wholesalers	212	1,937	1,935	1,968	23,490,353	928.23
424	MERCHANT WHOLESALERS, NONDURABLE GOODS	1,173	15,270	15,264	15,496	\$203,787,271	\$1,021.68
4241	Paper & Paper Product Merchant Wholesalers	71	1,102	1,091	1,104	15,261,648	1,068.22
4242	Druggist' Goods Merchant Wholesalers	65	955	932	951	12,934,680	1,051.77
4243	Apparel & Piece Goods Merchant Wholesalers	38	554	577	587	5,997,813	805.65
4244	Grocery Product Merchant Wholesalers	291	5,048	5,012	4,972	74,076,697	1,137.22
4245	Farm Product Merchant Wholesalers	72	871	845	846	6,601,313	594.61
4246	Chemical merchant Wholesalers	98	622	618	625	8,923,986	1,104.23
4247	Petroleum Merchant Wholesalers	135	1,465	1,463	1,482	23,075,706	1,207.52
4248	Alcoholic Beverage Merchant Wholesalers	37	1,252	1,256	1,250	15,068,069	925.29
4249	Miscellaneous Nondurable Goods Merchant Wholesaler	366	3,401	3,470	3,679	41,847,359	915.36
425	ELECTRONIC MARKETS & AGENTS & BROKERS	3,378	10,190	10,279	10,405	\$240,814,350	\$1,799.98
44 - 45	RETAIL TRADE	11,012	130,875	129,798	131,172	\$786,845,440	\$463.40
441	MOTOR VEHICLE & PARTS DEALERS	1,602	16,691	16,841	17,012	\$164,222,834	\$749.79
4411	Automobile Dealers	648	9,758	9,821	9,869	112,537,719	881.90
4412	Other Motor Vehicle Dealers	161	1,262	1,298	1,320	10,884,558	647.38
4413	Automotive Parts, Accessories & Tire Stores	793	5,671	5,722	5,823	40,800,557	546.90
442	FURNITURE & HOME FURNISHINGS STORES	533	3,370	3,358	3,374	\$23,817,565	\$544.09
4421	Furniture Stores	294	1,936	1,959	1,981	15,631,243	613.89
4422	Home Furnishings Stores	239	1,434	1,399	1,393	8,186,322	447.03
443	ELECTRONICS & APPLIANCE STORES	530	4,096	4,005	4,006	\$30,664,458	\$584.49
444	BUILDING MATERIAL & GARDEN SUPPLY STORES	839	9,959	10,155	10,779	\$63,995,383	\$478.04
4441	Building Material & Supplies Dealers	623	8,828	9,003	9,487	57,109,443	482.43
4442	Lawn & Garden Equipment & Supplies Stores	216	1,131	1,152	1,292	6,885,940	444.49

TABLE 5. STATEWIDE SUMMARY

NORTH AMERICAN INDUSTRY CLASSIFICATION SYSTEM - INDUSTRY GROUPS		NUMBER OF	EMPLOYMENT			TOTAL EARNINGS	AVERAGE
		EMPLOYING	JANUARY	FEBRUARY	MARCH	JAN-MAR 2012	WEEKLY
		UNITS					EARNINGS
445	FOOD & BEVERAGE STORES	1,008	17,755	17,731	17,662	\$87,358,154	\$379.31
4451	Grocery Stores	544	15,381	15,360	15,255	73,828,514	370.41
4452	Specialty Food Stores	140	853	843	863	6,173,608	556.73
4453	Beer, Wine & Liquor Stores	324	1,521	1,528	1,544	7,356,032	369.59
446	HEALTH & PERSONAL CARE STORES	963	7,903	7,816	7,912	\$66,835,645	\$652.69
447	GASOLINE STATIONS	1,590	11,442	11,456	11,590	\$48,776,252	\$326.38
44711	Gasoline Stations with Convenience Stores	1,485	10,322	10,334	10,449	41,999,612	311.60
44719	Other Gasoline Stations	105	1,120	1,122	1,141	6,776,640	462.26
448	CLOTHING & CLOTHING ACCESSORIES STORES	1,027	8,413	8,397	8,435	\$31,262,146	\$285.77
4481	Clothing Stores	737	6,465	6,457	6,493	20,940,258	248.90
4482	Shoe Stores	148	1,162	1,154	1,146	4,538,155	302.50
4483	Jewelry, Luggage & Leather Goods Stores	142	786	786	796	5,783,733	563.64
451	SPORTING GOODS, HOBBY, BOOK & MUSIC STORES	496	4,212	4,003	4,023	\$18,571,822	\$350.20
4511	Sporting Goods & Musical Instrument Stores	410	3,480	3,398	3,437	16,370,756	366.25
4512	Book, Periodical & Music Stores	86	732	605	586	2,201,066	264.14
452	GENERAL MERCH&ISE STORES	813	38,795	37,763	38,122	\$205,529,028	\$413.58
453	MISCELLANEOUS STORE RETAILERS	1,243	6,536	6,555	6,519	\$31,542,495	\$371.19
4531	Florists	214	752	838	772	3,036,702	296.69
4532	Office Supplies, Stationery & Gift Stores	308	2,028	2,016	2,019	10,628,954	404.56
4533	Used Merchandise Stores	234	1,379	1,302	1,302	5,887,041	341.09
4539	Other Miscellaneous Store Retailers	487	2,377	2,399	2,426	11,989,798	384.18
454	NONSTORE RETAILERS	368	1,703	1,718	1,738	\$14,269,658	\$638.30
4541	Electronic Shopping & Mail-Order Houses	150	499	497	528	4,667,588	706.78
4542	Vending Machine Operators	73	455	497	492	3,353,382	535.91
4543	Direct Selling Establishments	145	749	724	718	6,248,688	658.15
48 - 49	TRANSPORTATION & WAREHOUSING	2,891	49,743	49,601	49,957	527,755,621	\$815.73
481	AIR TRANSPORTATION	52	943	973	899	\$11,977,467	\$981.89
483	WATER TRANSPORTATION	3	82	81	82	\$1,436,664	\$1,353.22
484	TRUCK TRANSPORTATION	1,895	32,584	32,458	32,653	\$351,823,034	\$831.06
4841	General Freight Trucking	1,181	25,934	25,830	25,946	287,506,063	853.78
4842	Specialized Freight Trucking	714	6,650	6,628	6,707	64,316,971	742.68

TABLE 5. STATEWIDE SUMMARY

NORTH AMERICAN INDUSTRY CLASSIFICATION SYSTEM - INDUSTRY GROUPS		NUMBER OF	EMPLOYMENT			TOTAL EARNINGS	AVERAGE
		EMPLOYING	JANUARY	FEBRUARY	MARCH	JAN-MAR 2012	WEEKLY
		UNITS					EARNINGS
485	TRANSIT & GROUND PASSENGER TRANSPORTATION	81	1,287	1,320	1,342	\$5,467,490	\$319.51
4853	Taxi & Limousine Service	27	334	343	346	1,460,819	329.53
4854	School & Employee Bus Transportation	12	411	408	402	1,622,217	306.60
4855	Charter Bus Industry Service	7	79	79	87	471,399	444.02
4859	Other Ground Passenger Transportation	29	377	408	420	1,425,160	272.93
	Other	6	86	82	87	487,895	441.53
486	PIPELINE TRANSPORTATION	35	440	440	438	\$10,770,807	\$1,885.87
487	SCENIC & SIGHTSEEING TRANSPORTATION	7	32	33	42	\$96,567	\$208.27
488	SUPPORT ACTIVITIES FOR TRANSPORTATION	418	4,442	4,417	4,463	\$51,234,840	\$887.51
4881	Support Activities for Air Transportation	104	1,275	1,275	1,281	12,766,270	769.01
4882	Support Activities for Rail Transportation	39	410	404	414	3,963,331	744.80
4883	Support Activities for Water Transportation	23	551	559	550	6,556,932	911.53
4884	Support Activities for Road Transportation	124	592	580	596	3,734,760	487.48
4885	Freight Transportation Arrangement	112	1,510	1,494	1,518	23,555,485	1,202.10
4889	Other Support Activities for Transportation	16	104	105	104	658,062	485.18
492	COURIERS & MESSENGERS	171	2,944	2,929	2,981	\$30,488,367	\$794.64
4921	Couriers	80	2,541	2,520	2,555	27,576,681	\$835.59
4922	Local Messenger & Local Delivery	91	403	409	426	2,911,686	\$542.75
493	WARHOUSING & STORAGE	229	6,989	6,950	7,057	64,460,385	\$708.49
22	UTILITIES	412	7,651	7,631	7,791	\$162,415,751	\$1,624.43
2211	Power Generation & Supply	158	5,476	5,455	5,621	133,405,864	1,859.95
2212	Natural Gas Distribution	73	1,270	1,270	1,265	21,505,554	1,304.29
2213	Water, Sewage & Other Systems	181	905	906	905	7,504,333	637.62
INFORMATION		1,125	14,441	14,425	14,324	\$201,567,648	\$1,077.00
511	PUBLISHING INDUSTRIES, EXCEPT INTERNET	228	3,851	3,825	3,777	\$33,208,799	\$669.13
5111	Newspaper, Book & Directory Publishers	201	3,554	3,525	3,485	28,466,294	621.84
5112	Software Publishers	27	297	300	292	4,742,505	1,231.07
512	MOTION PICTURE & SOUND RECORDING INDUSTRY	136	1,135	1,173	1,209	\$5,385,486	\$353.37
5121	Motion Picture & Video Industries	118	1,107	1,145	1,181	5,068,746	340.73
5122	Sound Recording Industries	18	28	28	28	316,740	870.16
515	BROADCASTING, EXCEPT INTERNET	125	1,692	1,681	1,679	\$16,911,612	\$772.50
5151	Radio & Television Broadcasting	121	1,660	1,650	1,648	16,692,649	776.96
5152	Cable & Other Subscription Programming	4	32	31	31	218,963	537.55

TABLE 5. STATEWIDE SUMMARY

NORTH AMERICAN INDUSTRY CLASSIFICATION SYSTEM - INDUSTRY GROUPS		NUMBER OF	EMPLOYMENT			TOTAL EARNINGS	AVERAGE
		EMPLOYING	JANUARY	FEBRUARY	MARCH	JAN-MAR 2012	WEEKLY
		UNITS					EARNINGS
517	TELECOMMUNICATIONS	378	6,011	5,984	5,946	\$123,647,589	\$1,590.44
5171	Wired Telecommunications Carriers	266	3,789	3,767	3,751	64,107,591	1,308.40
5172	Wireless Telecommunications Carriers (except Satellite)	49	1,842	1,838	1,825	53,810,236	2,255.72
5174	Satellite Telecommunications Carriers	5	4	6	7	49,977	678.42
5179	Other Telecommunications	58	376	373	363	5,679,785	1,178.70
518	DATA PROCESSING, HOSTING & RELATED SERVICES	190	1,424	1,435	1,384	\$18,962,319	\$1,031.33
519	OTHER INFORMATION SERVICES	68	328	327	329	\$3,451,843	\$809.53
FINANCIAL ACTIVITIES		7,960	47,258	47,321	47,445	\$622,179,685	\$1,010.96
52	FINANCE & INSURANCE	4,769	34,290	34,357	34,360	\$518,224,191	\$1,160.99
522	CREDIT INTERMEDIATION & RELATED ACTIVITIES	1,910	18,700	18,736	18,693	\$218,614,826	\$898.81
5221	Depository Credit Intermediation	1,431	16,784	16,792	16,743	186,317,923	854.48
5222	Nondepository Credit Intermediation	346	1,573	1,600	1,613	27,238,319	1,313.37
5223	Activities Related to Credit Intermediation	133	343	344	337	5,058,584	1,140.01
523	FINANCIAL INVESTMENT & RELATED ACTIVITIES	667	3,002	3,016	3,029	\$113,654,429	\$2,899.08
524	INSURANCE CARRIERS & RELATED ACTIVITIES	2,112	12,444	12,467	12,496	\$184,390,461	\$1,137.53
5241	Insurance Carriers	329	5,136	5,141	5,157	92,941,405	1,389.66
5242	Insurance Agencies, Brokerages & Support	1,783	7,308	7,326	7,339	91,449,056	960.43
	OTHER	80	144	138	142	\$1,564,475	\$851.49
53	REAL ESTATE & RENTAL & LEASING	3,191	12,968	12,964	13,085	\$103,955,494	\$614.85
531	REAL ESTATE	2,491	8,413	8,434	8,488	\$62,113,872	\$565.78
5311	Lessors of Real Estate	1,057	4,162	4,162	4,183	28,666,400	528.93
5312	Offices of Real Estate Agents & Brokers	729	1,542	1,540	1,535	11,599,523	579.77
5313	Activities Related to Real Estate	705	2,709	2,732	2,770	21,847,949	614.03
532	RENTAL & LEASING SERVICES	679	4,479	4,455	4,523	\$41,034,356	\$703.68
5321	Automotive Equipment Rental & Leasing	113	866	877	885	6,273,656	550.90
5322	Consumer Goods Rental	344	1,935	1,927	1,998	14,254,339	561.34
5323	General Rental Centers	44	253	257	264	2,286,560	681.74
5324	Machinery & Equipment Rental & Leasing	178	1,425	1,394	1,376	18,219,801	1,002.28
533	LESSORS OF NONFINANCIAL INTANGIBLE ASSETS	21	76	75	74	\$807,266	\$827.97

TABLE 5. STATEWIDE SUMMARY

NORTH AMERICAN INDUSTRY CLASSIFICATION SYSTEM - INDUSTRY GROUPS		NUMBER OF	EMPLOYMENT			TOTAL EARNINGS	AVERAGE
		EMPLOYING	JANUARY	FEBRUARY	MARCH	JAN-MAR 2012	WEEKLY
		UNITS					EARNINGS
PROFESSIONAL & BUSINESS SERVICES		12,389	120,561	121,677	123,126	\$1,782,762,434	\$1,126.02
54	PROFESSIONAL & TECHNICAL SERVICES	7,794	39,071	39,625	39,548	\$494,359,790	\$964.81
5411	Legal Services	1,669	5,903	5,969	6,010	72,938,930	941.29
5412	Accounting & Bookkeeping Services	1,265	6,360	6,688	6,249	54,438,040	651.01
5413	Architectural & Engineering Services	916	5,850	5,855	5,916	74,244,416	972.32
5414	Specialized Design Services	197	425	428	439	5,330,294	952.06
5415	Computer Systems Design & Related Services	1,183	8,668	8,632	8,711	150,556,383	1,335.73
5416	Management & Technical Consulting Services	1,478	4,425	4,541	4,573	60,984,288	1,039.46
5417	Scientific Research & Development Services	119	1,206	1,199	1,200	18,627,826	1,192.44
5418	Advertising & Related Services	377	2,699	2,746	2,794	30,072,438	842.31
5419	Other Professional & Technical Services	590	3,535	3,567	3,656	27,167,175	582.76
55	MANAGEMENT OF COMPANIES & ENTERPRISES	500	30,474	30,645	30,749	\$959,929,157	\$2,411.31
56	ADMINISTRATIVE & SUPPORT SERVICES	4,095	51,016	51,407	52,829	\$328,473,487	\$488.25
561	ADMINISTRATIVE & SUPPORT SERVICES	3,825	48,071	48,473	49,873	\$299,424,997	\$471.93
5611	Office Administrative Services	566	2,041	2,040	2,074	27,511,245	1,031.48
5612	Facilities Support Services	23	211	213	219	2,436,542	874.46
5613	Employment Services	815	18,555	18,928	19,955	103,953,457	417.65
5614	Business Support Services	395	9,097	9,046	8,811	63,402,941	542.83
5615	Travel Arrangement & Reservation Services	79	321	321	328	2,486,179	591.48
5616	Investigation & Security Services	240	4,424	4,396	4,432	26,492,682	461.34
5617	Services to Buildings & Dwellings	1,466	11,961	12,077	12,569	61,410,903	387.13
5619	Other Support Services	241	1,461	1,452	1,485	11,731,048	615.54
562	WASTE MANAGEMENT & REMEDIATION SERVICES	270	2,945	2,934	2,956	\$29,048,490	\$758.74
5621	Waste Collection Services	109	1,015	1,007	1,015	9,388,711	713.41
5622	Waste Treatment & disposal Services	33	841	857	875	10,605,217	951.17
5629	Remediation & Other Waste Services	128	1,089	1,070	1,066	9,054,562	647.91
EDUCATION & HEALTH SERVICES		13,792	168,176	168,492	169,182	\$1,474,159,603	\$672.51
61	EDUCATIONAL SERVICES	714	12,284	12,691	12,600	\$85,891,794	\$527.51
6111	Elementary & Secondary Schools	90	4,852	5,011	4,993	25,572,659	397.24
6112	Junior Colleges	4	141	149	123	1,245,172	695.76
6113	Colleges & Universities	32	4,067	4,221	4,213	33,709,703	622.28
6114	Business, Computer, & Management Training	42	103	101	102	1,680,705	1,267.50
6115	Technical & Trade Schools	101	917	927	922	11,866,689	990.05
6116	Other Schools & Instruction	267	1,791	1,852	1,815	7,316,440	309.35
6117	Educational Support Services	178	413	430	432	4,500,426	814.56

TABLE 5. STATEWIDE SUMMARY

NORTH AMERICAN INDUSTRY CLASSIFICATION SYSTEM - INDUSTRY GROUPS		NUMBER OF	EMPLOYMENT			TOTAL EARNINGS	AVERAGE
		EMPLOYING	JANUARY	FEBRUARY	MARCH	JAN-MAR 2012	WEEKLY
		UNITS					EARNINGS
62	HEALTH CARE & SOCIAL ASSISTANCE	13,078	155,892	155,801	156,582	\$1,388,267,809	\$684.15
621	AMBULATORY HEALTH CARE SERVICES	5,092	46,628	46,612	47,021	\$605,974,349	\$997.00
6211	Offices of Physicians	2,245	21,754	21,801	21,891	368,229,272	1,298.41
6212	Offices of Dentists	980	6,672	6,675	6,688	70,485,482	811.87
6213	Offices of Other Health Practitioners	1,219	6,772	6,758	6,818	61,627,861	698.93
6214	Outpatient Care Centers	271	3,832	3,824	3,833	37,833,870	759.93
6215	Medical & Diagnostic Laboratories	110	953	918	945	11,585,855	949.45
6216	Home Health Care Services	134	4,130	4,132	4,297	35,295,269	648.54
6219	Other Ambulatory Health Care Services	133	2,515	2,504	2,549	20,916,740	637.81
622	HOSPITALS	119	41,764	41,740	41,627	\$439,866,909	\$811.21
6221	General Medical & Surgical Hospitals	75	36,699	36,655	36,548	387,803,521	814.30
6222	Psychiatric & Substance Abuse Hospitals	22	2,510	2,485	2,521	23,710,963	728.01
6223	Other Hospitals	22	2,555	2,600	2,558	28,352,425	848.29
623	Residential & Mental Health Facilities	575	31,402	31,310	31,557	\$173,548,625	\$424.84
6231	Nursing Care Facilities (Skilled Nursing Facilities)	262	23,008	22,945	23,108	127,349,438	425.54
6232	Residential Mental Health Facilities	156	4,261	4,212	4,263	24,259,316	439.57
6233	Continuing Care & Assisted Living Facilities	116	3,013	3,048	3,052	14,756,607	373.68
6239	Other Residential Care Facilities	41	1,120	1,105	1,134	7,183,264	493.50
624	SOCIAL ASSISTANCE	7,292	36,098	36,139	36,377	\$168,877,926	\$358.81
6241	Individual & Family Services	6,006	20,795	20,923	21,088	98,719,426	362.73
6242	Emergency & Other Relief Services	130	1,269	1,247	1,252	7,357,683	450.62
6243	Vocational Rehabilitation Services	139	3,964	3,934	3,909	21,034,473	411.12
6244	Child Day Care Services	1,017	10,070	10,035	10,128	41,766,344	318.80
LEISURE & HOSPITALITY		6,474	96,568	98,290	101,643	\$337,995,531	\$263.06
71	ARTS, ENTERTAINMENT & RECREATION	920	8,285	8,592	9,148	\$39,235,255	\$347.91
711	PERFORMING ARTS & SPECTATOR SPORTS	204	2,270	2,454	2,547	\$12,334,604	\$391.48
7111	Performing Arts Companies	46	320	344	355	1,594,403	361.08
7112	Spectator Sports	49	1,273	1,377	1,418	7,550,203	428.31
7113	Performing Arts & Sports Promoters	36	596	657	690	2,412,160	286.49
7114	Agents & Managers for Public Figures	21	25	22	29	281,100	853.54
7115	Independent Artists, Writers, & Performers	52	56	54	55	496,738	694.74
712	MUSEUMS, PARKS, & HISTORICAL SITES	54	393	417	437	\$3,198,024	\$591.82
713	GAMBLING, RECREATIONAL & AMUSEMENT INDUSTRY	662	5,622	5,721	6,164	\$23,702,627	\$312.44
72	ACCOMODATION & FOOD SERVICES	5,554	88,283	89,698	92,495	\$298,760,276	\$254.90

TABLE 5. STATEWIDE SUMMARY

NORTH AMERICAN INDUSTRY CLASSIFICATION SYSTEM - INDUSTRY GROUPS		NUMBER OF	EMPLOYMENT			TOTAL EARNINGS	AVERAGE
		EMPLOYING	JANUARY	FEBRUARY	MARCH	JAN-MAR 2012	WEEKLY
		UNITS					EARNINGS
721	ACCOMODATION	875	9,883	10,091	10,621	\$40,506,346	\$305.53
7211	Travel Accommodation	795	9,512	9,729	10,250	38,781,691	303.47
7212	RV Parks & Recreational Camps	59	273	260	279	1,280,384	363.88
7213	Rooming & Boarding Houses	21	98	102	92	444,271	351.11
722	FOOD SERVICES & DRINKING PLACES	4,679	78,400	79,607	81,874	\$258,253,930	\$248.44
7223	Special Food Services	166	2,777	2,926	2,785	10,816,069	294.06
7224	Drinking Places, Alcoholic Beverages	167	998	1,033	1,057	3,345,160	249.99
7225	Restaurants & Other Eating Places	4,346	74,625	75,648	78,032	\$244,092,701	246.73
722511	Full-Service Restaurants	1,990	33,569	34,081	35,039	118,895,525	267.19
722513	Limited-Service Eating Places	1,995	37,624	37,956	39,279	112,771,112	226.57
722514	Cafeterias, Grill Buffets, & Buffets	98	1,752	1,884	1,900	6,959,936	290.13
722515	Snack & Nonalcoholic Beverage Bars	263	1,680	1,727	1,814	5,466,128	241.60
OTHER SERVICES		5,344	23,784	23,945	24,309	\$164,972,607	\$528.48
811	REPAIR & MAINTENANCE	2,223	9,060	9,077	9,291	\$74,451,957	\$626.41
8111	Automotive Repair & Maintenance	1,458	6,226	6,243	6,318	47,855,601	587.83
8112	Electronic Equipment Repair & Maintenance	163	552	553	554	5,610,754	780.46
8113	Commercial Machinery Repair & Maintenance	418	1,727	1,727	1,841	17,226,340	750.77
8114	Household Goods Repair & Maintenance	184	555	554	578	3,759,262	514.24
812	PERSONAL & LAUNDRY SERVICES	1,328	8,171	8,209	8,332	\$42,652,761	\$398.31
8121	Personal Care Services	619	2,837	2,879	2,946	12,195,011	324.89
8122	Death Care Services	248	1,629	1,609	1,624	10,973,306	520.84
8123	Drycleaning & Laundry Service	273	3,011	3,009	3,026	16,107,354	410.91
8129	Other Personal Services	188	694	712	736	3,377,090	363.83
813	MEMBERSHIP ASSOCIATIONS & ORGANIZATIONS	1,083	5,580	5,680	5,732	\$43,245,189	\$587.32
8131	Religious Organizations	54	204	207	208	1,296,577	483.38
8132	Grantmaking & Giving Organizations	112	507	520	495	5,437,673	824.47
8133	Social Advocacy Organizations	223	1,787	1,800	1,814	13,811,054	590.11
8134	Civic & Social Organizations	189	1,215	1,240	1,253	4,832,826	300.77
8139	Professional & Similar Organizations	505	1,867	1,913	1,962	17,867,059	718.07
814	PRIVATE HOUSEHOLDS	710	973	979	954	\$4,622,700	\$367.09
LOCAL GOVERNMENT		1,957	118,357	119,388	119,852	\$944,708,380	\$609.65
STATE GOVERNMENT		1,127	67,382	69,736	69,943	\$703,089,398	\$783.59
NONCLASSIFIABLE ESTABLISHMENTS		0	0	0	0	\$0	\$0.00

TABLE 6. COUNTY SUMMARY

NORTH AMERICAN INDUSTRY CLASSIFICATION SYSTEM - INDUSTRY GROUPS	NUMBER OF EMPLOYING UNITS	EMPLOYMENT			TOTAL EARNINGS	AVERAGE WEEKLY EARNINGS
		JANUARY	FEBRUARY	MARCH	JAN-MAR 2012	
ARKANSAS COUNTY - TOTAL	716	9,518	9,663	9,759	\$78,678,190	\$627.38
Natural Resources & Mining	44	169	169	181	2,012,183	894.70
Construction	47	289	284	289	2,403,082	643.34
Manufacturing	29	3,523	3,622	3,673	31,382,737	669.46
Trade, Transportation & Utilities	208	2,008	2,035	2,068	18,701,959	706.24
Wholesale Trade	43	421	440	462	6,462,454	1,127.24
Retail Trade	96	1,018	1,013	1,017	5,846,438	442.64
Transportation, Warehousing & Utilities	69	569	582	589	6,393,067	847.89
Information	10	97	97	101	883,823	691.39
Financial Activities	47	331	336	338	3,157,012	724.92
Professional & Business Services	44	341	343	337	3,698,883	836.03
Education & Health Services	136	1,157	1,143	1,136	7,137,647	479.38
Leisure & Hospitality	54	508	535	533	1,597,723	233.95
Other Services	50	117	121	125	783,859	498.32
Local Government	32	795	794	789	5,690,502	552.23
State Government	15	183	184	189	1,228,780	510.01
ASHLEY COUNTY - TOTAL	578	7,352	7,446	7,485	\$71,310,939	\$738.52
Natural Resources & Mining	46	276	274	281	2,428,036	674.27
Construction	47	660	703	719	7,141,645	791.58
Manufacturing	27	2,063	2,035	2,027	32,651,608	1,230.20
Trade, Transportation & Utilities	135	1,253	1,283	1,306	8,894,677	534.26
Wholesale Trade	25	194	200	205	2,458,058	946.99
Retail Trade	84	824	840	853	4,145,317	380.06
Transportation, Warehousing & Utilities	26	235	243	248	2,291,302	728.32
Information	6	43	42	42	293,768	533.80
Financial Activities	35	212	218	216	2,001,422	714.96
Professional & Business Services	50	239	239	235	1,827,085	591.35
Education & Health Services	120	885	888	890	6,205,313	537.74
Leisure & Hospitality	31	407	417	443	1,115,844	203.24
Other Services	38	137	141	150	927,529	500.11
Local Government	32	982	1,004	977	6,587,764	513.08
State Government	11	195	202	199	1,236,248	478.67

TABLE 6. COUNTY SUMMARY

NORTH AMERICAN INDUSTRY CLASSIFICATION SYSTEM - INDUSTRY GROUPS	NUMBER OF EMPLOYING UNITS	EMPLOYMENT			TOTAL EARNINGS	AVERAGE WEEKLY EARNINGS
		JANUARY	FEBRUARY	MARCH	JAN-MAR 2012	
BAXTER COUNTY - TOTAL	1,221	13,822	13,868	14,021	\$100,903,795	\$558.26
Natural Resources & Mining	6	93	78	93	615,138	537.71
Construction	125	582	583	581	3,704,088	489.57
Manufacturing	56	2,163	2,192	2,189	20,167,322	711.19
Trade, Transportation & Utilities	267	2,517	2,504	2,529	15,231,033	465.54
Wholesale Trade	32	196	187	196	1,617,711	644.76
Retail Trade	211	2,163	2,161	2,174	12,119,850	430.42
Transportation, Warehousing & Utilities	24	158	156	159	1,493,472	728.64
Information	18	192	188	188	1,815,253	737.51
Financial Activities	106	646	657	653	6,835,835	806.49
Professional & Business Services	128	766	753	799	5,268,838	524.54
Education & Health Services	251	3,580	3,587	3,584	29,751,568	638.61
Leisure & Hospitality	120	1,359	1,383	1,429	4,191,702	231.91
Other Services	93	330	341	343	1,641,107	373.49
Local Government	39	1,247	1,251	1,280	9,180,077	560.74
State Government	12	347	351	353	2,501,834	549.33
BENTON COUNTY - TOTAL	5,384	93,649	94,472	95,488	\$1,438,565,249	\$1,170.54
Natural Resources & Mining	40	741	745	753	8,727,774	899.55
Construction	517	3,034	3,046	3,119	29,728,859	745.79
Manufacturing	200	10,522	10,478	10,473	103,349,107	757.79
Trade, Transportation & Utilities	1,466	21,957	21,740	21,986	277,366,922	974.49
Wholesale Trade	674	4,412	4,411	4,446	105,757,139	1,839.29
Retail Trade	627	9,550	9,409	9,572	61,642,198	498.58
Transportation, Warehousing & Utilities	165	7,995	7,920	7,968	109,967,585	1,062.56
Information	71	775	776	765	9,364,550	933.10
Financial Activities	530	2,657	2,690	2,688	35,089,538	1,007.79
Professional & Business Services	1,020	26,650	26,987	27,163	775,958,759	2,216.18
Education & Health Services	616	8,674	8,722	8,750	76,781,606	677.69
Leisure & Hospitality	481	8,584	8,823	9,181	34,029,703	295.36
Other Services	348	1,583	1,564	1,591	10,669,281	519.66
Local Government	78	7,630	7,681	7,781	68,736,914	686.92
State Government	17	842	1,220	1,238	8,762,236	612.74

TABLE 6. COUNTY SUMMARY

NORTH AMERICAN INDUSTRY CLASSIFICATION SYSTEM - INDUSTRY GROUPS	NUMBER OF EMPLOYING UNITS	EMPLOYMENT			TOTAL EARNINGS	AVERAGE WEEKLY EARNINGS
		JANUARY	FEBRUARY	MARCH	JAN-MAR 2012	
BOONE COUNTY - TOTAL	1,008	13,707	13,746	13,832	\$110,617,009	\$618.31
Natural Resources & Mining	4	4	7	6	23,367	\$317.20
Construction	82	489	498	492	3,405,880	531.42
Manufacturing	63	1,840	1,808	1,782	16,611,921	705.99
Trade, Transportation & Utilities	249	3,750	3,702	3,697	32,815,272	679.23
Wholesale Trade	53	441	417	384	3,450,940	641.20
Retail Trade	146	1,822	1,806	1,829	10,965,441	463.71
Transportation, Warehousing & Utilities	50	1,487	1,479	1,484	18,398,891	954.13
Information	19	380	378	380	4,559,644	924.63
Financial Activities	93	531	542	536	5,552,538	796.37
Professional & Business Services	109	888	934	949	7,406,733	616.83
Education & Health Services	175	1,551	1,522	1,504	11,432,529	576.42
Leisure & Hospitality	85	1,023	1,045	1,122	3,232,158	233.82
Other Services	55	249	254	272	1,886,604	561.77
Local Government	55	2,284	2,319	2,340	16,914,383	562.19
State Government	19	718	737	752	6,775,980	708.51
BRADLEY COUNTY - TOTAL	355	3,522	3,553	3,594	\$24,085,914	\$520.98
Natural Resources & Mining	42	404	405	422	2,324,983	435.85
Construction	16	106	110	110	729,380	516.31
Manufacturing	11	491	485	487	5,236,855	826.05
Trade, Transportation & Utilities	73	480	466	483	3,034,001	489.96
Wholesale Trade	13	71	71	73	919,017	986.42
Retail Trade	42	357	347	353	1,650,185	360.28
Transportation, Warehousing & Utilities	18	52	48	57	464,799	683.19
Information	4	11	13	13	113,508	707.95
Financial Activities	26	145	145	135	1,038,794	564.05
Professional & Business Services	27	115	116	116	797,566	530.41
Education & Health Services	92	608	606	615	4,038,882	509.60
Leisure & Hospitality	11	147	149	158	413,261	210.06
Other Services	28	91	87	94	458,136	388.69
Local Government	14	533	581	572	3,596,065	492.21
State Government	11	391	390	389	2,304,483	454.53

TABLE 6. COUNTY SUMMARY

NORTH AMERICAN INDUSTRY CLASSIFICATION SYSTEM - INDUSTRY GROUPS	NUMBER OF EMPLOYING UNITS	EMPLOYMENT			TOTAL EARNINGS	AVERAGE WEEKLY EARNINGS
		JANUARY	FEBRUARY	MARCH	JAN-MAR 2012	
CALHOUN COUNTY - TOTAL	115	2,798	2,772	2,796	\$31,678,536	\$873.83
Natural Resources & Mining	12	68	66	68	672,851	768.68
Construction	13	94	94	93	695,534	571.20
Manufacturing	10	1,883	1,867	1,876	24,535,698	1,006.41
Trade, Transportation & Utilities	27	248	237	243	1,829,899	580.06
Retail Trade	16	86	80	83	379,194	351.43
Transportation, Warehousing & Utilities	11	162	157	160	1,450,705	698.91
Financial Activities	6	80	81	80	778,105	745.07
Education & Health Services	10	47	48	49	402,148	644.47
Leisure & Hospitality	6	15	14	16	37,836	194.03
Other Services	5	8	6	8	29,500	309.44
Local Government	11	181	183	184	1,118,000	470.80
State Government	8	82	82	86	643,682	594.17
Other	7	92	94	93	935,283	773.60
CARROLL COUNTY - TOTAL	763	9,418	9,456	9,775	\$60,949,842	\$490.95
Natural Resources & Mining	15	245	250	256	1,747,664	537.03
Trade, Transportation & Utilities	196	1,505	1,476	1,540	9,061,980	462.56
Wholesale Trade	24	176	176	183	1,007,137	434.42
Retail Trade	156	1,091	1,064	1,118	5,549,164	391.25
Transportation, Warehousing & Utilities	16	238	236	239	2,505,679	810.99
Information	7	70	69	70	533,514	589.08
Financial Activities	67	350	349	354	3,491,961	765.28
Professional & Business Services	54	200	219	208	1,494,414	550.02
Education & Health Services	85	924	925	946	7,628,201	629.82
Leisure & Hospitality	160	1,020	1,049	1,252	3,460,164	240.44
Other Services	45	127	124	130	681,191	412.59
Local Government	24	1,048	1,063	1,071	7,170,548	520.03
State Government	10	113	113	111	730,774	500.42
Other	100	3,816	3,819	3,837	24,949,431	501.88

TABLE 6. COUNTY SUMMARY

NORTH AMERICAN INDUSTRY CLASSIFICATION SYSTEM - INDUSTRY GROUPS	NUMBER OF EMPLOYING UNITS	EMPLOYMENT			TOTAL EARNINGS	AVERAGE WEEKLY EARNINGS
		JANUARY	FEBRUARY	MARCH	JAN-MAR 2012	
CHICOT COUNTY - TOTAL	413	3,302	3,305	3,398	\$21,915,595	\$505.49
Natural Resources & Mining	51	220	229	244	1,346,192	448.28
Construction	16	156	152	162	1,320,986	648.60
Manufacturing	10	291	290	288	1,538,913	408.67
Trade, Transportation & Utilities	66	473	464	492	3,015,416	486.96
Wholesale Trade	11	64	64	65	524,811	627.51
Retail Trade	43	345	336	364	1,836,201	405.49
Transportation, Warehousing & Utilities	12	64	64	63	654,404	790.66
Information	5	9	9	9	59,471	508.30
Financial Activities	27	155	156	152	1,600,485	797.72
Professional & Business Services	17	47	47	44	388,792	650.15
Education & Health Services	159	742	731	741	4,500,003	469.04
Leisure & Hospitality	20	169	171	183	422,814	186.56
Other Services	15	56	61	69	395,011	490.09
Local Government	17	688	703	724	5,172,366	564.36
State Government	10	296	292	290	2,155,146	566.45
CLARK COUNTY - TOTAL	602	8,990	9,173	9,220	\$67,591,773	\$569.63
Natural Resources & Mining	30	202	204	212	1,681,893	628.04
Construction	29	83	83	85	438,310	402.98
Manufacturing	34	1,470	1,455	1,441	16,520,061	873.18
Trade, Transportation & Utilities	139	1,641	1,600	1,591	11,155,752	532.78
Wholesale Trade	16	218	217	215	2,099,722	745.46
Retail Trade	100	1,241	1,207	1,195	7,306,999	462.87
Transportation, Warehousing & Utilities	23	182	176	181	1,749,031	748.84
Information	8	25	25	25	231,564	712.50
Financial Activities	75	324	329	333	3,190,838	746.80
Professional & Business Services	45	578	588	587	4,313,599	567.85
Education & Health Services	97	1,410	1,419	1,429	9,655,768	523.31
Leisure & Hospitality	59	908	986	1,039	3,023,725	237.91
Other Services	45	199	202	206	1,158,871	440.58
Local Government	27	1,000	1,030	1,007	7,164,752	544.42
State Government	14	1,150	1,252	1,265	9,056,640	569.95

TABLE 6. COUNTY SUMMARY

NORTH AMERICAN INDUSTRY CLASSIFICATION SYSTEM - INDUSTRY GROUPS	NUMBER OF EMPLOYING UNITS	EMPLOYMENT			TOTAL EARNINGS	AVERAGE WEEKLY EARNINGS
		JANUARY	FEBRUARY	MARCH	JAN-MAR 2012	
CLAY COUNTY - TOTAL	397	3,463	3,432	3,554	\$23,469,666	\$518.33
Natural Resources & Mining	62	201	204	249	976,695	344.63
Construction	29	120	125	159	875,615	500.16
Manufacturing	13	355	338	348	3,457,649	766.49
Trade, Transportation & Utilities	99	888	880	878	6,359,326	554.62
Wholesale Trade	26	309	290	289	2,287,019	594.34
Retail Trade	46	405	412	407	2,382,076	449.11
Transportation, Warehousing & Utilities	27	174	178	182	1,690,231	730.44
Information	4	53	53	53	318,775	462.66
Financial Activities	27	115	114	117	921,056	614.31
Professional & Business Services	27	64	62	72	458,390	534.25
Education & Health Services	53	503	504	505	3,077,557	469.71
Leisure & Hospitality	18	199	193	203	511,725	198.47
Other Services	31	80	77	76	504,379	499.55
Local Government	23	828	824	835	5,621,838	521.65
State Government	11	57	58	59	386,661	512.81
CLEBURNE COUNTY - TOTAL	660	6,917	6,985	7,023	\$50,687,396	\$559.00
Natural Resources & Mining	29	347	364	336	4,616,129	1,017.44
Construction	66	340	354	356	2,695,520	592.42
Manufacturing	34	1,213	1,198	1,215	10,089,790	642.14
Trade, Transportation & Utilities	170	1,687	1,679	1,665	13,867,768	636.11
Wholesale Trade	41	288	288	288	3,351,501	895.17
Retail Trade	103	957	951	956	5,516,169	444.47
Transportation, Warehousing & Utilities	26	442	440	421	5,000,098	885.55
Information	7	54	53	52	361,708	524.98
Financial Activities	70	232	230	231	1,989,761	662.59
Professional & Business Services	63	298	308	289	2,231,653	575.42
Education & Health Services	70	845	835	851	5,331,818	486.14
Leisure & Hospitality	76	794	842	905	2,557,123	232.23
Other Services	48	142	154	157	799,681	407.38
Local Government	18	858	857	859	5,510,710	494.06
State Government	9	107	111	107	635,735	451.41

TABLE 6. COUNTY SUMMARY

NORTH AMERICAN INDUSTRY CLASSIFICATION SYSTEM - INDUSTRY GROUPS	NUMBER OF EMPLOYING UNITS	EMPLOYMENT			TOTAL EARNINGS	AVERAGE WEEKLY EARNINGS
		JANUARY	FEBRUARY	MARCH	JAN-MAR 2012	
CLEVELAND COUNTY - TOTAL	121	1,066	1,060	1,075	6,524,671	\$470.38
Natural Resources & Mining	13	177	166	175	1,248,164	556.06
Construction	8	27	28	26	101,125	288.11
Manufacturing	6	88	88	89	698,171	607.99
Trade, Transportation & Utilities	33	190	187	189	1,210,798	493.67
Retail Trade	15	69	64	65	194,979	227.25
Other Trade, Transportation & Utilities	18	121	123	124	1,015,819	637.01
Financial Activities	3	15	14	16	95,564	490.07
Education & Health Services	28	151	149	152	625,709	319.46
Other Services	5	12	12	12	106,213	680.85
Local Government	11	342	352	351	2,025,239	447.24
State Government	7	50	50	51	326,899	499.59
Other	7	14	14	14	86,789	476.86
COLUMBIA COUNTY - TOTAL	729	8,358	8,473	8,534	\$69,909,187	\$636.03
Natural Resources & Mining	44	408	395	397	5,877,844	1,130.35
Construction	42	347	351	359	3,325,020	725.93
Manufacturing	34	1,872	1,864	1,869	22,119,839	910.72
Trade, Transportation & Utilities	170	1,406	1,401	1,426	9,949,267	542.40
Wholesale Trade	29	202	207	219	2,225,474	817.79
Retail Trade	107	968	960	971	5,347,423	425.67
Transportation, Warehousing & Utilities	34	236	234	236	2,376,370	776.76
Information	9	69	68	65	429,905	491.13
Financial Activities	68	349	351	353	2,998,862	657.21
Professional & Business Services	58	363	362	364	2,806,587	594.74
Education & Health Services	163	1,057	1,063	1,073	5,829,348	421.31
Leisure & Hospitality	49	651	698	709	2,035,822	228.28
Other Services	53	227	230	231	972,552	326.21
Local Government	26	1,089	1,108	1,108	8,479,680	592.09
State Government	13	520	582	580	5,084,461	697.58

TABLE 6. COUNTY SUMMARY

NORTH AMERICAN INDUSTRY CLASSIFICATION SYSTEM - INDUSTRY GROUPS	NUMBER OF EMPLOYING UNITS	EMPLOYMENT			TOTAL EARNINGS	AVERAGE WEEKLY EARNINGS
		JANUARY	FEBRUARY	MARCH	JAN-MAR 2012	
CONWAY COUNTY - TOTAL	549	6,694	6,672	6,734	\$55,942,893	\$642.28
Natural Resources & Mining	34	321	321	321	3,693,881	885.19
Construction	52	521	510	523	6,218,806	923.49
Manufacturing	18	878	876	868	11,674,208	1,027.48
Trade, Transportation & Utilities	126	1,636	1,651	1,666	13,919,011	648.51
Wholesale Trade	23	217	223	218	2,496,133	875.43
Retail Trade	78	817	808	811	4,768,183	451.70
Transportation, Warehousing & Utilities	25	602	620	637	6,654,695	826.09
Information	3	12	12	13	105,638	658.86
Financial Activities	33	168	166	167	1,502,107	691.90
Professional & Business Services	43	351	338	380	1,863,617	402.31
Education & Health Services	133	949	947	933	6,107,803	498.23
Leisure & Hospitality	43	446	438	459	1,255,318	215.70
Other Services	28	103	105	106	727,825	534.90
Local Government	26	932	929	927	6,422,588	531.61
State Government	10	377	379	371	2,452,091	502.10
CRAIGHEAD COUNTY - TOTAL	2,629	43,432	43,558	43,879	\$367,350,324	\$647.77
Natural Resources & Mining	77	253	273	303	1,991,678	554.42
Construction	194	1,598	1,609	1,655	13,619,136	646.42
Manufacturing	113	6,135	6,176	6,169	62,690,688	782.85
Trade, Transportation & Utilities	736	8,932	8,903	8,949	69,659,356	600.18
Wholesale Trade	185	1,655	1,685	1,702	21,770,468	996.42
Retail Trade	439	6,057	5,991	6,009	35,254,844	450.56
Transportation, Warehousing & Utilities	112	1,220	1,227	1,238	12,634,044	791.19
Information	28	543	541	547	5,279,408	746.98
Financial Activities	254	1,427	1,424	1,436	18,257,507	982.80
Professional & Business Services	355	4,124	3,974	4,021	33,080,385	629.91
Education & Health Services	441	8,491	8,437	8,467	82,258,539	747.50
Leisure & Hospitality	223	4,521	4,724	4,744	15,266,870	251.85
Other Services	148	869	875	891	5,039,066	441.31
Local Government	37	3,817	3,891	3,979	31,185,116	615.78
State Government	23	2,722	2,731	2,718	29,022,575	819.67

TABLE 6. COUNTY SUMMARY

NORTH AMERICAN INDUSTRY CLASSIFICATION SYSTEM - INDUSTRY GROUPS	NUMBER OF EMPLOYING UNITS	EMPLOYMENT			TOTAL EARNINGS	AVERAGE WEEKLY EARNINGS
		JANUARY	FEBRUARY	MARCH	JAN-MAR 2012	
CRAWFORD COUNTY - TOTAL	1,294	19,113	19,123	19,204	\$149,936,570	\$602.38
Natural Resources & Mining	28	316	344	398	4,200,263	916.15
Construction	165	860	854	853	6,902,759	620.55
Manufacturing	76	4,292	4,318	4,327	37,984,013	677.56
Trade, Transportation & Utilities	322	6,087	6,048	5,990	49,345,463	628.27
Wholesale Trade	89	813	810	812	8,593,028	814.38
Retail Trade	162	1,915	1,881	1,904	11,314,552	458.08
Transportation, Warehousing & Utilities	71	3,359	3,357	3,274	29,437,883	680.02
Information	13	124	123	128	1,124,033	691.71
Financial Activities	128	512	514	520	4,452,883	664.68
Professional & Business Services	156	1,052	1,063	1,064	7,577,938	550.10
Education & Health Services	172	1,683	1,658	1,631	12,457,973	578.22
Leisure & Hospitality	94	1,468	1,460	1,535	4,655,681	240.73
Other Services	87	418	416	422	3,013,893	553.75
Local Government	43	2,179	2,200	2,211	17,251,873	604.13
State Government	10	122	125	125	969,798	601.61
CRITTENDEN COUNTY - TOTAL	1,301	15,627	15,823	16,017	\$124,355,362	\$604.58
Natural Resources & Mining	53	224	224	278	1,501,616	477.31
Construction	47	280	308	299	2,861,272	744.41
Manufacturing	41	1,453	1,433	1,436	16,205,641	865.29
Trade, Transportation & Utilities	316	4,369	4,375	4,423	37,634,981	659.60
Wholesale Trade	70	708	708	722	8,488,263	916.20
Retail Trade	163	1,882	1,884	1,887	10,816,510	441.56
Transportation, Warehousing & Utilities	83	1,779	1,783	1,814	18,330,208	786.84
Information	6	71	73	70	570,659	615.38
Financial Activities	94	500	497	504	5,072,281	779.83
Professional & Business Services	118	1,363	1,349	1,341	8,379,414	477.11
Education & Health Services	364	2,308	2,327	2,349	19,164,351	633.24
Leisure & Hospitality	123	1,893	1,943	2,020	7,348,264	289.58
Other Services	82	439	433	432	2,948,027	521.71
Local Government	43	2,292	2,323	2,329	19,225,276	638.91
State Government	14	435	538	536	3,443,580	526.62

TABLE 6. COUNTY SUMMARY

NORTH AMERICAN INDUSTRY CLASSIFICATION SYSTEM - INDUSTRY GROUPS	NUMBER OF EMPLOYING UNITS	EMPLOYMENT			TOTAL EARNINGS	AVERAGE WEEKLY EARNINGS
		JANUARY	FEBRUARY	MARCH	JAN-MAR 2012	
CROSS COUNTY - TOTAL	510	5,034	5,029	5,142	\$37,309,172	\$566.25
Natural Resources & Mining	32	174	173	191	1,110,819	476.47
Construction	19	79	79	85	558,607	530.49
Manufacturing	11	700	692	712	5,378,920	589.97
Trade, Transportation & Utilities	139	1,256	1,262	1,304	10,778,784	650.81
Wholesale Trade	30	293	293	314	3,618,479	927.82
Retail Trade	77	746	753	771	4,534,094	460.94
Transportation, Warehousing & Utilities	32	217	216	219	2,626,211	929.52
Information	5	37	32	33	255,080	577.10
Financial Activities	45	304	301	308	2,606,214	658.74
Professional & Business Services	43	151	147	151	1,225,678	629.95
Education & Health Services	119	866	869	855	5,486,742	488.87
Leisure & Hospitality	35	309	307	326	824,455	201.97
Other Services	36	72	76	78	463,739	473.53
Local Government	16	723	727	737	5,473,372	577.54
State Government	10	363	364	362	3,146,762	666.83
DALLAS COUNTY - TOTAL	264	2,917	2,929	2,944	\$20,472,717	\$537.48
Natural Resources & Mining	33	174	179	182	1,387,651	598.56
Construction	18	58	64	60	462,552	586.50
Manufacturing	11	559	531	526	4,672,060	667.18
Trade, Transportation & Utilities	64	527	518	525	4,318,856	634.81
Wholesale Trade	7	42	41	43	1,344,331	2,462.14
Retail Trade	39	345	342	344	1,894,626	424.08
Transportation, Warehousing & Utilities	18	140	135	138	1,079,899	603.41
Information	3	15	15	15	135,508	694.91
Financial Activities	13	65	65	65	568,002	672.19
Professional & Business Services	16	68	70	63	435,604	500.12
Education & Health Services	56	869	881	900	5,532,194	481.76
Leisure & Hospitality	12	120	150	152	358,801	196.21
Other Services	15	71	67	67	442,888	498.56
Local Government	15	341	340	338	1,868,281	423.10
State Government	8	50	49	51	290,320	446.65

TABLE 6. COUNTY SUMMARY

NORTH AMERICAN INDUSTRY CLASSIFICATION SYSTEM - INDUSTRY GROUPS	NUMBER OF EMPLOYING UNITS	EMPLOYMENT			TOTAL EARNINGS	AVERAGE WEEKLY EARNINGS
		JANUARY	FEBRUARY	MARCH	JAN-MAR 2012	
DESHA COUNTY - TOTAL	496	4,406	4,445	4,565	\$34,416,739	\$592.00
Natural Resources & Mining	62	235	244	269	1,612,423	497.46
Construction	19	103	99	105	730,025	548.75
Manufacturing	17	815	815	825	10,760,710	1,011.50
Trade, Transportation & Utilities	112	847	847	876	6,576,506	590.53
Wholesale Trade	19	184	184	191	2,565,461	1,059.09
Retail Trade	67	503	502	523	2,744,000	414.42
Transportation, Warehousing & Utilities	26	160	161	162	1,267,045	605.37
Information	5	30	31	30	224,821	570.13
Financial Activities	31	220	221	220	1,608,552	561.58
Professional & Business Services	36	80	87	88	555,231	502.47
Education & Health Services	126	763	766	781	4,738,158	473.34
Leisure & Hospitality	37	317	314	335	750,146	179.20
Other Services	22	50	65	62	252,737	329.51
Local Government	19	823	827	843	5,629,657	521.12
State Government	10	123	129	131	977,773	589.14
DREW COUNTY - TOTAL	509	6,228	6,274	6,363	\$43,750,186	\$535.18
Natural Resources & Mining	42	229	254	273	1,891,085	577.25
Construction	21	103	89	96	701,892	562.41
Manufacturing	20	759	739	747	5,572,366	572.80
Trade, Transportation & Utilities	123	1,179	1,179	1,213	7,722,254	499.04
Wholesale Trade	18	176	181	175	1,854,253	804.33
Retail Trade	84	913	903	947	5,020,047	419.28
Transportation, Warehousing & Utilities	21	90	95	91	847,954	708.99
Information	8	61	61	62	436,773	547.79
Financial Activities	45	239	235	233	2,288,475	746.97
Professional & Business Services	41	281	276	292	2,018,538	548.66
Education & Health Services	112	838	835	842	5,719,302	524.79
Leisure & Hospitality	41	566	572	584	1,599,174	214.31
Other Services	18	63	63	62	373,929	459.00
Local Government	22	1,294	1,316	1,330	9,480,739	555.30
State Government	16	616	655	629	5,945,659	722.14

TABLE 6. COUNTY SUMMARY

NORTH AMERICAN INDUSTRY CLASSIFICATION SYSTEM - INDUSTRY GROUPS	NUMBER OF EMPLOYING UNITS	EMPLOYMENT			TOTAL EARNINGS	AVERAGE WEEKLY EARNINGS
		JANUARY	FEBRUARY	MARCH	JAN-MAR 2012	
FAULKNER COUNTY - TOTAL	2,736	40,317	40,529	41,007	\$381,039,366	\$721.62
Natural Resources & Mining	58	1,852	1,839	1,833	42,952,499	1,794.37
Construction	318	2,440	2,436	2,455	21,883,001	688.85
Manufacturing	103	3,207	3,216	3,250	38,668,708	922.52
Trade, Transportation & Utilities	653	7,274	7,259	7,298	54,389,921	574.94
Wholesale Trade	168	954	973	959	12,116,021	968.82
Retail Trade	395	5,438	5,401	5,459	31,813,023	450.45
Transportation, Warehousing & Utilities	90	882	885	880	10,460,877	911.99
Information	27	385	376	392	4,048,428	810.28
Financial Activities	324	1,565	1,565	1,566	16,278,735	799.96
Professional & Business Services	395	5,918	6,023	6,084	73,078,070	935.60
Education & Health Services	389	5,718	5,777	5,834	48,741,069	649.08
Leisure & Hospitality	242	4,432	4,389	4,559	13,911,821	239.94
Other Services	171	722	748	755	5,161,157	535.30
Local Government	38	3,550	3,606	3,664	31,782,700	677.86
State Government	18	3,254	3,295	3,317	30,143,257	705.06
FRANKLIN COUNTY - TOTAL	341	4,268	4,278	4,285	\$35,560,203	\$639.56
Natural Resources & Mining	16	301	294	301	4,484,375	1,154.97
Construction	31	131	131	137	1,198,425	693.13
Manufacturing	15	846	842	854	8,376,976	760.48
Trade, Transportation & Utilities	87	824	819	817	6,860,026	643.53
Wholesale Trade	16	45	46	42	209,918	364.23
Retail Trade	53	495	495	494	2,749,917	427.63
Transportation, Warehousing & Utilities	18	284	278	281	3,900,191	1,067.67
Information	5	25	25	25	172,323	530.22
Financial Activities	30	222	226	230	1,744,123	593.64
Professional & Business Services	29	164	166	156	985,286	467.85
Education & Health Services	55	571	559	553	3,791,060	519.82
Leisure & Hospitality	26	274	280	279	781,804	216.59
Other Services	18	57	56	51	421,465	593.06
Local Government	20	750	771	771	5,708,354	574.74
State Government	9	103	109	111	1,035,986	740.17

TABLE 6. COUNTY SUMMARY

NORTH AMERICAN INDUSTRY CLASSIFICATION SYSTEM - INDUSTRY GROUPS	NUMBER OF EMPLOYING UNITS	EMPLOYMENT			TOTAL EARNINGS	AVERAGE WEEKLY EARNINGS
		JANUARY	FEBRUARY	MARCH	JAN-MAR 2012	
FULTON COUNTY - TOTAL	198	1,970	1,972	2,001	\$12,038,087	\$467.44
Manufacturing	12	144	141	149	670,427	356.48
Trade, Transportation & Utilities	51	328	322	320	2,036,709	484.55
Retail Trade	35	190	184	183	838,402	347.36
Other Trade, Transportation & Utilities	16	138	138	137	1,198,307	669.57
Information	3	34	33	35	123,488	279.38
Financial Activities	15	82	81	89	642,631	588.49
Professional & Business Services	16	61	62	61	471,418	591.24
Education & Health Services	46	475	474	466	2,848,913	464.62
Leisure & Hospitality	14	121	125	138	308,132	185.18
Local Government	13	524	527	540	3,477,897	504.46
State Government	10	117	116	115	768,960	509.92
Other	18	84	91	88	689,512	605.01
GARLAND COUNTY - TOTAL	3,100	34,802	35,158	35,758	\$264,917,776	\$578.28
Natural Resources & Mining	35	328	309	316	3,090,858	748.45
Construction	339	1,638	1,634	1,696	12,128,131	563.37
Manufacturing	98	2,124	2,135	2,129	19,818,073	715.94
Trade, Transportation & Utilities	714	7,035	7,029	7,183	50,129,130	544.47
Wholesale Trade	146	891	886	899	9,378,436	808.76
Retail Trade	502	5,586	5,579	5,707	34,055,348	465.80
Transportation, Warehousing & Utilities	66	558	564	577	6,695,346	909.41
Information	33	303	305	285	2,861,948	739.59
Financial Activities	357	1,418	1,420	1,420	14,164,987	767.69
Professional & Business Services	399	3,101	3,114	3,158	24,525,903	603.84
Education & Health Services	481	7,527	7,609	7,612	72,620,318	736.70
Leisure & Hospitality	357	6,095	6,234	6,511	24,007,535	294.07
Other Services	227	962	964	981	5,379,654	427.06
Local Government	34	3,216	3,238	3,290	27,087,860	641.53
State Government	26	1,055	1,167	1,177	9,103,379	618.06

TABLE 6. COUNTY SUMMARY

NORTH AMERICAN INDUSTRY CLASSIFICATION SYSTEM - INDUSTRY GROUPS	NUMBER OF EMPLOYING UNITS	EMPLOYMENT			TOTAL EARNINGS	AVERAGE WEEKLY EARNINGS
		JANUARY	FEBRUARY	MARCH	JAN-MAR 2012	
GRANT COUNTY - TOTAL	308	3,775	3,733	3,768	\$28,273,061	\$578.62
Natural Resources & Mining	23	167	165	165	2,012,934	934.65
Construction	26	129	132	131	1,478,546	870.42
Manufacturing	16	997	992	994	8,945,910	692.07
Trade, Transportation & Utilities	83	597	584	598	3,866,121	501.51
Wholesale Trade	15	114	115	112	990,743	670.48
Retail Trade	44	421	407	425	2,358,469	434.37
Transportation, Warehousing & Utilities	24	62	62	61	516,909	644.79
Information	4	35	34	36	563,108	1,237.60
Financial Activities	24	90	94	92	702,206	587.13
Professional & Business Services	20	77	76	69	760,251	790.28
Education & Health Services	51	426	417	418	2,469,624	451.95
Leisure & Hospitality	24	258	259	259	694,014	206.39
Other Services	19	46	43	43	215,405	376.58
Local Government	10	892	876	905	6,185,907	534.05
State Government	8	61	61	58	379,035	485.94
GREENE COUNTY - TOTAL	909	14,442	14,695	14,757	\$117,740,739	\$619.01
Natural Resources & Mining	38	203	217	235	1,481,099	521.82
Construction	78	267	260	274	2,232,089	643.07
Manufacturing	59	4,738	4,741	4,768	50,630,706	820.10
Trade, Transportation & Utilities	234	2,439	2,424	2,464	16,545,939	521.13
Wholesale Trade	54	578	569	579	5,463,921	730.54
Retail Trade	151	1,643	1,639	1,668	9,344,791	435.65
Transportation, Warehousing & Utilities	29	218	216	217	1,737,227	615.82
Information	11	96	92	91	543,932	449.90
Financial Activities	79	474	477	482	4,362,509	702.54
Professional & Business Services	98	1,136	1,341	1,220	6,962,424	434.60
Education & Health Services	151	1,849	1,879	1,886	14,120,245	580.43
Leisure & Hospitality	74	1,015	1,020	1,078	3,146,997	233.29
Other Services	46	188	193	193	1,093,777	439.74
Local Government	30	1,648	1,664	1,678	12,835,227	593.58
State Government	11	389	387	388	3,785,795	750.55

TABLE 6. COUNTY SUMMARY

NORTH AMERICAN INDUSTRY CLASSIFICATION SYSTEM - INDUSTRY GROUPS	NUMBER OF EMPLOYING UNITS	EMPLOYMENT			TOTAL EARNINGS	AVERAGE WEEKLY EARNINGS
		JANUARY	FEBRUARY	MARCH	JAN-MAR 2012	
HEMPSTEAD COUNTY - TOTAL	508	8,499	8,601	8,666	\$73,928,174	\$662.13
Natural Resources & Mining	18	189	193	199	1,826,710	725.56
Construction	34	1,147	1,213	1,282	18,342,588	1,162.25
Manufacturing	29	1,767	1,781	1,780	15,243,096	660.22
Trade, Transportation & Utilities	131	1,444	1,461	1,461	12,237,091	646.80
Wholesale Trade	24	335	346	356	3,553,306	790.74
Retail Trade	80	865	857	851	4,789,791	429.59
Transportation, Warehousing & Utilities	27	244	258	254	3,893,994	1,188.64
Information	8	49	48	47	318,672	510.69
Financial Activities	42	227	217	222	2,437,828	844.71
Professional & Business Services	36	149	147	148	1,505,730	782.60
Education & Health Services	82	1,149	1,129	1,118	6,212,386	422.15
Leisure & Hospitality	44	584	585	583	1,725,303	227.25
Other Services	39	175	173	174	1,237,625	547.14
Local Government	29	946	953	951	7,198,823	582.90
State Government	16	673	701	701	5,642,322	627.51
HOT SPRING COUNTY - TOTAL	590	8,586	8,498	8,219	\$65,347,851	\$595.99
Natural Resources & Mining	25	156	155	154	1,071,690	531.86
Construction	63	434	381	332	4,065,603	817.97
Manufacturing	31	1,367	1,389	1,404	16,370,724	908.14
Trade, Transportation & Utilities	149	1,339	1,331	1,341	10,615,773	610.77
Wholesale Trade	15	75	73	74	850,202	883.79
Retail Trade	95	892	889	899	5,110,029	440.01
Transportation, Warehousing & Utilities	39	372	369	368	4,655,542	968.76
Information	7	46	50	47	370,910	598.56
Financial Activities	54	266	266	267	2,388,787	689.94
Professional & Business Services	45	1,216	1,151	891	6,345,187	449.44
Education & Health Services	91	1,127	1,117	1,118	7,902,022	542.40
Leisure & Hospitality	46	503	507	529	1,333,220	199.91
Other Services	39	162	168	166	809,450	376.61
Local Government	27	1,095	1,103	1,092	8,043,355	564.18
State Government	13	875	880	878	6,031,130	528.60

TABLE 6. COUNTY SUMMARY

NORTH AMERICAN INDUSTRY CLASSIFICATION SYSTEM - INDUSTRY GROUPS	NUMBER OF EMPLOYING UNITS	EMPLOYMENT			TOTAL EARNINGS	AVERAGE WEEKLY EARNINGS
		JANUARY	FEBRUARY	MARCH	JAN-MAR 2012	
HOWARD COUNTY - TOTAL	354	7,272	7,303	7,352	\$47,651,318	\$501.50
Natural Resources & Mining	19	248	247	245	1,780,241	555.17
Construction	19	118	119	112	879,327	581.44
Manufacturing	23	3,841	3,838	3,878	25,257,261	504.33
Trade, Transportation & Utilities	96	856	857	864	5,959,061	533.63
Wholesale Trade	18	73	73	71	728,859	775.11
Retail Trade	55	601	601	610	3,467,872	441.65
Transportation, Warehousing & Utilities	23	182	183	183	1,762,330	742.14
Information	5	31	31	31	183,610	455.61
Financial Activities	36	139	140	139	1,034,091	570.90
Professional & Business Services	27	149	162	154	951,530	472.22
Education & Health Services	57	636	640	641	4,165,849	501.49
Leisure & Hospitality	22	310	310	316	889,426	219.29
Other Services	22	114	106	107	669,124	472.21
Local Government	17	717	728	729	5,025,787	533.49
State Government	11	113	125	136	856,011	528.18
INDEPENDENCE COUNTY - TOTAL	901	14,575	14,585	14,844	\$117,216,784	\$614.72
Natural Resources & Mining	15	315	309	310	3,355,068	828.96
Construction	67	360	364	386	2,755,993	572.97
Manufacturing	45	3,209	3,165	3,233	30,017,543	721.05
Trade, Transportation & Utilities	232	2,773	2,757	2,817	21,243,441	587.32
Wholesale Trade	33	390	386	391	3,564,735	704.91
Retail Trade	152	1,681	1,670	1,710	9,170,639	418.16
Transportation, Warehousing & Utilities	47	702	701	716	8,508,067	926.57
Information	10	125	128	126	959,573	584.27
Financial Activities	80	467	457	458	4,819,165	804.71
Professional & Business Services	88	583	547	559	3,417,163	466.89
Education & Health Services	157	3,114	3,140	3,158	30,044,823	736.66
Leisure & Hospitality	75	1,074	1,099	1,132	3,172,312	221.50
Other Services	68	347	342	346	1,791,819	399.51
Local Government	47	1,632	1,627	1,658	10,475,757	491.66
State Government	17	576	650	661	5,164,127	631.54

TABLE 6. COUNTY SUMMARY

NORTH AMERICAN INDUSTRY CLASSIFICATION SYSTEM - INDUSTRY GROUPS	NUMBER OF EMPLOYING UNITS	EMPLOYMENT			TOTAL EARNINGS	AVERAGE WEEKLY EARNINGS
		JANUARY	FEBRUARY	MARCH	JAN-MAR 2012	
IZARD COUNTY - TOTAL	256	2,996	3,087	3,199	\$21,008,207	\$522.31
Natural Resources & Mining	5	148	155	158	1,433,938	717.81
Construction	26	155	162	170	1,719,405	814.76
Manufacturing	11	242	261	270	2,164,314	646.13
Trade, Transportation & Utilities	68	549	548	552	3,230,443	452.08
Wholesale Trade	10	21	21	21	153,818	563.44
Retail Trade	46	399	396	400	2,040,146	393.98
Transportation, Warehousing & Utilities	12	129	131	131	1,036,479	611.73
Financial Activities	28	142	140	145	1,089,687	588.91
Professional & Business Services	16	89	89	90	464,021	399.56
Education & Health Services	42	554	551	590	3,373,020	459.23
Leisure & Hospitality	21	80	90	130	282,145	217.03
Local Government	18	565	568	575	3,600,671	486.49
State Government	10	449	499	494	3,534,599	565.66
Other	11	23	24	25	115,964	371.68
JACKSON COUNTY - TOTAL	472	5,192	5,207	5,270	\$44,609,600	\$657.00
Natural Resources & Mining	55	239	251	270	1,729,566	525.17
Construction	24	119	110	109	892,404	609.29
Manufacturing	16	880	897	906	12,141,424	1,044.30
Trade, Transportation & Utilities	112	1,027	1,033	1,052	8,217,041	609.33
Wholesale Trade	24	225	234	243	3,006,853	988.45
Retail Trade	72	704	696	708	4,214,429	461.37
Transportation, Warehousing & Utilities	16	98	103	101	995,759	760.90
Information	4	20	20	20	131,633	506.28
Financial Activities	36	155	150	151	1,548,291	783.55
Professional & Business Services	39	141	139	140	1,182,504	649.73
Education & Health Services	91	832	812	811	7,080,749	665.59
Leisure & Hospitality	26	257	261	272	742,387	216.86
Other Services	24	69	70	69	594,385	659.45
Local Government	32	703	710	719	4,319,280	467.52
State Government	13	750	754	751	6,029,936	617.08

TABLE 6. COUNTY SUMMARY

NORTH AMERICAN INDUSTRY CLASSIFICATION SYSTEM - INDUSTRY GROUPS	NUMBER OF EMPLOYING UNITS	EMPLOYMENT			TOTAL EARNINGS	AVERAGE WEEKLY EARNINGS
		JANUARY	FEBRUARY	MARCH	JAN-MAR 2012	
JEFFERSON COUNTY - TOTAL	2,071	29,152	29,416	29,803	\$271,801,164	\$709.77
Natural Resources & Mining	40	274	274	286	5,220,701	1,444.58
Construction	105	1,073	1,098	1,142	25,928,235	1,806.05
Manufacturing	66	5,449	5,435	5,465	58,445,047	824.96
Trade, Transportation & Utilities	439	5,229	5,160	5,253	44,402,062	655.07
Wholesale Trade	81	983	967	985	10,520,986	827.23
Retail Trade	291	3,300	3,237	3,296	19,749,981	463.51
Transportation, Warehousing & Utilities	67	946	956	972	14,131,095	1,134.66
Information	14	126	129	128	985,436	593.76
Financial Activities	150	1,120	1,124	1,116	12,673,507	870.43
Professional & Business Services	171	1,541	1,583	1,684	15,148,877	727.10
Education & Health Services	743	5,301	5,286	5,277	43,944,687	639.25
Leisure & Hospitality	134	1,832	1,878	1,928	5,558,629	227.52
Other Services	131	645	644	638	4,216,842	504.99
Local Government	41	3,271	3,276	3,276	24,996,835	587.24
State Government	37	3,291	3,529	3,610	30,280,306	669.97
JOHNSON COUNTY - TOTAL	463	8,589	8,618	8,555	\$59,569,123	\$533.60
Natural Resources & Mining	15	139	140	141	1,117,348	613.93
Construction	27	117	126	126	787,689	492.61
Manufacturing	33	3,195	3,193	3,165	20,355,380	491.72
Trade, Transportation & Utilities	108	1,933	1,897	1,894	14,928,487	601.86
Retail Trade	66	855	832	841	4,775,765	435.96
Other Trade, Transportation & Utilities	42	1,078	1,065	1,053	10,152,722	733.08
Information	4	35	35	35	177,165	389.37
Financial Activities	49	209	207	207	1,675,921	620.79
Professional & Business Services	48	140	149	159	1,159,653	597.35
Education & Health Services	90	1,198	1,179	1,185	9,290,968	601.93
Leisure & Hospitality	38	434	473	464	1,338,872	225.36
Other Services	28	70	73	74	391,768	416.63
Local Government	14	985	1,018	975	7,321,448	567.35
State Government	9	134	128	130	1,024,424	603.08

TABLE 6. COUNTY SUMMARY

NORTH AMERICAN INDUSTRY CLASSIFICATION SYSTEM - INDUSTRY GROUPS	NUMBER OF EMPLOYING UNITS	EMPLOYMENT			TOTAL EARNINGS	AVERAGE WEEKLY EARNINGS
		JANUARY	FEBRUARY	MARCH	JAN-MAR 2012	
LAFAYETTE COUNTY - TOTAL	169	1,285	1,273	1,268	\$8,556,056	\$516.07
Natural Resources & Mining	30	164	163	164	1,386,105	651.47
Construction	9	77	76	73	801,024	817.93
Manufacturing	6	27	27	26	336,932	971.92
Trade, Transportation & Utilities	35	203	200	201	1,266,686	483.96
Retail Trade	21	134	130	130	531,754	311.45
Other Trade, Transportation & Utilities	14	69	70	71	734,932	807.62
Financial Activities	15	54	54	53	361,865	518.68
Professional & Business Services	14	57	57	57	448,015	604.61
Education & Health Services	28	227	225	220	1,195,215	410.44
Leisure & Hospitality	5	48	44	42	136,271	234.68
Local Government	13	304	304	306	1,902,510	480.35
State Government	7	45	43	44	282,768	494.35
Other	7	79	80	82	438,665	420.04
LAWRENCE COUNTY - TOTAL	398	4,011	4,056	4,120	\$26,970,510	\$510.71
Natural Resources & Mining	41	154	162	178	1,085,059	506.88
Construction	24	106	115	118	791,847	539.04
Manufacturing	23	443	441	450	3,178,186	549.80
Trade, Transportation & Utilities	114	879	883	902	6,358,545	550.81
Wholesale Trade	21	200	204	214	2,015,410	752.58
Retail Trade	62	564	568	575	3,150,018	425.85
Transportation, Warehousing & Utilities	31	115	111	113	1,193,117	812.20
Financial Activities	30	136	135	138	1,008,869	569.23
Professional & Business Services	26	97	95	104	878,287	684.74
Education & Health Services	62	540	556	553	3,709,931	519.19
Leisure & Hospitality	23	279	286	295	743,134	199.41
Local Government	27	1,207	1,221	1,218	8,199,547	518.98
State Government	10	100	96	95	630,700	500.16
Other	18	70	66	69	386,405	434.98

TABLE 6. COUNTY SUMMARY

NORTH AMERICAN INDUSTRY CLASSIFICATION SYSTEM - INDUSTRY GROUPS	NUMBER OF EMPLOYING UNITS	EMPLOYMENT			TOTAL EARNINGS	AVERAGE WEEKLY EARNINGS
		JANUARY	FEBRUARY	MARCH	JAN-MAR 2012	
LEE COUNTY - TOTAL	296	2,021	2,005	2,037	\$14,447,897	\$549.91
Natural Resources & Mining	37	193	191	214	1,236,375	477.12
Construction	9	24	25	27	173,582	527.07
Trade, Transportation & Utilities	47	340	335	339	2,697,724	613.96
Wholesale Trade	8	72	75	82	1,089,310	1,097.73
Retail Trade	24	193	186	183	982,860	403.58
Transportation, Warehousing & Utilities	15	75	74	74	625,554	647.35
Financial Activities	16	67	68	69	636,939	720.52
Professional & Business Services	15	61	60	63	660,525	828.42
Education & Health Services	129	416	396	401	2,535,684	482.41
Leisure & Hospitality	7	67	66	61	207,393	246.70
Local Government	15	329	341	340	2,022,273	462.06
State Government	7	498	498	499	4,147,774	640.25
Other	14	26	25	24	129,628	398.86
LINCOLN COUNTY - TOTAL	254	2,947	2,947	2,976	\$22,062,055	\$573.98
Natural Resources & Mining	30	159	162	167	1,124,508	531.77
Construction	14	75	69	70	504,156	543.66
Manufacturing	8	321	333	334	2,518,274	588.20
Trade, Transportation & Utilities	45	344	351	355	3,321,380	729.97
Wholesale Trade	8	48	52	55	722,865	1,076.23
Retail Trade	25	172	173	175	778,517	345.50
Transportation, Warehousing & Utilities	12	124	126	125	1,819,998	1,120.00
Financial Activities	19	64	64	62	605,301	735.18
Professional & Business Services	12	28	28	31	172,749	458.22
Education & Health Services	78	401	392	397	2,220,799	430.67
Leisure & Hospitality	14	143	144	150	328,208	173.32
Local Government	7	389	385	384	2,612,963	520.72
State Government	12	990	987	992	8,469,265	658.28
Other	15	33	32	34	184,452	429.96

TABLE 6. COUNTY SUMMARY

NORTH AMERICAN INDUSTRY CLASSIFICATION SYSTEM - INDUSTRY GROUPS	NUMBER OF EMPLOYING UNITS	EMPLOYMENT			TOTAL EARNINGS	AVERAGE WEEKLY EARNINGS
		JANUARY	FEBRUARY	MARCH	JAN-MAR 2012	
LITTLE RIVER COUNTY - TOTAL	234	3,900	3,933	4,029	\$54,732,174	\$1,064.79
Natural Resources & Mining	12	87	81	83	727,947	669.27
Construction	19	448	501	569	7,326,275	1,113.75
Manufacturing	17	1,304	1,293	1,298	33,022,952	1,956.53
Trade, Transportation & Utilities	56	560	555	564	3,800,757	522.39
Wholesale Trade	9	30	29	27	396,549	1,064.08
Retail Trade	36	372	369	379	2,224,143	458.27
Transportation, Warehousing & Utilities	11	158	157	158	1,180,065	575.74
Financial Activities	21	84	86	90	675,806	599.83
Professional & Business Services	18	81	90	86	693,866	623.05
Education & Health Services	26	150	148	147	1,024,421	531.25
Leisure & Hospitality	15	188	197	206	588,013	229.60
Local Government	20	809	802	790	5,831,580	560.50
State Government	11	82	74	86	502,120	478.82
Other	19	107	106	110	538,437	384.69
LOGAN COUNTY - TOTAL	486	5,490	5,509	5,572	\$38,976,252	\$542.79
Natural Resources & Mining	20	186	197	205	2,866,985	1,125.19
Construction	45	240	252	241	2,055,308	647.07
Manufacturing	22	1,224	1,217	1,213	9,439,801	596.17
Trade, Transportation & Utilities	114	928	918	946	6,242,946	516.00
Wholesale Trade	13	74	73	78	266,615	273.45
Retail Trade	72	681	671	696	3,966,041	446.89
Transportation, Warehousing & Utilities	29	173	174	172	2,010,290	893.86
Information	6	40	40	39	352,670	683.91
Financial Activities	42	197	202	201	1,874,166	720.83
Professional & Business Services	48	116	117	109	699,588	472.06
Education & Health Services	96	757	752	765	5,113,828	518.96
Leisure & Hospitality	28	266	281	305	753,438	204.07
Other Services	29	134	131	129	960,856	562.78
Local Government	22	863	870	877	5,569,168	492.41
State Government	14	539	532	542	3,047,498	436.00

TABLE 6. COUNTY SUMMARY

NORTH AMERICAN INDUSTRY CLASSIFICATION SYSTEM - INDUSTRY GROUPS	NUMBER OF EMPLOYING UNITS	EMPLOYMENT			TOTAL EARNINGS	AVERAGE WEEKLY EARNINGS
		JANUARY	FEBRUARY	MARCH	JAN-MAR 2012	
LONOKE COUNTY - TOTAL	1,281	12,740	12,865	12,972	\$92,172,444	\$551.38
Natural Resources & Mining	78	422	425	466	3,433,963	603.54
Construction	139	746	746	770	6,670,001	680.47
Manufacturing	42	1,419	1,427	1,440	15,129,411	814.61
Trade, Transportation & Utilities	308	2,765	2,793	2,834	18,544,516	509.95
Wholesale Trade	73	350	363	386	4,032,850	846.82
Retail Trade	173	2,171	2,187	2,194	12,109,853	426.52
Transportation, Warehousing & Utilities	62	244	243	254	2,401,813	748.00
Information	15	96	97	98	812,716	644.50
Financial Activities	134	488	493	499	5,575,679	869.39
Professional & Business Services	152	605	646	642	4,792,479	584.23
Education & Health Services	195	1,637	1,657	1,660	10,780,923	502.20
Leisure & Hospitality	107	1,456	1,458	1,488	4,348,317	227.95
Other Services	70	198	202	206	1,189,854	453.11
Local Government	26	2,753	2,765	2,713	19,798,784	555.09
State Government	15	155	156	156	1,095,801	541.49
MADISON COUNTY - TOTAL	231	3,125	3,123	3,136	\$21,991,269	\$540.80
Natural Resources & Mining	9	29	27	29	217,455	590.38
Construction	26	91	80	82	708,227	646.00
Manufacturing	23	1,116	1,118	1,143	8,515,105	581.88
Trade, Transportation & Utilities	42	541	540	536	3,469,922	495.21
Wholesale Trade	3	14	15	14	118,732	637.20
Retail Trade	32	430	436	425	2,355,484	421.05
Transportation, Warehousing & Utilities	7	97	89	97	995,706	811.94
Information	6	36	36	38	523,928	1,099.15
Financial Activities	15	67	67	64	546,140	636.53
Professional & Business Services	25	142	138	134	1,022,991	570.23
Education & Health Services	42	267	265	262	1,600,378	465.14
Leisure & Hospitality	13	157	164	164	460,081	218.91
Other Services	14	32	35	33	229,092	528.67
Local Government	9	611	618	616	4,443,361	555.77
State Government	7	36	35	35	254,589	554.26

TABLE 6. COUNTY SUMMARY

NORTH AMERICAN INDUSTRY CLASSIFICATION SYSTEM - INDUSTRY GROUPS	NUMBER OF EMPLOYING UNITS	EMPLOYMENT			TOTAL EARNINGS	AVERAGE WEEKLY EARNINGS
		JANUARY	FEBRUARY	MARCH	JAN-MAR 2012	
MARION COUNTY - TOTAL	293	3,519	3,522	3,561	\$22,001,375	\$478.89
Natural Resources & Mining	4	25	24	26	122,623	377.30
Construction	22	58	53	57	265,126	364.18
Manufacturing	20	1,489	1,476	1,494	9,501,840	491.75
Trade, Transportation & Utilities	54	488	490	495	3,175,881	497.55
Wholesale Trade	6	40	40	41	532,909	1,016.36
Retail Trade	38	418	422	423	2,308,947	421.88
Transportation, Warehousing & Utilities	10	30	28	31	334,025	866.10
Information	3	57	57	57	668,170	901.71
Financial Activities	35	162	159	178	1,481,971	685.36
Professional & Business Services	29	48	48	48	293,862	470.93
Education & Health Services	50	350	357	353	2,045,408	445.30
Leisure & Hospitality	37	174	183	174	424,246	184.37
Other Services	14	31	35	36	123,702	279.87
Local Government	18	562	566	568	3,476,605	473.05
State Government	7	75	74	75	421,941	434.69
MILLER COUNTY - TOTAL	854	13,051	13,033	13,198	\$109,169,967	\$641.34
Natural Resources & Mining	28	164	168	148	1,377,823	662.41
Construction	80	798	809	859	6,355,356	594.74
Manufacturing	28	2,339	2,345	2,353	32,733,667	1,073.46
Trade, Transportation & Utilities	230	3,467	3,389	3,438	30,906,153	692.85
Wholesale Trade	52	553	547	561	8,127,082	1,129.13
Retail Trade	132	1,356	1,321	1,340	8,061,137	463.10
Transportation, Warehousing & Utilities	46	1,558	1,521	1,537	14,717,934	735.80
Information	7	72	70	73	1,047,913	1,124.77
Financial Activities	83	366	366	373	3,447,984	720.08
Professional & Business Services	84	1,163	1,116	1,174	6,109,771	408.33
Education & Health Services	125	908	915	923	6,026,373	506.45
Leisure & Hospitality	88	1,236	1,253	1,275	4,426,118	271.36
Other Services	60	327	355	343	1,716,891	386.54
Local Government	25	1,729	1,761	1,748	10,615,035	467.66
State Government	16	482	486	491	4,406,883	697.03

TABLE 6. COUNTY SUMMARY

NORTH AMERICAN INDUSTRY CLASSIFICATION SYSTEM - INDUSTRY GROUPS	NUMBER OF EMPLOYING UNITS	EMPLOYMENT			TOTAL EARNINGS	AVERAGE WEEKLY EARNINGS
		JANUARY	FEBRUARY	MARCH	JAN-MAR 2012	
MISSISSIPPI COUNTY - TOTAL	1,168	19,086	19,133	19,481	\$189,023,720	\$755.99
Natural Resources & Mining	107	512	507	554	3,369,967	494.40
Construction	63	584	590	687	7,086,055	878.69
Manufacturing	54	6,943	6,899	7,035	102,479,297	1,132.78
Trade, Transportation & Utilities	293	3,020	3,024	3,057	25,542,027	647.66
Wholesale Trade	60	477	482	490	6,504,588	1,035.93
Retail Trade	175	1,828	1,833	1,856	9,754,798	408.03
Transportation, Warehousing & Utilities	58	715	709	711	9,282,641	1,003.35
Information	9	68	68	65	460,398	528.59
Financial Activities	95	520	519	515	4,330,702	643.11
Professional & Business Services	86	1,451	1,455	1,428	8,895,254	473.64
Education & Health Services	252	1,858	1,852	1,878	12,053,386	497.77
Leisure & Hospitality	83	1,022	1,057	1,093	3,020,405	219.74
Other Services	60	211	205	207	1,113,712	412.54
Local Government	44	2,307	2,333	2,330	16,136,895	534.28
State Government	22	590	624	632	4,535,622	567.00
MONROE COUNTY - TOTAL	296	2,232	2,257	2,331	\$14,857,759	\$502.74
Natural Resources & Mining	35	127	134	161	897,256	490.66
Construction	15	64	64	68	505,037	594.63
Manufacturing	7	112	114	131	929,456	600.81
Trade, Transportation & Utilities	79	670	678	696	5,659,404	638.95
Wholesale Trade	19	240	257	270	3,076,586	925.66
Retail Trade	38	289	295	299	1,472,722	384.89
Transportation, Warehousing & Utilities	22	141	126	127	1,110,096	650.19
Financial Activities	19	90	87	88	796,421	693.55
Professional & Business Services	15	37	40	46	208,639	391.44
Education & Health Services	56	331	329	331	1,720,132	400.56
Leisure & Hospitality	20	225	223	219	543,812	188.15
Local Government	22	363	366	369	2,312,957	486.12
State Government	8	122	117	121	759,239	486.69
Other	20	91	105	101	525,406	408.24

TABLE 6. COUNTY SUMMARY

NORTH AMERICAN INDUSTRY CLASSIFICATION SYSTEM - INDUSTRY GROUPS	NUMBER OF EMPLOYING UNITS	EMPLOYMENT			TOTAL EARNINGS	AVERAGE WEEKLY EARNINGS
		JANUARY	FEBRUARY	MARCH	JAN-MAR 2012	
MONTGOMERY COUNTY - TOTAL	174	1,410	1,424	1,466	\$8,525,671	\$457.55
Natural Resources & Mining	8	32	32	30	286,146	702.49
Construction	21	75	74	88	480,298	467.67
Trade, Transportation & Utilities	47	257	249	249	1,596,857	488.09
Wholesale Trade	14	66	65	65	499,975	588.67
Retail Trade	23	164	160	159	901,117	430.54
Transportation, Warehousing & Utilities	10	27	24	25	195,765	594.43
Financial Activities	10	60	57	62	508,941	656.13
Professional & Business Services	13	19	16	16	118,317	535.37
Education & Health Services	16	87	88	88	564,017	494.90
Leisure & Hospitality	22	153	184	216	748,904	312.52
Local Government	9	515	514	508	3,053,783	458.50
State Government	7	38	40	39	302,766	597.17
Other	21	174	170	170	865,642	388.65
NEVADA COUNTY - TOTAL	184	2,252	2,298	2,329	\$22,154,269	\$743.21
Natural Resources & Mining	9	31	31	31	250,734	622.17
Trade, Transportation & Utilities	38	494	498	499	3,868,501	598.75
Wholesale Trade	3	13	14	14	43,916	247.18
Retail Trade	25	271	271	272	1,383,794	392.31
Transportation, Warehousing & Utilities	10	210	213	213	2,440,791	885.63
Financial Activities	14	60	63	61	452,430	567.43
Professional & Business Services	12	60	60	58	416,456	539.92
Education & Health Services	34	381	405	409	2,483,808	479.65
Leisure & Hospitality	8	78	80	83	222,963	213.50
Other Services	13	55	52	55	161,053	229.42
Local Government	27	407	401	412	2,342,507	443.10
State Government	10	70	70	69	474,475	523.90
Other	19	616	638	652	11,481,342	1,390.11

TABLE 6. COUNTY SUMMARY

NORTH AMERICAN INDUSTRY CLASSIFICATION SYSTEM - INDUSTRY GROUPS	NUMBER OF EMPLOYING UNITS	EMPLOYMENT			TOTAL EARNINGS	AVERAGE WEEKLY EARNINGS
		JANUARY	FEBRUARY	MARCH	JAN-MAR 2012	
NEWTON COUNTY - TOTAL	127	1,036	1,027	1,058	\$5,465,869	\$404.15
Construction	6	22	20	20	64,986	241.88
Manufacturing	10	48	47	50	332,612	529.36
Trade, Transportation & Utilities	29	156	152	161	846,826	416.68
Wholesale Trade	3	8	6	8	60,323	632.76
Retail Trade	14	98	95	102	389,113	304.39
Transportation, Warehousing & Utilities	12	50	51	51	397,390	603.32
Education & Health Services	32	238	232	239	999,354	325.28
Leisure & Hospitality	16	48	50	71	235,007	320.90
Other Services	5	6	5	5	25,248	364.15
Local Government	13	383	389	384	2,252,727	449.71
State Government	6	96	95	96	427,782	343.97
Other	10	39	37	32	281,327	601.13
OUACHITA COUNTY - TOTAL	638	7,056	7,136	7,172	\$50,789,844	\$548.62
Natural Resources & Mining	41	189	182	185	1,466,903	608.84
Construction	42	178	186	203	1,453,307	591.50
Manufacturing	24	571	574	562	5,365,128	725.31
Trade, Transportation & Utilities	171	1,630	1,635	1,634	11,273,035	531.02
Wholesale Trade	26	230	233	236	2,589,460	854.89
Retail Trade	114	1,108	1,101	1,098	5,360,341	374.06
Transportation, Warehousing & Utilities	31	292	301	300	3,323,234	858.79
Information	7	50	50	51	379,315	579.70
Financial Activities	60	286	286	289	2,321,700	622.27
Professional & Business Services	46	397	416	433	3,240,744	600.21
Education & Health Services	123	1,250	1,261	1,251	9,457,442	580.14
Leisure & Hospitality	40	503	513	519	1,344,347	202.11
Other Services	40	147	147	140	765,951	407.28
Local Government	30	1,123	1,130	1,139	7,906,550	537.91
State Government	14	732	756	766	5,815,422	595.40

TABLE 6. COUNTY SUMMARY

NORTH AMERICAN INDUSTRY CLASSIFICATION SYSTEM - INDUSTRY GROUPS	NUMBER OF EMPLOYING UNITS	EMPLOYMENT			TOTAL EARNINGS	AVERAGE WEEKLY EARNINGS
		JANUARY	FEBRUARY	MARCH	JAN-MAR 2012	
PERRY COUNTY - TOTAL	145	1,306	1,278	1,281	\$8,439,081	\$503.88
Construction	18	97	91	94	807,877	661.11
Manufacturing	5	41	42	40	280,977	527.16
Trade, Transportation & Utilities	24	191	188	193	1,091,857	440.50
Retail Trade	14	161	158	163	609,580	291.85
Other Trade, Transportation & Utilities	10	30	30	30	482,277	1,236.61
Financial Activities	10	30	30	30	291,088	746.38
Professional & Business Services	13	35	36	36	434,514	937.13
Education & Health Services	32	256	247	250	1,379,403	422.74
Leisure & Hospitality	9	60	58	66	215,352	270.09
Local Government	11	417	415	421	2,376,208	437.63
State Government	8	58	58	56	333,351	447.25
Other	15	121	113	95	1,228,454	861.67
PHILLIPS COUNTY - TOTAL	849	6,034	6,049	6,152	\$42,099,893	\$532.79
Natural Resources & Mining	75	263	282	318	1,444,481	386.26
Construction	28	115	118	120	774,694	506.45
Manufacturing	11	385	378	378	3,430,619	693.85
Trade, Transportation & Utilities	165	1,399	1,412	1,421	11,172,222	609.22
Wholesale Trade	33	344	350	358	4,381,537	961.14
Retail Trade	89	762	764	763	4,214,002	424.84
Transportation, Warehousing & Utilities	43	293	298	300	2,576,683	667.36
Information	10	44	46	43	363,900	631.41
Financial Activities	40	209	206	211	1,801,294	664.03
Professional & Business Services	50	301	300	315	2,116,132	533.12
Education & Health Services	361	1,496	1,487	1,488	9,167,274	473.17
Leisure & Hospitality	33	281	299	326	919,110	234.11
Other Services	35	73	77	77	429,545	436.68
Local Government	27	969	940	942	7,083,873	573.39
State Government	14	499	504	513	3,396,749	517.06

TABLE 6. COUNTY SUMMARY

NORTH AMERICAN INDUSTRY CLASSIFICATION SYSTEM - INDUSTRY GROUPS	NUMBER OF EMPLOYING UNITS	EMPLOYMENT			TOTAL EARNINGS	AVERAGE WEEKLY EARNINGS
		JANUARY	FEBRUARY	MARCH	JAN-MAR 2012	
PIKE COUNTY - TOTAL	250	2,225	2,239	2,273	\$14,118,589	\$483.62
Natural Resources & Mining	28	120	114	120	1,164,142	758.89
Construction	14	52	55	58	279,818	391.35
Manufacturing	17	200	206	195	1,175,088	451.20
Trade, Transportation & Utilities	74	492	492	502	3,029,979	470.54
Wholesale Trade	11	113	111	110	791,675	546.99
Retail Trade	46	326	333	335	1,679,899	390.01
Transportation, Warehousing & Utilities	17	53	48	57	558,405	815.59
Information	5	23	23	23	282,793	945.80
Financial Activities	22	179	177	174	1,671,689	727.88
Professional & Business Services	11	34	36	37	453,560	978.20
Education & Health Services	20	263	261	265	1,505,088	440.21
Leisure & Hospitality	19	164	182	194	464,668	198.58
Other Services	20	77	72	75	436,986	450.19
Local Government	10	507	506	511	3,072,083	465.19
State Government	10	114	115	119	582,695	386.40
POINSETT COUNTY - TOTAL	516	5,060	5,038	5,186	\$39,111,507	\$590.53
Natural Resources & Mining	60	294	300	316	2,961,655	751.05
Construction	25	84	94	105	518,133	422.51
Manufacturing	22	644	644	671	5,719,326	673.73
Trade, Transportation & Utilities	125	1,240	1,239	1,269	10,715,160	659.75
Wholesale Trade	28	364	363	399	5,618,593	1,151.51
Retail Trade	70	709	701	697	3,689,807	404.13
Transportation, Warehousing & Utilities	27	167	175	173	1,406,760	630.36
Information	6	52	53	53	570,727	833.58
Financial Activities	38	271	269	273	2,892,288	820.97
Professional & Business Services	32	237	213	202	1,888,712	668.49
Education & Health Services	98	647	636	650	3,935,037	469.78
Leisure & Hospitality	44	328	324	358	936,566	213.99
Other Services	24	63	62	66	353,549	427.16
Local Government	31	1,063	1,069	1,085	7,607,902	545.75
State Government	11	137	135	138	1,012,452	569.86

TABLE 6. COUNTY SUMMARY

NORTH AMERICAN INDUSTRY CLASSIFICATION SYSTEM - INDUSTRY GROUPS	NUMBER OF EMPLOYING UNITS	EMPLOYMENT			TOTAL EARNINGS	AVERAGE WEEKLY EARNINGS
		JANUARY	FEBRUARY	MARCH	JAN-MAR 2012	
POLK COUNTY - TOTAL	515	5,826	5,861	5,906	\$38,432,070	\$504.12
Natural Resources & Mining	23	136	136	135	1,271,891	721.16
Construction	37	174	172	176	1,043,377	461.26
Manufacturing	35	1,123	1,130	1,139	9,415,033	640.54
Trade, Transportation & Utilities	134	1,210	1,225	1,233	7,041,778	443.03
Wholesale Trade	19	64	63	62	428,770	523.53
Retail Trade	77	846	862	872	4,312,331	385.72
Transportation, Warehousing & Utilities	38	300	300	299	2,300,677	590.57
Information	7	49	50	50	310,573	481.01
Financial Activities	41	226	230	229	1,913,998	644.81
Professional & Business Services	46	156	155	157	1,233,413	608.19
Education & Health Services	85	1,058	1,056	1,062	7,298,515	530.31
Leisure & Hospitality	43	474	475	482	1,227,408	197.94
Other Services	30	142	140	142	807,413	439.45
Local Government	21	766	773	779	5,058,418	503.59
State Government	13	312	319	322	1,810,253	438.35
POPE COUNTY - TOTAL	1,760	25,188	25,509	26,026	\$212,163,206	\$638.15
Natural Resources & Mining	35	521	718	764	5,606,081	645.89
Construction	164	1,104	1,143	1,161	10,872,753	736.24
Manufacturing	73	4,420	4,418	4,435	38,653,858	672.05
Trade, Transportation & Utilities	426	5,803	5,768	5,862	64,910,414	859.25
Wholesale Trade	92	607	605	619	6,463,247	814.59
Retail Trade	259	3,160	3,140	3,150	17,299,965	422.47
Transportation, Warehousing & Utilities	75	2,036	2,023	2,093	41,147,202	1,543.48
Information	23	212	212	220	2,054,362	736.15
Financial Activities	179	1,181	1,157	1,154	9,275,759	612.99
Professional & Business Services	254	2,443	2,420	2,598	18,419,462	569.72
Education & Health Services	309	2,955	2,965	2,985	21,940,190	568.57
Leisure & Hospitality	133	2,255	2,323	2,399	7,019,982	232.19
Other Services	106	425	422	434	2,448,668	441.12
Local Government	42	2,345	2,338	2,384	17,211,389	562.03
State Government	16	1,524	1,625	1,630	13,750,288	663.98

TABLE 6. COUNTY SUMMARY

NORTH AMERICAN INDUSTRY CLASSIFICATION SYSTEM - INDUSTRY GROUPS	NUMBER OF EMPLOYING UNITS	EMPLOYMENT			TOTAL EARNINGS	AVERAGE WEEKLY EARNINGS
		JANUARY	FEBRUARY	MARCH	JAN-MAR 2012	
PRAIRIE COUNTY - TOTAL	242	1,400	1,393	1,403	\$9,464,765	\$520.54
Natural Resources & Mining	34	136	139	151	1,112,293	602.54
Construction	14	113	110	102	1,182,105	839.36
Trade, Transportation & Utilities	60	299	299	307	2,225,816	567.57
Wholesale Trade	10	63	64	72	1,107,369	1,284.15
Retail Trade	35	183	184	184	746,900	312.82
Transportation, Warehousing & Utilities	15	53	51	51	371,547	553.17
Financial Activities	15	53	53	53	413,500	600.15
Professional & Business Services	13	43	43	42	292,549	527.43
Education & Health Services	44	207	206	209	1,168,251	433.43
Leisure & Hospitality	18	116	107	105	290,285	204.23
Other Services	14	36	41	38	189,859	380.99
Local Government	15	333	332	337	2,155,955	496.54
State Government	9	43	42	39	270,105	502.68
Other	6	21	21	20	164,047	610.60
PULASKI COUNTY - TOTAL	14,177	229,836	231,330	233,149	\$2,535,023,403	\$842.56
Natural Resources & Mining	56	711	699	727	11,574,441	1,249.89
Construction	996	7,949	7,964	8,167	84,762,809	812.32
Manufacturing	365	12,948	12,960	13,068	168,457,509	997.40
Trade, Transportation & Utilities	3,208	46,279	45,961	46,321	471,773,913	785.73
Wholesale Trade	1,038	11,896	11,915	11,965	175,288,444	1,130.68
Retail Trade	1,764	24,281	24,002	24,141	161,391,152	514.25
Transportation, Warehousing & Utilities	406	10,102	10,044	10,215	135,094,317	1,026.83
Information	217	6,340	6,312	6,234	117,492,586	1,435.65
Financial Activities	1,719	15,678	15,739	15,750	286,419,622	1,401.34
Professional & Business Services	2,797	31,414	31,720	32,280	364,554,730	881.72
Education & Health Services	2,262	37,856	38,025	38,084	395,401,718	800.65
Leisure & Hospitality	1,119	20,223	20,459	21,020	81,027,872	303.05
Other Services	1,138	6,632	6,685	6,758	55,136,096	633.81
Local Government	102	16,797	17,009	16,992	168,214,876	764.18
State Government	198	27,009	27,797	27,748	330,207,231	923.05

TABLE 6. COUNTY SUMMARY

NORTH AMERICAN INDUSTRY CLASSIFICATION SYSTEM - INDUSTRY GROUPS	NUMBER OF EMPLOYING UNITS	EMPLOYMENT			TOTAL EARNINGS	AVERAGE WEEKLY EARNINGS
		JANUARY	FEBRUARY	MARCH	JAN-MAR 2012	
RANDOLPH COUNTY - TOTAL	416	4,527	4,579	4,605	\$29,135,329	\$490.38
Natural Resources & Mining	29	102	103	107	400,542	296.26
Construction	31	57	64	67	324,552	398.39
Manufacturing	31	623	618	623	4,363,545	540.22
Trade, Transportation & Utilities	102	892	892	892	5,957,688	513.77
Wholesale Trade	22	204	203	203	1,459,187	552.03
Retail Trade	59	564	558	560	3,134,800	430.09
Transportation, Warehousing & Utilities	21	124	131	129	1,363,701	819.53
Information	5	43	43	43	356,359	637.49
Financial Activities	30	125	123	123	921,434	573.15
Professional & Business Services	42	237	233	236	1,220,439	398.92
Education & Health Services	66	1,083	1,101	1,102	7,450,993	523.27
Leisure & Hospitality	27	328	336	345	919,540	210.31
Other Services	20	53	58	58	292,702	399.68
Local Government	22	737	733	731	4,725,101	495.41
State Government	11	247	275	278	2,202,434	635.32
SAINT FRANCIS COUNTY - TOTAL	787	7,319	7,352	7,395	\$51,532,861	\$538.94
Natural Resources & Mining	36	134	132	158	908,690	494.57
Construction	43	162	170	183	1,289,092	577.64
Manufacturing	11	706	690	676	5,799,526	645.92
Trade, Transportation & Utilities	163	1,997	1,995	2,002	14,530,046	559.41
Wholesale Trade	35	580	568	570	5,875,111	789.17
Retail Trade	106	1,128	1,130	1,134	5,882,507	400.21
Transportation, Warehousing & Utilities	22	289	297	298	2,772,428	723.75
Information	8	72	72	72	551,526	589.24
Financial Activities	63	308	302	308	2,408,005	605.33
Professional & Business Services	46	390	398	382	2,632,829	519.30
Education & Health Services	298	1,417	1,413	1,404	9,431,732	514.07
Leisure & Hospitality	47	565	570	592	1,674,511	223.76
Other Services	28	66	64	79	301,311	332.70
Local Government	28	1,000	1,004	1,008	7,820,189	599.16
State Government	16	502	542	531	4,185,404	613.25

TABLE 6. COUNTY SUMMARY

NORTH AMERICAN INDUSTRY CLASSIFICATION SYSTEM - INDUSTRY GROUPS	NUMBER OF EMPLOYING UNITS	EMPLOYMENT			TOTAL EARNINGS	AVERAGE WEEKLY EARNINGS
		JANUARY	FEBRUARY	MARCH	JAN-MAR 2012	
SALINE COUNTY - TOTAL	1,818	21,019	20,910	21,149	\$157,703,508	\$576.95
Natural Resources & Mining	12	33	34	35	288,565	652.86
Construction	264	1,647	1,623	1,673	13,939,956	650.80
Manufacturing	81	1,289	1,300	1,309	15,173,126	898.28
Trade, Transportation & Utilities	425	4,589	4,585	4,597	34,060,019	570.76
Wholesale Trade	116	509	510	521	5,860,993	878.27
Retail Trade	246	3,694	3,690	3,691	24,501,405	510.53
Transportation, Warehousing & Utilities	63	386	385	385	3,697,621	738.15
Information	10	78	74	80	926,234	921.32
Financial Activities	186	682	665	682	6,175,047	702.32
Professional & Business Services	248	1,401	1,391	1,403	10,624,323	584.45
Education & Health Services	246	3,305	3,293	3,334	24,766,056	575.44
Leisure & Hospitality	148	2,693	2,648	2,724	9,137,525	261.46
Other Services	151	681	691	699	4,248,511	473.41
Local Government	31	3,645	3,640	3,650	31,756,099	670.17
State Government	16	976	966	963	6,608,047	524.93
SCOTT COUNTY - TOTAL	188	2,932	2,949	2,965	\$17,910,077	\$467.23
Natural Resources & Mining	16	156	157	150	1,349,986	672.86
Trade, Transportation & Utilities	38	438	438	440	2,854,208	500.50
Wholesale Trade	9	76	74	75	734,758	753.60
Retail Trade	22	294	297	299	1,413,919	366.62
Transportation, Warehousing & Utilities	7	68	67	66	705,531	810.02
Financial Activities	22	68	70	69	446,092	497.32
Professional & Business Services	11	10	10	12	56,992	411.00
Education & Health Services	36	274	282	289	2,235,217	610.44
Leisure & Hospitality	17	156	150	154	495,591	248.62
Other Services	12	53	53	53	345,588	501.58
Local Government	5	423	433	429	2,598,813	466.71
State Government	7	68	67	62	357,716	419.03
Other	24	1,286	1,289	1,307	7,169,874	426.22

TABLE 6. COUNTY SUMMARY

NORTH AMERICAN INDUSTRY CLASSIFICATION SYSTEM - INDUSTRY GROUPS	NUMBER OF EMPLOYING UNITS	EMPLOYMENT			TOTAL EARNINGS	AVERAGE WEEKLY EARNINGS
		JANUARY	FEBRUARY	MARCH	JAN-MAR 2012	
SEARCY COUNTY - TOTAL	182	1,545	1,545	1,626	\$8,513,453	\$416.59
Construction	7	11	13	13	107,732	671.93
Manufacturing	17	175	177	171	846,941	373.71
Trade, Transportation & Utilities	41	276	271	277	1,379,001	386.20
Wholesale Trade	7	56	53	55	282,605	397.66
Retail Trade	28	201	199	204	869,176	332.08
Transportation, Warehousing & Utilities	6	19	19	18	227,220	936.35
Information	4	12	12	11	75,979	500.96
Financial Activities	14	83	74	74	554,704	554.15
Professional & Business Services	12	31	29	30	159,656	409.37
Education & Health Services	48	363	363	355	1,951,388	416.58
Leisure & Hospitality	12	89	90	100	214,394	177.33
Local Government	10	355	359	364	2,203,198	471.64
State Government	7	120	125	119	586,852	372.05
Other	10	30	32	112	433,608	575.08
SEBASTIAN COUNTY - TOTAL	3,756	64,031	64,039	64,580	\$609,441,100	\$730.03
Natural Resources & Mining	61	1,574	1,557	1,561	31,013,585	1,525.36
Construction	283	2,268	2,223	2,277	20,706,585	706.03
Manufacturing	193	12,856	12,617	12,531	140,569,319	853.57
Trade, Transportation & Utilities	957	12,728	12,671	12,760	108,434,994	655.77
Wholesale Trade	244	2,706	2,715	2,715	34,665,089	983.24
Retail Trade	571	7,775	7,744	7,818	45,868,353	453.57
Transportation, Warehousing & Utilities	142	2,247	2,212	2,227	27,901,552	963.03
Information	50	901	900	945	12,119,575	1,018.51
Financial Activities	416	2,511	2,525	2,515	28,931,624	884.19
Professional & Business Services	586	7,602	7,602	7,735	77,951,584	784.20
Education & Health Services	550	10,630	10,683	10,820	103,573,041	743.83
Leisure & Hospitality	323	5,407	5,446	5,604	19,522,972	273.76
Other Services	276	1,306	1,320	1,333	8,552,065	498.50
Local Government	40	4,661	4,705	4,697	41,225,811	676.50
State Government	21	1,587	1,790	1,802	16,839,945	750.37

TABLE 6. COUNTY SUMMARY

NORTH AMERICAN INDUSTRY CLASSIFICATION SYSTEM - INDUSTRY GROUPS	NUMBER OF EMPLOYING UNITS	EMPLOYMENT			TOTAL EARNINGS	AVERAGE WEEKLY EARNINGS
		JANUARY	FEBRUARY	MARCH	JAN-MAR 2012	
SEVIER COUNTY - TOTAL	323	4,786	4,714	4,784	\$31,501,615	\$508.93
Natural Resources & Mining	16	162	163	161	1,376,362	653.54
Construction	19	105	105	110	1,023,771	738.30
Trade, Transportation & Utilities	98	825	785	805	5,221,563	498.95
Wholesale Trade	14	93	94	90	1,103,934	919.69
Retail Trade	66	660	629	645	3,380,090	403.32
Transportation, Warehousing & Utilities	18	72	62	70	737,539	834.32
Information	3	23	24	22	199,998	668.89
Financial Activities	28	186	183	184	1,561,529	651.63
Professional & Business Services	31	86	87	87	577,525	512.60
Education & Health Services	44	479	468	486	3,335,268	537.11
Leisure & Hospitality	24	221	240	238	634,014	209.31
Local Government	12	920	909	917	6,189,820	520.18
State Government	8	167	183	199	1,221,056	513.26
Other	40	1,612	1,567	1,575	10,160,709	493.22
SHARP COUNTY - TOTAL	388	3,559	3,538	3,565	\$21,455,428	\$464.38
Construction	22	124	123	124	872,477	542.70
Manufacturing	17	147	143	145	859,826	456.14
Trade, Transportation & Utilities	87	982	960	955	6,050,255	481.95
Wholesale Trade	13	43	41	41	170,095	314.02
Retail Trade	58	641	606	607	2,994,744	372.76
Transportation, Warehousing & Utilities	16	298	313	307	2,885,416	725.34
Information	6	51	50	51	584,854	887.94
Financial Activities	34	185	184	185	1,633,444	680.41
Professional & Business Services	42	137	137	140	1,130,786	630.32
Education & Health Services	86	667	669	675	3,900,275	447.57
Leisure & Hospitality	31	336	331	351	906,846	205.57
Local Government	25	757	765	759	4,583,058	463.67
State Government	8	94	96	94	541,800	440.25
Other	30	79	80	86	391,807	369.05

TABLE 6. COUNTY SUMMARY

NORTH AMERICAN INDUSTRY CLASSIFICATION SYSTEM - INDUSTRY GROUPS	NUMBER OF EMPLOYING UNITS	EMPLOYMENT			TOTAL EARNINGS	AVERAGE WEEKLY EARNINGS
		JANUARY	FEBRUARY	MARCH	JAN-MAR 2012	
STONE COUNTY - TOTAL	285	2,507	2,522	2,520	\$14,395,796	\$440.07
Natural Resources & Mining	6	11	17	12	31,566	182.11
Construction	23	52	50	53	279,491	416.12
Manufacturing	21	184	176	156	863,745	386.29
Trade, Transportation & Utilities	67	661	661	671	3,822,618	442.62
Wholesale Trade	8	36	34	36	257,277	560.11
Retail Trade	46	590	593	602	3,148,001	406.98
Transportation, Warehousing & Utilities	13	35	34	33	417,340	944.21
Financial Activities	30	97	98	98	505,159	397.87
Professional & Business Services	18	37	43	38	298,503	583.77
Education & Health Services	45	538	513	516	3,880,661	571.50
Leisure & Hospitality	34	280	313	321	722,717	182.47
Local Government	10	410	419	421	2,721,652	502.46
State Government	8	144	143	144	701,960	375.85
Other	23	93	89	90	567,724	481.67
UNION COUNTY - TOTAL	1,337	17,108	17,179	17,320	\$201,973,390	\$903.16
Natural Resources & Mining	103	596	614	616	7,057,508	891.93
Construction	80	1,236	1,217	1,280	14,405,598	890.54
Manufacturing	54	2,910	2,912	2,915	47,567,339	1,256.39
Trade, Transportation & Utilities	339	3,610	3,638	3,675	37,894,180	800.59
Wholesale Trade	68	730	715	733	14,963,970	1,585.50
Retail Trade	210	2,063	2,090	2,096	11,638,606	429.80
Transportation, Warehousing & Utilities	61	817	833	846	11,291,604	1,043.97
Information	13	141	140	135	983,698	545.69
Financial Activities	120	739	736	732	6,835,109	714.70
Professional & Business Services	139	1,412	1,437	1,441	42,064,878	2,262.77
Education & Health Services	240	2,390	2,376	2,376	20,617,864	666.20
Leisure & Hospitality	90	1,165	1,125	1,162	3,495,685	233.69
Other Services	108	488	488	496	2,891,916	453.37
Local Government	34	1,868	1,892	1,886	13,466,801	550.43
State Government	17	553	604	606	4,692,814	614.27

TABLE 6. COUNTY SUMMARY

NORTH AMERICAN INDUSTRY CLASSIFICATION SYSTEM - INDUSTRY GROUPS	NUMBER OF EMPLOYING UNITS	EMPLOYMENT			TOTAL EARNINGS	AVERAGE WEEKLY EARNINGS
		JANUARY	FEBRUARY	MARCH	JAN-MAR 2012	
VAN BUREN COUNTY - TOTAL	364	3,812	3,796	3,891	\$32,584,456	\$653.93
Natural Resources & Mining	16	206	207	213	3,940,975	1,452.80
Construction	41	218	213	211	1,867,017	671.11
Manufacturing	9	72	65	74	612,906	670.33
Trade, Transportation & Utilities	97	1,130	1,117	1,138	12,706,956	866.28
Wholesale Trade	8	33	34	31	310,709	731.65
Retail Trade	55	563	544	556	3,562,849	494.41
Transportation, Warehousing & Utilities	34	534	539	551	8,833,398	1,255.22
Information	9	47	49	45	413,896	677.41
Financial Activities	33	150	146	148	1,270,949	660.58
Professional & Business Services	29	98	98	120	618,792	451.89
Education & Health Services	60	671	658	682	4,460,828	511.90
Leisure & Hospitality	30	362	377	399	1,331,035	269.91
Other Services	22	66	65	65	419,744	494.20
Local Government	11	729	732	726	4,465,474	471.19
State Government	7	63	69	70	475,884	543.66
WASHINGTON COUNTY - TOTAL	5,462	88,196	88,160	89,074	844,412,914	\$734.15
Natural Resources & Mining	46	455	456	464	5,157,925	865.67
Construction	463	3,729	3,734	3,813	35,669,118	729.99
Manufacturing	211	11,961	11,961	12,045	113,878,003	730.66
Trade, Transportation & Utilities	1,339	20,505	20,414	20,645	188,194,460	705.44
Wholesale Trade	392	3,488	3,469	3,454	55,808,836	1,237.05
Retail Trade	765	10,523	10,445	10,612	67,773,876	495.25
Transportation, Warehousing & Utilities	182	6,494	6,500	6,579	64,611,748	761.78
Information	86	982	968	953	9,888,958	786.11
Financial Activities	583	3,171	3,164	3,185	38,433,804	931.65
Professional & Business Services	965	9,315	9,388	9,504	126,932,779	1,038.47
Education & Health Services	737	13,242	13,239	13,337	136,322,968	790.07
Leisure & Hospitality	572	9,639	9,842	10,008	33,293,140	260.54
Other Services	377	1,765	1,781	1,810	11,867,205	511.31
Local Government	61	8,185	8,221	8,278	71,833,000	671.56
State Government	22	5,247	4,992	5,032	72,941,554	1,102.26

TABLE 6. COUNTY SUMMARY

NORTH AMERICAN INDUSTRY CLASSIFICATION SYSTEM - INDUSTRY GROUPS	NUMBER OF EMPLOYING UNITS	EMPLOYMENT			TOTAL EARNINGS	AVERAGE WEEKLY EARNINGS
		JANUARY	FEBRUARY	MARCH	JAN-MAR 2012	
WHITE COUNTY - TOTAL	1,827	25,426	25,590	25,779	\$225,098,205	\$676.42
Natural Resources & Mining	57	1,611	1,646	1,664	26,393,360	1,237.71
Construction	183	1,007	1,059	1,060	8,486,579	626.50
Manufacturing	70	2,312	2,314	2,326	23,643,699	784.84
Trade, Transportation & Utilities	497	6,646	6,600	6,651	56,767,416	658.40
Wholesale Trade	101	665	657	670	6,491,917	752.08
Retail Trade	291	3,309	3,281	3,303	18,022,703	420.41
Transportation, Warehousing & Utilities	105	2,672	2,662	2,678	32,252,796	928.98
Information	20	161	157	162	1,224,545	588.72
Financial Activities	171	846	854	849	8,425,098	762.75
Professional & Business Services	207	1,588	1,642	1,613	10,688,728	509.32
Education & Health Services	287	4,972	4,966	5,005	51,958,792	802.42
Leisure & Hospitality	151	2,260	2,266	2,375	6,776,283	226.60
Other Services	119	556	553	539	4,418,915	618.78
Local Government	47	2,730	2,752	2,748	20,622,368	578.25
State Government	18	737	781	787	5,692,422	569.91
WOODRUFF COUNTY - TOTAL	207	1,840	1,860	1,884	\$12,880,861	\$532.33
Natural Resources & Mining	28	114	124	151	866,372	513.96
Construction	5	36	34	41	222,109	461.77
Manufacturing	7	301	304	305	2,461,545	624.23
Trade, Transportation & Utilities	49	403	406	405	3,407,585	647.75
Wholesale Trade	12	151	154	159	1,861,637	925.88
Retail Trade	28	187	189	184	784,755	323.39
Transportation, Warehousing & Utilities	9	65	63	62	761,193	924.53
Financial Activities	13	58	58	60	469,593	615.73
Education & Health Services	65	240	243	242	1,345,017	428.12
Leisure & Hospitality	8	57	55	60	168,722	226.37
Local Government	10	503	509	493	2,871,822	440.35
State Government	6	47	46	46	303,573	504.00
Other	16	81	81	81	764,523	726.04

TABLE 6. COUNTY SUMMARY

NORTH AMERICAN INDUSTRY CLASSIFICATION SYSTEM - INDUSTRY GROUPS	NUMBER OF EMPLOYING UNITS	EMPLOYMENT			TOTAL EARNINGS	AVERAGE WEEKLY EARNINGS
		JANUARY	FEBRUARY	MARCH	JAN-MAR 2012	
YELL COUNTY - TOTAL	424	6,472	6,505	6,539	\$41,316,283	\$488.55
Natural Resources & Mining	24	197	194	195	1,503,175	591.96
Construction	35	200	229	243	1,527,209	524.45
Manufacturing	20	2,503	2,489	2,476	15,471,774	478.09
Trade, Transportation & Utilities	81	756	753	750	4,765,570	486.83
Wholesale Trade	15	38	39	38	193,016	387.32
Retail Trade	47	505	499	492	2,441,585	376.63
Transportation, Warehousing & Utilities	19	213	215	220	2,130,969	758.89
Financial Activities	33	175	167	169	1,261,007	569.47
Professional & Business Services	41	202	204	216	1,457,153	540.62
Education & Health Services	106	740	754	758	4,258,080	436.34
Leisure & Hospitality	28	313	313	331	832,757	200.81
Local Government	27	1,183	1,199	1,197	8,801,584	567.51
State Government	12	100	101	100	605,125	463.93
Other	17	103	102	104	832,849	621.99
STATEWIDE COUNTY - TOTAL	6,358	22,391	22,906	23,479	\$334,447,350	\$1,122.20
Natural Resources & Mining	74	403	416	414	6,861,029	1,284.12
Construction	624	3,080	3,269	3,428	33,017,943	779.33
Manufacturing	41	237	237	240	2,967,519	959.12
Trade, Transportation & Utilities	2,286	6,242	6,274	6,411	142,127,670	1,732.91
Wholesale Trade	1,973	5,147	5,188	5,305	128,225,921	1,891.98
Retail Trade	118	357	345	354	6,046,704	1,321.40
Transportation, Warehousing & Utilities	195	738	741	752	7,855,045	812.51
Information	175	575	613	557	8,530,624	1,128.14
Financial Activities	381	1,173	1,187	1,190	22,214,854	1,444.09
Professional & Business Services	2,264	6,339	6,494	6,774	87,865,841	1,034.16
Education & Health Services	219	3,251	3,327	3,281	18,875,956	441.83
Leisure & Hospitality	65	53	48	55	636,319	941.30
Other Services	214	353	358	441	5,011,936	1,003.99
State Government	15	685	683	688	6,337,659	711.35

TABLE 7. FEDERAL GOVERNMENT EMPLOYMENT AND EARNINGS IN ARKANSAS

CLASSIFICATION SYSTEM - INDUSTRY GROUPS	NUMBER OF EMPLOYING UNITS	EMPLOYMENT			TOTAL EARNINGS	AVERAGE
		JANUARY	FEBRUARY	MARCH	JAN-MAR 2012	WEEKLY EARNINGS
TOTAL	1,243	20,563	20,437	20,485	\$324,077,040	\$1,216.35
Trade, Transportation & Utilities	607	5,802	5,728	5,706	75,688,324	1,013.38
Information	2	48	47	47	711,353	1,156.04
Financial Activities	19	142	139	137	3,003,944	1,658.42
Professional & Business Services	30	814	813	812	13,328,190	1,261.06
Education & Health Services	18	4,922	4,905	4,921	94,529,356	1,479.15
Leisure & Hospitality	22	294	276	288	2,580,045	693.93
Other Services	3	11	10	10	48,837	363.55
Public Administration	542	8,530	8,519	8,564	134,186,991	1,209.00

TABLE 8. WORKFORCE INVESTMENT AREA SUMMARY

NORTH AMERICAN INDUSTRY CLASSIFICATION SYSTEM - INDUSTRY GROUPS	NUMBER OF EMPLOYING UNITS	EMPLOYMENT			TOTAL EARNINGS	AVERAGE WEEKLY EARNINGS
		JANUARY	FEBRUARY	MARCH	JAN-MAR 2012	
CENTRAL WORKFORCE INVESTMENT AREA	6,373	77,708	77,954	78,862	\$655,237,842	\$644.75
Natural Resources & Mining	217	2,570	2,571	2,646	48,684,576	1,442.78
Construction	750	5,010	4,979	5,068	44,180,100	677.12
Trade, Transportation & Utilities	1,525	15,597	15,614	15,732	114,879,676	564.74
Wholesale Trade	386	2,116	2,167	2,208	26,193,819	931.25
Retail Trade	887	11,775	11,757	11,827	70,643,903	461.05
Transportation, Warehousing & Utilities	252	1,706	1,690	1,697	18,041,954	817.50
Information	60	608	609	629	6,099,878	762.55
Financial Activities	678	2,878	2,863	2,888	29,239,382	781.96
Professional & Business Services	823	8,004	8,143	8,217	88,996,060	842.95
Education & Health Services	930	11,198	11,262	11,368	87,176,431	594.70
Leisure & Hospitality	535	8,922	8,825	9,095	28,231,760	242.72
Local Government	132	10,644	10,709	10,733	87,806,495	631.52
State Government	66	4,550	4,576	4,596	38,876,449	653.80
Other	657	7,727	7,803	7,890	81,067,035	798.79
EASTERN WORKFORCE INVESTMENT AREA	3,743	36,035	36,258	36,743	\$269,745,185	\$570.90
Natural Resources & Mining	233	988	1,002	1,159	6,201,981	454.50
Construction	146	660	700	714	5,657,247	629.47
Trade, Transportation & Utilities	830	9,361	9,379	9,489	76,813,757	627.94
Wholesale Trade	176	1,997	1,994	2,046	23,452,700	896.50
Retail Trade	459	4,711	4,717	4,738	26,429,973	430.55
Transportation, Warehousing & Utilities	195	2,653	2,668	2,705	26,931,084	774.34
Financial Activities	258	1,388	1,374	1,400	12,524,733	694.46
Professional & Business Services	272	2,266	2,254	2,252	15,014,578	511.65
Education & Health Services	1,271	6,503	6,492	6,497	45,785,783	542.07
Leisure & Hospitality	245	3,115	3,185	3,325	10,973,733	263.11
Local Government	129	5,313	5,335	5,356	41,624,983	600.21
State Government	61	2,297	2,446	2,441	18,320,269	588.50
Other	298	4,144	4,091	4,110	36,828,121	688.44

*Note: Pulaski County is not included in the Central Workforce Investment. Please refer to Page 51 for information on Pulaski County.
Central Workforce Includes these counties: Faulkner, Lonoke, Monroe, Prairie, and Saline.

Eastern Workforce Includes these counties: Crittenden, Cross, Lee, Phillips, and Saint Francis.

TABLE 8. WORKFORCE INVESTMENT AREA SUMMARY

NORTH AMERICAN INDUSTRY CLASSIFICATION SYSTEM - INDUSTRY GROUPS	NUMBER OF EMPLOYING UNITS	EMPLOYMENT			TOTAL EARNINGS	AVERAGE WEEKLY EARNINGS
		JANUARY	FEBRUARY	MARCH	JAN-MAR 2012	
NORTH CENTRAL WORKFORCE INVESTMENT AREA	5,558	68,794	69,142	69,976	\$551,974,820	\$612.66
Construction	457	2,411	2,469	2,510	19,790,995	618.02
Manufacturing	242	8,704	8,664	8,779	83,525,219	737.18
Trade, Transportation & Utilities	1,430	16,186	16,083	16,226	131,350,232	625.05
Retail Trade	886	9,221	9,110	9,209	50,292,837	421.42
Other Trade, Transportation & Utilities	544	6,965	6,973	7,017	81,057,395	892.65
Information	67	542	539	540	4,101,515	583.90
Financial Activities	510	2,414	2,398	2,414	22,393,778	715.17
Professional & Business Services	518	3,032	3,065	3,050	20,503,568	517.28
Education & Health Services	949	12,908	12,861	12,996	114,224,896	679.98
Leisure & Hospitality	466	5,621	5,759	6,083	16,967,702	224.22
Local Government	231	9,411	9,466	9,498	62,648,689	509.51
State Government	106	3,084	3,265	3,269	23,848,996	572.22
Other	582	4,481	4,573	4,611	52,619,230	888.61

North Central Workforce Includes these counties: Cleburne, Fulton, Independence, Izard, Jackson, Sharp, Stone, Van Buren, White, and Woodruff.

NORTHEAST WORKFORCE INVESTMENT AREA	6,433	94,021	94,491	95,582	\$792,801,795	\$643.99
Natural Resources & Mining	414	1,719	1,766	1,942	12,266,695	521.61
Construction	444	2,816	2,857	3,065	25,447,427	672.06
Manufacturing	315	19,881	19,857	20,064	232,519,397	897.27
Trade, Transportation & Utilities	1,703	18,290	18,245	18,411	141,138,041	592.77
Wholesale Trade	396	3,787	3,796	3,876	45,119,186	908.64
Retail Trade	1,002	11,770	11,702	11,772	66,711,134	436.81
Transportation, Warehousing & Utilities	305	2,733	2,747	2,763	29,307,721	820.49
Financial Activities	553	3,068	3,061	3,084	32,694,365	818.94
Professional & Business Services	666	7,346	7,373	7,283	53,383,891	559.92
Education & Health Services	1,123	14,971	14,965	15,041	126,605,688	649.59
Leisure & Hospitality	492	7,692	7,940	8,116	24,545,237	238.52
Local Government	214	11,607	11,735	11,856	86,311,626	565.89
State Government	99	4,242	4,306	4,308	41,576,239	746.31
Other	410	2,389	2,386	2,412	16,313,189	523.80

Northeast Workforce Includes these counties: Clay, Craighead, Greene, Lawrence, Mississippi, Poinsett, and Randolph.

TABLE 8. WORKFORCE INVESTMENT AREA SUMMARY

NORTH AMERICAN INDUSTRY CLASSIFICATION SYSTEM - INDUSTRY GROUPS	NUMBER OF EMPLOYING UNITS	EMPLOYMENT			TOTAL EARNINGS	AVERAGE WEEKLY EARNINGS
		JANUARY	FEBRUARY	MARCH	JAN-MAR 2012	
NORTHWEST WORKFORCE INVESTMENT AREA	14,671	228,017	228,919	231,571	\$2,613,420,775	\$875.95
Natural Resources & Mining	131	1,616	1,613	1,730	16,991,786	790.72
Trade, Transportation & Utilities	3,683	51,695	51,289	51,866	531,541,297	792.14
Wholesale Trade	1,194	8,831	8,774	8,781	168,636,332	1,474.88
Retail Trade	2,017	26,296	26,037	26,459	163,973,249	480.25
Transportation, Warehousing & Utilities	472	16,568	16,478	16,626	198,931,716	924.21
Education & Health Services	2,036	29,189	29,212	29,330	268,513,400	706.30
Leisure & Hospitality	1,496	22,093	22,629	23,501	79,540,595	269.05
Other Services	955	4,131	4,147	4,230	27,180,423	501.47
Local Government	307	22,305	22,467	22,682	186,210,813	637.05
State Government	107	7,594	7,742	7,811	93,403,542	931.21
Other	5,956	89,394	89,820	90,421	1,410,038,919	1,206.79

Northwest Workforce Includes these counties: Baxter, Benton, Boone, Carroll, Madison, Marion, Newton, Searcy, and Washington.

SOUTHEAST WORKFORCE INVESTMENT AREA	5,821	71,268	71,842	72,786	\$602,818,514	\$644.35
Natural Resources & Mining	393	2,310	2,342	2,463	21,221,209	688.29
Construction	319	2,721	2,764	2,850	41,039,072	1,136.24
Manufacturing	210	14,797	14,834	14,929	157,750,591	816.97
Trade, Transportation & Utilities	1,317	12,600	12,556	12,833	100,745,174	611.99
Retail Trade	791	7,922	7,822	8,018	44,324,134	430.46
Other Trade, Transportation & Utilities	526	4,678	4,734	4,815	56,421,040	915.18
Financial Activities	407	2,591	2,607	2,580	25,771,318	764.62
Education & Health Services	1,645	11,272	11,213	11,249	81,600,124	558.21
Local Government	205	10,009	10,114	10,151	71,978,037	548.67
State Government	137	6,196	6,479	6,538	53,303,594	640.23
Other	1,188	8,772	8,933	9,193	49,409,395	423.90

Southeast Workforce Includes these counties: Arkansas, Ashley, Bradley, Chicot, Cleveland, Desha, Drew, Grant, Jefferson, and Lincoln.

TABLE 8. WORKFORCE INVESTMENT AREA SUMMARY

NORTH AMERICAN INDUSTRY CLASSIFICATION SYSTEM - INDUSTRY GROUPS	NUMBER OF EMPLOYING UNITS	EMPLOYMENT			TOTAL EARNINGS	AVERAGE WEEKLY EARNINGS
		JANUARY	FEBRUARY	MARCH	JAN-MAR 2012	
SOUTHWEST WORKFORCE INVESTMENT AREA	5,709	79,282	79,644	80,392	\$722,517,247	\$696.71
Natural Resources & Mining	365	2,480	2,482	2,479	25,188,679	781.18
Trade, Transportation & Utilities	1455	15270	15174	15335	128525049	647.89
Retail Trade	901	8,829	8,751	8,819	48,458,771	423.61
Other Trade, Transportation & Utilities	554	6,441	6,423	6,516	80,066,278	953.40
Information	62	485	481	474	3,992,457	639.82
Financial Activities	506	2,635	2,628	2,641	23,473,311	685.34
Education & Health Services	988	9,543	9,559	9,593	66,282,316	533.05
Leisure & Hospitality	403	5,119	5,209	5,301	15,894,599	234.69
Other Services	410	1,934	1,935	1,940	10,527,988	418.24
Local Government	259	10,434	10,511	10,508	71,945,374	527.86
State Government	139	3,569	3,755	3,815	29,912,334	619.70
Other	1,122	27,813	27,910	28,306	346,775,140	952.35

Southwest Workforce Includes these counties: Calhoun, Columbia, Dallas, Hempstead, Howard, Lafayette, Little River, Miller, Nevada, Ouachita, Sevier, and Union

WEST CENTRAL WORKFORCE INVESTMENT AREA	8,057	104,262	105,074	106,071	\$797,932,246	\$583.81
Construction	762	4,321	4,326	4,406	37,606,494	664.86
Trade, Transportation & Utilities	1,888	21,083	20,958	21,231	176,142,830	642.44
Retail Trade	1,230	13,707	13,605	13,752	78,948,470	443.67
Other Trade, Transportation & Utilities	658	7,376	7,353	7,479	97,194,360	1,009.97
Financial Activities	822	4,010	3,976	3,983	35,931,124	692.77
Professional & Business Services	912	8,119	8,052	8,078	59,090,965	562.35
Education & Health Services	1,375	16,512	16,586	16,623	135,223,657	627.61
Leisure & Hospitality	754	11,331	11,698	12,208	40,240,333	263.54
Local Government	227	12,195	12,290	12,312	90,555,050	567.91
State Government	125	5,425	5,745	5,765	43,241,889	589.25
Other	1,192	21,266	21,443	21,465	179,899,904	646.92

West Central Workforce Includes these counties: Clark, Conway, Garland, Hot Spring, Johnson, Montgomery, Perry, Pike, Pope, and Yell

TABLE 8. WORKFORCE INVESTMENT AREA SUMMARY

NORTH AMERICAN INDUSTRY CLASSIFICATION SYSTEM - INDUSTRY GROUPS	NUMBER OF EMPLOYING UNITS	EMPLOYMENT			TOTAL EARNINGS	AVERAGE WEEKLY EARNINGS
		JANUARY	FEBRUARY	MARCH	JAN-MAR 2012	
WESTERN WORKFORCE INVESTMENT AREA	6,580	101,660	101,759	102,512	\$890,256,272	\$671.54
Natural Resources & Mining	164	2,669	2,685	2,750	45,187,085	1,286.75
Trade, Transportation & Utilities	1,652	22,215	22,119	22,186	180,779,415	627.15
Wholesale Trade	390	3,778	3,781	3,784	44,898,178	913.44
Retail Trade	957	12,006	11,950	12,083	69,625,113	445.83
Transportation, Warehousing & Utilities	305	6,431	6,388	6,319	66,256,124	798.93
Financial Activities	679	3,736	3,767	3,764	39,362,886	806.23
Professional & Business Services	876	9,100	9,113	9,233	88,504,801	744.16
Education & Health Services	994	14,973	14,990	15,120	134,469,634	688.32
Leisure & Hospitality	531	8,045	8,092	8,359	27,436,894	258.47
Other Services	452	2,110	2,116	2,130	14,101,280	511.98
Local Government	151	9,642	9,752	9,764	77,412,437	612.68
State Government	74	2,731	2,942	2,964	24,061,196	642.88
Other	1,007	26,439	26,183	26,242	258,940,644	757.70

Western Workforce Includes these counties: Crawford, Franklin, Logan, Polk, Scott, and Sebastian