

Arkansas Covered Employment & Earnings

Third Quarter
2011

Jobs for People. People for Jobs.

DWS
Department of
WORKFORCE**Services**

**COVERED EMPLOYMENT AND EARNINGS
STATE OF ARKANSAS
THIRD QUARTER 2011**

**MIKE BEEBE, GOVERNOR
STATE OF ARKANSAS**

**ARTEE WILLIAMS, DIRECTOR
DEPARTMENT OF WORKFORCE SERVICES**

**PUBLISHED BY
LABOR MARKET INFORMATION & ANALYSIS
BUREAU OF LABOR STATISTICS PROGRAMS
POST OFFICE BOX 2981
LITTLE ROCK, ARKANSAS 72203-2981
BERNADETTE COLEMAN, BLS PROGRAMS MANAGER
TELEPHONE (501) 682-3159
SUSAN PRICE, QCEW LEAD ANALYST
TELEPHONE (501) 682-3103**

STATE OF ARKANSAS WEBPAGE: <http://www.arkansas.gov>

DEPARTMENT OF WORKFORCE SERVICES WEBPAGE: <http://www.arkansas.gov/esd/>

WEBPAGE FOR LABOR MARKET INFORMATION: <http://www.discover.arkansas.gov>

RELEASED: JANUARY 2012

TABLE OF CONTENTS

DESCRIPTION OF DATA	PAGE
Industry Classification	1
Definition of Covered Employment and Earnings	2
Federal Government	2
County Classification	2
Significant Developments During Third Quarter 2011	3

LIST OF GRAPHS AND TABLES

Graph 1	Average Total Covered Employment for Selected Years, Arkansas	7
Graph 2	Total Covered Earnings, by Calendar Quarter for Selected Years, Arkansas	8
Table 1	Quarterly Comparison of Covered Employment and Wages, by Industry	5
Table 2	Total Covered Employment in Arkansas, 2004 – 2011	6
Table 3	Total Covered Earnings, 2004 – 2011	9
Table 4	Total Taxable Earnings, 2004 – 2011	10
Table 5	State Summary – Employment and Total Earnings, by Industry, Third Quarter 2011	11
Table 6	County Summary – Employment and Total Earnings, by Industry, Third Quarter 2011	24
Table 7	Federal Government Employment and Total Earnings in Arkansas, Third Quarter 2011	62
Table 8	Workforce Investment Area – Employment and Total Earnings, by Industry, Third Quarter 2011	63

EMPLOYMENT AND EARNINGS
UNDER THE ARKANSAS EMPLOYMENT SECURITY LAW
THIRD QUARTER 2011

DESCRIPTION OF DATA

This publication contains covered employment and payroll data by industry and county for the Third Quarter 2011. These data are compiled from quarterly contributions and wage reports submitted by employers subject to the Arkansas Employment Security Law. An employing unit is a single physical location where business is conducted, production takes place, or services are provided. Employment data have been tabulated for each month of the quarter by industry under the **North American Industry Classification System** (NAICS) (see "Industry Classification" below) on a statewide, county and workforce area basis. Payroll data represent the total wages paid during the quarter, and are also shown by industry for the State and

by publishable industry groups for each county and workforce area. The tabulation of this data is a joint effort in conjunction with the U.S. Bureau of Labor Statistics. In addition, there are tables included which set out total covered employment by months, quarterly payrolls, and average weekly earnings for the years 2004 through 2011. Data contained in this publication are subject to revisions. Revisions for a quarter are typically reflected in the specified year's Annual Covered Employment and Earnings publication. Industry codes changes between years could cause significant employment and wages shifts among industries.

INDUSTRY CLASSIFICATION

Previously published industry data will not be comparable in all instances with currently published data since industry codes have been revised. The last two revisions have occurred using the North American Industry Classification System (NAICS) which is a six digit industry code. Since 2001, NAICS codes are revised every five years. The most recent revision is NAICS 2012. These revisions are being incorporated in 2011 publications.

Auxiliary units are establishments primarily engaged in performing management of support services for other establishments of the same enterprise. The NAICS code is based on the actual activities that the establishment performs. Comparisons of many industries should

not be made between this publication and previous Covered Employment and Earnings publications that were based on previous coding revisions. A summary is available on the NAICS home page at <http://www.census.gov/naics>.

DEFINITION OF COVERED EMPLOYMENT AND EARNINGS

Covered Employment is the number of workers employed by employers subject to the Arkansas Employment Security Law who worked or received pay for the payroll period including the 12th of the month. An employer is subject to the law when they employ one or more employees in each of ten days during the current or preceding calendar year.

Currently excluded from coverage is employment covered by the Railroad Unemployment Insurance Act, some domestic service workers, employees of small agricultural establishments, self-

employed and unpaid family workers, insurance and real estate agents who are on commission only, and employees of churches and religious organizations except separately incorporated schools. The payroll information in this publication includes all wages and salaries paid to any covered employees by their employers including bonuses, commissions, and cash values of remuneration received in any medium other than cash. These wages include both taxable and nontaxable wages. Only the first \$12,000 paid to each worker by an employer in the calendar year is taxable under the Arkansas Employment Security Law.

FEDERAL GOVERNMENT EMPLOYMENT

Table 7 on page 62 lists the total number of civilians employed by the Federal Government in Arkansas during the Third Quarter 2011. Employment and wage data are set out by industry divisions.

These data are obtained from required reports submitted by various government agencies having employment in the State. Civilian Federal workers are covered by the Unemployment Compensation for Federal Employees (UCFE) program.

COUNTY CLASSIFICATION

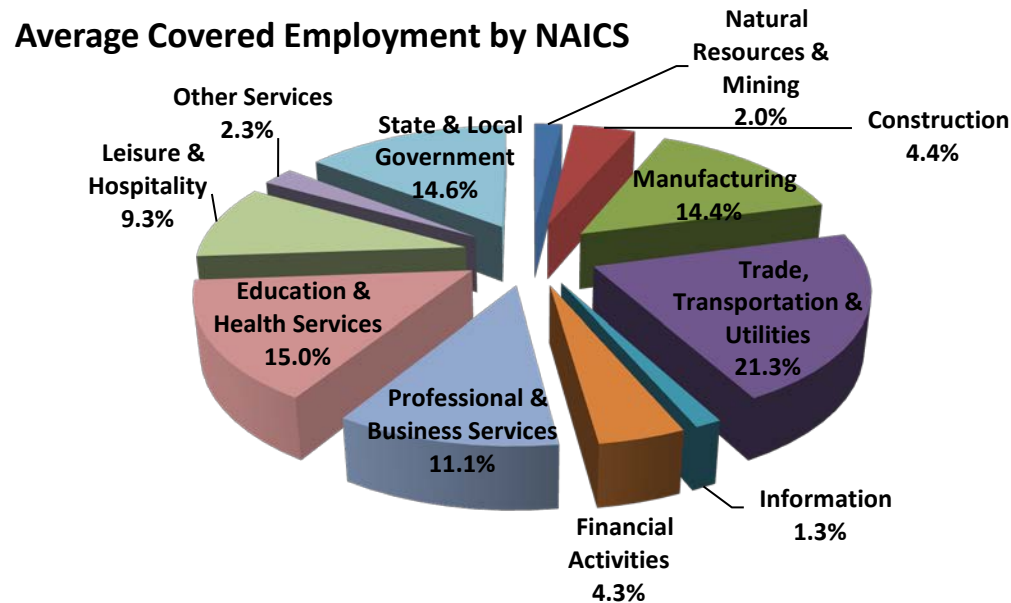
Employment and payroll data by county are classified according to the county where the workers are employed. Employers with operations in more than one county are requested to furnish this agency with a breakdown of employment and wages for at least one quarter of each year by the counties in which they operate. Many such employers submit county data with each regular contribution report. Note: This information is invaluable in the preparation of monthly employment and payroll data by county.

Employment and payroll data for multi-area employers, who do not furnish county data each quarter of the year, are prorated by county on the basis of one quarter's information. The "rest-of-state" table that appears on page 61 of this publication includes data on firms that did not provide a county breakdown of employment and payrolls. It also includes sales, and all other type of personnel with no permanent place of work, as well as employment of employers with no established place of business in Arkansas.

SIGNIFICANT DEVELOPMENTS DURING THIRD QUARTER 2011

AVERAGE EMPLOYMENT CHANGES

Covered employment averaged 1,106,659 during the Third Quarter 2011 (see table 1), a decrease of -19,814 (-1.8%) from the previous quarter and an increase of 7,387 (0.7%) from the average recorded one-year ago. This over-the-year increase is more significant when used as an economic indicator. This over-the-year comparison allows for the disregarding of many seasonal factors that are evident when making an over-the-quarter comparison.



EMPLOYMENT CHANGES FROM SECOND QUARTER 2011

Compared to Second Quarter 2011, covered employment increased in eight major industry sectors, more than offsetting the decline in three sectors. Professional and Business Services posted the highest gain (+2,405), with the greatest gain being in Administrative and Waste Services. Construction posted a gain of 1,478. Trade, Transportation, and Utilities added 1,476, mostly in Transportation and Warehousing.

Educational and Health Services gained 1,204 and Leisure and Hospitality gained 949. State and Local Government posted a decline (-28,143) primarily due to educational institutions letting out for the summer months. The Manufacturing and Information sectors both posted declines of -332 and -121 respectively.

EMPLOYMENT CHANGES FROM THIRD QUARTER 2010 (QUARTER YEAR AGO COMPARISON)

Over the year gains were recorded in five industry groups while six recorded losses (see Table 1). The largest gains were posted in Trade Transportation and Utilities (3,437), Professional and Business Services (3,334) and Education and Health Services (2,498). Significant losses occurred in Construction (-1,612), Manufacturing (-629) and Information (-542).

COVERED WAGES

Wages paid to covered workers totaled \$10,147,297,293 for the Third Quarter 2011 (see Table 1), for an average weekly wage of \$705.33 (see Table 5). Employees in Calhoun County recorded the highest average weekly wage (\$866.18), and workers in Newton County the lowest (\$423.37) (see Table 6).

The Information sector recorded the highest average weekly wage for the State of Arkansas at \$987.27; while the Leisure and Hospitality sector recorded the lowest at \$269.64 for the State of Arkansas (see Table 5).

Average Weekly Wage by Industry

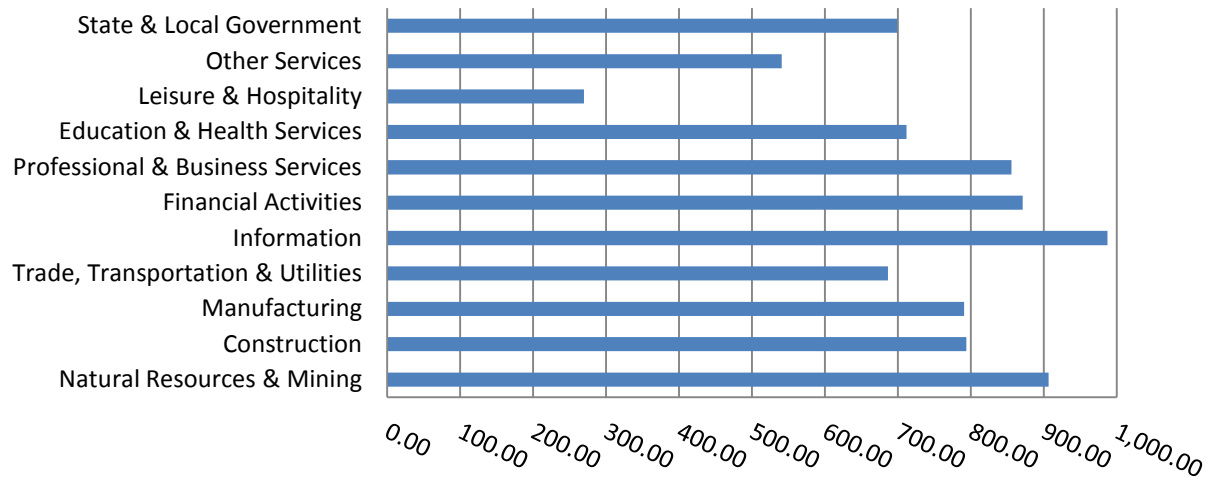


TABLE 1. QUARTERLY COMPARISON OF COVERED EMPLOYMENT AND WAGES, BY INDUSTRY

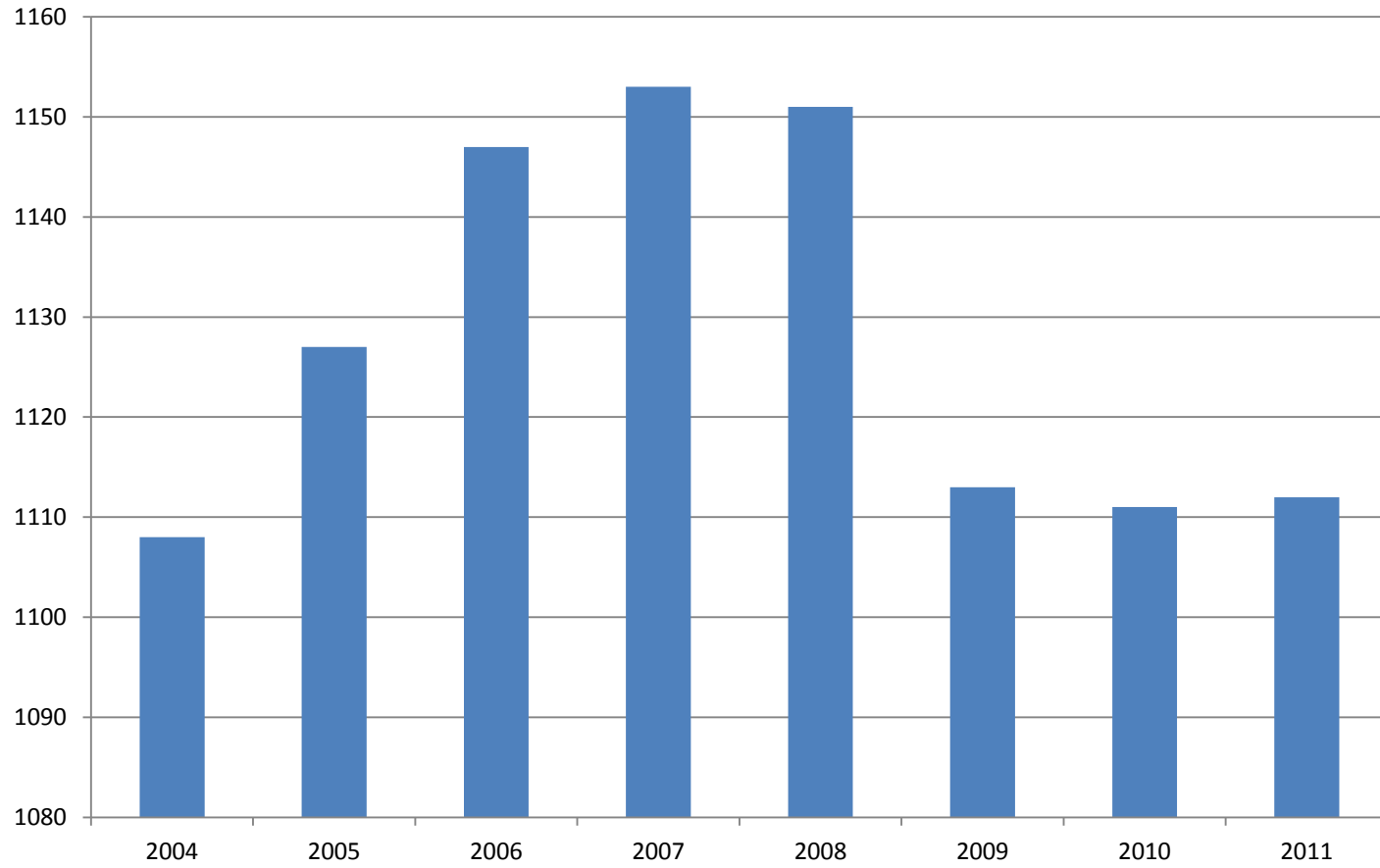
Note: Items do not necessarily add to totals because of rounding. Because of industry code changes between years, substantial employment and wage shifts among industries are anticipated.

North American Industry Classification System	Number of Employing Units	Monthly Employment Average	Percent of Total	Net Change From:		Total Wages Paid Jul - Sept 2011	Percent of Total
				Apr - Jun 2011	Jul - Sept 2010		
Total	84,778	1,106,659	100	-19,814	7,387	\$10,147,287,431	100
Natural Resources & Mining	2,497	21,851	2.0	720	-58	257,515,040	2.5
Agriculture, Forestry, Fishing & Hunting	1,974	12,468	1.1	239	-995	102,730,441	1.0
Mining	523	9,383	0.8	481	936	154,784,599	1.5
Construction	6,866	49,050	4.4	1,478	-1,612	506,129,234	5.0
Manufacturing	3,137	159,600	14.4	-332	-629	1,640,339,087	16.2
Trade, Transportation & Utilities	20,839	235,819	21.3	1,476	3,437	2,104,706,179	20.7
Wholesale Trade	6,592	47,168	4.3	478	569	657,404,001	6.5
Retail Trade	10,951	131,265	11.9	280	1,591	801,699,518	7.9
Transportation & Warehousing	2,886	50,241	4.5	732	1,447	520,075,753	5.1
Utilities	410	7,145	0.6	-15	-170	125,526,907	1.2
Information	1,119	14,748	1.3	-121	-542	189,284,092	1.9
Financial Activities	7,928	47,979	4.3	289	-45	543,324,567	5.4
Finance & Insurance	4,728	34,578	3.1	127	210	435,597,326	4.3
Real Estate & Rental & Leasing	3,200	13,402	1.2	163	-254	107,727,241	1.1
Professional & Business Services	12,354	122,524	11.1	2,405	3,334	1,363,289,574	13.4
Professional & Technical Services	7,725	38,670	3.5	-241	641	522,514,089	5.1
Management of Companies & Enterprises	504	26,325	2.4	511	-52	470,392,596	4.6
Administrative & Waste Services	4,125	57,529	5.2	2,135	2,745	370,382,889	3.7
Education & Health Services	15,069	165,621	15.0	1,204	2,498	1,532,322,027	15.1
Educational Services	712	10,688	1.0	-694	745	86,501,264	0.9
Health Care & Social Assistance	14,357	154,933	14.0	1,899	1,752	1,445,820,763	14.2
Leisure & Hospitality	6,505	103,148	9.3	949	1,286	361,569,453	3.6
Arts, Entertainment & Recreation	930	10,780	1.0	211	-149	46,714,294	0.5
Accommodation & Food Services	5,575	92,368	8.3	738	1,435	314,855,159	3.1
Other Services	5,382	25,156	2.3	260	136	176,792,523	1.7
State & Local Government	3,082	161,163	14.6	-28,143	-418	1,472,015,655	14.5
Local Government	1,959	92,657	8.4	-27,240	-886	743,188,487	7.3
State Government	1,123	68,506	6.2	-903	468	728,827,168	7.2
Nonclassifiable Establishments	0	0	0.0	0	0	0	0.0

TABLE 2. TOTAL COVERED EMPLOYMENT IN ARKANSAS

Period	2004	2005	2006	2007	2008	2009	2010	2011
Average	1,108,264	1,126,778	1,146,948	1,152,994	1,150,965	1,112,591	1,110,947	1,112,139
January	1,089,510	1,102,768	1,130,595	1,137,437	1,141,856	1,119,299	1,089,984	1,098,349
February	1,094,626	1,110,577	1,136,810	1,143,397	1,149,443	1,119,476	1,091,282	1,098,445
March	1,105,266	1,122,619	1,150,439	1,158,895	1,157,690	1,124,386	1,106,198	1,113,061
April	1,111,020	1,129,785	1,155,498	1,159,623	1,159,841	1,123,383	1,115,341	1,129,635
May	1,117,144	1,135,567	1,159,886	1,165,224	1,166,111	1,122,322	1,123,250	1,126,371
June	1,117,010	1,136,118	1,162,026	1,164,207	1,164,167	1,117,884	1,130,164	1,123,412
July	1,071,463	1,090,071	1,106,142	1,110,571	1,114,279	1,071,048	1,073,743	1,080,937
August	1,094,871	1,114,098	1,130,839	1,139,109	1,138,583	1,093,192	1,099,795	1,106,262
September	1,122,704	1,144,815	1,159,814	1,165,135	1,162,333	1,116,580	1,124,281	1,132,779
October	1,123,246	1,142,300	1,156,804	1,162,768	1,157,196	1,113,157	1,125,073	N/A
November	1,125,061	1,145,667	1,156,011	1,164,246	1,152,159	1,115,443	1,126,781	N/A
December	1,127,250	1,146,954	1,158,509	1,165,314	1,147,927	1,114,919	1,125,466	N/A

AVERAGE TOTAL COVERED EMPLOYMENT In Thousands



TOTAL COVERED EARNINGS BY CALENDAR YEAR In Thousands

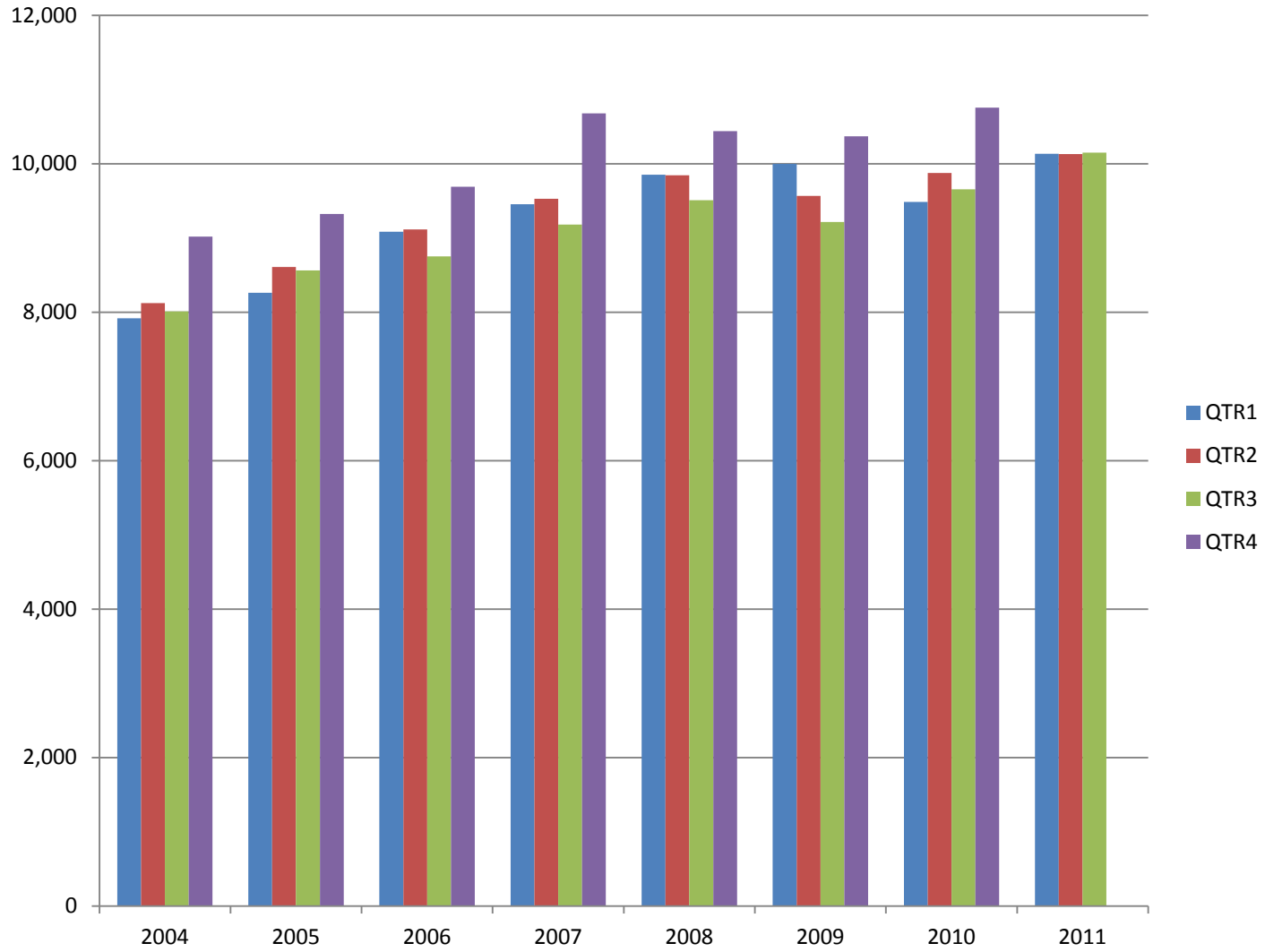


TABLE 3. TOTAL COVERED EARNINGS 2004 - 2011

Total	\$33,068,189,304	\$34,753,107,631	\$36,636,090,775	\$38,833,265,464
January - March	7,918,843,610	8,261,153,981	9,085,021,816	9,452,711,662
April - June	8,122,370,361	8,607,722,353	9,112,624,590	9,525,837,049
July - September	8,010,300,454	8,562,555,369	8,750,878,205	9,178,902,477
October - December	9,016,674,879	9,321,675,928	9,687,566,164	10,675,814,276
Average Weekly Earnings	\$573.80	\$593.13	\$614.27	\$647.70

Period	2008	2009	2010	2011
Total	\$39,643,039,342	\$39,149,476,305	\$39,769,504,992	\$30,409,597,296
January - March	9,851,866,058	9,998,452,028	9,486,245,580	10,134,035,254
April - June	9,843,711,293	9,566,968,853	9,873,489,653	10,128,274,611
July - September	9,509,150,631	9,213,797,140	9,653,588,807	10,147,287,431
October - December	10,438,311,360	10,370,258,284	10,756,180,952	N/A
Average Weekly Earnings	\$662.37	\$676.69	\$688.42	\$701.11

TABLE 4. TOTAL TAXABLE EARNINGS, 2004 - 2011

Period	2004	2005	2006	2007
Total	9,731,247,501	9,991,605,239	10,197,511,360	10,459,105,059
January - March	4,931,559,230	5,062,670,306	5,421,204,601	5,617,417,571
April - June	2,451,454,749	2,506,505,721	2,385,110,992	2,466,606,627
July - September	1,318,017,835	1,353,660,445	1,314,939,803	1,307,060,412
October - December	1,030,215,687	1,068,768,767	1,076,255,964	1,068,020,449

Period	2008	2009	2010	2011
Total	10,360,487,108	9,788,841,583	11,341,960,644	10,278,100,116
January - March	5,635,750,082	5,423,705,265	5,612,918,478	5,828,877,821
April - June	2,419,313,519	2,293,670,854	2,978,439,739	2,847,840,149
July - September	1,297,473,555	1,165,280,065	1,579,787,090	1,601,382,146
October - December	1,007,949,952	906,185,399	1,170,815,337	N/A

TABLE 5. STATEWIDE SUMMARY

NORTH AMERICAN INDUSTRY CLASSIFICATION SYSTEM - INDUSTRY GROUPS		NUMBER OF	EMPLOYMENT			TOTAL EARNINGS	AVERAGE
		EMPLOYING UNITS	JULY	AUGUST	SEPTEMBER	JUL-SEPT 2011	WEEKLY EARNINGS
TOTAL, ALL INDUSTRIES		84,778	1,080,937	1,106,262	1,132,779	10,147,287,431	\$705.33
NATURAL RESOURCES & MINING		2,497	22,074	21,460	22,018	\$257,515,040	\$906.56
11	AGRICULTURE, FORESTRY, FISHING & HUNTING	1,974	12,717	12,105	12,582	\$102,730,441	\$633.81
111	CROP PRODUCTION	830	4,531	4,334	4,377	\$25,895,861	\$451.29
1111	Oilseed & Grain Farming	517	2,619	2,489	2,508	15,318,566	464.16
1112	Vegetable & Melon Farming	10	112	120	128	617,614	395.91
1113	Fruit & Tree Nut Farming	12	186	136	114	539,404	285.50
1114	Greenhouse & Nursery Production	46	331	329	343	2,099,981	483.16
1119	Other Crop Farming	245	1,283	1,260	1,284	7,320,296	441.42
112	ANIMAL PRODUCTION & AQUACULTURE	280	2,929	2,891	2,871	\$27,152,919	\$720.98
1121	Cattle Ranching & Farming	92	342	330	334	2,163,845	496.37
1122	Hog & Pig Farming	10	88	103	105	984,151	767.27
1123	Poultry & Egg Production	100	1,992	1,968	1,965	20,472,574	797.37
1125	Animal Aquaculture	57	443	428	408	3,138,215	566.23
1129	Other Animal Production	21	64	62	59	394,134	491.64
113	FORESTRY & LOGGING	422	2,275	2,210	2,234	\$20,641,012	\$708.93
1131	Timber Tract Operations	37	186	178	177	1,846,582	787.68
1132	Forest Nurseries & Gathering of Forest Products	5	23	22	21	224,586	785.27
1133	Logging	380	2,066	2,010	2,036	18,569,844	701.14
	OTHER	442	2,982	2,670	3,100	\$29,040,649	\$765.73
21	MINING	523	9,357	9,355	9,436	\$154,784,599	\$1,268.99
211	OIL & GAS EXTRACTION	92	1,630	1,642	1,642	\$32,813,036	\$1,540.95
212	MINING (EXCEPT OIL & GAS)	112	2,211	2,211	2,248	\$26,809,434	\$927.56
213	SUPPORT ACTIVITIES FOR MINING	319	5,516	5,502	5,546	\$95,162,129	\$1,325.80

TABLE 5. STATEWIDE SUMMARY

NORTH AMERICAN INDUSTRY CLASSIFICATION SYSTEM - INDUSTRY GROUPS		NUMBER OF	EMPLOYMENT			TOTAL EARNINGS	AVERAGE
		EMPLOYING UNITS	JULY	AUGUST	SEPTEMBER	JUL-SEPT 2011	WEEKLY EARNINGS
CONSTRUCTION		6,866	49,280	48,713	49,157	\$506,129,234	\$793.74
236	CONSTRUCTION OF BUILDINGS	1,635	9,890	9,743	9,853	\$102,815,242	\$804.67
2361	Residential Building Construction	1,085	2,865	2,809	2,847	22,845,722	618.72
2362	Nonresidential Building Construction	550	7,025	6,934	7,006	79,969,520	880.25
237	HEAVY & CIVIL ENGINEERING CONSTRUCTION	803	10,015	10,062	10,311	\$124,799,289	\$947.74
2371	Utility System Construction	425	5,607	5,664	5,854	72,888,033	982.21
2372	L& Subdivision	87	302	306	311	2,874,885	721.91
2373	Highway, Street & Bridge Construction	200	2,898	2,968	2,932	29,966,035	786.00
2379	Other Heavy Construction	91	1,208	1,124	1,214	19,070,336	1,241.07
238	SPECIALTY TRADE CONTRACTORS	4,428	29,375	28,908	28,993	\$278,514,703	\$736.43
2381	Building Foundation & Exterior Contractors	850	5,593	5,563	5,621	47,362,009	651.47
2382	Building Equipment Contractors	2,008	14,795	14,635	14,677	157,453,571	823.80
2383	Building Finishing Contractors	798	4,088	3,991	3,948	31,674,171	607.75
2389	Other Specialty Trade Contractors	772	4,899	4,719	4,747	42,024,952	675.12
MANUFACTURING		3,137	160,014	159,502	159,285	\$1,640,339,087	\$790.60
311	FOOD MANUFACTURING	280	44,330	44,161	44,006	\$355,471,532	\$619.12
3111	Animal Food Manufacturing	48	1,668	1,670	1,620	16,007,651	745.07
3112	Grain & Oilseed Milling	28	2,250	2,272	2,295	27,247,190	922.37
3113	Sugar & Confectionery Product Manufacturing	6	45	44	58	279,807	439.26
3114	Fruit, Vegetable & Specialty Food	22	4,901	4,849	4,871	47,890,086	755.87
3115	Dairy Product Manufacturing	11	720	643	563	6,303,385	755.26
3116	Animal Slaughtering & Processing	83	29,989	29,936	29,852	212,318,923	545.76
3117	Seafood Product Preparation & Packaging	5	106	111	108	538,062	382.06
3118	Bakeries & Tortilla Manufacturing	55	2,969	2,957	2,955	28,268,802	734.55
3119	Other Food Manufacturing	22	1,682	1,679	1,684	16,617,626	760.13
312	BEVERAGE & TOBACCO PRODUCT MANUFACTURING	41	1,074	1,077	1,079	\$13,920,851	\$994.58
313	TEXTILE MILLS	14	89	82	81	\$595,059	\$544.93
314	TEXTILE PRODUCT MILLS	58	983	1,007	1,035	\$10,303,956	\$786.06
3141	Textile Furnishing Mills	13	43	43	41	552,362	1,003.69
3149	Other Textile Product Mills	45	940	964	994	9,751,594	776.52
315	APPAREL MANUFACTURING	26	1,169	1,152	1,160	\$7,117,660	\$471.86

TABLE 5. STATEWIDE SUMMARY

NORTH AMERICAN INDUSTRY CLASSIFICATION SYSTEM - INDUSTRY GROUPS		NUMBER OF	EMPLOYMENT			TOTAL EARNINGS	AVERAGE
		EMPLOYING UNITS	JULY	AUGUST	SEPTEMBER	JUL-SEPT 2011	WEEKLY EARNINGS
316	LEATHER & ALLIED PRODUCT MANUFACTURING	17	1,271	1,300	1,377	\$8,500,724	\$496.89
321	WOOD PRODUCT MANUFACTURING	338	9,329	9,336	9,345	\$86,554,947	\$713.11
3211	Sawmills & Wood Preservation	135	4,051	4,052	4,068	38,448,202	729.00
3212	Veneer & Engineered Wood Products	53	2,554	2,560	2,575	28,856,957	866.08
3219	Other Wood Product Manufacturing	150	2,724	2,724	2,702	19,249,788	545.06
322	PAPER MANUFACTURING	81	10,279	10,238	10,233	\$149,040,784	\$1,118.50
3221	Pulp, Paper & Paperboard Mills	13	4,270	4,255	4,225	76,859,306	1,391.12
3222	Converted Paper Product Manufacturing	68	6,009	5,983	6,008	72,181,478	925.40
323	PRINTING & RELATED SUPPORT ACTIVITIES	256	5,401	5,371	5,333	\$50,250,702	\$720.04
324	PETROLEUM & COAL PRODUCTS MANUFACTURING	18	968	960	964	\$12,652,775	\$1,009.64
325	CHEMICAL MANUFACTURING	119	4,949	4,936	4,924	\$69,519,991	\$1,083.33
3251	Basic Chemical Manufacturing	28	1,804	1,804	1,797	29,805,720	1,272.57
3252	Resin, Rubber & Artificial Fibers	7	267	266	275	4,022,021	1,148.71
3253	Agricultural Chemical Manufacturing	18	376	370	367	5,357,939	1,110.91
3254	Pharmaceutical & Medicine Manufacturing	12	154	157	157	2,184,966	1,077.40
3255	Paint, Coating & Adhesive Manufacturing	9	196	194	195	3,082,254	1,215.88
3256	Soap, Cleaning Compound, & Toilet Preparation Manufacturing	13	1,047	1,047	1,036	12,442,892	917.39
3259	Other Chemical Preparation Manufacturing	32	1,105	1,098	1,097	12,624,199	882.81
326	PLASTICS & RUBBER PRODUCTS MANUFACTURING	139	10,629	10,579	10,551	\$118,133,661	\$858.39
3261	Plastics Product Manufacturing	98	6,541	6,487	6,473	65,594,729	776.23
3262	Rubber Product Manufacturing	41	4,088	4,092	4,078	52,538,932	989.10
327	NONMETALLIC MINERAL PRODUCT MANUFACTURING	246	3,425	3,409	3,380	\$35,861,843	\$810.24
3271	Clay Product & Refractory Manufacturing	14	347	353	351	3,785,048	831.09
3272	Glass & Glass Product Manufacturing	15	387	385	386	4,020,711	801.26
3273	Cement & Concrete Product Manufacturing	178	1,971	1,935	1,917	19,614,641	777.34
3274	Lime & Gypsum Product Manufacturing	5	206	206	206	2,818,002	1,052.28
3279	Other Nonmetallic Mineral Products Manufacturing	34	514	530	520	5,623,441	829.74
331	PRIMARY METAL MANUFACTURING	73	8,723	8,743	8,778	\$123,502,313	\$1,085.98
3311	Iron & Steel Mills & Ferroalloys	9	2,384	2,394	2,379	48,708,163	1,570.54
3312	Purchased Steel Product Manufacturing	18	2,530	2,546	2,614	34,208,239	1,026.56
3313	Alumina & Aluminum Production	20	1,527	1,533	1,543	18,262,312	915.57
3314	Other Nonferrous Metal Production	9	772	758	743	7,512,365	762.70

TABLE 5. STATEWIDE SUMMARY

NORTH AMERICAN INDUSTRY CLASSIFICATION SYSTEM - INDUSTRY GROUPS		NUMBER OF	EMPLOYMENT			TOTAL EARNINGS	AVERAGE
		EMPLOYING UNITS	JULY	AUGUST	SEPTEMBER	JUL-SEPT 2011	WEEKLY EARNINGS
3315	Foundries	17	1,510	1,512	1,499	14,811,234	756.02
332	FABRICATED METAL PRODUCT MANUFACTURING	532	13,915	13,867	13,960	\$152,817,572	\$844.85
3321	Forging & Stamping	12	447	444	443	5,303,735	917.50
3322	Cutlery & H& Tool Manufacturing	16	944	946	942	9,325,493	759.90
3323	Architectural & Structural Metals	159	3,624	3,608	3,710	41,105,654	866.93
3324	Boilers, Tanks & Shipping Containers	17	559	545	526	6,532,506	924.85
3325	Hardware Manufacturing	8	350	346	345	3,724,586	825.67
3326	Spring & Wire Product Manufacturing	15	422	433	426	4,314,636	777.27
3327	Machine Shops & Threaded Products	204	1,782	1,762	1,765	16,911,449	735.10
3328	Coating, Engraving & Heat Treating Metals	36	569	585	591	5,112,703	676.13
3329	Other Fabricated Metal Product Manufacturing	65	5,218	5,198	5,212	60,486,810	893.17
333	MACHINERY MANUFACTURING	217	11,955	11,824	11,505	\$119,018,252	\$778.42
3331	Agriculture, Construction & Mining Machinery	37	3,050	2,981	2,902	25,880,248	668.57
3332	Industrial Machinery Manufacturing	28	601	578	569	6,579,882	868.67
3333	Commercial & Service Industry Machinery	21	878	870	860	9,795,029	866.71
3334	HVAC & Commercial Refrigeration Equipment	18	3,791	3,774	3,566	35,956,287	745.45
3335	Metalworking Machinery Manufacturing	62	1,021	1,014	1,009	10,895,021	825.96
3336	Turbine & Power Transmission Equipment Manufacturing	7	695	711	696	8,262,279	907.08
3339	Other General Purpose Machinery Manufacturing	44	1,919	1,896	1,903	21,649,506	873.74
334	COMPUTER & ELECTRONIC PRODUCT MANUFACTURING	67	3,110	3,093	3,088	\$32,795,030	\$814.56
3342	Communications Equipment Manufacturing	8	112	112	110	1,688,690	1,166.76
3343	Audio & Video Equipment Manufacturing	6	509	501	500	4,465,268	682.41
3344	Semiconductors & Electronic Components	28	1,946	1,934	1,937	19,831,144	786.73
3345	Electronic Instrument Manufacturing	22	527	527	522	6,677,703	977.80
	Other	3	16	19	19	132,225	565.06
335	ELECTRICAL EQUIPMENT & APPLIANCES	55	7,188	7,130	7,074	\$80,447,485	\$867.84
3353	Electrical Equipment Manufacturing	18	3,739	3,694	3,665	44,906,932	933.78
3359	Other Electrical Equipment & Component Manufacturing	22	1,755	1,772	1,771	19,915,878	867.49
	Other	15	1,694	1,664	1,638	15,624,675	721.72
336	TRANSPORTATION EQUIPMENT MANUFACTURING	156	13,346	13,376	13,526	\$143,016,408	\$820.01
3362	Motor Vehicle Body & Trailer Manufacturing	34	1,623	1,626	1,655	13,863,854	652.40
3363	Motor Vehicle Parts Manufacturing	54	6,111	6,134	6,136	58,195,178	730.63
3364	Aerospace Product & Parts Manufacturing	29	3,288	3,291	3,283	49,348,833	1,154.75
3366	Ship & Boat Building	25	1,340	1,335	1,377	10,134,698	577.19
	Other	14	984	990	1,075	11,473,845	868.42

TABLE 5. STATEWIDE SUMMARY

NORTH AMERICAN INDUSTRY CLASSIFICATION SYSTEM - INDUSTRY GROUPS		NUMBER OF	EMPLOYMENT			TOTAL EARNINGS	AVERAGE
		EMPLOYING UNITS	JULY	AUGUST	SEPTEMBER	JUL-SEPT 2011	WEEKLY EARNINGS
337	FURNITURE & RELATED PRODUCT MANUFACTURING	201	3,591	3,599	3,673	\$31,349,306	\$665.97
3371	Household & Institutional Furniture	164	2,603	2,619	2,627	21,289,315	625.93
3372	Office Furniture & Fixtures Manufacturing	28	891	884	949	9,430,465	798.92
3379	Other Furniture Related Product Manufacturing	9	97	96	97	629,526	500.95
339	MISCELLANEOUS MANUFACTURING	203	4,290	4,262	4,213	\$39,468,236	\$713.52
3391	Medical Equipment & Supplies Manufacturing	84	2,397	2,406	2,409	24,869,271	795.77
3399	Other Miscellaneous Manufacturing	119	1,893	1,856	1,804	14,598,965	606.70
TRADE, TRANSPORTATION & UTILITIES		20,839	236,284	235,675	235,497	\$2,104,706,179	\$686.55
42	WHOLESALE TRADE	6,592	47,399	47,095	47,011	\$657,404,001	\$1,072.11
423	MERCHANT WHOLESALERS, DURABLE GOODS	2,153	21,169	20,974	20,955	\$259,780,340	\$950.10
4231	Motor Vehicle & Part Merchant Wholesalers	244	2,661	2,624	2,643	27,440,531	798.74
4232	Furniture & Furnishings Merchant Wholesalers	55	345	352	357	4,205,150	920.70
4233	Lumber & Supply Merchant Wholesalers	180	1,403	1,386	1,391	14,749,438	814.29
4234	Commercial Goods Merchant Wholesalers	300	2,769	2,770	2,717	44,127,012	1,233.42
4235	Metal & Mineral Merchant Wholesalers	52	877	861	851	11,365,121	1,013.02
4236	Appliances & Electronics Goods Merchant Wholesalers	184	2,057	2,034	2,038	26,436,096	995.37
4237	Hardware & Plumbing Merchant Wholesalers	218	2,175	2,160	2,146	27,262,691	970.74
4238	Machinery & Supply Merchant Wholesalers	700	6,837	6,774	6,794	84,524,926	955.93
4239	Miscellaneous Durable Goods Merchant Wholesalers	220	2,045	2,013	2,018	19,669,375	747.05
424	MERCHANT WHOLESALERS, NONDURABLE GOODS	1,187	16,040	15,872	15,750	\$186,593,696	\$903.45
4241	Paper & Paper Product Merchant Wholesalers	71	1,084	1,079	1,077	12,931,021	921.01
4242	Druggist' Goods Merchant Wholesalers	66	953	967	973	11,368,724	906.86
4243	Apparel & Piece Goods Merchant Wholesalers	40	542	563	566	5,546,452	765.98
4244	Grocery Product Merchant Wholesalers	312	5,385	5,355	5,291	71,237,990	1,025.48
4245	Farm Product Merchant Wholesalers	71	884	896	927	7,320,621	624.08
4246	Chemical merchant Wholesalers	92	612	615	597	8,814,471	1,115.19
4247	Petroleum Merchant Wholesalers	132	1,478	1,477	1,487	17,634,636	916.15
4248	Alcoholic Beverage Merchant Wholesalers	37	1,273	1,266	1,262	14,676,023	891.02
4249	Miscellaneous Nondurable Goods Merchant Wholesaler	366	3,829	3,654	3,570	37,063,758	773.83
425	ELECTRONIC MARKETS & AGENTS & BROKERS	3,252	10,190	10,249	10,306	\$211,029,965	\$1,583.97
44 - 45	RETAIL TRADE	10,951	131,800	131,435	130,559	\$801,699,518	\$469.81

TABLE 5. STATEWIDE SUMMARY

NORTH AMERICAN INDUSTRY CLASSIFICATION SYSTEM - INDUSTRY GROUPS		NUMBER OF	EMPLOYMENT			TOTAL EARNINGS	AVERAGE
		EMPLOYING UNITS	JULY	AUGUST	SEPTEMBER	JUL-SEPT 2011	WEEKLY EARNINGS
441	MOTOR VEHICLE & PARTS DEALERS	1,602	17,155	16,989	17,039	\$168,445,487	\$759.47
4411	Automobile Dealers	652	10,046	10,066	10,119	115,380,150	880.76
4412	Other Motor Vehicle Dealers	160	1,304	1,261	1,258	11,856,251	715.68
4413	Automotive Parts, Accessories & Tire Stores	790	5,805	5,662	5,662	41,209,086	555.19
442	FURNITURE & HOME FURNISHINGS STORES	534	3,308	3,327	3,265	\$24,110,565	\$562.02
4421	Furniture Stores	289	2,006	1,983	1,950	15,488,582	601.83
4422	Home Furnishings Stores	245	1,302	1,344	1,315	8,621,983	502.32
443	ELECTRONICS & APPLIANCE STORES	524	4,444	4,387	4,320	\$35,138,297	\$616.59
444	BUILDING MATERIAL & GARDEN SUPPLY STORES	844	10,454	10,227	10,177	\$69,078,294	\$516.60
4441	Building Material & Supplies Dealers	633	9,136	8,970	8,929	61,260,778	522.92
4442	Lawn & Garden Equipment & Supplies Stores	211	1,318	1,257	1,248	7,817,516	471.89
445	FOOD & BEVERAGE STORES	1,012	18,123	17,999	17,757	\$88,223,226	\$377.87
4451	Grocery Stores	557	15,619	15,572	15,347	74,396,803	368.91
4452	Specialty Food Stores	141	904	874	866	5,901,995	515.13
4453	Beer, Wine & Liquor Stores	314	1,600	1,553	1,544	7,924,428	389.34
446	HEALTH & PERSONAL CARE STORES	964	7,907	7,888	8,018	\$71,923,152	\$697.00
447	GASOLINE STATIONS	1,571	11,512	11,483	11,492	49,384,038	\$330.45
44711	Gasoline Stations with Convenience Stores	1,461	10,323	10,307	10,329	42,840,864	319.34
44719	Other Gasoline Stations	110	1,189	1,176	1,163	6,543,174	427.99
448	CLOTHING & CLOTHING ACCESSORIES STORES	1,028	8,167	8,339	8,177	\$31,285,492	\$292.50
4481	Clothing Stores	737	6,278	6,421	6,315	21,256,908	257.99
4482	Shoe Stores	149	1,140	1,190	1,134	4,886,759	325.55
4483	Jewelry, Luggage & Leather Goods Stores	142	749	728	728	5,141,825	538.13
451	SPORTING GOODS, HOBBY, BOOK & MUSIC STORES	500	3,881	4,067	4,043	\$17,800,005	\$342.56
4511	Sporting Goods & Musical Instrument Stores	408	3,233	3,300	3,399	15,118,374	351.27
4512	Book, Periodical & Music Stores	92	648	767	644	2,681,631	300.55
452	GENERAL MERCHDISE STORES	795	38,770	38,550	38,040	\$196,822,710	\$393.73
453	MISCELLANEOUS STORE RETAILERS	1,228	6,396	6,505	6,551	\$34,783,292	\$412.65

TABLE 5. STATEWIDE SUMMARY

NORTH AMERICAN INDUSTRY CLASSIFICATION SYSTEM - INDUSTRY GROUPS		NUMBER OF	EMPLOYMENT			TOTAL EARNINGS	AVERAGE
		EMPLOYING UNITS	JULY	AUGUST	SEPTEMBER	JUL-SEPT 2011	WEEKLY EARNINGS
4531	Florists	207	746	722	702	2,797,990	297.55
4532	Office Supplies, Stationery & Gift Stores	306	2,029	2,050	2,148	11,519,214	426.90
4533	Used Merchandise Stores	230	1,218	1,381	1,327	6,586,294	387.14
4539	Other Miscellaneous Store Retailers	485	2,403	2,352	2,374	13,879,794	449.30
454	NONSTORE RETAILERS	349	1,683	1,674	1,680	\$14,704,960	\$673.71
4541	Electronic Shopping & Mail-Order Houses	134	469	473	469	4,912,959	803.52
4542	Vending Machine Operators	74	501	496	506	3,773,492	579.38
4543	Direct Selling Establishments	141	713	705	705	6,018,509	654.21
48 - 49	TRANSPORTATION & WAREHOUSING	2,886	49,912	50,010	50,800	\$520,075,753	\$796.28
481	AIR TRANSPORTATION	48	951	957	968	\$13,001,576	\$1,043.24
483	WATER TRANSPORTATION	4	89	90	91	\$1,401,902	\$1,198.21
484	TRUCK TRANSPORTATION	1,918	32,871	32,941	33,235	\$351,471,658	\$818.89
4841	General Freight Trucking	1,195	26,323	26,444	26,690	281,968,616	818.93
4842	Specialized Freight Trucking	723	6,548	6,497	6,545	69,503,042	818.74
485	TRANSIT & GROUND PASSENGER TRANSPORTATION	77	1,131	1,167	1,326	\$5,179,821	\$329.84
4853	Taxi & Limousine Service	25	323	315	323	1,398,700	335.88
4854	School & Employee Bus Transportation	12	230	276	437	1,410,873	345.27
4855	Charter Bus Industry Service	6	60	58	56	314,674	417.34
4859	Other Ground Passenger Transportation	28	401	399	398	1,526,769	294.10
	Other	6	117	119	112	528,805	350.67
486	PIPELINE TRANSPORTATION	32	432	439	437	\$8,742,220	\$1,542.38
487	SCENIC & SIGHTSEEING TRANSPORTATION	6	78	70	63	\$245,804	\$268.83
488	SUPPORT ACTIVITIES FOR TRANSPORTATION	405	4,370	4,360	4,413	\$47,811,595	\$839.49
4881	Support Activities for Air Transportation	100	1,321	1,295	1,285	13,340,238	789.16
4882	Support Activities for Rail Transportation	34	357	359	360	3,571,038	765.88
4883	Support Activities for Water Transportation	23	608	620	614	7,372,319	923.62
4884	Support Activities for Road Transportation	121	529	537	605	3,963,355	547.35
4885	Freight Transportation Arrangement	110	1,462	1,461	1,469	18,963,349	996.39
4889	Other Support Activities for Transportation	17	93	88	80	601,296	531.65

TABLE 5. STATEWIDE SUMMARY

NORTH AMERICAN INDUSTRY CLASSIFICATION SYSTEM - INDUSTRY GROUPS		NUMBER OF	EMPLOYMENT			TOTAL EARNINGS	AVERAGE
		EMPLOYING UNITS	JULY	AUGUST	SEPTEMBER	JUL-SEPT 2011	WEEKLY EARNINGS
491	POSTAL SERVICE	8	29	18	17	\$130,301	\$469.84
492	COURIERS & MESSENGERS	168	2,947	2,959	3,005	\$30,124,634	\$780.14
4921	Couriers	81	2,571	2,589	2,620	27,317,963	\$810.30
4922	Local Messenger & Local Delivery	87	376	370	385	2,806,671	\$572.67
493	WAREHOUSING & STORAGE	220	7,014	7,009	7,245	\$61,966,242	\$672.37
22	UTILITIES	410	7,173	7,135	7,127	\$125,526,907	\$1,351.42
2211	Power Generation & Supply	157	4,993	4,986	4,966	98,492,260	1,520.84
2212	Natural Gas Distribution	73	1,259	1,253	1,277	19,229,747	1,171.19
2213	Water, Sewage & Other Systems	180	921	896	884	7,804,900	666.84
INFORMATION		1,119	14,841	14,800	14,603	\$189,284,092	\$987.27
511	PUBLISHING INDUSTRIES, EXCEPT INTERNET	228	3,869	3,871	3,907	\$34,542,220	\$684.41
5111	Newspaper, Book & Directory Publishers	202	3,620	3,616	3,651	30,429,168	645.00
5112	Software Publishers	26	249	255	256	4,113,052	1,248.90
512	MOTION PICTURE & SOUND RECORDING INDUSTRY	142	1,252	1,228	1,116	\$6,345,407	\$407.21
5121	Motion Picture & Video Industries	121	1,213	1,188	1,078	5,974,105	396.27
5122	Sound Recording Industries	21	39	40	38	371,302	732.35
515	BROADCASTING, EXCEPT INTERNET	124	1,722	1,715	1,722	\$16,783,431	\$750.75
5151	Radio & Television Broadcasting	120	1,686	1,681	1,686	16,525,078	754.70
5152	Cable & Other Subscription Programming	4	36	34	36	258,353	562.45
517	TELECOMMUNICATIONS	392	6,397	6,359	6,255	\$111,744,488	\$1,356.44
5171	Wired Telecommunications Carriers	273	3,854	3,854	3,863	62,933,016	1,255.12
	Other	119	2,543	2,505	2,392	48,811,472	1,514.00
518	DATA PROCESSING, HOSTING & RELATED SERVICES	163	1,323	1,348	1,331	\$16,460,790	\$949.19
519	OTHER INFORMATION SERVICES	70	278	279	272	\$3,407,756	\$948.62
FINANCIAL ACTIVITIES		7,928	48,305	47,959	47,674	\$543,324,567	\$871.09
52	FINANCE & INSURANCE	4,728	34,716	34,578	34,439	\$435,597,326	\$969.05

TABLE 5. STATEWIDE SUMMARY

NORTH AMERICAN INDUSTRY CLASSIFICATION SYSTEM - INDUSTRY GROUPS		NUMBER OF	EMPLOYMENT			TOTAL EARNINGS	AVERAGE
		EMPLOYING UNITS	JULY	AUGUST	SEPTEMBER	JUL-SEPT 2011	WEEKLY EARNINGS
522	CREDIT INTERMEDIATION & RELATED ACTIVITIES	1,892	18,965	18,952	18,841	\$198,188,469	\$805.80
5221	Depository Credit Intermediation	1,428	17,071	17,064	16,969	171,879,578	776.15
5222	Nondepository Credit Intermediation	341	1,556	1,553	1,552	21,624,213	1,070.63
5223	Activities Related to Credit Intermediation	123	338	335	320	4,684,678	1,088.70
523	FINANCIAL INVESTMENT & RELATED ACTIVITIES	678	3,091	3,097	3,046	\$72,323,089	\$1,807.44
524	INSURANCE CARRIERS & RELATED ACTIVITIES	2,069	12,082	11,942	11,983	\$157,401,326	\$1,008.79
5241	Insurance Carriers	416	5,378	5,368	5,389	77,715,548	1,111.52
5242	Insurance Agencies, Brokerages & Support	1,653	6,704	6,574	6,594	79,685,778	925.37
	OTHER	89	578	587	569	\$7,684,442	\$1,022.68
53	REAL ESTATE & RENTAL & LEASING	3,200	13,589	13,381	13,235	\$107,727,241	\$618.33
531	REAL ESTATE	2,490	8,886	8,728	8,622	\$64,700,015	\$569.09
5311	Lessors of Real Estate	1,077	4,562	4,475	4,375	30,714,733	528.48
5312	Offices of Real Estate Agents & Brokers	742	1,641	1,590	1,609	12,597,243	600.63
5313	Activities Related to Real Estate	671	2,683	2,663	2,638	21,388,039	618.20
532	RENTAL & LEASING SERVICES	691	4,635	4,586	4,545	\$42,374,570	\$710.35
5321	Automotive Equipment Rental & Leasing	114	919	927	924	7,424,656	618.55
5322	Consumer Goods Rental	355	2,202	2,175	2,119	15,293,795	543.31
5323	General Rental Centers	44	249	242	243	2,549,142	801.45
5324	Machinery & Equipment Rental & Leasing	178	1,265	1,242	1,259	17,106,977	1,048.26
533	LESSORS OF NONFINANCIAL INTANGIBLE ASSETS	19	68	67	68	\$652,656	\$741.94
PROFESSIONAL & BUSINESS SERVICES		12,354	122,252	122,853	122,466	\$1,363,289,574	\$855.90
54	PROFESSIONAL & TECHNICAL SERVICES	7,725	38,937	38,601	38,472	\$522,514,089	\$1,039.39
5411	Legal Services	1,683	6,125	5,994	5,959	72,299,373	922.92
5412	Accounting & Bookkeeping Services	1,263	4,809	4,772	4,791	52,384,527	841.13
5413	Architectural & Engineering Services	933	6,277	6,176	6,155	84,978,721	1,053.87
5414	Specialized Design Services	181	469	468	469	5,483,414	900.00
5415	Computer Systems Design & Related Services	1,140	9,122	9,137	9,041	163,145,198	1,379.08
5416	Management & Technical Consulting Services	1,454	5,102	5,102	5,151	76,302,407	1,146.74
5417	Scientific Research & Development Services	107	1,285	1,271	1,253	17,441,057	1,056.67
5418	Advertising & Related Services	368	2,067	2,056	2,025	23,855,243	895.42

TABLE 5. STATEWIDE SUMMARY

NORTH AMERICAN INDUSTRY CLASSIFICATION SYSTEM - INDUSTRY GROUPS		NUMBER OF	EMPLOYMENT			TOTAL EARNINGS	AVERAGE
		EMPLOYING UNITS	JULY	AUGUST	SEPTEMBER	JUL-SEPT 2011	WEEKLY EARNINGS
5419	Other Professional & Technical Services	596	3,681	3,625	3,628	26,624,149	561.92
55	MANAGEMENT OF COMPANIES & ENTERPRISES	504	26,328	26,404	26,242	\$470,392,596	\$1,374.53
56	ADMINISTRATIVE & SUPPORT SERVICES	4,125	56,987	57,848	57,752	\$370,382,889	\$495.25
561	ADMINISTRATIVE & SUPPORT SERVICES	3,863	53,970	54,861	54,764	\$339,210,805	\$478.50
5611	Office Administrative Services	565	2,042	2,044	2,053	26,024,573	978.28
5612	Facilities Support Services	19	150	148	142	1,594,450	836.25
5613	Employment Services	801	21,364	22,441	22,401	122,313,551	426.34
5614	Business Support Services	428	10,177	10,091	10,049	68,992,589	525.16
5615	Travel Arrangement & Reservation Services	83	331	329	322	2,584,375	607.33
5616	Investigation & Security Services	237	4,554	4,574	4,575	28,381,917	477.97
5617	Services to Buildings & Dwellings	1,472	13,339	13,203	13,231	71,203,139	413.13
5619	Other Support Services	258	2,013	2,031	1,991	18,116,211	692.74
562	WASTE MANAGEMENT & REMEDIATION SERVICES	262	3,017	2,987	2,988	\$31,172,084	\$800.00
5621	Waste Collection Services	109	1,140	1,124	1,149	11,267,926	761.88
5622	Waste Treatment & Disposal Services	34	948	925	902	11,920,292	991.29
5629	Remediation & Other Waste Services	119	929	938	937	7,983,866	657.07
EDUCATION & HEALTH SERVICES		15,069	163,603	165,364	167,897	\$1,532,322,027	\$711.69
61	EDUCATIONAL SERVICES	712	9,543	10,321	12,201	\$86,501,264	\$622.54
6111	Elementary & Secondary Schools	91	2,909	3,388	4,778	23,114,346	481.63
6112	Junior Colleges	7	196	192	198	1,631,891	642.65
6113	Colleges & Universities	32	3,611	3,792	4,067	34,245,601	689.00
6114	Business, Computer, & Management Training	45	208	210	207	4,304,572	1,589.38
6115	Technical & Trade Schools	104	792	826	862	12,160,900	1,131.60
6116	Other Schools & Instruction	265	1,338	1,411	1,608	6,306,518	334.03
6117	Educational Support Services	168	489	502	481	4,737,436	742.70
62	HEALTH CARE & SOCIAL ASSISTANCE	14,357	154,060	155,043	155,696	\$1,445,820,763	\$717.84
621	AMBULATORY HEALTH CARE SERVICES	5,091	46,938	46,669	46,897	\$639,842,381	\$1,050.90
6211	Offices of Physicians	2,236	21,603	21,531	21,561	391,588,262	1,396.81
6212	Offices of Dentists	990	6,757	6,683	6,651	72,188,960	829.18
6213	Offices of Other Health Practitioners	1,216	6,837	6,773	7,032	63,186,768	706.40
6214	Outpatient Care Centers	274	4,139	4,078	4,068	41,327,275	776.32
6215	Medical & Diagnostic Laboratories	105	900	894	870	12,439,737	1,077.59

TABLE 5. STATEWIDE SUMMARY

NORTH AMERICAN INDUSTRY CLASSIFICATION SYSTEM - INDUSTRY GROUPS		NUMBER OF	EMPLOYMENT			TOTAL EARNINGS	AVERAGE
		EMPLOYING UNITS	JULY	AUGUST	SEPTEMBER	JUL-SEPT 2011	WEEKLY EARNINGS
6216	Home Health Care Services	140	4,210	4,218	4,246	36,906,886	672.00
6219	Other Ambulatory Health Care Services	130	2,492	2,492	2,469	22,204,493	687.52
622	HOSPITALS	110	41,655	41,666	41,772	\$456,928,034	\$842.93
6221	General Medical & Surgical Hospitals	78	37,165	37,117	37,200	409,545,533	847.76
6222	Psychiatric & Substance Abuse Hospitals	10	2,041	2,077	2,070	20,564,241	766.90
6223	Other Hospitals	22	2,449	2,472	2,502	26,818,260	833.74
623	Residential & Mental Health Facilities	563	31,481	31,676	31,672	\$181,129,413	\$440.78
6231	Nursing Care Facilities (Skilled Nursing Facilities)	267	23,053	23,208	23,152	132,428,201	440.27
6232	Residential Mental Health Facilities	143	4,391	4,388	4,473	26,295,315	457.90
6233	Continuing Care & Assisted Living Facilities	111	2,853	2,877	2,861	14,478,560	388.92
6239	Other Residential Care Facilities	42	1,184	1,203	1,186	7,927,337	512.00
624	SOCIAL ASSISTANCE	8,593	33,986	35,032	35,355	\$167,920,935	\$371.27
6241	Individual & Family Services	7,387	19,359	19,636	19,678	93,873,672	369.22
6242	Emergency & Other Relief Services	126	1,121	1,120	1,135	6,725,895	459.75
6243	Vocational Rehabilitation Services	130	4,062	4,009	4,036	23,088,458	440.08
6244	Child Day Care Services	950	9,444	10,267	10,506	44,232,910	337.81
LEISURE & HOSPITALITY		6,505	103,598	103,559	102,288	\$361,569,453	\$269.64
71	ARTS, ENTERTAINMENT & RECREATION	930	11,365	10,928	10,048	\$46,714,294	\$333.33
711	PERFORMING ARTS & SPECTATOR SPORTS	213	2,279	2,287	2,207	\$11,770,901	\$401.06
7111	Performing Arts Companies	51	557	511	589	1,952,963	271.99
7112	Spectator Sports	51	1,128	1,135	1,041	6,690,453	467.30
7113	Performing Arts & Sports Promoters	36	519	566	490	2,435,194	356.80
7114	Agents & Managers for Public Figures	21	23	23	25	370,840	1,205.33
7115	Independent Artists, Writers, & Performers	54	52	52	62	321,451	446.87
712	MUSEUMS, PARKS, & HISTORICAL SITES	54	367	342	329	\$2,741,673	\$609.53
713	GAMBLING, RECREATIONAL & AMUSEMENT INDUSTRY	663	8,719	8,299	7,512	\$32,201,720	\$302.94
72	ACCOMODATION & FOOD SERVICES	5,575	92,233	92,631	92,240	\$314,855,159	\$262.21
721	ACCOMODATION	883	12,418	11,917	11,252	\$48,389,464	\$313.79
7211	Travel Accommodation	799	11,114	10,922	10,796	45,299,262	318.40

TABLE 5. STATEWIDE SUMMARY

NORTH AMERICAN INDUSTRY CLASSIFICATION SYSTEM - INDUSTRY GROUPS		NUMBER OF	EMPLOYMENT			TOTAL EARNINGS	AVERAGE
		EMPLOYING UNITS	JULY	AUGUST	SEPTEMBER	JUL-SEPT 2011	WEEKLY EARNINGS
7212	RV Parks & Recreational Camps	62	1,246	916	354	2,731,092	250.50
7213	Rooming & Boarding Houses	22	58	79	102	359,110	346.74
722	FOOD SERVICES & DRINKING PLACES	4,692	79,815	80,714	80,988	\$266,465,695	\$254.61
7223	Special Food Services	170	1,825	2,260	2,689	9,460,058	322.27
7224	Drinking Places, Alcoholic Beverages	164	953	973	969	3,403,783	271.33
7225	Restaurants & Other Eating Places	4,358	77,037	77,481	77,330	253,601,854	252.42
722511	Full-Service Restaurants	1,990	34,704	34,741	34,674	122,076,010	270.57
722513	Limited-Service Eating Places	2,014	38,955	39,120	38,939	118,974,720	234.64
722514	Cafeterias, Grill Buffets, & Buffets	89	1,588	1,843	1,946	6,778,745	290.93
722515	Snack & Nonalcoholic Beverage Bars	265	1,790	1,777	1,771	5,772,379	249.55
OTHER SERVICES		5,382	25,654	24,975	24,839	\$176,792,523	\$540.60
811	REPAIR & MAINTENANCE	2,219	9,590	9,302	9,351	\$79,384,832	\$648.64
8111	Automotive Repair & Maintenance	1,468	6,413	6,221	6,240	49,379,279	603.75
8112	Electronic Equipment Repair & Maintenance	165	902	887	896	8,832,105	759.10
8113	Commercial Machinery Repair & Maintenance	404	1,697	1,644	1,675	16,894,846	777.27
8114	Household Goods Repair & Maintenance	182	578	550	540	4,278,602	591.95
812	PERSONAL & LAUNDRY SERVICES	1,336	8,373	8,286	8,276	\$44,988,839	\$416.36
8121	Personal Care Services	614	2,942	2,873	2,838	12,595,070	335.90
8122	Death Care Services	253	1,619	1,591	1,598	11,209,704	538.03
8123	Drycleaning & Laundry Service	279	3,099	3,112	3,147	17,817,004	439.37
8129	Other Personal Services	190	713	710	693	3,367,061	367.21
813	MEMBERSHIP ASSOCIATIONS & ORGANIZATIONS	1,082	6,690	6,425	6,234	\$47,851,080	\$570.70
8131	Religious Organizations	48	234	225	207	1,430,509	495.67
8132	Grantmaking & Giving Organizations	109	495	504	523	5,920,908	897.74
8133	Social Advocacy Organizations	222	2,031	2,136	2,157	16,028,044	584.88
8134	Civic & Social Organizations	191	1,705	1,424	1,324	5,949,162	308.31
8139	Professional & Similar Organizations	512	2,225	2,136	2,023	18,522,457	669.55

TABLE 5. STATEWIDE SUMMARY

NORTH AMERICAN INDUSTRY CLASSIFICATION SYSTEM - INDUSTRY GROUPS		NUMBER OF	EMPLOYMENT			TOTAL EARNINGS	AVERAGE
		EMPLOYING UNITS	JULY	AUGUST	SEPTEMBER	JUL-SEPT 2011	WEEKLY EARNINGS
814	PRIVATE HOUSEHOLDS	745	1,001	962	978	\$4,567,772	\$358.42
	LOCAL GOVERNMENT	1,959	67,887	93,252	116,833	\$743,188,487	\$616.99
	STATE GOVERNMENT	1,123	67,145	68,150	70,222	\$728,827,168	\$818.38
	NONCLASSIFIABLE ESTABLISHMENTS	0	0	0	0	\$0	\$0.00

TABLE 6. COUNTY SUMMARY

NORTH AMERICAN INDUSTRY CLASSIFICATION SYSTEM - INDUSTRY GROUPS	NUMBER OF	EMPLOYMENT			TOTAL EARNINGS	AVERAGE
	EMPLOYING UNITS	JULY	AUGUST	SEPTEMBER	JUL-SEPT 2011	WEEKLY EARNINGS
ARKANSAS COUNTY - TOTAL	742	9,747	9,768	9,845	\$82,146,770	\$645.67
Natural Resources & Mining	46	218	208	209	1,997,402	725.89
Construction	45	318	319	328	2,806,965	671.26
Manufacturing	29	3,557	3,588	3,605	34,877,690	748.72
Trade, Transportation & Utilities	206	2,184	2,119	2,120	18,100,063	650.31
Wholesale Trade	42	458	409	399	5,026,853	916.31
Retail Trade	98	1,047	1,042	1,027	6,110,814	452.56
Transportation, Warehousing & Utilities	66	679	668	694	6,962,396	787.22
Information	10	103	96	95	950,655	746.20
Financial Activities	44	317	327	322	3,037,738	725.69
Professional & Business Services	42	319	314	327	3,967,696	953.77
Education & Health Services	167	1,176	1,228	1,232	7,451,969	472.96
Leisure & Hospitality	53	538	513	502	1,471,165	218.61
Other Services	53	138	133	130	850,300	489.33
Local Government	32	705	754	799	5,334,598	545.20
State Government	15	174	169	176	1,300,529	578.27
ASHLEY COUNTY - TOTAL	582	7,573	7,685	8,048	\$75,872,210	\$751.26
Natural Resources & Mining	46	322	291	311	2,510,545	627.01
Construction	41	714	689	680	6,067,472	672.20
Manufacturing	27	2,624	2,617	2,626	39,403,411	1,155.85
Trade, Transportation & Utilities	135	1,271	1,304	1,288	9,486,782	566.72
Wholesale Trade	24	188	202	193	2,617,459	1,036.07
Retail Trade	85	847	856	847	4,346,954	393.39
Transportation, Warehousing & Utilities	26	236	246	248	2,522,369	797.38
Information	6	32	39	40	288,101	598.96
Financial Activities	36	225	223	226	2,024,324	693.10
Professional & Business Services	49	253	246	255	1,553,733	475.54
Education & Health Services	130	825	838	836	6,362,177	587.51
Leisure & Hospitality	30	398	405	394	1,122,571	216.42
Other Services	39	181	168	174	1,046,061	461.57
Local Government	32	530	661	992	4,688,856	495.67
State Government	11	198	204	226	1,318,177	484.39

TABLE 6. COUNTY SUMMARY

NORTH AMERICAN INDUSTRY CLASSIFICATION SYSTEM - INDUSTRY GROUPS	NUMBER OF	EMPLOYMENT			TOTAL EARNINGS	AVERAGE
	EMPLOYING UNITS	JULY	AUGUST	SEPTEMBER	JUL-SEPT 2011	WEEKLY EARNINGS
BAXTER COUNTY - TOTAL	1,275	13,553	13,604	14,109	\$104,161,682	\$582.50
Natural Resources & Mining	6	117	113	108	936,978	639.72
Construction	135	637	610	635	4,505,413	552.45
Manufacturing	59	2,150	2,155	2,147	20,657,760	738.87
Trade, Transportation & Utilities	267	2,570	2,514	2,525	15,436,133	468.15
Wholesale Trade	36	208	193	190	1,696,500	662.44
Retail Trade	208	2,193	2,161	2,177	12,259,345	433.18
Transportation, Warehousing & Utilities	23	169	160	158	1,480,288	701.45
Information	21	208	209	203	2,091,833	778.60
Financial Activities	102	626	621	626	6,614,330	814.94
Professional & Business Services	132	831	813	800	5,932,374	560.15
Education & Health Services	277	3,561	3,546	3,578	31,513,844	680.62
Leisure & Hospitality	126	1,614	1,553	1,521	5,198,050	255.88
Other Services	99	344	338	338	1,690,585	382.49
Local Government	39	590	811	1,268	7,032,590	608.06
State Government	12	305	321	360	2,551,792	597.24
BENTON COUNTY - TOTAL	5,407	90,870	92,561	94,670	\$1,040,644,208	\$863.53
Natural Resources & Mining	39	746	720	715	8,654,979	915.77
Construction	516	3,339	3,293	3,291	34,487,398	802.04
Manufacturing	211	11,194	11,043	10,897	111,895,721	779.32
Trade, Transportation & Utilities	1,453	21,958	22,033	22,163	244,252,417	852.04
Wholesale Trade	665	4,475	4,512	4,527	88,748,492	1,515.50
Retail Trade	629	9,517	9,541	9,509	63,478,126	512.79
Transportation, Warehousing & Utilities	159	7,966	7,980	8,127	92,025,799	882.18
Information	72	770	766	769	9,060,500	907.11
Financial Activities	530	3,476	3,468	3,437	42,019,075	934.08
Professional & Business Services	1,033	25,146	25,101	24,833	395,258,954	1,214.89
Education & Health Services	624	8,252	8,539	8,729	82,395,906	745.08
Leisure & Hospitality	486	9,398	9,442	9,296	36,702,203	301.03
Other Services	348	1,950	1,890	1,883	13,913,236	561.03
Local Government	78	3,684	5,425	7,470	53,269,918	741.48
State Government	17	957	841	1,187	8,733,901	675.21

TABLE 6. COUNTY SUMMARY

NORTH AMERICAN INDUSTRY CLASSIFICATION SYSTEM - INDUSTRY GROUPS	NUMBER OF	EMPLOYMENT			TOTAL EARNINGS	AVERAGE
	EMPLOYING UNITS	JULY	AUGUST	SEPTEMBER	JUL-SEPT 2011	WEEKLY EARNINGS
BOONE COUNTY - TOTAL	1,038	13,036	13,142	13,901	\$111,759,727	\$643.50
Construction	85	529	523	531	3,932,280	573.25
Manufacturing	64	1,823	1,795	1,782	16,229,637	693.57
Trade, Transportation & Utilities	249	3,927	3,850	3,808	36,315,082	723.38
Wholesale Trade	54	577	559	542	4,745,652	652.65
Retail Trade	145	1,846	1,826	1,792	11,325,551	478.33
Transportation, Warehousing & Utilities	50	1,504	1,465	1,474	20,243,879	1,051.47
Information	21	396	398	390	3,980,053	775.74
Financial Activities	97	563	578	573	5,473,630	736.96
Professional & Business Services	111	1,005	946	952	8,403,694	668.04
Education & Health Services	196	1,416	1,412	1,410	11,307,145	615.70
Leisure & Hospitality	88	1,094	1,129	1,149	3,634,986	248.77
Local Government	55	1,341	1,574	2,293	14,015,376	621.03
State Government	19	695	689	765	6,533,541	701.60
Other	53	247	248	248	1,934,303	600.78
BRADLEY COUNTY - TOTAL	382	3,150	3,186	3,464	\$24,360,147	\$573.63
Natural Resources & Mining	44	277	265	272	2,188,487	620.44
Construction	18	121	112	115	894,997	593.50
Manufacturing	11	514	508	513	5,503,052	827.32
Trade, Transportation & Utilities	76	498	500	499	3,214,456	495.52
Wholesale Trade	14	81	79	79	992,363	958.19
Retail Trade	41	362	366	364	1,704,579	360.22
Transportation, Warehousing & Utilities	21	55	55	56	517,514	719.44
Information	4	13	13	13	111,173	657.83
Financial Activities	25	146	143	142	1,140,840	610.84
Professional & Business Services	28	116	103	105	738,859	526.25
Education & Health Services	113	594	602	625	4,279,718	542.35
Leisure & Hospitality	10	156	159	154	476,450	234.43
Other Services	28	109	103	98	466,824	347.51
Local Government	14	234	296	541	2,671,271	575.58
State Government	11	372	382	387	2,674,020	540.83

TABLE 6. COUNTY SUMMARY

NORTH AMERICAN INDUSTRY CLASSIFICATION SYSTEM - INDUSTRY GROUPS	NUMBER OF EMPLOYING UNITS	EMPLOYMENT			TOTAL EARNINGS	AVERAGE WEEKLY EARNINGS
		JULY	AUGUST	SEPTEMBER	JUL-SEPT 2011	
CALHOUN COUNTY - TOTAL	118	2,792	2,836	2,869	\$31,893,051	\$866.18
Natural Resources & Mining	15	72	77	71	879,699	922.76
Construction	13	86	88	95	685,221	587.84
Manufacturing	8	1,917	1,910	1,917	23,920,149	961.01
Trade, Transportation & Utilities	28	253	253	251	2,199,337	670.46
Retail Trade	16	85	82	85	386,863	354.27
Transportation, Warehousing & Utilities	12	168	171	166	1,812,474	828.24
Financial Activities	6	82	85	81	597,480	555.97
Education & Health Services	14	50	50	51	420,617	642.82
Leisure & Hospitality	5	19	18	18	46,208	193.88
Other Services	4	7	8	7	36,515	383.02
Local Government	11	105	144	181	867,344	465.48
State Government	8	84	87	86	743,612	667.72
Other	6	117	116	111	1,496,869	1,004.16
CARROLL COUNTY - TOTAL	782	9,989	10,342	10,295	\$65,965,089	\$497.05
Natural Resources & Mining	15	215	210	212	1,870,042	677.47
Trade, Transportation & Utilities	193	1,651	1,629	1,647	10,152,721	475.53
Wholesale Trade	25	182	187	187	1,086,349	450.89
Retail Trade	150	1,174	1,140	1,153	6,161,378	410.11
Transportation, Warehousing & Utilities	18	295	302	307	2,904,994	741.57
Information	8	78	80	80	631,861	612.66
Financial Activities	70	367	363	357	3,258,827	691.85
Professional & Business Services	58	211	208	205	1,514,044	559.93
Education & Health Services	97	954	951	975	8,283,078	663.71
Leisure & Hospitality	164	1,807	1,749	1,708	5,741,023	251.68
Other Services	42	136	137	131	729,470	416.68
Local Government	24	575	994	1,029	6,206,299	551.28
State Government	10	112	111	119	852,981	575.56
Other	101	3,883	3,910	3,832	26,724,743	530.52

TABLE 6. COUNTY SUMMARY

NORTH AMERICAN INDUSTRY CLASSIFICATION SYSTEM - INDUSTRY GROUPS	NUMBER OF EMPLOYING UNITS	EMPLOYMENT			TOTAL EARNINGS	AVERAGE
		JULY	AUGUST	SEPTEMBER	JUL-SEPT 2011	WEEKLY EARNINGS
CHICOT COUNTY - TOTAL	431	3,281	3,402	3,470	\$24,024,833	\$546.06
Natural Resources & Mining	53	259	268	287	2,032,335	576.17
Construction	16	172	163	169	2,332,744	1,068.11
Manufacturing	10	306	305	302	1,756,622	444.00
Trade, Transportation & Utilities	68	510	525	523	3,411,368	505.29
Wholesale Trade	11	61	62	62	490,691	612.09
Retail Trade	44	381	385	379	2,124,522	428.19
Transportation, Warehousing & Utilities	13	68	78	82	796,155	805.82
Information	5	9	9	10	73,051	602.07
Financial Activities	29	165	171	162	1,331,845	617.17
Professional & Business Services	19	44	39	40	391,376	734.29
Education & Health Services	168	701	706	719	4,439,096	481.85
Leisure & Hospitality	20	175	172	186	444,805	192.58
Other Services	15	76	81	79	572,131	559.45
Local Government	18	548	652	685	4,887,609	598.36
State Government	10	316	311	308	2,351,851	580.47
CLARK COUNTY - TOTAL	615	8,517	8,902	9,172	\$68,271,604	\$592.49
Natural Resources & Mining	31	215	212	209	1,989,846	722.01
Construction	31	104	84	92	657,966	542.28
Manufacturing	34	1,554	1,553	1,515	16,822,711	839.93
Trade, Transportation & Utilities	136	1,472	1,518	1,504	11,324,050	581.50
Wholesale Trade	17	112	110	115	1,361,327	932.20
Retail Trade	96	1,172	1,221	1,203	8,049,607	516.57
Transportation, Warehousing & Utilities	23	188	187	186	1,913,116	786.97
Information	9	26	27	26	251,492	734.64
Financial Activities	75	316	306	316	2,717,056	668.46
Professional & Business Services	52	599	592	602	5,011,044	644.95
Education & Health Services	101	1,303	1,297	1,354	9,458,118	552.01
Leisure & Hospitality	61	997	1,031	1,054	3,376,463	252.82
Other Services	44	179	197	199	1,107,988	444.68
Local Government	27	771	956	1,028	6,344,433	531.43
State Government	14	981	1,129	1,273	9,210,437	628.28

TABLE 6. COUNTY SUMMARY

NORTH AMERICAN INDUSTRY CLASSIFICATION SYSTEM - INDUSTRY GROUPS	NUMBER OF EMPLOYING UNITS	EMPLOYMENT			TOTAL EARNINGS	AVERAGE
		JULY	AUGUST	SEPTEMBER	JUL-SEPT 2011	WEEKLY EARNINGS
CLAY COUNTY - TOTAL	407	3,619	3,783	3,783	\$24,447,494	\$504.40
Natural Resources & Mining	64	333	326	290	1,844,816	448.61
Construction	29	154	155	154	1,097,801	547.17
Manufacturing	14	511	496	518	3,895,700	589.51
Trade, Transportation & Utilities	99	867	848	865	6,258,205	559.77
Wholesale Trade	26	272	254	264	1,997,409	583.47
Retail Trade	46	414	415	407	2,428,394	453.40
Transportation, Warehousing & Utilities	27	181	179	194	1,832,402	763.29
Information	4	58	57	58	342,218	456.49
Financial Activities	27	115	109	109	795,562	551.33
Professional & Business Services	25	80	79	77	510,257	498.95
Education & Health Services	60	476	499	501	3,025,174	472.98
Leisure & Hospitality	20	224	218	223	560,575	194.53
Other Services	31	80	80	80	565,051	543.32
Local Government	23	664	860	849	5,120,430	497.95
State Government	11	57	56	59	431,705	579.21
CLEBURNE COUNTY - TOTAL	689	6,789	6,933	7,250	\$51,494,817	\$566.63
Natural Resources & Mining	33	447	459	468	5,799,155	973.99
Construction	65	343	334	342	2,705,154	612.63
Manufacturing	36	1,246	1,256	1,290	10,574,443	643.53
Trade, Transportation & Utilities	176	1,623	1,642	1,655	13,522,990	634.29
Wholesale Trade	43	294	298	305	3,503,382	901.31
Retail Trade	104	980	973	963	5,695,593	450.74
Transportation, Warehousing & Utilities	29	349	371	387	4,324,015	901.40
Information	7	55	56	54	361,831	506.06
Financial Activities	73	233	233	236	1,982,475	651.70
Professional & Business Services	65	306	294	290	2,046,381	530.61
Education & Health Services	79	816	848	845	5,482,799	504.29
Leisure & Hospitality	78	1,062	1,039	978	3,345,911	250.77
Other Services	50	192	169	173	995,883	430.37
Local Government	18	361	494	810	3,928,936	544.55
State Government	9	105	109	109	748,859	535.03

TABLE 6. COUNTY SUMMARY

NORTH AMERICAN INDUSTRY CLASSIFICATION SYSTEM - INDUSTRY GROUPS	NUMBER OF EMPLOYING UNITS	EMPLOYMENT			TOTAL EARNINGS	AVERAGE
		JULY	AUGUST	SEPTEMBER	JUL-SEPT 2011	WEEKLY EARNINGS
CLEVELAND COUNTY - TOTAL	122	825	1,019	1,047	\$6,139,081	\$490.04
Natural Resources & Mining	11	169	167	178	1,384,787	621.72
Construction	6	24	13	19	109,826	452.58
Manufacturing	6	102	98	96	745,699	581.37
Trade, Transportation & Utilities	33	154	158	156	867,188	427.61
Retail Trade	16	68	67	70	205,082	230.86
Other Trade, Transportation & Utilities	17	86	91	86	662,106	580.96
Education & Health Services	32	155	151	154	726,583	364.51
Other Services	5	13	13	13	117,034	692.51
Local Government	11	126	337	350	1,616,428	458.82
State Government	7	51	51	51	353,757	533.57
Other	11	31	31	30	217,779	546.27
COLUMBIA COUNTY - TOTAL	747	8,168	8,341	8,559	\$71,625,353	\$659.36
Natural Resources & Mining	45	415	416	396	5,689,358	1,070.03
Construction	40	343	342	338	3,228,563	728.30
Manufacturing	36	1,989	1,976	1,975	24,366,009	946.62
Trade, Transportation & Utilities	166	1,494	1,455	1,474	10,525,353	549.16
Wholesale Trade	31	218	218	212	2,264,034	806.28
Retail Trade	101	1,008	973	1,000	5,262,778	407.41
Transportation, Warehousing & Utilities	34	268	264	262	2,998,541	871.50
Information	9	69	66	68	483,091	549.18
Financial Activities	69	366	365	363	3,308,179	697.83
Professional & Business Services	60	367	349	333	2,813,888	619.03
Education & Health Services	184	1,041	1,048	1,059	6,123,903	448.92
Leisure & Hospitality	47	610	603	633	1,864,618	233.10
Other Services	52	228	232	233	1,016,786	338.59
Local Government	26	689	930	1,110	6,854,809	579.66
State Government	13	557	559	577	5,350,796	729.36

TABLE 6. COUNTY SUMMARY

NORTH AMERICAN INDUSTRY CLASSIFICATION SYSTEM - INDUSTRY GROUPS	NUMBER OF	EMPLOYMENT			TOTAL EARNINGS	AVERAGE
	EMPLOYING UNITS	JULY	AUGUST	SEPTEMBER	JUL-SEPT 2011	WEEKLY EARNINGS
CONWAY COUNTY - TOTAL	581	6,648	6,819	6,923	\$56,469,994	\$639.11
Natural Resources & Mining	35	307	304	307	3,436,776	863.95
Construction	51	659	636	641	7,683,944	915.92
Manufacturing	18	906	895	880	11,560,826	995.11
Trade, Transportation & Utilities	131	1,618	1,645	1,669	14,005,583	655.32
Wholesale Trade	23	246	257	257	2,972,779	902.67
Retail Trade	81	791	796	790	4,642,255	450.69
Transportation, Warehousing & Utilities	27	581	592	622	6,390,549	821.58
Information	3	16	16	16	114,174	548.91
Financial Activities	32	173	171	166	1,304,887	590.45
Professional & Business Services	44	383	402	419	2,329,265	446.45
Education & Health Services	162	946	977	980	6,785,316	539.39
Leisure & Hospitality	44	500	479	467	1,316,618	210.12
Other Services	25	99	95	88	640,545	524.18
Local Government	26	747	822	909	4,677,708	435.62
State Government	10	294	377	381	2,614,352	573.49
CRAIGHEAD COUNTY - TOTAL	2,652	42,010	43,715	44,374	\$361,821,082	\$641.80
Natural Resources & Mining	71	315	320	368	2,315,511	532.75
Construction	195	1,856	1,873	1,826	17,310,485	719.12
Manufacturing	119	6,314	6,254	6,230	66,406,927	815.23
Trade, Transportation & Utilities	725	8,824	8,889	8,803	68,095,932	592.64
Wholesale Trade	186	1,667	1,666	1,675	19,673,562	906.56
Retail Trade	429	5,910	5,974	5,847	35,133,518	457.26
Transportation, Warehousing & Utilities	110	1,247	1,249	1,281	13,288,852	811.93
Information	29	498	492	484	4,421,818	692.28
Financial Activities	263	1,497	1,486	1,481	16,738,350	865.30
Professional & Business Services	350	4,621	4,609	4,645	28,169,261	468.51
Education & Health Services	463	8,319	8,575	8,672	87,876,377	793.21
Leisure & Hospitality	223	4,460	4,483	4,503	15,281,049	262.26
Other Services	154	814	827	835	5,053,323	470.98
Local Government	37	1,807	3,210	3,870	23,691,113	615.19
State Government	23	2,685	2,697	2,657	26,460,936	759.59

TABLE 6. COUNTY SUMMARY

NORTH AMERICAN INDUSTRY CLASSIFICATION SYSTEM - INDUSTRY GROUPS	NUMBER OF	EMPLOYMENT			TOTAL EARNINGS	AVERAGE
	EMPLOYING UNITS	JULY	AUGUST	SEPTEMBER	JUL-SEPT 2011	WEEKLY EARNINGS
CRAWFORD COUNTY - TOTAL	1,303	18,319	19,394	19,573	\$151,246,911	\$609.28
Natural Resources & Mining	28	316	310	318	4,840,057	1,183.20
Construction	169	966	939	910	8,361,685	685.48
Manufacturing	79	4,369	4,357	4,350	38,643,799	682.00
Trade, Transportation & Utilities	314	6,373	6,345	6,366	51,153,160	618.56
Wholesale Trade	84	771	762	773	8,476,058	848.23
Retail Trade	158	1,951	1,918	1,901	11,275,745	450.97
Transportation, Warehousing & Utilities	72	3,651	3,665	3,692	31,401,357	658.29
Information	12	120	118	117	1,099,760	714.90
Financial Activities	126	517	494	490	4,403,474	677.01
Professional & Business Services	158	1,030	992	1,000	7,221,216	551.43
Education & Health Services	184	1,652	1,733	1,744	12,988,670	584.40
Leisure & Hospitality	95	1,541	1,536	1,520	5,035,233	252.77
Other Services	85	400	407	405	2,945,730	560.88
Local Government	43	896	2,024	2,216	13,402,612	602.20
State Government	10	139	139	137	1,151,515	640.32
CRITTENDEN COUNTY - TOTAL	1,341	14,888	15,193	15,831	\$122,255,987	\$614.50
Natural Resources & Mining	47	349	299	309	2,005,158	483.52
Construction	49	392	346	327	3,661,797	793.46
Manufacturing	42	1,618	1,628	1,613	17,655,662	838.52
Trade, Transportation & Utilities	310	4,434	4,430	4,397	38,637,046	672.37
Wholesale Trade	71	723	741	735	8,029,706	842.66
Retail Trade	160	1,917	1,902	1,888	11,096,161	448.69
Transportation, Warehousing & Utilities	79	1,794	1,787	1,774	19,511,179	840.82
Information	6	73	72	70	672,291	721.60
Financial Activities	94	509	508	498	4,518,610	688.29
Professional & Business Services	115	1,080	1,091	1,068	7,883,647	561.69
Education & Health Services	416	2,314	2,348	2,343	18,967,462	624.85
Leisure & Hospitality	118	2,013	2,010	1,900	7,444,550	290.05
Other Services	87	490	490	488	3,059,815	481.00
Local Government	43	1,195	1,566	2,289	14,172,839	647.65
State Government	14	421	405	529	3,577,110	609.22

TABLE 6. COUNTY SUMMARY

NORTH AMERICAN INDUSTRY CLASSIFICATION SYSTEM - INDUSTRY GROUPS	NUMBER OF	EMPLOYMENT			TOTAL EARNINGS	AVERAGE
	EMPLOYING UNITS	JULY	AUGUST	SEPTEMBER	JUL-SEPT 2011	WEEKLY EARNINGS
CROSS COUNTY - TOTAL	523	4,864	5,110	5,173	\$37,664,715	\$573.83
Natural Resources & Mining	32	197	178	196	1,536,623	621.03
Construction	17	90	91	95	674,368	563.85
Manufacturing	13	735	735	739	5,839,319	610.02
Trade, Transportation & Utilities	137	1,365	1,347	1,342	11,487,731	653.93
Wholesale Trade	29	333	315	301	3,176,351	772.40
Retail Trade	75	774	775	763	5,195,202	518.55
Transportation, Warehousing & Utilities	33	258	257	278	3,116,178	906.83
Information	4	35	34	35	260,592	578.24
Financial Activities	43	303	307	304	2,532,748	639.48
Professional & Business Services	43	159	165	158	1,417,473	678.65
Education & Health Services	138	801	819	812	5,085,406	482.55
Leisure & Hospitality	35	342	336	347	915,194	206.05
Other Services	35	61	60	59	329,571	422.53
Local Government	16	389	654	711	4,616,482	607.38
State Government	10	387	384	375	2,969,208	597.91
DALLAS COUNTY - TOTAL	273	2,880	2,930	2,962	\$19,797,493	\$520.82
Natural Resources & Mining	37	195	190	198	1,496,474	592.35
Construction	13	64	64	70	503,705	587.07
Manufacturing	15	597	599	610	5,292,282	676.24
Trade, Transportation & Utilities	65	510	506	503	3,545,977	538.71
Wholesale Trade	9	46	47	41	742,455	1,278.63
Retail Trade	39	367	362	359	1,951,676	413.96
Transportation, Warehousing & Utilities	17	97	97	103	851,846	661.89
Information	3	16	15	15	134,405	674.27
Financial Activities	15	67	65	65	556,430	651.81
Professional & Business Services	16	56	54	53	325,522	460.86
Education & Health Services	61	895	896	885	5,477,586	472.37
Leisure & Hospitality	10	123	118	124	321,178	203.06
Other Services	15	64	68	66	398,822	464.83
Local Government	15	246	309	326	1,419,347	371.78
State Government	8	47	46	47	325,765	536.98

TABLE 6. COUNTY SUMMARY

NORTH AMERICAN INDUSTRY CLASSIFICATION SYSTEM - INDUSTRY GROUPS	NUMBER OF EMPLOYING UNITS	EMPLOYMENT			TOTAL EARNINGS	AVERAGE
		JULY	AUGUST	SEPTEMBER	JUL-SEPT 2011	WEEKLY EARNINGS
DESHA COUNTY - TOTAL	505	4,165	4,539	4,630	\$34,379,217	\$595.00
Natural Resources & Mining	60	276	274	326	2,206,236	581.20
Construction	17	115	119	119	1,029,723	673.17
Manufacturing	17	873	865	843	10,155,223	907.99
Trade, Transportation & Utilities	108	909	935	945	6,409,322	530.32
Wholesale Trade	18	176	177	180	1,990,198	861.68
Retail Trade	63	541	550	534	2,740,633	389.20
Transportation, Warehousing & Utilities	27	192	208	231	1,678,491	613.86
Information	6	31	29	32	256,531	643.47
Financial Activities	32	225	224	218	1,620,939	560.81
Professional & Business Services	36	84	85	86	529,647	479.32
Education & Health Services	140	718	759	764	5,001,021	514.99
Leisure & Hospitality	38	335	312	306	827,544	200.39
Other Services	22	50	43	44	221,578	373.24
Local Government	19	428	767	807	5,095,789	587.39
State Government	10	121	127	140	1,025,664	610.03
DREW COUNTY - TOTAL	523	5,850	5,890	6,477	\$43,320,832	\$548.78
Natural Resources & Mining	43	353	329	353	2,514,385	560.62
Construction	22	114	103	94	871,565	646.72
Manufacturing	22	818	805	793	6,338,640	605.45
Trade, Transportation & Utilities	120	1,182	1,164	1,161	7,796,055	513.00
Wholesale Trade	18	162	157	160	1,689,675	814.04
Retail Trade	84	927	917	919	5,151,371	430.25
Transportation, Warehousing & Utilities	18	93	90	82	955,009	831.65
Information	8	63	63	62	493,803	606.14
Financial Activities	47	241	234	235	2,233,760	726.03
Professional & Business Services	42	258	274	285	2,236,257	631.65
Education & Health Services	120	849	865	863	5,775,496	517.19
Leisure & Hospitality	43	607	615	631	1,645,111	204.88
Other Services	18	66	63	59	399,274	490.11
Local Government	22	718	800	1,299	7,362,646	603.15
State Government	16	581	575	642	5,653,840	725.66

TABLE 6. COUNTY SUMMARY

NORTH AMERICAN INDUSTRY CLASSIFICATION SYSTEM - INDUSTRY GROUPS	NUMBER OF	EMPLOYMENT			TOTAL EARNINGS	AVERAGE
	EMPLOYING UNITS	JULY	AUGUST	SEPTEMBER	JUL-SEPT 2011	WEEKLY EARNINGS
FAULKNER COUNTY - TOTAL	2,751	38,717	39,371	40,827	\$367,286,018	\$712.76
Natural Resources & Mining	56	1,618	1,648	1,620	32,440,578	1,532.19
Construction	321	2,693	2,658	2,628	24,631,966	712.41
Manufacturing	105	3,375	3,361	3,384	41,234,571	940.28
Trade, Transportation & Utilities	643	7,165	7,124	7,086	54,767,126	591.28
Wholesale Trade	173	1,022	1,020	1,000	12,983,457	984.94
Retail Trade	384	5,293	5,245	5,211	31,860,674	466.85
Transportation, Warehousing & Utilities	86	850	859	875	9,922,995	886.19
Information	31	363	351	341	3,512,117	768.24
Financial Activities	320	1,512	1,493	1,516	14,301,523	730.00
Professional & Business Services	397	6,238	6,326	6,249	73,417,183	900.57
Education & Health Services	423	5,847	5,904	5,912	51,803,023	676.81
Leisure & Hospitality	234	4,456	4,533	4,559	14,399,095	245.27
Other Services	165	731	716	728	5,239,416	555.91
Local Government	38	1,667	2,286	3,417	20,993,426	657.35
State Government	18	3,052	2,971	3,387	30,545,994	749.10
FRANKLIN COUNTY - TOTAL	335	3,904	4,195	4,292	\$35,829,690	\$667.29
Natural Resources & Mining	14	312	304	304	4,391,495	1,101.55
Construction	31	96	98	97	1,015,082	804.98
Manufacturing	15	874	866	878	8,512,601	750.36
Trade, Transportation & Utilities	86	866	858	853	7,390,523	661.82
Wholesale Trade	16	59	57	60	676,874	887.51
Retail Trade	52	509	508	503	2,643,704	401.37
Transportation, Warehousing & Utilities	18	298	293	290	4,069,945	1,066.08
Information	5	26	24	23	192,139	607.39
Financial Activities	27	229	230	231	1,899,156	635.17
Professional & Business Services	29	125	119	120	743,909	471.62
Education & Health Services	56	576	585	590	3,955,469	521.30
Leisure & Hospitality	24	289	268	269	852,821	238.26
Other Services	19	61	59	58	572,243	741.89
Local Government	20	357	683	767	5,273,612	673.48
State Government	9	93	101	102	1,030,640	803.51

TABLE 6. COUNTY SUMMARY

NORTH AMERICAN INDUSTRY CLASSIFICATION SYSTEM - INDUSTRY GROUPS	NUMBER OF EMPLOYING UNITS	EMPLOYMENT			TOTAL EARNINGS	AVERAGE WEEKLY EARNINGS
		JULY	AUGUST	SEPTEMBER	JUL-SEPT 2011	
FULTON COUNTY - TOTAL	215	1,807	1,812	1,946	\$10,959,936	\$454.49
Construction	9	14	15	15	97,478	511.25
Manufacturing	12	137	133	134	653,690	373.39
Trade, Transportation & Utilities	51	340	338	337	2,175,275	494.57
Retail Trade	34	186	187	180	863,624	360.39
Other Trade, Transportation & Utilities	17	154	151	157	1,311,651	655.17
Information	3	32	32	34	128,485	302.55
Financial Activities	15	102	95	93	729,147	580.22
Professional & Business Services	17	67	66	67	569,847	657.52
Education & Health Services	58	429	427	429	2,373,964	426.33
Leisure & Hospitality	17	172	164	165	476,851	219.65
Local Government	13	379	407	534	2,809,054	491.09
State Government	10	112	112	114	851,922	581.65
Other	10	23	23	24	94,223	310.63
GARLAND COUNTY - TOTAL	3,120	34,575	35,033	35,387	\$271,150,492	\$595.96
Natural Resources & Mining	36	325	325	351	3,802,042	876.52
Construction	346	1,766	1,718	1,713	13,686,973	607.76
Manufacturing	105	2,155	2,154	2,157	20,747,493	740.47
Trade, Transportation & Utilities	700	7,295	7,337	7,240	51,116,432	539.32
Wholesale Trade	139	908	908	914	9,361,254	791.31
Retail Trade	500	5,815	5,866	5,771	35,196,486	465.41
Transportation, Warehousing & Utilities	61	572	563	555	6,558,692	895.59
Information	35	327	333	322	3,046,944	716.03
Financial Activities	349	1,440	1,407	1,404	13,376,495	726.15
Professional & Business Services	393	3,067	3,064	3,064	24,716,211	620.31
Education & Health Services	507	7,551	7,523	7,552	78,147,252	797.05
Leisure & Hospitality	357	6,750	6,516	6,224	26,194,767	310.16
Other Services	233	985	964	963	5,715,567	452.95
Local Government	33	1,930	2,596	3,242	21,129,899	627.72
State Government	26	984	1,096	1,155	9,470,417	675.57

TABLE 6. COUNTY SUMMARY

NORTH AMERICAN INDUSTRY CLASSIFICATION SYSTEM - INDUSTRY GROUPS	NUMBER OF	EMPLOYMENT			TOTAL EARNINGS	AVERAGE
	EMPLOYING UNITS	JULY	AUGUST	SEPTEMBER	JUL-SEPT 2011	WEEKLY EARNINGS
GRANT COUNTY - TOTAL	312	3,390	3,420	3,668	\$25,824,402	\$568.76
Natural Resources & Mining	23	166	170	171	2,105,859	958.52
Construction	27	168	168	167	1,595,789	732.13
Manufacturing	14	873	856	866	7,146,621	635.54
Trade, Transportation & Utilities	83	640	631	614	3,976,621	486.83
Wholesale Trade	15	125	117	123	1,022,571	646.51
Retail Trade	45	458	453	430	2,461,482	423.59
Transportation, Warehousing & Utilities	23	57	61	61	492,568	635.03
Information	3	14	14	15	162,896	874.22
Financial Activities	24	95	94	90	672,253	556.04
Professional & Business Services	20	63	64	60	690,048	851.56
Education & Health Services	56	470	478	473	2,749,368	446.50
Leisure & Hospitality	24	227	240	245	736,177	238.61
Other Services	20	48	45	44	258,148	434.84
Local Government	10	565	598	863	5,275,856	600.94
State Government	8	61	62	60	454,766	573.48
GREENE COUNTY - TOTAL	908	13,824	13,924	14,330	\$113,799,480	\$624.11
Natural Resources & Mining	36	251	247	236	1,864,014	586.05
Construction	76	339	324	318	2,946,864	693.22
Manufacturing	59	4,668	4,635	4,693	47,557,807	784.14
Trade, Transportation & Utilities	233	2,332	2,346	2,330	15,945,592	525.08
Wholesale Trade	56	506	502	487	4,686,434	723.40
Retail Trade	147	1,616	1,633	1,627	9,374,953	443.69
Transportation, Warehousing & Utilities	30	210	211	216	1,884,205	682.60
Information	11	110	105	100	593,339	434.68
Financial Activities	83	475	482	487	4,202,903	671.68
Professional & Business Services	101	1,043	1,063	1,066	7,556,478	549.75
Education & Health Services	149	1,780	1,783	1,834	14,075,705	601.86
Leisure & Hospitality	70	1,041	1,031	1,021	3,268,664	243.88
Other Services	49	180	175	192	1,113,421	469.73
Local Government	30	1,183	1,316	1,644	11,076,403	616.97
State Government	11	422	417	409	3,598,290	665.36

TABLE 6. COUNTY SUMMARY

NORTH AMERICAN INDUSTRY CLASSIFICATION SYSTEM - INDUSTRY GROUPS	NUMBER OF	EMPLOYMENT			TOTAL EARNINGS	AVERAGE
	EMPLOYING UNITS	JULY	AUGUST	SEPTEMBER	JUL-SEPT 2011	WEEKLY EARNINGS
HEMPSTEAD COUNTY - TOTAL	513	7,957	7,999	8,568	\$74,496,428	\$701.01
Natural Resources & Mining	16	191	185	187	1,881,230	771.10
Construction	34	1,249	1,226	1,250	21,160,267	1,310.91
Manufacturing	31	1,759	1,675	1,699	14,741,076	662.73
Trade, Transportation & Utilities	132	1,345	1,315	1,413	10,818,142	612.94
Wholesale Trade	25	306	296	328	3,155,578	783.02
Retail Trade	80	855	834	856	4,760,942	431.70
Transportation, Warehousing & Utilities	27	184	185	229	2,901,622	1,119.74
Information	8	51	51	51	385,615	581.62
Financial Activities	37	229	222	225	2,099,013	716.55
Professional & Business Services	39	147	144	144	1,386,041	735.30
Education & Health Services	91	1,118	1,129	1,132	8,009,674	547.02
Leisure & Hospitality	43	599	604	618	1,807,846	229.10
Other Services	37	161	165	162	1,193,764	564.52
Local Government	29	447	594	976	5,224,755	597.78
State Government	16	661	689	711	5,789,005	648.19
HOT SPRING COUNTY - TOTAL	592	7,905	8,253	8,467	\$61,408,126	\$575.48
Natural Resources & Mining	25	154	144	145	1,213,167	631.97
Construction	63	379	471	512	5,163,603	874.89
Manufacturing	30	1,328	1,341	1,324	15,483,226	894.83
Trade, Transportation & Utilities	147	1,326	1,310	1,312	10,425,197	609.38
Wholesale Trade	15	76	75	76	800,289	813.58
Retail Trade	94	893	875	878	5,190,751	452.71
Transportation, Warehousing & Utilities	38	357	360	358	4,434,157	951.88
Information	7	45	46	45	376,352	638.61
Financial Activities	50	272	267	265	2,349,101	674.25
Professional & Business Services	49	1,187	1,194	1,167	5,140,301	334.34
Education & Health Services	95	1,161	1,142	1,137	8,199,897	550.08
Leisure & Hospitality	46	549	576	568	1,514,815	206.48
Other Services	40	154	171	175	801,616	369.98
Local Government	27	698	906	1,114	5,396,639	458.20
State Government	13	652	685	703	5,344,212	604.55

TABLE 6. COUNTY SUMMARY

NORTH AMERICAN INDUSTRY CLASSIFICATION SYSTEM - INDUSTRY GROUPS	NUMBER OF EMPLOYING UNITS	EMPLOYMENT			TOTAL EARNINGS	AVERAGE
		JULY	AUGUST	SEPTEMBER	JUL-SEPT 2011	WEEKLY EARNINGS
HOWARD COUNTY - TOTAL	360	6,917	6,988	7,199	\$48,784,568	\$533.45
Natural Resources & Mining	20	189	191	193	1,592,893	641.52
Construction	18	117	113	113	1,007,623	677.93
Manufacturing	21	3,900	3,896	3,806	27,528,529	547.56
Trade, Transportation & Utilities	100	925	928	919	6,521,366	542.90
Wholesale Trade	19	76	79	79	938,646	925.69
Retail Trade	58	635	636	631	3,567,215	432.81
Transportation, Warehousing & Utilities	23	214	213	209	2,015,505	731.32
Information	5	31	31	33	201,841	490.30
Financial Activities	36	148	147	141	991,230	524.65
Professional & Business Services	23	102	103	110	753,255	551.84
Education & Health Services	65	657	641	661	4,426,521	521.44
Leisure & Hospitality	22	294	297	304	882,386	227.52
Other Services	22	124	129	119	700,926	434.82
Local Government	17	318	406	686	3,314,386	542.45
State Government	11	112	106	114	863,612	600.29
INDEPENDENCE COUNTY - TOTAL	932	13,979	14,053	14,859	\$117,000,181	\$629.50
Natural Resources & Mining	15	240	239	267	2,473,606	765.19
Construction	69	450	464	460	3,860,180	648.33
Manufacturing	46	3,362	3,307	3,335	31,171,573	719.06
Trade, Transportation & Utilities	238	2,921	2,869	2,860	22,292,072	594.72
Wholesale Trade	37	409	412	409	4,033,836	756.82
Retail Trade	152	1,675	1,649	1,669	9,230,659	426.63
Transportation, Warehousing & Utilities	49	837	808	782	9,027,577	858.38
Information	10	133	124	124	1,044,685	632.76
Financial Activities	83	499	489	485	4,444,190	696.25
Professional & Business Services	88	537	569	570	4,176,181	575.02
Education & Health Services	175	3,110	3,080	3,091	30,143,259	749.50
Leisure & Hospitality	74	993	1,035	1,064	3,266,945	243.83
Other Services	70	356	346	353	1,974,024	431.80
Local Government	47	753	958	1,591	7,306,032	510.60
State Government	17	625	573	659	4,847,434	602.39

TABLE 6. COUNTY SUMMARY

NORTH AMERICAN INDUSTRY CLASSIFICATION SYSTEM - INDUSTRY GROUPS	NUMBER OF EMPLOYING UNITS	EMPLOYMENT			TOTAL EARNINGS	AVERAGE WEEKLY EARNINGS
		JULY	AUGUST	SEPTEMBER	JUL-SEPT 2011	
IZARD COUNTY - TOTAL	271	2,758	3,006	3,103	\$19,599,575	\$510.09
Natural Resources & Mining	5	147	145	150	1,241,153	648.01
Construction	26	105	104	105	1,096,117	805.57
Manufacturing	11	229	221	213	1,816,732	632.35
Trade, Transportation & Utilities	69	563	558	548	3,318,408	458.83
Wholesale Trade	10	20	18	21	148,378	580.36
Retail Trade	47	419	414	402	2,088,150	390.19
Transportation, Warehousing & Utilities	12	124	126	125	1,081,880	665.77
Financial Activities	31	143	145	146	1,063,633	565.56
Professional & Business Services	18	89	97	97	557,117	454.29
Education & Health Services	53	643	644	655	3,707,722	440.59
Leisure & Hospitality	18	133	120	107	319,502	204.81
Local Government	18	263	523	551	2,879,737	497.05
State Government	10	415	422	505	3,446,871	592.72
Other	12	28	27	26	152,583	434.71
JACKSON COUNTY - TOTAL	481	5,006	5,236	5,371	\$42,274,900	\$624.85
Natural Resources & Mining	55	306	292	310	2,251,478	572.22
Construction	24	111	111	153	1,151,973	708.91
Manufacturing	18	915	919	924	9,851,298	824.28
Trade, Transportation & Utilities	110	1,024	1,036	1,041	7,783,783	579.25
Wholesale Trade	24	206	201	201	2,343,161	889.36
Retail Trade	69	705	718	706	4,264,833	462.28
Transportation, Warehousing & Utilities	17	113	117	134	1,175,789	745.43
Information	4	23	23	23	142,700	477.26
Financial Activities	35	154	154	154	1,444,801	721.68
Professional & Business Services	38	146	137	135	1,271,898	702.19
Education & Health Services	101	838	840	832	7,180,283	660.15
Leisure & Hospitality	28	303	297	281	814,611	213.38
Other Services	23	69	71	75	457,514	491.07
Local Government	32	415	649	717	3,660,363	474.28
State Government	13	702	707	726	6,264,198	677.09

TABLE 6. COUNTY SUMMARY

NORTH AMERICAN INDUSTRY CLASSIFICATION SYSTEM - INDUSTRY GROUPS	NUMBER OF EMPLOYING UNITS	EMPLOYMENT			TOTAL EARNINGS	AVERAGE WEEKLY EARNINGS
		JULY	AUGUST	SEPTEMBER	JUL-SEPT 2011	
JEFFERSON COUNTY - TOTAL	2,134	27,740	28,777	29,552	\$252,493,344	\$676.99
Natural Resources & Mining	41	317	301	302	3,745,687	939.55
Construction	106	1,239	1,189	1,304	17,430,573	1,077.82
Manufacturing	63	5,414	5,368	5,353	56,443,423	807.28
Trade, Transportation & Utilities	436	5,258	5,235	5,262	42,797,701	626.87
Wholesale Trade	80	1,001	1,003	1,009	9,974,423	763.95
Retail Trade	293	3,319	3,295	3,304	20,405,803	474.80
Transportation, Warehousing & Utilities	63	938	937	949	12,417,475	1,014.72
Information	13	123	120	116	1,136,023	730.25
Financial Activities	146	1,152	1,133	1,125	11,548,845	781.56
Professional & Business Services	168	1,611	1,606	1,671	14,198,224	670.32
Education & Health Services	813	5,187	5,303	5,279	45,319,320	663.22
Leisure & Hospitality	137	1,919	1,892	1,876	5,591,920	226.91
Other Services	132	682	665	661	4,178,973	480.27
Local Government	42	1,668	2,639	3,158	18,687,089	577.68
State Government	37	3,170	3,326	3,445	31,415,566	729.28
JOHNSON COUNTY - TOTAL	471	8,050	8,204	8,686	\$59,196,591	\$547.74
Natural Resources & Mining	16	123	137	134	1,058,794	620.14
Construction	27	153	110	124	997,858	595.03
Manufacturing	35	3,168	3,176	3,174	21,092,566	511.40
Trade, Transportation & Utilities	109	1,949	1,973	1,998	15,600,173	608.11
Retail Trade	67	856	864	856	4,790,927	429.19
Other Trade, Transportation & Utilities	42	1,093	1,109	1,142	10,809,246	745.95
Information	4	30	31	31	186,493	467.79
Financial Activities	48	212	198	199	1,717,121	650.67
Professional & Business Services	45	163	152	150	1,175,586	583.42
Education & Health Services	99	1,148	1,179	1,195	9,436,785	618.32
Leisure & Hospitality	37	479	486	482	1,443,643	230.23
Other Services	28	80	64	63	482,505	537.91
Local Government	14	410	563	1,002	4,811,487	562.20
State Government	9	135	135	134	1,193,580	681.79

TABLE 6. COUNTY SUMMARY

NORTH AMERICAN INDUSTRY CLASSIFICATION SYSTEM - INDUSTRY GROUPS	NUMBER OF EMPLOYING UNITS	EMPLOYMENT			TOTAL EARNINGS	AVERAGE WEEKLY EARNINGS
		JULY	AUGUST	SEPTEMBER	JUL-SEPT 2011	
LAFAYETTE COUNTY - TOTAL	176	1,201	1,217	1,259	\$8,539,887	\$535.96
Natural Resources & Mining	32	148	143	144	1,465,468	777.44
Construction	8	61	62	65	646,773	793.91
Manufacturing	5	30	29	28	258,695	686.19
Trade, Transportation & Utilities	36	205	201	193	1,244,686	479.52
Retail Trade	22	138	129	124	525,692	310.26
Other Trade, Transportation & Utilities	14	67	72	69	718,994	797.70
Financial Activities	14	53	51	47	360,723	551.28
Professional & Business Services	14	58	60	58	808,268	1,059.79
Education & Health Services	34	243	241	238	1,316,519	420.79
Leisure & Hospitality	6	51	51	51	143,742	216.81
Local Government	13	223	248	300	1,457,963	436.39
State Government	7	47	46	48	323,472	529.41
Other	7	82	85	87	513,578	466.61
LAWRENCE COUNTY - TOTAL	418	3,567	3,858	4,097	\$26,627,932	\$533.32
Natural Resources & Mining	41	187	184	181	1,596,672	667.51
Construction	26	117	117	111	985,209	659.00
Manufacturing	23	470	473	477	3,448,110	560.36
Trade, Transportation & Utilities	112	885	875	889	6,172,523	537.72
Wholesale Trade	21	196	188	198	1,792,197	710.63
Retail Trade	62	559	561	564	3,067,311	420.33
Transportation, Warehousing & Utilities	29	130	126	127	1,313,015	791.13
Financial Activities	33	148	148	145	1,100,295	575.77
Professional & Business Services	26	98	96	96	858,667	683.29
Education & Health Services	75	487	531	555	3,733,476	547.72
Leisure & Hospitality	23	233	250	285	710,442	213.47
Local Government	27	766	1,017	1,190	6,832,422	530.34
State Government	10	102	101	102	698,494	528.49
Other	22	74	66	66	491,622	550.73

TABLE 6. COUNTY SUMMARY

NORTH AMERICAN INDUSTRY CLASSIFICATION SYSTEM - INDUSTRY GROUPS	NUMBER OF EMPLOYING UNITS	EMPLOYMENT			TOTAL EARNINGS	AVERAGE WEEKLY EARNINGS
		JULY	AUGUST	SEPTEMBER	JUL-SEPT 2011	
LEE COUNTY - TOTAL	313	1,916	2,060	2,122	\$14,712,542	\$556.77
Natural Resources & Mining	35	237	229	266	1,677,241	528.76
Construction	9	28	27	29	157,965	433.97
Trade, Transportation & Utilities	48	346	345	344	2,542,090	566.80
Wholesale Trade	8	77	74	75	749,644	765.46
Retail Trade	24	196	200	188	1,025,114	405.08
Transportation, Warehousing & Utilities	16	73	71	81	767,332	787.01
Financial Activities	16	78	75	74	587,645	597.40
Professional & Business Services	15	58	54	52	588,081	827.51
Education & Health Services	146	412	416	411	2,712,599	505.23
Leisure & Hospitality	7	83	84	83	222,306	205.21
Local Government	15	150	308	337	1,769,692	513.70
State Government	7	498	494	497	4,288,746	664.68
Other	15	26	28	29	166,177	462.03
LINCOLN COUNTY - TOTAL	265	2,747	2,892	2,914	\$21,691,749	\$585.27
Natural Resources & Mining	30	156	159	180	1,285,409	599.26
Construction	15	75	72	70	528,495	562.03
Manufacturing	9	358	345	339	2,567,255	568.56
Trade, Transportation & Utilities	48	350	339	332	3,071,570	694.24
Wholesale Trade	10	53	52	49	512,471	767.94
Retail Trade	24	169	161	166	750,039	348.96
Transportation, Warehousing & Utilities	14	128	126	117	1,809,060	1,125.27
Financial Activities	19	60	60	61	536,555	684.09
Professional & Business Services	13	31	32	34	236,231	562.01
Education & Health Services	86	402	405	396	2,373,776	455.36
Leisure & Hospitality	12	148	146	144	316,608	166.81
Local Government	7	155	334	356	2,017,821	551.07
State Government	12	973	964	964	8,529,444	678.50
Other	14	39	36	38	228,585	466.82

TABLE 6. COUNTY SUMMARY

NORTH AMERICAN INDUSTRY CLASSIFICATION SYSTEM - INDUSTRY GROUPS	NUMBER OF	EMPLOYMENT			TOTAL EARNINGS	AVERAGE
	EMPLOYING UNITS	JULY	AUGUST	SEPTEMBER	JUL-SEPT 2011	WEEKLY EARNINGS
LITTLE RIVER COUNTY - TOTAL	249	3,551	3,550	3,705	\$39,262,379	\$838.47
Natural Resources & Mining	10	68	62	65	514,732	609.15
Construction	21	214	208	219	1,770,410	637.37
Manufacturing	18	1,305	1,295	1,293	23,718,345	1,405.98
Trade, Transportation & Utilities	57	605	600	597	4,263,674	546.02
Wholesale Trade	10	40	40	39	458,299	888.75
Retail Trade	34	376	373	370	2,172,057	447.94
Transportation, Warehousing & Utilities	13	189	187	188	1,633,318	668.30
Financial Activities	22	99	99	93	722,392	572.87
Professional & Business Services	17	98	91	96	753,122	609.82
Education & Health Services	41	160	150	153	1,001,887	499.36
Leisure & Hospitality	16	210	204	202	609,493	228.33
Local Government	20	617	674	819	4,858,012	531.32
State Government	11	73	71	74	549,440	581.62
Other	16	102	96	94	500,872	395.84
LOGAN COUNTY - TOTAL	498	4,992	5,230	5,353	\$38,093,378	\$564.42
Natural Resources & Mining	22	123	118	131	1,638,054	1,016.16
Construction	49	233	232	236	2,147,250	706.87
Manufacturing	23	1,122	1,148	1,153	9,932,175	669.60
Trade, Transportation & Utilities	117	930	932	923	6,034,762	500.05
Wholesale Trade	14	78	78	72	308,626	312.37
Retail Trade	73	713	716	718	3,889,369	418.05
Transportation, Warehousing & Utilities	30	139	138	133	1,836,767	1,033.83
Information	6	41	41	41	388,408	728.72
Financial Activities	40	219	214	211	1,848,742	662.47
Professional & Business Services	47	122	111	107	723,026	490.74
Education & Health Services	101	735	752	751	5,387,669	555.54
Leisure & Hospitality	28	277	277	268	829,344	232.83
Other Services	29	130	129	129	973,036	578.73
Local Government	22	510	724	845	4,615,512	512.32
State Government	14	550	552	558	3,575,400	497.04

TABLE 6. COUNTY SUMMARY

NORTH AMERICAN INDUSTRY CLASSIFICATION SYSTEM - INDUSTRY GROUPS	NUMBER OF EMPLOYING UNITS	EMPLOYMENT			TOTAL EARNINGS	AVERAGE WEEKLY EARNINGS
		JULY	AUGUST	SEPTEMBER	JUL-SEPT 2011	
LONOKE COUNTY - TOTAL	1,307	12,522	12,769	12,704	\$90,520,783	\$549.79
Natural Resources & Mining	82	544	509	498	5,027,697	748.06
Construction	141	761	731	714	6,502,098	680.18
Manufacturing	41	1,414	1,402	1,420	14,795,354	806.02
Trade, Transportation & Utilities	320	2,879	2,831	2,796	18,625,456	505.31
Wholesale Trade	79	393	377	381	4,158,814	833.82
Retail Trade	174	2,249	2,215	2,149	11,810,078	412.13
Transportation, Warehousing & Utilities	67	237	239	266	2,656,564	826.22
Information	18	99	98	93	955,865	760.64
Financial Activities	131	492	484	478	5,273,454	836.97
Professional & Business Services	154	670	668	660	5,228,273	603.87
Education & Health Services	207	1,654	1,682	1,675	11,282,746	519.60
Leisure & Hospitality	100	1,501	1,485	1,444	4,547,645	236.90
Other Services	72	221	211	213	1,325,496	474.24
Local Government	26	2,128	2,506	2,550	15,676,820	503.58
State Government	15	159	162	163	1,279,879	610.24
MADISON COUNTY - TOTAL	235	2,773	3,040	3,129	\$21,194,820	\$546.98
Natural Resources & Mining	10	30	34	38	271,851	615.05
Construction	25	76	80	85	881,291	843.88
Manufacturing	20	1,083	1,077	1,131	8,243,936	578.08
Trade, Transportation & Utilities	43	531	523	513	3,419,402	503.57
Wholesale Trade	4	17	15	14	142,365	714.21
Retail Trade	32	413	423	412	2,306,301	426.46
Transportation, Warehousing & Utilities	7	101	85	87	970,736	820.57
Information	5	38	37	37	401,175	826.60
Financial Activities	16	76	78	79	602,242	596.48
Professional & Business Services	28	187	179	177	1,222,817	519.68
Education & Health Services	44	228	232	249	1,450,656	472.17
Leisure & Hospitality	13	179	169	162	469,944	212.64
Other Services	15	33	32	32	245,049	582.99
Local Government	9	271	557	583	3,644,927	596.13
State Government	7	41	42	43	341,530	625.51

TABLE 6. COUNTY SUMMARY

NORTH AMERICAN INDUSTRY CLASSIFICATION SYSTEM - INDUSTRY GROUPS	NUMBER OF EMPLOYING UNITS	EMPLOYMENT			TOTAL EARNINGS	AVERAGE WEEKLY EARNINGS
		JULY	AUGUST	SEPTEMBER	JUL-SEPT 2011	
MARION COUNTY - TOTAL	306	3,479	3,569	3,651	\$22,464,492	\$484.54
Natural Resources & Mining	5	27	31	31	146,850	380.77
Construction	22	72	68	59	346,451	401.76
Manufacturing	20	1,463	1,477	1,499	10,050,531	522.49
Trade, Transportation & Utilities	56	544	542	522	3,213,978	461.25
Wholesale Trade	7	42	42	43	367,714	668.17
Retail Trade	40	469	466	445	2,505,446	418.97
Transportation, Warehousing & Utilities	9	33	34	34	340,818	778.72
Information	4	60	58	57	693,387	914.36
Financial Activities	36	217	218	203	1,573,919	569.30
Professional & Business Services	27	50	48	49	369,916	580.72
Education & Health Services	61	348	352	356	2,097,906	458.46
Leisure & Hospitality	37	234	233	229	627,773	208.15
Other Services	13	28	31	30	124,192	322.02
Local Government	18	358	432	533	2,744,811	478.77
State Government	7	78	79	83	474,778	456.52
MILLER COUNTY - TOTAL	880	12,635	13,001	13,577	\$110,286,718	\$649.04
Natural Resources & Mining	24	148	128	136	1,378,585	772.17
Construction	90	967	979	950	8,166,209	650.73
Manufacturing	27	2,398	2,408	2,381	33,768,175	1,084.27
Trade, Transportation & Utilities	234	3,373	3,422	3,419	28,819,410	651.13
Wholesale Trade	55	555	555	544	6,053,571	844.61
Retail Trade	129	1,330	1,329	1,350	7,603,122	437.66
Transportation, Warehousing & Utilities	50	1,488	1,538	1,525	15,162,717	768.86
Information	5	75	77	76	1,508,462	1,526.78
Financial Activities	81	375	374	373	3,230,002	664.34
Professional & Business Services	87	1,345	1,378	1,337	6,924,650	393.60
Education & Health Services	136	890	904	905	6,289,580	537.77
Leisure & Hospitality	92	1,411	1,448	1,456	4,866,536	260.27
Other Services	63	377	338	351	1,812,796	392.44
Local Government	25	778	1,051	1,703	8,586,814	561.03
State Government	16	498	494	490	4,935,499	768.53

TABLE 6. COUNTY SUMMARY

NORTH AMERICAN INDUSTRY CLASSIFICATION SYSTEM - INDUSTRY GROUPS	NUMBER OF EMPLOYING UNITS	EMPLOYMENT			TOTAL EARNINGS	AVERAGE WEEKLY EARNINGS
		JULY	AUGUST	SEPTEMBER	JUL-SEPT 2011	
MISSISSIPPI COUNTY - TOTAL	1,227	18,390	18,873	20,058	\$180,865,654	\$728.15
Natural Resources & Mining	107	710	687	806	4,424,163	463.44
Construction	67	714	677	699	9,224,664	1,018.55
Manufacturing	57	6,793	6,868	6,990	91,795,391	1,025.79
Trade, Transportation & Utilities	296	3,209	3,157	3,157	27,321,851	662.09
Wholesale Trade	62	501	487	491	6,065,027	946.33
Retail Trade	173	1,860	1,859	1,840	10,170,421	422.20
Transportation, Warehousing & Utilities	61	848	811	826	11,086,403	1,029.54
Information	10	92	92	90	568,357	478.68
Financial Activities	96	549	546	547	4,172,763	586.45
Professional & Business Services	90	1,224	1,427	1,669	8,677,680	463.55
Education & Health Services	293	1,697	1,757	1,816	12,001,307	525.53
Leisure & Hospitality	83	1,137	1,157	1,111	3,455,373	234.18
Other Services	62	244	231	244	1,258,165	403.82
Local Government	44	1,428	1,708	2,305	13,440,079	570.03
State Government	22	593	566	624	4,525,861	585.77
MONROE COUNTY - TOTAL	323	2,155	2,273	2,289	\$14,688,253	\$504.63
Natural Resources & Mining	36	196	172	169	1,673,552	719.19
Construction	15	69	70	66	611,841	688.75
Manufacturing	6	110	109	105	789,856	562.58
Trade, Transportation & Utilities	78	649	664	657	4,867,705	570.21
Wholesale Trade	18	232	242	241	2,215,572	715.09
Retail Trade	37	281	283	285	1,497,324	406.99
Transportation, Warehousing & Utilities	23	136	139	131	1,154,809	656.39
Financial Activities	18	90	86	87	747,343	655.76
Professional & Business Services	15	34	33	33	214,491	494.98
Education & Health Services	79	316	316	330	1,776,760	426.22
Leisure & Hospitality	25	244	236	229	647,824	210.86
Local Government	22	225	361	389	1,933,290	457.58
State Government	8	123	129	130	900,794	544.18
Other	21	99	97	94	524,797	417.61

TABLE 6. COUNTY SUMMARY

NORTH AMERICAN INDUSTRY CLASSIFICATION SYSTEM - INDUSTRY GROUPS	NUMBER OF EMPLOYING UNITS	EMPLOYMENT			TOTAL EARNINGS	AVERAGE WEEKLY EARNINGS
		JULY	AUGUST	SEPTEMBER	JUL-SEPT 2011	
MONTGOMERY COUNTY - TOTAL	172	1,772	1,725	1,502	\$9,172,352	\$423.42
Natural Resources & Mining	8	44	43	42	443,474	793.33
Construction	20	70	57	64	529,530	639.79
Trade, Transportation & Utilities	44	241	231	240	1,575,445	510.62
Wholesale Trade	13	72	70	70	563,647	613.55
Retail Trade	22	153	142	152	897,839	463.52
Transportation, Warehousing & Utilities	9	16	19	18	113,959	496.19
Financial Activities	10	77	78	70	568,515	583.09
Professional & Business Services	13	27	24	25	139,771	424.41
Education & Health Services	19	91	93	94	565,842	469.71
Leisure & Hospitality	20	695	577	239	1,636,209	249.89
Local Government	9	299	387	492	2,340,321	458.47
State Government	7	40	40	40	352,986	678.82
Other	22	188	195	196	1,020,259	406.64
NEVADA COUNTY - TOTAL	193	2,086	2,112	2,274	\$17,299,856	\$616.85
Natural Resources & Mining	9	33	33	33	243,453	567.49
Trade, Transportation & Utilities	40	503	512	512	3,757,988	567.93
Wholesale Trade	3	14	14	14	60,469	332.25
Retail Trade	27	283	287	284	1,516,145	409.70
Transportation, Warehousing & Utilities	10	206	211	214	2,181,374	797.77
Financial Activities	14	57	60	62	432,592	557.70
Professional & Business Services	12	50	52	52	358,773	537.62
Education & Health Services	37	400	402	413	2,411,543	458.03
Leisure & Hospitality	10	88	91	87	257,337	223.25
Other Services	15	59	50	49	199,712	291.69
Local Government	27	257	265	412	1,554,438	384.06
State Government	10	75	77	75	597,751	607.68
Other	19	564	570	579	7,486,269	1,008.52

TABLE 6. COUNTY SUMMARY

NORTH AMERICAN INDUSTRY CLASSIFICATION SYSTEM - INDUSTRY GROUPS	NUMBER OF EMPLOYING UNITS	EMPLOYMENT			TOTAL EARNINGS	AVERAGE WEEKLY EARNINGS
		JULY	AUGUST	SEPTEMBER	JUL-SEPT 2011	
NEWTON COUNTY - TOTAL	128	850	1,036	1,040	\$5,368,054	\$423.37
Construction	6	21	12	10	97,412	522.78
Manufacturing	10	51	51	51	359,706	542.54
Trade, Transportation & Utilities	29	159	141	141	875,255	458.01
Wholesale Trade	3	9	8	8	58,852	543.25
Retail Trade	14	99	87	89	436,570	366.35
Transportation, Warehousing & Utilities	12	51	46	44	379,833	621.66
Education & Health Services	32	227	236	233	1,052,301	348.91
Leisure & Hospitality	17	93	87	89	342,751	294.04
Other Services	5	5	5	6	32,546	469.41
Local Government	13	160	368	377	1,845,703	470.64
State Government	6	92	93	89	456,380	384.37
Other	10	42	43	44	306,000	547.41
OUACHITA COUNTY - TOTAL	652	7,014	7,165	7,375	\$52,675,909	\$563.98
Natural Resources & Mining	40	213	214	213	1,792,019	646.16
Construction	43	214	206	199	1,795,425	669.35
Manufacturing	28	878	864	845	7,790,765	694.96
Trade, Transportation & Utilities	167	1,643	1,605	1,590	11,458,063	546.54
Wholesale Trade	25	233	232	232	2,585,059	855.89
Retail Trade	114	1,104	1,067	1,064	5,515,244	393.43
Transportation, Warehousing & Utilities	28	306	306	294	3,357,760	855.26
Information	7	50	49	47	423,703	669.71
Financial Activities	60	324	318	318	2,482,575	596.77
Professional & Business Services	48	467	456	447	3,580,385	603.10
Education & Health Services	134	1,233	1,230	1,243	9,920,350	617.73
Leisure & Hospitality	41	504	515	493	1,382,279	210.97
Other Services	40	146	153	149	820,189	422.49
Local Government	30	621	860	1,112	5,493,536	488.91
State Government	14	721	695	719	5,736,620	620.06

TABLE 6. COUNTY SUMMARY

NORTH AMERICAN INDUSTRY CLASSIFICATION SYSTEM - INDUSTRY GROUPS	NUMBER OF EMPLOYING UNITS	EMPLOYMENT			TOTAL EARNINGS	AVERAGE
		JULY	AUGUST	SEPTEMBER	JUL-SEPT 2011	WEEKLY EARNINGS
PERRY COUNTY - TOTAL	158	1,152	1,335	1,379	\$9,401,103	\$561.17
Construction	20	96	97	103	973,791	759.19
Manufacturing	5	37	40	42	315,917	612.64
Trade, Transportation & Utilities	27	215	218	211	1,276,420	457.39
Retail Trade	16	173	183	175	682,767	296.73
Other Trade, Transportation & Utilities	11	42	35	36	593,653	1,212.36
Financial Activities	13	34	34	32	350,139	808.01
Professional & Business Services	14	43	44	44	371,111	653.75
Education & Health Services	36	239	244	263	1,396,998	432.15
Leisure & Hospitality	9	45	52	56	162,997	245.85
Local Government	11	199	381	408	1,863,243	435.20
State Government	8	46	50	53	337,279	522.37
Other	15	198	175	167	2,353,208	1,005.64
PHILLIPS COUNTY - TOTAL	949	5,755	6,074	6,184	\$40,989,689	\$525.13
Natural Resources & Mining	75	337	375	405	1,926,197	397.95
Construction	26	119	112	111	845,574	570.56
Manufacturing	12	357	359	357	2,995,798	644.30
Trade, Transportation & Utilities	171	1,469	1,473	1,423	10,815,137	571.78
Wholesale Trade	34	374	382	374	3,706,062	756.85
Retail Trade	88	784	792	749	4,324,596	429.24
Transportation, Warehousing & Utilities	49	311	299	300	2,784,479	706.12
Information	9	43	43	41	334,945	608.62
Financial Activities	41	221	210	209	1,892,505	682.39
Professional & Business Services	51	229	231	239	2,042,422	674.29
Education & Health Services	448	1,464	1,551	1,517	9,644,072	491.08
Leisure & Hospitality	40	378	370	346	1,170,068	246.82
Other Services	34	74	70	70	400,299	431.67
Local Government	28	574	809	976	5,280,889	516.60
State Government	14	490	471	490	3,641,783	579.19

TABLE 6. COUNTY SUMMARY

NORTH AMERICAN INDUSTRY CLASSIFICATION SYSTEM - INDUSTRY GROUPS	NUMBER OF EMPLOYING UNITS	EMPLOYMENT			TOTAL EARNINGS	AVERAGE
		JULY	AUGUST	SEPTEMBER	JUL-SEPT 2011	WEEKLY EARNINGS
PIKE COUNTY - TOTAL	263	2,134	2,300	2,330	\$14,185,437	\$483.97
Natural Resources & Mining	26	126	121	118	1,054,791	666.89
Construction	16	38	32	37	229,462	494.89
Manufacturing	18	200	200	192	1,203,337	469.08
Trade, Transportation & Utilities	85	560	543	550	3,539,880	494.19
Wholesale Trade	14	137	136	132	983,195	560.23
Retail Trade	50	359	341	350	1,851,868	407.00
Transportation, Warehousing & Utilities	21	64	66	68	704,817	821.47
Information	5	25	25	25	293,747	903.84
Financial Activities	23	194	191	191	1,751,033	701.54
Professional & Business Services	9	31	32	31	442,867	1,087.23
Education & Health Services	21	265	270	272	1,522,073	435.25
Leisure & Hospitality	20	255	241	220	683,299	220.23
Other Services	19	59	70	69	354,782	413.50
Local Government	11	241	441	487	2,343,534	462.63
State Government	10	140	134	138	766,632	429.41
POINSETT COUNTY - TOTAL	521	4,834	5,056	5,107	\$36,832,475	\$566.77
Natural Resources & Mining	61	323	326	337	3,208,702	750.98
Construction	26	108	106	98	903,341	668.15
Manufacturing	21	635	623	632	5,844,025	713.56
Trade, Transportation & Utilities	125	1,366	1,334	1,301	10,052,504	579.81
Wholesale Trade	29	408	398	380	4,674,557	909.56
Retail Trade	69	781	757	733	3,888,553	395.14
Transportation, Warehousing & Utilities	27	177	179	188	1,489,394	631.81
Information	6	57	57	57	679,653	917.21
Financial Activities	40	274	276	279	2,416,486	672.68
Professional & Business Services	29	171	190	190	1,720,926	720.76
Education & Health Services	106	615	609	611	3,981,731	500.74
Leisure & Hospitality	42	359	357	369	958,446	203.85
Other Services	24	58	52	53	338,614	479.40
Local Government	30	737	1,002	1,038	5,594,236	464.88
State Government	11	131	124	142	1,133,811	659.06

TABLE 6. COUNTY SUMMARY

NORTH AMERICAN INDUSTRY CLASSIFICATION SYSTEM - INDUSTRY GROUPS	NUMBER OF	EMPLOYMENT			TOTAL EARNINGS	AVERAGE
	EMPLOYING UNITS	JULY	AUGUST	SEPTEMBER	JUL-SEPT 2011	WEEKLY EARNINGS
POLK COUNTY - TOTAL	528	5,638	5,935	5,995	\$38,637,807	\$507.54
Natural Resources & Mining	22	146	136	139	1,383,429	758.32
Construction	39	203	202	203	1,349,527	512.22
Manufacturing	33	1,265	1,273	1,266	9,933,703	602.63
Trade, Transportation & Utilities	137	1,225	1,208	1,192	7,523,697	478.96
Wholesale Trade	19	65	69	65	690,562	800.81
Retail Trade	80	852	822	807	4,353,678	404.96
Transportation, Warehousing & Utilities	38	308	317	320	2,479,457	605.48
Information	9	58	58	58	392,150	520.09
Financial Activities	42	229	230	226	1,794,471	604.54
Professional & Business Services	47	154	144	141	1,024,751	538.68
Education & Health Services	89	1,037	1,078	1,090	7,247,413	521.83
Leisure & Hospitality	43	516	528	502	1,325,080	197.79
Other Services	33	141	141	136	878,148	484.81
Local Government	21	408	667	726	3,917,149	501.92
State Government	13	256	270	316	1,868,289	512.05
POPE COUNTY - TOTAL	1,785	24,755	24,920	26,041	\$208,536,897	\$635.58
Natural Resources & Mining	37	719	471	497	6,229,453	852.14
Construction	170	1,239	1,274	1,426	12,613,123	738.95
Manufacturing	76	4,542	4,494	4,517	42,399,890	721.95
Trade, Transportation & Utilities	440	5,881	5,851	5,831	56,687,072	744.84
Wholesale Trade	93	598	601	604	6,250,442	800.01
Retail Trade	268	3,223	3,200	3,190	18,017,249	432.52
Transportation, Warehousing & Utilities	79	2,060	2,050	2,037	32,419,381	1,217.08
Information	22	207	207	213	2,191,147	806.46
Financial Activities	178	748	744	732	6,412,999	665.43
Professional & Business Services	249	2,543	2,565	2,618	19,225,097	574.24
Education & Health Services	323	3,436	3,485	3,504	26,080,736	577.33
Leisure & Hospitality	133	2,369	2,374	2,438	7,583,194	243.69
Other Services	99	439	426	438	2,635,681	466.80
Local Government	42	1,192	1,475	2,282	12,994,669	605.93
State Government	16	1,440	1,554	1,545	13,483,836	685.54

TABLE 6. COUNTY SUMMARY

NORTH AMERICAN INDUSTRY CLASSIFICATION SYSTEM - INDUSTRY GROUPS	NUMBER OF EMPLOYING UNITS	EMPLOYMENT			TOTAL EARNINGS	AVERAGE WEEKLY EARNINGS
		JULY	AUGUST	SEPTEMBER	JUL-SEPT 2011	
PRAIRIE COUNTY - TOTAL	242	1,182	1,313	1,358	\$9,245,287	\$553.73
Natural Resources & Mining	26	159	152	137	1,722,780	887.42
Construction	12	79	85	68	807,704	803.42
Trade, Transportation & Utilities	58	279	284	310	2,034,242	537.73
Wholesale Trade	10	73	67	64	755,387	854.51
Retail Trade	32	160	165	166	722,930	339.78
Transportation, Warehousing & Utilities	16	46	52	80	555,925	720.73
Financial Activities	19	53	55	53	420,170	602.25
Professional & Business Services	13	46	45	45	297,705	505.16
Education & Health Services	50	199	203	204	1,214,386	462.45
Leisure & Hospitality	18	101	105	97	251,109	191.25
Other Services	16	46	44	44	217,318	374.26
Local Government	15	160	277	337	1,770,150	527.77
State Government	9	40	41	41	314,339	594.59
Other	6	20	22	22	195,384	704.51
PULASKI COUNTY - TOTAL	15,191	230,036	232,700	235,784	\$2,491,737,786	\$823.19
Natural Resources & Mining	65	836	837	844	11,504,447	1,054.78
Construction	1,086	8,471	8,367	8,593	95,780,025	869.14
Manufacturing	370	12,933	12,912	12,884	163,846,800	976.29
Trade, Transportation & Utilities	3,461	46,505	46,559	46,560	466,697,621	771.35
Wholesale Trade	1,270	12,650	12,588	12,504	184,390,381	1,127.43
Retail Trade	1,769	24,482	24,517	24,327	167,529,753	527.24
Transportation, Warehousing & Utilities	422	9,373	9,454	9,729	114,777,487	927.55
Information	235	6,818	6,774	6,674	106,370,912	1,211.25
Financial Activities	1,767	15,885	15,801	15,712	221,969,299	1,080.71
Professional & Business Services	3,098	34,275	34,314	33,936	367,393,236	826.95
Education & Health Services	2,487	37,292	37,396	37,482	420,574,021	865.25
Leisure & Hospitality	1,134	21,341	21,319	21,044	83,928,296	304.03
Other Services	1,187	7,466	7,215	7,123	59,425,390	628.95
Local Government	102	10,780	13,596	16,553	136,590,054	770.13
State Government	199	27,434	27,610	28,379	357,657,685	989.37

TABLE 6. COUNTY SUMMARY

NORTH AMERICAN INDUSTRY CLASSIFICATION SYSTEM - INDUSTRY GROUPS	NUMBER OF EMPLOYING UNITS	EMPLOYMENT			TOTAL EARNINGS	AVERAGE WEEKLY EARNINGS
		JULY	AUGUST	SEPTEMBER	JUL-SEPT 2011	
RANDOLPH COUNTY - TOTAL	417	4,515	4,615	4,704	\$29,031,194	\$484.28
Natural Resources & Mining	26	112	115	113	648,861	440.40
Construction	32	77	78	73	430,179	435.40
Manufacturing	33	678	677	672	4,792,560	545.62
Trade, Transportation & Utilities	102	887	897	924	5,864,737	499.78
Wholesale Trade	22	197	193	212	1,290,644	494.75
Retail Trade	58	558	569	573	3,158,628	428.77
Transportation, Warehousing & Utilities	22	132	135	139	1,415,465	804.55
Information	5	43	43	43	407,403	728.81
Financial Activities	29	119	120	120	896,020	575.97
Professional & Business Services	40	261	267	263	1,299,857	379.23
Education & Health Services	69	1,142	1,122	1,103	7,816,092	535.70
Leisure & Hospitality	28	373	365	341	1,003,847	214.70
Other Services	20	45	46	45	262,022	444.61
Local Government	22	591	644	726	3,609,043	424.71
State Government	11	187	241	281	2,000,573	651.16
SAINT FRANCIS COUNTY - TOTAL	829	7,060	7,554	7,545	\$52,950,908	\$551.44
Natural Resources & Mining	35	181	187	177	1,537,552	651.05
Construction	41	217	209	208	1,661,039	604.60
Manufacturing	12	712	711	690	5,875,768	641.72
Trade, Transportation & Utilities	168	2,058	2,039	2,050	14,989,169	562.72
Wholesale Trade	36	633	615	603	5,404,655	673.81
Retail Trade	109	1,133	1,126	1,137	6,663,847	452.83
Transportation, Warehousing & Utilities	23	292	298	310	2,920,667	748.89
Information	8	73	74	75	596,342	619.90
Financial Activities	64	291	302	296	2,504,080	650.02
Professional & Business Services	47	316	318	322	2,269,830	547.92
Education & Health Services	331	1,497	1,489	1,489	10,349,278	533.70
Leisure & Hospitality	47	631	631	601	1,860,052	230.40
Other Services	32	80	81	82	359,465	341.37
Local Government	28	501	995	1,009	6,494,137	598.26
State Government	16	503	518	546	4,454,196	655.96

TABLE 6. COUNTY SUMMARY

NORTH AMERICAN INDUSTRY CLASSIFICATION SYSTEM - INDUSTRY GROUPS	NUMBER OF	EMPLOYMENT			TOTAL EARNINGS	AVERAGE
	EMPLOYING UNITS	JULY	AUGUST	SEPTEMBER	JUL-SEPT 2011	WEEKLY EARNINGS
SALINE COUNTY - TOTAL	1,823	19,990	20,772	20,935	\$160,147,053	\$599.01
Natural Resources & Mining	12	39	36	36	599,321	1,245.99
Construction	275	1,815	1,797	1,792	16,616,006	709.56
Manufacturing	81	1,316	1,316	1,295	14,802,461	869.86
Trade, Transportation & Utilities	408	4,505	4,447	4,411	33,396,628	576.74
Wholesale Trade	109	498	500	494	5,395,066	834.46
Retail Trade	242	3,672	3,614	3,590	24,607,017	522.12
Transportation, Warehousing & Utilities	57	335	333	327	3,394,545	787.29
Information	10	80	77	77	889,565	877.28
Financial Activities	185	652	654	655	6,805,031	800.81
Professional & Business Services	247	1,436	1,434	1,410	12,009,562	647.53
Education & Health Services	268	3,213	3,204	3,216	26,051,346	624.09
Leisure & Hospitality	147	2,746	2,745	2,708	9,350,794	263.19
Other Services	143	661	670	675	4,269,285	491.14
Local Government	31	2,479	3,346	3,619	27,399,933	669.53
State Government	16	1,048	1,046	1,041	7,957,121	585.73
SCOTT COUNTY - TOTAL	187	2,949	2,942	2,949	\$18,057,115	\$471.38
Natural Resources & Mining	16	161	160	155	1,493,606	724.11
Trade, Transportation & Utilities	37	451	434	436	2,974,012	519.54
Wholesale Trade	8	65	62	65	754,209	906.50
Retail Trade	23	318	304	304	1,473,176	367.13
Transportation, Warehousing & Utilities	6	68	68	67	746,627	848.76
Financial Activities	22	68	63	64	428,488	507.09
Professional & Business Services	13	11	9	9	94,260	750.08
Education & Health Services	35	299	297	292	2,397,486	623.05
Leisure & Hospitality	15	160	161	144	513,855	255.01
Other Services	12	52	51	51	368,665	552.45
Local Government	5	384	391	415	1,638,309	317.71
State Government	7	64	65	71	429,116	495.13
Other	25	1,299	1,311	1,312	7,719,318	454.20

TABLE 6. COUNTY SUMMARY

NORTH AMERICAN INDUSTRY CLASSIFICATION SYSTEM - INDUSTRY GROUPS	NUMBER OF EMPLOYING UNITS	EMPLOYMENT			TOTAL EARNINGS	AVERAGE WEEKLY EARNINGS
		JULY	AUGUST	SEPTEMBER	JUL-SEPT 2011	
SEARCY COUNTY - TOTAL	194	1,471	1,640	1,641	\$8,814,881	\$428.07
Construction	8	15	12	12	119,804	708.90
Manufacturing	16	175	176	178	973,737	424.78
Trade, Transportation & Utilities	42	291	292	282	1,457,011	388.71
Wholesale Trade	8	54	51	52	267,488	393.17
Retail Trade	28	215	220	209	960,037	344.02
Transportation, Warehousing & Utilities	6	22	21	21	229,486	827.47
Information	5	12	14	14	78,409	452.36
Financial Activities	14	108	101	97	653,497	492.83
Professional & Business Services	11	36	38	35	104,128	220.45
Education & Health Services	59	357	356	357	2,019,579	435.57
Leisure & Hospitality	13	131	125	114	320,186	199.70
Local Government	10	160	348	376	1,757,262	458.74
State Government	7	117	116	126	662,971	426.17
Other	9	69	62	50	668,297	852.06
SEBASTIAN COUNTY - TOTAL	3,778	62,952	64,554	64,854	\$594,961,130	\$713.76
Natural Resources & Mining	65	1,577	1,572	1,574	28,113,222	1,373.63
Construction	282	2,456	2,406	2,370	23,444,619	748.11
Manufacturing	196	13,177	13,156	13,090	141,036,394	825.58
Trade, Transportation & Utilities	953	12,663	12,640	12,493	102,233,140	624.20
Wholesale Trade	241	2,677	2,637	2,574	29,935,049	875.77
Retail Trade	566	7,770	7,797	7,750	45,982,391	455.09
Transportation, Warehousing & Utilities	146	2,216	2,206	2,169	26,315,700	921.39
Information	51	853	863	850	11,345,514	1,020.34
Financial Activities	399	2,435	2,411	2,397	26,968,185	859.23
Professional & Business Services	590	7,745	8,121	8,056	73,920,187	713.09
Education & Health Services	576	10,364	10,464	10,497	109,227,271	804.67
Leisure & Hospitality	324	5,578	5,587	5,566	20,099,505	277.23
Other Services	282	1,442	1,347	1,341	9,200,979	514.12
Local Government	40	2,964	4,396	4,667	33,219,884	637.41
State Government	20	1,698	1,591	1,953	16,152,230	711.07

TABLE 6. COUNTY SUMMARY

NORTH AMERICAN INDUSTRY CLASSIFICATION SYSTEM - INDUSTRY GROUPS	NUMBER OF EMPLOYING UNITS	EMPLOYMENT			TOTAL EARNINGS	AVERAGE WEEKLY EARNINGS
		JULY	AUGUST	SEPTEMBER	JUL-SEPT 2011	
SEVIER COUNTY - TOTAL	325	4,740	4,790	4,961	\$33,480,789	\$533.18
Natural Resources & Mining	16	221	216	216	1,786,965	631.51
Construction	19	130	111	112	1,130,758	739.22
Trade, Transportation & Utilities	95	850	813	813	5,329,659	496.74
Wholesale Trade	16	109	97	101	1,306,988	982.45
Retail Trade	64	657	644	637	3,228,394	384.42
Transportation, Warehousing & Utilities	15	84	72	75	794,277	793.48
Information	3	21	21	21	177,044	648.51
Financial Activities	28	192	187	187	1,402,968	572.02
Professional & Business Services	30	92	80	80	660,099	604.49
Education & Health Services	49	512	512	507	3,439,775	518.48
Leisure & Hospitality	25	249	238	236	678,451	216.55
Local Government	12	683	826	909	5,722,370	546.13
State Government	8	185	160	202	1,247,214	526.18
Other	40	1,605	1,626	1,678	11,905,486	559.67
SHARP COUNTY - TOTAL	404	3,528	3,536	3,715	\$22,447,112	\$480.57
Construction	22	131	126	123	1,144,877	695.27
Manufacturing	18	171	165	163	908,069	419.95
Trade, Transportation & Utilities	88	961	970	963	6,520,505	519.95
Wholesale Trade	15	54	54	50	195,768	285.93
Retail Trade	56	593	596	594	3,014,310	390.13
Transportation, Warehousing & Utilities	17	314	320	319	3,310,427	801.62
Information	6	49	50	51	622,348	957.46
Financial Activities	35	212	208	207	1,756,755	646.58
Professional & Business Services	48	139	142	146	1,123,926	607.42
Education & Health Services	94	676	695	694	4,213,128	470.83
Leisure & Hospitality	30	390	364	371	1,055,834	216.58
Local Government	25	510	526	773	3,672,843	468.53
State Government	8	95	96	98	615,340	491.35
Other	30	194	194	126	813,487	365.23

TABLE 6. COUNTY SUMMARY

NORTH AMERICAN INDUSTRY CLASSIFICATION SYSTEM - INDUSTRY GROUPS	NUMBER OF	EMPLOYMENT			TOTAL EARNINGS	AVERAGE
	EMPLOYING UNITS	JULY	AUGUST	SEPTEMBER	JUL-SEPT 2011	WEEKLY EARNINGS
STONE COUNTY - TOTAL	294	2,574	2,681	2,661	\$15,023,272	\$437.96
Natural Resources & Mining	7	54	33	34	48,753	92.98
Construction	22	74	65	66	343,408	386.58
Manufacturing	23	195	198	194	1,023,452	402.35
Trade, Transportation & Utilities	71	700	700	679	3,986,866	442.54
Wholesale Trade	11	45	45	40	290,823	516.25
Retail Trade	47	613	615	600	3,273,623	413.27
Transportation, Warehousing & Utilities	13	42	40	39	422,420	805.63
Financial Activities	30	109	105	99	496,775	366.26
Professional & Business Services	15	33	34	32	174,833	407.54
Education & Health Services	55	520	527	538	4,133,542	601.83
Leisure & Hospitality	34	404	396	374	1,079,489	212.19
Local Government	10	239	386	393	2,226,059	504.62
State Government	8	159	151	156	901,851	446.61
Other	19	87	86	96	608,244	521.80
UNION COUNTY - TOTAL	1,345	16,291	16,679	17,108	\$165,857,772	\$764.31
Natural Resources & Mining	108	566	543	541	6,772,879	947.26
Construction	77	1,193	1,231	1,231	15,137,292	955.74
Manufacturing	53	2,861	2,847	2,858	38,158,031	1,027.98
Trade, Transportation & Utilities	336	3,690	3,601	3,600	34,484,418	730.69
Wholesale Trade	69	746	726	730	11,516,731	1,206.95
Retail Trade	209	2,105	2,034	2,031	11,786,465	440.84
Transportation, Warehousing & Utilities	58	839	841	839	11,181,222	1,024.33
Information	13	141	141	138	1,105,309	607.31
Financial Activities	119	782	761	757	6,902,912	692.60
Professional & Business Services	135	1,440	1,408	1,393	19,449,845	1,058.34
Education & Health Services	260	2,376	2,402	2,433	21,489,401	687.71
Leisure & Hospitality	88	1,224	1,219	1,168	3,651,623	233.37
Other Services	105	511	480	473	3,019,833	476.01
Local Government	34	928	1,485	1,904	10,659,824	569.83
State Government	17	579	561	612	5,026,405	662.07

TABLE 6. COUNTY SUMMARY

NORTH AMERICAN INDUSTRY CLASSIFICATION SYSTEM - INDUSTRY GROUPS	NUMBER OF	EMPLOYMENT			TOTAL EARNINGS	AVERAGE
	EMPLOYING UNITS	JULY	AUGUST	SEPTEMBER	JUL-SEPT 2011	WEEKLY EARNINGS
VAN BUREN COUNTY - TOTAL	371	3,532	3,671	3,898	\$29,317,397	\$609.45
Natural Resources & Mining	13	182	175	172	2,933,597	1,279.74
Construction	42	253	256	269	2,380,195	706.01
Manufacturing	11	66	66	68	573,562	661.80
Trade, Transportation & Utilities	104	1,101	1,081	1,106	10,663,440	748.42
Wholesale Trade	10	38	26	26	310,987	797.40
Retail Trade	59	591	564	575	3,133,553	417.99
Transportation, Warehousing & Utilities	35	472	491	505	7,218,900	1,134.81
Information	8	51	50	51	420,374	638.22
Financial Activities	31	150	149	149	1,113,222	573.43
Professional & Business Services	31	131	121	127	768,482	467.92
Education & Health Services	61	691	693	708	4,550,553	501.97
Leisure & Hospitality	28	426	420	391	1,543,258	287.90
Other Services	24	70	71	69	468,828	515.20
Local Government	11	341	522	721	3,365,416	490.30
State Government	7	70	67	67	536,470	606.87
WASHINGTON COUNTY - TOTAL	5,508	85,915	87,833	89,830	840,986,862	\$736.31
Natural Resources & Mining	48	392	389	415	4,530,125	874.09
Construction	478	3,981	3,934	3,909	42,550,992	830.47
Manufacturing	221	12,718	12,766	12,763	124,236,437	749.60
Trade, Transportation & Utilities	1,348	20,838	20,727	20,742	184,343,247	682.76
Wholesale Trade	403	3,772	3,743	3,705	55,168,004	1,134.68
Retail Trade	765	10,523	10,489	10,473	66,676,238	488.70
Transportation, Warehousing & Utilities	180	6,543	6,495	6,564	62,499,005	735.78
Information	84	1,073	1,052	1,032	11,495,681	840.31
Financial Activities	571	3,307	3,282	3,253	37,036,048	868.40
Professional & Business Services	957	9,824	9,858	9,783	130,040,864	1,018.48
Education & Health Services	760	12,957	13,033	13,140	136,927,368	807.53
Leisure & Hospitality	576	9,767	10,188	10,369	35,943,343	273.53
Other Services	382	1,843	1,786	1,783	13,338,979	568.78
Local Government	61	3,595	4,768	7,665	53,180,879	765.69
State Government	22	5,620	6,050	4,976	67,362,899	933.88

TABLE 6. COUNTY SUMMARY

NORTH AMERICAN INDUSTRY CLASSIFICATION SYSTEM - INDUSTRY GROUPS	NUMBER OF	EMPLOYMENT			TOTAL EARNINGS	AVERAGE
	EMPLOYING UNITS	JULY	AUGUST	SEPTEMBER	JUL-SEPT 2011	WEEKLY EARNINGS
WHITE COUNTY - TOTAL	1,853	24,472	25,170	25,601	\$220,484,704	\$676.22
Natural Resources & Mining	54	1,705	1,715	1,787	28,778,700	1,275.44
Construction	190	1,182	1,166	1,172	10,891,802	714.06
Manufacturing	71	2,562	2,473	2,350	25,318,499	791.16
Trade, Transportation & Utilities	482	6,363	6,339	6,393	54,112,033	653.96
Wholesale Trade	101	629	626	649	6,374,436	772.60
Retail Trade	283	3,216	3,224	3,255	18,333,777	436.40
Transportation, Warehousing & Utilities	98	2,518	2,489	2,489	29,403,820	905.22
Information	20	174	170	183	1,803,764	789.85
Financial Activities	172	875	866	863	8,285,629	734.28
Professional & Business Services	201	1,478	1,522	1,549	11,254,427	570.93
Education & Health Services	324	4,724	4,726	4,883	46,194,198	743.75
Leisure & Hospitality	153	2,371	2,329	2,394	7,145,588	232.45
Other Services	121	564	543	531	4,570,698	643.94
Local Government	47	1,864	2,586	2,748	16,990,716	544.73
State Government	18	610	735	748	5,138,650	566.58
WOODRUFF COUNTY - TOTAL	218	1,730	1,853	1,929	\$12,866,314	\$538.67
Natural Resources & Mining	27	157	142	149	1,137,283	585.83
Construction	5	44	38	37	323,662	627.66
Manufacturing	7	325	329	353	2,197,783	503.66
Trade, Transportation & Utilities	51	412	401	422	3,498,606	653.74
Wholesale Trade	12	158	158	181	1,890,279	877.70
Retail Trade	27	180	169	170	809,275	359.84
Transportation, Warehousing & Utilities	12	74	74	71	799,052	841.99
Financial Activities	13	60	58	56	483,232	640.89
Professional & Business Services	6	6	5	6	50,230	681.86
Education & Health Services	78	275	280	279	1,925,792	532.87
Leisure & Hospitality	7	61	55	58	188,880	250.50
Local Government	10	323	480	504	2,604,604	459.88
State Government	6	48	46	46	349,654	576.35
Other	8	19	19	19	106,588	431.53

TABLE 6. COUNTY SUMMARY

NORTH AMERICAN INDUSTRY CLASSIFICATION SYSTEM - INDUSTRY GROUPS	NUMBER OF	EMPLOYMENT			TOTAL EARNINGS	AVERAGE
	EMPLOYING UNITS	JULY	AUGUST	SEPTEMBER	JUL-SEPT 2011	WEEKLY EARNINGS
YELL COUNTY - TOTAL	439	5,858	6,140	6,350	\$38,473,993	\$483.90
Natural Resources & Mining	27	194	193	198	1,740,649	686.65
Construction	35	237	257	219	1,732,716	560.81
Manufacturing	20	2,463	2,483	2,482	15,741,019	489.03
Trade, Transportation & Utilities	83	656	644	638	3,313,924	394.61
Wholesale Trade	15	34	31	32	182,394	433.93
Retail Trade	48	526	517	513	2,315,390	343.39
Transportation, Warehousing & Utilities	20	96	96	93	816,140	660.84
Financial Activities	33	166	166	163	1,232,996	574.82
Professional & Business Services	43	217	203	199	1,525,830	568.84
Education & Health Services	112	688	724	717	4,354,227	471.97
Leisure & Hospitality	31	333	326	331	966,808	225.36
Local Government	27	686	941	1,200	6,364,952	519.57
State Government	12	109	106	109	686,041	488.63
Other	16	109	97	94	814,831	626.79
STATEWIDE COUNTY - TOTAL	5,381	18,162	18,464	20,191	\$271,489,668	\$1,102.69
Natural Resources & Mining	62	346	359	393	5,962,244	1,253.10
Construction	558	3,078	3,159	3,203	38,070,782	930.67
Manufacturing	37	274	269	269	3,241,423	921.21
Trade, Transportation & Utilities	1,910	5,710	5,793	5,865	110,522,991	1,468.52
Wholesale Trade	1,635	4,571	4,580	4,645	95,041,187	1,589.78
Retail Trade	104	418	459	450	5,797,581	1,008.22
Transportation, Warehousing & Utilities	171	721	754	770	9,684,223	995.47
Information	137	372	429	408	5,398,305	1,030.41
Financial Activities	327	997	1,020	1,023	15,759,484	1,196.32
Professional & Business Services	1,910	5,432	5,449	5,612	69,689,798	975.10
Education & Health Services	186	913	960	2,380	11,440,941	620.79
Leisure & Hospitality	63	77	66	73	672,049	718.00
Other	191	963	960	965	10,731,651	857.53

TABLE 7. FEDERAL GOVERNMENT EMPLOYMENT AND EARNINGS IN ARKANSAS

NORTH AMERICAN INDUSTRY CLASSIFICATION SYSTEM - INDUSTRY GROUPS	NUMBER OF EMPLOYING UNITS	EMPLOYMENT			TOTAL EARNINGS	AVERAGE WEEKLY EARNINGS
		JULY	AUGUST	SEPTEMBER	JUL-SEPT 2011	
TOTAL	1,249	21,308	21,025	20,726	\$331,778,032	\$1,214.17
Trade, Transportation & Utilities	612	5,898	5,798	5,498	76,191,581	1,022.61
Information	2	55	56	59	721,412	979.29
Financial Activities	19	167	165	163	2,690,163	1,254.16
Professional & Business Services	30	944	901	843	14,748,869	1,266.21
Education & Health Services	17	4,948	4,929	4,958	94,342,454	1,467.57
Leisure & Hospitality	22	419	398	395	3,438,695	654.74
Other Services	3	8	8	10	55,622	493.69
Public Administration	544	8,869	8,770	8,800	139,589,236	1,218.39

TABLE 8. WORKFORCE INVESTMENT AREA SUMMARY

NORTH AMERICAN INDUSTRY CLASSIFICATION SYSTEM - INDUSTRY GROUPS	NUMBER OF	EMPLOYMENT			TOTAL EARNINGS	AVERAGE
	EMPLOYING UNITS	JULY	AUGUST	SEPTEMBER	JUL-SEPT 2011	WEEKLY EARNINGS
CENTRAL WORKFORCE INVESTMENT AREA	6,446	74,566	76,498	78,113	\$641,887,394	\$646.35
Natural Resources & Mining	212	2,556	2,517	2,460	41,463,928	1,270.22
Construction	764	5,417	5,341	5,268	49,169,615	708.03
Trade, Transportation & Utilities	1,507	15,477	15,350	15,260	113,691,157	569.28
Wholesale Trade	389	2,218	2,206	2,180	25,508,296	891.36
Retail Trade	869	11,655	11,522	11,401	70,498,023	470.49
Transportation, Warehousing & Utilities	249	1,604	1,622	1,679	17,684,838	832.03
Information	67	594	576	558	5,692,528	760.22
Financial Activities	673	2,799	2,772	2,789	27,547,521	760.42
Professional & Business Services	826	8,424	8,506	8,397	91,167,214	830.68
Education & Health Services	1,027	11,229	11,309	11,337	92,128,261	627.61
Leisure & Hospitality	524	9,048	9,104	9,037	29,196,467	247.81
Local Government	132	6,659	8,776	10,312	67,773,619	607.45
State Government	66	4,422	4,349	4,762	40,998,127	699.11
Other	648	7,941	7,898	7,933	83,058,957	806.30

*Note: Pulaski County is not included in the Central Workforce Investment. Please refer to Page 53 for information on Pulaski County.
Central Workforce Includes these counties: Faulkner, Lonoke, Monroe, Prairie, and Saline.

EASTERN WORKFORCE INVESTMENT AREA	3,955	34,483	35,991	36,855	\$268,573,841	\$577.46
Natural Resources & Mining	224	1,301	1,268	1,353	8,682,771	510.89
Construction	142	846	785	770	7,000,743	672.87
Trade, Transportation & Utilities	834	9,672	9,634	9,556	78,471,173	627.42
Wholesale Trade	178	2,140	2,127	2,088	21,066,418	764.99
Retail Trade	456	4,804	4,795	4,725	28,304,920	456.01
Transportation, Warehousing & Utilities	200	2,728	2,712	2,743	29,099,835	820.65
Financial Activities	258	1,402	1,402	1,381	12,035,588	663.67
Professional & Business Services	271	1,842	1,859	1,839	14,201,453	591.56
Education & Health Services	1,479	6,488	6,623	6,572	46,758,817	548.21
Leisure & Hospitality	247	3,447	3,431	3,277	11,612,170	263.88
Local Government	130	2,809	4,332	5,322	32,334,039	598.71
State Government	61	2,299	2,272	2,437	18,931,043	623.39
Other	309	4,377	4,385	4,348	38,546,044	678.51

Eastern Workforce Includes these counties: Crittenden, Cross, Lee, Phillips, and Saint Francis.

TABLE 8. WORKFORCE INVESTMENT AREA SUMMARY

NORTH AMERICAN INDUSTRY CLASSIFICATION SYSTEM - INDUSTRY GROUPS	NUMBER OF	EMPLOYMENT			TOTAL EARNINGS	AVERAGE
	EMPLOYING UNITS	JULY	AUGUST	SEPTEMBER	JUL-SEPT 2011	WEEKLY EARNINGS
NORTH CENTRAL WORKFORCE INVESTMENT AREA	5,728	66,175	67,951	70,333	\$541,468,208	\$611.15
Construction	474	2,707	2,679	2,742	23,994,846	681.26
Manufacturing	253	9,208	9,067	9,024	84,089,101	710.84
Trade, Transportation & Utilities	1,440	16,008	15,934	16,004	127,873,978	615.47
Retail Trade	878	9,158	9,109	9,114	50,707,397	427.37
Other Trade, Transportation & Utilities	562	6,850	6,825	6,890	77,166,581	865.92
Information	66	564	552	567	4,846,083	664.48
Financial Activities	518	2,537	2,502	2,488	21,799,859	668.36
Professional & Business Services	527	2,932	2,987	3,019	21,993,322	567.84
Education & Health Services	1,078	12,722	12,760	12,954	109,905,240	659.87
Leisure & Hospitality	467	6,315	6,219	6,183	19,236,869	237.18
Local Government	231	5,448	7,531	9,342	49,443,760	511.18
State Government	106	2,941	3,018	3,228	23,701,249	595.35
Other	568	4,793	4,702	4,782	54,583,901	882.28

North Central Workforce Includes these counties: Cleburne, Fulton, Independence, Izard, Jackson, Sharp, Stone, Van Buren, White, and Woodruff.

NORTHEAST WORKFORCE INVESTMENT AREA	6,550	90,759	93,824	96,453	\$773,425,311	\$635.09
Natural Resources & Mining	406	2,231	2,205	2,331	15,902,739	542.32
Construction	451	3,365	3,330	3,279	32,898,543	761.18
Manufacturing	326	20,069	20,026	20,212	223,740,520	856.16
Trade, Transportation & Utilities	1,692	18,370	18,346	18,269	139,711,344	586.36
Wholesale Trade	402	3,747	3,688	3,707	40,179,830	832.19
Retail Trade	984	11,698	11,768	11,591	67,221,778	442.50
Transportation, Warehousing & Utilities	306	2,925	2,890	2,971	32,309,736	848.63
Financial Activities	571	3,177	3,167	3,168	30,322,379	735.65
Professional & Business Services	661	7,498	7,731	8,006	48,793,126	484.61
Education & Health Services	1,215	14,516	14,876	15,092	132,509,862	687.42
Leisure & Hospitality	489	7,827	7,861	7,853	25,238,396	247.41
Local Government	213	7,176	9,757	11,622	69,363,726	560.57
State Government	99	4,177	4,202	4,274	38,849,670	708.55
Other	427	2,353	2,323	2,347	16,095,006	528.87

Northeast Workforce Includes these counties: Clay, Craighead, Greene, Lawrence, Mississippi, Poinsett, and Randolph.

TABLE 8. WORKFORCE INVESTMENT AREA SUMMARY

NORTH AMERICAN INDUSTRY CLASSIFICATION SYSTEM - INDUSTRY GROUPS	NUMBER OF	EMPLOYMENT			TOTAL EARNINGS	AVERAGE
	EMPLOYING UNITS	JULY	AUGUST	SEPTEMBER	JUL-SEPT 2011	WEEKLY EARNINGS
NORTHWEST WORKFORCE INVESTMENT AREA	14,873	221,936	226,767	232,266	\$2,221,359,815	\$752.78
Natural Resources & Mining	133	1,590	1,555	1,566	17,040,497	834.73
Trade, Transportation & Utilities	3,680	52,469	52,251	52,343	499,465,246	733.85
Wholesale Trade	1,205	9,336	9,310	9,268	152,281,416	1,258.93
Retail Trade	2,011	26,449	26,353	26,259	166,108,992	484.85
Transportation, Warehousing & Utilities	464	16,684	16,588	16,816	181,074,838	834.26
Education & Health Services	2,150	28,300	28,657	29,027	277,047,783	743.56
Leisure & Hospitality	1,520	24,317	24,675	24,637	88,980,259	278.88
Other Services	957	4,593	4,473	4,457	32,049,535	546.92
Local Government	307	10,734	15,277	21,594	143,697,765	696.59
State Government	107	8,017	8,342	7,748	87,970,773	842.12
Other	6,019	91,916	91,537	90,894	1,075,107,957	904.34
Northwest Workforce Includes these counties: Baxter, Benton, Boone, Carroll, Madison, Marion, Newton, Searcy, and Washington.						
SOUTHEAST WORKFORCE INVESTMENT AREA	5,998	68,468	70,578	73,115	\$590,252,585	\$642.02
Natural Resources & Mining	397	2,513	2,432	2,589	21,971,132	672.98
Construction	313	3,060	2,947	3,065	33,668,149	856.43
Manufacturing	208	15,439	15,355	15,336	164,937,636	825.11
Trade, Transportation & Utilities	1,313	12,956	12,910	12,900	99,131,126	590.12
Retail Trade	793	8,119	8,092	8,040	46,001,279	437.74
Other Trade, Transportation & Utilities	520	4,837	4,818	4,860	53,129,847	844.69
Education & Health Services	1,825	11,077	11,335	11,341	84,478,524	577.58
Local Government	207	5,677	7,838	9,850	57,637,963	569.27
State Government	137	6,017	6,171	6,399	55,077,614	683.82
Other	1,598	11,729	11,590	11,635	73,350,441	484.27
Southeast Workforce Includes these counties: Arkansas, Ashley, Bradley, Chicot, Cleveland, Desha, Drew, Grant, Jefferson, and Lincoln.						

TABLE 8. WORKFORCE INVESTMENT AREA SUMMARY

NORTH AMERICAN INDUSTRY CLASSIFICATION SYSTEM - INDUSTRY GROUPS	NUMBER OF	EMPLOYMENT			TOTAL EARNINGS	AVERAGE
	EMPLOYING UNITS	JULY	AUGUST	SEPTEMBER	JUL-SEPT 2011	WEEKLY EARNINGS
SOUTHWEST WORKFORCE INVESTMENT AREA	5,831	76,232	77,608	80,416	\$674,000,203	\$663.97
Natural Resources & Mining	372	2,459	2,398	2,393	25,493,755	811.47
Trade, Transportation & Utilities	1456	15396	15211	15284	122968073	618.36
Retail Trade	893	8,943	8,750	8,791	48,276,593	420.66
Other Trade, Transportation & Utilities	563	6,453	6,461	6,493	74,691,480	888.16
Information	60	512	509	506	5,378,188	812.78
Financial Activities	501	2,774	2,734	2,712	23,086,496	648.13
Education & Health Services	1,106	9,575	9,605	9,680	70,327,356	562.35
Leisure & Hospitality	405	5,382	5,406	5,390	16,511,697	235.53
Other Services	405	1,977	1,916	1,903	10,790,593	429.63
Local Government	259	5,912	7,792	10,438	56,013,598	535.42
State Government	139	3,639	3,591	3,755	31,489,191	661.51
Other	1,128	28,606	28,446	28,355	311,941,256	842.86

Southwest Workforce Includes these counties: Calhoun, Columbia, Dallas, Hempstead, Howard, Lafayette, Little River, Miller, Nevada, Ouachita, Sevier, and Union

WEST CENTRAL WORKFORCE INVESTMENT AREA	8,196	101,366	103,631	106,237	\$796,266,589	\$590.40
Construction	779	4,741	4,736	4,931	44,268,966	709.04
Trade, Transportation & Utilities	1,902	21,213	21,270	21,193	168,864,176	611.98
Retail Trade	1,242	13,961	14,005	13,878	81,635,139	450.22
Other Trade, Transportation & Utilities	660	7,252	7,265	7,315	87,229,037	922.03
Financial Activities	811	3,632	3,562	3,538	31,780,342	683.37
Professional & Business Services	911	8,260	8,272	8,319	60,077,083	557.88
Education & Health Services	1,475	16,828	16,934	17,068	145,947,244	662.60
Leisure & Hospitality	758	12,972	12,658	12,079	44,878,813	274.65
Local Government	227	7,173	9,468	12,164	68,266,885	546.92
State Government	125	4,821	5,306	5,531	43,459,772	640.51
Other	1,208	21,726	21,425	21,414	188,723,308	674.54

West Central Workforce Includes these counties: Clark, Conway, Garland, Hot Spring, Johnson, Montgomery, Perry, Pike, Pope, and Yell

TABLE 8. WORKFORCE INVESTMENT AREA SUMMARY

NORTH AMERICAN INDUSTRY CLASSIFICATION SYSTEM - INDUSTRY GROUPS	NUMBER OF	EMPLOYMENT			TOTAL EARNINGS	AVERAGE
	EMPLOYING UNITS	JULY	AUGUST	SEPTEMBER	JUL-SEPT 2011	WEEKLY EARNINGS
WESTERN WORKFORCE INVESTMENT AREA	6,629	98,754	102,250	103,016	\$876,826,031	\$665.56
Natural Resources & Mining	167	2,635	2,600	2,621	41,859,863	1,229.63
Trade, Transportation & Utilities	1,644	22,508	22,417	22,263	177,309,294	609.00
Wholesale Trade	382	3,715	3,665	3,609	40,841,378	857.67
Retail Trade	952	12,113	12,065	11,983	69,618,063	444.28
Transportation, Warehousing & Utilities	310	6,680	6,687	6,671	66,849,853	769.88
Financial Activities	656	3,697	3,642	3,619	37,342,516	786.41
Professional & Business Services	884	9,187	9,496	9,433	83,727,349	687.21
Education & Health Services	1,041	14,663	14,909	14,964	141,203,978	731.67
Leisure & Hospitality	529	8,361	8,357	8,269	28,655,838	264.65
Other Services	460	2,226	2,134	2,120	14,938,801	532.01
Local Government	151	5,519	8,885	9,636	62,067,078	595.81
State Government	73	2,800	2,718	3,137	24,207,190	645.44
Other	1,024	27,158	27,092	26,954	265,514,124	754.55

Western Workforce Includes these counties: Crawford, Franklin, Logan, Polk, Scott, and Sebastian

