

Arkansas Covered Employment & Earnings

Fourth Quarter
2010

Jobs for People. People for Jobs.

DWS
Department of
WORKFORCE**Services**

**COVERED EMPLOYMENT AND EARNINGS
STATE OF ARKANSAS
FOURTH QUARTER 2010**

**MIKE BEEBE, GOVERNOR
STATE OF ARKANSAS**

**ARTEE WILLIAMS, DIRECTOR
DEPARTMENT OF WORKFORCE SERVICES**

**PUBLISHED BY
LABOR MARKET INFORMATION & ANALYSIS
BUREAU OF LABOR STATISTICS PROGRAMS
POST OFFICE BOX 2981
LITTLE ROCK, ARKANSAS 72203-2981
BERNADETTE COLEMAN, BLS PROGRAMS MANAGER
TELEPHONE (501) 682-3159
SUSAN PRICE, QCEW LEAD ANALYST
TELEPHONE (501) 682-3103**

STATE OF ARKANSAS WEBPAGE: <http://www.arkansas.gov>

DEPARTMENT OF WORKFORCE SERVICES WEBPAGE: <http://www.arkansas.gov/esd/>

WEBPAGE FOR LABOR MARKET INFORMATION: <http://www.discover.arkansas.gov>

RELEASED: NOVEMBER 2011

TABLE OF CONTENTS

	Page
Description of Data	1
Industry Classification	1
Definition of Covered Employment and Earnings	2
Federal Government	2
County Classification	2
Significant Developments During Fourth Quarter 2010	3

GRAPHS AND TABLES

Graph 1	Average Total Covered Employment for Selected Years, Arkansas	7
Graph 2	Total Covered Earnings, by Calendar Quarter for Selected Years, Arkansas	8
Table 1	Quarterly Comparison of Covered Employment and Wages, by Industry	5
Table 2	Total Covered Employment in Arkansas, 2003 – 2010	6
Table 3	Total Covered Earnings, 2003 – 2010	9
Table 4	Total Taxable Earnings, 2003 – 2010	10
Table 5	State Summary – Employment and Total Earnings, by Industry, Fourth Quarter 2010	11
Table 6	County Summary – Employment and Total Earnings, by Industry, Fourth Quarter 2010	25
Table 7	Federal Government Employment and Total Earnings in Arkansas, Fourth Quarter 2010	63
Table 8	Workforce Investment Area – Employment and Total Earnings, by Industry, Fourth Quarter 2010	64

EMPLOYMENT AND EARNINGS
UNDER THE ARKANSAS EMPLOYMENT SECURITY LAW
FOURTH QUARTER 2010

DESCRIPTION OF DATA

This publication contains covered employment and payroll data by industry and county for the Fourth Quarter 2010. These data are compiled from quarterly contributions and wage reports submitted by employers subject to the Arkansas Employment Security Law. An employing unit is a single physical location where business is conducted, production takes place, or services are provided. Employment data have been tabulated for each month of the quarter by industry under the **North American Industry Classification System** (NAICS) (see "Industry Classification" below) on a statewide, county and workforce area basis. Payroll data represent the total wages paid during the quarter, and are also shown by industry for the State and

by publishable industry groups for each county and workforce area. The tabulation of this data is a joint effort in conjunction with the U.S. Bureau of Labor Statistics. In addition, there are tables included which set out total covered employment by months, quarterly payrolls, and average weekly earnings for the years 2003 through 2010. Data contained in this publication are subject to revisions. These revisions are typically reflected in the 2010 Annual Covered Employment and Earnings publication. Because of industry code changes between years, substantial employment and wage shifts among industries are anticipated.

INDUSTRY CLASSIFICATION

Previously published industry data will not be comparable in all instances with currently published data since industry codes have been revised. The last two revisions have occurred using the North American Industry Classification System (NAICS) a six digit industry code instead of the Standard Industrial Classification (SIC) system a four digit industry code, which had been used previously. The following are the NAICS Manuals used to revise the data: (a) between January 1, 2001 and December 31, 2006 industry codes were assigned under the 2002 North American Industry Classification System (NAICS) Manual; (b) since January 1, 2007 industry codes have been assigned under the 2007 North American Industry Classification System Manual. The NAICS Manual represents a significant change in coding methodology as compared to the SIC Manual. One of the most significant changes involves how NAICS treats auxiliary units.

Auxiliary units are establishments primarily engaged in performing management of support services for other establishments of the same enterprise. The SIC code for these units was based on the activity of the enterprise served. The NAICS code is based on the actual activities that the establishment performs. Comparisons of many industries should not be made between this publication and previous Covered Employment and Earnings publications that were based on SIC. Even though some titles are the same or similar, in nature, NAICS and SIC could differ in classification of employers. The implementation of NAICS represents a profound change for statistical programs and will create significant benefits along with transition obstacles for both data collectors and data users. A summary is available on the NAICS home page at <http://www.census.gov/naics>.

DEFINITION OF COVERED EMPLOYMENT AND EARNINGS

Covered Employment is the number of workers employed by businesses subject to the Arkansas Employment Security Law who worked or received pay for the payroll period including the 12th of the month. An employer is subject to the law when they employ one or more employees in each of ten days during the current or preceding calendar year.

Currently excluded from coverage is employment covered by the Railroad Unemployment Insurance Act, some domestic service workers, employees of small agricultural establishments, self-

employed and unpaid family workers, insurance and real estate agents who are on commission only, and employees of churches and religious organizations except separately incorporated schools. The payroll information in this publication includes all wages and salaries paid to any covered employees by their employers including bonuses, commissions, and cash values of remuneration received in any medium other than cash. These wages include both taxable and nontaxable wages. Only the first \$10,000 paid to each worker by an employer in the calendar year is taxable under the Arkansas Employment Security Law.

FEDERAL GOVERNMENT EMPLOYMENT

Table 7 on page 63 lists the total number of civilians employed by the Federal Government in Arkansas during the Fourth Quarter 2010. Employment and wage data are set out by industry divisions.

These data are obtained from required reports submitted by various government agencies having employment in the State. Civilian Federal workers are covered by the Unemployment Compensation for Federal Employees (UCFE) program.

COUNTY CLASSIFICATION

Employment and payroll data by county are classified according to the county where the workers are employed. Employers with operations in more than one county are requested to furnish this agency with a breakdown of employment and wages for at least one quarter of each year by the counties in which they operate. Many such employers submit county data with each regular contribution report. Note: This information is invaluable in the preparation of monthly employment and payroll data by county.

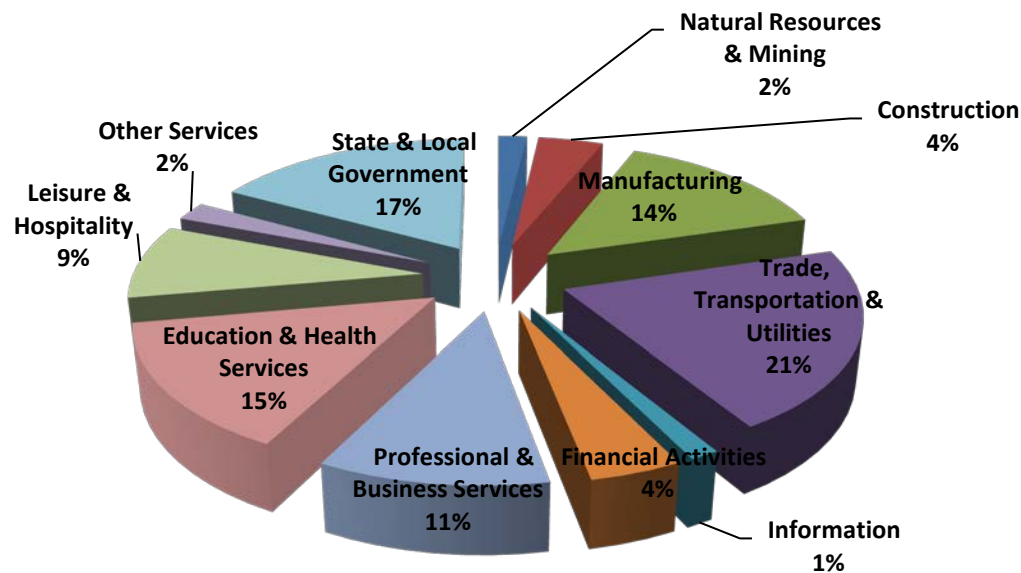
Employment and payroll data for multi-area employers, who do not furnish county data each quarter of the year, are prorated by county on the basis of one quarter's information. The "Statewide County" table that appears on page 62 of this publication includes data on firms that did not provide a county breakdown of employment and payrolls. It also includes sales, and all other types of personnel with no permanent place of work, as well as employment of employers with no established place of business in Arkansas.

SIGNIFICANT DEVELOPMENTS DURING FOURTH QUARTER 2010

AVERAGE EMPLOYMENT CHANGES

Covered employment averaged 1,125,773 during the Fourth Quarter 2010 (see table 1), an increase of 26,500 (2.4%) from the previous quarter and an increase of 11,267 (1.0%) from the average recorded one-year ago. This over-the-year increase is more significant when used as an economic indicator. This over-the-year comparison allows for the disregarding of many seasonal factors that are evident when making an over-the-quarter comparison.

Average Covered Employment by NAICS



EMPLOYMENT CHANGES FROM THIRD QUARTER 2010

Compared to Third Quarter 2010, covered employment increased in five major industry sectors, more than offsetting the declines in six sectors. State and Local Government posted the greatest gain (+29,557), caused mostly by fluctuations in public school employment. Trade, Transportation, and Utilities added 3,682, mostly in Retail Trade. Employment in Education and Health Services increased 1,689, with the largest gains seen in Educational Services.

Leisure and Hospitality reported the largest drop (-4,379). Losses occurred in both Arts-Entertainment-Recreation (-2,434) and Accommodation-Food Services (-1,945). Manufacturing posted quarterly declines of 2,546.

EMPLOYMENT CHANGES FROM FOURTH QUARTER 2009 (QUARTER YEAR AGO COMPARISON)

Over-the-year gains were recorded in seven industry groups while four recorded losses (see Table 1). The largest gains were posted in Professional & Business Services (5,423), Trade, Transportation & Utilities (4,237), and Education & Health Services (3,059). Significant losses occurred in Construction (-1,955), Financial Activities (-800), and Information (-640).

COVERED WAGES

Wages paid to covered workers totaled \$10,756,180,952 for the Fourth Quarter 2010 (see Table 1), for an average weekly wage of \$734.96 (see Table 5). Employees in Calhoun County recorded the highest average weekly wage (\$884.41), and workers in Newton County the lowest (\$416.91) (see Table 6).

The Professional & Business Services sector recorded the highest average weekly wage for the State of Arkansas at \$986.50; while the Leisure and Hospitality sector recorded the lowest at \$270.95 for the State of Arkansas (see Table 5).

Average Weekly Wage by Industry

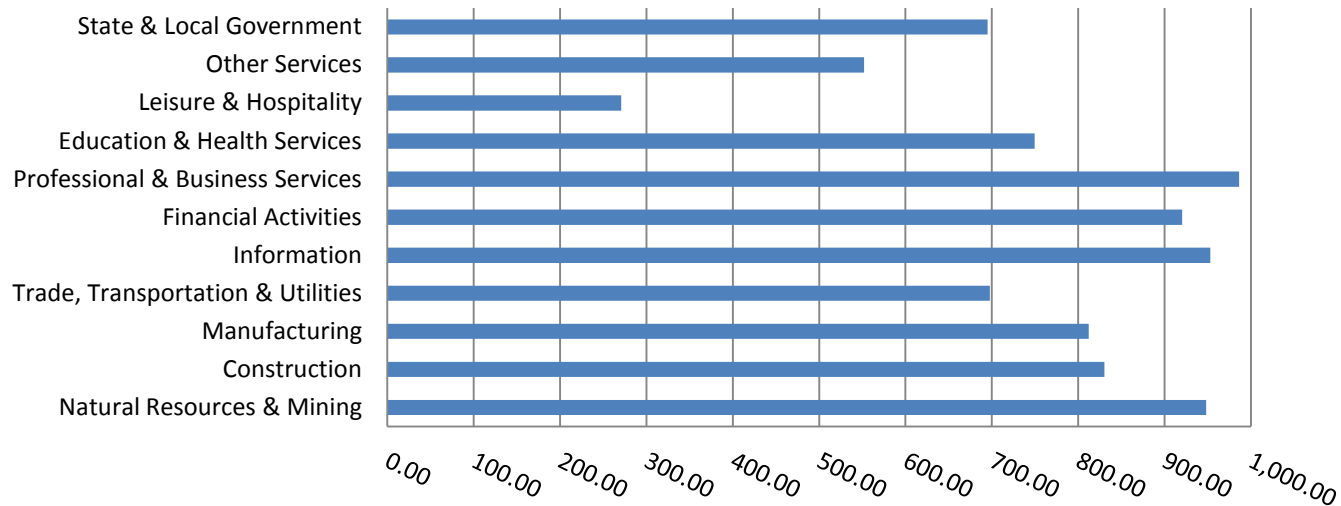


TABLE 1. QUARTERLY COMPARISON OF COVERED EMPLOYMENT AND WAGES, BY INDUSTRY

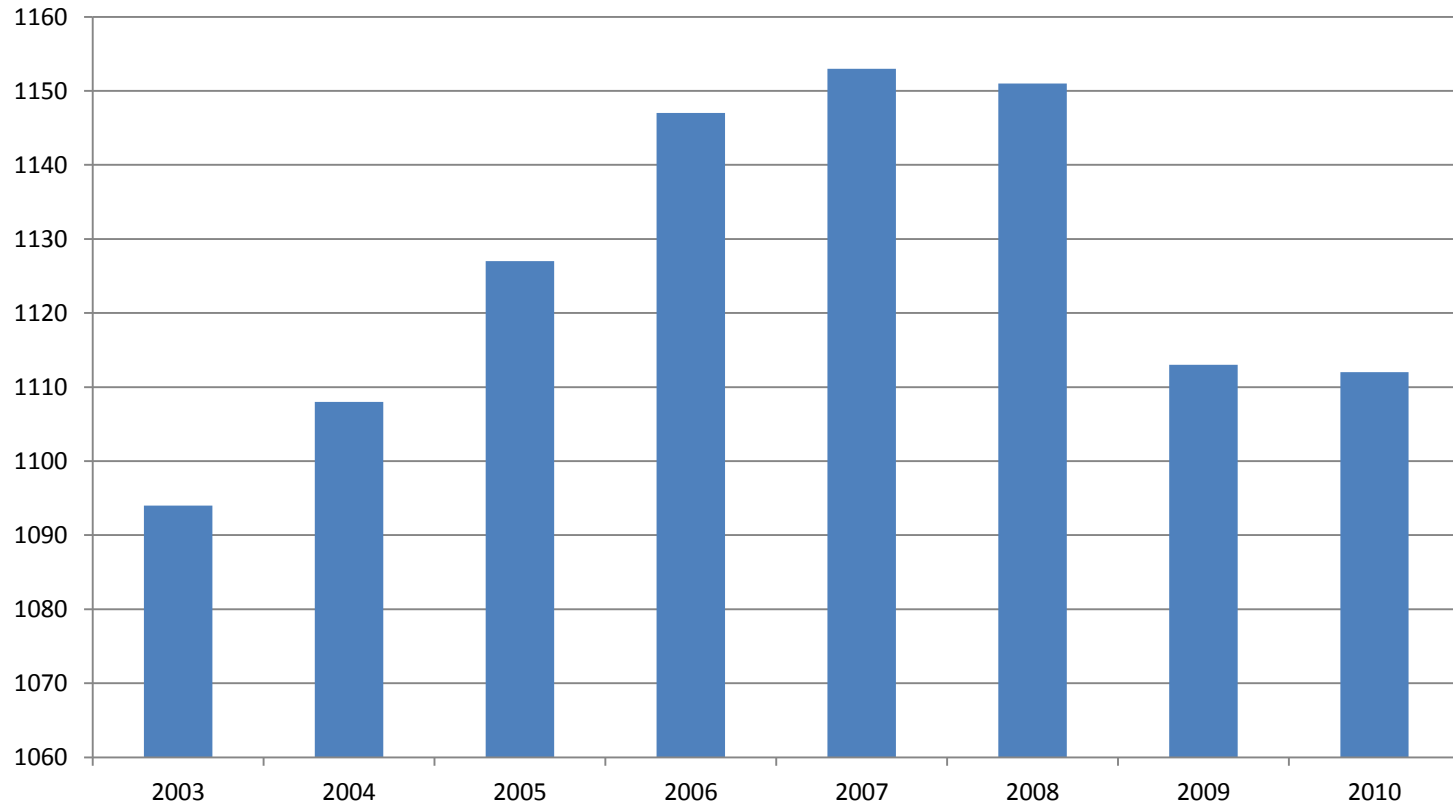
North American Industry Classification System	Number of Employing Units	Monthly Employment Average	Percent of Total	Net Change From:		Total Wages Paid Oct - Dec 2010	Percent of Total
				July - Sept 2010	Oct - Dec 2009		
Total	84,508	1,125,773	100	26,500	11,267	\$10,756,180,952	100
Natural Resources & Mining	2,511	21,086	1.9	-824	-9	259,893,782	2.4
Agriculture, Forestry, Fishing & Hunting	1,972	12,657	1.1	-805	-467	116,139,444	1.1
Mining	539	8,428	0.7	-18	458	143,754,338	1.3
Construction	7,044	48,116	4.3	-2,546	-1,955	519,497,427	4.8
Manufacturing	3,242	160,267	14.2	38	225	1,692,538,147	15.7
Trade, Transportation & Utilities	20,770	236,064	21.0	3,682	4,237	2,141,310,163	19.9
Wholesale Trade	6,480	46,817	4.2	218	255	715,022,914	6.6
Retail Trade	11,015	132,980	11.8	3,306	2,332	793,646,706	7.4
Transportation & Warehousing	2,868	48,937	4.3	143	1,039	501,575,375	4.7
Utilities	407	7,329	0.7	15	611	131,065,168	1.2
Information	1,127	15,221	1.4	-69	-640	188,575,509	1.8
Financial Activities	7,975	47,944	4.3	-80	-800	573,597,404	5.3
Finance & Insurance	4,689	34,481	3.1	113	-592	460,236,214	4.3
Real Estate & Rental & Leasing	3,286	13,463	1.2	-193	-208	113,361,190	1.1
Professional & Business Services	12,278	119,279	10.6	89	5,423	1,529,696,190	14.2
Professional & Technical Services	7,658	38,576	3.4	546	1,292	579,249,324	5.4
Management of Companies & Enterprises	512	26,171	2.3	-206	-310	591,143,083	5.5
Administrative & Waste Services	4,108	54,532	4.8	-252	4,440	359,303,783	3.3
Education & Health Services	14,726	164,812	14.6	1,689	3,059	1,605,658,773	14.9
Educational Services	695	11,003	1.0	1,060	200	85,621,822	0.8
Health Care & Social Assistance	14,031	153,809	13.7	629	2,859	1,520,036,951	14.1
Leisure & Hospitality	6,385	97,483	8.7	-4,379	572	343,366,101	3.2
Arts, Entertainment & Recreation	915	8,495	0.8	-2,434	-134	41,693,534	0.4
Accommodation & Food Services	5,470	88,988	7.9	-1,945	706	301,672,567	2.8
Other Services	5,355	24,363	2.2	-657	134	174,881,481	1.6
State & Local Government	3,095	191,138	17.0	29,557	1,020	1,727,165,975	16.1
Local Government	1,975	120,913	10.7	27,369	408	984,829,810	9.2
State Government	1,120	70,225	6.2	2,187	612	742,336,165	6.9
Nonclassifiable Establishments	0	0	0.0	0	0	0	0.0

Note: Items do not necessarily add to totals because of rounding. Because of industry code changes between years, substantial employment and wage shifts among industries are anticipated.

TABLE 2. TOTAL COVERED EMPLOYMENT IN ARKANSAS

Period	2003	2004	2005	2006	2007	2008	2009	2010
Average	1,094,087	1,108,264	1,126,778	1,146,948	1,152,994	1,150,965	1,112,738	1,111,667
January	1,082,740	1,089,510	1,102,768	1,130,595	1,137,437	1,141,856	1,119,299	1,090,880
February	1,084,880	1,094,626	1,110,577	1,136,810	1,143,397	1,149,443	1,119,476	1,092,164
March	1,092,172	1,105,266	1,122,619	1,150,439	1,158,895	1,157,690	1,124,386	1,107,071
April	1,095,341	1,111,020	1,129,785	1,155,498	1,159,623	1,159,841	1,123,383	1,115,785
May	1,103,099	1,117,144	1,135,567	1,159,886	1,165,224	1,166,111	1,122,322	1,123,682
June	1,099,688	1,117,010	1,136,118	1,162,026	1,164,207	1,164,167	1,117,884	1,130,613
July	1,053,220	1,071,463	1,090,071	1,106,142	1,110,571	1,114,279	1,071,048	1,075,180
August	1,077,775	1,094,871	1,114,098	1,130,839	1,139,109	1,138,583	1,093,192	1,101,405
September	1,105,980	1,122,704	1,144,815	1,159,814	1,165,135	1,162,333	1,116,580	1,125,898
October	1,112,550	1,123,246	1,142,300	1,156,804	1,162,768	1,157,196	1,113,761	1,125,073
November	1,109,712	1,125,061	1,145,667	1,156,011	1,164,246	1,152,159	1,116,035	1,126,781
December	1,111,892	1,127,250	1,146,954	1,158,509	1,165,314	1,147,927	1,115,486	1,125,466

Graph 1
AVERAGE TOTAL COVERED EMPLOYMENT
In Thousands



Graph 2
TOTAL COVERED EARNINGS BY CALENDAR YEARS
In Thousands

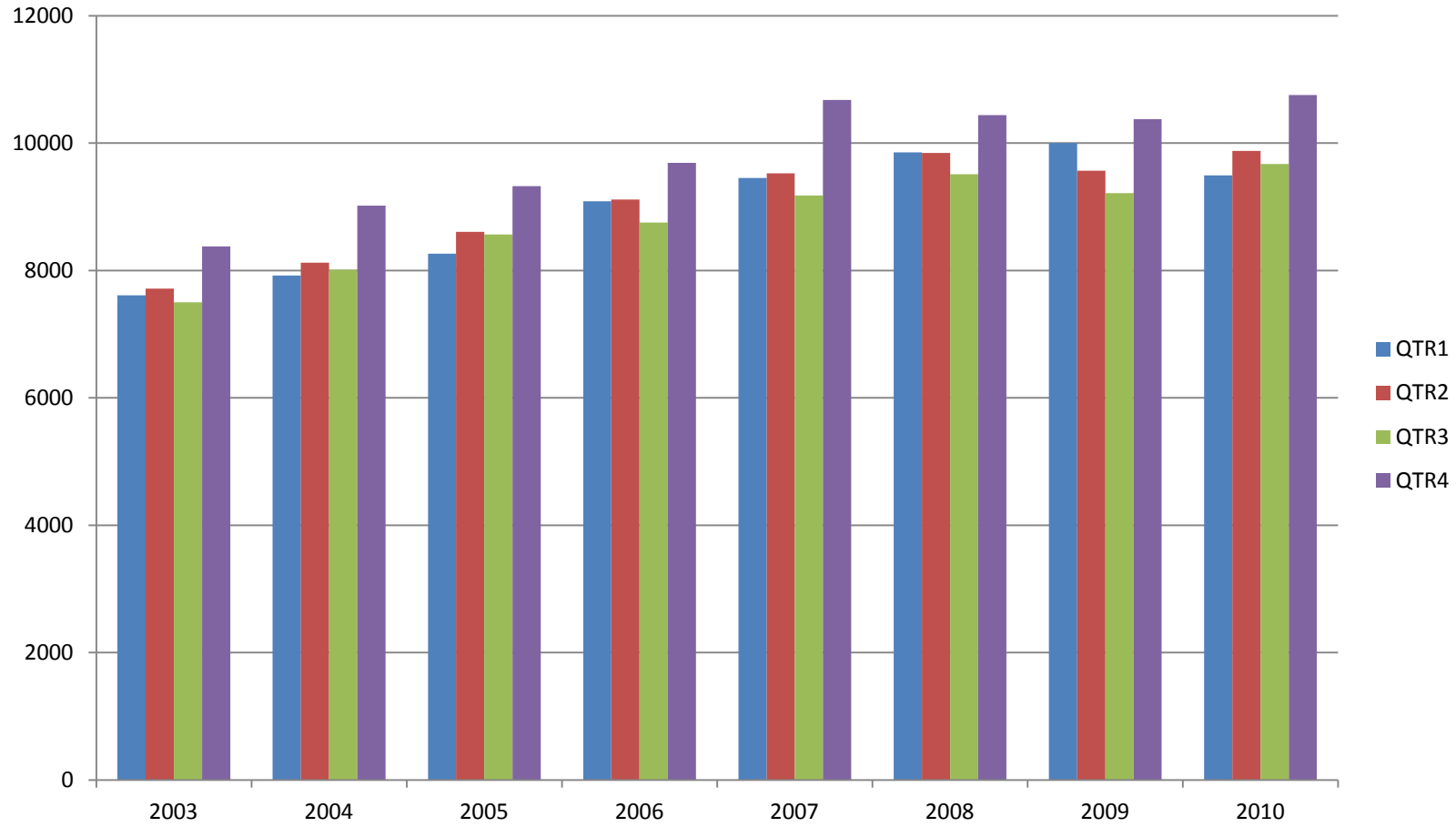


TABLE 3. TOTAL COVERED EARNINGS 2003 - 2010

Period	2003	2004	2005	2006
Total	31,202,576,767	33,068,189,304	34,753,107,631	36,636,090,775
January - March	7,608,130,008	7,918,843,610	8,261,153,981	9,085,021,816
April - June	7,714,813,038	8,122,370,361	8,607,722,353	9,112,624,590
July - September	7,500,204,764	8,010,300,454	8,562,555,369	8,750,878,205
October - December	8,379,428,957	9,016,674,879	9,321,675,928	9,687,566,164
Average Weekly Earnings	548.45	573.80	593.13	614.27

Period	2007	2008	2009	2010
Total	38,833,265,464	39,643,043,332	39,152,288,387	39,799,455,247
January - March	9,452,711,662	9,851,866,058	9,998,452,028	9,494,838,285
April - June	9,525,837,049	9,843,715,293	9,566,968,853	9,876,602,350
July - September	9,178,902,477	9,509,150,631	9,213,797,140	9,671,833,660
October - December	10,675,814,276	10,438,311,360	10,373,070,366	10,756,180,952
Average Weekly Earnings	647.70	662.37	676.65	688.49

TABLE 4. TOTAL TAXABLE EARNINGS, 2003 - 2010

Period	2003	2004	2005	2006
Total	9,154,938,743	9,731,247,501	9,991,605,239	10,197,511,360
January - March	4,737,918,796	4,931,559,230	5,062,670,306	5,421,204,601
April - June	2,270,519,362	2,451,454,749	2,506,505,721	2,385,110,992
July - September	1,188,681,170	1,318,017,835	1,353,660,445	1,314,939,803
October - December	957,819,415	1,030,215,687	1,068,768,767	1,076,255,964

Period	2007	2008	2009	2010
Total	10,459,105,059	10,360,487,108	9,788,841,583	11,341,960,644
January - March	5,617,417,571	5,635,750,082	5,423,705,265	5,612,918,478
April - June	2,466,606,627	2,419,313,519	2,293,670,854	2,978,439,739
July - September	1,307,060,412	1,297,473,555	1,165,280,065	1,579,787,090
October - December	1,068,020,449	1,007,949,952	906,185,399	1,170,815,337

TABLE 5. STATEWIDE SUMMARY
FOURTH QUARTER 2010

NORTH AMERICAN INDUSTRY CLASSIFICATION SYSTEM - INDUSTRY GROUPS		NUMBER OF	EMPLOYMENT			TOTAL EARNINGS	AVERAGE
		EMPLOYING UNITS	OCTOBER	NOVEMBER	DECEMBER	OCT - DEC 2010	WEEKLY EARNINGS
TOTAL, ALL INDUSTRIES		84,508	1,125,073	1,126,781	1,125,466	\$10,756,180,952	\$734.96
NATURAL RESOURCES & MINING		2,511	21,996	20,916	20,345	\$259,893,782	\$948.12
11	AGRICULTURE, FORESTRY, FISHING & HUNTING	1,972	13,555	12,484	11,933	\$116,139,444	\$705.82
111	CROP PRODUCTION	820	4,261	3,830	3,625	\$27,308,193	\$537.89
1111	Oilseed & Grain Farming	488	2,480	2,258	2,120	15,698,492	528.25
1112	Vegetable & Melon Farming	11	100	95	64	425,664	379.27
1113	Fruit & Tree Nut Farming	8	50	40	53	405,061	653.68
1114	Greenhouse & Nursery Production	49	291	258	272	1,976,216	555.48
1119	Other Crop Farming	264	1,340	1,179	1,116	8,802,760	558.85
112	ANIMAL PRODUCTION	287	3,269	3,215	3,184	\$36,766,169	\$877.59
1121	Cattle Ranching & Farming	90	362	330	342	2,385,423	532.38
1122	Hog & Pig Farming	8	73	69	69	2,337,515	2,556.52
1123	Poultry & Egg Production	107	2,352	2,366	2,344	27,867,695	910.65
1125	Animal Aquaculture	59	416	390	374	3,736,517	730.74
1129	Other Animal Production	23	66	60	55	439,019	559.74
113	FORESTRY & LOGGING	432	2,369	2,313	2,329	\$21,729,743	\$715.24
1131	Timber Tract Operations	37	197	194	196	1,932,075	759.56
1132	Forest Nurseries & Gathering of Forest Products	7	37	41	39	521,338	1,028.28
1133	Logging	388	2,135	2,078	2,094	19,276,330	705.31
	OTHER	433	3,656	3,126	2,795	\$30,335,339	\$730.97
21	MINING	539	8,441	8,432	8,412	\$143,754,338	\$1,312.01
211	OIL & GAS EXTRACTION	94	968	980	987	\$24,495,554	\$1,926.00
212	MINING (EXCEPT OIL & GAS)	107	2,162	2,148	2,133	\$25,396,818	\$909.64
213	SUPPORT ACTIVITES FOR MINING	338	5,311	5,304	5,292	\$93,861,966	\$1,361.69

TABLE 5. STATEWIDE SUMMARY
FOURTH QUARTER 2010

NORTH AMERICAN INDUSTRY CLASSIFICATION SYSTEM - INDUSTRY GROUPS		NUMBER OF	EMPLOYMENT			TOTAL EARNINGS	AVERAGE
		EMPLOYING UNITS	OCTOBER	NOVEMBER	DECEMBER	OCT - DEC 2010	WEEKLY EARNINGS
CONSTRUCTION		7,044	48,962	47,845	47,541	\$519,497,427	\$830.52
236	CONSTRUCTION OF BUILDINGS	1,739	9,701	9,659	9,578	\$112,595,440	\$897.90
2361	Residential Building Construction	1,163	2,982	2,895	2,940	27,056,383	708.15
2362	Nonresidential Building Construction	576	6,719	6,764	6,638	85,539,057	981.05
237	HEAVY & CIVIL ENGINEERING CONSTRUCTION	849	10,275	9,731	9,568	\$127,521,343	\$995.06
2371	Utility System Construction	451	5,732	5,372	5,300	71,045,479	999.46
2372	Land Subdivision	93	287	279	285	2,636,876	715.05
2373	Highway, Street & Bridge Construction	206	2,866	2,818	2,794	32,401,815	881.97
2379	Other Heavy Construction	99	1,390	1,262	1,189	21,437,173	1,287.96
238	SPECIALTY TRADE CONTRACTORS	4,456	28,986	28,455	28,395	\$279,380,644	\$751.11
2381	Building Foundation & Exterior Contractors	838	5,621	5,467	5,262	48,168,510	679.87
2382	Building Equipment Contractors	2,027	14,530	14,361	14,559	156,049,847	828.80
2383	Building Finishing Contractors	817	3,902	3,873	3,919	32,196,699	635.37
2389	Other Specialty Trade Contractors	774	4,933	4,754	4,655	42,965,588	691.34
MANUFACTURING		3,242	160,169	160,223	160,410	\$1,692,538,147	\$812.36
311	FOOD MANUFACTURING	301	46,122	45,996	45,775	\$378,049,750	\$632.68
3111	Animal Food Manufacturing	51	1,749	1,731	1,710	19,989,331	888.81
3112	Grain & Oilseed Milling	31	2,494	2,405	2,412	28,195,880	889.99
3113	Sugar & Confectionery Product Manufacturing	7	77	75	76	396,645	401.46
3114	Fruit, Vegetable & Specialty Food	20	4,932	5,079	5,114	51,575,195	786.91
3115	Dairy Product Manufacturing	11	705	691	693	7,653,406	845.46
3116	Animal Slaughtering & Processing	98	31,350	31,239	31,021	226,211,347	557.66
3117	Seafood Product Preparation & Packaging	5	112	110	100	558,204	400.05
3118	Bakeries and Tortilla Manufacturing	54	3,066	3,043	3,014	27,373,440	692.42
3119	Other Food Manufacturing	24	1,637	1,623	1,635	16,096,302	758.84
312	BEVERAGE & TOBACCO PRODUCT MANUFACTURING	42	1,052	1,043	1,037	\$11,488,272	\$846.47
313	TEXTILE MILLS	14	93	93	92	\$919,675	\$763.43

TABLE 5. STATEWIDE SUMMARY
FOURTH QUARTER 2010

NORTH AMERICAN INDUSTRY CLASSIFICATION SYSTEM - INDUSTRY GROUPS		NUMBER OF	EMPLOYMENT			TOTAL EARNINGS	AVERAGE
		EMPLOYING UNITS	OCTOBER	NOVEMBER	DECEMBER	OCT - DEC 2010	WEEKLY EARNINGS
314	TEXTILE PRODUCT MILLS	57	974	966	967	\$9,981,158	\$792.34
3141	Textile Furnishing Mills	12	23	24	27	153,423	478.45
3149	Other Textile Product Mills	45	951	942	940	9,827,735	800.54
315	APPAREL MANUFACTURING	28	1,278	1,275	1,261	\$7,409,927	\$448.34
316	LEATHER & ALLIED PRODUCT MANUFACTURING	21	1,222	1,320	1,254	\$8,098,044	\$492.30
321	WOOD PRODUCT MANUFACTURING	340	9,310	9,240	9,034	\$87,360,937	\$730.87
3211	Sawmills & Wood Preservation	136	4,124	4,093	4,070	39,614,834	744.03
3212	Veneer & Engineered Wood Products	56	2,551	2,549	2,366	28,251,226	873.23
3219	Other Wood Product Manufacturing	148	2,635	2,598	2,598	19,494,877	574.49
322	PAPER MANUFACTURING	80	10,422	10,426	10,382	\$153,321,139	\$1,132.94
3221	Pulp, Paper & Paperboard Mills	14	4,242	4,240	4,247	80,884,809	1,466.39
3222	Converted Paper Product Manufacturing	66	6,180	6,186	6,135	72,436,330	903.52
323	PRINTING & RELATED SUPPORT ACTIVITIES	260	5,325	5,384	5,383	\$53,957,772	\$773.79
324	PETROLEUM & COAL PRODUCTS MANUFACTURING	18	977	984	983	\$12,790,575	\$1,002.61
325	CHEMICAL MANUFACTURING	120	4,658	4,638	4,672	\$72,836,423	\$1,203.35
3251	Basic Chemical Manufacturing	31	1,782	1,772	1,762	31,290,097	1,358.31
3252	Resin, Rubber & Artificial Fibers	9	284	288	291	4,671,141	1,249.08
3253	Agricultural Chemical Manufacturing	15	292	296	297	5,260,942	1,371.82
3254	Pharmaceutical & Medicine Manufacturing	14	178	181	182	2,091,141	892.00
3255	Paint, Coating & Adhesive Manufacturing	9	173	174	185	2,750,804	1,193.23
3256	Soap, Cleaning Compound, & Toilet Preparation Manufacturing	14	929	923	926	13,214,847	1,097.76
3259	Other Chemical Preparation Manufacturing	28	1,020	1,004	1,029	13,557,451	1,024.78
326	PLASTICS & RUBBER PRODUCTS MANUFACTURING	148	10,433	10,461	10,473	\$124,921,503	\$919.06
3261	Plastics Product Manufacturing	106	6,601	6,613	6,631	69,550,191	808.77
3262	Rubber Product Manufacturing	42	3,832	3,848	3,842	55,371,312	1,109.01

TABLE 5. STATEWIDE SUMMARY
FOURTH QUARTER 2010

NORTH AMERICAN INDUSTRY CLASSIFICATION SYSTEM - INDUSTRY GROUPS		NUMBER OF	EMPLOYMENT			TOTAL EARNINGS	AVERAGE
		EMPLOYING UNITS	OCTOBER	NOVEMBER	DECEMBER	OCT - DEC 2010	WEEKLY EARNINGS
327	NONMETALLIC MINERAL PRODUCT MANUFACTURING	253	3,454	3,445	3,390	\$36,096,949	\$809.61
3271	Clay Product & Refractory Manufacturing	16	361	366	361	4,124,264	874.77
3272	Glass & Glass Product Manufacturing	16	368	359	360	3,763,785	799.05
3273	Cement & Concrete Product Manufacturing	183	2,023	2,013	1,966	19,801,390	761.34
3274	Lime & Gypsum Product Manufacturing	5	216	213	207	2,899,092	1,051.92
3279	Other Nonmetallic Mineral Products Manufacturing	33	486	494	496	5,508,418	861.23
331	PRIMARY METAL MANUFACTURING	71	7,678	7,734	7,811	\$114,130,366	\$1,134.12
3311	Iron & Steel Mills & Ferroalloys	10	2,286	2,308	2,307	48,355,214	1,617.00
3312	Purchased Steel Product Manufacturing	15	2,144	2,133	2,162	27,476,290	984.73
3313	Alumina & Aluminum Production	20	1,436	1,427	1,439	19,705,275	1,057.04
3314	Other Nonferrous Metal Production	11	719	733	738	7,198,201	758.50
3315	Foundries	15	1,093	1,133	1,165	11,395,386	775.50
332	FABRICATED METAL PRODUCT MANUFACTURING	540	14,539	14,495	14,483	\$166,472,380	\$882.80
3321	Forging & Stamping	12	436	436	422	5,031,670	897.34
3322	Cutlery & Hand Tool Manufacturing	16	1,011	1,007	1,005	10,628,803	811.38
3323	Architectural & Structural Metals	168	3,607	3,602	3,648	42,175,274	896.45
3324	Boilers, Tanks & Shipping Containers	18	541	547	535	6,422,459	913.19
3325	Hardware Manufacturing	7	243	229	236	2,233,032	727.85
3326	Spring & Wire Product Manufacturing	13	444	442	462	4,088,913	700.00
3327	Machine Shops & Threaded Products	207	1,789	1,808	1,814	18,779,106	800.89
3328	Coating, Engraving & Heat Treating Metals	37	555	561	579	4,852,447	660.65
3329	Other Fabricated Metal Product Manufacturing	62	5,913	5,863	5,782	72,260,676	949.74
333	MACHINERY MANUFACTURING	226	10,977	10,998	11,011	\$116,464,479	\$814.78
3331	Agriculture, Construction & Mining Machinery	38	2,518	2,584	2,577	21,357,143	641.82
3332	Industrial Machinery Manufacturing	32	679	667	672	8,340,132	953.74
3333	Commercial & Service Industry Machinery	20	816	822	831	10,384,730	970.63
3334	HVAC & Commercial Refrigeration Equipment	18	3,556	3,489	3,429	36,643,299	807.35
3335	Metalworking Machinery Manufacturing	65	989	985	994	10,381,119	807.16
3336	Turbine & Power Transmission Equipment Manufacturing	7	585	628	634	8,025,130	1,002.68
3339	Other General Purpose Machinery Manufacturing	46	1,834	1,823	1,874	21,332,926	890.07

TABLE 5. STATEWIDE SUMMARY
FOURTH QUARTER 2010

NORTH AMERICAN INDUSTRY CLASSIFICATION SYSTEM - INDUSTRY GROUPS		NUMBER OF	EMPLOYMENT			TOTAL EARNINGS	AVERAGE
		EMPLOYING UNITS	OCTOBER	NOVEMBER	DECEMBER	OCT - DEC 2010	WEEKLY EARNINGS
334	COMPUTER & ELECTRONIC PRODUCT MANUFACTURING	71	3,223	3,229	3,229	\$35,533,387	\$847.02
3342	Communications Equipment Manufacturing	8	106	103	106	1,581,846	1,158.86
3343	Audio & Video Equipment Manufacturing	8	571	578	578	5,928,386	792.18
3344	Semiconductors & Electronic Components	27	1,989	1,991	1,985	21,428,133	828.99
3345	Electronic Instrument Manufacturing	25	546	549	546	6,504,883	914.76
	Other	3	11	8	14	90,139	630.34
335	ELECTRICAL EQUIPMENT & APPLIANCES	55	7,966	7,987	8,369	\$94,613,594	\$897.70
3353	Electrical Equipment Manufacturing	19	3,861	3,894	3,943	51,738,949	1,020.67
3359	Other Electrical Equipment & Component Manufacturing	21	1,638	1,629	1,649	18,946,860	889.41
	Other	15	2,467	2,464	2,777	23,927,785	716.37
336	TRANSPORTATION EQUIPMENT MANUFACTURING	160	12,428	12,570	12,686	\$138,770,756	\$849.80
3362	Motor Vehicle Body & Trailer Manufacturing	35	1,426	1,474	1,509	12,992,111	680.01
3363	Motor Vehicle Parts Manufacturing	55	5,606	5,681	5,800	58,251,591	786.72
3364	Aerospace Product & Parts Manufacturing	28	3,352	3,324	3,328	48,253,621	1,113.10
3366	Ship & Boat Building	25	1,250	1,278	1,250	10,391,529	634.74
	Other	17	794	813	799	8,881,904	851.90
337	FURNITURE & RELATED PRODUCT MANUFACTURING	216	3,760	3,683	3,850	\$32,303,196	\$660.11
3371	Household & Institutional Furniture	177	2,717	2,715	2,730	21,862,061	618.12
3372	Office Furniture & Fixtures Manufacturing	31	950	874	1,025	9,712,378	786.70
3379	Other Furniture Related Product Manufacturing	8	93	94	95	728,757	596.36
339	MISCELLANEOUS MANUFACTURING	221	4,278	4,256	4,268	\$37,017,865	\$667.29
3391	Medical Equipment & Supplies Manufacturing	90	2,278	2,281	2,320	21,923,215	735.46
3399	Other Miscellaneous Manufacturing	131	2,000	1,975	1,948	15,094,650	588.11

TABLE 5. STATEWIDE SUMMARY
FOURTH QUARTER 2010

NORTH AMERICAN INDUSTRY CLASSIFICATION SYSTEM - INDUSTRY GROUPS		NUMBER OF	EMPLOYMENT			TOTAL EARNINGS	AVERAGE
		EMPLOYING UNITS	OCTOBER	NOVEMBER	DECEMBER	OCT - DEC 2010	WEEKLY EARNINGS
TRADE, TRANSPORTATION & UTILITIES		20,770	233,544	236,455	238,192	\$2,141,310,163	\$697.76
42	WHOLESALE TRADE	6,480	46,933	46,751	46,767	\$715,022,914	\$1,174.82
423	MERCHANT WHOLESALERS, DURABLE GOODS	2,207	20,561	20,511	20,568	\$276,362,544	\$1,034.65
4231	Motor Vehicle & Part Merchant Wholesalers	252	2,529	2,550	2,554	27,030,543	817.22
4232	Furniture & Furnishings Merchant Wholesalers	59	352	342	340	4,418,175	986.05
4233	Lumber & Supply Merchant Wholesalers	183	1,438	1,437	1,445	15,818,367	845.00
4234	Commercial Goods Merchant Wholesalers	317	2,783	2,776	2,785	44,256,238	1,223.99
4235	Metal & Mineral Merchant Wholesalers	56	826	812	813	11,256,812	1,059.86
4236	Electric Goods Merchant Wholesalers	183	1,962	1,954	1,982	29,299,852	1,146.41
4237	Hardware & Plumbing Merchant Wholesalers	221	2,137	2,137	2,133	29,723,977	1,070.61
4238	Machinery & Supply Merchant Wholesalers	711	6,707	6,687	6,702	92,317,333	1,060.11
4239	Miscellaneous Durable Goods Merchant Wholesalers	225	1,827	1,816	1,814	22,241,247	940.55
424	MERCHANT WHOLESALERS, NONDURABLE GOODS	1,239	16,243	16,148	15,986	\$210,651,629	\$1,004.86
4241	Paper & Paper Product Merchant Wholesalers	73	1,097	1,118	1,101	14,452,840	1,005.81
4242	Druggist' Goods Merchant Wholesalers	68	981	982	961	14,535,897	1,147.21
4243	Apparel & Piece Goods Merchant Wholesalers	43	579	586	577	6,516,594	863.28
4244	Grocery Product Merchant Wholesalers	330	5,701	5,655	5,599	76,918,553	1,046.91
4245	Farm Product Merchant Wholesalers	74	871	872	867	7,513,174	664.29
4246	Chemical merchant Wholesalers	95	591	575	574	9,119,390	1,209.47
4247	Petroleum Merchant Wholesalers	139	1,575	1,548	1,551	23,067,888	1,138.93
4248	Alcoholic Beverage Merchant Wholesalers	37	1,204	1,203	1,219	16,239,074	1,033.50
4249	Miscellaneous Nondurable Goods Merchant Wholesaler	380	3,644	3,609	3,537	42,288,219	904.43
425	ELECTRONIC MARKETS & AGENTS & BROKERS	3,034	10,129	10,092	10,213	\$228,008,741	\$1,728.90
44 - 45	RETAIL TRADE	11,015	130,500	133,567	134,874	\$793,646,706	\$459.09
441	MOTOR VEHICLE & PARTS DEALERS	1,633	16,691	16,608	16,559	\$161,338,002	\$746.76
4411	Automobile Dealers	675	9,749	9,721	9,703	108,876,873	861.26
4412	Other Motor Vehicle Dealers	175	1,308	1,276	1,260	11,533,123	692.38
4413	Automotive Parts, Accessories & Tire Stores	783	5,634	5,611	5,596	40,928,006	560.83
442	FURNITURE & HOME FURNISHINGS STORES	549	3,418	3,465	3,523	\$24,821,251	\$550.45
4421	Furniture Stores	301	2,011	2,039	2,042	16,133,988	611.17
4422	Home Furnishings Stores	248	1,407	1,426	1,481	8,687,263	464.71

TABLE 5. STATEWIDE SUMMARY
FOURTH QUARTER 2010

NORTH AMERICAN INDUSTRY CLASSIFICATION SYSTEM - INDUSTRY GROUPS		NUMBER OF	EMPLOYMENT			TOTAL EARNINGS	AVERAGE
		EMPLOYING UNITS	OCTOBER	NOVEMBER	DECEMBER	OCT - DEC 2010	WEEKLY EARNINGS
443	ELECTRONICS & APPLIANCE STORES	544	3,990	4,141	4,194	\$34,314,708	\$642.50
444	BUILDING MATERIAL & GARDEN SUPPLY STORES	840	10,035	10,037	10,045	\$68,942,815	\$528.27
4441	Building Material & Supplies Dealers	634	8,843	8,880	8,924	61,055,739	528.76
4442	Lawn & Garden Equipment & Supplies Stores	206	1,192	1,157	1,121	7,887,076	524.52
445	FOOD & BEVERAGE STORES	1,014	17,793	17,925	17,962	\$93,661,141	\$402.65
4451	Grocery Stores	562	15,362	15,407	15,437	78,158,901	390.35
4452	Specialty Food Stores	148	937	1,005	987	7,368,721	580.56
4453	Beer, Wine & Liquor Stores	304	1,494	1,513	1,538	8,133,519	412.97
446	HEALTH & PERSONAL CARE STORES	979	7,859	7,971	8,101	\$75,375,662	\$726.86
447	GASOLINE STATIONS	1,555	11,680	11,650	11,525	\$50,230,034	\$332.56
44711	Gasoline Stations with Convenience Stores	1,446	10,752	10,743	10,620	45,023,335	\$323.52
44719	Other Gasoline Stations	109	928	907	905	5,206,699	438.52
448	CLOTHING & CLOTHING ACCESSORIES STORES	1,000	8,691	9,520	9,949	\$36,059,279	\$295.50
4481	Clothing Stores	712	6,818	7,603	7,935	24,992,177	257.98
4482	Shoe Stores	149	1,107	1,132	1,177	4,804,366	324.56
4483	Jewelry, Luggage & Leather Goods Stores	139	766	785	837	6,262,736	605.21
451	SPORTING GOODS, HOBBY, BOOK & MUSIC STORES	528	4,395	4,683	4,841	\$19,821,585	\$328.63
4511	Sporting Goods & Musical Instrument Stores	408	3,257	3,511	3,591	15,621,399	348.00
4512	Book, Periodical & Music Stores	120	1,138	1,172	1,250	4,200,186	272.27
452	GENERAL MERCHANDISE STORES	771	37,861	39,425	39,883	\$179,233,408	\$353.01
453	MISCELLANEOUS STORE RETAILERS	1,249	6,355	6,383	6,521	\$33,828,673	\$405.35
4531	Florists	216	727	729	770	3,218,979	333.71
4532	Office Supplies, Stationery & Gift Stores	315	2,175	2,180	2,200	12,210,209	429.86
4533	Used Merchandise Stores	234	1,162	1,167	1,210	5,915,959	385.76
4539	Other Miscellaneous Store Retailers	484	2,291	2,307	2,341	12,483,526	415.16
454	NONSTORE RETAILERS	353	1,732	1,759	1,771	\$16,020,148	\$702.58
4541	Electronic Shopping & Mail-Order Houses	135	456	482	493	5,074,318	818.31
4542	Vending Machine Operators	69	492	490	487	3,706,418	582.25
4543	Direct Selling Establishments	149	784	787	791	7,239,412	707.30

TABLE 5. STATEWIDE SUMMARY
FOURTH QUARTER 2010

NORTH AMERICAN INDUSTRY CLASSIFICATION SYSTEM - INDUSTRY GROUPS		NUMBER OF	EMPLOYMENT			TOTAL EARNINGS	AVERAGE
		EMPLOYING UNITS	OCTOBER	NOVEMBER	DECEMBER	OCT - DEC 2010	WEEKLY EARNINGS
48 - 49	TRANSPORTATION & WAREHOUSING	2,868	48,816	48,801	49,194	\$501,575,375	\$788.42
481	AIR TRANSPORTATION	49	836	824	835	\$12,058,998	\$1,115.37
483	SUPPORT ACTIVITIES FOR TRANSPORTATION	4	101	101	104	\$1,386,718	\$1,045.79
484	TRUCK TRANSPORTATION	1,919	31,831	31,927	31,914	\$328,610,073	\$792.64
4841	General Freight Trucking	1,189	25,388	25,488	25,530	259,106,626	782.58
4842	Specialized Freight Trucking	730	6,443	6,439	6,384	69,503,447	832.52
485	TRANSIT & GROUND PASSENGER TRANSPORTATION	74	1,248	1,235	1,214	\$5,432,390	\$339.09
4853	Taxi & Limousine Service	25	312	309	304	1,260,745	314.53
4854	School & Employee Bus Transportation	8	389	393	388	1,911,598	377.04
4855	Charter Bus Industry Service	8	61	63	45	323,344	441.53
4859	Other Ground Passenger Transportation	27	359	351	343	1,428,475	313.06
	Other	6	127	119	134	508,228	308.64
486	PIPELINE TRANSPORTATION	31	347	351	356	\$6,776,635	\$1,483.72
487	SCENIC AND SIGHTSEEING TRANSPORTATION	7	56	40	38	\$195,240	\$336.23
488	SUPPORT ACTIVITIES FOR TRANSPORTATION	392	4,081	4,052	4,089	\$49,847,679	\$941.20
4881	Support Activities for Air Transportation	92	1,313	1,286	1,303	13,219,896	781.84
4882	Support Activities for Rail Transportation	33	299	307	302	3,027,932	769.55
4883	Support Activities for Water Transportation	27	549	546	557	12,798,437	1,787.82
4884	Support Activities for Road Transportation	114	492	479	472	3,511,361	561.55
4885	Freight Transportation Arrangement	111	1,348	1,353	1,370	16,682,004	945.64
4889	Other Support Activities for Transportation	15	80	81	85	608,049	570.40
491	POSTAL SERVICE	12	13	14	15	\$71,425	\$392.45
492	COURIERS & MESSENGERS	158	2,976	3,135	3,620	\$34,029,461	\$807.00
493	WARHOUSING & STORAGE	222	7,327	7,122	7,009	\$63,166,756	\$679.32

TABLE 5. STATEWIDE SUMMARY
FOURTH QUARTER 2010

NORTH AMERICAN INDUSTRY CLASSIFICATION SYSTEM - INDUSTRY GROUPS		NUMBER OF	EMPLOYMENT			TOTAL EARNINGS	AVERAGE
		EMPLOYING UNITS	OCTOBER	NOVEMBER	DECEMBER	OCT - DEC 2010	WEEKLY EARNINGS
22	UTILITIES	407	7,295	7,336	7,357	\$131,065,168	\$1,375.56
2211	Power Generation & Supply	159	4,948	4,998	5,034	98,329,524	1,514.78
2212	Natural Gas Distribution	71	1,481	1,470	1,456	25,022,604	1,310.29
2213	Water, Sewage and Other Systems	177	866	868	867	7,713,040	684.33
INFORMATION		1,127	15,175	15,233	15,256	\$188,575,509	\$952.99
511	PUBLISHING INDUSTRIES, EXCEPT INTERNET	239	3,960	3,947	3,981	\$37,140,491	\$720.97
5111	Newspaper, Book & Directory Publishers	211	3,711	3,705	3,735	33,036,717	683.69
5112	Software Publishers	28	249	242	246	4,103,774	1,284.97
512	MOTION PICTURE & SOUND RECORDING INDUSTRY	143	1,184	1,232	1,315	\$5,774,751	\$357.18
5121	Motion Picture & Video Industries	121	1,147	1,193	1,275	5,344,124	341.15
5122	Sound Recording Industries	22	37	39	40	430,627	856.69
515	BROADCASTING, EXCEPT INTERNET	129	1,762	1,763	1,746	\$17,137,306	\$750.29
5151	Radio & Television Broadcasting	124	1,725	1,726	1,710	16,884,878	754.99
5152	Cable & Other Subscription Programming	5	37	37	36	252,428	529.57
517	TELECOMMUNICATIONS	385	6,487	6,487	6,496	\$106,611,160	\$1,263.61
5171	Wired Telecommunications Carriers	275	3,929	3,929	3,941	63,978,399	1,251.31
5174	Satellite Telecommunications	4	5	4	4	34,362	609.98
	Other	106	2,553	2,554	2,551	42,598,399	1,283.68
518	DATA PROCESSING, HOSTING & RELATED SERVICES	167	1,509	1,516	1,423	\$18,804,109	\$975.59
519	OTHER INFORMATION SERVICES	64	273	288	295	\$3,107,692	\$837.80
FINANCIAL ACTIVITIES		7,975	47,914	47,856	48,062	\$573,597,404	\$920.30
52	FINANCE & INSURANCE	4,689	34,444	34,444	34,555	\$460,236,214	\$1,026.73
522	CREDIT INTERMEDIATION & RELATED ACTIVITIES	1,857	19,172	19,214	19,272	\$212,083,372	\$848.84
5221	Depository Credit Intermediation	1,398	17,175	17,232	17,282	181,689,297	811.16
5222	Nondepository Credit Intermediation	329	1,621	1,608	1,634	25,349,748	1,202.95
5223	Activities Related to Credit Intermediation	130	376	374	356	5,044,327	1,052.51

TABLE 5. STATEWIDE SUMMARY
FOURTH QUARTER 2010

NORTH AMERICAN INDUSTRY CLASSIFICATION SYSTEM - INDUSTRY GROUPS		NUMBER OF	EMPLOYMENT			TOTAL EARNINGS	AVERAGE
		EMPLOYING UNITS	OCTOBER	NOVEMBER	DECEMBER	OCT - DEC 2010	WEEKLY EARNINGS
523	FINANCIAL INVESTMENT & RELATED ACTIVITIES	676	3,119	3,121	3,102	\$83,626,155	\$2,065.76
524	INSURANCE CARRIERS & RELATED ACTIVITIES	2,070	11,654	11,621	11,663	\$158,847,946	\$1,049.21
5241	Insurance Carriers	420	5,458	5,463	5,478	82,494,375	1,160.87
5242	Insurance Agencies, Brokerages & Support	1,650	6,196	6,158	6,185	76,353,571	950.43
	OTHER	86	499	488	518	\$5,678,741	\$870.75
53	REAL ESTATE & RENTAL & LEASING	3,286	13,470	13,412	13,507	\$113,361,190	\$647.71
531	REAL ESTATE	2,559	8,809	8,827	8,899	\$70,537,755	\$613.45
5311	Lessors of Real Estate	1,087	4,486	4,504	4,508	31,705,797	542.06
5312	Offices of Real Estate Agents & Brokers	801	1,656	1,648	1,740	15,458,816	707.26
5313	Activities Related to Real Estate	671	2,667	2,675	2,651	23,373,142	674.82
532	RENTAL & LEASING SERVICES	709	4,600	4,524	4,548	\$42,174,786	\$711.87
5321	Automotive Equipment Rental & Leasing	124	881	872	873	6,407,883	563.12
5322	Consumer Goods Rental	377	2,246	2,192	2,207	16,736,222	581.22
5323	General Rental Centers	28	227	223	224	2,167,811	742.23
5324	Machinery & Equipment Rental & Leasing	180	1,246	1,237	1,244	16,862,870	1,044.12
533	LESSORS OF NONFINANCIAL INTANGIBLE ASSETS	18	61	61	60	\$648,649	\$822.46
PROFESSIONAL & BUSINESS SERVICES		12,278	119,398	118,889	119,550	\$1,529,696,190	\$986.50
54	PROFESSIONAL & TECHNICAL SERVICES	7,658	38,223	38,426	39,078	\$579,249,324	\$1,155.07
5411	Legal Services	1,694	6,202	6,182	6,228	110,164,304	1,365.92
5412	Accounting & Bookkeeping Services	1,282	4,831	4,860	5,217	61,299,614	948.89
5413	Architectural & Engineering Services	974	6,375	6,410	6,483	107,481,356	1,287.28
5414	Specialized Design Services	175	466	452	459	6,247,582	1,047.02
5415	Computer Systems Design & Related Services	1,068	8,146	8,247	8,252	139,870,391	1,309.71
5416	Management & Technical Consulting Services	1,368	5,243	5,270	5,346	79,881,645	1,162.38
5417	Scientific Research & Development Services	115	1,144	1,142	1,187	18,395,183	1,222.30
5418	Advertising & Related Services	366	2,019	2,030	2,080	26,592,822	1,001.27
5419	Other Professional & Technical Services	616	3,797	3,833	3,826	29,316,427	590.55

TABLE 5. STATEWIDE SUMMARY
FOURTH QUARTER 2010

NORTH AMERICAN INDUSTRY CLASSIFICATION SYSTEM - INDUSTRY GROUPS		NUMBER OF	EMPLOYMENT			TOTAL EARNINGS	AVERAGE
		EMPLOYING UNITS	OCTOBER	NOVEMBER	DECEMBER	OCT - DEC 2010	WEEKLY EARNINGS
55	MANAGEMENT OF COMPANIES & ENTERPRISES	512	26,093	26,138	26,282	\$591,143,083	\$1,737.52
56	ADMINISTRATIVE & WASTE SERVICES	4,108	55,082	54,325	54,190	\$359,303,783	\$506.83
561	ADMINISTRATIVE & SUPPORT SERVICES	3,865	51,997	51,255	51,114	\$327,915,532	\$490.22
5611	Office Administrative Services	568	1,767	1,754	1,805	27,221,376	1,179.47
5612	Facilities Support Services	20	135	136	140	1,651,700	927.40
5613	Employment Services	805	21,470	20,978	20,929	118,479,805	431.41
5614	Business Support Services	431	9,718	9,745	9,788	70,194,421	553.78
5615	Travel Arrangement & Reservation Services	85	324	322	326	3,017,902	716.50
5616	Investigation & Security Services	250	4,492	4,448	4,477	27,885,535	479.62
5617	Services to Buildings & Dwellings	1,432	12,270	12,045	11,770	62,295,271	398.39
5619	Other Support Services	274	1,821	1,827	1,879	17,169,522	716.88
562	WASTE MANAGEMENT & REMEDIATION SERVICES	243	3,085	3,070	3,076	\$31,388,251	\$784.69
5621	Waste Collection Services	107	1,206	1,200	1,208	11,752,867	750.47
5622	Waste Treatment & disposal Services	36	893	898	895	11,545,129	991.91
5629	Remediation & Other Waste Services	100	986	972	973	8,090,255	636.98
EDUCATION & HEALTH SERVICES		14,726	164,592	164,828	165,016	\$1,605,658,773	\$749.41
61	EDUCATIONAL SERVICES	695	10,991	11,036	10,981	\$85,621,822	\$598.61
6111	Elementary & Secondary Schools	89	3,506	3,522	3,466	22,926,910	504.18
6112	Junior Colleges	7	210	207	220	1,713,537	620.77
6113	Colleges & Universities	32	4,023	4,033	4,001	33,007,170	631.75
6114	Business, Computer, & Management Training	46	242	252	250	4,135,725	1,282.79
6115	Technical & Trade Schools	106	897	883	881	12,557,924	1,089.06
6116	Other Schools & Instruction	270	1,673	1,718	1,728	6,514,915	293.70
6117	Educational Support Services	145	440	421	435	4,765,641	848.58

TABLE 5. STATEWIDE SUMMARY
FOURTH QUARTER 2010

NORTH AMERICAN INDUSTRY CLASSIFICATION SYSTEM - INDUSTRY GROUPS		NUMBER OF	EMPLOYMENT			TOTAL EARNINGS	AVERAGE
		EMPLOYING UNITS	OCTOBER	NOVEMBER	DECEMBER	OCT - DEC 2010	WEEKLY EARNINGS
62	HEALTH CARE & SOCIAL ASSISTANCE	14,031	153,601	153,792	154,035	\$1,520,036,951	\$760.20
621	AMBULATORY HEALTH CARE SERVICES	5,073	46,300	46,248	46,426	\$721,129,411	\$1,197.45
6211	Offices of Physicians	2,240	21,594	21,621	21,773	459,430,873	1,631.42
6212	Offices of Dentists	979	6,614	6,604	6,579	81,059,792	944.90
6213	Offices of Other Health Practitioners	1,198	6,614	6,498	6,493	62,774,206	738.91
6214	Outpatient Care Centers	266	3,816	3,797	3,806	42,445,796	857.80
6215	Medical & Diagnostic Laboratories	110	904	905	923	14,311,332	1,208.86
6216	Home Health Care Services	146	4,311	4,369	4,370	38,105,347	673.83
6219	Other Ambulatory Health Care Services	134	2,447	2,454	2,482	23,002,065	718.97
622	HOSPITALS	119	41,854	41,937	42,007	\$448,717,262	\$823.15
6221	General Medical & Surgical Hospitals	85	37,513	37,519	37,652	402,082,664	823.44
6222	Psychiatric & Substance Abuse Hospitals	10	1,963	2,001	1,959	19,468,651	758.53
6223	Other Hospitals	24	2,378	2,417	2,396	27,165,947	871.79
623	NURSING & RESIDENTIAL CARE FACILITIES	555	31,107	31,110	31,288	\$181,754,389	\$448.57
6231	Nursing Care Facilities	265	22,794	22,740	22,857	133,810,486	451.51
6232	Residential Mental Health Facilities	139	4,261	4,324	4,332	26,036,316	465.15
6233	Community Care Facilities for the Elderly	109	2,849	2,850	2,885	14,120,000	379.60
6239	Other Residential Care Facilities	42	1,203	1,196	1,214	7,787,587	497.41
624	SOCIAL ASSISTANCE	8,284	34,340	34,497	34,314	\$168,435,889	\$376.82
6241	Individual & Family Services	7,097	19,161	19,237	19,207	93,713,205	375.42
6242	Emergency & Other Relief Services	122	1,082	1,095	1,109	6,490,672	455.83
6243	Vocational Rehabilitation Services	131	3,828	3,883	3,856	22,646,403	451.81
6244	Child Day Care Services	934	10,269	10,282	10,142	45,585,609	342.74
LEISURE & HOSPITALITY		6,385	98,777	97,267	96,406	\$343,366,101	\$270.95
71	ARTS, ENTERTAINMENT & RECREATION	915	9,217	8,180	8,089	\$41,693,534	\$377.52
711	PERFORMING ARTS & SPECTATOR SPORTS	212	2,195	1,634	1,837	\$12,132,118	\$494.13
7111	Performing Arts Companies	43	631	385	378	2,321,395	384.29
7112	Spectator Sports	52	813	775	874	5,467,710	512.50
7113	Performing Arts & Sports Promoters	35	645	371	459	2,775,185	434.19
7114	Agents & Managers for Public Figures	24	19	21	25	493,400	1,751.72
7115	Independent Artists, Writers, & Performers	58	87	82	101	1,074,428	918.31

TABLE 5. STATEWIDE SUMMARY
FOURTH QUARTER 2010

NORTH AMERICAN INDUSTRY CLASSIFICATION SYSTEM - INDUSTRY GROUPS		NUMBER OF	EMPLOYMENT			TOTAL EARNINGS	AVERAGE
		EMPLOYING UNITS	OCTOBER	NOVEMBER	DECEMBER	OCT - DEC 2010	WEEKLY EARNINGS
712	MUSEUMS, PARKS, & HISTORICAL SITES	53	328	326	303	\$1,999,570	\$482.17
713	GAMBLING, RECREATIONAL & AMUSEMENT INDUSTRY	650	6,694	6,220	5,949	\$27,561,846	\$337.19
72	ACCOMODATION & FOOD SERVICES	5,470	89,560	89,087	88,317	\$301,672,567	\$260.77
721	ACCOMODATION	877	11,164	10,785	10,466	\$45,580,234	\$324.50
7211	Travel Accommodation	792	10,690	10,405	10,104	43,671,630	323.03
7212	RV Parks & Recreational Camps	64	379	283	276	1,483,265	364.92
7213	Rooming & Boarding Houses	21	95	97	86	425,339	\$353.08
722	FOOD SERVICES & DRINKING PLACES	4,593	78,396	78,302	77,851	\$256,092,333	251.97
7221	Full - Service Restaurants	1,953	33,303	33,216	33,267	115,382,733	266.84
7222	Limited - Service Eating Places	2,327	41,334	41,334	40,843	126,088,414	235.58
7223	Special Food Services	163	2,717	2,683	2,667	11,327,224	324.03
7224	Drinking Places, Alcoholic Beverages	150	1,042	1,069	1,074	3,293,962	238.66
OTHER SERVICES		5,355	24,599	24,370	24,120	\$174,881,481	\$552.17
811	REPAIR & MAINTENANCE	2,185	9,123	9,027	8,859	\$77,388,679	\$661.22
8111	Automotive Repair & Maintenance	1,448	6,035	5,946	5,968	46,083,181	592.49
8112	Electronic Equipment Repair & Maintenance	164	908	883	726	9,347,651	857.03
8113	Commercial Machinery Repair & Maintenance	388	1,624	1,670	1,642	18,079,590	845.26
8114	Household Goods Repair & Maintenance	185	556	528	523	3,878,257	556.93
812	PERSONAL & LAUNDRY SERVICES	1,308	8,156	8,087	8,068	\$44,275,032	\$420.28
8121	Personal Care Services	581	2,700	2,664	2,668	11,352,794	326.18
8122	Death Care Services	246	1,627	1,626	1,596	12,136,699	577.60
8123	Drycleaning & Laundry Service	284	3,152	3,110	3,094	17,259,885	425.72
8129	Other Personal Services	197	677	687	710	3,525,654	392.29
813	MEMBERSHIP ASSOCIATIONS & ORGANIZATIONS	1,087	6,248	6,198	6,128	\$48,212,494	\$599.01
8131	Religious Organizations	47	210	210	200	1,385,563	515.72
8132	Grantmaking & Giving Organizations	108	522	528	558	5,878,564	843.65
8133	Social Advocacy Organizations	216	2,108	2,094	2,087	16,388,272	601.35
8134	Civic & Social Organizations	197	1,306	1,284	1,293	5,140,283	305.49
8139	Professional & Similar Organizations	519	2,102	2,082	1,990	19,419,812	725.87

TABLE 5. STATEWIDE SUMMARY
FOURTH QUARTER 2010

NORTH AMERICAN INDUSTRY CLASSIFICATION SYSTEM - INDUSTRY GROUPS		NUMBER OF EMPLOYING UNITS	EMPLOYMENT			TOTAL EARNINGS	AVERAGE
			OCTOBER	NOVEMBER	DECEMBER	OCT - DEC 2010	WEEKLY EARNINGS
814	PRIVATE HOUSEHOLDS	775	1,072	1,058	1,065	\$5,005,276	\$361.52
	LOCAL GOVERNMENT	1,975	119,900	122,095	120,743	\$984,829,810	\$626.54
	STATE GOVERNMENT	1,120	70,047	70,804	69,825	\$742,336,165	\$813.14
	NONCLASSIFIABLE ESTABLISHMENTS	0	0	0	0	\$0	\$0.00

TABLE 6. COUNTY SUMMARY
FOURTH QUARTER 2010

NORTH AMERICAN INDUSTRY CLASSIFICATION SYSTEM - INDUSTRY GROUPS	NUMBER OF	EMPLOYMENT			TOTAL EARNINGS	AVERAGE
	EMPLOYING UNITS	OCTOBER	NOVEMBER	DECEMBER	OCT - DEC 2010	WEEKLY EARNINGS
ARKANSAS COUNTY - TOTAL	748	9,614	9,545	9,534	\$86,278,201	\$693.91
Natural Resources & Mining	41	180	173	189	2,097,806	893.19
Construction	47	264	260	263	2,343,292	687.12
Manufacturing	32	3,399	3,394	3,341	33,122,170	754.25
Trade, Transportation & Utilities	212	2,205	2,169	2,160	20,014,212	706.87
Wholesale Trade	48	429	427	398	6,720,086	1,236.67
Retail Trade	97	1,077	1,086	1,110	6,564,567	462.85
Transportation, Warehousing & Utilities	67	699	656	652	6,729,559	773.78
Information	10	106	109	107	980,628	702.79
Financial Activities	44	316	309	329	4,883,518	1,181.31
Professional & Business Services	45	393	364	362	5,330,391	1,099.28
Education & Health Services	164	1,150	1,147	1,164	7,885,500	525.78
Leisure & Hospitality	51	442	450	433	1,351,663	235.41
Other Services	55	133	136	133	850,236	488.08
Local Government	32	838	835	853	5,987,505	547.00
State Government	15	188	199	200	1,431,280	562.68
ASHLEY COUNTY - TOTAL	587	8,028	7,942	7,874	\$80,501,861	\$779.12
Natural Resources & Mining	47	365	301	286	2,827,627	685.43
Construction	43	613	615	570	7,780,013	998.55
Manufacturing	29	2,610	2,576	2,560	39,451,626	1,175.34
Trade, Transportation & Utilities	140	1,188	1,216	1,216	8,364,611	533.23
Wholesale Trade	24	180	183	180	2,251,448	956.84
Retail Trade	87	769	795	795	3,828,484	374.52
Transportation, Warehousing & Utilities	29	239	238	241	2,284,679	734.31
Information	7	47	45	45	337,355	568.26
Financial Activities	37	227	224	224	2,016,349	689.35
Professional & Business Services	51	426	389	400	2,489,390	472.82
Education & Health Services	122	785	805	809	6,452,160	620.66
Leisure & Hospitality	27	364	365	367	1,127,542	237.41
Other Services	41	146	147	142	868,969	460.99
Local Government	32	1,017	1,020	1,014	7,424,534	561.57
State Government	11	240	239	241	1,361,685	436.44

TABLE 6. COUNTY SUMMARY
FOURTH QUARTER 2010

NORTH AMERICAN INDUSTRY CLASSIFICATION SYSTEM - INDUSTRY GROUPS	NUMBER OF	EMPLOYMENT			TOTAL EARNINGS	AVERAGE
	EMPLOYING UNITS	OCTOBER	NOVEMBER	DECEMBER	OCT - DEC 2010	WEEKLY EARNINGS
BAXTER COUNTY - TOTAL	1,299	14,091	14,260	14,018	\$116,335,622	\$633.64
Natural Resources & Mining	6	128	127	120	953,440	586.73
Construction	133	647	652	630	5,080,915	607.84
Manufacturing	62	2,073	2,091	2,118	19,752,994	725.63
Trade, Transportation & Utilities	274	2,540	2,524	2,512	15,355,885	467.75
Wholesale Trade	40	184	182	178	1,597,144	677.52
Retail Trade	210	2,204	2,186	2,166	12,087,003	425.46
Transportation, Warehousing & Utilities	24	152	156	168	1,671,738	810.47
Information	20	213	217	208	2,194,670	793.83
Financial Activities	112	696	693	701	9,433,821	1,041.64
Professional & Business Services	140	813	788	785	6,972,075	674.33
Education & Health Services	272	3,426	3,437	3,418	37,055,608	831.76
Leisure & Hospitality	128	1,541	1,532	1,477	5,300,112	268.81
Other Services	100	346	340	350	1,774,741	395.32
Local Government	40	1,289	1,485	1,327	9,762,364	549.34
State Government	12	379	374	372	2,698,997	553.64
BENTON COUNTY - TOTAL	5,377	92,027	92,620	92,921	\$1,011,530,247	\$840.98
Natural Resources & Mining	38	757	729	737	13,100,278	1,359.94
Construction	524	3,297	3,224	3,233	33,325,935	788.46
Manufacturing	219	11,439	11,661	11,712	115,300,568	764.33
Trade, Transportation & Utilities	1,435	20,886	21,276	21,416	217,951,094	791.10
Wholesale Trade	654	3,830	3,794	3,792	81,259,280	1,642.62
Retail Trade	623	9,014	9,352	9,481	56,197,856	465.71
Transportation, Warehousing & Utilities	158	8,042	8,130	8,143	80,493,958	763.95
Information	73	748	764	760	9,195,911	934.04
Financial Activities	536	3,522	3,513	3,527	41,549,510	907.82
Professional & Business Services	1,051	24,011	24,131	24,342	371,271,483	1,182.03
Education & Health Services	601	8,414	8,479	8,551	85,805,662	778.23
Leisure & Hospitality	460	8,410	8,255	8,177	32,182,924	298.96
Other Services	345	1,914	1,897	1,737	13,812,533	574.53
Local Government	78	7,445	7,505	7,546	68,908,302	706.88
State Government	17	1,184	1,186	1,183	9,126,047	592.74

TABLE 6. COUNTY SUMMARY
FOURTH QUARTER 2010

NORTH AMERICAN INDUSTRY CLASSIFICATION SYSTEM - INDUSTRY GROUPS	NUMBER OF	EMPLOYMENT			TOTAL EARNINGS	AVERAGE
	EMPLOYING UNITS	OCTOBER	NOVEMBER	DECEMBER	OCT - DEC 2010	WEEKLY EARNINGS
BOONE COUNTY - TOTAL	1,034	13,701	13,770	13,723	\$113,479,079	\$635.71
Construction	86	463	463	450	3,702,858	621.01
Manufacturing	68	1,700	1,717	1,748	16,971,414	758.27
Trade, Transportation & Utilities	243	3,814	3,865	3,874	33,681,493	672.78
Wholesale Trade	52	557	564	562	4,739,742	649.90
Retail Trade	141	1,785	1,818	1,820	10,547,680	448.84
Transportation, Warehousing & Utilities	50	1,472	1,483	1,492	18,394,071	954.53
Information	22	374	380	380	3,750,861	763.30
Financial Activities	92	536	523	527	5,019,998	730.43
Professional & Business Services	116	949	960	950	8,205,869	662.35
Education & Health Services	193	1,392	1,405	1,395	11,541,782	635.37
Leisure & Hospitality	81	1,126	1,104	1,066	3,632,987	254.36
Local Government	57	2,329	2,331	2,317	17,437,011	576.74
State Government	19	756	760	757	7,512,090	762.67
Other	57	262	262	259	2,022,716	596.14
BRADLEY COUNTY - TOTAL	391	3,771	3,720	3,758	\$32,065,979	\$657.82
Natural Resources & Mining	42	231	234	278	2,130,814	661.81
Construction	20	188	178	167	1,242,556	537.98
Manufacturing	11	883	859	830	11,817,366	1,060.30
Trade, Transportation & Utilities	80	499	499	506	3,519,781	540.06
Wholesale Trade	14	85	83	86	1,145,274	1,040.53
Retail Trade	41	351	353	357	1,782,775	387.76
Transportation, Warehousing & Utilities	25	63	63	63	591,732	722.51
Information	4	15	14	14	118,488	635.89
Financial Activities	26	149	148	148	1,245,355	645.82
Professional & Business Services	26	89	89	93	566,176	482.13
Education & Health Services	117	616	608	610	4,137,090	520.56
Leisure & Hospitality	11	168	154	159	470,302	225.64
Other Services	29	96	97	100	620,887	489.02
Local Government	14	555	551	558	3,884,219	538.68
State Government	11	282	289	295	2,312,945	616.35

TABLE 6. COUNTY SUMMARY
FOURTH QUARTER 2010

NORTH AMERICAN INDUSTRY CLASSIFICATION SYSTEM - INDUSTRY GROUPS	NUMBER OF	EMPLOYMENT			TOTAL EARNINGS	AVERAGE
	EMPLOYING UNITS	OCTOBER	NOVEMBER	DECEMBER	OCT - DEC 2010	WEEKLY EARNINGS
CALHOUN COUNTY - TOTAL	121	3,034	3,040	3,052	\$34,974,780	\$884.41
Natural Resources & Mining	15	91	90	89	848,156	724.92
Construction	14	107	112	110	869,406	609.82
Manufacturing	8	2,025	2,022	2,037	25,671,899	973.75
Trade, Transportation & Utilities	30	242	244	244	1,870,030	591.16
Retail Trade	16	82	84	83	387,711	359.32
Transportation, Warehousing & Utilities	14	160	160	161	1,482,319	711.17
Financial Activities	7	88	85	84	683,669	613.89
Education & Health Services	14	47	45	45	402,371	677.77
Leisure & Hospitality	5	15	13	13	33,389	187.93
Other Services	3	4	4	4	28,866	555.12
Local Government	11	209	218	220	1,325,723	472.85
State Government	8	81	85	84	760,224	701.75
Other	6	125	122	122	2,481,047	1,551.62
CARROLL COUNTY - TOTAL	797	10,348	9,975	9,801	\$67,719,463	\$518.77
Natural Resources & Mining	17	296	297	297	2,803,657	726.96
Trade, Transportation & Utilities	195	1,577	1,574	1,585	10,120,609	493.14
Wholesale Trade	24	178	176	174	1,156,187	505.33
Retail Trade	154	1,148	1,154	1,162	6,046,807	402.83
Transportation, Warehousing & Utilities	17	251	244	249	2,917,615	904.97
Information	8	78	77	77	572,808	569.77
Financial Activities	70	361	358	359	3,353,643	717.92
Professional & Business Services	63	235	236	226	1,575,902	521.76
Education & Health Services	92	954	957	954	8,150,240	656.48
Leisure & Hospitality	165	1,715	1,392	1,237	4,897,947	260.20
Other Services	42	147	147	129	777,322	424.07
Local Government	26	1,055	1,042	1,032	7,533,152	555.58
State Government	10	106	104	105	790,743	579.30
Other	109	3,824	3,791	3,800	27,143,440	548.74

TABLE 6. COUNTY SUMMARY
FOURTH QUARTER 2010

NORTH AMERICAN INDUSTRY CLASSIFICATION SYSTEM - INDUSTRY GROUPS	NUMBER OF	EMPLOYMENT			TOTAL EARNINGS	AVERAGE
	EMPLOYING UNITS	OCTOBER	NOVEMBER	DECEMBER	OCT - DEC 2010	WEEKLY EARNINGS
CHICOT COUNTY - TOTAL	420	3,384	3,368	3,369	\$23,801,180	\$542.69
Natural Resources & Mining	50	291	260	250	1,638,389	472.02
Construction	13	160	158	165	1,996,827	954.05
Manufacturing	8	280	282	277	1,568,774	431.50
Trade, Transportation & Utilities	71	480	473	488	3,258,549	521.84
Wholesale Trade	13	63	63	68	605,187	719.89
Retail Trade	46	353	352	353	1,976,175	431.04
Transportation, Warehousing & Utilities	12	64	58	67	677,187	826.85
Information	5	10	10	10	72,067	554.36
Financial Activities	29	169	168	166	1,595,541	732.01
Professional & Business Services	23	42	44	45	374,954	660.52
Education & Health Services	162	728	726	731	4,635,549	489.58
Leisure & Hospitality	17	150	150	143	382,079	199.03
Other Services	14	64	68	62	656,916	781.42
Local Government	18	710	730	732	5,376,126	571.20
State Government	10	300	299	300	2,245,409	576.39
CLARK COUNTY - TOTAL	619	9,257	9,253	9,268	\$72,230,440	\$600.06
Natural Resources & Mining	32	227	222	228	1,989,439	678.14
Construction	34	111	112	114	727,170	497.95
Manufacturing	34	1,954	1,955	1,954	19,196,987	755.60
Trade, Transportation & Utilities	137	1,407	1,419	1,451	10,030,534	541.21
Wholesale Trade	18	53	54	54	643,890	922.92
Retail Trade	97	1,170	1,176	1,205	7,361,468	478.40
Transportation, Warehousing & Utilities	22	184	189	192	2,025,176	827.17
Information	9	31	30	31	288,024	722.47
Financial Activities	76	306	307	303	2,851,660	718.42
Professional & Business Services	52	310	320	327	5,164,244	1,245.30
Education & Health Services	98	1,365	1,358	1,357	9,942,495	562.36
Leisure & Hospitality	61	1,040	1,004	988	3,181,384	242.14
Other Services	45	227	231	221	1,607,784	546.43
Local Government	27	1,000	1,012	1,006	7,460,429	570.46
State Government	14	1,279	1,283	1,288	9,790,290	586.83

TABLE 6. COUNTY SUMMARY
FOURTH QUARTER 2010

NORTH AMERICAN INDUSTRY CLASSIFICATION SYSTEM - INDUSTRY GROUPS	NUMBER OF	EMPLOYMENT			TOTAL EARNINGS	AVERAGE
	EMPLOYING UNITS	OCTOBER	NOVEMBER	DECEMBER	OCT - DEC 2010	WEEKLY EARNINGS
CLAY COUNTY - TOTAL	402	3,877	3,864	3,885	\$27,394,639	\$543.77
Natural Resources & Mining	60	303	282	244	1,856,548	516.81
Construction	29	172	167	153	1,108,201	519.79
Manufacturing	14	562	516	583	4,536,590	630.29
Trade, Transportation & Utilities	98	910	910	907	7,276,667	615.78
Wholesale Trade	23	288	298	295	2,802,505	734.09
Retail Trade	47	405	414	420	2,527,008	470.67
Transportation, Warehousing & Utilities	28	217	198	192	1,947,154	740.27
Information	4	58	58	59	370,215	488.20
Financial Activities	28	113	111	109	1,130,042	783.12
Professional & Business Services	25	68	65	65	456,025	531.50
Education & Health Services	59	488	490	492	3,219,104	505.35
Leisure & Hospitality	24	220	218	221	500,171	175.15
Other Services	28	69	66	70	506,912	570.63
Local Government	22	859	926	928	6,015,670	511.70
State Government	11	55	55	54	418,494	588.88
CLEBURNE COUNTY - TOTAL	696	6,911	6,914	6,952	\$52,623,645	\$584.49
Natural Resources & Mining	32	417	421	401	5,347,911	996.07
Construction	71	360	339	352	3,195,574	701.66
Manufacturing	37	1,209	1,196	1,197	10,015,405	641.66
Trade, Transportation & Utilities	175	1,580	1,593	1,627	13,120,751	630.81
Wholesale Trade	43	295	299	296	3,870,275	1,003.53
Retail Trade	103	967	974	1,003	5,635,837	441.77
Transportation, Warehousing & Utilities	29	318	320	328	3,614,639	863.51
Information	7	57	57	57	400,879	541.00
Financial Activities	72	239	240	243	2,304,669	736.63
Professional & Business Services	65	252	289	287	2,204,166	614.32
Education & Health Services	82	866	871	868	5,749,615	509.34
Leisure & Hospitality	78	806	777	772	2,522,630	247.20
Other Services	50	165	163	155	949,651	453.73
Local Government	18	846	859	881	6,039,238	538.93
State Government	9	114	109	112	773,156	532.60

TABLE 6. COUNTY SUMMARY
FOURTH QUARTER 2010

NORTH AMERICAN INDUSTRY CLASSIFICATION SYSTEM - INDUSTRY GROUPS	NUMBER OF	EMPLOYMENT			TOTAL EARNINGS	AVERAGE
	EMPLOYING UNITS	OCTOBER	NOVEMBER	DECEMBER	OCT - DEC 2010	WEEKLY EARNINGS
CLEVELAND COUNTY - TOTAL	122	1,122	1,104	1,122	\$6,976,691	\$480.89
Natural Resources & Mining	12	150	154	155	1,274,647	640.85
Construction	6	24	19	27	122,064	402.41
Manufacturing	6	93	91	94	636,565	528.42
Trade, Transportation & Utilities	31	164	163	169	885,255	411.87
Retail Trade	16	78	82	83	253,882	241.10
Other Trade, Transportation & Utilities	15	86	81	86	631,373	575.90
Education & Health Services	33	143	138	157	717,403	377.98
Other Services	5	11	6	6	98,878	992.09
Local Government	11	363	362	344	2,465,770	532.30
State Government	7	56	55	55	339,173	471.51
Other	11	118	116	115	436,936	288.92
COLUMBIA COUNTY - TOTAL	752	8,691	8,665	8,551	\$78,141,128	\$696.05
Natural Resources & Mining	46	484	464	498	8,210,984	1,310.40
Construction	40	288	280	282	2,626,745	713.14
Manufacturing	39	1,983	1,967	1,800	24,750,951	993.35
Trade, Transportation & Utilities	165	1,523	1,541	1,565	10,702,671	533.56
Wholesale Trade	28	231	235	228	2,630,584	874.72
Retail Trade	101	1,038	1,050	1,081	5,356,037	390.03
Transportation, Warehousing & Utilities	36	254	256	256	2,716,050	818.25
Information	9	71	70	71	507,292	552.20
Financial Activities	72	387	389	386	4,389,963	871.83
Professional & Business Services	61	299	284	288	3,163,230	838.09
Education & Health Services	182	1,082	1,071	1,058	6,225,737	447.43
Leisure & Hospitality	47	608	624	622	2,368,785	294.85
Other Services	52	258	253	261	1,060,375	316.97
Local Government	26	1,120	1,137	1,127	8,827,349	601.97
State Government	13	588	585	593	5,307,046	693.49

TABLE 6. COUNTY SUMMARY
FOURTH QUARTER 2010

NORTH AMERICAN INDUSTRY CLASSIFICATION SYSTEM - INDUSTRY GROUPS	NUMBER OF	EMPLOYMENT			TOTAL EARNINGS	AVERAGE
	EMPLOYING UNITS	OCTOBER	NOVEMBER	DECEMBER	OCT - DEC 2010	WEEKLY EARNINGS
CONWAY COUNTY - TOTAL	581	6,798	6,840	6,811	\$58,352,068	\$658.51
Natural Resources & Mining	34	239	244	243	3,128,690	994.50
Construction	53	496	489	505	6,286,594	973.66
Manufacturing	20	935	945	956	12,408,312	1,009.68
Trade, Transportation & Utilities	130	1,542	1,539	1,504	13,110,526	659.87
Wholesale Trade	22	230	230	221	3,098,913	1,050.12
Retail Trade	83	828	817	809	4,518,964	424.95
Transportation, Warehousing & Utilities	25	484	492	474	5,492,649	874.16
Information	4	10	10	10	126,096	969.97
Financial Activities	32	173	169	170	1,416,131	638.28
Professional & Business Services	42	530	548	546	2,748,719	390.59
Education & Health Services	164	974	976	991	7,178,028	563.23
Leisure & Hospitality	42	450	456	485	1,295,546	214.93
Other Services	24	93	95	91	668,651	553.06
Local Government	26	926	933	924	6,886,208	571.01
State Government	10	430	436	386	3,098,567	571.13
CRAIGHEAD COUNTY - TOTAL	2,683	42,588	42,929	42,756	\$383,799,376	\$690.47
Natural Resources & Mining	70	493	457	313	3,858,259	704.96
Construction	213	1,667	1,671	1,618	16,989,898	791.11
Manufacturing	128	6,000	6,038	6,028	62,956,082	804.18
Trade, Transportation & Utilities	731	8,601	8,845	9,026	70,139,289	611.44
Wholesale Trade	185	1,634	1,610	1,619	21,170,230	1,004.61
Retail Trade	432	5,730	6,017	6,155	35,296,532	455.00
Transportation, Warehousing & Utilities	114	1,237	1,218	1,252	13,672,527	851.15
Information	31	505	502	513	4,489,265	681.57
Financial Activities	262	1,492	1,490	1,503	16,142,136	830.57
Professional & Business Services	350	3,905	3,911	3,902	33,611,504	661.93
Education & Health Services	456	8,225	8,244	8,269	95,699,204	892.73
Leisure & Hospitality	221	4,279	4,290	4,167	14,271,532	258.59
Other Services	159	846	847	829	4,863,266	445.00
Local Government	39	3,890	3,906	3,907	31,732,769	625.73
State Government	23	2,685	2,728	2,681	29,046,172	828.14

TABLE 6. COUNTY SUMMARY
FOURTH QUARTER 2010

NORTH AMERICAN INDUSTRY CLASSIFICATION SYSTEM - INDUSTRY GROUPS	NUMBER OF	EMPLOYMENT			TOTAL EARNINGS	AVERAGE
	EMPLOYING UNITS	OCTOBER	NOVEMBER	DECEMBER	OCT - DEC 2010	WEEKLY EARNINGS
CRAWFORD COUNTY - TOTAL	1,310	19,450	19,295	19,313	\$151,512,621	\$602.23
Natural Resources & Mining	29	301	280	303	4,558,436	1,189.99
Construction	182	1,117	1,068	1,076	10,359,767	733.12
Manufacturing	82	4,100	4,065	4,070	30,725,079	579.52
Trade, Transportation & Utilities	311	6,099	6,091	6,049	50,391,363	637.58
Wholesale Trade	84	746	754	753	8,482,329	868.82
Retail Trade	162	1,884	1,898	1,918	10,785,997	436.68
Transportation, Warehousing & Utilities	65	3,469	3,439	3,378	31,123,037	698.25
Information	12	118	117	121	940,508	609.66
Financial Activities	129	543	547	549	5,015,689	706.20
Professional & Business Services	161	1,217	1,213	1,240	9,964,230	626.55
Education & Health Services	172	1,706	1,687	1,722	13,354,497	602.50
Leisure & Hospitality	95	1,527	1,509	1,492	4,752,565	242.21
Other Services	84	373	372	377	2,767,087	569.13
Local Government	43	2,217	2,214	2,184	17,587,640	613.56
State Government	10	132	132	130	1,095,760	641.80
CRITTENDEN COUNTY - TOTAL	1,354	15,938	15,867	15,688	\$131,812,502	\$640.48
Natural Resources & Mining	47	361	322	297	2,919,130	687.39
Construction	56	359	374	344	4,029,504	863.40
Manufacturing	42	1,680	1,672	1,641	19,465,191	899.65
Trade, Transportation & Utilities	323	4,545	4,539	4,501	41,341,202	702.27
Wholesale Trade	74	761	757	748	9,031,792	919.80
Retail Trade	166	1,937	1,940	1,945	10,857,686	430.37
Transportation, Warehousing & Utilities	83	1,847	1,842	1,808	21,451,724	900.56
Information	6	60	61	60	533,582	680.30
Financial Activities	99	566	561	569	5,382,685	732.40
Professional & Business Services	123	1,091	1,060	1,071	7,450,772	533.65
Education & Health Services	398	2,133	2,161	2,166	16,806,466	600.37
Leisure & Hospitality	112	1,796	1,780	1,807	6,710,416	287.68
Other Services	91	501	491	475	3,237,643	509.30
Local Government	43	2,296	2,298	2,303	19,979,924	668.52
State Government	14	550	548	454	3,955,987	588.22

TABLE 6. COUNTY SUMMARY
FOURTH QUARTER 2010

NORTH AMERICAN INDUSTRY CLASSIFICATION SYSTEM - INDUSTRY GROUPS	NUMBER OF	EMPLOYMENT			TOTAL EARNINGS	AVERAGE
	EMPLOYING UNITS	OCTOBER	NOVEMBER	DECEMBER	OCT - DEC 2010	WEEKLY EARNINGS
CROSS COUNTY - TOTAL	526	4,905	4,872	4,876	\$38,915,647	\$612.88
Natural Resources & Mining	34	187	177	156	1,482,443	657.89
Construction	22	99	87	88	745,313	627.72
Manufacturing	13	659	670	670	5,440,648	628.08
Trade, Transportation & Utilities	139	1,260	1,245	1,248	10,714,077	658.80
Wholesale Trade	31	295	294	291	3,353,178	879.33
Retail Trade	76	698	709	718	4,631,283	502.94
Transportation, Warehousing & Utilities	32	267	242	239	2,729,616	842.13
Information	4	33	36	35	262,506	582.48
Financial Activities	41	297	299	299	2,689,598	693.49
Professional & Business Services	46	107	108	113	1,056,543	743.35
Education & Health Services	132	777	759	778	6,098,766	608.21
Leisure & Hospitality	32	314	311	313	889,828	218.92
Other Services	37	65	65	65	356,729	422.16
Local Government	16	732	735	733	5,924,460	621.45
State Government	10	375	380	378	3,254,736	662.92
DALLAS COUNTY - TOTAL	260	3,018	3,070	3,015	\$21,561,022	\$546.59
Natural Resources & Mining	35	206	196	198	1,663,898	639.96
Construction	12	63	56	51	477,951	648.80
Manufacturing	14	634	651	625	5,619,008	678.90
Trade, Transportation & Utilities	63	486	488	482	3,585,892	568.35
Wholesale Trade	7	41	44	41	757,974	1,388.23
Retail Trade	40	358	355	355	2,054,001	443.82
Transportation, Warehousing & Utilities	16	87	89	86	773,917	681.67
Information	3	17	17	17	135,461	612.95
Financial Activities	16	88	94	92	860,229	724.51
Professional & Business Services	17	51	45	47	281,930	454.97
Education & Health Services	52	888	893	912	5,494,551	470.84
Leisure & Hospitality	11	94	93	100	277,730	223.32
Other Services	14	73	71	70	408,238	440.23
Local Government	15	365	412	369	2,403,345	483.96
State Government	8	53	54	52	352,789	512.03

TABLE 6. COUNTY SUMMARY
FOURTH QUARTER 2010

NORTH AMERICAN INDUSTRY CLASSIFICATION SYSTEM - INDUSTRY GROUPS	NUMBER OF	EMPLOYMENT			TOTAL EARNINGS	AVERAGE
	EMPLOYING UNITS	OCTOBER	NOVEMBER	DECEMBER	OCT - DEC 2010	WEEKLY EARNINGS
DESHA COUNTY - TOTAL	501	4,370	4,281	4,219	\$31,094,383	\$557.55
Natural Resources & Mining	57	338	289	252	2,522,189	662.17
Construction	17	112	116	119	1,112,462	739.83
Manufacturing	17	494	500	503	4,055,663	625.20
Trade, Transportation & Utilities	108	953	918	879	6,951,166	583.31
Wholesale Trade	16	158	154	154	2,223,785	1,101.25
Retail Trade	65	540	546	537	2,873,040	408.51
Transportation, Warehousing & Utilities	27	255	218	188	1,854,341	647.39
Information	6	32	33	34	272,808	635.92
Financial Activities	44	215	216	214	1,908,874	682.96
Professional & Business Services	34	87	90	88	586,310	510.57
Education & Health Services	132	746	749	744	5,165,389	532.39
Leisure & Hospitality	34	307	305	296	758,923	192.88
Other Services	22	76	69	69	397,381	428.52
Local Government	20	846	838	860	6,198,246	562.25
State Government	10	164	158	161	1,164,972	556.60
DREW COUNTY - TOTAL	527	6,476	6,571	6,477	\$47,309,883	\$559.19
Natural Resources & Mining	49	389	367	300	3,155,763	689.63
Construction	19	96	93	106	754,527	590.24
Manufacturing	20	852	856	823	6,597,953	601.58
Trade, Transportation & Utilities	119	1,132	1,171	1,182	8,009,949	530.40
Wholesale Trade	18	170	172	174	1,863,400	833.36
Retail Trade	82	874	914	921	5,044,498	429.72
Transportation, Warehousing & Utilities	19	88	85	87	1,102,051	978.15
Information	8	63	63	63	530,321	647.52
Financial Activities	45	228	232	229	2,092,330	700.79
Professional & Business Services	45	302	291	283	2,334,747	615.05
Education & Health Services	119	783	784	811	5,363,138	520.46
Leisure & Hospitality	45	603	588	616	1,648,850	210.57
Other Services	19	59	59	59	389,921	508.37
Local Government	23	1,317	1,426	1,352	10,089,289	568.57
State Government	16	652	641	653	6,343,095	752.21

TABLE 6. COUNTY SUMMARY
FOURTH QUARTER 2010

NORTH AMERICAN INDUSTRY CLASSIFICATION SYSTEM - INDUSTRY GROUPS	NUMBER OF	EMPLOYMENT			TOTAL EARNINGS	AVERAGE
	EMPLOYING UNITS	OCTOBER	NOVEMBER	DECEMBER	OCT - DEC 2010	WEEKLY EARNINGS
FAULKNER COUNTY - TOTAL	2,737	39,910	39,969	40,158	\$375,112,723	\$721.15
Natural Resources & Mining	51	908	905	913	21,073,372	1,783.96
Construction	320	2,583	2,528	2,541	26,179,746	789.53
Manufacturing	109	3,384	3,393	3,437	41,869,407	945.97
Trade, Transportation & Utilities	642	7,288	7,459	7,524	57,498,798	595.80
Wholesale Trade	176	1,249	1,269	1,265	16,077,455	980.75
Retail Trade	387	5,184	5,346	5,391	30,910,763	448.04
Transportation, Warehousing & Utilities	79	855	844	868	10,510,580	944.88
Information	29	320	342	380	3,613,281	800.22
Financial Activities	325	1,462	1,451	1,447	14,255,932	754.55
Professional & Business Services	383	5,967	5,962	6,034	73,869,273	948.99
Education & Health Services	431	6,006	5,996	6,030	54,161,783	693.15
Leisure & Hospitality	223	4,526	4,441	4,340	13,931,917	241.61
Other Services	166	690	654	650	4,410,645	510.45
Local Government	40	3,428	3,472	3,487	32,714,608	726.82
State Government	18	3,348	3,366	3,375	31,533,961	721.29
FRANKLIN COUNTY - TOTAL	328	4,225	4,209	4,265	\$37,195,014	\$675.92
Natural Resources & Mining	12	264	267	277	4,380,970	1,251.23
Construction	30	98	94	102	1,044,239	819.65
Manufacturing	16	859	852	854	8,712,810	783.88
Trade, Transportation & Utilities	88	861	848	849	7,653,709	690.48
Wholesale Trade	17	59	58	53	521,353	707.72
Retail Trade	51	497	488	491	3,031,124	473.91
Transportation, Warehousing & Utilities	20	305	302	305	4,101,232	1,037.76
Information	5	27	27	25	205,092	599.10
Financial Activities	27	219	222	225	1,821,307	631.08
Professional & Business Services	25	114	98	146	797,555	514.11
Education & Health Services	54	562	574	566	4,128,283	559.74
Leisure & Hospitality	22	284	284	268	842,096	232.45
Other Services	20	56	57	59	484,847	650.51
Local Government	20	779	784	792	6,076,837	595.48
State Government	9	102	102	102	1,047,269	789.80

TABLE 6. COUNTY SUMMARY
FOURTH QUARTER 2010

NORTH AMERICAN INDUSTRY CLASSIFICATION SYSTEM - INDUSTRY GROUPS	NUMBER OF	EMPLOYMENT			TOTAL EARNINGS	AVERAGE
	EMPLOYING UNITS	OCTOBER	NOVEMBER	DECEMBER	OCT - DEC 2010	WEEKLY EARNINGS
FULTON COUNTY - TOTAL	218	1,960	1,966	1,943	\$12,336,568	\$485.07
Construction	10	18	20	19	171,702	695.15
Manufacturing	12	133	134	134	671,822	386.62
Trade, Transportation & Utilities	49	305	309	317	2,459,905	609.74
Retail Trade	31	164	168	168	902,325	416.46
Other Trade, Transportation & Utilities	18	141	141	149	1,557,580	833.97
Information	4	35	35	36	156,024	339.67
Financial Activities	16	90	83	85	704,636	630.26
Professional & Business Services	15	62	60	59	515,298	656.99
Education & Health Services	63	450	449	458	2,556,290	434.72
Leisure & Hospitality	17	145	135	128	354,449	200.48
Local Government	13	577	601	571	3,821,140	504.17
State Government	10	118	115	113	830,467	553.89
Other	9	27	25	23	94,835	291.80
GARLAND COUNTY - TOTAL	3,163	34,839	34,932	34,804	\$277,731,431	\$612.88
Natural Resources & Mining	36	352	343	339	3,460,029	772.21
Construction	364	1,719	1,713	1,678	13,838,881	624.97
Manufacturing	106	2,090	2,113	2,122	20,858,275	761.02
Trade, Transportation & Utilities	708	7,222	7,348	7,437	51,557,880	540.64
Wholesale Trade	147	1,043	1,042	1,046	10,992,599	810.21
Retail Trade	498	5,664	5,820	5,861	34,653,443	461.05
Transportation, Warehousing & Utilities	63	515	486	530	5,911,838	891.10
Information	34	323	324	320	2,987,731	713.01
Financial Activities	341	1,429	1,416	1,429	13,276,589	716.85
Professional & Business Services	409	3,194	3,171	3,196	26,694,573	644.31
Education & Health Services	516	7,385	7,454	7,491	79,539,530	822.00
Leisure & Hospitality	350	5,794	5,492	5,452	22,132,665	305.15
Other Services	239	986	978	969	5,843,078	459.73
Local Government	34	3,161	3,401	3,195	27,992,865	662.08
State Government	26	1,184	1,179	1,176	9,549,335	622.69

TABLE 6. COUNTY SUMMARY
FOURTH QUARTER 2010

NORTH AMERICAN INDUSTRY CLASSIFICATION SYSTEM - INDUSTRY GROUPS	NUMBER OF	EMPLOYMENT			TOTAL EARNINGS	AVERAGE
	EMPLOYING UNITS	OCTOBER	NOVEMBER	DECEMBER	OCT - DEC 2010	WEEKLY EARNINGS
GRANT COUNTY - TOTAL	324	3,668	3,646	3,702	\$27,371,161	\$573.39
Natural Resources & Mining	21	178	171	171	2,174,468	965.00
Construction	31	148	146	151	1,270,220	658.71
Manufacturing	15	854	856	844	6,557,218	592.48
Trade, Transportation & Utilities	91	630	627	637	4,871,771	593.59
Wholesale Trade	17	127	128	123	1,989,516	1,214.60
Retail Trade	49	444	442	453	2,385,347	411.10
Transportation, Warehousing & Utilities	25	59	57	61	496,908	647.86
Information	3	13	12	12	138,344	862.85
Financial Activities	25	93	92	93	782,522	649.58
Professional & Business Services	21	68	68	70	866,401	970.58
Education & Health Services	57	452	452	462	2,733,867	461.85
Leisure & Hospitality	23	261	254	250	728,987	219.91
Other Services	19	45	44	44	244,541	424.30
Local Government	10	868	867	910	6,568,220	573.06
State Government	8	58	57	58	434,602	579.73
GREENE COUNTY - TOTAL	921	13,959	13,987	14,172	\$114,768,199	\$628.83
Natural Resources & Mining	34	221	198	188	1,976,370	751.38
Construction	82	339	317	297	2,681,861	649.41
Manufacturing	61	4,436	4,463	4,564	45,755,337	784.29
Trade, Transportation & Utilities	235	2,299	2,331	2,335	15,491,165	513.26
Wholesale Trade	60	518	517	505	4,925,101	738.03
Retail Trade	147	1,561	1,596	1,618	8,610,697	416.14
Transportation, Warehousing & Utilities	28	220	218	212	1,955,367	694.21
Information	12	113	112	111	552,919	379.75
Financial Activities	80	469	467	469	4,584,567	753.01
Professional & Business Services	104	1,000	992	1,128	8,242,504	609.65
Education & Health Services	149	1,809	1,805	1,777	14,215,530	608.52
Leisure & Hospitality	74	1,058	1,073	1,055	3,265,223	236.51
Other Services	49	183	179	183	1,067,481	452.00
Local Government	30	1,629	1,650	1,664	12,950,284	604.60
State Government	11	403	400	401	3,984,958	763.79

TABLE 6. COUNTY SUMMARY
FOURTH QUARTER 2010

NORTH AMERICAN INDUSTRY CLASSIFICATION SYSTEM - INDUSTRY GROUPS	NUMBER OF	EMPLOYMENT			TOTAL EARNINGS	AVERAGE
	EMPLOYING UNITS	OCTOBER	NOVEMBER	DECEMBER	OCT - DEC 2010	WEEKLY EARNINGS
HEMPSTEAD COUNTY - TOTAL	504	8,058	7,984	7,994	\$70,872,037	\$680.44
Natural Resources & Mining	16	173	170	166	1,573,553	713.41
Construction	33	1,039	969	1,003	15,992,880	1,225.73
Manufacturing	28	1,555	1,555	1,574	14,500,155	714.39
Trade, Transportation & Utilities	130	1,279	1,280	1,294	9,586,492	574.17
Wholesale Trade	26	241	242	238	2,372,089	759.23
Retail Trade	83	851	850	862	4,557,907	410.39
Transportation, Warehousing & Utilities	21	187	188	194	2,656,496	1,077.39
Information	8	55	55	55	414,760	580.08
Financial Activities	36	222	219	219	2,102,691	735.21
Professional & Business Services	44	140	137	139	1,790,083	993.02
Education & Health Services	88	1,119	1,106	1,078	7,929,645	554.02
Leisure & Hospitality	41	574	572	568	1,781,509	239.86
Other Services	35	161	163	166	1,120,136	527.54
Local Government	29	1,019	1,031	1,027	7,745,217	580.88
State Government	16	722	727	705	6,334,916	678.69
HOT SPRING COUNTY - TOTAL	590	7,723	7,768	7,912	\$64,242,053	\$633.47
Natural Resources & Mining	26	177	180	182	1,428,612	611.65
Construction	63	307	314	302	2,842,040	710.57
Manufacturing	29	1,342	1,340	1,340	15,826,573	908.08
Trade, Transportation & Utilities	154	1,359	1,356	1,372	12,268,939	692.76
Wholesale Trade	20	78	80	82	2,791,355	2,684.00
Retail Trade	98	917	920	932	4,945,776	412.18
Transportation, Warehousing & Utilities	36	364	356	358	4,531,808	970.13
Information	7	53	47	46	432,961	684.34
Financial Activities	56	261	268	266	2,609,504	757.48
Professional & Business Services	47	543	578	696	4,124,898	523.89
Education & Health Services	90	1,152	1,149	1,160	8,296,024	553.15
Leisure & Hospitality	42	504	499	502	1,356,735	208.04
Other Services	36	165	164	165	970,488	453.36
Local Government	27	1,157	1,160	1,163	8,420,212	558.37
State Government	13	703	713	718	5,665,067	612.62

TABLE 6. COUNTY SUMMARY
FOURTH QUARTER 2010

NORTH AMERICAN INDUSTRY CLASSIFICATION SYSTEM - INDUSTRY GROUPS	NUMBER OF	EMPLOYMENT			TOTAL EARNINGS	AVERAGE
	EMPLOYING UNITS	OCTOBER	NOVEMBER	DECEMBER	OCT - DEC 2010	WEEKLY EARNINGS
HOWARD COUNTY - TOTAL	353	6,831	6,889	6,826	\$51,493,837	\$578.37
Natural Resources & Mining	19	183	174	174	1,573,101	683.66
Construction	16	121	127	143	1,116,061	658.70
Manufacturing	24	3,404	3,432	3,395	28,505,812	642.97
Trade, Transportation & Utilities	99	904	915	913	6,142,482	518.85
Wholesale Trade	19	70	71	74	717,710	770.35
Retail Trade	58	622	624	622	3,218,572	397.62
Transportation, Warehousing & Utilities	22	212	220	217	2,206,200	784.47
Information	5	33	31	32	192,013	461.57
Financial Activities	38	146	147	149	1,100,563	574.61
Professional & Business Services	22	91	90	92	763,087	645.04
Education & Health Services	58	653	651	634	4,504,196	536.34
Leisure & Hospitality	20	305	321	311	831,247	204.72
Other Services	24	113	120	117	665,611	438.86
Local Government	17	751	753	738	5,184,374	533.63
State Government	11	127	128	128	915,290	551.49
INDEPENDENCE COUNTY - TOTAL	936	15,401	15,643	15,490	\$127,918,327	\$634.37
Natural Resources & Mining	12	235	234	237	2,586,240	845.36
Construction	71	472	432	419	3,985,988	695.27
Manufacturing	50	3,705	3,744	3,726	37,450,880	773.38
Trade, Transportation & Utilities	240	3,003	3,074	3,081	23,647,582	595.89
Wholesale Trade	38	454	463	461	4,399,728	736.81
Retail Trade	155	1,709	1,768	1,785	9,844,493	431.74
Transportation, Warehousing & Utilities	47	840	843	835	9,403,361	861.80
Information	10	128	129	131	991,091	589.47
Financial Activities	85	514	513	517	4,982,043	744.63
Professional & Business Services	89	545	542	534	3,857,430	549.15
Education & Health Services	172	3,081	3,085	3,105	29,476,632	733.72
Leisure & Hospitality	72	1,041	1,018	1,030	3,355,714	250.69
Other Services	71	359	354	360	1,858,081	399.62
Local Government	47	1,657	1,847	1,672	10,182,437	453.98
State Government	17	661	671	678	5,544,209	636.53

TABLE 6. COUNTY SUMMARY
FOURTH QUARTER 2010

NORTH AMERICAN INDUSTRY CLASSIFICATION SYSTEM - INDUSTRY GROUPS	NUMBER OF	EMPLOYMENT			TOTAL EARNINGS	AVERAGE
	EMPLOYING UNITS	OCTOBER	NOVEMBER	DECEMBER	OCT - DEC 2010	WEEKLY EARNINGS
IZARD COUNTY - TOTAL	275	3,035	3,030	2,987	\$20,950,707	\$534.11
Natural Resources & Mining	5	134	131	130	1,347,615	787.31
Construction	28	73	69	68	489,328	537.72
Manufacturing	11	223	218	220	1,742,986	608.51
Trade, Transportation & Utilities	69	576	578	572	3,770,783	504.16
Wholesale Trade	9	38	36	32	301,832	657.11
Retail Trade	49	402	409	407	2,225,802	421.71
Transportation, Warehousing & Utilities	11	136	133	133	1,243,149	713.63
Financial Activities	29	143	143	146	1,481,526	791.41
Professional & Business Services	20	74	73	71	531,107	562.22
Education & Health Services	57	620	643	624	3,586,276	438.58
Leisure & Hospitality	17	108	97	88	256,306	201.87
Local Government	18	562	557	556	3,704,558	510.39
State Government	10	494	493	486	3,878,268	607.59
Other	11	28	28	26	161,954	455.78
JACKSON COUNTY - TOTAL	477	5,154	5,114	5,115	\$43,190,296	\$647.92
Natural Resources & Mining	52	270	250	220	1,743,386	543.68
Construction	23	108	114	117	1,691,242	1,151.29
Manufacturing	19	855	844	859	9,603,395	866.37
Trade, Transportation & Utilities	108	993	967	972	8,041,985	632.96
Wholesale Trade	25	195	194	199	2,638,973	1,035.70
Retail Trade	67	675	665	668	4,144,556	476.31
Transportation, Warehousing & Utilities	16	123	108	105	1,258,456	864.32
Information	4	28	28	28	158,469	435.35
Financial Activities	37	160	157	155	1,480,023	723.61
Professional & Business Services	37	156	142	146	1,273,276	661.79
Education & Health Services	101	825	815	835	7,153,851	667.03
Leisure & Hospitality	29	287	280	282	786,108	213.67
Other Services	22	72	70	68	488,427	536.73
Local Government	32	667	711	697	4,537,395	504.62
State Government	13	733	736	736	6,232,739	652.30

TABLE 6. COUNTY SUMMARY
FOURTH QUARTER 2010

NORTH AMERICAN INDUSTRY CLASSIFICATION SYSTEM - INDUSTRY GROUPS	NUMBER OF	EMPLOYMENT			TOTAL EARNINGS	AVERAGE
	EMPLOYING UNITS	OCTOBER	NOVEMBER	DECEMBER	OCT - DEC 2010	WEEKLY EARNINGS
JEFFERSON COUNTY - TOTAL	2,120	30,131	30,172	30,011	\$282,514,817	\$721.88
Natural Resources & Mining	40	325	318	315	3,948,981	951.26
Construction	106	1,497	1,374	1,299	20,631,760	1,141.77
Manufacturing	67	5,529	5,337	5,276	61,954,822	885.72
Trade, Transportation & Utilities	437	5,249	5,331	5,316	46,884,031	680.64
Wholesale Trade	80	996	995	1,005	13,874,813	1,068.72
Retail Trade	295	3,363	3,429	3,380	20,850,924	473.04
Transportation, Warehousing & Utilities	62	890	907	931	12,158,294	1,028.50
Information	13	128	128	127	1,107,706	667.43
Financial Activities	145	1,137	1,153	1,162	12,204,237	815.86
Professional & Business Services	180	1,810	1,792	1,807	15,800,767	674.12
Education & Health Services	769	5,222	5,203	5,177	49,935,122	738.59
Leisure & Hospitality	144	2,056	2,052	2,007	6,151,128	232.13
Other Services	139	635	640	638	4,212,581	508.17
Local Government	43	3,213	3,238	3,266	26,432,396	627.74
State Government	37	3,330	3,606	3,621	33,251,286	726.85
JOHNSON COUNTY - TOTAL	477	8,774	8,872	8,872	\$61,580,271	\$535.89
Natural Resources & Mining	22	266	272	271	2,090,382	596.29
Construction	22	89	89	89	648,968	560.91
Manufacturing	39	3,149	3,109	3,178	21,403,412	523.45
Trade, Transportation & Utilities	109	2,002	2,014	2,034	13,889,230	529.79
Retail Trade	70	925	944	954	4,645,447	379.75
Other Trade, Transportation & Utilities	39	1,077	1,070	1,080	9,243,783	661.04
Information	4	29	30	31	189,223	485.19
Financial Activities	46	208	199	215	2,021,910	750.15
Professional & Business Services	46	145	148	152	1,259,444	653.13
Education & Health Services	100	1,186	1,197	1,195	9,318,767	601.03
Leisure & Hospitality	38	484	491	486	1,431,043	226.04
Other Services	28	70	65	65	389,234	449.12
Local Government	14	1,009	1,122	1,022	7,799,144	570.82
State Government	9	137	136	134	1,139,514	646.11

TABLE 6. COUNTY SUMMARY
FOURTH QUARTER 2010

NORTH AMERICAN INDUSTRY CLASSIFICATION SYSTEM - INDUSTRY GROUPS	NUMBER OF	EMPLOYMENT			TOTAL EARNINGS	AVERAGE
	EMPLOYING UNITS	OCTOBER	NOVEMBER	DECEMBER	OCT - DEC 2010	WEEKLY EARNINGS
LAFAYETTE COUNTY - TOTAL	181	1,342	1,329	1,344	\$9,928,403	\$570.65
Natural Resources & Mining	32	164	158	157	1,536,843	740.41
Construction	9	64	64	62	1,139,493	1,384.00
Manufacturing	5	31	31	31	280,985	697.23
Trade, Transportation & Utilities	36	207	202	205	1,232,144	463.10
Retail Trade	22	147	146	146	573,795	301.63
Other Trade, Transportation & Utilities	14	60	56	59	658,349	868.15
Financial Activities	17	57	57	57	398,402	537.65
Professional & Business Services	13	51	53	57	764,025	1,095.11
Education & Health Services	36	254	249	248	1,358,631	417.48
Leisure & Hospitality	6	47	50	54	167,745	256.36
Local Government	13	330	331	339	2,178,401	502.71
State Government	7	44	43	44	313,151	551.65
Other	7	93	91	90	558,583	470.45
LAWRENCE COUNTY - TOTAL	419	4,097	4,066	4,105	\$27,707,945	\$521.20
Natural Resources & Mining	39	206	192	184	1,596,005	632.83
Construction	24	73	70	68	583,767	638.46
Manufacturing	23	461	442	452	3,177,825	541.21
Trade, Transportation & Utilities	112	851	837	863	6,032,443	545.71
Wholesale Trade	22	181	178	189	1,718,840	723.82
Retail Trade	60	528	523	540	2,900,032	420.64
Transportation, Warehousing & Utilities	30	142	136	134	1,413,571	791.77
Financial Activities	33	152	147	148	1,209,845	624.60
Professional & Business Services	26	99	101	92	892,208	705.12
Education & Health Services	78	550	560	558	3,978,876	550.48
Leisure & Hospitality	25	279	283	298	801,740	215.14
Local Government	27	1,241	1,243	1,253	8,198,185	506.26
State Government	10	111	112	110	749,964	519.73
Other	22	74	79	79	487,087	484.50

TABLE 6. COUNTY SUMMARY
FOURTH QUARTER 2010

NORTH AMERICAN INDUSTRY CLASSIFICATION SYSTEM - INDUSTRY GROUPS	NUMBER OF	EMPLOYMENT			TOTAL EARNINGS	AVERAGE
	EMPLOYING UNITS	OCTOBER	NOVEMBER	DECEMBER	OCT - DEC 2010	WEEKLY EARNINGS
LEE COUNTY - TOTAL	307	2,167	2,101	2,013	\$16,579,273	\$609.14
Natural Resources & Mining	34	304	266	201	2,064,425	617.91
Construction	8	33	30	21	197,401	542.31
Trade, Transportation & Utilities	48	340	332	336	2,670,617	611.40
Wholesale Trade	7	81	80	78	800,604	773.03
Retail Trade	25	181	175	173	1,077,726	470.14
Transportation, Warehousing & Utilities	16	78	77	85	792,287	761.81
Financial Activities	15	86	80	81	666,976	623.15
Professional & Business Services	17	64	45	44	897,954	1,354.38
Education & Health Services	138	426	424	418	2,832,313	515.47
Leisure & Hospitality	8	82	89	82	225,753	205.92
Local Government	15	343	346	343	2,420,159	541.18
State Government	7	456	460	458	4,419,148	742.21
Other	17	33	29	29	184,527	467.95
LINCOLN COUNTY - TOTAL	270	2,848	2,848	2,855	\$23,306,263	\$628.98
Natural Resources & Mining	34	195	180	156	1,624,932	706.19
Construction	14	75	80	80	511,767	502.55
Manufacturing	9	332	325	319	2,741,050	648.10
Trade, Transportation & Utilities	48	329	329	322	2,949,528	694.55
Wholesale Trade	10	47	45	44	428,168	726.53
Retail Trade	24	163	163	160	803,358	381.46
Transportation, Warehousing & Utilities	14	119	121	118	1,718,002	1,107.44
Financial Activities	20	65	66	68	648,982	752.59
Professional & Business Services	13	28	28	28	220,826	606.66
Education & Health Services	88	397	394	400	2,452,895	475.28
Leisure & Hospitality	11	132	130	144	276,671	157.26
Local Government	7	356	363	370	3,111,343	659.32
State Government	12	901	919	932	8,538,265	715.98
Other	14	38	34	36	230,004	491.46

TABLE 6. COUNTY SUMMARY
FOURTH QUARTER 2010

NORTH AMERICAN INDUSTRY CLASSIFICATION SYSTEM - INDUSTRY GROUPS	NUMBER OF	EMPLOYMENT			TOTAL EARNINGS	AVERAGE
	EMPLOYING UNITS	OCTOBER	NOVEMBER	DECEMBER	OCT - DEC 2010	WEEKLY EARNINGS
LITTLE RIVER COUNTY - TOTAL	249	3,898	3,935	3,949	\$44,307,977	\$867.84
Natural Resources & Mining	10	77	78	79	551,181	543.57
Construction	21	290	339	333	2,981,591	715.24
Manufacturing	18	1,346	1,345	1,356	26,183,079	1,493.02
Trade, Transportation & Utilities	58	620	616	611	4,176,508	521.82
Wholesale Trade	10	39	38	38	474,498	952.17
Retail Trade	36	369	371	372	2,060,906	427.69
Transportation, Warehousing & Utilities	12	212	207	201	1,641,104	610.83
Financial Activities	23	99	98	97	712,206	559.03
Professional & Business Services	16	104	95	101	826,202	635.54
Education & Health Services	40	159	156	155	1,037,079	509.20
Leisure & Hospitality	15	174	170	170	524,353	235.42
Local Government	20	841	857	864	6,274,654	565.18
State Government	11	89	89	90	569,899	490.73
Other	17	99	92	93	471,225	382.90
LOGAN COUNTY - TOTAL	506	5,574	5,588	5,595	\$41,197,962	\$567.36
Natural Resources & Mining	25	188	170	172	2,339,338	1,018.58
Construction	46	192	176	186	1,350,767	562.66
Manufacturing	26	1,345	1,372	1,381	11,707,970	659.31
Trade, Transportation & Utilities	123	878	869	871	5,703,308	502.73
Wholesale Trade	15	83	80	77	397,513	382.22
Retail Trade	75	695	687	695	4,133,391	459.25
Transportation, Warehousing & Utilities	33	100	102	99	1,172,404	898.85
Information	6	43	43	43	449,303	803.76
Financial Activities	44	254	252	249	2,603,688	795.83
Professional & Business Services	42	107	110	114	661,166	460.96
Education & Health Services	102	784	785	788	5,521,226	540.57
Leisure & Hospitality	32	314	312	294	855,407	214.57
Other Services	24	82	82	81	519,966	489.76
Local Government	22	839	858	851	5,966,786	540.40
State Government	14	548	559	565	3,519,037	485.70

TABLE 6. COUNTY SUMMARY
FOURTH QUARTER 2010

NORTH AMERICAN INDUSTRY CLASSIFICATION SYSTEM - INDUSTRY GROUPS	NUMBER OF	EMPLOYMENT			TOTAL EARNINGS	AVERAGE
	EMPLOYING UNITS	OCTOBER	NOVEMBER	DECEMBER	OCT - DEC 2010	WEEKLY EARNINGS
LONOKE COUNTY - TOTAL	1,310	13,159	13,048	13,013	\$100,832,533	\$593.30
Natural Resources & Mining	79	477	447	449	4,560,134	766.45
Construction	145	766	735	739	7,235,036	745.37
Manufacturing	38	1,386	1,353	1,284	16,100,072	923.54
Trade, Transportation & Utilities	328	2,904	2,947	2,943	20,015,646	525.24
Wholesale Trade	80	466	467	463	5,669,600	937.23
Retail Trade	180	2,185	2,235	2,238	11,957,597	414.46
Transportation, Warehousing & Utilities	68	253	245	242	2,388,449	744.84
Information	17	99	98	106	1,490,976	1,135.55
Financial Activities	127	499	504	500	6,008,132	922.48
Professional & Business Services	152	665	618	621	5,481,826	664.41
Education & Health Services	205	1,678	1,694	1,685	11,831,342	539.91
Leisure & Hospitality	105	1,517	1,506	1,514	4,306,428	219.04
Other Services	73	211	206	203	1,336,791	497.56
Local Government	26	2,802	2,784	2,813	21,220,509	583.05
State Government	15	155	156	156	1,245,641	615.54
MADISON COUNTY - TOTAL	240	3,119	3,090	3,096	\$22,495,691	\$557.91
Natural Resources & Mining	11	40	20	27	246,797	654.63
Construction	29	85	67	71	610,364	631.63
Manufacturing	20	1,122	1,106	1,097	8,539,018	592.64
Trade, Transportation & Utilities	47	540	549	538	3,585,703	508.59
Wholesale Trade	6	18	19	18	139,642	585.91
Retail Trade	33	421	418	416	2,393,292	440.08
Transportation, Warehousing & Utilities	8	101	112	104	1,052,769	766.39
Information	5	41	40	41	532,538	1,007.32
Financial Activities	15	76	74	73	609,101	630.32
Professional & Business Services	26	148	157	154	1,143,182	574.75
Education & Health Services	43	245	247	248	1,494,046	465.92
Leisure & Hospitality	13	171	172	168	514,751	232.46
Other Services	15	31	28	31	237,100	607.95
Local Government	9	579	589	608	4,646,826	603.80
State Government	7	41	41	40	336,265	636.06

TABLE 6. COUNTY SUMMARY
FOURTH QUARTER 2010

NORTH AMERICAN INDUSTRY CLASSIFICATION SYSTEM - INDUSTRY GROUPS	NUMBER OF	EMPLOYMENT			TOTAL EARNINGS	AVERAGE
	EMPLOYING UNITS	OCTOBER	NOVEMBER	DECEMBER	OCT - DEC 2010	WEEKLY EARNINGS
MARION COUNTY - TOTAL	312	3,581	3,574	3,554	\$24,250,389	\$522.57
Natural Resources & Mining	6	30	30	30	172,394	442.04
Construction	22	75	68	70	390,994	423.61
Manufacturing	20	1,345	1,357	1,358	9,845,925	559.64
Trade, Transportation & Utilities	54	534	532	541	3,371,575	484.17
Wholesale Trade	6	31	31	33	327,793	796.26
Retail Trade	40	471	469	476	2,705,327	440.89
Transportation, Warehousing & Utilities	8	32	32	32	338,455	813.59
Information	4	59	57	56	1,083,476	1,453.68
Financial Activities	35	192	179	171	1,451,334	617.94
Professional & Business Services	29	113	126	122	830,669	531.01
Education & Health Services	64	356	365	348	2,144,268	462.89
Leisure & Hospitality	39	225	206	198	582,175	213.59
Other Services	12	27	21	26	121,154	377.82
Local Government	20	547	556	557	3,793,233	527.33
State Government	7	78	77	77	463,192	460.73
MILLER COUNTY - TOTAL	859	13,425	13,364	13,363	\$122,194,071	\$702.30
Natural Resources & Mining	26	140	133	133	1,135,959	645.68
Construction	83	850	840	811	6,562,002	605.48
Manufacturing	32	2,399	2,411	2,410	40,409,636	1,291.59
Trade, Transportation & Utilities	228	3,342	3,348	3,404	28,281,613	646.57
Wholesale Trade	56	572	568	557	6,998,784	951.74
Retail Trade	126	1,324	1,316	1,329	7,330,461	426.21
Transportation, Warehousing & Utilities	46	1,446	1,464	1,518	13,952,368	727.14
Information	8	79	79	80	1,670,826	1,620.06
Financial Activities	79	373	383	389	4,359,595	878.66
Professional & Business Services	94	1,440	1,349	1,330	8,241,561	461.74
Education & Health Services	130	850	851	847	6,202,046	561.71
Leisure & Hospitality	81	1,334	1,322	1,326	4,578,202	265.32
Other Services	57	330	325	326	1,741,551	409.68
Local Government	25	1,802	1,834	1,816	14,272,856	604.13
State Government	16	486	489	491	4,738,224	745.86

TABLE 6. COUNTY SUMMARY
FOURTH QUARTER 2010

NORTH AMERICAN INDUSTRY CLASSIFICATION SYSTEM - INDUSTRY GROUPS	NUMBER OF	EMPLOYMENT			TOTAL EARNINGS	AVERAGE
	EMPLOYING UNITS	OCTOBER	NOVEMBER	DECEMBER	OCT - DEC 2010	WEEKLY EARNINGS
MISSISSIPPI COUNTY - TOTAL	1,255	19,443	19,261	19,279	\$188,459,280	\$750.06
Natural Resources & Mining	108	958	744	663	6,173,164	602.36
Construction	68	691	623	607	7,820,698	939.50
Manufacturing	56	6,647	6,719	6,780	93,331,645	1,069.10
Trade, Transportation & Utilities	304	3,193	3,161	3,168	28,061,154	680.07
Wholesale Trade	63	506	498	486	7,080,324	1,096.59
Retail Trade	177	1,837	1,841	1,854	9,957,156	415.37
Transportation, Warehousing & Utilities	64	850	822	828	11,023,674	1,017.57
Information	11	95	94	95	601,306	
Financial Activities	100	557	553	554	4,307,029	597.31
Professional & Business Services	97	1,076	1,117	1,165	8,387,701	576.42
Education & Health Services	292	1,745	1,758	1,777	12,368,995	540.60
Leisure & Hospitality	87	1,104	1,103	1,121	3,409,763	236.44
Other Services	65	241	232	224	1,330,028	
Local Government	45	2,455	2,477	2,451	17,625,818	550.93
State Government	22	681	680	674	5,041,979	571.76
MONROE COUNTY - TOTAL	321	2,207	2,260	2,206	\$15,669,184	\$541.88
Natural Resources & Mining	36	162	141	131	1,048,639	557.59
Construction	16	55	57	56	485,416	666.78
Manufacturing	6	106	107	110	983,386	702.59
Trade, Transportation & Utilities	78	633	637	638	5,518,912	667.50
Wholesale Trade	18	209	210	204	2,273,035	841.97
Retail Trade	36	276	276	284	2,057,717	568.01
Transportation, Warehousing & Utilities	24	148	151	150	1,188,160	610.67
Financial Activities	18	96	86	87	799,489	685.86
Professional & Business Services	15	32	29	32	171,476	425.50
Education & Health Services	75	310	310	313	1,848,513	457.21
Leisure & Hospitality	25	217	223	236	640,990	218.82
Local Government	22	392	462	391	2,831,170	524.78
State Government	8	117	117	119	844,118	551.83
Other	22	87	91	93	497,075	423.28

TABLE 6. COUNTY SUMMARY
FOURTH QUARTER 2010

NORTH AMERICAN INDUSTRY CLASSIFICATION SYSTEM - INDUSTRY GROUPS	NUMBER OF	EMPLOYMENT			TOTAL EARNINGS	AVERAGE
	EMPLOYING UNITS	OCTOBER	NOVEMBER	DECEMBER	OCT - DEC 2010	WEEKLY EARNINGS
MONTGOMERY COUNTY - TOTAL	182	1,532	1,523	1,464	\$9,478,904	\$484.05
Natural Resources & Mining	11	33	36	29	337,595	794.96
Construction	24	83	85	84	745,950	683.10
Trade, Transportation & Utilities	46	260	262	252	1,608,483	479.57
Wholesale Trade	15	80	72	66	508,854	538.66
Retail Trade	23	172	181	177	1,045,612	455.27
Transportation, Warehousing & Utilities	8	8	9	9	54,017	479.44
Financial Activities	10	81	79	75	642,280	630.72
Professional & Business Services	13	29	28	26	267,413	743.50
Education & Health Services	18	88	87	89	597,531	522.32
Leisure & Hospitality	21	216	196	152	778,781	318.65
Local Government	9	515	515	521	3,156,140	469.59
State Government	7	42	42	43	319,447	580.46
Other	23	185	193	193	1,025,284	414.37
NEVADA COUNTY - TOTAL	191	2,133	2,148	2,142	\$16,775,744	\$602.73
Natural Resources & Mining	10	35	35	37	257,312	554.95
Trade, Transportation & Utilities	40	500	501	506	3,835,475	587.33
Wholesale Trade	3	15	16	16	56,481	277.32
Retail Trade	26	267	270	273	1,420,517	404.71
Transportation, Warehousing & Utilities	11	218	215	217	2,358,477	837.33
Financial Activities	13	56	68	63	462,353	570.57
Professional & Business Services	10	47	47	49	339,926	548.56
Education & Health Services	34	406	406	404	2,354,544	446.84
Leisure & Hospitality	12	83	85	83	233,788	214.94
Other Services	15	63	54	54	239,092	322.66
Local Government	27	419	419	413	2,673,688	493.21
State Government	10	72	76	74	556,206	578.18
Other	20	452	457	459	5,823,360	982.35

TABLE 6. COUNTY SUMMARY
FOURTH QUARTER 2010

NORTH AMERICAN INDUSTRY CLASSIFICATION SYSTEM - INDUSTRY GROUPS	NUMBER OF	EMPLOYMENT			TOTAL EARNINGS	AVERAGE
	EMPLOYING UNITS	OCTOBER	NOVEMBER	DECEMBER	OCT - DEC 2010	WEEKLY EARNINGS
NEWTON COUNTY - TOTAL	129	1,034	1,048	1,042	\$5,643,843	\$416.91
Construction	7	19	33	19	101,034	328.39
Manufacturing	10	42	42	44	288,328	519.82
Trade, Transportation & Utilities	30	167	170	185	994,282	439.56
Wholesale Trade	3	9	9	10	64,455	531.22
Retail Trade	14	105	108	127	516,841	350.80
Transportation, Warehousing & Utilities	13	53	53	48	412,986	618.86
Education & Health Services	31	229	228	232	958,169	320.92
Leisure & Hospitality	17	69	57	49	235,691	310.80
Other Services	3	5	5	5	22,128	340.43
Local Government	13	382	392	383	2,333,579	465.44
State Government	6	85	82	85	408,554	374.13
Other	12	36	39	40	302,078	606.18
OUACHITA COUNTY - TOTAL	659	7,716	7,713	7,749	\$58,464,902	\$582.10
Natural Resources & Mining	40	210	193	195	1,698,482	655.45
Construction	46	214	210	214	1,751,673	633.59
Manufacturing	28	885	870	889	8,863,633	773.62
Trade, Transportation & Utilities	171	1,777	1,794	1,794	13,253,121	570.07
Wholesale Trade	27	243	243	244	2,963,485	936.82
Retail Trade	113	1,085	1,105	1,098	5,599,203	392.98
Transportation, Warehousing & Utilities	31	449	446	452	4,690,433	803.57
Information	7	48	51	52	431,872	660.02
Financial Activities	62	325	326	329	2,901,614	683.27
Professional & Business Services	47	491	487	499	3,742,392	584.72
Education & Health Services	128	1,199	1,202	1,200	8,996,581	576.54
Leisure & Hospitality	40	473	469	473	1,231,699	200.88
Other Services	46	157	160	159	985,279	477.67
Local Government	30	1,186	1,197	1,201	8,630,018	555.68
State Government	14	751	754	744	5,978,538	613.46

TABLE 6. COUNTY SUMMARY
FOURTH QUARTER 2010

NORTH AMERICAN INDUSTRY CLASSIFICATION SYSTEM - INDUSTRY GROUPS	NUMBER OF	EMPLOYMENT			TOTAL EARNINGS	AVERAGE
	EMPLOYING UNITS	OCTOBER	NOVEMBER	DECEMBER	OCT - DEC 2010	WEEKLY EARNINGS
PERRY COUNTY - TOTAL	164	1,308	1,330	1,333	\$10,545,026	\$612.81
Construction	21	88	87	85	1,064,260	944.61
Manufacturing	6	46	47	48	363,216	594.46
Trade, Transportation & Utilities	29	215	216	204	1,268,129	460.86
Wholesale Trade	7	8	9	11	120,120	990.00
Retail Trade	16	175	175	161	683,349	308.60
Transportation, Warehousing & Utilities	6	32	32	32	464,660	1,116.97
Financial Activities	14	35	34	36	730,360	1,605.19
Professional & Business Services	16	49	49	40	367,186	614.02
Education & Health Services	35	225	227	223	1,587,683	542.80
Leisure & Hospitality	8	48	45	45	128,754	215.31
Local Government	12	387	393	406	2,612,651	508.36
State Government	8	47	48	47	307,640	499.96
Other	15	168	184	199	2,115,147	885.86
PHILLIPS COUNTY - TOTAL	965	6,517	6,547	6,477	\$52,161,643	\$616.00
Natural Resources & Mining	87	411	348	293	2,271,378	498.25
Construction	26	123	120	118	1,033,480	660.65
Manufacturing	12	341	360	354	2,636,722	576.75
Trade, Transportation & Utilities	167	1,531	1,543	1,529	18,651,742	935.10
Wholesale Trade	33	368	360	354	4,259,363	908.44
Retail Trade	88	835	824	833	5,019,907	464.86
Transportation, Warehousing & Utilities	46	328	359	342	9,372,472	2,101.92
Information	11	51	50	49	395,187	607.98
Financial Activities	44	227	228	228	2,036,464	688.07
Professional & Business Services	54	241	241	257	2,310,789	721.60
Education & Health Services	446	1,514	1,525	1,514	9,812,361	497.34
Leisure & Hospitality	38	347	347	339	1,108,345	247.60
Other Services	37	74	72	85	441,618	441.18
Local Government	29	1,117	1,142	1,139	7,458,159	506.51
State Government	14	540	571	572	4,005,398	549.21

TABLE 6. COUNTY SUMMARY
FOURTH QUARTER 2010

NORTH AMERICAN INDUSTRY CLASSIFICATION SYSTEM - INDUSTRY GROUPS	NUMBER OF	EMPLOYMENT			TOTAL EARNINGS	AVERAGE
	EMPLOYING UNITS	OCTOBER	NOVEMBER	DECEMBER	OCT - DEC 2010	WEEKLY EARNINGS
PIKE COUNTY - TOTAL	256	2,391	2,379	2,387	\$16,397,422	\$528.72
Natural Resources & Mining	25	135	131	128	1,047,198	613.35
Construction	14	41	32	51	257,759	479.70
Manufacturing	16	160	160	161	907,045	435.17
Trade, Transportation & Utilities	84	601	588	591	3,903,503	506.07
Wholesale Trade	16	160	161	162	1,249,554	597.02
Retail Trade	45	376	373	363	1,934,026	401.36
Transportation, Warehousing & Utilities	23	65	54	66	719,923	898.03
Information	4	21	21	21	276,136	1,011.49
Financial Activities	21	206	207	205	2,155,790	805.00
Professional & Business Services	9	28	32	33	893,104	2,216.14
Education & Health Services	22	271	277	274	1,479,456	415.34
Leisure & Hospitality	21	213	215	206	583,734	212.47
Other Services	18	65	62	63	446,529	542.34
Local Government	12	526	527	527	3,800,137	555.03
State Government	10	124	127	127	647,031	395.01
POINSETT COUNTY - TOTAL	514	5,084	5,011	5,065	\$39,743,275	\$604.98
Natural Resources & Mining	57	405	320	302	3,251,868	730.70
Construction	25	95	84	86	1,041,449	906.92
Manufacturing	21	641	640	653	5,874,856	701.00
Trade, Transportation & Utilities	127	1,241	1,230	1,244	10,126,974	629.07
Wholesale Trade	30	390	381	387	5,309,249	1,058.04
Retail Trade	71	690	702	709	3,562,087	391.25
Transportation, Warehousing & Utilities	26	161	147	148	1,255,638	635.44
Information	6	55	55	55	766,408	1,071.90
Financial Activities	42	284	291	288	2,848,238	761.63
Professional & Business Services	32	121	120	171	1,485,452	832.03
Education & Health Services	97	605	607	606	3,884,026	493.02
Leisure & Hospitality	43	335	329	333	891,604	206.37
Other Services	23	56	56	55	401,869	555.32
Local Government	30	1,095	1,126	1,121	8,025,051	554.14
State Government	11	151	153	151	1,145,480	580.97

TABLE 6. COUNTY SUMMARY
FOURTH QUARTER 2010

NORTH AMERICAN INDUSTRY CLASSIFICATION SYSTEM - INDUSTRY GROUPS	NUMBER OF	EMPLOYMENT			TOTAL EARNINGS	AVERAGE
	EMPLOYING UNITS	OCTOBER	NOVEMBER	DECEMBER	OCT - DEC 2010	WEEKLY EARNINGS
POLK COUNTY - TOTAL	544	5,962	6,093	6,067	\$40,131,762	\$511.05
Natural Resources & Mining	25	215	213	208	2,048,217	743.18
Construction	44	182	188	197	1,283,441	522.36
Manufacturing	37	1,160	1,165	1,144	8,354,422	555.76
Trade, Transportation & Utilities	144	1,210	1,250	1,263	7,511,846	465.62
Wholesale Trade	22	74	75	77	732,939	748.41
Retail Trade	81	827	853	857	4,227,912	384.58
Transportation, Warehousing & Utilities	41	309	322	329	2,550,995	613.22
Information	9	63	57	59	419,296	540.56
Financial Activities	43	228	230	229	2,033,701	683.14
Professional & Business Services	51	177	159	189	1,175,171	516.56
Education & Health Services	88	1,077	1,076	1,086	7,728,474	550.63
Leisure & Hospitality	39	413	412	442	1,166,487	212.46
Other Services	30	138	138	140	919,090	509.85
Local Government	21	771	869	772	5,459,912	522.38
State Government	13	328	336	338	2,031,705	467.92
POPE COUNTY - TOTAL	1,790	26,242	26,440	26,696	\$226,407,500	\$658.22
Natural Resources & Mining	31	594	576	675	5,697,928	712.69
Construction	175	1,296	1,320	1,366	13,821,383	800.99
Manufacturing	78	4,561	4,575	4,547	44,952,648	758.14
Trade, Transportation & Utilities	448	5,967	6,098	6,179	60,424,522	764.31
Wholesale Trade	95	603	602	607	6,824,736	869.17
Retail Trade	275	3,254	3,325	3,352	18,796,351	436.78
Transportation, Warehousing & Utilities	78	2,110	2,171	2,220	34,803,435	1,235.43
Information	21	209	205	204	2,156,250	805.17
Financial Activities	187	747	747	759	6,680,837	684.30
Professional & Business Services	255	2,628	2,526	2,574	22,852,178	682.40
Education & Health Services	304	3,428	3,443	3,451	26,890,816	601.20
Leisure & Hospitality	140	2,469	2,451	2,556	7,819,334	241.37
Other Services	95	423	423	421	2,614,514	476.20
Local Government	40	2,326	2,470	2,355	18,205,515	587.51
State Government	16	1,594	1,606	1,609	14,291,575	685.81

TABLE 6. COUNTY SUMMARY
FOURTH QUARTER 2010

NORTH AMERICAN INDUSTRY CLASSIFICATION SYSTEM - INDUSTRY GROUPS	NUMBER OF	EMPLOYMENT			TOTAL EARNINGS	AVERAGE
	EMPLOYING UNITS	OCTOBER	NOVEMBER	DECEMBER	OCT - DEC 2010	WEEKLY EARNINGS
PRAIRIE COUNTY - TOTAL	253	1,327	1,309	1,281	\$9,647,984	\$568.41
Natural Resources & Mining	29	140	138	138	1,543,307	856.12
Construction	12	48	46	47	495,862	811.56
Trade, Transportation & Utilities	64	311	293	282	2,109,391	549.42
Wholesale Trade	10	59	63	61	682,705	860.91
Retail Trade	34	163	159	154	696,704	337.77
Transportation, Warehousing & Utilities	20	89	71	67	729,982	742.10
Financial Activities	19	59	59	58	619,559	812.36
Professional & Business Services	14	39	38	39	286,220	569.40
Education & Health Services	53	221	224	224	1,336,887	461.15
Leisure & Hospitality	17	86	87	93	243,613	211.35
Other Services	14	40	39	37	204,189	406.21
Local Government	15	327	329	307	2,337,325	560.11
State Government	9	37	37	37	283,144	588.66
Other	7	19	19	19	188,487	763.11
PULASKI COUNTY - TOTAL	15,103	236,355	236,905	236,782	\$2,626,518,886	\$853.64
Natural Resources & Mining	66	805	782	777	10,589,472	1,033.72
Construction	1,113	8,803	8,817	8,831	108,701,494	948.36
Manufacturing	385	13,045	13,003	12,976	168,379,235	995.71
Trade, Transportation & Utilities	3,429	46,748	47,559	47,990	480,123,103	778.64
Wholesale Trade	1,258	12,767	12,710	12,733	199,147,344	1,202.75
Retail Trade	1,758	24,776	25,597	25,914	167,706,288	507.31
Transportation, Warehousing & Utilities	413	9,205	9,252	9,343	113,269,471	940.26
Information	241	7,049	7,070	7,041	101,901,771	1,111.33
Financial Activities	1,759	15,294	15,340	15,378	232,799,087	1,167.58
Professional & Business Services	3,110	34,159	34,081	34,108	412,244,588	929.51
Education & Health Services	2,430	37,809	37,988	37,881	450,480,209	914.49
Leisure & Hospitality	1,101	20,854	20,431	20,459	83,488,230	312.04
Other Services	1,172	7,012	6,939	6,932	58,600,786	647.57
Local Government	100	17,129	17,151	17,108	168,110,816	754.94
State Government	197	27,648	27,744	27,301	351,100,095	979.81

TABLE 6. COUNTY SUMMARY
FOURTH QUARTER 2010

NORTH AMERICAN INDUSTRY CLASSIFICATION SYSTEM - INDUSTRY GROUPS	NUMBER OF	EMPLOYMENT			TOTAL EARNINGS	AVERAGE
	EMPLOYING UNITS	OCTOBER	NOVEMBER	DECEMBER	OCT - DEC 2010	WEEKLY EARNINGS
RANDOLPH COUNTY - TOTAL	425	4,927	4,935	4,877	\$31,802,220	\$497.93
Natural Resources & Mining	25	110	103	94	653,773	491.44
Construction	32	100	92	94	473,260	381.87
Manufacturing	33	805	816	780	5,043,606	484.76
Trade, Transportation & Utilities	100	908	912	917	5,621,731	473.99
Wholesale Trade	20	206	210	202	1,347,362	503.12
Retail Trade	60	569	569	571	3,006,262	405.94
Transportation, Warehousing & Utilities	20	133	133	144	1,268,107	713.76
Information	4	40	41	41	395,497	748.10
Financial Activities	29	124	124	124	990,944	614.73
Professional & Business Services	43	268	260	269	1,640,464	474.99
Education & Health Services	73	1,042	1,036	1,033	7,827,584	580.64
Leisure & Hospitality	33	400	400	396	1,093,549	211.00
Other Services	20	52	52	52	287,231	424.90
Local Government	22	774	789	790	5,104,099	500.58
State Government	11	304	310	287	2,670,482	683.98
SAINT FRANCIS COUNTY - TOTAL	811	7,685	7,672	7,603	\$57,163,855	\$574.55
Natural Resources & Mining	33	245	194	145	1,505,813	595.03
Construction	41	175	171	170	1,654,515	739.94
Manufacturing	13	726	717	711	6,252,204	669.83
Trade, Transportation & Utilities	172	1,986	1,983	2,023	15,269,908	588.09
Wholesale Trade	36	653	647	653	6,817,338	805.55
Retail Trade	112	1,119	1,126	1,140	5,887,215	401.36
Transportation, Warehousing & Utilities	24	214	210	230	2,565,355	905.21
Information	8	71	72	72	575,540	617.75
Financial Activities	62	312	328	328	2,686,676	640.50
Professional & Business Services	47	315	328	320	2,617,285	627.20
Education & Health Services	306	1,496	1,494	1,504	10,486,291	538.48
Leisure & Hospitality	53	624	625	600	1,873,509	233.83
Other Services	32	85	84	83	395,584	362.26
Local Government	28	1,088	1,093	1,094	9,181,263	646.95
State Government	16	562	583	553	4,665,267	634.04

TABLE 6. COUNTY SUMMARY
FOURTH QUARTER 2010

NORTH AMERICAN INDUSTRY CLASSIFICATION SYSTEM - INDUSTRY GROUPS	NUMBER OF	EMPLOYMENT			TOTAL EARNINGS	AVERAGE
	EMPLOYING UNITS	OCTOBER	NOVEMBER	DECEMBER	OCT - DEC 2010	WEEKLY EARNINGS
SALINE COUNTY - TOTAL	1,838	21,028	21,074	21,017	\$168,272,737	\$615.22
Natural Resources & Mining	11	34	35	38	663,622	1,431.25
Construction	296	1,889	1,885	1,854	18,124,584	743.18
Manufacturing	79	1,211	1,206	1,188	14,672,208	939.22
Trade, Transportation & Utilities	415	4,479	4,550	4,567	33,814,323	573.94
Wholesale Trade	116	551	557	549	6,365,036	886.45
Retail Trade	247	3,649	3,730	3,754	24,642,513	510.80
Transportation, Warehousing & Utilities	52	279	263	264	2,806,774	803.62
Information	11	102	83	85	880,425	752.50
Financial Activities	188	682	665	671	6,383,203	729.95
Professional & Business Services	251	1,417	1,425	1,430	13,343,366	720.80
Education & Health Services	264	3,156	3,130	3,139	25,608,311	627.01
Leisure & Hospitality	142	2,627	2,624	2,597	9,014,001	265.06
Other Services	135	618	638	632	4,756,327	581.36
Local Government	30	3,675	3,692	3,674	32,213,635	673.30
State Government	16	1,138	1,141	1,142	8,798,732	593.53
SCOTT COUNTY - TOTAL	187	2,804	2,884	2,811	\$19,451,895	\$528.17
Natural Resources & Mining	18	144	154	160	1,498,206	754.89
Trade, Transportation & Utilities	39	417	413	410	2,953,696	549.70
Wholesale Trade	8	64	63	63	785,348	953.86
Retail Trade	25	305	302	300	1,548,835	394.07
Transportation, Warehousing & Utilities	6	48	48	47	619,513	999.75
Financial Activities	21	67	67	71	499,719	562.54
Professional & Business Services	11	10	9	10	151,833	1,208.22
Education & Health Services	33	289	297	299	2,443,881	637.26
Leisure & Hospitality	15	138	134	138	419,736	236.25
Other Services	10	44	37	37	314,386	614.84
Local Government	5	419	488	416	2,823,173	492.44
State Government	7	69	67	65	415,316	476.83
Other	28	1,207	1,218	1,205	7,931,949	504.26

TABLE 6. COUNTY SUMMARY
FOURTH QUARTER 2010

NORTH AMERICAN INDUSTRY CLASSIFICATION SYSTEM - INDUSTRY GROUPS	NUMBER OF	EMPLOYMENT			TOTAL EARNINGS	AVERAGE
	EMPLOYING UNITS	OCTOBER	NOVEMBER	DECEMBER	OCT - DEC 2010	WEEKLY EARNINGS
SEARCY COUNTY - TOTAL	194	1,601	1,607	1,589	\$9,421,283	\$453.23
Construction	8	17	16	14	130,404	640.28
Manufacturing	16	196	194	199	1,003,563	393.19
Trade, Transportation & Utilities	41	270	271	267	1,423,922	406.68
Wholesale Trade	8	30	29	29	164,394	431.10
Retail Trade	26	216	218	215	1,024,885	364.43
Transportation, Warehousing & Utilities	7	24	24	23	234,643	762.65
Information	5	13	13	13	89,755	531.09
Financial Activities	14	79	79	80	606,574	588.15
Professional & Business Services	13	22	20	33	164,710	506.80
Education & Health Services	55	380	386	382	2,201,168	442.48
Leisure & Hospitality	13	97	93	91	269,163	221.05
Local Government	10	370	366	363	2,371,751	498.02
State Government	7	112	109	108	630,864	442.50
Other	12	45	60	39	529,409	848.41
SEBASTIAN COUNTY - TOTAL	3,810	66,169	66,260	66,494	\$643,132,190	\$746.09
Natural Resources & Mining	70	1,476	1,496	1,464	26,110,724	1,358.33
Construction	292	2,438	2,390	2,369	26,624,140	853.69
Manufacturing	205	14,120	14,121	14,387	163,347,086	884.29
Trade, Transportation & Utilities	963	12,774	13,122	13,268	107,705,534	634.64
Wholesale Trade	246	2,638	2,645	2,656	32,146,992	934.44
Retail Trade	574	7,793	8,116	8,195	46,607,652	446.22
Transportation, Warehousing & Utilities	143	2,343	2,361	2,417	28,950,890	938.21
Information	52	845	849	846	10,693,742	971.57
Financial Activities	412	2,477	2,456	2,479	26,446,866	823.41
Professional & Business Services	590	7,969	7,739	7,647	75,714,390	748.13
Education & Health Services	564	10,668	10,581	10,677	117,328,830	848.08
Leisure & Hospitality	321	5,350	5,465	5,422	19,281,186	274.03
Other Services	278	1,353	1,308	1,315	9,084,918	527.29
Local Government	43	4,656	4,689	4,575	43,325,715	718.26
State Government	20	2,043	2,044	2,045	17,469,059	657.42

TABLE 6. COUNTY SUMMARY
FOURTH QUARTER 2010

NORTH AMERICAN INDUSTRY CLASSIFICATION SYSTEM - INDUSTRY GROUPS	NUMBER OF	EMPLOYMENT			TOTAL EARNINGS	AVERAGE
	EMPLOYING UNITS	OCTOBER	NOVEMBER	DECEMBER	OCT - DEC 2010	WEEKLY EARNINGS
SEVIER COUNTY - TOTAL	322	5,657	5,655	5,630	\$37,053,256	\$504.71
Natural Resources & Mining	14	208	206	203	1,622,058	606.68
Construction	16	146	133	133	1,156,164	647.59
Manufacturing	9	2,069	2,086	2,051	13,147,199	488.88
Trade, Transportation & Utilities	99	867	887	888	5,272,822	460.56
Wholesale Trade	18	125	137	140	1,206,690	692.70
Retail Trade	63	631	640	637	3,111,399	376.32
Transportation, Warehousing & Utilities	18	111	110	111	954,733	663.62
Information	3	21	20	20	174,012	658.31
Financial Activities	29	188	189	189	1,600,431	652.53
Professional & Business Services	29	102	107	114	589,439	421.13
Education & Health Services	47	506	500	510	3,548,817	540.21
Leisure & Hospitality	24	265	269	253	704,776	206.66
Other Services	32	154	154	150	883,012	444.92
Local Government	12	913	887	905	6,966,014	594.29
State Government	8	218	217	214	1,388,512	493.72
SHARP COUNTY - TOTAL	429	3,676	3,640	3,613	\$22,451,385	\$474.07
Natural Resources & Mining	3	9	9	9	\$33,405	285.51
Construction	27	133	139	140	1,247,752	698.89
Manufacturing	19	155	163	166	955,994	455.81
Trade, Transportation & Utilities	94	935	936	937	5,839,327	479.89
Wholesale Trade	13	44	47	46	219,224	369.27
Retail Trade	64	625	623	623	2,906,075	358.44
Transportation, Warehousing & Utilities	17	266	266	268	2,714,028	782.89
Information	7	52	54	52	661,252	965.80
Financial Activities	37	222	211	215	1,824,933	649.90
Professional & Business Services	46	139	136	133	1,024,510	579.47
Education & Health Services	99	676	670	676	4,180,104	477.07
Leisure & Hospitality	33	378	364	344	898,608	190.95
Other Services	31	77	74	73	394,502	406.42
Local Government	25	803	787	769	4,758,626	465.51
State Government	8	97	97	99	632,372	498.06

TABLE 6. COUNTY SUMMARY
FOURTH QUARTER 2010

NORTH AMERICAN INDUSTRY CLASSIFICATION SYSTEM - INDUSTRY GROUPS	NUMBER OF	EMPLOYMENT			TOTAL EARNINGS	AVERAGE
	EMPLOYING UNITS	OCTOBER	NOVEMBER	DECEMBER	OCT - DEC 2010	WEEKLY EARNINGS
STONE COUNTY - TOTAL	294	2,773	2,905	2,717	\$16,310,910	\$448.37
Natural Resources & Mining	7	3	7	9	35,696	433.55
Construction	22	81	71	66	433,655	459.06
Manufacturing	25	272	255	246	1,838,259	548.79
Trade, Transportation & Utilities	74	697	706	714	4,140,630	451.36
Wholesale Trade	12	45	41	44	318,496	565.38
Retail Trade	49	604	609	613	3,396,004	429.19
Transportation, Warehousing & Utilities	13	48	56	57	426,130	610.79
Financial Activities	29	106	97	99	521,840	398.76
Professional & Business Services	13	33	33	36	205,074	463.97
Education & Health Services	54	539	520	527	3,600,769	523.93
Leisure & Hospitality	35	379	370	341	982,880	208.09
Local Government	10	413	590	431	3,050,849	490.96
State Government	8	165	173	170	845,449	384.06
Other	17	85	83	78	655,809	615.21
UNION COUNTY - TOTAL	1,359	17,079	17,122	17,180	\$182,593,607	\$820.09
Natural Resources & Mining	112	539	555	518	8,074,252	1,155.89
Construction	82	1,078	1,078	1,114	13,582,044	958.51
Manufacturing	54	2,704	2,684	2,699	36,362,547	1,037.64
Trade, Transportation & Utilities	341	3,698	3,703	3,753	36,779,710	760.95
Wholesale Trade	71	738	715	718	13,381,741	1,422.43
Retail Trade	212	2,147	2,180	2,200	11,932,252	421.88
Transportation, Warehousing & Utilities	58	813	808	835	11,465,717	1,077.33
Information	13	149	150	150	1,183,848	608.45
Financial Activities	116	743	761	756	7,259,331	741.25
Professional & Business Services	135	1,517	1,492	1,485	29,247,621	1,501.88
Education & Health Services	248	2,398	2,413	2,397	22,300,867	713.98
Leisure & Hospitality	91	1,164	1,199	1,219	3,740,742	241.00
Other Services	115	519	538	526	4,505,347	656.79
Local Government	35	1,959	1,946	1,965	14,555,748	572.23
State Government	17	611	603	598	5,001,550	636.98

TABLE 6. COUNTY SUMMARY
FOURTH QUARTER 2010

NORTH AMERICAN INDUSTRY CLASSIFICATION SYSTEM - INDUSTRY GROUPS	NUMBER OF	EMPLOYMENT			TOTAL EARNINGS	AVERAGE
	EMPLOYING UNITS	OCTOBER	NOVEMBER	DECEMBER	OCT - DEC 2010	WEEKLY EARNINGS
VAN BUREN COUNTY - TOTAL	368	3,634	3,600	3,579	\$24,983,927	\$533.20
Natural Resources & Mining	8	42	44	44	716,349	1,271.63
Construction	42	200	209	202	1,759,362	664.50
Manufacturing	11	57	59	59	535,796	706.54
Trade, Transportation & Utilities	99	970	976	975	7,827,799	618.42
Wholesale Trade	12	29	28	31	305,410	800.90
Retail Trade	56	579	581	581	3,132,440	415.20
Transportation, Warehousing & Utilities	31	362	367	363	4,389,949	927.72
Information	8	47	49	46	466,343	757.87
Financial Activities	31	167	151	153	1,326,579	649.97
Professional & Business Services	33	131	125	128	815,763	490.24
Education & Health Services	62	674	659	665	4,195,050	484.53
Leisure & Hospitality	29	469	457	436	1,681,578	284.92
Other Services	27	81	77	77	528,169	518.66
Local Government	11	719	719	719	4,579,267	489.92
State Government	7	77	75	75	551,872	561.04
WASHINGTON COUNTY - TOTAL	5,476	88,251	88,845	88,674	1,007,075,682	\$874.45
Natural Resources & Mining	42	413	416	417	8,627,289	1,597.84
Construction	494	3,824	3,824	3,811	43,165,546	869.30
Manufacturing	228	12,614	12,670	12,727	124,010,271	752.88
Trade, Transportation & Utilities	1,357	20,245	20,537	20,848	203,192,059	760.84
Wholesale Trade	411	3,613	3,604	3,603	70,451,363	1,502.59
Retail Trade	761	10,375	10,675	10,880	66,638,487	481.62
Transportation, Warehousing & Utilities	185	6,257	6,258	6,365	66,102,209	807.96
Information	88	1,194	1,199	1,193	14,504,907	933.43
Financial Activities	577	3,325	3,322	3,297	38,159,112	885.55
Professional & Business Services	949	9,296	9,238	9,129	244,008,284	2,035.56
Education & Health Services	732	12,729	12,788	12,802	143,293,923	862.96
Leisure & Hospitality	551	9,377	9,341	9,218	33,634,373	277.84
Other Services	376	1,753	1,770	1,776	12,349,306	537.81
Local Government	60	8,197	8,277	8,265	71,665,030	668.50
State Government	22	5,284	5,463	5,191	70,465,582	1,020.28

TABLE 6. COUNTY SUMMARY
FOURTH QUARTER 2010

NORTH AMERICAN INDUSTRY CLASSIFICATION SYSTEM - INDUSTRY GROUPS	NUMBER OF	EMPLOYMENT			TOTAL EARNINGS	AVERAGE
	EMPLOYING UNITS	OCTOBER	NOVEMBER	DECEMBER	OCT - DEC 2010	WEEKLY EARNINGS
WHITE COUNTY - TOTAL	1,836	25,440	25,381	25,337	\$224,959,499	\$681.66
Natural Resources & Mining	56	1,665	1,637	1,639	26,048,707	1,216.60
Construction	195	1,270	1,171	1,174	11,830,954	755.25
Manufacturing	73	2,454	2,489	2,501	26,380,857	817.83
Trade, Transportation & Utilities	479	6,138	6,222	6,196	50,457,516	627.51
Wholesale Trade	97	619	610	616	6,618,534	827.83
Retail Trade	284	3,186	3,236	3,250	18,471,705	440.73
Transportation, Warehousing & Utilities	98	2,333	2,376	2,330	25,367,277	831.65
Information	22	150	142	145	1,139,910	601.96
Financial Activities	177	932	933	957	10,248,588	838.08
Professional & Business Services	192	1,439	1,426	1,468	12,372,344	658.93
Education & Health Services	317	4,824	4,833	4,821	46,659,009	743.71
Leisure & Hospitality	144	2,438	2,379	2,341	7,032,497	226.72
Other Services	116	575	550	545	4,261,060	588.82
Local Government	47	2,776	2,814	2,811	22,513,543	618.43
State Government	18	779	785	739	6,014,514	602.68
WOODRUFF COUNTY - TOTAL	217	1,972	1,916	1,905	\$14,488,984	\$577.18
Natural Resources & Mining	26	163	128	126	1,315,484	727.99
Construction	7	40	38	43	300,294	572.72
Manufacturing	7	347	337	323	2,523,191	578.23
Trade, Transportation & Utilities	47	424	419	418	3,660,856	669.95
Wholesale Trade	11	161	151	149	2,007,639	1,004.99
Retail Trade	23	177	181	184	886,003	377.24
Transportation, Warehousing & Utilities	13	86	87	85	767,214	686.24
Financial Activities	14	66	67	69	645,776	737.75
Professional & Business Services	6	8	8	8	113,677	1,093.05
Education & Health Services	78	266	268	268	1,870,051	538.09
Leisure & Hospitality	7	74	72	71	211,973	225.42
Local Government	10	521	514	515	3,352,830	499.18
State Government	6	42	44	43	368,214	658.70
Other	9	21	21	21	126,638	463.88

TABLE 6. COUNTY SUMMARY
FOURTH QUARTER 2010

NORTH AMERICAN INDUSTRY CLASSIFICATION SYSTEM - INDUSTRY GROUPS	NUMBER OF	EMPLOYMENT			TOTAL EARNINGS	AVERAGE
	EMPLOYING UNITS	OCTOBER	NOVEMBER	DECEMBER	OCT - DEC 2010	WEEKLY EARNINGS
YELL COUNTY - TOTAL	448	6,375	6,319	6,321	\$42,759,109	\$518.93
Natural Resources & Mining	30	238	232	232	1,897,823	623.87
Construction	38	223	201	194	1,743,540	651.06
Manufacturing	20	2,475	2,399	2,403	15,954,874	505.96
Trade, Transportation & Utilities	84	635	641	640	3,495,058	420.96
Wholesale Trade	17	32	31	31	206,450	506.83
Retail Trade	47	509	518	515	2,402,806	359.59
Transportation, Warehousing & Utilities	20	94	92	94	885,802	730.06
Information	2	64	65	65	879,229	1,045.87
Financial Activities	35	162	162	167	1,275,449	599.46
Professional & Business Services	43	196	193	201	1,512,217	591.48
Education & Health Services	111	712	717	717	4,683,485	503.64
Leisure & Hospitality	32	314	321	295	840,856	208.65
Other Services	14	36	35	35	166,955	363.47
Local Government	27	1,209	1,245	1,265	9,646,376	598.57
State Government	12	111	108	107	663,247	469.50
STATEWIDE COUNTY - TOTAL	4,985	18,474	18,110	18,028	\$269,726,653	\$1,139.76
Natural Resources & Mining	75	488	471	469	9,206,089	1,487.73
Construction	543	3,470	3,108	3,002	36,864,914	888.03
Manufacturing	36	193	191	195	2,301,539	917.31
Trade, Transportation & Utilities	1,754	5,599	5,575	5,668	114,285,192	1,565.94
Wholesale Trade	1,481	4,555	4,516	4,583	100,349,502	1,696.03
Retail Trade	111	426	430	446	7,350,151	1,302.76
Transportation, Warehousing & Utilities	162	618	629	639	6,585,539	805.80
Information	124	384	399	416	4,726,039	909.61
Financial Activities	302	914	914	941	15,771,303	1,314.38
Professional & Business Services	1,734	5,310	5,434	5,361	63,915,264	915.84
Education & Health Services	185	1,201	1,084	1,036	11,637,515	808.67
Leisure & Hospitality	58	74	80	87	1,116,607	1,069.21
Other	174	841	854	853	9,902,191	896.83

TABLE 7. FEDERAL GOVERNMENT EMPLOYMENT AND EARNINGS IN ARKANSAS

NORTH AMERICAN INDUSTRY CLASSIFICATION SYSTEM - INDUSTRY GROUPS	NUMBER OF EMPLOYING UNITS	EMPLOYMENT			TOTAL	AVERAGE WEEKLY EARNINGS
		OCT	NOV	DEC	EARNINGS OCT - DEC	
TOTAL	1,262	21,541	21,332	21,481	\$352,810,398	\$1,265.15
Trade, Transportation & Utilities	617	6,074	6,008	6,061	77,319,318	983.46
Information	2	56	55	57	670,968	921.66
Financial Activities	19	183	185	183	3,413,426	1,429.61
Professional & Business Services	29	852	848	845	15,914,056	1,443.02
Education & Health Services	18	4,973	4,997	5,007	95,760,750	1,475.50
Leisure & Hospitality	22	371	353	370	3,437,120	725.03
Other Services	3	7	7	9	38,610	387.39
Public Administration	552	9,025	8,879	8,949	156,256,150	1,342.83

TABLE 8. WORKFORCE INVESTMENT AREA SUMMARY
FOURTH QUARTER 2010

NORTH AMERICAN INDUSTRY CLASSIFICATION SYSTEM - INDUSTRY GROUPS	NUMBER OF	EMPLOYMENT			TOTAL EARNINGS	AVERAGE
	EMPLOYING UNITS	OCTOBER	NOVEMBER	DECEMBER	OCT - DEC 2010	WEEKLY EARNINGS
CENTRAL WORKFORCE INVESTMENT AREA*	6,459	77,631	77,660	77,675	\$669,535,161	\$663.22
Natural Resources & Mining	206	1,721	1,666	1,669	28,889,074	1,318.57
Construction	789	5,341	5,251	5,237	52,520,644	765.69
Trade, Transportation & Utilities	1,527	15,615	15,886	15,954	118,957,070	578.48
Wholesale Trade	400	2,534	2,566	2,542	31,067,831	938.17
Retail Trade	884	11,457	11,746	11,821	70,265,294	462.97
Transportation, Warehousing & Utilities	243	1,624	1,574	1,591	17,623,945	849.25
Information	66	566	571	616	6,303,124	829.76
Financial Activities	677	2,798	2,765	2,763	28,066,315	777.91
Professional & Business Services	815	8,120	8,072	8,156	93,152,161	882.89
Education & Health Services	1,028	11,371	11,354	11,391	94,786,836	641.16
Leisure & Hospitality	512	8,973	8,881	8,780	28,136,949	243.79
Local Government	133	10,624	10,739	10,672	91,317,247	657.82
State Government	66	4,795	4,817	4,829	42,705,596	682.44
Other	640	7,707	7,658	7,608	84,700,145	850.83

*Note: Pulaski County is not included in the Central Workforce Investment. Please refer to Page 54 for information on Pulaski County.
Central Workforce Includes these counties: Faulkner, Lonoke, Monroe, Prairie, and Saline.

EASTERN WORKFORCE INVESTMENT AREA	3,963	37,212	37,059	36,657	\$296,632,920	\$617.10
Natural Resources & Mining	235	1,508	1,307	1,092	10,243,189	605.02
Construction	153	789	782	741	7,660,213	764.59
Trade, Transportation & Utilities	849	9,662	9,642	9,637	88,647,546	706.86
Wholesale Trade	181	2,158	2,138	2,124	24,262,275	872.12
Retail Trade	467	4,770	4,774	4,809	27,473,817	441.73
Transportation, Warehousing & Utilities	201	2,734	2,730	2,704	36,911,454	1,042.85
Financial Activities	261	1,488	1,496	1,505	13,462,399	692.07
Professional & Business Services	287	1,818	1,782	1,805	14,333,343	611.97
Education & Health Services	1,420	6,346	6,363	6,380	46,036,197	556.54
Leisure & Hospitality	243	3,163	3,152	3,141	10,807,851	263.76
Local Government	131	5,576	5,614	5,612	44,963,965	617.56
State Government	61	2,483	2,542	2,415	20,300,536	629.67
Other	323	4,379	4,379	4,329	40,177,681	708.47

Eastern Workforce Includes these counties: Crittenden, Cross, Lee, Phillips, and Saint Francis.

TABLE 8. WORKFORCE INVESTMENT AREA SUMMARY
FOURTH QUARTER 2010

NORTH AMERICAN INDUSTRY CLASSIFICATION SYSTEM - INDUSTRY GROUPS	NUMBER OF	EMPLOYMENT			TOTAL EARNINGS	AVERAGE
	EMPLOYING UNITS	OCTOBER	NOVEMBER	DECEMBER	OCT - DEC 2010	WEEKLY EARNINGS
NORTH CENTRAL WORKFORCE INVESTMENT AREA	5,746	69,956	70,109	69,638	\$560,214,248	\$616.49
Construction	496	2,755	2,602	2,600	25,105,851	728.12
Manufacturing	264	9,410	9,439	9,431	91,718,585	748.44
Trade, Transportation & Utilities	1,434	15,621	15,780	15,809	122,967,134	601.08
Retail Trade	881	9,088	9,214	9,282	51,545,240	431.23
Other Trade, Transportation & Utilities	553	6,533	6,566	6,527	71,421,894	839.80
Information	69	545	542	543	4,386,174	620.98
Financial Activities	527	2,639	2,595	2,639	25,520,613	748.05
Professional & Business Services	516	2,839	2,834	2,870	22,912,645	618.93
Education & Health Services	1,085	12,821	12,813	12,847	109,027,647	653.84
Leisure & Hospitality	461	6,125	5,949	5,833	18,082,743	233.03
Local Government	231	9,541	9,999	9,622	66,539,883	526.55
State Government	106	3,280	3,298	3,251	25,671,260	602.72
Other	557	4,380	4,258	4,193	48,281,713	868.36

North Central Workforce Includes these counties: Cleburne, Fulton, Independence, IZard, Jackson, Sharp, Stone, Van Buren, White, and Woodruff.

NORTHEAST WORKFORCE INVESTMENT AREA	6,619	93,975	94,053	94,139	\$813,674,934	\$665.46
Natural Resources & Mining	393	2,696	2,296	1,988	19,365,987	640.27
Construction	473	3,137	3,024	2,923	30,699,134	779.88
Manufacturing	336	19,552	19,634	19,840	220,675,941	862.76
Trade, Transportation & Utilities	1,707	18,003	18,226	18,460	142,749,423	602.35
Wholesale Trade	403	3,723	3,692	3,683	44,353,611	922.28
Retail Trade	994	11,320	11,662	11,867	65,859,774	436.12
Transportation, Warehousing & Utilities	310	2,960	2,872	2,910	32,536,038	858.88
Financial Activities	574	3,191	3,183	3,195	31,212,801	752.74
Professional & Business Services	677	6,537	6,566	6,792	54,715,858	634.67
Education & Health Services	1,204	14,464	14,500	14,512	141,193,319	749.45
Leisure & Hospitality	507	7,675	7,696	7,591	24,233,582	243.55
Local Government	215	11,943	12,117	12,114	89,651,876	571.93
State Government	99	4,390	4,438	4,358	43,057,529	753.55
Other	434	2,387	2,373	2,366	16,119,484	522.02

Northeast Workforce Includes these counties: Clay, Craighead, Greene, Lawrence, Mississippi, Poinsett, and Randolph.

TABLE 8. WORKFORCE INVESTMENT AREA SUMMARY
FOURTH QUARTER 2010

NORTH AMERICAN INDUSTRY CLASSIFICATION SYSTEM - INDUSTRY GROUPS	NUMBER OF	EMPLOYMENT			TOTAL EARNINGS	AVERAGE
	EMPLOYING UNITS	OCTOBER	NOVEMBER	DECEMBER	OCT - DEC 2010	WEEKLY EARNINGS
NORTHWEST WORKFORCE INVESTMENT AREA	14,858	227,753	228,789	228,418	\$2,377,951,299	\$801.15
Natural Resources & Mining	133	1,711	1,678	1,670	26,540,098	1,210.64
Trade, Transportation & Utilities	3,676	50,573	51,298	51,766	489,676,622	735.51
Wholesale Trade	1,204	8,450	8,408	8,399	159,900,000	1,460.98
Retail Trade	2,002	25,739	26,398	26,743	158,158,178	462.70
Transportation, Warehousing & Utilities	470	16,384	16,492	16,624	171,618,444	800.09
Education & Health Services	2,083	28,125	28,292	28,330	292,644,866	796.88
Leisure & Hospitality	1,467	22,731	22,152	21,681	81,250,123	281.68
Other Services	951	4,484	4,472	4,311	31,011,516	539.42
Local Government	313	22,193	22,543	22,398	188,451,248	647.79
State Government	107	8,025	8,196	7,918	92,432,334	883.65
Other	6,128	89,911	90,158	90,344	1,175,944,492	1,003.55
SOUTHEAST WORKFORCE INVESTMENT AREA	6,010	73,412	73,197	72,921	\$641,220,419	\$674.05
Natural Resources & Mining	393	2,642	2,447	2,352	23,395,616	725.57
Construction	316	3,177	3,039	2,947	37,765,488	951.12
Manufacturing	214	15,326	15,076	14,867	168,503,207	858.98
Trade, Transportation & Utilities	1,337	12,829	12,896	12,875	105,708,853	631.98
Retail Trade	802	8,012	8,162	8,149	46,363,050	439.88
Other Trade, Transportation & Utilities	535	4,817	4,734	4,726	59,345,803	959.25
Education & Health Services	1,763	11,022	11,006	11,065	89,478,113	623.96
Local Government	210	10,083	10,230	10,259	77,537,648	585.28
State Government	137	6,171	6,462	6,516	57,422,712	692.01
Other	1,640	12,162	12,041	12,040	81,408,782	518.35

Northwest Workforce Includes these counties: Baxter, Benton, Boone, Carroll, Madison, Marion, Newton, Searcy, and Washington.

Southeast Workforce Includes these counties: Arkansas, Ashley, Bradley, Chicot, Cleveland, Desha, Drew, Grant, Jefferson, and Lincoln.

TABLE 8. WORKFORCE INVESTMENT AREA SUMMARY
FOURTH QUARTER 2010

NORTH AMERICAN INDUSTRY CLASSIFICATION SYSTEM - INDUSTRY GROUPS	NUMBER OF	EMPLOYMENT			TOTAL EARNINGS	AVERAGE
	EMPLOYING UNITS	OCTOBER	NOVEMBER	DECEMBER	OCT - DEC 2010	WEEKLY EARNINGS
SOUTHWEST WORKFORCE INVESTMENT AREA	5,810	80,882	80,914	80,795	\$728,360,764	\$692.87
Natural Resources & Mining	375	2,510	2,452	2,447	28,745,779	895.35
Trade, Transportation & Utilities	1460	15445	15519	15659	124718960	617.32
Retail Trade	896	8,921	8,991	9,058	47,602,761	407.31
Other Trade, Transportation & Utilities	564	6,524	6,528	6,601	77,116,199	905.51
Information	63	535	535	540	6,401,879	917.61
Financial Activities	508	2,772	2,816	2,810	26,831,047	737.29
Education & Health Services	1,057	9,561	9,543	9,488	70,355,065	567.84
Leisure & Hospitality	393	5,136	5,187	5,192	16,473,965	245.03
Other Services	414	1,995	1,996	1,986	12,357,997	477.14
Local Government	260	10,914	11,022	10,984	81,037,387	568.07
State Government	139	3,842	3,850	3,817	32,216,345	645.98
Other	1,141	28,172	27,994	27,872	329,222,340	904.05

Southwest Workforce Includes these counties: Calhoun, Columbia, Dallas, Hempstead, Howard, Lafayette, Little River, Miller, Nevada, Ouachita, Sevier, and Union

WEST CENTRAL WORKFORCE INVESTMENT AREA	8,270	105,239	105,656	105,868	\$839,724,224	\$611.76
Construction	808	4,453	4,442	4,468	41,976,545	724.90
Trade, Transportation & Utilities	1,929	21,210	21,481	21,664	171,556,804	615.18
Retail Trade	1,252	13,990	14,249	14,329	80,987,242	439.05
Other Trade, Transportation & Utilities	677	7,220	7,232	7,335	90,569,562	959.32
Financial Activities	818	3,608	3,588	3,625	33,660,510	717.85
Professional & Business Services	932	7,652	7,593	7,791	65,883,976	660.01
Education & Health Services	1,458	16,786	16,885	16,948	149,513,815	681.63
Leisure & Hospitality	755	11,532	11,170	11,167	39,548,832	269.47
Local Government	228	12,216	12,778	12,384	95,979,677	592.57
State Government	125	5,651	5,678	5,635	45,471,713	618.57
Other	1,217	22,131	22,041	22,186	196,132,352	682.08

West Central Workforce Includes these counties: Clark, Conway, Garland, Hot Spring, Johnson, Montgomery, Perry, Pike, Pope, and Yell

TABLE 8. WORKFORCE INVESTMENT AREA SUMMARY
FOURTH QUARTER 2010

NORTH AMERICAN INDUSTRY CLASSIFICATION SYSTEM - INDUSTRY GROUPS	NUMBER OF	EMPLOYMENT			TOTAL EARNINGS	AVERAGE
	EMPLOYING UNITS	OCTOBER	NOVEMBER	DECEMBER	OCT - DEC 2010	WEEKLY EARNINGS
WESTERN WORKFORCE INVESTMENT AREA	6,685	104,184	104,329	104,545	\$932,621,444	\$687.48
Natural Resources & Mining	179	2,588	2,580	2,584	40,935,891	1,218.62
Trade, Transportation & Utilities	1,668	22,239	22,593	22,710	181,919,456	621.56
Wholesale Trade	392	3,664	3,675	3,679	43,066,474	902.02
Retail Trade	968	12,001	12,344	12,456	70,334,911	441.05
Transportation, Warehousing & Utilities	308	6,574	6,574	6,575	68,518,071	801.70
Financial Activities	676	3,788	3,774	3,802	38,420,970	780.22
Professional & Business Services	880	9,594	9,328	9,346	88,464,345	722.19
Education & Health Services	1,013	15,086	15,000	15,138	150,505,191	768.00
Leisure & Hospitality	524	8,026	8,116	8,056	27,317,477	260.52
Other Services	446	2,046	1,994	2,009	14,090,294	537.54
Local Government	154	9,681	9,902	9,590	81,240,063	642.64
State Government	73	3,222	3,240	3,245	25,578,146	608.08
Other	1,072	27,914	27,802	28,065	284,149,611	782.67

Western Workforce Includes these counties: Crawford, Franklin, Logan, Polk, Scott, and Sebastian

