

Arkansas Covered Employment & Earnings

Annual
2009

Jobs for People. People for Jobs.

DWS

Department of
WORKFORCE**Services**

**COVERED EMPLOYMENT AND EARNINGS
STATE OF ARKANSAS
ANNUAL 2009**

**MIKE BEEBE, GOVERNOR
STATE OF ARKANSAS**

**ARTEE WILLIAMS, DIRECTOR
DEPARTMENT OF WORKFORCE SERVICES**

**PUBLISHED BY
LABOR MARKET INFORMATION & ANALYSIS
BUREAU OF LABOR STATISTICS PROGRAMS
POST OFFICE BOX 2981
LITTLE ROCK, ARKANSAS 72203-2981
BERNADETTE COLEMAN, BLS PROGRAMS MANAGER
TELEPHONE (501) 682-3159
SUSAN PRICE, QCEW LEAD ANALYST
TELEPHONE (501) 682-3103**

STATE OF ARKANSAS WEBPAGE: <http://www.arkansas.gov>

DEPARTMENT OF WORKFORCE SERVICES WEBPAGE: <http://www.arkansas.gov/esd/>

WEBPAGE FOR LABOR MARKET INFORMATION: <http://www.discover.arkansas.gov>

RELEASED: JUNE 2013

TABLE OF CONTENTS

	Page
Description of Data	1
Industry Classification	1
Definition of Covered Employment and Earnings	2
Federal Government	2
County Classification	2
Significant Developments During Calendar Year 2009	3

LIST OF GRAPHS AND TABLES

Graph 1	Average Total Covered Employment for Selected Years, Arkansas	7
Graph 2	Total Covered Earnings, by Calendar Quarter for Selected Years, Arkansas	8
Table 1	Annual Comparison of Covered Employment and Wages, by Industry	5
Table 2	Total Covered Employment in Arkansas, 2002 – 2009	6
Table 3	Total Covered Earnings, 2002 – 2009	9
Table 4	Total Taxable Earnings, 2002 – 2009	10
Table 5	State Summary – Employment and Total Earnings, by Industry, Calendar Year 2009	11
Table 6	County Summary – Employment and Total Earnings, by Industry, Calendar Year 2009	22
Table 7	Federal Government Employment and Total Earnings in Arkansas, Calendar Year 2009	60
Table 8	Workforce Investment Area – Employment and Total Earnings, by Industry, Calendar Year 2009	61

EMPLOYMENT AND EARNINGS
UNDER THE ARKANSAS EMPLOYMENT SECURITY LAW
ANNUAL 2009

DESCRIPTION OF DATA

This publication contains covered employment and payroll data by industry and county for the Calendar Year 2009. These data are compiled from quarterly contributions and wage reports submitted by employers subject to the Arkansas Employment Security Law. An employing unit is a single physical location where business is conducted, production takes place, or services are provided. Employment and wage data have been tabulated annually for the calendar year by industry under the **North American Industry Classification System** (NAICS) (see "Industry Classification" below) on a statewide, county and workforce area basis. Payroll data represent the total wages paid during the calendar year, and are also shown by

industry for the State and by publishable industry groups for each county and workforce area. The tabulation of this data is a joint effort in conjunction with the U.S. Bureau of Labor Statistics. In addition, there are tables included which set out total covered employment by months, quarterly payrolls, and average weekly earnings for the years 2002 through 2009. Data contained in this publication are subject to revision. Because of industry code changes between years, substantial employment and wage shifts among industries are anticipated.

INDUSTRY CLASSIFICATION

Previously published industry data will not be comparable in all instances with currently published data since industry codes have been revised. The last two revisions were based on the North American Industry Classification System (NAICS) a six digit industry code instead of the Standard Industrial Classification (SIC) system, a four digit industry code, which had been used previously. The following are the NAICS Manuals used to revise the data: (a) between January 1, 2001 and December 31, 2006 industry codes were assigned under the 2002 North American Industry Classification System (NAICS) Manual; (b) since January 1, 2007 industry codes have been assigned under the 2007 North American Industry Classification System Manual. The NAICS Manual represents a significant change in coding methodology as compared to the SIC Manual. One of the most significant changes involves how NAICS treats auxiliary units.

Auxiliary units are establishments primarily engaged in performing management of support services for other establishments of the same enterprise. The SIC code for these units was based on the activity of the enterprise served. The NAICS code is based on the actual activities that the establishment performs. Comparisons of many industries should not be made between this publication and previous Covered Employment and Earnings publications that were based on SIC. Even though some titles are the same or similar in nature, NAICS and SIC could differ in classification of employers. The implementation of NAICS represents a profound change for statistical programs and will create significant benefits along with transition obstacles for both data collectors and data users. A summary is available on the NAICS home page at <http://www.census.gov/naics>.

DEFINITION OF COVERED EMPLOYMENT AND EARNINGS

Covered Employment is the number of workers employed by businesses subject to the Arkansas Employment Security Law who worked or received pay for the payroll period including the 12th of the month. An employer is subject to the law when they employ one or more employees in each of ten days during the current or preceding calendar year.

Currently excluded from coverage is employment covered by the Railroad Unemployment Insurance Act, some domestic service workers, employees of small agricultural establishments, self-

employed and unpaid family workers, insurance and real estate agents who are on commission only, and employees of churches and religious organizations except separately incorporated schools. The payroll information in this publication includes all wages and salaries paid to any covered employees by their employers including bonuses, commissions, and cash values of remuneration received in any medium other than cash. These wages include both taxable and nontaxable wages. Only the first \$10,000 paid to each worker by an employer in the calendar year is taxable under the Arkansas Employment Security Law.

FEDERAL GOVERNMENT EMPLOYMENT

Table 7 on page 60 lists the average number of civilians employed by the Federal Government in Arkansas during the Calendar Year 2009. Employment and wage data are set out by industry divisions.

These data are obtained from required reports submitted by various government agencies having employment in the State. Civilian Federal workers are covered by the Unemployment Compensation for Federal Employees (UCFE) program.

COUNTY CLASSIFICATION

Employment and payroll data by county are classified according to the county where the workers are employed. Employers with operations in more than one county are requested to furnish this agency with a breakdown of employment and wages for at least one quarter of each year by the counties in which they operate. Many such employers submit county data with each regular contribution report. Note: This information is invaluable in the preparation of monthly employment and payroll data by county.

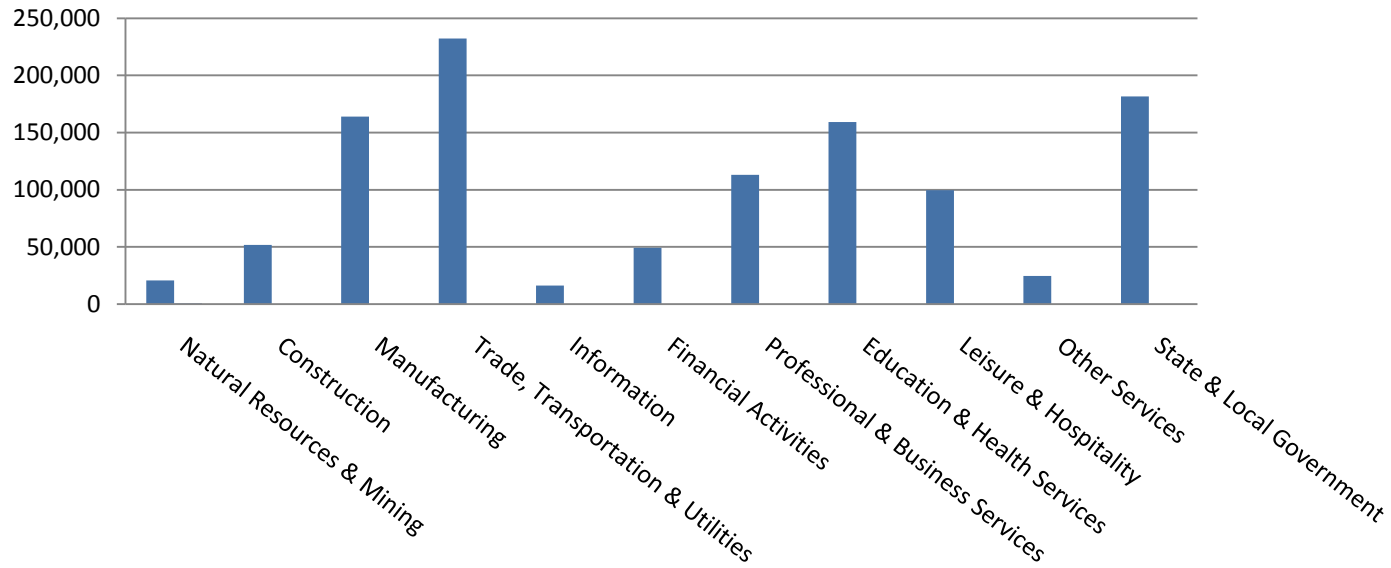
Employment and payroll data for multi-area employers, who do not furnish county data each quarter of the year, are prorated by county on the basis of one quarter's information. The "Statewide County" table that appears on page 59 of this publication includes data on firms that did not provide a county breakdown of employment and payrolls. It also includes sales, and all other types of personnel with no permanent place of work, as well as employment of employers with no established place of business in Arkansas.

SIGNIFICANT DEVELOPMENTS DURING CALENDAR YEAR 2009

AVERAGE EMPLOYMENT CHANGES

Covered employment averaged 1,112,601 during the Calendar Year 2009 (see Table 1, page 5), a decrease of 38,077 from the previous year. The largest employment gains occurred in Education & Health Services (4,544) and State & Local Government (2,150).

Average Covered Employment by NAICS



EMPLOYMENT CHANGES FOR CALENDAR YEAR 2009

Nine of the eleven major industry sectors recorded job losses over-the-year. The largest declines occurred in Manufacturing (-18,298), Trade, Transportation, & Utilities (-11,535), Construction (-4,523), and Professional & Business Services (-4,369). The recession is mostly responsible for the declines in these sectors. Other industries reporting losses include Information (-2,385), Financial Activities (-1,518), Leisure & Hospitality (-1,083), Natural Resources & Mining (-566), and Other Services (-496). The two industries that experienced the most growth were Education & Health Services (4,544) and State & Local Government (2,150). In Education & Health Services, Health Care & Social Assistance increased by 3,974, only a slight decrease in the trend from 2008. State & Local Government expanded with 2,330 new positions in 2009. Local Government lost 180 positions within that sector.

EMPLOYMENT CHANGES FOR CALENDAR YEAR 2009

Pulaski County posted the highest average covered employment in 2009 at 234,545. Benton County came in second with 90,560 in covered employment, slightly higher than Washington County with 86,606. Sebastian County had the fourth highest number of covered employment with 66,947, followed by Craighead County with 41,191. All five leading counties experienced declines compared to 2008 due to the effects of the recession.

COVERED WAGES

Wages paid to covered workers totaled \$39,149,476,305 for the Calendar Year 2009 (see Table 1), for an average weekly wage of \$676.68 (see Table 5). Employees in Little River County recorded the highest average weekly wage (\$875.35), and workers in Newton County the lowest (\$409.77) (see Table 6).

The Information sector recorded the highest average weekly wage for the State of Arkansas at \$1,286.94. The Leisure and Hospitality sector recorded the lowest average weekly wage at \$250.39 for the State of Arkansas (see Table 5).

Average Weekly Wage by Industry

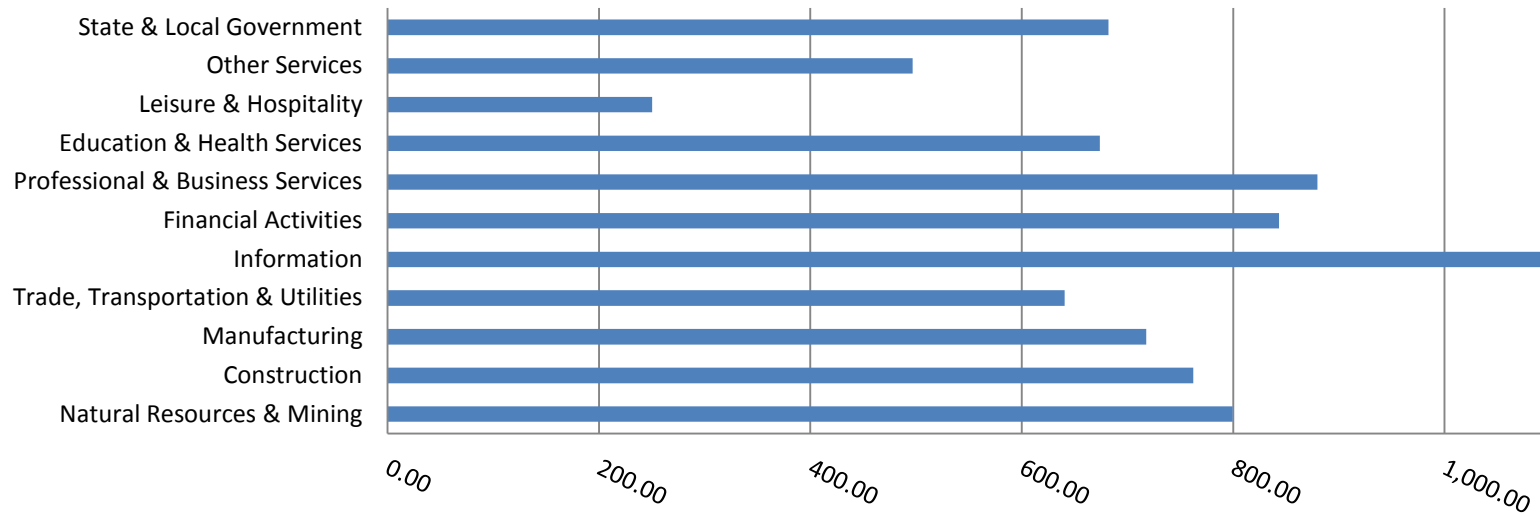


TABLE 1. YEARLY COMPARISON OF COVERED EMPLOYMENT AND WAGES, BY INDUSTRY

North American Industry Classification System	Number of Employing Units	Average Covered Employment	Percent of Total	Net Change From: 2008	Total Calendar Earnings 2009	Percent of Total	Average Weekly Earning
Total	84,460	1,112,601	100	-38,077	\$39,149,476,305	100	676.68
Natural Resources & Mining	2,483	20,784	1.9	-566	864,196,463	2.2	799.61
Agriculture, Forestry, Fishing & Hunting	1,936	12,599	1.1	-436	378,740,465	1.0	578.10
Mining	547	8,185	0.7	-130	485,455,998	1.2	1,140.59
Construction	7,423	51,808	4.7	-4,523	2,053,618,609	5.2	762.29
Manufacturing	3,436	164,097	14.7	-18,298	6,124,909,898	15.6	717.79
Trade, Transportation & Utilities	20,652	232,191	20.9	-11,535	7,734,647,103	19.8	640.61
Wholesale Trade	6,203	47,013	4.2	-1,466	2,504,695,142	6.4	1,024.55
Retail Trade	11,142	129,619	11.7	-4,065	2,924,287,717	7.5	433.86
Transportation & Warehousing	2,940	48,804	4.4	-5,969	1,831,835,788	4.7	721.82
Utilities	367	6,755	0.6	-35	473,828,456	1.2	1,348.94
Information	1,140	16,262	1.5	-2,385	1,088,271,531	2.8	1,286.94
Financial Activities	8,238	49,171	4.4	-1,518	2,156,589,778	5.5	843.44
Finance & Insurance	4,790	35,371	3.2	-1,042	1,748,935,930	4.5	950.87
Real Estate & Rental & Leasing	3,448	13,800	1.2	-476	407,653,848	1.0	568.08
Professional & Business Services	12,184	112,999	10.2	-4,369	5,168,738,088	13.2	879.64
Professional & Technical Services	7,477	37,649	3.4	-1,136	1,898,744,117	4.8	969.86
Management of Companies & Enterprises	552	26,479	2.4	713	2,107,364,501	5.4	1,530.50
Administrative & Waste Services	4,155	48,871	4.4	-3,946	1,162,629,470	3.0	457.50
Education & Health Services	14,146	159,349	14.3	4,544	5,583,738,653	14.3	673.86
Educational Services	646	10,324	0.9	570	313,776,984	0.8	584.48
Health Care & Social Assistance	13,500	149,025	13.4	3,974	5,269,961,669	13.5	680.06
Leisure & Hospitality	6,264	99,714	9.0	-1,083	1,298,289,398	3.3	250.39
Arts, Entertainment & Recreation	921	9,750	0.9	-105	169,359,877	0.4	334.04
Accommodation & Food Services	5,343	89,964	8.1	-978	1,128,929,521	2.9	241.32
Other Services	5,341	24,719	2.2	-496	638,700,589	1.6	496.89
State & Local Government	3,153	181,507	16.3	2,150	6,437,776,195	16.4	682.09
Local Government	1,972	113,060	10.2	-180	3,692,854,974	9.4	628.13
State Government	1,181	68,447	6.2	2,330	2,744,921,221	7.0	771.21
Nonclassifiable Establishments	0	0	0.0	0	0	0.0	0.00

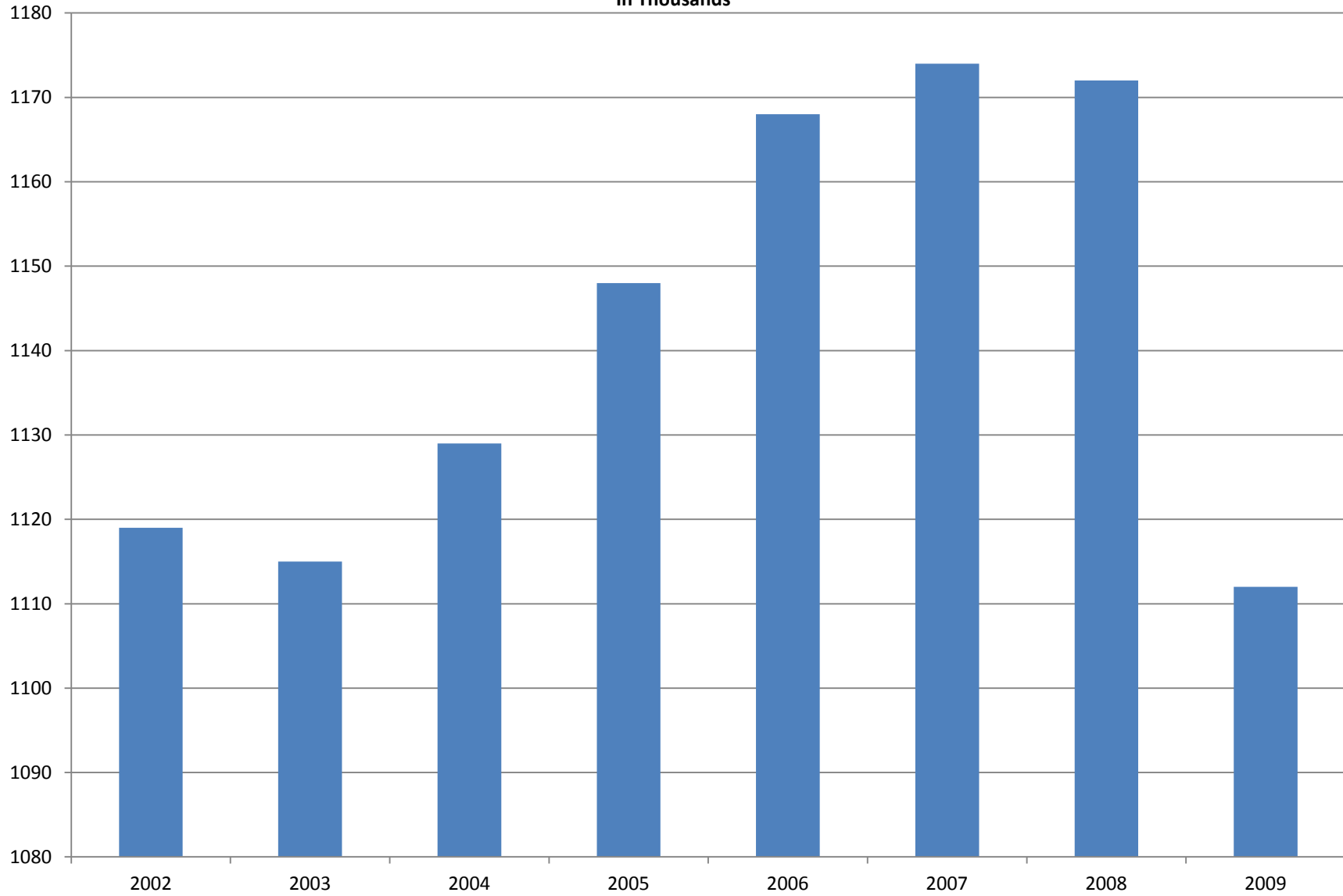
Note: Items do not necessarily add to total because of rounding. Because of industry code changes between years, substantial employment and wage shifts among industries are anticipated.

TABLE 2. TOTAL COVERED EMPLOYMENT IN ARKANSAS

Period	2002	2003	2004	2005	2006	2007	2008	2009
Average	1,119,447	1,115,109	1,129,044	1,147,610	1,167,801	1,173,852	1,173,852	1,112,591
January	1,102,625	1,103,552	1,110,046	1,123,532	1,151,264	1,158,017	1,158,017	1,119,299
February	1,107,547	1,105,572	1,115,104	1,131,258	1,157,439	1,163,878	1,163,878	1,119,476
March	1,119,183	1,112,927	1,125,766	1,143,119	1,171,124	1,179,495	1,179,495	1,124,386
April	1,124,024	1,116,200	1,131,814	1,150,559	1,176,144	1,180,292	1,180,292	1,123,383
May	1,132,656	1,124,090	1,137,751	1,156,330	1,180,634	1,185,947	1,185,947	1,122,322
June	1,133,186	1,120,918	1,137,916	1,157,297	1,183,026	1,185,310	1,185,310	1,117,884
July	1,086,932	1,074,596	1,092,584	1,111,083	1,127,102	1,131,735	1,131,735	1,071,048
August	1,106,894	1,098,914	1,115,802	1,135,025	1,151,787	1,160,146	1,160,146	1,093,192
September	1,133,752	1,127,146	1,143,589	1,165,824	1,180,808	1,186,072	1,186,072	1,116,580
October	1,129,416	1,133,536	1,144,075	1,163,053	1,177,840	1,183,899	1,183,899	1,113,157
November	1,128,629	1,130,920	1,145,880	1,166,536	1,177,007	1,185,338	1,185,338	1,115,443
December	1,128,522	1,132,939	1,148,198	1,167,709	1,179,436	1,186,094	1,186,094	1,114,919

AVERAGE TOTAL COVERED EMPLOYMENT

In Thousands



TOTAL COVERED EARNINGS BY CALENDAR YEAR

In Thousands

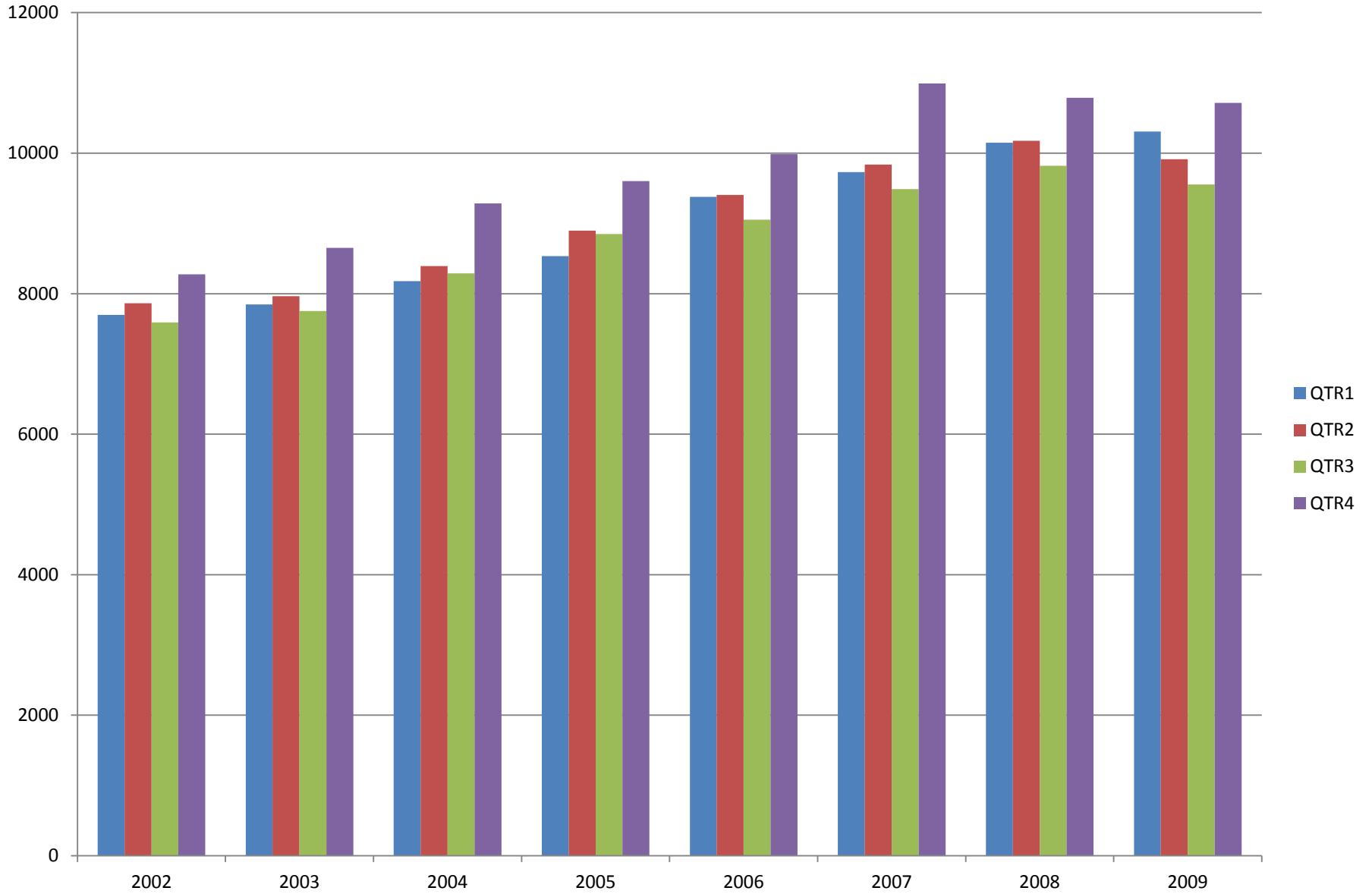


TABLE 3. TOTAL COVERED EARNINGS 2002 - 2009

Period	2002	2003	2004	2005
Total	\$31,427,674,322	\$32,217,395,722	\$34,146,210,588	\$35,881,493,472
January - March	7,698,792,470	7,848,356,266	8,180,467,286	8,534,836,899
April - June	7,863,090,002	7,963,584,234	8,392,021,454	8,896,067,219
July - September	7,590,369,338	7,752,594,314	8,289,094,990	8,848,767,295
October - December	8,275,422,512	8,652,860,908	9,284,626,858	9,601,822,059
Average Weekly Earnings	\$539.89	\$555.61	\$581.61	\$601.27

Period	2006	2007	2008	2009
Total	\$37,824,423,795	\$40,049,203,714	\$40,931,819,015	\$39,149,476,305
January - March	9,378,479,383	9,731,362,683	10,146,587,729	9,998,452,028
April - June	9,406,844,396	9,838,439,469	10,176,262,282	9,566,968,853
July - September	9,054,484,699	9,487,726,500	9,820,954,443	9,213,797,140
October - December	9,984,615,317	10,991,675,062	10,788,014,561	10,370,258,284
Average Weekly Earnings	\$622.87	\$656.11	\$670.57	\$676.69

TABLE 4. TOTAL TAXABLE EARNINGS, 2002 - 2009

Period	2002	2003	2004	2005
Total	8,887,270,978	9,154,938,743	9,731,247,501	9,991,605,239
January - March	4,668,534,587	4,737,918,796	4,931,559,230	5,062,670,306
April - June	2,162,971,435	2,270,519,362	2,451,454,749	2,506,505,721
July - September	1,158,197,858	1,188,681,170	1,318,017,835	1,353,660,445
October - December	897,567,098	957,819,415	1,030,215,687	1,068,768,767
<hr/>				
Period	2006	2007	2008	2009
Total	10,194,511,360	10,459,105,059	10,360,487,108	9,787,660,886
January - March	5,421,204,601	5,617,417,571	5,635,750,082	5,423,705,265
April - June	2,385,110,992	2,466,606,627	2,419,313,519	2,293,670,854
July - September	1,314,939,803	1,307,060,412	1,297,473,555	1,165,280,065
October - December	1,073,255,964	1,068,020,449	1,007,949,952	905,004,702

TABLE 5. STATEWIDE SUMMARY CALENDAR YEAR 2009

NORTH AMERICAN INDUSTRY CLASSIFICATION SYSTEM - INDUSTRY GROUPS		AVERAGE EMPLOYING UNITS	AVERAGE COVERED EMPLOYMENT	TOTAL CALENDAR EARNINGS	AVERAGE WEEKLY EARNINGS
TOTAL, ALL INDUSTRIES		84,460	1,112,601	\$39,149,476,305	\$676.68
NATURAL RESOURCES & MINING		2,483	20,784	\$864,196,463	\$799.61
11	AGRICULTURE, FORESTRY, FISHING & HUNTING	1,936	12,599	\$378,740,465	\$578.10
111	CROP PRODUCTION	758	3,720	\$86,503,182	\$447.18
1111	Oilseed & Grain Farming	444	2,064	49,147,223	457.92
1112	Vegetable & Melon Farming	10	89	1,216,914	262.95
1113	Fruit & Tree Nut Farming	9	112	1,827,698	313.82
1114	Greenhouse & Nursery Production	47	351	8,323,472	456.03
1119	Other Crop Farming	248	1,104	25,987,875	452.69
112	ANIMAL PRODUCTION & AQUACULTURE	268	3,568	\$116,932,934	\$630.24
1121	Cattle Ranching & Farming	84	335	8,632,080	495.53
1122	Hog & Pig Farming	9	134	4,961,549	712.05
1123	Poultry & Egg Production	92	2,574	87,958,131	657.15
1125	Animal Aquaculture	57	453	13,630,038	578.62
1129	Other Animal Production	26	72	1,751,136	467.72
113	FORESTRY & LOGGING	465	2,331	\$71,573,826	\$590.48
1131	Timber Tract Operations	40	224	9,794,355	840.86
1132	Forest Nurseries & Gathering of Forest Products	7	34	1,417,106	801.53
1133	Logging	418	2,073	60,362,365	559.97
114	FISHING, HUNTING & TRAPPING	4	20	\$416,424	\$400.41
115	SUPPORT ACTIVITIES FOR AGRICULTURE & FORESTRY	441	2,960	\$103,314,099	\$671.22
1151	Support Activities for Crop Production	308	1,692	67,759,730	770.14
1152	Support Activities for Animal Production	58	552	14,268,221	497.08
1153	Support Activities for Forestry	75	716	21,286,148	571.72
21	MINING	547	8,185	\$485,455,998	\$1,140.59
211	OIL & GAS EXTRACTION	100	874	\$61,966,951	\$1,363.47
212	MINING (EXCEPT OIL & GAS)	114	1,975	\$91,347,840	\$889.46
213	SUPPORT ACTIVITIES FOR MINING	333	5,336	\$332,141,207	\$1,197.03

TABLE 5. STATEWIDE SUMMARY CALENDAR YEAR 2009

NORTH AMERICAN INDUSTRY CLASSIFICATION SYSTEM - INDUSTRY GROUPS		AVERAGE EMPLOYING UNITS	AVERAGE COVERED EMPLOYMENT	TOTAL CALENDAR EARNINGS	AVERAGE WEEKLY EARNINGS
CONSTRUCTION		7,423	51,808	\$2,053,618,609	\$762.29
236	CONSTRUCTION OF BUILDINGS	1,947	11,892	\$561,036,728	\$907.26
2361	Residential Building Construction	1,329	3,076	96,000,127	600.18
2362	Nonresidential Building Construction	618	8,816	465,036,601	1,014.41
237	HEAVY & CIVIL ENGINEERING CONSTRUCTION	854	9,816	\$439,066,082	\$860.19
2371	Utility System Construction	445	5,494	252,077,660	882.35
2372	Land Subdivision	107	258	9,606,886	716.08
2373	Highway, Street & Bridge Construction	202	2,691	101,205,572	723.25
2379	Other Heavy Construction	100	1,373	76,175,964	1,066.95
238	SPECIALTY TRADE CONTRACTORS	4,622	30,100	\$1,053,515,799	\$673.09
2381	Building Foundation & Exterior Contractors	901	6,082	199,429,675	630.58
2382	Building Equipment Contractors	2,082	14,734	565,920,450	738.64
2383	Building Finishing Contractors	850	4,250	131,211,507	593.72
2389	Other Specialty Trade Contractors	789	5,034	156,954,167	599.59
MANUFACTURING		3,436	164,097	\$6,124,909,898	\$717.79
311	FOOD MANUFACTURING	307	46,825	\$1,369,297,420	\$562.36
3111	Animal Food Manufacturing	58	1,524	60,765,019	766.77
3112	Grain & Oilseed Milling	32	2,360	95,434,910	777.66
3113	Sugar & Confectionery Product Manufacturing	7	74	1,269,079	329.80
3114	Fruit, Vegetable & Specialty Food	24	5,840	204,650,587	673.90
3115	Dairy Product Manufacturing	11	699	28,641,415	787.98
3116	Animal Slaughtering & Processing	89	31,293	804,437,500	494.36
3117	Seafood Product Preparation & Packaging	5	123	2,521,161	394.18
3118	Bakeries & Tortilla Manufacturing	52	3,257	109,059,829	643.94
3119	Other Food Manufacturing	29	1,655	62,517,920	726.45
312	BEVERAGE & TOBACCO PRODUCT MANUFACTURING	40	1,153	\$45,980,802	\$766.91
313	TEXTILE MILLS	16	271	\$12,193,379	\$865.27
314	TEXTILE PRODUCT MILLS	62	870	\$31,816,809	\$703.29
3141	Textile Furnishing Mills	14	29	601,173	398.66
3149	Other Textile Product Mills	48	841	31,215,636	713.79
315	APPAREL MANUFACTURING	33	1,372	\$29,961,517	\$419.96
316	LEATHER & ALLIED PRODUCT MANUFACTURING	20	1,637	\$39,807,104	\$467.64

TABLE 5. STATEWIDE SUMMARY CALENDAR YEAR 2009

NORTH AMERICAN INDUSTRY CLASSIFICATION SYSTEM - INDUSTRY GROUPS		AVERAGE EMPLOYING UNITS	AVERAGE COVERED EMPLOYMENT	TOTAL CALENDAR EARNINGS	AVERAGE WEEKLY EARNINGS
321	WOOD PRODUCT MANUFACTURING	364	9,653	\$318,223,661	\$633.97
3211	Sawmills & Wood Preservation	154	4,352	142,555,894	629.93
3212	Veneer & Engineered Wood Products	54	2,521	102,744,853	783.76
3219	Other Wood Product Manufacturing	156	2,780	72,922,914	504.45
322	PAPER MANUFACTURING	83	10,661	\$584,183,768	\$1,053.78
3221	Pulp, Paper & Paperboard Mills	13	4,252	298,060,446	1,348.06
3222	Converted Paper Product Manufacturing	70	6,409	286,123,322	858.54
323	PRINTING & RELATED SUPPORT ACTIVITIES	267	5,388	\$185,636,277	\$662.57
324	PETROLEUM & COAL PRODUCTS MANUFACTURING	21	1,066	\$57,391,386	\$1,035.35
325	CHEMICAL MANUFACTURING	125	4,641	\$246,454,491	\$1,021.23
3251	Basic Chemical Manufacturing	31	1,945	114,160,672	1,128.74
3252	Resin, Rubber & Artificial Fibers	10	276	14,845,475	1,034.38
3253	Agricultural Chemical Manufacturing	14	298	16,645,885	1,074.21
3254	Pharmaceutical & Medicine Manufacturing	14	155	5,946,141	737.73
3255	Paint, Coating & Adhesive Manufacturing	9	186	9,354,255	967.15
3256	Soap, Cleaning Compound, & Toilet Preparation Manufacturing	18	906	45,029,931	955.81
3259	Other Chemical Preparation Manufacturing	29	875	40,472,132	889.50
326	PLASTICS & RUBBER PRODUCTS MANUFACTURING	149	9,864	\$404,577,401	\$788.76
3261	Plastics Product Manufacturing	103	6,264	232,403,571	713.49
3262	Rubber Product Manufacturing	46	3,600	172,173,830	919.73
327	NONMETALLIC MINERAL PRODUCT MANUFACTURING	256	3,631	\$139,313,294	\$737.84
3271	Clay Product & Refractory Manufacturing	20	355	14,128,861	765.38
3272	Glass & Glass Product Manufacturing	14	396	13,223,233	642.15
3273	Cement & Concrete Product Manufacturing	184	2,152	79,660,227	711.86
3274	Lime & Gypsum Product Manufacturing	5	257	12,172,439	910.84
3279	Other Nonmetallic Mineral Products Manufacturing	33	471	20,128,534	821.84
331	PRIMARY METAL MANUFACTURING	80	7,138	\$365,778,925	\$985.46
3311	Iron & Steel Mills & Ferroalloys	12	2,179	164,043,410	1,447.77
3312	Purchased Steel Product Manufacturing	16	1,746	72,779,612	801.61
3313	Alumina & Aluminum Production	21	1,480	70,494,973	915.99
3314	Other Nonferrous Metal Production	15	654	22,415,639	659.13
3315	Foundries	16	1,079	36,045,291	642.43

TABLE 5. STATEWIDE SUMMARY CALENDAR YEAR 2009

NORTH AMERICAN INDUSTRY CLASSIFICATION SYSTEM - INDUSTRY GROUPS		AVERAGE EMPLOYING UNITS	AVERAGE COVERED EMPLOYMENT	TOTAL CALENDAR EARNINGS	AVERAGE WEEKLY EARNINGS
332	FABRICATED METAL PRODUCT MANUFACTURING	568	14,776	\$617,783,988	\$804.04
3321	Forging & Stamping	12	580	22,635,656	750.52
3322	Cutlery & Hand Tool Manufacturing	19	1,040	37,439,353	692.30
3323	Architectural & Structural Metals	180	4,088	180,612,189	849.64
3324	Boilers, Tanks & Shipping Containers	19	619	27,678,523	859.90
3325	Hardware Manufacturing	6	164	5,834,664	684.18
3326	Spring & Wire Product Manufacturing	11	387	11,887,601	590.72
3327	Machine Shops & Threaded Products	218	1,718	59,011,009	660.55
3328	Coating, Engraving & Heat Treating Metals	37	516	16,474,892	614.00
3329	Other Fabricated Metal Product Manufacturing	66	5,664	256,210,101	869.90
333	MACHINERY MANUFACTURING	252	11,390	\$407,472,232	\$687.97
3331	Agriculture, Construction & Mining Machinery	39	2,847	74,238,391	501.46
3332	Industrial Machinery Manufacturing	37	706	29,024,133	790.59
3333	Commercial & Service Industry Machinery	24	794	34,813,563	843.19
3334	HVAC & Commercial Refrigeration Equipment	21	3,400	129,942,216	734.97
3335	Metalworking Machinery Manufacturing	71	960	36,469,508	730.56
3336	Turbine & Power Transmission Equipment Manufacturing	9	701	26,235,801	719.74
3339	Other General Purpose Machinery Manufacturing	51	1,982	76,748,620	744.67
334	COMPUTER & ELECTRONIC PRODUCT MANUFACTURING	77	3,257	\$125,733,924	\$742.39
3343	Audio & Video Equipment Manufacturing	8	678	23,433,622	664.67
3344	Semiconductors & Electronic Components	28	1,873	68,767,465	706.06
3345	Electronic Instrument Manufacturing	27	539	25,173,061	898.14
	Other	14	167	8,359,776	962.66
335	ELECTRICAL EQUIPMENT & APPLIANCES	62	8,186	\$302,937,622	\$711.67
3353	Electrical Equipment Manufacturing	23	4,365	160,955,867	709.12
3359	Other Electrical Equipment & Component Manufacturing	22	1,668	66,750,566	769.58
	Other	17	2,153	75,231,189	671.97
336	TRANSPORTATION EQUIPMENT MANUFACTURING	175	12,684	\$518,883,290	\$786.70
3362	Motor Vehicle Body & Trailer Manufacturing	40	1,682	60,198,066	688.26
3363	Motor Vehicle Parts Manufacturing	58	4,848	164,927,366	654.22
3364	Aerospace Product & Parts Manufacturing	32	4,160	227,309,568	1,050.80
3366	Ship & Boat Building	26	1,034	27,540,285	512.21
	Other	19	960	38,908,005	779.41
337	FURNITURE & RELATED PRODUCT MANUFACTURING	241	5,137	\$170,075,786	\$636.69
3371	Household & Institutional Furniture	196	3,327	104,511,144	604.10
3372	Office Furniture & Fixtures Manufacturing	38	1,710	63,087,009	709.48
3379	Other Furniture Related Product Manufacturing	7	100	2,477,633	476.47
339	MISCELLANEOUS MANUFACTURING	238	4,497	\$151,406,822	\$647.47
3391	Medical Equipment & Supplies Manufacturing	92	2,299	85,906,938	718.60
3399	Other Miscellaneous Manufacturing	146	2,198	65,499,884	573.07

TABLE 5. STATEWIDE SUMMARY CALENDAR YEAR 2009

NORTH AMERICAN INDUSTRY CLASSIFICATION SYSTEM - INDUSTRY GROUPS		AVERAGE EMPLOYING UNITS	AVERAGE COVERED EMPLOYMENT	TOTAL CALENDAR EARNINGS	AVERAGE WEEKLY EARNINGS
TRADE, TRANSPORTATION & UTILITIES		20,652	232,191	\$7,734,647,103	\$640.61
42	WHOLESALE TRADE	6,203	47,013	\$2,504,695,142	\$1,024.55
423	MERCHANT WHOLESALERS, DURABLE GOODS	2,297	21,349	\$995,785,459	\$896.98
4231	Motor Vehicle & Part Merchant Wholesalers	253	2,501	97,352,173	748.56
4232	Furniture & Furnishings Merchant Wholesalers	66	375	18,051,863	925.74
4233	Lumber & Supply Merchant Wholesalers	190	1,446	58,826,460	782.35
4234	Commercial Goods Merchant Wholesalers	320	2,847	176,482,754	1,192.10
4235	Metal & Mineral Merchant Wholesalers	63	894	43,452,543	934.70
4236	Appliances & Electronics Goods Merchant Wholesalers	189	2,136	107,401,118	966.95
4237	Hardware & Plumbing Merchant Wholesalers	231	2,233	103,323,959	889.83
4238	Machinery & Supply Merchant Wholesalers	743	7,141	321,483,223	865.76
4239	Miscellaneous Durable Goods Merchant Wholesalers	242	1,776	69,411,366	751.60
424	MERCHANT WHOLESALERS, NONDURABLE GOODS	1,303	16,269	\$746,016,550	\$881.83
4241	Paper & Paper Product Merchant Wholesalers	82	1,043	51,184,050	943.73
4242	Druggist' Goods Merchant Wholesalers	67	1,049	49,324,282	904.24
4243	Apparel & Piece Goods Merchant Wholesalers	52	542	19,582,136	694.80
4244	Grocery Product Merchant Wholesalers	337	5,578	281,335,815	969.94
4245	Farm Product Merchant Wholesalers	73	865	27,297,577	606.88
4246	Chemical merchant Wholesalers	95	547	29,009,382	1,019.88
4247	Petroleum Merchant Wholesalers	149	1,505	76,758,722	980.82
4248	Alcoholic Beverage Merchant Wholesalers	39	1,174	58,414,934	956.87
4249	Miscellaneous Nondurable Goods Merchant Wholesaler	409	3,966	153,109,652	742.41
425	ELECTRONIC MARKETS & AGENTS & BROKERS	2,603	9,395	\$762,893,133	\$1,561.58
44 - 45	RETAIL TRADE	11,142	129,619	\$2,924,287,717	\$433.86
441	MOTOR VEHICLE & PARTS DEALERS	1,694	16,255	\$563,921,084	\$667.16
4411	Automobile Dealers	706	9,386	372,871,844	763.97
4412	Other Motor Vehicle Dealers	190	1,387	45,139,266	625.86
4413	Automotive Parts, Accessories & Tire Stores	798	5,482	145,909,974	511.85
442	FURNITURE & HOME FURNISHINGS STORES	550	3,373	\$92,163,679	\$525.46
4421	Furniture Stores	297	2,039	59,050,940	556.94
4422	Home Furnishings Stores	253	1,334	33,112,739	477.35
443	ELECTRONICS & APPLIANCE STORES	560	3,958	\$125,900,255	\$611.71
444	BUILDING MATERIAL & GARDEN SUPPLY STORES	841	10,298	\$268,581,682	\$501.56
4441	Building Material & Supplies Dealers	659	9,363	244,405,477	501.99
4442	Lawn & Garden Equipment & Supplies Stores	182	935	24,176,205	497.25

TABLE 5. STATEWIDE SUMMARY CALENDAR YEAR 2009

NORTH AMERICAN INDUSTRY CLASSIFICATION SYSTEM - INDUSTRY GROUPS		AVERAGE EMPLOYING UNITS	AVERAGE COVERED EMPLOYMENT	TOTAL CALENDAR EARNINGS	AVERAGE WEEKLY EARNINGS
445	FOOD & BEVERAGE STORES	1,036	18,290	\$335,821,226	\$353.09
4451	Grocery Stores	585	15,891	285,729,908	345.78
4452	Specialty Food Stores	146	860	22,140,748	495.10
4453	Beer, Wine & Liquor Stores	305	1,539	27,950,570	349.26
446	HEALTH & PERSONAL CARE STORES	958	7,551	\$250,327,270	\$637.53
447	GASOLINE STATIONS	1,545	11,570	\$177,307,234	\$294.71
44711	Gasoline Stations with Convenience Stores	1,395	10,406	155,336,194	287.07
44719	Other Gasoline Stations	150	1,164	21,971,040	362.99
448	CLOTHING & CLOTHING ACCESSORIES STORES	1,014	8,342	\$120,352,864	\$277.45
4481	Clothing Stores	704	6,456	82,522,679	245.81
4482	Shoe Stores	167	1,141	17,655,435	297.57
4483	Jewelry, Luggage & Leather Goods Stores	143	745	20,174,750	520.77
451	SPORTING GOODS, HOBBY, BOOK & MUSIC STORES	557	4,402	\$71,572,488	\$312.67
4511	Sporting Goods & Musical Instrument Stores	422	3,171	54,876,334	332.80
4512	Book, Periodical & Music Stores	135	1,231	16,696,154	260.83
452	GENERAL MERCH&ISE STORES	740	37,742	\$738,771,206	\$376.43
453	MISCELLANEOUS STORE RETAILERS	1,273	6,118	\$122,990,169	\$386.60
4531	Florists	228	829	13,212,206	306.49
4532	Office Supplies, Stationery & Gift Stores	339	2,130	44,077,544	397.96
4533	Used Merchandise Stores	217	878	18,036,472	395.05
4539	Other Miscellaneous Store Retailers	489	2,281	47,663,947	401.85
454	NONSTORE RETAILERS	374	1,720	\$56,578,560	\$632.59
4541	Electronic Shopping & Mail-Order Houses	138	410	16,390,773	768.80
4542	Vending Machine Operators	67	515	14,031,957	523.97
4543	Direct Selling Establishments	169	795	26,155,830	632.70
48 - 49	TRANSPORTATION & WAREHOUSING	2,940	48,804	1,831,835,788	\$721.82
481	AIR TRANSPORTATION	45	796	\$40,204,916	\$971.32
484	TRUCK TRANSPORTATION	1,943	30,719	\$1,155,109,598	\$723.12
4841	General Freight Trucking	1,220	24,910	942,532,775	727.64
4842	Specialized Freight Trucking	723	5,809	212,576,823	703.74

TABLE 5. STATEWIDE SUMMARY CALENDAR YEAR 2009

NORTH AMERICAN INDUSTRY CLASSIFICATION SYSTEM - INDUSTRY GROUPS		AVERAGE EMPLOYING UNITS	AVERAGE COVERED EMPLOYMENT	TOTAL CALENDAR EARNINGS	AVERAGE WEEKLY EARNINGS
485	TRANSIT & GROUND PASSENGER TRANSPORTATION	77	1,122	\$17,458,522	\$299.23
4853	Taxi & Limousine Service	28	333	4,869,316	281.20
4854	School & Employee Bus Transportation	9	315	4,867,106	297.14
4855	Charter Bus Industry Service	7	56	979,988	336.53
4859	Other Ground Passenger Transportation	27	308	4,802,847	299.88
	Other	6	110	1,939,265	339.03
486	PIPELINE TRANSPORTATION	69	870	\$53,932,582	\$1,192.14
488	SUPPORT ACTIVITIES FOR TRANSPORTATION	412	4,101	\$174,362,377	\$817.64
4881	Support Activities for Air Transportation	105	1,368	51,067,382	717.88
4882	Support Activities for Rail Transportation	31	322	11,354,752	678.14
4883	Support Activities for Water Transportation	23	564	24,411,009	832.34
4884	Support Activities for Road Transportation	112	458	13,256,573	556.62
4885	Freight Transportation Arrangement	122	1,304	71,761,964	1,058.31
4889	Other Support Activities for Transportation	19	85	2,510,697	568.03
	OTHER	13	165	\$5,872,759	\$684.47
492	COURIERS & MESSENGERS	146	3,134	\$121,725,730	\$746.93
493	OTHER WAREHOUSING & STORAGE	235	7,897	263,169,304	\$640.87
22	UTILITIES	367	6,755	\$473,828,456	\$1,348.94
2211	Power Generation & Supply	162	5,105	391,927,152	1,476.41
2212	Natural Gas Distribution	35	838	55,422,996	1,271.87
2213	Water, Sewage & Other Systems	170	812	26,478,308	627.09
INFORMATION		1,140	16,262	\$1,088,271,531	\$1,286.94
511	PUBLISHING INDUSTRIES, EXCEPT INTERNET	260	4,406	\$148,220,798	\$646.94
5111	Newspaper, Book & Directory Publishers	225	4,161	132,394,258	611.88
5112	Software Publishers	35	245	15,826,540	1,242.27
512	MOTION PICTURE & SOUND RECORDING INDUSTRY	151	1,253	\$22,119,460	\$339.48
5121	Motion Picture & Video Industries	127	1,215	20,838,173	329.82
5122	Sound Recording Industries	24	38	1,281,287	648.42
515	BROADCASTING, EXCEPT INTERNET	137	1,834	\$65,271,183	\$684.41
5151	Radio & Television Broadcasting	131	1,793	64,263,773	689.26
5152	Cable & Other Subscription Programming	6	41	1,007,410	472.52

TABLE 5. STATEWIDE SUMMARY CALENDAR YEAR 2009

NORTH AMERICAN INDUSTRY CLASSIFICATION SYSTEM - INDUSTRY GROUPS		AVERAGE EMPLOYING UNITS	AVERAGE COVERED EMPLOYMENT	TOTAL CALENDAR EARNINGS	AVERAGE WEEKLY EARNINGS
517	TELECOMMUNICATIONS	408	7,447	\$781,155,274	\$2,017.22
5171	Wired Telecommunications Carriers	287	4,221	256,545,345	1,168.81
5172	Wireless Telecommunications Carriers (except Satellite)	37	2,761	500,485,158	3,485.95
5174	Satellite Telecommunications Carriers	5	5	292,932	1,126.66
5179	Other Telecommunications	79	460	23,831,839	996.31
518	DATA PROCESSING, HOSTING & RELATED SERVICES	113	1,014	\$59,615,676	\$1,130.63
519	OTHER INFORMATION SERVICES	71	308	\$11,889,140	\$742.33
FINANCIAL ACTIVITIES		8,238	49,171	\$2,156,589,778	\$843.44
52	FINANCE & INSURANCE	4,790	35,371	\$1,748,935,930	\$950.87
522	CREDIT INTERMEDIATION & RELATED ACTIVITIES	1,970	20,107	\$812,865,493	\$777.44
5221	Depository Credit Intermediation	1,421	17,635	681,513,884	743.18
5222	Nondepository Credit Intermediation	380	1,801	103,509,122	1,105.25
5223	Activities Related to Credit Intermediation	169	671	27,842,487	797.96
523	FINANCIAL INVESTMENT & RELATED ACTIVITIES	671	3,212	\$318,240,622	\$1,905.36
524	INSURANCE CARRIERS & RELATED ACTIVITIES	2,082	11,560	\$596,890,248	\$992.96
5241	Insurance Carriers	400	5,229	305,129,401	1,122.18
5242	Insurance Agencies, Brokerages & Support	1,682	6,331	291,760,847	886.24
	OTHER	67	492	\$20,939,567	\$818.46
53	REAL ESTATE & RENTAL & LEASING	3,448	13,800	\$407,653,848	\$568.08
531	REAL ESTATE	2,587	8,834	\$255,752,701	\$556.75
5311	Lessors of Real Estate	1,085	4,477	120,502,771	517.61
5312	Offices of Real Estate Agents & Brokers	870	1,784	55,527,930	598.57
5313	Activities Related to Real Estate	632	2,573	79,722,000	595.85
532	RENTAL & LEASING SERVICES	840	4,906	\$149,148,985	\$584.64
5321	Automotive Equipment Rental & Leasing	130	942	27,204,027	555.37
5322	Consumer Goods Rental	502	2,610	62,009,929	456.90
5323	General Rental Centers	29	236	7,967,469	649.24
5324	Machinery & Equipment Rental & Leasing	179	1,118	51,967,560	893.90
533	LESSORS OF NONFINANCIAL INTANGIBLE ASSETS	21	60	\$2,752,162	\$882.10

TABLE 5. STATEWIDE SUMMARY CALENDAR YEAR 2009

NORTH AMERICAN INDUSTRY CLASSIFICATION SYSTEM - INDUSTRY GROUPS		AVERAGE EMPLOYING UNITS	AVERAGE COVERED EMPLOYMENT	TOTAL CALENDAR EARNINGS	AVERAGE WEEKLY EARNINGS
PROFESSIONAL & BUSINESS SERVICES		12,184	112,999	\$5,168,738,088	\$879.64
54	PROFESSIONAL & TECHNICAL SERVICES	7,477	37,649	\$1,898,744,117	\$969.86
5411	Legal Services	1,688	6,255	316,146,335	971.98
5412	Accounting & Bookkeeping Services	1,258	5,712	216,912,227	730.29
5413	Architectural & Engineering Services	992	6,357	347,385,088	1,050.89
5414	Specialized Design Services	176	402	15,958,197	763.40
5415	Computer Systems Design & Related Services	1,005	7,585	519,220,553	1,316.42
5416	Management & Technical Consulting Services	1,279	4,537	243,316,229	1,031.33
5417	Scientific Research & Development Services	116	1,095	60,912,799	1,069.77
5418	Advertising & Related Services	353	1,830	82,301,563	864.88
5419	Other Professional & Technical Services	610	3,876	96,591,126	479.24
55	MANAGEMENT OF COMPANIES & ENTERPRISES	552	26,479	\$2,107,364,501	\$1,530.50
56	ADMINISTRATIVE & SUPPORT SERVICES	4,155	48,871	\$1,162,629,470	\$457.50
561	ADMINISTRATIVE & SUPPORT SERVICES	3,905	46,125	\$1,059,898,294	\$441.90
5611	Office Administrative Services	509	1,716	89,909,294	1,007.59
5612	Facilities Support Services	21	126	4,404,562	672.25
5613	Employment Services	760	17,605	354,461,025	387.19
5614	Business Support Services	580	8,531	204,803,877	461.67
5615	Travel Arrangement & Reservation Services	92	345	10,559,652	588.61
5616	Investigation & Security Services	242	4,535	112,830,794	478.46
5617	Services to Buildings & Dwellings	1,390	11,570	228,750,501	380.21
5619	Other Support Services	311	1,697	54,178,589	613.96
562	WASTE MANAGEMENT & REMEDIATION SERVICES	250	2,746	\$102,731,176	\$719.45
5621	Waste Collection Services	111	1,197	43,782,374	703.40
5622	Waste Treatment & disposal Services	41	713	34,351,092	926.50
5629	Remediation & Other Waste Services	98	836	24,597,710	565.83
EDUCATION & HEALTH SERVICES		14,146	159,349	\$5,583,738,653	\$673.86
61	EDUCATIONAL SERVICES	646	10,324	\$313,776,984	\$584.48
6111	Elementary & Secondary Schools	85	3,506	86,106,648	472.30
6112	Junior Colleges	9	298	8,697,770	561.29
6113	Colleges & Universities	30	3,561	118,307,889	638.91
6114	Business, Computer, & Management Training	55	299	24,317,530	1,564.03
6115	Technical & Trade Schools	110	841	41,581,396	950.82
6116	Other Schools & Instruction	248	1,485	20,988,429	271.80
6117	Educational Support Services	109	334	13,777,322	793.26

TABLE 5. STATEWIDE SUMMARY CALENDAR YEAR 2009

NORTH AMERICAN INDUSTRY CLASSIFICATION SYSTEM - INDUSTRY GROUPS		AVERAGE EMPLOYING UNITS	AVERAGE COVERED EMPLOYMENT	TOTAL CALENDAR EARNINGS	AVERAGE WEEKLY EARNINGS
62	HEALTH CARE & SOCIAL ASSISTANCE	13,500	149,025	\$5,269,961,669	\$680.06
621	AMBULATORY HEALTH CARE SERVICES	5,057	45,661	\$2,367,605,468	\$997.15
6211	Offices of Physicians	2,231	21,528	1,475,721,024	1,318.25
6212	Offices of Dentists	967	6,422	272,009,414	814.54
6213	Offices of Other Health Practitioners	1,172	6,149	205,558,733	642.88
6214	Outpatient Care Centers	264	3,900	152,605,316	752.49
6215	Medical & Diagnostic Laboratories	110	880	48,783,391	1,066.07
6216	Home Health Care Services	179	4,316	131,949,731	587.93
6219	Other Ambulatory Health Care Services	134	2,466	80,977,859	631.49
622	HOSPITALS	129	42,793	\$1,712,796,059	\$769.71
6221	General Medical & Surgical Hospitals	89	38,826	1,559,761,315	772.56
6222	Psychiatric & Substance Abuse Hospitals	11	1,744	63,492,570	700.12
6223	Other Hospitals	29	2,223	89,542,174	774.61
623	Residential & Mental Health Facilities	539	29,513	\$640,065,724	\$417.07
6231	Nursing Care Facilities (Skilled Nursing Facilities)	261	21,776	473,122,882	417.82
6232	Residential Mental Health Facilities	131	3,891	86,919,920	429.59
6233	Continuing Care & Assisted Living Facilities	104	2,623	50,357,947	369.20
6239	Other Residential Care Facilities	43	1,223	29,664,975	466.46
624	SOCIAL ASSISTANCE	7,775	31,058	\$549,494,418	\$340.24
6241	Individual & Family Services	6,582	17,096	304,952,618	343.03
6242	Emergency & Other Relief Services	126	1,035	22,893,062	425.36
6243	Vocational Rehabilitation Services	130	3,793	77,545,809	393.16
6244	Child Day Care Services	937	9,134	144,102,929	303.40
LEISURE & HOSPITALITY		6,264	99,714	\$1,298,289,398	\$250.39
71	ARTS, ENTERTAINMENT & RECREATION	921	9,750	\$169,359,877	\$334.04
711	PERFORMING ARTS & SPECTATOR SPORTS	229	2,354	\$53,004,696	\$433.02
7111	Performing Arts Companies	41	465	7,447,280	307.99
7112	Spectator Sports	62	1,162	25,765,355	426.41
7113	Performing Arts & Sports Promoters	43	598	11,713,333	376.68
7114	Agents & Managers for Public Figures	24	20	1,202,381	1,156.14
7115	Independent Artists, Writers, & Performers	59	109	6,876,347	1,213.19
712	MUSEUMS, PARKS, & HISTORICAL SITES	52	301	\$6,674,629	\$426.44
713	GAMBLING, RECREATIONAL & AMUSEMENT INDUSTRY	640	7,095	\$109,680,552	\$297.29
72	ACCOMODATION & FOOD SERVICES	5,343	89,964	\$1,128,929,521	\$241.32

TABLE 5. STATEWIDE SUMMARY CALENDAR YEAR 2009

NORTH AMERICAN INDUSTRY CLASSIFICATION SYSTEM - INDUSTRY GROUPS		AVERAGE EMPLOYING UNITS	AVERAGE COVERED EMPLOYMENT	TOTAL CALENDAR EARNINGS	AVERAGE WEEKLY EARNINGS
721	ACCOMODATION	863	11,222	\$172,426,542	\$295.48
7211	Travel Accommodation	783	10,688	163,458,899	294.11
7212	RV Parks & Recreational Camps	61	458	7,699,530	323.29
7213	Rooming & Boarding Houses	19	76	1,268,113	320.88
722	FOOD SERVICES & DRINKING PLACES	4,480	78,742	\$956,502,979	\$233.60
7221	Full-Service Restaurants	1,902	33,654	437,348,157	249.91
7222	Limited-Service Eating Places	2,277	41,728	471,845,337	217.45
7223	Special Food Services	156	2,289	34,560,133	290.35
7224	Drinking Places, Alcoholic Beverages	145	1,070	12,749,352	229.14
OTHER SERVICES		5,341	24,719	\$638,700,589	\$496.89
811	REPAIR & MAINTENANCE	2,156	8,867	\$273,622,555	\$593.43
8111	Automotive Repair & Maintenance	1,462	6,062	172,299,902	546.60
8112	Electronic Equipment Repair & Maintenance	159	672	25,194,488	721.00
8113	Commercial Machinery Repair & Maintenance	347	1,531	59,455,616	746.82
8114	Household Goods Repair & Maintenance	188	602	16,672,549	532.60
812	PERSONAL & LAUNDRY SERVICES	1,293	8,407	\$169,426,657	\$387.56
8121	Personal Care Services	562	2,822	45,993,344	313.43
8122	Death Care Services	242	1,639	43,906,302	515.16
8123	Drycleaning & Laundry Service	302	3,289	67,463,758	394.46
8129	Other Personal Services	187	657	12,063,253	353.10
813	MEMBERSHIP ASSOCIATIONS & ORGANIZATIONS	1,055	6,271	\$175,281,675	\$537.52
8131	Religious Organizations	45	248	6,174,141	478.76
8132	Grantmaking & Giving Organizations	100	512	20,245,132	760.41
8133	Social Advocacy Organizations	196	2,055	58,847,421	550.70
8134	Civic & Social Organizations	203	1,406	20,917,554	286.10
8139	Professional & Similar Organizations	511	2,050	69,097,427	648.19
814	PRIVATE HOUSEHOLDS	837	1,174	\$20,369,702	\$333.67
	LOCAL GOVERNMENT	1,972	113,060	\$3,692,854,974	\$628.13
	STATE GOVERNMENT	1,181	68,447	\$2,744,921,221	\$771.21
	NONCLASSIFIABLE ESTABLISHMENTS	0	0	0	\$0.00

TABLE 6. COUNTY SUMMARY CALENDAR YEAR 2009

NORTH AMERICAN INDUSTRY CLASSIFICATION SYSTEM - INDUSTRY GROUPS	AVERAGE EMPLOYING UNITS	AVERAGE COVERED EMPLOYMENT	TOTAL CALENDAR EARNINGS	AVERAGE WEEKLY EARNINGS
ARKANSAS COUNTY - TOTAL	760	9,641	\$304,471,621	\$607.33
Natural Resources & Mining	39	214	9,868,452	886.81
Construction	47	292	9,079,971	598.00
Manufacturing	32	3,281	115,401,009	676.39
Trade, Transportation & Utilities	203	2,037	68,603,675	647.67
Wholesale Trade	44	400	21,096,926	1,014.28
Retail Trade	97	1,083	24,126,925	428.42
Transportation, Warehousing & Utilities	62	554	23,379,824	811.57
Information	10	105	3,716,046	680.59
Financial Activities	48	334	13,811,833	795.25
Professional & Business Services	60	419	17,338,596	795.79
Education & Health Services	159	1,307	29,059,906	427.58
Leisure & Hospitality	55	458	5,018,202	210.71
Other Services	60	154	3,176,517	396.67
Local Government	32	838	23,981,765	550.34
State Government	15	202	5,415,649	515.58
ASHLEY COUNTY - TOTAL	583	7,615	\$278,633,177	\$703.65
Natural Resources & Mining	53	337	10,436,168	595.54
Construction	45	562	18,413,011	630.06
Manufacturing	28	2,390	137,364,201	1,105.28
Trade, Transportation & Utilities	135	1,213	32,548,686	516.02
Wholesale Trade	24	173	7,663,060	851.83
Retail Trade	83	795	15,262,255	369.19
Transportation, Warehousing & Utilities	28	245	9,623,371	755.37
Information	8	47	1,353,865	553.95
Financial Activities	38	234	7,313,121	601.01
Professional & Business Services	49	381	8,728,399	440.56
Education & Health Services	112	727	23,197,294	613.62
Leisure & Hospitality	29	395	4,182,024	203.60
Other Services	43	161	3,435,323	410.33
Local Government	32	931	26,584,427	549.13
State Government	11	237	5,076,658	411.93

TABLE 6. COUNTY SUMMARY CALENDAR YEAR 2009

NORTH AMERICAN INDUSTRY CLASSIFICATION SYSTEM - INDUSTRY GROUPS	AVERAGE EMPLOYING UNITS	AVERAGE COVERED EMPLOYMENT	TOTAL CALENDAR EARNINGS	AVERAGE WEEKLY EARNINGS
BAXTER COUNTY - TOTAL	1,334	13,992	\$416,213,341	\$572.05
Natural Resources & Mining	5	120	3,233,848	518.24
Construction	144	642	18,545,745	555.53
Manufacturing	65	2,087	75,177,957	692.73
Trade, Transportation & Utilities	279	2,518	62,217,179	475.17
Wholesale Trade	39	207	6,278,346	583.27
Retail Trade	211	2,138	49,654,814	446.63
Transportation, Warehousing & Utilities	29	173	6,284,019	698.53
Information	23	222	8,545,169	740.23
Financial Activities	122	652	25,342,736	747.49
Professional & Business Services	143	803	23,026,597	551.46
Education & Health Services	275	3,475	127,266,028	704.29
Leisure & Hospitality	123	1,541	18,953,323	236.53
Other Services	106	372	7,208,465	372.65
Local Government	37	1,216	36,986,707	584.94
State Government	12	344	9,709,587	542.80
BENTON COUNTY - TOTAL	5,405	90,560	\$4,052,351,171	\$860.53
Natural Resources & Mining	34	767	34,191,537	857.27
Construction	583	3,427	129,668,411	727.64
Manufacturing	231	11,970	425,026,776	682.84
Trade, Transportation & Utilities	1,437	21,241	855,456,851	774.50
Wholesale Trade	644	3,593	292,348,163	1,564.73
Retail Trade	621	9,044	219,007,248	465.69
Transportation, Warehousing & Utilities	172	8,604	344,101,440	769.10
Information	74	769	32,146,674	803.91
Financial Activities	565	3,695	171,623,392	893.22
Professional & Business Services	1,040	23,091	1,661,688,035	1,383.90
Education & Health Services	562	7,573	286,137,378	726.61
Leisure & Hospitality	438	8,329	115,786,288	267.34
Other Services	346	1,725	45,336,959	505.43
Local Government	78	7,004	264,382,016	725.91
State Government	17	969	30,906,854	613.38

TABLE 6. COUNTY SUMMARY CALENDAR YEAR 2009

NORTH AMERICAN INDUSTRY CLASSIFICATION SYSTEM - INDUSTRY GROUPS	AVERAGE EMPLOYING UNITS	AVERAGE COVERED EMPLOYMENT	TOTAL CALENDAR EARNINGS	AVERAGE WEEKLY EARNINGS
BOONE COUNTY - TOTAL	1,060	13,437	\$425,152,504	\$608.47
Construction	92	414	12,438,218	577.77
Manufacturing	70	1,652	58,820,815	684.73
Trade, Transportation & Utilities	249	4,066	139,583,842	660.18
Wholesale Trade	51	580	18,088,495	599.75
Retail Trade	143	1,788	40,556,167	436.20
Transportation, Warehousing & Utilities	55	1,698	80,939,180	916.68
Information	20	392	15,273,852	749.31
Financial Activities	93	600	20,494,987	656.89
Professional & Business Services	112	674	21,509,327	613.71
Education & Health Services	202	1,261	37,611,360	573.59
Leisure & Hospitality	77	1,137	13,705,350	231.81
Local Government	59	2,212	69,455,268	603.83
State Government	19	745	28,038,232	723.75
Other	67	284	8,221,253	556.69
BRADLEY COUNTY - TOTAL	395	3,810	\$115,612,171	\$583.55
Natural Resources & Mining	44	287	7,780,518	521.34
Construction	18	155	3,942,594	489.16
Manufacturing	10	927	44,418,166	921.46
Trade, Transportation & Utilities	85	485	11,010,173	436.57
Wholesale Trade	15	74	3,010,948	782.47
Retail Trade	44	353	6,129,808	333.94
Transportation, Warehousing & Utilities	26	58	1,869,417	619.83
Information	4	14	420,200	577.20
Financial Activities	25	149	4,429,732	571.73
Professional & Business Services	26	88	1,959,023	428.11
Education & Health Services	115	612	15,830,998	497.45
Leisure & Hospitality	12	183	1,856,293	195.07
Other Services	31	111	2,304,654	399.28
Local Government	14	511	14,107,385	530.91
State Government	11	288	7,552,435	504.30

TABLE 6. COUNTY SUMMARY CALENDAR YEAR 2009

NORTH AMERICAN INDUSTRY CLASSIFICATION SYSTEM - INDUSTRY GROUPS	AVERAGE EMPLOYING UNITS	AVERAGE COVERED EMPLOYMENT	TOTAL CALENDAR EARNINGS	AVERAGE WEEKLY EARNINGS
CALHOUN COUNTY - TOTAL	125	2,942	\$127,073,546	\$830.63
Natural Resources & Mining	17	127	4,380,377	663.29
Construction	14	85	2,349,021	531.45
Manufacturing	9	1,998	97,852,374	941.83
Trade, Transportation & Utilities	32	204	5,170,247	487.39
Retail Trade	20	89	1,571,887	339.65
Other Trade, Transportation, & Utilities	12	115	3,598,360	601.73
Financial Activities	6	86	2,513,878	562.14
Education & Health Services	11	46	1,577,320	659.41
Leisure & Hospitality	6	19	173,486	175.59
Local Government	11	194	4,616,291	457.60
State Government	8	68	2,138,234	604.70
Other	11	115	6,302,318	1,053.90
CARROLL COUNTY - TOTAL	820	9,809	\$244,845,159	\$480.02
Natural Resources & Mining	15	271	8,045,724	570.94
Trade, Transportation & Utilities	204	1,588	39,603,691	479.60
Wholesale Trade	28	163	4,082,400	481.64
Retail Trade	156	1,177	24,762,889	404.60
Transportation, Warehousing & Utilities	20	248	10,758,402	834.24
Information	10	86	2,675,785	598.34
Financial Activities	78	368	13,146,752	687.02
Professional & Business Services	63	214	5,492,731	493.60
Education & Health Services	96	947	28,699,472	582.80
Leisure & Hospitality	169	1,514	18,672,344	237.18
Local Government	25	971	28,244,231	559.38
State Government	10	100	3,095,519	595.29
Other	150	3,750	97,168,910	498.30

TABLE 6. COUNTY SUMMARY CALENDAR YEAR 2009

NORTH AMERICAN INDUSTRY CLASSIFICATION SYSTEM - INDUSTRY GROUPS	AVERAGE EMPLOYING UNITS	AVERAGE COVERED EMPLOYMENT	TOTAL CALENDAR EARNINGS	AVERAGE WEEKLY EARNINGS
CHICOT COUNTY - TOTAL	414	3,444	\$88,026,504	\$491.53
Natural Resources & Mining	49	273	7,848,470	552.86
Construction	13	125	3,780,483	581.61
Trade, Transportation & Utilities	74	630	15,295,512	466.90
Wholesale Trade	15	175	5,412,475	594.78
Retail Trade	49	392	7,304,389	358.34
Transportation, Warehousing & Utilities	10	63	2,578,648	787.13
Information	6	10	253,256	487.03
Financial Activities	29	168	5,749,390	658.13
Professional & Business Services	26	75	2,553,745	654.81
Education & Health Services	143	656	16,364,477	479.73
Leisure & Hospitality	21	178	1,608,482	173.78
Local Government	17	698	19,437,135	535.52
State Government	10	328	8,828,921	517.64
Other	26	303	6,306,633	400.27
CLARK COUNTY - TOTAL	628	9,364	\$267,485,492	\$549.33
Natural Resources & Mining	31	201	6,182,053	591.47
Construction	34	105	3,066,710	561.67
Manufacturing	36	2,079	73,932,658	683.88
Trade, Transportation & Utilities	143	1,507	39,812,466	508.05
Wholesale Trade	21	70	2,421,037	665.12
Retail Trade	100	1,147	27,282,173	457.42
Transportation, Warehousing & Utilities	22	290	10,109,256	670.38
Information	9	40	1,213,813	583.56
Financial Activities	82	345	11,221,025	625.48
Professional & Business Services	53	332	16,426,157	951.47
Education & Health Services	94	1,355	36,798,746	522.26
Leisure & Hospitality	59	1,040	11,912,384	220.27
Other Services	46	205	4,271,464	400.70
Local Government	27	961	27,900,624	558.33
State Government	14	1,194	34,747,392	559.65

TABLE 6. COUNTY SUMMARY CALENDAR YEAR 2009

NORTH AMERICAN INDUSTRY CLASSIFICATION SYSTEM - INDUSTRY GROUPS	AVERAGE EMPLOYING UNITS	AVERAGE COVERED EMPLOYMENT	TOTAL CALENDAR EARNINGS	AVERAGE WEEKLY EARNINGS
CLAY COUNTY - TOTAL	417	3,974	\$103,720,870	\$501.92
Natural Resources & Mining	59	229	5,871,702	493.09
Construction	31	154	3,909,021	488.14
Manufacturing	16	703	21,665,683	592.67
Trade, Transportation & Utilities	96	908	26,027,505	551.24
Wholesale Trade	22	328	10,584,666	620.58
Retail Trade	47	409	8,529,418	401.04
Transportation, Warehousing & Utilities	27	171	6,913,421	777.49
Information	3	60	1,319,613	422.95
Financial Activities	33	127	3,699,187	560.14
Professional & Business Services	26	59	1,578,915	514.64
Education & Health Services	66	498	11,374,287	439.23
Leisure & Hospitality	23	206	1,943,180	181.40
Other Services	31	83	2,045,210	473.87
Local Government	22	887	22,751,611	493.27
State Government	11	60	1,534,956	491.97
CLEBURNE COUNTY - TOTAL	704	6,736	\$179,266,901	\$511.79
Natural Resources & Mining	27	260	10,317,489	763.13
Construction	80	426	13,890,828	627.07
Manufacturing	39	1,100	33,838,338	591.58
Trade, Transportation & Utilities	177	1,553	42,632,948	527.92
Wholesale Trade	42	193	7,455,752	742.90
Retail Trade	107	1,000	21,368,123	410.93
Transportation, Warehousing & Utilities	28	360	13,809,073	737.66
Information	7	50	1,337,264	514.33
Financial Activities	74	295	10,228,997	666.82
Professional & Business Services	61	247	6,559,433	510.70
Education & Health Services	89	863	21,722,681	484.06
Leisure & Hospitality	74	929	10,879,516	225.21
Other Services	49	160	3,228,704	388.07
Local Government	18	743	21,714,575	562.03
State Government	9	110	2,916,128	509.81

TABLE 6. COUNTY SUMMARY CALENDAR YEAR 2009

NORTH AMERICAN INDUSTRY CLASSIFICATION SYSTEM - INDUSTRY GROUPS	AVERAGE EMPLOYING UNITS	AVERAGE COVERED EMPLOYMENT	TOTAL CALENDAR EARNINGS	AVERAGE WEEKLY EARNINGS
CLEVELAND COUNTY - TOTAL	124	1,060	\$23,364,853	\$423.89
Natural Resources & Mining	15	164	4,232,558	496.31
Construction	9	19	320,369	324.26
Manufacturing	6	90	2,400,720	512.97
Trade, Transportation & Utilities	31	160	3,183,551	382.64
Retail Trade	15	71	816,002	221.02
Other Trade, Transportation & Utilities	16	89	2,367,549	511.57
Financial Activities	4	17	490,480	554.84
Education & Health Services	30	129	2,169,282	323.39
Local Government	11	316	7,640,828	465.00
State Government	7	56	1,320,372	453.42
Other	11	109	1,606,693	283.47
COLUMBIA COUNTY - TOTAL	756	8,638	\$278,479,288	\$619.98
Natural Resources & Mining	48	486	27,030,371	1,069.58
Construction	41	252	7,892,936	602.33
Manufacturing	40	2,147	95,365,755	854.20
Trade, Transportation & Utilities	167	1,450	35,458,931	470.28
Wholesale Trade	26	191	6,111,015	615.29
Retail Trade	107	1,014	19,923,907	377.86
Transportation, Warehousing & Utilities	34	245	9,424,009	739.72
Information	9	68	1,931,071	546.12
Financial Activities	75	398	13,840,333	668.74
Professional & Business Services	61	312	8,307,091	512.02
Education & Health Services	177	1,009	22,687,881	432.41
Leisure & Hospitality	49	637	7,951,505	240.05
Other Services	48	231	3,903,498	324.97
Local Government	28	1,077	33,688,342	601.53
State Government	13	571	20,421,574	687.78

TABLE 6. COUNTY SUMMARY CALENDAR YEAR 2009

NORTH AMERICAN INDUSTRY CLASSIFICATION SYSTEM - INDUSTRY GROUPS	AVERAGE EMPLOYING UNITS	AVERAGE COVERED EMPLOYMENT	TOTAL CALENDAR EARNINGS	AVERAGE WEEKLY EARNINGS
CONWAY COUNTY - TOTAL	580	6,827	\$208,682,395	\$587.83
Natural Resources & Mining	28	215	10,025,666	896.75
Construction	55	492	22,984,760	898.40
Manufacturing	23	981	46,295,669	907.54
Trade, Transportation & Utilities	129	1,526	44,662,158	562.84
Wholesale Trade	20	214	8,451,073	759.44
Retail Trade	82	859	18,839,730	421.77
Transportation, Warehousing & Utilities	27	453	17,371,355	737.45
Information	4	14	607,860	834.97
Financial Activities	33	166	5,164,449	598.29
Professional & Business Services	42	621	11,691,491	362.06
Education & Health Services	165	932	24,513,305	505.80
Leisure & Hospitality	42	472	4,863,940	198.17
Other Services	23	94	2,390,306	489.02
Local Government	26	922	25,346,069	528.66
State Government	10	392	10,136,722	497.29
CRAIGHEAD COUNTY - TOTAL	2,669	41,191	\$1,317,851,005	\$615.26
Natural Resources & Mining	66	304	8,202,551	518.89
Construction	226	1,655	56,791,349	659.90
Manufacturing	136	6,201	222,431,173	689.81
Trade, Transportation & Utilities	718	8,341	238,946,405	550.91
Wholesale Trade	184	1,650	72,237,154	841.92
Retail Trade	427	5,588	123,103,368	423.65
Transportation, Warehousing & Utilities	107	1,103	43,605,883	760.27
Information	28	518	18,060,287	670.49
Financial Activities	267	1,574	64,705,370	790.56
Professional & Business Services	358	3,765	105,991,810	541.38
Education & Health Services	440	7,691	312,487,032	781.35
Leisure & Hospitality	206	4,013	50,243,594	240.77
Other Services	163	857	18,314,946	410.98
Local Government	38	3,584	118,903,090	638.00
State Government	23	2,688	102,773,398	735.27

TABLE 6. COUNTY SUMMARY CALENDAR YEAR 2009

NORTH AMERICAN INDUSTRY CLASSIFICATION SYSTEM - INDUSTRY GROUPS	AVERAGE EMPLOYING UNITS	AVERAGE COVERED EMPLOYMENT	TOTAL CALENDAR EARNINGS	AVERAGE WEEKLY EARNINGS
CRAWFORD COUNTY - TOTAL	1,308	19,381	\$552,226,693	\$547.95
Natural Resources & Mining	28	365	15,235,965	802.74
Construction	191	1,230	41,182,305	643.88
Manufacturing	82	3,831	113,706,746	570.78
Trade, Transportation & Utilities	311	6,320	180,522,745	549.30
Retail Trade	164	1,995	42,401,483	408.73
Other Trade, Transportation & Utilities	147	4,325	138,121,262	614.15
Information	13	155	5,190,699	644.01
Financial Activities	134	544	16,907,239	597.68
Professional & Business Services	164	1,180	31,959,273	520.85
Education & Health Services	162	1,645	48,336,021	565.07
Leisure & Hospitality	89	1,577	18,868,156	230.09
Other Services	83	379	10,207,910	517.96
Local Government	41	2,026	65,940,588	625.91
State Government	10	129	4,169,046	621.50
CRITTENDEN COUNTY - TOTAL	1,327	15,986	\$499,431,351	\$600.80
Natural Resources & Mining	46	262	7,912,338	580.76
Construction	61	582	25,497,796	842.51
Manufacturing	46	1,754	73,986,209	811.18
Trade, Transportation & Utilities	334	4,659	150,241,682	620.15
Wholesale Trade	79	798	36,200,266	872.38
Retail Trade	171	2,115	43,489,277	395.43
Transportation, Warehousing & Utilities	84	1,746	70,552,139	777.07
Information	7	67	2,434,967	698.90
Financial Activities	103	562	19,970,967	683.38
Professional & Business Services	129	876	21,878,804	480.30
Education & Health Services	338	2,172	67,633,609	598.82
Leisure & Hospitality	110	1,835	26,045,975	272.96
Other Services	94	509	11,670,196	440.92
Local Government	45	2,245	78,644,724	673.67
State Government	14	463	13,514,084	561.31

TABLE 6. COUNTY SUMMARY CALENDAR YEAR 2009

NORTH AMERICAN INDUSTRY CLASSIFICATION SYSTEM - INDUSTRY GROUPS	AVERAGE EMPLOYING UNITS	AVERAGE COVERED EMPLOYMENT	TOTAL CALENDAR EARNINGS	AVERAGE WEEKLY EARNINGS
CROSS COUNTY - TOTAL	564	5,058	\$139,741,373	\$531.30
Natural Resources & Mining	37	211	5,184,838	472.55
Construction	31	120	3,397,055	544.40
Manufacturing	14	639	18,416,870	554.26
Trade, Transportation & Utilities	145	1,302	38,188,202	564.05
Wholesale Trade	29	301	11,631,763	743.15
Retail Trade	81	752	17,099,791	437.29
Transportation, Warehousing & Utilities	35	249	9,456,648	730.36
Information	4	38	1,092,939	553.11
Financial Activities	45	317	9,951,159	603.69
Professional & Business Services	46	150	4,515,594	578.92
Education & Health Services	139	790	19,591,481	476.91
Leisure & Hospitality	36	357	3,782,499	203.75
Other Services	39	69	1,498,028	417.51
Local Government	17	697	22,056,949	608.57
State Government	11	368	12,065,759	630.53
DALLAS COUNTY - TOTAL	273	3,288	\$90,625,404	\$530.05
Natural Resources & Mining	40	186	4,997,148	516.66
Construction	13	122	5,272,411	831.09
Manufacturing	17	862	30,567,105	681.94
Trade, Transportation & Utilities	63	473	13,036,643	530.03
Wholesale Trade	7	42	2,764,355	1,265.73
Retail Trade	42	344	7,554,645	422.33
Transportation, Warehousing & Utilities	14	87	2,717,643	600.72
Information	3	18	632,515	675.76
Financial Activities	19	83	2,491,195	577.20
Professional & Business Services	16	43	1,262,832	564.77
Education & Health Services	52	886	19,940,062	432.80
Leisure & Hospitality	13	114	1,271,065	214.42
Other Services	14	62	1,297,894	402.57
Local Government	15	380	8,563,772	433.39
State Government	8	59	1,292,762	421.37

TABLE 6. COUNTY SUMMARY CALENDAR YEAR 2009

NORTH AMERICAN INDUSTRY CLASSIFICATION SYSTEM - INDUSTRY GROUPS	AVERAGE EMPLOYING UNITS	AVERAGE COVERED EMPLOYMENT	TOTAL CALENDAR EARNINGS	AVERAGE WEEKLY EARNINGS
DESHA COUNTY - TOTAL	500	4,165	\$110,882,083	\$511.97
Natural Resources & Mining	54	257	7,242,959	541.98
Construction	20	119	3,702,652	598.36
Manufacturing	19	561	16,624,854	569.89
Trade, Transportation & Utilities	116	860	23,461,841	524.64
Wholesale Trade	18	159	7,557,467	914.06
Retail Trade	71	535	10,379,462	373.09
Transportation, Warehousing & Utilities	27	166	5,524,912	640.05
Information	7	45	1,309,816	559.75
Financial Activities	45	223	6,388,220	550.90
Professional & Business Services	35	74	1,686,000	438.15
Education & Health Services	114	678	17,167,426	486.94
Leisure & Hospitality	37	272	2,598,585	183.72
Other Services	24	115	2,963,900	495.64
Local Government	19	808	23,686,348	563.75
State Government	10	153	4,049,482	508.98
DREW COUNTY - TOTAL	538	6,204	\$166,345,654	\$515.63
Natural Resources & Mining	45	318	9,143,025	552.92
Construction	21	90	2,310,489	493.69
Manufacturing	22	760	21,341,915	540.03
Trade, Transportation & Utilities	125	1,152	29,704,234	495.86
Wholesale Trade	19	176	6,630,685	724.51
Retail Trade	86	873	19,072,921	420.15
Transportation, Warehousing & Utilities	20	103	4,000,628	746.94
Information	6	71	2,001,755	542.19
Financial Activities	49	238	8,905,954	719.61
Professional & Business Services	52	306	9,574,995	601.75
Education & Health Services	119	769	19,266,820	481.82
Leisure & Hospitality	41	595	5,726,992	185.10
Other Services	19	63	1,371,578	418.67
Local Government	23	1,199	33,941,566	544.39
State Government	16	643	23,056,331	689.57

TABLE 6. COUNTY SUMMARY CALENDAR YEAR 2009

NORTH AMERICAN INDUSTRY CLASSIFICATION SYSTEM - INDUSTRY GROUPS	AVERAGE EMPLOYING UNITS	AVERAGE COVERED EMPLOYMENT	TOTAL CALENDAR EARNINGS	AVERAGE WEEKLY EARNINGS
FAULKNER COUNTY - TOTAL	2,689	38,120	\$1,322,324,461	\$667.09
Natural Resources & Mining	45	851	66,548,442	1,503.85
Construction	341	2,625	93,385,247	684.14
Manufacturing	117	4,013	178,361,520	854.73
Trade, Transportation & Utilities	624	6,921	196,513,810	546.04
Wholesale Trade	168	948	44,095,247	894.50
Retail Trade	375	5,072	111,341,193	422.16
Transportation, Warehousing & Utilities	81	901	41,077,370	876.75
Information	31	350	14,724,550	809.04
Financial Activities	321	1,496	53,166,324	683.44
Professional & Business Services	381	4,629	237,532,860	986.81
Education & Health Services	419	5,825	185,677,371	613.00
Leisure & Hospitality	207	4,389	49,914,725	218.71
Other Services	145	615	15,272,519	477.56
Local Government	39	3,163	114,930,272	698.77
State Government	19	3,243	116,296,821	689.63
FRANKLIN COUNTY - TOTAL	327	4,160	\$127,427,613	\$589.07
Natural Resources & Mining	14	212	10,661,623	967.13
Construction	30	170	6,089,956	688.91
Manufacturing	19	914	29,649,974	623.84
Trade, Transportation & Utilities	87	876	28,777,608	631.75
Wholesale Trade	18	52	1,190,409	440.24
Retail Trade	49	492	9,672,605	378.07
Transportation, Warehousing & Utilities	20	332	17,914,594	1,037.69
Information	5	27	820,445	584.36
Financial Activities	30	222	5,957,335	516.05
Professional & Business Services	22	69	1,890,202	526.81
Education & Health Services	48	480	11,498,992	460.70
Leisure & Hospitality	23	279	3,165,617	218.20
Other Services	21	65	1,618,097	478.73
Local Government	19	749	23,488,618	603.08
State Government	9	97	3,809,146	755.18

TABLE 6. COUNTY SUMMARY CALENDAR YEAR 2009

NORTH AMERICAN INDUSTRY CLASSIFICATION SYSTEM - INDUSTRY GROUPS	AVERAGE EMPLOYING UNITS	AVERAGE COVERED EMPLOYMENT	TOTAL CALENDAR EARNINGS	AVERAGE WEEKLY EARNINGS
FULTON COUNTY - TOTAL	231	1,926	\$44,118,051	\$440.51
Construction	12	24	670,311	537.11
Manufacturing	11	100	1,810,380	348.15
Trade, Transportation & Utilities	58	345	9,481,595	528.52
Retail Trade	38	177	3,084,046	335.08
Other Trade, Transportation & Utilities	20	168	6,397,549	732.32
Information	4	45	685,971	293.15
Financial Activities	15	97	2,851,558	565.34
Professional & Business Services	16	63	1,461,621	446.16
Education & Health Services	65	420	8,746,097	400.46
Leisure & Hospitality	17	159	1,611,863	194.95
Local Government	13	548	14,022,199	492.08
State Government	10	102	2,434,327	458.96
Other	10	23	342,129	286.06
GARLAND COUNTY - TOTAL	3,231	35,462	\$1,027,857,045	\$557.40
Natural Resources & Mining	40	321	13,313,796	797.62
Construction	399	1,925	54,534,000	544.80
Manufacturing	109	1,945	71,873,853	710.64
Trade, Transportation & Utilities	713	7,261	190,508,631	504.56
Wholesale Trade	151	1,087	40,452,213	715.66
Retail Trade	500	5,630	126,733,365	432.89
Transportation, Warehousing & Utilities	62	544	23,323,053	824.49
Information	36	369	12,413,436	646.94
Financial Activities	362	1,413	48,073,197	654.27
Professional & Business Services	420	3,595	99,763,110	533.66
Education & Health Services	500	7,325	281,676,439	739.50
Leisure & Hospitality	361	6,234	92,481,992	285.29
Other Services	230	953	21,160,622	427.00
Local Government	34	3,010	105,442,351	673.67
State Government	27	1,111	36,615,618	633.80

TABLE 6. COUNTY SUMMARY CALENDAR YEAR 2009

NORTH AMERICAN INDUSTRY CLASSIFICATION SYSTEM - INDUSTRY GROUPS	AVERAGE EMPLOYING UNITS	AVERAGE COVERED EMPLOYMENT	TOTAL CALENDAR EARNINGS	AVERAGE WEEKLY EARNINGS
GRANT COUNTY - TOTAL	320	3,717	\$100,212,039	\$518.47
Natural Resources & Mining	23	159	7,034,564	850.82
Construction	30	174	5,393,855	596.14
Manufacturing	15	886	25,658,564	556.92
Trade, Transportation & Utilities	89	607	15,680,645	496.79
Wholesale Trade	19	131	5,089,326	747.11
Retail Trade	44	423	8,958,038	407.26
Transportation, Warehousing & Utilities	26	53	1,633,281	592.63
Information	3	13	531,655	786.47
Financial Activities	25	105	3,021,093	553.31
Professional & Business Services	23	84	3,386,344	775.26
Education & Health Services	52	481	9,875,944	394.85
Leisure & Hospitality	24	274	3,009,861	211.25
Other Services	18	49	881,179	345.83
Local Government	10	837	24,276,293	557.77
State Government	8	48	1,462,042	585.75
GREENE COUNTY - TOTAL	923	14,385	\$415,220,449	\$555.09
Natural Resources & Mining	34	208	5,845,526	540.45
Construction	81	362	10,742,211	570.67
Manufacturing	65	4,435	163,641,099	709.57
Trade, Transportation & Utilities	233	2,201	54,781,486	478.64
Wholesale Trade	53	398	13,997,751	676.35
Retail Trade	154	1,619	34,269,446	407.06
Transportation, Warehousing & Utilities	26	184	6,514,289	680.84
Information	11	109	2,166,995	382.32
Financial Activities	87	457	14,292,606	601.44
Professional & Business Services	103	1,626	33,004,590	390.35
Education & Health Services	152	1,814	50,926,512	539.89
Leisure & Hospitality	69	1,101	12,362,260	215.93
Other Services	47	169	3,694,762	420.43
Local Government	30	1,489	49,122,324	634.43
State Government	11	414	14,640,078	680.05

TABLE 6. COUNTY SUMMARY CALENDAR YEAR 2009

NORTH AMERICAN INDUSTRY CLASSIFICATION SYSTEM - INDUSTRY GROUPS	AVERAGE EMPLOYING UNITS	AVERAGE COVERED EMPLOYMENT	TOTAL CALENDAR EARNINGS	AVERAGE WEEKLY EARNINGS
HEMPSTEAD COUNTY - TOTAL	497	7,995	\$242,577,066	\$583.48
Natural Resources & Mining	17	200	5,995,541	576.49
Construction	30	759	38,097,626	965.28
Manufacturing	26	1,868	58,572,077	602.99
Trade, Transportation & Utilities	135	1,256	33,313,533	510.07
Wholesale Trade	28	226	8,190,265	696.93
Retail Trade	84	868	17,636,390	390.74
Transportation, Warehousing & Utilities	23	162	7,486,878	888.76
Information	8	58	1,793,584	594.69
Financial Activities	42	220	7,948,279	694.78
Professional & Business Services	41	188	4,854,728	496.60
Education & Health Services	76	1,032	26,943,403	502.08
Leisure & Hospitality	43	608	6,798,105	215.02
Other Services	35	170	4,623,505	523.02
Local Government	28	933	30,374,836	626.08
State Government	16	703	23,261,849	636.33
HOT SPRING COUNTY - TOTAL	608	7,432	\$221,292,757	\$572.61
Natural Resources & Mining	27	183	4,852,284	509.91
Construction	67	322	10,499,719	627.07
Manufacturing	31	1,194	52,134,688	839.69
Trade, Transportation & Utilities	159	1,375	42,975,115	601.05
Wholesale Trade	20	86	5,803,463	1,297.73
Retail Trade	100	927	19,829,926	411.38
Transportation, Warehousing & Utilities	39	362	17,341,726	921.26
Information	8	58	1,865,866	618.66
Financial Activities	60	270	8,999,505	640.99
Professional & Business Services	47	432	9,936,205	442.32
Education & Health Services	91	1,143	29,993,442	504.63
Leisure & Hospitality	43	540	5,825,264	207.45
Other Services	35	167	3,216,521	370.40
Local Government	27	1,111	31,821,278	550.81
State Government	13	637	19,172,870	578.82

TABLE 6. COUNTY SUMMARY CALENDAR YEAR 2009

NORTH AMERICAN INDUSTRY CLASSIFICATION SYSTEM - INDUSTRY GROUPS	AVERAGE EMPLOYING UNITS	AVERAGE COVERED EMPLOYMENT	TOTAL CALENDAR EARNINGS	AVERAGE WEEKLY EARNINGS
HOWARD COUNTY - TOTAL	360	7,203	\$193,754,502	\$517.29
Natural Resources & Mining	22	256	7,763,862	583.22
Construction	20	112	3,786,876	650.22
Manufacturing	22	3,813	107,171,065	540.51
Trade, Transportation & Utilities	100	924	23,776,267	494.84
Wholesale Trade	17	66	2,591,799	755.19
Retail Trade	63	629	12,412,575	379.50
Transportation, Warehousing & Utilities	20	229	8,771,893	736.64
Information	5	36	913,705	488.09
Financial Activities	39	162	4,159,865	493.81
Professional & Business Services	23	111	3,164,041	548.17
Education & Health Services	57	605	15,207,585	483.39
Leisure & Hospitality	20	305	3,175,236	200.20
Other Services	23	118	2,650,195	431.91
Local Government	18	647	18,902,632	561.84
State Government	11	114	3,083,173	520.10
INDEPENDENCE COUNTY - TOTAL	943	14,886	\$448,630,174	\$579.57
Natural Resources & Mining	12	141	5,004,957	682.62
Construction	70	432	12,780,587	568.94
Manufacturing	54	3,617	124,190,996	660.30
Trade, Transportation & Utilities	243	2,916	87,153,622	574.77
Wholesale Trade	44	500	17,174,161	660.54
Retail Trade	152	1,591	34,238,331	413.85
Transportation, Warehousing & Utilities	47	825	35,741,130	833.13
Information	9	139	4,176,620	577.84
Financial Activities	86	485	16,124,720	639.36
Professional & Business Services	97	608	14,528,927	459.54
Education & Health Services	176	2,985	105,395,888	679.01
Leisure & Hospitality	66	1,049	11,993,900	219.88
Other Services	66	383	7,520,777	377.62
Local Government	47	1,496	39,541,532	508.30
State Government	17	635	20,217,648	612.28

TABLE 6. COUNTY SUMMARY CALENDAR YEAR 2009

NORTH AMERICAN INDUSTRY CLASSIFICATION SYSTEM - INDUSTRY GROUPS	AVERAGE EMPLOYING UNITS	AVERAGE COVERED EMPLOYMENT	TOTAL CALENDAR EARNINGS	AVERAGE WEEKLY EARNINGS
IZARD COUNTY - TOTAL	285	2,920	\$73,190,914	\$482.03
Natural Resources & Mining	5	85	3,077,112	696.18
Construction	28	80	2,033,554	488.84
Trade, Transportation & Utilities	67	533	12,097,462	436.48
Wholesale Trade	9	29	900,596	597.21
Retail Trade	48	383	7,599,263	381.57
Transportation, Warehousing & Utilities	10	121	3,597,603	571.77
Financial Activities	28	151	4,571,322	582.19
Professional & Business Services	23	80	1,791,190	430.57
Education & Health Services	62	632	13,661,662	415.70
Leisure & Hospitality	20	144	1,429,228	190.87
Local Government	18	513	13,561,116	508.36
State Government	10	470	14,234,535	582.43
Other	24	232	6,733,733	558.17
JACKSON COUNTY - TOTAL	493	5,188	\$156,736,448	\$580.99
Natural Resources & Mining	51	242	6,285,068	499.45
Construction	21	113	4,393,534	747.71
Manufacturing	24	967	36,613,435	728.13
Trade, Transportation & Utilities	113	985	28,660,962	559.57
Wholesale Trade	26	204	9,321,918	878.76
Retail Trade	69	664	14,858,833	430.34
Transportation, Warehousing & Utilities	18	117	4,480,211	736.39
Information	4	34	892,546	504.83
Financial Activities	38	161	5,304,686	633.62
Professional & Business Services	35	127	3,809,120	576.79
Education & Health Services	110	827	25,388,604	590.38
Leisure & Hospitality	28	269	2,942,674	210.37
Other Services	24	85	1,929,201	436.47
Local Government	32	685	17,631,231	494.98
State Government	13	693	22,885,387	635.07

TABLE 6. COUNTY SUMMARY CALENDAR YEAR 2009

NORTH AMERICAN INDUSTRY CLASSIFICATION SYSTEM - INDUSTRY GROUPS	AVERAGE EMPLOYING UNITS	AVERAGE COVERED EMPLOYMENT	TOTAL CALENDAR EARNINGS	AVERAGE WEEKLY EARNINGS
JEFFERSON COUNTY - TOTAL	2,085	30,186	\$1,008,559,013	\$642.53
Natural Resources & Mining	46	503	21,338,928	815.83
Construction	114	1,470	76,005,131	994.31
Manufacturing	70	5,355	211,651,558	760.08
Trade, Transportation & Utilities	436	5,196	160,477,077	593.94
Wholesale Trade	80	977	38,468,079	757.19
Retail Trade	290	3,430	76,643,544	429.71
Transportation, Warehousing & Utilities	66	789	45,365,454	1,105.72
Information	12	145	4,335,840	575.05
Financial Activities	159	1,185	44,942,543	729.35
Professional & Business Services	188	1,590	54,751,430	662.21
Education & Health Services	696	5,260	170,232,091	622.38
Leisure & Hospitality	143	2,076	23,759,404	220.09
Other Services	140	650	16,269,535	481.35
Local Government	43	3,213	102,075,018	610.95
State Government	38	3,543	122,720,458	666.10
JOHNSON COUNTY - TOTAL	472	8,564	\$229,350,696	\$515.02
Natural Resources & Mining	19	273	9,080,008	639.62
Construction	27	116	3,300,479	547.16
Manufacturing	40	2,897	73,845,762	490.20
Trade, Transportation & Utilities	117	2,087	55,989,158	515.91
Retail Trade	79	924	18,278,584	380.42
Other Trade, Transportation & Utilities	38	1,163	37,710,574	623.56
Information	6	33	842,525	490.98
Financial Activities	45	209	6,473,194	595.62
Professional & Business Services	47	148	4,696,983	610.31
Education & Health Services	88	1,153	34,268,408	571.56
Leisure & Hospitality	36	508	5,437,956	205.86
Other Services	24	60	1,383,535	443.44
Local Government	14	935	29,454,125	605.80
State Government	9	145	4,578,563	607.24

TABLE 6. COUNTY SUMMARY CALENDAR YEAR 2009

NORTH AMERICAN INDUSTRY CLASSIFICATION SYSTEM - INDUSTRY GROUPS	AVERAGE EMPLOYING UNITS	AVERAGE COVERED EMPLOYMENT	TOTAL CALENDAR EARNINGS	AVERAGE WEEKLY EARNINGS
LAFAYETTE COUNTY - TOTAL	178	1,334	\$34,385,831	\$495.70
Natural Resources & Mining	34	163	5,349,344	631.12
Construction	8	56	2,388,122	820.10
Manufacturing	6	34	1,562,912	884.00
Trade, Transportation & Utilities	34	198	4,800,281	466.23
Retail Trade	20	140	2,382,754	327.30
Other Trade, Transportation & Utilities	14	58	2,417,527	801.57
Financial Activities	17	58	1,506,754	499.59
Professional & Business Services	12	67	1,945,781	558.49
Education & Health Services	35	250	4,994,053	384.16
Leisure & Hospitality	6	53	596,496	216.44
Local Government	13	317	8,046,858	488.16
State Government	7	45	1,201,746	513.57
Other	6	93	1,993,484	412.22
LAWRENCE COUNTY - TOTAL	426	3,954	\$100,612,967	\$489.34
Natural Resources & Mining	38	180	5,354,417	572.05
Construction	23	55	1,321,806	462.17
Manufacturing	22	441	11,785,115	513.92
Trade, Transportation & Utilities	120	846	22,425,798	509.77
Wholesale Trade	20	200	6,359,368	611.48
Retail Trade	63	507	10,562,734	400.65
Transportation, Warehousing & Utilities	37	139	5,503,696	761.44
Financial Activities	34	153	4,300,880	540.58
Professional & Business Services	24	99	3,092,113	600.64
Education & Health Services	81	524	13,785,454	505.93
Leisure & Hospitality	24	330	3,105,051	180.95
Local Government	28	1,156	31,327,609	521.15
State Government	10	107	2,658,091	477.73
Other	22	63	1,456,633	444.64

TABLE 6. COUNTY SUMMARY CALENDAR YEAR 2009

NORTH AMERICAN INDUSTRY CLASSIFICATION SYSTEM - INDUSTRY GROUPS	AVERAGE EMPLOYING UNITS	AVERAGE COVERED EMPLOYMENT	TOTAL CALENDAR EARNINGS	AVERAGE WEEKLY EARNINGS
LEE COUNTY - TOTAL	301	2,065	\$58,179,969	\$541.81
Natural Resources & Mining	32	222	5,266,613	456.22
Construction	8	28	802,068	550.87
Trade, Transportation & Utilities	55	348	9,318,032	514.92
Wholesale Trade	8	71	2,625,786	711.21
Retail Trade	29	200	3,753,797	360.94
Transportation, Warehousing & Utilities	18	77	2,938,449	733.88
Financial Activities	17	76	2,721,464	688.63
Professional & Business Services	16	76	3,499,781	885.57
Education & Health Services	126	378	9,458,749	481.21
Leisure & Hospitality	8	80	779,621	187.41
Local Government	15	338	10,066,428	572.74
State Government	7	483	15,488,887	616.69
Other	17	36	778,326	415.77
LINCOLN COUNTY - TOTAL	260	2,896	\$83,331,175	\$553.36
Natural Resources & Mining	33	167	5,218,889	600.98
Construction	14	73	1,788,687	471.20
Manufacturing	10	341	10,639,587	600.02
Trade, Transportation & Utilities	45	332	10,584,944	613.12
Retail Trade	22	173	2,817,533	313.20
Other Trade, Transportation & Utilities	23	159	7,767,411	939.45
Financial Activities	22	77	2,428,720	606.57
Professional & Business Services	14	28	807,637	554.70
Education & Health Services	75	389	8,761,245	433.12
Leisure & Hospitality	14	154	1,319,567	164.78
Local Government	7	356	10,134,339	547.45
State Government	12	946	30,848,797	627.11
Other	14	33	798,763	465.48

TABLE 6. COUNTY SUMMARY CALENDAR YEAR 2009

NORTH AMERICAN INDUSTRY CLASSIFICATION SYSTEM - INDUSTRY GROUPS	AVERAGE EMPLOYING UNITS	AVERAGE COVERED EMPLOYMENT	TOTAL CALENDAR EARNINGS	AVERAGE WEEKLY EARNINGS
LITTLE RIVER COUNTY - TOTAL	255	4,570	\$208,018,424	\$875.35
Natural Resources & Mining	12	69	2,075,136	578.35
Construction	23	957	55,569,202	1,116.65
Manufacturing	18	1,345	94,713,123	1,354.21
Trade, Transportation & Utilities	58	640	15,333,874	460.75
Wholesale Trade	10	38	1,557,238	788.08
Retail Trade	35	396	7,772,760	377.47
Transportation, Warehousing & Utilities	13	206	6,003,876	560.48
Financial Activities	23	108	2,800,870	498.73
Professional & Business Services	19	112	3,329,649	571.71
Education & Health Services	37	172	4,154,695	464.52
Leisure & Hospitality	17	184	2,089,907	218.43
Local Government	20	806	24,081,194	574.57
State Government	11	82	2,145,771	503.23
Other	17	95	1,725,003	349.19
LOGAN COUNTY - TOTAL	515	5,406	\$144,249,831	\$513.14
Natural Resources & Mining	22	102	4,407,126	830.91
Construction	53	243	6,562,953	519.39
Manufacturing	28	1,125	33,204,740	567.60
Trade, Transportation & Utilities	124	906	20,994,496	445.63
Wholesale Trade	17	43	901,373	403.12
Retail Trade	79	742	15,328,811	397.28
Transportation, Warehousing & Utilities	28	121	4,764,312	757.20
Information	7	43	4,291,658	1,919.35
Financial Activities	46	267	9,662,729	695.96
Professional & Business Services	44	107	2,296,603	412.76
Education & Health Services	96	825	21,833,166	508.93
Leisure & Hospitality	32	314	3,317,303	203.17
Other Services	27	75	1,878,942	481.78
Local Government	22	817	22,554,359	530.89
State Government	14	582	13,245,756	437.67

TABLE 6. COUNTY SUMMARY CALENDAR YEAR 2009

NORTH AMERICAN INDUSTRY CLASSIFICATION SYSTEM - INDUSTRY GROUPS	AVERAGE EMPLOYING UNITS	AVERAGE COVERED EMPLOYMENT	TOTAL CALENDAR EARNINGS	AVERAGE WEEKLY EARNINGS
LONOKE COUNTY - TOTAL	1,321	12,775	\$360,409,430	\$542.54
Natural Resources & Mining	75	463	17,112,849	710.78
Construction	153	821	29,128,644	682.30
Manufacturing	39	1,288	56,934,511	850.07
Trade, Transportation & Utilities	344	2,865	75,063,649	503.85
Wholesale Trade	81	464	19,015,074	788.09
Retail Trade	190	2,118	45,357,983	411.84
Transportation, Warehousing & Utilities	73	283	10,690,592	726.46
Information	16	93	4,033,578	834.07
Financial Activities	132	496	18,902,221	732.87
Professional & Business Services	147	651	18,928,889	559.17
Education & Health Services	188	1,593	40,090,648	483.98
Leisure & Hospitality	110	1,546	16,882,053	210.00
Other Services	75	219	4,901,796	430.44
Local Government	27	2,600	74,235,960	549.08
State Government	15	140	4,194,632	576.19
MADISON COUNTY - TOTAL	244	2,989	\$77,034,168	\$495.63
Natural Resources & Mining	9	31	846,601	525.19
Construction	35	68	1,808,922	511.57
Manufacturing	20	1,042	27,047,970	499.19
Trade, Transportation & Utilities	54	569	14,038,959	474.48
Retail Trade	36	419	8,579,519	393.77
Other Trade, Transportation & Utilities	18	150	5,459,440	699.93
Information	5	38	1,764,397	892.91
Financial Activities	17	80	2,577,058	619.49
Professional & Business Services	22	136	3,093,908	437.49
Education & Health Services	40	226	4,881,398	415.37
Leisure & Hospitality	12	146	1,592,789	209.80
Other Services	14	26	807,653	597.38
Local Government	9	587	17,241,154	564.84
State Government	7	40	1,333,359	641.04

TABLE 6. COUNTY SUMMARY CALENDAR YEAR 2009

NORTH AMERICAN INDUSTRY CLASSIFICATION SYSTEM - INDUSTRY GROUPS	AVERAGE EMPLOYING UNITS	AVERAGE COVERED EMPLOYMENT	TOTAL CALENDAR EARNINGS	AVERAGE WEEKLY EARNINGS
MARION COUNTY - TOTAL	320	3,552	\$87,170,821	\$471.95
Natural Resources & Mining	6	35	758,876	416.96
Construction	24	70	1,343,204	369.01
Manufacturing	23	1,275	32,755,279	494.05
Trade, Transportation & Utilities	56	611	13,495,154	424.75
Wholesale Trade	8	35	1,583,689	870.16
Retail Trade	38	467	8,695,992	358.10
Transportation, Warehousing & Utilities	10	109	3,215,473	567.30
Financial Activities	37	195	5,742,208	566.29
Professional & Business Services	30	63	2,063,861	629.99
Education & Health Services	63	366	8,691,354	456.67
Leisure & Hospitality	37	219	2,421,754	212.66
Local Government	20	548	14,665,837	514.66
State Government	7	84	1,746,997	399.95
Other	17	86	3,486,297	554.70
MILLER COUNTY - TOTAL	847	12,373	\$401,083,880	\$623.39
Natural Resources & Mining	28	134	3,633,836	521.50
Construction	86	816	24,450,147	576.22
Manufacturing	33	2,244	115,304,093	988.14
Trade, Transportation & Utilities	225	3,269	103,073,440	606.36
Wholesale Trade	54	527	23,558,138	859.66
Retail Trade	129	1,364	29,590,909	417.20
Transportation, Warehousing & Utilities	42	1,378	49,924,393	696.72
Information	9	83	5,545,267	1,284.82
Financial Activities	78	360	12,394,023	662.07
Professional & Business Services	86	880	21,656,966	473.27
Education & Health Services	124	887	22,576,391	489.47
Leisure & Hospitality	80	1,342	17,159,770	245.90
Other Services	56	327	6,153,884	361.91
Local Government	26	1,547	51,662,555	642.22
State Government	16	484	17,473,508	694.27

TABLE 6. COUNTY SUMMARY CALENDAR YEAR 2009

NORTH AMERICAN INDUSTRY CLASSIFICATION SYSTEM - INDUSTRY GROUPS	AVERAGE EMPLOYING UNITS	AVERAGE COVERED EMPLOYMENT	TOTAL CALENDAR EARNINGS	AVERAGE WEEKLY EARNINGS
MISSISSIPPI COUNTY - TOTAL	1,234	17,942	\$629,018,262	\$674.20
Natural Resources & Mining	96	650	17,767,173	525.66
Construction	68	527	20,010,920	730.22
Manufacturing	59	6,144	300,242,810	939.76
Trade, Transportation & Utilities	298	2,969	85,076,585	551.06
Wholesale Trade	67	515	21,344,363	797.03
Retail Trade	178	1,811	36,733,932	390.07
Transportation, Warehousing & Utilities	53	643	26,998,290	807.46
Information	10	98	2,411,380	473.19
Financial Activities	104	634	22,730,331	689.47
Professional & Business Services	100	886	32,589,952	707.37
Education & Health Services	276	1,697	44,450,761	503.73
Leisure & Hospitality	88	1,172	13,221,249	216.94
Other Services	67	247	4,945,099	385.01
Local Government	45	2,300	67,213,301	561.98
State Government	23	618	18,358,701	571.28
MONROE COUNTY - TOTAL	328	2,281	\$55,000,074	\$463.70
Natural Resources & Mining	36	138	3,564,827	496.77
Construction	13	38	832,264	421.19
Manufacturing	6	105	3,111,003	569.78
Trade, Transportation & Utilities	85	649	18,405,055	545.37
Wholesale Trade	21	204	7,271,614	685.48
Retail Trade	41	290	6,360,739	421.80
Transportation, Warehousing & Utilities	23	155	4,772,702	592.15
Financial Activities	16	88	3,017,339	659.38
Professional & Business Services	15	47	1,056,898	432.45
Education & Health Services	77	367	6,931,698	363.22
Leisure & Hospitality	25	241	2,503,564	199.77
Local Government	22	380	10,330,862	522.82
State Government	8	123	3,176,121	496.58
Other	25	105	2,070,443	379.20

TABLE 6. COUNTY SUMMARY CALENDAR YEAR 2009

NORTH AMERICAN INDUSTRY CLASSIFICATION SYSTEM - INDUSTRY GROUPS	AVERAGE EMPLOYING UNITS	AVERAGE COVERED EMPLOYMENT	TOTAL CALENDAR EARNINGS	AVERAGE WEEKLY EARNINGS
MONTGOMERY COUNTY - TOTAL	191	1,591	\$36,501,349	\$441.20
Natural Resources & Mining	11	47	1,665,203	681.34
Construction	22	86	2,507,798	560.78
Trade, Transportation & Utilities	50	264	5,883,209	428.56
Wholesale Trade	14	70	1,818,502	499.59
Retail Trade	25	180	3,770,660	402.85
Transportation, Warehousing & Utilities	11	14	294,047	403.91
Financial Activities	11	73	2,103,930	554.25
Professional & Business Services	15	58	1,145,378	379.77
Education & Health Services	18	79	1,690,001	411.39
Leisure & Hospitality	23	285	4,436,200	299.34
Local Government	9	462	11,945,957	497.25
State Government	7	45	1,328,987	567.94
Other	25	192	3,794,686	380.08
NEVADA COUNTY - TOTAL	191	2,171	\$60,587,227	\$536.68
Natural Resources & Mining	11	38	1,002,548	507.36
Trade, Transportation & Utilities	42	495	12,812,569	497.77
Wholesale Trade	3	11	176,762	309.02
Retail Trade	28	265	4,836,915	351.01
Transportation, Warehousing & Utilities	11	219	7,798,892	684.83
Financial Activities	14	64	1,919,582	576.80
Professional & Business Services	9	51	1,411,685	532.31
Education & Health Services	26	396	8,829,764	428.80
Leisure & Hospitality	12	94	966,932	197.82
Local Government	28	447	10,890,510	468.53
State Government	10	71	2,082,234	563.99
Other	39	515	20,671,403	771.90

TABLE 6. COUNTY SUMMARY CALENDAR YEAR 2009

NORTH AMERICAN INDUSTRY CLASSIFICATION SYSTEM - INDUSTRY GROUPS	AVERAGE EMPLOYING UNITS	AVERAGE COVERED EMPLOYMENT	TOTAL CALENDAR EARNINGS	AVERAGE WEEKLY EARNINGS
NEWTON COUNTY - TOTAL	127	1,031	\$21,968,798	\$409.77
Construction	8	23	447,229	373.94
Manufacturing	13	58	1,624,378	538.59
Trade, Transportation & Utilities	26	153	3,368,349	423.37
Retail Trade	12	96	1,583,407	317.19
Other Trade, Transportation & Utilities	14	57	1,784,942	602.21
Education & Health Services	27	219	3,879,625	340.68
Leisure & Hospitality	19	80	923,724	222.05
Local Government	13	372	8,948,682	462.61
State Government	6	82	1,578,095	370.10
Other	15	44	1,198,716	523.91
OUACHITA COUNTY - TOTAL	663	7,699	\$216,537,919	\$540.87
Natural Resources & Mining	45	220	7,878,679	688.70
Construction	45	199	6,045,065	584.18
Manufacturing	30	950	32,812,480	664.22
Trade, Transportation & Utilities	170	1,872	51,250,170	526.49
Wholesale Trade	28	240	9,621,565	770.96
Retail Trade	112	1,168	22,622,916	372.48
Transportation, Warehousing & Utilities	30	464	19,005,689	787.70
Information	8	60	1,909,734	612.09
Financial Activities	67	321	9,658,223	578.61
Professional & Business Services	52	342	8,840,415	497.10
Education & Health Services	119	1,209	34,627,456	550.80
Leisure & Hospitality	40	499	4,883,218	188.19
Other Services	42	135	3,159,693	450.10
Local Government	30	1,177	33,524,669	547.75
State Government	15	715	21,948,117	590.32

TABLE 6. COUNTY SUMMARY CALENDAR YEAR 2009

NORTH AMERICAN INDUSTRY CLASSIFICATION SYSTEM - INDUSTRY GROUPS	AVERAGE EMPLOYING UNITS	AVERAGE COVERED EMPLOYMENT	TOTAL CALENDAR EARNINGS	AVERAGE WEEKLY EARNINGS
PERRY COUNTY - TOTAL	160	1,295	\$36,698,641	\$544.98
Construction	19	75	3,324,361	852.40
Manufacturing	7	59	1,486,682	484.58
Trade, Transportation & Utilities	29	195	4,481,050	441.92
Retail Trade	17	158	2,425,361	295.20
Other Trade, Transportation & Utilities	12	37	2,055,689	1,068.45
Financial Activities	14	38	1,602,551	811.01
Professional & Business Services	16	40	1,152,282	553.98
Education & Health Services	34	219	4,945,396	434.26
Leisure & Hospitality	6	47	426,462	174.49
Local Government	12	402	10,571,324	505.71
State Government	8	39	1,091,921	538.42
Other	15	181	7,616,612	809.24
PHILLIPS COUNTY - TOTAL	944	6,330	\$170,634,138	\$518.39
Natural Resources & Mining	86	329	6,852,870	400.57
Construction	29	141	4,039,613	550.96
Manufacturing	13	293	9,178,198	602.40
Trade, Transportation & Utilities	172	1,612	44,401,125	529.69
Wholesale Trade	35	451	16,648,458	709.90
Retail Trade	91	881	18,430,116	402.30
Transportation, Warehousing & Utilities	46	280	9,322,551	640.29
Information	9	52	1,530,892	566.16
Financial Activities	53	257	9,001,643	673.57
Professional & Business Services	55	176	6,132,516	670.07
Education & Health Services	410	1,439	34,635,295	462.87
Leisure & Hospitality	36	359	4,059,490	217.46
Other Services	37	79	1,537,964	374.38
Local Government	30	1,050	34,845,951	638.20
State Government	14	543	14,418,581	510.65

TABLE 6. COUNTY SUMMARY CALENDAR YEAR 2009

NORTH AMERICAN INDUSTRY CLASSIFICATION SYSTEM - INDUSTRY GROUPS	AVERAGE EMPLOYING UNITS	AVERAGE COVERED EMPLOYMENT	TOTAL CALENDAR EARNINGS	AVERAGE WEEKLY EARNINGS
PIKE COUNTY - TOTAL	266	2,663	\$65,462,701	\$472.74
Natural Resources & Mining	24	120	4,036,317	646.85
Construction	14	24	562,006	450.33
Manufacturing	16	356	8,364,340	451.83
Trade, Transportation & Utilities	87	619	15,007,880	466.26
Wholesale Trade	18	170	5,247,259	593.58
Retail Trade	47	368	7,133,909	372.80
Transportation, Warehousing & Utilities	22	81	2,626,712	623.63
Information	5	25	1,104,098	849.31
Financial Activities	25	191	6,380,869	642.46
Professional & Business Services	12	37	2,053,031	1,067.06
Education & Health Services	22	266	5,443,713	393.56
Leisure & Hospitality	19	233	2,533,011	209.06
Other Services	19	123	2,451,276	383.25
Local Government	13	538	15,072,096	538.75
State Government	10	131	2,454,064	360.26
POINSETT COUNTY - TOTAL	501	5,221	\$147,617,679	\$543.73
Natural Resources & Mining	51	305	10,424,552	657.29
Construction	20	90	2,716,185	580.38
Manufacturing	22	731	21,953,880	577.55
Trade, Transportation & Utilities	127	1,330	40,491,984	585.48
Wholesale Trade	31	433	22,580,852	1,002.88
Retail Trade	68	736	13,254,376	346.32
Transportation, Warehousing & Utilities	28	161	4,656,756	556.23
Information	6	53	2,711,972	984.02
Financial Activities	51	287	9,676,548	648.39
Professional & Business Services	33	167	5,625,620	647.81
Education & Health Services	87	600	14,068,752	450.92
Leisure & Hospitality	42	376	3,345,193	171.09
Other Services	22	49	1,118,100	438.81
Local Government	29	1,100	31,222,801	545.85
State Government	11	133	4,262,092	616.27

TABLE 6. COUNTY SUMMARY CALENDAR YEAR 2009

NORTH AMERICAN INDUSTRY CLASSIFICATION SYSTEM - INDUSTRY GROUPS	AVERAGE EMPLOYING UNITS	AVERAGE COVERED EMPLOYMENT	TOTAL CALENDAR EARNINGS	AVERAGE WEEKLY EARNINGS
POLK COUNTY - TOTAL	564	6,137	\$150,843,162	\$472.68
Natural Resources & Mining	25	225	7,403,807	632.80
Construction	48	200	5,142,396	494.46
Manufacturing	38	1,207	31,549,210	502.66
Trade, Transportation & Utilities	149	1,222	28,312,634	445.56
Wholesale Trade	22	85	2,903,635	656.93
Retail Trade	82	826	16,340,435	380.43
Transportation, Warehousing & Utilities	45	311	9,068,564	560.76
Information	9	57	1,517,054	511.83
Financial Activities	43	239	7,168,049	576.77
Professional & Business Services	56	233	4,870,419	401.98
Education & Health Services	89	1,059	27,405,945	497.67
Leisure & Hospitality	40	478	4,664,974	187.68
Other Services	34	135	3,208,612	457.07
Local Government	20	768	21,971,577	550.17
State Government	13	314	7,628,485	467.20
POPE COUNTY - TOTAL	1,775	25,436	\$804,861,385	\$608.51
Natural Resources & Mining	30	638	20,090,571	605.58
Construction	178	1,388	52,349,703	725.31
Manufacturing	83	4,452	155,297,680	670.82
Trade, Transportation & Utilities	449	6,068	229,830,712	728.38
Wholesale Trade	95	601	23,904,484	764.89
Retail Trade	271	3,188	69,284,173	417.94
Transportation, Warehousing & Utilities	83	2,279	136,642,055	1,153.02
Information	18	213	8,975,261	810.33
Financial Activities	187	780	26,066,092	642.66
Professional & Business Services	247	2,214	64,634,687	561.42
Education & Health Services	286	3,203	91,774,659	551.01
Leisure & Hospitality	139	2,389	27,920,900	224.76
Other Services	102	461	10,025,380	418.21
Local Government	40	2,126	67,164,854	607.54
State Government	16	1,504	50,730,886	648.67

TABLE 6. COUNTY SUMMARY CALENDAR YEAR 2009

NORTH AMERICAN INDUSTRY CLASSIFICATION SYSTEM - INDUSTRY GROUPS	AVERAGE EMPLOYING UNITS	AVERAGE COVERED EMPLOYMENT	TOTAL CALENDAR EARNINGS	AVERAGE WEEKLY EARNINGS
PRAIRIE COUNTY - TOTAL	262	1,394	\$36,750,162	\$506.98
Natural Resources & Mining	29	133	4,511,347	652.31
Construction	14	47	1,377,609	563.67
Trade, Transportation & Utilities	68	333	8,698,753	502.35
Wholesale Trade	12	64	2,985,495	897.08
Retail Trade	36	188	2,797,730	286.18
Transportation, Warehousing & Utilities	20	81	2,915,528	692.20
Financial Activities	20	75	2,529,567	648.61
Professional & Business Services	17	57	1,536,248	518.30
Education & Health Services	49	210	4,491,893	411.35
Leisure & Hospitality	17	73	780,022	205.49
Local Government	15	304	8,392,972	530.93
State Government	9	36	1,117,124	596.75
Other	24	126	3,314,627	505.90
PULASKI COUNTY - TOTAL	14,919	234,545	\$9,860,271,034	\$808.46
Natural Resources & Mining	63	780	39,644,928	977.44
Construction	1,116	8,792	378,782,035	828.51
Manufacturing	416	14,497	671,666,524	890.99
Trade, Transportation & Utilities	3,361	46,755	1,739,176,009	715.34
Wholesale Trade	1,193	13,570	721,503,679	1,022.48
Retail Trade	1,753	23,423	582,269,560	478.06
Transportation, Warehousing & Utilities	415	9,762	435,402,770	857.73
Information	240	7,652	751,890,361	1,889.63
Financial Activities	1,769	15,606	886,416,709	1,092.30
Professional & Business Services	2,970	32,532	1,361,116,658	804.60
Education & Health Services	2,416	36,703	1,556,163,318	815.36
Leisure & Hospitality	1,058	20,493	314,742,202	295.36
Other Services	1,156	7,087	215,023,131	583.47
Local Government	102	16,293	620,238,080	732.07
State Government	252	27,355	1,325,411,079	931.77

TABLE 6. COUNTY SUMMARY CALENDAR YEAR 2009

NORTH AMERICAN INDUSTRY CLASSIFICATION SYSTEM - INDUSTRY GROUPS	AVERAGE EMPLOYING UNITS	AVERAGE COVERED EMPLOYMENT	TOTAL CALENDAR EARNINGS	AVERAGE WEEKLY EARNINGS
RANDOLPH COUNTY - TOTAL	422	4,846	\$115,413,547	\$458.00
Natural Resources & Mining	24	87	1,809,673	400.02
Construction	27	85	1,695,701	383.64
Manufacturing	35	754	18,005,219	459.22
Trade, Transportation & Utilities	100	891	21,036,304	454.03
Wholesale Trade	22	196	4,720,837	463.19
Retail Trade	59	568	11,672,118	395.18
Transportation, Warehousing & Utilities	19	127	4,643,349	703.11
Information	5	40	1,597,337	767.95
Financial Activities	27	125	3,758,083	578.17
Professional & Business Services	42	254	5,046,638	382.09
Education & Health Services	74	971	26,351,636	521.90
Leisure & Hospitality	30	402	3,959,770	189.43
Other Services	24	67	1,160,004	332.95
Local Government	23	868	22,215,453	492.19
State Government	11	302	8,777,729	558.95
SAINT FRANCIS COUNTY - TOTAL	803	7,602	\$208,878,890	\$528.40
Natural Resources & Mining	32	182	4,608,183	486.92
Construction	46	184	5,769,272	602.98
Manufacturing	13	631	19,831,695	604.40
Trade, Transportation & Utilities	176	1,975	56,604,543	551.16
Wholesale Trade	31	595	22,912,452	740.54
Retail Trade	121	1,149	23,421,887	392.01
Transportation, Warehousing & Utilities	24	231	10,270,204	855.00
Information	7	81	2,372,147	563.19
Financial Activities	61	333	9,647,916	557.17
Professional & Business Services	55	348	10,570,991	584.16
Education & Health Services	277	1,474	36,298,119	473.57
Leisure & Hospitality	55	730	8,190,474	215.77
Other Services	36	87	1,496,123	330.71
Local Government	28	1,053	35,708,083	652.13
State Government	17	524	17,781,344	652.57

TABLE 6. COUNTY SUMMARY CALENDAR YEAR 2009

NORTH AMERICAN INDUSTRY CLASSIFICATION SYSTEM - INDUSTRY GROUPS	AVERAGE EMPLOYING UNITS	AVERAGE COVERED EMPLOYMENT	TOTAL CALENDAR EARNINGS	AVERAGE WEEKLY EARNINGS
SALINE COUNTY - TOTAL	1,859	20,598	\$610,914,017	\$570.36
Natural Resources & Mining	13	37	1,908,211	991.79
Construction	310	1,856	63,940,756	662.52
Manufacturing	81	1,498	64,438,490	827.24
Trade, Transportation & Utilities	425	4,502	129,891,450	554.85
Wholesale Trade	112	559	28,026,365	964.17
Retail Trade	258	3,670	91,737,047	480.70
Transportation, Warehousing & Utilities	55	273	10,128,038	713.44
Information	15	121	4,449,859	707.22
Financial Activities	192	715	24,100,989	648.22
Professional & Business Services	246	1,106	32,442,041	564.09
Education & Health Services	255	3,044	86,876,654	548.85
Leisure & Hospitality	133	2,577	33,014,924	246.37
Other Services	142	616	14,996,529	468.17
Local Government	31	3,440	123,864,319	692.44
State Government	16	1,086	30,989,795	548.76
SCOTT COUNTY - TOTAL	199	2,929	\$71,042,985	\$466.44
Natural Resources & Mining	19	219	6,653,602	584.26
Trade, Transportation & Utilities	41	452	10,914,682	464.38
Wholesale Trade	10	65	2,285,920	676.31
Retail Trade	25	335	6,201,548	356.00
Transportation, Warehousing & Utilities	6	52	2,427,214	897.64
Financial Activities	22	70	1,874,513	514.98
Professional & Business Services	11	8	292,793	703.83
Education & Health Services	36	305	8,405,296	529.97
Leisure & Hospitality	19	143	1,649,526	221.83
Local Government	5	376	10,193,485	521.35
State Government	7	74	1,480,996	384.87
Other	39	1,282	29,578,092	443.69

TABLE 6. COUNTY SUMMARY CALENDAR YEAR 2009

NORTH AMERICAN INDUSTRY CLASSIFICATION SYSTEM - INDUSTRY GROUPS	AVERAGE EMPLOYING UNITS	AVERAGE COVERED EMPLOYMENT	TOTAL CALENDAR EARNINGS	AVERAGE WEEKLY EARNINGS
SEARCY COUNTY - TOTAL	193	1,658	\$34,963,320	\$405.53
Construction	8	23	555,338	464.33
Manufacturing	17	224	3,922,966	336.79
Trade, Transportation & Utilities	40	288	5,214,701	348.20
Wholesale Trade	7	41	707,147	331.68
Retail Trade	25	208	3,401,046	314.45
Transportation, Warehousing & Utilities	8	39	1,106,508	545.62
Information	5	13	377,362	558.23
Financial Activities	16	92	2,258,388	472.07
Professional & Business Services	14	30	794,711	509.43
Education & Health Services	54	350	7,251,588	398.44
Leisure & Hospitality	13	110	1,152,775	201.53
Local Government	10	371	9,409,707	487.75
State Government	7	103	2,225,483	415.51
Other	9	54	1,800,301	641.13
SEBASTIAN COUNTY - TOTAL	3,855	66,947	\$2,312,827,987	\$664.37
Natural Resources & Mining	79	1,714	107,301,651	1,203.91
Construction	313	2,581	99,550,581	741.74
Manufacturing	228	14,734	540,558,549	705.54
Trade, Transportation & Utilities	984	12,824	388,188,829	582.12
Wholesale Trade	248	2,629	117,300,566	858.04
Retail Trade	584	7,977	179,250,398	432.13
Transportation, Warehousing & Utilities	152	2,218	91,637,865	794.53
Information	55	943	44,746,266	912.52
Financial Activities	416	2,441	101,164,717	797.00
Professional & Business Services	572	7,799	261,529,926	644.88
Education & Health Services	547	10,679	435,032,176	783.41
Leisure & Hospitality	318	5,730	73,829,663	247.78
Other Services	280	1,321	34,041,571	495.57
Local Government	43	4,432	164,597,048	714.20
State Government	20	1,749	62,287,010	684.86

TABLE 6. COUNTY SUMMARY CALENDAR YEAR 2009

NORTH AMERICAN INDUSTRY CLASSIFICATION SYSTEM - INDUSTRY GROUPS	AVERAGE EMPLOYING UNITS	AVERAGE COVERED EMPLOYMENT	TOTAL CALENDAR EARNINGS	AVERAGE WEEKLY EARNINGS
SEVIER COUNTY - TOTAL	318	5,629	\$138,397,541	\$472.82
Natural Resources & Mining	19	223	6,679,476	576.02
Construction	18	126	3,952,427	603.24
Trade, Transportation & Utilities	92	827	20,401,101	474.40
Wholesale Trade	16	127	4,834,013	731.98
Retail Trade	58	591	11,349,957	369.32
Transportation, Warehousing & Utilities	18	109	4,217,131	744.02
Information	4	34	1,041,665	589.18
Financial Activities	30	186	5,459,426	564.46
Professional & Business Services	26	78	1,999,597	493.00
Education & Health Services	47	573	14,609,496	490.32
Leisure & Hospitality	24	278	2,849,884	197.14
Local Government	12	881	24,248,343	529.30
State Government	8	191	5,086,855	512.17
Other	38	2,232	52,069,271	448.63
SHARP COUNTY - TOTAL	435	3,644	\$87,039,067	\$459.34
Construction	27	165	5,274,585	614.75
Manufacturing	23	158	3,434,360	418.01
Trade, Transportation & Utilities	94	945	24,171,187	491.88
Wholesale Trade	10	37	936,759	486.88
Retail Trade	68	632	11,542,187	351.21
Transportation, Warehousing & Utilities	16	276	11,692,241	814.68
Information	7	55	3,066,570	1,072.23
Financial Activities	36	226	6,882,573	585.65
Professional & Business Services	44	149	4,244,884	547.87
Education & Health Services	107	623	14,140,141	436.48
Leisure & Hospitality	34	381	3,843,316	193.99
Local Government	24	758	18,042,666	457.75
State Government	8	93	2,329,959	481.79
Other	31	91	1608826	339.99

TABLE 6. COUNTY SUMMARY CALENDAR YEAR 2009

NORTH AMERICAN INDUSTRY CLASSIFICATION SYSTEM - INDUSTRY GROUPS	AVERAGE EMPLOYING UNITS	AVERAGE COVERED EMPLOYMENT	TOTAL CALENDAR EARNINGS	AVERAGE WEEKLY EARNINGS
STONE COUNTY - TOTAL	299	2,728	\$62,568,706	\$441.07
Natural Resources & Mining	5	24	323,466	259.19
Construction	25	83	1,847,734	428.11
Manufacturing	27	334	8,272,834	476.33
Trade, Transportation & Utilities	74	682	15,626,232	440.62
Wholesale Trade	9	53	1,166,003	423.08
Retail Trade	53	591	12,936,443	420.94
Transportation, Warehousing & Utilities	12	38	1,523,786	771.15
Financial Activities	31	115	2,563,981	428.76
Professional & Business Services	16	41	907,795	425.80
Education & Health Services	56	501	13,425,440	515.33
Leisure & Hospitality	32	311	3,071,257	189.91
Local Government	10	402	11,304,200	540.77
State Government	8	163	3,150,743	371.73
Other	15	72	2,075,024	554.23
UNION COUNTY - TOTAL	1,375	18,160	\$710,905,978	\$752.82
Natural Resources & Mining	111	497	21,320,763	824.98
Construction	87	1,721	97,216,531	1,086.32
Manufacturing	58	3,194	146,444,060	881.73
Trade, Transportation & Utilities	347	3,630	130,818,803	693.04
Wholesale Trade	75	709	46,015,137	1,248.11
Retail Trade	212	2,114	44,683,053	406.48
Transportation, Warehousing & Utilities	60	807	40,120,613	956.07
Information	14	150	4,698,013	602.31
Financial Activities	122	730	25,015,551	659.00
Professional & Business Services	137	1,540	95,646,950	1,194.39
Education & Health Services	236	2,454	84,267,136	660.36
Leisure & Hospitality	86	1,208	14,410,325	229.41
Other Services	124	586	17,939,692	588.73
Local Government	35	1,871	54,999,934	565.31
State Government	18	579	18,128,220	602.11

TABLE 6. COUNTY SUMMARY CALENDAR YEAR 2009

NORTH AMERICAN INDUSTRY CLASSIFICATION SYSTEM - INDUSTRY GROUPS	AVERAGE EMPLOYING UNITS	AVERAGE COVERED EMPLOYMENT	TOTAL CALENDAR EARNINGS	AVERAGE WEEKLY EARNINGS
VAN BUREN COUNTY - TOTAL	374	3,457	\$89,192,339	\$496.16
Natural Resources & Mining	8	29	1,067,405	707.83
Construction	44	256	9,028,651	678.23
Manufacturing	12	52	1,608,960	595.03
Trade, Transportation & Utilities	101	865	23,122,170	514.05
Wholesale Trade	14	39	1,422,254	701.31
Retail Trade	57	610	12,360,580	389.68
Transportation, Warehousing & Utilities	30	216	9,339,336	831.49
Information	9	48	1,817,376	728.12
Financial Activities	31	165	5,266,266	613.78
Professional & Business Services	27	130	2,935,497	434.25
Education & Health Services	65	667	17,846,885	514.56
Leisure & Hospitality	30	455	6,037,251	255.17
Other Services	29	88	2,053,842	448.83
Local Government	11	626	16,315,667	501.22
State Government	7	76	2,092,369	529.45
WASHINGTON COUNTY - TOTAL	5,576	86,606	\$3,146,532,308	\$698.68
Natural Resources & Mining	42	460	18,268,357	763.73
Construction	569	4,237	162,891,545	739.33
Manufacturing	235	13,640	466,425,591	657.60
Trade, Transportation & Utilities	1,339	18,836	645,564,815	659.09
Wholesale Trade	394	3,496	201,202,368	1,106.77
Retail Trade	758	10,373	242,874,549	450.27
Transportation, Warehousing & Utilities	187	4,967	201,487,898	780.10
Information	95	1,229	53,386,112	835.36
Financial Activities	611	3,527	149,746,122	816.48
Professional & Business Services	962	8,648	470,850,477	1,047.04
Education & Health Services	718	12,103	477,771,583	759.14
Leisure & Hospitality	546	9,548	126,770,253	255.33
Other Services	377	1,852	46,968,301	487.71
Local Government	59	7,219	268,526,388	715.33
State Government	23	5,307	259,362,764	939.84

TABLE 6. COUNTY SUMMARY CALENDAR YEAR 2009

NORTH AMERICAN INDUSTRY CLASSIFICATION SYSTEM - INDUSTRY GROUPS	AVERAGE EMPLOYING UNITS	AVERAGE COVERED EMPLOYMENT	TOTAL CALENDAR EARNINGS	AVERAGE WEEKLY EARNINGS
WHITE COUNTY - TOTAL	1,836	24,748	\$826,866,701	\$642.53
Natural Resources & Mining	56	1,464	91,240,648	1,198.52
Construction	192	1,649	73,163,963	853.24
Manufacturing	80	2,450	98,623,584	774.13
Trade, Transportation & Utilities	486	5,849	181,733,028	597.52
Wholesale Trade	95	576	21,923,728	731.96
Retail Trade	293	3,135	69,459,007	426.08
Transportation, Warehousing & Utilities	98	2,138	90,350,293	812.68
Information	21	150	4,492,343	575.94
Financial Activities	182	950	33,456,872	677.26
Professional & Business Services	193	1,338	40,852,424	587.16
Education & Health Services	315	4,524	162,079,522	688.97
Leisure & Hospitality	140	2,442	27,513,232	216.67
Other Services	107	557	14,448,117	498.83
Local Government	46	2,617	78,146,506	574.25
State Government	18	758	21,116,462	535.73
WOODRUFF COUNTY - TOTAL	233	1,799	\$49,011,396	\$523.92
Natural Resources & Mining	23	131	4,027,781	591.28
Construction	8	47	1,126,789	461.04
Manufacturing	7	270	7,993,517	569.34
Trade, Transportation & Utilities	50	422	12,854,492	585.79
Wholesale Trade	12	150	6,837,798	876.64
Retail Trade	25	197	2,984,530	291.34
Transportation, Warehousing & Utilities	13	75	3,032,164	777.48
Financial Activities	17	63	2,137,671	652.52
Education & Health Services	86	251	6,204,087	475.34
Leisure & Hospitality	10	85	850,737	192.47
Local Government	10	460	11,807,852	493.64
State Government	6	43	1,274,912	570.18
Other	16	27	733,558	522.48

TABLE 6. COUNTY SUMMARY CALENDAR YEAR 2009

NORTH AMERICAN INDUSTRY CLASSIFICATION SYSTEM - INDUSTRY GROUPS	AVERAGE EMPLOYING UNITS	AVERAGE COVERED EMPLOYMENT	TOTAL CALENDAR EARNINGS	AVERAGE WEEKLY EARNINGS
YELL COUNTY - TOTAL	436	6,242	\$165,568,906	\$510.10
Natural Resources & Mining	24	237	6,458,309	524.04
Construction	43	266	8,270,922	597.96
Manufacturing	20	2,183	57,021,904	502.32
Trade, Transportation & Utilities	84	661	13,844,758	402.79
Wholesale Trade	17	35	954,431	524.41
Retail Trade	50	536	9,613,172	344.90
Transportation, Warehousing & Utilities	17	90	3,277,155	700.25
Financial Activities	38	177	5,298,428	575.67
Professional & Business Services	40	337	13,954,768	796.32
Education & Health Services	95	691	17,174,550	477.97
Leisure & Hospitality	33	326	3,387,901	199.85
Local Government	27	1,143	33,907,258	570.48
State Government	12	110	2,659,984	465.03
Other	20	111	3,590,124	621.99
STATEWIDE COUNTY - TOTAL	4,789	18,099	\$1,070,389,806	\$1,137.32
Natural Resources & Mining	81	600	34,922,576	1,119.31
Construction	559	3,633	196,224,590	1,038.69
Manufacturing	51	232	9,241,301	766.02
Trade, Transportation & Utilities	1,584	5,745	442,779,159	1,482.16
Wholesale Trade	1,299	4,548	389,795,313	1,648.21
Retail Trade	129	436	24,320,353	1,072.70
Transportation, Warehousing & Utilities	156	761	28,663,493	724.34
Information	119	391	16,636,606	818.25
Financial Activities	306	905	61,815,321	1,313.54
Professional & Business Services	1,750	4,890	230,512,462	906.53
Education & Health Services	133	860	38,513,611	861.22
Leisure & Hospitality	57	62	3,081,146	955.69
Other Services	141	313	14,583,079	895.99
State Government	8	468	22,079,955	907.30

TABLE 7. FEDERAL GOVERNMENT EMPLOYMENT AND EARNINGS IN ARKANSAS

NORTH AMERICAN INDUSTRY CLASSIFICATION SYSTEM - INDUSTRY GROUPS	AVERAGE EMPLOYING UNITS	AVERAGE COVERED EMPLOYMENT	TOTAL CALENDAR EARNINGS	AVERAGE WEEKLY EARNINGS
TOTAL	1,238	21,758	\$1,339,880,693	\$1,184.25
Trade, Transportation & Utilities	615	6,351	291,441,270	882.48
Information	1	39	1,965,325	969.10
Financial Activities	20	160	11,301,013	1,358.29
Professional & Business Services	30	861	57,520,645	1,284.75
Education & Health Services	12	4,801	402,383,309	1,611.78
Leisure & Hospitality	15	243	10,560,136	835.72
Other Services	2	277	4,761,959	330.60
Public Administration	543	9,026	559,947,036	1,193.02

TABLE 8. WORKFORCE INVESTMENT AREA SUMMARY CALENDAR YEAR 2009

NORTH AMERICAN INDUSTRY CLASSIFICATION SYSTEM - INDUSTRY GROUPS	AVERAGE EMPLOYING UNITS	AVERAGE COVERED EMPLOYMENT	TOTAL CALENDAR EARNINGS	AVERAGE WEEKLY EARNINGS
CENTRAL WORKFORCE INVESTMENT AREA	6,459	75,168	\$2,385,398,144	\$610.27
Construction	831	5,387	188,664,520	673.50
Trade, Transportation & Utilities	1,546	15,270	428,572,717	539.74
Wholesale Trade	394	2,239	101,393,795	870.87
Retail Trade	900	11,338	257,594,692	436.92
Transportation, Warehousing & Utilities	252	1,693	69,584,230	790.41
Information	71	618	24,543,970	763.75
Financial Activities	681	2,870	101,716,440	681.56
Professional & Business Services	806	6,490	291,496,936	863.75
Education & Health Services	988	11,039	324,068,264	564.55
Leisure & Hospitality	492	8,826	103,095,288	224.63
Local Government	134	9,887	331,754,385	645.28
State Government	67	4,628	155,774,493	647.29
Other	843	10,153	435,711,131	825.28

*Note: Pulaski County is not included in the Central Workforce Investment. Please refer to Page 51 for information on Pulaski County.
Central Workforce Includes these counties: Faulkner, Lonoke, Monroe, Prairie, and Saline.

EASTERN WORKFORCE INVESTMENT AREA	3,939	37,041	\$1,076,865,721	\$559.08
Natural Resources & Mining	233	1,206	29,824,842	475.58
Construction	175	1,055	39,505,804	720.12
Trade, Transportation & Utilities	882	9,896	298,753,584	580.56
Wholesale Trade	182	2,216	90,018,725	781.20
Retail Trade	493	5,097	106,194,868	400.67
Transportation, Warehousing & Utilities	207	2,583	102,539,991	763.42
Financial Activities	279	1,545	51,293,149	638.45
Professional & Business Services	301	1,626	46,597,686	551.11
Education & Health Services	1,290	6,253	167,617,253	515.50
Leisure & Hospitality	245	3,361	42,858,059	245.22
Local Government	135	5,383	181,322,135	647.77
State Government	63	2,381	73,268,655	591.77
Other	336	4,335	145,824,554	646.90

Eastern Workforce Includes these counties: Crittenden, Cross, Lee, Phillips, and Saint Francis.

TABLE 8. WORKFORCE INVESTMENT AREA SUMMARY CALENDAR YEAR 2009

NORTH AMERICAN INDUSTRY CLASSIFICATION SYSTEM - INDUSTRY GROUPS	AVERAGE EMPLOYING UNITS	AVERAGE COVERED EMPLOYMENT	TOTAL CALENDAR EARNINGS	AVERAGE WEEKLY EARNINGS
NORTH CENTRAL WORKFORCE INVESTMENT AREA	5,833	68,032	\$2,016,620,697	\$570.04
Construction	507	3,275	124,210,536	729.36
Trade, Transportation & Utilities	1,463	15,095	437,533,698	557.41
Retail Trade	910	8,980	190,431,343	407.81
Other Trade, Transportation & Utilities	553	6,115	247,102,355	777.10
Financial Activities	538	2,708	89,388,646	634.79
Education & Health Services	1,131	12,293	388,611,007	607.93
Leisure & Hospitality	451	6,224	70,172,974	216.82
Local Government	229	8,848	242,087,544	526.17
State Government	106	3,143	92,652,470	566.90
Other	1,408	16,446	571,963,822	668.81

North Central Workforce Includes these counties: Cleburne, Fulton, Independence, Izard, Jackson, Sharp, Stone, Van Buren, White, and Woodruff.

NORTHEAST WORKFORCE INVESTMENT AREA	6,592	91,513	\$2,829,454,779	\$594.59
Natural Resources & Mining	368	1,963	55,275,594	541.51
Construction	476	2,928	97,187,193	638.31
Manufacturing	355	19,409	759,724,979	752.75
Trade, Transportation & Utilities	1,692	17,486	488,786,067	537.56
Wholesale Trade	399	3,720	151,824,991	784.87
Retail Trade	996	11,238	238,125,392	407.49
Transportation, Warehousing & Utilities	297	2,528	98,835,684	751.85
Financial Activities	603	3,357	123,163,005	705.55
Professional & Business Services	686	6,856	186,929,638	524.33
Education & Health Services	1,176	13,795	473,444,434	660.00
Leisure & Hospitality	482	7,600	88,180,297	223.13
Local Government	215	11,384	342,756,189	579.01
State Government	100	4,322	153,005,045	680.80
Other	439	2,413	61,002,338	486.17

Northeast Workforce Includes these counties: Clay, Craighead, Greene, Lawrence, Mississippi, Poinsett, and Randolph.

TABLE 8. WORKFORCE INVESTMENT AREA SUMMARY CALENDAR YEAR 2009

NORTH AMERICAN INDUSTRY CLASSIFICATION SYSTEM - INDUSTRY GROUPS	AVERAGE EMPLOYING UNITS	AVERAGE COVERED EMPLOYMENT	TOTAL CALENDAR EARNINGS	AVERAGE WEEKLY EARNINGS
NORTHWEST WORKFORCE INVESTMENT AREA	15,079	223,634	\$8,506,231,590	\$731.47
Trade, Transportation & Utilities	3,684	49,870	1,778,543,541	685.84
Retail Trade	2,000	25,710	599,115,631	448.13
Other Trade, Transportation & Utilities	1,684	24,160	1,179,427,910	938.80
Education & Health Services	2,037	26,520	982,189,786	712.23
Leisure & Hospitality	1,434	22,624	299,978,600	254.99
Local Government	310	20,500	717,859,990	673.41
State Government	108	7,774	337,996,890	836.11
Other	7,506	96,346	4,389,662,783	876.18

Northwest Workforce Includes these counties: Baxter, Benton, Boone, Carroll, Madison, Marion, Newton, Searcy, and Washington.

SOUTHEAST WORKFORCE INVESTMENT AREA	5,979	72,738	\$2,279,438,290	\$602.65
Natural Resources & Mining	401	2,679	90,144,531	647.09
Construction	331	3,079	124,737,242	779.08
Manufacturing	212	14,591	585,500,574	771.68
Trade, Transportation & Utilities	1,339	12,672	370,550,338	562.34
Retail Trade	801	8,128	171,510,877	405.79
Other Trade, Transportation & Utilities	538	4,544	199,039,461	842.36
Financial Activities	444	2,730	97,481,086	686.68
Education & Health Services	1,615	11,008	311,925,483	544.93
Local Government	208	9,707	285,865,104	566.33
State Government	138	6,444	210,331,145	627.69
Other	1,291	9,828	202,902,787	397.03

Southeast Workforce Includes these counties: Arkansas, Ashley, Bradley, Chicot, Cleveland, Desha, Drew, Grant, Jefferson, and Lincoln.

TABLE 8. WORKFORCE INVESTMENT AREA SUMMARY CALENDAR YEAR 2009

NORTH AMERICAN INDUSTRY CLASSIFICATION SYSTEM - INDUSTRY GROUPS	AVERAGE EMPLOYING UNITS	AVERAGE COVERED EMPLOYMENT	TOTAL CALENDAR EARNINGS	AVERAGE WEEKLY EARNINGS
SOUTHWEST WORKFORCE INVESTMENT AREA	5,838	82,002	\$2,702,426,606	\$633.76
Natural Resources & Mining	404	2,599	98,107,081	725.92
Trade, Transportation & Utilities	1465	15238	449,245,859	566.96
Retail Trade	910	8,982	182,338,668	390.39
Other Trade, Transportation & Utilities	555	6,256	266,907,191	820.47
Financial Activities	532	2,776	89,707,979	621.45
Education & Health Services	997	9,519	260,415,242	526.10
Leisure & Hospitality	396	5,341	62,325,929	224.41
Local Government	264	10,277	303,599,936	568.11
State Government	141	3,682	118,264,043	617.68
Other	1,639	32,570	1,320,760,537	779.84

Southwest Workforce Includes these counties: Calhoun, Columbia, Dallas, Hempstead, Howard, Lafayette, Little River, Miller, Nevada, Ouachita, Sevier, and Union

WEST CENTRAL WORKFORCE INVESTMENT AREA	8,347	104,876	\$3,063,761,367	\$561.79
Construction	858	4,799	161,400,458	646.77
Trade, Transportation & Utilities	1,960	21,563	642,995,137	573.45
Retail Trade	1,271	13,917	303,191,053	418.96
Other Trade, Transportation & Utilities	689	7,646	339,804,084	854.66
Financial Activities	857	3,662	121,383,240	637.44
Professional & Business Services	939	7,814	225,454,092	554.86
Education & Health Services	1,393	16,366	528,278,659	620.75
Leisure & Hospitality	761	12,074	159,226,010	253.61
Local Government	229	11,610	358,625,936	594.03
State Government	126	5,308	163,517,007	592.42
Other	1,224	21,680	702,880,828	623.48

West Central Workforce Includes these counties: Clark, Conway, Garland, Hot Spring, Johnson, Montgomery, Perry, Pike, Pope, and Yell

TABLE 8. WORKFORCE INVESTMENT AREA SUMMARY CALENDAR YEAR 2009

NORTH AMERICAN INDUSTRY CLASSIFICATION SYSTEM - INDUSTRY GROUPS	AVERAGE EMPLOYING UNITS	AVERAGE COVERED EMPLOYMENT	TOTAL CALENDAR EARNINGS	AVERAGE WEEKLY EARNINGS
WESTERN WORKFORCE INVESTMENT AREA	6,768	104,960	\$3,358,618,271	\$615.37
Natural Resources & Mining	187	2,837	151,663,774	1,028.06
Trade, Transportation & Utilities	1,696	22,600	657,710,994	559.66
Retail Trade	983	12,367	269,195,280	418.60
Other Trade, Transportation & Utilities	713	10,233	388,515,714	730.13
Financial Activities	691	3,783	142,734,582	725.59
Professional & Business Services	869	9,396	302,839,216	619.82
Education & Health Services	978	14,993	552,511,596	708.68
Leisure & Hospitality	521	8,521	105,495,239	238.09
Local Government	150	9,168	308,745,675	647.62
State Government	73	2,945	92,620,439	604.81
Other	1,603	30,717	1,044,296,756	653.80

Western Workforce Includes these counties: Crawford, Franklin, Logan, Polk, Scott, and Sebastian