

Arkansas Covered Employment & Earnings

Jobs for People. People for Jobs.

DWS
Department of
WORKFORCE**Services**

Fourth Quarter
2008

**COVERED EMPLOYMENT AND EARNINGS
STATE OF ARKANSAS
FOURTH QUARTER 2008**

**MIKE BEEBE, GOVERNOR
STATE OF ARKANSAS**

**ARTEE WILLIAMS, DIRECTOR
DEPARTMENT OF WORKFORCE SERVICES**

**PUBLISHED BY
LABOR MARKET INFORMATION & ANALYSIS
BUREAU OF LABOR STATISTICS PROGRAMS
POST OFFICE BOX 2981
LITTLE ROCK, ARKANSAS 72203-2981
BERNADETTE COLEMAN, BLS PROGRAMS MANAGER
TELEPHONE: (501) 682-3159**

STATE OF ARKANSAS HOME PAGE: <http://www.arkansas.gov>

DEPARTMENT OF WORKFORCE SERVICES HOME PAGE: <http://www.arkansas.gov/esd/>

**INTERNET SITE FOR LABOR MARKET INFORMATION:
<http://www.discover.arkansas.gov>**

RELEASED: JUNE 2009

TABLE OF CONTENTS

Description of Data	Page 1
Industry Classification	Page 1
Definition of Covered Employment and Earnings	Page 2
Federal Government Employment	Page 2
County Classification	Page 2
Significant Developments During Fourth Quarter 2008	Page 3

LIST OF GRAPHS AND TABLES

Graph 1	Total Covered Employment for Selected Years, Arkansas	Page 7
Graph 2	Total Covered Earnings, by Calendar Quarter for Selected Years, Arkansas	Page 8
Table 1	Quarterly Comparison of Covered Employment and Wages, by Industry	Page 5
Table 2	Total Covered Employment in Arkansas, 2001-2008	Page 6
Table 3	Total Covered Earnings, 2001-2008	Page 9
Table 4	Total Taxable Earnings, 2001-2008	Page 10
Table 5	State Summary - Employment and Total Earnings, by Industry, Fourth Quarter 2008	Page 11
Table 6	County Summary - Employment and Total Earnings, by Industry, Fourth Quarter 2008	Page 24
Table 7	Federal Government Employment and Total Earnings in Arkansas, Fourth Quarter 2008	Page 62
Table 8	Workforce Information Area – Employment and Total Earnings, by Industry, Fourth Quarter 2008	Page 63

EMPLOYMENT AND EARNINGS
UNDER THE ARKANSAS EMPLOYMENT SECURITY LAW
FOURTH QUARTER 2008

DESCRIPTION OF DATA

This publication contains covered employment and payroll data by industry and county for the Fourth Quarter 2008. These data are compiled from quarterly contribution and wage reports submitted by employers subject to the Arkansas Employment Security Law. An employing unit is a single physical location where business is conducted, production takes place, or services are provided. Employment data have been tabulated for each month of the quarter by industry under the **North American Industry Classification System** (NAICS) (see "Industry Classification" below) on a statewide, county and workforce area basis. Payroll data represent the total wages paid during the quarter, and are also shown by

industry for the State and by publishable industry groups for each county and workforce area. The tabulation of this data is a joint effort in conjunction with the U.S. Bureau of Labor Statistics. In addition, there are tables included which set out total covered employment by months, quarterly payrolls, and average weekly earnings for the years 2001 through 2008. Data contained in this publication are subject to revision. These revisions will be reflected in the 2008 Annual Covered Employment and Earnings publication. Because of industry code changes between years, substantial employment and wage shifts among industries are anticipated.

INDUSTRY CLASSIFICATION

Previously published industry data **will not** be comparable in all instances with currently published data since industry codes have been revised according to the following Manuals: (a) between January 1, 1958 and December 31, 1967, industry codes were assigned under the 1957 Standard Industrial Classification (SIC) Manual; (b) between January 1, 1968 and December 31, 1974, industry codes were assigned under the 1967 Standard Industrial Classification (SIC) Manual; (c) between January 1, 1975 and December 31, 1987, industry codes were assigned under the 1972 Standard Industrial Classification (SIC) Manual; (d) between January 1, 1988 and December 31, 2000, industry codes were assigned under the 1987 Standard Industrial Classification (SIC) Manual; (e) between January 1, 2001 and December 31, 2006, industry codes were assigned under the 2002 North American Industry Classification System (NAICS) Manual; and (f) since January 1, 2007, industry codes have been assigned under the 2007 North American Industry Classification System (NAICS) Manual.

The NAICS Manual represents a significant change in coding methodology as compared to the SIC Manual. One of the most significant changes involves how NAICS treats auxiliary units. Auxiliary units are establishments primarily engaged in performing management or support services for other establishments of the same enterprise. The SIC code for these units was based on the activity of the enterprise served. The NAICS code is based on the actual activities that the establishment performs. Comparisons of many industries **should not be made** between this publication and previous Covered Employment and Earnings publications that were based on SIC. Even though some titles are the same or similar, in nature, NAICS and SIC could differ in the classification of employers. The implementation of NAICS represents a profound change for statistical programs, and will create significant benefits along with transition obstacles for both data collectors and data users. A summary is available on the NAICS home page at <http://www.census.gov/naics>.

DEFINITION OF COVERED EMPLOYMENT AND EARNINGS

Covered Employment is the number of workers employed by employers subject to the Arkansas Employment Security Law who worked or received pay for the payroll period including the 12th of the month. An employer is subject to the law when they employ one or more employees in each of ten days during the current or preceding calendar year.

Currently excluded from coverage is employment covered by the Railroad Unemployment Insurance Act, some domestic service workers, employees of small agricultural establishments, self-employed and unpaid family workers, insurance and real estate

agents who are on commission only, and employees of churches and religious organizations except separately incorporated schools. The payroll information in this publication includes all wages and salaries paid to any covered employees by their employers including bonuses, commissions, and cash values of remuneration received in any medium other than cash. These wages include both taxable and nontaxable wages. Only the first \$10,000 paid to each worker by an employer in the calendar year is taxable under the Arkansas Employment Security Law.

FEDERAL GOVERNMENT EMPLOYMENT

Table 7 on page 62 lists the total number of civilians employed by the Federal Government in Arkansas during the Fourth Quarter 2008. Employment and wage data are set out by industry divisions. These data are obtained from required reports submitted by various

government agencies having employment in the State. Civilian Federal workers are covered by the Unemployment Compensation for Federal Employees (UCFE) program.

COUNTY CLASSIFICATION

Employment and payroll data by county are classified according to the county where the workers are employed. Employers with operations in more than one county are requested to furnish this agency with a breakdown of employment and wages for at least one quarter of each year by the counties in which they operate. Many such employers submit county data with each regular contribution report. **Note:** This information is invaluable in the preparation of monthly employment and payroll data by county.

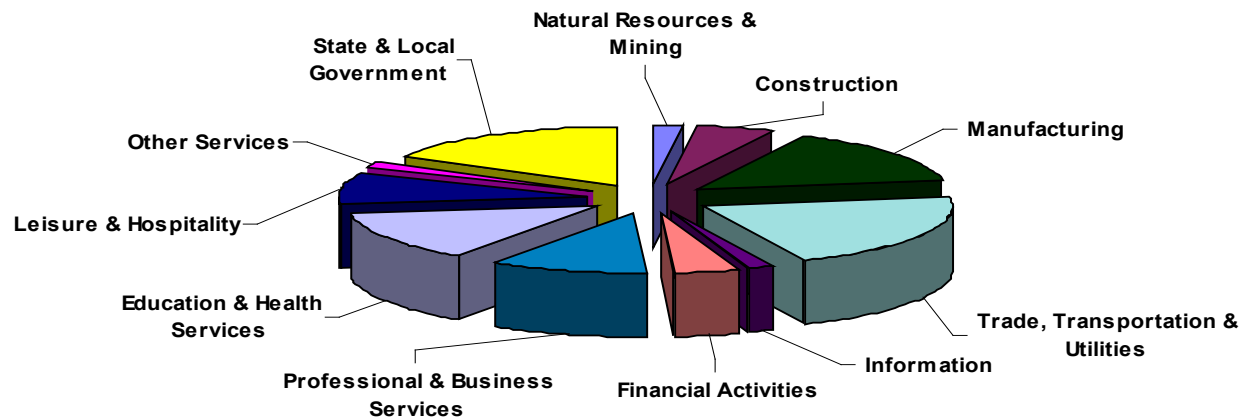
Employment and payroll data for multi - area employers, who do not furnish county data each quarter of the year, are prorated by county on the basis of one quarter's information. The "rest-of-state" table that appears on page 61 of this publication includes data on firms that **did not** provide a county breakdown of employment and payrolls. It also includes sales, and all other type of personnel with no permanent place of work, as well as employment of employers with no established place of business in Arkansas.

SIGNIFICANT DEVELOPMENTS DURING FOURTH QUARTER 2008

AVERAGE EMPLOYMENT CHANGES

Covered employment averaged 1,151,279 during the Fourth Quarter 2008 (see table 1), an increase of 11,354 (+1.0%) from the previous quarter and a decrease of 14,599 (-1.3%) from the average recorded one-year ago. This *over-the-year* decrease is more significant when used as an economic indicator. This *over-the-year* comparison allows for the disregarding of many seasonal factors that are evident when making an *over-the-quarter* comparison.

Average Covered Employment by NAICS Group



EMPLOYMENT CHANGES FROM THIRD QUARTER 2008

Over the quarter losses were experienced in eight industry groups while three enjoyed gains. The largest loss occurred in Leisure & Hospitality (-5,303), with the usual seasonal decline in Arts, Entertainment & Recreation (-2,207) and a combination of seasonal and economic factors leading to a decline in Accommodation & Food Service (-3,097). Manufacturing continued to lose jobs (-4,859), with layoffs and closures accelerated due to lack of demand. Trade, Transportation & Utilities (-2,132) also declined despite the holiday season. Almost three-quarters of lost jobs were attributed to layoffs in the Truck Transportation subsector (-1,536). Construction jobs decreased 1,896, due to the combination of seasonal factors and the

decline in the real estate market. The cutting of Employment Services jobs (-1,620), a key indicator for the health of the overall economy, led to the loss of jobs in Professional & Business Services (-1,273). Job declines also occurred in Other Services (-932), Financial Activities (-791), and Information (-455).

Growth occurred in State & Local Government (+27,345) and Education & Health Services (+1,447) due to the reopening of schools and colleges after summer vacation. A slight gain was also recorded in Natural Resources & Mining (+204).

EMPLOYMENT CHANGES FROM FOURTH QUARTER 2007

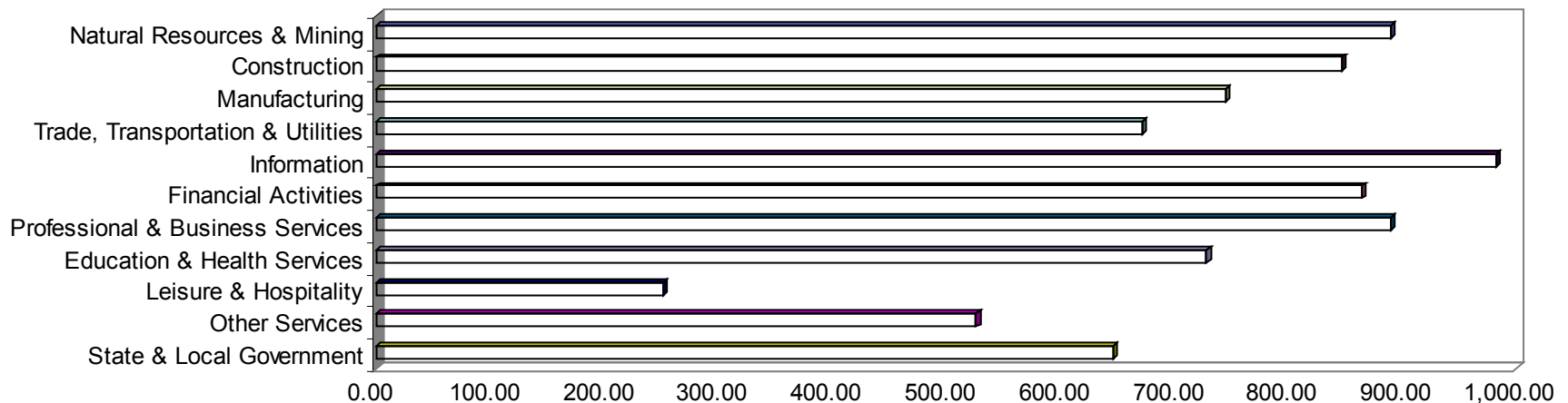
Over-the-year gains were recorded in three industry groups while eight recorded losses (see Table 1). Gains were posted in Education & Health Services (+4,329), State & Local Government (+1,866), and Natural Resources & Mining (+1,210). Significant losses occurred in Manufacturing (-8,897), Trade, Transportation & Utilities (-6,987), and Financial Activities (-2,192).

COVERED WAGES

Wages paid to covered workers totaled \$10,416,775,312 for the Fourth Quarter 2008 (see table 1), for an average weekly wage of \$696.00 (see table 5). Employees in Little River County recorded the highest average weekly wage (\$879.32), and workers in Newton County the lowest (\$399.37) (see table 6).

The Information sector recorded the highest average weekly wage for the State of Arkansas at \$982.39, while the Leisure & Hospitality sector recorded the lowest at \$251.84 for the State of Arkansas (see table 5).

Average Weekly Wages by Industry Group



Note: Because of industry code changes between years, substantial employment and wage shifts among industries are anticipated.

TABLE 1. QUARTERLY COMPARISON OF COVERED EMPLOYMENT AND WAGES, BY INDUSTRY

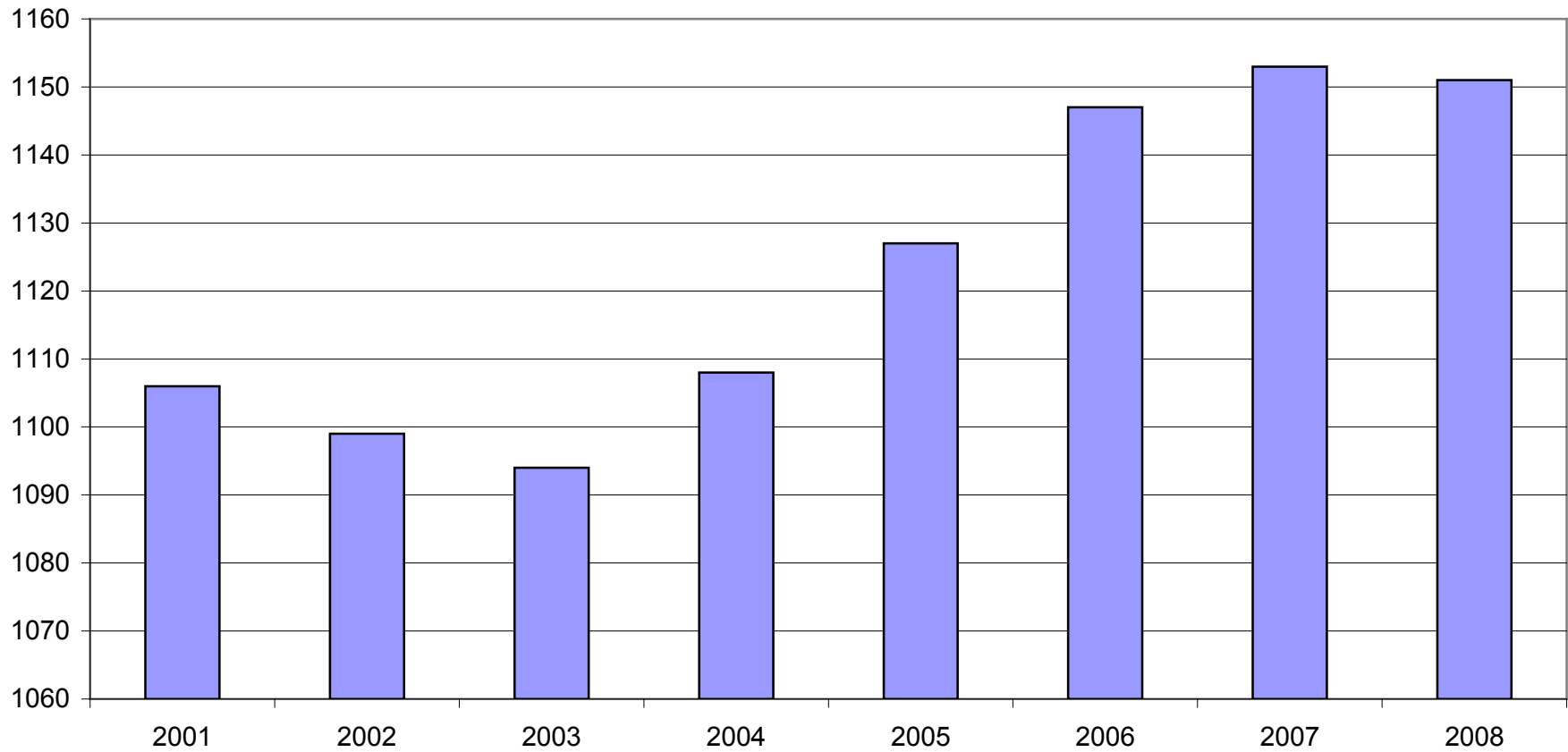
North American Industry Classification System Industry	Number of Employing Units	Average Monthly Employment	% of Employment Total	Net Change From July - Sept. 2008	Net Change From Oct. - Dec. 2007	Total Wages Paid Oct. - Dec. 2008	% of Total Wages Paid
Total	85,295	1,151,279	100.0%	-21,802	-14,599	\$10,416,775,312	100.0%
Natural Resources & Mining	2,477	22,249	1.9%	204	1,210	\$257,356,202	2.5%
Agriculture, Forestry, Fishing & Hunting	1,948	13,269	1.2%	43	-552	\$111,941,226	1.1%
Mining	529	8,979	0.8%	161	1,762	\$145,414,976	1.4%
Construction	7,855	56,155	4.9%	-1,896	-157	\$618,637,822	5.9%
Manufacturing	3,574	177,982	15.5%	-4,859	-8,897	\$1,724,365,054	16.6%
Trade, Transportation & Utilities	21,117	242,259	21.0%	-2,132	-6,987	\$2,116,528,878	20.3%
Wholesale Trade	6,443	48,042	4.2%	-823	-323	\$700,422,962	6.7%
Retail Trade	11,294	133,849	11.6%	60	-2,888	\$764,777,778	7.3%
Transportation & Warehousing	3,013	53,611	4.7%	-1,503	-3,656	\$533,658,912	5.1%
Utilities	367	6,758	0.6%	134	-120	\$117,669,226	1.1%
Information	1,132	18,238	1.6%	-455	-1,795	\$232,913,476	2.2%
Financial Activities	8,461	49,953	4.3%	-791	-2,192	\$561,806,449	5.4%
Finance & Insurance	4,942	35,884	3.1%	-486	-1,857	\$448,043,200	4.3%
Real Estate & Rental & Leasing	3,519	14,069	1.2%	-305	-334	\$113,763,249	1.1%
Professional & Business Services	12,073	116,835	10.1%	-1,273	-739	\$1,352,436,026	13.0%
Professional & Technical Services	7,536	38,696	3.4%	444	83	\$544,830,344	5.2%
Management of Companies & Enterprises	557	26,206	2.3%	224	1,286	\$492,097,710	4.7%
Administrative & Waste Services	3,980	51,933	4.5%	-1,941	-2,108	\$315,507,972	3.0%
Education & Health Services	13,631	156,515	13.6%	1,447	4,329	\$1,481,907,468	14.2%
Educational Services	637	10,317	0.9%	953	357	\$77,025,511	0.7%
Health Care & Social Assistance	12,994	146,198	12.7%	494	3,972	\$1,404,881,957	13.5%
Leisure & Hospitality	6,290	98,667	8.6%	-5,303	-831	\$323,023,515	3.1%
Arts, Entertainment & Recreation	929	8,668	0.8%	-2,207	-269	\$42,608,705	0.4%
Accommodation & Food Services	5,361	89,999	7.8%	-3,097	-561	\$280,414,810	2.7%
Other Services	5,465	24,635	2.1%	-932	-406	\$168,634,706	1.6%
State & Local Government	3,220	187,793	16.3%	27,345	1,866	\$1,579,165,716	15.2%
Local Government	1,977	119,979	10.4%	24,930	-310	\$936,398,692	9.0%
State Government	1,243	67,814	5.9%	2,415	2,176	\$642,767,024	6.2%
Nonclassifiable Establishments	0	0	0.0%	0	0	\$0	0.0%

Note: Items do not necessarily add to totals because of rounding. Because of industry code changes between years, substantial employment and wage shifts among industries are anticipated.

TABLE 2. TOTAL COVERED EMPLOYMENT IN ARKANSAS

Period	2001	2002	2003	2004	2005	2006	2007	2008
Average	1,106,066	1,098,558	1,094,087	1,108,264	1,126,778	1,146,948	1,152,994	1,150,586
January	1,096,009	1,081,635	1,082,740	1,089,510	1,102,768	1,130,595	1,137,437	1,141,697
February	1,101,616	1,086,793	1,084,880	1,094,626	1,110,577	1,136,810	1,143,397	1,149,049
March	1,112,143	1,098,500	1,092,172	1,105,266	1,122,619	1,150,439	1,158,895	1,157,496
April	1,115,526	1,103,399	1,095,341	1,111,020	1,129,785	1,155,498	1,159,623	1,158,601
May	1,119,815	1,111,998	1,103,099	1,117,144	1,135,567	1,159,886	1,165,224	1,164,266
June	1,119,734	1,112,028	1,099,688	1,117,010	1,136,118	1,162,026	1,164,207	1,162,315
July	1,071,921	1,065,697	1,053,220	1,071,463	1,090,071	1,106,142	1,110,571	1,116,129
August	1,094,160	1,086,011	1,077,775	1,094,871	1,114,098	1,130,839	1,139,109	1,139,948
September	1,115,976	1,113,148	1,105,980	1,122,704	1,144,815	1,159,814	1,165,135	1,163,697
October	1,110,994	1,108,447	1,112,550	1,123,246	1,142,300	1,156,804	1,162,768	1,156,197
November	1,109,012	1,107,611	1,109,712	1,125,061	1,145,667	1,156,011	1,164,246	1,150,885
December	1,105,887	1,107,425	1,111,892	1,127,250	1,146,954	1,158,509	1,165,314	1,146,754

AVERAGE TOTAL COVERED EMPLOYMENT GRAPH 1
In Thousands



TOTAL COVERED EARNINGS BY CALENDAR QUARTER, GRAPH 2

In Thousands

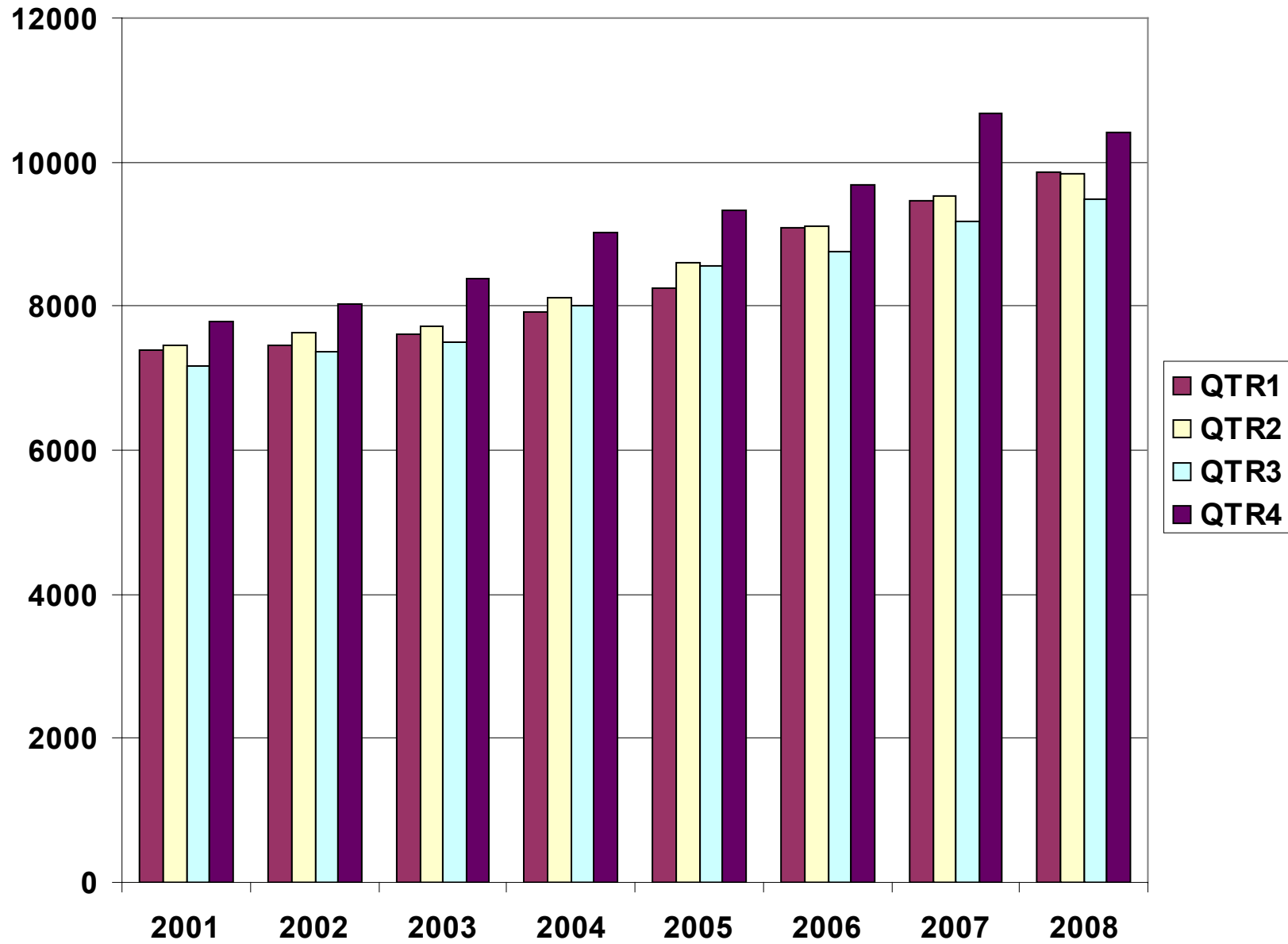


TABLE 3. TOTAL COVERED EARNINGS, 2001 - 2008

Period	2001	2002	2003	2004
Total	\$29,807,669,666	\$30,472,854,103	\$31,202,576,767	\$33,068,189,304
January - March	\$7,398,887,532	\$7,465,250,305	\$7,608,130,008	\$7,918,843,610
April - June	\$7,448,023,298	\$7,621,878,775	\$7,714,813,038	\$8,122,370,361
July - September	\$7,177,293,061	\$7,361,666,511	\$7,500,204,764	\$8,010,300,454
October - December	\$7,783,465,775	\$8,024,058,512	\$8,379,428,957	\$9,016,674,879
Average Weekly Earnings	\$518.26	\$533.44	\$548.45	\$573.80

Period	2005	2006	2007	2008
Total	\$34,753,107,631	\$36,636,090,775	\$38,833,265,464	\$39,587,430,495
January - March	\$8,261,153,981	\$9,085,021,816	\$9,452,711,662	\$9,849,712,834
April - June	\$8,607,722,353	\$9,112,624,590	\$9,525,837,049	\$9,830,766,145
July - September	\$8,562,555,369	\$8,750,878,205	\$9,178,902,477	\$9,490,176,204
October - December	\$9,321,675,928	\$9,687,566,164	\$10,675,814,276	\$10,416,775,312
Average Weekly Earnings	\$593.13	\$614.27	\$647.70	\$661.66

TABLE 4. TOTAL TAXABLE EARNINGS, 2001 - 2008

Period	2001	2002	2003	2004
Total	\$9,003,189,480	\$8,887,270,978	\$9,154,938,743	\$9,731,247,501
January - March	\$4,670,296,360	\$4,668,534,587	\$4,737,918,796	\$4,931,559,230
April - June	\$2,219,485,263	\$2,162,971,435	\$2,270,519,362	\$2,451,454,749
July - September	\$1,190,098,737	\$1,158,197,858	\$1,188,681,170	\$1,318,017,835
October - December	\$923,309,120	\$897,567,098	\$957,819,415	\$1,030,215,687

Period	2005	2006	2007	2008
Total	\$9,991,605,239	\$10,197,511,360	\$10,459,105,059	\$10,379,106,531
January - March	\$5,062,670,306	\$5,421,204,601	\$5,617,417,571	\$5,633,961,758
April - June	\$2,506,505,721	\$2,385,110,992	\$2,466,606,627	\$2,441,783,728
July - September	\$1,353,660,445	\$1,314,939,803	\$1,307,060,412	\$1,297,265,392
October - December	\$1,068,768,767	\$1,076,255,964	\$1,068,020,449	\$1,006,095,653

**TABLE 5. STATEWIDE SUMMARY
EMPLOYMENT AND TOTAL EARNINGS, BY INDUSTRY
FOURTH QUARTER 2008**

NORTH AMERICAN INDUSTRY CLASSIFICATION SYSTEM INDUSTRY GROUPS	NUMBER OF EMPLOYING UNITS	EMPLOYMENT	EMPLOYMENT	EMPLOYMENT	TOTAL EARNINGS	AVERAGE
		OCTOBER	NOVEMBER	DECEMBER	OCTOBER - DECEMBER	WEEKLY EARNINGS
TOTAL, ALL INDUSTRIES	85,295	1,156,197	1,150,885	1,146,754	\$10,416,775,312	\$696.00
NATURAL RESOURCES AND MINING	2,477	22,906	22,423	21,417	\$257,356,202	\$889.79
AGRICULTURE, FORESTRY, FISHING AND HUNTING	1,948	13,961	13,313	12,534	\$111,941,226	\$648.93
CROP PRODUCTION	728	4,007	3,730	3,477	\$26,620,115	\$547.81
Oilseed and Grain Farming	452	2,227	2,053	1,993	\$15,333,191	\$564.07
Vegetable and Melon Farming	10	123	131	88	\$350,246	\$236.33
Fruit and Tree Nut Farming	9	93	79	64	\$430,690	\$421.14
Greenhouse and Nursery Production	51	307	305	304	\$2,312,468	\$582.58
Other Crop Farming	206	1,257	1,162	1,028	\$8,193,520	\$548.54
ANIMAL PRODUCTION	269	3,675	3,668	3,669	\$33,054,037	\$692.69
Cattle Ranching and Farming	79	344	332	340	\$2,676,238	\$607.87
Hog and Pig Farming	9	151	153	160	\$1,592,428	\$791.99
Poultry and Egg Production	92	2,648	2,633	2,648	\$24,449,838	\$711.60
Animal Aquaculture	62	462	478	447	\$3,929,294	\$653.76
Other	27	70	72	74	\$406,239	\$434.02
FORESTRY AND LOGGING	501	2,538	2,469	2,504	\$21,697,981	\$666.65
Timber Tract Operations	40	227	223	234	\$2,524,468	\$851.71
Forest Nurseries & Gathering of Forest Products	6	33	33	33	\$548,126	\$1,277.68
Logging	455	2,278	2,213	2,237	\$18,625,387	\$638.85
OTHER	450	3,741	3,446	2,884	\$30,569,093	\$700.47
MINING	529	8,945	9,110	8,883	\$145,414,976	\$1,245.72
OIL AND GAS EXTRACTION	105	1,021	1,071	924	\$20,269,437	\$1,550.92
MINING (EXCEPT OIL AND GAS)	111	2,167	2,150	2,107	\$24,996,883	\$897.96
SUPPORT ACTIVITIES FOR MINING	313	5,757	5,889	5,852	\$100,148,656	\$1,320.79
CONSTRUCTION	7,855	57,364	56,024	55,076	\$618,637,822	\$847.44
CONSTRUCTION OF BUILDINGS	2,154	13,791	13,298	13,326	\$168,365,870	\$961.37
Residential Building Construction	1,511	3,585	3,509	3,533	\$30,816,546	\$669.19
Nonresidential Building Construction	643	10,206	9,789	9,793	\$137,549,324	\$1,065.60

**TABLE 5. STATEWIDE SUMMARY
EMPLOYMENT AND TOTAL EARNINGS, BY INDUSTRY
FOURTH QUARTER 2008**

NORTH AMERICAN INDUSTRY CLASSIFICATION SYSTEM INDUSTRY GROUPS	NUMBER OF EMPLOYING UNITS	EMPLOYMENT	EMPLOYMENT	EMPLOYMENT	TOTAL EARNINGS	AVERAGE WEEKLY EARNINGS
		OCTOBER	NOVEMBER	DECEMBER	OCTOBER - DECEMBER	
HEAVY AND CIVIL ENGINEERING CONSTRUCTION	865	11,339	10,878	10,245	\$138,815,961	\$986.83
Utility System Construction	424	6,690	6,416	5,942	\$88,337,406	\$1,070.22
Land Subdivision	122	319	285	281	\$2,955,492	\$770.66
Highway, Street and Bridge Construction	210	3,033	2,925	2,821	\$29,579,006	\$777.53
Other Heavy Construction	109	1,297	1,252	1,201	\$17,944,057	\$1,104.25
SPECIALTY TRADE CONTRACTORS	4,836	32,234	31,848	31,505	\$311,455,991	\$751.93
Building Foundation and Exterior Contractors	974	6,675	6,498	6,319	\$61,693,225	\$730.40
Building Equipment Contractors	2,144	15,597	15,512	15,481	\$162,975,260	\$807.25
Building Finishing Contractors	899	4,526	4,434	4,467	\$39,038,274	\$670.95
Other Specialty Trade Contractors	819	5,436	5,404	5,238	\$47,749,232	\$685.35
MANUFACTURING	3,574	180,486	177,433	176,027	\$1,724,365,054	\$745.26
FOOD MANUFACTURING	313	48,558	48,277	48,219	\$370,347,712	\$589.19
Animal Food Manufacturing	60	1,546	1,544	1,563	\$15,862,346	\$786.71
Grain and Oilseed Milling	30	2,365	2,332	2,290	\$25,507,796	\$842.48
Sugar & Confectionery Product Manufacturing	7	61	78	74	\$369,212	\$400.01
Fruit, Vegetable and Specialty Food	25	5,814	5,835	5,906	\$53,981,532	\$709.61
Dairy Product Manufacturing	11	691	677	681	\$6,930,385	\$780.54
Animal Slaughtering and Processing	92	32,875	32,631	32,536	\$222,315,189	\$523.28
Seafood Product Preparation & Packaging	5	201	152	110	\$701,899	\$349.84
Bakeries and Tortilla Manufacturing	55	3,323	3,337	3,372	\$29,440,118	\$677.22
Other Food Manufacturing	28	1,682	1,691	1,687	\$15,239,235	\$695.01
BEVERAGE AND TOBACCO PRODUCT MFG.	43	1,252	1,235	1,219	\$12,451,648	\$775.35
TEXTILE MILLS	17	315	329	322	\$3,939,303	\$941.07
TEXTILE PRODUCT MILLS	61	1,045	1,052	1,055	\$9,797,777	\$717.33
Textile Furnishing Mills	14	36	35	35	\$177,694	\$386.85
Other Textile Product Mills	47	1,009	1,017	1,020	\$9,620,083	\$728.83
APPAREL MANUFACTURING	35	1,478	1,472	1,461	\$7,750,945	\$405.50
Apparel Knitting Mills	3	721	707	695	\$4,180,220	\$454.39
Cut and Sew Apparel Manufacturing	26	549	543	535	\$2,537,587	\$359.92
Accessories & Other Apparel Manufacturing	6	208	222	231	\$1,033,138	\$360.69
LEATHER AND ALLIED PRODUCT MANUFACTURING	22	2,061	1,985	1,970	\$12,951,241	\$496.80

**TABLE 5. STATEWIDE SUMMARY
EMPLOYMENT AND TOTAL EARNINGS, BY INDUSTRY
FOURTH QUARTER 2008**

NORTH AMERICAN INDUSTRY CLASSIFICATION SYSTEM INDUSTRY GROUPS	NUMBER OF EMPLOYING UNITS	EMPLOYMENT	EMPLOYMENT	EMPLOYMENT	TOTAL EARNINGS	AVERAGE WEEKLY EARNINGS
		OCTOBER	NOVEMBER	DECEMBER	OCTOBER - DECEMBER	
WOOD PRODUCT MANUFACTURING	378	10,710	10,449	10,335	\$86,764,940	\$635.76
Sawmills and Wood Preservation	158	4,556	4,473	4,421	\$39,781,661	\$682.56
Veneer and Engineered Wood Products	53	2,743	2,678	2,674	\$24,287,530	\$692.38
Other Wood Product Manufacturing	167	3,411	3,298	3,240	\$22,695,749	\$526.43
PAPER MANUFACTURING	85	10,882	10,739	10,825	\$149,380,350	\$1,062.45
Pulp, Paper and Paperboard Mills	13	4,284	4,214	4,239	\$74,529,300	\$1,350.32
Converted Paper Product Manufacturing	72	6,598	6,525	6,586	\$74,851,050	\$876.42
PRINTING AND RELATED SUPPORT ACTIVITIES	281	4,445	4,443	4,398	\$45,913,562	\$797.49
PETROLEUM AND COAL PRODUCTS MANUFACTURING	22	998	977	985	\$15,719,217	\$1,225.51
CHEMICAL MANUFACTURING	128	4,821	4,787	4,818	\$66,407,262	\$1,062.30
Basic Chemical Manufacturing	32	2,065	2,032	2,045	\$30,765,756	\$1,155.94
Resin, Rubber and Artificial Fibers	10	290	288	295	\$3,897,013	\$1,030.14
Agricultural Chemical Manufacturing	16	345	346	356	\$5,015,791	\$1,105.53
Paint, Coating and Adhesive Manufacturing	9	189	189	195	\$2,543,397	\$1,024.32
Other Chemical Preparation Manufacturing	31	874	866	874	\$11,108,420	\$980.67
Other	30	1,058	1,066	1,053	\$13,076,885	\$949.87
PLASTICS AND RUBBER PRODUCTS MANUFACTURING	155	11,271	11,099	10,786	\$112,782,969	\$784.98
Plastics Product Manufacturing	108	7,286	7,142	6,876	\$66,988,365	\$725.63
Rubber Product Manufacturing	47	3,985	3,957	3,910	\$45,794,604	\$891.66
NONMETALLIC MINERAL PRODUCT MANUFACTURING	268	4,165	4,109	3,987	\$40,432,461	\$761.00
Clay Product & Refractory Manufacturing	23	486	481	457	\$4,458,007	\$722.45
Glass and Glass Product Manufacturing	13	457	462	457	\$4,378,232	\$734.27
Cement and Concrete Product Manufacturing	189	2,321	2,290	2,236	\$22,292,510	\$751.34
Lime and Gypsum Product Manufacturing	5	321	307	295	\$3,570,637	\$892.73
Other Nonmetallic Mineral Products Manufacturing	38	580	569	542	\$5,733,075	\$782.39
PRIMARY METAL MANUFACTURING	85	8,368	8,257	8,123	\$113,664,046	\$1,059.89
Iron and Steel Mills and Ferroalloys	13	2,281	2,279	2,280	\$42,846,007	\$1,445.55
Purchased Steel Product Manufacturing	17	2,372	2,323	2,286	\$32,233,236	\$1,065.53
Alumina and Aluminum Production	22	1,823	1,783	1,699	\$22,214,820	\$966.35
Other Nonferrous Metal Production	18	699	692	667	\$5,357,235	\$600.72
Foundries	15	1,193	1,180	1,191	\$11,012,748	\$713.08

**TABLE 5. STATEWIDE SUMMARY
EMPLOYMENT AND TOTAL EARNINGS, BY INDUSTRY
FOURTH QUARTER 2008**

NORTH AMERICAN INDUSTRY CLASSIFICATION SYSTEM INDUSTRY GROUPS	NUMBER OF EMPLOYING UNITS	EMPLOYMENT	EMPLOYMENT	EMPLOYMENT	TOTAL EARNINGS	AVERAGE WEEKLY EARNINGS
		OCTOBER	NOVEMBER	DECEMBER	OCTOBER - DECEMBER	
FABRICATED METAL PRODUCT MANUFACTURING	584	16,490	16,331	16,062	\$175,113,722	\$826.69
Forging and Stamping	11	728	705	659	\$7,233,348	\$797.91
Cutlery and Hand Tool Manufacturing	20	1,167	1,149	1,082	\$10,202,793	\$692.90
Architectural and Structural Metals	195	4,734	4,650	4,601	\$55,264,942	\$911.94
Boilers, Tanks and Shipping Containers	18	681	666	647	\$7,505,839	\$868.66
Hardware Manufacturing	8	196	215	203	\$1,682,776	\$632.46
Spring and Wire Product Manufacturing	12	456	445	445	\$3,193,002	\$547.43
Machine Shops and Threaded Products	213	1,954	1,957	1,944	\$18,982,000	\$748.16
Coating, Engraving and Heat Treating Metals	39	621	618	588	\$4,784,705	\$604.36
Other Fabricated Metal Product Manufacturing	68	5,953	5,926	5,893	\$66,264,317	\$860.44
MACHINERY MANUFACTURING	264	13,852	13,241	13,118	\$129,987,548	\$745.99
Agricultural, Construction and Mining Machinery	40	2,978	2,902	2,970	\$20,970,019	\$546.81
Industrial Machinery Manufacturing	36	776	741	713	\$8,503,051	\$879.93
Commercial and Service Industry Machinery	26	888	853	852	\$10,650,121	\$947.83
HVAC and Commercial Refrigeration Equipment	23	4,269	3,846	3,826	\$35,912,726	\$694.04
Metalworking Machinery Manufacturing	77	1,372	1,386	1,300	\$15,308,384	\$870.55
Turbine and Power Transmission Equipment Manufacturing	8	868	906	894	\$9,834,753	\$850.66
Other General Purpose Machinery Manufacturing	54	2,701	2,607	2,563	\$28,808,494	\$844.63
COMPUTER AND ELECTRONIC PRODUCT MANUFACTURING	82	3,879	3,880	3,816	\$37,178,180	\$741.22
Communications Equipment Manufacturing	8	144	151	154	\$2,246,475	\$1,154.60
Audio and Video Equipment Manufacturing	10	798	783	777	\$7,591,121	\$742.92
Semiconductors and Electronic Components	30	2,052	2,056	2,005	\$18,734,983	\$707.26
Electronic Instrument Manufacturing	27	854	858	850	\$8,489,518	\$764.68
Other	7	31	32	30	\$116,083	\$288.05
ELECTRICAL EQUIPMENT AND APPLIANCES	64	9,756	9,475	9,380	\$89,033,054	\$718.12
Electrical Equipment Manufacturing	23	4,758	4,771	4,765	\$46,925,222	\$757.58
Other Electrical Equipment and Component Manufacturing	23	2,029	1,992	1,971	\$21,451,820	\$826.17
Other	18	2,969	2,712	2,644	\$20,656,012	\$572.59

**TABLE 5. STATEWIDE SUMMARY
EMPLOYMENT AND TOTAL EARNINGS, BY INDUSTRY
FOURTH QUARTER 2008**

NORTH AMERICAN INDUSTRY CLASSIFICATION SYSTEM INDUSTRY GROUPS	NUMBER OF EMPLOYING UNITS	EMPLOYMENT	EMPLOYMENT	EMPLOYMENT	TOTAL EARNINGS	AVERAGE WEEKLY EARNINGS
		OCTOBER	NOVEMBER	DECEMBER	OCTOBER - DECEMBER	
TRANSPORTATION EQUIPMENT MANUFACTURING	179	15,650	15,144	14,943	\$156,733,230	\$790.81
Motor Vehicle Body and Trailer Manufacturing	41	2,169	2,012	1,990	\$18,063,734	\$675.51
Motor Vehicle Parts Manufacturing	60	6,026	5,852	5,739	\$47,139,462	\$617.49
Aerospace Product and Parts Manufacturing	32	4,586	4,532	4,549	\$67,051,189	\$1,132.17
Ship and Boat Building	26	1,465	1,356	1,297	\$10,237,686	\$573.71
Other	20	1,404	1,392	1,368	\$14,241,159	\$789.25
FURNITURE & RELATED PRODUCT MFG.	254	5,628	5,487	5,504	\$46,711,684	\$648.63
Household and Institutional Furniture	207	3,877	3,780	3,762	\$32,038,323	\$647.47
Office Furniture and Fixtures Manufacturing	40	1,640	1,601	1,637	\$13,961,773	\$660.51
Other Furniture Related Product Manufacturing	7	111	106	105	\$711,588	\$509.98
MISCELLANEOUS MANUFACTURING	254	4,862	4,665	4,701	\$41,304,203	\$669.93
Medical Equipment and Supplies Manufacturing	97	2,380	2,354	2,334	\$20,695,222	\$675.70
Other Miscellaneous Manufacturing	157	2,482	2,311	2,367	\$20,608,981	\$664.23
TRADE, TRANSPORTATION AND UTILITIES	21,117	241,066	242,733	242,977	\$2,116,528,878	\$672.05
WHOLESALE TRADE	6,443	48,189	48,048	47,888	\$700,422,962	\$1,121.50
MERCHANT WHOLESALERS, DURABLE GOODS	2,308	22,202	22,062	22,002	\$285,790,677	\$995.26
Motor Vehicle and Part Merchant Wholesalers	259	2,630	2,644	2,578	\$26,574,803	\$781.03
Furniture and Furnishing Merchant Wholesalers	72	442	436	441	\$5,023,207	\$878.85
Lumber and Supply Merchant Wholesalers	193	1,623	1,611	1,593	\$17,862,072	\$853.95
Commercial Goods Merchant Wholesalers	316	2,759	2,753	2,779	\$43,501,392	\$1,210.80
Metal and Mineral Merchant Wholesalers	62	964	951	949	\$15,549,234	\$1,252.89
Electric Goods Merchant Wholesalers	186	2,141	2,140	2,119	\$30,269,890	\$1,091.46
Hardware and Plumbing Merchant Wholesalers	235	2,346	2,346	2,340	\$28,115,966	\$922.68
Machinery and Supply Merchant Wholesalers	742	7,457	7,430	7,478	\$95,343,003	\$983.78
Miscellaneous Durable Goods Merchant Wholesalers	243	1,840	1,751	1,725	\$23,551,110	\$1,022.36

**TABLE 5. STATEWIDE SUMMARY
EMPLOYMENT AND TOTAL EARNINGS, BY INDUSTRY
FOURTH QUARTER 2008**

NORTH AMERICAN INDUSTRY CLASSIFICATION SYSTEM INDUSTRY GROUPS	NUMBER OF EMPLOYING UNITS	EMPLOYMENT	EMPLOYMENT	EMPLOYMENT	TOTAL EARNINGS	AVERAGE WEEKLY EARNINGS
		OCTOBER	NOVEMBER	DECEMBER	OCTOBER - DECEMBER	
MERCHANT WHOLESALERS, NONDURABLE GOODS	1,308	16,033	15,965	15,921	\$197,041,542	\$948.92
Paper and Paper Product Merchant Wholesalers	82	1,080	1,084	1,094	\$13,446,070	\$952.41
Druggists' Goods Merchant Wholesalers	66	1,062	1,072	1,082	\$12,997,632	\$932.67
Apparel and Piece Goods Merchant Wholesalers	48	429	440	435	\$5,059,777	\$895.43
Grocery Product Merchant Wholesalers	344	5,507	5,489	5,506	\$70,492,315	\$985.79
Farm Product Merchant Wholesalers	76	938	906	879	\$7,878,035	\$667.65
Chemical Merchant Wholesalers	89	494	498	507	\$6,873,158	\$1,058.11
Petroleum Merchant Wholesalers	154	1,463	1,477	1,489	\$21,514,276	\$1,120.98
Alcoholic Beverage Merchant Wholesalers	37	1,140	1,140	1,134	\$15,330,122	\$1,036.24
Miscellaneous Nondurable Goods Merchant Wholesalers	412	3,920	3,859	3,795	\$43,450,157	\$866.33
ELECTRONIC MARKETS AND AGENTS AND BROKERS	2,827	9,954	10,021	9,965	\$217,590,743	\$1,677.13
RETAIL TRADE	11,294	132,012	134,270	135,264	\$764,777,778	\$439.52
MOTOR VEHICLE AND PARTS DEALERS	1,721	17,344	16,961	16,715	\$150,283,795	\$679.75
Automobile Dealers	723	10,187	9,908	9,733	\$98,628,799	\$763.06
Other Motor Vehicle Dealers	194	1,568	1,535	1,508	\$13,330,533	\$667.16
Automotive Parts, Accessories and Tire Stores	804	5,589	5,518	5,474	\$38,324,463	\$533.39
FURNITURE AND HOME FURNISHINGS STORES	585	3,665	3,758	3,724	\$26,230,010	\$543.02
Furniture Stores	310	2,149	2,144	2,116	\$16,123,681	\$580.57
Home Furnishings Stores	275	1,516	1,614	1,608	\$10,106,329	\$492.24
ELECTRONICS AND APPLIANCE STORES	526	4,207	4,270	4,289	\$33,519,573	\$605.93
BUILDING MATERIAL AND GARDEN SUPPLY STORES	848	10,609	10,556	10,471	\$69,375,004	\$506.06
Building Material and Supplies Dealers	663	9,696	9,691	9,618	\$62,927,370	\$500.66
Lawn and Garden Equipment and Supplies Stores	185	913	865	853	\$6,447,634	\$565.53
FOOD AND BEVERAGE STORES	1,063	18,293	18,376	18,500	\$86,301,384	\$360.99
Grocery Stores	608	15,922	15,918	16,055	\$73,053,636	\$351.99
Specialty Food Stores	150	849	890	884	\$5,900,836	\$519.15
Beer, Wine and Liquor Stores	305	1,522	1,568	1,561	\$7,346,912	\$364.53
HEALTH AND PERSONAL CARE STORES	949	7,475	7,638	7,845	\$64,782,380	\$651.18
GASOLINE STATIONS	1,568	11,740	11,708	11,606	\$44,379,978	\$292.16
Gasoline Stations with Convenience Stores	1,418	10,444	10,416	10,315	\$39,087,859	\$289.34
Other Gasoline Stations	150	1,296	1,292	1,291	\$5,292,119	\$314.84

**TABLE 5. STATEWIDE SUMMARY
EMPLOYMENT AND TOTAL EARNINGS, BY INDUSTRY
FOURTH QUARTER 2008**

NORTH AMERICAN INDUSTRY CLASSIFICATION SYSTEM INDUSTRY GROUPS	NUMBER OF EMPLOYING UNITS	EMPLOYMENT	EMPLOYMENT	EMPLOYMENT	TOTAL EARNINGS	AVERAGE WEEKLY EARNINGS
		OCTOBER	NOVEMBER	DECEMBER	OCTOBER - DECEMBER	
CLOTHING AND CLOTHING ACCESSORIES STORES	1,050	8,869	9,246	9,606	\$33,545,917	\$279.26
Clothing Stores	724	6,941	7,275	7,530	\$23,153,249	\$245.70
Shoe Stores	171	1,131	1,140	1,214	\$4,563,661	\$302.20
Jewelry, Luggage and Leather Goods Stores	155	797	831	862	\$5,829,007	\$540.22
SPORTING GOODS, HOBBY, BOOK AND MUSIC STORES	578	4,479	4,751	4,975	\$19,232,755	\$312.45
Sporting Goods and Musical Instrument Stores	434	3,211	3,422	3,497	\$14,871,534	\$338.79
Book, Periodical and Music Stores	144	1,268	1,329	1,478	\$4,361,221	\$246.98
GENERAL MERCHANDISE STORES	736	37,401	39,086	39,446	\$190,102,075	\$378.41
MISCELLANEOUS STORE RETAILERS	1,324	6,224	6,200	6,317	\$32,260,776	\$397.25
Florists	245	845	847	867	\$3,611,671	\$325.70
Office Supplies, Stationery and Gift Stores	352	2,245	2,236	2,272	\$11,687,341	\$399.39
Used Merchandise Stores	214	789	797	841	\$4,166,249	\$396.14
Other Miscellaneous Store Retailers	513	2,345	2,320	2,337	\$12,795,515	\$421.71
NONSTORE RETAILERS	346	1,706	1,720	1,770	\$14,764,131	\$655.72
Electronic Shopping and Mail -Order Houses	100	305	318	342	\$3,840,830	\$918.49
Vending Machine Operators	71	591	589	590	\$3,928,545	\$512.20
Direct Selling Establishments	175	810	813	838	\$6,994,756	\$655.90
TRANSPORTATION AND WAREHOUSING	3,013	54,137	53,664	53,031	\$533,658,912	\$765.72
AIR TRANSPORTATION	45	965	868	848	\$11,350,184	\$976.98
TRUCK TRANSPORTATION	2,021	33,661	33,322	32,766	\$341,228,256	\$789.43
General Freight Trucking	1,290	27,938	27,647	27,067	\$276,995,919	\$773.39
Specialized Freight Trucking	731	5,723	5,675	5,699	\$64,232,337	\$866.99
TRANSIT AND GROUND PASSENGER TRANSPORTATION	68	1,135	1,131	1,105	\$4,802,740	\$328.78
Urban Transit Systems	4	59	52	50	\$250,530	\$359.10
Interurban and Rural Bus Transportation	3	55	58	56	\$337,988	\$461.52
Taxi and Limousine Service	24	351	347	344	\$1,291,336	\$285.99
School and Employee Bus Transportation	8	356	358	355	\$1,597,916	\$344.95
Charter Bus Industry	6	33	36	33	\$165,700	\$374.89
Other Ground Passenger Transportation	23	281	280	267	\$1,159,270	\$323.10

**TABLE 5. STATEWIDE SUMMARY
EMPLOYMENT AND TOTAL EARNINGS, BY INDUSTRY
FOURTH QUARTER 2008**

NORTH AMERICAN INDUSTRY CLASSIFICATION SYSTEM INDUSTRY GROUPS	NUMBER OF EMPLOYING UNITS	EMPLOYMENT	EMPLOYMENT	EMPLOYMENT	TOTAL EARNINGS	AVERAGE WEEKLY EARNINGS
		OCTOBER	NOVEMBER	DECEMBER	OCTOBER - DECEMBER	
PIPELINE TRANSPORTATION	68	858	856	857	\$13,486,627	\$1,210.54
SUPPORT ACTIVITIES FOR TRANSPORTATION	419	4,415	4,446	4,412	\$47,911,547	\$833.01
Support Activities for Air Transportation	102	1,384	1,421	1,404	\$14,066,601	\$771.24
Support Activities for Rail Transportation	34	358	359	351	\$3,457,720	\$747.13
Support Activities for Water Transportation	23	636	626	612	\$7,060,531	\$869.45
Support Activities for Road Transportation	110	505	484	502	\$3,405,323	\$527.06
Freight Transportation Arrangement	127	1,382	1,405	1,393	\$18,636,162	\$1,028.86
Other Support Activities for Transportation	23	150	151	150	\$1,285,210	\$657.62
POSTAL SERVICE	7	12	12	14	\$74,790	\$454.19
COURIERS AND MESSENGERS	143	3,311	3,532	3,879	\$33,499,875	\$721.02
Couriers	82	2,989	3,184	3,557	\$31,276,205	\$741.79
Local Messengers and Local Delivery	61	322	348	322	\$2,223,670	\$517.29
WAREHOUSING AND STORAGE	230	9,602	9,338	8,987	\$79,459,499	\$656.60
OTHER	12	178	159	163	\$1,845,394	\$851.72
UTILITIES	367	6,728	6,751	6,794	\$117,669,226	\$1,339.44
Power Generation and Supply	161	5,071	5,085	5,118	\$97,197,076	\$1,468.51
Natural Gas Distribution	35	813	820	827	\$12,855,663	\$1,205.97
Water, Sewage and Other Systems	171	844	846	849	\$7,616,487	\$692.26
INFORMATION	1,132	18,276	18,237	18,200	\$232,913,476	\$982.39
PUBLISHING INDUSTRIES, EXCEPT INTERNET	258	6,010	5,988	5,930	\$50,967,755	\$656.06
Newspaper, Book and Directory Publishers	228	5,785	5,761	5,702	\$47,412,153	\$634.35
Software Publishers	30	225	227	228	\$3,555,602	\$1,206.65
MOTION PICTURE AND SOUND RECORDING INDUSTRY	148	1,113	1,162	1,205	\$5,701,338	\$378.07
Motion Picture and Video Industries	127	1,069	1,120	1,160	\$5,272,748	\$363.33
Sound Recording Industries	21	44	42	45	\$428,590	\$755.00
BROADCASTING, EXCEPT INTERNET	139	2,092	2,046	2,041	\$18,829,167	\$703.22
Radio and Television Broadcasting	133	2,055	2,007	2,001	\$18,558,238	\$706.36
Cable and Other Subscription Programming	6	37	39	40	\$270,929	\$538.98

**TABLE 5. STATEWIDE SUMMARY
EMPLOYMENT AND TOTAL EARNINGS, BY INDUSTRY
FOURTH QUARTER 2008**

NORTH AMERICAN INDUSTRY CLASSIFICATION SYSTEM INDUSTRY GROUPS	NUMBER OF EMPLOYING UNITS	EMPLOYMENT	EMPLOYMENT	EMPLOYMENT	TOTAL EARNINGS	AVERAGE
		OCTOBER	NOVEMBER	DECEMBER	OCTOBER - DECEMBER	WEEKLY EARNINGS
TELECOMMUNICATIONS	420	7,760	7,733	7,718	\$138,502,473	\$1,377.02
Wired Telecommunications Carriers	298	4,300	4,284	4,278	\$64,637,316	\$1,159.72
Other Telecommunications	84	528	528	530	\$6,076,959	\$884.22
Other	38	2,932	2,921	2,910	\$67,788,198	\$1,785.17
DATA PROCESSING, HOSTING AND RELATED SERVICES	102	994	1,005	1,000	\$15,743,432	\$1,211.44
OTHER	65	307	303	306	\$3,169,311	\$798.45
FINANCIAL ACTIVITIES	8,461	49,961	49,785	50,113	\$561,806,449	\$865.13
FINANCE AND INSURANCE	4,942	35,945	35,789	35,918	\$448,043,200	\$960.45
CREDIT INTERMEDIATION AND RELATED ACTIVITIES	2,092	20,678	20,570	20,584	\$208,022,962	\$776.38
Depository Credit Intermediation	1,429	17,949	17,872	17,905	\$175,883,781	\$755.47
Nondepository Credit Intermediation	401	1,874	1,874	1,862	\$24,516,769	\$1,008.51
Activities Related to Credit Intermediation	262	855	824	817	\$7,622,412	\$704.73
FINANCIAL INVESTMENT AND RELATED ACTIVITIES	661	3,275	3,268	3,221	\$77,229,023	\$1,825.28
INSURANCE CARRIERS AND RELATED ACTIVITIES	2,128	11,519	11,467	11,635	\$157,994,742	\$1,053.13
Insurance Carriers	388	4,960	4,941	5,007	\$77,485,282	\$1,199.44
Insurance Agencies, Brokerages and Support	1,740	6,559	6,526	6,628	\$80,509,460	\$942.48
OTHER	61	473	484	478	\$4,796,473	\$771.34
REAL ESTATE AND RENTAL AND LEASING	3,519	14,016	13,996	14,195	\$113,763,249	\$622.01
REAL ESTATE	2,657	8,801	8,833	8,998	\$69,452,709	\$601.82
Lessors of Real Estate	1,068	4,456	4,452	4,468	\$32,593,440	\$562.32
Offices of Real Estate Agents and Brokers	956	1,990	1,956	2,020	\$18,225,534	\$704.98
Activities Related to Real Estate	633	2,355	2,425	2,510	\$18,633,735	\$589.86
RENTAL AND LEASING SERVICES	841	5,148	5,096	5,130	\$43,254,683	\$649.27
Automotive Equipment Rental and Leasing	124	1,001	1,035	1,018	\$7,658,944	\$578.73
Consumer Goods Rental	512	2,763	2,676	2,705	\$16,274,360	\$461.15
General Rental Centers	30	225	217	227	\$2,058,757	\$710.16
Machinery and Equipment Rental and Leasing	175	1,159	1,168	1,180	\$17,262,622	\$1,135.92

**TABLE 5. STATEWIDE SUMMARY
EMPLOYMENT AND TOTAL EARNINGS, BY INDUSTRY
FOURTH QUARTER 2008**

NORTH AMERICAN INDUSTRY CLASSIFICATION SYSTEM INDUSTRY GROUPS	NUMBER OF EMPLOYING UNITS	EMPLOYMENT OCTOBER	EMPLOYMENT NOVEMBER	EMPLOYMENT DECEMBER	TOTAL EARNINGS OCTOBER - DECEMBER	AVERAGE WEEKLY EARNINGS
LESSORS OF NONFINANCIAL INTANGIBLE ASSETS	21	67	67	67	\$1,055,857	\$1,212.24
PROFESSIONAL AND BUSINESS SERVICES	12,073	118,102	116,534	115,869	\$1,352,436,026	\$890.43
PROFESSIONAL AND TECHNICAL SERVICES	7,536	38,311	38,613	39,164	\$544,830,344	\$1,083.06
Legal Services	1,690	6,551	6,534	6,541	\$107,946,133	\$1,269.27
Accounting and Bookkeeping Services	1,254	5,019	5,315	5,586	\$59,869,585	\$867.84
Architectural and Engineering Services	1,015	6,702	6,693	6,685	\$102,698,773	\$1,180.26
Specialized Design Services	187	449	460	466	\$5,160,986	\$866.18
Computer Systems Design and Related Services	1,009	7,985	8,013	7,998	\$135,395,321	\$1,302.10
Management and Technical Consulting Services	1,299	4,626	4,494	4,690	\$64,720,410	\$1,081.50
Scientific Research and Development Services	115	1,113	1,152	1,178	\$16,216,862	\$1,086.95
Advertising and Related Services	350	1,868	1,847	1,901	\$24,748,185	\$1,016.94
Other Professional and Technical Services	617	3,998	4,105	4,119	\$28,074,089	\$530.08
MANAGEMENT OF COMPANIES AND ENTERPRISES	557	25,999	26,364	26,256	\$492,097,710	\$1,444.45
ADMINISTRATIVE AND WASTE SERVICES	3,980	53,792	51,557	50,449	\$315,507,972	\$467.33
ADMINISTRATIVE AND SUPPORT SERVICES	3,750	51,251	49,048	47,940	\$289,696,588	\$450.98
Office Administrative Services	416	1,405	1,398	1,451	\$22,141,826	\$1,201.14
Facilities Support Services	21	139	125	129	\$1,081,755	\$635.21
Employment Services	738	23,120	20,984	19,785	\$108,736,436	\$392.76
Business Support Services	492	7,696	7,897	8,092	\$47,025,388	\$458.18
Travel Arrangement and Reservation Services	102	396	374	368	\$3,122,108	\$633.12
Investigation and Security Services	247	4,539	4,510	4,500	\$29,439,667	\$501.42
Services to Buildings and Dwellings	1,408	12,334	12,179	12,012	\$62,805,802	\$396.81
Other Support Services	326	1,622	1,581	1,603	\$15,343,606	\$736.75
WASTE MANAGEMENT AND REMEDIATION SERVICES	230	2,541	2,509	2,509	\$25,811,384	\$788.00
Waste Collection Services	108	1,295	1,276	1,267	\$12,415,669	\$746.52
Waste Treatment and Disposal Services	43	739	739	746	\$8,707,659	\$903.53
Remediation and Other Waste Services	79	507	494	496	\$4,688,056	\$722.68

**TABLE 5. STATEWIDE SUMMARY
EMPLOYMENT AND TOTAL EARNINGS, BY INDUSTRY
FOURTH QUARTER 2008**

NORTH AMERICAN INDUSTRY CLASSIFICATION SYSTEM INDUSTRY GROUPS	NUMBER OF EMPLOYING UNITS	EMPLOYMENT	EMPLOYMENT	EMPLOYMENT	TOTAL EARNINGS	AVERAGE WEEKLY EARNINGS
		OCTOBER	NOVEMBER	DECEMBER	OCTOBER - DECEMBER	
EDUCATION AND HEALTH SERVICES	13,631	156,260	156,406	156,878	\$1,481,907,468	\$728.32
EDUCATIONAL SERVICES	637	10,309	10,337	10,305	\$77,025,511	\$574.30
Elementary and Secondary Schools	79	3,381	3,413	3,412	\$21,373,345	\$483.28
Junior Colleges	9	296	292	307	\$2,269,173	\$585.09
Colleges and Universities	29	3,668	3,683	3,576	\$29,091,769	\$614.39
Business, Computer and Management Training	53	235	240	245	\$4,645,209	\$1,488.85
Technical and Trade Schools	109	771	782	811	\$9,747,519	\$951.53
Other Schools and Instruction	248	1,558	1,568	1,578	\$6,020,079	\$295.33
Educational Support Services	110	400	359	376	\$3,878,417	\$788.56
HEALTH CARE AND SOCIAL ASSISTANCE	12,994	145,951	146,069	146,573	\$1,404,881,957	\$739.19
AMBULATORY HEALTH CARE SERVICES	5,079	45,127	45,259	45,777	\$679,240,472	\$1,151.18
Offices of Physicians	2,251	21,389	21,461	21,689	\$442,981,931	\$1,583.95
Offices of Dentists	959	6,259	6,304	6,376	\$76,780,305	\$935.56
Offices of Other Health Practitioners	1,181	6,162	6,167	6,238	\$54,740,550	\$680.37
Outpatient Care Centers	259	3,984	3,953	3,964	\$40,607,562	\$787.41
Medical and Diagnostic Laboratories	108	854	874	890	\$13,104,959	\$1,155.16
Home Health Care Services	184	4,136	4,159	4,183	\$31,593,512	\$584.29
Other Ambulatory Health Care Services	137	2,343	2,341	2,437	\$19,431,653	\$629.72
HOSPITALS	124	42,622	42,383	42,408	\$435,165,072	\$788.17
General Medical and Surgical Hospitals	91	38,821	38,581	38,625	\$397,018,964	\$789.64
Psychiatric and Substance Abuse Hospitals	11	1,844	1,840	1,828	\$16,534,021	\$692.22
Other Hospitals	22	1,957	1,962	1,955	\$21,612,087	\$849.06
NURSING AND RESIDENTIAL CARE FACILITIES	526	28,561	28,754	28,744	\$158,116,918	\$423.99
Nursing Care Facilities	256	21,167	21,314	21,283	\$116,525,942	\$421.72
Residential Mental Health Facilities	127	3,405	3,430	3,429	\$19,986,598	\$449.37
Community Care Facilities for the Elderly	96	2,418	2,438	2,435	\$12,071,900	\$382.09
Other Residential Care Facilities	47	1,571	1,572	1,597	\$9,532,478	\$464.09
SOCIAL ASSISTANCE	7,265	29,641	29,673	29,644	\$132,359,495	\$343.36
Individual and Family Services	6,045	15,903	16,022	16,049	\$72,466,277	\$348.58
Emergency and Other Relief Services	126	949	948	962	\$5,337,054	\$430.79
Vocational Rehabilitation Services	131	3,784	3,788	3,761	\$19,233,778	\$391.65
Child Day Care Services	963	9,005	8,915	8,872	\$35,322,386	\$304.24

**TABLE 5. STATEWIDE SUMMARY
EMPLOYMENT AND TOTAL EARNINGS, BY INDUSTRY
FOURTH QUARTER 2008**

NORTH AMERICAN INDUSTRY CLASSIFICATION SYSTEM INDUSTRY GROUPS	NUMBER OF EMPLOYING UNITS	EMPLOYMENT	EMPLOYMENT	EMPLOYMENT	TOTAL EARNINGS	AVERAGE WEEKLY EARNINGS
		OCTOBER	NOVEMBER	DECEMBER	OCTOBER - DECEMBER	
LEISURE AND HOSPITALITY	6,290	99,792	98,752	97,457	\$323,023,515	\$251.84
ARTS, ENTERTAINMENT AND RECREATION	929	9,280	8,455	8,269	\$42,608,705	\$378.13
PERFORMING ARTS AND SPECTATOR SPORTS	236	2,180	1,856	1,877	\$13,861,089	\$540.96
Performing Arts Companies	40	550	301	278	\$1,848,283	\$377.79
Spectator Sports	64	847	845	958	\$5,607,822	\$488.34
Performing Arts and Sports Promoters	48	653	572	503	\$3,515,113	\$469.43
Agents and Managers for Public Figures	21	21	27	21	\$503,604	\$1,684.29
Independent Artists, Writers and Performers	63	109	111	117	\$2,386,267	\$1,634.06
MUSEUMS, PARKS AND HISTORICAL SITES	51	271	261	248	\$1,360,588	\$402.54
GAMBLING, RECREATION AND AMUSEMENT INDUSTRY	642	6,829	6,338	6,144	\$27,387,028	\$327.28
ACCOMMODATION AND FOOD SERVICES	5,361	90,512	90,297	89,188	\$280,414,810	\$239.67
ACCOMMODATION	853	11,597	11,269	10,786	\$44,482,444	\$305.04
Traveler Accommodation	772	11,210	10,921	10,450	\$42,859,666	\$303.57
RV Parks and Recreational Camps	63	312	271	263	\$1,280,656	\$349.33
Rooming and Boarding Houses	18	75	77	73	\$342,122	\$350.89
FOOD SERVICES AND DRINKING PLACES	4,508	78,915	79,028	78,402	\$235,932,366	\$230.37
Full -Service Restaurants	1,967	33,831	33,803	33,549	\$107,462,150	\$245.09
Limited-Service Eating Places	2,243	41,703	41,830	41,583	\$115,901,638	\$213.77
Special Food Services	152	2,340	2,358	2,241	\$9,362,268	\$311.36
Drinking Places, Alcoholic Beverages	146	1,041	1,037	1,029	\$3,206,310	\$238.15
OTHER SERVICES	5,465	24,645	24,545	24,714	\$168,634,706	\$526.57
REPAIR AND MAINTENANCE	2,183	9,225	9,135	9,105	\$75,152,668	\$631.46
Automotive Repair and Maintenance	1,492	6,298	6,239	6,232	\$45,956,671	\$565.05
Electronic Equipment Repair and Maintenance	158	672	658	656	\$6,618,737	\$769.08
Commercial Machinery Repair and Maintenance	347	1,626	1,623	1,610	\$18,022,745	\$855.96
Household Goods Repair and Maintenance	186	629	615	607	\$4,554,515	\$567.82
PERSONAL AND LAUNDRY SERVICES	1,347	7,938	7,926	8,046	\$43,345,822	\$418.36
Personal Care Services	587	2,671	2,692	2,727	\$11,157,894	\$318.28
Death Care Services	241	1,609	1,599	1,650	\$12,608,007	\$598.92
Drycleaning and Laundry Services	337	2,994	2,973	2,976	\$16,124,456	\$416.08
Other Personal Services	182	664	662	693	\$3,455,465	\$394.96

**TABLE 5. STATEWIDE SUMMARY
EMPLOYMENT AND TOTAL EARNINGS, BY INDUSTRY
FOURTH QUARTER 2008**

NORTH AMERICAN INDUSTRY CLASSIFICATION SYSTEM INDUSTRY GROUPS	NUMBER OF EMPLOYING UNITS	EMPLOYMENT	EMPLOYMENT	EMPLOYMENT	TOTAL EARNINGS	AVERAGE
		OCTOBER	NOVEMBER	DECEMBER	OCTOBER - DECEMBER	WEEKLY EARNINGS
MEMBERSHIP ASSOCIATIONS AND ORGANIZATIONS	1,051	6,281	6,284	6,347	\$44,596,246	\$544.18
Religious Organizations	47	238	248	250	\$1,550,399	\$486.12
Grantmaking and Giving Services	104	489	510	535	\$5,213,983	\$784.37
Social Advocacy Organizations	187	2,029	2,043	2,075	\$14,450,570	\$542.50
Civic and Social Organizations	205	1,436	1,426	1,410	\$5,286,097	\$285.55
Professional and Similar Organizations	508	2,089	2,057	2,077	\$18,095,197	\$671.03
PRIVATE HOUSEHOLDS	884	1,201	1,200	1,216	\$5,539,970	\$353.46
LOCAL GOVERNMENT	1,977	119,603	120,170	120,163	\$936,398,692	\$600.36
STATE GOVERNMENT	1,243	67,736	67,843	67,863	\$642,767,024	\$729.11
NONCLASSIFIABLE ESTABLISHMENTS	0	0	0	0	\$0	

**TABLE 6. COUNTY SUMMARY
EMPLOYMENT AND TOTAL EARNINGS, BY INDUSTRY
FOURTH QUARTER 2008**

NORTH AMERICAN INDUSTRY CLASSIFICATION SYSTEM INDUSTRY GROUP	NUMBER OF EMPLOYING UNITS	EMPLOYMENT	EMPLOYMENT	EMPLOYMENT	TOTAL EARNINGS	AVERAGE
		OCTOBER	NOVEMBER	DECEMBER	OCTOBER - DECEMBER	WEEKLY EARNINGS
ARKANSAS COUNTY - TOTAL	758	10,262	9,851	9,833	\$84,949,892	\$654.64
Natural Resources & Mining	47	264	225	209	\$2,134,545	\$705.71
Construction	47	335	344	333	\$3,581,917	\$816.79
Manufacturing	33	3,669	3,345	3,326	\$31,220,441	\$696.78
Trade, Transportation & Utilities	198	2,143	2,115	2,124	\$20,140,529	\$728.27
Wholesale Trade	43	403	386	391	\$6,726,031	\$1,315.39
Retail Trade	96	1,114	1,126	1,144	\$6,953,410	\$474.18
Transportation, Warehousing & Utilities	59	626	603	589	\$6,461,088	\$820.14
Information	11	105	104	107	\$911,870	\$665.92
Financial Activities	50	314	319	319	\$4,247,468	\$1,029.61
Professional & Business Services	62	430	417	408	\$5,417,315	\$996.14
Education & Health Services	141	1,293	1,269	1,271	\$7,403,499	\$445.73
Leisure & Hospitality	59	484	470	480	\$1,335,435	\$214.91
Other Services	62	142	147	143	\$827,163	\$441.86
Local Government	32	846	854	873	\$6,256,955	\$561.18
State Government	16	237	242	240	\$1,472,755	\$472.69
ASHLEY COUNTY - TOTAL	584	7,891	7,845	7,776	\$70,736,209	\$694.27
Natural Resources & Mining	61	413	361	322	\$3,162,148	\$665.81
Construction	50	587	617	635	\$5,700,860	\$715.38
Manufacturing	26	2,454	2,429	2,398	\$32,514,292	\$1,030.53
Trade, Transportation & Utilities	135	1,202	1,182	1,188	\$8,434,450	\$544.91
Wholesale Trade	23	181	168	165	\$2,082,530	\$934.99
Retail Trade	83	752	760	777	\$3,885,385	\$391.71
Transportation, Warehousing & Utilities	29	269	254	246	\$2,466,535	\$740.18
Information	8	46	46	45	\$338,778	\$570.65
Financial Activities	39	251	246	250	\$2,302,622	\$711.34
Professional & Business Services	51	418	413	401	\$2,678,119	\$501.65
Education & Health Services	100	694	687	693	\$5,436,845	\$604.95
Leisure & Hospitality	28	406	425	422	\$1,069,935	\$197.05
Other Services	42	186	174	174	\$1,024,008	\$442.53
Local Government	32	989	1,012	998	\$6,762,078	\$520.33
State Government	12	245	253	250	\$1,312,074	\$404.79

**TABLE 6. COUNTY SUMMARY
EMPLOYMENT AND TOTAL EARNINGS, BY INDUSTRY
FOURTH QUARTER 2008**

NORTH AMERICAN INDUSTRY CLASSIFICATION SYSTEM INDUSTRY GROUP	NUMBER OF EMPLOYING UNITS	EMPLOYMENT OCTOBER	EMPLOYMENT NOVEMBER	EMPLOYMENT DECEMBER	TOTAL EARNINGS OCTOBER - DECEMBER	AVERAGE WEEKLY EARNINGS
BAXTER COUNTY - TOTAL	1,349	14,673	14,530	14,392	\$111,586,909	\$590.68
Natural Resources & Mining	5	133	129	114	\$973,136	\$597.26
Construction	148	730	694	676	\$5,639,805	\$619.76
Manufacturing	66	2,431	2,339	2,305	\$20,970,464	\$684.01
Trade, Transportation & Utilities	290	2,630	2,629	2,615	\$16,068,836	\$470.94
Wholesale Trade	40	214	214	221	\$1,630,448	\$579.75
Retail Trade	217	2,213	2,208	2,180	\$12,711,684	\$444.40
Transportation, Warehousing & Utilities	33	203	207	214	\$1,726,704	\$638.57
Information	22	239	242	235	\$2,174,067	\$700.71
Financial Activities	125	687	687	680	\$7,403,633	\$831.81
Professional & Business Services	146	847	837	812	\$6,787,171	\$627.51
Education & Health Services	272	3,436	3,441	3,485	\$33,487,672	\$745.79
Leisure & Hospitality	123	1,517	1,480	1,423	\$4,618,443	\$241.13
Other Services	103	374	369	363	\$1,829,055	\$381.64
Local Government	36	1,299	1,332	1,335	\$9,231,703	\$537.16
State Government	13	350	351	349	\$2,402,924	\$528.12
BENTON COUNTY - TOTAL	5,562	94,972	94,831	94,155	\$1,037,645,915	\$843.28
Natural Resources & Mining	30	811	808	793	\$10,419,351	\$996.88
Construction	663	3,929	3,866	3,813	\$39,618,960	\$787.63
Manufacturing	241	13,130	12,904	12,743	\$124,556,210	\$741.26
Trade, Transportation & Utilities	1,511	22,624	22,523	22,529	\$234,900,816	\$800.99
Wholesale Trade	685	3,802	3,801	3,814	\$76,617,729	\$1,548.66
Retail Trade	638	9,111	9,303	9,396	\$55,850,663	\$463.45
Transportation, Warehousing & Utilities	188	9,711	9,419	9,319	\$102,432,424	\$830.90
Information	76	850	828	810	\$9,701,808	\$899.87
Financial Activities	585	3,828	3,822	3,859	\$44,790,122	\$898.10
Professional & Business Services	1,035	23,335	23,531	23,341	\$388,607,303	\$1,277.35
Education & Health Services	537	7,424	7,453	7,426	\$67,519,521	\$698.62
Leisure & Hospitality	448	8,648	8,655	8,406	\$29,451,023	\$264.36
Other Services	340	1,652	1,614	1,626	\$11,275,275	\$531.89
Local Government	78	7,663	7,752	7,739	\$69,063,328	\$688.33
State Government	18	1,078	1,075	1,070	\$7,742,198	\$554.35

**TABLE 6. COUNTY SUMMARY
EMPLOYMENT AND TOTAL EARNINGS, BY INDUSTRY
FOURTH QUARTER 2008**

NORTH AMERICAN INDUSTRY CLASSIFICATION SYSTEM INDUSTRY GROUP	NUMBER OF EMPLOYING UNITS	EMPLOYMENT	EMPLOYMENT	EMPLOYMENT	TOTAL EARNINGS	AVERAGE
		OCTOBER	NOVEMBER	DECEMBER	OCTOBER - DECEMBER	WEEKLY EARNINGS
BOONE COUNTY - TOTAL	1,079	13,660	13,603	13,657	\$108,264,153	\$610.56
Construction	96	438	441	439	\$3,626,823	\$635.02
Manufacturing	72	1,823	1,733	1,755	\$16,286,585	\$707.67
Trade, Transportation & Utilities	259	4,338	4,365	4,384	\$38,002,568	\$670.12
Wholesale Trade	58	640	625	611	\$5,199,398	\$639.58
Retail Trade	146	1,851	1,867	1,894	\$10,880,685	\$447.42
Transportation, Warehousing & Utilities	55	1,847	1,873	1,879	\$21,922,485	\$903.56
Information	20	422	421	422	\$3,841,110	\$700.72
Financial Activities	98	627	625	633	\$5,294,201	\$648.14
Professional & Business Services	113	519	499	489	\$4,128,101	\$632.14
Education & Health Services	200	1,199	1,198	1,222	\$9,739,254	\$621.03
Leisure & Hospitality	76	1,097	1,106	1,080	\$3,369,709	\$236.86
Local Government	58	2,325	2,331	2,347	\$16,620,560	\$547.70
State Government	21	590	597	600	\$5,334,095	\$688.83
Other	66	282	287	286	\$2,021,147	\$545.52
BRADLEY COUNTY - TOTAL	398	3,779	3,519	3,491	\$24,534,789	\$524.78
Natural Resources & Mining	44	272	270	291	\$2,112,640	\$585.27
Construction	20	175	163	150	\$1,095,705	\$518.15
Manufacturing	11	789	521	505	\$5,483,010	\$697.14
Trade, Transportation & Utilities	81	477	479	476	\$2,822,779	\$454.90
Wholesale Trade	15	67	69	69	\$593,457	\$668.06
Retail Trade	44	365	366	358	\$1,778,091	\$376.79
Transportation, Warehousing & Utilities	22	45	44	49	\$451,231	\$754.57
Information	4	16	16	18	\$104,067	\$480.31
Financial Activities	27	163	161	159	\$1,375,237	\$657.06
Professional & Business Services	27	81	81	81	\$406,015	\$385.58
Education & Health Services	110	638	631	636	\$4,462,501	\$540.58
Leisure & Hospitality	16	184	208	199	\$433,301	\$169.19
Other Services	32	109	111	115	\$852,581	\$587.31
Local & State Government	26	875	878	861	\$5,386,953	\$475.57

**TABLE 6. COUNTY SUMMARY
EMPLOYMENT AND TOTAL EARNINGS, BY INDUSTRY
FOURTH QUARTER 2008**

NORTH AMERICAN INDUSTRY CLASSIFICATION SYSTEM INDUSTRY GROUP	NUMBER OF EMPLOYING UNITS	EMPLOYMENT OCTOBER	EMPLOYMENT NOVEMBER	EMPLOYMENT DECEMBER	TOTAL EARNINGS OCTOBER - DECEMBER	AVERAGE WEEKLY EARNINGS
CALHOUN COUNTY - TOTAL	125	2,937	2,940	2,956	\$32,733,223	\$855.18
Natural Resources & Mining	18	209	207	202	\$1,867,844	\$697.48
Construction	13	59	57	55	\$407,424	\$549.83
Manufacturing	10	1,943	1,943	1,946	\$24,533,391	\$970.77
Trade, Transportation & Utilities	34	188	190	201	\$1,291,185	\$514.62
Retail Trade	21	77	80	88	\$287,338	\$270.65
Other Trade, Transportation & Utilities	13	111	110	113	\$1,003,847	\$693.58
Financial Activities	6	89	88	84	\$600,579	\$531.02
Education & Health Services	8	49	47	48	\$373,127	\$597.96
Leisure & Hospitality	6	22	22	24	\$39,436	\$133.83
Local & State Government	19	275	281	283	\$1,707,952	\$469.78
Other	11	103	105	113	\$1,912,285	\$1,374.76
CARROLL COUNTY - TOTAL	844	10,326	10,013	9,869	\$64,970,310	\$496.33
Natural Resources & Mining	15	266	275	278	\$2,133,249	\$601.08
Construction	80	315	305	306	\$2,262,860	\$563.93
Trade, Transportation & Utilities	212	1,679	1,671	1,659	\$10,694,344	\$492.70
Wholesale Trade	28	168	168	172	\$978,360	\$444.44
Retail Trade	164	1,241	1,239	1,218	\$6,790,672	\$423.76
Transportation, Warehousing & Utilities	20	270	264	269	\$2,925,312	\$840.69
Information	13	96	96	96	\$769,948	\$616.95
Financial Activities	76	379	370	383	\$3,400,585	\$693.24
Professional & Business Services	65	230	210	214	\$1,370,435	\$483.57
Education & Health Services	95	963	970	969	\$7,233,998	\$575.25
Leisure & Hospitality	170	1,743	1,437	1,252	\$4,711,319	\$245.31
Local Government	25	1,045	1,048	1,063	\$7,012,930	\$512.79
State Government	11	106	108	107	\$765,626	\$550.41
Other	82	3,504	3,523	3,542	\$24,615,016	\$537.46

**TABLE 6. COUNTY SUMMARY
EMPLOYMENT AND TOTAL EARNINGS, BY INDUSTRY
FOURTH QUARTER 2008**

NORTH AMERICAN INDUSTRY CLASSIFICATION SYSTEM INDUSTRY GROUP	NUMBER OF EMPLOYING UNITS	EMPLOYMENT	EMPLOYMENT	EMPLOYMENT	TOTAL EARNINGS	AVERAGE
		OCTOBER	NOVEMBER	DECEMBER	OCTOBER - DECEMBER	WEEKLY EARNINGS
CHICOT COUNTY - TOTAL	412	3,567	3,491	3,417	\$22,557,247	\$496.95
Natural Resources & Mining	48	287	270	260	\$2,083,925	\$588.62
Construction	14	108	111	105	\$933,748	\$665.06
Manufacturing	11	472	431	385	\$1,886,489	\$338.00
Trade, Transportation & Utilities	70	568	557	552	\$3,859,492	\$531.10
Wholesale Trade	14	104	101	98	\$1,283,857	\$977.80
Retail Trade	47	393	394	383	\$1,866,138	\$368.07
Transportation, Warehousing & Utilities	9	71	62	71	\$709,497	\$802.60
Information	6	10	10	10	\$61,027	\$469.44
Financial Activities	29	171	173	178	\$1,489,444	\$658.46
Professional & Business Services	30	82	76	78	\$628,992	\$615.05
Education & Health Services	138	629	632	628	\$3,832,343	\$468.18
Leisure & Hospitality	21	140	125	138	\$317,119	\$181.59
Other Services	17	42	39	36	\$219,395	\$432.73
Local Government	17	718	728	707	\$5,186,168	\$555.88
State Government	11	340	339	340	\$2,059,105	\$466.32
CLARK COUNTY - TOTAL	634	9,860	9,789	9,767	\$68,204,435	\$535.07
Natural Resources & Mining	33	209	188	203	\$1,758,131	\$676.20
Construction	35	119	119	122	\$708,786	\$454.35
Manufacturing	34	2,329	2,255	2,273	\$18,825,427	\$633.56
Trade, Transportation & Utilities	145	1,574	1,571	1,566	\$9,847,704	\$482.39
Wholesale Trade	20	80	85	87	\$844,731	\$773.56
Retail Trade	102	1,200	1,192	1,194	\$6,448,167	\$414.96
Transportation, Warehousing & Utilities	23	294	294	285	\$2,554,806	\$675.34
Information	9	46	45	46	\$354,781	\$597.61
Financial Activities	85	363	354	359	\$2,741,392	\$587.95
Professional & Business Services	52	328	335	336	\$4,224,338	\$975.82
Education & Health Services	93	1,370	1,349	1,352	\$9,960,648	\$564.63
Leisure & Hospitality	58	1,049	1,055	1,032	\$3,057,302	\$224.98
Other Services	48	204	218	213	\$1,214,389	\$441.33
Local Government	27	1,006	1,030	1,008	\$6,859,220	\$520.01
State Government	15	1,263	1,270	1,257	\$8,652,317	\$526.83

**TABLE 6. COUNTY SUMMARY
EMPLOYMENT AND TOTAL EARNINGS, BY INDUSTRY
FOURTH QUARTER 2008**

NORTH AMERICAN INDUSTRY CLASSIFICATION SYSTEM INDUSTRY GROUP	NUMBER OF EMPLOYING UNITS	EMPLOYMENT	EMPLOYMENT	EMPLOYMENT	TOTAL EARNINGS	AVERAGE
		OCTOBER	NOVEMBER	DECEMBER	OCTOBER - DECEMBER	WEEKLY EARNINGS
CLAY COUNTY - TOTAL	422	3,993	3,976	3,920	\$26,231,930	\$509.17
Natural Resources & Mining	61	243	223	193	\$1,425,873	\$499.31
Construction	32	136	165	141	\$1,109,784	\$579.42
Manufacturing	17	625	614	632	\$4,326,293	\$533.61
Trade, Transportation & Utilities	98	959	951	943	\$7,054,536	\$570.62
Wholesale Trade	22	338	345	352	\$2,922,442	\$651.60
Retail Trade	49	420	421	423	\$2,302,500	\$420.37
Transportation, Warehousing & Utilities	27	201	185	168	\$1,829,594	\$762.12
Information	4	65	64	62	\$366,456	\$442.76
Financial Activities	33	127	129	130	\$1,085,430	\$648.92
Professional & Business Services	27	50	52	53	\$397,630	\$592.00
Education & Health Services	65	526	523	518	\$3,061,475	\$450.86
Leisure & Hospitality	23	196	186	188	\$446,566	\$180.80
Other Services	28	71	70	73	\$480,729	\$518.40
Local Government	22	918	922	910	\$6,031,732	\$506.16
State Government	12	77	77	77	\$445,426	\$444.98
CLEBURNE COUNTY - TOTAL	708	6,905	6,735	6,771	\$48,539,083	\$548.79
Natural Resources & Mining	23	213	221	234	\$2,550,245	\$881.02
Construction	87	530	456	483	\$4,973,010	\$781.22
Manufacturing	40	1,272	1,163	1,163	\$9,664,888	\$619.89
Trade, Transportation & Utilities	183	1,552	1,547	1,536	\$10,655,879	\$530.54
Wholesale Trade	42	200	206	205	\$2,105,824	\$795.35
Retail Trade	111	995	992	995	\$5,385,287	\$416.75
Transportation, Warehousing & Utilities	30	357	349	336	\$3,164,768	\$700.89
Information	7	55	55	61	\$304,267	\$410.62
Financial Activities	76	312	314	319	\$2,798,652	\$683.43
Professional & Business Services	59	222	217	218	\$1,797,831	\$631.48
Education & Health Services	87	839	849	851	\$6,216,187	\$564.99
Leisure & Hospitality	68	843	836	832	\$2,576,463	\$236.79
Other Services	50	147	148	165	\$763,660	\$383.11
Local Government	18	795	807	792	\$5,453,516	\$525.69
State Government	10	125	122	117	\$784,485	\$497.35

**TABLE 6. COUNTY SUMMARY
EMPLOYMENT AND TOTAL EARNINGS, BY INDUSTRY
FOURTH QUARTER 2008**

NORTH AMERICAN INDUSTRY CLASSIFICATION SYSTEM INDUSTRY GROUP	NUMBER OF EMPLOYING UNITS	EMPLOYMENT OCTOBER	EMPLOYMENT NOVEMBER	EMPLOYMENT DECEMBER	TOTAL EARNINGS OCTOBER - DECEMBER	AVERAGE WEEKLY EARNINGS
CLEVELAND COUNTY - TOTAL	122	1,106	1,098	1,080	\$6,006,364	\$422.07
Natural Resources & Mining	15	181	171	176	\$1,226,033	\$535.85
Construction	9	24	26	26	\$119,823	\$363.84
Manufacturing	6	89	90	89	\$590,928	\$508.84
Trade, Transportation & Utilities	31	174	176	170	\$943,790	\$418.84
Retail Trade	16	77	79	76	\$231,786	\$230.56
Other Trade, Transportation & Utilities	15	97	97	94	\$712,004	\$570.52
Education & Health Services	29	119	119	120	\$511,960	\$330.01
Other Services	5	16	16	16	\$132,455	\$636.80
Local Government	11	348	349	339	\$1,725,912	\$384.45
State Government	8	63	63	62	\$368,959	\$452.90
Other	8	92	88	82	\$386,504	\$340.43
COLUMBIA COUNTY - TOTAL	744	9,137	9,106	9,054	\$80,953,268	\$684.38
Natural Resources & Mining	47	548	562	544	\$10,269,865	\$1,432.87
Construction	42	346	338	325	\$3,445,619	\$788.05
Manufacturing	38	2,472	2,420	2,404	\$28,045,720	\$887.07
Trade, Transportation & Utilities	168	1,455	1,457	1,474	\$10,196,358	\$536.48
Wholesale Trade	27	202	193	196	\$2,568,830	\$1,003.06
Retail Trade	108	980	991	1,012	\$4,983,461	\$385.53
Transportation, Warehousing & Utilities	33	273	273	266	\$2,644,067	\$751.44
Information	9	59	60	64	\$468,622	\$590.95
Financial Activities	78	401	400	393	\$4,200,080	\$811.77
Professional & Business Services	64	350	338	346	\$2,464,838	\$550.11
Education & Health Services	161	970	974	958	\$5,467,390	\$434.77
Leisure & Hospitality	48	595	599	590	\$1,976,255	\$255.64
Other Services	49	218	221	215	\$1,077,330	\$380.14
Local Government	26	1,138	1,146	1,149	\$8,270,767	\$555.97
State Government	14	585	591	592	\$5,070,424	\$661.82

**TABLE 6. COUNTY SUMMARY
EMPLOYMENT AND TOTAL EARNINGS, BY INDUSTRY
FOURTH QUARTER 2008**

NORTH AMERICAN INDUSTRY CLASSIFICATION SYSTEM INDUSTRY GROUP	NUMBER OF EMPLOYING UNITS	EMPLOYMENT	EMPLOYMENT	EMPLOYMENT	TOTAL EARNINGS	AVERAGE
		OCTOBER	NOVEMBER	DECEMBER	OCTOBER - DECEMBER	WEEKLY EARNINGS
CONWAY COUNTY - TOTAL	599	6,878	6,922	7,010	\$54,751,888	\$607.16
Natural Resources & Mining	26	247	246	250	\$3,343,847	\$1,038.57
Construction	57	527	517	567	\$6,561,790	\$939.95
Manufacturing	25	1,005	992	1,017	\$11,920,340	\$912.69
Trade, Transportation & Utilities	139	1,406	1,471	1,461	\$10,896,796	\$579.68
Wholesale Trade	23	201	205	205	\$2,477,632	\$935.78
Retail Trade	85	837	904	889	\$5,009,093	\$439.52
Transportation, Warehousing & Utilities	31	368	362	367	\$3,410,071	\$717.36
Information	5	13	13	14	\$167,903	\$968.67
Financial Activities	35	174	176	174	\$1,422,972	\$626.68
Professional & Business Services	44	560	562	585	\$2,712,351	\$366.68
Education & Health Services	156	941	937	918	\$6,003,938	\$495.54
Leisure & Hospitality	47	513	494	499	\$1,267,994	\$194.30
Other Services	26	153	156	166	\$1,449,079	\$704.01
Local Government	28	914	936	943	\$6,294,161	\$520.05
State Government	11	425	422	416	\$2,710,717	\$495.29
CRAIGHEAD COUNTY - TOTAL	2,657	42,749	42,502	42,575	\$362,171,674	\$653.84
Natural Resources & Mining	65	425	416	349	\$3,170,162	\$614.77
Construction	230	1,805	1,787	1,730	\$17,313,326	\$750.73
Manufacturing	138	6,992	6,941	6,846	\$67,862,472	\$753.67
Trade, Transportation & Utilities	718	8,627	8,762	8,826	\$64,010,195	\$563.48
Wholesale Trade	181	1,712	1,704	1,693	\$20,949,788	\$946.28
Retail Trade	423	5,701	5,875	5,948	\$31,122,141	\$409.84
Transportation, Warehousing & Utilities	114	1,214	1,183	1,185	\$11,938,266	\$769.12
Information	31	526	530	517	\$4,435,596	\$650.73
Financial Activities	263	1,622	1,602	1,609	\$17,378,878	\$829.82
Professional & Business Services	355	4,074	3,945	3,994	\$32,141,875	\$617.44
Education & Health Services	424	7,371	7,293	7,358	\$83,797,192	\$878.11
Leisure & Hospitality	201	4,025	3,984	4,046	\$12,273,763	\$234.96
Other Services	169	870	872	879	\$4,941,411	\$435.07
Local Government	38	3,816	3,823	3,802	\$29,415,275	\$593.32
State Government	25	2,596	2,547	2,619	\$25,431,529	\$756.10

**TABLE 6. COUNTY SUMMARY
EMPLOYMENT AND TOTAL EARNINGS, BY INDUSTRY
FOURTH QUARTER 2008**

NORTH AMERICAN INDUSTRY CLASSIFICATION SYSTEM INDUSTRY GROUP	NUMBER OF EMPLOYING UNITS	EMPLOYMENT OCTOBER	EMPLOYMENT NOVEMBER	EMPLOYMENT DECEMBER	TOTAL EARNINGS OCTOBER - DECEMBER	AVERAGE WEEKLY EARNINGS
CRAWFORD COUNTY - TOTAL	1,299	20,025	19,980	19,667	\$150,816,038	\$583.25
Natural Resources & Mining	28	394	401	400	\$4,884,277	\$943.21
Construction	192	1,289	1,249	1,226	\$12,440,925	\$762.75
Manufacturing	79	3,844	3,815	3,777	\$29,416,070	\$593.59
Trade, Transportation & Utilities	314	6,739	6,781	6,549	\$51,301,423	\$589.90
Wholesale Trade	80	757	765	762	\$8,029,917	\$811.32
Retail Trade	160	1,981	2,022	2,042	\$10,909,191	\$416.46
Transportation, Warehousing & Utilities	74	4,001	3,994	3,745	\$32,362,315	\$636.14
Information	11	171	164	162	\$1,380,010	\$640.77
Financial Activities	137	576	569	582	\$5,510,307	\$736.31
Professional & Business Services	168	1,283	1,260	1,231	\$9,309,324	\$569.24
Education & Health Services	153	1,490	1,517	1,494	\$11,382,943	\$583.61
Leisure & Hospitality	87	1,545	1,539	1,565	\$4,644,192	\$230.53
Other Services	79	381	378	384	\$2,714,197	\$547.99
Local Government	40	2,144	2,138	2,128	\$16,423,356	\$591.26
State Government	11	169	169	169	\$1,409,014	\$641.34
CRITTENDEN COUNTY - TOTAL	1,312	17,034	16,980	16,600	\$137,008,753	\$624.68
Natural Resources & Mining	41	318	302	268	\$3,335,749	\$866.88
Construction	70	552	627	564	\$6,428,516	\$851.12
Manufacturing	46	2,097	2,102	2,053	\$21,092,315	\$778.54
Trade, Transportation & Utilities	340	4,884	4,929	4,852	\$42,163,685	\$663.49
Wholesale Trade	80	805	823	830	\$10,651,824	\$1,000.05
Retail Trade	172	2,124	2,182	2,126	\$11,233,767	\$403.05
Transportation, Warehousing & Utilities	88	1,955	1,924	1,896	\$20,278,094	\$810.31
Information	7	71	72	71	\$605,166	\$652.59
Financial Activities	107	589	590	572	\$5,055,868	\$666.33
Professional & Business Services	135	939	836	780	\$6,345,016	\$573.09
Education & Health Services	305	2,186	2,163	2,161	\$18,168,831	\$644.06
Leisure & Hospitality	105	1,800	1,780	1,810	\$6,745,195	\$288.79
Other Services	95	590	571	551	\$3,541,237	\$477.34
Local Government	46	2,452	2,453	2,460	\$19,777,586	\$619.70
State Government	15	556	555	458	\$3,749,589	\$551.49

**TABLE 6. COUNTY SUMMARY
EMPLOYMENT AND TOTAL EARNINGS, BY INDUSTRY
FOURTH QUARTER 2008**

NORTH AMERICAN INDUSTRY CLASSIFICATION SYSTEM INDUSTRY GROUP	NUMBER OF EMPLOYING UNITS	EMPLOYMENT OCTOBER	EMPLOYMENT NOVEMBER	EMPLOYMENT DECEMBER	TOTAL EARNINGS OCTOBER - DECEMBER	AVERAGE WEEKLY EARNINGS
CROSS COUNTY - TOTAL	565	5,067	5,060	5,073	\$35,875,140	\$544.66
Natural Resources & Mining	38	240	237	213	\$1,353,974	\$452.83
Construction	33	155	147	148	\$1,063,346	\$545.31
Manufacturing	15	722	720	727	\$4,789,518	\$509.58
Trade, Transportation & Utilities	146	1,307	1,304	1,291	\$10,667,208	\$630.87
Wholesale Trade	28	290	296	296	\$3,317,416	\$867.98
Retail Trade	83	748	762	764	\$4,483,706	\$455.01
Transportation, Warehousing & Utilities	35	269	246	231	\$2,866,086	\$886.60
Information	4	40	41	43	\$296,040	\$550.94
Financial Activities	46	334	331	330	\$2,638,044	\$611.84
Professional & Business Services	47	131	137	137	\$1,187,872	\$676.85
Education & Health Services	132	740	754	756	\$5,320,447	\$545.69
Leisure & Hospitality	34	359	360	385	\$1,063,199	\$222.24
Other Services	42	74	72	73	\$378,896	\$399.26
Local Government	17	738	729	742	\$5,367,048	\$560.68
State Government	11	227	228	228	\$1,749,548	\$591.13
DALLAS COUNTY - TOTAL	276	3,377	3,380	3,401	\$23,639,305	\$537.04
Natural Resources & Mining	40	190	193	197	\$1,474,338	\$586.61
Construction	15	66	65	57	\$535,728	\$657.60
Manufacturing	16	939	927	931	\$7,711,293	\$636.23
Trade, Transportation & Utilities	62	454	451	459	\$3,201,238	\$541.60
Wholesale Trade	6	23	24	23	\$191,270	\$630.56
Retail Trade	42	343	338	345	\$2,287,784	\$514.57
Transportation, Warehousing & Utilities	14	88	89	91	\$722,184	\$621.86
Information	3	20	20	20	\$169,525	\$652.02
Financial Activities	20	104	101	100	\$848,191	\$641.76
Professional & Business Services	16	38	40	40	\$347,176	\$678.96
Education & Health Services	49	847	865	872	\$5,399,488	\$482.21
Leisure & Hospitality	15	128	125	118	\$305,649	\$190.12
Other Services	15	61	61	63	\$326,692	\$407.52
Local Government	16	456	453	465	\$2,874,449	\$482.78
State Government	9	74	79	79	\$445,538	\$443.17

**TABLE 6. COUNTY SUMMARY
EMPLOYMENT AND TOTAL EARNINGS, BY INDUSTRY
FOURTH QUARTER 2008**

NORTH AMERICAN INDUSTRY CLASSIFICATION SYSTEM INDUSTRY GROUP	NUMBER OF EMPLOYING UNITS	EMPLOYMENT	EMPLOYMENT	EMPLOYMENT	TOTAL EARNINGS	AVERAGE
		OCTOBER	NOVEMBER	DECEMBER	OCTOBER - DECEMBER	WEEKLY EARNINGS
DESHA COUNTY - TOTAL	492	4,735	4,529	4,489	\$35,020,437	\$587.63
Natural Resources & Mining	51	339	277	254	\$2,191,731	\$581.36
Construction	21	183	111	115	\$1,122,382	\$633.28
Manufacturing	19	934	912	911	\$10,426,066	\$872.69
Trade, Transportation & Utilities	121	957	893	867	\$6,771,451	\$575.14
Wholesale Trade	18	156	154	159	\$2,168,416	\$1,066.96
Retail Trade	77	552	543	554	\$2,934,367	\$410.65
Transportation, Warehousing & Utilities	26	249	196	154	\$1,668,668	\$642.87
Information	6	27	27	27	\$218,228	\$621.73
Financial Activities	45	201	203	207	\$1,744,129	\$658.74
Professional & Business Services	35	67	66	72	\$449,930	\$506.49
Education & Health Services	104	667	652	656	\$3,953,985	\$462.00
Leisure & Hospitality	36	276	269	265	\$641,910	\$182.88
Other Services	24	68	64	66	\$295,341	\$344.22
Local Government	19	840	873	869	\$5,980,874	\$534.55
State Government	11	176	182	180	\$1,224,410	\$525.20
DREW COUNTY - TOTAL	540	6,625	6,615	6,693	\$44,142,762	\$511.05
Natural Resources & Mining	42	352	322	333	\$3,051,241	\$699.24
Construction	22	112	106	99	\$674,686	\$491.16
Manufacturing	22	722	730	734	\$5,065,092	\$534.71
Trade, Transportation & Utilities	128	1,204	1,222	1,216	\$7,821,947	\$495.62
Wholesale Trade	20	182	186	187	\$1,697,786	\$705.94
Retail Trade	88	921	935	926	\$4,962,272	\$411.62
Transportation, Warehousing & Utilities	20	101	101	103	\$1,161,889	\$879.11
Information	7	71	73	70	\$507,111	\$546.85
Financial Activities	49	228	228	236	\$2,324,071	\$775.03
Professional & Business Services	51	306	307	319	\$2,253,669	\$558.02
Education & Health Services	113	949	951	976	\$5,382,801	\$431.91
Leisure & Hospitality	45	645	666	657	\$1,566,242	\$183.66
Other Services	21	61	64	68	\$350,950	\$419.63
Local Government	23	1,304	1,276	1,313	\$9,155,163	\$542.70
State Government	17	671	670	672	\$5,989,789	\$686.67

**TABLE 6. COUNTY SUMMARY
EMPLOYMENT AND TOTAL EARNINGS, BY INDUSTRY
FOURTH QUARTER 2008**

NORTH AMERICAN INDUSTRY CLASSIFICATION SYSTEM INDUSTRY GROUP	NUMBER OF EMPLOYING UNITS	EMPLOYMENT OCTOBER	EMPLOYMENT NOVEMBER	EMPLOYMENT DECEMBER	TOTAL EARNINGS OCTOBER - DECEMBER	AVERAGE WEEKLY EARNINGS
FAULKNER COUNTY - TOTAL	2,746	39,119	39,221	39,108	\$350,246,117	\$688.19
Natural Resources & Mining	41	951	939	941	\$19,911,740	\$1,623.11
Construction	379	2,766	2,744	2,723	\$27,844,705	\$780.48
Manufacturing	124	4,443	4,382	4,359	\$47,869,889	\$837.90
Trade, Transportation & Utilities	642	6,976	6,988	7,070	\$49,881,616	\$547.26
Wholesale Trade	173	931	921	918	\$10,638,169	\$886.27
Retail Trade	380	5,051	5,089	5,145	\$27,586,330	\$416.49
Transportation, Warehousing & Utilities	89	994	978	1,007	\$11,657,117	\$903.02
Information	32	373	378	375	\$3,824,640	\$783.84
Financial Activities	325	1,534	1,537	1,531	\$14,228,821	\$713.51
Professional & Business Services	376	4,770	4,783	4,767	\$61,607,016	\$992.81
Education & Health Services	410	5,595	5,649	5,649	\$49,549,074	\$676.87
Leisure & Hospitality	207	4,286	4,314	4,212	\$12,152,522	\$218.89
Other Services	152	615	621	632	\$4,243,965	\$524.29
Local Government	39	3,379	3,460	3,449	\$29,798,639	\$668.41
State Government	19	3,431	3,426	3,400	\$29,333,490	\$659.97
FRANKLIN COUNTY - TOTAL	327	4,215	4,246	4,230	\$33,066,620	\$601.27
Natural Resources & Mining	12	170	169	174	\$2,730,150	\$1,228.14
Construction	30	215	227	199	\$1,868,327	\$672.62
Manufacturing	22	930	945	940	\$8,075,724	\$662.04
Trade, Transportation & Utilities	85	811	810	825	\$6,616,733	\$624.26
Wholesale Trade	17	49	48	48	\$313,323	\$498.66
Retail Trade	48	479	476	489	\$2,713,017	\$433.57
Transportation, Warehousing & Utilities	20	283	286	288	\$3,590,393	\$966.81
Information	7	52	51	53	\$255,280	\$377.63
Financial Activities	30	238	239	239	\$1,856,898	\$598.48
Professional & Business Services	24	72	74	76	\$631,153	\$656.08
Education & Health Services	48	483	483	475	\$2,826,657	\$452.68
Leisure & Hospitality	22	279	282	278	\$803,426	\$220.98
Other Services	18	48	51	51	\$338,262	\$520.40
Local Government	19	790	787	793	\$5,892,623	\$573.77
State Government	10	127	128	127	\$1,171,387	\$707.64

**TABLE 6. COUNTY SUMMARY
EMPLOYMENT AND TOTAL EARNINGS, BY INDUSTRY
FOURTH QUARTER 2008**

NORTH AMERICAN INDUSTRY CLASSIFICATION SYSTEM INDUSTRY GROUP	NUMBER OF EMPLOYING UNITS	EMPLOYMENT OCTOBER	EMPLOYMENT NOVEMBER	EMPLOYMENT DECEMBER	TOTAL EARNINGS OCTOBER - DECEMBER	AVERAGE WEEKLY EARNINGS
FULTON COUNTY - TOTAL	239	1,964	1,942	1,981	\$11,425,289	\$447.87
Construction	14	18	19	24	\$171,263	\$647.91
Manufacturing	12	130	125	125	\$607,179	\$368.73
Trade, Transportation & Utilities	63	362	357	377	\$2,658,468	\$559.76
Wholesale Trade	13	64	64	65	\$418,988	\$500.98
Retail Trade	40	176	175	187	\$820,719	\$352.04
Transportation, Warehousing & Utilities	10	122	118	125	\$1,418,761	\$897.00
Financial Activities	14	96	86	90	\$651,038	\$552.35
Professional & Business Services	14	56	54	55	\$369,226	\$516.40
Education & Health Services	65	421	420	424	\$2,180,095	\$397.71
Leisure & Hospitality	19	152	160	148	\$381,474	\$191.37
Local Government	13	550	544	552	\$3,447,842	\$483.39
State Government	11	112	111	111	\$666,148	\$460.26
Other	14	67	66	75	\$292,556	\$324.58
GARLAND COUNTY - TOTAL	3,337	35,986	35,663	35,981	\$271,766,201	\$582.69
Natural Resources & Mining	45	383	382	377	\$3,254,376	\$657.63
Construction	432	2,181	2,174	2,179	\$17,044,746	\$601.99
Manufacturing	119	2,431	2,305	2,300	\$21,736,391	\$712.92
Trade, Transportation & Utilities	730	7,264	7,363	7,419	\$49,997,184	\$523.35
Wholesale Trade	163	1,032	1,026	1,025	\$10,456,427	\$782.69
Retail Trade	505	5,675	5,778	5,781	\$33,298,063	\$445.87
Transportation, Warehousing & Utilities	62	557	559	613	\$6,242,694	\$833.21
Information	39	381	380	390	\$3,476,758	\$697.07
Financial Activities	374	1,455	1,470	1,491	\$13,362,692	\$698.30
Professional & Business Services	434	3,384	3,341	3,480	\$25,361,830	\$573.52
Education & Health Services	493	7,201	7,211	7,260	\$74,817,675	\$796.68
Leisure & Hospitality	370	6,034	5,726	5,772	\$21,662,782	\$285.14
Other Services	239	966	956	959	\$5,458,406	\$437.22
Local Government	34	3,132	3,170	3,179	\$26,551,537	\$646.27
State Government	28	1,174	1,185	1,175	\$9,041,824	\$590.43

**TABLE 6. COUNTY SUMMARY
EMPLOYMENT AND TOTAL EARNINGS, BY INDUSTRY
FOURTH QUARTER 2008**

NORTH AMERICAN INDUSTRY CLASSIFICATION SYSTEM INDUSTRY GROUP	NUMBER OF EMPLOYING UNITS	EMPLOYMENT	EMPLOYMENT	EMPLOYMENT	TOTAL EARNINGS	AVERAGE WEEKLY EARNINGS
		OCTOBER	NOVEMBER	DECEMBER	OCTOBER - DECEMBER	
GRANT COUNTY - TOTAL	316	3,822	3,831	3,818	\$27,274,650	\$548.70
Natural Resources & Mining	22	158	154	158	\$1,919,625	\$942.53
Construction	31	206	202	193	\$1,767,960	\$678.85
Manufacturing	16	930	916	917	\$6,878,314	\$574.49
Trade, Transportation & Utilities	88	611	626	617	\$4,769,095	\$593.61
Wholesale Trade	20	143	142	145	\$2,043,732	\$1,096.82
Retail Trade	42	414	430	417	\$2,251,561	\$412.05
Transportation, Warehousing & Utilities	26	54	54	55	\$473,802	\$670.79
Information	5	27	25	25	\$262,883	\$787.86
Financial Activities	26	102	103	102	\$813,739	\$611.68
Professional & Business Services	27	86	81	80	\$1,026,681	\$959.22
Education & Health Services	45	466	460	461	\$2,485,289	\$413.50
Leisure & Hospitality	20	243	255	254	\$734,110	\$225.28
Other Services	17	45	45	49	\$207,094	\$343.82
Local Government	10	889	906	903	\$5,999,035	\$513.12
State Government	9	59	58	59	\$410,825	\$538.67
GREENE COUNTY - TOTAL	923	15,326	15,203	15,231	\$108,699,855	\$548.18
Natural Resources & Mining	35	230	212	192	\$1,959,178	\$713.12
Construction	82	401	386	364	\$3,167,566	\$635.08
Manufacturing	65	5,194	5,072	5,023	\$45,039,247	\$679.81
Trade, Transportation & Utilities	241	2,251	2,281	2,271	\$14,270,106	\$484.07
Wholesale Trade	56	419	413	398	\$3,568,215	\$669.46
Retail Trade	157	1,627	1,665	1,672	\$8,798,944	\$409.05
Transportation, Warehousing & Utilities	28	205	203	201	\$1,902,947	\$721.09
Information	12	100	104	103	\$490,787	\$368.92
Financial Activities	89	490	487	486	\$4,187,987	\$660.60
Professional & Business Services	94	1,747	1,769	1,927	\$9,143,628	\$387.67
Education & Health Services	147	1,806	1,780	1,780	\$12,512,534	\$538.11
Leisure & Hospitality	67	1,068	1,059	1,034	\$3,002,021	\$219.16
Other Services	50	177	171	181	\$1,003,707	\$437.85
Local Government	30	1,597	1,613	1,603	\$11,864,737	\$568.88
State Government	11	265	269	267	\$2,058,357	\$593.02

**TABLE 6. COUNTY SUMMARY
EMPLOYMENT AND TOTAL EARNINGS, BY INDUSTRY
FOURTH QUARTER 2008**

NORTH AMERICAN INDUSTRY CLASSIFICATION SYSTEM INDUSTRY GROUP	NUMBER OF EMPLOYING UNITS	EMPLOYMENT OCTOBER	EMPLOYMENT NOVEMBER	EMPLOYMENT DECEMBER	TOTAL EARNINGS OCTOBER - DECEMBER	AVERAGE WEEKLY EARNINGS
HEMPSTEAD COUNTY - TOTAL	498	7,843	7,870	7,898	\$58,492,108	\$571.69
Natural Resources & Mining	17	211	209	210	\$1,748,669	\$640.54
Construction	30	446	498	507	\$5,259,730	\$836.52
Manufacturing	27	2,035	1,991	1,980	\$17,446,230	\$670.34
Trade, Transportation & Utilities	134	1,283	1,311	1,302	\$9,135,487	\$541.12
Wholesale Trade	27	252	249	246	\$2,253,601	\$696.20
Retail Trade	86	889	896	895	\$4,529,802	\$390.05
Transportation, Warehousing & Utilities	21	142	166	161	\$2,352,084	\$1,157.33
Information	9	57	57	58	\$500,166	\$671.06
Financial Activities	42	231	230	235	\$1,999,694	\$663.03
Professional & Business Services	39	198	181	190	\$1,227,019	\$497.64
Education & Health Services	72	982	973	977	\$5,911,216	\$465.25
Leisure & Hospitality	44	584	590	601	\$1,577,613	\$205.11
Other Services	39	196	197	198	\$1,444,298	\$563.96
Local Government	29	1,046	1,058	1,063	\$7,799,686	\$568.34
State Government	16	574	575	577	\$4,442,300	\$593.94
HOT SPRING COUNTY - TOTAL	606	7,467	7,452	7,477	\$58,559,065	\$603.39
Natural Resources & Mining	30	208	204	206	\$1,380,235	\$515.40
Construction	69	325	327	310	\$2,717,680	\$651.93
Manufacturing	32	1,353	1,305	1,335	\$14,150,046	\$817.78
Trade, Transportation & Utilities	158	1,458	1,460	1,482	\$13,201,156	\$692.37
Wholesale Trade	21	90	91	90	\$3,387,158	\$2,884.32
Retail Trade	97	973	973	977	\$5,185,347	\$409.38
Transportation, Warehousing & Utilities	40	395	396	415	\$4,628,651	\$885.70
Information	8	54	59	54	\$502,255	\$694.04
Financial Activities	61	310	305	307	\$2,514,666	\$629.40
Professional & Business Services	49	192	209	210	\$1,323,545	\$499.89
Education & Health Services	83	1,114	1,124	1,124	\$8,461,285	\$580.79
Leisure & Hospitality	41	516	505	502	\$1,398,573	\$211.92
Other Services	35	171	177	170	\$864,906	\$385.32
Local Government	26	1,110	1,115	1,113	\$7,681,005	\$531.02
State Government	14	656	662	664	\$4,363,713	\$508.08

**TABLE 6. COUNTY SUMMARY
EMPLOYMENT AND TOTAL EARNINGS, BY INDUSTRY
FOURTH QUARTER 2008**

NORTH AMERICAN INDUSTRY CLASSIFICATION SYSTEM INDUSTRY GROUP	NUMBER OF EMPLOYING UNITS	EMPLOYMENT OCTOBER	EMPLOYMENT NOVEMBER	EMPLOYMENT DECEMBER	TOTAL EARNINGS OCTOBER - DECEMBER	AVERAGE WEEKLY EARNINGS
HOWARD COUNTY - TOTAL	365	7,486	7,530	7,548	\$52,323,168	\$535.13
Natural Resources & Mining	24	235	236	235	\$1,970,017	\$643.94
Construction	21	117	121	112	\$1,143,981	\$754.27
Manufacturing	23	4,090	4,058	4,096	\$30,072,630	\$566.79
Trade, Transportation & Utilities	103	933	963	963	\$6,354,594	\$512.92
Wholesale Trade	18	81	82	82	\$889,836	\$838.15
Retail Trade	62	618	641	636	\$3,227,793	\$393.07
Transportation, Warehousing & Utilities	23	234	240	245	\$2,236,965	\$717.97
Information	5	37	36	37	\$242,880	\$509.54
Financial Activities	40	162	156	164	\$1,089,088	\$521.43
Professional & Business Services	26	105	118	125	\$814,662	\$540.23
Education & Health Services	51	548	560	559	\$3,367,863	\$466.23
Leisure & Hospitality	20	298	305	286	\$780,350	\$202.57
Other Services	22	110	110	111	\$652,596	\$454.98
Local Government	18	703	719	713	\$4,842,265	\$523.39
State Government	12	148	148	147	\$992,242	\$516.88
INDEPENDENCE COUNTY - TOTAL	941	15,292	15,134	15,188	\$121,237,209	\$613.36
Natural Resources & Mining	13	103	120	121	\$1,178,805	\$790.79
Construction	67	480	439	432	\$3,496,391	\$597.23
Manufacturing	54	3,798	3,715	3,787	\$37,268,462	\$761.10
Trade, Transportation & Utilities	250	2,928	2,939	2,969	\$23,345,635	\$609.72
Wholesale Trade	49	524	502	500	\$4,429,143	\$669.80
Retail Trade	154	1,585	1,614	1,638	\$9,065,984	\$432.53
Transportation, Warehousing & Utilities	47	819	823	831	\$9,850,508	\$919.21
Information	9	142	140	141	\$1,082,563	\$590.60
Financial Activities	88	487	493	491	\$4,151,319	\$651.26
Professional & Business Services	95	853	771	740	\$4,508,249	\$440.09
Education & Health Services	170	2,947	2,952	2,971	\$27,632,023	\$718.90
Leisure & Hospitality	66	1,026	997	967	\$2,792,448	\$215.52
Other Services	65	368	371	376	\$1,831,727	\$379.11
Local Government	47	1,642	1,676	1,680	\$9,974,559	\$460.55
State Government	17	518	521	513	\$3,975,028	\$591.05

**TABLE 6. COUNTY SUMMARY
EMPLOYMENT AND TOTAL EARNINGS, BY INDUSTRY
FOURTH QUARTER 2008**

NORTH AMERICAN INDUSTRY CLASSIFICATION SYSTEM INDUSTRY GROUP	NUMBER OF EMPLOYING UNITS	EMPLOYMENT OCTOBER	EMPLOYMENT NOVEMBER	EMPLOYMENT DECEMBER	TOTAL EARNINGS OCTOBER - DECEMBER	AVERAGE WEEKLY EARNINGS
IZARD COUNTY - TOTAL	288	3,160	3,122	3,096	\$19,475,937	\$479.25
Natural Resources & Mining	4	90	90	92	\$789,798	\$670.08
Construction	27	85	90	90	\$592,270	\$515.76
Trade, Transportation & Utilities	68	515	505	518	\$3,051,960	\$457.93
Retail Trade	49	387	381	395	\$1,947,040	\$386.34
Other Trade, Transportation & Utilities	19	128	124	123	\$1,104,920	\$679.95
Financial Activities	30	152	150	148	\$1,445,855	\$741.46
Professional & Business Services	22	87	83	77	\$506,324	\$473.05
Education & Health Services	66	634	640	631	\$3,524,498	\$426.95
Leisure & Hospitality	18	197	182	170	\$366,382	\$154.01
Local Government	18	553	558	544	\$3,433,541	\$478.76
State Government	11	484	480	488	\$3,087,495	\$490.70
Other	24	363	344	338	\$2,677,814	\$591.35
JACKSON COUNTY - TOTAL	513	5,801	5,695	5,524	\$43,156,232	\$585.14
Natural Resources & Mining	49	252	228	206	\$1,670,733	\$562.03
Construction	22	102	118	97	\$1,292,181	\$940.68
Manufacturing	25	1,300	1,249	1,155	\$10,905,147	\$679.42
Trade, Transportation & Utilities	116	1,099	1,084	1,058	\$8,129,401	\$578.84
Wholesale Trade	26	190	193	202	\$2,331,590	\$919.76
Retail Trade	71	658	656	662	\$3,840,117	\$448.47
Transportation, Warehousing & Utilities	19	251	235	194	\$1,957,694	\$664.38
Information	4	35	33	35	\$247,815	\$555.22
Financial Activities	40	160	159	164	\$1,264,064	\$603.95
Professional & Business Services	36	125	128	133	\$977,822	\$584.59
Education & Health Services	115	844	860	838	\$7,024,879	\$637.74
Leisure & Hospitality	30	277	270	259	\$782,199	\$223.95
Other Services	30	86	84	83	\$471,190	\$429.79
Local Government	32	743	699	711	\$4,596,847	\$492.71
State Government	14	778	783	785	\$5,793,954	\$569.93

**TABLE 6. COUNTY SUMMARY
EMPLOYMENT AND TOTAL EARNINGS, BY INDUSTRY
FOURTH QUARTER 2008**

NORTH AMERICAN INDUSTRY CLASSIFICATION SYSTEM INDUSTRY GROUP	NUMBER OF EMPLOYING UNITS	EMPLOYMENT OCTOBER	EMPLOYMENT NOVEMBER	EMPLOYMENT DECEMBER	TOTAL EARNINGS OCTOBER - DECEMBER	AVERAGE WEEKLY EARNINGS
JEFFERSON COUNTY - TOTAL	2,048	30,538	30,597	30,632	\$268,790,556	\$675.94
Natural Resources & Mining	47	509	518	503	\$5,380,485	\$811.54
Construction	125	1,337	1,330	1,257	\$17,403,610	\$1,023.50
Manufacturing	70	5,769	5,750	5,750	\$65,604,852	\$876.69
Trade, Transportation & Utilities	439	5,365	5,422	5,510	\$43,341,644	\$613.73
Wholesale Trade	81	1,017	1,023	1,039	\$11,689,522	\$876.12
Retail Trade	295	3,503	3,543	3,629	\$20,847,777	\$450.68
Transportation, Warehousing & Utilities	63	845	856	842	\$10,804,345	\$980.46
Information	13	137	142	142	\$1,214,226	\$665.57
Financial Activities	160	1,184	1,168	1,174	\$11,216,856	\$734.12
Professional & Business Services	184	1,548	1,520	1,528	\$13,800,847	\$692.95
Education & Health Services	640	5,175	5,202	5,216	\$46,677,115	\$690.80
Leisure & Hospitality	147	2,141	2,149	2,120	\$6,195,099	\$223.03
Other Services	137	640	647	654	\$4,541,324	\$539.93
Local Government	44	3,360	3,352	3,353	\$25,712,559	\$589.53
State Government	42	3,373	3,397	3,425	\$27,701,939	\$627.05
JOHNSON COUNTY - TOTAL	474	8,995	9,005	8,998	\$63,556,766	\$543.26
Natural Resources & Mining	18	264	270	270	\$2,608,211	\$748.63
Construction	27	142	138	135	\$1,144,311	\$636.32
Manufacturing	44	3,087	3,072	3,044	\$20,850,214	\$522.83
Trade, Transportation & Utilities	119	2,177	2,190	2,190	\$16,258,963	\$572.22
Retail Trade	80	922	943	945	\$4,811,028	\$395.10
Other Trade, Transportation & Utilities	39	1,255	1,247	1,245	\$11,447,935	\$705.05
Information	5	33	33	33	\$253,099	\$589.97
Financial Activities	47	208	211	224	\$1,764,925	\$633.42
Professional & Business Services	50	158	158	163	\$1,287,786	\$620.42
Education & Health Services	81	1,157	1,162	1,161	\$9,010,162	\$597.49
Leisure & Hospitality	35	533	520	514	\$1,374,169	\$202.37
Other Services	24	58	59	65	\$385,298	\$488.54
Local Government	14	1,011	1,025	1,031	\$7,350,705	\$553.09
State Government	10	167	167	168	\$1,268,923	\$583.32

**TABLE 6. COUNTY SUMMARY
EMPLOYMENT AND TOTAL EARNINGS, BY INDUSTRY
FOURTH QUARTER 2008**

NORTH AMERICAN INDUSTRY CLASSIFICATION SYSTEM INDUSTRY GROUP	NUMBER OF EMPLOYING UNITS	EMPLOYMENT OCTOBER	EMPLOYMENT NOVEMBER	EMPLOYMENT DECEMBER	TOTAL EARNINGS OCTOBER - DECEMBER	AVERAGE WEEKLY EARNINGS
LAFAYETTE COUNTY - TOTAL	180	1,388	1,404	1,403	\$9,809,617	\$539.63
Natural Resources & Mining	39	175	173	175	\$1,651,067	\$728.52
Construction	9	59	59	62	\$932,379	\$1,195.36
Manufacturing	6	41	37	36	\$544,565	\$1,102.36
Trade, Transportation & Utilities	32	183	186	179	\$1,332,159	\$560.99
Wholesale Trade	6	33	34	34	\$314,010	\$717.46
Retail Trade	19	122	125	121	\$648,866	\$406.90
Transportation, Warehousing & Utilities	7	28	27	24	\$369,283	\$1,078.72
Financial Activities	18	64	66	66	\$402,940	\$474.42
Professional & Business Services	10	87	97	95	\$673,460	\$557.04
Education & Health Services	33	256	254	255	\$1,181,534	\$356.42
Leisure & Hospitality	6	54	56	56	\$214,742	\$298.53
Local Government	13	325	328	333	\$2,020,914	\$472.99
State Government	8	55	56	57	\$351,290	\$482.54
Other	6	89	92	89	\$504,567	\$431.25
LAWRENCE COUNTY - TOTAL	440	4,027	4,047	3,986	\$25,679,102	\$491.37
Natural Resources & Mining	38	175	167	171	\$1,443,430	\$649.32
Construction	25	71	68	69	\$430,708	\$477.86
Manufacturing	23	481	496	432	\$3,204,248	\$524.80
Trade, Transportation & Utilities	124	838	823	823	\$5,610,613	\$521.24
Wholesale Trade	20	186	179	186	\$1,550,654	\$649.44
Retail Trade	64	506	497	499	\$2,601,236	\$399.66
Transportation, Warehousing & Utilities	40	146	147	138	\$1,458,723	\$781.04
Financial Activities	36	158	154	160	\$1,138,172	\$556.47
Professional & Business Services	23	96	98	97	\$824,592	\$653.92
Education & Health Services	85	509	509	493	\$3,281,293	\$501.14
Leisure & Hospitality	24	329	353	351	\$733,617	\$163.89
Local Government	28	1,187	1,198	1,197	\$7,901,849	\$509.07
State Government	11	120	120	122	\$724,590	\$461.91
Other	23	63	61	71	\$385,990	\$456.79

**TABLE 6. COUNTY SUMMARY
EMPLOYMENT AND TOTAL EARNINGS, BY INDUSTRY
FOURTH QUARTER 2008**

NORTH AMERICAN INDUSTRY CLASSIFICATION SYSTEM INDUSTRY GROUP	NUMBER OF EMPLOYING UNITS	EMPLOYMENT OCTOBER	EMPLOYMENT NOVEMBER	EMPLOYMENT DECEMBER	TOTAL EARNINGS OCTOBER - DECEMBER	AVERAGE WEEKLY EARNINGS
LEE COUNTY - TOTAL	293	2,261	2,223	2,100	\$14,679,658	\$514.52
Natural Resources & Mining	34	322	303	206	\$1,974,307	\$548.27
Construction	10	46	42	43	\$344,074	\$606.12
Trade, Transportation & Utilities	53	387	375	368	\$2,460,293	\$502.44
Wholesale Trade	8	72	70	69	\$673,240	\$736.32
Retail Trade	28	210	201	201	\$965,812	\$364.18
Transportation, Warehousing & Utilities	17	105	104	98	\$821,241	\$617.32
Financial Activities	18	88	84	82	\$639,977	\$581.44
Professional & Business Services	14	73	72	74	\$897,868	\$946.12
Education & Health Services	111	377	388	375	\$2,326,697	\$470.99
Leisure & Hospitality	8	76	69	67	\$186,133	\$202.61
Local Government	15	346	344	343	\$2,158,016	\$482.09
State Government	8	501	503	500	\$3,411,058	\$523.38
Other	22	45	43	42	\$281,235	\$499.23
LINCOLN COUNTY - TOTAL	262	2,997	2,982	2,965	\$20,922,795	\$539.84
Natural Resources & Mining	34	223	193	174	\$1,866,678	\$730.12
Construction	13	67	67	66	\$412,370	\$475.81
Manufacturing	10	357	347	354	\$2,762,412	\$602.53
Trade, Transportation & Utilities	49	346	355	350	\$2,723,924	\$598.10
Wholesale Trade	8	26	31	25	\$273,598	\$769.98
Retail Trade	25	190	190	194	\$844,010	\$339.32
Transportation, Warehousing & Utilities	16	130	134	131	\$1,606,316	\$938.45
Financial Activities	22	72	72	73	\$590,737	\$628.22
Professional & Business Services	12	26	25	24	\$215,796	\$663.99
Education & Health Services	72	370	375	383	\$2,068,576	\$423.19
Leisure & Hospitality	16	159	156	155	\$343,243	\$168.53
Local & State Government	20	1,340	1,357	1,350	\$9,740,824	\$555.44
Other	14	37	35	36	\$198,235	\$423.58

**TABLE 6. COUNTY SUMMARY
EMPLOYMENT AND TOTAL EARNINGS, BY INDUSTRY
FOURTH QUARTER 2008**

NORTH AMERICAN INDUSTRY CLASSIFICATION SYSTEM INDUSTRY GROUP	NUMBER OF EMPLOYING UNITS	EMPLOYMENT OCTOBER	EMPLOYMENT NOVEMBER	EMPLOYMENT DECEMBER	TOTAL EARNINGS OCTOBER - DECEMBER	AVERAGE WEEKLY EARNINGS
LITTLE RIVER COUNTY - TOTAL	259	4,747	4,720	4,817	\$54,427,664	\$879.32
Natural Resources & Mining	12	74	74	79	\$575,963	\$585.53
Construction	25	951	983	1,097	\$15,770,340	\$1,200.70
Manufacturing	18	1,388	1,338	1,359	\$23,424,041	\$1,323.27
Trade, Transportation & Utilities	60	677	673	648	\$4,102,248	\$473.81
Retail Trade	36	415	402	400	\$2,046,911	\$388.14
Other Trade, Transportation & Utilities	24	262	271	248	\$2,055,337	\$607.31
Financial Activities	23	98	99	98	\$664,887	\$520.12
Professional & Business Services	22	135	129	119	\$859,804	\$518.06
Education & Health Services	33	177	185	177	\$1,247,880	\$534.27
Leisure & Hospitality	17	212	213	211	\$558,541	\$202.66
Local Government	20	839	833	837	\$6,185,483	\$568.92
State Government	12	98	98	97	\$604,450	\$476.07
Other	17	98	95	95	\$434,027	\$347.78
LOGAN COUNTY - TOTAL	511	5,595	5,629	5,672	\$38,971,969	\$532.29
Natural Resources & Mining	22	168	167	169	\$2,368,361	\$1,084.41
Construction	52	201	212	200	\$1,672,527	\$629.64
Manufacturing	30	1,265	1,245	1,247	\$9,895,049	\$607.79
Trade, Transportation & Utilities	117	844	876	896	\$5,706,995	\$503.44
Wholesale Trade	16	28	28	39	\$246,620	\$599.08
Retail Trade	75	709	738	748	\$4,215,136	\$443.15
Transportation, Warehousing & Utilities	26	107	110	109	\$1,245,239	\$881.48
Information	7	41	43	43	\$338,324	\$614.76
Financial Activities	46	269	274	273	\$2,918,800	\$825.45
Professional & Business Services	46	116	123	128	\$768,496	\$483.23
Education & Health Services	95	797	787	804	\$5,147,317	\$497.42
Leisure & Hospitality	32	338	330	335	\$838,682	\$192.96
Other Services	27	86	85	85	\$501,479	\$452.05
Local & State Government	37	1,470	1,487	1,492	\$8,815,939	\$457.28

**TABLE 6. COUNTY SUMMARY
EMPLOYMENT AND TOTAL EARNINGS, BY INDUSTRY
FOURTH QUARTER 2008**

NORTH AMERICAN INDUSTRY CLASSIFICATION SYSTEM INDUSTRY GROUP	NUMBER OF EMPLOYING UNITS	EMPLOYMENT OCTOBER	EMPLOYMENT NOVEMBER	EMPLOYMENT DECEMBER	TOTAL EARNINGS OCTOBER - DECEMBER	AVERAGE WEEKLY EARNINGS
LONOKE COUNTY - TOTAL	1,363	12,694	12,595	12,523	\$93,352,190	\$569.73
Natural Resources & Mining	75	490	487	439	\$4,761,256	\$775.95
Construction	178	958	939	911	\$9,591,822	\$788.28
Manufacturing	40	1,281	1,192	1,154	\$12,697,297	\$807.87
Trade, Transportation & Utilities	360	2,770	2,805	2,770	\$19,846,761	\$548.83
Wholesale Trade	85	479	486	475	\$5,655,439	\$906.32
Retail Trade	201	1,997	2,031	2,031	\$11,406,887	\$434.45
Transportation, Warehousing & Utilities	74	294	288	264	\$2,784,435	\$759.53
Information	16	85	86	90	\$1,226,679	\$1,084.60
Financial Activities	139	517	510	510	\$5,494,960	\$825.03
Professional & Business Services	148	575	565	587	\$4,513,914	\$603.17
Education & Health Services	179	1,460	1,509	1,510	\$10,210,410	\$526.07
Leisure & Hospitality	108	1,541	1,515	1,542	\$3,987,568	\$200.13
Other Services	76	196	196	198	\$1,218,337	\$476.53
Local Government	28	2,668	2,638	2,659	\$18,755,973	\$543.42
State Government	16	153	153	153	\$1,047,213	\$526.50
MADISON COUNTY - TOTAL	262	3,166	3,160	3,145	\$20,934,015	\$510.08
Natural Resources & Mining	12	41	41	38	\$280,253	\$538.95
Construction	42	84	83	72	\$523,193	\$505.18
Manufacturing	22	1,155	1,173	1,177	\$7,995,555	\$526.43
Trade, Transportation & Utilities	59	604	602	584	\$3,832,769	\$494.13
Wholesale Trade	10	29	26	25	\$215,740	\$622.33
Retail Trade	37	435	438	427	\$2,344,506	\$416.18
Transportation, Warehousing & Utilities	12	140	138	132	\$1,272,523	\$716.24
Financial Activities	17	74	76	76	\$620,486	\$633.58
Professional & Business Services	19	131	127	130	\$716,281	\$426.02
Education & Health Services	41	240	238	241	\$1,366,127	\$438.47
Leisure & Hospitality	14	114	106	105	\$230,847	\$163.92
Local Government	9	598	589	596	\$4,277,673	\$553.65
State Government	8	57	57	57	\$391,690	\$528.60
Other	19	68	68	69	\$699,141	\$787.03

**TABLE 6. COUNTY SUMMARY
EMPLOYMENT AND TOTAL EARNINGS, BY INDUSTRY
FOURTH QUARTER 2008**

NORTH AMERICAN INDUSTRY CLASSIFICATION SYSTEM INDUSTRY GROUP	NUMBER OF EMPLOYING UNITS	EMPLOYMENT	EMPLOYMENT	EMPLOYMENT	TOTAL EARNINGS	AVERAGE WEEKLY EARNINGS
		OCTOBER	NOVEMBER	DECEMBER	OCTOBER - DECEMBER	
MARION COUNTY - TOTAL	315	4,009	3,956	3,770	\$25,084,152	\$493.28
Natural Resources & Mining	6	46	48	53	\$310,427	\$487.33
Construction	27	81	74	74	\$436,099	\$439.47
Manufacturing	22	1,632	1,598	1,464	\$10,514,930	\$516.94
Trade, Transportation & Utilities	55	611	616	611	\$3,503,822	\$439.92
Wholesale Trade	8	31	34	31	\$416,691	\$1,001.66
Retail Trade	37	454	455	461	\$2,214,250	\$372.98
Transportation, Warehousing & Utilities	10	126	127	119	\$872,881	\$541.49
Financial Activities	37	202	195	188	\$1,379,259	\$544.09
Professional & Business Services	28	51	55	53	\$500,327	\$726.16
Education & Health Services	57	369	357	356	\$2,173,404	\$463.54
Leisure & Hospitality	38	229	224	218	\$624,097	\$214.64
Local Government	20	553	560	562	\$3,733,196	\$514.33
State Government	8	110	109	107	\$687,553	\$486.71
Other	17	125	120	84	\$1,221,038	\$856.47
MILLER COUNTY - TOTAL	846	13,002	12,886	12,922	\$107,196,677	\$637.41
Natural Resources & Mining	27	136	137	139	\$1,086,485	\$608.56
Construction	89	847	798	810	\$6,567,980	\$617.39
Manufacturing	33	2,327	2,318	2,317	\$28,666,658	\$950.21
Trade, Transportation & Utilities	230	3,340	3,361	3,372	\$29,792,590	\$682.54
Wholesale Trade	55	516	525	519	\$9,153,208	\$1,354.02
Retail Trade	134	1,348	1,354	1,338	\$7,550,247	\$431.28
Transportation, Warehousing & Utilities	41	1,476	1,482	1,515	\$13,089,135	\$675.29
Information	8	90	92	94	\$1,706,861	\$1,427.14
Financial Activities	77	324	318	327	\$3,359,138	\$799.99
Professional & Business Services	86	927	889	875	\$5,749,375	\$493.04
Education & Health Services	116	1,060	1,058	1,065	\$7,393,634	\$536.04
Leisure & Hospitality	81	1,339	1,296	1,286	\$4,207,329	\$247.62
Other Services	56	337	334	327	\$1,640,246	\$379.28
Local Government	26	1,758	1,769	1,795	\$12,758,418	\$553.22
State Government	17	517	516	515	\$4,267,963	\$636.25

**TABLE 6. COUNTY SUMMARY
EMPLOYMENT AND TOTAL EARNINGS, BY INDUSTRY
FOURTH QUARTER 2008**

NORTH AMERICAN INDUSTRY CLASSIFICATION SYSTEM INDUSTRY GROUP	NUMBER OF EMPLOYING UNITS	EMPLOYMENT OCTOBER	EMPLOYMENT NOVEMBER	EMPLOYMENT DECEMBER	TOTAL EARNINGS OCTOBER - DECEMBER	AVERAGE WEEKLY EARNINGS
MISSISSIPPI COUNTY - TOTAL	1,222	20,087	19,942	19,344	\$185,639,830	\$721.54
Natural Resources & Mining	96	984	945	621	\$7,418,710	\$671.38
Construction	68	754	735	688	\$8,463,252	\$897.13
Manufacturing	59	6,082	6,050	5,964	\$85,713,724	\$1,093.06
Trade, Transportation & Utilities	293	2,942	2,957	2,928	\$22,072,890	\$577.06
Wholesale Trade	66	498	483	483	\$5,818,692	\$917.20
Retail Trade	176	1,825	1,858	1,844	\$9,438,504	\$394.09
Transportation, Warehousing & Utilities	51	619	616	601	\$6,815,694	\$856.67
Financial Activities	102	583	584	594	\$4,752,659	\$622.81
Professional & Business Services	102	1,199	1,116	1,056	\$9,610,756	\$657.93
Education & Health Services	268	1,662	1,630	1,615	\$11,101,456	\$522.09
Leisure & Hospitality	84	1,255	1,263	1,236	\$3,321,302	\$204.17
Local Government	46	2,339	2,329	2,320	\$16,676,125	\$550.71
State Government	24	673	678	674	\$4,607,579	\$525.08
Other	80	1,614	1,655	1,648	\$11,901,377	\$558.57
MONROE COUNTY - TOTAL	325	2,278	2,269	2,236	\$14,742,763	\$501.57
Natural Resources & Mining	34	149	146	131	\$853,707	\$462.46
Construction	12	35	35	34	\$186,755	\$414.40
Manufacturing	7	114	109	108	\$881,442	\$614.53
Trade, Transportation & Utilities	86	628	623	617	\$5,531,950	\$683.41
Wholesale Trade	21	147	146	139	\$1,730,352	\$924.33
Retail Trade	42	321	315	314	\$2,215,943	\$538.29
Transportation, Warehousing & Utilities	23	160	162	164	\$1,585,655	\$752.92
Financial Activities	16	87	86	87	\$744,864	\$661.12
Professional & Business Services	15	39	39	37	\$263,648	\$529.06
Education & Health Services	72	364	363	372	\$1,725,543	\$362.33
Leisure & Hospitality	26	235	242	236	\$638,095	\$206.53
Local Government	22	387	390	376	\$2,569,968	\$514.37
State Government	9	138	137	136	\$814,740	\$457.46
Other	26	102	99	102	\$532,051	\$405.22

**TABLE 6. COUNTY SUMMARY
EMPLOYMENT AND TOTAL EARNINGS, BY INDUSTRY
FOURTH QUARTER 2008**

NORTH AMERICAN INDUSTRY CLASSIFICATION SYSTEM INDUSTRY GROUP	NUMBER OF EMPLOYING UNITS	EMPLOYMENT OCTOBER	EMPLOYMENT NOVEMBER	EMPLOYMENT DECEMBER	TOTAL EARNINGS OCTOBER - DECEMBER	AVERAGE WEEKLY EARNINGS
MONTGOMERY COUNTY - TOTAL	189	1,515	1,528	1,510	\$9,300,332	\$471.39
Natural Resources & Mining	12	52	51	51	\$559,722	\$838.74
Construction	21	89	85	83	\$723,480	\$649.64
Manufacturing	11	150	146	145	\$735,464	\$384.86
Trade, Transportation & Utilities	47	222	256	254	\$1,535,890	\$484.20
Wholesale Trade	12	78	74	79	\$499,630	\$499.13
Retail Trade	25	134	171	168	\$981,927	\$479.07
Transportation, Warehousing & Utilities	10	10	11	7	\$54,333	\$447.80
Financial Activities	11	70	68	69	\$568,600	\$633.89
Professional & Business Services	15	32	35	53	\$236,888	\$455.55
Education & Health Services	18	65	68	70	\$423,625	\$481.57
Leisure & Hospitality	23	222	194	152	\$751,200	\$305.20
Local Government	9	496	507	513	\$3,066,105	\$466.73
State Government	8	52	53	55	\$396,796	\$572.30
Other	14	65	65	65	\$302,562	\$358.06
NEVADA COUNTY - TOTAL	190	2,353	2,376	2,388	\$16,627,937	\$539.16
Natural Resources & Mining	12	28	28	37	\$309,863	\$768.89
Trade, Transportation & Utilities	41	498	501	509	\$3,259,216	\$498.76
Retail Trade	28	275	274	279	\$1,252,787	\$349.16
Other Trade, Transportation & Utilities	13	223	227	230	\$2,006,429	\$680.91
Financial Activities	15	62	65	65	\$517,085	\$621.50
Professional & Business Services	9	39	41	42	\$308,265	\$583.10
Education & Health Services	22	401	407	409	\$2,364,442	\$448.35
Leisure & Hospitality	12	99	96	99	\$259,579	\$203.75
Other Services	18	63	69	69	\$247,916	\$284.63
Local Government	28	506	510	497	\$2,840,712	\$433.28
State Government	11	85	85	86	\$566,106	\$510.31
Other	22	572	574	575	\$5,954,753	\$798.47

**TABLE 6. COUNTY SUMMARY
EMPLOYMENT AND TOTAL EARNINGS, BY INDUSTRY
FOURTH QUARTER 2008**

NORTH AMERICAN INDUSTRY CLASSIFICATION SYSTEM INDUSTRY GROUP	NUMBER OF EMPLOYING UNITS	EMPLOYMENT OCTOBER	EMPLOYMENT NOVEMBER	EMPLOYMENT DECEMBER	TOTAL EARNINGS OCTOBER - DECEMBER	AVERAGE WEEKLY EARNINGS
NEWTON COUNTY - TOTAL	130	1,064	1,041	1,044	\$5,449,706	\$399.37
Construction	7	24	25	26	\$135,052	\$415.54
Manufacturing	16	69	61	62	\$434,779	\$522.57
Trade, Transportation & Utilities	26	146	148	145	\$874,875	\$459.90
Retail Trade	13	92	92	91	\$436,145	\$366.00
Other Trade, Transportation & Utilities	13	54	56	54	\$438,730	\$617.35
Education & Health Services	26	220	218	230	\$924,095	\$319.24
Leisure & Hospitality	18	70	66	58	\$201,825	\$240.08
Other Services	4	8	3	6	\$26,862	\$364.64
Local Government	13	388	381	380	\$2,124,426	\$426.68
State Government	7	99	99	97	\$465,463	\$364.12
Other	13	40	40	40	\$262,329	\$504.48
OUACHITA COUNTY - TOTAL	659	7,581	7,563	7,596	\$55,227,098	\$560.45
Natural Resources & Mining	47	261	251	253	\$2,217,642	\$668.97
Construction	45	263	256	258	\$1,992,980	\$591.92
Manufacturing	31	889	878	909	\$7,952,735	\$685.82
Trade, Transportation & Utilities	170	1,765	1,789	1,819	\$12,957,656	\$556.53
Wholesale Trade	28	232	236	229	\$2,559,508	\$847.43
Retail Trade	113	1,080	1,089	1,122	\$5,491,969	\$385.10
Transportation, Warehousing & Utilities	29	453	464	468	\$4,906,179	\$817.47
Information	7	59	62	63	\$526,518	\$660.35
Financial Activities	67	316	314	318	\$3,026,957	\$736.84
Professional & Business Services	51	397	376	378	\$2,692,611	\$539.85
Education & Health Services	120	1,216	1,213	1,214	\$9,092,760	\$575.99
Leisure & Hospitality	37	473	468	461	\$1,180,554	\$194.32
Other Services	40	138	136	141	\$829,520	\$461.27
Local Government	30	1,224	1,232	1,199	\$8,499,007	\$536.61
State Government	14	580	588	583	\$4,258,158	\$561.19

**TABLE 6. COUNTY SUMMARY
EMPLOYMENT AND TOTAL EARNINGS, BY INDUSTRY
FOURTH QUARTER 2008**

NORTH AMERICAN INDUSTRY CLASSIFICATION SYSTEM INDUSTRY GROUP	NUMBER OF EMPLOYING UNITS	EMPLOYMENT OCTOBER	EMPLOYMENT NOVEMBER	EMPLOYMENT DECEMBER	TOTAL EARNINGS OCTOBER - DECEMBER	AVERAGE WEEKLY EARNINGS
PERRY COUNTY - TOTAL	160	1,370	1,385	1,400	\$10,689,271	\$593.68
Construction	22	58	66	68	\$563,554	\$677.35
Manufacturing	7	69	70	64	\$442,326	\$502.83
Trade, Transportation & Utilities	29	239	246	252	\$2,024,917	\$634.04
Retail Trade	17	157	163	164	\$589,318	\$280.98
Other Trade, Transportation & Utilities	12	82	83	88	\$1,435,599	\$1,309.45
Financial Activities	14	62	61	69	\$1,183,877	\$1,422.93
Professional & Business Services	15	36	36	38	\$287,674	\$603.51
Education & Health Services	31	198	208	206	\$1,377,319	\$519.35
Local Government	12	422	424	429	\$2,487,124	\$450.16
State Government	9	52	51	52	\$349,999	\$521.09
Other	21	234	223	222	\$1,972,481	\$670.38
PHILLIPS COUNTY - TOTAL	904	6,632	6,631	6,573	\$44,319,760	\$515.61
Natural Resources & Mining	65	453	411	380	\$2,511,898	\$465.97
Construction	31	155	153	155	\$1,105,850	\$551.18
Manufacturing	13	331	345	333	\$2,665,894	\$609.72
Trade, Transportation & Utilities	175	1,649	1,639	1,616	\$11,772,776	\$554.00
Wholesale Trade	35	467	455	446	\$4,365,254	\$736.38
Retail Trade	97	863	874	875	\$4,695,945	\$414.88
Transportation, Warehousing & Utilities	43	319	310	295	\$2,711,577	\$677.22
Information	9	50	51	49	\$362,795	\$558.15
Financial Activities	54	272	278	265	\$1,964,443	\$556.24
Professional & Business Services	59	163	161	169	\$1,599,170	\$748.56
Education & Health Services	372	1,466	1,463	1,461	\$8,589,311	\$451.51
Leisure & Hospitality	39	368	376	380	\$968,061	\$198.75
Other Services	40	80	80	79	\$476,320	\$459.92
Local Government	30	1,058	1,066	1,080	\$8,630,040	\$621.58
State Government	17	587	608	606	\$3,673,202	\$470.66

**TABLE 6. COUNTY SUMMARY
EMPLOYMENT AND TOTAL EARNINGS, BY INDUSTRY
FOURTH QUARTER 2008**

NORTH AMERICAN INDUSTRY CLASSIFICATION SYSTEM INDUSTRY GROUP	NUMBER OF EMPLOYING UNITS	EMPLOYMENT	EMPLOYMENT	EMPLOYMENT	TOTAL EARNINGS	AVERAGE WEEKLY EARNINGS
		OCTOBER	NOVEMBER	DECEMBER	OCTOBER - DECEMBER	
PIKE COUNTY - TOTAL	279	2,761	2,730	2,739	\$17,824,745	\$499.81
Natural Resources & Mining	26	148	143	147	\$1,264,909	\$666.44
Construction	12	24	27	25	\$179,402	\$544.74
Manufacturing	16	372	370	364	\$2,164,771	\$451.68
Trade, Transportation & Utilities	96	646	647	639	\$4,320,680	\$516.09
Wholesale Trade	21	159	155	156	\$1,344,407	\$660.10
Retail Trade	48	360	361	357	\$1,936,827	\$414.62
Transportation, Warehousing & Utilities	27	127	131	126	\$1,039,446	\$624.67
Information	5	29	29	29	\$336,734	\$893.19
Financial Activities	26	182	184	186	\$1,719,129	\$718.70
Professional & Business Services	13	36	37	38	\$1,006,377	\$2,092.26
Education & Health Services	20	216	221	233	\$1,329,283	\$457.85
Leisure & Hospitality	21	244	214	199	\$538,955	\$189.31
Other Services	20	126	129	132	\$670,376	\$399.75
Local Government	13	591	582	600	\$3,671,971	\$477.93
State Government	11	147	147	147	\$622,158	\$325.57
POINSETT COUNTY - TOTAL	505	5,459	5,504	5,400	\$40,290,264	\$568.22
Natural Resources & Mining	51	394	356	287	\$3,205,567	\$713.35
Construction	21	84	88	86	\$793,482	\$709.73
Manufacturing	23	782	773	776	\$6,544,641	\$647.92
Trade, Transportation & Utilities	126	1,357	1,351	1,326	\$10,475,148	\$599.24
Wholesale Trade	31	477	459	443	\$5,849,889	\$978.95
Retail Trade	68	698	725	733	\$3,201,864	\$342.71
Transportation, Warehousing & Utilities	27	182	167	150	\$1,423,395	\$658.27
Information	6	50	53	53	\$695,411	\$1,028.71
Financial Activities	53	287	290	291	\$3,151,048	\$837.75
Professional & Business Services	34	169	172	174	\$1,280,340	\$573.71
Education & Health Services	83	585	664	591	\$3,647,802	\$457.50
Leisure & Hospitality	43	339	350	409	\$814,398	\$171.16
Other Services	23	55	54	53	\$401,526	\$571.97
Local Government	30	1,145	1,141	1,136	\$7,863,747	\$530.31
State Government	12	212	212	218	\$1,417,154	\$509.40

**TABLE 6. COUNTY SUMMARY
EMPLOYMENT AND TOTAL EARNINGS, BY INDUSTRY
FOURTH QUARTER 2008**

NORTH AMERICAN INDUSTRY CLASSIFICATION SYSTEM INDUSTRY GROUP	NUMBER OF EMPLOYING UNITS	EMPLOYMENT OCTOBER	EMPLOYMENT NOVEMBER	EMPLOYMENT DECEMBER	TOTAL EARNINGS OCTOBER - DECEMBER	AVERAGE WEEKLY EARNINGS
POLK COUNTY - TOTAL	565	6,359	6,390	6,372	\$39,117,660	\$472.11
Natural Resources & Mining	27	219	218	215	\$2,028,183	\$717.86
Construction	41	176	170	168	\$1,132,896	\$508.63
Manufacturing	40	1,320	1,332	1,327	\$8,539,960	\$495.29
Trade, Transportation & Utilities	152	1,299	1,317	1,315	\$7,632,464	\$448.06
Wholesale Trade	22	92	86	85	\$804,431	\$705.85
Retail Trade	84	858	874	881	\$4,333,667	\$382.73
Transportation, Warehousing & Utilities	46	349	357	349	\$2,494,366	\$545.61
Information	9	55	58	58	\$405,173	\$546.79
Financial Activities	43	252	247	248	\$2,130,265	\$658.10
Professional & Business Services	57	246	235	239	\$1,372,929	\$440.04
Education & Health Services	87	1,017	1,030	1,044	\$6,555,386	\$489.41
Leisure & Hospitality	38	463	474	449	\$1,068,672	\$177.93
Other Services	37	146	150	144	\$839,993	\$440.56
Local Government	20	828	823	827	\$5,475,458	\$509.91
State Government	14	338	336	338	\$1,936,281	\$441.54
POPE COUNTY - TOTAL	1,806	27,041	26,962	26,405	\$225,213,236	\$646.36
Natural Resources & Mining	28	455	488	539	\$3,853,864	\$600.10
Construction	190	1,979	1,927	1,565	\$22,014,735	\$928.59
Manufacturing	85	4,966	4,952	4,844	\$45,767,385	\$715.47
Trade, Transportation & Utilities	470	6,383	6,358	6,381	\$63,450,139	\$765.73
Wholesale Trade	102	661	646	648	\$7,003,941	\$826.75
Retail Trade	276	3,343	3,361	3,368	\$17,830,905	\$408.54
Transportation, Warehousing & Utilities	92	2,379	2,351	2,365	\$38,615,293	\$1,255.99
Information	16	223	218	226	\$2,053,774	\$710.57
Financial Activities	196	815	803	819	\$7,053,497	\$667.92
Professional & Business Services	255	2,504	2,437	2,266	\$19,998,515	\$640.36
Education & Health Services	273	3,110	3,146	3,172	\$23,363,992	\$571.88
Leisure & Hospitality	134	2,470	2,458	2,431	\$6,928,176	\$217.26
Other Services	103	480	467	481	\$2,978,033	\$481.26
Local Government	40	2,291	2,331	2,304	\$16,653,214	\$554.87
State Government	16	1,365	1,377	1,377	\$11,097,912	\$621.77

**TABLE 6. COUNTY SUMMARY
EMPLOYMENT AND TOTAL EARNINGS, BY INDUSTRY
FOURTH QUARTER 2008**

NORTH AMERICAN INDUSTRY CLASSIFICATION SYSTEM INDUSTRY GROUP	NUMBER OF EMPLOYING UNITS	EMPLOYMENT OCTOBER	EMPLOYMENT NOVEMBER	EMPLOYMENT DECEMBER	TOTAL EARNINGS OCTOBER - DECEMBER	AVERAGE WEEKLY EARNINGS
PRAIRIE COUNTY - TOTAL	256	1,449	1,420	1,393	\$10,319,386	\$558.75
Natural Resources & Mining	29	141	121	122	\$1,269,808	\$763.11
Construction	15	44	42	41	\$409,829	\$744.69
Trade, Transportation & Utilities	68	347	331	307	\$2,415,283	\$565.86
Wholesale Trade	11	54	54	52	\$693,188	\$999.79
Retail Trade	37	183	190	186	\$736,986	\$304.25
Transportation, Warehousing & Utilities	20	110	87	69	\$985,109	\$854.63
Financial Activities	19	74	74	77	\$764,231	\$783.83
Professional & Business Services	17	57	59	59	\$392,857	\$518.05
Education & Health Services	43	193	199	202	\$1,134,462	\$440.74
Leisure & Hospitality	17	60	63	65	\$177,080	\$217.36
Other Services	14	38	35	39	\$198,239	\$408.46
Local Government	15	306	314	303	\$2,117,808	\$529.50
State Government	10	54	55	55	\$388,799	\$547.09
Other	9	135	127	123	\$1,050,990	\$629.96
PULASKI COUNTY - TOTAL	15,131	241,206	241,193	241,339	\$2,595,233,214	\$827.51
Natural Resources & Mining	62	814	782	769	\$10,890,843	\$1,062.69
Construction	1,172	9,951	9,731	9,733	\$130,131,955	\$1,020.92
Manufacturing	434	15,767	15,793	15,800	\$197,003,630	\$959.93
Trade, Transportation & Utilities	3,418	49,667	50,217	50,234	\$485,478,515	\$746.30
Wholesale Trade	1,212	13,676	13,604	13,571	\$195,900,061	\$1,106.65
Retail Trade	1,787	24,388	25,037	25,213	\$156,317,456	\$483.31
Transportation, Warehousing & Utilities	419	11,603	11,576	11,450	\$133,260,998	\$888.06
Information	228	7,974	7,979	7,957	\$132,425,842	\$1,278.12
Financial Activities	1,819	15,489	15,538	15,650	\$222,140,525	\$1,098.25
Professional & Business Services	2,959	34,640	34,554	34,413	\$389,062,050	\$866.58
Education & Health Services	2,386	36,278	36,002	36,243	\$432,189,795	\$919.03
Leisure & Hospitality	1,082	20,392	20,346	20,029	\$80,446,154	\$305.50
Other Services	1,229	6,795	6,795	6,906	\$54,861,262	\$617.70
Local Government	103	17,160	17,050	17,040	\$159,811,977	\$719.60
State Government	239	26,279	26,406	26,565	\$300,790,666	\$875.88

**TABLE 6. COUNTY SUMMARY
EMPLOYMENT AND TOTAL EARNINGS, BY INDUSTRY
FOURTH QUARTER 2008**

NORTH AMERICAN INDUSTRY CLASSIFICATION SYSTEM INDUSTRY GROUP	NUMBER OF EMPLOYING UNITS	EMPLOYMENT OCTOBER	EMPLOYMENT NOVEMBER	EMPLOYMENT DECEMBER	TOTAL EARNINGS OCTOBER - DECEMBER	AVERAGE WEEKLY EARNINGS
RANDOLPH COUNTY - TOTAL	430	4,928	4,907	4,885	\$30,022,946	\$470.68
Natural Resources & Mining	25	115	108	92	\$577,683	\$423.21
Construction	26	84	81	79	\$439,199	\$415.38
Manufacturing	38	738	723	692	\$4,563,778	\$489.17
Trade, Transportation & Utilities	103	887	896	901	\$5,568,798	\$478.80
Wholesale Trade	22	215	208	209	\$1,217,494	\$444.56
Retail Trade	63	555	571	567	\$3,184,432	\$434.06
Transportation, Warehousing & Utilities	18	117	117	125	\$1,166,872	\$750.08
Information	5	41	39	40	\$351,019	\$675.04
Financial Activities	30	129	129	131	\$1,121,611	\$665.38
Professional & Business Services	37	261	258	254	\$1,363,474	\$407.05
Education & Health Services	80	975	987	982	\$6,815,390	\$534.23
Leisure & Hospitality	28	405	387	386	\$930,570	\$182.30
Other Services	23	57	48	67	\$317,439	\$425.90
Local Government	23	893	916	921	\$5,533,853	\$467.78
State Government	12	343	335	340	\$2,440,132	\$553.15
SAINT FRANCIS COUNTY - TOTAL	801	7,613	7,606	7,622	\$53,634,229	\$541.88
Natural Resources & Mining	32	252	229	160	\$1,389,557	\$500.26
Construction	44	244	231	209	\$1,905,782	\$642.98
Manufacturing	15	675	687	687	\$5,831,670	\$656.79
Trade, Transportation & Utilities	181	1,884	1,894	1,935	\$14,186,648	\$573.05
Wholesale Trade	30	524	522	516	\$5,564,666	\$822.12
Retail Trade	124	1,105	1,120	1,159	\$5,806,177	\$395.95
Transportation, Warehousing & Utilities	27	255	252	260	\$2,815,805	\$847.20
Information	7	77	76	77	\$593,930	\$595.92
Financial Activities	62	323	313	334	\$2,117,364	\$503.73
Professional & Business Services	57	316	322	348	\$2,751,507	\$643.98
Education & Health Services	264	1,427	1,431	1,435	\$9,401,911	\$505.40
Leisure & Hospitality	57	694	690	713	\$1,970,775	\$216.88
Other Services	36	84	83	89	\$362,610	\$326.87
Local Government	28	1,095	1,107	1,101	\$8,754,833	\$611.67
State Government	18	542	543	534	\$4,367,642	\$622.56

**TABLE 6. COUNTY SUMMARY
EMPLOYMENT AND TOTAL EARNINGS, BY INDUSTRY
FOURTH QUARTER 2008**

NORTH AMERICAN INDUSTRY CLASSIFICATION SYSTEM INDUSTRY GROUP	NUMBER OF EMPLOYING UNITS	EMPLOYMENT	EMPLOYMENT	EMPLOYMENT	TOTAL EARNINGS	AVERAGE
		OCTOBER	NOVEMBER	DECEMBER	OCTOBER - DECEMBER	WEEKLY EARNINGS
SALINE COUNTY - TOTAL	1,896	21,240	21,166	21,177	\$168,190,323	\$610.43
Natural Resources & Mining	14	35	38	38	\$604,818	\$1,257.42
Construction	326	1,978	1,909	1,881	\$18,788,150	\$751.69
Manufacturing	83	1,778	1,739	1,704	\$20,309,872	\$897.70
Trade, Transportation & Utilities	439	4,624	4,688	4,709	\$36,706,792	\$604.15
Wholesale Trade	121	587	592	585	\$11,445,565	\$1,497.33
Retail Trade	259	3,729	3,790	3,815	\$22,184,145	\$451.69
Transportation, Warehousing & Utilities	59	308	306	309	\$3,077,082	\$769.33
Information	14	124	121	126	\$1,069,578	\$665.30
Financial Activities	199	770	762	759	\$6,831,333	\$688.11
Professional & Business Services	248	1,225	1,214	1,190	\$9,378,081	\$596.36
Education & Health Services	247	2,997	3,015	3,015	\$22,665,186	\$579.42
Leisure & Hospitality	137	2,481	2,464	2,520	\$7,922,553	\$244.91
Other Services	141	600	614	620	\$4,326,143	\$544.35
Local & State Government	48	4,628	4,602	4,615	\$39,587,817	\$659.85
SCOTT COUNTY - TOTAL	198	2,908	2,924	2,943	\$18,935,469	\$497.97
Natural Resources & Mining	17	181	179	219	\$1,637,208	\$652.53
Construction	10	28	27	25	\$122,350	\$352.93
Trade, Transportation & Utilities	40	445	445	443	\$2,871,481	\$497.11
Wholesale Trade	10	69	68	72	\$653,062	\$721.08
Retail Trade	24	317	318	311	\$1,584,054	\$386.42
Transportation, Warehousing & Utilities	6	59	59	60	\$634,365	\$822.43
Financial Activities	24	89	85	86	\$523,805	\$464.92
Professional & Business Services	12	7	7	8	\$133,700	\$1,402.45
Education & Health Services	35	297	292	290	\$2,036,610	\$534.68
Leisure & Hospitality	18	148	145	140	\$392,418	\$209.14
Local Government	5	406	410	400	\$2,719,418	\$516.08
State Government	8	78	74	76	\$443,234	\$448.62
Other	29	1,229	1,260	1,256	\$8,055,245	\$496.37

**TABLE 6. COUNTY SUMMARY
EMPLOYMENT AND TOTAL EARNINGS, BY INDUSTRY
FOURTH QUARTER 2008**

NORTH AMERICAN INDUSTRY CLASSIFICATION SYSTEM INDUSTRY GROUP	NUMBER OF EMPLOYING UNITS	EMPLOYMENT OCTOBER	EMPLOYMENT NOVEMBER	EMPLOYMENT DECEMBER	TOTAL EARNINGS OCTOBER - DECEMBER	AVERAGE WEEKLY EARNINGS
SEARCY COUNTY - TOTAL	194	1,754	1,691	1,712	\$9,548,083	\$427.26
Construction	7	30	29	32	\$112,608	\$285.57
Manufacturing	18	226	207	224	\$1,084,733	\$381.01
Trade, Transportation & Utilities	41	326	320	321	\$1,474,297	\$351.83
Wholesale Trade	6	63	61	56	\$286,170	\$366.88
Retail Trade	26	220	214	220	\$902,730	\$318.54
Transportation, Warehousing & Utilities	9	43	45	45	\$285,397	\$495.19
Information	5	13	13	13	\$119,902	\$709.48
Financial Activities	15	90	86	84	\$557,684	\$494.99
Professional & Business Services	14	27	26	28	\$218,070	\$621.28
Education & Health Services	53	341	344	338	\$1,951,142	\$440.14
Leisure & Hospitality	15	117	121	120	\$321,278	\$207.10
Local Government	10	361	362	368	\$2,269,897	\$480.13
State Government	8	145	142	141	\$901,236	\$485.93
Other	8	78	41	43	\$537,236	\$765.29
SEBASTIAN COUNTY - TOTAL	3,855	72,236	71,377	70,928	\$632,649,999	\$680.50
Natural Resources & Mining	79	2,103	2,135	2,143	\$35,886,160	\$1,297.83
Construction	325	2,826	2,734	2,751	\$28,959,633	\$804.11
Manufacturing	236	17,166	16,675	16,504	\$152,637,420	\$699.65
Trade, Transportation & Utilities	974	13,320	13,635	13,772	\$108,858,115	\$616.82
Wholesale Trade	255	2,726	2,765	2,769	\$36,212,338	\$1,011.71
Retail Trade	574	8,244	8,483	8,596	\$48,115,727	\$438.48
Transportation, Warehousing & Utilities	145	2,350	2,387	2,407	\$24,530,050	\$792.38
Information	53	1,006	977	966	\$11,787,514	\$922.41
Financial Activities	432	2,560	2,556	2,585	\$29,123,202	\$872.71
Professional & Business Services	567	9,379	8,575	8,009	\$69,866,089	\$621.00
Education & Health Services	542	10,691	10,862	10,983	\$114,706,702	\$813.58
Leisure & Hospitality	305	5,607	5,619	5,588	\$18,337,628	\$251.68
Other Services	277	1,350	1,366	1,360	\$9,499,603	\$537.84
Local Government	43	4,661	4,661	4,670	\$39,699,342	\$654.76
State Government	22	1,567	1,582	1,597	\$13,288,591	\$646.14

**TABLE 6. COUNTY SUMMARY
EMPLOYMENT AND TOTAL EARNINGS, BY INDUSTRY
FOURTH QUARTER 2008**

NORTH AMERICAN INDUSTRY CLASSIFICATION SYSTEM INDUSTRY GROUP	NUMBER OF EMPLOYING UNITS	EMPLOYMENT OCTOBER	EMPLOYMENT NOVEMBER	EMPLOYMENT DECEMBER	TOTAL EARNINGS OCTOBER - DECEMBER	AVERAGE WEEKLY EARNINGS
SEVIER COUNTY - TOTAL	322	5,541	5,541	5,511	\$34,815,107	\$484.20
Natural Resources & Mining	17	231	224	229	\$1,737,704	\$586.27
Construction	18	135	136	136	\$1,091,334	\$618.79
Manufacturing	12	2,062	2,012	2,003	\$11,431,324	\$434.10
Trade, Transportation & Utilities	91	817	827	806	\$5,649,920	\$532.17
Wholesale Trade	14	134	131	126	\$1,651,783	\$974.89
Retail Trade	58	587	591	583	\$2,844,795	\$372.79
Transportation, Warehousing & Utilities	19	96	105	97	\$1,153,342	\$893.14
Information	4	43	42	41	\$302,297	\$553.66
Financial Activities	31	179	179	181	\$1,424,932	\$610.08
Professional & Business Services	28	63	66	74	\$466,604	\$530.43
Education & Health Services	49	543	551	550	\$3,763,984	\$528.35
Leisure & Hospitality	24	256	254	248	\$695,537	\$211.75
Other Services	28	122	128	119	\$561,790	\$351.34
Local Government	11	877	907	911	\$6,330,495	\$542.07
State Government	9	213	215	213	\$1,359,186	\$489.33
SHARP COUNTY - TOTAL	441	3,783	3,733	3,749	\$22,541,562	\$461.78
Construction	30	222	214	215	\$1,780,408	\$631.13
Manufacturing	25	174	172	170	\$1,006,106	\$449.96
Trade, Transportation & Utilities	94	961	954	954	\$6,337,383	\$509.75
Wholesale Trade	10	41	39	35	\$141,492	\$283.93
Retail Trade	69	630	631	636	\$2,941,461	\$357.83
Transportation, Warehousing & Utilities	15	290	284	283	\$3,254,430	\$876.34
Information	7	56	56	60	\$700,144	\$939.37
Financial Activities	35	230	229	231	\$1,766,716	\$590.87
Professional & Business Services	45	151	145	149	\$1,101,361	\$571.15
Education & Health Services	111	606	604	609	\$3,506,669	\$444.88
Leisure & Hospitality	33	400	393	387	\$903,468	\$176.69
Local Government	24	793	779	785	\$4,388,013	\$429.62
State Government	9	106	105	107	\$681,604	\$494.63
Other	28	84	82	82	\$369,690	\$344.00

**TABLE 6. COUNTY SUMMARY
EMPLOYMENT AND TOTAL EARNINGS, BY INDUSTRY
FOURTH QUARTER 2008**

NORTH AMERICAN INDUSTRY CLASSIFICATION SYSTEM INDUSTRY GROUP	NUMBER OF EMPLOYING UNITS	EMPLOYMENT OCTOBER	EMPLOYMENT NOVEMBER	EMPLOYMENT DECEMBER	TOTAL EARNINGS OCTOBER - DECEMBER	AVERAGE WEEKLY EARNINGS
STONE COUNTY - TOTAL	299	2,904	2,868	2,873	\$16,703,301	\$445.88
Natural Resources & Mining	5	22	20	21	\$88,470	\$324.07
Construction	26	104	93	92	\$599,858	\$478.99
Manufacturing	27	375	374	373	\$2,037,862	\$419.14
Trade, Transportation & Utilities	73	671	674	687	\$4,183,595	\$475.12
Wholesale Trade	8	55	54	55	\$305,308	\$429.61
Retail Trade	55	578	581	596	\$3,511,692	\$461.76
Transportation, Warehousing & Utilities	10	38	39	36	\$366,595	\$748.66
Financial Activities	34	125	120	117	\$900,365	\$573.97
Professional & Business Services	16	30	29	36	\$204,097	\$495.78
Education & Health Services	51	498	502	505	\$3,646,902	\$559.20
Leisure & Hospitality	32	418	392	376	\$951,935	\$185.23
Local Government	10	410	415	418	\$2,696,296	\$500.58
State Government	9	175	175	174	\$826,216	\$363.86
Other	16	76	74	74	\$567,705	\$584.86
UNION COUNTY - TOTAL	1,411	19,090	18,497	18,614	\$183,349,406	\$752.86
Natural Resources & Mining	118	552	547	558	\$7,057,295	\$982.86
Construction	90	1,708	1,313	1,385	\$18,327,241	\$959.91
Manufacturing	64	3,737	3,638	3,597	\$44,488,240	\$935.70
Trade, Transportation & Utilities	362	3,707	3,706	3,739	\$35,154,564	\$727.46
Wholesale Trade	80	739	743	738	\$12,768,442	\$1,327.28
Retail Trade	218	2,148	2,149	2,195	\$11,734,341	\$417.12
Transportation, Warehousing & Utilities	64	820	814	806	\$10,651,781	\$1,007.42
Information	14	161	159	156	\$1,141,774	\$553.54
Financial Activities	122	753	766	776	\$6,482,445	\$651.83
Professional & Business Services	141	1,652	1,581	1,568	\$18,342,348	\$881.66
Education & Health Services	226	2,471	2,444	2,465	\$24,255,403	\$758.46
Leisure & Hospitality	88	1,158	1,164	1,178	\$3,553,947	\$234.33
Other Services	132	599	585	582	\$5,079,590	\$663.77
Local Government	35	1,997	2,009	2,000	\$15,019,374	\$577.09
State Government	19	595	585	610	\$4,447,185	\$573.34

**TABLE 6. COUNTY SUMMARY
EMPLOYMENT AND TOTAL EARNINGS, BY INDUSTRY
FOURTH QUARTER 2008**

NORTH AMERICAN INDUSTRY CLASSIFICATION SYSTEM INDUSTRY GROUP	NUMBER OF EMPLOYING UNITS	EMPLOYMENT OCTOBER	EMPLOYMENT NOVEMBER	EMPLOYMENT DECEMBER	TOTAL EARNINGS OCTOBER - DECEMBER	AVERAGE WEEKLY EARNINGS
VAN BUREN COUNTY - TOTAL	371	3,686	3,710	3,734	\$24,553,447	\$509.09
Natural Resources & Mining	11	41	30	30	\$362,376	\$827.97
Construction	45	295	276	281	\$2,880,146	\$780.10
Trade, Transportation & Utilities	101	809	811	836	\$5,576,561	\$523.98
Wholesale Trade	16	41	43	39	\$476,133	\$893.31
Retail Trade	57	602	599	617	\$3,149,004	\$399.72
Transportation, Warehousing & Utilities	28	166	169	180	\$1,951,424	\$874.42
Information	11	52	50	48	\$500,631	\$770.20
Financial Activities	30	155	160	162	\$1,255,673	\$607.49
Professional & Business Services	28	103	126	120	\$688,633	\$455.34
Education & Health Services	62	637	659	662	\$4,503,057	\$530.73
Leisure & Hospitality	24	424	429	429	\$1,486,372	\$267.56
Local Government	11	625	641	643	\$4,035,702	\$487.86
State Government	8	88	84	83	\$610,755	\$552.72
Other	40	457	444	440	\$2,653,541	\$456.64
WASHINGTON COUNTY - TOTAL	5,758	90,129	89,683	89,049	\$849,510,983	\$729.15
Natural Resources & Mining	38	491	490	483	\$5,067,762	\$798.83
Construction	632	4,788	4,675	4,623	\$47,520,305	\$778.52
Manufacturing	240	14,568	14,478	14,282	\$126,378,197	\$673.10
Trade, Transportation & Utilities	1,361	19,829	20,036	20,106	\$178,277,185	\$686.01
Wholesale Trade	415	3,653	3,662	3,621	\$58,239,095	\$1,228.95
Retail Trade	757	10,934	11,115	11,199	\$65,559,795	\$455.04
Transportation, Warehousing & Utilities	189	5,242	5,259	5,286	\$54,478,295	\$796.35
Information	93	1,483	1,465	1,443	\$16,531,602	\$868.82
Financial Activities	663	3,746	3,679	3,679	\$38,540,694	\$800.97
Professional & Business Services	991	8,917	8,648	8,602	\$129,228,321	\$1,139.68
Education & Health Services	713	11,458	11,478	11,473	\$128,878,872	\$864.35
Leisure & Hospitality	548	9,690	9,581	9,314	\$31,955,490	\$257.98
Other Services	397	1,921	1,912	1,908	\$12,757,743	\$512.82
Local & State Government	82	13,238	13,241	13,136	\$134,374,812	\$782.77

**TABLE 6. COUNTY SUMMARY
EMPLOYMENT AND TOTAL EARNINGS, BY INDUSTRY
FOURTH QUARTER 2008**

NORTH AMERICAN INDUSTRY CLASSIFICATION SYSTEM INDUSTRY GROUP	NUMBER OF EMPLOYING UNITS	EMPLOYMENT	EMPLOYMENT	EMPLOYMENT	TOTAL EARNINGS	AVERAGE WEEKLY EARNINGS
		OCTOBER	NOVEMBER	DECEMBER	OCTOBER - DECEMBER	
WHITE COUNTY - TOTAL	1,862	25,475	25,499	25,150	\$227,359,818	\$689.24
Natural Resources & Mining	50	1,419	1,498	1,316	\$23,762,013	\$1,295.43
Construction	202	2,137	2,120	1,999	\$32,333,339	\$1,192.70
Manufacturing	82	2,602	2,575	2,567	\$26,186,406	\$780.35
Trade, Transportation & Utilities	507	6,005	6,026	6,101	\$47,193,786	\$600.64
Wholesale Trade	103	614	604	600	\$6,279,342	\$797.07
Retail Trade	304	3,249	3,268	3,357	\$18,019,311	\$421.14
Transportation, Warehousing & Utilities	100	2,142	2,154	2,144	\$22,895,133	\$820.42
Information	22	163	158	148	\$1,189,842	\$585.46
Financial Activities	190	957	958	959	\$8,704,737	\$698.95
Professional & Business Services	191	1,296	1,255	1,256	\$10,649,092	\$645.52
Education & Health Services	309	4,381	4,379	4,326	\$40,817,585	\$719.81
Leisure & Hospitality	138	2,464	2,476	2,422	\$6,574,755	\$206.09
Other Services	107	582	584	583	\$4,037,025	\$532.66
Local Government	45	2,681	2,695	2,705	\$20,029,410	\$571.98
State Government	19	788	775	768	\$5,881,828	\$582.30
WOODRUFF COUNTY - TOTAL	234	1,989	1,962	1,943	\$13,549,297	\$530.50
Natural Resources & Mining	24	147	138	124	\$1,440,835	\$812.96
Construction	9	59	60	63	\$430,466	\$545.81
Manufacturing	7	375	372	373	\$2,324,348	\$478.92
Trade, Transportation & Utilities	54	446	443	428	\$3,573,793	\$626.21
Wholesale Trade	12	158	151	140	\$1,932,724	\$993.35
Retail Trade	27	200	205	202	\$806,099	\$306.46
Transportation, Warehousing & Utilities	15	88	87	86	\$834,970	\$738.26
Financial Activities	16	59	61	61	\$608,961	\$776.41
Professional & Business Services	5	5	5	5	\$45,399	\$698.45
Education & Health Services	83	234	240	246	\$1,532,907	\$491.32
Leisure & Hospitality	10	98	87	87	\$197,968	\$167.96
Local Government	10	486	478	477	\$2,868,044	\$459.30
State Government	7	58	57	57	\$404,968	\$543.34
Other	9	22	21	22	\$121,608	\$431.74

**TABLE 6. COUNTY SUMMARY
EMPLOYMENT AND TOTAL EARNINGS, BY INDUSTRY
FOURTH QUARTER 2008**

NORTH AMERICAN INDUSTRY CLASSIFICATION SYSTEM INDUSTRY GROUP	NUMBER OF EMPLOYING UNITS	EMPLOYMENT OCTOBER	EMPLOYMENT NOVEMBER	EMPLOYMENT DECEMBER	TOTAL EARNINGS OCTOBER - DECEMBER	AVERAGE WEEKLY EARNINGS
YELL COUNTY - TOTAL	428	6,950	7,009	6,930	\$47,063,499	\$519.93
Natural Resources & Mining	25	247	244	255	\$1,789,967	\$553.71
Construction	43	257	301	274	\$2,555,876	\$708.92
Manufacturing	19	2,780	2,778	2,726	\$18,276,958	\$509.15
Trade, Transportation & Utilities	84	682	679	685	\$3,555,847	\$401.07
Wholesale Trade	16	25	22	23	\$153,345	\$505.53
Retail Trade	51	563	562	566	\$2,531,400	\$345.46
Transportation, Warehousing & Utilities	17	94	95	96	\$871,102	\$705.35
Information	3	73	73	73	\$851,609	\$897.38
Financial Activities	38	206	197	195	\$1,455,719	\$561.76
Professional & Business Services	38	288	296	292	\$3,542,462	\$933.21
Education & Health Services	90	654	652	655	\$4,117,575	\$484.55
Leisure & Hospitality	30	375	364	348	\$869,396	\$184.57
Other Services	18	65	64	63	\$308,547	\$370.85
Local Government	27	1,201	1,236	1,241	\$9,042,718	\$567.37
State Government	13	122	125	123	\$696,825	\$434.61
REST-OF-STATE-TOTAL	4,641	18,358	18,370	18,536	\$283,885,305	\$1,185.44
Natural Resources & Mining	78	574	596	607	\$9,631,634	\$1,250.81
Construction	553	4,105	4,014	3,936	\$51,846,278	\$992.49
Manufacturing	66	254	254	249	\$2,951,206	\$899.67
Trade, Transportation & Utilities	1,657	6,091	6,122	6,102	\$121,886,289	\$1,535.77
Wholesale Trade	1,376	4,924	4,938	4,918	\$109,207,035	\$1,705.12
Retail Trade	123	435	419	430	\$5,383,401	\$967.54
Transportation, Warehousing & Utilities	158	732	765	754	\$7,295,853	\$747.96
Information	105	240	216	234	\$3,399,407	\$1,136.93
Financial Activities	291	792	751	748	\$14,047,665	\$1,415.00
Professional & Business Services	1,581	4,786	4,923	5,147	\$63,256,204	\$982.61
Education & Health Services	115	731	724	729	\$8,995,020	\$950.45
Leisure & Hospitality	58	71	73	96	\$709,237	\$681.96
Other	137	714	697	688	\$7,162,365	\$787.45

TABLE 7. FEDERAL GOVERNMENT EMPLOYMENT AND EARNINGS IN ARKANSAS

NORTH AMERICAN INDUSTRY CLASSIFICATION SYSTEM INDUSTRY GROUP	NUMBER OF EMPLOYING UNITS	EMPLOYMENT OCTOBER	EMPLOYMENT NOVEMBER	EMPLOYMENT DECEMBER	TOTAL EARNINGS OCT. - DEC. 2008
Trade, Transportation & Utilities	614	6,575	6,535	6,611	\$81,165,894
Information	1	33	33	33	\$471,495
Financial Activities	23	165	164	168	\$3,076,504
Professional & Business Services	30	764	764	767	\$14,072,983
Education & Health Services	5	4,646	4,656	4,657	\$106,207,469
Leisure & Hospitality	15	238	232	238	\$2,841,914
Other Services	2	271	264	269	\$1,062,805
Public Administration	508	8,841	8,781	8,665	\$140,604,137
TOTAL	1,198	21,533	21,429	21,408	\$349,503,201

**TABLE 8. WORKFORCE INFORMATION AREA, SUMMARY
EMPLOYMENT AND TOTAL EARNINGS, BY INDUSTRY
FOURTH QUARTER 2008**

NORTH AMERICAN INDUSTRY CLASSIFICATION SYSTEM INDUSTRY GROUP	NUMBER OF EMPLOYING UNITS	EMPLOYMENT OCTOBER	EMPLOYMENT NOVEMBER	EMPLOYMENT DECEMBER	TOTAL EARNINGS OCTOBER - DECEMBER	AVERAGE WEEKLY EARNINGS
CENTRAL WORKFORCE INFORMATION*	6,586	76,780	76,671	76,437	\$636,850,779	\$639.29
Natural Resources & Mining	193	1,766	1,731	1,671	\$27,401,329	\$1,223.56
Construction	910	5,781	5,669	5,590	\$56,821,261	\$769.52
Trade, Transportation & Utilities	1,595	15,345	15,435	15,473	\$114,382,402	\$570.69
Wholesale Trade	411	2,198	2,199	2,169	\$30,162,713	\$1,060.10
Retail Trade	919	11,281	11,415	11,491	\$64,130,291	\$432.89
Transportation, Warehousing & Utilities	265	1,866	1,821	1,813	\$20,089,398	\$842.91
Financial Activities	698	2,982	2,969	2,964	\$28,064,209	\$726.46
Professional & Business Services	804	6,666	6,660	6,640	\$76,155,516	\$880.21
Education & Health Services	951	10,609	10,735	10,748	\$85,284,675	\$613.27
Leisure & Hospitality	495	8,603	8,598	8,575	\$24,877,818	\$222.73
Local & State Government	206	15,144	15,175	15,146	\$124,414,447	\$631.50
Other	734	9,884	9,699	9,630	\$99,449,122	\$785.60
*Note: Pulaski County is not included in the Central Workforce Information. Please refer to Page 53 for information on Pulaski County.						
Central Workforce Includes these counties: Faulkner, Lonoke, Monroe, Prairie, and Saline.						
EASTERN WORKFORCE INFORMATION	3,875	38,607	38,500	37,968	\$285,517,540	\$572.57
Natural Resources & Mining	210	1,585	1,482	1,227	\$10,565,485	\$567.81
Construction	188	1,152	1,200	1,119	\$10,847,568	\$721.20
Trade, Transportation & Utilities	895	10,111	10,141	10,062	\$81,250,610	\$618.53
Wholesale Trade	181	2,158	2,166	2,157	\$24,572,400	\$874.95
Retail Trade	504	5,050	5,139	5,125	\$27,185,407	\$409.66
Transportation, Warehousing & Utilities	210	2,903	2,836	2,780	\$29,492,803	\$798.92
Financial Activities	287	1,606	1,596	1,583	\$12,415,696	\$598.78
Professional & Business Services	312	1,622	1,528	1,508	\$12,781,433	\$633.22
Education & Health Services	1,184	6,196	6,199	6,188	\$43,807,197	\$544.01
Leisure & Hospitality	243	3,297	3,275	3,355	\$10,933,363	\$254.16
Local Government	136	5,689	5,699	5,726	\$44,687,523	\$602.58
State Government	69	2,413	2,437	2,326	\$16,951,039	\$545.12
Other	351	4,936	4,943	4,874	\$41,277,626	\$645.67
Eastern Workforce Includes these counties: Crittenden, Cross, Lee, Phillips, and Saint Francis.						

**TABLE 8. WORKFORCE INFORMATION AREA, SUMMARY
EMPLOYMENT AND TOTAL EARNINGS, BY INDUSTRY
FOURTH QUARTER 2008**

NORTH AMERICAN INDUSTRY CLASSIFICATION SYSTEM INDUSTRY GROUP	NUMBER OF EMPLOYING UNITS	EMPLOYMENT OCTOBER	EMPLOYMENT NOVEMBER	EMPLOYMENT DECEMBER	TOTAL EARNINGS OCTOBER - DECEMBER	AVERAGE WEEKLY EARNINGS
NORTH CENTRAL WORKFORCE INFORMATION	5,896	70,959	70,400	70,009	\$548,541,175	\$598.89
Construction	529	4,032	3,885	3,776	\$48,549,332	\$958.15
Trade, Transportation & Utilities	1,509	15,348	15,340	15,464	\$114,706,461	\$573.56
Retail Trade	937	9,060	9,102	9,285	\$49,486,714	\$416.08
Other Trade, Transportation & Utilities	572	6,288	6,238	6,179	\$65,219,747	\$804.64
Financial Activities	553	2,733	2,730	2,742	\$23,547,380	\$662.28
Professional & Business Services	511	2,928	2,813	2,789	\$20,848,034	\$564.02
Education & Health Services	1,119	12,041	12,105	12,063	\$100,584,802	\$641.05
Leisure & Hospitality	438	6,299	6,222	6,077	\$17,013,464	\$211.11
Local Government	228	9,278	9,292	9,307	\$60,923,770	\$504.33
State Government	115	3,232	3,213	3,203	\$22,712,481	\$543.26
Other	894	15,068	14,800	14,588	\$139,655,451	\$724.95
North Central Workforce Includes these counties: Cleburne, Fulton, Independence, Izard, Jackson, Sharp, Stone, Van Buren, White, and Woodruff						
NORTHEAST WORKFORCE INFORMATION	6,599	96,569	96,081	95,341	\$778,735,601	\$624.01
Natural Resources & Mining	371	2,566	2,427	1,905	\$19,200,603	\$642.35
Construction	484	3,335	3,310	3,157	\$31,717,317	\$746.72
Manufacturing	363	20,894	20,669	20,365	\$217,254,403	\$809.58
Trade, Transportation & Utilities	1,703	17,861	18,021	18,018	\$129,062,286	\$552.57
Wholesale Trade	398	3,845	3,791	3,764	\$41,877,174	\$847.72
Retail Trade	1,000	11,332	11,612	11,686	\$60,649,621	\$404.16
Transportation, Warehousing & Utilities	305	2,684	2,618	2,568	\$26,535,491	\$778.09
Financial Activities	606	3,396	3,375	3,401	\$32,815,785	\$744.48
Professional & Business Services	672	7,596	7,410	7,555	\$54,762,295	\$560.15
Education & Health Services	1,152	13,434	13,386	13,337	\$124,217,142	\$713.84
Leisure & Hospitality	470	7,617	7,582	7,650	\$21,522,237	\$217.37
Local Government	217	11,895	11,942	11,889	\$85,287,318	\$550.91
State Government	107	4,286	4,238	4,317	\$37,124,767	\$667.18
Other	454	3,689	3,721	3,747	\$25,771,448	\$533.05
Northeast Workforce Includes these counties: Clay, Craighead, Greene, Lawrence, Mississippi, Poinsett, and Randolph.						

**TABLE 8. WORKFORCE INFORMATION AREA, SUMMARY
EMPLOYMENT AND TOTAL EARNINGS, BY INDUSTRY
FOURTH QUARTER 2008**

NORTH AMERICAN INDUSTRY CLASSIFICATION SYSTEM INDUSTRY GROUP	NUMBER OF EMPLOYING UNITS	EMPLOYMENT OCTOBER	EMPLOYMENT NOVEMBER	EMPLOYMENT DECEMBER	TOTAL EARNINGS OCTOBER - DECEMBER	AVERAGE WEEKLY EARNINGS
NORTHWEST WORKFORCE INFORMATION	15,493	233,753	232,508	230,793	\$2,232,994,226	\$739.26
Construction	1,702	10,419	10,192	10,061	\$99,875,705	\$751.44
Trade, Transportation & Utilities	3,814	52,787	52,910	52,954	\$487,629,512	\$709.29
Retail Trade	2,035	26,551	26,931	27,086	\$157,691,130	\$451.67
Other Trade, Transportation & Utilities	1,779	26,236	25,979	25,868	\$329,938,382	\$975.11
Education & Health Services	1,994	25,650	25,697	25,740	\$253,274,085	\$758.21
Leisure & Hospitality	1,450	23,225	22,776	21,976	\$75,484,031	\$256.25
Local & State Government	425	30,005	30,134	30,054	\$267,399,310	\$684.17
Other	6,108	91,667	90,799	90,008	\$1,049,331,583	\$888.72
Northwest Workforce Includes these counties: Baxter, Benton, Boone, Carroll, Madison, Marion, Newton, Searcy, and Washington.						
SOUTHEAST WORKFORCE INFORMATION	5,932	75,322	74,358	74,194	\$604,935,701	\$623.57
Natural Resources & Mining	411	2,998	2,761	2,680	\$25,129,051	\$687.17
Construction	352	3,134	3,077	2,979	\$32,813,061	\$823.97
Manufacturing	224	16,185	15,471	15,369	\$162,431,896	\$797.11
Trade, Transportation & Utilities	1,340	13,047	13,027	13,070	\$101,629,101	\$599.14
Retail Trade	813	8,281	8,366	8,458	\$46,554,797	\$427.94
Other Trade, Transportation & Utilities	527	4,766	4,661	4,612	\$55,074,304	\$905.30
Education & Health Services	1,492	11,000	10,978	11,040	\$82,214,914	\$574.62
Local & State Government	360	16,673	16,789	16,794	\$122,446,377	\$562.26
Other	1,753	12,285	12,255	12,262	\$78,271,301	\$490.81
Southeast Workforce Includes these counties: Arkansas, Ashley, Bradley, Chicot, Cleveland, Desha, Drew, Grant, Jefferson, and Lincoln						
SOUTHWEST WORKFORCE INFORMATION	5,875	84,482	83,813	84,108	\$709,594,578	\$648.77
Natural Resources & Mining	418	2,850	2,841	2,858	\$31,966,752	\$862.90
Trade, Transportation & Utilities	1,487	15,300	15,415	15,471	\$122,427,215	\$611.71
Retail Trade	925	8,882	8,930	9,014	\$46,886,094	\$403.34
Other Trade, Transportation & Utilities	562	6,418	6,485	6,457	\$75,541,121	\$900.44
Financial Activities	539	2,783	2,782	2,807	\$24,616,016	\$678.53
Education & Health Services	940	9,520	9,531	9,549	\$69,818,721	\$563.36
Leisure & Hospitality	398	5,218	5,188	5,158	\$15,349,532	\$227.59
Local & State Government	412	14,668	14,781	14,801	\$105,954,364	\$552.57
Other	1,681	34,143	33,275	33,464	\$339,461,978	\$776.52
Southwest Workforce Includes these counties: Calhoun, Columbia, Dallas, Hempstead, Howard, Lafayette, Little River, Miller, Nevada, Ouachita, Sevier, and Union						

**TABLE 8. WORKFORCE INFORMATION AREA, SUMMARY
EMPLOYMENT AND TOTAL EARNINGS, BY INDUSTRY
FOURTH QUARTER 2008**

NORTH AMERICAN INDUSTRY CLASSIFICATION SYSTEM INDUSTRY GROUP	NUMBER OF EMPLOYING UNITS	EMPLOYMENT OCTOBER	EMPLOYMENT NOVEMBER	EMPLOYMENT DECEMBER	TOTAL EARNINGS OCTOBER - DECEMBER	AVERAGE WEEKLY EARNINGS
WEST CENTRAL WORKFORCE INFORMATION	8,512	108,823	108,445	108,217	\$826,929,438	\$586.29
Construction	908	5,701	5,681	5,328	\$54,214,360	\$748.71
Manufacturing	392	18,542	18,245	18,112	\$154,869,322	\$651.00
Trade, Transportation & Utilities	2,017	22,051	22,241	22,329	\$175,089,276	\$606.49
Retail Trade	1,286	14,164	14,408	14,409	\$78,622,075	\$422.13
Other Trade, Transportation & Utilities	731	7,887	7,833	7,920	\$96,467,201	\$941.69
Financial Activities	887	3,845	3,829	3,893	\$33,787,469	\$674.08
Professional & Business Services	965	7,518	7,446	7,461	\$59,981,766	\$617.26
Education & Health Services	1,338	16,026	16,078	16,151	\$138,865,502	\$664.09
Local Government	230	12,174	12,356	12,361	\$89,657,760	\$560.85
State Government	135	5,423	5,459	5,434	\$39,201,184	\$554.45
Other	1,640	17,543	17,110	17,148	\$81,262,799	\$362.02
West Central Workforce Includes these counties: Clark, Conway, Garland, Hot Spring, Johnson, Montgomery, Perry, Pike, Pope, and Yell						
WESTERN WORKFORCE INFORMATION	6,755	111,338	110,546	109,812	\$913,557,755	\$635.59
Natural Resources & Mining	185	3,235	3,269	3,320	\$49,534,339	\$1,163.58
Construction	650	4,735	4,619	4,569	\$46,196,658	\$765.69
Trade, Transportation & Utilities	1,682	23,458	23,864	23,800	\$182,987,211	\$593.74
Wholesale Trade	400	3,721	3,760	3,775	\$46,259,691	\$948.41
Retail Trade	965	12,588	12,911	13,067	\$71,870,792	\$430.06
Transportation, Warehousing & Utilities	317	7,149	7,193	6,958	\$64,856,728	\$702.67
Financial Activities	712	3,984	3,970	4,013	\$42,063,277	\$811.14
Professional & Business Services	874	11,103	10,274	9,691	\$82,081,691	\$609.69
Education & Health Services	960	14,775	14,971	15,090	\$142,655,615	\$734.24
Leisure & Hospitality	502	8,380	8,389	8,355	\$26,085,018	\$239.60
Local & State Government	229	12,578	12,595	12,617	\$97,274,643	\$594.02
Other	961	29,090	28,595	28,357	\$244,679,303	\$656.24
Western Workforce Includes these counties: Crawford, Franklin, Logan, Polk, Scott, and Sebastian						