

Arkansas Covered Employment & Earnings

Jobs for People. People for Jobs.

DWS
Department of
WORKFORCE**Services**

Third Quarter
2008

**COVERED EMPLOYMENT AND EARNINGS
STATE OF ARKANSAS
THIRD QUARTER 2008**

**MIKE BEEBE, GOVERNOR
STATE OF ARKANSAS**

**ARTEE WILLIAMS, DIRECTOR
DEPARTMENT OF WORKFORCE SERVICES**

**PUBLISHED BY
LABOR MARKET INFORMATION & ANALYSIS
BUREAU OF LABOR STATISTICS PROGRAMS
POST OFFICE BOX 2981
LITTLE ROCK, ARKANSAS 72203-2981
BERNADETTE COLEMAN, BLS PROGRAMS MANAGER
TELEPHONE: (501) 682-3159**

STATE OF ARKANSAS HOME PAGE: <http://www.arkansas.gov>

DEPARTMENT OF WORKFORCE SERVICES HOME PAGE: <http://www.arkansas.gov/esd/>

**INTERNET SITE FOR LABOR MARKET INFORMATION:
<http://www.discover.arkansas.gov>**

RELEASED: MARCH 2009

TABLE OF CONTENTS

DESCRIPTION OF DATA	Page
Industry Classification	1
Definition of Covered Employment and Earnings	2
Federal Government Employment	2
County Classification	2
Significant Developments During Third Quarter 2008	3

LIST OF GRAPHS AND TABLES

Graph 1	Total Covered Employment for Selected Years, Arkansas	7
Graph 2	Total Covered Earnings, by Calendar Quarter for Selected Years, Arkansas	8
Table 1	Quarterly Comparison of Covered Employment and Wages, by Industry	5
Table 2	Total Covered Employment in Arkansas, 2001-2008	6
Table 3	Total Covered Earnings, 2001-2008	9
Table 4	Total Taxable Earnings, 2001-2008	10
Table 5	State Summary - Employment and Total Earnings, by Industry, Third Quarter 2008	11
Table 6	County Summary - Employment and Total Earnings, by Industry, Third Quarter 2008	24
Table 7	Federal Government Employment and Total Earnings in Arkansas, Third Quarter 2008	62
Table 8	Workforce Information Area – Employment and Total Earnings, by Industry, Third Quarter 2008	63

EMPLOYMENT AND EARNINGS
UNDER THE ARKANSAS EMPLOYMENT SECURITY LAW
THIRD QUARTER 2008

DESCRIPTION OF DATA

This publication contains covered employment and payroll data by industry and county for the Third Quarter 2008. These data are compiled from quarterly contribution and wage reports submitted by employers subject to the Arkansas Employment Security Law. An employing unit is a single physical location where business is conducted, production takes place, or services are provided. Employment data have been tabulated for each month of the quarter by industry under the **North American Industry Classification System** (NAICS) (see "Industry Classification" below) on a statewide, county and workforce area basis. Payroll data represent the total wages paid during the quarter, and are also shown by

industry for the State and by publishable industry groups for each county and workforce area. The tabulation of this data is a joint effort in conjunction with the U.S. Bureau of Labor Statistics. In addition, there are tables included which set out total covered employment by months, quarterly payrolls, and average weekly earnings for the years 2001 through 2008. Data contained in this publication are subject to revision. These revisions will be reflected in the 2008 Annual Covered Employment and Earnings publication. Because of industry code changes between years, substantial employment and wage shifts among industries are anticipated.

INDUSTRY CLASSIFICATION

Previously published industry data **will not** be comparable in all instances with currently published data since industry codes have been revised according to the following Manuals: (a) between January 1, 1958 and December 31, 1967, industry codes were assigned under the 1957 Standard Industrial Classification (SIC) Manual; (b) between January 1, 1968 and December 31, 1974, industry codes were assigned under the 1967 Standard Industrial Classification (SIC) Manual; (c) between January 1, 1975 and December 31, 1987, industry codes were assigned under the 1972 Standard Industrial Classification (SIC) Manual; (d) between January 1, 1988 and December 31, 2000, industry codes were assigned under the 1987 Standard Industrial Classification (SIC) Manual; (e) between January 1, 2001 and December 31, 2006, industry codes were assigned under the 2002 North American Industry Classification System (NAICS) Manual; and (f) since January 1, 2007, industry codes have been assigned under the 2007 North American Industry Classification System (NAICS) Manual.

The NAICS Manual represents a significant change in coding methodology as compared to the SIC Manual. One of the most significant changes involves how NAICS treats auxiliary units. Auxiliary units are establishments primarily engaged in performing management or support services for other establishments of the same enterprise. The SIC code for these units was based on the activity of the enterprise served. The NAICS code is based on the actual activities that the establishment performs. Comparisons of many industries **should not be made** between this publication and previous Covered Employment and Earnings publications that were based on SIC. Even though some titles are the same or similar, in nature, NAICS and SIC could differ in the classification of employers. The implementation of NAICS represents a profound change for statistical programs, and will create significant benefits along with transition obstacles for both data collectors and data users. A summary is available on the NAICS home page at <http://www.census.gov/naics>.

DEFINITION OF COVERED EMPLOYMENT AND EARNINGS

Covered Employment is the number of workers employed by employers subject to the Arkansas Employment Security Law who worked or received pay for the payroll period including the 12th of the month. An employer is subject to the law when they employ one or more employees in each of ten days during the current or preceding calendar year.

Currently excluded from coverage is employment covered by the Railroad Unemployment Insurance Act, some domestic service workers, employees of small agricultural establishments, self-employed and unpaid family workers, insurance and real estate

agents who are on commission only, and employees of churches and religious organizations except separately incorporated schools. The payroll information in this publication includes all wages and salaries paid to any covered employees by their employers including bonuses, commissions, and cash values of remuneration received in any medium other than cash. These wages include both taxable and nontaxable wages. Only the first \$10,000 paid to each worker by an employer in the calendar year is taxable under the Arkansas Employment Security Law.

FEDERAL GOVERNMENT EMPLOYMENT

Table 7 on page 62 lists the total number of civilians employed by the Federal Government in Arkansas during the Third Quarter 2008. Employment and wage data are set out by industry divisions. These data are obtained from required reports submitted by various

government agencies having employment in the State. Civilian Federal workers are covered by the Unemployment Compensation for Federal Employees (UCFE) program.

COUNTY CLASSIFICATION

Employment and payroll data by county are classified according to the county where the workers are employed. Employers with operations in more than one county are requested to furnish this agency with a breakdown of employment and wages for at least one quarter of each year by the counties in which they operate. Many such employers submit county data with each regular contribution report. **Note:** This information is invaluable in the preparation of monthly employment and payroll data by county.

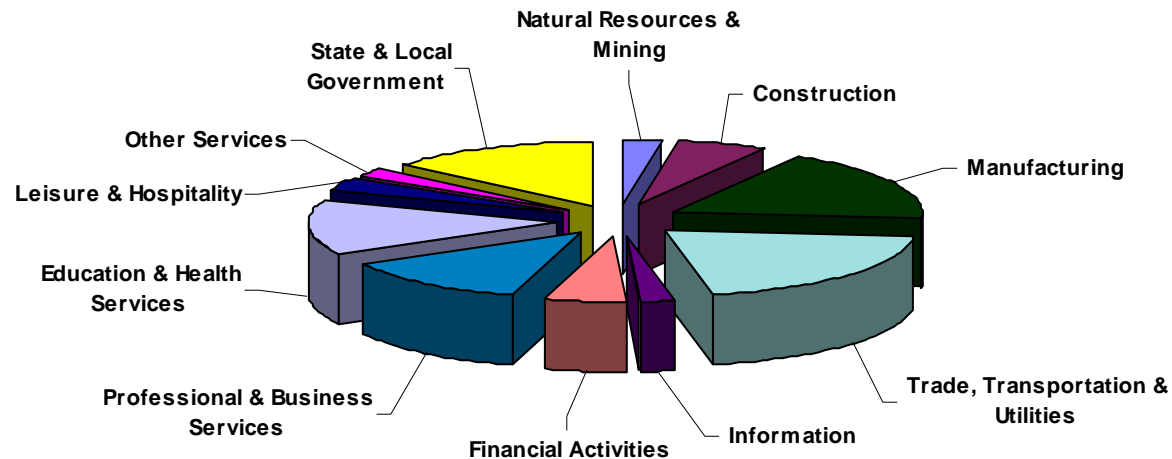
Employment and payroll data for multi - area employers, who do not furnish county data each quarter of the year, are prorated by county on the basis of one quarter's information. The "rest-of-state" table that appears on page 61 of this publication includes data on firms that **did not** provide a county breakdown of employment and payrolls. It also includes sales, and all other type of personnel with no permanent place of work, as well as employment of employers with no established place of business in Arkansas.

SIGNIFICANT DEVELOPMENTS DURING THIRD QUARTER 2008

AVERAGE EMPLOYMENT CHANGES

Covered employment averaged 1,139,925 during the Third Quarter 2008 (see table 1), a decrease of 21,802 (-1.9%) from the previous quarter and 3,096 (0.3%) above the average recorded one-year ago. This *over-the-year* increase is more significant when used as an economic indicator. This *over-the-year* comparison allows for the disregarding of many seasonal factors that are evident when making an *over-the-quarter* comparison.

Average Covered Employment by NAICS Group



EMPLOYMENT CHANGES FROM SECOND QUARTER 2008

Over the quarter gains were recorded in six industry groups while five declined (see Table 1). Construction enjoyed the largest gain with a seasonal increase of 1,609. Leisure & Hospitality (+976) also gained employment due to seasonal factors. Natural Resources & Mining grew by 699, mostly attributed to the oil and gas industry. Education & Health Services added 645 jobs, all in health care and social assistance. Increases were also recorded in Professional & Business Services (+445) and Other Services (+12).

State & Local Government had the largest decline, with a seasonal decrease of 24,084 due to the end of the school year. Manufacturing lost 1,120 jobs due to layoffs and closures. Trade, Transportation & Utilities went down 496 with the losses mostly occurring in Transportation & Warehousing (-193) and Utilities (-249). Financial Activities (-330) and Information (-157) also declined.

EMPLOYMENT CHANGES FROM THIRD QUARTER 2007

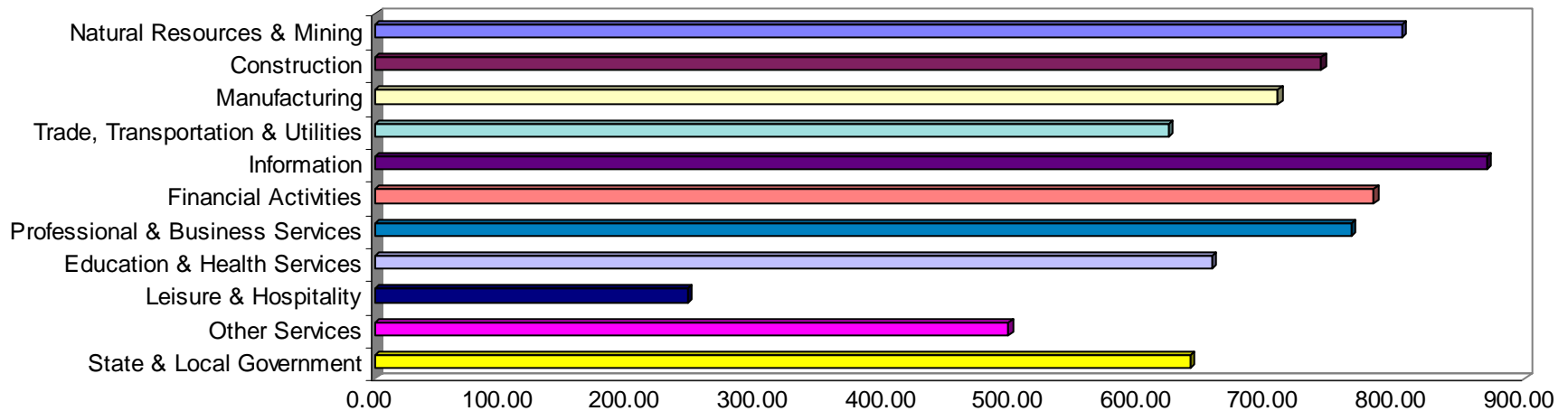
Over-the-year gains were recorded in six industry groups while five recorded losses (see table 1). Significant gains were posted in Education & Health Services (+4,678), State & Local Government (+4,527), and Leisure & Hospitality (+2,021). Significant losses occurred in Manufacturing (-5,775), Trade, Transportation & Utilities (-1,826), and Financial Activities (-1,714)

COVERED WAGES

Wages paid to covered workers totaled \$9,490,176,204 for the Third Quarter 2008 (see table 1), for an average weekly wage of \$640.41 (see table 5). Employees in Calhoun County recorded the highest average weekly wage (\$792.26), and workers in Searcy County the lowest (\$386.16) (see table 6).

The Information sector recorded the highest average weekly wage for the State of Arkansas at \$870.80, while the Leisure & Hospitality sector recorded the lowest at \$244.83 for the State of Arkansas (see table 5).

Average Weekly Wages by Industry Group



Note: Because of industry code changes between years, substantial employment and wage shifts among industries are anticipated.

TABLE 1. QUARTERLY COMPARISON OF COVERED EMPLOYMENT AND WAGES, BY INDUSTRY

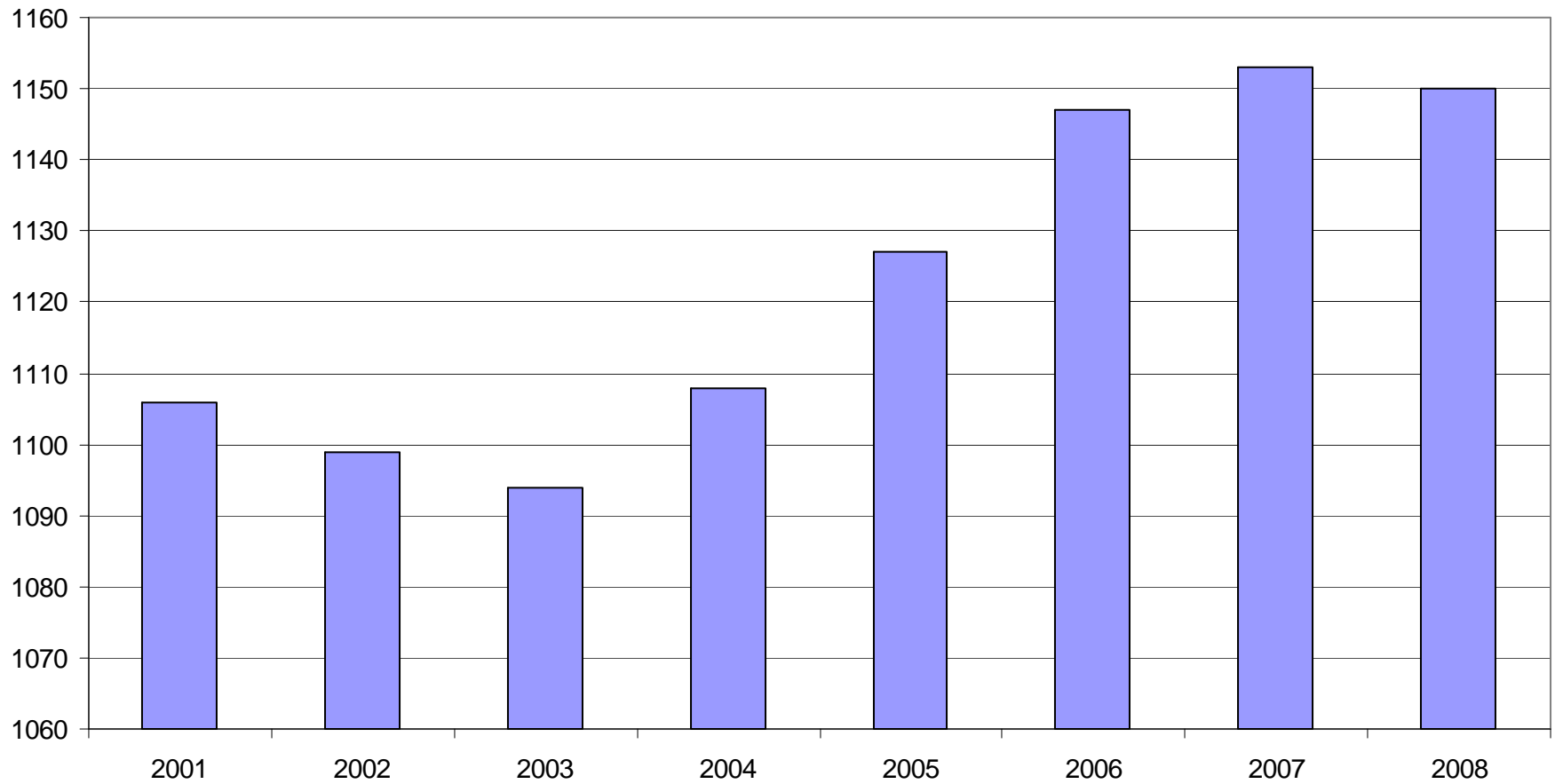
North American Industry Classification System Industry Group	Number of Employing Units	Average Covered Employment		Net Change From:		Total Wages Paid	
		July – Sept. 2008 Monthly Average	% of Total	Apr. – June 2008	July – Sept. 2007	July – Sept. 2008	% of Total
Total	84,887	1,139,925	100.0	-21,802	3,096	\$9,490,176,204	100.0
Natural Resources and Mining	2,460	22,045	1.9	699	1,354	230,309,547	2.4
Agriculture, Forestry, Fishing and Hunting	1,934	13,227	1.2	-69	-332	96,824,600	1.0
Mining	526	8,818	0.8	767	1,686	133,484,947	1.4
Construction	7,928	58,050	5.1	1,609	428	559,194,945	5.9
Manufacturing	3,587	182,841	16.0	-1,120	-5,775	1,679,836,126	17.7
Trade, Transportation, and Utilities	21,157	244,391	21.4	-496	-1,826	1,973,031,811	20.8
Wholesale Trade	6,465	48,865	4.3	-30	569	619,764,270	6.5
Retail Trade	11,321	133,789	11.7	-24	194	734,098,573	7.7
Transportation and Warehousing	3,007	55,114	4.8	-193	-2,317	516,814,231	5.4
Utilities	364	6,623	0.6	-249	-271	102,354,737	1.1
Information	1,123	18,693	1.6	-157	-1,210	211,608,704	2.2
Financial Activities	8,427	50,744	4.5	-330	-1,714	515,639,774	5.4
Finance and Insurance	4,917	36,370	3.2	-229	-1,394	414,111,604	4.4
Real Estate and Rental and Leasing	3,510	14,374	1.3	-101	-320	101,528,170	1.1
Professional and Business Services	11,902	118,108	10.4	445	648	1,173,151,135	12.4
Professional and Technical Services	7,423	38,252	3.4	-423	188	451,855,340	4.8
Management of Companies and Enterprises	554	25,983	2.3	498	1,104	416,866,984	4.4
Administrative and Waste Services	3,925	53,874	4.7	370	-644	304,428,811	3.2
Education and Health Services	13,390	155,068	13.6	645	4,678	1,320,910,601	13.9
Educational Services	625	9,364	0.8	-295	194	71,286,720	0.8
Health Care and Social Assistance	12,765	145,704	12.8	940	4,484	1,249,623,881	13.2
Leisure and Hospitality	6,259	103,970	9.1	976	2,021	330,916,066	3.5
Arts, Entertainment and Recreation	918	10,875	1.0	-72	141	44,518,483	0.5
Accommodation and Food Services	5,341	93,096	8.2	1,048	1,879	286,397,583	3.0
Other Services	5,414	25,567	2.2	12	-36	164,808,501	1.7
State and Local Government	3,240	160,448	14.1	-24,084	4,527	1,330,768,994	14.0
Local Government	1,983	95,048	8.3	-24,254	2,284	674,140,753	7.1
State Government	1,257	65,399	5.7	170	2,244	656,628,241	6.9
Nonclassifiable Establishments	0	0	0.0	0	0	0	0.0

Note: Items do not necessarily add to totals because of rounding. Because of industry code changes between years, substantial employment and wage shifts among industries are anticipated.

TABLE 2. TOTAL COVERED EMPLOYMENT IN ARKANSAS

Period	2001	2002	2003	2004	2005	2006	2007	2008
Average	1,106,066	1,098,558	1,094,087	1,108,264	1,126,778	1,146,948	1,152,994	1,150,355
January	1,096,009	1,081,635	1,082,740	1,089,510	1,102,768	1,130,595	1,137,437	1,141,697
February	1,101,616	1,086,793	1,084,880	1,094,626	1,110,577	1,136,810	1,143,397	1,149,049
March	1,112,143	1,098,500	1,092,172	1,105,266	1,122,619	1,150,439	1,158,895	1,157,496
April	1,115,526	1,103,399	1,095,341	1,111,020	1,129,785	1,155,498	1,159,623	1,158,601
May	1,119,815	1,111,998	1,103,099	1,117,144	1,135,567	1,159,886	1,165,224	1,164,266
June	1,119,734	1,112,028	1,099,688	1,117,010	1,136,118	1,162,026	1,164,207	1,162,315
July	1,071,921	1,065,697	1,053,220	1,071,463	1,090,071	1,106,142	1,110,571	1,116,129
August	1,094,160	1,086,011	1,077,775	1,094,871	1,114,098	1,130,839	1,139,109	1,139,948
September	1,115,976	1,113,148	1,105,980	1,122,704	1,144,815	1,159,814	1,165,135	1,163,697
October	1,110,994	1,108,447	1,112,550	1,123,246	1,142,300	1,156,804	1,162,768	N/A
November	1,109,012	1,107,611	1,109,712	1,125,061	1,145,667	1,156,011	1,164,246	N/A
December	1,105,887	1,107,425	1,111,892	1,127,250	1,146,954	1,158,509	1,165,314	N/A

AVERAGE TOTAL COVERED EMPLOYMENT GRAPH 1
In Thousands



TOTAL COVERED EARNINGS BY CALENDAR QUARTER, GRAPH 2
In Thousands

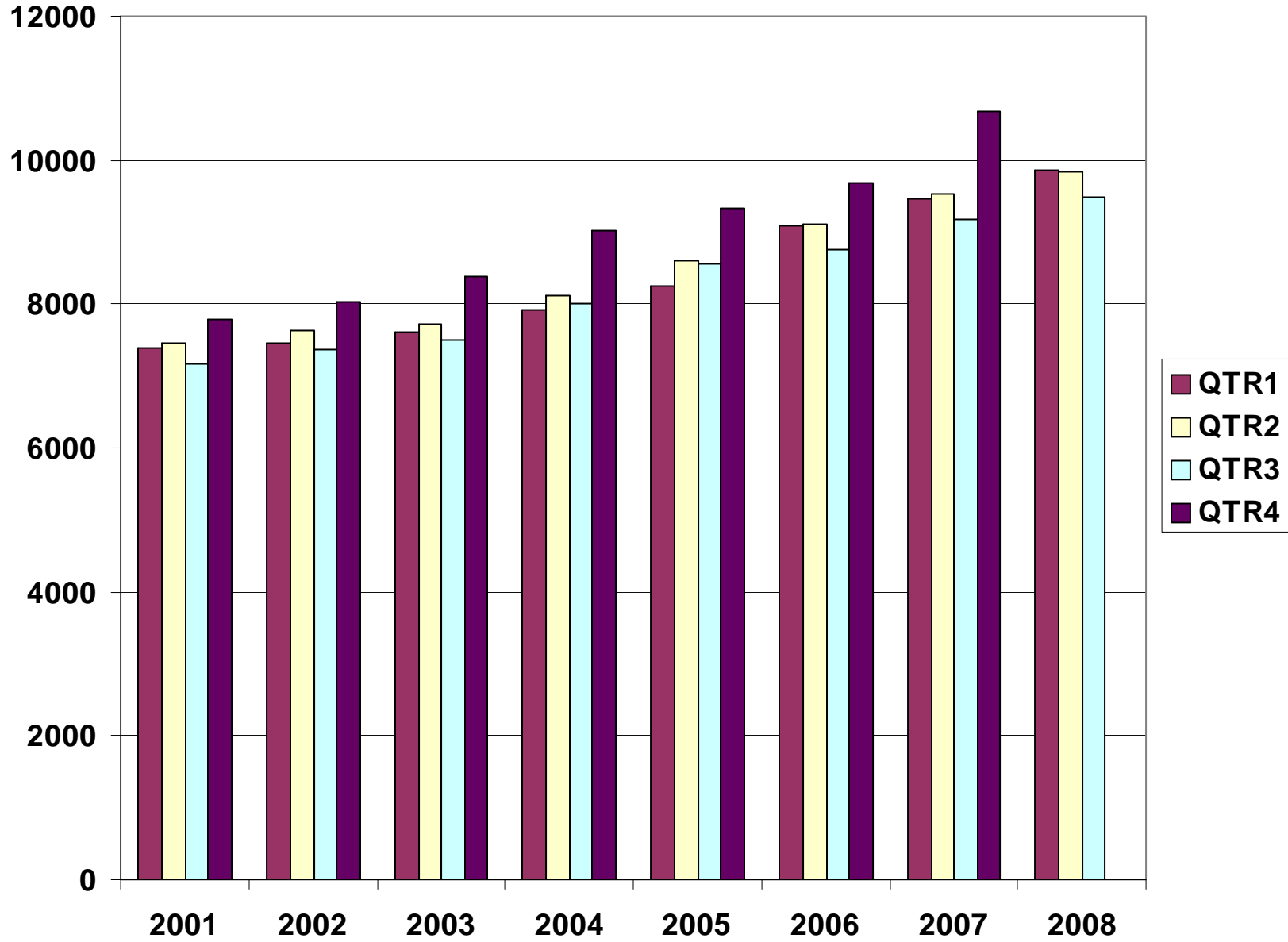


TABLE 3. TOTAL COVERED EARNINGS, 2001 - 2008

Period	2001	2002	2003	2004
Total	\$29,807,669,666	\$30,472,854,103	\$31,202,576,767	\$33,068,189,304
January - March	7,398,887,532	7,465,250,305	7,608,130,008	7,918,843,610
April - June	7,448,023,298	7,621,878,775	7,714,813,038	8,122,370,361
July - September	7,177,293,061	7,361,666,511	7,500,204,764	8,010,300,454
October - December	7,783,465,775	8,024,058,512	8,379,428,957	9,016,674,879
Average Weekly Earnings	518.26	533.44	548.45	573.80

Period	2005	2006	2007	2008
Total	\$34,753,107,631	\$36,636,090,775	\$38,833,265,464	\$29,170,655,183
January - March	8,261,153,981	9,085,021,816	9,452,711,662	9,849,712,834
April - June	8,607,722,353	9,112,624,590	9,525,837,049	9,830,766,145
July - September	8,562,555,369	8,750,878,205	9,178,902,477	9,490,176,204
October - December	9,321,675,928	9,687,566,164	10,675,814,276	N/A
Average Weekly Earnings	593.13	614.27	647.70	650.20

TABLE 4. TOTAL TAXABLE EARNINGS, 2001 - 2008

Period	2001	2002	2003	2004
Total	\$9,003,189,480	\$8,887,270,978	\$9,154,938,743	\$9,731,247,501
January - March	4,670,296,360	4,668,534,587	4,737,918,796	4,931,559,230
April - June	2,219,485,263	2,162,971,435	2,270,519,362	2,451,454,749
July - September	1,190,098,737	1,158,197,858	1,188,681,170	1,318,017,835
October - December	923,309,120	897,567,098	957,819,415	1,030,215,687
Period	2005	2006	2007	2008
Total	\$9,991,605,239	\$10,197,511,360	\$10,459,105,059	\$9,373,010,878
January - March	5,062,670,306	5,421,204,601	5,617,417,571	5,633,961,758
April - June	2,506,505,721	2,385,110,992	2,466,606,627	2,441,783,728
July - September	1,353,660,445	1,314,939,803	1,307,060,412	1,297,265,392
October - December	1,068,768,767	1,076,255,964	1,068,020,449	N/A

**TABLE 5. STATEWIDE SUMMARY
EMPLOYMENT AND TOTAL EARNINGS, BY INDUSTRY
THIRD QUARTER 2008**

NORTH AMERICAN INDUSTRY CLASSIFICATION SYSTEM INDUSTRY GROUPS		NUMBER OF EMPLOYING UNITS	EMPLOYMENT			TOTAL EARNINGS	AVERAGE
			JULY	AUGUST	SEPTEMBER	JULY - SEPTEMBER	WEEKLY EARNINGS
TOTAL, ALL INDUSTRIES		84,887	1,116,129	1,139,948	1,163,697	\$9,490,176,204	\$640.41
NATURAL RESOURCES & MINING		2,460	22,103	22,019	22,013	\$230,309,547	\$803.63
11	AGRICULTURE, FORESTRY, FISHING & HUNTING	1,934	13,316	13,221	13,143	\$96,824,600	\$563.11
111	CROP PRODUCTION	715	3,805	3,733	3,800	\$20,132,674	\$409.77
1111	Oilseed and Grain Farming	443	2,068	2,033	2,142	11,576,321	427.91
1112	Vegetable and Melon Farming	10	68	84	88	228,152	219.38
1113	Fruit and Tree Nut Farming	9	218	213	153	918,553	362.97
1114	Greenhouse & Nursery Production	52	395	370	349	2,040,334	422.66
1119	Other Crop Farming	201	1,056	1,033	1,068	5,369,314	392.48
112	ANIMAL PRODUCTION	266	3,695	3,669	3,694	\$29,439,902	\$614.38
1121	Cattle Ranching and Farming	76	326	332	332	2,029,994	473.19
1122	Hog and Pig Farming	9	156	146	149	1,391,067	711.79
1123	Poultry and Egg Production	92	2,617	2,611	2,636	22,143,587	649.80
1125	Animal Aquaculture	61	531	515	505	3,480,189	517.81
	Other	28	65	65	72	395,065	451.33
113	FORESTRY AND LOGGING	505	2,616	2,600	2,583	\$20,675,703	\$611.79
1131	Timber Tract Operations	40	231	232	233	2,350,228	779.25
1132	Forest Nurseries & Gathering of Forest Products	6	32	32	32	348,360	837.40
1133	Logging	459	2,353	2,336	2,318	17,977,115	592.06
	OTHER	448	3,200	3,219	3,066	\$26,576,321	\$646.60
21	MINING	526	8,787	8,798	8,870	\$133,484,947	\$1,164.40
211	OIL AND GAS EXTRACTION	105	1,118	1,093	1,125	\$20,441,560	\$1,414.05
212	MINING (EXCEPT OIL AND GAS)	117	2,239	2,232	2,199	\$24,715,101	\$855.10
213	SUPPORT ACTIVITIES FOR MINING	304	5,430	5,473	5,546	\$88,328,286	\$1,239.19

**TABLE 5. STATEWIDE SUMMARY
EMPLOYMENT AND TOTAL EARNINGS, BY INDUSTRY
THIRD QUARTER 2008**

NORTH AMERICAN INDUSTRY CLASSIFICATION SYSTEM INDUSTRY GROUPS		NUMBER OF EMPLOYING UNITS	EMPLOYMENT			TOTAL EARNINGS	AVERAGE
			JULY	AUGUST	SEPTEMBER	JULY - SEPTEMBER	WEEKLY EARNINGS
CONSTRUCTION		7,928	57,813	58,443	57,895	\$559,194,945	\$740.99
236	CONSTRUCTION OF BUILDINGS	2,170	13,301	13,557	13,323	\$135,012,523	\$775.41
2361	Residential Building Construction	1,524	3,659	3,704	3,745	27,186,203	564.79
2362	Nonresidential Building Construction	646	9,642	9,853	9,578	107,826,320	855.88
237	HEAVY & CIVIL ENGINEERING CONSTRUCTION	868	10,899	11,378	11,621	\$131,526,851	\$895.40
2371	Utility System Construction	424	6,133	6,411	6,657	81,197,407	975.88
2372	Land Subdivision	124	360	343	338	3,136,681	695.34
2373	Highway, Street & Bridge Construction	212	3,026	3,165	3,169	28,775,055	709.44
2379	Other Heavy Construction	108	1,380	1,459	1,457	18,417,708	989.35
238	SPECIALTY TRADE CONTRACTORS	4,890	33,613	33,508	32,951	\$292,655,571	\$674.87
2381	Building Foundation & Exterior Contractors	979	7,090	7,029	6,958	58,087,019	635.99
2382	Building Equipment Contractors	2,173	16,106	16,131	15,880	152,604,214	731.89
2383	Building Finishing Contractors	908	4,885	4,811	4,689	36,455,854	584.84
2389	Other Specialty Trade Contractors	830	5,532	5,537	5,424	45,508,484	636.75
MANUFACTURING		3,587	183,138	182,624	182,761	\$1,679,836,126	\$706.72
311	FOOD MANUFACTURING	312	48,435	48,439	48,953	\$354,772,102	\$561.42
3111	Animal Food Manufacturing	61	1,535	1,534	1,546	14,370,345	718.58
3112	Grain and Oilseed Milling	30	2,275	2,318	2,355	22,970,478	762.94
3113	Sugar & Confectionery Product Manufacturing	7	51	53	65	290,964	397.31
3114	Fruit, Vegetable & Specialty Food	24	5,617	5,648	5,826	49,120,585	663.24
3115	Dairy Product Manufacturing	11	702	692	694	7,089,223	783.51
3116	Animal Slaughtering & Processing	93	33,086	32,946	33,229	216,722,253	503.85
3117	Seafood Product Preparation & Packaging	5	195	199	210	872,856	333.49
3118	Bakeries and Tortilla Manufacturing	53	3,333	3,370	3,354	28,934,237	663.93
3119	Other Food Manufacturing	28	1,641	1,679	1,674	14,401,161	665.47
312	BEVERAGE & TOBACCO PRODUCT MFG.	42	1,243	1,244	1,229	\$12,341,153	\$766.40
313	TEXTILE MILLS	16	269	263	252	\$2,755,193	\$810.99
314	TEXTILE PRODUCT MILLS	63	1,065	1,104	1,120	\$9,800,762	\$687.66
3141	Textile Furnishing Mills	15	34	32	37	162,786	\$364.72
3149	Other Textile Product Mills	48	1,031	1,072	1,083	9,637,976	\$698.10

**TABLE 5. STATEWIDE SUMMARY
EMPLOYMENT AND TOTAL EARNINGS, BY INDUSTRY
THIRD QUARTER 2008**

NORTH AMERICAN INDUSTRY CLASSIFICATION SYSTEM INDUSTRY GROUPS		NUMBER OF EMPLOYING UNITS	EMPLOYMENT			TOTAL EARNINGS	AVERAGE
			JULY	AUGUST	SEPTEMBER	JULY - SEPTEMBER	WEEKLY EARNINGS
315	APPAREL MANUFACTURING	35	1,449	1,447	1,426	\$7,836,599	\$418.43
3151	Apparel Knitting Mills	3	708	709	728	4,258,373	458.14
3152	Cut & Sew Apparel Manufacturing	27	582	576	538	2,764,341	376.13
3159	Accessories & Other Apparel Manufacturing	5	159	162	160	813,885	390.48
316	LEATHER & ALLIED PRODUCT MANUFACTURING	22	1,840	1,924	1,991	\$10,987,140	\$440.57
321	WOOD PRODUCT MANUFACTURING	384	11,274	11,159	11,102	\$92,494,548	\$636.50
3211	Sawmills and Wood Preservation	161	4,754	4,783	4,779	40,716,697	656.34
3212	Veneer & Engineered Wood Products	55	2,843	2,812	2,782	28,699,222	784.98
3219	Other Wood Product Manufacturing	168	3,677	3,564	3,541	23,078,629	493.96
322	PAPER MANUFACTURING	86	10,926	10,946	10,933	\$143,484,854	\$1,009.35
3221	Pulp, Paper & Paperboard Mills	13	4,300	4,282	4,307	72,185,681	1292.44
3222	Converted Paper Product Manufacturing	73	6,626	6,664	6,626	71,299,173	826.15
323	PRINTING & RELATED SUPPORT ACTIVITIES	281	4,523	4,504	4,466	\$39,538,971	\$676.23
324	PETROLEUM AND COAL PRODUCTS MFG.	23	1,043	1,019	1,001	\$11,850,876	\$892.86
325	CHEMICAL MANUFACTURING	130	4,946	4,978	4,974	\$63,030,035	\$976.33
3251	Basic Chemical Manufacturing	31	2,100	2,084	2,090	30,162,930	1109.45
3252	Resin, Rubber & Artificial Fibers	11	354	423	420	5,283,398	1018.58
3253	Agricultural Chemical Manufacturing	16	345	340	340	3,929,876	884.78
3255	Paint, Coating & Adhesive Manufacturing	9	185	185	181	2,314,738	969.46
3259	Other Chemical Preparation Manufacturing	31	887	883	883	9,692,072	843.06
	Other	32	1,075	1,063	1,060	11,647,021	840.45
326	PLASTICS & RUBBER PRODUCTS MFG.	156	11,402	11,164	11,176	\$108,302,817	\$740.71
3261	Plastics Product Manufacturing	108	7,326	7,143	7,151	62,845,233	670.80
3262	Rubber Product Manufacturing	48	4,076	4,021	4,025	45,457,584	865.39
327	NONMETALLIC MINERAL PRODUCT MFG.	264	4,471	4,432	4,301	\$41,471,508	\$724.81
3271	Clay Product & Refractory Manufacturing	22	528	512	495	4,615,180	693.84
3272	Glass & Glass Product Manufacturing	13	476	483	485	3,872,135	618.82
3273	Cement & Concrete Product Manufacturing	186	2,541	2,510	2,443	23,778,466	732.23
3274	Lime & Gypsum Product Manufacturing	5	339	342	326	3,891,540	891.81
3279	Other Nonmetallic Mineral Products Manufacturing	38	587	585	552	5,314,187	711.34

**TABLE 5. STATEWIDE SUMMARY
EMPLOYMENT AND TOTAL EARNINGS, BY INDUSTRY
THIRD QUARTER 2008**

NORTH AMERICAN INDUSTRY CLASSIFICATION SYSTEM INDUSTRY GROUPS		NUMBER OF EMPLOYING UNITS	EMPLOYMENT			TOTAL EARNINGS	AVERAGE
			JULY	AUGUST	SEPTEMBER	JULY - SEPTEMBER	WEEKLY EARNINGS
331	PRIMARY METAL MANUFACTURING	86	8,515	8,470	8,433	\$116,504,619	\$1,057.74
3311	Iron & Steel Mills and Ferroalloys	13	2,284	2,299	2,249	47,179,095	1593.60
3312	Purchased Steel Product Manufacturing	17	2,475	2,469	2,492	28,596,087	887.45
3313	Alumina & Aluminum Production	22	1,917	1,921	1,894	21,935,044	883.10
3314	Other Nonferrous Metal Production	17	668	666	669	6,175,948	711.54
3315	Foundries	17	1,171	1,115	1,129	12,618,445	852.69
332	FABRICATED METAL PRODUCT MANUFACTURING	581	16,793	16,849	16,825	\$170,944,017	\$781.67
3321	Forging & Stamping	12	774	753	740	7,329,710	746.13
3322	Cutlery & Hand Tool Manufacturing	20	1,206	1,210	1,212	10,847,039	689.96
3323	Architectural & Structural Metals	195	4,920	4,919	4,877	54,092,728	848.26
3324	Boilers, Tanks & Shipping Containers	18	693	692	697	7,475,373	828.57
3325	Hardware Manufacturing	8	247	229	227	1,798,944	590.53
3326	Spring & Wire Product Manufacturing	12	472	476	471	3,633,137	590.85
3327	Machine Shops & Threaded Products	209	2,047	2,026	2,025	17,737,022	671.23
3328	Coating, Engraving & Heat Treating Metals	39	662	658	655	4,814,393	562.54
3329	Other Fabricated Metal Product Manufacturing	68	5,772	5,886	5,921	63,215,671	829.87
333	MACHINERY MANUFACTURING	267	14,112	14,128	14,107	\$122,033,893	\$665.02
3331	Agri., Construction & Mining Machinery	42	2,948	3,014	2,999	16,521,089	425.46
3332	Industrial Machinery Manufacturing	37	826	827	807	8,273,431	776.12
3333	Commercial & Service Industry Machinery	28	957	947	911	9,730,437	797.69
3334	HVAC & Commercial Refrigeration Equipment	22	4,542	4,456	4,447	41,195,171	707.07
3335	Metalworking Machinery Manufacturing	77	1,382	1,381	1,395	13,629,131	756.42
3336	Turbine & Power Transmission Equipment Manufacturing	7	632	715	787	6,675,636	721.90
3339	Other General Purpose Machinery Manufacturing	54	2,825	2,788	2,761	26,008,998	716.75
334	COMPUTER & ELECTRONIC PRODUCT MFG.	84	3,913	3,893	3,987	\$37,761,567	\$738.93
3342	Communications Equipment Manufacturing	9	147	150	149	2,171,056	\$1,123.35
3343	Audio & Video Equipment Manufacturing	10	705	685	815	7,379,379	772.31
3344	Semiconductors & Electronic Components	29	2,196	2,186	2,159	18,438,109	650.50
3345	Electronic Instrument Manufacturing	29	834	837	835	9,660,125	889.57
	Other	7	31	35	29	112,898	274.25
335	ELECTRICAL EQUIPMENT & APPLIANCES	65	9,661	9,679	9,730	\$90,476,725	\$718.24
3353	Electrical Equipment Manufacturing	23	4,757	4,731	4,745	46,347,875	751.47
3359	Other Electrical Equipment & Component Manufacturing	23	2,010	2,048	2,050	21,652,945	818.08
	Other	19	2,894	2,900	2,935	22,475,905	594.20

**TABLE 5. STATEWIDE SUMMARY
EMPLOYMENT AND TOTAL EARNINGS, BY INDUSTRY
THIRD QUARTER 2008**

NORTH AMERICAN INDUSTRY CLASSIFICATION SYSTEM INDUSTRY GROUPS		NUMBER OF EMPLOYING UNITS	EMPLOYMENT			TOTAL EARNINGS	AVERAGE
			JULY	AUGUST	SEPTEMBER	JULY - SEPTEMBER	WEEKLY EARNINGS
336	TRANSPORTATION EQUIPMENT MANUFACTURING	177	16,228	15,999	15,899	\$154,770,513	\$742.14
3362	Motor Vehicle Body & Trailer Manufacturing	40	2,347	2,275	2,222	18,634,455	628.33
3363	Motor Vehicle Parts Manufacturing	60	6,271	6,222	6,124	50,534,687	626.41
3364	Aerospace Product & Parts Manufacturing	31	4,645	4,588	4,615	59,864,325	997.61
3366	Ship & Boat Building	27	1,566	1,536	1,526	11,558,990	576.37
	Other	19	1,399	1,378	1,412	14,178,056	781.06
337	FURNITURE & RELATED PRODUCT MFG.	256	6,042	5,977	5,927	\$46,810,594	\$601.94
3371	Household & Institutional Furniture	209	4,031	3,984	3,944	30,336,217	585.39
3372	Office Furniture & Fixtures Manufacturing	40	1,897	1,879	1,873	15,841,621	647.15
3379	Other Furniture Related Product Manufacturing	7	114	114	110	632,756	432.01
339	MISCELLANEOUS MANUFACTURING	257	4,988	5,006	4,929	\$41,867,640	\$647.44
3391	Medical Equipment & Supplies Manufacturing	97	2,446	2,446	2,435	21,485,780	676.71
3399	Other Miscellaneous Manufacturing	160	2,542	2,560	2,494	20,381,860	619.21
TRADE, TRANSPORTATION & UTILITIES		21,157	244,599	244,670	243,904	\$1,973,031,811	\$621.02
42	WHOLESALE TRADE	6,465	48,838	48,929	48,828	\$619,764,270	\$975.63
423	MERCHANT WHOLESALERS, DURABLE GOODS	2,272	22,430	22,505	22,405	\$254,555,119	\$872.34
4231	Motor Vehicle & Part Merchant Wholesalers	252	2,676	2,680	2,635	25,280,733	730.07
4232	Furniture & Furnishing Merchant Wholesalers	71	462	457	459	5,199,460	870.74
4233	Lumber & Supply Merchant Wholesalers	192	1,734	1,719	1,695	17,136,776	768.19
4234	Commercial Goods Merchant Wholesalers	305	2,730	2,754	2,752	42,001,505	1176.86
4235	Metal & Mineral Merchant Wholesalers	61	943	965	974	11,159,895	893.60
4236	Electric Goods Merchant Wholesalers	186	2,123	2,143	2,152	26,274,786	944.75
4237	Hardware & Plumbing Merchant Wholesalers	236	2,407	2,406	2,387	26,566,154	851.48
4238	Machinery & Supply Merchant Wholesalers	727	7,530	7,534	7,488	84,150,454	861.09
4239	Misc. Durable Goods Merchant Wholesalers	242	1,825	1,847	1,863	16,785,356	699.83

**TABLE 5. STATEWIDE SUMMARY
EMPLOYMENT AND TOTAL EARNINGS, BY INDUSTRY
THIRD QUARTER 2008**

NORTH AMERICAN INDUSTRY CLASSIFICATION SYSTEM INDUSTRY GROUPS		NUMBER OF EMPLOYING UNITS	EMPLOYMENT			TOTAL EARNINGS	AVERAGE
			JULY	AUGUST	SEPTEMBER	JULY - SEPTEMBER	WEEKLY EARNINGS
424	MERCHANT WHOLESALERS, NONDURABLE GOODS	1,296	16,521	16,438	16,436	\$172,548,870	\$806.13
4241	Paper & Paper Product Merchant Wholesalers	79	1,119	1,110	1,110	12,545,174	867.04
4242	Druggists' Goods Merchant Wholesalers	63	1,080	1,073	1,069	11,504,767	824.01
4243	Apparel & Piece Goods Merchant Wholesalers	49	563	544	524	4,263,201	603.20
4244	Grocery Product Merchant Wholesalers	337	5,560	5,546	5,569	67,914,496	939.88
4245	Farm Product Merchant Wholesalers	74	880	910	938	6,049,992	511.79
4246	Chemical Merchant Wholesalers	91	549	546	551	6,722,009	942.43
4247	Petroleum Merchant Wholesalers	153	1,430	1,479	1,477	17,444,059	917.82
4248	Alcoholic Beverage Merchant Wholesalers	37	1,166	1,165	1,150	12,621,620	836.74
4249	Misc. Nondurable Goods Merchant Wholesalers	413	4,174	4,065	4,048	33,483,552	628.87
425	ELECTRONIC MARKETS & AGENTS & BROKERS	2,897	9,887	9,986	9,987	\$192,660,281	\$1,488.95
44-45	RETAIL TRADE	11,321	133,935	134,064	133,368	\$734,098,573	\$422.08
441	MOTOR VEHICLE & PARTS DEALERS	1,719	18,110	18,019	17,911	\$154,106,517	\$658.09
4411	Automobile Dealers	720	10,726	10,621	10,543	104,040,333	752.88
4412	Other Motor Vehicle Dealers	194	1,670	1,645	1,631	13,988,238	652.66
4413	Automotive Parts, Accessories & Tire Stores	805	5,714	5,753	5,737	36,077,946	483.94
442	FURNITURE & HOME FURNISHINGS STORES	588	3,755	3,735	3,775	\$25,715,425	\$526.79
4421	Furniture Stores	311	2,210	2,198	2,197	16,080,495	561.83
4422	Home Furnishings Stores	277	1,545	1,537	1,578	9,634,930	477.13
443	ELECTRONICS & APPLIANCE STORES	534	4,007	4,070	4,094	\$31,602,193	\$599.20
444	BUILDING MATERIAL & GARDEN SUPPLY STORES	852	11,214	11,061	10,971	\$74,193,159	\$514.99
4441	Building Material & Supplies Dealers	666	10,174	10,066	10,004	67,880,911	517.95
4442	Lawn & Garden Equipment & Supplies Stores	186	1,040	995	967	6,312,248	485.23
445	FOOD & BEVERAGE STORES	1,073	18,703	18,646	18,641	\$80,379,405	\$331.29
4451	Grocery Stores	607	16,311	16,240	16,252	68,588,521	324.33
4452	Specialty Food Stores	155	857	873	838	5,221,332	469.21
4453	Beer, Wine & Liquor Stores	311	1,535	1,533	1,551	6,569,552	328.22
446	HEALTH & PERSONAL CARE STORES	950	7,521	7,514	7,574	\$60,531,767	\$617.85
447	GASOLINE STATIONS	1,569	11,909	12,081	12,044	\$43,809,459	\$280.56
44711	Gasoline Stations with Convenience Stores	1,420	10,685	10,822	10,758	38,491,459	275.30
44719	Other Gasoline Stations	149	1,224	1,259	1,286	5,318,000	325.61

**TABLE 5. STATEWIDE SUMMARY
EMPLOYMENT AND TOTAL EARNINGS, BY INDUSTRY
THIRD QUARTER 2008**

NORTH AMERICAN INDUSTRY CLASSIFICATION SYSTEM INDUSTRY GROUPS		NUMBER OF EMPLOYING UNITS	EMPLOYMENT			TOTAL EARNINGS	AVERAGE
			JULY	AUGUST	SEPTEMBER	JULY - SEPTEMBER	WEEKLY EARNINGS
448	CLOTHING & CLOTHING ACCESSORIES STORES	1,056	8,660	8,880	8,683	\$30,580,642	\$269.12
4481	Clothing Stores	723	6,771	6,948	6,801	21,299,466	239.54
4482	Shoe Stores	178	1,107	1,156	1,120	4,344,141	296.33
4483	Jewelry, Luggage & Leather Goods Stores	155	782	776	762	4,937,035	491.08
451	SPORTING GOODS, HOBBY, BOOK & MUSIC STORES	582	4,367	4,480	4,518	\$17,123,232	\$295.66
4511	Sporting Goods & Musical Instrument Stores	438	3,112	3,162	3,215	12,782,040	310.85
4512	Book, Periodical & Music Stores	144	1,255	1,318	1,303	4,341,192	258.47
452	GENERAL MERCHANDISE STORES	739	37,507	37,624	37,188	\$171,354,251	\$352.06
453	MISCELLANEOUS STORE RETAILERS	1,317	6,499	6,257	6,270	\$31,532,442	\$382.46
4531	Florists	244	871	886	890	3,332,885	290.57
4532	Office Supplies, Stationery & Gift Stores	351	2,074	2,181	2,201	11,178,487	399.57
4533	Used Merchandise Stores	213	818	834	852	3,724,858	343.28
4539	Other Miscellaneous Store Retailers	509	2,736	2,356	2,327	13,296,212	413.58
454	NONSTORE RETAILERS	342	1,683	1,697	1,699	\$13,170,081	\$598.40
4541	Electronic Shopping & Mail -Order Houses	93	317	324	324	3,502,411	837.56
4542	Vending Machine Operators	71	597	608	616	4,086,338	517.85
4543	Direct Selling Establishments	178	769	765	759	5,581,332	561.71
48-49	TRANSPORTATION & WAREHOUSING	3,007	55,157	55,043	55,141	\$516,814,231	\$721.33
481	AIR TRANSPORTATION	49	1,004	983	964	\$12,782,085	\$999.56
484	TRUCK TRANSPORTATION	2,014	34,890	34,815	34,653	\$338,508,413	\$748.55
4841	General Freight Trucking	1,284	29,095	28,953	28,777	280,315,630	745.04
4842	Specialized Freight Trucking	730	5,795	5,862	5,876	58,192,783	765.93
485	TRANSIT & GROUND PASSENGER TRANS.	64	939	934	1,100	\$4,407,014	\$342.08
4851	Urban Transit Systems	4	66	64	63	380,835	455.36
4852	Interurban & Rural Bus Transportation	3	61	59	59	286,080	368.82
4853	Taxi & Limousine Service	23	316	300	317	1,222,373	302.34
4854	School & Employee Bus Transportation	7	141	197	353	948,552	316.78
4855	Charter Bus Industry Service	6	65	41	36	427,441	694.65
4859	Other Ground Passenger Transportation	21	290	273	272	1,141,733	315.54
486	PIPELINE TRANSPORTATION	68	882	870	867	\$12,684,572	\$1,117.68

**TABLE 5. STATEWIDE SUMMARY
EMPLOYMENT AND TOTAL EARNINGS, BY INDUSTRY
THIRD QUARTER 2008**

NORTH AMERICAN INDUSTRY CLASSIFICATION SYSTEM INDUSTRY GROUPS		NUMBER OF EMPLOYING UNITS	EMPLOYMENT			TOTAL EARNINGS	AVERAGE
			JULY	AUGUST	SEPTEMBER	JULY - SEPTEMBER	WEEKLY EARNINGS
488	SUPPORT ACTIVITIES FOR TRANSPORTATION	422	4,518	4,513	4,439	\$45,030,499	\$771.47
4881	Support Activities for Air Transportation	104	1,374	1,384	1,403	12,495,650	693.01
4882	Support Activities for Rail Transportation	32	371	381	374	3,299,674	676.26
4883	Support Activities for Water Transportation	23	648	652	625	7,507,291	899.97
4884	Support Activities for Road Transportation	112	531	517	468	3,530,011	537.35
4885	Freight Transportation Arrangement	129	1,410	1,400	1,394	17,042,217	935.49
4889	Other Support Activities for Transportation	22	184	179	175	1,155,656	495.71
491	POSTAL SERVICE	7	15	15	16	\$66,299	\$332.60
492	COURIERS & MESSENGERS	139	3,314	3,291	3,301	\$30,384,293	\$707.83
4921	Couriers	85	3,000	2,985	2,990	28,243,029	726.20
4922	Local Messengers & Local Delivery	54	314	306	311	2,141,264	530.76
493	WAREHOUSING & STORAGE	231	9,395	9,431	9,623	\$71,329,199	\$578.60
	OTHER	13	200	191	178	\$1,621,857	\$657.78
22	UTILITIES	364	6,669	6,634	6,567	\$102,354,737	\$1,188.74
2211	Power Generation & Supply	162	5,114	5,108	5,072	86,385,209	1303.46
2212	Natural Gas Distribution	33	695	690	684	9,202,109	1026.37
2213	Water, Sewage and Other Systems	169	860	836	811	6,767,419	622.94
INFORMATION		1,123	18,765	18,775	18,538	\$211,608,704	\$870.80
511	PUBLISHING INDUSTRIES, EXCEPT INTERNET	254	6,094	6,098	6,074	\$49,398,016	\$624.09
5111	Newspaper, Book & Directory Publishers	226	5,867	5,867	5,846	46,103,080	605.19
5112	Software Publishers	28	227	231	228	3,294,936	1108.41
512	MOTION PICTURE & SOUND RECORDING INDUSTRY	139	1,311	1,291	1,189	\$5,934,436	\$361.25
5121	Motion Picture & Video Industries	119	1,266	1,249	1,146	5,568,887	351.03
5122	Sound Recording Industries	20	45	42	43	365,549	648.90
515	BROADCASTING, EXCEPT INTERNET	142	2,084	2,094	2,081	\$19,063,519	\$702.87
5151	Radio & Television Broadcasting	137	2,049	2,057	2,043	18,840,658	707.08
5152	Cable & Other Subscription Programming	5	35	37	38	222,861	467.54

**TABLE 5. STATEWIDE SUMMARY
EMPLOYMENT AND TOTAL EARNINGS, BY INDUSTRY
THIRD QUARTER 2008**

NORTH AMERICAN INDUSTRY CLASSIFICATION SYSTEM INDUSTRY GROUPS		NUMBER OF EMPLOYING UNITS	EMPLOYMENT			TOTAL EARNINGS	AVERAGE WEEKLY EARNINGS
			JULY	AUGUST	SEPTEMBER	JULY - SEPTEMBER	
517	TELECOMMUNICATIONS	426	7,985	8,009	7,899	\$118,997,630	\$1,149.33
5171	Wired Telecommunications Carriers	301	4,427	4,442	4,415	66,873,233	1161.72
5179	Other Telecommunications	88	568	569	538	6,170,052	850.06
	Other	37	2,990	2,998	2,946	45,954,345	1187.02
518	DATA PROCESSING, HOSTING & RELATED SERVICES	100	985	974	998	15,500,376	\$1,209.68
	OTHER	62	306	309	297	\$2,714,727	\$686.92
FINANCIAL ACTIVITIES		8,427	50,758	50,842	50,631	\$515,639,774	\$781.67
52	FINANCE & INSURANCE	4,917	36,403	36,401	36,305	\$414,111,604	\$875.86
522	CREDIT INTERMEDIATION & RELATED ACTIVITIES	2,090	21,130	21,075	20,861	\$198,318,273	\$725.68
5221	Depository Credit Intermediation	1,429	18,253	18,193	18,046	165,851,106	702.37
5222	Nondepository Credit Intermediation	394	1,963	1,964	1,914	24,498,470	967.90
5223	Activities Related to Credit Intermediation	267	914	918	901	7,968,697	672.86
523	FINANCIAL INVESTMENT & RELATED ACTIVITIES	644	3,260	3,268	3,259	\$71,945,925	\$1,696.42
524	INSURANCE CARRIERS & RELATED ACTIVITIES	2,132	11,559	11,611	11,737	\$139,508,960	\$922.29
5241	Insurance Carriers	394	4,981	4,970	4,967	67,392,681	1042.51
5242	Insurance Agencies, Brokerages & Support	1,738	6,578	6,641	6,770	72,116,279	832.57
	OTHER	51	454	447	448	\$4,338,446	\$742.16
53	REAL ESTATE & RENTAL & LEASING	3,510	14,355	14,441	14,326	\$101,528,170	\$543.33
531	REAL ESTATE	2,653	9,003	9,012	8,939	\$61,546,292	\$526.93
5311	Lessors of Real Estate	1,073	4,533	4,563	4,528	29,137,824	493.55
5312	Offices of Real Estate Agents & Brokers	960	1,996	1,988	1,966	14,896,280	577.75
5313	Activities Related to Real Estate	620	2,474	2,461	2,445	17,512,188	547.60
532	RENTAL & LEASING SERVICES	838	5,280	5,360	5,323	\$38,992,775	\$563.70
5321	Automotive Equipment Rental & Leasing	125	1,067	1,063	1,056	7,502,130	543.40
5322	Consumer Goods Rental	512	2,937	2,956	2,912	16,289,775	426.94
5323	General Rental Centers	30	244	242	247	1,957,755	616.36
5324	Machinery & Equipment Rental & Leasing	171	1,032	1,099	1,108	13,243,115	943.53
533	LESSORS OF NONFINANCIAL INTANGIBLE ASSETS	19	72	69	64	\$989,103	\$1,113.44

**TABLE 5. STATEWIDE SUMMARY
EMPLOYMENT AND TOTAL EARNINGS, BY INDUSTRY
THIRD QUARTER 2008**

NORTH AMERICAN INDUSTRY CLASSIFICATION SYSTEM INDUSTRY GROUPS		NUMBER OF EMPLOYING UNITS	EMPLOYMENT			TOTAL EARNINGS	AVERAGE
			JULY	AUGUST	SEPTEMBER	JULY - SEPTEMBER	WEEKLY EARNINGS
PROFESSIONAL & BUSINESS SERVICES		11,902	116,977	118,643	118,705	\$1,173,151,135	\$764.06
54	PROFESSIONAL & TECHNICAL SERVICES	7,423	38,279	38,235	38,241	\$451,855,340	\$908.67
5411	Legal Services	1,680	6,564	6,602	6,539	71,345,804	835.55
5412	Accounting & Bookkeeping Services	1,249	4,937	4,928	4,984	47,801,129	742.88
5413	Architectural & Engineering Services	1,000	6,793	6,793	6,778	85,808,142	972.40
5414	Specialized Design Services	181	465	464	457	4,827,081	803.71
5415	Computer Systems Design & Related Services	995	7,785	7,804	7,795	125,995,690	1243.41
5416	Management & Technical Consulting Services	1,251	4,661	4,612	4,603	54,553,424	907.27
5417	Scientific Research & Development Services	110	1,125	1,104	1,099	14,374,818	996.77
5418	Advertising & Related Services	338	2,005	1,978	1,980	23,818,141	921.77
5419	Other Professional & Technical Services	619	3,944	3,950	4,006	23,331,111	452.45
55	MANAGEMENT OF COMPANIES & ENTERPRISES	554	25,934	26,043	25,971	\$416,866,984	\$1,234.16
56	ADMINISTRATIVE & WASTE SERVICES	3,925	52,764	54,365	54,493	\$304,428,811	\$434.67
561	ADMINISTRATIVE & SUPPORT SERVICES	3,703	50,241	51,803	51,935	\$279,535,444	\$418.94
5611	Office Administrative Services	402	1,371	1,350	1,352	17,027,309	964.74
5612	Facilities Support Services	19	402	413	411	1,594,994	300.22
5613	Employment Services	735	22,550	23,710	23,900	114,004,348	374.98
5614	Business Support Services	471	6,656	7,088	7,081	40,864,733	452.84
5615	Travel Arrangement & Reservation Services	102	378	381	371	3,147,151	642.71
5616	Investigation & Security Services	243	4,533	4,485	4,500	27,546,080	470.25
5617	Services to Buildings & Dwellings	1,402	12,680	12,739	12,648	62,034,827	376.07
5619	Other Support Services	329	1,671	1,637	1,672	13,316,002	617.05
562	WASTE MANAGEMENT & REMEDIATION SERVICES	222	2,523	2,562	2,558	\$24,893,367	\$751.62
5621	Waste Collection Services	107	1,285	1,294	1,294	12,155,584	724.28
5622	Waste Treatment & Disposal Services	41	731	737	740	8,505,188	888.92
5629	Remediation & Other Waste Services	74	507	531	524	4,232,595	625.32

**TABLE 5. STATEWIDE SUMMARY
EMPLOYMENT AND TOTAL EARNINGS, BY INDUSTRY
THIRD QUARTER 2008**

NORTH AMERICAN INDUSTRY CLASSIFICATION SYSTEM INDUSTRY GROUPS		NUMBER OF EMPLOYING UNITS	EMPLOYMENT			TOTAL EARNINGS	AVERAGE WEEKLY EARNINGS
			JULY	AUGUST	SEPTEMBER	JULY - SEPTEMBER	
EDUCATION & HEALTH SERVICES		13,390	153,855	155,206	156,142	\$1,320,910,601	\$655.25
61	EDUCATIONAL SERVICES	625	8,984	9,050	10,058	\$71,286,720	\$585.60
6111	Elementary & Secondary Schools	77	2,824	3,062	3,244	18,470,956	466.87
6112	Junior Colleges	8	260	275	304	1,917,999	527.55
6113	Colleges & Universities	29	3,251	3,093	3,627	27,999,390	648.02
6114	Business, Computer, & Management Training	45	208	214	224	5,278,825	1885.74
6115	Technical & Trade Schools	109	691	735	799	8,910,066	924.12
6116	Other Schools & Instruction	244	1,304	1,345	1,490	5,048,938	281.50
6117	Educational Support Services	113	446	326	370	3,660,546	739.70
62	HEALTH CARE & SOCIAL ASSISTANCE	12,765	144,871	146,156	146,084	\$1,249,623,881	\$659.73
621	AMBULATORY HEALTH CARE SERVICES	5,062	45,087	45,368	45,291	\$557,452,560	\$947.67
6211	Offices of Physicians	2,236	21,260	21,352	21,311	343,896,804	1241.51
6212	Offices of Dentists	956	6,403	6,418	6,361	65,438,948	787.26
6213	Offices of Other Health Practitioners	1,184	6,098	6,190	6,206	48,355,202	603.38
6214	Outpatient Care Centers	255	4,023	4,040	4,027	39,141,337	747.11
6215	Medical & Diagnostic Laboratories	108	861	881	871	11,706,796	1033.90
6216	Home Health Care Services	185	4,127	4,152	4,162	29,653,330	550.04
6219	Other Ambulatory Health Care Services	138	2,315	2,335	2,353	19,260,143	634.68
622	HOSPITALS	124	42,669	42,702	42,599	\$411,855,624	\$742.70
6221	General Medical & Surgical Hospitals	91	38,942	38,936	38,828	378,549,795	748.53
6222	Psychiatric & Substance Abuse Hospitals	11	1,710	1,771	1,782	14,569,114	638.82
6223	Other Hospitals	22	2,017	1,995	1,989	18,736,715	720.52
623	NURSING & RESIDENTIAL CARE FACILITIES	526	28,651	28,571	28,529	\$154,308,496	\$415.27
6231	Nursing Care Facilities	255	21,214	21,099	21,034	114,715,700	417.90
6232	Residential Mental Health Facilities	128	3,399	3,397	3,425	19,094,507	431.11
6233	Community Care Facilities for the Elderly	97	2,450	2,492	2,455	11,479,933	358.15
6239	Other Residential Care Facilities	46	1,588	1,583	1,615	9,018,356	434.84
624	SOCIAL ASSISTANCE	7,053	28,464	29,515	29,665	\$126,007,201	\$331.78
6241	Individual & Family Services	5,838	15,554	15,807	15,782	69,590,839	340.65
6242	Emergency & Other Relief Services	127	946	942	972	5,109,975	412.32
6243	Vocational Rehabilitation Services	130	3,744	3,805	3,821	18,797,226	381.51
6244	Child Day Care Services	958	8,220	8,961	9,090	32,509,161	285.57

**TABLE 5. STATEWIDE SUMMARY
EMPLOYMENT AND TOTAL EARNINGS, BY INDUSTRY
THIRD QUARTER 2008**

NORTH AMERICAN INDUSTRY CLASSIFICATION SYSTEM INDUSTRY GROUPS		NUMBER OF EMPLOYING UNITS	EMPLOYMENT			TOTAL EARNINGS	AVERAGE
			JULY	AUGUST	SEPTEMBER	JULY - SEPTEMBER	WEEKLY EARNINGS
LEISURE & HOSPITALITY		6,259	104,261	104,613	103,037	\$330,916,066	\$244.83
71	ARTS, ENTERTAINMENT & RECREATION	918	11,431	11,033	10,160	\$44,518,483	\$314.91
711	PERFORMING ARTS & SPECTATOR SPORTS	230	2,321	2,233	2,393	\$12,243,693	\$406.72
7111	Performing Arts Companies	39	544	568	562	2,027,280	279.47
7112	Spectator Sports	62	1,154	1,106	1,066	5,742,718	398.45
7113	Performing Arts & Sports Promoters	47	488	442	633	2,444,012	360.85
7114	Agents & Managers for Public Figures	21	36	22	22	211,689	610.64
7115	Independent Artists, Writers & Performers	61	99	95	110	1,817,994	1380.06
712	MUSEUMS, PARKS & HISTORICAL SITES	52	293	290	293	\$1,350,051	\$355.65
713	GAMBLING, RECREATION & AMUSEMENT INDUSTRY	636	8,817	8,510	7,474	\$30,924,739	\$287.75
72	ACCOMMODATION & FOOD SERVICES	5,341	92,830	93,580	92,877	\$286,397,583	\$236.64
721	ACCOMMODATION	840	12,816	12,259	11,860	\$46,421,758	\$290.04
7211	Traveler Accommodation	759	11,752	11,612	11,426	43,833,430	290.76
7212	RV Parks & Recreational Camps	62	1,009	581	369	2,331,446	274.64
7213	Rooming & Boarding Houses	19	55	66	65	256,882	318.71
722	FOOD SERVICES & DRINKING PLACES	4,501	80,014	81,321	81,017	\$239,975,825	\$228.51
7221	Full -Service Restaurants	1,981	34,596	35,143	35,128	110,752,554	243.72
7222	Limited-Service Eating Places	2,225	42,476	43,064	42,546	118,263,507	213.07
7223	Special Food Services	149	1,902	2,069	2,259	7,909,404	292.98
7224	Drinking Places, Alcoholic Beverages	146	1,040	1,045	1,084	3,050,360	222.13
OTHER SERVICES		5,414	25,724	25,541	25,436	\$164,808,501	\$495.86
811	REPAIR & MAINTENANCE	2,178	9,474	9,491	9,475	\$74,222,094	\$602.26
8111	Automotive Repair & Maintenance	1,489	6,475	6,485	6,474	45,291,558	537.82
8112	Electronic Equipment Repair & Maintenance	160	655	666	689	6,121,382	702.80
8113	Commercial Machinery Repair & Maintenance	346	1,690	1,704	1,682	18,063,629	821.22
8114	Household Goods Repair & Maintenance	183	654	636	630	4,745,525	570.38

**TABLE 5. STATEWIDE SUMMARY
EMPLOYMENT AND TOTAL EARNINGS, BY INDUSTRY
THIRD QUARTER 2008**

NORTH AMERICAN INDUSTRY CLASSIFICATION SYSTEM INDUSTRY GROUPS		NUMBER OF EMPLOYING UNITS	EMPLOYMENT			TOTAL EARNINGS	AVERAGE WEEKLY EARNINGS
			JULY	AUGUST	SEPTEMBER	JULY - SEPTEMBER	
812	PERSONAL & LAUNDRY SERVICES	1,322	8,156	8,239	8,229	\$40,423,391	\$378.84
8121	Personal Care Services	580	2,737	2,805	2,781	11,263,891	312.31
8122	Death Care Services	241	1,673	1,652	1,648	10,250,427	475.67
8123	Drycleaning & Laundry Services	327	3,055	3,108	3,116	15,598,294	387.93
8129	Other Personal Services	174	691	674	684	3,310,779	372.88
813	MEMBERSHIP ASSOCIATIONS & ORGANIZATIONS	1,050	6,906	6,636	6,549	\$44,960,922	\$516.43
8131	Religious Organizations	46	272	238	248	1,503,874	457.85
8132	Grantmaking & Giving Services	105	497	509	500	5,167,918	791.90
8133	Social Advocacy Organizations	185	1,941	2,050	2,063	14,446,362	550.67
8134	Civic & Social Organizations	205	1,887	1,545	1,519	6,367,022	296.77
8139	Professional & Similar Organizations	509	2,309	2,294	2,219	17,475,746	591.16
814	PRIVATE HOUSEHOLDS	864	1,188	1,175	1,183	\$5,202,094	\$338.55
	LOCAL GOVERNMENT	1,983	73,966	93,682	117,497	\$674,140,753	\$545.59
	STATE GOVERNMENT	1,257	64,170	64,890	67,138	\$656,628,241	\$772.33
	NONCLASSIFIABLE ESTABLISHMENTS	0	0	0	0	\$0	

**TABLE 6. COUNTY SUMMARY
EMPLOYMENT AND TOTAL EARNINGS, BY INDUSTRY
THIRD QUARTER 2008**

NORTH AMERICAN INDUSTRY CLASSIFICATION SYSTEM INDUSTRY GROUP	NUMBER OF EMPLOYING UNITS	EMPLOYMENT			TOTAL EARNINGS	AVERAGE WEEKLY EARNINGS
		JULY	AUGUST	SEPTEMBER	JULY - SEPTEMBER	
ARKANSAS COUNTY - TOTAL	747	10,105	10,158	10,143	\$75,549,507	\$573.39
Natural Resources & Mining	43	235	262	257	2,662,699	814.95
Construction	48	327	321	317	2,828,873	676.49
Manufacturing	33	3,681	3,638	3,636	30,823,397	649.30
Trade, Transportation & Utilities	202	2,089	2,084	2,132	15,796,858	578.18
Wholesale Trade	43	414	398	389	4,245,534	815.77
Retail Trade	99	1,082	1,093	1,114	5,809,471	407.62
Transportation, Warehousing & Utilities	60	593	593	629	5,741,853	730.05
Information	11	98	99	102	973,388	751.26
Financial Activities	51	329	322	325	2,596,609	613.95
Professional & Business Services	61	435	432	427	4,132,745	737.03
Education & Health Services	134	1,185	1,247	1,233	6,825,809	429.79
Leisure & Hospitality	56	537	559	520	1,362,485	194.57
Other Services	60	142	146	141	800,481	430.60
Local Government	32	818	828	831	5,209,263	485.32
State Government	16	229	220	222	1,536,900	528.57
ASHLEY COUNTY - TOTAL	589	7,574	7,659	7,838	\$67,004,823	\$670.22
Natural Resources & Mining	63	415	411	411	2,874,246	536.21
Construction	49	500	493	472	3,756,745	591.77
Manufacturing	27	2,467	2,468	2,493	34,847,381	1082.62
Trade, Transportation & Utilities	139	1,234	1,254	1,231	7,756,027	481.27
Wholesale Trade	24	176	183	194	1,764,301	736.25
Retail Trade	86	808	808	783	3,690,064	354.96
Transportation, Warehousing & Utilities	29	250	263	254	2,301,662	692.51
Information	8	45	46	46	356,701	600.84
Financial Activities	39	256	260	249	1,849,162	557.82
Professional & Business Services	53	385	392	389	2,188,238	433.09
Education & Health Services	97	692	695	692	5,542,540	615.22
Leisure & Hospitality	28	433	437	437	1,134,369	200.29
Other Services	42	201	196	197	1,051,264	408.42
Local Government	32	732	767	979	4,390,086	408.84
State Government	12	214	240	242	1,258,064	417.13

**TABLE 6. COUNTY SUMMARY
EMPLOYMENT AND TOTAL EARNINGS, BY INDUSTRY
THIRD QUARTER 2008**

NORTH AMERICAN INDUSTRY CLASSIFICATION SYSTEM INDUSTRY GROUP	NUMBER OF EMPLOYING UNITS	EMPLOYMENT			TOTAL EARNINGS	AVERAGE WEEKLY EARNINGS
		JULY	AUGUST	SEPTEMBER	JULY - SEPTEMBER	
BAXTER COUNTY - TOTAL	1,345	14,190	14,708	14,919	\$105,444,384	\$555.34
Natural Resources & Mining	5	141	140	138	1,070,040	589.34
Construction	152	740	738	735	4,953,579	516.55
Manufacturing	65	2,507	2,454	2,429	22,253,862	694.93
Trade, Transportation & Utilities	290	2,709	2,712	2,688	16,577,083	471.76
Wholesale Trade	40	211	214	214	1,575,585	569.01
Retail Trade	217	2,279	2,286	2,262	13,234,039	447.34
Transportation, Warehousing & Utilities	33	219	212	212	1,767,459	634.33
Information	22	248	253	245	2,001,721	619.22
Financial Activities	124	718	715	694	5,764,909	625.46
Professional & Business Services	144	899	898	866	5,949,033	515.53
Education & Health Services	267	3,415	3,481	3,488	31,144,564	692.14
Leisure & Hospitality	121	1,547	1,767	1,627	5,055,013	236.09
Other Services	104	380	383	384	1,748,676	351.82
Local Government	38	594	850	1,280	6,634,063	562.02
State Government	13	292	317	345	2,291,841	554.39
BENTON COUNTY - TOTAL	5,561	91,926	93,873	95,429	\$926,727,563	\$760.45
Natural Resources & Mining	30	808	800	806	8,392,961	802.34
Construction	684	4,216	4,199	4,081	38,238,521	706.17
Manufacturing	244	13,114	13,115	13,205	117,442,130	687.28
Trade, Transportation & Utilities	1,512	23,093	23,150	22,749	225,014,068	752.64
Wholesale Trade	684	3,883	3,899	3,880	75,165,346	1487.38
Retail Trade	638	9,137	9,277	9,160	54,677,084	457.60
Transportation, Warehousing & Utilities	190	10,073	9,974	9,709	95,171,638	738.09
Information	74	870	866	856	8,426,636	750.23
Financial Activities	588	3,919	3,962	4,052	41,325,985	799.19
Professional & Business Services	1,021	23,084	23,154	23,218	321,039,402	1066.66
Education & Health Services	532	7,131	7,233	7,368	64,844,327	688.57
Leisure & Hospitality	443	8,927	8,980	8,769	30,208,247	261.33
Other Services	336	1,686	1,702	1,709	10,965,411	496.46
Local Government	78	4,228	5,909	7,548	53,255,085	694.92
State Government	19	850	803	1,068	7,574,790	642.42

**TABLE 6. COUNTY SUMMARY
EMPLOYMENT AND TOTAL EARNINGS, BY INDUSTRY
THIRD QUARTER 2008**

NORTH AMERICAN INDUSTRY CLASSIFICATION SYSTEM INDUSTRY GROUP	NUMBER OF EMPLOYING UNITS	EMPLOYMENT			TOTAL EARNINGS	AVERAGE WEEKLY EARNINGS
		JULY	AUGUST	SEPTEMBER	JULY - SEPTEMBER	
BOONE COUNTY - TOTAL	1,085	12,823	13,037	13,811	\$108,716,876	\$632.41
Construction	96	452	461	437	3,587,764	613.29
Manufacturing	74	1,822	1,810	1,846	16,678,682	702.62
Trade, Transportation & Utilities	260	4,527	4,512	4,486	42,605,317	726.95
Wholesale Trade	58	665	652	643	5,053,123	594.95
Retail Trade	148	1,919	1,921	1,914	10,270,437	411.90
Transportation, Warehousing & Utilities	54	1,943	1,939	1,929	27,281,757	1083.43
Information	20	421	420	424	3,732,974	680.99
Financial Activities	97	629	627	620	5,370,470	660.63
Professional & Business Services	115	508	512	553	3,748,478	549.93
Education & Health Services	199	1,170	1,177	1,175	8,909,481	583.77
Leisure & Hospitality	79	1,163	1,147	1,122	3,434,673	230.95
Local Government	61	1,299	1,514	2,278	13,322,579	603.90
State Government	21	539	568	585	5,320,442	725.65
Other	63	293	289	285	2,006,016	533.94
BRADLEY COUNTY - TOTAL	397	3,668	3,674	3,940	\$23,401,648	\$478.67
Natural Resources & Mining	47	382	402	405	2,314,826	449.28
Construction	20	206	178	174	1,286,436	532.02
Manufacturing	10	908	836	869	6,267,084	553.48
Trade, Transportation & Utilities	81	495	513	509	2,545,483	387.22
Wholesale Trade	17	75	74	75	583,607	601.24
Retail Trade	43	350	363	364	1,514,356	324.48
Transportation, Warehousing & Utilities	21	70	76	70	447,520	478.12
Information	4	16	14	15	119,042	610.47
Financial Activities	27	161	163	162	1,159,154	550.41
Professional & Business Services	27	73	74	74	341,737	356.84
Education & Health Services	106	629	639	632	3,996,090	485.36
Leisure & Hospitality	17	124	127	125	378,573	232.35
Other Services	32	124	123	113	648,221	415.53
Local & State Government	26	550	605	862	4,345,002	497.12

**TABLE 6. COUNTY SUMMARY
EMPLOYMENT AND TOTAL EARNINGS, BY INDUSTRY
THIRD QUARTER 2008**

NORTH AMERICAN INDUSTRY CLASSIFICATION SYSTEM INDUSTRY GROUP	NUMBER OF EMPLOYING UNITS	EMPLOYMENT			TOTAL EARNINGS	AVERAGE WEEKLY EARNINGS
		JULY	AUGUST	SEPTEMBER	JULY - SEPTEMBER	
CALHOUN COUNTY - TOTAL	121	2,873	2,903	2,945	\$29,940,414	\$792.26
Natural Resources & Mining	17	207	211	207	1,800,042	664.63
Construction	12	53	56	53	308,088	438.87
Manufacturing	10	1,965	1,962	1,953	22,751,678	892.92
Trade, Transportation & Utilities	32	208	198	204	1,305,133	493.75
Retail Trade	21	82	79	80	273,819	262.20
Other Trade, Transportation & Utilities	11	126	119	124	1,031,314	644.97
Financial Activities	6	82	85	86	557,455	508.47
Education & Health Services	8	48	46	46	348,858	575.04
Leisure & Hospitality	6	23	23	23	40,698	136.11
Local & State Government	20	186	222	273	1,432,698	485.50
Other	10	101	100	100	1,395,764	1070.10
CARROLL COUNTY - TOTAL	841	9,994	10,477	10,521	\$62,630,158	\$466.35
Natural Resources & Mining	17	267	276	283	2,128,109	594.55
Construction	82	366	363	350	2,747,128	587.54
Trade, Transportation & Utilities	209	1,717	1,706	1,687	10,484,046	473.46
Wholesale Trade	29	146	146	156	892,404	459.69
Retail Trade	161	1,269	1,273	1,255	6,576,292	399.69
Transportation, Warehousing & Utilities	19	302	287	276	3,015,350	804.45
Information	14	107	103	104	823,559	605.26
Financial Activities	76	384	394	390	3,212,697	634.75
Professional & Business Services	65	212	222	219	1,413,510	499.53
Education & Health Services	90	934	931	961	7,413,194	605.36
Leisure & Hospitality	169	1,888	1,906	1,831	5,804,364	238.13
Local Government	25	541	957	1,022	5,560,109	509.17
State Government	11	107	105	107	841,015	608.40
Other	83	3,471	3,514	3,567	22,202,427	485.56

**TABLE 6. COUNTY SUMMARY
EMPLOYMENT AND TOTAL EARNINGS, BY INDUSTRY
THIRD QUARTER 2008**

NORTH AMERICAN INDUSTRY CLASSIFICATION SYSTEM INDUSTRY GROUP	NUMBER OF EMPLOYING UNITS	EMPLOYMENT			TOTAL EARNINGS	AVERAGE WEEKLY EARNINGS
		JULY	AUGUST	SEPTEMBER	JULY - SEPTEMBER	
CHICOT COUNTY - TOTAL	406	3,509	3,587	3,592	\$22,151,419	\$478.28
Natural Resources & Mining	47	280	280	294	2,128,733	575.23
Construction	14	119	122	118	981,515	630.93
Manufacturing	9	433	434	446	2,056,029	361.36
Trade, Transportation & Utilities	71	603	617	605	3,796,876	480.11
Wholesale Trade	15	141	137	131	1,396,075	787.70
Retail Trade	47	393	406	401	1,700,563	327.03
Transportation, Warehousing & Utilities	9	69	74	73	700,238	748.12
Information	7	12	12	12	67,694	433.94
Financial Activities	29	169	172	171	1,377,386	620.82
Professional & Business Services	30	87	89	86	764,096	673.01
Education & Health Services	133	638	648	651	3,846,275	458.24
Leisure & Hospitality	20	143	142	140	348,871	189.43
Other Services	18	45	44	43	250,033	437.12
Local Government	17	640	684	687	4,269,877	489.98
State Government	11	340	343	339	2,264,034	511.22
CLARK COUNTY - TOTAL	634	9,353	9,662	9,950	\$66,916,462	\$533.14
Natural Resources & Mining	34	222	226	212	1,734,659	606.52
Construction	35	106	109	109	720,119	512.91
Manufacturing	34	2,388	2,402	2,360	20,220,319	652.62
Trade, Transportation & Utilities	149	1,620	1,639	1,646	10,093,662	474.88
Wholesale Trade	21	81	80	87	830,143	772.47
Retail Trade	103	1,240	1,252	1,261	6,504,466	399.95
Transportation, Warehousing & Utilities	25	299	307	298	2,759,053	704.32
Information	9	39	42	43	354,708	660.13
Financial Activities	88	383	392	384	2,990,113	595.36
Professional & Business Services	51	309	306	294	3,512,349	891.69
Education & Health Services	88	1,292	1,311	1,352	8,709,309	508.18
Leisure & Hospitality	58	1,045	1,053	1,064	2,959,666	216.00
Other Services	46	187	205	203	1,174,479	455.52
Local Government	27	731	918	1,024	5,914,446	510.61
State Government	15	1,031	1,059	1,259	8,532,633	587.96

**TABLE 6. COUNTY SUMMARY
EMPLOYMENT AND TOTAL EARNINGS, BY INDUSTRY
THIRD QUARTER 2008**

NORTH AMERICAN INDUSTRY CLASSIFICATION SYSTEM INDUSTRY GROUP	NUMBER OF EMPLOYING UNITS	EMPLOYMENT			TOTAL EARNINGS	AVERAGE WEEKLY EARNINGS
		JULY	AUGUST	SEPTEMBER	JULY - SEPTEMBER	
CLAY COUNTY - TOTAL	417	3,882	4,094	4,070	\$24,003,681	\$459.85
Natural Resources & Mining	62	232	221	208	1,390,701	485.52
Construction	32	168	167	158	1,085,370	508.05
Manufacturing	17	757	764	747	5,054,578	514.30
Trade, Transportation & Utilities	96	920	896	918	5,673,421	478.88
Wholesale Trade	22	336	322	324	2,098,301	493.10
Retail Trade	49	426	417	422	1,956,527	356.92
Transportation, Warehousing & Utilities	25	158	157	172	1,618,593	766.98
Information	4	66	64	60	352,050	427.59
Financial Activities	33	127	127	130	847,369	509.24
Professional & Business Services	27	52	49	50	316,434	483.60
Education & Health Services	64	502	536	533	2,987,108	438.79
Leisure & Hospitality	22	206	200	202	435,651	165.35
Other Services	26	76	78	77	468,408	467.94
Local Government	22	700	915	909	4,876,373	445.85
State Government	12	76	77	78	516,218	515.70
CLEBURNE COUNTY - TOTAL	709	6,905	7,110	7,307	\$48,296,094	\$522.71
Natural Resources & Mining	22	147	191	191	1,723,111	751.68
Construction	85	749	738	720	8,200,288	857.44
Manufacturing	42	1,326	1,338	1,355	10,020,461	575.37
Trade, Transportation & Utilities	182	1,606	1,598	1,580	10,315,375	497.59
Wholesale Trade	43	200	198	192	1,793,087	701.34
Retail Trade	111	1,025	1,027	1,026	5,237,244	392.66
Transportation, Warehousing & Utilities	28	381	373	362	3,285,044	679.29
Information	7	57	55	57	369,956	505.17
Financial Activities	77	314	297	301	2,545,643	644.14
Professional & Business Services	57	230	235	232	1,414,547	468.34
Education & Health Services	88	809	852	837	5,204,026	480.76
Leisure & Hospitality	72	1,043	1,039	974	3,020,857	228.12
Other Services	49	154	155	159	754,568	372.07
Local Government	18	348	491	777	3,823,345	545.98
State Government	10	122	121	124	903,917	568.38

**TABLE 6. COUNTY SUMMARY
EMPLOYMENT AND TOTAL EARNINGS, BY INDUSTRY
THIRD QUARTER 2008**

NORTH AMERICAN INDUSTRY CLASSIFICATION SYSTEM INDUSTRY GROUP	NUMBER OF EMPLOYING UNITS	EMPLOYMENT			TOTAL EARNINGS	AVERAGE WEEKLY EARNINGS
		JULY	AUGUST	SEPTEMBER	JULY - SEPTEMBER	
CLEVELAND COUNTY - TOTAL	122	843	1,010	1,083	\$5,729,958	\$450.37
Natural Resources & Mining	16	146	148	162	1,110,072	561.78
Construction	9	31	30	33	133,526	327.81
Manufacturing	6	96	93	94	620,244	505.77
Trade, Transportation & Utilities	29	163	162	166	836,480	393.14
Retail Trade	15	72	72	77	214,968	224.47
Other Trade Transportation & Utilities	14	91	90	89	621,512	531.21
Education & Health Services	30	114	118	122	569,288	371.11
Other Services	5	15	17	16	124,784	599.92
Local Government	11	132	294	353	1,571,968	465.68
State Government	8	61	63	63	415,518	512.77
Other	8	85	85	74	348,078	329.20
COLUMBIA COUNTY - TOTAL	740	8,832	9,116	9,401	\$75,220,331	\$634.70
Natural Resources & Mining	49	668	658	639	8,712,009	1023.14
Construction	43	343	338	349	3,017,118	675.98
Manufacturing	38	2,473	2,496	2,499	28,385,421	877.14
Trade, Transportation & Utilities	171	1,488	1,519	1,529	9,088,854	462.40
Wholesale Trade	27	252	249	246	1,753,878	541.82
Retail Trade	111	964	1,001	1,006	4,809,760	373.59
Transportation, Warehousing & Utilities	33	272	269	277	2,525,216	712.40
Information	9	67	61	62	475,734	577.81
Financial Activities	78	412	406	403	3,427,821	647.86
Professional & Business Services	63	351	340	362	2,333,570	511.41
Education & Health Services	151	939	961	957	5,166,290	417.30
Leisure & Hospitality	49	636	653	674	1,692,928	199.02
Other Services	49	224	207	229	930,878	325.48
Local Government	26	692	915	1,118	6,817,166	577.32
State Government	14	539	562	580	5,172,542	710.09

**TABLE 6. COUNTY SUMMARY
EMPLOYMENT AND TOTAL EARNINGS, BY INDUSTRY
THIRD QUARTER 2008**

NORTH AMERICAN INDUSTRY CLASSIFICATION SYSTEM INDUSTRY GROUP	NUMBER OF EMPLOYING UNITS	EMPLOYMENT			TOTAL EARNINGS	AVERAGE WEEKLY EARNINGS
		JULY	AUGUST	SEPTEMBER	JULY - SEPTEMBER	
CONWAY COUNTY - TOTAL	596	6,677	6,910	7,047	\$50,449,135	\$564.22
Natural Resources & Mining	25	232	235	228	3,015,412	1001.24
Construction	58	522	544	539	5,513,319	792.71
Manufacturing	24	1,039	1,022	1,003	12,233,084	921.35
Trade, Transportation & Utilities	140	1,452	1,472	1,497	9,976,978	520.78
Wholesale Trade	24	213	211	213	1,817,289	658.36
Retail Trade	83	858	863	861	4,668,094	417.22
Transportation, Warehousing & Utilities	33	381	398	423	3,491,595	670.34
Information	6	14	14	14	164,523	903.97
Financial Activities	35	180	180	180	1,319,117	563.73
Professional & Business Services	43	528	550	566	2,623,932	368.32
Education & Health Services	153	902	934	933	6,096,397	508.08
Leisure & Hospitality	45	567	578	571	1,284,916	172.80
Other Services	28	184	164	172	1,573,677	698.38
Local Government	28	723	791	921	4,110,942	389.60
State Government	11	334	426	423	2,536,838	494.86
CRAIGHEAD COUNTY - TOTAL	2,653	40,735	40,793	42,705	\$319,713,343	\$593.88
Natural Resources & Mining	64	284	285	326	1,771,185	456.69
Construction	231	1,832	1,850	1,873	16,103,075	668.96
Manufacturing	139	7,024	6,900	6,973	60,781,831	671.22
Trade, Transportation & Utilities	723	8,707	8,718	8,687	59,199,923	523.19
Wholesale Trade	186	1,719	1,721	1,725	17,112,408	764.57
Retail Trade	422	5,794	5,807	5,751	30,453,087	405.00
Transportation, Warehousing & Utilities	115	1,194	1,190	1,211	11,634,428	746.83
Information	30	553	541	528	4,655,488	662.36
Financial Activities	257	1,614	1,640	1,620	15,820,001	749.03
Professional & Business Services	355	3,564	3,751	3,796	24,418,660	507.16
Education & Health Services	418	7,297	7,380	7,415	74,035,764	773.36
Leisure & Hospitality	205	4,166	4,141	4,242	12,624,749	232.16
Other Services	168	900	909	909	4,789,161	406.62
Local Government	38	2,271	2,757	3,737	22,357,161	588.63
State Government	25	2,523	1,921	2,599	23,156,345	758.74

**TABLE 6. COUNTY SUMMARY
EMPLOYMENT AND TOTAL EARNINGS, BY INDUSTRY
THIRD QUARTER 2008**

NORTH AMERICAN INDUSTRY CLASSIFICATION SYSTEM INDUSTRY GROUP	NUMBER OF EMPLOYING UNITS	EMPLOYMENT			TOTAL EARNINGS	AVERAGE WEEKLY EARNINGS
		JULY	AUGUST	SEPTEMBER	JULY - SEPTEMBER	
CRAWFORD COUNTY - TOTAL	1,280	18,871	20,205	20,501	\$140,943,510	\$545.94
Natural Resources & Mining	27	398	398	394	4,165,606	807.81
Construction	188	1,331	1,320	1,270	11,551,952	679.89
Manufacturing	77	3,718	3,757	3,847	27,624,751	563.06
Trade, Transportation & Utilities	312	6,897	6,905	6,971	50,985,110	566.40
Wholesale Trade	80	734	726	737	7,669,478	805.59
Retail Trade	160	1,998	2,013	1,993	10,047,924	386.20
Transportation, Warehousing & Utilities	72	4,165	4,166	4,241	33,267,708	610.66
Information	12	177	169	164	1,377,622	623.36
Financial Activities	135	553	549	552	4,085,474	570.01
Professional & Business Services	164	1,307	1,507	1,558	8,560,170	451.84
Education & Health Services	150	1,458	1,519	1,496	11,299,328	582.95
Leisure & Hospitality	85	1,564	1,595	1,542	4,677,821	229.63
Other Services	78	382	382	384	2,565,524	515.72
Local Government	41	914	1,932	2,154	12,444,406	574.36
State Government	11	172	172	169	1,605,746	722.33
CRITTENDEN COUNTY - TOTAL	1,293	16,214	16,035	16,809	\$122,463,989	\$576.07
Natural Resources & Mining	40	238	233	291	1,424,829	431.50
Construction	72	589	532	519	4,799,357	675.33
Manufacturing	45	2,147	2,136	2,140	20,443,476	734.50
Trade, Transportation & Utilities	342	5,213	4,906	4,818	40,063,070	618.95
Wholesale Trade	80	803	804	795	9,212,880	885.12
Retail Trade	173	2,449	2,126	2,092	11,169,246	386.61
Transportation, Warehousing & Utilities	89	1,961	1,976	1,931	19,680,944	773.99
Information	8	69	70	72	667,987	730.57
Financial Activities	107	606	612	604	4,757,524	602.57
Professional & Business Services	133	859	680	671	5,933,199	619.55
Education & Health Services	286	2,248	2,257	2,231	16,665,110	570.93
Leisure & Hospitality	105	1,996	1,963	1,891	6,820,865	269.07
Other Services	94	601	614	602	3,346,686	425.05
Local Government	46	1,202	1,591	2,426	14,021,404	619.99
State Government	15	446	441	544	3,520,482	567.73

**TABLE 6. COUNTY SUMMARY
EMPLOYMENT AND TOTAL EARNINGS, BY INDUSTRY
THIRD QUARTER 2008**

NORTH AMERICAN INDUSTRY CLASSIFICATION SYSTEM INDUSTRY GROUP	NUMBER OF EMPLOYING UNITS	EMPLOYMENT			TOTAL EARNINGS	AVERAGE WEEKLY EARNINGS
		JULY	AUGUST	SEPTEMBER	JULY - SEPTEMBER	
CROSS COUNTY - TOTAL	568	4,574	4,980	5,110	\$33,248,899	\$523.24
Natural Resources & Mining	37	215	220	222	1,282,268	450.39
Construction	34	180	185	181	1,232,123	520.76
Manufacturing	17	633	688	722	5,529,578	624.60
Trade, Transportation & Utilities	147	1,253	1,258	1,273	9,277,297	565.78
Wholesale Trade	27	291	283	282	2,770,569	746.92
Retail Trade	83	716	713	708	4,097,600	442.49
Transportation, Warehousing & Utilities	37	246	262	283	2,409,128	702.85
Information	4	41	41	41	288,358	541.01
Financial Activities	45	353	351	361	2,443,510	529.47
Professional & Business Services	48	149	149	149	1,051,130	542.66
Education & Health Services	132	721	738	738	4,595,337	482.69
Leisure & Hospitality	34	396	390	383	1,012,431	199.86
Other Services	42	78	78	81	367,936	358.26
Local Government	17	330	653	739	4,224,868	566.18
State Government	11	225	229	220	1,944,063	665.62
DALLAS COUNTY - TOTAL	276	3,209	3,308	3,362	\$22,181,117	\$518.14
Natural Resources & Mining	39	206	199	196	1,402,321	538.46
Construction	15	58	71	68	467,681	547.85
Manufacturing	17	931	926	933	8,923,572	738.10
Trade, Transportation & Utilities	62	461	484	461	2,755,776	452.31
Wholesale Trade	7	23	28	25	178,700	542.61
Retail Trade	41	345	360	345	1,786,519	392.64
Transportation, Warehousing & Utilities	14	93	96	91	790,557	651.56
Information	3	22	22	22	159,549	557.86
Financial Activities	20	105	103	102	699,916	521.03
Professional & Business Services	16	48	39	41	306,948	553.39
Education & Health Services	49	817	810	822	4,556,680	429.38
Leisure & Hospitality	15	138	137	140	328,178	182.49
Other Services	15	58	58	56	257,485	345.46
Local Government	16	290	384	448	1,822,799	374.91
State Government	9	75	75	73	500,212	517.64

**TABLE 6. COUNTY SUMMARY
EMPLOYMENT AND TOTAL EARNINGS, BY INDUSTRY
THIRD QUARTER 2008**

NORTH AMERICAN INDUSTRY CLASSIFICATION SYSTEM INDUSTRY GROUP	NUMBER OF EMPLOYING UNITS	EMPLOYMENT			TOTAL EARNINGS	AVERAGE WEEKLY EARNINGS
		JULY	AUGUST	SEPTEMBER	JULY - SEPTEMBER	
DESHA COUNTY - TOTAL	494	4,427	4,584	4,599	\$31,858,010	\$540.18
Natural Resources & Mining	49	265	260	280	1,873,075	536.95
Construction	20	122	118	119	1,040,182	668.64
Manufacturing	19	1,020	992	978	10,190,979	786.54
Trade, Transportation & Utilities	126	888	890	915	5,649,457	484.11
Wholesale Trade	19	167	168	159	1,630,061	761.47
Retail Trade	78	560	563	564	2,664,690	364.51
Transportation, Warehousing & Utilities	29	161	159	192	1,354,706	610.59
Information	6	24	23	24	197,778	642.83
Financial Activities	46	215	215	207	1,469,699	532.44
Professional & Business Services	37	109	70	68	413,280	386.12
Education & Health Services	99	630	654	658	3,694,560	439.03
Leisure & Hospitality	38	320	320	289	718,091	178.38
Other Services	24	68	70	68	345,019	386.50
Local Government	19	606	799	818	5,015,206	520.63
State Government	11	160	173	175	1,250,684	568.15
DREW COUNTY - TOTAL	541	6,093	6,287	6,680	\$40,132,659	\$485.91
Natural Resources & Mining	44	297	313	302	2,207,471	558.57
Construction	23	101	113	111	697,230	495.07
Manufacturing	22	834	835	828	5,264,368	486.53
Trade, Transportation & Utilities	131	1,253	1,251	1,216	7,405,521	459.40
Wholesale Trade	20	200	199	197	1,569,480	607.70
Retail Trade	91	956	954	920	4,851,668	395.62
Transportation, Warehousing & Utilities	20	97	98	99	984,373	772.66
Information	6	69	79	78	487,331	497.62
Financial Activities	49	240	238	230	2,111,384	688.20
Professional & Business Services	49	309	293	300	2,768,095	708.19
Education & Health Services	112	914	926	941	5,413,494	449.22
Leisure & Hospitality	44	651	662	678	1,506,490	174.61
Other Services	21	74	78	73	354,675	363.77
Local Government	23	728	785	1,257	6,100,844	508.26
State Government	17	623	714	666	5,815,756	670.04

**TABLE 6. COUNTY SUMMARY
EMPLOYMENT AND TOTAL EARNINGS, BY INDUSTRY
THIRD QUARTER 2008**

NORTH AMERICAN INDUSTRY CLASSIFICATION SYSTEM INDUSTRY GROUP	NUMBER OF EMPLOYING UNITS	EMPLOYMENT			TOTAL EARNINGS	AVERAGE WEEKLY EARNINGS
		JULY	AUGUST	SEPTEMBER	JULY - SEPTEMBER	
FAULKNER COUNTY - TOTAL	2,698	37,736	38,669	39,783	\$335,743,331	\$666.84
Natural Resources & Mining	41	894	896	934	20,024,628	1696.43
Construction	376	3,225	3,321	3,304	33,905,369	794.35
Manufacturing	124	4,651	4,589	4,520	48,290,750	809.89
Trade, Transportation & Utilities	630	7,000	7,050	7,050	49,773,570	544.37
Wholesale Trade	169	905	924	931	10,041,030	839.55
Retail Trade	372	5,091	5,098	5,091	27,880,939	421.08
Transportation, Warehousing & Utilities	89	1,004	1,028	1,028	11,851,601	893.79
Information	34	359	363	379	3,759,781	788.05
Financial Activities	318	1,521	1,533	1,532	13,123,841	660.40
Professional & Business Services	364	4,798	4,829	4,819	59,983,769	958.22
Education & Health Services	402	5,617	5,568	5,556	43,026,863	593.11
Leisure & Hospitality	204	4,212	4,234	4,462	11,632,644	207.97
Other Services	147	645	714	676	5,372,151	609.20
Local Government	39	1,856	2,323	3,203	18,069,451	564.87
State Government	19	2,958	3,249	3,348	28,780,514	695.10
FRANKLIN COUNTY - TOTAL	328	4,017	4,150	4,277	\$31,213,976	\$578.85
Natural Resources & Mining	12	193	192	185	2,140,928	866.77
Construction	32	253	239	244	2,078,175	651.60
Manufacturing	22	959	947	938	8,411,849	682.56
Trade, Transportation & Utilities	86	826	834	841	6,172,773	569.57
Wholesale Trade	17	47	49	48	288,394	462.17
Retail Trade	48	475	482	481	2,371,751	380.62
Transportation, Warehousing & Utilities	21	304	303	312	3,512,628	882.05
Information	6	48	50	53	266,655	407.52
Financial Activities	28	223	222	220	1,477,862	512.85
Professional & Business Services	23	75	79	79	551,412	546.13
Education & Health Services	46	470	437	478	2,759,791	459.84
Leisure & Hospitality	26	278	302	294	795,071	209.93
Other Services	18	53	52	53	316,836	462.76
Local Government	19	516	674	764	5,034,154	594.54
State Government	10	123	122	128	1,208,470	747.66

**TABLE 6. COUNTY SUMMARY
EMPLOYMENT AND TOTAL EARNINGS, BY INDUSTRY
THIRD QUARTER 2008**

NORTH AMERICAN INDUSTRY CLASSIFICATION SYSTEM INDUSTRY GROUP	NUMBER OF EMPLOYING UNITS	EMPLOYMENT			TOTAL EARNINGS	AVERAGE WEEKLY EARNINGS
		JULY	AUGUST	SEPTEMBER	JULY - SEPTEMBER	
FULTON COUNTY - TOTAL	241	1,908	1,898	1,999	\$10,373,281	\$412.37
Construction	16	34	34	34	217,864	492.90
Manufacturing	12	137	136	133	538,328	305.98
Trade, Transportation & Utilities	63	385	383	386	2,667,855	533.50
Wholesale Trade	14	60	61	70	462,727	559.07
Retail Trade	40	191	189	190	742,325	300.54
Transportation, Warehousing & Utilities	9	134	133	126	1,462,803	858.96
Financial Activities	14	112	106	102	746,004	537.98
Professional & Business Services	14	66	64	61	384,509	464.57
Education & Health Services	65	398	409	410	2,073,170	393.12
Leisure & Hospitality	19	198	195	176	491,129	199.19
Local Government	13	390	387	515	2,216,749	395.94
State Government	11	115	114	111	740,050	502.30
Other	14	73	70	71	297,623	320.95
GARLAND COUNTY - TOTAL	3,325	35,411	35,806	36,156	\$246,993,381	\$530.85
Natural Resources & Mining	45	376	363	374	3,403,077	705.59
Construction	430	2,207	2,197	2,196	15,817,241	553.05
Manufacturing	116	2,504	2,510	2,495	21,079,612	647.83
Trade, Transportation & Utilities	741	7,323	7,331	7,345	46,276,331	485.44
Wholesale Trade	164	1,037	1,038	1,036	9,611,224	712.95
Retail Trade	513	5,716	5,728	5,743	30,927,319	415.26
Transportation, Warehousing & Utilities	64	570	565	566	5,737,788	778.43
Information	40	378	397	380	3,419,757	683.27
Financial Activities	374	1,531	1,530	1,520	13,134,833	661.67
Professional & Business Services	430	3,504	3,505	3,439	23,441,797	517.77
Education & Health Services	482	6,879	6,893	6,831	63,868,777	715.38
Leisure & Hospitality	370	6,887	6,778	6,465	23,840,976	273.31
Other Services	235	996	995	978	5,424,701	421.64
Local Government	34	1,911	2,246	3,050	18,510,621	592.71
State Government	28	915	1,061	1,083	8,775,658	662.03

**TABLE 6. COUNTY SUMMARY
EMPLOYMENT AND TOTAL EARNINGS, BY INDUSTRY
THIRD QUARTER 2008**

NORTH AMERICAN INDUSTRY CLASSIFICATION SYSTEM INDUSTRY GROUP	NUMBER OF EMPLOYING UNITS	EMPLOYMENT			TOTAL EARNINGS	AVERAGE WEEKLY EARNINGS
		JULY	AUGUST	SEPTEMBER	JULY - SEPTEMBER	
GRANT COUNTY - TOTAL	318	3,581	3,576	3,801	\$24,914,289	\$524.68
Natural Resources & Mining	23	175	169	173	1,856,113	828.50
Construction	31	196	198	208	1,851,150	709.62
Manufacturing	16	935	927	922	6,711,338	556.31
Trade, Transportation & Utilities	89	635	634	627	3,859,480	469.75
Wholesale Trade	20	148	147	145	1,293,323	678.32
Retail Trade	43	432	431	427	2,111,095	377.66
Transportation, Warehousing & Utilities	26	55	56	55	455,062	632.62
Information	4	28	28	28	252,434	693.50
Financial Activities	26	107	106	105	869,070	630.67
Professional & Business Services	27	88	90	86	800,647	699.87
Education & Health Services	46	469	476	476	2,397,302	389.32
Leisure & Hospitality	20	254	252	252	704,375	214.44
Other Services	17	54	52	52	205,667	300.39
Local Government	10	583	586	814	4,940,400	574.93
State Government	9	57	58	58	466,313	622.03
GREENE COUNTY - TOTAL	931	14,136	14,639	15,530	\$106,374,962	\$554.07
Natural Resources & Mining	37	210	202	202	1,333,624	501.24
Construction	85	430	447	431	3,369,624	594.50
Manufacturing	62	5,359	5,319	5,268	48,144,763	696.75
Trade, Transportation & Utilities	242	2,329	2,346	2,303	14,137,749	467.55
Wholesale Trade	57	430	425	424	3,717,228	670.70
Retail Trade	156	1,683	1,703	1,662	8,497,866	388.48
Transportation, Warehousing & Utilities	29	216	218	217	1,922,655	681.55
Information	11	117	114	108	565,465	384.93
Financial Activities	91	500	499	492	3,631,503	562.07
Professional & Business Services	92	987	1,142	1,801	6,832,035	401.18
Education & Health Services	149	1,747	1,762	1,801	12,262,901	532.94
Leisure & Hospitality	70	1,155	1,108	1,109	3,054,613	209.05
Other Services	51	182	186	185	940,493	392.47
Local Government	30	849	1,239	1,560	9,790,187	619.32
State Government	11	271	275	270	2,312,005	653.85

**TABLE 6. COUNTY SUMMARY
EMPLOYMENT AND TOTAL EARNINGS, BY INDUSTRY
THIRD QUARTER 2008**

NORTH AMERICAN INDUSTRY CLASSIFICATION SYSTEM INDUSTRY GROUP	NUMBER OF EMPLOYING UNITS	EMPLOYMENT			TOTAL EARNINGS	AVERAGE WEEKLY EARNINGS
		JULY	AUGUST	SEPTEMBER	JULY - SEPTEMBER	
HEMPSTEAD COUNTY - TOTAL	502	7,488	7,616	7,937	\$53,216,074	\$532.99
Natural Resources & Mining	17	227	224	222	1,641,055	562.71
Construction	31	381	377	368	3,574,604	732.60
Manufacturing	28	2,042	2,067	2,070	16,357,426	610.91
Trade, Transportation & Utilities	135	1,400	1,373	1,378	8,605,232	478.40
Wholesale Trade	29	276	327	335	2,290,032	563.40
Retail Trade	87	923	899	898	4,344,877	368.63
Transportation, Warehousing & Utilities	19	201	147	145	1,970,323	922.29
Information	9	59	58	60	547,463	713.77
Financial Activities	43	233	235	233	1,832,557	603.28
Professional & Business Services	42	238	237	214	1,322,143	442.83
Education & Health Services	68	945	957	965	6,415,688	516.41
Leisure & Hospitality	43	610	625	619	1,727,134	214.98
Other Services	40	196	197	203	1,281,047	496.02
Local Government	29	603	727	1,026	5,348,868	523.92
State Government	17	554	539	579	4,562,857	629.76
HOT SPRING COUNTY - TOTAL	605	7,335	7,468	7,457	\$54,252,096	\$562.43
Natural Resources & Mining	29	203	210	210	1,357,480	502.83
Construction	68	339	343	342	2,638,998	594.73
Manufacturing	34	1,382	1,386	1,382	16,214,065	901.62
Trade, Transportation & Utilities	158	1,430	1,427	1,414	10,249,630	553.80
Wholesale Trade	21	93	96	96	884,158	715.92
Retail Trade	97	947	938	931	4,925,831	403.67
Transportation, Warehousing & Utilities	40	390	393	387	4,439,641	875.67
Information	8	53	58	53	473,514	666.30
Financial Activities	62	311	314	317	2,403,980	588.92
Professional & Business Services	49	207	208	202	1,404,021	525.13
Education & Health Services	81	1,117	1,116	1,134	7,534,773	516.42
Leisure & Hospitality	41	563	537	518	1,494,012	213.09
Other Services	35	154	174	173	837,344	385.70
Local Government	26	971	1,045	1,058	5,017,477	376.67
State Government	14	605	650	654	4,626,802	559.31

**TABLE 6. COUNTY SUMMARY
EMPLOYMENT AND TOTAL EARNINGS, BY INDUSTRY
THIRD QUARTER 2008**

NORTH AMERICAN INDUSTRY CLASSIFICATION SYSTEM INDUSTRY GROUP	NUMBER OF EMPLOYING UNITS	EMPLOYMENT			TOTAL EARNINGS	AVERAGE WEEKLY EARNINGS
		JULY	AUGUST	SEPTEMBER	JULY - SEPTEMBER	
HOWARD COUNTY - TOTAL	369	7,160	7,327	7,526	\$49,198,648	\$515.76
Natural Resources & Mining	23	241	240	236	1,955,085	629.25
Construction	21	136	127	122	1,375,398	824.41
Manufacturing	23	4,041	4,092	4,096	28,273,624	533.54
Trade, Transportation & Utilities	106	957	951	948	6,218,004	502.42
Wholesale Trade	18	92	87	89	971,177	836.26
Retail Trade	62	620	627	624	2,918,724	360.00
Transportation, Warehousing & Utilities	26	245	237	235	2,328,103	749.31
Information	5	37	37	39	241,017	492.21
Financial Activities	40	169	172	172	1,043,970	469.62
Professional & Business Services	27	121	125	117	879,888	559.37
Education & Health Services	51	566	527	531	3,636,847	516.79
Leisure & Hospitality	20	325	333	324	819,832	192.66
Other Services	23	110	118	116	636,787	427.18
Local Government	18	317	468	685	3,057,751	480.02
State Government	12	140	137	140	1,060,445	586.85
INDEPENDENCE COUNTY - TOTAL	942	14,632	14,693	15,421	\$107,965,038	\$556.81
Natural Resources & Mining	14	126	128	121	1,151,621	708.69
Construction	70	479	464	482	3,259,861	527.91
Manufacturing	54	3,958	3,909	3,854	32,736,358	644.53
Trade, Transportation & Utilities	247	2,998	2,987	2,961	21,554,429	556.01
Wholesale Trade	48	548	549	545	4,774,759	671.05
Retail Trade	153	1,633	1,623	1,600	8,155,741	387.58
Transportation, Warehousing & Utilities	46	817	815	816	8,623,929	812.96
Information	8	140	140	139	1,085,350	597.77
Financial Activities	88	499	488	483	3,822,335	600.05
Professional & Business Services	94	777	812	841	4,561,763	433.22
Education & Health Services	169	3,006	2,953	2,981	24,437,323	630.80
Leisure & Hospitality	66	1,059	1,086	1,090	2,928,804	208.93
Other Services	68	394	391	388	1,803,856	354.88
Local Government	47	743	913	1,578	6,655,335	474.91
State Government	17	453	422	503	3,968,003	664.51

**TABLE 6. COUNTY SUMMARY
EMPLOYMENT AND TOTAL EARNINGS, BY INDUSTRY
THIRD QUARTER 2008**

NORTH AMERICAN INDUSTRY CLASSIFICATION SYSTEM INDUSTRY GROUP	NUMBER OF EMPLOYING UNITS	EMPLOYMENT			TOTAL EARNINGS	AVERAGE WEEKLY EARNINGS
		JULY	AUGUST	SEPTEMBER	JULY - SEPTEMBER	
IZARD COUNTY - TOTAL	287	3,031	2,972	3,093	\$18,305,315	\$464.41
Natural Resources & Mining	4	85	86	85	842,041	759.05
Construction	26	91	91	87	543,079	465.90
Trade, Transportation & Utilities	67	529	531	532	2,737,939	396.88
Retail Trade	48	407	413	414	1,907,469	356.71
Other Trade, Transportation & Utilities	19	122	118	118	830,470	535.33
Financial Activities	31	154	153	157	1,056,293	525.34
Professional & Business Services	21	55	55	57	409,353	565.67
Education & Health Services	64	637	630	613	3,170,883	389.22
Leisure & Hospitality	18	220	209	210	452,001	163.24
Local Government	18	335	406	498	2,857,793	532.28
State Government	11	410	435	487	3,296,273	571.08
Other	27	515	376	367	2,939,660	539.26
JACKSON COUNTY - TOTAL	515	5,456	5,714	5,838	\$39,984,204	\$542.52
Natural Resources & Mining	49	226	217	233	1,458,601	497.93
Construction	23	133	134	111	1,049,907	640.97
Manufacturing	25	1,291	1,258	1,295	10,395,219	624.06
Trade, Transportation & Utilities	117	1,129	1,128	1,139	7,511,937	510.46
Wholesale Trade	27	215	214	211	2,106,143	759.43
Retail Trade	71	675	671	671	3,546,221	405.73
Transportation, Warehousing & Utilities	19	239	243	257	1,859,573	580.69
Information	4	40	38	37	290,840	583.63
Financial Activities	39	164	163	160	1,303,315	617.59
Professional & Business Services	37	135	130	131	907,938	529.10
Education & Health Services	113	838	846	844	6,293,965	574.55
Leisure & Hospitality	31	322	308	303	906,194	224.14
Other Services	31	96	98	98	509,267	402.48
Local Government	32	386	665	720	3,556,320	463.40
State Government	14	696	729	767	5,800,701	610.69

**TABLE 6. COUNTY SUMMARY
EMPLOYMENT AND TOTAL EARNINGS, BY INDUSTRY
THIRD QUARTER 2008**

NORTH AMERICAN INDUSTRY CLASSIFICATION SYSTEM INDUSTRY GROUP	NUMBER OF EMPLOYING UNITS	EMPLOYMENT			TOTAL EARNINGS	AVERAGE WEEKLY EARNINGS
		JULY	AUGUST	SEPTEMBER	JULY - SEPTEMBER	
JEFFERSON COUNTY - TOTAL	2,035	29,596	30,254	30,725	\$241,482,714	\$615.26
Natural Resources & Mining	45	490	492	493	4,818,892	753.93
Construction	125	1,425	1,466	1,501	18,237,448	958.25
Manufacturing	72	5,800	5,847	5,888	58,628,382	771.58
Trade, Transportation & Utilities	443	5,431	5,445	5,426	39,354,220	557.09
Wholesale Trade	81	1,071	1,052	1,031	9,450,761	691.49
Retail Trade	298	3,529	3,562	3,558	19,302,322	418.29
Transportation, Warehousing & Utilities	64	831	831	837	10,601,137	978.96
Information	13	171	165	158	1,258,114	587.72
Financial Activities	160	1,179	1,173	1,165	11,070,600	726.40
Professional & Business Services	181	1,671	1,652	1,596	13,441,498	630.59
Education & Health Services	627	5,139	5,148	5,171	38,465,803	574.25
Leisure & Hospitality	144	2,150	2,140	2,141	5,971,367	214.28
Other Services	139	683	685	683	4,136,805	465.45
Local Government	44	2,347	2,879	3,276	18,025,999	489.28
State Government	42	3,110	3,162	3,227	28,073,586	682.02
JOHNSON COUNTY - TOTAL	476	8,207	8,378	8,899	\$56,607,777	\$512.61
Natural Resources & Mining	18	263	273	268	2,348,450	674.07
Construction	26	155	160	151	1,173,275	581.02
Manufacturing	43	3,050	3,019	3,059	19,928,491	503.82
Trade, Transportation & Utilities	119	2,094	2,127	2,154	14,332,091	518.81
Retail Trade	80	907	908	914	4,376,889	370.12
Other Trade, Transportation & Utilities	39	1,187	1,219	1,240	9,955,202	630.10
Information	5	32	34	33	194,396	453.14
Financial Activities	48	214	214	213	1,748,613	629.53
Professional & Business Services	48	161	159	155	1,235,427	600.21
Education & Health Services	83	1,086	1,124	1,122	7,997,933	553.92
Leisure & Hospitality	37	484	520	553	1,439,622	213.37
Other Services	25	64	67	66	377,571	442.29
Local Government	14	435	515	959	4,441,295	536.89
State Government	10	169	166	166	1,390,613	640.54

**TABLE 6. COUNTY SUMMARY
EMPLOYMENT AND TOTAL EARNINGS, BY INDUSTRY
THIRD QUARTER 2008**

NORTH AMERICAN INDUSTRY CLASSIFICATION SYSTEM INDUSTRY GROUP	NUMBER OF EMPLOYING UNITS	EMPLOYMENT			TOTAL EARNINGS	AVERAGE WEEKLY EARNINGS
		JULY	AUGUST	SEPTEMBER	JULY - SEPTEMBER	
LAFAYETTE COUNTY - TOTAL	180	1,406	1,412	1,419	\$8,370,564	\$455.90
Natural Resources & Mining	39	172	174	178	1,683,099	741.24
Construction	9	57	58	57	515,719	691.93
Manufacturing	6	43	43	42	310,513	559.82
Trade, Transportation & Utilities	32	202	205	211	1,222,002	456.31
Wholesale Trade	5	54	54	54	345,586	492.29
Retail Trade	20	122	123	126	533,233	331.68
Transportation, Warehousing & Utilities	7	26	28	31	343,183	931.72
Financial Activities	18	52	54	55	325,536	466.61
Professional & Business Services	10	86	83	86	627,031	567.45
Education & Health Services	32	254	257	257	1,163,910	349.73
Leisure & Hospitality	6	52	50	46	146,888	229.04
Local Government	13	332	334	336	1,510,164	347.80
State Government	8	56	58	55	380,551	519.64
Other	7	100	96	96	485,151	383.42
LAWRENCE COUNTY - TOTAL	440	3,654	3,914	4,086	23,768,027	\$470.65
Natural Resources & Mining	38	187	178	177	1,375,272	585.55
Construction	25	71	61	72	457,511	517.55
Manufacturing	23	512	499	487	3,489,804	537.61
Trade, Transportation & Utilities	123	864	861	868	5,471,737	486.97
Wholesale Trade	21	194	190	191	1,518,484	609.43
Retail Trade	65	515	518	522	2,565,614	380.75
Transportation, Warehousing & Utilities	37	155	153	155	1,387,639	691.63
Financial Activities	36	157	158	157	1,013,999	495.76
Professional & Business Services	25	115	114	115	865,445	580.58
Education & Health Services	83	435	464	502	3,180,370	523.86
Leisure & Hospitality	25	340	330	340	747,813	170.86
Local Government	28	784	1,061	1,179	5,961,932	454.97
State Government	11	119	120	122	824,082	526.79
Other	23	70	68	67	380,062	427.84

**TABLE 6. COUNTY SUMMARY
EMPLOYMENT AND TOTAL EARNINGS, BY INDUSTRY
THIRD QUARTER 2008**

NORTH AMERICAN INDUSTRY CLASSIFICATION SYSTEM INDUSTRY GROUP	NUMBER OF EMPLOYING UNITS	EMPLOYMENT			TOTAL EARNINGS	AVERAGE WEEKLY EARNINGS
		JULY	AUGUST	SEPTEMBER	JULY - SEPTEMBER	
LEE COUNTY - TOTAL	292	1,911	2,132	2,173	\$13,754,806	\$510.65
Natural Resources & Mining	33	206	212	231	1,177,695	418.76
Construction	10	36	41	46	332,232	623.32
Trade, Transportation & Utilities	53	379	381	387	2,262,165	455.13
Wholesale Trade	8	72	71	71	567,938	612.44
Retail Trade	28	207	209	211	882,985	324.99
Transportation, Warehousing & Utilities	17	100	101	105	811,242	611.80
Financial Activities	17	78	83	84	582,480	548.65
Professional & Business Services	16	66	69	69	802,450	907.75
Education & Health Services	109	378	390	395	2,438,072	483.78
Leisure & Hospitality	8	86	76	73	192,646	189.18
Local Government	15	133	331	341	1,992,356	571.15
State Government	8	503	503	502	3,741,168	572.51
Other	23	46	46	45	233,542	393.39
LINCOLN COUNTY - TOTAL	259	2,794	2,883	2,968	\$19,379,193	\$517.31
Natural Resources & Mining	34	176	174	178	1,324,685	578.97
Construction	13	83	78	68	511,992	515.95
Manufacturing	10	370	370	367	2,461,411	513.11
Trade, Transportation & Utilities	50	367	359	346	2,524,648	543.48
Wholesale Trade	7	28	28	27	306,636	852.56
Retail Trade	26	199	192	195	727,844	286.63
Transportation, Warehousing & Utilities	17	140	139	124	1,490,168	853.31
Financial Activities	22	75	78	72	556,001	570.26
Professional & Business Services	12	28	25	28	206,456	588.19
Education & Health Services	68	362	388	378	2,001,492	409.47
Leisure & Hospitality	17	170	166	166	366,108	168.30
Local & State Government	20	1,131	1,211	1,333	9,240,229	580.23
Other	13	32	34	32	186,171	438.39

**TABLE 6. COUNTY SUMMARY
EMPLOYMENT AND TOTAL EARNINGS, BY INDUSTRY
THIRD QUARTER 2008**

NORTH AMERICAN INDUSTRY CLASSIFICATION SYSTEM INDUSTRY GROUP	NUMBER OF EMPLOYING UNITS	EMPLOYMENT			TOTAL EARNINGS	AVERAGE WEEKLY EARNINGS
		JULY	AUGUST	SEPTEMBER	JULY - SEPTEMBER	
LITTLE RIVER COUNTY - TOTAL	263	4,341	4,386	4,555	\$44,165,735	\$767.36
Natural Resources & Mining	12	72	73	69	539,959	582.27
Construction	25	816	815	814	9,744,234	919.70
Manufacturing	17	1,415	1,393	1,389	21,330,132	1172.82
Trade, Transportation & Utilities	62	652	674	669	3,936,842	455.39
Retail Trade	38	392	412	412	1,901,019	360.77
Other Trade, Transportation & Utilities	24	260	262	257	2,035,823	603.09
Financial Activities	23	98	99	95	582,742	460.54
Professional & Business Services	22	132	131	133	832,501	485.14
Education & Health Services	34	175	173	179	1,015,627	444.74
Leisure & Hospitality	18	210	208	204	555,496	206.10
Local Government	20	580	624	814	4,566,748	522.23
State Government	12	94	90	93	635,233	529.21
Other	18	97	106	96	426,221	328.96
LOGAN COUNTY - TOTAL	510	5,305	5,493	5,646	\$35,736,081	\$501.51
Natural Resources & Mining	23	159	165	164	2,015,681	953.19
Construction	53	192	197	204	1,474,202	573.69
Manufacturing	32	1,261	1,253	1,274	9,721,211	592.23
Trade, Transportation & Utilities	118	869	885	873	4,825,308	423.88
Wholesale Trade	16	33	35	36	199,167	441.94
Retail Trade	75	743	757	747	3,662,732	376.17
Transportation, Warehousing & Utilities	27	93	93	90	963,409	805.53
Information	7	45	45	45	332,918	569.09
Financial Activities	45	292	295	285	2,454,564	649.58
Professional & Business Services	44	139	127	121	717,978	428.13
Education & Health Services	93	782	788	796	4,973,185	485.06
Leisure & Hospitality	31	319	319	337	788,213	186.56
Other Services	27	86	75	83	477,339	451.46
Local & State Government	37	1,161	1,344	1,464	7,955,482	462.55

**TABLE 6. COUNTY SUMMARY
EMPLOYMENT AND TOTAL EARNINGS, BY INDUSTRY
THIRD QUARTER 2008**

NORTH AMERICAN INDUSTRY CLASSIFICATION SYSTEM INDUSTRY GROUP	NUMBER OF EMPLOYING UNITS	EMPLOYMENT			TOTAL EARNINGS	AVERAGE WEEKLY EARNINGS
		JULY	AUGUST	SEPTEMBER	JULY - SEPTEMBER	
LONOKE COUNTY - TOTAL	1,353	12,243	12,768	12,821	\$85,786,572	\$523.28
Natural Resources & Mining	76	485	480	487	4,654,517	739.75
Construction	173	955	965	944	9,155,745	737.73
Manufacturing	41	1,275	1,296	1,301	12,611,336	751.63
Trade, Transportation & Utilities	361	2,832	2,854	2,863	17,858,329	482.06
Wholesale Trade	88	481	490	477	4,705,702	749.95
Retail Trade	197	2,047	2,066	2,079	10,420,858	388.37
Transportation, Warehousing & Utilities	76	304	298	307	2,731,769	693.52
Information	16	89	89	84	987,483	869.77
Financial Activities	139	529	532	521	4,974,338	725.62
Professional & Business Services	147	551	576	601	4,185,204	558.92
Education & Health Services	175	1,495	1,514	1,517	10,864,122	553.93
Leisure & Hospitality	108	1,586	1,586	1,555	4,315,631	210.69
Other Services	73	222	220	223	1,220,920	423.69
Local Government	28	2,069	2,502	2,572	13,743,975	444.03
State Government	16	155	154	153	1,214,972	606.88
MADISON COUNTY - TOTAL	266	3,039	3,238	3,186	19,563,235	\$477.08
Natural Resources & Mining	12	42	43	42	297,501	540.58
Construction	44	98	95	89	592,072	484.51
Manufacturing	22	1,165	1,151	1,128	7,766,328	520.39
Trade, Transportation & Utilities	62	603	640	639	3,724,240	456.66
Wholesale Trade	11	32	32	30	348,289	855.05
Retail Trade	39	423	463	468	2,150,274	366.48
Transportation, Warehousing & Utilities	12	148	145	141	1,225,677	651.72
Financial Activities	17	75	78	75	547,043	553.69
Professional & Business Services	19	124	128	127	717,490	436.87
Education & Health Services	42	249	252	247	1,227,899	378.83
Leisure & Hospitality	13	133	138	126	260,807	151.60
Local Government	9	421	586	589	3,381,070	488.88
State Government	8	58	58	57	457,599	610.40
Other	18	71	69	67	591,186	659.07

**TABLE 6. COUNTY SUMMARY
EMPLOYMENT AND TOTAL EARNINGS, BY INDUSTRY
THIRD QUARTER 2008**

NORTH AMERICAN INDUSTRY CLASSIFICATION SYSTEM INDUSTRY GROUP	NUMBER OF EMPLOYING UNITS	EMPLOYMENT			TOTAL EARNINGS	AVERAGE WEEKLY EARNINGS
		JULY	AUGUST	SEPTEMBER	JULY - SEPTEMBER	
MARION COUNTY - TOTAL	317	3,940	3,978	4,044	\$23,921,315	\$461.49
Natural Resources & Mining	7	46	47	47	242,273	399.35
Construction	27	87	88	85	476,579	423.00
Manufacturing	21	1,648	1,635	1,644	11,075,139	518.73
Trade, Transportation & Utilities	56	631	624	613	3,259,809	402.71
Wholesale Trade	9	26	27	26	235,254	687.21
Retail Trade	36	477	472	463	2,185,707	357.22
Transportation, Warehousing & Utilities	11	128	125	124	838,848	513.48
Financial Activities	35	195	199	202	1,415,275	547.99
Professional & Business Services	28	57	55	55	431,090	595.70
Education & Health Services	59	356	354	355	1,972,939	427.51
Leisure & Hospitality	39	278	279	263	732,207	206.06
Local Government	20	399	457	543	2,573,904	424.57
State Government	8	109	109	108	740,633	524.28
Other	17	134	131	129	1,001,467	586.57
MILLER COUNTY - TOTAL	857	12,418	12,408	13,185	\$96,293,530	\$584.61
Natural Resources & Mining	27	130	136	140	1,033,517	587.45
Construction	91	789	812	799	6,487,265	623.78
Manufacturing	33	2,363	2,345	2,352	27,484,181	898.37
Trade, Transportation & Utilities	231	3,548	3,484	3,548	25,481,241	555.79
Wholesale Trade	55	523	517	525	5,322,317	784.81
Retail Trade	136	1,484	1,445	1,441	7,361,265	388.73
Transportation, Warehousing & Utilities	40	1,541	1,522	1,582	12,797,659	635.80
Information	9	93	95	95	1,686,836	1375.51
Financial Activities	82	341	338	331	2,687,677	614.09
Professional & Business Services	86	1,020	1,012	960	5,434,562	419.16
Education & Health Services	117	1,096	1,049	1,033	6,729,580	488.67
Leisure & Hospitality	82	1,339	1,327	1,389	4,228,945	240.67
Other Services	56	423	337	331	1,667,150	352.64
Local Government	26	761	957	1,691	8,662,856	586.42
State Government	17	515	516	516	4,709,720	702.56

**TABLE 6. COUNTY SUMMARY
EMPLOYMENT AND TOTAL EARNINGS, BY INDUSTRY
THIRD QUARTER 2008**

NORTH AMERICAN INDUSTRY CLASSIFICATION SYSTEM INDUSTRY GROUP	NUMBER OF EMPLOYING UNITS	EMPLOYMENT			TOTAL EARNINGS	AVERAGE WEEKLY EARNINGS
		JULY	AUGUST	SEPTEMBER	JULY - SEPTEMBER	
MISSISSIPPI COUNTY - TOTAL	1,232	19,456	19,680	20,109	\$172,907,204	\$673.50
Natural Resources & Mining	96	608	578	688	3,909,866	481.47
Construction	66	791	788	831	9,099,994	871.37
Manufacturing	60	6,076	6,132	6,091	83,503,153	1053.06
Trade, Transportation & Utilities	300	2,959	2,975	2,971	20,599,395	533.82
Wholesale Trade	67	514	504	500	4,632,076	704.18
Retail Trade	181	1,847	1,849	1,834	8,963,029	374.03
Transportation, Warehousing & Utilities	52	598	622	637	7,004,290	870.42
Financial Activities	104	599	598	592	4,331,313	558.71
Professional & Business Services	106	1,309	1,338	1,316	9,779,194	569.45
Education & Health Services	263	1,669	1,710	1,717	10,918,828	494.45
Leisure & Hospitality	86	1,193	1,259	1,237	3,289,389	205.77
Local Government	46	2,053	2,067	2,343	11,692,818	417.51
State Government	24	591	612	667	4,552,293	561.78
Other	81	1,608	1,623	1,656	11,230,961	530.34
MONROE COUNTY - TOTAL	324	2,251	2,431	2,396	\$13,223,748	\$431.14
Natural Resources & Mining	33	157	157	142	1,092,246	552.76
Construction	13	42	35	37	222,703	450.82
Manufacturing	7	109	109	108	633,254	448.27
Trade, Transportation & Utilities	85	739	722	720	4,387,783	464.27
Wholesale Trade	21	235	219	210	1,572,616	546.55
Retail Trade	41	348	348	341	1,564,329	348.12
Transportation, Warehousing & Utilities	23	156	155	169	1,250,838	601.36
Financial Activities	16	97	96	95	664,260	532.26
Professional & Business Services	16	39	49	37	271,875	501.92
Education & Health Services	72	349	364	364	1,754,226	375.88
Leisure & Hospitality	24	275	256	253	721,096	212.25
Local Government	22	198	399	408	2,039,075	468.21
State Government	9	135	137	133	929,198	529.46
Other	27	111	107	99	508,032	369.84

**TABLE 6. COUNTY SUMMARY
EMPLOYMENT AND TOTAL EARNINGS, BY INDUSTRY
THIRD QUARTER 2008**

NORTH AMERICAN INDUSTRY CLASSIFICATION SYSTEM INDUSTRY GROUP	NUMBER OF EMPLOYING UNITS	EMPLOYMENT			TOTAL EARNINGS	AVERAGE WEEKLY EARNINGS
		JULY	AUGUST	SEPTEMBER	JULY - SEPTEMBER	
MONTGOMERY COUNTY - TOTAL	185	1,732	1,644	1,538	\$8,664,416	\$406.89
Natural Resources & Mining	12	45	55	47	529,395	831.08
Construction	22	83	83	92	578,394	517.35
Manufacturing	10	149	148	149	740,219	383.00
Trade, Transportation & Utilities	45	215	226	216	1,337,276	469.71
Wholesale Trade	11	78	79	77	543,789	536.28
Retail Trade	24	129	136	129	751,236	440.01
Transportation, Warehousing & Utilities	10	8	11	10	42,251	336.21
Financial Activities	11	77	76	78	547,903	547.36
Professional & Business Services	14	33	31	30	209,884	515.26
Education & Health Services	17	70	66	73	403,195	445.19
Leisure & Hospitality	23	578	424	241	1,474,324	273.72
Local Government	9	367	419	495	2,116,105	381.21
State Government	8	52	53	53	436,461	637.48
Other	14	63	63	64	291,260	353.76
NEVADA COUNTY - TOTAL	191	2,139	2,169	2,379	\$15,309,429	\$528.33
Natural Resources & Mining	12	46	47	47	294,990	486.25
Trade, Transportation & Utilities	40	479	495	505	3,239,957	505.53
Retail Trade	27	277	281	286	1,346,831	368.25
Other Trade, Transportation & Utilities	13	202	214	219	1,893,126	687.99
Financial Activities	15	66	61	61	445,227	546.51
Professional & Business Services	9	41	39	42	304,358	575.71
Education & Health Services	22	399	403	407	2,063,917	393.95
Leisure & Hospitality	13	106	113	117	279,141	191.72
Other Services	19	65	59	61	213,315	266.09
Local Government	28	274	293	482	1,683,414	370.33
State Government	11	88	87	85	633,504	562.28
Other	22	575	572	572	6,151,606	825.83

**TABLE 6. COUNTY SUMMARY
EMPLOYMENT AND TOTAL EARNINGS, BY INDUSTRY
THIRD QUARTER 2008**

NORTH AMERICAN INDUSTRY CLASSIFICATION SYSTEM INDUSTRY GROUP	NUMBER OF EMPLOYING UNITS	EMPLOYMENT			TOTAL EARNINGS	AVERAGE WEEKLY EARNINGS
		JULY	AUGUST	SEPTEMBER	JULY - SEPTEMBER	
NEWTON COUNTY - TOTAL	133	848	1,053	1,069	\$5,265,475	\$409.13
Construction	8	28	26	25	128,299	374.78
Manufacturing	16	69	69	66	452,708	512.11
Trade, Transportation & Utilities	27	152	156	150	844,199	425.36
Retail Trade	13	100	101	97	375,010	290.41
Other Trade, Transportation & Utilities	14	52	55	53	469,189	676.71
Professional & Business Services	6	20	9	22	152,839	691.58
Education & Health Services	26	211	218	221	982,109	348.68
Leisure & Hospitality	18	88	86	85	222,967	198.66
Other Services	4	12	11	9	36,431	262.72
Local Government	13	151	360	369	1,748,776	458.60
State Government	7	92	93	97	521,002	426.35
Other	8	25	25	25	176,145	541.98
OUACHITA COUNTY - TOTAL	654	7,473	7,478	7,645	\$49,482,259	\$505.35
Natural Resources & Mining	47	270	269	264	2,300,547	661.14
Construction	48	265	277	275	2,256,777	637.45
Manufacturing	32	937	923	923	7,629,591	632.65
Trade, Transportation & Utilities	170	1,772	1,779	1,785	11,986,494	518.39
Wholesale Trade	26	239	241	241	2,268,483	726.07
Retail Trade	115	1,070	1,067	1,082	4,911,458	352.10
Transportation, Warehousing & Utilities	29	463	471	462	4,806,553	794.56
Information	7	63	60	60	535,338	675.08
Financial Activities	64	342	343	347	2,610,080	583.65
Professional & Business Services	50	362	357	371	2,262,322	478.97
Education & Health Services	116	1,219	1,218	1,245	8,124,221	509.19
Leisure & Hospitality	37	552	535	501	1,252,043	181.95
Other Services	39	141	140	141	741,054	405.24
Local Government	30	986	1,017	1,188	5,201,873	376.19
State Government	14	564	560	545	4,581,919	633.53

**TABLE 6. COUNTY SUMMARY
EMPLOYMENT AND TOTAL EARNINGS, BY INDUSTRY
THIRD QUARTER 2008**

NORTH AMERICAN INDUSTRY CLASSIFICATION SYSTEM INDUSTRY GROUP	NUMBER OF EMPLOYING UNITS	EMPLOYMENT			TOTAL EARNINGS	AVERAGE WEEKLY EARNINGS
		JULY	AUGUST	SEPTEMBER	JULY - SEPTEMBER	
PERRY COUNTY - TOTAL	158	1,306	1,326	1,328	\$8,702,387	\$507.13
Construction	21	65	72	61	471,959	550.07
Manufacturing	7	74	73	68	455,515	488.92
Trade, Transportation & Utilities	29	235	218	198	1,469,263	520.83
Retail Trade	18	157	162	164	595,193	284.37
Other Trade, Transportation & Utilities	11	78	56	34	874,070	1200.65
Financial Activities	15	70	68	68	650,404	728.61
Professional & Business Services	15	43	38	39	309,051	594.33
Education & Health Services	29	191	204	200	1,029,788	399.40
Local Government	12	326	362	410	1,841,046	386.94
State Government	9	50	51	52	392,003	591.26
Other	21	252	240	232	2,083,358	664.05
PHILLIPS COUNTY - TOTAL	894	6,433	6,470	6,503	\$38,308,375	\$455.55
Natural Resources & Mining	66	369	375	400	1,952,687	393.90
Construction	32	170	153	149	1,061,713	519.09
Manufacturing	13	356	316	324	2,666,773	617.88
Trade, Transportation & Utilities	175	1,605	1,607	1,617	10,146,431	484.88
Wholesale Trade	34	459	464	461	3,694,440	616.01
Retail Trade	97	883	881	883	4,237,875	369.46
Transportation, Warehousing & Utilities	44	263	262	273	2,214,116	640.29
Information	9	51	50	50	406,224	620.82
Financial Activities	57	271	278	274	2,244,636	629.40
Professional & Business Services	59	194	176	167	1,403,067	602.95
Education & Health Services	357	1,392	1,436	1,439	7,974,652	431.29
Leisure & Hospitality	40	403	386	386	1,069,097	209.97
Other Services	39	83	83	79	390,328	367.66
Local Government	30	984	1,083	1,082	5,317,857	389.71
State Government	17	555	527	536	3,674,910	524.14

**TABLE 6. COUNTY SUMMARY
EMPLOYMENT AND TOTAL EARNINGS, BY INDUSTRY
THIRD QUARTER 2008**

NORTH AMERICAN INDUSTRY CLASSIFICATION SYSTEM INDUSTRY GROUP	NUMBER OF EMPLOYING UNITS	EMPLOYMENT			TOTAL EARNINGS	AVERAGE WEEKLY EARNINGS
		JULY	AUGUST	SEPTEMBER	JULY - SEPTEMBER	
PIKE COUNTY - TOTAL	276	2,579	2,786	2,819	\$16,241,077	\$457.96
Natural Resources & Mining	26	149	143	140	1,335,854	713.60
Construction	12	16	19	16	104,178	471.39
Manufacturing	16	374	393	380	2,353,995	473.61
Trade, Transportation & Utilities	95	674	671	675	4,188,406	478.49
Wholesale Trade	21	170	168	167	1,359,143	621.09
Retail Trade	47	376	374	378	1,767,789	361.66
Transportation, Warehousing & Utilities	27	128	129	130	1,061,474	632.96
Information	5	26	29	30	301,920	819.69
Financial Activities	27	192	196	193	1,458,903	579.47
Professional & Business Services	13	38	38	41	406,238	801.26
Education & Health Services	20	240	244	236	1,237,383	396.60
Leisure & Hospitality	20	264	263	262	727,537	212.79
Other Services	18	102	132	134	582,900	365.53
Local Government	13	355	511	563	2,752,143	444.44
State Government	11	149	147	149	791,620	410.52
POINSETT COUNTY - TOTAL	504	5,153	5,364	5,471	\$34,220,635	\$493.94
Natural Resources & Mining	51	342	320	325	2,765,324	646.56
Construction	22	86	85	81	722,069	661.24
Manufacturing	22	819	811	796	6,086,020	578.92
Trade, Transportation & Utilities	125	1,349	1,343	1,368	9,264,655	526.60
Wholesale Trade	31	476	462	469	4,992,512	818.85
Retail Trade	67	710	716	719	3,069,436	330.22
Transportation, Warehousing & Utilities	27	163	165	180	1,202,707	546.35
Information	6	54	54	53	623,671	893.94
Financial Activities	53	278	280	286	2,113,469	577.87
Professional & Business Services	34	180	180	170	1,372,818	597.74
Education & Health Services	84	560	590	584	3,325,707	442.60
Leisure & Hospitality	43	392	396	405	777,644	150.42
Other Services	22	53	52	53	309,363	451.84
Local Government	30	835	1,084	1,138	5,447,080	411.19
State Government	12	205	169	212	1,412,815	556.37

**TABLE 6. COUNTY SUMMARY
EMPLOYMENT AND TOTAL EARNINGS, BY INDUSTRY
THIRD QUARTER 2008**

NORTH AMERICAN INDUSTRY CLASSIFICATION SYSTEM INDUSTRY GROUP	NUMBER OF EMPLOYING UNITS	EMPLOYMENT			TOTAL EARNINGS	AVERAGE WEEKLY EARNINGS
		JULY	AUGUST	SEPTEMBER	JULY - SEPTEMBER	
POLK COUNTY - TOTAL	562	6,119	6,271	6,455	\$36,825,274	\$450.95
Natural Resources & Mining	26	223	221	224	1,920,928	663.61
Construction	45	181	182	181	1,098,816	466.13
Manufacturing	41	1,323	1,322	1,330	8,257,379	479.38
Trade, Transportation & Utilities	149	1,365	1,361	1,356	7,444,698	420.87
Wholesale Trade	21	100	97	99	693,282	540.50
Retail Trade	84	911	905	901	4,109,851	349.07
Transportation, Warehousing & Utilities	44	354	359	356	2,641,565	570.25
Information	10	58	59	59	386,775	507.14
Financial Activities	42	267	263	260	1,788,277	522.38
Professional & Business Services	57	275	262	255	1,403,514	408.95
Education & Health Services	86	1,034	1,056	1,049	6,383,552	469.30
Leisure & Hospitality	36	445	460	463	1,120,574	189.03
Other Services	36	145	141	151	863,910	456.21
Local Government	20	493	658	789	4,161,175	494.99
State Government	14	310	286	338	1,995,676	493.08
POPE COUNTY - TOTAL	1,793	25,209	25,844	26,508	\$195,284,026	\$581.03
Natural Resources & Mining	27	723	714	424	4,483,383	555.95
Construction	190	1,360	1,431	1,566	11,914,017	631.03
Manufacturing	87	4,884	4,951	5,004	45,452,648	706.86
Trade, Transportation & Utilities	470	6,546	6,550	6,490	54,677,309	644.23
Wholesale Trade	102	678	683	687	6,317,386	711.84
Retail Trade	274	3,351	3,340	3,346	17,778,932	408.77
Transportation, Warehousing & Utilities	94	2,517	2,527	2,457	30,580,991	940.83
Information	16	228	217	216	2,265,041	790.77
Financial Activities	190	808	822	809	6,388,454	604.45
Professional & Business Services	245	2,366	2,437	2,387	15,445,091	495.72
Education & Health Services	274	3,043	3,092	3,079	22,149,926	554.76
Leisure & Hospitality	133	2,352	2,463	2,462	7,022,964	222.71
Other Services	105	482	463	473	2,586,239	420.89
Local Government	40	1,131	1,419	2,225	11,677,525	564.36
State Government	16	1,286	1,285	1,373	11,221,429	656.58

**TABLE 6. COUNTY SUMMARY
EMPLOYMENT AND TOTAL EARNINGS, BY INDUSTRY
THIRD QUARTER 2008**

NORTH AMERICAN INDUSTRY CLASSIFICATION SYSTEM INDUSTRY GROUP	NUMBER OF EMPLOYING UNITS	EMPLOYMENT			TOTAL EARNINGS	AVERAGE WEEKLY EARNINGS
		JULY	AUGUST	SEPTEMBER	JULY - SEPTEMBER	
PRAIRIE COUNTY - TOTAL	251	1,354	1,439	1,506	\$9,212,383	\$494.52
Natural Resources & Mining	28	166	154	150	1,282,011	629.47
Construction	15	74	69	69	420,521	457.75
Trade, Transportation & Utilities	64	328	324	349	2,045,826	471.64
Wholesale Trade	10	73	63	62	622,403	725.41
Retail Trade	35	180	181	177	690,200	296.05
Transportation, Warehousing & Utilities	19	75	80	110	733,223	638.51
Financial Activities	19	68	69	68	494,564	556.73
Professional & Business Services	17	66	65	63	403,051	479.44
Education & Health Services	42	188	190	191	1,082,130	438.88
Leisure & Hospitality	17	70	73	68	166,226	181.80
Other Services	15	39	40	38	202,303	399.02
Local Government	15	159	260	320	1,689,988	527.74
State Government	10	55	55	53	427,529	605.28
Other	9	141	140	137	998,234	551.10
PULASKI COUNTY - TOTAL	15,015	237,603	240,490	243,433	\$2,333,710,801	\$746.40
Natural Resources & Mining	60	809	796	783	10,331,336	998.39
Construction	1,181	10,370	10,333	10,058	110,115,210	826.09
Manufacturing	436	15,744	15,803	15,799	174,412,350	850.10
Trade, Transportation & Utilities	3,407	50,593	50,668	50,536	457,699,286	695.82
Wholesale Trade	1,213	13,799	13,831	13,775	176,073,851	981.34
Retail Trade	1,783	24,803	24,878	24,657	151,992,454	471.83
Transportation, Warehousing & Utilities	411	11,991	11,959	12,104	129,632,981	829.74
Information	223	8,316	8,295	8,081	112,609,198	1052.44
Financial Activities	1,803	15,670	15,677	15,622	207,334,047	1018.68
Professional & Business Services	2,912	34,428	34,594	34,659	327,534,169	729.01
Education & Health Services	2,366	35,890	36,152	36,425	374,117,620	795.95
Leisure & Hospitality	1,063	21,130	21,262	20,908	79,926,924	291.39
Other Services	1,211	7,233	7,133	7,021	54,010,756	582.78
Local Government	103	11,733	13,900	17,233	109,783,819	591.02
State Government	250	25,687	25,877	26,308	315,836,086	935.96

**TABLE 6. COUNTY SUMMARY
EMPLOYMENT AND TOTAL EARNINGS, BY INDUSTRY
THIRD QUARTER 2008**

NORTH AMERICAN INDUSTRY CLASSIFICATION SYSTEM INDUSTRY GROUP	NUMBER OF EMPLOYING UNITS	EMPLOYMENT			TOTAL EARNINGS	AVERAGE WEEKLY EARNINGS
		JULY	AUGUST	SEPTEMBER	JULY - SEPTEMBER	
RANDOLPH COUNTY - TOTAL	431	4,560	4,712	4,917	\$26,888,228	\$437.31
Natural Resources & Mining	25	101	103	105	541,879	404.69
Construction	27	91	93	98	421,963	345.31
Manufacturing	37	671	703	714	4,223,394	466.78
Trade, Transportation & Utilities	103	897	907	926	5,124,090	433.14
Wholesale Trade	21	202	215	224	1,163,278	418.80
Retail Trade	65	581	576	584	2,834,927	375.77
Transportation, Warehousing & Utilities	17	114	116	118	1,125,885	746.61
Information	5	40	40	42	414,121	783.33
Financial Activities	33	149	149	151	1,006,907	517.51
Professional & Business Services	37	267	274	268	1,282,620	365.87
Education & Health Services	79	961	985	984	6,346,379	499.85
Leisure & Hospitality	28	393	406	390	995,168	193.15
Other Services	22	57	63	70	298,006	361.95
Local Government	23	730	731	838	4,068,107	408.35
State Government	12	203	258	331	2,165,594	631.00
SAINT FRANCIS COUNTY - TOTAL	788	7,124	7,517	7,682	\$49,834,570	\$515.18
Natural Resources & Mining	29	177	165	176	1,105,665	492.57
Construction	44	271	255	257	1,997,776	588.79
Manufacturing	16	597	583	700	5,625,960	690.58
Trade, Transportation & Utilities	180	1,963	1,953	1,955	13,483,913	530.01
Wholesale Trade	31	532	532	536	4,663,479	672.62
Retail Trade	123	1,178	1,164	1,147	6,057,822	400.68
Transportation, Warehousing & Utilities	26	253	257	272	2,762,612	815.25
Information	7	79	80	81	620,691	596.82
Financial Activities	62	323	318	315	2,055,931	496.28
Professional & Business Services	57	273	277	276	2,568,367	717.55
Education & Health Services	254	1,434	1,446	1,458	8,563,036	455.53
Leisure & Hospitality	56	735	713	724	2,024,162	215.06
Other Services	37	101	89	91	363,104	298.20
Local Government	28	633	1,093	1,098	6,937,603	566.92
State Government	18	538	545	551	4,488,362	633.89

**TABLE 6. COUNTY SUMMARY
EMPLOYMENT AND TOTAL EARNINGS, BY INDUSTRY
THIRD QUARTER 2008**

NORTH AMERICAN INDUSTRY CLASSIFICATION SYSTEM INDUSTRY GROUP	NUMBER OF EMPLOYING UNITS	EMPLOYMENT			TOTAL EARNINGS	AVERAGE WEEKLY EARNINGS
		JULY	AUGUST	SEPTEMBER	JULY - SEPTEMBER	
SALINE COUNTY - TOTAL	1,886	20,595	21,188	21,248	\$149,924,412	\$548.90
Natural Resources & Mining	14	43	41	41	550,117	1015.60
Construction	326	2,062	2,074	1,975	17,962,270	678.31
Manufacturing	85	1,853	1,857	1,818	18,953,920	791.24
Trade, Transportation & Utilities	441	4,575	4,605	4,546	31,269,277	525.72
Wholesale Trade	123	587	597	585	6,475,846	844.79
Retail Trade	258	3,698	3,718	3,666	22,121,649	460.66
Transportation, Warehousing & Utilities	60	290	290	295	2,671,782	704.65
Information	13	126	121	117	1,033,320	655.11
Financial Activities	195	818	816	803	6,531,945	618.54
Professional & Business Services	245	1,276	1,256	1,259	9,377,021	570.81
Education & Health Services	243	2,940	2,966	3,007	20,480,604	530.27
Leisure & Hospitality	137	2,572	2,548	2,492	7,749,519	234.94
Other Services	139	618	610	624	3,624,154	451.59
Local & State Government	48	3,712	4,294	4,566	32,392,265	594.59
SCOTT COUNTY - TOTAL	196	2,839	2,833	2,871	\$16,337,384	\$441.32
Natural Resources & Mining	17	171	172	177	1,425,525	632.63
Construction	10	44	45	44	216,128	375.01
Trade, Transportation & Utilities	40	456	451	439	2,633,492	451.51
Wholesale Trade	10	68	69	71	571,662	634.24
Retail Trade	24	326	321	311	1,443,073	347.62
Transportation, Warehousing & Utilities	6	62	61	57	618,757	793.28
Financial Activities	23	81	81	81	471,075	447.36
Professional & Business Services	12	7	8	7	60,238	631.87
Education & Health Services	35	333	319	305	2,036,865	491.17
Leisure & Hospitality	17	138	145	136	425,713	234.47
Local Government	5	355	350	389	1,534,142	323.61
State Government	8	76	72	74	485,433	504.61
Other	29	1,178	1,190	1,219	7,048,773	453.48

**TABLE 6. COUNTY SUMMARY
EMPLOYMENT AND TOTAL EARNINGS, BY INDUSTRY
THIRD QUARTER 2008**

NORTH AMERICAN INDUSTRY CLASSIFICATION SYSTEM INDUSTRY GROUP	NUMBER OF EMPLOYING UNITS	EMPLOYMENT			TOTAL EARNINGS	AVERAGE WEEKLY EARNINGS
		JULY	AUGUST	SEPTEMBER	JULY - SEPTEMBER	
SEARCY COUNTY - TOTAL	196	1,706	1,834	1,784	\$8,908,977	\$386.16
Construction	7	22	25	27	167,151	521.26
Manufacturing	19	241	246	244	1,027,575	324.39
Trade, Transportation & Utilities	41	329	333	314	1,360,438	321.67
Wholesale Trade	6	66	67	66	252,914	293.29
Retail Trade	26	217	220	205	837,853	301.17
Transportation, Warehousing & Utilities	9	46	46	43	269,671	460.98
Information	5	15	15	14	104,177	546.38
Financial Activities	14	112	103	97	604,310	446.97
Professional & Business Services	14	27	27	25	188,955	551.96
Education & Health Services	54	336	332	337	1,659,226	380.99
Leisure & Hospitality	16	166	157	134	437,459	220.90
Local Government	10	236	353	370	1,791,957	431.21
State Government	8	144	147	143	985,726	524.14
Other	8	78	96	79	582,003	530.86
SEBASTIAN COUNTY - TOTAL	3,817	70,915	72,309	72,980	\$606,543,130	\$647.40
Natural Resources & Mining	79	2,023	2,055	2,076	34,498,401	1293.66
Construction	320	2,905	2,946	2,926	25,294,872	665.07
Manufacturing	234	17,446	17,344	17,374	160,362,268	709.43
Trade, Transportation & Utilities	971	13,220	13,195	13,342	99,384,245	576.88
Wholesale Trade	254	2,714	2,729	2,738	30,494,496	860.19
Retail Trade	575	8,150	8,105	8,232	45,231,065	426.26
Transportation, Warehousing & Utilities	142	2,356	2,361	2,372	23,658,684	770.16
Information	50	999	999	997	12,431,033	957.83
Financial Activities	430	2,534	2,566	2,564	25,932,958	780.86
Professional & Business Services	563	9,653	10,196	9,713	68,994,858	538.59
Education & Health Services	527	10,622	10,680	10,716	107,733,015	776.48
Leisure & Hospitality	303	5,896	6,006	5,788	19,220,372	250.73
Other Services	275	1,416	1,383	1,379	9,157,122	505.79
Local Government	43	2,920	3,594	4,561	31,092,329	647.87
State Government	22	1,281	1,345	1,544	12,441,657	688.53

**TABLE 6. COUNTY SUMMARY
EMPLOYMENT AND TOTAL EARNINGS, BY INDUSTRY
THIRD QUARTER 2008**

NORTH AMERICAN INDUSTRY CLASSIFICATION SYSTEM INDUSTRY GROUP	NUMBER OF EMPLOYING UNITS	EMPLOYMENT			TOTAL EARNINGS	AVERAGE WEEKLY EARNINGS
		JULY	AUGUST	SEPTEMBER	JULY - SEPTEMBER	
SEVIER COUNTY - TOTAL	331	5,621	5,637	5,681	33,947,185	\$462.48
Natural Resources & Mining	18	265	261	257	1,753,265	516.73
Construction	19	152	142	143	1,101,751	581.81
Manufacturing	12	2,172	2,123	2,056	12,441,282	452.07
Trade, Transportation & Utilities	96	883	867	849	5,420,738	481.32
Wholesale Trade	14	140	134	141	1,489,756	828.41
Retail Trade	63	614	611	598	2,716,965	343.93
Transportation, Warehousing & Utilities	19	129	122	110	1,214,017	776.06
Information	4	45	45	46	333,593	566.05
Financial Activities	31	190	190	184	1,225,135	501.28
Professional & Business Services	28	81	81	81	498,113	473.04
Education & Health Services	51	560	565	570	3,329,225	453.26
Leisure & Hospitality	24	270	279	268	714,039	201.69
Other Services	28	130	133	121	569,256	342.10
Local Government	11	686	780	914	5,326,104	516.43
State Government	9	187	171	192	1,234,684	518.05
SHARP COUNTY - TOTAL	450	3,600	3,622	3,859	\$21,319,661	\$444.00
Construction	30	213	217	211	1,736,660	625.22
Manufacturing	25	180	177	176	946,803	409.93
Trade, Transportation & Utilities	95	1,009	1,016	967	6,207,842	478.80
Wholesale Trade	11	41	41	39	170,068	324.35
Retail Trade	69	640	655	646	2,754,683	327.51
Transportation, Warehousing & Utilities	15	328	320	282	3,283,091	814.66
Information	7	58	60	57	793,610	1046.52
Financial Activities	37	236	241	236	1,671,568	541.02
Professional & Business Services	47	169	175	166	1,197,839	542.01
Education & Health Services	110	573	588	595	3,267,390	429.39
Leisure & Hospitality	37	411	457	483	990,853	169.25
Local Government	24	511	502	777	3,382,811	436.12
State Government	9	108	111	110	761,059	533.83
Other	29	132	78	81	363,226	288.05

**TABLE 6. COUNTY SUMMARY
EMPLOYMENT AND TOTAL EARNINGS, BY INDUSTRY
THIRD QUARTER 2008**

NORTH AMERICAN INDUSTRY CLASSIFICATION SYSTEM INDUSTRY GROUP	NUMBER OF EMPLOYING UNITS	EMPLOYMENT			TOTAL EARNINGS	AVERAGE WEEKLY EARNINGS
		JULY	AUGUST	SEPTEMBER	JULY - SEPTEMBER	
STONE COUNTY - TOTAL	302	2,830	2,952	2,957	15,771,024	\$416.46
Natural Resources & Mining	5	74	46	21	129,237	211.52
Construction	25	91	99	100	603,693	480.39
Manufacturing	27	417	406	397	2,152,776	407.21
Trade, Transportation & Utilities	75	696	694	692	4,088,093	453.12
Wholesale Trade	8	52	50	61	297,720	421.50
Retail Trade	57	605	605	590	3,411,599	437.38
Transportation, Warehousing & Utilities	10	39	39	41	378,774	734.53
Financial Activities	33	135	131	128	835,401	489.30
Professional & Business Services	15	32	35	31	188,490	443.85
Education & Health Services	55	489	496	490	3,128,684	489.49
Leisure & Hospitality	33	426	408	418	1,072,079	197.61
Local Government	10	218	382	424	2,131,674	480.40
State Government	9	182	182	181	942,033	398.88
Other	15	70	73	75	498,864	528.08
UNION COUNTY - TOTAL	1,408	18,441	18,976	19,448	\$168,791,171	\$684.99
Natural Resources & Mining	114	527	529	536	5,339,513	773.99
Construction	89	1,236	1,357	1,308	15,300,864	905.14
Manufacturing	64	4,584	4,510	4,420	47,263,472	807.09
Trade, Transportation & Utilities	364	3,659	3,703	3,710	31,961,202	666.15
Wholesale Trade	79	695	708	728	10,788,453	1168.30
Retail Trade	220	2,152	2,205	2,167	11,115,763	393.19
Transportation, Warehousing & Utilities	65	812	790	815	10,056,986	960.22
Information	15	170	173	173	1,355,827	606.36
Financial Activities	121	752	755	753	6,002,703	612.94
Professional & Business Services	141	1,609	1,734	1,696	18,545,894	849.34
Education & Health Services	225	2,460	2,469	2,486	20,230,795	629.62
Leisure & Hospitality	87	1,201	1,191	1,196	3,557,249	228.79
Other Services	135	625	582	626	5,204,810	655.27
Local Government	35	1,047	1,428	1,959	9,378,560	488.11
State Government	18	571	545	585	4,650,282	630.89

**TABLE 6. COUNTY SUMMARY
EMPLOYMENT AND TOTAL EARNINGS, BY INDUSTRY
THIRD QUARTER 2008**

NORTH AMERICAN INDUSTRY CLASSIFICATION SYSTEM INDUSTRY GROUP	NUMBER OF EMPLOYING UNITS	EMPLOYMENT			TOTAL EARNINGS	AVERAGE WEEKLY EARNINGS
		JULY	AUGUST	SEPTEMBER	JULY - SEPTEMBER	
VAN BUREN COUNTY - TOTAL	369	3,447	3,663	3,792	\$22,105,033	\$467.91
Natural Resources & Mining	11	55	62	59	566,963	743.40
Construction	46	216	282	287	1,962,869	577.03
Trade, Transportation & Utilities	98	886	859	860	5,311,128	470.50
Wholesale Trade	16	53	53	49	452,150	673.18
Retail Trade	56	649	621	623	3,052,222	372.09
Transportation, Warehousing & Utilities	26	184	185	188	1,806,756	748.55
Information	11	44	48	49	427,182	699.15
Financial Activities	29	152	154	155	1,234,008	617.72
Professional & Business Services	28	118	122	129	643,207	402.26
Education & Health Services	62	626	642	649	3,825,283	460.49
Leisure & Hospitality	24	468	467	435	1,511,195	254.55
Local Government	11	289	453	624	2,761,139	466.46
State Government	8	88	88	88	660,034	576.95
Other	41	505	486	457	3,202,025	510.31
WASHINGTON COUNTY - TOTAL	5,758	86,967	88,699	90,288	\$767,367,634	\$665.85
Natural Resources & Mining	38	511	503	516	5,481,230	826.73
Construction	646	4,989	4,910	4,849	46,999,910	735.43
Manufacturing	240	14,662	14,643	14,649	124,574,242	654.05
Trade, Transportation & Utilities	1,372	19,854	19,803	19,657	164,246,446	639.02
Wholesale Trade	420	3,764	3,755	3,711	52,063,001	1069.86
Retail Trade	762	10,977	11,001	10,930	63,921,493	448.25
Transportation, Warehousing & Utilities	190	5,113	5,047	5,016	48,261,952	733.88
Information	94	1,560	1,540	1,512	17,077,442	854.50
Financial Activities	667	3,930	3,910	3,843	37,714,087	744.95
Professional & Business Services	985	9,007	9,226	9,206	111,087,784	934.28
Education & Health Services	696	11,242	11,370	11,475	107,130,265	725.27
Leisure & Hospitality	544	10,097	9,901	9,794	32,543,576	252.08
Other Services	393	1,910	1,937	1,957	12,142,030	482.77
Local & State Government	83	9,205	10,956	12,830	108,370,622	758.04

**TABLE 6. COUNTY SUMMARY
EMPLOYMENT AND TOTAL EARNINGS, BY INDUSTRY
THIRD QUARTER 2008**

NORTH AMERICAN INDUSTRY CLASSIFICATION SYSTEM INDUSTRY GROUP	NUMBER OF EMPLOYING UNITS	EMPLOYMENT			TOTAL EARNINGS	AVERAGE WEEKLY EARNINGS
		JULY	AUGUST	SEPTEMBER	JULY - SEPTEMBER	
WHITE COUNTY - TOTAL	1,825	23,917	25,021	25,619	\$203,597,407	\$630.18
Natural Resources & Mining	44	1,414	1,296	1,321	19,907,232	1139.66
Construction	199	1,841	2,119	2,216	27,511,810	1027.99
Manufacturing	81	2,651	2,646	2,597	26,061,848	761.88
Trade, Transportation & Utilities	503	6,010	6,040	6,040	44,402,663	566.43
Wholesale Trade	103	603	624	623	5,702,640	711.35
Retail Trade	305	3,236	3,226	3,238	17,563,560	417.85
Transportation, Warehousing & Utilities	95	2,171	2,190	2,179	21,136,463	745.82
Information	22	164	161	161	1,243,862	590.63
Financial Activities	192	980	989	991	7,612,230	593.47
Professional & Business Services	187	1,298	1,329	1,261	9,457,655	561.35
Education & Health Services	300	4,265	4,284	4,377	36,717,976	655.53
Leisure & Hospitality	132	2,312	2,445	2,573	6,445,448	202.92
Other Services	101	585	597	586	3,836,714	500.79
Local Government	45	1,743	2,418	2,637	15,110,748	512.96
State Government	19	654	697	859	5,289,221	552.30
WOODRUFF COUNTY - TOTAL	234	1,753	1,954	1,991	\$12,171,211	\$492.93
Natural Resources & Mining	24	156	148	146	1,082,360	555.06
Construction	9	64	60	60	418,118	524.40
Manufacturing	7	290	352	368	2,244,602	512.86
Trade, Transportation & Utilities	58	458	452	454	3,346,523	566.18
Wholesale Trade	13	156	153	160	1,796,836	884.12
Retail Trade	28	210	208	209	747,288	275.04
Transportation, Warehousing & Utilities	17	92	91	85	802,399	690.93
Financial Activities	16	64	62	58	438,123	549.49
Professional & Business Services	5	7	6	5	44,687	572.91
Education & Health Services	80	237	236	240	1,376,766	445.60
Leisure & Hospitality	10	80	80	77	217,593	211.87
Local Government	10	318	479	506	2,434,238	431.12
State Government	7	58	58	56	448,857	602.22
Other	8	21	21	21	119,344	437.16

**TABLE 6. COUNTY SUMMARY
EMPLOYMENT AND TOTAL EARNINGS, BY INDUSTRY
THIRD QUARTER 2008**

NORTH AMERICAN INDUSTRY CLASSIFICATION SYSTEM INDUSTRY GROUP	NUMBER OF EMPLOYING UNITS	EMPLOYMENT			TOTAL EARNINGS	AVERAGE WEEKLY EARNINGS
		JULY	AUGUST	SEPTEMBER	JULY - SEPTEMBER	
YELL COUNTY - TOTAL	424	6,302	6,646	7,029	\$41,653,473	\$481.17
Natural Resources & Mining	25	258	274	274	1,684,218	482.22
Construction	44	363	367	334	2,653,153	575.44
Manufacturing	19	2,722	2,750	2,757	17,791,753	498.94
Trade, Transportation & Utilities	84	656	682	678	3,390,096	388.06
Wholesale Trade	16	25	28	27	164,078	473.30
Retail Trade	51	550	562	560	2,341,069	323.11
Transportation, Warehousing & Utilities	17	81	92	91	884,949	773.56
Information	3	69	69	73	566,666	619.76
Financial Activities	38	190	193	186	1,251,722	507.66
Professional & Business Services	38	284	288	296	3,008,460	799.84
Education & Health Services	88	610	651	675	3,767,445	449.08
Leisure & Hospitality	29	363	381	372	870,535	180.01
Other Services	16	69	65	65	274,679	318.53
Local Government	27	598	808	1,198	5,595,154	495.85
State Government	13	120	118	121	799,592	513.99
REST-OF-STATE-TOTAL	4,576	17,835	17,998	18,105	\$257,570,091	\$1,101.99
Natural Resources & Mining	77	508	542	547	7,864,351	1136.41
Construction	570	3,916	4,017	4,047	44,391,904	855.12
Manufacturing	66	263	255	240	2,941,909	895.65
Trade, Transportation & Utilities	1,658	6,028	6,057	6,050	110,851,271	1410.59
Wholesale Trade	1,377	4,880	4,908	4,910	98,922,364	1553.15
Retail Trade	125	450	444	441	5,185,101	896.30
Transportation, Warehousing & Utilities	156	698	705	699	6,743,806	740.37
Information	101	202	254	265	3,321,217	1063.02
Financial Activities	281	717	693	730	11,600,667	1250.97
Professional & Business Services	1,523	4,644	4,714	4,756	59,682,497	975.83
Education & Health Services	113	731	666	695	7,997,349	882.19
Leisure & Hospitality	55	88	73	57	508,970	538.78
Other	132	738	727	718	8,409,956	889.03

TABLE 7. FEDERAL GOVERNMENT EMPLOYMENT AND EARNINGS IN ARKANSAS

NORTH AMERICAN INDUSTRY CLASSIFICATION SYSTEM INDUSTRY GROUP	NUMBER OF EMPLOYING UNITS	EMPLOYMENT			TOTAL EARNINGS
		JULY	AUGUST	SEPTEMBER	JULY-SEPT. 2008
Trade, Transportation & Utilities	614	6,674	6,577	6,564	68,960,224
Information	1	34	34	35	385,249
Financial Activities	23	166	165	160	2,548,930
Professional & Business Services	30	876	871	835	12,317,699
Education & Health Services	5	4,476	4,529	4,573	95,963,369
Leisure & Hospitality	15	319	272	266	3,126,971
Other Services	2	285	279	272	1,202,992
Public Administration	495	8,713	8,666	8,640	128,126,134
TOTAL	1,185	21,543	21,393	21,345	\$312,631,568

**TABLE 8. WORKFORCE INFORMATION AREA, SUMMARY
EMPLOYMENT AND TOTAL EARNINGS, BY INDUSTRY
THIRD QUARTER 2008**

NORTH AMERICAN INDUSTRY CLASSIFICATION SYSTEM INDUSTRY GROUP	NUMBER OF EMPLOYING UNITS	EMPLOYMENT			TOTAL EARNINGS	AVERAGE WEEKLY EARNINGS
		JULY	AUGUST	SEPTEMBER	JULY-SEPTEMBER	
CENTRAL WORKFORCE INFORMATION*	6,512	74,179	76,495	77,754	\$593,890,446	\$599.98
Natural Resources & Mining	192	1,745	1,728	1,754	27,603,519	1218.68
Construction	903	6,358	6,464	6,329	61,666,608	743.08
Trade, Transportation & Utilities	1,581	15,474	15,555	15,528	105,334,785	522.11
Wholesale Trade	411	2,281	2,293	2,265	23,417,597	790.18
Retail Trade	903	11,364	11,411	11,354	62,677,975	423.81
Transportation, Warehousing & Utilities	267	1,829	1,851	1,909	19,239,213	794.39
Financial Activities	687	3,033	3,046	3,019	25,788,948	654.13
Professional & Business Services	789	6,730	6,775	6,779	74,220,920	844.40
Education & Health Services	934	10,589	10,602	10,635	77,207,945	559.83
Leisure & Hospitality	490	8,715	8,697	8,830	24,585,116	216.20
Local & State Government	206	11,297	13,373	14,756	99,286,967	581.15
Other	730	10,238	10,255	10,124	98,195,638	740.13
EASTERN WORKFORCE INFORMATION	3,835	36,256	37,134	38,277	\$257,610,639	\$532.37
Natural Resources & Mining	205	1,205	1,205	1,320	6,943,144	429.56
Construction	192	1,246	1,166	1,152	9,423,201	610.15
Trade, Transportation & Utilities	897	10,413	10,105	10,050	75,232,876	567.96
Wholesale Trade	180	2,157	2,154	2,145	20,909,306	747.40
Retail Trade	504	5,433	5,093	5,041	26,445,528	392.04
Transportation, Warehousing & Utilities	213	2,823	2,858	2,864	27,878,042	752.88
Financial Activities	288	1,631	1,642	1,638	12,084,081	567.83
Professional & Business Services	313	1,541	1,351	1,332	11,758,213	642.38
Education & Health Services	1,138	6,173	6,267	6,261	40,236,207	496.51
Leisure & Hospitality	243	3,616	3,528	3,457	11,119,201	242.05
Local Government	136	3,282	4,751	5,686	32,494,088	546.59
State Government	69	2,267	2,245	2,353	17,368,985	583.86
Other	354	4,882	4,874	5,028	40,950,643	639.21

*Note: Pulaski County is not included in the Central Workforce Information. Please refer to Page 53 for information on Pulaski County.
Central Workforce Includes these counties: Faulkner, Lonoke, Monroe, Prairie, and Saline.

Eastern Workforce Includes these counties: Crittenden, Cross, Lee, Phillips, and Saint Francis.

**TABLE 8. WORKFORCE INFORMATION AREA, SUMMARY
EMPLOYMENT AND TOTAL EARNINGS, BY INDUSTRY
THIRD QUARTER 2008**

NORTH AMERICAN INDUSTRY CLASSIFICATION SYSTEM INDUSTRY GROUP	NUMBER OF EMPLOYING UNITS	EMPLOYMENT			TOTAL EARNINGS	AVERAGE WEEKLY EARNINGS
		JULY	AUGUST	SEPTEMBER	JULY-SEPTEMBER	
NORTH CENTRAL WORKFORCE INFORMATION	5,874	67,479	69,599	71,876	\$499,888,268	\$552.08
Construction	529	3,911	4,238	4,308	45,504,149	842.98
Trade, Transportation & Utilities	1,505	15,706	15,688	15,611	108,143,784	530.93
Retail Trade	938	9,271	9,238	9,207	47,118,352	392.32
Other Trade, Transportation & Utilities	567	6,435	6,450	6,404	61,025,432	730.09
Financial Activities	556	2,810	2,784	2,771	21,264,920	586.65
Professional & Business Services	505	2,887	2,963	2,914	19,209,988	505.83
Education & Health Services	1,106	11,878	11,936	12,036	89,495,466	576.09
Leisure & Hospitality	442	6,539	6,694	6,739	18,036,153	208.40
Local Government	228	5,281	7,096	9,056	44,930,152	483.76
State Government	115	2,886	2,957	3,286	22,810,148	576.61
Other	888	15,581	15,243	15,155	130,493,508	654.95

North Central Workforce Includes these counties: Cleburne, Fulton, Independence, Izard, Jackson, Sharp, Stone, Van Buren, White, and Woodruff

NORTHEAST WORKFORCE INFORMATION	6,608	91,576	93,196	96,888	\$707,876,080	\$579.98
Natural Resources & Mining	373	1,964	1,887	2,031	13,087,851	513.48
Construction	488	3,469	3,491	3,544	31,259,606	686.76
Manufacturing	360	21,218	21,128	21,076	211,283,543	768.78
Trade, Transportation & Utilities	1,712	18,025	18,046	18,041	119,470,970	509.50
Wholesale Trade	405	3,871	3,839	3,857	35,234,287	702.95
Retail Trade	1,005	11,556	11,586	11,494	58,340,486	388.71
Transportation, Warehousing & Utilities	302	2,598	2,621	2,690	25,896,197	755.60
Financial Activities	607	3,424	3,451	3,428	28,764,561	644.28
Professional & Business Services	676	6,474	6,848	7,516	44,867,206	496.88
Education & Health Services	1,140	13,171	13,427	13,536	113,057,057	650.07
Leisure & Hospitality	479	7,845	7,840	7,925	21,925,027	214.30
Local Government	217	8,222	9,854	11,704	64,193,658	497.45
State Government	107	3,988	3,432	4,279	34,939,352	689.20
Other	449	3,776	3,792	3,808	25,027,249	507.69

Northeast Workforce Includes these counties: Clay, Craighead, Greene, Lawrence, Mississippi, Poinsett, and Randolph.

**TABLE 8. WORKFORCE INFORMATION AREA, SUMMARY
EMPLOYMENT AND TOTAL EARNINGS, BY INDUSTRY
THIRD QUARTER 2008**

NORTH AMERICAN INDUSTRY CLASSIFICATION SYSTEM INDUSTRY GROUP	NUMBER OF EMPLOYING UNITS	EMPLOYMENT			TOTAL EARNINGS	AVERAGE WEEKLY EARNINGS
		JULY	AUGUST	SEPTEMBER	JULY-SEPTEMBER	
NORTHWEST WORKFORCE INFORMATION	15,502	225,433	230,897	235,051	\$2,028,545,617	\$677.09
Construction	1,746	10,998	10,905	10,678	97,891,003	693.36
Trade, Transportation & Utilities	3,829	53,615	53,636	52,983	468,115,646	674.18
Retail Trade	2,040	26,798	27,014	26,754	154,228,189	441.76
Other Trade, Transportation & Utilities	1,789	26,817	26,622	26,229	313,887,457	909.22
Professional & Business Services	2,397	33,938	34,231	34,291	444,728,581	1001.66
Education & Health Services	1,965	25,044	25,348	25,627	225,284,004	683.89
Leisure & Hospitality	1,442	24,287	24,361	23,751	78,699,313	250.85
Local & State Government	432	19,265	24,142	29,339	215,371,213	683.21
Other	3,691	58,286	58,274	58,382	498,455,857	657.52

Northwest Workforce Includes these counties: Baxter, Benton, Boone, Carroll, Madison, Marion, Newton, Searcy, and Washington.

SOUTHEAST WORKFORCE INFORMATION	5,908	72,190	73,672	75,369	\$551,604,220	\$575.39
Natural Resources & Mining	411	2,861	2,911	2,955	23,170,812	612.71
Construction	352	3,110	3,117	3,121	31,325,097	773.31
Manufacturing	224	16,544	16,440	16,521	157,870,613	735.92
Trade, Transportation & Utilities	1,361	13,158	13,209	13,173	89,525,050	522.50
Retail Trade	826	8,381	8,444	8,403	42,587,041	389.56
Other Trade, Transportation & Utilities	535	4,777	4,765	4,770	46,938,009	756.84
Education & Health Services	1,452	10,772	10,939	10,954	72,752,653	513.98
Local & State Government	360	13,061	14,411	16,202	104,189,729	550.53
Other	1,748	12,684	12,645	12,443	72,770,266	444.59

Southeast Workforce Includes these counties: Arkansas, Ashley, Bradley, Chicot, Cleveland, Desha, Drew, Grant, Jefferson, and Lincoln

**TABLE 8. WORKFORCE INFORMATION AREA, SUMMARY
EMPLOYMENT AND TOTAL EARNINGS, BY INDUSTRY
THIRD QUARTER 2008**

NORTH AMERICAN INDUSTRY CLASSIFICATION SYSTEM INDUSTRY GROUP	NUMBER OF EMPLOYING UNITS	EMPLOYMENT			TOTAL EARNINGS	AVERAGE WEEKLY EARNINGS
		JULY	AUGUST	SEPTEMBER	JULY-SEPTEMBER	
SOUTHWEST WORKFORCE INFORMATION	5,892	81,401	82,736	85,483	\$646,116,457	\$597.32
Natural Resources & Mining	414	3,031	3,021	2,991	28,455,402	726.16
Trade, Transportation & Utilities	1,501	15,709	15,732	15,797	111,221,475	543.34
Retail Trade	941	9,045	9,110	9,065	44,020,233	373.20
Other Trade, Transportation & Utilities	560	6,664	6,622	6,732	67,201,242	774.70
Financial Activities	541	2,842	2,841	2,822	21,440,819	581.76
Education & Health Services	924	9,478	9,435	9,498	62,781,638	509.95
Leisure & Hospitality	400	5,462	5,474	5,501	15,342,571	215.40
Local & State Government	413	10,137	11,489	14,377	82,930,950	531.56
Other	1,699	34,742	34,744	34,497	323,943,602	718.93

Southwest Workforce Includes these counties: Calhoun, Columbia, Dallas, Hempstead, Howard, Lafayette, Little River, Miller, Nevada, Ouachita, Sevier, and Union

WEST CENTRAL WORKFORCE INFORMATION	8,472	104,111	106,470	108,731	\$745,764,230	\$538.97
Construction	906	5,216	5,325	5,406	41,584,653	601.77
Manufacturing	390	18,566	18,654	18,657	156,469,701	646.21
Trade, Transportation & Utilities	2,030	22,245	22,343	22,313	155,991,042	538.08
Retail Trade	1,290	14,231	14,263	14,287	74,636,818	402.61
Other Trade, Transportation & Utilities	740	8,014	8,080	8,026	81,354,224	778.36
Financial Activities	888	3,956	3,985	3,948	31,894,042	619.07
Professional & Business Services	946	7,473	7,560	7,449	51,596,250	529.62
Education & Health Services	1,315	15,430	15,635	15,635	122,794,926	606.79
Local Government	230	7,548	9,034	11,903	61,976,754	502.10
State Government	135	4,711	5,016	5,333	39,503,649	605.33
Other	1,632	18,966	18,918	18,087	83,953,213	346.14

West Central Workforce Includes these counties: Clark, Conway, Garland, Hot Spring, Johnson, Montgomery, Perry, Pike, Pope, and Yell

**TABLE 8. WORKFORCE INFORMATION AREA, SUMMARY
EMPLOYMENT AND TOTAL EARNINGS, BY INDUSTRY
THIRD QUARTER 2008**

NORTH AMERICAN INDUSTRY CLASSIFICATION SYSTEM INDUSTRY GROUP	NUMBER OF EMPLOYING UNITS	EMPLOYMENT			TOTAL EARNINGS	AVERAGE WEEKLY EARNINGS
		JULY	AUGUST	SEPTEMBER	JULY-SEPTEMBER	
WESTERN WORKFORCE INFORMATION	6,693	108,066	111,261	112,730	\$867,599,355	\$602.95
Natural Resources & Mining	184	3,167	3,203	3,220	46,167,069	1110.94
Construction	648	4,906	4,929	4,869	41,714,145	654.67
Trade, Transportation & Utilities	1,676	23,633	23,631	23,822	171,445,626	556.57
Wholesale Trade	398	3,696	3,705	3,729	39,916,479	827.63
Retail Trade	966	12,603	12,583	12,665	66,866,396	407.67
Transportation, Warehousing & Utilities	312	7,334	7,343	7,428	64,662,751	675.06
Financial Activities	703	3,950	3,976	3,962	36,210,210	702.91
Professional & Business Services	863	11,456	12,179	11,733	80,288,170	523.86
Education & Health Services	937	14,699	14,799	14,840	135,185,736	703.61
Leisure & Hospitality	498	8,640	8,827	8,560	27,027,764	239.64
Local & State Government	230	8,321	10,549	12,374	79,958,670	590.58
Other	954	29,294	29,168	29,350	249,601,965	655.95

