

Arkansas Covered Employment & Earnings

Jobs for People. People for Jobs.

DWS
Department of
WORKFORCE**Services**

First Quarter
2008

**COVERED EMPLOYMENT AND EARNINGS
STATE OF ARKANSAS
FIRST QUARTER 2008**

**MIKE BEEBE, GOVERNOR
STATE OF ARKANSAS**

**ARTEE WILLIAMS, DIRECTOR
DEPARTMENT OF WORKFORCE SERVICES**

**PUBLISHED BY
LABOR MARKET INFORMATION & ANALYSIS
BUREAU OF LABOR STATISTICS PROGRAMS
POST OFFICE BOX 2981
LITTLE ROCK, ARKANSAS 72203-2981
BERNADETTE COLEMAN, BLS PROGRAMS MANAGER
TELEPHONE: (501) 682-3159**

STATE OF ARKANSAS HOME PAGE: <http://www.arkansas.gov>

DEPARTMENT OF WORKFORCE SERVICES HOME PAGE: <http://www.arkansas.gov/esd/>

**INTERNET SITE FOR LABOR MARKET INFORMATION:
<http://www.discover.arkansas.gov>**

RELEASED: FEBRUARY 2009

TABLE OF CONTENTS

DESCRIPTION OF DATA	Page
Industry Classification	1
Definition of Covered Employment and Earnings	2
Federal Government Employment	2
County Classification	2
Significant Developments During First Quarter 2008	3

LIST OF GRAPHS AND TABLES

Graph 1	Total Covered Employment for Selected Years, Arkansas	7
Graph 2	Total Covered Earnings, by Calendar Quarter for Selected Years, Arkansas	8
Table 1	Quarterly Comparison of Covered Employment and Wages, by Industry	5
Table 2	Total Covered Employment in Arkansas, 2001-2008	6
Table 3	Total Covered Earnings, 2001-2008	9
Table 4	Total Taxable Earnings, 2001-2008	10
Table 5	State Summary - Employment and Total Earnings, by Industry, First Quarter 2008	11
Table 6	County Summary - Employment and Total Earnings, by Industry, First Quarter 2008	24
Table 7	Federal Government Employment and Total Earnings in Arkansas, First Quarter 2008	62
Table 8	Workforce Information Area – Employment and Total Earnings, by Industry, First Quarter 2008	63

EMPLOYMENT AND EARNINGS UNDER THE ARKANSAS EMPLOYMENT SECURITY LAW FIRST QUARTER 2008

DESCRIPTION OF DATA

This publication contains covered employment and payroll data by industry and county for the First Quarter 2008. These data are compiled from quarterly contribution and wage reports submitted by employers subject to the Arkansas Employment Security Law. An employing unit is a single physical location where business is conducted, production takes place, or services are provided. Employment data have been tabulated for each month of the quarter by industry under the **North American Industry Classification System** (NAICS) (see "Industry Classification" below) on a statewide, county and workforce area basis. Payroll data represent the total wages paid during the quarter, and are also shown by

industry for the State and by publishable industry groups for each county and workforce area. The tabulation of this data is a joint effort in conjunction with the U.S. Bureau of Labor Statistics. In addition, there are tables included which set out total covered employment by months, quarterly payrolls, and average weekly earnings for the years 2001 through 2008. Data contained in this publication are subject to revision. These revisions will be reflected in the 2008 Annual Covered Employment and Earnings publication. Because of industry code changes between years, substantial employment and wage shifts among industries are anticipated.

INDUSTRY CLASSIFICATION

Previously published industry data **will not** be comparable in all instances with currently published data since industry codes have been revised according to the following Manuals: (a) between January 1, 1958 and December 31, 1967, industry codes were assigned under the 1957 Standard Industrial Classification (SIC) Manual; (b) between January 1, 1968 and December 31, 1974, industry codes were assigned under the 1967 Standard Industrial Classification (SIC) Manual; (c) between January 1, 1975 and December 31, 1987, industry codes were assigned under the 1972 Standard Industrial Classification (SIC) Manual; (d) between January 1, 1988 and December 31, 2000, industry codes were assigned under the 1987 Standard Industrial Classification (SIC) Manual; (e) between January 1, 2001 and December 31, 2006, industry codes were assigned under the 2002 North American Industry Classification System (NAICS) Manual; and (f) since January 1, 2007, industry codes have been assigned under the 2007 North American Industry Classification System (NAICS) Manual.

The NAICS Manual represents a significant change in coding methodology as compared to the SIC Manual. One of the most significant changes involves how NAICS treats auxiliary units. Auxiliary units are establishments primarily engaged in performing management or support services for other establishments of the same enterprise. The SIC code for these units was based on the activity of the enterprise served. The NAICS code is based on the actual activities that the establishment performs. Comparisons of many industries **should not be made** between this publication and previous Covered Employment and Earnings publications that were based on SIC. Even though some titles are the same or similar, in nature, NAICS and SIC could differ in the classification of employers. The implementation of NAICS represents a profound change for statistical programs, and will create significant benefits along with transition obstacles for both data collectors and data users. A summary is available on the NAICS home page at <http://www.census.gov/naics>.

DEFINITION OF COVERED EMPLOYMENT AND EARNINGS

Covered Employment is the number of workers employed by employers subject to the Arkansas Employment Security Law who worked or received pay for the payroll period including the 12th of the month. An employer is subject to the law when they employ one or more employees in each of ten days during the current or preceding calendar year.

Currently excluded from coverage is employment covered by the Railroad Unemployment Insurance Act, some domestic service workers, employees of small agricultural establishments, self-employed and unpaid family workers, insurance and real estate

agents who are on commission only, and employees of churches and religious organizations except separately incorporated schools. The payroll information in this publication includes all wages and salaries paid to any covered employees by their employers including bonuses, commissions, and cash values of remuneration received in any medium other than cash. These wages include both taxable and nontaxable wages. Only the first \$10,000 paid to each worker by an employer in the calendar year is taxable under the Arkansas Employment Security Law.

FEDERAL GOVERNMENT EMPLOYMENT

Table 7 on page 62 lists the total number of civilians employed by the Federal Government in Arkansas during the First Quarter 2008. Employment and wage data are set out by industry divisions. These data are obtained from required reports submitted by various

government agencies having employment in the State. Civilian Federal workers are covered by the Unemployment Compensation for Federal Employees (UCFE) program.

COUNTY CLASSIFICATION

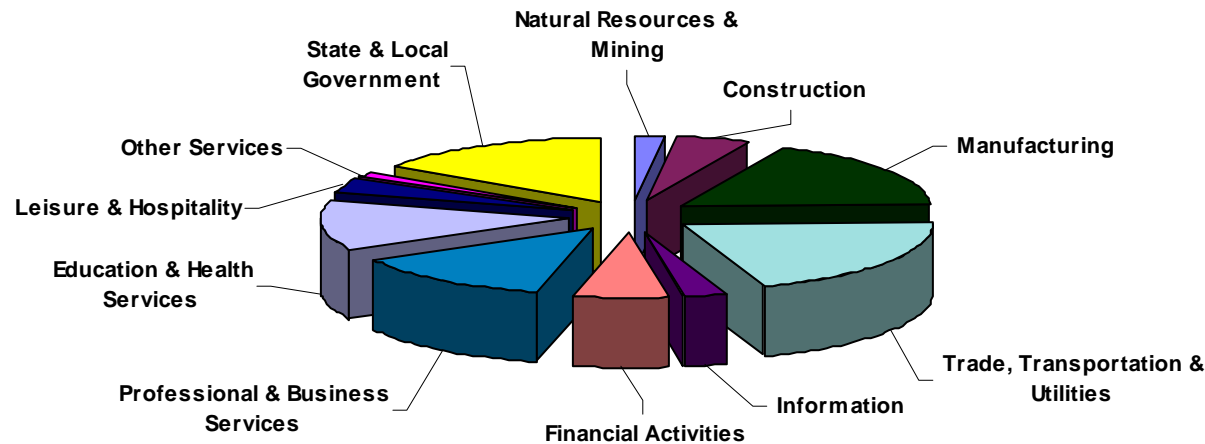
Employment and payroll data by county are classified according to the county where the workers are employed. Employers with operations in more than one county are requested to furnish this agency with a breakdown of employment and wages for at least one quarter of each year by the counties in which they operate. Many such employers submit county data with each regular contribution report. **Note:** This information is invaluable in the preparation of monthly employment and payroll data by county.

Employment and payroll data for multi - area employers, who do not furnish county data each quarter of the year, are prorated by county on the basis of one quarter's information. The "rest-of-state" table that appears on page 61 of this publication includes data on firms that **did not** provide a county breakdown of employment and payrolls. It also includes sales, and all other type of personnel with no permanent place of work, as well as employment of employers with no established place of business in Arkansas.

SIGNIFICANT DEVELOPMENTS DURING FIRST QUARTER 2008

AVERAGE EMPLOYMENT CHANGES

Covered employment averaged 1,149,414 during the First Quarter 2008 (see table 1), a decrease of 16,464 (-1.4%) from the previous quarter and 2,539 (0.2%) above the average recorded one-year ago. This *over-the-year* increase is more significant when used as an economic indicator. This *over-the-year* comparison allows for the disregarding of many seasonal factors that are evident when making an *over-the-quarter* comparison.

Average Covered Employment by NAICS Group**EMPLOYMENT CHANGES FROM FOURTH QUARTER 2007**

Over the quarter losses were recorded in ten industries while one industry gained jobs. The largest decrease was found in Trade, Transportation & Utilities (-5,123) due to the release of seasonal workers in both Retail Trade (-3,153) and Transportation & Warehousing (-1,807) following the end of the holiday season. Seasonal decreases were also noted in Leisure & Hospitality (-1,934), Construction (-1,917), Natural Resources & Mining (-1,691), State & Local Government (-1,427), and Professional & Business Services (-920). Continuing layoffs and closures caused a job loss of

2,005 in Manufacturing. Decreases also occurred in Information (-1,149), Financial Activities (-1,158) and Other Services (-1).

Education & Health Services (+860) was the only industry to experience a gain in jobs. All the growth occurred in the Health Care & Social Assistance (+1,043) which was partially offset by seasonal losses in Educational Services (-183).

EMPLOYMENT CHANGES FROM FIRST QUARTER 2007

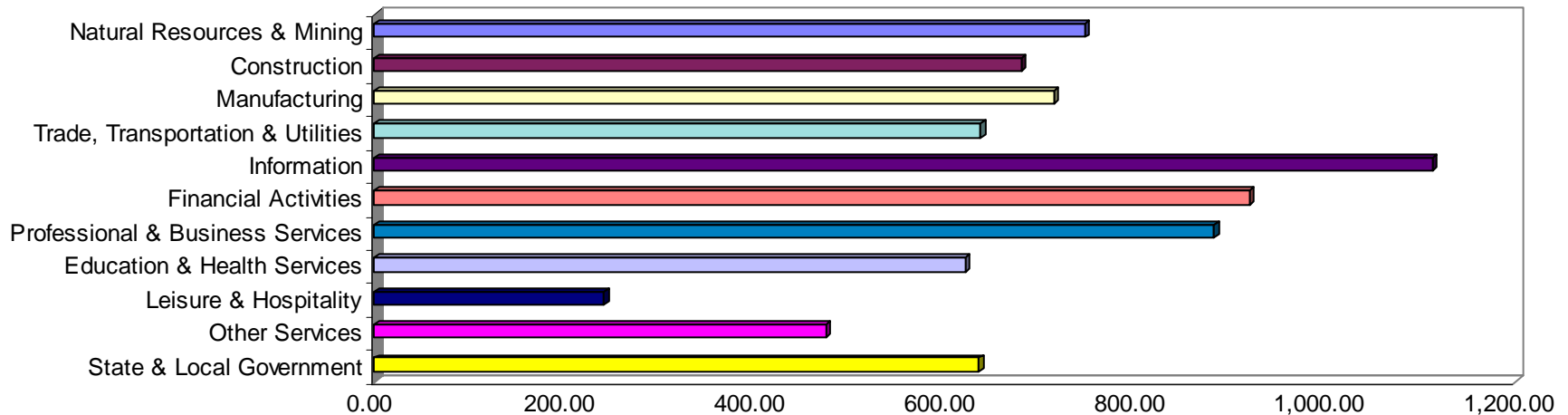
Over-the-year gains were recorded in five industry groups while six recorded losses (see table 1). Significant gains were posted in Educational & Health Services (+5,304), State & Local Government (+2,300), and Leisure & Hospitality (+1,987). Significant losses occurred in Manufacturing (-7,356), Information (-712), and Construction (-505).

COVERED WAGES

Wages paid to covered workers totaled \$9,849,712,834 for the First Quarter 2008 (see table 1), for an average weekly wage of \$659.18 (see table 5). Employees in Benton County recorded the highest average weekly wage (\$880.18), and workers in Searcy County the lowest (\$384.73) (see table 6).

The Information sector recorded the highest average weekly wage for the State of Arkansas at \$1,111.45, while the Leisure & Hospitality sector recorded the lowest at \$241.80 for the State of Arkansas (see table 5).

Average Weekly Wages by Industry Group



Note: Because of industry code changes between years, substantial employment and wage shifts among industries are anticipated.

TABLE 1. QUARTERLY COMPARISON OF COVERED EMPLOYMENT AND WAGES, BY INDUSTRY

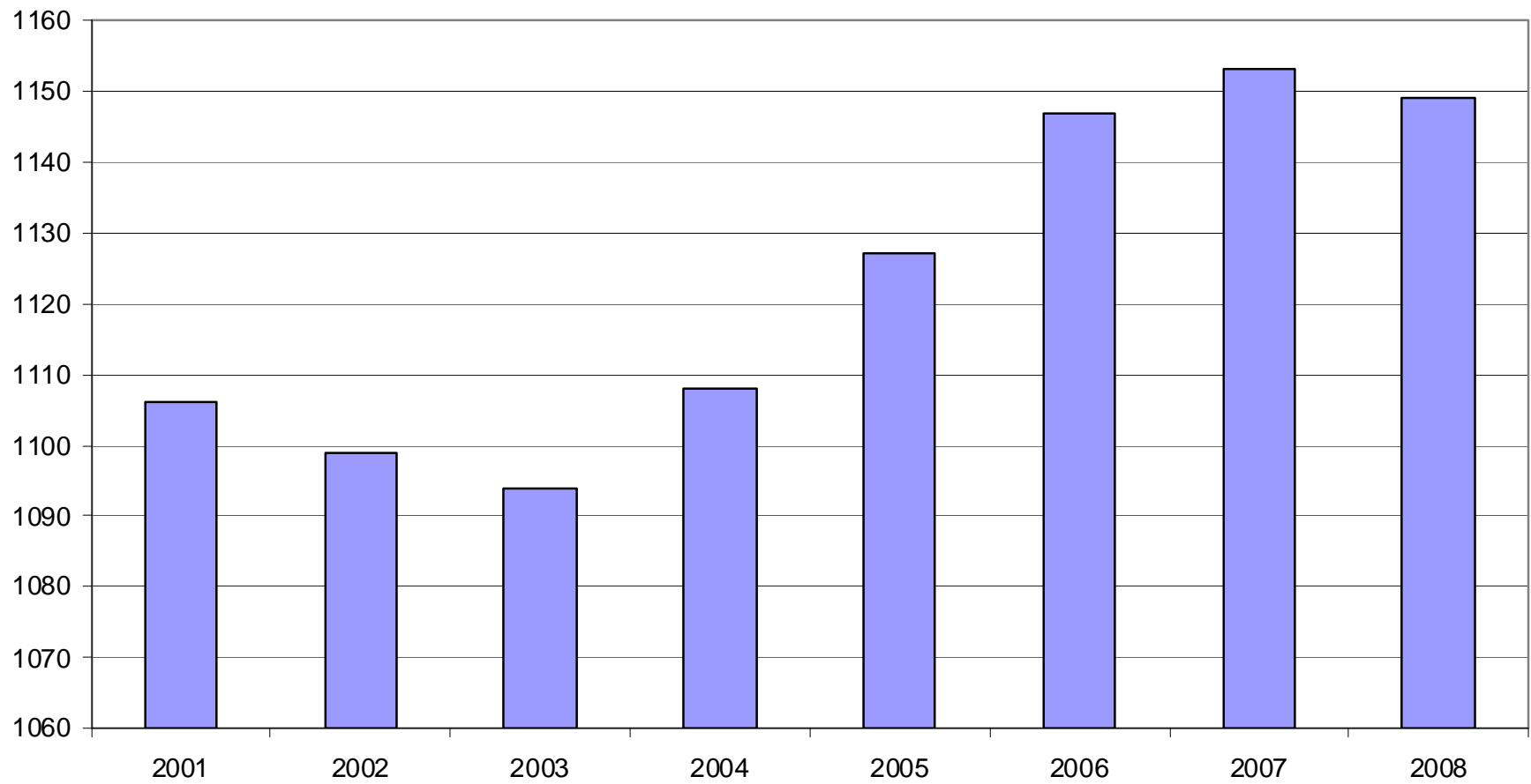
North American Industry Classification System Industry Group	Number of Employing Units	Average Covered Employment		Net Change From:		Total Wages Paid	
		Jan. – Mar. 2008 Monthly Average	% of Total	Oct. – Dec. 2007	Jan. – Mar. 2007	Jan. – Mar. 2008	% of Total
Total	84,031	1,149,414	100.0	-16,464	2,539	\$9,849,712,834	100.0
Natural Resources and Mining	2,440	19,347	1.7	-1,691	788	187,660,702	1.9
Agriculture, Forestry, Fishing and Hunting	1,956	12,216	1.1	-1,606	-291	84,793,542	0.9
Mining	484	7,132	0.6	-85	1,079	102,867,160	1.0
Construction	7,978	54,395	4.7	-1,917	-505	480,584,070	4.9
Manufacturing	3,599	184,874	16.1	-2,005	-7,356	1,715,690,513	17.4
Trade, Transportation, and Utilities	21,145	244,123	21.2	-5,123	-344	2,023,398,367	20.5
Wholesale Trade	6,432	48,327	4.2	-37	765	648,651,635	6.6
Retail Trade	11,340	133,584	11.6	-3,153	636	729,733,517	7.4
Transportation and Warehousing	3,011	55,460	4.8	-1,807	-1,564	510,655,850	5.2
Utilities	362	6,752	0.6	-125	-181	134,357,365	1.4
Information	1,131	18,884	1.6	-1,149	-712	272,850,995	2.8
Financial Activities	8,403	50,987	4.4	-1,158	-165	609,364,687	6.2
Finance and Insurance	4,900	36,928	3.2	-813	-104	508,897,614	5.2
Real Estate and Rental and Leasing	3,503	14,058	1.2	-345	-61	100,467,073	1.0
Professional and Business Services	11,642	116,654	10.1	-920	1,528	1,338,883,401	13.6
Professional and Technical Services	7,295	39,562	3.4	949	664	467,072,853	4.7
Management of Companies and Enterprises	567	25,420	2.2	499	836	589,168,316	6.0
Administrative and Waste Services	3,780	51,673	4.5	-2,368	28	282,642,232	2.9
Education and Health Services	12,865	153,046	13.3	860	5,304	1,235,885,991	12.5
Educational Services	601	9,777	0.9	-183	423	66,891,441	0.7
Health Care and Social Assistance	12,264	143,269	12.5	1,043	4,881	1,168,994,550	11.9
Leisure and Hospitality	6,199	97,564	8.5	-1,934	1,987	306,686,584	3.1
Arts, Entertainment and Recreation	912	8,883	0.8	-54	13	43,077,312	0.4
Accommodation and Food Services	5,287	88,681	7.7	-1,880	1,974	263,609,272	2.7
Other Services	5,431	25,040	2.2	-1	-286	154,377,158	1.6
State and Local Government	3,198	184,500	16.1	-1,427	2,300	1,524,330,366	15.5
Local Government	1,991	119,219	10.4	-1,070	831	885,040,511	9.0
State Government	1,207	65,281	5.7	-357	1,469	639,289,855	6.5
Nonclassifiable Establishments	0	0	0.0	0	0	0	0.0

Note: Items do not necessarily add to totals because of rounding. Because of industry code changes between years, substantial employment and wage shifts among industries are anticipated.

TABLE 2. TOTAL COVERED EMPLOYMENT IN ARKANSAS

Period	2001	2002	2003	2004	2005	2006	2007	2008
Average	1,106,066	1,098,558	1,094,087	1,108,264	1,126,778	1,146,948	1,152,994	1,149,414
January	1,096,009	1,081,635	1,082,740	1,089,510	1,102,768	1,130,595	1,137,437	1,141,697
February	1,101,616	1,086,793	1,084,880	1,094,626	1,110,577	1,136,810	1,143,397	1,149,049
March	1,112,143	1,098,500	1,092,172	1,105,266	1,122,619	1,150,439	1,158,895	1,157,496
April	1,115,526	1,103,399	1,095,341	1,111,020	1,129,785	1,155,498	1,159,623	N/A
May	1,119,815	1,111,998	1,103,099	1,117,144	1,135,567	1,159,886	1,165,224	N/A
June	1,119,734	1,112,028	1,099,688	1,117,010	1,136,118	1,162,026	1,164,207	N/A
July	1,071,921	1,065,697	1,053,220	1,071,463	1,090,071	1,106,142	1,110,571	N/A
August	1,094,160	1,086,011	1,077,775	1,094,871	1,114,098	1,130,839	1,139,109	N/A
September	1,115,976	1,113,148	1,105,980	1,122,704	1,144,815	1,159,814	1,165,135	N/A
October	1,110,994	1,108,447	1,112,550	1,123,246	1,142,300	1,156,804	1,162,768	N/A
November	1,109,012	1,107,611	1,109,712	1,125,061	1,145,667	1,156,011	1,164,246	N/A
December	1,105,887	1,107,425	1,111,892	1,127,250	1,146,954	1,158,509	1,165,314	N/A

AVERAGE TOTAL COVERED EMPLOYMENT GRAPH 1
In Thousands



TOTAL COVERED EARNINGS BY CALENDAR QUARTER, GRAPH 2

In Thousands

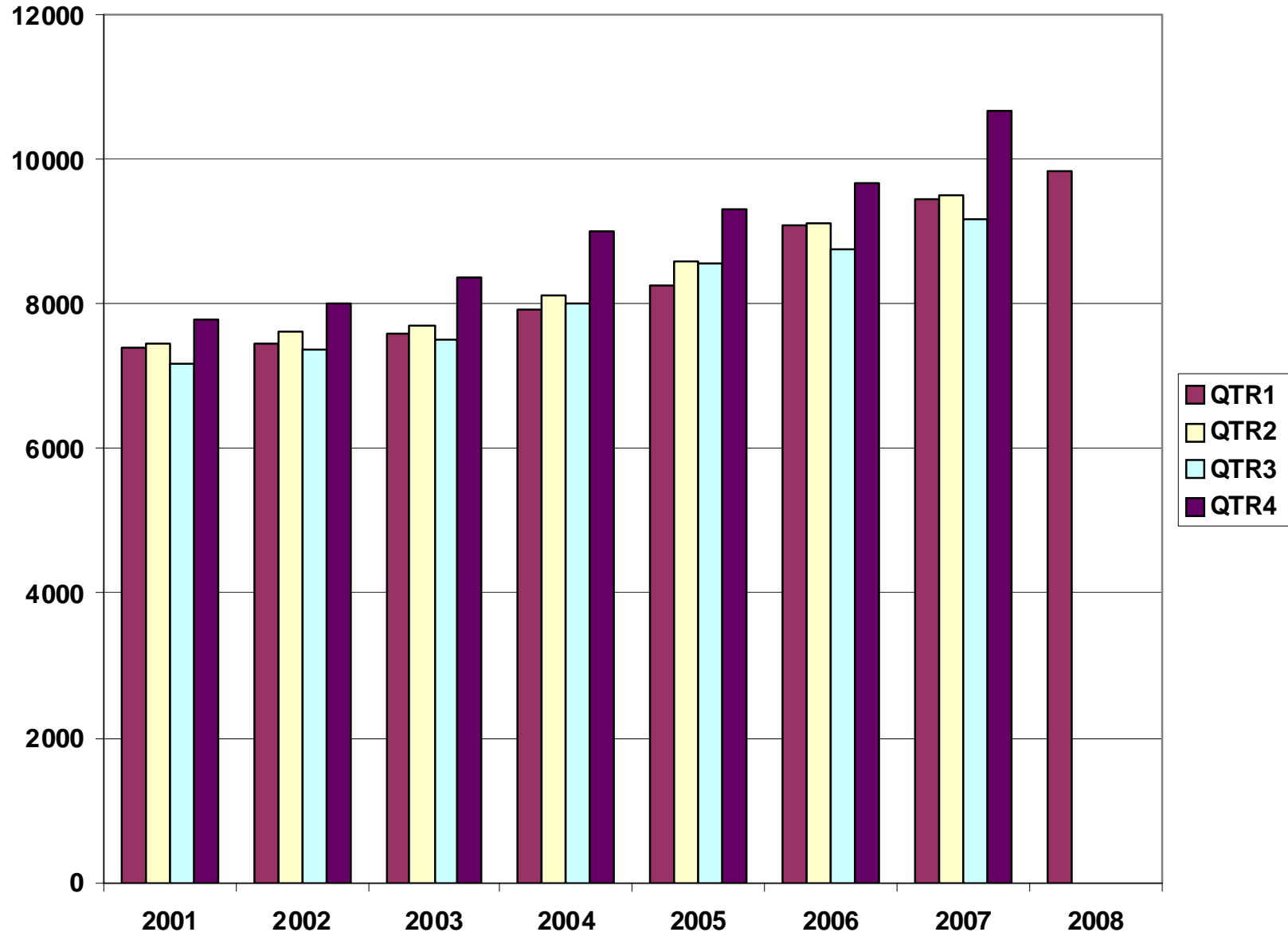


TABLE 3. TOTAL COVERED EARNINGS, 2001 - 2008

Period	2001	2002	2003	2004
Total	\$29,807,669,666	\$30,472,854,103	\$31,202,576,767	\$33,068,189,304
January - March	7,398,887,532	7,465,250,305	7,608,130,008	7,918,843,610
April - June	7,448,023,298	7,621,878,775	7,714,813,038	8,122,370,361
July - September	7,177,293,061	7,361,666,511	7,500,204,764	8,010,300,454
October - December	7,783,465,775	8,024,058,512	8,379,428,957	9,016,674,879
Average Weekly Earnings	518.26	533.44	548.45	573.80

Period	2005	2006	2007	2008
Total	\$34,753,107,631	\$36,636,090,775	\$38,833,265,464	\$9,849,712,834
January - March	8,261,153,981	9,085,021,816	9,452,711,662	9,849,712,834
April - June	8,607,722,353	9,112,624,590	9,525,837,049	N/A
July - September	8,562,555,369	8,750,878,205	9,178,902,477	N/A
October - December	9,321,675,928	9,687,566,164	10,675,814,276	N/A
Average Weekly Earnings	593.13	614.27	647.70	659.18

TABLE 4. TOTAL TAXABLE EARNINGS, 2001 - 2008

Period	2001	2002	2003	2004
Total	\$9,003,189,480	\$8,887,270,978	\$9,154,938,743	\$9,731,247,501
January - March	4,670,296,360	4,668,534,587	4,737,918,796	4,931,559,230
April - June	2,219,485,263	2,162,971,435	2,270,519,362	2,451,454,749
July - September	1,190,098,737	1,158,197,858	1,188,681,170	1,318,017,835
October - December	923,309,120	897,567,098	957,819,415	1,030,215,687
Period	2005	2006	2007	2008
Total	\$9,991,605,239	\$10,197,511,360	\$10,459,105,059	\$5,633,961,758
January - March	5,062,670,306	5,421,204,601	5,617,417,571	5,633,961,758
April - June	2,506,505,721	2,385,110,992	2,466,606,627	N/A
July - September	1,353,660,445	1,314,939,803	1,307,060,412	N/A
October - December	1,068,768,767	1,076,255,964	1,068,020,449	N/A

**TABLE 5. STATEWIDE SUMMARY
EMPLOYMENT AND TOTAL EARNINGS, BY INDUSTRY
FIRST QUARTER 2008**

NORTH AMERICAN INDUSTRY CLASSIFICATION SYSTEM INDUSTRY GROUPS		NUMBER OF	EMPLOYMENT			TOTAL EARNINGS	AVERAGE
		EMPLOYING UNITS	JANUARY	FEBRUARY	MARCH	JANUARY -MARCH	WEEKLY EARNINGS
TOTAL, ALL INDUSTRIES		84,031	1,141,697	1,149,049	1,157,496	\$9,849,712,834	\$659.18
NATURAL RESOURCES & MINING		2,440	18,843	19,302	19,897	\$187,660,702	\$746.12
11	AGRICULTURE, FORESTRY, FISHING & HUNTING	1,956	11,760	12,261	12,626	\$84,793,542	\$533.95
111	CROP PRODUCTION	716	2,809	2,985	3,207	\$15,147,030	\$388.34
1111	Oilseed and Grain Farming	448	1,617	1,677	1,792	8,756,252	397.30
1112	Vegetable and Melon Farming	8	62	68	71	156,679	179.88
1113	Fruit and Tree Nut Farming	8	53	64	72	297,346	363.06
1114	Greenhouse & Nursery Production	54	319	375	408	2,155,142	451.31
1119	Other Crop Farming	198	758	801	864	3,781,611	360.16
112	ANIMAL PRODUCTION	269	3,579	3,601	3,674	\$27,947,276	\$594.19
1121	Cattle Ranching and Farming	79	330	320	330	2,046,424	481.89
1122	Hog and Pig Farming	9	144	142	145	1,332,550	713.48
1123	Poultry and Egg Production	90	2,589	2,602	2,626	21,041,192	621.17
1125	Animal Aquaculture	62	439	462	495	3,131,995	517.74
	Other	29	77	75	78	395,115	396.44
113	FORESTRY AND LOGGING	522	2,716	2,723	2,677	\$20,444,021	\$581.30
1131	Timber Tract Operations	42	241	244	242	2,854,147	905.98
1132	Forest Nurseries & Gathering of Forest Products	6	30	29	31	359,448	921.66
1133	Logging	474	2,445	2,450	2,404	17,230,426	544.77
	OTHER	449	2,656	2,952	3,068	\$21,255,215	\$565.36
21	MINING	484	7,083	7,041	7,271	\$102,867,160	\$1,109.54
211	OIL AND GAS EXTRACTION	101	1,080	1,068	1,156	\$18,653,254	\$1,302.84
212	MINING (EXCEPT OIL AND GAS)	111	2,099	2,099	2,090	\$25,371,607	\$931.14
213	SUPPORT ACTIVITIES FOR MINING	272	3,904	3,874	4,025	\$58,842,299	\$1,150.47

**TABLE 5. STATEWIDE SUMMARY
EMPLOYMENT AND TOTAL EARNINGS, BY INDUSTRY
FIRST QUARTER 2008**

NORTH AMERICAN INDUSTRY CLASSIFICATION SYSTEM INDUSTRY GROUPS		NUMBER OF	EMPLOYMENT			TOTAL EARNINGS	AVERAGE
		EMPLOYING UNITS	JANUARY	FEBRUARY	MARCH	JANUARY -MARCH	WEEKLY EARNINGS
CONSTRUCTION		7,978	53,662	54,077	55,445	\$480,584,070	\$679.63
236	CONSTRUCTION OF BUILDINGS	2,226	12,449	12,604	13,026	\$123,782,108	\$750.15
2361	Residential Building Construction	1,579	3,672	3,683	3,695	27,162,565	567.27
2362	Nonresidential Building Construction	647	8,777	8,921	9,331	96,619,543	824.92
237	HEAVY & CIVIL ENGINEERING CONSTRUCTION	863	8,712	9,085	9,621	\$85,807,743	\$722.22
2371	Utility System Construction	408	4,356	4,685	5,175	42,211,496	685.22
2372	Land Subdivision	130	354	372	382	3,381,384	704.26
2373	Highway, Street & Bridge Construction	214	2,735	2,752	2,871	23,635,983	652.60
2379	Other Heavy Construction	111	1,267	1,276	1,193	16,578,880	1024.06
238	SPECIALTY TRADE CONTRACTORS	4,889	32,501	32,388	32,798	\$270,994,219	\$640.18
2381	Building Foundation & Exterior Contractors	972	6,547	6,612	6,772	54,527,381	631.34
2382	Building Equipment Contractors	2,162	15,792	15,668	15,789	141,849,323	692.81
2383	Building Finishing Contractors	909	4,953	4,917	4,839	35,288,953	553.65
2389	Other Specialty Trade Contractors	846	5,209	5,191	5,398	39,328,562	574.49
MANUFACTURING		3,599	185,246	184,611	184,766	\$1,715,690,513	\$713.87
311	FOOD MANUFACTURING	316	48,991	49,143	49,271	\$355,604,775	\$556.72
3111	Animal Food Manufacturing	61	1,571	1,588	1,590	14,190,227	689.55
3112	Grain and Oilseed Milling	30	2,393	2,385	2,371	21,227,621	685.23
3113	Sugar & Confectionery Product Manufacturing	7	46	50	57	269,669	406.74
3114	Fruit, Vegetable & Specialty Food	24	5,666	5,608	5,710	51,178,314	695.38
3115	Dairy Product Manufacturing	11	690	676	681	6,805,256	767.19
3116	Animal Slaughtering & Processing	94	33,300	33,523	33,566	217,020,193	498.88
3117	Seafood Product Preparation & Packaging	5	169	177	180	826,070	362.42
3118	Bakeries and Tortilla Manufacturing	55	3,489	3,452	3,429	28,455,341	633.23
3119	Other Food Manufacturing	29	1,667	1,684	1,687	15,632,084	716.04
312	BEVERAGE & TOBACCO PRODUCT MFG.	43	1,197	1,209	1,219	\$11,888,297	\$756.81
313	TEXTILE MILLS	18	255	251	248	\$2,719,437	\$832.31
314	TEXTILE PRODUCT MILLS	60	1,023	1,001	999	\$9,341,879	\$713.14
3141	Textile Furnishing Mills	14	35	33	33	148,227	\$338.68
3149	Other Textile Product Mills	46	988	968	966	9,193,652	\$726.08

**TABLE 5. STATEWIDE SUMMARY
EMPLOYMENT AND TOTAL EARNINGS, BY INDUSTRY
FIRST QUARTER 2008**

NORTH AMERICAN INDUSTRY CLASSIFICATION SYSTEM INDUSTRY GROUPS		NUMBER OF	EMPLOYMENT			TOTAL EARNINGS	AVERAGE
		EMPLOYING UNITS	JANUARY	FEBRUARY	MARCH	JANUARY -MARCH	WEEKLY EARNINGS
315	APPAREL MANUFACTURING	37	1,463	1,493	1,519	\$8,041,231	\$414.67
3151	Apparel Knitting Mills	3	668	698	716	4,205,130	466.10
3152	Cut & Sew Apparel Manufacturing	28	546	557	561	2,719,781	377.19
3159	Accessories & Other Apparel Manufacturing	6	249	238	242	1,116,320	353.38
316	LEATHER & ALLIED PRODUCT MANUFACTURING	21	1,868	1,851	1,899	\$11,590,409	\$476.10
321	WOOD PRODUCT MANUFACTURING	381	11,849	11,608	11,683	\$91,832,797	\$603.08
3211	Sawmills and Wood Preservation	157	4,901	4,826	4,752	39,370,964	627.50
3212	Veneer & Engineered Wood Products	54	2,969	2,911	3,095	28,423,297	730.83
3219	Other Wood Product Manufacturing	170	3,979	3,871	3,836	24,038,536	474.70
322	PAPER MANUFACTURING	86	11,076	11,067	11,021	\$156,285,194	\$1,087.50
3221	Pulp, Paper & Paperboard Mills	12	4,243	4,288	4,265	81,242,734	1465.17
3222	Converted Paper Product Manufacturing	74	6,833	6,779	6,756	75,042,460	850.23
323	PRINTING & RELATED SUPPORT ACTIVITIES	287	4,591	4,575	4,525	\$40,338,821	\$679.93
324	PETROLEUM AND COAL PRODUCTS MFG.	24	997	1,001	1,001	\$12,190,952	\$938.08
325	CHEMICAL MANUFACTURING	125	4,713	4,668	4,650	\$61,168,611	\$1,006.05
3251	Basic Chemical Manufacturing	31	2,027	2,015	2,010	30,635,621	1168.17
3252	Resin, Rubber & Artificial Fibers	10	294	294	291	4,314,637	1132.75
3253	Agricultural Chemical Manufacturing	14	334	336	334	3,997,426	918.81
3255	Paint, Coating & Adhesive Manufacturing	10	198	200	197	2,447,300	949.18
3259	Other Chemical Preparation Manufacturing	30	945	919	922	10,208,012	845.55
	Other	30	915	904	896	9,565,615	813.06
326	PLASTICS & RUBBER PRODUCTS MFG.	157	11,447	11,363	11,316	\$118,731,923	\$802.90
3261	Plastics Product Manufacturing	110	7,306	7,287	7,234	64,969,234	686.90
3262	Rubber Product Manufacturing	47	4,141	4,076	4,082	53,762,689	1008.76
327	NONMETALLIC MINERAL PRODUCT MFG.	267	4,649	4,605	4,593	\$42,065,529	\$701.05
3271	Clay Product & Refractory Manufacturing	22	613	607	604	5,326,709	673.93
3272	Glass & Glass Product Manufacturing	13	432	437	442	3,649,998	642.49
3273	Cement & Concrete Product Manufacturing	189	2,569	2,564	2,559	22,130,611	663.94
3274	Lime & Gypsum Product Manufacturing	5	418	395	393	4,991,415	955.11
3279	Other Nonmetallic Mineral Products Manufacturing	38	617	602	595	5,966,796	759.07

**TABLE 5. STATEWIDE SUMMARY
EMPLOYMENT AND TOTAL EARNINGS, BY INDUSTRY
FIRST QUARTER 2008**

NORTH AMERICAN INDUSTRY CLASSIFICATION SYSTEM INDUSTRY GROUPS		NUMBER OF	EMPLOYMENT			TOTAL EARNINGS	AVERAGE
		EMPLOYING UNITS	JANUARY	FEBRUARY	MARCH	JANUARY -MARCH	WEEKLY EARNINGS
331	PRIMARY METAL MANUFACTURING	82	8,484	8,472	8,451	\$120,125,158	\$1,091.08
3311	Iron & Steel Mills and Ferroalloys	13	2,214	2,221	2,166	52,665,654	1841.18
3312	Purchased Steel Product Manufacturing	18	2,360	2,324	2,346	25,574,727	839.52
3313	Alumina & Aluminum Production	22	2,039	2,049	2,038	23,657,154	891.18
3314	Other Nonferrous Metal Production	14	643	653	671	6,422,747	753.52
3315	Foundries	15	1,228	1,225	1,230	11,804,876	739.67
332	FABRICATED METAL PRODUCT MANUFACTURING	576	17,064	17,000	17,083	\$172,214,276	\$777.01
3321	Forging & Stamping	11	768	759	763	7,268,075	732.42
3322	Cutlery & Hand Tool Manufacturing	19	1,234	1,237	1,229	10,973,178	684.40
3323	Architectural & Structural Metals	196	5,092	5,107	5,160	55,355,197	831.71
3324	Boilers, Tanks & Shipping Containers	18	724	714	706	8,514,480	916.46
3325	Hardware Manufacturing	8	267	262	264	2,202,934	641.07
3326	Spring & Wire Product Manufacturing	12	580	569	574	3,617,724	484.54
3327	Machine Shops & Threaded Products	202	1,951	1,970	1,976	16,417,123	642.46
3328	Coating, Engraving & Heat Treating Metals	42	628	630	645	4,602,733	558.16
3329	Other Fabricated Metal Product Manufacturing	68	5,820	5,752	5,766	63,262,832	842.03
333	MACHINERY MANUFACTURING	267	14,116	14,277	14,328	\$124,574,705	\$672.92
3331	Agri., Construction & Mining Machinery	41	3,046	3,140	3,167	19,022,890	469.36
3332	Industrial Machinery Manufacturing	35	846	817	833	10,036,048	927.89
3333	Commercial & Service Industry Machinery	28	974	975	968	10,595,541	838.23
3334	HVAC & Commercial Refrigeration Equipment	23	4,531	4,609	4,571	40,291,413	678.14
3335	Metalworking Machinery Manufacturing	78	1,364	1,375	1,376	13,334,499	747.80
3336	Turbine & Power Transmission Equipment Manufacturing	7	421	456	474	3,856,619	658.76
3339	Other General Purpose Machinery Manufacturing	55	2,934	2,905	2,939	27,437,695	721.32
334	COMPUTER & ELECTRONIC PRODUCT MFG.	81	4,221	4,080	4,129	\$37,378,615	\$693.95
3342	Communications Equipment Manufacturing	9	147	150	151	2,241,159	1,154.44
3343	Audio & Video Equipment Manufacturing	10	953	869	919	7,669,294	645.69
3344	Semiconductors & Electronic Components	29	2,252	2,202	2,207	18,542,552	642.40
3345	Electronic Instrument Manufacturing	26	854	844	838	8,827,829	803.31
	Other	7	15	15	14	97,781	512.84
335	ELECTRICAL EQUIPMENT & APPLIANCES	66	9,881	9,914	9,864	\$96,961,831	\$754.44
3353	Electrical Equipment Manufacturing	23	4,780	4,757	4,741	46,811,051	756.59
3359	Other Electrical Equipment & Component Manufacturing	23	1,992	2,017	1,985	22,857,340	880.01
	Other	20	3,109	3,140	3,138	27,293,440	670.98

**TABLE 5. STATEWIDE SUMMARY
EMPLOYMENT AND TOTAL EARNINGS, BY INDUSTRY
FIRST QUARTER 2008**

NORTH AMERICAN INDUSTRY CLASSIFICATION SYSTEM INDUSTRY GROUPS		NUMBER OF	EMPLOYMENT			TOTAL EARNINGS	AVERAGE
		EMPLOYING UNITS	JANUARY	FEBRUARY	MARCH	JANUARY -MARCH	WEEKLY EARNINGS
336	TRANSPORTATION EQUIPMENT MANUFACTURING	179	16,210	16,057	16,175	\$157,363,948	\$749.65
3362	Motor Vehicle Body & Trailer Manufacturing	40	2,845	2,574	2,505	22,393,065	652.15
3363	Motor Vehicle Parts Manufacturing	60	6,408	6,509	6,502	54,832,079	651.61
3364	Aerospace Product & Parts Manufacturing	30	4,070	4,156	4,190	55,326,682	1028.33
3366	Ship & Boat Building	30	1,698	1,642	1,650	12,528,199	579.38
	Other	19	1,189	1,176	1,328	12,283,923	767.60
337	FURNITURE & RELATED PRODUCT MFG.	267	5,939	5,862	5,707	\$45,160,022	\$595.24
3371	Household & Institutional Furniture	219	4,140	4,102	4,007	28,504,957	537.03
3372	Office Furniture & Fixtures Manufacturing	41	1,663	1,634	1,565	15,869,990	753.25
3379	Other Furniture Related Product Manufacturing	7	136	126	135	785,075	456.35
339	MISCELLANEOUS MANUFACTURING	259	5,212	5,114	5,085	\$40,112,103	\$600.65
3391	Medical Equipment & Supplies Manufacturing	94	2,486	2,504	2,503	21,838,209	672.57
3399	Other Miscellaneous Manufacturing	165	2,726	2,610	2,582	18,273,894	532.59
TRADE, TRANSPORTATION & UTILITIES		21,145	243,992	243,200	245,176	\$2,023,398,367	\$637.57
42	WHOLESALE TRADE	6,432	47,988	48,298	48,696	\$648,651,635	\$1,032.46
423	MERCHANT WHOLESALERS, DURABLE GOODS	2,188	22,048	22,065	22,125	\$253,443,152	\$882.98
4231	Motor Vehicle & Part Merchant Wholesalers	247	2,681	2,673	2,646	25,875,304	746.40
4232	Furniture & Furnishing Merchant Wholesalers	70	423	437	449	5,071,922	894.15
4233	Lumber & Supply Merchant Wholesalers	186	1,751	1,775	1,795	18,391,118	797.61
4234	Commercial Goods Merchant Wholesalers	280	2,665	2,683	2,681	42,112,838	1210.41
4235	Metal & Mineral Merchant Wholesalers	60	908	905	918	11,307,875	955.51
4236	Electric Goods Merchant Wholesalers	181	2,248	2,231	2,214	29,457,429	1015.67
4237	Hardware & Plumbing Merchant Wholesalers	228	2,410	2,376	2,370	27,386,333	883.16
4238	Machinery & Supply Merchant Wholesalers	694	7,167	7,170	7,231	75,222,943	804.86
4239	Misc. Durable Goods Merchant Wholesalers	242	1,795	1,815	1,821	18,617,390	791.07

**TABLE 5. STATEWIDE SUMMARY
EMPLOYMENT AND TOTAL EARNINGS, BY INDUSTRY
FIRST QUARTER 2008**

NORTH AMERICAN INDUSTRY CLASSIFICATION SYSTEM INDUSTRY GROUPS		NUMBER OF	EMPLOYMENT			TOTAL EARNINGS	AVERAGE
		EMPLOYING UNITS	JANUARY	FEBRUARY	MARCH	JANUARY -MARCH	WEEKLY EARNINGS
424	MERCHANT WHOLESALERS, NONDURABLE GOODS	1,258	16,237	16,351	16,559	\$188,486,454	\$885.04
4241	Paper & Paper Product Merchant Wholesalers	73	1,133	1,137	1,155	13,719,259	924.37
4242	Druggists' Goods Merchant Wholesalers	59	1,152	1,159	1,174	13,919,893	921.75
4243	Apparel & Piece Goods Merchant Wholesalers	41	486	491	482	4,311,417	681.93
4244	Grocery Product Merchant Wholesalers	324	5,524	5,521	5,533	71,479,884	995.01
4245	Farm Product Merchant Wholesalers	75	870	850	881	6,205,028	550.53
4246	Chemical Merchant Wholesalers	85	547	551	544	6,373,772	895.78
4247	Petroleum Merchant Wholesalers	155	1,482	1,484	1,473	22,377,305	1163.32
4248	Alcoholic Beverage Merchant Wholesalers	36	1,163	1,167	1,158	13,307,329	880.42
4249	Misc. Nondurable Goods Merchant Wholesalers	410	3,880	3,991	4,159	36,792,567	705.78
425	ELECTRONIC MARKETS & AGENTS & BROKERS	2,986	9,703	9,882	10,012	\$206,722,029	\$1,611.82
44-45	RETAIL TRADE	11,340	133,895	132,773	134,083	\$729,733,517	\$420.21
441	MOTOR VEHICLE & PARTS DEALERS	1,730	18,086	18,017	18,088	\$155,616,738	\$662.68
4411	Automobile Dealers	730	10,914	10,865	10,865	108,041,167	763.77
4412	Other Motor Vehicle Dealers	199	1,583	1,564	1,577	11,886,880	580.68
4413	Automotive Parts, Accessories & Tire Stores	801	5,589	5,588	5,646	35,688,691	489.56
442	FURNITURE & HOME FURNISHINGS STORES	598	3,973	3,936	3,954	\$25,749,804	\$500.91
4421	Furniture Stores	316	2,359	2,335	2,361	16,216,400	530.44
4422	Home Furnishings Stores	282	1,614	1,601	1,593	9,533,404	457.57
443	ELECTRONICS & APPLIANCE STORES	535	4,140	4,053	4,071	\$30,820,311	\$579.94
444	BUILDING MATERIAL & GARDEN SUPPLY STORES	856	10,624	10,637	10,931	\$70,017,913	\$501.93
4441	Building Material & Supplies Dealers	670	9,750	9,745	9,955	64,754,779	507.42
4442	Lawn & Garden Equipment & Supplies Stores	186	874	892	976	5,263,134	442.95
445	FOOD & BEVERAGE STORES	1,076	18,380	18,451	18,415	\$78,771,083	\$329.04
4451	Grocery Stores	611	16,078	16,173	16,069	67,482,629	322.29
4452	Specialty Food Stores	158	835	824	839	5,145,354	475.34
4453	Beer, Wine & Liquor Stores	307	1,467	1,454	1,507	6,143,100	320.15
446	HEALTH & PERSONAL CARE STORES	924	7,457	7,425	7,453	\$55,646,764	\$574.95
447	GASOLINE STATIONS	1,571	11,969	11,935	12,022	\$43,040,353	\$276.47
44711	Gasoline Stations with Convenience Stores	1,418	10,737	10,698	10,786	37,269,104	266.92
44719	Other Gasoline Stations	153	1,232	1,237	1,236	5,771,249	359.47

**TABLE 5. STATEWIDE SUMMARY
EMPLOYMENT AND TOTAL EARNINGS, BY INDUSTRY
FIRST QUARTER 2008**

NORTH AMERICAN INDUSTRY CLASSIFICATION SYSTEM INDUSTRY GROUPS		NUMBER OF EMPLOYING UNITS	EMPLOYMENT			TOTAL EARNINGS	AVERAGE
			JANUARY	FEBRUARY	MARCH	JANUARY -MARCH	WEEKLY EARNINGS
448	CLOTHING & CLOTHING ACCESSORIES STORES	1,086	9,346	9,027	9,034	\$31,837,073	\$268.07
4481	Clothing Stores	739	7,213	6,927	6,939	21,720,234	237.79
4482	Shoe Stores	183	1,203	1,207	1,224	4,281,175	271.87
4483	Jewelry, Luggage & Leather Goods Stores	164	930	893	871	5,835,664	499.89
451	SPORTING GOODS, HOBBY, BOOK & MUSIC STORES	580	4,875	4,567	4,532	\$17,646,467	\$291.42
4511	Sporting Goods & Musical Instrument Stores	433	3,352	3,169	3,170	13,154,120	313.24
4512	Book, Periodical & Music Stores	147	1,523	1,398	1,362	4,492,347	242.05
452	GENERAL MERCHANDISE STORES	730	36,863	36,628	37,572	\$176,761,839	\$367.28
453	MISCELLANEOUS STORE RETAILERS	1,329	6,347	6,309	6,237	\$30,606,669	\$373.85
4531	Florists	250	916	989	948	3,897,213	315.23
4532	Office Supplies, Stationery & Gift Stores	350	2,201	2,171	2,152	11,107,769	392.91
4533	Used Merchandise Stores	212	888	820	820	3,777,126	344.80
4539	Other Miscellaneous Store Retailers	517	2,342	2,329	2,317	11,824,561	390.49
454	NONSTORE RETAILERS	325	1,835	1,788	1,774	\$13,218,503	\$565.21
4541	Electronic Shopping & Mail -Order Houses	81	358	344	316	2,958,845	670.74
4542	Vending Machine Operators	74	623	620	640	3,923,690	480.86
4543	Direct Selling Establishments	170	854	824	818	6,335,968	585.80
48-49	TRANSPORTATION & WAREHOUSING	3,011	55,353	55,390	55,636	\$510,655,850	\$708.28
481	AIR TRANSPORTATION	51	1,062	1,064	1,080	\$13,595,844	\$978.63
483	WATER TRANSPORTATION	4	103	95	103	\$1,288,147	\$987.59
484	TRUCK TRANSPORTATION	2,024	34,993	35,022	35,035	\$319,635,038	\$702.16
4841	General Freight Trucking	1,291	29,489	29,495	29,487	273,065,464	712.27
4842	Specialized Freight Trucking	733	5,504	5,527	5,548	46,569,574	648.22
485	TRANSIT & GROUND PASSENGER TRANS.	65	1,092	1,116	1,132	\$4,352,132	\$300.70
4851	Urban Transit Systems	4	51	54	55	265,005	382.22
4852	Interurban & Rural Bus Transportation	3	61	59	61	295,602	376.88
4853	Taxi & Limousine Service	23	276	303	324	1,109,033	283.42
4854	School & Employee Bus Transportation	7	361	345	341	1,348,550	297.23
4855	Charter Bus Industry Service	7	59	66	65	333,061	404.53
4859	Other Ground Passenger Transportation	21	284	289	286	1,000,881	268.89

**TABLE 5. STATEWIDE SUMMARY
EMPLOYMENT AND TOTAL EARNINGS, BY INDUSTRY
FIRST QUARTER 2008**

NORTH AMERICAN INDUSTRY CLASSIFICATION SYSTEM INDUSTRY GROUPS		NUMBER OF	EMPLOYMENT			TOTAL EARNINGS	AVERAGE
		EMPLOYING UNITS	JANUARY	FEBRUARY	MARCH	JANUARY -MARCH	WEEKLY EARNINGS
486	PIPELINE TRANSPORTATION	67	888	868	863	\$14,539,112	\$1,281.09
488	SUPPORT ACTIVITIES FOR TRANSPORTATION	416	4,510	4,589	4,604	\$48,563,114	\$817.84
4881	Support Activities for Air Transportation	104	1,509	1,486	1,506	13,382,188	686.11
4882	Support Activities for Rail Transportation	30	380	383	379	3,229,394	652.58
4883	Support Activities for Water Transportation	23	595	583	576	7,025,163	924.28
4884	Support Activities for Road Transportation	108	453	483	508	2,878,840	460.07
4885	Freight Transportation Arrangement	127	1,407	1,486	1,466	20,915,470	1107.28
4889	Other Support Activities for Transportation	24	166	168	169	1,132,059	519.37
491	POSTAL SERVICE	8	11	12	15	\$91,818	\$557.60
492	COURIERS & MESSENGERS	140	3,258	3,278	3,277	\$30,052,228	\$706.73
4921	Couriers	85	2,941	2,961	2,958	27,981,702	728.82
4922	Local Messengers & Local Delivery	55	317	317	319	2,070,526	501.38
493	WAREHOUSING & STORAGE	227	9,380	9,302	9,474	\$78,346,287	\$642.13
	OTHER	9	56	44	53	\$192,130	\$289.79
22	UTILITIES	362	6,756	6,739	6,761	\$134,357,365	\$1,530.68
2211	Power Generation & Supply	161	5,061	5,030	5,031	110,199,124	1681.69
2212	Natural Gas Distribution	34	893	908	909	17,859,942	1520.86
2213	Water, Sewage and Other Systems	167	802	801	821	6,298,299	599.61
INFORMATION		1,131	18,834	18,942	18,876	\$272,850,995	\$1,111.45
511	PUBLISHING INDUSTRIES, EXCEPT INTERNET	256	6,161	6,208	6,154	\$51,046,653	\$635.97
5111	Newspaper, Book & Directory Publishers	229	5,940	5,981	5,925	47,880,159	619.15
5112	Software Publishers	27	221	227	229	3,166,494	1079.36
512	MOTION PICTURE & SOUND RECORDING INDUSTRY	141	1,175	1,221	1,222	\$5,317,996	\$339.20
5121	Motion Picture & Video Industries	121	1,133	1,179	1,178	4,997,861	330.47
5122	Sound Recording Industries	20	42	42	44	320,135	577.17
515	BROADCASTING, EXCEPT INTERNET	148	2,210	2,172	2,146	\$19,803,287	\$700.06
5151	Radio & Television Broadcasting	142	2,172	2,133	2,099	19,550,025	704.49
5152	Cable & Other Subscription Programming	6	38	39	47	253,262	471.33

**TABLE 5. STATEWIDE SUMMARY
EMPLOYMENT AND TOTAL EARNINGS, BY INDUSTRY
FIRST QUARTER 2008**

NORTH AMERICAN INDUSTRY CLASSIFICATION SYSTEM INDUSTRY GROUPS		NUMBER OF	EMPLOYMENT			TOTAL EARNINGS	AVERAGE
		EMPLOYING UNITS	JANUARY	FEBRUARY	MARCH	JANUARY -MARCH	WEEKLY EARNINGS
517	TELECOMMUNICATIONS	431	8,020	8,082	8,062	\$177,977,332	\$1,699.71
5171	Wired Telecommunications Carriers	305	4,465	4,511	4,508	71,968,651	1231.69
5179	Other Telecommunications	89	553	555	558	6,124,362	848.33
	Other	37	3,002	3,016	2,996	99,884,319	2557.16
518	DATA PROCESSING, HOSTING & RELATED SERVICES	100	977	977	992	16,142,592	\$1,264.50
	OTHER	55	291	282	300	\$2,563,135	\$677.54
FINANCIAL ACTIVITIES		8,403	50,956	50,946	51,058	\$609,364,687	\$919.34
52	FINANCE & INSURANCE	4,900	36,965	36,886	36,934	\$508,897,614	\$1,060.05
522	CREDIT INTERMEDIATION & RELATED ACTIVITIES	2,106	21,725	21,650	21,621	\$225,161,416	\$799.44
5221	Depository Credit Intermediation	1,416	18,526	18,457	18,439	183,529,408	764.19
5222	Nondepository Credit Intermediation	399	2,141	2,132	2,129	32,769,842	1181.24
5223	Activities Related to Credit Intermediation	291	1,058	1,061	1,053	8,862,166	644.74
523	FINANCIAL INVESTMENT & RELATED ACTIVITIES	627	3,161	3,164	3,181	\$114,155,273	\$2,771.25
524	INSURANCE CARRIERS & RELATED ACTIVITIES	2,123	11,618	11,620	11,671	\$163,938,889	\$1,083.73
5241	Insurance Carriers	382	4,982	5,002	5,010	85,746,655	1319.71
5242	Insurance Agencies, Brokerages & Support	1,741	6,636	6,618	6,661	78,192,234	906.07
	OTHER	44	461	452	461	\$5,642,036	\$947.60
53	REAL ESTATE & RENTAL & LEASING	3,503	13,991	14,060	14,124	\$100,467,073	\$549.73
531	REAL ESTATE	2,642	8,757	8,758	8,756	\$62,501,272	\$549.02
5311	Lessors of Real Estate	1,054	4,292	4,295	4,339	28,728,449	512.89
5312	Offices of Real Estate Agents & Brokers	971	2,030	2,019	2,011	14,918,855	568.12
5313	Activities Related to Real Estate	617	2,435	2,444	2,406	18,853,968	597.24
532	RENTAL & LEASING SERVICES	843	5,168	5,233	5,300	\$36,904,880	\$542.42
5321	Automotive Equipment Rental & Leasing	126	1,021	1,024	1,024	7,411,154	557.27
5322	Consumer Goods Rental	513	2,935	2,984	3,025	16,144,962	416.57
5323	General Rental Centers	32	249	244	244	2,029,811	635.57
5324	Machinery & Equipment Rental & Leasing	172	963	981	1,007	11,318,953	885.15
533	LESSORS OF NONFINANCIAL INTANGIBLE ASSETS	18	66	69	68	\$1,060,921	\$1,206.05

**TABLE 5. STATEWIDE SUMMARY
EMPLOYMENT AND TOTAL EARNINGS, BY INDUSTRY
FIRST QUARTER 2008**

NORTH AMERICAN INDUSTRY CLASSIFICATION SYSTEM INDUSTRY GROUPS		NUMBER OF	EMPLOYMENT			TOTAL EARNINGS	AVERAGE
		EMPLOYING UNITS	JANUARY	FEBRUARY	MARCH	JANUARY -MARCH	WEEKLY EARNINGS
PROFESSIONAL & BUSINESS SERVICES		11,642	115,070	117,348	117,545	\$1,338,883,401	\$882.87
54	PROFESSIONAL & TECHNICAL SERVICES	7,295	39,405	39,793	39,488	\$467,072,853	\$908.16
5411	Legal Services	1,672	6,423	6,447	6,479	68,626,615	818.49
5412	Accounting & Bookkeeping Services	1,256	6,766	7,094	6,736	56,069,928	628.24
5413	Architectural & Engineering Services	985	6,755	6,712	6,741	81,261,450	927.98
5414	Specialized Design Services	177	466	458	466	4,619,192	766.88
5415	Computer Systems Design & Related Services	958	7,917	7,993	7,801	139,782,017	1360.44
5416	Management & Technical Consulting Services	1,208	4,284	4,301	4,404	58,267,841	1035.22
5417	Scientific Research & Development Services	103	1,073	1,067	1,072	14,370,763	1032.48
5418	Advertising & Related Services	326	1,990	2,008	2,015	22,330,213	857.00
5419	Other Professional & Technical Services	610	3,731	3,713	3,774	21,744,834	447.32
55	MANAGEMENT OF COMPANIES & ENTERPRISES	567	25,282	25,344	25,633	\$589,168,316	\$1,782.90
56	ADMINISTRATIVE & WASTE SERVICES	3,780	50,383	52,211	52,424	\$282,642,232	\$420.76
561	ADMINISTRATIVE & SUPPORT SERVICES	3,563	48,061	49,893	50,109	\$259,167,652	\$403.94
5611	Office Administrative Services	391	1,235	1,279	1,297	17,413,062	1054.42
5612	Facilities Support Services	16	116	107	108	930,270	648.57
5613	Employment Services	700	22,349	23,532	23,646	105,934,685	351.61
5614	Business Support Services	414	6,447	6,883	6,886	39,485,777	450.74
5615	Travel Arrangement & Reservation Services	101	381	387	415	3,233,485	630.76
5616	Investigation & Security Services	248	4,624	4,608	4,582	27,939,780	466.75
5617	Services to Buildings & Dwellings	1,385	11,370	11,550	11,702	52,581,038	350.47
5619	Other Support Services	308	1,539	1,547	1,473	11,649,555	589.68
562	WASTE MANAGEMENT & REMEDIATION SERVICES	217	2,322	2,318	2,315	\$23,474,580	\$778.89
5621	Waste Collection Services	103	1,212	1,205	1,222	11,924,284	756.19
5622	Waste Treatment & Disposal Services	42	682	688	672	8,037,737	908.36
5629	Remediation & Other Waste Services	72	428	425	421	3,512,559	636.26

**TABLE 5. STATEWIDE SUMMARY
EMPLOYMENT AND TOTAL EARNINGS, BY INDUSTRY
FIRST QUARTER 2008**

NORTH AMERICAN INDUSTRY CLASSIFICATION SYSTEM INDUSTRY GROUPS		NUMBER OF	EMPLOYMENT			TOTAL EARNINGS	AVERAGE
		EMPLOYING UNITS	JANUARY	FEBRUARY	MARCH	JANUARY -MARCH	WEEKLY EARNINGS
EDUCATION & HEALTH SERVICES		12,865	152,207	153,072	153,859	\$1,235,885,991	\$621.17
61	EDUCATIONAL SERVICES	601	9,538	9,905	9,889	\$66,891,441	\$526.27
6111	Elementary & Secondary Schools	73	3,261	3,350	3,318	17,470,763	406.05
6112	Junior Colleges	7	271	291	284	1,839,301	501.72
6113	Colleges & Universities	29	3,301	3,540	3,530	26,272,484	584.60
6114	Business, Computer, & Management Training	42	188	190	199	4,714,294	1885.47
6115	Technical & Trade Schools	107	750	745	761	8,492,778	868.74
6116	Other Schools & Instruction	239	1,465	1,494	1,487	5,028,258	260.99
6117	Educational Support Services	104	302	295	310	3,073,563	782.01
62	HEALTH CARE & SOCIAL ASSISTANCE	12,264	142,669	143,167	143,970	\$1,168,994,550	\$627.65
621	AMBULATORY HEALTH CARE SERVICES	5,003	44,063	44,221	44,387	\$504,185,000	\$876.98
6211	Offices of Physicians	2,214	20,923	20,948	20,946	305,742,272	1123.20
6212	Offices of Dentists	941	6,170	6,161	6,199	57,851,122	720.47
6213	Offices of Other Health Practitioners	1,175	5,966	6,056	6,084	47,246,327	602.18
6214	Outpatient Care Centers	249	3,896	3,897	3,949	37,036,478	727.89
6215	Medical & Diagnostic Laboratories	105	829	825	829	10,604,127	985.54
6216	Home Health Care Services	181	4,078	4,074	4,104	27,874,555	524.85
6219	Other Ambulatory Health Care Services	138	2,201	2,260	2,276	17,830,119	610.75
622	HOSPITALS	125	41,818	42,080	42,297	\$398,554,490	\$728.83
6221	General Medical & Surgical Hospitals	91	38,266	38,496	38,653	366,812,883	733.43
6222	Psychiatric & Substance Abuse Hospitals	11	1,649	1,667	1,710	13,878,691	637.24
6223	Other Hospitals	23	1,903	1,917	1,934	17,862,916	716.41
623	NURSING & RESIDENTIAL CARE FACILITIES	531	28,018	28,077	28,283	\$145,532,830	\$398.02
6231	Nursing Care Facilities	257	20,809	20,874	21,009	108,293,450	398.63
6232	Residential Mental Health Facilities	129	3,356	3,328	3,345	18,416,258	423.76
6233	Community Care Facilities for the Elderly	99	2,353	2,355	2,389	10,662,290	346.70
6239	Other Residential Care Facilities	46	1,500	1,520	1,540	8,160,832	413.00
624	SOCIAL ASSISTANCE	6,605	28,770	28,789	29,003	\$120,722,230	\$321.84
6241	Individual & Family Services	5,413	15,103	15,054	15,131	64,414,669	328.23
6242	Emergency & Other Relief Services	128	935	950	932	4,887,124	400.35
6243	Vocational Rehabilitation Services	126	3,614	3,579	3,643	17,504,755	372.79
6244	Child Day Care Services	938	9,118	9,206	9,297	33,915,682	283.36

**TABLE 5. STATEWIDE SUMMARY
EMPLOYMENT AND TOTAL EARNINGS, BY INDUSTRY
FIRST QUARTER 2008**

NORTH AMERICAN INDUSTRY CLASSIFICATION SYSTEM INDUSTRY GROUPS		NUMBER OF	EMPLOYMENT			TOTAL EARNINGS	AVERAGE
		EMPLOYING UNITS	JANUARY	FEBRUARY	MARCH	JANUARY -MARCH	WEEKLY EARNINGS
LEISURE & HOSPITALITY		6,199	95,941	97,194	99,556	\$306,686,584	\$241.80
71	ARTS, ENTERTAINMENT & RECREATION	912	8,683	8,792	9,174	\$43,077,312	\$373.03
711	PERFORMING ARTS & SPECTATOR SPORTS	225	2,530	2,558	2,645	\$13,728,841	\$409.70
7111	Performing Arts Companies	35	305	289	305	1,355,802	348.03
7112	Spectator Sports	59	1,511	1,485	1,502	7,230,081	370.94
7113	Performing Arts & Sports Promoters	50	595	649	704	4,158,327	492.61
7114	Agents & Managers for Public Figures	21	23	25	28	285,089	865.65
7115	Independent Artists, Writers & Performers	60	96	110	106	699,542	517.41
712	MUSEUMS, PARKS & HISTORICAL SITES	48	199	196	232	\$1,125,598	\$414.28
713	GAMBLING, RECREATION & AMUSEMENT INDUSTRY	639	5,954	6,038	6,297	\$28,222,873	\$356.11
72	ACCOMMODATION & FOOD SERVICES	5,287	87,258	88,402	90,382	\$263,609,272	\$228.66
721	ACCOMMODATION	842	10,626	11,003	11,357	\$40,267,124	\$281.71
7211	Traveler Accommodation	765	10,303	10,683	10,998	38,812,454	280.04
7212	RV Parks & Recreational Camps	59	254	240	281	1,110,569	330.69
7213	Rooming & Boarding Houses	18	69	80	78	344,101	349.81
722	FOOD SERVICES & DRINKING PLACES	4,445	76,632	77,399	79,025	\$223,342,148	\$221.15
7221	Full -Service Restaurants	1,948	33,824	34,397	34,742	105,213,187	235.81
7222	Limited-Service Eating Places	2,207	39,384	39,442	40,695	106,598,781	205.82
7223	Special Food Services	143	2,446	2,571	2,566	8,674,758	263.99
7224	Drinking Places, Alcoholic Beverages	147	978	989	1,022	2,855,422	220.46
OTHER SERVICES		5,431	24,829	25,006	25,286	\$154,377,158	\$474.24
811	REPAIR & MAINTENANCE	2,191	9,334	9,342	9,502	\$67,877,950	\$555.90
8111	Automotive Repair & Maintenance	1,503	6,512	6,510	6,567	43,950,181	517.76
8112	Electronic Equipment Repair & Maintenance	159	679	691	706	6,111,154	679.32
8113	Commercial Machinery Repair & Maintenance	345	1,555	1,551	1,613	14,074,502	688.27
8114	Household Goods Repair & Maintenance	184	588	590	616	3,742,113	481.36

**TABLE 5. STATEWIDE SUMMARY
EMPLOYMENT AND TOTAL EARNINGS, BY INDUSTRY
FIRST QUARTER 2008**

NORTH AMERICAN INDUSTRY CLASSIFICATION SYSTEM INDUSTRY GROUPS		NUMBER OF EMPLOYING UNITS	EMPLOYMENT			TOTAL EARNINGS	AVERAGE
			JANUARY	FEBRUARY	MARCH	JANUARY -MARCH	WEEKLY EARNINGS
812	PERSONAL & LAUNDRY SERVICES	1,317	8,040	8,247	8,321	\$39,698,739	\$372.29
8121	Personal Care Services	575	2,601	2,718	2,782	10,519,905	299.68
8122	Death Care Services	238	1,616	1,637	1,650	10,096,972	475.23
8123	Drycleaning & Laundry Services	330	3,162	3,212	3,188	15,666,041	378.08
8129	Other Personal Services	174	661	680	701	3,415,821	386.03
813	MEMBERSHIP ASSOCIATIONS & ORGANIZATIONS	1,032	6,228	6,178	6,221	\$41,662,046	\$516.15
8131	Religious Organizations	43	236	243	238	1,583,003	509.50
8132	Grantmaking & Giving Services	102	485	461	474	4,728,198	768.40
8133	Social Advocacy Organizations	176	2,034	2,016	2,007	13,217,978	503.60
8134	Civic & Social Organizations	207	1,456	1,458	1,438	5,096,042	270.22
8139	Professional & Similar Organizations	504	2,017	2,000	2,064	17,036,825	646.53
814	PRIVATE HOUSEHOLDS	891	1,227	1,239	1,242	\$5,138,423	\$319.79
	LOCAL GOVERNMENT	1,991	118,381	119,430	119,845	\$885,040,511	\$571.05
	STATE GOVERNMENT	1,207	63,736	65,921	66,187	\$639,289,855	\$753.30
	NONCLASSIFIABLE ESTABLISHMENTS	0	0	0	0	\$0	

**TABLE 6. COUNTY SUMMARY
EMPLOYMENT AND TOTAL EARNINGS, BY INDUSTRY
FIRST QUARTER 2008**

NORTH AMERICAN INDUSTRY CLASSIFICATION SYSTEM INDUSTRY GROUP	NUMBER OF EMPLOYING UNITS	EMPLOYMENT			TOTAL EARNINGS	AVERAGE WEEKLY EARNINGS
		JANUARY	FEBRUARY	MARCH	JANUARY - MARCH	
ARKANSAS COUNTY - TOTAL	749	9,969	10,060	10,191	\$73,283,456	\$559.62
Natural Resources & Mining	43	168	169	192	1,311,155	571.97
Construction	46	308	305	307	2,595,792	651.12
Manufacturing	33	3,649	3,696	3,765	30,231,178	627.94
Trade, Transportation & Utilities	204	1,975	1,961	2,003	15,816,207	614.56
Wholesale Trade	43	379	384	412	4,781,251	939.03
Retail Trade	99	1,116	1,100	1,110	5,795,195	402.09
Transportation, Warehousing & Utilities	62	480	477	481	5,239,761	840.87
Information	11	109	106	109	1,029,852	733.51
Financial Activities	53	337	344	340	2,836,652	641.15
Professional & Business Services	60	403	402	403	3,736,479	713.80
Education & Health Services	130	1,257	1,278	1,264	6,501,755	394.95
Leisure & Hospitality	62	526	531	533	1,271,313	184.52
Other Services	59	137	139	142	761,081	420.18
Local Government	32	874	896	888	5,752,062	499.40
State Government	16	226	233	245	1,439,930	472.01
ASHLEY COUNTY - TOTAL	586	7,800	7,934	8,210	\$69,454,664	\$669.40
Natural Resources & Mining	64	382	393	377	3,027,945	606.56
Construction	48	571	626	674	4,832,318	596.02
Manufacturing	27	2,450	2,478	2,677	34,452,535	1045.44
Trade, Transportation & Utilities	137	1,259	1,256	1,274	7,641,393	465.40
Wholesale Trade	24	189	192	189	1,657,014	670.86
Retail Trade	85	850	836	858	3,846,134	348.89
Transportation, Warehousing & Utilities	28	220	228	227	2,138,245	731.02
Information	8	47	53	52	336,789	511.32
Financial Activities	40	251	256	256	2,047,332	619.22
Professional & Business Services	53	357	361	349	2,063,705	446.34
Education & Health Services	94	681	691	702	5,397,945	600.62
Leisure & Hospitality	28	407	418	441	972,744	177.31
Other Services	43	193	198	204	1,165,121	451.89
Local Government	32	974	966	965	6,212,773	493.53
State Government	12	228	238	239	1,304,064	426.86

**TABLE 6. COUNTY SUMMARY
EMPLOYMENT AND TOTAL EARNINGS, BY INDUSTRY
FIRST QUARTER 2008**

NORTH AMERICAN INDUSTRY CLASSIFICATION SYSTEM INDUSTRY GROUP	NUMBER OF EMPLOYING UNITS	EMPLOYMENT			TOTAL EARNINGS	AVERAGE WEEKLY EARNINGS
		JANUARY	FEBRUARY	MARCH	JANUARY - MARCH	
BAXTER COUNTY - TOTAL	1,324	14,571	14,632	14,826	\$103,650,170	\$543.26
Natural Resources & Mining	5	118	128	133	781,644	475.94
Construction	148	690	698	676	4,296,307	480.36
Manufacturing	65	2,548	2,531	2,567	22,652,548	683.69
Trade, Transportation & Utilities	292	2,643	2,633	2,723	16,702,308	481.86
Wholesale Trade	37	221	215	211	1,666,251	594.31
Retail Trade	220	2,211	2,203	2,300	13,272,008	456.18
Transportation, Warehousing & Utilities	35	211	215	212	1,764,049	638.07
Information	24	241	241	241	2,178,309	695.28
Financial Activities	126	710	717	708	6,107,754	660.18
Professional & Business Services	139	827	875	883	5,870,455	524.07
Education & Health Services	251	3,432	3,385	3,412	28,492,411	642.80
Leisure & Hospitality	118	1,357	1,371	1,429	4,024,832	223.43
Other Services	105	380	383	393	1,685,454	336.46
Local Government	38	1,295	1,329	1,325	8,569,999	500.81
State Government	13	330	341	336	2,288,149	524.36
BENTON COUNTY - TOTAL	5,612	93,992	94,727	95,284	\$1,083,224,334	\$880.18
Natural Resources & Mining	32	748	741	765	7,622,482	780.41
Construction	736	4,287	4,224	4,229	36,878,196	668.00
Manufacturing	245	13,233	13,203	13,103	113,217,075	660.79
Trade, Transportation & Utilities	1,534	22,947	23,068	23,348	235,309,689	782.87
Wholesale Trade	701	3,877	3,909	3,929	84,311,998	1660.83
Retail Trade	643	8,895	8,839	8,976	53,137,296	459.10
Transportation, Warehousing & Utilities	190	10,175	10,320	10,443	97,860,395	729.95
Information	74	909	908	907	9,343,888	791.59
Financial Activities	597	3,953	3,945	3,968	50,470,061	981.54
Professional & Business Services	1,012	22,524	22,572	22,716	456,673,151	1554.09
Education & Health Services	520	7,355	7,428	7,386	62,606,092	651.70
Leisure & Hospitality	430	8,041	8,298	8,486	27,195,802	252.81
Other Services	336	1,605	1,632	1,645	10,628,489	502.40
Local Government	77	7,631	7,693	7,688	65,809,585	659.95
State Government	19	759	1,015	1,043	7,469,824	611.93

**TABLE 6. COUNTY SUMMARY
EMPLOYMENT AND TOTAL EARNINGS, BY INDUSTRY
FIRST QUARTER 2008**

NORTH AMERICAN INDUSTRY CLASSIFICATION SYSTEM INDUSTRY GROUP	NUMBER OF EMPLOYING UNITS	EMPLOYMENT			TOTAL EARNINGS	AVERAGE WEEKLY EARNINGS
		JANUARY	FEBRUARY	MARCH	JANUARY - MARCH	
BOONE COUNTY - TOTAL	1,091	13,803	13,725	13,798	\$104,336,833	\$582.63
Construction	98	455	454	459	3,343,454	564.01
Manufacturing	74	1,934	1,893	1,912	16,288,278	654.96
Trade, Transportation & Utilities	264	4,478	4,409	4,439	36,554,298	633.02
Wholesale Trade	58	675	666	661	4,863,763	560.64
Retail Trade	151	1,907	1,857	1,882	10,169,678	415.67
Transportation, Warehousing & Utilities	55	1,896	1,886	1,896	21,520,857	874.67
Information	19	412	418	421	3,515,585	648.51
Financial Activities	99	652	653	646	5,783,409	684.08
Professional & Business Services	116	494	527	518	3,431,035	514.48
Education & Health Services	195	1,187	1,185	1,179	8,448,163	549.02
Leisure & Hospitality	81	1,059	1,052	1,065	2,995,076	217.62
Local Government	62	2,274	2,284	2,291	16,574,122	558.45
State Government	21	591	575	590	5,490,210	721.51
Other	62	267	275	278	1,913,203	538.42
BRADLEY COUNTY - TOTAL	402	4,078	4,087	4,088	\$25,073,177	\$472.22
Natural Resources & Mining	47	386	371	341	2,061,524	433.28
Construction	19	160	174	179	1,099,577	494.64
Manufacturing	9	1,045	1,033	1,026	7,353,852	546.73
Trade, Transportation & Utilities	87	456	457	464	2,501,706	419.26
Wholesale Trade	17	70	70	71	628,730	687.64
Retail Trade	44	335	337	347	1,427,483	323.28
Transportation, Warehousing & Utilities	26	51	50	46	445,493	699.36
Information	4	13	14	14	125,507	706.42
Financial Activities	25	156	162	159	1,069,241	517.29
Professional & Business Services	28	96	101	100	385,285	299.37
Education & Health Services	108	639	624	627	3,854,290	470.61
Leisure & Hospitality	16	170	174	181	441,332	193.99
Other Services	33	127	126	123	680,954	417.93
Local & State Government	26	830	851	874	5,499,909	496.76

**TABLE 6. COUNTY SUMMARY
EMPLOYMENT AND TOTAL EARNINGS, BY INDUSTRY
FIRST QUARTER 2008**

NORTH AMERICAN INDUSTRY CLASSIFICATION SYSTEM INDUSTRY GROUP	NUMBER OF EMPLOYING UNITS	EMPLOYMENT			TOTAL EARNINGS	AVERAGE WEEKLY EARNINGS
		JANUARY	FEBRUARY	MARCH	JANUARY - MARCH	
CALHOUN COUNTY - TOTAL	119	3,023	3,010	3,027	\$29,916,115	\$762.00
Natural Resources & Mining	17	195	197	195	1,529,549	601.32
Construction	11	54	51	50	318,575	474.31
Manufacturing	11	2,027	2,022	2,016	22,651,442	861.87
Trade, Transportation & Utilities	28	220	210	229	1,378,011	482.55
Retail Trade	18	85	80	81	280,638	263.26
Other Trade, Transportation & Utilities	10	135	130	148	1,097,373	613.17
Financial Activities	6	81	75	80	864,056	844.90
Education & Health Services	9	50	49	50	360,978	559.08
Leisure & Hospitality	6	19	21	21	41,040	155.26
Local & State Government	20	278	284	286	1,715,581	466.87
Other	11	99	101	100	1,056,883	812.99
CARROLL COUNTY - TOTAL	842	9,291	9,461	9,760	\$58,424,273	\$472.87
Natural Resources & Mining	17	270	273	280	1,886,268	528.91
Construction	84	328	339	350	2,484,496	563.76
Trade, Transportation & Utilities	206	1,591	1,627	1,675	9,999,357	471.60
Wholesale Trade	28	149	145	139	882,555	470.36
Retail Trade	158	1,188	1,191	1,238	6,096,357	388.96
Transportation, Warehousing & Utilities	20	254	291	298	3,020,445	826.84
Information	15	106	103	101	801,050	596.32
Financial Activities	75	363	366	373	3,272,674	685.33
Professional & Business Services	70	229	225	239	1,465,813	488.12
Education & Health Services	89	842	830	831	6,320,669	582.75
Leisure & Hospitality	169	1,088	1,147	1,321	3,392,710	220.17
Local Government	25	1,079	1,090	1,103	7,093,683	500.31
State Government	11	107	107	107	811,977	583.74
Other	81	3,288	3,354	3,380	20,895,576	481.15

**TABLE 6. COUNTY SUMMARY
EMPLOYMENT AND TOTAL EARNINGS, BY INDUSTRY
FIRST QUARTER 2008**

NORTH AMERICAN INDUSTRY CLASSIFICATION SYSTEM INDUSTRY GROUP	NUMBER OF EMPLOYING UNITS	EMPLOYMENT			TOTAL EARNINGS	AVERAGE WEEKLY EARNINGS
		JANUARY	FEBRUARY	MARCH	JANUARY - MARCH	
CHICOT COUNTY - TOTAL	391	3,460	3,503	3,520	\$20,477,188	\$450.78
Natural Resources & Mining	48	210	212	232	1,335,337	471.18
Construction	14	118	121	131	858,741	535.60
Manufacturing	10	485	490	478	2,236,808	355.26
Trade, Transportation & Utilities	67	528	540	540	2,837,333	407.19
Wholesale Trade	13	94	96	96	703,536	567.67
Retail Trade	45	381	389	389	1,579,213	314.44
Transportation, Warehousing & Utilities	9	53	55	55	554,584	785.16
Information	6	9	9	10	48,090	396.35
Financial Activities	29	168	155	157	1,557,135	748.62
Professional & Business Services	28	83	82	82	682,152	637.33
Education & Health Services	124	644	641	648	3,649,483	435.69
Leisure & Hospitality	19	142	151	152	331,430	171.87
Other Services	18	35	44	44	196,060	367.84
Local Government	17	705	721	709	4,498,324	486.22
State Government	11	333	337	337	2,246,295	514.77
CLARK COUNTY - TOTAL	635	9,790	9,987	9,954	\$66,626,729	\$517.15
Natural Resources & Mining	36	234	228	211	1,703,282	584.05
Construction	29	94	90	93	502,993	419.04
Manufacturing	37	2,482	2,501	2,434	19,491,895	606.46
Trade, Transportation & Utilities	152	1,623	1,573	1,608	9,740,105	467.88
Wholesale Trade	22	93	92	94	895,880	741.01
Retail Trade	106	1,241	1,196	1,220	6,241,585	393.87
Transportation, Warehousing & Utilities	24	289	285	294	2,602,640	691.95
Information	9	49	50	49	388,288	605.44
Financial Activities	89	382	377	383	3,429,182	692.95
Professional & Business Services	49	329	339	324	3,793,999	882.60
Education & Health Services	89	1,331	1,344	1,354	8,378,297	479.88
Leisure & Hospitality	58	959	1,037	1,046	2,703,371	205.08
Other Services	46	217	216	215	1,155,311	411.44
Local Government	26	968	991	994	6,538,073	510.93
State Government	15	1,122	1,241	1,243	8,801,933	563.29

**TABLE 6. COUNTY SUMMARY
EMPLOYMENT AND TOTAL EARNINGS, BY INDUSTRY
FIRST QUARTER 2008**

NORTH AMERICAN INDUSTRY CLASSIFICATION SYSTEM INDUSTRY GROUP	NUMBER OF EMPLOYING UNITS	EMPLOYMENT			TOTAL EARNINGS	AVERAGE WEEKLY EARNINGS
		JANUARY	FEBRUARY	MARCH	JANUARY - MARCH	
CLAY COUNTY - TOTAL	419	3,931	3,939	3,983	\$23,581,092	\$459.11
Natural Resources & Mining	62	164	164	177	893,939	408.50
Construction	33	117	118	145	603,825	366.70
Manufacturing	17	672	674	651	5,003,045	578.14
Trade, Transportation & Utilities	97	919	922	945	5,649,741	467.98
Wholesale Trade	23	350	347	368	2,183,023	473.03
Retail Trade	50	420	424	425	2,026,152	368.46
Transportation, Warehousing & Utilities	24	149	151	152	1,440,566	735.48
Information	4	72	72	74	388,153	410.89
Financial Activities	34	133	132	127	963,715	567.34
Professional & Business Services	28	52	51	53	355,995	526.62
Education & Health Services	63	538	536	537	2,983,546	427.38
Leisure & Hospitality	21	194	196	192	400,263	158.71
Other Services	26	68	70	71	435,214	480.55
Local Government	22	927	926	935	5,421,006	448.71
State Government	12	75	78	76	482,650	486.38
CLEBURNE COUNTY - TOTAL	723	6,800	6,955	7,091	\$44,057,273	\$487.72
Natural Resources & Mining	21	147	146	167	1,356,510	680.52
Construction	87	498	584	618	4,112,167	558.21
Manufacturing	40	1,340	1,345	1,360	10,532,744	600.90
Trade, Transportation & Utilities	189	1,550	1,542	1,566	9,615,493	476.38
Wholesale Trade	46	210	207	206	1,848,079	684.56
Retail Trade	115	1,000	986	1,013	4,946,981	380.66
Transportation, Warehousing & Utilities	28	340	349	347	2,820,433	628.25
Information	7	52	54	56	393,752	560.90
Financial Activities	81	288	291	300	2,459,155	645.62
Professional & Business Services	57	225	227	223	1,408,057	481.39
Education & Health Services	88	805	824	825	4,990,055	469.25
Leisure & Hospitality	73	796	839	859	2,290,209	211.91
Other Services	51	152	155	157	743,189	369.62
Local Government	19	823	824	839	5,282,093	490.32
State Government	10	124	124	121	873,849	546.50

**TABLE 6. COUNTY SUMMARY
EMPLOYMENT AND TOTAL EARNINGS, BY INDUSTRY
FIRST QUARTER 2008**

NORTH AMERICAN INDUSTRY CLASSIFICATION SYSTEM INDUSTRY GROUP	NUMBER OF EMPLOYING UNITS	EMPLOYMENT			TOTAL EARNINGS	AVERAGE WEEKLY EARNINGS
		JANUARY	FEBRUARY	MARCH	JANUARY - MARCH	
CLEVELAND COUNTY - TOTAL	122	1,023	1,039	1,060	\$5,717,045	\$422.59
Natural Resources & Mining	16	166	150	157	1,007,589	491.59
Construction	8	35	34	34	156,805	351.32
Manufacturing	6	92	93	94	563,768	466.31
Trade, Transportation & Utilities	28	167	172	175	785,834	352.81
Retail Trade	14	69	71	74	195,260	210.56
Other Trade, Transportation & Utilities	14	98	101	101	590,574	454.29
Education & Health Services	30	117	120	120	427,250	276.18
Other Services	6	24	24	27	176,475	543.00
Local Government	11	309	329	332	1,938,708	461.23
State Government	8	61	64	64	412,428	503.58
Other	9	52	53	57	248,188	353.54
COLUMBIA COUNTY - TOTAL	738	9,259	9,422	9,455	\$74,252,591	\$609.01
Natural Resources & Mining	49	595	606	620	8,377,702	1061.68
Construction	46	364	398	411	3,497,042	687.99
Manufacturing	41	2,579	2,552	2,504	26,957,988	814.81
Trade, Transportation & Utilities	173	1,473	1,498	1,555	8,810,060	449.20
Wholesale Trade	27	202	234	257	1,690,085	562.80
Retail Trade	113	1,003	1,001	1,037	4,738,445	359.58
Transportation, Warehousing & Utilities	33	268	263	261	2,381,530	693.92
Information	9	75	75	72	517,550	537.99
Financial Activities	76	412	408	413	3,647,039	682.58
Professional & Business Services	62	339	347	338	2,073,968	467.39
Education & Health Services	143	929	952	951	4,792,161	390.50
Leisure & Hospitality	49	625	650	650	1,566,072	187.74
Other Services	49	225	221	236	1,004,731	339.97
Local Government	27	1,135	1,156	1,150	8,144,853	546.23
State Government	14	508	559	555	4,863,425	691.94

**TABLE 6. COUNTY SUMMARY
EMPLOYMENT AND TOTAL EARNINGS, BY INDUSTRY
FIRST QUARTER 2008**

NORTH AMERICAN INDUSTRY CLASSIFICATION SYSTEM INDUSTRY GROUP	NUMBER OF EMPLOYING UNITS	EMPLOYMENT			TOTAL EARNINGS	AVERAGE WEEKLY EARNINGS
		JANUARY	FEBRUARY	MARCH	JANUARY - MARCH	
CONWAY COUNTY - TOTAL	592	6,877	6,890	6,891	\$48,706,743	\$544.10
Natural Resources & Mining	23	205	199	198	2,044,263	783.64
Construction	56	501	485	499	4,423,182	687.36
Manufacturing	25	1,083	1,097	1,083	11,519,180	814.67
Trade, Transportation & Utilities	141	1,505	1,463	1,471	9,591,697	498.64
Wholesale Trade	26	208	206	208	1,815,539	673.59
Retail Trade	83	928	891	890	4,561,499	388.58
Transportation, Warehousing & Utilities	32	369	366	373	3,214,659	669.53
Information	6	13	13	13	179,343	1061.20
Financial Activities	36	188	186	183	1,401,832	580.79
Professional & Business Services	44	512	529	514	2,194,646	325.70
Education & Health Services	152	918	920	925	6,110,311	510.34
Leisure & Hospitality	42	490	476	471	1,183,469	190.05
Other Services	28	156	152	161	1,460,927	718.84
Local Government	28	948	956	958	6,038,331	486.88
State Government	11	358	414	415	2,559,562	497.61
CRAIGHEAD COUNTY - TOTAL	2,695	41,272	41,400	41,651	\$323,197,584	\$599.92
Natural Resources & Mining	59	201	208	217	1,181,005	435.37
Construction	238	1,638	1,621	1,652	12,396,246	582.50
Manufacturing	133	6,815	6,792	6,779	61,082,004	691.45
Trade, Transportation & Utilities	754	8,733	8,686	8,720	59,764,903	527.64
Wholesale Trade	190	1,688	1,690	1,702	18,234,610	828.34
Retail Trade	439	5,823	5,759	5,801	30,201,092	400.94
Transportation, Warehousing & Utilities	125	1,222	1,237	1,217	11,329,201	711.22
Information	33	580	575	578	5,074,691	675.75
Financial Activities	258	1,660	1,653	1,645	17,177,502	799.52
Professional & Business Services	357	3,374	3,432	3,508	22,347,375	500.01
Education & Health Services	419	7,225	7,218	7,280	69,251,029	735.67
Leisure & Hospitality	204	3,883	3,976	4,014	16,683,890	324.28
Other Services	177	906	905	898	4,539,179	386.68
Local Government	38	3,709	3,774	3,796	28,209,110	577.16
State Government	25	2,548	2,560	2,564	25,490,650	766.74

**TABLE 6. COUNTY SUMMARY
EMPLOYMENT AND TOTAL EARNINGS, BY INDUSTRY
FIRST QUARTER 2008**

NORTH AMERICAN INDUSTRY CLASSIFICATION SYSTEM INDUSTRY GROUP	NUMBER OF EMPLOYING UNITS	EMPLOYMENT			TOTAL EARNINGS	AVERAGE WEEKLY EARNINGS
		JANUARY	FEBRUARY	MARCH	JANUARY - MARCH	
CRAWFORD COUNTY - TOTAL	1,288	19,859	20,002	20,125	\$140,679,167	\$541.20
Natural Resources & Mining	26	430	490	497	4,408,897	718.02
Construction	187	1,403	1,411	1,427	11,377,630	619.10
Manufacturing	78	3,640	3,630	3,639	26,282,342	555.98
Trade, Transportation & Utilities	314	6,761	6,750	6,739	50,448,387	574.91
Wholesale Trade	82	729	725	742	7,120,919	748.31
Retail Trade	158	1,947	1,980	1,980	9,894,001	386.53
Transportation, Warehousing & Utilities	74	4,085	4,045	4,017	33,433,467	635.17
Information	12	185	183	182	1,586,159	665.52
Financial Activities	143	562	567	561	4,297,478	586.82
Professional & Business Services	156	1,256	1,313	1,364	7,804,963	457.96
Education & Health Services	150	1,365	1,400	1,414	10,326,509	570.24
Leisure & Hospitality	89	1,531	1,533	1,560	4,316,671	215.43
Other Services	81	385	389	394	2,389,620	472.13
Local Government	41	2,170	2,166	2,178	15,965,285	565.60
State Government	11	171	170	170	1,475,226	666.22
CRITTENDEN COUNTY - TOTAL	1,277	16,728	16,664	16,880	\$127,007,479	\$583.02
Natural Resources & Mining	41	212	208	229	1,192,999	424.20
Construction	72	454	445	489	3,733,752	620.77
Manufacturing	45	2,244	2,203	2,233	22,138,553	764.80
Trade, Transportation & Utilities	340	4,811	4,683	4,742	38,368,824	621.97
Wholesale Trade	79	791	765	801	9,307,757	911.30
Retail Trade	174	2,061	2,015	2,015	10,339,615	391.74
Transportation, Warehousing & Utilities	87	1,959	1,903	1,926	18,721,452	746.43
Information	7	69	68	70	650,886	725.63
Financial Activities	110	576	582	593	5,685,287	749.28
Professional & Business Services	131	763	827	812	5,287,834	508.02
Education & Health Services	274	2,113	2,136	2,179	16,895,763	606.57
Leisure & Hospitality	104	1,941	1,932	1,961	6,718,414	265.75
Other Services	92	553	571	579	3,175,013	430.24
Local Government	46	2,489	2,499	2,479	19,532,081	603.64
State Government	15	503	510	514	3,628,073	548.30

**TABLE 6. COUNTY SUMMARY
EMPLOYMENT AND TOTAL EARNINGS, BY INDUSTRY
FIRST QUARTER 2008**

NORTH AMERICAN INDUSTRY CLASSIFICATION SYSTEM INDUSTRY GROUP	NUMBER OF EMPLOYING UNITS	EMPLOYMENT			TOTAL EARNINGS	AVERAGE WEEKLY EARNINGS
		JANUARY	FEBRUARY	MARCH	JANUARY - MARCH	
CROSS COUNTY - TOTAL	538	4,793	4,851	4,930	\$32,159,225	\$509.22
Natural Resources & Mining	36	166	176	188	768,198	334.48
Construction	32	142	151	161	931,953	473.71
Manufacturing	14	615	632	652	5,258,156	638.98
Trade, Transportation & Utilities	136	1,191	1,194	1,221	8,203,602	525.00
Wholesale Trade	28	267	271	282	2,330,758	655.94
Retail Trade	71	701	700	709	3,725,583	407.46
Transportation, Warehousing & Utilities	37	223	223	230	2,147,261	733.02
Information	4	42	41	42	286,009	528.02
Financial Activities	47	341	344	347	2,713,303	606.73
Professional & Business Services	45	202	187	185	1,306,991	525.46
Education & Health Services	122	695	698	707	4,190,533	460.50
Leisure & Hospitality	34	391	374	372	906,985	184.08
Other Services	40	70	77	76	368,804	381.65
Local Government	17	718	758	760	5,521,131	569.82
State Government	11	220	219	219	1,703,560	597.46
DALLAS COUNTY - TOTAL	279	3,298	3,268	3,309	\$21,712,043	\$507.39
Natural Resources & Mining	41	193	186	189	1,291,557	524.74
Construction	15	54	67	60	411,893	525.15
Manufacturing	16	927	893	921	8,185,866	689.18
Trade, Transportation & Utilities	67	466	460	462	2,702,969	449.40
Wholesale Trade	7	24	24	29	202,778	607.73
Retail Trade	43	350	344	341	1,801,990	401.78
Transportation, Warehousing & Utilities	17	92	92	92	698,201	583.78
Information	3	21	21	21	151,272	554.11
Financial Activities	20	106	107	107	735,723	530.57
Professional & Business Services	16	48	46	42	561,027	951.97
Education & Health Services	48	767	776	773	4,151,414	413.65
Leisure & Hospitality	14	127	122	124	263,730	163.17
Other Services	14	61	59	61	259,994	331.48
Local Government	16	459	461	478	2,509,677	414.27
State Government	9	69	70	71	486,921	535.08

**TABLE 6. COUNTY SUMMARY
EMPLOYMENT AND TOTAL EARNINGS, BY INDUSTRY
FIRST QUARTER 2008**

NORTH AMERICAN INDUSTRY CLASSIFICATION SYSTEM INDUSTRY GROUP	NUMBER OF EMPLOYING UNITS	EMPLOYMENT			TOTAL EARNINGS	AVERAGE WEEKLY EARNINGS
		JANUARY	FEBRUARY	MARCH	JANUARY - MARCH	
DESHA COUNTY - TOTAL	493	4,502	4,514	4,625	\$33,112,735	\$560.18
Natural Resources & Mining	50	212	217	239	1,412,546	487.98
Construction	21	124	128	129	862,401	522.35
Manufacturing	19	1,076	1,072	1,076	11,495,675	822.84
Trade, Transportation & Utilities	130	878	879	882	5,578,880	487.85
Wholesale Trade	19	162	162	171	1,801,614	839.91
Retail Trade	82	559	560	556	2,546,225	350.80
Transportation, Warehousing & Utilities	29	157	157	155	1,231,041	605.73
Information	6	26	18	19	237,049	868.31
Financial Activities	45	196	199	201	1,380,641	534.58
Professional & Business Services	35	135	135	123	881,046	517.35
Education & Health Services	101	616	623	636	3,496,423	430.33
Leisure & Hospitality	32	251	264	275	633,116	184.94
Other Services	24	68	65	70	327,626	372.44
Local Government	19	741	732	790	5,504,924	561.36
State Government	11	179	182	185	1,302,408	550.47
DREW COUNTY - TOTAL	533	6,658	6,765	6,919	\$40,990,424	\$465.01
Natural Resources & Mining	42	280	302	313	2,200,046	567.27
Construction	22	96	107	99	538,840	411.75
Manufacturing	23	767	777	814	4,846,359	474.30
Trade, Transportation & Utilities	129	1,184	1,192	1,201	7,479,315	482.53
Wholesale Trade	21	198	199	196	1,717,480	668.37
Retail Trade	88	884	895	904	4,719,427	405.93
Transportation, Warehousing & Utilities	20	102	98	101	1,042,408	799.19
Information	6	70	73	74	483,098	513.75
Financial Activities	48	246	244	245	2,329,787	731.49
Professional & Business Services	46	304	319	318	2,106,281	516.54
Education & Health Services	111	928	898	904	5,017,088	424.10
Leisure & Hospitality	41	571	587	658	1,313,136	166.87
Other Services	25	81	76	82	365,588	353.00
Local Government	23	1,280	1,297	1,295	8,020,868	478.04
State Government	17	851	893	916	6,290,018	545.69

**TABLE 6. COUNTY SUMMARY
EMPLOYMENT AND TOTAL EARNINGS, BY INDUSTRY
FIRST QUARTER 2008**

NORTH AMERICAN INDUSTRY CLASSIFICATION SYSTEM INDUSTRY GROUP	NUMBER OF EMPLOYING UNITS	EMPLOYMENT			TOTAL EARNINGS	AVERAGE WEEKLY EARNINGS
		JANUARY	FEBRUARY	MARCH	JANUARY - MARCH	
FAULKNER COUNTY - TOTAL	2,645	38,924	38,893	39,009	\$324,172,968	\$640.35
Natural Resources & Mining	33	737	736	735	12,713,368	1328.74
Construction	372	2,932	2,849	2,864	23,075,205	615.97
Manufacturing	123	4,974	4,657	4,589	49,849,573	808.98
Trade, Transportation & Utilities	627	6,746	6,727	6,749	45,730,766	521.87
Wholesale Trade	162	788	791	808	8,994,700	869.59
Retail Trade	380	5,003	4,952	4,969	26,132,081	404.08
Transportation, Warehousing & Utilities	85	955	984	972	10,603,985	840.63
Information	35	353	346	358	3,630,444	792.62
Financial Activities	322	1,505	1,511	1,518	17,557,889	893.65
Professional & Business Services	372	4,981	5,107	5,098	62,378,759	947.92
Education & Health Services	358	5,405	5,511	5,557	39,311,973	550.72
Leisure & Hospitality	199	3,929	4,001	4,044	10,797,839	208.10
Other Services	145	620	620	633	3,441,927	424.07
Local Government	40	3,396	3,403	3,438	27,022,958	609.17
State Government	19	3,346	3,425	3,426	28,662,267	648.66
FRANKLIN COUNTY - TOTAL	335	4,244	4,265	4,327	\$31,355,328	\$563.71
Natural Resources & Mining	12	176	172	181	1,824,975	796.12
Construction	33	244	237	241	1,936,477	618.95
Manufacturing	23	921	956	949	8,276,358	675.84
Trade, Transportation & Utilities	86	850	833	857	6,467,064	587.56
Wholesale Trade	17	44	45	44	288,545	500.66
Retail Trade	49	497	473	505	2,313,130	361.90
Transportation, Warehousing & Utilities	20	309	315	308	3,865,389	957.10
Information	6	49	48	49	271,910	429.78
Financial Activities	29	233	233	233	1,740,164	574.50
Professional & Business Services	23	76	81	82	503,671	486.33
Education & Health Services	48	457	469	476	2,655,132	437.03
Leisure & Hospitality	27	294	282	299	701,719	185.07
Other Services	19	52	52	50	287,400	430.67
Local Government	19	773	775	783	5,559,288	550.37
State Government	10	119	127	127	1,131,170	699.84

**TABLE 6. COUNTY SUMMARY
EMPLOYMENT AND TOTAL EARNINGS, BY INDUSTRY
FIRST QUARTER 2008**

NORTH AMERICAN INDUSTRY CLASSIFICATION SYSTEM INDUSTRY GROUP	NUMBER OF EMPLOYING UNITS	EMPLOYMENT			TOTAL EARNINGS	AVERAGE WEEKLY EARNINGS
		JANUARY	FEBRUARY	MARCH	JANUARY - MARCH	
FULTON COUNTY - TOTAL	237	1,900	1,894	1,936	\$10,596,561	\$426.76
Construction	16	37	37	36	213,009	446.87
Manufacturing	12	104	105	114	490,121	350.17
Trade, Transportation & Utilities	65	397	377	382	2,556,860	510.42
Wholesale Trade	15	73	63	65	423,582	486.32
Retail Trade	41	193	186	183	692,198	284.23
Transportation, Warehousing & Utilities	9	131	128	134	1,441,080	846.20
Financial Activities	14	89	89	88	678,773	588.87
Professional & Business Services	14	58	61	63	347,151	440.17
Education & Health Services	62	400	396	402	2,004,558	386.14
Leisure & Hospitality	17	133	136	147	325,231	180.42
Local Government	13	501	511	520	2,992,504	450.77
State Government	11	110	111	112	692,639	480.00
Other	13	71	71	72	295,715	318.89
GARLAND COUNTY - TOTAL	3,340	36,702	36,744	37,434	\$256,239,136	\$533.30
Natural Resources & Mining	45	359	341	346	4,361,820	962.31
Construction	456	2,207	2,160	2,215	14,636,090	513.15
Manufacturing	122	2,675	2,621	2,616	21,728,889	633.77
Trade, Transportation & Utilities	732	7,392	7,303	7,399	47,832,418	499.60
Wholesale Trade	160	1,001	1,000	996	9,603,474	739.47
Retail Trade	506	5,782	5,693	5,785	32,011,407	428.00
Transportation, Warehousing & Utilities	66	609	610	618	6,217,537	781.06
Information	41	389	396	387	3,498,436	688.85
Financial Activities	374	1,497	1,523	1,528	13,276,450	673.66
Professional & Business Services	428	3,478	3,428	3,500	23,402,087	518.98
Education & Health Services	469	7,156	7,159	7,227	63,685,806	682.24
Leisure & Hospitality	381	6,344	6,489	6,805	22,553,505	265.03
Other Services	231	930	951	957	5,054,895	411.03
Local Government	34	3,194	3,244	3,284	26,738,156	634.68
State Government	27	1,081	1,129	1,170	9,470,584	646.60

**TABLE 6. COUNTY SUMMARY
EMPLOYMENT AND TOTAL EARNINGS, BY INDUSTRY
FIRST QUARTER 2008**

NORTH AMERICAN INDUSTRY CLASSIFICATION SYSTEM INDUSTRY GROUP	NUMBER OF EMPLOYING UNITS	EMPLOYMENT			TOTAL EARNINGS	AVERAGE WEEKLY EARNINGS
		JANUARY	FEBRUARY	MARCH	JANUARY - MARCH	
GRANT COUNTY - TOTAL	304	4,036	4,008	4,017	\$26,734,466	\$511.52
Natural Resources & Mining	22	164	160	152	2,014,922	976.85
Construction	29	216	218	221	1,805,365	636.07
Manufacturing	16	1,044	1,026	1,018	7,411,629	553.88
Trade, Transportation & Utilities	84	627	621	639	3,965,599	484.97
Wholesale Trade	18	132	135	134	1,398,320	804.71
Retail Trade	41	421	414	436	2,097,108	380.76
Transportation, Warehousing & Utilities	25	74	72	69	470,171	504.66
Information	4	30	29	30	253,913	658.37
Financial Activities	25	108	105	101	838,746	616.42
Professional & Business Services	25	115	114	112	942,679	637.95
Education & Health Services	44	445	453	446	2,274,162	390.48
Leisure & Hospitality	20	245	261	243	659,355	203.15
Other Services	16	51	52	53	203,877	301.59
Local Government	10	933	911	943	5,943,914	492.17
State Government	9	58	58	59	420,305	554.25
GREENE COUNTY - TOTAL	940	14,295	14,652	14,588	\$103,348,684	\$547.83
Natural Resources & Mining	38	181	193	197	1,042,064	421.15
Construction	88	299	291	312	2,109,040	539.58
Manufacturing	59	5,022	5,028	5,159	46,343,564	703.18
Trade, Transportation & Utilities	247	2,329	2,343	2,334	13,864,585	456.68
Wholesale Trade	56	440	446	438	3,645,686	635.43
Retail Trade	160	1,699	1,698	1,696	8,458,470	383.26
Transportation, Warehousing & Utilities	31	190	199	200	1,760,429	689.73
Information	11	115	114	110	578,114	393.54
Financial Activities	92	502	500	512	3,727,135	568.10
Professional & Business Services	95	997	1,284	1,016	6,372,755	446.05
Education & Health Services	146	1,702	1,733	1,753	11,556,142	514.03
Leisure & Hospitality	69	1,127	1,122	1,137	2,918,412	198.90
Other Services	53	185	188	190	951,893	390.17
Local Government	31	1,568	1,585	1,601	11,785,379	572.09
State Government	11	268	271	267	2,099,601	601.15

**TABLE 6. COUNTY SUMMARY
EMPLOYMENT AND TOTAL EARNINGS, BY INDUSTRY
FIRST QUARTER 2008**

NORTH AMERICAN INDUSTRY CLASSIFICATION SYSTEM INDUSTRY GROUP	NUMBER OF EMPLOYING UNITS	EMPLOYMENT			TOTAL EARNINGS	AVERAGE WEEKLY EARNINGS
		JANUARY	FEBRUARY	MARCH	JANUARY - MARCH	
HEMPSTEAD COUNTY - TOTAL	501	7,964	7,973	8,014	\$54,346,711	\$523.63
Natural Resources & Mining	17	215	213	211	1,557,891	562.62
Construction	31	135	133	133	852,269	490.47
Manufacturing	29	2,228	2,231	2,238	17,491,160	602.72
Trade, Transportation & Utilities	132	1,391	1,385	1,368	8,882,164	494.63
Wholesale Trade	27	269	271	267	1,730,267	494.79
Retail Trade	85	882	873	885	4,464,949	390.29
Transportation, Warehousing & Utilities	20	240	241	216	2,686,948	889.62
Information	9	51	50	60	507,639	727.62
Financial Activities	43	259	262	263	2,396,210	705.32
Professional & Business Services	36	274	277	290	1,378,837	378.35
Education & Health Services	74	957	960	958	6,336,865	508.64
Leisure & Hospitality	46	645	656	660	1,639,885	192.98
Other Services	38	204	195	201	1,499,117	576.58
Local Government	29	1,065	1,057	1,074	7,386,824	533.37
State Government	17	540	554	558	4,417,850	617.13
HOT SPRING COUNTY - TOTAL	610	7,494	7,537	7,517	\$55,840,123	\$571.50
Natural Resources & Mining	29	200	197	197	1,244,817	483.61
Construction	71	332	329	323	2,423,753	568.42
Manufacturing	37	1,486	1,450	1,446	16,427,913	865.14
Trade, Transportation & Utilities	159	1,430	1,404	1,426	9,999,793	541.70
Wholesale Trade	21	94	91	88	833,000	704.14
Retail Trade	97	945	923	953	4,918,849	402.38
Transportation, Warehousing & Utilities	41	391	390	385	4,247,944	840.73
Information	8	63	64	64	496,446	599.81
Financial Activities	58	307	306	309	2,585,529	647.14
Professional & Business Services	52	208	216	183	1,379,998	524.65
Education & Health Services	76	1,112	1,099	1,110	6,783,725	471.39
Leisure & Hospitality	42	490	511	510	1,294,361	197.68
Other Services	38	179	185	182	818,016	345.74
Local Government	26	1,091	1,115	1,107	7,545,493	525.59
State Government	14	596	661	660	4,840,279	582.67

**TABLE 6. COUNTY SUMMARY
EMPLOYMENT AND TOTAL EARNINGS, BY INDUSTRY
FIRST QUARTER 2008**

NORTH AMERICAN INDUSTRY CLASSIFICATION SYSTEM INDUSTRY GROUP	NUMBER OF EMPLOYING UNITS	EMPLOYMENT			TOTAL EARNINGS	AVERAGE WEEKLY EARNINGS
		JANUARY	FEBRUARY	MARCH	JANUARY - MARCH	
HOWARD COUNTY - TOTAL	362	7,493	7,573	7,574	\$50,687,168	\$516.65
Natural Resources & Mining	24	248	254	257	1,933,434	587.85
Construction	20	136	128	126	1,091,807	646.04
Manufacturing	26	3,989	4,034	4,036	28,989,635	554.77
Trade, Transportation & Utilities	103	969	965	981	6,049,209	478.89
Wholesale Trade	18	91	88	88	925,563	799.97
Retail Trade	61	620	624	632	2,970,918	365.46
Transportation, Warehousing & Utilities	24	258	253	261	2,152,728	643.50
Information	5	35	35	35	236,029	518.75
Financial Activities	40	172	165	173	1,160,323	525.03
Professional & Business Services	27	136	139	133	863,107	488.18
Education & Health Services	47	573	582	567	3,441,119	461.15
Leisure & Hospitality	20	284	300	303	733,491	190.83
Other Services	20	121	122	122	635,015	401.48
Local Government	18	691	700	691	4,516,200	500.58
State Government	12	139	149	150	1,037,799	546.79
INDEPENDENCE COUNTY - TOTAL	949	15,584	15,569	15,606	\$111,357,170	\$549.58
Natural Resources & Mining	14	131	131	122	1,046,229	628.74
Construction	72	461	443	451	2,831,920	482.30
Manufacturing	55	4,032	3,993	4,005	34,472,040	661.27
Trade, Transportation & Utilities	261	3,055	3,065	3,065	22,246,199	558.93
Wholesale Trade	50	568	566	571	4,783,556	647.45
Retail Trade	158	1,677	1,651	1,663	8,070,765	373.17
Transportation, Warehousing & Utilities	53	810	848	831	9,391,878	870.77
Information	10	142	144	137	1,077,355	587.76
Financial Activities	88	543	519	511	4,343,227	637.18
Professional & Business Services	96	855	796	811	4,101,869	384.48
Education & Health Services	157	2,929	2,939	2,934	23,544,687	617.29
Leisure & Hospitality	64	997	1,008	1,020	2,647,053	201.94
Other Services	68	377	403	412	1,730,875	335.09
Local Government	47	1,619	1,629	1,642	9,493,505	448.02
State Government	17	443	499	496	3,822,211	613.39

**TABLE 6. COUNTY SUMMARY
EMPLOYMENT AND TOTAL EARNINGS, BY INDUSTRY
FIRST QUARTER 2008**

NORTH AMERICAN INDUSTRY CLASSIFICATION SYSTEM INDUSTRY GROUP	NUMBER OF EMPLOYING UNITS	EMPLOYMENT			TOTAL EARNINGS	AVERAGE WEEKLY EARNINGS
		JANUARY	FEBRUARY	MARCH	JANUARY - MARCH	
IZARD COUNTY - TOTAL	284	3,117	3,107	3,086	\$18,018,682	\$446.63
Natural Resources & Mining	4	84	86	86	904,994	815.80
Construction	26	69	68	70	448,178	499.64
Trade, Transportation & Utilities	70	540	534	528	2,611,909	376.25
Retail Trade	50	424	420	417	1,850,347	338.62
Other Trade, Transportation & Utilities	20	116	114	111	761,562	515.38
Financial Activities	29	157	150	151	988,862	498.25
Professional & Business Services	20	76	85	88	421,795	390.91
Education & Health Services	60	582	577	578	2,848,607	378.45
Leisure & Hospitality	20	189	185	195	356,608	144.63
Local Government	18	541	535	536	3,313,380	474.33
State Government	11	435	485	486	3,533,704	579.99
Other	26	444	402	368	2,590,645	492.46
JACKSON COUNTY - TOTAL	513	5,469	5,601	5,598	\$40,583,943	\$561.89
Natural Resources & Mining	47	167	186	199	962,680	402.46
Construction	25	103	112	130	820,330	548.72
Manufacturing	25	1,100	1,166	1,155	11,503,844	776.01
Trade, Transportation & Utilities	117	1,101	1,098	1,096	7,047,478	493.58
Wholesale Trade	28	212	217	218	1,989,781	709.71
Retail Trade	71	656	653	644	3,319,417	392.23
Transportation, Warehousing & Utilities	18	233	228	234	1,738,280	577.18
Information	5	41	39	38	291,272	569.63
Financial Activities	40	173	175	174	1,602,155	708.29
Professional & Business Services	37	139	141	143	997,389	544.13
Education & Health Services	110	867	882	872	6,009,129	529.08
Leisure & Hospitality	33	289	284	281	826,146	223.24
Other Services	28	97	101	100	513,798	397.88
Local Government	32	707	722	711	4,140,522	446.50
State Government	14	685	695	699	5,869,200	651.48

**TABLE 6. COUNTY SUMMARY
EMPLOYMENT AND TOTAL EARNINGS, BY INDUSTRY
FIRST QUARTER 2008**

NORTH AMERICAN INDUSTRY CLASSIFICATION SYSTEM INDUSTRY GROUP	NUMBER OF EMPLOYING UNITS	EMPLOYMENT			TOTAL EARNINGS	AVERAGE WEEKLY EARNINGS
		JANUARY	FEBRUARY	MARCH	JANUARY - MARCH	
JEFFERSON COUNTY - TOTAL	2,018	30,330	30,703	30,875	\$251,373,591	\$631.17
Natural Resources & Mining	43	401	412	429	5,014,637	931.74
Construction	121	1,312	1,342	1,269	16,471,275	968.92
Manufacturing	70	5,714	5,779	5,783	60,149,669	803.47
Trade, Transportation & Utilities	450	5,601	5,528	5,605	41,520,877	572.59
Wholesale Trade	83	1,057	1,068	1,087	9,277,624	666.56
Retail Trade	301	3,688	3,609	3,660	20,244,557	426.38
Transportation, Warehousing & Utilities	66	856	851	858	11,998,696	1079.50
Information	14	160	172	173	1,213,519	554.54
Financial Activities	159	1,188	1,196	1,186	13,057,151	844.03
Professional & Business Services	182	1,727	1,757	1,657	13,792,017	619.10
Education & Health Services	608	5,161	5,147	5,202	37,630,293	559.89
Leisure & Hospitality	149	2,001	2,075	2,133	5,635,413	209.45
Other Services	138	641	652	665	3,916,978	461.65
Local Government	44	3,331	3,390	3,405	24,693,963	562.77
State Government	40	3,093	3,253	3,368	28,277,799	671.78
JOHNSON COUNTY - TOTAL	482	8,766	8,779	8,865	\$58,074,149	\$507.45
Natural Resources & Mining	18	232	240	246	1,973,333	634.24
Construction	25	158	139	148	1,063,224	551.37
Manufacturing	46	2,996	3,032	3,056	20,934,704	531.82
Trade, Transportation & Utilities	117	2,060	2,053	2,068	13,512,596	504.50
Retail Trade	78	884	888	903	4,414,023	380.79
Other Trade, Transportation & Utilities	39	1,176	1,165	1,165	9,098,573	598.88
Information	6	35	34	34	199,509	447.00
Financial Activities	46	222	227	229	1,656,502	563.82
Professional & Business Services	51	170	172	177	1,364,778	606.84
Education & Health Services	84	1,151	1,152	1,157	7,630,625	508.93
Leisure & Hospitality	37	512	507	509	1,323,168	199.83
Other Services	28	67	64	68	380,406	441.14
Local Government	14	1,001	992	1,004	6,690,575	515.17
State Government	10	162	167	169	1,344,729	623.14

**TABLE 6. COUNTY SUMMARY
EMPLOYMENT AND TOTAL EARNINGS, BY INDUSTRY
FIRST QUARTER 2008**

NORTH AMERICAN INDUSTRY CLASSIFICATION SYSTEM INDUSTRY GROUP	NUMBER OF EMPLOYING UNITS	EMPLOYMENT			TOTAL EARNINGS	AVERAGE WEEKLY EARNINGS
		JANUARY	FEBRUARY	MARCH	JANUARY - MARCH	
LAFAYETTE COUNTY - TOTAL	177	1,377	1,381	1,413	\$8,607,356	\$476.22
Natural Resources & Mining	38	182	167	170	1,378,501	612.94
Construction	9	49	49	48	464,247	733.79
Manufacturing	6	48	49	48	406,129	646.36
Trade, Transportation & Utilities	33	196	199	201	1,311,526	507.82
Wholesale Trade	5	42	36	37	430,489	863.86
Retail Trade	21	131	140	141	591,933	331.55
Transportation, Warehousing & Utilities	7	23	23	23	289,104	966.90
Financial Activities	17	52	53	61	394,488	548.41
Professional & Business Services	10	93	97	91	666,246	547.15
Education & Health Services	26	234	233	243	1,022,198	332.24
Leisure & Hospitality	9	39	46	49	141,183	243.14
Local Government	13	342	342	352	1,955,939	435.69
State Government	8	52	53	54	380,127	551.71
Other	8	90	93	96	486,772	402.62
LAWRENCE COUNTY - TOTAL	439	4,057	4,082	4,085	24,476,518	\$462.08
Natural Resources & Mining	38	171	172	172	1,191,419	533.87
Construction	25	66	61	67	363,955	432.94
Manufacturing	22	535	517	503	3,128,857	464.34
Trade, Transportation & Utilities	131	863	871	875	5,396,132	477.29
Wholesale Trade	22	176	164	170	1,301,940	589.11
Retail Trade	70	550	556	555	2,713,300	376.97
Transportation, Warehousing & Utilities	39	137	151	150	1,380,892	727.55
Financial Activities	37	158	162	161	995,366	477.55
Professional & Business Services	23	114	114	113	1,029,749	696.88
Education & Health Services	76	456	460	461	3,158,872	529.39
Leisure & Hospitality	23	319	333	335	676,481	158.17
Local Government	28	1,180	1,198	1,204	7,350,915	473.58
State Government	11	120	118	120	787,178	507.42
Other	25	75	76	74	397,594	407.79

**TABLE 6. COUNTY SUMMARY
EMPLOYMENT AND TOTAL EARNINGS, BY INDUSTRY
FIRST QUARTER 2008**

NORTH AMERICAN INDUSTRY CLASSIFICATION SYSTEM INDUSTRY GROUP	NUMBER OF EMPLOYING UNITS	EMPLOYMENT			TOTAL EARNINGS	AVERAGE WEEKLY EARNINGS
		JANUARY	FEBRUARY	MARCH	JANUARY - MARCH	
LEE COUNTY - TOTAL	285	1,967	2,029	2,049	\$13,451,967	\$513.53
Natural Resources & Mining	34	123	159	180	768,668	383.95
Construction	10	29	23	27	198,889	580.98
Trade, Transportation & Utilities	51	336	364	358	2,019,184	440.42
Wholesale Trade	8	46	62	63	482,877	651.66
Retail Trade	26	193	201	196	793,450	310.35
Transportation, Warehousing & Utilities	17	97	101	99	742,857	577.20
Financial Activities	17	74	73	73	711,474	746.30
Professional & Business Services	17	59	59	64	639,496	810.86
Education & Health Services	102	353	359	355	2,083,587	450.64
Leisure & Hospitality	8	100	90	92	195,128	159.68
Local Government	14	347	349	345	2,468,514	547.22
State Government	8	488	495	499	4,107,314	639.57
Other	24	58	58	56	259,713	348.45
LINCOLN COUNTY - TOTAL	264	2,950	2,974	3,008	\$20,726,566	\$535.50
Natural Resources & Mining	33	140	143	134	1,050,593	581.40
Construction	13	73	73	74	412,752	432.96
Manufacturing	11	367	371	382	3,209,985	661.40
Trade, Transportation & Utilities	50	343	348	358	2,496,514	549.21
Wholesale Trade	7	27	27	28	292,809	824.04
Retail Trade	25	183	186	194	647,819	265.54
Transportation, Warehousing & Utilities	18	133	135	136	1,555,886	888.74
Financial Activities	23	79	78	80	653,877	636.69
Professional & Business Services	13	23	22	25	140,325	462.61
Education & Health Services	69	365	366	367	1,799,971	378.30
Leisure & Hospitality	17	164	167	162	360,906	168.94
Local & State Government	22	1,368	1,376	1,391	10,411,305	581.04
Other	13	28	30	35	190,338	472.30

**TABLE 6. COUNTY SUMMARY
EMPLOYMENT AND TOTAL EARNINGS, BY INDUSTRY
FIRST QUARTER 2008**

NORTH AMERICAN INDUSTRY CLASSIFICATION SYSTEM INDUSTRY GROUP	NUMBER OF EMPLOYING UNITS	EMPLOYMENT			TOTAL EARNINGS	AVERAGE WEEKLY EARNINGS
		JANUARY	FEBRUARY	MARCH	JANUARY - MARCH	
LITTLE RIVER COUNTY - TOTAL	263	4,131	4,197	4,235	\$47,258,547	\$868.09
Natural Resources & Mining	11	81	76	71	540,149	546.71
Construction	25	400	466	514	4,777,093	798.84
Manufacturing	16	1,370	1,367	1,366	28,827,489	1621.37
Trade, Transportation & Utilities	63	669	658	642	3,682,541	431.60
Retail Trade	39	403	393	380	1,803,717	353.95
Other Trade, Transportation & Utilities	24	266	265	262	1,878,824	546.75
Financial Activities	23	98	96	95	618,672	494.02
Professional & Business Services	23	143	153	156	938,095	478.95
Education & Health Services	33	168	167	173	934,537	424.53
Leisure & Hospitality	20	211	212	208	513,062	187.64
Local Government	20	802	811	812	5,359,122	509.99
State Government	12	89	95	97	619,450	508.72
Other	17	100	96	101	448,337	348.36
LOGAN COUNTY - TOTAL	495	6,143	6,179	6,175	\$40,282,593	\$502.57
Natural Resources & Mining	21	164	160	157	1,513,491	726.13
Construction	53	191	164	167	1,166,616	515.75
Manufacturing	29	1,918	1,927	1,903	14,755,987	592.42
Trade, Transportation & Utilities	116	855	868	867	4,865,420	433.51
Wholesale Trade	16	24	27	37	223,245	585.43
Retail Trade	75	742	748	739	3,720,774	385.21
Transportation, Warehousing & Utilities	25	89	93	91	921,401	778.87
Information	6	39	39	39	328,516	647.96
Financial Activities	44	260	261	265	2,269,085	666.20
Professional & Business Services	42	120	123	127	689,951	430.32
Education & Health Services	92	752	763	766	4,634,753	468.90
Leisure & Hospitality	27	334	336	358	742,734	166.73
Other Services	28	82	83	81	465,017	436.23
Local & State Government	37	1,428	1,455	1,445	8,851,023	471.94

**TABLE 6. COUNTY SUMMARY
EMPLOYMENT AND TOTAL EARNINGS, BY INDUSTRY
FIRST QUARTER 2008**

NORTH AMERICAN INDUSTRY CLASSIFICATION SYSTEM INDUSTRY GROUP	NUMBER OF EMPLOYING UNITS	EMPLOYMENT			TOTAL EARNINGS	AVERAGE WEEKLY EARNINGS
		JANUARY	FEBRUARY	MARCH	JANUARY - MARCH	
LONOKE COUNTY - TOTAL	1,311	12,600	12,591	12,624	\$83,414,503	\$509.04
Natural Resources & Mining	73	372	396	437	3,117,518	597.04
Construction	175	1,007	971	943	7,579,478	598.81
Manufacturing	40	1,369	1,355	1,352	12,963,743	733.96
Trade, Transportation & Utilities	353	2,872	2,866	2,886	18,173,769	486.31
Wholesale Trade	88	564	584	582	5,408,332	721.43
Retail Trade	188	2,012	1,990	2,019	10,417,864	399.29
Transportation, Warehousing & Utilities	77	296	292	285	2,347,573	620.56
Information	14	92	91	95	899,784	746.92
Financial Activities	136	515	518	521	4,804,722	713.50
Professional & Business Services	142	587	605	610	4,065,383	520.62
Education & Health Services	165	1,440	1,441	1,439	8,723,440	466.00
Leisure & Hospitality	98	1,461	1,444	1,447	3,739,573	198.29
Other Services	71	197	203	213	1,198,517	451.19
Local Government	28	2,528	2,541	2,522	17,006,369	517.00
State Government	16	160	160	159	1,142,207	550.28
MADISON COUNTY - TOTAL	262	3,213	3,229	3,240	20,785,849	\$495.43
Natural Resources & Mining	11	55	57	54	363,810	505.76
Construction	45	97	100	93	588,339	468.17
Manufacturing	20	1,160	1,163	1,157	7,933,702	526.11
Trade, Transportation & Utilities	59	592	600	615	4,029,487	514.60
Wholesale Trade	10	32	32	32	508,053	1221.28
Retail Trade	37	397	396	404	2,068,024	398.69
Transportation, Warehousing & Utilities	12	163	172	179	1,453,410	652.53
Financial Activities	17	78	77	75	602,361	604.38
Professional & Business Services	21	107	108	109	607,774	432.89
Education & Health Services	42	256	249	249	1,282,567	392.54
Leisure & Hospitality	12	122	125	131	260,503	159.04
Local Government	9	623	624	630	4,149,172	510.12
State Government	8	56	57	57	395,322	536.64
Other	18	67	69	70	572,812	641.69

**TABLE 6. COUNTY SUMMARY
EMPLOYMENT AND TOTAL EARNINGS, BY INDUSTRY
FIRST QUARTER 2008**

NORTH AMERICAN INDUSTRY CLASSIFICATION SYSTEM INDUSTRY GROUP	NUMBER OF EMPLOYING UNITS	EMPLOYMENT			TOTAL EARNINGS	AVERAGE WEEKLY EARNINGS
		JANUARY	FEBRUARY	MARCH	JANUARY - MARCH	
MARION COUNTY - TOTAL	322	4,124	4,105	4,135	\$24,675,554	\$460.56
Natural Resources & Mining	7	52	53	48	231,239	348.78
Construction	27	79	71	84	385,896	380.57
Manufacturing	22	1,705	1,681	1,681	11,287,144	514.06
Trade, Transportation & Utilities	60	640	637	652	3,142,916	375.99
Wholesale Trade	9	33	34	35	288,437	652.57
Retail Trade	39	468	464	478	2,025,303	331.47
Transportation, Warehousing & Utilities	12	139	139	139	829,176	458.87
Financial Activities	35	173	174	191	1,487,173	637.91
Professional & Business Services	28	49	48	50	383,713	602.38
Education & Health Services	56	366	375	374	1,975,880	408.94
Leisure & Hospitality	39	203	211	217	564,034	206.28
Local Government	20	567	575	574	3,382,831	454.93
State Government	8	109	110	104	691,487	494.04
Other	20	181	170	160	1,143,241	516.29
MILLER COUNTY - TOTAL	861	12,833	12,906	13,009	\$104,494,094	\$622.33
Natural Resources & Mining	26	138	133	138	910,948	513.98
Construction	97	745	727	756	5,086,320	526.83
Manufacturing	33	2,354	2,333	2,368	32,792,677	1072.65
Trade, Transportation & Utilities	229	3,398	3,393	3,412	27,517,408	622.38
Wholesale Trade	56	562	552	549	6,156,945	854.38
Retail Trade	132	1,395	1,359	1,393	7,114,672	395.91
Transportation, Warehousing & Utilities	41	1,441	1,482	1,470	14,245,791	748.35
Information	11	92	94	92	1,364,415	1132.61
Financial Activities	84	345	343	343	2,882,949	645.29
Professional & Business Services	84	892	919	929	4,849,816	408.46
Education & Health Services	110	1,077	1,082	1,079	6,622,929	472.01
Leisure & Hospitality	83	1,213	1,260	1,261	3,831,667	236.81
Other Services	61	336	348	341	1,519,055	342.00
Local Government	26	1,746	1,775	1,793	12,645,968	549.17
State Government	17	497	499	497	4,469,942	690.91

**TABLE 6. COUNTY SUMMARY
EMPLOYMENT AND TOTAL EARNINGS, BY INDUSTRY
FIRST QUARTER 2008**

NORTH AMERICAN INDUSTRY CLASSIFICATION SYSTEM INDUSTRY GROUP	NUMBER OF EMPLOYING UNITS	EMPLOYMENT			TOTAL EARNINGS	AVERAGE WEEKLY EARNINGS
		JANUARY	FEBRUARY	MARCH	JANUARY - MARCH	
MISSISSIPPI COUNTY - TOTAL	1,230	19,457	19,633	20,058	\$186,336,194	\$727.00
Natural Resources & Mining	98	517	536	550	3,271,009	470.90
Construction	73	761	800	884	10,298,955	972.06
Manufacturing	56	6,040	6,066	6,173	89,942,503	1135.51
Trade, Transportation & Utilities	299	2,951	2,889	2,910	20,617,939	543.77
Wholesale Trade	68	482	483	504	4,865,370	764.31
Retail Trade	182	1,874	1,824	1,819	9,045,961	378.38
Transportation, Warehousing & Utilities	49	595	582	587	6,706,608	877.37
Financial Activities	106	595	598	596	4,772,894	615.67
Professional & Business Services	102	1,280	1,421	1,552	12,053,046	654.00
Education & Health Services	258	1,669	1,651	1,709	10,489,744	481.35
Leisure & Hospitality	85	1,102	1,098	1,101	2,808,190	196.32
Local Government	46	2,346	2,333	2,349	16,038,312	526.63
State Government	24	618	656	660	4,723,457	563.61
Other	83	1,578	1,585	1,574	11,320,145	551.48
MONROE COUNTY - TOTAL	318	2,357	2,418	2,433	\$13,196,972	\$422.51
Natural Resources & Mining	36	110	117	128	616,238	400.59
Construction	11	30	33	35	159,869	376.46
Manufacturing	7	107	114	113	782,436	540.61
Trade, Transportation & Utilities	87	716	729	728	4,374,578	464.57
Wholesale Trade	22	211	215	222	1,763,051	627.87
Retail Trade	40	352	351	342	1,511,773	333.85
Transportation, Warehousing & Utilities	25	153	163	164	1,099,754	528.73
Financial Activities	16	95	94	95	844,263	686.02
Professional & Business Services	16	55	55	54	271,362	381.84
Education & Health Services	65	352	359	359	1,618,356	349.03
Leisure & Hospitality	24	247	252	255	630,586	193.00
Local Government	22	401	412	410	2,553,603	481.84
State Government	9	133	139	136	881,847	498.78
Other	25	111	114	120	463,834	310.26

**TABLE 6. COUNTY SUMMARY
EMPLOYMENT AND TOTAL EARNINGS, BY INDUSTRY
FIRST QUARTER 2008**

NORTH AMERICAN INDUSTRY CLASSIFICATION SYSTEM INDUSTRY GROUP	NUMBER OF EMPLOYING UNITS	EMPLOYMENT			TOTAL EARNINGS	AVERAGE WEEKLY EARNINGS
		JANUARY	FEBRUARY	MARCH	JANUARY - MARCH	
MONTGOMERY COUNTY - TOTAL	184	1,485	1,512	1,548	\$8,376,946	\$425.33
Natural Resources & Mining	14	64	67	65	569,249	670.23
Construction	22	84	91	83	552,183	493.90
Manufacturing	10	174	167	166	806,074	366.90
Trade, Transportation & Utilities	43	213	220	220	1,247,512	440.87
Wholesale Trade	10	64	70	72	577,202	646.60
Retail Trade	23	129	130	127	589,322	352.32
Transportation, Warehousing & Utilities	10	20	20	21	80,988	306.39
Financial Activities	11	68	65	73	557,963	625.05
Professional & Business Services	13	25	25	27	146,892	440.24
Education & Health Services	15	67	69	70	389,386	436.21
Leisure & Hospitality	22	171	188	220	678,655	270.49
Local Government	9	495	499	503	2,746,258	423.35
State Government	8	55	54	54	411,562	582.67
Other	17	69	67	67	271,212	308.31
NEVADA COUNTY - TOTAL	190	2,540	2,572	2,556	\$19,551,505	\$588.40
Natural Resources & Mining	13	60	62	61	448,482	565.55
Manufacturing	9	717	723	706	9,285,438	998.51
Trade, Transportation & Utilities	41	501	492	487	3,049,534	475.50
Retail Trade	27	295	289	285	1,281,257	340.25
Other Trade, Transportation & Utilities	14	206	203	202	1,768,277	667.86
Financial Activities	15	59	63	71	426,638	510.13
Professional & Business Services	9	45	53	43	349,483	571.99
Education & Health Services	21	396	399	399	1,937,338	374.44
Leisure & Hospitality	14	99	99	106	269,998	204.96
Other Services	17	62	64	64	208,141	252.80
Local Government	28	490	504	504	2,701,116	416.11
State Government	11	82	84	84	633,700	584.95
Other	12	29	29	31	241,637	626.54

**TABLE 6. COUNTY SUMMARY
EMPLOYMENT AND TOTAL EARNINGS, BY INDUSTRY
FIRST QUARTER 2008**

NORTH AMERICAN INDUSTRY CLASSIFICATION SYSTEM INDUSTRY GROUP	NUMBER OF EMPLOYING UNITS	EMPLOYMENT			TOTAL EARNINGS	AVERAGE WEEKLY EARNINGS
		JANUARY	FEBRUARY	MARCH	JANUARY - MARCH	
NEWTON COUNTY - TOTAL	137	1,058	1,028	1,054	\$5,364,042	\$394.22
Construction	9	27	27	28	101,223	284.87
Manufacturing	16	78	68	71	493,041	524.33
Trade, Transportation & Utilities	27	149	149	146	761,721	395.90
Retail Trade	13	97	97	96	350,510	278.92
Other Trade, Transportation & Utilities	14	52	52	50	411,211	616.20
Professional & Business Services	7	20	6	20	154,718	776.18
Education & Health Services	27	227	220	216	826,829	287.79
Leisure & Hospitality	19	47	46	68	176,409	252.86
Other Services	4	13	11	12	34,595	221.76
Local Government	13	384	384	380	2,179,143	438.05
State Government	7	89	92	89	473,982	405.11
Other	8	24	25	24	162,381	513.32
OUACHITA COUNTY - TOTAL	651	7,468	7,578	7,679	\$49,822,923	\$505.94
Natural Resources & Mining	46	259	251	252	2,051,774	621.37
Construction	46	252	253	253	1,773,799	540.02
Manufacturing	29	817	836	849	7,317,547	674.93
Trade, Transportation & Utilities	173	1,667	1,687	1,734	11,279,792	511.60
Wholesale Trade	27	242	244	264	2,381,828	732.87
Retail Trade	119	1,032	1,040	1,068	4,891,340	359.48
Transportation, Warehousing & Utilities	27	393	403	402	4,006,624	771.79
Information	6	56	60	62	504,094	653.54
Financial Activities	62	351	354	352	2,692,230	587.78
Professional & Business Services	52	357	357	360	2,172,195	466.74
Education & Health Services	117	1,274	1,284	1,275	8,059,392	485.22
Leisure & Hospitality	33	472	499	507	1,116,671	174.35
Other Services	43	161	163	163	787,249	373.04
Local Government	30	1,268	1,278	1,273	7,899,925	477.37
State Government	14	534	556	599	4,168,255	569.51

**TABLE 6. COUNTY SUMMARY
EMPLOYMENT AND TOTAL EARNINGS, BY INDUSTRY
FIRST QUARTER 2008**

NORTH AMERICAN INDUSTRY CLASSIFICATION SYSTEM INDUSTRY GROUP	NUMBER OF EMPLOYING UNITS	EMPLOYMENT			TOTAL EARNINGS	AVERAGE
		JANUARY	FEBRUARY	MARCH	JANUARY - MARCH	WEEKLY EARNINGS
PERRY COUNTY - TOTAL	160	1,275	1,284	1,278	\$7,690,224	\$462.51
Natural Resources & Mining	8	55	61	63	658,484	848.93
Construction	23	58	54	55	369,455	510.53
Manufacturing	7	83	81	72	458,491	448.33
Trade, Transportation & Utilities	29	222	222	226	1,182,421	407.26
Retail Trade	19	160	161	160	590,270	283.19
Other Trade, Transportation & Utilities	10	62	61	66	592,151	723.02
Financial Activities	14	67	68	63	543,983	634.01
Professional & Business Services	16	35	34	39	271,088	579.25
Education & Health Services	27	191	187	184	956,934	392.94
Local Government	12	414	434	433	2,411,732	434.47
State Government	9	52	51	49	363,387	551.70
Other	15	98	92	94	474,249	385.36
PHILLIPS COUNTY - TOTAL	870	6,429	6,552	6,710	\$40,283,659	\$472.11
Natural Resources & Mining	66	247	289	342	1,463,454	384.65
Construction	31	142	159	167	883,819	435.81
Manufacturing	13	387	387	373	2,866,760	576.77
Trade, Transportation & Utilities	174	1,612	1,640	1,699	10,480,593	488.51
Wholesale Trade	34	439	464	462	4,179,486	706.59
Retail Trade	97	880	893	955	4,111,738	347.82
Transportation, Warehousing & Utilities	43	293	283	282	2,189,369	588.86
Information	9	45	45	45	347,673	594.31
Financial Activities	55	272	273	272	2,247,304	634.77
Professional & Business Services	60	181	189	186	1,395,930	579.38
Education & Health Services	340	1,418	1,421	1,413	7,628,680	414.03
Leisure & Hospitality	37	374	389	411	1,025,694	201.62
Other Services	38	88	86	84	380,882	340.68
Local Government	30	1,119	1,112	1,115	8,083,541	557.51
State Government	17	544	562	603	3,479,329	469.82

**TABLE 6. COUNTY SUMMARY
EMPLOYMENT AND TOTAL EARNINGS, BY INDUSTRY
FIRST QUARTER 2008**

NORTH AMERICAN INDUSTRY CLASSIFICATION SYSTEM INDUSTRY GROUP	NUMBER OF EMPLOYING UNITS	EMPLOYMENT			TOTAL EARNINGS	AVERAGE WEEKLY EARNINGS
		JANUARY	FEBRUARY	MARCH	JANUARY - MARCH	
PIKE COUNTY - TOTAL	277	2,562	2,585	2,614	\$15,352,307	\$456.49
Natural Resources & Mining	27	154	162	157	1,363,290	665.13
Construction	10	20	26	33	245,563	717.32
Manufacturing	16	236	217	214	1,243,730	430.31
Trade, Transportation & Utilities	98	642	632	650	4,021,331	482.33
Wholesale Trade	22	160	164	167	1,440,906	677.22
Retail Trade	47	374	351	368	1,677,017	354.07
Transportation, Warehousing & Utilities	29	108	117	115	903,408	613.17
Information	4	27	27	27	270,452	770.52
Financial Activities	25	185	188	190	1,382,159	566.54
Professional & Business Services	15	33	36	35	349,422	775.34
Education & Health Services	20	233	234	242	1,154,095	375.64
Leisure & Hospitality	19	202	202	212	521,129	195.23
Other Services	19	127	136	136	556,836	322.06
Local Government	13	560	577	574	3,564,852	480.81
State Government	11	143	148	144	679,448	360.45
POINSETT COUNTY - TOTAL	495	5,450	5,448	5,427	\$35,446,393	\$501.07
Natural Resources & Mining	51	271	283	303	2,092,368	563.42
Construction	22	78	81	83	363,377	346.51
Manufacturing	22	871	840	796	6,127,169	564.01
Trade, Transportation & Utilities	129	1,295	1,292	1,298	9,279,614	551.21
Wholesale Trade	32	443	441	463	5,090,539	872.12
Retail Trade	68	693	691	675	3,041,598	340.90
Transportation, Warehousing & Utilities	29	159	160	160	1,147,477	552.82
Information	6	52	54	54	663,017	956.27
Financial Activities	47	285	285	284	2,317,422	626.22
Professional & Business Services	30	179	189	176	1,411,048	598.58
Education & Health Services	78	599	598	598	3,069,721	394.65
Leisure & Hospitality	45	391	389	409	806,158	156.46
Other Services	23	61	62	60	329,975	416.11
Local Government	30	1,156	1,163	1,155	7,537,697	500.71
State Government	12	212	212	211	1,448,827	526.53

**TABLE 6. COUNTY SUMMARY
EMPLOYMENT AND TOTAL EARNINGS, BY INDUSTRY
FIRST QUARTER 2008**

NORTH AMERICAN INDUSTRY CLASSIFICATION SYSTEM INDUSTRY GROUP	NUMBER OF EMPLOYING UNITS	EMPLOYMENT			TOTAL EARNINGS	AVERAGE WEEKLY EARNINGS
		JANUARY	FEBRUARY	MARCH	JANUARY - MARCH	
POLK COUNTY - TOTAL	551	6,325	6,319	6,369	\$36,167,421	\$438.98
Natural Resources & Mining	26	214	213	214	1,754,945	631.81
Construction	41	163	163	160	892,942	424.00
Manufacturing	42	1,318	1,305	1,306	7,940,227	466.37
Trade, Transportation & Utilities	151	1,314	1,319	1,348	7,182,943	416.38
Wholesale Trade	22	106	107	105	504,111	365.83
Retail Trade	85	855	849	871	4,060,773	363.92
Transportation, Warehousing & Utilities	44	353	363	372	2,618,059	555.30
Information	9	49	48	48	365,141	581.13
Financial Activities	39	240	240	246	1,690,426	537.33
Professional & Business Services	51	272	253	267	1,257,043	366.27
Education & Health Services	84	1,022	1,020	1,004	6,012,753	455.53
Leisure & Hospitality	37	429	431	429	1,003,997	179.75
Other Services	36	144	146	146	828,213	438.36
Local Government	21	832	841	852	5,331,561	487.27
State Government	14	328	340	349	1,907,230	432.77
POPE COUNTY - TOTAL	1,789	26,162	26,807	27,382	\$214,851,683	\$617.06
Natural Resources & Mining	27	582	799	817	5,385,039	565.38
Construction	187	1,265	1,401	1,846	13,877,324	709.76
Manufacturing	90	5,010	4,931	4,922	43,455,798	674.71
Trade, Transportation & Utilities	473	6,562	6,470	6,522	67,924,032	801.61
Wholesale Trade	105	635	627	644	5,840,287	707.11
Retail Trade	277	3,401	3,357	3,375	17,138,382	390.31
Transportation, Warehousing & Utilities	91	2,526	2,486	2,503	44,945,363	1380.17
Information	16	225	223	222	2,380,140	819.80
Financial Activities	191	839	848	842	7,312,999	667.31
Professional & Business Services	245	2,265	2,473	2,513	16,654,390	530.04
Education & Health Services	265	3,032	3,049	3,040	21,828,506	552.28
Leisure & Hospitality	131	2,389	2,444	2,453	6,585,373	208.58
Other Services	108	475	490	510	2,863,771	448.05
Local Government	40	2,278	2,323	2,338	15,851,311	527.16
State Government	16	1,240	1,356	1,357	10,733,000	626.57

**TABLE 6. COUNTY SUMMARY
EMPLOYMENT AND TOTAL EARNINGS, BY INDUSTRY
FIRST QUARTER 2008**

NORTH AMERICAN INDUSTRY CLASSIFICATION SYSTEM INDUSTRY GROUP	NUMBER OF EMPLOYING UNITS	EMPLOYMENT			TOTAL EARNINGS	AVERAGE WEEKLY EARNINGS
		JANUARY	FEBRUARY	MARCH	JANUARY - MARCH	
PRAIRIE COUNTY - TOTAL	247	1,393	1,434	1,450	\$8,791,453	\$474.35
Natural Resources & Mining	28	107	124	138	788,709	493.25
Construction	13	65	73	61	456,976	529.93
Trade, Transportation & Utilities	65	305	311	316	1,750,692	433.48
Wholesale Trade	9	47	51	52	502,442	772.99
Retail Trade	36	183	184	187	622,841	259.45
Transportation, Warehousing & Utilities	20	75	76	77	625,409	633.01
Financial Activities	19	69	71	71	551,985	603.70
Professional & Business Services	16	46	44	46	274,926	466.50
Education & Health Services	42	172	172	177	1,039,113	460.26
Leisure & Hospitality	17	80	79	80	197,875	191.06
Other Services	14	40	40	43	191,816	359.88
Local Government	15	319	329	323	2,096,589	498.28
State Government	10	50	51	52	386,972	583.67
Other	8	140	140	143	1,055,800	576.00
PULASKI COUNTY - TOTAL	14,659	239,309	240,383	241,713	\$2,430,357,573	\$777.44
Natural Resources & Mining	55	686	662	662	9,196,516	1055.86
Construction	1,167	10,097	10,147	10,222	106,088,582	803.58
Manufacturing	446	15,332	15,306	15,348	174,883,891	877.61
Trade, Transportation & Utilities	3,324	50,926	50,760	50,954	458,629,873	693.38
Wholesale Trade	1,161	13,654	13,692	13,696	178,618,635	1004.33
Retail Trade	1,767	24,859	24,769	24,951	149,608,884	462.93
Transportation, Warehousing & Utilities	396	12,413	12,299	12,307	130,402,354	812.90
Information	226	8,335	8,377	8,333	171,519,513	1580.41
Financial Activities	1,797	15,943	15,963	15,935	270,810,807	1306.30
Professional & Business Services	2,835	34,280	34,621	34,651	325,261,597	724.86
Education & Health Services	2,239	35,239	35,534	35,778	342,403,527	741.58
Leisure & Hospitality	1,052	20,194	20,025	20,734	75,876,232	287.27
Other Services	1,208	6,786	6,800	6,823	50,455,967	570.52
Local Government	103	16,831	16,838	16,910	148,064,592	675.55
State Government	207	24,660	25,350	25,363	297,166,476	909.83

**TABLE 6. COUNTY SUMMARY
EMPLOYMENT AND TOTAL EARNINGS, BY INDUSTRY
FIRST QUARTER 2008**

NORTH AMERICAN INDUSTRY CLASSIFICATION SYSTEM INDUSTRY GROUP	NUMBER OF EMPLOYING UNITS	EMPLOYMENT			TOTAL EARNINGS	AVERAGE WEEKLY EARNINGS
		JANUARY	FEBRUARY	MARCH	JANUARY - MARCH	
RANDOLPH COUNTY - TOTAL	429	4,670	4,722	4,766	\$27,667,734	\$450.97
Natural Resources & Mining	24	88	84	93	384,008	334.40
Construction	25	77	80	81	345,275	334.79
Manufacturing	36	688	653	657	4,372,789	505.06
Trade, Transportation & Utilities	108	925	910	937	5,069,441	422.03
Wholesale Trade	22	209	210	208	1,033,256	380.29
Retail Trade	65	595	580	608	2,956,933	382.71
Transportation, Warehousing & Utilities	21	121	120	121	1,079,252	688.01
Information	5	40	39	38	427,985	844.15
Financial Activities	31	146	150	147	1,203,312	626.83
Professional & Business Services	38	246	254	260	1,074,146	326.16
Education & Health Services	76	941	947	955	6,042,034	490.44
Leisure & Hospitality	27	350	349	359	839,617	183.14
Other Services	24	65	69	81	324,358	348.15
Local Government	23	847	853	869	5,322,495	478.11
State Government	12	257	334	289	2,262,274	593.25
SAINT FRANCIS COUNTY - TOTAL	765	7,635	7,597	7,701	\$49,502,568	\$498.13
Natural Resources & Mining	32	158	163	175	889,894	414.03
Construction	45	207	209	230	1,260,228	450.19
Manufacturing	16	815	742	786	5,952,496	586.28
Trade, Transportation & Utilities	180	2,003	1,995	2,003	13,314,308	512.00
Wholesale Trade	32	489	490	501	4,753,585	741.20
Retail Trade	123	1,252	1,240	1,238	5,889,440	364.37
Transportation, Warehousing & Utilities	25	262	265	264	2,671,283	779.33
Information	8	84	82	83	625,022	579.26
Financial Activities	62	315	318	317	2,167,803	526.59
Professional & Business Services	58	273	274	273	2,101,353	591.38
Education & Health Services	224	1,336	1,375	1,379	7,992,843	450.98
Leisure & Hospitality	54	689	665	687	1,860,231	210.33
Other Services	40	102	107	104	396,244	292.14
Local Government	29	1,123	1,134	1,132	8,329,931	567.22
State Government	17	530	533	532	4,612,215	667.31

**TABLE 6. COUNTY SUMMARY
EMPLOYMENT AND TOTAL EARNINGS, BY INDUSTRY
FIRST QUARTER 2008**

NORTH AMERICAN INDUSTRY CLASSIFICATION SYSTEM INDUSTRY GROUP	NUMBER OF EMPLOYING UNITS	EMPLOYMENT			TOTAL EARNINGS	AVERAGE WEEKLY EARNINGS
		JANUARY	FEBRUARY	MARCH	JANUARY - MARCH	
SALINE COUNTY - TOTAL	1,860	21,239	21,283	21,321	\$150,269,601	\$543.17
Natural Resources & Mining	15	34	35	36	386,882	850.29
Construction	320	1,969	1,950	1,979	15,050,930	588.89
Manufacturing	88	1,930	1,923	1,906	19,344,534	775.16
Trade, Transportation & Utilities	446	4,603	4,606	4,663	33,689,439	560.44
Wholesale Trade	124	590	599	600	6,003,709	774.44
Retail Trade	265	3,720	3,713	3,760	25,070,164	516.88
Transportation, Warehousing & Utilities	57	293	294	303	2,615,566	678.19
Information	13	121	125	128	968,337	597.49
Financial Activities	192	775	757	769	6,331,481	634.99
Professional & Business Services	234	1,287	1,288	1,240	8,213,230	496.82
Education & Health Services	228	2,952	2,976	2,930	19,453,521	506.80
Leisure & Hospitality	138	2,465	2,514	2,550	7,421,471	227.47
Other Services	137	640	629	625	3,588,529	437.23
Local & State Government	49	4,463	4,480	4,495	35,821,247	615.15
SCOTT COUNTY - TOTAL	191	2,843	2,862	2,856	\$16,506,803	\$444.96
Natural Resources & Mining	15	179	177	183	1,340,554	573.95
Construction	10	51	54	59	278,389	391.73
Manufacturing	18	1,111	1,130	1,138	6,516,461	445.04
Trade, Transportation & Utilities	41	452	455	459	2,444,324	412.94
Wholesale Trade	10	59	67	71	500,742	586.58
Retail Trade	24	329	323	324	1,316,820	311.35
Transportation, Warehousing & Utilities	7	64	65	64	626,762	749.42
Financial Activities	21	82	81	83	504,164	472.95
Professional & Business Services	12	18	11	10	72,212	427.29
Education & Health Services	35	298	293	286	1,911,623	503.01
Leisure & Hospitality	15	156	155	157	342,502	168.89
Local Government	5	383	389	364	2,338,997	475.15
State Government	8	73	73	73	451,597	475.87
Other	11	40	44	44	305,980	551.65

**TABLE 6. COUNTY SUMMARY
EMPLOYMENT AND TOTAL EARNINGS, BY INDUSTRY
FIRST QUARTER 2008**

NORTH AMERICAN INDUSTRY CLASSIFICATION SYSTEM INDUSTRY GROUP	NUMBER OF EMPLOYING UNITS	EMPLOYMENT			TOTAL EARNINGS	AVERAGE WEEKLY EARNINGS
		JANUARY	FEBRUARY	MARCH	JANUARY - MARCH	
SEARCY COUNTY - TOTAL	196	1,713	1,729	1,770	\$8,689,272	\$384.73
Construction	7	15	19	21	84,124	352.97
Manufacturing	17	252	248	251	1,236,911	380.08
Trade, Transportation & Utilities	41	328	331	332	1,329,317	309.55
Wholesale Trade	6	62	60	64	239,609	297.28
Retail Trade	26	214	221	218	791,872	279.85
Transportation, Warehousing & Utilities	9	52	50	50	297,836	452.18
Information	6	14	14	14	96,559	530.54
Financial Activities	13	83	84	89	602,226	542.87
Professional & Business Services	18	32	34	47	242,426	495.08
Education & Health Services	53	327	327	328	1,483,840	348.70
Leisure & Hospitality	15	102	103	123	241,513	169.92
Local Government	10	370	374	374	2,134,901	440.67
State Government	8	148	148	148	934,022	485.46
Other	8	42	47	43	303,433	530.48
SEBASTIAN COUNTY - TOTAL	3,771	71,594	72,206	72,306	\$613,029,698	\$654.63
Natural Resources & Mining	76	1,656	1,669	1,717	26,519,122	1213.76
Construction	317	2,641	2,621	2,685	24,061,835	698.72
Manufacturing	234	18,166	18,166	18,019	163,715,247	695.12
Trade, Transportation & Utilities	961	13,304	13,281	13,322	100,655,753	582.06
Wholesale Trade	251	2,622	2,681	2,672	31,481,641	910.97
Retail Trade	574	8,351	8,265	8,279	45,992,305	426.33
Transportation, Warehousing & Utilities	136	2,331	2,335	2,371	23,181,807	760.22
Information	53	988	993	988	13,563,541	1054.24
Financial Activities	431	2,561	2,531	2,525	26,129,543	791.64
Professional & Business Services	540	9,055	9,395	9,323	77,031,905	640.07
Education & Health Services	520	10,420	10,507	10,587	102,486,008	750.48
Leisure & Hospitality	307	5,533	5,604	5,704	17,239,952	236.24
Other Services	267	1,329	1,313	1,347	8,626,922	499.08
Local Government	43	4,539	4,603	4,574	40,160,313	675.69
State Government	22	1,402	1,523	1,515	12,839,557	667.34

**TABLE 6. COUNTY SUMMARY
EMPLOYMENT AND TOTAL EARNINGS, BY INDUSTRY
FIRST QUARTER 2008**

NORTH AMERICAN INDUSTRY CLASSIFICATION SYSTEM INDUSTRY GROUP	NUMBER OF EMPLOYING UNITS	EMPLOYMENT			TOTAL EARNINGS	AVERAGE WEEKLY EARNINGS
		JANUARY	FEBRUARY	MARCH	JANUARY - MARCH	
SEVIER COUNTY - TOTAL	328	5,798	5,841	5,818	37,307,881	\$493.18
Natural Resources & Mining	18	250	252	254	1,705,908	520.73
Construction	19	159	156	160	1,473,794	716.01
Manufacturing	11	2,221	2,260	2,235	13,893,162	477.38
Trade, Transportation & Utilities	95	841	830	835	5,673,617	522.46
Wholesale Trade	15	133	142	132	1,539,413	872.85
Retail Trade	62	590	575	594	2,760,127	362.11
Transportation, Warehousing & Utilities	18	118	113	109	1,374,077	932.63
Information	5	52	48	49	391,084	605.71
Financial Activities	30	188	189	189	1,313,466	535.53
Professional & Business Services	28	106	96	94	1,690,388	1317.87
Education & Health Services	49	506	517	524	3,039,878	453.46
Leisure & Hospitality	23	245	252	250	596,316	184.22
Other Services	30	147	137	150	591,613	314.58
Local Government	11	904	894	865	5,655,219	490.07
State Government	9	179	210	213	1,283,436	491.99
SHARP COUNTY - TOTAL	447	3,696	3,648	3,629	\$20,773,683	\$436.88
Construction	29	170	171	164	1,279,603	584.74
Manufacturing	23	180	177	168	813,004	357.36
Trade, Transportation & Utilities	95	943	909	913	5,779,300	482.35
Wholesale Trade	11	44	43	41	268,423	483.94
Retail Trade	69	632	611	625	2,665,819	329.33
Transportation, Warehousing & Utilities	15	267	255	247	2,845,058	853.77
Information	7	57	57	58	821,289	1101.91
Financial Activities	37	240	242	239	1,669,619	534.39
Professional & Business Services	46	175	172	172	1,166,566	518.70
Education & Health Services	105	575	566	571	3,119,333	420.47
Leisure & Hospitality	41	383	382	373	821,811	166.65
Local Government	24	782	788	779	4,275,289	420.01
State Government	9	115	109	116	712,230	483.41
Other	31	76	75	76	315,639	320.88

**TABLE 6. COUNTY SUMMARY
EMPLOYMENT AND TOTAL EARNINGS, BY INDUSTRY
FIRST QUARTER 2008**

NORTH AMERICAN INDUSTRY CLASSIFICATION SYSTEM INDUSTRY GROUP	NUMBER OF EMPLOYING UNITS	EMPLOYMENT			TOTAL EARNINGS	AVERAGE WEEKLY EARNINGS
		JANUARY	FEBRUARY	MARCH	JANUARY - MARCH	
STONE COUNTY - TOTAL	298	2,921	2,886	2,914	15,455,266	\$408.97
Natural Resources & Mining	5	17	20	22	90,835	355.29
Construction	26	108	98	104	542,737	404.02
Manufacturing	27	448	414	412	2,187,078	396.16
Trade, Transportation & Utilities	74	697	686	692	3,671,692	408.34
Wholesale Trade	8	57	53	57	285,296	394.24
Retail Trade	55	602	594	598	2,973,314	382.47
Transportation, Warehousing & Utilities	11	38	39	37	413,082	836.20
Financial Activities	29	126	125	129	909,914	552.58
Professional & Business Services	13	33	36	35	273,011	605.79
Education & Health Services	57	505	505	501	3,087,796	471.59
Leisure & Hospitality	33	330	337	354	777,524	175.74
Local Government	10	416	423	422	2,657,239	486.29
State Government	9	172	175	174	750,338	332.35
Other	15	69	67	69	507,102	570.85
UNION COUNTY - TOTAL	1,418	19,200	19,271	19,257	\$193,012,805	\$771.57
Natural Resources & Mining	115	510	519	517	5,128,884	765.58
Construction	87	1,177	1,136	1,141	11,729,990	783.71
Manufacturing	65	4,687	4,660	4,605	50,347,356	832.76
Trade, Transportation & Utilities	368	3,648	3,648	3,672	34,406,516	723.92
Wholesale Trade	79	676	676	673	13,945,228	1589.20
Retail Trade	224	2,161	2,164	2,172	10,933,261	388.34
Transportation, Warehousing & Utilities	65	811	808	827	9,528,027	898.93
Information	15	177	178	186	1,346,222	574.25
Financial Activities	125	731	714	725	5,863,189	623.52
Professional & Business Services	142	1,596	1,691	1,659	41,143,703	1919.67
Education & Health Services	220	2,444	2,447	2,444	18,948,676	596.15
Leisure & Hospitality	88	1,153	1,141	1,143	3,396,244	228.03
Other Services	139	538	564	589	3,152,642	430.24
Local Government	36	1,982	2,001	2,000	13,157,076	507.48
State Government	18	557	572	576	4,392,307	594.49

**TABLE 6. COUNTY SUMMARY
EMPLOYMENT AND TOTAL EARNINGS, BY INDUSTRY
FIRST QUARTER 2008**

NORTH AMERICAN INDUSTRY CLASSIFICATION SYSTEM INDUSTRY GROUP	NUMBER OF EMPLOYING UNITS	EMPLOYMENT			TOTAL EARNINGS	AVERAGE WEEKLY EARNINGS
		JANUARY	FEBRUARY	MARCH	JANUARY - MARCH	
VAN BUREN COUNTY - TOTAL	365	3,687	3,668	3,697	\$21,896,031	\$457.20
Natural Resources & Mining	12	76	59	58	593,084	709.15
Construction	46	219	218	217	1,363,370	481.08
Trade, Transportation & Utilities	96	835	835	852	5,193,189	475.19
Wholesale Trade	16	57	65	62	525,453	659.01
Retail Trade	56	600	594	610	3,052,773	390.51
Transportation, Warehousing & Utilities	24	178	176	180	1,614,963	697.91
Information	10	51	51	53	431,367	642.23
Financial Activities	27	146	148	144	1,198,487	631.45
Professional & Business Services	26	88	90	95	536,793	453.76
Education & Health Services	59	617	623	627	3,603,041	445.35
Leisure & Hospitality	27	414	417	416	1,274,925	235.94
Local Government	11	635	632	635	3,771,014	457.54
State Government	8	86	87	86	642,829	572.76
Other	43	520	508	514	3,287,932	492.06
WASHINGTON COUNTY - TOTAL	5,698	89,582	89,655	89,941	\$791,295,664	\$678.39
Natural Resources & Mining	38	501	508	506	4,327,346	659.15
Construction	668	5,232	5,217	5,213	46,916,242	691.28
Manufacturing	237	14,687	14,649	14,658	123,920,485	650.02
Trade, Transportation & Utilities	1,360	20,381	20,281	20,295	172,947,742	654.74
Wholesale Trade	407	3,584	3,590	3,609	49,501,435	1059.39
Retail Trade	763	11,349	11,232	11,233	65,063,553	444.04
Transportation, Warehousing & Utilities	190	5,448	5,459	5,453	58,382,754	823.53
Information	95	1,533	1,535	1,511	17,213,360	867.51
Financial Activities	674	3,978	3,951	3,966	41,569,754	806.48
Professional & Business Services	967	8,505	8,556	8,580	118,253,216	1064.28
Education & Health Services	669	10,931	10,959	11,056	96,433,768	675.47
Leisure & Hospitality	518	8,995	9,142	9,259	29,648,525	249.74
Other Services	390	1,971	1,984	2,008	11,930,565	461.72
Local & State Government	82	12,868	12,873	12,889	128,134,661	765.46

**TABLE 6. COUNTY SUMMARY
EMPLOYMENT AND TOTAL EARNINGS, BY INDUSTRY
FIRST QUARTER 2008**

NORTH AMERICAN INDUSTRY CLASSIFICATION SYSTEM INDUSTRY GROUP	NUMBER OF EMPLOYING UNITS	EMPLOYMENT			TOTAL EARNINGS	AVERAGE WEEKLY EARNINGS
		JANUARY	FEBRUARY	MARCH	JANUARY - MARCH	
WHITE COUNTY - TOTAL	1,783	23,479	23,690	24,025	\$185,018,654	\$599.72
Natural Resources & Mining	46	873	854	980	12,960,530	1104.87
Construction	196	1,099	1,130	1,178	9,534,974	645.84
Manufacturing	85	2,704	2,724	2,704	26,978,489	765.59
Trade, Transportation & Utilities	498	5,955	5,925	6,049	50,913,617	655.32
Wholesale Trade	94	575	586	601	5,279,681	691.48
Retail Trade	309	3,260	3,276	3,313	16,971,315	397.65
Transportation, Warehousing & Utilities	95	2,120	2,063	2,135	28,662,621	1046.92
Information	21	190	187	173	1,360,362	570.78
Financial Activities	183	943	948	962	7,464,108	603.75
Professional & Business Services	179	1,234	1,305	1,331	7,991,475	476.53
Education & Health Services	280	4,232	4,279	4,299	34,666,650	624.51
Leisure & Hospitality	128	2,268	2,331	2,357	5,912,557	196.15
Other Services	103	583	582	584	3,767,223	497.06
Local Government	45	2,636	2,644	2,636	17,731,692	516.92
State Government	19	762	781	772	5,736,977	571.89
WOODRUFF COUNTY - TOTAL	230	1,873	1,866	1,910	\$11,681,595	\$477.21
Natural Resources & Mining	23	109	109	119	712,591	487.96
Construction	9	44	44	49	313,192	527.56
Manufacturing	8	334	325	338	2,320,771	537.17
Trade, Transportation & Utilities	58	445	453	464	3,035,612	514.34
Wholesale Trade	13	151	151	152	1,408,960	716.18
Retail Trade	28	200	198	202	710,054	273.10
Transportation, Warehousing & Utilities	17	94	104	110	916,598	686.76
Financial Activities	16	58	60	60	439,415	569.68
Professional & Business Services	5	9	7	7	88,870	891.67
Education & Health Services	76	227	229	224	1,276,027	433.04
Leisure & Hospitality	10	48	48	54	99,693	153.37
Local Government	10	516	509	515	2,866,618	429.56
State Government	7	60	59	59	403,114	522.62
Other	8	23	23	21	125,692	432.92

**TABLE 6. COUNTY SUMMARY
EMPLOYMENT AND TOTAL EARNINGS, BY INDUSTRY
FIRST QUARTER 2008**

NORTH AMERICAN INDUSTRY CLASSIFICATION SYSTEM INDUSTRY GROUP	NUMBER OF EMPLOYING UNITS	EMPLOYMENT			TOTAL EARNINGS	AVERAGE WEEKLY EARNINGS
		JANUARY	FEBRUARY	MARCH	JANUARY - MARCH	
YELL COUNTY - TOTAL	421	6,718	6,857	6,933	\$43,340,659	\$487.70
Natural Resources & Mining	22	216	222	232	1,507,408	519.20
Construction	45	351	391	390	2,749,213	560.45
Manufacturing	20	2,663	2,678	2,705	17,597,770	504.73
Trade, Transportation & Utilities	86	668	678	678	3,261,994	371.92
Wholesale Trade	16	22	26	26	152,519	475.63
Retail Trade	52	564	569	568	2,359,829	320.15
Transportation, Warehousing & Utilities	18	82	83	84	749,646	694.76
Information	3	74	73	72	592,672	624.52
Financial Activities	38	190	192	190	1,352,001	545.45
Professional & Business Services	36	280	278	298	3,275,795	883.12
Education & Health Services	87	616	623	633	3,532,987	435.53
Leisure & Hospitality	28	290	312	306	744,182	189.13
Other Services	16	74	75	71	305,925	320.90
Local Government	27	1,174	1,214	1,241	7,666,966	487.54
State Government	13	122	121	117	753,746	483.17
REST-OF-STATE-TOTAL	4,426	17,289	17,909	18,385	262,133,058	\$1,128.94
Natural Resources & Mining	76	353	358	373	6,035,519	1284.88
Construction	551	3,213	3,433	3,658	36,373,888	814.63
Manufacturing	68	246	236	237	2,795,699	897.30
Trade, Transportation & Utilities	1,661	6,279	6,350	6,427	129,827,405	1572.22
Wholesale Trade	1,395	4,988	5,074	5,142	115,711,044	1756.28
Retail Trade	116	493	488	486	6,307,340	992.19
Transportation, Warehousing & Utilities	150	798	788	799	7,809,021	755.59
Information	94	194	229	220	3,147,075	1129.47
Financial Activities	262	746	755	769	13,002,827	1321.87
Professional & Business Services	1,432	4,936	5,204	5,330	56,290,787	839.70
Education & Health Services	105	591	592	602	6,799,870	879.10
Leisure & Hospitality	54	54	58	68	568,664	729.06
Other	123	677	694	701	7,291,324	812.07

TABLE 7. FEDERAL GOVERNMENT EMPLOYMENT AND EARNINGS IN ARKANSAS

NORTH AMERICAN INDUSTRY CLASSIFICATION SYSTEM INDUSTRY GROUP	NUMBER EMPLOYING UNITS	EMPLOYMENT			TOTAL EARNINGS
		JANUARY	FEBRUARY	MARCH	JAN. - MAR. 2008
Trade, Transportation & Utilities	614	6,722	6,721	6,679	69,942,040
Information	1	36	36	35	403,062
Financial Activities	23	165	161	162	2,599,838
Professional & Business Services	30	738	738	741	13,589,716
Education & Health Services	5	4,324	4,545	4,466	80,570,913
Leisure & Hospitality	15	192	188	197	1,780,593
Other Services	2	255	247	258	994,623
Public Administration	491	8,436	8,361	8,415	124,840,886
TOTAL	1,181	20,868	20,997	20,953	\$294,721,671

**TABLE 8. WORKFORCE INFORMATION AREA, SUMMARY
EMPLOYMENT AND TOTAL EARNINGS, BY INDUSTRY
FIRST QUARTER 2008**

NORTH AMERICAN INDUSTRY CLASSIFICATION SYSTEM INDUSTRY GROUP	NUMBER OF EMPLOYING UNITS	EMPLOYMENT			TOTAL EARNINGS	AVERAGE WEEKLY EARNINGS
		JANUARY	FEBRUARY	MARCH	JANUARY - MARCH	
CENTRAL WORKFORCE INFORMATION*	6,381	76,513	76,619	76,837	\$579,845,497	\$581.86
Natural Resources & Mining	185	1,360	1,408	1,474	17,622,715	958.69
Construction	891	6,003	5,876	5,882	46,322,458	601.87
Trade, Transportation & Utilities	1,578	15,242	15,239	15,342	103,719,244	522.34
Wholesale Trade	405	2,200	2,240	2,264	22,672,234	780.44
Retail Trade	909	11,270	11,190	11,277	63,754,723	436.10
Transportation, Warehousing & Utilities	264	1,772	1,809	1,801	17,292,287	741.46
Financial Activities	685	2,959	2,951	2,974	30,090,340	781.62
Professional & Business Services	780	6,956	7,099	7,048	75,203,660	822.38
Education & Health Services	858	10,321	10,459	10,462	70,146,403	518.14
Leisure & Hospitality	476	8,182	8,290	8,376	22,787,344	211.63
Local & State Government	208	14,796	14,940	14,961	115,574,059	596.71
Other	720	10,694	10,357	10,318	98,379,274	723.74

*Note: Pulaski County is not included in the Central Workforce Information. Please refer to Page 53 for information on Pulaski County.
Central Workforce Includes these counties: Faulkner, Lonoke, Monroe, Prairie, and Saline.

EASTERN WORKFORCE INFORMATION	3,735	37,552	37,693	38,270	\$262,404,898	\$533.45
Natural Resources & Mining	209	906	995	1,114	5,083,213	389.07
Construction	190	974	987	1,074	7,008,641	532.91
Trade, Transportation & Utilities	881	9,953	9,876	10,023	72,386,511	559.58
Wholesale Trade	181	2,032	2,052	2,109	21,054,463	784.55
Retail Trade	491	5,087	5,049	5,113	24,859,826	376.21
Transportation, Warehousing & Utilities	209	2,834	2,775	2,801	26,472,222	726.39
Financial Activities	291	1,578	1,590	1,602	13,525,171	654.34
Professional & Business Services	311	1,478	1,536	1,520	10,731,604	546.21
Education & Health Services	1,062	5,915	5,989	6,033	38,791,406	499.07
Leisure & Hospitality	237	3,495	3,450	3,523	10,706,452	236.03
Local Government	136	5,796	5,852	5,831	43,935,198	580.06
State Government	68	2,285	2,319	2,367	17,530,491	580.33
Other	350	5,172	5,099	5,183	42,706,211	637.72

Eastern Workforce Includes these counties: Crittenden, Cross, Lee, Phillips, and Saint Francis.

**TABLE 8. WORKFORCE INFORMATION AREA, SUMMARY
EMPLOYMENT AND TOTAL EARNINGS, BY INDUSTRY
FIRST QUARTER 2008**

NORTH AMERICAN INDUSTRY CLASSIFICATION SYSTEM INDUSTRY GROUP	NUMBER OF EMPLOYING UNITS	EMPLOYMENT			TOTAL EARNINGS	AVERAGE WEEKLY EARNINGS
		JANUARY	FEBRUARY	MARCH	JANUARY - MARCH	
NORTH CENTRAL WORKFORCE INFORMATION	5,829	68,526	68,884	69,492	\$479,438,858	\$534.74
Construction	532	2,808	2,905	3,017	21,459,480	567.26
Trade, Transportation & Utilities	1,523	15,518	15,424	15,607	112,671,349	558.57
Retail Trade	952	9,244	9,169	9,268	45,252,983	377.26
Other Trade, Transportation & Utilities	571	6,274	6,255	6,339	67,418,366	824.58
Financial Activities	544	2,763	2,747	2,758	21,753,715	607.17
Professional & Business Services	493	2,892	2,920	2,968	17,332,976	455.57
Education & Health Services	1,054	11,739	11,820	11,833	85,149,883	555.21
Leisure & Hospitality	446	5,847	5,967	6,056	15,331,757	197.99
Local Government	229	9,176	9,217	9,235	56,523,856	472.13
State Government	115	2,992	3,125	3,121	23,037,091	575.48
Other	893	14,791	14,759	14,897	126,178,751	655.12

North Central Workforce Includes these counties: Cleburne, Fulton, Independence, Izard, Jackson, Sharp, Stone, Van Buren, White, and Woodruff

NORTHEAST WORKFORCE INFORMATION	6,647	93,132	93,876	94,558	\$724,054,199	\$593.43
Natural Resources & Mining	370	1,593	1,640	1,709	10,055,812	469.56
Construction	504	3,036	3,052	3,224	26,480,673	656.24
Manufacturing	345	20,643	20,570	20,718	215,999,931	804.87
Trade, Transportation & Utilities	1,765	18,015	17,913	18,019	119,642,355	511.79
Wholesale Trade	413	3,788	3,781	3,853	36,354,424	734.50
Retail Trade	1,034	11,654	11,532	11,579	58,443,506	387.95
Transportation, Warehousing & Utilities	318	2,573	2,600	2,587	24,844,425	738.83
Financial Activities	605	3,479	3,480	3,472	31,157,346	689.31
Professional & Business Services	673	6,242	6,745	6,678	44,644,114	523.90
Education & Health Services	1,116	13,130	13,143	13,293	106,551,088	621.46
Leisure & Hospitality	474	7,366	7,463	7,547	25,133,011	259.20
Local Government	218	11,733	11,832	11,909	81,664,914	531.26
State Government	107	4,098	4,229	4,187	37,294,637	687.75
Other	470	3,797	3,809	3,802	25,430,318	514.42

Northeast Workforce Includes these counties: Clay, Craighead, Greene, Lawrence, Mississippi, Poinsett, and Randolph.

**TABLE 8. WORKFORCE INFORMATION AREA, SUMMARY
EMPLOYMENT AND TOTAL EARNINGS, BY INDUSTRY
FIRST QUARTER 2008**

NORTH AMERICAN INDUSTRY CLASSIFICATION SYSTEM INDUSTRY GROUP	NUMBER OF EMPLOYING UNITS	EMPLOYMENT			TOTAL EARNINGS	AVERAGE WEEKLY EARNINGS
		JANUARY	FEBRUARY	MARCH	JANUARY - MARCH	
NORTHWEST WORKFORCE INFORMATION	15,484	231,347	232,291	233,808	\$2,200,445,991	\$728.08
Construction	1,822	11,210	11,149	11,153	95,078,277	654.72
Trade, Transportation & Utilities	3,843	53,749	53,735	54,225	480,776,835	686.10
Retail Trade	2,050	26,726	26,500	26,825	152,974,601	440.99
Other Trade, Transportation & Utilities	1,793	27,023	27,235	27,400	327,802,234	926.38
Professional & Business Services	2,378	32,787	32,951	33,162	587,082,301	1369.87
Education & Health Services	1,902	24,923	24,958	25,031	207,870,219	640.35
Leisure & Hospitality	1,401	21,014	21,495	22,099	68,499,404	244.67
Local & State Government	431	29,280	29,671	29,728	256,583,070	667.71
Other	3,707	58,384	58,332	58,410	504,555,885	664.87

Northwest Workforce Includes these counties: Baxter, Benton, Boone, Carroll, Madison, Marion, Newton, Searcy, and Washington.

SOUTHEAST WORKFORCE INFORMATION	5,862	74,806	75,587	76,513	\$566,943,312	\$576.60
Natural Resources & Mining	408	2,509	2,529	2,566	20,436,294	620.21
Construction	341	3,013	3,128	3,117	29,633,866	738.67
Manufacturing	224	16,689	16,815	17,113	161,951,458	738.36
Trade, Transportation & Utilities	1,366	13,018	12,954	13,141	90,623,658	534.69
Retail Trade	824	8,486	8,397	8,528	43,098,421	391.40
Other Trade, Transportation & Utilities	542	4,532	4,557	4,613	47,525,237	800.42
Education & Health Services	1,419	10,853	10,841	10,916	70,048,660	495.71
Local & State Government	360	16,374	16,727	17,005	120,169,997	553.46
Other	1,744	12,350	12,593	12,655	74,079,379	454.68

Southeast Workforce Includes these counties: Arkansas, Ashley, Bradley, Chicot, Cleveland, Desha, Drew, Grant, Jefferson, and Lincoln

**TABLE 8. WORKFORCE INFORMATION AREA, SUMMARY
EMPLOYMENT AND TOTAL EARNINGS, BY INDUSTRY
FIRST QUARTER 2008**

NORTH AMERICAN INDUSTRY CLASSIFICATION SYSTEM INDUSTRY GROUP	NUMBER OF EMPLOYING UNITS	EMPLOYMENT			TOTAL EARNINGS	AVERAGE WEEKLY EARNINGS
		JANUARY	FEBRUARY	MARCH	JANUARY - MARCH	
SOUTHWEST WORKFORCE INFORMATION	5,887	84,384	84,992	85,346	\$690,969,739	\$625.99
Natural Resources & Mining	415	2,926	2,916	2,935	26,854,779	706.08
Manufacturing	292	23,964	23,960	23,892	247,145,889	794.16
Trade, Transportation & Utilities	1,505	15,439	15,425	15,578	114,743,347	570.16
Retail Trade	944	8,947	8,882	9,009	43,633,247	375.18
Other Trade, Transportation & Utilities	561	6,492	6,543	6,569	71,110,100	837.08
Financial Activities	541	2,854	2,829	2,872	22,994,983	620.28
Education & Health Services	897	9,375	9,448	9,436	59,647,485	487.09
Leisure & Hospitality	405	5,132	5,258	5,282	14,109,359	207.76
Local & State Government	415	14,408	14,664	14,732	100,400,712	528.93
Other	1,417	10,286	10,492	10,619	105,073,185	772.29

Southwest Workforce Includes these counties: Calhoun, Columbia, Dallas, Hempstead, Howard, Lafayette, Little River, Miller, Nevada, Ouachita, Sevier, and Union

WEST CENTRAL WORKFORCE INFORMATION	8,490	107,831	108,982	110,416	\$775,098,699	\$546.62
Natural Resources & Mining	249	2,301	2,516	2,532	20,810,985	653.50
Construction	924	5,070	5,166	5,685	40,842,980	592.00
Manufacturing	410	18,888	18,775	18,714	153,664,444	629.00
Trade, Transportation & Utilities	2,030	22,317	22,018	22,268	168,313,899	583.18
Retail Trade	1,288	14,408	14,159	14,349	74,502,183	400.62
Other Trade, Transportation & Utilities	742	7,909	7,859	7,919	93,811,716	913.96
Financial Activities	882	3,945	3,980	3,990	33,498,600	648.80
Professional & Business Services	949	7,335	7,530	7,610	52,833,095	542.48
Education & Health Services	1,284	15,807	15,836	15,942	120,450,672	584.14
Local Government	229	12,123	12,345	12,436	85,791,747	536.48
State Government	134	4,931	5,342	5,378	39,958,230	589.17
Other	1,399	15,114	15,474	15,861	58,934,047	292.80

West Central Workforce Includes these counties: Clark, Conway, Garland, Hot Spring, Johnson, Montgomery, Perry, Pike, Pope, and Yell

**TABLE 8. WORKFORCE INFORMATION AREA, SUMMARY
EMPLOYMENT AND TOTAL EARNINGS, BY INDUSTRY
FIRST QUARTER 2008**

NORTH AMERICAN INDUSTRY CLASSIFICATION SYSTEM INDUSTRY GROUP	NUMBER OF EMPLOYING UNITS	EMPLOYMENT			TOTAL EARNINGS	AVERAGE WEEKLY EARNINGS
		JANUARY	FEBRUARY	MARCH	JANUARY - MARCH	
WESTERN WORKFORCE INFORMATION	6,631	111,008	111,833	112,158	\$878,021,010	\$604.84
Natural Resources & Mining	176	2,819	2,881	2,949	37,361,984	996.88
Construction	641	4,693	4,650	4,739	39,713,889	650.81
Manufacturing	424	27,074	27,114	26,954	227,486,622	646.98
Trade, Transportation & Utilities	1,669	23,536	23,506	23,592	172,063,891	562.15
Wholesale Trade	398	3,584	3,652	3,671	40,119,203	848.84
Retail Trade	965	12,721	12,638	12,698	67,297,803	408.08
Transportation, Warehousing & Utilities	306	7,231	7,216	7,223	64,646,885	688.44
Financial Activities	707	3,938	3,913	3,913	36,630,860	718.57
Professional & Business Services	824	10,797	11,176	11,173	87,359,745	608.22
Education & Health Services	929	14,314	14,452	14,533	128,026,778	682.34
Leisure & Hospitality	502	8,277	8,341	8,507	24,347,575	223.63
Local & State Government	231	12,218	12,462	12,430	96,011,247	597.05
Other	528	3,342	3,338	3,368	29,018,419	666.46

Western Workforce Includes these counties: Crawford, Franklin, Logan, Polk, Scott, and Sebastian

