

# Arkansas Covered Employment & Earnings

Jobs for People. People for Jobs.

**DWS**  
Department of  
WORKFORCE**Services**

Fourth Quarter  
2006

**COVERED EMPLOYMENT AND EARNINGS  
STATE OF ARKANSAS  
FOURTH QUARTER 2006**

**MIKE BEEBE, GOVERNOR  
STATE OF ARKANSAS**

**ARTEE WILLIAMS, DIRECTOR  
DEPARTMENT OF WORKFORCE SERVICES**

**PUBLISHED BY  
LABOR MARKET INFORMATION & ANALYSIS  
BUREAU OF LABOR STATISTICS PROGRAMS  
POST OFFICE BOX 2981  
LITTLE ROCK, ARKANSAS 72203-2981  
BERNADETTE COLEMAN, BLS PROGRAMS MANAGER  
TELEPHONE: (501) 682-3159**

**STATE OF ARKANSAS HOME PAGE: <http://www.arkansas.gov>**

**DEPARTMENT OF WORKFORCE SERVICES HOME PAGE: <http://www.arkansas.gov/esd/>**

**INTERNET SITE FOR LABOR MARKET INFORMATION:  
<http://www.discover.arkansas.gov>**

**RELEASED: JUNE 2008**

## TABLE OF CONTENTS

Description of Data	Page 1
Industry Classification	Page 1
Definition of Covered Employment and Earnings	Page 2
Federal Government Employment	Page 2
County Classification	Page 2
Significant Developments During Third Quarter 2006	Page 3

## LIST OF GRAPHS AND TABLES

Graph 1	Total Covered Employment for Selected Years, Arkansas	Page 7
Graph 2	Total Covered Earnings, by Calendar Quarter for Selected Years, Arkansas	Page 8
Table 1	Quarterly Comparison of Covered Employment and Wages, by Industry	Page 5
Table 2	Total Covered Employment in Arkansas, 1999-2006	Page 6
Table 3	Total Covered Earnings, 1999-2006	Page 9
Table 4	Total Taxable Earnings, 1999-2006	Page 10
Table 5	State Summary - Employment and Total Earnings, by Industry, Third Quarter 2006	Page 11
Table 6	County Summary - Employment and Total Earnings, by Industry, Third Quarter 2006	Page 23
Table 7	Federal Government Employment and Total Earnings in Arkansas, Third Quarter 2006	Page 61
Table 8	Workforce Information Area – Employment and Total Earnings, by Industry, Third Quarter 2006	Page 62

EMPLOYMENT AND EARNINGS  
UNDER THE ARKANSAS EMPLOYMENT SECURITY LAW  
FOURTH QUARTER 2006

## DESCRIPTION OF DATA

This publication contains covered employment and payroll data by industry and county for the Fourth Quarter 2006. These data are compiled from quarterly contribution and wage reports submitted by employers subject to the Arkansas Employment Security Law. An employing unit is a single physical location where business is conducted, production takes place, or services are provided. Employment data have been tabulated for each month of the quarter by industry under the **North American Industry Classification System** (NAICS) (see "Industry Classification" below) on a statewide, county and workforce area basis. Payroll data represent the total wages paid during the quarter, and are also shown by

industry for the State and by publishable industry groups for each county and workforce area. The tabulation of this data is a joint effort in conjunction with the U.S. Bureau of Labor Statistics. In addition, there are tables included which set out total covered employment by months, quarterly payrolls, and average weekly earnings for the years 1999 through 2006. Data contained in this publication are subject to revision. These revisions will be reflected in the 2006 Annual Covered Employment and Earnings publication. Because of industry code changes between years, substantial employment and wage shifts among industries are anticipated.

## INDUSTRY CLASSIFICATION

Previously published industry data **will not** be comparable in all instances with currently published data since industry codes have been revised according to the following Manuals: (a) between January 1, 1958 and December 31, 1967, industry codes were assigned under the 1957 Standard Industrial Classification (SIC) Manual; (b) between January 1, 1968 and December 31, 1974, industry codes were assigned under the 1967 Standard Industrial Classification (SIC) Manual; (c) between January 1, 1975 and December 31, 1987, industry codes were assigned under the 1972 Standard Industrial Classification (SIC) Manual; (d) between January 1, 1988 and December 31, 2000, industry codes were assigned under the 1987 Standard Industrial Classification (SIC) Manual; and (e) since January 1, 2001, industry codes have been assigned under the 2002 North American Industry Classification System (NAICS) Manual. **The NAICS Manual represents a significant change in coding methodology as compared to the**

**SIC Manual.** One of the most significant changes involves how NAICS treats auxiliary units. Auxiliary units are establishments primarily engaged in performing management or support services for other establishments of the same enterprise. The SIC code for these units was based on the activity of the enterprise served. The NAICS code is based on the actual activities that the establishment performs. Comparisons of many industries **should not be made** between this publication and previous Covered Employment and Earnings publications that were based on SIC. Even though some titles are the same or similar, in nature, NAICS and SIC could differ in the classification of employers. The implementation of NAICS represents a profound change for statistical programs, and will create significant benefits along with transition obstacles for both data collectors and data users. A summary is available on the NAICS home page at <http://www.census.gov/naics>.



## DEFINITION OF COVERED EMPLOYMENT AND EARNINGS

Covered Employment is the number of workers employed by employers subject to the Arkansas Employment Security Law who worked or received pay for the payroll period including the 12th of the month. An employer is subject to the law when they employ one or more employees in each of ten days during the current or preceding calendar year.

Currently excluded from coverage is employment covered by the Railroad Unemployment Insurance Act, some domestic service workers, employees of small agricultural establishments, self-employed and unpaid family workers, insurance and real estate

agents who are on commission only, and employees of churches and religious organizations except separately incorporated schools. The payroll information in this publication includes all wages and salaries paid to any covered employees by their employers including bonuses, commissions, and cash values of remuneration received in any medium other than cash. These wages include both taxable and nontaxable wages. Only the first \$10,000 paid to each worker by an employer in the calendar year is taxable under the Arkansas Employment Security Law.

## FEDERAL GOVERNMENT EMPLOYMENT

Table 7 on page 61 lists the total number of civilians employed by the Federal Government in Arkansas during the Fourth Quarter 2006. Employment and wage data are set out by industry divisions. These data are obtained from required reports submitted by various

government agencies having employment in the State. Civilian Federal workers are covered by the Unemployment Compensation for Federal Employees (UCFE) program.

## COUNTY CLASSIFICATION

Employment and payroll data by county are classified according to the county where the workers are employed. Employers with operations in more than one county are requested to furnish this agency with a breakdown of employment and wages for at least one quarter of each year by the counties in which they operate. Many such employers submit county data with each regular contribution report. **Note:** This information is invaluable in the preparation of monthly employment and payroll data by county.

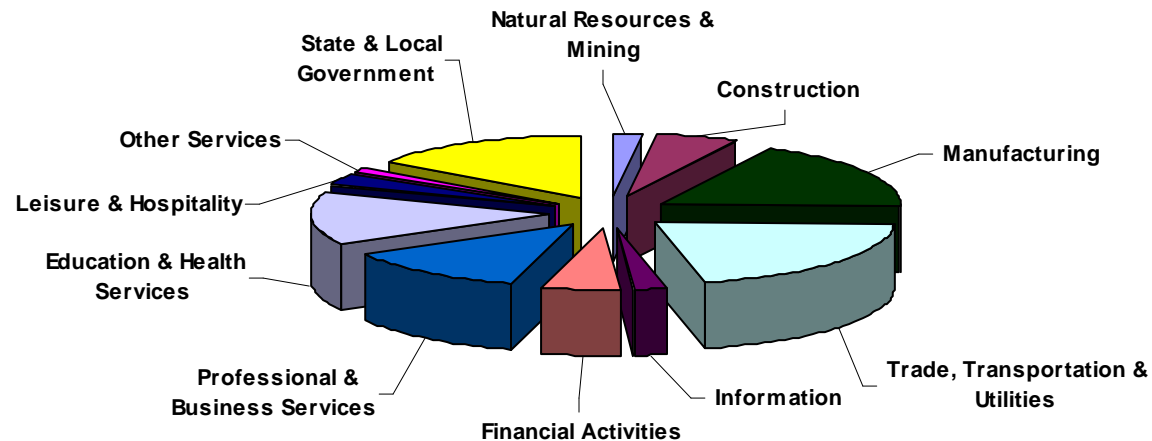
Employment and payroll data for multi - area employers, who do not furnish county data each quarter of the year, are prorated by county on the basis of one quarter of information. The "rest-of-state" table that appears on page 60 of this publication includes data on firms that **did not** provide a county breakdown of employment and payrolls. It also includes sales, and all other type of personnel with no permanent place of work, as well as employment of employers with no established place of business in Arkansas.

## SIGNIFICANT DEVELOPMENTS DURING FOURTH QUARTER 2006

**AVERAGE EMPLOYMENT CHANGES**

Covered employment averaged 1,157,046 during the Fourth Quarter 2006 (see table 1), an increase of 21,794 (1.9%) from the previous quarter and 11,743 (1.0%) above the average recorded one-year ago. This *over-the-year* increase is more significant when used as an economic indicator. This *over-the-year* comparison allows for the disregarding of many seasonal factors that are evident when making an *over-the-quarter* comparison.

Average Covered Employment by NAICS Group

**EMPLOYMENT CHANGES FROM THIRD QUARTER 2006**

Over the quarter gains were recorded in six industry groups while five suffered losses (see Table 1). Employment in State and Local Government rose 27,213 or 17.6% from the previous quarter due to the start of school in local school districts. Trade, Transportation and Utilities gained 3,731 jobs. This boost in employment is primarily found in Retail Trade (3,626 jobs) because of the increase in seasonal workers for the holiday season. Education and Health Services saw a gain of 0.8%. The continuing natural gas boom in Arkansas led to an increase of 347 jobs in Natural Resources and

Mining. Financial Activities (+32) and Information (+12) also reported minimal gains.

Layoffs have led to a decrease of 4,335 jobs in Manufacturing. Leisure & Hospitality lost 3,223 jobs because of the end of the summer travel season. Construction (-1,783), Other Services (-637) and Professional and Business Services (-694) also reported losses.

## EMPLOYMENT CHANGES FROM FOURTH QUARTER 2005

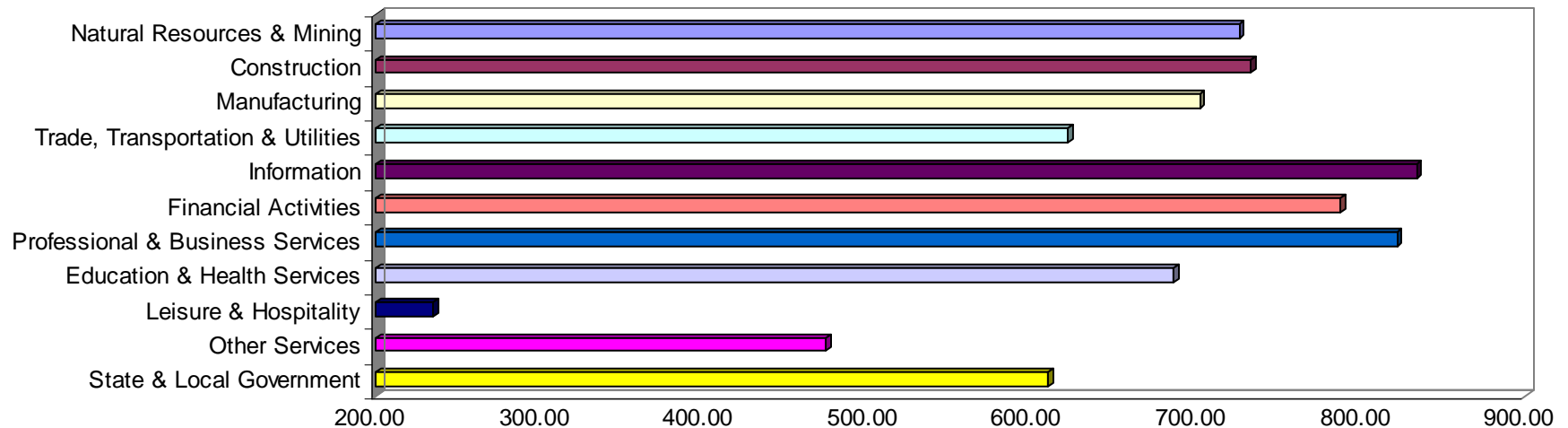
Over-the-year gains were recorded in ten industry groups while one recorded a loss (see table 1). Significant gains were posted in Educational & Health Services (+4,068), Leisure & Hospitality (+3,556), and State & Local Government (+3,436). The only loss occurred in Manufacturing (-6,332).

## COVERED WAGES

Wages paid to covered workers totaled \$9,685,672,308 for the Fourth Quarter 2006 (see table 1), for an average weekly wage of \$643.93 (see table 5). Employees in Little River County recorded the highest average weekly wage (\$780.69), and workers in Newton County the lowest (\$373.53) (see table 6).

The Information sector recorded the highest average weekly wage for the State of Arkansas at \$833.80, while the Leisure & Hospitality sector recorded the lowest at \$235.09 for the State of Arkansas (see table 5).

### Average Weekly Wages by Industry Group



Note: Because of industry code changes between years, substantial employment and wage shifts among industries are anticipated.

TABLE 1. QUARTERLY COMPARISON OF COVERED EMPLOYMENT AND WAGES, BY INDUSTRY

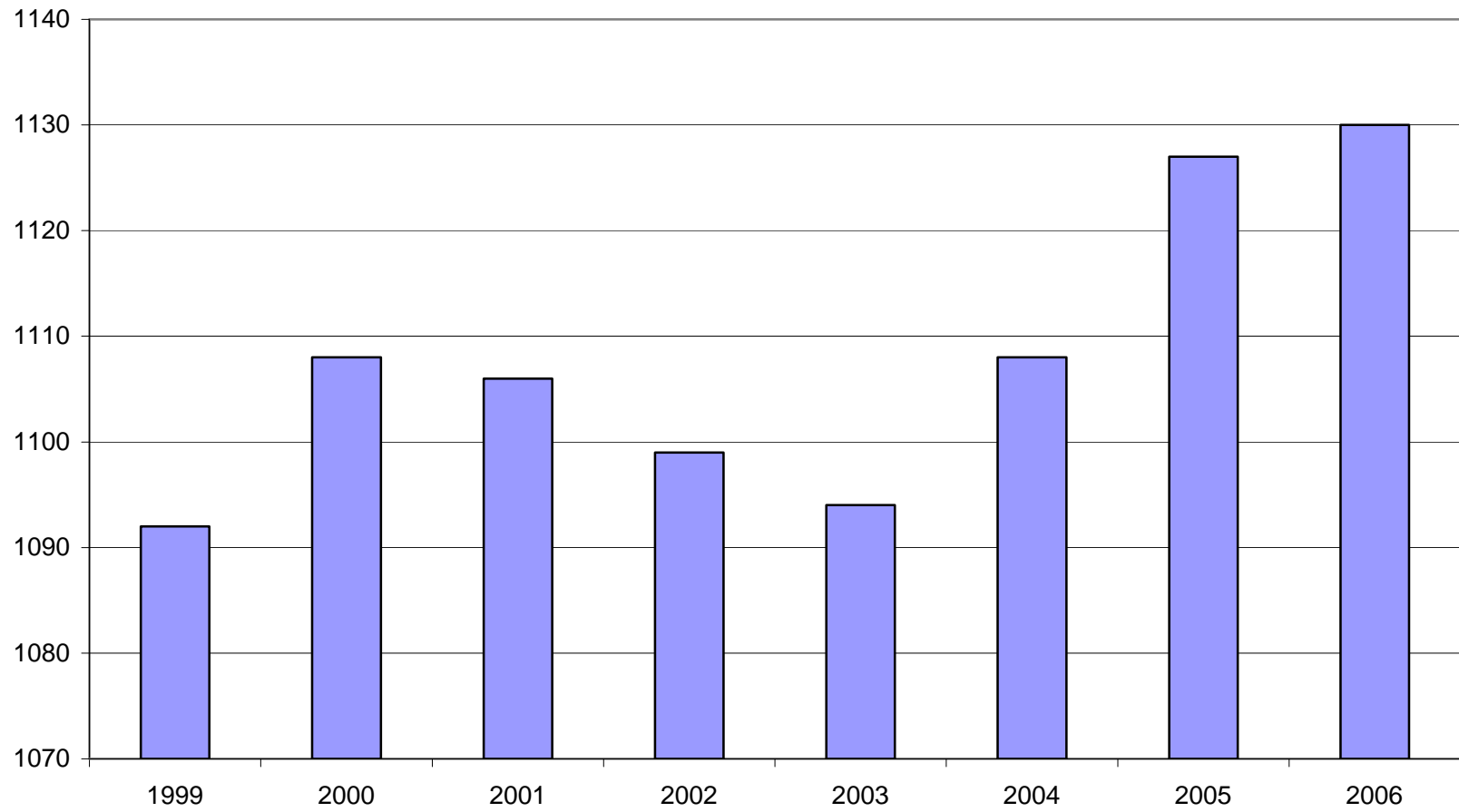
North American Industry Classification System Industry	Number of Employing Units	Average Monthly Employment	% of Employment Total	Net Change From July - Sept. 2006	Net Change From Oct. - Dec. 2005	Total Wages Paid Oct. - Dec. 2006	% of Total Wages Paid
<b>Total</b>	<b>81,125</b>	<b>1,157,046</b>	<b>100.0%</b>	<b>21,794</b>	<b>11,743</b>	<b>\$9,685,672,308</b>	<b>100.0%</b>
<b>Natural Resources &amp; Mining</b>	<b>2,390</b>	<b>19,468</b>	<b>1.7%</b>	<b>347</b>	<b>646</b>	<b>\$183,680,093</b>	<b>1.9%</b>
Agriculture, Forestry, Fishing & Hunting	1,998	14,171	1.2%	105	-350	\$112,038,374	1.2%
Mining	392	5,297	0.5%	241	996	\$71,641,719	0.7%
<b>Construction</b>	<b>8,059</b>	<b>56,757</b>	<b>4.9%</b>	<b>-1,783</b>	<b>938</b>	<b>\$540,506,084</b>	<b>5.6%</b>
<b>Manufacturing</b>	<b>3,602</b>	<b>194,737</b>	<b>16.8%</b>	<b>-4,335</b>	<b>-6,332</b>	<b>\$1,776,767,133</b>	<b>18.3%</b>
<b>Trade, Transportation &amp; Utilities</b>	<b>20,951</b>	<b>248,897</b>	<b>21.5%</b>	<b>3,731</b>	<b>2,800</b>	<b>\$2,011,213,726</b>	<b>20.8%</b>
Wholesale Trade	6,352	48,158	4.2%	-72	383	\$629,646,467	6.5%
Retail Trade	11,253	135,625	11.7%	2,626	738	\$726,110,971	7.5%
Transportation & Warehousing	2,986	58,223	5.0%	1,177	1,460	\$543,517,297	5.6%
Utilities	360	6,891	0.6%	1	218	\$111,938,991	1.2%
<b>Information</b>	<b>1,196</b>	<b>20,048</b>	<b>1.7%</b>	<b>12</b>	<b>53</b>	<b>\$217,310,894</b>	<b>2.2%</b>
<b>Financial Activities</b>	<b>8,116</b>	<b>51,583</b>	<b>4.5%</b>	<b>32</b>	<b>1,252</b>	<b>\$528,157,696</b>	<b>5.5%</b>
Finance & Insurance	4,758	37,150	3.2%	24	612	\$421,225,419	4.3%
Real Estate & Rental & Leasing	3,358	14,433	1.2%	8	640	\$106,932,277	1.1%
<b>Professional &amp; Business Services</b>	<b>11,053</b>	<b>114,109</b>	<b>9.9%</b>	<b>-694</b>	<b>602</b>	<b>\$1,219,262,232</b>	<b>12.6%</b>
Professional & Technical Services	6,975	37,545	3.2%	1,014	1,953	\$495,157,286	5.1%
Management of Companies & Enterprises	511	24,267	2.1%	86	618	\$443,711,418	4.6%
Administrative & Waste Services	3,567	52,297	4.5%	-1,795	-1,969	\$280,393,528	2.9%
<b>Education &amp; Health Services</b>	<b>10,923</b>	<b>147,407</b>	<b>12.7%</b>	<b>1,131</b>	<b>4,068</b>	<b>\$1,314,640,527</b>	<b>13.6%</b>
Educational Services	553	9,407	0.8%	626	54	\$63,172,932	0.7%
Health Care & Social Assistance	10,370	138,000	11.9%	505	4,015	\$1,251,467,595	12.9%
<b>Leisure &amp; Hospitality</b>	<b>6,151</b>	<b>96,643</b>	<b>8.4%</b>	<b>-3,223</b>	<b>3,556</b>	<b>\$295,352,438</b>	<b>3.0%</b>
Arts, Entertainment & Recreation	919	8,657	0.7%	-1,722	275	\$37,700,661	0.4%
Accommodation & Food Services	5,232	87,986	7.6%	-1,501	3,281	\$257,651,777	2.7%
<b>Other Services</b>	<b>5,484</b>	<b>25,630</b>	<b>2.2%</b>	<b>-637</b>	<b>724</b>	<b>\$157,863,678</b>	<b>1.6%</b>
<b>State &amp; Local Government</b>	<b>3,200</b>	<b>181,767</b>	<b>15.7%</b>	<b>27,213</b>	<b>3,436</b>	<b>\$1,440,917,807</b>	<b>14.9%</b>
Local Government	2,001	118,093	10.2%	25,463	379	\$881,155,952	9.1%
State Government	1,199	63,674	5.5%	1,751	3,057	\$559,761,855	5.8%
Nonclassifiable Establishments	0	0	0.0%	0	0	\$0	0.0%

Note: Items do not necessarily add to totals because of rounding. Because of industry code changes between years, substantial employment and wage shifts among industries are anticipated.

TABLE 2. TOTAL COVERED EMPLOYMENT IN ARKANSAS

Period	1999	2000	2001	2002	2003	2004	2005	2006
Average	1,092,351	1,108,479	1,106,066	1,098,558	1,094,087	1,108,264	1,126,778	1,130,458
January	1,065,920	1,089,943	1,096,009	1,081,635	1,082,740	1,089,510	1,102,768	1,104,692
February	1,074,315	1,096,113	1,101,616	1,086,793	1,084,880	1,094,626	1,110,577	1,112,453
March	1,084,653	1,109,144	1,112,143	1,098,500	1,092,172	1,105,266	1,122,619	1,124,250
April	1,093,574	1,111,525	1,115,526	1,103,399	1,095,341	1,111,020	1,129,785	1,130,599
May	1,098,539	1,116,760	1,119,815	1,111,998	1,103,099	1,117,144	1,135,567	1,136,212
June	1,101,748	1,121,225	1,119,734	1,112,028	1,099,688	1,117,010	1,136,118	1,136,984
July	1,062,563	1,075,066	1,071,921	1,065,697	1,053,220	1,071,463	1,090,071	1,090,058
August	1,081,260	1,096,848	1,094,160	1,086,011	1,077,775	1,094,871	1,114,098	1,114,403
September	1,108,212	1,123,725	1,115,976	1,113,148	1,105,980	1,122,704	1,144,815	1,144,705
October	1,110,604	1,122,884	1,110,994	1,108,447	1,112,550	1,123,246	1,142,300	1,156,725
November	1,112,003	1,120,620	1,109,012	1,107,611	1,109,712	1,125,061	1,145,667	1,156,046
December	1,114,823	1,117,892	1,105,887	1,107,425	1,111,892	1,127,250	1,146,954	1,158,366

AVERAGE TOTAL COVERED EMPLOYMENT GRAPH 1  
In Thousands



TOTAL COVERED EARNINGS BY CALENDAR QUARTER, GRAPH 2  
In Thousands

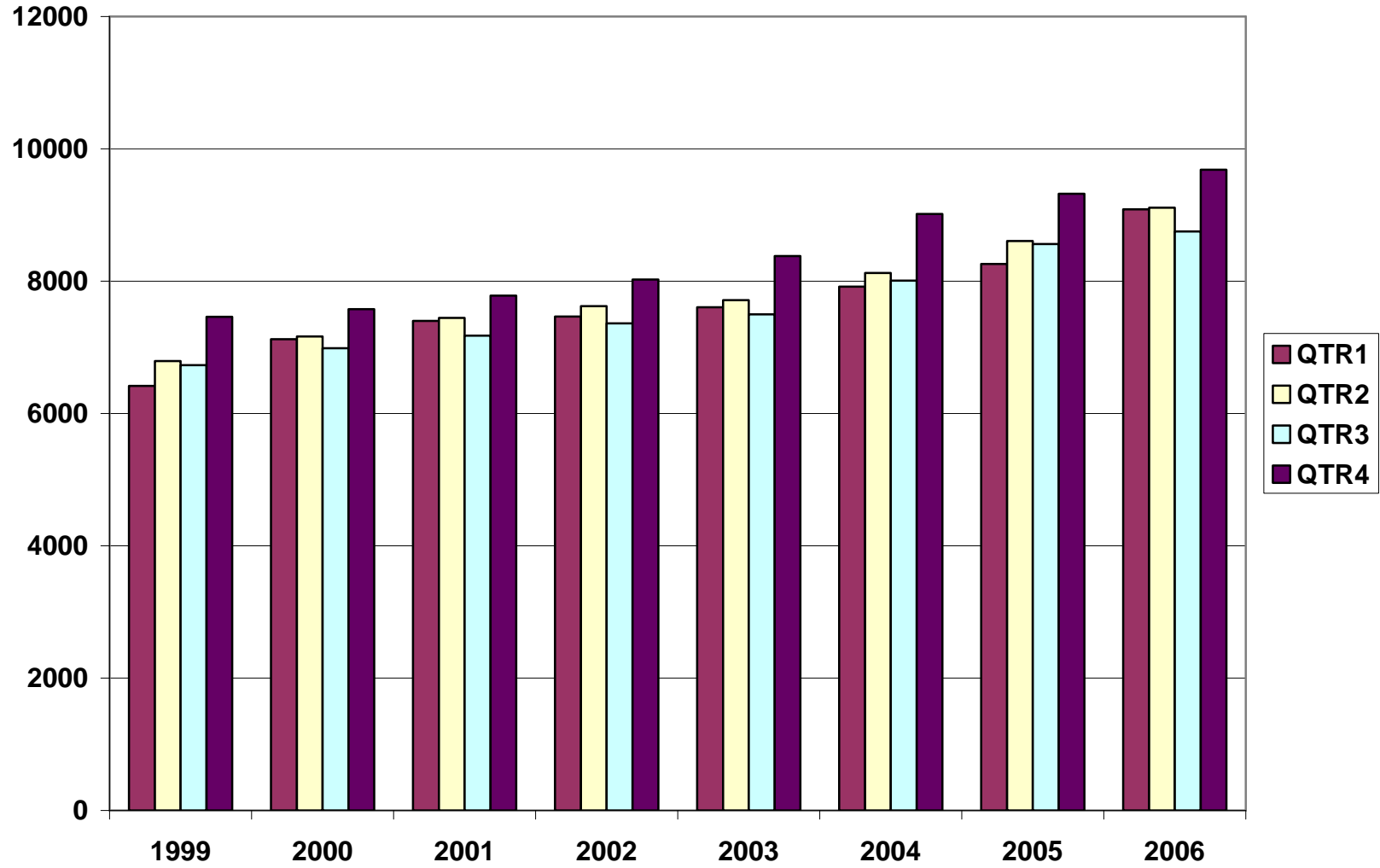


TABLE 3. TOTAL COVERED EARNINGS, 1999- 2006

<b>Period</b>	<b>1999</b>	<b>2000</b>	<b>2001</b>	<b>2002</b>
Total	\$27,407,925,462	\$28,853,716,151	\$29,807,669,666	\$30,472,854,103
January - March	\$6,418,456,638	\$7,122,636,896	\$7,398,887,532	\$7,465,250,305
April - June	\$6,791,960,679	\$7,166,049,182	\$7,448,023,298	\$7,621,878,775
July - September	\$6,733,480,079	\$6,986,085,106	\$7,177,293,061	\$7,361,666,511
October - December	\$7,464,028,066	\$7,578,944,967	\$7,783,465,775	\$8,024,058,512
Average Weekly Earnings	\$482.51	\$500.58	\$518.26	\$533.44

<b>Period</b>	<b>2003</b>	<b>2004</b>	<b>2005</b>	<b>2006</b>
Total	\$31,202,576,767	\$33,068,189,304	\$34,753,437,458	\$36,637,452,115
January - March	\$7,608,130,008	\$7,918,843,610	\$8,261,153,981	\$9,086,373,822
April - June	\$7,714,813,038	\$8,122,370,361	\$8,607,722,353	\$9,112,835,784
July - September	\$7,500,204,764	\$8,010,300,454	\$8,562,885,196	\$8,752,570,201
October - December	\$8,379,428,957	\$9,016,674,879	\$9,321,675,928	\$9,685,672,308
Average Weekly Earnings	\$548.45	\$573.80	\$593.14	\$623.26



TABLE 4. TOTAL TAXABLE EARNINGS, 1999 - 2006

<b>Period</b>	<b>1999</b>	<b>2000</b>	<b>2001</b>	<b>2002</b>
Total	\$8,807,445,422	\$9,047,924,530	\$9,003,189,480	\$8,887,270,978
January - March	\$4,203,067,856	\$4,560,783,991	\$4,670,296,360	\$4,668,534,587
April - June	\$2,325,649,764	\$2,260,680,255	\$2,219,485,263	\$2,162,971,435
July - September	\$1,267,562,743	\$1,250,832,297	\$1,190,098,737	\$1,158,197,858
October - December	\$1,011,165,059	\$975,627,987	\$923,309,120	\$897,567,098

<b>Period</b>	<b>2003</b>	<b>2004</b>	<b>2005</b>	<b>2006</b>
Total	\$9,154,938,743	\$9,731,247,501	\$9,991,618,726	\$10,239,377,155
January - March	\$4,737,918,796	\$4,931,559,230	\$5,062,670,306	\$5,422,414,259
April - June	\$2,270,519,362	\$2,451,454,749	\$2,506,505,721	\$2,385,187,226
July - September	\$1,188,681,170	\$1,318,017,835	\$1,353,673,932	\$1,355,673,606
October - December	\$957,819,415	\$1,030,215,687	\$1,068,768,767	\$1,076,102,064

**TABLE 5. STATEWIDE SUMMARY  
EMPLOYMENT AND TOTAL EARNINGS, BY INDUSTRY  
FOURTH QUARTER 2006**

NORTH AMERICAN INDUSTRY CLASSIFICATION SYSTEM INDUSTRY GROUPS	NUMBER OF EMPLOYING UNITS	EMPLOYMENT OCTOBER	EMPLOYMENT NOVEMBER	EMPLOYMENT DECEMBER	TOTAL EARNINGS OCTOBER - DECEMBER	AVERAGE WEEKLY EARNINGS
TOTAL, ALL INDUSTRIES	81,117	1,156,580	1,155,901	1,158,236	\$9,683,955,591	\$643.93
NATURAL RESOURCES AND MINING	2,382	19,911	19,257	18,816	\$181,963,376	\$724.19
AGRICULTURE, FORESTRY, FISHING AND HUNTING	1,990	14,687	13,939	13,466	\$110,321,657	\$604.84
CROP PRODUCTION	725	4,236	3,796	3,549	\$24,845,477	\$495.08
Oilseed and Grain Farming	424	2,186	1,978	1,880	\$12,303,048	\$469.75
Vegetable and Melon Farming	12	119	103	99	\$482,057	\$346.55
Fruit and Tree Nut Farming	9	63	61	59	\$371,467	\$468.43
Greenhouse and Nursery Production	51	291	287	297	\$2,047,523	\$540.01
Other Crop Farming	229	1,577	1,367	1,214	\$9,641,382	\$535.10
ANIMAL PRODUCTION	250	3,485	3,411	3,389	\$30,953,108	\$694.51
Cattle Ranching and Farming	74	309	301	301	\$3,013,147	\$763.27
Poultry and Egg Production	84	2,555	2,540	2,540	\$23,526,504	\$711.09
Animal Aquaculture	60	535	482	464	\$3,949,616	\$615.43
Other	32	86	88	84	\$463,841	\$414.88
FORESTRY AND LOGGING	557	2,964	2,935	3,001	\$22,426,081	\$581.49
Timber Tract Operations	45	257	260	259	\$2,311,390	\$687.37
Forest Nurseries & Gathering of Forest Products	6	34	34	34	\$304,954	\$689.94
Logging	506	2,673	2,641	2,708	\$19,809,737	\$569.87
OTHER	458	4,002	3,797	3,527	\$32,096,991	\$653.98
MINING	392	5,224	5,318	5,350	\$71,641,719	\$1,040.32
OIL AND GAS EXTRACTION	88	437	472	456	\$7,767,816	\$1,313.24
MINING (EXCEPT OIL AND GAS)	105	2,101	2,057	2,040	\$21,433,797	\$798.04
SUPPORT ACTIVITIES FOR MINING	199	2,686	2,789	2,854	\$42,440,106	\$1,175.88
CONSTRUCTION	8,059	57,445	56,291	56,534	\$540,506,084	\$732.56
CONSTRUCTION OF BUILDINGS	2,296	13,196	12,950	13,124	\$143,827,670	\$845.20
Residential Building Construction	1,681	4,628	4,557	4,652	\$39,510,712	\$658.95
Nonresidential Building Construction	615	8,568	8,393	8,472	\$104,316,958	\$946.53
HEAVY AND CIVIL ENGINEERING CONSTRUCTION	911	10,998	10,373	10,246	\$108,745,044	\$793.72
Utility System Construction	429	5,162	4,838	4,886	\$50,451,586	\$782.12
Land Subdivision	143	544	534	533	\$7,183,395	\$1,028.99
Highway, Street and Bridge Construction	225	3,791	3,544	3,475	\$33,164,176	\$707.98

**TABLE 5. STATEWIDE SUMMARY  
EMPLOYMENT AND TOTAL EARNINGS, BY INDUSTRY  
FOURTH QUARTER 2006**

NORTH AMERICAN INDUSTRY CLASSIFICATION SYSTEM INDUSTRY GROUPS	NUMBER OF EMPLOYING UNITS	EMPLOYMENT OCTOBER	EMPLOYMENT NOVEMBER	EMPLOYMENT DECEMBER	TOTAL EARNINGS OCTOBER - DECEMBER	AVERAGE WEEKLY EARNINGS
Other Heavy Construction	114	1,501	1,457	1,352	\$17,945,887	\$960.87
<b>SPECIALTY TRADE CONTRACTORS</b>	<b>4,852</b>	<b>33,251</b>	<b>32,968</b>	<b>33,164</b>	<b>\$287,933,370</b>	<b>\$668.59</b>
Building Foundation and Exterior Contractors	975	6,642	6,517	6,586	\$51,991,103	\$607.64
Building Equipment Contractors	2,128	15,974	15,905	15,975	\$155,784,293	\$751.25
Building Finishing Contractors	906	5,202	5,234	5,251	\$39,439,256	\$580.19
Other Specialty Trade Contractors	843	5,433	5,312	5,352	\$40,718,718	\$583.75
<b>MANUFACTURING</b>	<b>3,602</b>	<b>196,102</b>	<b>193,897</b>	<b>194,211</b>	<b>\$1,776,767,133</b>	<b>\$701.84</b>
<b>FOOD MANUFACTURING</b>	<b>326</b>	<b>50,808</b>	<b>50,897</b>	<b>50,855</b>	<b>\$356,136,165</b>	<b>\$538.71</b>
Animal Food Manufacturing	59	1,469	1,455	1,438	\$14,215,942	\$752.09
Grain and Oilseed Milling	30	2,360	2,353	2,358	\$21,557,172	\$703.54
Fruit, Vegetable and Specialty Food	35	6,930	6,949	6,927	\$58,391,872	\$647.65
Dairy Product Manufacturing	13	715	706	706	\$6,396,125	\$693.95
Animal Slaughtering and Processing	95	34,014	34,095	34,120	\$213,358,965	\$481.63
Bakeries and Tortilla Manufacturing	53	3,339	3,349	3,330	\$26,438,238	\$609.02
Other Food Manufacturing	27	1,725	1,733	1,718	\$14,668,033	\$653.97
Other	14	256	257	258	\$1,109,818	\$332.18
<b>BEVERAGE AND TOBACCO PRODUCT MFG.</b>	<b>35</b>	<b>1,251</b>	<b>1,238</b>	<b>1,235</b>	<b>\$11,867,855</b>	<b>\$735.43</b>
<b>TEXTILE MILLS</b>	<b>20</b>	<b>424</b>	<b>406</b>	<b>410</b>	<b>\$4,473,624</b>	<b>\$832.56</b>
Fabric Mills	6	331	318	320	\$3,911,709	\$931.58
Textile and Fabric Finishing Mills	14	93	88	90	\$561,915	\$478.50
<b>TEXTILE PRODUCT MILLS</b>	<b>55</b>	<b>1,276</b>	<b>1,273</b>	<b>1,257</b>	<b>\$11,572,176</b>	<b>\$701.66</b>
<b>APPAREL MANUFACTURING</b>	<b>45</b>	<b>1,779</b>	<b>1,745</b>	<b>1,708</b>	<b>\$10,383,665</b>	<b>\$458.00</b>
Cut and Sew Apparel Manufacturing	36	840	803	764	\$4,262,901	\$408.70
Other	9	939	942	944	\$6,120,764	\$499.99
<b>LEATHER AND ALLIED PRODUCT MANUFACTURING</b>	<b>20</b>	<b>1,898</b>	<b>1,823</b>	<b>1,814</b>	<b>\$11,066,280</b>	<b>\$461.38</b>
Footwear Manufacturing	10	1,689	1,615	1,603	\$8,722,290	\$410.20
Other Leather Product Manufacturing	10	209	208	211	\$2,343,990	\$861.34
<b>WOOD PRODUCT MANUFACTURING</b>	<b>390</b>	<b>13,286</b>	<b>13,240</b>	<b>12,938</b>	<b>\$107,128,138</b>	<b>\$626.44</b>
Sawmills and Wood Preservation	175	5,949	5,940	5,836	\$53,187,139	\$692.47
Veneer and Engineered Wood Products	48	3,181	3,205	3,079	\$27,384,723	\$667.68
Other Wood Product Manufacturing	167	4,156	4,095	4,023	\$26,556,276	\$499.30
<b>PAPER MANUFACTURING</b>	<b>86</b>	<b>11,589</b>	<b>11,543</b>	<b>11,527</b>	<b>\$155,978,035</b>	<b>\$1,038.54</b>

**TABLE 5. STATEWIDE SUMMARY  
EMPLOYMENT AND TOTAL EARNINGS, BY INDUSTRY  
FOURTH QUARTER 2006**

NORTH AMERICAN INDUSTRY CLASSIFICATION SYSTEM INDUSTRY GROUPS	NUMBER OF EMPLOYING UNITS	EMPLOYMENT OCTOBER	EMPLOYMENT NOVEMBER	EMPLOYMENT DECEMBER	TOTAL EARNINGS OCTOBER - DECEMBER	AVERAGE WEEKLY EARNINGS
Pulp, Paper and Paperboard Mills	12	4,537	4,507	4,463	\$80,080,445	\$1,368.19
Converted Paper Product Manufacturing	74	7,052	7,036	7,064	\$75,897,590	\$828.05
PRINTING AND RELATED SUPPORT ACTIVITIES	301	4,589	4,589	4,610	\$46,204,010	\$773.31
PETROLEUM AND COAL PRODUCTS MANUFACTURING	20	900	898	909	\$13,665,546	\$1,164.98
CHEMICAL MANUFACTURING	111	4,611	4,595	4,636	\$61,931,709	\$1,032.50
Basic Chemical Manufacturing	28	1,929	1,933	1,961	\$28,552,056	\$1,131.54
Resin, Rubber and Artificial Fibers	6	303	292	289	\$4,348,226	\$1,135.11
Agricultural Chemical Manufacturing	15	342	339	337	\$4,664,761	\$1,057.45
Paint, Coating and Adhesive Manufacturing	8	173	167	171	\$2,370,008	\$1,070.30
Other Chemical Preparation Manufacturing	26	953	956	960	\$11,145,843	\$896.52
Other	28	911	908	918	10,850,815	\$914.88
PLASTICS AND RUBBER PRODUCTS MANUFACTURING	169	12,825	12,800	12,654	\$125,264,151	\$755.17
Plastics Product Manufacturing	126	7,895	7,888	7,747	\$68,173,580	\$668.61
Rubber Product Manufacturing	43	4,930	4,912	4,907	\$57,090,571	\$893.26
NONMETALLIC MINERAL PRODUCT MANUFACTURING	248	4,502	4,443	4,438	\$42,329,534	\$729.91
Clay Product and Refractory Manufacturing	16	432	438	441	\$4,045,397	\$712.09
Glass and Glass Product Manufacturing	14	403	401	408	\$3,641,057	\$693.27
Cement and Concrete Product Manufacturing	177	2,711	2,660	2,648	\$24,676,798	\$710.14
Lime and Gypsum Product Manufacturing	4	430	424	430	\$4,929,206	\$885.91
Other Nonmetallic Mineral Products	37	526	520	511	\$5,037,076	\$746.57
PRIMARY METAL MANUFACTURING	68	8,433	8,404	8,373	\$111,242,807	\$1,018.30
Iron and Steel Mills and Ferroalloys	10	2,182	2,194	2,197	\$47,508,078	\$1,667.95
Purchased Steel Product Manufacturing	14	2,490	2,499	2,540	\$28,144,557	\$862.65
Alumina and Aluminum Production	20	1,874	1,833	1,764	\$19,451,310	\$820.46
Other Nonferrous Metal Production	10	588	584	577	\$4,362,922	\$575.66
Foundries	14	1,299	1,294	1,295	\$11,775,940	\$698.95
FABRICATED METAL PRODUCT MANUFACTURING	580	17,793	17,822	17,486	\$175,697,459	\$763.56
Forging and Stamping	14	952	971	717	\$7,827,513	\$684.22
Cutlery and Hand Tool Manufacturing	16	1,406	1,431	1,406	\$14,660,693	\$797.37
Architectural and Structural Metals	205	5,231	5,191	5,187	\$54,515,770	\$805.98
Boilers, Tanks and Shipping Containers	20	1,090	1,081	1,078	\$11,614,392	\$824.94
Hardware Manufacturing	9	274	273	274	\$2,066,986	\$580.99

**TABLE 5. STATEWIDE SUMMARY  
EMPLOYMENT AND TOTAL EARNINGS, BY INDUSTRY  
FOURTH QUARTER 2006**

NORTH AMERICAN INDUSTRY CLASSIFICATION SYSTEM INDUSTRY GROUPS	NUMBER OF EMPLOYING UNITS	EMPLOYMENT OCTOBER	EMPLOYMENT NOVEMBER	EMPLOYMENT DECEMBER	TOTAL EARNINGS OCTOBER - DECEMBER	AVERAGE WEEKLY EARNINGS
Spring and Wire Product Manufacturing	15	649	658	616	\$4,526,580	\$543.21
Machine Shops and Threaded Products	198	1,846	1,859	1,897	\$17,136,373	\$705.92
Coating, Engraving and Heat Treating Metals	38	771	739	726	\$5,726,557	\$591.02
Other Fabricated Metal Product Manufacturing	65	5,574	5,619	5,585	\$57,622,595	\$792.56
<b>MACHINERY MANUFACTURING</b>	<b>252</b>	<b>14,282</b>	<b>14,232</b>	<b>14,209</b>	<b>\$126,386,419</b>	<b>\$682.68</b>
Agricultural, Construction and Mining Machinery	37	2,571	2,574	2,583	\$15,641,347	\$467.07
Commercial and Service Industry Machinery	27	973	960	983	\$10,125,268	\$801.30
HVAC and Commercial Refrigeration Equipment	24	5,228	5,185	5,156	\$46,864,387	\$694.64
Metalworking Machinery Manufacturing	74	1,302	1,297	1,302	\$13,775,815	\$814.93
Other General Purpose Machinery Manufacturing	56	3,220	3,223	3,212	\$29,706,503	\$710.03
Other	34	988	993	973	\$10,273,099	\$802.54
<b>COMPUTER AND ELECTRONIC PRODUCT MANUFACTURING</b>	<b>82</b>	<b>5,743</b>	<b>5,691</b>	<b>5,370</b>	<b>\$51,788,350</b>	<b>\$711.21</b>
Audio and Video Equipment Manufacturing	11	1,297	1,282	1,050	\$10,969,740	\$697.57
Semiconductors and Electronic Components	25	2,361	2,356	2,355	\$20,758,435	\$677.38
Electronic Instrument Manufacturing	30	1,219	1,214	1,227	\$9,469,290	\$597.05
Other	16	866	839	738	\$10,590,885	\$1,000.43
<b>ELECTRICAL EQUIPMENT AND APPLIANCES</b>	<b>72</b>	<b>11,462</b>	<b>9,583</b>	<b>10,991</b>	<b>\$104,360,707</b>	<b>\$751.76</b>
Electrical Equipment Manufacturing	23	4,903	4,920	4,964	\$47,100,233	\$735.06
Other	49	6,559	4,663	6,027	\$57,260,474	\$766.07
<b>TRANSPORTATION EQUIPMENT MANUFACTURING</b>	<b>173</b>	<b>16,642</b>	<b>16,721</b>	<b>16,932</b>	<b>\$156,417,094</b>	<b>\$717.69</b>
Motor Vehicle Body and Trailer Manufacturing	42	3,870	3,905	3,866	\$34,702,794	\$687.94
Motor Vehicle Parts Manufacturing	60	6,241	6,254	6,415	\$50,301,603	\$613.86
Aerospace Product and Parts Manufacturing	26	3,472	3,504	3,552	\$46,235,281	\$1,013.46
Ship and Boat Building	27	1,675	1,656	1,676	\$11,536,142	\$531.69
Other	18	1,384	1,402	1,423	\$13,641,274	\$747.92
<b>FURNITURE &amp; RELATED PRODUCT MFG.</b>	<b>275</b>	<b>6,343</b>	<b>6,305</b>	<b>6,158</b>	<b>\$49,522,549</b>	<b>\$607.69</b>
Household & Institutional Furniture	225	4,198	4,178	4,115	\$33,127,079	\$612.02
Office Furniture & Fixtures Manufacturing	42	2,007	1,989	1,905	\$15,507,424	\$606.45
Other Furniture Related Product Manufacturing	8	138	138	138	\$888,046	\$495.01
<b>MISCELLANEOUS MANUFACTURING</b>	<b>274</b>	<b>5,666</b>	<b>5,649</b>	<b>5,701</b>	<b>\$43,350,860</b>	<b>\$587.92</b>
Medical Equipment & Supplies Manufacturing	99	2,634	2,628	2,690	\$21,072,923	\$611.54

**TABLE 5. STATEWIDE SUMMARY  
EMPLOYMENT AND TOTAL EARNINGS, BY INDUSTRY  
FOURTH QUARTER 2006**

NORTH AMERICAN INDUSTRY CLASSIFICATION SYSTEM INDUSTRY GROUPS	NUMBER OF EMPLOYING UNITS	EMPLOYMENT OCTOBER	EMPLOYMENT NOVEMBER	EMPLOYMENT DECEMBER	TOTAL EARNINGS OCTOBER - DECEMBER	AVERAGE WEEKLY EARNINGS
Other Miscellaneous Manufacturing	175	3,032	3,021	3,011	\$22,277,937	\$567.20
TRADE, TRANSPORTATION AND UTILITIES	20,951	246,099	249,070	251,522	\$2,011,213,726	\$621.58
WHOLESALE TRADE	6,352	48,025	48,029	48,421	\$629,646,467	\$1,005.73
MERCHANT WHOLESALERS, DURABLE GOODS	2,108	22,262	22,315	22,501	\$262,092,203	\$901.68
Motor Vehicle & Part Merchant Wholesalers	234	2,669	2,661	2,657	\$25,680,579	\$741.99
Furniture & Furnishing Merchant Wholesalers	70	450	442	441	\$4,907,147	\$849.53
Lumber & Supply Merchant Wholesalers	181	1,846	1,891	1,893	\$19,442,817	\$796.95
Commercial Goods Merchant Wholesalers	246	2,620	2,619	2,648	\$40,004,616	\$1,170.51
Metal & Mineral Merchant Wholesalers	49	816	831	841	\$9,179,698	\$851.44
Electric Goods Merchant Wholesalers	175	2,180	2,174	2,196	\$29,058,813	\$1,023.80
Hardware & Plumbing Merchant Wholesalers	225	2,518	2,537	2,552	\$28,888,260	\$876.37
Machinery & Supply Merchant Wholesalers	688	7,261	7,235	7,291	\$84,074,398	\$890.52
Misc. Durable Goods Merchant Wholesalers	240	1,902	1,925	1,982	\$20,855,875	\$828.52
MERCHANT WHOLESALERS, NONDURABLE GOODS	1,293	16,478	16,388	16,403	\$176,135,433	\$824.99
Paper & Paper Product Merchant Wholesalers	72	1,151	1,162	1,171	\$12,322,060	\$816.17
Druggists' Goods Merchant Wholesalers	58	1,216	1,217	1,234	\$14,572,103	\$917.04
Apparel & Piece Goods Merchant Wholesalers	41	455	479	492	\$4,720,958	\$763.99
Grocery Product Merchant Wholesalers	341	5,252	5,232	5,254	\$59,988,564	\$879.62
Farm Product Merchant Wholesalers	76	928	914	871	\$6,566,940	\$558.59
Chemical Merchant Wholesalers	81	477	479	483	\$6,134,444	\$983.77
Petroleum Merchant Wholesalers	155	1,531	1,527	1,539	\$18,873,204	\$947.43
Alcoholic Beverage Merchant Wholesalers	38	1,112	1,109	1,109	\$13,345,256	\$924.83
Misc. Nondurable Goods Merchant Wholesalers	431	4,356	4,269	4,250	\$39,611,904	\$710.00
ELECTRONIC MARKETS & AGENTS & BROKERS	2,951	9,285	9,326	9,517	\$191,418,831	\$1,570.45
RETAIL TRADE	11,253	133,227	136,050	137,598	\$726,110,971	\$411.83
MOTOR VEHICLE & PARTS DEALERS	1,727	17,901	17,812	17,885	\$154,406,215	\$664.80
Automobile Dealers	743	10,652	10,606	10,691	\$104,459,616	\$754.52
Other Motor Vehicle Dealers	196	1,580	1,558	1,533	\$13,526,226	\$668.26
Automotive Parts, Accessories & Tire Stores	788	5,669	5,648	5,661	\$36,420,373	\$495.03
FURNITURE & HOME FURNISHINGS STORES	601	4,122	4,236	4,246	\$28,203,129	\$516.38
Furniture Stores	322	2,543	2,568	2,585	\$17,447,694	\$523.18
Home Furnishings Stores	279	1,579	1,668	1,661	\$10,755,435	\$505.71

**TABLE 5. STATEWIDE SUMMARY  
EMPLOYMENT AND TOTAL EARNINGS, BY INDUSTRY  
FOURTH QUARTER 2006**

NORTH AMERICAN INDUSTRY CLASSIFICATION SYSTEM INDUSTRY GROUPS	NUMBER OF EMPLOYING UNITS	EMPLOYMENT OCTOBER	EMPLOYMENT NOVEMBER	EMPLOYMENT DECEMBER	TOTAL EARNINGS OCTOBER - DECEMBER	AVERAGE WEEKLY EARNINGS
ELECTRONICS & APPLIANCE STORES	446	3,034	3,325	3,341	\$19,741,784	\$469.67
BUILDING MATERIAL & GARDEN SUPPLY STORES	846	11,071	10,968	10,975	\$69,529,679	\$486.02
Building Material & Supplies Dealers	673	10,217	10,129	10,171	\$64,545,826	\$488.09
Lawn & Garden Equipment & Supplies Stores	173	854	839	804	\$4,983,853	\$460.60
FOOD & BEVERAGE STORES	1,099	18,341	18,633	18,691	\$76,039,478	\$315.24
Grocery Stores	623	15,909	16,130	16,145	\$63,229,101	\$302.83
Specialty Food Stores	165	957	1,004	1,050	\$6,297,883	\$482.68
Beer, Wine & Liquor Stores	311	1,475	1,499	1,496	\$6,512,494	\$336.22
HEALTH & PERSONAL CARE STORES	810	7,033	7,136	7,336	\$52,812,542	\$566.73
GASOLINE STATIONS	1,593	12,453	12,338	12,229	\$44,780,360	\$279.14
Gasoline Stations with Convenience Stores	1,433	11,211	11,103	11,022	\$38,635,837	\$267.46
Other Gasoline Stations	160	1,242	1,235	1,207	\$6,144,523	\$384.90
CLOTHING & CLOTHING ACCESSORIES STORES	1,099	9,278	10,399	10,640	\$33,957,472	\$258.48
Clothing Stores	742	7,136	8,108	8,248	\$22,699,048	\$222.98
Shoe Stores	186	1,188	1,242	1,281	\$4,650,893	\$289.22
Jewelry, Luggage & Leather Goods Stores	171	954	1,049	1,111	\$6,607,531	\$489.66
SPORTING GOODS, HOBBY, BOOK & MUSIC STORES	581	4,586	4,902	5,189	\$18,461,853	\$290.28
Sporting Goods & Musical Instrument Stores	424	3,209	3,444	3,585	\$14,027,163	\$316.18
Book, Periodical & Music Stores	157	1,377	1,458	1,604	\$4,434,690	\$230.55
GENERAL MERCHANDISE STORES	714	36,894	37,627	38,165	\$180,273,005	\$369.18
MISCELLANEOUS STORE RETAILERS	1,411	6,597	6,720	6,933	\$33,311,089	\$379.61
Florists	265	978	980	1,024	\$3,793,029	\$293.53
Office Supplies, Stationery & Gift Stores	385	2,460	2,538	2,636	\$12,570,541	\$380.00
Used Merchandise Stores	218	763	791	811	\$3,963,399	\$386.74
Other Miscellaneous Store Retailers	543	2,396	2,411	2,462	\$12,984,120	\$412.21
NONSTORE RETAILERS	326	1,917	1,954	1,968	\$14,594,365	\$576.80
Electronic Shopping & Mail -Order Houses	69	373	399	417	\$4,056,774	\$787.37
Vending Machine Operators	80	684	689	679	\$4,003,196	\$450.20
Direct Selling Establishments	177	860	866	872	\$6,534,395	\$580.42
TRANSPORTATION & WAREHOUSING	2,986	57,970	58,109	58,590	\$543,517,297	\$718.08
AIR TRANSPORTATION	49	926	928	903	\$11,783,492	\$986.31
TRUCK TRANSPORTATION	1,996	36,506	36,831	36,907	\$350,133,303	\$732.92

**TABLE 5. STATEWIDE SUMMARY  
EMPLOYMENT AND TOTAL EARNINGS, BY INDUSTRY  
FOURTH QUARTER 2006**

NORTH AMERICAN INDUSTRY CLASSIFICATION SYSTEM INDUSTRY GROUPS	NUMBER OF EMPLOYING UNITS	EMPLOYMENT OCTOBER	EMPLOYMENT NOVEMBER	EMPLOYMENT DECEMBER	TOTAL EARNINGS OCTOBER - DECEMBER	AVERAGE WEEKLY EARNINGS
General Freight Trucking	1,269	31,387	31,733	31,722	\$302,578,390	\$736.23
Specialized Freight Trucking	727	5,119	5,098	5,185	\$47,554,913	\$712.52
TRANSIT & GROUND PASSENGER TRANSPORTATION	58	1,100	1,106	1,102	\$4,776,745	\$333.23
Taxi & Limousine Service	18	211	222	218	\$784,862	\$278.22
School & Employee Bus Transportation	8	469	459	454	\$2,053,325	\$342.87
Charter Bus Industry	9	91	89	91	\$426,326	\$363.04
Other Ground Passenger Transportation	17	224	231	239	\$1,034,313	\$343.93
Other	6	105	105	100	\$477,919	\$355.77
PIPELINE TRANSPORTATION	66	914	903	908	\$12,004,908	\$1,016.65
SUPPORT ACTIVITIES FOR TRANSPORTATION	432	4,990	5,009	5,051	\$52,190,079	\$800.26
Support Activities for Air Transportation	108	1,670	1,689	1,714	\$15,312,682	\$696.57
Support Activities for Rail Transportation	31	399	408	414	\$3,713,853	\$701.92
Support Activities for Water Transportation	29	695	671	657	\$7,625,464	\$869.86
Support Activities for Road Transportation	106	507	515	531	\$3,156,867	\$469.10
Freight Transportation Arrangement	132	1,560	1,564	1,563	\$21,179,721	\$1,042.81
Other Support Activities for Transportation	26	159	162	172	\$1,201,492	\$562.41
COURIERS & MESSENGERS	146	3,267	3,350	3,790	\$32,668,237	\$724.40
Couriers	88	3,002	3,086	3,541	\$31,009,298	\$743.17
Local Messengers & Local Delivery	58	265	264	249	\$1,658,939	\$492.07
WAREHOUSING & STORAGE	213	10,018	9,756	9,709	\$77,893,482	\$609.69
OTHER	26	249	226	220	\$2,067,051	\$686.35
UTILITIES	360	6,877	6,882	6,913	\$111,938,991	\$1,249.62
Power Generation & Supply	159	5,029	5,033	5,050	\$88,782,016	\$1,355.75
Natural Gas Distribution	35	1,018	1,020	1,036	\$17,098,624	\$1,283.62
Water, Sewage and Other Systems	166	830	829	827	\$6,058,351	\$562.38
INFORMATION	1,196	20,008	20,043	20,094	\$217,310,894	\$833.80
PUBLISHING INDUSTRIES, EXCEPT INTERNET	245	6,394	6,366	6,353	\$51,317,735	\$619.61
Newspaper, Book & Directory Publishers	217	6,126	6,088	6,076	\$47,520,872	\$599.58
Software Publishers	28	268	278	277	\$3,796,863	\$1,064.64
MOTION PICTURE & SOUND RECORDING INDUSTRY	137	1,153	1,171	1,184	\$5,365,053	\$352.93
Motion Picture & Video Industries	122	1,116	1,135	1,148	\$4,929,930	\$334.71
Sound Recording Industries	15	37	36	36	\$435,123	\$921.22



**TABLE 5. STATEWIDE SUMMARY  
EMPLOYMENT AND TOTAL EARNINGS, BY INDUSTRY  
FOURTH QUARTER 2006**

NORTH AMERICAN INDUSTRY CLASSIFICATION SYSTEM INDUSTRY GROUPS	NUMBER OF EMPLOYING UNITS	EMPLOYMENT OCTOBER	EMPLOYMENT NOVEMBER	EMPLOYMENT DECEMBER	TOTAL EARNINGS OCTOBER - DECEMBER	AVERAGE WEEKLY EARNINGS
BROADCASTING, EXCEPT INTERNET	144	2,080	2,075	2,077	\$17,997,308	\$666.44
Radio & Television Broadcasting	135	2,045	2,040	2,041	\$17,781,999	\$669.86
Cable & Other Subscription Programming	9	35	35	36	\$215,309	\$468.74
TELECOMMUNICATIONS	478	8,982	9,025	9,065	\$123,274,095	\$1,050.82
Wired Telecommunications Carriers	217	3,164	3,170	3,165	\$52,911,544	\$1,285.44
Wireless Telecommunications Carriers	117	4,037	4,065	4,101	\$53,201,596	\$1,006.09
Cable & Other Program Distribution	78	1,302	1,304	1,307	\$11,811,706	\$696.60
Other	66	479	486	492	\$5,349,249	\$847.25
ISPS, SEARCH PORTALS, & DATA PROCESSING	154	1,101	1,104	1,112	\$16,794,989	\$1,168.46
ISPs, & Web Search Portals	64	141	152	150	\$1,767,802	\$920.89
Data Processing & Related Services	90	960	952	962	\$15,027,187	\$1,206.62
OTHER	38	298	302	303	\$2,561,714	\$654.67
FINANCIAL ACTIVITIES	8,116	51,350	51,575	51,824	\$528,157,696	\$787.61
FINANCE & INSURANCE	4,758	37,028	37,142	37,280	\$421,225,419	\$872.19
CREDIT INTERMEDIATION & RELATED ACTIVITIES	2,032	22,013	22,111	22,170	\$214,180,553	\$745.56
Depository Credit Intermediation	1,326	18,306	18,375	18,404	\$171,494,255	\$718.45
Nondepository Credit Intermediation	392	2,558	2,576	2,599	\$33,129,551	\$988.66
Activities Related to Credit Intermediation	314	1,149	1,160	1,167	\$9,556,747	\$634.47
FINANCIAL INVESTMENT & RELATED ACTIVITIES	580	3,091	3,079	3,091	\$63,683,433	\$1,586.89
Security & Commodity Investment Activities	322	2,287	2,297	2,300	\$48,864,433	\$1,638.06
Other Financial Investment Activities	258	804	782	791	\$14,819,000	\$1,438.69
INSURANCE CARRIERS & RELATED ACTIVITIES	2,106	11,488	11,513	11,576	\$138,811,287	\$926.44
Insurance Carriers	399	4,763	4,782	4,785	\$63,660,676	\$1,025.19
Insurance Agencies, Brokerages & Support	1,707	6,725	6,731	6,791	\$75,150,611	\$856.54
OTHER	40	436	439	443	\$4,550,146	\$796.69
REAL ESTATE & RENTAL & LEASING	3,358	14,322	14,433	14,544	\$106,932,277	\$569.91
REAL ESTATE	2,548	9,063	9,142	9,261	\$70,746,721	\$594.41
Lessors of Real Estate	1,034	4,357	4,409	4,482	\$30,511,985	\$531.49
Offices of Real Estate Agents & Brokers	902	2,289	2,287	2,319	\$21,155,088	\$708.04
Activities Related to Real Estate	612	2,417	2,446	2,460	\$19,079,648	\$601.26
RENTAL & LEASING SERVICES	785	5,175	5,209	5,201	\$34,629,002	\$512.76
Automotive Equipment Rental & Leasing	127	1,003	1,024	1,020	\$7,027,044	\$532.20

**TABLE 5. STATEWIDE SUMMARY  
EMPLOYMENT AND TOTAL EARNINGS, BY INDUSTRY  
FOURTH QUARTER 2006**

NORTH AMERICAN INDUSTRY CLASSIFICATION SYSTEM INDUSTRY GROUPS	NUMBER OF EMPLOYING UNITS	EMPLOYMENT OCTOBER	EMPLOYMENT NOVEMBER	EMPLOYMENT DECEMBER	TOTAL EARNINGS OCTOBER - DECEMBER	AVERAGE WEEKLY EARNINGS
Consumer Goods Rental	477	3,104	3,108	3,086	\$16,311,905	\$404.85
General Rental Centers	35	247	252	257	\$2,099,955	\$641.01
Machinery & Equipment Rental & Leasing	146	821	825	838	\$9,190,098	\$853.78
LESSORS OF NONFINANCIAL INTANGIBLE ASSETS	25	84	82	82	\$1,556,554	\$1,448.41
PROFESSIONAL AND BUSINESS SERVICES	11,053	114,536	114,019	113,773	\$1,219,262,232	\$821.93
PROFESSIONAL & TECHNICAL SERVICES	6,975	37,014	37,361	38,260	\$495,157,286	\$1,014.49
Legal Services	1,669	6,657	6,663	6,738	\$103,303,466	\$1,188.52
Accounting & Bookkeeping Services	1,211	4,606	4,814	5,289	\$50,669,013	\$794.95
Architectural & Engineering Services	952	6,610	6,651	6,707	\$92,665,130	\$1,070.93
Specialized Design Services	158	467	467	489	\$4,359,978	\$707.06
Computer Systems Design & Related Services	852	7,710	7,742	7,809	\$133,479,143	\$1,324.23
Management & Technical Consulting Services	1,115	3,762	3,835	3,920	\$48,274,517	\$967.29
Scientific Research & Development Services	113	1,121	1,131	1,159	\$15,368,734	\$1,039.76
Advertising & Related Services	318	2,118	2,145	2,111	\$24,388,345	\$882.97
Other Professional & Technical Services	587	3,963	3,913	4,038	\$22,648,960	\$438.70
MANAGEMENT OF COMPANIES & ENTERPRISES	511	24,242	24,263	24,296	\$443,711,418	\$1,406.50
ADMINISTRATIVE & WASTE SERVICES	3,567	53,280	52,395	51,217	\$280,393,528	\$412.43
ADMINISTRATIVE & SUPPORT SERVICES	3,362	51,004	50,099	48,901	\$257,733,074	\$396.50
Office Administrative Services	371	1,302	1,329	1,382	\$19,736,281	\$1,134.94
Facilities Support Services	16	141	143	150	\$1,193,657	\$634.70
Employment Services	660	26,233	25,158	24,029	\$112,543,759	\$344.36
Business Support Services	374	5,294	5,527	5,377	\$27,565,740	\$392.72
Travel Arrangement & Reservation Services	103	426	423	427	\$2,854,163	\$516.19
Investigation & Security Services	245	4,488	4,497	4,517	\$27,187,736	\$464.68
Services to Buildings & Dwellings	1,311	11,633	11,559	11,520	\$54,476,184	\$362.16
Other Support Services	282	1,487	1,463	1,499	\$12,175,554	\$631.54
WASTE MANAGEMENT & REMEDIATION SERVICES	205	2,276	2,296	2,316	\$22,660,454	\$759.20
Waste Collection	97	1,058	1,073	1,077	\$10,182,154	\$732.46
Waste Treatment & Disposal	39	673	682	680	\$7,962,968	\$903.00
Remediation & Other Waste Services	69	545	541	559	\$4,515,332	\$633.43
EDUCATION AND HEALTH SERVICES	10,923	147,135	147,342	147,744	\$1,314,640,527	\$686.03
EDUCATIONAL SERVICES	553	9,399	9,422	9,400	\$63,172,932	\$516.58

**TABLE 5. STATEWIDE SUMMARY  
EMPLOYMENT AND TOTAL EARNINGS, BY INDUSTRY  
FOURTH QUARTER 2006**

NORTH AMERICAN INDUSTRY CLASSIFICATION SYSTEM INDUSTRY GROUPS	NUMBER OF EMPLOYING UNITS	EMPLOYMENT OCTOBER	EMPLOYMENT NOVEMBER	EMPLOYMENT DECEMBER	TOTAL EARNINGS OCTOBER - DECEMBER	AVERAGE WEEKLY EARNINGS
Elementary & Secondary Schools	78	3,298	3,309	3,325	\$17,608,440	\$409.13
Junior Colleges	7	256	257	275	\$1,859,475	\$544.56
Colleges & Universities	25	3,308	3,308	3,240	\$24,869,601	\$582.30
Business, Computer & Management Training	45	165	170	167	\$3,542,087	\$1,628.30
Technical & Trade Schools	99	744	738	742	\$7,497,206	\$777.93
Other Schools & Instruction	210	1,368	1,404	1,415	\$5,444,641	\$300.08
Educational Support Services	89	260	236	236	\$2,351,482	\$741.32
<b>HEALTH CARE &amp; SOCIAL ASSISTANCE</b>	<b>10,370</b>	<b>137,736</b>	<b>137,920</b>	<b>138,344</b>	<b>\$1,251,467,595</b>	<b>\$697.59</b>
<b>AMBULATORY HEALTH CARE SERVICES</b>	<b>4,826</b>	<b>42,409</b>	<b>42,622</b>	<b>42,882</b>	<b>\$607,228,242</b>	<b>\$1,095.51</b>
Offices of Physicians	2,176	20,649	20,683	20,825	\$402,758,509	\$1,495.31
Offices of Dentists	916	6,020	6,044	6,125	\$69,054,320	\$876.11
Offices of Other Health Practitioners	1,140	5,507	5,566	5,615	\$46,140,150	\$638.05
Outpatient Care Centers	215	3,526	3,561	3,550	\$34,185,583	\$741.65
Medical & Diagnostic Laboratories	97	803	816	807	\$12,078,710	\$1,148.97
Home Health Care Services	137	3,717	3,763	3,761	\$26,634,972	\$546.80
Other Ambulatory Health Care Services	145	2,187	2,189	2,199	\$16,375,998	\$574.76
<b>HOSPITALS</b>	<b>107</b>	<b>41,760</b>	<b>41,623</b>	<b>41,766</b>	<b>\$393,972,180</b>	<b>\$726.47</b>
General Medical & Surgical Hospitals	77	38,465	38,347	38,441	\$362,786,982	\$726.40
Psychiatric & Substance Abuse Hospitals	10	1,542	1,516	1,515	\$13,081,810	\$660.15
Other Hospitals	20	1,753	1,760	1,810	\$18,103,388	\$784.84
<b>NURSING &amp; RESIDENTIAL CARE FACILITIES</b>	<b>503</b>	<b>27,154</b>	<b>27,208</b>	<b>27,256</b>	<b>\$137,750,041</b>	<b>\$389.48</b>
Nursing Care Facilities	241	20,379	20,437	20,473	\$102,660,689	\$386.54
Residential Mental Health Facilities	124	3,070	3,070	3,096	\$16,248,732	\$405.99
Community Care Facilities for the Elderly	92	2,225	2,233	2,220	\$10,459,309	\$361.44
Other Residential Care Facilities	46	1,480	1,468	1,467	\$8,381,311	\$438.09
<b>SOCIAL ASSISTANCE</b>	<b>4,934</b>	<b>26,413</b>	<b>26,467</b>	<b>26,440</b>	<b>\$112,517,132</b>	<b>\$327.35</b>
Individual & Family Services	3,784	13,510	13,541	13,537	\$60,273,393	\$342.69
Emergency & Other Relief Services	121	874	852	900	\$4,512,421	\$396.55
Vocational Rehabilitation Services	129	3,423	3,395	3,394	\$16,517,789	\$373.27
Child Day Care Services	900	8,606	8,679	8,609	\$31,213,529	\$278.18
<b>LEISURE AND HOSPITALITY</b>	<b>6,151</b>	<b>97,275</b>	<b>96,624</b>	<b>96,031</b>	<b>\$295,352,438</b>	<b>\$235.09</b>
<b>ARTS, ENTERTAINMENT &amp; RECREATION</b>	<b>919</b>	<b>8,983</b>	<b>8,420</b>	<b>8,569</b>	<b>\$37,700,661</b>	<b>\$334.98</b>

**TABLE 5. STATEWIDE SUMMARY  
EMPLOYMENT AND TOTAL EARNINGS, BY INDUSTRY  
FOURTH QUARTER 2006**

NORTH AMERICAN INDUSTRY CLASSIFICATION SYSTEM INDUSTRY GROUPS	NUMBER OF EMPLOYING UNITS	EMPLOYMENT OCTOBER	EMPLOYMENT NOVEMBER	EMPLOYMENT DECEMBER	TOTAL EARNINGS OCTOBER - DECEMBER	AVERAGE WEEKLY EARNINGS
PERFORMING ARTS & SPECTATOR SPORTS	203	2,026	1,880	2,142	\$11,891,057	\$453.72
Performing Arts Companies	35	611	437	398	\$1,914,866	\$305.60
Spectator Sports	54	769	896	1,028	\$4,430,583	\$379.67
Performing Arts & Sports Promoters	44	507	405	579	\$4,338,792	\$671.54
Agents & Managers for Public Figures	11	19	18	18	\$153,898	\$645.73
Independent Artists, Writers & Performers	59	120	124	119	\$1,052,918	\$669.37
MUSEUMS, PARKS & HISTORICAL SITES	47	220	214	218	\$1,013,099	\$358.58
GAMBLING, RECREATION & AMUSEMENT INDUSTRY	669	6,737	6,326	6,209	\$24,796,505	\$296.92
Other Amusement & Recreation Industries	628	6,260	6,082	5,969	\$23,833,341	\$300.37
Other	41	477	244	240	\$963,164	\$231.29
ACCOMMODATION & FOOD SERVICES	5,232	88,292	88,204	87,462	\$257,651,777	\$225.26
ACCOMMODATION	827	11,120	10,928	10,502	\$40,326,555	\$285.90
Traveler Accommodation	750	10,810	10,630	10,203	\$38,742,666	\$282.55
RV Parks & Recreational Camps	58	240	223	221	\$1,210,106	\$408.27
Rooming & Boarding Houses	19	70	75	78	\$373,783	\$386.81
FOOD SERVICES & DRINKING PLACES	4,405	77,172	77,276	76,960	\$217,325,222	\$216.73
Full -Service Restaurants	1,963	33,911	34,158	34,331	\$102,891,639	\$231.88
Limited-Service Eating Places	2,139	40,143	40,044	39,574	\$104,203,891	\$200.79
Special Food Services	157	2,240	2,223	2,206	\$7,736,039	\$267.69
Drinking Places, Alcoholic Beverages	146	878	851	849	\$2,493,653	\$223.22
OTHER SERVICES	5,484	25,656	25,555	25,678	\$157,863,678	\$473.80
REPAIR & MAINTENANCE	2,214	9,664	9,621	9,601	\$69,827,397	\$557.85
Automotive Repair & Maintenance	1,531	6,848	6,824	6,833	\$45,730,947	\$514.67
Electronic Equipment Repair & Maintenance	161	686	694	688	\$6,439,622	\$718.60
Commercial Machinery Repair & Maintenance	340	1,594	1,577	1,543	\$14,208,116	\$695.54
Household Goods Repair & Maintenance	182	536	526	537	\$3,448,712	\$497.72
PERSONAL & LAUNDRY SERVICES	1,319	8,154	8,105	8,230	\$41,988,143	\$395.67
Personal Care Services	565	2,546	2,523	2,569	\$9,984,530	\$301.67
Death Care Services	246	1,668	1,646	1,656	\$11,677,879	\$542.23
Drycleaning & Laundry Services	336	3,209	3,185	3,224	\$16,114,594	\$386.65
Other Personal Services	172	731	751	781	\$4,211,140	\$429.43
MEMBERSHIP ASSOCIATIONS & ORGANIZATIONS	1,015	6,408	6,421	6,446	\$40,254,683	\$481.95

**TABLE 5. STATEWIDE SUMMARY  
EMPLOYMENT AND TOTAL EARNINGS, BY INDUSTRY  
FOURTH QUARTER 2006**

NORTH AMERICAN INDUSTRY CLASSIFICATION SYSTEM INDUSTRY GROUPS	NUMBER OF EMPLOYING UNITS	EMPLOYMENT OCTOBER	EMPLOYMENT NOVEMBER	EMPLOYMENT DECEMBER	TOTAL EARNINGS OCTOBER - DECEMBER	AVERAGE WEEKLY EARNINGS
Religious Organizations	40	218	221	222	\$1,300,670	\$454.09
Grantmaking & Giving Services	95	444	445	441	\$4,291,266	\$744.58
Social Advocacy Organizations	148	1,976	2,048	2,058	\$11,834,902	\$449.05
Civic & Social Organizations	219	1,508	1,498	1,492	\$5,186,012	\$266.07
Professional & Similar Organizations	513	2,262	2,209	2,233	\$17,641,833	\$607.28
PRIVATE HOUSEHOLDS	936	1,430	1,408	1,401	\$5,793,455	\$315.39
LOCAL GOVERNMENT	2,001	117,508	118,298	118,472	\$881,155,952	\$573.97
STATE GOVERNMENT	1,199	63,555	63,930	63,537	\$559,761,855	\$676.24
NONCLASSIFIABLE ESTABLISHMENTS	0	0	0	0	\$0	

**TABLE 6. COUNTY SUMMARY  
EMPLOYMENT AND TOTAL EARNINGS, BY INDUSTRY  
FOURTH QUARTER 2006**

NORTH AMERICAN INDUSTRY CLASSIFICATION SYSTEM INDUSTRY GROUP	NUMBER OF EMPLOYING UNITS	EMPLOYMENT	EMPLOYMENT	EMPLOYMENT	TOTAL EARNINGS	AVERAGE WEEKLY EARNINGS
		OCTOBER	NOVEMBER	DECEMBER	OCTOBER - DECEMBER	
ARKANSAS COUNTY - TOTAL	681	9,868	9,793	9,849	\$75,673,944	\$591.77
Natural Resources & Mining	43	220	217	202	\$1,946,712	\$703.04
Construction	53	321	307	297	\$2,834,545	\$707.16
Manufacturing	32	3,413	3,361	3,373	\$28,578,077	\$649.94
Trade, Transportation & Utilities	200	2,133	2,108	2,119	\$17,110,389	\$620.84
Wholesale Trade	46	436	408	407	\$5,187,810	\$956.98
Retail Trade	101	1,090	1,103	1,128	\$5,705,569	\$396.47
Transportation, Warehousing & Utilities	53	607	597	584	\$6,217,010	\$802.40
Information	10	95	96	102	\$787,580	\$620.30
Financial Activities	42	319	317	322	\$3,493,308	\$841.49
Professional & Business Services	54	398	386	397	\$4,607,698	\$900.35
Education & Health Services	91	1,212	1,213	1,224	\$6,973,740	\$441.03
Leisure & Hospitality	59	516	542	534	\$1,374,000	\$199.17
Other Services	49	132	130	131	\$741,257	\$435.27
Local Government	32	876	883	918	\$5,862,940	\$505.41
State Government	16	233	233	230	\$1,363,698	\$452.15
ASHLEY COUNTY - TOTAL	540	8,281	8,276	8,095	\$76,679,246	\$717.80
Natural Resources & Mining	62	510	528	475	\$3,741,364	\$570.65
Construction	46	642	601	619	\$4,035,140	\$500.10
Manufacturing	29	2,922	2,897	2,750	\$42,113,492	\$1,134.15
Trade, Transportation & Utilities	130	1,216	1,221	1,180	\$7,674,948	\$489.67
Wholesale Trade	23	184	182	149	\$1,754,532	\$786.20
Retail Trade	82	784	794	794	\$3,669,203	\$356.97
Transportation, Warehousing & Utilities	25	248	245	237	\$2,251,213	\$711.66
Information	9	46	49	51	\$340,528	\$538.24
Financial Activities	32	209	222	230	\$1,789,655	\$624.81
Professional & Business Services	50	338	337	335	\$1,807,471	\$412.98
Education & Health Services	66	602	600	596	\$4,676,089	\$600.17
Leisure & Hospitality	28	382	383	390	\$981,540	\$196.11
Other Services	44	181	182	193	\$1,091,577	\$453.06
Local Government	32	1,016	1,036	1,062	\$7,299,775	\$540.96
State Government	12	217	220	214	\$1,127,667	\$399.74

**TABLE 6. COUNTY SUMMARY  
EMPLOYMENT AND TOTAL EARNINGS, BY INDUSTRY  
FOURTH QUARTER 2006**

NORTH AMERICAN INDUSTRY CLASSIFICATION SYSTEM INDUSTRY GROUP	NUMBER OF EMPLOYING UNITS	EMPLOYMENT	EMPLOYMENT	EMPLOYMENT	TOTAL EARNINGS	AVERAGE
		OCTOBER	NOVEMBER	DECEMBER	OCTOBER - DECEMBER	WEEKLY EARNINGS
BAXTER COUNTY - TOTAL	1,273	14,895	14,952	15,019	\$107,757,197	\$554.25
Natural Resources & Mining	6	122	113	111	\$790,513	\$527.24
Construction	139	723	729	722	\$5,079,228	\$539.16
Manufacturing	62	2,524	2,546	2,534	\$20,843,518	\$632.57
Trade, Transportation & Utilities	282	2,769	2,776	2,771	\$15,899,460	\$441.21
Wholesale Trade	35	213	217	218	\$1,690,307	\$601.96
Retail Trade	213	2,317	2,313	2,303	\$12,355,359	\$411.26
Transportation, Warehousing & Utilities	34	239	246	250	\$1,853,794	\$582.04
Information	24	253	264	262	\$2,154,442	\$638.23
Financial Activities	117	738	733	738	\$7,153,732	\$747.33
Professional & Business Services	139	751	744	768	\$6,141,861	\$626.32
Education & Health Services	226	3,413	3,442	3,458	\$32,495,225	\$727.13
Leisure & Hospitality	123	1,560	1,542	1,616	\$4,361,001	\$213.31
Other Services	106	451	443	442	\$2,046,168	\$353.44
Local Government	36	1,279	1,310	1,288	\$8,767,746	\$521.88
State Government	13	312	310	309	\$2,024,303	\$501.77
BENTON COUNTY - TOTAL	5,338	94,530	94,967	95,102	\$926,584,338	\$751.33
Natural Resources & Mining	28	648	650	645	\$10,957,506	\$1,301.42
Construction	806	5,289	5,172	5,218	\$48,562,446	\$714.76
Manufacturing	249	14,169	14,133	14,027	\$121,026,198	\$659.81
Trade, Transportation & Utilities	1,428	24,028	24,546	24,473	\$225,505,024	\$712.41
Wholesale Trade	645	3,576	3,633	3,662	\$63,188,584	\$1,341.37
Retail Trade	611	8,594	8,827	8,906	\$50,007,011	\$438.34
Transportation, Warehousing & Utilities	172	11,858	12,086	11,905	\$112,309,429	\$722.96
Information	66	928	930	931	\$8,455,013	\$699.59
Financial Activities	586	3,935	3,926	3,921	\$39,467,823	\$773.04
Professional & Business Services	902	21,934	21,943	22,038	\$313,354,324	\$1,097.06
Education & Health Services	454	6,454	6,448	6,507	\$56,643,216	\$673.48
Leisure & Hospitality	411	7,504	7,532	7,524	\$24,433,884	\$249.94
Other Services	314	1,756	1,774	1,803	\$11,613,199	\$502.53
Local Government	75	7,083	7,096	7,194	\$60,078,329	\$648.68
State Government	19	802	817	821	\$6,487,376	\$613.56

**TABLE 6. COUNTY SUMMARY  
EMPLOYMENT AND TOTAL EARNINGS, BY INDUSTRY  
FOURTH QUARTER 2006**

<b>NORTH AMERICAN INDUSTRY CLASSIFICATION SYSTEM INDUSTRY GROUP</b>	<b>NUMBER OF EMPLOYING UNITS</b>	<b>EMPLOYMENT OCTOBER</b>	<b>EMPLOYMENT NOVEMBER</b>	<b>EMPLOYMENT DECEMBER</b>	<b>TOTAL EARNINGS OCTOBER - DECEMBER</b>	<b>AVERAGE WEEKLY EARNINGS</b>
BOONE COUNTY - TOTAL	1,067	13,978	14,025	14,040	\$106,072,890	\$582.22
Construction	95	489	496	494	\$3,802,736	\$593.34
Manufacturing	74	2,022	2,001	1,975	\$16,819,636	\$647.12
Trade, Transportation & Utilities	261	4,463	4,471	4,536	\$38,098,843	\$652.71
Wholesale Trade	57	640	639	665	\$5,376,281	\$638.21
Retail Trade	152	1,944	1,952	1,951	\$10,994,955	\$433.95
Transportation, Warehousing & Utilities	52	1,879	1,880	1,920	\$21,727,607	\$882.91
Information	19	451	449	443	\$4,343,666	\$746.38
Financial Activities	94	640	641	640	\$5,381,203	\$646.44
Professional & Business Services	109	533	543	535	\$3,305,757	\$473.54
Education & Health Services	174	1,147	1,156	1,162	\$8,877,579	\$591.25
Leisure & Hospitality	86	1,193	1,175	1,151	\$3,209,212	\$210.45
Local Government	60	2,278	2,285	2,303	\$15,895,045	\$534.24
State Government	21	500	539	532	\$4,672,932	\$686.42
Other	74	262	269	269	\$1,666,281	\$480.66
BRADLEY COUNTY - TOTAL	389	4,134	4,065	4,136	\$26,254,663	\$491.19
Natural Resources & Mining	48	309	286	345	\$2,068,769	\$507.88
Construction	24	210	194	197	\$1,300,715	\$499.44
Manufacturing	9	1,080	1,079	1,031	\$7,752,798	\$560.85
Trade, Transportation & Utilities	91	537	518	551	\$2,856,575	\$410.47
Wholesale Trade	17	126	123	125	\$594,179	\$366.63
Retail Trade	49	331	317	328	\$1,594,982	\$377.12
Transportation, Warehousing & Utilities	25	80	78	98	\$667,414	\$601.64
Information	3	12	12	11	\$82,950	\$546.92
Financial Activities	25	176	176	173	\$1,346,370	\$591.81
Professional & Business Services	27	84	84	92	\$443,803	\$393.91
Education & Health Services	85	581	586	584	\$3,939,048	\$519.14
Leisure & Hospitality	17	170	166	173	\$399,490	\$181.12
Other Services	33	133	122	127	\$950,061	\$573.94
Local & State Government	27	842	842	852	\$5,114,084	\$465.37



**TABLE 6. COUNTY SUMMARY  
EMPLOYMENT AND TOTAL EARNINGS, BY INDUSTRY  
FOURTH QUARTER 2006**

<b>NORTH AMERICAN INDUSTRY CLASSIFICATION SYSTEM INDUSTRY GROUP</b>	<b>NUMBER OF EMPLOYING UNITS</b>	<b>EMPLOYMENT OCTOBER</b>	<b>EMPLOYMENT NOVEMBER</b>	<b>EMPLOYMENT DECEMBER</b>	<b>TOTAL EARNINGS OCTOBER - DECEMBER</b>	<b>AVERAGE WEEKLY EARNINGS</b>
CALHOUN COUNTY - TOTAL	113	3,075	3,079	3,087	\$29,427,252	\$734.87
Natural Resources & Mining	19	199	210	222	\$1,574,743	\$575.91
Construction	10	73	73	71	\$466,402	\$496.00
Manufacturing	11	2,054	2,041	2,030	\$21,803,775	\$821.49
Trade, Transportation & Utilities	26	214	211	221	\$1,336,345	\$477.38
Wholesale Trade & Retail Trade	18	69	68	70	\$235,855	\$262.94
Transportation, Warehousing & Utilities	8	145	143	151	\$1,100,490	\$578.49
Financial Activities	6	83	84	81	\$507,405	\$472.15
Education & Health Services	5	46	47	47	\$344,773	\$568.31
Local Government	11	214	221	223	\$1,222,363	\$428.70
State Government	9	82	80	82	\$544,177	\$514.67
Other	16	110	112	110	\$1,627,269	\$1,131.10
CARROLL COUNTY - TOTAL	845	10,244	9,926	9,740	\$59,279,050	\$457.36
Natural Resources & Mining	17	273	271	276	\$1,863,838	\$524.53
Trade, Transportation & Utilities	207	1,682	1,661	1,640	\$9,930,111	\$459.88
Wholesale Trade	25	138	140	143	\$880,050	\$482.40
Retail Trade	160	1,256	1,261	1,235	\$6,492,619	\$399.33
Transportation, Warehousing & Utilities	22	288	260	262	\$2,557,442	\$728.62
Professional & Business Services	82	250	250	246	\$1,744,798	\$539.74
Education & Health Services	82	809	815	818	\$6,054,185	\$572.12
Leisure & Hospitality	171	1,886	1,614	1,427	\$4,642,971	\$217.47
Local Government	25	1,118	1,111	1,106	\$7,272,154	\$503.21
State Government	11	105	104	108	\$704,113	\$512.58
Other	250	4,121	4,100	4,119	\$27,066,880	\$506.18

**TABLE 6. COUNTY SUMMARY  
EMPLOYMENT AND TOTAL EARNINGS, BY INDUSTRY  
FOURTH QUARTER 2006**

<b>NORTH AMERICAN INDUSTRY CLASSIFICATION SYSTEM INDUSTRY GROUP</b>	<b>NUMBER OF EMPLOYING UNITS</b>	<b>EMPLOYMENT OCTOBER</b>	<b>EMPLOYMENT NOVEMBER</b>	<b>EMPLOYMENT DECEMBER</b>	<b>TOTAL EARNINGS OCTOBER - DECEMBER</b>	<b>AVERAGE WEEKLY EARNINGS</b>
CHICOT COUNTY - TOTAL	349	3,598	3,559	3,567	\$21,824,708	\$469.64
Natural Resources & Mining	45	343	290	248	\$2,006,825	\$525.67
Construction	18	136	120	115	\$908,737	\$565.25
Manufacturing	11	512	517	516	\$2,372,649	\$354.39
Trade, Transportation & Utilities	77	565	562	573	\$3,346,261	\$454.24
Wholesale Trade	15	100	100	99	\$952,475	\$735.12
Retail Trade	51	402	403	403	\$1,752,357	\$334.76
Transportation, Warehousing & Utilities	11	63	59	71	\$641,429	\$766.95
Information	6	17	17	17	\$86,704	\$392.33
Financial Activities	30	169	168	166	\$1,376,541	\$631.54
Professional & Business Services	26	88	86	87	\$673,507	\$595.50
Education & Health Services	71	510	541	545	\$3,287,005	\$475.28
Leisure & Hospitality	21	214	200	201	\$447,258	\$167.83
Other Services	16	51	50	51	\$274,284	\$416.42
Local Government	17	671	692	725	\$5,097,267	\$563.36
State Government	11	322	316	323	\$1,947,670	\$467.70
CLARK COUNTY - TOTAL	614	9,774	9,779	9,785	\$66,257,546	\$521.17
Natural Resources & Mining	41	247	250	257	\$1,860,225	\$569.34
Construction	29	147	144	150	\$890,358	\$465.91
Manufacturing	34	2,380	2,416	2,390	\$18,100,519	\$581.28
Trade, Transportation & Utilities	144	1,419	1,424	1,441	\$9,072,754	\$488.73
Wholesale Trade	18	66	65	64	\$616,831	\$729.98
Retail Trade	104	1,083	1,082	1,095	\$5,926,247	\$419.51
Transportation, Warehousing & Utilities	22	270	277	282	\$2,529,676	\$704.19
Information	10	30	27	27	\$210,467	\$578.21
Financial Activities	86	393	388	391	\$3,660,878	\$720.83
Professional & Business Services	49	350	361	388	\$4,116,217	\$864.33
Education & Health Services	76	1,473	1,467	1,453	\$10,478,509	\$550.45
Leisure & Hospitality	57	1,000	999	990	\$2,792,505	\$215.60
Other Services	47	209	207	209	\$1,127,626	\$416.35
Local Government	26	943	924	928	\$5,853,109	\$483.26
State Government	15	1,183	1,172	1,161	\$8,094,379	\$531.27

**TABLE 6. COUNTY SUMMARY  
EMPLOYMENT AND TOTAL EARNINGS, BY INDUSTRY  
FOURTH QUARTER 2006**

NORTH AMERICAN INDUSTRY CLASSIFICATION SYSTEM INDUSTRY GROUP	NUMBER OF EMPLOYING UNITS	EMPLOYMENT	EMPLOYMENT	EMPLOYMENT	TOTAL EARNINGS	AVERAGE
		OCTOBER	NOVEMBER	DECEMBER	OCTOBER - DECEMBER	WEEKLY EARNINGS
CLAY COUNTY - TOTAL	409	4,490	4,399	4,316	\$28,550,484	\$498.95
Natural Resources & Mining	59	241	235	206	\$1,519,869	\$514.28
Construction	36	182	177	166	\$896,392	\$394.02
Manufacturing	19	1,081	1,008	927	\$7,649,774	\$585.32
Trade, Transportation & Utilities	99	943	958	968	\$5,875,677	\$472.61
Wholesale Trade	22	312	346	366	\$2,248,110	\$506.64
Retail Trade	55	457	456	446	\$2,078,819	\$353.00
Transportation, Warehousing & Utilities	22	174	156	156	\$1,548,748	\$735.40
Information	7	77	78	80	\$1,138,417	\$1,117.92
Financial Activities	35	154	156	157	\$1,230,099	\$607.86
Professional & Business Services	24	47	45	43	\$338,296	\$578.28
Education & Health Services	51	498	497	497	\$2,806,055	\$434.02
Leisure & Hospitality	21	198	203	202	\$463,136	\$177.24
Other Services	24	50	50	55	\$304,336	\$453.11
Local Government	22	939	912	936	\$5,852,314	\$484.58
State Government	12	80	80	79	\$476,119	\$459.72
CLEBURNE COUNTY - TOTAL	683	6,844	6,744	6,694	\$42,783,210	\$486.79
Natural Resources & Mining	14	82	65	70	\$540,887	\$575.21
Construction	76	349	337	333	\$2,235,825	\$506.34
Manufacturing	43	1,700	1,659	1,635	\$12,140,733	\$561.01
Trade, Transportation & Utilities	182	1,517	1,503	1,539	\$9,705,317	\$491.27
Wholesale Trade	41	187	191	192	\$1,475,350	\$597.31
Retail Trade	110	1,032	1,014	1,036	\$5,386,311	\$403.31
Transportation, Warehousing & Utilities	31	298	298	311	\$2,843,656	\$723.52
Information	8	63	61	61	\$464,843	\$579.85
Financial Activities	73	256	252	258	\$1,951,171	\$587.82
Professional & Business Services	54	186	188	191	\$1,345,770	\$549.67
Education & Health Services	75	796	797	801	\$5,366,969	\$517.35
Leisure & Hospitality	72	779	765	758	\$2,144,299	\$214.96
Other Services	57	161	158	161	\$914,170	\$439.50
Local Government	19	835	834	768	\$5,200,614	\$492.47
State Government	10	120	125	119	\$772,612	\$489.82

**TABLE 6. COUNTY SUMMARY  
EMPLOYMENT AND TOTAL EARNINGS, BY INDUSTRY  
FOURTH QUARTER 2006**

<b>NORTH AMERICAN INDUSTRY CLASSIFICATION SYSTEM INDUSTRY GROUP</b>	<b>NUMBER OF EMPLOYING UNITS</b>	<b>EMPLOYMENT OCTOBER</b>	<b>EMPLOYMENT NOVEMBER</b>	<b>EMPLOYMENT DECEMBER</b>	<b>TOTAL EARNINGS OCTOBER - DECEMBER</b>	<b>AVERAGE WEEKLY EARNINGS</b>
CLEVELAND COUNTY - TOTAL	111	1,084	1,085	1,099	\$6,836,042	\$482.73
Natural Resources & Mining	17	158	151	156	\$1,117,502	\$554.59
Construction	8	38	39	38	\$164,742	\$330.59
Manufacturing	4	91	91	91	\$516,159	\$436.31
Trade, Transportation & Utilities	29	178	182	181	\$958,857	\$409.01
Wholesale Trade	4	14	14	15	\$90,927	\$487.98
Retail Trade	13	79	80	79	\$194,467	\$188.56
Transportation, Warehousing & Utilities	12	85	88	87	\$673,463	\$597.75
Local Government	11	335	337	352	\$2,081,741	\$469.14
State Government	8	66	66	62	\$371,858	\$442.34
Other	34	218	219	219	\$1,625,183	\$571.71
COLUMBIA COUNTY - TOTAL	705	9,433	9,425	9,416	\$76,688,297	\$625.92
Natural Resources & Mining	50	532	527	527	\$8,407,711	\$1,223.35
Construction	43	307	301	312	\$2,954,788	\$741.17
Manufacturing	41	2,779	2,791	2,765	\$28,093,972	\$777.83
Trade, Transportation & Utilities	177	1,545	1,499	1,499	\$9,183,464	\$466.49
Wholesale Trade	29	256	226	219	\$1,953,192	\$642.99
Retail Trade	109	1,021	1,015	1,019	\$4,705,547	\$355.45
Transportation, Warehousing & Utilities	39	268	258	261	\$2,524,725	\$740.32
Information	9	74	65	69	\$459,457	\$509.75
Financial Activities	73	524	526	528	\$5,624,412	\$822.52
Professional & Business Services	59	325	316	303	\$2,081,092	\$508.74
Education & Health Services	115	850	872	887	\$4,776,716	\$422.51
Leisure & Hospitality	47	643	648	640	\$1,854,509	\$221.63
Other Services	50	203	214	209	\$838,697	\$309.18
Local Government	27	1,113	1,110	1,132	\$7,807,885	\$537.06
State Government	14	538	556	545	\$4,605,594	\$648.46

**TABLE 6. COUNTY SUMMARY  
EMPLOYMENT AND TOTAL EARNINGS, BY INDUSTRY  
FOURTH QUARTER 2006**

NORTH AMERICAN INDUSTRY CLASSIFICATION SYSTEM INDUSTRY GROUP	NUMBER OF EMPLOYING UNITS	EMPLOYMENT	EMPLOYMENT	EMPLOYMENT	TOTAL EARNINGS	AVERAGE
		OCTOBER	NOVEMBER	DECEMBER	OCTOBER - DECEMBER	WEEKLY EARNINGS
CONWAY COUNTY - TOTAL	544	6,857	6,847	6,796	\$47,301,237	\$532.47
Natural Resources & Mining	21	135	141	160	\$1,448,217	\$766.52
Construction	57	533	528	516	\$5,124,676	\$749.92
Manufacturing	29	1,168	1,179	1,150	\$11,872,825	\$783.50
Trade, Transportation & Utilities	133	1,392	1,391	1,410	\$9,480,718	\$521.79
Wholesale Trade	25	225	220	223	\$2,119,453	\$732.19
Retail Trade	79	881	875	893	\$4,620,110	\$402.48
Transportation, Warehousing & Utilities	29	286	296	294	\$2,741,155	\$722.12
Information	5	12	12	13	\$131,269	\$818.73
Financial Activities	34	193	193	194	\$1,336,100	\$531.60
Professional & Business Services	47	674	672	635	\$2,637,379	\$307.23
Education & Health Services	116	895	886	876	\$5,406,626	\$469.58
Leisure & Hospitality	37	453	443	452	\$1,091,850	\$186.92
Other Services	27	93	96	92	\$711,184	\$584.05
Local Government	27	906	907	904	\$5,842,540	\$496.24
State Government	11	403	399	394	\$2,217,853	\$427.94
CRAIGHEAD COUNTY - TOTAL	2,680	41,878	41,971	41,886	\$325,934,870	\$598.21
Natural Resources & Mining	68	444	428	393	\$3,227,598	\$588.80
Construction	245	1,665	1,578	1,595	\$13,899,430	\$662.99
Manufacturing	135	6,738	6,705	6,694	\$60,129,098	\$689.08
Trade, Transportation & Utilities	742	8,595	8,733	8,893	\$56,923,959	\$500.98
Wholesale Trade	185	1,539	1,516	1,509	\$16,278,237	\$823.08
Retail Trade	440	5,909	6,112	6,241	\$30,327,565	\$383.24
Transportation, Warehousing & Utilities	117	1,147	1,105	1,143	\$10,318,157	\$701.36
Information	31	617	608	606	\$4,929,148	\$621.24
Financial Activities	258	1,582	1,595	1,611	\$16,313,398	\$786.26
Professional & Business Services	358	3,507	3,596	3,419	\$28,336,065	\$621.47
Education & Health Services	399	7,526	7,439	7,475	\$75,133,871	\$772.66
Leisure & Hospitality	201	4,101	4,117	4,037	\$11,480,761	\$216.19
Other Services	180	1,012	1,003	996	\$5,483,335	\$420.25
Local Government	38	3,729	3,763	3,761	\$27,168,588	\$557.16
State Government	25	2,362	2,406	2,406	\$22,909,619	\$736.94

**TABLE 6. COUNTY SUMMARY  
EMPLOYMENT AND TOTAL EARNINGS, BY INDUSTRY  
FOURTH QUARTER 2006**

<b>NORTH AMERICAN INDUSTRY CLASSIFICATION SYSTEM INDUSTRY GROUP</b>	<b>NUMBER OF EMPLOYING UNITS</b>	<b>EMPLOYMENT OCTOBER</b>	<b>EMPLOYMENT NOVEMBER</b>	<b>EMPLOYMENT DECEMBER</b>	<b>TOTAL EARNINGS OCTOBER - DECEMBER</b>	<b>AVERAGE WEEKLY EARNINGS</b>
<b>CRAWFORD COUNTY - TOTAL</b>	1,216	19,329	19,309	19,405	\$138,434,324	\$550.39
Natural Resources & Mining	26	380	388	400	\$3,866,610	\$763.95
Construction	181	1,443	1,425	1,465	\$12,249,392	\$652.38
Manufacturing	75	3,776	3,777	3,765	\$27,196,852	\$554.53
Trade, Transportation & Utilities	314	6,644	6,756	6,800	\$49,537,806	\$565.93
Wholesale Trade	83	687	685	689	\$6,374,456	\$713.74
Retail Trade	161	1,994	2,021	1,981	\$10,066,479	\$387.43
Transportation, Warehousing & Utilities	70	3,963	4,050	4,130	\$33,096,871	\$628.98
Financial Activities	127	507	504	514	\$3,881,046	\$587.30
Professional & Business Services	149	797	705	728	\$6,548,526	\$677.67
Education & Health Services	122	1,382	1,378	1,369	\$10,041,346	\$561.21
Leisure & Hospitality	82	1,549	1,528	1,495	\$4,065,253	\$205.19
Local Government	41	2,148	2,140	2,139	\$15,619,994	\$560.85
State Government	11	158	164	166	\$1,335,405	\$631.50
Other	88	545	544	564	\$4,092,094	\$571.28
<b>CRITTENDEN COUNTY - TOTAL</b>	1,212	16,869	17,023	17,166	\$129,189,907	\$583.91
Natural Resources & Mining	45	397	354	330	\$3,017,674	\$644.21
Construction	77	583	558	557	\$4,773,792	\$648.79
Manufacturing	47	1,800	1,864	1,896	\$19,972,334	\$828.96
Trade, Transportation & Utilities	329	4,942	4,951	4,965	\$39,451,639	\$612.75
Wholesale Trade	73	785	778	775	\$8,411,634	\$830.26
Retail Trade	168	2,039	2,037	2,077	\$10,405,748	\$390.27
Transportation, Warehousing & Utilities	88	2,118	2,136	2,113	\$20,634,257	\$747.88
Information	10	79	85	87	\$709,746	\$652.54
Financial Activities	107	570	589	582	\$4,861,320	\$644.37
Professional & Business Services	125	898	863	874	\$6,083,637	\$532.80
Education & Health Services	206	2,003	2,006	2,021	\$16,967,180	\$649.34
Leisure & Hospitality	102	1,945	2,025	2,185	\$6,690,844	\$250.86
Other Services	103	626	619	615	\$3,772,577	\$468.06
Local Government	46	2,529	2,612	2,645	\$19,850,325	\$588.34
State Government	15	497	497	409	\$3,038,839	\$499.84

**TABLE 6. COUNTY SUMMARY  
EMPLOYMENT AND TOTAL EARNINGS, BY INDUSTRY  
FOURTH QUARTER 2006**

NORTH AMERICAN INDUSTRY CLASSIFICATION SYSTEM INDUSTRY GROUP	NUMBER OF EMPLOYING UNITS	EMPLOYMENT	EMPLOYMENT	EMPLOYMENT	TOTAL EARNINGS	AVERAGE
		OCTOBER	NOVEMBER	DECEMBER	OCTOBER - DECEMBER	WEEKLY EARNINGS
CROSS COUNTY - TOTAL	518	5,046	4,988	4,942	\$33,282,140	\$512.85
Natural Resources & Mining	43	214	199	185	\$1,026,661	\$396.19
Construction	36	190	179	163	\$1,250,335	\$542.37
Manufacturing	16	685	641	642	\$4,548,125	\$533.32
Trade, Transportation & Utilities	126	1,190	1,156	1,159	\$8,783,062	\$578.28
Wholesale Trade	30	262	256	264	\$2,717,979	\$802.08
Retail Trade	64	641	641	644	\$3,528,281	\$422.75
Transportation, Warehousing & Utilities	32	287	259	251	\$2,536,802	\$734.52
Information	6	59	62	63	\$433,740	\$543.99
Financial Activities	48	400	412	402	\$3,294,455	\$626.24
Professional & Business Services	43	153	159	157	\$1,271,287	\$625.53
Education & Health Services	101	691	686	687	\$4,294,721	\$480.18
Leisure & Hospitality	32	393	391	384	\$876,605	\$173.20
Other Services	39	71	71	74	\$353,180	\$377.33
Local Government	17	788	818	811	\$5,399,892	\$515.57
State Government	11	212	214	215	\$1,750,077	\$630.05
DALLAS COUNTY - TOTAL	278	3,332	3,394	3,352	\$21,975,413	\$503.20
Natural Resources & Mining	40	204	205	200	\$1,532,792	\$580.82
Construction	14	75	74	79	\$477,281	\$483.08
Manufacturing	15	895	953	903	\$7,255,039	\$608.59
Trade, Transportation & Utilities	73	462	467	460	\$2,903,261	\$482.35
Wholesale Trade	10	41	43	40	\$457,896	\$852.16
Retail Trade	45	364	369	360	\$2,046,760	\$432.14
Transportation, Warehousing & Utilities	18	57	55	60	\$398,605	\$534.80
Information	3	29	29	29	\$165,427	\$438.80
Financial Activities	18	101	101	101	\$792,178	\$603.33
Professional & Business Services	18	30	29	31	\$201,487	\$516.63
Education & Health Services	38	810	811	811	\$4,766,091	\$452.25
Leisure & Hospitality	20	131	122	127	\$304,221	\$184.75
Other Services	14	63	65	63	\$291,821	\$352.58
Local Government	16	466	469	481	\$2,821,507	\$459.83
State Government	9	66	69	67	\$464,308	\$530.44

**TABLE 6. COUNTY SUMMARY  
EMPLOYMENT AND TOTAL EARNINGS, BY INDUSTRY  
FOURTH QUARTER 2006**

NORTH AMERICAN INDUSTRY CLASSIFICATION SYSTEM INDUSTRY GROUP	NUMBER OF EMPLOYING UNITS	EMPLOYMENT	EMPLOYMENT	EMPLOYMENT	TOTAL EARNINGS	AVERAGE
		OCTOBER	NOVEMBER	DECEMBER	OCTOBER - DECEMBER	WEEKLY EARNINGS
DESHA COUNTY - TOTAL	470	5,035	4,983	4,922	\$36,517,595	\$564.07
Natural Resources & Mining	50	393	338	296	\$2,607,646	\$585.94
Construction	26	114	117	119	\$941,230	\$620.59
Manufacturing	15	1,258	1,250	1,223	\$12,604,794	\$779.63
Trade, Transportation & Utilities	132	1,026	985	941	\$6,259,661	\$489.34
Wholesale Trade	22	183	182	184	\$1,959,997	\$823.87
Retail Trade	78	567	562	563	\$2,538,165	\$346.18
Transportation, Warehousing & Utilities	32	276	241	194	\$1,761,499	\$571.73
Information	5	24	24	24	\$174,335	\$558.77
Financial Activities	44	215	222	228	\$1,619,040	\$561.84
Professional & Business Services	35	99	103	110	\$727,397	\$538.02
Education & Health Services	70	580	598	602	\$3,770,592	\$488.84
Leisure & Hospitality	36	299	292	291	\$722,232	\$188.97
Other Services	27	63	66	69	\$228,474	\$266.29
Local Government	19	792	816	846	\$5,655,149	\$531.80
State Government	11	172	172	173	\$1,207,045	\$538.78
DREW COUNTY - TOTAL	520	6,883	6,885	6,807	\$42,513,202	\$476.83
Natural Resources & Mining	37	338	315	315	\$3,071,396	\$732.21
Construction	27	101	95	93	\$597,314	\$476.96
Manufacturing	23	773	762	757	\$5,014,772	\$504.91
Trade, Transportation & Utilities	134	1,226	1,239	1,224	\$7,825,410	\$489.53
Wholesale Trade	23	235	238	232	\$2,214,320	\$724.82
Retail Trade	87	880	891	885	\$4,487,665	\$389.92
Transportation, Warehousing & Utilities	24	111	110	107	\$1,123,425	\$790.40
Information	9	80	78	79	\$602,564	\$586.72
Financial Activities	43	262	263	262	\$2,261,243	\$663.06
Professional & Business Services	46	322	319	316	\$2,177,489	\$525.08
Education & Health Services	87	833	823	806	\$4,611,300	\$432.23
Leisure & Hospitality	45	648	632	622	\$1,574,728	\$191.06
Other Services	29	100	99	98	\$405,389	\$314.99
Local Government	23	1,348	1,384	1,363	\$8,540,120	\$481.27
State Government	17	852	876	872	\$5,831,477	\$517.59



**TABLE 6. COUNTY SUMMARY  
EMPLOYMENT AND TOTAL EARNINGS, BY INDUSTRY  
FOURTH QUARTER 2006**

NORTH AMERICAN INDUSTRY CLASSIFICATION SYSTEM INDUSTRY GROUP	NUMBER OF EMPLOYING UNITS	EMPLOYMENT	EMPLOYMENT	EMPLOYMENT	TOTAL EARNINGS	AVERAGE
		OCTOBER	NOVEMBER	DECEMBER	OCTOBER - DECEMBER	WEEKLY EARNINGS
FAULKNER COUNTY - TOTAL	2,509	38,568	38,759	39,028	\$317,306,500	\$629.32
Natural Resources & Mining	21	284	289	312	\$4,268,898	\$1,113.14
Construction	366	2,968	2,971	3,018	\$27,254,656	\$702.19
Manufacturing	121	5,242	5,233	5,255	\$51,248,345	\$751.85
Trade, Transportation & Utilities	617	6,511	6,604	6,687	\$40,308,569	\$469.75
Wholesale Trade	159	795	791	829	\$7,903,525	\$755.23
Retail Trade	377	4,989	5,074	5,097	\$24,980,792	\$380.26
Transportation, Warehousing & Utilities	81	727	739	761	\$7,424,252	\$769.33
Information	38	356	361	368	\$3,039,386	\$646.45
Financial Activities	301	1,426	1,436	1,443	\$12,261,380	\$657.27
Professional & Business Services	336	5,315	5,346	5,394	\$67,050,332	\$963.76
Education & Health Services	321	5,345	5,391	5,427	\$45,616,601	\$651.30
Leisure & Hospitality	194	3,920	3,953	3,912	\$10,267,568	\$201.06
Other Services	134	595	575	583	\$3,213,437	\$423.02
Local Government	41	3,297	3,320	3,335	\$27,309,074	\$633.25
State Government	19	3,309	3,280	3,294	\$25,468,254	\$594.69
FRANKLIN COUNTY - TOTAL	329	4,278	4,249	4,218	\$29,740,504	\$538.50
Natural Resources & Mining	10	96	92	90	\$1,425,633	\$1,183.43
Construction	31	235	237	243	\$2,055,678	\$663.48
Manufacturing	24	945	912	907	\$7,515,880	\$627.51
Trade, Transportation & Utilities	87	858	869	873	\$6,080,021	\$539.65
Wholesale Trade	14	51	50	49	\$243,748	\$375.00
Retail Trade	51	455	472	477	\$2,253,703	\$370.43
Transportation, Warehousing & Utilities	22	352	347	347	\$3,582,570	\$790.39
Information	7	49	48	45	\$244,611	\$397.53
Financial Activities	29	226	229	225	\$1,401,901	\$475.76
Professional & Business Services	22	60	57	60	\$390,806	\$509.53
Education & Health Services	44	487	480	487	\$2,832,253	\$449.52
Leisure & Hospitality	25	322	328	312	\$769,935	\$184.70
Other Services	21	65	64	61	\$338,085	\$410.63
Local Government	19	791	785	778	\$5,601,984	\$549.18
State Government	10	144	148	137	\$1,083,717	\$582.96

**TABLE 6. COUNTY SUMMARY  
EMPLOYMENT AND TOTAL EARNINGS, BY INDUSTRY  
FOURTH QUARTER 2006**

<b>NORTH AMERICAN INDUSTRY CLASSIFICATION SYSTEM INDUSTRY GROUP</b>	<b>NUMBER OF EMPLOYING UNITS</b>	<b>EMPLOYMENT OCTOBER</b>	<b>EMPLOYMENT NOVEMBER</b>	<b>EMPLOYMENT DECEMBER</b>	<b>TOTAL EARNINGS OCTOBER - DECEMBER</b>	<b>AVERAGE WEEKLY EARNINGS</b>
FULTON COUNTY - TOTAL	229	1,858	1,853	1,861	\$10,743,275	\$444.94
Construction	15	30	27	28	\$174,256	\$473.09
Manufacturing	14	114	113	112	\$491,254	\$334.41
Trade, Transportation & Utilities	65	381	381	385	\$2,275,909	\$457.90
Retail Trade	42	210	209	213	\$739,168	\$269.90
Other Trade, Transportation & Utilities	23	171	172	172	\$1,536,741	\$688.61
Financial Activities	15	93	89	90	\$656,820	\$557.26
Professional & Business Services	15	42	43	42	\$1,360,375	\$2,471.91
Education & Health Services	52	375	381	385	\$1,620,941	\$327.84
Leisure & Hospitality	15	139	131	126	\$332,507	\$193.77
Local Government	13	519	521	522	\$2,958,274	\$437.05
State Government	11	98	102	104	\$598,013	\$453.96
Other	14	67	65	67	\$274,926	\$318.82
GARLAND COUNTY - TOTAL	3,289	36,776	36,543	36,903	\$261,461,885	\$547.42
Natural Resources & Mining	47	347	354	356	\$3,191,212	\$696.72
Construction	445	2,447	2,407	2,445	\$17,466,027	\$552.22
Manufacturing	133	3,428	3,391	3,361	\$27,435,515	\$621.93
Trade, Transportation & Utilities	722	7,475	7,530	7,649	\$47,972,805	\$488.68
Wholesale Trade	151	1,134	1,126	1,120	\$10,986,291	\$750.09
Retail Trade	496	5,648	5,702	5,796	\$30,567,756	\$411.41
Transportation, Warehousing & Utilities	75	693	702	733	\$6,418,758	\$696.08
Information	41	422	424	433	\$3,489,839	\$629.67
Financial Activities	375	1,561	1,547	1,566	\$13,351,360	\$659.20
Professional & Business Services	427	2,830	2,934	2,987	\$21,614,024	\$569.98
Education & Health Services	435	6,986	6,991	7,020	\$68,734,257	\$755.43
Leisure & Hospitality	377	6,130	5,806	5,830	\$20,440,972	\$265.52
Other Services	226	938	925	944	\$5,120,310	\$420.95
Local Government	34	3,133	3,145	3,215	\$24,380,153	\$592.67
State Government	27	1,079	1,089	1,097	\$8,265,411	\$584.20

**TABLE 6. COUNTY SUMMARY  
EMPLOYMENT AND TOTAL EARNINGS, BY INDUSTRY  
FOURTH QUARTER 2006**

NORTH AMERICAN INDUSTRY CLASSIFICATION SYSTEM INDUSTRY GROUP	NUMBER OF EMPLOYING UNITS	EMPLOYMENT	EMPLOYMENT	EMPLOYMENT	TOTAL EARNINGS	AVERAGE WEEKLY EARNINGS
		OCTOBER	NOVEMBER	DECEMBER	OCTOBER - DECEMBER	
GRANT COUNTY - TOTAL	296	3,605	3,599	3,654	\$24,033,853	\$510.80
Natural Resources & Mining	23	174	161	167	\$1,619,736	\$744.59
Construction	33	221	219	216	\$1,620,285	\$569.99
Manufacturing	19	884	877	918	\$6,610,084	\$569.39
Trade, Transportation & Utilities	82	583	577	594	\$3,597,624	\$473.33
Wholesale Trade	16	113	114	112	\$1,241,308	\$845.00
Retail Trade	37	416	410	425	\$1,931,469	\$356.29
Transportation, Warehousing & Utilities	29	54	53	57	\$424,847	\$597.81
Information	4	32	32	34	\$275,134	\$647.88
Financial Activities	22	105	104	101	\$887,330	\$660.54
Professional & Business Services	22	91	95	96	\$864,141	\$707.15
Education & Health Services	34	225	228	227	\$1,399,928	\$475.09
Leisure & Hospitality	22	280	286	273	\$785,317	\$216.00
Other Services	16	53	56	54	\$238,383	\$337.49
Local Government	10	896	904	915	\$5,749,291	\$488.68
State Government	9	61	60	59	\$386,600	\$495.64
GREENE COUNTY - TOTAL	912	15,350	15,466	15,465	\$108,923,898	\$543.12
Natural Resources & Mining	38	231	226	204	\$1,716,725	\$599.35
Construction	84	392	377	360	\$2,584,462	\$528.27
Manufacturing	56	5,503	5,536	5,551	\$49,544,240	\$689.17
Trade, Transportation & Utilities	246	2,166	2,187	2,204	\$13,153,556	\$462.93
Wholesale Trade	55	416	409	410	\$3,534,183	\$660.39
Retail Trade	159	1,541	1,567	1,574	\$7,754,550	\$382.21
Transportation, Warehousing & Utilities	32	209	211	220	\$1,864,823	\$672.41
Information	13	123	123	121	\$605,519	\$380.75
Financial Activities	90	493	495	497	\$4,057,074	\$630.47
Professional & Business Services	93	1,664	1,755	1,786	\$8,933,971	\$396.10
Education & Health Services	138	1,742	1,738	1,750	\$11,188,095	\$493.67
Leisure & Hospitality	66	1,020	1,002	971	\$2,765,176	\$213.20
Other Services	46	168	171	169	\$918,858	\$417.41
Local Government	31	1,597	1,606	1,598	\$11,379,494	\$546.98
State Government	11	251	250	254	\$2,076,728	\$634.76

**TABLE 6. COUNTY SUMMARY  
EMPLOYMENT AND TOTAL EARNINGS, BY INDUSTRY  
FOURTH QUARTER 2006**

<b>NORTH AMERICAN INDUSTRY CLASSIFICATION SYSTEM INDUSTRY GROUP</b>	<b>NUMBER OF EMPLOYING UNITS</b>	<b>EMPLOYMENT OCTOBER</b>	<b>EMPLOYMENT NOVEMBER</b>	<b>EMPLOYMENT DECEMBER</b>	<b>TOTAL EARNINGS OCTOBER - DECEMBER</b>	<b>AVERAGE WEEKLY EARNINGS</b>
HEMPSTEAD COUNTY - TOTAL	502	8,266	8,331	8,343	\$56,921,448	\$526.69
Natural Resources & Mining	18	209	212	217	\$1,788,678	\$646.98
Construction	35	159	162	162	\$1,002,842	\$479.14
Manufacturing	29	2,575	2,629	2,652	\$21,856,963	\$642.05
Trade, Transportation & Utilities	133	1,227	1,237	1,239	\$7,832,685	\$488.13
Wholesale Trade	25	191	187	186	\$1,308,116	\$535.24
Retail Trade	86	863	873	876	\$4,162,665	\$367.77
Transportation, Warehousing & Utilities	22	173	177	177	\$2,361,904	\$1,034.26
Information	10	65	68	75	\$542,770	\$602.19
Financial Activities	44	258	253	251	\$2,212,702	\$670.11
Professional & Business Services	34	345	306	278	\$1,203,991	\$299.08
Education & Health Services	71	997	1,006	1,022	\$6,114,815	\$466.48
Leisure & Hospitality	44	607	612	613	\$1,585,383	\$199.70
Other Services	38	218	221	224	\$1,376,503	\$479.12
Local Government	29	1,058	1,077	1,069	\$7,351,540	\$529.50
State Government	17	548	548	541	\$4,052,576	\$571.29
HOT SPRING COUNTY - TOTAL	605	8,270	8,284	8,265	\$63,563,221	\$591.02
Natural Resources & Mining	37	209	204	215	\$1,434,606	\$527.17
Construction	65	627	650	642	\$7,283,232	\$875.84
Manufacturing	41	1,717	1,685	1,709	\$17,066,161	\$770.56
Trade, Transportation & Utilities	155	1,445	1,427	1,418	\$11,669,093	\$627.71
Wholesale Trade	20	100	98	99	\$2,360,388	\$1,834.02
Retail Trade	92	928	919	907	\$4,746,950	\$397.77
Transportation, Warehousing & Utilities	43	417	410	412	\$4,561,755	\$849.65
Information	9	69	70	73	\$663,499	\$722.24
Financial Activities	63	349	353	349	\$2,725,054	\$598.34
Professional & Business Services	55	232	253	245	\$1,618,478	\$511.64
Education & Health Services	61	1,030	1,040	1,053	\$6,834,392	\$505.02
Leisure & Hospitality	41	559	564	530	\$1,262,089	\$176.20
Other Services	38	293	291	292	\$1,195,534	\$314.95
Local Government	26	1,115	1,121	1,106	\$7,899,319	\$545.46
State Government	14	625	626	633	\$3,911,764	\$479.15

**TABLE 6. COUNTY SUMMARY  
EMPLOYMENT AND TOTAL EARNINGS, BY INDUSTRY  
FOURTH QUARTER 2006**

<b>NORTH AMERICAN INDUSTRY CLASSIFICATION SYSTEM INDUSTRY GROUP</b>	<b>NUMBER OF EMPLOYING UNITS</b>	<b>EMPLOYMENT OCTOBER</b>	<b>EMPLOYMENT NOVEMBER</b>	<b>EMPLOYMENT DECEMBER</b>	<b>TOTAL EARNINGS OCTOBER - DECEMBER</b>	<b>AVERAGE WEEKLY EARNINGS</b>
HOWARD COUNTY - TOTAL	359	7,397	7,343	7,360	\$48,226,666	\$503.59
Natural Resources & Mining	22	240	248	244	\$1,975,536	\$622.80
Construction	26	102	98	92	\$672,835	\$531.75
Manufacturing	26	3,985	3,947	3,960	\$27,889,232	\$541.20
Trade, Transportation & Utilities	104	917	909	913	\$5,643,519	\$475.48
Wholesale Trade	20	110	107	105	\$1,080,495	\$774.36
Retail Trade	63	621	613	622	\$2,920,831	\$363.17
Transportation, Warehousing & Utilities	21	186	189	186	\$1,642,193	\$675.52
Information	6	37	38	38	\$227,314	\$464.22
Financial Activities	35	139	137	139	\$1,105,924	\$614.97
Professional & Business Services	28	118	122	146	\$766,930	\$458.51
Education & Health Services	43	602	591	596	\$3,102,034	\$400.14
Leisure & Hospitality	19	294	283	267	\$678,568	\$185.54
Other Services	20	113	115	119	\$609,640	\$405.44
Local Government	18	712	718	711	\$4,617,914	\$497.75
State Government	12	138	137	135	\$937,220	\$527.52
INDEPENDENCE COUNTY - TOTAL	928	16,308	16,265	16,387	\$117,547,606	\$554.05
Natural Resources & Mining	13	144	142	143	\$1,077,833	\$579.79
Construction	67	447	446	451	\$3,276,020	\$562.50
Manufacturing	57	4,704	4,693	4,776	\$39,286,276	\$639.67
Trade, Transportation & Utilities	272	2,960	3,003	3,037	\$21,668,340	\$555.60
Wholesale Trade	52	532	536	545	\$4,464,393	\$638.71
Retail Trade	163	1,641	1,681	1,687	\$8,377,026	\$385.94
Transportation, Warehousing & Utilities	57	787	786	805	\$8,826,921	\$856.59
Information	12	165	163	166	\$1,163,248	\$543.40
Financial Activities	85	460	467	467	\$3,678,302	\$608.92
Professional & Business Services	86	970	924	905	\$4,725,549	\$389.61
Education & Health Services	140	2,876	2,843	2,872	\$24,984,997	\$671.14
Leisure & Hospitality	65	1,107	1,097	1,080	\$2,560,068	\$179.90
Other Services	66	383	371	373	\$1,699,978	\$348.09
Local Government	48	1,606	1,640	1,635	\$9,772,917	\$462.05
State Government	17	486	476	482	\$3,654,078	\$583.97

**TABLE 6. COUNTY SUMMARY  
EMPLOYMENT AND TOTAL EARNINGS, BY INDUSTRY  
FOURTH QUARTER 2006**

<b>NORTH AMERICAN INDUSTRY CLASSIFICATION SYSTEM INDUSTRY GROUP</b>	<b>NUMBER OF EMPLOYING UNITS</b>	<b>EMPLOYMENT OCTOBER</b>	<b>EMPLOYMENT NOVEMBER</b>	<b>EMPLOYMENT DECEMBER</b>	<b>TOTAL EARNINGS OCTOBER - DECEMBER</b>	<b>AVERAGE WEEKLY EARNINGS</b>
IZARD COUNTY - TOTAL	279	3,024	3,050	3,045	\$17,386,488	\$439.99
Natural Resources & Mining	5	93	93	83	\$746,041	\$640.01
Construction	24	49	59	59	\$306,480	\$423.51
Manufacturing	11	350	353	347	\$2,148,879	\$472.28
Trade, Transportation & Utilities	66	525	541	545	\$2,880,285	\$412.59
Retail Trade	49	420	432	440	\$1,920,197	\$342.97
Other Trade, Transportation & Utilities	17	105	109	105	\$960,088	\$694.54
Information	3	8	8	7	\$36,780	\$369.03
Financial Activities	32	152	148	154	\$1,346,129	\$684.24
Professional & Business Services	20	77	81	79	\$373,088	\$363.28
Education & Health Services	52	541	541	552	\$2,947,412	\$416.26
Leisure & Hospitality	23	180	176	164	\$409,890	\$181.90
Other Services	14	33	35	33	\$165,048	\$377.11
Local Government	18	548	548	546	\$3,104,846	\$436.36
State Government	11	468	467	476	\$2,921,610	\$477.83
JACKSON COUNTY - TOTAL	524	5,727	5,649	5,575	\$40,269,683	\$548.23
Natural Resources & Mining	46	232	200	189	\$1,329,446	\$494.03
Construction	28	185	171	166	\$1,643,246	\$726.46
Manufacturing	25	1,159	1,142	1,127	\$9,808,535	\$660.30
Trade, Transportation & Utilities	124	1,104	1,094	1,077	\$7,515,388	\$529.56
Wholesale Trade	34	195	193	189	\$2,146,795	\$858.60
Retail Trade	72	659	669	660	\$3,483,803	\$404.40
Transportation, Warehousing & Utilities	18	250	232	228	\$1,884,790	\$612.61
Information	6	38	37	37	\$281,838	\$580.71
Financial Activities	44	191	195	189	\$1,362,732	\$546.92
Professional & Business Services	38	157	165	160	\$1,289,047	\$617.16
Education & Health Services	94	823	822	826	\$6,691,018	\$624.88
Leisure & Hospitality	39	330	330	324	\$885,787	\$207.74
Other Services	32	94	94	93	\$422,535	\$347.00
Local Government	34	731	719	734	\$4,322,809	\$456.76
State Government	14	683	680	653	\$4,717,302	\$539.98

**TABLE 6. COUNTY SUMMARY  
EMPLOYMENT AND TOTAL EARNINGS, BY INDUSTRY  
FOURTH QUARTER 2006**

<b>NORTH AMERICAN INDUSTRY CLASSIFICATION SYSTEM INDUSTRY GROUP</b>	<b>NUMBER OF EMPLOYING UNITS</b>	<b>EMPLOYMENT OCTOBER</b>	<b>EMPLOYMENT NOVEMBER</b>	<b>EMPLOYMENT DECEMBER</b>	<b>TOTAL EARNINGS OCTOBER - DECEMBER</b>	<b>AVERAGE WEEKLY EARNINGS</b>
JEFFERSON COUNTY - TOTAL	1,931	32,049	32,142	31,909	\$256,288,042	\$615.44
Natural Resources & Mining	42	515	506	454	\$4,334,607	\$678.17
Construction	137	1,491	1,484	1,461	\$15,993,691	\$832.02
Manufacturing	72	6,023	6,015	6,006	\$61,557,574	\$787.28
Trade, Transportation & Utilities	484	5,824	5,939	5,983	\$42,588,349	\$553.82
Wholesale Trade	84	1,017	1,028	1,023	\$10,190,833	\$766.54
Retail Trade	332	3,915	4,010	4,050	\$21,045,351	\$405.56
Transportation, Warehousing & Utilities	68	892	901	910	\$11,352,165	\$969.19
Information	18	203	207	207	\$1,623,187	\$607.10
Financial Activities	157	1,224	1,230	1,226	\$11,940,419	\$748.77
Professional & Business Services	181	1,706	1,712	1,696	\$13,954,839	\$629.71
Education & Health Services	451	5,491	5,472	5,433	\$44,435,612	\$625.42
Leisure & Hospitality	153	2,278	2,267	2,198	\$5,956,934	\$203.87
Other Services	155	733	723	725	\$4,648,386	\$491.84
Local Government	41	3,250	3,255	3,247	\$24,095,685	\$570.20
State Government	40	3,311	3,332	3,273	\$25,158,759	\$585.50
JOHNSON COUNTY - TOTAL	478	8,483	8,565	8,593	\$56,117,081	\$505.05
Natural Resources & Mining	15	194	197	198	\$1,645,248	\$644.61
Construction	29	115	118	118	\$773,085	\$508.27
Manufacturing	46	3,007	2,990	2,991	\$20,380,414	\$523.27
Trade, Transportation & Utilities	122	1,861	1,896	1,930	\$12,393,581	\$502.91
Information	6	31	32	33	\$272,088	\$654.06
Financial Activities	41	232	228	230	\$1,627,059	\$544.17
Professional & Business Services	51	177	187	189	\$1,248,808	\$521.13
Education & Health Services	75	1,147	1,155	1,151	\$8,114,895	\$542.33
Leisure & Hospitality	39	513	522	504	\$1,386,800	\$207.95
Other Services	30	92	92	91	\$473,233	\$397.12
Local Government	14	956	986	993	\$6,599,594	\$518.90
State Government	10	158	162	165	\$1,202,276	\$572.06

**TABLE 6. COUNTY SUMMARY  
EMPLOYMENT AND TOTAL EARNINGS, BY INDUSTRY  
FOURTH QUARTER 2006**

<b>NORTH AMERICAN INDUSTRY CLASSIFICATION SYSTEM INDUSTRY GROUP</b>	<b>NUMBER OF EMPLOYING UNITS</b>	<b>EMPLOYMENT OCTOBER</b>	<b>EMPLOYMENT NOVEMBER</b>	<b>EMPLOYMENT DECEMBER</b>	<b>TOTAL EARNINGS OCTOBER - DECEMBER</b>	<b>AVERAGE WEEKLY EARNINGS</b>
LAFAYETTE COUNTY - TOTAL	171	1,415	1,435	1,399	\$9,550,896	\$518.72
Natural Resources & Mining	33	197	202	181	\$1,808,518	\$719.57
Trade, Transportation & Utilities	37	233	234	228	\$1,258,480	\$417.87
Retail Trade	22	147	150	147	\$574,731	\$298.72
Other Trade, Transportation & Utilities	15	86	84	81	\$683,749	\$628.64
Financial Activities	17	84	84	82	\$520,054	\$480.05
Professional & Business Services	8	53	55	50	\$465,475	\$679.86
Education & Health Services	24	229	233	231	\$1,141,844	\$380.23
Leisure & Hospitality	6	41	42	48	\$236,565	\$416.73
Other Services	8	74	78	78	\$325,900	\$326.99
Local Government	13	331	332	337	\$2,095,484	\$483.57
State Government	8	49	50	51	\$354,229	\$544.97
Other	17	124	125	113	\$1,344,347	\$857.00
LAWRENCE COUNTY - TOTAL	428	4,144	4,158	4,164	\$25,171,636	\$465.97
Natural Resources & Mining	35	171	179	169	\$1,441,461	\$640.93
Construction	25	61	59	63	\$372,292	\$469.47
Manufacturing	22	554	550	540	\$3,532,165	\$495.81
Trade, Transportation & Utilities	130	936	919	914	\$5,459,004	\$454.95
Wholesale Trade	24	202	201	201	\$1,531,085	\$584.98
Retail Trade	70	598	584	577	\$2,700,978	\$354.35
Transportation, Warehousing & Utilities	36	136	134	136	\$1,226,941	\$697.39
Information	6	21	19	18	\$152,802	\$607.97
Financial Activities	29	134	132	132	\$832,413	\$482.65
Professional & Business Services	24	120	125	119	\$1,023,720	\$649.02
Education & Health Services	66	462	461	455	\$2,840,515	\$475.69
Leisure & Hospitality	26	321	336	357	\$690,238	\$157.09
Other Services	26	75	71	73	\$294,528	\$310.36
Local Government	28	1,176	1,192	1,212	\$7,782,232	\$501.65
State Government	11	113	115	112	\$750,266	\$509.23



**TABLE 6. COUNTY SUMMARY  
EMPLOYMENT AND TOTAL EARNINGS, BY INDUSTRY  
FOURTH QUARTER 2006**

<b>NORTH AMERICAN INDUSTRY CLASSIFICATION SYSTEM INDUSTRY GROUP</b>	<b>NUMBER OF EMPLOYING UNITS</b>	<b>EMPLOYMENT OCTOBER</b>	<b>EMPLOYMENT NOVEMBER</b>	<b>EMPLOYMENT DECEMBER</b>	<b>TOTAL EARNINGS OCTOBER - DECEMBER</b>	<b>AVERAGE WEEKLY EARNINGS</b>
LEE COUNTY - TOTAL	253	2,210	2,147	2,142	\$14,170,596	\$503.18
Natural Resources & Mining	28	288	248	237	\$1,843,619	\$550.39
Construction	11	33	26	28	\$158,623	\$420.75
Trade, Transportation & Utilities	53	353	357	358	\$2,231,638	\$482.20
Wholesale Trade	9	75	73	72	\$608,322	\$638.10
Retail Trade	27	190	195	197	\$810,914	\$321.54
Transportation, Warehousing & Utilities	17	88	89	89	\$812,402	\$704.80
Financial Activities	15	79	77	75	\$673,811	\$673.14
Professional & Business Services	19	67	65	65	\$597,994	\$700.50
Education & Health Services	68	299	297	300	\$1,901,792	\$489.82
Leisure & Hospitality	9	101	101	98	\$179,073	\$137.75
Local Government	16	383	376	378	\$2,330,860	\$473.08
State Government	8	471	469	474	\$3,425,109	\$558.99
Other	26	136	131	129	\$828,077	\$482.56
LINCOLN COUNTY - TOTAL	222	3,072	3,055	2,991	\$20,663,896	\$522.99
Natural Resources & Mining	32	242	227	187	\$1,878,403	\$660.79
Construction	13	65	65	68	\$428,559	\$499.49
Manufacturing	9	435	436	422	\$3,348,551	\$597.64
Trade, Transportation & Utilities	47	372	374	363	\$2,692,054	\$560.18
Wholesale Trade	7	28	29	31	\$388,371	\$1,018.46
Retail Trade	25	209	211	199	\$802,979	\$299.36
Transportation, Warehousing & Utilities	15	135	134	133	\$1,500,704	\$861.48
Financial Activities	22	76	77	76	\$568,749	\$573.14
Professional & Business Services	13	21	21	20	\$141,282	\$525.86
Education & Health Services	35	293	298	308	\$1,575,641	\$404.46
Leisure & Hospitality	15	145	147	149	\$318,440	\$166.64
Local & State Government	22	1,383	1,374	1,360	\$9,509,943	\$533.06
Other	14	40	36	38	\$202,274	\$409.46

**TABLE 6. COUNTY SUMMARY  
EMPLOYMENT AND TOTAL EARNINGS, BY INDUSTRY  
FOURTH QUARTER 2006**

<b>NORTH AMERICAN INDUSTRY CLASSIFICATION SYSTEM INDUSTRY GROUP</b>	<b>NUMBER OF EMPLOYING UNITS</b>	<b>EMPLOYMENT OCTOBER</b>	<b>EMPLOYMENT NOVEMBER</b>	<b>EMPLOYMENT DECEMBER</b>	<b>TOTAL EARNINGS OCTOBER - DECEMBER</b>	<b>AVERAGE WEEKLY EARNINGS</b>
LITTLE RIVER COUNTY - TOTAL	260	4,504	4,511	4,564	\$45,937,757	\$780.69
Natural Resources & Mining	12	69	69	77	\$508,378	\$545.67
Trade, Transportation & Utilities	68	1,223	1,215	1,263	\$11,592,706	\$722.84
Retail Trade	41	320	318	316	\$1,542,176	\$373.05
Other Trade, Transportation & Utilities	27	903	897	947	\$10,050,530	\$844.32
Information	3	11	10	10	\$74,802	\$556.84
Financial Activities	24	96	96	95	\$677,715	\$544.93
Professional & Business Services	20	129	132	127	\$723,852	\$430.52
Education & Health Services	26	162	163	155	\$873,132	\$419.78
Leisure & Hospitality	19	213	210	214	\$537,432	\$194.70
Other Services	14	102	100	100	\$351,840	\$268.85
Local Government	20	793	793	808	\$5,538,358	\$533.87
State Government	12	81	82	82	\$545,285	\$513.61
Other	42	1,625	1,641	1,633	\$24,514,257	\$1,154.75
LOGAN COUNTY - TOTAL	483	5,915	5,911	5,935	\$37,097,712	\$482.01
Natural Resources & Mining	20	94	96	92	\$825,350	\$675.41
Construction	50	156	148	156	\$1,100,185	\$551.93
Manufacturing	28	1,785	1,798	1,812	\$12,475,544	\$533.64
Trade, Transportation & Utilities	117	859	862	857	\$4,481,238	\$401.14
Wholesale Trade	17	45	45	43	\$261,604	\$453.91
Retail Trade	75	737	737	736	\$3,505,641	\$366.06
Transportation, Warehousing & Utilities	25	77	80	78	\$713,993	\$701.14
Information	6	45	45	45	\$385,006	\$658.13
Financial Activities	43	246	249	248	\$2,730,890	\$848.19
Professional & Business Services	44	182	181	190	\$1,080,546	\$450.92
Education & Health Services	79	737	748	750	\$4,419,047	\$456.28
Leisure & Hospitality	31	321	305	304	\$819,670	\$203.39
Other Services	28	85	79	79	\$463,511	\$440.18
Local & State Government	37	1,405	1,400	1,402	\$8,316,725	\$456.20

**TABLE 6. COUNTY SUMMARY  
EMPLOYMENT AND TOTAL EARNINGS, BY INDUSTRY  
FOURTH QUARTER 2006**

<b>NORTH AMERICAN INDUSTRY CLASSIFICATION SYSTEM INDUSTRY GROUP</b>	<b>NUMBER OF EMPLOYING UNITS</b>	<b>EMPLOYMENT OCTOBER</b>	<b>EMPLOYMENT NOVEMBER</b>	<b>EMPLOYMENT DECEMBER</b>	<b>TOTAL EARNINGS OCTOBER - DECEMBER</b>	<b>AVERAGE WEEKLY EARNINGS</b>
LONOKE COUNTY - TOTAL	1,228	12,338	12,339	12,208	\$88,666,917	\$554.74
Natural Resources & Mining	70	493	424	376	\$4,380,726	\$781.85
Construction	167	946	942	940	\$10,270,004	\$838.05
Manufacturing	37	1,371	1,380	1,307	\$13,034,360	\$741.23
Trade, Transportation & Utilities	334	2,737	2,735	2,725	\$17,065,752	\$480.45
Wholesale Trade	82	449	449	446	\$4,582,171	\$786.77
Retail Trade	178	1,972	1,978	1,974	\$9,994,447	\$389.33
Transportation, Warehousing & Utilities	74	316	308	305	\$2,489,134	\$618.32
Information	16	111	105	104	\$1,263,650	\$911.29
Financial Activities	126	600	598	605	\$6,245,072	\$799.32
Professional & Business Services	140	573	575	593	\$4,476,111	\$593.31
Education & Health Services	139	1,368	1,398	1,394	\$8,958,369	\$496.95
Leisure & Hospitality	87	1,316	1,329	1,311	\$3,425,755	\$199.84
Other Services	68	197	197	195	\$1,186,174	\$464.74
Local Government	28	2,470	2,500	2,493	\$17,394,449	\$537.87
State Government	16	156	156	165	\$966,495	\$467.58
MADISON COUNTY - TOTAL	261	3,219	3,208	3,206	\$20,959,693	\$502.11
Natural Resources & Mining	11	57	52	54	\$349,480	\$494.78
Construction	44	151	150	150	\$921,042	\$471.28
Manufacturing	20	1,148	1,134	1,122	\$8,015,033	\$543.37
Trade, Transportation & Utilities	66	573	578	575	\$3,354,510	\$448.50
Wholesale Trade	16	43	39	39	\$415,415	\$792.27
Retail Trade	34	408	417	414	\$1,963,809	\$365.77
Transportation, Warehousing & Utilities	16	122	122	122	\$975,286	\$614.93
Information	4	34	35	34	\$483,677	\$1,083.67
Financial Activities	15	88	90	93	\$733,559	\$624.66
Professional & Business Services	22	85	82	94	\$458,588	\$405.47
Education & Health Services	37	269	268	268	\$1,343,481	\$385.14
Leisure & Hospitality	14	131	129	119	\$248,876	\$151.54
Other Services	12	25	24	25	\$177,699	\$554.15
Local Government	8	609	618	625	\$4,539,554	\$565.65
State Government	8	49	48	47	\$334,194	\$535.57

**TABLE 6. COUNTY SUMMARY  
EMPLOYMENT AND TOTAL EARNINGS, BY INDUSTRY  
FOURTH QUARTER 2006**

<b>NORTH AMERICAN INDUSTRY CLASSIFICATION SYSTEM INDUSTRY GROUP</b>	<b>NUMBER OF EMPLOYING UNITS</b>	<b>EMPLOYMENT  OCTOBER</b>	<b>EMPLOYMENT  NOVEMBER</b>	<b>EMPLOYMENT  DECEMBER</b>	<b>TOTAL EARNINGS  OCTOBER - DECEMBER</b>	<b>AVERAGE WEEKLY EARNINGS</b>
MARION COUNTY - TOTAL	315	4,167	4,151	4,139	\$24,867,115	\$460.67
Natural Resources & Mining	5	57	55	55	\$257,402	\$355.69
Construction	25	70	71	78	\$392,951	\$414.07
Manufacturing	27	1,782	1,778	1,788	\$11,426,347	\$493.05
Trade, Transportation & Utilities	58	641	644	651	\$3,316,481	\$395.32
Retail Trade	38	461	466	465	\$1,967,839	\$326.23
Other Trade, Transportation & Utilities	20	180	178	186	\$1,348,642	\$572.10
Financial Activities	35	176	165	154	\$1,167,507	\$544.29
Professional & Business Services	28	71	70	69	\$527,693	\$579.88
Education & Health Services	51	376	385	374	\$2,027,010	\$412.13
Leisure & Hospitality	39	246	230	214	\$633,577	\$211.90
Local Government	20	557	556	561	\$3,435,434	\$473.59
State Government	8	104	109	107	\$700,350	\$505.06
Other	19	87	88	88	\$982,363	\$861.97
MILLER COUNTY - TOTAL	839	12,530	12,336	12,383	\$101,490,561	\$628.77
Natural Resources & Mining	28	149	136	143	\$1,086,889	\$586.03
Construction	91	859	775	796	\$6,083,273	\$577.71
Manufacturing	34	2,628	2,614	2,606	\$36,584,726	\$1,075.77
Trade, Transportation & Utilities	229	2,581	2,592	2,624	\$19,227,389	\$569.08
Wholesale Trade	65	638	643	652	\$7,005,961	\$836.40
Retail Trade	127	1,383	1,388	1,389	\$6,829,205	\$378.84
Transportation, Warehousing & Utilities	37	560	561	583	\$5,392,223	\$730.26
Information	9	94	95	95	\$1,740,394	\$1,414.19
Financial Activities	85	378	375	372	\$3,353,300	\$687.86
Professional & Business Services	83	853	779	805	\$4,745,916	\$449.41
Education & Health Services	90	1,106	1,091	1,068	\$7,322,838	\$517.58
Leisure & Hospitality	84	1,307	1,281	1,293	\$4,102,348	\$243.93
Other Services	63	342	343	349	\$1,328,060	\$296.40
Local Government	26	1,760	1,786	1,763	\$12,193,847	\$530.04
State Government	17	473	469	469	\$3,721,581	\$608.67

**TABLE 6. COUNTY SUMMARY  
EMPLOYMENT AND TOTAL EARNINGS, BY INDUSTRY  
FOURTH QUARTER 2006**

NORTH AMERICAN INDUSTRY CLASSIFICATION SYSTEM INDUSTRY GROUP	NUMBER OF EMPLOYING UNITS	EMPLOYMENT	EMPLOYMENT	EMPLOYMENT	TOTAL EARNINGS	AVERAGE WEEKLY EARNINGS
		OCTOBER	NOVEMBER	DECEMBER	OCTOBER - DECEMBER	
MISSISSIPPI COUNTY - TOTAL	1,173	19,789	19,552	19,454	\$175,039,918	\$687.03
Natural Resources & Mining	103	1,186	1,031	817	\$8,793,868	\$668.87
Construction	69	611	622	623	\$5,449,875	\$677.62
Manufacturing	55	5,520	5,601	5,698	\$79,650,240	\$1,092.86
Trade, Transportation & Utilities	300	3,135	3,093	3,144	\$22,422,097	\$552.11
Wholesale Trade	63	553	548	563	\$5,849,771	\$811.27
Retail Trade	184	1,908	1,889	1,917	\$9,438,833	\$381.20
Transportation, Warehousing & Utilities	53	674	656	664	\$7,133,493	\$825.57
Financial Activities	100	553	551	566	\$4,155,404	\$574.22
Professional & Business Services	98	1,200	1,126	1,088	\$7,948,274	\$537.26
Education & Health Services	210	1,756	1,740	1,726	\$12,491,395	\$552.02
Leisure & Hospitality	79	1,088	1,067	1,069	\$3,190,747	\$228.39
Local Government	46	2,460	2,470	2,480	\$16,381,042	\$510.15
State Government	24	660	662	646	\$4,276,125	\$501.42
Other	89	1,620	1,589	1,597	\$10,280,851	\$493.65
MONROE COUNTY - TOTAL	310	2,381	2,363	2,350	\$13,991,534	\$455.15
Natural Resources & Mining	37	179	163	148	\$1,004,713	\$473.18
Construction	14	32	31	31	\$123,509	\$303.21
Manufacturing	8	100	107	118	\$819,346	\$581.78
Trade, Transportation & Utilities	90	685	673	667	\$4,670,686	\$532.27
Wholesale Trade	22	185	185	177	\$1,766,454	\$745.23
Retail Trade	41	337	346	351	\$1,652,359	\$368.78
Transportation, Warehousing & Utilities	27	163	142	139	\$1,251,873	\$650.66
Financial Activities	15	94	94	93	\$810,926	\$665.97
Professional & Business Services	17	38	41	41	\$246,813	\$474.64
Education & Health Services	46	313	320	317	\$1,375,451	\$334.12
Leisure & Hospitality	26	255	252	254	\$686,477	\$208.17
Local Government	22	451	453	454	\$2,978,461	\$506.14
State Government	9	120	118	117	\$762,844	\$495.89
Other	26	114	111	110	\$512,308	\$352.91

**TABLE 6. COUNTY SUMMARY  
EMPLOYMENT AND TOTAL EARNINGS, BY INDUSTRY  
FOURTH QUARTER 2006**

NORTH AMERICAN INDUSTRY CLASSIFICATION SYSTEM INDUSTRY GROUP	NUMBER OF EMPLOYING UNITS	EMPLOYMENT	EMPLOYMENT	EMPLOYMENT	TOTAL EARNINGS	AVERAGE WEEKLY EARNINGS
		OCTOBER	NOVEMBER	DECEMBER	OCTOBER - DECEMBER	
MONTGOMERY COUNTY - TOTAL	186	1,634	1,627	1,590	\$9,036,742	\$429.89
Natural Resources & Mining	14	59	59	59	\$506,724	\$660.66
Construction	24	130	127	121	\$1,016,538	\$620.60
Trade, Transportation & Utilities	46	207	204	202	\$1,023,868	\$385.44
Wholesale Trade	10	61	59	57	\$352,561	\$459.66
Retail Trade	25	124	123	124	\$552,483	\$343.66
Transportation, Warehousing & Utilities	11	22	22	21	\$118,824	\$421.86
Financial Activities	10	71	72	73	\$528,953	\$565.12
Education & Health Services	16	50	52	53	\$307,951	\$458.49
Leisure & Hospitality	22	218	212	190	\$888,661	\$330.77
Other Services	12	80	78	77	\$296,685	\$291.34
Local Government	9	494	503	508	\$2,945,560	\$451.66
State Government	8	57	56	53	\$408,005	\$567.20
Other	25	268	264	254	\$1,113,797	\$327.01
NEVADA COUNTY - TOTAL	189	2,604	2,635	2,612	\$18,029,989	\$529.97
Natural Resources & Mining	15	62	64	63	\$580,934	\$709.32
Construction	9	13	14	14	\$75,833	\$426.83
Manufacturing	9	785	774	787	\$6,967,973	\$685.42
Trade, Transportation & Utilities	46	518	530	509	\$3,531,453	\$523.41
Retail Trade	30	276	294	276	\$1,371,148	\$374.02
Other Trade, Transportation & Utilities	16	242	236	233	\$2,160,305	\$701.17
Financial Activities	14	63	64	63	\$596,637	\$724.66
Education & Health Services	17	384	380	379	\$2,134,724	\$431.00
Leisure & Hospitality	14	101	105	106	\$279,852	\$206.99
Other Services	14	75	81	75	\$247,300	\$247.05
Local Government	28	481	491	488	\$2,700,107	\$426.78
State Government	11	82	89	86	\$572,183	\$513.78
Other	12	40	43	42	\$342,993	\$633.22

**TABLE 6. COUNTY SUMMARY  
EMPLOYMENT AND TOTAL EARNINGS, BY INDUSTRY  
FOURTH QUARTER 2006**

<b>NORTH AMERICAN INDUSTRY CLASSIFICATION SYSTEM INDUSTRY GROUP</b>	<b>NUMBER OF EMPLOYING UNITS</b>	<b>EMPLOYMENT OCTOBER</b>	<b>EMPLOYMENT NOVEMBER</b>	<b>EMPLOYMENT DECEMBER</b>	<b>TOTAL EARNINGS OCTOBER - DECEMBER</b>	<b>AVERAGE WEEKLY EARNINGS</b>
NEWTON COUNTY - TOTAL	133	1,100	1,101	1,100	\$5,343,058	\$373.53
Natural Resources & Mining	4	2	2	2	\$7,000	\$269.23
Construction	8	14	13	10	\$51,624	\$321.98
Manufacturing	16	88	88	90	\$543,702	\$471.69
Trade, Transportation & Utilities	31	156	155	157	\$693,894	\$342.16
Retail Trade	15	103	102	103	\$357,481	\$267.84
Other Trade, Transportation & Utilities	16	53	53	54	\$336,413	\$485.21
Education & Health Services	21	226	223	226	\$914,710	\$312.72
Leisure & Hospitality	17	73	80	68	\$189,313	\$197.68
Other Services	4	8	8	8	\$25,693	\$247.05
Local Government	13	397	396	399	\$2,140,847	\$414.46
State Government	7	87	87	91	\$439,471	\$382.70
Other	12	49	49	49	\$336,804	\$528.73
OUACHITA COUNTY - TOTAL	659	7,631	7,672	7,690	\$52,135,126	\$523.25
Natural Resources & Mining	48	284	280	297	\$2,023,557	\$542.36
Construction	51	257	260	273	\$1,791,120	\$523.21
Manufacturing	30	787	797	788	\$7,330,889	\$713.21
Trade, Transportation & Utilities	180	1,762	1,775	1,797	\$12,097,833	\$523.40
Wholesale Trade	31	257	256	255	\$3,091,179	\$928.84
Retail Trade	121	1,084	1,097	1,106	\$4,954,857	\$347.86
Transportation, Warehousing & Utilities	28	421	422	436	\$4,051,797	\$731.06
Information	9	90	89	89	\$703,723	\$605.96
Financial Activities	64	367	364	373	\$3,064,382	\$640.55
Professional & Business Services	53	319	318	321	\$2,038,801	\$491.12
Education & Health Services	97	1,266	1,271	1,278	\$8,724,036	\$527.72
Leisure & Hospitality	40	510	497	491	\$1,208,619	\$186.19
Other Services	43	154	156	151	\$781,829	\$391.37
Local Government	30	1,291	1,303	1,292	\$8,320,674	\$494.12
State Government	14	544	562	540	\$4,049,663	\$567.76

**TABLE 6. COUNTY SUMMARY  
EMPLOYMENT AND TOTAL EARNINGS, BY INDUSTRY  
FOURTH QUARTER 2006**

NORTH AMERICAN INDUSTRY CLASSIFICATION SYSTEM INDUSTRY GROUP	NUMBER OF EMPLOYING UNITS	EMPLOYMENT	EMPLOYMENT	EMPLOYMENT	TOTAL EARNINGS	AVERAGE
		OCTOBER	NOVEMBER	DECEMBER	OCTOBER - DECEMBER	WEEKLY EARNINGS
PERRY COUNTY - TOTAL	161	1,220	1,233	1,243	\$7,453,911	\$465.40
Natural Resources & Mining	9	38	51	55	\$378,074	\$605.89
Construction	28	73	75	74	\$544,549	\$566.06
Manufacturing	7	82	80	74	\$479,801	\$469.17
Trade, Transportation & Utilities	26	177	180	185	\$919,623	\$391.55
Retail Trade	18	149	152	158	\$565,391	\$284.26
Other Trade, Transportation & Utilities	8	28	28	27	\$354,232	\$984.89
Financial Activities	14	48	50	49	\$543,835	\$853.74
Professional & Business Services	14	42	38	33	\$252,575	\$515.81
Education & Health Services	25	183	185	191	\$1,025,687	\$423.43
Local Government	12	416	418	423	\$2,485,929	\$456.38
State Government	9	55	53	55	\$354,468	\$501.84
Other	17	106	103	104	\$469,370	\$346.06
PHILLIPS COUNTY - TOTAL	777	6,845	6,797	6,714	\$43,307,500	\$490.96
Natural Resources & Mining	71	692	593	512	\$3,763,512	\$483.31
Construction	30	115	112	112	\$712,812	\$485.24
Manufacturing	11	384	394	391	\$2,924,047	\$577.23
Trade, Transportation & Utilities	173	1,578	1,599	1,603	\$10,166,838	\$490.84
Wholesale Trade	36	381	380	384	\$3,309,279	\$666.97
Retail Trade	102	876	900	898	\$4,417,573	\$381.24
Transportation, Warehousing & Utilities	35	321	319	321	\$2,439,986	\$585.92
Information	10	48	48	48	\$335,640	\$537.88
Financial Activities	54	268	273	273	\$1,945,759	\$551.62
Professional & Business Services	62	221	223	236	\$1,809,532	\$614.09
Education & Health Services	237	1,309	1,322	1,303	\$8,116,631	\$476.12
Leisure & Hospitality	38	434	433	431	\$1,016,856	\$180.79
Other Services	43	86	81	83	\$408,541	\$377.11
Local Government	31	1,119	1,125	1,131	\$8,721,371	\$596.33
State Government	17	591	594	591	\$3,385,961	\$439.96



**TABLE 6. COUNTY SUMMARY  
EMPLOYMENT AND TOTAL EARNINGS, BY INDUSTRY  
FOURTH QUARTER 2006**

<b>NORTH AMERICAN INDUSTRY CLASSIFICATION SYSTEM INDUSTRY GROUP</b>	<b>NUMBER OF EMPLOYING UNITS</b>	<b>EMPLOYMENT OCTOBER</b>	<b>EMPLOYMENT NOVEMBER</b>	<b>EMPLOYMENT DECEMBER</b>	<b>TOTAL EARNINGS OCTOBER - DECEMBER</b>	<b>AVERAGE WEEKLY EARNINGS</b>
PIKE COUNTY - TOTAL	267	2,869	2,828	2,843	\$16,698,676	\$451.23
Natural Resources & Mining	29	152	146	141	\$1,037,501	\$545.38
Construction	16	128	105	102	\$715,562	\$492.92
Manufacturing	14	502	494	479	\$2,714,170	\$424.64
Trade, Transportation & Utilities	90	582	580	594	\$3,402,264	\$447.12
Wholesale Trade	18	122	125	127	\$1,018,917	\$628.70
Retail Trade	42	339	337	344	\$1,510,538	\$341.75
Transportation, Warehousing & Utilities	30	121	118	123	\$872,809	\$556.40
Information	6	31	31	31	\$330,107	\$819.12
Financial Activities	26	173	176	173	\$1,714,963	\$758.16
Professional & Business Services	11	27	26	30	\$116,945	\$325.15
Education & Health Services	19	254	250	254	\$1,225,691	\$373.16
Leisure & Hospitality	18	199	200	210	\$501,366	\$189.98
Other Services	14	103	107	106	\$584,154	\$426.60
Local Government	13	610	610	620	\$3,766,411	\$472.38
State Government	11	108	103	103	\$589,542	\$433.27
POINSETT COUNTY - TOTAL	497	5,920	5,863	5,821	\$40,344,972	\$528.88
Natural Resources & Mining	51	431	403	337	\$3,027,302	\$596.59
Construction	26	59	60	62	\$550,704	\$702.13
Manufacturing	24	1,169	1,179	1,184	\$9,263,118	\$605.22
Trade, Transportation & Utilities	133	1,343	1,311	1,306	\$9,315,782	\$542.88
Wholesale Trade	33	522	496	489	\$5,230,811	\$801.00
Retail Trade	75	684	682	690	\$3,078,696	\$345.56
Transportation, Warehousing & Utilities	25	137	133	127	\$1,006,275	\$584.93
Information	6	55	55	53	\$688,649	\$974.96
Financial Activities	44	302	308	312	\$3,002,628	\$751.53
Professional & Business Services	31	147	152	165	\$941,922	\$468.46
Education & Health Services	65	566	563	555	\$3,316,534	\$454.49
Leisure & Hospitality	46	391	375	381	\$789,260	\$158.79
Other Services	28	61	61	62	\$409,687	\$513.82
Local Government	31	1,189	1,183	1,191	\$7,741,338	\$501.39
State Government	12	207	213	213	\$1,298,048	\$473.22

**TABLE 6. COUNTY SUMMARY  
EMPLOYMENT AND TOTAL EARNINGS, BY INDUSTRY  
FOURTH QUARTER 2006**

<b>NORTH AMERICAN INDUSTRY CLASSIFICATION SYSTEM INDUSTRY GROUP</b>	<b>NUMBER OF EMPLOYING UNITS</b>	<b>EMPLOYMENT OCTOBER</b>	<b>EMPLOYMENT NOVEMBER</b>	<b>EMPLOYMENT DECEMBER</b>	<b>TOTAL EARNINGS OCTOBER - DECEMBER</b>	<b>AVERAGE WEEKLY EARNINGS</b>
POLK COUNTY - TOTAL	545	6,261	6,295	6,348	\$36,768,224	\$448.85
Natural Resources & Mining	28	250	249	251	\$1,948,240	\$599.46
Construction	37	203	201	211	\$1,149,627	\$431.38
Manufacturing	45	1,347	1,351	1,350	\$8,964,606	\$511.06
Trade, Transportation & Utilities	149	1,358	1,362	1,380	\$7,286,769	\$410.14
Wholesale Trade	26	123	123	125	\$616,760	\$383.64
Retail Trade	80	820	813	826	\$3,934,784	\$369.27
Transportation, Warehousing & Utilities	43	415	426	429	\$2,735,225	\$497.01
Information	9	53	53	54	\$395,521	\$570.46
Financial Activities	39	225	233	232	\$1,769,454	\$591.79
Professional & Business Services	50	165	163	175	\$1,135,706	\$521.05
Education & Health Services	76	942	948	939	\$5,430,149	\$442.95
Leisure & Hospitality	42	446	446	452	\$970,513	\$166.64
Other Services	35	135	140	140	\$699,389	\$388.91
Local Government	21	797	810	828	\$5,239,294	\$496.54
State Government	14	340	339	336	\$1,778,956	\$404.46
POPE COUNTY - TOTAL	1,737	27,189	27,155	27,461	\$207,089,435	\$584.19
Natural Resources & Mining	22	312	419	662	\$2,590,130	\$429.09
Construction	180	1,437	1,224	1,261	\$13,923,048	\$819.23
Manufacturing	89	5,145	5,165	5,181	\$45,777,921	\$681.95
Trade, Transportation & Utilities	472	6,707	6,822	6,853	\$63,461,919	\$718.53
Wholesale Trade	101	711	729	747	\$6,991,639	\$737.75
Retail Trade	279	3,450	3,505	3,532	\$17,409,994	\$383.11
Transportation, Warehousing & Utilities	92	2,546	2,588	2,574	\$39,060,286	\$1,169.42
Information	24	252	253	255	\$2,377,385	\$721.88
Financial Activities	179	871	858	865	\$7,314,762	\$650.74
Professional & Business Services	231	2,753	2,672	2,642	\$15,261,543	\$436.58
Education & Health Services	236	2,918	2,923	2,963	\$20,868,606	\$547.01
Leisure & Hospitality	139	2,439	2,441	2,394	\$6,490,966	\$205.93
Other Services	109	469	460	443	\$2,774,704	\$466.70
Local Government	40	2,266	2,289	2,300	\$15,701,961	\$528.60
State Government	16	1,620	1,629	1,642	\$10,546,490	\$497.61

**TABLE 6. COUNTY SUMMARY  
EMPLOYMENT AND TOTAL EARNINGS, BY INDUSTRY  
FOURTH QUARTER 2006**

<b>NORTH AMERICAN INDUSTRY CLASSIFICATION SYSTEM INDUSTRY GROUP</b>	<b>NUMBER OF EMPLOYING UNITS</b>	<b>EMPLOYMENT OCTOBER</b>	<b>EMPLOYMENT NOVEMBER</b>	<b>EMPLOYMENT DECEMBER</b>	<b>TOTAL EARNINGS OCTOBER - DECEMBER</b>	<b>AVERAGE WEEKLY EARNINGS</b>
PRAIRIE COUNTY - TOTAL	245	1,477	1,412	1,412	\$9,379,998	\$503.28
Natural Resources & Mining	32	133	118	123	\$962,188	\$593.70
Trade, Transportation & Utilities	70	384	346	340	\$2,034,490	\$438.78
Wholesale Trade	11	71	50	48	\$550,242	\$751.35
Retail Trade	39	205	207	210	\$708,348	\$262.81
Transportation, Warehousing & Utilities	20	108	89	82	\$775,900	\$641.77
Information	4	6	8	9	\$87,430	\$877.22
Financial Activities	16	65	64	65	\$631,709	\$751.44
Professional & Business Services	15	40	41	40	\$271,267	\$517.36
Education & Health Services	30	155	158	160	\$948,903	\$462.95
Leisure & Hospitality	19	90	82	85	\$260,754	\$234.14
Other Services	14	39	39	38	\$162,548	\$323.37
Local Government	15	336	331	332	\$2,060,400	\$475.95
State Government	10	46	47	49	\$350,422	\$569.48
Other	20	183	178	171	\$1,609,887	\$698.33
PULASKI COUNTY - TOTAL	14,300	238,653	239,278	240,895	\$2,387,860,397	\$766.59
Natural Resources & Mining	52	729	715	669	\$8,374,081	\$914.57
Construction	1,168	10,638	10,460	10,485	\$126,478,878	\$924.15
Manufacturing	446	15,810	15,766	15,676	\$176,227,892	\$860.66
Trade, Transportation & Utilities	3,276	51,921	53,011	53,854	\$483,417,323	\$702.57
Wholesale Trade	1,113	13,329	13,410	13,500	\$184,766,963	\$1,059.63
Retail Trade	1,757	24,830	25,891	26,472	\$153,450,408	\$458.74
Transportation, Warehousing & Utilities	406	13,762	13,710	13,882	\$145,199,952	\$810.26
Information	238	8,840	8,898	8,912	\$115,808,565	\$1,002.82
Financial Activities	1,752	16,283	16,428	16,475	\$207,121,306	\$971.76
Professional & Business Services	2,770	33,820	33,806	34,099	\$364,816,607	\$827.61
Education & Health Services	2,023	33,481	33,474	33,727	\$381,383,947	\$874.16
Leisure & Hospitality	1,033	19,651	19,488	19,714	\$72,162,476	\$282.96
Other Services	1,235	6,831	6,785	6,845	\$49,691,199	\$560.44
Local Government	104	16,240	16,067	16,104	\$148,895,288	\$709.77
State Government	203	24,409	24,380	24,335	\$253,482,835	\$799.96

**TABLE 6. COUNTY SUMMARY  
EMPLOYMENT AND TOTAL EARNINGS, BY INDUSTRY  
FOURTH QUARTER 2006**

NORTH AMERICAN INDUSTRY CLASSIFICATION SYSTEM INDUSTRY GROUP	NUMBER OF EMPLOYING UNITS	EMPLOYMENT	EMPLOYMENT	EMPLOYMENT	TOTAL EARNINGS	AVERAGE
		OCTOBER	NOVEMBER	DECEMBER	OCTOBER - DECEMBER	WEEKLY EARNINGS
RANDOLPH COUNTY - TOTAL	416	5,033	5,007	5,068	\$30,281,004	\$462.53
Natural Resources & Mining	22	85	78	78	\$404,264	\$387.10
Construction	27	113	103	97	\$479,115	\$353.24
Manufacturing	39	1,032	1,016	1,009	\$7,563,653	\$570.97
Trade, Transportation & Utilities	103	921	916	970	\$4,987,929	\$410.07
Wholesale Trade	21	213	208	208	\$1,058,726	\$388.43
Retail Trade	61	586	589	635	\$2,820,550	\$359.61
Transportation, Warehousing & Utilities	21	122	119	127	\$1,108,653	\$695.23
Information	5	41	40	42	\$415,963	\$780.42
Financial Activities	27	153	155	154	\$931,870	\$465.47
Professional & Business Services	36	225	222	233	\$1,051,442	\$356.82
Education & Health Services	69	876	894	897	\$6,110,842	\$528.76
Leisure & Hospitality	29	386	372	358	\$783,519	\$162.02
Other Services	24	71	73	75	\$324,126	\$341.54
Local Government	23	861	866	882	\$5,226,064	\$462.25
State Government	12	269	272	273	\$2,002,217	\$567.63
SAINT FRANCIS COUNTY - TOTAL	672	8,041	8,034	7,827	\$52,563,063	\$507.49
Natural Resources & Mining	23	209	192	186	\$1,348,593	\$530.18
Construction	45	236	228	233	\$1,807,221	\$598.35
Manufacturing	20	1,213	1,211	957	\$8,860,140	\$604.75
Trade, Transportation & Utilities	185	2,076	2,064	2,091	\$13,592,668	\$503.41
Wholesale Trade	32	514	516	509	\$4,465,565	\$669.60
Retail Trade	124	1,214	1,222	1,229	\$6,041,800	\$380.43
Transportation, Warehousing & Utilities	29	348	326	353	\$3,085,303	\$693.27
Information	9	94	94	94	\$651,103	\$532.82
Financial Activities	53	284	299	308	\$1,961,782	\$508.10
Professional & Business Services	49	161	171	172	\$1,741,976	\$797.61
Education & Health Services	154	1,314	1,308	1,351	\$7,974,870	\$463.22
Leisure & Hospitality	48	691	696	672	\$1,899,469	\$212.89
Other Services	40	115	115	116	\$452,080	\$301.52
Local Government	29	1,126	1,136	1,130	\$8,320,200	\$566.05
State Government	17	522	520	517	\$3,952,961	\$585.13

**TABLE 6. COUNTY SUMMARY  
EMPLOYMENT AND TOTAL EARNINGS, BY INDUSTRY  
FOURTH QUARTER 2006**

NORTH AMERICAN INDUSTRY CLASSIFICATION SYSTEM INDUSTRY GROUP	NUMBER OF EMPLOYING UNITS	EMPLOYMENT	EMPLOYMENT	EMPLOYMENT	TOTAL EARNINGS	AVERAGE
		OCTOBER	NOVEMBER	DECEMBER	OCTOBER - DECEMBER	WEEKLY EARNINGS
SALINE COUNTY - TOTAL	1,761	20,609	20,576	20,597	\$151,745,264	\$566.80
Natural Resources & Mining	12	34	34	37	\$407,008	\$894.52
Construction	312	1,962	1,926	1,934	\$17,592,879	\$697.34
Manufacturing	87	1,821	1,843	1,872	\$20,407,490	\$850.69
Trade, Transportation & Utilities	434	4,640	4,637	4,667	\$31,688,243	\$524.43
Wholesale Trade	126	559	548	551	\$6,823,382	\$949.71
Retail Trade	251	3,835	3,828	3,854	\$22,506,605	\$450.97
Transportation, Warehousing & Utilities	57	246	261	262	\$2,358,256	\$707.69
Information	16	145	146	148	\$1,004,992	\$528.29
Financial Activities	172	768	745	769	\$6,497,318	\$657.05
Professional & Business Services	218	1,169	1,136	1,142	\$8,543,439	\$571.96
Education & Health Services	190	2,689	2,700	2,722	\$18,703,334	\$532.14
Leisure & Hospitality	141	2,433	2,516	2,508	\$7,328,317	\$226.79
Other Services	129	582	581	565	\$3,562,201	\$475.72
Local & State Government	50	4,366	4,312	4,233	\$36,010,043	\$643.64
SCOTT COUNTY - TOTAL	190	2,892	2,874	2,878	\$16,764,152	\$447.55
Natural Resources & Mining	17	176	178	180	\$1,399,579	\$604.83
Trade, Transportation & Utilities	40	457	453	451	\$2,575,179	\$436.64
Wholesale Trade	7	63	64	64	\$495,103	\$598.19
Retail Trade	27	332	330	325	\$1,520,736	\$355.56
Transportation, Warehousing & Utilities	6	62	59	62	\$559,340	\$705.35
Financial Activities	19	70	70	73	\$472,534	\$511.95
Professional & Business Services	12	13	14	16	\$137,249	\$736.58
Education & Health Services	29	303	309	311	\$1,729,451	\$432.40
Leisure & Hospitality	19	183	176	170	\$365,208	\$159.32
Other Services	11	60	59	59	\$591,912	\$767.39
Local Government	5	367	374	378	\$2,323,003	\$479.07
State Government	8	73	75	71	\$434,211	\$457.55
Other	30	1,190	1,166	1,169	\$6,735,826	\$440.97

**TABLE 6. COUNTY SUMMARY  
EMPLOYMENT AND TOTAL EARNINGS, BY INDUSTRY  
FOURTH QUARTER 2006**

<b>NORTH AMERICAN INDUSTRY CLASSIFICATION SYSTEM INDUSTRY GROUP</b>	<b>NUMBER OF EMPLOYING UNITS</b>	<b>EMPLOYMENT OCTOBER</b>	<b>EMPLOYMENT NOVEMBER</b>	<b>EMPLOYMENT DECEMBER</b>	<b>TOTAL EARNINGS OCTOBER - DECEMBER</b>	<b>AVERAGE WEEKLY EARNINGS</b>
SEARCY COUNTY - TOTAL	180	1,710	1,689	1,681	\$8,952,124	\$406.67
Construction	7	13	24	17	\$84,627	\$361.65
Manufacturing	16	264	258	266	\$1,421,181	\$416.20
Trade, Transportation & Utilities	38	273	289	296	\$1,196,682	\$321.86
Retail Trade	27	202	213	220	\$802,917	\$291.79
Other Trade, Transportation & Utilities	11	71	76	76	\$393,765	\$407.48
Financial Activities	14	86	85	81	\$604,058	\$553.17
Professional & Business Services	16	36	36	36	\$165,516	\$353.67
Education & Health Services	45	298	307	304	\$1,618,908	\$410.99
Leisure & Hospitality	11	113	101	97	\$252,677	\$187.49
Local Government	10	393	398	393	\$2,187,545	\$426.37
State Government	8	137	142	143	\$912,017	\$498.73
Other	15	97	49	48	\$508,913	\$605.37
SEBASTIAN COUNTY - TOTAL	3,646	73,290	71,513	72,951	\$600,600,340	\$636.50
Natural Resources & Mining	69	1,477	1,494	1,518	\$23,645,327	\$1,215.55
Construction	311	2,951	2,969	2,979	\$28,212,030	\$731.60
Manufacturing	228	20,159	18,241	19,867	\$179,713,858	\$711.77
Trade, Transportation & Utilities	929	12,882	13,257	13,434	\$95,085,980	\$554.49
Wholesale Trade	241	2,637	2,639	2,656	\$28,676,482	\$834.30
Retail Trade	562	7,977	8,357	8,484	\$44,738,420	\$416.00
Transportation, Warehousing & Utilities	126	2,268	2,261	2,294	\$21,671,078	\$732.96
Information	57	1,145	1,136	1,136	\$12,828,113	\$866.35
Financial Activities	410	2,525	2,533	2,541	\$24,405,751	\$741.16
Professional & Business Services	521	9,675	9,321	8,878	\$66,253,283	\$548.51
Education & Health Services	466	9,694	9,694	9,757	\$96,885,476	\$767.14
Leisure & Hospitality	315	5,317	5,392	5,441	\$16,517,533	\$236.02
Other Services	275	1,460	1,462	1,471	\$9,100,319	\$478.05
Local Government	43	4,529	4,505	4,438	\$36,697,075	\$628.60
State Government	22	1,476	1,509	1,491	\$11,255,595	\$580.30

**TABLE 6. COUNTY SUMMARY  
EMPLOYMENT AND TOTAL EARNINGS, BY INDUSTRY  
FOURTH QUARTER 2006**

<b>NORTH AMERICAN INDUSTRY CLASSIFICATION SYSTEM INDUSTRY GROUP</b>	<b>NUMBER OF EMPLOYING UNITS</b>	<b>EMPLOYMENT OCTOBER</b>	<b>EMPLOYMENT NOVEMBER</b>	<b>EMPLOYMENT DECEMBER</b>	<b>TOTAL EARNINGS OCTOBER - DECEMBER</b>	<b>AVERAGE WEEKLY EARNINGS</b>
SEVIER COUNTY - TOTAL	336	5,761	5,801	5,841	\$36,507,588	\$484.10
Natural Resources & Mining	18	227	227	227	\$1,538,222	\$521.25
Trade, Transportation & Utilities	95	857	868	852	\$5,471,477	\$489.97
Wholesale Trade	15	149	147	147	\$1,776,884	\$925.62
Retail Trade	60	594	605	589	\$2,691,188	\$347.34
Transportation, Warehousing & Utilities	20	114	116	116	\$1,003,405	\$669.23
Information	6	39	39	39	\$325,379	\$641.77
Financial Activities	28	204	207	216	\$1,568,130	\$577.15
Professional & Business Services	30	103	102	105	\$1,790,658	\$1,333.00
Education & Health Services	54	526	545	554	\$3,403,660	\$483.36
Leisure & Hospitality	22	245	237	242	\$544,353	\$173.51
Other Services	31	133	148	148	\$673,509	\$362.30
Local Government	11	905	889	877	\$5,736,306	\$495.61
State Government	9	202	205	211	\$1,279,647	\$477.84
Other	32	2,320	2,334	2,370	\$14,176,247	\$465.75
SHARP COUNTY - TOTAL	442	3,997	3,938	3,897	\$21,914,752	\$427.42
Construction	34	245	232	227	\$1,647,501	\$540.05
Manufacturing	20	189	191	196	\$919,206	\$368.27
Trade, Transportation & Utilities	101	1,060	1,019	998	\$6,812,568	\$510.93
Retail Trade	70	636	630	619	\$2,873,177	\$351.75
Other Trade, Transportation & Utilities	31	424	389	379	\$3,939,391	\$762.66
Information	7	53	58	56	\$645,186	\$891.55
Financial Activities	41	268	269	269	\$1,832,903	\$524.79
Professional & Business Services	40	164	164	168	\$1,056,294	\$491.45
Education & Health Services	88	590	603	598	\$2,930,349	\$377.57
Leisure & Hospitality	42	459	440	420	\$966,527	\$169.10
Local Government	29	798	788	783	\$4,157,376	\$404.98
State Government	9	99	102	106	\$611,333	\$459.53
Other	31	72	72	76	\$335,509	\$351.93

**TABLE 6. COUNTY SUMMARY  
EMPLOYMENT AND TOTAL EARNINGS, BY INDUSTRY  
FOURTH QUARTER 2006**

<b>NORTH AMERICAN INDUSTRY CLASSIFICATION SYSTEM INDUSTRY GROUP</b>	<b>NUMBER OF EMPLOYING UNITS</b>	<b>EMPLOYMENT OCTOBER</b>	<b>EMPLOYMENT NOVEMBER</b>	<b>EMPLOYMENT DECEMBER</b>	<b>TOTAL EARNINGS OCTOBER - DECEMBER</b>	<b>AVERAGE WEEKLY EARNINGS</b>
STONE COUNTY - TOTAL	280	2,974	2,968	2,893	\$16,227,850	\$423.87
Construction	23	105	103	108	\$559,720	\$408.75
Manufacturing	25	493	476	480	\$2,382,586	\$379.45
Trade, Transportation & Utilities	78	716	722	719	\$4,541,600	\$485.89
Wholesale Trade	11	53	59	59	\$335,794	\$453.16
Retail Trade	54	610	612	607	\$3,779,826	\$476.91
Transportation, Warehousing & Utilities	13	53	51	53	\$425,980	\$626.13
Financial Activities	24	105	104	106	\$755,829	\$553.72
Professional & Business Services	9	18	19	16	\$156,930	\$683.29
Education & Health Services	47	462	462	459	\$3,171,683	\$529.23
Leisure & Hospitality	36	445	445	371	\$923,258	\$168.96
Other Services	13	27	26	27	\$156,739	\$452.13
Local Government	10	394	397	396	\$2,493,855	\$484.84
State Government	9	171	174	175	\$775,486	\$344.15
Other	6	38	40	36	\$310,164	\$627.86
UNION COUNTY - TOTAL	1,393	19,586	19,711	19,818	\$175,673,456	\$685.78
Natural Resources & Mining	111	517	552	553	\$5,461,444	\$777.02
Construction	94	1,254	1,268	1,270	\$13,732,691	\$835.73
Manufacturing	65	5,018	5,045	5,102	\$55,063,907	\$837.92
Trade, Transportation & Utilities	356	3,579	3,571	3,612	\$29,086,435	\$623.70
Wholesale Trade	79	591	577	585	\$8,418,511	\$1,108.23
Retail Trade	218	2,205	2,232	2,239	\$11,204,059	\$387.29
Transportation, Warehousing & Utilities	59	783	762	788	\$9,463,865	\$936.12
Information	20	191	201	200	\$1,325,610	\$516.74
Financial Activities	118	716	725	727	\$5,944,647	\$632.77
Professional & Business Services	137	1,639	1,615	1,607	\$20,003,370	\$949.63
Education & Health Services	201	2,415	2,461	2,450	\$21,344,325	\$672.35
Leisure & Hospitality	89	1,021	1,025	1,025	\$3,113,753	\$233.98
Other Services	147	645	643	658	\$3,442,710	\$408.26
Local Government	37	2,047	2,063	2,052	\$13,335,720	\$499.43
State Government	18	544	542	562	\$3,818,844	\$534.75



**TABLE 6. COUNTY SUMMARY  
EMPLOYMENT AND TOTAL EARNINGS, BY INDUSTRY  
FOURTH QUARTER 2006**

<b>NORTH AMERICAN INDUSTRY CLASSIFICATION SYSTEM INDUSTRY GROUP</b>	<b>NUMBER OF EMPLOYING UNITS</b>	<b>EMPLOYMENT  OCTOBER</b>	<b>EMPLOYMENT  NOVEMBER</b>	<b>EMPLOYMENT  DECEMBER</b>	<b>TOTAL EARNINGS  OCTOBER - DECEMBER</b>	<b>AVERAGE WEEKLY EARNINGS</b>
VAN BUREN COUNTY - TOTAL	356	3,770	3,759	3,697	\$21,034,641	\$432.40
Natural Resources & Mining	10	26	19	18	\$71,915	\$263.42
Construction	44	194	197	193	\$1,248,596	\$493.39
Manufacturing	14	538	521	521	\$3,157,230	\$461.13
Trade, Transportation & Utilities	95	777	774	785	\$4,504,373	\$444.98
Wholesale Trade	16	48	46	47	\$483,607	\$791.50
Retail Trade	58	585	585	592	\$2,854,212	\$373.82
Transportation, Warehousing & Utilities	21	144	143	146	\$1,166,554	\$621.72
Information	10	56	57	59	\$513,865	\$689.44
Financial Activities	28	158	157	160	\$1,044,239	\$507.32
Professional & Business Services	29	91	94	88	\$487,208	\$411.84
Education & Health Services	49	596	614	592	\$3,696,614	\$473.40
Leisure & Hospitality	32	469	463	421	\$1,369,453	\$233.58
Other Services	26	79	76	81	\$407,119	\$398.10
Local Government	11	699	697	690	\$3,938,564	\$435.71
State Government	8	87	90	89	\$595,465	\$516.60
WASHINGTON COUNTY - TOTAL	5,575	91,574	92,470	92,252	\$842,785,726	\$703.92
Natural Resources & Mining	40	474	470	465	\$4,097,648	\$671.12
Construction	679	5,778	5,687	5,714	\$57,257,772	\$769.16
Manufacturing	239	15,258	15,246	15,323	\$128,981,323	\$649.51
Trade, Transportation & Utilities	1,362	20,610	21,067	21,367	\$177,971,083	\$651.45
Wholesale Trade	389	3,722	3,715	3,757	\$53,030,242	\$1,093.24
Retail Trade	773	11,553	11,973	12,141	\$67,317,140	\$435.55
Transportation, Warehousing & Utilities	200	5,335	5,379	5,469	\$57,623,701	\$821.71
Information	91	1,527	1,508	1,504	\$16,200,684	\$823.67
Financial Activities	665	3,981	3,983	4,027	\$40,904,958	\$787.22
Professional & Business Services	924	9,231	9,189	9,037	\$138,807,294	\$1,166.64
Education & Health Services	619	10,769	10,800	10,748	\$112,916,352	\$806.31
Leisure & Hospitality	500	9,522	9,450	9,253	\$29,991,312	\$245.21
Other Services	372	1,994	1,998	2,002	\$12,474,684	\$480.28
Local & State Government	84	12,430	13,072	12,812	\$123,182,616	\$741.94

**TABLE 6. COUNTY SUMMARY  
EMPLOYMENT AND TOTAL EARNINGS, BY INDUSTRY  
FOURTH QUARTER 2006**

<b>NORTH AMERICAN INDUSTRY CLASSIFICATION SYSTEM INDUSTRY GROUP</b>	<b>NUMBER OF EMPLOYING UNITS</b>	<b>EMPLOYMENT  OCTOBER</b>	<b>EMPLOYMENT  NOVEMBER</b>	<b>EMPLOYMENT  DECEMBER</b>	<b>TOTAL EARNINGS  OCTOBER - DECEMBER</b>	<b>AVERAGE WEEKLY EARNINGS</b>
WHITE COUNTY - TOTAL	1,649	23,955	24,148	23,394	\$177,432,669	\$572.70
Natural Resources & Mining	38	242	265	270	\$2,172,154	\$645.13
Construction	187	1,186	1,175	1,170	\$10,614,316	\$693.70
Manufacturing	85	3,499	3,459	2,775	\$31,965,255	\$757.90
Trade, Transportation & Utilities	470	5,832	5,885	5,973	\$42,755,565	\$557.75
Wholesale Trade	96	609	600	605	\$4,691,091	\$596.78
Retail Trade	290	3,094	3,128	3,203	\$16,037,443	\$392.67
Transportation, Warehousing & Utilities	84	2,129	2,157	2,165	\$22,027,031	\$787.96
Information	21	233	234	232	\$1,604,058	\$529.57
Financial Activities	176	941	950	967	\$7,761,742	\$626.72
Professional & Business Services	160	1,412	1,407	1,335	\$9,797,656	\$544.29
Education & Health Services	217	4,374	4,362	4,275	\$36,719,196	\$651.27
Leisure & Hospitality	121	2,193	2,331	2,298	\$5,684,250	\$192.28
Other Services	109	624	632	634	\$4,219,555	\$515.21
Local Government	46	2,668	2,693	2,713	\$18,810,688	\$537.64
State Government	19	751	755	752	\$5,328,234	\$544.55
WOODRUFF COUNTY - TOTAL	191	2,011	1,989	1,975	\$14,384,875	\$555.58
Natural Resources & Mining	19	110	104	108	\$899,245	\$644.47
Construction	6	75	73	71	\$494,570	\$521.15
Manufacturing	9	369	367	340	\$2,803,847	\$601.34
Trade, Transportation & Utilities	56	524	512	506	\$4,568,268	\$683.67
Wholesale Trade	13	210	198	181	\$2,655,806	\$1,040.54
Retail Trade	26	208	207	210	\$794,806	\$293.47
Transportation, Warehousing & Utilities	17	106	107	115	\$1,117,656	\$786.34
Financial Activities	15	61	58	62	\$552,047	\$703.84
Professional & Business Services	4	6	6	6	\$61,590	\$789.62
Education & Health Services	48	226	227	228	\$1,464,839	\$496.39
Leisure & Hospitality	7	51	49	49	\$94,206	\$145.91
Local Government	10	503	505	520	\$2,923,871	\$441.58
State Government	7	58	60	57	\$369,170	\$486.82
Other	10	28	28	28	\$153,222	\$420.94

**TABLE 6. COUNTY SUMMARY  
EMPLOYMENT AND TOTAL EARNINGS, BY INDUSTRY  
FOURTH QUARTER 2006**

NORTH AMERICAN INDUSTRY CLASSIFICATION SYSTEM INDUSTRY GROUP	NUMBER OF EMPLOYING UNITS	EMPLOYMENT	EMPLOYMENT	EMPLOYMENT	TOTAL EARNINGS	AVERAGE
		OCTOBER	NOVEMBER	DECEMBER	OCTOBER - DECEMBER	WEEKLY EARNINGS
YELL COUNTY - TOTAL	407	6,893	6,883	6,887	\$42,569,105	\$475.42
Natural Resources & Mining	22	237	238	227	\$1,506,296	\$495.17
Construction	45	327	324	331	\$2,164,382	\$508.63
Manufacturing	22	2,878	2,855	2,836	\$17,533,185	\$472.18
Trade, Transportation & Utilities	84	692	681	692	\$3,272,536	\$365.71
Wholesale Trade	11	21	21	21	\$128,678	\$471.35
Retail Trade	54	582	571	580	\$2,359,623	\$314.21
Transportation, Warehousing & Utilities	19	89	89	91	\$784,235	\$672.78
Information	4	77	76	77	\$706,407	\$708.77
Financial Activities	37	203	203	206	\$1,358,937	\$512.42
Professional & Business Services	36	228	230	232	\$2,511,733	\$840.04
Education & Health Services	68	468	479	479	\$2,910,349	\$470.98
Leisure & Hospitality	29	320	325	316	\$826,960	\$198.58
Other Services	19	76	71	73	\$294,403	\$308.81
Local Government	28	1,276	1,292	1,311	\$8,826,807	\$525.12
State Government	13	111	109	107	\$657,110	\$463.73
REST-OF-STATE-TOTAL	4,267	16,126	16,052	16,219	\$230,831,735	\$1,100.66
Natural Resources & Mining	64	464	437	439	\$6,142,713	\$1,057.87
Construction	559	2,975	2,890	2,875	\$30,142,746	\$795.88
Manufacturing	47	168	165	164	\$1,571,353	\$729.62
Trade, Transportation & Utilities	1,709	6,659	6,692	6,882	\$124,679,784	\$1,422.05
Wholesale Trade	1,458	5,547	5,573	5,728	\$113,083,402	\$1,548.92
Retail Trade	98	447	448	452	\$5,133,624	\$879.50
Transportation, Warehousing & Utilities	153	665	671	702	\$6,462,758	\$731.80
Information	100	212	222	215	\$3,162,906	\$1,124.66
Financial Activities	262	662	679	684	\$10,265,507	\$1,169.86
Professional & Business Services	1,238	3,760	3,759	3,808	\$43,202,189	\$880.17
Education & Health Services	111	564	547	527	\$5,681,815	\$800.48
Leisure & Hospitality	43	60	59	55	\$666,331	\$883.73
Other	134	602	602	570	\$5,316,391	\$691.58

TABLE 7. FEDERAL GOVERNMENT EMPLOYMENT AND EARNINGS IN ARKANSAS

NORTH AMERICAN INDUSTRY CLASSIFICATION SYSTEM INDUSTRY GROUP	NUMBER OF EMPLOYING UNITS	EMPLOYMENT OCTOBER	EMPLOYMENT NOVEMBER	EMPLOYMENT DECEMBER	TOTAL EARNINGS OCT - DEC 2006
Manufacturing	2	5	13	25	\$236,060
Trade, Transportation & Utilities	449	6,869	6,819	6,932	\$77,698,633
Information	1	23	26	29	\$353,140
Financial Activities	24	194	193	191	\$2,603,618
Professional & Business Services	32	804	797	800	\$11,267,071
Education & Health Services	6	4,071	4,077	4,080	\$67,263,898
Leisure & Hospitality	16	206	193	200	\$1,795,569
Other Services	2	293	299	310	\$1,119,675
Public Administration	453	8,362	8,400	8,377	\$105,563,322
<b>TOTAL</b>	<b>985</b>	<b>20,827</b>	<b>20,817</b>	<b>20,944</b>	<b>\$267,900,986</b>

**TABLE 8. WORKFORCE INFORMATION AREA, SUMMARY  
EMPLOYMENT AND TOTAL EARNINGS, BY INDUSTRY  
FOURTH QUARTER 2006**

NORTH AMERICAN INDUSTRY CLASSIFICATION SYSTEM INDUSTRY GROUP	NUMBER OF EMPLOYING UNITS	EMPLOYMENT OCTOBER	EMPLOYMENT NOVEMBER	EMPLOYMENT DECEMBER	TOTAL EARNINGS OCT. - DEC. 2005	AVERAGE WEEKLY EARNINGS
<b>CENTRAL WORKFORCE INFORMATION*</b>	6,053	75,373	75,449	75,595	\$581,090,213	\$545.57
Natural Resources & Mining	172	1,123	1,028	996	\$11,023,533	\$535.11
Trade, Transportation & Utilities	1,545	14,957	14,995	15,086	\$95,767,740	\$446.24
Wholesale Trade	400	2,059	2,023	2,051	\$21,625,774	\$651.37
Retail Trade	886	11,338	11,433	11,486	\$59,842,551	\$385.26
Transportation, Warehousing & Utilities	259	1,560	1,539	1,549	\$14,299,415	\$629.97
Financial Activities	630	2,953	2,937	2,975	\$26,446,405	\$561.33
Professional & Business Services	726	7,135	7,139	7,210	\$80,587,962	\$778.00
Education & Health Services	726	9,870	9,967	10,020	\$75,602,658	\$501.93
Leisure & Hospitality	467	8,014	8,132	8,070	\$21,968,871	\$196.08
Local & State Government	210	14,551	14,517	14,472	\$113,300,442	\$651.01
Other	1,577	16,770	16,734	16,766	\$156,392,602	\$624.35
*Note: Pulaski County is not included in the Central Workforce Information. Please refer to Page 55 for information on Pulaski County.						
Central Workforce Includes these counties: Faulkner, Lonoke, Monroe, Prairie, and Saline.						
<b>EASTERN WORKFORCE INFORMATION</b>	3,432	39,011	38,989	38,791	\$272,513,206	\$505.44
Natural Resources & Mining	210	1,800	1,586	1,450	\$11,000,059	\$397.18
Construction	199	1,157	1,103	1,093	\$8,702,783	\$534.05
Trade, Transportation & Utilities	866	10,139	10,127	10,176	\$74,225,845	\$499.92
Wholesale Trade	180	2,017	2,003	2,004	\$19,512,779	\$614.93
Retail Trade	485	4,960	4,995	5,045	\$25,204,316	\$344.10
Transportation, Warehousing & Utilities	201	3,162	3,129	3,127	\$29,508,750	\$691.30
Financial Activities	277	1,601	1,650	1,640	\$12,737,127	\$531.70
Professional & Business Services	298	1,500	1,481	1,504	\$11,504,426	\$510.73
Education & Health Services	766	5,616	5,619	5,662	\$39,255,194	\$474.97
Leisure & Hospitality	229	3,564	3,646	3,770	\$10,662,847	\$195.99
Local Government	139	5,945	6,067	6,095	\$44,622,648	\$661.01
State Government	68	2,293	2,294	2,206	\$15,552,947	\$539.22
Other	380	5,396	5,416	5,195	\$44,249,330	\$574.57
Eastern Workforce Includes these counties: Crittenden, Cross, Lee, Phillips, and Saint Francis.						

**TABLE 8. WORKFORCE INFORMATION AREA, SUMMARY  
EMPLOYMENT AND TOTAL EARNINGS, BY INDUSTRY  
FOURTH QUARTER 2006**

NORTH AMERICAN INDUSTRY CLASSIFICATION SYSTEM INDUSTRY GROUP	NUMBER OF EMPLOYING UNITS	EMPLOYMENT OCTOBER	EMPLOYMENT NOVEMBER	EMPLOYMENT DECEMBER	TOTAL EARNINGS OCT. - DEC. 2005	AVERAGE WEEKLY EARNINGS
<b>NORTH CENTRAL WORKFORCE INFORMATION</b>	5,561	70,468	70,363	69,418	\$479,725,049	\$491.40
Construction	504	2,865	2,820	2,806	\$22,200,530	\$507.98
Manufacturing	303	13,115	12,974	12,309	\$105,103,801	\$607.59
Trade, Transportation & Utilities	1,509	15,396	15,434	15,564	\$107,227,613	\$468.08
Retail Trade	934	9,095	9,167	9,267	\$46,245,969	\$338.92
Other Trade, Transportation & Utilities	575	6,301	6,267	6,297	\$60,981,644	\$656.61
Financial Activities	533	2,685	2,689	2,722	\$20,941,914	\$494.10
Professional & Business Services	455	3,123	3,091	2,990	\$20,653,507	\$421.20
Education & Health Services	862	11,659	11,652	11,588	\$89,594,018	\$537.74
Leisure & Hospitality	452	6,152	6,227	6,011	\$15,370,245	\$181.33
Local Government	238	9,301	9,342	9,307	\$57,683,814	\$540.89
State Government	115	3,021	3,031	3,013	\$20,343,303	\$505.96
Other	590	3,151	3,103	3,108	\$20,606,304	\$440.52
North Central Workforce Includes these counties: Cleburne, Fulton, Independence, Izard, Jackson, Sharp, Stone, Van Buren, White, and Woodruff						
<b>NORTHEAST WORKFORCE INFORMATION</b>	6,515	96,604	96,416	96,174	\$734,246,782	\$527.74
Natural Resources & Mining	376	2,789	2,580	2,204	\$20,131,087	\$454.85
Construction	512	3,083	2,976	2,966	\$24,232,270	\$530.31
Manufacturing	350	21,597	21,595	21,603	\$217,332,288	\$655.01
Trade, Transportation & Utilities	1,753	18,039	18,117	18,399	\$118,138,004	\$456.00
Wholesale Trade	403	3,757	3,724	3,746	\$35,730,923	\$625.83
Retail Trade	1,044	11,683	11,879	12,080	\$58,199,991	\$358.49
Transportation, Warehousing & Utilities	306	2,599	2,514	2,573	\$24,207,090	\$643.34
Financial Activities	583	3,371	3,392	3,429	\$30,522,886	\$602.55
Professional & Business Services	664	6,910	7,021	6,853	\$48,573,690	\$428.94
Education & Health Services	998	13,426	13,332	13,355	\$113,887,307	\$571.77
Leisure & Hospitality	468	7,505	7,472	7,375	\$20,162,837	\$185.54
Local Government	219	11,951	11,992	12,060	\$81,531,072	\$604.85
State Government	107	3,942	3,998	3,983	\$33,789,122	\$607.05
Other	485	3,991	3,941	3,947	\$25,946,219	\$459.89
Northeast Workforce Includes these counties: Clay, Craighead, Greene, Lawrence, Mississippi, Poinsett, and Randolph.						

**TABLE 8. WORKFORCE INFORMATION AREA, SUMMARY  
EMPLOYMENT AND TOTAL EARNINGS, BY INDUSTRY  
FOURTH QUARTER 2006**

NORTH AMERICAN INDUSTRY CLASSIFICATION SYSTEM INDUSTRY GROUP	NUMBER OF EMPLOYING UNITS	EMPLOYMENT OCTOBER	EMPLOYMENT NOVEMBER	EMPLOYMENT DECEMBER	TOTAL EARNINGS OCT. - DEC. 2005	AVERAGE WEEKLY EARNINGS
<b>NORTHWEST WORKFORCE INFORMATION</b>	14,987	235,417	236,489	236,279	\$2,102,601,191	\$615.92
Trade, Transportation & Utilities	3,733	55,195	56,187	56,466	\$475,966,088	\$591.49
Retail Trade	2,023	26,838	27,524	27,738	\$152,259,130	\$405.53
Other Trade, Transportation & Utilities	1,710	28,357	28,663	28,728	\$323,706,958	\$762.65
Education & Health Services	1,709	23,761	23,844	23,865	\$222,890,666	\$610.56
Leisure & Hospitality	1,372	22,228	21,853	21,469	\$67,962,823	\$220.04
Local & State Government	426	28,240	28,998	28,839	\$243,774,026	\$698.08
Other	7,747	105,993	105,607	105,640	\$1,092,007,588	\$688.39
Northwest Workforce Includes these counties: Baxter, Benton, Boone, Carroll, Madison, Marion, Newton, Searcy, and Washington.						
<b>SOUTHEAST WORKFORCE INFORMATION</b>	5,509	77,609	77,442	77,029	\$587,285,191	\$546.39
Natural Resources & Mining	399	3,202	3,019	2,845	\$24,392,960	\$511.24
Construction	385	3,339	3,241	3,223	\$28,824,958	\$654.09
Manufacturing	223	17,391	17,285	17,087	\$170,468,950	\$704.13
Trade, Transportation & Utilities	1,406	13,660	13,705	13,709	\$94,910,128	\$457.78
Wholesale Trade	257	2,436	2,418	2,377	\$24,574,752	\$623.81
Retail Trade	855	8,673	8,781	8,854	\$43,722,207	\$338.67
Transportation, Warehousing & Utilities	294	2,551	2,506	2,478	\$26,613,169	\$735.22
Local & State Government	358	16,643	16,798	16,846	\$116,400,769	\$590.20
Other	2,738	23,374	23,394	23,319	\$152,287,426	\$415.77
Southeast Workforce Includes these counties: Arkansas, Ashley, Bradley, Chicot, Cleveland, Desha, Drew, Grant, Jefferson, and Lincoln						
<b>SOUTHWEST WORKFORCE INFORMATION</b>	5,804	85,534	85,673	85,865	\$672,564,449	\$560.83
Natural Resources & Mining	414	2,889	2,932	2,951	\$28,287,402	\$598.57
Trade, Transportation & Utilities	1,524	15,118	15,108	15,217	\$109,165,047	\$462.94
Education & Health Services	781	9,393	9,471	9,478	\$64,048,988	\$452.03
Local Government	266	11,171	11,252	11,233	\$73,741,705	\$592.25
State Government	150	3,347	3,389	3,371	\$24,945,307	\$582.84
Other	2,669	43,616	43,521	43,615	\$372,376,000	\$602.73
Southwest Workforce Includes these counties: Calhoun, Columbia, Dallas, Hempstead, Howard, Lafayette, Little River, Miller, Nevada, Ouachita, Sevier, and Union						

**TABLE 8. WORKFORCE INFORMATION AREA, SUMMARY  
EMPLOYMENT AND TOTAL EARNINGS, BY INDUSTRY  
FOURTH QUARTER 2006**

NORTH AMERICAN INDUSTRY CLASSIFICATION SYSTEM INDUSTRY GROUP	NUMBER OF EMPLOYING UNITS	EMPLOYMENT OCTOBER	EMPLOYMENT NOVEMBER	EMPLOYMENT DECEMBER	TOTAL EARNINGS OCT. - DEC. 2005	AVERAGE WEEKLY EARNINGS
<b>WEST CENTRAL WORKFORCE INFORMATION</b>	8,288	109,965	109,744	110,366	\$777,548,839	\$505.24
Natural Resources & Mining	257	1,930	2,059	2,330	\$15,598,233	\$586.39
Construction	918	5,964	5,702	5,760	\$49,901,457	\$545.63
Trade, Transportation & Utilities	1,994	21,957	22,135	22,374	\$162,669,161	\$492.05
Financial Activities	865	4,094	4,068	4,096	\$34,161,901	\$551.22
Education & Health Services	1,127	15,404	15,428	15,493	\$125,906,963	\$556.12
Local Government	229	12,115	12,195	12,308	\$84,301,383	\$643.77
State Government	134	5,399	5,398	5,410	\$36,247,298	\$574.27
Other	2,764	43,102	42,759	42,595	\$268,762,443	\$434.92
West Central Workforce Includes these counties: Clark, Conway, Garland, Hot Spring, Johnson, Montgomery, Perry, Pike, Pope, and Yell						
<b>WESTERN WORKFORCE INFORMATION</b>	6,409	111,965	110,151	111,735	\$859,405,256	\$555.86
Natural Resources & Mining	170	2,473	2,497	2,531	\$33,110,739	\$736.78
Trade, Transportation & Utilities	1,636	23,058	23,559	23,795	\$165,046,993	\$499.68
Wholesale Trade	388	3,606	3,606	3,626	\$36,668,153	\$662.57
Retail Trade	956	12,315	12,730	12,829	\$66,019,763	\$383.80
Transportation, Warehousing & Utilities	292	7,137	7,223	7,340	\$62,359,077	\$628.75
Financial Activities	667	3,799	3,818	3,833	\$34,661,576	\$623.05
Professional & Business Services	798	10,892	10,441	10,047	\$75,546,116	\$476.62
Education & Health Services	816	13,545	13,557	13,613	\$121,337,722	\$630.20
Leisure & Hospitality	514	8,138	8,175	8,174	\$23,508,112	\$203.44
Local & State Government	231	12,228	12,249	12,164	\$89,685,959	\$666.17
Other	1,577	37,832	35,855	37,578	\$316,508,039	\$606.70
Western Workforce Includes these counties: Crawford, Franklin, Logan, Polk, Scott, and Sebastian						