

# Arkansas Covered Employment & Earnings

Jobs for People. People for Jobs.

**DWS**  
Department of  
WORKFORCE**Services**

Third Quarter  
2006



**COVERED EMPLOYMENT AND EARNINGS  
STATE OF ARKANSAS  
THIRD QUARTER 2006**

**MIKE BEEBE, GOVERNOR  
STATE OF ARKANSAS**

**ARTEE WILLIAMS, DIRECTOR  
DEPARTMENT OF WORKFORCE SERVICES**

**PUBLISHED BY  
LABOR MARKET INFORMATION & ANALYSIS  
BUREAU OF LABOR STATISTICS PROGRAMS  
POST OFFICE BOX 2981  
LITTLE ROCK, ARKANSAS 72203-2981  
BERNADETTE COLEMAN, BLS PROGRAMS MANAGER  
TELEPHONE: (501) 682-3159**

**STATE OF ARKANSAS HOME PAGE: <http://www.arkansas.gov>**

**DEPARTMENT OF WORKFORCE SERVICES HOME PAGE: <http://www.arkansas.gov/esd/>**

**INTERNET SITE FOR LABOR MARKET INFORMATION:  
<http://www.discover.arkansas.gov>**

**RELEASED: FEBRUARY 2008**



## TABLE OF CONTENTS

Description of Data	1
Industry Classification	1
Definition of Covered Employment and Earnings	2
Federal Government Employment	2
County Classification	2
Significant Developments During Third Quarter 2006	3

## LIST OF GRAPHS AND TABLES

Graph 1	Total Covered Employment for Selected Years, Arkansas	7
Graph 2	Total Covered Earnings, by Calendar Quarter for Selected Years, Arkansas	8
Table 1	Quarterly Comparison of Covered Employment and Wages, by Industry	5
Table 2	Total Covered Employment in Arkansas, 1999-2006	6
Table 3	Total Covered Earnings, 1999-2006	9
Table 4	Total Taxable Earnings, 1999-2006	10
Table 5	State Summary - Employment and Total Earnings, by Industry, Third Quarter 2006	11
Table 6	County Summary - Employment and Total Earnings, by Industry, Third Quarter 2006	24
Table 7	Federal Government Employment and Total Earnings in Arkansas, Third Quarter 2006	62
Table 8	Workforce Information Area – Employment and Total Earnings, by Industry, Third Quarter 2006	63



EMPLOYMENT AND EARNINGS  
UNDER THE ARKANSAS EMPLOYMENT SECURITY LAW  
THIRD QUARTER 2006

## DESCRIPTION OF DATA

This publication contains covered employment and payroll data by industry and county for the Third Quarter 2006. These data are compiled from quarterly contribution and wage reports submitted by employers subject to the Arkansas Employment Security Law. An employing unit is a single physical location where business is conducted, production takes place, or services are provided. Employment data have been tabulated for each month of the quarter by industry under the **North American Industry Classification System** (NAICS) (see "Industry Classification" below) on a statewide, county and workforce area basis. Payroll data represent the total wages paid during the quarter, and are also shown by

industry for the State and by publishable industry groups for each county and workforce area. The tabulation of this data is a joint effort in conjunction with the U.S. Bureau of Labor Statistics. In addition, there are tables included which set out total covered employment by months, quarterly payrolls, and average weekly earnings for the years 1999 through 2006. Data contained in this publication are subject to revision. These revisions will be reflected in the 2006 Annual Covered Employment and Earnings publication. Because of industry code changes between years, substantial employment and wage shifts among industries are anticipated.

## INDUSTRY CLASSIFICATION

Previously published industry data **will not** be comparable in all instances with currently published data since industry codes have been revised according to the following Manuals: (a) between January 1, 1958 and December 31, 1967, industry codes were assigned under the 1957 Standard Industrial Classification (SIC) Manual; (b) between January 1, 1968 and December 31, 1974, industry codes were assigned under the 1967 Standard Industrial Classification (SIC) Manual; (c) between January 1, 1975 and December 31, 1987, industry codes were assigned under the 1972 Standard Industrial Classification (SIC) Manual; (d) between January 1, 1988 and December 31, 2000, industry codes were assigned under the 1987 Standard Industrial Classification (SIC) Manual; and (e) since January 1, 2001, industry codes have been assigned under the 2002 North American Industry Classification System (NAICS) Manual. **The NAICS Manual represents a significant change in coding methodology as compared to the**

**SIC Manual.** One of the most significant changes involves how NAICS treats auxiliary units. Auxiliary units are establishments primarily engaged in performing management or support services for other establishments of the same enterprise. The SIC code for these units was based on the activity of the enterprise served. The NAICS code is based on the actual activities that the establishment performs. Comparisons of many industries **should not be made** between this publication and previous Covered Employment and Earnings publications that were based on SIC. Even though some titles are the same or similar, in nature, NAICS and SIC could differ in the classification of employers. The implementation of NAICS represents a profound change for statistical programs, and will create significant benefits along with transition obstacles for both data collectors and data users. A summary is available on the NAICS home page at <http://www.census.gov/naics>.

## DEFINITION OF COVERED EMPLOYMENT AND EARNINGS

Covered Employment is the number of workers employed by employers subject to the Arkansas Employment Security Law who worked or received pay for the payroll period including the 12th of the month. An employer is subject to the law when they employ one or more employees in each of ten days during the current or preceding calendar year.

Currently excluded from coverage is employment covered by the Railroad Unemployment Insurance Act, some domestic service workers, employees of small agricultural establishments, self-employed and unpaid family workers, insurance and real estate

agents who are on commission only, and employees of churches and religious organizations except separately incorporated schools. The payroll information in this publication includes all wages and salaries paid to any covered employees by their employers including bonuses, commissions, and cash values of remuneration received in any medium other than cash. These wages include both taxable and nontaxable wages. Only the first \$10,000 paid to each worker by an employer in the calendar year is taxable under the Arkansas Employment Security Law.

## FEDERAL GOVERNMENT EMPLOYMENT

Table 7 on page 62 lists the total number of civilians employed by the Federal Government in Arkansas during the Third Quarter 2006. Employment and wage data are set out by industry divisions. These data are obtained from required reports submitted by various

government agencies having employment in the State. Civilian Federal workers are covered by the Unemployment Compensation for Federal Employees (UCFE) program.

## COUNTY CLASSIFICATION

Employment and payroll data by county are classified according to the county where the workers are employed. Employers with operations in more than one county are requested to furnish this agency with a breakdown of employment and wages for at least one quarter of each year by the counties in which they operate. Many such employers submit county data with each regular contribution report. **Note:** This information is invaluable in the preparation of monthly employment and payroll data by county.

Employment and payroll data for multi - area employers, who do not furnish county data each quarter of the year, are prorated by county on the basis of one quarter's information. The "rest-of-state" table that appears on page 61 of this publication includes data on firms that **did not** provide a county breakdown of employment and payrolls. It also includes sales, and all other type of personnel with no permanent place of work, as well as employment of employers with no established place of business in Arkansas.

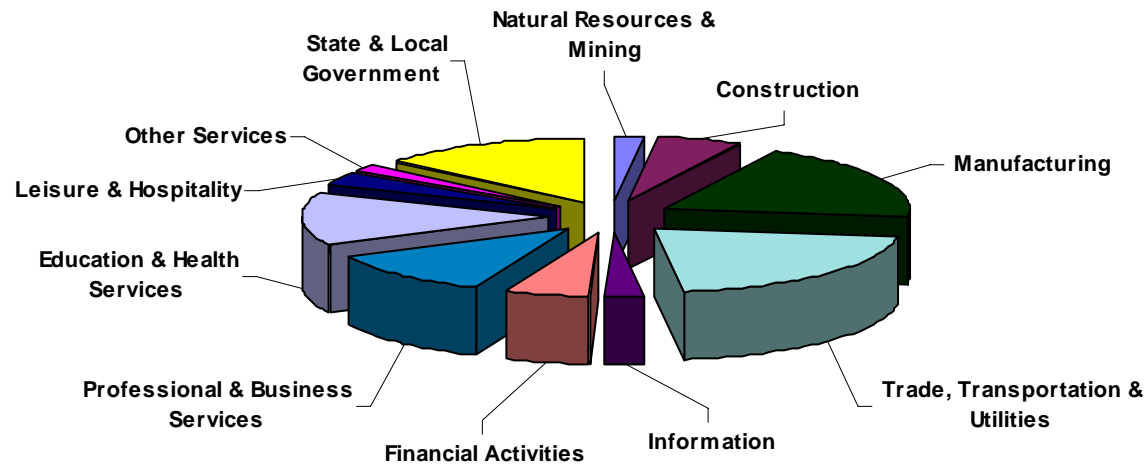


## SIGNIFICANT DEVELOPMENTS DURING THIRD QUARTER 2006

**AVERAGE EMPLOYMENT CHANGES**

Covered employment averaged 1,135,252 during the Third Quarter 2006 (see table 1), a decrease of 23,911 (-2.1%) from the previous quarter and 18,863 (1.7%) above the average recorded one-year ago. This *over-the-year* increase is more significant when used as an economic indicator. This *over-the-year* comparison allows for the disregarding of many seasonal factors that are evident when making an *over-the-quarter* comparison.

Average Covered Employment by NAICS Group

**EMPLOYMENT CHANGES FROM SECOND QUARTER 2006**

*Over the quarter* gains were recorded in seven industry groups while four suffered losses (see table 1). Employment in Natural Resources & Mining rose 3.3% over the preceding quarter adding 619 workers. This increase was associated with the continuation of the growing season and interest in natural gas in the state. New projects and the expansion of existing projects resulted in an increase of 593 employees in Construction. Trade, Transportation, & Utilities gained 584 workers. The increase occurred in Transportation and Warehousing (1.1%). Other industries posting over the quarter

increases were: Education & Health Services (0.3%); Financial Activities (0.8%); and Information (1.0%).

State & Local Government declined 24,915 or 13.9%. This drop was due to the summer vacation period in local school districts. The downturn in Manufacturing (-1,396) is attributed plants closing and layoffs. Leisure & Hospitality and Professional & Business services reported a loss of 344 and 135, respectively.

## EMPLOYMENT CHANGES FROM THIRD QUARTER 2005

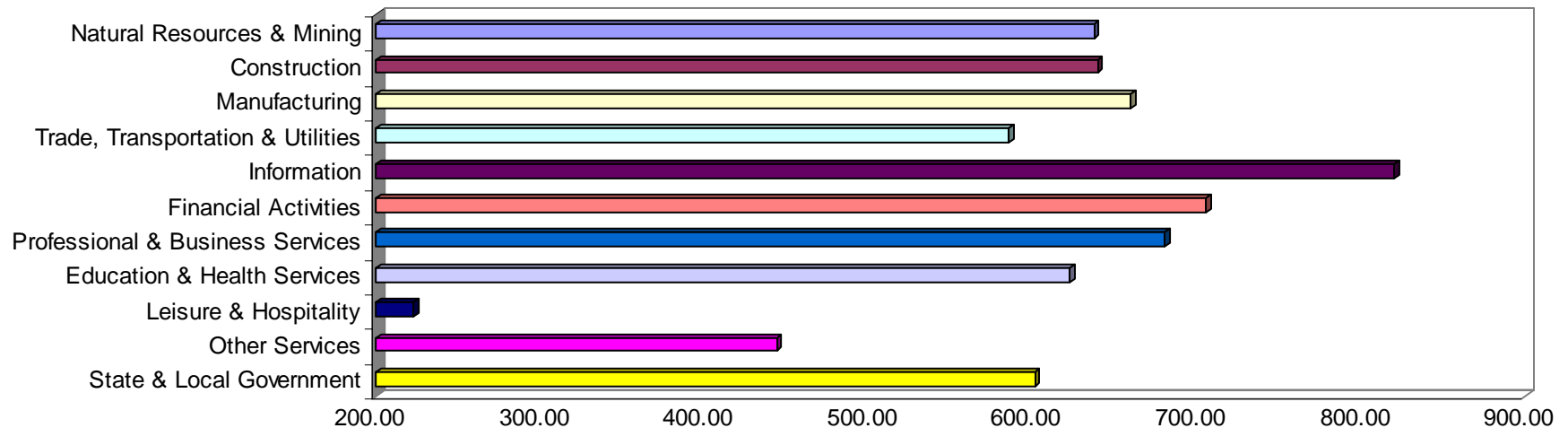
*Over-the-year* gains were recorded in Ten industry groups while one recorded a loss (see table 1). Significant gains were posted in Educational & Health Services (+4,844), State & Local Government (+3,893), and Leisure & Hospitality (+3,027). The only Loss occurred in Manufacturing (-1,411).

## COVERED WAGES

Wages paid to covered workers totaled \$8,752,570,201 for the Third Quarter 2006 (see table 1), for an average weekly wage of \$593.06 (see table 5). Employees in Calhoun County recorded the highest average weekly wage (\$716.55), and workers in Newton County the lowest (\$369.12) (see table 6).

The Information sector recorded the highest average weekly wage for the State of Arkansas at \$819.88, while the Leisure & Hospitality sector recorded the lowest at \$223.32 for the State of Arkansas (see table 5).

### Average Weekly Wages by Industry Group



Note: Because of industry code changes between years, substantial employment and wage shifts among industries are anticipated.

TABLE 1. QUARTERLY COMPARISON OF COVERED EMPLOYMENT AND WAGES, BY INDUSTRY

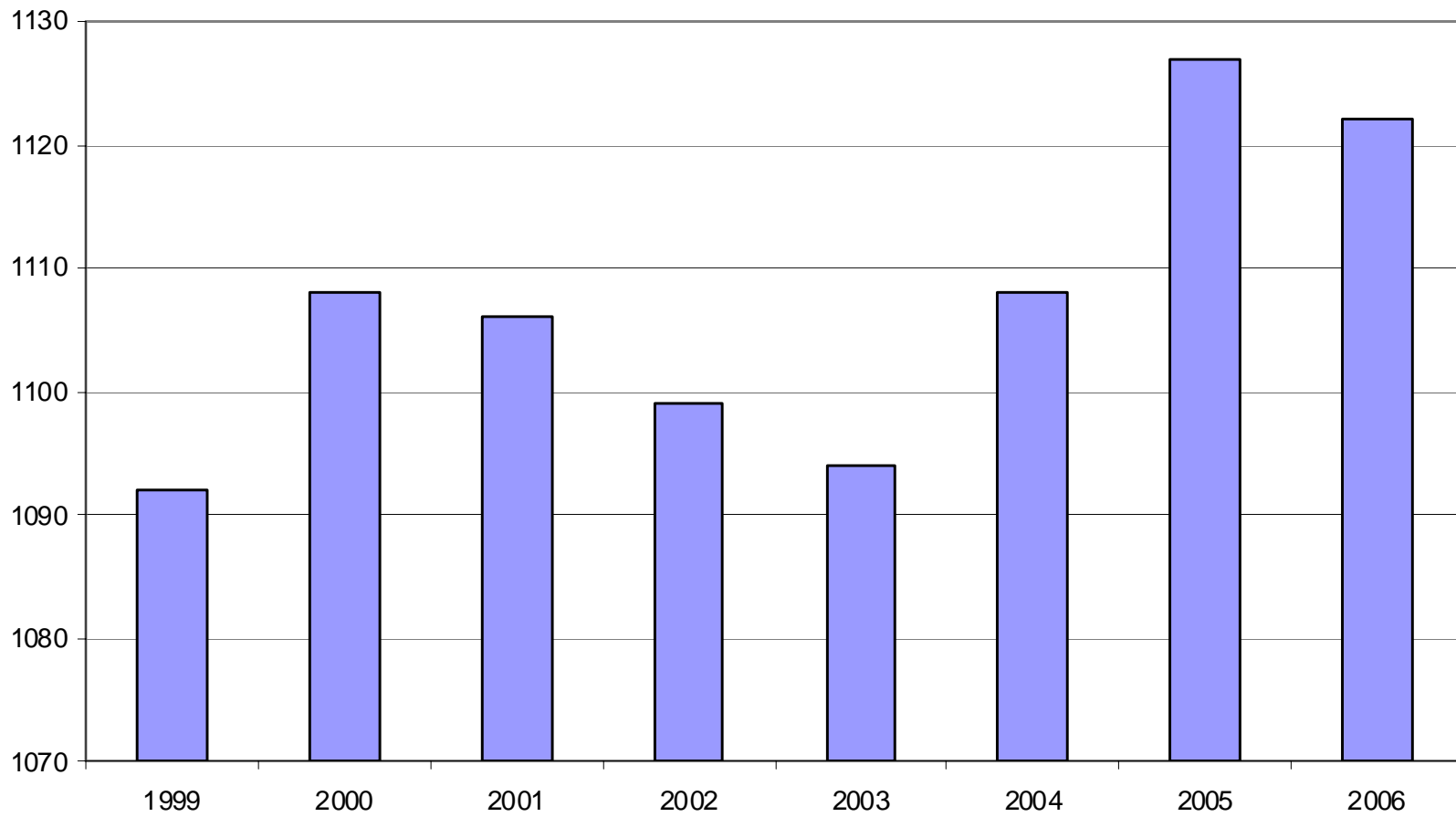
North American Industry Classification System Industry Group	Number of Employing Units	Average Covered Employment		Net Change From:		Total Wages Paid July - September 2006	% of Total
		Jul. – Sep. 2006 Monthly Average	% of Total	Apr. – Jun. 2006	Jul. – Sep. 2005		
<b>Total</b>	<b>80,885</b>	<b>1,135,252</b>	<b>100.0</b>	<b>-23,911</b>	<b>18,863</b>	<b>\$8,752,570,201</b>	<b>100.0</b>
<b>Natural Resources and Mining</b>	2,362	19,121	1.7	619	204	158,401,380	1.8
Agriculture, Forestry, Fishing and Hunting	1,992	14,066	1.2	342	-646	93,351,660	1.1
Mining	370	5,056	0.4	277	851	65,049,720	0.7
<b>Construction</b>	8,037	58,540	5.2	593	1,995	486,509,004	5.6
<b>Manufacturing</b>	3,598	199,072	17.5	-1,396	-1,411	1,706,404,043	19.5
<b>Trade, Transportation, and Utilities</b>	21,011	245,166	21.6	584	2,385	1,865,385,394	21.3
Wholesale Trade	6,313	48,230	4.2	-37	244	563,620,220	6.4
Retail Trade	11,336	132,999	11.7	-69	1,166	683,115,004	7.8
Transportation and Warehousing	2,999	57,046	5.0	612	719	519,909,880	5.9
Utilities	363	6,890	0.6	78	256	98,740,290	1.1
<b>Information</b>	1,208	20,036	1.8	200	9	213,551,924	2.4
<b>Financial Activities</b>	8,131	51,551	4.5	430	1,287	472,968,660	5.4
Finance and Insurance	4,779	37,126	3.3	253	826	379,018,533	4.3
Real Estate and Rental and Leasing	3,352	14,425	1.3	177	461	93,950,127	1.1
<b>Professional and Business Services</b>	10,934	114,803	10.1	-135	1,929	1,015,067,376	11.6
Professional and Technical Services	6,875	36,531	3.2	-437	1,294	397,387,344	4.5
Management of Companies and Enterprises	515	24,181	2.1	106	505	346,875,232	4.0
Administrative and Waste Services	3,544	54,092	4.8	196	130	270,804,800	3.1
<b>Education and Health Services</b>	10,766	146,276	12.9	442	4,844	1,184,475,801	13.5
Educational Services	558	8,781	0.8	-294	514	59,710,037	0.7
Health Care and Social Assistance	10,208	137,495	12.1	735	4,330	1,124,765,764	12.9
<b>Leisure and Hospitality</b>	6,138	99,866	8.8	-344	3,027	289,920,542	3.3
Arts, Entertainment and Recreation	935	10,379	0.9	171	-9	37,158,289	0.4
Accommodation and Food Services	5,203	89,487	7.9	-515	3,036	252,762,253	2.9
<b>Other Services</b>	5,495	26,267	2.3	11	701	151,690,588	1.7
<b>State and Local Government</b>	3,205	154,554	13.6	-24,915	3,893	1,208,195,489	13.8
Local Government	2,006	92,630	8.2	-24,498	1,781	634,330,288	7.2
State Government	1,199	61,923	5.5	-417	2,112	573,865,201	6.6
Nonclassifiable Establishments	0	0	0.0	0	0	0	0.0

Note: Items do not necessarily add to totals because of rounding. Because of industry code changes between years, substantial employment and wage shifts among industries are anticipated.

TABLE 2. TOTAL COVERED EMPLOYMENT IN ARKANSAS

<b>Period</b>	<b>1999</b>	<b>2000</b>	<b>2001</b>	<b>2002</b>	<b>2003</b>	<b>2004</b>	<b>2005</b>	<b>2006</b>
<b>Average</b>	<b>1,092,351</b>	<b>1,108,479</b>	<b>1,106,066</b>	<b>1,098,558</b>	<b>1,094,087</b>	<b>1,108,264</b>	<b>1,126,778</b>	<b>1,121,595</b>
January	1,065,920	1,089,943	1,096,009	1,081,635	1,082,740	1,089,510	1,102,768	1,104,692
February	1,074,315	1,096,113	1,101,616	1,086,793	1,084,880	1,094,626	1,110,577	1,112,453
March	1,084,653	1,109,144	1,112,143	1,098,500	1,092,172	1,105,266	1,122,619	1,124,250
April	1,093,574	1,111,525	1,115,526	1,103,399	1,095,341	1,111,020	1,129,785	1,130,599
May	1,098,539	1,116,760	1,119,815	1,111,998	1,103,099	1,117,144	1,135,567	1,136,212
June	1,101,748	1,121,225	1,119,734	1,112,028	1,099,688	1,117,010	1,136,118	1,136,984
July	1,062,563	1,075,066	1,071,921	1,065,697	1,053,220	1,071,463	1,090,071	1,090,058
August	1,081,260	1,096,848	1,094,160	1,086,011	1,077,775	1,094,871	1,114,098	1,114,403
September	1,108,212	1,123,725	1,115,976	1,113,148	1,105,980	1,122,704	1,144,815	1,144,705
October	1,110,604	1,122,884	1,110,994	1,108,447	1,112,550	1,123,246	1,142,300	N/A
November	1,112,003	1,120,620	1,109,012	1,107,611	1,109,712	1,125,061	1,145,667	N/A
December	1,114,823	1,117,892	1,105,887	1,107,425	1,111,892	1,127,250	1,146,954	N/A

AVERAGE TOTAL COVERED EMPLOYMENT GRAPH 1  
In Thousands



TOTAL COVERED EARNINGS BY CALENDAR QUARTER, GRAPH 2  
In Thousands

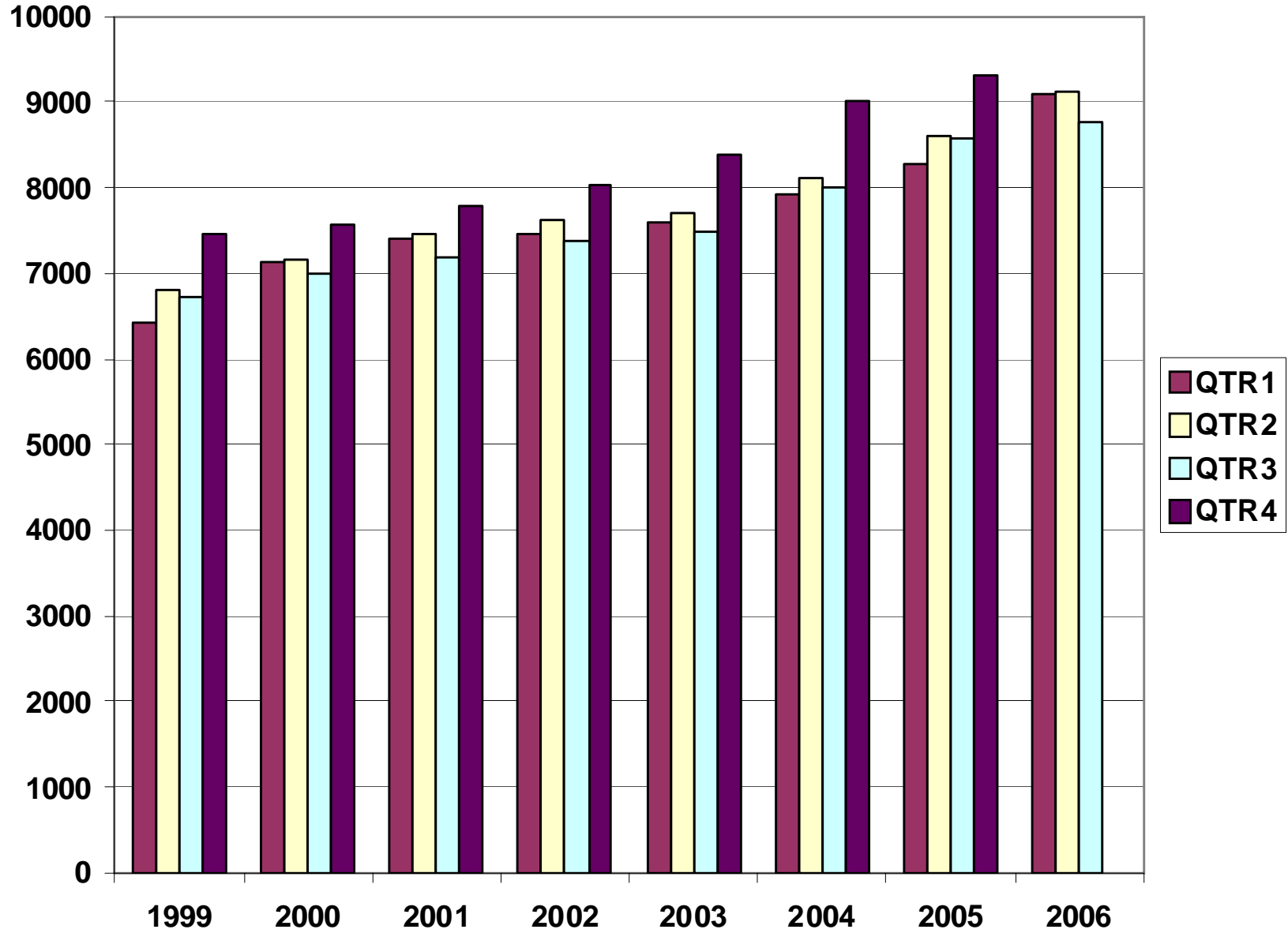


TABLE 3. TOTAL COVERED EARNINGS, 1999- 2006

<b>Period</b>	<b>1999</b>	<b>2000</b>	<b>2001</b>	<b>2002</b>
<b>Total</b>	<b>\$27,407,925,462</b>	<b>\$28,853,716,151</b>	<b>\$29,807,669,666</b>	<b>\$30,472,854,103</b>
January - March	6,418,456,638	7,122,636,896	7,398,887,532	7,465,250,305
April - June	6,791,960,679	7,166,049,182	7,448,023,298	7,621,878,775
July - September	6,733,480,079	6,986,085,106	7,177,293,061	7,361,666,511
October - December	7,464,028,066	7,578,944,967	7,783,465,775	8,024,058,512
<b>Average Weekly Earnings</b>	<b>482.51</b>	<b>500.58</b>	<b>518.26</b>	<b>533.44</b>

<b>Period</b>	<b>2003</b>	<b>2004</b>	<b>2005</b>	<b>2006</b>
<b>Total</b>	<b>\$31,202,576,767</b>	<b>\$33,068,189,304</b>	<b>\$34,753,437,458</b>	<b>\$26,951,779,807</b>
January - March	7,608,130,008	7,918,843,610	8,261,153,981	9,086,373,822
April - June	7,714,813,038	8,122,370,361	8,607,722,353	9,112,835,784
July - September	7,500,204,764	8,010,300,454	8,562,885,196	8,752,570,201
October - December	8,379,428,957	9,016,674,879	9,321,675,928	N/A
<b>Average Weekly Earnings</b>	<b>548.45</b>	<b>573.80</b>	<b>593.14</b>	<b>616.15</b>

TABLE 4. TOTAL TAXABLE EARNINGS, 1999 - 2006

<b>Period</b>	<b>1999</b>	<b>2000</b>	<b>2001</b>	<b>2002</b>
<b>Total</b>	<b>\$8,807,445,422</b>	<b>\$9,047,924,530</b>	<b>\$9,003,189,480</b>	<b>\$8,887,270,978</b>
January - March	4,203,067,856	4,560,814,012	4,670,296,360	4,668,534,587
April - June	2,325,649,764	2,260,741,187	2,219,485,263	2,162,971,435
July - September	1,267,562,743	1,250,850,348	1,190,098,737	1,158,197,858
October - December	1,011,165,059	975,627,987	923,309,120	897,567,098

<b>Period</b>	<b>2003</b>	<b>2004</b>	<b>2005</b>	<b>2006</b>
<b>Total</b>	<b>\$9,154,938,743</b>	<b>\$9,731,247,501</b>	<b>\$9,991,605,239</b>	<b>\$9,163,275,091</b>
January - March	4,737,918,796	4,931,559,230	5,062,670,306	5,422,414,259
April - June	2,270,519,362	2,451,476,366	2,506,450,471	2,385,187,226
July - September	1,188,681,170	1,318,044,471	1,353,673,932	1,355,673,606
October - December	957,819,415	1,030,799,557	1,068,771,237	N/A



**TABLE 5. STATEWIDE SUMMARY  
EMPLOYMENT AND TOTAL EARNINGS, BY INDUSTRY  
THIRD QUARTER 2006**

NORTH AMERICAN INDUSTRY CLASSIFICATION SYSTEM INDUSTRY GROUPS	NUMBER OF EMPLOYING UNITS	EMPLOYMENT			TOTAL EARNINGS	AVERAGE
		JULY	AUGUST	SEPTEMBER	JULY-SEPTEMBER	WEEKLY EARNINGS
<b>TOTAL, ALL INDUSTRIES</b>	<b>80,885</b>	<b>1,109,082</b>	<b>1,133,760</b>	<b>1,162,914</b>	<b>\$8,752,570,201</b>	<b>\$593.06</b>
<b>NATURAL RESOURCES &amp; MINING</b>	<b>2,362</b>	<b>18,750</b>	<b>18,680</b>	<b>19,934</b>	<b>\$158,401,380</b>	<b>\$637.23</b>
<b>11 AGRICULTURE, FORESTRY, FISHING &amp; HUNTING</b>	<b>1,992</b>	<b>13,799</b>	<b>13,694</b>	<b>14,704</b>	<b>\$93,351,660</b>	<b>\$510.53</b>
<b>111 CROP PRODUCTION</b>	<b>718</b>	<b>3,843</b>	<b>3,822</b>	<b>4,175</b>	<b>\$19,374,604</b>	<b>\$377.62</b>
1111 Oilseed and Grain Farming	418	1,908	1,913	2,072	9,875,850	386.74
1112 Vegetable and Melon Farming	12	243	225	252	541,406	173.53
1113 Fruit and Tree Nut Farming	9	119	93	74	387,334	312.53
1114 Greenhouse & Nursery Production	50	282	288	305	1,791,375	472.45
1119 Other Crop Farming	229	1,291	1,303	1,472	6,778,639	384.73
<b>112 ANIMAL PRODUCTION</b>	<b>254</b>	<b>3,753</b>	<b>3,718</b>	<b>3,701</b>	<b>\$27,532,283</b>	<b>\$568.71</b>
1121 Cattle Ranching and Farming	72	313	305	299	2,009,046	505.59
1122 Hog and Pig Farming	7	143	144	139	1,200,137	650.13
1123 Poultry and Egg Production	84	2,594	2,590	2,588	20,114,418	597.25
1125 Animal Aquaculture	59	626	604	590	3,779,184	479.19
Other	32	77	75	85	429,498	418.21
<b>113 FORESTRY AND LOGGING</b>	<b>566</b>	<b>3,019</b>	<b>3,036</b>	<b>3,049</b>	<b>\$22,642,617</b>	<b>\$573.95</b>
1131 Timber Tract Operations	45	260	258	257	2,109,554	628.16
1132 Forest Nurseries & Gathering of Forest Products	6	30	30	30	261,970	671.72
1133 Logging	515	2,729	2,748	2,762	20,271,093	567.78
<b>OTHER</b>	<b>454</b>	<b>3,184</b>	<b>3,118</b>	<b>3,779</b>	<b>\$23,802,156</b>	<b>\$544.87</b>
<b>21 MINING</b>	<b>370</b>	<b>4,951</b>	<b>4,986</b>	<b>5,230</b>	<b>\$65,049,720</b>	<b>\$989.75</b>
<b>211 OIL AND GAS EXTRACTION</b>	<b>85</b>	<b>424</b>	<b>422</b>	<b>435</b>	<b>\$6,064,489</b>	<b>\$1,092.50</b>
<b>212 MINING (EXCEPT OIL AND GAS)</b>	<b>105</b>	<b>2,069</b>	<b>2,083</b>	<b>2,126</b>	<b>\$23,215,923</b>	<b>\$853.38</b>
<b>213 SUPPORT ACTIVITIES FOR MINING</b>	<b>180</b>	<b>2,458</b>	<b>2,481</b>	<b>2,669</b>	<b>\$35,769,308</b>	<b>\$1,084.97</b>

**TABLE 5. STATEWIDE SUMMARY  
EMPLOYMENT AND TOTAL EARNINGS, BY INDUSTRY  
THIRD QUARTER 2006**

NORTH AMERICAN INDUSTRY CLASSIFICATION SYSTEM INDUSTRY GROUPS		NUMBER OF EMPLOYING UNITS	EMPLOYMENT			TOTAL EARNINGS	AVERAGE
			JULY	AUGUST	SEPTEMBER	JULY-SEPTEMBER	WEEKLY EARNINGS
<b>CONSTRUCTION</b>		<b>8,037</b>	<b>57,947</b>	<b>58,558</b>	<b>59,115</b>	<b>\$486,509,004</b>	<b>\$639.29</b>
<b>236</b>	<b>CONSTRUCTION OF BUILDINGS</b>	<b>2,280</b>	<b>13,562</b>	<b>13,664</b>	<b>13,646</b>	<b>\$119,049,800</b>	<b>\$672.17</b>
2361	Residential Building Construction	1,670	4,738	4,855	4,839	35,258,804	563.79
2362	Nonresidential Building Construction	610	8,824	8,809	8,807	83,790,996	731.33
<b>237</b>	<b>HEAVY &amp; CIVIL ENGINEERING CONSTRUCTION</b>	<b>905</b>	<b>10,545</b>	<b>10,842</b>	<b>11,296</b>	<b>\$101,727,216</b>	<b>\$718.28</b>
2371	Utility System Construction	426	4,932	5,068	5,448	45,965,260	686.65
2372	Land Subdivision	143	510	508	502	4,370,047	663.47
2373	Highway, Street & Bridge Construction	224	3,831	3,922	3,974	34,542,208	679.74
2379	Other Heavy Construction	112	1,272	1,344	1,372	16,849,701	975.02
<b>238</b>	<b>SPECIALTY TRADE CONTRACTORS</b>	<b>4,852</b>	<b>33,840</b>	<b>34,052</b>	<b>34,173</b>	<b>\$265,731,988</b>	<b>\$600.82</b>
2381	Building Foundation & Exterior Contractors	967	6,834	6,769	6,768	48,563,740	550.15
2382	Building Equipment Contractors	2,124	16,072	16,238	16,423	139,759,713	661.82
2383	Building Finishing Contractors	907	5,255	5,360	5,345	36,109,419	522.11
2389	Other Specialty Trade Contractors	854	5,679	5,685	5,637	41,299,116	560.59
<b>MANUFACTURING</b>		<b>3,598</b>	<b>199,729</b>	<b>199,624</b>	<b>197,862</b>	<b>\$1,706,404,043</b>	<b>\$659.37</b>
<b>311</b>	<b>FOOD MANUFACTURING</b>	<b>319</b>	<b>51,087</b>	<b>51,025</b>	<b>50,804</b>	<b>\$350,387,374</b>	<b>\$528.78</b>
3111	Animal Food Manufacturing	59	1,409	1,431	1,455	12,321,246	662.02
3112	Grain and Oilseed Milling	29	2,307	2,280	2,317	20,402,047	681.95
3114	Fruit, Vegetable & Specialty Food	35	6,976	6,943	6,950	55,928,813	618.46
3115	Dairy Product Manufacturing	13	707	705	704	6,569,986	716.52
3116	Animal Slaughtering & Processing	92	34,307	34,336	34,115	210,901,717	473.63
3118	Bakeries and Tortilla Manufacturing	52	3,388	3,354	3,285	28,683,203	660.14
3119	Other Food Manufacturing	26	1,768	1,750	1,738	14,485,077	635.98
	Other	13	225	226	240	1,095,285	365.79
<b>312</b>	<b>BEVERAGE &amp; TOBACCO PRODUCT MFG.</b>	<b>37</b>	<b>1,277</b>	<b>1,283</b>	<b>1,261</b>	<b>\$12,764,848</b>	<b>\$770.93</b>
<b>313</b>	<b>TEXTILE MILLS</b>	<b>20</b>	<b>400</b>	<b>398</b>	<b>403</b>	<b>\$4,021,654</b>	<b>\$772.75</b>
3132	Fabric Mills	6	316	313	315	3,532,814	863.63
	Other	14	84	85	88	488,840	438.95

**TABLE 5. STATEWIDE SUMMARY  
EMPLOYMENT AND TOTAL EARNINGS, BY INDUSTRY  
THIRD QUARTER 2006**

NORTH AMERICAN INDUSTRY CLASSIFICATION SYSTEM INDUSTRY GROUPS		NUMBER OF EMPLOYING UNITS	EMPLOYMENT			TOTAL EARNINGS	AVERAGE
			JULY	AUGUST	SEPTEMBER	JULY-SEPTEMBER	WEEKLY EARNINGS
<b>314</b>	<b>TEXTILE PRODUCT MILLS</b>	<b>56</b>	<b>1,270</b>	<b>1,283</b>	<b>1,271</b>	<b>\$11,473,420</b>	<b>\$692.39</b>
3141	Textile Furnishing Mills	17	33	35	33	128,066	\$292.61
3149	Other Textile Product Mills	39	1,237	1,248	1,238	11,345,354	\$703.24
<b>315</b>	<b>APPAREL MANUFACTURING</b>	<b>45</b>	<b>1,823</b>	<b>1,825</b>	<b>1,819</b>	<b>\$8,897,518</b>	<b>\$375.58</b>
3152	Cut & Sew Apparel Manufacturing	36	873	885	861	4,129,580	363.87
	Other	9	950	940	958	4,767,938	386.34
<b>316</b>	<b>LEATHER &amp; ALLIED PRODUCT MANUFACTURING</b>	<b>20</b>	<b>1,939</b>	<b>1,956</b>	<b>1,937</b>	<b>\$10,315,030</b>	<b>\$408.16</b>
3162	Footwear Manufacturing	10	1,737	1,744	1,722	8,977,255	398.17
3169	Other Leather Product Manufacturing	10	202	212	215	1,337,775	490.81
<b>321</b>	<b>WOOD PRODUCT MANUFACTURING</b>	<b>390</b>	<b>14,045</b>	<b>13,767</b>	<b>13,675</b>	<b>\$107,313,318</b>	<b>\$596.92</b>
3211	Sawmills and Wood Preservation	178	6,377	6,273	6,272	50,939,654	621.25
3212	Veneer & Engineered Wood Products	47	3,251	3,118	3,080	30,162,844	736.66
3219	Other Wood Product Manufacturing	165	4,417	4,376	4,323	26,210,820	461.17
<b>322</b>	<b>PAPER MANUFACTURING</b>	<b>86</b>	<b>11,684</b>	<b>11,629</b>	<b>11,678</b>	<b>\$146,646,534</b>	<b>\$967.15</b>
3221	Pulp, Paper & Paperboard Mills	12	4,624	4,587	4,648	73,866,885	1229.97
3222	Converted Paper Product Manufacturing	74	7,060	7,042	7,030	72,779,649	794.78
<b>323</b>	<b>PRINTING &amp; RELATED SUPPORT ACTIVITIES</b>	<b>297</b>	<b>4,637</b>	<b>4,660</b>	<b>4,656</b>	<b>\$39,615,187</b>	<b>\$655.20</b>
<b>324</b>	<b>PETROLEUM AND COAL PRODUCTS MFG.</b>	<b>21</b>	<b>925</b>	<b>944</b>	<b>946</b>	<b>\$11,258,655</b>	<b>\$922.97</b>
<b>325</b>	<b>CHEMICAL MANUFACTURING</b>	<b>110</b>	<b>4,695</b>	<b>4,659</b>	<b>4,615</b>	<b>55,928,939</b>	<b>\$923.95</b>
3251	Basic Chemical Manufacturing	28	1,955	1,938	1,929	27,449,020	1088.01
3252	Resin, Rubber & Artificial Fibers	5	311	311	306	3,854,202	958.44
3253	Agricultural Chemical Manufacturing	16	354	347	340	3,604,956	799.15
3255	Paint, Coating & Adhesive Manufacturing	8	192	189	182	2,716,083	1113.30
3259	Other Chemical Preparation Manufacturing	26	941	943	935	9,098,398	744.81
	Other	27	942	931	923	9,206,280	759.84
<b>326</b>	<b>PLASTICS &amp; RUBBER PRODUCTS MFG.</b>	<b>172</b>	<b>13,000</b>	<b>13,075</b>	<b>12,980</b>	<b>\$114,948,200</b>	<b>\$679.21</b>
3261	Plastics Product Manufacturing	129	7,879	7,917	7,959	64,846,096	629.95
3262	Rubber Product Manufacturing	43	5,121	5,158	5,021	50,102,104	755.69

**TABLE 5. STATEWIDE SUMMARY  
EMPLOYMENT AND TOTAL EARNINGS, BY INDUSTRY  
THIRD QUARTER 2006**

NORTH AMERICAN INDUSTRY CLASSIFICATION SYSTEM INDUSTRY GROUPS		NUMBER OF EMPLOYING UNITS	EMPLOYMENT			TOTAL EARNINGS	AVERAGE
			JULY	AUGUST	SEPTEMBER	JULY-SEPTEMBER	WEEKLY EARNINGS
<b>327</b>	<b>NONMETALLIC MINERAL PRODUCT MFG.</b>	<b>252</b>	<b>4,689</b>	<b>4,677</b>	<b>4,593</b>	<b>\$42,624,222</b>	<b>\$704.66</b>
3271	Clay Product & Refractory Manufacturing	16	451	454	439	4,129,670	709.08
3272	Glass & Glass Product Manufacturing	14	404	397	388	3,433,751	666.45
3273	Cement & Concrete Product Manufacturing	179	2,860	2,849	2,784	25,196,690	684.64
3274	Lime & Gypsum Product Manufacturing	4	423	428	430	4,777,939	860.73
3279	Other Nonmetallic Mineral Products	39	551	549	552	5,086,172	710.49
<b>331</b>	<b>PRIMARY METAL MANUFACTURING</b>	<b>66</b>	<b>8,357</b>	<b>8,353</b>	<b>8,373</b>	<b>\$103,059,939</b>	<b>\$948.17</b>
3311	Iron & Steel Mills and Ferroalloys	10	2,130	2,135	2,093	41,089,027	1491.36
3312	Purchased Steel Product Manufacturing	13	2,428	2,428	2,459	24,269,883	765.65
3313	Alumina & Aluminum Production	19	1,839	1,847	1,871	21,009,180	872.46
3314	Other Nonferrous Metal Production	10	573	573	596	4,975,426	659.11
3315	Foundries	14	1,387	1,370	1,354	11,716,423	657.70
<b>332</b>	<b>FABRICATED METAL PRODUCT MANUFACTURING</b>	<b>576</b>	<b>17,859</b>	<b>18,000</b>	<b>17,931</b>	<b>\$166,575,644</b>	<b>\$714.64</b>
3321	Forging & Stamping	14	952	958	943	7,923,676	640.92
3322	Cutlery & Hand Tool Manufacturing	16	1,400	1,392	1,422	11,844,687	648.64
3323	Architectural & Structural Metals	203	5,185	5,227	5,291	50,514,213	742.35
3324	Boilers, Tanks & Shipping Containers	20	1,119	1,121	1,116	10,266,756	705.97
3325	Hardware Manufacturing	9	280	280	285	2,026,092	553.33
3326	Spring & Wire Product Manufacturing	16	576	730	709	4,863,972	557.05
3327	Machine Shops & Threaded Products	196	1,839	1,836	1,838	15,376,085	643.63
3328	Coating, Engraving & Heat Treating Metals	37	913	909	793	6,614,957	583.76
3329	Other Fabricated Metal Product Manufacturing	65	5,595	5,547	5,534	57,145,206	790.80
<b>333</b>	<b>MACHINERY MANUFACTURING</b>	<b>254</b>	<b>14,695</b>	<b>14,687</b>	<b>14,269</b>	<b>\$124,485,218</b>	<b>\$658.11</b>
3331	Agri., Construction & Mining Machinery	37	2,953	2,907	2,834	16,611,766	440.93
3333	Commercial & Service Industry Machinery	27	1,004	976	975	9,605,085	750.10
3334	HVAC & Commercial Refrigeration Equipment	24	5,284	5,313	5,427	48,907,103	704.33
3335	Metalworking Machinery Manufacturing	76	1,320	1,321	858	13,362,932	881.32
3339	Other General Purpose Machinery Manufacturing	56	3,186	3,182	3,168	27,323,683	661.23
	Other	34	948	988	1,007	8,674,649	680.20
<b>334</b>	<b>COMPUTER &amp; ELECTRONIC PRODUCT MFG.</b>	<b>85</b>	<b>5,815</b>	<b>5,842</b>	<b>5,964</b>	<b>\$50,916,694</b>	<b>\$666.82</b>
3343	Audio & Video Equipment Manufacturing	11	1,482	1,487	1,510	11,038,172	568.71
3344	Semiconductors & Electronic Components	26	2,295	2,361	2,371	20,600,928	676.54
3345	Electronic Instrument Manufacturing	32	1,208	1,204	1,207	9,470,208	603.88
	Other	16	830	790	876	9,807,386	906.75

**TABLE 5. STATEWIDE SUMMARY  
EMPLOYMENT AND TOTAL EARNINGS, BY INDUSTRY  
THIRD QUARTER 2006**

NORTH AMERICAN INDUSTRY CLASSIFICATION SYSTEM INDUSTRY GROUPS		NUMBER OF EMPLOYING UNITS	EMPLOYMENT			TOTAL EARNINGS	AVERAGE
			JULY	AUGUST	SEPTEMBER	JULY-SEPTEMBER	WEEKLY EARNINGS
<b>335</b>	<b>ELECTRICAL EQUIPMENT &amp; APPLIANCES</b>	<b>73</b>	<b>12,466</b>	<b>12,420</b>	<b>11,714</b>	<b>\$106,773,982</b>	<b>\$673.23</b>
3353	Electrical Equipment Manufacturing	24	4,918	4,918	4,946	46,732,717	729.57
	Other	49	7,548	7,502	6,768	60,041,265	635.06
<b>336</b>	<b>TRANSPORTATION EQUIPMENT MANUFACTURING</b>	<b>169</b>	<b>16,715</b>	<b>16,784</b>	<b>16,707</b>	<b>\$147,161,365</b>	<b>\$676.42</b>
3362	Motor Vehicle Body & Trailer Manufacturing	43	3,877	3,957	3,909	31,640,172	621.78
3363	Motor Vehicle Parts Manufacturing	56	6,341	6,298	6,262	48,804,657	595.87
3364	Aerospace Product & Parts Manufacturing	26	3,406	3,411	3,469	41,835,599	938.59
3366	Ship & Boat Building	26	1,722	1,688	1,683	12,597,131	570.79
	Other	18	1,369	1,430	1,384	12,283,806	677.68
<b>337</b>	<b>FURNITURE &amp; RELATED PRODUCT MFG.</b>	<b>277</b>	<b>6,505</b>	<b>6,514</b>	<b>6,467</b>	<b>\$47,432,488</b>	<b>\$561.73</b>
3371	Household & Institutional Furniture	229	4,282	4,300	4,272	30,477,712	547.17
3372	Office Furniture & Fixtures Manufacturing	40	2,084	2,073	2,058	16,205,548	601.73
3379	Other Furniture Related Product Manufacturing	8	139	141	137	749,228	414.63
<b>339</b>	<b>MISCELLANEOUS MANUFACTURING</b>	<b>273</b>	<b>5,846</b>	<b>5,843</b>	<b>5,799</b>	<b>\$43,803,814</b>	<b>\$578.03</b>
3391	Medical Equipment & Supplies Manufacturing	99	2,606	2,654	2,647	20,478,135	597.66
3399	Other Miscellaneous Manufacturing	174	3,240	3,189	3,152	23,325,679	561.83
<b>TRADE, TRANSPORTATION &amp; UTILITIES</b>		<b>21,011</b>	<b>244,312</b>	<b>245,077</b>	<b>246,108</b>	<b>\$1,865,385,394</b>	<b>\$585.28</b>
<b>42</b>	<b>WHOLESALE TRADE</b>	<b>6,313</b>	<b>48,195</b>	<b>48,167</b>	<b>48,328</b>	<b>\$563,620,220</b>	<b>\$898.93</b>
<b>423</b>	<b>MERCHANT WHOLESALERS, DURABLE GOODS</b>	<b>2,110</b>	<b>22,402</b>	<b>22,471</b>	<b>22,537</b>	<b>\$234,394,003</b>	<b>\$802.42</b>
4231	Motor Vehicle & Part Merchant Wholesalers	239	2,776	2,796	2,793	25,325,534	698.67
4232	Furniture & Furnishing Merchant Wholesalers	68	445	448	448	4,920,245	846.71
4233	Lumber & Supply Merchant Wholesalers	176	1,856	1,854	1,879	18,308,876	755.97
4234	Commercial Goods Merchant Wholesalers	247	2,564	2,582	2,612	35,603,533	1059.06
4235	Metal & Mineral Merchant Wholesalers	50	765	771	794	8,585,531	850.33
4236	Electric Goods Merchant Wholesalers	177	2,206	2,161	2,155	23,028,945	814.84
4237	Hardware & Plumbing Merchant Wholesalers	223	2,503	2,542	2,523	26,867,891	819.28
4238	Machinery & Supply Merchant Wholesalers	690	7,355	7,355	7,380	75,484,053	788.56
4239	Misc. Durable Goods Merchant Wholesalers	240	1,932	1,962	1,953	16,269,395	642.12

**TABLE 5. STATEWIDE SUMMARY  
EMPLOYMENT AND TOTAL EARNINGS, BY INDUSTRY  
THIRD QUARTER 2006**

NORTH AMERICAN INDUSTRY CLASSIFICATION SYSTEM INDUSTRY GROUPS		NUMBER OF EMPLOYING UNITS	EMPLOYMENT			TOTAL EARNINGS	AVERAGE
			JULY	AUGUST	SEPTEMBER	JULY-SEPTEMBER	WEEKLY EARNINGS
<b>424</b>	<b>MERCHANT WHOLESALERS, NONDURABLE GOODS</b>	<b>1,304</b>	<b>16,615</b>	<b>16,513</b>	<b>16,518</b>	<b>\$159,251,644</b>	<b>\$740.25</b>
4241	Paper & Paper Product Merchant Wholesalers	76	1,139	1,118	1,138	10,644,924	723.57
4242	Druggists' Goods Merchant Wholesalers	56	1,212	1,226	1,218	12,611,046	796.02
4243	Apparel & Piece Goods Merchant Wholesalers	40	465	471	472	3,266,908	535.44
4244	Grocery Product Merchant Wholesalers	351	5,331	5,327	5,317	59,614,145	861.16
4245	Farm Product Merchant Wholesalers	77	821	867	931	5,192,954	457.57
4246	Chemical Merchant Wholesalers	83	491	488	483	5,782,762	912.78
4247	Petroleum Merchant Wholesalers	155	1,475	1,491	1,507	16,485,556	850.52
4248	Alcoholic Beverage Merchant Wholesalers	38	1,134	1,143	1,140	11,807,585	797.43
4249	Misc. Nondurable Goods Merchant Wholesalers	428	4,547	4,382	4,312	33,845,764	589.88
<b>425</b>	<b>ELECTRONIC MARKETS &amp; AGENTS &amp; BROKERS</b>	<b>2,899</b>	<b>9,178</b>	<b>9,183</b>	<b>9,273</b>	<b>\$169,974,573</b>	<b>\$1,419.44</b>
<b>44-45</b>	<b>RETAIL TRADE</b>	<b>11,336</b>	<b>132,587</b>	<b>133,175</b>	<b>133,236</b>	<b>\$683,115,004</b>	<b>\$395.09</b>
<b>441</b>	<b>MOTOR VEHICLE &amp; PARTS DEALERS</b>	<b>1,741</b>	<b>18,397</b>	<b>18,540</b>	<b>18,485</b>	<b>\$156,724,667</b>	<b>\$652.58</b>
4411	Automobile Dealers	750	11,044	11,157	11,133	108,628,906	752.03
4412	Other Motor Vehicle Dealers	196	1,626	1,634	1,634	13,760,010	648.83
4413	Automotive Parts, Accessories & Tire Stores	795	5,727	5,749	5,718	34,335,751	460.84
<b>442</b>	<b>FURNITURE &amp; HOME FURNISHINGS STORES</b>	<b>608</b>	<b>4,043</b>	<b>4,083</b>	<b>4,122</b>	<b>\$27,494,777</b>	<b>\$518.04</b>
4421	Furniture Stores	320	2,508	2,553	2,571	16,317,282	493.39
4422	Home Furnishings Stores	288	1,535	1,530	1,551	11,177,495	558.80
<b>443</b>	<b>ELECTRONICS &amp; APPLIANCE STORES</b>	<b>452</b>	<b>2,867</b>	<b>2,962</b>	<b>2,953</b>	<b>\$18,449,132</b>	<b>\$484.80</b>
<b>444</b>	<b>BUILDING MATERIAL &amp; GARDEN SUPPLY STORES</b>	<b>835</b>	<b>11,618</b>	<b>11,371</b>	<b>11,227</b>	<b>\$73,448,753</b>	<b>\$495.37</b>
4441	Building Material & Supplies Dealers	663	10,668	10,470	10,329	68,368,928	501.40
4442	Lawn & Garden Equipment & Supplies Stores	172	950	901	898	5,079,825	426.43
<b>445</b>	<b>FOOD &amp; BEVERAGE STORES</b>	<b>1,110</b>	<b>18,627</b>	<b>18,675</b>	<b>18,688</b>	<b>\$74,546,807</b>	<b>\$307.25</b>
4451	Grocery Stores	630	16,202	16,237	16,204	63,057,006	299.15
4452	Specialty Food Stores	166	902	920	957	5,408,852	449.15
4453	Beer, Wine & Liquor Stores	314	1,523	1,518	1,527	6,080,949	307.20
<b>446</b>	<b>HEALTH &amp; PERSONAL CARE STORES</b>	<b>817</b>	<b>6,957</b>	<b>6,979</b>	<b>7,018</b>	<b>\$48,478,864</b>	<b>\$533.90</b>
<b>447</b>	<b>GASOLINE STATIONS</b>	<b>1,635</b>	<b>12,688</b>	<b>12,872</b>	<b>12,821</b>	<b>\$44,401,081</b>	<b>\$266.97</b>
44711	Gasoline Stations with Convenience Stores	1,473	11,379	11,588	11,559	38,575,204	257.83
44719	Other Gasoline Stations	162	1,309	1,284	1,262	5,825,877	348.75

**TABLE 5. STATEWIDE SUMMARY  
EMPLOYMENT AND TOTAL EARNINGS, BY INDUSTRY  
THIRD QUARTER 2006**

NORTH AMERICAN INDUSTRY CLASSIFICATION SYSTEM INDUSTRY GROUPS		NUMBER OF	EMPLOYMENT			TOTAL EARNINGS	AVERAGE
		EMPLOYING UNITS	JULY	AUGUST	SEPTEMBER	JULY-SEPTEMBER	WEEKLY EARNINGS
<b>448</b>	<b>CLOTHING &amp; CLOTHING ACCESSORIES STORES</b>	<b>1,077</b>	<b>8,416</b>	<b>8,618</b>	<b>8,569</b>	<b>\$28,771,797</b>	<b>\$259.33</b>
4481	Clothing Stores	725	6,348	6,516	6,492	19,535,752	232.91
4482	Shoe Stores	184	1,170	1,218	1,178	4,189,253	271.10
4483	Jewelry, Luggage & Leather Goods Stores	168	898	884	899	5,046,792	434.41
<b>451</b>	<b>SPORTING GOODS, HOBBY, BOOK &amp; MUSIC STORES</b>	<b>590</b>	<b>4,336</b>	<b>4,607</b>	<b>4,601</b>	<b>\$16,248,239</b>	<b>\$276.85</b>
4511	Sporting Goods & Musical Instrument Stores	425	2,938	3,121	3,167	11,956,029	299.06
4512	Book, Periodical & Music Stores	165	1,398	1,486	1,434	4,292,210	229.39
<b>452</b>	<b>GENERAL MERCHANDISE STORES</b>	<b>719</b>	<b>35,899</b>	<b>35,944</b>	<b>36,276</b>	<b>\$151,050,501</b>	<b>\$322.40</b>
<b>453</b>	<b>MISCELLANEOUS STORE RETAILERS</b>	<b>1,422</b>	<b>6,841</b>	<b>6,612</b>	<b>6,581</b>	<b>\$30,618,065</b>	<b>\$352.69</b>
4531	Florists	270	962	947	969	3,391,146	271.92
4532	Office Supplies, Stationery & Gift Stores	386	2,422	2,445	2,423	11,499,357	364.02
4533	Used Merchandise Stores	216	727	768	750	3,338,184	343.14
4539	Other Miscellaneous Store Retailers	550	2,730	2,452	2,439	12,389,378	375.16
<b>454</b>	<b>NONSTORE RETAILERS</b>	<b>330</b>	<b>1,898</b>	<b>1,912</b>	<b>1,895</b>	<b>\$12,882,321</b>	<b>\$521.09</b>
4541	Electronic Shopping & Mail -Order Houses	68	374	364	363	3,083,474	646.30
4542	Vending Machine Operators	83	730	745	727	4,191,021	439.22
4543	Direct Selling Establishments	179	794	803	805	5,607,826	538.77
<b>48-49</b>	<b>TRANSPORTATION &amp; WAREHOUSING</b>	<b>2,999</b>	<b>56,632</b>	<b>56,849</b>	<b>57,658</b>	<b>\$519,909,880</b>	<b>\$701.06</b>
<b>481</b>	<b>AIR TRANSPORTATION</b>	<b>48</b>	<b>929</b>	<b>927</b>	<b>919</b>	<b>\$12,212,265</b>	<b>\$1,015.57</b>
<b>484</b>	<b>TRUCK TRANSPORTATION</b>	<b>2,015</b>	<b>35,879</b>	<b>35,928</b>	<b>36,200</b>	<b>\$343,382,473</b>	<b>\$733.68</b>
4841	General Freight Trucking	1,272	30,696	30,686	30,984	298,696,570	746.27
4842	Specialized Freight Trucking	743	5,183	5,242	5,216	44,685,903	659.30
<b>485</b>	<b>TRANSIT &amp; GROUND PASSENGER TRANS.</b>	<b>59</b>	<b>834</b>	<b>917</b>	<b>1,059</b>	<b>\$4,024,824</b>	<b>\$330.54</b>
4853	Taxi & Limousine Service	17	202	204	198	691,357	264.15
4854	School & Employee Bus Transportation	7	250	321	437	1,716,654	393.01
4855	Charter Bus Industry Service	8	99	94	93	479,780	387.13
4859	Other Ground Passenger Transportation	17	175	192	217	734,880	290.39
	Other	10	108	106	114	402,153	282.94
<b>486</b>	<b>PIPELINE TRANSPORTATION</b>	<b>65</b>	<b>926</b>	<b>923</b>	<b>914</b>	<b>\$11,452,373</b>	<b>\$956.52</b>

**TABLE 5. STATEWIDE SUMMARY  
EMPLOYMENT AND TOTAL EARNINGS, BY INDUSTRY  
THIRD QUARTER 2006**

NORTH AMERICAN INDUSTRY CLASSIFICATION SYSTEM INDUSTRY GROUPS		NUMBER OF EMPLOYING UNITS	EMPLOYMENT			TOTAL EARNINGS	AVERAGE
			JULY	AUGUST	SEPTEMBER	JULY-SEPTEMBER	WEEKLY EARNINGS
<b>488</b>	<b>SUPPORT ACTIVITIES FOR TRANSPORTATION</b>	<b>431</b>	<b>4,893</b>	<b>4,925</b>	<b>4,954</b>	<b>\$46,666,158</b>	<b>\$729.02</b>
4881	Support Activities for Air Transportation	106	1,611	1,632	1,669	14,127,307	663.71
4882	Support Activities for Rail Transportation	31	408	412	418	3,421,681	637.82
4883	Support Activities for Water Transportation	28	696	663	646	7,383,093	849.77
4884	Support Activities for Road Transportation	106	496	526	533	3,020,455	448.25
4885	Freight Transportation Arrangement	135	1,528	1,542	1,530	17,639,616	884.93
4889	Other Support Activities for Transportation	25	154	150	158	1,074,006	536.47
<b>492</b>	<b>COURIERS &amp; MESSENGERS</b>	<b>141</b>	<b>3,195</b>	<b>3,246</b>	<b>3,302</b>	<b>\$29,051,340</b>	<b>\$688.10</b>
4921	Couriers	87	2,963	3,011	3,057	27,599,241	705.24
4922	Local Messengers & Local Delivery	54	232	235	245	1,452,099	470.65
<b>493</b>	<b>WAREHOUSING &amp; STORAGE</b>	<b>216</b>	<b>9,716</b>	<b>9,719</b>	<b>10,042</b>	<b>\$71,112,764</b>	<b>\$556.73</b>
	<b>OTHER</b>	<b>24</b>	<b>260</b>	<b>264</b>	<b>268</b>	<b>\$2,007,683</b>	<b>\$584.99</b>
<b>22</b>	<b>UTILITIES</b>	<b>363</b>	<b>6,898</b>	<b>6,886</b>	<b>6,886</b>	<b>\$98,740,290</b>	<b>\$1,102.38</b>
2211	Power Generation & Supply	165	5,099	5,083	5,048	78,077,890	1183.06
2212	Natural Gas Distribution	33	965	979	1,000	14,862,691	1165.03
2213	Water, Sewage and Other Systems	165	834	824	838	5,799,709	536.22
<b>INFORMATION</b>		<b>1,208</b>	<b>19,882</b>	<b>20,089</b>	<b>20,137</b>	<b>\$213,551,924</b>	<b>\$819.88</b>
<b>511</b>	<b>PUBLISHING INDUSTRIES, EXCEPT INTERNET</b>	<b>248</b>	<b>6,197</b>	<b>6,338</b>	<b>6,439</b>	<b>\$47,982,662</b>	<b>\$583.58</b>
5111	Newspaper, Book & Directory Publishers	219	5,944	6,082	6,183	44,318,034	561.66
5112	Software Publishers	29	253	256	256	3,664,628	1105.47
<b>512</b>	<b>MOTION PICTURE &amp; SOUND RECORDING INDUSTRY</b>	<b>138</b>	<b>1,276</b>	<b>1,261</b>	<b>1,189</b>	<b>\$6,048,165</b>	<b>\$374.59</b>
5121	Motion Picture & Video Industries	122	1,245	1,224	1,152	5,762,036	367.22
5122	Sound Recording Industries	16	31	37	37	286,129	628.85
<b>515</b>	<b>BROADCASTING, EXCEPT INTERNET</b>	<b>142</b>	<b>2,058</b>	<b>2,080</b>	<b>2,074</b>	<b>\$17,295,850</b>	<b>\$642.52</b>
5151	Radio & Television Broadcasting	133	2,024	2,046	2,038	17,098,366	646.00
5152	Cable & Other Subscription Programming	9	34	34	36	197,484	438.20
<b>517</b>	<b>TELECOMMUNICATIONS</b>	<b>492</b>	<b>8,907</b>	<b>8,976</b>	<b>9,001</b>	<b>\$125,424,357</b>	<b>\$1,076.63</b>
5171	Wired Telecommunications Carriers	218	3,129	3,188	3,223	55,691,997	1347.17
5172	Wireless Telecommunications Carriers	118	4,032	4,046	4,026	52,258,253	996.33
5175	Cable & Other Program Distribution	89	1,240	1,232	1,256	12,234,002	757.30
	Other	67	506	510	496	5,240,105	799.77



**TABLE 5. STATEWIDE SUMMARY  
EMPLOYMENT AND TOTAL EARNINGS, BY INDUSTRY  
THIRD QUARTER 2006**

NORTH AMERICAN INDUSTRY CLASSIFICATION SYSTEM INDUSTRY GROUPS		NUMBER OF EMPLOYING UNITS	EMPLOYMENT			TOTAL EARNINGS	AVERAGE
			JULY	AUGUST	SEPTEMBER	JULY-SEPTEMBER	WEEKLY EARNINGS
<b>518</b>	<b>ISPS, SEARCH PORTALS, &amp; DATA PROCESSING</b>	<b>150</b>	<b>1,140</b>	<b>1,134</b>	<b>1,137</b>	<b>\$14,586,385</b>	<b>\$986.83</b>
5181	ISPs, & Web Search Portals	64	162	164	164	1,583,050	745.55
5182	Data Processing & Related Services	86	978	970	973	13,003,335	1027.31
	<b>OTHER</b>	<b>38</b>	<b>304</b>	<b>300</b>	<b>297</b>	<b>\$2,214,505</b>	<b>\$567.19</b>
<b>FINANCIAL ACTIVITIES</b>		<b>8,131</b>	<b>51,547</b>	<b>51,613</b>	<b>51,493</b>	<b>\$472,968,660</b>	<b>\$705.75</b>
<b>52</b>	<b>FINANCE &amp; INSURANCE</b>	<b>4,779</b>	<b>37,113</b>	<b>37,158</b>	<b>37,107</b>	<b>\$379,018,533</b>	<b>\$785.31</b>
<b>522</b>	<b>CREDIT INTERMEDIATION &amp; RELATED ACTIVITIES</b>	<b>2,062</b>	<b>22,116</b>	<b>22,119</b>	<b>22,054</b>	<b>\$190,623,863</b>	<b>\$663.61</b>
5221	Depository Credit Intermediation	1,343	18,499	18,421	18,295	152,259,235	636.36
5222	Nondepository Credit Intermediation	395	2,570	2,580	2,607	29,577,970	879.94
5223	Activities Related to Credit Intermediation	324	1,047	1,118	1,152	8,786,658	611.30
<b>523</b>	<b>FINANCIAL INVESTMENT &amp; RELATED ACTIVITIES</b>	<b>571</b>	<b>3,081</b>	<b>3,089</b>	<b>3,092</b>	<b>\$58,087,376</b>	<b>\$1,447.29</b>
5231	Security & Commodity Investment Activities	322	2,327	2,346	2,294	48,074,707	1592.39
5239	Other Financial Investment Activities	249	754	743	798	10,012,669	1006.80
<b>524</b>	<b>INSURANCE CARRIERS &amp; RELATED ACTIVITIES</b>	<b>2,108</b>	<b>11,469</b>	<b>11,501</b>	<b>11,520</b>	<b>\$126,780,757</b>	<b>\$848.28</b>
5241	Insurance Carriers	416	4,724	4,731	4,762	59,426,229	964.60
5242	Insurance Agencies, Brokerages & Support	1,692	6,745	6,770	6,758	67,354,528	766.70
	<b>OTHER</b>	<b>38</b>	<b>447</b>	<b>449</b>	<b>441</b>	<b>\$3,526,537</b>	<b>\$608.69</b>
<b>53</b>	<b>REAL ESTATE &amp; RENTAL &amp; LEASING</b>	<b>3,352</b>	<b>14,434</b>	<b>14,455</b>	<b>14,386</b>	<b>\$93,950,127</b>	<b>\$501.00</b>
<b>531</b>	<b>REAL ESTATE</b>	<b>2,538</b>	<b>9,054</b>	<b>9,081</b>	<b>9,088</b>	<b>\$59,689,224</b>	<b>\$505.99</b>
5311	Lessors of Real Estate	1,071	4,407	4,387	4,439	26,511,367	462.33
5312	Offices of Real Estate Agents & Brokers	854	2,171	2,201	2,218	16,105,944	564.00
5313	Activities Related to Real Estate	613	2,476	2,493	2,431	17,071,913	532.39
<b>532</b>	<b>RENTAL &amp; LEASING SERVICES</b>	<b>789</b>	<b>5,306</b>	<b>5,301</b>	<b>5,241</b>	<b>\$33,293,629</b>	<b>\$484.80</b>
5321	Automotive Equipment Rental & Leasing	127	1,019	1,027	1,011	7,025,278	530.33
5322	Consumer Goods Rental	482	3,245	3,249	3,167	15,651,011	373.85
5323	General Rental Centers	35	256	255	252	1,908,251	577.15
5324	Machinery & Equipment Rental & Leasing	145	786	770	811	8,709,089	849.09
<b>533</b>	<b>LESSORS OF NONFINANCIAL INTANGIBLE ASSETS</b>	<b>25</b>	<b>74</b>	<b>73</b>	<b>57</b>	<b>\$967,274</b>	<b>\$1,094.20</b>

**TABLE 5. STATEWIDE SUMMARY  
EMPLOYMENT AND TOTAL EARNINGS, BY INDUSTRY  
THIRD QUARTER 2006**

NORTH AMERICAN INDUSTRY CLASSIFICATION SYSTEM INDUSTRY GROUPS	NUMBER OF EMPLOYING UNITS		EMPLOYMENT			TOTAL EARNINGS	AVERAGE WEEKLY EARNINGS
		JULY	AUGUST	SEPTEMBER	JULY-SEPTEMBER		
<b>PROFESSIONAL &amp; BUSINESS SERVICES</b>	<b>10,934</b>	<b>114,041</b>	<b>114,619</b>	<b>115,750</b>	<b>\$1,015,067,376</b>	<b>\$680.14</b>	
<b>54 PROFESSIONAL &amp; TECHNICAL SERVICES</b>	<b>6,875</b>	<b>36,390</b>	<b>36,521</b>	<b>36,681</b>	<b>\$397,387,344</b>	<b>\$836.78</b>	
5411 Legal Services	1,657	6,692	6,710	6,682	65,948,311	757.76	
5412 Accounting & Bookkeeping Services	1,205	4,560	4,542	4,600	40,086,143	675.13	
5413 Architectural & Engineering Services	931	6,663	6,715	6,655	75,215,226	866.44	
5414 Specialized Design Services	157	444	453	466	3,558,371	602.47	
5415 Computer Systems Design & Related Services	826	7,662	7,651	7,726	122,833,761	1230.36	
5416 Management & Technical Consulting Services	1,082	3,290	3,380	3,462	37,538,250	854.98	
5417 Scientific Research & Development Services	114	1,111	1,134	1,124	12,450,550	852.84	
5418 Advertising & Related Services	320	2,043	2,028	2,102	20,471,877	765.31	
5419 Other Professional & Technical Services	583	3,925	3,908	3,864	19,284,855	380.47	
<b>55 MANAGEMENT OF COMPANIES &amp; ENTERPRISES</b>	<b>515</b>	<b>24,147</b>	<b>24,152</b>	<b>24,244</b>	<b>\$346,875,232</b>	<b>\$1,103.46</b>	
<b>56 ADMINISTRATIVE &amp; WASTE SERVICES</b>	<b>3,544</b>	<b>53,504</b>	<b>53,946</b>	<b>54,825</b>	<b>\$270,804,800</b>	<b>\$385.11</b>	
<b>561 ADMINISTRATIVE &amp; SUPPORT SERVICES</b>	<b>3,343</b>	<b>51,116</b>	<b>51,578</b>	<b>52,486</b>	<b>\$247,886,636</b>	<b>\$368.63</b>	
5611 Office Administrative Services	357	1,316	1,326	1,338	15,554,316	901.87	
5612 Facilities Support Services	16	131	143	150	990,824	539.27	
5613 Employment Services	652	25,775	26,849	27,417	114,220,847	329.31	
5614 Business Support Services	367	5,249	4,848	5,016	24,297,904	371.02	
5615 Travel Arrangement & Reservation Services	102	466	450	439	3,123,956	532.04	
5616 Investigation & Security Services	236	4,426	4,438	4,441	24,754,365	429.35	
5617 Services to Buildings & Dwellings	1,317	12,134	11,969	12,146	53,478,514	340.46	
5619 Other Support Services	296	1,619	1,555	1,539	11,465,910	561.42	
<b>562 WASTE MANAGEMENT &amp; REMEDIATION SERVICES</b>	<b>201</b>	<b>2,388</b>	<b>2,368</b>	<b>2,339</b>	<b>\$22,918,164</b>	<b>\$745.43</b>	
5621 Waste Collection Services	94	1,089	1,085	1,097	9,760,105	688.58	
5622 Waste Treatment & Disposal Services	37	750	737	690	9,155,871	970.55	
5629 Remediation & Other Waste Services	70	549	546	552	4,002,188	560.77	

**TABLE 5. STATEWIDE SUMMARY  
EMPLOYMENT AND TOTAL EARNINGS, BY INDUSTRY  
THIRD QUARTER 2006**

NORTH AMERICAN INDUSTRY CLASSIFICATION SYSTEM INDUSTRY GROUPS		NUMBER OF EMPLOYING UNITS			EMPLOYMENT		TOTAL EARNINGS	AVERAGE
		JULY	AUGUST	SEPTEMBER	JULY-SEPTEMBER	WEEKLY EARNINGS		
<b>EDUCATION &amp; HEALTH SERVICES</b>		<b>10,766</b>	<b>144,864</b>	<b>146,417</b>	<b>147,547</b>	<b>\$1,184,475,801</b>	<b>\$622.89</b>	
<b>61</b>	<b>EDUCATIONAL SERVICES</b>	<b>558</b>	<b>8,405</b>	<b>8,528</b>	<b>9,411</b>	<b>\$59,710,037</b>	<b>\$523.05</b>	
6111	Elementary & Secondary Schools	82	2,826	3,007	3,409	16,876,493	421.40	
6112	Junior Colleges	7	230	240	257	1,669,510	529.95	
6113	Colleges & Universities	26	3,030	2,942	3,215	24,191,878	607.68	
6114	Business, Computer, & Management Training	46	157	158	159	2,873,875	1399.16	
6115	Technical & Trade Schools	101	636	656	731	7,360,477	839.63	
6116	Other Schools & Instruction	210	1,257	1,299	1,420	4,542,055	263.62	
6117	Educational Support Services	86	269	226	220	2,195,749	708.69	
<b>62</b>	<b>HEALTH CARE &amp; SOCIAL ASSISTANCE</b>	<b>10,208</b>	<b>136,459</b>	<b>137,889</b>	<b>138,136</b>	<b>\$1,124,765,764</b>	<b>\$629.26</b>	
<b>621</b>	<b>AMBULATORY HEALTH CARE SERVICES</b>	<b>4,796</b>	<b>42,493</b>	<b>42,764</b>	<b>42,729</b>	<b>\$506,638,762</b>	<b>\$913.51</b>	
6211	Offices of Physicians	2,157	20,609	20,669	20,653	323,841,527	1206.71	
6212	Offices of Dentists	920	6,063	6,115	6,087	58,174,830	735.01	
6213	Offices of Other Health Practitioners	1,131	5,608	5,657	5,649	41,260,779	562.95	
6214	Outpatient Care Centers	211	3,483	3,512	3,565	32,712,312	714.87	
6215	Medical & Diagnostic Laboratories	96	764	788	799	9,927,716	974.48	
6216	Home Health Care Services	136	3,782	3,832	3,787	24,778,279	501.54	
6219	Other Ambulatory Health Care Services	145	2,184	2,191	2,189	15,943,319	560.52	
<b>622</b>	<b>HOSPITALS</b>	<b>104</b>	<b>41,678</b>	<b>41,779</b>	<b>41,673</b>	<b>\$377,620,007</b>	<b>\$696.42</b>	
6221	General Medical & Surgical Hospitals	76	38,331	38,454	38,412	350,151,310	701.44	
6222	Psychiatric & Substance Abuse Hospitals	9	1,515	1,527	1,501	11,747,417	596.73	
6223	Other Hospitals	19	1,832	1,798	1,760	15,721,280	673.10	
<b>623</b>	<b>NURSING &amp; RESIDENTIAL CARE FACILITIES</b>	<b>509</b>	<b>27,019</b>	<b>27,128</b>	<b>27,138</b>	<b>\$134,572,394</b>	<b>\$382.05</b>	
6231	Nursing Care Facilities	246	20,346	20,416	20,367	100,729,095	380.26	
6232	Residential Mental Health Facilities	125	3,025	3,070	3,091	16,475,879	413.90	
6233	Community Care Facilities for the Elderly	90	2,172	2,162	2,195	9,603,938	339.45	
6239	Other Residential Care Facilities	48	1,476	1,480	1,485	7,763,482	403.42	
<b>624</b>	<b>SOCIAL ASSISTANCE</b>	<b>4,799</b>	<b>25,269</b>	<b>26,218</b>	<b>26,596</b>	<b>\$105,934,601</b>	<b>\$313.08</b>	
6241	Individual & Family Services	3,646	13,356	13,518	13,523	57,191,742	326.71	
6242	Emergency & Other Relief Services	120	866	886	884	4,396,242	384.87	
6243	Vocational Rehabilitation Services	130	3,462	3,491	3,532	16,695,469	367.46	
6244	Child Day Care Services	903	7,585	8,323	8,657	27,651,148	259.76	

**TABLE 5. STATEWIDE SUMMARY  
EMPLOYMENT AND TOTAL EARNINGS, BY INDUSTRY  
THIRD QUARTER 2006**

NORTH AMERICAN INDUSTRY CLASSIFICATION SYSTEM INDUSTRY GROUPS		NUMBER OF	EMPLOYMENT			TOTAL EARNINGS	AVERAGE
		EMPLOYING UNITS	JULY	AUGUST	SEPTEMBER	JULY-SEPTEMBER	WEEKLY EARNINGS
<b>LEISURE &amp; HOSPITALITY</b>		<b>6,138</b>	<b>100,484</b>	<b>100,285</b>	<b>98,829</b>	<b>\$289,920,542</b>	<b>\$223.32</b>
<b>71</b>	<b>ARTS, ENTERTAINMENT &amp; RECREATION</b>	<b>935</b>	<b>10,887</b>	<b>10,569</b>	<b>9,682</b>	<b>\$37,158,289</b>	<b>\$275.39</b>
<b>711</b>	<b>PERFORMING ARTS &amp; SPECTATOR SPORTS</b>	<b>204</b>	<b>2,025</b>	<b>2,046</b>	<b>2,037</b>	<b>\$8,122,722</b>	<b>\$306.89</b>
7111	Performing Arts Companies	35	604	594	611	1,941,054	247.62
7112	Spectator Sports	55	806	781	703	3,334,844	336.06
7113	Performing Arts & Sports Promoters	43	470	533	588	1,989,189	288.53
7114	Agents & Managers for Public Figures	12	18	17	16	132,343	598.84
7115	Independent Artists, Writers & Performers	59	127	121	119	725,292	456.06
<b>712</b>	<b>MUSEUMS, PARKS &amp; HISTORICAL SITES</b>	<b>47</b>	<b>252</b>	<b>252</b>	<b>243</b>	<b>\$1,079,001</b>	<b>\$333.33</b>
<b>713</b>	<b>GAMBLING, RECREATION &amp; AMUSEMENT INDUSTRY</b>	<b>684</b>	<b>8,610</b>	<b>8,271</b>	<b>7,402</b>	<b>\$27,956,566</b>	<b>\$265.68</b>
7139	Other Amusement & Recreation Industries	643	7,626	7,439	6,909	26,146,674	274.59
	Other	41	984	832	493	1,809,892	180.89
<b>72</b>	<b>ACCOMMODATION &amp; FOOD SERVICES</b>	<b>5,203</b>	<b>89,597</b>	<b>89,716</b>	<b>89,147</b>	<b>\$252,762,253</b>	<b>\$217.28</b>
<b>721</b>	<b>ACCOMMODATION</b>	<b>815</b>	<b>12,069</b>	<b>11,875</b>	<b>11,545</b>	<b>\$41,203,587</b>	<b>\$267.93</b>
7211	Traveler Accommodation	740	11,370	11,424	11,194	39,066,465	265.25
7212	RV Parks & Recreational Camps	56	649	379	272	1,881,312	333.96
7213	Rooming & Boarding Houses	19	50	72	79	255,810	293.70
<b>722</b>	<b>FOOD SERVICES &amp; DRINKING PLACES</b>	<b>4,388</b>	<b>77,528</b>	<b>77,841</b>	<b>77,602</b>	<b>\$211,558,666</b>	<b>\$209.56</b>
7221	Full -Service Restaurants	1,938	34,368	34,419	34,196	99,285,744	222.48
7222	Limited-Service Eating Places	2,138	40,614	40,794	40,426	103,538,842	196.12
7223	Special Food Services	157	1,704	1,779	2,126	6,382,888	262.61
7224	Drinking Places, Alcoholic Beverages	155	842	849	854	2,351,192	213.20
<b>OTHER SERVICES</b>		<b>5,495</b>	<b>26,432</b>	<b>26,299</b>	<b>26,071</b>	<b>\$151,690,588</b>	<b>\$444.22</b>
<b>811</b>	<b>REPAIR &amp; MAINTENANCE</b>	<b>2,232</b>	<b>9,680</b>	<b>9,737</b>	<b>9,794</b>	<b>\$65,880,190</b>	<b>\$520.46</b>
8111	Automotive Repair & Maintenance	1,548	6,841	6,876	6,890	43,737,798	489.80
8112	Electronic Equipment Repair & Maintenance	162	670	674	687	5,909,825	671.49
8113	Commercial Machinery Repair & Maintenance	338	1,580	1,596	1,645	12,584,415	602.38
8114	Household Goods Repair & Maintenance	184	589	591	572	3,648,152	480.53
<b>812</b>	<b>PERSONAL &amp; LAUNDRY SERVICES</b>	<b>1,326</b>	<b>8,354</b>	<b>8,404</b>	<b>8,317</b>	<b>\$39,534,645</b>	<b>\$363.84</b>

**TABLE 5. STATEWIDE SUMMARY  
EMPLOYMENT AND TOTAL EARNINGS, BY INDUSTRY  
THIRD QUARTER 2006**

NORTH AMERICAN INDUSTRY CLASSIFICATION SYSTEM INDUSTRY GROUPS		NUMBER OF EMPLOYING UNITS	EMPLOYMENT			TOTAL EARNINGS	AVERAGE
			JULY	AUGUST	SEPTEMBER	JULY-SEPTEMBER	WEEKLY EARNINGS
8121	Personal Care Services	564	2,663	2,658	2,626	10,186,601	295.80
8122	Death Care Services	247	1,713	1,721	1,705	10,033,227	450.55
8123	Drycleaning & Laundry Services	345	3,222	3,246	3,250	15,392,049	365.51
8129	Other Personal Services	170	756	779	736	3,922,768	398.61
<b>813</b>	<b>MEMBERSHIP ASSOCIATIONS &amp; ORGANIZATIONS</b>	<b>1,025</b>	<b>6,961</b>	<b>6,738</b>	<b>6,542</b>	<b>\$40,787,238</b>	<b>\$465.02</b>
8131	Religious Organizations	41	242	226	229	1,250,276	413.95
8132	Grantmaking & Giving Services	97	450	464	460	4,387,351	736.87
8133	Social Advocacy Organizations	149	1,932	1,970	1,992	12,101,184	473.80
8134	Civic & Social Organizations	221	1,928	1,645	1,543	5,569,961	251.25
8139	Professional & Similar Organizations	517	2,409	2,433	2,318	17,478,466	563.34
<b>814</b>	<b>PRIVATE HOUSEHOLDS</b>	<b>912</b>	<b>1,437</b>	<b>1,420</b>	<b>1,418</b>	<b>\$5,488,515</b>	<b>\$296.28</b>
	<b>LOCAL GOVERNMENT</b>	<b>2,006</b>	<b>70,538</b>	<b>91,436</b>	<b>115,917</b>	<b>\$634,330,288</b>	<b>\$526.77</b>
	<b>STATE GOVERNMENT</b>	<b>1,199</b>	<b>60,556</b>	<b>61,063</b>	<b>64,151</b>	<b>\$573,865,201</b>	<b>\$712.87</b>
	<b>NONCLASSIFIABLE ESTABLISHMENTS</b>	<b>0</b>	<b>0</b>	<b>0</b>	<b>0</b>	<b>\$0</b>	



**TABLE 6. COUNTY SUMMARY  
EMPLOYMENT AND TOTAL EARNINGS, BY INDUSTRY  
THIRD QUARTER 2006**

NORTH AMERICAN INDUSTRY CLASSIFICATION SYSTEM INDUSTRY GROUP	NUMBER OF EMPLOYING UNITS	EMPLOYMENT			TOTAL EARNINGS	AVERAGE WEEKLY EARNINGS
		JULY	AUGUST	SEPTEMBER	JULY-SEPTEMBER 2006	
<b>ARKANSAS COUNTY - TOTAL</b>	<b>692</b>	<b>9,767</b>	<b>9,747</b>	<b>9,910</b>	<b>\$69,007,452</b>	<b>\$541.22</b>
Natural Resources & Mining	42	220	245	257	1,725,789	551.61
Construction	56	288	295	318	2,321,470	594.59
Manufacturing	32	3,482	3,474	3,481	28,257,241	624.79
Trade, Transportation & Utilities	202	2,052	2,011	2,046	15,023,387	567.51
Wholesale Trade	47	446	399	404	4,137,492	764.46
Retail Trade	102	1,010	1,004	1,015	5,086,334	387.51
Transportation, Warehousing & Utilities	53	596	608	627	5,799,561	730.94
Information	11	95	96	98	891,732	712.06
Financial Activities	41	323	320	319	2,401,265	576.03
Professional & Business Services	55	420	411	412	3,536,334	656.54
Education & Health Services	92	1,215	1,244	1,246	6,534,167	406.99
Leisure & Hospitality	60	526	514	505	1,305,634	195.02
Other Services	53	145	147	142	734,707	390.66
Local Government	32	777	776	881	4,832,965	458.22
State Government	16	224	214	205	1,442,761	517.80
<b>ASHLEY COUNTY - TOTAL</b>	<b>546</b>	<b>7,809</b>	<b>7,982</b>	<b>8,466</b>	<b>\$68,921,228</b>	<b>\$655.68</b>
Natural Resources & Mining	63	517	492	549	3,291,761	487.57
Construction	49	630	644	714	4,330,771	502.72
Manufacturing	30	2,920	2,904	2,913	38,597,051	1019.46
Trade, Transportation & Utilities	134	1,239	1,220	1,233	7,154,662	447.20
Wholesale Trade	24	162	170	198	1,657,549	721.72
Retail Trade	87	839	807	795	3,439,198	325.14
Transportation, Warehousing & Utilities	23	238	243	240	2,057,915	658.67
Information	8	50	51	48	310,248	480.51
Financial Activities	32	224	225	223	1,491,670	512.25
Professional & Business Services	49	358	352	356	1,963,042	424.96
Education & Health Services	65	590	604	612	4,614,412	589.63
Leisure & Hospitality	29	377	396	392	925,483	183.32
Other Services	43	193	185	197	840,961	337.51
Local Government	32	511	692	1,003	4,300,967	449.92
State Government	12	200	217	226	1,100,200	394.86

**TABLE 6. COUNTY SUMMARY  
EMPLOYMENT AND TOTAL EARNINGS, BY INDUSTRY  
THIRD QUARTER 2006**

NORTH AMERICAN INDUSTRY CLASSIFICATION SYSTEM INDUSTRY GROUP	NUMBER OF EMPLOYING UNITS	EMPLOYMENT			TOTAL EARNINGS	AVERAGE WEEKLY EARNINGS
		JULY	AUGUST	SEPTEMBER	JULY-SEPTEMBER 2006	
<b>BAXTER COUNTY - TOTAL</b>	<b>1,260</b>	<b>14,277</b>	<b>14,846</b>	<b>14,913</b>	<b>\$96,893,540</b>	<b>\$507.77</b>
Natural Resources & Mining	6	121	122	119	883,974	563.52
Construction	140	734	723	719	4,444,401	471.34
Manufacturing	59	2,583	2,569	2,537	20,442,853	613.55
Trade, Transportation & Utilities	281	2,753	2,773	2,752	15,302,594	426.60
Wholesale Trade	35	210	219	219	1,565,948	557.67
Retail Trade	213	2,268	2,276	2,270	11,743,979	397.73
Transportation, Warehousing & Utilities	33	275	278	263	1,992,667	563.54
Information	25	274	266	258	2,072,937	599.46
Financial Activities	116	732	746	749	5,463,486	566.14
Professional & Business Services	140	766	788	772	5,143,434	510.30
Education & Health Services	217	3,332	3,336	3,397	28,619,036	656.17
Leisure & Hospitality	125	1,632	1,677	1,604	4,545,772	213.52
Other Services	102	440	443	447	1,888,981	327.76
Local Government	36	647	1,104	1,258	6,069,266	465.47
State Government	13	263	299	301	2,016,806	539.30
<b>BENTON COUNTY - TOTAL</b>	<b>5,269</b>	<b>90,414</b>	<b>92,269</b>	<b>93,801</b>	<b>\$820,622,712</b>	<b>\$684.94</b>
Natural Resources & Mining	25	675	668	660	6,402,077	737.59
Construction	809	5,576	5,553	5,550	47,181,167	652.79
Manufacturing	246	14,285	14,320	13,765	119,848,951	652.76
Trade, Transportation & Utilities	1,391	22,784	22,897	23,258	209,455,913	701.14
Wholesale Trade	625	3,439	3,457	3,515	59,273,481	1313.85
Retail Trade	594	7,859	7,963	8,241	46,369,444	444.69
Transportation, Warehousing & Utilities	172	11,486	11,477	11,502	103,812,988	695.11
Information	65	950	943	930	7,879,438	644.11
Financial Activities	588	3,800	3,842	3,832	34,812,886	700.17
Professional & Business Services	880	22,037	22,099	22,206	253,243,704	880.90
Education & Health Services	451	6,412	6,528	6,513	53,572,592	635.53
Leisure & Hospitality	409	7,452	7,543	7,591	24,195,020	247.21
Other Services	311	1,824	1,802	1,780	11,199,599	478.08
Local Government	75	4,026	5,419	6,846	46,762,541	662.41
State Government	19	593	655	870	6,068,824	661.24



**TABLE 6. COUNTY SUMMARY  
EMPLOYMENT AND TOTAL EARNINGS, BY INDUSTRY  
THIRD QUARTER 2006**

NORTH AMERICAN INDUSTRY CLASSIFICATION SYSTEM INDUSTRY GROUP	NUMBER OF EMPLOYING UNITS	EMPLOYMENT			TOTAL EARNINGS	AVERAGE WEEKLY EARNINGS
		JULY	AUGUST	SEPTEMBER	JULY-SEPTEMBER 2006	
<b>BOONE COUNTY - TOTAL</b>	<b>1,074</b>	<b>13,283</b>	<b>13,641</b>	<b>14,345</b>	<b>\$107,465,960</b>	<b>\$600.93</b>
Construction	92	488	473	481	3,313,375	530.25
Manufacturing	73	2,149	2,142	2,120	16,704,905	601.31
Trade, Transportation & Utilities	267	4,557	4,535	4,489	44,931,555	763.48
Wholesale Trade	60	684	666	652	4,842,073	558.14
Retail Trade	155	1,973	1,997	1,957	10,186,979	396.63
Transportation, Warehousing & Utilities	52	1,900	1,872	1,880	29,902,503	1220.91
Information	19	392	424	449	3,594,807	655.79
Financial Activities	98	651	661	647	4,849,325	571.25
Professional & Business Services	111	578	616	641	3,563,454	448.14
Education & Health Services	172	1,145	1,157	1,188	7,754,896	512.78
Leisure & Hospitality	87	1,213	1,243	1,239	3,316,802	207.15
Local Government	60	1,317	1,554	2,257	12,693,814	571.24
State Government	21	523	562	560	5,072,494	711.60
Other	74	270	274	274	1,670,533	471.28
<b>BRADLEY COUNTY - TOTAL</b>	<b>395</b>	<b>3,777</b>	<b>3,860</b>	<b>4,165</b>	<b>\$24,238,505</b>	<b>\$473.95</b>
Natural Resources & Mining	49	361	361	364	2,145,487	455.90
Construction	24	169	176	191	1,142,605	491.94
Manufacturing	9	1,044	1,060	1,079	7,995,234	579.66
Trade, Transportation & Utilities	89	520	526	529	2,557,117	374.67
Wholesale Trade	15	124	124	122	518,616	323.46
Retail Trade	49	323	331	334	1,442,945	337.03
Transportation, Warehousing & Utilities	25	73	71	73	595,556	633.35
Information	3	12	12	12	78,405	502.60
Financial Activities	25	178	176	181	1,116,268	481.50
Professional & Business Services	28	83	84	84	380,570	349.90
Education & Health Services	87	561	569	579	3,524,652	475.94
Leisure & Hospitality	19	181	180	190	415,923	174.20
Other Services	34	128	123	123	659,061	406.66
Local & State Government	28	540	593	833	4,223,183	495.72

**TABLE 6. COUNTY SUMMARY  
EMPLOYMENT AND TOTAL EARNINGS, BY INDUSTRY  
THIRD QUARTER 2006**

NORTH AMERICAN INDUSTRY CLASSIFICATION SYSTEM INDUSTRY GROUP	NUMBER OF EMPLOYING UNITS	EMPLOYMENT			TOTAL EARNINGS	AVERAGE WEEKLY EARNINGS
		JULY	AUGUST	SEPTEMBER	JULY-SEPTEMBER 2006	
<b>CALHOUN COUNTY - TOTAL</b>	<b>112</b>	<b>3,017</b>	<b>3,013</b>	<b>3,058</b>	<b>\$28,218,665</b>	<b>\$716.55</b>
Natural Resources & Mining	19	173	176	186	1,337,409	576.88
Construction	10	68	77	79	480,035	494.54
Manufacturing	11	2,108	2,055	2,045	21,523,676	800.10
Trade, Transportation & Utilities	26	214	219	216	1,393,900	495.64
Wholesale Trade & Retail Trade	18	70	73	70	228,525	247.59
Transportation, Warehousing & Utilities	8	144	146	146	1,165,375	616.82
Financial Activities	6	86	84	86	513,490	462.88
Education & Health Services	4	43	43	44	331,199	587.93
Local Government	11	136	169	207	911,200	410.70
State Government	9	80	79	81	579,774	557.48
Other	16	109	111	114	1,147,982	793.17
<b>CARROLL COUNTY - TOTAL</b>	<b>849</b>	<b>9,947</b>	<b>10,424</b>	<b>10,421</b>	<b>\$56,326,089</b>	<b>\$422.13</b>
Natural Resources & Mining	17	274	277	275	1,844,225	515.24
Trade, Transportation & Utilities	207	1,670	1,685	1,685	9,530,559	436.38
Wholesale Trade	21	128	128	136	733,614	431.88
Retail Trade	165	1,261	1,278	1,261	6,151,482	373.57
Transportation, Warehousing & Utilities	21	281	279	288	2,645,463	719.92
Professional & Business Services	83	266	261	258	1,643,871	483.25
Education & Health Services	83	769	789	785	5,642,595	555.76
Leisure & Hospitality	173	2,062	2,092	2,019	5,605,497	209.55
Local Government	25	605	983	1,100	5,581,462	479.18
State Government	11	109	109	109	743,193	524.48
Other	250	4,192	4,228	4,190	25,734,687	470.96

**TABLE 6. COUNTY SUMMARY  
EMPLOYMENT AND TOTAL EARNINGS, BY INDUSTRY  
THIRD QUARTER 2006**

NORTH AMERICAN INDUSTRY CLASSIFICATION SYSTEM INDUSTRY GROUP	NUMBER OF EMPLOYING UNITS	EMPLOYMENT			TOTAL EARNINGS	AVERAGE WEEKLY EARNINGS
		JULY	AUGUST	SEPTEMBER	JULY-SEPTEMBER 2006	
<b>CHICOT COUNTY - TOTAL</b>	<b>342</b>	<b>3,411</b>	<b>3,615</b>	<b>3,785</b>	<b>\$21,098,743</b>	<b>\$450.37</b>
Natural Resources & Mining	43	268	267	341	2,027,715	534.17
Construction	19	172	163	145	1,230,751	591.71
Manufacturing	12	474	478	510	2,167,581	342.14
Trade, Transportation & Utilities	79	575	595	597	3,356,319	438.33
Wholesale Trade	15	107	106	105	1,046,413	759.37
Retail Trade	52	400	412	424	1,639,853	306.17
Transportation, Warehousing & Utilities	12	68	77	68	670,053	725.95
Information	6	14	14	14	94,803	520.90
Financial Activities	30	171	167	171	1,244,740	564.34
Professional & Business Services	25	85	85	86	703,505	634.17
Education & Health Services	66	473	489	507	2,887,111	453.54
Leisure & Hospitality	20	229	235	238	470,815	154.77
Other Services	15	54	54	54	277,745	395.65
Local Government	16	562	737	791	4,476,320	494.26
State Government	11	334	331	331	2,161,338	500.77
<b>CLARK COUNTY - TOTAL</b>	<b>615</b>	<b>9,299</b>	<b>9,542</b>	<b>9,874</b>	<b>\$61,477,138</b>	<b>\$494.06</b>
Natural Resources & Mining	43	236	235	242	1,832,503	593.11
Construction	28	156	151	155	1,051,353	525.15
Manufacturing	34	2,363	2,365	2,397	16,888,421	546.99
Trade, Transportation & Utilities	144	1,484	1,462	1,443	9,169,315	482.11
Wholesale Trade	20	82	79	66	715,269	727.15
Retail Trade	102	1,096	1,095	1,096	5,838,963	409.93
Transportation, Warehousing & Utilities	22	306	288	281	2,615,083	689.69
Information	11	31	29	29	284,855	738.60
Financial Activities	84	398	414	396	2,606,833	497.99
Professional & Business Services	49	382	368	366	3,825,007	790.94
Education & Health Services	74	1,373	1,360	1,420	9,107,357	506.07
Leisure & Hospitality	60	1,042	1,024	1,046	2,629,186	194.97
Other Services	47	197	214	209	1,113,737	414.54
Local Government	26	669	857	955	4,978,457	463.07
State Government	15	968	1,063	1,216	7,990,114	567.87

**TABLE 6. COUNTY SUMMARY  
EMPLOYMENT AND TOTAL EARNINGS, BY INDUSTRY  
THIRD QUARTER 2006**

NORTH AMERICAN INDUSTRY CLASSIFICATION SYSTEM INDUSTRY GROUP	NUMBER OF EMPLOYING UNITS	EMPLOYMENT			TOTAL EARNINGS	AVERAGE WEEKLY EARNINGS
		JULY	AUGUST	SEPTEMBER	JULY-SEPTEMBER 2006	
<b>CLAY COUNTY - TOTAL</b>	<b>407</b>	<b>4,377</b>	<b>4,498</b>	<b>4,500</b>	<b>\$23,940,559</b>	<b>\$413.07</b>
Natural Resources & Mining	57	253	235	214	1,145,622	376.60
Construction	35	189	181	185	994,619	413.56
Manufacturing	19	1,161	1,121	1,113	6,372,951	433.19
Trade, Transportation & Utilities	98	898	899	931	5,279,880	446.64
Wholesale Trade	22	302	295	301	1,924,317	494.51
Retail Trade	55	448	455	457	1,878,948	318.83
Transportation, Warehousing & Utilities	21	148	149	173	1,476,615	725.02
Information	7	85	84	80	542,118	502.43
Financial Activities	36	156	156	156	972,813	479.69
Professional & Business Services	26	52	48	50	261,710	402.63
Education & Health Services	50	493	509	507	2,594,267	396.74
Leisure & Hospitality	21	223	217	214	432,258	152.53
Other Services	24	55	59	57	295,251	398.45
Local Government	22	735	911	915	4,556,204	410.56
State Government	12	77	78	78	492,866	488.15
<b>CLEBURNE COUNTY - TOTAL</b>	<b>689</b>	<b>6,645</b>	<b>6,773</b>	<b>6,932</b>	<b>\$38,977,639</b>	<b>\$442.01</b>
Natural Resources & Mining	15	74	71	92	550,221	535.76
Construction	74	359	369	377	2,024,195	422.73
Manufacturing	44	1,703	1,717	1,713	12,431,836	558.91
Trade, Transportation & Utilities	183	1,542	1,554	1,532	8,500,441	423.86
Wholesale Trade	39	197	195	197	1,417,655	555.43
Retail Trade	112	1,068	1,064	1,048	4,829,707	350.49
Transportation, Warehousing & Utilities	32	277	295	287	2,253,079	605.29
Information	8	63	61	59	353,281	445.50
Financial Activities	73	248	254	251	1,628,663	499.13
Professional & Business Services	53	191	187	194	1,279,012	516.01
Education & Health Services	74	754	784	774	4,599,894	459.13
Leisure & Hospitality	75	953	963	880	2,561,270	211.40
Other Services	59	167	159	154	764,592	367.59
Local Government	21	472	536	786	3,455,439	444.49
State Government	10	119	118	120	828,795	535.74

**TABLE 6. COUNTY SUMMARY  
EMPLOYMENT AND TOTAL EARNINGS, BY INDUSTRY  
THIRD QUARTER 2006**

NORTH AMERICAN INDUSTRY CLASSIFICATION SYSTEM INDUSTRY GROUP	NUMBER OF EMPLOYING UNITS	EMPLOYMENT			TOTAL EARNINGS	AVERAGE WEEKLY EARNINGS
		JULY	AUGUST	SEPTEMBER	JULY-SEPTEMBER 2006	
<b>CLEVELAND COUNTY - TOTAL</b>	<b>111</b>	<b>916</b>	<b>1,082</b>	<b>1,115</b>	<b>\$6,366,797</b>	<b>\$471.98</b>
Natural Resources & Mining	17	174	174	171	1,214,298	539.93
Construction	7	40	39	39	155,157	303.44
Manufacturing	5	107	101	100	589,125	441.40
Trade, Transportation & Utilities	29	192	190	192	876,367	352.33
Wholesale Trade	4	16	15	15	81,845	410.59
Retail Trade	13	89	84	88	197,748	174.84
Transportation, Warehousing & Utilities	12	87	91	89	596,774	515.79
Local Government	12	138	314	341	1,612,179	469.16
State Government	8	66	67	71	393,795	445.47
Other	33	199	197	201	1,525,876	589.82
<b>COLUMBIA COUNTY - TOTAL</b>	<b>706</b>	<b>9,031</b>	<b>9,256</b>	<b>9,540</b>	<b>\$70,677,981</b>	<b>\$586.13</b>
Natural Resources & Mining	50	522	514	527	6,505,617	960.52
Construction	44	296	301	299	2,243,563	577.84
Manufacturing	42	2,846	2,835	2,842	28,915,641	782.92
Trade, Transportation & Utilities	177	1,567	1,569	1,574	8,621,780	422.43
Wholesale Trade	29	276	276	280	1,926,311	534.29
Retail Trade	108	1,008	1,005	1,010	4,228,309	322.78
Transportation, Warehousing & Utilities	40	283	288	284	2,467,160	665.90
Information	9	72	73	73	494,345	523.30
Financial Activities	73	518	521	521	4,764,542	704.81
Professional & Business Services	59	300	322	316	1,693,083	416.54
Education & Health Services	114	812	837	854	4,157,154	383.28
Leisure & Hospitality	47	672	681	684	1,578,298	178.80
Other Services	49	206	196	202	802,665	306.67
Local Government	28	681	888	1,117	6,240,307	536.14
State Government	14	539	519	531	4,660,986	676.91

**TABLE 6. COUNTY SUMMARY  
EMPLOYMENT AND TOTAL EARNINGS, BY INDUSTRY  
THIRD QUARTER 2006**

NORTH AMERICAN INDUSTRY CLASSIFICATION SYSTEM INDUSTRY GROUP	NUMBER OF EMPLOYING UNITS	EMPLOYMENT			TOTAL EARNINGS	AVERAGE WEEKLY EARNINGS
		JULY	AUGUST	SEPTEMBER	JULY-SEPTEMBER 2006	
<b>CONWAY COUNTY - TOTAL</b>	<b>542</b>	<b>6,598</b>	<b>6,657</b>	<b>6,793</b>	<b>\$43,690,202</b>	<b>\$502.91</b>
Natural Resources & Mining	20	131	128	136	1,131,222	660.89
Construction	56	525	516	513	4,888,199	725.90
Manufacturing	29	1,212	1,192	1,182	11,938,158	768.25
Trade, Transportation & Utilities	131	1,377	1,392	1,387	8,328,413	462.45
Wholesale Trade	23	214	217	220	1,725,491	611.66
Retail Trade	81	893	892	885	4,232,344	365.80
Transportation, Warehousing & Utilities	27	270	283	282	2,370,578	655.16
Information	5	40	12	11	158,927	582.15
Financial Activities	35	204	197	194	1,292,195	501.17
Professional & Business Services	46	623	600	619	2,425,481	303.87
Education & Health Services	118	879	896	884	5,686,589	493.53
Leisure & Hospitality	37	464	461	483	1,045,024	171.28
Other Services	26	104	92	89	576,192	466.55
Local Government	28	736	836	893	4,036,226	377.86
State Government	11	303	335	402	2,183,576	484.52
<b>CRAIGHEAD COUNTY - TOTAL</b>	<b>2,650</b>	<b>40,325</b>	<b>41,496</b>	<b>42,039</b>	<b>\$289,579,309</b>	<b>\$539.53</b>
Natural Resources & Mining	67	326	340	413	1,800,811	385.15
Construction	241	1,806	1,799	1,766	13,801,267	592.98
Manufacturing	135	6,794	6,796	6,807	57,084,243	645.84
Trade, Transportation & Utilities	739	8,409	8,426	8,415	50,399,820	460.62
Wholesale Trade	180	1,538	1,511	1,516	12,699,877	642.00
Retail Trade	444	5,728	5,773	5,732	27,481,805	368.01
Transportation, Warehousing & Utilities	115	1,143	1,142	1,167	10,218,138	683.09
Information	30	605	604	594	5,037,926	644.81
Financial Activities	261	1,546	1,543	1,551	13,524,129	672.62
Professional & Business Services	352	3,532	3,592	3,507	21,173,922	459.63
Education & Health Services	387	7,332	7,532	7,521	69,215,508	713.55
Leisure & Hospitality	195	4,139	4,190	4,173	11,141,214	205.65
Other Services	180	1,044	1,058	1,064	5,126,706	373.68
Local Government	38	2,444	3,157	3,683	20,390,783	506.85
State Government	25	2,348	2,459	2,545	20,882,980	655.49

**TABLE 6. COUNTY SUMMARY  
EMPLOYMENT AND TOTAL EARNINGS, BY INDUSTRY  
THIRD QUARTER 2006**

NORTH AMERICAN INDUSTRY CLASSIFICATION SYSTEM INDUSTRY GROUP	NUMBER OF EMPLOYING UNITS	EMPLOYMENT			TOTAL EARNINGS	AVERAGE WEEKLY EARNINGS
		JULY	AUGUST	SEPTEMBER	JULY-SEPTEMBER 2006	
<b>CRAWFORD COUNTY - TOTAL</b>	<b>1,209</b>	<b>17,958</b>	<b>18,916</b>	<b>19,295</b>	<b>\$127,779,970</b>	<b>\$524.98</b>
Natural Resources & Mining	26	387	355	372	3,213,959	665.78
Construction	177	1,533	1,515	1,485	11,921,479	606.91
Manufacturing	74	3,793	3,790	3,813	26,465,751	535.93
Trade, Transportation & Utilities	312	6,599	6,524	6,613	46,685,153	545.88
Wholesale Trade	80	670	672	681	6,151,861	701.76
Retail Trade	161	2,017	1,999	2,000	9,465,613	363.09
Transportation, Warehousing & Utilities	71	3,912	3,853	3,932	31,067,679	612.93
Financial Activities	128	497	504	506	3,465,682	530.71
Professional & Business Services	150	768	777	801	5,843,636	574.82
Education & Health Services	118	1,352	1,368	1,364	9,609,840	543.01
Leisure & Hospitality	82	1,431	1,476	1,482	3,834,689	201.62
Local Government	41	881	1,898	2,150	11,726,417	549.02
State Government	11	161	160	157	1,395,808	673.87
Other	90	556	549	552	3,617,556	503.81
<b>CRITTENDEN COUNTY - TOTAL</b>	<b>1,208</b>	<b>15,425</b>	<b>15,658</b>	<b>16,454</b>	<b>\$110,181,217</b>	<b>\$534.88</b>
Natural Resources & Mining	46	279	276	391	1,643,468	400.91
Construction	79	583	621	602	4,333,427	553.72
Manufacturing	47	1,635	1,641	1,716	17,063,517	788.81
Trade, Transportation & Utilities	331	5,158	4,943	4,929	37,194,308	571.08
Wholesale Trade	75	799	802	782	7,899,516	764.99
Retail Trade	170	2,356	2,106	2,086	9,954,423	350.82
Transportation, Warehousing & Utilities	86	2,003	2,035	2,061	19,340,369	731.79
Information	8	94	86	83	766,084	672.20
Financial Activities	110	587	591	569	4,246,317	560.92
Professional & Business Services	119	770	792	744	4,747,842	475.13
Education & Health Services	196	1,989	2,023	2,001	14,749,569	566.06
Leisure & Hospitality	104	1,856	1,872	1,860	5,394,051	222.76
Other Services	106	632	627	620	3,551,972	436.24
Local Government	47	1,437	1,744	2,454	13,503,353	553.00
State Government	15	405	442	485	2,987,309	517.55

**TABLE 6. COUNTY SUMMARY  
EMPLOYMENT AND TOTAL EARNINGS, BY INDUSTRY  
THIRD QUARTER 2006**

NORTH AMERICAN INDUSTRY CLASSIFICATION SYSTEM INDUSTRY GROUP	NUMBER OF EMPLOYING UNITS	EMPLOYMENT			TOTAL EARNINGS	AVERAGE WEEKLY EARNINGS
		JULY	AUGUST	SEPTEMBER	JULY-SEPTEMBER 2006	
<b>CROSS COUNTY - TOTAL</b>	<b>533</b>	<b>4,553</b>	<b>4,931</b>	<b>5,072</b>	<b>\$30,259,718</b>	<b>\$479.73</b>
Natural Resources & Mining	44	214	229	240	1,129,748	381.71
Construction	39	193	202	201	1,328,002	514.20
Manufacturing	18	702	702	700	5,191,869	569.45
Trade, Transportation & Utilities	132	1,209	1,202	1,231	8,035,343	509.15
Wholesale Trade	32	279	262	264	2,153,458	617.33
Retail Trade	69	666	666	661	3,348,669	387.74
Transportation, Warehousing & Utilities	31	264	274	306	2,533,216	692.64
Information	6	60	60	62	414,171	525.15
Financial Activities	48	346	344	340	2,223,284	498.12
Professional & Business Services	43	168	166	167	1,167,975	537.99
Education & Health Services	101	658	677	677	4,083,937	468.41
Leisure & Hospitality	33	396	410	394	840,878	161.71
Other Services	41	75	78	76	323,778	326.28
Local Government	17	313	645	768	3,867,738	517.12
State Government	11	219	216	216	1,652,995	585.96
<b>DALLAS COUNTY - TOTAL</b>	<b>280</b>	<b>3,199</b>	<b>3,210</b>	<b>3,375</b>	<b>\$20,043,310</b>	<b>\$472.75</b>
Natural Resources & Mining	40	215	219	215	1,549,123	550.83
Construction	13	76	81	74	501,913	501.41
Manufacturing	15	929	925	913	7,920,675	660.59
Trade, Transportation & Utilities	72	469	473	468	2,363,899	386.89
Wholesale Trade	9	43	41	42	277,498	508.24
Retail Trade	45	367	372	366	1,662,511	347.20
Transportation, Warehousing & Utilities	18	59	60	60	423,890	546.48
Information	3	26	26	26	144,764	428.30
Financial Activities	20	104	103	104	690,316	512.23
Professional & Business Services	19	45	44	47	425,962	722.79
Education & Health Services	39	811	806	816	3,846,592	364.85
Leisure & Hospitality	19	150	132	125	298,091	169.02
Other Services	15	67	64	62	258,592	309.20
Local Government	16	241	269	459	1,561,422	371.86
State Government	9	66	68	66	481,961	556.11



**TABLE 6. COUNTY SUMMARY  
EMPLOYMENT AND TOTAL EARNINGS, BY INDUSTRY  
THIRD QUARTER 2006**

NORTH AMERICAN INDUSTRY CLASSIFICATION SYSTEM INDUSTRY GROUP	NUMBER OF EMPLOYING UNITS	EMPLOYMENT			TOTAL EARNINGS	AVERAGE WEEKLY EARNINGS
		JULY	AUGUST	SEPTEMBER	JULY-SEPTEMBER 2006	
<b>DESHA COUNTY - TOTAL</b>	<b>468</b>	<b>4,544</b>	<b>4,868</b>	<b>5,057</b>	<b>\$32,997,929</b>	<b>\$526.29</b>
Natural Resources & Mining	50	265	268	382	1,875,437	473.00
Construction	26	127	123	121	882,617	549.00
Manufacturing	15	1,294	1,299	1,244	12,373,842	744.20
Trade, Transportation & Utilities	133	909	929	1,002	5,474,507	444.84
Wholesale Trade	22	192	189	186	1,724,106	701.71
Retail Trade	79	556	566	553	2,371,116	326.67
Transportation, Warehousing & Utilities	32	161	174	263	1,379,285	532.27
Information	5	22	22	22	190,524	666.17
Financial Activities	43	231	222	227	1,326,515	450.17
Professional & Business Services	35	116	110	112	620,700	423.78
Education & Health Services	69	527	546	561	3,225,550	455.54
Leisure & Hospitality	35	331	305	294	675,602	167.64
Other Services	27	59	59	67	227,562	283.86
Local Government	19	508	815	854	4,965,774	526.39
State Government	11	155	170	171	1,159,299	539.38
<b>DREW COUNTY - TOTAL</b>	<b>515</b>	<b>5,913</b>	<b>6,141</b>	<b>6,645</b>	<b>\$37,283,261</b>	<b>\$460.12</b>
Natural Resources & Mining	37	285	274	305	2,205,709	589.13
Construction	27	147	141	104	926,998	545.72
Manufacturing	19	776	771	777	4,828,069	479.42
Trade, Transportation & Utilities	136	1,200	1,204	1,210	6,962,203	444.57
Wholesale Trade	24	239	243	244	1,930,341	613.59
Retail Trade	89	853	854	859	4,008,957	360.54
Transportation, Warehousing & Utilities	23	108	107	107	1,022,905	733.09
Information	9	78	79	78	563,085	552.95
Financial Activities	43	266	263	261	2,115,527	617.97
Professional & Business Services	45	326	320	324	2,915,646	693.65
Education & Health Services	86	826	841	826	4,230,068	391.56
Leisure & Hospitality	45	623	621	630	1,289,168	158.75
Other Services	28	101	100	103	388,339	294.79
Local Government	23	700	770	1,211	5,460,163	469.99
State Government	17	585	757	816	5,398,286	577.27

**TABLE 6. COUNTY SUMMARY  
EMPLOYMENT AND TOTAL EARNINGS, BY INDUSTRY  
THIRD QUARTER 2006**

NORTH AMERICAN INDUSTRY CLASSIFICATION SYSTEM INDUSTRY GROUP	NUMBER OF EMPLOYING UNITS	EMPLOYMENT			TOTAL EARNINGS	AVERAGE WEEKLY EARNINGS
		JULY	AUGUST	SEPTEMBER	JULY-SEPTEMBER 2006	
<b>FAULKNER COUNTY - TOTAL</b>	<b>2,459</b>	<b>36,197</b>	<b>37,362</b>	<b>38,512</b>	<b>\$287,620,832</b>	<b>\$592.25</b>
Natural Resources & Mining	18	186	212	262	2,992,755	1046.42
Construction	351	2,997	3,048	3,033	23,141,078	588.26
Manufacturing	121	5,258	5,292	5,218	51,116,367	748.10
Trade, Transportation & Utilities	607	6,507	6,599	6,647	39,479,279	461.23
Wholesale Trade	151	837	844	885	7,424,883	667.75
Retail Trade	379	4,989	5,061	5,033	25,024,998	382.88
Transportation, Warehousing & Utilities	77	681	694	729	7,029,398	770.99
Information	39	342	349	349	3,042,656	675.15
Financial Activities	299	1,413	1,410	1,395	10,883,108	595.42
Professional & Business Services	326	5,333	5,306	5,304	63,258,958	915.65
Education & Health Services	313	5,198	5,197	5,316	38,250,194	561.83
Leisure & Hospitality	192	3,792	3,851	3,895	9,890,472	197.82
Other Services	133	575	596	573	3,015,018	398.95
Local Government	41	1,613	2,218	3,187	17,293,714	568.66
State Government	19	2,983	3,284	3,333	25,257,233	607.15
<b>FRANKLIN COUNTY - TOTAL</b>	<b>328</b>	<b>3,800</b>	<b>4,202</b>	<b>4,321</b>	<b>\$27,868,636</b>	<b>\$521.89</b>
Natural Resources & Mining	10	88	89	97	1,014,377	854.33
Construction	29	228	230	236	2,009,070	668.06
Manufacturing	23	947	967	978	7,717,796	615.85
Trade, Transportation & Utilities	86	881	874	869	5,551,542	488.23
Wholesale Trade	13	49	48	53	222,307	342.01
Retail Trade	51	494	488	469	2,010,184	319.70
Transportation, Warehousing & Utilities	22	338	338	347	3,319,051	748.71
Information	7	50	50	51	273,612	418.15
Financial Activities	28	222	229	225	1,403,463	479.11
Professional & Business Services	23	60	54	62	299,954	393.30
Education & Health Services	46	470	483	492	2,743,745	438.18
Leisure & Hospitality	27	343	336	355	765,698	170.89
Other Services	20	59	60	59	281,808	365.35
Local Government	19	346	709	766	4,855,336	615.30
State Government	10	106	121	131	952,235	613.82

**TABLE 6. COUNTY SUMMARY  
EMPLOYMENT AND TOTAL EARNINGS, BY INDUSTRY  
THIRD QUARTER 2006**

NORTH AMERICAN INDUSTRY CLASSIFICATION SYSTEM INDUSTRY GROUP	NUMBER OF EMPLOYING UNITS	EMPLOYMENT			TOTAL EARNINGS	AVERAGE WEEKLY EARNINGS
		JULY	AUGUST	SEPTEMBER	JULY-SEPTEMBER 2006	
<b>FULTON COUNTY - TOTAL</b>	<b>228</b>	<b>1,739</b>	<b>1,777</b>	<b>1,889</b>	<b>\$8,938,528</b>	<b>\$381.64</b>
Construction	15	28	27	27	161,516	454.55
Manufacturing	14	135	135	128	581,967	337.44
Trade, Transportation & Utilities	65	400	409	400	2,432,188	464.25
Retail Trade	42	204	210	215	701,371	257.32
Other Trade, Transportation & Utilities	23	196	199	185	1,730,817	688.65
Financial Activities	17	130	124	115	719,135	449.74
Professional & Business Services	17	38	40	43	289,079	551.33
Education & Health Services	47	344	365	355	1,494,844	324.21
Leisure & Hospitality	15	165	162	153	424,182	203.93
Local Government	13	341	356	498	1,940,212	374.68
State Government	11	98	98	103	628,235	484.87
Other	14	60	61	67	267,170	327.95
<b>GARLAND COUNTY - TOTAL</b>	<b>3,244</b>	<b>35,705</b>	<b>36,211</b>	<b>36,785</b>	<b>\$244,193,003</b>	<b>\$518.42</b>
Natural Resources & Mining	48	356	350	354	4,407,470	959.54
Construction	437	2,391	2,388	2,437	15,779,995	504.65
Manufacturing	128	3,409	3,456	3,483	28,256,371	630.14
Trade, Transportation & Utilities	720	7,380	7,388	7,444	44,518,693	462.52
Wholesale Trade	155	1,137	1,124	1,180	10,339,971	693.45
Retail Trade	493	5,576	5,586	5,566	28,431,118	392.22
Transportation, Warehousing & Utilities	72	667	678	698	5,747,604	649.23
Information	40	449	435	439	3,482,248	607.40
Financial Activities	372	1,587	1,582	1,549	12,710,741	621.71
Professional & Business Services	418	2,661	2,677	2,763	18,460,440	525.87
Education & Health Services	428	7,013	7,090	7,028	64,660,239	706.15
Leisure & Hospitality	368	6,754	6,607	6,260	21,819,958	256.63
Other Services	224	999	1,002	998	5,065,092	389.75
Local Government	34	1,867	2,262	3,014	17,114,827	552.93
State Government	27	839	974	1,016	7,916,929	645.81

**TABLE 6. COUNTY SUMMARY  
EMPLOYMENT AND TOTAL EARNINGS, BY INDUSTRY  
THIRD QUARTER 2006**

NORTH AMERICAN INDUSTRY CLASSIFICATION SYSTEM INDUSTRY GROUP	NUMBER OF EMPLOYING UNITS	EMPLOYMENT			TOTAL EARNINGS	AVERAGE WEEKLY EARNINGS
		JULY	AUGUST	SEPTEMBER	JULY-SEPTEMBER 2006	
<b>GRANT COUNTY - TOTAL</b>	<b>302</b>	<b>3,346</b>	<b>3,319</b>	<b>3,525</b>	<b>\$23,140,302</b>	<b>\$524.05</b>
Natural Resources & Mining	23	201	186	181	2,298,400	933.80
Construction	35	236	232	225	1,795,000	597.74
Manufacturing	19	863	850	851	6,777,477	610.00
Trade, Transportation & Utilities	85	590	580	583	2,942,058	387.30
Wholesale Trade	16	108	111	109	820,866	577.53
Retail Trade	39	420	409	415	1,676,218	310.95
Transportation, Warehousing & Utilities	30	62	60	59	444,974	567.33
Information	3	16	17	16	115,291	542.97
Financial Activities	21	100	102	99	776,910	595.64
Professional & Business Services	23	86	88	92	769,143	667.27
Education & Health Services	34	237	241	233	1,428,287	463.58
Leisure & Hospitality	23	298	296	284	758,373	199.33
Other Services	17	54	57	57	233,373	320.57
Local Government	10	603	610	842	4,873,691	547.30
State Government	9	62	60	62	372,299	466.93
<b>GREENE COUNTY - TOTAL</b>	<b>900</b>	<b>14,301</b>	<b>14,794</b>	<b>15,344</b>	<b>\$100,045,322</b>	<b>\$519.53</b>
Natural Resources & Mining	38	215	201	207	1,256,236	465.33
Construction	81	407	413	389	2,608,768	497.95
Manufacturing	55	5,531	5,568	5,507	46,790,396	650.23
Trade, Transportation & Utilities	241	2,097	2,104	2,122	12,314,924	449.46
Wholesale Trade	52	404	396	411	3,528,805	672.45
Retail Trade	158	1,484	1,497	1,497	6,981,626	359.79
Transportation, Warehousing & Utilities	31	209	211	214	1,804,493	656.82
Information	13	134	129	129	590,057	347.36
Financial Activities	87	489	491	490	2,891,380	453.91
Professional & Business Services	91	1,246	1,328	1,618	7,557,175	416.02
Education & Health Services	136	1,732	1,732	1,747	11,329,118	501.71
Leisure & Hospitality	66	1,170	1,174	1,123	2,535,818	168.79
Other Services	50	179	176	180	907,632	391.50
Local Government	31	841	1,220	1,582	9,242,836	585.50
State Government	11	260	258	250	2,020,982	607.27

**TABLE 6. COUNTY SUMMARY  
EMPLOYMENT AND TOTAL EARNINGS, BY INDUSTRY  
THIRD QUARTER 2006**

NORTH AMERICAN INDUSTRY CLASSIFICATION SYSTEM INDUSTRY GROUP	NUMBER OF EMPLOYING UNITS	EMPLOYMENT			TOTAL EARNINGS	AVERAGE WEEKLY EARNINGS
		JULY	AUGUST	SEPTEMBER	JULY-SEPTEMBER 2006	
<b>HEMPSTEAD COUNTY - TOTAL</b>	<b>500</b>	<b>7,697</b>	<b>7,951</b>	<b>8,306</b>	<b>\$52,569,423</b>	<b>\$506.45</b>
Natural Resources & Mining	18	207	210	215	1,563,404	570.86
Construction	34	163	168	172	1,008,885	462.86
Manufacturing	29	2,691	2,670	2,632	20,917,717	603.92
Trade, Transportation & Utilities	136	1,243	1,241	1,245	7,123,992	440.87
Wholesale Trade	26	188	190	189	1,132,200	460.81
Retail Trade	86	870	879	877	4,021,156	353.37
Transportation, Warehousing & Utilities	24	185	172	179	1,970,636	848.44
Information	10	74	76	75	524,355	537.80
Financial Activities	43	258	260	251	1,946,289	584.06
Professional & Business Services	34	190	241	265	962,916	319.27
Education & Health Services	68	997	997	988	6,171,346	477.58
Leisure & Hospitality	43	656	673	654	1,676,963	195.15
Other Services	39	233	236	231	1,360,261	448.44
Local Government	29	511	667	1,043	5,256,538	546.17
State Government	17	474	512	535	4,056,757	615.50
<b>HOT SPRING COUNTY - TOTAL</b>	<b>618</b>	<b>7,983</b>	<b>7,880</b>	<b>8,094</b>	<b>\$56,553,687</b>	<b>\$544.76</b>
Natural Resources & Mining	37	193	196	201	1,472,875	576.09
Construction	68	628	627	633	6,315,943	771.99
Manufacturing	41	1,695	1,582	1,591	16,967,879	804.37
Trade, Transportation & Utilities	165	1,465	1,454	1,464	9,668,080	509.03
Wholesale Trade	22	98	97	96	978,136	775.68
Retail Trade	98	966	962	975	4,573,651	363.57
Transportation, Warehousing & Utilities	45	401	395	393	4,116,293	798.92
Information	9	70	70	71	621,821	680.08
Financial Activities	62	335	331	336	2,405,578	554.03
Professional & Business Services	54	244	251	257	1,390,508	426.71
Education & Health Services	62	1,020	1,035	1,033	6,021,864	450.02
Leisure & Hospitality	42	623	605	567	1,510,245	194.16
Other Services	38	261	298	284	1,238,284	338.98
Local Government	26	871	884	1,063	5,016,972	410.85
State Government	14	578	547	594	3,923,638	526.73

**TABLE 6. COUNTY SUMMARY  
EMPLOYMENT AND TOTAL EARNINGS, BY INDUSTRY  
THIRD QUARTER 2006**

NORTH AMERICAN INDUSTRY CLASSIFICATION SYSTEM INDUSTRY GROUP	NUMBER OF EMPLOYING UNITS	EMPLOYMENT			TOTAL EARNINGS	AVERAGE WEEKLY EARNINGS
		JULY	AUGUST	SEPTEMBER	JULY-SEPTEMBER 2006	
<b>HOWARD COUNTY - TOTAL</b>	<b>365</b>	<b>7,357</b>	<b>7,477</b>	<b>7,662</b>	<b>\$47,851,365</b>	<b>\$490.87</b>
Natural Resources & Mining	21	232	241	240	1,868,186	604.66
Construction	27	113	110	98	673,848	484.43
Manufacturing	26	4,304	4,275	4,230	29,542,476	532.24
Trade, Transportation & Utilities	108	938	962	948	5,395,825	437.22
Wholesale Trade	21	108	114	115	874,836	599.07
Retail Trade	65	635	649	641	2,819,053	337.95
Transportation, Warehousing & Utilities	22	195	199	192	1,701,936	670.23
Information	6	37	38	36	228,580	475.22
Financial Activities	37	135	133	129	973,021	565.60
Professional & Business Services	27	122	127	131	732,382	444.77
Education & Health Services	44	611	608	598	3,325,068	422.30
Leisure & Hospitality	19	319	312	311	715,714	175.33
Other Services	20	111	114	113	534,229	364.74
Local Government	18	300	425	693	2,932,069	477.17
State Government	12	135	132	135	929,967	533.85
<b>INDEPENDENCE COUNTY - TOTAL</b>	<b>935</b>	<b>15,205</b>	<b>15,709</b>	<b>16,220</b>	<b>\$105,603,230</b>	<b>\$517.04</b>
Natural Resources & Mining	13	144	149	148	1,072,924	561.45
Construction	67	463	472	466	3,123,309	514.46
Manufacturing	59	4,647	4,762	4,690	36,727,313	601.14
Trade, Transportation & Utilities	276	2,986	2,991	2,973	19,865,880	512.23
Wholesale Trade	52	565	567	559	4,535,523	618.96
Retail Trade	168	1,702	1,697	1,693	7,824,067	354.59
Transportation, Warehousing & Utilities	56	719	727	721	7,506,290	799.36
Information	13	171	169	166	1,223,157	557.84
Financial Activities	85	460	459	457	3,468,917	581.77
Professional & Business Services	87	910	979	981	4,882,537	392.59
Education & Health Services	138	2,876	2,901	2,826	21,392,064	573.83
Leisure & Hospitality	65	1,100	1,153	1,124	2,616,048	178.77
Other Services	67	377	381	379	1,618,673	328.53
Local Government	48	661	885	1,528	6,215,935	466.64
State Government	17	410	408	482	3,396,473	602.92

**TABLE 6. COUNTY SUMMARY  
EMPLOYMENT AND TOTAL EARNINGS, BY INDUSTRY  
THIRD QUARTER 2006**

NORTH AMERICAN INDUSTRY CLASSIFICATION SYSTEM INDUSTRY GROUP	NUMBER OF EMPLOYING UNITS	EMPLOYMENT			TOTAL EARNINGS	AVERAGE WEEKLY EARNINGS
		JULY	AUGUST	SEPTEMBER	JULY-SEPTEMBER 2006	
<b>IZARD COUNTY - TOTAL</b>	<b>274</b>	<b>2,660</b>	<b>2,926</b>	<b>3,060</b>	<b>16,349,120</b>	<b>\$436.37</b>
Natural Resources & Mining	4	92	89	91	766,468	650.28
Construction	23	47	49	49	265,827	423.07
Manufacturing	11	360	373	360	2,736,688	577.81
Trade, Transportation & Utilities	67	538	544	536	2,490,601	355.23
Retail Trade	50	422	428	423	1,755,991	318.33
Other Trade, Transportation & Utilities	17	116	116	113	734,610	491.38
Information	3	6	7	8	30,953	340.14
Financial Activities	29	152	155	162	1,002,359	493.21
Professional & Business Services	20	81	82	83	392,755	368.44
Education & Health Services	51	534	533	543	2,707,412	388.07
Leisure & Hospitality	23	187	197	209	446,098	173.60
Other Services	14	36	35	35	158,715	345.53
Local Government	18	239	448	531	2,343,233	443.96
State Government	11	388	414	453	3,008,011	553.11
<b>JACKSON COUNTY - TOTAL</b>	<b>523</b>	<b>5,454</b>	<b>5,707</b>	<b>5,791</b>	<b>\$37,523,396</b>	<b>\$510.81</b>
Natural Resources & Mining	44	207	218	241	1,314,827	455.59
Construction	29	197	169	163	1,346,363	587.33
Manufacturing	25	1,099	1,112	1,143	9,183,661	631.87
Trade, Transportation & Utilities	121	1,102	1,113	1,126	6,992,097	482.96
Wholesale Trade	31	208	211	205	1,903,933	704.12
Retail Trade	71	663	666	662	3,177,243	368.26
Transportation, Warehousing & Utilities	19	231	236	259	1,910,921	607.41
Information	6	40	41	41	296,221	560.32
Financial Activities	45	186	187	184	1,344,557	557.06
Professional & Business Services	38	247	243	245	1,550,555	486.83
Education & Health Services	92	798	819	834	5,901,983	555.69
Leisure & Hospitality	39	352	349	338	953,898	211.87
Other Services	35	99	100	102	442,317	339.11
Local Government	35	466	695	692	3,254,101	405.26
State Government	14	661	661	682	4,942,816	569.19

**TABLE 6. COUNTY SUMMARY  
EMPLOYMENT AND TOTAL EARNINGS, BY INDUSTRY  
THIRD QUARTER 2006**

NORTH AMERICAN INDUSTRY CLASSIFICATION SYSTEM INDUSTRY GROUP	NUMBER OF EMPLOYING UNITS	EMPLOYMENT			TOTAL EARNINGS	AVERAGE WEEKLY EARNINGS
		JULY	AUGUST	SEPTEMBER	JULY-SEPTEMBER 2006	
<b>JEFFERSON COUNTY - TOTAL</b>	<b>1,939</b>	<b>30,319</b>	<b>31,161</b>	<b>32,133</b>	<b>\$233,925,501</b>	<b>\$576.66</b>
Natural Resources & Mining	42	468	472	507	3,960,275	631.59
Construction	136	1,421	1,479	1,479	17,130,934	902.78
Manufacturing	72	6,204	6,183	6,100	59,909,920	747.84
Trade, Transportation & Utilities	499	5,811	5,866	5,912	37,404,640	490.75
Wholesale Trade	86	1,036	1,050	1,050	8,005,035	589.07
Retail Trade	346	3,890	3,917	3,947	19,033,841	373.70
Transportation, Warehousing & Utilities	67	885	899	915	10,365,764	886.29
Information	20	211	211	209	1,476,377	539.94
Financial Activities	155	1,238	1,222	1,223	10,309,420	645.97
Professional & Business Services	175	1,675	1,712	1,709	13,188,237	597.22
Education & Health Services	451	5,370	5,362	5,457	37,652,934	536.73
Leisure & Hospitality	151	2,241	2,228	2,200	5,643,961	195.30
Other Services	157	799	781	779	4,480,336	438.29
Local Government	41	1,811	2,587	3,355	17,134,485	510.01
State Government	40	3,070	3,058	3,203	25,633,982	633.97
<b>JOHNSON COUNTY - TOTAL</b>	<b>478</b>	<b>8,000</b>	<b>8,071</b>	<b>8,544</b>	<b>\$49,478,969</b>	<b>\$463.87</b>
Natural Resources & Mining	15	209	208	193	1,638,237	619.76
Construction	29	132	129	124	794,974	476.51
Manufacturing	44	3,110	3,076	3,061	19,552,107	487.94
Trade, Transportation & Utilities	123	1,816	1,822	1,852	10,229,326	429.98
Information	6	33	33	32	217,351	511.82
Financial Activities	45	246	250	243	1,636,587	511.06
Professional & Business Services	50	169	170	166	1,113,145	508.67
Education & Health Services	74	1,118	1,153	1,153	7,267,639	489.82
Leisure & Hospitality	39	515	531	543	1,316,458	191.19
Other Services	29	90	90	90	415,871	355.45
Local Government	14	404	456	935	4,019,317	516.73
State Government	10	158	153	152	1,277,957	636.96



**TABLE 6. COUNTY SUMMARY  
EMPLOYMENT AND TOTAL EARNINGS, BY INDUSTRY  
THIRD QUARTER 2006**

NORTH AMERICAN INDUSTRY CLASSIFICATION SYSTEM INDUSTRY GROUP	NUMBER OF EMPLOYING UNITS	EMPLOYMENT			TOTAL EARNINGS	AVERAGE WEEKLY EARNINGS
		JULY	AUGUST	SEPTEMBER	JULY-SEPTEMBER 2006	
<b>LAFAYETTE COUNTY - TOTAL</b>	<b>172</b>	<b>1,261</b>	<b>1,313</b>	<b>1,435</b>	<b>\$8,413,223</b>	<b>\$484.29</b>
Natural Resources & Mining	33	180	178	186	1,335,641	566.59
Trade, Transportation & Utilities	38	229	227	225	1,364,634	462.43
Retail Trade	22	156	154	154	703,149	349.71
Other Trade, Transportation & Utilities	16	73	73	71	661,485	703.46
Financial Activities	17	87	94	92	599,110	506.43
Professional & Business Services	8	53	53	53	450,136	653.32
Education & Health Services	23	226	227	233	1,017,670	342.34
Leisure & Hospitality	6	40	43	42	164,860	304.36
Other Services	8	80	76	78	304,578	300.37
Local Government	13	185	233	338	1,461,529	446.13
State Government	8	47	48	48	356,807	575.80
Other	18	134	134	140	1,358,258	768.25
<b>LAWRENCE COUNTY - TOTAL</b>	<b>424</b>	<b>3,764</b>	<b>3,994</b>	<b>4,234</b>	<b>\$22,975,118</b>	<b>\$442.12</b>
Natural Resources & Mining	35	182	179	178	1,424,330	609.82
Construction	25	62	69	70	410,929	471.79
Manufacturing	22	578	571	566	3,563,631	479.52
Trade, Transportation & Utilities	128	944	950	943	5,202,981	423.22
Wholesale Trade	24	204	205	205	1,508,493	566.96
Retail Trade	71	603	609	602	2,555,810	325.14
Transportation, Warehousing & Utilities	33	137	136	136	1,138,678	642.47
Information	6	21	19	19	156,079	610.48
Financial Activities	30	137	133	131	890,817	512.65
Professional & Business Services	23	134	123	132	997,497	591.75
Education & Health Services	68	468	502	644	3,539,262	506.04
Leisure & Hospitality	25	322	323	336	648,992	152.67
Other Services	25	82	88	91	283,288	250.48
Local Government	26	722	926	1,014	5,049,022	437.70
State Government	11	112	111	110	808,290	560.15

**TABLE 6. COUNTY SUMMARY  
EMPLOYMENT AND TOTAL EARNINGS, BY INDUSTRY  
THIRD QUARTER 2006**

NORTH AMERICAN INDUSTRY CLASSIFICATION SYSTEM INDUSTRY GROUP	NUMBER OF EMPLOYING UNITS	EMPLOYMENT			TOTAL EARNINGS	AVERAGE WEEKLY EARNINGS
		JULY	AUGUST	SEPTEMBER	JULY-SEPTEMBER 2006	
<b>LEE COUNTY - TOTAL</b>	<b>254</b>	<b>1,873</b>	<b>2,074</b>	<b>2,191</b>	<b>\$12,624,039</b>	<b>\$474.62</b>
Natural Resources & Mining	28	196	188	283	1,283,206	443.96
Construction	9	16	13	16	77,589	397.89
Trade, Transportation & Utilities	54	341	337	362	1,838,778	408.01
Wholesale Trade	9	74	68	69	482,883	528.13
Retail Trade	27	188	189	196	699,284	281.63
Transportation, Warehousing & Utilities	18	79	80	97	656,611	591.90
Financial Activities	15	81	82	85	555,980	517.35
Professional & Business Services	18	67	66	68	575,459	660.69
Education & Health Services	68	298	298	300	1,862,600	479.72
Leisure & Hospitality	10	90	107	102	184,596	142.47
Local Government	16	180	386	381	1,856,616	452.43
State Government	8	472	462	463	3,593,580	593.62
Other	28	132	135	131	795,635	461.33
<b>LINCOLN COUNTY - TOTAL</b>	<b>225</b>	<b>2,769</b>	<b>2,787</b>	<b>3,013</b>	<b>\$18,163,603</b>	<b>\$489.16</b>
Natural Resources & Mining	32	166	167	231	1,253,880	513.04
Construction	13	70	70	73	443,971	481.01
Manufacturing	9	448	442	438	2,729,335	474.28
Trade, Transportation & Utilities	46	379	378	364	2,454,513	505.29
Wholesale Trade	6	29	28	27	257,918	708.57
Retail Trade	25	208	207	200	665,967	249.89
Transportation, Warehousing & Utilities	15	142	143	137	1,530,628	837.02
Financial Activities	22	72	77	73	539,618	560.93
Professional & Business Services	13	21	21	21	138,941	508.94
Education & Health Services	36	300	308	309	1,595,368	401.49
Leisure & Hospitality	15	141	138	143	315,247	172.39
Local & State Government	22	1,126	1,141	1,315	8,482,317	546.47
Other	17	46	45	46	210,413	354.43

**TABLE 6. COUNTY SUMMARY  
EMPLOYMENT AND TOTAL EARNINGS, BY INDUSTRY  
THIRD QUARTER 2006**

NORTH AMERICAN INDUSTRY CLASSIFICATION SYSTEM INDUSTRY GROUP	NUMBER OF EMPLOYING UNITS	EMPLOYMENT			TOTAL EARNINGS	AVERAGE WEEKLY EARNINGS
		JULY	AUGUST	SEPTEMBER	JULY-SEPTEMBER 2006	
<b>LITTLE RIVER COUNTY - TOTAL</b>	<b>261</b>	<b>4,288</b>	<b>4,269</b>	<b>4,531</b>	<b>\$40,294,824</b>	<b>\$710.48</b>
Natural Resources & Mining	12	69	69	71	604,343	667.29
Trade, Transportation & Utilities	69	1,176	1,178	1,173	10,923,725	714.73
Wholesale Trade	11	45	48	50	396,122	639.25
Retail Trade	41	313	315	318	1,449,176	353.52
Transportation, Warehousing & Utilities	17	818	815	805	9,078,427	859.32
Information	3	9	9	9	83,102	710.27
Financial Activities	24	103	102	103	598,541	448.46
Professional & Business Services	22	129	124	127	727,950	442.07
Education & Health Services	25	159	167	163	839,508	396.18
Leisure & Hospitality	20	222	221	218	539,129	188.22
Other Services	15	108	100	99	339,142	254.93
Local Government	20	583	562	772	3,992,746	480.65
State Government	12	78	76	78	572,017	568.98
Other	39	1,652	1,661	1,718	21,074,621	966.68
<b>LOGAN COUNTY - TOTAL</b>	<b>486</b>	<b>5,602</b>	<b>5,727</b>	<b>5,906</b>	<b>\$34,636,397</b>	<b>\$463.77</b>
Natural Resources & Mining	19	91	87	93	740,989	630.99
Construction	51	157	158	155	1,037,696	509.51
Manufacturing	27	1,795	1,789	1,786	12,581,913	540.69
Trade, Transportation & Utilities	118	862	863	874	4,230,630	375.64
Wholesale Trade	19	64	64	68	479,385	564.43
Retail Trade	73	724	727	730	3,088,651	326.81
Transportation, Warehousing & Utilities	26	74	72	76	662,594	688.77
Information	6	45	45	47	362,600	610.78
Financial Activities	45	247	244	241	1,950,181	614.81
Professional & Business Services	43	218	194	186	915,800	353.41
Education & Health Services	80	735	733	745	4,182,432	436.14
Leisure & Hospitality	31	346	335	336	767,713	174.20
Other Services	28	72	71	84	419,122	426.08
Local & State Government	38	1,034	1,208	1,359	7,447,321	477.26

**TABLE 6. COUNTY SUMMARY  
EMPLOYMENT AND TOTAL EARNINGS, BY INDUSTRY  
THIRD QUARTER 2006**

NORTH AMERICAN INDUSTRY CLASSIFICATION SYSTEM INDUSTRY GROUP	NUMBER OF EMPLOYING UNITS	EMPLOYMENT			TOTAL EARNINGS	AVERAGE WEEKLY EARNINGS
		JULY	AUGUST	SEPTEMBER	JULY-SEPTEMBER 2006	
<b>LONOKE COUNTY - TOTAL</b>	<b>1,228</b>	<b>11,749</b>	<b>12,193</b>	<b>12,471</b>	<b>\$75,558,609</b>	<b>\$478.86</b>
Natural Resources & Mining	71	479	470	518	3,832,957	602.95
Construction	170	941	949	944	7,124,014	580.10
Manufacturing	38	1,387	1,402	1,390	12,467,772	688.48
Trade, Transportation & Utilities	335	2,757	2,761	2,808	15,815,668	438.36
Wholesale Trade	80	463	438	444	4,133,480	709.20
Retail Trade	179	2,001	2,020	2,032	9,256,651	352.91
Transportation, Warehousing & Utilities	76	293	303	332	2,425,537	603.17
Information	16	123	120	118	941,906	602.11
Financial Activities	125	584	584	602	5,299,531	690.94
Professional & Business Services	140	542	570	556	3,834,338	530.48
Education & Health Services	135	1,352	1,367	1,377	7,763,689	437.41
Leisure & Hospitality	87	1,322	1,340	1,357	3,354,257	192.60
Other Services	67	199	196	191	1,065,898	419.76
Local Government	28	1,925	2,288	2,467	13,054,139	450.97
State Government	16	138	146	143	1,004,440	542.84
<b>MADISON COUNTY - TOTAL</b>	<b>257</b>	<b>3,108</b>	<b>3,183</b>	<b>3,182</b>	<b>\$18,378,423</b>	<b>\$447.71</b>
Natural Resources & Mining	12	56	56	53	388,835	543.83
Construction	45	171	158	149	986,121	476.08
Manufacturing	20	1,104	1,105	1,103	6,996,426	487.49
Trade, Transportation & Utilities	64	583	581	585	3,448,257	454.98
Wholesale Trade	16	40	40	41	590,588	1126.36
Retail Trade	34	430	430	425	1,934,357	347.39
Transportation, Warehousing & Utilities	14	113	111	119	923,312	621.20
Information	4	36	34	35	339,723	746.64
Financial Activities	14	91	92	89	621,696	527.46
Professional & Business Services	21	87	85	87	438,223	390.46
Education & Health Services	38	256	267	259	1,206,621	356.08
Leisure & Hospitality	12	131	138	133	217,602	124.92
Other Services	11	23	25	26	157,339	490.66
Local Government	8	523	595	615	3,195,102	425.47
State Government	8	47	47	48	382,478	621.58

**TABLE 6. COUNTY SUMMARY  
EMPLOYMENT AND TOTAL EARNINGS, BY INDUSTRY  
THIRD QUARTER 2006**

NORTH AMERICAN INDUSTRY CLASSIFICATION SYSTEM INDUSTRY GROUP	NUMBER OF EMPLOYING UNITS	EMPLOYMENT			TOTAL EARNINGS	AVERAGE WEEKLY EARNINGS
		JULY	AUGUST	SEPTEMBER	JULY-SEPTEMBER 2006	
<b>MARION COUNTY - TOTAL</b>	<b>308</b>	<b>4,058</b>	<b>4,121</b>	<b>4,204</b>	<b>\$23,881,804</b>	<b>\$445.06</b>
Natural Resources & Mining	5	62	63	63	226,070	277.50
Construction	25	71	80	77	380,789	385.41
Manufacturing	26	1,788	1,794	1,800	12,228,999	524.35
Trade, Transportation & Utilities	54	655	659	644	3,063,175	361.02
Retail Trade	36	502	505	494	2,078,636	319.58
Other Trade, Transportation & Utilities	18	153	154	150	984,539	497.16
Financial Activities	34	196	187	188	1,160,832	469.15
Professional & Business Services	27	49	50	54	379,992	573.14
Education & Health Services	49	372	374	378	1,896,657	389.40
Leisure & Hospitality	40	298	293	266	711,050	191.47
Local Government	20	370	429	541	2,422,644	417.22
State Government	8	111	107	102	672,396	484.90
Other	20	86	85	91	739,200	651.09
<b>MILLER COUNTY - TOTAL</b>	<b>839</b>	<b>11,839</b>	<b>11,907</b>	<b>12,677</b>	<b>\$87,920,117</b>	<b>\$557.05</b>
Natural Resources & Mining	28	140	141	144	1,076,714	584.64
Construction	92	815	848	858	6,395,159	585.40
Manufacturing	34	2,745	2,725	2,681	28,478,453	806.28
Trade, Transportation & Utilities	231	2,657	2,650	2,646	17,748,827	515.01
Wholesale Trade	65	638	645	660	5,841,866	693.84
Retail Trade	126	1,452	1,444	1,422	6,571,451	351.20
Transportation, Warehousing & Utilities	40	567	561	564	5,335,510	727.70
Information	8	105	104	102	2,295,861	1703.58
Financial Activities	87	392	378	380	2,769,398	555.73
Professional & Business Services	84	1,053	1,008	967	5,282,176	402.56
Education & Health Services	87	1,099	1,096	1,099	6,532,421	457.64
Leisure & Hospitality	82	1,246	1,273	1,250	3,653,749	223.71
Other Services	63	407	337	335	1,280,345	273.83
Local Government	26	707	877	1,747	8,345,452	578.17
State Government	17	473	470	468	4,061,562	664.27

**TABLE 6. COUNTY SUMMARY  
EMPLOYMENT AND TOTAL EARNINGS, BY INDUSTRY  
THIRD QUARTER 2006**

NORTH AMERICAN INDUSTRY CLASSIFICATION SYSTEM INDUSTRY GROUP	NUMBER OF EMPLOYING UNITS	EMPLOYMENT			TOTAL EARNINGS	AVERAGE WEEKLY EARNINGS
		JULY	AUGUST	SEPTEMBER	JULY-SEPTEMBER 2006	
<b>MISSISSIPPI COUNTY - TOTAL</b>	<b>1,177</b>	<b>18,511</b>	<b>18,681</b>	<b>19,740</b>	<b>\$148,043,763</b>	<b>\$600.08</b>
Natural Resources & Mining	101	714	697	912	4,170,764	414.33
Construction	67	571	662	691	5,721,326	686.23
Manufacturing	55	5,393	5,400	5,453	66,775,228	948.52
Trade, Transportation & Utilities	301	3,157	3,141	3,149	20,538,166	501.70
Wholesale Trade	64	594	586	577	5,213,449	684.75
Retail Trade	185	1,954	1,943	1,950	8,987,373	354.71
Transportation, Warehousing & Utilities	52	609	612	622	6,337,344	793.52
Financial Activities	106	591	582	579	3,730,408	491.36
Professional & Business Services	98	1,229	1,218	1,412	7,741,461	462.94
Education & Health Services	211	1,657	1,652	1,732	11,211,263	513.23
Leisure & Hospitality	79	1,156	1,137	1,129	2,774,168	187.08
Local Government	46	2,043	2,072	2,389	11,182,142	396.75
State Government	24	613	578	660	4,146,832	517.00
Other	89	1,387	1,542	1,634	10,052,005	508.37
<b>MONROE COUNTY - TOTAL</b>	<b>310</b>	<b>2,135</b>	<b>2,324</b>	<b>2,374</b>	<b>\$12,131,091</b>	<b>\$409.70</b>
Natural Resources & Mining	35	141	133	155	928,518	499.47
Construction	14	39	37	35	190,106	395.23
Manufacturing	8	101	107	103	674,933	500.82
Trade, Transportation & Utilities	94	689	695	709	3,765,983	415.23
Wholesale Trade	23	200	198	194	1,322,654	515.59
Retail Trade	43	344	345	351	1,408,416	312.52
Transportation, Warehousing & Utilities	28	145	152	164	1,034,913	518.06
Financial Activities	16	100	97	93	704,381	560.52
Professional & Business Services	17	41	37	40	241,498	472.29
Education & Health Services	43	309	300	317	1,438,680	358.53
Leisure & Hospitality	26	268	260	250	610,837	181.19
Local Government	22	223	440	449	2,210,570	458.75
State Government	9	117	116	115	866,604	574.67
Other	26	107	102	108	498,981	363.25

**TABLE 6. COUNTY SUMMARY  
EMPLOYMENT AND TOTAL EARNINGS, BY INDUSTRY  
THIRD QUARTER 2006**

NORTH AMERICAN INDUSTRY CLASSIFICATION SYSTEM INDUSTRY GROUP	NUMBER OF EMPLOYING UNITS	EMPLOYMENT			TOTAL EARNINGS	AVERAGE WEEKLY EARNINGS
		JULY	AUGUST	SEPTEMBER	JULY-SEPTEMBER 2006	
<b>MONTGOMERY COUNTY - TOTAL</b>	<b>187</b>	<b>1,699</b>	<b>1,591</b>	<b>1,706</b>	<b>\$8,292,933</b>	<b>\$383.06</b>
Natural Resources & Mining	15	51	53	59	477,390	675.87
Construction	23	127	158	176	971,843	486.49
Trade, Transportation & Utilities	46	205	198	210	1,015,366	382.24
Wholesale Trade	9	65	62	63	365,370	443.77
Retail Trade	26	130	127	128	591,977	354.83
Transportation, Warehousing & Utilities	11	10	9	19	58,019	352.34
Financial Activities	10	82	81	78	489,117	468.35
Education & Health Services	16	49	51	52	252,441	383.26
Leisure & Hospitality	22	502	294	247	1,239,489	274.24
Other Services	12	64	72	68	313,521	354.66
Local Government	9	289	348	478	1,925,833	398.59
State Government	8	57	57	56	415,563	564.11
Other	26	273	279	282	1,192,370	329.93
<b>NEVADA COUNTY - TOTAL</b>	<b>192</b>	<b>2,434</b>	<b>2,452</b>	<b>2,647</b>	<b>\$16,129,705</b>	<b>\$494.12</b>
Natural Resources & Mining	16	60	61	61	446,553	566.21
Construction	12	15	15	15	88,240	452.51
Manufacturing	9	831	826	830	6,767,008	627.91
Trade, Transportation & Utilities	46	534	549	531	3,368,375	481.61
Retail Trade	30	302	299	294	1,309,876	337.74
Other Trade, Transportation & Utilities	16	232	250	237	2,058,499	660.69
Financial Activities	14	65	63	65	504,956	603.77
Education & Health Services	16	390	387	389	1,900,799	376.20
Leisure & Hospitality	14	125	119	107	280,869	184.66
Other Services	15	73	69	71	233,298	252.76
Local Government	27	225	246	462	1,606,864	397.44
State Government	11	78	78	78	597,183	588.94
Other	12	38	39	38	335,560	673.36

**TABLE 6. COUNTY SUMMARY  
EMPLOYMENT AND TOTAL EARNINGS, BY INDUSTRY  
THIRD QUARTER 2006**

NORTH AMERICAN INDUSTRY CLASSIFICATION SYSTEM INDUSTRY GROUP	NUMBER OF EMPLOYING UNITS	EMPLOYMENT			TOTAL EARNINGS	AVERAGE WEEKLY EARNINGS
		JULY	AUGUST	SEPTEMBER	JULY-SEPTEMBER 2006	
<b>NEWTON COUNTY - TOTAL</b>	<b>132</b>	<b>882</b>	<b>1,061</b>	<b>1,094</b>	<b>\$4,857,736</b>	<b>\$369.12</b>
Natural Resources & Mining	5	7	6	8	20,491	225.18
Construction	8	15	14	14	73,932	396.77
Manufacturing	16	99	97	86	507,457	415.27
Trade, Transportation & Utilities	31	165	164	162	689,950	324.28
Retail Trade	15	110	109	109	351,966	247.63
Other Trade, Transportation & Utilities	16	55	55	53	337,984	478.50
Education & Health Services	20	223	225	228	859,193	293.31
Leisure & Hospitality	16	84	82	77	206,460	196.07
Other Services	4	10	10	8	29,774	245.39
Local Government	13	146	326	380	1,694,566	458.98
State Government	7	87	88	81	448,623	404.41
Other	12	46	49	50	327,290	520.89
<b>OUACHITA COUNTY - TOTAL</b>	<b>651</b>	<b>7,803</b>	<b>7,780</b>	<b>7,911</b>	<b>\$47,769,836</b>	<b>\$469.22</b>
Natural Resources & Mining	47	278	283	290	2,474,989	671.15
Construction	50	296	315	320	1,905,549	472.33
Manufacturing	31	976	950	942	8,079,884	650.14
Trade, Transportation & Utilities	178	1,779	1,804	1,810	11,043,698	472.57
Wholesale Trade	31	248	251	257	2,471,757	754.50
Retail Trade	120	1,105	1,127	1,125	4,549,776	312.76
Transportation, Warehousing & Utilities	27	426	426	428	4,022,165	725.15
Information	9	88	95	89	649,147	550.75
Financial Activities	65	362	365	369	2,560,402	539.11
Professional & Business Services	52	361	341	347	1,930,457	424.68
Education & Health Services	94	1,249	1,242	1,257	7,773,053	478.60
Leisure & Hospitality	39	557	566	539	1,260,011	174.95
Other Services	42	173	174	170	705,004	314.69
Local Government	30	1,153	1,148	1,269	5,374,491	347.41
State Government	14	531	497	509	4,013,151	602.55



**TABLE 6. COUNTY SUMMARY  
EMPLOYMENT AND TOTAL EARNINGS, BY INDUSTRY  
THIRD QUARTER 2006**

NORTH AMERICAN INDUSTRY CLASSIFICATION SYSTEM INDUSTRY GROUP	NUMBER OF EMPLOYING UNITS	EMPLOYMENT			TOTAL EARNINGS	AVERAGE WEEKLY EARNINGS
		JULY	AUGUST	SEPTEMBER	JULY-SEPTEMBER 2006	
<b>PERRY COUNTY - TOTAL</b>	<b>162</b>	<b>1,165</b>	<b>1,179</b>	<b>1,222</b>	<b>\$6,359,762</b>	<b>\$411.56</b>
Natural Resources & Mining	9	34	38	39	286,655	595.96
Construction	26	77	73	70	467,241	490.11
Manufacturing	7	88	88	82	496,679	444.26
Trade, Transportation & Utilities	29	182	196	194	892,008	359.87
Retail Trade	20	152	166	165	569,769	272.23
Other Trade, Transportation & Utilities	9	30	30	29	322,239	835.54
Financial Activities	14	53	55	52	463,101	667.93
Professional & Business Services	13	38	41	38	283,156	558.49
Education & Health Services	25	170	174	188	920,761	399.40
Local Government	12	355	362	399	1,733,471	358.45
State Government	9	54	54	54	354,990	505.68
Other	18	114	98	106	461,700	335.05
<b>PHILLIPS COUNTY - TOTAL</b>	<b>770</b>	<b>6,142</b>	<b>6,379</b>	<b>6,674</b>	<b>\$37,056,923</b>	<b>\$445.51</b>
Natural Resources & Mining	71	492	514	622	2,743,681	388.92
Construction	31	122	113	111	686,240	457.70
Manufacturing	11	416	378	372	2,944,112	582.68
Trade, Transportation & Utilities	176	1,564	1,539	1,556	8,880,625	439.87
Wholesale Trade	36	388	398	386	3,019,177	594.48
Retail Trade	106	902	870	892	3,902,161	338.03
Transportation, Warehousing & Utilities	34	274	271	278	1,959,287	549.38
Information	10	49	49	49	379,189	595.27
Financial Activities	55	265	269	278	1,784,926	507.27
Professional & Business Services	61	231	220	204	1,398,361	492.67
Education & Health Services	226	1,206	1,268	1,302	7,382,387	451.17
Leisure & Hospitality	41	479	472	455	1,027,683	168.68
Other Services	41	85	90	81	394,627	355.73
Local Government	30	681	929	1,134	5,779,724	486.07
State Government	17	552	538	510	3,655,368	527.22

**TABLE 6. COUNTY SUMMARY  
EMPLOYMENT AND TOTAL EARNINGS, BY INDUSTRY  
THIRD QUARTER 2006**

NORTH AMERICAN INDUSTRY CLASSIFICATION SYSTEM INDUSTRY GROUP	NUMBER OF EMPLOYING UNITS	EMPLOYMENT			TOTAL EARNINGS	AVERAGE WEEKLY EARNINGS
		JULY	AUGUST	SEPTEMBER	JULY-SEPTEMBER 2006	
<b>PIKE COUNTY - TOTAL</b>	<b>268</b>	<b>2,741</b>	<b>2,922</b>	<b>2,896</b>	<b>\$16,074,508</b>	<b>\$433.40</b>
Natural Resources & Mining	32	147	150	153	1,144,390	586.87
Construction	13	125	119	113	924,919	597.88
Manufacturing	14	539	536	513	3,190,468	463.64
Trade, Transportation & Utilities	91	609	601	590	3,614,695	463.42
Wholesale Trade	18	129	126	121	923,266	566.65
Retail Trade	44	349	342	340	1,731,701	387.61
Transportation, Warehousing & Utilities	29	131	133	129	959,728	563.55
Information	5	29	29	29	304,310	807.19
Financial Activities	25	175	177	175	1,190,769	521.43
Professional & Business Services	11	33	32	30	123,395	299.74
Education & Health Services	19	245	241	246	1,072,143	338.00
Leisure & Hospitality	20	214	222	211	565,288	201.62
Other Services	14	117	127	125	603,985	377.73
Local Government	13	377	558	581	2,636,999	401.41
State Government	11	131	130	130	703,147	415.00
<b>POINSETT COUNTY - TOTAL</b>	<b>503</b>	<b>5,678</b>	<b>5,844</b>	<b>6,033</b>	<b>\$35,170,018</b>	<b>\$462.33</b>
Natural Resources & Mining	49	369	368	374	2,452,716	509.46
Construction	29	64	64	59	489,916	604.59
Manufacturing	26	1,247	1,246	1,235	8,717,394	539.62
Trade, Transportation & Utilities	136	1,365	1,344	1,365	8,856,426	501.67
Wholesale Trade	34	494	467	490	5,054,759	803.92
Retail Trade	75	736	735	719	2,859,728	301.34
Transportation, Warehousing & Utilities	27	135	142	156	941,939	502.01
Information	6	57	57	59	653,864	872.21
Financial Activities	45	333	347	349	2,478,202	555.78
Professional & Business Services	31	142	141	141	937,824	510.43
Education & Health Services	65	569	586	578	3,015,373	401.53
Leisure & Hospitality	44	405	409	409	806,225	152.13
Other Services	29	62	61	63	330,751	410.36
Local Government	31	867	1,011	1,185	5,166,552	389.25
State Government	12	198	210	216	1,264,775	467.74

**TABLE 6. COUNTY SUMMARY  
EMPLOYMENT AND TOTAL EARNINGS, BY INDUSTRY  
THIRD QUARTER 2006**

NORTH AMERICAN INDUSTRY CLASSIFICATION SYSTEM INDUSTRY GROUP	NUMBER OF EMPLOYING UNITS	EMPLOYMENT			TOTAL EARNINGS	AVERAGE WEEKLY EARNINGS
		JULY	AUGUST	SEPTEMBER	JULY-SEPTEMBER 2006	
<b>POLK COUNTY - TOTAL</b>	<b>543</b>	<b>5,883</b>	<b>6,162</b>	<b>6,375</b>	<b>\$34,036,183</b>	<b>\$426.41</b>
Natural Resources & Mining	26	256	255	253	1,967,700	594.35
Construction	37	213	214	222	1,035,429	368.17
Manufacturing	45	1,402	1,400	1,387	8,325,540	458.65
Trade, Transportation & Utilities	154	1,353	1,368	1,372	6,691,450	377.27
Wholesale Trade	26	119	119	122	561,082	359.67
Retail Trade	83	841	844	829	3,392,687	311.43
Transportation, Warehousing & Utilities	45	393	405	421	2,737,681	518.27
Information	9	59	59	60	396,581	514.15
Financial Activities	40	226	229	224	1,450,075	492.83
Professional & Business Services	50	166	173	172	1,112,467	502.39
Education & Health Services	76	935	951	943	5,767,888	470.50
Leisure & Hospitality	41	454	474	477	985,134	161.81
Other Services	30	157	153	149	603,059	303.20
Local Government	21	392	620	786	3,927,726	504.11
State Government	14	270	266	330	1,773,134	472.50
<b>POPE COUNTY - TOTAL</b>	<b>1,727</b>	<b>25,523</b>	<b>26,126</b>	<b>27,251</b>	<b>\$182,961,124</b>	<b>\$535.13</b>
Natural Resources & Mining	22	673	629	459	3,394,038	444.77
Construction	179	1,171	1,255	1,539	11,267,049	655.76
Manufacturing	90	5,081	5,132	5,150	42,220,508	634.20
Trade, Transportation & Utilities	469	6,580	6,633	6,684	53,647,130	622.21
Wholesale Trade	100	709	721	718	5,732,568	615.88
Retail Trade	280	3,351	3,385	3,434	17,164,321	389.48
Transportation, Warehousing & Utilities	89	2,520	2,527	2,532	30,750,241	936.30
Information	25	262	262	265	2,595,373	759.10
Financial Activities	178	846	853	859	6,260,204	564.76
Professional & Business Services	227	2,799	2,741	2,659	13,739,624	386.72
Education & Health Services	241	2,876	2,937	2,964	20,628,026	542.36
Leisure & Hospitality	133	2,396	2,452	2,470	6,389,347	201.48
Other Services	107	452	463	467	2,303,761	384.69
Local Government	40	1,212	1,470	2,214	11,100,829	523.23
State Government	16	1,175	1,299	1,521	9,415,235	543.87

**TABLE 6. COUNTY SUMMARY  
EMPLOYMENT AND TOTAL EARNINGS, BY INDUSTRY  
THIRD QUARTER 2006**

NORTH AMERICAN INDUSTRY CLASSIFICATION SYSTEM INDUSTRY GROUP	NUMBER OF EMPLOYING UNITS	EMPLOYMENT			TOTAL EARNINGS	AVERAGE WEEKLY EARNINGS
		JULY	AUGUST	SEPTEMBER	JULY-SEPTEMBER 2006	
<b>PRAIRIE COUNTY - TOTAL</b>	<b>239</b>	<b>1,369</b>	<b>1,434</b>	<b>1,513</b>	<b>\$8,614,483</b>	<b>\$460.60</b>
Natural Resources & Mining	31	158	150	145	1,124,496	572.85
Trade, Transportation & Utilities	68	360	346	374	2,009,169	429.31
Wholesale Trade	10	71	59	54	493,259	618.64
Retail Trade	39	214	209	209	684,491	249.94
Transportation, Warehousing & Utilities	19	75	78	111	831,419	726.76
Information	4	9	9	9	100,014	854.82
Financial Activities	16	59	59	60	411,816	533.90
Professional & Business Services	16	58	57	59	328,906	436.21
Education & Health Services	30	159	158	155	967,015	472.79
Leisure & Hospitality	20	109	113	108	240,858	168.43
Other Services	12	36	37	36	169,226	358.28
Local Government	14	168	260	329	1,611,078	491.13
State Government	10	48	49	45	325,636	529.20
Other	18	205	196	193	1,326,269	515.26
<b>PULASKI COUNTY - TOTAL</b>	<b>14,162</b>	<b>234,048</b>	<b>237,147</b>	<b>241,287</b>	<b>\$2,157,185,569</b>	<b>\$698.70</b>
Natural Resources & Mining	46	752	766	768	8,815,012	889.87
Construction	1,151	10,688	10,794	10,919	102,288,898	728.53
Manufacturing	447	15,760	15,743	15,865	161,251,799	785.59
Trade, Transportation & Utilities	3,269	51,456	51,768	51,798	443,910,077	660.81
Wholesale Trade	1,097	13,411	13,449	13,410	161,186,578	923.69
Retail Trade	1,762	24,559	24,788	24,606	142,671,356	445.20
Transportation, Warehousing & Utilities	410	13,486	13,531	13,782	140,052,143	792.17
Information	238	8,873	8,871	8,856	117,511,874	1019.48
Financial Activities	1,734	16,228	16,287	16,263	190,890,064	903.10
Professional & Business Services	2,713	34,006	33,848	34,436	296,086,242	667.98
Education & Health Services	1,980	33,188	33,428	33,779	336,727,663	774.01
Leisure & Hospitality	1,044	20,431	20,341	19,710	69,183,445	263.97
Other Services	1,233	7,128	7,041	6,925	48,486,914	530.45
Local Government	104	11,395	13,756	16,834	110,401,061	606.82
State Government	203	24,143	24,504	25,134	271,632,520	849.60

**TABLE 6. COUNTY SUMMARY  
EMPLOYMENT AND TOTAL EARNINGS, BY INDUSTRY  
THIRD QUARTER 2006**

NORTH AMERICAN INDUSTRY CLASSIFICATION SYSTEM INDUSTRY GROUP	NUMBER OF EMPLOYING UNITS	EMPLOYMENT			TOTAL EARNINGS	AVERAGE WEEKLY EARNINGS
		JULY	AUGUST	SEPTEMBER	JULY-SEPTEMBER 2006	
<b>RANDOLPH COUNTY - TOTAL</b>	<b>417</b>	<b>5,025</b>	<b>5,047</b>	<b>5,158</b>	<b>\$26,960,143</b>	<b>\$408.51</b>
Natural Resources & Mining	22	77	73	76	382,959	391.04
Construction	26	110	119	131	496,431	318.23
Manufacturing	42	1,075	1,075	1,067	6,460,250	463.42
Trade, Transportation & Utilities	102	958	948	988	4,956,810	395.26
Wholesale Trade	22	193	200	220	956,296	360.01
Retail Trade	62	605	585	603	2,513,009	323.44
Transportation, Warehousing & Utilities	18	160	163	165	1,487,505	703.42
Information	5	45	45	44	417,038	718.21
Financial Activities	27	148	147	153	834,969	430.10
Professional & Business Services	37	233	237	235	1,032,140	337.85
Education & Health Services	68	844	872	888	5,471,104	484.86
Leisure & Hospitality	29	477	468	417	832,567	141.07
Other Services	24	69	69	70	316,366	351.00
Local Government	23	762	764	823	3,868,830	380.08
State Government	12	227	230	266	1,890,679	603.47
<b>SAINT FRANCIS COUNTY - TOTAL</b>	<b>677</b>	<b>7,692</b>	<b>8,221</b>	<b>8,355</b>	<b>\$48,679,329</b>	<b>\$462.90</b>
Natural Resources & Mining	21	187	178	221	1,179,841	464.63
Construction	45	240	232	249	1,698,324	543.58
Manufacturing	21	1,344	1,367	1,419	9,309,800	520.20
Trade, Transportation & Utilities	190	2,090	2,078	2,083	12,552,995	463.42
Wholesale Trade	30	508	500	506	3,753,666	572.15
Retail Trade	127	1,261	1,259	1,238	5,872,499	360.62
Transportation, Warehousing & Utilities	33	321	319	339	2,926,830	689.91
Information	9	98	100	101	681,619	526.08
Financial Activities	49	294	286	284	1,757,563	469.43
Professional & Business Services	50	167	165	163	1,199,243	559.09
Education & Health Services	156	1,309	1,319	1,332	7,193,742	419.22
Leisure & Hospitality	49	758	789	744	1,885,593	189.93
Other Services	40	122	122	122	471,601	297.35
Local Government	30	577	1,075	1,118	6,710,096	559.02
State Government	17	506	510	519	4,038,912	607.20

**TABLE 6. COUNTY SUMMARY  
EMPLOYMENT AND TOTAL EARNINGS, BY INDUSTRY  
THIRD QUARTER 2006**

NORTH AMERICAN INDUSTRY CLASSIFICATION SYSTEM INDUSTRY GROUP	NUMBER OF EMPLOYING UNITS	EMPLOYMENT			TOTAL EARNINGS	AVERAGE WEEKLY EARNINGS
		JULY	AUGUST	SEPTEMBER	JULY-SEPTEMBER 2006	
<b>SALINE COUNTY - TOTAL</b>	<b>1,726</b>	<b>19,226</b>	<b>19,894</b>	<b>20,462</b>	<b>\$135,505,114</b>	<b>\$524.83</b>
Natural Resources & Mining	10	33	33	32	298,932	703.92
Construction	302	1,942	2,022	2,011	16,461,378	635.78
Manufacturing	87	1,844	1,855	1,834	18,048,253	752.75
Trade, Transportation & Utilities	429	4,410	4,455	4,689	29,632,001	504.51
Wholesale Trade	124	566	563	559	5,988,915	818.75
Retail Trade	251	3,591	3,640	3,863	21,408,651	445.33
Transportation, Warehousing & Utilities	54	253	252	267	2,234,435	667.93
Information	16	138	140	142	963,608	529.45
Financial Activities	166	762	758	773	5,818,130	585.54
Professional & Business Services	216	1,217	1,203	1,213	7,733,424	491.23
Education & Health Services	186	2,674	2,705	2,678	17,797,587	509.76
Leisure & Hospitality	136	2,371	2,335	2,296	7,293,614	240.38
Other Services	128	587	573	579	3,405,413	451.91
Local & State Government	50	3,248	3,815	4,215	28,052,774	574.01
<b>SCOTT COUNTY - TOTAL</b>	<b>186</b>	<b>2,827</b>	<b>2,841</b>	<b>2,893</b>	<b>15,463,391</b>	<b>\$416.83</b>
Natural Resources & Mining	17	175	181	182	1,411,948	605.64
Trade, Transportation & Utilities	40	459	461	450	2,337,923	393.81
Wholesale Trade	7	67	66	62	443,739	525.13
Retail Trade	26	330	333	329	1,290,311	300.17
Transportation, Warehousing & Utilities	7	62	62	59	603,873	761.50
Information	2	7	7	7	73,170	804.07
Financial Activities	17	71	70	69	422,162	463.91
Professional & Business Services	9	10	10	11	43,872	326.59
Education & Health Services	30	309	306	308	1,687,706	421.96
Leisure & Hospitality	19	183	200	193	381,867	152.99
Other Services	11	62	63	62	600,213	740.70
Local Government	5	237	246	345	1,332,686	371.43
State Government	8	72	73	73	443,829	469.83
Other	28	1,242	1,224	1,193	6,728,015	424.33

**TABLE 6. COUNTY SUMMARY  
EMPLOYMENT AND TOTAL EARNINGS, BY INDUSTRY  
THIRD QUARTER 2006**

NORTH AMERICAN INDUSTRY CLASSIFICATION SYSTEM INDUSTRY GROUP	NUMBER OF EMPLOYING UNITS	EMPLOYMENT			TOTAL EARNINGS	AVERAGE WEEKLY EARNINGS
		JULY	AUGUST	SEPTEMBER	JULY-SEPTEMBER 2006	
<b>SEARCY COUNTY - TOTAL</b>	<b>177</b>	<b>1,530</b>	<b>1,749</b>	<b>1,736</b>	<b>\$8,055,057</b>	<b>\$370.66</b>
Construction	6	12	16	16	75,417	395.54
Manufacturing	16	280	271	272	1,218,074	341.55
Trade, Transportation & Utilities	38	271	276	273	1,156,255	325.40
Retail Trade	27	203	205	198	804,175	306.24
Other Trade, Transportation & Utilities	11	68	71	75	352,080	379.67
Financial Activities	14	107	104	98	597,283	446.07
Professional & Business Services	16	35	35	35	159,357	350.24
Education & Health Services	44	323	312	319	1,378,815	333.53
Leisure & Hospitality	11	126	127	105	263,806	170.05
Local Government	10	165	378	384	1,741,621	433.56
State Government	8	141	139	134	889,275	495.69
Other	14	70	91	100	575,154	508.54
<b>SEBASTIAN COUNTY - TOTAL</b>	<b>3,645</b>	<b>72,204</b>	<b>73,577</b>	<b>73,570</b>	<b>\$575,576,378</b>	<b>\$605.54</b>
Natural Resources & Mining	65	1,369	1,372	1,457	22,121,233	1216.03
Construction	309	2,996	2,958	2,942	24,462,876	634.59
Manufacturing	232	21,172	21,228	20,584	184,978,083	677.75
Trade, Transportation & Utilities	934	12,783	12,882	12,832	89,278,057	535.17
Wholesale Trade	241	2,592	2,616	2,615	26,354,605	777.43
Retail Trade	567	7,965	8,052	8,016	41,164,189	395.27
Transportation, Warehousing & Utilities	126	2,226	2,214	2,201	21,759,263	756.12
Information	57	1,168	1,159	1,154	12,046,400	798.60
Financial Activities	406	2,511	2,504	2,507	22,384,346	686.73
Professional & Business Services	517	9,283	9,699	9,451	63,822,504	518.00
Education & Health Services	463	9,622	9,692	9,644	93,552,266	745.53
Leisure & Hospitality	318	5,651	5,617	5,615	16,087,827	219.90
Other Services	279	1,525	1,528	1,491	8,877,725	450.86
Local Government	43	2,840	3,608	4,449	27,438,638	581.08
State Government	22	1,284	1,330	1,444	10,526,423	598.61

**TABLE 6. COUNTY SUMMARY  
EMPLOYMENT AND TOTAL EARNINGS, BY INDUSTRY  
THIRD QUARTER 2006**

NORTH AMERICAN INDUSTRY CLASSIFICATION SYSTEM INDUSTRY GROUP	NUMBER OF EMPLOYING UNITS	EMPLOYMENT			TOTAL EARNINGS	AVERAGE WEEKLY EARNINGS
		JULY	AUGUST	SEPTEMBER	JULY-SEPTEMBER 2006	
<b>SEVIER COUNTY - TOTAL</b>	<b>338</b>	<b>5,616</b>	<b>5,783</b>	<b>5,877</b>	<b>35,545,351</b>	<b>\$474.81</b>
Natural Resources & Mining	18	212	224	227	1,676,904	583.68
Trade, Transportation & Utilities	94	856	865	868	5,254,039	468.32
Wholesale Trade	16	151	149	151	1,692,248	865.90
Retail Trade	59	592	602	604	2,481,566	318.50
Transportation, Warehousing & Utilities	19	113	114	113	1,080,225	733.18
Information	6	41	41	41	307,371	576.68
Financial Activities	29	220	221	214	1,319,288	464.81
Professional & Business Services	31	92	94	99	1,638,913	1327.06
Education & Health Services	55	532	573	565	3,008,038	415.67
Leisure & Hospitality	19	262	266	255	545,291	160.71
Other Services	33	147	142	154	626,806	326.52
Local Government	11	650	753	854	4,952,356	506.36
State Government	9	169	156	180	1,102,936	504.01
Other	33	2,435	2,448	2,420	15,113,409	477.57
<b>SHARP COUNTY - TOTAL</b>	<b>434</b>	<b>3,725</b>	<b>3,662</b>	<b>3,925</b>	<b>\$20,301,927</b>	<b>\$414.17</b>
Construction	36	223	214	242	1,552,301	527.57
Manufacturing	21	174	172	177	843,585	372.22
Trade, Transportation & Utilities	100	1,051	1,053	1,008	6,349,977	470.88
Retail Trade	69	648	651	635	2,618,583	312.46
Other Trade, Transportation & Utilities	31	403	402	373	3,731,394	730.98
Information	7	55	56	57	710,355	975.76
Financial Activities	38	271	271	280	1,724,150	484.04
Professional & Business Services	39	161	161	171	1,025,830	480.18
Education & Health Services	85	563	565	581	2,809,734	379.40
Leisure & Hospitality	38	493	481	469	1,039,662	166.27
Local Government	29	511	518	768	3,226,582	414.35
State Government	9	99	94	97	672,141	534.86
Other	32	124	77	75	347,610	290.64



**TABLE 6. COUNTY SUMMARY  
EMPLOYMENT AND TOTAL EARNINGS, BY INDUSTRY  
THIRD QUARTER 2006**

NORTH AMERICAN INDUSTRY CLASSIFICATION SYSTEM INDUSTRY GROUP	NUMBER OF EMPLOYING UNITS	EMPLOYMENT			TOTAL EARNINGS	AVERAGE WEEKLY EARNINGS
		JULY	AUGUST	SEPTEMBER	JULY-SEPTEMBER 2006	
<b>STONE COUNTY - TOTAL</b>	<b>270</b>	<b>2,859</b>	<b>3,050</b>	<b>3,007</b>	<b>\$14,642,437</b>	<b>\$378.98</b>
Construction	23	110	116	112	621,124	424.07
Manufacturing	25	489	500	516	2,601,358	398.88
Trade, Transportation & Utilities	73	714	730	719	3,668,240	391.36
Wholesale Trade	8	51	48	49	226,237	352.76
Retail Trade	51	602	622	608	3,043,013	383.32
Transportation, Warehousing & Utilities	14	61	60	62	398,990	503.14
Financial Activities	23	98	100	99	687,906	534.50
Professional & Business Services	10	18	17	18	112,029	487.79
Education & Health Services	43	456	467	466	2,760,837	458.69
Leisure & Hospitality	34	473	472	438	990,799	165.33
Other Services	13	28	27	27	154,207	433.98
Local Government	10	226	405	401	1,927,328	430.98
State Government	9	172	168	170	863,385	390.67
Other	7	75	48	41	255,224	359.13
<b>UNION COUNTY - TOTAL</b>	<b>1,391</b>	<b>19,010</b>	<b>19,227</b>	<b>19,850</b>	<b>\$156,379,520</b>	<b>\$621.27</b>
Natural Resources & Mining	108	513	515	525	4,289,776	637.44
Construction	93	1,344	1,299	1,292	13,179,602	772.92
Manufacturing	65	5,174	5,094	5,086	49,120,887	738.28
Trade, Transportation & Utilities	358	3,656	3,663	3,628	27,918,501	588.54
Wholesale Trade	79	568	574	580	8,466,753	1134.65
Retail Trade	220	2,285	2,291	2,248	10,553,086	356.88
Transportation, Warehousing & Utilities	59	803	798	800	8,898,662	855.28
Information	21	198	197	195	1,387,987	542.89
Financial Activities	125	721	715	717	5,664,059	607.10
Professional & Business Services	135	1,728	1,711	1,732	18,606,734	830.37
Education & Health Services	199	2,343	2,361	2,386	17,466,223	568.50
Leisure & Hospitality	86	1,079	1,088	1,028	2,903,012	209.68
Other Services	146	665	660	666	3,305,643	383.14
Local Government	37	1,056	1,415	2,049	8,525,340	435.26
State Government	18	533	509	546	4,011,756	582.99

**TABLE 6. COUNTY SUMMARY  
EMPLOYMENT AND TOTAL EARNINGS, BY INDUSTRY  
THIRD QUARTER 2006**

NORTH AMERICAN INDUSTRY CLASSIFICATION SYSTEM INDUSTRY GROUP	NUMBER OF EMPLOYING UNITS	EMPLOYMENT			TOTAL EARNINGS	AVERAGE WEEKLY EARNINGS
		JULY	AUGUST	SEPTEMBER	JULY-SEPTEMBER 2006	
<b>VAN BUREN COUNTY - TOTAL</b>	<b>356</b>	<b>3,414</b>	<b>3,665</b>	<b>3,794</b>	<b>\$19,176,668</b>	<b>\$407.01</b>
Natural Resources & Mining	9	20	18	16	77,292	330.31
Construction	44	193	195	200	1,276,519	500.99
Manufacturing	14	535	544	537	3,443,639	491.76
Trade, Transportation & Utilities	97	800	811	799	3,963,073	379.48
Wholesale Trade	16	50	49	52	395,508	604.44
Retail Trade	59	616	629	612	2,598,795	322.95
Transportation, Warehousing & Utilities	22	134	133	135	968,770	556.13
Information	10	54	54	55	440,445	623.57
Financial Activities	27	147	155	159	982,466	491.81
Professional & Business Services	29	100	100	100	535,118	411.63
Education & Health Services	47	581	607	604	3,215,598	414.10
Leisure & Hospitality	32	531	525	503	1,483,775	219.63
Other Services	26	78	81	77	413,771	404.60
Local Government	13	285	491	660	2,717,484	436.71
State Government	8	90	84	84	627,488	561.26
<b>WASHINGTON COUNTY - TOTAL</b>	<b>5,620</b>	<b>88,116</b>	<b>88,908</b>	<b>91,985</b>	<b>\$732,660,202</b>	<b>\$628.51</b>
Natural Resources & Mining	41	469	473	480	3,423,212	555.54
Construction	692	5,939	5,925	5,930	52,238,447	677.48
Manufacturing	236	15,593	15,579	15,312	124,911,277	620.12
Trade, Transportation & Utilities	1,365	20,608	20,711	20,684	168,042,702	625.44
Wholesale Trade	379	3,719	3,723	3,657	46,959,309	976.37
Retail Trade	780	11,534	11,568	11,572	68,957,736	458.94
Transportation, Warehousing & Utilities	206	5,355	5,420	5,455	52,125,657	741.16
Information	97	1,480	1,465	1,467	14,510,370	758.96
Financial Activities	692	4,074	4,069	4,051	36,572,377	692.13
Professional & Business Services	926	9,246	9,394	9,388	98,393,862	810.13
Education & Health Services	617	10,558	10,627	10,763	95,459,742	689.53
Leisure & Hospitality	500	9,406	9,294	9,500	29,567,950	241.96
Other Services	371	1,953	2,005	1,996	12,011,395	465.55
Local & State Government	83	8,790	9,366	12,414	97,528,868	736.23

**TABLE 6. COUNTY SUMMARY  
EMPLOYMENT AND TOTAL EARNINGS, BY INDUSTRY  
THIRD QUARTER 2006**

NORTH AMERICAN INDUSTRY CLASSIFICATION SYSTEM INDUSTRY GROUP	NUMBER OF EMPLOYING UNITS	EMPLOYMENT			TOTAL EARNINGS	AVERAGE WEEKLY EARNINGS
		JULY	AUGUST	SEPTEMBER	JULY-SEPTEMBER 2006	
<b>WHITE COUNTY - TOTAL</b>	<b>1,643</b>	<b>22,892</b>	<b>23,613</b>	<b>24,298</b>	<b>\$160,744,640</b>	<b>\$523.92</b>
Natural Resources & Mining	36	251	239	255	1,925,806	596.53
Construction	182	1,316	1,307	1,239	9,670,055	577.82
Manufacturing	85	3,662	3,642	3,584	32,958,255	698.54
Trade, Transportation & Utilities	479	5,927	5,998	5,949	38,610,305	498.49
Wholesale Trade	98	595	616	604	4,531,542	576.17
Retail Trade	298	3,114	3,194	3,199	15,135,323	367.39
Transportation, Warehousing & Utilities	83	2,218	2,188	2,146	18,943,440	667.21
Information	22	225	237	236	1,624,709	537.15
Financial Activities	177	918	925	929	6,329,631	526.94
Professional & Business Services	159	1,424	1,359	1,467	8,488,753	460.93
Education & Health Services	214	4,196	4,250	4,340	33,255,354	600.21
Leisure & Hospitality	119	2,261	2,212	2,280	5,225,063	178.56
Other Services	105	637	640	625	4,009,783	486.51
Local Government	46	1,457	2,244	2,608	13,890,992	508.10
State Government	19	618	560	786	4,755,934	558.82
<b>WOODRUFF COUNTY - TOTAL</b>	<b>191</b>	<b>1,787</b>	<b>1,989</b>	<b>2,050</b>	<b>\$12,061,314</b>	<b>\$477.75</b>
Natural Resources & Mining	20	106	108	117	672,488	468.85
Construction	6	71	78	86	440,744	432.81
Manufacturing	9	330	363	362	2,638,389	577.12
Trade, Transportation & Utilities	56	530	534	546	3,508,642	502.91
Wholesale Trade	13	215	222	231	1,827,226	631.24
Retail Trade	26	212	208	211	714,617	261.35
Transportation, Warehousing & Utilities	17	103	104	104	966,799	717.39
Financial Activities	15	61	58	58	397,816	518.66
Professional & Business Services	4	7	7	7	71,155	781.92
Education & Health Services	47	227	231	232	1,399,455	468.05
Leisure & Hospitality	7	69	64	55	117,251	143.93
Local Government	10	296	459	500	2,293,790	421.78
State Government	7	61	58	58	372,948	486.24
Other	10	29	29	29	148,636	394.26

**TABLE 6. COUNTY SUMMARY  
EMPLOYMENT AND TOTAL EARNINGS, BY INDUSTRY  
THIRD QUARTER 2006**

NORTH AMERICAN INDUSTRY CLASSIFICATION SYSTEM INDUSTRY GROUP	NUMBER OF EMPLOYING UNITS	EMPLOYMENT			TOTAL EARNINGS	AVERAGE WEEKLY EARNINGS
		JULY	AUGUST	SEPTEMBER	JULY-SEPTEMBER 2006	
<b>YELL COUNTY - TOTAL</b>	<b>407</b>	<b>6,489</b>	<b>6,579</b>	<b>6,882</b>	<b>\$38,362,430</b>	<b>\$443.75</b>
Natural Resources & Mining	24	265	277	252	1,603,521	466.05
Construction	45	391	324	315	2,409,295	539.80
Manufacturing	21	2,924	2,931	2,877	17,073,081	451.21
Trade, Transportation & Utilities	87	665	662	700	3,024,135	344.29
Wholesale Trade	11	21	21	20	143,221	533.08
Retail Trade	55	549	541	582	2,075,590	286.47
Transportation, Warehousing & Utilities	21	95	100	98	805,324	634.28
Information	4	51	76	76	624,418	709.83
Financial Activities	37	203	202	198	1,273,352	487.31
Professional & Business Services	34	235	227	228	2,171,767	726.34
Education & Health Services	66	476	490	493	2,466,800	390.17
Leisure & Hospitality	29	373	343	334	903,607	198.59
Other Services	19	73	71	70	291,354	314.18
Local Government	28	718	861	1,226	5,820,708	478.87
State Government	13	115	115	113	700,392	471.22
<b>REST-OF-STATE-TOTAL</b>	<b>4,365</b>	<b>16,098</b>	<b>16,333</b>	<b>16,764</b>	<b>217,217,271</b>	<b>\$1,018.95</b>
Natural Resources & Mining	63	449	442	488	5,060,089	846.78
Construction	583	2,672	2,905	3,108	26,597,010	706.71
Manufacturing	48	180	178	180	1,783,992	765.22
Trade, Transportation & Utilities	1,752	6,822	6,845	6,911	117,110,873	1313.32
Wholesale Trade	1,483	5,652	5,654	5,693	105,434,421	1431.32
Retail Trade	102	457	454	441	4,775,475	815.11
Transportation, Warehousing & Utilities	167	713	737	777	6,900,977	715.10
Information	104	227	251	254	3,209,485	1011.82
Financial Activities	267	851	829	847	11,282,138	1030.30
Professional & Business Services	1,248	3,572	3,603	3,730	39,875,918	843.85
Education & Health Services	114	609	559	545	5,846,286	787.59
Leisure & Hospitality	42	68	64	69	491,837	564.68
Other	144	648	657	632	5,959,643	710.02

TABLE 7. FEDERAL GOVERNMENT EMPLOYMENT AND EARNINGS IN ARKANSAS

NORTH AMERICAN INDUSTRY CLASSIFICATION SYSTEM INDUSTRY GROUP	NUMBER OF EMPLOYING UNITS	EMPLOYMENT			TOTAL
		JULY	AUGUST	SEPTEMBER	EARNINGS JUL.-SEP. 2006
Manufacturing	2	3	3	3	\$63,414
Trade, Transportation & Utilities	441	6,790	6,754	6,776	79,706,343
Information	1	36	35	34	441,170
Financial Activities	23	178	179	177	2,603,262
Professional & Business Services	31	867	871	772	13,240,568
Education & Health Services	6	4,015	4,063	4,089	78,288,934
Leisure & Hospitality	15	269	245	243	2,912,602
Other Services	2	251	256	248	969,652
Public Administration	480	8,550	8,541	8,651	125,370,678
<b>TOTAL</b>	<b>1,001</b>	<b>20,959</b>	<b>20,947</b>	<b>20,993</b>	<b>\$303,596,623</b>



**TABLE 8. WORKFORCE INFORMATION AREA, SUMMARY  
EMPLOYMENT AND TOTAL EARNINGS, BY INDUSTRY  
THIRD QUARTER 2006**

NORTH AMERICAN INDUSTRY CLASSIFICATION SYSTEM INDUSTRY GROUP	NUMBER OF EMPLOYING UNITS	EMPLOYMENT			TOTAL EARNINGS	AVERAGE WEEKLY EARNINGS
		JULY	AUGUST	SEPTEMBER	JUL. - SEP. 2006	
<b>CENTRAL WORKFORCE INFORMATION*</b>	<b>5,962</b>	<b>70,676</b>	<b>73,207</b>	<b>75,332</b>	<b>\$519,430,129</b>	<b>\$546.81</b>
Natural Resources & Mining	165	997	998	1,112	9,177,658	681.66
Trade, Transportation & Utilities	1,533	14,723	14,856	15,227	90,702,100	467.15
Wholesale Trade	388	2,137	2,102	2,136	19,363,191	700.93
Retail Trade	891	11,139	11,275	11,488	57,783,207	393.33
Transportation, Warehousing & Utilities	254	1,447	1,479	1,603	13,555,702	690.71
Financial Activities	622	2,918	2,908	2,923	23,116,966	609.75
Professional & Business Services	715	7,191	7,173	7,172	75,397,124	807.92
Education & Health Services	707	9,692	9,727	9,843	66,217,165	522.21
Leisure & Hospitality	461	7,862	7,899	7,906	21,390,038	208.57
Local & State Government	209	10,463	12,616	14,283	89,676,188	553.89
Other	1,550	16,830	17,030	16,866	143,752,890	653.98

\*Note: Pulaski County is not included in the Central Workforce Information. Please refer to Page 54 for information on Pulaski County.  
Central Workforce Includes these counties: Faulkner, Lonoke, Monroe, Prairie, and Saline.

<b>EASTERN WORKFORCE INFORMATION</b>	<b>3,442</b>	<b>35,685</b>	<b>37,263</b>	<b>38,746</b>	<b>\$238,801,226</b>	<b>\$493.38</b>
Natural Resources & Mining	210	1,368	1,385	1,757	7,979,944	408.32
Construction	203	1,154	1,181	1,179	8,123,582	533.49
Trade, Transportation & Utilities	883	10,362	10,099	10,161	68,502,049	516.24
Wholesale Trade	182	2,048	2,030	2,007	17,308,700	656.42
Retail Trade	499	5,373	5,090	5,073	23,777,036	353.18
Transportation, Warehousing & Utilities	202	2,941	2,979	3,081	27,416,313	702.90
Financial Activities	277	1,573	1,572	1,556	10,568,070	518.78
Professional & Business Services	291	1,403	1,409	1,346	9,088,880	504.43
Education & Health Services	747	5,460	5,585	5,612	35,272,235	488.67
Leisure & Hospitality	237	3,579	3,650	3,555	9,332,801	199.71
Local Government	140	3,188	4,779	5,855	31,717,527	529.55
State Government	68	2,154	2,168	2,193	15,928,164	564.19
Other	386	5,444	5,435	5,532	42,287,974	594.65

Eastern Workforce Includes these counties: Crittenden, Cross, Lee, Phillips, and Saint Francis.

**TABLE 8. WORKFORCE INFORMATION AREA, SUMMARY  
EMPLOYMENT AND TOTAL EARNINGS, BY INDUSTRY  
THIRD QUARTER 2006**

NORTH AMERICAN INDUSTRY CLASSIFICATION SYSTEM INDUSTRY GROUP	NUMBER OF EMPLOYING UNITS	EMPLOYMENT			TOTAL EARNINGS	AVERAGE WEEKLY EARNINGS
		JULY	AUGUST	SEPTEMBER	JUL. - SEP. 2006	
<b>NORTH CENTRAL WORKFORCE INFORMATION</b>	<b>5,543</b>	<b>66,380</b>	<b>68,871</b>	<b>70,966</b>	<b>\$434,318,899</b>	<b>\$486.03</b>
Construction	499	3,007	2,996	2,961	20,481,953	527.29
Manufacturing	307	13,134	13,320	13,210	104,146,691	605.94
Trade, Transportation & Utilities	1,517	15,590	15,737	15,588	96,381,444	474.09
Retail Trade	946	9,251	9,369	9,306	42,398,710	350.37
Other Trade, Transportation & Utilities	571	6,339	6,368	6,282	53,982,734	656.04
Financial Activities	529	2,671	2,688	2,694	18,285,600	524.00
Professional & Business Services	456	3,177	3,175	3,309	18,626,823	444.93
Education & Health Services	838	11,329	11,522	11,555	79,537,175	533.47
Leisure & Hospitality	447	6,584	6,578	6,449	15,858,046	186.61
Local Government	243	4,954	7,037	8,972	41,265,096	454.26
State Government	115	2,716	2,663	3,035	20,096,226	551.18
Other	592	3,218	3,155	3,193	19,639,845	473.79

North Central Workforce Includes these counties: Cleburne, Fulton, Independence, Izard, Jackson, Sharp, Stone, Van Buren, White, and Woodruff

<b>NORTHEAST WORKFORCE INFORMATION</b>	<b>6,478</b>	<b>91,981</b>	<b>94,354</b>	<b>97,048</b>	<b>\$646,714,232</b>	<b>\$526.64</b>
Natural Resources & Mining	369	2,136	2,093	2,374	12,633,438	441.53
Construction	504	3,209	3,307	3,291	24,523,256	577.06
Manufacturing	354	21,779	21,777	21,748	195,764,093	691.79
Trade, Transportation & Utilities	1,745	17,828	17,812	17,913	107,549,007	463.45
Wholesale Trade	398	3,729	3,660	3,720	30,885,996	641.60
Retail Trade	1,050	11,558	11,597	11,560	53,258,299	354.04
Transportation, Warehousing & Utilities	297	2,541	2,555	2,633	23,404,712	698.81
Financial Activities	592	3,400	3,399	3,409	25,322,718	572.46
Professional & Business Services	658	6,568	6,687	7,095	39,701,729	450.22
Education & Health Services	985	13,095	13,385	13,617	106,375,895	612.22
Leisure & Hospitality	459	7,892	7,918	7,801	19,171,242	187.38
Local Government	217	8,414	10,061	11,591	59,456,369	456.35
State Government	107	3,835	3,924	4,125	31,507,404	611.83
Other	488	3,825	3,991	4,084	24,709,081	479.17

Northeast Workforce Includes these counties: Clay, Craighead, Greene, Lawrence, Mississippi, Poinsett, and Randolph.



**TABLE 8. WORKFORCE INFORMATION AREA, SUMMARY  
EMPLOYMENT AND TOTAL EARNINGS, BY INDUSTRY  
THIRD QUARTER 2006**

NORTH AMERICAN INDUSTRY CLASSIFICATION SYSTEM INDUSTRY GROUP	NUMBER OF EMPLOYING UNITS	EMPLOYMENT			TOTAL EARNINGS	AVERAGE WEEKLY EARNINGS
		JULY	AUGUST	SEPTEMBER	JUL. - SEP. 2006	

<b>NORTHWEST WORKFORCE INFORMATION</b>	<b>14,946</b>	<b>225,615</b>	<b>230,202</b>	<b>235,681</b>	<b>\$1,869,141,523</b>	<b>\$623.78</b>
Trade, Transportation & Utilities	3,698	54,046	54,281	54,532	455,620,960	645.61
Retail Trade	2,019	26,140	26,331	26,527	148,578,754	434.03
Other Trade, Transportation & Utilities	1,679	27,906	27,950	28,005	307,042,206	844.92
Education & Health Services	1,691	23,390	23,615	23,830	196,390,147	639.81
Leisure & Hospitality	1,373	22,404	22,489	22,534	68,629,959	234.89
Local & State Government	425	18,463	22,160	28,000	193,983,973	652.34
Other	7,759	107,312	107,657	106,785	954,516,484	684.60

Northwest Workforce Includes these counties: Baxter, Benton, Boone, Carroll, Madison, Marion, Newton, Searcy, and Washington.

<b>SOUTHEAST WORKFORCE INFORMATION</b>	<b>5,535</b>	<b>72,571</b>	<b>74,562</b>	<b>77,814</b>	<b>\$535,143,321</b>	<b>\$548.99</b>
Natural Resources & Mining	398	2,925	2,906	3,288	21,998,751	556.71
Construction	392	3,300	3,362	3,409	30,360,274	695.68
Manufacturing	222	17,612	17,562	17,493	164,224,875	719.58
Trade, Transportation & Utilities	1,432	13,467	13,499	13,668	84,205,773	478.22
Wholesale Trade	259	2,459	2,435	2,460	20,180,181	633.26
Retail Trade	881	8,588	8,591	8,630	39,562,177	353.74
Transportation, Warehousing & Utilities	292	2,420	2,473	2,578	24,463,415	755.64
Local & State Government	359	11,972	13,909	16,511	98,024,004	533.61
Other	2,732	23,295	23,324	23,445	136,329,644	449.03

Southeast Workforce Includes these counties: Arkansas, Ashley, Bradley, Chicot, Cleveland, Desha, Drew, Grant, Jefferson, and Lincoln

<b>SOUTHWEST WORKFORCE INFORMATION</b>	<b>5,807</b>	<b>82,552</b>	<b>83,638</b>	<b>86,869</b>	<b>\$611,813,320</b>	<b>\$557.92</b>
Natural Resources & Mining	410	2,801	2,831	2,887	24,728,659	669.87
Trade, Transportation & Utilities	1,533	15,318	15,400	15,332	102,521,195	513.76
Education & Health Services	768	9,272	9,344	9,392	56,369,071	464.45
Local Government	266	6,428	7,652	11,010	51,160,314	470.56
State Government	150	3,203	3,144	3,255	25,424,857	611.05
Other	2,680	45,530	45,267	44,993	351,609,224	597.54

Southwest Workforce Includes these counties: Calhoun, Columbia, Dallas, Hempstead, Howard, Lafayette, Little River, Miller, Nevada, Ouachita, Sevier, and Union

**TABLE 8. WORKFORCE INFORMATION AREA, SUMMARY  
EMPLOYMENT AND TOTAL EARNINGS, BY INDUSTRY  
THIRD QUARTER 2006**

NORTH AMERICAN INDUSTRY CLASSIFICATION SYSTEM INDUSTRY GROUP	NUMBER OF EMPLOYING UNITS	EMPLOYMENT			TOTAL EARNINGS	AVERAGE WEEKLY EARNINGS
		JULY	AUGUST	SEPTEMBER	JUL. - SEP. 2006	
<b>WEST CENTRAL WORKFORCE INFORMATION</b>	<b>8,248</b>	<b>105,202</b>	<b>106,758</b>	<b>110,047</b>	<b>\$707,443,756</b>	<b>\$507.00</b>
Natural Resources & Mining	265	2,295	2,264	2,088	17,388,301	603.68
Construction	904	5,723	5,740	6,075	44,870,811	590.42
Trade, Transportation & Utilities	2,005	21,763	21,808	21,968	144,107,161	507.42
Financial Activities	862	4,129	4,142	4,080	30,328,477	566.66
Education & Health Services	1,123	15,219	15,427	15,461	118,083,859	591.02
Local Government	230	7,498	8,894	11,758	58,383,639	478.62
State Government	134	4,378	4,727	5,254	34,881,541	560.60
Other	2,725	44,197	43,756	43,363	259,399,967	455.86

West Central Workforce Includes these counties: Clark, Conway, Garland, Hot Spring, Johnson, Montgomery, Perry, Pike, Pope, and Yell

<b>WESTERN WORKFORCE INFORMATION</b>	<b>6,397</b>	<b>108,274</b>	<b>111,425</b>	<b>112,360</b>	<b>\$815,360,955</b>	<b>\$566.65</b>
Natural Resources & Mining	163	2,366	2,339	2,454	30,470,206	982.20
Trade, Transportation & Utilities	1,644	22,937	22,972	23,010	154,774,755	518.25
Wholesale Trade	386	3,561	3,585	3,601	34,212,979	734.65
Retail Trade	961	12,371	12,443	12,373	60,411,635	374.89
Transportation, Warehousing & Utilities	297	7,005	6,944	7,036	60,150,141	661.46
Financial Activities	664	3,774	3,780	3,772	31,075,909	633.18
Professional & Business Services	792	10,505	10,907	10,683	72,038,233	517.97
Education & Health Services	813	13,423	13,533	13,496	117,543,877	670.56
Leisure & Hospitality	518	8,408	8,438	8,458	22,822,928	208.14
Local & State Government	232	7,623	10,239	11,990	71,819,553	555.20
Other	1,571	39,238	39,217	38,497	314,815,494	621.19

Western Workforce Includes these counties: Crawford, Franklin, Logan, Polk, Scott, and Sebastian

