

Arkansas Covered Employment & Earnings

Jobs for People. People for Jobs.

DWS
Department of
WORKFORCE**Services**

First Quarter
2006

**COVERED EMPLOYMENT AND EARNINGS
STATE OF ARKANSAS
FIRST QUARTER 2006**

**MIKE BEEBE, GOVERNOR
STATE OF ARKANSAS**

**ARTEE WILLIAMS, DIRECTOR
DEPARTMENT OF WORKFORCE SERVICES**

**PUBLISHED BY
LABOR MARKET INFORMATION & ANALYSIS
BUREAU OF LABOR STATISTICS PROGRAMS
POST OFFICE BOX 2981
LITTLE ROCK, ARKANSAS 72203-2981
BERNADETTE COLEMAN, BLS PROGRAMS MANAGER
TELEPHONE: (501) 682-3159**

STATE OF ARKANSAS HOME PAGE: <http://www.arkansas.gov>

DEPARTMENT OF WORKFORCE SERVICES HOME PAGE: <http://www.arkansas.gov/esd/>

**INTERNET SITE FOR LABOR MARKET INFORMATION:
<http://www.discoverarkansas.net>**

**Equal Opportunity Employer/Program
Auxiliary aids and services are available upon request to individuals with disabilities.
TTD/TTY Voice: 1-800-285-1121 TDD: 1-800-285-1131**

RELEASED: AUGUST 2007

TABLE OF CONTENTS

DESCRIPTION OF DATA	Page
Industry Classification	1
Definition of Covered Employment and Earnings	2
Federal Government Employment	2
County Classification	2
Significant Developments During First Quarter 2006	3

LIST OF GRAPHS AND TABLES

Graph 1	Total Covered Employment for Selected Years, Arkansas	7
Graph 2	Total Covered Earnings, by Calendar Quarter for Selected Years, Arkansas	8
Table 1	Quarterly Comparison of Covered Employment and Wages, by Industry	5
Table 2	Total Covered Employment in Arkansas, 1999-2006	6
Table 3	Total Covered Earnings, 1999-2006	9
Table 4	Total Taxable Earnings, 1999-2006	10
Table 5	State Summary - Employment and Total Earnings, by Industry, First Quarter 2006	11
Table 6	County Summary - Employment and Total Earnings, by Industry, First Quarter 2006	24
Table 7	Federal Government Employment and Total Earnings in Arkansas, First Quarter 2006	62
Table 8	Workforce Information Area – Employment and Total Earnings, by Industry, First Quarter 2006	63

EMPLOYMENT AND EARNINGS UNDER THE ARKANSAS EMPLOYMENT SECURITY LAW FIRST QUARTER 2006

DESCRIPTION OF DATA

This publication contains covered employment and payroll data by industry and county for the First Quarter 2006. These data are compiled from quarterly contribution and wage reports submitted by employers subject to the Arkansas Employment Security Law. An employing unit is a single physical location where business is conducted, production takes place, or services are provided. Employment data have been tabulated for each month of the quarter by industry under the **North American Industry Classification System** (NAICS) (see "Industry Classification" below) on a statewide, county and workforce area basis. Payroll data represent the total wages paid during the quarter, and are also shown by

industry for the State and by publishable industry groups for each county and workforce area. The tabulation of this data is a joint effort in conjunction with the U.S. Bureau of Labor Statistics. In addition, there are tables included which set out total covered employment by months, quarterly payrolls, and average weekly earnings for the years 1999 through 2006. Data contained in this publication are subject to revision. These revisions will be reflected in the 2006 Annual Covered Employment and Earnings publication. Because of industry code changes between years, substantial employment and wage shifts among industries are anticipated.

INDUSTRY CLASSIFICATION

Previously published industry data **will not** be comparable in all instances with currently published data since industry codes have been revised according to the following Manuals: (a) between January 1, 1958 and December 31, 1967, industry codes were assigned under the 1957 Standard Industrial Classification (SIC) Manual; (b) between January 1, 1968 and December 31, 1974, industry codes were assigned under the 1967 Standard Industrial Classification (SIC) Manual; (c) between January 1, 1975 and December 31, 1987, industry codes were assigned under the 1972 Standard Industrial Classification (SIC) Manual; (d) between January 1, 1988 and December 31, 2000, industry codes were assigned under the 1987 Standard Industrial Classification (SIC) Manual; and (e) since January 1, 2001, industry codes have been assigned under the 2002 North American Industry Classification System (NAICS) Manual. **The NAICS Manual represents a significant change in coding methodology as compared to the**

SIC Manual. One of the most significant changes involves how NAICS treats auxiliary units. Auxiliary units are establishments primarily engaged in performing management or support services for other establishments of the same enterprise. The SIC code for these units was based on the activity of the enterprise served. The NAICS code is based on the actual activities that the establishment performs. Comparisons of many industries **should not be made** between this publication and previous Covered Employment and Earnings publications that were based on SIC. Even though some titles are the same or similar, in nature, NAICS and SIC could differ in the classification of employers. The implementation of NAICS represents a profound change for statistical programs, and will create significant benefits along with transition obstacles for both data collectors and data users. A summary is available on the NAICS home page at <http://www.census.gov/naics>.

DEFINITION OF COVERED EMPLOYMENT AND EARNINGS

Covered Employment is the number of workers employed by employers subject to the Arkansas Employment Security Law who worked or received pay for the payroll period including the 12th of the month. An employer is subject to the law when they employ one or more employees in each of ten days during the current or preceding calendar year.

Currently excluded from coverage is employment covered by the Railroad Unemployment Insurance Act, some domestic service workers, employees of small agricultural establishments, self-employed and unpaid family workers, insurance and real estate

agents who are on commission only, and employees of churches and religious organizations except separately incorporated schools. The payroll information in this publication includes all wages and salaries paid to any covered employees by their employers including bonuses, commissions, and cash values of remuneration received in any medium other than cash. These wages include both taxable and nontaxable wages. Only the first \$10,000 paid to each worker by an employer in the calendar year is taxable under the Arkansas Employment Security Law.

FEDERAL GOVERNMENT EMPLOYMENT

Table 7 on page 62 lists the total number of civilians employed by the Federal Government in Arkansas during the First Quarter 2006. Employment and wage data are set out by industry divisions. These data are obtained from required reports submitted by various

government agencies having employment in the State. Civilian Federal workers are covered by the Unemployment Compensation for Federal Employees (UCFE) program.

COUNTY CLASSIFICATION

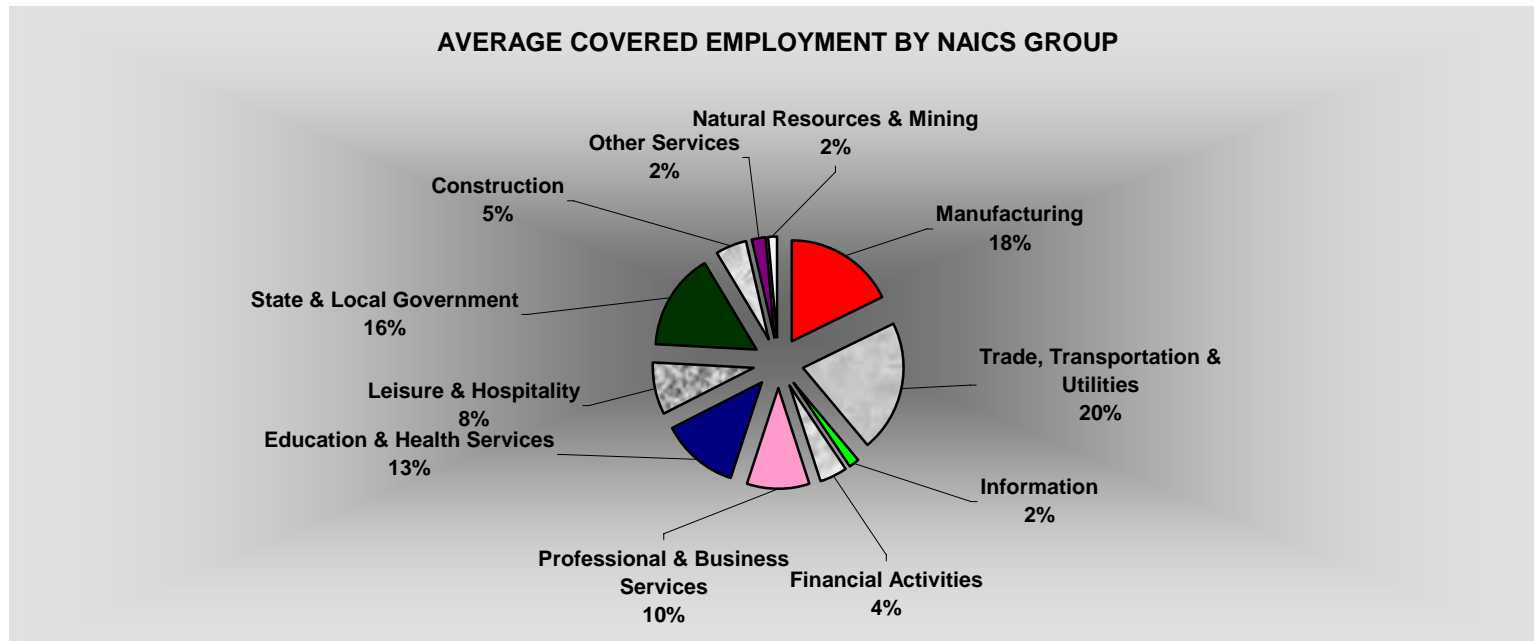
Employment and payroll data by county are classified according to the county where the workers are employed. Employers with operations in more than one county are requested to furnish this agency with a breakdown of employment and wages for at least one quarter of each year by the counties in which they operate. Many such employers submit county data with each regular contribution report. **Note:** This information is invaluable in the preparation of monthly employment and payroll data by county.

Employment and payroll data for multi - area employers, who do not furnish county data each quarter of the year, are prorated by county on the basis of one quarter's information. The "rest-of-state" table that appears on page 61 of this publication includes data on firms that **did not** provide a county breakdown of employment and payrolls. It also includes sales, and all other type of personnel with no permanent place of work, as well as employment of employers with no established place of business in Arkansas.

SIGNIFICANT DEVELOPMENTS DURING FIRST QUARTER 2006

AVERAGE EMPLOYMENT CHANGES

Covered employment averaged 1,140,049 during the First Quarter 2006 (see table 1), a decrease of 5,254 (-0.5%) from the previous quarter and 26,251 (2.4%) above the average recorded one-year ago. This *over-the-year* increase is more significant when used as an economic indicator. This *over-the-year* comparison allows for the disregarding of many seasonal factors that are evident when making an *over-the-quarter* comparison.

**EMPLOYMENT CHANGES FROM FOURTH QUARTER 2005**

Over the quarter losses were recorded in six of the eleven industry groups (see table 1). Trade, Transportation and Utilities experienced the biggest drop of 4,323 employees. The focus of the decrease was in the trade industries with 79% of the decline. This is mainly due to the end of the holiday season as retailers release temporary workers. The Natural Resources and Mining (-1,655) sector had a seasonal contraction with the beginning of winter. Construction continued its downward path with a loss of 923 jobs. Other sectors

with a decline included Professional & Business Services (-264), Information (-249), and Education & Health Services (-196).

Gains were recorded in five industries. State and Local Government recorded the largest increase of 1,260 employees. This increase was mainly attributed to the return of educational facilities as employment returned to normal levels after the holiday break.

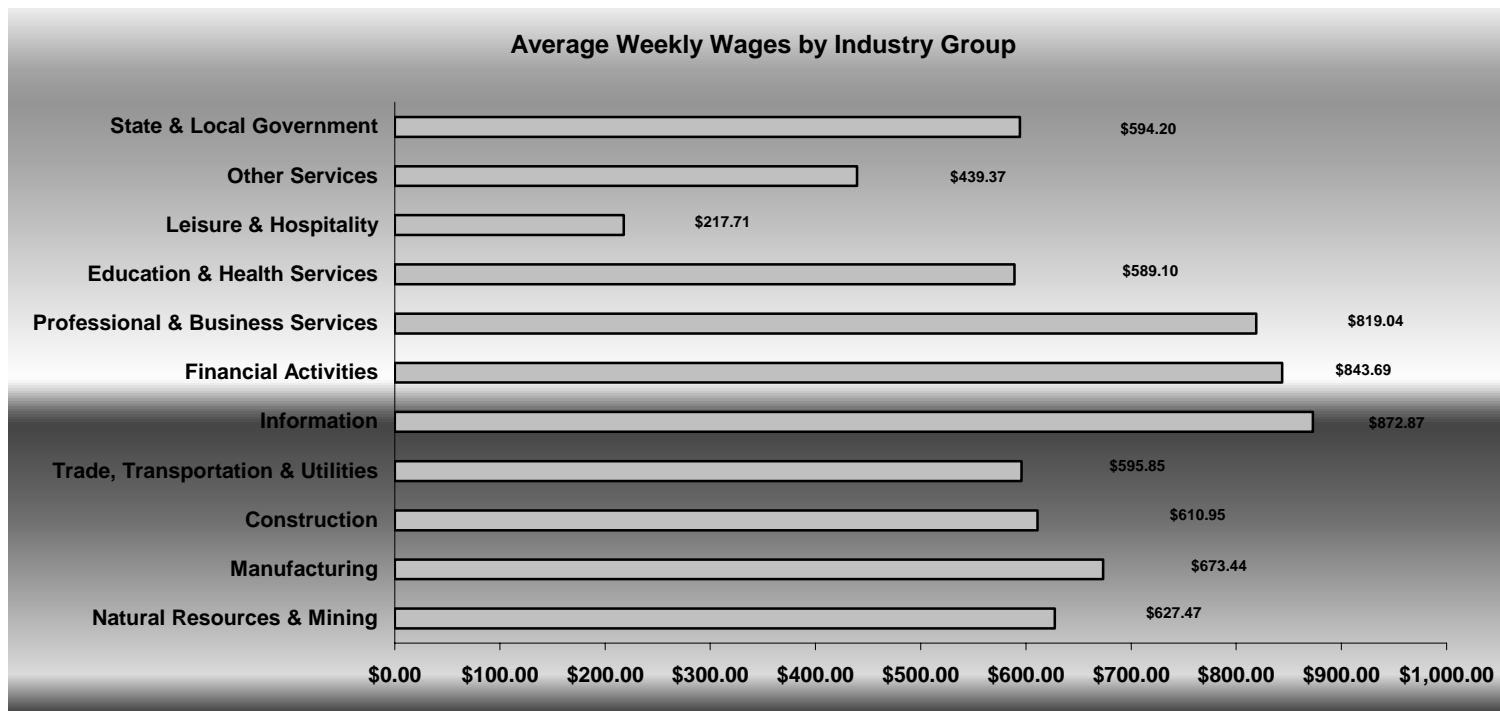
EMPLOYMENT CHANGES FROM FIRST QUARTER 2005

Over-the-year gains were recorded in nine industry groups while two recorded losses (see table 1). Significant gains were posted in State & Local Government (+5,214), Professional & Business Services (+4,646), and Educational & Health Services (+4,489). The only losses occurred in Information (-558) and Manufacturing (-99).

COVERED WAGES

Wages paid to covered workers totaled \$9,086,373,822 for the First Quarter 2006 (see table 1), for an average weekly wage of \$613.09 (see table 5). Employees in Little River County recorded the highest average weekly wage (\$813.60), and workers in Newton County the lowest (\$343.14) (see table 6).

The Information sector recorded the highest average weekly wage for the State of Arkansas at \$872.87, while the Leisure & Hospitality sector recorded the lowest at \$217.71 for the State of Arkansas (see table 5).



Note: Because of industry code changes between years, substantial employment and wage shifts among industries are anticipated.

TABLE 1. QUARTERLY COMPARISON OF COVERED EMPLOYMENT AND WAGES, BY INDUSTRY

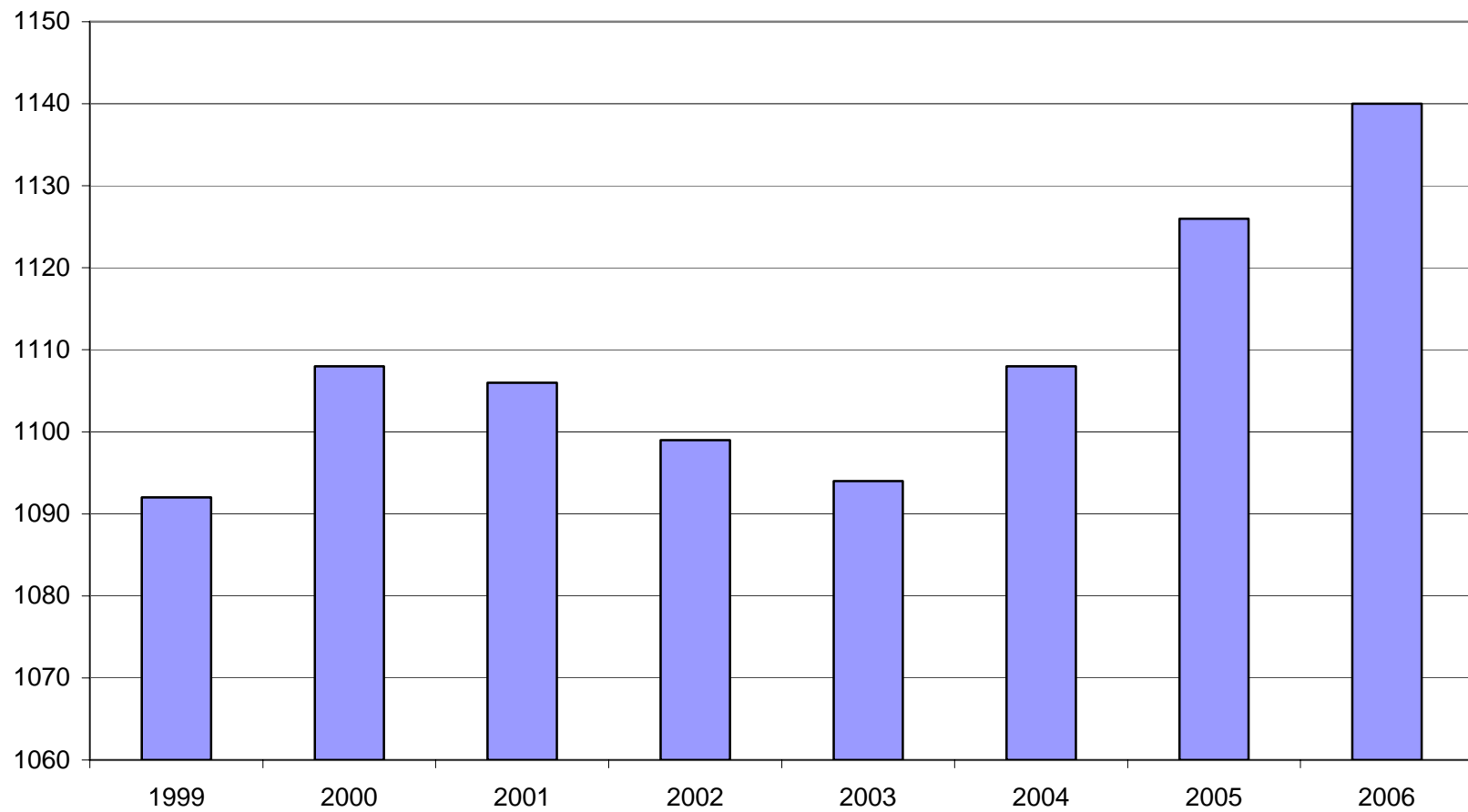
North American Industry Classification System Industry Group	Number of Employing Units	Average Covered Employment		Net Change From:		Total Wages Paid	
		January – March 2006 Monthly Average	% of Total	Oct. – Dec. 2005	Jan. – Mar. 2005	January – March 2006	% of Total
Total	79,468	1,140,049	100.0	-5,254	26,251	\$9,086,373,822	100.0
Natural Resources and Mining	2,346	17,167	1.5	-1,655	264	140,031,023	1.5
Agriculture, Forestry, Fishing and Hunting	1,998	12,668	1.1	-1,853	-420	80,834,614	0.9
Mining	348	4,499	0.4	198	684	59,196,409	0.7
Construction	7,842	54,896	4.8	-923	3,222	436,002,960	4.8
Manufacturing	3,601	201,132	17.6	63	-99	1,760,850,776	19.4
Trade, Transportation, and Utilities	20,907	241,774	21.2	-4,323	4,016	1,872,779,294	20.6
Wholesale Trade	6,300	47,257	4.1	-518	707	582,499,380	6.4
Retail Trade	11,290	131,971	11.6	-2,916	1,966	672,362,609	7.4
Transportation and Warehousing	2,953	55,827	4.9	-936	1,100	506,919,838	5.6
Utilities	364	6,719	0.6	46	243	110,997,467	1.2
Information	1,202	19,746	1.7	-249	-558	224,068,142	2.5
Financial Activities	8,015	50,575	4.4	244	1,673	554,707,334	6.1
Finance and Insurance	4,709	36,741	3.2	203	1,052	461,417,690	5.1
Real Estate and Rental and Leasing	3,306	13,834	1.2	41	620	93,289,644	1.0
Professional and Business Services	10,719	113,243	9.9	-264	4,646	1,205,760,645	13.3
Professional and Technical Services	6,770	37,536	3.3	1,944	1,520	417,654,902	4.6
Management of Companies and Enterprises	496	23,874	2.1	225	442	533,503,984	5.9
Administrative and Waste Services	3,453	51,834	4.5	-2,432	2,685	254,601,759	2.8
Education and Health Services	10,081	143,143	12.6	-196	4,489	1,096,228,117	12.1
Educational Services	549	9,023	0.8	-330	519	56,792,202	0.6
Health Care and Social Assistance	9,532	134,120	11.8	135	3,971	1,039,435,915	11.4
Leisure and Hospitality	6,054	93,618	8.2	531	3,218	264,955,118	2.9
Arts, Entertainment and Recreation	926	8,450	0.7	68	306	32,584,282	0.4
Accommodation and Food Services	5,128	85,167	7.5	462	2,911	232,370,836	2.6
Other Services	5,504	25,164	2.2	258	165	143,730,814	1.6
State and Local Government	3,197	179,591	15.8	1,260	5,214	1,387,259,599	15.3
Local Government	2,004	117,430	10.3	-284	2,710	821,376,924	9.0
State Government	1,193	62,161	5.5	1,544	2,504	565,882,675	6.2
Nonclassifiable Establishments	0	0	0.0	0	0	0	0.0

Note: Items do not necessarily add to totals because of rounding. Because of industry code changes between years, substantial employment and wage shifts among industries are anticipated.

TABLE 2. TOTAL COVERED EMPLOYMENT IN ARKANSAS

Period	1999	2000	2001	2002	2003	2004	2005	2006
Average	1,092,351	1,108,479	1,106,066	1,098,558	1,094,087	1,108,264	1,126,778	1,140,049
January	1,065,920	1,089,943	1,096,009	1,081,635	1,082,740	1,089,510	1,102,768	1,131,326
February	1,074,315	1,096,113	1,101,616	1,086,793	1,084,880	1,094,626	1,110,577	1,137,832
March	1,084,653	1,109,144	1,112,143	1,098,500	1,092,172	1,105,266	1,122,619	1,150,990
April	1,093,574	1,111,525	1,115,526	1,103,399	1,095,341	1,111,020	1,129,785	N/A
May	1,098,539	1,116,760	1,119,815	1,111,998	1,103,099	1,117,144	1,135,567	N/A
June	1,101,748	1,121,225	1,119,734	1,112,028	1,099,688	1,117,010	1,136,118	N/A
July	1,062,563	1,075,066	1,071,921	1,065,697	1,053,220	1,071,463	1,090,071	N/A
August	1,081,260	1,096,848	1,094,160	1,086,011	1,077,775	1,094,871	1,114,098	N/A
September	1,108,212	1,123,725	1,115,976	1,113,148	1,105,980	1,122,704	1,144,815	N/A
October	1,110,604	1,122,884	1,110,994	1,108,447	1,112,550	1,123,246	1,142,300	N/A
November	1,112,003	1,120,620	1,109,012	1,107,611	1,109,712	1,125,061	1,145,667	N/A
December	1,114,823	1,117,892	1,105,887	1,107,425	1,111,892	1,127,250	1,146,954	N/A

AVERAGE TOTAL COVERED EMPLOYMENT GRAPH 1
In Thousands



TOTAL COVERED EARNINGS BY CALENDAR QUARTER, GRAPH 2
In Thousands

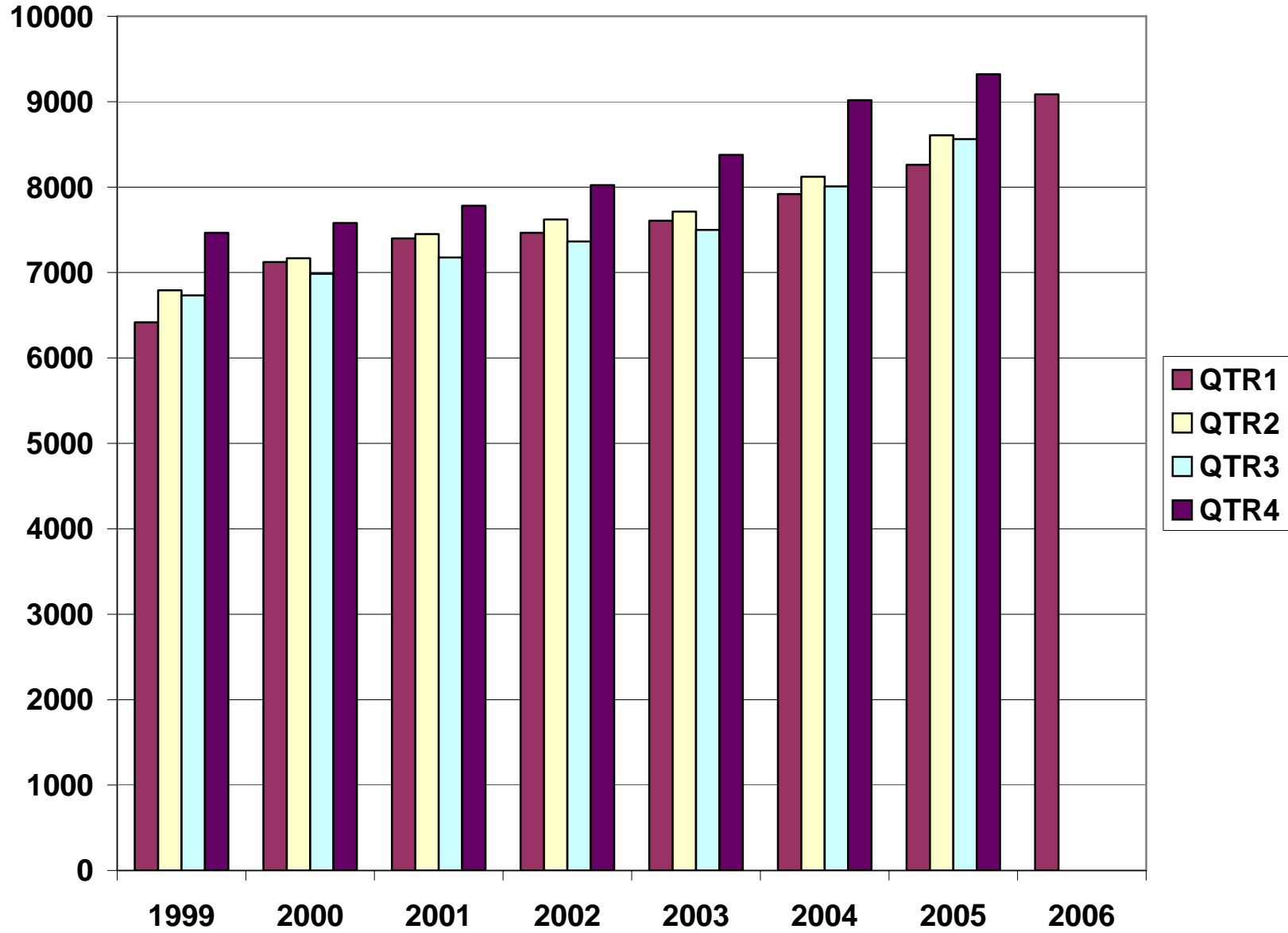


TABLE 3. TOTAL COVERED EARNINGS, 1999- 2006

Period	1999	2000	2001	2002
Total	\$27,407,925,462	\$28,853,716,151	\$29,807,669,666	\$30,472,854,103
January - March	6,418,456,638	7,122,636,896	7,398,887,532	7,465,250,305
April - June	6,791,960,679	7,166,049,182	7,448,023,298	7,621,878,775
July - September	6,733,480,079	6,986,085,106	7,177,293,061	7,361,666,511
October - December	7,464,028,066	7,578,944,967	7,783,465,775	8,024,058,512
Average Weekly Earnings	482.51	500.58	518.26	533.44

Period	2003	2004	2005	2006
Total	\$31,202,576,767	\$33,068,189,304	\$34,753,437,458	\$9,086,373,822
January - March	7,608,130,008	7,918,843,610	8,261,153,981	9,086,373,822
April - June	7,714,813,038	8,122,370,361	8,607,722,353	N/A
July - September	7,500,204,764	8,010,300,454	8,562,885,196	N/A
October - December	8,379,428,957	9,016,674,879	9,321,675,928	N/A
Average Weekly Earnings	548.45	573.80	593.14	664.18

TABLE 4. TOTAL TAXABLE EARNINGS, 1999 - 2006

Period	1999	2000	2001	2002
Total	\$8,807,445,422	\$9,047,924,530	\$9,003,189,480	\$8,887,270,978
January - March	4,203,067,856	4,560,783,991	4,670,296,360	4,668,534,587
April - June	2,325,649,764	2,260,680,255	2,219,485,263	2,162,971,435
July - September	1,267,562,743	1,250,832,297	1,190,098,737	1,158,197,858
October - December	1,011,165,059	975,627,987	923,309,120	897,567,098

Period	2003	2004	2005	2006
Total	\$9,154,938,743	\$9,731,247,501	\$9,991,605,239	\$5,422,414,259
January - March	4,737,918,796	4,931,559,230	5,062,670,306	5,422,414,259
April - June	2,270,519,362	2,451,454,749	2,506,505,721	N/A
July - September	1,188,681,170	1,318,017,835	1,353,660,445	N/A
October - December	957,819,415	1,030,215,687	1,068,768,767	N/A

**TABLE 5. STATEWIDE SUMMARY
EMPLOYMENT AND TOTAL EARNINGS, BY INDUSTRY
FIRST QUARTER 2006**

NORTH AMERICAN INDUSTRY CLASSIFICATION SYSTEM INDUSTRY GROUPS		NUMBER OF	EMPLOYMENT			TOTAL EARNINGS	AVERAGE
		EMPLOYING UNITS	JANUARY	FEBRUARY	MARCH	JANUARY - MARCH	WEEKLY EARNINGS
TOTAL, ALL INDUSTRIES		79,468	1,131,326	1,137,832	1,150,990	\$9,086,373,822	\$613.09
NATURAL RESOURCES & MINING		2,346	16,699	17,172	17,629	\$140,031,023	\$627.47
11	AGRICULTURE, FORESTRY, FISHING & HUNTING	1,998	12,337	12,645	13,021	\$80,834,614	\$490.86
111	CROP PRODUCTION	719	2,967	3,007	3,403	\$15,178,820	\$373.55
1111	Oilseed and Grain Farming	425	1,522	1,521	1,685	7,437,047	363.00
1112	Vegetable and Melon Farming	11	138	138	145	439,393	240.85
1113	Fruit and Tree Nut Farming	9	61	65	66	262,594	315.62
1114	Greenhouse & Nursery Production	49	317	353	445	2,034,564	421.09
1119	Other Crop Farming	225	929	930	1,062	5,005,222	395.43
112	ANIMAL PRODUCTION	254	3,603	3,615	3,644	\$26,658,690	\$566.38
1121	Cattle Ranching and Farming	75	309	309	313	1,930,938	478.63
1122	Hog and Pig Farming	7	145	144	141	1,300,244	
1123	Poultry and Egg Production	87	2,579	2,578	2,570	19,808,970	591.60
1125	Animal Aquaculture	58	493	501	533	3,191,323	482.29
1129	Other Animal Production	27	77	83	87	427,215	399.14
113	FORESTRY AND LOGGING	566	3,089	3,059	3,059	\$21,490,533	\$538.65
1131	Timber Tract Operations	45	252	254	253	2,669,550	811.66
1132	Forest Nurseries & Gathering of Forest Products	6	33	34	33	269,739	622.47
1133	Logging	515	2,804	2,771	2,773	18,551,244	512.82
	OTHER	459	2,678	2,964	2,915	\$17,506,571	\$472.13
21	MINING	348	4,362	4,527	4,608	\$59,196,409	\$1,012.13
211	OIL AND GAS EXTRACTION	80	389	389	398	\$5,582,453	\$1,095.46
212	MINING (EXCEPT OIL AND GAS)	102	1,970	1,997	2,012	\$23,086,411	\$891.06
213	SUPPORT ACTIVITIES FOR MINING	166	2,003	2,141	2,198	\$30,527,545	\$1,110.82

**TABLE 5. STATEWIDE SUMMARY
EMPLOYMENT AND TOTAL EARNINGS, BY INDUSTRY
FIRST QUARTER 2006**

NORTH AMERICAN INDUSTRY CLASSIFICATION SYSTEM INDUSTRY GROUPS		NUMBER OF	EMPLOYMENT			TOTAL EARNINGS	AVERAGE
		EMPLOYING UNITS	JANUARY	FEBRUARY	MARCH	JANUARY - MARCH	WEEKLY EARNINGS
CONSTRUCTION		7,842	54,415	54,578	55,694	\$436,002,960	\$610.95
236	CONSTRUCTION OF BUILDINGS	2,203	12,888	12,742	12,973	\$109,436,645	\$654.21
2361	Residential Building Construction	1,596	4,617	4,530	4,719	33,447,991	556.67
2362	Nonresidential Building Construction	607	8,271	8,212	8,254	75,988,654	708.89
237	HEAVY & CIVIL ENGINEERING CONSTRUCTION	882	9,887	10,032	10,114	\$85,428,235	\$656.42
2371	Utility System Construction	419	4,704	4,378	4,542	35,618,961	603.33
2372	Land Subdivision	128	428	429	468	4,113,611	716.45
2373	Highway, Street & Bridge Construction	219	3,346	3,353	3,442	27,505,574	625.92
2379	Other Heavy Construction	116	1,409	1,872	1,662	18,190,089	849.22
238	SPECIALTY TRADE CONTRACTORS	4,757	31,640	31,804	32,607	\$241,138,080	\$579.35
2381	Building Foundation & Exterior Contractors	941	6,173	6,227	6,485	46,122,518	563.60
2382	Building Equipment Contractors	2,088	15,448	15,468	15,715	126,946,703	628.24
2383	Building Finishing Contractors	885	5,040	5,115	5,223	33,326,224	500.11
2389	Other Specialty Trade Contractors	843	4,979	4,994	5,184	34,742,635	528.97
MANUFACTURING		3,601	201,075	201,124	201,197	\$1,760,850,776	\$673.44
311	FOOD MANUFACTURING	313	51,391	51,074	51,041	\$349,536,601	\$525.47
3111	Animal Food Manufacturing	56	1,362	1,360	1,381	12,604,013	708.90
3112	Grain and Oilseed Milling	29	2,458	2,456	2,442	20,756,217	651.16
3114	Fruit, Vegetable & Specialty Food	35	6,979	6,906	6,948	56,530,797	626.20
3115	Dairy Product Manufacturing	13	715	717	732	6,746,022	719.40
3116	Animal Slaughtering & Processing	91	34,411	34,267	34,154	209,427,571	469.98
3118	Bakeries and Tortilla Manufacturing	52	3,500	3,441	3,454	26,265,503	583.09
3119	Other Food Manufacturing	24	1,735	1,695	1,694	16,221,526	730.57
	Other	13	231	232	236	984,952	325.17
312	BEVERAGE & TOBACCO PRODUCT MFG.	36	1,231	1,224	1,227	\$11,649,847	\$730.15
313	TEXTILE MILLS	19	403	412	418	\$4,540,519	\$849.81
3132	Fabric Mills	6	333	339	337	4,059,766	928.51
3133	Textile & Fabric Finishing Mills	13	70	73	81	480,753	495.28

**TABLE 5. STATEWIDE SUMMARY
EMPLOYMENT AND TOTAL EARNINGS, BY INDUSTRY
FIRST QUARTER 2006**

NORTH AMERICAN INDUSTRY CLASSIFICATION SYSTEM INDUSTRY GROUPS		NUMBER OF	EMPLOYMENT			TOTAL EARNINGS	AVERAGE
		EMPLOYING UNITS	JANUARY	FEBRUARY	MARCH	JANUARY - MARCH	WEEKLY EARNINGS
314	TEXTILE PRODUCT MILLS	59	1,324	1,319	1,333	\$12,411,293	\$720.36
3141	Textile Furnishing Mills	17	30	31	33	133,770	328.40
3143	Other Textile Product Mills	42	1,294	1,288	1,300	12,277,523	729.85
315	APPAREL MANUFACTURING	44	1,895	1,902	1,916	\$9,087,414	\$367.07
3152	Cut & Sew Apparel Manufacturing	36	854	884	883	4,206,974	370.41
	Other	8	1,041	1,018	1,033	4,880,440	364.25
316	LEATHER & ALLIED PRODUCT MANUFACTURING	21	2,318	2,325	2,286	\$12,020,905	\$400.35
3162	Footwear Manufacturing	10	2,117	2,115	2,063	10,658,389	390.73
3169	Other Leather Product Manufacturing	11	201	210	223	1,362,516	495.94
321	WOOD PRODUCT MANUFACTURING	394	13,712	13,762	13,928	\$110,557,532	\$616.23
3211	Sawmills and Wood Preservation	182	6,187	6,213	6,252	52,902,314	654.53
3212	Veneer & Engineered Wood Products	49	3,317	3,298	3,334	30,964,865	718.24
3219	Other Wood Product Manufacturing	163	4,208	4,251	4,342	26,690,353	481.16
322	PAPER MANUFACTURING	88	12,078	11,997	11,816	\$162,365,902	\$1,043.97
3221	Pulp, Paper & Paperboard Mills	13	4,743	4,699	4,624	85,805,511	1407.74
3222	Converted Paper Product Manufacturing	75	7,335	7,298	7,192	76,560,391	809.52
323	PRINTING & RELATED SUPPORT ACTIVITIES	300	4,600	4,613	4,667	\$39,535,399	\$657.32
324	PETROLEUM AND COAL PRODUCTS MFG.	21	858	853	884	\$10,737,041	\$954.83
325	CHEMICAL MANUFACTURING	107	4,687	4,728	4,743	\$58,243,519	\$949.34
3251	Basic Chemical Manufacturing	26	1,970	1,962	1,958	28,497,180	1116.51
3252	Resin, Rubber & Artificial Fibers	5	298	299	302	4,323,604	1109.85
3253	Agricultural Chemical Manufacturing	17	347	348	350	4,038,670	891.87
3255	Paint, Coating & Adhesive Manufacturing	7	181	178	177	2,380,573	1024.93
3259	Other Chemical Preparation Manufacturing	24	938	992	1,018	9,740,060	762.45
	Other	28	953	949	938	9,263,432	752.72
326	PLASTICS & RUBBER PRODUCTS MFG.	174	13,129	13,144	13,190	\$124,539,324	\$728.27
3261	Plastics Product Manufacturing	129	7,788	7,831	7,847	65,196,927	641.16
3262	Rubber Product Manufacturing	45	5,341	5,313	5,343	59,342,397	856.06

**TABLE 5. STATEWIDE SUMMARY
EMPLOYMENT AND TOTAL EARNINGS, BY INDUSTRY
FIRST QUARTER 2006**

NORTH AMERICAN INDUSTRY CLASSIFICATION SYSTEM INDUSTRY GROUPS		NUMBER OF	EMPLOYMENT			TOTAL EARNINGS	AVERAGE
		EMPLOYING UNITS	JANUARY	FEBRUARY	MARCH	JANUARY - MARCH	WEEKLY EARNINGS
327	NONMETALLIC MINERAL PRODUCT MFG.	248	4,673	4,674	4,629	\$42,302,319	\$698.49
3271	Clay Product & Refractory Manufacturing	15	463	463	456	4,257,296	710.89
3272	Glass & Glass Product Manufacturing	14	422	422	422	3,473,286	633.12
3273	Cement & Concrete Product Manufacturing	181	2,833	2,830	2,802	24,011,718	654.60
3274	Lime & Gypsum Product Manufacturing	3	418	427	420	5,029,645	917.54
3279	Other Nonmetallic Mineral Products	35	537	532	529	5,530,374	798.65
331	PRIMARY METAL MANUFACTURING	69	8,349	8,482	8,456	\$109,511,682	\$999.40
3311	Iron & Steel Mills and Ferroalloys	8	2,093	2,089	2,042	45,568,915	1689.57
3312	Purchased Steel Product Manufacturing	14	2,336	2,370	2,419	23,226,981	752.29
3313	Alumina & Aluminum Production	19	1,803	1,882	1,853	20,783,834	866.07
3314	Other Nonferrous Metal Production	11	593	598	594	5,476,100	707.96
3315	Foundries	17	1,524	1,543	1,548	14,455,852	722.85
332	FABRICATED METAL PRODUCT MANUFACTURING	583	17,683	17,753	17,778	\$162,003,495	\$702.55
3321	Forging & Stamping	14	916	928	921	7,498,244	625.81
3322	Cutlery & Hand Tool Manufacturing	17	1,372	1,356	1,341	10,814,247	613.32
3323	Architectural & Structural Metals	204	4,992	5,051	5,107	46,876,655	714.04
3324	Boilers, Tanks & Shipping Containers	20	1,111	1,113	1,113	9,974,109	689.76
3325	Hardware Manufacturing	10	312	298	291	2,346,885	601.10
3326	Spring & Wire Product Manufacturing	16	756	749	787	5,479,557	551.71
3327	Machine Shops & Threaded Products	198	1,725	1,748	1,772	14,306,866	629.47
3328	Coating, Engraving & Heat Treating Metals	37	952	938	888	6,848,555	568.91
3329	Other Fabricated Metal Product Manufacturing	67	5,547	5,572	5,558	57,858,377	800.62
333	MACHINERY MANUFACTURING	256	14,696	14,778	14,792	\$132,023,470	\$688.27
3331	Agri., Construction & Mining Machinery	38	3,165	3,322	3,312	20,470,326	482.08
3333	Commercial & Service Industry Machinery	27	1,001	1,000	1,002	10,656,002	818.87
3334	HVAC & Commercial Refrigeration Equipment	24	4,991	4,966	4,987	50,921,500	786.34
3335	Metalworking Machinery Manufacturing	76	1,379	1,372	1,372	12,703,799	711.05
3339	Other General Purpose Machinery Manufacturing	56	3,218	3,175	3,154	27,724,326	670.15
	Other	35	942	943	965	9,547,517	773.08
334	COMPUTER & ELECTRONIC PRODUCT MFG.	80	5,488	5,563	5,505	\$46,995,874	\$655.06
3343	Audio & Video Equipment Manufacturing	10	1,231	1,295	1,296	10,757,242	649.51
3344	Semiconductors & Electronic Components	24	2,039	2,048	2,038	17,299,183	651.77
3345	Electronic Instrument Manufacturing	29	1,195	1,200	1,210	9,158,063	586.24
	Other	17	1,023	1,020	961	9,781,386	751.41

**TABLE 5. STATEWIDE SUMMARY
EMPLOYMENT AND TOTAL EARNINGS, BY INDUSTRY
FIRST QUARTER 2006**

NORTH AMERICAN INDUSTRY CLASSIFICATION SYSTEM INDUSTRY GROUPS		NUMBER OF EMPLOYING UNITS	EMPLOYMENT			TOTAL EARNINGS	AVERAGE
			JANUARY	FEBRUARY	MARCH	JANUARY - MARCH	WEEKLY EARNINGS
335	ELECTRICAL EQUIPMENT & APPLIANCES	71	13,104	12,960	12,918	\$123,789,586	\$732.82
3353	Electrical Equipment Manufacturing	24	4,966	4,963	4,958	47,182,121	731.39
	Other	47	8,138	7,997	7,960	76,607,465	733.71
336	TRANSPORTATION EQUIPMENT MANUFACTURING	175	17,020	17,091	17,165	\$148,344,620	\$667.63
3362	Motor Vehicle Body & Trailer Manufacturing	45	3,649	3,697	3,772	31,067,590	644.85
3363	Motor Vehicle Parts Manufacturing	57	6,864	6,810	6,723	51,533,046	583.04
3364	Aerospace Product & Parts Manufacturing	30	3,377	3,408	3,432	41,113,817	928.63
3366	Ship & Boat Building	24	1,683	1,702	1,681	11,855,906	540.07
	Other	19	1,447	1,474	1,557	12,774,261	658.31
337	FURNITURE & RELATED PRODUCT MFG.	273	6,659	6,623	6,648	\$48,757,043	\$564.56
3371	Household & Institutional Furniture	225	4,487	4,489	4,479	30,713,364	526.77
3372	Office Furniture & Fixtures Manufacturing	40	2,029	1,990	2,022	17,032,935	650.67
3379	Other Furniture Related Product Manufacturing	8	143	144	147	1,010,744	537.44
339	MISCELLANEOUS MANUFACTURING	270	5,777	5,847	5,857	\$41,897,391	\$553.09
3391	Medical Equipment & Supplies Manufacturing	99	2,629	2,671	2,653	20,361,613	590.83
3399	Other Miscellaneous Manufacturing	171	3,148	3,176	3,204	21,535,778	521.60
TRADE, TRANSPORTATION & UTILITIES		20,907	240,928	240,541	243,852	\$1,872,779,294	\$595.85
42	WHOLESALE TRADE	6,300	47,006	47,196	47,568	\$582,499,380	\$948.18
423	MERCHANT WHOLESALERS, DURABLE GOODS	2,108	21,735	21,834	21,918	\$236,041,621	\$831.79
4231	Motor Vehicle & Part Merchant Wholesalers	233	2,716	2,734	2,752	25,440,398	715.78
4232	Furniture & Furnishing Merchant Wholesalers	60	424	425	427	5,311,111	960.53
4233	Lumber & Supply Merchant Wholesalers	171	1,815	1,827	1,827	18,624,895	785.89
4234	Commercial Goods Merchant Wholesalers	247	2,391	2,434	2,447	37,045,068	1175.59
4235	Metal & Mineral Merchant Wholesalers	50	772	784	786	8,688,673	856.14
4236	Electric Goods Merchant Wholesalers	179	2,187	2,179	2,130	25,785,900	916.04
4237	Hardware & Plumbing Merchant Wholesalers	226	2,416	2,420	2,450	28,032,765	887.88
4238	Machinery & Supply Merchant Wholesalers	703	7,216	7,227	7,266	69,789,641	741.87
4239	Misc. Durable Goods Merchant Wholesalers	239	1,798	1,804	1,833	17,323,170	735.54

**TABLE 5. STATEWIDE SUMMARY
EMPLOYMENT AND TOTAL EARNINGS, BY INDUSTRY
FIRST QUARTER 2006**

NORTH AMERICAN INDUSTRY CLASSIFICATION SYSTEM INDUSTRY GROUPS		NUMBER OF	EMPLOYMENT			TOTAL EARNINGS	AVERAGE
		EMPLOYING UNITS	JANUARY	FEBRUARY	MARCH	JANUARY - MARCH	WEEKLY EARNINGS
424	MERCHANT WHOLESALERS, NONDURABLE GOODS	1,307	16,346	16,428	16,659	\$164,902,742	\$769.82
4241	Paper & Paper Product Merchant Wholesalers	73	1,188	1,197	1,180	12,059,610	780.64
4242	Druggists' Goods Merchant Wholesalers	56	1,212	1,206	1,221	13,413,894	850.65
4243	Apparel & Piece Goods Merchant Wholesalers	40	458	451	463	3,720,894	625.85
4244	Grocery Product Merchant Wholesalers	359	5,198	5,181	5,207	61,020,225	903.48
4245	Farm Product Merchant Wholesalers	80	857	837	835	4,794,911	437.53
4246	Chemical Merchant Wholesalers	80	440	444	444	5,316,149	923.80
4247	Petroleum Merchant Wholesalers	156	1,444	1,449	1,478	17,847,970	942.29
4248	Alcoholic Beverage Merchant Wholesalers	37	1,133	1,121	1,130	12,598,815	859.17
4249	Misc. Nondurable Goods Merchant Wholesalers	426	4,416	4,542	4,701	34,130,274	576.63
425	ELECTRONIC MARKETS & AGENTS & BROKERS	2,885	8,925	8,934	8,991	\$181,555,017	\$1,560.42
44-45	RETAIL TRADE	11,290	131,700	130,825	133,388	\$672,362,609	\$391.91
441	MOTOR VEHICLE & PARTS DEALERS	1,742	17,577	17,576	17,674	\$140,385,132	\$613.26
4411	Automobile Dealers	747	10,469	10,473	10,492	96,495,714	708.41
4412	Other Motor Vehicle Dealers	196	1,448	1,481	1,523	10,557,460	547.25
4413	Automotive Parts, Accessories & Tire Stores	799	5,660	5,622	5,659	33,331,958	454.05
442	FURNITURE & HOME FURNISHINGS STORES	608	4,101	4,087	4,163	\$25,897,644	\$483.88
4421	Furniture Stores	320	2,553	2,569	2,568	16,451,318	493.69
4422	Home Furnishings Stores	288	1,548	1,518	1,595	9,446,326	467.69
443	ELECTRONICS & APPLIANCE STORES	464	2,945	2,894	2,913	\$17,575,230	\$463.42
444	BUILDING MATERIAL & GARDEN SUPPLY STORES	821	10,866	11,211	11,557	\$74,085,732	\$508.32
4441	Building Material & Supplies Dealers	650	10,126	10,444	10,676	69,969,952	516.77
4442	Lawn & Garden Equipment & Supplies Stores	171	740	767	881	4,115,780	397.74
445	FOOD & BEVERAGE STORES	1,110	18,415	18,385	18,591	\$71,991,384	\$299.93
4451	Grocery Stores	638	16,065	16,085	16,245	61,675,463	294.10
4452	Specialty Food Stores	160	855	838	859	4,471,368	404.33
4453	Beer, Wine & Liquor Stores	312	1,495	1,462	1,487	5,844,553	303.50
446	HEALTH & PERSONAL CARE STORES	804	6,734	6,771	6,764	\$44,438,119	\$505.94
447	GASOLINE STATIONS	1,652	12,542	12,499	12,699	\$42,704,368	\$261.12
44711	Gasoline Stations with Convenience Stores	1,480	11,317	11,252	11,481	37,263,319	252.55
44719	Other Gasoline Stations	172	1,225	1,247	1,218	5,441,049	340.28

**TABLE 5. STATEWIDE SUMMARY
EMPLOYMENT AND TOTAL EARNINGS, BY INDUSTRY
FIRST QUARTER 2006**

NORTH AMERICAN INDUSTRY CLASSIFICATION SYSTEM INDUSTRY GROUPS		NUMBER OF	EMPLOYMENT			TOTAL EARNINGS	AVERAGE
		EMPLOYING UNITS	JANUARY	FEBRUARY	MARCH	JANUARY - MARCH	WEEKLY EARNINGS
448	CLOTHING & CLOTHING ACCESSORIES STORES	1,050	8,479	8,125	8,293	\$29,058,168	\$269.34
4481	Clothing Stores	699	6,284	5,980	6,149	19,161,938	240.16
4482	Shoe Stores	176	1,182	1,177	1,187	4,107,792	267.33
4483	Jewelry, Luggage & Leather Goods Stores	175	1,013	968	957	5,788,438	454.66
451	SPORTING GOODS, HOBBY, BOOK & MUSIC STORES	565	4,519	4,289	4,360	\$15,452,296	\$270.80
4511	Sporting Goods & Musical Instrument Stores	400	2,949	2,845	2,878	11,018,207	293.20
4512	Book, Periodical & Music Stores	165	1,570	1,444	1,482	4,434,089	227.59
452	GENERAL MERCHANDISE STORES	698	36,727	36,257	37,738	\$167,835,239	\$349.81
453	MISCELLANEOUS STORE RETAILERS	1,450	6,751	6,747	6,711	\$29,751,713	\$339.74
4531	Florists	272	1,030	1,115	1,026	3,891,947	283.24
4532	Office Supplies, Stationery & Gift Stores	403	2,490	2,453	2,470	11,511,239	358.35
4533	Used Merchandise Stores	219	836	790	792	3,472,365	331.40
4539	Other Miscellaneous Store Retailers	556	2,395	2,389	2,423	10,876,162	348.26
454	NONSTORE RETAILERS	326	2,044	1,984	1,925	\$13,187,584	\$511.22
4541	Electronic Shopping & Mail -Order Houses	63	393	367	338	2,835,706	595.99
4542	Vending Machine Operators	82	693	685	680	4,120,623	462.06
4543	Direct Selling Establishments	181	958	932	907	6,231,255	514.12
48-49	TRANSPORTATION & WAREHOUSING	2,953	55,504	55,812	56,165	\$506,919,838	\$698.48
481	AIR TRANSPORTATION	48	994	985	999	\$14,756,976	\$1,143.54
484	TRUCK TRANSPORTATION	1,977	34,952	35,261	35,483	\$328,618,449	\$717.48
4841	General Freight Trucking	1,242	30,052	30,328	30,490	290,609,493	738.02
4842	Specialized Freight Trucking	735	4,900	4,933	4,993	38,008,956	591.62
485	TRANSIT & GROUND PASSENGER TRANS.	56	972	977	1,002	\$3,782,956	\$295.83
4853	Taxi & Limousine Service	18	230	238	243	671,960	218.10
4854	School & Employee Bus Transportation	8	402	402	411	1,925,826	365.78
4855	Charter Bus Industry Service	8	85	89	98	402,521	341.51
4859	Other Ground Passenger Transportation	14	162	163	165	504,070	237.40
	Other	8	93	85	85	278,579	244.44
486	PIPELINE TRANSPORTATION	65	942	935	926	\$13,576,704	\$1,117.76

**TABLE 5. STATEWIDE SUMMARY
EMPLOYMENT AND TOTAL EARNINGS, BY INDUSTRY
FIRST QUARTER 2006**

NORTH AMERICAN INDUSTRY CLASSIFICATION SYSTEM INDUSTRY GROUPS		NUMBER OF	EMPLOYMENT			TOTAL EARNINGS	AVERAGE
		EMPLOYING UNITS	JANUARY	FEBRUARY	MARCH	JANUARY - MARCH	WEEKLY EARNINGS
488	SUPPORT ACTIVITIES FOR TRANSPORTATION	433	4,800	4,788	4,856	\$48,468,312	\$774.37
4881	Support Activities for Air Transportation	106	1,659	1,665	1,685	14,163,123	652.51
4882	Support Activities for Rail Transportation	33	392	394	407	3,136,514	606.71
4883	Support Activities for Water Transportation	29	657	631	621	6,545,554	791.26
4884	Support Activities for Road Transportation	102	452	465	495	2,757,735	450.71
4885	Freight Transportation Arrangement	140	1,544	1,538	1,549	21,323,311	1062.57
4889	Other Support Activities for Transportation	23	96	95	99	542,075	431.36
492	COURIERS & MESSENGERS	138	3,147	3,154	3,167	\$27,605,388	\$672.84
4921	Couriers	86	2,899	2,924	2,937	26,205,634	690.35
4922	Local Messengers & Local Delivery	52	248	230	230	1,399,754	456.24
493	WAREHOUSING & STORAGE	212	9,497	9,503	9,514	\$68,494,409	\$554.34
	OTHER	24	200	209	218	\$1,616,644	\$595.01
22	UTILITIES	364	6,718	6,708	6,731	\$110,997,467	\$1,270.76
2211	Power Generation & Supply	166	5,029	5,014	5,017	91,312,526	1399.21
2212	Natural Gas Distribution	34	882	896	907	13,953,861	1199.30
2213	Water, Sewage and Other Systems	164	807	798	807	5,731,080	548.32
INFORMATION		1,202	19,705	19,756	19,778	\$224,068,142	\$872.87
511	PUBLISHING INDUSTRIES, EXCEPT INTERNET	250	6,323	6,357	6,390	\$49,695,567	\$601.37
5111	Newspaper, Book & Directory Publishers	219	6,057	6,090	6,120	45,966,773	580.70
5112	Software Publishers	31	266	267	270	3,728,794	1071.60
512	MOTION PICTURE & SOUND RECORDING INDUSTRY	138	1,145	1,159	1,168	\$4,533,049	\$301.29
5121	Motion Picture & Video Industries	122	1,113	1,121	1,131	4,267,820	292.68
5122	Sound Recording Industries	16	32	38	37	265,229	572.03
515	BROADCASTING, EXCEPT INTERNET	138	2,075	2,064	2,055	\$17,364,239	\$646.94
5151	Radio & Television Broadcasting	131	2,031	2,024	2,017	17,150,504	651.81
5152	Cable & Other Subscription Programming	7	44	40	38	213,735	404.29
517	TELECOMMUNICATIONS	484	8,698	8,714	8,704	\$134,211,748	\$1,185.94
5171	Wired Telecommunications Carriers	211	3,137	3,148	3,148	61,469,189	1503.78
5172	Wireless Telecommunications Carriers	124	3,824	3,829	3,833	55,196,756	1108.98
5175	Cable & Other Program Distribution	80	1,219	1,234	1,228	12,044,279	755.08
	Other	69	518	503	495	5,501,524	837.46

**TABLE 5. STATEWIDE SUMMARY
EMPLOYMENT AND TOTAL EARNINGS, BY INDUSTRY
FIRST QUARTER 2006**

NORTH AMERICAN INDUSTRY CLASSIFICATION SYSTEM INDUSTRY GROUPS		NUMBER OF EMPLOYING UNITS	EMPLOYMENT			TOTAL EARNINGS	AVERAGE
			JANUARY	FEBRUARY	MARCH	JANUARY - MARCH	WEEKLY EARNINGS
518	ISPS, SEARCH PORTALS, & DATA PROCESSING	153	1,164	1,158	1,158	\$15,953,013	\$1,057.89
5181	ISPs, & Web Search Portals	68	180	180	190	1,725,121	723.83
5182	Data Processing & Related Services	85	984	978	968	14,227,892	1120.60
	OTHER	39	300	304	303	\$2,310,526	\$587.87
FINANCIAL ACTIVITIES		8,015	50,482	50,492	50,752	\$554,707,334	\$843.69
52	FINANCE & INSURANCE	4,709	36,743	36,681	36,800	\$461,417,690	\$966.04
522	CREDIT INTERMEDIATION & RELATED ACTIVITIES	2,027	21,664	21,605	21,684	\$213,300,460	\$757.83
5221	Depository Credit Intermediation	1,314	18,115	18,065	18,141	173,862,126	738.61
5222	Nondepository Credit Intermediation	404	2,640	2,628	2,621	31,861,241	932.01
5223	Activities Related to Credit Intermediation	309	909	912	922	7,577,093	637.46
523	FINANCIAL INVESTMENT & RELATED ACTIVITIES	575	3,044	3,050	3,070	\$98,919,149	\$2,491.00
5231	Security & Commodity Investment Activities	323	2,340	2,339	2,339	89,234,673	2934.26
5239	Other Financial Investment Activities	252	704	711	731	9,684,476	1041.42
524	INSURANCE CARRIERS & RELATED ACTIVITIES	2,065	11,540	11,524	11,539	\$143,490,678	\$956.95
5241	Insurance Carriers	399	4,733	4,725	4,725	67,087,139	1091.56
5242	Insurance Agencies, Brokerages & Support	1,666	6,807	6,799	6,814	76,403,539	863.45
	OTHER	42	495	502	507	\$5,707,403	\$875.73
53	REAL ESTATE & RENTAL & LEASING	3,306	13,739	13,811	13,952	\$93,289,644	\$518.73
531	REAL ESTATE	2,474	8,560	8,544	8,635	\$59,314,721	\$531.80
5311	Lessors of Real Estate	1,070	4,262	4,241	4,302	25,994,449	468.47
5312	Offices of Real Estate Agents & Brokers	809	2,035	2,048	2,062	16,324,596	613.05
5313	Activities Related to Real Estate	595	2,263	2,255	2,271	16,995,676	577.71
532	RENTAL & LEASING SERVICES	806	5,093	5,184	5,237	\$32,474,873	\$483.06
5321	Automotive Equipment Rental & Leasing	131	1,072	1,103	1,103	7,582,441	533.80
5322	Consumer Goods Rental	493	3,060	3,116	3,165	15,275,821	377.39
5323	General Rental Centers	35	211	200	207	1,540,561	575.27
5324	Machinery & Equipment Rental & Leasing	147	750	765	762	8,076,050	818.49
533	LESSORS OF NONFINANCIAL INTANGIBLE ASSETS	26	86	83	80	\$1,500,050	\$1,390.22

**TABLE 5. STATEWIDE SUMMARY
EMPLOYMENT AND TOTAL EARNINGS, BY INDUSTRY
FIRST QUARTER 2006**

NORTH AMERICAN INDUSTRY CLASSIFICATION SYSTEM INDUSTRY GROUPS		NUMBER OF	EMPLOYMENT			TOTAL EARNINGS	AVERAGE
		EMPLOYING UNITS	JANUARY	FEBRUARY	MARCH	JANUARY - MARCH	WEEKLY EARNINGS
PROFESSIONAL & BUSINESS SERVICES		10,719	111,668	112,925	115,137	\$1,205,760,645	\$819.04
54	PROFESSIONAL & TECHNICAL SERVICES	6,770	37,189	37,753	37,666	\$417,654,902	\$855.91
5411	Legal Services	1,654	6,607	6,609	6,618	65,955,359	767.39
5412	Accounting & Bookkeeping Services	1,202	6,461	6,686	6,312	46,945,637	556.74
5413	Architectural & Engineering Services	897	6,489	6,476	6,505	71,818,531	851.23
5414	Specialized Design Services	154	454	453	483	3,350,269	556.22
5415	Computer Systems Design & Related Services	782	7,417	7,461	7,594	142,749,517	1465.92
5416	Management & Technical Consulting Services	1,064	2,787	2,991	3,098	35,221,684	915.74
5417	Scientific Research & Development Services	115	1,101	1,104	1,112	12,499,244	869.59
5418	Advertising & Related Services	321	2,002	2,051	2,029	20,119,896	763.41
5419	Other Professional & Technical Services	581	3,871	3,922	3,915	18,994,765	374.39
55	MANAGEMENT OF COMPANIES & ENTERPRISES	496	23,727	23,765	24,129	\$533,503,984	\$1,719.00
56	ADMINISTRATIVE & WASTE SERVICES	3,453	50,752	51,407	53,342	\$254,601,759	\$377.84
561	ADMINISTRATIVE & SUPPORT SERVICES	3,245	48,516	49,128	51,077	\$232,580,184	\$360.89
5611	Office Administrative Services	339	1,236	1,213	1,207	15,581,530	983.52
5612	Facilities Support Services	15	118	110	111	888,459	604.81
5613	Employment Services	632	24,887	25,423	26,814	105,976,639	317.10
5614	Business Support Services	358	4,909	5,134	5,193	24,141,792	365.66
5615	Travel Arrangement & Reservation Services	101	437	429	444	3,053,354	537.88
5616	Investigation & Security Services	233	4,351	4,318	4,356	24,995,948	442.86
5617	Services to Buildings & Dwellings	1,294	11,037	10,987	11,420	46,527,103	321.04
5619	Other Support Services	273	1,541	1,514	1,532	11,415,359	574.30
562	WASTE MANAGEMENT & REMEDIATION SERVICES	208	2,236	2,279	2,265	\$22,021,575	\$749.54
5621	Waste Collection Services	96	1,043	1,061	1,070	10,551,525	767.16
5622	Waste Treatment & Disposal Services	38	723	728	722	8,134,003	863.82
5629	Remediation & Other Waste Services	74	470	490	473	3,336,047	537.23

**TABLE 5. STATEWIDE SUMMARY
EMPLOYMENT AND TOTAL EARNINGS, BY INDUSTRY
FIRST QUARTER 2006**

NORTH AMERICAN INDUSTRY CLASSIFICATION SYSTEM INDUSTRY GROUPS		NUMBER OF	EMPLOYMENT			TOTAL EARNINGS	AVERAGE
		EMPLOYING UNITS	JANUARY	FEBRUARY	MARCH	JANUARY - MARCH	WEEKLY EARNINGS
EDUCATION & HEALTH SERVICES		10,081	142,278	143,072	144,080	\$1,096,228,117	\$589.10
61	EDUCATIONAL SERVICES	549	8,716	9,178	9,176	\$56,792,202	\$484.15
6111	Elementary & Secondary Schools	83	3,199	3,215	3,227	15,911,322	380.86
6112	Junior Colleges	7	253	255	261	1,897,044	569.28
6113	Colleges & Universities	26	2,951	3,321	3,206	23,142,173	563.46
6114	Business, Computer, & Management Training	43	121	123	124	2,527,348	1584.88
6115	Technical & Trade Schools	98	693	694	695	7,032,684	779.50
6116	Other Schools & Instruction	214	1,322	1,376	1,456	4,467,861	248.21
6117	Educational Support Services	78	177	194	207	1,813,770	724.16
62	HEALTH CARE & SOCIAL ASSISTANCE	9,532	133,562	133,894	134,904	\$1,039,435,915	\$596.16
621	AMBULATORY HEALTH CARE SERVICES	4,765	41,933	41,911	42,259	\$448,857,928	\$821.41
6211	Offices of Physicians	2,126	20,481	20,458	20,565	280,121,556	1051.04
6212	Offices of Dentists	919	5,883	5,844	5,923	51,505,375	673.42
6213	Offices of Other Health Practitioners	1,127	5,401	5,452	5,536	39,135,990	551.06
6214	Outpatient Care Centers	205	3,434	3,420	3,445	30,005,957	672.34
6215	Medical & Diagnostic Laboratories	100	777	779	760	9,087,748	905.51
6216	Home Health Care Services	137	3,840	3,841	3,875	24,076,136	480.79
6219	Other Ambulatory Health Care Services	151	2,117	2,117	2,155	14,925,166	539.09
622	HOSPITALS	105	41,164	41,244	41,285	\$364,766,145	\$680.53
6221	General Medical & Surgical Hospitals	76	37,949	38,010	38,056	338,113,452	684.35
6222	Psychiatric & Substance Abuse Hospitals	9	1,474	1,463	1,469	11,833,948	619.82
6223	Other Hospitals	20	1,741	1,771	1,760	14,818,745	648.66
623	NURSING & RESIDENTIAL CARE FACILITIES	510	26,717	26,729	27,077	\$127,229,222	\$364.62
6231	Nursing Care Facilities	249	20,144	20,146	20,434	95,100,070	361.41
6232	Residential Mental Health Facilities	127	2,983	3,003	3,024	15,545,781	398.17
6233	Community Care Facilities for the Elderly	87	2,198	2,185	2,213	9,336,089	326.63
6239	Other Residential Care Facilities	47	1,392	1,395	1,406	7,247,282	398.87
624	SOCIAL ASSISTANCE	4,152	23,748	24,010	24,283	\$98,582,620	\$315.79
6241	Individual & Family Services	3,016	11,315	11,389	11,484	50,207,206	338.90
6242	Emergency & Other Relief Services	118	843	848	851	4,127,696	374.72
6243	Vocational Rehabilitation Services	127	3,349	3,341	3,398	15,587,512	356.57
6244	Child Day Care Services	891	8,241	8,432	8,550	28,660,206	262.22

**TABLE 5. STATEWIDE SUMMARY
EMPLOYMENT AND TOTAL EARNINGS, BY INDUSTRY
FIRST QUARTER 2006**

NORTH AMERICAN INDUSTRY CLASSIFICATION SYSTEM INDUSTRY GROUPS		NUMBER OF	EMPLOYMENT			TOTAL EARNINGS	AVERAGE
		EMPLOYING UNITS	JANUARY	FEBRUARY	MARCH	JANUARY - MARCH	WEEKLY EARNINGS
LEISURE & HOSPITALITY		6,054	91,932	92,819	96,102	\$264,955,118	\$217.71
71	ARTS, ENTERTAINMENT & RECREATION	926	8,229	8,168	8,954	\$32,584,282	\$296.61
711	PERFORMING ARTS & SPECTATOR SPORTS	194	2,309	2,144	2,551	\$9,876,923	\$325.43
7111	Performing Arts Companies	35	297	321	332	1,488,279	361.53
7112	Spectator Sports	53	1,321	1,191	1,330	4,671,170	280.57
7113	Performing Arts & Sports Promoters	39	577	506	751	2,957,583	372.15
7114	Agents & Managers for Public Figures	12	16	16	21	135,822	591.39
7115	Independent Artists, Writers & Performers	55	98	110	117	624,069	443.13
712	MUSEUMS, PARKS & HISTORICAL SITES	47	183	189	210	\$887,860	\$352.05
713	GAMBLING, RECREATION & AMUSEMENT INDUSTRY	685	5,737	5,835	6,193	\$21,819,499	\$283.44
7139	Other Amusement & Recreation Industries	645	5,544	5,648	5,932	21,092,593	284.25
	Other	40	193	187	261	726,906	261.70
72	ACCOMMODATION & FOOD SERVICES	5,128	83,703	84,651	87,148	\$232,370,836	\$209.88
721	ACCOMMODATION	818	9,906	10,178	10,685	\$35,465,865	\$266.00
7211	Traveler Accommodation	746	9,656	9,938	10,406	34,292,785	263.79
7212	RV Parks & Recreational Camps	52	175	164	199	854,425	366.50
7213	Rooming & Boarding Houses	20	75	76	80	318,655	318.34
722	FOOD SERVICES & DRINKING PLACES	4,310	73,797	74,473	76,463	\$196,904,971	\$202.19
7221	Full -Service Restaurants	1,899	32,481	32,704	33,727	92,670,848	216.21
7222	Limited-Service Eating Places	2,102	38,210	38,609	39,476	94,847,407	188.21
7223	Special Food Services	157	2,161	2,230	2,338	6,996,691	239.95
7224	Drinking Places, Alcoholic Beverages	152	945	930	922	2,390,025	197.19
OTHER SERVICES		5,504	24,988	25,037	25,467	\$143,730,814	\$439.37
811	REPAIR & MAINTENANCE	2,241	9,200	9,196	9,390	\$61,309,037	\$509.19
8111	Automotive Repair & Maintenance	1,548	6,603	6,583	6,691	41,452,567	481.26
8112	Electronic Equipment Repair & Maintenance	170	656	650	666	5,285,928	618.57
8113	Commercial Machinery Repair & Maintenance	335	1,410	1,436	1,497	11,627,192	617.82
8114	Household Goods Repair & Maintenance	188	531	527	536	2,943,350	426.12

**TABLE 5. STATEWIDE SUMMARY
EMPLOYMENT AND TOTAL EARNINGS, BY INDUSTRY
FIRST QUARTER 2006**

NORTH AMERICAN INDUSTRY CLASSIFICATION SYSTEM INDUSTRY GROUPS		NUMBER OF EMPLOYING UNITS	EMPLOYMENT			TOTAL EARNINGS	AVERAGE
			JANUARY	FEBRUARY	MARCH	JANUARY - MARCH	WEEKLY EARNINGS
812	PERSONAL & LAUNDRY SERVICES	1,315	8,162	8,221	8,349	\$39,215,210	\$365.91
8121	Personal Care Services	563	2,554	2,630	2,693	9,690,911	283.91
8122	Death Care Services	246	1,640	1,622	1,665	9,760,983	457.18
8123	Drycleaning & Laundry Services	342	3,256	3,256	3,273	15,425,026	363.78
8129	Other Personal Services	164	712	713	718	4,338,290	467.17
813	MEMBERSHIP ASSOCIATIONS & ORGANIZATIONS	1,022	6,188	6,194	6,292	\$37,612,886	\$464.81
8131	Religious Organizations	39	201	199	209	1,153,735	437.19
8132	Grantmaking & Giving Services	97	443	444	453	4,102,608	706.53
8133	Social Advocacy Organizations	143	1,927	1,961	1,964	11,405,141	449.75
8134	Civic & Social Organizations	224	1,504	1,486	1,479	4,997,710	258.07
8139	Professional & Similar Organizations	519	2,113	2,104	2,187	15,953,692	574.89
814	PRIVATE HOUSEHOLDS	926	1,438	1,426	1,436	\$5,593,681	\$300.20
	LOCAL GOVERNMENT	2,004	116,671	117,551	118,068	\$821,376,924	\$538.05
	STATE GOVERNMENT	1,193	60,485	62,765	63,234	\$565,882,675	\$700.27
	NONCLASSIFIABLE ESTABLISHMENTS	0	0	0	0	\$0	

**TABLE 6. COUNTY SUMMARY
EMPLOYMENT AND TOTAL EARNINGS, BY INDUSTRY
FIRST QUARTER 2006**

NORTH AMERICAN INDUSTRY CLASSIFICATION SYSTEM INDUSTRY GROUP	NUMBER OF EMPLOYING UNITS	EMPLOYMENT			TOTAL EARNINGS	AVERAGE WEEKLY EARNINGS
		JANUARY	FEBRUARY	MARCH	JANUARY - MARCH	
ARKANSAS COUNTY - TOTAL	677	9,969	10,050	10,092	\$70,486,239	\$540.20
Natural Resources & Mining	43	190	195	216	1,501,581	576.57
Construction	56	232	238	243	1,753,185	567.43
Manufacturing	32	3,755	3,807	3,776	30,701,005	624.88
Trade, Transportation & Utilities	203	1,974	1,992	2,021	14,662,251	565.16
Wholesale Trade	46	412	442	468	4,507,238	786.79
Retail Trade	104	1,052	1,033	1,037	5,132,227	379.36
Transportation, Warehousing & Utilities	53	510	517	516	5,022,786	751.20
Information	8	81	79	80	731,922	703.77
Financial Activities	43	340	341	337	2,406,912	545.62
Professional & Business Services	50	400	402	395	3,520,402	678.70
Education & Health Services	79	1,231	1,222	1,237	6,422,150	401.64
Leisure & Hospitality	59	533	528	537	1,250,829	180.63
Other Services	56	157	157	161	799,795	388.56
Local Government	32	867	876	877	5,325,467	469.07
State Government	16	209	213	212	1,410,740	513.49
ASHLEY COUNTY - TOTAL	541	8,246	8,220	8,286	\$75,469,671	\$703.62
Natural Resources & Mining	62	445	447	462	3,092,480	527.07
Construction	49	534	526	544	3,569,778	513.59
Manufacturing	30	3,018	2,959	2,944	42,840,094	1108.19
Trade, Transportation & Utilities	135	1,226	1,226	1,234	7,065,091	442.32
Wholesale Trade	26	147	159	159	1,280,556	635.51
Retail Trade	87	867	862	869	3,793,183	336.93
Transportation, Warehousing & Utilities	22	212	205	206	1,991,352	737.63
Information	9	49	50	49	324,842	506.51
Financial Activities	34	226	221	219	1,690,858	585.88
Professional & Business Services	48	340	339	361	3,139,323	696.60
Education & Health Services	60	583	584	593	4,529,501	593.90
Leisure & Hospitality	28	366	383	395	860,392	173.56
Other Services	42	184	193	200	877,820	351.08
Local Government	32	1,058	1,071	1,061	6,272,914	453.79
State Government	12	217	221	224	1,206,578	420.61

**TABLE 6. COUNTY SUMMARY
EMPLOYMENT AND TOTAL EARNINGS, BY INDUSTRY
FIRST QUARTER 2006**

NORTH AMERICAN INDUSTRY CLASSIFICATION SYSTEM INDUSTRY GROUP	NUMBER OF EMPLOYING UNITS	EMPLOYMENT			TOTAL EARNINGS	AVERAGE WEEKLY EARNINGS
		JANUARY	FEBRUARY	MARCH	JANUARY - MARCH	
BAXTER COUNTY - TOTAL	1,218	14,216	14,327	14,535	\$94,920,900	\$508.49
Natural Resources & Mining	6	136	124	118	778,516	475.28
Construction	133	679	650	689	4,050,321	463.18
Manufacturing	61	2,555	2,579	2,556	20,762,982	623.08
Trade, Transportation & Utilities	273	2,611	2,637	2,702	15,510,605	450.24
Wholesale Trade	33	200	184	187	1,616,936	653.48
Retail Trade	211	2,159	2,182	2,249	12,055,592	422.16
Transportation, Warehousing & Utilities	29	252	271	266	1,838,077	537.61
Information	24	287	288	282	2,282,210	614.54
Financial Activities	116	679	689	693	5,625,448	629.88
Professional & Business Services	135	715	732	745	4,722,192	497.14
Education & Health Services	199	3,223	3,219	3,240	25,932,365	618.09
Leisure & Hospitality	123	1,386	1,449	1,525	3,717,441	196.76
Other Services	99	405	408	435	1,627,051	300.86
Local Government	36	1,233	1,247	1,242	7,800,923	483.67
State Government	13	307	305	308	2,110,846	529.48
BENTON COUNTY - TOTAL	5,061	90,737	91,438	92,426	\$942,273,298	\$791.87
Natural Resources & Mining	27	656	661	662	6,489,165	756.70
Construction	766	5,058	5,147	5,245	41,530,353	620.32
Manufacturing	240	14,515	14,445	14,462	120,919,957	642.64
Trade, Transportation & Utilities	1,343	22,261	22,561	22,660	220,426,036	753.79
Wholesale Trade	608	3,310	3,326	3,375	59,913,873	1381.11
Retail Trade	567	7,445	7,482	7,631	43,160,826	441.54
Transportation, Warehousing & Utilities	168	11,506	11,753	11,654	117,351,337	775.67
Information	65	928	928	932	8,322,722	688.89
Financial Activities	565	3,612	3,624	3,657	42,418,420	898.64
Professional & Business Services	828	21,460	21,358	21,830	355,281,037	1268.22
Education & Health Services	431	6,435	6,509	6,478	52,869,973	628.19
Leisure & Hospitality	399	6,564	6,644	6,839	21,030,365	242.09
Other Services	303	1,678	1,715	1,698	10,816,532	490.30
Local Government	75	6,938	7,008	7,109	56,135,501	615.26
State Government	19	632	838	854	6,033,237	599.09

**TABLE 6. COUNTY SUMMARY
EMPLOYMENT AND TOTAL EARNINGS, BY INDUSTRY
FIRST QUARTER 2006**

NORTH AMERICAN INDUSTRY CLASSIFICATION SYSTEM INDUSTRY GROUP	NUMBER OF EMPLOYING UNITS	EMPLOYMENT			TOTAL EARNINGS	AVERAGE WEEKLY EARNINGS
		JANUARY	FEBRUARY	MARCH	JANUARY - MARCH	
BOONE COUNTY - TOTAL	1,051	13,697	13,926	14,058	\$102,258,554	\$566.16
Construction	90	440	441	445	3,804,616	662.13
Manufacturing	71	2,131	2,136	2,158	18,238,281	655.07
Trade, Transportation & Utilities	270	4,354	4,352	4,382	35,279,385	622.05
Wholesale Trade	58	638	643	646	4,610,353	552.12
Retail Trade	156	1,941	1,935	1,947	9,979,385	395.49
Transportation, Warehousing & Utilities	56	1,775	1,774	1,789	20,689,647	894.44
Information	21	408	407	406	3,600,661	680.53
Financial Activities	95	621	619	619	5,350,185	664.15
Professional & Business Services	107	588	650	670	3,416,117	413.17
Education & Health Services	156	1,084	1,104	1,124	7,622,415	531.10
Leisure & Hospitality	83	1,067	1,108	1,128	2,957,710	206.65
Local Government	60	2,224	2,237	2,246	15,452,713	531.68
State Government	21	530	625	628	5,058,678	654.73
Other	77	250	247	252	1,477,793	455.31
BRADLEY COUNTY - TOTAL	384	4,152	4,264	4,090	\$25,249,313	\$465.92
Natural Resources & Mining	51	511	603	459	2,316,904	339.90
Construction	21	134	140	139	805,419	450.04
Manufacturing	10	1,099	1,092	1,084	8,567,147	603.67
Trade, Transportation & Utilities	89	491	477	480	2,617,989	417.23
Wholesale Trade	14	114	114	113	639,730	432.93
Retail Trade	50	316	300	305	1,449,696	363.24
Transportation, Warehousing & Utilities	25	61	63	62	528,563	655.79
Information	3	12	12	12	102,143	654.76
Financial Activities	23	183	179	174	1,066,658	459.24
Professional & Business Services	26	83	84	79	357,730	335.58
Education & Health Services	83	542	543	534	3,275,033	466.82
Leisure & Hospitality	17	167	167	171	387,651	177.14
Other Services	33	96	103	105	429,443	325.99
Local & State Government	28	834	864	853	5,323,196	481.55

**TABLE 6. COUNTY SUMMARY
EMPLOYMENT AND TOTAL EARNINGS, BY INDUSTRY
FIRST QUARTER 2006**

NORTH AMERICAN INDUSTRY CLASSIFICATION SYSTEM INDUSTRY GROUP	NUMBER OF EMPLOYING UNITS	EMPLOYMENT			TOTAL EARNINGS	AVERAGE WEEKLY EARNINGS
		JANUARY	FEBRUARY	MARCH	JANUARY - MARCH	
CALHOUN COUNTY - TOTAL	111	2,861	2,843	2,831	\$23,292,036	\$629.77
Natural Resources & Mining	19	159	156	156	1,011,387	495.54
Construction	10	70	71	77	450,954	477.37
Manufacturing	10	1,918	1,899	1,890	17,049,027	689.40
Trade, Transportation & Utilities	25	188	182	176	1,136,846	480.49
Wholesale Trade & Retail Trade	18	74	65	67	228,098	255.52
Transportation, Warehousing & Utilities	7	114	117	109	908,748	616.80
Financial Activities	7	85	85	81	634,147	583.03
Education & Health Services	4	44	45	46	348,136	595.10
Leisure & Hospitality	5	24	24	24	45,941	147.25
Local Government	11	204	210	210	1,121,269	414.67
State Government	9	81	82	80	636,992	604.93
Other	11	88	89	91	857,337	738.24
CARROLL COUNTY - TOTAL	834	9,081	9,158	9,439	\$52,298,295	\$436.04
Natural Resources & Mining	17	263	256	251	1,476,224	442.42
Trade, Transportation & Utilities	208	1,504	1,520	1,604	8,797,097	438.66
Wholesale Trade	24	119	121	120	646,890	414.67
Retail Trade	164	1,148	1,155	1,230	5,748,029	375.45
Transportation, Warehousing & Utilities	20	237	244	254	2,402,178	754.22
Information	12	98	99	100	692,935	538.41
Professional & Business Services	77	247	260	259	1,563,046	470.89
Education & Health Services	77	768	767	759	5,201,661	523.27
Leisure & Hospitality	172	1,097	1,140	1,351	3,147,585	202.44
Local Government	25	1,080	1,074	1,085	6,445,208	459.20
State Government	11	104	104	104	776,455	574.30
Other	235	3,920	3,938	3,926	24,198,084	473.88

**TABLE 6. COUNTY SUMMARY
EMPLOYMENT AND TOTAL EARNINGS, BY INDUSTRY
FIRST QUARTER 2006**

NORTH AMERICAN INDUSTRY CLASSIFICATION SYSTEM INDUSTRY GROUP	NUMBER OF EMPLOYING UNITS	EMPLOYMENT			TOTAL EARNINGS	AVERAGE
		JANUARY	FEBRUARY	MARCH	JANUARY - MARCH	WEEKLY EARNINGS
CHICOT COUNTY - TOTAL	346	3,593	3,598	3,633	\$19,763,677	\$421.36
Natural Resources & Mining	47	199	206	215	1,145,275	426.28
Construction	19	238	220	213	1,586,480	545.62
Manufacturing	12	481	494	507	2,023,039	315.02
Trade, Transportation & Utilities	83	542	553	560	2,748,011	383.18
Wholesale Trade	16	98	101	101	687,407	528.77
Retail Trade	55	382	390	398	1,450,647	286.12
Transportation, Warehousing & Utilities	12	62	62	61	609,957	760.86
Information	6	12	12	12	87,397	560.24
Financial Activities	28	165	165	169	1,357,862	627.96
Professional & Business Services	25	99	98	94	758,554	601.55
Education & Health Services	63	496	491	483	2,798,853	439.38
Leisure & Hospitality	20	223	219	224	452,918	156.94
Other Services	16	38	36	47	190,792	363.88
Local Government	16	796	797	801	4,494,159	433.21
State Government	11	304	307	308	2,120,337	532.44
CLARK COUNTY - TOTAL	600	9,437	9,571	9,680	\$60,915,556	\$490.01
Natural Resources & Mining	43	245	246	234	1,744,710	555.35
Construction	31	123	122	117	685,420	436.94
Manufacturing	35	2,261	2,229	2,248	17,040,690	583.63
Trade, Transportation & Utilities	135	1,491	1,444	1,477	8,998,485	470.66
Wholesale Trade	20	101	97	98	758,337	591.22
Retail Trade	92	1,104	1,073	1,096	5,702,647	402.08
Transportation, Warehousing & Utilities	23	286	274	283	2,537,501	694.63
Information	9	34	34	34	262,741	594.44
Financial Activities	88	371	368	377	2,893,651	598.36
Professional & Business Services	44	360	380	385	3,536,593	725.45
Education & Health Services	70	1,380	1,426	1,443	8,546,020	464.15
Leisure & Hospitality	57	974	1,008	1,022	2,413,959	185.44
Other Services	47	220	220	223	1,146,875	399.19
Local Government	26	909	921	941	5,431,209	452.31
State Government	15	1,069	1,173	1,179	8,215,203	554.17

**TABLE 6. COUNTY SUMMARY
EMPLOYMENT AND TOTAL EARNINGS, BY INDUSTRY
FIRST QUARTER 2006**

NORTH AMERICAN INDUSTRY CLASSIFICATION SYSTEM INDUSTRY GROUP	NUMBER OF EMPLOYING UNITS	EMPLOYMENT			TOTAL EARNINGS	AVERAGE WEEKLY EARNINGS
		JANUARY	FEBRUARY	MARCH	JANUARY - MARCH	
CLAY COUNTY - TOTAL	411	4,479	4,399	4,467	\$23,593,451	\$407.99
Natural Resources & Mining	56	134	142	175	544,558	278.64
Construction	37	135	123	150	552,891	312.72
Manufacturing	19	1,193	1,125	1,105	6,584,260	443.89
Trade, Transportation & Utilities	97	959	958	949	5,202,187	418.88
Wholesale Trade	23	358	359	337	1,985,241	434.66
Retail Trade	52	452	448	460	1,903,934	323.07
Transportation, Warehousing & Utilities	22	149	151	152	1,313,012	670.36
Information	8	86	84	83	616,179	562.04
Financial Activities	36	156	155	153	993,656	494.19
Professional & Business Services	25	59	57	61	350,882	457.47
Education & Health Services	50	504	496	499	2,505,502	385.72
Leisure & Hospitality	23	212	216	227	387,764	136.62
Other Services	26	53	52	56	280,560	402.14
Local Government	22	913	914	928	5,062,413	424.05
State Government	12	75	77	81	512,599	507.69
CLEBURNE COUNTY - TOTAL	668	6,604	6,738	6,783	\$38,890,100	\$445.94
Natural Resources & Mining	15	82	120	113	698,086	511.42
Construction	71	279	283	297	1,413,751	379.80
Manufacturing	43	1,725	1,743	1,734	12,358,583	548.25
Trade, Transportation & Utilities	181	1,514	1,524	1,562	8,748,672	438.90
Wholesale Trade	38	197	196	195	1,283,826	503.86
Retail Trade	112	1,012	1,027	1,062	4,743,071	352.97
Transportation, Warehousing & Utilities	31	305	301	305	2,721,775	689.46
Information	9	60	59	58	350,026	456.36
Financial Activities	70	244	240	244	1,681,605	533.05
Professional & Business Services	56	207	210	211	1,213,465	445.91
Education & Health Services	71	773	773	776	4,374,168	434.72
Leisure & Hospitality	66	623	677	686	1,749,233	203.26
Other Services	56	163	161	156	641,662	308.49
Local Government	20	825	839	829	4,878,096	451.55
State Government	10	109	109	117	782,753	539.21

**TABLE 6. COUNTY SUMMARY
EMPLOYMENT AND TOTAL EARNINGS, BY INDUSTRY
FIRST QUARTER 2006**

NORTH AMERICAN INDUSTRY CLASSIFICATION SYSTEM INDUSTRY GROUP	NUMBER OF EMPLOYING UNITS	EMPLOYMENT			TOTAL EARNINGS	AVERAGE WEEKLY EARNINGS
		JANUARY	FEBRUARY	MARCH	JANUARY - MARCH	
CLEVELAND COUNTY - TOTAL	113	1,081	1,072	1,097	\$6,213,588	\$441.20
Natural Resources & Mining	19	180	170	167	1,130,528	504.62
Construction	7	41	41	41	132,916	249.37
Manufacturing	5	94	94	95	522,246	425.86
Trade, Transportation & Utilities	29	179	183	186	764,072	321.76
Wholesale Trade	3	14	14	14	58,782	322.98
Retail Trade	14	79	77	81	152,893	148.87
Transportation, Warehousing & Utilities	12	86	92	91	552,397	473.89
Local Government	12	341	339	355	1,975,728	440.52
State Government	8	68	66	64	386,550	450.52
Other	33	178	179	189	1,301,548	550.10
COLUMBIA COUNTY - TOTAL	693	9,320	9,507	9,631	\$70,810,449	\$574.21
Natural Resources & Mining	49	485	488	495	6,121,005	962.22
Construction	46	305	309	308	2,213,383	553.99
Manufacturing	41	2,765	2,846	2,838	28,415,719	776.12
Trade, Transportation & Utilities	175	1,558	1,583	1,634	8,441,522	407.97
Wholesale Trade	28	288	295	310	1,846,133	477.08
Retail Trade	108	1,008	1,017	1,041	4,382,004	329.82
Transportation, Warehousing & Utilities	39	262	271	283	2,213,385	625.96
Information	10	76	78	77	531,715	531.18
Financial Activities	76	508	510	513	5,137,973	774.45
Professional & Business Services	60	324	326	351	1,595,679	367.87
Education & Health Services	98	829	842	850	4,097,324	375.06
Leisure & Hospitality	46	649	662	685	1,462,794	169.12
Other Services	49	207	208	209	839,190	310.35
Local Government	29	1,132	1,119	1,135	7,517,160	512.32
State Government	14	482	536	536	4,436,985	658.89

**TABLE 6. COUNTY SUMMARY
EMPLOYMENT AND TOTAL EARNINGS, BY INDUSTRY
FIRST QUARTER 2006**

NORTH AMERICAN INDUSTRY CLASSIFICATION SYSTEM INDUSTRY GROUP	NUMBER OF EMPLOYING UNITS	EMPLOYMENT			TOTAL EARNINGS	AVERAGE
		JANUARY	FEBRUARY	MARCH	JANUARY - MARCH	WEEKLY EARNINGS
CONWAY COUNTY - TOTAL	513	6,565	6,619	6,690	\$43,352,905	\$503.40
Natural Resources & Mining	16	126	134	134	1,048,057	613.86
Construction	52	514	506	495	4,176,350	636.15
Manufacturing	28	1,063	1,083	1,127	11,036,892	778.18
Trade, Transportation & Utilities	131	1,354	1,357	1,390	8,098,469	455.71
Wholesale Trade	27	211	213	216	1,695,163	611.24
Retail Trade	78	853	859	889	4,304,447	381.90
Transportation, Warehousing & Utilities	26	290	285	285	2,098,859	563.20
Information	6	39	38	39	180,259	358.61
Financial Activities	32	187	186	188	1,313,427	540.28
Professional & Business Services	46	712	718	696	2,871,229	311.66
Education & Health Services	101	803	801	824	5,407,062	513.91
Leisure & Hospitality	37	428	432	448	936,135	165.16
Other Services	26	86	85	85	524,824	473.10
Local Government	27	894	898	885	5,575,603	480.64
State Government	11	359	381	379	2,184,598	450.53
CRAIGHEAD COUNTY - TOTAL	2,621	40,462	40,477	41,123	\$294,010,179	\$555.85
Natural Resources & Mining	66	231	223	250	1,318,588	432.23
Construction	231	1,664	1,673	1,702	11,718,381	536.66
Manufacturing	140	6,908	6,884	6,907	61,142,515	681.67
Trade, Transportation & Utilities	742	8,113	8,056	8,324	50,737,496	478.04
Wholesale Trade	182	1,413	1,440	1,478	12,853,071	684.85
Retail Trade	441	5,588	5,501	5,730	27,889,320	382.66
Transportation, Warehousing & Utilities	119	1,112	1,115	1,116	9,995,105	689.97
Information	32	626	623	620	5,655,666	698.32
Financial Activities	260	1,570	1,571	1,580	15,024,849	734.44
Professional & Business Services	339	3,613	3,652	3,655	21,096,336	445.82
Education & Health Services	377	7,405	7,364	7,498	66,083,959	684.88
Leisure & Hospitality	189	3,578	3,627	3,719	9,938,245	209.95
Other Services	183	1,022	1,030	1,058	4,828,239	358.27
Local Government	38	3,489	3,543	3,552	23,941,439	522.01
State Government	24	2,243	2,231	2,258	22,524,466	772.13

**TABLE 6. COUNTY SUMMARY
EMPLOYMENT AND TOTAL EARNINGS, BY INDUSTRY
FIRST QUARTER 2006**

NORTH AMERICAN INDUSTRY CLASSIFICATION SYSTEM INDUSTRY GROUP	NUMBER OF EMPLOYING UNITS	EMPLOYMENT			TOTAL EARNINGS	AVERAGE WEEKLY EARNINGS
		JANUARY	FEBRUARY	MARCH	JANUARY - MARCH	
CRAWFORD COUNTY - TOTAL	1,199	18,303	18,533	18,928	\$128,170,422	\$530.41
Natural Resources & Mining	27	387	462	536	3,246,005	540.85
Construction	181	1,391	1,421	1,458	11,500,532	621.54
Manufacturing	76	3,460	3,540	3,575	24,347,450	531.31
Trade, Transportation & Utilities	307	6,364	6,404	6,620	47,395,428	564.13
Retail Trade	158	1,830	1,842	1,924	9,325,323	384.56
Other Trade, Transportation & Utilities	149	4,534	4,562	4,696	38,070,105	636.99
Information	14	202	197	193	1,520,197	592.59
Financial Activities	127	494	500	496	3,704,457	573.74
Professional & Business Services	143	740	750	761	5,409,507	554.57
Education & Health Services	114	1,311	1,330	1,320	9,186,646	535.22
Leisure & Hospitality	80	1,358	1,352	1,394	3,540,761	199.10
Other Services	78	321	307	315	2,096,539	513.06
Local Government	41	2,119	2,115	2,103	14,930,654	543.72
State Government	11	156	155	157	1,292,246	637.20
CRITTENDEN COUNTY - TOTAL	1,172	16,013	16,003	16,238	\$111,748,337	\$534.42
Natural Resources & Mining	45	220	227	264	1,241,193	402.85
Construction	79	617	564	546	4,673,162	624.45
Manufacturing	49	1,539	1,555	1,599	16,319,545	802.48
Trade, Transportation & Utilities	325	4,916	4,829	4,923	35,553,272	559.35
Wholesale Trade	71	809	794	798	7,504,279	721.26
Retail Trade	170	2,104	2,044	2,105	9,661,405	356.56
Transportation, Warehousing & Utilities	84	2,003	1,991	2,020	18,387,588	705.57
Information	8	95	95	94	820,845	666.99
Financial Activities	109	562	567	569	5,057,791	687.39
Professional & Business Services	116	751	792	761	4,609,724	461.71
Education & Health Services	174	1,868	1,851	1,876	13,452,125	554.84
Leisure & Hospitality	101	1,844	1,877	1,952	5,377,409	218.75
Other Services	104	603	611	614	3,403,055	429.61
Local Government	47	2,545	2,569	2,573	18,383,009	551.87
State Government	15	453	466	467	2,857,207	475.73

**TABLE 6. COUNTY SUMMARY
EMPLOYMENT AND TOTAL EARNINGS, BY INDUSTRY
FIRST QUARTER 2006**

NORTH AMERICAN INDUSTRY CLASSIFICATION SYSTEM INDUSTRY GROUP	NUMBER OF EMPLOYING UNITS	EMPLOYMENT			TOTAL EARNINGS	AVERAGE
		JANUARY	FEBRUARY	MARCH	JANUARY - MARCH	WEEKLY EARNINGS
CROSS COUNTY - TOTAL	525	4,891	4,973	5,114	\$31,245,084	\$481.40
Natural Resources & Mining	45	148	153	166	711,727	351.70
Construction	37	135	141	181	930,184	469.71
Manufacturing	19	724	742	749	5,809,916	605.30
Trade, Transportation & Utilities	134	1,158	1,162	1,188	7,342,654	483.03
Wholesale Trade	32	262	259	267	1,953,529	572.10
Retail Trade	67	663	660	676	3,146,680	363.26
Transportation, Warehousing & Utilities	35	233	243	245	2,242,445	717.74
Information	6	61	59	59	381,798	492.22
Financial Activities	47	400	397	398	3,126,403	603.75
Professional & Business Services	42	176	174	174	1,226,191	540.01
Education & Health Services	96	657	646	662	3,794,280	445.60
Leisure & Hospitality	31	354	365	389	729,077	151.85
Other Services	40	72	72	74	321,395	340.22
Local Government	17	799	855	864	5,227,824	479.12
State Government	11	207	207	210	1,643,635	607.85
DALLAS COUNTY - TOTAL	275	3,395	3,353	3,409	\$20,859,275	\$473.93
Natural Resources & Mining	40	217	209	215	1,506,491	542.36
Construction	13	78	73	81	498,786	496.14
Manufacturing	15	941	926	932	7,611,824	627.57
Trade, Transportation & Utilities	74	478	465	469	2,327,288	380.36
Wholesale Trade	9	43	43	45	283,382	499.20
Retail Trade	46	373	362	365	1,668,276	349.99
Transportation, Warehousing & Utilities	19	62	60	59	375,630	478.92
Information	3	26	27	27	152,447	439.75
Financial Activities	21	103	106	104	711,650	524.69
Professional & Business Services	17	65	62	66	937,791	1121.31
Education & Health Services	32	753	754	770	3,687,310	373.70
Leisure & Hospitality	19	137	133	137	283,948	161.00
Other Services	16	62	61	63	257,570	319.57
Local Government	16	480	481	489	2,443,353	388.86
State Government	9	55	56	56	440,817	609.14

**TABLE 6. COUNTY SUMMARY
EMPLOYMENT AND TOTAL EARNINGS, BY INDUSTRY
FIRST QUARTER 2006**

NORTH AMERICAN INDUSTRY CLASSIFICATION SYSTEM INDUSTRY GROUP	NUMBER OF EMPLOYING UNITS	EMPLOYMENT			TOTAL EARNINGS	AVERAGE
		JANUARY	FEBRUARY	MARCH	JANUARY - MARCH	WEEKLY EARNINGS
DESHA COUNTY - TOTAL	460	4,921	4,894	4,958	\$32,176,205	\$502.62
Natural Resources & Mining	51	208	213	229	1,401,334	497.52
Construction	26	129	130	134	907,529	532.90
Manufacturing	15	1,326	1,327	1,301	12,209,060	712.56
Trade, Transportation & Utilities	131	955	934	948	5,391,658	438.57
Wholesale Trade	21	181	185	189	1,607,575	668.43
Retail Trade	80	598	580	592	2,582,099	336.65
Transportation, Warehousing & Utilities	30	176	169	167	1,201,984	541.76
Information	5	23	23	24	197,143	649.92
Financial Activities	42	227	227	227	1,317,505	446.46
Professional & Business Services	36	222	205	201	913,553	335.70
Education & Health Services	60	492	497	518	2,816,650	431.32
Leisure & Hospitality	36	326	321	313	646,520	155.41
Other Services	28	62	61	84	238,446	265.83
Local Government	19	788	789	815	4,983,882	480.82
State Government	11	163	167	164	1,152,925	538.58
DREW COUNTY - TOTAL	500	6,650	6,673	6,779	\$38,244,023	\$439.04
Natural Resources & Mining	39	318	323	324	1,850,592	442.55
Construction	25	138	107	113	843,220	543.55
Manufacturing	20	766	753	753	4,633,056	470.58
Trade, Transportation & Utilities	136	1,259	1,231	1,270	7,323,601	449.48
Wholesale Trade	25	247	241	250	2,334,900	730.11
Retail Trade	88	910	889	918	4,095,357	347.84
Transportation, Warehousing & Utilities	23	102	101	102	893,344	675.92
Information	9	79	78	80	603,016	587.16
Financial Activities	43	278	277	275	2,355,530	654.92
Professional & Business Services	43	317	336	341	1,983,025	460.38
Education & Health Services	75	811	815	836	4,034,354	378.15
Leisure & Hospitality	43	588	604	623	1,208,975	153.72
Other Services	27	83	81	86	349,765	322.86
Local Government	23	1,222	1,252	1,242	7,073,035	439.25
State Government	17	791	816	836	5,985,854	565.43

**TABLE 6. COUNTY SUMMARY
EMPLOYMENT AND TOTAL EARNINGS, BY INDUSTRY
FIRST QUARTER 2006**

NORTH AMERICAN INDUSTRY CLASSIFICATION SYSTEM INDUSTRY GROUP	NUMBER OF EMPLOYING UNITS	EMPLOYMENT			TOTAL EARNINGS	AVERAGE WEEKLY EARNINGS
		JANUARY	FEBRUARY	MARCH	JANUARY - MARCH	
FAULKNER COUNTY - TOTAL	2,379	36,485	36,825	37,242	\$287,733,441	\$600.62
Natural Resources & Mining	14	79	99	102	1,140,631	940.08
Construction	336	2,829	2,838	2,943	20,732,052	555.67
Manufacturing	121	5,203	5,186	5,203	50,693,216	750.28
Trade, Transportation & Utilities	589	6,299	6,359	6,408	38,321,190	463.83
Wholesale Trade	146	743	749	758	7,597,192	779.20
Retail Trade	371	4,917	4,961	4,979	24,312,891	377.64
Transportation, Warehousing & Utilities	72	639	649	671	6,411,107	755.23
Information	39	335	337	349	2,831,498	639.98
Financial Activities	284	1,337	1,334	1,339	11,202,990	644.71
Professional & Business Services	319	5,084	5,149	5,216	66,659,389	995.72
Education & Health Services	294	4,902	5,019	5,055	34,889,643	537.62
Leisure & Hospitality	185	3,650	3,665	3,791	9,322,627	193.71
Other Services	137	528	534	543	2,794,313	401.77
Local Government	42	3,149	3,134	3,161	23,866,970	583.20
State Government	19	3,090	3,171	3,132	25,278,922	621.06
FRANKLIN COUNTY - TOTAL	333	4,173	4,211	4,255	\$26,391,433	\$481.87
Natural Resources & Mining	10	89	89	85	878,690	771.01
Construction	29	195	205	211	1,592,633	601.52
Manufacturing	22	991	989	1,004	6,972,401	539.21
Trade, Transportation & Utilities	95	838	840	844	5,216,816	477.35
Wholesale Trade	15	54	48	50	231,925	352.11
Retail Trade	58	478	487	486	2,035,378	323.71
Transportation, Warehousing & Utilities	22	306	305	308	2,949,513	740.65
Information	7	52	55	53	275,952	398.01
Financial Activities	28	209	210	213	1,357,414	495.65
Professional & Business Services	20	55	55	55	321,127	449.13
Education & Health Services	44	471	472	470	2,565,797	419.04
Leisure & Hospitality	29	323	326	326	677,308	160.31
Other Services	20	54	53	64	302,680	408.48
Local Government	19	788	796	807	5,315,449	513.02
State Government	10	108	121	123	915,166	599.98

**TABLE 6. COUNTY SUMMARY
EMPLOYMENT AND TOTAL EARNINGS, BY INDUSTRY
FIRST QUARTER 2006**

NORTH AMERICAN INDUSTRY CLASSIFICATION SYSTEM INDUSTRY GROUP	NUMBER OF EMPLOYING UNITS	EMPLOYMENT			TOTAL EARNINGS	AVERAGE WEEKLY EARNINGS
		JANUARY	FEBRUARY	MARCH	JANUARY - MARCH	
FULTON COUNTY - TOTAL	220	1,824	1,861	1,863	\$9,397,533	\$390.89
Construction	15	25	26	25	154,287	468.48
Manufacturing	13	151	155	150	653,866	330.90
Trade, Transportation & Utilities	62	359	372	365	2,301,847	484.67
Retail Trade	41	192	202	197	733,118	286.26
Other Trade, Transportation & Utilities	21	167	170	168	1,568,729	716.86
Financial Activities	19	95	96	104	644,537	504.20
Professional & Business Services	17	49	49	49	302,089	474.24
Education & Health Services	41	347	344	346	1,419,244	315.83
Leisure & Hospitality	15	129	130	135	279,444	163.67
Local Government	13	515	522	520	2,707,359	401.27
State Government	11	94	98	99	665,318	527.61
Other	14	60	69	70	269,542	312.57
GARLAND COUNTY - TOTAL	3,173	36,357	36,236	37,023	\$241,755,588	\$508.96
Natural Resources & Mining	48	323	346	337	4,261,960	977.66
Construction	418	2,273	2,227	2,277	14,978,294	510.04
Manufacturing	128	3,412	3,427	3,435	26,263,205	589.91
Trade, Transportation & Utilities	699	7,268	7,233	7,384	44,114,643	465.17
Wholesale Trade	142	1,070	1,096	1,104	9,982,126	704.45
Retail Trade	488	5,563	5,498	5,628	28,512,969	394.27
Transportation, Warehousing & Utilities	69	635	639	652	5,619,548	673.32
Information	41	436	431	436	3,477,737	615.93
Financial Activities	367	1,587	1,569	1,574	13,058,278	637.09
Professional & Business Services	407	2,610	2,622	2,669	18,315,167	534.94
Education & Health Services	409	6,897	6,906	6,954	59,590,455	662.51
Leisure & Hospitality	370	6,499	6,344	6,748	20,759,855	244.54
Other Services	225	916	918	942	4,656,299	387.08
Local Government	34	3,125	3,153	3,181	23,612,583	576.07
State Government	27	1,011	1,060	1,086	8,667,112	633.55

**TABLE 6. COUNTY SUMMARY
EMPLOYMENT AND TOTAL EARNINGS, BY INDUSTRY
FIRST QUARTER 2006**

NORTH AMERICAN INDUSTRY CLASSIFICATION SYSTEM INDUSTRY GROUP	NUMBER OF EMPLOYING UNITS	EMPLOYMENT			TOTAL EARNINGS	AVERAGE WEEKLY EARNINGS
		JANUARY	FEBRUARY	MARCH	JANUARY - MARCH	
GRANT COUNTY - TOTAL	297	3,643	3,726	3,773	\$23,795,815	\$492.85
Natural Resources & Mining	24	191	187	196	1,842,601	740.79
Construction	33	251	249	253	1,585,241	485.82
Manufacturing	21	836	849	849	6,396,699	582.54
Trade, Transportation & Utilities	86	589	676	698	3,615,597	425.05
Wholesale Trade	17	163	162	166	1,369,014	643.43
Retail Trade	37	367	454	470	1,817,074	324.81
Transportation, Warehousing & Utilities	32	59	60	62	429,509	547.61
Information	3	39	38	38	302,118	606.26
Financial Activities	21	93	92	105	755,639	601.30
Professional & Business Services	21	94	93	92	801,172	662.67
Education & Health Services	32	239	231	236	1,383,682	452.28
Leisure & Hospitality	21	288	285	281	689,139	186.22
Other Services	16	54	55	55	212,077	298.42
Local Government	10	909	913	910	5,789,121	489.00
State Government	9	60	58	60	422,729	548.05
GREENE COUNTY - TOTAL	881	14,840	14,980	15,108	\$100,415,024	\$515.77
Natural Resources & Mining	36	170	169	185	1,008,266	444.04
Construction	78	352	378	390	2,522,629	519.77
Manufacturing	58	5,521	5,525	5,602	47,846,187	663.23
Trade, Transportation & Utilities	236	2,102	2,093	2,136	11,649,710	424.64
Wholesale Trade	52	363	363	363	2,881,688	610.66
Retail Trade	157	1,551	1,536	1,574	7,190,849	356.02
Transportation, Warehousing & Utilities	27	188	194	199	1,577,173	626.44
Information	14	126	120	119	607,329	383.98
Financial Activities	84	472	475	483	3,362,980	542.71
Professional & Business Services	92	1,333	1,417	1,318	6,922,027	392.67
Education & Health Services	126	1,720	1,717	1,733	10,740,448	479.41
Leisure & Hospitality	65	1,058	1,059	1,100	2,366,530	169.76
Other Services	50	168	170	172	874,408	395.66
Local Government	31	1,570	1,607	1,621	10,534,985	506.70
State Government	11	248	250	249	1,979,525	611.53

**TABLE 6. COUNTY SUMMARY
EMPLOYMENT AND TOTAL EARNINGS, BY INDUSTRY
FIRST QUARTER 2006**

NORTH AMERICAN INDUSTRY CLASSIFICATION SYSTEM INDUSTRY GROUP	NUMBER OF EMPLOYING UNITS	EMPLOYMENT			TOTAL EARNINGS	AVERAGE WEEKLY EARNINGS
		JANUARY	FEBRUARY	MARCH	JANUARY - MARCH	
HEMPSTEAD COUNTY - TOTAL	510	8,324	8,383	8,467	\$53,792,276	\$493.11
Natural Resources & Mining	19	209	210	213	1,470,269	536.86
Construction	35	157	149	148	995,327	505.93
Manufacturing	29	2,755	2,738	2,789	20,344,201	566.87
Trade, Transportation & Utilities	139	1,262	1,277	1,297	7,054,464	424.39
Wholesale Trade	25	167	176	177	1,004,718	445.88
Retail Trade	87	901	909	924	4,052,846	342.09
Transportation, Warehousing & Utilities	27	194	192	196	1,996,900	791.79
Information	10	78	75	77	569,958	571.86
Financial Activities	45	254	249	249	2,143,025	657.64
Professional & Business Services	36	211	246	239	951,732	315.56
Education & Health Services	71	994	1,021	1,000	6,243,580	477.89
Leisure & Hospitality	43	604	596	619	1,521,884	193.08
Other Services	37	206	212	215	1,294,443	471.91
Local Government	29	1,066	1,080	1,092	7,110,756	506.78
State Government	17	528	530	529	4,092,637	595.12
HOT SPRING COUNTY - TOTAL	625	7,732	7,790	7,954	\$54,132,022	\$532.12
Natural Resources & Mining	39	205	210	211	1,542,608	568.67
Construction	70	340	379	440	2,685,591	534.73
Manufacturing	42	1,631	1,639	1,644	17,282,724	811.62
Trade, Transportation & Utilities	167	1,499	1,498	1,520	9,738,512	497.53
Wholesale Trade	20	102	102	106	840,347	625.57
Retail Trade	101	966	962	981	4,658,172	369.53
Transportation, Warehousing & Utilities	46	431	434	433	4,239,993	753.82
Information	9	71	71	68	593,296	651.97
Financial Activities	61	327	324	329	2,358,220	555.31
Professional & Business Services	55	218	222	283	1,170,340	373.55
Education & Health Services	61	1,011	1,015	1,015	5,866,306	445.17
Leisure & Hospitality	43	589	592	602	1,307,146	169.18
Other Services	39	312	305	306	1,207,595	301.92
Local & State Government	39	1,529	1,535	1,536	10,379,684	520.72

**TABLE 6. COUNTY SUMMARY
EMPLOYMENT AND TOTAL EARNINGS, BY INDUSTRY
FIRST QUARTER 2006**

NORTH AMERICAN INDUSTRY CLASSIFICATION SYSTEM INDUSTRY GROUP	NUMBER OF EMPLOYING UNITS	EMPLOYMENT			TOTAL EARNINGS	AVERAGE
		JANUARY	FEBRUARY	MARCH	JANUARY - MARCH	WEEKLY EARNINGS
HOWARD COUNTY - TOTAL	367	7,753	7,850	7,964	\$50,559,498	\$495.08
Natural Resources & Mining	21	232	237	236	1,728,947	565.94
Construction	25	109	103	110	664,801	476.45
Manufacturing	27	4,387	4,450	4,508	31,658,483	547.46
Trade, Transportation & Utilities	112	957	954	960	5,360,320	430.86
Wholesale Trade	21	97	98	103	821,781	636.38
Retail Trade	66	656	654	656	2,831,556	332.37
Transportation, Warehousing & Utilities	25	204	202	201	1,706,983	648.96
Information	8	38	38	38	227,466	460.46
Financial Activities	35	132	130	134	916,668	534.19
Professional & Business Services	28	126	126	124	768,374	471.59
Education & Health Services	41	579	576	594	3,066,463	404.60
Leisure & Hospitality	21	278	296	314	606,607	157.64
Other Services	19	112	113	115	525,724	356.83
Local Government	18	681	699	702	4,141,916	459.09
State Government	12	122	128	129	893,729	544.18
INDEPENDENCE COUNTY - TOTAL	938	16,392	16,457	16,499	\$108,611,976	\$507.91
Natural Resources & Mining	14	142	142	143	1,101,870	595.50
Construction	69	415	415	454	2,618,972	470.70
Manufacturing	57	4,964	4,959	4,942	39,086,961	606.80
Trade, Transportation & Utilities	283	2,986	2,986	3,027	20,170,419	517.25
Wholesale Trade	53	546	542	543	4,597,164	650.45
Retail Trade	173	1,697	1,680	1,714	7,826,563	354.77
Transportation, Warehousing & Utilities	57	743	764	770	7,746,692	785.11
Information	12	152	151	151	1,141,806	580.38
Financial Activities	84	464	460	469	3,737,436	619.16
Professional & Business Services	93	1,102	1,048	964	4,266,233	316.16
Education & Health Services	129	2,734	2,731	2,765	20,067,934	562.70
Leisure & Hospitality	68	1,126	1,133	1,152	2,517,860	170.34
Other Services	69	335	353	365	1,588,983	348.23
Local Government	43	1,563	1,607	1,587	8,921,071	432.77
State Government	17	409	472	480	3,392,431	575.22

**TABLE 6. COUNTY SUMMARY
EMPLOYMENT AND TOTAL EARNINGS, BY INDUSTRY
FIRST QUARTER 2006**

NORTH AMERICAN INDUSTRY CLASSIFICATION SYSTEM INDUSTRY GROUP	NUMBER OF EMPLOYING UNITS	EMPLOYMENT			TOTAL EARNINGS	AVERAGE
		JANUARY	FEBRUARY	MARCH	JANUARY - MARCH	WEEKLY EARNINGS
IZARD COUNTY - TOTAL	262	2,914	3,018	3,120	17,444,490	\$444.73
Natural Resources & Mining	4	85	84	81	775,463	715.81
Construction	19	41	45	45	208,824	367.86
Manufacturing	13	397	446	500	3,376,446	580.18
Trade, Transportation & Utilities	66	488	497	511	2,453,257	378.43
Retail Trade	50	384	390	405	1,713,555	335.40
Other Trade, Transportation & Utilities	16	104	107	106	739,702	538.49
Information	3	8	8	8	39,779	382.49
Financial Activities	27	147	149	151	928,304	479.25
Professional & Business Services	21	74	71	75	353,591	370.90
Education & Health Services	43	534	539	538	2,605,625	373.25
Leisure & Hospitality	24	150	157	195	341,574	157.02
Other Services	13	38	42	43	182,555	342.50
Local Government	18	545	563	563	3,015,739	416.48
State Government	11	407	417	410	3,163,333	591.57
JACKSON COUNTY - TOTAL	531	5,600	5,631	5,716	\$37,993,372	\$517.36
Natural Resources & Mining	45	167	164	173	900,363	412.25
Construction	28	168	174	176	1,194,121	531.98
Manufacturing	25	1,003	1,011	1,010	9,372,682	715.25
Trade, Transportation & Utilities	130	1,137	1,132	1,155	6,576,501	443.24
Wholesale Trade	37	223	224	227	1,857,942	636.14
Retail Trade	74	679	683	702	3,037,866	339.65
Transportation, Warehousing & Utilities	19	235	225	226	1,680,693	565.38
Information	6	32	32	37	306,681	700.72
Financial Activities	45	195	184	185	1,477,425	604.51
Professional & Business Services	38	249	255	273	1,728,708	513.43
Education & Health Services	89	846	851	853	6,176,485	558.96
Leisure & Hospitality	38	311	321	333	801,542	191.68
Other Services	38	101	100	101	446,132	340.91
Local Government	35	731	746	755	4,133,519	427.37
State Government	14	660	661	665	4,879,213	566.95

**TABLE 6. COUNTY SUMMARY
EMPLOYMENT AND TOTAL EARNINGS, BY INDUSTRY
FIRST QUARTER 2006**

NORTH AMERICAN INDUSTRY CLASSIFICATION SYSTEM INDUSTRY GROUP	NUMBER OF EMPLOYING UNITS	EMPLOYMENT			TOTAL EARNINGS	AVERAGE WEEKLY EARNINGS
		JANUARY	FEBRUARY	MARCH	JANUARY - MARCH	
JEFFERSON COUNTY - TOTAL	1,873	32,130	32,275	32,571	\$248,066,689	\$590.31
Natural Resources & Mining	41	446	442	453	4,518,826	777.63
Construction	133	1,420	1,450	1,555	16,350,640	852.71
Manufacturing	72	6,299	6,266	6,227	63,881,190	784.47
Trade, Transportation & Utilities	494	5,893	5,854	5,971	39,234,144	511.01
Wholesale Trade	85	1,032	1,017	1,045	8,003,761	596.97
Retail Trade	341	3,974	3,958	4,026	19,263,149	371.75
Transportation, Warehousing & Utilities	68	887	879	900	11,967,234	1035.88
Information	20	208	208	211	1,567,370	576.88
Financial Activities	156	1,226	1,206	1,216	12,057,117	762.72
Professional & Business Services	177	1,889	1,817	1,742	14,168,032	600.14
Education & Health Services	396	5,354	5,363	5,432	36,300,507	518.73
Leisure & Hospitality	146	2,090	2,190	2,247	5,286,858	186.92
Other Services	158	761	774	791	4,553,570	451.77
Local Government	41	3,362	3,375	3,356	23,743,634	542.88
State Government	39	3,182	3,330	3,370	26,404,801	616.62
JOHNSON COUNTY - TOTAL	475	8,458	8,559	8,676	\$51,266,444	\$460.46
Natural Resources & Mining	15	199	200	200	1,483,835	571.66
Construction	32	139	142	143	876,437	477.02
Manufacturing	43	3,155	3,142	3,152	19,795,800	483.47
Trade, Transportation & Utilities	126	1,715	1,768	1,826	10,285,744	447.10
Information	6	36	34	33	232,391	520.67
Financial Activities	42	221	229	229	1,651,341	561.24
Professional & Business Services	51	200	205	206	1,124,578	424.74
Education & Health Services	69	1,109	1,114	1,143	6,992,522	479.40
Leisure & Hospitality	38	508	532	550	1,233,176	178.98
Other Services	29	78	77	83	376,219	364.79
Local Government	14	951	966	960	6,011,477	482.19
State Government	10	147	150	151	1,202,924	619.64

**TABLE 6. COUNTY SUMMARY
EMPLOYMENT AND TOTAL EARNINGS, BY INDUSTRY
FIRST QUARTER 2006**

NORTH AMERICAN INDUSTRY CLASSIFICATION SYSTEM INDUSTRY GROUP	NUMBER OF EMPLOYING UNITS	EMPLOYMENT			TOTAL EARNINGS	AVERAGE
		JANUARY	FEBRUARY	MARCH	JANUARY - MARCH	WEEKLY EARNINGS
LAFAYETTE COUNTY - TOTAL	171	1,455	1,455	1,459	\$8,360,927	\$441.62
Natural Resources & Mining	33	179	174	179	1,182,693	513.02
Construction	11	93	93	98	742,153	603.05
Trade, Transportation & Utilities	38	231	230	228	1,210,264	405.36
Wholesale Trade	4	38	42	37	343,915	678.33
Retail Trade	22	161	156	160	567,043	274.33
Transportation, Warehousing & Utilities	12	32	32	31	299,306	727.06
Financial Activities	17	82	85	84	481,462	442.66
Professional & Business Services	11	60	61	60	468,073	596.78
Education & Health Services	21	214	213	207	986,221	358.97
Leisure & Hospitality	4	38	37	41	94,107	187.22
Other Services	8	79	75	72	321,710	328.50
Local Government	13	360	367	373	1,930,560	405.01
State Government	8	55	53	53	390,037	559.06
Other	7	64	67	64	553,647	655.20
LAWRENCE COUNTY - TOTAL	424	4,098	4,095	4,171	\$23,463,564	\$437.94
Natural Resources & Mining	34	168	164	173	1,235,321	564.50
Construction	26	60	61	64	329,618	411.17
Manufacturing	23	577	572	563	3,555,577	479.27
Trade, Transportation & Utilities	130	894	891	906	5,183,065	444.48
Wholesale Trade	24	198	204	208	1,582,960	598.85
Retail Trade	71	584	573	576	2,502,179	333.19
Transportation, Warehousing & Utilities	35	112	114	122	1,097,926	728.07
Information	6	23	21	20	184,495	665.25
Financial Activities	30	136	137	137	876,574	493.38
Professional & Business Services	25	130	124	129	948,872	571.72
Education & Health Services	61	441	435	432	2,708,446	477.85
Leisure & Hospitality	25	301	312	334	580,489	141.46
Other Services	25	79	72	83	273,174	269.40
Local Government	28	1,175	1,190	1,212	6,819,100	439.93
State Government	11	114	116	118	768,833	509.84

**TABLE 6. COUNTY SUMMARY
EMPLOYMENT AND TOTAL EARNINGS, BY INDUSTRY
FIRST QUARTER 2006**

NORTH AMERICAN INDUSTRY CLASSIFICATION SYSTEM INDUSTRY GROUP	NUMBER OF EMPLOYING UNITS	EMPLOYMENT			TOTAL EARNINGS	AVERAGE WEEKLY EARNINGS
		JANUARY	FEBRUARY	MARCH	JANUARY - MARCH	
LEE COUNTY - TOTAL	240	1,982	1,981	2,028	\$12,296,770	\$473.66
Natural Resources & Mining	32	140	146	166	807,585	412.31
Construction	6	12	9	8	41,510	330.32
Trade, Transportation & Utilities	53	336	333	346	1,845,339	419.55
Wholesale Trade	8	70	65	69	465,412	526.48
Retail Trade	28	180	183	189	691,557	289.11
Transportation, Warehousing & Utilities	17	86	85	88	688,370	613.34
Financial Activities	14	87	86	87	544,580	483.36
Professional & Business Services	18	63	64	69	551,215	649.00
Education & Health Services	56	301	291	295	1,789,257	465.51
Leisure & Hospitality	9	73	72	75	155,525	163.14
Local Government	16	393	392	394	2,516,699	492.60
State Government	8	444	444	445	3,229,293	559.06
Other	28	133	144	143	815,767	448.22
LINCOLN COUNTY - TOTAL	221	2,956	2,948	2,988	\$19,674,694	\$510.61
Natural Resources & Mining	32	161	159	162	1,013,449	485.21
Construction	12	61	61	62	393,423	493.42
Manufacturing	9	426	422	431	3,475,751	627.13
Trade, Transportation & Utilities	47	373	366	383	2,398,560	493.33
Wholesale Trade	6	35	35	35	328,967	723.00
Retail Trade	25	200	200	213	663,313	249.71
Transportation, Warehousing & Utilities	16	138	131	135	1,406,280	803.28
Financial Activities	23	81	77	78	579,413	566.57
Professional & Business Services	13	21	23	23	176,615	608.32
Education & Health Services	33	315	320	316	1,518,926	368.58
Leisure & Hospitality	14	126	126	132	277,765	166.93
Local & State Government	22	1,348	1,349	1,358	9,634,409	548.29
Other	16	44	45	43	206,383	360.81

**TABLE 6. COUNTY SUMMARY
EMPLOYMENT AND TOTAL EARNINGS, BY INDUSTRY
FIRST QUARTER 2006**

NORTH AMERICAN INDUSTRY CLASSIFICATION SYSTEM INDUSTRY GROUP	NUMBER OF EMPLOYING UNITS	EMPLOYMENT			TOTAL EARNINGS	AVERAGE WEEKLY EARNINGS
		JANUARY	FEBRUARY	MARCH	JANUARY - MARCH	
LITTLE RIVER COUNTY - TOTAL	258	4,452	4,460	4,458	\$47,137,381	\$813.60
Natural Resources & Mining	12	69	68	68	572,300	644.24
Trade, Transportation & Utilities	68	1,105	1,117	1,119	9,680,168	668.63
Wholesale Trade	9	40	41	41	336,840	637.15
Retail Trade	41	323	335	328	1,406,605	329.21
Transportation, Warehousing & Utilities	18	742	741	750	7,936,723	820.22
Information	3	11	12	12	98,961	652.49
Financial Activities	26	98	96	98	602,950	476.51
Professional & Business Services	21	153	149	148	795,997	408.20
Education & Health Services	23	144	158	161	830,595	413.99
Leisure & Hospitality	19	215	220	229	486,530	169.09
Other Services	14	103	94	97	341,577	268.11
Local Government	20	770	776	773	4,646,190	462.35
State Government	12	78	81	78	542,342	528.08
Other	40	1,706	1,689	1,675	28,539,771	1299.03
LOGAN COUNTY - TOTAL	480	5,718	5,699	5,775	\$33,517,943	\$449.91
Natural Resources & Mining	18	86	87	95	660,546	568.78
Construction	54	168	164	173	970,086	443.30
Manufacturing	27	1,785	1,768	1,766	11,900,887	516.33
Trade, Transportation & Utilities	117	831	813	830	3,896,055	363.42
Wholesale Trade	17	38	41	42	203,714	388.52
Retail Trade	73	725	714	725	3,124,192	333.16
Transportation, Warehousing & Utilities	27	68	58	63	568,149	693.71
Information	7	45	45	45	378,035	646.21
Financial Activities	43	239	239	241	2,001,516	642.40
Professional & Business Services	44	129	135	154	659,580	364.14
Education & Health Services	71	767	763	758	4,082,952	411.81
Leisure & Hospitality	31	310	311	326	711,254	173.32
Other Services	30	78	74	74	400,256	408.70
Local & State Government	38	1,280	1,300	1,313	7,856,776	465.73

**TABLE 6. COUNTY SUMMARY
EMPLOYMENT AND TOTAL EARNINGS, BY INDUSTRY
FIRST QUARTER 2006**

NORTH AMERICAN INDUSTRY CLASSIFICATION SYSTEM INDUSTRY GROUP	NUMBER OF EMPLOYING UNITS	EMPLOYMENT			TOTAL EARNINGS	AVERAGE WEEKLY EARNINGS
		JANUARY	FEBRUARY	MARCH	JANUARY - MARCH	
LONOKE COUNTY - TOTAL	1,198	11,715	11,792	12,037	\$73,849,818	\$479.47
Natural Resources & Mining	69	381	395	422	2,856,984	550.34
Construction	165	882	900	905	6,592,828	566.22
Manufacturing	38	1,414	1,411	1,416	12,245,748	666.34
Trade, Transportation & Utilities	326	2,491	2,498	2,611	14,394,269	437.07
Wholesale Trade	75	414	414	426	3,816,339	702.31
Retail Trade	177	1,810	1,820	1,911	8,512,966	354.54
Transportation, Warehousing & Utilities	74	267	264	274	2,064,964	591.96
Information	17	118	119	120	914,853	591.37
Financial Activities	120	573	579	577	4,975,551	664.09
Professional & Business Services	147	509	525	551	3,714,160	540.77
Education & Health Services	124	1,246	1,257	1,293	7,332,310	445.75
Leisure & Hospitality	82	1,263	1,251	1,241	2,942,549	180.84
Other Services	65	197	196	197	1,070,417	418.68
Local Government	29	2,501	2,520	2,562	15,815,854	481.32
State Government	16	140	141	142	994,295	542.44
MADISON COUNTY - TOTAL	251	3,139	3,143	3,149	\$18,623,672	\$455.71
Natural Resources & Mining	12	63	59	58	407,351	522.24
Construction	44	147	157	158	991,574	495.29
Manufacturing	19	1,084	1,088	1,071	6,571,583	467.63
Trade, Transportation & Utilities	62	570	567	583	3,354,756	450.10
Wholesale Trade	13	40	40	39	626,953	1215.81
Retail Trade	34	415	410	434	1,911,548	350.38
Transportation, Warehousing & Utilities	15	115	117	110	816,255	550.78
Information	4	34	34	34	340,460	770.27
Financial Activities	16	96	93	92	737,046	605.29
Professional & Business Services	19	84	80	77	430,408	412.14
Education & Health Services	32	243	247	242	1,115,003	351.51
Leisure & Hospitality	13	110	110	119	203,952	138.84
Other Services	14	26	26	26	170,281	503.79
Local Government	8	635	635	641	3,934,578	475.13
State Government	8	47	47	48	366,680	595.90

**TABLE 6. COUNTY SUMMARY
EMPLOYMENT AND TOTAL EARNINGS, BY INDUSTRY
FIRST QUARTER 2006**

NORTH AMERICAN INDUSTRY CLASSIFICATION SYSTEM INDUSTRY GROUP	NUMBER OF EMPLOYING UNITS	EMPLOYMENT			TOTAL EARNINGS	AVERAGE
		JANUARY	FEBRUARY	MARCH	JANUARY - MARCH	WEEKLY EARNINGS
MARION COUNTY - TOTAL	306	3,969	4,008	4,066	\$22,662,953	\$434.27
Natural Resources & Mining	5	51	56	61	225,448	309.68
Construction	20	58	56	53	232,421	321.17
Manufacturing	26	1,671	1,698	1,700	11,080,237	504.43
Trade, Transportation & Utilities	61	662	665	691	2,894,013	330.95
Retail Trade	39	505	506	523	1,922,424	289.20
Other Trade, Transportation & Utilities	22	157	159	168	971,589	463.25
Financial Activities	34	166	167	176	1,123,647	509.44
Professional & Business Services	26	40	40	44	317,751	591.35
Education & Health Services	43	376	357	355	1,798,925	381.56
Leisure & Hospitality	43	214	226	237	523,086	178.30
Local Government	20	530	539	542	3,063,856	438.88
State Government	8	111	111	115	681,293	466.53
Other	20	90	93	92	722,276	606.11
MILLER COUNTY - TOTAL	829	12,493	12,548	12,706	\$92,427,346	\$565.06
Natural Resources & Mining	28	133	128	139	965,459	557.00
Construction	86	710	718	728	5,148,701	551.10
Manufacturing	35	2,784	2,777	2,781	32,056,104	886.79
Trade, Transportation & Utilities	230	2,705	2,682	2,750	18,487,061	524.30
Wholesale Trade	65	615	613	607	6,342,236	797.60
Retail Trade	127	1,477	1,471	1,540	6,859,280	352.70
Transportation, Warehousing & Utilities	38	613	598	603	5,285,545	672.40
Information	8	98	98	99	1,522,415	1190.94
Financial Activities	87	374	379	382	3,159,539	642.40
Professional & Business Services	83	872	944	937	4,605,682	386.07
Education & Health Services	87	1,024	1,017	1,021	6,130,778	462.05
Leisure & Hospitality	85	1,296	1,314	1,348	3,581,082	208.79
Other Services	61	336	330	327	1,230,291	285.91
Local Government	22	1,714	1,712	1,744	11,693,970	521.97
State Government	17	447	449	450	3,846,264	659.43

**TABLE 6. COUNTY SUMMARY
EMPLOYMENT AND TOTAL EARNINGS, BY INDUSTRY
FIRST QUARTER 2006**

NORTH AMERICAN INDUSTRY CLASSIFICATION SYSTEM INDUSTRY GROUP	NUMBER OF EMPLOYING UNITS	EMPLOYMENT			TOTAL EARNINGS	AVERAGE WEEKLY EARNINGS
		JANUARY	FEBRUARY	MARCH	JANUARY - MARCH	
MISSISSIPPI COUNTY - TOTAL	1,161	18,044	18,194	18,506	\$154,959,133	\$653.22
Natural Resources & Mining	102	550	516	537	3,179,343	457.70
Construction	59	433	439	467	3,842,560	662.24
Manufacturing	56	5,262	5,273	5,324	71,988,535	1047.53
Trade, Transportation & Utilities	306	3,014	3,039	3,071	19,417,999	491.13
Wholesale Trade	66	570	572	583	5,494,187	735.01
Retail Trade	187	1,880	1,890	1,913	8,524,784	346.17
Transportation, Warehousing & Utilities	53	564	577	575	5,399,028	726.07
Financial Activities	103	590	578	580	4,237,068	559.37
Professional & Business Services	98	977	999	1,103	9,752,976	730.98
Education & Health Services	194	1,625	1,628	1,642	10,361,977	488.50
Leisure & Hospitality	83	1,091	1,100	1,104	2,589,793	181.38
Local Government	46	2,392	2,424	2,460	15,183,176	481.56
State Government	24	587	640	649	4,249,071	522.68
Other	90	1,523	1,558	1,569	10,156,635	504.05
MONROE COUNTY - TOTAL	301	2,342	2,373	2,406	\$12,160,875	\$394.10
Natural Resources & Mining	33	111	115	132	564,458	363.85
Construction	15	33	34	37	165,802	367.90
Manufacturing	7	95	98	103	666,026	519.25
Trade, Transportation & Utilities	91	672	667	682	3,689,990	421.34
Wholesale Trade	23	187	188	197	1,327,874	535.72
Retail Trade	40	331	332	338	1,351,933	311.67
Transportation, Warehousing & Utilities	28	154	147	147	1,010,183	520.36
Financial Activities	16	101	100	96	721,522	560.62
Professional & Business Services	17	54	43	49	256,118	404.82
Education & Health Services	37	302	310	295	1,413,282	359.58
Leisure & Hospitality	28	266	281	280	627,508	175.10
Local Government	22	467	480	482	2,722,042	439.58
State Government	9	114	114	118	803,007	535.58
Other	26	127	131	132	531,120	314.27

**TABLE 6. COUNTY SUMMARY
EMPLOYMENT AND TOTAL EARNINGS, BY INDUSTRY
FIRST QUARTER 2006**

NORTH AMERICAN INDUSTRY CLASSIFICATION SYSTEM INDUSTRY GROUP	NUMBER OF EMPLOYING UNITS	EMPLOYMENT			TOTAL EARNINGS	AVERAGE WEEKLY EARNINGS
		JANUARY	FEBRUARY	MARCH	JANUARY - MARCH	
MONTGOMERY COUNTY - TOTAL	187	1,554	1,596	1,636	\$8,008,792	\$386.16
Natural Resources & Mining	15	60	59	57	453,992	595.27
Construction	25	112	125	145	832,845	503.13
Trade, Transportation & Utilities	44	183	176	182	853,669	364.14
Wholesale Trade	8	52	55	54	312,419	447.81
Retail Trade	25	118	109	114	475,698	321.93
Transportation, Warehousing & Utilities	11	13	12	14	65,552	387.88
Financial Activities	10	61	66	70	548,400	642.41
Education & Health Services	16	57	57	58	261,174	350.41
Leisure & Hospitality	22	176	203	223	719,010	275.62
Other Services	13	75	70	72	286,159	304.32
Local Government	9	479	492	481	2,490,809	395.87
State Government	8	59	58	59	396,869	520.37
Other	25	292	290	289	1,165,865	308.89
NEVADA COUNTY - TOTAL	190	2,644	2,660	2,661	\$19,644,321	\$569.15
Natural Resources & Mining	16	60	59	59	421,657	546.66
Construction	11	14	15	14	77,718	417.09
Manufacturing	9	870	863	855	10,032,082	894.55
Trade, Transportation & Utilities	48	511	507	516	2,914,887	438.50
Retail Trade	31	295	292	296	897,266	234.50
Other Trade, Transportation & Utilities	17	216	215	220	2,017,621	715.21
Financial Activities	13	63	64	65	498,909	599.65
Education & Health Services	14	351	359	370	1,773,437	378.94
Leisure & Hospitality	15	93	100	102	221,174	173.02
Other Services	15	70	67	64	207,206	237.89
Local Government	27	485	499	497	2,614,357	407.37
State Government	11	76	78	78	576,746	573.69
Other	11	51	49	41	306,148	501.06

**TABLE 6. COUNTY SUMMARY
EMPLOYMENT AND TOTAL EARNINGS, BY INDUSTRY
FIRST QUARTER 2006**

NORTH AMERICAN INDUSTRY CLASSIFICATION SYSTEM INDUSTRY GROUP	NUMBER OF EMPLOYING UNITS	EMPLOYMENT			TOTAL EARNINGS	AVERAGE WEEKLY EARNINGS
		JANUARY	FEBRUARY	MARCH	JANUARY - MARCH	
NEWTON COUNTY - TOTAL	138	1,114	1,096	1,112	\$4,939,598	\$343.14
Natural Resources & Mining	5	12	13	13	24,220	147.09
Construction	8	19	11	8	49,610	301.28
Manufacturing	16	104	101	106	512,530	380.31
Trade, Transportation & Utilities	31	167	159	154	642,289	308.79
Retail Trade	17	110	105	101	332,135	242.55
Other Trade, Transportation & Utilities	14	57	54	53	310,154	436.43
Education & Health Services	19	216	218	218	805,537	285.11
Leisure & Hospitality	20	60	58	75	168,731	201.75
Other Services	5	11	11	11	50,521	353.29
Local Government	13	385	385	388	1,931,857	384.99
State Government	7	92	92	91	436,417	366.22
Other	14	48	48	48	317,886	509.43
OUACHITA COUNTY - TOTAL	650	8,295	8,396	8,458	\$55,392,582	\$508.29
Natural Resources & Mining	43	256	261	274	1,861,247	543.01
Construction	53	315	295	305	1,855,625	468.00
Manufacturing	34	1,382	1,432	1,407	14,773,495	807.69
Trade, Transportation & Utilities	185	1,803	1,818	1,836	10,888,101	460.44
Wholesale Trade	32	252	251	248	2,498,889	767.87
Retail Trade	123	1,133	1,153	1,179	4,679,561	311.66
Transportation, Warehousing & Utilities	30	418	414	409	3,709,651	689.83
Information	8	93	94	92	642,693	531.59
Financial Activities	64	362	358	361	2,574,009	549.49
Professional & Business Services	50	379	372	360	1,906,502	396.01
Education & Health Services	85	1,219	1,230	1,229	7,499,199	470.52
Leisure & Hospitality	37	486	494	517	1,155,565	178.14
Other Services	47	165	169	168	705,882	324.49
Local Government	30	1,322	1,324	1,331	7,596,969	440.82
State Government	14	513	549	578	3,933,295	553.47

**TABLE 6. COUNTY SUMMARY
EMPLOYMENT AND TOTAL EARNINGS, BY INDUSTRY
FIRST QUARTER 2006**

NORTH AMERICAN INDUSTRY CLASSIFICATION SYSTEM INDUSTRY GROUP	NUMBER OF EMPLOYING UNITS	EMPLOYMENT			TOTAL EARNINGS	AVERAGE WEEKLY EARNINGS
		JANUARY	FEBRUARY	MARCH	JANUARY - MARCH	
PERRY COUNTY - TOTAL	155	1,155	1,180	1,212	\$6,458,168	\$420.17
Natural Resources & Mining	8	29	29	30	261,297	685.22
Construction	24	84	80	75	443,586	428.31
Manufacturing	7	81	82	79	463,601	442.09
Trade, Transportation & Utilities	28	184	185	192	824,171	339.03
Retail Trade	17	154	155	163	528,626	258.45
Other Trade, Transportation & Utilities	11	30	30	29	295,545	766.32
Financial Activities	13	50	50	50	386,497	594.61
Professional & Business Services	13	34	32	34	199,248	459.80
Education & Health Services	22	165	171	173	850,610	385.65
Local Government	12	388	400	408	2,243,641	432.91
State Government	9	54	53	52	372,790	541.06
Other	19	86	98	119	412,727	314.34
PHILLIPS COUNTY - TOTAL	738	6,312	6,347	6,504	\$38,971,302	\$469.31
Natural Resources & Mining	72	300	309	406	1,628,995	370.37
Construction	30	109	105	112	652,174	461.66
Manufacturing	13	406	414	423	3,021,360	560.93
Trade, Transportation & Utilities	182	1,536	1,535	1,563	10,604,288	528.08
Wholesale Trade	36	396	395	410	3,384,396	650.30
Retail Trade	108	869	877	883	3,836,731	336.78
Transportation, Warehousing & Utilities	38	271	263	270	3,383,161	971.06
Information	11	62	60	56	441,620	572.54
Financial Activities	55	279	278	273	2,247,222	624.81
Professional & Business Services	58	220	247	233	1,376,980	453.95
Education & Health Services	191	1,233	1,229	1,249	6,529,246	406.02
Leisure & Hospitality	40	402	395	403	912,009	175.39
Other Services	40	85	83	88	397,674	358.48
Local Government	30	1,180	1,185	1,186	7,737,452	502.83
State Government	16	500	507	512	3,422,282	519.92

**TABLE 6. COUNTY SUMMARY
EMPLOYMENT AND TOTAL EARNINGS, BY INDUSTRY
FIRST QUARTER 2006**

NORTH AMERICAN INDUSTRY CLASSIFICATION SYSTEM INDUSTRY GROUP	NUMBER OF EMPLOYING UNITS	EMPLOYMENT			TOTAL EARNINGS	AVERAGE
		JANUARY	FEBRUARY	MARCH	JANUARY - MARCH	WEEKLY EARNINGS
PIKE COUNTY - TOTAL	262	2,855	2,862	2,919	\$16,557,723	\$442.45
Natural Resources & Mining	32	146	145	146	1,201,845	634.67
Construction	13	98	101	104	802,146	610.93
Manufacturing	14	540	531	546	3,520,212	502.39
Trade, Transportation & Utilities	90	557	544	558	3,300,083	459.05
Wholesale Trade	18	118	109	114	1,043,150	705.94
Retail Trade	44	314	315	321	1,333,255	323.87
Transportation, Warehousing & Utilities	28	125	120	123	923,678	579.23
Information	5	30	30	30	301,620	773.38
Financial Activities	24	174	173	176	1,222,892	539.59
Professional & Business Services	7	26	25	29	110,860	319.79
Education & Health Services	18	242	244	248	967,598	304.21
Leisure & Hospitality	20	199	202	209	452,039	171.01
Other Services	15	132	137	141	656,805	369.68
Local Government	13	583	603	603	3,393,862	437.79
State Government	11	128	127	129	627,761	377.26
POINSETT COUNTY - TOTAL	502	5,910	5,895	5,992	\$36,379,141	\$471.72
Natural Resources & Mining	49	284	275	272	1,715,780	476.47
Construction	29	83	85	88	399,296	359.94
Manufacturing	28	1,284	1,253	1,241	9,233,482	564.00
Trade, Transportation & Utilities	136	1,355	1,364	1,429	9,027,897	502.26
Wholesale Trade	34	499	509	533	5,210,342	780.26
Retail Trade	76	718	717	756	2,790,227	293.88
Transportation, Warehousing & Utilities	26	138	138	140	1,027,328	569.89
Information	6	53	53	53	558,041	809.93
Financial Activities	45	322	324	332	2,279,217	537.80
Professional & Business Services	30	145	148	151	1,032,410	536.60
Education & Health Services	58	535	537	553	2,762,061	392.25
Leisure & Hospitality	47	396	400	420	798,219	151.48
Other Services	31	61	59	59	306,992	395.78
Local Government	31	1,194	1,205	1,198	6,988,085	448.33
State Government	12	198	192	196	1,277,661	503.15

**TABLE 6. COUNTY SUMMARY
EMPLOYMENT AND TOTAL EARNINGS, BY INDUSTRY
FIRST QUARTER 2006**

NORTH AMERICAN INDUSTRY CLASSIFICATION SYSTEM INDUSTRY GROUP	NUMBER OF EMPLOYING UNITS	EMPLOYMENT			TOTAL EARNINGS	AVERAGE WEEKLY EARNINGS
		JANUARY	FEBRUARY	MARCH	JANUARY - MARCH	
POLK COUNTY - TOTAL	536	6,216	6,247	6,308	\$35,061,645	\$431.05
Natural Resources & Mining	26	254	252	251	1,945,220	592.99
Construction	36	187	187	192	951,490	387.94
Manufacturing	45	1,314	1,320	1,327	8,514,615	496.06
Trade, Transportation & Utilities	154	1,354	1,374	1,397	6,940,378	388.27
Wholesale Trade	27	116	120	119	523,285	340.16
Retail Trade	85	839	845	869	3,741,803	338.23
Transportation, Warehousing & Utilities	42	399	409	409	2,675,290	507.29
Information	10	51	51	51	379,412	572.27
Financial Activities	41	221	224	221	1,473,922	510.71
Professional & Business Services	48	140	145	143	948,961	511.66
Education & Health Services	74	959	942	958	5,671,650	457.80
Leisure & Hospitality	39	437	443	452	892,523	154.63
Other Services	28	125	127	130	570,618	344.71
Local Government	21	839	839	837	5,046,751	463.08
State Government	14	335	343	349	1,726,105	387.86
POPE COUNTY - TOTAL	1,717	26,751	27,183	26,869	\$188,300,130	\$537.78
Natural Resources & Mining	22	663	780	747	4,277,225	450.71
Construction	172	1,452	1,554	1,100	8,811,077	495.21
Manufacturing	92	5,133	5,124	5,113	40,369,274	606.11
Trade, Transportation & Utilities	477	6,521	6,506	6,529	58,920,712	695.29
Wholesale Trade	103	723	720	711	5,726,107	613.47
Retail Trade	283	3,343	3,334	3,387	16,908,346	387.71
Transportation, Warehousing & Utilities	91	2,455	2,452	2,431	36,286,259	1141.15
Information	23	276	275	268	2,578,988	726.68
Financial Activities	180	847	850	858	6,854,524	619.10
Professional & Business Services	223	2,631	2,576	2,603	13,119,630	387.66
Education & Health Services	226	2,857	2,928	2,919	20,277,210	537.61
Leisure & Hospitality	129	2,277	2,314	2,349	5,743,219	190.97
Other Services	116	461	461	478	2,398,698	395.39
Local Government	41	2,267	2,288	2,295	14,961,774	504.05
State Government	16	1,366	1,527	1,610	9,987,799	511.85

**TABLE 6. COUNTY SUMMARY
EMPLOYMENT AND TOTAL EARNINGS, BY INDUSTRY
FIRST QUARTER 2006**

NORTH AMERICAN INDUSTRY CLASSIFICATION SYSTEM INDUSTRY GROUP	NUMBER OF EMPLOYING UNITS	EMPLOYMENT			TOTAL EARNINGS	AVERAGE WEEKLY EARNINGS
		JANUARY	FEBRUARY	MARCH	JANUARY - MARCH	
PRAIRIE COUNTY - TOTAL	237	1,565	1,570	1,608	\$9,271,158	\$451.09
Natural Resources & Mining	28	102	102	115	671,712	485.93
Trade, Transportation & Utilities	72	374	372	383	2,257,140	461.36
Wholesale Trade	11	57	62	64	392,397	494.83
Retail Trade	41	236	231	241	1,206,141	393.14
Transportation, Warehousing & Utilities	20	81	79	78	658,602	638.59
Information	4	8	9	9	99,211	880.57
Financial Activities	16	63	64	62	471,137	575.26
Professional & Business Services	16	53	53	53	319,896	464.29
Education & Health Services	26	244	239	248	1,321,241	417.10
Leisure & Hospitality	19	100	102	104	287,679	216.95
Other Services	12	36	36	38	160,182	336.05
Local Government	15	357	364	356	2,054,328	440.18
State Government	10	49	48	49	345,868	546.68
Other	19	179	181	191	1,282,764	537.25
PULASKI COUNTY - TOTAL	13,903	234,710	236,123	238,837	\$2,193,320,887	\$713.22
Natural Resources & Mining	44	619	649	689	8,326,106	981.81
Construction	1,133	10,245	10,252	10,382	94,006,900	702.55
Manufacturing	446	15,826	15,886	15,825	164,872,231	800.38
Trade, Transportation & Utilities	3,234	51,461	50,930	51,300	442,686,708	664.70
Wholesale Trade	1,085	13,154	13,094	13,096	161,551,307	947.57
Retail Trade	1,757	25,019	24,530	24,867	141,532,310	438.90
Transportation, Warehousing & Utilities	392	13,288	13,306	13,337	139,603,091	806.79
Information	239	8,616	8,575	8,599	125,471,283	1122.72
Financial Activities	1,701	16,029	16,085	16,071	247,662,201	1186.11
Professional & Business Services	2,645	33,086	33,761	34,728	289,438,161	657.58
Education & Health Services	1,908	32,404	32,746	32,964	299,612,269	704.70
Leisure & Hospitality	1,022	19,082	19,055	19,874	66,335,930	263.89
Other Services	1,226	6,546	6,563	6,664	44,465,719	518.96
Local Government	104	16,756	16,792	16,818	148,804,604	681.80
State Government	201	24,040	24,829	24,923	261,638,775	818.22

**TABLE 6. COUNTY SUMMARY
EMPLOYMENT AND TOTAL EARNINGS, BY INDUSTRY
FIRST QUARTER 2006**

NORTH AMERICAN INDUSTRY CLASSIFICATION SYSTEM INDUSTRY GROUP	NUMBER OF EMPLOYING UNITS	EMPLOYMENT			TOTAL EARNINGS	AVERAGE WEEKLY EARNINGS
		JANUARY	FEBRUARY	MARCH	JANUARY - MARCH	
RANDOLPH COUNTY - TOTAL	409	4,971	5,081	5,108	\$28,126,836	\$428.15
Natural Resources & Mining	22	61	59	68	299,683	367.86
Construction	24	83	93	99	446,262	374.49
Manufacturing	40	1,106	1,099	1,093	6,984,128	488.70
Trade, Transportation & Utilities	101	934	938	952	5,058,938	413.40
Wholesale Trade	22	189	193	204	975,309	384.08
Retail Trade	62	602	600	608	2,645,994	337.36
Transportation, Warehousing & Utilities	17	143	145	140	1,437,635	775.14
Information	5	44	45	46	437,419	747.72
Financial Activities	29	144	150	150	825,888	429.26
Professional & Business Services	38	215	221	220	936,422	329.42
Education & Health Services	62	816	829	856	5,028,284	463.96
Leisure & Hospitality	29	411	416	414	796,715	148.15
Other Services	24	56	60	71	293,985	362.80
Local Government	23	872	882	872	5,030,490	442.07
State Government	12	229	289	267	1,988,622	584.60
SAINT FRANCIS COUNTY - TOTAL	656	8,075	8,104	8,155	\$48,413,147	\$459.12
Natural Resources & Mining	20	124	120	141	527,008	315.89
Construction	41	223	201	227	1,309,366	464.15
Manufacturing	20	1,181	1,226	1,210	8,786,799	560.61
Trade, Transportation & Utilities	193	2,100	2,104	2,128	12,529,549	456.64
Wholesale Trade	33	492	510	523	3,749,337	567.36
Retail Trade	128	1,279	1,269	1,281	5,907,071	356.01
Transportation, Warehousing & Utilities	32	329	325	324	2,873,141	677.95
Information	9	98	98	97	674,141	530.96
Financial Activities	48	290	291	295	1,814,584	478.03
Professional & Business Services	48	195	197	194	1,265,272	498.27
Education & Health Services	140	1,319	1,328	1,266	6,984,021	411.88
Leisure & Hospitality	50	733	722	775	1,757,875	181.91
Other Services	40	127	124	126	457,992	280.35
Local Government	30	1,188	1,195	1,195	8,231,389	530.90
State Government	17	497	498	501	4,075,151	628.62

**TABLE 6. COUNTY SUMMARY
EMPLOYMENT AND TOTAL EARNINGS, BY INDUSTRY
FIRST QUARTER 2006**

NORTH AMERICAN INDUSTRY CLASSIFICATION SYSTEM INDUSTRY GROUP	NUMBER OF EMPLOYING UNITS	EMPLOYMENT			TOTAL EARNINGS	AVERAGE WEEKLY EARNINGS
		JANUARY	FEBRUARY	MARCH	JANUARY - MARCH	
SALINE COUNTY - TOTAL	1,674	19,642	19,566	19,722	\$131,472,283	\$514.84
Natural Resources & Mining	12	34	31	32	542,315	1290.20
Construction	299	1,881	1,855	1,887	13,819,542	567.16
Manufacturing	83	1,907	1,858	1,862	18,553,615	760.90
Trade, Transportation & Utilities	423	4,211	4,224	4,267	27,766,774	504.47
Wholesale Trade	125	532	532	541	5,302,074	762.34
Retail Trade	248	3,427	3,445	3,474	20,492,198	457.08
Transportation, Warehousing & Utilities	50	252	247	252	1,972,502	606.12
Information	17	138	131	136	919,050	523.68
Financial Activities	157	716	712	737	5,752,856	613.20
Professional & Business Services	208	1,182	1,184	1,185	7,082,610	460.28
Education & Health Services	171	2,564	2,571	2,608	16,629,400	495.62
Leisure & Hospitality	123	2,270	2,218	2,219	6,340,388	218.16
Other Services	130	570	596	590	3,399,384	446.74
Local & State Government	51	4,169	4,186	4,199	30,666,349	563.71
SCOTT COUNTY - TOTAL	188	2,898	2,892	2,914	15,697,406	\$416.19
Natural Resources & Mining	18	179	185	183	1,440,287	607.63
Trade, Transportation & Utilities	41	462	456	472	2,216,907	368.05
Wholesale Trade	7	65	66	70	412,848	473.99
Retail Trade	27	321	314	326	1,221,851	293.41
Transportation, Warehousing & Utilities	7	76	76	76	582,208	589.28
Information	3	9	9	9	75,114	642.00
Financial Activities	17	68	68	70	418,629	468.96
Professional & Business Services	9	17	17	15	55,420	261.00
Education & Health Services	29	336	311	313	1,679,895	403.82
Leisure & Hospitality	19	178	182	193	347,630	145.07
Other Services	10	56	57	58	485,286	654.91
Local Government	5	352	367	361	2,063,511	440.92
State Government	8	65	66	67	400,183	466.41
Other	29	1,176	1,174	1,173	6,514,544	426.73

**TABLE 6. COUNTY SUMMARY
EMPLOYMENT AND TOTAL EARNINGS, BY INDUSTRY
FIRST QUARTER 2006**

NORTH AMERICAN INDUSTRY CLASSIFICATION SYSTEM INDUSTRY GROUP	NUMBER OF EMPLOYING UNITS	EMPLOYMENT			TOTAL EARNINGS	AVERAGE WEEKLY EARNINGS
		JANUARY	FEBRUARY	MARCH	JANUARY - MARCH	
SEARCY COUNTY - TOTAL	165	1,622	1,656	1,650	\$8,008,465	\$375.02
Construction	5	13	13	13	64,368	380.88
Manufacturing	16	258	267	254	1,216,220	360.29
Trade, Transportation & Utilities	38	297	303	292	1,123,387	290.63
Retail Trade	27	211	213	202	766,009	282.38
Other Trade, Transportation & Utilities	11	86	90	90	357,378	310.04
Financial Activities	14	77	77	84	517,475	501.75
Professional & Business Services	17	37	34	32	179,881	403.02
Education & Health Services	34	288	285	286	1,233,627	331.41
Leisure & Hospitality	10	86	107	111	230,087	174.66
Local Government	10	357	355	355	2,101,719	454.56
State Government	8	168	164	165	1,009,403	468.69
Other	13	41	51	58	332,298	511.23
SEBASTIAN COUNTY - TOTAL	3,616	73,029	73,157	74,033	\$680,150,672	\$712.74
Natural Resources & Mining	62	1,198	1,237	1,261	20,937,277	1307.27
Construction	300	2,782	2,764	2,815	21,994,110	607.05
Manufacturing	228	21,556	21,496	21,540	196,576,825	702.31
Trade, Transportation & Utilities	929	12,750	12,679	12,860	89,858,627	541.58
Wholesale Trade	238	2,443	2,466	2,482	27,261,775	851.19
Retail Trade	563	8,160	8,030	8,166	41,771,463	395.78
Transportation, Warehousing & Utilities	128	2,147	2,183	2,212	20,825,389	734.62
Information	59	1,165	1,174	1,174	13,726,154	901.67
Financial Activities	414	2,556	2,548	2,561	24,091,025	725.31
Professional & Business Services	517	9,133	9,248	9,537	155,869,419	1288.41
Education & Health Services	451	9,500	9,518	9,593	86,113,012	694.57
Leisure & Hospitality	313	5,149	5,209	5,328	14,877,404	218.87
Other Services	278	1,482	1,465	1,506	8,822,210	457.20
Local Government	43	4,379	4,406	4,417	36,146,536	631.84
State Government	22	1,379	1,413	1,441	11,138,073	607.21

**TABLE 6. COUNTY SUMMARY
EMPLOYMENT AND TOTAL EARNINGS, BY INDUSTRY
FIRST QUARTER 2006**

NORTH AMERICAN INDUSTRY CLASSIFICATION SYSTEM INDUSTRY GROUP	NUMBER OF EMPLOYING UNITS	EMPLOYMENT			TOTAL EARNINGS	AVERAGE WEEKLY EARNINGS
		JANUARY	FEBRUARY	MARCH	JANUARY - MARCH	
SEVIER COUNTY - TOTAL	331	5,878	5,930	5,912	36,732,858	\$478.38
Natural Resources & Mining	19	202	189	189	1,391,076	553.48
Trade, Transportation & Utilities	89	819	824	838	4,972,748	462.54
Wholesale Trade	15	138	137	133	1,504,672	851.06
Retail Trade	57	579	581	597	2,457,346	322.75
Transportation, Warehousing & Utilities	17	102	106	108	1,010,730	738.12
Information	6	38	39	39	295,499	587.86
Financial Activities	27	219	219	219	1,728,904	607.27
Professional & Business Services	29	103	96	97	2,277,089	1775.28
Education & Health Services	53	546	538	545	2,790,214	395.27
Leisure & Hospitality	21	218	228	242	529,358	177.56
Other Services	33	143	148	143	611,999	325.42
Local Government	12	816	827	850	4,908,480	454.36
State Government	9	171	187	190	1,168,503	492.07
Other	33	2,603	2,635	2,560	16,058,988	475.24
SHARP COUNTY - TOTAL	426	3,973	3,942	3,946	\$20,770,537	\$404.11
Construction	34	201	201	220	1,344,771	498.93
Manufacturing	22	186	186	194	866,995	353.49
Trade, Transportation & Utilities	99	1,066	1,034	1,037	6,115,636	449.89
Wholesale Trade	12	53	51	54	214,453	313.22
Retail Trade	70	678	665	679	2,713,379	309.68
Transportation, Warehousing & Utilities	17	335	318	304	3,187,804	768.70
Information	8	62	54	56	942,550	1264.60
Financial Activities	38	267	256	259	1,967,156	580.51
Professional & Business Services	38	179	183	176	945,514	405.57
Education & Health Services	77	596	591	550	2,837,941	377.03
Leisure & Hospitality	43	463	470	481	835,355	136.33
Local Government	29	778	798	798	4,000,500	388.88
State Government	9	95	94	96	619,233	501.40
Other	29	80	75	79	294,886	290.81

**TABLE 6. COUNTY SUMMARY
EMPLOYMENT AND TOTAL EARNINGS, BY INDUSTRY
FIRST QUARTER 2006**

NORTH AMERICAN INDUSTRY CLASSIFICATION SYSTEM INDUSTRY GROUP	NUMBER OF EMPLOYING UNITS	EMPLOYMENT			TOTAL EARNINGS	AVERAGE WEEKLY EARNINGS
		JANUARY	FEBRUARY	MARCH	JANUARY - MARCH	
STONE COUNTY - TOTAL	268	2,782	2,803	2,871	\$14,004,123	\$382.18
Construction	23	98	92	95	526,243	426.11
Manufacturing	26	450	461	468	2,484,022	415.69
Trade, Transportation & Utilities	75	687	682	694	3,254,733	364.08
Wholesale Trade	9	41	49	50	229,115	377.66
Retail Trade	53	606	593	604	2,675,635	342.46
Transportation, Warehousing & Utilities	13	40	40	40	349,983	673.04
Financial Activities	22	90	91	91	673,018	571.00
Professional & Business Services	10	36	34	32	221,107	500.24
Education & Health Services	39	458	470	473	2,685,165	442.29
Leisure & Hospitality	34	324	335	368	650,238	146.11
Other Services	14	25	26	27	119,495	353.54
Local Government	10	402	396	402	2,409,888	463.44
State Government	9	171	171	172	741,276	332.81
Other	6	41	45	49	238,938	408.44
UNION COUNTY - TOTAL	1,359	20,035	19,993	20,057	\$171,019,599	\$656.84
Natural Resources & Mining	105	511	515	508	4,170,373	627.38
Construction	91	1,373	1,340	1,367	13,189,405	746.01
Manufacturing	66	5,250	5,186	5,184	53,099,505	784.49
Trade, Transportation & Utilities	358	3,651	3,657	3,688	29,413,812	617.30
Wholesale Trade	81	572	566	575	9,711,939	1308.36
Retail Trade	219	2,300	2,312	2,339	11,134,791	369.67
Transportation, Warehousing & Utilities	58	779	779	774	8,567,082	847.78
Information	18	205	204	212	1,404,821	522.04
Financial Activities	124	751	739	735	5,899,450	611.87
Professional & Business Services	135	1,755	1,782	1,789	25,937,115	1123.82
Education & Health Services	176	2,317	2,317	2,305	16,007,701	532.37
Leisure & Hospitality	87	1,043	1,060	1,076	2,781,611	201.92
Other Services	144	619	602	609	3,016,443	380.38
Local Government	37	2,062	2,061	2,052	12,257,264	458.07
State Government	18	498	530	532	3,842,099	568.36

**TABLE 6. COUNTY SUMMARY
EMPLOYMENT AND TOTAL EARNINGS, BY INDUSTRY
FIRST QUARTER 2006**

NORTH AMERICAN INDUSTRY CLASSIFICATION SYSTEM INDUSTRY GROUP	NUMBER OF EMPLOYING UNITS	EMPLOYMENT			TOTAL EARNINGS	AVERAGE WEEKLY EARNINGS
		JANUARY	FEBRUARY	MARCH	JANUARY - MARCH	
VAN BUREN COUNTY - TOTAL	363	3,751	3,742	3,787	\$19,468,909	\$398.30
Natural Resources & Mining	9	23	22	23	99,119	336.38
Construction	49	159	170	167	961,404	447.30
Manufacturing	14	609	587	574	3,459,533	451.05
Trade, Transportation & Utilities	100	785	780	788	4,007,482	393.03
Wholesale Trade	17	50	54	55	415,929	603.67
Retail Trade	63	600	592	598	2,685,194	346.18
Transportation, Warehousing & Utilities	20	135	134	135	906,359	517.72
Information	10	50	51	51	371,893	564.61
Financial Activities	26	135	134	137	916,904	521.17
Professional & Business Services	29	101	98	101	473,149	363.96
Education & Health Services	45	612	596	590	3,198,375	410.50
Leisure & Hospitality	32	429	442	490	1,223,502	207.46
Other Services	28	74	73	77	379,831	391.31
Local Government	13	688	703	704	3,790,381	417.52
State Government	8	86	86	85	587,336	527.39
WASHINGTON COUNTY - TOTAL	5,525	89,661	89,885	90,876	\$722,548,716	\$616.60
Natural Resources & Mining	40	453	452	453	3,220,489	547.27
Construction	681	5,768	5,791	5,918	49,934,914	659.35
Manufacturing	231	15,660	15,675	15,635	122,616,838	602.43
Trade, Transportation & Utilities	1,342	20,405	20,249	20,429	160,268,118	605.49
Wholesale Trade	365	3,660	3,664	3,654	46,875,631	985.38
Retail Trade	772	11,534	11,380	11,512	64,150,862	430.03
Transportation, Warehousing & Utilities	205	5,211	5,205	5,263	49,241,625	724.76
Information	94	1,418	1,448	1,452	15,076,243	805.73
Financial Activities	677	3,875	3,887	3,932	39,879,223	786.98
Professional & Business Services	905	8,846	9,011	9,253	94,473,792	804.19
Education & Health Services	608	10,218	10,339	10,434	85,145,645	634.02
Leisure & Hospitality	501	8,895	9,057	9,255	27,473,612	233.03
Other Services	363	1,943	1,911	1,924	11,455,621	457.53
Local & State Government	83	12,180	12,065	12,191	113,004,221	715.72

**TABLE 6. COUNTY SUMMARY
EMPLOYMENT AND TOTAL EARNINGS, BY INDUSTRY
FIRST QUARTER 2006**

NORTH AMERICAN INDUSTRY CLASSIFICATION SYSTEM INDUSTRY GROUP	NUMBER OF EMPLOYING UNITS	EMPLOYMENT			TOTAL EARNINGS	AVERAGE WEEKLY EARNINGS
		JANUARY	FEBRUARY	MARCH	JANUARY - MARCH	
WHITE COUNTY - TOTAL	1,618	23,419	23,708	23,942	\$158,656,260	\$515.18
Natural Resources & Mining	34	210	216	217	1,467,050	526.52
Construction	172	1,163	1,143	1,168	7,620,147	506.19
Manufacturing	84	3,789	3,785	3,717	33,179,040	678.12
Trade, Transportation & Utilities	478	5,880	5,863	5,982	38,310,790	498.78
Wholesale Trade	97	595	601	608	4,497,442	575.32
Retail Trade	298	3,080	3,087	3,174	14,808,050	365.83
Transportation, Warehousing & Utilities	83	2,205	2,175	2,200	19,005,298	666.54
Information	21	228	226	215	1,613,200	556.47
Financial Activities	175	880	857	867	6,326,060	560.62
Professional & Business Services	153	1,302	1,348	1,394	8,078,758	461.01
Education & Health Services	209	4,101	4,113	4,162	32,223,239	600.85
Leisure & Hospitality	120	2,107	2,142	2,200	4,728,944	169.22
Other Services	107	648	630	638	3,779,959	455.27
Local Government	46	2,555	2,600	2,593	16,292,431	485.26
State Government	19	556	785	789	5,036,642	545.68
WOODRUFF COUNTY - TOTAL	179	1,917	1,931	1,989	\$11,861,440	\$468.95
Natural Resources & Mining	20	72	69	90	459,865	459.41
Construction	6	46	43	63	268,695	407.94
Manufacturing	9	381	381	388	2,778,679	557.59
Trade, Transportation & Utilities	55	499	512	514	3,241,094	490.46
Wholesale Trade	13	208	223	228	1,726,129	604.46
Retail Trade	27	181	185	187	656,549	273.98
Transportation, Warehousing & Utilities	15	110	104	99	858,416	632.89
Financial Activities	14	57	62	57	378,836	496.73
Professional & Business Services	3	6	5	7	42,120	540.00
Education & Health Services	40	212	215	218	1,341,801	480.07
Leisure & Hospitality	7	53	54	52	112,509	163.29
Local Government	10	507	504	515	2,744,514	415.04
State Government	7	57	58	58	351,647	469.07
Other	8	27	28	27	141,680	398.72

**TABLE 6. COUNTY SUMMARY
EMPLOYMENT AND TOTAL EARNINGS, BY INDUSTRY
FIRST QUARTER 2006**

NORTH AMERICAN INDUSTRY CLASSIFICATION SYSTEM INDUSTRY GROUP	NUMBER OF EMPLOYING UNITS	EMPLOYMENT			TOTAL EARNINGS	AVERAGE
		JANUARY	FEBRUARY	MARCH	JANUARY - MARCH	WEEKLY EARNINGS
YELL COUNTY - TOTAL	415	7,037	6,999	7,095	\$41,188,518	\$449.82
Natural Resources & Mining	24	273	261	260	1,593,531	463.15
Construction	46	362	329	395	2,241,397	476.28
Manufacturing	23	2,928	2,898	2,899	17,390,836	459.97
Trade, Transportation & Utilities	90	714	730	739	3,257,068	344.31
Wholesale Trade	12	26	29	29	127,505	350.29
Retail Trade	58	591	606	615	2,339,536	297.95
Transportation, Warehousing & Utilities	20	97	95	95	790,027	635.24
Information	4	50	50	50	557,052	857.00
Financial Activities	38	192	193	190	1,296,445	520.31
Professional & Business Services	35	233	241	245	2,756,305	884.66
Education & Health Services	66	471	465	463	2,383,780	393.21
Leisure & Hospitality	28	338	356	367	855,421	186.06
Other Services	20	72	75	73	292,701	307.03
Local Government	28	1,291	1,289	1,301	7,868,770	467.89
State Government	13	113	112	113	695,212	474.66
REST-OF-STATE-TOTAL	4,384	15,894	16,154	16,550	229,216,372	\$1,088.44
Natural Resources & Mining	59	370	428	435	4,084,182	764.40
Construction	584	2,435	2,520	2,758	23,520,211	703.71
Manufacturing	44	176	175	181	1,747,641	758.09
Trade, Transportation & Utilities	1,776	6,937	6,999	7,072	134,410,490	1476.48
Wholesale Trade	1,526	5,676	5,719	5,752	123,200,316	1658.07
Retail Trade	97	602	602	611	4,909,841	624.26
Transportation, Warehousing & Utilities	153	659	678	709	6,300,333	710.62
Information	97	217	272	260	3,194,152	984.13
Financial Activities	267	839	857	873	12,599,835	1131.82
Professional & Business Services	1,256	3,594	3,568	3,634	36,656,120	783.54
Education & Health Services	114	640	638	639	6,303,333	758.80
Leisure & Hospitality	40	74	72	74	597,157	626.39
Other	147	612	625	624	6,103,251	756.82

TABLE 7. FEDERAL GOVERNMENT EMPLOYMENT AND EARNINGS IN ARKANSAS

NORTH AMERICAN INDUSTRY CLASSIFICATION SYSTEM INDUSTRY GROUP	NUMBER OF EMPLOYING UNITS	EMPLOYMENT			TOTAL
		JANUARY	FEBRUARY	MARCH	EARNINGS JANUARY - MARCH
Manufacturing	2	4	4	3	\$86,545
Trade, Transportation & Utilities	444	6,664	6,639	6,631	68,822,823
Information	1	34	34	32	360,823
Financial Activities	23	182	181	181	2,658,586
Professional & Business Services	32	764	757	758	13,638,086
Education & Health Services	6	3,934	3,950	3,961	66,828,443
Leisure & Hospitality	17	195	195	208	2,453,577
Other Services	2	275	271	275	1,001,942
Public Administration	486	8,615	8,598	8,636	126,127,584
TOTAL	1,013	20,667	20,629	20,685	\$281,978,409

**TABLE 8. WORKFORCE INFORMATION AREA, SUMMARY
EMPLOYMENT AND TOTAL EARNINGS, BY INDUSTRY
FIRST QUARTER 2006**

NORTH AMERICAN INDUSTRY CLASSIFICATION SYSTEM INDUSTRY GROUP	NUMBER OF EMPLOYING UNITS	EMPLOYMENT			TOTAL EARNINGS	AVERAGE WEEKLY EARNINGS
		JANUARY	FEBRUARY	MARCH	JANUARY - MARCH	
CENTRAL WORKFORCE INFORMATION*	5,789	71,749	72,126	73,015	\$514,487,575	\$547.41
Natural Resources & Mining	156	707	742	803	5,776,100	591.89
Trade, Transportation & Utilities	1,501	14,047	14,120	14,351	86,429,363	469.10
Wholesale Trade	380	1,933	1,945	1,986	18,435,876	725.52
Retail Trade	877	10,721	10,789	10,943	55,876,129	397.33
Transportation, Warehousing & Utilities	244	1,393	1,386	1,422	12,117,358	665.63
Financial Activities	593	2,790	2,789	2,811	23,124,056	636.03
Professional & Business Services	707	6,882	6,954	7,054	78,032,173	862.01
Education & Health Services	652	9,258	9,396	9,499	61,585,876	504.82
Leisure & Hospitality	437	7,549	7,517	7,635	19,520,751	198.44
Local & State Government	213	14,036	14,158	14,201	102,547,635	558.20
Other	1,530	16,480	16,450	16,661	137,471,621	639.72

*Note: Pulaski County is not included in the Central Workforce Information. Please refer to Page 53 for information on Pulaski County.
Central Workforce Includes these counties: Faulkner, Lonoke, Monroe, Prairie, and Saline.

EASTERN WORKFORCE INFORMATION	3,331	37,273	37,408	38,039	\$242,674,640	\$496.82
Natural Resources & Mining	214	932	955	1,143	4,916,508	374.45
Construction	193	1,096	1,020	1,074	7,606,396	550.26
Trade, Transportation & Utilities	887	10,046	9,963	10,148	67,875,102	519.40
Wholesale Trade	180	2,029	2,023	2,067	17,056,953	643.28
Retail Trade	501	5,095	5,033	5,134	23,243,444	351.45
Transportation, Warehousing & Utilities	206	2,922	2,907	2,947	27,574,705	725.09
Financial Activities	273	1,618	1,619	1,622	12,790,580	607.46
Professional & Business Services	282	1,405	1,474	1,431	9,029,382	483.46
Education & Health Services	657	5,378	5,345	5,348	32,548,929	467.38
Leisure & Hospitality	231	3,406	3,431	3,594	8,931,895	197.60
Local Government	140	6,105	6,196	6,212	42,096,373	524.74
State Government	67	2,101	2,122	2,135	15,227,568	552.70
Other	387	5,186	5,283	5,332	41,651,907	608.31

Eastern Workforce Includes these counties: Crittenden, Cross, Lee, Phillips, and Saint Francis.

**TABLE 8. WORKFORCE INFORMATION AREA, SUMMARY
EMPLOYMENT AND TOTAL EARNINGS, BY INDUSTRY
FIRST QUARTER 2006**

NORTH AMERICAN INDUSTRY CLASSIFICATION SYSTEM INDUSTRY GROUP	NUMBER OF EMPLOYING UNITS	EMPLOYMENT			TOTAL EARNINGS	AVERAGE WEEKLY EARNINGS
		JANUARY	FEBRUARY	MARCH	JANUARY - MARCH	
NORTH CENTRAL WORKFORCE INFORMATION	5,473	69,176	69,831	70,516	\$437,098,740	\$481.42
Construction	486	2,595	2,592	2,710	16,311,215	476.65
Manufacturing	306	13,655	13,714	13,677	107,616,807	605.04
Trade, Transportation & Utilities	1,529	15,401	15,382	15,635	95,180,431	473.19
Retail Trade	961	9,109	9,104	9,322	41,592,980	348.59
Other Trade, Transportation & Utilities	568	6,292	6,278	6,313	53,587,451	654.89
Financial Activities	520	2,574	2,529	2,564	18,731,281	563.79
Professional & Business Services	458	3,305	3,301	3,282	17,624,734	411.33
Education & Health Services	783	11,213	11,223	11,271	76,929,977	526.69
Leisure & Hospitality	447	5,715	5,861	6,092	13,240,201	172.94
Local Government	237	9,109	9,278	9,266	52,893,498	441.41
State Government	115	2,644	2,951	2,971	20,219,182	544.71
Other	592	2,965	3,000	3,048	18,351,414	469.87

North Central Workforce Includes these counties: Cleburne, Fulton, Independence, Izard, Jackson, Sharp, Stone, Van Buren, White, and Woodruff

NORTHEAST WORKFORCE INFORMATION	6,409	92,804	93,121	94,475	\$660,947,328	\$543.96
Natural Resources & Mining	365	1,598	1,548	1,660	9,301,539	446.63
Construction	484	2,810	2,852	2,960	19,811,637	530.26
Manufacturing	364	21,851	21,731	21,835	207,334,684	731.41
Trade, Transportation & Utilities	1,748	17,371	17,339	17,767	106,277,292	467.36
Wholesale Trade	403	3,590	3,640	3,706	30,982,798	653.79
Retail Trade	1,046	11,375	11,265	11,617	53,447,287	360.04
Transportation, Warehousing & Utilities	299	2,406	2,434	2,444	21,847,207	692.16
Financial Activities	587	3,390	3,390	3,415	27,600,232	624.75
Professional & Business Services	647	6,472	6,618	6,637	41,039,925	480.09
Education & Health Services	928	13,046	13,006	13,213	100,190,677	588.84
Leisure & Hospitality	461	7,047	7,130	7,318	17,457,755	187.43
Local Government	219	11,605	11,765	11,843	73,559,688	482.08
State Government	106	3,694	3,795	3,818	33,300,777	679.65
Other	500	3,920	3,947	4,009	25,073,122	487.21

Northeast Workforce Includes these counties: Clay, Craighead, Greene, Lawrence, Mississippi, Poinsett, and Randolph.

**TABLE 8. WORKFORCE INFORMATION AREA, SUMMARY
EMPLOYMENT AND TOTAL EARNINGS, BY INDUSTRY
FIRST QUARTER 2006**

NORTH AMERICAN INDUSTRY CLASSIFICATION SYSTEM INDUSTRY GROUP	NUMBER OF EMPLOYING UNITS	EMPLOYMENT			TOTAL EARNINGS	AVERAGE WEEKLY EARNINGS
		JANUARY	FEBRUARY	MARCH	JANUARY - MARCH	
NORTHWEST WORKFORCE INFORMATION	14,549	227,236	228,637	231,311	\$1,968,534,451	\$661.07
Trade, Transportation & Utilities	3,628	52,831	53,013	53,497	448,295,686	649.25
Retail Trade	1,987	25,468	25,368	25,829	140,026,810	421.49
Other Trade, Transportation & Utilities	1,641	27,363	27,645	27,668	308,268,876	860.45
Education & Health Services	1,599	22,851	23,045	23,136	181,725,151	607.49
Leisure & Hospitality	1,364	19,479	19,899	20,640	59,452,569	228.60
Local & State Government	425	27,553	27,831	28,112	226,343,585	625.58
Other	7,533	104,522	104,849	105,926	1,052,717,460	770.50
Northwest Workforce Includes these counties: Baxter, Benton, Boone, Carroll, Madison, Marion, Newton, Searcy, and Washington.						
SOUTHEAST WORKFORCE INFORMATION	5,412	77,341	77,720	78,267	\$559,139,914	\$553.01
Natural Resources & Mining	409	2,849	2,945	2,883	19,813,570	526.95
Construction	381	3,178	3,162	3,297	27,927,831	668.76
Manufacturing	226	18,100	18,063	17,967	175,249,287	747.13
Trade, Transportation & Utilities	1,433	13,481	13,492	13,751	85,820,974	486.32
Wholesale Trade	259	2,443	2,470	2,540	20,817,930	644.59
Retail Trade	881	8,745	8,743	8,909	40,399,638	353.18
Transportation, Warehousing & Utilities	293	2,293	2,279	2,302	24,603,406	825.97
Local & State Government	358	16,519	16,803	16,866	113,706,059	522.83
Other	2,605	23,214	23,255	23,503	136,622,193	450.58
Southeast Workforce Includes these counties: Arkansas, Ashley, Bradley, Chicot, Cleveland, Desha, Drew, Grant, Jefferson, and Lincoln						
SOUTHWEST WORKFORCE INFORMATION	5,744	86,905	87,378	88,013	\$650,028,548	\$571.90
Natural Resources & Mining	404	2,712	2,694	2,731	22,402,904	635.36
Trade, Transportation & Utilities	1,541	15,268	15,296	15,511	101,887,481	510.31
Education & Health Services	705	9,014	9,070	9,098	53,460,958	453.87
Leisure & Hospitality	402	5,081	5,164	5,334	12,770,601	189.17
Local Government	264	11,092	11,155	11,248	67,982,244	468.37
State Government	150	3,106	3,259	3,289	24,800,446	592.83
Other	2,278	40,632	40,740	40,802	366,723,914	692.69
Southwest Workforce Includes these counties: Calhoun, Columbia, Dallas, Hempstead, Howard, Lafayette, Little River, Miller, Nevada, Ouachita, Sevier, and Union						

**TABLE 8. WORKFORCE INFORMATION AREA, SUMMARY
EMPLOYMENT AND TOTAL EARNINGS, BY INDUSTRY
FIRST QUARTER 2006**

NORTH AMERICAN INDUSTRY CLASSIFICATION SYSTEM INDUSTRY GROUP	NUMBER OF EMPLOYING UNITS	EMPLOYMENT			TOTAL EARNINGS	AVERAGE WEEKLY EARNINGS
		JANUARY	FEBRUARY	MARCH	JANUARY - MARCH	
WEST CENTRAL WORKFORCE INFORMATION	8,122	107,901	108,595	109,754	\$711,935,846	\$503.58
Natural Resources & Mining	262	2,269	2,410	2,356	17,869,060	586.16
Construction	883	5,497	5,565	5,291	36,533,143	515.55
Trade, Transportation & Utilities	1,987	21,486	21,441	21,797	148,391,556	529.08
Financial Activities	855	4,017	4,008	4,041	31,583,675	604.06
Education & Health Services	1,058	14,992	15,127	15,240	111,142,737	565.45
Local & State Government	363	16,722	17,186	17,349	114,319,680	514.69
Other	2,714	42,918	42,858	43,680	252,095,995	449.39

West Central Workforce Includes these counties: Clark, Conway, Garland, Hot Spring, Johnson, Montgomery, Perry, Pike, Pope, and Yell

WESTERN WORKFORCE INFORMATION	6,352	110,337	110,739	112,213	\$918,989,521	\$636.31
Natural Resources & Mining	161	2,193	2,312	2,411	29,108,025	971.26
Trade, Transportation & Utilities	1,643	22,599	22,566	23,023	155,524,211	526.34
Retail Trade	964	12,353	12,232	12,496	61,220,010	381.00
Other Trade, Transportation & Utilities	679	10,246	10,334	10,527	94,304,201	699.60
Information	100	1,524	1,531	1,525	16,354,864	824.06
Financial Activities	670	3,787	3,789	3,802	33,046,963	670.26
Professional & Business Services	781	10,214	10,350	10,665	163,264,014	1206.45
Education & Health Services	783	13,344	13,336	13,412	109,299,952	629.13
Leisure & Hospitality	511	7,755	7,823	8,019	21,046,880	205.83
Other Services	444	2,116	2,083	2,147	12,677,589	461.01
Local & State Government	232	11,800	11,921	11,975	86,831,450	561.35
Other	1,027	35,005	35,028	35,234	291,835,573	639.77

Western Workforce Includes these counties: Crawford, Franklin, Logan, Polk, Scott, and Sebastian