

Arkansas Covered Employment & Earnings

Jobs for People. People for Jobs.

DWS
Department of
WORKFORCE**Services**

Fourth Quarter
2005

**COVERED EMPLOYMENT AND EARNINGS
STATE OF ARKANSAS
FOURTH QUARTER 2005**

**MIKE HUCKABEE, GOVERNOR
STATE OF ARKANSAS**

**ARTEE WILLIAMS, DIRECTOR
DEPARTMENT OF WORKFORCE SERVICES**

**PUBLISHED BY
LABOR MARKET INFORMATION & ANALYSIS
BUREAU OF LABOR STATISTICS PROGRAMS
POST OFFICE BOX 2981
LITTLE ROCK, ARKANSAS 72203-2981
BERNADETTE COLEMAN, BLS PROGRAMS MANAGER
TELEPHONE: (501) 682-3159**

STATE OF ARKANSAS HOME PAGE: <http://www.arkansas.gov>

DEPARTMENT OF WORKFORCE SERVICES HOME PAGE: <http://www.arkansas.gov/esd/>

**INTERNET SITE FOR LABOR MARKET INFORMATION:
<http://www.discoverarkansas.net>**

RELEASED: May 2006

TABLE OF CONTENTS

Description of Data	Page 1
Industry Classification	Page 1
Definition of Covered Employment and Earnings	Page 2
Federal Government Employment	Page 2
County Classification	Page 2
Significant Developments During Fourth Quarter 2005	Page 3

Graph 1	Total Covered Employment for Selected Years, Arkansas	Page 7
Graph 2	Total Covered Earnings, by Calendar Quarter for Selected Years, Arkansas	Page 8
Table 1	Quarterly Comparison of Covered Employment and Wages, by Industry	Page 5
Table 2	Total Covered Employment in Arkansas, 1998-2005	Page 6
Table 3	Total Covered Earnings, 1998-2005	Page 9
Table 4	Total Taxable Earnings, 1998-2005	Page 10
Table 5	Statewide Summary - Employment and Total Earnings, by Industry, Fourth Quarter 2005	Page 11
Table 6	County Summary - Employment and Total Earnings, by Industry, Fourth Quarter 2005	Page 22
Table 7	Federal Government Employment and Total Earnings in Arkansas, Fourth Quarter 2005	Page 60
Table 8	Workforce Information Area – Employment and Total Earnings, by Industry, Fourth Quarter 2005	Page 61

EMPLOYMENT AND EARNINGS
UNDER THE ARKANSAS EMPLOYMENT SECURITY LAW
FOURTH QUARTER 2005

DESCRIPTION OF DATA

This publication contains covered employment and payroll data by industry and county for the Fourth Quarter 2005. These data are compiled from quarterly contribution and wage reports submitted by employers subject to the Arkansas Employment Security Law. An employing unit is a single physical location where business is conducted, production takes place, or services are provided. Employment data have been tabulated for each month of the quarter by industry under the **North American Industry Classification System** (NAICS) (see "Industry Classification" below) on a statewide, county and workforce area basis. Payroll data represent the total wages paid during the quarter, and are also shown by

industry for the State and by publishable industry groups for each county and workforce area. The tabulation of this data is a joint effort in conjunction with the U.S. Bureau of Labor Statistics. In addition, there are tables included which set out total covered employment by months, quarterly payrolls, and average weekly earnings for the years 1998 through 2005. Data contained in this publication are subject to revision. These revisions will be reflected in the 2005 Annual Covered Employment and Earnings publication. Because of industry code changes between years, substantial employment and wage shifts among industries are anticipated.

INDUSTRY CLASSIFICATION

Previously published industry data **will not** be comparable in all instances with currently published data since industry codes have been revised according to the following Manuals: (a) between January 1, 1958 and December 31, 1967, industry codes were assigned under the 1957 Standard Industrial Classification (SIC) Manual; (b) between January 1, 1968 and December 31, 1974, industry codes were assigned under the 1967 Standard Industrial Classification (SIC) Manual; (c) between January 1, 1975 and December 31, 1987, industry codes were assigned under the 1972 Standard Industrial Classification (SIC) Manual; (d) between January 1, 1988 and December 31, 2000, industry codes were assigned under the 1987 Standard Industrial Classification (SIC) Manual; and (e) since January 1, 2001, industry codes have been assigned under the 2002 North American Industry Classification System (NAICS) Manual. **The NAICS Manual represents a significant change in coding methodology as compared to the**

SIC Manual. One of the most significant changes involves how NAICS treats auxiliary units. Auxiliary units are establishments primarily engaged in performing management or support services for other establishments of the same enterprise. The SIC code for these units was based on the activity of the enterprise served. The NAICS code is based on the actual activities that the establishment performs. Comparisons of many industries **should not be made** between this publication and previous Covered Employment and Earnings publications that were based on SIC. Even though some titles are the same or similar, in nature, NAICS and SIC could differ in the classification of employers. The implementation of NAICS represents a profound change for statistical programs, and will create significant benefits along with transition obstacles for both data collectors and data users. A summary is available on the NAICS home page at <http://www.census.gov/naics>.

DEFINITION OF COVERED EMPLOYMENT AND EARNINGS

Covered Employment is the number of workers employed by employers subject to the Arkansas Employment Security Law who worked or received pay for the payroll period including the 12th of the month. An employer is subject to the law when they employ one or more employees in each of ten days during the current or preceding calendar year.

Currently excluded from coverage is employment covered by the Railroad Unemployment Insurance Act, some domestic service workers, employees of small agricultural establishments, self-employed and unpaid family workers, insurance and real estate

agents who are on commission only, and employees of churches and religious organizations except separately incorporated schools. The payroll information in this publication includes all wages and salaries paid to any covered employees by their employers including bonuses, commissions, and cash values of remuneration received in any medium other than cash. These wages include both taxable and nontaxable wages. Only the first \$10,000 paid to each worker by an employer in the calendar year is taxable under the Arkansas Employment Security Law.

FEDERAL GOVERNMENT EMPLOYMENT

Table 7 on page 60 lists the total number of civilians employed by the Federal Government in Arkansas during the Fourth Quarter 2005. Employment and wage data are set out by industry divisions. These data are obtained from required reports submitted by various

government agencies having employment in the State. Civilian Federal workers are covered by the Unemployment Compensation for Federal Employees (UCFE) program.

COUNTY CLASSIFICATION

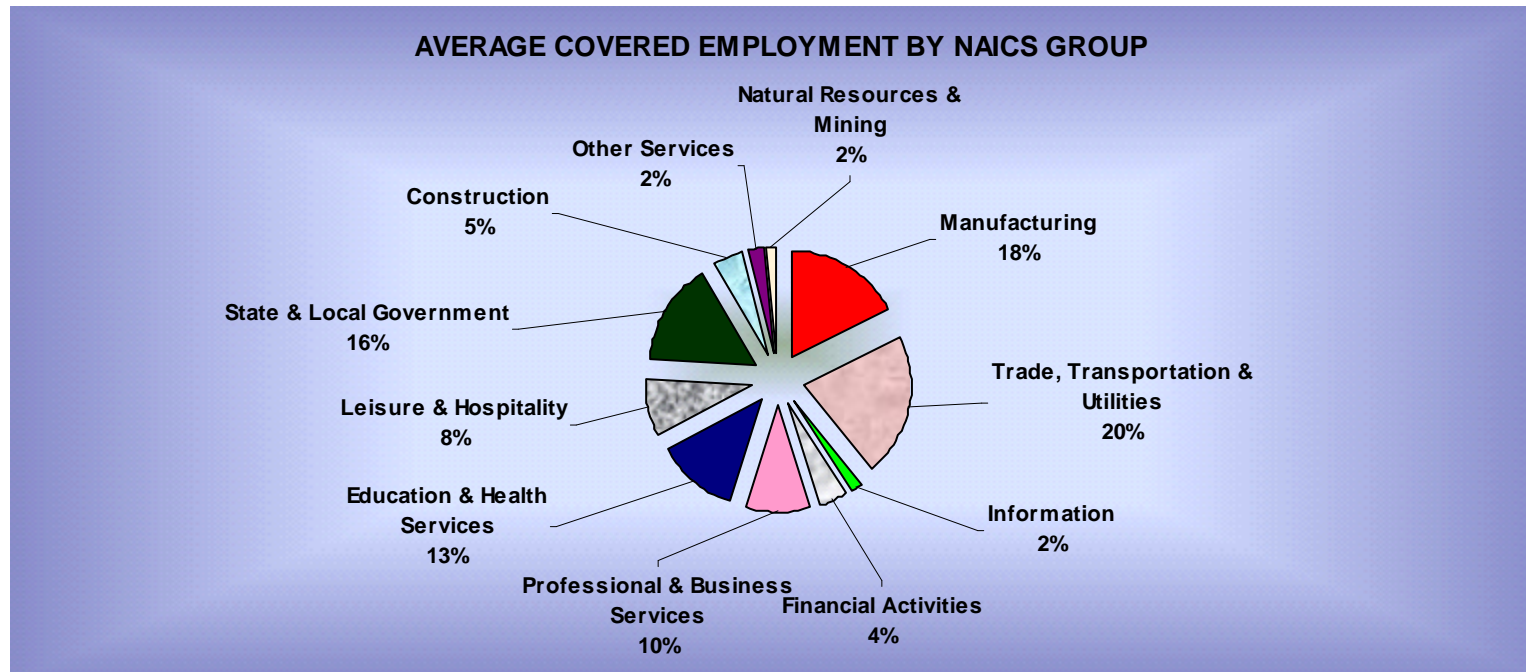
Employment and payroll data by county are classified according to the county where the workers are employed. Employers with operations in more than one county are requested to furnish this agency with a breakdown of employment and wages for at least one quarter of each year by the counties in which they operate. Many such employers submit county data with each regular contribution report. **Note:** This information is invaluable in the preparation of monthly employment and payroll data by county.

Employment and payroll data for multi - area employers, who do not furnish county data each quarter of the year, are prorated by county on the basis of one quarter's information. The "rest-of-state" table that appears on page 59 of this publication includes data on firms that **did not** provide a county breakdown of employment and payrolls. It also includes sales, and all other type of personnel with no permanent place of work, as well as employment of employers with no established place of business in Arkansas.

SIGNIFICANT DEVELOPMENTS DURING FOURTH QUARTER 2005

AVERAGE EMPLOYMENT CHANGES

Covered employment averaged 1,145,303 during the Fourth Quarter 2005 (see table 1), an increase of 28,914 (2.6%) from the previous quarter and 19,320 (1.7%) above the average recorded one-year ago. *This over-the-year* increase is more significant when used as an economic indicator. This *over-the-year* comparison allows for the disregarding of many seasonal factors that are evident when making an *over-the-quarter* comparison.



EMPLOYMENT CHANGES FROM THIRD QUARTER 2005

Over the quarter gains were recorded in six of the eleven industry groups (see table 1). State and Local Government recorded the single largest gain of 27,671 employees. This increase was mainly attributed to the return of educational facilities as employment returned to normal levels after the summer break. Trade, Transportation and Utilities rose 3,316 as many of the stores increased employment for the holiday season. Educational and Health Services expanded 1,907 jobs with the end of the summer

vacation. Other industry increases occurred in Professional and Business Services (+632), Manufacturing (+587) and Financial Activities (+67).

Losses were recorded in five industry groups. Leisure and Hospitality decreased 3,752 jobs as many employers released summer workers at the end of the school break. Employment drops occurred in Construction (-726), Other Services (-661), Natural Resources and Mining (-95) and Information (-32).

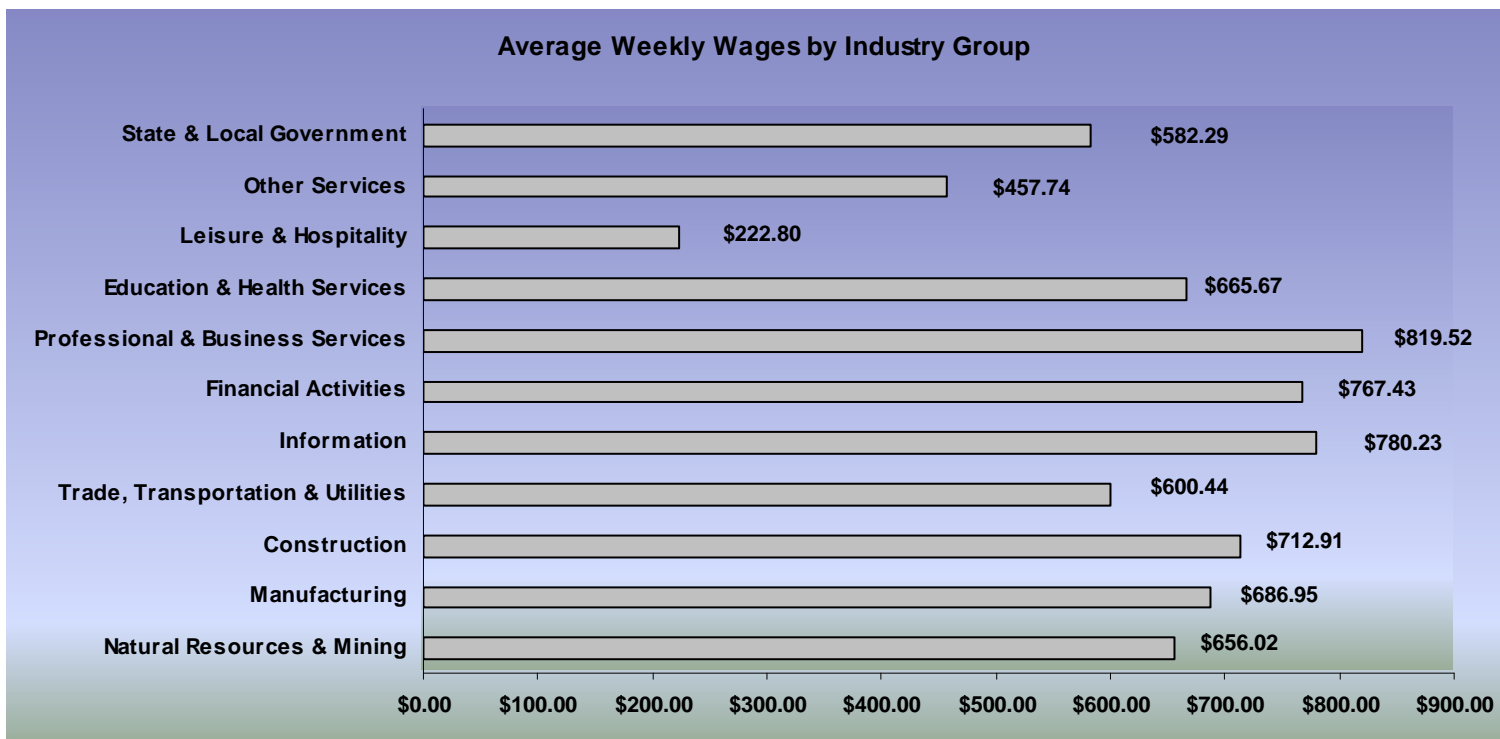
EMPLOYMENT CHANGES FROM FOURTH QUARTER 2004

Over-the-year gains were recorded in seven industry groups while four recorded losses (see table 1). Significant gains were posted in Educational & Health Services (+4,713), Trade, Transportation and Utilities (+4,569) and Construction (+4,106). Losses occurred in Manufacturing (-2,363), Other Services (-691) and Natural Resources & Mining (-355).

COVERED WAGES

Wages paid to covered workers totaled \$9,316,817,657 for the Fourth Quarter 2005 (see table 1), for an average weekly wage of \$625.75 (see table 5). Employees in Little River County recorded the highest average weekly wage (\$762.48), and workers in Newton County the lowest (\$344.07) (see table 6).

The Professional & Business Services sector recorded the highest average weekly wage for the State of Arkansas at \$780.23, while the Leisure & Hospitality sector recorded the lowest at \$222.80 for the State of Arkansas (see table 5).



Note: Because of industry code changes between years, substantial employment and wage shifts among industries are anticipated.

TABLE 1. QUARTERLY COMPARISON OF COVERED EMPLOYMENT AND WAGES, BY INDUSTRY

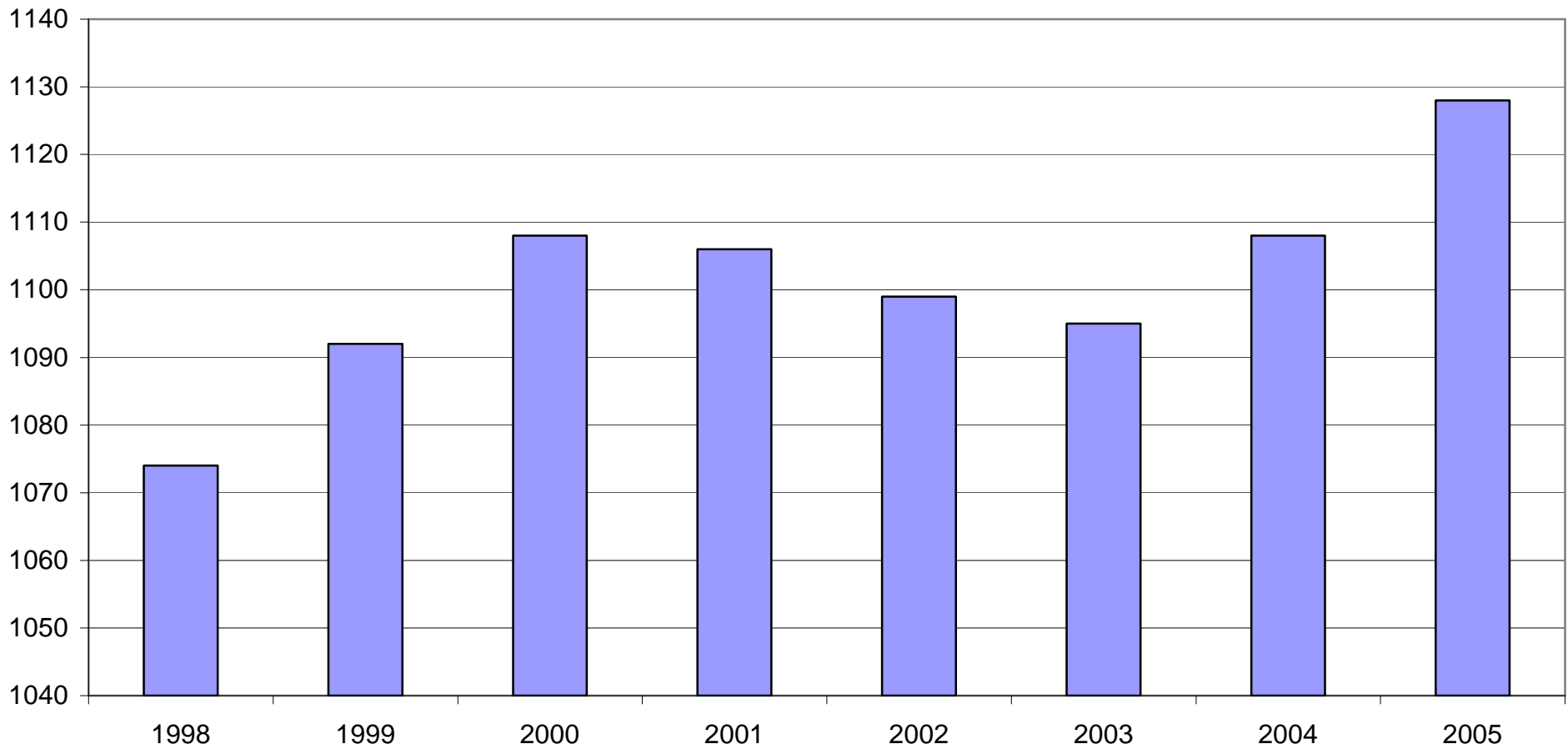
North American Industry Classification System Industry	Number of Employing Units	Average Monthly Employment	% of Employment Total	Net Change From Jul. - Sep. 2005	Net Change From Oct. - Dec. 2004	Total Wages Paid Oct. - Dec. 2005	% of Total Wages Paid
Total	77,332	1,145,303	100.0%	28,914	19,320	\$9,316,817,657	100.0%
Natural Resources & Mining	2,348	18,822	1.6%	-95	-355	\$160,521,061	1.7%
Agriculture, Forestry, Fishing & Hunting	2,018	14,521	1.3%	-191	-705	\$108,168,069	1.2%
Mining	330	4,301	0.4%	96	350	\$52,352,992	0.6%
Construction	7,729	55,819	4.9%	-726	4,106	\$517,326,412	5.6%
Manufacturing	3,581	201,069	17.6%	587	-2,363	\$1,795,621,336	19.3%
Trade, Transportation & Utilities	20,854	246,097	21.5%	3,316	4,569	\$1,920,980,959	20.6%
Wholesale Trade	6,257	47,775	4.2%	-211	1,466	\$596,088,942	6.4%
Retail Trade	11,307	134,887	11.8%	3,053	1,223	\$692,788,401	7.4%
Transportation & Warehousing	2,936	56,763	5.0%	436	1,705	\$521,863,660	5.6%
Utilities	354	6,673	0.6%	39	176	\$110,239,956	1.2%
Information	1,203	19,995	1.7%	-32	-188	\$202,809,124	2.2%
Financial Activities	7,863	50,331	4.4%	67	722	\$502,132,379	5.4%
Finance & Insurance	4,621	36,538	3.2%	238	199	\$401,199,478	4.3%
Real Estate & Rental & Leasing	3,242	13,793	1.2%	-171	523	\$100,932,901	1.1%
Professional & Business Services	10,571	113,507	9.9%	632	3,443	\$1,209,276,557	13.0%
Professional & Technical Services	6,668	35,592	3.1%	355	1,194	\$468,481,354	5.0%
Management of Companies & Enterprises	488	23,649	2.1%	-27	729	\$456,438,084	4.9%
Administrative & Waste Services	3,415	54,266	4.7%	305	1,520	\$284,357,119	3.1%
Education & Health Services	8,475	143,339	12.5%	1,907	4,713	\$1,240,413,150	13.3%
Educational Services	548	9,353	0.8%	1,086	980	\$57,735,787	0.6%
Health Care & Social Assistance	7,927	133,985	11.7%	821	3,731	\$1,182,677,363	12.7%
Leisure & Hospitality	5,968	93,087	8.1%	-3,752	2,498	\$269,613,789	2.9%
Arts, Entertainment & Recreation	916	8,382	0.7%	-2,006	71	\$32,814,284	0.4%
Accommodation & Food Services	5,052	84,705	7.4%	-1,746	2,427	\$236,799,505	2.5%
Other Services	5,546	24,906	2.2%	-661	-691	\$148,203,028	1.6%
State & Local Government	3,194	178,331	15.6%	27,671	2,866	\$1,349,919,862	14.5%
Local Government	1,999	117,714	10.3%	26,865	2,394	\$818,861,278	8.8%
State Government	1,195	60,617	5.3%	806	472	\$531,058,584	5.7%
Nonclassifiable Establishments	0	0	0.0%	0	0	\$0	0.0%

Note: Items do not necessarily add to totals because of rounding. Because of industry code changes between years, substantial employment and wage shifts among industries are anticipated.

TABLE 2. TOTAL COVERED EMPLOYMENT IN ARKANSAS

Period	1998	1999	2000	2001	2002	2003	2004	2005
Average	1,073,732	1,092,351	1,108,490	1,106,053	1,098,558	1,094,087	1,108,275	1,121,595
January	1,050,970	1,065,920	1,089,956	1,096,009	1,081,635	1,082,740	1,089,510	1,104,692
February	1,057,593	1,074,315	1,096,126	1,101,616	1,086,793	1,084,880	1,094,626	1,112,453
March	1,066,099	1,084,653	1,109,157	1,112,143	1,098,500	1,092,172	1,105,266	1,124,250
April	1,074,416	1,093,574	1,111,543	1,115,526	1,103,399	1,095,341	1,111,023	1,130,599
May	1,083,133	1,098,539	1,116,779	1,119,815	1,111,998	1,103,099	1,117,154	1,136,212
June	1,086,125	1,101,748	1,121,245	1,119,734	1,112,028	1,099,688	1,117,021	1,136,984
July	1,046,396	1,062,563	1,075,096	1,071,830	1,065,697	1,053,220	1,071,474	1,090,058
August	1,063,680	1,081,260	1,096,841	1,094,068	1,086,011	1,077,775	1,094,887	1,114,403
September	1,088,772	1,108,212	1,123,735	1,115,996	1,113,148	1,105,980	1,122,725	1,144,705
October	1,089,836	1,110,604	1,122,884	1,110,994	1,108,447	1,112,550	1,123,261	1,142,394
November	1,087,855	1,112,003	1,120,620	1,109,012	1,107,611	1,109,712	1,125,082	1,145,899
December	1,089,913	1,114,823	1,117,892	1,105,887	1,107,425	1,111,892	1,127,274	1,147,617

AVERAGE TOTAL COVERED EMPLOYMENT GRAPH 1
In Thousands



TOTAL COVERED EARNINGS BY CALENDAR QUARTER, GRAPH 2
In Thousands

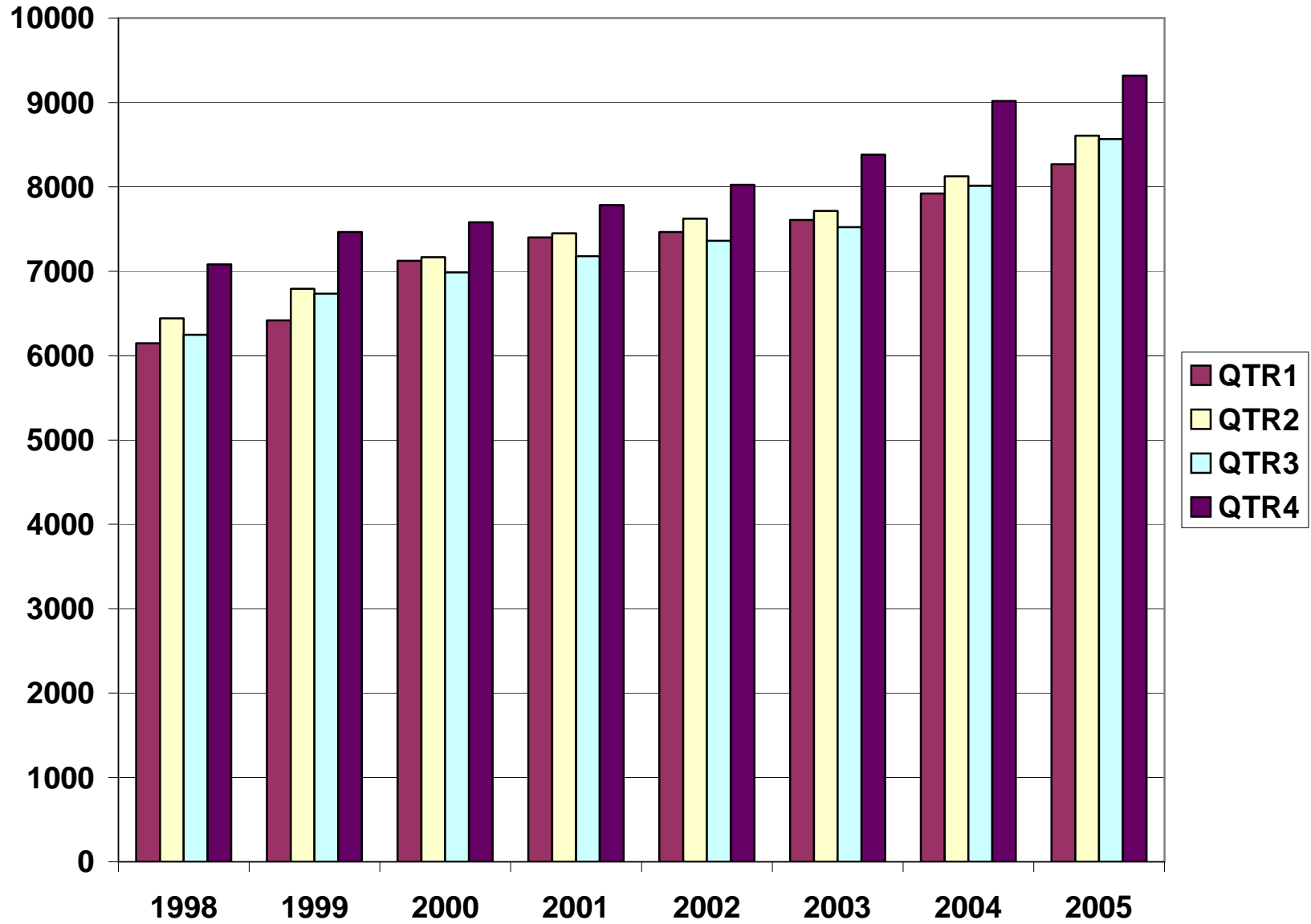


TABLE 3. TOTAL COVERED EARNINGS, 1998- 2005

Period	1998	1999	2000	2001
Total	\$25,914,345,060	\$27,407,925,462	\$28,853,825,155	\$29,807,669,666
January - March	\$6,145,178,755	\$6,418,456,638	\$7,122,666,917	\$7,398,887,532
April - June	\$6,441,129,069	\$6,791,960,679	\$7,166,110,114	\$7,448,023,298
July - September	\$6,246,775,598	\$6,733,480,079	\$6,986,103,157	\$7,177,293,061
October - December	\$7,081,261,638	\$7,464,028,066	\$7,578,944,967	\$7,783,465,775
Average Weekly Earnings	\$464.13	\$482.51	\$500.57	\$518.26

Period	2002	2003	2004	2005
Total	\$30,472,854,103	\$31,202,576,767	\$33,068,346,519	\$34,758,732,888
January - March	\$7,465,250,305	\$7,608,130,008	\$7,918,843,610	\$8,269,065,129
April - June	\$7,621,878,775	\$7,714,813,038	\$8,122,399,978	\$8,607,184,713
July - September	\$7,361,666,511	\$7,500,204,764	\$8,010,367,744	\$8,565,665,389
October - December	\$8,024,058,512	\$8,379,428,957	\$9,016,735,187	\$9,316,817,657
Average Weekly Earnings	\$533.44	\$548.45	\$573.80	\$595.97

TABLE 4. TOTAL TAXABLE EARNINGS, 1998 – 2005

Period	1998	1999	2000	2001
Total	\$8,554,973,370	\$8,807,445,422	\$9,048,033,534	\$9,003,189,480
January - March	\$4,063,795,529	\$4,203,067,856	\$4,560,814,012	\$4,670,296,360
April - June	\$2,271,303,325	\$2,325,649,764	\$2,260,741,187	\$2,219,485,263
July - September	\$1,236,054,184	\$1,267,562,743	\$1,250,850,348	\$1,190,098,737
October - December	\$983,820,332	\$1,011,165,059	\$975,627,987	\$923,309,120

Period	2002	2003	2004	2005
Total	\$8,887,270,978	\$9,154,938,743	\$9,731,879,624	\$9,993,877,064
January - March	\$4,668,534,587	\$4,737,918,796	\$4,931,559,230	\$5,068,103,112
April - June	\$2,162,971,435	\$2,270,519,362	\$2,451,476,366	\$2,504,400,617
July - September	\$1,158,197,858	\$1,188,681,170	\$1,318,044,471	\$1,355,673,606
October - December	\$897,567,098	\$957,819,415	\$1,030,799,557	\$1,065,699,729

**TABLE 5. STATEWIDE SUMMARY
EMPLOYMENT AND TOTAL EARNINGS, BY INDUSTRY
FOURTH QUARTER 2005**

NORTH AMERICAN INDUSTRY CLASSIFICATION SYSTEM INDUSTRY GROUPS	NUMBER OF EMPLOYING UNITS	EMPLOYMENT OCTOBER	EMPLOYMENT NOVEMBER	EMPLOYMENT DECEMBER	TOTAL EARNINGS OCT. - DEC. 2005	AVERAGE WEEKLY EARNINGS
TOTAL, ALL INDUSTRIES	77,332	1,142,394	1,145,899	1,147,617	\$9,316,817,657	\$625.75
NATURAL RESOURCES AND MINING	2,348	19,613	18,788	18,066	\$160,521,061	\$656.02
AGRICULTURE, FORESTRY, FISHING AND HUNTING	2,018	15,334	14,480	13,750	\$108,168,069	\$572.99
CROP PRODUCTION	725	4,375	3,858	3,593	\$23,994,144	\$468.21
Oilseed and Grain Farming	435	2,276	2,035	1,897	\$12,570,961	\$467.30
Vegetable and Melon Farming	10	101	104	101	\$369,333	\$278.53
Fruit and Tree Nut Farming	10	71	77	77	\$410,120	\$420.64
Greenhouse and Nursery Production	48	296	292	313	\$2,040,877	\$522.72
Other Crop Farming	222	1,631	1,350	1,205	\$8,602,853	\$474.27
ANIMAL PRODUCTION	255	3,727	3,701	3,674	\$31,001,686	\$644.41
Cattle Ranching and Farming	76	326	321	326	\$2,503,600	\$593.79
Poultry and Egg Production	89	2,604	2,614	2,616	\$22,063,654	\$649.94
Animal Aquaculture	60	577	547	523	\$4,563,220	\$639.38
Other	30	220	219	209	\$1,871,212	\$666.39
FORESTRY AND LOGGING	573	3,235	3,184	3,237	\$25,610,435	\$612.07
Timber Tract Operations	45	262	260	261	\$2,181,955	\$643.08
Forest Nurseries & Gathering of Forest Products	6	27	35	48	\$321,053	\$673.54
Logging	522	2,946	2,889	2,928	\$23,107,427	\$608.52
OTHER	465	3,997	3,737	3,246	\$27,561,804	\$579.27
MINING	330	4,279	4,308	4,316	\$52,352,992	\$936.33
OIL AND GAS EXTRACTION	74	400	415	410	\$6,410,135	\$1,207.56
MINING (EXCEPT OIL AND GAS)	100	2,050	2,012	1,965	\$21,650,578	\$828.98
SUPPORT ACTIVITIES FOR MINING	156	1,829	1,881	1,941	\$24,292,279	\$992.02
CONSTRUCTION	7,729	55,725	55,856	55,877	\$517,326,412	\$712.91
CONSTRUCTION OF BUILDINGS	2,169	12,550	12,678	12,604	\$138,077,979	\$842.25
Residential Building Construction	1,578	4,653	4,610	4,750	\$41,278,566	\$679.78
Nonresidential Building Construction	591	7,897	8,068	7,854	\$96,799,413	\$937.84
HEAVY AND CIVIL ENGINEERING CONSTRUCTION	887	11,089	10,900	10,656	\$111,302,031	\$786.80
Utility System Construction	413	4,995	4,903	4,868	\$46,905,920	\$733.07
Land Subdivision	126	423	423	440	\$5,354,367	\$960.83

NORTH AMERICAN INDUSTRY CLASSIFICATION SYSTEM INDUSTRY GROUPS	NUMBER OF EMPLOYING UNITS	EMPLOYMENT OCTOBER	EMPLOYMENT NOVEMBER	EMPLOYMENT DECEMBER	TOTAL EARNINGS OCT. - DEC. 2005	AVERAGE WEEKLY EARNINGS
Highway, Street and Bridge Construction	231	3,900	3,766	3,686	\$34,777,882	\$706.98
Other Heavy Construction	117	1,771	1,808	1,662	\$24,263,862	\$1,068.37
SPECIALTY TRADE CONTRACTORS	4,673	32,086	32,278	32,617	\$267,946,402	\$637.59
Building Foundation and Exterior Contractors	916	6,368	6,411	6,415	\$46,885,564	\$563.70
Building Equipment Contractors	2,046	15,402	15,548	15,655	\$143,192,316	\$709.03
Building Finishing Contractors	873	4,909	4,992	5,170	\$37,177,474	\$569.27
Other Specialty Trade Contractors	838	5,407	5,327	5,377	\$40,691,048	\$582.85
MANUFACTURING	3,581	201,028	201,203	200,975	\$1,795,621,336	\$686.95
FOOD MANUFACTURING	297	51,006	51,082	51,002	\$358,371,179	\$540.21
Animal Food Manufacturing	48	1,346	1,355	1,374	\$16,811,236	\$952.03
Grain and Oilseed Milling	30	2,442	2,416	2,407	\$21,697,896	\$689.22
Fruit, Vegetable and Specialty Food	37	7,107	7,111	7,182	\$59,159,040	\$637.95
Dairy Product Manufacturing	11	710	709	710	\$6,184,812	\$670.39
Animal Slaughtering and Processing	86	34,322	34,331	34,186	\$212,727,109	\$477.36
Bakeries and Tortilla Manufacturing	51	3,360	3,348	3,321	\$26,874,730	\$618.39
Other Food Manufacturing	22	1,580	1,577	1,575	\$13,929,340	\$679.30
Other	12	139	235	247	\$987,016	\$366.78
BEVERAGE AND TOBACCO PRODUCT MFG.	37	1,248	1,241	1,249	\$12,706,275	\$784.43
TEXTILE MILLS	19	417	420	423	\$4,654,293	\$852.43
Fabric Mills	5	328	328	333	\$4,170,325	\$973.09
Textile and Fabric Finishing Mills	14	89	92	90	\$483,968	\$412.12
TEXTILE PRODUCT MILLS	60	1,355	1,352	1,341	\$13,193,182	\$752.12
APPAREL MANUFACTURING	40	1,919	1,854	1,820	\$10,831,955	\$446.93
Cut and Sew Apparel Manufacturing	33	845	784	842	\$4,542,033	\$424.19
Other	7	1,074	1,070	978	\$6,289,922	\$464.93
LEATHER AND ALLIED PRODUCT MANUFACTURING	23	2,391	2,399	2,399	\$13,984,584	\$448.91
Footwear Manufacturing	12	2,186	2,193	2,197	\$12,051,698	\$422.93
Other Leather Product Manufacturing	11	205	206	202	\$1,932,886	\$727.65
WOOD PRODUCT MANUFACTURING	394	13,767	13,669	13,750	\$111,044,171	\$622.19
Sawmills and Wood Preservation	183	6,215	6,180	6,215	\$53,745,032	\$666.45
Veneer and Engineered Wood Products	49	3,271	3,266	3,266	\$29,278,995	\$689.25
Other Wood Product Manufacturing	162	4,281	4,223	4,269	\$28,020,144	\$506.24
PAPER MANUFACTURING	85	12,007	12,002	11,992	\$159,198,336	\$1,020.47
Pulp, Paper and Paperboard Mills	12	4,778	4,727	4,722	\$85,057,730	\$1,379.68

NORTH AMERICAN INDUSTRY CLASSIFICATION SYSTEM INDUSTRY GROUPS	NUMBER OF EMPLOYING UNITS	EMPLOYMENT OCTOBER	EMPLOYMENT NOVEMBER	EMPLOYMENT DECEMBER	TOTAL EARNINGS OCT. - DEC. 2005	AVERAGE WEEKLY EARNINGS
Converted Paper Product Manufacturing	73	7,229	7,275	7,270	\$74,140,606	\$785.77
PRINTING AND RELATED SUPPORT ACTIVITIES	306	4,683	4,643	4,704	\$43,598,905	\$717.13
PETROLEUM AND COAL PRODUCTS MANUFACTURING	21	892	891	869	\$13,055,595	\$1,136.06
CHEMICAL MANUFACTURING	112	5,099	5,053	4,992	\$65,726,130	\$1,001.56
Basic Chemical Manufacturing	24	1,571	1,561	1,550	\$20,465,323	\$1,008.71
Resin, Rubber and Artificial Fibers	7	312	322	323	\$4,628,360	\$1,116.07
Agricultural Chemical Manufacturing	18	386	375	354	\$5,141,464	\$1,064.12
Pharmaceutical and Medicine Manufacturing	13	144	140	138	\$1,431,887	\$783.02
Paint, Coating and Adhesive Manufacturing	7	183	180	181	\$2,471,682	\$1,048.51
Cleaning Compound and Toiletry Manufacturing	17	1,059	1,056	1,054	\$13,960,815	\$1,016.64
Other Chemical Preparation Manufacturing	26	1,444	1,419	1,392	\$17,626,599	\$955.98
PLASTICS AND RUBBER PRODUCTS MANUFACTURING	171	12,984	13,018	13,118	\$124,521,782	\$734.56
Plastics Product Manufacturing	126	7,535	7,597	7,719	\$63,298,720	\$639.25
Rubber Product Manufacturing	45	5,449	5,421	5,399	\$61,223,062	\$868.42
NONMETALLIC MINERAL PRODUCT MANUFACTURING	254	4,695	4,716	4,752	\$43,740,521	\$712.70
Clay Product and Refractory Manufacturing	16	465	471	500	\$4,224,298	\$678.86
Glass and Glass Product Manufacturing	15	411	403	415	\$3,826,846	\$718.57
Cement and Concrete Product Manufacturing	183	2,861	2,865	2,854	\$25,547,743	\$687.14
Lime and Gypsum Product Manufacturing	3	411	420	421	\$5,076,399	\$935.68
Other Nonmetallic Mineral Products	37	547	557	562	\$5,065,235	\$701.62
PRIMARY METAL MANUFACTURING	67	8,041	8,098	8,167	\$105,163,107	\$998.45
Iron and Steel Mills and Ferroalloys	7	2,116	2,107	2,123	\$44,470,431	\$1,617.15
Purchased Steel Product Manufacturing	14	2,219	2,257	2,296	\$23,170,544	\$789.58
Alumina and Aluminum Production	19	1,761	1,796	1,787	\$19,555,742	\$844.47
Other Nonferrous Metal Production	11	598	593	598	\$5,624,039	\$725.46
Foundries	16	1,347	1,345	1,363	\$12,342,351	\$702.40
FABRICATED METAL PRODUCT MANUFACTURING	580	18,178	18,181	18,052	\$169,691,374	\$719.70
Forging and Stamping	14	910	914	920	\$7,569,695	\$636.61
Cutlery and Hand Tool Manufacturing	20	1,405	1,402	1,384	\$12,771,806	\$703.25
Architectural and Structural Metals	195	5,086	5,106	5,175	\$50,151,347	\$753.13
Boilers, Tanks and Shipping Containers	18	1,084	1,087	1,092	\$9,950,127	\$703.70
Hardware Manufacturing	12	300	298	294	\$2,329,634	\$602.70
Spring and Wire Product Manufacturing	18	787	795	806	\$6,020,329	\$581.79
Machine Shops and Threaded Products	198	1,695	1,691	1,711	\$15,533,346	\$703.28

NORTH AMERICAN INDUSTRY CLASSIFICATION SYSTEM INDUSTRY GROUPS	NUMBER OF EMPLOYING UNITS	EMPLOYMENT OCTOBER	EMPLOYMENT NOVEMBER	EMPLOYMENT DECEMBER	TOTAL EARNINGS OCT. - DEC. 2005	AVERAGE WEEKLY EARNINGS
Coating, Engraving and Heat Treating Metals	38	987	988	970	\$6,457,257	\$505.99
Other Fabricated Metal Product Manufacturing	67	5,924	5,900	5,700	\$58,907,833	\$775.74
MACHINERY MANUFACTURING	251	13,989	14,126	13,884	\$124,973,996	\$686.69
Agricultural, Construction and Mining Machinery	38	2,642	2,657	2,779	\$15,621,321	\$446.26
Commercial and Service Industry Machinery	25	1,004	1,005	1,005	\$9,795,310	\$749.99
HVAC and Commercial Refrigeration Equipment	25	4,891	4,973	4,522	\$46,830,953	\$751.23
Metalworking Machinery Manufacturing	76	1,373	1,385	1,383	\$14,181,918	\$790.33
Other General Purpose Machinery Manufacturing	54	3,132	3,184	3,217	\$29,016,073	\$702.40
Other	33	947	922	978	\$9,528,421	\$772.35
COMPUTER AND ELECTRONIC PRODUCT MANUFACTURING	75	5,934	5,936	5,830	\$53,735,553	\$700.59
Audio and Video Equipment Manufacturing	10	1,349	1,426	1,447	\$11,873,997	\$649.02
Semiconductors and Electronic Components	23	2,070	2,057	2,067	\$18,946,211	\$705.88
Electronic Instrument Manufacturing	26	1,217	1,206	1,210	\$11,496,534	\$730.26
Other	16	1,298	1,247	1,106	\$11,418,811	\$721.75
ELECTRICAL EQUIPMENT AND APPLIANCES	74	13,064	13,058	13,145	\$120,167,046	\$706.21
Electrical Equipment Manufacturing	27	4,973	4,960	5,006	\$48,972,414	\$756.50
Other	47	8,091	8,098	8,139	\$71,194,632	\$675.33
TRANSPORTATION EQUIPMENT MANUFACTURING	179	16,927	17,118	17,051	\$152,613,399	\$689.26
Motor Vehicle Body and Trailer Manufacturing	43	3,597	3,614	3,646	\$31,433,153	\$668.12
Motor Vehicle Parts Manufacturing	65	7,012	7,044	6,948	\$54,847,209	\$602.60
Aerospace Product and Parts Manufacturing	30	3,312	3,353	3,387	\$42,591,522	\$977.80
Ship and Boat Building	23	1,683	1,707	1,705	\$11,311,088	\$512.32
Other	18	1,323	1,400	1,365	\$12,430,427	\$701.70
FURNITURE & RELATED PRODUCT MFG.	269	6,545	6,500	6,647	\$50,535,124	\$592.22
Household & Institutional Furniture	220	4,516	4,448	4,474	\$33,973,383	\$583.42
Office Furniture & Fixtures Manufacturing	40	1,881	1,902	2,028	\$15,656,969	\$621.78
Other Furniture Related Product Manufacturing	9	148	150	145	\$904,772	\$471.32
MISCELLANEOUS MANUFACTURING	267	5,887	5,846	5,788	\$44,114,829	\$581.04
Medical Equipment & Supplies Manufacturing	97	2,544	2,539	2,525	\$19,717,886	\$598.09
Other Miscellaneous Manufacturing	170	3,343	3,307	3,263	\$24,396,943	\$567.95
TRADE, TRANSPORTATION AND UTILITIES	20,854	243,003	246,514	248,775	\$1,920,980,959	\$600.44
WHOLESALE TRADE	6,257	47,639	47,665	48,020	\$596,088,942	\$959.78
MERCHANT WHOLESALERS, DURABLE GOODS	2,094	21,685	21,803	21,886	\$250,122,642	\$882.93
Motor Vehicle & Part Merchant Wholesalers	230	2,701	2,700	2,707	\$25,210,614	\$717.54

NORTH AMERICAN INDUSTRY CLASSIFICATION SYSTEM INDUSTRY GROUPS	NUMBER OF EMPLOYING UNITS	EMPLOYMENT OCTOBER	EMPLOYMENT NOVEMBER	EMPLOYMENT DECEMBER	TOTAL EARNINGS OCT. - DEC. 2005	AVERAGE WEEKLY EARNINGS
Furniture & Furnishing Merchant Wholesalers	61	433	445	445	\$4,693,661	\$818.71
Lumber & Supply Merchant Wholesalers	168	1,777	1,805	1,798	\$19,550,930	\$838.62
Commercial Goods Merchant Wholesalers	238	2,388	2,398	2,417	\$35,285,725	\$1,130.48
Metal & Mineral Merchant Wholesalers	47	726	742	740	\$8,194,805	\$856.48
Electric Goods Merchant Wholesalers	175	2,213	2,204	2,203	\$27,733,738	\$966.78
Hardware & Plumbing Merchant Wholesalers	239	2,441	2,494	2,501	\$28,232,490	\$876.17
Machinery & Supply Merchant Wholesalers	706	7,256	7,257	7,299	\$83,642,807	\$884.93
Misc. Durable Goods Merchant Wholesalers	230	1,750	1,758	1,776	\$17,577,872	\$767.68
MERCHANT WHOLESALERS, NONDURABLE GOODS	1,313	17,158	17,041	17,135	\$173,283,025	\$778.98
Paper & Paper Product Merchant Wholesalers	73	1,194	1,212	1,245	\$12,419,904	\$785.03
Druggists' Goods Merchant Wholesalers	54	993	1,007	1,036	\$10,715,436	\$814.49
Apparel & Piece Goods Merchant Wholesalers	41	485	488	491	\$4,398,028	\$693.26
Grocery Product Merchant Wholesalers	360	6,033	6,013	6,042	\$62,753,816	\$800.62
Farm Product Merchant Wholesalers	82	991	975	944	\$6,786,836	\$538.21
Chemical Merchant Wholesalers	81	441	435	435	\$5,396,465	\$949.91
Petroleum Merchant Wholesalers	157	1,408	1,429	1,447	\$19,070,872	\$1,027.30
Alcoholic Beverage Merchant Wholesalers	37	1,127	1,134	1,168	\$14,158,465	\$952.85
Misc. Nondurable Goods Merchant Wholesalers	428	4,486	4,348	4,327	\$37,583,203	\$659.00
ELECTRONIC MARKETS & AGENTS & BROKERS	2,850	8,796	8,821	8,999	\$172,683,275	\$1,497.22
RETAIL TRADE	11,307	132,198	135,503	136,959	\$692,788,401	\$395.08
MOTOR VEHICLE & PARTS DEALERS	1,733	17,863	17,677	17,780	\$147,124,887	\$636.76
Automobile Dealers	743	10,705	10,568	10,602	\$100,097,501	\$724.69
Other Motor Vehicle Dealers	198	1,496	1,466	1,470	\$12,578,567	\$654.95
Automotive Parts, Accessories & Tire Stores	792	5,662	5,643	5,708	\$34,448,819	\$467.27
FURNITURE & HOME FURNISHINGS STORES	616	4,126	4,148	4,209	\$27,715,713	\$512.37
Furniture Stores	317	2,477	2,482	2,507	\$17,222,245	\$532.33
Home Furnishings Stores	299	1,649	1,666	1,702	\$10,493,468	\$482.67
ELECTRONICS & APPLIANCE STORES	472	2,961	3,148	3,147	\$18,310,807	\$456.52
BUILDING MATERIAL & GARDEN SUPPLY STORES	816	10,850	10,899	10,936	\$69,915,007	\$493.63
Building Material & Supplies Dealers	642	9,999	10,058	10,138	\$65,117,945	\$497.67
Lawn & Garden Equipment & Supplies Stores	174	851	841	798	\$4,797,062	\$444.58
FOOD & BEVERAGE STORES	1,130	18,889	18,938	19,124	\$74,127,137	\$300.37
Grocery Stores	656	16,538	16,527	16,644	\$63,004,221	\$292.49
Specialty Food Stores	159	869	909	935	\$4,698,968	\$399.70

NORTH AMERICAN INDUSTRY CLASSIFICATION SYSTEM INDUSTRY GROUPS	NUMBER OF EMPLOYING UNITS	EMPLOYMENT OCTOBER	EMPLOYMENT NOVEMBER	EMPLOYMENT DECEMBER	TOTAL EARNINGS OCT. - DEC. 2005	AVERAGE WEEKLY EARNINGS
Beer, Wine & Liquor Stores	315	1,482	1,502	1,545	\$6,423,948	\$327.32
HEALTH & PERSONAL CARE STORES	796	6,671	6,774	6,870	\$47,596,542	\$540.68
GASOLINE STATIONS	1,651	12,532	12,582	12,630	\$43,880,901	\$268.29
Gasoline Stations with Convenience Stores	1,475	11,265	11,311	11,331	\$37,656,045	\$256.29
Other Gasoline Stations	176	1,267	1,271	1,299	\$6,224,856	\$374.38
CLOTHING & CLOTHING ACCESSORIES STORES	1,052	8,259	8,938	9,327	\$30,910,396	\$268.93
Clothing Stores	691	6,104	6,666	6,962	\$20,036,484	\$234.33
Shoe Stores	185	1,198	1,235	1,267	\$4,525,931	\$282.28
Jewelry, Luggage & Leather Goods Stores	176	957	1,037	1,098	\$6,347,981	\$473.78
SPORTING GOODS, HOBBY, BOOK & MUSIC STORES	563	4,368	4,593	4,928	\$16,823,156	\$279.52
Sporting Goods & Musical Instrument Stores	398	2,948	3,093	3,323	\$12,618,516	\$310.97
Book, Periodical & Music Stores	165	1,420	1,500	1,605	\$4,204,640	\$214.43
GENERAL MERCHANDISE STORES	704	36,962	38,961	38,970	\$169,353,455	\$340.16
MISCELLANEOUS STORE RETAILERS	1,451	6,722	6,814	6,969	\$32,329,305	\$363.84
Florists	272	1,008	1,031	1,054	\$3,867,476	\$288.55
Office Supplies, Stationery & Gift Stores	409	2,541	2,603	2,694	\$12,221,460	\$359.83
Used Merchandise Stores	213	803	811	821	\$3,796,630	\$359.81
Other Miscellaneous Store Retailers	557	2,370	2,369	2,400	\$12,443,739	\$402.25
NONSTORE RETAILERS	323	1,995	2,031	2,069	\$14,701,095	\$556.61
Electronic Shopping & Mail -Order Houses	69	392	397	387	\$3,761,253	\$738.08
Vending Machine Operators	83	702	696	713	\$4,037,111	\$441.33
Direct Selling Establishments	171	901	938	969	\$6,902,731	\$567.29
TRANSPORTATION & WAREHOUSING	2,936	56,528	56,677	57,085	\$521,863,660	\$707.21
AIR TRANSPORTATION	48	1,044	1,038	1,040	\$12,892,179	\$952.95
TRUCK TRANSPORTATION	1,962	35,108	35,449	35,584	\$336,246,407	\$731.06
General Freight Trucking	1,233	29,742	30,463	30,615	\$293,074,058	\$744.69
Specialized Freight Trucking	729	5,366	4,986	4,969	\$43,172,349	\$650.27
TRANSIT & GROUND PASSENGER TRANSPORTATION	55	1,021	1,029	1,025	\$3,901,099	\$292.77
Taxi & Limousine Service	20	227	230	226	\$673,429	\$227.54
School & Employee Bus Transportation	8	410	408	416	\$1,785,349	\$333.88
Charter Bus Industry	8	93	96	90	\$459,331	\$379.93
Other Ground Passenger Transportation	11	211	214	213	\$649,193	\$234.82
Other	8	80	81	80	\$333,797	\$319.63
PIPELINE TRANSPORTATION	66	950	952	941	\$11,705,206	\$950.12

NORTH AMERICAN INDUSTRY CLASSIFICATION SYSTEM INDUSTRY GROUPS	NUMBER OF EMPLOYING UNITS	EMPLOYMENT OCTOBER	EMPLOYMENT NOVEMBER	EMPLOYMENT DECEMBER	TOTAL EARNINGS OCT. - DEC. 2005	AVERAGE WEEKLY EARNINGS
SUPPORT ACTIVITIES FOR TRANSPORTATION	438	4,840	4,746	4,805	\$47,129,435	\$755.75
Support Activities for Air Transportation	106	1,673	1,646	1,672	\$15,124,316	\$699.30
Support Activities for Rail Transportation	34	415	403	404	\$3,364,209	\$635.32
Support Activities for Water Transportation	31	634	608	613	\$6,417,483	\$798.36
Support Activities for Road Transportation	100	458	460	468	\$2,784,603	\$463.64
Freight Transportation Arrangement	145	1,519	1,464	1,473	\$18,208,137	\$942.97
Other Support Activities for Transportation	22	141	165	175	\$1,230,687	\$590.45
COURIERS & MESSENGERS	134	3,220	3,317	3,703	\$32,368,971	\$729.47
Couriers	89	2,980	3,081	3,463	\$30,831,912	\$747.07
Local Messengers & Local Delivery	45	240	236	240	\$1,537,059	\$495.40
WAREHOUSING & STORAGE	210	10,147	9,965	9,815	\$75,878,564	\$585.11
OTHER	23	198	181	172	\$1,741,799	\$729.50
UTILITIES	354	6,638	6,669	6,711	\$110,239,956	\$1,270.86
Power Generation & Supply	160	4,977	4,996	5,018	\$91,101,329	\$1,402.40
Natural Gas Distribution	31	857	869	880	\$13,426,246	\$1,188.93
Water, Sewage and Other Systems	163	804	804	813	\$5,712,381	\$544.50
INFORMATION	1,203	19,934	20,001	20,050	\$202,809,124	\$780.23
PUBLISHING INDUSTRIES, EXCEPT INTERNET	248	6,475	6,445	6,417	\$49,301,193	\$588.36
Newspaper, Book & Directory Publishers	217	6,226	6,193	6,157	\$45,994,706	\$571.39
Software Publishers	31	249	252	260	\$3,306,487	\$1,002.67
MOTION PICTURE & SOUND RECORDING INDUSTRY	138	1,078	1,146	1,180	\$4,524,795	\$306.75
Motion Picture & Video Industries	126	1,051	1,119	1,153	\$4,253,434	\$295.38
Sound Recording Industries	12	27	27	27	\$271,361	\$773.11
BROADCASTING, EXCEPT INTERNET	136	2,078	2,064	2,045	\$17,146,600	\$639.55
Radio & Television Broadcasting	129	2,042	2,030	2,012	\$16,945,885	\$642.77
Cable & Other Subscription Programming	7	36	34	33	\$200,715	\$449.70
TELECOMMUNICATIONS	493	8,811	8,884	8,932	\$113,041,719	\$979.70
Wired Telecommunications Carriers	211	5,068	5,128	5,129	\$77,701,149	\$1,170.05
Wireless Telecommunications Carriers	123	1,963	1,953	1,986	\$18,295,490	\$715.36
Cable & Other Program Distribution	83	1,244	1,260	1,255	\$10,747,863	\$659.82
Other	76	536	543	562	\$6,297,217	\$885.56
ISPS, SEARCH PORTALS, & DATA PROCESSING	153	1,187	1,159	1,162	\$16,330,661	\$1,074.29
ISPs, & Web Search Portals	66	202	191	194	\$1,815,116	\$713.58
Data Processing & Related Services	87	985	968	968	\$14,515,545	\$1,146.78

NORTH AMERICAN INDUSTRY CLASSIFICATION SYSTEM INDUSTRY GROUPS	NUMBER OF EMPLOYING UNITS	EMPLOYMENT OCTOBER	EMPLOYMENT NOVEMBER	EMPLOYMENT DECEMBER	TOTAL EARNINGS OCT. - DEC. 2005	AVERAGE WEEKLY EARNINGS
OTHER	35	305	303	314	\$2,464,156	\$616.76
FINANCIAL ACTIVITIES	7,863	50,042	50,168	50,783	\$502,132,379	\$767.43
FINANCE & INSURANCE	4,621	36,335	36,475	36,803	\$401,199,478	\$844.65
CREDIT INTERMEDIATION & RELATED ACTIVITIES	1,984	21,484	21,577	21,720	\$202,243,511	\$720.45
Depository Credit Intermediation	1,280	17,876	17,974	18,106	\$161,922,780	\$692.54
Nondepository Credit Intermediation	402	2,689	2,687	2,692	\$32,515,455	\$930.04
Activities Related to Credit Intermediation	302	919	916	922	\$7,805,276	\$653.33
FINANCIAL INVESTMENT & RELATED ACTIVITIES	578	3,115	3,077	3,110	\$60,069,685	\$1,490.24
Security & Commodity Investment Activities	325	2,380	2,363	2,389	\$48,336,220	\$1,564.01
Other Financial Investment Activities	253	735	714	721	\$11,733,465	\$1,247.80
INSURANCE CARRIERS & RELATED ACTIVITIES	2,020	11,315	11,397	11,520	\$133,830,224	\$902.19
Insurance Carriers	382	4,650	4,713	4,758	\$60,039,880	\$981.19
Insurance Agencies, Brokerages & Support	1,638	6,665	6,684	6,762	\$73,790,344	\$846.73
OTHER	39	421	424	453	\$5,056,058	\$898.91
REAL ESTATE & RENTAL & LEASING	3,242	13,707	13,693	13,980	\$100,932,901	\$562.89
REAL ESTATE	2,417	8,621	8,649	8,867	\$67,964,554	\$600.07
Lessors of Real Estate	1,028	4,247	4,254	4,327	\$26,740,353	\$481.05
Offices of Real Estate Agents & Brokers	808	2,051	2,065	2,164	\$21,460,002	\$788.58
Activities Related to Real Estate	581	2,323	2,330	2,376	\$19,764,199	\$648.88
RENTAL & LEASING SERVICES	801	4,990	4,953	5,016	\$31,773,685	\$490.17
Automotive Equipment Rental & Leasing	125	954	940	946	\$6,679,874	\$542.78
Consumer Goods Rental	495	3,136	3,104	3,118	\$15,801,243	\$389.66
General Rental Centers	35	192	194	202	\$1,746,128	\$685.29
Machinery & Equipment Rental & Leasing	146	708	715	750	\$7,546,440	\$801.42
LESSORS OF NONFINANCIAL INTANGIBLE ASSETS	24	96	91	97	\$1,194,662	\$970.74
PROFESSIONAL AND BUSINESS SERVICES	10,571	113,325	113,504	113,693	\$1,209,276,557	\$819.52
PROFESSIONAL & TECHNICAL SERVICES	6,668	35,200	35,492	36,085	\$468,481,354	\$1,012.49
Legal Services	1,625	6,716	6,766	6,817	\$105,547,421	\$1,199.92
Accounting & Bookkeeping Services	1,186	4,578	4,593	4,906	\$48,983,565	\$803.00
Architectural & Engineering Services	887	6,398	6,453	6,496	\$86,615,103	\$1,033.14
Specialized Design Services	154	478	478	481	\$3,751,632	\$602.48
Computer Systems Design & Related Services	777	7,477	7,473	7,473	\$127,675,318	\$1,313.99
Management & Technical Consulting Services	1,040	2,737	2,716	2,830	\$38,227,779	\$1,065.05
Scientific Research & Development Services	111	1,101	1,102	1,106	\$13,400,940	\$934.58

NORTH AMERICAN INDUSTRY CLASSIFICATION SYSTEM INDUSTRY GROUPS	NUMBER OF EMPLOYING UNITS	EMPLOYMENT OCTOBER	EMPLOYMENT NOVEMBER	EMPLOYMENT DECEMBER	TOTAL EARNINGS OCT. - DEC. 2005	AVERAGE WEEKLY EARNINGS
Advertising & Related Services	315	1,932	1,981	1,998	\$23,707,150	\$925.54
Other Professional & Technical Services	573	3,783	3,930	3,978	\$20,572,446	\$406.08
MANAGEMENT OF COMPANIES & ENTERPRISES	488	23,531	23,673	23,744	\$456,438,084	\$1,484.63
ADMINISTRATIVE & WASTE SERVICES	3,415	54,594	54,339	53,864	\$284,357,119	\$403.08
ADMINISTRATIVE & SUPPORT SERVICES	3,217	52,204	51,954	51,480	\$261,494,136	\$387.73
Office Administrative Services	324	1,355	1,324	1,351	\$18,363,909	\$1,051.57
Facilities Support Services	13	110	111	106	\$862,451	\$608.65
Employment Services	619	28,054	27,942	26,978	\$123,962,279	\$344.77
Business Support Services	352	4,759	4,739	5,292	\$24,768,247	\$386.46
Travel Arrangement & Reservation Services	102	451	427	429	\$3,050,623	\$538.63
Investigation & Security Services	232	4,383	4,418	4,434	\$25,369,703	\$442.35
Services to Buildings & Dwellings	1,286	11,570	11,443	11,328	\$51,893,841	\$348.72
Other Support Services	289	1,522	1,550	1,562	\$13,223,083	\$658.50
WASTE MANAGEMENT & REMEDIATION SERVICES	198	2,390	2,385	2,384	\$22,862,983	\$736.98
Waste Collection	89	1,126	1,119	1,106	\$10,606,736	\$730.44
Waste Treatment & Disposal	38	766	774	777	\$8,525,523	\$849.13
Remediation & Other Waste Services	71	498	492	501	\$3,730,724	\$577.42
EDUCATION AND HEALTH SERVICES	8,475	143,540	143,244	143,232	\$1,240,413,150	\$665.67
EDUCATIONAL SERVICES	548	9,355	9,415	9,290	\$57,735,787	\$474.83
Elementary & Secondary Schools	83	3,418	3,416	3,402	\$16,563,700	\$373.43
Junior Colleges	8	272	263	267	\$1,791,089	\$515.37
Colleges & Universities	25	3,246	3,281	3,216	\$23,226,687	\$550.14
Business, Computer & Management Training	46	127	127	128	\$1,900,014	\$1,147.81
Technical & Trade Schools	95	756	769	763	\$6,884,287	\$694.35
Other Schools & Instruction	218	1,313	1,335	1,274	\$5,018,064	\$295.26
Educational Support Services	73	223	224	240	\$2,351,946	\$790.04
HEALTH CARE & SOCIAL ASSISTANCE	7,927	134,185	133,829	133,942	\$1,182,677,363	\$678.99
AMBULATORY HEALTH CARE SERVICES	4,707	42,081	42,145	42,435	\$579,960,182	\$1,056.65
Offices of Physicians	2,093	20,419	20,480	20,617	\$389,086,214	\$1,459.61
Offices of Dentists	913	5,940	5,918	6,010	\$63,732,209	\$823.12
Offices of Other Health Practitioners	1,125	5,341	5,311	5,377	\$43,466,871	\$625.79
Outpatient Care Centers	204	3,584	3,590	3,586	\$33,166,485	\$711.32
Medical & Diagnostic Laboratories	95	739	747	763	\$10,319,020	\$1,058.83
Home Health Care Services	130	3,946	3,942	3,924	\$25,727,988	\$502.64

NORTH AMERICAN INDUSTRY CLASSIFICATION SYSTEM INDUSTRY GROUPS	NUMBER OF EMPLOYING UNITS	EMPLOYMENT OCTOBER	EMPLOYMENT NOVEMBER	EMPLOYMENT DECEMBER	TOTAL EARNINGS OCT. - DEC. 2005	AVERAGE WEEKLY EARNINGS
Other Ambulatory Health Care Services	147	2,112	2,157	2,158	\$14,461,395	\$519.25
HOSPITALS	111	42,256	41,696	41,555	\$379,634,666	\$698.03
General Medical & Surgical Hospitals	78	38,860	38,315	38,164	\$349,802,535	\$699.88
Psychiatric & Substance Abuse Hospitals	10	1,494	1,496	1,509	\$12,082,801	\$619.77
Other Hospitals	23	1,902	1,885	1,882	\$17,749,330	\$722.53
NURSING & RESIDENTIAL CARE FACILITIES	496	26,687	26,620	26,582	\$125,955,013	\$363.84
Nursing Care Facilities	235	20,046	19,955	19,979	\$93,631,837	\$360.24
Residential Mental Health Facilities	128	2,999	3,018	3,025	\$15,019,525	\$383.33
Community Care Facilities for the Elderly	89	2,230	2,230	2,146	\$9,607,184	\$335.61
Other Residential Care Facilities	44	1,412	1,417	1,432	\$7,696,467	\$416.83
SOCIAL ASSISTANCE	2,613	23,161	23,368	23,370	\$97,127,502	\$320.66
Individual & Family Services	1,485	10,494	10,635	10,698	\$47,938,679	\$347.59
Emergency & Other Relief Services	115	891	895	871	\$4,377,890	\$380.23
Vocational Rehabilitation Services	127	3,370	3,398	3,381	\$15,436,787	\$351.00
Child Day Care Services	886	8,406	8,440	8,420	\$29,374,146	\$268.29
LEISURE AND HOSPITALITY	5,968	93,397	93,173	92,691	\$269,613,789	\$222.80
ARTS, ENTERTAINMENT & RECREATION	916	8,847	8,042	8,258	\$32,814,284	\$301.13
PERFORMING ARTS & SPECTATOR SPORTS	199	1,989	1,706	1,970	\$8,520,655	\$347.10
Performing Arts Companies	38	646	457	414	\$1,903,688	\$289.59
Spectator Sports	57	643	642	803	\$3,207,879	\$354.54
Performing Arts & Sports Promoters	40	589	489	625	\$2,589,462	\$350.89
Agents & Managers for Public Figures	11	15	14	15	\$124,990	\$655.54
Independent Artists, Writers & Performers	53	96	104	113	\$694,636	\$512.14
MUSEUMS, PARKS & HISTORICAL SITES	47	218	208	199	\$951,394	\$351.28
GAMBLING, RECREATION & AMUSEMENT INDUSTRY	670	6,640	6,128	6,089	\$23,342,235	\$285.66
Other Amusement & Recreation Industries	632	6,228	5,960	5,896	\$22,452,632	\$286.52
Other	38	412	168	193	\$889,603	\$265.58
ACCOMMODATION & FOOD SERVICES	5,052	84,550	85,131	84,433	\$236,799,505	\$215.05
ACCOMMODATION	797	11,102	10,810	10,406	\$38,421,988	\$274.36
Traveler Accommodation	727	10,799	10,534	10,135	\$37,091,467	\$272.01
RV Parks & Recreational Camps	50	220	201	190	\$992,644	\$374.91
Rooming & Boarding Houses	20	83	75	81	\$337,877	\$326.24
FOOD SERVICES & DRINKING PLACES	4,255	73,448	74,321	74,027	\$198,377,517	\$206.40
Full -Service Restaurants	1,844	31,955	32,325	32,340	\$93,510,390	\$223.34

NORTH AMERICAN INDUSTRY CLASSIFICATION SYSTEM INDUSTRY GROUPS	NUMBER OF EMPLOYING UNITS	EMPLOYMENT OCTOBER	EMPLOYMENT NOVEMBER	EMPLOYMENT DECEMBER	TOTAL EARNINGS OCT. - DEC. 2005	AVERAGE WEEKLY EARNINGS
Limited-Service Eating Places	2,097	38,307	38,713	38,432	\$95,124,173	\$190.14
Special Food Services	158	2,221	2,295	2,244	\$7,240,708	\$247.18
Drinking Places, Alcoholic Beverages	156	965	988	1,011	\$2,502,246	\$194.82
OTHER SERVICES	5,546	24,758	24,865	25,094	\$148,203,028	\$457.74
REPAIR & MAINTENANCE	2,251	9,152	9,138	9,196	\$63,490,863	\$533.06
Automotive Repair & Maintenance	1,559	6,530	6,508	6,543	\$41,625,442	\$490.57
Electronic Equipment Repair & Maintenance	164	635	636	645	\$5,618,742	\$676.74
Commercial Machinery Repair & Maintenance	337	1,412	1,439	1,442	\$12,748,269	\$685.28
Household Goods Repair & Maintenance	191	575	555	566	\$3,498,410	\$476.02
PERSONAL & LAUNDRY SERVICES	1,323	7,919	8,006	8,116	\$41,359,635	\$397.01
Personal Care Services	567	2,385	2,433	2,486	\$9,082,137	\$286.95
Death Care Services	247	1,650	1,659	1,680	\$11,738,995	\$542.99
Drycleaning & Laundry Services	344	3,139	3,140	3,171	\$15,864,951	\$387.42
Other Personal Services	165	745	774	779	\$4,673,552	\$469.33
MEMBERSHIP ASSOCIATIONS & ORGANIZATIONS	1,017	6,222	6,257	6,289	\$37,435,659	\$460.30
Religious Organizations	39	205	202	213	\$1,156,778	\$430.56
Grantmaking & Giving Services	96	427	431	444	\$3,990,818	\$707.34
Social Advocacy Organizations	137	1,887	1,899	1,931	\$10,654,838	\$430.09
Civic & Social Organizations	225	1,566	1,569	1,551	\$5,018,139	\$247.13
Professional & Similar Organizations	520	2,137	2,156	2,150	\$16,615,086	\$595.10
PRIVATE HOUSEHOLDS	955	1,465	1,464	1,493	\$5,916,871	\$308.78
LOCAL GOVERNMENT	1,999	117,210	117,967	117,964	\$818,861,278	\$535.11
STATE GOVERNMENT	1,195	60,819	60,616	60,417	\$531,058,584	\$673.91
NONCLASSIFIABLE ESTABLISHMENTS	0	0	0	0	\$0	

**TABLE 6. COUNTY SUMMARY
EMPLOYMENT AND TOTAL EARNINGS, BY INDUSTRY
FOURTH QUARTER 2005**

NORTH AMERICAN INDUSTRY CLASSIFICATION SYSTEM INDUSTRY GROUP	NUMBER OF EMPLOYING UNITS	EMPLOYMENT OCTOBER	EMPLOYMENT NOVEMBER	EMPLOYMENT DECEMBER	TOTAL EARNINGS OCT. - DEC. 2005	AVERAGE WEEKLY EARNINGS
ARKANSAS COUNTY - TOTAL	654	9,951	9,901	10,003	\$72,909,640	\$563.57
Natural Resources & Mining	46	287	242	225	\$1,950,390	\$596.94
Construction	56	253	246	245	\$1,942,582	\$602.54
Manufacturing	32	3,642	3,653	3,676	\$28,911,767	\$608.14
Trade, Transportation & Utilities	201	2,077	2,043	2,117	\$16,501,001	\$610.54
Wholesale Trade	42	438	405	415	\$5,429,156	\$995.93
Retail Trade	105	1,052	1,062	1,122	\$5,453,757	\$388.92
Transportation, Warehousing & Utilities	54	587	576	580	\$5,618,088	\$743.82
Information	8	81	81	83	\$666,774	\$628.04
Financial Activities	42	327	327	330	\$3,233,579	\$758.34
Professional & Business Services	50	391	388	398	\$4,074,416	\$798.85
Education & Health Services	65	1,151	1,185	1,178	\$6,753,189	\$443.49
Leisure & Hospitality	54	521	525	519	\$1,260,266	\$185.83
Other Services	53	156	154	151	\$824,523	\$412.74
Local Government	31	864	859	874	\$5,316,517	\$472.43
State Government	16	201	198	207	\$1,474,636	\$561.55
ASHLEY COUNTY - TOTAL	527	8,479	8,446	8,450	\$81,690,971	\$742.93
Natural Resources & Mining	59	583	563	540	\$3,823,456	\$523.33
Construction	50	622	613	610	\$4,328,976	\$541.46
Manufacturing	28	2,957	2,948	2,944	\$46,692,526	\$1,217.67
Trade, Transportation & Utilities	136	1,262	1,284	1,306	\$7,575,728	\$453.85
Wholesale Trade	26	171	164	180	\$1,685,989	\$755.48
Retail Trade	89	862	887	907	\$3,844,856	\$334.06
Transportation, Warehousing & Utilities	21	229	233	219	\$2,044,883	\$692.95
Information	10	50	53	53	\$342,592	\$506.79
Financial Activities	35	221	223	229	\$1,757,156	\$602.52
Professional & Business Services	47	364	352	337	\$3,445,032	\$754.99
Education & Health Services	49	582	582	585	\$4,453,448	\$587.60
Leisure & Hospitality	29	371	366	363	\$873,767	\$183.31
Other Services	40	184	171	182	\$906,038	\$389.36
Local Government	32	1,075	1,083	1,084	\$6,356,518	\$452.46
State Government	12	208	208	217	\$1,135,734	\$414.05

NORTH AMERICAN INDUSTRY CLASSIFICATION SYSTEM INDUSTRY GROUP	NUMBER OF EMPLOYING UNITS	EMPLOYMENT OCTOBER	EMPLOYMENT NOVEMBER	EMPLOYMENT DECEMBER	TOTAL EARNINGS OCT. - DEC. 2005	AVERAGE WEEKLY EARNINGS
BAXTER COUNTY - TOTAL	1,198	14,337	14,324	14,388	\$99,925,864	\$535.66
Natural Resources & Mining	7	140	132	129	\$910,243	\$523.83
Construction	139	685	677	701	\$4,397,205	\$491.88
Manufacturing	64	2,560	2,529	2,545	\$20,091,899	\$607.36
Trade, Transportation & Utilities	269	2,559	2,599	2,610	\$14,351,141	\$426.34
Wholesale Trade	32	180	179	180	\$1,511,791	\$647.26
Retail Trade	209	2,127	2,165	2,170	\$10,956,903	\$391.29
Transportation, Warehousing & Utilities	28	252	255	260	\$1,882,447	\$566.38
Information	23	277	284	284	\$2,201,311	\$601.18
Financial Activities	110	662	663	678	\$5,604,515	\$645.71
Professional & Business Services	133	799	803	813	\$6,014,683	\$574.74
Education & Health Services	177	3,214	3,235	3,254	\$30,591,189	\$727.56
Leisure & Hospitality	122	1,498	1,473	1,420	\$3,961,079	\$208.17
Other Services	105	404	402	411	\$1,569,176	\$297.55
Local Government	36	1,236	1,225	1,250	\$8,251,010	\$513.09
State Government	13	303	302	293	\$1,982,413	\$509.44
BENTON COUNTY - TOTAL	4,908	90,109	90,558	91,088	\$874,041,340	\$742.22
Natural Resources & Mining	25	672	670	665	\$7,866,981	\$904.56
Construction	752	4,908	4,939	5,019	\$45,476,516	\$705.95
Manufacturing	242	13,627	13,652	13,702	\$119,140,926	\$670.90
Trade, Transportation & Utilities	1,305	22,676	23,040	23,320	\$209,578,766	\$700.57
Wholesale Trade	581	3,847	3,901	3,983	\$55,812,013	\$1,097.92
Retail Trade	559	7,325	7,492	7,590	\$43,514,166	\$448.15
Transportation, Warehousing & Utilities	165	11,504	11,647	11,747	\$110,252,587	\$729.06
Information	67	905	918	920	\$8,220,906	\$691.63
Financial Activities	545	3,378	3,407	3,498	\$32,427,614	\$727.73
Professional & Business Services	810	21,860	21,878	21,712	\$307,328,412	\$1,083.60
Education & Health Services	392	6,492	6,479	6,542	\$52,260,447	\$618.05
Leisure & Hospitality	373	6,505	6,448	6,446	\$20,651,182	\$245.67
Other Services	303	1,730	1,723	1,745	\$11,577,003	\$513.97
Local Government	75	6,696	6,746	6,857	\$53,522,312	\$608.47
State Government	19	660	658	662	\$5,990,275	\$698.17

NORTH AMERICAN INDUSTRY CLASSIFICATION SYSTEM INDUSTRY GROUP	NUMBER OF EMPLOYING UNITS	EMPLOYMENT OCTOBER	EMPLOYMENT NOVEMBER	EMPLOYMENT DECEMBER	TOTAL EARNINGS OCT. - DEC. 2005	AVERAGE WEEKLY EARNINGS
BOONE COUNTY - TOTAL	1,018	13,797	13,858	14,066	\$102,310,078	\$565.90
Construction	93	474	456	471	\$3,217,827	\$530.03
Manufacturing	67	2,098	2,110	2,127	\$17,764,678	\$647.13
Trade, Transportation & Utilities	272	4,413	4,394	4,468	\$36,706,325	\$638.09
Wholesale Trade	59	641	633	640	\$4,962,056	\$598.27
Retail Trade	159	2,009	1,994	2,027	\$10,718,410	\$410.20
Transportation, Warehousing & Utilities	54	1,763	1,767	1,801	\$21,025,859	\$910.17
Information	18	408	412	410	\$3,599,968	\$675.42
Financial Activities	94	627	622	621	\$4,969,536	\$613.27
Professional & Business Services	105	520	570	598	\$3,164,368	\$432.61
Education & Health Services	127	1,083	1,100	1,097	\$8,521,874	\$599.57
Leisure & Hospitality	82	1,157	1,135	1,118	\$2,907,815	\$196.78
Local Government	60	2,250	2,286	2,279	\$14,918,395	\$505.17
State Government	21	514	523	628	\$4,776,774	\$662.06
Other	79	253	250	249	\$1,762,518	\$540.87
BRADLEY COUNTY - TOTAL	352	3,932	3,965	3,946	\$26,258,778	\$511.67
Natural Resources & Mining	51	253	247	249	\$1,680,797	\$517.86
Construction	21	151	151	151	\$970,464	\$494.38
Manufacturing	11	1,080	1,096	1,079	\$9,142,857	\$648.20
Trade, Transportation & Utilities	90	509	518	524	\$2,746,270	\$408.61
Wholesale Trade	14	110	110	110	\$551,227	\$385.47
Retail Trade	51	326	336	342	\$1,589,693	\$365.39
Transportation, Warehousing & Utilities	25	73	72	72	\$605,350	\$643.76
Information	3	14	14	14	\$91,639	\$503.51
Financial Activities	24	180	178	182	\$1,327,683	\$567.39
Professional & Business Services	26	98	96	99	\$433,884	\$341.73
Education & Health Services	48	541	544	541	\$3,859,295	\$547.73
Leisure & Hospitality	17	173	177	171	\$355,424	\$157.43
Other Services	33	100	99	97	\$645,040	\$502.89
Local & State Government	28	833	845	839	\$5,005,425	\$458.92

NORTH AMERICAN INDUSTRY CLASSIFICATION SYSTEM INDUSTRY GROUP	NUMBER OF EMPLOYING UNITS	EMPLOYMENT OCTOBER	EMPLOYMENT NOVEMBER	EMPLOYMENT DECEMBER	TOTAL EARNINGS OCT. - DEC. 2005	AVERAGE WEEKLY EARNINGS
CALHOUN COUNTY - TOTAL	120	3,959	3,937	3,891	\$34,724,885	\$679.85
Natural Resources & Mining	20	148	149	151	\$1,005,663	\$518.03
Construction	11	104	101	101	\$577,949	\$435.86
Manufacturing	14	2,694	2,652	2,623	\$25,726,500	\$745.00
Trade, Transportation & Utilities	26	202	207	200	\$1,293,251	\$490.05
Wholesale Trade & Retail Trade	18	67	68	69	\$239,487	\$270.91
Transportation, Warehousing & Utilities	8	135	139	131	\$1,053,764	\$600.44
Professional & Business Services	8	125	125	125	\$855,765	\$526.62
Education & Health Services	4	42	44	43	\$350,128	\$626.35
Local Government	11	209	214	216	\$1,213,894	\$438.39
State Government	10	326	339	326	\$2,115,353	\$492.59
Other	16	109	106	106	\$1,586,382	\$1,140.46
CARROLL COUNTY - TOTAL	799	9,997	9,714	9,547	\$56,625,843	\$446.63
Natural Resources & Mining	17	276	276	279	\$2,017,148	\$560.16
Trade, Transportation & Utilities	207	1,635	1,643	1,629	\$9,010,189	\$423.74
Wholesale Trade	22	118	118	116	\$564,436	\$370.04
Retail Trade	168	1,263	1,286	1,278	\$6,140,914	\$370.30
Transportation, Warehousing & Utilities	17	254	239	235	\$2,304,839	\$730.61
Professional & Business Services	71	238	243	251	\$1,638,450	\$516.54
Education & Health Services	58	740	755	761	\$5,551,746	\$567.90
Leisure & Hospitality	174	1,818	1,520	1,343	\$4,351,445	\$214.52
Local Government	25	1,103	1,102	1,089	\$6,949,440	\$486.86
State Government	11	107	103	98	\$677,631	\$507.72
Other	236	4,080	4,072	4,097	\$26,429,794	\$497.93

NORTH AMERICAN INDUSTRY CLASSIFICATION SYSTEM INDUSTRY GROUP	NUMBER OF EMPLOYING UNITS	EMPLOYMENT OCTOBER	EMPLOYMENT NOVEMBER	EMPLOYMENT DECEMBER	TOTAL EARNINGS OCT. - DEC. 2005	AVERAGE WEEKLY EARNINGS
CHICOT COUNTY - TOTAL	330	3,665	3,766	3,757	\$22,450,479	\$463.07
Natural Resources & Mining	46	306	293	262	\$1,744,976	\$467.70
Construction	19	298	303	299	\$2,189,270	\$561.35
Manufacturing	12	375	468	477	\$2,097,818	\$366.75
Trade, Transportation & Utilities	85	586	587	614	\$3,391,725	\$438.00
Wholesale Trade	16	103	106	107	\$1,012,898	\$739.70
Retail Trade	57	407	409	424	\$1,652,130	\$307.47
Transportation, Warehousing & Utilities	12	76	72	83	\$726,697	\$725.97
Information	6	13	12	11	\$81,078	\$519.73
Financial Activities	28	165	165	168	\$1,276,803	\$591.66
Professional & Business Services	24	83	89	82	\$785,876	\$714.00
Education & Health Services	46	480	480	494	\$2,867,899	\$455.17
Leisure & Hospitality	21	226	223	221	\$469,289	\$161.64
Other Services	16	50	48	48	\$435,423	\$688.23
Local Government	16	783	801	794	\$5,262,191	\$510.66
State Government	11	300	297	287	\$1,848,131	\$482.46
CLARK COUNTY - TOTAL	605	9,774	9,802	9,857	\$63,322,590	\$496.48
Natural Resources & Mining	42	245	242	247	\$1,790,150	\$562.82
Construction	34	128	127	122	\$761,938	\$466.40
Manufacturing	35	2,335	2,353	2,356	\$17,616,583	\$577.14
Trade, Transportation & Utilities	140	1,431	1,452	1,485	\$9,010,745	\$476.05
Wholesale Trade	21	75	75	77	\$667,100	\$678.18
Retail Trade	93	1,081	1,105	1,122	\$5,769,452	\$402.48
Transportation, Warehousing & Utilities	26	275	272	286	\$2,574,193	\$713.14
Information	9	40	40	35	\$261,871	\$525.49
Financial Activities	91	401	398	390	\$2,734,650	\$530.76
Professional & Business Services	45	364	363	384	\$3,967,950	\$824.20
Education & Health Services	63	1,433	1,446	1,439	\$9,821,007	\$524.87
Leisure & Hospitality	57	1,077	1,079	1,104	\$2,779,523	\$196.76
Other Services	48	220	219	222	\$1,238,679	\$432.45
Local Government	26	954	957	945	\$5,567,684	\$449.88
State Government	15	1,146	1,126	1,128	\$7,771,810	\$527.50

NORTH AMERICAN INDUSTRY CLASSIFICATION SYSTEM INDUSTRY GROUP	NUMBER OF EMPLOYING UNITS	EMPLOYMENT OCTOBER	EMPLOYMENT NOVEMBER	EMPLOYMENT DECEMBER	TOTAL EARNINGS OCT. - DEC. 2005	AVERAGE WEEKLY EARNINGS
CLAY COUNTY - TOTAL	402	4,626	4,615	4,618	\$26,727,616	\$445.05
Natural Resources & Mining	57	266	236	202	\$1,527,088	\$500.58
Construction	38	182	182	176	\$1,063,608	\$454.53
Manufacturing	20	1,049	1,077	1,141	\$6,563,232	\$463.60
Trade, Transportation & Utilities	96	974	957	982	\$5,874,002	\$465.34
Wholesale Trade	23	341	335	363	\$2,306,138	\$512.21
Retail Trade	51	454	464	461	\$2,006,456	\$335.77
Transportation, Warehousing & Utilities	22	179	158	158	\$1,561,408	\$727.93
Information	9	129	131	131	\$867,189	\$511.82
Financial Activities	36	159	160	157	\$1,138,834	\$552.12
Professional & Business Services	24	59	57	59	\$338,852	\$446.84
Education & Health Services	41	534	533	519	\$2,458,727	\$357.75
Leisure & Hospitality	23	229	233	228	\$421,814	\$141.07
Other Services	24	51	46	49	\$275,445	\$435.37
Local Government	22	925	932	902	\$5,704,904	\$477.17
State Government	12	69	71	72	\$493,921	\$537.65
CLEBURNE COUNTY - TOTAL	657	6,803	6,795	6,738	\$40,514,286	\$459.75
Natural Resources & Mining	16	55	48	46	\$463,928	\$718.53
Construction	67	316	308	303	\$1,643,809	\$409.21
Manufacturing	44	1,786	1,816	1,809	\$13,244,066	\$564.84
Trade, Transportation & Utilities	183	1,540	1,498	1,485	\$8,748,255	\$446.35
Wholesale Trade	40	167	162	166	\$1,152,279	\$537.19
Retail Trade	109	1,062	1,017	998	\$4,702,459	\$352.68
Transportation, Warehousing & Utilities	34	311	319	321	\$2,893,517	\$702.14
Information	9	58	65	59	\$349,957	\$443.73
Financial Activities	73	261	258	263	\$1,929,922	\$569.52
Professional & Business Services	56	179	180	182	\$1,191,649	\$508.31
Education & Health Services	58	772	779	785	\$5,101,847	\$504.00
Leisure & Hospitality	66	720	720	686	\$1,855,602	\$201.42
Other Services	55	163	160	159	\$705,240	\$337.65
Local Government	20	838	848	857	\$4,589,759	\$416.51
State Government	10	115	115	104	\$690,252	\$476.91

NORTH AMERICAN INDUSTRY CLASSIFICATION SYSTEM INDUSTRY GROUP	NUMBER OF EMPLOYING UNITS	EMPLOYMENT OCTOBER	EMPLOYMENT NOVEMBER	EMPLOYMENT DECEMBER	TOTAL EARNINGS OCT. - DEC. 2005	AVERAGE WEEKLY EARNINGS
CLEVELAND COUNTY - TOTAL	112	1,135	1,117	1,115	\$6,530,266	\$447.57
Natural Resources & Mining	20	184	184	182	\$1,330,347	\$558.19
Construction	6	37	37	37	\$149,461	\$310.73
Manufacturing	5	93	92	92	\$468,304	\$390.14
Trade, Transportation & Utilities	33	208	193	193	\$990,368	\$384.76
Wholesale Trade	5	25	13	13	\$104,862	\$474.49
Retail Trade	16	88	86	84	\$217,585	\$194.62
Transportation, Warehousing & Utilities	12	95	94	96	\$667,921	\$540.83
Local Government	12	366	365	363	\$2,016,853	\$425.44
State Government	8	68	66	64	\$372,833	\$434.54
Other	28	179	180	184	\$1,202,100	\$510.88
COLUMBIA COUNTY - TOTAL	681	9,237	9,245	9,290	\$69,424,988	\$576.88
Natural Resources & Mining	51	490	496	489	\$6,815,233	\$1,066.27
Construction	45	295	277	288	\$2,293,663	\$615.47
Manufacturing	40	2,748	2,751	2,793	\$27,355,386	\$761.31
Trade, Transportation & Utilities	179	1,525	1,562	1,547	\$8,667,798	\$431.65
Wholesale Trade	28	255	248	230	\$1,917,505	\$603.69
Retail Trade	113	1,020	1,058	1,069	\$4,637,134	\$340.04
Transportation, Warehousing & Utilities	38	250	256	248	\$2,113,159	\$646.75
Information	10	81	79	79	\$499,156	\$481.97
Financial Activities	79	409	411	418	\$3,610,905	\$673.09
Professional & Business Services	63	346	338	329	\$1,792,536	\$408.35
Education & Health Services	75	831	829	836	\$4,351,801	\$402.35
Leisure & Hospitality	45	636	624	625	\$1,499,225	\$183.54
Other Services	51	209	212	216	\$833,445	\$301.94
Local Government	29	1,126	1,128	1,142	\$7,275,817	\$494.42
State Government	14	541	538	528	\$4,430,023	\$636.16

NORTH AMERICAN INDUSTRY CLASSIFICATION SYSTEM INDUSTRY GROUP	NUMBER OF EMPLOYING UNITS	EMPLOYMENT OCTOBER	EMPLOYMENT NOVEMBER	EMPLOYMENT DECEMBER	TOTAL EARNINGS OCT. - DEC. 2005	AVERAGE WEEKLY EARNINGS
CONWAY COUNTY - TOTAL	482	6,571	6,666	6,641	\$44,029,812	\$511.15
Natural Resources & Mining	18	130	135	145	\$1,131,069	\$636.62
Construction	51	535	539	508	\$4,828,463	\$704.34
Manufacturing	30	1,066	1,074	1,072	\$10,805,379	\$776.32
Trade, Transportation & Utilities	135	1,425	1,413	1,409	\$8,798,497	\$478.08
Wholesale Trade	30	252	244	244	\$1,994,707	\$622.05
Retail Trade	79	891	889	887	\$4,474,164	\$387.14
Transportation, Warehousing & Utilities	26	282	280	278	\$2,329,626	\$640.01
Information	6	30	28	28	\$171,033	\$458.94
Financial Activities	35	183	183	183	\$1,372,377	\$576.87
Professional & Business Services	46	621	686	701	\$2,851,999	\$327.77
Education & Health Services	56	790	791	792	\$4,935,641	\$479.98
Leisure & Hospitality	38	449	456	441	\$978,651	\$167.79
Other Services	29	80	88	87	\$685,303	\$620.18
Local Government	27	895	899	902	\$5,467,366	\$467.99
State Government	11	367	374	373	\$2,004,034	\$415.14
CRAIGHEAD COUNTY - TOTAL	2,549	41,218	41,453	40,995	\$313,871,198	\$585.71
Natural Resources & Mining	61	436	403	302	\$2,604,397	\$526.74
Construction	223	1,748	1,851	1,677	\$13,959,701	\$610.59
Manufacturing	137	6,927	6,982	7,033	\$61,856,403	\$681.62
Trade, Transportation & Utilities	737	8,253	8,367	8,489	\$52,436,830	\$481.93
Wholesale Trade	189	1,501	1,491	1,483	\$15,187,056	\$783.17
Retail Trade	432	5,655	5,791	5,904	\$27,796,216	\$369.71
Transportation, Warehousing & Utilities	116	1,097	1,085	1,102	\$9,453,558	\$664.31
Information	33	648	654	659	\$5,222,711	\$614.61
Financial Activities	258	1,575	1,581	1,593	\$17,051,812	\$828.60
Professional & Business Services	327	3,929	4,041	3,708	\$28,589,368	\$564.96
Education & Health Services	346	7,265	7,131	7,133	\$71,648,776	\$768.00
Leisure & Hospitality	184	3,548	3,666	3,647	\$9,872,713	\$209.77
Other Services	181	1,008	992	1,002	\$5,341,873	\$410.64
Local Government	38	3,543	3,572	3,549	\$23,540,293	\$509.41
State Government	24	2,338	2,213	2,203	\$21,746,321	\$743.02

NORTH AMERICAN INDUSTRY CLASSIFICATION SYSTEM INDUSTRY GROUP	NUMBER OF EMPLOYING UNITS	EMPLOYMENT OCTOBER	EMPLOYMENT NOVEMBER	EMPLOYMENT DECEMBER	TOTAL EARNINGS OCT. - DEC. 2005	AVERAGE WEEKLY EARNINGS
CRAWFORD COUNTY - TOTAL	1,170	18,628	18,671	18,785	\$132,448,222	\$544.99
Natural Resources & Mining	26	440	435	447	\$3,872,424	\$675.97
Construction	180	1,400	1,381	1,400	\$11,588,995	\$639.65
Manufacturing	75	3,540	3,556	3,627	\$25,911,353	\$557.64
Trade, Transportation & Utilities	311	6,448	6,496	6,458	\$46,722,148	\$555.72
Wholesale Trade	79	676	689	690	\$6,152,477	\$690.90
Retail Trade	163	1,886	1,901	1,896	\$9,280,500	\$376.85
Transportation, Warehousing & Utilities	69	3,886	3,906	3,872	\$31,289,171	\$619.05
Financial Activities	120	503	504	513	\$3,729,623	\$566.24
Professional & Business Services	135	659	642	629	\$5,511,344	\$658.99
Education & Health Services	98	1,515	1,545	1,563	\$11,851,092	\$591.58
Leisure & Hospitality	81	1,323	1,327	1,337	\$3,438,533	\$199.02
Local Government	41	2,117	2,106	2,108	\$14,670,695	\$534.76
State Government	11	157	154	149	\$1,256,745	\$630.47
Other	92	526	525	554	\$3,895,270	\$560.07
CRITTENDEN COUNTY - TOTAL	1,133	16,212	16,255	16,079	\$120,290,048	\$571.81
Natural Resources & Mining	48	442	377	301	\$2,933,066	\$604.34
Construction	78	649	672	623	\$6,474,955	\$768.63
Manufacturing	52	1,495	1,536	1,539	\$16,956,495	\$856.24
Trade, Transportation & Utilities	320	4,804	4,868	4,902	\$37,942,679	\$600.80
Wholesale Trade	64	782	776	792	\$8,170,316	\$802.32
Retail Trade	172	2,017	2,055	2,089	\$10,221,083	\$382.85
Transportation, Warehousing & Utilities	84	2,005	2,037	2,021	\$19,551,280	\$744.16
Information	10	97	95	97	\$765,506	\$611.26
Financial Activities	112	545	550	556	\$4,683,618	\$654.65
Professional & Business Services	107	821	763	761	\$5,431,491	\$534.51
Education & Health Services	146	1,867	1,853	1,872	\$14,772,555	\$609.63
Leisure & Hospitality	100	1,866	1,917	1,844	\$5,355,687	\$219.64
Other Services	101	593	587	589	\$3,481,135	\$454.12
Local Government	44	2,574	2,585	2,633	\$18,866,760	\$558.76
State Government	15	459	452	362	\$2,626,101	\$476.06

NORTH AMERICAN INDUSTRY CLASSIFICATION SYSTEM INDUSTRY GROUP	NUMBER OF EMPLOYING UNITS	EMPLOYMENT OCTOBER	EMPLOYMENT NOVEMBER	EMPLOYMENT DECEMBER	TOTAL EARNINGS OCT. - DEC. 2005	AVERAGE WEEKLY EARNINGS
CROSS COUNTY - TOTAL	491	5,008	5,031	4,996	\$33,392,300	\$512.53
Natural Resources & Mining	46	235	214	204	\$1,141,194	\$403.30
Construction	34	169	165	172	\$1,062,245	\$484.45
Manufacturing	21	698	702	708	\$6,116,160	\$669.55
Trade, Transportation & Utilities	131	1,193	1,203	1,193	\$8,795,734	\$565.56
Wholesale Trade	33	282	279	285	\$2,811,943	\$767.03
Retail Trade	64	632	670	657	\$3,491,204	\$411.26
Transportation, Warehousing & Utilities	34	279	254	251	\$2,492,587	\$733.69
Information	7	59	61	60	\$368,616	\$472.58
Financial Activities	47	364	385	387	\$2,837,959	\$576.51
Professional & Business Services	42	141	141	137	\$1,043,269	\$574.59
Education & Health Services	60	631	637	633	\$3,799,433	\$461.23
Leisure & Hospitality	33	384	370	361	\$808,343	\$167.30
Other Services	42	84	81	80	\$359,794	\$338.90
Local Government	17	846	867	858	\$5,331,381	\$478.54
State Government	11	204	205	203	\$1,728,172	\$651.65
DALLAS COUNTY - TOTAL	273	3,282	3,268	3,295	\$21,744,950	\$509.71
Natural Resources & Mining	40	232	223	225	\$1,711,715	\$580.90
Construction	12	75	73	82	\$594,707	\$596.70
Manufacturing	15	853	838	816	\$6,496,571	\$598.01
Trade, Transportation & Utilities	74	478	477	481	\$2,862,741	\$460.05
Wholesale Trade	9	38	39	39	\$409,654	\$814.96
Retail Trade	46	376	376	376	\$2,017,407	\$412.73
Transportation, Warehousing & Utilities	19	64	62	66	\$435,680	\$523.65
Information	3	26	26	26	\$169,272	\$500.80
Financial Activities	21	101	101	104	\$1,251,706	\$943.97
Professional & Business Services	18	53	54	45	\$555,530	\$843.42
Education & Health Services	29	741	739	761	\$4,267,893	\$439.49
Leisure & Hospitality	20	138	135	144	\$279,605	\$154.73
Other Services	16	64	64	65	\$297,982	\$356.30
Local Government	16	465	484	491	\$2,820,941	\$452.07
State Government	9	56	54	55	\$436,287	\$610.19

NORTH AMERICAN INDUSTRY CLASSIFICATION SYSTEM INDUSTRY GROUP	NUMBER OF EMPLOYING UNITS	EMPLOYMENT OCTOBER	EMPLOYMENT NOVEMBER	EMPLOYMENT DECEMBER	TOTAL EARNINGS OCT. - DEC. 2005	AVERAGE WEEKLY EARNINGS
DESHA COUNTY - TOTAL	457	5,271	5,120	5,098	\$35,918,174	\$535.14
Natural Resources & Mining	50	434	372	294	\$2,578,088	\$540.86
Construction	26	120	117	126	\$998,387	\$634.70
Manufacturing	15	1,322	1,321	1,315	\$13,001,147	\$758.03
Trade, Transportation & Utilities	132	1,171	1,109	1,028	\$6,828,818	\$476.38
Wholesale Trade	20	186	185	181	\$1,967,369	\$822.48
Retail Trade	82	685	673	668	\$3,110,980	\$354.35
Transportation, Warehousing & Utilities	30	300	251	179	\$1,750,469	\$553.36
Information	6	22	22	22	\$168,470	\$589.06
Financial Activities	42	220	220	230	\$1,602,037	\$551.79
Professional & Business Services	37	186	193	201	\$975,593	\$388.17
Education & Health Services	53	514	505	517	\$2,947,567	\$442.84
Leisure & Hospitality	38	259	250	316	\$646,659	\$180.88
Other Services	28	69	71	70	\$222,896	\$244.94
Local Government	19	798	786	820	\$4,839,213	\$464.53
State Government	11	156	154	159	\$1,109,299	\$545.83
DREW COUNTY - TOTAL	488	6,925	6,927	6,872	\$42,933,786	\$478.08
Natural Resources & Mining	39	355	339	329	\$3,216,383	\$725.55
Construction	26	144	156	150	\$1,036,618	\$531.60
Manufacturing	21	914	884	888	\$6,151,545	\$528.51
Trade, Transportation & Utilities	139	1,275	1,297	1,297	\$7,929,339	\$472.95
Wholesale Trade	26	262	259	261	\$2,407,912	\$710.58
Retail Trade	90	900	925	927	\$4,361,660	\$365.75
Transportation, Warehousing & Utilities	23	113	113	109	\$1,159,767	\$798.92
Information	9	87	88	89	\$591,976	\$517.46
Financial Activities	42	275	281	274	\$2,460,877	\$684.21
Professional & Business Services	43	352	354	326	\$2,215,814	\$495.49
Education & Health Services	58	789	782	801	\$3,911,866	\$380.58
Leisure & Hospitality	44	560	576	548	\$1,271,781	\$174.28
Other Services	27	83	82	83	\$336,307	\$312.94
Local Government	23	1,247	1,258	1,264	\$8,126,307	\$497.56
State Government	17	844	830	823	\$5,684,973	\$525.40

NORTH AMERICAN INDUSTRY CLASSIFICATION SYSTEM INDUSTRY GROUP	NUMBER OF EMPLOYING UNITS	EMPLOYMENT OCTOBER	EMPLOYMENT NOVEMBER	EMPLOYMENT DECEMBER	TOTAL EARNINGS OCT. - DEC. 2005	AVERAGE WEEKLY EARNINGS
FAULKNER COUNTY - TOTAL	2,325	36,414	36,567	36,729	\$286,783,140	\$603.23
Natural Resources & Mining	10	41	40	42	\$425,816	\$798.90
Construction	325	2,711	2,780	2,850	\$24,164,635	\$668.56
Manufacturing	119	5,269	5,185	5,245	\$49,399,161	\$726.15
Trade, Transportation & Utilities	580	6,265	6,400	6,420	\$36,096,669	\$436.47
Wholesale Trade	138	752	739	752	\$6,471,753	\$665.84
Retail Trade	372	4,872	5,011	5,007	\$23,389,415	\$362.50
Transportation, Warehousing & Utilities	70	641	650	661	\$6,235,501	\$737.17
Information	39	339	336	343	\$2,588,307	\$586.74
Financial Activities	282	1,338	1,343	1,366	\$10,989,920	\$626.67
Professional & Business Services	318	5,047	5,094	5,147	\$62,151,192	\$938.16
Education & Health Services	274	4,820	4,821	4,881	\$40,329,951	\$640.88
Leisure & Hospitality	176	3,762	3,727	3,676	\$9,282,394	\$191.86
Other Services	142	566	568	577	\$2,937,007	\$396.13
Local Government	41	3,229	3,261	3,181	\$24,463,595	\$583.75
State Government	19	3,027	3,012	3,001	\$23,954,493	\$611.50
FRANKLIN COUNTY - TOTAL	319	4,272	4,237	4,255	\$28,068,349	\$507.47
Natural Resources & Mining	8	130	131	140	\$1,704,845	\$981.11
Construction	26	155	142	142	\$1,004,547	\$528.06
Manufacturing	22	1,043	998	996	\$7,448,185	\$565.96
Trade, Transportation & Utilities	93	840	839	848	\$5,372,952	\$490.67
Wholesale Trade	15	57	52	58	\$222,788	\$307.86
Retail Trade	56	478	478	479	\$2,075,172	\$333.72
Transportation, Warehousing & Utilities	22	305	309	311	\$3,074,992	\$767.15
Information	7	46	49	54	\$247,826	\$383.83
Financial Activities	27	194	199	207	\$1,153,496	\$443.65
Professional & Business Services	20	57	51	54	\$492,754	\$701.93
Education & Health Services	40	518	522	520	\$3,185,625	\$471.25
Leisure & Hospitality	27	329	333	325	\$748,407	\$174.98
Other Services	20	57	55	59	\$311,073	\$419.80
Local Government	19	789	794	795	\$5,503,670	\$534.09
State Government	10	114	124	115	\$894,969	\$585.07

NORTH AMERICAN INDUSTRY CLASSIFICATION SYSTEM INDUSTRY GROUP	NUMBER OF EMPLOYING UNITS	EMPLOYMENT OCTOBER	EMPLOYMENT NOVEMBER	EMPLOYMENT DECEMBER	TOTAL EARNINGS OCT. - DEC. 2005	AVERAGE WEEKLY EARNINGS
FULTON COUNTY - TOTAL	207	1,909	1,913	1,897	\$9,507,268	\$383.63
Construction	14	31	31	29	\$176,254	\$446.97
Manufacturing	12	137	138	139	\$604,002	\$336.68
Trade, Transportation & Utilities	61	374	368	360	\$2,062,706	\$431.95
Retail Trade	41	201	196	189	\$661,571	\$260.53
Other Trade, Transportation & Utilities	20	173	172	171	\$1,401,135	\$626.63
Financial Activities	18	104	97	99	\$683,622	\$525.86
Professional & Business Services	16	43	46	44	\$286,816	\$497.66
Education & Health Services	30	413	409	410	\$1,699,380	\$318.32
Leisure & Hospitality	17	145	155	147	\$350,181	\$180.79
Local Government	13	502	515	514	\$2,780,344	\$419.08
State Government	11	97	92	91	\$613,055	\$505.27
Other	15	63	62	64	\$250,908	\$306.36
GARLAND COUNTY - TOTAL	3,059	35,615	35,658	35,830	\$248,861,682	\$536.21
Natural Resources & Mining	49	337	347	356	\$3,218,590	\$714.18
Construction	418	2,357	2,349	2,359	\$16,686,619	\$545.05
Manufacturing	126	3,340	3,365	3,403	\$27,479,163	\$627.36
Trade, Transportation & Utilities	703	7,267	7,444	7,543	\$45,520,679	\$472.04
Wholesale Trade	140	1,073	1,077	1,078	\$9,383,772	\$670.84
Retail Trade	489	5,470	5,620	5,693	\$29,211,556	\$401.66
Transportation, Warehousing & Utilities	74	724	747	772	\$6,925,351	\$712.51
Information	38	422	433	439	\$3,244,988	\$578.70
Financial Activities	353	1,564	1,544	1,565	\$12,876,813	\$635.90
Professional & Business Services	394	2,663	2,612	2,624	\$19,164,454	\$559.89
Education & Health Services	335	6,905	6,852	6,820	\$65,339,903	\$732.78
Leisure & Hospitality	360	5,745	5,581	5,623	\$19,386,736	\$263.96
Other Services	222	942	952	937	\$4,772,680	\$389.05
Local Government	36	3,150	3,246	3,248	\$24,370,459	\$583.16
State Government	25	923	933	913	\$6,800,598	\$566.76

NORTH AMERICAN INDUSTRY CLASSIFICATION SYSTEM INDUSTRY GROUP	NUMBER OF EMPLOYING UNITS	EMPLOYMENT OCTOBER	EMPLOYMENT NOVEMBER	EMPLOYMENT DECEMBER	TOTAL EARNINGS OCT. - DEC. 2005	AVERAGE WEEKLY EARNINGS
GRANT COUNTY - TOTAL	288	3,538	3,536	3,564	\$24,286,383	\$526.84
Natural Resources & Mining	25	217	206	209	\$1,991,520	\$727.19
Construction	34	238	248	252	\$1,809,849	\$565.93
Manufacturing	20	851	835	831	\$6,456,659	\$591.97
Trade, Transportation & Utilities	86	562	561	571	\$3,903,190	\$531.72
Wholesale Trade	17	148	145	153	\$1,866,801	\$965.92
Retail Trade	39	352	355	354	\$1,576,231	\$342.83
Transportation, Warehousing & Utilities	30	62	61	64	\$460,158	\$567.86
Information	3	38	38	39	\$281,842	\$565.57
Financial Activities	19	101	100	104	\$808,582	\$611.79
Professional & Business Services	21	87	89	88	\$750,646	\$656.16
Education & Health Services	23	224	222	230	\$1,240,229	\$423.38
Leisure & Hospitality	23	286	305	296	\$776,673	\$202.07
Other Services	15	37	38	34	\$153,630	\$325.26
Local Government	10	843	837	851	\$5,715,384	\$521.11
State Government	9	54	57	59	\$398,179	\$540.51
GREENE COUNTY - TOTAL	861	15,024	15,109	15,150	\$102,899,478	\$524.39
Natural Resources & Mining	36	223	203	179	\$2,087,059	\$796.08
Construction	76	400	382	371	\$2,405,474	\$481.45
Manufacturing	57	5,334	5,428	5,505	\$46,563,092	\$660.56
Trade, Transportation & Utilities	236	2,181	2,188	2,179	\$12,303,039	\$433.59
Wholesale Trade	52	395	398	392	\$3,307,776	\$644.16
Retail Trade	156	1,587	1,586	1,594	\$7,331,462	\$354.91
Transportation, Warehousing & Utilities	28	199	204	193	\$1,663,801	\$644.22
Information	14	126	130	133	\$600,246	\$356.09
Financial Activities	87	470	466	468	\$3,895,859	\$640.35
Professional & Business Services	90	1,427	1,486	1,447	\$8,029,150	\$424.97
Education & Health Services	105	1,704	1,691	1,708	\$10,765,902	\$486.86
Leisure & Hospitality	65	1,138	1,155	1,137	\$2,603,497	\$175.16
Other Services	53	171	171	181	\$894,622	\$394.74
Local Government	31	1,603	1,564	1,603	\$10,702,678	\$517.79
State Government	11	247	245	239	\$2,048,860	\$646.80

NORTH AMERICAN INDUSTRY CLASSIFICATION SYSTEM INDUSTRY GROUP	NUMBER OF EMPLOYING UNITS	EMPLOYMENT OCTOBER	EMPLOYMENT NOVEMBER	EMPLOYMENT DECEMBER	TOTAL EARNINGS OCT. - DEC. 2005	AVERAGE WEEKLY EARNINGS
HEMPSTEAD COUNTY - TOTAL	501	8,358	8,348	8,413	\$56,669,805	\$520.63
Natural Resources & Mining	19	215	214	220	\$1,673,852	\$595.18
Construction	36	157	164	171	\$981,547	\$460.39
Manufacturing	31	2,741	2,765	2,757	\$22,789,501	\$636.47
Trade, Transportation & Utilities	138	1,266	1,268	1,270	\$7,292,996	\$442.43
Wholesale Trade	26	179	183	178	\$1,046,457	\$447.20
Retail Trade	87	892	893	896	\$3,864,094	\$332.60
Transportation, Warehousing & Utilities	25	195	192	196	\$2,382,445	\$943.04
Information	11	83	83	82	\$573,599	\$533.75
Financial Activities	44	265	265	263	\$2,091,672	\$608.69
Professional & Business Services	35	262	228	249	\$935,738	\$292.21
Education & Health Services	62	980	986	994	\$6,058,666	\$472.35
Leisure & Hospitality	42	596	591	605	\$1,504,930	\$193.80
Other Services	37	210	211	215	\$1,355,375	\$491.79
Local Government	29	1,052	1,057	1,075	\$7,413,549	\$537.32
State Government	17	531	516	512	\$3,998,380	\$591.86
HOT SPRING COUNTY - TOTAL	615	7,749	7,815	7,814	\$58,025,984	\$572.79
Natural Resources & Mining	38	173	182	176	\$1,460,573	\$634.76
Construction	68	349	350	332	\$2,531,522	\$566.63
Manufacturing	45	1,643	1,636	1,645	\$16,003,958	\$750.04
Trade, Transportation & Utilities	170	1,423	1,440	1,445	\$13,149,739	\$704.40
Wholesale Trade	20	96	98	100	\$4,905,865	\$3,850.76
Retail Trade	102	946	955	963	\$4,656,258	\$375.18
Transportation, Warehousing & Utilities	48	381	387	382	\$3,587,616	\$719.92
Information	9	69	69	71	\$612,751	\$676.57
Financial Activities	56	300	305	303	\$2,174,237	\$552.58
Professional & Business Services	53	248	248	247	\$1,643,884	\$510.58
Education & Health Services	48	1,009	1,006	996	\$6,721,514	\$515.15
Leisure & Hospitality	46	544	571	623	\$1,346,086	\$178.73
Other Services	41	280	280	282	\$1,190,321	\$326.23
Local Government	26	1,112	1,138	1,136	\$7,562,667	\$515.43
State Government	15	599	590	558	\$3,628,732	\$479.34

NORTH AMERICAN INDUSTRY CLASSIFICATION SYSTEM INDUSTRY GROUP	NUMBER OF EMPLOYING UNITS	EMPLOYMENT OCTOBER	EMPLOYMENT NOVEMBER	EMPLOYMENT DECEMBER	TOTAL EARNINGS OCT. - DEC. 2005	AVERAGE WEEKLY EARNINGS
HOWARD COUNTY - TOTAL	356	7,367	7,421	7,523	\$48,593,956	\$502.62
Natural Resources & Mining	20	243	244	245	\$1,828,010	\$576.30
Construction	24	94	96	92	\$594,448	\$486.45
Manufacturing	24	3,965	3,977	4,074	\$29,205,375	\$560.89
Trade, Transportation & Utilities	110	935	941	963	\$5,547,488	\$450.93
Wholesale Trade	20	103	101	106	\$868,614	\$646.61
Retail Trade	66	637	647	664	\$2,938,114	\$348.06
Transportation, Warehousing & Utilities	24	195	193	193	\$1,740,760	\$691.42
Information	8	36	36	36	\$228,414	\$488.06
Financial Activities	33	136	141	140	\$913,988	\$505.80
Professional & Business Services	28	104	110	114	\$680,647	\$478.88
Education & Health Services	40	621	639	637	\$3,016,952	\$367.01
Leisure & Hospitality	20	287	285	277	\$652,163	\$177.27
Other Services	19	110	107	107	\$527,385	\$375.63
Local Government	18	712	716	706	\$4,495,732	\$486.17
State Government	12	124	129	132	\$903,354	\$541.47
INDEPENDENCE COUNTY - TOTAL	913	16,559	16,680	16,609	\$115,306,378	\$533.81
Natural Resources & Mining	12	129	133	129	\$1,049,896	\$619.65
Construction	72	420	411	420	\$3,018,701	\$556.85
Manufacturing	55	5,038	4,981	4,980	\$39,633,490	\$609.79
Trade, Transportation & Utilities	282	3,033	3,094	3,118	\$21,679,082	\$541.14
Wholesale Trade	54	513	521	522	\$4,347,521	\$644.78
Retail Trade	174	1,737	1,772	1,772	\$8,564,270	\$374.24
Transportation, Warehousing & Utilities	54	783	801	824	\$8,767,291	\$840.21
Information	12	161	158	160	\$1,069,901	\$515.45
Financial Activities	86	469	475	475	\$3,487,542	\$567.17
Professional & Business Services	90	1,070	1,099	1,003	\$4,859,459	\$353.54
Education & Health Services	110	2,713	2,732	2,759	\$22,789,876	\$641.05
Leisure & Hospitality	68	1,129	1,167	1,135	\$2,578,289	\$173.42
Other Services	66	333	340	346	\$1,658,095	\$375.50
Local Government	43	1,581	1,621	1,623	\$10,039,586	\$480.17
State Government	17	483	469	461	\$3,442,461	\$562.22

NORTH AMERICAN INDUSTRY CLASSIFICATION SYSTEM INDUSTRY GROUP	NUMBER OF EMPLOYING UNITS	EMPLOYMENT OCTOBER	EMPLOYMENT NOVEMBER	EMPLOYMENT DECEMBER	TOTAL EARNINGS OCT. - DEC. 2005	AVERAGE WEEKLY EARNINGS
IZARD COUNTY - TOTAL	245	2,893	2,903	2,893	\$17,548,919	\$466.08
Natural Resources & Mining	4	86	87	75	\$721,323	\$671.21
Construction	22	76	71	65	\$350,405	\$381.43
Manufacturing	13	346	359	378	\$3,073,534	\$654.92
Trade, Transportation & Utilities	66	514	513	519	\$3,012,078	\$449.61
Retail Trade	50	409	409	415	\$1,930,644	\$361.34
Other Trade, Transportation & Utilities	16	105	104	104	\$1,081,434	\$797.32
Information	3	8	8	8	\$39,089	\$375.86
Financial Activities	26	151	144	147	\$1,236,573	\$645.62
Professional & Business Services	22	82	80	75	\$352,344	\$343.08
Education & Health Services	22	427	433	426	\$2,376,687	\$426.49
Leisure & Hospitality	25	185	186	175	\$374,723	\$158.38
Other Services	13	43	43	47	\$182,857	\$317.28
Local Government	18	565	569	541	\$3,112,031	\$428.75
State Government	11	410	410	437	\$2,717,275	\$498.86
JACKSON COUNTY - TOTAL	521	5,821	5,638	5,656	\$39,211,792	\$528.71
Natural Resources & Mining	46	234	226	192	\$1,481,846	\$524.49
Construction	27	188	192	192	\$1,527,671	\$616.33
Manufacturing	26	998	985	1,003	\$8,642,974	\$667.96
Trade, Transportation & Utilities	136	1,145	1,175	1,174	\$7,714,468	\$509.52
Wholesale Trade	40	183	203	217	\$2,253,723	\$862.50
Retail Trade	77	707	740	724	\$3,420,229	\$363.56
Transportation, Warehousing & Utilities	19	255	232	233	\$2,040,516	\$654.01
Information	5	39	39	37	\$291,706	\$585.36
Financial Activities	45	192	194	197	\$1,335,703	\$528.71
Professional & Business Services	39	126	173	221	\$1,140,241	\$506.02
Education & Health Services	72	1,091	884	876	\$7,386,718	\$597.91
Leisure & Hospitality	37	326	312	312	\$826,633	\$200.80
Other Services	39	101	100	100	\$431,176	\$330.57
Local Government	35	753	747	741	\$4,272,460	\$439.96
State Government	14	628	611	611	\$4,160,196	\$518.94

NORTH AMERICAN INDUSTRY CLASSIFICATION SYSTEM INDUSTRY GROUP	NUMBER OF EMPLOYING UNITS	EMPLOYMENT OCTOBER	EMPLOYMENT NOVEMBER	EMPLOYMENT DECEMBER	TOTAL EARNINGS OCT. - DEC. 2005	AVERAGE WEEKLY EARNINGS
JEFFERSON COUNTY - TOTAL	1,784	32,714	32,828	32,770	\$253,741,667	\$595.61
Natural Resources & Mining	40	569	546	482	\$4,436,997	\$641.15
Construction	130	1,457	1,468	1,487	\$15,168,571	\$793.39
Manufacturing	72	6,237	6,265	6,253	\$63,268,004	\$778.48
Trade, Transportation & Utilities	493	5,956	6,040	6,093	\$41,218,294	\$525.84
Wholesale Trade	87	1,048	1,037	1,056	\$9,898,474	\$727.24
Retail Trade	339	3,978	4,073	4,077	\$20,274,934	\$385.79
Transportation, Warehousing & Utilities	67	930	930	960	\$11,044,886	\$903.84
Information	19	207	206	219	\$1,525,566	\$557.05
Financial Activities	154	1,232	1,218	1,232	\$10,671,474	\$668.83
Professional & Business Services	175	1,999	1,958	1,886	\$15,255,422	\$602.51
Education & Health Services	314	5,394	5,449	5,407	\$42,981,228	\$610.38
Leisure & Hospitality	142	2,193	2,208	2,176	\$5,684,389	\$199.45
Other Services	164	769	777	792	\$4,711,707	\$465.06
Local Government	42	3,481	3,524	3,525	\$24,557,839	\$538.20
State Government	39	3,220	3,169	3,218	\$24,262,176	\$582.80
JOHNSON COUNTY - TOTAL	455	8,471	8,551	8,662	\$54,030,440	\$485.46
Natural Resources & Mining	16	201	200	203	\$1,569,816	\$599.78
Construction	34	165	158	163	\$970,675	\$460.91
Manufacturing	41	3,191	3,210	3,246	\$21,129,146	\$505.44
Trade, Transportation & Utilities	127	1,712	1,741	1,765	\$10,479,317	\$463.45
Information	6	33	34	34	\$266,912	\$609.85
Financial Activities	38	217	218	221	\$1,571,057	\$552.67
Professional & Business Services	48	162	169	174	\$1,240,256	\$566.76
Education & Health Services	53	1,089	1,108	1,118	\$7,718,634	\$537.32
Leisure & Hospitality	39	520	531	525	\$1,309,690	\$191.77
Other Services	29	82	85	87	\$436,654	\$396.72
Local Government	14	950	952	986	\$6,264,552	\$500.58
State Government	10	149	145	140	\$1,073,731	\$570.93

NORTH AMERICAN INDUSTRY CLASSIFICATION SYSTEM INDUSTRY GROUP	NUMBER OF EMPLOYING UNITS	EMPLOYMENT OCTOBER	EMPLOYMENT NOVEMBER	EMPLOYMENT DECEMBER	TOTAL EARNINGS OCT. - DEC. 2005	AVERAGE WEEKLY EARNINGS
LAFAYETTE COUNTY - TOTAL	162	1,548	1,539	1,554	\$9,244,274	\$459.66
Natural Resources & Mining	32	209	204	202	\$1,409,068	\$528.73
Trade, Transportation & Utilities	39	234	236	240	\$1,197,040	\$389.07
Retail Trade	22	162	166	167	\$557,627	\$259.97
Other Trade, Transportation & Utilities	17	72	70	73	\$639,413	\$686.31
Financial Activities	17	83	88	88	\$537,240	\$478.68
Professional & Business Services	12	56	53	53	\$505,067	\$719.47
Education & Health Services	12	218	218	221	\$1,033,908	\$363.16
Leisure & Hospitality	5	49	53	56	\$163,142	\$238.28
Other Services	7	75	74	80	\$330,064	\$332.61
Local Government	13	382	383	387	\$2,061,500	\$412.96
State Government	8	57	54	52	\$381,240	\$539.75
Other	17	185	176	175	\$1,626,005	\$700.06
LAWRENCE COUNTY - TOTAL	413	4,272	4,277	4,252	\$25,024,700	\$451.13
Natural Resources & Mining	34	161	151	146	\$1,097,888	\$553.19
Construction	28	98	90	92	\$731,356	\$602.77
Manufacturing	24	651	631	604	\$4,024,732	\$492.46
Trade, Transportation & Utilities	132	991	985	989	\$5,598,069	\$435.70
Wholesale Trade	25	207	204	203	\$1,596,160	\$599.91
Retail Trade	71	657	655	660	\$2,817,379	\$329.70
Transportation, Warehousing & Utilities	36	127	126	126	\$1,184,530	\$721.25
Information	6	19	23	23	\$176,862	\$627.91
Financial Activities	30	140	140	141	\$868,223	\$475.91
Professional & Business Services	24	121	118	124	\$935,008	\$594.41
Education & Health Services	45	419	430	414	\$2,621,267	\$478.95
Leisure & Hospitality	25	299	318	312	\$571,835	\$142.05
Other Services	26	70	71	75	\$317,611	\$339.33
Local Government	28	1,189	1,210	1,216	\$7,328,247	\$467.81
State Government	11	114	110	116	\$753,602	\$511.49

NORTH AMERICAN INDUSTRY CLASSIFICATION SYSTEM INDUSTRY GROUP	NUMBER OF EMPLOYING UNITS	EMPLOYMENT OCTOBER	EMPLOYMENT NOVEMBER	EMPLOYMENT DECEMBER	TOTAL EARNINGS OCT. - DEC. 2005	AVERAGE WEEKLY EARNINGS
LEE COUNTY - TOTAL	229	2,185	2,121	2,103	\$13,566,425	\$488.49
Natural Resources & Mining	32	312	266	253	\$1,919,534	\$533.06
Construction	7	13	12	12	\$66,469	\$414.57
Trade, Transportation & Utilities	55	360	362	366	\$2,289,928	\$485.70
Wholesale Trade	9	73	73	72	\$658,836	\$697.43
Retail Trade	29	196	201	201	\$846,490	\$326.66
Transportation, Warehousing & Utilities	17	91	88	93	\$784,602	\$665.67
Financial Activities	13	80	82	83	\$580,594	\$546.87
Professional & Business Services	18	63	65	66	\$577,720	\$687.22
Education & Health Services	43	304	298	297	\$1,799,721	\$461.98
Leisure & Hospitality	8	83	83	72	\$155,223	\$150.51
Local Government	16	407	401	405	\$2,516,331	\$478.72
State Government	8	423	415	415	\$2,824,088	\$520.12
Other	29	140	137	134	\$836,817	\$469.86
LINCOLN COUNTY - TOTAL	211	2,996	2,936	2,818	\$19,040,846	\$502.18
Natural Resources & Mining	33	255	242	223	\$1,716,121	\$550.04
Construction	13	62	63	64	\$396,291	\$483.87
Manufacturing	9	445	443	342	\$3,235,354	\$607.01
Trade, Transportation & Utilities	45	321	321	317	\$2,384,082	\$573.69
Wholesale Trade	6	30	29	29	\$300,656	\$788.43
Retail Trade	23	154	154	153	\$614,004	\$307.36
Transportation, Warehousing & Utilities	16	137	138	135	\$1,469,422	\$827.07
Financial Activities	22	80	79	80	\$523,199	\$505.18
Professional & Business Services	13	25	24	23	\$167,491	\$536.83
Education & Health Services	23	302	302	300	\$1,564,979	\$399.50
Leisure & Hospitality	15	134	136	131	\$295,107	\$169.83
Local & State Government	22	1,323	1,278	1,291	\$8,518,567	\$505.09
Other	16	49	48	47	\$239,655	\$384.06

NORTH AMERICAN INDUSTRY CLASSIFICATION SYSTEM INDUSTRY GROUP	NUMBER OF EMPLOYING UNITS	EMPLOYMENT OCTOBER	EMPLOYMENT NOVEMBER	EMPLOYMENT DECEMBER	TOTAL EARNINGS OCT. - DEC. 2005	AVERAGE WEEKLY EARNINGS
LITTLE RIVER COUNTY - TOTAL	249	4,554	4,521	4,550	\$45,018,047	\$762.48
Natural Resources & Mining	12	73	73	73	\$595,088	\$627.07
Trade, Transportation & Utilities	70	1,148	1,149	1,166	\$10,105,487	\$673.41
Wholesale Trade	11	46	45	45	\$432,916	\$734.59
Retail Trade	41	339	349	347	\$1,592,575	\$355.09
Transportation, Warehousing & Utilities	18	763	755	774	\$8,079,996	\$813.53
Information	3	9	10	11	\$72,719	\$559.38
Financial Activities	23	102	106	107	\$785,237	\$575.27
Professional & Business Services	20	161	149	143	\$774,627	\$394.61
Education & Health Services	16	159	151	156	\$856,439	\$424.12
Leisure & Hospitality	21	224	213	209	\$525,230	\$187.63
Other Services	13	97	100	100	\$330,036	\$256.44
Local Government	20	778	791	783	\$5,023,516	\$492.89
State Government	12	79	79	80	\$542,923	\$526.43
Other	39	1,724	1,700	1,722	\$25,406,745	\$1,139.35
LOGAN COUNTY - TOTAL	464	5,718	5,716	5,682	\$35,576,752	\$479.67
Natural Resources & Mining	14	90	93	89	\$780,197	\$661.93
Construction	51	157	159	163	\$1,015,497	\$489.24
Manufacturing	26	1,759	1,760	1,750	\$12,367,359	\$541.66
Trade, Transportation & Utilities	119	832	833	828	\$4,211,057	\$389.80
Wholesale Trade	19	43	42	44	\$235,576	\$421.42
Retail Trade	74	713	714	710	\$3,360,915	\$362.94
Transportation, Warehousing & Utilities	26	76	77	74	\$614,566	\$624.77
Information	8	43	41	45	\$444,197	\$794.63
Financial Activities	43	242	245	246	\$2,204,258	\$693.96
Professional & Business Services	45	147	139	131	\$816,560	\$451.89
Education & Health Services	57	771	774	759	\$4,393,254	\$440.03
Leisure & Hospitality	31	311	313	313	\$740,267	\$182.32
Other Services	32	91	86	85	\$430,487	\$379.17
Local & State Government	38	1,275	1,273	1,273	\$8,173,619	\$493.65

NORTH AMERICAN INDUSTRY CLASSIFICATION SYSTEM INDUSTRY GROUP	NUMBER OF EMPLOYING UNITS	EMPLOYMENT OCTOBER	EMPLOYMENT NOVEMBER	EMPLOYMENT DECEMBER	TOTAL EARNINGS OCT. - DEC. 2005	AVERAGE WEEKLY EARNINGS
LONOKE COUNTY - TOTAL	1,176	11,653	11,804	11,789	\$81,289,485	\$532.23
Natural Resources & Mining	74	499	456	402	\$4,569,002	\$777.00
Construction	163	843	822	856	\$8,313,457	\$761.00
Manufacturing	40	1,424	1,426	1,341	\$12,731,156	\$701.02
Trade, Transportation & Utilities	324	2,506	2,538	2,600	\$15,806,730	\$477.20
Wholesale Trade	74	422	411	420	\$4,277,923	\$787.88
Retail Trade	180	1,826	1,880	1,935	\$9,517,537	\$389.36
Transportation, Warehousing & Utilities	70	258	247	245	\$2,011,270	\$618.85
Information	16	110	109	105	\$1,271,638	\$905.73
Financial Activities	117	579	592	599	\$5,512,661	\$718.73
Professional & Business Services	149	456	461	468	\$3,686,119	\$614.18
Education & Health Services	104	1,292	1,312	1,318	\$8,141,363	\$479.04
Leisure & Hospitality	80	1,114	1,244	1,259	\$2,888,736	\$184.31
Other Services	65	199	192	189	\$1,102,709	\$438.74
Local Government	28	2,485	2,526	2,519	\$16,366,837	\$501.59
State Government	16	146	126	133	\$899,077	\$512.29
MADISON COUNTY - TOTAL	242	3,114	3,140	3,159	\$20,066,557	\$491.95
Natural Resources & Mining	12	59	57	64	\$388,052	\$497.50
Construction	46	152	149	153	\$959,691	\$487.81
Manufacturing	20	1,060	1,075	1,092	\$7,909,613	\$565.63
Trade, Transportation & Utilities	62	589	603	596	\$3,111,616	\$401.60
Wholesale Trade	13	42	40	41	\$328,351	\$616.04
Retail Trade	35	426	437	431	\$1,909,788	\$340.59
Transportation, Warehousing & Utilities	14	121	126	124	\$873,477	\$543.32
Information	4	36	35	35	\$491,974	\$1,071.06
Financial Activities	15	92	95	94	\$686,254	\$563.58
Professional & Business Services	17	90	87	82	\$510,999	\$455.30
Education & Health Services	22	240	237	232	\$1,192,500	\$388.14
Leisure & Hospitality	13	122	122	124	\$213,344	\$133.79
Other Services	15	28	27	26	\$168,411	\$479.80
Local Government	8	597	606	616	\$4,081,613	\$517.82
State Government	8	49	47	45	\$352,490	\$576.91

NORTH AMERICAN INDUSTRY CLASSIFICATION SYSTEM INDUSTRY GROUP	NUMBER OF EMPLOYING UNITS	EMPLOYMENT OCTOBER	EMPLOYMENT NOVEMBER	EMPLOYMENT DECEMBER	TOTAL EARNINGS OCT. - DEC. 2005	AVERAGE WEEKLY EARNINGS
MARION COUNTY - TOTAL	282	4,047	4,081	4,059	\$23,097,374	\$437.36
Natural Resources & Mining	5	45	52	51	\$252,224	\$393.28
Construction	17	46	47	47	\$226,081	\$372.66
Manufacturing	25	1,695	1,714	1,706	\$10,599,284	\$478.20
Trade, Transportation & Utilities	60	676	692	688	\$3,094,429	\$347.32
Retail Trade	38	528	540	543	\$2,069,630	\$296.47
Other Trade, Transportation & Utilities	22	148	152	145	\$1,024,799	\$531.44
Financial Activities	34	182	178	175	\$1,190,130	\$513.36
Professional & Business Services	24	38	37	36	\$300,711	\$625.18
Education & Health Services	25	337	334	347	\$1,806,088	\$409.42
Leisure & Hospitality	44	290	269	262	\$657,839	\$184.91
Local Government	20	535	557	550	\$3,308,870	\$465.03
State Government	8	114	110	109	\$700,770	\$485.63
Other	20	89	91	88	\$960,948	\$827.45
MILLER COUNTY - TOTAL	823	12,869	12,776	12,930	\$100,154,377	\$599.16
Natural Resources & Mining	28	149	146	149	\$1,125,875	\$585.17
Construction	83	803	774	759	\$5,902,086	\$583.06
Manufacturing	38	2,841	2,836	2,813	\$37,781,745	\$1,026.96
Trade, Transportation & Utilities	239	2,792	2,856	2,927	\$18,990,205	\$511.06
Wholesale Trade	65	621	613	623	\$6,305,959	\$783.64
Retail Trade	134	1,570	1,609	1,622	\$6,899,499	\$331.64
Transportation, Warehousing & Utilities	40	601	634	682	\$5,784,747	\$696.37
Information	8	94	92	94	\$1,858,014	\$1,531.33
Financial Activities	84	407	380	379	\$3,572,033	\$706.96
Professional & Business Services	84	846	840	890	\$4,602,070	\$412.27
Education & Health Services	76	986	966	977	\$6,471,282	\$509.86
Leisure & Hospitality	81	1,372	1,367	1,389	\$3,904,345	\$218.27
Other Services	63	331	332	338	\$1,207,804	\$278.45
Local Government	22	1,811	1,768	1,792	\$11,246,139	\$483.20
State Government	17	437	419	423	\$3,492,779	\$630.20

NORTH AMERICAN INDUSTRY CLASSIFICATION SYSTEM INDUSTRY GROUP	NUMBER OF EMPLOYING UNITS	EMPLOYMENT OCTOBER	EMPLOYMENT NOVEMBER	EMPLOYMENT DECEMBER	TOTAL EARNINGS OCT. - DEC. 2005	AVERAGE WEEKLY EARNINGS
MISSISSIPPI COUNTY - TOTAL	1,116	19,089	18,810	18,638	\$155,848,425	\$636.13
Natural Resources & Mining	104	1,277	1,126	836	\$7,201,063	\$513.05
Construction	55	404	383	404	\$3,430,665	\$664.73
Manufacturing	59	5,195	5,224	5,284	\$70,594,759	\$1,037.45
Trade, Transportation & Utilities	298	3,039	3,040	3,106	\$21,029,929	\$528.37
Wholesale Trade	65	580	590	597	\$6,019,914	\$786.20
Retail Trade	186	1,891	1,884	1,938	\$8,989,074	\$363.10
Transportation, Warehousing & Utilities	47	568	566	571	\$6,020,941	\$814.93
Financial Activities	104	590	593	601	\$4,157,212	\$537.76
Professional & Business Services	97	1,176	1,065	1,041	\$7,572,828	\$532.47
Education & Health Services	156	1,625	1,607	1,612	\$11,219,722	\$534.51
Leisure & Hospitality	80	1,142	1,155	1,128	\$2,853,879	\$192.29
Local Government	46	2,426	2,451	2,464	\$13,741,704	\$431.98
State Government	25	640	648	623	\$4,105,589	\$495.78
Other	92	1,575	1,518	1,539	\$9,941,075	\$495.27
MONROE COUNTY - TOTAL	301	2,610	2,523	2,486	\$14,195,145	\$429.95
Natural Resources & Mining	33	190	167	151	\$952,904	\$432.88
Construction	16	41	33	37	\$156,198	\$324.74
Manufacturing	9	155	100	101	\$818,417	\$530.52
Trade, Transportation & Utilities	92	707	685	674	\$4,707,877	\$525.86
Wholesale Trade	23	194	191	171	\$1,622,590	\$673.46
Retail Trade	41	336	336	344	\$1,737,145	\$394.57
Transportation, Warehousing & Utilities	28	177	158	159	\$1,348,142	\$629.78
Financial Activities	16	99	100	102	\$781,671	\$599.29
Professional & Business Services	15	34	39	36	\$229,564	\$486.02
Education & Health Services	35	387	392	389	\$1,712,928	\$338.43
Leisure & Hospitality	28	277	269	273	\$615,170	\$173.34
Local Government	22	471	487	485	\$2,928,658	\$468.36
State Government	9	119	122	111	\$752,554	\$493.37
Other	26	130	129	127	\$539,204	\$322.36

NORTH AMERICAN INDUSTRY CLASSIFICATION SYSTEM INDUSTRY GROUP	NUMBER OF EMPLOYING UNITS	EMPLOYMENT OCTOBER	EMPLOYMENT NOVEMBER	EMPLOYMENT DECEMBER	TOTAL EARNINGS OCT. - DEC. 2005	AVERAGE WEEKLY EARNINGS
MONTGOMERY COUNTY - TOTAL	180	1,687	1,648	1,617	\$8,819,429	\$411.00
Natural Resources & Mining	14	62	63	64	\$482,425	\$589.04
Construction	23	122	114	120	\$755,350	\$489.64
Trade, Transportation & Utilities	48	226	221	223	\$1,158,175	\$398.91
Wholesale Trade	12	72	73	69	\$399,885	\$431.22
Retail Trade	27	131	126	130	\$634,907	\$378.60
Transportation, Warehousing & Utilities	9	23	22	24	\$123,383	\$412.65
Financial Activities	10	75	67	66	\$553,118	\$613.67
Education & Health Services	12	58	58	59	\$240,754	\$317.48
Leisure & Hospitality	21	236	210	166	\$877,846	\$331.01
Other Services	12	74	76	74	\$309,794	\$319.16
Local Government	9	494	497	498	\$2,837,483	\$439.76
State Government	8	54	55	58	\$377,995	\$522.33
Other	23	286	287	289	\$1,226,489	\$328.35
NEVADA COUNTY - TOTAL	196	2,703	2,730	2,728	\$17,836,317	\$504.36
Natural Resources & Mining	15	57	57	59	\$435,203	\$580.53
Construction	15	43	36	44	\$248,459	\$466.15
Manufacturing	9	858	867	870	\$8,071,117	\$717.75
Trade, Transportation & Utilities	48	491	491	488	\$2,542,641	\$399.16
Retail Trade	31	295	302	303	\$976,825	\$250.47
Other Trade, Transportation & Utilities	17	196	189	185	\$1,565,816	\$633.93
Financial Activities	12	62	63	64	\$578,298	\$706.10
Education & Health Services	13	393	404	397	\$2,013,140	\$389.09
Leisure & Hospitality	16	93	94	98	\$225,108	\$182.27
Other Services	17	73	77	77	\$256,538	\$260.80
Local Government	27	518	529	520	\$2,478,433	\$364.99
State Government	11	75	75	71	\$540,249	\$564.13
Other	13	40	37	40	\$447,131	\$881.92

NORTH AMERICAN INDUSTRY CLASSIFICATION SYSTEM INDUSTRY GROUP	NUMBER OF EMPLOYING UNITS	EMPLOYMENT OCTOBER	EMPLOYMENT NOVEMBER	EMPLOYMENT DECEMBER	TOTAL EARNINGS OCT. - DEC. 2005	AVERAGE WEEKLY EARNINGS
NEWTON COUNTY - TOTAL	130	1,074	1,068	1,072	\$4,792,012	\$344.07
Natural Resources & Mining	5	13	11	13	\$30,848	\$192.40
Construction	7	11	8	8	\$26,632	\$227.62
Manufacturing	16	81	78	80	\$375,257	\$362.33
Trade, Transportation & Utilities	29	158	160	161	\$632,089	\$304.52
Retail Trade	17	107	107	108	\$352,339	\$252.51
Other Trade, Transportation & Utilities	12	51	53	53	\$279,750	\$411.20
Education & Health Services	14	214	216	223	\$879,111	\$310.68
Leisure & Hospitality	20	81	78	68	\$191,435	\$194.61
Other Services	5	11	12	11	\$27,833	\$188.91
Local Government	13	367	368	369	\$1,900,239	\$397.21
State Government	7	89	88	90	\$414,401	\$358.17
Other	14	49	49	49	\$314,167	\$493.20
OUACHITA COUNTY - TOTAL	626	7,459	7,483	7,549	\$50,830,821	\$521.55
Natural Resources & Mining	44	265	267	268	\$2,430,519	\$701.11
Construction	50	303	303	304	\$2,422,248	\$614.26
Manufacturing	32	847	848	863	\$7,778,832	\$701.77
Trade, Transportation & Utilities	181	1,759	1,771	1,788	\$11,924,184	\$517.44
Wholesale Trade	31	259	264	263	\$2,864,563	\$841.03
Retail Trade	122	1,086	1,096	1,107	\$4,869,500	\$341.66
Transportation, Warehousing & Utilities	28	414	411	418	\$4,190,121	\$777.92
Information	8	95	93	91	\$634,458	\$524.78
Financial Activities	63	338	331	333	\$2,543,604	\$585.81
Professional & Business Services	48	382	422	419	\$2,315,490	\$436.91
Education & Health Services	72	1,232	1,224	1,221	\$8,225,423	\$516.23
Leisure & Hospitality	35	478	471	479	\$1,124,730	\$181.76
Other Services	50	165	166	170	\$793,522	\$365.51
Local Government	30	1,311	1,307	1,334	\$8,200,222	\$478.84
State Government	13	284	280	279	\$2,437,589	\$667.28

NORTH AMERICAN INDUSTRY CLASSIFICATION SYSTEM INDUSTRY GROUP	NUMBER OF EMPLOYING UNITS	EMPLOYMENT OCTOBER	EMPLOYMENT NOVEMBER	EMPLOYMENT DECEMBER	TOTAL EARNINGS OCT. - DEC. 2005	AVERAGE WEEKLY EARNINGS
PERRY COUNTY - TOTAL	154	1,165	1,153	1,168	\$6,333,638	\$419.28
Natural Resources & Mining	8	30	30	30	\$258,285	\$662.27
Construction	25	85	79	87	\$551,750	\$507.28
Manufacturing	6	72	72	69	\$477,614	\$517.46
Trade, Transportation & Utilities	29	181	181	187	\$881,716	\$370.62
Retail Trade	18	154	154	159	\$530,292	\$262.05
Other Trade, Transportation & Utilities	11	27	27	28	\$351,424	\$989.00
Financial Activities	14	50	54	58	\$700,309	\$997.59
Professional & Business Services	14	40	34	29	\$221,019	\$495.19
Education & Health Services	18	163	162	165	\$815,407	\$384.02
Local Government	12	400	401	402	\$1,697,481	\$325.62
State Government	9	52	55	53	\$361,444	\$521.31
Other	19	92	85	88	\$368,613	\$321.00
PHILLIPS COUNTY - TOTAL	698	6,909	6,725	6,638	\$44,178,271	\$502.91
Natural Resources & Mining	71	728	600	509	\$3,724,830	\$467.92
Construction	32	112	112	106	\$745,703	\$521.47
Manufacturing	12	370	359	355	\$2,876,350	\$612.34
Trade, Transportation & Utilities	181	1,530	1,540	1,546	\$11,654,505	\$582.65
Wholesale Trade	35	391	380	387	\$3,278,990	\$653.45
Retail Trade	108	871	895	892	\$4,287,389	\$372.23
Transportation, Warehousing & Utilities	38	268	265	267	\$4,088,126	\$1,179.27
Information	11	61	61	62	\$404,032	\$506.73
Financial Activities	53	290	276	290	\$1,936,015	\$521.93
Professional & Business Services	54	243	241	239	\$2,231,516	\$712.26
Education & Health Services	157	1,226	1,224	1,225	\$7,455,472	\$468.16
Leisure & Hospitality	37	429	392	389	\$958,492	\$182.80
Other Services	42	85	84	82	\$423,774	\$389.62
Local Government	32	1,331	1,343	1,336	\$8,217,468	\$472.90
State Government	16	504	493	499	\$3,550,114	\$547.63

NORTH AMERICAN INDUSTRY CLASSIFICATION SYSTEM INDUSTRY GROUP	NUMBER OF EMPLOYING UNITS	EMPLOYMENT OCTOBER	EMPLOYMENT NOVEMBER	EMPLOYMENT DECEMBER	TOTAL EARNINGS OCT. - DEC. 2005	AVERAGE WEEKLY EARNINGS
PIKE COUNTY - TOTAL	263	2,811	2,834	2,859	\$16,695,833	\$453.07
Natural Resources & Mining	33	182	185	192	\$1,362,175	\$562.34
Construction	13	102	128	105	\$1,097,035	\$755.71
Manufacturing	14	505	508	517	\$2,731,333	\$411.97
Trade, Transportation & Utilities	88	546	557	560	\$3,113,389	\$432.04
Wholesale Trade	15	94	93	92	\$731,053	\$604.68
Retail Trade	46	335	339	345	\$1,471,523	\$333.25
Transportation, Warehousing & Utilities	27	117	125	123	\$910,813	\$575.86
Information	5	31	31	30	\$322,275	\$808.38
Financial Activities	24	172	172	177	\$1,570,421	\$695.59
Professional & Business Services	9	35	29	29	\$142,722	\$354.15
Education & Health Services	16	226	228	224	\$1,038,196	\$353.37
Leisure & Hospitality	21	185	186	180	\$406,155	\$170.11
Other Services	16	136	135	136	\$696,544	\$394.94
Local Government	13	572	561	588	\$3,642,243	\$488.39
State Government	11	119	114	121	\$573,345	\$373.76
POINSETT COUNTY - TOTAL	498	6,381	6,391	6,166	\$42,285,769	\$515.27
Natural Resources & Mining	49	432	423	389	\$2,693,829	\$499.72
Construction	31	96	94	87	\$646,539	\$538.63
Manufacturing	30	1,487	1,463	1,307	\$12,046,232	\$653.02
Trade, Transportation & Utilities	137	1,431	1,446	1,430	\$9,334,361	\$500.14
Wholesale Trade	33	479	487	459	\$4,896,715	\$792.99
Retail Trade	75	799	812	821	\$3,240,522	\$307.49
Transportation, Warehousing & Utilities	29	153	147	150	\$1,197,124	\$613.91
Information	6	62	61	59	\$564,239	\$715.43
Financial Activities	44	338	340	334	\$2,501,263	\$570.37
Professional & Business Services	26	102	106	112	\$950,251	\$685.28
Education & Health Services	52	622	627	625	\$3,743,939	\$461.04
Leisure & Hospitality	48	402	415	400	\$819,012	\$155.30
Other Services	32	74	75	76	\$630,474	\$646.64
Local Government	30	1,093	1,104	1,113	\$6,889,085	\$480.30
State Government	13	242	237	234	\$1,466,545	\$474.66

NORTH AMERICAN INDUSTRY CLASSIFICATION SYSTEM INDUSTRY GROUP	NUMBER OF EMPLOYING UNITS	EMPLOYMENT OCTOBER	EMPLOYMENT NOVEMBER	EMPLOYMENT DECEMBER	TOTAL EARNINGS OCT. - DEC. 2005	AVERAGE WEEKLY EARNINGS
POLK COUNTY - TOTAL	534	6,330	6,352	6,386	\$36,348,372	\$439.90
Natural Resources & Mining	26	267	262	262	\$2,129,046	\$621.14
Construction	34	208	215	206	\$1,006,169	\$369.15
Manufacturing	45	1,373	1,379	1,375	\$9,203,473	\$514.63
Trade, Transportation & Utilities	154	1,402	1,436	1,420	\$7,399,447	\$401.03
Wholesale Trade	24	146	147	144	\$755,871	\$399.16
Retail Trade	87	867	891	879	\$3,940,587	\$344.85
Transportation, Warehousing & Utilities	43	389	398	397	\$2,702,989	\$526.83
Information	10	55	56	56	\$370,158	\$511.50
Financial Activities	40	216	214	216	\$1,743,632	\$622.87
Professional & Business Services	47	141	136	139	\$891,309	\$494.44
Education & Health Services	69	969	974	978	\$5,311,579	\$419.63
Leisure & Hospitality	43	430	425	445	\$930,344	\$165.15
Other Services	31	128	128	128	\$566,034	\$340.16
Local Government	21	820	812	843	\$5,105,281	\$476.02
State Government	14	321	315	318	\$1,691,900	\$409.26
POPE COUNTY - TOTAL	1,659	27,564	27,621	27,647	\$211,788,414	\$590.04
Natural Resources & Mining	22	319	289	498	\$2,563,888	\$534.96
Construction	174	2,020	2,097	1,917	\$24,755,452	\$946.77
Manufacturing	90	5,011	4,991	5,032	\$41,947,563	\$643.89
Trade, Transportation & Utilities	477	6,760	6,770	6,807	\$61,878,875	\$702.16
Wholesale Trade	104	736	740	752	\$6,430,315	\$666.03
Retail Trade	279	3,500	3,527	3,536	\$16,578,015	\$362.18
Transportation, Warehousing & Utilities	94	2,524	2,503	2,519	\$38,870,545	\$1,188.73
Information	21	284	292	286	\$2,208,339	\$591.20
Financial Activities	172	796	801	820	\$6,763,590	\$645.77
Professional & Business Services	218	2,718	2,671	2,645	\$17,891,127	\$513.91
Education & Health Services	182	2,872	2,887	2,814	\$20,007,064	\$538.55
Leisure & Hospitality	132	2,415	2,430	2,405	\$6,012,011	\$191.36
Other Services	115	487	496	480	\$2,624,792	\$414.03
Local Government	40	2,325	2,345	2,341	\$15,042,902	\$495.14
State Government	16	1,557	1,552	1,602	\$10,092,811	\$494.40

NORTH AMERICAN INDUSTRY CLASSIFICATION SYSTEM INDUSTRY GROUP	NUMBER OF EMPLOYING UNITS	EMPLOYMENT OCTOBER	EMPLOYMENT NOVEMBER	EMPLOYMENT DECEMBER	TOTAL EARNINGS OCT. - DEC. 2005	AVERAGE WEEKLY EARNINGS
PRAIRIE COUNTY - TOTAL	230	1,563	1,510	1,530	\$9,312,415	\$466.87
Natural Resources & Mining	28	132	121	112	\$920,289	\$581.85
Trade, Transportation & Utilities	67	371	341	363	\$1,923,174	\$412.85
Wholesale Trade	10	54	48	45	\$378,253	\$593.80
Retail Trade	37	205	204	231	\$659,533	\$237.81
Transportation, Warehousing & Utilities	20	112	89	87	\$885,388	\$709.45
Information	4	9	9	9	\$89,979	\$769.05
Financial Activities	16	64	60	68	\$548,636	\$659.42
Professional & Business Services	16	49	48	50	\$284,484	\$446.60
Education & Health Services	21	205	196	199	\$997,158	\$383.52
Leisure & Hospitality	19	95	98	101	\$250,944	\$196.97
Other Services	14	48	48	49	\$201,138	\$320.11
Local Government	15	348	351	341	\$2,294,915	\$509.23
State Government	10	52	52	50	\$349,312	\$523.44
Other	20	190	186	188	\$1,452,386	\$594.27
PULASKI COUNTY - TOTAL	13,597	236,688	238,008	240,032	\$2,279,970,362	\$736.15
Natural Resources & Mining	43	684	677	675	\$8,631,502	\$978.33
Construction	1,122	10,382	10,452	10,480	\$121,378,689	\$894.50
Manufacturing	431	16,263	16,207	16,143	\$182,224,773	\$865.03
Trade, Transportation & Utilities	3,211	51,653	52,708	53,445	\$464,114,945	\$678.70
Wholesale Trade	1,078	13,057	13,078	13,112	\$169,890,983	\$998.95
Retail Trade	1,740	25,023	25,979	26,541	\$149,870,060	\$446.02
Transportation, Warehousing & Utilities	393	13,573	13,651	13,792	\$144,353,902	\$812.18
Information	241	8,673	8,705	8,758	\$105,063,788	\$927.67
Financial Activities	1,696	16,119	16,216	16,368	\$203,875,347	\$966.02
Professional & Business Services	2,618	33,246	33,614	34,474	\$339,047,890	\$772.12
Education & Health Services	1,689	33,424	33,386	33,349	\$366,587,946	\$844.63
Leisure & Hospitality	1,012	19,333	19,230	19,587	\$66,480,241	\$263.83
Other Services	1,231	6,377	6,390	6,441	\$44,688,917	\$536.90
Local Government	103	16,778	16,742	16,614	\$136,342,894	\$627.59
State Government	200	23,756	23,681	23,698	\$241,533,430	\$783.56

NORTH AMERICAN INDUSTRY CLASSIFICATION SYSTEM INDUSTRY GROUP	NUMBER OF EMPLOYING UNITS	EMPLOYMENT OCTOBER	EMPLOYMENT NOVEMBER	EMPLOYMENT DECEMBER	TOTAL EARNINGS OCT. - DEC. 2005	AVERAGE WEEKLY EARNINGS
RANDOLPH COUNTY - TOTAL	401	5,136	5,179	5,128	\$28,836,082	\$430.91
Natural Resources & Mining	21	89	75	71	\$455,009	\$446.82
Construction	23	119	117	112	\$507,350	\$336.44
Manufacturing	38	1,110	1,091	1,068	\$7,179,049	\$506.79
Trade, Transportation & Utilities	101	985	985	972	\$5,100,286	\$400.06
Wholesale Trade	22	240	221	200	\$1,077,302	\$376.11
Retail Trade	60	593	610	622	\$2,602,808	\$329.12
Transportation, Warehousing & Utilities	19	152	154	150	\$1,420,176	\$718.71
Information	5	43	44	45	\$408,199	\$713.63
Financial Activities	27	149	149	159	\$885,397	\$447.09
Professional & Business Services	38	230	228	223	\$1,096,766	\$371.66
Education & Health Services	54	800	820	830	\$5,259,087	\$495.36
Leisure & Hospitality	32	438	469	441	\$813,576	\$139.28
Other Services	27	65	67	69	\$368,860	\$423.49
Local Government	23	848	879	872	\$4,941,010	\$438.72
State Government	12	260	255	266	\$1,821,493	\$538.21
SAINT FRANCIS COUNTY - TOTAL	632	8,465	8,521	8,523	\$52,267,683	\$472.84
Natural Resources & Mining	22	190	170	178	\$1,267,031	\$543.48
Construction	41	237	237	229	\$2,021,405	\$663.55
Manufacturing	23	1,303	1,349	1,387	\$9,504,139	\$543.02
Trade, Transportation & Utilities	189	2,115	2,116	2,108	\$13,604,856	\$495.28
Wholesale Trade	33	507	511	496	\$4,107,643	\$626.10
Retail Trade	124	1,234	1,245	1,253	\$6,345,178	\$392.36
Transportation, Warehousing & Utilities	32	374	360	359	\$3,152,035	\$665.50
Information	10	123	123	119	\$855,867	\$541.12
Financial Activities	49	286	290	297	\$1,896,924	\$501.43
Professional & Business Services	45	166	167	174	\$1,496,160	\$681.00
Education & Health Services	111	1,321	1,332	1,322	\$7,267,658	\$421.92
Leisure & Hospitality	54	764	776	769	\$1,907,718	\$190.66
Other Services	41	131	137	137	\$489,080	\$278.68
Local Government	30	1,267	1,260	1,256	\$8,226,953	\$501.86
State Government	17	562	564	547	\$3,729,892	\$514.49

NORTH AMERICAN INDUSTRY CLASSIFICATION SYSTEM INDUSTRY GROUP	NUMBER OF EMPLOYING UNITS	EMPLOYMENT OCTOBER	EMPLOYMENT NOVEMBER	EMPLOYMENT DECEMBER	TOTAL EARNINGS OCT. - DEC. 2005	AVERAGE WEEKLY EARNINGS
SALINE COUNTY - TOTAL	1,598	19,408	19,474	19,479	\$139,069,762	\$549.91
Natural Resources & Mining	12	38	37	38	\$607,004	\$1,239.63
Construction	287	1,845	1,844	1,860	\$15,781,697	\$656.32
Manufacturing	83	1,828	1,830	1,871	\$18,860,958	\$787.22
Trade, Transportation & Utilities	414	4,341	4,374	4,402	\$31,245,084	\$549.70
Wholesale Trade	122	548	541	549	\$8,056,925	\$1,135.10
Retail Trade	248	3,546	3,585	3,604	\$21,005,801	\$451.56
Transportation, Warehousing & Utilities	44	247	248	249	\$2,182,358	\$676.91
Information	14	108	110	108	\$674,061	\$477.16
Financial Activities	148	695	701	706	\$5,531,353	\$607.26
Professional & Business Services	196	1,087	1,076	1,088	\$7,299,494	\$518.15
Education & Health Services	147	2,524	2,554	2,583	\$17,308,893	\$521.39
Leisure & Hospitality	118	2,180	2,167	2,089	\$6,100,707	\$218.75
Other Services	128	592	618	610	\$3,590,466	\$455.26
Local & State Government	51	4,170	4,163	4,124	\$32,070,045	\$594.11
SCOTT COUNTY - TOTAL	179	2,939	2,936	2,948	\$17,107,613	\$447.46
Natural Resources & Mining	17	178	176	180	\$1,455,731	\$629.10
Trade, Transportation & Utilities	43	465	476	477	\$2,507,714	\$408.11
Wholesale Trade	8	60	61	65	\$467,808	\$580.41
Retail Trade	28	330	337	332	\$1,415,254	\$326.92
Transportation, Warehousing & Utilities	7	75	78	80	\$624,652	\$618.67
Information	3	10	10	10	\$69,824	\$537.11
Financial Activities	15	68	68	68	\$445,772	\$504.27
Professional & Business Services	9	10	10	10	\$49,152	\$378.09
Education & Health Services	20	329	324	332	\$1,723,484	\$403.78
Leisure & Hospitality	18	161	156	159	\$326,288	\$158.19
Other Services	9	56	55	55	\$807,569	\$1,122.66
Local Government	5	363	363	361	\$2,187,403	\$464.38
State Government	8	67	65	63	\$383,342	\$453.66
Other	32	1,232	1,233	1,233	\$7,151,334	\$446.27

NORTH AMERICAN INDUSTRY CLASSIFICATION SYSTEM INDUSTRY GROUP	NUMBER OF EMPLOYING UNITS	EMPLOYMENT OCTOBER	EMPLOYMENT NOVEMBER	EMPLOYMENT DECEMBER	TOTAL EARNINGS OCT. - DEC. 2005	AVERAGE WEEKLY EARNINGS
SEARCY COUNTY - TOTAL	148	1,639	1,620	1,629	\$8,571,786	\$404.69
Construction	5	17	22	22	\$87,335	\$330.40
Manufacturing	18	279	276	276	\$1,613,916	\$448.19
Trade, Transportation & Utilities	40	301	295	304	\$1,213,701	\$311.21
Retail Trade	29	215	212	219	\$802,548	\$286.69
Other Trade, Transportation & Utilities	11	86	83	85	\$411,153	\$373.55
Financial Activities	16	46	46	43	\$251,464	\$429.85
Professional & Business Services	16	33	34	36	\$171,798	\$384.91
Education & Health Services	13	268	267	272	\$1,369,269	\$391.56
Leisure & Hospitality	10	104	110	100	\$255,363	\$187.67
Local Government	9	341	339	337	\$2,066,936	\$469.01
State Government	9	188	185	192	\$1,196,461	\$488.68
Other	12	62	46	47	\$345,543	\$514.46
SEBASTIAN COUNTY - TOTAL	3,561	72,921	73,454	72,946	\$641,622,446	\$675.11
Natural Resources & Mining	63	1,098	1,154	1,202	\$15,658,738	\$1,046.19
Construction	301	2,789	2,818	2,854	\$25,836,813	\$704.69
Manufacturing	220	21,683	21,777	21,212	\$197,580,599	\$705.03
Trade, Transportation & Utilities	925	12,402	12,814	12,893	\$88,441,455	\$535.56
Wholesale Trade	230	2,393	2,425	2,419	\$26,120,361	\$832.91
Retail Trade	575	7,970	8,349	8,401	\$42,192,798	\$393.88
Transportation, Warehousing & Utilities	120	2,039	2,040	2,073	\$20,128,296	\$755.04
Information	56	1,173	1,180	1,182	\$12,895,218	\$841.82
Financial Activities	404	2,454	2,475	2,531	\$23,962,653	\$741.27
Professional & Business Services	510	9,560	9,381	9,212	\$118,530,583	\$971.59
Education & Health Services	428	9,339	9,364	9,328	\$88,874,688	\$731.67
Leisure & Hospitality	304	5,188	5,213	5,277	\$15,569,277	\$229.17
Other Services	285	1,509	1,536	1,543	\$9,667,121	\$486.24
Local Government	43	4,389	4,403	4,420	\$34,418,397	\$601.17
State Government	22	1,337	1,339	1,292	\$10,186,904	\$592.45

NORTH AMERICAN INDUSTRY CLASSIFICATION SYSTEM INDUSTRY GROUP	NUMBER OF EMPLOYING UNITS	EMPLOYMENT OCTOBER	EMPLOYMENT NOVEMBER	EMPLOYMENT DECEMBER	TOTAL EARNINGS OCT. - DEC. 2005	AVERAGE WEEKLY EARNINGS
SEVIER COUNTY - TOTAL	315	5,861	5,843	5,809	\$35,071,932	\$462.14
Natural Resources & Mining	19	197	194	194	\$1,463,831	\$577.45
Trade, Transportation & Utilities	88	851	849	850	\$5,089,128	\$460.55
Wholesale Trade	15	139	140	145	\$1,576,041	\$857.79
Retail Trade	56	601	596	596	\$2,539,522	\$326.85
Transportation, Warehousing & Utilities	17	111	113	109	\$973,565	\$674.68
Information	7	43	41	40	\$320,272	\$596.04
Financial Activities	26	217	217	210	\$1,598,760	\$572.90
Professional & Business Services	31	99	92	92	\$1,788,584	\$1,458.48
Education & Health Services	38	506	521	518	\$3,001,949	\$448.39
Leisure & Hospitality	20	243	222	215	\$554,478	\$188.17
Other Services	32	146	146	144	\$645,042	\$341.41
Local Government	12	857	853	818	\$5,187,845	\$473.57
State Government	9	187	184	185	\$1,239,326	\$514.39
Other	33	2,515	2,524	2,543	\$14,182,717	\$431.67
SHARP COUNTY - TOTAL	394	3,935	3,982	3,945	\$20,563,069	\$400.04
Construction	35	215	214	205	\$1,376,221	\$500.93
Manufacturing	23	213	217	215	\$1,003,452	\$359.02
Trade, Transportation & Utilities	103	1,030	1,041	1,021	\$5,999,649	\$447.78
Retail Trade	70	654	680	675	\$2,797,741	\$321.37
Other Trade, Transportation & Utilities	33	376	361	346	\$3,201,908	\$682.27
Information	8	60	61	58	\$765,569	\$986.98
Financial Activities	35	257	258	258	\$1,609,398	\$480.47
Professional & Business Services	36	160	160	174	\$960,969	\$448.91
Education & Health Services	49	573	586	579	\$2,986,012	\$396.48
Leisure & Hospitality	39	456	469	466	\$897,508	\$148.90
Local Government	29	798	809	798	\$4,071,074	\$390.64
State Government	9	98	93	95	\$592,333	\$477.94
Other	28	75	74	76	\$300,884	\$308.60

NORTH AMERICAN INDUSTRY CLASSIFICATION SYSTEM INDUSTRY GROUP	NUMBER OF EMPLOYING UNITS	EMPLOYMENT OCTOBER	EMPLOYMENT NOVEMBER	EMPLOYMENT DECEMBER	TOTAL EARNINGS OCT. - DEC. 2005	AVERAGE WEEKLY EARNINGS
STONE COUNTY - TOTAL	246	2,907	2,896	2,869	\$16,044,607	\$426.96
Construction	21	101	94	98	\$730,499	\$575.35
Manufacturing	22	458	447	454	\$2,339,953	\$397.34
Trade, Transportation & Utilities	77	723	769	745	\$4,647,416	\$479.43
Wholesale Trade	10	55	57	58	\$322,214	\$437.39
Retail Trade	54	626	668	643	\$3,905,911	\$465.34
Transportation, Warehousing & Utilities	13	42	44	44	\$419,291	\$744.30
Financial Activities	21	85	88	90	\$733,266	\$643.40
Professional & Business Services	11	22	22	23	\$225,468	\$776.58
Education & Health Services	25	439	441	442	\$2,880,621	\$502.84
Leisure & Hospitality	32	405	366	335	\$808,420	\$168.68
Other Services	12	27	26	28	\$128,515	\$366.14
Local Government	10	444	445	450	\$2,423,473	\$417.67
State Government	9	162	156	162	\$767,372	\$368.93
Other	6	41	42	42	\$359,604	\$663.88
UNION COUNTY - TOTAL	1,322	20,024	20,176	20,325	\$166,588,835	\$635.17
Natural Resources & Mining	105	511	511	530	\$5,024,529	\$747.10
Construction	92	1,332	1,384	1,409	\$14,026,987	\$784.73
Manufacturing	68	5,288	5,312	5,283	\$50,384,188	\$732.05
Trade, Transportation & Utilities	358	3,630	3,708	3,763	\$29,522,101	\$613.71
Wholesale Trade	78	554	569	582	\$9,964,116	\$1,348.63
Retail Trade	223	2,298	2,349	2,380	\$10,763,939	\$353.49
Transportation, Warehousing & Utilities	57	778	790	801	\$8,794,046	\$856.65
Information	18	199	202	203	\$1,249,544	\$477.41
Financial Activities	122	758	759	781	\$5,963,828	\$598.90
Professional & Business Services	133	1,766	1,770	1,769	\$19,421,207	\$844.83
Education & Health Services	139	2,243	2,241	2,251	\$18,233,734	\$624.76
Leisure & Hospitality	88	1,058	1,048	1,068	\$3,187,215	\$231.73
Other Services	144	609	616	642	\$3,104,444	\$383.72
Local Government	37	2,083	2,098	2,091	\$12,773,095	\$469.97
State Government	18	547	527	535	\$3,697,963	\$530.38

NORTH AMERICAN INDUSTRY CLASSIFICATION SYSTEM INDUSTRY GROUP	NUMBER OF EMPLOYING UNITS	EMPLOYMENT OCTOBER	EMPLOYMENT NOVEMBER	EMPLOYMENT DECEMBER	TOTAL EARNINGS OCT. - DEC. 2005	AVERAGE WEEKLY EARNINGS
VAN BUREN COUNTY - TOTAL	351	3,765	3,780	3,691	\$20,311,227	\$417.16
Natural Resources & Mining	9	26	24	23	\$118,679	\$375.17
Construction	47	133	143	159	\$905,994	\$480.63
Manufacturing	14	610	617	623	\$3,538,349	\$441.37
Trade, Transportation & Utilities	103	788	794	802	\$4,374,616	\$423.46
Wholesale Trade	16	53	54	54	\$502,512	\$720.28
Retail Trade	66	603	606	617	\$2,770,703	\$350.16
Transportation, Warehousing & Utilities	21	132	134	131	\$1,101,401	\$640.23
Information	9	52	52	52	\$460,919	\$681.83
Financial Activities	27	127	127	130	\$770,976	\$463.33
Professional & Business Services	28	92	93	95	\$468,137	\$385.83
Education & Health Services	36	625	629	531	\$3,636,012	\$470.07
Leisure & Hospitality	30	450	442	428	\$1,265,115	\$221.17
Other Services	27	74	75	73	\$337,601	\$350.94
Local Government	13	703	694	690	\$3,880,748	\$429.11
State Government	8	85	90	85	\$554,081	\$491.79
WASHINGTON COUNTY - TOTAL	5,377	89,683	90,515	90,433	\$791,154,693	\$674.62
Natural Resources & Mining	42	455	453	464	\$3,790,727	\$637.60
Construction	646	5,686	5,613	5,729	\$59,192,904	\$802.20
Manufacturing	227	15,977	15,900	15,863	\$129,493,876	\$625.96
Trade, Transportation & Utilities	1,336	20,464	20,922	21,195	\$165,265,753	\$609.42
Wholesale Trade	358	3,720	3,723	3,795	\$49,301,432	\$1,012.39
Retail Trade	777	11,499	11,915	12,036	\$63,945,693	\$416.27
Transportation, Warehousing & Utilities	201	5,245	5,284	5,364	\$52,018,628	\$755.32
Information	99	1,479	1,489	1,451	\$15,306,361	\$799.33
Financial Activities	634	3,972	3,943	3,977	\$41,670,003	\$808.62
Professional & Business Services	897	8,821	8,793	8,798	\$121,624,052	\$1,062.66
Education & Health Services	552	10,325	10,309	10,359	\$103,596,579	\$771.36
Leisure & Hospitality	499	9,072	9,201	8,932	\$28,033,792	\$237.80
Other Services	362	1,788	1,802	1,837	\$10,732,407	\$456.37
Local & State Government	83	11,644	12,090	11,828	\$112,448,239	\$729.70

NORTH AMERICAN INDUSTRY CLASSIFICATION SYSTEM INDUSTRY GROUP	NUMBER OF EMPLOYING UNITS	EMPLOYMENT OCTOBER	EMPLOYMENT NOVEMBER	EMPLOYMENT DECEMBER	TOTAL EARNINGS OCT. - DEC. 2005	AVERAGE WEEKLY EARNINGS
WHITE COUNTY - TOTAL	1,547	24,031	23,802	24,019	\$171,678,845	\$551.39
Natural Resources & Mining	34	277	286	275	\$1,929,161	\$531.25
Construction	172	1,265	1,205	1,268	\$10,478,092	\$646.88
Manufacturing	80	3,776	3,757	3,786	\$32,495,599	\$662.51
Trade, Transportation & Utilities	470	5,912	5,989	6,007	\$41,613,802	\$536.25
Wholesale Trade	98	573	580	591	\$4,681,349	\$619.44
Retail Trade	291	3,086	3,158	3,161	\$15,257,439	\$374.37
Transportation, Warehousing & Utilities	81	2,253	2,251	2,255	\$21,675,014	\$740.04
Information	21	223	221	218	\$1,473,898	\$513.79
Financial Activities	172	900	911	907	\$6,807,888	\$578.02
Professional & Business Services	148	1,395	1,275	1,360	\$9,592,435	\$549.29
Education & Health Services	169	4,366	4,190	4,165	\$36,745,699	\$666.60
Leisure & Hospitality	113	2,031	2,065	2,087	\$4,877,960	\$182.06
Other Services	103	576	587	593	\$3,628,299	\$476.82
Local Government	46	2,552	2,562	2,613	\$17,114,835	\$511.14
State Government	19	758	754	740	\$4,921,177	\$504.29
WOODRUFF COUNTY - TOTAL	171	2,112	2,080	2,039	\$15,115,192	\$559.80
Natural Resources & Mining	22	118	112	94	\$849,654	\$605.17
Construction	7	65	63	64	\$403,137	\$484.54
Manufacturing	10	503	506	499	\$3,476,202	\$531.96
Trade, Transportation & Utilities	55	520	501	479	\$4,972,517	\$765.00
Wholesale Trade	12	218	206	185	\$3,244,967	\$1,229.62
Retail Trade	28	198	195	191	\$689,984	\$272.65
Transportation, Warehousing & Utilities	15	104	100	103	\$1,037,566	\$779.93
Financial Activities	13	60	58	60	\$596,367	\$773.16
Professional & Business Services	3	6	7	6	\$49,473	\$600.89
Education & Health Services	29	180	176	178	\$1,328,021	\$573.91
Leisure & Hospitality	7	62	59	58	\$126,621	\$163.24
Local Government	10	515	516	515	\$2,828,018	\$422.13
State Government	7	54	52	56	\$344,290	\$490.44
Other	8	29	30	30	\$140,892	\$365.32

NORTH AMERICAN INDUSTRY CLASSIFICATION SYSTEM INDUSTRY GROUP	NUMBER OF EMPLOYING UNITS	EMPLOYMENT OCTOBER	EMPLOYMENT NOVEMBER	EMPLOYMENT DECEMBER	TOTAL EARNINGS OCT. - DEC. 2005	AVERAGE WEEKLY EARNINGS
YELL COUNTY - TOTAL	400	7,285	7,386	7,329	\$43,494,501	\$456.24
Natural Resources & Mining	26	290	307	312	\$1,770,240	\$449.41
Construction	50	448	449	450	\$2,975,924	\$509.84
Manufacturing	23	2,999	3,031	3,021	\$18,064,689	\$460.59
Trade, Transportation & Utilities	91	729	760	733	\$3,497,744	\$363.26
Wholesale Trade	13	31	29	29	\$180,236	\$467.34
Retail Trade	57	597	631	607	\$2,416,120	\$303.85
Transportation, Warehousing & Utilities	21	101	100	97	\$901,388	\$698.03
Information	4	49	49	48	\$602,765	\$952.74
Financial Activities	39	203	202	199	\$1,266,000	\$483.70
Professional & Business Services	35	253	253	252	\$2,419,843	\$736.71
Education & Health Services	44	480	481	466	\$2,674,088	\$432.44
Leisure & Hospitality	27	397	377	366	\$923,218	\$186.89
Other Services	20	71	72	73	\$300,834	\$321.40
Local Government	28	1,259	1,294	1,305	\$8,333,045	\$498.45
State Government	13	107	111	104	\$666,111	\$477.38
REST-OF-STATE-TOTAL	4,402	15,674	15,850	15,813	\$212,383,969	\$1,035.38
Natural Resources & Mining	60	198	201	198	\$2,409,256	\$931.29
Construction	571	2,380	2,385	2,299	\$20,937,125	\$683.98
Manufacturing	45	168	172	165	\$1,583,225	\$723.48
Trade, Transportation & Utilities	1,794	6,927	6,980	7,104	\$122,686,140	\$1,347.49
Wholesale Trade	1,539	5,640	5,670	5,750	\$111,236,606	\$1,504.69
Retail Trade	98	584	606	658	\$4,708,384	\$587.96
Transportation, Warehousing & Utilities	157	703	704	696	\$6,741,150	\$739.73
Information	98	232	247	239	\$3,094,350	\$994.54
Financial Activities	265	686	684	712	\$9,711,675	\$1,076.44
Professional & Business Services	1,271	3,875	3,953	3,887	\$39,813,222	\$784.27
Education & Health Services	109	589	600	572	\$6,399,063	\$838.56
Leisure & Hospitality	37	73	68	69	\$483,225	\$531.02
Other	152	546	560	568	\$5,266,688	\$726.04

TABLE 7. FEDERAL GOVERNMENT EMPLOYMENT AND EARNINGS IN ARKANSAS

NORTH AMERICAN INDUSTRY CLASSIFICATION SYSTEM INDUSTRY GROUP	NUMBER OF EMPLOYING UNITS	EMPLOYMENT OCTOBER	EMPLOYMENT NOVEMBER	EMPLOYMENT DECEMBER	TOTAL EARNINGS OCT. - DEC. 2005
Manufacturing	2	3	3	4	\$53,897
Trade, Transportation & Utilities	444	6,751	6,780	6,857	\$69,365,522
Information	1	34	34	31	\$422,560
Financial Activities	23	185	186	182	\$3,053,730
Professional & Business Services	32	774	766	768	\$11,783,396
Education & Health Services	6	3,950	3,958	3,959	\$66,530,219
Leisure & Hospitality	17	205	195	209	\$2,143,057
Other Services	2	279	285	295	\$1,274,730
Public Administration	484	8,572	8,662	8,450	\$125,519,020
TOTAL	1,011	20,753	20,869	20,755	\$280,146,131

**TABLE 8. WORKFORCE INFORMATION AREA, SUMMARY
EMPLOYMENT AND TOTAL EARNINGS, BY INDUSTRY
FOURTH QUARTER 2005**

NORTH AMERICAN INDUSTRY CLASSIFICATION SYSTEM INDUSTRY GROUP	NUMBER OF EMPLOYING UNITS	EMPLOYMENT OCTOBER	EMPLOYMENT NOVEMBER	EMPLOYMENT DECEMBER	TOTAL EARNINGS OCT. - DEC. 2005	AVERAGE WEEKLY EARNINGS
CENTRAL WORKFORCE INFORMATION*	5,630	71,648	71,878	72,013	\$530,649,947	\$545.57
Natural Resources & Mining	157	900	821	745	\$7,475,015	\$535.11
Trade, Transportation & Utilities	1,477	14,190	14,338	14,459	\$89,779,534	\$446.24
Wholesale Trade	367	1,970	1,930	1,937	\$20,807,444	\$651.37
Retail Trade	878	10,785	11,016	11,121	\$56,309,431	\$385.26
Transportation, Warehousing & Utilities	232	1,435	1,392	1,401	\$12,662,659	\$629.97
Financial Activities	579	2,775	2,796	2,841	\$23,364,241	\$561.33
Professional & Business Services	694	6,673	6,718	6,789	\$73,650,853	\$778.00
Education & Health Services	581	9,228	9,275	9,370	\$68,490,293	\$501.93
Leisure & Hospitality	421	7,428	7,505	7,398	\$19,137,951	\$196.08
Local & State Government	211	14,047	14,100	13,945	\$104,079,486	\$651.01
Other	1,510	16,407	16,325	16,466	\$144,672,574	\$624.35
*Note: Pulaski County is not included in the Central Workforce Information. Please refer to Page 51 for information on Pulaski County.						
Central Workforce Includes these counties: Faulkner, Lonoke, Monroe, Prairie, and Saline.						
EASTERN WORKFORCE INFORMATION	3,183	38,779	38,653	38,339	\$263,694,727	\$505.44
Natural Resources & Mining	219	1,907	1,627	1,445	\$10,985,655	\$397.18
Construction	192	1,180	1,198	1,142	\$10,370,777	\$534.05
Trade, Transportation & Utilities	876	10,002	10,089	10,115	\$74,287,702	\$499.92
Wholesale Trade	174	2,035	2,019	2,032	\$19,027,728	\$614.93
Retail Trade	497	4,950	5,066	5,092	\$25,191,344	\$344.10
Transportation, Warehousing & Utilities	205	3,017	3,004	2,991	\$30,068,630	\$691.30
Financial Activities	274	1,565	1,583	1,613	\$11,935,110	\$531.70
Professional & Business Services	266	1,434	1,377	1,377	\$10,780,156	\$510.73
Education & Health Services	517	5,349	5,344	5,349	\$35,094,839	\$474.97
Leisure & Hospitality	232	3,526	3,538	3,435	\$9,185,463	\$195.99
Local Government	139	6,425	6,456	6,488	\$43,158,893	\$661.01
State Government	67	2,152	2,129	2,026	\$14,458,367	\$539.22
Other	401	5,239	5,312	5,349	\$43,437,765	\$574.57
Eastern Workforce Includes these counties: Crittenden, Cross, Lee, Phillips, and Saint Francis.						

NORTH AMERICAN INDUSTRY CLASSIFICATION SYSTEM INDUSTRY GROUP	NUMBER OF EMPLOYING UNITS	EMPLOYMENT OCTOBER	EMPLOYMENT NOVEMBER	EMPLOYMENT DECEMBER	TOTAL EARNINGS OCT. - DEC. 2005	AVERAGE WEEKLY EARNINGS
NORTH CENTRAL WORKFORCE INFORMATION	5,252	70,735	70,469	70,356	\$465,801,583	\$491.40
Construction	484	2,810	2,732	2,803	\$20,610,783	\$507.98
Manufacturing	299	13,865	13,823	13,886	\$108,051,621	\$607.59
Trade, Transportation & Utilities	1,536	15,579	15,742	15,710	\$104,824,589	\$468.08
Retail Trade	960	9,283	9,441	9,385	\$44,700,951	\$338.92
Other Trade, Transportation & Utilities	576	6,296	6,301	6,325	\$60,123,638	\$656.61
Financial Activities	516	2,606	2,610	2,626	\$19,191,257	\$494.10
Professional & Business Services	449	3,175	3,135	3,183	\$19,126,991	\$421.20
Education & Health Services	600	11,599	11,259	11,151	\$86,930,873	\$537.74
Leisure & Hospitality	434	5,909	5,941	5,829	\$13,961,052	\$181.33
Local Government	237	9,251	9,326	9,342	\$55,112,328	\$540.89
State Government	115	2,890	2,842	2,842	\$18,802,492	\$505.96
Other	582	3,051	3,059	2,984	\$19,189,597	\$440.52
North Central Workforce Includes these counties: Cleburne, Fulton, Independence, IZard, Jackson, Sharp, Stone, Van Buren, White, and Woodruff						
NORTHEAST WORKFORCE INFORMATION	6,240	95,746	95,834	94,947	\$695,493,268	\$527.74
Natural Resources & Mining	362	2,884	2,617	2,125	\$17,666,333	\$454.85
Construction	474	3,047	3,099	2,919	\$22,744,693	\$530.31
Manufacturing	365	21,753	21,896	21,942	\$208,827,499	\$655.01
Trade, Transportation & Utilities	1,737	17,854	17,968	18,147	\$111,676,516	\$456.00
Wholesale Trade	409	3,743	3,726	3,697	\$34,391,061	\$625.83
Retail Trade	1,031	11,636	11,802	12,000	\$54,783,917	\$358.49
Transportation, Warehousing & Utilities	297	2,475	2,440	2,450	\$22,501,538	\$643.34
Financial Activities	586	3,421	3,429	3,453	\$30,498,600	\$602.55
Professional & Business Services	626	7,044	7,101	6,714	\$47,512,223	\$428.94
Education & Health Services	799	12,969	12,839	12,841	\$107,717,420	\$571.77
Leisure & Hospitality	457	7,196	7,411	7,293	\$17,956,326	\$185.54
Local Government	218	11,627	11,712	11,719	\$72,847,921	\$604.85
State Government	108	3,910	3,779	3,753	\$32,436,331	\$607.05
Other	508	4,041	3,983	4,041	\$25,609,406	\$459.89
Northeast Workforce Includes these counties: Clay, Craighead, Greene, Lawrence, Mississippi, Poinsett, and Randolph.						

NORTH AMERICAN INDUSTRY CLASSIFICATION SYSTEM INDUSTRY GROUP	NUMBER OF EMPLOYING UNITS	EMPLOYMENT OCTOBER	EMPLOYMENT NOVEMBER	EMPLOYMENT DECEMBER	TOTAL EARNINGS OCT. - DEC. 2005	AVERAGE WEEKLY EARNINGS
NORTHWEST WORKFORCE INFORMATION	14,102	227,797	228,878	229,441	\$1,980,585,547	\$615.92
Trade, Transportation & Utilities	3,580	53,471	54,348	54,971	\$442,964,009	\$591.49
Retail Trade	1,991	25,499	26,148	26,402	\$140,410,391	\$405.53
Other Trade, Transportation & Utilities	1,589	27,972	28,200	28,569	\$302,553,618	\$762.65
Education & Health Services	1,380	22,913	22,932	23,087	\$205,768,803	\$610.56
Leisure & Hospitality	1,337	20,647	20,356	19,813	\$61,223,294	\$220.04
Local & State Government	425	26,793	27,335	27,292	\$223,538,269	\$698.08
Other	7,380	103,973	103,907	104,278	\$1,047,091,172	\$688.39
Northwest Workforce Includes these counties: Baxter, Benton, Boone, Carroll, Madison, Marion, Newton, Searcy, and Washington.						
SOUTHEAST WORKFORCE INFORMATION	5,203	78,606	78,542	78,393	\$585,760,990	\$546.39
Natural Resources & Mining	409	3,443	3,234	2,995	\$24,469,075	\$511.24
Construction	381	3,382	3,402	3,421	\$28,990,469	\$654.09
Manufacturing	225	17,916	18,005	17,897	\$179,425,981	\$704.13
Trade, Transportation & Utilities	1,440	13,927	13,953	14,060	\$93,468,815	\$457.78
Wholesale Trade	259	2,521	2,453	2,505	\$25,225,344	\$623.81
Retail Trade	891	8,804	8,960	9,058	\$42,695,830	\$338.67
Transportation, Warehousing & Utilities	290	2,602	2,540	2,497	\$25,547,641	\$735.22
Local & State Government	358	16,664	16,615	16,739	\$112,000,775	\$590.20
Other	2,390	23,274	23,333	23,281	\$147,405,875	\$415.77
Southeast Workforce Includes these counties: Arkansas, Ashley, Bradley, Chicot, Cleveland, Desha, Drew, Grant, Jefferson, and Lincoln						
SOUTHWEST WORKFORCE INFORMATION	5,624	87,221	87,287	87,857	\$655,903,187	\$560.83
Natural Resources & Mining	405	2,789	2,778	2,805	\$25,518,586	\$598.57
Trade, Transportation & Utilities	1,550	15,311	15,515	15,683	\$105,035,060	\$462.94
Education & Health Services	576	8,952	8,962	9,012	\$57,881,315	\$452.03
Local Government	264	11,304	11,328	11,355	\$70,190,683	\$592.25
State Government	150	3,244	3,194	3,178	\$24,215,466	\$582.84
Other	2,679	45,621	45,510	45,824	\$373,062,077	\$602.73
Southwest Workforce Includes these counties: Calhoun, Columbia, Dallas, Hempstead, Howard, Lafayette, Little River, Miller, Nevada, Ouachita, Sevier, and Union						

NORTH AMERICAN INDUSTRY CLASSIFICATION SYSTEM INDUSTRY GROUP	NUMBER OF EMPLOYING UNITS	EMPLOYMENT OCTOBER	EMPLOYMENT NOVEMBER	EMPLOYMENT DECEMBER	TOTAL EARNINGS OCT. - DEC. 2005	AVERAGE WEEKLY EARNINGS
WEST CENTRAL WORKFORCE INFORMATION	7,872	108,692	109,134	109,424	\$755,402,323	\$505.24
Natural Resources & Mining	266	1,969	1,980	2,223	\$15,607,211	\$586.39
Construction	890	6,311	6,390	6,163	\$55,914,728	\$545.63
Trade, Transportation & Utilities	2,008	21,700	21,979	22,157	\$157,488,876	\$492.05
Financial Activities	832	3,961	3,944	3,982	\$31,582,572	\$551.22
Education & Health Services	827	15,025	15,019	14,893	\$119,312,208	\$556.12
Local Government	231	12,111	12,290	12,351	\$80,785,882	\$643.77
State Government	133	5,073	5,055	5,050	\$33,350,611	\$574.27
Other	2,685	42,542	42,477	42,605	\$261,360,235	\$434.92
West Central Workforce Includes these counties: Clark, Conway, Garland, Hot Spring, Johnson, Montgomery, Perry, Pike, Pope, and Yell						
WESTERN WORKFORCE INFORMATION	6,227	110,808	111,366	111,002	\$891,171,754	\$555.86
Natural Resources & Mining	154	2,203	2,251	2,320	\$25,600,981	\$736.78
Trade, Transportation & Utilities	1,645	22,389	22,894	22,924	\$154,654,773	\$499.68
Wholesale Trade	375	3,375	3,416	3,420	\$33,954,881	\$662.57
Retail Trade	983	12,244	12,670	12,697	\$62,265,226	\$383.80
Transportation, Warehousing & Utilities	287	6,770	6,808	6,807	\$58,434,666	\$628.75
Financial Activities	649	3,677	3,705	3,781	\$33,239,434	\$623.05
Professional & Business Services	766	10,574	10,359	10,175	\$126,291,702	\$476.62
Education & Health Services	712	13,441	13,503	13,480	\$115,339,722	\$630.20
Leisure & Hospitality	504	7,742	7,767	7,856	\$21,753,116	\$203.44
Local & State Government	232	11,749	11,748	11,737	\$84,472,925	\$666.17
Other	1,565	39,033	39,139	38,729	\$329,819,101	\$606.70
Western Workforce Includes these counties: Crawford, Franklin, Logan, Polk, Scott, and Sebastian						