

# Arkansas Covered Employment & Earnings

Jobs for People. People for Jobs.

**DWS**  
Department of  
WORKFORCE**Services**

## 2005 Annual



**COVERED EMPLOYMENT AND EARNINGS  
STATE OF ARKANSAS  
CALENDAR YEAR 2005**

**MIKE HUCKABEE, GOVERNOR  
STATE OF ARKANSAS**

**ARTEE WILLIAMS, DIRECTOR  
ARKANSAS DEPARTMENT OF WORKFORCE SERVICES**

**PUBLISHED BY  
BUREAU OF LABOR STATISTICS PROGRAMS  
ARKANSAS DEPARTMENT OF WORKFORCE SERVICES  
POST OFFICE BOX 2981  
LITTLE ROCK, ARKANSAS 72203-2981  
BERNADETTE COLEMAN, BLS PROGRAMS MANAGER  
TELEPHONE: (501) 682-3159**

**STATE OF ARKANSAS HOME PAGE: <http://www.arkansas.gov>**

**ARKANSAS DEPARTMENT OF WORKFORCE SERVICES  
HOME PAGE: <http://www.arkansas.gov/esd/>**

**INTERNET SITE FOR LABOR MARKET INFORMATION:  
<http://www.discover.arkansas.gov>**

**RELEASED: AUGUST 2006**



## TABLE OF CONTENTS

DESCRIPTION OF DATA	Page
Industry Classification	1
Definition of Covered Employment and Earnings	2
Federal Government Employment	2
County Classification	2
Significant Developments During Calendar Year 2005	3

### LIST OF GRAPHS AND TABLES

Graph 1	Total Covered Employment for Selected Years, Arkansas	7
Graph 2	Total Covered Earnings, by Calendar Quarter for Selected Years, Arkansas	8
Table 1	Quarterly Comparison of Covered Employment and Wages, by Industry	5
Table 2	Total Covered Employment in Arkansas, 1998-2005	6
Table 3	Total Covered Earnings, 1998-2005	9
Table 4	Total Taxable Earnings, 1998-2005	10
Table 5	State Summary - Employment and Total Earnings, by Industry, Calendar Year 2005	11
Table 6	County Summary - Employment and Total Earnings, by Industry, Calendar Year 2005	24
Table 7	Federal Government Employment and Total Earnings in Arkansas, Calendar Year 2005	62
Table 8	Workforce Information Area – Employment and Total Earnings, by Industry, Calendar Year 2005	63



## EMPLOYMENT AND EARNINGS UNDER THE ARKANSAS EMPLOYMENT SECURITY LAW CALENDAR YEAR 2005

### DESCRIPTION OF DATA

This publication contains covered employment and payroll data by industry and county for the Calendar Year 2005. These data are compiled from quarterly contribution and wage reports submitted by employers subject to the Arkansas Employment Security Law. An employing unit is a single physical location where business is conducted, production takes place, or services are provided. Employment data have been tabulated for each month of the quarter by industry under the **North American Industry Classification System** (NAICS) (see "Industry Classification" below) on a statewide, county and workforce area basis. Payroll data represent the total wages paid during the quarter, and are also shown by

industry for the State and by publishable industry groups for each county and workforce area. The tabulation of this data is a joint effort in conjunction with the U.S. Bureau of Labor Statistics. In addition, there are tables included which set out total covered employment by months, quarterly payrolls, and average weekly earnings for the years 1998 through 2005. Data contained in this publication are subject to revision. These revisions will be reflected in the 2006 First Quarter Covered Employment and Earnings publication. Because of industry code changes between years, substantial employment and wage shifts among industries are anticipated.

### INDUSTRY CLASSIFICATION

Previously published industry data **will not** be comparable in all instances with currently published data since industry codes have been revised according to the following Manuals: (a) between January 1, 1958 and December 31, 1967, industry codes were assigned under the 1957 Standard Industrial Classification (SIC) Manual; (b) between January 1, 1968 and December 31, 1974, industry codes were assigned under the 1967 Standard Industrial Classification (SIC) Manual; (c) between January 1, 1975 and December 31, 1987, industry codes were assigned under the 1972 Standard Industrial Classification (SIC) Manual; (d) between January 1, 1988 and December 31, 2000, industry codes were assigned under the 1987 Standard Industrial Classification (SIC) Manual; and (e) since January 1, 2001, industry codes have been assigned under the 2002 North American Industry Classification System (NAICS) Manual. **The NAICS Manual represents a significant change in coding methodology as compared to the**

**SIC Manual.** One of the most significant changes involves how NAICS treats auxiliary units. Auxiliary units are establishments primarily engaged in performing management or support services for other establishments of the same enterprise. The SIC code for these units was based on the activity of the enterprise served. The NAICS code is based on the actual activities that the establishment performs. Comparisons of many industries **should not be made** between this publication and previous Covered Employment and Earnings publications that were based on SIC. Even though some titles are the same or similar, in nature, NAICS and SIC could differ in the classification of employers. The implementation of NAICS represents a profound change for statistical programs, and will create significant benefits along with transition obstacles for both data collectors and data users. A summary is available on the NAICS home page at <http://www.census.gov/naics>.

## DEFINITION OF COVERED EMPLOYMENT AND EARNINGS

Covered Employment is the number of workers employed by employers subject to the Arkansas Employment Security Law who worked or received pay for the payroll period including the 12th of the month. An employer is subject to the law when they employ one or more employees in each of ten days during the current or preceding calendar year.

Currently excluded from coverage is employment covered by the Railroad Unemployment Insurance Act, some domestic service workers, employees of small agricultural establishments, self-employed and unpaid family workers, insurance and real estate

agents who are on commission only, and employees of churches and religious organizations except separately incorporated schools. The payroll information in this publication includes all wages and salaries paid to any covered employees by their employers including bonuses, commissions, and cash values of remuneration received in any medium other than cash. These wages include both taxable and nontaxable wages. Only the first \$10,000 paid to each worker by an employer in the calendar year is taxable under the Arkansas Employment Security Law.

## FEDERAL GOVERNMENT EMPLOYMENT

Table 7 on page 62 lists the total number of civilians employed by the Federal Government in Arkansas during the Calendar Year 2005. Employment and wage data are set out by industry divisions. These data are obtained from required reports submitted by various

government agencies having employment in the State. Civilian Federal workers are covered by the Unemployment Compensation for Federal Employees (UCFE) program.

## COUNTY CLASSIFICATION

Employment and payroll data by county are classified according to the county where the workers are employed. Employers with operations in more than one county are requested to furnish this agency with a breakdown of employment and wages for at least one quarter of each year by the counties in which they operate. Many such employers submit county data with each regular contribution report. **Note:** This information is invaluable in the preparation of monthly employment and payroll data by county.

Employment and payroll data for multi - area employers who do not furnish county data each quarter of the year, are prorated by county on the basis of one quarter's information. The "rest-of-state" table that appears on page 61 of this publication includes data on firms that **did not** provide a county breakdown of employment and payrolls. It also includes sales, and all other type of personnel with no permanent place of work, as well as employment of employers with no established place of business in Arkansas.



## SIGNIFICANT DEVELOPMENTS DURING CALENDAR YEAR 2005

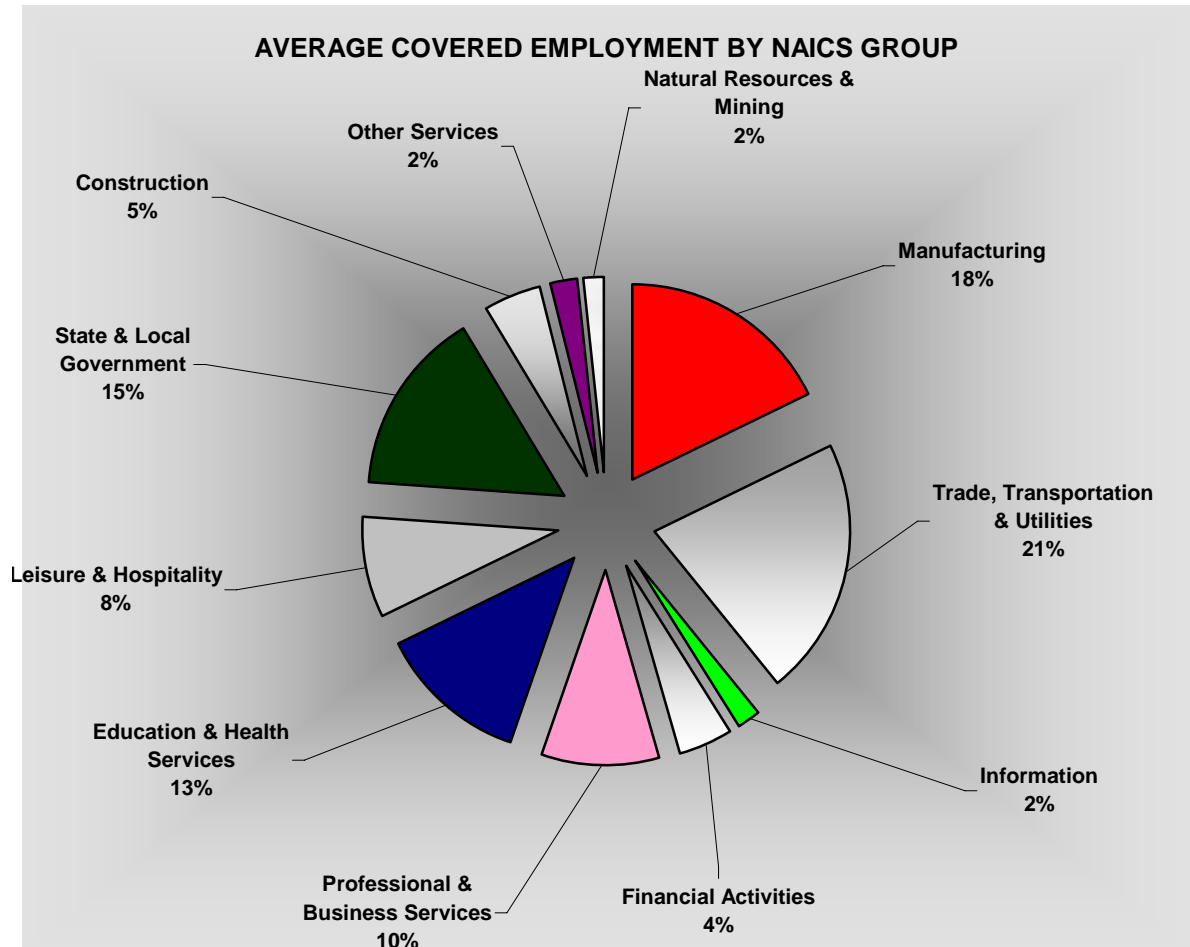
## AVERAGE EMPLOYMENT CHANGES

Covered employment averaged 1,126,871 during the Calendar Year 2005 (see table 1), an increase of 18,217 (+1.64%) from the previous year and 28,173 from 2002 above the average recorded previously. The sectors driving the three year increase are Education & Health Services (+11,269), Professional & Business Services (+10,527), Government (+7,366) and Leisure & Hospitality (+6,690).

Seven of the eleven major industries recorded gains over the year. Education & Health Services had a jump in employment to 140,960 an increase of 4,310 jobs. Individual & family services (+711), Home Health Care Services (+466), and nursing care facilities (+463) all contributed to the gain in employment. Trade, Transportation & Utilities added 3,998 new hires. General freight trucking (+998), building material & supply dealers (+850), and grocery product merchant wholesalers (+717) contributed to the gain. Professional & Business Services added 3,428 jobs. The majority of the increase occurred within the employment services and architectural & engineering services.

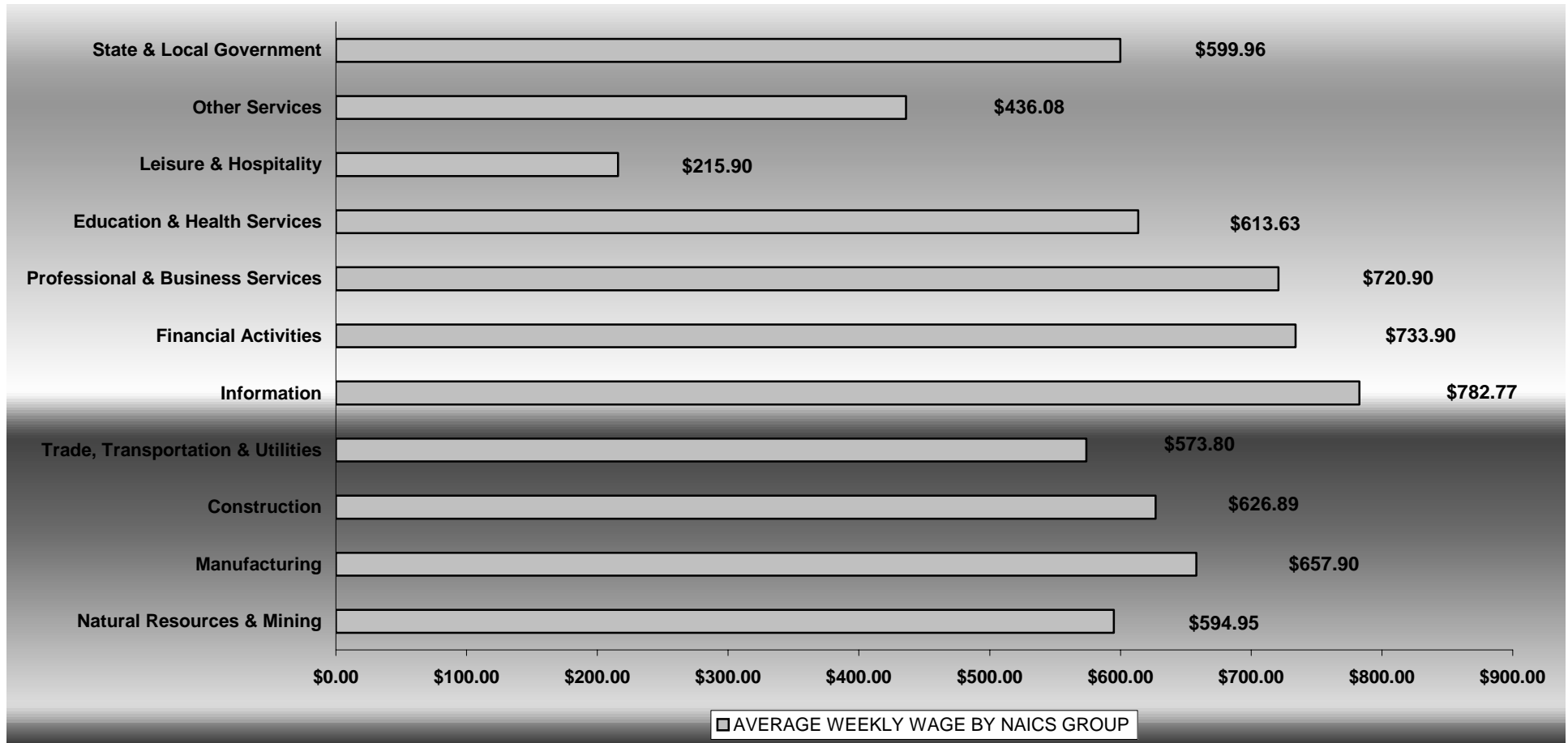
Four industries experienced losses this year. The most significant loss occurred in the Manufacturing industry (-2,705). Sectors within the manufacturing group have continued to downsize and layoff workers. Slight declines occurred in Other Services (-510), Natural Resources & Mining (-361) and Information (-140).

Pulaski ranked first among the counties in covered employment, averaging 234,878 during 2005. Second ranked Benton County averaged 88,677 followed by Washington County with 88,048. Sebastian and Craighead Counties averaged 72,212 and 40,065, respectively, to make the top five among the counties.



## AVERAGE WEEKLY EARNINGS

Wages paid to covered workers totaled \$34,748,658,215 for the Calendar Year 2005 (see table 1), for an average weekly wage of \$593.01 (see table 5). This represented an increase of \$19.21 from the level of \$573.80 recorded in 2004. Employees in Information recorded the highest weekly wage with \$782.77 while Leisure & Hospitality recorded the lowest yearly average weekly wage at \$215.90.



Note: Because of industry code changes between years, substantial employment and wage shifts among industries are anticipated.

TABLE 1. YEARLY COMPARISON OF COVERED EMPLOYMENT AND WAGES, BY INDUSTRY

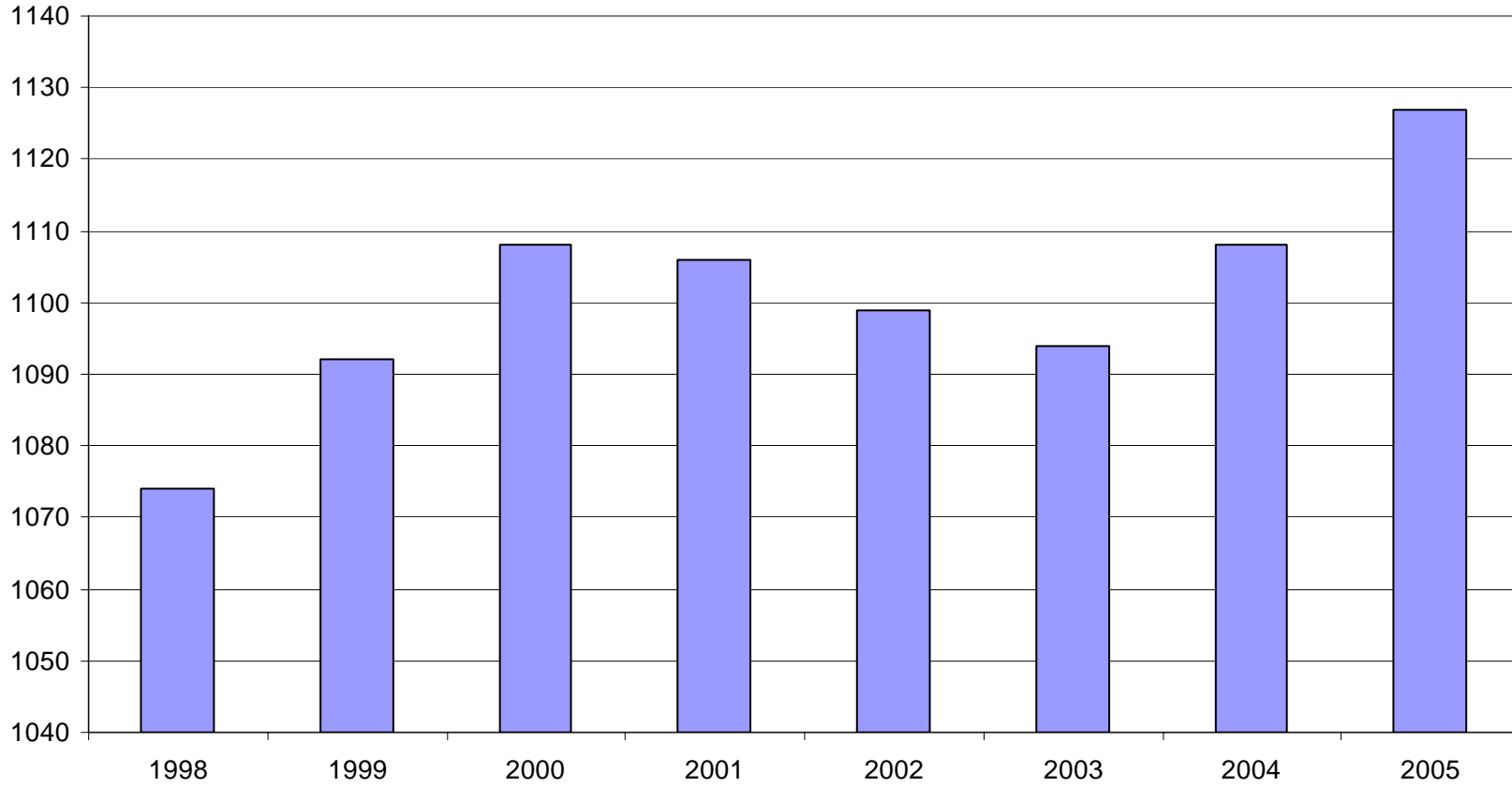
North American Industry Classification System Industry Group	Number of Employing Units	Average Covered Employment	% of Total	Net Change From 2004	Total Earnings 2005	% of Total	Average Weekly Earnings
<b>Total</b>	<b>76,665</b>	<b>1,126,871</b>	<b>100.0</b>	<b>18,217</b>	<b>34,748,658,215</b>	<b>100.0</b>	<b>\$593.01</b>
<b>Natural Resources &amp; Mining</b>	2,347	18,288	1.6	-361	565,786,509	1.6%	\$594.95
Agriculture, Forestry, Fishing & Hunting	2,022	14,151	1.3	-565	375,779,534	1.1%	\$510.67
Mining	325	4,137	0.4	204	190,006,975	0.5%	\$883.24
<b>Construction</b>	7,587	54,607	4.8	3,200	1,780,088,803	5.1%	\$626.89
<b>Manufacturing</b>	3,571	200,997	17.8	-2,705	6,876,251,191	19.8%	\$657.90
<b>Trade, Transportation &amp; Utilities</b>	20,850	241,805	21.5	3,998	7,214,824,993	20.8%	\$573.80
Wholesale Trade	6,235	47,602	4.2	1,663	2,165,551,095	6.2%	\$874.86
Retail Trade	11,330	131,903	11.7	1,179	2,647,509,213	7.6%	\$385.99
Transportation & Warehousing	2,932	55,692	4.9	1,078	1,982,219,541	5.7%	\$684.47
Utilities	353	6,608	0.6	78	419,545,144	1.2%	\$1,220.97
<b>Information</b>	1,208	20,043	1.8	-140	815,828,328	2.3%	\$782.77
<b>Financial Activities</b>	7,754	49,767	4.4	585	1,899,257,036	5.5%	\$733.90
Finance & Insurance	4,572	36,085	3.2	145	1,542,552,595	4.4%	\$822.07
Real Estate & Rental & Leasing	3,182	13,682	1.2	440	356,704,441	1.0%	\$501.37
<b>Professional &amp; Business Services</b>	10,414	111,519	9.9	3,428	4,180,480,757	12.0%	\$720.90
Professional & Technical Services	6,554	35,590	3.2	1,892	1,590,477,773	4.6%	\$859.40
Management of Companies & Enterprises	484	23,550	2.1	751	1,566,963,693	4.5%	\$1,279.57
Administrative & Waste Services	3,376	52,379	4.6	3,561	1,023,039,291	2.9%	\$375.61
<b>Education &amp; Health Services</b>	8,303	140,960	12.5	4,310	4,497,830,437	12.9%	\$613.63
Educational Services	543	8,671	0.8	671	216,270,171	0.6%	\$479.65
Health Care & Social Assistance	7,760	132,289	11.7	3,639	4,281,560,266	12.3%	\$622.41
<b>Leisure &amp; Hospitality</b>	5,909	94,089	8.3	3,096	1,056,328,154	3.0%	\$215.90
Arts, Entertainment & Recreation	906	9,269	0.8	136	133,015,699	0.4%	\$275.97
Accommodation & Food Services	5,003	84,820	7.5	2,960	923,312,455	2.7%	\$209.34
<b>Other Services</b>	5,539	25,265	2.2	-510	572,910,871	1.6%	\$436.08
<b>State &amp; Local Government</b>	3,186	169,532	15.0	3,317	5,289,071,136	15.2%	\$599.96
Local Government	1,987	109,243	9.7	1,982	3,180,215,703	9.2%	\$559.83
State Government	1,199	60,289	5.4	1,335	2,108,855,433	6.1%	\$672.68
<b>Nonclassifiable Establishments</b>	0	0	0	0	0	0	\$0.00

Note: Items do not necessarily add to totals because of rounding. Because of industry code changes between years, substantial employment and wage shifts among industries are anticipated.

TABLE 2. TOTAL COVERED EMPLOYMENT IN ARKANSAS

<b>Period</b>	<b>1998</b>	<b>1999</b>	<b>2000</b>	<b>2001</b>	<b>2002</b>	<b>2003</b>	<b>2004</b>	<b>2005</b>
<b>Average</b>	<b>1,073,732</b>	<b>1,092,351</b>	<b>1,108,490</b>	<b>1,106,053</b>	<b>1,098,558</b>	<b>1,094,087</b>	<b>1,108,273</b>	<b>1,126,870</b>
January	1,050,970	1,065,920	1,089,956	1,096,009	1,081,635	1,082,740	1,089,510	1,102,770
February	1,057,593	1,074,315	1,096,126	1,101,616	1,086,793	1,084,880	1,094,626	1,110,579
March	1,066,099	1,084,653	1,109,157	1,112,143	1,098,500	1,092,172	1,105,266	1,122,621
April	1,074,416	1,093,574	1,111,543	1,115,526	1,103,399	1,095,341	1,111,020	1,129,797
May	1,083,133	1,098,539	1,116,779	1,119,815	1,111,998	1,103,099	1,117,144	1,135,580
June	1,086,125	1,101,748	1,121,245	1,119,734	1,112,028	1,099,688	1,117,010	1,136,132
July	1,046,396	1,062,563	1,075,096	1,071,830	1,065,697	1,053,220	1,071,473	1,090,092
August	1,063,680	1,081,260	1,096,841	1,094,068	1,086,011	1,077,775	1,094,886	1,114,123
September	1,088,772	1,108,212	1,123,735	1,115,996	1,113,148	1,105,980	1,122,724	1,144,840
October	1,089,836	1,110,604	1,122,884	1,110,994	1,108,447	1,112,550	1,123,260	1,142,394
November	1,087,855	1,112,003	1,120,620	1,109,012	1,107,611	1,109,712	1,125,081	1,145,899
December	1,089,913	1,114,823	1,117,892	1,105,887	1,107,425	1,111,892	1,127,271	1,147,617

AVERAGE TOTAL COVERED EMPLOYMENT GRAPH 1  
In Thousands



TOTAL COVERED EARNINGS BY CALENDAR QUARTER, GRAPH 2  
In Thousands

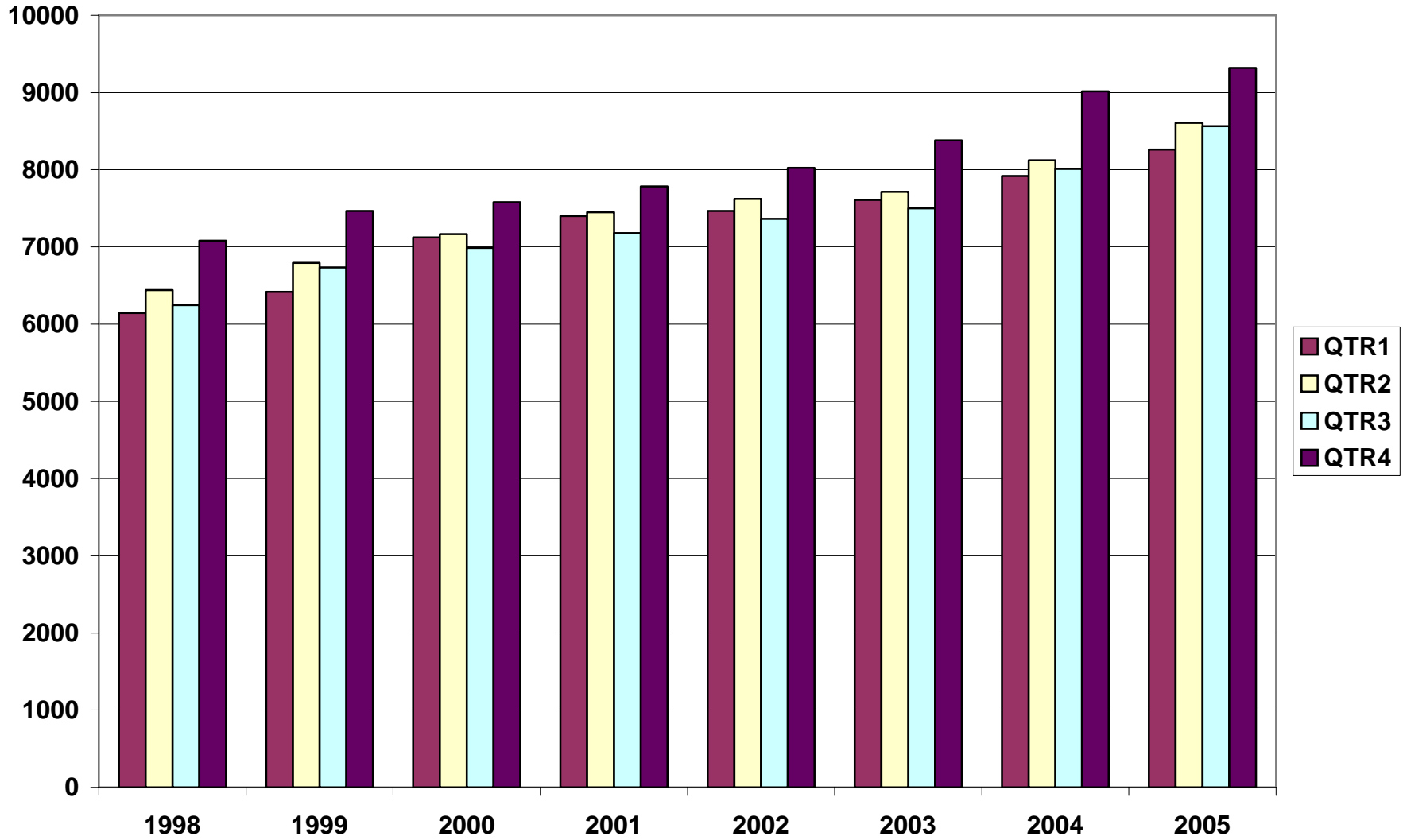


TABLE 3. TOTAL COVERED EARNINGS, 1998 - 2005

Period	1998	1999	2000	2001
<b>Total</b>	<b>\$25,914,345,060</b>	<b>\$27,407,925,462</b>	<b>\$28,853,825,155</b>	<b>\$29,807,669,666</b>
January - March	6,145,178,755	6,418,456,638	7,122,666,917	7,398,887,532
April - June	6,441,129,069	6,791,960,679	7,166,110,114	7,448,023,298
July - September	6,246,775,598	6,733,480,079	6,986,103,157	7,177,293,061
October - December	7,081,261,638	7,464,028,066	7,578,944,967	7,783,465,775
<b>Average Weekly Earnings</b>	<b>464.13</b>	<b>482.51</b>	<b>500.57</b>	<b>518.26</b>

Period	2002	2003	2004	2005
<b>Total</b>	<b>\$30,472,854,103</b>	<b>\$31,202,576,767</b>	<b>\$33,068,302,933</b>	<b>\$34,748,658,215</b>
January - March	7,465,250,305	7,608,130,008	7,918,843,610	8,261,160,581
April - June	7,621,878,775	7,714,813,038	8,122,370,361	8,607,765,828
July - September	7,361,666,511	7,500,204,764	8,010,367,094	8,562,914,149
October - December	8,024,058,512	8,379,428,957	9,016,721,868	9,316,817,657
<b>Average Weekly Earnings</b>	<b>533.44</b>	<b>548.45</b>	<b>573.80</b>	<b>593.01</b>

TABLE 4. TOTAL TAXABLE EARNINGS, 1998 - 2005

Period	1998	1999	2000	2001
<b>Total</b>	<b>\$8,554,973,370</b>	<b>\$8,807,445,422</b>	<b>\$9,048,033,534</b>	<b>\$9,003,189,480</b>
January - March	4,063,795,529	4,203,067,856	4,560,814,012	4,670,296,360
April - June	2,271,303,325	2,325,649,764	2,260,741,187	2,219,485,263
July - September	1,236,054,184	1,267,562,743	1,250,850,348	1,190,098,737
October - December	983,820,332	1,011,165,059	975,627,987	923,309,120

Period	2002	2003	2004	2005
<b>Total</b>	<b>\$8,887,270,978</b>	<b>\$9,154,938,743</b>	<b>\$9,731,263,681</b>	<b>\$9,987,286,576</b>
January - March	4,668,534,587	4,737,918,796	4,931,559,230	5,061,418,525
April - June	2,162,971,435	2,270,519,362	2,451,454,749	2,506,471,437
July - September	1,158,197,858	1,188,681,170	1,318,017,835	1,353,696,885
October - December	897,567,098	957,819,415	1,030,231,867	1,065,699,729



**TABLE 5. STATEWIDE SUMMARY  
EMPLOYMENT AND TOTAL EARNINGS, BY INDUSTRY  
CALENDAR YEAR 2005**

NORTH AMERICAN INDUSTRY CLASSIFICATION SYSTEM INDUSTRY GROUPS		AVERAGE EMPLOYING UNITS	AVERAGE COVERED EMPLOYMENT	TOTAL EARNINGS	AVERAGE WEEKLY EARNINGS
<b>TOTAL, ALL INDUSTRIES</b>		<b>76,665</b>	<b>1,126,871</b>	<b>\$34,748,658,215</b>	<b>\$593.01</b>
<b>NATURAL RESOURCES &amp; MINING</b>		<b>2,347</b>	<b>18,288</b>	<b>\$565,786,509</b>	<b>\$594.95</b>
<b>11</b>	<b>AGRICULTURE, FORESTRY, FISHING &amp; HUNTING</b>	<b>2,022</b>	<b>14,151</b>	<b>\$375,779,534</b>	<b>\$510.67</b>
<b>111</b>	<b>CROP PRODUCTION</b>	<b>724</b>	<b>3,878</b>	<b>\$80,741,074</b>	<b>\$400.39</b>
1111	Oilseed and Grain Farming	437	2,011	42,045,710	<b>\$402.07</b>
1112	Vegetable and Melon Farming	10	163	1,937,188	<b>\$228.55</b>
1113	Fruit and Tree Nut Farming	10	96	1,501,350	<b>\$300.75</b>
1114	Greenhouse & Nursery Production	48	347	8,554,877	<b>\$474.11</b>
1119	Other Crop Farming	219	1,261	26,701,949	<b>\$407.22</b>
<b>112</b>	<b>ANIMAL PRODUCTION</b>	<b>255</b>	<b>3,715</b>	<b>\$112,511,056</b>	<b>\$582.42</b>
1121	Cattle Ranching and Farming	75	343	8,313,990	<b>\$466.14</b>
1122	Hog and Pig Farming	9	137	5,034,093	<b>\$706.64</b>
1123	Poultry and Egg Production	88	2,580	81,422,051	<b>\$606.90</b>
1125	Animal Aquaculture	61	564	15,781,151	<b>\$538.09</b>
1129	Other Animal Production	23	92	1,959,771	<b>\$409.65</b>
<b>113</b>	<b>FORESTRY AND LOGGING</b>	<b>579</b>	<b>3,216</b>	<b>\$93,702,866</b>	<b>\$560.32</b>
1131	Timber Tract Operations	46	262	9,364,407	<b>\$687.35</b>
1132	Forest Nurseries & Gathering of Forest Products	6	37	1,141,021	<b>\$593.05</b>
1133	Logging	527	2,918	83,197,438	<b>\$548.30</b>
	<b>OTHER</b>	<b>465</b>	<b>3,342</b>	<b>\$88,824,538</b>	<b>\$511.12</b>
<b>21</b>	<b>MINING</b>	<b>325</b>	<b>4,137</b>	<b>\$190,006,975</b>	<b>\$883.24</b>
<b>211</b>	<b>OIL AND GAS EXTRACTION</b>	<b>73</b>	<b>390</b>	<b>\$21,214,217</b>	<b>\$1,046.07</b>
<b>212</b>	<b>MINING (EXCEPT OIL AND GAS)</b>	<b>102</b>	<b>1,957</b>	<b>\$83,554,446</b>	<b>\$821.06</b>
<b>213</b>	<b>SUPPORT ACTIVITIES FOR MINING</b>	<b>150</b>	<b>1,790</b>	<b>\$85,238,312</b>	<b>\$915.75</b>

**TABLE 5. STATEWIDE SUMMARY  
EMPLOYMENT AND TOTAL EARNINGS, BY INDUSTRY  
CALENDAR YEAR 2005**

<b>NORTH AMERICAN INDUSTRY CLASSIFICATION SYSTEM INDUSTRY GROUPS</b>		<b>AVERAGE EMPLOYING UNITS</b>	<b>AVERAGE COVERED EMPLOYMENT</b>	<b>TOTAL EARNINGS</b>	<b>AVERAGE WEEKLY EARNINGS</b>
<b>CONSTRUCTION</b>		<b>7,587</b>	<b>54,607</b>	<b>\$1,780,088,803</b>	<b>\$626.89</b>
<b>236</b>	<b>CONSTRUCTION OF BUILDINGS</b>	<b>2,086</b>	<b>12,455</b>	<b>\$442,470,228</b>	<b>\$683.18</b>
2361	Residential Building Construction	1,492	4,520	134,094,570	<b>\$570.52</b>
2362	Nonresidential Building Construction	594	7,934	308,375,658	<b>\$747.45</b>
<b>237</b>	<b>HEAVY &amp; CIVIL ENGINEERING CONSTRUCTION</b>	<b>882</b>	<b>10,590</b>	<b>\$378,129,119</b>	<b>\$686.66</b>
2371	Utility System Construction	414	4,912	162,539,737	<b>\$636.35</b>
2372	Land Subdivision	115	397	15,445,550	<b>\$748.19</b>
2373	Highway, Street & Bridge Construction	239	3,781	126,710,725	<b>\$644.47</b>
2379	Other Heavy Construction	114	1,501	73,433,107	<b>\$940.82</b>
<b>238</b>	<b>SPECIALTY TRADE CONTRACTORS</b>	<b>4,620</b>	<b>31,563</b>	<b>\$959,489,456</b>	<b>\$584.60</b>
2381	Building Foundation & Exterior Contractors	906	6,146	170,252,610	<b>\$532.72</b>
2382	Building Equipment Contractors	2,021	15,231	506,882,725	<b>\$639.99</b>
2383	Building Finishing Contractors	860	4,903	133,963,602	<b>\$525.44</b>
2389	Other Specialty Trade Contractors	834	5,284	148,390,519	<b>\$540.06</b>
<b>MANUFACTURING</b>		<b>3,571</b>	<b>200,997</b>	<b>\$6,876,251,191</b>	<b>\$657.90</b>
<b>311</b>	<b>FOOD MANUFACTURING</b>	<b>295</b>	<b>51,079</b>	<b>\$1,391,056,587</b>	<b>\$523.72</b>
3111	Animal Food Manufacturing	50	1,333	58,227,583	<b>\$840.03</b>
3112	Grain and Oilseed Milling	29	2,456	82,906,317	<b>\$649.17</b>
3114	Fruit, Vegetable & Specialty Food	37	6,980	222,084,356	<b>\$611.87</b>
3115	Dairy Product Manufacturing	10	716	25,159,847	<b>\$675.76</b>
3116	Animal Slaughtering & Processing	86	34,493	829,295,789	<b>\$462.35</b>
3118	Bakeries and Tortilla Manufacturing	52	3,383	109,396,368	<b>\$621.87</b>
3119	Other Food Manufacturing	21	1,584	61,165,994	<b>\$742.59</b>
	Other	10	136	2,820,333	<b>\$398.80</b>
<b>312</b>	<b>BEVERAGE &amp; TOBACCO PRODUCT MFG.</b>	<b>37</b>	<b>1,245</b>	<b>\$47,255,712</b>	<b>\$729.93</b>
<b>313</b>	<b>TEXTILE MILLS</b>	<b>19</b>	<b>400</b>	<b>\$16,723,920</b>	<b>\$804.03</b>
3132	Fabric Mills	5	312	14,855,326	<b>\$915.64</b>
3133	Textile & Fabric Finishing Mills	14	87	1,868,594	<b>\$413.04</b>

**TABLE 5. STATEWIDE SUMMARY  
EMPLOYMENT AND TOTAL EARNINGS, BY INDUSTRY  
CALENDAR YEAR 2005**

<b>NORTH AMERICAN INDUSTRY CLASSIFICATION SYSTEM INDUSTRY GROUPS</b>		<b>AVERAGE EMPLOYING UNITS</b>	<b>AVERAGE COVERED EMPLOYMENT</b>	<b>TOTAL EARNINGS</b>	<b>AVERAGE WEEKLY EARNINGS</b>
<b>314</b>	<b>TEXTILE PRODUCT MILLS</b>	<b>59</b>	<b>1,399</b>	<b>\$50,965,738</b>	<b>\$700.58</b>
3141	Textile Furnishing Mills	18	109	2,506,878	\$442.29
3149	Other Textile Product Mills	42	1,290	48,458,860	\$722.40
<b>315</b>	<b>APPAREL MANUFACTURING</b>	<b>40</b>	<b>1,972</b>	<b>\$40,842,879</b>	<b>\$398.30</b>
3152	Cut & Sew Apparel Manufacturing	33	883	17,636,550	\$384.10
	Other	7	1,089	23,206,329	\$409.80
<b>316</b>	<b>LEATHER &amp; ALLIED PRODUCT MANUFACTURING</b>	<b>23</b>	<b>2,389</b>	<b>\$52,565,754</b>	<b>\$423.14</b>
3162	Footwear Manufacturing	12	2,186	46,732,783	\$411.12
3169	Other Leather Product Manufacturing	11	204	5,832,971	\$549.87
<b>321</b>	<b>WOOD PRODUCT MANUFACTURING</b>	<b>394</b>	<b>13,650</b>	<b>\$427,451,907</b>	<b>\$602.21</b>
3211	Sawmills and Wood Preservation	183	6,132	203,563,527	\$638.40
3212	Veneer & Engineered Wood Products	48	3,296	119,426,305	\$696.80
3219	Other Wood Product Manufacturing	162	4,222	104,462,075	\$475.81
<b>322</b>	<b>PAPER MANUFACTURING</b>	<b>86</b>	<b>11,999</b>	<b>\$604,205,628</b>	<b>\$968.36</b>
3221	Pulp, Paper & Paperboard Mills	11	4,751	318,428,972	\$1,288.91
3222	Converted Paper Product Manufacturing	75	7,248	285,776,656	\$758.24
<b>323</b>	<b>PRINTING &amp; RELATED SUPPORT ACTIVITIES</b>	<b>306</b>	<b>4,699</b>	<b>\$155,358,787</b>	<b>\$635.81</b>
<b>324</b>	<b>PETROLEUM AND COAL PRODUCTS MFG.</b>	<b>20</b>	<b>891</b>	<b>\$45,370,237</b>	<b>\$979.24</b>
<b>325</b>	<b>CHEMICAL MANUFACTURING</b>	<b>114</b>	<b>5,075</b>	<b>\$250,012,731</b>	<b>\$947.38</b>
3251	Basic Chemical Manufacturing	24	1,580	86,478,698	\$1,052.56
3252	Resin, Rubber & Artificial Fibers	7	315	16,719,625	\$1,020.73
3253	Agricultural Chemical Manufacturing	20	395	18,926,426	\$921.44
3254	Pharmaceutical & Medicine Manufacturing	13	145	5,482,042	\$727.06
3255	Paint, Coating & Adhesive Manufacturing	7	180	9,117,607	\$974.10
3256	Cleaning Compound & Toiletry Manufacturing	17	1,068	47,471,339	\$854.78
3259	Other Chemical Preparation Manufacturing	26	1,393	65,816,994	\$908.62
<b>326</b>	<b>PLASTICS &amp; RUBBER PRODUCTS MFG.</b>	<b>171</b>	<b>13,007</b>	<b>\$475,807,111</b>	<b>\$703.48</b>
3261	Plastics Product Manufacturing	127	7,599	243,321,293	\$615.77
3262	Rubber Product Manufacturing	44	5,408	232,485,818	\$826.72

**TABLE 5. STATEWIDE SUMMARY  
EMPLOYMENT AND TOTAL EARNINGS, BY INDUSTRY  
CALENDAR YEAR 2005**

NORTH AMERICAN INDUSTRY CLASSIFICATION SYSTEM INDUSTRY GROUPS		AVERAGE EMPLOYING UNITS	AVERAGE COVERED EMPLOYMENT	TOTAL EARNINGS	AVERAGE WEEKLY EARNINGS
<b>327</b>	<b>NONMETALLIC MINERAL PRODUCT MFG.</b>	<b>251</b>	<b>4,584</b>	<b>\$166,617,817</b>	<b>\$698.99</b>
3271	Clay Product & Refractory Manufacturing	15	490	16,662,843	\$653.96
3272	Glass & Glass Product Manufacturing	15	378	13,415,092	\$682.49
3273	Cement & Concrete Product Manufacturing	184	2,789	96,237,950	\$663.58
3274	Lime & Gypsum Product Manufacturing	3	405	20,524,551	\$974.58
3279	Other Nonmetallic Mineral Products	34	523	19,777,381	\$727.22
<b>331</b>	<b>PRIMARY METAL MANUFACTURING</b>	<b>66</b>	<b>8,011</b>	<b>\$393,116,198</b>	<b>\$943.69</b>
3311	Iron & Steel Mills and Ferroalloys	7	2,102	161,809,166	\$1,480.36
3312	Purchased Steel Product Manufacturing	14	2,155	84,211,629	\$751.49
3313	Alumina & Aluminum Production	19	1,751	76,023,267	\$834.94
3314	Other Nonferrous Metal Production	10	634	22,868,002	\$693.64
3315	Foundries	16	1,369	48,204,134	\$677.14
<b>332</b>	<b>FABRICATED METAL PRODUCT MANUFACTURING</b>	<b>579</b>	<b>18,140</b>	<b>\$652,771,835</b>	<b>\$692.02</b>
3321	Forging & Stamping	14	907	29,293,337	\$621.10
3322	Cutlery & Hand Tool Manufacturing	19	1,351	44,423,316	\$632.34
3323	Architectural & Structural Metals	192	5,047	187,263,530	\$713.54
3324	Boilers, Tanks & Shipping Containers	18	1,091	40,281,527	\$710.03
3325	Hardware Manufacturing	12	343	10,243,402	\$574.31
3326	Spring & Wire Product Manufacturing	18	844	23,919,885	\$545.02
3327	Machine Shops & Threaded Products	200	1,692	55,299,185	\$628.51
3328	Coating, Engraving & Heat Treating Metals	39	977	29,232,947	\$575.41
3329	Other Fabricated Metal Product Manufacturing	68	5,887	232,814,706	\$760.52
<b>333</b>	<b>MACHINERY MANUFACTURING</b>	<b>253</b>	<b>14,066</b>	<b>\$483,190,843</b>	<b>\$660.61</b>
3331	Agri., Construction & Mining Machinery	38	2,911	69,268,678	\$457.61
3333	Commercial & Service Industry Machinery	26	1,029	40,831,426	\$763.09
3334	HVAC & Commercial Refrigeration Equipment	26	4,677	175,018,098	\$719.63
3335	Metalworking Machinery Manufacturing	77	1,405	53,778,250	\$736.08
3339	Other General Purpose Machinery Manufacturing	55	3,180	109,654,097	\$663.12
	Other	33	863	34,640,294	\$771.91
<b>334</b>	<b>COMPUTER &amp; ELECTRONIC PRODUCT MFG.</b>	<b>75</b>	<b>5,837</b>	<b>\$197,613,106</b>	<b>\$651.06</b>
3343	Audio & Video Equipment Manufacturing	10	1,420	44,760,510	\$606.18
3344	Semiconductors & Electronic Components	24	2,049	69,941,348	\$656.43
3345	Electronic Instrument Manufacturing	26	1,242	39,177,303	\$606.61
	Other	16	1,127	43,733,945	\$746.26

**TABLE 5. STATEWIDE SUMMARY  
EMPLOYMENT AND TOTAL EARNINGS, BY INDUSTRY  
CALENDAR YEAR 2005**

<b>NORTH AMERICAN INDUSTRY CLASSIFICATION SYSTEM INDUSTRY GROUPS</b>		<b>AVERAGE EMPLOYING UNITS</b>	<b>AVERAGE COVERED EMPLOYMENT</b>	<b>TOTAL EARNINGS</b>	<b>AVERAGE WEEKLY EARNINGS</b>
<b>335</b>	<b>ELECTRICAL EQUIPMENT &amp; APPLIANCES</b>	<b>71</b>	<b>13,040</b>	<b>\$478,859,699</b>	<b>\$706.20</b>
3353	Electrical Equipment Manufacturing	27	4,989	184,779,995	\$712.26
	Other	45	8,052	294,079,704	\$702.36
<b>336</b>	<b>TRANSPORTATION EQUIPMENT MANUFACTURING</b>	<b>178</b>	<b>16,594</b>	<b>\$574,449,636</b>	<b>\$665.73</b>
3362	Motor Vehicle Body & Trailer Manufacturing	43	3,570	118,400,838	\$637.80
3363	Motor Vehicle Parts Manufacturing	64	6,797	212,641,972	\$601.63
3364	Aerospace Product & Parts Manufacturing	31	3,256	153,532,555	\$906.80
3366	Ship & Boat Building	23	1,664	45,526,038	\$526.14
	Other	17	1,307	44,348,233	\$652.53
<b>337</b>	<b>FURNITURE &amp; RELATED PRODUCT MFG.</b>	<b>267</b>	<b>7,045</b>	<b>\$200,231,167</b>	<b>\$546.57</b>
3371	Household & Institutional Furniture	218	4,758	130,297,033	\$526.63
3372	Office Furniture & Fixtures Manufacturing	40	2,141	66,388,367	\$596.31
3379	Other Furniture Related Product Manufacturing	9	147	3,545,767	\$463.86
<b>339</b>	<b>MISCELLANEOUS MANUFACTURING</b>	<b>270</b>	<b>5,875</b>	<b>\$171,783,899</b>	<b>\$562.30</b>
3391	Medical Equipment & Supplies Manufacturing	99	2,553	79,950,842	\$602.24
3399	Other Miscellaneous Manufacturing	172	3,322	91,833,057	\$531.61
<b>TRADE, TRANSPORTATION &amp; UTILITIES</b>		<b>20,850</b>	<b>241,805</b>	<b>\$7,214,824,993</b>	<b>\$573.80</b>
<b>42</b>	<b>WHOLESALE TRADE</b>	<b>6,235</b>	<b>47,602</b>	<b>\$2,165,551,095</b>	<b>\$874.86</b>
<b>423</b>	<b>MERCHANT WHOLESALERS, DURABLE GOODS</b>	<b>2,088</b>	<b>21,624</b>	<b>\$904,146,132</b>	<b>\$804.08</b>
4231	Motor Vehicle & Part Merchant Wholesalers	236	2,705	95,503,214	\$678.96
4232	Furniture & Furnishing Merchant Wholesalers	59	427	18,660,909	\$840.43
4233	Lumber & Supply Merchant Wholesalers	165	1,764	70,225,644	\$765.59
4234	Commercial Goods Merchant Wholesalers	238	2,366	134,119,899	\$1,090.12
4235	Metal & Mineral Merchant Wholesalers	49	731	31,824,053	\$837.21
4236	Electric Goods Merchant Wholesalers	171	2,195	104,693,222	\$917.24
4237	Hardware & Plumbing Merchant Wholesalers	238	2,448	101,701,200	\$798.93
4238	Machinery & Supply Merchant Wholesalers	705	7,250	288,352,216	\$764.86
4239	Misc. Durable Goods Merchant Wholesalers	226	1,738	59,065,775	\$653.56

**TABLE 5. STATEWIDE SUMMARY  
EMPLOYMENT AND TOTAL EARNINGS, BY INDUSTRY  
CALENDAR YEAR 2005**

<b>NORTH AMERICAN INDUSTRY CLASSIFICATION SYSTEM INDUSTRY GROUPS</b>		<b>AVERAGE EMPLOYING UNITS</b>	<b>AVERAGE COVERED EMPLOYMENT</b>	<b>TOTAL EARNINGS</b>	<b>AVERAGE WEEKLY EARNINGS</b>
<b>424</b>	<b>MERCHANT WHOLESALERS, NONDURABLE GOODS</b>	<b>1,307</b>	<b>17,294</b>	<b>\$636,360,274</b>	<b>\$707.63</b>
4241	Paper & Paper Product Merchant Wholesalers	73	1,229	46,305,510	\$724.57
4242	Druggists' Goods Merchant Wholesalers	54	1,031	39,125,884	\$729.80
4243	Apparel & Piece Goods Merchant Wholesalers	39	449	13,798,893	\$591.01
4244	Grocery Product Merchant Wholesalers	361	6,014	242,426,008	\$775.20
4245	Farm Product Merchant Wholesalers	82	937	22,246,219	\$456.58
4246	Chemical Merchant Wholesalers	81	437	20,094,069	\$884.27
4247	Petroleum Merchant Wholesalers	157	1,424	59,671,638	\$805.85
4248	Alcoholic Beverage Merchant Wholesalers	37	1,141	49,104,464	\$827.62
4249	Misc. Nondurable Goods Merchant Wholesalers	423	4,633	143,587,589	\$596.01
<b>425</b>	<b>ELECTRONIC MARKETS &amp; AGENTS &amp; BROKERS</b>	<b>2,841</b>	<b>8,684</b>	<b>\$625,044,689</b>	<b>\$1,384.17</b>
<b>44-45</b>	<b>RETAIL TRADE</b>	<b>11,330</b>	<b>131,903</b>	<b>\$2,647,509,213</b>	<b>\$385.99</b>
<b>441</b>	<b>MOTOR VEHICLE &amp; PARTS DEALERS</b>	<b>1,728</b>	<b>17,808</b>	<b>\$575,502,028</b>	<b>\$621.48</b>
4411	Automobile Dealers	743	10,782	397,332,258	\$708.68
4412	Other Motor Vehicle Dealers	197	1,453	45,451,715	\$601.56
4413	Automotive Parts, Accessories & Tire Stores	789	5,574	132,718,055	\$457.89
<b>442</b>	<b>FURNITURE &amp; HOME FURNISHINGS STORES</b>	<b>620</b>	<b>4,147</b>	<b>\$103,064,213</b>	<b>\$477.94</b>
4421	Furniture Stores	318	2,524	63,274,158	\$482.10
4422	Home Furnishings Stores	302	1,623	39,790,055	\$471.47
<b>443</b>	<b>ELECTRONICS &amp; APPLIANCE STORES</b>	<b>483</b>	<b>2,988</b>	<b>\$69,608,044</b>	<b>\$448.00</b>
<b>444</b>	<b>BUILDING MATERIAL &amp; GARDEN SUPPLY STORES</b>	<b>816</b>	<b>10,671</b>	<b>\$265,769,797</b>	<b>\$478.96</b>
4441	Building Material & Supplies Dealers	640	9,811	247,433,253	\$485.00
4442	Lawn & Garden Equipment & Supplies Stores	176	860	18,336,544	\$410.03
<b>445</b>	<b>FOOD &amp; BEVERAGE STORES</b>	<b>1,144</b>	<b>18,868</b>	<b>\$289,004,332</b>	<b>\$294.56</b>
4451	Grocery Stores	672	16,547	248,409,433	\$288.70
4452	Specialty Food Stores	159	862	17,763,126	\$396.29
4453	Beer, Wine & Liquor Stores	313	1,459	22,831,773	\$300.94
<b>446</b>	<b>HEALTH &amp; PERSONAL CARE STORES</b>	<b>788</b>	<b>6,603</b>	<b>\$174,452,450</b>	<b>\$508.08</b>
<b>447</b>	<b>GASOLINE STATIONS</b>	<b>1,664</b>	<b>12,827</b>	<b>\$171,070,946</b>	<b>\$256.48</b>
44711	Gasoline Stations with Convenience Stores	1,484	11,539	148,570,116	\$247.61
44719	Other Gasoline Stations	180	1,288	22,500,830	\$335.95

**TABLE 5. STATEWIDE SUMMARY  
EMPLOYMENT AND TOTAL EARNINGS, BY INDUSTRY  
CALENDAR YEAR 2005**

<b>NORTH AMERICAN INDUSTRY CLASSIFICATION SYSTEM INDUSTRY GROUPS</b>		<b>AVERAGE EMPLOYING UNITS</b>	<b>AVERAGE COVERED EMPLOYMENT</b>	<b>TOTAL EARNINGS</b>	<b>AVERAGE WEEKLY EARNINGS</b>
<b>448</b>	<b>CLOTHING &amp; CLOTHING ACCESSORIES STORES</b>	<b>1,056</b>	<b>8,257</b>	<b>\$114,464,733</b>	<b>\$266.59</b>
4481	Clothing Stores	696	6,084	75,469,501	\$238.55
4482	Shoe Stores	184	1,216	16,525,763	\$261.35
4483	Jewelry, Luggage & Leather Goods Stores	177	957	22,469,469	\$451.52
<b>451</b>	<b>SPORTING GOODS, HOBBY, BOOK &amp; MUSIC STORES</b>	<b>552</b>	<b>4,251</b>	<b>\$60,991,212</b>	<b>\$275.91</b>
4511	Sporting Goods & Musical Instrument Stores	390	2,781	43,950,758	\$303.92
4512	Book, Periodical & Music Stores	163	1,470	17,040,454	\$222.93
<b>452</b>	<b>GENERAL MERCHANDISE STORES</b>	<b>701</b>	<b>36,619</b>	<b>\$648,541,207</b>	<b>\$340.59</b>
<b>453</b>	<b>MISCELLANEOUS STORE RETAILERS</b>	<b>1,458</b>	<b>6,837</b>	<b>\$121,394,238</b>	<b>\$341.45</b>
4531	Florists	277	1,059	15,211,548	\$276.23
4532	Office Supplies, Stationery & Gift Stores	413	2,540	46,810,410	\$354.41
4533	Used Merchandise Stores	220	804	13,650,539	\$326.51
4539	Other Miscellaneous Store Retailers	549	2,434	45,721,741	\$361.24
<b>454</b>	<b>NONSTORE RETAILERS</b>	<b>320</b>	<b>2,026</b>	<b>\$53,646,013</b>	<b>\$509.21</b>
4541	Electronic Shopping & Mail -Order Houses	68	389	12,290,962	\$607.62
4542	Vending Machine Operators	82	707	16,229,762	\$441.46
4543	Direct Selling Establishments	170	930	25,125,289	\$519.55
<b>48-49</b>	<b>TRANSPORTATION &amp; WAREHOUSING</b>	<b>2,932</b>	<b>55,692</b>	<b>\$1,982,219,541</b>	<b>\$684.47</b>
<b>481</b>	<b>AIR TRANSPORTATION</b>	<b>45</b>	<b>1,016</b>	<b>\$50,702,069</b>	<b>\$959.68</b>
<b>484</b>	<b>TRUCK TRANSPORTATION</b>	<b>1,965</b>	<b>34,857</b>	<b>\$1,289,858,349</b>	<b>\$711.62</b>
4841	General Freight Trucking	1,222	29,545	1,131,721,653	\$736.63
4842	Specialized Freight Trucking	743	5,313	158,136,696	\$572.39
<b>485</b>	<b>TRANSIT &amp; GROUND PASSENGER TRANS.</b>	<b>56</b>	<b>987</b>	<b>\$15,129,501</b>	<b>\$294.78</b>
4853	Taxi & Limousine Service	20	230	2,602,737	\$217.62
4854	School & Employee Bus Transportation	8	369	6,804,160	\$354.60
4855	Charter Bus Industry Service	8	92	1,867,441	\$390.35
4859	Other Ground Passenger Transportation	11	205	2,384,902	\$223.72
	Other	9	91	1,470,261	\$310.71
<b>486</b>	<b>PIPELINE TRANSPORTATION</b>	<b>67</b>	<b>949</b>	<b>\$49,567,623</b>	<b>\$1,004.45</b>

**TABLE 5. STATEWIDE SUMMARY  
EMPLOYMENT AND TOTAL EARNINGS, BY INDUSTRY  
CALENDAR YEAR 2005**

<b>NORTH AMERICAN INDUSTRY CLASSIFICATION SYSTEM INDUSTRY GROUPS</b>		<b>AVERAGE EMPLOYING UNITS</b>	<b>AVERAGE COVERED EMPLOYMENT</b>	<b>TOTAL EARNINGS</b>	<b>AVERAGE WEEKLY EARNINGS</b>
<b>488</b>	<b>SUPPORT ACTIVITIES FOR TRANSPORTATION</b>	<b>434</b>	<b>4,797</b>	<b>\$177,442,481</b>	<b>\$711.35</b>
4881	Support Activities for Air Transportation	105	1,612	54,792,758	\$653.66
4882	Support Activities for Rail Transportation	33	408	12,584,061	\$593.14
4883	Support Activities for Water Transportation	31	664	25,317,012	\$733.23
4884	Support Activities for Road Transportation	101	460	10,770,160	\$450.26
4885	Freight Transportation Arrangement	146	1,499	69,810,278	\$895.60
4889	Other Support Activities for Transportation	20	155	4,168,212	\$517.15
<b>492</b>	<b>COURIERS &amp; MESSENGERS</b>	<b>136</b>	<b>3,228</b>	<b>\$115,066,700</b>	<b>\$685.51</b>
4921	Couriers	90	2,989	109,569,631	\$704.95
4922	Local Messengers & Local Delivery	47	239	5,497,069	\$442.31
<b>493</b>	<b>WAREHOUSING &amp; STORAGE</b>	<b>210</b>	<b>9,674</b>	<b>\$278,467,546</b>	<b>\$553.56</b>
	<b>OTHER</b>	<b>20</b>	<b>185</b>	<b>\$5,985,272</b>	<b>\$622.17</b>
<b>22</b>	<b>UTILITIES</b>	<b>353</b>	<b>6,608</b>	<b>\$419,545,144</b>	<b>\$1,220.97</b>
2211	Power Generation & Supply	158	4,972	347,666,852	\$1,344.71
2212	Natural Gas Distribution	31	836	49,770,382	\$1,144.88
2213	Water, Sewage and Other Systems	164	801	22,107,910	\$530.78
<b>INFORMATION</b>		<b>1,208</b>	<b>20,043</b>	<b>\$815,828,328</b>	<b>\$782.77</b>
<b>511</b>	<b>PUBLISHING INDUSTRIES, EXCEPT INTERNET</b>	<b>248</b>	<b>6,435</b>	<b>\$191,716,336</b>	<b>\$572.94</b>
5111	Newspaper, Book & Directory Publishers	217	6,183	177,898,327	\$553.31
5112	Software Publishers	31	252	13,818,009	\$1,054.49
<b>512</b>	<b>MOTION PICTURE &amp; SOUND RECORDING INDUSTRY</b>	<b>136</b>	<b>1,174</b>	<b>\$18,050,829</b>	<b>\$295.68</b>
5121	Motion Picture & Video Industries	123	1,148	17,152,707	\$287.33
5122	Sound Recording Industries	13	26	898,122	\$664.29
<b>515</b>	<b>BROADCASTING, EXCEPT INTERNET</b>	<b>137</b>	<b>2,087</b>	<b>\$68,082,537</b>	<b>\$627.35</b>
5151	Radio & Television Broadcasting	131	2,050	67,237,527	\$630.75
5152	Cable & Other Subscription Programming	7	36	845,010	\$451.39



**TABLE 5. STATEWIDE SUMMARY  
EMPLOYMENT AND TOTAL EARNINGS, BY INDUSTRY  
CALENDAR YEAR 2005**

NORTH AMERICAN INDUSTRY CLASSIFICATION SYSTEM INDUSTRY GROUPS		AVERAGE EMPLOYING UNITS	AVERAGE COVERED EMPLOYMENT	TOTAL EARNINGS	AVERAGE WEEKLY EARNINGS
<b>517</b>	<b>TELECOMMUNICATIONS</b>	<b>500</b>	<b>8,828</b>	<b>\$466,514,326</b>	<b>\$1,016.25</b>
5171	Wired Telecommunications Carriers	213	5,043	322,094,296	\$1,228.26
5172	Wireless Telecommunications Carriers	124	1,986	74,557,476	\$721.95
5175	Cable & Other Program Distribution	83	1,250	44,227,539	\$680.42
	Other	79	550	25,635,015	\$896.33
<b>518</b>	<b>ISPS, SEARCH PORTALS, &amp; DATA PROCESSING</b>	<b>153</b>	<b>1,200</b>	<b>\$61,898,018</b>	<b>\$991.96</b>
5181	ISPs, & Web Search Portals	64	203	7,068,976	\$669.66
5182	Data Processing & Related Services	90	997	54,829,042	\$1,057.58
	<b>OTHER</b>	<b>36</b>	<b>319</b>	<b>\$9,566,282</b>	<b>\$576.70</b>
<b>FINANCIAL ACTIVITIES</b>		<b>7,754</b>	<b>49,767</b>	<b>\$1,899,257,036</b>	<b>\$733.90</b>
<b>52</b>	<b>FINANCE &amp; INSURANCE</b>	<b>4,572</b>	<b>36,085</b>	<b>\$1,542,552,595</b>	<b>\$822.07</b>
<b>522</b>	<b>CREDIT INTERMEDIATION &amp; RELATED ACTIVITIES</b>	<b>1,967</b>	<b>21,372</b>	<b>\$767,617,722</b>	<b>\$690.71</b>
5221	Depository Credit Intermediation	1,270	17,806	614,035,154	\$663.17
5222	Nondepository Credit Intermediation	402	2,692	124,886,124	\$892.15
5223	Activities Related to Credit Intermediation	295	875	28,696,444	\$630.69
<b>523</b>	<b>FINANCIAL INVESTMENT &amp; RELATED ACTIVITIES</b>	<b>572</b>	<b>3,079</b>	<b>\$260,192,500</b>	<b>\$1,625.11</b>
5231	Security & Commodity Investment Activities	325	2,399	223,235,624	\$1,789.49
5239	Other Financial Investment Activities	247	680	36,956,876	\$1,045.16
<b>524</b>	<b>INSURANCE CARRIERS &amp; RELATED ACTIVITIES</b>	<b>1,994</b>	<b>11,206</b>	<b>\$496,676,403</b>	<b>\$852.35</b>
5241	Insurance Carriers	382	4,687	231,043,884	\$947.97
5242	Insurance Agencies, Brokerages & Support	1,613	6,519	265,632,519	\$783.60
	<b>OTHER</b>	<b>40</b>	<b>429</b>	<b>\$18,065,970</b>	<b>\$809.84</b>
<b>53</b>	<b>REAL ESTATE &amp; RENTAL &amp; LEASING</b>	<b>3,182</b>	<b>13,682</b>	<b>\$356,704,441</b>	<b>\$501.37</b>
<b>531</b>	<b>REAL ESTATE</b>	<b>2,364</b>	<b>8,529</b>	<b>\$230,424,340</b>	<b>\$519.55</b>
5311	Lessors of Real Estate	1,027	4,259	98,943,068	\$446.76
5312	Offices of Real Estate Agents & Brokers	768	1,963	64,147,892	\$628.43
5313	Activities Related to Real Estate	569	2,307	67,333,380	\$561.28

**TABLE 5. STATEWIDE SUMMARY  
EMPLOYMENT AND TOTAL EARNINGS, BY INDUSTRY  
CALENDAR YEAR 2005**

NORTH AMERICAN INDUSTRY CLASSIFICATION SYSTEM INDUSTRY GROUPS		AVERAGE EMPLOYING UNITS	AVERAGE COVERED EMPLOYMENT	TOTAL EARNINGS	AVERAGE WEEKLY EARNINGS
<b>532</b>	<b>RENTAL &amp; LEASING SERVICES</b>	<b>794</b>	<b>5,066</b>	<b>\$121,702,853</b>	<b>\$461.99</b>
5321	Automotive Equipment Rental & Leasing	127	935	26,158,961	\$538.03
5322	Consumer Goods Rental	494	3,237	62,683,543	\$372.40
5323	General Rental Centers	36	190	5,980,711	\$605.34
5324	Machinery & Equipment Rental & Leasing	138	704	26,879,638	\$734.26
<b>533</b>	<b>LESSORS OF NONFINANCIAL INTANGIBLE ASSETS</b>	<b>24</b>	<b>87</b>	<b>\$4,577,248</b>	<b>\$1,011.77</b>
<b>PROFESSIONAL &amp; BUSINESS SERVICES</b>		<b>10,414</b>	<b>111,519</b>	<b>\$4,180,480,757</b>	<b>\$720.90</b>
<b>54</b>	<b>PROFESSIONAL &amp; TECHNICAL SERVICES</b>	<b>6,554</b>	<b>35,590</b>	<b>\$1,590,477,773</b>	<b>\$859.40</b>
5411	Legal Services	1,608	6,663	290,359,958	\$838.04
5412	Accounting & Bookkeeping Services	1,174	5,209	175,901,551	\$649.40
5413	Architectural & Engineering Services	876	6,297	284,784,579	\$869.72
5414	Specialized Design Services	154	460	12,891,787	\$538.95
5415	Computer Systems Design & Related Services	760	7,539	499,310,665	\$1,273.66
5416	Management & Technical Consulting Services	1,000	2,569	126,725,124	\$948.63
5417	Scientific Research & Development Services	108	1,120	48,680,059	\$835.85
5418	Advertising & Related Services	309	1,951	78,468,819	\$773.46
5419	Other Professional & Technical Services	565	3,783	73,355,231	\$372.90
<b>55</b>	<b>MANAGEMENT OF COMPANIES &amp; ENTERPRISES</b>	<b>484</b>	<b>23,550</b>	<b>\$1,566,963,693</b>	<b>\$1,279.57</b>
<b>56</b>	<b>ADMINISTRATIVE &amp; WASTE SERVICES</b>	<b>3,376</b>	<b>52,379</b>	<b>\$1,023,039,291</b>	<b>\$375.61</b>
<b>561</b>	<b>ADMINISTRATIVE &amp; SUPPORT SERVICES</b>	<b>3,181</b>	<b>50,064</b>	<b>\$938,298,140</b>	<b>\$360.42</b>
5611	Office Administrative Services	321	1,314	59,734,287	\$874.23
5612	Facilities Support Services	13	121	3,859,288	\$613.36
5613	Employment Services	609	26,130	434,627,459	\$319.87
5614	Business Support Services	354	4,639	89,795,490	\$372.24
5615	Travel Arrangement & Reservation Services	103	451	12,958,581	\$552.56
5616	Investigation & Security Services	222	4,422	95,810,713	\$416.67
5617	Services to Buildings & Dwellings	1,267	11,413	194,634,265	\$327.96
5619	Other Support Services	293	1,575	46,878,057	\$572.38

**TABLE 5. STATEWIDE SUMMARY  
EMPLOYMENT AND TOTAL EARNINGS, BY INDUSTRY  
CALENDAR YEAR 2005**

NORTH AMERICAN INDUSTRY CLASSIFICATION SYSTEM INDUSTRY GROUPS		AVERAGE EMPLOYING UNITS	AVERAGE COVERED EMPLOYMENT	TOTAL EARNINGS	AVERAGE WEEKLY EARNINGS
<b>562</b>	<b>WASTE MANAGEMENT &amp; REMEDIATION SERVICES</b>	<b>195</b>	<b>2,315</b>	<b>\$84,741,151</b>	<b>\$703.95</b>
5621	Waste Collection Services	88	1,082	38,763,761	\$688.96
5622	Waste Treatment & Disposal Services	38	760	32,501,460	\$822.41
5629	Remediation & Other Waste Services	69	473	13,475,930	\$547.89
<b>EDUCATION &amp; HEALTH SERVICES</b>		<b>8,303</b>	<b>140,960</b>	<b>\$4,497,830,437</b>	<b>\$613.63</b>
<b>61</b>	<b>EDUCATIONAL SERVICES</b>	<b>543</b>	<b>8,671</b>	<b>\$216,270,171</b>	<b>\$479.65</b>
6111	Elementary & Secondary Schools	83	3,129	62,517,571	\$384.23
6112	Junior Colleges	8	247	6,907,951	\$537.83
6113	Colleges & Universities	25	3,047	89,245,004	\$563.26
6114	Business, Computer, & Management Training	46	155	8,893,971	\$1,103.47
6115	Technical & Trade Schools	95	688	25,364,375	\$708.98
6116	Other Schools & Instruction	218	1,200	16,422,881	\$263.19
6117	Educational Support Services	68	205	6,918,418	\$649.01
<b>62</b>	<b>HEALTH CARE &amp; SOCIAL ASSISTANCE</b>	<b>7,760</b>	<b>132,289</b>	<b>\$4,281,560,266</b>	<b>\$622.41</b>
<b>621</b>	<b>AMBULATORY HEALTH CARE SERVICES</b>	<b>4,664</b>	<b>41,351</b>	<b>\$1,956,115,057</b>	<b>\$909.71</b>
6211	Offices of Physicians	2,072	20,085	1,275,451,349	\$1,221.21
6212	Offices of Dentists	908	5,947	219,798,693	\$710.76
6213	Offices of Other Health Practitioners	1,116	5,269	155,945,864	\$569.17
6214	Outpatient Care Centers	205	3,458	122,741,771	\$682.60
6215	Medical & Diagnostic Laboratories	92	717	34,043,200	\$913.08
6216	Home Health Care Services	127	3,809	93,409,784	\$471.60
6219	Other Ambulatory Health Care Services	144	2,066	54,724,396	\$509.39
<b>622</b>	<b>HOSPITALS</b>	<b>109</b>	<b>41,921</b>	<b>\$1,465,594,369</b>	<b>\$672.32</b>
6221	General Medical & Surgical Hospitals	77	38,571	1,350,652,158	\$673.41
6222	Psychiatric & Substance Abuse Hospitals	10	1,444	47,155,309	\$628.00
6223	Other Hospitals	22	1,905	67,786,902	\$684.30

**TABLE 5. STATEWIDE SUMMARY  
EMPLOYMENT AND TOTAL EARNINGS, BY INDUSTRY  
CALENDAR YEAR 2005**

NORTH AMERICAN INDUSTRY CLASSIFICATION SYSTEM INDUSTRY GROUPS		AVERAGE EMPLOYING UNITS	AVERAGE COVERED EMPLOYMENT	TOTAL EARNINGS	AVERAGE WEEKLY EARNINGS
<b>623</b>	<b>NURSING &amp; RESIDENTIAL CARE FACILITIES</b>	<b>502</b>	<b>26,300</b>	<b>\$491,984,290</b>	<b>\$359.74</b>
6231	Nursing Care Facilities	239	19,804	368,959,151	<b>\$358.28</b>
6232	Residential Mental Health Facilities	128	2,908	56,951,837	<b>\$376.63</b>
6233	Community Care Facilities for the Elderly	91	2,224	37,330,414	<b>\$322.79</b>
6239	Other Residential Care Facilities	44	1,364	28,742,888	<b>\$405.24</b>
<b>624</b>	<b>SOCIAL ASSISTANCE</b>	<b>2,486</b>	<b>22,717</b>	<b>\$367,866,550</b>	<b>\$311.41</b>
6241	Individual & Family Services	1,367	10,303	180,309,460	<b>\$336.55</b>
6242	Emergency & Other Relief Services	113	864	16,901,665	<b>\$376.19</b>
6243	Vocational Rehabilitation Services	127	3,334	61,883,594	<b>\$356.95</b>
6244	Child Day Care Services	880	8,216	108,771,831	<b>\$254.60</b>
<b>LEISURE &amp; HOSPITALITY</b>		<b>5,909</b>	<b>94,089</b>	<b>\$1,056,328,154</b>	<b>\$215.90</b>
<b>71</b>	<b>ARTS, ENTERTAINMENT &amp; RECREATION</b>	<b>906</b>	<b>9,269</b>	<b>\$133,015,699</b>	<b>\$275.97</b>
<b>711</b>	<b>PERFORMING ARTS &amp; SPECTATOR SPORTS</b>	<b>196</b>	<b>2,110</b>	<b>\$33,721,785</b>	<b>\$307.34</b>
7111	Performing Arts Companies	40	514	7,109,378	<b>\$265.99</b>
7112	Spectator Sports	57	917	14,768,984	<b>\$309.73</b>
7113	Performing Arts & Sports Promoters	38	557	8,284,461	<b>\$286.03</b>
7114	Agents & Managers for Public Figures	11	16	523,235	<b>\$628.89</b>
7115	Independent Artists, Writers & Performers	51	106	3,035,727	<b>\$550.75</b>
<b>712</b>	<b>MUSEUMS, PARKS &amp; HISTORICAL SITES</b>	<b>47</b>	<b>220</b>	<b>\$3,523,413</b>	<b>\$307.99</b>
<b>713</b>	<b>GAMBLING, RECREATION &amp; AMUSEMENT INDUSTRY</b>	<b>663</b>	<b>6,939</b>	<b>\$95,770,501</b>	<b>\$265.42</b>
7139	Other Amusement & Recreation Industries	627	6,448	91,004,135	<b>\$271.41</b>
	Other	37	491	4,766,366	<b>\$186.68</b>
<b>72</b>	<b>ACCOMMODATION &amp; FOOD SERVICES</b>	<b>5,003</b>	<b>84,820</b>	<b>\$923,312,455</b>	<b>\$209.34</b>
<b>721</b>	<b>ACCOMMODATION</b>	<b>784</b>	<b>11,060</b>	<b>\$149,981,976</b>	<b>\$260.78</b>
7211	Traveler Accommodation	715	10,705	144,361,594	<b>\$259.34</b>
7212	RV Parks & Recreational Camps	49	282	4,516,187	<b>\$307.98</b>
7213	Rooming & Boarding Houses	20	73	1,104,195	<b>\$290.88</b>

**TABLE 5. STATEWIDE SUMMARY  
EMPLOYMENT AND TOTAL EARNINGS, BY INDUSTRY  
CALENDAR YEAR 2005**

<b>NORTH AMERICAN INDUSTRY CLASSIFICATION SYSTEM INDUSTRY GROUPS</b>		<b>AVERAGE EMPLOYING UNITS</b>	<b>AVERAGE COVERED EMPLOYMENT</b>	<b>TOTAL EARNINGS</b>	<b>AVERAGE WEEKLY EARNINGS</b>
<b>722</b>	<b>FOOD SERVICES &amp; DRINKING PLACES</b>	<b>4,219</b>	<b>73,760</b>	<b>\$773,330,479</b>	<b>\$201.62</b>
7221	Full -Service Restaurants	1,807	32,003	360,783,017	<b>\$216.80</b>
7222	Limited-Service Eating Places	2,098	38,746	377,508,618	<b>\$187.37</b>
7223	Special Food Services	155	2,035	25,338,192	<b>\$239.45</b>
7224	Drinking Places, Alcoholic Beverages	159	977	9,700,652	<b>\$190.94</b>
<b>OTHER SERVICES</b>		<b>5,539</b>	<b>25,265</b>	<b>\$572,910,871</b>	<b>\$436.08</b>
<b>811</b>	<b>REPAIR &amp; MAINTENANCE</b>	<b>2,248</b>	<b>9,257</b>	<b>\$242,855,222</b>	<b>\$504.51</b>
8111	Automotive Repair & Maintenance	1,558	6,642	163,019,605	<b>\$472.00</b>
8112	Electronic Equipment Repair & Maintenance	160	587	18,838,002	<b>\$617.15</b>
8113	Commercial Machinery Repair & Maintenance	337	1,444	47,009,766	<b>\$626.06</b>
8114	Household Goods Repair & Maintenance	193	584	13,987,849	<b>\$460.61</b>
<b>812</b>	<b>PERSONAL &amp; LAUNDRY SERVICES</b>	<b>1,318</b>	<b>8,203</b>	<b>\$158,181,991</b>	<b>\$370.84</b>
8121	Personal Care Services	565	2,495	36,453,953	<b>\$280.98</b>
8122	Death Care Services	248	1,671	41,858,459	<b>\$481.73</b>
8123	Drycleaning & Laundry Services	345	3,274	62,232,071	<b>\$365.54</b>
8129	Other Personal Services	160	763	17,637,508	<b>\$444.54</b>
<b>813</b>	<b>MEMBERSHIP ASSOCIATIONS &amp; ORGANIZATIONS</b>	<b>1,006</b>	<b>6,334</b>	<b>\$144,892,491</b>	<b>\$439.91</b>
8131	Religious Organizations	38	201	4,214,838	<b>\$403.26</b>
8132	Grantmaking & Giving Services	96	420	15,214,705	<b>\$696.64</b>
8133	Social Advocacy Organizations	136	1,909	42,643,204	<b>\$429.58</b>
8134	Civic & Social Organizations	224	1,635	20,617,350	<b>\$242.50</b>
8139	Professional & Similar Organizations	514	2,170	62,202,394	<b>\$551.24</b>
<b>814</b>	<b>PRIVATE HOUSEHOLDS</b>	<b>966</b>	<b>1,471</b>	<b>\$26,981,167</b>	<b>\$352.73</b>
	<b>LOCAL GOVERNMENT</b>	<b>1,987</b>	<b>109,243</b>	<b>\$3,180,215,703</b>	<b>\$559.83</b>
	<b>STATE GOVERNMENT</b>	<b>1,199</b>	<b>60,289</b>	<b>\$2,108,855,433</b>	<b>\$672.68</b>
	<b>NONCLASSIFIABLE ESTABLISHMENTS</b>	<b>0</b>	<b>0</b>	<b>\$0</b>	

**TABLE 6. COUNTY SUMMARY  
EMPLOYMENT AND TOTAL EARNINGS, BY INDUSTRY  
CALENDAR YEAR 2005**

<b>NORTH AMERICAN INDUSTRY CLASSIFICATION SYSTEM INDUSTRY GROUP</b>	<b>AVERAGE EMPLOYING UNITS</b>	<b>AVERAGE COVERED EMPLOYMENT</b>	<b>TOTAL EARNINGS</b>	<b>AVERAGE WEEKLY EARNINGS</b>
<b>ARKANSAS COUNTY - TOTAL</b>	<b>648</b>	<b>9,840</b>	<b>\$276,866,506</b>	<b>\$541.09</b>
Natural Resources & Mining	47	275	7,615,599	532.56
Construction	55	265	7,698,978	558.71
Manufacturing	31	3,605	113,409,438	604.98
Trade, Transportation & Utilities	198	2,057	60,630,676	566.83
Wholesale Trade	42	443	20,097,308	872.43
Retail Trade	103	1,083	20,613,351	366.03
Transportation, Warehousing & Utilities	53	531	19,920,017	721.43
Information	9	81	2,819,238	669.33
Financial Activities	43	324	10,246,641	608.18
Professional & Business Services	51	401	14,842,362	711.80
Education & Health Services	64	1,158	25,094,421	416.74
Leisure & Hospitality	53	504	4,792,243	182.85
Other Services	51	154	3,271,222	408.49
Local Government	31	809	20,700,912	492.08
State Government	16	208	5,744,776	531.14
<b>ASHLEY COUNTY - TOTAL</b>	<b>525</b>	<b>8,257</b>	<b>\$291,818,108</b>	<b>\$679.65</b>
Natural Resources & Mining	60	490	13,559,947	532.18
Construction	49	598	16,169,140	519.97
Manufacturing	28	2,977	163,204,465	1054.27
Trade, Transportation & Utilities	135	1,267	28,669,457	435.15
Wholesale Trade	25	165	6,027,288	702.48
Retail Trade	88	878	14,811,064	324.41
Transportation, Warehousing & Utilities	22	225	7,831,105	669.33
Information	10	53	1,373,992	498.55
Financial Activities	35	228	6,329,671	533.88
Professional & Business Services	47	347	9,660,130	535.37
Education & Health Services	49	579	17,403,247	578.03
Leisure & Hospitality	30	370	3,436,465	178.61
Other Services	39	173	3,265,589	363.00
Local Government	32	964	24,182,490	482.41
State Government	12	211	4,563,515	415.92

**TABLE 6. COUNTY SUMMARY  
EMPLOYMENT AND TOTAL EARNINGS, BY INDUSTRY  
CALENDAR YEAR 2005**

<b>NORTH AMERICAN INDUSTRY CLASSIFICATION SYSTEM INDUSTRY GROUP</b>	<b>AVERAGE EMPLOYING UNITS</b>	<b>AVERAGE COVERED EMPLOYMENT</b>	<b>TOTAL EARNINGS</b>	<b>AVERAGE WEEKLY EARNINGS</b>
<b>BAXTER COUNTY - TOTAL</b>	<b>1,178</b>	<b>14,188</b>	<b>\$373,278,025</b>	<b>\$505.95</b>
Natural Resources & Mining	7	116	3,075,363	509.84
Construction	130	648	14,752,049	437.80
Manufacturing	66	2,574	80,855,954	604.09
Trade, Transportation & Utilities	266	2,594	55,805,390	413.72
Wholesale Trade	31	179	5,490,407	589.86
Retail Trade	208	2,152	42,981,568	384.09
Transportation, Warehousing & Utilities	28	263	7,333,415	536.23
Information	24	288	8,511,516	568.34
Financial Activities	107	661	21,236,005	617.83
Professional & Business Services	130	782	20,601,037	506.62
Education & Health Services	175	3,156	107,114,548	652.69
Leisure & Hospitality	120	1,555	15,914,023	196.81
Other Services	106	406	6,412,585	303.74
Local Government	36	1,120	31,443,303	539.89
State Government	13	288	7,556,252	504.56
<b>BENTON COUNTY - TOTAL</b>	<b>4,785</b>	<b>88,677</b>	<b>\$3,324,382,299</b>	<b>\$720.94</b>
Natural Resources & Mining	25	639	26,131,223	786.42
Construction	723	4,832	160,832,177	640.09
Manufacturing	241	13,713	457,016,292	640.91
Trade, Transportation & Utilities	1,285	22,358	807,822,830	694.83
Wholesale Trade	560	3,728	205,471,203	1059.92
Retail Trade	562	7,201	161,654,322	431.71
Transportation, Warehousing & Utilities	163	11,429	440,697,305	741.53
Information	69	901	32,668,393	697.27
Financial Activities	530	3,300	123,431,225	719.30
Professional & Business Services	764	21,467	1,162,942,089	1041.80
Education & Health Services	387	6,343	201,850,205	611.97
Leisure & Hospitality	364	6,431	80,684,231	241.27
Other Services	304	1,739	43,201,352	477.74
Local Government	75	6,253	206,099,435	633.85
State Government	19	702	21,702,847	594.53

**TABLE 6. COUNTY SUMMARY  
EMPLOYMENT AND TOTAL EARNINGS, BY INDUSTRY  
CALENDAR YEAR 2005**

<b>NORTH AMERICAN INDUSTRY CLASSIFICATION SYSTEM INDUSTRY GROUP</b>	<b>AVERAGE EMPLOYING UNITS</b>	<b>AVERAGE COVERED EMPLOYMENT</b>	<b>TOTAL EARNINGS</b>	<b>AVERAGE WEEKLY EARNINGS</b>
<b>BOONE COUNTY - TOTAL</b>	<b>1,014</b>	<b>13,672</b>	<b>\$394,479,247</b>	<b>\$554.87</b>
Construction	92	463	12,514,556	519.79
Manufacturing	69	2,109	68,271,777	622.53
Trade, Transportation & Utilities	269	4,329	141,938,022	630.53
Wholesale Trade	57	664	19,196,173	555.96
Retail Trade	159	1,972	40,273,991	392.75
Transportation, Warehousing & Utilities	53	1,692	82,467,858	937.31
Information	18	415	13,658,662	632.93
Financial Activities	95	617	19,727,004	614.85
Professional & Business Services	105	540	11,632,385	414.26
Education & Health Services	128	1,114	31,368,375	541.51
Leisure & Hospitality	82	1,159	11,901,020	197.47
Local Government	59	2,094	58,401,527	536.34
State Government	21	575	18,710,099	625.76
Other	78	259	6,355,820	471.92
<b>BRADLEY COUNTY - TOTAL</b>	<b>344</b>	<b>4,039</b>	<b>\$100,053,611</b>	<b>\$476.38</b>
Natural Resources & Mining	53	420	7,398,464	338.76
Construction	22	163	4,243,292	500.62
Manufacturing	11	1,084	33,873,796	600.94
Trade, Transportation & Utilities	91	493	10,038,527	391.58
Wholesale Trade	14	104	2,025,713	374.58
Retail Trade	51	315	5,599,027	341.82
Transportation, Warehousing & Utilities	26	74	2,413,787	627.28
Information	3	13	345,008	510.37
Financial Activities	24	185	4,648,424	483.20
Professional & Business Services	25	101	2,840,000	540.75
Education & Health Services	38	528	13,576,670	494.49
Leisure & Hospitality	18	178	1,376,864	148.75
Other Services	32	96	1,846,572	369.91
Local Government	16	514	13,060,668	488.65
State Government	12	265	6,805,326	493.86



**TABLE 6. COUNTY SUMMARY  
EMPLOYMENT AND TOTAL EARNINGS, BY INDUSTRY  
CALENDAR YEAR 2005**

<b>NORTH AMERICAN INDUSTRY CLASSIFICATION SYSTEM INDUSTRY GROUP</b>	<b>AVERAGE EMPLOYING UNITS</b>	<b>AVERAGE COVERED EMPLOYMENT</b>	<b>TOTAL EARNINGS</b>	<b>AVERAGE WEEKLY EARNINGS</b>
<b>CALHOUN COUNTY - TOTAL</b>	<b>120</b>	<b>3,867</b>	<b>\$132,698,266</b>	<b>\$659.91</b>
Natural Resources & Mining	20	132	3,304,453	481.42
Construction	11	100	2,438,247	468.89
Manufacturing	15	2,628	100,159,660	732.93
Trade, Transportation & Utilities	26	203	4,895,253	463.74
Wholesale Trade & Retail Trade	18	73	1,016,223	267.71
Transportation, Warehousing & Utilities	9	129	3,879,030	578.27
Financial Activities	8	126	3,538,362	540.04
Education & Health Services	4	44	1,287,188	562.58
Local Government	11	192	4,451,966	445.91
State Government	10	328	8,212,190	481.48
Other	16	114	4,410,947	744.09
<b>CARROLL COUNTY - TOTAL</b>	<b>794</b>	<b>9,666</b>	<b>\$215,639,444</b>	<b>\$429.02</b>
Natural Resources & Mining	17	271	7,332,928	520.36
Trade, Transportation & Utilities	208	1,624	35,094,874	415.58
Wholesale Trade	22	115	2,160,652	361.31
Retail Trade	166	1,256	23,402,761	358.32
Transportation, Warehousing & Utilities	19	253	9,531,461	724.50
Professional & Business Services	69	230	5,931,258	495.92
Education & Health Services	58	742	21,232,529	550.29
Leisure & Hospitality	174	1,618	17,676,475	210.09
Local Government	25	997	25,581,219	493.43
State Government	11	103	2,836,159	529.53
Other	234	4,081	99,954,002	471.01

**TABLE 6. COUNTY SUMMARY  
EMPLOYMENT AND TOTAL EARNINGS, BY INDUSTRY  
CALENDAR YEAR 2005**

<b>NORTH AMERICAN INDUSTRY CLASSIFICATION SYSTEM INDUSTRY GROUP</b>	<b>AVERAGE EMPLOYING UNITS</b>	<b>AVERAGE COVERED EMPLOYMENT</b>	<b>TOTAL EARNINGS</b>	<b>AVERAGE WEEKLY EARNINGS</b>
<b>CHICOT COUNTY - TOTAL</b>	<b>333</b>	<b>3,631</b>	<b>\$84,025,070</b>	<b>\$445.02</b>
Natural Resources & Mining	47	261	6,417,428	472.84
Construction	20	292	8,606,952	566.84
Manufacturing	12	379	7,409,685	375.97
Trade, Transportation & Utilities	84	597	12,429,863	400.40
Wholesale Trade	16	106	3,471,365	629.78
Retail Trade	56	417	6,326,106	291.74
Transportation, Warehousing & Utilities	13	73	2,632,392	693.46
Information	6	13	367,954	544.31
Financial Activities	28	160	4,732,932	568.86
Professional & Business Services	25	90	3,249,358	694.31
Education & Health Services	45	474	10,481,242	425.24
Leisure & Hospitality	22	240	1,982,688	158.87
Other Services	17	53	1,213,478	440.30
Local Government	16	776	19,521,867	483.79
State Government	12	297	7,611,623	492.85
<b>CLARK COUNTY - TOTAL</b>	<b>605</b>	<b>9,712</b>	<b>\$242,560,955</b>	<b>\$480.30</b>
Natural Resources & Mining	41	257	7,241,903	541.90
Construction	36	125	2,895,467	445.46
Manufacturing	35	2,371	67,811,498	550.01
Trade, Transportation & Utilities	139	1,457	34,849,365	459.97
Wholesale Trade	21	74	2,382,328	619.11
Retail Trade	92	1,095	22,278,128	391.26
Transportation, Warehousing & Utilities	26	289	10,188,909	678.00
Information	10	42	1,205,939	552.17
Financial Activities	90	394	10,977,980	535.82
Professional & Business Services	45	396	14,065,458	683.05
Education & Health Services	65	1,425	36,007,508	485.93
Leisure & Hospitality	55	1,065	10,774,884	194.56
Other Services	49	218	4,787,800	422.35
Local Government	26	890	21,519,093	464.98
State Government	15	1,072	30,424,060	545.78

**TABLE 6. COUNTY SUMMARY  
EMPLOYMENT AND TOTAL EARNINGS, BY INDUSTRY  
CALENDAR YEAR 2005**

<b>NORTH AMERICAN INDUSTRY CLASSIFICATION SYSTEM INDUSTRY GROUP</b>	<b>AVERAGE EMPLOYING UNITS</b>	<b>AVERAGE COVERED EMPLOYMENT</b>	<b>TOTAL EARNINGS</b>	<b>AVERAGE WEEKLY EARNINGS</b>
<b>CLAY COUNTY - TOTAL</b>	<b>405</b>	<b>4,693</b>	<b>\$104,394,082</b>	<b>\$427.78</b>
Natural Resources & Mining	57	215	4,800,490	429.38
Construction	40	175	3,943,524	433.35
Manufacturing	19	1,259	28,427,966	434.23
Trade, Transportation & Utilities	98	963	22,438,535	448.09
Wholesale Trade	24	345	8,868,545	494.34
Retail Trade	52	456	7,793,048	328.65
Transportation, Warehousing & Utilities	21	163	5,776,942	681.56
Information	9	131	3,320,774	487.49
Financial Activities	36	157	4,014,226	491.70
Professional & Business Services	24	56	1,208,613	415.05
Education & Health Services	40	509	9,775,006	369.31
Leisure & Hospitality	24	227	1,685,710	142.81
Other Services	25	50	1,073,142	412.75
Local Government	22	873	21,738,200	478.86
State Government	12	79	1,967,896	479.04
<b>CLEBURNE COUNTY - TOTAL</b>	<b>664</b>	<b>6,704</b>	<b>\$157,163,178</b>	<b>\$450.83</b>
Natural Resources & Mining	15	40	1,318,905	634.09
Construction	66	289	5,921,699	394.04
Manufacturing	46	1,820	52,775,412	557.64
Trade, Transportation & Utilities	190	1,520	33,684,169	426.17
Wholesale Trade	41	167	4,254,248	489.89
Retail Trade	111	1,033	18,287,889	340.46
Transportation, Warehousing & Utilities	38	321	11,142,032	667.51
Information	8	61	1,415,002	446.09
Financial Activities	69	255	6,880,510	518.89
Professional & Business Services	58	195	4,809,827	474.34
Education & Health Services	59	759	18,349,445	464.92
Leisure & Hospitality	65	750	7,875,329	201.93
Other Services	58	156	2,687,550	331.31
Local Government	20	744	18,609,366	481.01
State Government	10	115	2,835,964	474.24

**TABLE 6. COUNTY SUMMARY  
EMPLOYMENT AND TOTAL EARNINGS, BY INDUSTRY  
CALENDAR YEAR 2005**

<b>NORTH AMERICAN INDUSTRY CLASSIFICATION SYSTEM INDUSTRY GROUP</b>	<b>AVERAGE EMPLOYING UNITS</b>	<b>AVERAGE COVERED EMPLOYMENT</b>	<b>TOTAL EARNINGS</b>	<b>AVERAGE WEEKLY EARNINGS</b>
<b>CLEVELAND COUNTY - TOTAL</b>	<b>111</b>	<b>1,067</b>	<b>\$25,033,456</b>	<b>\$451.18</b>
Natural Resources & Mining	20	177	4,788,925	520.31
Construction	6	38	582,019	294.54
Manufacturing	6	91	1,952,724	412.66
Trade, Transportation & Utilities	32	205	3,821,669	358.51
Wholesale Trade	5	25	483,093	371.61
Retail Trade	15	81	846,641	201.01
Transportation, Warehousing & Utilities	12	99	2,491,935	484.06
Local Government	12	323	7,975,876	474.87
State Government	8	62	1,452,760	450.61
Other	27	171	4,459,483	501.52
<b>COLUMBIA COUNTY - TOTAL</b>	<b>687</b>	<b>9,279</b>	<b>\$266,922,281</b>	<b>\$553.20</b>
Natural Resources & Mining	49	469	22,382,718	917.78
Construction	46	326	10,449,032	616.39
Manufacturing	38	2,722	105,516,790	745.47
Trade, Transportation & Utilities	185	1,581	33,327,711	405.39
Wholesale Trade	29	276	7,161,985	499.02
Retail Trade	116	1,058	18,016,309	327.47
Transportation, Warehousing & Utilities	41	246	8,149,417	637.07
Information	10	81	2,055,828	488.09
Financial Activities	77	403	12,609,739	601.72
Professional & Business Services	64	331	6,828,050	396.70
Education & Health Services	77	850	16,822,253	380.59
Leisure & Hospitality	45	658	6,069,405	177.38
Other Services	53	216	4,110,424	365.96
Local Government	30	1,102	29,189,361	509.38
State Government	14	541	17,560,970	624.23

**TABLE 6. COUNTY SUMMARY  
EMPLOYMENT AND TOTAL EARNINGS, BY INDUSTRY  
CALENDAR YEAR 2005**

<b>NORTH AMERICAN INDUSTRY CLASSIFICATION SYSTEM INDUSTRY GROUP</b>	<b>AVERAGE EMPLOYING UNITS</b>	<b>AVERAGE COVERED EMPLOYMENT</b>	<b>TOTAL EARNINGS</b>	<b>AVERAGE WEEKLY EARNINGS</b>
<b>CONWAY COUNTY - TOTAL</b>	<b>481</b>	<b>6,518</b>	<b>\$168,877,500</b>	<b>\$498.26</b>
Natural Resources & Mining	18	131	4,100,718	601.98
Construction	50	513	17,151,966	642.97
Manufacturing	31	1,079	42,994,927	766.29
Trade, Transportation & Utilities	136	1,417	32,272,588	437.99
Wholesale Trade	30	259	7,430,173	551.69
Retail Trade	80	885	16,387,467	356.09
Transportation, Warehousing & Utilities	27	272	8,454,948	597.78
Information	6	36	710,006	379.28
Financial Activities	36	186	5,271,380	545.01
Professional & Business Services	45	658	11,274,930	329.52
Education & Health Services	55	746	19,280,746	497.03
Leisure & Hospitality	39	467	3,980,479	163.91
Other Services	27	80	2,207,108	530.55
Local Government	27	857	21,668,723	486.24
State Government	11	347	7,963,929	441.36
<b>CRAIGHEAD COUNTY - TOTAL</b>	<b>2,524</b>	<b>40,065</b>	<b>\$1,151,426,676</b>	<b>\$552.67</b>
Natural Resources & Mining	59	292	7,012,985	461.87
Construction	222	1,700	49,085,264	555.26
Manufacturing	140	6,906	239,105,917	665.83
Trade, Transportation & Utilities	729	8,076	197,719,786	470.82
Wholesale Trade	187	1,505	52,952,719	676.63
Retail Trade	427	5,498	108,501,076	379.51
Transportation, Warehousing & Utilities	115	1,073	36,265,991	649.97
Information	34	654	21,300,590	626.34
Financial Activities	256	1,575	59,840,398	730.65
Professional & Business Services	319	3,705	87,925,797	456.38
Education & Health Services	344	6,951	255,657,388	707.31
Leisure & Hospitality	177	3,559	38,040,868	205.55
Other Services	182	1,021	20,058,680	377.81
Local Government	38	3,337	92,810,791	534.86
State Government	24	2,289	82,868,212	696.21

**TABLE 6. COUNTY SUMMARY  
EMPLOYMENT AND TOTAL EARNINGS, BY INDUSTRY  
CALENDAR YEAR 2005**

<b>NORTH AMERICAN INDUSTRY CLASSIFICATION SYSTEM INDUSTRY GROUP</b>	<b>AVERAGE EMPLOYING UNITS</b>	<b>AVERAGE COVERED EMPLOYMENT</b>	<b>TOTAL EARNINGS</b>	<b>AVERAGE WEEKLY EARNINGS</b>
<b>CRAWFORD COUNTY - TOTAL</b>	<b>1,153</b>	<b>18,411</b>	<b>\$495,940,307</b>	<b>\$518.02</b>
Natural Resources & Mining	25	473	15,083,727	613.26
Construction	180	1,356	40,902,764	580.08
Manufacturing	75	3,503	96,607,166	530.35
Trade, Transportation & Utilities	307	6,406	177,515,901	532.90
Wholesale Trade	78	675	22,766,539	648.62
Retail Trade	162	1,856	35,458,086	367.40
Transportation, Warehousing & Utilities	67	3,876	119,291,276	591.86
Information	13	224	7,147,845	613.65
Financial Activities	117	510	13,997,763	527.82
Professional & Business Services	133	687	19,007,624	532.07
Education & Health Services	95	1,483	42,476,421	550.81
Leisure & Hospitality	80	1,306	13,296,209	195.79
Other Services	76	333	7,932,341	458.09
Local Government	41	1,966	56,939,814	556.97
State Government	11	164	5,032,732	590.14
<b>CRITTENDEN COUNTY - TOTAL</b>	<b>1,119</b>	<b>15,726</b>	<b>\$437,701,818</b>	<b>\$535.25</b>
Natural Resources & Mining	49	323	8,058,029	479.76
Construction	74	598	19,843,317	638.13
Manufacturing	52	1,487	60,950,987	788.25
Trade, Transportation & Utilities	314	4,861	141,305,124	559.02
Wholesale Trade	62	784	29,349,161	719.91
Retail Trade	169	2,073	38,410,941	356.33
Transportation, Warehousing & Utilities	84	2,004	73,545,022	705.75
Information	10	93	3,259,699	674.05
Financial Activities	111	539	17,786,753	634.61
Professional & Business Services	109	704	17,782,148	485.74
Education & Health Services	142	1,837	53,657,391	561.72
Leisure & Hospitality	100	1,871	20,775,613	213.54
Other Services	100	593	13,034,814	422.71
Local Government	42	2,390	70,565,995	567.80
State Government	16	430	10,681,948	477.73

**TABLE 6. COUNTY SUMMARY  
EMPLOYMENT AND TOTAL EARNINGS, BY INDUSTRY  
CALENDAR YEAR 2005**

<b>NORTH AMERICAN INDUSTRY CLASSIFICATION SYSTEM INDUSTRY GROUP</b>	<b>AVERAGE EMPLOYING UNITS</b>	<b>AVERAGE COVERED EMPLOYMENT</b>	<b>TOTAL EARNINGS</b>	<b>AVERAGE WEEKLY EARNINGS</b>
<b>CROSS COUNTY - TOTAL</b>	<b>492</b>	<b>5,112</b>	<b>\$129,904,416</b>	<b>\$488.69</b>
Natural Resources & Mining	46	230	4,638,423	387.83
Construction	35	166	3,596,596	416.66
Manufacturing	20	798	24,927,791	600.73
Trade, Transportation & Utilities	132	1,210	31,843,512	506.10
Wholesale Trade	33	306	10,183,472	639.99
Retail Trade	66	651	12,494,091	369.08
Transportation, Warehousing & Utilities	34	253	9,165,949	696.71
Information	8	61	1,501,624	473.40
Financial Activities	46	378	10,878,866	553.46
Professional & Business Services	42	166	4,360,995	505.21
Education & Health Services	61	623	14,716,980	454.28
Leisure & Hospitality	32	381	3,328,676	168.01
Other Services	42	77	1,316,293	328.74
Local Government	17	807	22,148,997	527.81
State Government	11	215	6,645,663	594.42
<b>DALLAS COUNTY - TOTAL</b>	<b>276</b>	<b>3,238</b>	<b>\$81,598,553</b>	<b>\$484.62</b>
Natural Resources & Mining	41	220	6,358,297	555.80
Construction	13	75	2,204,472	565.25
Manufacturing	15	852	27,043,421	610.41
Trade, Transportation & Utilities	75	481	9,891,514	395.47
Wholesale Trade	9	42	1,256,561	575.35
Retail Trade	47	374	6,991,004	359.47
Transportation, Warehousing & Utilities	19	65	1,643,949	486.38
Information	3	25	615,095	473.15
Financial Activities	21	103	3,310,097	618.02
Professional & Business Services	18	54	2,497,182	889.31
Education & Health Services	29	731	15,723,071	413.63
Leisure & Hospitality	20	140	1,151,111	158.12
Other Services	16	63	1,055,895	322.31
Local Government	16	434	10,031,930	444.52
State Government	9	60	1,716,468	550.15

**TABLE 6. COUNTY SUMMARY  
EMPLOYMENT AND TOTAL EARNINGS, BY INDUSTRY  
CALENDAR YEAR 2005**

<b>NORTH AMERICAN INDUSTRY CLASSIFICATION SYSTEM INDUSTRY GROUP</b>	<b>AVERAGE EMPLOYING UNITS</b>	<b>AVERAGE COVERED EMPLOYMENT</b>	<b>TOTAL EARNINGS</b>	<b>AVERAGE WEEKLY EARNINGS</b>
<b>DESHA COUNTY - TOTAL</b>	<b>455</b>	<b>4,999</b>	<b>\$134,522,738</b>	<b>\$517.50</b>
Natural Resources & Mining	51	304	7,179,420	454.16
Construction	27	135	4,109,379	585.38
Manufacturing	15	1,278	47,889,475	720.62
Trade, Transportation & Utilities	134	1,067	24,300,103	437.97
Wholesale Trade	20	189	7,050,111	717.35
Retail Trade	83	672	11,375,636	325.54
Transportation, Warehousing & Utilities	31	205	5,874,356	551.07
Information	6	23	742,384	620.72
Financial Activities	41	227	5,609,890	475.25
Professional & Business Services	37	151	4,772,495	607.81
Education & Health Services	48	510	11,339,787	427.59
Leisure & Hospitality	38	295	2,515,695	164.00
Other Services	28	72	957,478	255.74
Local Government	19	777	20,666,201	511.49
State Government	11	160	4,440,431	533.71
<b>DREW COUNTY - TOTAL</b>	<b>488</b>	<b>6,825</b>	<b>\$161,442,758</b>	<b>\$454.90</b>
Natural Resources & Mining	40	328	9,541,886	559.44
Construction	28	150	3,505,242	449.39
Manufacturing	22	983	25,100,242	491.04
Trade, Transportation & Utilities	137	1,274	30,029,162	453.28
Wholesale Trade	26	273	9,301,659	655.23
Retail Trade	89	898	16,685,872	357.33
Transportation, Warehousing & Utilities	21	103	4,041,631	754.60
Information	9	87	2,367,240	523.26
Financial Activities	42	272	9,013,966	637.30
Professional & Business Services	43	365	9,930,919	523.23
Education & Health Services	57	779	15,033,140	371.12
Leisure & Hospitality	43	581	4,698,378	155.51
Other Services	27	83	1,285,954	297.95
Local Government	23	1,129	29,382,840	500.49
State Government	17	794	21,553,789	522.04



**TABLE 6. COUNTY SUMMARY  
EMPLOYMENT AND TOTAL EARNINGS, BY INDUSTRY  
CALENDAR YEAR 2005**

NORTH AMERICAN INDUSTRY CLASSIFICATION SYSTEM INDUSTRY GROUP	AVERAGE EMPLOYING UNITS	AVERAGE COVERED EMPLOYMENT	TOTAL EARNINGS	AVERAGE WEEKLY EARNINGS
<b>FAULKNER COUNTY - TOTAL</b>	<b>2,270</b>	<b>35,535</b>	<b>\$1,085,009,286</b>	<b>\$587.18</b>
Natural Resources & Mining	10	48	1,823,915	730.74
Construction	312	2,637	81,445,986	593.96
Manufacturing	117	5,168	196,365,051	730.70
Trade, Transportation & Utilities	565	6,213	140,638,755	435.31
Wholesale Trade	131	740	25,171,435	654.14
Retail Trade	366	4,839	91,604,588	364.05
Transportation, Warehousing & Utilities	69	634	23,862,732	723.81
Information	39	351	11,040,983	604.92
Financial Activities	274	1,305	40,256,931	593.24
Professional & Business Services	308	5,206	241,260,921	891.21
Education & Health Services	270	4,614	138,556,410	577.49
Leisure & Hospitality	178	3,706	36,238,263	188.04
Other Services	140	577	11,439,496	381.27
Local Government	38	2,863	93,242,591	626.31
State Government	19	2,847	92,699,984	626.17
<b>FRANKLIN COUNTY - TOTAL</b>	<b>314</b>	<b>4,209</b>	<b>\$106,941,726</b>	<b>\$488.61</b>
Natural Resources & Mining	7	140	5,846,090	803.03
Construction	26	143	3,852,471	518.08
Manufacturing	21	1,018	27,801,736	525.20
Trade, Transportation & Utilities	94	844	21,068,109	480.04
Wholesale Trade	14	60	927,010	297.12
Retail Trade	58	477	7,843,272	316.21
Transportation, Warehousing & Utilities	22	307	12,297,827	770.35
Information	7	54	1,051,672	374.53
Financial Activities	25	186	4,737,920	489.86
Professional & Business Services	19	57	1,396,109	471.02
Education & Health Services	40	529	12,645,185	459.69
Leisure & Hospitality	27	329	2,876,943	168.16
Other Services	19	56	1,170,360	401.91
Local Government	19	727	20,924,308	553.49
State Government	10	126	3,570,823	545.00

**TABLE 6. COUNTY SUMMARY  
EMPLOYMENT AND TOTAL EARNINGS, BY INDUSTRY  
CALENDAR YEAR 2005**

<b>NORTH AMERICAN INDUSTRY CLASSIFICATION SYSTEM INDUSTRY GROUP</b>	<b>AVERAGE EMPLOYING UNITS</b>	<b>AVERAGE COVERED EMPLOYMENT</b>	<b>TOTAL EARNINGS</b>	<b>AVERAGE WEEKLY EARNINGS</b>
<b>FULTON COUNTY - TOTAL</b>	<b>209</b>	<b>1,899</b>	<b>\$37,483,299</b>	<b>\$379.59</b>
Construction	15	32	701,322	421.47
Manufacturing	12	141	2,354,717	321.16
Trade, Transportation & Utilities	61	371	8,278,584	429.12
Retail Trade	42	200	2,698,982	259.52
Other Trade, Transportation & Utilities	19	171	5,579,602	627.49
Financial Activities	18	107	2,842,838	510.93
Professional & Business Services	16	49	1,201,441	471.52
Education & Health Services	29	389	6,347,931	313.82
Leisure & Hospitality	18	162	1,482,510	175.99
Local Government	13	479	10,713,844	430.14
State Government	11	101	2,482,719	472.72
Other	16	68	1,077,393	304.69
<b>GARLAND COUNTY - TOTAL</b>	<b>3,026</b>	<b>35,708</b>	<b>\$951,445,554</b>	<b>\$512.41</b>
Natural Resources & Mining	49	355	12,269,138	664.63
Construction	412	2,308	62,427,222	520.16
Manufacturing	125	3,414	106,825,822	601.74
Trade, Transportation & Utilities	698	7,271	172,186,685	455.41
Wholesale Trade	141	1,069	35,651,141	641.35
Retail Trade	484	5,489	110,371,819	386.69
Transportation, Warehousing & Utilities	72	713	26,163,725	705.68
Information	37	439	13,329,469	583.91
Financial Activities	350	1,536	48,819,309	611.22
Professional & Business Services	387	2,616	73,129,267	537.59
Education & Health Services	326	6,862	241,125,696	675.76
Leisure & Hospitality	352	6,098	80,525,322	253.95
Other Services	228	962	18,751,252	374.85
Local Government	36	2,932	94,557,287	620.19
State Government	26	915	27,499,085	577.95

**TABLE 6. COUNTY SUMMARY  
EMPLOYMENT AND TOTAL EARNINGS, BY INDUSTRY  
CALENDAR YEAR 2005**

NORTH AMERICAN INDUSTRY CLASSIFICATION SYSTEM INDUSTRY GROUP	AVERAGE EMPLOYING UNITS	AVERAGE COVERED EMPLOYMENT	TOTAL EARNINGS	AVERAGE WEEKLY EARNINGS
<b>GRANT COUNTY - TOTAL</b>	<b>285</b>	<b>3,515</b>	<b>\$92,696,296</b>	<b>\$507.15</b>
Natural Resources & Mining	25	208	8,163,143	754.73
Construction	33	246	7,190,633	562.12
Manufacturing	20	843	25,061,535	571.71
Trade, Transportation & Utilities	86	564	13,097,092	446.57
Wholesale Trade	16	153	5,338,310	670.98
Retail Trade	40	352	6,079,066	332.12
Transportation, Warehousing & Utilities	30	59	1,679,716	547.50
Information	3	39	1,137,463	560.88
Financial Activities	20	100	2,965,886	570.36
Professional & Business Services	22	87	2,851,758	630.36
Education & Health Services	22	211	4,825,990	439.85
Leisure & Hospitality	21	270	2,732,239	194.60
Other Services	14	37	630,473	327.69
Local Government	10	851	22,494,889	508.34
State Government	9	59	1,545,195	503.65
<b>GREENE COUNTY - TOTAL</b>	<b>866</b>	<b>14,875</b>	<b>\$395,884,281</b>	<b>\$511.81</b>
Natural Resources & Mining	37	210	5,983,261	547.92
Construction	75	387	9,181,876	456.26
Manufacturing	56	5,470	182,641,695	642.11
Trade, Transportation & Utilities	244	2,170	47,749,109	423.16
Wholesale Trade	53	410	13,226,639	620.39
Retail Trade	161	1,572	28,428,171	347.77
Transportation, Warehousing & Utilities	30	187	6,094,299	626.73
Information	14	109	2,246,738	396.39
Financial Activities	86	466	13,610,118	561.66
Professional & Business Services	88	1,370	29,305,226	411.36
Education & Health Services	102	1,681	41,228,562	471.66
Leisure & Hospitality	66	1,134	10,177,614	172.60
Other Services	55	168	3,340,945	382.43
Local Government	32	1,457	42,538,778	561.46
State Government	11	253	7,880,359	598.99

**TABLE 6. COUNTY SUMMARY  
EMPLOYMENT AND TOTAL EARNINGS, BY INDUSTRY  
CALENDAR YEAR 2005**

<b>NORTH AMERICAN INDUSTRY CLASSIFICATION SYSTEM INDUSTRY GROUP</b>	<b>AVERAGE EMPLOYING UNITS</b>	<b>AVERAGE COVERED EMPLOYMENT</b>	<b>TOTAL EARNINGS</b>	<b>AVERAGE WEEKLY EARNINGS</b>
<b>HEMPSTEAD COUNTY - TOTAL</b>	<b>500</b>	<b>8,252</b>	<b>\$215,966,719</b>	<b>\$503.30</b>
Natural Resources & Mining	19	218	6,873,687	606.36
Construction	35	141	3,428,346	467.59
Manufacturing	32	2,800	85,374,031	586.36
Trade, Transportation & Utilities	137	1,251	27,338,314	420.25
Wholesale Trade	26	188	4,323,391	442.25
Retail Trade	87	881	14,870,596	324.60
Transportation, Warehousing & Utilities	24	182	8,144,327	860.56
Information	11	86	2,209,292	494.03
Financial Activities	44	269	8,227,748	588.20
Professional & Business Services	36	212	3,252,329	295.02
Education & Health Services	61	978	23,559,125	463.25
Leisure & Hospitality	43	599	6,020,656	193.29
Other Services	36	213	5,413,912	488.80
Local Government	29	959	28,293,013	567.36
State Government	17	526	15,976,266	584.10
<b>HOT SPRING COUNTY - TOTAL</b>	<b>614</b>	<b>7,637</b>	<b>\$213,500,911</b>	<b>\$537.62</b>
Natural Resources & Mining	40	174	5,486,655	606.39
Construction	68	372	10,968,422	567.02
Manufacturing	45	1,638	64,068,690	752.19
Trade, Transportation & Utilities	170	1,465	39,667,999	520.71
Wholesale Trade	21	107	7,900,486	1419.93
Retail Trade	102	984	18,420,233	360.00
Transportation, Warehousing & Utilities	46	374	13,347,280	686.31
Information	9	68	2,395,507	677.46
Financial Activities	55	302	8,224,646	523.73
Professional & Business Services	54	228	5,656,024	477.06
Education & Health Services	47	984	24,490,414	478.63
Leisure & Hospitality	44	572	5,477,518	184.16
Other Services	41	282	4,635,392	316.11
Local Government	26	1,037	29,374,032	544.73
State Government	15	515	13,055,612	487.51

**TABLE 6. COUNTY SUMMARY  
EMPLOYMENT AND TOTAL EARNINGS, BY INDUSTRY  
CALENDAR YEAR 2005**

NORTH AMERICAN INDUSTRY CLASSIFICATION SYSTEM INDUSTRY GROUP	AVERAGE EMPLOYING UNITS	AVERAGE COVERED EMPLOYMENT	TOTAL EARNINGS	AVERAGE WEEKLY EARNINGS
<b>HOWARD COUNTY - TOTAL</b>	<b>362</b>	<b>7,545</b>	<b>\$194,953,745</b>	<b>\$496.90</b>
Natural Resources & Mining	22	244	7,090,482	558.83
Construction	23	86	2,029,920	453.92
Manufacturing	26	4,202	120,236,439	550.27
Trade, Transportation & Utilities	109	943	20,949,387	427.22
Wholesale Trade	20	105	3,347,145	613.03
Retail Trade	66	651	11,211,219	331.18
Transportation, Warehousing & Utilities	23	188	6,391,023	653.75
Information	8	37	952,981	495.31
Financial Activities	34	141	3,578,447	488.06
Professional & Business Services	28	115	2,724,601	455.62
Education & Health Services	40	618	12,114,750	376.98
Leisure & Hospitality	22	285	2,586,570	174.53
Other Services	20	105	1,955,363	358.13
Local Government	18	642	17,182,341	514.69
State Government	12	127	3,552,464	537.93
<b>INDEPENDENCE COUNTY - TOTAL</b>	<b>914</b>	<b>16,249</b>	<b>\$431,107,972</b>	<b>\$510.22</b>
Natural Resources & Mining	11	129	4,133,981	616.28
Construction	69	378	10,090,557	513.36
Manufacturing	55	5,015	154,915,217	594.05
Trade, Transportation & Utilities	287	3,043	79,728,252	503.86
Wholesale Trade	54	509	16,639,420	628.66
Retail Trade	179	1,743	31,594,850	348.59
Transportation, Warehousing & Utilities	55	791	31,493,982	765.68
Information	12	163	4,655,450	549.25
Financial Activities	86	459	13,338,181	558.83
Professional & Business Services	89	956	17,238,220	346.76
Education & Health Services	107	2,688	81,048,595	579.85
Leisure & Hospitality	71	1,158	10,320,095	171.38
Other Services	69	342	6,382,952	358.92
Local Government	40	1,457	36,246,036	478.41
State Government	18	461	13,010,436	542.73

**TABLE 6. COUNTY SUMMARY  
EMPLOYMENT AND TOTAL EARNINGS, BY INDUSTRY  
CALENDAR YEAR 2005**

<b>NORTH AMERICAN INDUSTRY CLASSIFICATION SYSTEM INDUSTRY GROUP</b>	<b>AVERAGE EMPLOYING UNITS</b>	<b>AVERAGE COVERED EMPLOYMENT</b>	<b>TOTAL EARNINGS</b>	<b>AVERAGE WEEKLY EARNINGS</b>
<b>IZARD COUNTY - TOTAL</b>	<b>250</b>	<b>2,845</b>	<b>\$66,242,620</b>	<b>\$447.77</b>
Natural Resources & Mining	5	82	2,739,605	642.50
Construction	24	80	1,747,053	419.96
Manufacturing	12	376	12,251,491	626.61
Trade, Transportation & Utilities	67	508	10,265,982	388.63
Retail Trade	51	400	6,973,877	335.28
Other Trade, Transportation & Utilities	16	108	3,292,105	586.20
Information	3	7	139,398	382.96
Financial Activities	26	145	3,936,211	522.04
Professional & Business Services	22	83	1,483,837	343.80
Education & Health Services	22	424	8,516,672	386.28
Leisure & Hospitality	26	181	1,490,406	158.35
Other Services	14	40	705,035	338.96
Local Government	18	507	11,976,061	454.26
State Government	11	412	10,990,869	513.02
<b>JACKSON COUNTY - TOTAL</b>	<b>520</b>	<b>5,718</b>	<b>\$154,720,371</b>	<b>\$520.36</b>
Natural Resources & Mining	46	228	5,417,657	456.95
Construction	28	186	4,977,338	514.61
Manufacturing	27	1,005	38,578,505	738.20
Trade, Transportation & Utilities	135	1,179	28,332,944	462.14
Wholesale Trade	38	222	8,043,829	696.80
Retail Trade	77	710	12,731,436	344.84
Transportation, Warehousing & Utilities	19	247	7,557,679	588.42
Information	4	36	1,198,924	640.45
Financial Activities	46	200	5,500,212	528.87
Professional & Business Services	38	138	3,679,279	512.72
Education & Health Services	68	989	28,955,528	563.03
Leisure & Hospitality	38	334	3,363,861	193.68
Other Services	41	103	1,702,103	317.79
Local Government	35	721	16,195,350	431.97
State Government	14	599	16,818,670	539.96

**TABLE 6. COUNTY SUMMARY  
EMPLOYMENT AND TOTAL EARNINGS, BY INDUSTRY  
CALENDAR YEAR 2005**

<b>NORTH AMERICAN INDUSTRY CLASSIFICATION SYSTEM INDUSTRY GROUP</b>	<b>AVERAGE EMPLOYING UNITS</b>	<b>AVERAGE COVERED EMPLOYMENT</b>	<b>TOTAL EARNINGS</b>	<b>AVERAGE WEEKLY EARNINGS</b>
<b>JEFFERSON COUNTY - TOTAL</b>	<b>1,773</b>	<b>32,549</b>	<b>\$973,639,445</b>	<b>\$575.25</b>
Natural Resources & Mining	40	491	16,859,826	660.34
Construction	126	1,439	60,623,581	810.17
Manufacturing	75	6,343	247,613,446	750.72
Trade, Transportation & Utilities	497	6,065	155,592,424	493.35
Wholesale Trade	87	1,071	34,145,735	613.12
Retail Trade	344	4,089	77,681,859	365.34
Transportation, Warehousing & Utilities	66	905	43,764,830	929.98
Information	19	223	6,102,325	526.24
Financial Activities	153	1,245	41,766,432	645.14
Professional & Business Services	176	1,914	58,771,462	590.50
Education & Health Services	301	5,435	154,421,239	546.39
Leisure & Hospitality	141	2,283	22,664,044	190.91
Other Services	164	810	18,008,663	427.56
Local Government	42	3,207	94,589,290	567.20
State Government	39	3,094	96,626,713	600.58
<b>JOHNSON COUNTY - TOTAL</b>	<b>451</b>	<b>8,419</b>	<b>\$202,720,458</b>	<b>\$463.06</b>
Natural Resources & Mining	15	209	6,068,648	558.40
Construction	33	159	3,763,941	455.24
Manufacturing	42	3,174	80,020,412	484.83
Trade, Transportation & Utilities	126	1,722	38,193,555	426.53
Information	6	32	865,673	520.24
Financial Activities	38	216	6,088,273	542.05
Professional & Business Services	47	173	4,466,471	496.50
Education & Health Services	52	1,099	28,278,250	494.82
Leisure & Hospitality	39	536	5,057,218	181.44
Other Services	29	85	1,656,609	374.80
Local Government	14	864	23,864,102	531.16
State Government	10	150	4,397,306	563.76

**TABLE 6. COUNTY SUMMARY  
EMPLOYMENT AND TOTAL EARNINGS, BY INDUSTRY  
CALENDAR YEAR 2005**

<b>NORTH AMERICAN INDUSTRY CLASSIFICATION SYSTEM INDUSTRY GROUP</b>	<b>AVERAGE EMPLOYING UNITS</b>	<b>AVERAGE COVERED EMPLOYMENT</b>	<b>TOTAL EARNINGS</b>	<b>AVERAGE WEEKLY EARNINGS</b>
<b>LAFAYETTE COUNTY - TOTAL</b>	<b>162</b>	<b>1,574</b>	<b>\$36,932,490</b>	<b>\$451.23</b>
Natural Resources & Mining	31	185	4,801,663	499.13
Trade, Transportation & Utilities	39	235	4,750,588	388.76
Retail Trade	23	161	2,371,994	283.32
Other Trade, Transportation & Utilities	16	73	2,378,594	626.61
Financial Activities	17	85	1,943,216	439.64
Professional & Business Services	11	55	1,811,483	633.39
Education & Health Services	12	209	3,950,544	363.50
Leisure & Hospitality	5	47	480,655	196.67
Other Services	8	78	1,272,606	313.76
Local Government	14	348	8,077,852	446.39
State Government	8	59	1,518,691	495.01
Other	17	273	8,325,192	586.45
<b>LAWRENCE COUNTY - TOTAL</b>	<b>420</b>	<b>4,257</b>	<b>\$99,767,065</b>	<b>\$450.69</b>
Natural Resources & Mining	34	155	4,466,597	554.17
Construction	28	101	2,830,367	538.91
Manufacturing	23	658	17,498,977	511.43
Trade, Transportation & Utilities	136	1,004	22,000,828	421.41
Wholesale Trade	26	213	6,405,604	578.33
Retail Trade	74	663	11,081,944	321.44
Transportation, Warehousing & Utilities	36	127	4,513,280	683.42
Information	7	22	715,722	625.63
Financial Activities	30	141	3,489,621	475.94
Professional & Business Services	24	122	3,744,578	590.26
Education & Health Services	47	420	10,795,251	494.29
Leisure & Hospitality	27	309	2,228,984	138.72
Other Services	25	70	1,162,985	319.50
Local Government	28	1,131	27,802,675	472.74
State Government	11	124	3,030,480	469.99



**TABLE 6. COUNTY SUMMARY  
EMPLOYMENT AND TOTAL EARNINGS, BY INDUSTRY  
CALENDAR YEAR 2005**

<b>NORTH AMERICAN INDUSTRY CLASSIFICATION SYSTEM INDUSTRY GROUP</b>	<b>AVERAGE EMPLOYING UNITS</b>	<b>AVERAGE COVERED EMPLOYMENT</b>	<b>TOTAL EARNINGS</b>	<b>AVERAGE WEEKLY EARNINGS</b>
<b>LEE COUNTY - TOTAL</b>	<b>228</b>	<b>2,068</b>	<b>\$50,930,668</b>	<b>\$473.62</b>
Natural Resources & Mining	32	221	5,235,318	455.56
Construction	7	11	197,912	346.00
Trade, Transportation & Utilities	57	360	8,177,046	436.81
Wholesale Trade	9	68	2,180,496	616.66
Retail Trade	31	201	3,083,329	295.00
Transportation, Warehousing & Utilities	17	91	2,913,221	615.64
Financial Activities	13	80	1,956,841	470.39
Professional & Business Services	19	68	2,113,978	597.84
Education & Health Services	38	298	7,058,120	455.48
Leisure & Hospitality	8	90	704,681	150.57
Local Government	16	368	10,113,022	528.48
State Government	8	430	11,805,660	527.98
Other	30	142	3,568,090	483.22
<b>LINCOLN COUNTY - TOTAL</b>	<b>215</b>	<b>2,910</b>	<b>\$73,830,984</b>	<b>\$487.91</b>
Natural Resources & Mining	34	211	5,438,206	495.64
Construction	14	69	1,654,472	461.11
Manufacturing	10	444	12,984,065	562.37
Trade, Transportation & Utilities	49	339	9,321,749	528.80
Wholesale Trade	7	32	1,074,798	645.91
Retail Trade	25	165	2,435,005	283.80
Transportation, Warehousing & Utilities	17	142	5,811,946	787.10
Financial Activities	22	75	1,982,311	508.28
Professional & Business Services	12	23	592,334	495.26
Education & Health Services	22	312	6,092,612	375.53
Leisure & Hospitality	15	128	1,065,179	160.03
Local & State Government	22	1,265	33,839,508	514.43
Other	15	44	860,548	376.11

**TABLE 6. COUNTY SUMMARY  
EMPLOYMENT AND TOTAL EARNINGS, BY INDUSTRY  
CALENDAR YEAR 2005**

<b>NORTH AMERICAN INDUSTRY CLASSIFICATION SYSTEM INDUSTRY GROUP</b>	<b>AVERAGE EMPLOYING UNITS</b>	<b>AVERAGE COVERED EMPLOYMENT</b>	<b>TOTAL EARNINGS</b>	<b>AVERAGE WEEKLY EARNINGS</b>
<b>LITTLE RIVER COUNTY - TOTAL</b>	<b>254</b>	<b>4,489</b>	<b>\$173,429,905</b>	<b>\$742.97</b>
Natural Resources & Mining	12	72	2,313,173	617.83
Construction	25	227	5,910,251	500.70
Manufacturing	13	1,505	94,064,765	1201.95
Trade, Transportation & Utilities	72	1,110	37,241,665	645.21
Wholesale Trade	10	36	1,123,641	600.24
Retail Trade	42	334	5,781,397	332.88
Transportation, Warehousing & Utilities	20	740	30,336,627	788.37
Information	4	10	321,142	617.58
Financial Activities	24	106	2,685,952	487.29
Professional & Business Services	21	159	3,397,710	410.95
Education & Health Services	17	159	3,176,843	384.23
Leisure & Hospitality	19	217	2,081,632	184.48
Other Services	15	99	1,255,831	243.95
Local Government	20	739	18,765,728	488.33
State Government	12	86	2,215,213	495.35
<b>LOGAN COUNTY - TOTAL</b>	<b>458</b>	<b>5,663</b>	<b>\$135,654,218</b>	<b>\$460.66</b>
Natural Resources & Mining	14	84	2,674,366	612.26
Construction	49	159	3,640,316	440.29
Manufacturing	27	1,808	50,636,391	538.59
Trade, Transportation & Utilities	119	851	15,593,145	352.37
Wholesale Trade	19	49	907,093	356.00
Retail Trade	75	732	12,489,295	328.11
Transportation, Warehousing & Utilities	26	70	2,196,757	603.50
Information	8	42	1,452,414	665.02
Financial Activities	43	240	7,926,128	635.11
Professional & Business Services	42	118	2,609,643	425.30
Education & Health Services	55	734	16,142,776	422.94
Leisure & Hospitality	31	319	2,949,660	177.82
Other Services	32	91	1,721,538	363.81
Local Government	23	780	20,178,915	497.51
State Government	15	437	10,128,926	445.74

**TABLE 6. COUNTY SUMMARY  
EMPLOYMENT AND TOTAL EARNINGS, BY INDUSTRY  
CALENDAR YEAR 2005**

<b>NORTH AMERICAN INDUSTRY CLASSIFICATION SYSTEM INDUSTRY GROUP</b>	<b>AVERAGE EMPLOYING UNITS</b>	<b>AVERAGE COVERED EMPLOYMENT</b>	<b>TOTAL EARNINGS</b>	<b>AVERAGE WEEKLY EARNINGS</b>
<b>LONOKE COUNTY - TOTAL</b>	<b>1,156</b>	<b>11,552</b>	<b>\$296,058,858</b>	<b>\$492.85</b>
Natural Resources & Mining	73	464	14,838,460	614.99
Construction	160	902	27,875,958	594.32
Manufacturing	39	1,380	48,951,604	682.16
Trade, Transportation & Utilities	322	2,515	57,289,349	438.06
Wholesale Trade	75	423	15,549,574	706.93
Retail Trade	179	1,837	34,020,894	356.15
Transportation, Warehousing & Utilities	68	255	7,718,881	582.12
Information	16	110	4,274,188	747.24
Financial Activities	116	581	19,439,189	643.43
Professional & Business Services	141	468	12,383,716	508.86
Education & Health Services	102	1,266	29,274,759	444.69
Leisure & Hospitality	78	1,152	11,210,116	187.13
Other Services	65	196	4,226,627	414.70
Local Government	28	2,375	62,645,722	507.25
State Government	16	143	3,649,170	490.74
<b>MADISON COUNTY - TOTAL</b>	<b>240</b>	<b>3,152</b>	<b>\$74,462,958</b>	<b>\$454.31</b>
Natural Resources & Mining	13	62	1,657,470	514.10
Construction	44	127	2,962,781	448.63
Manufacturing	20	1,109	28,194,141	488.90
Trade, Transportation & Utilities	61	591	12,382,511	402.92
Wholesale Trade	13	41	1,358,487	637.19
Retail Trade	35	422	7,433,162	338.73
Transportation, Warehousing & Utilities	14	129	3,590,862	535.31
Information	4	37	1,606,346	834.90
Financial Activities	15	91	2,620,815	553.85
Professional & Business Services	18	100	2,232,123	429.25
Education & Health Services	22	234	4,417,023	363.00
Leisure & Hospitality	13	122	870,440	137.21
Other Services	14	25	617,976	475.37
Local Government	8	599	15,473,806	496.78
State Government	8	55	1,427,526	499.13

**TABLE 6. COUNTY SUMMARY  
EMPLOYMENT AND TOTAL EARNINGS, BY INDUSTRY  
CALENDAR YEAR 2005**

<b>NORTH AMERICAN INDUSTRY CLASSIFICATION SYSTEM INDUSTRY GROUP</b>	<b>AVERAGE EMPLOYING UNITS</b>	<b>AVERAGE COVERED EMPLOYMENT</b>	<b>TOTAL EARNINGS</b>	<b>AVERAGE WEEKLY EARNINGS</b>
<b>MARION COUNTY - TOTAL</b>	<b>280</b>	<b>4,015</b>	<b>\$89,891,612</b>	<b>\$430.56</b>
Natural Resources & Mining	5	44	837,389	365.99
Construction	16	47	778,888	318.69
Manufacturing	25	1,692	43,009,883	488.84
Trade, Transportation & Utilities	59	696	11,968,164	330.69
Wholesale Trade	8	39	1,070,267	527.75
Retail Trade	38	542	8,074,705	286.50
Transportation, Warehousing & Utilities	13	115	2,823,192	472.11
Financial Activities	34	185	4,699,361	488.50
Professional & Business Services	25	37	1,069,833	556.05
Education & Health Services	24	330	6,600,091	384.62
Leisure & Hospitality	44	278	2,699,233	186.72
Local Government	20	503	12,450,629	476.01
State Government	8	112	2,697,393	463.15
Other	20	91	3,080,748	651.05
<b>MILLER COUNTY - TOTAL</b>	<b>827</b>	<b>12,641</b>	<b>\$376,590,016</b>	<b>\$572.91</b>
Natural Resources & Mining	30	153	4,515,481	567.56
Construction	84	816	23,036,010	542.89
Manufacturing	37	2,837	138,894,083	941.50
Trade, Transportation & Utilities	242	2,731	71,031,999	500.18
Wholesale Trade	66	620	23,236,990	720.75
Retail Trade	135	1,508	26,664,925	340.04
Transportation, Warehousing & Utilities	42	603	21,130,084	673.88
Information	8	92	5,056,782	1057.02
Financial Activities	84	429	14,193,938	636.27
Professional & Business Services	82	885	17,793,396	386.64
Education & Health Services	77	1,001	24,245,796	465.80
Leisure & Hospitality	80	1,365	15,175,811	213.80
Other Services	64	351	4,997,080	273.78
Local Government	22	1,541	43,357,656	541.08
State Government	17	440	14,291,984	624.65

**TABLE 6. COUNTY SUMMARY  
EMPLOYMENT AND TOTAL EARNINGS, BY INDUSTRY  
CALENDAR YEAR 2005**

<b>NORTH AMERICAN INDUSTRY CLASSIFICATION SYSTEM INDUSTRY GROUP</b>	<b>AVERAGE EMPLOYING UNITS</b>	<b>AVERAGE COVERED EMPLOYMENT</b>	<b>TOTAL EARNINGS</b>	<b>AVERAGE WEEKLY EARNINGS</b>
<b>MISSISSIPPI COUNTY - TOTAL</b>	<b>1,124</b>	<b>18,230</b>	<b>\$577,566,274</b>	<b>\$609.27</b>
Natural Resources & Mining	106	801	19,296,506	463.28
Construction	54	399	13,947,430	672.23
Manufacturing	58	5,083	257,303,736	973.47
Trade, Transportation & Utilities	304	3,048	77,473,604	488.80
Wholesale Trade	65	593	21,254,253	689.27
Retail Trade	190	1,890	34,395,010	349.97
Transportation, Warehousing & Utilities	49	565	21,824,341	742.83
Financial Activities	104	599	15,699,689	504.04
Professional & Business Services	97	1,080	29,609,722	527.24
Education & Health Services	158	1,607	41,505,813	496.69
Leisure & Hospitality	79	1,123	10,788,036	184.74
Local Government	46	2,319	57,040,128	473.02
State Government	25	635	16,700,369	505.77
Other	93	1,536	38,201,241	478.28
<b>MONROE COUNTY - TOTAL</b>	<b>299</b>	<b>2,571</b>	<b>\$53,496,615</b>	<b>\$400.15</b>
Natural Resources & Mining	33	160	3,505,382	421.32
Construction	16	43	855,334	382.53
Manufacturing	9	153	3,577,089	449.61
Trade, Transportation & Utilities	92	689	16,193,345	451.97
Wholesale Trade	23	202	5,953,200	566.76
Retail Trade	41	330	5,698,162	332.06
Transportation, Warehousing & Utilities	28	158	4,541,983	552.82
Information	7	63	961,416	293.47
Financial Activities	16	100	2,882,120	554.25
Professional & Business Services	15	39	938,799	462.92
Education & Health Services	32	369	6,571,233	342.47
Leisure & Hospitality	29	304	2,648,538	167.54
Other Services	19	73	1,222,279	321.99
Local Government	22	448	10,929,410	469.15
State Government	9	130	3,211,670	475.10

**TABLE 6. COUNTY SUMMARY  
EMPLOYMENT AND TOTAL EARNINGS, BY INDUSTRY  
CALENDAR YEAR 2005**

NORTH AMERICAN INDUSTRY CLASSIFICATION SYSTEM INDUSTRY GROUP	AVERAGE EMPLOYING UNITS	AVERAGE COVERED EMPLOYMENT	TOTAL EARNINGS	AVERAGE WEEKLY EARNINGS
<b>MONTGOMERY COUNTY - TOTAL</b>	<b>175</b>	<b>1,660</b>	<b>\$33,592,998</b>	<b>\$389.17</b>
Natural Resources & Mining	14	64	1,718,118	516.26
Construction	23	124	3,016,484	467.82
Trade, Transportation & Utilities	47	222	4,277,174	370.51
Wholesale Trade	12	76	1,621,876	410.39
Retail Trade	27	122	2,157,216	340.04
Transportation, Warehousing & Utilities	8	24	498,082	399.10
Financial Activities	10	71	1,910,321	517.42
Education & Health Services	12	58	949,082	314.68
Leisure & Hospitality	20	257	3,908,759	292.48
Other Services	11	70	1,168,836	321.11
Local Government	9	458	10,124,972	425.13
State Government	8	56	1,544,014	530.22
Other	21	280	4,975,238	341.71
<b>NEVADA COUNTY - TOTAL</b>	<b>198</b>	<b>2,653</b>	<b>\$70,945,503</b>	<b>\$514.26</b>
Natural Resources & Mining	15	57	1,522,767	513.75
Construction	13	41	1,011,138	474.27
Manufacturing	9	834	33,193,292	765.39
Trade, Transportation & Utilities	49	487	9,503,655	375.28
Wholesale Trade	5	13	183,237	271.06
Retail Trade	32	303	3,688,235	234.08
Transportation, Warehousing & Utilities	12	171	5,632,183	633.40
Financial Activities	12	63	1,977,427	603.61
Education & Health Services	13	390	7,499,149	369.78
Leisure & Hospitality	18	104	885,915	163.82
Other Services	17	80	1,017,486	244.59
Local Government	27	466	10,186,704	420.38
State Government	11	81	2,257,295	535.92
Other	14	50	1,890,675	727.18

**TABLE 6. COUNTY SUMMARY  
EMPLOYMENT AND TOTAL EARNINGS, BY INDUSTRY  
CALENDAR YEAR 2005**

<b>NORTH AMERICAN INDUSTRY CLASSIFICATION SYSTEM INDUSTRY GROUP</b>	<b>AVERAGE EMPLOYING UNITS</b>	<b>AVERAGE COVERED EMPLOYMENT</b>	<b>TOTAL EARNINGS</b>	<b>AVERAGE WEEKLY EARNINGS</b>
<b>NEWTON COUNTY - TOTAL</b>	<b>131</b>	<b>1,053</b>	<b>\$18,777,899</b>	<b>\$342.94</b>
Natural Resources & Mining	6	10	96,035	184.68
Construction	8	12	119,100	190.87
Manufacturing	16	74	1,483,650	385.56
Trade, Transportation & Utilities	30	164	2,557,519	299.90
Retail Trade	17	108	1,375,169	244.87
Other Trade, Transportation & Utilities	14	56	1,182,350	406.03
Education & Health Services	14	213	3,241,034	292.62
Leisure & Hospitality	20	81	821,203	194.97
Other Services	5	11	132,909	232.36
Local Government	12	347	7,410,742	410.70
State Government	7	91	1,663,044	351.45
Other	13	50	1,252,663	481.79
<b>OUACHITA COUNTY - TOTAL</b>	<b>626</b>	<b>7,327</b>	<b>\$186,391,242</b>	<b>\$489.21</b>
Natural Resources & Mining	44	282	8,871,095	604.96
Construction	47	242	6,599,471	524.43
Manufacturing	30	786	26,536,788	649.27
Trade, Transportation & Utilities	183	1,769	45,290,352	492.35
Wholesale Trade	31	263	10,467,809	765.41
Retail Trade	123	1,093	18,506,015	325.60
Transportation, Warehousing & Utilities	28	413	16,316,528	759.76
Information	8	95	2,554,926	517.19
Financial Activities	64	337	9,285,623	529.88
Professional & Business Services	48	349	7,366,680	405.92
Education & Health Services	71	1,235	31,218,206	486.11
Leisure & Hospitality	36	516	4,599,916	171.43
Other Services	52	169	3,269,813	372.08
Local Government	30	1,247	31,255,552	482.01
State Government	13	300	9,542,820	611.72

**TABLE 6. COUNTY SUMMARY  
EMPLOYMENT AND TOTAL EARNINGS, BY INDUSTRY  
CALENDAR YEAR 2005**

<b>NORTH AMERICAN INDUSTRY CLASSIFICATION SYSTEM INDUSTRY GROUP</b>	<b>AVERAGE EMPLOYING UNITS</b>	<b>AVERAGE COVERED EMPLOYMENT</b>	<b>TOTAL EARNINGS</b>	<b>AVERAGE WEEKLY EARNINGS</b>
<b>PERRY COUNTY - TOTAL</b>	<b>152</b>	<b>1,163</b>	<b>\$25,457,293</b>	<b>\$420.95</b>
Natural Resources & Mining	7	30	1,078,703	691.48
Construction	24	83	1,949,505	451.69
Manufacturing	6	73	1,806,684	475.94
Trade, Transportation & Utilities	30	186	3,408,289	352.39
Retail Trade	19	158	2,180,658	265.42
Other Trade, Transportation & Utilities	11	28	1,227,631	843.15
Financial Activities	14	53	2,034,205	738.10
Professional & Business Services	15	42	904,023	413.93
Education & Health Services	16	163	3,115,155	367.53
Local Government	12	383	8,179,014	410.68
State Government	9	55	1,382,495	483.39
Other	19	95	1,599,220	323.73
<b>PHILLIPS COUNTY - TOTAL</b>	<b>694</b>	<b>6,591</b>	<b>\$163,457,947</b>	<b>\$476.93</b>
Natural Resources & Mining	72	486	10,105,283	399.86
Construction	34	115	2,802,384	468.63
Manufacturing	13	415	12,359,508	572.73
Trade, Transportation & Utilities	181	1,551	43,193,388	535.55
Wholesale Trade	35	394	12,747,005	622.17
Retail Trade	109	900	15,957,654	340.98
Transportation, Warehousing & Utilities	38	258	14,488,729	1079.96
Information	11	61	1,723,282	543.28
Financial Activities	54	291	8,082,784	534.15
Professional & Business Services	55	245	6,953,647	545.81
Education & Health Services	144	1,203	27,113,084	433.42
Leisure & Hospitality	37	409	3,652,127	171.72
Other Services	44	93	1,817,980	375.93
Local Government	33	1,205	31,670,459	505.43
State Government	16	517	13,984,021	520.16



**TABLE 6. COUNTY SUMMARY  
EMPLOYMENT AND TOTAL EARNINGS, BY INDUSTRY  
CALENDAR YEAR 2005**

NORTH AMERICAN INDUSTRY CLASSIFICATION SYSTEM INDUSTRY GROUP	AVERAGE EMPLOYING UNITS	AVERAGE COVERED EMPLOYMENT	TOTAL EARNINGS	AVERAGE WEEKLY EARNINGS
<b>PIKE COUNTY - TOTAL</b>	<b>266</b>	<b>2,850</b>	<b>\$64,240,833</b>	<b>\$433.47</b>
Natural Resources & Mining	33	187	5,249,887	539.89
Construction	13	109	3,654,322	644.73
Manufacturing	14	493	11,559,860	450.92
Trade, Transportation & Utilities	90	580	12,193,838	404.30
Wholesale Trade	16	107	2,886,143	518.72
Retail Trade	50	353	5,946,042	323.93
Transportation, Warehousing & Utilities	25	120	3,361,653	538.73
Information	5	32	1,224,596	735.94
Financial Activities	24	176	5,198,482	568.02
Professional & Business Services	9	38	662,004	335.02
Education & Health Services	16	224	3,759,009	322.72
Leisure & Hospitality	21	208	1,801,025	166.51
Other Services	17	130	2,782,075	411.55
Local Government	13	549	13,637,289	477.70
State Government	11	124	2,518,446	390.58
<b>POINSETT COUNTY - TOTAL</b>	<b>502</b>	<b>6,232</b>	<b>\$158,808,113</b>	<b>\$490.05</b>
Natural Resources & Mining	49	364	9,165,049	484.21
Construction	30	109	2,654,388	468.31
Manufacturing	30	1,454	45,171,723	597.45
Trade, Transportation & Utilities	139	1,433	35,867,236	481.34
Wholesale Trade	33	483	19,097,163	760.36
Retail Trade	77	795	12,246,502	296.24
Transportation, Warehousing & Utilities	30	156	4,523,571	557.64
Information	7	58	2,329,957	772.53
Financial Activities	45	339	10,240,492	580.92
Professional & Business Services	26	99	3,413,271	663.03
Education & Health Services	52	601	13,539,546	433.24
Leisure & Hospitality	48	408	3,233,627	152.41
Other Services	33	71	1,785,798	483.69
Local Government	30	1,054	25,683,011	468.60
State Government	13	242	5,724,015	454.86

**TABLE 6. COUNTY SUMMARY  
EMPLOYMENT AND TOTAL EARNINGS, BY INDUSTRY  
CALENDAR YEAR 2005**

<b>NORTH AMERICAN INDUSTRY CLASSIFICATION SYSTEM INDUSTRY GROUP</b>	<b>AVERAGE EMPLOYING UNITS</b>	<b>AVERAGE COVERED EMPLOYMENT</b>	<b>TOTAL EARNINGS</b>	<b>AVERAGE WEEKLY EARNINGS</b>
<b>POLK COUNTY - TOTAL</b>	<b>532</b>	<b>6,255</b>	<b>\$139,975,356</b>	<b>\$430.35</b>
Natural Resources & Mining	27	260	8,082,215	597.80
Construction	35	193	3,716,324	370.30
Manufacturing	45	1,397	35,548,452	489.35
Trade, Transportation & Utilities	153	1,406	28,507,682	389.92
Wholesale Trade	24	147	3,179,749	415.98
Retail Trade	85	870	14,871,436	328.72
Transportation, Warehousing & Utilities	44	389	10,456,497	516.93
Information	10	54	1,490,062	530.65
Financial Activities	40	215	5,880,069	525.95
Professional & Business Services	47	142	3,372,680	456.76
Education & Health Services	66	946	20,899,399	424.85
Leisure & Hospitality	43	425	3,594,529	162.65
Other Services	31	135	2,334,186	332.51
Local Government	21	764	19,793,992	498.24
State Government	14	318	6,755,766	408.55
<b>POPE COUNTY - TOTAL</b>	<b>1,639</b>	<b>26,274</b>	<b>\$753,439,419</b>	<b>\$551.47</b>
Natural Resources & Mining	22	581	15,373,919	508.87
Construction	168	1,593	58,659,161	708.14
Manufacturing	89	4,927	153,624,449	599.62
Trade, Transportation & Utilities	475	6,540	227,352,405	668.53
Wholesale Trade	104	752	23,956,920	612.65
Retail Trade	278	3,283	61,448,102	359.94
Transportation, Warehousing & Utilities	94	2,506	141,947,383	1089.29
Information	22	292	9,507,090	626.13
Financial Activities	165	785	24,379,839	597.25
Professional & Business Services	214	2,514	57,680,036	441.22
Education & Health Services	183	2,802	76,896,548	527.76
Leisure & Hospitality	131	2,357	22,915,555	186.97
Other Services	114	476	10,195,787	411.92
Local Government	40	2,115	58,169,465	528.91
State Government	16	1,292	38,685,165	575.81

**TABLE 6. COUNTY SUMMARY  
EMPLOYMENT AND TOTAL EARNINGS, BY INDUSTRY  
CALENDAR YEAR 2005**

<b>NORTH AMERICAN INDUSTRY CLASSIFICATION SYSTEM INDUSTRY GROUP</b>	<b>AVERAGE EMPLOYING UNITS</b>	<b>AVERAGE COVERED EMPLOYMENT</b>	<b>TOTAL EARNINGS</b>	<b>AVERAGE WEEKLY EARNINGS</b>
<b>PRAIRIE COUNTY - TOTAL</b>	<b>227</b>	<b>1,566</b>	<b>\$36,402,853</b>	<b>\$447.03</b>
Natural Resources & Mining	26	142	3,946,195	534.43
Trade, Transportation & Utilities	66	371	7,949,226	412.05
Wholesale Trade	10	58	1,626,491	539.29
Retail Trade	36	220	3,178,550	277.85
Transportation, Warehousing & Utilities	20	94	3,144,185	643.25
Information	4	10	396,395	762.30
Financial Activities	16	64	1,788,480	537.40
Professional & Business Services	16	48	1,130,860	453.07
Education & Health Services	20	202	4,093,970	389.75
Leisure & Hospitality	19	103	936,433	174.84
Other Services	15	52	819,491	303.07
Local Government	15	321	8,263,222	495.04
State Government	10	52	1,376,155	508.93
Other	20	201	5,702,426	545.58
<b>PULASKI COUNTY - TOTAL</b>	<b>13,416</b>	<b>234,878</b>	<b>\$8,448,535,738</b>	<b>\$691.73</b>
Natural Resources & Mining	43	652	31,707,196	935.21
Construction	1,105	10,529	398,272,017	727.43
Manufacturing	430	16,059	659,570,978	789.84
Trade, Transportation & Utilities	3,193	51,342	1,736,089,356	650.27
Wholesale Trade	1,067	12,930	612,760,671	911.36
Retail Trade	1,734	25,032	572,615,628	439.91
Transportation, Warehousing & Utilities	392	13,380	550,713,057	791.53
Information	237	8,615	433,685,637	968.09
Financial Activities	1,663	16,078	792,211,649	947.56
Professional & Business Services	2,564	32,958	1,129,301,736	658.94
Education & Health Services	1,656	32,786	1,296,660,450	760.56
Leisure & Hospitality	995	19,693	257,691,296	251.64
Other Services	1,227	6,573	178,231,358	521.46
Local Government	103	15,834	559,818,102	679.91
State Government	200	23,759	975,295,963	789.41

**TABLE 6. COUNTY SUMMARY  
EMPLOYMENT AND TOTAL EARNINGS, BY INDUSTRY  
CALENDAR YEAR 2005**

<b>NORTH AMERICAN INDUSTRY CLASSIFICATION SYSTEM INDUSTRY GROUP</b>	<b>AVERAGE EMPLOYING UNITS</b>	<b>AVERAGE COVERED EMPLOYMENT</b>	<b>TOTAL EARNINGS</b>	<b>AVERAGE WEEKLY EARNINGS</b>
<b>RANDOLPH COUNTY - TOTAL</b>	<b>402</b>	<b>5,021</b>	<b>\$111,118,603</b>	<b>\$425.59</b>
Natural Resources & Mining	21	77	1,596,112	398.63
Construction	22	114	2,083,397	351.45
Manufacturing	37	1,097	28,000,422	490.86
Trade, Transportation & Utilities	105	964	19,715,276	393.30
Wholesale Trade	22	203	3,976,115	376.67
Retail Trade	63	609	10,302,042	325.31
Transportation, Warehousing & Utilities	20	152	5,437,119	687.89
Information	6	49	1,713,738	672.58
Financial Activities	27	150	3,353,799	429.97
Professional & Business Services	39	219	4,057,470	356.29
Education & Health Services	54	798	19,390,447	467.28
Leisure & Hospitality	31	409	3,125,590	146.96
Other Services	25	64	1,163,470	349.60
Local Government	23	821	19,766,661	463.01
State Government	12	259	7,152,221	531.05
<b>SAINT FRANCIS COUNTY - TOTAL</b>	<b>621</b>	<b>8,394</b>	<b>\$202,783,238</b>	<b>\$464.58</b>
Natural Resources & Mining	22	162	3,843,035	456.20
Construction	42	252	7,059,803	538.75
Manufacturing	22	1,338	38,076,106	547.26
Trade, Transportation & Utilities	189	2,140	52,200,547	469.09
Wholesale Trade	33	530	15,921,703	577.71
Retail Trade	123	1,261	24,066,900	367.03
Transportation, Warehousing & Utilities	32	349	12,211,944	672.91
Information	10	127	3,632,871	550.10
Financial Activities	50	298	7,282,714	469.97
Professional & Business Services	44	156	4,396,805	542.01
Education & Health Services	105	1,303	28,446,954	419.84
Leisure & Hospitality	51	764	7,585,420	190.93
Other Services	39	131	1,817,682	266.84
Local Government	30	1,159	33,208,109	551.01
State Government	17	564	15,233,192	519.41

**TABLE 6. COUNTY SUMMARY  
EMPLOYMENT AND TOTAL EARNINGS, BY INDUSTRY  
CALENDAR YEAR 2005**

NORTH AMERICAN INDUSTRY CLASSIFICATION SYSTEM INDUSTRY GROUP	AVERAGE EMPLOYING UNITS	AVERAGE COVERED EMPLOYMENT	TOTAL EARNINGS	AVERAGE WEEKLY EARNINGS
<b>SALINE COUNTY - TOTAL</b>	<b>1,581</b>	<b>19,162</b>	<b>\$517,975,939</b>	<b>\$519.83</b>
Natural Resources & Mining	12	40	1,858,959	893.73
Construction	286	1,802	54,936,814	586.28
Manufacturing	82	1,844	70,660,073	736.90
Trade, Transportation & Utilities	410	4,357	115,366,860	509.20
Wholesale Trade	117	537	23,440,558	839.44
Retail Trade	251	3,572	83,544,028	449.78
Transportation, Warehousing & Utilities	43	248	8,382,274	649.99
Information	14	106	2,626,115	476.44
Financial Activities	148	683	20,313,347	571.95
Professional & Business Services	193	1,177	28,587,606	467.09
Education & Health Services	144	2,509	65,504,891	502.08
Leisure & Hospitality	116	2,063	23,110,627	215.43
Other Services	125	590	13,496,169	439.90
Local & State Government	51	3,991	121,514,478	585.52
<b>SCOTT COUNTY - TOTAL</b>	<b>180</b>	<b>2,897</b>	<b>\$63,998,134</b>	<b>\$424.83</b>
Natural Resources & Mining	17	174	5,493,002	607.10
Construction	11	39	917,960	452.64
Manufacturing	19	1,167	26,083,704	429.83
Trade, Transportation & Utilities	45	474	9,175,053	372.24
Wholesale Trade	9	63	1,754,879	535.68
Retail Trade	29	335	5,070,830	291.09
Transportation, Warehousing & Utilities	8	76	2,349,344	594.47
Information	4	12	325,566	521.74
Financial Activities	15	70	1,701,197	467.36
Professional & Business Services	9	12	213,719	342.50
Education & Health Services	20	321	6,642,440	397.94
Leisure & Hospitality	17	170	1,383,900	156.55
Other Services	10	57	2,212,820	746.57
Local Government	5	335	8,341,991	478.87
State Government	8	66	1,506,782	439.04

**TABLE 6. COUNTY SUMMARY  
EMPLOYMENT AND TOTAL EARNINGS, BY INDUSTRY  
CALENDAR YEAR 2005**

<b>NORTH AMERICAN INDUSTRY CLASSIFICATION SYSTEM INDUSTRY GROUP</b>	<b>AVERAGE EMPLOYING UNITS</b>	<b>AVERAGE COVERED EMPLOYMENT</b>	<b>TOTAL EARNINGS</b>	<b>AVERAGE WEEKLY EARNINGS</b>
<b>SEARCY COUNTY - TOTAL</b>	<b>149</b>	<b>1,634</b>	<b>\$31,700,080</b>	<b>\$373.08</b>
Construction	5	17	271,286	306.88
Manufacturing	18	289	5,347,164	355.81
Trade, Transportation & Utilities	40	302	4,539,580	289.07
Retail Trade	29	215	3,019,027	270.04
Other Trade, Transportation & Utilities	11	87	1,520,553	336.11
Financial Activities	15	56	1,236,315	424.56
Professional & Business Services	16	35	693,159	380.86
Education & Health Services	13	264	4,715,088	343.47
Leisure & Hospitality	12	115	978,500	163.63
Local Government	9	311	7,813,148	483.13
State Government	9	187	4,623,052	475.43
Other	12	58	1,482,788	491.64
<b>SEBASTIAN COUNTY - TOTAL</b>	<b>3,527</b>	<b>72,212</b>	<b>\$2,300,544,054</b>	<b>\$612.66</b>
Natural Resources & Mining	61	1,111	55,503,024	960.73
Construction	292	2,897	96,670,753	641.72
Manufacturing	218	21,463	745,655,904	668.10
Trade, Transportation & Utilities	915	12,313	338,561,537	528.77
Wholesale Trade	231	2,382	96,535,629	779.37
Retail Trade	568	7,902	165,272,469	402.22
Transportation, Warehousing & Utilities	117	2,029	76,753,439	727.47
Information	56	1,180	50,322,301	820.12
Financial Activities	399	2,489	91,092,652	703.81
Professional & Business Services	508	9,330	312,697,790	644.53
Education & Health Services	421	9,160	335,741,607	704.87
Leisure & Hospitality	306	5,278	60,053,971	218.81
Other Services	286	1,512	35,183,406	447.49
Local Government	43	4,147	138,356,304	641.60
State Government	22	1,332	40,704,805	587.68

**TABLE 6. COUNTY SUMMARY  
EMPLOYMENT AND TOTAL EARNINGS, BY INDUSTRY  
CALENDAR YEAR 2005**

<b>NORTH AMERICAN INDUSTRY CLASSIFICATION SYSTEM INDUSTRY GROUP</b>	<b>AVERAGE EMPLOYING UNITS</b>	<b>AVERAGE COVERED EMPLOYMENT</b>	<b>TOTAL EARNINGS</b>	<b>AVERAGE WEEKLY EARNINGS</b>
<b>SEVIER COUNTY - TOTAL</b>	<b>322</b>	<b>5,854</b>	<b>\$141,954,088</b>	<b>\$466.33</b>
Natural Resources & Mining	20	201	5,499,677	526.18
Construction	23	147	3,984,437	521.25
Manufacturing	12	2,392	54,956,465	441.83
Trade, Transportation & Utilities	91	848	19,408,221	440.14
Wholesale Trade	15	139	5,978,786	827.17
Retail Trade	58	604	9,819,242	312.64
Transportation, Warehousing & Utilities	18	104	3,610,193	667.57
Information	7	44	1,248,508	545.68
Financial Activities	27	210	5,727,057	524.46
Professional & Business Services	31	122	10,363,415	1633.58
Education & Health Services	36	514	11,637,065	435.39
Leisure & Hospitality	21	263	2,546,600	186.21
Other Services	33	153	2,566,035	322.53
Local Government	12	780	19,161,768	472.43
State Government	9	180	4,854,840	518.68
<b>SHARP COUNTY - TOTAL</b>	<b>390</b>	<b>3,905</b>	<b>\$81,184,500</b>	<b>\$399.81</b>
Construction	34	210	5,414,977	495.88
Manufacturing	23	207	3,784,635	351.60
Trade, Transportation & Utilities	103	1,052	23,887,306	436.66
Retail Trade	72	671	10,819,737	310.09
Other Trade, Transportation & Utilities	31	381	13,067,569	659.58
Information	8	63	3,184,705	972.13
Financial Activities	33	257	6,879,851	514.80
Professional & Business Services	37	153	3,731,480	469.01
Education & Health Services	49	570	11,360,113	383.27
Leisure & Hospitality	40	467	3,604,915	148.45
Local Government	26	734	15,698,706	411.31
State Government	9	102	2,376,206	448.00
Other	28	90	1,261,606	269.57

**TABLE 6. COUNTY SUMMARY  
EMPLOYMENT AND TOTAL EARNINGS, BY INDUSTRY  
CALENDAR YEAR 2005**

<b>NORTH AMERICAN INDUSTRY CLASSIFICATION SYSTEM INDUSTRY GROUP</b>	<b>AVERAGE EMPLOYING UNITS</b>	<b>AVERAGE COVERED EMPLOYMENT</b>	<b>TOTAL EARNINGS</b>	<b>AVERAGE WEEKLY EARNINGS</b>
<b>STONE COUNTY - TOTAL</b>	<b>244</b>	<b>2,786</b>	<b>\$57,113,199</b>	<b>\$394.23</b>
Construction	21	89	2,143,254	463.11
Manufacturing	21	459	9,442,005	395.59
Trade, Transportation & Utilities	77	640	14,062,957	422.56
Wholesale Trade	10	53	997,345	361.88
Retail Trade	52	541	11,498,034	408.72
Transportation, Warehousing & Utilities	14	45	1,567,578	669.91
Financial Activities	21	88	2,490,652	544.29
Professional & Business Services	11	27	801,728	571.03
Education & Health Services	24	421	10,204,083	466.11
Leisure & Hospitality	32	383	3,246,849	163.03
Other Services	12	28	500,507	343.75
Local Government	10	420	9,644,484	441.60
State Government	9	168	3,258,467	372.99
Other	6	63	1,318,213	402.38
<b>UNION COUNTY - TOTAL</b>	<b>1,320</b>	<b>19,934</b>	<b>\$643,886,100</b>	<b>\$621.17</b>
Natural Resources & Mining	105	513	17,427,298	653.30
Construction	95	1,434	55,892,859	749.56
Manufacturing	66	5,202	208,743,803	771.68
Trade, Transportation & Utilities	363	3,610	101,923,001	542.95
Wholesale Trade	80	537	28,746,446	1029.45
Retail Trade	226	2,340	42,287,028	347.53
Transportation, Warehousing & Utilities	57	733	30,889,527	810.41
Information	20	208	5,358,290	495.40
Financial Activities	123	755	22,830,925	581.53
Professional & Business Services	132	1,750	79,817,632	877.12
Education & Health Services	132	2,228	63,919,541	551.72
Leisure & Hospitality	90	1,116	12,560,338	216.44
Other Services	139	636	12,114,007	366.29
Local Government	37	1,944	48,249,750	477.30
State Government	18	538	15,048,656	537.91



**TABLE 6. COUNTY SUMMARY  
EMPLOYMENT AND TOTAL EARNINGS, BY INDUSTRY  
CALENDAR YEAR 2005**

<b>NORTH AMERICAN INDUSTRY CLASSIFICATION SYSTEM INDUSTRY GROUP</b>	<b>AVERAGE EMPLOYING UNITS</b>	<b>AVERAGE COVERED EMPLOYMENT</b>	<b>TOTAL EARNINGS</b>	<b>AVERAGE WEEKLY EARNINGS</b>
<b>VAN BUREN COUNTY - TOTAL</b>	<b>355</b>	<b>3,687</b>	<b>\$77,684,215</b>	<b>\$405.19</b>
Natural Resources & Mining	10	44	864,843	377.99
Construction	46	123	3,107,409	485.84
Manufacturing	14	602	14,226,085	454.45
Trade, Transportation & Utilities	103	811	16,169,624	383.42
Wholesale Trade	16	55	1,657,833	579.66
Retail Trade	65	618	10,586,668	329.43
Transportation, Warehousing & Utilities	22	139	3,925,123	543.04
Information	9	49	1,508,510	592.04
Financial Activities	29	121	2,939,723	467.22
Professional & Business Services	29	89	1,956,363	422.72
Education & Health Services	36	600	13,078,807	419.19
Leisure & Hospitality	30	453	5,155,234	218.85
Other Services	28	73	1,309,306	344.92
Local Government	13	629	15,043,849	459.94
State Government	8	93	2,324,462	480.66
<b>WASHINGTON COUNTY - TOTAL</b>	<b>5,266</b>	<b>88,048</b>	<b>\$2,841,904,734</b>	<b>\$620.71</b>
Natural Resources & Mining	40	450	13,494,669	576.70
Construction	613	5,343	189,745,835	682.94
Manufacturing	227	15,694	494,038,738	605.37
Trade, Transportation & Utilities	1,330	20,411	620,621,531	584.74
Wholesale Trade	352	3,725	181,093,839	934.92
Retail Trade	779	11,461	249,759,574	419.08
Transportation, Warehousing & Utilities	199	5,225	189,768,118	698.45
Information	100	1,533	58,973,971	739.80
Financial Activities	620	3,892	153,938,497	760.63
Professional & Business Services	867	8,567	383,855,074	861.66
Education & Health Services	539	10,030	354,559,640	679.81
Leisure & Hospitality	488	8,922	107,060,219	230.76
Other Services	359	1,898	43,503,661	440.78
Local & State Government	83	11,308	422,112,899	717.86

**TABLE 6. COUNTY SUMMARY  
EMPLOYMENT AND TOTAL EARNINGS, BY INDUSTRY  
CALENDAR YEAR 2005**

<b>NORTH AMERICAN INDUSTRY CLASSIFICATION SYSTEM INDUSTRY GROUP</b>	<b>AVERAGE EMPLOYING UNITS</b>	<b>AVERAGE COVERED EMPLOYMENT</b>	<b>TOTAL EARNINGS</b>	<b>AVERAGE WEEKLY EARNINGS</b>
<b>WHITE COUNTY - TOTAL</b>	<b>1,528</b>	<b>23,628</b>	<b>\$644,727,673</b>	<b>\$524.74</b>
Natural Resources & Mining	34	276	7,516,586	523.73
Construction	167	1,149	34,654,255	580.01
Manufacturing	80	3,814	130,875,925	659.90
Trade, Transportation & Utilities	472	5,928	154,707,650	501.88
Wholesale Trade	98	585	17,638,128	579.82
Retail Trade	293	3,132	57,937,715	355.74
Transportation, Warehousing & Utilities	82	2,211	79,131,807	688.27
Information	21	229	5,927,165	497.75
Financial Activities	165	880	24,012,674	524.75
Professional & Business Services	142	1,295	32,624,204	484.47
Education & Health Services	169	4,262	138,477,439	624.83
Leisure & Hospitality	111	2,054	19,110,410	178.92
Other Services	102	595	14,188,694	458.59
Local Government	46	2,447	64,549,130	507.29
State Government	19	699	18,083,541	497.51
<b>WOODRUFF COUNTY - TOTAL</b>	<b>171</b>	<b>2,058</b>	<b>\$52,393,436</b>	<b>\$489.59</b>
Natural Resources & Mining	21	100	2,356,296	453.13
Construction	7	69	1,551,426	432.39
Manufacturing	9	487	13,588,271	536.58
Trade, Transportation & Utilities	57	519	15,016,656	556.42
Wholesale Trade	12	218	8,700,499	767.51
Retail Trade	30	207	2,779,930	258.26
Transportation, Warehousing & Utilities	16	95	3,536,227	715.84
Financial Activities	14	58	1,690,567	560.53
Professional & Business Services	3	6	168,442	539.88
Education & Health Services	27	177	4,684,909	509.01
Leisure & Hospitality	7	64	496,271	149.12
Local Government	10	492	10,977,115	429.06
State Government	7	56	1,319,734	453.21
Other	9	30	543,749	348.56

**TABLE 6. COUNTY SUMMARY  
EMPLOYMENT AND TOTAL EARNINGS, BY INDUSTRY  
CALENDAR YEAR 2005**

<b>NORTH AMERICAN INDUSTRY CLASSIFICATION SYSTEM INDUSTRY GROUP</b>	<b>AVERAGE EMPLOYING UNITS</b>	<b>AVERAGE COVERED EMPLOYMENT</b>	<b>TOTAL EARNINGS</b>	<b>AVERAGE WEEKLY EARNINGS</b>
<b>YELL COUNTY - TOTAL</b>	<b>400</b>	<b>7,094</b>	<b>\$163,490,888</b>	<b>\$443.20</b>
Natural Resources & Mining	26	307	7,051,629	441.72
Construction	50	438	11,099,189	487.32
Manufacturing	24	2,968	69,560,277	450.71
Trade, Transportation & Utilities	91	666	12,160,865	351.15
Wholesale Trade	13	29	651,542	432.06
Retail Trade	58	542	8,336,847	295.80
Transportation, Warehousing & Utilities	20	95	3,172,476	642.20
Information	5	50	2,201,183	846.61
Financial Activities	39	198	4,843,260	470.40
Professional & Business Services	34	247	8,890,134	692.16
Education & Health Services	44	475	9,439,098	382.15
Leisure & Hospitality	28	393	3,722,850	182.17
Other Services	18	67	1,093,955	313.99
Local Government	28	1,171	30,768,387	505.29
State Government	13	114	2,660,061	448.73
<b>REST-OF-STATE-TOTAL</b>	<b>4,509</b>	<b>15,815</b>	<b>804,520,500</b>	<b>\$978.28</b>
Natural Resources & Mining	60	241	9,261,780	739.05
Construction	585	2,382	78,856,168	636.64
Manufacturing	47	167	6,141,006	707.16
Trade, Transportation & Utilities	1,835	6,908	464,282,994	1292.49
Wholesale Trade	1,578	5,644	420,532,105	1432.88
Retail Trade	100	540	17,432,472	620.81
Transportation, Warehousing & Utilities	158	725	26,318,417	698.10
Information	101	249	13,033,819	1006.63
Financial Activities	265	633	33,923,164	1030.60
Professional & Business Services	1,311	3,970	151,458,925	733.67
Education & Health Services	114	653	25,470,408	750.10
Leisure & Hospitality	40	80	1,998,427	480.39
Other	151	532	20,093,809	726.35

**TABLE 7. FEDERAL GOVERNMENT EMPLOYMENT AND EARNINGS IN ARKANSAS**

<b>NORTH AMERICAN INDUSTRY CLASSIFICATION SYSTEM INDUSTRY GROUP</b>	<b>AVERAGE EMPLOYING UNITS</b>	<b>AVERAGE COVERED EMPLOYMENT</b>	<b>TOTAL EARNINGS</b>	<b>AVERAGE WEEKLY EARNINGS</b>
Manufacturing	2	7	\$577,533	\$1,586.63
Trade, Transportation & Utilities	449	6,773	\$286,029,870	\$812.13
Information	1	32	\$1,527,124	\$917.74
Financial Activities	24	182	\$11,756,362	\$1,242.22
Professional & Business Services	32	817	\$49,595,620	\$1,167.40
Education & Health Services	6	4,021	\$277,933,700	\$1,329.24
Leisure & Hospitality	16	225	\$8,742,911	\$747.26
Other Services	2	276	\$4,363,036	\$304.00
Public Administration	478	8,500	\$487,859,685	\$1,103.75
<b>TOTAL</b>	<b>1,009</b>	<b>20,832</b>	<b>\$1,128,385,841</b>	<b>\$1,041.65</b>

**TABLE 8. WORKFORCE INFORMATION AREA, SUMMARY  
EMPLOYMENT AND TOTAL EARNINGS, BY INDUSTRY  
CALENDAR YEAR 2005**

<b>NORTH AMERICAN INDUSTRY CLASSIFICATION SYSTEM INDUSTRY GROUP</b>	<b>AVERAGE EMPLOYING UNITS</b>	<b>AVERAGE COVERED EMPLOYMENT</b>	<b>TOTAL EARNINGS</b>	<b>AVERAGE WEEKLY EARNINGS</b>
<b>CENTRAL WORKFORCE INFORMATION*</b>	<b>5,533</b>	<b>70,386</b>	<b>\$1,988,943,551</b>	<b>\$543.42</b>
Natural Resources & Mining	154	854	25,972,911	584.87
Trade, Transportation & Utilities	1,457	14,147	337,437,535	458.70
Wholesale Trade	356	1,960	71,741,258	703.90
Retail Trade	873	10,798	218,046,222	388.33
Transportation, Warehousing & Utilities	228	1,389	47,650,055	659.72
Financial Activities	570	2,733	84,680,067	595.85
Professional & Business Services	673	6,938	284,301,902	788.03
Education & Health Services	568	8,960	244,001,263	523.70
Leisure & Hospitality	420	7,328	74,143,977	194.58
Local & State Government	208	13,170	397,532,402	580.47
Other	1,485	16,258	540,873,494	639.77
<b>EASTERN WORKFORCE INFORMATION</b>	<b>3,154</b>	<b>37,891</b>	<b>\$984,778,087</b>	<b>\$499.80</b>
Natural Resources & Mining	221	1,422	31,880,088	431.14
Construction	192	1,142	33,500,012	564.13
Trade, Transportation & Utilities	875	10,123	276,719,617	525.69
Wholesale Trade	172	2,082	70,381,837	650.09
Retail Trade	498	5,086	94,012,915	355.47
Transportation, Warehousing & Utilities	205	2,955	112,324,865	731.00
Financial Activities	274	1,586	45,987,958	557.62
Professional & Business Services	269	1,339	35,607,573	511.40
Education & Health Services	490	5,264	130,992,529	478.55
Leisure & Hospitality	228	3,515	36,046,517	197.21
Local Government	138	5,929	167,706,582	543.96
State Government	68	2,156	58,350,484	520.47
Other	401	5,416	167,986,727	596.48

\*Note: Pulaski County is not included in the Central Workforce Information. Please refer to Page 53 for information on Pulaski County.  
Central Workforce Includes these counties: Faulkner, Lonoke, Monroe, Prairie, and Saline.

Eastern Workforce Includes these counties: Crittenden, Cross, Lee, Phillips, and Saint Francis.

**TABLE 8. WORKFORCE INFORMATION AREA, SUMMARY  
EMPLOYMENT AND TOTAL EARNINGS, BY INDUSTRY  
CALENDAR YEAR 2005**

<b>NORTH AMERICAN INDUSTRY CLASSIFICATION SYSTEM INDUSTRY GROUP</b>	<b>AVERAGE EMPLOYING UNITS</b>	<b>AVERAGE COVERED EMPLOYMENT</b>	<b>TOTAL EARNINGS</b>	<b>AVERAGE WEEKLY EARNINGS</b>
<b>NORTH CENTRAL WORKFORCE INFORMATION</b>	<b>5,245</b>	<b>69,479</b>	<b>\$1,759,820,463</b>	<b>\$487.09</b>
Construction	477	2,605	70,309,290	519.04
Manufacturing	299	13,926	432,792,263	597.65
Trade, Transportation & Utilities	1,553	15,573	384,134,124	474.36
Retail Trade	972	9,255	165,909,118	344.74
Other Trade, Transportation & Utilities	581	6,318	218,225,006	664.23
Financial Activities	507	2,570	70,511,419	527.62
Professional & Business Services	445	2,991	67,694,821	435.25
Education & Health Services	590	11,279	321,023,522	547.35
Leisure & Hospitality	438	6,006	56,145,880	179.77
Local Government	231	8,630	209,653,941	467.19
State Government	116	2,806	73,501,068	503.74
Other	590	3,095	74,054,135	460.14
<b>NORTHEAST WORKFORCE INFORMATION</b>	<b>6,243</b>	<b>93,373</b>	<b>\$2,598,965,094</b>	<b>\$535.27</b>
Natural Resources & Mining	363	2,114	52,321,000	475.96
Construction	471	2,985	83,726,246	539.40
Manufacturing	363	21,927	798,150,436	700.01
Trade, Transportation & Utilities	1,755	17,658	422,964,374	460.64
Wholesale Trade	410	3,752	125,781,038	644.69
Retail Trade	1,044	11,483	212,747,793	356.29
Transportation, Warehousing & Utilities	301	2,423	84,435,543	670.14
Financial Activities	584	3,427	110,248,343	618.66
Professional & Business Services	617	6,651	159,264,677	460.50
Education & Health Services	797	12,567	391,892,013	599.70
Leisure & Hospitality	452	7,169	69,280,429	185.84
Local Government	219	10,992	287,380,244	502.78
State Government	108	3,881	125,323,552	620.99
Other	515	4,003	98,413,780	472.79

North Central Workforce Includes these counties: Cleburne, Fulton, Independence, Izard, Jackson, Sharp, Stone, Van Buren, White, and Woodruff

Northeast Workforce Includes these counties: Clay, Craighead, Greene, Lawrence, Mississippi, Poinsett, and Randolph.

**TABLE 8. WORKFORCE INFORMATION AREA, SUMMARY  
EMPLOYMENT AND TOTAL EARNINGS, BY INDUSTRY  
CALENDAR YEAR 2005**

<b>NORTH AMERICAN INDUSTRY CLASSIFICATION SYSTEM INDUSTRY GROUP</b>	<b>AVERAGE EMPLOYING UNITS</b>	<b>AVERAGE COVERED EMPLOYMENT</b>	<b>TOTAL EARNINGS</b>	<b>AVERAGE WEEKLY EARNINGS</b>
---	--	---	-----------------------	--

<b>NORTHWEST WORKFORCE INFORMATION</b>	<b>13,837</b>	<b>224,105</b>	<b>\$7,364,516,298</b>	<b>\$631.96</b>
Trade, Transportation & Utilities	3,550	53,069	1,692,730,421	613.40
Retail Trade	1,993	25,329	537,974,279	408.45
Other Trade, Transportation & Utilities	1,557	27,740	1,154,756,142	800.54
Education & Health Services	1,360	22,426	735,098,533	630.36
Leisure & Hospitality	1,317	20,281	238,605,344	226.25
Local & State Government	423	25,645	848,003,080	635.90
Other	7,196	102,687	3,850,078,920	721.03

Northwest Workforce Includes these counties: Baxter, Benton, Boone, Carroll, Madison, Marion, Newton, Searcy, and Washington.

<b>SOUTHEAST WORKFORCE INFORMATION</b>	<b>5,177</b>	<b>77,632</b>	<b>\$2,213,928,972</b>	<b>\$548.43</b>
Natural Resources & Mining	417	3,165	86,962,844	528.39
Construction	380	3,395	114,383,688	647.92
Manufacturing	230	18,027	678,498,871	723.81
Trade, Transportation & Utilities	1,443	13,927	347,930,722	480.43
Wholesale Trade	258	2,561	89,015,380	668.42
Retail Trade	894	8,950	162,453,627	349.06
Transportation, Warehousing & Utilities	291	2,416	96,461,715	767.81
Local & State Government	359	15,765	436,758,669	532.78
Other	2,352	23,355	549,394,178	452.38

Southeast Workforce Includes these counties: Arkansas, Ashley, Bradley, Chicot, Cleveland, Desha, Drew, Grant, Jefferson, and Lincoln

<b>SOUTHWEST WORKFORCE INFORMATION</b>	<b>5,654</b>	<b>86,653</b>	<b>\$2,522,268,908</b>	<b>\$559.76</b>
Natural Resources & Mining	408	2,746	90,960,791	637.02
Trade, Transportation & Utilities	1,571	15,249	385,551,660	486.23
Education & Health Services	569	8,957	215,153,531	461.94
Local Government	266	10,394	268,203,621	496.22
State Government	150	3,266	96,747,857	569.67
Other	2,692	46,042	1,465,651,448	612.17

Southwest Workforce Includes these counties: Calhoun, Columbia, Dallas, Hempstead, Howard, Lafayette, Little River, Miller, Nevada, Ouachita, Sevier, and Union

**TABLE 8. WORKFORCE INFORMATION AREA, SUMMARY  
EMPLOYMENT AND TOTAL EARNINGS, BY INDUSTRY  
CALENDAR YEAR 2005**

<b>NORTH AMERICAN INDUSTRY CLASSIFICATION SYSTEM INDUSTRY GROUP</b>	<b>AVERAGE EMPLOYING UNITS</b>	<b>AVERAGE COVERED EMPLOYMENT</b>	<b>TOTAL EARNINGS</b>	<b>AVERAGE WEEKLY EARNINGS</b>
---	--	---	-----------------------	--

<b>WEST CENTRAL WORKFORCE INFORMATION</b>	<b>7,809</b>	<b>107,035</b>	<b>\$2,819,326,809</b>	<b>\$506.54</b>
Natural Resources & Mining	265	2,295	65,639,318	550.02
Construction	877	5,824	175,585,679	579.78
Trade, Transportation & Utilities	2,002	21,526	576,562,763	515.09
Financial Activities	821	3,917	117,747,695	578.09
Education & Health Services	816	14,838	443,341,506	574.59
Local Government	231	11,256	311,862,364	532.81
State Government	134	4,640	130,130,173	539.33
Other	2,664	42,738	998,457,311	449.27

West Central Workforce Includes these counties: Clark, Conway, Garland, Hot Spring, Johnson, Montgomery, Perry, Pike, Pope, and Yell

<b>WESTERN WORKFORCE INFORMATION</b>	<b>6,164</b>	<b>109,647</b>	<b>\$3,243,053,795</b>	<b>\$568.79</b>
Natural Resources & Mining	151	2,242	92,682,424	794.98
Trade, Transportation & Utilities	1,636	22,295	590,421,427	509.27
Wholesale Trade	375	3,376	126,070,899	718.14
Retail Trade	977	12,172	241,005,388	380.77
Transportation, Warehousing & Utilities	284	6,747	223,345,140	636.59
Financial Activities	639	3,710	125,335,729	649.68
Professional & Business Services	758	10,346	339,297,565	630.67
Education & Health Services	697	13,173	434,547,828	634.38
Leisure & Hospitality	504	7,827	84,155,212	206.77
Local & State Government	232	11,162	332,235,158	572.40
Other	1,550	38,893	1,244,378,452	615.29

Western Workforce Includes these counties: Crawford, Franklin, Logan, Polk, Scott, and Sebastian