

Arkansas Covered Employment & Earnings



Third Quarter
2004

**COVERED EMPLOYMENT AND EARNINGS
STATE OF ARKANSAS
THIRD QUARTER 2004**

**MIKE HUCKABEE, GOVERNOR
STATE OF ARKANSAS**

**ARTEE WILLIAMS, DIRECTOR
ARKANSAS EMPLOYMENT SECURITY DEPARTMENT**

**PUBLISHED BY
BUREAU OF LABOR STATISTICS PROGRAMS
ARKANSAS EMPLOYMENT SECURITY DEPARTMENT
POST OFFICE BOX 2981
LITTLE ROCK, ARKANSAS 72203-2981
BERNADETTE COLEMAN, BLS PROGRAMS MANAGER
TELEPHONE: (501) 682-3159**

STATE OF ARKANSAS HOME PAGE: <http://www.arkansas.gov>

ARKANSAS EMPLOYMENT SECURITY DEPARTMENT HOME PAGE: <http://www.arkansas.gov/esd/>

**INTERNET SITE FOR LABOR MARKET INFORMATION:
<http://www.discoverarkansas.net>**

RELEASED: MARCH 2005

TABLE OF CONTENTS

DESCRIPTION OF DATA		Page
	Industry Classification	Page 1
	Definition of Covered Employment and Earnings	Page 2
	Federal Government Employment	Page 2
	County Classification	Page 2
	Significant Developments During Third Quarter 2004	Page 3
LIST OF GRAPHS AND TABLES		
Graph 1	Total Covered Employment for Selected Years, Arkansas	Page 7
Graph 2	Total Covered Earnings, by Calendar Quarter for Selected Years, Arkansas	Page 8
Table 1	Quarterly Comparison of Covered Employment and Wages, by Industry	Page 5
Table 2	Total Covered Employment in Arkansas, 1997-2004	Page 6
Table 3	Total Covered Earnings, 1997-2004	Page 9
Table 4	Total Taxable Earnings, 1997-2004	Page 10
Table 5	State Summary - Employment and Total Earnings, by Industry, Third Quarter 2004	Page 11
Table 6	County Summary - Employment and Total Earnings, by Industry, Third Quarter 2004	Page 25
Table 7	Federal Government Employment and Total Earnings in Arkansas, Third Quarter 2004	Page 63
Table 8	Workforce Information Area – Employment and Total Earnings, by Industry, Third Quarter 2004	Page 64

EMPLOYMENT AND EARNINGS UNDER THE ARKANSAS EMPLOYMENT SECURITY LAW THIRD QUARTER 2004

DESCRIPTION OF DATA

This publication contains covered employment and payroll data by industry and county for the Third Quarter 2004. These data are compiled from quarterly contribution and wage reports submitted by employers subject to the Arkansas Employment Security Law. An employing unit is a single physical location where business is conducted, production takes place, or services are provided. Employment data have been tabulated for each month of the quarter by industry under the **North American Industry Classification System** (NAICS) (see "Industry Classification" below) on a statewide and county basis. Payroll data represent the total wages paid during the quarter, and are also shown by industry for the State and by

publishable industry groups for each county. The tabulation of this data is a joint effort in conjunction with the U.S. Bureau of Labor Statistics. In addition, there are tables included which set out total covered employment by months, quarterly payrolls, and average weekly earnings for the years 1997 through 2004. Data contained in this publication are subject to revision. These revisions will be reflected in the 2004 Annual Covered Employment and Earnings publication. Because of industry code changes between years, substantial employment and wage shifts among industries are anticipated.

INDUSTRY CLASSIFICATION

Previously published industry data **will not** be comparable in all instances with currently published data since industry codes have been revised according to the following Manuals: (a) between January 1, 1958 and December 31, 1967, industry codes were assigned under the 1957 Standard Industrial Classification (SIC) Manual; (b) between January 1, 1968 and December 31, 1974, industry codes were assigned under the 1967 Standard Industrial Classification (SIC) Manual; (c) between January 1, 1975 and December 31, 1987, industry codes were assigned under the 1972 Standard Industrial Classification (SIC) Manual; (d) between January 1, 1988 and December 31, 2000, industry codes were assigned under the 1987 Standard Industrial Classification (SIC) Manual; and (e) since January 1, 2001, industry codes have been assigned under the 2002 North American Industry Classification System (NAICS) Manual. **The NAICS Manual represents a significant change in coding methodology as compared to the**

SIC Manual. One of the most significant changes involves how NAICS treats auxiliary units. Auxiliary units are establishments primarily engaged in performing management or support services for other establishments of the same enterprise. The SIC code for these units was based on the activity of the enterprise served. The NAICS code is based on the actual activities that the establishment performs. Comparisons of many industries **should not be made** between this publication and previous Covered Employment and Earnings publications that were based on SIC. Even though some titles are the same or similar in nature, NAICS and SIC could differ in the classification of employers. The implementation of NAICS represents a profound change for statistical programs, and will create significant benefits along with transition obstacles for both data collectors and data users. A summary is available on the NAICS home page at <http://www.census.gov/naics>.

DEFINITION OF COVERED EMPLOYMENT AND EARNINGS

Covered Employment is the number of workers employed by employers subject to the Arkansas Employment Security Law who worked or received pay for the payroll period including the 12th of the month. An employer is subject to the law when they employ one or more employees in each of ten days during the current or preceding calendar year.

Currently excluded from coverage is employment covered by the Railroad Unemployment Insurance Act, some domestic service workers, employees of small agricultural establishments, self-employed and unpaid family workers, insurance and real estate

agents who are on commission only, and employees of churches and religious organizations except separately incorporated schools. The payroll information in this publication includes all wages and salaries paid to any covered employees by their employers including bonuses, commissions, and cash values of remuneration received in any medium other than cash. These wages include both taxable and nontaxable wages. Only the first \$10,000 paid to each worker by an employer in the calendar year is taxable under the Arkansas Employment Security Law.

FEDERAL GOVERNMENT EMPLOYMENT

Table 7 on page 63 lists the total number of civilians employed by the Federal Government in Arkansas during the Third Quarter 2004. Employment and wage data are set out by industry divisions. These data are obtained from required reports submitted by various

government agencies having employment in the State. Civilian Federal workers are covered by the Unemployment Compensation for Federal Employees (UCFE) program.

COUNTY CLASSIFICATION

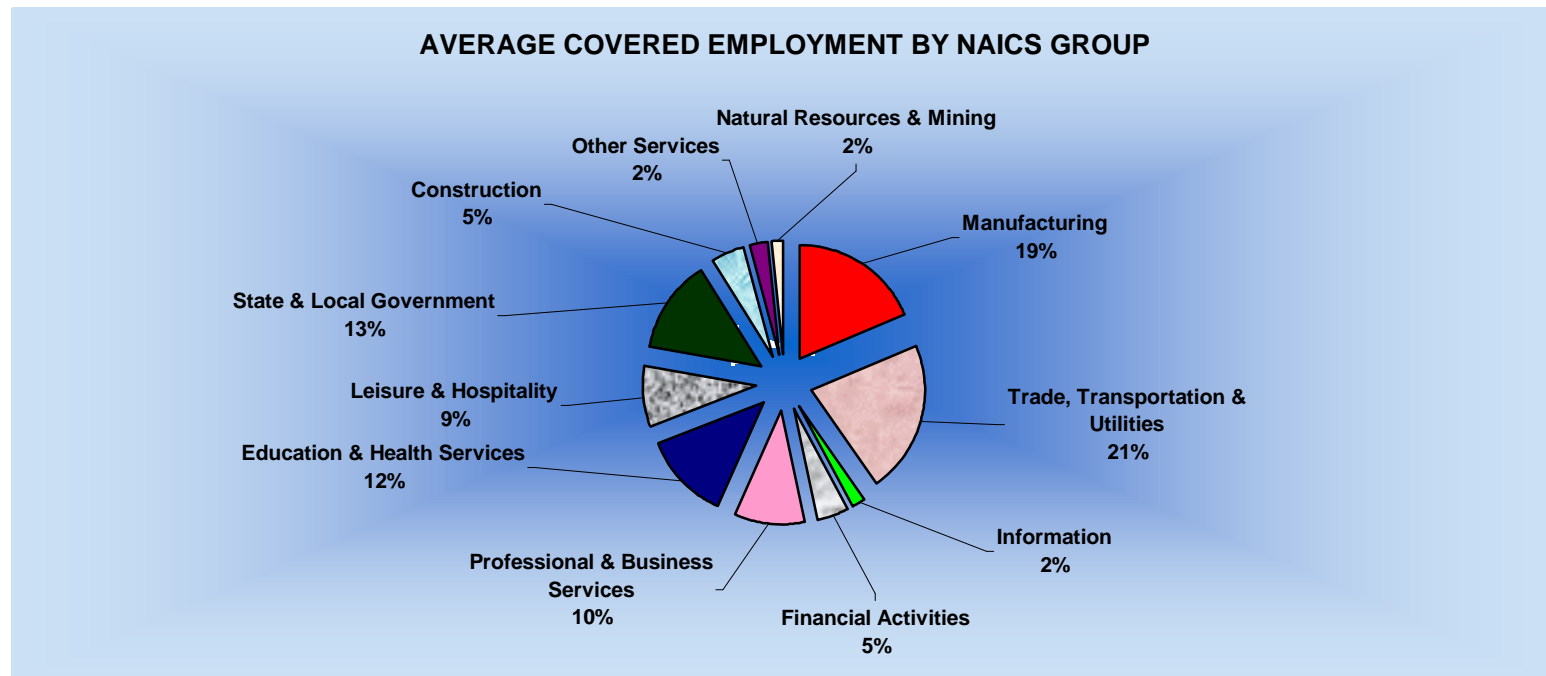
Employment and payroll data by county are classified according to the county where the workers are employed. Employers with operations in more than one county are requested to furnish this agency with a breakdown of employment and wages for at least one quarter of each year by the counties in which they operate. Many such employers submit county data with each regular contribution report. **Note:** This information is invaluable in the preparation of monthly employment and payroll data by county.

Employment and payroll data for multi - area employers who do not furnish county data each quarter of the year, are prorated by county on the basis of one quarter's information. The "rest-of-state" table that appears on page 62 of this publication includes data on firms that **did not** provide a county breakdown of employment and payrolls. It also includes sales, and all other type of personnel with no permanent place of work, as well as employment of employers with no established place of business in Arkansas.

SIGNIFICANT DEVELOPMENTS DURING THIRD QUARTER 2004

AVERAGE EMPLOYMENT CHANGES

Covered employment averaged 1,098,112 during the Third Quarter 2004 (see table 1), a decrease of 17,032 (-1.5%) from the previous quarter and, 16,262 (1.5%) above the average recorded one year ago. This *over-the-year* increase is more significant when used as an economic indicator. This *over-the-year* comparison allows for the disregarding of many seasonal factors that are evident when making an *over-the-quarter* comparison.



EMPLOYMENT CHANGES FROM SECOND QUARTER 2004

Over-the-quarter gains were recorded in eight industry groups (see table 1). Professional and Business Services recorded the largest quarterly gain of 1,995 employees. The driving factor for the increase was focused in Administrative & Support Services as companies' added temporary employees. Leisure and Hospitality added 1,421 employees due to the increase in demand in the food service industry. Trade, Transportation, and Utilities increased 1,404 with over half of the increase noted in the trucking industry.

Construction (+1,286), Education and Health Services (+635), Natural Resources and Mining (+469), Financial Activities (+343) and Manufacturing (+238) all recorded gains for the quarter.

Losses occurred in three industry groups. State and Local Government experienced the largest drop of 24,627 employees. This was mainly due to summer break as schools were still out. Other Services and Information decreased respectively 133 and 61.

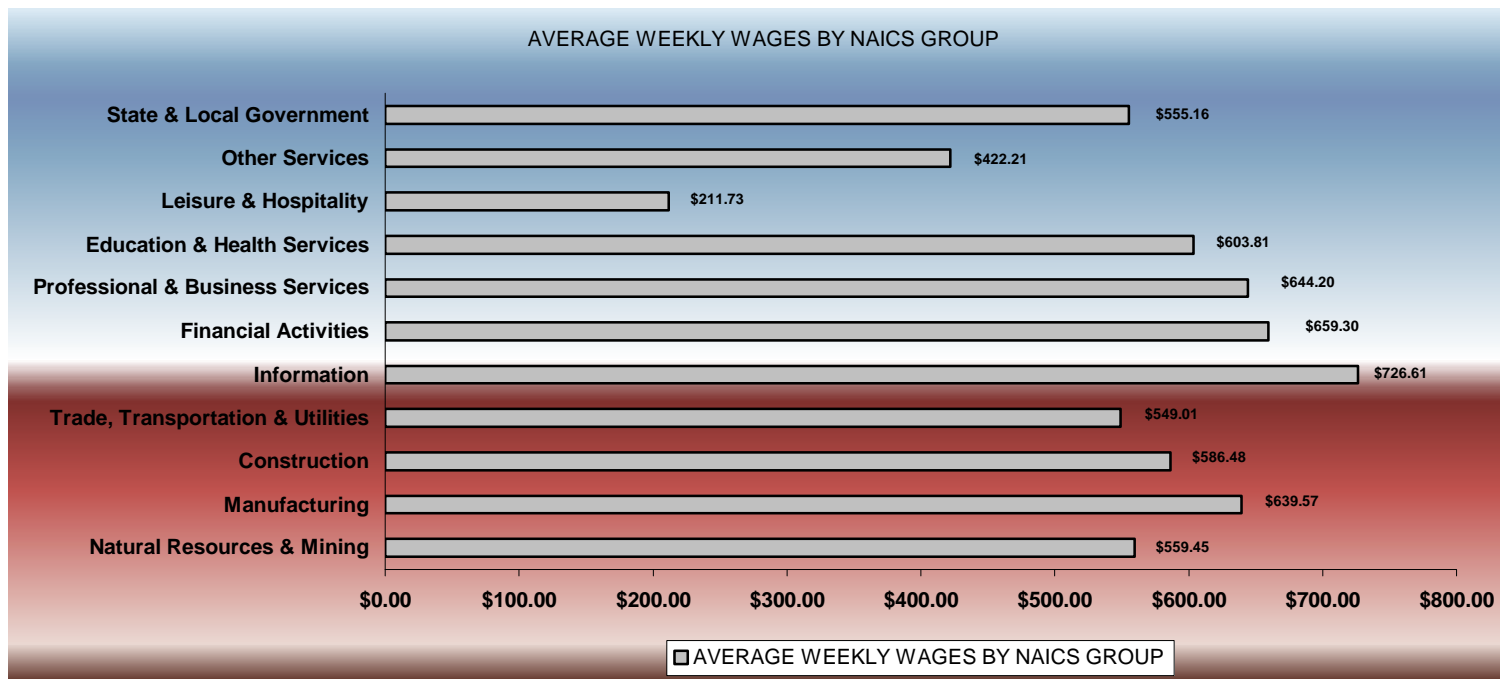
EMPLOYMENT CHANGES FROM THIRD QUARTER 2003

Over-the-year gains were recorded in nine industry groups while two recorded losses (see table 1). Significant gains were posted in Professional & Business Services (4,637), Educational & Health Services (3,120) and Trade, Transportation & Utilities (2,774). The only losses occurred in Manufacturing (-485), and Information (-214).

COVERED WAGES

Wages paid to covered workers totaled \$8,012,954,303 for the Third Quarter 2004 (see table 1), for an average weekly wage of \$561.31 (see table 5). Employees in Little River County had the highest average weekly wage (\$703.95), and workers in Newton County the lowest (\$333.76) (see table 6).

The Information sector recorded the highest average weekly wage for the State of Arkansas at \$726.61, while the Leisure & Hospitality sector recorded the lowest at \$211.76 for the State of Arkansas (see table 5).



Note: Because of industry code changes between years, substantial employment and wage shifts among industries are anticipated.

TABLE 1. QUARTERLY COMPARISON OF COVERED EMPLOYMENT AND WAGES, BY INDUSTRY

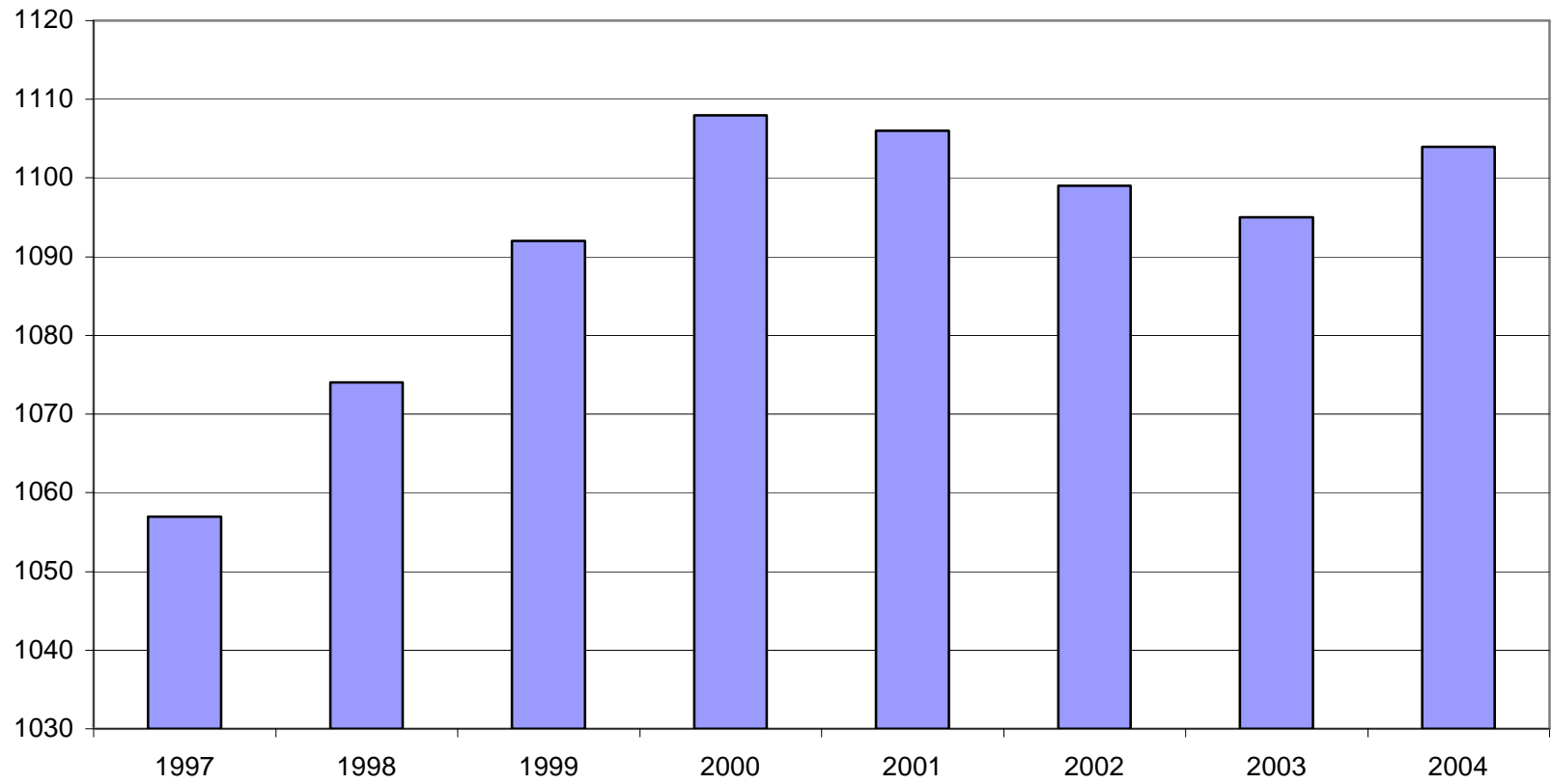
North American Industry Classification System Industry Group	Number of Employing Units	Average Covered Employment Jul. – Sep. 2004 Monthly Average	Average Covered Employment Jul. – Sep. 2004 % of Total	Net Change From Apr. – Jun. 2004	Net Change From Jul. – Sep. 2003	Total Wages Paid Jul – Sep. 2004	Total Wages Paid % of Total
Total	75,400	1,098,112	100.0	-17,032	16,262	\$8,012,954,303	100.0
Natural Resources and Mining	2,360	19,186	1.7	469	643	139,534,841	1.7
Agriculture, Forestry, Fishing and Hunting	2,038	15,151	1.4	358	360	97,746,362	1.2
Mining	322	4,035	0.4	111	283	41,788,479	0.5
Construction	7,394	53,576	4.9	1,286	1,261	408,478,182	5.1
Manufacturing	3,613	204,575	18.6	238	-485	1,700,906,962	21.2
Trade, Transportation, and Utilities	20,862	238,754	21.7	1,404	2,774	1,704,030,194	21.3
Wholesale Trade	6,115	46,442	4.2	146	1,555	489,762,582	6.1
Retail Trade	11,486	130,763	11.9	401	1,719	642,427,845	8.0
Transportation and Warehousing	2,937	54,992	5.0	855	-298	477,224,928	6.0
Utilities	324	6,557	0.6	3	-202	94,614,839	1.2
Information	1,213	20,185	1.8	-61	-214	190,666,465	2.4
Financial Activities	7,443	49,564	4.5	343	566	424,808,249	5.3
Finance and Insurance	4,402	36,056	3.3	232	48	345,268,448	4.3
Real Estate and Rental and Leasing	3,041	13,508	1.2	111	518	79,539,801	1.0
Professional and Business Services	10,095	109,202	9.9	1,995	4,637	914,517,080	11.4
Professional and Technical Services	6,277	33,420	3.0	-103	3,022	339,280,055	4.2
Management of Companies and Enterprises	475	22,848	2.1	257	-901	326,059,071	4.1
Administrative and Waste Services	3,343	52,934	4.8	1,841	2,516	249,177,954	3.1
Education and Health Services	7,863	136,892	12.5	635	3,120	1,074,547,199	13.4
Educational Services	513	7,765	0.7	-177	308	49,345,805	0.6
Health Care and Social Assistance	7,350	129,127	11.8	812	2,812	1,025,201,394	12.8
Leisure and Hospitality	5,853	94,189	8.6	1,421	2,758	259,297,112	3.2
Arts, Entertainment and Recreation	882	10,286	0.9	284	-72	34,073,868	0.4
Accommodation and Food Services	4,971	83,903	7.6	1,137	2,830	225,223,244	2.8
Other Services	5,514	26,100	2.4	-133	83	143,254,882	1.8
State and Local Government	3,190	145,891	13.3	-24,627	1,121	1,052,913,137	13.1
Local Government	1,988	88,040	8.0	-23,301	529	572,923,723	7.1
State Government	1,202	57,850	5.3	-1,327	591	479,989,414	6.0
Nonclassifiable Establishments	0	0	0.0	0	0	0	0.0

Note: Items do not necessarily add to totals because of rounding. Because of industry code changes between years, substantial employment and wage shifts among industries are anticipated.

TABLE 2. TOTAL COVERED EMPLOYMENT IN ARKANSAS

Period	1997	1998	1999	2000	2001	2002	2003	2004
Average	1,057,350	1,073,732	1,092,351	1,108,490	1,106,053	1,098,558	1,094,904	1,104,087
January	1,025,949	1,050,970	1,065,920	1,089,956	1,096,009	1,081,635	1,082,740	1,091,643
February	1,034,361	1,057,593	1,074,315	1,096,126	1,101,616	1,086,793	1,084,880	1,097,370
March	1,046,551	1,066,099	1,084,653	1,109,157	1,112,143	1,098,500	1,092,172	1,108,001
April	1,057,633	1,074,416	1,093,574	1,111,543	1,115,526	1,103,399	1,095,341	1,110,784
May	1,067,078	1,083,133	1,098,539	1,116,779	1,119,815	1,111,998	1,103,099	1,116,986
June	1,066,728	1,086,125	1,101,748	1,121,245	1,119,734	1,112,028	1,099,688	1,117,663
July	1,028,510	1,046,396	1,062,563	1,075,096	1,071,830	1,065,697	1,056,155	1,073,136
August	1,050,656	1,063,680	1,081,260	1,096,841	1,094,068	1,086,011	1,080,681	1,096,390
September	1,075,759	1,088,772	1,108,212	1,123,735	1,115,996	1,113,148	1,108,905	1,124,811
October	1,079,093	1,089,836	1,110,604	1,122,884	1,110,994	1,108,447	1,112,900	N/A
November	1,076,715	1,087,855	1,112,003	1,120,620	1,109,012	1,107,611	1,110,041	N/A
December	1,079,166	1,089,913	1,114,823	1,117,892	1,105,887	1,107,425	1,112,243	N/A

GRAPH 1
AVERAGE TOTAL COVERED EMPLOYMENT
In Thousands



GRAPH 2
TOTAL COVERED EARNINGS BY CALENDAR QUARTER
In Thousands

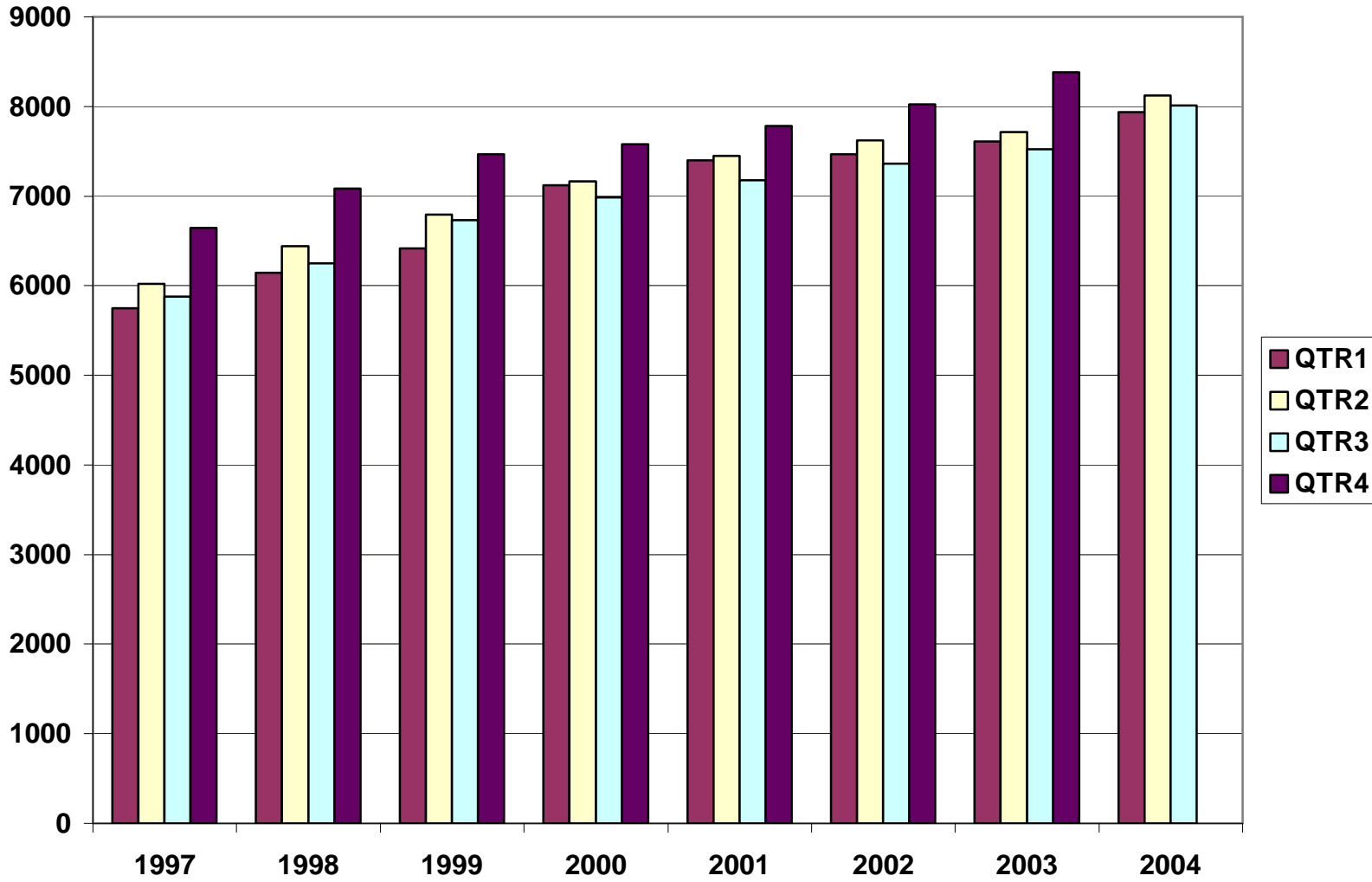


TABLE 3. TOTAL COVERED EARNINGS, 1997 - 2004

Period	1997	1998	1999	2000
Total	\$24,296,555,335	\$25,914,345,060	\$27,407,925,462	\$28,853,825,155
January - March	\$5,751,056,136	\$6,145,178,755	\$6,418,456,638	\$7,122,666,917
April - June	\$6,021,537,518	\$6,441,129,069	\$6,791,960,679	\$7,166,110,114
July - September	\$5,877,681,886	\$6,246,775,598	\$6,733,480,079	\$6,986,103,157
October - December	\$6,646,279,795	\$7,081,261,638	\$7,464,028,066	\$7,578,944,967
Average Weekly Earnings	\$441.90	\$464.13	\$482.51	\$500.57
Period	2001	2002	2003	2004
Total	\$29,807,669,666	\$30,472,854,103	\$31,226,612,657	\$24,071,636,680
January - March	\$7,398,887,532	\$7,465,250,305	\$7,608,130,008	\$7,935,999,703
April - June	\$7,448,023,298	\$7,621,878,775	\$7,714,813,038	\$8,122,682,674
July - September	\$7,177,293,061	\$7,361,666,511	\$7,522,456,991	\$8,012,954,303
October - December	\$7,783,465,775	\$8,024,058,512	\$8,381,212,620	N/A
Average Weekly Earnings	\$518.26	\$533.44	\$548.46	\$559.03

TABLE 4. TOTAL TAXABLE EARNINGS, 1997 - 2004

Period	1997	1998	1999	2000
Total	\$8,262,066,213	\$8,554,973,370	\$8,807,445,422	\$9,048,033,534
Jan.-March	\$3,871,667,342	\$4,063,795,529	\$4,203,067,856	\$4,560,814,012
Apr.-June	\$2,223,918,770	\$2,271,303,325	\$2,325,649,764	\$2,260,741,187
July-Sept.	\$1,208,701,615	\$1,236,054,184	\$1,267,562,743	\$1,250,850,348
Oct.-Dec.	\$957,778,486	\$983,820,332	\$1,011,165,059	\$975,627,987
Period	2001	2002	2003	2004
Total	\$9,003,189,480	\$8,887,270,978	\$9,155,945,780	\$8,722,767,680
Jan.-March	\$4,670,296,360	\$4,668,534,587	\$4,737,918,796	\$4,942,118,249
Apr.-June	\$2,219,485,263	\$2,162,971,435	\$2,270,519,362	\$2,459,193,434
July-Sept.	\$1,190,098,737	\$1,158,197,858	\$1,188,784,400	\$1,321,455,997
Oct.-Dec.	\$923,309,120	\$897,567,098	\$958,723,222	N/A

**TABLE 5. STATE SUMMARY
EMPLOYMENT AND TOTAL EARNINGS, BY INDUSTRY
THIRD QUARTER 2004**

NORTH AMERICAN INDUSTRY CLASSIFICATION SYSTEM INDUSTRY GROUPS	NUMBER OF EMPLOYING UNITS	EMPLOYMENT JULY	EMPLOYMENT AUGUST	EMPLOYMENT SEPTEMBER	TOTAL EARNINGS JUL. - SEP. 2004	AVERAGE WEEKLY EARNINGS
TOTAL, ALL INDUSTRIES	75,400	1,073,136	1,096,390	1,124,811	\$8,012,954,303	\$561.31
NATURAL RESOURCES and MINING	2,360	18,951	18,939	19,667	\$139,534,841	\$559.45
AGRICULTURE, FORESTRY, FISHING and HUNTING	2,038	14,991	14,866	15,596	\$97,746,362	\$496.27
CROP PRODUCTION	716	4,181	4,019	4,216	\$19,937,380	\$370.56
Oilseed and Grain Farming	426	2,127	2,132	2,205	\$10,667,075	\$380.82
Vegetable and Melon Farming	8	234	148	154	\$280,850	\$120.92
Fruit and Tree Nut Farming	9	116	91	71	\$356,210	\$295.69
Greenhouse and Nursery Production	50	302	283	291	\$1,799,179	\$473.97
Other Crop Farming	223	1,402	1,365	1,495	\$6,834,066	\$370.04
ANIMAL PRODUCTION	266	3,961	3,934	3,904	\$29,837,600	\$583.57
Cattle Ranching and Farming	76	416	408	399	\$2,260,908	\$426.61
Poultry and Egg Production	93	2,660	2,649	2,642	\$21,534,666	\$625.02
Animal Aquaculture	66	650	643	620	\$4,397,232	\$530.45
Other	31	235	234	243	\$1,644,794	\$533.10
FORESTRY AND LOGGING	593	3,468	3,539	3,619	\$25,058,538	\$544.21
Timber Tract Operations	45	271	272	268	\$2,198,408	\$625.55
Forest Nurseries & Gathering of Forest Products	6	30	31	31	\$227,005	\$569.41
Logging	542	3,167	3,236	3,320	\$22,633,125	\$537.18
OTHER	463	3,381	3,374	3,857	\$22,912,844	\$498.26
MINING	322	3,960	4,073	4,071	\$41,788,479	\$796.72
OIL AND GAS EXTRACTION	72	373	373	365	\$4,186,232	\$869.54
MINING (EXCEPT OIL AND GAS)	111	2,079	2,115	2,097	\$21,068,747	\$772.85
SUPPORT ACTIVITIES FOR MINING	139	1,508	1,585	1,609	\$16,533,500	\$811.45
CONSTRUCTION	7,394	53,529	53,697	53,503	\$408,478,182	\$586.48
CONSTRUCTION OF BUILDINGS	1,952	12,120	12,290	12,240	\$97,616,992	\$614.65
Residential Building Construction	1,353	4,125	4,207	4,247	\$27,669,051	\$507.61
Nonresidential Building Construction	599	7,995	8,083	7,993	\$69,947,941	\$670.59
HEAVY AND CIVIL ENGINEERING CONSTRUCTION	906	10,147	10,109	10,085	\$83,844,562	\$637.71
Utility System Construction	427	4,827	4,769	4,779	\$38,794,605	\$622.79

**TABLE 5. STATE SUMMARY
EMPLOYMENT AND TOTAL EARNINGS, BY INDUSTRY
THIRD QUARTER 2004**

NORTH AMERICAN INDUSTRY CLASSIFICATION SYSTEM INDUSTRY GROUPS	NUMBER OF EMPLOYING UNITS	EMPLOYMENT JULY	EMPLOYMENT AUGUST	EMPLOYMENT SEPTEMBER	TOTAL EARNINGS JUL. - SEP. 2004	AVERAGE WEEKLY EARNINGS
Land Subdivision	121	390	409	392	\$3,386,863	\$656.24
Highway, Street and Bridge Construction	249	4,056	4,106	4,108	\$34,675,945	\$652.17
Other Heavy Construction	109	874	825	806	\$6,987,149	\$643.68
SPECIALTY TRADE CONTRACTORS	4,536	31,262	31,298	31,178	\$227,016,628	\$558.88
Building Foundation and Exterior Contractors	916	6,074	6,058	5,972	\$40,148,666	\$511.77
Building Equipment Contractors	1,955	14,764	14,693	14,660	\$118,503,945	\$619.88
Building Finishing Contractors	855	5,088	5,090	5,084	\$32,219,056	\$487.17
Other Specialty Trade Contractors	810	5,336	5,457	5,462	\$36,144,961	\$513.14
MANUFACTURING	3,613	204,628	204,502	204,594	\$1,700,906,962	\$639.57
FOOD MANUFACTURING	297	51,395	51,781	52,009	\$356,676,919	\$530.40
Animal Food Manufacturing	50	1,395	1,400	1,399	\$12,371,220	\$680.71
Grain and Oilseed Milling	31	2,424	2,443	2,511	\$20,583,560	\$643.81
Fruit, Vegetable and Specialty Food	39	6,513	6,569	6,670	\$50,997,491	\$595.82
Dairy Product Manufacturing	10	739	729	724	\$6,397,897	\$673.56
Animal Slaughtering and Processing	88	35,073	35,374	35,405	\$221,308,891	\$482.48
Bakeries and Tortilla Manufacturing	51	3,377	3,383	3,427	\$30,123,473	\$682.40
Other Food Manufacturing	19	1,763	1,769	1,754	\$14,372,751	\$627.47
Other	9	111	114	119	\$521,636	\$349.93
BEVERAGE AND TOBACCO PRODUCT MFG.	38	1,258	1,266	1,263	\$10,937,093	\$666.48
TEXTILE MILLS	14	360	361	372	\$3,813,399	\$805.14
Fabric Mills	4	300	298	305	\$3,464,529	\$885.39
Textile and Fabric Finishing Mills	10	60	63	67	\$348,870	\$423.73
TEXTILE PRODUCT MILLS	59	1,632	1,616	1,615	\$13,901,671	\$659.69
APPAREL MANUFACTURING	37	2,108	2,109	2,138	\$11,154,093	\$405.04
Cut and Sew Apparel Manufacturing	30	866	836	884	\$4,165,898	\$371.76
Other	7	1,242	1,273	1,254	\$6,988,195	\$427.87
LEATHER AND ALLIED PRODUCT MANUFACTURING	21	2,544	2,571	2,634	\$12,862,811	\$383.06
Footwear Manufacturing	10	2,348	2,369	2,430	\$11,494,754	\$371.15

**TABLE 5. STATE SUMMARY
EMPLOYMENT AND TOTAL EARNINGS, BY INDUSTRY
THIRD QUARTER 2004**

NORTH AMERICAN INDUSTRY CLASSIFICATION SYSTEM INDUSTRY GROUPS	NUMBER OF EMPLOYING UNITS	EMPLOYMENT JULY	EMPLOYMENT AUGUST	EMPLOYMENT SEPTEMBER	TOTAL EARNINGS JUL. - SEP. 2004	AVERAGE WEEKLY EARNINGS
Other Leather Product Manufacturing	11	196	202	204	\$1,368,057	\$524.43
WOOD PRODUCT MANUFACTURING	405	14,137	14,074	14,044	\$104,108,849	\$568.57
Sawmills and Wood Preservation	190	6,327	6,333	6,298	\$48,796,256	\$593.98
Veneer and Engineered Wood Products	49	3,400	3,351	3,369	\$28,609,101	\$652.38
Other Wood Product Manufacturing	166	4,410	4,390	4,377	\$26,703,492	\$467.66
PAPER MANUFACTURING	86	12,242	12,181	12,210	\$146,574,542	\$923.34
Pulp, Paper and Paperboard Mills	12	4,824	4,750	4,709	\$73,698,931	\$1,190.75
Converted Paper Product Manufacturing	74	7,418	7,431	7,501	\$72,875,611	\$752.46
PRINTING AND RELATED SUPPORT ACTIVITIES	307	4,786	4,805	4,798	\$39,261,647	\$629.67
PETROLEUM AND COAL PRODUCTS MANUFACTURING	21	978	972	926	\$11,091,172	\$889.95
CHEMICAL MANUFACTURING	121	5,119	5,126	5,122	\$60,797,656	\$913.01
Basic Chemical Manufacturing	25	1,593	1,591	1,598	\$20,994,862	\$1,013.17
Resin, Rubber and Artificial Fibers	8	293	296	294	\$3,601,694	\$941.29
Agricultural Chemical Manufacturing	24	456	450	451	\$5,369,619	\$913.15
Pharmaceutical and Medicine Manufacturing	13	124	120	131	\$1,022,703	\$629.36
Paint, Coating and Adhesive Manufacturing	8	205	202	209	\$2,288,300	\$857.26
Cleaning Compound and Toiletry Manufacturing	18	1,088	1,086	1,068	\$10,945,863	\$779.14
Other Chemical Preparation Manufacturing	25	1,360	1,381	1,371	\$16,574,615	\$930.18
PLASTICS AND RUBBER PRODUCTS MANUFACTURING	183	13,170	13,127	13,080	\$115,679,728	\$677.94
Plastics Product Manufacturing	140	7,686	7,627	7,610	\$60,145,061	\$605.49
Rubber Product Manufacturing	43	5,484	5,500	5,470	\$55,534,667	\$778.88
NONMETALLIC MINERAL PRODUCT MANUFACTURING	256	4,520	4,515	4,495	\$39,274,318	\$669.87
Clay Product and Refractory Manufacturing	20	535	532	537	\$4,336,668	\$623.92
Glass and Glass Product Manufacturing	14	366	362	362	\$3,293,753	\$697.34
Cement and Concrete Product Manufacturing	188	2,706	2,717	2,688	\$22,750,557	\$647.28
Lime and Gypsum Product Manufacturing	3	397	395	394	\$4,356,326	\$847.64
Other Nonmetallic Mineral Products	31	516	509	514	\$4,537,014	\$680.31
PRIMARY METAL MANUFACTURING	66	8,190	8,163	8,104	\$96,565,134	\$911.16
Iron and Steel Mills and Ferroalloys	7	2,094	2,083	2,082	\$40,579,847	\$1,496.18

**TABLE 5. STATE SUMMARY
EMPLOYMENT AND TOTAL EARNINGS, BY INDUSTRY
THIRD QUARTER 2004**

NORTH AMERICAN INDUSTRY CLASSIFICATION SYSTEM INDUSTRY GROUPS	NUMBER OF EMPLOYING UNITS	EMPLOYMENT JULY	EMPLOYMENT AUGUST	EMPLOYMENT SEPTEMBER	TOTAL EARNINGS JUL. - SEP. 2004	AVERAGE WEEKLY EARNINGS
Purchased Steel Product Manufacturing	13	2,222	2,215	2,208	\$20,618,335	\$716.04
Alumina and Aluminum Production	20	1,759	1,798	1,755	\$18,529,661	\$804.98
Other Nonferrous Metal Production	10	709	705	699	\$5,833,076	\$637.05
Foundries	16	1,406	1,362	1,360	\$11,004,215	\$615.17
FABRICATED METAL PRODUCT MANUFACTURING	574	17,948	17,841	17,899	\$153,847,043	\$661.29
Forging and Stamping	16	815	814	829	\$6,703,520	\$629.36
Cutlery and Hand Tool Manufacturing	18	1,323	1,321	1,321	\$9,921,122	\$577.42
Architectural and Structural Metals	179	5,021	5,009	4,998	\$44,615,337	\$685.11
Boilers, Tanks and Shipping Containers	20	1,101	1,098	1,102	\$10,772,861	\$753.12
Hardware Manufacturing	12	507	437	445	\$3,407,718	\$566.16
Spring and Wire Product Manufacturing	17	894	880	917	\$6,404,040	\$549.18
Machine Shops and Threaded Products	205	1,648	1,653	1,685	\$12,732,922	\$589.32
Coating, Engraving and Heat Treating Metals	36	992	996	1,001	\$7,298,619	\$563.50
Other Fabricated Metal Product Manufacturing	71	5,647	5,633	5,601	\$51,990,904	\$710.73
MACHINERY MANUFACTURING	257	14,193	13,910	13,855	\$118,044,436	\$649.25
Agricultural, Construction and Mining Machinery	38	2,962	2,822	2,763	\$15,964,972	\$431.05
Commercial and Service Industry Machinery	26	1,042	1,038	1,043	\$9,769,780	\$721.92
HVAC and Commercial Refrigeration Equipment	26	4,596	4,470	4,449	\$42,621,635	\$727.77
Metalworking Machinery Manufacturing	83	1,536	1,522	1,517	\$14,586,201	\$735.75
Other General Purpose Machinery Manufacturing	53	3,174	3,176	3,202	\$26,737,190	\$645.95
Other	31	883	882	881	\$8,364,658	\$729.52
COMPUTER AND ELECTRONIC PRODUCT MANUFACTURING	72	6,217	6,234	6,202	\$51,139,674	\$632.68
Audio and Video Equipment Manufacturing	10	1,647	1,629	1,655	\$10,936,859	\$511.84
Semiconductors and Electronic Components	24	1,986	1,980	2,011	\$17,593,192	\$679.27
Electronic Instrument Manufacturing	25	1,305	1,314	1,286	\$10,642,171	\$628.91
Other	13	1,279	1,311	1,250	\$11,967,452	\$719.20
ELECTRICAL EQUIPMENT AND APPLIANCES	69	12,876	12,950	12,903	\$116,165,381	\$692.18
Electric Lighting Equipment Manufacturing	14	680	687	665	\$5,690,317	\$646.24
Electrical Equipment Manufacturing	29	5,188	5,167	5,162	\$47,807,688	\$711.00

**TABLE 5. STATE SUMMARY
EMPLOYMENT AND TOTAL EARNINGS, BY INDUSTRY
THIRD QUARTER 2004**

NORTH AMERICAN INDUSTRY CLASSIFICATION SYSTEM INDUSTRY GROUPS	NUMBER OF EMPLOYING UNITS	EMPLOYMENT JULY	EMPLOYMENT AUGUST	EMPLOYMENT SEPTEMBER	TOTAL EARNINGS JUL. - SEP. 2004	AVERAGE WEEKLY EARNINGS
Other	26	7,008	7,096	7,076	\$62,667,376	\$682.80
TRANSPORTATION EQUIPMENT MANUFACTURING	185	16,288	16,354	16,425	\$137,885,081	\$648.49
Motor Vehicle Body and Trailer Manufacturing	45	3,408	3,443	3,443	\$27,068,767	\$606.82
Motor Vehicle Parts Manufacturing	68	7,231	7,200	7,142	\$54,971,342	\$588.04
Aerospace Product and Parts Manufacturing	32	3,070	3,083	3,111	\$36,318,366	\$904.70
Ship and Boat Building	23	1,673	1,641	1,665	\$11,459,607	\$531.14
Other	17	906	987	1,064	\$8,066,999	\$629.56
FURNITURE & RELATED PRODUCT MANUFACTURING	271	8,109	8,033	7,933	\$54,895,953	\$526.20
Household & Institutional Furniture	221	5,333	5,308	5,271	\$33,786,578	\$490.00
Office Furniture & Fixtures Manufacturing	40	2,618	2,575	2,510	\$20,386,380	\$610.74
Other Furniture Related Product Manufacturing	10	158	150	152	\$722,995	\$362.71
MISCELLANEOUS MANUFACTURING	274	6,558	6,513	6,567	\$46,230,362	\$543.26
Medical Equipment & Supplies Manufacturing	94	2,583	2,591	2,577	\$20,277,622	\$603.72
Other Miscellaneous Manufacturing	180	3,975	3,922	3,990	\$25,952,740	\$503.84
TRADE, TRANSPORTATION & UTILITIES	20,862	238,313	238,698	239,250	\$1,704,030,194	\$549.01
WHOLESALE TRADE	6,115	46,667	46,314	46,345	\$489,762,582	\$811.21
MERCHANT WHOLESALERS, DURABLE GOODS	2,074	21,404	21,429	21,428	\$206,290,771	\$740.82
Motor Vehicle & Part Merchant Wholesalers	237	2,717	2,721	2,688	\$22,168,933	\$629.57
Furniture & Furnishing Merchant Wholesalers	55	378	377	380	\$3,862,843	\$785.40
Lumber & Supply Merchant Wholesalers	157	1,818	1,817	1,807	\$16,995,662	\$720.70
Commercial Goods Merchant Wholesalers	244	2,310	2,307	2,321	\$31,502,320	\$1,047.82
Metal & Mineral Merchant Wholesalers	53	751	743	754	\$7,662,784	\$786.63
Electric Goods Merchant Wholesalers	171	2,188	2,192	2,203	\$21,827,616	\$765.17
Hardware & Plumbing Merchant Wholesalers	228	2,220	2,255	2,272	\$21,973,884	\$751.58
Machinery & Supply Merchant Wholesalers	716	7,278	7,265	7,265	\$67,412,787	\$713.35
Miscellaneous Durable Goods Merchant Wholesalers	213	1,744	1,752	1,738	\$12,883,942	\$568.06
MERCHANT WHOLESALERS, NONDURABLE GOODS	1,306	16,768	16,433	16,392	\$142,359,141	\$662.43
Paper & Paper Product Merchant Wholesalers	80	1,392	1,318	1,308	\$11,159,010	\$640.90
Druggists' Goods Merchant Wholesalers	51	921	915	943	\$8,649,843	\$718.29

**TABLE 5. STATE SUMMARY
EMPLOYMENT AND TOTAL EARNINGS, BY INDUSTRY
THIRD QUARTER 2004**

NORTH AMERICAN INDUSTRY CLASSIFICATION SYSTEM INDUSTRY GROUPS	NUMBER OF EMPLOYING UNITS	EMPLOYMENT JULY	EMPLOYMENT AUGUST	EMPLOYMENT SEPTEMBER	TOTAL EARNINGS JUL. - SEP. 2004	AVERAGE WEEKLY EARNINGS
Apparel & Piece Goods Merchant Wholesalers	41	451	446	447	\$3,104,567	\$533.06
Grocery Product Merchant Wholesalers	362	5,323	5,300	5,298	\$53,118,179	\$769.93
Farm Product Merchant Wholesalers	83	942	925	994	\$5,623,408	\$453.59
Chemical Merchant Wholesalers	82	445	431	419	\$4,802,695	\$855.84
Petroleum Merchant Wholesalers	157	1,420	1,427	1,427	\$11,978,870	\$646.78
Alcoholic Beverage Merchant Wholesalers	39	1,146	1,148	1,154	\$10,716,237	\$717.22
Miscellaneous Nondurable Goods Merchant Wholesalers	411	4,728	4,523	4,402	\$33,206,332	\$561.27
ELECTRONIC MARKETS & AGENTS & BROKERS	2,735	8,495	8,452	8,525	\$141,112,670	\$1,278.44
RETAIL TRADE	11,486	130,519	130,887	130,882	\$642,427,845	\$377.92
MOTOR VEHICLE & PARTS DEALERS	1,757	18,039	18,076	18,089	\$142,298,575	\$605.82
Automobile Dealers	747	10,957	11,037	11,057	\$99,172,290	\$692.44
Other Motor Vehicle Dealers	196	1,416	1,391	1,403	\$10,431,849	\$571.82
Automotive Parts, Accessories & Tire Stores	814	5,666	5,648	5,629	\$32,694,436	\$445.31
FURNITURE & HOME FURNISHINGS STORES	629	4,138	4,191	4,170	\$25,878,412	\$477.79
Furniture Stores	321	2,519	2,548	2,534	\$15,638,051	\$474.78
Home Furnishings Stores	308	1,619	1,643	1,636	\$10,240,361	\$482.47
ELECTRONICS & APPLIANCE STORES	507	3,017	3,048	3,036	\$17,165,385	\$435.25
BUILDING MATERIAL & GARDEN SUPPLY STORES	811	10,044	10,075	10,096	\$59,647,425	\$455.56
Building Material & Supplies Dealers	628	9,081	9,160	9,193	\$54,922,160	\$461.99
Lawn & Garden Equipment & Supplies Stores	183	963	915	903	\$4,725,265	\$392.11
FOOD & BEVERAGE STORES	1,171	19,625	19,690	19,720	\$74,819,624	\$292.47
Grocery Stores	696	17,239	17,284	17,275	\$64,443,329	\$287.11
Specialty Food Stores	164	922	933	959	\$4,886,127	\$400.70
Beer, Wine & Liquor Stores	311	1,464	1,473	1,486	\$5,490,168	\$286.45
HEALTH & PERSONAL CARE STORES	773	5,996	6,028	6,099	\$39,317,065	\$500.64
GASOLINE STATIONS	1,683	13,274	13,255	13,210	\$43,575,727	\$253.05
Gasoline Stations with Convenience Stores	1,499	11,858	11,840	11,834	\$37,790,566	\$245.44
Other Gasoline Stations	184	1,416	1,415	1,376	\$5,785,161	\$317.34
CLOTHING & CLOTHING ACCESSORIES STORES	1,069	7,748	8,027	7,914	\$27,517,973	\$268.07

**TABLE 5. STATE SUMMARY
EMPLOYMENT AND TOTAL EARNINGS, BY INDUSTRY
THIRD QUARTER 2004**

NORTH AMERICAN INDUSTRY CLASSIFICATION SYSTEM INDUSTRY GROUPS	NUMBER OF EMPLOYING UNITS	EMPLOYMENT JULY	EMPLOYMENT AUGUST	EMPLOYMENT SEPTEMBER	TOTAL EARNINGS JUL. - SEP. 2004	AVERAGE WEEKLY EARNINGS
Clothing Stores	683	5,619	5,850	5,723	\$18,081,693	\$242.71
Shoe Stores	193	1,182	1,243	1,235	\$4,017,455	\$253.31
Jewelry, Luggage & Leather Goods Stores	193	947	934	956	\$5,418,825	\$440.78
SPORTING GOODS, HOBBY, BOOK & MUSIC STORES	561	4,099	4,189	4,183	\$14,595,827	\$270.09
Sporting Goods & Musical Instrument Stores	399	2,679	2,716	2,718	\$10,413,813	\$296.21
Book, Periodical & Music Stores	162	1,420	1,473	1,465	\$4,182,014	\$221.45
GENERAL MERCHANDISE STORES	693	34,992	35,016	35,108	\$153,428,545	\$336.83
MISCELLANEOUS STORE RETAILERS	1,512	7,443	7,165	7,053	\$30,446,974	\$324.37
Florists	290	1,067	1,073	1,073	\$3,488,295	\$250.54
Office Supplies, Stationery & Gift Stores	438	2,573	2,608	2,597	\$11,894,829	\$352.91
Used Merchandise Stores	225	716	784	730	\$2,666,122	\$275.90
Other Miscellaneous Store Retailers	559	3,087	2,700	2,653	\$12,397,728	\$338.98
NONSTORE RETAILERS	320	2,104	2,127	2,204	\$13,736,313	\$492.61
Electronic Shopping & Mail -Order Houses	64	425	447	474	\$3,368,298	\$577.49
Vending Machine Operators	89	749	746	758	\$4,127,163	\$422.74
Direct Selling Establishments	167	930	934	972	\$6,240,852	\$507.83
TRANSPORTATION & WAREHOUSING	2,937	54,555	54,933	55,489	\$477,224,928	\$667.54
AIR TRANSPORTATION	44	967	954	963	\$11,168,203	\$893.65
TRUCK TRANSPORTATION	1,972	33,864	34,107	34,035	\$307,118,446	\$694.80
General Freight Trucking	1,199	28,724	28,930	28,899	\$270,429,644	\$721.02
Specialized Freight Trucking	773	5,140	5,177	5,136	\$36,688,802	\$547.90
TRANSIT & GROUND PASSENGER TRANS.	61	789	841	989	\$3,418,395	\$301.21
Taxi & Limousine Service	20	201	201	200	\$548,411	\$210.23
School & Employee Bus Transportation	8	205	266	409	\$1,248,341	\$327.36
Charter Bus Industry	12	108	98	101	\$506,502	\$380.73
Other Ground Passenger Transportation	12	153	148	150	\$611,315	\$312.80
Other	9	122	128	129	\$503,826	\$306.77
PIPELINE TRANSPORTATION	69	973	962	949	\$11,339,415	\$907.35
SUPPORT ACTIVITIES FOR TRANSPORTATION	431	4,855	4,873	4,893	\$43,417,675	\$685.28

**TABLE 5. STATE SUMMARY
EMPLOYMENT AND TOTAL EARNINGS, BY INDUSTRY
THIRD QUARTER 2004**

NORTH AMERICAN INDUSTRY CLASSIFICATION SYSTEM INDUSTRY GROUPS	NUMBER OF EMPLOYING UNITS	EMPLOYMENT JULY	EMPLOYMENT AUGUST	EMPLOYMENT SEPTEMBER	TOTAL EARNINGS JUL. - SEP. 2004	AVERAGE WEEKLY EARNINGS
Support Activities for Air Transportation	106	1,533	1,550	1,526	\$12,615,167	\$631.63
Support Activities for Rail Transportation	30	557	545	562	\$4,275,553	\$592.95
Support Activities for Water Transportation	28	694	706	727	\$6,158,332	\$668.15
Support Activities for Road Transportation	104	456	460	464	\$2,625,237	\$439.00
Freight Transportation Arrangement	144	1,451	1,451	1,452	\$16,715,608	\$885.95
Other Support Activities for Transportation	19	164	161	162	\$1,027,778	\$487.02
COURIERS & MESSENGERS	129	3,057	3,070	3,075	\$26,927,295	\$675.29
Couriers	86	2,842	2,858	2,869	\$25,712,451	\$692.45
Local Messengers & Local Delivery	43	215	212	206	\$1,214,844	\$442.89
WAREHOUSING & STORAGE	214	9,858	9,923	10,384	\$72,394,843	\$553.84
OTHER	17	192	203	201	\$1,440,656	\$557.82
UTILITIES	324	6,572	6,564	6,534	\$94,614,839	\$1,110.03
Power Generation & Supply	127	4,955	4,951	4,925	\$79,591,446	\$1,238.44
Natural Gas Distribution	33	815	811	813	\$9,851,004	\$932.07
Water, Sewage and Other Systems	164	802	802	796	\$5,172,389	\$497.35
INFORMATION	1,213	20,157	20,210	20,188	\$190,666,465	\$726.61
PUBLISHING INDUSTRIES, EXCEPT INTERNET	257	6,334	6,494	6,533	\$44,942,168	\$535.68
Newspaper, Book & Directory Publishers	222	6,088	6,247	6,286	\$41,867,166	\$518.86
Software Publishers	35	246	247	247	\$3,075,002	\$958.94
MOTION PICTURE & SOUND RECORDING INDUSTRY	132	1,325	1,315	1,232	\$4,544,199	\$270.83
Motion Picture & Video Industries	117	1,297	1,287	1,204	\$4,339,908	\$264.39
Sound Recording Industries	15	28	28	28	\$204,291	\$561.24
BROADCASTING, EXCEPT INTERNET	145	2,165	2,147	2,160	\$17,004,522	\$606.32
Radio & Television Broadcasting	130	2,084	2,070	2,083	\$16,321,736	\$603.90
Cable & Other Subscription Programming	15	81	77	77	\$682,786	\$670.49
TELECOMMUNICATIONS	501	8,677	8,624	8,641	\$105,280,903	\$936.54
Wired Telecommunications Carriers	216	4,963	4,937	4,955	\$71,406,982	\$1,109.29
Wireless Telecommunications Carriers	127	1,970	1,941	1,960	\$17,633,235	\$693.10
Cable & Other Program Distribution	67	1,147	1,150	1,129	\$9,237,802	\$622.24

**TABLE 5. STATE SUMMARY
EMPLOYMENT AND TOTAL EARNINGS, BY INDUSTRY
THIRD QUARTER 2004**

NORTH AMERICAN INDUSTRY CLASSIFICATION SYSTEM INDUSTRY GROUPS	NUMBER OF EMPLOYING UNITS	EMPLOYMENT JULY	EMPLOYMENT AUGUST	EMPLOYMENT SEPTEMBER	TOTAL EARNINGS JUL. - SEP. 2004	AVERAGE WEEKLY EARNINGS
Other	91	597	596	597	\$7,002,884	\$902.82
ISPS, SEARCH PORTALS, & DATA PROCESSING	146	1,326	1,306	1,307	\$16,411,667	\$961.49
ISPs, & Web Search Portals	58	244	240	239	\$1,985,007	\$633.58
Data Processing & Related Services	88	1,082	1,066	1,068	\$14,426,660	\$1,035.21
OTHER	32	330	324	315	\$2,483,006	\$591.33
FINANCIAL ACTIVITIES	7,443	49,586	49,597	49,508	\$424,808,249	\$659.30
FINANCE & INSURANCE	4,402	36,054	36,028	36,085	\$345,268,448	\$736.61
CREDIT INTERMEDIATION & RELATED ACTIVITIES	1,875	20,990	20,992	20,909	\$170,555,083	\$625.83
Depository Credit Intermediation	1,220	17,544	17,555	17,474	\$136,540,251	\$599.34
Nondepository Credit Intermediation	389	2,673	2,657	2,657	\$28,319,873	\$818.25
Activities Related to Credit Intermediation	266	773	780	778	\$5,694,959	\$563.80
FINANCIAL INVESTMENT & RELATED ACTIVITIES	579	3,108	3,112	3,149	\$56,337,044	\$1,387.65
Security & Commodity Investment Activities	331	2,461	2,461	2,475	\$48,627,138	\$1,517.05
Other Financial Investment Activities	248	647	651	674	\$7,709,906	\$902.24
INSURANCE CARRIERS & RELATED ACTIVITIES	1,918	11,471	11,473	11,580	\$113,013,981	\$755.42
Insurance Carriers	353	5,019	5,024	5,044	\$53,571,290	\$819.42
Insurance Agencies, Brokerages & Support	1,565	6,452	6,449	6,536	\$59,442,691	\$705.74
OTHER	30	485	451	447	\$5,362,340	\$894.77
REAL ESTATE & RENTAL & LEASING	3,041	13,532	13,569	13,423	\$79,539,801	\$452.95
REAL ESTATE	2,219	8,210	8,261	8,204	\$49,463,485	\$462.60
Lessors of Real Estate	994	4,193	4,217	4,166	\$22,408,672	\$411.20
Offices of Real Estate Agents & Brokers	681	1,856	1,853	1,866	\$12,564,336	\$520.08
Activities Related to Real Estate	544	2,161	2,191	2,172	\$14,490,477	\$512.56
RENTAL & LEASING SERVICES	796	5,228	5,215	5,124	\$28,823,594	\$427.29
Automotive Equipment Rental & Leasing	125	1,005	1,012	1,006	\$6,537,668	\$499.07
Consumer Goods Rental	505	3,395	3,369	3,281	\$15,436,412	\$354.63
General Rental Centers	38	220	218	212	\$1,527,017	\$542.14
Machinery & Equipment Rental & Leasing	128	608	616	625	\$5,322,497	\$664.29
LESSORS OF NONFINANCIAL INTANGIBLE ASSETS	26	94	93	95	\$1,252,722	\$1,025.14

**TABLE 5. STATE SUMMARY
EMPLOYMENT AND TOTAL EARNINGS, BY INDUSTRY
THIRD QUARTER 2004**

NORTH AMERICAN INDUSTRY CLASSIFICATION SYSTEM INDUSTRY GROUPS	NUMBER OF EMPLOYING UNITS	EMPLOYMENT JULY	EMPLOYMENT AUGUST	EMPLOYMENT SEPTEMBER	TOTAL EARNINGS JUL. - SEP. 2004	AVERAGE WEEKLY EARNINGS
PROFESSIONAL & BUSINESS SERVICES	10,095	108,862	109,542	109,201	\$914,517,080	\$644.20
PROFESSIONAL & TECHNICAL SERVICES	6,277	33,341	33,436	33,482	\$339,280,055	\$780.93
Legal Services	1,569	6,572	6,612	6,548	\$58,481,901	\$683.96
Accounting & Bookkeeping Services	1,140	4,432	4,442	4,536	\$36,517,740	\$628.42
Architectural & Engineering Services	851	5,941	5,966	5,954	\$61,034,010	\$788.58
Specialized Design Services	149	453	452	450	\$2,900,604	\$494.00
Computer Systems Design & Related Services	708	7,137	7,171	7,209	\$110,874,805	\$1,189.13
Management & Technical Consulting Services	903	2,224	2,256	2,286	\$24,644,835	\$840.57
Scientific Research & Development Services	107	1,088	1,077	1,066	\$10,714,912	\$765.30
Advertising & Related Services	305	1,960	1,946	1,925	\$17,949,600	\$710.38
Other Professional & Technical Services	545	3,534	3,514	3,508	\$16,161,648	\$353.32
MANAGEMENT OF COMPANIES & ENTERPRISES	475	22,856	22,785	22,902	\$326,059,071	\$1,097.77
ADMINISTRATIVE & WASTE SERVICES	3,343	52,665	53,321	52,817	\$249,177,954	\$362.10
ADMINISTRATIVE & SUPPORT SERVICES	3,149	49,894	50,548	50,029	\$222,375,747	\$341.05
Office Administrative Services	294	1,075	1,076	1,137	\$11,998,023	\$842.08
Facilities Support Services	14	94	109	109	\$868,954	\$642.72
Employment Services	598	26,137	26,482	26,255	\$103,524,901	\$302.89
Business Support Services	355	4,787	4,855	4,696	\$22,268,149	\$358.40
Travel Arrangement & Reservation Services	107	458	464	454	\$3,267,493	\$547.99
Investigation & Security Services	211	4,231	4,295	4,305	\$21,314,167	\$383.34
Services to Buildings & Dwellings	1,254	11,526	11,680	11,441	\$48,222,797	\$321.19
Other Support Services	316	1,586	1,587	1,632	\$10,911,263	\$524.03
WASTE MANAGEMENT & REMEDIATION SERVICES	194	2,771	2,773	2,788	\$26,802,207	\$742.33
Waste Collection	85	1,018	1,030	1,061	\$8,764,793	\$650.58
Waste Treatment & Disposal	39	1,285	1,259	1,261	\$14,728,800	\$893.29
Remediation & Other Waste Services	70	468	484	466	\$3,308,614	\$538.45
EDUCATION & HEALTH SERVICES	7,863	135,861	136,902	137,914	\$1,074,547,199	\$603.81
EDUCATIONAL SERVICES	513	7,453	7,520	8,323	\$49,345,805	\$488.82
Elementary & Secondary Schools	80	2,430	2,582	2,879	\$13,604,256	\$397.85

**TABLE 5. STATE SUMMARY
EMPLOYMENT AND TOTAL EARNINGS, BY INDUSTRY
THIRD QUARTER 2004**

NORTH AMERICAN INDUSTRY CLASSIFICATION SYSTEM INDUSTRY GROUPS	NUMBER OF EMPLOYING UNITS	EMPLOYMENT JULY	EMPLOYMENT AUGUST	EMPLOYMENT SEPTEMBER	TOTAL EARNINGS JUL. - SEP. 2004	AVERAGE WEEKLY EARNINGS
Junior Colleges	8	202	213	229	\$1,573,083	\$563.69
Colleges & Universities	26	2,858	2,675	3,072	\$21,283,776	\$570.79
Business, Computer & Management Training	47	212	210	206	\$2,718,957	\$999.13
Technical & Trade Schools	105	610	630	640	\$5,468,826	\$671.30
Other Schools & Instruction	202	986	1,060	1,148	\$3,771,188	\$272.47
Educational Support Services	45	155	150	149	\$925,719	\$470.55
HEALTH CARE & SOCIAL ASSISTANCE	7,350	128,408	129,382	129,591	\$1,025,201,394	\$610.73
AMBULATORY HEALTH CARE SERVICES	4,571	39,655	39,870	39,983	\$456,509,390	\$881.52
Offices of Physicians	2,050	19,739	19,753	19,808	\$299,330,907	\$1,164.86
Offices of Dentists	895	5,879	5,911	5,902	\$52,030,987	\$678.68
Offices of Other Health Practitioners	1,081	5,031	5,061	5,030	\$36,101,403	\$550.93
Outpatient Care Centers	198	3,042	3,139	3,172	\$28,370,259	\$699.99
Medical & Diagnostic Laboratories	82	676	678	674	\$7,476,615	\$850.78
Home Health Care Services	127	3,300	3,317	3,365	\$20,764,162	\$480.04
Other Ambulatory Health Care Services	138	1,988	2,011	2,032	\$12,435,057	\$475.81
HOSPITALS	107	42,053	41,871	41,795	\$366,085,251	\$671.98
General Medical & Surgical Hospitals	77	38,749	38,594	38,532	\$338,182,696	\$673.50
Psychiatric & Substance Abuse Hospitals	10	1,364	1,357	1,357	\$10,489,378	\$593.58
Other Hospitals	20	1,940	1,920	1,906	\$17,413,177	\$696.92
NURSING & RESIDENTIAL CARE FACILITIES	508	25,722	25,900	25,860	\$117,978,461	\$351.38
Nursing Care Facilities	243	19,429	19,476	19,498	\$88,469,474	\$349.57
Residential Mental Health Facilities	132	2,878	2,936	2,897	\$14,192,166	\$375.97
Community Care Facilities for the Elderly	89	2,067	2,148	2,121	\$8,524,595	\$310.48
Other Residential Care Facilities	44	1,348	1,340	1,344	\$6,792,226	\$388.75
SOCIAL ASSISTANCE	2,164	20,978	21,741	21,953	\$84,628,292	\$301.98
Individual & Family Services	1,041	9,523	9,737	9,751	\$41,558,335	\$330.58
Emergency & Other Relief Services	108	784	809	821	\$3,935,485	\$376.22
Vocational Rehabilitation Services	131	3,234	3,197	3,222	\$14,652,824	\$350.30
Child Day Care Services	884	7,437	7,998	8,159	\$24,481,648	\$239.45

**TABLE 5. STATE SUMMARY
EMPLOYMENT AND TOTAL EARNINGS, BY INDUSTRY
THIRD QUARTER 2004**

NORTH AMERICAN INDUSTRY CLASSIFICATION SYSTEM INDUSTRY GROUPS	NUMBER OF EMPLOYING UNITS	EMPLOYMENT JULY	EMPLOYMENT AUGUST	EMPLOYMENT SEPTEMBER	TOTAL EARNINGS JUL. - SEP. 2004	AVERAGE WEEKLY EARNINGS
LEISURE & HOSPITALITY	5,853	94,454	94,667	93,446	\$259,297,112	\$211.76
ARTS, ENTERTAINMENT & RECREATION	882	10,727	10,610	9,520	\$34,073,868	\$254.83
PERFORMING ARTS & SPECTATOR SPORTS	187	2,020	2,149	1,875	\$7,483,702	\$285.74
Performing Arts Companies	43	729	698	682	\$2,073,019	\$226.83
Spectator Sports	58	792	773	649	\$2,968,298	\$309.39
Performing Arts & Sports Promoters	34	398	570	436	\$1,704,392	\$280.14
Agents & Managers for Public Figures	10	18	18	17	\$133,066	\$579.39
Independent Artists, Writers & Performers	42	83	90	91	\$604,927	\$528.78
MUSEUMS, PARKS & HISTORICAL SITES	46	219	230	237	\$856,716	\$288.20
GAMBLING, RECREATION & AMUSEMENT INDUSTRY	649	8,488	8,231	7,408	\$25,733,450	\$246.13
Other Amusement & Recreation Industries	618	7,582	7,392	6,944	\$23,960,003	\$252.27
Other	31	906	839	464	\$1,773,447	\$185.27
ACCOMMODATION & FOOD SERVICES	4,971	83,727	84,057	83,926	\$225,223,244	\$206.49
ACCOMMODATION	790	11,935	11,645	11,448	\$38,414,579	\$253.08
Traveler Accommodation	721	11,288	11,233	11,128	\$36,997,103	\$253.73
RV Parks & Recreational Camps	49	614	348	250	\$1,211,315	\$230.64
Rooming & Boarding Houses	20	33	64	70	\$206,161	\$284.88
FOOD SERVICES & DRINKING PLACES	4,181	71,792	72,412	72,478	\$186,808,665	\$198.95
Full -Service Restaurants	1,758	30,846	31,019	30,968	\$85,976,102	\$213.72
Limited-Service Eating Places	2,105	38,481	38,797	38,703	\$93,605,897	\$186.25
Special Food Services	149	1,542	1,655	1,854	\$4,990,257	\$227.99
Drinking Places, Alcoholic Beverages	169	923	941	953	\$2,236,409	\$183.21
OTHER SERVICES	5,514	26,327	26,040	25,932	\$143,254,882	\$422.21
REPAIR & MAINTENANCE	2,265	9,657	9,722	9,742	\$63,313,238	\$501.73
Automotive Repair & Maintenance	1,592	7,191	7,207	7,192	\$45,055,168	\$481.58
Electronic Equipment Repair & Maintenance	152	519	527	524	\$4,231,406	\$621.96
Commercial Machinery Repair & Maintenance	328	1,360	1,401	1,453	\$10,464,000	\$573.03
Household Goods Repair & Maintenance	193	587	587	573	\$3,562,664	\$470.61
PERSONAL & LAUNDRY SERVICES	1,330	8,488	8,405	8,405	\$40,308,732	\$367.70

**TABLE 5. STATE SUMMARY
EMPLOYMENT AND TOTAL EARNINGS, BY INDUSTRY
THIRD QUARTER 2004**

NORTH AMERICAN INDUSTRY CLASSIFICATION SYSTEM INDUSTRY GROUPS	NUMBER OF EMPLOYING UNITS	EMPLOYMENT JULY	EMPLOYMENT AUGUST	EMPLOYMENT SEPTEMBER	TOTAL EARNINGS JUL. - SEP. 2004	AVERAGE WEEKLY EARNINGS
Personal Care Services	565	2,440	2,430	2,426	\$8,524,500	\$269.63
Death Care Services	243	1,753	1,727	1,744	\$10,226,828	\$451.77
Drycleaning & Laundry Services	370	3,517	3,476	3,460	\$15,842,942	\$349.76
Other Personal Services	152	778	772	775	\$5,714,462	\$567.19
MEMBERSHIP ASSOCIATIONS & ORGANIZATIONS	978	6,768	6,483	6,350	\$34,450,712	\$405.60
Religious Organizations	38	232	228	222	\$1,086,466	\$367.63
Grantmaking & Giving Services	91	375	387	421	\$3,541,112	\$690.77
Social Advocacy Organizations	132	1,846	1,902	1,904	\$9,925,317	\$405.25
Civic & Social Organizations	210	2,039	1,692	1,522	\$5,409,760	\$237.66
Professional & Similar Organizations	507	2,276	2,274	2,281	\$14,488,057	\$489.44
PRIVATE HOUSEHOLDS	941	1,414	1,430	1,435	\$5,182,200	\$279.48
LOCAL GOVERNMENT	1,988	66,238	86,024	111,859	\$572,923,723	\$500.58
STATE GOVERNMENT	1,202	56,230	57,572	59,749	\$479,989,414	\$638.24
NONCLASSIFIABLE ESTABLISHMENTS	0	0	0	0	\$0	

**TABLE 6. COUNTY SUMMARY
EMPLOYMENT AND TOTAL EARNINGS, BY INDUSTRY
THIRD QUARTER 2004**

NORTH AMERICAN INDUSTRY CLASSIFICATION SYSTEM	NUMBER OF EMPLOYING UNITS	EMPLOYMENT JULY	EMPLOYMENT AUGUST	EMPLOYMENT SEPTEMBER	TOTAL EARNINGS JUL. - SEP. 2004	AVERAGE WEEKLY EARNINGS
ARKANSAS COUNTY - TOTAL	661	9,786	9,862	10,034	\$65,512,914	\$509.34
Natural Resources & Mining	45	352	369	346	\$2,230,298	\$482.37
Construction	55	292	297	312	\$2,052,847	\$525.79
Manufacturing	30	3,458	3,438	3,484	\$26,071,945	\$579.63
Trade, Transportation & Utilities	209	2,165	2,151	2,177	\$14,816,492	\$526.60
Wholesale Trade	46	497	481	458	\$4,911,561	\$789.30
Retail Trade	110	1,102	1,094	1,114	\$5,111,856	\$356.39
Transportation, Warehousing & Utilities	53	566	576	605	\$4,793,075	\$633.14
Information	9	85	84	84	\$756,453	\$689.98
Financial Activities	47	359	361	365	\$2,526,015	\$537.26
Professional & Business Services	54	387	394	403	\$3,431,460	\$668.81
Education & Health Services	60	1,087	1,123	1,151	\$6,011,105	\$412.73
Leisure & Hospitality	58	546	557	556	\$1,199,281	\$166.82
Other Services	47	140	141	138	\$652,103	\$359.15
Local Government	31	725	741	800	\$4,524,796	\$460.80
State Government	16	190	206	218	\$1,240,119	\$466.09
ASHLEY COUNTY - TOTAL	540	8,182	8,155	8,494	\$66,829,546	\$621.09
Natural Resources & Mining	62	545	487	519	\$3,364,826	\$500.64
Construction	50	718	740	705	\$4,752,810	\$507.07
Manufacturing	28	3,076	2,975	2,955	\$36,199,176	\$927.57
Trade, Transportation & Utilities	141	1,224	1,204	1,232	\$7,041,553	\$443.98
Wholesale Trade	26	164	164	172	\$1,756,295	\$810.60
Retail Trade	93	820	803	817	\$3,453,522	\$326.63
Transportation, Warehousing & Utilities	22	240	237	243	\$1,831,736	\$587.09
Information	11	66	64	64	\$460,520	\$547.80
Financial Activities	38	347	348	334	\$2,513,471	\$563.68
Professional & Business Services	46	359	350	355	\$2,140,861	\$464.33
Education & Health Services	46	518	544	548	\$3,780,361	\$541.86
Leisure & Hospitality	33	411	398	396	\$950,043	\$181.94
Other Services	41	178	191	192	\$772,572	\$317.80
Local Government	32	535	648	980	\$3,818,170	\$407.36
State Government	12	205	206	214	\$1,035,183	\$382.22

**TABLE 6. COUNTY SUMMARY
EMPLOYMENT AND TOTAL EARNINGS, BY INDUSTRY
THIRD QUARTER 2004**

NORTH AMERICAN INDUSTRY CLASSIFICATION SYSTEM	NUMBER OF EMPLOYING UNITS	EMPLOYMENT JULY	EMPLOYMENT AUGUST	EMPLOYMENT SEPTEMBER	TOTAL EARNINGS JUL. - SEP. 2004	AVERAGE WEEKLY EARNINGS
BAXTER COUNTY - TOTAL	1,185	13,375	13,964	14,117	\$86,402,337	\$480.97
Natural Resources & Mining	6	105	109	111	\$679,575	\$482.54
Construction	126	624	622	621	\$3,446,648	\$426.02
Manufacturing	65	2,495	2,549	2,528	\$19,050,546	\$580.60
Trade, Transportation & Utilities	274	2,538	2,545	2,559	\$12,982,336	\$392.03
Wholesale Trade	31	181	185	184	\$1,279,280	\$536.76
Retail Trade	216	2,111	2,115	2,129	\$10,113,598	\$367.26
Transportation, Warehousing & Utilities	27	246	245	246	\$1,589,458	\$497.69
Information	24	295	297	294	\$2,130,812	\$555.00
Financial Activities	106	623	629	634	\$4,492,438	\$549.69
Professional & Business Services	134	807	815	793	\$5,030,604	\$480.71
Education & Health Services	171	3,023	3,048	3,053	\$25,404,971	\$642.56
Leisure & Hospitality	122	1,588	1,563	1,543	\$3,989,636	\$196.14
Other Services	109	431	439	444	\$1,678,270	\$294.74
Local Government	36	621	1,077	1,261	\$5,984,405	\$466.72
State Government	12	225	271	276	\$1,532,096	\$457.98
BENTON COUNTY - TOTAL	4,443	82,762	84,198	85,691	\$742,252,952	\$677.97
Natural Resources & Mining	29	672	679	671	\$6,881,112	\$785.34
Construction	646	4,315	4,367	4,393	\$32,922,459	\$581.07
Manufacturing	235	14,132	14,216	14,283	\$120,187,787	\$650.60
Trade, Transportation & Utilities	1,211	21,046	21,092	21,029	\$182,668,046	\$667.34
Wholesale Trade	496	2,939	2,938	2,935	\$40,111,534	\$1,050.44
Retail Trade	559	6,992	7,020	6,973	\$38,868,244	\$427.43
Transportation, Warehousing & Utilities	156	11,115	11,134	11,121	\$103,688,268	\$717.05
Information	68	904	886	886	\$7,619,075	\$657.04
Financial Activities	481	3,149	3,164	3,163	\$27,222,433	\$662.95
Professional & Business Services	690	20,288	20,316	20,301	\$244,131,463	\$925.01
Education & Health Services	372	5,875	6,100	6,107	\$46,366,281	\$591.74
Leisure & Hospitality	327	6,205	6,274	6,292	\$19,414,080	\$238.68
Other Services	290	1,717	1,693	1,694	\$11,396,607	\$515.28
Local Government	75	3,863	4,811	6,193	\$38,826,285	\$602.67

**TABLE 6. COUNTY SUMMARY
EMPLOYMENT AND TOTAL EARNINGS, BY INDUSTRY
THIRD QUARTER 2004**

NORTH AMERICAN INDUSTRY CLASSIFICATION SYSTEM	NUMBER OF EMPLOYING UNITS	EMPLOYMENT JULY	EMPLOYMENT AUGUST	EMPLOYMENT SEPTEMBER	TOTAL EARNINGS JUL. - SEP. 2004	AVERAGE WEEKLY EARNINGS
State Government	19	596	600	679	\$4,617,324	\$568.29
BOONE COUNTY - TOTAL	1,001	12,771	13,079	13,636	\$93,586,763	\$546.95
Construction	96	476	509	484	\$2,984,015	\$468.77
Manufacturing	70	2,188	2,149	2,144	\$16,450,018	\$585.74
Trade, Transportation & Utilities	270	4,132	4,237	4,247	\$36,529,585	\$668.19
Wholesale Trade	53	698	700	697	\$4,863,861	\$535.77
Retail Trade	167	1,914	2,013	2,017	\$10,253,154	\$398.07
Transportation, Warehousing & Utilities	50	1,520	1,524	1,533	\$21,412,570	\$1,079.61
Information	17	427	418	415	\$3,532,397	\$646.96
Financial Activities	95	602	604	596	\$4,559,433	\$583.89
Professional & Business Services	107	524	539	523	\$2,574,365	\$374.58
Education & Health Services	118	1,099	1,096	1,097	\$7,177,246	\$503.13
Leisure & Hospitality	83	1,227	1,255	1,222	\$3,071,378	\$191.36
Local Government	51	1,356	1,479	2,113	\$11,334,899	\$528.65
State Government	20	480	534	530	\$3,838,163	\$573.66
Other	74	260	259	265	\$1,535,264	\$451.90
BRADLEY COUNTY - TOTAL	344	3,949	4,028	4,215	\$25,141,552	\$475.88
Natural Resources & Mining	57	378	398	394	\$1,625,919	\$320.69
Construction	21	189	189	189	\$1,415,057	\$575.93
Manufacturing	10	1,075	1,089	1,066	\$8,301,434	\$593.10
Trade, Transportation & Utilities	92	614	614	613	\$3,282,337	\$411.44
Wholesale Trade	13	193	197	195	\$1,136,054	\$448.15
Retail Trade	49	318	310	313	\$1,357,369	\$332.88
Transportation, Warehousing & Utilities	30	103	107	105	\$788,914	\$577.96
Information	3	12	13	14	\$79,618	\$471.11
Financial Activities	22	191	187	187	\$1,264,185	\$516.35
Professional & Business Services	25	143	143	143	\$1,485,383	\$799.02
Education & Health Services	36	519	527	527	\$3,248,272	\$476.54
Leisure & Hospitality	18	213	211	206	\$344,263	\$126.10
Other Services	32	106	105	105	\$441,614	\$322.50
Local Government	16	269	313	531	\$2,186,450	\$453.34

**TABLE 6. COUNTY SUMMARY
EMPLOYMENT AND TOTAL EARNINGS, BY INDUSTRY
THIRD QUARTER 2004**

NORTH AMERICAN INDUSTRY CLASSIFICATION SYSTEM	NUMBER OF EMPLOYING UNITS	EMPLOYMENT JULY	EMPLOYMENT AUGUST	EMPLOYMENT SEPTEMBER	TOTAL EARNINGS JUL. - SEP. 2004	AVERAGE WEEKLY EARNINGS
State Government	12	240	239	240	\$1,467,020	\$470.85
CALHOUN COUNTY - TOTAL	125	3,576	3,655	3,713	\$28,273,314	\$596.18
Natural Resources & Mining	23	143	147	140	\$949,735	\$509.70
Construction	9	87	88	84	\$482,643	\$430.04
Manufacturing	16	2,473	2,503	2,519	\$21,387,856	\$658.53
Trade, Transportation & Utilities	27	205	206	199	\$1,231,375	\$465.84
Wholesale Trade & Retail Trade	17	73	70	70	\$251,905	\$272.92
Transportation, Warehousing & Utilities	10	132	136	129	\$979,470	\$569.35
Professional & Business Services	8	98	98	94	\$531,330	\$422.81
Education & Health Services	4	44	43	43	\$281,211	\$499.19
Local Government	11	130	164	199	\$785,445	\$367.66
State Government	10	289	297	328	\$1,918,189	\$484.31
Other	17	107	109	107	\$705,530	\$504.07
CARROLL COUNTY - TOTAL	799	9,831	10,225	10,173	\$56,449,384	\$430.94
Natural Resources & Mining	15	282	278	283	\$2,029,384	\$555.54
Trade, Transportation & Utilities	217	1,700	1,683	1,667	\$9,406,064	\$429.83
Wholesale Trade	26	116	116	110	\$535,903	\$361.61
Retail Trade	172	1,308	1,297	1,289	\$6,434,454	\$381.32
Transportation, Warehousing & Utilities	19	276	270	268	\$2,435,707	\$690.52
Professional & Business Services	67	222	214	209	\$1,238,566	\$443.14
Education & Health Services	58	709	728	728	\$5,405,160	\$576.14
Leisure & Hospitality	172	2,030	2,003	1,962	\$5,311,990	\$204.48
Local Government	24	553	975	1,010	\$5,098,220	\$463.56
State Government	11	107	102	100	\$629,380	\$470.04

**TABLE 6. COUNTY SUMMARY
EMPLOYMENT AND TOTAL EARNINGS, BY INDUSTRY
THIRD QUARTER 2004**

NORTH AMERICAN INDUSTRY CLASSIFICATION SYSTEM	NUMBER OF EMPLOYING UNITS	EMPLOYMENT JULY	EMPLOYMENT AUGUST	EMPLOYMENT SEPTEMBER	TOTAL EARNINGS JUL. - SEP. 2004	AVERAGE WEEKLY EARNINGS
Other	235	4,228	4,242	4,214	\$27,330,620	\$497.25
CHICOT COUNTY - TOTAL	342	3,507	3,698	3,800	\$20,641,092	\$432.83
Natural Resources & Mining	54	284	279	304	\$2,063,681	\$549.29
Construction	23	270	290	306	\$2,384,055	\$635.30
Manufacturing	14	321	307	326	\$1,570,938	\$380.00
Trade, Transportation & Utilities	87	616	624	629	\$3,240,195	\$400.07
Wholesale Trade	14	111	110	106	\$825,106	\$582.29
Retail Trade	58	425	426	435	\$1,612,874	\$289.43
Transportation, Warehousing & Utilities	15	80	88	88	\$802,215	\$723.15
Information	5	22	23	24	\$111,185	\$371.86
Financial Activities	28	154	153	154	\$1,061,086	\$531.16
Professional & Business Services	26	156	143	140	\$917,011	\$482.05
Education & Health Services	37	428	434	448	\$2,372,670	\$417.97
Leisure & Hospitality	23	273	283	286	\$537,691	\$147.37
Other Services	18	59	58	57	\$273,083	\$362.18
Local Government	16	629	808	831	\$4,362,596	\$443.89
State Government	11	295	296	295	\$1,746,901	\$455.00
CLARK COUNTY - TOTAL	611	9,238	9,480	9,923	\$58,410,388	\$470.63
Natural Resources & Mining	45	281	290	293	\$2,016,080	\$538.48
Construction	39	98	100	113	\$611,672	\$453.87
Manufacturing	36	2,470	2,446	2,471	\$17,382,553	\$543.03
Trade, Transportation & Utilities	140	1,483	1,474	1,481	\$8,633,706	\$448.94
Wholesale Trade	24	75	73	77	\$527,221	\$540.74
Retail Trade	93	1,123	1,112	1,118	\$5,628,200	\$387.36
Transportation, Warehousing & Utilities	23	285	289	286	\$2,478,285	\$665.01
Information	10	51	52	52	\$387,615	\$577.09
Financial Activities	86	389	390	392	\$2,537,745	\$500.11
Professional & Business Services	47	332	325	328	\$3,184,734	\$746.13
Education & Health Services	62	1,357	1,388	1,470	\$8,731,335	\$478.04
Leisure & Hospitality	55	1,053	1,044	1,057	\$2,567,390	\$187.85
Other Services	50	202	221	223	\$1,176,186	\$420.17

**TABLE 6. COUNTY SUMMARY
EMPLOYMENT AND TOTAL EARNINGS, BY INDUSTRY
THIRD QUARTER 2004**

NORTH AMERICAN INDUSTRY CLASSIFICATION SYSTEM	NUMBER OF EMPLOYING UNITS	EMPLOYMENT JULY	EMPLOYMENT AUGUST	EMPLOYMENT SEPTEMBER	TOTAL EARNINGS JUL. - SEP. 2004	AVERAGE WEEKLY EARNINGS
Local Government	27	611	759	919	\$4,352,888	\$438.84
State Government	14	911	991	1,124	\$6,828,484	\$520.75
CLAY COUNTY - TOTAL	414	4,890	5,215	5,210	\$26,330,900	\$396.76
Natural Resources & Mining	56	238	221	221	\$1,216,127	\$412.71
Construction	44	199	197	192	\$1,148,635	\$450.80
Manufacturing	24	1,849	1,876	1,843	\$9,102,468	\$377.26
Trade, Transportation & Utilities	100	897	864	884	\$4,910,559	\$428.43
Wholesale Trade	25	241	215	220	\$1,357,090	\$463.28
Retail Trade	55	470	463	454	\$1,937,335	\$322.33
Transportation, Warehousing & Utilities	20	186	186	210	\$1,616,134	\$640.81
Information	8	138	143	137	\$811,975	\$448.27
Financial Activities	37	155	151	156	\$950,243	\$474.65
Professional & Business Services	23	64	62	63	\$287,369	\$350.88
Education & Health Services	39	455	494	478	\$2,370,298	\$383.32
Leisure & Hospitality	24	209	213	204	\$414,804	\$152.91
Other Services	25	52	46	53	\$256,087	\$391.37
Local Government	22	554	868	900	\$4,420,159	\$439.29
State Government	12	80	80	79	\$442,176	\$426.95
CLEBURNE COUNTY - TOTAL	662	6,337	6,530	6,730	\$37,401,598	\$440.43
Natural Resources & Mining	14	34	34	32	\$249,073	\$574.78
Construction	65	253	242	256	\$1,704,472	\$523.75
Manufacturing	48	1,779	1,815	1,843	\$13,003,422	\$551.92
Trade, Transportation & Utilities	194	1,499	1,492	1,489	\$8,233,984	\$424.14
Wholesale Trade	38	162	161	168	\$949,132	\$446.09
Retail Trade	115	990	982	987	\$4,612,408	\$359.72
Transportation, Warehousing & Utilities	41	347	349	334	\$2,672,444	\$598.76
Information	8	61	62	58	\$357,087	\$455.27
Financial Activities	66	251	250	253	\$1,593,275	\$487.64
Professional & Business Services	60	200	200	198	\$1,145,423	\$442.02
Education & Health Services	62	719	756	768	\$4,496,776	\$462.65
Leisure & Hospitality	61	885	856	795	\$2,229,723	\$202.90

**TABLE 6. COUNTY SUMMARY
EMPLOYMENT AND TOTAL EARNINGS, BY INDUSTRY
THIRD QUARTER 2004**

NORTH AMERICAN INDUSTRY CLASSIFICATION SYSTEM	NUMBER OF EMPLOYING UNITS	EMPLOYMENT JULY	EMPLOYMENT AUGUST	EMPLOYMENT SEPTEMBER	TOTAL EARNINGS JUL. - SEP. 2004	AVERAGE WEEKLY EARNINGS
Other Services	54	161	162	154	\$653,672	\$316.24
Local Government	20	388	555	774	\$3,114,247	\$418.56
State Government	10	107	106	110	\$620,444	\$443.28
CLEVELAND COUNTY - TOTAL	110	849	1,036	1,081	\$5,286,742	\$411.33
Natural Resources & Mining	18	169	173	179	\$1,166,404	\$516.64
Construction	8	50	50	50	\$144,307	\$222.01
Manufacturing	6	89	93	97	\$527,852	\$436.60
Trade, Transportation & Utilities	33	218	231	235	\$1,030,340	\$347.62
Wholesale Trade	6	52	57	53	\$245,838	\$350.20
Retail Trade	15	76	73	84	\$192,755	\$190.91
Transportation, Warehousing & Utilities	12	90	101	98	\$591,747	\$472.52
Financial Activities	4	28	30	30	\$175,169	\$459.36
Local Government	12	131	284	320	\$1,408,894	\$442.35
State Government	8	52	55	55	\$313,028	\$445.91
Other	21	112	120	115	\$520,748	\$346.32
COLUMBIA COUNTY - TOTAL	685	8,788	9,024	9,240	\$63,965,832	\$545.67
Natural Resources & Mining	46	400	409	399	\$4,160,664	\$794.83
Construction	49	322	312	306	\$2,275,377	\$558.60
Manufacturing	39	2,783	2,819	2,771	\$27,881,847	\$768.45
Trade, Transportation & Utilities	188	1,581	1,598	1,608	\$8,152,304	\$393.00
Wholesale Trade	29	281	277	284	\$1,633,371	\$447.66
Retail Trade	115	1,066	1,082	1,087	\$4,532,276	\$323.31
Transportation, Warehousing & Utilities	44	234	239	237	\$1,986,657	\$645.72
Information	9	79	80	79	\$523,720	\$507.81
Financial Activities	74	394	391	399	\$2,637,790	\$514.12
Professional & Business Services	62	349	346	332	\$1,771,933	\$398.16
Education & Health Services	73	802	819	846	\$4,097,454	\$383.29
Leisure & Hospitality	46	605	604	612	\$1,454,882	\$184.37

**TABLE 6. COUNTY SUMMARY
EMPLOYMENT AND TOTAL EARNINGS, BY INDUSTRY
THIRD QUARTER 2004**

NORTH AMERICAN INDUSTRY CLASSIFICATION SYSTEM	NUMBER OF EMPLOYING UNITS	EMPLOYMENT JULY	EMPLOYMENT AUGUST	EMPLOYMENT SEPTEMBER	TOTAL EARNINGS JUL. - SEP. 2004	AVERAGE WEEKLY EARNINGS
Other Services	54	227	231	235	\$932,948	\$310.67
Local Government	30	710	899	1,124	\$5,910,221	\$499.05
State Government	15	536	516	529	\$4,166,692	\$608.19
CONWAY COUNTY - TOTAL	468	6,363	6,522	6,609	\$39,538,181	\$468.05
Natural Resources & Mining	17	134	129	131	\$993,885	\$582.13
Construction	48	581	578	563	\$4,777,777	\$640.28
Manufacturing	29	1,092	1,077	1,076	\$10,249,617	\$728.90
Trade, Transportation & Utilities	131	1,403	1,422	1,393	\$7,662,866	\$419.24
Wholesale Trade	28	248	249	249	\$1,727,702	\$534.45
Retail Trade	79	933	927	898	\$4,121,896	\$344.89
Transportation, Warehousing & Utilities	24	222	246	246	\$1,813,268	\$586.06
Information	6	40	43	42	\$210,527	\$388.67
Financial Activities	39	189	189	186	\$1,179,018	\$482.41
Professional & Business Services	47	689	699	704	\$3,096,422	\$341.57
Education & Health Services	51	715	734	736	\$4,433,547	\$468.25
Leisure & Hospitality	39	461	459	478	\$1,062,949	\$175.46
Other Services	23	92	93	89	\$522,270	\$439.87
Local Government	27	659	760	840	\$3,508,248	\$358.39
State Government	11	308	339	371	\$1,841,055	\$417.35
CRAIGHEAD COUNTY - TOTAL	2,484	38,729	39,578	39,975	\$268,048,630	\$522.97
Natural Resources & Mining	58	261	249	278	\$1,479,035	\$433.14
Construction	219	1,996	1,980	1,924	\$13,265,374	\$518.85
Manufacturing	149	7,549	7,536	7,508	\$59,057,548	\$603.23
Trade, Transportation & Utilities	710	7,832	7,887	7,865	\$45,966,230	\$449.78
Wholesale Trade	174	1,491	1,461	1,466	\$11,971,637	\$625.32
Retail Trade	427	5,276	5,375	5,297	\$25,373,050	\$367.15
Transportation, Warehousing & Utilities	109	1,065	1,051	1,102	\$8,621,543	\$618.27
Information	32	646	641	626	\$5,241,718	\$632.32
Financial Activities	248	1,590	1,590	1,572	\$13,457,818	\$653.55
Professional & Business Services	297	3,442	3,332	3,213	\$18,217,936	\$420.96
Education & Health Services	340	6,546	6,586	6,639	\$61,351,382	\$716.10

**TABLE 6. COUNTY SUMMARY
EMPLOYMENT AND TOTAL EARNINGS, BY INDUSTRY
THIRD QUARTER 2004**

NORTH AMERICAN INDUSTRY CLASSIFICATION SYSTEM	NUMBER OF EMPLOYING UNITS	EMPLOYMENT JULY	EMPLOYMENT AUGUST	EMPLOYMENT SEPTEMBER	TOTAL EARNINGS JUL. - SEP. 2004	AVERAGE WEEKLY EARNINGS
Leisure & Hospitality	180	3,640	3,615	3,621	\$9,451,043	\$200.53
Other Services	187	1,107	1,135	1,099	\$5,187,025	\$358.28
Local Government	39	2,153	2,750	3,332	\$16,969,173	\$475.53
State Government	25	1,967	2,277	2,298	\$18,404,348	\$649.21
CRAWFORD COUNTY - TOTAL	1,122	16,864	17,844	18,041	\$112,341,721	\$491.48
Natural Resources & Mining	24	450	433	461	\$3,259,580	\$559.68
Construction	181	1,367	1,355	1,349	\$9,656,725	\$547.40
Manufacturing	79	3,547	3,546	3,495	\$24,684,439	\$538.01
Trade, Transportation & Utilities	302	5,968	6,040	6,066	\$39,673,152	\$506.55
Wholesale Trade	71	623	623	624	\$4,943,282	\$610.03
Retail Trade	167	1,772	1,758	1,775	\$8,315,888	\$361.74
Transportation, Warehousing & Utilities	64	3,573	3,659	3,667	\$26,413,982	\$559.27
Financial Activities	106	496	501	496	\$3,209,548	\$496.09
Professional & Business Services	128	652	657	652	\$3,842,647	\$452.20
Education & Health Services	84	1,424	1,426	1,432	\$8,898,909	\$479.59
Leisure & Hospitality	73	1,323	1,309	1,307	\$3,322,283	\$194.64
Local Government	42	890	1,826	2,038	\$10,740,977	\$521.39
State Government	11	170	168	167	\$1,113,013	\$508.61
Other	92	577	583	578	\$3,940,448	\$523.21
CRITENDEN COUNTY - TOTAL	1,107	15,198	15,217	15,985	\$100,954,837	\$502.10
Natural Resources & Mining	51	336	314	380	\$1,706,811	\$382.41
Construction	77	712	713	716	\$4,869,145	\$524.82
Manufacturing	54	1,548	1,549	1,561	\$14,487,035	\$717.72
Trade, Transportation & Utilities	316	5,251	4,939	4,874	\$36,300,384	\$556.09
Wholesale Trade	61	597	600	582	\$5,245,441	\$680.43
Retail Trade	169	2,382	2,088	2,028	\$9,911,460	\$351.99
Transportation, Warehousing & Utilities	86	2,272	2,251	2,264	\$21,143,483	\$718.91
Information	10	91	85	88	\$748,707	\$654.46
Financial Activities	104	492	490	476	\$3,580,141	\$566.66
Professional & Business Services	113	754	747	804	\$4,155,179	\$416.00

**TABLE 6. COUNTY SUMMARY
EMPLOYMENT AND TOTAL EARNINGS, BY INDUSTRY
THIRD QUARTER 2004**

NORTH AMERICAN INDUSTRY CLASSIFICATION SYSTEM	NUMBER OF EMPLOYING UNITS	EMPLOYMENT JULY	EMPLOYMENT AUGUST	EMPLOYMENT SEPTEMBER	TOTAL EARNINGS JUL. - SEP. 2004	AVERAGE WEEKLY EARNINGS
Education & Health Services	127	1,681	1,710	1,712	\$12,083,922	\$546.46
Leisure & Hospitality	102	2,036	2,015	1,939	\$5,514,988	\$212.47
Other Services	96	614	617	593	\$3,181,687	\$402.54
Local Government	40	1,259	1,661	2,380	\$11,780,961	\$512.96
State Government	17	424	377	462	\$2,545,877	\$465.17
CROSS COUNTY - TOTAL	469	5,038	5,268	5,402	\$30,948,867	\$454.68
Natural Resources & Mining	40	247	244	272	\$1,391,112	\$420.74
Construction	32	159	156	156	\$810,521	\$397.12
Manufacturing	18	1,014	995	976	\$6,746,981	\$521.61
Trade, Transportation & Utilities	130	1,250	1,257	1,285	\$7,959,994	\$484.42
Wholesale Trade	33	336	327	323	\$2,506,232	\$586.57
Retail Trade	66	649	656	651	\$3,284,662	\$387.53
Transportation, Warehousing & Utilities	31	265	274	311	\$2,169,100	\$588.90
Information	9	60	59	59	\$378,229	\$490.36
Financial Activities	43	381	377	370	\$2,557,284	\$523.18
Professional & Business Services	40	175	172	169	\$1,091,702	\$488.24
Education & Health Services	53	601	604	608	\$3,474,174	\$442.21
Leisure & Hospitality	31	388	370	367	\$824,560	\$169.14
Other Services	44	88	87	85	\$376,766	\$334.41
Local Government	17	448	723	832	\$3,825,701	\$440.77
State Government	12	227	224	223	\$1,511,843	\$517.64
DALLAS COUNTY - TOTAL	275	3,069	3,088	3,324	\$17,949,195	\$436.89
Natural Resources & Mining	40	208	210	215	\$1,536,566	\$560.18
Construction	15	92	87	81	\$489,960	\$434.88
Manufacturing	16	900	907	899	\$6,114,894	\$521.48
Trade, Transportation & Utilities	80	508	498	506	\$2,448,729	\$373.74
Wholesale Trade	10	50	50	48	\$287,688	\$448.58
Retail Trade	49	380	373	384	\$1,690,557	\$343.12
Transportation, Warehousing & Utilities	21	78	75	74	\$470,484	\$478.30
Information	3	24	24	25	\$151,026	\$477.43
Financial Activities	20	109	106	107	\$611,012	\$437.90

**TABLE 6. COUNTY SUMMARY
EMPLOYMENT AND TOTAL EARNINGS, BY INDUSTRY
THIRD QUARTER 2004**

NORTH AMERICAN INDUSTRY CLASSIFICATION SYSTEM	NUMBER OF EMPLOYING UNITS	EMPLOYMENT JULY	EMPLOYMENT AUGUST	EMPLOYMENT SEPTEMBER	TOTAL EARNINGS JUL. - SEP. 2004	AVERAGE WEEKLY EARNINGS
Professional & Business Services	16	50	49	49	\$429,064	\$669.02
Education & Health Services	26	677	680	712	\$3,687,703	\$411.31
Leisure & Hospitality	17	139	132	137	\$283,095	\$160.12
Other Services	17	69	66	66	\$249,379	\$286.31
Local Government	16	227	262	463	\$1,565,465	\$379.48
State Government	9	66	67	64	\$382,302	\$447.84
DESHA COUNTY - TOTAL	448	4,649	4,920	5,228	\$31,981,456	\$498.77
Natural Resources & Mining	55	304	284	379	\$1,850,099	\$441.52
Construction	25	135	137	135	\$1,029,687	\$583.83
Manufacturing	16	1,062	1,088	1,089	\$9,661,242	\$688.34
Trade, Transportation & Utilities	139	1,150	1,133	1,227	\$6,234,387	\$409.89
Wholesale Trade	20	206	198	201	\$1,789,439	\$682.56
Retail Trade	88	740	726	726	\$3,008,327	\$316.71
Transportation, Warehousing & Utilities	31	204	209	300	\$1,436,621	\$464.98
Information	6	25	25	25	\$226,607	\$697.25
Financial Activities	37	231	233	224	\$1,219,570	\$409.07
Professional & Business Services	35	213	208	215	\$2,509,953	\$910.72
Education & Health Services	38	504	516	514	\$2,737,408	\$411.81
Leisure & Hospitality	35	324	329	324	\$608,830	\$143.81
Other Services	29	72	73	69	\$223,272	\$240.77
Local Government	22	475	741	867	\$4,655,279	\$515.74
State Government	11	154	153	160	\$1,025,122	\$506.57
DREW COUNTY - TOTAL	502	6,402	6,576	7,023	\$38,421,588	\$443.30
Natural Resources & Mining	45	320	336	354	\$2,297,550	\$524.95
Construction	25	143	145	155	\$982,352	\$511.73
Manufacturing	27	1,380	1,375	1,377	\$8,982,369	\$501.66
Trade, Transportation & Utilities	143	1,271	1,294	1,310	\$7,167,371	\$426.84
Wholesale Trade	26	265	273	271	\$1,987,774	\$567.02
Retail Trade	95	910	922	939	\$4,221,228	\$351.54
Transportation, Warehousing & Utilities	22	96	99	100	\$958,369	\$749.70
Information	9	91	92	89	\$590,150	\$500.69

**TABLE 6. COUNTY SUMMARY
EMPLOYMENT AND TOTAL EARNINGS, BY INDUSTRY
THIRD QUARTER 2004**

NORTH AMERICAN INDUSTRY CLASSIFICATION SYSTEM	NUMBER OF EMPLOYING UNITS	EMPLOYMENT JULY	EMPLOYMENT AUGUST	EMPLOYMENT SEPTEMBER	TOTAL EARNINGS JUL. - SEP. 2004	AVERAGE WEEKLY EARNINGS
Financial Activities	48	274	277	275	\$1,954,232	\$545.98
Professional & Business Services	42	276	284	278	\$1,447,899	\$398.72
Education & Health Services	53	752	755	750	\$3,485,792	\$356.41
Leisure & Hospitality	40	568	555	607	\$1,092,076	\$145.67
Other Services	30	92	96	98	\$352,872	\$284.73
Local Government	23	723	796	1,172	\$5,120,338	\$439.10
State Government	17	512	571	558	\$4,948,587	\$695.91
FAULKNER COUNTY - TOTAL	2,173	33,466	34,125	34,832	\$246,818,939	\$556.11
Natural Resources & Mining	8	48	47	46	\$435,255	\$712.36
Construction	311	2,722	2,723	2,672	\$20,124,742	\$572.15
Manufacturing	113	5,203	5,224	5,171	\$48,061,426	\$711.06
Trade, Transportation & Utilities	547	5,963	6,136	6,144	\$32,986,479	\$417.27
Wholesale Trade	118	658	688	703	\$5,673,742	\$639.01
Retail Trade	366	4,683	4,824	4,809	\$21,834,289	\$351.96
Transportation, Warehousing & Utilities	63	622	624	632	\$5,478,448	\$673.19
Information	38	392	386	390	\$2,890,664	\$571.13
Financial Activities	246	1,309	1,311	1,320	\$9,173,284	\$537.29
Professional & Business Services	290	5,019	5,118	4,877	\$54,388,738	\$835.97
Education & Health Services	257	4,278	4,272	4,343	\$32,424,806	\$580.37
Leisure & Hospitality	176	3,649	3,616	3,691	\$8,816,989	\$185.71
Other Services	132	592	618	621	\$2,889,103	\$364.13
Local Government	36	1,725	1,999	2,858	\$14,231,025	\$498.95
State Government	19	2,566	2,675	2,699	\$20,396,428	\$592.80
FRANKLIN COUNTY - TOTAL	316	3,908	4,290	4,354	\$25,632,792	\$471.26
Natural Resources & Mining	8	159	156	147	\$1,311,609	\$655.15
Construction	28	159	159	167	\$1,070,682	\$509.44
Manufacturing	20	1,073	1,079	1,063	\$7,089,486	\$508.88
Trade, Transportation & Utilities	101	855	852	857	\$5,235,066	\$471.17
Wholesale Trade	13	43	48	53	\$200,734	\$321.69
Retail Trade	61	508	501	503	\$2,016,599	\$307.78
Transportation, Warehousing & Utilities	27	304	303	301	\$3,017,733	\$766.96

**TABLE 6. COUNTY SUMMARY
EMPLOYMENT AND TOTAL EARNINGS, BY INDUSTRY
THIRD QUARTER 2004**

NORTH AMERICAN INDUSTRY CLASSIFICATION SYSTEM	NUMBER OF EMPLOYING UNITS	EMPLOYMENT JULY	EMPLOYMENT AUGUST	EMPLOYMENT SEPTEMBER	TOTAL EARNINGS JUL. - SEP. 2004	AVERAGE WEEKLY EARNINGS
Information	7	61	58	60	\$267,503	\$344.87
Financial Activities	25	178	176	180	\$953,260	\$411.95
Professional & Business Services	18	56	53	53	\$294,368	\$419.33
Education & Health Services	37	540	545	543	\$3,256,666	\$461.63
Leisure & Hospitality	26	320	327	313	\$724,648	\$174.19
Other Services	16	52	53	45	\$251,131	\$386.36
Local Government	20	341	705	793	\$4,336,026	\$544.11
State Government	10	114	127	133	\$842,347	\$519.75
FULTON COUNTY - TOTAL	207	1,790	1,811	1,901	\$8,171,069	\$338.66
Construction	16	33	32	33	\$179,292	\$422.19
Manufacturing	11	165	160	145	\$572,092	\$280.90
Trade, Transportation & Utilities	58	376	381	384	\$2,008,194	\$406.16
Retail Trade	43	212	213	215	\$676,170	\$243.81
Other Trade, Transportation & Utilities	15	164	168	169	\$1,332,024	\$613.55
Financial Activities	21	133	122	119	\$722,114	\$445.57
Professional & Business Services	16	44	45	44	\$277,557	\$481.59
Education & Health Services	26	353	366	365	\$1,413,155	\$300.84
Leisure & Hospitality	19	187	189	174	\$429,884	\$180.37
Local Government	13	332	346	469	\$1,744,649	\$351.01
State Government	11	100	102	100	\$552,128	\$421.90
Other	16	67	68	68	\$272,004	\$309.21
GARLAND COUNTY - TOTAL	2,966	34,348	34,869	35,912	\$222,625,319	\$483.89
Natural Resources & Mining	47	344	345	346	\$2,763,651	\$616.20
Construction	401	2,213	2,255	2,239	\$14,124,291	\$485.98
Manufacturing	127	3,544	3,503	3,532	\$26,198,975	\$571.50
Trade, Transportation & Utilities	699	7,085	7,101	7,259	\$41,584,066	\$447.49
Wholesale Trade	146	1,116	1,105	1,125	\$8,849,231	\$610.32
Retail Trade	486	5,271	5,295	5,425	\$26,245,856	\$378.76
Transportation, Warehousing & Utilities	67	698	701	709	\$6,488,979	\$710.37

**TABLE 6. COUNTY SUMMARY
EMPLOYMENT AND TOTAL EARNINGS, BY INDUSTRY
THIRD QUARTER 2004**

NORTH AMERICAN INDUSTRY CLASSIFICATION SYSTEM	NUMBER OF EMPLOYING UNITS	EMPLOYMENT JULY	EMPLOYMENT AUGUST	EMPLOYMENT SEPTEMBER	TOTAL EARNINGS JUL. - SEP. 2004	AVERAGE WEEKLY EARNINGS
Information	38	486	493	483	\$3,562,158	\$562.27
Financial Activities	325	1,545	1,538	1,523	\$11,261,575	\$564.23
Professional & Business Services	373	2,559	2,617	2,642	\$16,204,558	\$478.32
Education & Health Services	316	6,854	6,836	6,861	\$59,311,908	\$666.02
Leisure & Hospitality	346	6,316	6,312	6,076	\$20,177,085	\$248.94
Other Services	232	999	999	986	\$4,778,474	\$369.55
Local Government	36	1,614	2,067	3,064	\$16,652,719	\$569.75
State Government	26	789	803	901	\$6,005,859	\$555.94
GRANT COUNTY - TOTAL	295	3,329	3,343	3,612	\$22,816,394	\$511.99
Natural Resources & Mining	27	256	254	252	\$2,666,030	\$807.40
Construction	30	227	229	232	\$1,743,623	\$584.85
Manufacturing	22	866	877	905	\$6,654,308	\$579.91
Trade, Transportation & Utilities	89	562	558	562	\$3,168,248	\$434.68
Wholesale Trade	17	141	140	142	\$1,138,038	\$620.86
Retail Trade	42	361	359	362	\$1,582,885	\$337.60
Transportation, Warehousing & Utilities	30	60	59	58	\$447,325	\$583.21
Information	3	38	38	37	\$285,191	\$582.42
Financial Activities	21	96	97	93	\$589,953	\$476.02
Professional & Business Services	22	72	70	71	\$535,677	\$580.37
Education & Health Services	23	233	229	226	\$1,263,360	\$423.76
Leisure & Hospitality	22	268	278	278	\$657,928	\$184.26
Other Services	16	39	40	41	\$173,589	\$333.83
Local Government	10	608	609	853	\$4,714,089	\$525.54
State Government	10	64	64	62	\$364,398	\$442.59
GREENE COUNTY - TOTAL	852	13,655	14,011	14,577	\$90,812,108	\$496.10
Natural Resources & Mining	36	195	188	193	\$1,150,688	\$461.01
Construction	76	411	403	395	\$2,628,468	\$501.71
Manufacturing	54	5,191	5,235	5,262	\$43,083,951	\$633.76
Trade, Transportation & Utilities	253	2,240	2,217	2,267	\$12,199,072	\$418.67
Wholesale Trade	53	460	448	446	\$3,651,892	\$622.41

**TABLE 6. COUNTY SUMMARY
EMPLOYMENT AND TOTAL EARNINGS, BY INDUSTRY
THIRD QUARTER 2004**

NORTH AMERICAN INDUSTRY CLASSIFICATION SYSTEM	NUMBER OF EMPLOYING UNITS	EMPLOYMENT JULY	EMPLOYMENT AUGUST	EMPLOYMENT SEPTEMBER	TOTAL EARNINGS JUL. - SEP. 2004	AVERAGE WEEKLY EARNINGS
Retail Trade	166	1,595	1,587	1,635	\$7,063,525	\$338.39
Transportation, Warehousing & Utilities	34	185	182	186	\$1,483,655	\$619.14
Information	13	97	97	96	\$590,134	\$469.60
Financial Activities	83	455	459	463	\$2,603,904	\$436.38
Professional & Business Services	76	1,275	1,238	1,350	\$7,351,997	\$439.20
Education & Health Services	100	1,574	1,599	1,618	\$8,996,777	\$433.35
Leisure & Hospitality	62	1,045	1,056	1,036	\$2,344,545	\$172.47
Other Services	56	178	172	173	\$767,830	\$338.80
Local Government	32	742	1,097	1,475	\$7,310,672	\$509.08
State Government	11	252	250	249	\$1,784,070	\$548.21
HEMPSTEAD COUNTY - TOTAL	496	8,166	8,332	8,814	\$51,826,458	\$472.50
Natural Resources & Mining	18	226	227	229	\$1,850,058	\$626.01
Construction	34	115	107	126	\$753,723	\$499.82
Manufacturing	34	2,910	2,959	2,977	\$21,364,403	\$557.34
Trade, Transportation & Utilities	135	1,314	1,312	1,296	\$7,121,442	\$419.02
Wholesale Trade	24	198	198	189	\$1,065,558	\$420.34
Retail Trade	86	911	902	912	\$3,759,440	\$318.37
Transportation, Warehousing & Utilities	25	205	212	195	\$2,296,444	\$865.93
Information	11	68	67	69	\$470,264	\$531.97
Financial Activities	44	281	277	276	\$2,097,132	\$580.28
Professional & Business Services	34	520	477	504	\$1,719,560	\$264.37
Education & Health Services	62	941	953	955	\$5,440,371	\$440.67
Leisure & Hospitality	44	629	604	592	\$1,486,872	\$188.01
Other Services	35	218	208	209	\$1,324,355	\$481.29
Local Government	29	463	624	1,036	\$4,668,196	\$507.43
State Government	16	481	517	545	\$3,530,082	\$527.95
HOT SPRING COUNTY - TOTAL	612	7,108	7,220	7,753	\$49,734,074	\$519.77
Natural Resources & Mining	40	195	212	221	\$1,897,904	\$697.42
Construction	70	366	390	386	\$2,986,485	\$603.49
Manufacturing	55	1,926	1,905	1,909	\$17,466,871	\$702.23
Trade, Transportation & Utilities	164	1,342	1,336	1,349	\$8,414,971	\$482.22

**TABLE 6. COUNTY SUMMARY
EMPLOYMENT AND TOTAL EARNINGS, BY INDUSTRY
THIRD QUARTER 2004**

NORTH AMERICAN INDUSTRY CLASSIFICATION SYSTEM	NUMBER OF EMPLOYING UNITS	EMPLOYMENT JULY	EMPLOYMENT AUGUST	EMPLOYMENT SEPTEMBER	TOTAL EARNINGS JUL. - SEP. 2004	AVERAGE WEEKLY EARNINGS
Wholesale Trade	18	87	86	87	\$884,823	\$785.35
Retail Trade	102	899	885	899	\$4,098,814	\$352.55
Transportation, Warehousing & Utilities	44	356	365	363	\$3,431,334	\$730.49
Information	9	67	65	67	\$625,406	\$725.25
Financial Activities	52	307	304	305	\$1,928,294	\$485.80
Professional & Business Services	58	257	269	287	\$1,605,481	\$455.71
Education & Health Services	44	898	915	910	\$5,462,729	\$462.96
Leisure & Hospitality	41	557	537	551	\$1,224,247	\$171.74
Other Services	38	226	262	266	\$1,093,886	\$334.79
Local Government	27	641	677	1,091	\$4,840,303	\$463.67
State Government	14	326	348	411	\$2,187,497	\$465.26
HOWARD COUNTY - TOTAL	361	7,575	7,573	7,719	\$46,347,156	\$467.73
Natural Resources & Mining	23	267	273	278	\$1,911,602	\$539.29
Construction	25	109	112	122	\$739,715	\$497.68
Manufacturing	26	4,531	4,415	4,268	\$29,325,567	\$512.14
Trade, Transportation & Utilities	108	925	924	931	\$5,075,289	\$421.30
Wholesale Trade	17	101	100	99	\$731,832	\$562.95
Retail Trade	69	652	645	650	\$2,790,377	\$330.73
Transportation, Warehousing & Utilities	22	172	179	182	\$1,553,080	\$672.43
Information	7	34	36	34	\$229,121	\$508.40
Financial Activities	37	173	171	169	\$973,120	\$437.75
Professional & Business Services	27	102	104	102	\$591,542	\$443.21
Education & Health Services	36	585	592	596	\$2,837,918	\$369.38
Leisure & Hospitality	23	304	289	289	\$638,335	\$167.02
Other Services	19	107	104	110	\$469,946	\$337.85
Local Government	18	319	437	700	\$2,777,891	\$440.28
State Government	12	119	116	120	\$777,110	\$505.16
INDEPENDENCE COUNTY - TOTAL	920	15,539	15,795	16,435	\$102,037,508	\$492.94
Natural Resources & Mining	14	139	139	136	\$1,038,173	\$578.69
Construction	69	462	464	473	\$3,155,487	\$520.51
Manufacturing	55	5,086	5,123	5,148	\$39,520,739	\$593.88

**TABLE 6. COUNTY SUMMARY
EMPLOYMENT AND TOTAL EARNINGS, BY INDUSTRY
THIRD QUARTER 2004**

NORTH AMERICAN INDUSTRY CLASSIFICATION SYSTEM	NUMBER OF EMPLOYING UNITS	EMPLOYMENT JULY	EMPLOYMENT AUGUST	EMPLOYMENT SEPTEMBER	TOTAL EARNINGS JUL. - SEP. 2004	AVERAGE WEEKLY EARNINGS
Trade, Transportation & Utilities	293	3,088	3,052	3,017	\$18,533,229	\$467.06
Wholesale Trade	52	445	443	441	\$3,068,181	\$532.76
Retail Trade	184	1,812	1,781	1,742	\$7,822,184	\$338.35
Transportation, Warehousing & Utilities	57	831	828	834	\$7,642,864	\$707.48
Information	11	175	171	171	\$1,219,718	\$544.44
Financial Activities	83	427	423	417	\$2,817,755	\$513.22
Professional & Business Services	91	1,030	1,111	1,091	\$5,391,436	\$384.96
Education & Health Services	104	2,555	2,528	2,515	\$17,681,479	\$537.03
Leisure & Hospitality	76	1,134	1,166	1,161	\$2,502,970	\$166.89
Other Services	68	345	335	340	\$1,516,853	\$343.18
Local Government	37	699	898	1,492	\$5,930,962	\$443.08
State Government	19	399	385	474	\$2,728,707	\$500.56
IZARD COUNTY - TOTAL	252	2,737	2,837	2,912	\$15,217,078	\$413.81
Natural Resources & Mining	5	83	83	81	\$647,891	\$605.32
Construction	27	72	72	75	\$337,788	\$355.94
Manufacturing	13	513	436	437	\$3,336,131	\$555.47
Trade, Transportation & Utilities	70	530	523	514	\$2,437,206	\$358.92
Retail Trade	51	404	399	395	1,651,860	\$318.20
Other Trade, Transportation & Utilities	19	126	124	119	785,346	\$491.15
Information	3	10	10	9	\$43,437	\$345.65
Financial Activities	25	149	146	143	\$963,595	\$507.69
Professional & Business Services	23	85	89	86	\$360,187	\$319.69
Education & Health Services	22	411	430	420	\$1,959,645	\$358.62
Leisure & Hospitality	24	175	165	162	\$373,949	\$171.90
Other Services	14	41	37	39	\$158,606	\$312.83
Local Government	18	295	438	533	\$2,129,548	\$388.18
State Government	11	383	418	422	\$2,512,532	\$474.09
JACKSON COUNTY - TOTAL	526	5,573	5,808	5,934	\$36,742,819	\$489.70
Natural Resources & Mining	46	263	253	249	\$1,564,018	\$471.80
Construction	31	197	195	192	\$1,262,990	\$499.07
Manufacturing	30	1,094	1,078	1,051	\$8,606,916	\$616.26

**TABLE 6. COUNTY SUMMARY
EMPLOYMENT AND TOTAL EARNINGS, BY INDUSTRY
THIRD QUARTER 2004**

NORTH AMERICAN INDUSTRY CLASSIFICATION SYSTEM	NUMBER OF EMPLOYING UNITS	EMPLOYMENT JULY	EMPLOYMENT AUGUST	EMPLOYMENT SEPTEMBER	TOTAL EARNINGS JUL. - SEP. 2004	AVERAGE WEEKLY EARNINGS
Trade, Transportation & Utilities	142	1,249	1,228	1,252	\$7,252,839	\$448.84
Wholesale Trade	37	261	244	230	\$1,864,267	\$585.33
Retail Trade	85	732	727	735	\$3,398,192	\$357.43
Transportation, Warehousing & Utilities	20	256	257	287	\$1,990,380	\$574.15
Information	5	39	40	41	\$303,805	\$584.24
Financial Activities	42	187	193	191	\$1,145,031	\$462.76
Professional & Business Services	39	134	130	133	\$809,731	\$470.68
Education & Health Services	66	1,013	1,034	1,023	\$7,601,937	\$571.43
Leisure & Hospitality	37	349	352	339	\$872,195	\$193.53
Other Services	40	117	120	112	\$494,362	\$326.89
Local Government	34	430	682	753	\$3,253,329	\$402.56
State Government	14	501	503	598	\$3,575,666	\$515.08
JEFFERSON COUNTY - TOTAL	1,763	31,045	31,375	32,977	\$231,561,679	\$560.16
Natural Resources & Mining	41	495	498	518	\$4,218,146	\$644.22
Construction	122	1,073	1,033	987	\$8,142,810	\$607.54
Manufacturing	83	6,656	6,716	6,710	\$65,130,763	\$748.44
Trade, Transportation & Utilities	500	5,995	5,969	6,075	\$35,741,154	\$457.23
Wholesale Trade	91	1,051	1,048	1,068	\$8,094,480	\$589.82
Retail Trade	345	4,136	4,125	4,174	\$19,099,891	\$354.46
Transportation, Warehousing & Utilities	64	808	796	833	\$8,546,783	\$809.33
Information	19	227	220	217	\$1,649,020	\$573.11
Financial Activities	148	1,209	1,189	1,176	\$9,586,505	\$618.99
Professional & Business Services	185	2,389	2,406	2,420	\$21,092,437	\$674.63
Education & Health Services	275	5,388	5,507	5,559	\$38,277,959	\$536.85
Leisure & Hospitality	144	2,295	2,326	2,326	\$5,941,366	\$197.36
Other Services	164	813	797	819	\$4,374,716	\$415.62
Local Government	42	1,697	1,933	3,243	\$15,896,592	\$533.75
State Government	40	2,808	2,781	2,927	\$21,510,211	\$582.89
JOHNSON COUNTY - TOTAL	438	7,913	8,021	8,551	\$49,268,937	\$464.36

**TABLE 6. COUNTY SUMMARY
EMPLOYMENT AND TOTAL EARNINGS, BY INDUSTRY
THIRD QUARTER 2004**

NORTH AMERICAN INDUSTRY CLASSIFICATION SYSTEM	NUMBER OF EMPLOYING UNITS	EMPLOYMENT JULY	EMPLOYMENT AUGUST	EMPLOYMENT SEPTEMBER	TOTAL EARNINGS JUL. - SEP. 2004	AVERAGE WEEKLY EARNINGS
Natural Resources & Mining	13	208	204	201	\$1,537,874	\$578.95
Construction	28	188	196	191	\$1,151,312	\$462.07
Manufacturing	42	3,209	3,232	3,253	\$21,480,047	\$511.34
Trade, Transportation & Utilities	120	1,670	1,683	1,751	\$9,284,330	\$419.78
Information	6	30	28	30	\$207,907	\$545.21
Financial Activities	39	217	215	212	\$1,363,040	\$488.43
Professional & Business Services	44	146	153	152	\$839,196	\$429.40
Education & Health Services	52	1,054	1,060	1,068	\$6,942,277	\$503.48
Leisure & Hospitality	40	557	559	551	\$1,277,142	\$176.80
Other Services	30	82	81	83	\$393,498	\$369.14
Local Government	14	404	462	910	\$3,812,758	\$495.42
State Government	10	148	148	149	\$979,556	\$507.98
LAFAYETTE COUNTY - TOTAL	160	1,517	1,580	1,720	\$9,067,582	\$434.40
Natural Resources & Mining	29	157	164	181	\$947,269	\$435.46
Trade, Transportation & Utilities	38	234	235	243	\$1,432,351	\$464.25
Retail Trade	24	148	148	156	\$572,840	\$292.46
Other Trade, Transportation & Utilities	14	86	87	87	\$859,511	\$762.88
Financial Activities	16	91	96	86	\$463,014	\$391.39
Professional & Business Services	10	51	51	52	\$402,620	\$603.33
Education & Health Services	10	210	212	211	\$910,059	\$331.78
Leisure & Hospitality	8	59	58	57	\$128,084	\$169.87
Other Services	7	90	88	89	\$330,017	\$285.24
Local Government	14	202	255	349	\$1,403,856	\$401.94
State Government	8	64	63	63	\$358,155	\$435.01
Other	20	359	358	389	\$2,692,157	\$561.72
LAWRENCE COUNTY - TOTAL	424	4,015	4,232	4,404	\$24,178,020	\$441.04
Natural Resources & Mining	32	190	184	173	\$1,249,262	\$527.04
Construction	27	121	117	120	\$804,698	\$518.71
Manufacturing	24	743	735	727	\$5,125,113	\$536.38

**TABLE 6. COUNTY SUMMARY
EMPLOYMENT AND TOTAL EARNINGS, BY INDUSTRY
THIRD QUARTER 2004**

NORTH AMERICAN INDUSTRY CLASSIFICATION SYSTEM	NUMBER OF EMPLOYING UNITS	EMPLOYMENT JULY	EMPLOYMENT AUGUST	EMPLOYMENT SEPTEMBER	TOTAL EARNINGS JUL. - SEP. 2004	AVERAGE WEEKLY EARNINGS
Trade, Transportation & Utilities	142	1,033	1,024	1,033	\$5,447,834	\$406.86
Wholesale Trade	24	228	218	218	\$1,599,919	\$556.04
Retail Trade	82	669	669	678	\$2,833,729	\$324.37
Transportation, Warehousing & Utilities	36	136	137	137	\$1,014,186	\$570.84
Information	6	25	25	26	\$183,387	\$556.84
Financial Activities	30	153	146	144	\$852,479	\$444.08
Professional & Business Services	24	120	116	115	\$962,486	\$632.80
Education & Health Services	46	398	407	429	\$2,592,314	\$484.79
Leisure & Hospitality	29	294	288	304	\$570,075	\$148.48
Other Services	24	77	71	70	\$273,708	\$289.74
Local Government	28	732	991	1,139	\$5,435,537	\$438.28
State Government	12	129	128	124	\$681,127	\$412.55
LEE COUNTY - TOTAL	225	1,896	2,105	2,272	\$12,197,951	\$448.73
Natural Resources & Mining	30	192	207	302	\$1,359,109	\$447.42
Construction	8	17	17	18	\$88,652	\$393.43
Trade, Transportation & Utilities	66	395	388	388	\$2,145,660	\$422.85
Wholesale Trade	9	77	75	71	\$476,696	\$493.30
Retail Trade	38	217	215	216	\$829,307	\$295.34
Transportation, Warehousing & Utilities	19	101	98	101	\$839,657	\$645.89
Financial Activities	11	81	80	81	\$412,761	\$393.61
Professional & Business Services	18	78	78	76	\$418,704	\$416.48
Education & Health Services	28	294	300	300	\$1,592,417	\$411.05
Leisure & Hospitality	9	68	64	65	\$151,063	\$176.96
Local Government	17	144	336	400	\$2,146,744	\$562.96
State Government	8	444	448	456	\$2,755,365	\$471.70
Other	30	183	187	186	\$1,127,476	\$467.96
LINCOLN COUNTY - TOTAL	220	2,884	2,954	3,189	\$17,149,033	\$438.40
Natural Resources & Mining	31	206	198	248	\$1,432,476	\$507.01

**TABLE 6. COUNTY SUMMARY
EMPLOYMENT AND TOTAL EARNINGS, BY INDUSTRY
THIRD QUARTER 2004**

NORTH AMERICAN INDUSTRY CLASSIFICATION SYSTEM	NUMBER OF EMPLOYING UNITS	EMPLOYMENT JULY	EMPLOYMENT AUGUST	EMPLOYMENT SEPTEMBER	TOTAL EARNINGS JUL. - SEP. 2004	AVERAGE WEEKLY EARNINGS
Construction	17	100	91	90	\$550,075	\$451.75
Manufacturing	10	479	491	487	\$2,893,426	\$458.28
Trade, Transportation & Utilities	56	397	400	397	\$2,487,361	\$480.74
Wholesale Trade	8	33	33	32	\$245,642	\$578.43
Retail Trade	29	205	209	218	\$752,338	\$274.71
Transportation, Warehousing & Utilities	19	159	158	147	\$1,489,381	\$740.74
Financial Activities	22	93	94	98	\$558,678	\$452.37
Professional & Business Services	11	25	25	26	\$168,315	\$511.08
Education & Health Services	20	301	320	323	\$1,520,371	\$371.67
Leisure & Hospitality	16	122	129	123	\$272,765	\$168.30
Local & State Government	23	1,105	1,152	1,343	\$7,036,307	\$451.05
Other	14	56	54	54	\$229,259	\$322.60
LITTLE RIVER COUNTY - TOTAL	252	4,330	4,348	4,509	\$40,226,425	\$703.95
Natural Resources & Mining	12	81	81	81	\$603,941	\$573.54
Trade, Transportation & Utilities	76	1,058	1,063	1,088	\$8,196,253	\$589.42
Wholesale Trade	9	32	32	32	\$216,894	\$521.38
Retail Trade	44	349	349	353	\$1,478,842	\$324.71
Transportation, Warehousing & Utilities	23	677	682	703	\$6,500,517	\$727.51
Information	4	11	11	10	\$76,489	\$551.60
Financial Activities	27	132	130	129	\$732,391	\$432.26
Professional & Business Services	21	168	167	165	\$925,362	\$427.09
Education & Health Services	14	169	156	152	\$927,182	\$448.56
Leisure & Hospitality	19	212	210	211	\$489,916	\$178.61
Other Services	16	102	94	92	\$284,655	\$228.09
Local Government	20	539	570	738	\$3,523,113	\$440.19
State Government	12	93	90	92	\$493,066	\$413.76
Other	31	1,765	1,776	1,751	\$23,974,057	\$1,045.44
LOGAN COUNTY - TOTAL	445	5,584	5,699	5,811	\$32,694,218	\$437.00
Natural Resources & Mining	15	86	80	87	\$656,690	\$598.99

**TABLE 6. COUNTY SUMMARY
EMPLOYMENT AND TOTAL EARNINGS, BY INDUSTRY
THIRD QUARTER 2004**

NORTH AMERICAN INDUSTRY CLASSIFICATION SYSTEM	NUMBER OF EMPLOYING UNITS	EMPLOYMENT JULY	EMPLOYMENT AUGUST	EMPLOYMENT SEPTEMBER	TOTAL EARNINGS JUL. - SEP. 2004	AVERAGE WEEKLY EARNINGS
Construction	45	130	135	148	\$717,865	\$401.12
Manufacturing	26	1,979	1,955	1,929	\$13,888,421	\$546.65
Trade, Transportation & Utilities	122	875	868	873	\$3,791,204	\$334.44
Wholesale Trade	20	56	55	55	\$253,110	\$351.87
Retail Trade	75	754	748	750	\$3,062,426	\$313.82
Transportation, Warehousing & Utilities	27	65	65	68	\$475,668	\$554.39
Information	9	41	41	42	\$345,035	\$642.12
Financial Activities	42	232	229	233	\$1,692,662	\$562.84
Professional & Business Services	37	101	106	106	\$578,799	\$426.74
Education & Health Services	48	700	694	711	\$3,636,570	\$398.67
Leisure & Hospitality	30	344	361	349	\$780,121	\$170.80
Other Services	32	94	91	101	\$447,637	\$361.19
Local Government	23	566	707	797	\$3,841,316	\$428.24
State Government	16	436	432	435	\$2,317,898	\$410.51
LONOKE COUNTY - TOTAL	1,129	10,915	11,395	11,707	\$69,187,048	\$460.75
Natural Resources & Mining	74	474	473	497	\$4,177,622	\$667.64
Construction	152	1,009	1,041	1,074	\$7,323,443	\$540.98
Manufacturing	34	1,371	1,359	1,342	\$12,354,272	\$700.14
Trade, Transportation & Utilities	314	2,503	2,465	2,488	\$13,474,716	\$417.05
Wholesale Trade	72	428	410	404	\$3,605,061	\$669.84
Retail Trade	175	1,765	1,753	1,761	\$7,621,679	\$333.18
Transportation, Warehousing & Utilities	67	310	302	323	\$2,247,976	\$554.83
Information	16	119	122	117	\$1,015,650	\$654.69
Financial Activities	124	597	587	579	\$4,349,416	\$569.32
Professional & Business Services	130	472	477	461	\$3,045,609	\$498.46
Education & Health Services	99	1,317	1,317	1,326	\$7,037,219	\$410.09
Leisure & Hospitality	80	1,161	1,145	1,141	\$2,811,010	\$188.19
Other Services	62	180	181	175	\$887,279	\$382.01
Local Government	28	1,566	2,076	2,360	\$11,874,054	\$456.54
State Government	16	146	152	147	\$836,758	\$433.93
MADISON COUNTY - TOTAL	234	2,950	2,962	3,082	\$17,510,202	\$449.28

**TABLE 6. COUNTY SUMMARY
EMPLOYMENT AND TOTAL EARNINGS, BY INDUSTRY
THIRD QUARTER 2004**

NORTH AMERICAN INDUSTRY CLASSIFICATION SYSTEM	NUMBER OF EMPLOYING UNITS	EMPLOYMENT JULY	EMPLOYMENT AUGUST	EMPLOYMENT SEPTEMBER	TOTAL EARNINGS JUL. - SEP. 2004	AVERAGE WEEKLY EARNINGS
Natural Resources & Mining	15	68	65	63	\$427,432	\$503.26
Construction	36	85	85	84	\$468,170	\$425.35
Manufacturing	21	1,154	1,149	1,150	\$7,179,752	\$479.83
Trade, Transportation & Utilities	60	599	595	581	\$2,862,715	\$372.18
Wholesale Trade	12	44	48	45	\$254,863	\$429.30
Retail Trade	35	430	423	411	\$1,727,250	\$315.35
Transportation, Warehousing & Utilities	13	125	124	125	\$880,602	\$543.36
Information	4	39	40	40	\$391,093	\$758.42
Financial Activities	19	88	87	90	\$583,532	\$508.16
Professional & Business Services	19	123	118	118	\$702,987	\$451.89
Education & Health Services	20	233	236	235	\$1,080,606	\$354.22
Leisure & Hospitality	11	124	131	131	\$213,639	\$127.72
Other Services	13	30	29	28	\$161,374	\$428.05
Local Government	8	352	372	509	\$3,107,767	\$581.65
State Government	8	55	55	53	\$331,135	\$468.81
MARION COUNTY - TOTAL	273	3,840	3,847	3,933	\$20,840,333	\$413.88
Natural Resources & Mining	6	41	40	41	\$206,106	\$389.86
Construction	14	57	54	49	\$220,578	\$318.14
Manufacturing	27	1,678	1,686	1,681	\$10,830,377	\$495.40
Trade, Transportation & Utilities	58	563	533	538	\$2,414,312	\$340.97
Financial Activities	33	219	213	209	\$1,169,364	\$420.99
Professional & Business Services	23	40	42	40	\$211,128	\$399.36
Education & Health Services	24	334	329	336	\$1,621,957	\$374.67
Leisure & Hospitality	40	305	299	285	\$750,566	\$194.83
Local Government	20	400	448	555	\$2,105,386	\$346.30
State Government	8	112	112	109	\$600,413	\$416.09
Other	20	91	91	90	\$710,146	\$602.50
MILLER COUNTY - TOTAL	825	12,019	12,135	12,802	\$88,119,377	\$550.26
Natural Resources & Mining	33	153	163	153	\$1,314,764	\$646.92

**TABLE 6. COUNTY SUMMARY
EMPLOYMENT AND TOTAL EARNINGS, BY INDUSTRY
THIRD QUARTER 2004**

NORTH AMERICAN INDUSTRY CLASSIFICATION SYSTEM	NUMBER OF EMPLOYING UNITS	EMPLOYMENT JULY	EMPLOYMENT AUGUST	EMPLOYMENT SEPTEMBER	TOTAL EARNINGS JUL. - SEP. 2004	AVERAGE WEEKLY EARNINGS
Construction	88	848	904	893	\$6,538,678	\$570.48
Manufacturing	37	2,809	2,802	2,771	\$31,865,971	\$877.32
Trade, Transportation & Utilities	243	2,825	2,828	2,842	\$18,023,940	\$489.63
Wholesale Trade	65	626	628	626	\$5,137,682	\$630.65
Retail Trade	135	1,440	1,433	1,443	\$6,508,289	\$347.99
Transportation, Warehousing & Utilities	43	759	767	773	\$6,377,969	\$640.21
Information	9	97	89	89	\$947,764	\$795.33
Financial Activities	80	430	431	433	\$3,486,477	\$621.77
Professional & Business Services	77	898	857	759	\$4,322,162	\$396.75
Education & Health Services	72	952	956	952	\$5,662,320	\$456.88
Leisure & Hospitality	80	1,396	1,358	1,360	\$3,747,052	\$210.19
Other Services	65	471	355	360	\$1,485,306	\$289.01
Local Government	23	715	963	1,764	\$7,465,057	\$500.50
State Government	18	425	429	426	\$3,259,886	\$587.72
MISSISSIPPI COUNTY - TOTAL	1,126	17,258	17,420	18,166	\$132,667,996	\$579.36
Natural Resources & Mining	102	864	867	1,005	\$4,110,443	\$346.70
Construction	58	404	410	451	\$3,085,486	\$562.87
Manufacturing	57	4,712	4,687	4,699	\$62,594,875	\$1,024.61
Trade, Transportation & Utilities	311	3,013	2,964	2,980	\$18,618,419	\$479.69
Wholesale Trade	64	589	563	572	\$5,035,448	\$674.03
Retail Trade	197	1,874	1,866	1,851	\$8,122,797	\$335.27
Transportation, Warehousing & Utilities	50	550	535	557	\$5,460,174	\$767.38
Financial Activities	108	618	618	626	\$3,933,996	\$487.56
Professional & Business Services	93	1,005	1,018	1,050	\$5,867,464	\$440.62
Education & Health Services	148	1,532	1,531	1,627	\$9,419,546	\$463.48
Leisure & Hospitality	79	1,097	1,105	1,081	\$2,561,411	\$180.05
Local Government	46	2,045	2,068	2,375	\$9,779,239	\$347.83
State Government	25	593	601	692	\$3,786,575	\$463.32
Other	99	1,375	1,551	1,580	\$8,910,542	\$456.34

**TABLE 6. COUNTY SUMMARY
EMPLOYMENT AND TOTAL EARNINGS, BY INDUSTRY
THIRD QUARTER 2004**

NORTH AMERICAN INDUSTRY CLASSIFICATION SYSTEM	NUMBER OF EMPLOYING UNITS	EMPLOYMENT JULY	EMPLOYMENT AUGUST	EMPLOYMENT SEPTEMBER	TOTAL EARNINGS JUL. - SEP. 2004	AVERAGE WEEKLY EARNINGS
MONROE COUNTY - TOTAL	291	2,425	2,660	2,743	\$12,682,101	\$373.87
Natural Resources & Mining	32	215	217	231	\$1,133,604	\$394.57
Construction	15	61	57	62	\$315,579	\$404.59
Manufacturing	8	197	191	196	\$1,194,050	\$471.83
Trade, Transportation & Utilities	90	686	689	713	\$3,692,635	\$408.12
Wholesale Trade	23	205	200	195	\$1,254,348	\$482.44
Retail Trade	41	335	343	352	\$1,389,896	\$311.40
Transportation, Warehousing & Utilities	26	146	146	166	\$1,048,391	\$528.25
Information	7	34	36	37	\$176,371	\$380.38
Financial Activities	16	103	102	99	\$655,160	\$497.34
Professional & Business Services	15	35	36	50	\$217,805	\$415.39
Education & Health Services	27	335	342	338	\$1,434,055	\$326.05
Leisure & Hospitality	31	337	348	348	\$718,759	\$160.57
Other Services	18	68	66	73	\$300,261	\$334.74
Local Government	22	220	439	457	\$2,083,439	\$430.82
State Government	10	134	137	139	\$760,383	\$427.98
MONTGOMERY COUNTY - TOTAL	170	1,676	1,539	1,652	\$7,687,108	\$364.48
Natural Resources & Mining	14	62	64	61	\$377,706	\$466.11
Construction	23	138	155	152	\$945,060	\$490.09
Trade, Transportation & Utilities	45	232	227	230	\$1,119,232	\$374.87
Wholesale Trade	11	76	73	73	\$371,233	\$385.90
Retail Trade	25	127	126	129	\$561,908	\$339.45
Transportation, Warehousing & Utilities	9	29	28	28	\$186,091	\$505.22
Financial Activities	9	76	75	73	\$452,298	\$465.97
Education & Health Services	12	59	60	60	\$237,714	\$306.46
Leisure & Hospitality	20	453	237	213	\$966,062	\$246.89
Other Services	10	56	65	63	\$286,060	\$358.77
Local Government	9	270	325	458	\$1,787,022	\$391.63
State Government	8	58	58	57	\$344,754	\$459.88

**TABLE 6. COUNTY SUMMARY
EMPLOYMENT AND TOTAL EARNINGS, BY INDUSTRY
THIRD QUARTER 2004**

NORTH AMERICAN INDUSTRY CLASSIFICATION SYSTEM	NUMBER OF EMPLOYING UNITS	EMPLOYMENT JULY	EMPLOYMENT AUGUST	EMPLOYMENT SEPTEMBER	TOTAL EARNINGS JUL. - SEP. 2004	AVERAGE WEEKLY EARNINGS
Other	20	272	273	285	\$1,171,200	\$325.63
NEVADA COUNTY - TOTAL	195	2,358	2,401	2,610	\$16,256,503	\$509.09
Natural Resources & Mining	18	61	61	65	\$381,478	\$470.77
Construction	13	30	34	35	\$176,916	\$412.39
Manufacturing	7	727	737	732	\$7,478,501	\$785.89
Trade, Transportation & Utilities	45	455	464	460	\$2,448,265	\$409.71
Retail Trade	30	282	282	284	\$1,177,985	\$320.57
Other Trade, Transportation & Utilities	15	173	182	176	\$1,270,280	\$552.06
Financial Activities	12	69	68	66	\$459,777	\$522.67
Education & Health Services	12	384	380	385	\$1,855,730	\$372.71
Leisure & Hospitality	18	147	152	154	\$312,595	\$159.24
Other Services	17	84	81	74	\$236,825	\$228.67
Local Government	27	249	271	485	\$1,683,148	\$386.49
State Government	11	86	85	87	\$498,246	\$445.66
Other	15	66	68	67	\$725,022	\$832.40
NEWTON COUNTY - TOTAL	132	870	963	1,072	\$4,201,524	\$333.76
Natural Resources & Mining	8	18	14	14	\$46,984	\$235.71
Construction	8	12	7	10	\$19,513	\$155.28
Manufacturing	14	61	63	64	\$311,766	\$382.69
Trade, Transportation & Utilities	31	166	169	171	\$682,386	\$311.21
Wholesale Trade	4	9	9	9	\$71,539	\$611.44
Retail Trade	17	110	112	115	\$340,079	\$232.88
Transportation, Warehousing & Utilities	10	47	48	47	\$270,768	\$440.03
Education & Health Services	13	135	134	140	\$426,249	\$240.50
Leisure & Hospitality	20	79	75	72	\$189,807	\$193.81
Other Services	5	14	13	14	\$44,000	\$247.65
Local Government	12	238	343	435	\$1,770,054	\$402.04
State Government	7	90	91	95	\$374,760	\$313.34

**TABLE 6. COUNTY SUMMARY
EMPLOYMENT AND TOTAL EARNINGS, BY INDUSTRY
THIRD QUARTER 2004**

NORTH AMERICAN INDUSTRY CLASSIFICATION SYSTEM	NUMBER OF EMPLOYING UNITS	EMPLOYMENT JULY	EMPLOYMENT AUGUST	EMPLOYMENT SEPTEMBER	TOTAL EARNINGS JUL. - SEP. 2004	AVERAGE WEEKLY EARNINGS
Other	14	57	54	57	\$336,005	\$461.55
OUACHITA COUNTY - TOTAL	634	7,330	7,363	7,690	\$43,389,569	\$447.35
Natural Resources & Mining	48	460	468	476	\$3,840,512	\$631.25
Construction	46	190	189	197	\$1,141,539	\$457.35
Manufacturing	28	833	837	845	\$6,235,213	\$572.13
Trade, Transportation & Utilities	194	1,740	1,720	1,724	\$10,016,500	\$445.89
Wholesale Trade	33	293	287	292	\$2,447,267	\$647.65
Retail Trade	131	1,152	1,144	1,156	\$4,849,060	\$324.16
Transportation, Warehousing & Utilities	30	295	289	276	\$2,720,173	\$729.92
Information	8	96	95	97	\$644,882	\$516.73
Financial Activities	63	368	364	354	\$2,403,171	\$510.66
Professional & Business Services	46	412	415	463	\$2,001,438	\$358.04
Education & Health Services	66	1,240	1,250	1,260	\$7,932,276	\$488.14
Leisure & Hospitality	38	563	545	539	\$1,168,998	\$163.79
Other Services	54	182	196	185	\$800,566	\$328.15
Local Government	30	943	985	1,246	\$5,017,638	\$364.81
State Government	13	303	299	304	\$2,186,836	\$557.01
PERRY COUNTY - TOTAL	151	1,006	1,175	1,193	\$5,707,610	\$390.38
Natural Resources & Mining	6	27	27	28	\$237,992	\$669.77
Construction	25	87	80	83	\$489,672	\$452.00
Manufacturing	7	80	79	77	\$481,845	\$471.17
Trade, Transportation & Utilities	31	184	188	198	\$872,842	\$353.38
Wholesale Trade	5	7	7	8	\$64,383	\$675.35
Retail Trade	19	156	159	167	\$543,094	\$260.02
Transportation, Warehousing & Utilities	7	21	22	23	\$265,365	\$927.85
Financial Activities	14	53	56	53	\$344,863	\$491.26
Education & Health Services	14	159	169	163	\$760,165	\$357.28
Local Government	12	210	363	377	\$1,594,964	\$387.44
State Government	8	55	55	56	\$322,173	\$447.88

**TABLE 6. COUNTY SUMMARY
EMPLOYMENT AND TOTAL EARNINGS, BY INDUSTRY
THIRD QUARTER 2004**

NORTH AMERICAN INDUSTRY CLASSIFICATION SYSTEM	NUMBER OF EMPLOYING UNITS	EMPLOYMENT JULY	EMPLOYMENT AUGUST	EMPLOYMENT SEPTEMBER	TOTAL EARNINGS JUL. - SEP. 2004	AVERAGE WEEKLY EARNINGS
Other	34	151	158	158	\$603,094	\$298.02
PHILLIPS COUNTY - TOTAL	657	6,308	6,611	7,129	\$36,014,930	\$414.56
Natural Resources & Mining	76	514	537	633	\$2,719,554	\$372.68
Construction	32	148	149	146	\$851,668	\$443.65
Manufacturing	16	469	386	454	\$3,381,049	\$596.06
Trade, Transportation & Utilities	177	1,622	1,647	1,745	\$9,802,445	\$451.16
Wholesale Trade	36	411	419	424	\$3,141,279	\$578.08
Retail Trade	107	912	928	1,008	\$4,174,360	\$338.24
Transportation, Warehousing & Utilities	34	299	300	313	\$2,486,806	\$629.25
Information	12	61	59	58	\$432,162	\$560.28
Financial Activities	54	284	304	296	\$1,856,195	\$484.56
Professional & Business Services	57	348	333	300	\$1,742,967	\$410.01
Education & Health Services	104	1,091	1,112	1,146	\$6,141,449	\$423.19
Leisure & Hospitality	36	432	429	404	\$816,911	\$149.03
Other Services	43	106	109	105	\$480,217	\$346.31
Local Government	34	762	1,021	1,277	\$4,724,591	\$356.30
State Government	16	471	525	565	\$3,065,722	\$453.22
PIKE COUNTY - TOTAL	265	2,663	2,821	2,836	\$14,459,999	\$401.07
Natural Resources & Mining	35	200	204	200	\$1,376,244	\$525.82
Construction	13	70	70	73	\$387,863	\$420.22
Manufacturing	11	461	461	462	\$2,839,631	\$473.48
Trade, Transportation & Utilities	89	628	629	625	\$3,097,386	\$379.80
Wholesale Trade	18	146	138	140	\$915,655	\$498.36
Retail Trade	52	392	397	388	\$1,512,201	\$296.49
Transportation, Warehousing & Utilities	19	90	94	97	\$669,530	\$549.85
Information	6	41	43	42	\$346,955	\$635.45
Financial Activities	25	195	198	192	\$1,260,486	\$497.23
Professional & Business Services	11	47	52	50	\$245,731	\$380.58
Education & Health Services	11	175	177	174	\$781,615	\$342.91
Leisure & Hospitality	22	235	221	222	\$527,179	\$179.43

**TABLE 6. COUNTY SUMMARY
EMPLOYMENT AND TOTAL EARNINGS, BY INDUSTRY
THIRD QUARTER 2004**

NORTH AMERICAN INDUSTRY CLASSIFICATION SYSTEM	NUMBER OF EMPLOYING UNITS	EMPLOYMENT JULY	EMPLOYMENT AUGUST	EMPLOYMENT SEPTEMBER	TOTAL EARNINGS JUL. - SEP. 2004	AVERAGE WEEKLY EARNINGS
Other Services	18	111	115	118	\$559,728	\$375.49
Local Government	13	379	531	558	\$2,426,091	\$381.38
State Government	11	121	120	120	\$611,090	\$390.64
POINSETT COUNTY - TOTAL	500	5,981	6,314	6,411	\$35,322,045	\$435.76
Natural Resources & Mining	49	397	411	407	\$2,379,180	\$451.89
Construction	29	109	111	103	\$805,838	\$575.74
Manufacturing	27	1,509	1,495	1,518	\$10,669,889	\$544.51
Trade, Transportation & Utilities	143	1,280	1,370	1,400	\$7,945,518	\$452.74
Wholesale Trade	33	448	429	439	\$3,726,485	\$653.46
Retail Trade	80	680	781	786	\$3,092,990	\$317.65
Transportation, Warehousing & Utilities	30	152	160	175	\$1,126,043	\$533.59
Information	7	61	63	62	\$643,126	\$797.92
Financial Activities	46	332	330	331	\$1,939,807	\$450.80
Professional & Business Services	24	85	82	79	\$632,712	\$593.54
Education & Health Services	51	535	532	521	\$2,672,728	\$388.40
Leisure & Hospitality	47	509	516	518	\$1,062,521	\$158.91
Other Services	33	71	72	74	\$371,532	\$395.11
Local Government	31	873	1,097	1,159	\$4,924,003	\$363.15
State Government	13	220	235	239	\$1,275,191	\$424.03
POLK COUNTY - TOTAL	524	5,779	5,986	6,149	\$31,942,044	\$411.48
Natural Resources & Mining	27	255	260	268	\$1,974,325	\$581.88
Construction	37	164	171	169	\$786,778	\$360.25
Manufacturing	47	1,462	1,439	1,427	\$8,657,402	\$461.61
Trade, Transportation & Utilities	153	1,341	1,318	1,304	\$6,320,237	\$368.03
Wholesale Trade	26	150	142	145	\$750,659	\$396.41
Retail Trade	83	854	836	815	\$3,390,764	\$312.37
Transportation, Warehousing & Utilities	44	337	340	344	\$2,178,814	\$492.46
Information	9	51	53	52	\$369,415	\$546.47
Financial Activities	37	223	220	213	\$1,279,948	\$450.26
Professional & Business Services	46	186	182	186	\$1,062,035	\$442.39
Education & Health Services	60	856	895	927	\$4,865,243	\$419.25

**TABLE 6. COUNTY SUMMARY
EMPLOYMENT AND TOTAL EARNINGS, BY INDUSTRY
THIRD QUARTER 2004**

NORTH AMERICAN INDUSTRY CLASSIFICATION SYSTEM	NUMBER OF EMPLOYING UNITS	EMPLOYMENT JULY	EMPLOYMENT AUGUST	EMPLOYMENT SEPTEMBER	TOTAL EARNINGS JUL. - SEP. 2004	AVERAGE WEEKLY EARNINGS
Leisure & Hospitality	38	406	409	407	\$836,055	\$157.89
Other Services	34	131	133	132	\$581,995	\$339.16
Local Government	21	425	586	741	\$3,662,639	\$482.43
State Government	15	279	320	323	\$1,545,972	\$386.94
POPE COUNTY - TOTAL	1,616	23,269	24,127	24,851	\$162,717,244	\$519.75
Natural Resources & Mining	21	576	563	546	\$3,400,382	\$465.70
Construction	161	1,144	1,078	1,019	\$8,380,479	\$596.72
Manufacturing	88	4,353	4,536	4,723	\$36,465,662	\$618.22
Trade, Transportation & Utilities	475	6,385	6,409	6,374	\$52,746,449	\$635.03
Wholesale Trade	104	776	776	774	\$5,837,781	\$579.18
Retail Trade	278	3,112	3,135	3,096	\$14,544,406	\$359.24
Transportation, Warehousing & Utilities	93	2,497	2,498	2,504	\$32,364,262	\$995.96
Information	22	297	293	293	\$2,420,200	\$632.51
Financial Activities	156	744	745	763	\$5,211,867	\$534.08
Professional & Business Services	206	2,280	2,343	2,279	\$11,645,831	\$389.38
Education & Health Services	180	2,635	2,712	2,746	\$16,391,704	\$467.40
Leisure & Hospitality	132	2,273	2,337	2,346	\$5,518,157	\$183.07
Other Services	119	495	474	487	\$2,333,298	\$369.82
Local Government	39	1,164	1,609	2,184	\$9,936,107	\$462.57
State Government	17	923	1,028	1,091	\$8,267,108	\$627.15
PRAIRIE COUNTY - TOTAL	226	1,555	1,645	1,743	\$9,610,092	\$448.66
Natural Resources & Mining	24	157	143	135	\$1,156,285	\$613.41
Trade, Transportation & Utilities	69	413	396	431	\$2,064,615	\$384.23
Wholesale Trade	10	68	59	57	\$415,671	\$521.33
Retail Trade	37	251	239	240	\$710,187	\$224.51
Transportation, Warehousing & Utilities	22	94	98	134	\$938,757	\$664.53
Information	4	10	10	9	\$102,337	\$814.35
Financial Activities	17	65	65	66	\$406,395	\$478.49
Professional & Business Services	17	56	57	63	\$310,645	\$407.31
Education & Health Services	16	194	193	197	\$967,133	\$382.17
Leisure & Hospitality	18	109	107	106	\$225,341	\$161.50

**TABLE 6. COUNTY SUMMARY
EMPLOYMENT AND TOTAL EARNINGS, BY INDUSTRY
THIRD QUARTER 2004**

NORTH AMERICAN INDUSTRY CLASSIFICATION SYSTEM	NUMBER OF EMPLOYING UNITS	EMPLOYMENT JULY	EMPLOYMENT AUGUST	EMPLOYMENT SEPTEMBER	TOTAL EARNINGS JUL. - SEP. 2004	AVERAGE WEEKLY EARNINGS
Other Services	15	48	53	46	\$200,517	\$314.78
Local Government	15	174	287	368	\$1,531,119	\$426.22
State Government	10	50	51	50	\$303,272	\$463.48
Other	21	279	283	272	\$2,342,433	\$648.16
PULASKI COUNTY - TOTAL	13,224	227,148	230,981	233,899	\$1,954,023,556	\$651.60
Natural Resources & Mining	42	714	726	727	\$7,610,520	\$810.46
Construction	1,108	10,711	10,683	10,641	\$94,517,435	\$680.87
Manufacturing	425	16,156	16,183	16,148	\$156,016,104	\$742.54
Trade, Transportation & Utilities	3,201	50,600	51,032	50,958	\$412,264,389	\$623.49
Wholesale Trade	1,068	12,940	12,972	12,975	\$144,685,404	\$858.61
Retail Trade	1,748	24,710	24,991	24,895	\$138,252,675	\$427.70
Transportation, Warehousing & Utilities	385	12,950	13,069	13,088	\$129,326,310	\$763.15
Information	227	8,669	8,609	8,604	\$97,627,136	\$870.46
Financial Activities	1,603	16,314	16,272	16,251	\$176,591,760	\$834.45
Professional & Business Services	2,502	32,485	32,729	32,649	\$257,883,135	\$608.11
Education & Health Services	1,609	31,655	31,645	31,898	\$313,160,639	\$759.13
Leisure & Hospitality	980	19,573	19,813	19,032	\$61,380,049	\$242.47
Other Services	1,227	7,271	7,229	7,135	\$47,222,177	\$503.69
Local Government	104	10,210	13,026	16,327	\$104,030,734	\$606.81
State Government	196	22,790	23,034	23,529	\$225,719,478	\$751.07
RANDOLPH COUNTY - TOTAL	399	4,795	5,001	5,125	\$26,943,582	\$416.71
Natural Resources & Mining	21	82	83	84	\$375,265	\$347.79
Construction	21	108	115	112	\$555,183	\$382.45
Manufacturing	36	1,308	1,348	1,365	\$9,199,698	\$527.98
Trade, Transportation & Utilities	109	968	981	982	\$4,804,925	\$378.31
Wholesale Trade	21	165	162	162	\$835,756	\$394.41
Retail Trade	65	632	647	648	\$2,653,893	\$317.82
Transportation, Warehousing & Utilities	23	171	172	172	\$1,315,276	\$589.37
Information	7	50	51	50	\$418,512	\$639.60
Financial Activities	25	156	157	154	\$897,828	\$443.66

**TABLE 6. COUNTY SUMMARY
EMPLOYMENT AND TOTAL EARNINGS, BY INDUSTRY
THIRD QUARTER 2004**

NORTH AMERICAN INDUSTRY CLASSIFICATION SYSTEM	NUMBER OF EMPLOYING UNITS	EMPLOYMENT JULY	EMPLOYMENT AUGUST	EMPLOYMENT SEPTEMBER	TOTAL EARNINGS JUL. - SEP. 2004	AVERAGE WEEKLY EARNINGS
Professional & Business Services	41	220	235	216	\$792,771	\$272.65
Education & Health Services	50	691	708	714	\$4,241,162	\$463.19
Leisure & Hospitality	27	372	373	394	\$812,312	\$164.58
Other Services	27	59	55	60	\$255,217	\$338.48
Local Government	23	595	675	747	\$3,047,332	\$348.65
State Government	12	186	220	247	\$1,543,377	\$545.43
SAINT FRANCIS COUNTY - TOTAL	603	7,942	8,427	8,744	\$49,099,328	\$451.19
Natural Resources & Mining	24	191	192	191	\$1,215,102	\$488.52
Construction	46	295	282	273	\$1,834,802	\$498.14
Manufacturing	22	1,452	1,435	1,495	\$9,454,166	\$497.88
Trade, Transportation & Utilities	187	2,082	2,072	2,101	\$12,605,098	\$465.05
Wholesale Trade	33	529	524	518	\$3,764,800	\$553.02
Retail Trade	120	1,224	1,205	1,203	\$5,769,348	\$366.57
Transportation, Warehousing & Utilities	34	329	343	380	\$3,070,950	\$673.65
Information	12	107	106	100	\$789,717	\$582.24
Financial Activities	48	283	273	272	\$1,529,789	\$426.36
Professional & Business Services	42	141	134	135	\$1,083,923	\$610.09
Education & Health Services	83	1,367	1,402	1,419	\$8,164,370	\$449.88
Leisure & Hospitality	49	793	791	778	\$2,001,036	\$195.50
Other Services	43	142	142	146	\$480,490	\$257.87
Local Government	30	611	1,103	1,254	\$6,474,555	\$503.41
State Government	17	478	495	580	\$3,466,280	\$515.07
SALINE COUNTY - TOTAL	1,547	18,156	18,565	18,996	\$119,464,427	\$494.80
Natural Resources & Mining	13	50	50	52	\$456,929	\$693.72
Construction	278	1,753	1,731	1,725	\$12,276,138	\$543.86
Manufacturing	80	1,787	1,780	1,787	\$15,998,415	\$689.57
Trade, Transportation & Utilities	403	4,422	4,440	4,409	\$28,259,001	\$491.40
Wholesale Trade	105	532	527	518	\$4,827,748	\$706.47
Retail Trade	253	3,626	3,653	3,622	\$21,044,135	\$445.49
Transportation, Warehousing & Utilities	45	264	260	269	\$2,387,118	\$694.67
Information	16	135	136	141	\$925,178	\$518.21

**TABLE 6. COUNTY SUMMARY
EMPLOYMENT AND TOTAL EARNINGS, BY INDUSTRY
THIRD QUARTER 2004**

NORTH AMERICAN INDUSTRY CLASSIFICATION SYSTEM	NUMBER OF EMPLOYING UNITS	EMPLOYMENT JULY	EMPLOYMENT AUGUST	EMPLOYMENT SEPTEMBER	TOTAL EARNINGS JUL. - SEP. 2004	AVERAGE WEEKLY EARNINGS
Financial Activities	147	675	671	675	\$4,609,733	\$526.37
Professional & Business Services	185	1,229	1,302	1,305	\$7,165,633	\$431.08
Education & Health Services	135	2,413	2,423	2,427	\$15,491,822	\$492.23
Leisure & Hospitality	116	2,066	2,069	2,067	\$5,743,200	\$213.70
Other Services	123	548	552	543	\$3,001,178	\$421.53
Local & State Government	51	3,078	3,411	3,865	\$25,537,200	\$569.17
SCOTT COUNTY - TOTAL	181	2,720	2,743	2,813	\$15,363,730	\$428.40
Natural Resources & Mining	16	174	174	168	\$1,286,400	\$575.31
Construction	10	37	39	40	\$205,002	\$407.83
Manufacturing	19	1,117	1,118	1,119	\$7,011,456	\$482.42
Trade, Transportation & Utilities	49	501	501	475	\$2,307,308	\$360.50
Wholesale Trade	8	62	63	62	\$398,395	\$491.64
Retail Trade	31	359	359	333	\$1,320,274	\$289.89
Transportation, Warehousing & Utilities	10	80	79	80	\$588,639	\$568.37
Information	4	12	12	13	\$94,659	\$590.39
Financial Activities	16	75	80	74	\$382,840	\$385.80
Professional & Business Services	8	12	13	13	\$51,622	\$313.49
Education & Health Services	19	291	299	287	\$1,659,492	\$436.67
Leisure & Hospitality	16	156	156	152	\$293,922	\$146.18
Other Services	11	58	59	57	\$466,083	\$618.15
Local Government	5	224	232	352	\$1,262,634	\$360.62
State Government	8	63	60	63	\$342,312	\$424.70
SEARCY COUNTY - TOTAL	148	1,467	1,588	1,633	\$6,958,948	\$342.56
Construction	5	13	11	11	\$49,014	\$323.17
Manufacturing	17	302	299	306	\$1,158,129	\$294.66
Trade, Transportation & Utilities	40	296	295	293	\$1,065,129	\$278.05
Retail Trade	30	215	218	215	\$725,420	\$258.34
Other Trade, Transportation & Utilities	10	81	77	78	\$339,709	\$332.18
Financial Activities	14	70	67	65	\$309,151	\$353.18
Professional & Business Services	17	39	39	40	\$193,967	\$379.34

**TABLE 6. COUNTY SUMMARY
EMPLOYMENT AND TOTAL EARNINGS, BY INDUSTRY
THIRD QUARTER 2004**

NORTH AMERICAN INDUSTRY CLASSIFICATION SYSTEM	NUMBER OF EMPLOYING UNITS	EMPLOYMENT JULY	EMPLOYMENT AUGUST	EMPLOYMENT SEPTEMBER	TOTAL EARNINGS JUL. - SEP. 2004	AVERAGE WEEKLY EARNINGS
Education & Health Services	14	278	284	277	\$1,205,550	\$331.59
Leisure & Hospitality	13	115	119	112	\$242,669	\$161.85
Local Government	9	157	261	314	\$1,498,699	\$472.48
State Government	9	157	173	174	\$998,556	\$457.21
Other	10	40	40	41	\$238,084	\$454.07
SEBASTIAN COUNTY - TOTAL	3,506	69,841	70,639	71,707	\$524,411,865	\$570.34
Natural Resources & Mining	62	965	1,027	1,029	\$10,908,049	\$833.25
Construction	279	2,788	2,764	2,746	\$21,038,450	\$585.08
Manufacturing	220	21,232	21,042	21,189	\$184,958,918	\$672.56
Trade, Transportation & Utilities	911	12,166	12,153	12,095	\$79,039,813	\$500.91
Wholesale Trade	224	2,320	2,316	2,332	\$21,657,599	\$717.27
Retail Trade	566	7,787	7,785	7,705	\$38,571,437	\$382.40
Transportation, Warehousing & Utilities	121	2,059	2,052	2,058	\$18,810,777	\$703.67
Information	55	1,231	1,207	1,211	\$12,043,472	\$761.65
Financial Activities	382	2,479	2,474	2,483	\$20,527,966	\$637.07
Professional & Business Services	513	9,615	9,722	9,575	\$58,157,551	\$464.20
Education & Health Services	414	9,121	9,111	9,078	\$82,417,824	\$696.43
Leisure & Hospitality	310	5,104	5,280	5,216	\$14,695,414	\$217.39
Other Services	294	1,556	1,473	1,481	\$8,183,378	\$418.73
Local Government	43	2,439	3,380	4,263	\$23,366,699	\$534.85
State Government	23	1,145	1,006	1,341	\$9,074,331	\$599.68
SEVIER COUNTY - TOTAL	326	5,583	5,640	5,773	\$32,479,783	\$441.01
Natural Resources & Mining	23	193	193	195	\$1,205,439	\$478.79
Construction	26	136	143	141	\$958,805	\$526.82
Manufacturing	13	2,334	2,316	2,291	\$12,885,878	\$428.42
Trade, Transportation & Utilities	93	886	889	886	\$4,898,399	\$424.80
Wholesale Trade	16	136	135	137	\$1,421,483	\$804.01
Retail Trade	58	647	649	646	\$2,588,320	\$307.57
Transportation, Warehousing & Utilities	19	103	105	103	\$888,596	\$659.36

**TABLE 6. COUNTY SUMMARY
EMPLOYMENT AND TOTAL EARNINGS, BY INDUSTRY
THIRD QUARTER 2004**

NORTH AMERICAN INDUSTRY CLASSIFICATION SYSTEM	NUMBER OF EMPLOYING UNITS	EMPLOYMENT JULY	EMPLOYMENT AUGUST	EMPLOYMENT SEPTEMBER	TOTAL EARNINGS JUL. - SEP. 2004	AVERAGE WEEKLY EARNINGS
Information	7	46	44	44	\$338,743	\$583.37
Financial Activities	25	172	170	164	\$1,032,261	\$470.78
Professional & Business Services	30	134	134	138	\$1,915,258	\$1,088.63
Education & Health Services	38	526	535	515	\$3,089,119	\$452.33
Leisure & Hospitality	19	291	284	272	\$684,838	\$186.59
Other Services	31	186	166	154	\$649,758	\$296.33
Local Government	12	528	633	814	\$3,824,333	\$446.85
State Government	9	151	133	159	\$996,952	\$519.34
SHARP COUNTY - TOTAL	387	3,757	3,714	3,982	\$19,252,761	\$387.93
Construction	32	189	199	196	\$1,126,331	\$445.07
Manufacturing	22	170	169	164	\$842,408	\$386.48
Trade, Transportation & Utilities	106	1,058	1,060	1,067	\$5,828,732	\$422.32
Retail Trade	76	666	656	656	\$2,628,587	\$306.67
Other Trade, Transportation & Utilities	30	392	404	411	\$3,200,145	\$611.84
Information	11	63	62	64	\$802,714	\$980.11
Financial Activities	29	267	267	266	\$1,625,951	\$469.02
Professional & Business Services	39	133	131	140	\$837,574	\$478.43
Education & Health Services	45	614	623	630	\$3,104,102	\$383.68
Leisure & Hospitality	38	504	480	471	\$1,043,702	\$165.54
Local Government	26	527	540	806	\$3,190,019	\$393.04
State Government	9	91	94	94	\$504,338	\$417.15
Other	30	141	89	84	\$346,890	\$254.94
STONE COUNTY - TOTAL	246	2,617	2,773	2,742	\$12,772,153	\$362.45
Construction	22	84	84	87	\$433,338	\$392.16
Manufacturing	25	477	482	477	\$2,328,314	\$374.17
Trade, Transportation & Utilities	78	594	592	573	\$2,959,025	\$388.20
Wholesale Trade	10	59	53	53	\$252,851	\$353.64
Retail Trade	54	492	494	473	\$2,350,361	\$371.76
Transportation, Warehousing & Utilities	14	43	45	47	\$355,813	\$608.23

**TABLE 6. COUNTY SUMMARY
EMPLOYMENT AND TOTAL EARNINGS, BY INDUSTRY
THIRD QUARTER 2004**

NORTH AMERICAN INDUSTRY CLASSIFICATION SYSTEM	NUMBER OF EMPLOYING UNITS	EMPLOYMENT JULY	EMPLOYMENT AUGUST	EMPLOYMENT SEPTEMBER	TOTAL EARNINGS JUL. - SEP. 2004	AVERAGE WEEKLY EARNINGS
Financial Activities	20	88	90	91	\$573,951	\$492.38
Professional & Business Services	9	21	23	21	\$100,537	\$356.94
Education & Health Services	23	418	424	414	\$2,234,345	\$410.52
Leisure & Hospitality	31	440	429	410	\$941,616	\$169.90
Other Services	12	24	24	25	\$101,082	\$319.54
Local Government	10	211	386	413	\$1,820,660	\$415.99
State Government	10	186	183	177	\$904,127	\$382.13
Other	6	74	56	54	\$375,158	\$470.52
UNION COUNTY - TOTAL	1,346	19,364	19,701	20,297	\$147,021,954	\$571.55
Natural Resources & Mining	103	539	543	542	\$4,144,367	\$588.91
Construction	100	1,513	1,534	1,592	\$14,893,512	\$740.88
Manufacturing	67	5,275	5,301	5,294	\$47,995,009	\$697.91
Trade, Transportation & Utilities	372	3,633	3,630	3,606	\$23,346,191	\$495.68
Wholesale Trade	82	525	519	523	\$5,205,507	\$766.61
Retail Trade	234	2,376	2,386	2,367	\$10,765,234	\$348.48
Transportation, Warehousing & Utilities	56	732	725	716	\$7,375,450	\$783.26
Information	20	228	222	220	\$1,343,673	\$462.80
Financial Activities	125	775	774	781	\$5,529,683	\$547.67
Professional & Business Services	137	1,745	1,730	1,721	\$15,357,962	\$682.09
Education & Health Services	131	2,225	2,217	2,189	\$15,428,584	\$536.94
Leisure & Hospitality	97	1,207	1,207	1,195	\$3,221,805	\$206.01
Other Services	137	641	636	625	\$2,908,545	\$352.89
Local Government	39	1,064	1,393	1,989	\$9,345,227	\$485.06
State Government	18	519	514	543	\$3,507,396	\$513.58
VAN BUREN COUNTY - TOTAL	349	3,508	3,507	3,845	\$17,626,045	\$374.54
Natural Resources & Mining	9	52	49	52	\$251,990	\$380.08
Construction	44	174	169	155	\$860,496	\$398.75
Manufacturing	14	615	612	593	\$3,390,667	\$429.92
Trade, Transportation & Utilities	104	838	824	845	\$3,989,242	\$367.21
Wholesale Trade	16	62	65	66	\$474,104	\$566.88

**TABLE 6. COUNTY SUMMARY
EMPLOYMENT AND TOTAL EARNINGS, BY INDUSTRY
THIRD QUARTER 2004**

NORTH AMERICAN INDUSTRY CLASSIFICATION SYSTEM	NUMBER OF EMPLOYING UNITS	EMPLOYMENT JULY	EMPLOYMENT AUGUST	EMPLOYMENT SEPTEMBER	TOTAL EARNINGS JUL. - SEP. 2004	AVERAGE WEEKLY EARNINGS
Retail Trade	67	626	609	634	\$2,625,105	\$324.13
Transportation, Warehousing & Utilities	21	150	150	145	\$890,033	\$461.56
Information	8	45	45	48	\$335,466	\$560.98
Financial Activities	31	148	145	141	\$672,448	\$357.56
Professional & Business Services	27	94	92	89	\$581,691	\$488.13
Education & Health Services	35	579	578	597	\$3,014,166	\$396.57
Leisure & Hospitality	28	491	476	469	\$1,417,898	\$227.86
Other Services	28	86	83	84	\$346,626	\$316.17
Local Government	13	295	344	683	\$2,236,952	\$390.48
State Government	8	91	90	89	\$528,403	\$451.63
WASHINGTON COUNTY - TOTAL	5,044	81,637	83,253	85,554	\$639,316,316	\$589.09
Natural Resources & Mining	39	507	505	497	\$3,550,829	\$543.02
Construction	566	4,796	4,795	4,807	\$40,353,903	\$646.79
Manufacturing	234	15,565	15,523	15,540	\$121,171,739	\$599.70
Trade, Transportation & Utilities	1,311	20,075	20,077	20,030	\$146,821,263	\$562.99
Wholesale Trade	333	3,672	3,567	3,508	\$40,949,437	\$879.30
Retail Trade	771	11,274	11,361	11,350	\$60,387,678	\$410.05
Transportation, Warehousing & Utilities	207	5,129	5,149	5,172	\$45,484,148	\$679.37
Information	94	1,493	1,479	1,466	\$13,316,412	\$692.43
Financial Activities	579	3,608	3,648	3,652	\$31,980,145	\$676.57
Professional & Business Services	811	7,721	7,717	7,835	\$79,481,445	\$788.12
Education & Health Services	500	9,721	9,704	9,772	\$85,437,637	\$675.29
Leisure & Hospitality	479	8,167	8,284	8,417	\$24,698,675	\$229.20
Other Services	347	1,813	1,811	1,883	\$10,423,466	\$436.79
Local & State Government	84	8,171	9,710	11,655	\$82,080,802	\$641.31
WHITE COUNTY - TOTAL	1,521	22,812	23,376	23,835	\$155,862,684	\$513.66
Natural Resources & Mining	32	301	267	265	\$2,087,335	\$578.26
Construction	166	1,135	1,137	1,113	\$8,159,680	\$556.28
Manufacturing	82	4,345	4,296	4,136	\$36,479,363	\$658.86
Trade, Transportation & Utilities	477	5,923	5,908	5,923	\$37,501,959	\$487.46

**TABLE 6. COUNTY SUMMARY
EMPLOYMENT AND TOTAL EARNINGS, BY INDUSTRY
THIRD QUARTER 2004**

NORTH AMERICAN INDUSTRY CLASSIFICATION SYSTEM	NUMBER OF EMPLOYING UNITS	EMPLOYMENT JULY	EMPLOYMENT AUGUST	EMPLOYMENT SEPTEMBER	TOTAL EARNINGS JUL. - SEP. 2004	AVERAGE WEEKLY EARNINGS
Wholesale Trade	101	571	577	580	\$3,992,077	\$533.13
Retail Trade	295	3,124	3,088	3,103	\$14,044,305	\$347.93
Transportation, Warehousing & Utilities	81	2,228	2,243	2,240	\$19,465,577	\$669.36
Information	22	230	225	226	\$1,603,407	\$543.34
Financial Activities	157	915	916	915	\$5,739,142	\$482.31
Professional & Business Services	133	1,245	1,241	1,243	\$6,813,457	\$421.65
Education & Health Services	164	4,076	4,101	4,223	\$32,765,081	\$609.77
Leisure & Hospitality	120	1,925	1,928	1,968	\$4,333,409	\$171.79
Other Services	103	636	619	607	\$3,630,745	\$449.98
Local Government	46	1,540	2,214	2,498	\$12,727,497	\$469.79
State Government	19	541	524	718	\$4,021,609	\$520.51
WOODRUFF COUNTY - TOTAL	172	1,932	2,067	2,123	\$12,254,814	\$461.95
Natural Resources & Mining	20	116	108	111	\$582,672	\$401.38
Construction	7	82	90	92	\$497,687	\$435.04
Manufacturing	8	452	461	460	\$3,171,100	\$532.99
Trade, Transportation & Utilities	62	532	530	553	\$3,661,908	\$523.25
Wholesale Trade	12	221	215	236	\$2,037,963	\$699.85
Retail Trade	34	218	212	214	\$769,602	\$275.78
Transportation, Warehousing & Utilities	16	93	103	103	\$854,343	\$659.38
Financial Activities	14	62	62	59	\$351,715	\$443.52
Professional & Business Services	4	9	10	8	\$46,357	\$396.21
Education & Health Services	23	181	187	190	\$1,063,138	\$439.68
Leisure & Hospitality	9	52	51	49	\$111,704	\$169.59
Local Government	10	355	483	514	\$2,341,952	\$399.74
State Government	7	58	57	58	\$294,741	\$393.16
Other	8	33	28	29	\$131,840	\$338.05
YELL COUNTY - TOTAL	387	6,487	6,634	7,075	\$38,680,377	\$441.98
Natural Resources & Mining	27	355	350	370	\$2,139,089	\$459.20
Construction	51	375	404	428	\$2,291,578	\$438.13
Manufacturing	23	2,950	2,965	2,998	\$18,631,980	\$482.41

**TABLE 6. COUNTY SUMMARY
EMPLOYMENT AND TOTAL EARNINGS, BY INDUSTRY
THIRD QUARTER 2004**

NORTH AMERICAN INDUSTRY CLASSIFICATION SYSTEM	NUMBER OF EMPLOYING UNITS	EMPLOYMENT JULY	EMPLOYMENT AUGUST	EMPLOYMENT SEPTEMBER	TOTAL EARNINGS JUL. - SEP. 2004	AVERAGE WEEKLY EARNINGS
Trade, Transportation & Utilities	88	591	597	597	\$2,775,910	\$358.88
Wholesale Trade	10	23	23	26	\$132,641	\$425.13
Retail Trade	61	475	482	486	\$1,929,266	\$308.53
Transportation, Warehousing & Utilities	17	93	92	85	\$714,003	\$610.26
Information	6	51	51	51	\$563,633	\$850.13
Financial Activities	34	190	195	191	\$1,203,581	\$482.20
Professional & Business Services	34	249	240	228	\$2,089,545	\$672.53
Education & Health Services	38	447	455	461	\$2,155,369	\$364.93
Leisure & Hospitality	27	392	397	384	\$934,675	\$183.88
Other Services	18	71	70	65	\$279,246	\$312.82
Local Government	28	692	785	1,177	\$4,985,874	\$433.53
State Government	13	124	125	125	\$629,897	\$388.67
REST-OF-STATE-TOTAL	4,363	14,627	14,917	15,058	\$181,267,470	\$937.87
Natural Resources & Mining	52	175	187	187	\$1,810,782	\$761.15
Construction	543	2,253	2,303	2,280	\$18,735,037	\$632.46
Manufacturing	42	141	138	141	\$1,632,482	\$896.97
Trade, Transportation & Utilities	1,830	6,776	6,771	6,798	\$105,585,053	\$1,197.63
Wholesale Trade	1,585	5,716	5,656	5,687	\$95,878,248	\$1,297.01
Retail Trade	100	442	460	461	\$3,991,128	\$675.74
Transportation, Warehousing & Utilities	145	618	655	650	\$5,715,677	\$685.91
Information	113	294	309	318	\$3,178,656	\$796.46
Financial Activities	237	500	559	604	\$8,014,536	\$1,112.15
Professional & Business Services	1,274	3,277	3,426	3,525	\$31,442,010	\$709.41
Education & Health Services	109	735	743	726	\$6,370,647	\$667.04
Leisure & Hospitality	40	78	79	75	\$608,406	\$605.18
Other	123	398	402	404	\$3,889,861	\$745.56

TABLE 7. FEDERAL GOVERNMENT EMPLOYMENT AND EARNINGS IN ARKANSAS

North American Industry Classification System Industry Group	Number of Employing Units	Employment July	Employment August	Employment September	Total Earnings Jul. – Sep. 2004
Manufacturing	2	26	26	26	445,331
Trade, Transportation, and Utilities	450	7,009	6,821	6,806	73,712,945
Information	1	23	22	21	329,138
Financial Activities	24	195	195	193	3,213,231
Professional and Business Services	32	954	953	941	13,094,011
Education and Health Services	6	4,043	4,080	4,052	70,006,507
Leisure and Hospitality	16	277	250	238	2,405,216
Other Services	2	297	296	302	919,103
Public Administration	453	8,297	8,288	8,306	114,669,054
TOTAL	986	21,121	20,931	20,885	278,794,536

**TABLE 8. WORKFORCE INFORMATION AREA, SUMMARY
EMPLOYMENT AND TOTAL EARNINGS, BY INDUSTRY
THIRD QUARTER 2004**

NORTH AMERICAN INDUSTRY CLASSIFICATION SYSTEM INDUSTRY GROUP	NUMBER OF EMPLOYING UNITS	EMPLOYMENT JULY	EMPLOYMENT AUGUST	EMPLOYMENT SEPTEMBER	TOTAL EARNINGS JUL. - SEP. 2004	AVERAGE WEEKLY EARNINGS
CENTRAL*	5,366	66,517	68,390	70,021	\$457,762,607	\$515.49
Natural Resources & Mining	151	944	930	961	\$7,359,695	\$599.08
Construction	773	5,637	5,641	5,621	\$40,979,638	\$559.61
Manufacturing	239	8,745	8,748	8,680	\$79,010,860	\$696.64
Trade, Transportation & Utilities	1,423	13,987	14,126	14,185	\$80,477,446	\$439.07
Information	81	690	690	694	\$5,110,200	\$568.60
Financial Activities	550	2,749	2,736	2,739	\$19,193,988	\$538.59
Professional & Business Services	637	6,811	6,990	6,756	\$65,128,430	\$731.12
Education & Health Services	534	8,537	8,547	8,631	\$57,355,035	\$514.71
Leisure & Hospitality	421	7,322	7,285	7,353	\$18,315,299	\$192.47
Other Services	350	1,436	1,470	1,458	\$7,278,338	\$384.88
Local Government	135	5,811	7,265	8,961	\$49,420,721	\$517.53
State Government	72	3,848	3,962	3,982	\$28,132,957	\$550.56

*Note: Pulaski County is not included in the Central Workforce Information Area. Please refer to Page 55 for information on Pulaski County.

Central Workforce Information Area includes these counties: Faulkner, Lonoke Monroe, Prairie, and Saline.

EASTERN	3,061	31,843	31,446	31,835	\$191,044,497	\$463.47
Natural Resources & Mining	221	1,480	1,494	1,778	\$8,391,688	\$407.52
Construction	195	1,331	1,317	1,309	\$8,454,788	\$493.08
Manufacturing	114	4,605	4,492	4,613	\$34,959,125	\$588.44
Trade, Transportation & Utilities	876	10,600	10,303	10,393	\$68,813,581	\$507.41
Information	45	328	317	311	\$2,383,974	\$575.47
Financial Activities	260	1,521	1,524	1,495	\$9,936,170	\$505.06
Professional & Business Services	270	1,496	1,464	1,484	\$8,492,475	\$441.00
Education & Health Services	395	5,034	5,128	5,185	\$31,456,332	\$473.00
Leisure & Hospitality	227	3,717	3,669	3,553	\$9,308,558	\$196.37
Other Services	250	1,002	1,007	982	\$4,721,583	\$364.29
Local Government	138	105	109	111	\$679,575	\$482.54
State Government	70	624	622	621	\$3,446,648	\$426.02

Eastern Workforce Information Area includes these counties: Crittenden, Cross, Lee, Phillips, and Saint Francis.

**TABLE 8. WORKFORCE INFORMATION AREA, SUMMARY
EMPLOYMENT AND TOTAL EARNINGS, BY INDUSTRY
THIRD QUARTER 2004**

NORTH AMERICAN INDUSTRY CLASSIFICATION SYSTEM INDUSTRY GROUP	NUMBER OF EMPLOYING UNITS	EMPLOYMENT JULY	EMPLOYMENT AUGUST	EMPLOYMENT SEPTEMBER	TOTAL EARNINGS JUL. - SEP. 2004	AVERAGE WEEKLY EARNINGS
NORTH CENTRAL	5,245	66,612	68,228	70,448	\$417,381,966	\$469.19
Natural Resources & Mining	147	1,033	959	952	\$6,530,834	\$511.93
Construction	479	2,681	2,684	2,672	\$17,717,561	\$508.73
Manufacturing	308	14,696	14,632	14,454	\$111,251,152	\$586.39
Trade, Transportation & Utilities	1,584	15,687	15,590	15,617	\$92,406,318	\$454.74
Information	77	716	710	711	\$5,208,977	\$562.50
Financial Activities	488	2,627	2,614	2,595	\$16,204,977	\$477.23
Professional & Business Services	441	2,995	3,072	3,053	\$16,363,950	\$414.07
Education & Health Services	570	10,919	11,027	11,145	\$75,333,824	\$525.36
Leisure & Hospitality	443	6,142	6,092	5,998	\$14,257,050	\$180.46
Other Services	363	1,587	1,500	1,476	\$7,374,813	\$372.97
Local Government	227	5,072	6,886	8,935	\$38,489,815	\$425.13
State Government	118	2,457	2,462	2,840	\$16,242,695	\$483.09

North Central Workforce Information Area includes these counties: Cleburne, Fulton, Independence, IZard, Jackson, Sharp, Stone, Van Buren, White, and Woodruff

NORTHEAST	6,199	89,323	91,771	93,868	\$604,303,281	\$507.18
Natural Resources & Mining	354	2,227	2,203	2,361	\$11,960,000	\$406.42
Construction	474	3,348	3,333	3,297	\$22,293,682	\$515.60
Manufacturing	371	22,861	22,912	22,922	\$198,833,542	\$667.95
Trade, Transportation & Utilities	1,768	17,263	17,307	17,411	\$99,892,557	\$443.47
Information	86	2,084	2,283	2,290	\$15,663,606	\$542.99
Financial Activities	577	3,459	3,451	3,446	\$24,636,075	\$548.98
Professional & Business Services	578	6,211	6,083	6,086	\$34,112,735	\$428.30
Education & Health Services	774	11,731	11,857	12,026	\$91,644,207	\$593.83
Leisure & Hospitality	448	7,166	7,166	7,158	\$17,216,711	\$184.88
Other Services	438	1,852	1,839	1,816	\$8,247,187	\$345.60
Local Government	221	7,694	9,546	11,127	\$51,886,115	\$422.10
State Government	110	3,427	3,791	3,928	\$27,916,864	\$578.00

Northeast Workforce Information Area includes these counties: Clay, Craighead, Greene, Lawrence, Mississippi, Poinsett, and Randolph.

**TABLE 8. WORKFORCE INFORMATION AREA, SUMMARY
EMPLOYMENT AND TOTAL EARNINGS, BY INDUSTRY
THIRD QUARTER 2004**

NORTH AMERICAN INDUSTRY CLASSIFICATION SYSTEM INDUSTRY GROUP	NUMBER OF EMPLOYING UNITS	EMPLOYMENT JULY	EMPLOYMENT AUGUST	EMPLOYMENT SEPTEMBER	TOTAL EARNINGS JUL. - SEP. 2004	AVERAGE WEEKLY EARNINGS
NORTHWEST	13,259	209,503	214,079	218,891	\$1,667,518,759	\$598.95
Natural Resources & Mining	125	1,710	1,707	1,697	\$13,972,038	\$630.49
Construction	1,572	10,683	10,746	10,743	\$82,145,919	\$589.23
Manufacturing	726	40,881	40,956	41,005	\$317,998,898	\$597.39
Trade, Transportation & Utilities	3,472	51,115	51,226	51,115	\$395,431,836	\$594.66
Information	229	3,343	3,305	3,287	\$28,409,735	\$659.90
Financial Activities	1,395	8,754	8,811	8,815	\$73,035,730	\$638.91
Professional & Business Services	1,876	29,798	29,832	29,892	\$333,787,458	\$860.44
Education & Health Services	1,290	21,407	21,659	21,745	\$174,125,657	\$620.00
Leisure & Hospitality	1,267	19,840	20,003	20,036	\$57,882,440	\$223.07
Other Services	894	4,439	4,420	4,495	\$26,000,704	\$449.32
Local Government	294	10,631	14,122	18,900	\$102,950,973	\$544.24
State Government	119	6,902	7,292	7,161	\$61,777,371	\$667.59

Northwest Workforce Information Area includes these counties: Baxter, Benton, Boone, Carroll, Madison, Marion, Newton, Searcy, and Washington.

SOUTHEAST	5,225	74,582	75,947	79,653	\$525,341,996	\$526.68
Natural Resources & Mining	435	3,309	3,276	3,493	\$22,915,429	\$524.72
Construction	376	3,197	3,201	3,161	\$23,197,623	\$560.03
Manufacturing	246	18,462	18,449	18,496	\$165,993,453	\$691.36
Trade, Transportation & Utilities	1,489	14,212	14,178	14,457	\$84,209,438	\$453.54
Information	69	580	573	568	\$4,285,943	\$574.70
Financial Activities	415	2,982	2,969	2,936	\$21,448,864	\$556.96
Professional & Business Services	447	4,021	4,024	4,052	\$33,732,596	\$643.50
Education & Health Services	596	9,803	10,027	10,115	\$63,007,864	\$485.57
Leisure & Hospitality	392	5,038	5,089	5,122	\$11,639,903	\$176.15
Other Services	396	1,561	1,565	1,584	\$7,536,803	\$369.27
Local Government	214	5,978	7,105	9,997	\$48,115,958	\$481.10
State Government	150	5,439	5,491	5,672	\$39,258,122	\$545.69

Southeast Workforce Information Area includes these counties: Arkansas, Ashley, Bradley, Chicot, Cleveland, Desha, Drew, Grant, Jefferson, and Lincoln

**TABLE 8. WORKFORCE INFORMATION AREA, SUMMARY
EMPLOYMENT AND TOTAL EARNINGS, BY INDUSTRY
THIRD QUARTER 2004**

NORTH AMERICAN INDUSTRY CLASSIFICATION SYSTEM INDUSTRY GROUP	NUMBER OF EMPLOYING UNITS	EMPLOYMENT JULY	EMPLOYMENT AUGUST	EMPLOYMENT SEPTEMBER	TOTAL EARNINGS JUL. - SEP. 2004	AVERAGE WEEKLY EARNINGS
SOUTHWEST	5,680	83,675	84,840	88,211	\$584,923,148	\$525.78
Natural Resources & Mining	416	2,888	2,939	2,954	\$22,846,395	\$600.42
Construction	435	3,783	3,860	3,913	\$30,814,808	\$615.36
Manufacturing	302	27,334	27,356	27,148	\$236,685,203	\$667.41
Trade, Transportation & Utilities	1,599	15,364	15,367	15,389	\$92,391,038	\$462.29
Information	85	742	727	725	\$5,317,113	\$559.26
Financial Activities	531	3,092	3,076	3,058	\$20,957,158	\$524.20
Professional & Business Services	476	4,528	4,432	4,386	\$30,340,369	\$524.62
Education & Health Services	544	8,755	8,793	8,816	\$52,149,927	\$456.48
Leisure & Hospitality	414	5,569	5,460	5,434	\$13,649,254	\$191.33
Other Services	458	2,399	2,248	2,221	\$9,727,381	\$326.85
Local Government	269	6,089	7,456	10,907	\$47,969,590	\$452.72
State Government	151	3,132	3,126	3,260	\$22,074,912	\$535.22

Southwest Workforce Information Area includes these counties: Calhoun, Columbia, Dallas, Hempstead, Howard, Lafayette, Little River, Miller, Nevada, Ouachita, Sevier, and Union

WEST CENTRAL	7,684	100,071	102,408	106,355	\$648,829,237	\$484.82
Natural Resources & Mining	265	2,382	2,388	2,397	\$16,740,807	\$539.03
Construction	859	5,260	5,306	5,247	\$36,146,189	\$527.50
Manufacturing	429	20,337	20,457	20,765	\$152,236,021	\$570.69
Trade, Transportation & Utilities	1,982	21,003	21,066	21,257	\$136,191,758	\$496.30
Information	106	1,072	1,076	1,068	\$8,381,923	\$601.46
Financial Activities	779	3,905	3,905	3,890	\$26,742,767	\$527.47
Professional & Business Services	844	6,618	6,757	6,733	\$39,246,900	\$450.42
Education & Health Services	780	14,353	14,506	14,649	\$105,208,363	\$558.03
Leisure & Hospitality	728	12,356	12,169	11,941	\$34,386,999	\$217.61
Other Services	548	2,378	2,425	2,425	\$11,633,063	\$371.41
Local Government	232	6,644	8,338	11,578	\$53,896,974	\$468.29
State Government	132	3,763	4,015	4,405	\$28,017,473	\$530.70

West Central Workforce Information Area includes these counties: Clark, Conway, Garland, Hot Spring, Johnson, Montgomery, Perry, Pike, Pope, and Yell

**TABLE 8. WORKFORCE INFORMATION AREA, SUMMARY
EMPLOYMENT AND TOTAL EARNINGS, BY INDUSTRY
THIRD QUARTER 2004**

NORTH AMERICAN INDUSTRY CLASSIFICATION SYSTEM INDUSTRY GROUP	NUMBER OF EMPLOYING UNITS	EMPLOYMENT JULY	EMPLOYMENT AUGUST	EMPLOYMENT SEPTEMBER	TOTAL EARNINGS JUL. - SEP. 2004	AVERAGE WEEKLY EARNINGS
WESTERN	6,094	104,696	107,201	108,875	\$742,386,370	\$534.09
Natural Resources & Mining	152	2,089	2,130	2,160	\$19,396,653	\$701.70
Construction	580	4,645	4,623	4,619	\$33,475,502	\$556.28
Manufacturing	411	30,410	30,179	30,222	\$246,290,122	\$625.87
Trade, Transportation & Utilities	1,638	21,706	21,732	21,670	\$136,366,780	\$483.34
Information	95	1,639	1,611	1,612	\$15,099,202	\$716.67
Financial Activities	608	3,683	3,680	3,679	\$28,046,224	\$586.14
Professional & Business Services	750	10,622	10,733	10,585	\$63,987,022	\$462.31
Education & Health Services	662	12,932	12,970	12,978	\$104,734,704	\$621.64
Leisure & Hospitality	493	7,653	7,842	7,744	\$20,652,443	\$205.08
Other Services	468	2,225	2,152	2,160	\$11,891,554	\$419.80
Local Government	154	4,885	7,436	8,984	\$47,210,291	\$511.37
State Government	83	2,207	2,113	2,462	\$15,235,873	\$518.43

Western Workforce Information Area includes these counties: Crawford, Franklin, Logan, Polk, Scott, and Sebastian