

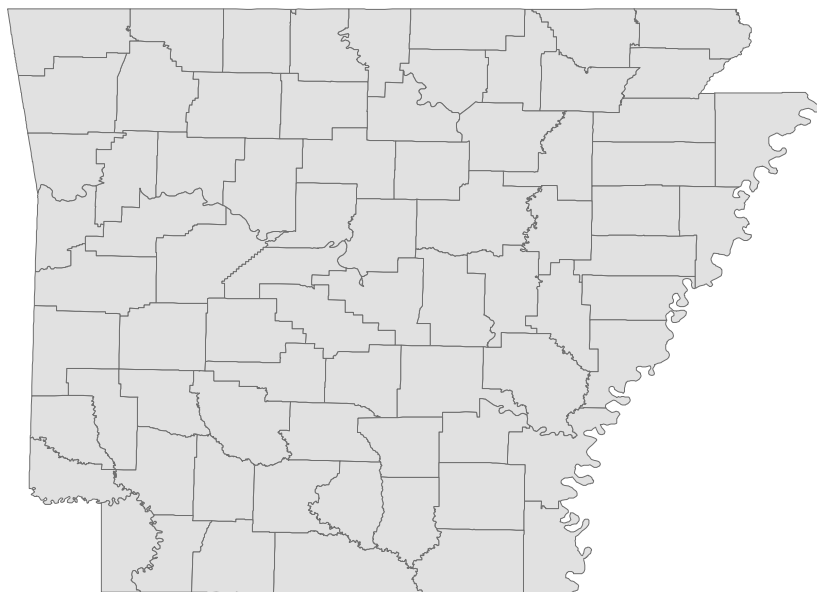
Arkansas Labor Market Report

December 2017



www.discover.arkansas.gov

Table of Contents



Monthly Spotlight.....	2
Arkansas Labor Force Summary.....	3
Arkansas Nonfarm Payroll Jobs.....	4
Arkansas Production Workers.....	6
Metropolitan Statistical Areas.....	7
Micropolitan Statistical Areas/Cities.....	14
County Labor Force Statistics.....	15
Local Workforce Development Areas.....	18

Technical Notes

The *Arkansas Labor Market* is prepared monthly in conjunction with the U.S. Department of Labor, Bureau of Labor Statistics (BLS). The current month's estimates are preliminary, while previous month's data is subject to revision.

Estimates of nonfarm payroll jobs show the number of jobs by industry and reflect employment by place of work. Hours and earnings estimates are based on payroll and worker-hour data collected for production workers in manufacturing industries.

Industries are classified according to the North American Industry Classification System (NAICS). All estimates are based on a first quarter 2016 benchmark.

Explanation of Terms and Concepts

Monthly Business Survey of Employers

A monthly sample survey designed to provide industry information on nonfarm payroll jobs. Data are compiled each month from mail surveys and telephone interviews conducted by the Bureau of Labor Statistics in cooperation with Department of Workforce Services. The data are based on establishment records and include all workers, full-or part-time, who received pay during the payroll period which includes the 12th of the

month. Approximately 5,000 Arkansas business establishments are surveyed.

Metropolitan Statistical Area (MSA)

A term applied by the U.S. Office of Management and Budget to counties that have one or more central cities and that meet specified criteria of population density, commuting patterns and social and economic integration.

Current Population Survey (CPS)

A monthly sample survey of the population 16 years of age and over, designed to provide data on the labor force, the employed and the unemployed. The survey is conducted each month by the Bureau of the Census for BLS. The information is collected by trained interviewers from a sample of about 60,000 households. The data collected are based on the activity reported for the calendar week including the 12th of the month. Approximately 800 Arkansas households are represented in the sample survey.

Civilian Labor Force

The sum of all employed and unemployed persons 16 years of age or older. Members of the Armed Forces are excluded.

Employment

An estimate of the number of persons who worked any time for pay or profit or worked 15 hours or more as unpaid workers in a family business during the calendar week which includes the 12th of the month. Also included are those who, although not working, had some job attachment and were not looking for work, and persons involved in labor management disputes.

Unemployment

An estimate of the number of persons who did not have a job, but were available for work and actively seeking work during the calendar week which includes the 12th of the month.

Unemployment Rate

The number of unemployed as a percentage of the civilian labor force. Unemployment rates are calculated from unrounded data.

Seasonal Adjustment

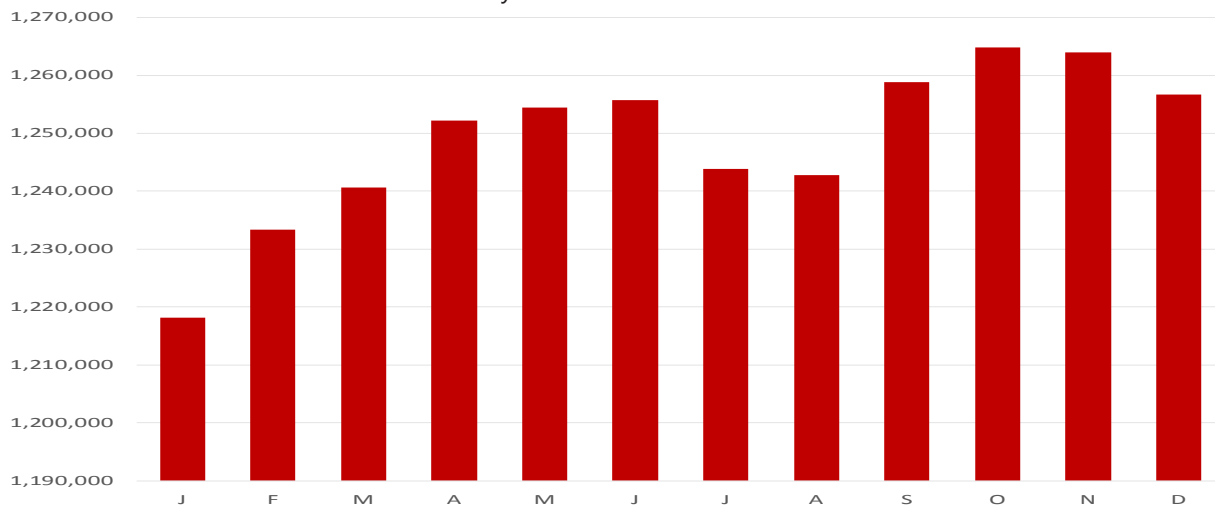
A statistical technique applied to monthly data to eliminate changes that normally occur during the year due to seasonal events such as weather, major holidays, schedule shifts, harvest times, and the opening/closing of schools.

December Spotlight

The Year in Review

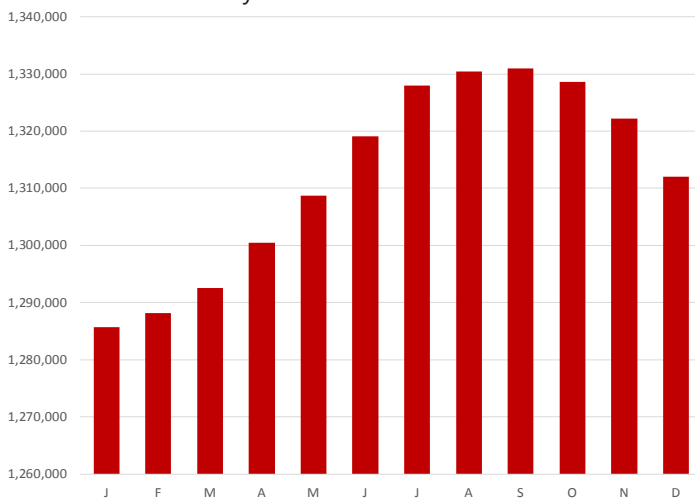
In 2017, nonfarm payroll jobs in Arkansas ranged from a low of 1,218,200 in January to a high of 1,264,800 in October. Job totals in October set a new all-time record high number of jobs in the State. Jobs steadily increased throughout the first half of the year. Seasonal declines occurred in the summer, while job totals leveled off in the latter half of the year. Arkansas' preliminary annual average nonfarm employment for 2017 was 1,248,800, notably higher than the 2016 average of 1,227,500. Annual average nonfarm payroll jobs have increased each year since 2013.

Nonfarm Payroll Jobs (Not Seasonally Adjusted)
January 2017 - December 2017

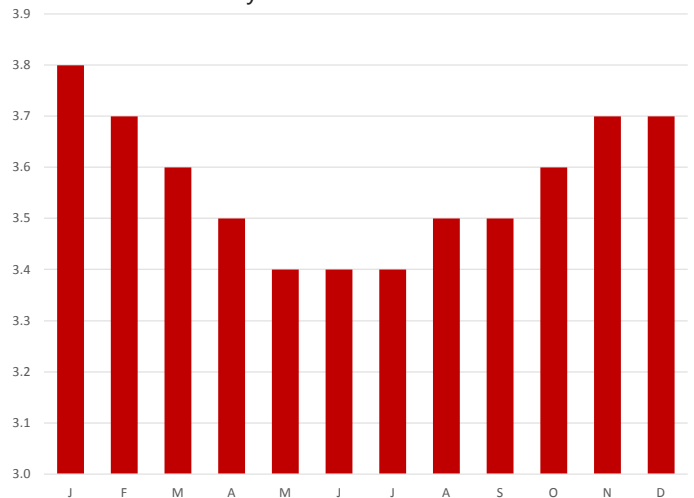


In 2017, the number of employed Arkansans ranged from a low of 1,285,753 in January to a high of 1,330,975 in September (new record high employment). Seasonally adjusted employment expanded rapidly during the first six months of the year, before peaking and slowly declining after September. Reversely, seasonally adjusted unemployment rates declined from a high of 3.8 percent in January to a low of 3.4 percent in May, June, and July. Rates increased during the second half of the year, ending with a rate of 3.7 percent in December.

Number of Employed (Seasonally Adjusted)
January 2017 - December 2017



Unemployment Rates (Seasonally Adjusted)
January 2017 - December 2017



Labor Market Report

State of Arkansas Civilian Labor Force Summary

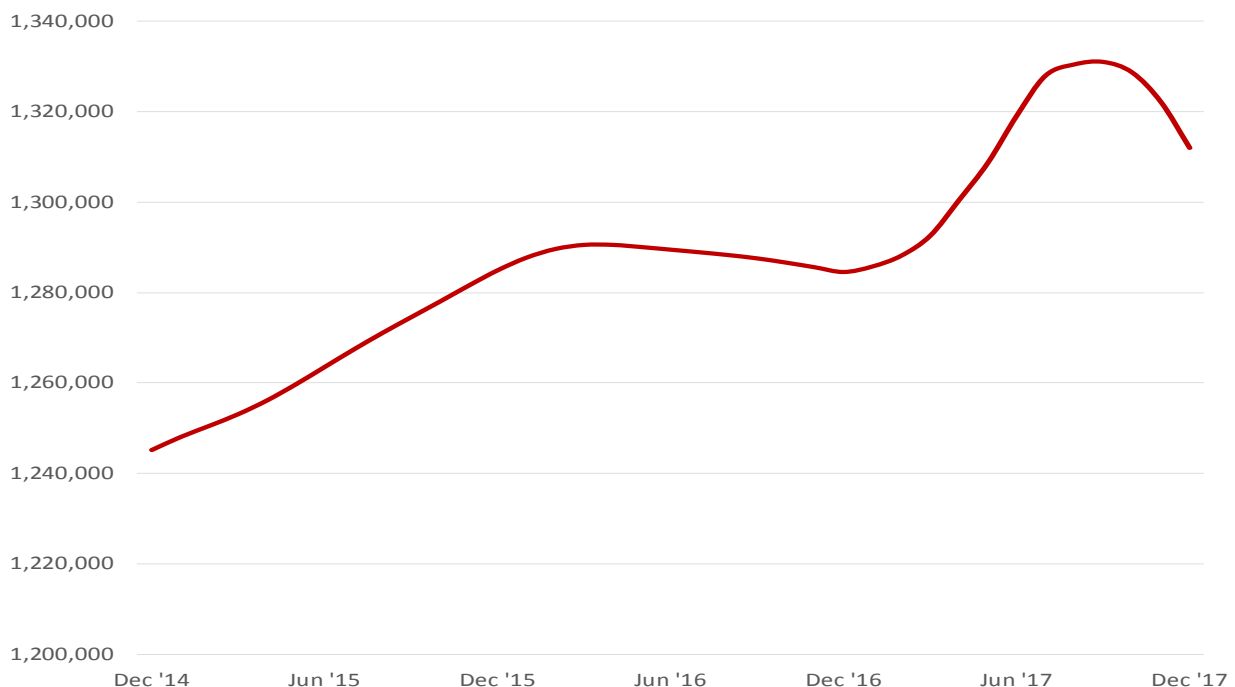
Labor force data, produced by the U.S. Department of Labor, Bureau of Labor Statistics and released by the Arkansas Department of Workforce Services, show Arkansas' seasonally adjusted unemployment rate was stable at 3.7 percent between November and December. Arkansas' civilian labor force decreased 10,088, a result of 10,167 fewer employed and 79 more unemployed Arkansans. At 4.1 percent, the United States' jobless rate was also unchanged over the month.

BLS Program Operations Manager Susan Price said, "Arkansas' jobless rate remained stable in December, mirroring the trend seen at the national level. While the size of the civilian labor force declined, it was not enough to impact the unemployment rate."

Civilian Labor Force Estimates

	Seasonally Adjusted				Not Seasonally Adjusted		
	Dec 17	Nov 17	Dec 16		Dec 17	Nov 17	Dec 16
Civilian Labor Force	1,362,173	1,372,261	1,337,311	Civilian Labor Force	1,341,053	1,359,008	1,327,109
Employment	1,311,977	1,322,144	1,284,532	Employment	1,292,193	1,313,850	1,276,550
Unemployment	50,196	50,117	52,779	Unemployment	48,860	45,158	50,559
Unemployment Rate	3.7	3.7	3.9	Unemployment Rate	3.6	3.3	3.8
U.S. Unemployment	4.1	4.1	4.7	U.S. Unemployment	3.9	3.9	4.5

Number of Employed (Seasonally Adjusted)
December 2014 - December 2017



State of Arkansas Nonfarm Payroll Jobs

Not Seasonally Adjusted

(In Thousands)

(NAICS)	<u>Dec 17</u>	<u>Nov 17</u>	<u>Dec 16</u>	<u>OTM</u>	<u>OTY</u>
Total Nonfarm	1256.7	1264.0	1240.6	-7.3	16.1
Goods Producing	219.3	220.8	211.1	-1.5	8.2
Mining, Logging, and Construction	58.2	59.4	55.2	-1.2	3.0
Mining & Logging	6.0	6.1	6.1	-0.1	-0.1
Construction	52.2	53.3	49.1	-1.1	3.1
Specialty Trade Contractors	33.0	33.7	31.2	-0.7	1.8
Manufacturing	161.1	161.4	155.9	-0.3	5.2
Durable Goods	73.7	73.8	73.5	-0.1	0.2
Nondurable Goods	87.4	87.6	82.4	-0.2	5.0
Service Providing	1037.4	1043.2	1029.5	-5.8	7.9
Trade, Transportation & Utilities	255.5	256.7	257.3	-1.2	-1.8
Wholesale Trade	47.1	47.8	46.5	-0.7	0.6
Retail Trade	142.5	144.0	144.3	-1.5	-1.8
Transport, Warehousing & Utilities	65.9	64.9	66.5	1.0	-0.6
Information	13.0	13.2	13.4	-0.2	-0.4
Financial Activities	51.7	51.2	51.5	0.5	0.2
Finance & Insurance	38.5	38.1	38.2	0.4	0.3
Real Estate & Rental & Leasing	13.2	13.1	13.3	0.1	-0.1
Professional & Business Services	148.2	150.3	145.0	-2.1	3.2
Professional, Scientific & Technical	45.2	45.3	43.2	-0.1	2.0
Management of Companies	33.8	33.8	35.5	0.0	-1.7
Administrative & Support Services	69.2	71.2	66.3	-2.0	2.9
Educational & Health Services	191.5	191.9	185.7	-0.4	5.8
Educational Services	19.0	19.3	16.3	-0.3	2.7
Health Care & Social Assistance	172.5	172.6	169.4	-0.1	3.1
Ambulatory Health Care	59.0	59.0	55.5	0.0	3.5
Social Assistance	39.2	39.1	39.6	0.1	-0.4
Leisure & Hospitality	113.2	115.5	112.6	-2.3	0.6
Arts, Entertainment & Recreation	9.5	9.6	9.2	-0.1	0.3
Accommodation & Food Services	103.7	105.9	103.4	-2.2	0.3
Accommodation Services	11.7	12.0	10.6	-0.3	1.1
Food Services	92.0	93.9	92.8	-1.9	-0.8
Other Services	49.9	49.2	48.5	0.7	1.4
Government	214.4	215.2	215.5	-0.8	-1.1
Federal Government	20.2	20.2	20.8	0.0	-0.6
State Government	79.6	80.4	79.1	-0.8	0.5
Local Government	114.6	114.6	115.6	0.0	-1.0

State of Arkansas Nonfarm Payroll Job Summary

November 2017 - December 2017

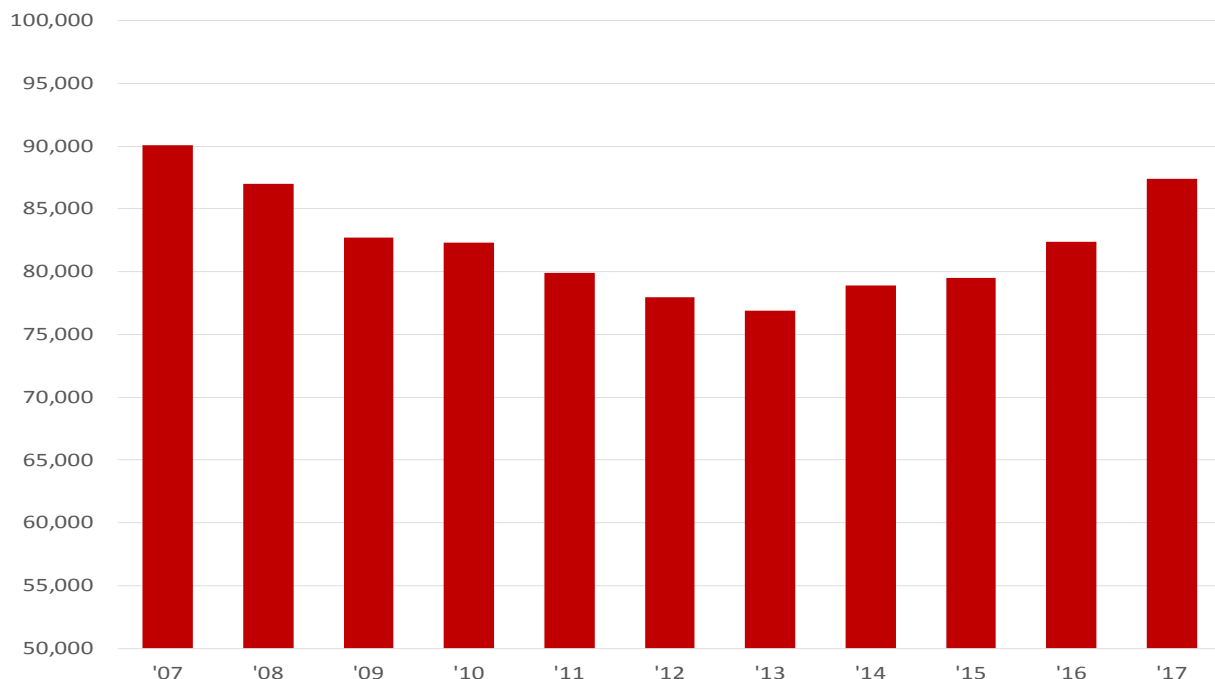
Arkansas' nonfarm payroll employment decreased 7,300 in December to total 1,256,700. Nine major industry sectors posted job declines, while two reported small gains. The greatest loss was in **leisure and hospitality** (-2,300). Most of the decrease occurred in food services (-1,900), due to a combination of seasonal factors and recent restaurant closures. Employment in **professional and business services** dropped 2,100. A majority of the loss was posted in administrative and support services (-2,000), an expected seasonal decline for the subsector. Jobs in **trade, transportation, and utilities** declined 1,200, largely affected by retail trade (-1,500). This was due in part to reported contractions at stores that do not typically see holiday hiring, such as convenience stores, pharmacies, and grocery stores. **Construction** is down 1,100, a typical seasonal drop.

December 2016 - December 2017

Compared to December 2016, nonfarm payroll jobs in Arkansas are up 16,100. Seven major industries reported growth, with four adding 3,100 or more jobs, each. Employment in **educational and health services** rose 5,800. Gains were posted in both health care and social assistance (+3,100) and educational services (+2,700). **Manufacturing** increased 5,200, largely in nondurable goods manufacturing (+5,000). **Professional and business services** added 3,200 jobs. Expansions in administrative-support services (+2,900) and professional-scientific-technical services (+2,000) more than offset the losses in management of companies (-1,700). Jobs in **construction** rose 3,100, with specialty trade construction up 1,800. Employment in **trade, transportation, and utilities** declined 1,800. Most of the loss was posted in retail trade (-1,800). Jobs in **government** are down 1,100, mostly in local government (-1,000).

Jobs in Nondurable Goods Manufacturing (Not Seasonally Adjusted)

December: 2007 - 2017



State of Arkansas

Production Workers- Hours and Earnings

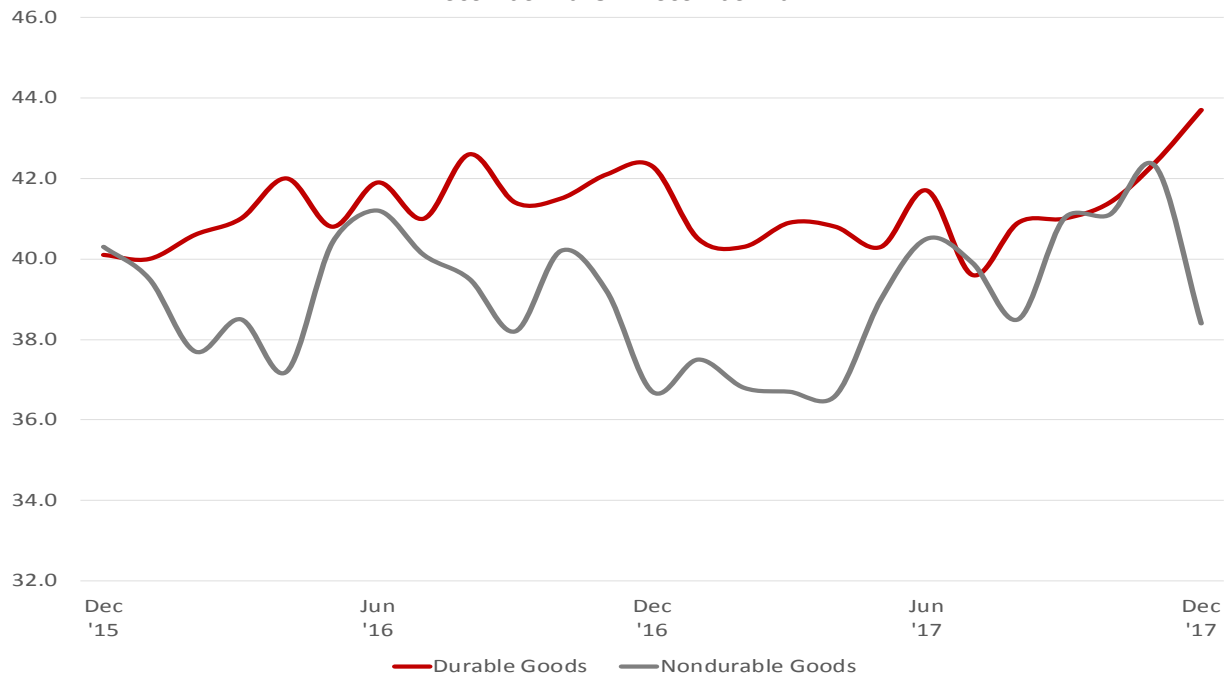
Manufacturing

	Dec 17	Nov 17	Dec 16
Average Weekly Hours	41.9	43.7	39.3
Average Hourly Earnings	16.37	16.38	15.83
Average Weekly Earnings	685.90	715.81	622.12

Durable Goods and Nondurable Goods Manufacturing

Durable Goods Manufacturing				Nondurable Goods Manufacturing			
	Dec 17	Nov 17	Dec 16		Dec 17	Nov 17	Dec 16
Average Weekly Hours	43.0	42.4	42.3	Average Weekly Hours	41.0	44.7	36.7
Average Hourly Earnings	18.22	17.77	17.67	Average Hourly Earnings	14.78	15.27	13.91
Average Weekly Earnings	783.46	753.45	747.44	Average Weekly Earnings	605.98	682.57	510.50

Average Weekly Hours Worked- Durable Goods vs Nondurable Goods Manufacturing
December 2015 - December 2017



Labor Market Report

Metropolitan Statistical Areas Little Rock-North Little Rock-Conway MSA

The Little Rock-North Little Rock-Conway MSA= Faulkner, Grant, Lonoke, Perry, Pulaski, & Saline counties.

Civilian Labor Force Estimates (Not Seasonally Adjusted)

	<u>Dec 17</u>	<u>Nov 17</u>	<u>Dec 16</u>	<u>OTM</u>	<u>QTY</u>
Civilian Labor Force	350,792	353,921	345,345	-3,129	5,447
Employment	338,970	343,253	333,813	-4,283	5,157
Unemployment	11,822	10,668	11,532	1,154	290
Unemployment Rate	3.4	3.0	3.3	0.4	0.1

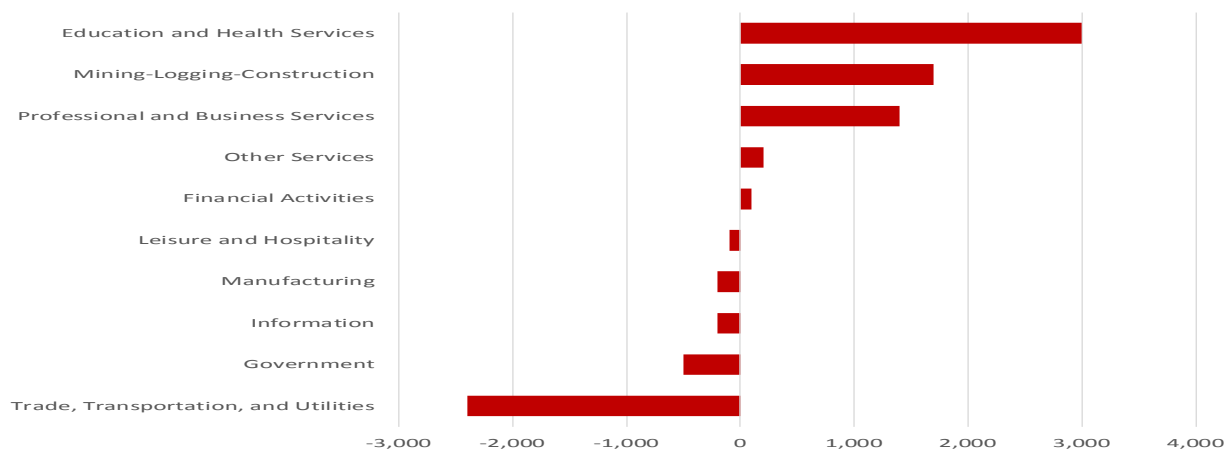
Nonfarm Payroll Jobs (Not Seasonally Adjusted)

(In Thousands)

<u>NAICS</u>	<u>Dec 17</u>	<u>Nov 17</u>	<u>Dec 16</u>	<u>OTM</u>	<u>QTY</u>
Total Nonfarm	359.6	358.8	356.6	0.8	3.0
Goods Producing	38.3	38.4	36.8	-0.1	1.5
Mining, Logging & Construction	18.3	18.3	16.6	0.0	1.7
Manufacturing	20.0	20.1	20.2	-0.1	-0.2
Service Providing	321.3	320.4	319.8	0.9	1.5
Trade, Transportation & Utilities	70.5	70.7	72.9	-0.2	-2.4
Wholesale Trade	14.8	14.8	15.0	0.0	-0.2
Retail Trade	39.4	39.8	41.5	-0.4	-2.1
Trans., Warehousing & Utilities	16.3	16.1	16.4	0.2	-0.1
Information	6.0	6.0	6.2	0.0	-0.2
Financial Activities	20.7	20.5	20.6	0.2	0.1
Professional & Business Services	48.0	47.9	46.6	0.1	1.4
Educational & Health Services	58.4	58.0	55.4	0.4	3.0
Leisure & Hospitality	32.7	32.3	32.8	0.4	-0.1
Other Services	14.8	14.7	14.6	0.1	0.2
Government	70.2	70.3	70.7	-0.1	-0.5
Federal Government	9.8	9.7	10.0	0.1	-0.2
State Government	35.4	35.5	35.1	-0.1	0.3
Local Government	25.0	25.1	25.6	-0.1	-0.6

Over-the-Year Change by Industry Sector (Ranked)

December 2016 - December 2017



Labor Market Report

Metropolitan Statistical Areas Fayetteville-Springdale-Rogers MSA

The Fayetteville-Springdale-Rogers MSA= Benton, Madison, & Washington counties in Arkansas & McDonald county in Missouri.

Civilian Labor Force Estimates (Not Seasonally Adjusted)

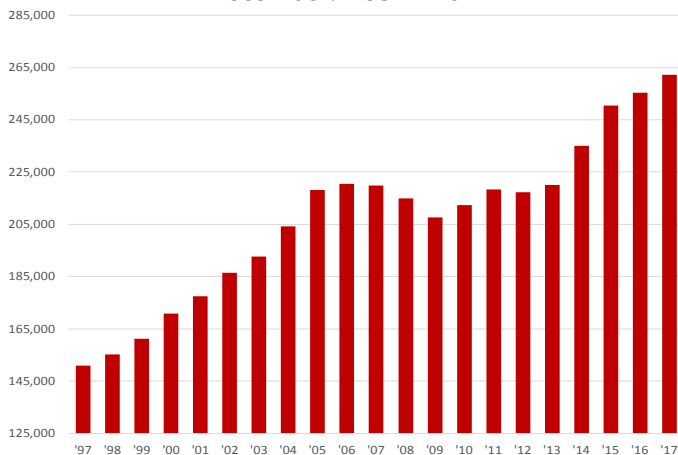
	<u>Dec 17</u>	<u>Nov 17</u>	<u>Dec 16</u>	<u>OTM</u>	<u>QTY</u>
Civilian Labor Force	269,533	275,724	262,250	-6,191	7,283
Employment	262,237	268,758	255,298	-6,521	6,939
Unemployment	7,296	6,966	6,952	330	344
Unemployment Rate	2.7	2.5	2.7	0.2	0.0

Nonfarm Payroll Jobs (Not Seasonally Adjusted)

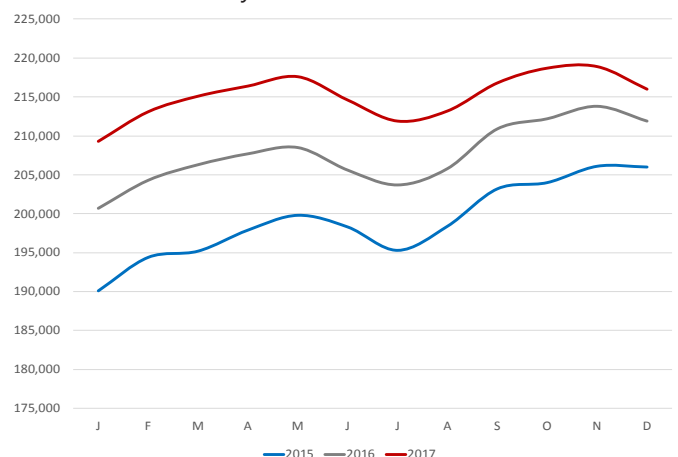
(In Thousands)

<u>NAICS</u>	<u>Dec 17</u>	<u>Nov 17</u>	<u>Dec 16</u>	<u>OTM</u>	<u>QTY</u>
Total Nonfarm	255.5	258.2	249.6	-2.7	5.9
Goods Producing	39.5	39.3	37.7	0.2	1.8
Mining, Logging & Construction	11.0	11.1	10.3	-0.1	0.7
Manufacturing	28.5	28.2	27.4	0.3	1.1
Service Providing	216.0	218.9	211.9	-2.9	4.1
Trade, Transportation & Utilities	56.4	56.7	56.4	-0.3	0.0
Wholesale Trade	12.9	12.9	12.4	0.0	0.5
Retail Trade	25.6	26.1	26.4	-0.5	-0.8
Trans., Warehousing & Utilities	17.9	17.7	17.6	0.2	0.3
Information	1.9	1.9	1.9	0.0	0.0
Financial Activities	8.1	8.0	7.8	0.1	0.3
Professional & Business Services	51.2	52.5	50.9	-1.3	0.3
Educational & Health Services	29.0	29.0	27.9	0.0	1.1
Leisure & Hospitality	25.0	25.9	23.9	-0.9	1.1
Other Services	7.9	7.8	7.7	0.1	0.2
Government	36.5	37.1	35.4	-0.6	1.1
Federal Government	2.6	2.5	2.6	0.1	0.0
State Government	14.6	15.4	13.8	-0.8	0.8
Local Government	19.3	19.2	19.0	0.1	0.3

Number of Employed
December: 1997 - 2017



Jobs in Service Providing Industries
January 2015 - December 2017



Labor Market Report

Metropolitan Statistical Areas Fort Smith MSA

The Fort Smith MSA= Crawford & Sebastian counties in Arkansas & LeFlore & Sequoyah counties in Oklahoma.

Civilian Labor Force Estimates (Not Seasonally Adjusted)

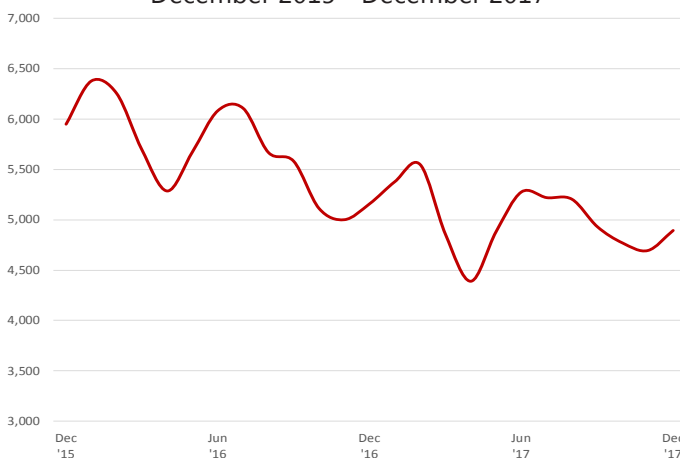
	<u>Dec 17</u>	<u>Nov 17</u>	<u>Dec 16</u>	<u>OTM</u>	<u>QTY</u>
Civilian Labor Force	119,998	121,636	119,853	-1,638	145
Employment	115,104	116,945	114,694	-1,841	410
Unemployment	4,894	4,691	5,159	203	-265
Unemployment Rate	4.1	3.9	4.3	0.2	-0.2

Nonfarm Payroll Jobs (Not Seasonally Adjusted)

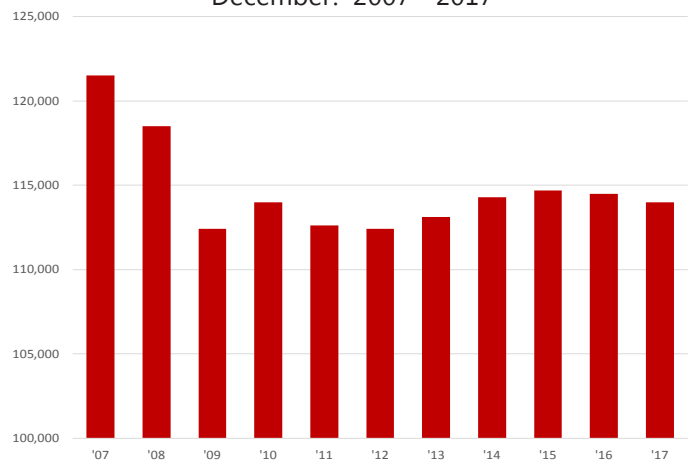
(In Thousands)

<u>NAICS</u>	<u>Dec 17</u>	<u>Nov 17</u>	<u>Dec 16</u>	<u>OTM</u>	<u>QTY</u>
Total Nonfarm	114.0	114.3	114.5	-0.3	-0.5
Goods Producing	23.1	23.0	23.1	0.1	0.0
Mining, Logging & Construction	5.3	5.3	5.3	0.0	0.0
Manufacturing	17.8	17.7	17.8	0.1	0.0
Service Providing	90.9	91.3	91.4	-0.4	-0.5
Trade, Transportation & Utilities	23.1	23.2	24.0	-0.1	-0.9
Wholesale Trade	4.0	4.0	3.9	0.0	0.1
Retail Trade	12.6	12.7	13.3	-0.1	-0.7
Trans., Warehousing & Utilities	6.5	6.5	6.8	0.0	-0.3
Information	1.2	1.3	1.2	-0.1	0.0
Financial Activities	3.8	3.8	3.9	0.0	-0.1
Professional & Business Services	13.5	13.5	13.0	0.0	0.5
Educational & Health Services	16.9	16.9	16.9	0.0	0.0
Leisure & Hospitality	9.3	9.5	9.4	-0.2	-0.1
Other Services	4.3	4.3	4.3	0.0	0.0
Government	18.8	18.8	18.7	0.0	0.1
Federal Government	1.3	1.3	1.3	0.0	0.0
State Government	3.2	3.2	3.2	0.0	0.0
Local Government	14.3	14.3	14.2	0.0	0.1

Number of Unemployed
December 2015 - December 2017



Nonfarm Payroll Jobs
December: 2007 - 2017



Labor Market Report

Metropolitan Statistical Areas

Hot Springs MSA

The Hot Springs MSA= Garland County.

Civilian Labor Force Estimates (Not Seasonally Adjusted)

	Dec 17	Nov 17	Dec 16	OTM	QTY
Civilian Labor Force	39,467	39,937	39,037	-470	430
Employment	37,911	38,491	37,326	-580	585
Unemployment	1,556	1,446	1,711	110	-155
Unemployment Rate	3.9	3.6	4.4	0.3	-0.5

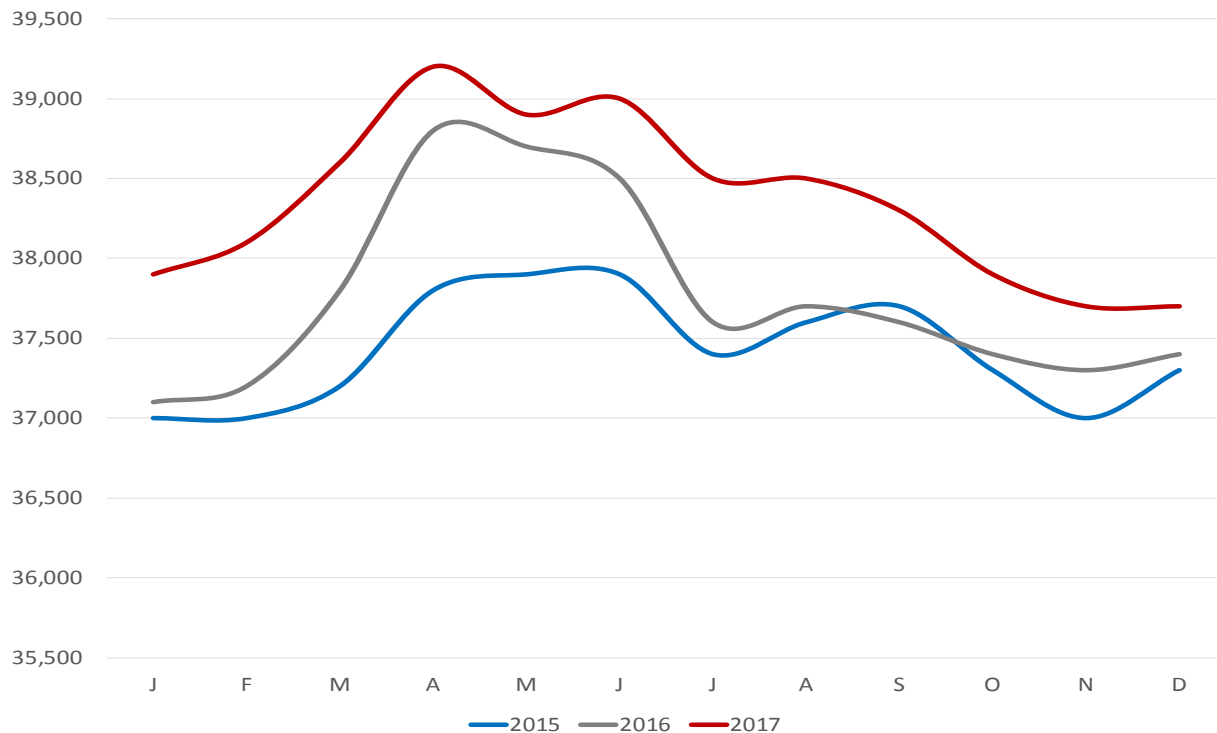
Nonfarm Payroll Jobs (Not Seasonally Adjusted)

(In Thousands)

NAICS	Dec 17	Nov 17	Dec 16	OTM	QTY
Total Nonfarm	37.7	37.7	37.4	0.0	0.3
Goods Producing	4.6	4.6	4.4	0.0	0.2
Service Providing	33.1	33.1	33.0	0.0	0.1
Government	4.5	4.5	4.6	0.0	-0.1

Nonfarm Payroll Jobs

January 2015 - December 2017



Labor Market Report

Metropolitan Statistical Areas

Jonesboro MSA

The Jonesboro MSA= Craighead & Poinsett counties.

Civilian Labor Force Estimates (Not Seasonally Adjusted)

	<u>Dec 17</u>	<u>Nov 17</u>	<u>Dec 16</u>	<u>OTM</u>	<u>QTY</u>
Civilian Labor Force	62,890	63,966	61,919	-1,076	971
Employment	60,981	62,158	59,938	-1,177	1,043
Unemployment	1,909	1,808	1,981	101	-72
Unemployment Rate	3.0	2.8	3.2	0.2	-0.2

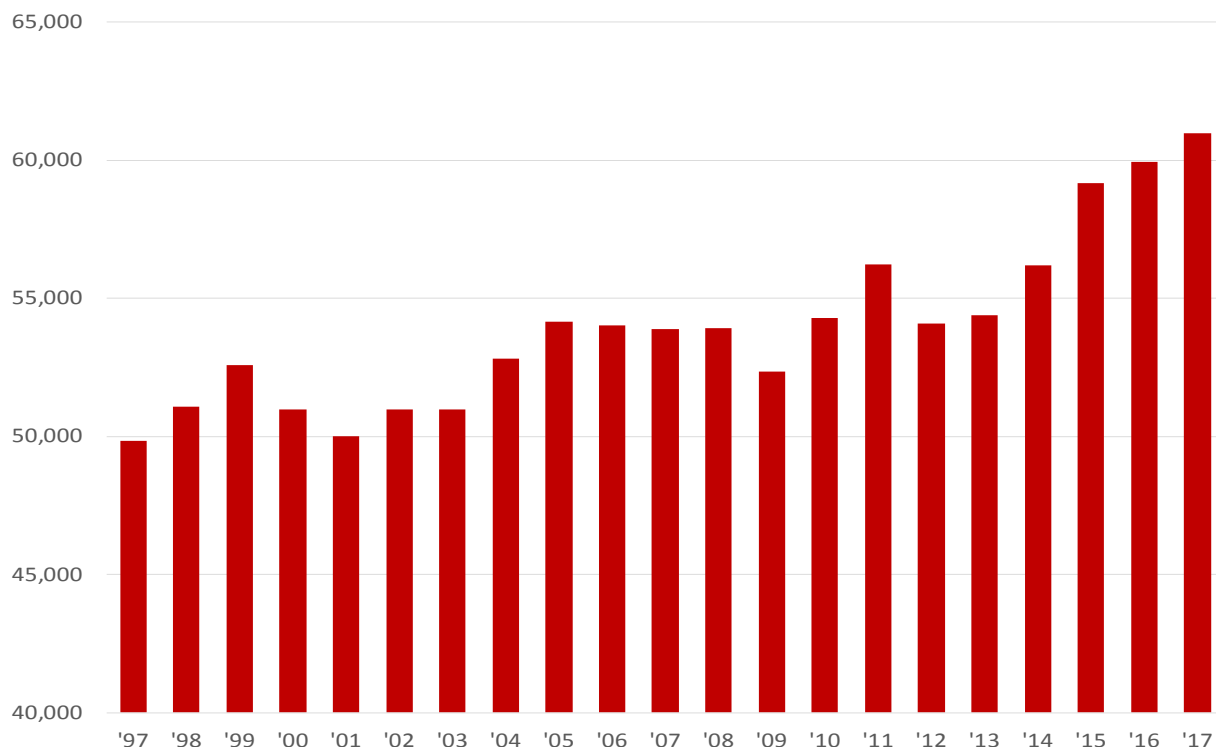
Nonfarm Payroll Jobs (Not Seasonally Adjusted)

(In Thousands)

<u>NAICS</u>	<u>Dec 17</u>	<u>Nov 17</u>	<u>Dec 16</u>	<u>OTM</u>	<u>QTY</u>
Total Nonfarm	57.4	57.7	56.8	-0.3	0.6
Goods Producing	9.4	9.5	9.2	-0.1	0.2
Service Providing	48.0	48.2	47.6	-0.2	0.4
Government	9.3	9.3	9.2	0.0	0.1

Employment

December: 1997 - 2017



Labor Market Report

Metropolitan Statistical Areas

Pine Bluff MSA

The Pine Bluff MSA= Cleveland, Jefferson, & Lincoln counties.

Civilian Labor Force Estimates (Not Seasonally Adjusted)

	<u>Dec 17</u>	<u>Nov 17</u>	<u>Dec 16</u>	<u>OTM</u>	<u>QTY</u>
Civilian Labor Force	35,130	35,717	35,564	-587	-434
Employment	33,404	34,103	33,752	-699	-348
Unemployment	1,726	1,614	1,812	112	-86
Unemployment Rate	4.9	4.5	5.1	0.4	-0.2

Nonfarm Payroll Jobs (Not Seasonally Adjusted)

(In Thousands)

<u>NAICS</u>	<u>Dec 17</u>	<u>Nov 17</u>	<u>Dec 16</u>	<u>OTM</u>	<u>QTY</u>
Total Nonfarm	33.1	33.3	33.8	-0.2	-0.7
Goods Producing	6.0	5.9	6.2	0.1	-0.2
Service Providing	27.1	27.4	27.6	-0.3	-0.5
Government	9.6	9.6	9.7	0.0	-0.1

Number of Unemployed

December 2014 - December 2017



Labor Market Report

Metropolitan Statistical Areas Out-of-State MSA

Civilian Labor Force Estimates (Not Seasonally Adjusted)

Memphis, TN-MS-AR MSA

The Memphis, TN-MS-AR MSA= Fayette, Shelby, & Tipton counties in Tennessee; Benton, Desoto, Marshall, Tate, & Tunica counties in Mississippi; & Crittenden County in Arkansas.

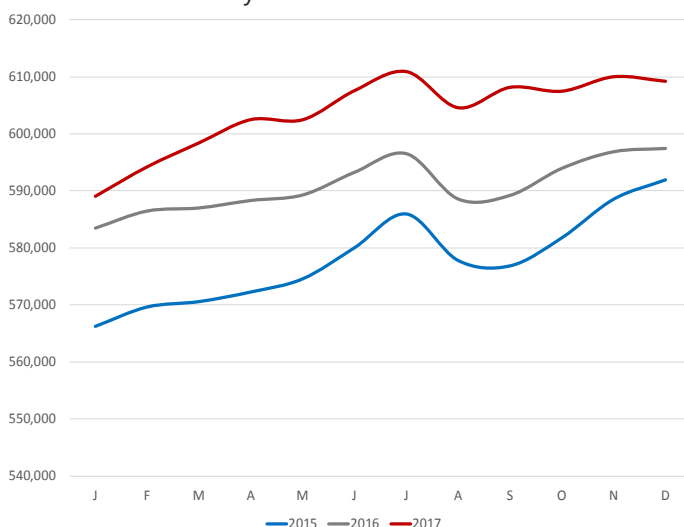
	<u>Dec 17</u>	<u>Nov 17</u>	<u>Dec 16</u>	<u>OTM</u>	<u>OTY</u>
Civilian Labor Force	632,641	634,828	631,117	-2,187	1,524
Employment	609,207	610,002	597,431	-795	11,776
Unemployment	23,434	24,826	33,686	-1,392	-10,252
Unemployment Rate	3.7	3.9	5.3	-0.2	-1.6

Texarkana MSA

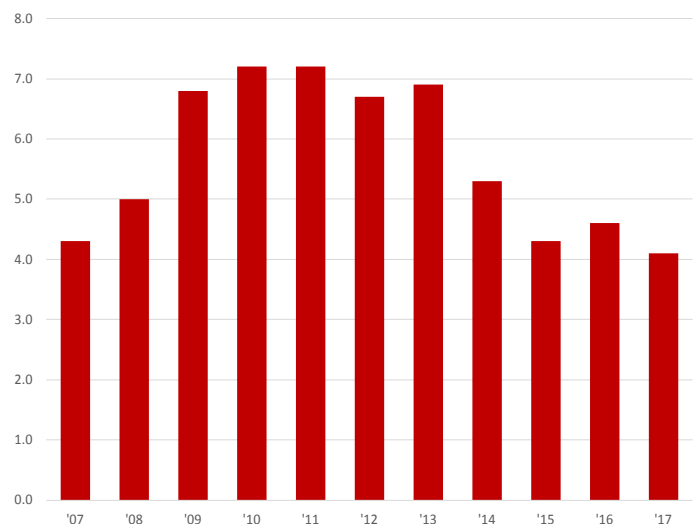
The Texarkana MSA= Bowie County in Texas & Little River & Miller counties in Arkansas.

	<u>Dec 17</u>	<u>Nov 17</u>	<u>Dec 16</u>	<u>OTM</u>	<u>OTY</u>
Civilian Labor Force	64,849	64,973	64,581	-124	268
Employment	62,212	62,366	61,613	-154	599
Unemployment	2,637	2,607	2,968	30	-331
Unemployment Rate	4.1	4.0	4.6	0.1	-0.5

Employment - Memphis MSA
January 2015 - December 2017



Unemployment Rates - Texarkana MSA
December: 2007 - 2017



Labor Market Report

Micropolitan Statistical Areas and Cities

Civilian Labor Force Estimates

Micropolitan Labor Force Estimates (Not Seasonally Adjusted)

Micro Area	December 2017				November 2017				December 2016			
	CLF	Emp	Unemp	Rate	CLF	Emp	Unemp	Rate	CLF	Emp	Unemp	Rate
Arkadelphia Micro	9,619	9,273	346	3.6	9,724	9,390	334	3.4	9,559	9,179	380	4.0
Batesville Micro	16,299	15,684	615	3.8	16,390	15,781	609	3.7	15,895	15,138	757	4.8
Blytheville Micro	17,691	16,760	931	5.3	17,923	17,066	857	4.8	18,309	17,050	1,259	6.9
Camden Micro	12,078	11,558	520	4.3	12,190	11,690	500	4.1	12,048	11,500	548	4.5
El Dorado Micro	16,073	15,234	839	5.2	16,178	15,419	759	4.7	16,109	15,258	851	5.3
Forrest City Micro	8,295	7,884	411	5.0	8,378	7,990	388	4.6	8,709	8,286	423	4.9
Harrison Micro	19,095	18,399	696	3.6	19,307	18,688	619	3.2	19,330	18,607	723	3.7
Helena-West Helena Micro	6,556	6,149	407	6.2	6,594	6,225	369	5.6	6,553	6,179	374	5.7
Hope Micro	13,478	13,026	452	3.4	13,623	13,204	419	3.1	13,531	13,036	495	3.7
Magnolia Micro	9,009	8,594	415	4.6	9,155	8,751	404	4.4	9,187	8,649	538	5.9
Malvern Micro	14,106	13,611	495	3.5	14,234	13,757	477	3.4	13,965	13,454	511	3.7
Mountain Home Micro	16,223	15,527	696	4.3	16,438	15,781	657	4.0	15,858	15,135	723	4.6
Paragould Micro	19,506	18,826	680	3.5	19,738	19,095	643	3.3	19,641	18,780	861	4.4
Russellville Micro	38,262	36,635	1,627	4.3	38,796	37,306	1,490	3.8	37,832	36,189	1,643	4.3
Searcy Micro	33,743	32,238	1,505	4.5	33,999	32,656	1,343	4.0	33,767	32,176	1,591	4.7

Arkadelphia Micro= Clark County

Batesville Micro= Independence County

Blytheville Micro= Mississippi County

Camden Micro= Calhoun & Ouachita counties

El Dorado Micro= Union County

Forrest City Micro= St. Francis County

Harrison Micro= Boone & Newton counties

Helena-West Helena Micro= Phillips County

Hope Micro= Hempstead & Nevada counties

Magnolia Micro= Columbia County

Malvern Micro= Hot Spring County

Mountain Home Micro= Baxter County

Paragould Micro= Greene County

Russellville Micro= Pope & Yell counties

Searcy Micro= White County

City Labor Force Statistics (Not Seasonally Adjusted)

City	December 2017				November 2017				December 2016			
	CLF	Emp	Unemp	Rate	CLF	Emp	Unemp	Rate	CLF	Emp	Unemp	Rate
Bella Vista	12,305	11,860	445	3.6	12,584	12,157	427	3.4	11,916	11,524	392	3.3
Benton	16,348	15,850	498	3.0	16,510	16,051	459	2.8	16,092	15,607	485	3.0
Bentonville	24,249	23,572	677	2.8	24,819	24,162	657	2.6	23,434	22,903	531	2.3
Blytheville	6,063	5,714	349	5.8	6,154	5,818	336	5.5	6,318	5,813	505	8.0
Cabot	11,749	11,321	428	3.6	11,804	11,461	343	2.9	11,494	11,158	336	2.9
Conway	33,078	31,991	1,087	3.3	33,434	32,395	1,039	3.1	32,652	31,512	1,140	3.5
El Dorado	6,990	6,594	396	5.7	7,023	6,674	349	5.0	7,030	6,605	425	6.0
Fayetteville	47,109	45,954	1,155	2.5	48,256	47,104	1,152	2.4	45,826	44,661	1,165	2.5
Fort Smith	39,805	38,411	1,394	3.5	40,448	39,106	1,342	3.3	39,689	38,324	1,365	3.4
Hot Springs	13,799	13,183	616	4.5	13,940	13,385	555	4.0	13,652	12,980	672	4.9
Jacksonville	11,834	11,244	590	5.0	11,855	11,387	468	3.9	11,542	11,071	471	4.1
Jonesboro	36,991	35,937	1,054	2.8	37,653	36,638	1,015	2.7	36,393	35,312	1,081	3.0
Little Rock	96,575	93,504	3,071	3.2	97,632	94,692	2,940	3.0	95,189	92,061	3,128	3.3
North Little Rock	29,987	28,834	1,153	3.8	30,216	29,200	1,016	3.4	29,467	28,389	1,078	3.7
Paragould	12,211	11,772	439	3.6	12,370	11,940	430	3.5	12,345	11,743	602	4.9
Pine Bluff	16,749	15,777	972	5.8	17,015	16,112	903	5.3	16,896	15,939	957	5.7
Rogers	34,418	33,487	931	2.7	35,226	34,326	900	2.6	33,455	32,538	917	2.7
Russellville	13,655	13,164	491	3.6	13,908	13,408	500	3.6	13,512	12,998	514	3.8
Searcy	10,335	9,950	385	3.7	10,428	10,079	349	3.3	10,323	9,931	392	3.8
Sherwood	15,606	15,120	486	3.1	15,721	15,312	409	2.6	15,380	14,886	494	3.2
Springdale	39,098	38,098	1,000	2.6	39,976	39,051	925	2.3	37,938	37,025	913	2.4
Texarkana, AR	13,777	13,227	550	4.0	13,966	13,393	573	4.1	13,696	13,087	609	4.4
Van Buren	10,278	9,926	352	3.4	10,458	10,103	355	3.4	10,234	9,905	329	3.2
West Memphis	10,731	10,230	501	4.7	10,854	10,407	447	4.1	10,685	10,132	553	5.2

Labor Market Report

County Labor Force Statistics

Civilian Labor Force Estimates

Not Seasonally Adjusted

County	December 2017				November 2017				December 2016			
	CLF	Emp	Unemp	Rate	CLF	Emp	Unemp	Rate	CLF	Emp	Unemp	Rate
Arkansas	9,022	8,695	327	3.6	9,038	8,752	286	3.2	9,210	8,900	310	3.4
Ashley	7,643	7,213	430	5.6	7,709	7,334	375	4.9	7,870	7,334	536	6.8
Baxter	16,223	15,527	696	4.3	16,438	15,781	657	4.0	15,858	15,135	723	4.6
Benton	129,519	125,719	3,800	2.9	132,438	128,867	3,571	2.7	125,596	122,154	3,442	2.7
Boone	15,746	15,170	576	3.7	15,930	15,410	520	3.3	15,913	15,339	574	3.6
Bradley	4,510	4,336	174	3.9	4,529	4,359	170	3.8	4,533	4,296	237	5.2
Calhoun	2,361	2,265	96	4.1	2,377	2,290	87	3.7	2,351	2,256	95	4.0
Carroll	12,985	12,529	456	3.5	13,166	12,804	362	2.7	12,870	12,379	491	3.8
Chicot	3,476	3,234	242	7.0	3,487	3,276	211	6.1	3,501	3,254	247	7.1
Clark	9,619	9,273	346	3.6	9,724	9,390	334	3.4	9,559	9,179	380	4.0
Clay	5,770	5,515	255	4.4	5,854	5,623	231	3.9	5,908	5,576	332	5.6
Cleburne	9,218	8,779	439	4.8	9,352	8,949	403	4.3	9,321	8,825	496	5.3
Cleveland	3,244	3,116	128	3.9	3,303	3,177	126	3.8	3,296	3,148	148	4.5
Columbia	9,009	8,594	415	4.6	9,155	8,751	404	4.4	9,187	8,649	538	5.9
Conway	8,203	7,833	370	4.5	8,253	7,926	327	4.0	8,288	7,858	430	5.2
Craighead	52,626	51,120	1,506	2.9	53,547	52,117	1,430	2.7	51,786	50,230	1,556	3.0
Crawford	26,439	25,502	937	3.5	26,847	25,958	889	3.3	26,380	25,448	932	3.5
Crittenden	21,682	20,786	896	4.1	21,959	21,146	813	3.7	21,548	20,588	960	4.5
Cross	7,651	7,345	306	4.0	7,723	7,441	282	3.7	7,896	7,531	365	4.6
Dallas	2,925	2,810	115	3.9	2,965	2,849	116	3.9	2,899	2,767	132	4.6
Desha	5,379	5,121	258	4.8	5,452	5,227	225	4.1	5,384	5,092	292	5.4
Drew	7,987	7,596	391	4.9	8,027	7,671	356	4.4	8,052	7,612	440	5.5
Faulkner	60,286	58,322	1,964	3.3	60,924	59,060	1,864	3.1	59,530	57,449	2,081	3.5
Franklin	7,481	7,228	253	3.4	7,579	7,341	238	3.1	7,201	6,932	269	3.7
Fulton	4,692	4,487	205	4.4	4,731	4,554	177	3.7	4,644	4,443	201	4.3
Garland	39,467	37,911	1,556	3.9	39,937	38,491	1,446	3.6	39,037	37,326	1,711	4.4
Grant	8,282	8,027	255	3.1	8,369	8,124	245	2.9	8,189	7,905	284	3.5
Greene	19,506	18,826	680	3.5	19,738	19,095	643	3.3	19,641	18,780	861	4.4
Hempstead	9,832	9,506	326	3.3	9,936	9,635	301	3.0	9,884	9,515	369	3.7
Hot Spring	14,106	13,611	495	3.5	14,234	13,757	477	3.4	13,965	13,454	511	3.7
Howard	5,796	5,620	176	3.0	5,842	5,685	157	2.7	5,739	5,554	185	3.2
Independence	16,299	15,684	615	3.8	16,390	15,781	609	3.7	15,895	15,138	757	4.8
Izard	4,935	4,643	292	5.9	4,970	4,706	264	5.3	5,007	4,723	284	5.7
Jackson	5,834	5,468	366	6.3	5,849	5,556	293	5.0	6,003	5,614	389	6.5
Jefferson	27,922	26,488	1,434	5.1	28,386	27,051	1,335	4.7	28,245	26,760	1,485	5.3
Johnson	10,700	10,263	437	4.1	10,836	10,421	415	3.8	10,487	10,014	473	4.5
Lafayette	2,518	2,398	120	4.8	2,551	2,434	117	4.6	2,590	2,447	143	5.5
Lawrence	6,914	6,657	257	3.7	7,028	6,797	231	3.3	6,906	6,619	287	4.2
Lee	2,887	2,757	130	4.5	2,913	2,790	123	4.2	3,042	2,897	145	4.8
Lincoln	3,964	3,800	164	4.1	4,028	3,875	153	3.8	4,023	3,844	179	4.4
Little River	5,625	5,357	268	4.8	5,691	5,425	266	4.7	5,547	5,295	252	4.5
Logan	8,838	8,512	326	3.7	8,912	8,612	300	3.4	9,004	8,646	358	4.0
Lonoke	33,491	32,172	1,319	3.9	33,569	32,569	1,000	3.0	32,759	31,708	1,051	3.2
Madison	7,366	7,163	203	2.8	7,515	7,326	189	2.5	7,209	6,993	216	3.0
Marion	6,389	6,117	272	4.3	6,458	6,224	234	3.6	6,466	6,193	273	4.2
Miller	19,938	19,145	793	4.0	20,162	19,386	776	3.8	19,759	18,942	817	4.1

(continued on Page 16)

County Labor Force Statistics

Civilian Labor Force Estimates

Not Seasonally Adjusted

(continued from Page 15)

County	December 2017				November 2017				December 2016			
	CLF	Emp	Unemp	Rate	CLF	Emp	Unemp	Rate	CLF	Emp	Unemp	Rate
Mississippi	17,691	16,760	931	5.3	17,923	17,066	857	4.8	18,309	17,050	1,259	6.9
Monroe	2,776	2,653	123	4.4	2,789	2,672	117	4.2	2,778	2,623	155	5.6
Montgomery	2,939	2,789	150	5.1	2,981	2,847	134	4.5	2,811	2,645	166	5.9
Nevada	3,646	3,520	126	3.5	3,687	3,569	118	3.2	3,647	3,521	126	3.5
Newton	3,349	3,229	120	3.6	3,377	3,278	99	2.9	3,417	3,268	149	4.4
Ouachita	9,717	9,293	424	4.4	9,813	9,400	413	4.2	9,697	9,244	453	4.7
Perry	4,176	4,006	170	4.1	4,219	4,055	164	3.9	4,137	3,952	185	4.5
Phillips	6,556	6,149	407	6.2	6,594	6,225	369	5.6	6,553	6,179	374	5.7
Pike	4,280	4,092	188	4.4	4,306	4,140	166	3.9	4,112	3,939	173	4.2
Poinsett	10,264	9,861	403	3.9	10,419	10,041	378	3.6	10,133	9,708	425	4.2
Polk	7,913	7,579	334	4.2	8,011	7,699	312	3.9	8,173	7,772	401	4.9
Pope	29,481	28,195	1,286	4.4	29,897	28,718	1,179	3.9	29,121	27,840	1,281	4.4
Prairie	3,731	3,549	182	4.9	3,737	3,593	144	3.9	3,583	3,447	136	3.8
Pulaski	187,952	181,536	6,416	3.4	189,641	183,841	5,800	3.1	184,999	178,734	6,265	3.4
Randolph	6,889	6,604	285	4.1	6,981	6,709	272	3.9	6,457	6,142	315	4.9
St. Francis	8,295	7,884	411	5.0	8,378	7,990	388	4.6	8,709	8,286	423	4.9
Saline	56,605	54,907	1,698	3.0	57,199	55,604	1,595	2.8	55,731	54,065	1,666	3.0
Scott	4,476	4,319	157	3.5	4,521	4,364	157	3.5	4,391	4,246	145	3.3
Searcy	2,839	2,711	128	4.5	2,897	2,771	126	4.3	3,034	2,887	147	4.8
Sebastian	57,158	55,145	2,013	3.5	58,085	56,143	1,942	3.3	56,989	55,019	1,970	3.5
Sevier	5,709	5,455	254	4.4	5,774	5,534	240	4.2	5,615	5,346	269	4.8
Sharp	5,962	5,704	258	4.3	6,047	5,799	248	4.1	5,969	5,636	333	5.6
Stone	4,712	4,489	223	4.7	4,793	4,592	201	4.2	4,674	4,415	259	5.5
Union	16,073	15,234	839	5.2	16,178	15,419	759	4.7	16,109	15,258	851	5.3
Van Buren	5,969	5,653	316	5.3	6,060	5,771	289	4.8	5,843	5,463	380	6.5
Washington	122,148	119,177	2,971	2.4	125,033	122,159	2,874	2.3	118,733	115,823	2,910	2.5
White	33,743	32,238	1,505	4.5	33,999	32,656	1,343	4.0	33,767	32,176	1,591	4.7
Woodruff	2,919	2,784	135	4.6	2,948	2,814	134	4.5	2,937	2,778	159	5.4
Yell	8,781	8,440	341	3.9	8,899	8,588	311	3.5	8,711	8,349	362	4.2

County Labor Force Summary

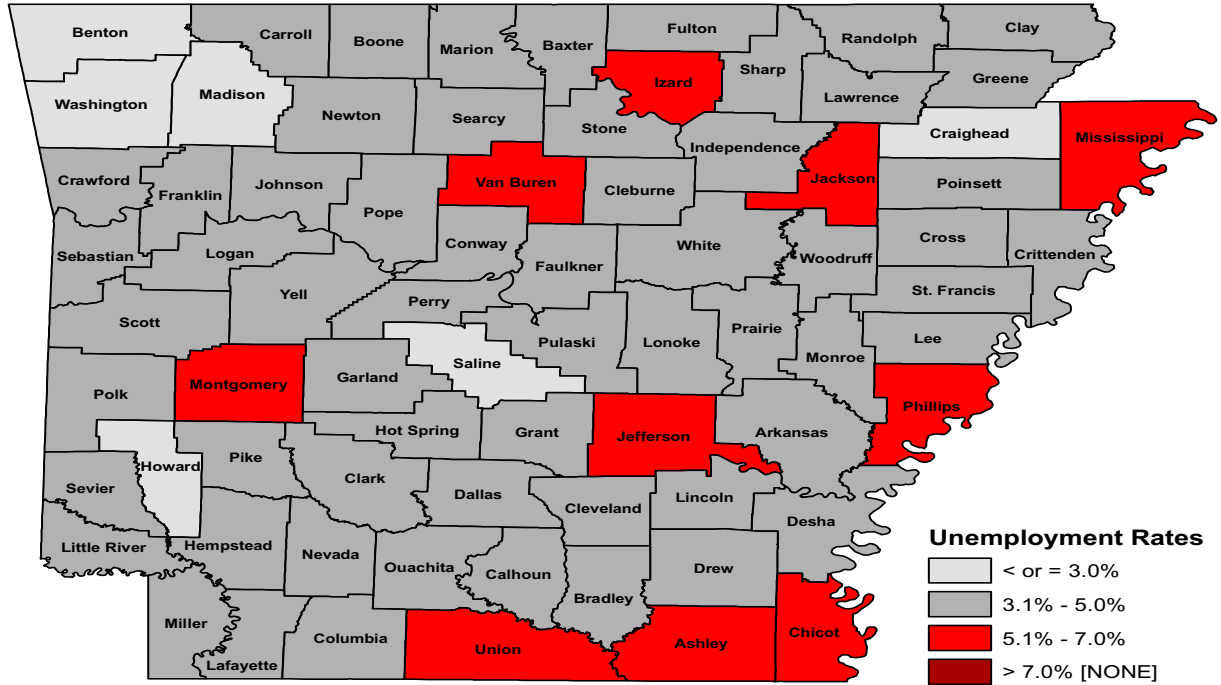
Between November and December, unemployment rates increased in 73 of Arkansas' 75 counties. Two counties-- Dallas and Scott-- were unchanged over the month. Rates ranged from a low of 2.4 percent in Washington County to a high of 7.0 percent in Chicot County.

In December, thirty-four counties posted jobless rates at or below four percent. That is down from 50 counties at or below four percent in November. For the tenth month in a row, no county reported an unemployment rate above 8 percent.

Compared to December 2016, unemployment rates are down in 55 Arkansas counties. Rates increased in 14 counties and were the same in six counties.

Labor Market Report

County Labor Force Statistics



Ranked by Unemployment Rates

December 2017- Not Seasonally Adjusted

Rank	County	Rate	Rank	County	Rate	Rank	County	Rate
1	Washington	2.4	26	Bradley	3.9	45	Sevier	4.4
2	Madison	2.8	26	Cleveland	3.9	52	Conway	4.5
3	Benton	2.9	26	Dallas	3.9	52	Lee	4.5
3	Craighead	2.9	26	Garland	3.9	52	Searcy	4.5
5	Howard	3.0	26	Lonoke	3.9	52	White	4.5
5	Saline	3.0	26	Poinsett	3.9	56	Columbia	4.6
7	Grant	3.1	26	Yell	3.9	56	Woodruff	4.6
8	Faulkner	3.3	33	Cross	4.0	58	Stone	4.7
8	Hempstead	3.3	33	Miller	4.0	59	Cleburne	4.8
10	Franklin	3.4	35	Calhoun	4.1	59	Desha	4.8
10	Pulaski	3.4	35	Crittenden	4.1	59	Lafayette	4.8
12	Carroll	3.5	35	Johnson	4.1	59	Little River	4.8
12	Crawford	3.5	35	Lincoln	4.1	63	Drew	4.9
12	Greene	3.5	35	Perry	4.1	63	Prairie	4.9
12	Hot Spring	3.5	35	Randolph	4.1	65	St. Francis	5.0
12	Nevada	3.5	41	Polk	4.2	66	Jefferson	5.1
12	Scott	3.5	42	Baxter	4.3	66	Montgomery	5.1
12	Sebastian	3.5	42	Marion	4.3	68	Union	5.2
19	Arkansas	3.6	42	Sharp	4.3	69	Mississippi	5.3
19	Clark	3.6	45	Clay	4.4	69	Van Buren	5.3
19	Newton	3.6	45	Fulton	4.4	71	Ashley	5.6
22	Boone	3.7	45	Monroe	4.4	72	Izard	5.9
22	Lawrence	3.7	45	Ouachita	4.4	73	Phillips	6.2
22	Logan	3.7	45	Pike	4.4	74	Jackson	6.3
25	Independence	3.8	45	Pope	4.4	75	Chicot	7.0

Labor Market Report

Local Workforce Development Areas Civilian Labor Force Estimates

LWDA Labor Force Estimates (Not Seasonally Adjusted)

LWDA	December 2017				November 2017				December 2016			
	CLF	Emp	Unemp	Rate	CLF	Emp	Unemp	Rate	CLF	Emp	Unemp	Rate
Central (minus LR)	248,266	239,635	8,631	3.5	250,227	242,647	7,580	3.0	244,191	235,965	8,226	3.4
City of Little Rock	96,575	93,504	3,071	3.2	97,632	94,692	2,940	3.0	95,189	92,061	3,128	3.3
Eastern	47,071	44,921	2,150	4.6	47,567	45,592	1,975	4.2	47,748	45,481	2,267	4.7
North Central	94,283	89,929	4,354	4.6	95,139	91,178	3,961	4.2	94,060	89,211	4,849	5.2
Northeast	119,660	115,343	4,317	3.6	121,490	117,448	4,042	3.3	119,140	114,105	5,035	4.2
Northwest	316,564	307,342	9,222	2.9	323,252	314,620	8,632	2.7	309,096	300,171	8,925	2.9
Southeast	81,429	77,626	3,803	4.7	82,328	78,846	3,482	4.2	82,303	78,145	4,158	5.1
Southwest	93,149	89,197	3,952	4.2	94,131	90,377	3,754	4.0	93,024	88,794	4,230	4.5
West Central	131,752	126,413	5,339	4.1	133,286	128,333	4,953	3.7	130,228	124,556	5,672	4.4
Western	112,305	108,285	4,020	3.6	113,955	110,117	3,838	3.4	112,138	108,063	4,075	3.6

