

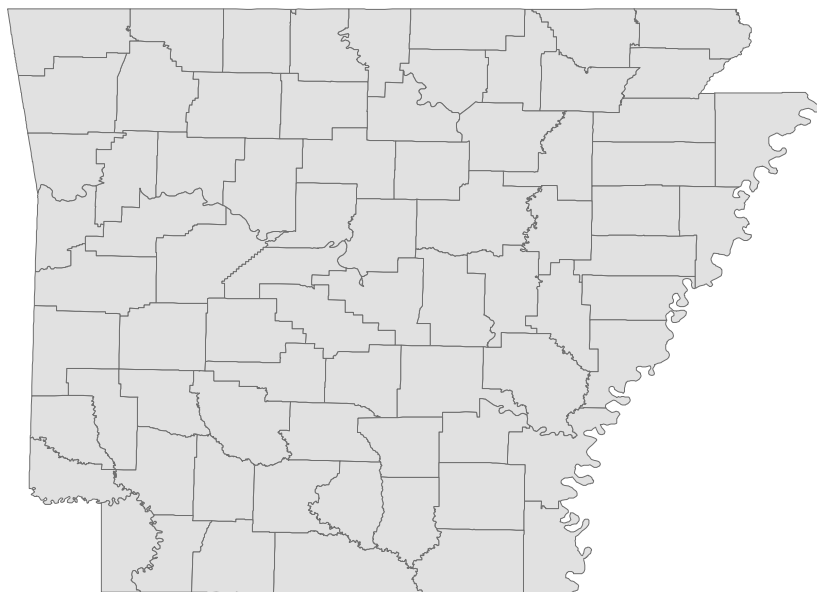
Arkansas Labor Market Report

August 2017



www.discover.arkansas.gov

Table of Contents



Monthly Spotlight.....	2
Arkansas Labor Force Summary.....	3
Arkansas Nonfarm Payroll Jobs.....	4
Arkansas Production Workers.....	6
Metropolitan Statistical Areas.....	7
Micropolitan Statistical Areas/Cities.....	14
County Labor Force Statistics.....	15
Local Workforce Development Areas.....	18

Technical Notes

The *Arkansas Labor Market* is prepared monthly in conjunction with the U.S. Department of Labor, Bureau of Labor Statistics (BLS). The current month's estimates are preliminary, while previous month's data is subject to revision.

Estimates of nonfarm payroll jobs show the number of jobs by industry and reflect employment by place of work. Hours and earnings estimates are based on payroll and worker-hour data collected for production workers in manufacturing industries.

Industries are classified according to the North American Industry Classification System (NAICS). All estimates are based on a first quarter 2016 benchmark.

Explanation of Terms and Concepts

Monthly Business Survey of Employers

A monthly sample survey designed to provide industry information on nonfarm payroll jobs. Data are compiled each month from mail surveys and telephone interviews conducted by the Bureau of Labor Statistics in cooperation with Department of Workforce Services. The data are based on establishment records and include all workers, full-or part-time, who received pay during the payroll period which includes the 12th of the

month. Approximately 5,000 Arkansas business establishments are surveyed.

Metropolitan Statistical Area (MSA)

A term applied by the U.S. Office of Management and Budget to counties that have one or more central cities and that meet specified criteria of population density, commuting patterns and social and economic integration.

Current Population Survey (CPS)

A monthly sample survey of the population 16 years of age and over, designed to provide data on the labor force, the employed and the unemployed. The survey is conducted each month by the Bureau of the Census for BLS. The information is collected by trained interviewers from a sample of about 60,000 households. The data collected are based on the activity reported for the calendar week including the 12th of the month. Approximately 800 Arkansas households are represented in the sample survey.

Civilian Labor Force

The sum of all employed and unemployed persons 16 years of age or older. Members of the Armed Forces are excluded.

Employment

An estimate of the number of persons who worked any time for pay or profit or worked 15 hours or more as unpaid workers in a family business during the calendar week which includes the 12th of the month. Also included are those who, although not working, had some job attachment and were not looking for work, and persons involved in labor management disputes.

Unemployment

An estimate of the number of persons who did not have a job, but were available for work and actively seeking work during the calendar week which includes the 12th of the month.

Unemployment Rate

The number of unemployed as a percentage of the civilian labor force. Unemployment rates are calculated from unrounded data.

Seasonal Adjustment

A statistical technique applied to monthly data to eliminate changes that normally occur during the year due to seasonal events such as weather, major holidays, schedule shifts, harvest times, and the opening/closing of schools.

August Spotlight

Seasonal Employment Trends (Part 1 of 2)

Employment in several major industry sectors is directly affected by seasonal patterns. These patterns can be seen by comparing monthly employment across multiple years. Seasonal trends can be attributed to set schedules of operation, holidays, or weather patterns. Examples of all three types are provided.

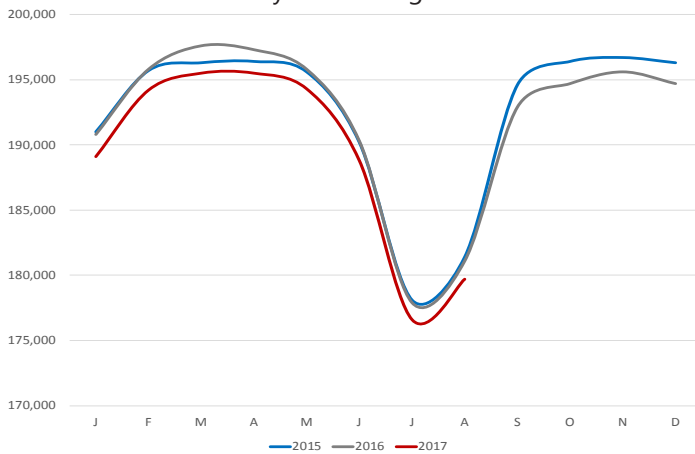
Education is one of the most obvious examples of seasonal employment. Most of Arkansas' public schools and universities are scheduled to operate from August to May. Chart 1 shows how state and local government employment is affected by the operation schedule of public schools. Note that the number of jobs begin to decline between May and June, reaches a low in July, and then increases between August and September. Jobs remain fairly stable during the rest of the year, with the exception of the holiday-related drop in December/January.

While employment at public universities and secondary schools falls under state and local government, employment at *private* universities and *private* secondary schools falls under educational services. This is a subsector under **educational and health services**. With the exception of the few schools that utilize a three-quarter system, the majority of private schools operate on the same August to May schedule as public schools. Chart 2 below

shows the seasonal employment trends of private educational services, which closely mirrors the trend seen in state and local government.

Chart 1. Jobs in State and Local Government

January 2015 - August 2017



Leisure and hospitality is another sector affected by seasonal patterns. People tend to travel more during the summer months. Hotels, restaurants, and recreational facilities have increased business during this time and require more employees. Similarly, many recreational facilities in Arkansas are only open during the summer months—amusement parks and camps are prime examples. Chart 3 shows the seasonal employment pattern that occurs in the **leisure and hospitality** sector. Note that employment begins to steadily rise throughout the spring, peaks in June, and then typically declines slowly throughout the second half of the year.

Chart 2. Jobs in Educational Services

January 2015 - August 2017

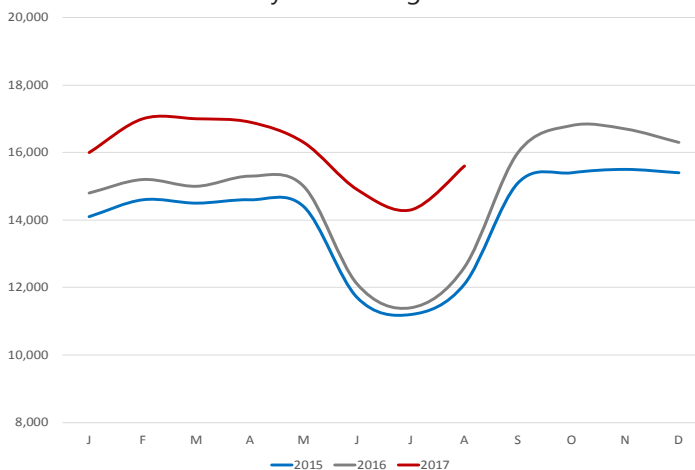
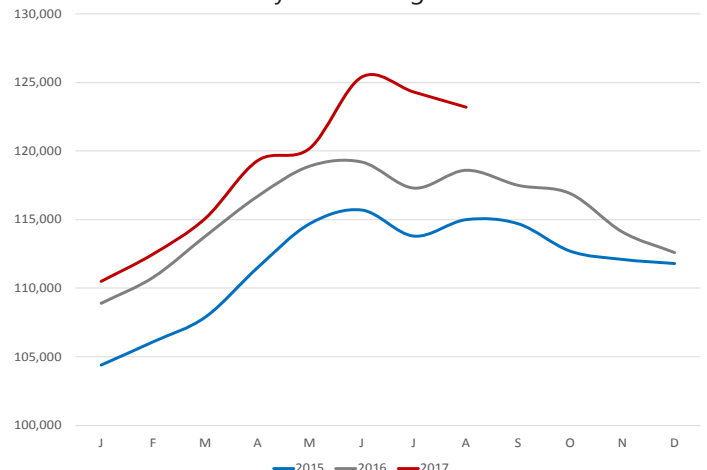


Chart 3. Jobs in Leisure and Hospitality

January 2015 - August 2017



State of Arkansas Civilian Labor Force Summary

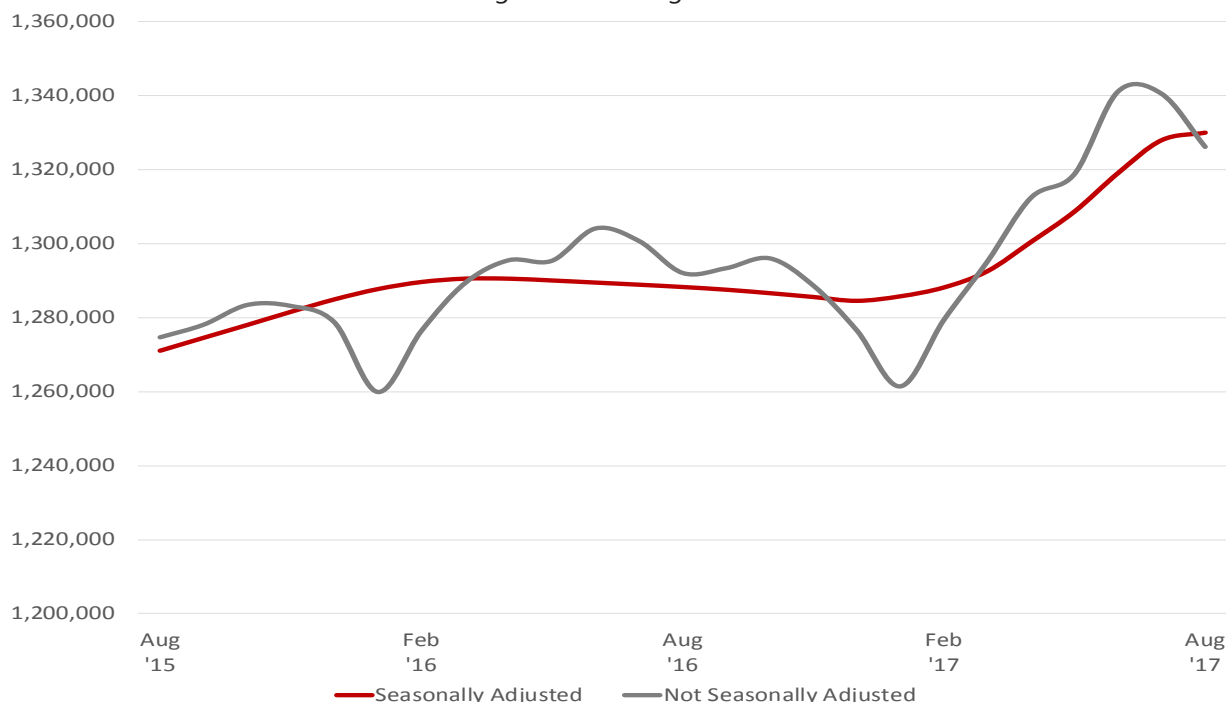
Labor force data, produced by the U.S. Department of Labor, Bureau of Labor Statistics and released by the Arkansas Department of Workforce Services, show Arkansas' seasonally adjusted unemployment rate increased one-tenth of a percentage point, from 3.4 percent in July to 3.5 percent in August. Arkansas' civilian labor force added 3,272, a result of 2,038 additional employed and 1,234 more unemployed Arkansans. Reaching 4.4 percent, the United States' jobless rate rose one-tenth of a percentage point between July and August.

BLS Program Operations Manager Susan Price said, "Arkansas' unemployment rate increased one-tenth of a percentage point in August, as the number of employed and unemployed both rose slightly. The movement in the jobless rate mirrored the trend seen at the national level."

Civilian Labor Force Estimates

	Seasonally Adjusted			Not Seasonally Adjusted			
	Aug 17	Jul 17	Aug 16	Aug 17	Jul 17	Aug 16	
Civilian Labor Force	1,377,710	1,374,438	1,342,501	Civilian Labor Force	1,371,780	1,393,745	1,345,036
Employment	1,329,979	1,327,941	1,288,269	Employment	1,323,147	1,340,486	1,292,067
Unemployment	47,731	46,497	54,232	Unemployment	48,633	53,259	52,969
Unemployment Rate	3.5	3.4	4.0	Unemployment Rate	3.5	3.8	3.9
U.S. Unemployment	4.4	4.3	4.9	U.S. Unemployment	4.5	4.6	5.0

Number of Employed (Seasonally Adjusted vs Not Seasonally Adjusted)
August 2015 - August 2017



State of Arkansas

Nonfarm Payroll Jobs

Not Seasonally Adjusted

(In Thousands)

(NAICS)	<u>Aug 17</u>	<u>Jul 17</u>	<u>Aug 16</u>	<u>OTM</u>	<u>OTY</u>
Total Nonfarm	1241.2	1243.8	1218.7	-2.6	22.5
Goods Producing	217.0	217.5	212.2	-0.5	4.8
Mining, Logging, and Construction	58.6	58.9	57.1	-0.3	1.5
Mining & Logging	6.1	6.1	6.2	0.0	-0.1
Construction	52.5	52.8	50.9	-0.3	1.6
Specialty Trade Contractors	34.1	34.3	32.6	-0.2	1.5
Manufacturing	158.4	158.6	155.1	-0.2	3.3
Durable Goods	73.1	73.2	74.3	-0.1	-1.2
Nondurable Goods	85.3	85.4	80.8	-0.1	4.5
Service Providing	1024.2	1026.3	1006.5	-2.1	17.7
Trade, Transportation & Utilities	254.1	257.1	252.4	-3.0	1.7
Wholesale Trade	47.3	48.9	46.4	-1.6	0.9
Retail Trade	141.8	142.7	142.5	-0.9	-0.7
Transport, Warehousing & Utilities	65.0	65.5	63.5	-0.5	1.5
Information	13.2	13.1	13.5	0.1	-0.3
Financial Activities	51.2	51.9	51.5	-0.7	-0.3
Finance & Insurance	37.9	38.6	38.0	-0.7	-0.1
Real Estate & Rental & Leasing	13.3	13.3	13.5	0.0	-0.2
Professional & Business Services	146.4	147.2	141.3	-0.8	5.1
Professional, Scientific & Technical	43.6	44.2	42.2	-0.6	1.4
Management of Companies	34.0	33.7	35.5	0.3	-1.5
Administrative & Support Services	68.8	69.3	63.6	-0.5	5.2
Educational & Health Services	186.9	186.0	180.3	0.9	6.6
Educational Services	15.6	14.3	12.6	1.3	3.0
Health Care & Social Assistance	171.3	171.7	167.7	-0.4	3.6
Ambulatory Health Care	58.3	57.6	53.9	0.7	4.4
Social Assistance	37.8	39.1	39.5	-1.3	-1.7
Leisure & Hospitality	123.2	124.3	118.6	-1.1	4.6
Arts, Entertainment & Recreation	12.7	13.0	12.3	-0.3	0.4
Accommodation & Food Services	110.5	111.3	106.3	-0.8	4.2
Accommodation Services	12.9	13.2	11.7	-0.3	1.2
Food Services	97.6	98.1	94.6	-0.5	3.0
Other Services	49.3	49.6	47.5	-0.3	1.8
Government	199.9	197.1	201.4	2.8	-1.5
Federal Government	20.2	20.5	20.3	-0.3	-0.1
State Government	74.5	73.0	75.0	1.5	-0.5
Local Government	105.2	103.6	106.1	1.6	-0.9

State of Arkansas Nonfarm Payroll Job Summary

July 2017 - August 2017

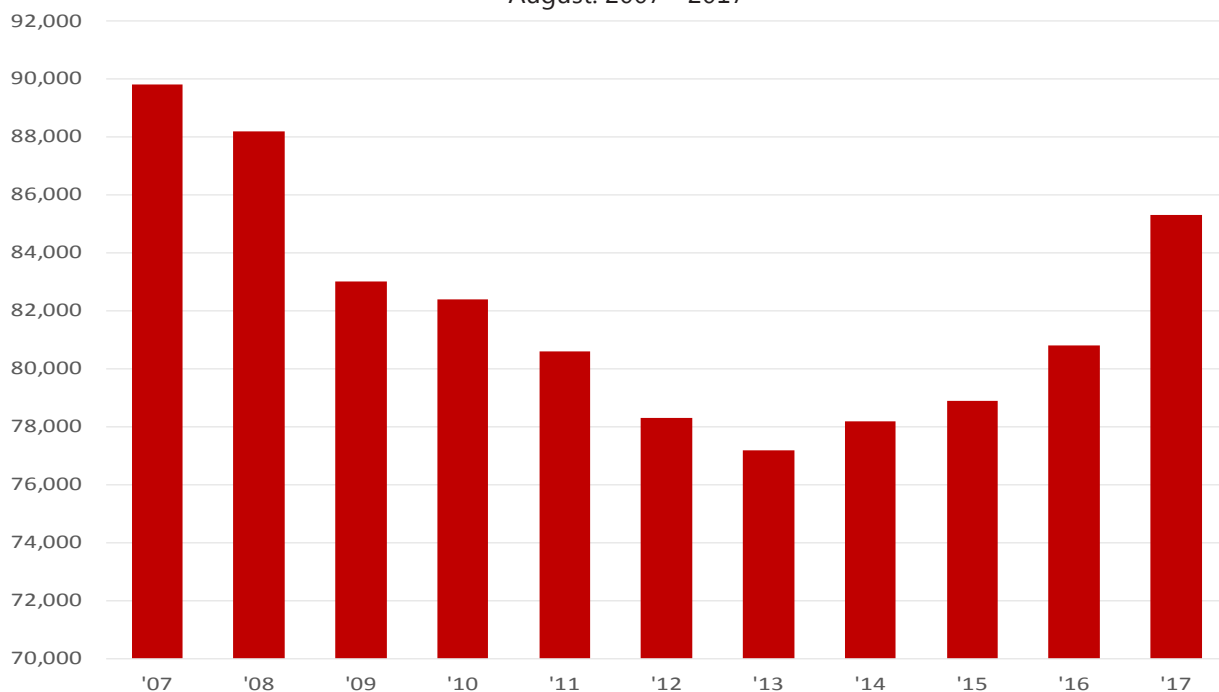
Arkansas' nonfarm payroll jobs decreased 2,600 in August to total 1,241,200. Seven major industry sectors posted declines, while three sectors added jobs. Employment in **trade, transportation, and utilities** dropped 3,000. A majority of the loss occurred in wholesale trade (-1,600), attributed in part to reported contractions in farm supplies merchant wholesalers. Jobs in **leisure and hospitality** decreased 1,100. Accommodation and food services posted most of the decline (-800). **Government** added 2,800 jobs. Expansions occurred in local (+1,600) and state (+1,500) government, as public educational facilities begin the new school year.

August 2016 - August 2017

Compared to August 2016, nonfarm payroll jobs in Arkansas rose 22,500. Growth occurred in seven major industry sectors, with four adding 3,300 or more jobs, each. Employment is down in four industry sectors. **Educational and health services** reported the largest increase, up 6,600. Gains were seen in both health care and social assistance (+3,600) and educational services (+3,000). **Professional and business services** added 5,100 jobs. Most of the expansion occurred in administrative and support services (+5,200), a subsector which includes employment agencies. Jobs in **leisure and hospitality** rose 4,600, largely in food services (+3,000). **Manufacturing** increased 3,300, all in nondurable goods manufacturing (+4,500). Gains was also reported in **other services** (+1,800), **trade-transportation-utilities** (+1,700), and **construction** (+1,600). **Government** posted the largest decline, down 1,500.

Jobs in Nondurable Goods Manufacturing (Not Seasonally Adjusted)

August: 2007 - 2017



Labor Market Report

State of Arkansas

Production Workers- Hours and Earnings

Manufacturing

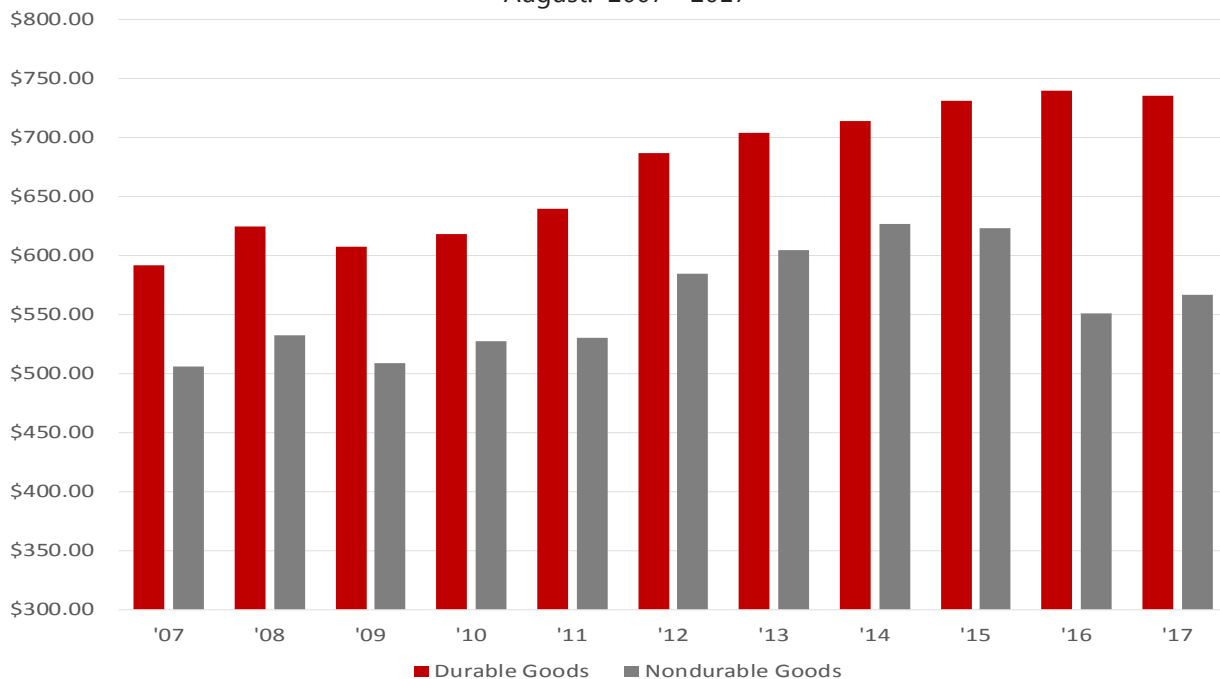
	<u>Aug 17</u>	<u>Jul 17</u>	<u>Aug 16</u>
Average Weekly Hours	39.4	39.8	41.0
Average Hourly Earnings	16.29	16.05	15.64
Average Weekly Earnings	641.83	638.79	641.24

Durable Goods and Nondurable Goods Manufacturing

Durable Goods Manufacturing				Nondurable Goods Manufacturing			
	<u>Aug 17</u>	<u>Jul 17</u>	<u>Aug 16</u>		<u>Aug 17</u>	<u>Jul 17</u>	<u>Aug 16</u>
Average Weekly Hours	41.0	39.6	42.6	Average Weekly Hours	38.1	39.9	39.5
Average Hourly Earnings	17.94	18.10	17.36	Average Hourly Earnings	14.88	14.41	13.94
Average Weekly Earnings	735.54	716.76	739.54	Average Weekly Earnings	566.93	574.96	550.63

Average Weekly Earnings: Durable Goods vs. Nondurable Goods

August: 2007 - 2017



Labor Market Report

Metropolitan Statistical Areas Little Rock-North Little Rock-Conway MSA

The Little Rock-North Little Rock-Conway MSA= Faulkner, Grant, Lonoke, Perry, Pulaski, & Saline counties.

Civilian Labor Force Estimates (Not Seasonally Adjusted)

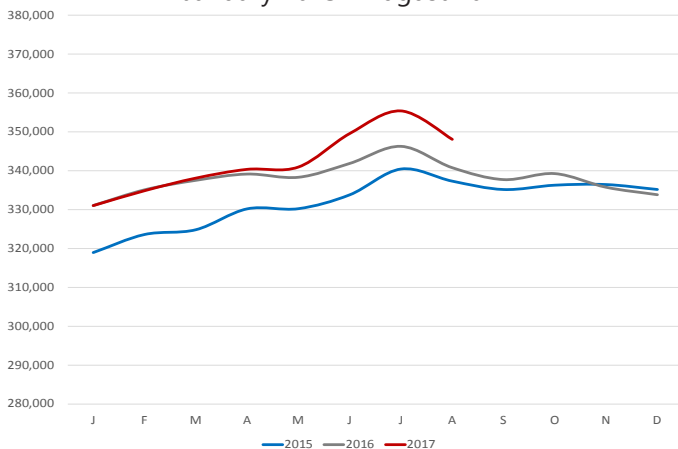
	Aug 17	Jul 17	Aug 16	OTM	QTY
Civilian Labor Force	359,448	367,752	353,122	-8,304	6,326
Employment	348,064	355,378	340,768	-7,314	7,296
Unemployment	11,384	12,374	12,354	-990	-970
Unemployment Rate	3.2	3.4	3.5	-0.2	-0.3

Nonfarm Payroll Jobs (Not Seasonally Adjusted)

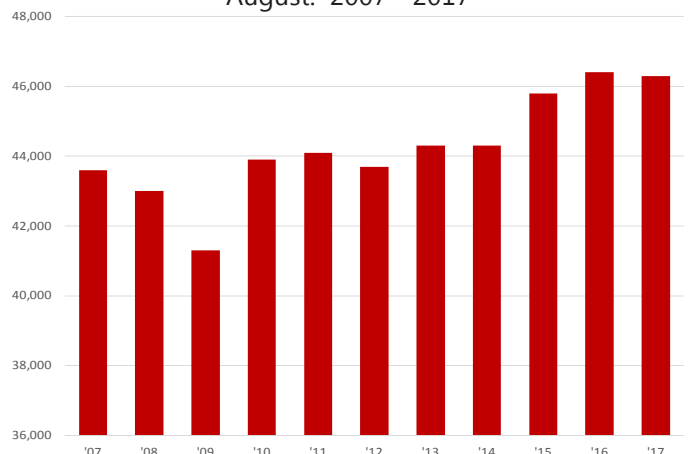
(In Thousands)

NAICS	Aug 17	Jul 17	Aug 16	OTM	QTY
Total Nonfarm	353.8	353.5	352.8	0.3	1.0
Goods Producing	37.7	37.6	37.3	0.1	0.4
Mining, Logging & Construction	17.7	17.6	17.1	0.1	0.6
Manufacturing	20.0	20.0	20.2	0.0	-0.2
Service Providing	316.1	315.9	315.5	0.2	0.6
Trade, Transportation & Utilities	69.8	70.5	69.8	-0.7	0.0
Wholesale Trade	15.0	15.1	15.1	-0.1	-0.1
Retail Trade	38.8	39.3	39.2	-0.5	-0.4
Trans., Warehousing & Utilities	16.0	16.1	15.5	-0.1	0.5
Information	6.1	6.1	6.3	0.0	-0.2
Financial Activities	20.6	20.6	20.5	0.0	0.1
Professional & Business Services	46.3	46.5	46.4	-0.2	-0.1
Educational & Health Services	56.7	56.0	54.8	0.7	1.9
Leisure & Hospitality	33.7	34.0	34.6	-0.3	-0.9
Other Services	15.0	15.1	14.7	-0.1	0.3
Government	67.9	67.1	68.4	0.8	-0.5
Federal Government	9.7	9.7	9.6	0.0	0.1
State Government	34.3	33.7	34.1	0.6	0.2
Local Government	23.9	23.7	24.7	0.2	-0.8

Number of Employed
January 2015 - August 2017



Jobs in Professional & Business Services
August: 2007 - 2017



Labor Market Report

Metropolitan Statistical Areas Fayetteville-Springdale-Rogers MSA

The Fayetteville-Springdale-Rogers MSA= Benton, Madison, & Washington counties in Arkansas & McDonald county in Missouri.

Civilian Labor Force Estimates (Not Seasonally Adjusted)

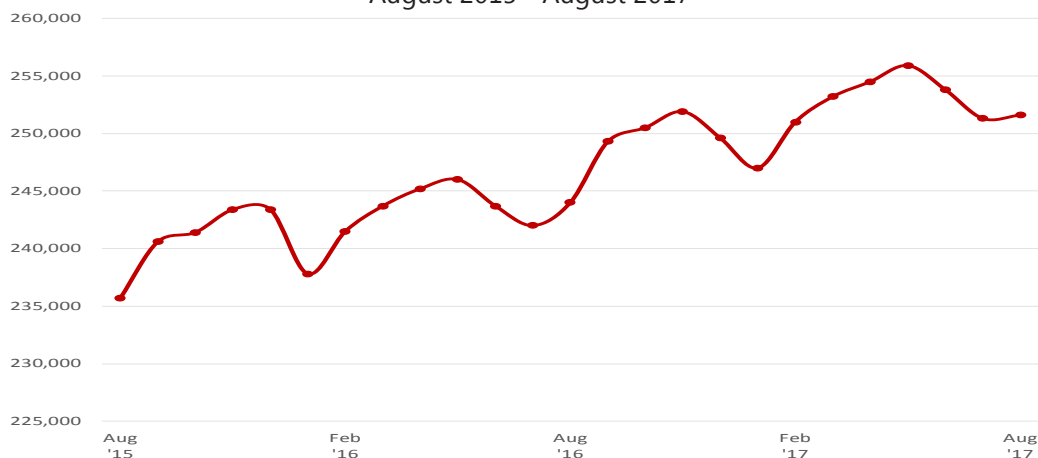
	Aug 17	Jul 17	Aug 16	OTM	QTY
Civilian Labor Force	277,181	283,189	265,220	-6,008	11,961
Employment	269,663	274,971	257,669	-5,308	11,994
Unemployment	7,518	8,218	7,551	-700	-33
Unemployment Rate	2.7	2.9	2.8	-0.2	-0.1

Nonfarm Payroll Jobs (Not Seasonally Adjusted)

(In Thousands)

NAICS	Aug 17	Jul 17	Aug 16	OTM	QTY
Total Nonfarm	251.6	251.3	244.0	0.3	7.6
Goods Producing	39.3	39.4	38.2	-0.1	1.1
Mining, Logging & Construction	11.2	11.2	10.6	0.0	0.6
Manufacturing	28.1	28.2	27.6	-0.1	0.5
Service Providing	212.3	211.9	205.8	0.4	6.5
Trade, Transportation & Utilities	56.4	56.5	56.1	-0.1	0.3
Wholesale Trade	12.9	12.9	12.4	0.0	0.5
Retail Trade	25.8	25.9	26.7	-0.1	-0.9
Trans., Warehousing & Utilities	17.7	17.7	17.0	0.0	0.7
Information	1.9	1.9	1.9	0.0	0.0
Financial Activities	8.0	8.0	7.7	0.0	0.3
Professional & Business Services	52.0	52.2	49.2	-0.2	2.8
Educational & Health Services	27.8	27.5	26.7	0.3	1.1
Leisure & Hospitality	26.1	26.6	25.2	-0.5	0.9
Other Services	7.8	7.8	7.6	0.0	0.2
Government	32.3	31.4	31.4	0.9	0.9
Federal Government	2.5	2.6	2.5	-0.1	0.0
State Government	12.6	11.8	11.9	0.8	0.7
Local Government	17.2	17.0	17.0	0.2	0.2

Nonfarm Payroll Jobs
August 2015 - August 2017



Labor Market Report

Metropolitan Statistical Areas Fort Smith MSA

The Fort Smith MSA= Crawford & Sebastian counties in Arkansas & LeFlore & Sequoyah counties in Oklahoma.

Civilian Labor Force Estimates (Not Seasonally Adjusted)

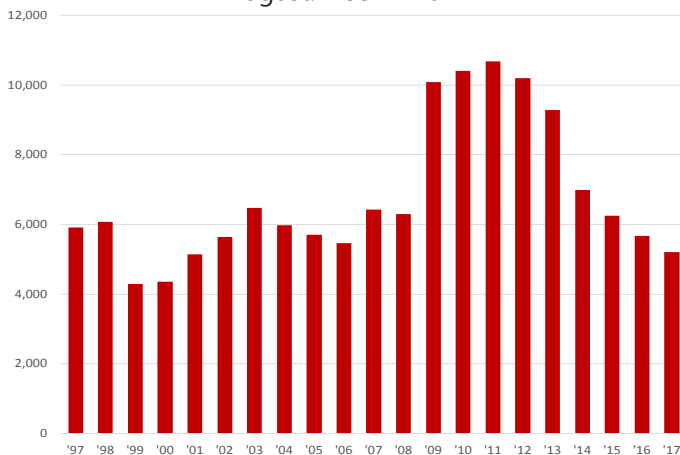
	<u>Aug 17</u>	<u>Jul 17</u>	<u>Aug 16</u>	<u>OTM</u>	<u>QTY</u>
Civilian Labor Force	122,231	123,168	121,797	-937	434
Employment	117,029	117,948	116,129	-919	900
Unemployment	5,202	5,220	5,668	-18	-466
Unemployment Rate	4.3	4.2	4.7	0.1	-0.4

Nonfarm Payroll Jobs (Not Seasonally Adjusted)

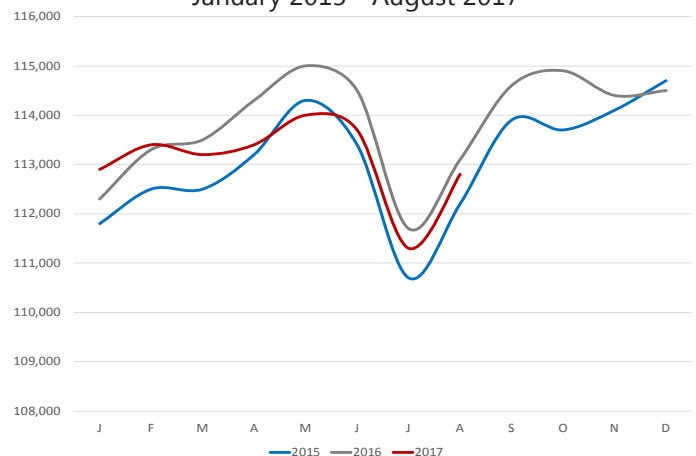
(In Thousands)

<u>NAICS</u>	<u>Aug 17</u>	<u>Jul 17</u>	<u>Aug 16</u>	<u>OTM</u>	<u>QTY</u>
Total Nonfarm	112.8	111.3	113.1	1.5	-0.3
Goods Producing	23.2	23.0	23.6	0.2	-0.4
Mining, Logging & Construction	5.4	5.4	5.6	0.0	-0.2
Manufacturing	17.8	17.6	18.0	0.2	-0.2
Service Providing	89.6	88.3	89.5	1.3	0.1
Trade, Transportation & Utilities	23.2	23.2	23.8	0.0	-0.6
Wholesale Trade	3.9	4.0	4.0	-0.1	-0.1
Retail Trade	12.8	12.7	13.1	0.1	-0.3
Trans., Warehousing & Utilities	6.5	6.5	6.7	0.0	-0.2
Information	1.3	1.3	1.2	0.0	0.1
Financial Activities	3.8	3.8	3.8	0.0	0.0
Professional & Business Services	13.1	13.1	12.7	0.0	0.4
Educational & Health Services	16.8	16.7	16.7	0.1	0.1
Leisure & Hospitality	9.9	9.9	9.9	0.0	0.0
Other Services	4.3	4.3	4.3	0.0	0.0
Government	17.2	16.0	17.1	1.2	0.1
Federal Government	1.3	1.3	1.3	0.0	0.0
State Government	2.9	2.9	2.9	0.0	0.0
Local Government	13.0	11.8	12.9	1.2	0.1

Number of Unemployed
August: 1997 - 2017



Nonfarm Payroll Jobs
January 2015 - August 2017



Labor Market Report

Metropolitan Statistical Areas

Hot Springs MSA

The Hot Springs MSA= Garland County.

Civilian Labor Force Estimates (Not Seasonally Adjusted)

	Aug 17	Jul 17	Aug 16	OTM	QTY
Civilian Labor Force	41,888	42,923	40,510	-1,035	1,378
Employment	40,313	41,153	38,818	-840	1,495
Unemployment	1,575	1,770	1,692	-195	-117
Unemployment Rate	3.8	4.1	4.2	-0.3	-0.4

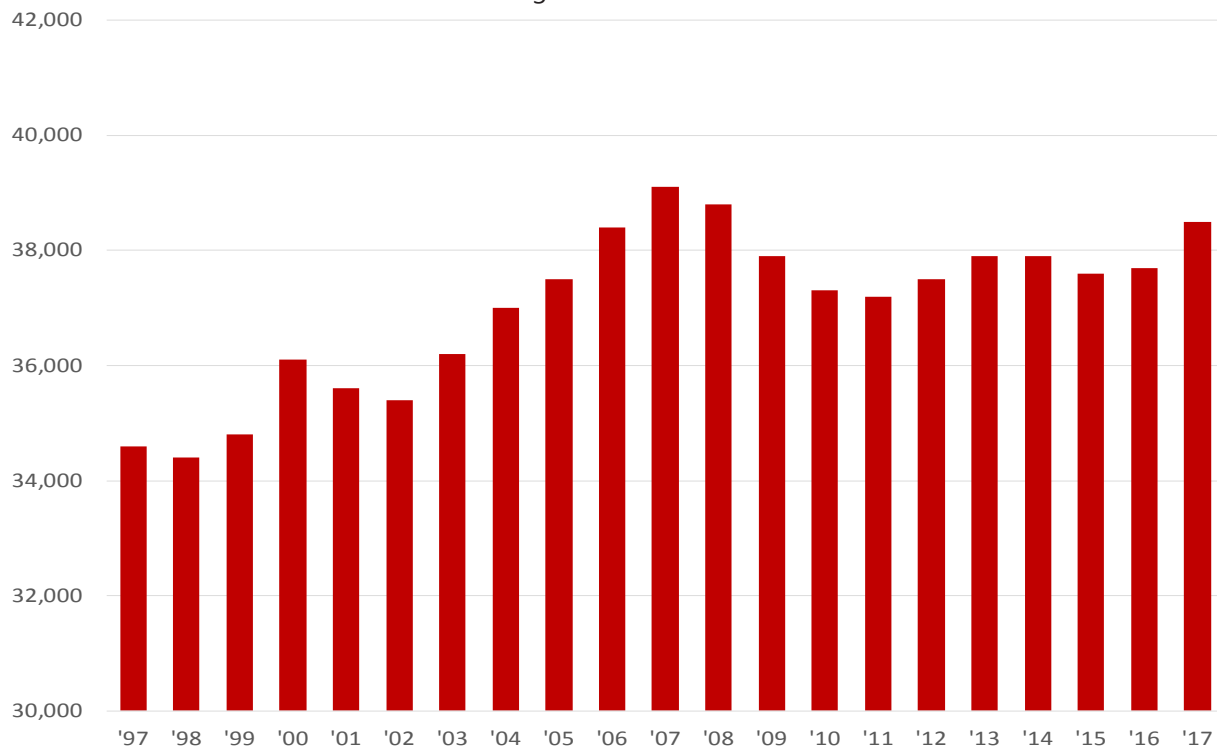
Nonfarm Payroll Jobs (Not Seasonally Adjusted)

(In Thousands)

NAICS	Aug 17	Jul 17	Aug 16	OTM	QTY
Total Nonfarm	38.5	38.5	37.7	0.0	0.8
Goods Producing	4.6	4.6	4.3	0.0	0.3
Service Providing	33.9	33.9	33.4	0.0	0.5
Government	4.2	4.0	4.3	0.2	-0.1

Nonfarm Payroll Jobs

August: 1997 - 2017



Labor Market Report

Metropolitan Statistical Areas

Jonesboro MSA

The Jonesboro MSA= Craighead & Poinsett counties.

Civilian Labor Force Estimates (Not Seasonally Adjusted)

	<u>Aug 17</u>	<u>Jul 17</u>	<u>Aug 16</u>	<u>OTM</u>	<u>QTY</u>
Civilian Labor Force	64,581	66,009	62,678	-1,428	1,903
Employment	62,532	63,794	60,568	-1,262	1,964
Unemployment	2,049	2,215	2,110	-166	-61
Unemployment Rate	3.2	3.4	3.4	-0.2	-0.2

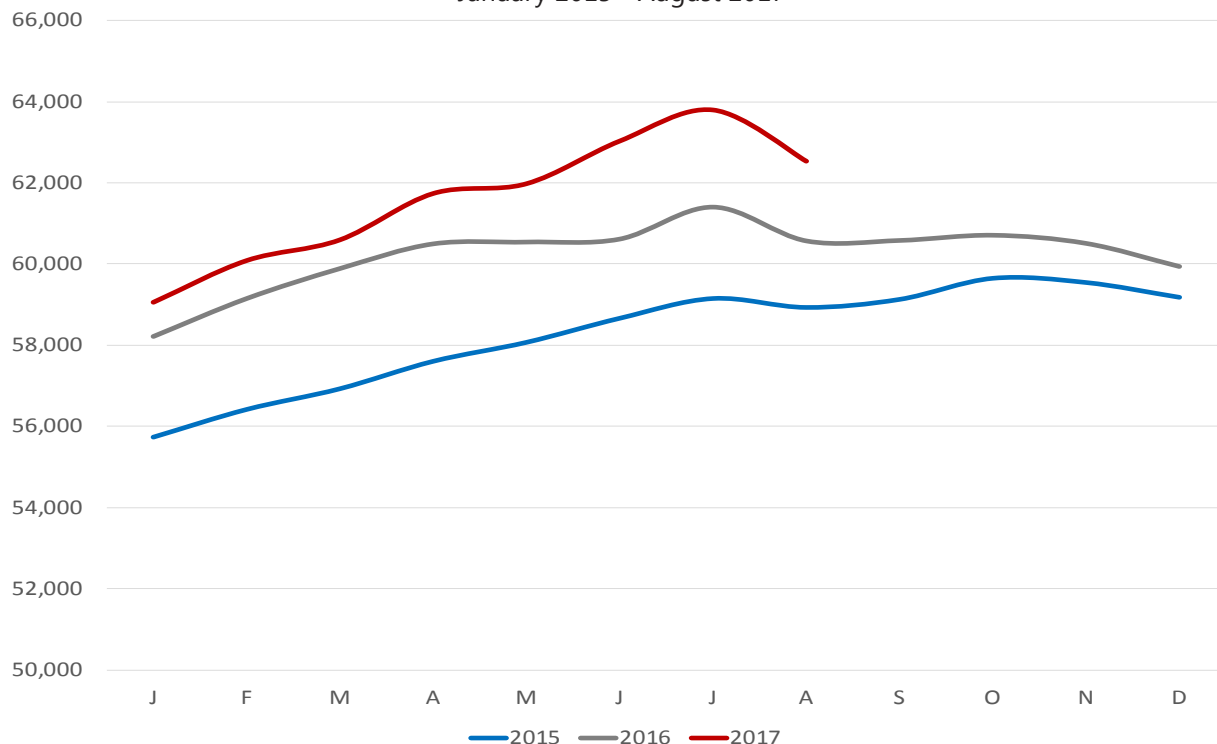
Nonfarm Payroll Jobs (Not Seasonally Adjusted)

(In Thousands)

<u>NAICS</u>	<u>Aug 17</u>	<u>Jul 17</u>	<u>Aug 16</u>	<u>OTM</u>	<u>QTY</u>
Total Nonfarm	56.5	56.4	55.5	0.1	1.0
Goods Producing	9.5	9.6	9.2	-0.1	0.3
Service Providing	47.0	46.8	46.3	0.2	0.7
Government	8.7	8.6	8.6	0.1	0.1

Number of Employed

January 2015 - August 2017



Labor Market Report

Metropolitan Statistical Areas

Pine Bluff MSA

The Pine Bluff MSA= Cleveland, Jefferson, & Lincoln counties.

Civilian Labor Force Estimates (Not Seasonally Adjusted)

	Aug 17	Jul 17	Aug 16	OTM	QTY
Civilian Labor Force	36,016	36,710	36,052	-694	-36
Employment	34,269	34,794	33,993	-525	276
Unemployment	1,747	1,916	2,059	-169	-312
Unemployment Rate	4.9	5.2	5.7	-0.3	-0.8

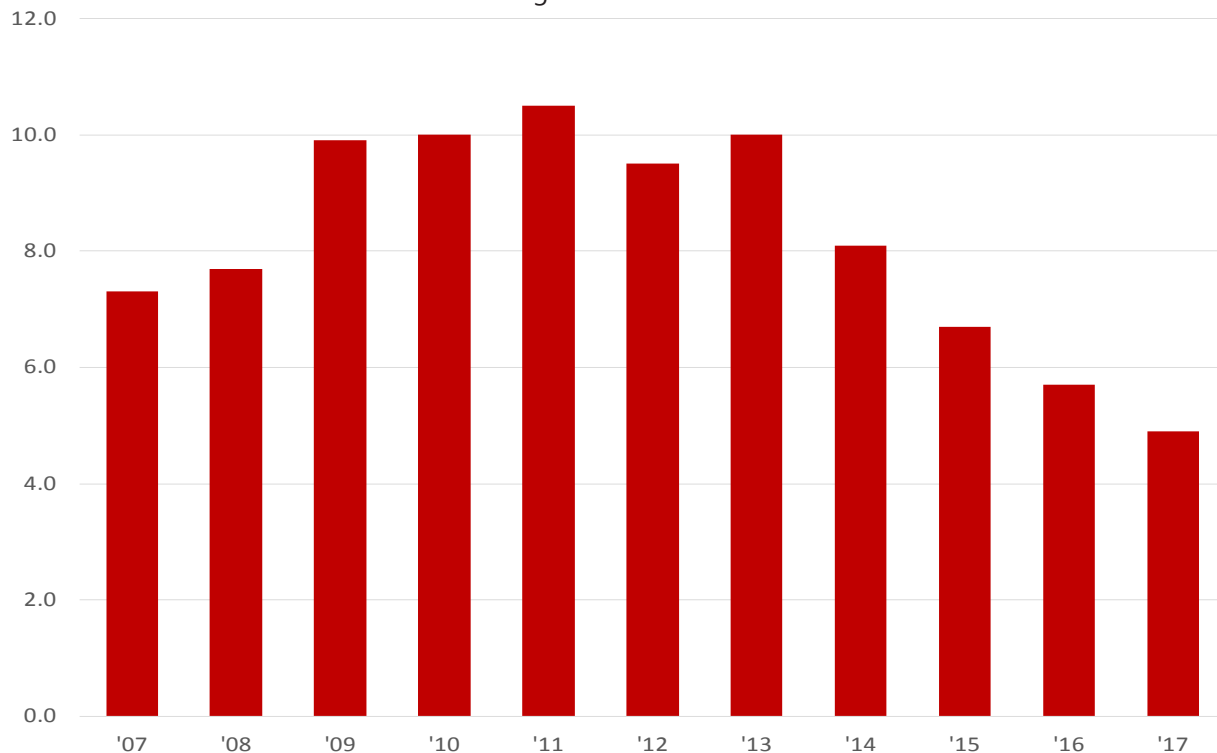
Nonfarm Payroll Jobs (Not Seasonally Adjusted)

(In Thousands)

NAICS	Aug 17	Jul 17	Aug 16	OTM	QTY
Total Nonfarm	32.6	32.4	33.0	0.2	-0.4
Goods Producing	5.9	5.9	6.1	0.0	-0.2
Service Providing	26.7	26.5	26.9	0.2	-0.2
Government	9.1	8.9	9.2	0.2	-0.1

Unemployment Rates

August: 2007 - 2017



Labor Market Report

Metropolitan Statistical Areas

Out-of-State MSA

Civilian Labor Force Estimates (Not Seasonally Adjusted)

Memphis, TN-MS-AR MSA

The Memphis, TN-MS-AR MSA= Fayette, Shelby, & Tipton counties in Tennessee; Benton, Desoto, Marshall, Tate, & Tunica counties in Mississippi; & Crittenden County in Arkansas.

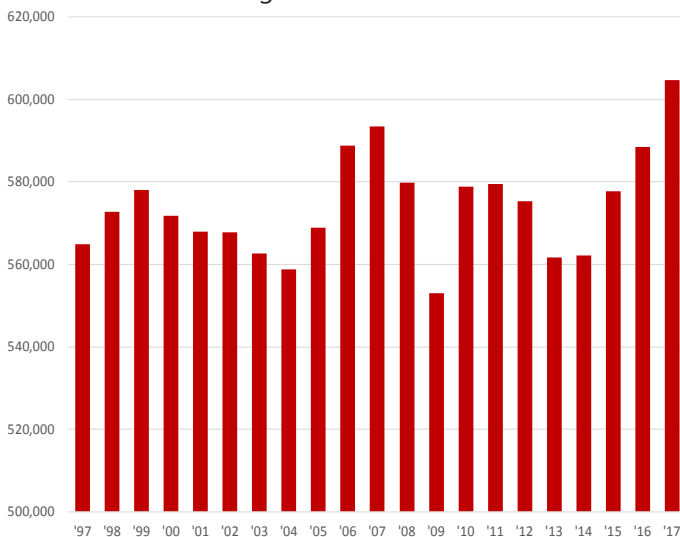
	<u>Aug 17</u>	<u>Jul 17</u>	<u>Aug 16</u>	<u>OTM</u>	<u>OTY</u>
Civilian Labor Force	630,876	641,388	623,533	-10,512	7,343
Employment	604,614	610,902	588,556	-6,288	16,058
Unemployment	26,262	30,486	34,977	-4,224	-8,715
Unemployment Rate	4.2	4.8	5.6	-0.6	-1.4

Texarkana MSA

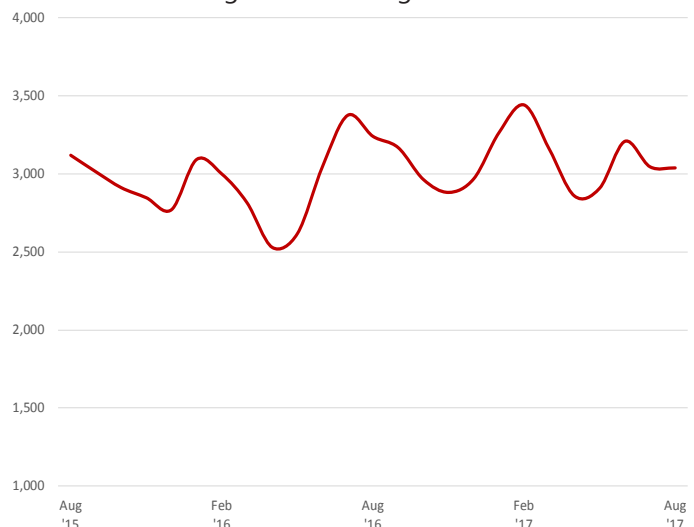
The Texarkana MSA= Bowie County in Texas & Little River & Miller counties in Arkansas.

	<u>Aug 17</u>	<u>Jul 17</u>	<u>Aug 16</u>	<u>OTM</u>	<u>OTY</u>
Civilian Labor Force	64,543	64,974	65,159	-431	-616
Employment	61,505	61,929	61,919	-424	-414
Unemployment	3,038	3,045	3,240	-7	-202
Unemployment Rate	4.7	4.7	5.0	0.0	-0.3

Employment - Memphis MSA
August: 1997 - 2017



Unemployment - Texarkana MSA
August 2015 - August 2017



Labor Market Report

Micropolitan Statistical Areas and Cities

Civilian Labor Force Estimates

Micropolitan Labor Force Estimates (Not Seasonally Adjusted)

Micro Area	August 2017				July 2017				August 2016			
	CLF	Emp	Unemp	Rate	CLF	Emp	Unemp	Rate	CLF	Emp	Unemp	Rate
Arkadelphia Micro	9,672	9,301	371	3.8	9,586	9,158	428	4.5	9,373	8,934	439	4.7
Batesville Micro	16,169	15,486	683	4.2	16,470	15,697	773	4.7	15,645	14,848	797	5.1
Blytheville Micro	18,048	16,983	1,065	5.9	18,295	17,082	1,213	6.6	18,385	17,093	1,292	7.0
Camden Micro	12,373	11,829	544	4.4	12,572	12,003	569	4.5	12,193	11,511	682	5.6
El Dorado Micro	16,252	15,432	820	5.0	16,395	15,460	935	5.7	16,406	15,437	969	5.9
Forrest City Micro	8,949	8,533	416	4.6	8,854	8,402	452	5.1	9,091	8,636	455	5.0
Harrison Micro	18,981	18,376	605	3.2	19,072	18,399	673	3.5	19,052	18,398	654	3.4
Helena-West Helena Micro	6,544	6,175	369	5.6	6,506	6,107	399	6.1	6,642	6,269	373	5.6
Hope Micro	13,587	13,122	465	3.4	13,745	13,239	506	3.7	13,301	12,800	501	3.8
Magnolia Micro	9,099	8,631	468	5.1	8,974	8,467	507	5.6	9,033	8,490	543	6.0
Malvern Micro	14,389	13,857	532	3.7	14,596	14,009	587	4.0	13,998	13,478	520	3.7
Mountain Home Micro	16,487	15,819	668	4.1	16,616	15,893	723	4.4	16,187	15,523	664	4.1
Paragould Micro	19,806	19,129	677	3.4	20,232	19,432	800	4.0	19,743	18,948	795	4.0
Russellville Micro	37,990	36,247	1,743	4.6	38,096	36,176	1,920	5.0	37,530	35,751	1,779	4.7
Searcy Micro	34,275	32,887	1,388	4.0	34,048	32,537	1,511	4.4	33,915	32,222	1,693	5.0

Arkadelphia Micro= Clark County
 Batesville Micro= Independence County
 Blytheville Micro= Mississippi County
 Camden Micro= Calhoun & Ouachita counties
 El Dorado Micro= Union County

Forrest City Micro= St. Francis County
 Harrison Micro= Boone & Newton counties
 Helena-West Helena Micro= Phillips County
 Hope Micro= Hempstead & Nevada counties
 Magnolia Micro= Columbia County

Malvern Micro= Hot Spring County
 Mountain Home Micro= Baxter County
 Paragould Micro= Greene County
 Russellville Micro= Pope & Yell counties
 Searcy Micro= White County

City Labor Force Statistics (Not Seasonally Adjusted)

City	August 2017				July 2017				August 2016			
	CLF	Emp	Unemp	Rate	CLF	Emp	Unemp	Rate	CLF	Emp	Unemp	Rate
Bella Vista	12,641	12,203	438	3.5	12,941	12,443	498	3.8	12,026	11,636	390	3.2
Benton	16,737	16,280	457	2.7	17,134	16,615	519	3.0	16,450	15,933	517	3.1
Bentonville	25,042	24,253	789	3.2	25,575	24,729	846	3.3	23,738	23,126	612	2.6
Blytheville	6,206	5,790	416	6.7	6,313	5,824	489	7.7	6,343	5,827	516	8.1
Cabot	11,994	11,604	390	3.3	12,262	11,876	386	3.1	11,762	11,385	377	3.2
Conway	33,902	32,839	1,063	3.1	34,723	33,541	1,182	3.4	33,329	32,164	1,165	3.5
El Dorado	7,076	6,680	396	5.6	7,113	6,692	421	5.9	7,165	6,682	483	6.7
Fayetteville	48,542	47,274	1,268	2.6	49,630	48,212	1,418	2.9	46,455	45,095	1,360	2.9
Fort Smith	41,015	39,625	1,390	3.4	41,581	40,071	1,510	3.6	40,500	39,051	1,449	3.6
Hot Springs	14,633	14,019	614	4.2	15,024	14,311	713	4.7	14,162	13,499	663	4.7
Jacksonville	12,032	11,551	481	4.0	12,309	11,787	522	4.2	11,818	11,303	515	4.4
Jonesboro	38,040	36,877	1,163	3.1	38,848	37,587	1,261	3.2	36,864	35,686	1,178	3.2
Little Rock	99,252	96,055	3,197	3.2	101,443	98,018	3,425	3.4	97,460	93,991	3,469	3.6
North Little Rock	30,721	29,620	1,101	3.6	31,449	30,226	1,223	3.9	30,121	28,984	1,137	3.8
Paragould	12,413	11,961	452	3.6	12,706	12,151	555	4.4	12,387	11,848	539	4.4
Pine Bluff	17,192	16,207	985	5.7	17,511	16,426	1,085	6.2	17,256	16,055	1,201	7.0
Rogers	35,409	34,455	954	2.7	36,119	35,132	987	2.7	33,715	32,854	861	2.6
Russellville	13,588	13,031	557	4.1	13,606	12,980	626	4.6	13,431	12,837	594	4.4
Searcy	10,558	10,151	407	3.9	10,490	10,043	447	4.3	10,404	9,946	458	4.4
Sherwood	15,990	15,532	458	2.9	16,357	15,850	507	3.1	15,707	15,199	508	3.2
Springdale	40,150	39,193	957	2.4	40,979	39,970	1,009	2.5	38,407	37,384	1,023	2.7
Texarkana, AR	14,046	13,400	646	4.6	14,341	13,648	693	4.8	13,986	13,316	670	4.8
Van Buren	10,567	10,230	337	3.2	10,728	10,358	370	3.4	10,460	10,091	369	3.5
West Memphis	11,064	10,526	538	4.9	11,308	10,720	588	5.2	10,765	10,197	568	5.3

Labor Market Report

County Labor Force Statistics

Civilian Labor Force Estimates

Not Seasonally Adjusted

County	August 2017				July 2017				August 2016			
	CLF	Emp	Unemp	Rate	CLF	Emp	Unemp	Rate	CLF	Emp	Unemp	Rate
Arkansas	9,414	9,146	268	2.8	9,564	9,268	296	3.1	9,387	9,087	300	3.2
Ashley	7,739	7,323	416	5.4	7,814	7,355	459	5.9	7,641	7,136	505	6.6
Baxter	16,487	15,819	668	4.1	16,616	15,893	723	4.4	16,187	15,523	664	4.1
Benton	133,179	129,351	3,828	2.9	136,022	131,893	4,129	3.0	126,897	123,343	3,554	2.8
Boone	15,647	15,157	490	3.1	15,704	15,157	547	3.5	15,696	15,164	532	3.4
Bradley	4,427	4,239	188	4.2	4,485	4,283	202	4.5	4,233	3,967	266	6.3
Calhoun	2,397	2,309	88	3.7	2,462	2,357	105	4.3	2,379	2,258	121	5.1
Carroll	13,504	13,153	351	2.6	13,422	13,029	393	2.9	13,221	12,848	373	2.8
Chicot	3,604	3,406	198	5.5	3,624	3,409	215	5.9	3,581	3,364	217	6.1
Clark	9,672	9,301	371	3.8	9,586	9,158	428	4.5	9,373	8,934	439	4.7
Clay	5,899	5,649	250	4.2	5,937	5,652	285	4.8	6,091	5,781	310	5.1
Cleburne	9,351	8,930	421	4.5	9,502	9,037	465	4.9	9,532	8,982	550	5.8
Cleveland	3,327	3,183	144	4.3	3,407	3,250	157	4.6	3,319	3,169	150	4.5
Columbia	9,099	8,631	468	5.1	8,974	8,467	507	5.6	9,033	8,490	543	6.0
Conway	8,460	8,094	366	4.3	8,583	8,171	412	4.8	8,468	7,945	523	6.2
Craighead	54,065	52,456	1,609	3.0	55,237	53,467	1,770	3.2	52,435	50,763	1,672	3.2
Crawford	27,214	26,283	931	3.4	27,615	26,613	1,002	3.6	26,959	25,926	1,033	3.8
Crittenden	22,351	21,389	962	4.3	22,817	21,782	1,035	4.5	21,701	20,720	981	4.5
Cross	7,941	7,656	285	3.6	7,767	7,468	299	3.8	8,015	7,695	320	4.0
Dallas	3,013	2,880	133	4.4	3,079	2,929	150	4.9	2,901	2,746	155	5.3
Desha	5,426	5,190	236	4.3	5,381	5,101	280	5.2	5,486	5,200	286	5.2
Drew	7,660	7,267	393	5.1	7,764	7,336	428	5.5	7,539	7,077	462	6.1
Faulkner	61,817	59,868	1,949	3.2	63,298	61,149	2,149	3.4	60,943	58,639	2,304	3.8
Franklin	7,532	7,282	250	3.3	7,508	7,211	297	4.0	7,435	7,147	288	3.9
Fulton	4,608	4,416	192	4.2	4,710	4,499	211	4.5	4,525	4,342	183	4.0
Garland	41,888	40,313	1,575	3.8	42,923	41,153	1,770	4.1	40,510	38,818	1,692	4.2
Grant	8,492	8,232	260	3.1	8,704	8,419	285	3.3	8,340	8,067	273	3.3
Greene	19,806	19,129	677	3.4	20,232	19,432	800	4.0	19,743	18,948	795	4.0
Hempstead	9,908	9,572	336	3.4	10,033	9,667	366	3.6	9,710	9,344	366	3.8
Hot Spring	14,389	13,857	532	3.7	14,596	14,009	587	4.0	13,998	13,478	520	3.7
Howard	6,025	5,854	171	2.8	6,155	5,955	200	3.2	5,940	5,742	198	3.3
Independence	16,169	15,486	683	4.2	16,470	15,697	773	4.7	15,645	14,848	797	5.1
Izard	5,063	4,788	275	5.4	4,927	4,640	287	5.8	4,975	4,707	268	5.4
Jackson	6,017	5,690	327	5.4	6,081	5,731	350	5.8	6,067	5,698	369	6.1
Jefferson	28,659	27,209	1,450	5.1	29,165	27,577	1,588	5.4	28,664	26,955	1,709	6.0
Johnson	10,482	10,019	463	4.4	10,660	10,146	514	4.8	10,285	9,793	492	4.8
Lafayette	2,525	2,391	134	5.3	2,531	2,393	138	5.5	2,500	2,343	157	6.3
Lawrence	6,781	6,527	254	3.7	6,681	6,399	282	4.2	6,777	6,465	312	4.6
Lee	3,118	2,978	140	4.5	3,135	2,978	157	5.0	3,136	2,994	142	4.5
Lincoln	4,030	3,877	153	3.8	4,138	3,967	171	4.1	4,069	3,869	200	4.9
Little River	5,711	5,431	280	4.9	5,804	5,524	280	4.8	5,686	5,391	295	5.2
Logan	9,189	8,855	334	3.6	9,260	8,860	400	4.3	9,204	8,791	413	4.5
Lonoke	34,040	32,977	1,063	3.1	34,863	33,749	1,114	3.2	33,452	32,352	1,100	3.3
Madison	7,520	7,319	201	2.7	7,748	7,528	220	2.8	7,277	7,056	221	3.0
Marion	6,586	6,346	240	3.6	6,637	6,378	259	3.9	6,577	6,328	249	3.8
Miller	20,265	19,396	869	4.3	20,670	19,754	916	4.4	20,152	19,274	878	4.4

(continued on Page 16)

County Labor Force Statistics

Civilian Labor Force Estimates

Not Seasonally Adjusted

(continued from Page 15)

County	August 2017				July 2017				August 2016			
	CLF	Emp	Unemp	Rate	CLF	Emp	Unemp	Rate	CLF	Emp	Unemp	Rate
Mississippi	18,048	16,983	1,065	5.9	18,295	17,082	1,213	6.6	18,385	17,093	1,292	7.0
Monroe	2,901	2,788	113	3.9	2,903	2,779	124	4.3	2,888	2,753	135	4.7
Montgomery	3,156	3,017	139	4.4	3,305	3,147	158	4.8	3,085	2,938	147	4.8
Nevada	3,679	3,550	129	3.5	3,712	3,572	140	3.8	3,591	3,456	135	3.8
Newton	3,334	3,219	115	3.4	3,368	3,242	126	3.7	3,356	3,234	122	3.6
Ouachita	9,976	9,520	456	4.6	10,110	9,646	464	4.6	9,814	9,253	561	5.7
Perry	4,261	4,102	159	3.7	4,374	4,203	171	3.9	4,226	4,032	194	4.6
Phillips	6,544	6,175	369	5.6	6,506	6,107	399	6.1	6,642	6,269	373	5.6
Pike	4,347	4,183	164	3.8	4,312	4,133	179	4.2	4,169	4,007	162	3.9
Poinsett	10,516	10,076	440	4.2	10,772	10,327	445	4.1	10,243	9,805	438	4.3
Polk	8,080	7,753	327	4.0	8,108	7,724	384	4.7	8,184	7,796	388	4.7
Pope	29,302	27,911	1,391	4.7	29,332	27,802	1,530	5.2	28,886	27,495	1,391	4.8
Prairie	3,710	3,566	144	3.9	3,706	3,553	153	4.1	3,631	3,494	137	3.8
Pulaski	192,786	186,487	6,299	3.3	197,124	190,299	6,825	3.5	189,227	182,481	6,746	3.6
Randolph	6,889	6,614	275	4.0	6,866	6,577	289	4.2	6,677	6,389	288	4.3
St. Francis	8,949	8,533	416	4.6	8,854	8,402	452	5.1	9,091	8,636	455	5.0
Saline	58,052	56,398	1,654	2.8	59,389	57,559	1,830	3.1	56,934	55,197	1,737	3.1
Scott	4,521	4,369	152	3.4	4,632	4,460	172	3.7	4,465	4,300	165	3.7
Searcy	3,051	2,913	138	4.5	2,916	2,769	147	5.0	3,153	3,020	133	4.2
Sebastian	58,924	56,887	2,037	3.5	59,702	57,528	2,174	3.6	58,164	56,064	2,100	3.6
Sevier	5,746	5,496	250	4.4	5,836	5,575	261	4.5	5,644	5,371	273	4.8
Sharp	6,044	5,776	268	4.4	6,175	5,874	301	4.9	5,960	5,651	309	5.2
Stone	4,790	4,581	209	4.4	4,778	4,554	224	4.7	4,802	4,570	232	4.8
Union	16,252	15,432	820	5.0	16,395	15,460	935	5.7	16,406	15,437	969	5.9
Van Buren	5,828	5,533	295	5.1	5,852	5,519	333	5.7	5,943	5,523	420	7.1
Washington	125,671	122,601	3,070	2.4	128,430	125,033	3,397	2.6	120,204	116,949	3,255	2.7
White	34,275	32,887	1,388	4.0	34,048	32,537	1,511	4.4	33,915	32,222	1,693	5.0
Woodruff	2,969	2,841	128	4.3	2,897	2,759	138	4.8	3,023	2,869	154	5.1
Yell	8,688	8,336	352	4.1	8,764	8,374	390	4.5	8,644	8,256	388	4.5

County Labor Force Summary

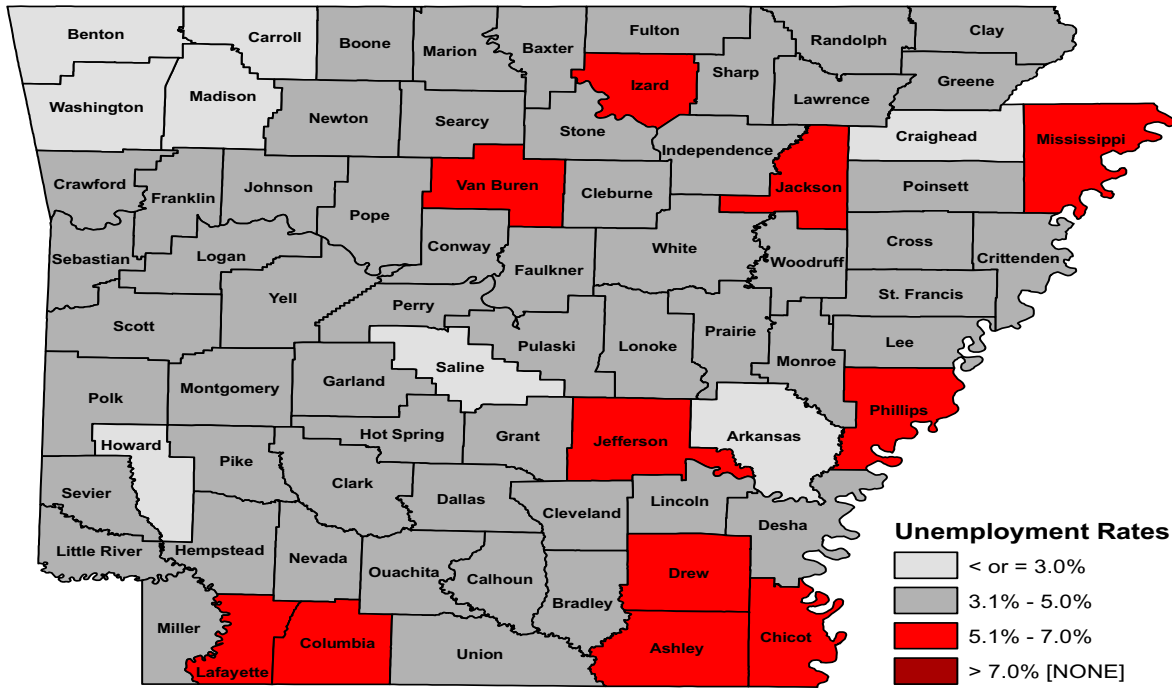
Between July and August, unemployment rates declined in 72 of Arkansas' 75 counties. Two counties-- Little River and Poinsett-- increased slightly while Ouachita County was unchanged over the month. Jobless rates ranged from a low of 2.4 percent in Washington County to a high of 5.9 percent in Mississippi County.

In August, thirty-seven counties posted jobless rates at or below four percent. This is up from 25 counties at or below four percent in July. For the sixth consecutive month, no county reported an unemployment rate above eight percent.

Compared to August 2016, jobless rates are down in sixty-six Arkansas counties. Five counties were the same, while rates in four counties increased over the year.

Labor Market Report

County Labor Force Statistics



Ranked by Unemployment Rates

August 2017- Not Seasonally Adjusted

Rank	County	Rate	Rank	County	Rate	Rank	County	Rate
1	Washington	2.4	25	Hot Spring	3.7	51	Dallas	4.4
2	Carroll	2.6	25	Lawrence	3.7	51	Johnson	4.4
3	Madison	2.7	25	Perry	3.7	51	Montgomery	4.4
4	Arkansas	2.8	29	Clark	3.8	51	Sevier	4.4
4	Howard	2.8	29	Garland	3.8	51	Sharp	4.4
4	Saline	2.8	29	Lincoln	3.8	51	Stone	4.4
7	Benton	2.9	29	Pike	3.8	57	Cleburne	4.5
8	Craighead	3.0	33	Monroe	3.9	57	Lee	4.5
9	Boone	3.1	33	Prairie	3.9	57	Searcy	4.5
9	Grant	3.1	35	Polk	4.0	60	Ouachita	4.6
9	Lonoke	3.1	35	Randolph	4.0	60	St. Francis	4.6
12	Faulkner	3.2	35	White	4.0	62	Pope	4.7
13	Franklin	3.3	38	Baxter	4.1	63	Little River	4.9
13	Pulaski	3.3	38	Yell	4.1	64	Union	5.0
15	Crawford	3.4	40	Bradley	4.2	65	Columbia	5.1
15	Greene	3.4	40	Clay	4.2	65	Drew	5.1
15	Hempstead	3.4	40	Fulton	4.2	65	Jefferson	5.1
15	Newton	3.4	40	Independence	4.2	65	Van Buren	5.1
15	Scott	3.4	40	Poinsett	4.2	69	Lafayette	5.3
20	Nevada	3.5	45	Cleveland	4.3	70	Ashley	5.4
20	Sebastian	3.5	45	Conway	4.3	70	Izard	5.4
22	Cross	3.6	45	Crittenden	4.3	70	Jackson	5.4
22	Logan	3.6	45	Desha	4.3	73	Chicot	5.5
22	Marion	3.6	45	Miller	4.3	74	Phillips	5.6
25	Calhoun	3.7	45	Woodruff	4.3	75	Mississippi	5.9

Labor Market Report

Local Workforce Development Areas Civilian Labor Force Estimates

LWDA Labor Force Estimates (Not Seasonally Adjusted)

LWDA	August 2017				July 2017				August 2016			
	CLF	Emp	Unemp	Rate	CLF	Emp	Unemp	Rate	CLF	Emp	Unemp	Rate
Central (minus LR)	254,054	246,029	8,025	3.2	259,840	251,070	8,770	3.4	249,615	240,925	8,690	3.5
City of Little Rock	99,252	96,055	3,197	3.2	101,443	98,018	3,425	3.4	97,460	93,991	3,469	3.6
Eastern	48,903	46,731	2,172	4.4	49,079	46,737	2,342	4.8	48,585	46,314	2,271	4.7
North Central	95,114	90,928	4,186	4.4	95,440	90,847	4,593	4.8	94,387	89,412	4,975	5.3
Northeast	122,004	117,434	4,570	3.7	124,020	118,936	5,084	4.1	120,351	115,244	5,107	4.2
Northwest	324,979	315,878	9,101	2.8	330,863	320,922	9,941	3.0	312,568	303,465	9,103	2.9
Southeast	82,778	79,072	3,706	4.5	84,046	79,965	4,081	4.9	82,259	77,891	4,368	5.3
Southwest	94,596	90,462	4,134	4.4	95,761	91,299	4,462	4.7	93,756	89,105	4,651	5.0
West Central	134,645	129,133	5,512	4.1	136,435	130,296	6,139	4.5	131,644	125,696	5,948	4.5
Western	115,460	111,429	4,031	3.5	116,825	112,396	4,429	3.8	114,411	110,024	4,387	3.8

