

# Arkansas

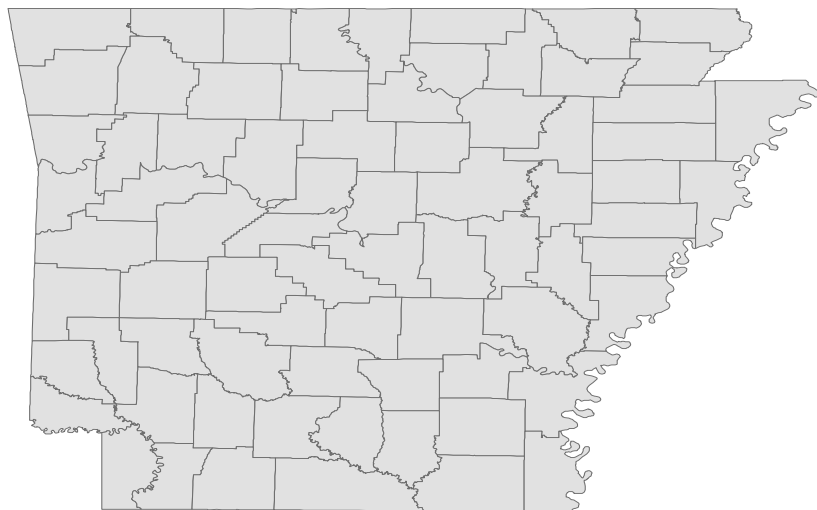
## Labor Market Report

**August 2016**



[www.discover.arkansas.gov](http://www.discover.arkansas.gov)

# Table of Contents



Monthly Spotlight.....	2
Arkansas Labor Force Summary.....	3
Arkansas Nonfarm Payroll Jobs.....	4
Arkansas Production Workers.....	6
Metropolitan Statistical Areas.....	7
Micropolitan Statistical Areas/Cities.....	14
County Labor Force Statistics.....	15
Local Workforce Development Areas.....	18

# Technical Notes

The *Arkansas Labor Market* is prepared monthly in conjunction with the U.S. Department of Labor, Bureau of Labor Statistics (BLS). The current month's estimates are preliminary, while previous data are subject to revision.

Estimates of nonfarm payroll jobs show the number of jobs by industry and reflect employment by place of work. Hours and earnings estimates are based on payroll and worker-hour data collected for production workers in manufacturing industries.

Industries are classified according to the North American Industry Classification System (NAICS). All estimates are based on a first quarter 2015 benchmark.

### **Explanation of Terms and Concepts**

#### **Monthly Business Survey of Employers**

A monthly sample survey designed to provide industry information on nonfarm payroll jobs. Data are compiled each month from mail surveys and telephone interviews conducted by the Bureau of Labor Statistics in cooperation with Department of Workforce Services. The data are based on establishment records and include all workers, full-or part-time, who received pay during the payroll period which includes the 12th of the

month. Approximately 5,000 Arkansas business establishments are surveyed.

#### **Metropolitan Statistical Area (MSA)**

A term applied by the U.S. Office of Management and Budget to counties that have one or more central cities and that meet specified criteria of population density, commuting patterns and social and economic integration.

#### **Current Population Survey (CPS)**

A monthly sample survey of the population 16 years of age and over, designed to provide data on the labor force, the employed and the unemployed. The survey is conducted each month by the Bureau of the Census for BLS. The information is collected by trained interviewers from a sample of about 60,000 households. The data collected are based on the activity reported for the calendar week including the 12th of the month. Approximately 800 Arkansas households are represented in the sample survey.

#### **Civilian Labor Force**

The sum of all employed and unemployed persons 16 years of age or older. Members of the Armed Forces are excluded.

#### **Employment**

An estimate of the number of persons who worked any time for pay or profit or worked 15 hours or more as unpaid workers in a family business during the calendar week which includes the 12th of the month. Also included are those who, although not working, had some job attachment and were not looking for work, and persons involved in labor management disputes.

#### **Unemployment**

An estimate of the number of persons who did not have a job, but were available for work and actively seeking work during the calendar week which includes the 12th of the month.

#### **Unemployment Rate**

The number of unemployed as a percentage of the civilian labor force. Unemployment rates are calculated from unrounded data.

#### **Seasonal Adjustment**

A statistical technique applied to monthly data to eliminate changes that normally occur during the year due to seasonal events such as weather, major holidays, schedule shifts, harvest times, and the opening/closing of schools.

## August Spotlight

### Seasonal Employment Trends (Part 2 of 2)

As discussed in the July Labor Market Report, employment in some major industry sectors is directly influenced by seasonal trends. When employment from multiple years is compared, these patterns become apparent. Seasonal trends are related to set schedules of operation, holidays, and weather patterns. Last month's Spotlight discussed the seasonal trends seen in state and local government, educational services, and **leisure and hospitality**. In this issue, the seasonality of **construction** and professional-scientific-technical services is highlighted, along with some of the industries that are *indirectly* affected by seasonal movements.

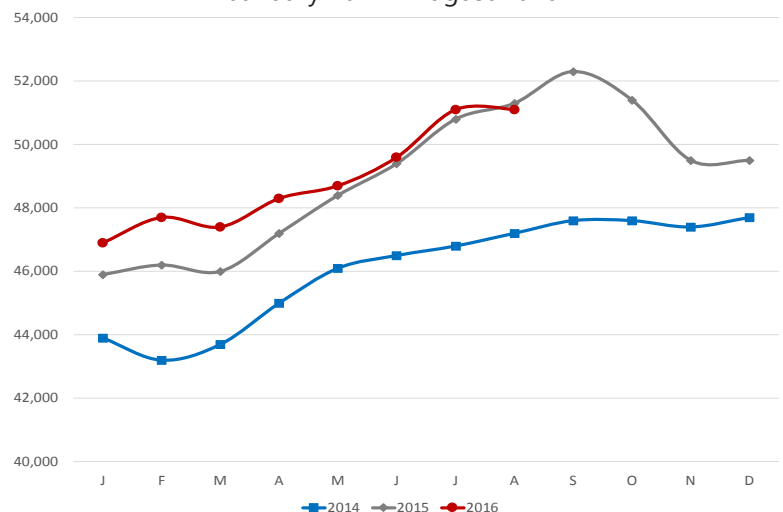
Employment in the **construction** sector is significantly affected by weather patterns. While construction operations run year round, more projects are commissioned during the spring and summer than in the winter. In general, employment in **construction** begins to increase in March, often peaks around July or August, and then tends to decline in September or October (see Chart 4). These weather patterns are a generalization, as non-typical weather events will also influence jobs in **construction**. On the other hand, large scale projects can cause employment spikes that are unrelated to the weather.

Found under the **professional and business services** sector, the professional-scientific-technical services subsector includes a particular type of business that is highly seasonal-- accounting and tax preparation services. Seasonal hiring related to tax preparation typically begins in November or December, with employment in the subsector peaking from February to April. Employment tends to remain fairly constant throughout the summer and fall months. While this seasonal trend is significant, employment in accounting and tax preparation is not large enough to affect the trend of the **professional and business services** sector as a whole.

There are also other seasonal businesses, many of which may not be visible when tracking the movement of the major industry sector. For example, landscaping services is influenced by weather and the seasons. Employment in landscaping services increases during the spring and summer months, but the number of workers is not large enough to impact the movement of the administrative and support services subsector as a whole. Similarly, employment in other services to buildings and dwellings (also under the administrative and support services subsector) tends to increase in the spring and summer. This includes activities such as cleaning swimming pools, driveways, and gutters and power-washing building exteriors.

It is important to keep in mind that some other industries are *indirectly* affected by these seasonal employment fluctuations. The timber industry, for example, relies heavily on the **construction** sector and may experience declines and increases in employment related to construction patterns. Similarly, movement within the retail trade sector will affect both wholesale trade and the transportation of goods. Some industries are indirectly affected by school closures in the summer. Employment in day care services (found under the social assistance subsector) increases in the summer when schools are closed, as does employment at businesses such as day camps and summer sports programs. There are also many non-profit organizations (under **Other Services**) with activities designed for children during the summer months.

**Chart 4. Employment in Construction**  
January 2014 - August 2016



### State of Arkansas Civilian Labor Force Summary

Labor force data, produced by the U.S. Department of Labor, Bureau of Labor Statistics and released by the Arkansas Department of Workforce Services, show Arkansas' seasonally adjusted unemployment rate remained stable between July and August at 3.9 percent. Arkansas' civilian labor force declined 1,520, a result of 1,787 fewer employed and 267 more unemployed Arkansans. At 4.9 percent, the United States' jobless rate was unchanged over the month.

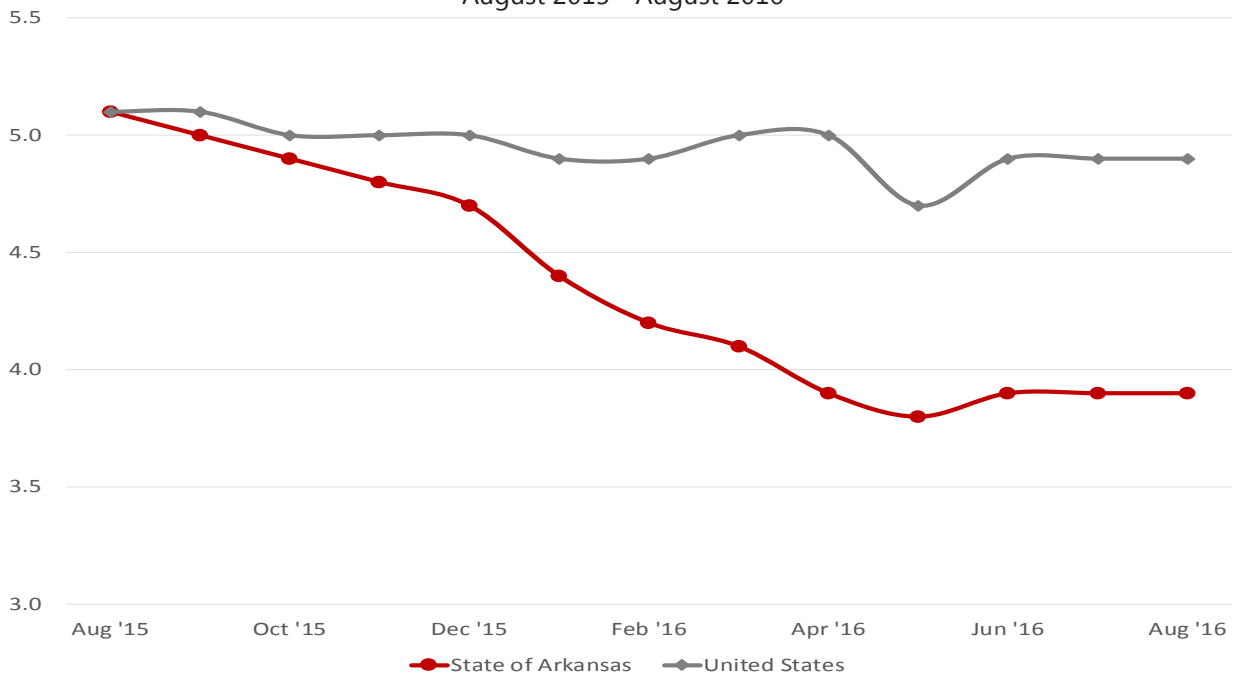
BLS Program Operations Manager Susan Price said, "The unemployment rate in Arkansas remained stable this month, as did the national unemployment rate. While jobless rates in Arkansas and the U.S. were both at 5.1 percent in August 2015, Arkansas has declined at a faster pace. We are now one full percentage point lower than the national rate."

#### Civilian Labor Force Estimates

	Seasonally Adjusted			Not Seasonally Adjusted			
	Aug 16	Jul 16	Aug 15	Aug 16	Jul 16	Aug 15	
Civilian Labor Force	1,355,931	1,357,451	1,331,901	Civilian Labor Force	1,351,630	1,369,163	1,334,052
Employment	1,302,761	1,304,548	1,264,414	Employment	1,299,864	1,309,896	1,268,523
Unemployment	53,170	52,903	67,487	Unemployment	51,766	59,267	65,529
Unemployment Rate	3.9	3.9	5.1	Unemployment Rate	3.8	4.3	4.9
U.S. Unemployment	4.9	4.9	5.1	U.S. Unemployment	5.0	5.1	5.2

#### Unemployment Rates (Seasonally Adjusted)

State of Arkansas vs. United States  
August 2015 - August 2016



State of Arkansas  
Nonfarm Payroll Jobs

## Not Seasonally Adjusted

(In Thousands)

(NAICS)	<u>Aug 16</u>	<u>Jul 16</u>	<u>Aug 15</u>	<u>OTM</u>	<u>OTY</u>
Total Nonfarm	1220.0	1215.0	1203.1	5.0	16.9
Goods Producing	210.6	211.4	213.9	-0.8	-3.3
Mining, Logging, and Construction	57.6	57.8	59.1	-0.2	-1.5
<b>Mining &amp; Logging</b>	<b>6.5</b>	<b>6.7</b>	<b>7.8</b>	<b>-0.2</b>	<b>-1.3</b>
<b>Construction</b>	<b>51.1</b>	<b>51.1</b>	<b>51.3</b>	<b>0.0</b>	<b>-0.2</b>
Specialty Trade Contractors	34.2	33.8	31.9	0.4	2.3
<b>Manufacturing</b>	<b>153.0</b>	<b>153.6</b>	<b>154.8</b>	<b>-0.6</b>	<b>-1.8</b>
Durable Goods	73.6	73.5	75.9	0.1	-2.3
Nondurable Goods	79.4	80.1	78.9	-0.7	0.5
Service Providing	1009.4	1003.6	989.2	5.8	20.2
<b>Trade, Transportation &amp; Utilities</b>	<b>256.8</b>	<b>255.3</b>	<b>253.4</b>	<b>1.5</b>	<b>3.4</b>
Wholesale Trade	49.0	48.5	47.6	0.5	1.4
Retail Trade	143.8	143.1	141.6	0.7	2.2
Transport, Warehousing & Utilities	64.0	63.7	64.2	0.3	-0.2
<b>Information</b>	<b>13.8</b>	<b>13.9</b>	<b>13.4</b>	<b>-0.1</b>	<b>0.4</b>
<b>Financial Activities</b>	<b>49.8</b>	<b>50.0</b>	<b>49.7</b>	<b>-0.2</b>	<b>0.1</b>
Finance & Insurance	36.6	36.8	36.3	-0.2	0.3
Real Estate & Rental & Leasing	13.2	13.2	13.4	0.0	-0.2
<b>Professional &amp; Business Services</b>	<b>145.1</b>	<b>145.2</b>	<b>137.5</b>	<b>-0.1</b>	<b>7.6</b>
Professional, Scientific & Technical	42.9	43.7	40.6	-0.8	2.3
Management of Companies	35.3	35.1	33.8	0.2	1.5
Administrative & Support Services	66.9	66.4	63.1	0.5	3.8
<b>Educational &amp; Health Services</b>	<b>180.6</b>	<b>179.2</b>	<b>174.2</b>	<b>1.4</b>	<b>6.4</b>
Educational Services	12.6	12.1	12.0	0.5	0.6
Health Care & Social Assistance	168.0	167.1	162.2	0.9	5.8
Ambulatory Health Care	52.9	53.3	51.5	-0.4	1.4
Social Assistance	40.1	39.0	38.6	1.1	1.5
<b>Leisure &amp; Hospitality</b>	<b>116.7</b>	<b>116.0</b>	<b>115.1</b>	<b>0.7</b>	<b>1.6</b>
Arts, Entertainment & Recreation	12.2	12.4	12.1	-0.2	0.1
Accommodation & Food Services	104.5	103.6	103.0	0.9	1.5
Accommodation Services	12.0	12.3	11.6	-0.3	0.4
Food Services	92.5	91.3	91.4	1.2	1.1
<b>Other Services</b>	<b>44.4</b>	<b>45.0</b>	<b>44.0</b>	<b>-0.6</b>	<b>0.4</b>
<b>Government</b>	<b>202.2</b>	<b>199.0</b>	<b>201.9</b>	<b>3.2</b>	<b>0.3</b>
Federal Government	20.6	20.6	20.3	0.0	0.3
State Government	75.0	73.4	74.4	1.6	0.6
Local Government	106.6	105.0	107.2	1.6	-0.6

## State of Arkansas Nonfarm Payroll Job Summary

### July 2016 - August 2016

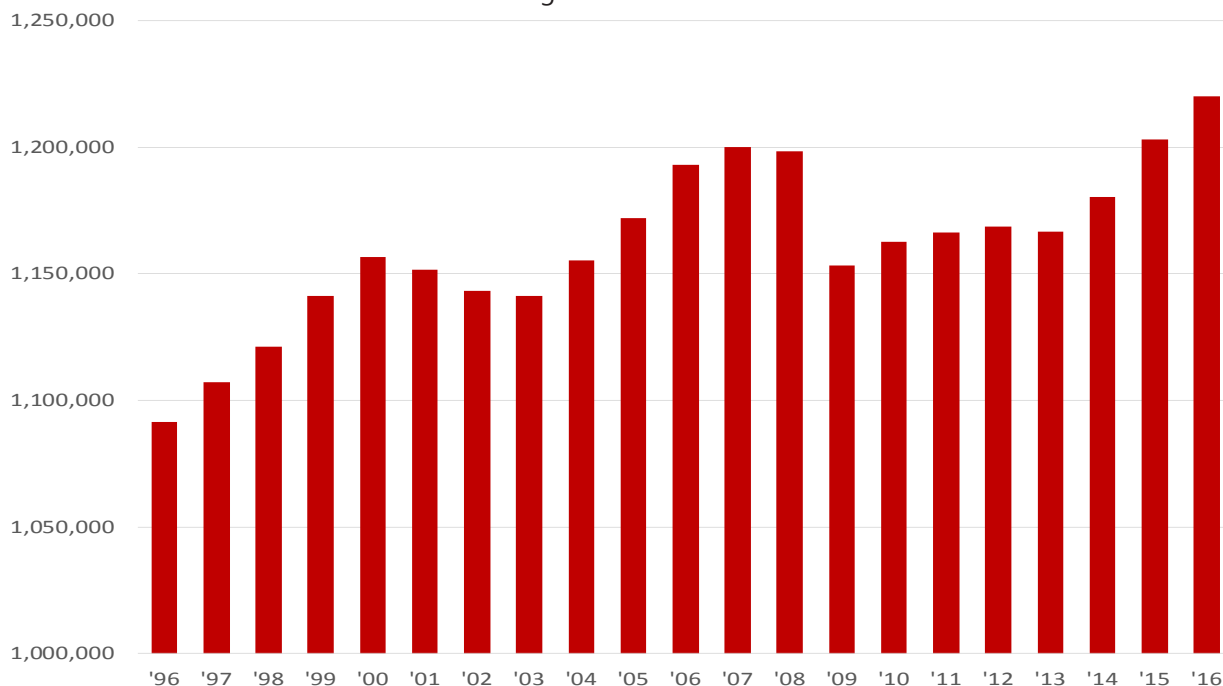
Arkansas' nonfarm payroll employment rose 5,000 in August to total 1,220,000. Jobs in four major industry sectors increased, more than offsetting minor declines in six sectors. **Government** added 3,200 jobs. Gains in state (+1,600) and local (+1,600) government were related to the start of the 2016-2017 school year. Employment in **trade, transportation, and utilities** rose 1,500. Seasonal hiring was reported across all three subsectors. Employment in **educational and health services** increased 1,400. Typical expansions occurred in both health care and social assistance (+900) and in educational services (+500).

### August 2015 - August 2016

Compared to August 2015, nonfarm payroll jobs in Arkansas are up 16,900. Eight major industry sectors posted growth, while employment in three sectors declined. Jobs in **professional and business services** increased 7,600. The majority of the hiring was reported in administrative and support services (+3,800), a subsector that includes employment agencies. **Educational and health services** added 6,400 jobs, mostly in health care and social assistance (+5,800). Employment in **trade, transportation, and utilities** rose 3,400. Most of the gains were in retail trade (+2,200). Jobs in **leisure and hospitality** increased 1,600. Expansions in accommodation and food services accounted for a majority of the growth. Employment in **manufacturing** decreased 1,800. Losses in durable goods (-2,300) offset the gains in nondurable goods (+500). **Mining and logging** declined 1,300, due to layoffs and closures.

**Nonfarm Payroll Jobs (Not Seasonally Adjusted)**

August: 1996 - 2016



## Labor Market Report

# State of Arkansas

## Production Workers- Hours and Earnings

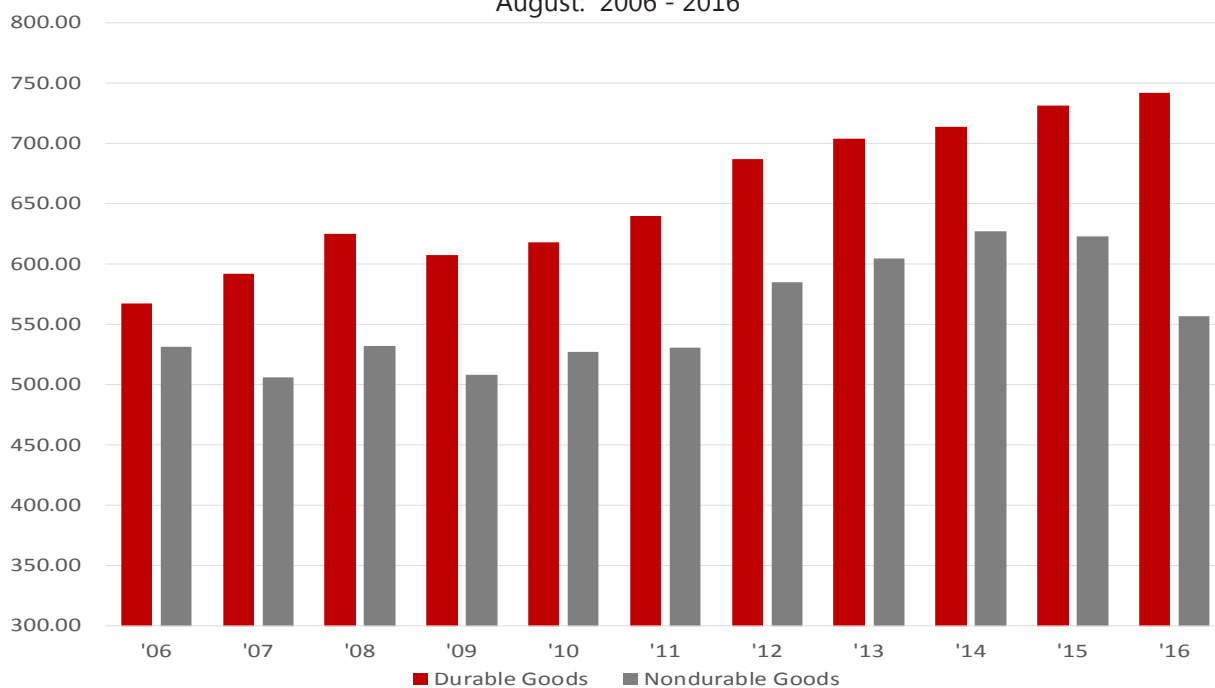
### Manufacturing

	<b>Aug 16</b>	<b>Jul 16</b>	<b>Aug 15</b>
Average Weekly Hours	41.3	40.5	41.5
Average Hourly Earnings	15.66	15.76	16.29
Average Weekly Earnings	646.76	638.28	676.04

### Durable Goods and Nondurable Goods Manufacturing

Durable Goods Manufacturing				Nondurable Goods Manufacturing			
	<b>Aug 16</b>	<b>Jul 16</b>	<b>Aug 15</b>		<b>Aug 16</b>	<b>Jul 16</b>	<b>Aug 15</b>
Average Weekly Hours	42.6	41.0	40.9	Average Weekly Hours	40.0	40.1	42.1
Average Hourly Earnings	17.41	17.68	17.88	Average Hourly Earnings	13.92	13.93	14.80
Average Weekly Earnings	741.67	724.88	731.29	Average Weekly Earnings	556.80	558.59	623.08

**Average Weekly Earnings: Durable Goods vs. Nondurable Goods**  
August: 2006 - 2016



## Labor Market Report

# Metropolitan Statistical Areas

## Little Rock-North Little Rock-Conway MSA

The Little Rock-North Little Rock-Conway MSA= Faulkner, Grant, Lonoke, Perry, Pulaski, & Saline counties.

### Civilian Labor Force Estimates (Not Seasonally Adjusted)

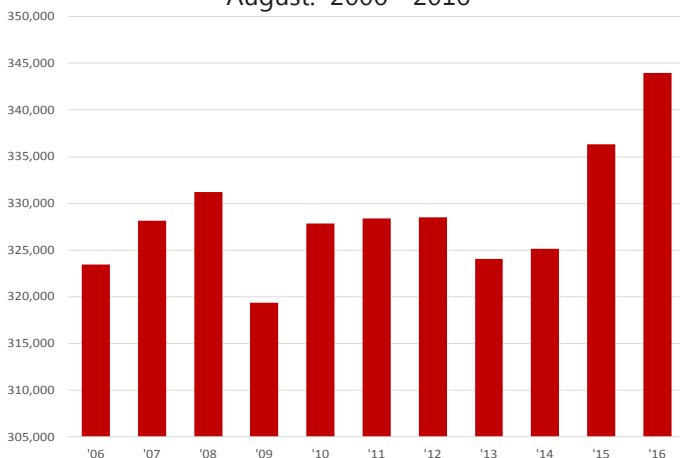
	<b>Aug 16</b>	<b>Jul 16</b>	<b>Aug 15</b>	<b>OTM</b>	<b>QTY</b>
Civilian Labor Force	356,084	363,885	351,682	-7,801	4,402
Employment	343,946	350,111	336,299	-6,165	7,647
Unemployment	12,138	13,774	15,383	-1,636	-3,245
Unemployment Rate	3.4	3.8	4.4	-0.4	-1.0

### Nonfarm Payroll Jobs (Not Seasonally Adjusted)

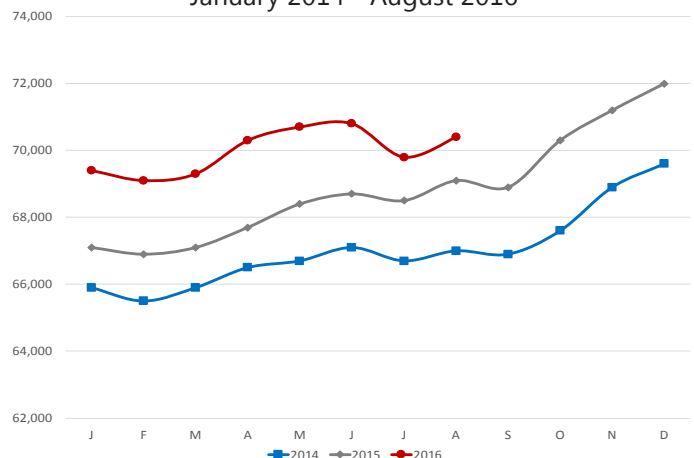
(In Thousands)

<b>NAICS</b>	<b>Aug 16</b>	<b>Jul 16</b>	<b>Aug 15</b>	<b>OTM</b>	<b>QTY</b>
Total Nonfarm	355.1	354.1	350.6	1.0	4.5
Goods Producing	37.0	36.9	37.7	0.1	-0.7
Mining, Logging & Construction	16.7	16.5	17.4	0.2	-0.7
Manufacturing	20.3	20.4	20.3	-0.1	0.0
Service Providing	318.1	317.2	312.9	0.9	5.2
Trade, Transportation & Utilities	70.4	69.8	69.1	0.6	1.3
Wholesale Trade	15.3	15.3	15.3	0.0	0.0
Retail Trade	40.3	39.7	39.3	0.6	1.0
Trans., Warehousing & Utilities	14.8	14.8	14.5	0.0	0.3
Information	6.2	6.2	6.4	0.0	-0.2
Financial Activities	20.8	20.8	20.8	0.0	0.0
Professional & Business Services	48.9	48.8	46.4	0.1	2.5
Educational & Health Services	53.1	53.4	52.0	-0.3	1.1
Leisure & Hospitality	34.1	34.4	34.0	-0.3	0.1
Other Services	15.4	15.6	15.3	-0.2	0.1
Government	69.2	68.2	68.9	1.0	0.3
Federal Government	9.8	9.8	9.7	0.0	0.1
State Government	34.1	33.5	33.7	0.6	0.4
Local Government	25.3	24.9	25.5	0.4	-0.2

**Number of Employed**  
August: 2006 - 2016



**Jobs in Trade, Transportation, and Utilities**  
January 2014 - August 2016





## Labor Market Report

# Metropolitan Statistical Areas Fayetteville-Springdale-Rogers MSA

The Fayetteville-Springdale-Rogers MSA= Benton, Madison, & Washington counties in Arkansas & McDonald county in Missouri.

### Civilian Labor Force Estimates (Not Seasonally Adjusted)

	<b>Aug 16</b>	<b>Jul 16</b>	<b>Aug 15</b>	<b>OTM</b>	<b>QTY</b>
Civilian Labor Force	262,910	268,347	254,914	-5,437	7,996
Employment	255,574	259,899	246,009	-4,325	9,565
Unemployment	7,336	8,448	8,905	-1,112	-1,569
Unemployment Rate	2.8	3.1	3.5	-0.3	-0.7

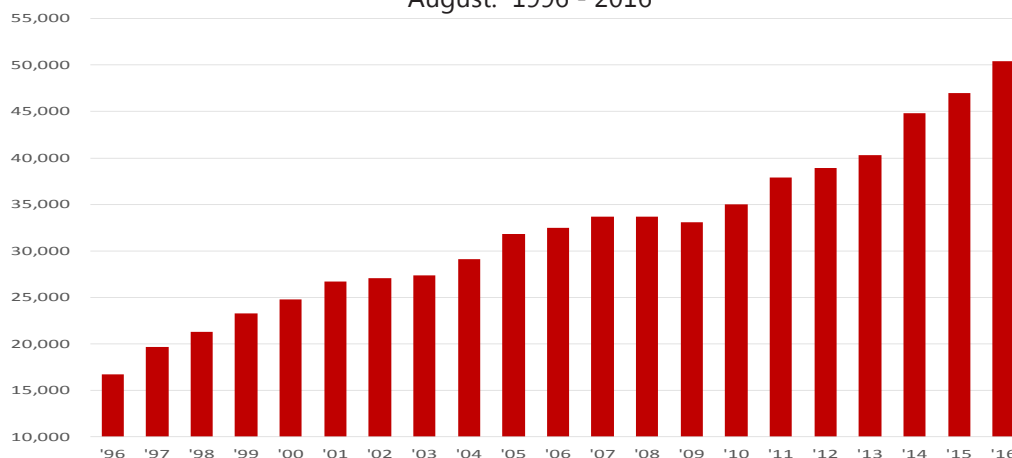
### Nonfarm Payroll Jobs (Not Seasonally Adjusted)

(In Thousands)

<b>NAICS</b>	<b>Aug 16</b>	<b>Jul 16</b>	<b>Aug 15</b>	<b>OTM</b>	<b>QTY</b>
Total Nonfarm	241.2	240.9	234.3	0.3	6.9
Goods Producing	36.6	36.9	37.1	-0.3	-0.5
Mining, Logging & Construction	10.5	10.6	10.0	-0.1	0.5
Manufacturing	26.1	26.3	27.1	-0.2	-1.0
Service Providing	204.6	204.0	197.2	0.6	7.4
Trade, Transportation & Utilities	55.5	55.3	54.2	0.2	1.3
Wholesale Trade	12.3	12.3	11.9	0.0	0.4
Retail Trade	26.7	26.6	26.1	0.1	0.6
Trans., Warehousing & Utilities	16.5	16.4	16.2	0.1	0.3
Information	2.0	2.0	2.0	0.0	0.0
Financial Activities	7.0	7.0	6.9	0.0	0.1
Professional & Business Services	50.4	50.9	47.0	-0.5	3.4
Educational & Health Services	26.4	26.2	25.3	0.2	1.1
Leisure & Hospitality	24.5	24.6	24.1	-0.1	0.4
Other Services	7.4	7.4	7.2	0.0	0.2
Government	31.4	30.6	30.5	0.8	0.9
Federal Government	2.6	2.6	2.6	0.0	0.0
State Government	11.9	11.2	11.3	0.7	0.6
Local Government	16.9	16.8	16.6	0.1	0.3

### Jobs in Professional and Business Services

August: 1996 - 2016



## Labor Market Report

# Metropolitan Statistical Areas Fort Smith MSA

The Fort Smith MSA= Crawford & Sebastian counties in Arkansas & LeFlore & Sequoyah counties in Oklahoma.

### Civilian Labor Force Estimates (Not Seasonally Adjusted)

	<u>Aug 16</u>	<u>Jul 16</u>	<u>Aug 15</u>	<u>OTM</u>	<u>QTY</u>
Civilian Labor Force	121,477	122,874	121,317	-1,397	160
Employment	115,858	116,749	114,988	-891	870
Unemployment	5,619	6,125	6,329	-506	-710
Unemployment Rate	4.6	5.0	5.2	-0.4	-0.6

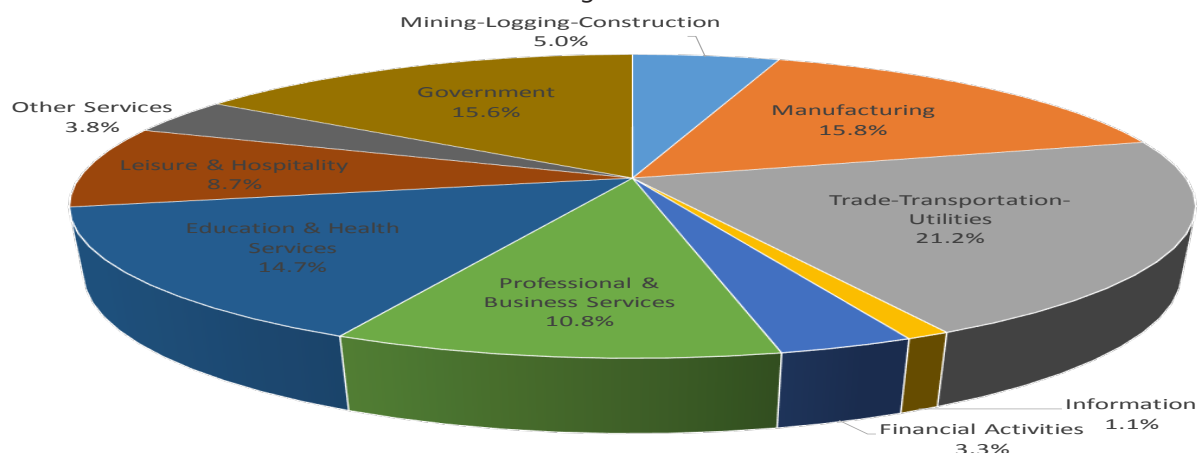
### Nonfarm Payroll Jobs (Not Seasonally Adjusted)

(In Thousands)

<u>NAICS</u>	<u>Aug 16</u>	<u>Jul 16</u>	<u>Aug 15</u>	<u>OTM</u>	<u>QTY</u>
Total Nonfarm	113.0	111.7	112.4	1.3	0.6
Goods Producing	23.6	23.7	23.8	-0.1	-0.2
Mining, Logging & Construction	5.7	5.8	6.1	-0.1	-0.4
Manufacturing	17.9	17.9	17.7	0.0	0.2
Service Providing	89.4	88.0	88.6	1.4	0.8
Trade, Transportation & Utilities	24.0	23.7	23.8	0.3	0.2
Wholesale Trade	4.4	4.3	4.2	0.1	0.2
Retail Trade	13.0	12.8	12.8	0.2	0.2
Trans., Warehousing & Utilities	6.6	6.6	6.8	0.0	-0.2
Information	1.2	1.2	1.2	0.0	0.0
Financial Activities	3.7	3.7	3.8	0.0	-0.1
Professional & Business Services	12.2	12.1	12.1	0.1	0.1
Educational & Health Services	16.6	16.7	16.6	-0.1	0.0
Leisure & Hospitality	9.8	9.8	9.6	0.0	0.2
Other Services	4.3	4.4	4.3	-0.1	0.0
Government	17.6	16.4	17.2	1.2	0.4
Federal Government	1.4	1.4	1.3	0.0	0.1
State Government	2.9	2.9	2.9	0.0	0.0
Local Government	13.3	12.1	13.0	1.2	0.3

### Nonfarm Payroll Jobs by Industry (Percent of Total)

August 2016



## Labor Market Report

# Metropolitan Statistical Areas

## Hot Springs MSA

The Hot Springs MSA= Garland County.

### Civilian Labor Force Estimates (Not Seasonally Adjusted)

	<b>Aug 16</b>	<b>Jul 16</b>	<b>Aug 15</b>	<b>OTM</b>	<b>QTY</b>
Civilian Labor Force	41,200	42,401	40,737	-1,201	463
Employment	39,537	40,471	38,568	-934	969
Unemployment	1,663	1,930	2,169	-267	-506
Unemployment Rate	4.0	4.6	5.3	-0.6	-1.3

### Nonfarm Payroll Jobs (Not Seasonally Adjusted)

(In Thousands)

<b>NAICS</b>	<b>Aug 16</b>	<b>Jul 16</b>	<b>Aug 15</b>	<b>OTM</b>	<b>QTY</b>
Total Nonfarm	38.3	38.4	37.7	-0.1	0.6
Goods Producing	4.5	4.5	4.5	0.0	0.0
Service Providing	33.8	33.9	33.2	-0.1	0.6
Government	4.5	4.2	4.5	0.3	0.0

**Nonfarm Payroll Jobs**  
August 2014 - August 2016



## Labor Market Report

# Metropolitan Statistical Areas

## Jonesboro MSA

The Jonesboro MSA= Craighead & Poinsett counties.

### Civilian Labor Force Estimates (Not Seasonally Adjusted)

	<b>Aug 16</b>	<b>Jul 16</b>	<b>Aug 15</b>	<b>OTM</b>	<b>QTY</b>
Civilian Labor Force	63,188	64,170	61,237	-982	1,951
Employment	61,122	61,786	58,528	-664	2,594
Unemployment	2,066	2,384	2,709	-318	-643
Unemployment Rate	3.3	3.7	4.4	-0.4	-1.1

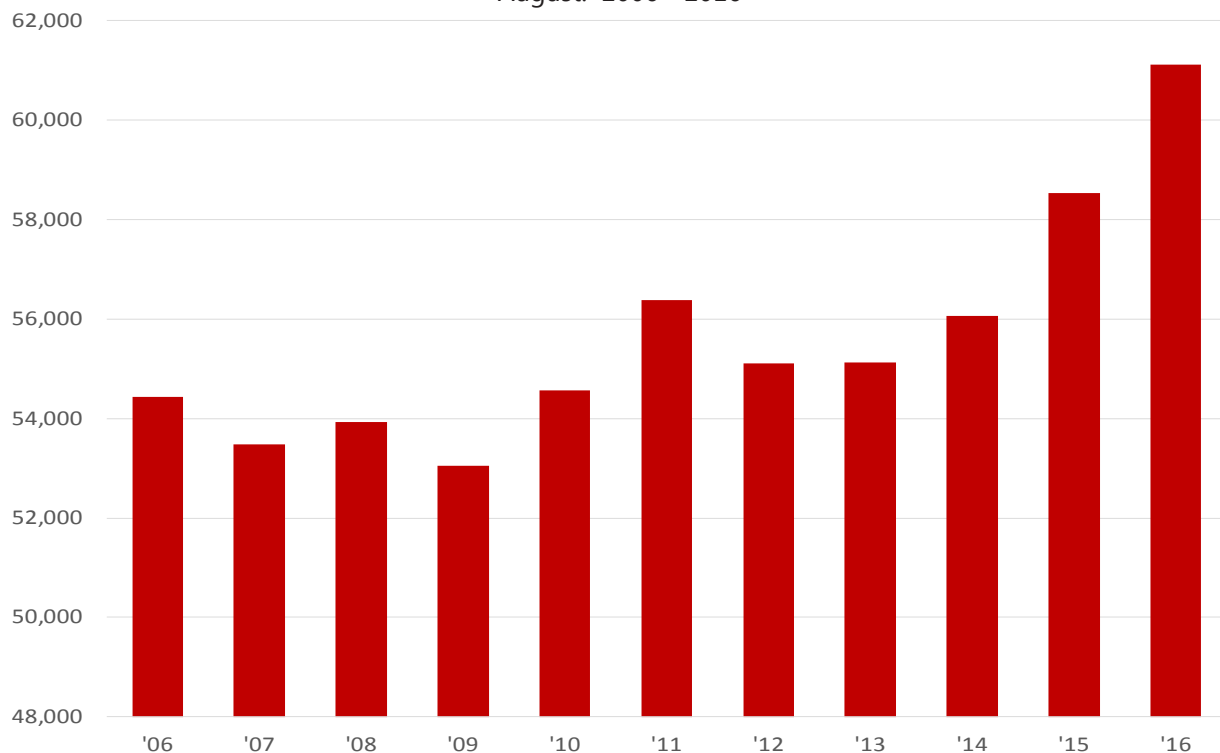
### Nonfarm Payroll Jobs (Not Seasonally Adjusted)

(In Thousands)

<b>NAICS</b>	<b>Aug 16</b>	<b>Jul 16</b>	<b>Aug 15</b>	<b>OTM</b>	<b>QTY</b>
Total Nonfarm	55.9	55.5	54.1	0.4	1.8
Goods Producing	9.2	9.2	8.9	0.0	0.3
Service Providing	46.7	46.3	45.2	0.4	1.5
Government	8.5	8.4	8.4	0.1	0.1

### Number of Employed

August: 2006 - 2016



## Labor Market Report

# Metropolitan Statistical Areas

## Pine Bluff MSA

The Pine Bluff MSA= Cleveland, Jefferson, & Lincoln counties.

### Civilian Labor Force Estimates (Not Seasonally Adjusted)

	<b>Aug 16</b>	<b>Jul 16</b>	<b>Aug 15</b>	<b>OTM</b>	<b>QTY</b>
Civilian Labor Force	36,172	36,817	36,669	-645	-497
Employment	34,142	34,604	34,146	-462	-4
Unemployment	2,030	2,213	2,523	-183	-493
Unemployment Rate	5.6	6.0	6.9	-0.4	-1.3

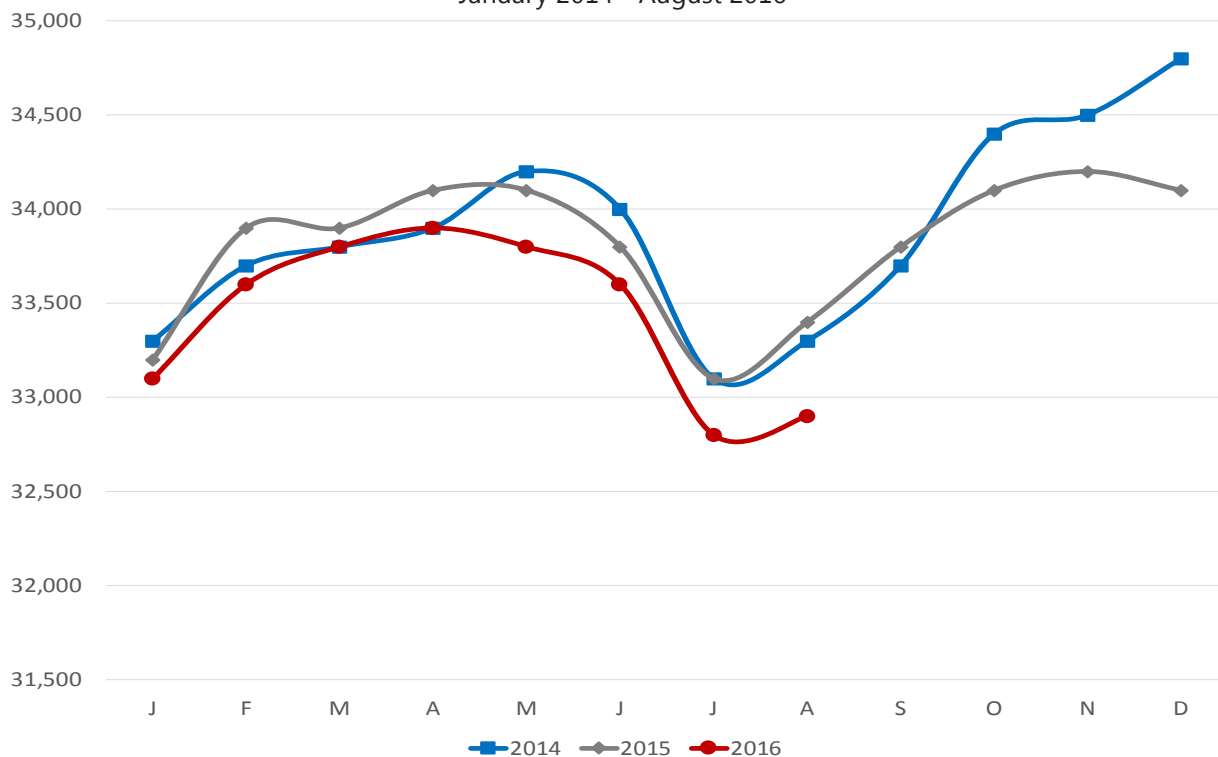
### Nonfarm Payroll Jobs (Not Seasonally Adjusted)

(In Thousands)

<b>NAICS</b>	<b>Aug 16</b>	<b>Jul 16</b>	<b>Aug 15</b>	<b>OTM</b>	<b>QTY</b>
Total Nonfarm	32.9	32.8	33.4	0.1	-0.5
Goods Producing	5.9	5.9	6.2	0.0	-0.3
Service Providing	27.0	26.9	27.2	0.1	-0.2
Government	9.0	8.9	9.2	0.1	-0.2

### Nonfarm Payroll Jobs

January 2014 - August 2016



## Labor Market Report

# Metropolitan Statistical Areas

## Out-of-State MSA

### Civilian Labor Force Estimates (Not Seasonally Adjusted)

#### Memphis, TN-MS-AR MSA

The Memphis, TN-MS-AR MSA= Fayette, Shelby, & Tipton counties in Tennessee; Benton, Desoto, Marshall, Tate, & Tunica counties in Mississippi; & Crittenden County in Arkansas.

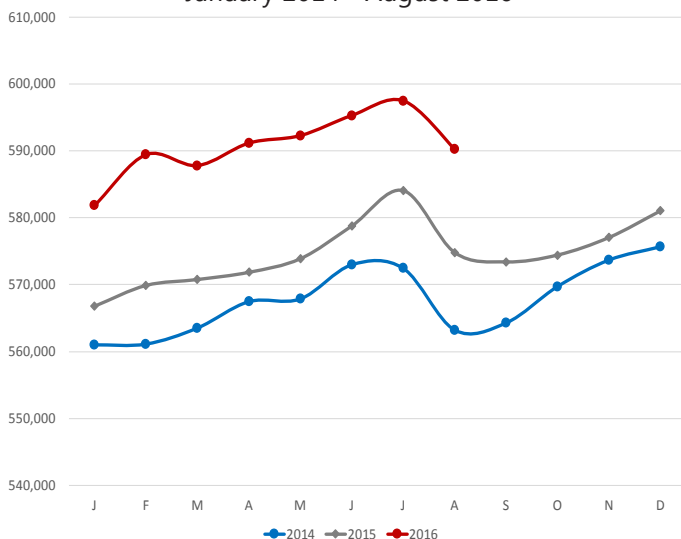
	<b>Aug 16</b>	<b>Jul 16</b>	<b>Aug 15</b>	<b>OTM</b>	<b>QTY</b>
Civilian Labor Force	624,425	632,007	614,016	-7,582	10,409
Employment	590,261	597,518	574,812	-7,257	15,449
Unemployment	34,164	34,489	39,204	-325	-5,040
Unemployment Rate	5.5	5.5	6.4	0.0	-0.9

#### Texarkana MSA

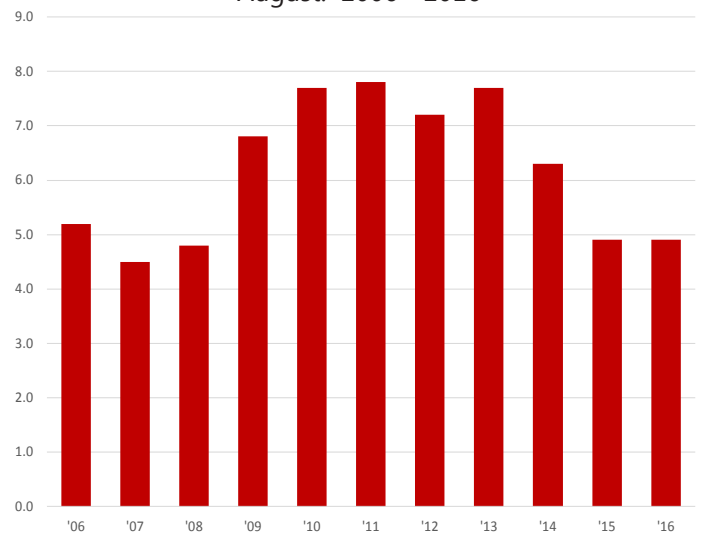
The Texarkana MSA= Bowie County in Texas & Little River & Miller counties in Arkansas.

	<b>Aug 16</b>	<b>Jul 16</b>	<b>Aug 15</b>	<b>OTM</b>	<b>QTY</b>
Civilian Labor Force	64,852	65,180	64,458	-328	394
Employment	61,642	61,783	61,273	-141	369
Unemployment	3,210	3,397	3,185	-187	25
Unemployment Rate	4.9	5.2	4.9	-0.3	0.0

**Number of Employed- Memphis MSA**  
January 2014 - August 2016



**Unemployment Rates- Texarkana MSA**  
August: 2006 - 2016



## Labor Market Report

# Micropolitan Statistical Areas and Cities

## Civilian Labor Force Estimates

### Micropolitan Labor Force Estimates (Not Seasonally Adjusted)

Micro Area	August 2016				July 2016				August 2015			
	CLF	Emp	Unemp	Rate	CLF	Emp	Unemp	Rate	CLF	Emp	Unemp	Rate
Arkadelphia Micro	9,666	9,241	425	4.4	9,540	9,037	503	5.3	9,423	8,890	533	5.7
Batesville Micro	15,716	14,937	779	5.0	15,923	15,047	876	5.5	15,369	14,319	1,050	6.8
Blytheville Micro	17,777	16,500	1,277	7.2	17,806	16,474	1,332	7.5	18,352	16,586	1,766	9.6
Camden Micro	12,357	11,684	673	5.4	12,532	11,811	721	5.8	12,187	11,471	716	5.9
El Dorado Micro	17,351	16,396	955	5.5	17,520	16,478	1,042	5.9	17,104	16,043	1,061	6.2
Forrest City Micro	8,947	8,496	451	5.0	8,777	8,291	486	5.5	9,028	8,334	694	7.7
Harrison Micro	18,993	18,364	629	3.3	19,014	18,250	764	4.0	19,195	18,321	874	4.6
Helena-West Helena Micro	6,853	6,482	371	5.4	6,705	6,285	420	6.3	6,915	6,404	511	7.4
Magnolia Micro	9,396	8,866	530	5.6	9,259	8,661	598	6.5	9,386	8,739	647	6.9
Malvern Micro	14,347	13,832	515	3.6	14,558	13,921	637	4.4	14,310	13,621	689	4.8
Mountain Home Micro	16,159	15,510	649	4.0	16,243	15,496	747	4.6	16,144	15,316	828	5.1
Paragould Micro	19,744	18,964	780	4.0	20,000	19,064	936	4.7	19,809	18,843	966	4.9
Russellville Micro	38,124	36,380	1,744	4.6	38,132	36,047	2,085	5.5	37,992	35,918	2,074	5.5
Searcy Micro	34,845	33,197	1,648	4.7	34,553	32,673	1,880	5.4	34,353	32,283	2,070	6.0

Arkadelphia Micro= Clark County

Batesville Micro= Independence County

Blytheville Micro= Mississippi County

Camden Micro= Calhoun & Ouachita counties

El Dorado Micro= Union County

Forrest City Micro= St. Francis County

Harrison Micro= Boone & Newton counties

Helena-West Helena Micro= Phillips County

Magnolia Micro= Columbia County

Malvern Micro= Hot Spring County

Mountain Home Micro= Baxter County

Paragould Micro= Greene County

Russellville Micro= Pope & Yell counties

Searcy Micro= White County

### City Labor Force Statistics (Not Seasonally Adjusted)

City	August 2016				July 2016				August 2015			
	CLF	Emp	Unemp	Rate	CLF	Emp	Unemp	Rate	CLF	Emp	Unemp	Rate
Bella Vista	12,051	11,683	368	3.1	12,344	11,887	457	3.7	11,721	11,239	482	4.1
Benton	16,388	15,879	509	3.1	16,752	16,168	584	3.5	16,174	15,534	640	4.0
Bentonville	22,539	21,959	580	2.6	23,062	22,343	719	3.1	21,826	21,124	702	3.2
Blytheville	6,134	5,633	501	8.2	6,124	5,625	499	8.1	6,435	5,663	772	12.0
Cabot	11,911	11,546	365	3.1	12,146	11,735	411	3.4	11,708	11,261	447	3.8
Conway	33,464	32,331	1,133	3.4	34,189	32,906	1,283	3.8	33,036	31,611	1,425	4.3
El Dorado	7,535	7,071	464	6.2	7,620	7,106	514	6.7	7,461	6,918	543	7.3
Fayetteville	45,864	44,566	1,298	2.8	46,865	45,345	1,520	3.2	44,477	42,886	1,591	3.6
Fort Smith	40,306	38,898	1,408	3.5	40,787	39,229	1,558	3.8	40,063	38,207	1,856	4.6
Hot Springs	14,391	13,743	648	4.5	14,823	14,068	755	5.1	14,243	13,406	837	5.9
Jacksonville	12,030	11,515	515	4.3	12,323	11,725	598	4.9	11,890	11,264	626	5.3
Jonesboro	36,814	35,668	1,146	3.1	37,454	36,073	1,381	3.7	35,751	34,179	1,572	4.4
Little Rock	98,441	95,065	3,376	3.4	100,638	96,800	3,838	3.8	97,394	92,994	4,400	4.5
North Little Rock	30,616	29,492	1,124	3.7	31,310	30,030	1,280	4.1	30,287	28,850	1,437	4.7
Paragould	12,315	11,807	508	4.1	12,508	11,870	638	5.1	12,358	11,732	626	5.1
Pine Bluff	17,335	16,145	1,190	6.9	17,681	16,377	1,304	7.4	17,665	16,175	1,490	8.4
Rogers	33,310	32,464	846	2.5	33,982	33,031	951	2.8	32,359	31,230	1,129	3.5
Russellville	13,618	12,985	633	4.6	13,619	12,872	747	5.5	13,577	12,841	736	5.4
Searcy	10,657	10,230	427	4.0	10,567	10,069	498	4.7	10,522	9,949	573	5.4
Sherwood	15,800	15,339	461	2.9	16,123	15,619	504	3.1	15,578	15,004	574	3.7
Springdale	38,318	37,327	991	2.6	39,129	37,980	1,149	2.9	37,093	35,919	1,174	3.2
Texarkana, AR	13,749	13,156	593	4.3	14,072	13,336	736	5.2	13,785	13,029	756	5.5
Van Buren	10,518	10,144	374	3.6	10,647	10,223	424	4.0	10,457	9,949	508	4.9
West Memphis	10,917	10,356	561	5.1	11,111	10,469	642	5.8	10,876	10,157	719	6.6

## Labor Market Report

# County Labor Force Statistics

## Civilian Labor Force Estimates

Not Seasonally Adjusted

County	August 2016				July 2016				August 2015			
	CLF	Emp	Unemp	Rate	CLF	Emp	Unemp	Rate	CLF	Emp	Unemp	Rate
Arkansas	9,709	9,409	300	3.1	9,797	9,451	346	3.5	9,450	9,070	380	4.0
Ashley	8,112	7,621	491	6.1	8,109	7,579	530	6.5	8,013	7,406	607	7.6
Baxter	16,159	15,510	649	4.0	16,243	15,496	747	4.6	16,144	15,316	828	5.1
Benton	124,982	121,553	3,429	2.7	127,640	123,675	3,965	3.1	121,211	116,931	4,280	3.5
Boone	15,647	15,135	512	3.3	15,666	15,044	622	4.0	15,839	15,113	726	4.6
Bradley	4,518	4,255	263	5.8	4,523	4,231	292	6.5	4,159	3,901	258	6.2
Calhoun	2,370	2,249	121	5.1	2,399	2,267	132	5.5	2,330	2,195	135	5.8
Carroll	13,318	12,958	360	2.7	13,166	12,735	431	3.3	12,812	12,340	472	3.7
Chicot	3,650	3,439	211	5.8	3,619	3,367	252	7.0	3,704	3,391	313	8.5
Clark	9,666	9,241	425	4.4	9,540	9,037	503	5.3	9,423	8,890	533	5.7
Clay	6,121	5,815	306	5.0	6,062	5,698	364	6.0	6,220	5,845	375	6.0
Cleburne	9,689	9,150	539	5.6	9,765	9,164	601	6.2	9,528	8,900	628	6.6
Cleveland	3,352	3,205	147	4.4	3,410	3,239	171	5.0	3,360	3,187	173	5.1
Columbia	9,396	8,866	530	5.6	9,259	8,661	598	6.5	9,386	8,739	647	6.9
Conway	8,770	8,260	510	5.8	8,855	8,300	555	6.3	8,684	8,146	538	6.2
Craighead	52,651	51,016	1,635	3.1	53,515	51,595	1,920	3.6	51,071	48,886	2,185	4.3
Crawford	27,084	26,072	1,012	3.7	27,442	26,274	1,168	4.3	26,930	25,570	1,360	5.1
Crittenden	21,956	20,985	971	4.4	22,314	21,212	1,102	4.9	21,902	20,580	1,322	6.0
Cross	8,056	7,740	316	3.9	7,830	7,478	352	4.5	8,060	7,648	412	5.1
Dallas	2,991	2,837	154	5.1	3,027	2,853	174	5.7	2,852	2,660	192	6.7
Desha	5,536	5,252	284	5.1	5,391	5,070	321	6.0	5,479	5,102	377	6.9
Drew	7,729	7,289	440	5.7	7,741	7,243	498	6.4	7,474	6,976	498	6.7
Faulkner	61,270	59,006	2,264	3.7	62,610	60,056	2,554	4.1	60,444	57,693	2,751	4.6
Franklin	7,505	7,218	287	3.8	7,410	7,075	335	4.5	7,417	7,062	355	4.8
Fulton	4,583	4,408	175	3.8	4,654	4,441	213	4.6	4,640	4,414	226	4.9
Garland	41,200	39,537	1,663	4.0	42,401	40,471	1,930	4.6	40,737	38,568	2,169	5.3
Grant	8,455	8,188	267	3.2	8,651	8,323	328	3.8	8,342	7,981	361	4.3
Greene	19,744	18,964	780	4.0	20,000	19,064	936	4.7	19,809	18,843	966	4.9
Hempstead	9,743	9,384	359	3.7	9,809	9,388	421	4.3	9,625	9,151	474	4.9
Hot Spring	14,347	13,832	515	3.6	14,558	13,921	637	4.4	14,310	13,621	689	4.8
Howard	6,018	5,826	192	3.2	6,079	5,858	221	3.6	5,899	5,648	251	4.3
Independence	15,716	14,937	779	5.0	15,923	15,047	876	5.5	15,369	14,319	1,050	6.8
Izard	5,002	4,740	262	5.2	4,881	4,555	326	6.7	5,029	4,675	354	7.0
Jackson	6,180	5,818	362	5.9	6,199	5,799	400	6.5	6,114	5,684	430	7.0
Jefferson	28,729	27,047	1,682	5.9	29,260	27,435	1,825	6.2	29,202	27,096	2,106	7.2
Johnson	10,041	9,561	480	4.8	10,199	9,617	582	5.7	10,012	9,426	586	5.9
Lafayette	2,523	2,368	155	6.1	2,493	2,327	166	6.7	2,558	2,356	202	7.9
Lawrence	6,870	6,564	306	4.5	6,699	6,353	346	5.2	6,836	6,428	408	6.0
Lee	3,071	2,931	140	4.6	3,016	2,851	165	5.5	3,073	2,868	205	6.7
Lincoln	4,091	3,890	201	4.9	4,147	3,930	217	5.2	4,107	3,863	244	5.9
Little River	5,686	5,410	276	4.9	5,801	5,485	316	5.4	5,645	5,354	291	5.2
Logan	9,199	8,799	400	4.3	9,228	8,726	502	5.4	9,317	8,778	539	5.8
Lonoke	33,805	32,721	1,084	3.2	34,498	33,258	1,240	3.6	33,265	31,913	1,352	4.1
Madison	7,365	7,146	219	3.0	7,486	7,234	252	3.4	7,082	6,832	250	3.5
Marion	6,562	6,317	245	3.7	6,601	6,314	287	4.3	6,559	6,240	319	4.9
Miller	19,851	19,048	803	4.0	20,259	19,308	951	4.7	19,845	18,864	981	4.9

(continued on Page 16)



## County Labor Force Statistics

### Civilian Labor Force Estimates

Not Seasonally Adjusted

(continued from Page 15)

County	August 2016				July 2016				August 2015			
	CLF	Emp	Unemp	Rate	CLF	Emp	Unemp	Rate	CLF	Emp	Unemp	Rate
Mississippi	17,777	16,500	1,277	7.2	17,806	16,474	1,332	7.5	18,352	16,586	1,766	9.6
Monroe	2,920	2,787	133	4.6	2,871	2,706	165	5.7	2,927	2,755	172	5.9
Montgomery	3,141	2,997	144	4.6	3,256	3,082	174	5.3	3,100	2,887	213	6.9
Nevada	3,628	3,497	131	3.6	3,660	3,503	157	4.3	3,605	3,423	182	5.0
Newton	3,346	3,229	117	3.5	3,348	3,206	142	4.2	3,356	3,208	148	4.4
Ouachita	9,987	9,435	552	5.5	10,133	9,544	589	5.8	9,857	9,276	581	5.9
Perry	4,293	4,104	189	4.4	4,378	4,169	209	4.8	4,247	4,006	241	5.7
Phillips	6,853	6,482	371	5.4	6,705	6,285	420	6.3	6,915	6,404	511	7.4
Pike	4,228	4,063	165	3.9	4,129	3,926	203	4.9	4,162	3,922	240	5.8
Poinsett	10,537	10,106	431	4.1	10,655	10,191	464	4.4	10,166	9,642	524	5.2
Polk	8,191	7,818	373	4.6	8,066	7,624	442	5.5	8,201	7,705	496	6.0
Pope	29,258	27,896	1,362	4.7	29,266	27,653	1,613	5.5	29,208	27,588	1,620	5.5
Prairie	3,662	3,529	133	3.6	3,591	3,445	146	4.1	3,611	3,451	160	4.4
Pulaski	191,488	184,849	6,639	3.5	195,721	188,223	7,498	3.8	189,322	180,823	8,499	4.5
Randolph	5,895	5,618	277	4.7	5,861	5,546	315	5.4	6,055	5,672	383	6.3
St. Francis	8,947	8,496	451	5.0	8,777	8,291	486	5.5	9,028	8,334	694	7.7
Saline	56,773	55,078	1,695	3.0	58,027	56,082	1,945	3.4	56,062	53,883	2,179	3.9
Scott	4,475	4,313	162	3.6	4,526	4,335	191	4.2	4,330	4,117	213	4.9
Searcy	3,049	2,922	127	4.2	2,896	2,752	144	5.0	3,105	2,949	156	5.0
Sebastian	57,993	55,941	2,052	3.5	58,739	56,417	2,322	4.0	57,616	54,948	2,668	4.6
Sevier	5,620	5,352	268	4.8	5,683	5,358	325	5.7	5,589	5,246	343	6.1
Sharp	5,867	5,563	304	5.2	6,007	5,652	355	5.9	5,901	5,514	387	6.6
Stone	4,754	4,528	226	4.8	4,665	4,405	260	5.6	4,696	4,425	271	5.8
Union	17,351	16,396	955	5.5	17,520	16,478	1,042	5.9	17,104	16,043	1,061	6.2
Van Buren	6,440	6,038	402	6.2	6,440	5,975	465	7.2	6,376	5,963	413	6.5
Washington	119,420	116,279	3,141	2.6	121,974	118,313	3,661	3.0	115,801	111,897	3,904	3.4
White	34,845	33,197	1,648	4.7	34,553	32,673	1,880	5.4	34,353	32,283	2,070	6.0
Woodruff	3,001	2,846	155	5.2	2,872	2,688	184	6.4	2,962	2,774	188	6.3
Yell	8,866	8,484	382	4.3	8,866	8,394	472	5.3	8,784	8,330	454	5.2

## County Labor Force Summary

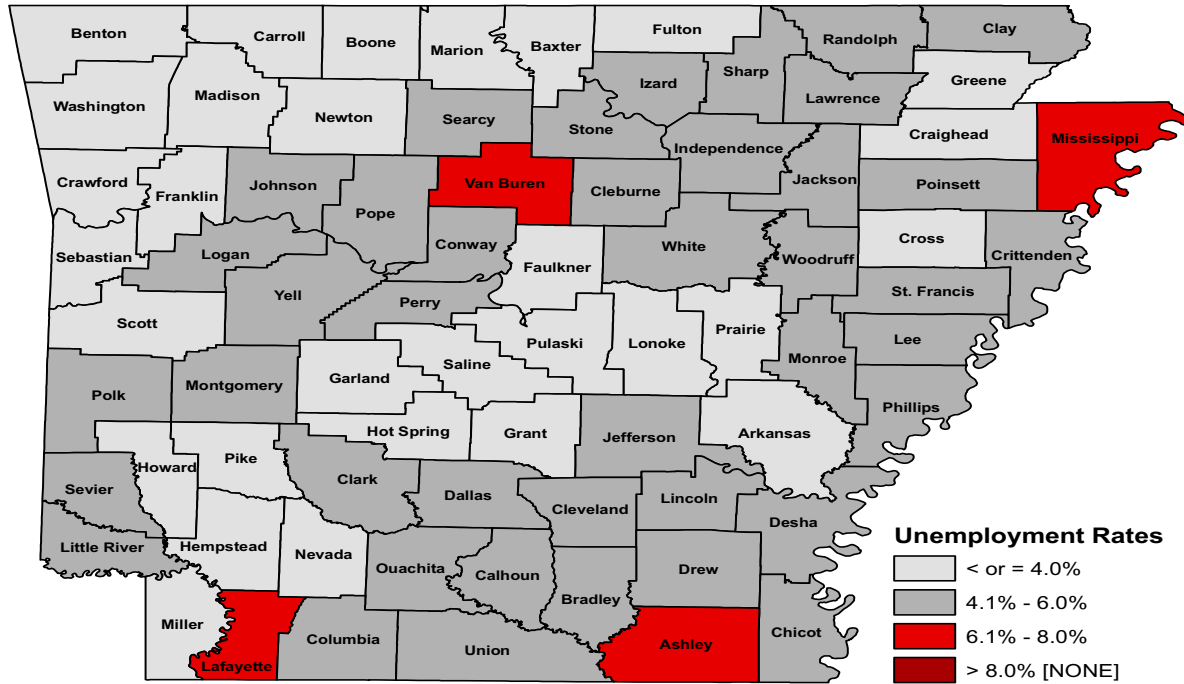
Between July and August, unemployment rates declined in all 75 Arkansas counties. Jobless rates ranged from a low of 2.6 percent in Washington County to a high of 7.2 percent in Mississippi County.

In August, thirty counties posted unemployment rates at or below four percent, compared to 13 counties at or below four percent in July. For the second month in a row, no county reported a jobless rate above eight percent.

Compared to August 2015, unemployment rates are down in all 75 Arkansas counties.

## Labor Market Report

### County Labor Force Statistics



### Ranked by Unemployment Rates

August 2016- Not Seasonally Adjusted

Rank	County	Rate	Rank	County	Rate	Rank	County	Rate
1	Washington	2.6	25	Pike	3.9	50	Little River	4.9
2	Benton	2.7	27	Baxter	4.0	52	Clay	5.0
2	Carroll	2.7	27	Garland	4.0	52	Independence	5.0
4	Madison	3.0	27	Greene	4.0	52	St. Francis	5.0
4	Saline	3.0	27	Miller	4.0	55	Calhoun	5.1
6	Arkansas	3.1	31	Poinsett	4.1	55	Dallas	5.1
6	Craighead	3.1	32	Searcy	4.2	55	Desha	5.1
8	Grant	3.2	33	Logan	4.3	58	Izard	5.2
8	Howard	3.2	33	Yell	4.3	58	Sharp	5.2
8	Lonoke	3.2	35	Clark	4.4	58	Woodruff	5.2
11	Boone	3.3	35	Cleveland	4.4	61	Phillips	5.4
12	Newton	3.5	35	Crittenden	4.4	62	Ouachita	5.5
12	Pulaski	3.5	35	Perry	4.4	62	Union	5.5
12	Sebastian	3.5	39	Lawrence	4.5	64	Cleburne	5.6
15	Hot Spring	3.6	40	Lee	4.6	64	Columbia	5.6
15	Nevada	3.6	40	Monroe	4.6	66	Drew	5.7
15	Prairie	3.6	40	Montgomery	4.6	67	Bradley	5.8
15	Scott	3.6	40	Polk	4.6	67	Chicot	5.8
19	Crawford	3.7	44	Pope	4.7	67	Conway	5.8
19	Faulkner	3.7	44	Randolph	4.7	70	Jackson	5.9
19	Hempstead	3.7	44	White	4.7	70	Jefferson	5.9
19	Marion	3.7	47	Johnson	4.8	72	Ashley	6.1
23	Franklin	3.8	47	Sevier	4.8	72	Lafayette	6.1
23	Fulton	3.8	47	Stone	4.8	74	Van Buren	6.2
25	Cross	3.9	50	Lincoln	4.9	75	Mississippi	7.2

## Labor Market Report

# Local Workforce Development Areas Civilian Labor Force Estimates

### LWDA Labor Force Estimates (Not Seasonally Adjusted)

LWDA	August 2016				July 2016				August 2015			
	CLF	Emp	Unemp	Rate	CLF	Emp	Unemp	Rate	CLF	Emp	Unemp	Rate
Central (minus LR)	251,477	242,905	8,572	3.4	256,680	246,970	9,710	3.8	248,237	237,524	10,713	4.3
City of Little Rock	98,441	95,065	3,376	3.4	100,638	96,800	3,838	3.8	97,394	92,994	4,400	4.5
Eastern	48,883	46,634	2,249	4.6	48,642	46,117	2,525	5.2	48,978	45,834	3,144	6.4
North Central	96,077	91,225	4,852	5.1	95,959	90,399	5,560	5.8	94,968	88,951	6,017	6.3
Northeast	119,595	114,583	5,012	4.2	120,598	114,921	5,677	4.7	118,509	111,902	6,607	5.6
Northwest	309,848	301,049	8,799	2.8	315,020	304,769	10,251	3.3	301,909	290,826	11,083	3.7
Southeast	83,881	79,595	4,286	5.1	84,648	79,868	4,780	5.6	83,290	77,973	5,317	6.4
Southwest	95,164	90,668	4,496	4.7	96,122	91,030	5,092	5.3	94,295	88,955	5,340	5.7
West Central	133,810	127,975	5,835	4.4	135,448	128,570	6,878	5.1	132,667	125,384	7,283	5.5
Western	114,447	110,161	4,286	3.7	115,411	110,451	4,960	4.3	113,811	108,180	5,631	4.9

