

Arkansas Labor Market

December 2014

Employment Headlines

Arkansas' Unemployment Rate Declines to 5.7 Percent

Nonfarm Payroll Jobs Decrease 1,500 in December

Employment Quick Facts

Unemployment Rates

Seasonally Adjusted

	<u>Dec 14</u>	<u>Nov 14</u>	<u>Dec 13</u>
AR Unemployment Rate	5.7	5.9	7.4
US Unemployment Rate	5.6	5.8	6.7

Nonfarm Payroll Summary

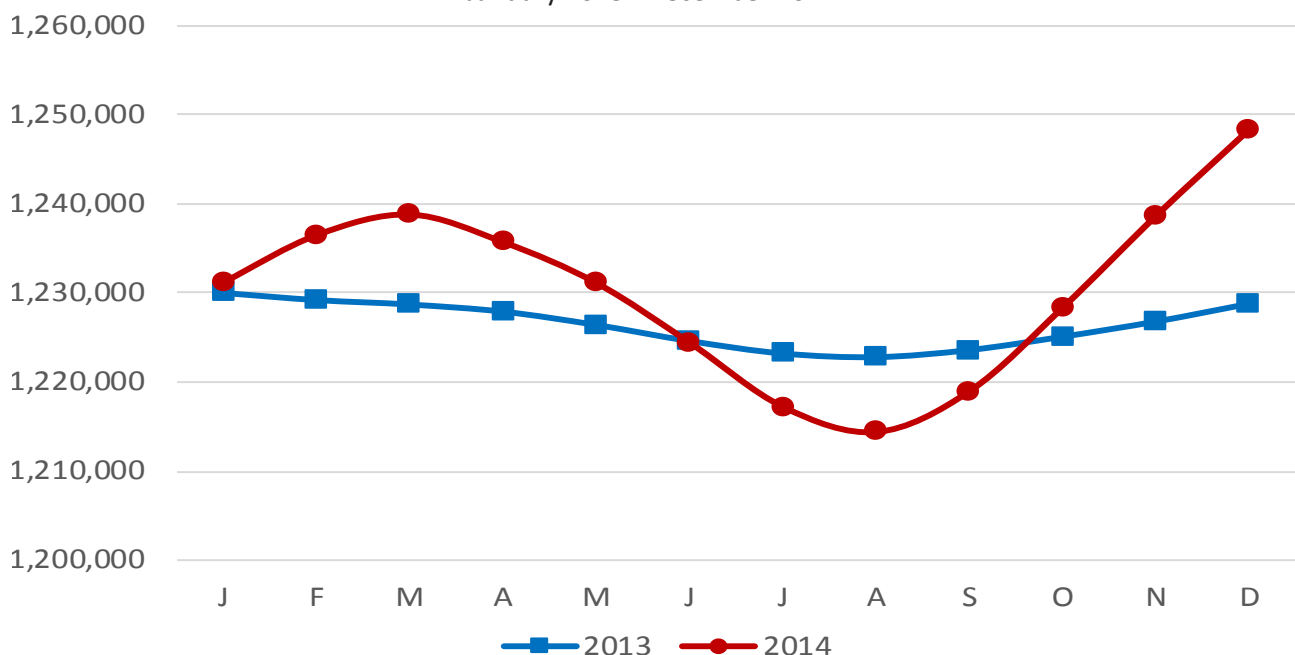
State of Arkansas

	<u>Dec 14</u>	<u>Nov 14</u>	<u>Dec 13</u>
Total Nonfarm	1,210,100	1,211,600	1,187,500
Goods Producing	218,500	217,600	206,800
Service Providing	991,600	994,000	980,700

Number of Employed (Seasonally Adjusted)

State of Arkansas

January 2013 - December 2014



Nonfarm Payroll Employment

State of Arkansas

November 2014 - December 2014

Nonfarm payroll jobs in Arkansas declined 1,500 in December to total 1,210,100. Six major industry sectors posted losses, while four increased and one remained stable. **Educational and health services** decreased 1,100. The drop in educational services (-600) was due to the winter break at private educational facilities. Jobs in **government** declined 900. Losses in state (-800) and local (-500) government were related to the seasonal closures at public schools. **Construction** employment rose 800, attributed in part to on-going large scale projects throughout the state.

December 2013 - December 2014

Since December 2013, Arkansas' nonfarm payroll employment increased 22,600. Eight major industry sectors added jobs, while two sectors posted minor declines. Employment in **leisure and hospitality** rose 6,700. A majority of the growth occurred in food services (+6,200). **Construction** added jobs (+5,800), with specialty trade contractors up 2,900. Jobs in **manufacturing** increased 5,500. Most of the gains were reported in durable goods (+4,000), including transportation equipment manufacturing and wood products manufacturing. **Educational and health services** rose 3,600. Health care and social assistance posted a majority of the growth (+2,900). **Professional and business services** added 1,300 jobs. Gains were reported in management of companies (+700) and administrative and support services (+600).

(NAICS)	Nonfarm Payroll Jobs		
	Dec 14	Nov 14	Dec 13
Total Nonfarm	1,210,100	1,211,600	1,187,500
Goods Producing	218,500	217,600	206,800
Mining & Logging	10,000	10,000	9,600
Construction	51,000	50,200	45,200
Specialty Trade Contractors	31,900	31,600	29,000
Manufacturing	157,500	157,400	152,000
Durable Goods	79,800	79,800	75,800
Nondurable Goods	77,700	77,600	76,200
Service Providing	991,600	994,000	980,700
Trade, Transportation & Utilities	247,800	247,300	247,700
Wholesale Trade	47,700	47,300	47,500
Retail Trade	136,600	136,700	137,900
Transport, Warehousing & Utilities	63,500	63,300	62,300
Information	13,300	13,500	14,100
Financial Activities	50,000	50,300	50,500
Finance & Insurance	36,800	37,100	37,100
Real Estate & Rental & Leasing	13,200	13,200	13,400
Professional & Business Services	130,000	130,300	128,700
Professional, Scientific & Technical	39,600	38,600	39,600
Management of Companies	32,400	32,200	31,700
Administrative & Support Services	58,000	59,500	57,400
Educational & Health Services	177,700	178,800	174,100
Educational Services	15,400	16,000	14,700
Health Care & Social Assistance	162,300	162,800	159,400
Ambulatory Health Care	50,000	49,800	48,500
Social Assistance	39,300	39,900	38,100
Leisure & Hospitality	109,900	110,100	103,200
Arts, Entertainment & Recreation	8,900	8,800	8,700
Accommodation & Food Services	101,000	101,300	94,500
Accommodation Services	10,800	10,900	10,500
Food Services	90,200	90,400	84,000
Other Services	43,300	43,200	42,800
Government	219,600	220,500	219,600
Federal Government	20,400	20,000	20,300
State Government	79,200	80,000	78,600
Local Government	120,000	120,500	120,700

Hours and Earnings of Arkansas Production Workers

(Manufacturing Industries)

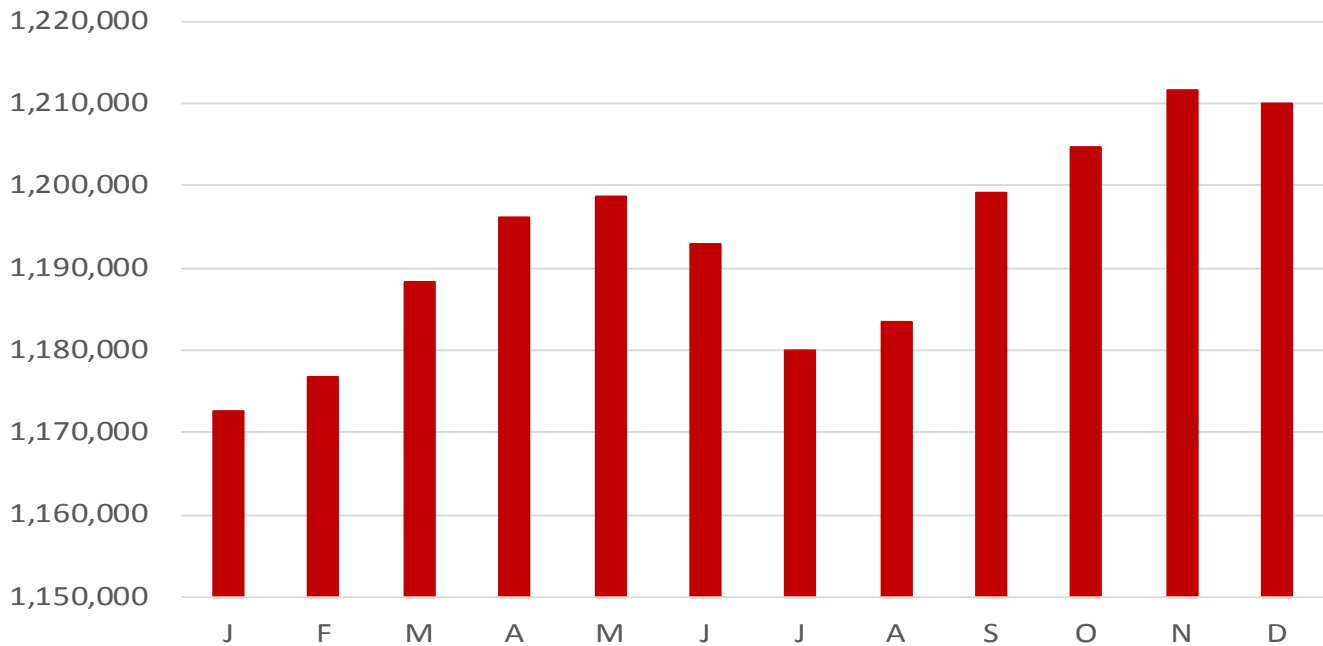
	Average Weekly Earnings			Average Weekly Hours			Average Hourly Earnings		
	Dec 14	Nov 14	Dec 13	Dec 14	Nov 14	Dec 13	Dec 14	Nov 14	Dec 13
Manufacturing	\$673.13	\$671.97	\$623.12	41.5	41.2	40.7	\$16.22	\$16.31	\$15.31
Durable Goods	719.02	723.76	687.86	40.9	41.5	42.2	17.58	17.44	16.30
Nondurable Goods	627.29	621.56	565.39	42.1	41.0	39.4	14.90	15.16	14.35

Spotlight

The Year in Review

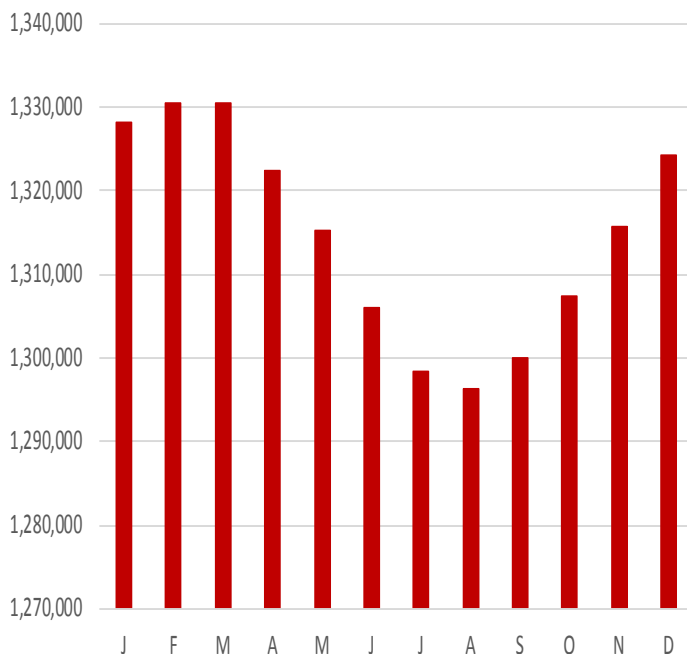
In 2014, nonfarm payroll jobs in Arkansas ranged from a high of 1,221,600 in November to a low of 1,172,700 in January. Arkansas' preliminary annual average nonfarm employment for 2014 is 1,192,900, slightly higher than the 2013 average of 1,177,400.

Nonfarm Payroll Jobs (Not Seasonally Adjusted)
January 2014 - December 2014

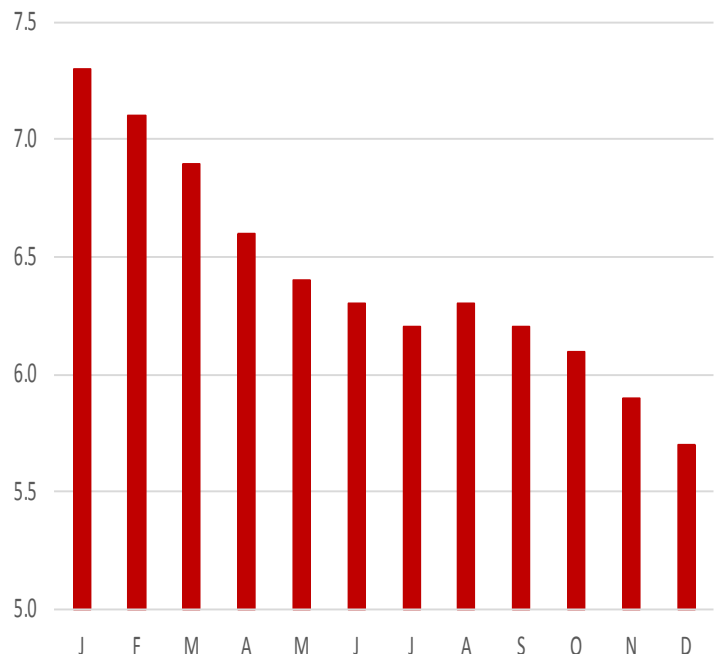


In 2014, Arkansas' civilian labor force ranged from a high of 1,330,600 in February and March to a low of 1,296,300 in August. Steadily declining throughout the year, unemployment rates in Arkansas ranged from a high of 7.3 percent in January to a low of 5.7 percent in December.

Civilian Labor Force (Seasonally Adjusted)
January 2014 - December 2014



Unemployment Rates (Seasonally Adjusted)
January 2014 - December 2014



Metropolitan Statistical Areas

Little Rock-North Little Rock-Conway MSA

Nonfarm Payroll Jobs

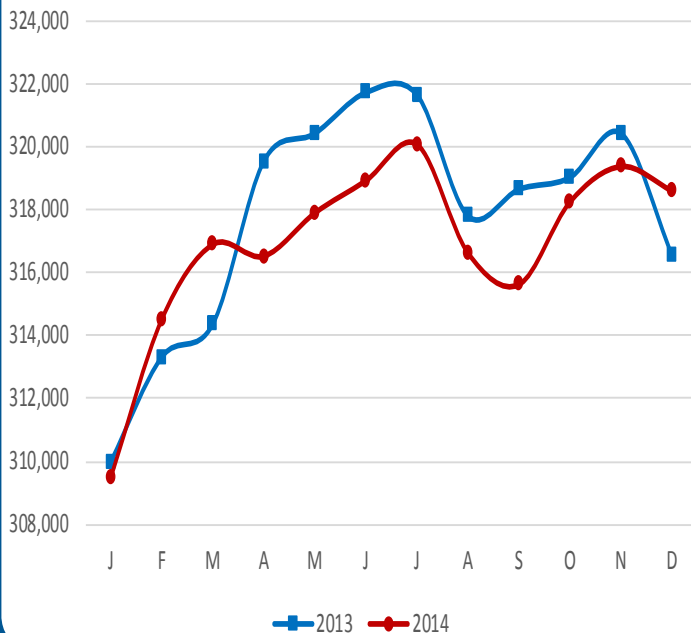
NAICS	Dec 14	Nov 14	Dec 13
Total Nonfarm	350,900	350,300	345,900
Goods Producing	38,800	38,600	35,500
Mining, Logging & Construction	18,700	18,500	15,900
Manufacturing	20,100	20,100	19,600
Service Providing	312,100	311,700	310,400
Trade, Transportation & Utilities	68,000	67,600	67,800
Wholesale Trade	15,500	15,400	15,700
Retail Trade	37,600	37,600	37,600
Trans., Warehousing & Utilities	14,900	14,600	14,500
Information	6,800	6,900	7,200
Financial Activities	20,400	20,300	20,300
Professional & Business Services	44,200	44,100	45,400
Educational & Health Services	51,900	52,400	51,100
Leisure & Hospitality	32,600	32,200	31,000
Other Services	15,900	15,900	15,700
Government	72,300	72,300	71,900
Federal Government	9,700	9,600	9,600
State Government	34,600	34,700	34,300
Local Government	28,000	28,000	28,000

The LR-NLR-Conway MSA consists of the following counties:
Faulkner, Grant, Lonoke, Perry, Pulaski, and Saline

Civilian Labor Force Estimates

	Dec 14	Nov 14	Dec 13
Civilian Labor Force	335,425	335,575	337,725
Employment	318,600	319,375	316,550
Unemployment	16,825	16,200	21,175
Unemployment Rate	5.0	4.8	6.3

Number of Employed
January 2013 - December 2014



Fayetteville-Springdale-Rogers MSA

Nonfarm Payroll Jobs

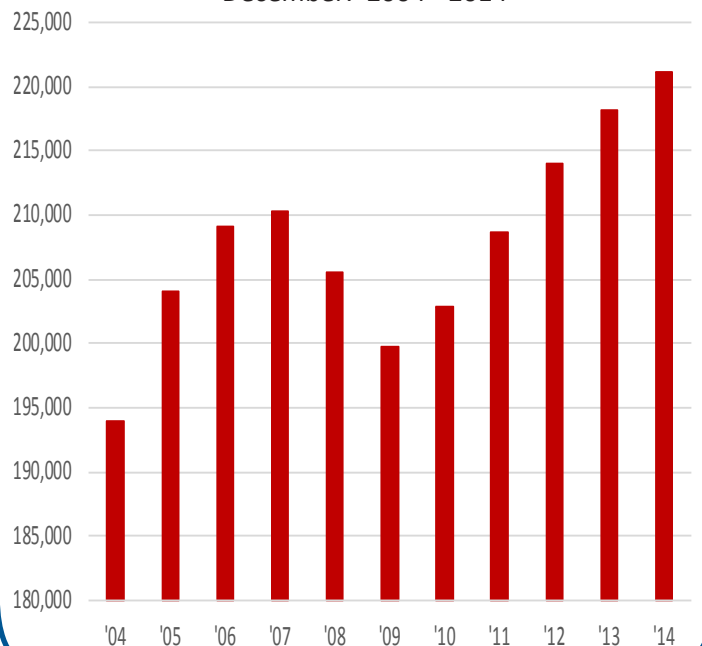
NAICS	Dec 14	Nov 14	Dec 13
Total Nonfarm	221,100	221,300	218,100
Goods Producing	35,000	34,900	34,500
Mining, Logging & Construction	8,800	8,700	8,100
Manufacturing	26,200	26,200	26,400
Service Providing	186,100	186,400	183,600
Trade, Transportation & Utilities	48,300	47,800	49,600
Wholesale Trade	10,300	10,200	10,400
Retail Trade	23,600	23,400	24,200
Trans., Warehousing & Utilities	14,400	14,200	15,000
Information	1,800	1,800	1,900
Financial Activities	7,000	7,000	6,700
Professional & Business Services	41,800	41,700	41,000
Educational & Health Services	25,400	25,500	24,800
Leisure & Hospitality	22,300	22,500	21,100
Other Services	6,300	6,300	6,200
Government	33,200	33,800	32,300
Federal Government	2,500	2,500	2,500
State Government	12,300	12,900	11,600
Local Government	18,400	18,400	18,200

The FSR MSA consists of the following counties:
Benton, Madison, Washington, and McDonald (in Missouri)

Civilian Labor Force Estimates

	Dec 14	Nov 14	Dec 13
Civilian Labor Force	234,125	234,850	234,025
Employment	224,475	225,650	222,175
Unemployment	9,650	9,200	11,850
Unemployment Rate	4.1	3.9	5.1

Nonfarm Payroll Jobs
December: 2004 - 2014



Metropolitan Statistical Areas

Fort Smith MSA

Nonfarm Payroll Jobs

<u>NAICS</u>	<u>Dec 14</u>	<u>Nov 14</u>	<u>Dec 13</u>
Total Nonfarm	116,700	117,400	117,300
Goods Producing	24,400	24,300	25,300
Mining, Logging & Construction	6,500	6,500	6,900
Manufacturing	17,900	17,800	18,400
Service Providing	92,300	93,100	92,000
Trade, Transportation & Utilities	25,100	25,000	24,800
Wholesale Trade	4,100	4,100	4,100
Retail Trade	13,700	13,600	13,700
Trans., Warehousing & Utilities	7,300	7,300	7,000
Information	1,300	1,300	1,300
Financial Activities	4,100	4,200	4,200
Professional & Business Services	12,300	12,300	12,300
Educational & Health Services	16,300	16,500	16,600
Leisure & Hospitality	9,500	9,900	9,200
Other Services	4,100	4,200	4,200
Government	19,600	19,700	19,400
Federal Government	1,500	1,500	1,500
State Government	3,200	3,200	3,200
Local Government	14,900	15,000	14,700

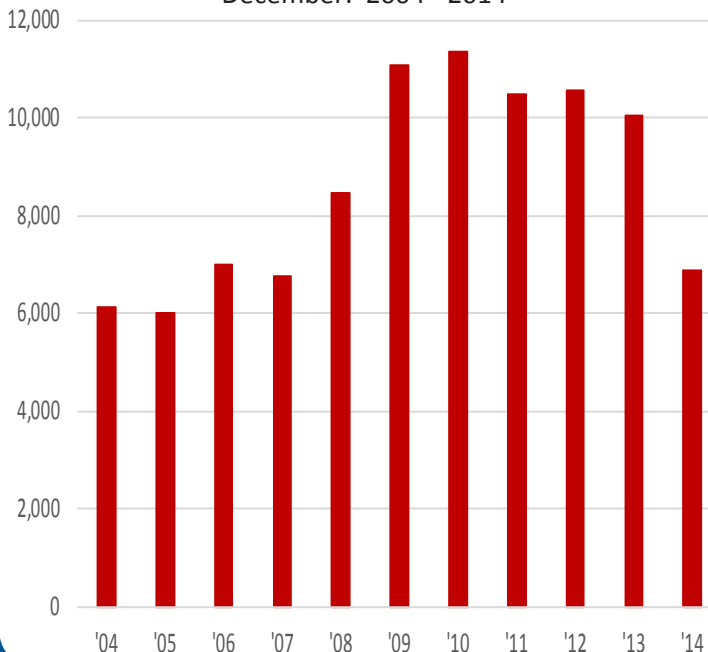
The FS MSA consists of the following counties: Crawford, Franklin, Sebastian, and LeFlore and Sequoyah (in Oklahoma)

Civilian Labor Force Estimates

	<u>Dec 14</u>	<u>Nov 14</u>	<u>Dec 13</u>
Civilian Labor Force	125,525	126,650	130,025
Employment	118,650	119,725	119,975
Unemployment	6,875	6,925	10,050
Unemployment Rate	5.5	5.5	7.7

Number of Unemployed

December: 2004 - 2014



Hot Springs MSA

Nonfarm Payroll Jobs

<u>NAICS</u>	<u>Dec 14</u>	<u>Nov 14</u>	<u>Dec 13</u>
Total Nonfarm	37,600	37,500	37,100
Goods Producing	4,700	4,700	4,500
Service Providing	32,900	32,800	32,600
Government	4,800	4,800	4,800

The HS MSA consists of the following county: Garland

Civilian Labor Force Estimates

	<u>Dec 14</u>	<u>Nov 14</u>	<u>Dec 13</u>
Civilian Labor Force	40,100	40,125	40,200
Employment	37,700	37,800	37,200
Unemployment	2,400	2,325	3,000
Unemployment Rate	6.0	5.8	7.5

Jonesboro MSA

Nonfarm Payroll Jobs

<u>NAICS</u>	<u>Dec 14</u>	<u>Nov 14</u>	<u>Dec 13</u>
Total Nonfarm	54,800	54,700	53,200
Goods Producing	9,200	9,300	8,600
Service Providing	45,600	45,400	44,600
Government	9,200	9,200	9,100

The Jonesboro MSA consists of the following counties:

Craighead and Poinsett

Civilian Labor Force Estimates

	<u>Dec 14</u>	<u>Nov 14</u>	<u>Dec 13</u>
Civilian Labor Force	60,400	60,375	59,700
Employment	57,300	57,475	55,750
Unemployment	3,100	2,900	3,950
Unemployment Rate	5.1	4.8	6.6

Pine Bluff MSA

Nonfarm Payroll Jobs

<u>NAICS</u>	<u>Dec 14</u>	<u>Nov 14</u>	<u>Dec 13</u>
Total Nonfarm	35,200	35,300	35,700
Goods Producing	7,000	7,100	7,000
Service Providing	28,200	28,200	28,700
Government	9,900	9,900	10,200

The PB MSA consists of the following counties: Cleveland, Jefferson, and Lincoln

Civilian Labor Force Estimates

	<u>Dec 14</u>	<u>Nov 14</u>	<u>Dec 13</u>
Civilian Labor Force	39,575	39,675	40,950
Employment	36,750	36,950	36,950
Unemployment	2,825	2,725	4,000
Unemployment Rate	7.2	6.8	9.7

Civilian Labor Force Statistics

State of Arkansas

(Seasonally Adjusted)

(Not Seasonally Adjusted)

	<u>Dec 14</u>	<u>Nov 14</u>	<u>Dec 13</u>	<u>OTM</u>	<u>OTY</u>	<u>Dec 14</u>	<u>Nov 14</u>	<u>Dec 13</u>	<u>OTM</u>	<u>OTY</u>
Civilian Labor Force	1,324,200	1,315,700	1,327,300	8,500	-3,100	1,317,000	1,320,400	1,314,900	-3,400	2,100
Employment	1,248,400	1,238,700	1,228,800	9,700	19,600	1,243,100	1,250,800	1,220,300	-7,700	22,800
Unemployment	75,800	77,000	98,500	-1,200	-22,700	73,900	69,600	94,600	4,300	-20,700
Unemployment Rate	5.7	5.9	7.4	-0.2	-1.7	5.6	5.3	7.2	0.3	-1.6
U.S. Unemployment Rate	5.6	5.8	6.7	-0.2	-1.1	5.4	5.5	6.5	-0.1	-1.1

Out-of-State MSAs

Memphis, Tennessee

	<u>Dec 14</u>	<u>Nov 14</u>	<u>Dec 13</u>
Civilian Labor Force	581,825	584,025	594,225
Employment	537,375	539,925	543,525
Unemployment	44,450	44,100	50,700
Unemployment Rate	7.6	7.6	8.5

Texarkana, Texas

	<u>Dec 14</u>	<u>Nov 14</u>	<u>Dec 13</u>
Civilian Labor Force	61,550	62,125	62,450
Employment	58,450	58,875	58,100
Unemployment	3,100	3,250	4,350
Unemployment Rate	5.0	5.2	7.0

Between November and December, unemployment rates increased in 71 of Arkansas' 75 counties. Rates in two counties declined, while two remained stable.

In December, thirty-one counties posted jobless rates at or below six percent. No county had a rate above ten percent, for the fifth month in a row.

Compared to December 2013, unemployment rates are down in 74 counties. Only one county posted a rate increase over-the-year.

Unemployment Rates by County

<u>Rank</u>	<u>County</u>	<u>Dec 14</u>	<u>Nov 14</u>	<u>Dec 13</u>	<u>Rank</u>	<u>County</u>	<u>Dec 14</u>	<u>Nov 14</u>	<u>Dec 13</u>
3	Arkansas	4.2	4.2	6.1	71	Lee	9.0	8.0	10.9
68	Ashley	8.8	8.2	11.9	57	Lincoln	7.5	7.2	9.4
28	Baxter	6.0	5.4	7.7	51	Little River	7.0	6.5	7.5
4	Benton	4.3	4.0	5.2	17	Logan	5.2	4.9	7.1
19	Boone	5.3	5.0	7.1	11	Lonoke	4.9	4.6	5.7
40	Bradley	6.5	6.3	8.8	2	Madison	4.0	3.8	5.4
25	Calhoun	5.5	5.6	8.0	28	Marion	6.0	5.3	7.8
19	Carroll	5.3	4.1	6.1	38	Miller	6.4	5.9	7.8
74	Chicot	9.7	8.5	11.5	55	Mississippi	7.4	6.8	10.4
17	Clark	5.2	5.2	7.6	45	Monroe	6.6	5.9	8.3
70	Clay	8.9	8.0	11.6	57	Montgomery	7.5	6.7	9.7
40	Cleburne	6.5	5.8	7.5	6	Nevada	4.5	4.6	6.8
32	Cleveland	6.1	5.7	8.0	32	Newton	6.1	5.7	8.1
32	Columbia	6.1	5.9	8.2	40	Ouachita	6.5	6.1	9.0
21	Conway	5.4	5.1	7.5	53	Perry	7.3	6.5	8.1
11	Craighead	4.9	4.6	6.3	63	Phillips	8.0	7.5	11.4
21	Crawford	5.4	5.2	8.3	60	Pike	7.7	7.0	8.1
74	Crittenden	9.7	9.1	10.8	32	Poinsett	6.1	5.4	8.0
40	Cross	6.5	6.2	8.1	37	Polk	6.3	5.7	7.6
60	Dallas	7.7	7.3	9.9	25	Pope	5.5	5.3	7.4
73	Desha	9.4	7.8	10.9	21	Prairie	5.4	5.1	6.6
64	Drew	8.1	7.5	10.2	15	Pulaski	5.1	4.9	6.3
15	Faulkner	5.1	4.8	7.0	64	Randolph	8.1	6.4	9.1
8	Franklin	4.6	4.2	6.0	64	St. Francis	8.1	7.5	10.6
21	Fulton	5.4	4.7	7.0	6	Saline	4.5	4.4	5.6
28	Garland	6.0	5.8	7.5	5	Scott	4.4	4.1	5.9
9	Grant	4.7	4.5	6.1	28	Searcy	6.0	5.3	7.5
32	Greene	6.1	5.9	8.6	13	Sebastian	5.0	4.8	8.1
46	Hempstead	6.7	6.2	7.4	38	Sevier	6.4	6.0	7.1
10	Hot Spring	4.8	4.6	6.5	62	Sharp	7.8	7.2	10.5
72	Howard	9.3	8.3	6.5	68	Stone	8.8	7.8	11.3
48	Independence	6.8	6.4	9.5	40	Union	6.5	6.3	8.0
52	Izard	7.2	6.4	9.4	46	Van Buren	6.7	6.0	9.1
67	Jackson	8.7	7.4	11.1	1	Washington	3.9	3.8	4.9
53	Jefferson	7.3	6.9	10.0	49	White	6.9	6.4	8.3
27	Johnson	5.7	5.3	6.8	59	Woodruff	7.6	7.3	10.8
55	Lafayette	7.4	7.0	9.9	13	Yell	5.0	4.6	6.0
49	Lawrence	6.9	6.1	8.8					

Lowest Rates

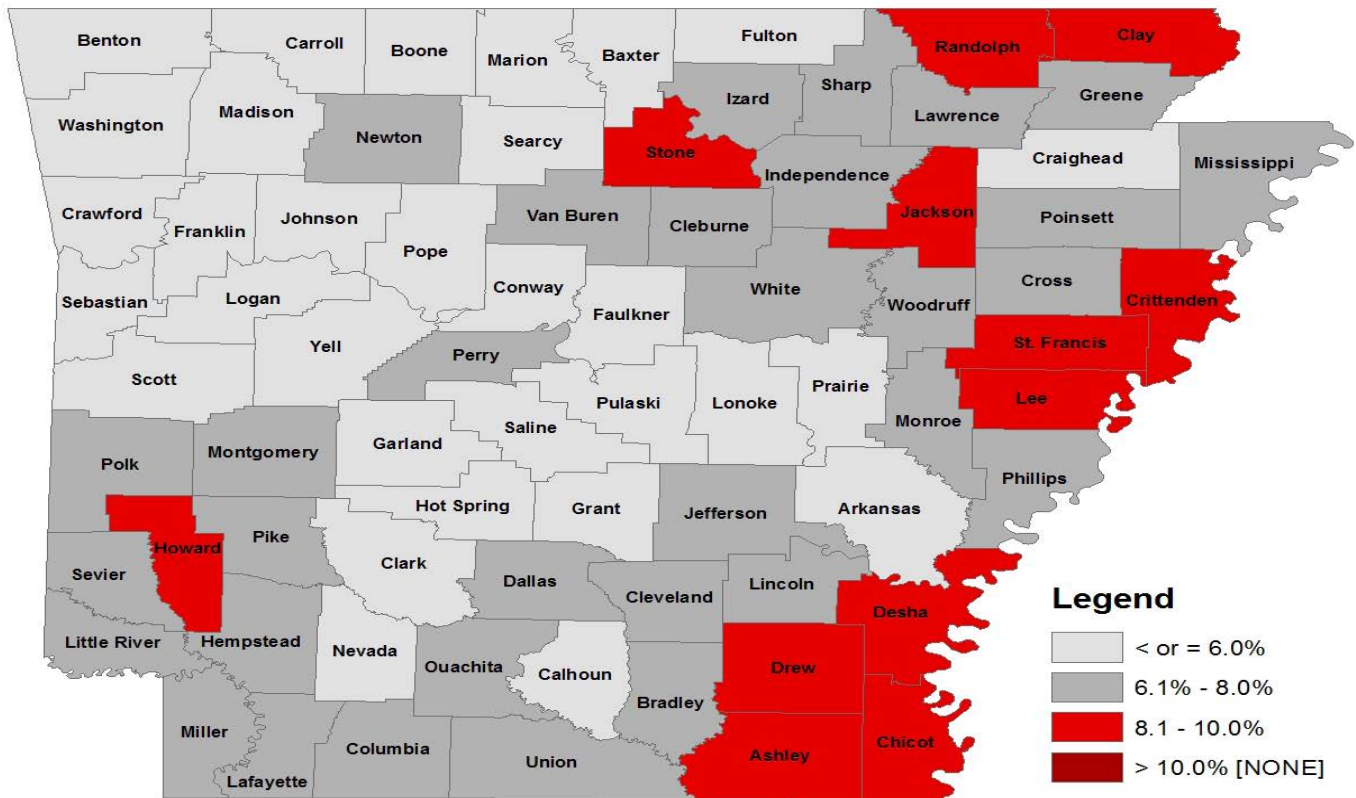
<u>Rank</u>	<u>County</u>	<u>Rate</u>
1	Washington	3.9
2	Madison	4.0
3	Arkansas	4.2
4	Benton	4.3
5	Scott	4.4

Highest Rates

<u>Rank</u>	<u>County</u>	<u>Rate</u>
72	Howard	9.3
73	Desha	9.4
74	Chicot	9.7
74	Crittenden	9.7

Civilian Labor Force Statistics

For complete County Labor Force Statistics, please visit our website at www.discover.arkansas.gov



Technical Notes

The *Arkansas Labor Market* is prepared monthly in conjunction with the U.S. Department of Labor, Bureau of Labor Statistics (BLS). The current month's estimates are preliminary, while previous data are subject to revision.

Estimates of nonfarm payroll jobs show the number of jobs by industry and reflect employment by place of work. Hours and earnings estimates are based on payroll and worker-hour data collected for production workers in manufacturing industries.

Industries are classified according to the North American Industry Classification System (NAICS). All estimates are based on a first quarter 2013 benchmark.

Explanation of Terms and Concepts

Monthly Business Survey of Employers

A monthly sample survey designed to provide industry information on nonfarm payroll jobs. Data are compiled each month from mail surveys and telephone interviews conducted by the Bureau of Labor Statistics in cooperation with Department of Workforce Services. The data are based on establishment records and include all workers, full- or part-time, who received pay during the payroll period which includes the 12th

of the month. Approximately 5,000 Arkansas business establishments are surveyed.

Metropolitan Statistical Area (MSA)

A term applied by the U.S. Office of Management and Budget to counties that have one or more central cities and that meet specified criteria of population density, commuting patterns and social and economic integration.

Current Population Survey (CPS)

A monthly sample survey of the population 16 years of age and over, designed to provide data on the labor force, the employed and the unemployed. The survey is conducted each month by the Bureau of the Census for BLS. The information is collected by trained interviewers from a sample of about 60,000 households. The data collected are based on the activity reported for the calendar week including the 12th of the month. Approximately 800 Arkansas households are represented in the sample survey.

Civilian Labor Force

The sum of all employed and unemployed persons 16 years of age or older. Members of the Armed Forces are excluded.

Employment

An estimate of the number of persons who worked any time for pay or profit or worked 15 hours or more as unpaid workers in a family business during the calendar week which includes the 12th of the month. Also included are those who, although not working, had some job attachment and were not looking for work, and persons involved in labor management disputes.

Unemployment

An estimate of the number of persons who did not have a job, but were available for work and actively seeking work during the calendar week which includes the 12th of the month.

Unemployment Rate

The number of unemployed as a percentage of the civilian labor force. Unemployment rates are calculated from unrounded data.

Seasonal Adjustment

A statistical technique applied to monthly data to eliminate changes that normally occur during the year due to seasonal events such as weather, major holidays, schedule shifts, harvest times, and the opening/closing of schools.

Arkansas Labor Market

December 2014

The *Arkansas Labor Market* is produced by the Department of Workforce Services, Bureau of Labor Statistics. All Statistics are published in cooperation with the United States Department of Labor, Bureau of Labor Statistics.

Auxiliary aids and services are available upon request to individuals with disabilities.

Voice: 1-800-285-1121

TDD: 1-800-285-1131



Department of Workforce Services
Bureau of Labor Statistics
P.O. Box 2981
Little Rock, AR 72203-2981