

Arkansas Labor Market

November 2011

Employment Headlines

Arkansas' Unemployment Rate Drops to 8.0 Percent

Nonfarm Payroll Jobs Up 5,300 in November

Employment Quick Facts

Unemployment Rates

Seasonally Adjusted

	<u>Nov 11</u>	<u>Oct 11</u>	<u>Nov 10</u>
AR Unemployment Rate	8.0	8.2	7.9
US Unemployment Rate	8.6	9.0	9.8

Nonfarm Payroll Summary

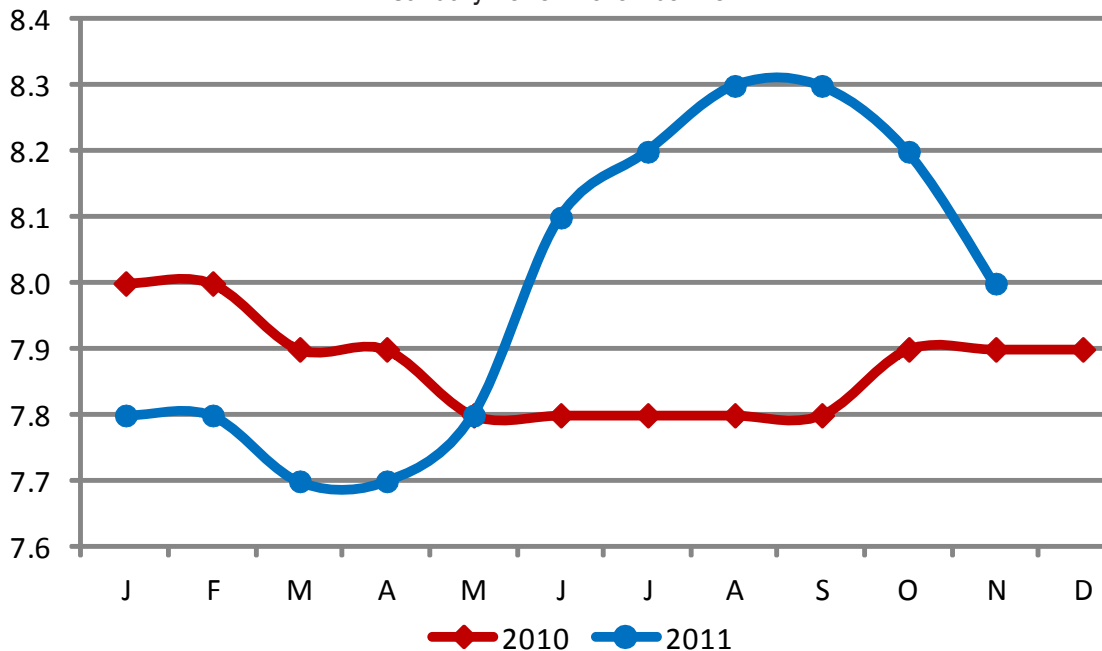
State of Arkansas

	<u>Nov 11</u>	<u>Oct 11</u>	<u>Nov 10</u>
Total Nonfarm	1,186,000	1,180,700	1,178,600
Goods Producing	214,000	214,900	218,200
Service Providing	972,000	965,800	960,400

Unemployment Rates (Seasonally Adjusted)

State of Arkansas

January 2010 - November 2011



Nonfarm Payroll Employment

State of Arkansas

October 2011 - November 2011

Nonfarm payroll jobs in Arkansas increased 5,300 in November 2011 to total 1,186,000. Eight major industry sectors posted gains, more than offsetting declines in three sectors. Jobs in **trade, transportation, and utilities** rose 3,900. Most of the additions were seasonal, with retail trade adding 3,800 jobs for the holidays. Employment in **educational and health services** increased 2,100. Most of the gain occurred in social assistance (+1,200). **Manufacturing** added 900 jobs, posted in both nondurable (+500) and durable (+400) goods manufacturing. Employment in **construction** fell 1,600. **Leisure and hospitality** declined 1,300. Decreases were seasonal and spread throughout all subsectors, with arts-entertainment-recreation posting the largest drop (-900).

November 2010 - November 2011

Since November 2010, Arkansas' nonfarm payroll employment increased 7,400. Seven major industry sectors enjoyed growth, with three sectors adding 3,300 or more jobs, each. **Government** posted the largest gain (+4,100). Most of the increase occurred in local government (+4,500). **Professional and business services** added 3,300 jobs. A majority of the growth occurred in administrative and support services (+3,100). **Educational and health services** increased 3,300. Most of the gains were attributed to expansions in health care and social assistance (+1,900). Jobs in **manufacturing** decreased 4,700.

Nonfarm Payroll Jobs

(NAICS)	Nov 11	Oct 11	Nov 10
Total Nonfarm	1,186,000	1,180,700	1,178,600
Goods Producing	214,000	214,900	218,200
Mining & Logging	10,700	10,900	10,500
Construction	47,700	49,300	47,400
Specialty Trade Contractors	28,400	29,100	28,100
Manufacturing	155,600	154,700	160,300
Durable Goods	76,500	76,100	78,200
Nondurable Goods	79,100	78,600	82,100
Service Providing	972,000	965,800	960,400
Trade, Transportation & Utilities	237,200	233,300	239,200
Wholesale Trade	45,900	45,700	46,100
Retail Trade	131,500	127,700	132,900
Transportation, Warehousing & Utilities	59,800	59,900	60,200
Information	15,600	15,500	15,600
Financial Activities	50,300	50,200	48,700
Finance & Insurance	36,700	36,600	35,200
Real Estate & Rental & Leasing	13,600	13,600	13,500
Professional & Business Services	122,300	122,200	119,000
Professional, Scientific & Technical	37,600	37,800	37,400
Management of Companies	26,500	26,700	26,500
Administrative & Support Services	58,200	57,700	55,100
Educational & Health Services	172,400	170,300	169,100
Health Care & Social Assistance	156,600	154,800	154,700
Ambulatory Health Care	46,500	45,900	46,400
Social Assistance	35,700	34,500	34,600
Leisure & Hospitality	103,500	104,800	102,200
Arts, Entertainment & Recreation	9,000	9,900	8,900
Accommodation & Food Services	94,500	94,900	93,300
Accommodation Services	11,300	11,500	11,300
Food Services	83,200	83,400	82,000
Other Services	45,600	45,200	45,600
Government	225,100	224,300	221,000
Federal Government	20,100	20,400	21,000
State Government	78,000	77,700	77,500
Local Government	127,000	126,200	122,500

Hours & Earnings of Arkansas Production Workers

(Manufacturing Industries)

	Average Weekly Earnings			Average Weekly Hours			Average Hourly Earnings		
	Nov 11	Oct 11	Nov 10	Nov 11	Oct 11	Nov 10	Nov 11	Oct 11	Nov 10
Manufacturing	\$595.50	\$593.17	\$575.56	40.4	40.6	41.2	\$14.74	\$14.61	\$13.97
Durable Goods	682.55	649.23	628.77	41.9	40.3	40.1	16.29	16.11	15.68
Nondurable Goods	515.19	540.60	530.45	39.0	40.8	42.2	13.21	13.25	12.57

Spotlight

A Comparative Look at Unemployment Rates

Unemployment rates began rising across the nation when the recession hit in late 2007. Though the national recession officially ended in the 1st quarter of 2009, jobless rates in many states continue to remain fairly high. Because of differing economies and labor force conditions, some states' unemployment rates reached higher levels or declined at a slower rate, compared to other states. In November 2011, state jobless rates ranged from a low of 3.4 percent in North Dakota to a high of 13.0 percent in Nevada.

In terms of the unemployment rate, Arkansas fared the economic recession better than the majority of other states, though Arkansas' jobless rate has not yet returned to the levels enjoyed before the recession. This month, Arkansas posted a seasonally adjusted unemployment rate of 8.0 percent, ranking 25th out of 51 (includes the District of Columbia). Twenty-four states posted higher unemployment rates this month than Arkansas. Also, Arkansas enjoys a jobless rate that is six-tenths of a percentage point lower than the national rate.

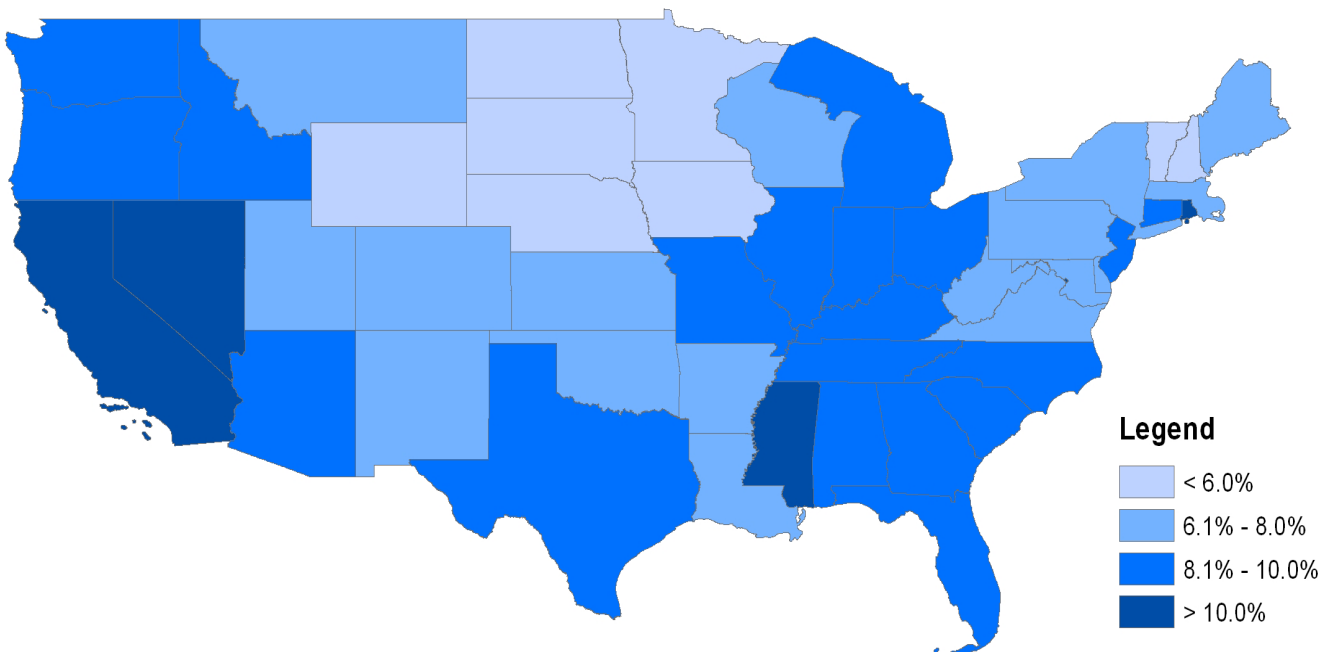
While unemployment in Arkansas is currently average relative to other states, this has not always been the case. When comparing annual average rates over the last five years, Arkansas only recently began to improve in the ranking. Since 2005, Arkansas' annual average unemployment rate ranking has ranged from a high of 42nd in 2006 and 2007 to a low of 17th in 2009 and 2010.

Unemployment Rates by Rank
(Seasonally Adjusted)
November 2011

Rank	State	Rate	Rank	State	Rate
1	North Dakota	3.4	25	New York	8.0
2	Nebraska	4.1	28	Texas	8.1
3	South Dakota	4.3	29	Missouri	8.2
4	New Hampshire	5.2	30	Connecticut	8.4
5	Vermont	5.3	31	Idaho	8.5
6	Iowa	5.7	31	Ohio	8.5
7	Wyoming	5.8	33	Alabama	8.7
8	Minnesota	5.9	33	Arizona	8.7
9	Oklahoma	6.1	33	Washington	8.7
10	Virginia	6.2	36	Indiana	9.0
11	Utah	6.4	37	New Jersey	9.1
12	Hawaii	6.5	37	Oregon	9.1
12	Kansas	6.5	37	Tennessee	9.1
12	New Mexico	6.5	40	Kentucky	9.4
15	Louisiana	6.9	41	Michigan	9.8
15	Maryland	6.9	42	Georgia	9.9
17	Maine	7.0	42	South Carolina	9.9
17	Massachusetts	7.0	44	Florida	10.0
19	Montana	7.1	44	Illinois	10.0
20	Alaska	7.3	44	North Carolina	10.0
20	Wisconsin	7.3	47	Mississippi	10.5
22	Delaware	7.6	47	Rhode Island	10.5
23	Pennsylvania	7.9	49	District of Columbia	10.6
23	West Virginia	7.9	50	California	11.3
25	Arkansas	8.0	51	Nevada	13.0
25	Colorado	8.0			

U.S. Unemployment Rate = 8.6 Percent

Unemployment Rates by State (Seasonally Adjusted)
November 2011



Continental U.S. Only

Metropolitan Statistical Areas

Little Rock-North Little Rock-Conway MSA

Nonfarm Payroll Jobs

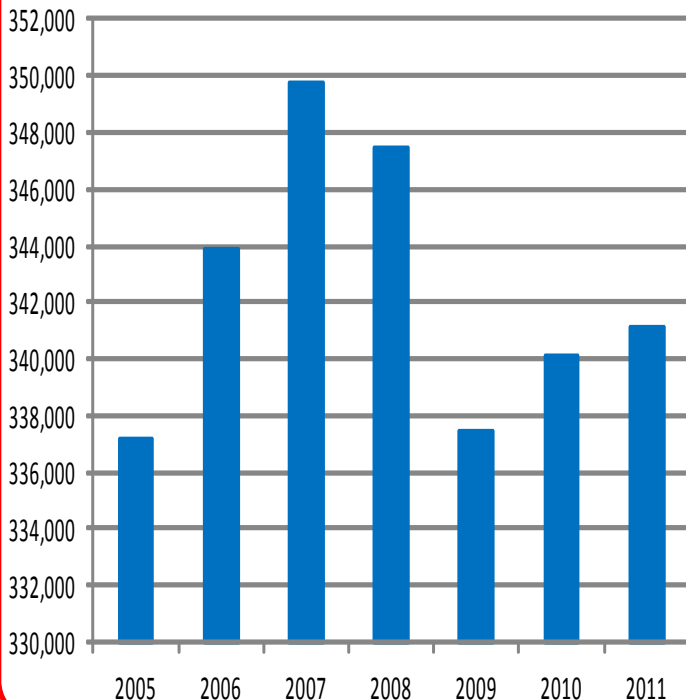
(NAICS)	Nov 11	Oct 11	Nov 10
Total Nonfarm	341,100	338,100	340,100
Goods Producing	36,900	37,400	36,400
Mining, Logging & Construction	17,400	17,900	16,500
Manufacturing	19,500	19,500	19,900
Service Providing	304,200	300,700	303,700
Trade, Transportation & Utilities	65,000	62,500	65,300
Wholesale Trade	16,800	16,500	16,800
Retail Trade	36,600	34,600	36,300
Trans., Warehousing & Utilities	11,600	11,400	12,200
Information	7,600	7,600	7,800
Financial Activities	18,600	18,600	18,500
Professional & Business Services	44,900	45,400	43,800
Educational & Health Services	50,000	49,500	52,100
Leisure & Hospitality	31,700	31,100	30,100
Other Services	14,900	14,800	14,700
Government	71,500	71,200	71,400
Federal Government	9,300	9,400	9,500
State Government	34,200	34,000	33,900
Local Government	28,000	27,800	28,000

(The following counties make up the LR-NLR-Conway MSA:
Faulkner, Grant, Lonoke, Perry, Pulaski, and Saline.)

Civilian Labor Force Statistics

	Nov 11	Oct 11	Nov 10
Civilian Labor Force	343,575	343,325	343,575
Employment	321,825	320,200	321,150
Unemployment	21,750	23,125	22,425
Unemployment Rate	6.3	6.7	6.5

Nonfarm Payroll Jobs
November: 2005 - 2011



Fayetteville-Springdale-Rogers MSA

Nonfarm Payroll Jobs

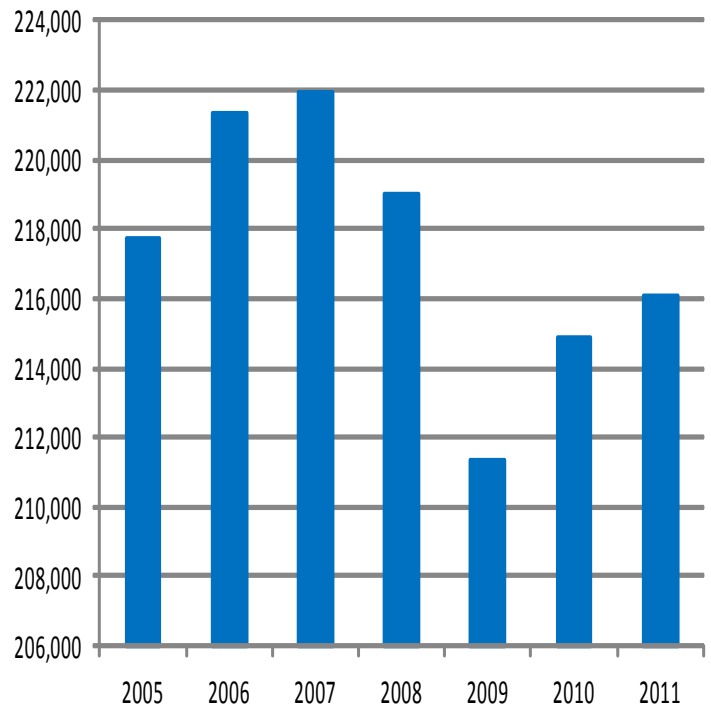
(NAICS)	Nov 11	Oct 11	Nov 10
Total Nonfarm	204,200	203,500	203,200
Goods Producing	36,000	35,800	37,000
Mining, Logging & Construction	8,000	8,100	7,900
Manufacturing	28,000	27,700	29,100
Service Providing	168,200	167,700	166,200
Trade, Transportation & Utilities	44,700	44,200	45,000
Wholesale Trade	8,800	8,800	8,800
Retail Trade	20,800	20,300	21,100
Trans., Warehousing & Utilities	15,100	15,100	15,100
Information	2,200	2,000	2,100
Financial Activities	7,100	7,100	7,200
Professional & Business Services	35,300	35,300	34,700
Educational & Health Services	22,900	22,800	22,500
Leisure & Hospitality	19,000	19,200	18,600
Other Services	6,900	6,900	6,800
Government	30,100	30,200	29,300
Federal Government	2,300	2,400	2,400
State Government	10,200	10,300	9,700
Local Government	17,600	17,500	17,200

(The following counties make up the FSR MSA:
Benton, Madison, and Washington in Arkansas and McDonald in Missouri.)

Civilian Labor Force Statistics

	Nov 11	Oct 11	Nov 10
Civilian Labor Force	228,600	228,400	228,275
Employment	216,050	214,900	214,900
Unemployment	12,550	13,500	13,375
Unemployment Rate	5.5	5.9	5.9

Number of Employed
November: 2005 - 2011



Metropolitan Statistical Areas

Fort Smith MSA

Nonfarm Payroll Jobs

(NAICS)	Nov 11	Oct 11	Nov 10
Total Nonfarm	116,100	116,500	117,400
Goods Producing	28,300	28,300	28,400
Mining, Logging & Construction	7,600	7,700	7,200
Manufacturing	20,700	20,600	21,200
Service Providing	87,800	88,200	89,000
Trade, Transportation & Utilities	23,800	23,800	24,200
Wholesale Trade	3,900	4,000	4,000
Retail Trade	12,800	12,600	13,000
Trans., Warehousing & Utilities	7,100	7,200	7,200
Information	1,100	1,100	1,200
Financial Activities	4,100	4,100	4,100
Professional & Business Services	11,800	12,000	11,800
Educational & Health Services	16,000	16,200	16,200
Leisure & Hospitality	8,900	9,000	8,700
Other Services	3,600	3,600	3,700
Government	18,500	18,400	19,100
Federal Government	1,600	1,600	1,600
State Government	3,700	3,700	3,800
Local Government	13,200	13,100	13,700

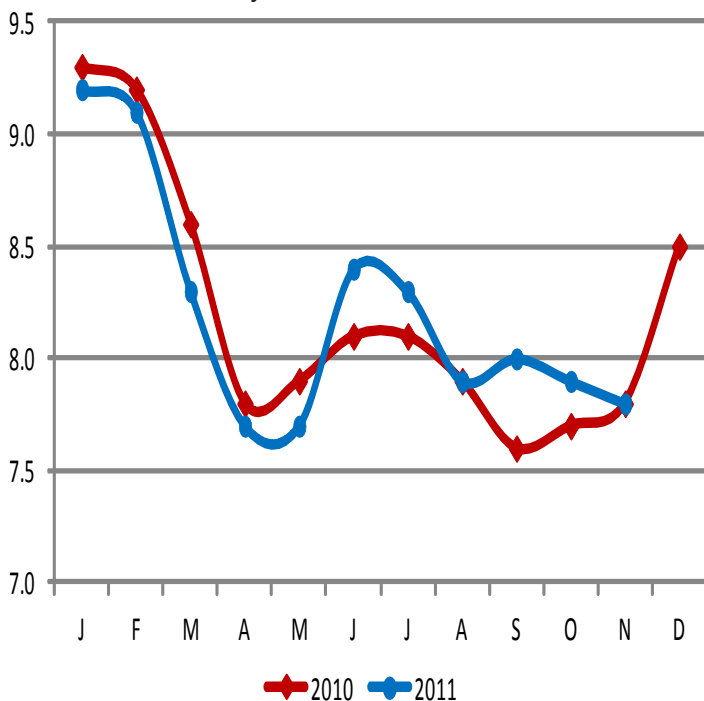
(The following counties make up the Fort Smith MSA: Crawford, Franklin, and Sebastian in Arkansas and LeFlore and Sequoyah in Oklahoma.)

Civilian Labor Force Statistics

	Nov 11	Oct 11	Nov 10
Civilian Labor Force	132,050	132,250	134,100
Employment	121,825	121,750	123,575
Unemployment	10,225	10,500	10,525
Unemployment Rate	7.8	7.9	7.8

Unemployment Rates

January 2010 - November 2011



Hot Springs MSA

Nonfarm Payroll Jobs

(NAICS)	Nov 11	Oct 11	Nov 10
Total Nonfarm	39,600	39,700	37,000
Goods Producing	4,100	4,100	4,100
Service Providing	35,500	35,600	32,900
Government	5,500	5,500	4,800

(The following county makes up the Hot Springs MSA: Garland.)

Civilian Labor Force Statistics

	Nov 11	Oct 11	Nov 10
Civilian Labor Force	44,375	44,500	41,900
Employment	41,250	41,300	38,700
Unemployment	3,125	3,200	3,200
Unemployment Rate	7.0	7.2	7.7

Jonesboro MSA

Nonfarm Payroll Jobs

(NAICS)	Nov 11	Oct 11	Nov 10
Total Nonfarm	49,300	48,800	49,500
Goods Producing	8,400	8,500	8,600
Service Providing	40,900	40,300	40,900
Government	9,100	9,000	9,000

(The following counties make up the Jonesboro MSA: Craighead and Poinsett.)

Civilian Labor Force Statistics

	Nov 11	Oct 11	Nov 10
Civilian Labor Force	57,800	57,250	58,225
Employment	54,100	53,325	54,125
Unemployment	3,700	3,925	4,100
Unemployment Rate	6.4	6.8	7.0

Pine Bluff MSA

Nonfarm Payroll Jobs

(NAICS)	Nov 11	Oct 11	Nov 10
Total Nonfarm	36,400	36,600	37,000
Goods Producing	7,400	7,500	7,500
Service Providing	29,000	29,100	29,500
Government	10,900	11,000	11,000

(The following counties make up the PB MSA: Cleveland, Jefferson, and Lincoln.)

Civilian Labor Force Statistics

	Nov 11	Oct 11	Nov 10
Civilian Labor Force	43,025	43,400	43,850
Employment	39,025	39,325	39,775
Unemployment	4,000	4,075	4,075
Unemployment Rate	9.3	9.4	9.3

Civilian Labor Force Statistics

State of Arkansas

(Seasonally Adjusted)

(Not Seasonally Adjusted)

	<u>Nov 11</u>	<u>Oct 11</u>	<u>Nov 10</u>	<u>OTM</u>	<u>OTY</u>	<u>Nov 11</u>	<u>Oct 11</u>	<u>Nov 10</u>	<u>OTM</u>	<u>OTY</u>
Civilian Labor Force	1,365,000	1,358,300	1,358,600	6,700	6,400	1,366,000	1,362,900	1,355,400	3,100	10,600
Employment	1,256,500	1,246,500	1,251,700	10,000	4,800	1,267,900	1,262,000	1,254,900	5,900	13,000
Unemployment	108,500	111,800	106,900	-3,300	1,600	98,100	100,900	100,500	-2,800	-2,400
Unemployment Rate	8.0	8.2	7.9	-0.2	0.1	7.2	7.4	7.4	-0.2	-0.2
U.S. Unemployment Rate	8.6	9.0	9.8	-0.4	-1.2	8.2	8.5	9.3	-0.3	-1.1

Out-of-State MSAs

Memphis, Tennessee

Texarkana, Texas

	<u>Nov 11</u>	<u>Oct 11</u>	<u>Nov 10</u>
Civilian Labor Force	628,625	628,450	607,450
Employment	570,625	565,775	548,275
Unemployment	58,000	62,675	59,175
Unemployment Rate	9.2	10.0	9.7

	<u>Nov 11</u>	<u>Oct 11</u>	<u>Nov 10</u>
Civilian Labor Force	65,900	65,525	65,475
Employment	61,375	60,650	60,800
Unemployment	4,525	4,875	4,675
Unemployment Rate	6.9	7.4	7.1

Unemployment Rates by County

Between October and November, unemployment rates declined in 55 of Arkansas' 75 counties. Fourteen counties posted rate gains, while six remained constant. Jobless rates ranged from a low of 5.0 percent in Yell County to a high of 16.0 percent in Arkansas County.

In November, ten counties enjoyed unemployment rates at or below six percent. Nine counties posted rates at or above ten percent, down from eleven counties last month.

Compared to November 2010, jobless rates dropped in 52 counties. Twenty-one counties posted rates higher than this time last year, while two were the same.

Lowest Rates

<u>Rank</u>	<u>County</u>	<u>Rate</u>
1	Yell	5.0
2	Carroll	5.2
2	Washington	5.2
4	Johnson	5.5
5	Madison	5.6

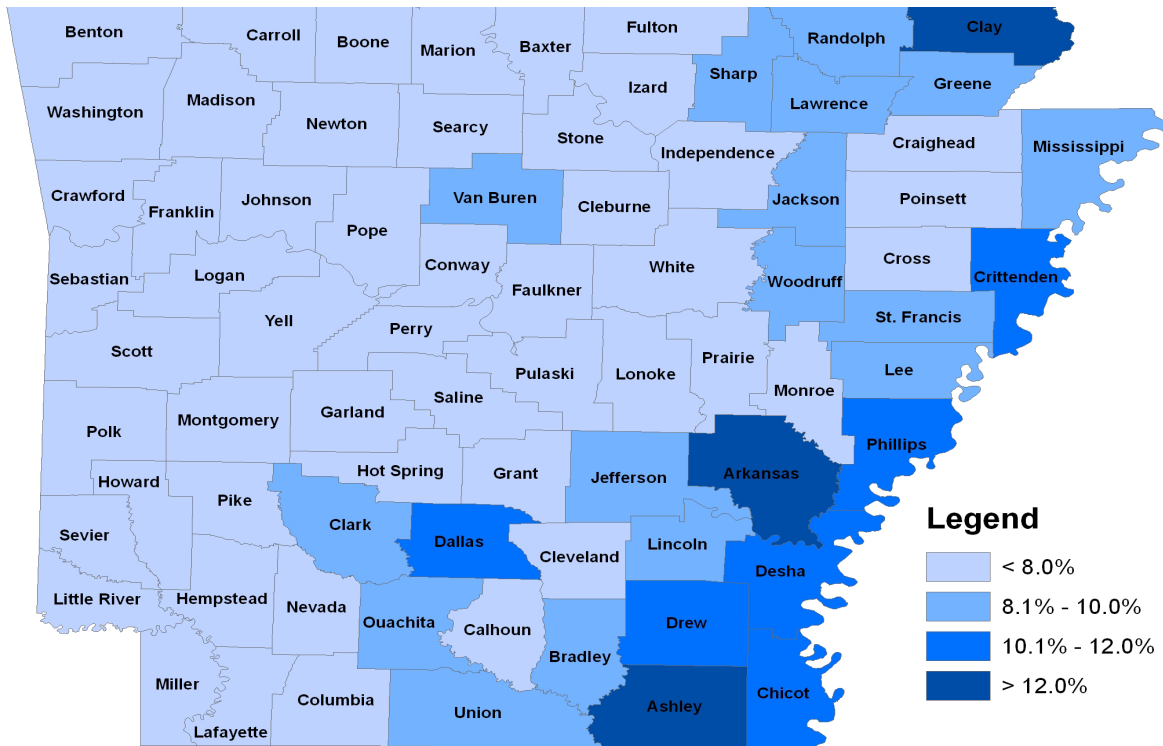
Highest Rates

<u>Rank</u>	<u>County</u>	<u>Rate</u>
72	Crittenden	11.4
73	Ashley	12.6
74	Clay	13.3
75	Arkansas	16.0

<u>Rank</u>	<u>County</u>	<u>Nov 11</u>	<u>Oct 11</u>	<u>Nov 10</u>	<u>Rank</u>	<u>County</u>	<u>Nov 11</u>	<u>Oct 11</u>	<u>Nov 10</u>
75	Arkansas	16.0	15.5	16.8	60	Lee	9.5	10.0	9.9
73	Ashley	12.6	9.5	10.0	57	Lincoln	9.2	9.0	8.6
33	Baxter	7.5	7.7	8.1	11	Little River	6.2	6.6	7.0
6	Benton	5.7	6.0	5.7	22	Logan	7.0	7.4	7.3
19	Boone	6.7	7.1	6.5	9	Lonoke	6.0	6.3	6.5
63	Bradley	9.7	9.6	9.5	5	Madison	5.6	5.6	6.1
35	Calhoun	7.6	8.5	9.5	46	Marion	7.9	8.1	9.1
2	Carroll	5.2	5.0	5.8	7	Miller	5.9	5.5	5.4
71	Chicot	10.6	10.8	10.9	58	Mississippi	9.3	9.5	10.5
62	Clark	9.6	10.3	7.8	40	Monroe	7.8	8.2	8.1
74	Clay	13.3	13.3	12.6	33	Montgomery	7.5	7.6	8.5
16	Cleburne	6.4	6.7	6.8	49	Nevada	8.0	8.9	9.3
31	Cleveland	7.4	7.8	8.0	27	Newton	7.2	7.6	7.2
39	Columbia	7.7	8.1	8.5	55	Ouachita	9.1	8.1	7.8
22	Conway	7.0	7.7	7.6	31	Perry	7.4	8.4	7.0
11	Craighead	6.2	6.7	6.7	68	Phillips	10.3	10.5	9.4
40	Crawford	7.8	8.0	7.9	40	Pike	7.8	8.1	9.4
72	Crittenden	11.4	10.4	11.4	35	Poinsett	7.6	7.6	8.6
40	Cross	7.8	8.0	8.1	27	Polk	7.2	7.7	7.2
67	Dallas	10.2	10.0	10.0	16	Pope	6.4	6.6	7.2
69	Desha	10.4	10.3	10.8	46	Prairie	7.9	8.6	8.3
70	Drew	10.5	10.0	10.5	14	Pulaski	6.3	6.6	6.6
20	Faulkner	6.9	7.8	6.6	66	Randolph	9.9	9.3	9.0
20	Franklin	6.9	7.5	6.4	58	St. Francis	9.3	9.8	9.6
14	Fulton	6.3	6.7	6.7	9	Saline	6.0	6.3	6.3
22	Garland	7.0	7.2	7.7	7	Scott	5.9	6.5	6.4
11	Grant	6.2	6.7	6.4	26	Searcy	7.1	7.6	7.9
55	Greene	9.1	9.3	9.6	46	Sebastian	7.9	7.8	7.5
35	Hempstead	7.6	7.7	8.6	22	Sevier	7.0	7.3	6.2
18	Hot Spring	6.5	6.8	7.0	53	Sharp	8.8	9.2	8.7
29	Howard	7.3	7.8	8.0	49	Stone	8.0	8.7	8.2
29	Independence	7.3	7.7	7.3	53	Union	8.8	9.0	9.8
40	Izard	7.8	7.8	8.8	51	Van Buren	8.1	8.5	9.4
63	Jackson	9.7	9.7	10.1	2	Washington	5.2	5.6	5.7
60	Jefferson	9.5	9.7	9.5	35	White	7.6	7.9	7.9
4	Johnson	5.5	5.9	7.0	63	Woodruff	9.7	9.6	10.2
40	Lafayette	7.8	8.5	9.6	1	Yell	5.0	5.6	6.2
52	Lawrence	8.3	8.3	8.9					

Civilian Labor Force Statistics

For complete County Labor Force Statistics, please visit our website at www.discover.arkansas.gov



Technical Notes

The *Arkansas Labor Market* is prepared monthly in conjunction with the U.S. Department of Labor, Bureau of Labor Statistics (BLS). The current month's estimates are preliminary, while previous data are subject to revision.

Estimates of nonfarm payroll jobs show the number of jobs by industry and reflect employment by place of work. Hours and earnings estimates are based on payroll and worker-hour data collected for production workers in manufacturing industries.

Industries are classified according to the North American Industry Classification System (NAICS). All estimates are based on a first quarter 2010 benchmark.

Explanation of Terms and Concepts

Monthly Business Survey of Employers

A monthly sample survey designed to provide industry information on nonfarm payroll jobs. Data are compiled each month from mail surveys and telephone interviews conducted by the Bureau of Labor Statistics in cooperation with Department of Workforce Services. The data are based on establishment records and include all workers, full-or part-time, who received pay during the payroll period which includes the 12th of the

month. Approximately 3,000 Arkansas business establishments are surveyed.

Metropolitan Statistical Area (MSA)

A term applied by the U.S. Office of Management and Budget to counties that have one or more central cities and that meet specified criteria of population density, commuting patterns and social and economic integration.

Current Population Survey (CPS)

A monthly sample survey of the population 16 years of age and over, designed to provide data on the labor force, the employed and the unemployed. The survey is conducted each month by the Bureau of the Census for BLS. The information is collected by trained interviewers from a sample of about 60,000 households. The data collected are based on the activity reported for the calendar week including the 12th of the month. Approximately 800 Arkansas households are represented in the sample survey.

Civilian Labor Force

The sum of all employed and unemployed persons 16 years of age or older. Members of the Armed Forces are excluded.

Employment

An estimate of the number of persons who worked any time for pay or profit or worked 15 hours or more as unpaid workers in a family business during the calendar week which includes the 12th of the month. Also included are those who, although not working, had some job attachment and were not looking for work, and persons involved in labor management disputes.

Unemployment

An estimate of the number of persons who did not have a job, but were available for work and actively seeking work during the calendar week which includes the 12th of the month.

Unemployment Rate

The number of unemployed as a percentage of the civilian labor force. Unemployment rates in this publication are calculated from unrounded data.

Seasonal Adjustment

A statistical technique applied to monthly data to eliminate changes that normally occur during the year due to seasonal events such as weather, major holidays, shifts in schedules, harvest times, and the opening/closing of schools.

Arkansas Labor Market

November 2011

The *Arkansas Labor Market* is produced by the Department of Workforce Services, Bureau of Labor Statistics. All Statistics are published in cooperation with the United States Department of Labor, Bureau of Labor Statistics.

Equal Opportunity Employer/Program

Auxiliary aids and services are available upon request to individuals with disabilities.



Voice: 1-800-285-1121

TDD: 1-800-285-1131

Mike Beebe- Governor
Artee Williams- DWS Director



Department of Workforce Services
Bureau of Labor Statistics
P.O. Box 2981
Little Rock, AR 72203-2981